



**WEATHER**

November 7	69	38
November 8	78	33
November 9	79	34
November 10	68	28

# BAILEY COUNTY JOURNAL

*'The Community Of Opportunity-Where Water Makes the Difference'*

Vol. 22, Number 46

16 Pages Today

Published Every Sunday at Muleshoe, Bailey County, Texas 79347

Sunday, November 12, 1984

## Republicans 'Sweep' Top Electoral Spots

### Harlem Thrillers Will Meet Coaches In Action Here

Basketball --showball--clownball--funball--or whatever you might want to call it, there is one thing for sure--you will be thrilled when you see the 'Fantastic Harlem Thrillers' in action, led by their dribbling ace, Ice Douglass and Set Shot Artist Bingo Knight.

Muleshoe High School DECA presents the 1984-85 edition of the Harlem Thrillers, who will bring their fulfilled show to Watson Junior High School gym, Monday night, November 12.

Game time is set for 8 p.m. Art "Bones" Smith, the Crown Prince of basketball will also be on hand with his bag of gags. This will be one of the greatest sports attractions ever to stop in Muleshoe.

Grade school basketball fans are encouraged to come early, dressed in gym cloths to get shooting and dribbling tips as well as autographs from members of the Harlem Thrillers.

Con't Page 6, Col. 4



Bob Phillips said the fund project for Jamie Newsom, 20 month old resident of Tahoka, has passed the \$2200 mark in Muleshoe. The youngster needs more than \$100,000 for a liver transplant which will be necessary to save his life.

Phillips, James Storie and the "Gentle Country" band all express their sincere appreciation to the many people who have opened their hearts and their pocketbooks for the youngster.

Contributions may still be made at the First National Bank to the Jaime Newsom Fund, or make contributions through Bob Phillips.

Jenny-slippers will meet for a regular luncheon meeting on Tuesday, November 13 in the back meeting room at the Muleshoe Public Library.

Margie Merritt said a good attendance is needed for the dinner which will feature turkey and dressing.

Nominations will be made for new officers. To be discussed will be the Holiday Barbecue Buffet and the Christmas Parade, as well as the Jenny-slippers Christmas float.

Con't Page 6, Col. 2

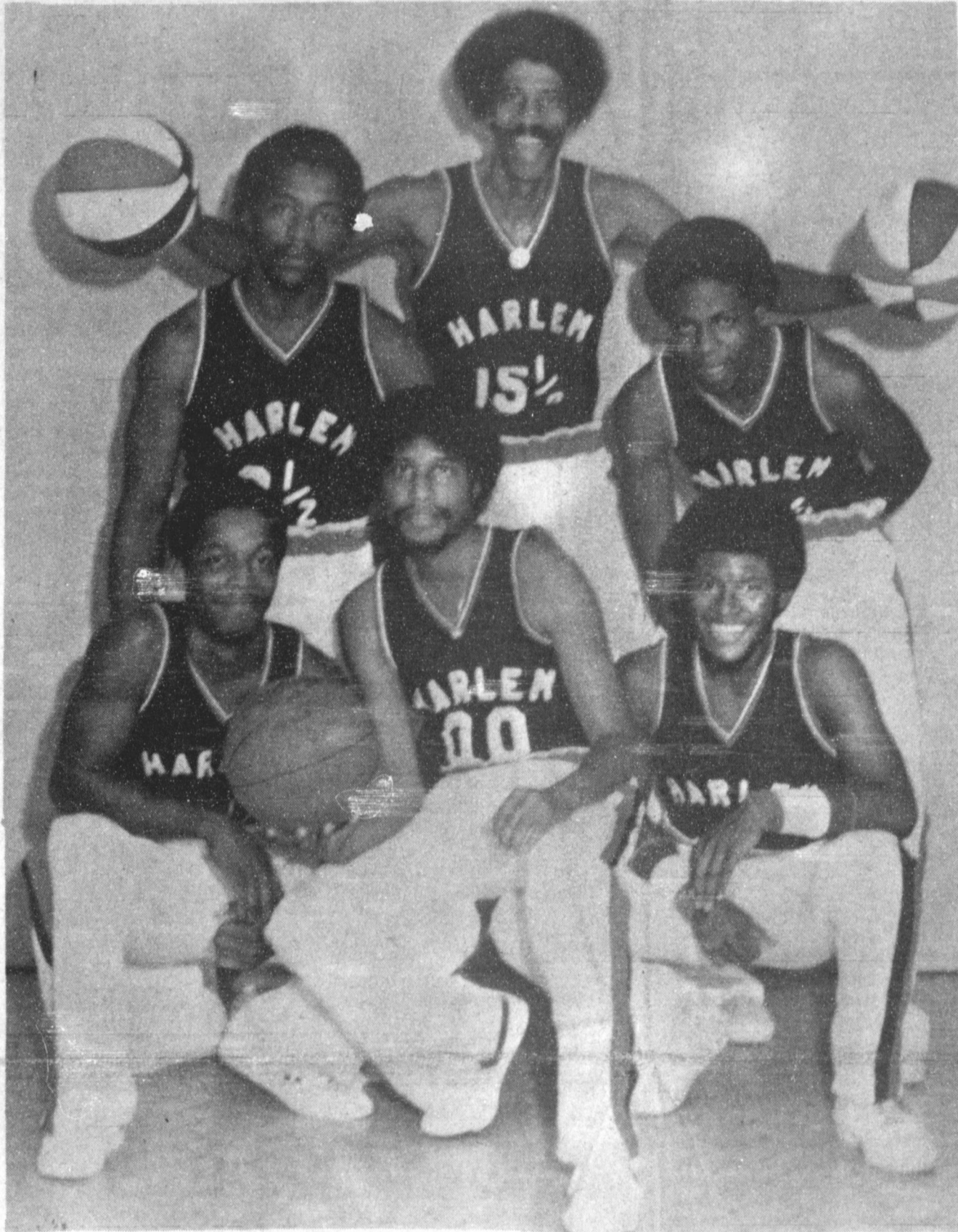
### 'Christmas Card Project' To Buy Movie Projector

"The Muleshoe area has always contributed so generously to the Muleshoe Hospital and Nursing Home Auxiliary in support of our work in the hospital and nursing home," said Dorothy Green, projects chairman for the Auxiliary.

"With your help, we feel we have accomplished so much. We believe that we have made life for the nursing home residents a little more comfortable and enjoyable," she continued.

"We have enlarged the day room into a more spacious room which is used for many occasions. These days, they are especially enjoying the wood burning fireplace. Soon, the day room and entire home will be decorated in the Christmas theme which will give them a little bit of home atmosphere. We have installed an AM-FM radio with speakers in the halls and dining room. Soon they will be enjoying Christmas music to add to the holiday season."

Mrs. Green said this year they have added three new televisions to the hospital/nursing home complex -- the



HARLEM THRILLERS

### South Plains Supports Reaga, Gramm, Combest

Traditionally a Democratic stronghold, Bailey County voters joined the rest of the nation last Tuesday in giving President Ronald Reagan an overwhelming victory and approval to serve a second four year term.

President Reagan received 1,888 votes in this county to 684 for Walter Mondale. In the nation, he received 52,413,468 popular votes and broke the record established by Franklin D. Roosevelt when he opposed Alf London and received 523 electoral votes. President Reagan received 525 electoral votes to topple the previous record as established in 1936.

Walter Mondale received 36,336,523 popular votes and 13 electoral votes, carrying only his home state of Minnesota and the District of Columbia.

This broke down to the President receiving 74.9 percent of the vote on the South Plains and 64 percent in the State of Texas. While Mondale got most of the rest of the presidential vote.

In another highly contested race, Republican Phil Gramm overpowered his Democratic opponent, Lloyd Doggett, in competition for the U.S. Senator seat being vacated by John

Tower. In this county, Gramm received 1,562 votes to 838 for Doggett. In the state, Gramm won by 59 percent and was victorious in the South Plains with 70.1 percent of the votes cast.

Republican Larry Combest narrowly failed to carry Bailey County in his bid for Congressman, 19th District, losing 1,423-1,206 to Democrat Don Richards.

However, Combest carried 58.25 percent of the vote in the district to win the post, while Richards had 41.75 percent. Districtwide, Combest received 102,849 votes to 73,717 for Richards.

In his home county of Lubbock, Combest won by 61 percent. He took Ector County by a 3 to 1 vote, and won

Con't Page 6, Col. 1

### Comptroller Mails Out Tax Checks

State Comptroller Bob Bullock sent checks totaling \$11.6 million to 221 counties and 425 cities as their third quarter share of the state's 10 percent mixed drink tax collected through October 1, 1984.

The Texas Legislature raised the rate to 12 percent, effective October 2.

Bullock said the state collected \$40.4 million in taxes on the sale of mixed drinks during the quarter, up 8.5 percent over the same period in 1983.

In Bailey County, the county received a check in the amount of \$957.64 on tax revenues reported at \$6,384.28. Muleshoe received a check in the amount of \$587.86 on reported tax revenues of \$3,919.05.

Cochran County's check was \$180.93 on their reported mixed drink tax of \$1,206.20.

Lamb County received the largest check, \$1,220.07 on their reported mixed drink tax of \$8,133.80. Littlefield's check was \$595.91 on their reported taxes of \$3,972.70.

For Parmer County, the check was \$49.28 on reported taxes of \$328.50.

Texas cities and counties each now receive a 15 percent

Con't Page 6, Col. 5

## Tax Rebate Checks Increasing For 1984

State Comptroller Bob Bullock last Monday sent checks totaling \$99.5 million in local tax payments to the 985 cities that levy the one-percent local sales tax.

"So far this year, we've sent 13 percent more money to these cities than we did last year," Bullock said. "And they can expect another increase next month as we begin sending them receipts we collect for the

new items and services that became taxable October 2. We'll be getting this extra money later in November and sending it to the city halls in December."

Muleshoe's check was in the amount of \$24,643.59, up 3.88 percent for the year. Last year, for the same month, Muleshoe received a check for \$19,607.74. This brought the yearly total to \$189,611.36, compared to the \$182,521.43 for the same time last year.

In Cochran County, Morton received a check for \$6,583.35. During the same month last year, Morton's check was \$7,239.05, reflecting a slight decrease. However, Morton has an overall increase in tax rebates for the year of 6.59

percent. Last year at this time, they had received \$42,633.29, up to \$45,444.15 at the same time this year.

For Littlefield, the gain this year in tax rebate checks has been increased by nearly nine percent. They show an increase for the year of 8.95 percent in tax rebates to the city. Their latest payment was \$29,310.25, down slightly from the \$30,950.40 for the same month last year. They do show the increase overall for receipts for

Con't Page 6, Col. 2

### Check Sminar Thursday Night Was Informative

On Thursday night, the Muleshoe Police Department and Muleshoe Chamber of Commerce and Agriculture jointly sponsored a 'hot check' seminar at the Bailey County Civic Center.

Presenting the program were Special Agent Feriks of the Secret Service; Lt. Parrigin and Trooper Fitzgeard of the DPS Driver's License Division Texas Department of Public Safety.

Attendance was small at the meeting, which was termed both interesting and informative.

Businesses represented included Lee's Western Wear, James Roy's Meat Market, Ben Franklin Store, Lambert's Cleaners, Higginbotham-Bartlett, Perry's Bratcher Motor and Supply. Also attending were Sgt. Wayne Holmes, Detective Julian Dominguez and Chief Les Irvin of the Muleshoe Police Department and Deputy Sheriff Jerry Hicks of the Bailey County Sheriff's office.

### Needmore Group Plans Dinner For Thanksgiving

It is time for the Needmore Thanksgiving Dinner, which is held annually on the Saturday evening preceding Thanksgiving.

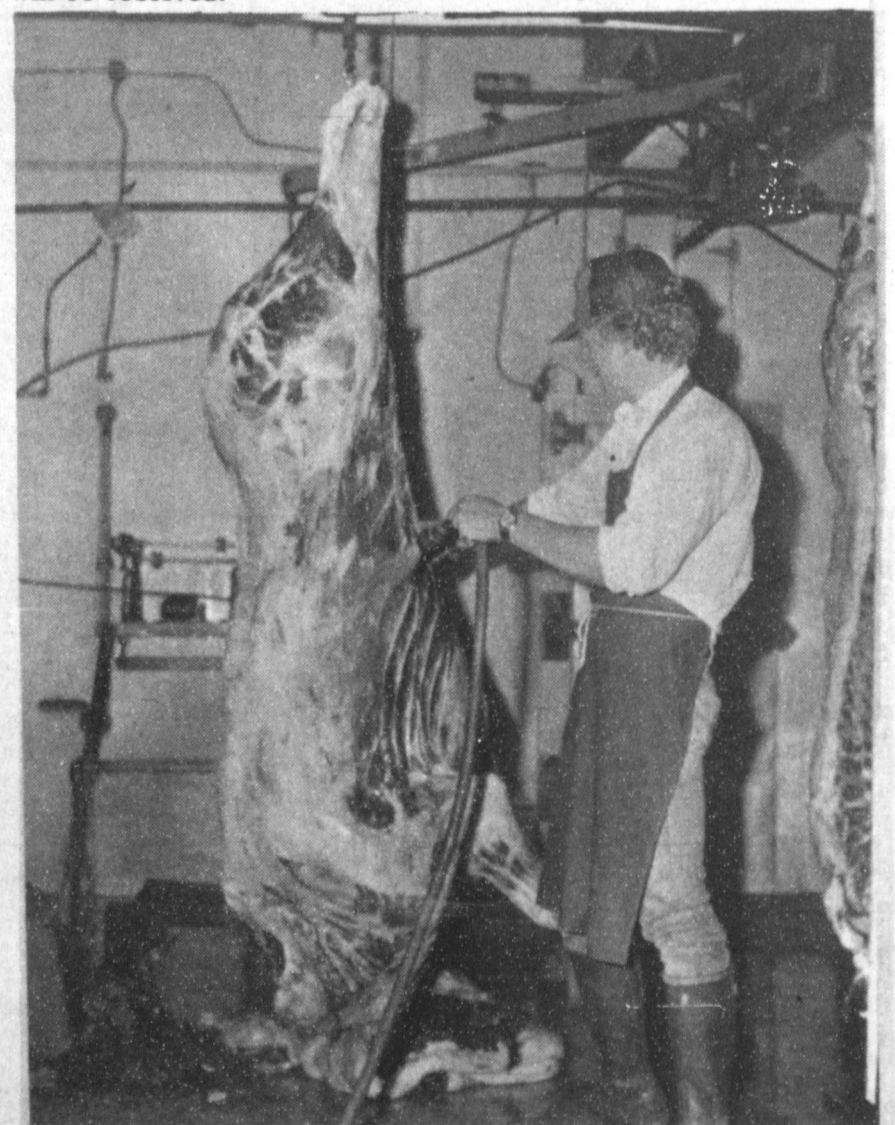
This year, the dinner will be in the Needmore Community Building beginning at 6 p.m. and continuing until everyone is served.

The popular dinner will feature turkey and dressing, with all the trimmings, including multi-choices for dessert and your choice of tea or coffee.

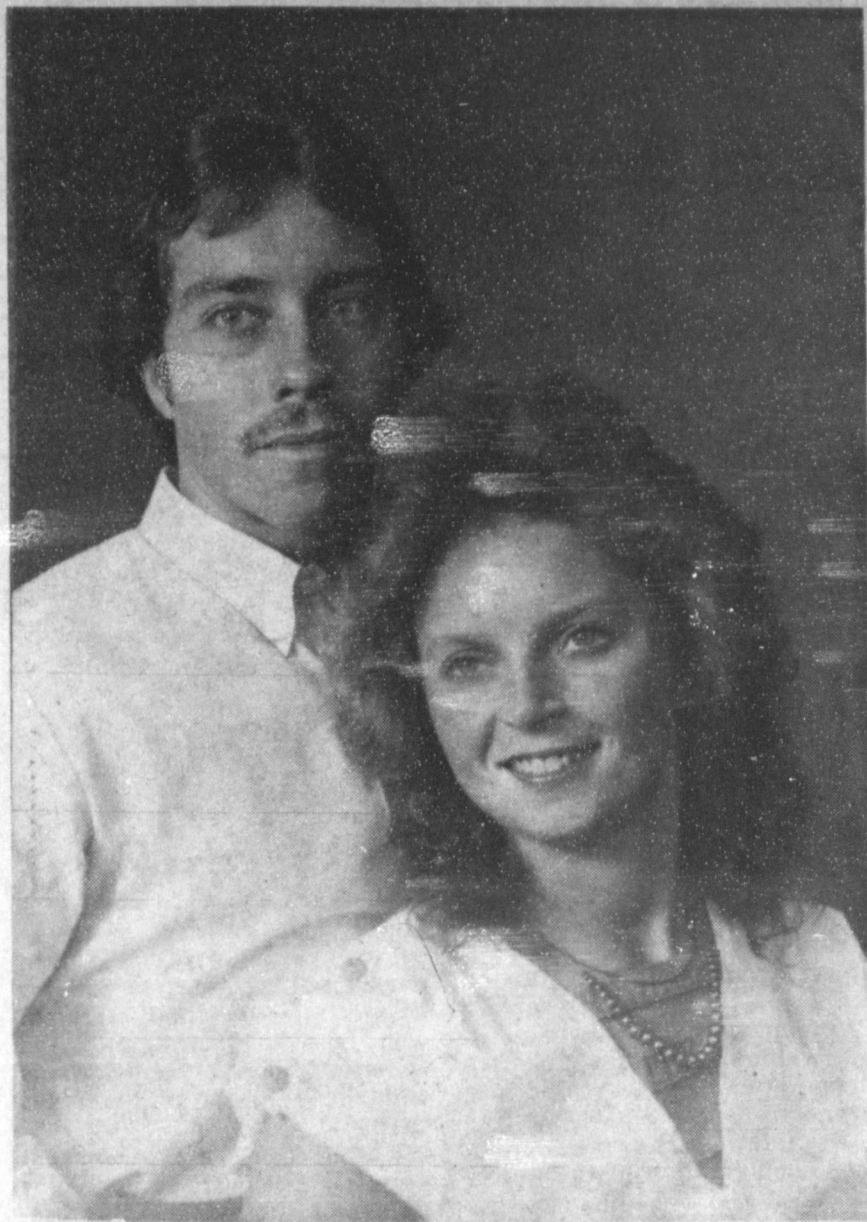
Tickets are \$4.50 for adults and \$2.50 for children under the age of 12.

In conjunction with the dinner, the Needmore Singers will be giving away a king-size quilt during the evening in a drawing.

Con't Page 6, Col. 2



BUFFALO BEING PROCESSED--Thursday, Winkler Meat Co. processed seven buffalo for Rod Porter, who resides north of Clovis, N.M. Porter donated one half of a large buffalo cow to Girlstown, U.S.A. and the other half to Boys Ranch of New Mexico. Processing for the buffalo was donated by Winkler Meat Co. Keith Langfitt is working on the buffalo.



**MARRIAGE ANNOUNCED**--Lonnie Wood of Muleshoe and Donna Thaden of Lubbock announce the marriage of their daughter, Melinda Kay to James Monroe Killam, son of Doris Killam of San Angelo. The couple were married on Oct. 27 in Lubbock, where they will make their home.



**POLISH HAM** makes an impressive main dish, especially appropriate with the onset of winter and the holiday season. †

## Enjoy impressive walnut glazed Polish ham

With the onset of the winter season and the holidays, Polish ham is always an impressive main dish for formal dinners or festive buffets. Polish canned ham is already cooked and ready to serve or to glaze and bake in any number of imaginative ways.

Polish ham has a superior flavor, is tender and juicy and is all lean meat, prepared under the most modern and scientific methods of curing and canning. It is economical to use as there is never a drop of waste and there are any number of ways to use leftovers.

A favorite with many, Walnut Glazed Polish Ham with Mushroom Stuffing is a simple but impressive main dish.

### Walnut Glazed Polish Ham with Mushroom Stuffing

- 1 5-pound canned Polish Ham
  - Mushroom stuffing (recipe follows)
  - ½ cup honey
  - 1 teaspoon dry mustard
  - ½ cup chopped walnuts
  - ½ teaspoon cracked pepper (optional)
  - Walnut halves as garnish
- Preheat oven to 350 degrees F.

With a sharp knife, make a deep pocket in the ham by cutting from the wide end to within 1 inch of outside surfaces. Pack the pocket with stuffing. Line a roasting pan with foil. Place ham in pan. Brush top and sides of ham with honey-mustard mixture. Sprinkle with walnuts and pepper. Bake 60 minutes. Let stand 10 minutes before slicing.

### Mushroom Stuffing

- 2 tablespoons butter
- 1 pound mushrooms, sliced (about 5 cups)
- 1 small onion, chopped
- ½ cup walnuts
- 1 teaspoon thyme
- 1 teaspoon dry mustard
- ½ cup bread crumbs.

In a large skillet over medium heat, cook mushrooms and onions in butter for 10 minutes or until most of the liquid has evaporated. Coarsely chop walnuts in processor or blender. Add mushrooms and seasonings and blend thoroughly. Stir in breadcrumbs. After stuffing ham any remaining mushroom mixture may be heated and served with ham slices. †

## South Plains College Celebrates Anniversary

South Plains College, celebrating its 10th anniversary this year in country/bluegrass music education, will sponsor a Bluegrass Fair Dec. 1.

Highlights will include all-day jam sessions, guitar and mandolin workshop by Joe Carr, former member of Country Gazette and now an SPC bluegrass music instructor, free use of SPC's recording studio by bluegrass bands, and an evening bluegrass concert.

"We'd like to invite people throughout the area who are interested in bluegrass music to drop by during the Bluegrass Fair," explained Carr, who joined SPC's faculty this fall

after touring with Country Gazette for five years. "SPC's country/bluegrass music program has grown tremendously since it was established in 1975, from one instructor and eight students to five full-time instructors today teaching more than 100 students from throughout the nation and other parts of the world," Carr noted. The program is housed in a modern Country Music/Sound Technology building containing the 16-track Waylon Jennings Recording Studio, rehearsal hall, practice rooms and offices.

The Bluegrass Fair at SPC will kick off at 1 p.m. Dec. 1 with registration in the Country Music/Sound Technology Building, located on the east side of the campus.

Carr said there will be on-going jam sessions, 15-20 minute live recording sessions of bluegrass bands in the recording studio, mandolin/guitar workshop from 4-5:30 p.m., chili dog supper from 5:30-7 p.m. in the Student Center, and bluegrass concert at 7:30 p.m. in SPC's Sundown Room.

The concert will feature performances by several top SPC bluegrass ensembles, including The Original Sound and The Bluegrass Commandos, in addition to a local band selected by SPC's faculty. The Original Sound recently performed at Spur's 75th anniversary celebration, and the Commandos were a featured group at Lubbock's Buddy Holly Park.

Admission is free to all events, with the exception of the chili dog supper. A small fee will be charged for cassette tapes made during the recording sessions, according to Randy Ellis, SPC sound technology instructor. Recording sessions will be scheduled according to the number of bluegrass bands involved, he noted. "We encourage interested bluegrass groups to stop by during the Fair to participate in brief recording sessions," Ellis said.

For more information on SPC's Bluegrass Fair or the country/bluegrass and sound technology programs, contact Carr at SPC, 1401 College Avenue, Levelland, Texas 79336 or phone him at (806) 894-9611, ext. 272.

### Study Club

Mrs. Ed Johnson was the hostess for the GFWC Muleshoe Study Club, Thursday afternoon.

Refreshments were served to 11 members, those being: Mrs. Barry Lewis, Mrs. Wilson Witherspoon, Mrs. Mervin Wilterding, Mrs. T.R. White, Mrs. Doyle Turner, Mrs. Wilma Thompson, Mrs. H.S. Sanders, Mrs. Wesley Glover, Mrs. Rufus Gilbreath, Mrs. Betty Carpenter and the hostess.

In the absence of the president, Mrs. Turner opened the business meeting. Mrs. Glover led the Club Creed and Mrs. Witherspoon read the correspondence.

The motion was made and approved to enter Mrs. O.N. Jennings, an honorary life member in the Golden Book in Austin. This is a tribute the club pays to members and honorary members in the event of their death.

The Christmas dinner was planned and will be held in the home of Mrs. Rufus Gilbreath on Dec. 13, which will be the next regular meeting time. Also the club will be in Pay and Save Grocery Store all day Wednesday Nov. 14 to give the public a chance to view the Christmas tablecloth that will be given away on Dec. 1 at the bazaar to be held in the Bailey County Coliseum. You may also make your donation on that day and receive a ticket on the cloth.

Following the business meeting Mrs. Lewis gave a book review on a favorite author, Lewis LaMoure. The title of the book was "Cherokee Trail."



**RUNNER-UP**--Payton Rennels, four year old son of Mr. and Mrs. Jack Rennels, was second runner-up in the Little Mr. Miss Pageant held recently in the Springlake-Earth School Auditorium. The event was hosted by the Earth Young Homemakers.



**PAGEANT**--Nochole Hartline, three year old daughter of Mr. and Mrs. Bruce Hartline, was fifth runner up in the three to five year old division in the Little Mr. Miss Pageant held at Springlake-Earth School Auditorium recently. The event was hosted by the Earth Young Homemakers.



Before 1859 baseball umpires sat in a padded rocking chair behind the catcher.

### TOPS CLUB

Muleshoe TOPS Club chapter No. 34 met at 6:30 p.m. Thursday, Nov. 1 in the meeting room of Bailey County Electric with Clara Lou Jones, leader, in charge.

The TOPS pledge was recited and the fellowship song sung. Laverne James, weight recorder, called the roll with nine members present. Evelene Harris, secretary, read the minutes of the previous meeting.

Evelene Harris was named best loser for the week. Best loser for the month was Laverne James and Jewell Peeler was first runner up. Mae Provence was named KOPS Queen for the month.

Jewell Peeler reported that Side 1 was ahead in the contest. The meeting was closed with the singing of the goodnight song.

### Art Students

#### Schedule Exhibit

Art students of Rheta White will hold an art exhibit from 1 until 3:30 p.m. Sunday, Nov. 18 at the Heritage House inn.

Oil paintings, pastels, water colors and enamel on copper will be featured by teen agers and children, as well as a few paintings by Ms. White.

A drawing for a door prize will be held and the winner will not have to be present to win.

Bridal Selections for  
*Karen Mulos*  
Bride-elect of Brent Gunter

Art Loft

1529 American Blvd. 272-9485

**SPARTAN**  
Phone 272-5130  
or 1-800-462-TRIP

The Key  
To Quality  
& Dependable  
Transportation

## Anthony's C.R. ANTHONY CO.

# FABRIC CLEARANCE

**Fabric Groups**

Group I 77¢ yd. 3 yds. **\$2**

Group II 1.37 yd. 3 yds. **\$4**

Group III 1.77 yd. 3 yds. **\$5**

Choose from 45" and 60" poly/cotton blends, wovens, and knits in a variety of prints and solids. They're perfect for your summer wardrobe!

**Carded Buttons**  
10 Cards **\$1**

Buttons, Buttons, we've got the buttons! This selection includes a large variety of styles in White and summer colors. Reg. 6 cards for \$1.

**Sewing Thread**  
8 yds. **\$1**

Stock up now on 100% spun polyester thread on spools of 200-225 yds. Select from basic and fashion colors, reg. 6 spools for \$1.

We Accept  
AMERICAN EXPRESS VISA

321 S. Main Phone 272-3478

SEW AND SAVE



**BIRTHDAY SURPRISE**—Mrs. Roy (Polly) Clark was surprised on her 70th. birthday Sunday, Nov. 4 when her children hosted a surprise luncheon at K-Bob's Steak House in her honor. A daughter, Bernice Bynum, baked her a birthday cake in the shape of a piano. Those present included her husband; daughters, Mrs. Jane Packard and Mrs. Noraene Stallings, both of Hereford and Ms. Bynum of Muleshoe; and daughter-in-law, Mary Hugins of Amherst; a brother, Mr. and Mrs. Herman Wages of Olney; two grandchildren and three great grandchildren. Also a host of friends.

**Gymnasts Attend Qualifying Meet**

Twelve gymnasts from "Muleshoe Dance & Gymnastics" attended their last qualifying meet in Midland, Nov. 3.

Participants from Dallas, Albuquerque, Hobbs, Lubbock, San Angelo, Wichita Falls, & Midland were in attendance.

Gymnasts from MDG competing in the morning session were Jenna Glover, Jarah Redwine, LaTavia Copley, Christy Cook, JeriLynn LaFrance, and Tina Copley. This was the first year of USGF competition for these girls.

Girls in the evening session tying for team championship and qualification (overall score of 32 points) for semi-finals to be held in Midland in two weeks were; Lori Givens with an overall score of 31.70, Angie King 30.95, Lashelle Scoggin 31.55, Erin Kelley 30.85, Tiffany Angeley 31.75, and Renee Martin 32.30, who qualified to advance to semi-finals.

Those accompanying the girls to Midland were Coach Bob Cowley, Ricki Kelley and Danny Kelley.

**Shelley McMeans**

**Named AAUW**

**Girl Of The Month**

Each month of the school year the American Association of University Women select a senior girl of MHS to be recognized for her active participation in school, church and community. November Girl of the Month is Miss Shelley McMeans, daughter of Dub and Paula McMeans.

Miss McMeans participates in many school activities. She has been on the track team for four years and on the crosscountry team for three years. She is also a member of the Fellowship of Christian Athletes.

Shelley is a member of Future Teachers of America, is presently serving as historian of the Student Community Action Club, reporter for both the Student Council and the senior class. She is currently a varsity cheerleader and was selected Homecoming Queen for 1984.

During her junior year she was chosen junior class favorite and Princess of Friendship. She was the speech candidate for the 1984 Harvest Festival Queen. Shelley and her family attend the Church of Christ. Next year she plans to attend Texas Tech and become a nurse or medical technologist.

"It is with pleasure that AAUW honors Shelley McMeans as November Girl of the Month," said a spokesman of the group.



SHELLEY MCMEANS

**WMU Weekly Meeting Held**

WMU of the Trinity Baptist Church met at 2 p.m. Tuesday, Nov. 6 at the church for Bible Study. The lesson for the day was "Partners In Mission". Dora Barber led the opening prayer.

Those present included: Dora Barber, Clara Coffman, Eva Ashford, Pearl Dunlap and Wenona Spears.

Clara Coffman dismissed the group with a prayer.

**Plainview Dollers**

**Sponsor Third**

**Annual Doll Show**

The Plainview Dollers will be sponsoring their third Annual Doll Show and Sale Saturday, Nov. 17 from 9 a.m. until 6 p.m. at the Hale County Agriculture Center on South I-27 and South Business Route 87.

Tonya McWharter, a doll appraiser, will be a special guest. "The public is invited to bring their dolls and let Ms. McWharter take a look at them," said Billie Shugart.

There will be a drawing for a 22 inch life-size porcelain doll to be given away. With each one dollar donation you receive a chance on the doll. The drawing will be held at 5:30 p.m.

**USDA BEEF GRADES EXPLAINED**—Many consumers buy USDA graded beef without knowing what the different grade labels really mean. The United States Department of Agriculture (USDA) grades meat according to the number and size of flecks of fat found in the red meat portion of the cut, says Marilyn Haggard, a food and nutrition specialist with the Texas A&M University Agricultural Extension Service.

**Star-studded party recipes from Hollywood's caterer**

Who plans the parties for the Hollywood crowd and creates the fun for superstars like Richard Dreyfuss, Patty Duke Astin, Valerie Harper, and John Travolta? This group of celebrities would seem the hardest to entertain, but they are the clientele for Randy Fuhrman, the owner, inspiration and head chef for Randy L. Fuhrman Creative Catering in Beverly Hills. Fuhrman knows what will make a hit with the stars and his party productions continue to bring him applause and ovations.

His parties range from movie premieres, such as the opening for "E.T., The Extra Terrestrial" attended by more than 600 people, including Steven Spielberg, Jane Fonda and Jack Nicholson, to an intimate "Black-tie-only" jacuzzi soiree for some suitably un-attired guests.

So, even if invitations to his next star-studded party won't be arriving in your mailbox, Randy has scribbled a menu for use by all "Ordinary People."

To start, Randy suggests indulging in the newest craze in liquid refreshments — frozen drinks. These icy cold temptations please the palate and the director's eye for good presentation. Randy's special selection is a Frosty Comfort. Combine orange juice, orange sherbet and Southern Comfort, a unique American spirit which, as Randy himself discovered years ago, adds just the "Right Stuff" to many of his party recipes.

For a main attraction, Randy presents specially marinated chicken breasts which also take their cue from the delicious combination of Southern Comfort and orange juice. This leading entree is best made ahead of time, and Randy has served it chilled for his outdoor home-on-the-range party or warm at a more formal sit down affair.

For a finale, the "caterer to the stars" pulls out one from his list of "all-time favorites" — glazed, sliced oranges that can be served refreshingly by themselves or mixed with whipped cream for a spotlight dessert. Try them all and see if there's a four-star rating awaiting your next bash.

More Randy Fuhrman recipes, including a barbecue sauce that's a favorite of many of his clients, have been pulled together in a colorful eight-page booklet from Southern Comfort. For a free copy, just send a postcard with your name and address

**Children Home Associates Make**

**Pillow Corsages**

The Muleshoe Associates of the Portales Christian Childrens Home met Monday, Nov. 5 in the home of Vickie Hendricks.

Quilts were tacked and 24 pillow corsages were made to sell for the benefit of the home.

Those present included: Drucella Hutton, Mae Provence, Nan Gatlin, Bernice Amerson, Hazel Waddell, Ethel Julian, Marie Darnell, and Mabel Caldwell.

The hostesses served cake, banana nut bread, sandwiches, chips and dips and cold drinks.

The next meeting will be Monday, Dec. 3, at which time the group will tack a quilt.

to: Cool Comforts, Suite 1400, 221 North LaSalle Street, Chicago, IL 60601.†

**Frosty Comfort**

- 1 ½ cup of orange juice
- 1 pt. orange sherbet
- 1 cup Southern Comfort

Place all ingredients in a blender. Blend until smooth. Pour into stemmed glasses and garnish with long straws and fresh orange wheels. Serves 4.

**Marinated Chicken Breasts**

- 8 chicken breasts — split (to make about 8 oz. halves)
- ½ cup apricot jam
- 1 cup orange marmalade
- 1 packet of dry onion soup mix
- ¼ cup of Southern Comfort
- ¼ cup of fresh orange juice

Blend all ingredients and use as marinade for chicken breasts for two hours. Bake in preheated 350° oven for 35-45 minutes or until golden brown. Baste occasionally with marinade. Serve either warm or refrigerate for delicious cold chicken.

**Glazed Sliced Oranges**

- 6 oranges
- 3 cups white sugar
- 1 ¼ cups water
- zest of two oranges
- ½ cup Southern Comfort

**WHO KNOWS**

1. Name the flower and the stone for November.
2. Where may one find the statement, "Blessed is the nation whose God is the Lord"?
3. What is the Ninth Commandment?
4. From what does the word Nevada derive?
5. Name the highest waterfall in North America.

**Answers to Who Knows**

1. The flower is Chrysanthemum and the stone is Topaz.
2. Psalms 33:12.
3. Thou shalt not bear false witness against your neighbor.
4. From a Spanish word meaning snow-clad.
5. Ribbon Falls in California, 1,612 feet.

With a knife, remove the peel and white outer membrane from the oranges. Cut each orange into 4 slices. Set aside.

In a saucepan, combine sugar, water and orange zest (the thin, oily skin of the orange) and bring mixture to a boil. Once sugar has dissolved (about 1 minute) remove from the heat and add Southern Comfort.

Let cool slightly, pour over orange slices and refrigerate overnight. Serve cold.

**Nursing Home News**

by Joy Stancell

Mrs. Hollis & Mrs. Cotton returned to the Nursing Home this week after being hospitalized. Welcome back ladies.

Ruth Bruns visits her mother Edith Bruns every eve. Mrs. Bruns was also visited Wed. by her grand daughter Tammy Black.

Terri and Tammy from Honey Comb gave Claudia Cannon a new perm Wed. morning. It really does look pretty.

Mr. & Mrs. Arnold Morris are visited everyday by their daughter Barbara.

Alva Shofner was visited this week by Mr. & Mrs. J.T. Shofner, Zora Mae Bellar, Mrs. Shofner is doing really good in our exercise class. We enjoy her.

Lois Ethridge makes the best coffee in the Nursing Home or the Hospital. Come try a cup. You will feel the same way I'm sure. Thanks Lois.

Wed. afternoon the hospital and Nursing Home Aux. hosted a reception in the Nursing Home Day Room in honor of our former residents who are now in the Farwell Convalescent Center and the guest they brought to visit us too from the Convalescent Center. We appreciate all the good Muleshoe people who dropped by to visit. Glenda Jennings lead us in a Sing-A-Long. Refreshments of punch & cookies were served.

Our thanks to Wilma Waddle for the large tins of cookies. We really appreciate her thoughtfulnes.

Our thanks to the Truth Seekers Sun. School class of the First Bapt. Church, for their donation for our craft class.

**Courthouse News**

**MARRIAGE LICENSE**  
Erstelllo Carlos Lueras and Diana Demecia Lueras, Muleshoe

**COUNTY COURT**  
Rosa Elena Alarcon Order of Dismissal

First National Bank of Muleshoe VS Steffan Moore Plaintiff's Motion of Dismiss

Robert Michael Holder DWI 30 Days Jail \$250 Fine

Larry D. Ross Order Discharging Defendant From Probation

Ernesto Perez Toscano Order Discharging Defendant From Probation.

**NEW VEHICLES**  
Five Area Telephone Coop, Inc., 1984 Ford 4dr, Muleshoe Mtr. Co., Inc., Eugene Houston, 1985 Ford PU, Muleshoe Mtr. Co., Inc., Edgar H. Langfitt, 1984 Ford PU, Muleshoe Mtr. Co., Inc., Barbara T. Rex Griffiths, 1985 Buick 4dr, Robert D. Green, Inc., Calvin A. Meissner, 1984 Buick 2dr, Robert D. Green, Inc., John David Agee, 1984 Chev 2dr, Robert D. Green, Inc., and W.A. Givens, 1984 Chev Pu, Robert D. Green, Inc.

**A&M FivePoint**  
Hi-Protein  
50 lb. Bag  
**Dog Food**  
**\$9.75**

**Bailey County Journal** EST. 1905  
Established March 31, 1905. Published by the Bailey County Journal Publishing Co., Inc. Every Sunday at 304 W. Second St. 449, Muleshoe, Texas, 79347. Second Class Postage paid at Muleshoe, Texas 79347.

**MEMBER 1984**  
**TEXAS PRESS ASSOCIATION**

U.B. Hall-President  
James Woods-Vice President  
Clara Williams-Secretary  
Folomee Harris-Society  
Holt Miltap-Advertising  
Little Noyce-Circulation Classified  
Sammy Hall-Bookkeeper

**SUBSCRIPTIONS:**  
Muleshoe Journal and Bailey County Journal  
Bailey and surrounding counties  
Muleshoe Journal and Bailey County Journal  
Elsewhere in Texas \$12.95  
Muleshoe Journal and Bailey County Journal  
Outside of Texas \$13.95  
Yearly by Carrier \$11.50  
Advertising rate card on application.

**True Value HARDWARE STORES**

**BARGAIN OF THE MONTH**  
3½-Qt. Slow Cooker  
Tenderizes meats and simmers in good flavor. Almond. 3100MB  
QUANTITIES LIMITED  
While Supplies Last  
**9.99**

**True Value HARDWARE STORES**

**TOOL VALUE OF THE MONTH**  
11-Pc. Wrench Set  
Contains 6 standard and 5 metric wrenches of drop-forged chrome-vanadium steel in pouch. 1161AM  
QUANTITIES LIMITED  
While Supplies Last  
**7.77**

**True Value HARDWARE STORES**

**HARDWARE VALUE OF THE MONTH**  
20-Ft. 18/3 SVT Reel Light  
With metal case, grounded bulb guard, more. Bulb not incl. 44610  
QUANTITIES LIMITED  
While Supplies Last  
**10.88**

**Fry & Cox, Inc.**

401 S. 1st.

272-4511

# Farm Income Down And Economy Hurt

Texas' farm economy has gone downhill steadily in the past few years, and farmers have found themselves in the worst economic squeezes since the Great Depression.

That assessment comes from Dr. Carl Anderson, an economist with the Texas Agricultural Extension Service, Texas A&M University System.

"The adjusted farm income for inflation nationwide in 1983 was the lowest since the bleak years of 1932-33," Anderson points out.

Net farm income in Texas this year will be only about half of what it was in 1979, says Anderson. This means that the purchasing power of the farm dollar is only about 25 to 30 percent of what it was five years ago.

The current farm financial stress stems largely from depressed crop and livestock prices, steady increases in costs, adverse weather conditions and high real interest rates that increase costs and strengthen the dollar against foreign currencies, the economist points out. "A strong dollar has discouraged exports and encouraged imports and foreign production," Anderson says, "further squeezing markets for American farm commodities."

Extreme drought conditions have persisted over much of Texas this year, lowering forage and crop production and increasing production costs. Prices paid by farmers for inputs have increased almost a third in the last five years while average prices received for crops and livestock have fallen slightly.

But Anderson says the present "crunch" on agriculture results mainly from action outside its confines. National economic policies, trade subsidies of other countries, tariffs, trade restrictions and other forces have influenced interest rates, inflation and other economic conditions at home and abroad.

"Extremely high interest rates which support the strong value of the dollar have been the number one problem to farmers," he emphasizes. "When the dollar rises in value, exports decrease and imports increase. All this gives farmers overseas incentive to produce more to satisfy their own needs as well as to export when possible."

Mechanization and chemicals for pest control encouraged farmers to expand and take on lower profit margins in the 1970's. "When interest rates sky-rocketed, export markets began to disappear and stockpiles of surplus grain, cotton, and dairy products appeared in the early 1980's," notes Anderson.

## Election...

Con't From Page 1  
Andrews, Gaines, Hale and Yoakum counties. He was almost 50-50 with Richards in Hockley and Parmer counties.

Combest said he believes the first six months of the 88th Congress will be critical, saying the budget needs to be worked on toward balancing it, and federal level spending must be cut.

Locally, Combest said he sees a need to continue to work on decontrol of natural gas, oppose the windfall profits tax on oil production and get a farm bill.

The new Congressman also believed he will have a chance to be named to a seat on the House Agriculture Committee.

So went the 1984 elections, which saw voters turn out locally, statewide and nationally in record numbers, giving the nod to Republicans for most of the top spots in government.

## Thank You

I would like to thank all my friends who supported and voted to re-elect me to the office of county commissioner Precinct I - I will continue to serve Bailey County and especially Precinct I to the best of my ability, please call on me anytime for your needs. I also want to thank all my friends who couldn't vote but supported me with their words of encouragement

thank you again

R.L. Scott

These low returns to investments are beginning to show now, especially in the less populated areas where agriculture is the dominant use of land and land values have declined.

Outstanding agricultural debt now exceeds \$13 billion in Texas, a rise if farm debt of nearly 50 percent since 1977.

And though ample loanable funds are available to agriculture, the problem is that many agricultural borrowers are unable to generate a cash flow that can support commercial lending practices, the economist explains.

"Some farmers will either be forced out of agriculture," says Anderson, "or they will have to come under the Farmers Home Administration's emergency loan procedures."

Despite depressed income, Texas agriculture is still financially sound, believes Anderson. Debt, as a percent of assets, is averaging less than 20 percent, and agricultural loan losses have increased only slightly since 1980.

## Project...

Con't From Page 1  
pressing your love and concern for your fellow man. And, after all, isn't that what life is all about?"

Proceeds from this year's Christmas Card Project will be used to purchase a movie projector for the nursing home. At this time, the only access to a projector is through the Muleshoe Public Library, and at times, it is not available as it has already been loaned out to persons or organizations.

Mrs. Green said contributions will be received from November 14 through December 14 and may be made at First National Bank, Muleshoe State Bank, Poyner's White Stores, or by mailing to Hospital Auxiliary, 708 South First St., Muleshoe, TX 79347, or given to any auxiliary member.

## Muleshoe...

Con't From Page 1  
American Legion Post and the VFW will serve breakfast, beginning at 6 a.m. and concluding at 8:30 a.m. at the American Legion Building on West Avenue B on Monday, November 12.

Veterans are asked to attend the breakfast and bring their spouses for the meal and fellowship.

Owen Jones said you can renew old friendships and remember those friends who are not here to celebrate. "It is a once-a-year time when veterans of this nation let the communities know 'America is Number One--Thanks to Our Veterans'" said Jones.

Myrtle Creamer and Clea Williams were in Cross Plains over the weekend to attend funeral services for a nephew and cousin, Lynn Carlton Davidson, 49, who died suddenly of a heart attack on Thursday afternoon in Arlington.

## Tax Rebate

Con't From Page 1

the year. To date, Littlefield has received tax rebates in the amount of \$246,387.42, as compared to last year's figures at this time of \$226,139.30.

Friona received a tax rebate check in the amount of \$11,436.36. This is also increased from last year's check at this time for \$10,325.68. For the year, Friona shows an increase of 11.93 percent. Rebates to date last year totaled \$84,219.43, increasing to the

This year's farm income may improve slightly from the depressed levels of the last two years. The improvement is a mixture of stronger prices early in the year and livestock liquidations by ranchers due to drought conditions, explains the economist.

"The greater cash flow is from ranchers being forced to sell livestock," Anderson says. "The liquidation of breeding herds has increased the cash flow this year but will decrease it in the coming years."

However, more Texas farmers and ranchers will likely be in serious financial trouble by year-end due to heavy debt and adverse weather conditions, adds Anderson.

# Farm Bureau Objects To New Pesticide Law

Bailey County Farm Bureau is taking steps to oppose pesticide regulations which are being proposed by the Texas Department of Agriculture, according to Sam Harlan, of Muleshoe, county president.

Harlan pointed out that existing state and federal regulations are adequate for protection of farm workers, farm operators, applicators, and others.

The county farm leader said the proposals are unnecessary, unreasonable and, in many cases, unworkable. The proposed regulations, which deal with the application of pesticides, would make it difficult for farmers to use this valuable tool to make a profit, he said.

Proposed standards were printed in the Texas Register on October 23 and interested parties have 30 days from that date to make official comment.

Bailey County Farm Bureau has sent a letter to the TDA in opposition to the proposals. A number of county leaders will attend a hearing on the subject November 15 in the Civic Center in Lubbock, at 2 p.m., says Harlan.

The regulations would establish rules for: (1) Notifying persons who might be affected by pesticides; (2) Posting notices and knowing specific details of chemical safety information; (3) Providing oral warnings to persons who might enter a treated field; (4) Determining illegal applications and clarifying drift liability; (5) Establishing re-entry intervals into treated fields and (6) Establishing a TDA technical advisory committee.

Harlan said farmers who must use agricultural chemicals should not be fooled by conditional exemptions for some crops. He said the rules relate only to posting warnings and re-entry intervals -- and then only if workers are not "required to make substantial contact with plants, foliage, soil, or other sources of pesticide residue."

"Farmers and ranchers have more reason than most people to be careful with farm chemicals," pointed out Harlan.

"We live on the land, and of course, we don't want to hurt the environment or those who work for us," added Harlan. He said that by complying with existing state and federal regulations, farmers are providing adequate protection. He said the Texas Department of

# Travis Williams Recives Honors At Junior College

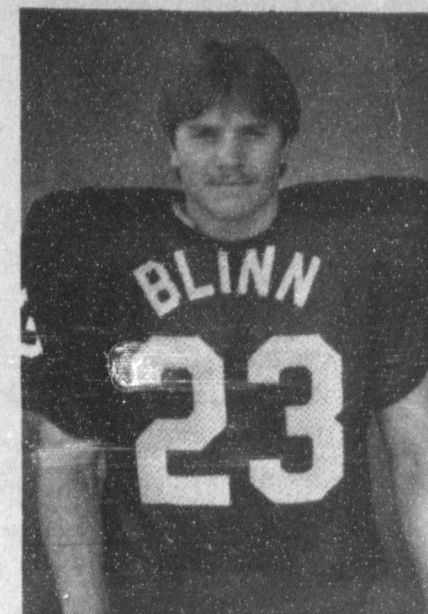
Travis Williams, son of Mr. and Mrs. Rufus Williams of Lazbuddie, is completing his second year as quarterback for the Blinn College Buccaneers football team at Brenham.

Williams, a 1982 graduate of Cladwell High School, was recognized as All-Central Texas in football and basketball.

He also was a member of the honor society at Caldwell and received the title of "Outstanding Senior." At Blinn College, Williams has made the

"All Texas Junior College Conference" in football and is a member of the Phi Theta Kappa, the national honor fraternity for junior colleges.

He is an architecture major and upon graduation from Blinn College plans to attend Rice University.



TRAVIS WILLIAMS

## Commissioners Will Canvas

Election Returns

Bailey County Commissioners Court will meet in regular session on Monday, November 12, at 10 a.m., according to Bailey County Judge Gordon H. Green.

Items on the agenda include canvass election returns for Bailey County; pay election expenses; pay routine county bills; consider an amendment to FY 1985 budget; consider an order for the annual independent audit and miscellaneous items.

## Tax...

Con't From Page 1  
rabate of the tax collected on mixed drinks sold within their boundaries under the law that legalized the sale of mixed drinks in the state. The state's general revenue fund receives the balance--\$28.7 million--of the tax money collected.

Cities and counties will get a 15 percent share of the increased mixed drinks gross receipts tax from fourth quarter collections. Beginning with the first quarter of 1985, cities and counties will each receive a 12.5 percent share of the increased tax and the state will get the entire gain from the tax increase.

The mixed drink tax is collected by the Alcoholic Beverage Commission and city-county rebates are sent out quarterly by the Comptroller's Office.

Bullock said the mixed drink tax has brought in \$120.5 million so far during 1984.

**DRUNK DRIVING**  
The National Transportation Safety Board, reporting on a study of 51 accidents involving drunken driving, said recently that one-third of the drivers involved had a suspended license and nearly three of every four had a previous traffic offense involving alcohol.

This show is being presented as part of DECA's Civic Consciousness Project. All proceeds will be donated to the Spina Bifida Association.

Tickets are \$2.50 for students, \$3 for adults and all tickets will be \$3.50 at the door the night of the game.

Tickets are \$2.50 for students, \$3 for adults and all tickets will be \$3.50 at the door the night of the game.

Tickets are \$2.50 for students, \$3 for adults and all tickets will be \$3.50 at the door the night of the game.

**Labeling on Bulk Products**--Just because you buy food products from bulk dispensers at the grocery store, doesn't mean you give up your right to product information, says Texas A&M University Agricultural Extension Service food and nutrition specialist Marilyn Haggard. According to recent FDA guidelines, bulk food containers must show either a counter card or manufacturer's label stating the name of the product and its ingredients in order of predominance.

# School Board Trustees Slate Monday Meet

Trustees for the Muleshoe Independent School District will meet at 7 p.m. on Monday, November 12, in the school administration office with a large number of items to consider.

Informational reports will be given by Sudduth, Field & Co., on the audit; and an academic program presentation will be presented from junior high, along with the fall survey of student membership and October attendance report.

Full financial reports will be given and trustees will consider approval of the 1983-84 financial audit; 1984-85 substitute teacher list; 1984-85 local textbook committee; a bid for installation of ceiling fans at Dillman Elementary, DeShazo Elementary and Watson Junior High and guidelines for a proposal to allow junior high student council fundraising.

Trustees will also hear tax collection reports and consider personnel action as well as hearing the superintendent's report and hear correspondence and hear of school and community events.

# Helping Hand For Students Aided By GTE

General Telephone of the Southwest announced a new community service project for assisting in the protection of a very valuable asset -- our children. The "Helping Hand" program is aimed at helping protect children as they come and go to school each day. Recognizing that children sometimes may need the help and assistance of a responsible adult when a parent is not available, GTE is supporting the "Helping Hand" program.

The "Helping Hand" program was inaugurated by local schools and parent teacher associations across the United States. The key to the success of the "Helping Hands" is the placement of the symbol in the windows of residences and businesses located near elementary schools. The bright orange silhouette of a spread hand is a beacon that means help and safety to the area school children.

Students are told that if they are approached by an unknown person or have any problem, such as being chased by a dog or becoming lost, they should seek immediate help from persons at the locations displaying the "Helping Hands" symbol.

General Telephone is making the decals available to schools and PTA groups interested in the program as well as to those groups currently conducting the program who need additional materials. Groups interested in obtaining "Helping Hand" information or materials should contact the Public Affairs Department, General Telephone of the Southwest, P.O. Box 130, Hobbs, N.M. 88240, or call (505) 397-6286.

## Card of Thanks

Thank you and God Bless all of you for the flowers, food, prayers and thoughts, during the illness and loss of our wife, mother and grandmother. A special thank you to Dr. Purdy and the nursing staff at West Plains Medical Center.

Harvey Toten

Mr. & Mrs. Cleve Bland & family

Carolyn Collis & family

Mr. & Mrs. James Roy Jones & family

# George Strait

SATURDAY, NOVEMBER 17th  
COWBOY COUNTRY CLUB • Hereford, Texas

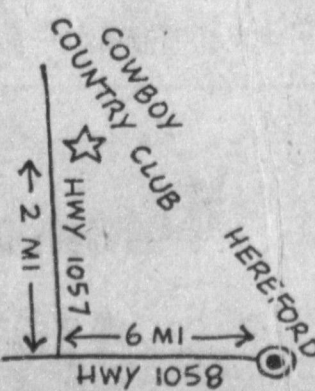
The Southwest's NEWEST multi-purpose indoor arena.



Join us during our 3 day GRAND OPENING

FRI., NOV. 16th	9:00 PM--Dance with Pake McEntire
SAT., NOV. 17th	12 NOON--Jackpot Calf Roping Special match between World Champions ROY COOPER and CHRIS LYBBERT 9:00 PM--GEORGE STRAIT
SUN., NOV. 18th	10:30 AM--Barrel Racing 12 NOON--Jackpot Steer Roping Special match: JAKE BARNES and LEO CAMARILLO vs. MIKE BEERS and DEE PICKETT. (ranked number one and two nationally)

TICKET INFO CALL 806 / 289-5286



**EDITORIAL**

**Reagan & Congress**

President Reagan's record reelection victory, including a 57-42 percent endorsement by women was of historic importance. It means the country now knows what lies ahead from the White House in the next four years. The congressional elections were nevertheless a slight disappointment to Republicans. They had hoped to gain 25 House seats, and gained only about 14. Their majority in the Senate

dropped from 55 to 53. President Reagan's huge 49-state mandate, however, makes it likely many Democratic members of Congress will be more inclined to support Mr. Reagan's programs. Those who won close races will be thinking hard about 1986 in opposing the November voter mandate. That landslide victory is likely to reduce House obstructionist tactics in the first session of the 99th Congress.

**The Hispanic Vote**

Marshall Ingwerson, writing in the *Christian Science Monitor* from Los Angeles, says the old cliché that to be Mexican-American is to be Roman Catholic and Democratic is beginning to change. He reports about an Orange County lawyer, Rudy Montejano—who switched to the Republican Party two years ago and recently headed the Reagan campaign in his county. Montejano says the Democratic Party left him, and says many Hispanics are closer to the conservative Republican philosophy than the Democratic. Most of all, Hispanics want to escape from poverty, welfare and the handout mentality, he says. Though massive numbers of Hispanics have not yet shifted parties, and though Democrats still consider Hispanics in Texas

and states to the west mostly "in the bag," some shifting is taking place. The Republican Party is courting Hispanics actively, with some success, as November 6 showed. For Hispanics, it's a question of a one or two-party system. If Hispanics, like blacks, vote always as a bloc, their political power is limited to one party, and that party can take them for granted. If Hispanics are a factor within both parties, their vote will be courted by both; they will have leaders "in" with every administration and they will be part of the mainstream, two-party electorate. That's the question of the future for Hispanics, and also for blacks long in the bag, and whose leader in 1984 received relatively little in return for his efforts and public loyalty.

**Mondale's Accomplishment**

In retrospect, though Walter Mondale was a disaster as presidential nominee, he probably accomplished one goal. In giving a strong performance in his first debate with President Reagan, he rekindled hope among many of his party's lower-echelon candidates. That performance almost certainly helped his party to reduce the number of

seats it lost in the Democratic-controlled House. Because of that temporary change of momentum, President Reagan and Vice President George Bush delayed their plans to actively help congressional candidates in close races for about two weeks. That probably helped insure a continued liberal majority in the House.



United Feature Syndicate • 200 Park Ave. • New York, N.Y. 10017 • (212) 557-2333

**NEWS REPORT FROM WASHINGTON**

WASHINGTON, D.C. -- Walter Mondale probably could not have beaten President Reagan under any circumstances November 6, but he himself made the fatal decisions that produced a disaster for Democrats. The worst was choosing a New York liberal as his running mate. The idea of a woman on the ticket was admirable. But, as his own Minnesota governor told him at the time, only two Democrats have won the presidency since 1960--both southerners. Twenty-four years ago John Kennedy won with a southerner on the ticket, carrying the South. Harry Truman won in 1948 with Kentucky's Alben Barkley. In other words, Democrats can't win the White House without solid

southern support. They never have. Why, then, didn't Mondale know this last June? He picked a militant, northern liberal from a state he was stronger in than any other, except Minnesota. How he reasoned in making the choice for two northern liberals on the ticket escapes seasoned political pros. In pushing for early CIO-AFL endorsement, breaking precedent, he obligated himself too heavily to union leadership. In concentrating a major effort in California, the Mondale campaign wasted its time. There was no chance he could win in the president's home state. He lost the primary there to Gary Hart. In openly and repeatedly attacking fundament-

alist religion and religious leaders, Mondale stirred up a hornet's nest unnecessarily. He would have been better off to leave that to others if it was felt this was absolutely necessary. Lastly, he and his running mate seemed to be constantly asking for apologies in the final days of the race. Maybe they were in order but voters soon tire of candidates' complaints that they have been badly treated. Mondale was probably too often self-righteous, indignant and too often complaining of being wronged or insulted. But he was in command of the issues and facts in debates; his appearance was usually pleasing, and he proved a better speaker--he has never been known as one of the best--in 1984 than ever before. That wasn't enough; too many major strategic blunders doomed him and the Democratic Party.

**WASHINGTON NOTES**

**TAX DROP**  
Government tax collections declined by \$5.6 billion between 1982 and 1983, for the first drop in 12 years, the Census Bureau reported recently.

**SLUGGISH PACE**  
The U.S. economy grew at a sluggish 2.7 percent rate in the third quarter of 1984, down dramatically from the 8.6 percent growth rate of the first half of the year, the Commerce Department announced recently.

**INCOME UP**  
Americans' average personal income rose a healthy 2.1 percent from April through June of this year, but residents in six farm states actually lost ground, the Commerce Department reported recently.

**LOW INVENTORY**  
The U.S. corn inventory going into this fall's harvest was the lowest in eight years, reflecting the 1983 drought and government acreage cutbacks, a report by the Agriculture Department showed recently.

**RECRUITING GOOD**  
The armed services scored "resounding recruiting successes" in fiscal 1984 while matching or exceeding record results posted in the previous year, the Defense Department said recently.

**CONSERVING ENERGY**  
With oil prices down to less than \$29 a barrel and natural gas prices stabilizing after five years of sharp increases, Americans seem to be losing some zeal for conserving energy, according to newly released government figures.

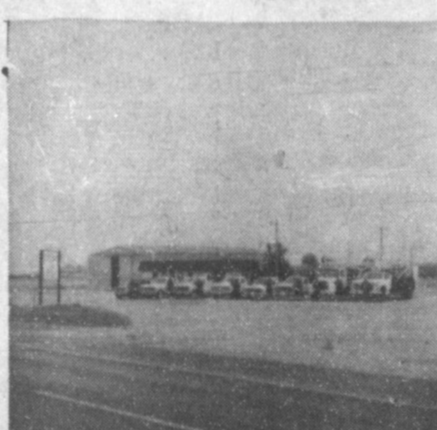
**OLDEST VETERAN DIES**  
ST. PETERSBURG, FLA. -- Harry J. Chaloner, America's oldest veteran died recently at the age of 110. He served in the Spanish-American War for the United States and in World War I for Canada.



**JIM LEFEBRE,**  
15 YEARS CENTER PIVOT SERVICE EXPERIENCE



**WALDO PEREZ, PUMPS AND TRUCK**  
**DANNY NAVEJAR, HELPER**  
**GILBERT REYES, HELPER**



**RADIO DISPATCHED SERVICE FLEET**



**SMILEY ANGUIANO, PUMPS & TRUCK**  
**BENNY TORRES, HELPER**



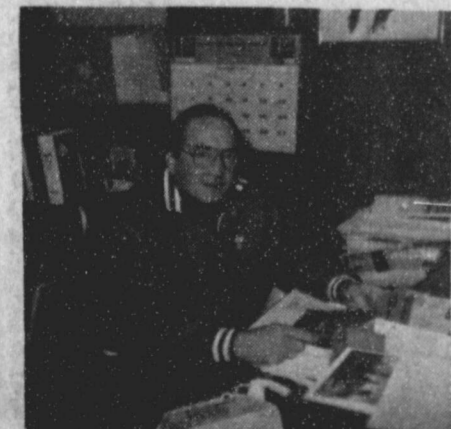
**17 YEARS CENTER PIVOT SERVICE EXPERIENCE**



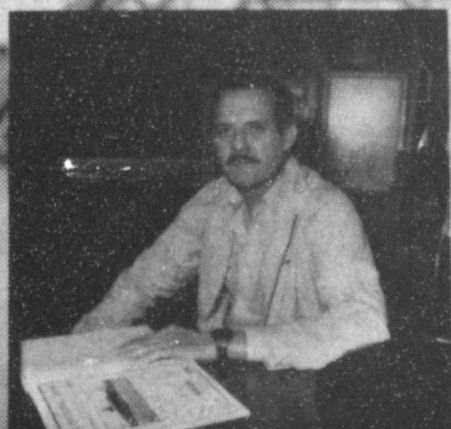
**SHARON MONTGOMERY,**  
BOOKKEEPER



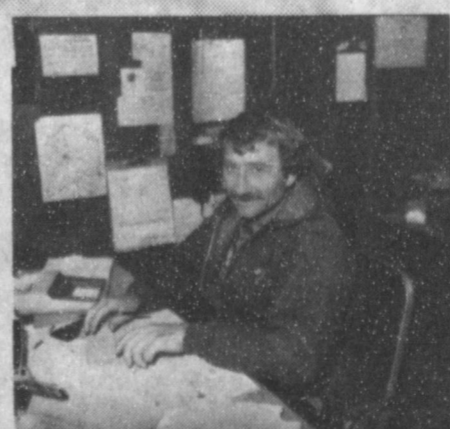
**SUE HOLT,**  
BOOKKEEPING



CENTER PIVOT SALES, 272-5632



**DON LEROY,**  
OWNER/MANAGER



**PARTS & SERVICE, MANAGER**



**GENE PAUL JARMOU,**  
CENTER PIVOT SALES, 965-2340

**IRRIGATION PUMPS & POWER, Inc.**  
Muleshoe, Texas  
272-4488 272-5597

## 'All Natural' Might Not Be

The terms "all natural," "no preservatives," and "no artificial flavors" appear on food products that a health-conscious person may believe are more wholesome and without additives.

This is not necessarily true, says the Texas Medical Association.

A recent issue of the Tufts University Diet and Nutrition Letter notes that many products with these labels contain food additives and are high in fat, sugar, and calories.

One breakfast pastry touts "no preservatives, no artificial flavors," although it contains the preservative citric acid, artificial coloring, and three different sources of sugar. Of the 10 ingredients in a "natural high fiber" cereal, three are basically sugar.

A granola-type product that has 130 calories in only a quarter of a cup lists brown sugar as the second largest ingredient. A "100 percent natural" granola bar is full of sugar and chocolate chips.

Among the dairy products, an "all natural flavor" ice cream contains the emulsifier polysorbate 80. In addition, a brand of yogurt that has all natural flavor and color contains citric acid and sorbic acid.

Additives certainly are not all dangerous, the Tufts newsletter notes, and many are essential for food safety. The point is that people attracted to many "all natural" products may not be getting what they think they are.

There is no government regulation of the term "all natural," which means products labeled that way do not have to meet any standards. In fact, natural-type claims do not necessarily mean the product is particularly healthful.

The only way to ensure that you receive natural products without unwanted additives, fat, sugar, and calories is to read the fine print on boxes and packages.

## Sudan News

by Evelyn Rütchie

The Searchers Sunday School class of the FBC held an installation service Monday night in the home of Charls Ann Williams with Lynette Burns as co-hostess.

Frances Gardner installed the new officers with the theme of "The Searchers." Teacher - Marge Cardwell; President - Georgeann Rasco; V. Pres. Charls Ann Williams; Secretary - Lynette Burns; Group Leaders, Marge Cardwell and Mary Powell.

Attending were Patsy Kent, Linda Summer, Marge Cardwell, Mary Powell, Georgeann Rasco, guest, Frances Gardner and the hostesses.

## Valine Owens Funeral Services Held At Clovis

Funeral services for Valine Owens, 64, of Clovis, N.M. were held at 2 p.m. Wednesday, Nov. 7 in Steed-Todd Chapel in Clovis with the Rev. Neil Easter and the Rev. Scott Anthony officiating.

Interment was in Lawnhaven Memorial Gardens under the direction of Steed-Todd Funeral Home. Mrs. Owens died Monday at her home in Clovis.

A native of Hot Springs, Ark., Mrs. Owens was born Aug. 3, 1920, and moved to Muleshoe at 14 years of age from Hot Springs. She moved to Clovis in 1942. She married Dick Owens on April 19, 1941, in Roswell, N.M.

Survivors include her husband, Dick; two daughters, Kay Hamburger of Amarillo, and Jeanie Moberly of Melrose, N.M.; one son, Glenn of Lubbock; one sister, Bonnie Eden of Hot Springs, Ark.; two brothers, Ben Lewallyn of Benton, Ark. and William Dabbs of California; and nine grandchildren.

Pallbearers were Jerry Owens, Rex Black, Rickey Black, Ronnie Black, Gaylon Black and Kim Black.

## Bobby Gray Services Pending At Plainview

Funeral services for Bobby Gray, 55, of Plainview were pending at press time with Wood-Dunning Funeral Home. Gray died at noon Thursday at his home. Justice of the Peace Glenn Stone ruled the death was of natural causes.

Gray was born in Bogata and was reared in Childress. He married Vonnie Summers in Nov. 21, 1984, in Childress. They moved to Plainview in 1952. He worked for the city of Plainview from 1968-79 and prior to that he worked for the Plainview Cemetery Association. He was a Baptist.

Survivors include his wife, Vonnie; one son, Ronnie Arm of Oklahoma City, Okla.; six brothers, Ronny and Bill of Plainview, James of Muleshoe, and Gene, Dene and Wayne of Denison; and four sisters, Faye Clark, Mary Callas, Linda Sheppard and Francis Gallagher of Dennison.

## Nursing Home News

by Joy Stancell

Thursday afternoon Ladies of the Hospital and Nursing Home Aux. came to play Skip-Bo and dominoes with the residents. Maud Kersey also came.

Friday morning Lois Ethridge, Edith Goucher, Hylton Moore, Cleo Bellar, Rosa Holland, Ernest Kerr, Margaret Beard, and Edith Bruns painted an ash tray in ceramic class. Later Clara Weaver painted one.

Friday afternoon Lindy Schuster and Jana St. Clair came to play Bingo with the residents. Cleo Bellar Bingedo twice, Lois Ethridge once, and Fred Peat once. Refreshments of punch and home made cookies were served.

Sunday morning Mr. Peterson came for Bible Study. Sunday afternoon the Calvary Baptist Church came for Gospel singing.

Tuesday morning the residents had a group discussion class in the Day Room. Residents attending were Lois Ethridge, Edith Goucher, Edith Bruns, Rosa Holland, Jewel Tipton, Mrs. Cannon and Margaret Beard.

Tuesday afternoon the Hospital and Nursing Home Aux. came to shampoo and set the ladies hair, give manicures and play Skip-Bo.

Fred Beene and Mr. Cannon played dominoes Wed. morning in the Day Room.

Gayla Trombs brought her 4H cooking class Saturday morning to visit and serve home made cookies to the residents. The residents enjoyed the young people and their delicious cookies.

Our thanks to Mr. and Mrs.

Ray Edwards for the beautiful bouquet of flowers that they arranged and brought to us. We all are enjoying them.

Right before Halloween Mickey Merriott brought his 'pet' cat to visit. I understand this special cat can do a lot of tricks and other interesting things that other cats can't do.

Our thanks to Stella Morgan for the donation of ladies hose to our residents. They really are coming in handy.

Wed. morning Berta Muyschondt & her son showed slides of Carlsbad Caverns to the residents and visitors in the Day Room. We really do thank them for sharing this with us. We really enjoyed it. Our thanks too, to Ruth Hall, Lena & Rita.

Cleo Bellar was hospitalized Wed. Hurry and get well Cleo, We miss you.

The Muleshoe Church of Christ came Sun. afternoon to sing Gospel songs to the residents.

They brought Communion Sun. morning to the residents that wanted to partake.

Mr. and Mrs. Arnold Morris was visited by their daughter Barbes several times this week.

Clara Weaver spent the week end at her home in the country.

Mrs. Hollis received a nice package for her birthday from her friend in Kermit. Mrs. Hollis is still in the hospital at this time.

Monday afternoon The Muleshoe Church of Christ hosted our Halloween Party. Dub & Paula McMeans put on a very special and enjoyable puppet show. Our visitors children, the residents and employees were dressed in their best Halloween fashions. Mr. & Mrs. Ernest Holland were chosen our Halloween King & Queen of the Nursing Home. Refreshments of decorated cookies, sweet breads and orange slush were served.

## Brucellosis Vaccination Required For Heifer Calves

Regulations relating to brucellosis vaccination of heifer calves in the Class C Area of Texas have been amended by the Texas Animal Health Commission and will become effective Nov. 5.

The changes were made in response to recommendations from the livestock industry during recent hearings favoring an increase in vaccination for brucellosis control, explains Spencer Tanksley, county agent with the Texas Agricultural Extension Service, Texas A&M University System.

The new regulation is in two parts, Tanksley reports.

1. Heifer calves born after Jan. 1 of this year which are between 4 and 12 months of age and acquired and used for breeding, grazing, dairying or confinement in a dry lot not under quarantine must be officially vaccinated according to the amended regulation.

2. Heifer calves born after Jan. 1 of this year which are unvaccinated when they are over 12 months of age may change ownership only after being spayed or consigned to a livestock market to be spayed or "S" branded prior to the sale; or consigned directly to slaughter, quarantined feedlot or

quarantined pasture. Producers should start making plans now for vaccination of all eligible heifers, the agent reminds.


State funds are available for free vaccinations. Producers should contact their own private veterinarian or their area Texas Animal Health Commission office for complete details. The new regulation applies to the 113 counties making up the Class C Area of Texas.

It is important that livestock producers make sure their calves are properly identified when vaccinated. A tattoo in the right ear is proof of vaccination, but the procedure must be done correctly. The person doing the vaccination should clean the ear carefully, rub the ink in thoroughly and press the tattoo piers firmly.

A vaccinated calf is worth more, but if not properly identified it will cost the producer later on, reminds the agent.

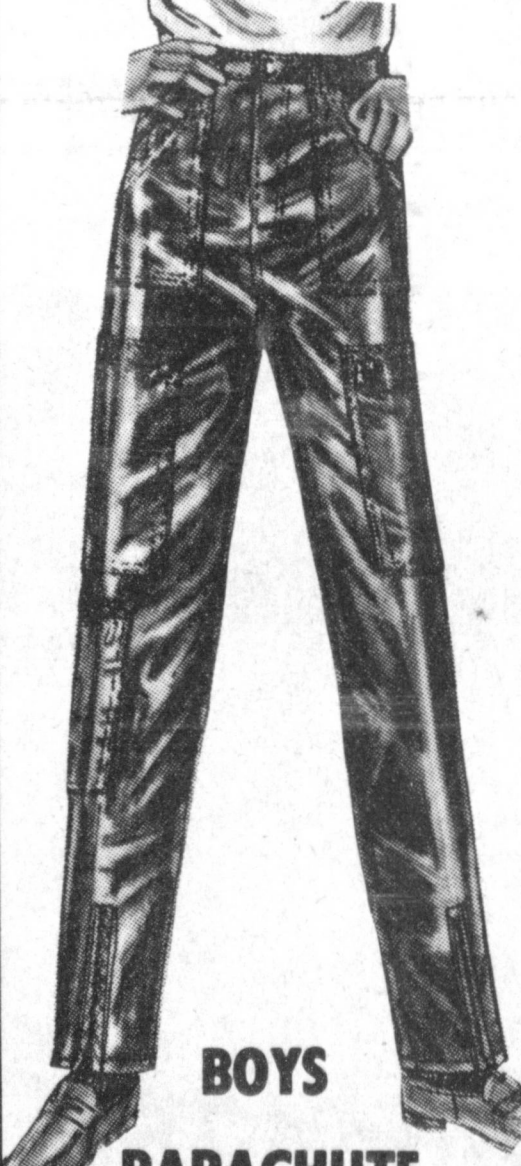
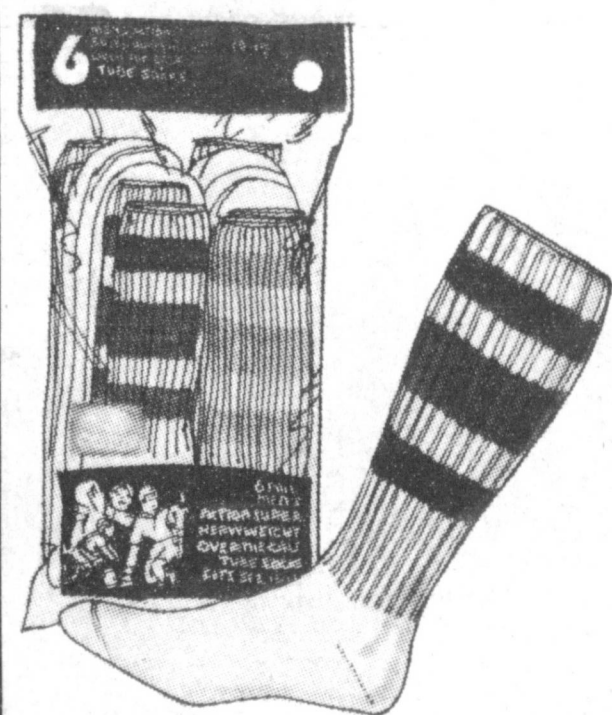

George Shultz, Secretary of State, on Beirut bombing:

"The casualties would have been worse had it not been for security measures."



**NEW STORE HOURS**  
**7:30 A.M. till 7:30 P.M.**  
**MONDAY**  
**THROUGH SATURDAY**

## HARVEST OF SAVINGS

 <p><b>BOYS PARACHUTE PANTS</b>                  SIZES 8-20 Reg. 14.99 to 16.99 <b>12<sup>97</sup></b>                  STUDENTS SIZES Reg. 19.99 <b>16<sup>97</sup></b></p>	 <p><b>MENS AND BOYS 6 PACK OF TUBE SOCKS</b>                  MENS REG. 6 For 6.50 <b>5<sup>97</sup></b>                  BOYS Reg. 6 For 5.50 <b>4<sup>97</sup></b></p>	 <p><b>ATB CORDUROY BLAZER FOR LADIES</b>                  100% COTTON Reg. 35.00                  SIZES 8-20 Assorted Colors <b>28<sup>97</sup></b></p>
<p><b>BOYS REAR GEAR CASUAL OR DRESS PANTS</b>                  In Many Colors. Cotton Polyester Blends.                  BOYS SIZES 4-7 Reg. 12.50 <b>9<sup>97</sup></b>                  BOYS SIZE 8-14 Reg. 16.00 <b>12<sup>97</sup></b></p>	<p><b>MENS IVY CLASSIC DRESS SHIRTS</b>                  SIZES 14 1/2 to 17 POLYESTER COTTON BLENDS Reg. 13.99 <b>10<sup>97</sup></b></p>	<p><b>JUNIOR EDITION PANTS DRESS SLACKS FOR THAT JUNIOR GAL</b> Reg. 16.00 Sizes 3-15 <b>12<sup>97</sup></b></p>
<p><b>BOYS LEVIS CORDUROY PANTS STRAIGHT LEG</b>                  73% Cotton 27% Polyester Reg. 16.99 Sizes 8-14 Shrinkage Controlled Wrinkle Controlled <b>14<sup>97</sup></b></p>	<p><b>STUDENT LEVIS CORDUROY PANTS STRAIGHT LEG</b> 73% Cotton 27% Polyester. Reg. 17.99 Sizes 25-30 Waist Shrinkage Controlled Wrinkle Controlled <b>15<sup>97</sup></b></p>	<p><b>SELECTED GROUP OF JR. PANTS VALUES TO 32.00</b> <b>24<sup>97</sup></b></p>
<p>321 S. Main</p>	<p>We're Just Around the Corner Serving You!</p> <h1 style="margin: 0;">ANTHONY'S</h1>	<p><b>MENS HAGGAR SLACKS ASSORTED GROUPS. MENS AND YOUNG MENS</b> Waist Sizes 28-42 <b>10<sup>97</sup> - 14<sup>97</sup> - 16<sup>97</sup></b></p>



**TRU-TEST PAINTS**  
**PAINTING HELP SPOKEN HERE.**  
 BY *Bonnie Blaire*  
 TRU-TEST COLOR CONSULTANT

Dear Bonnie,  
 I'm a collector! I love going to garage sales and antique shops. Alas, I have accumulated so many treasures, my home looks like a junk shop. Do you have some tips for organizing my beloved clutter?

Maryanne

Dear Maryanne,  
 The word is "simplify." You want to focus attention on your treasures, so start by quieting down the colors of your walls, floors and window treatment, creating a monochromatic background for them.

Divide the collections into color family groups, reds in one, greens in another, etc. Create two or three color schemes, based upon particular items. Store some, display others, changing them seasonally. Bring out warm colored and textured items, such as baskets and quilts for winter, displaying glass and white wicker during the summer. Have a garage sale with the leftovers.

Bonnie

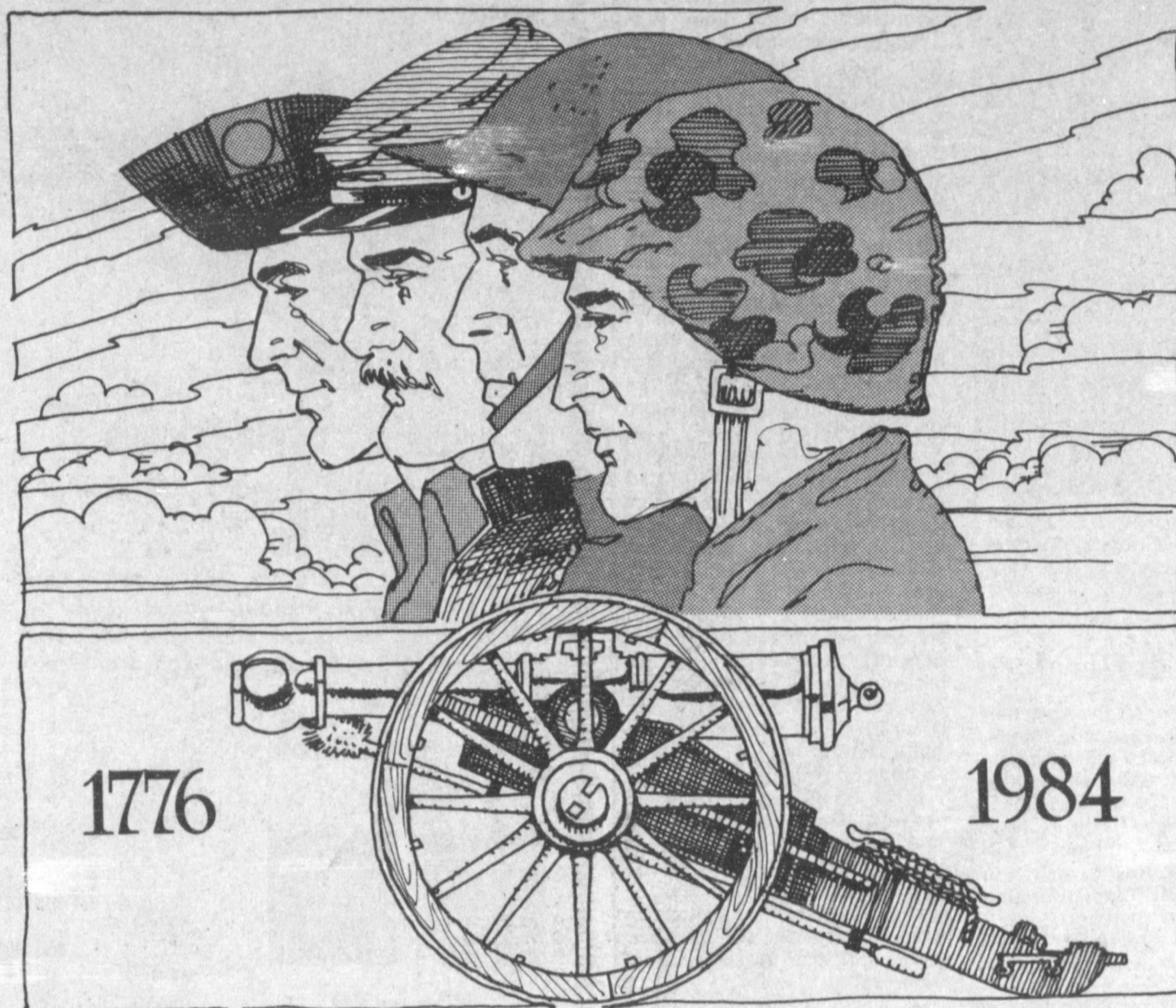


**Fry & Cox, Inc.**  
 401 South 1st 272-4511





# Veterans Day



Veterans Day...a time set aside to remember and reflect upon the courage and steadfastness of all the members of our armed forces throughout our nation's history who have so honorably served their country in time of need. We ask all to join us in tribute to these gallant men and women. They live on in our hearts; we are eternally grateful. Let us reaffirm our devotion to the ideals for which they fought and died in ongoing tribute to them all.

*Sponsored By The Following Patriotic Minded Merchants*

**Farmers Cooperative Elevators**

**Muleshoe Livestock Auction Inc.**

**El Nuevo Leal's Restaurant**

**Claunch Gin**

**Muleshoe Floral & Gift**

**Western Drug Co.**

**Serv-All Thriftway**

**Dinner Bell Cafe**

**Muleshoe Co-Op Gins**

**Bobo Insurance Agency**

**Higginbotham-Bartlett Co.**

**John's Custom Mill**

**Albertson's Shop For Men**

**Foster Fertilizer Inc.**

**Ray Griffiths & Sons Inc.**

**Black Insurance Agency**

**Muleshoe Trade Center**

**Kemp's Discount Furniture**

**Shipman & Son Body Shop**

**First National Bank**

**Lambert Cleaners**

**JLC Company**

**Terry Field Insurance**

**Pay-N-Save**

**A&B Plumbing & Target Gas**

**Bailey County Farm Bureau**

**North Lazbuddie Gin Co.**

**Decorators Nursery & Floral Inc.**

**McCormick Seeds Inc.**

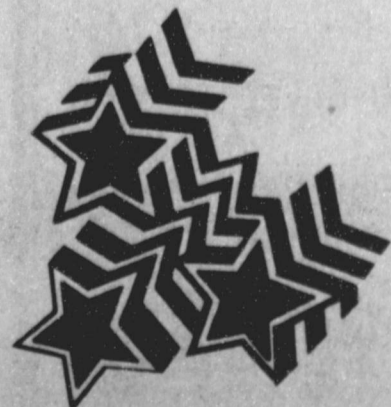
**Spudnut Shop**

**Maple Coop Gin**

**Farmers Coop Gin Association Of Enochs**

**Hochheim Prairie Farm Mutual Ins.**

**Bailey County Electric Cooperative Association**





**READY TO BE DRESSED OUT**--Shorty Aguirre, who has handled processing of animals for Winkler Meat Co. for a number of years, prepares to dress out a buffalo on Thursday afternoon. This is a once a year process from the Porters in New Mexico.

### Cotton Harvesting Resumed After Rain

High Plains skies cleared last weekend. Harvesting resumed where sandy soils dried quickly. High humidity and heavy dew restricted most harvesting to afternoon hours, according to Mack Bennett, Area Director for USDA's Marketing Services Office at Lubbock.

Growers sold some early ginnings during down time. Small mixed lots of mostly grades 32, 42 and 52, staples 30-32, mike 35-49 sold at around 900 to 1,275 points over 1984 Commodity Credit loan rates. Trading remained slow due to the light amount available, Bennett said.

Rains and threats of rain in the Mississippi Delta states pushed prices upward for the short supplies available across the entire cotton belt.

Gins paid growers \$85 to \$110 per ton for cottonseed, mostly \$90.

USDA's Marketing Service Office at Lubbock classed 6,500 samples during the week ending November 1. This brought the season's total to 21,300 and compares with 58,000 classed by the same date last year.

Predominant grades during the week were grade 41 at 12 percent followed by grade 42 at 39 percent and grade 52 at 19 percent. About one percent was reduced one grade because of prep and 8 percent for bark.

The week's predominant staples were staple 32 at 23 percent, staple 33 was 24 percent, staple 34 accounted for 23 percent and staple 34 was 23 percent. The week's average staple length was 32.9 thirty-seconds of an inch.

Mike 35-49 amounted to 44 percent, 33-34 was 19 percent, 30-32 accounted for 21 percent while 27-29 was 12 percent. The average was 34 for the week.

High Volume Instrument breaking strength averaged 25.9 grams per tex at Lubbock for the week.

### Cowboy Country Club To Open At Hereford

The Cowboy Country Club of Hereford has announced final plans for their 3 day Grand Opening the weekend of November 16-18. Headlining the weekend will be country singer George Strait whose recording of "Amarillo by Morning" was a million selling number one hit single. Strait will perform at the Saturday night dance November 17th.

Also, over 90 of the nations' top steer ropers, calf ropers, and barrel racers will compete for more than \$50,000 in prize money during the weekend.

Saturday afternoon, Nov. 17th, World Champion All-around Cowboy Roy Cooper will rope against 1982's All-around Cowboy Chris Lybbert in a special match roping. A \$4,000 jackpot goes to the winner.

**Dr. Jerry D. Gregory**  
**General Practice & Bariatrics**  
 3303 University Ave, Lubbock  
 806/795-6466 For Appointment

**Hours**  
 Mon-Fri - 9am - 4pm  
 Sat - 8am - 12pm

Dr. Gregory is Now On Staff At Community Hospital Of Lubbock  
 5301 University Avenue

### Chicken Pox Virus

#### Also Causes Shingles

When your childhood case of chicken pox ended, you were probably glad to hear you would never get it again.

You won't, but the herpes zoster virus that caused chicken pox remains in the body and can strike years later in the form of a disease called shingles, says the Texas Medical Association. (This virus is different from genital herpes.)

A typical case of shingles begins after age 50 with four or five days of fever and sometimes chills and an upset stomach. A rash resembling chicken pox then appears but is usually confined to one area--often the chest or back--and on only one side.

The rash turns into small blisters that usually begin to dry out and crust over after five days. A funny feeling or sharp pain can precede the rash, but pain more often occurs during or after the rash.

Normally, the pain will gradually go away as the rash disappears, and recovery follows. But this not always the case.

Older people can experience pain for months or even years after the rash clears up. The rash can involve almost any part of the body and can lead to blindness if it occurs near the eyes and is left untreated.

The virus that causes shingles remains dormant in the body because the virus is never totally eliminated after a person recovers from chicken pox. Instead, the virus retreats to nerve cells next to the spinal cord. There, the virus is held at bay by the body's immune system.

But sometimes the virus gains the upper hand, and an infection occurs again, this time as shingles. Generally the infection is restricted to the group of nerves containing the virus and to the skin served by those nerves. The result is pain and a rash.

Most cases of shingles clear up naturally, but serious cases may require drugs such as amitriptyline, carbamazepine, interferon, or acyclovir to control the symptoms.

Estimates are that up to half of all people who reach 85 have suffered a case of shingles. Fortunately, only about one-tenth of a percent have a second attack by that age. Shingles can occur at any age.

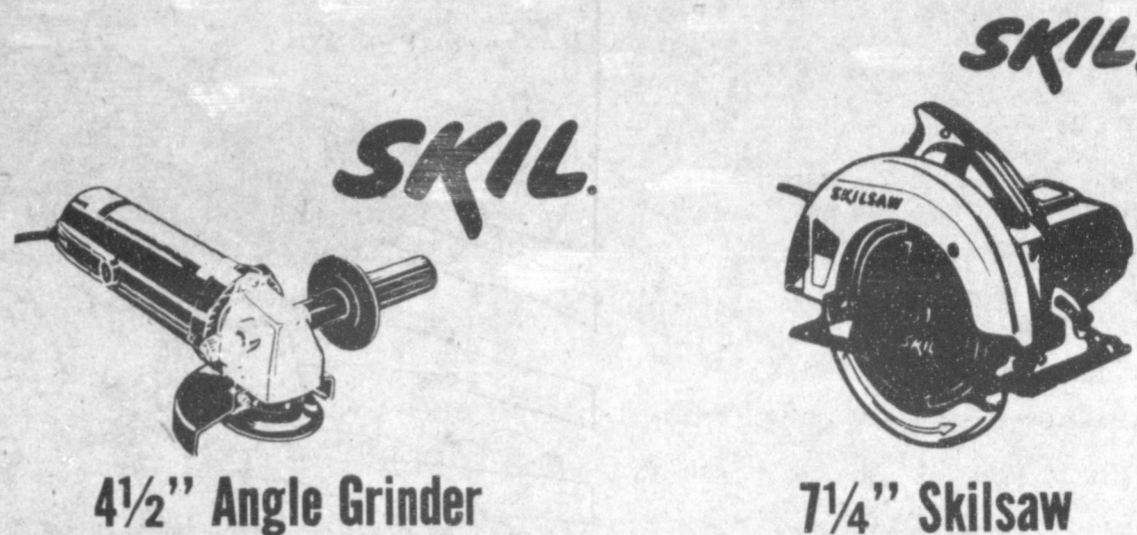
No Where  
 Maybe you can't take money with you, but where can you go without it?

Coast Guard News.



Prices Effective Thru Nov. 17

1302 W. American Blvd.  
 OPEN MON.-SAT. 7:30 a.m. til 7:30 p.m.



4 1/2" Angle Grinder

54<sup>95</sup>

No. 915

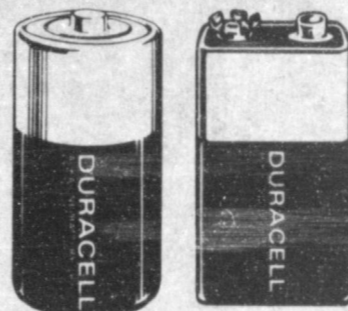
4.5 amp - 12,500 RPM. Ball bearing construction. Side handle mounts right or left side. Equipped with wheel guard, flange kit, spanner and spindle wrenches.

7 1/4" Skilsaw

44<sup>95</sup>

No. 1574

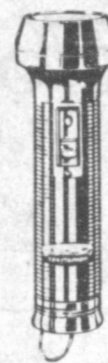
2 HP, 10 amp burnout protected motor, no-load speed of 4600 RPM. Includes combination blade and blade wrench.



Duracell Batteries

D or C Cell ..... 1<sup>79</sup>  
 AA ..... 1<sup>49</sup>

Duracell lasts and lasts!



D Cell Steel Flashlight

1<sup>79</sup>

Uses 2 D cell batteries. J2K



Heavy Duty Ray-O-Vac

D cell ..... 69<sup>c</sup>  
 6 Volt ..... 2<sup>69</sup>  
 9 Volt ..... 99<sup>c</sup>



Texaco Anti-Freeze

3<sup>25</sup>

One Gallon

20" Cross Lug Wrench

3<sup>79</sup>

Sturdy metal.

Lever Operated Grease Gun

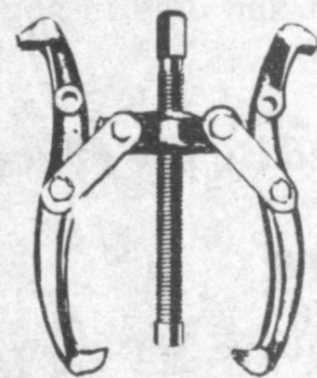
6<sup>19</sup>

Loads 3 ways: standard 14 oz. cartridge. Pressure filler.

Pickup Seat Cover With Scabbard

28<sup>95</sup>

Blanket styling. Machine washable. T-4.



3 Arm Gear Puller

3" ..... 3<sup>99</sup> 6" ..... 11<sup>49</sup>  
 4" ..... 5<sup>99</sup> 8" ..... 14<sup>99</sup>

Deluxe Cast Iron Jack

37<sup>49</sup>

48" deluxe cast iron jack. Many uses.

Hi-Lift



NO TOOLS HOOKUP

PEERLESS MODEL

8500

NO TOOLS HOOKUP

PEERLESS MODEL

8200

- MODERN SINGLE HANDLE KITCHEN W/SPRAY
- FOR 4 HOLE SINKS—REPLACES SINGLE OR TWO HANDLE
- FLEXIBLE SUPPLY TUBES EASIER HOOKUP
- EXCLUSIVE WASHERLESS BALL CONTROL
- 10 YR. LIMITED WARRANTY
- NO TOOLS HOOKUP

\$ 39<sup>95</sup>

- MODERN SINGLE HANDLE KITCHEN
- FOR 3 HOLE SINKS—REPLACES SINGLE OR TWO HANDLE
- FLEXIBLE SUPPLY TUBES EASIER HOOKUP
- EXCLUSIVE WASHERLESS BALL CONTROL
- 10 YR. LIMITED WARRANTY
- NO TOOLS HOOKUP

\$ 32<sup>95</sup>

◆ BEST IN THE FIELD ◆  
**PARTS**  
 R • O • U • N • D • U • P

Buy one battery at regular price

Get a second battery at 1/2 price

See us today.  
 Offer ends November 30.

**Reynolds & Young, Inc.**

803 W. American 272-4236



## Smith Elected President Of Soil And Water Conservation

TEMPLE--District Directors at the Forty-fourth Annual State Meeting of Soil and Water Conservation Districts elected Waldo Smith of Brenham president, and W.Q. Richards of Paducah vice president of the Association of Texas Soil and Water Conservation District. Approximately 1,000 persons attended this meeting including directors representing the 201 conservation districts in Texas. The meeting was held recently in Corpus Christi.

Smith, a livestock producer and agri-businessman, has served as a director of the State Association for Area Three since 1980. Area Three consists of 40 SWCDs which cover 50 counties in the southernmost region of Texas. Smith is also a current member and secretary of the

Washington SWCD which is headquartered in Brenham.

The ATSWCD's new president, a partner in and secretary of the Big Four Plant Food Company, Inc. located in Brenham, is also a past state officer in the Future Farmers of America and Young Farmers Association. He is a past president of the South Central Association of Soil and Water Conservation Districts. An elder in the Presbyterian Church, Smith is a past director of the Washington County Youth Board and a past officer of the Washington County Fair Association.

Richards, a farmer and rancher, is vice-chairman of the Cattle SWCD headquartered in Paducah. He has been a member of the board of

directors of his local district since April 1973 and has served as chairman of the ATSWCD's Organization Committee.

Richards represents Area One which consists of 47 SWCDs covering 51 counties in the Panhandle and South Plains region of Texas.

Other directors of the State Association are Judge Larry McCasland of Pittsburg, Wilson Scaling of Henrietta and Charles D. "Buddy" Clark of Menard.

Clark, also newly elected in Corpus Christi to the ATSWCD

Board of Directors, is a livestock producer. He currently serves as a director of the Menard County SWCD. He is a past president of the Hill Country Association of SWCDs and has served as an alternate director of the State Association for Area Two.

As a member of the Board of Directors of the State Association, Clark will represent 42 SECDs covering a 51 county area in the Hill Country to the Western and Trans Pecos section of the state. Clark is a past president of the Menard Cham-

ber of Commerce and is a director of the Texas Sheep and Goat Raisers Association and a member of the Mohair Council of America. In other professional organizations, Clark is a member of the Texas and Southwestern Cattle Raisers Association and the National Cattlemen's Association.

McCasland represents Area Four which consists of 35 SWCDs located in a 51 county area in the East Texas forested region. McCasland, a livestock producer and who serves as Camp County Judge, currently serves as chairman of the Sulphur-Cypress Soil and Water Conservation District head-

quartered in Mount Pleasant. Judge McCasland also currently serves on the review committee of the East Texas Council of Governments and on the Insurance Committee of the Texas Association of Counties.

Scaling, who is a small grain and livestock producer, represents Area Five on the ATSWCD Board of Directors. He serves as a vice chairman of the Little Wichita SWCD headquartered in Henrietta. Area Five consists of 36 SWCDs in the Central to North Central Area of the state.

Joe Montgomery, immediate past president of the State Association, will continue to serve on the Board of Directors as an ex-officio member. He farms near Abilene, Texas.

### By Spencer Tanksley County Extension Agent

Pine, spruce and other cone bearing trees have lots of trouble with diseases which cause needles to drop prematurely. We seem to have more than our share of these diseases in West Texas. Our harsh climate and adverse soil conditions are often at fault as much as the presence of pathogenic fungi which may attack trees under stress. Other adverse factors which influence disease development may include herbicide injury, cold damage, natural gas leaks, salt in soil or water and fertility problems.

Needlecast, as I look at it, is a complex of several different pathogenic diseases caused by different fungi. They have very similar life cycles and they respond to the same control measures. Precise identification is not only very different, but it is usually not necessary for successful control.

Cedars, junipers and Arizona Cypress have similar diseases called twig blight and needle (scalp) drop. The same control measures apply to these plants as suggested for pine and spruce.

Winter injury is very common on young trees planted for windbreaks and landscape use. Home owners often push too hard in the fall in an effort to get all the growth possible. A sudden freeze on tender young plants can be fatal. They are lush, very turgid and very susceptible to freezing. Evergreens should be managed for maximum growth in the spring.

### Firefighter's Report by Wayne Peterson

The November business meeting was called to order by President H.E. Reeder. Owen Jones read the minutes from October which were approved.

The department voted to pay it's \$75 annual dues to maintain membership in the State Firemen's and Fire Marshall Association.

Read was a letter the department received concerning legislation trying to ban the use of Class 'C' Fire Works sold to the public during certain holidays. The department voted not to support such a bill at this time.

The rules, regulations and policies governing the actions of this department after a call comes in are time proven, effective and as efficient as training and equipment allow. Sometimes lives are lost before rules are made or policy changes adopted. Odd as it may seem, this is the reason things are done the way they are. One such policy has recently been questioned by unknowledgeable individuals. Anytime a call comes in requiring the Jaws of Life, at least one fire fighting unit will run with the rescue unit in case of fire. Protection for the life of the fireman and accident victim are of utmost importance, and water sometimes extinguishes fires. For those not aware of the emergency phone number for this area, it is 272-4200.

Rich Magby made a motion to adjourn-motion denied.

The building committee will be trying to get together with the city council to inquire of the progress on the new proposed fire house.

A motion was made and seconded to deposit \$100 in an account for the Women's Fire Department Auxiliary.

The fire department wants to congratulate the Mighty 'M' Band on its district and regional wins.

Magby made a motion to adjourn and motion passed.

and for maturity of tissues in the fall. I suggest that fertilizer and irrigation be limited to the spring months. No new growth is wanted or needed after August 1. The best management for reaching this goal might be to restrict water. Winter irrigation is necessary, but it should be done only when the tree is dormant. December and February are good months for watering trees in winter as well as April, May, June, and July in the spring.

Control of Needle Cast and Twig Blights:

Control of needles and twig diseases of evergreens involves appropriate pruning, fertilization to maintain vigorous growth, watering during stress periods and use of fungicides. Identification of the disease and elimination of mangement problems which cause similar damage is very important. Chemical control is expensive and time consuming. Results will be very slow in showing an improvement. One should practice the time honored virtues of patience and persistence when controlling disease on these slow developing trees.

The choice of fungicides does not seem as important as the timing of applications and the continuation of the schedule until recovery is complete. Bordeaux mixture, copper hydroxide (Kocide 101), Citcop 4 E, and other labeled neutral and fixed copper fungicides, organic fungicides like Benlate, Manzate D, or Dithane flowable with zinc, and Bravo 500 can be used to control needle diseases.

Make the first application when the new growth appears in the spring. Repeat twice at 10-21 day intervals and make two applications in September. This will protect the new growth, but older needles may develop disease because they are already infected. The tree may even look worse!! Repeat the entire schedule in the next season and expect improved appearance only after two growing seasons.

/s/ Spencer Tanksley  
Spencer Tanksley, CEA-Ag



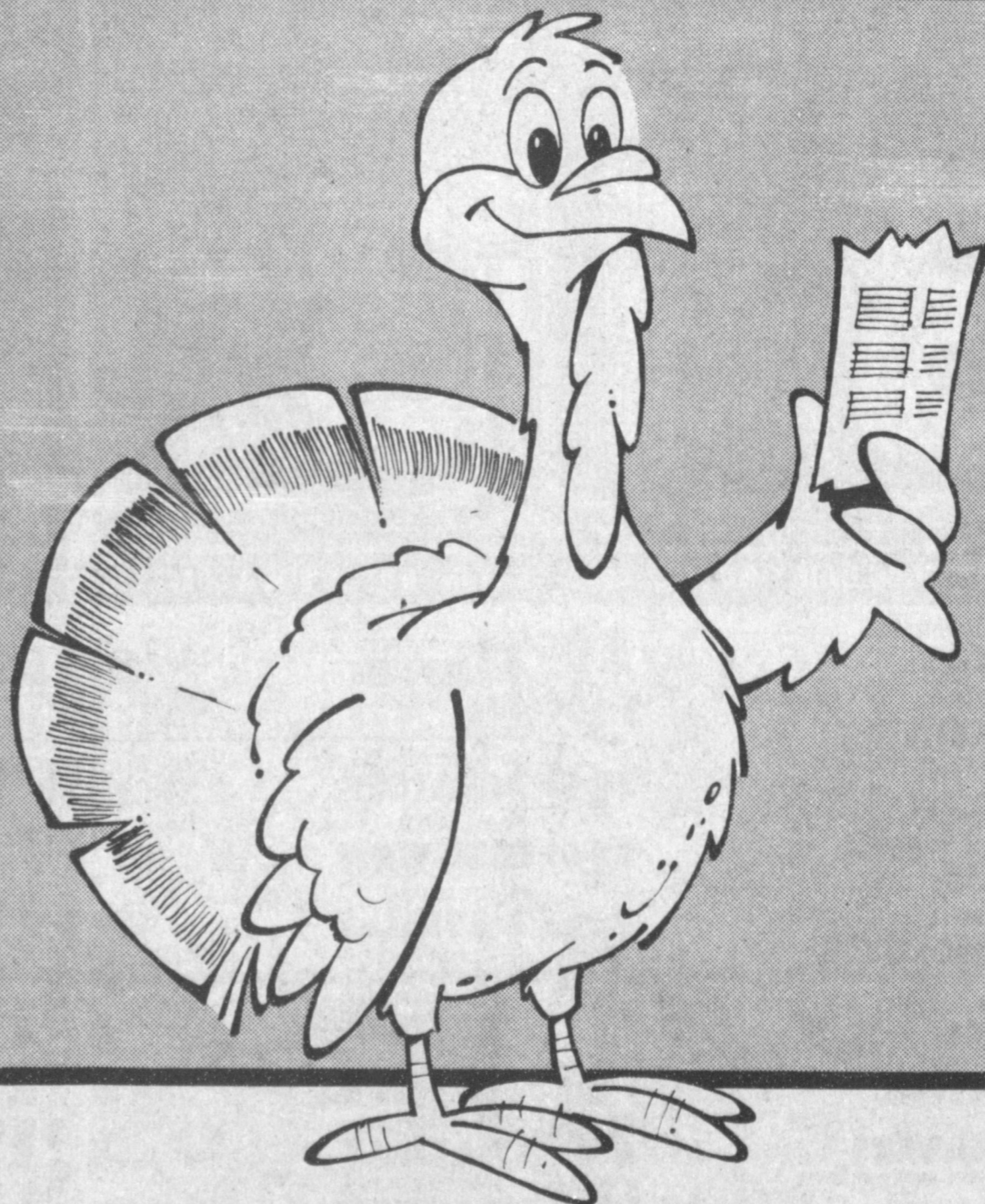
**DON MCELROY HONORED**--Don McElroy of Irrigation Pumps & Power, Inc. of Muleshoe, has been named the 1984 recipient of the Lindsay Manufacturing Co. Master Dealer Award. The annual award recognizes his accomplishments for increased sales. A Lindsay dealer for the past three years, McElroy was recognized, along with 31 other Lindsay dealers during the company's sales convention in Keystone, Colo. recently.

**ROBERT D. GREEN, INC.**
  
 2400 W. AMERICAN BLVD. — MULESHOE, TEXAS 79347
   
 — HOME OF THE GREEN MACHINES —
   
 BUS. PH. 806 272-4588
   
 TERRY YELL SALESMAN
   
 HOME PH. 806 272-4948

**NEW STORE HOURS**
  
**7:30 A.M. till 7:30 P.M.**
  
**MONDAY**
  
**THROUGH SATURDAY**

**Haq Babur, M.D.**
  
 Announces The Opening Of His Office For
   
**Neurosurgery Practice**
  
 (Adult & Pediatric)
   
**November 21, 1984**
  
 2000 W. 21st ST. Call 505-762-3700
   
 Clovis N M For Appointment
   
 (Across From Clovis Hospital)

## BIG BIRDS READ LITTLE ADS IN THE CLASSIFIEDS!



The reason is great "stuff 'n' trimmings" are found in the classifieds. The classifieds are a great feast for sellers or buyers. Not to mention the "gravy" of low cost classified ads.

**Muleshoe & Bailey County Journals**

272-4536

## SMALL WONDER

**Amana**  
COMPACT  
MICROWAVE OVEN



Model ML-10

**\$ 199<sup>95</sup>**

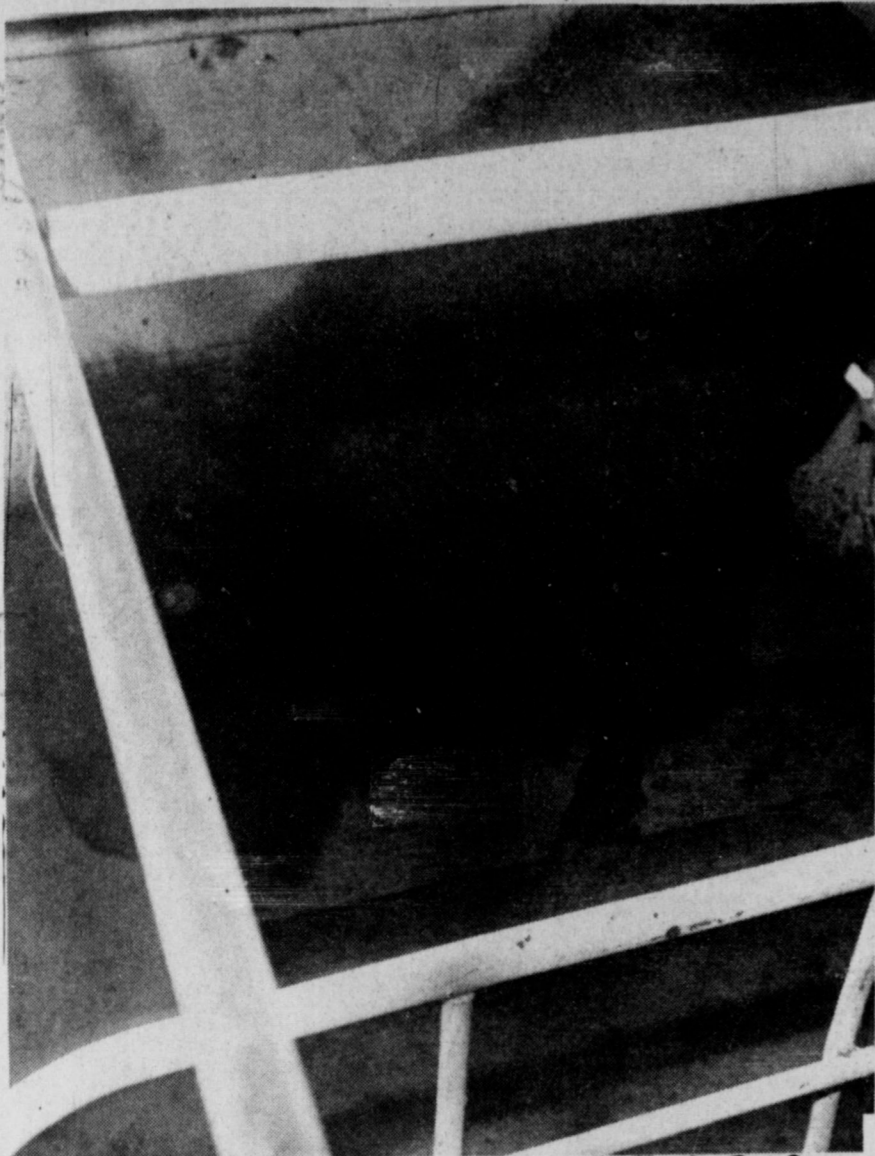
Save space and cook fast and easy with this Amana microwave oven. Its compact size fits almost anywhere and you get many wonderful "big oven" features.

- 800 WATTS OF COOKING POWER cooks in just 1/2 the conventional time.
- DEFROST CONTROL thaws frozen food fast.
- EASY DIAL TIMER has adjustable speeds to 20 minutes.
- SEE-THROUGH DOOR AND INTERIOR LIGHT make it easy to see food as it cooks.
- REMOVABLE COOKING TRAY catches spills and boilovers.
- AMANA MICROWAVE OVEN COOKBOOK

Buy the Amana Compact Microwave Oven at:

**Harvey Bass Appl.**  
122 S. 1st 272-3030

# CLASSIFIED ADS



**SPENDING IT'S LAST HOURS**--Unhappy, snorting and pawing, this large buffalo cow waits for her turn at Winkler Meat Co., unaware she is headed for someone's diner table. Winkler Meat Co. processed seven buffalo Thursday for Rod Porter, who raises buffalo north of Clovis, N.M.



**'PRIORITY'**

## Lazbuddie Methodists Set Concert

'Priority', a gospel quartet, based in Lamesa, will appear in concert on Saturday, November 17 at 7:30 p.m. in the Lazbuddie United Methodist Church according to the pastor, Les Burrus.

He said they will be presenting a special time to encourage and refresh your heart. Rev. Burrus said, "The music will be versatile and designed to exalt our Lord Jesus Christ. Come join us in this unique opportunity of praise and worship."

'Priority' began in November, 1982, born from what the group says is a heartfelt desire to make Jesus Christ Lord of their

lives. The name, 'Priority', evolved from this commitment and they say their music is designed to exalt Christ both in praise and worship.

"We are a group of lay people, farmers and homemakers, who are active in the music ministries of our own local churches," they said. "We see our ministry as one of encouraging and refreshing the heart of the Body of Christ. 'Priority' has been received well in churches of all sizes and faiths."

Group members include Jenny McClendon, Candy Smith, Gary Barron, Layne Heald and Rick Smith.

## West Plains Hospital Report

Patients In West Plains Medical Center, Inc.

November 6  
Berly Hollis, Blanche Cotten, Thelma Seales, David Johnson, Yaunda Martin, DeNettie Watson, Josh Curtis, Timmy Gonzales, Gregorio Torres.

November 7  
Cleo Bellar, Gregorio Torres, Vashti Fowler, Renee Bryant, Heriverito Galaviz, Thelma Seales, David Vester Johnson, Yaunda Martin, Madge Clements, Johnny Burch, Mike Morris, Ricky Vaughn.

November 8  
Myrtle Lee, Cleo Bellar, Gregorio Torres, Vashti Fowler, Andres Garza, Heriverito Galaviz, Ruby Alexander, Ricky Vaughn, David Vester Johnson, Madge Clements, A.J. Commons, John Burch, Mike Morris.

\*\*\*\*  
What happens is not as important as what the people believe has happened.

**MAGICAL TOUCH**  
that's it. the CLASSIFIEDS

SELL or BUY ANYTHING!  
**CALL 272-4536**

Change  
"How on earth do you keep a maid so long?"  
"Well, we move the furniture around so often that she feels it's a new place every week."

## MEDICARE NEWS

Medicare and private insurance can be an intimidating subject for many people 65 and over. There seems to be an endless number of questions about what is covered by Medicare, how to file claims, how to obtain the maximum amount on Medicare claims and how to appeal the amount paid on a claim. Added to the confusion about Medicare are the many choices of Medicare Supplement policies on the market today designed to fill in the "medigap", or the gap between what is actually charged the patient and the amount paid by Medicare.

Advertising sometimes makes promises too good to be true and often the reality of the policy is hidden in the fine print. Many times people over 65 tend to take the path of least resistance and leave their insurance decisions to someone else or fail to insure themselves at all.

South Plains Association of Governments, has joined together with the Health Care Financing Administration to provide trained workers to respond to these difficult questions. Medicare beneficiaries may call the "Gapline" 1-800-858-1809 for answers to their questions about Medicare coverage or Medicare supplemental insurance.

Say **Congratulations**

with new Competitive-Rate  
**U.S. Savings Bonds**  
America's favorite way to save!

## Strike or Spare



### There's a New Tax on Bowling Fees.

Beginning October 2, bowling will be subject to state and local sales taxes.

For more information call toll free 1-800-252-5555.

**Bob Bullock**  
Texas Comptroller of Public Accounts

## 8. REAL ESTATE FOR SALE

### WHITT-REID

Henry Reid Broker  
We Try Harder

3-1/4-2 Brick-Richland Hills, formal living room, large den, fenced back yard, approx. 1700 sq. ft.

COUNTRY LIVING, 3B 1B Bar-storm windows, with large lot & will drill well & build well house for only \$42,500.00

3-1/4-1 Brick over 2100 sq. ft. spacious den, fireplace, 2 blks from Neil Dillman School.

BUY YOUR OWN business a ceramic shop.

FARMS-choice 320 acres Lazbuddie Land 3 good 8" wells Tile, on payment-top yields-Fresh on market

DRYLAND-Central Bailey Co. on pavement, choice good allotment priced to sell.

Thursie Reid 272-5318 Roy Whitt 272-3058  
Joy Whitt 272-3058 Lucille Harp 272-4693

REAL ESTATE-INSURANCE  
201 MAIN PH: 272-3611

## 10. FARM EQUIP FOR SALE

79 MODEL Hesston 3000 Stripper, clean, \$2500

IH MODEL 95 Cotton Stripper \$10,000

IH MODEL 95 Cotton Stripper, Clean \$12,500

ONE IH MODEL 85 Stripper \$500

ONE 81 MODEL 1400 Stripper Reconditioned & Clean \$25,000

Wooley International  
W. Hwy 84  
Muleshoe, Texas

w10-44s-tfc

## Ellis Funeral Home

Pre-Need Funeral Plans

Supervised By Texas Department Of Banking  
Price Frozen At Time Of Purchase



NEW STORE HOURS

7:30 A.M. till 7:30 P.M.,  
MONDAY  
THROUGH SATURDAY

## AUCTION

Rogers Dairy - Elida, N.M.  
Friday - 11 A.M. - Nov. 16

Location from Elida, New Mexico. Two miles North on Melrose Highway, then two miles West, 1/2 mile North.

Having sold all of our dairy cows - we will sell the following equipment at auction.

- 1978 Ford Truck W/Oswalt feeder bed, auger, front discharge
- 1979 Chev. Truck W/Oswalt feeder bed, center discharge.
- 1980 IH 510 loader
- 504 IH tractor W/scraper blade
- 560 IH tractor (butane) W/Farmhand front end loader
- 560 IH tractor (diesel)
- 966 IH tractor W/cab W/air
- 1466 IH tractor W/cog
- 1981 Chev. 1/2 ton pickup
- 1978 Chev. 1/2 ton pickup
- Hart 6'x20' tandem gooseneck stock trailer
- Champion 14' tandem stock trailer
- 3-axle gooseneck flatbed trailer
- 2000 gallon water trailer (gooseneck)
- 2-wheel dump trailer
- 4 1/2 yd. cement mixer on trailer, PTO driven
- Portable cement mixer on wheels, gas motor
- 1978 Lincoln portable welder
- Shop welder NGC Sureweld Model SU180
- Wards shop air compressor 2HP
- 65KW Wimpower generator 100/60 PTO driven
- 25KW Winco generator PTO driven
- 2-15KW Wimpower generators, portable
- Danuser posthole digger
- 5' weed shredder
- 2 - Rhino blades
- 4 row knife sled
- 2 - 2 row knife sleds
- tandem disc
- 4 row planter
- hoeme
- electric posthole digger
- miscellaneous farm equipment, parts, etc.
- 2 wide front axles for 560 IH tractor
- Spring-O-Matic hoof trimming chute
- My-D-Hand squeeze chute
- 2-position head lock gate
- electric cesspool pump
- 10 HP Briggs & Stratton motor
- 5 HP electric motor
- Misc electric motors
- pump jacks
- water pumps
- pressure tank
- windmill
- 2 electric calf waterers
- Calf cage (fits in pickup bed)
- 50" screw
- 41"x6" auger (new)
- misc augers and motors
- 7 - 1/2" steel water tanks
- misc water tubs
- 2 - 55 gallon feed bins
- 1 - 6 ton upright steel feed bin
- 3 - 6 ton self-feeders
- 5 - barrel feeders
- 5 - hay feeders
- 11 - Moorman mineral feeders
- Cargill molasses tank W/pump
- hay elevator
- old feedroom scales
- 16' freestanding 2-sided pigeon-hole bin for storing bolts, plumbing and electrical supplies, etc.
- 3 shelving units
- misc. tools, oil and air filters.
- 5'x12'x1/2" steel
- 6'x20'x1/2" flat metal
- misc. sheet steel
- 1/2" cable
- 22' and 16' grain bed tip tops
- grain truck end gate
- silage gates and belly braces
- misc. mobile home and truck axles
- misc. 900x20, 1000x20, 14 1/2" tires and wheels
- 150 gallon pickup diesel tank
- 25 gallon butane bottle
- 2 - 5 gallon butane bottles
- clothesline poles
- misc. 2"x4" lumber
- misc. new and used doors
- misc. mobile home and house type windows
- 2 steel boxcars
- panels
- gooseneck trailer hitch W/plate
- headache rack
- cross ties
- wood fence posts
- camper shell
- desk
- misc. stoves and refrigerators
- misc. furniture
- wheelchair and hospital patient table
- 2 overhead furnaces
- 3 sets truck flares
- survey transom and stick
- saddle, etc.
- 2 sets children's playhouse furniture
- Misc household goods and toys
- 2 sets freeze branding irons
- nitrogen pot for freeze brands
- 3 nitrogen pots for semen storage (one with 33 straws COBA and ABS semen)
- 1 umbraugh cow calendar, stainless steel
- 2 stainless steel breeding boxes
- 2 electric constant temp warm water baths
- Babcock butterfat, test set up, complete with acid dispenser, agitator, washer, glassware and 4 gallons acid
- 16 Universal milk meters
- 16 Surge Tru Test milk meters
- 1972 American double-wide mobile home, 24x56 3 bedroom, 2 bath, W/family room
- 1972 Lancer 14x72 mobile home, 3 bedroom, 2 bath (located east of intersection of Hwy 70 and Hwy 330 at Elida)

Dick Moore, Auctioneer  
505-356-4740 Portales, N.M.

# CLASSIFIED ADS

**DEADLINE FOR CLASSIFIED ADS IS TUESDAYS AND FRIDAYS 12:00 NOON**

**CLASSIFIED RATES**  
 1st Insertion Per Word...\$.15  
 Minimum Charge...\$2.30  
 2nd Insertion Per Word...\$.13  
 Minimum Charge...\$2.00  
**CLASSIFIED DISPLAY**  
 \$1.70... per column inch  
**BLIND AD RATES**  
 50% more DEADLINES 12 Noon Tues. for Thursday paper 12 Noon Fri. for Sunday paper **WE RESERVE THE RIGHT TO CLASSIFY REVISE OR REJECT ANY AD NOT RESPONSIBLE FOR ANY ERROR AFTER AD HAS RUN ONCE**

**JAMES DISCOUNT**  
 Furniture is now open in new location, 414 W. American Blvd. See our new line of furniture, lamps, tables and etc. Arriving in time for Christmas.  
 j1-45s-4tc

**PHEASANT, Chuker,**  
 Quail Hunting-Nov. 1 to April 1-\$75.00 a day-Olton area -call 806-889-3853 or write: Pheasant Inn Hunting Club, Rt. 4 Box 9, Olton, Tx 79064.  
 p1-45t-4tc

**WANTED OLD** post cards & envelopes, and would like to buy, sell or trade postage stamps. Call Mike Pugh at 272-3039 or come by 1628 W. Ave. B.  
 p1-45t-7tc

**WANTED:** Sewing in my home. 920 S. First 272-4066. Ann Moore  
 m1-46s-4tc

**RESPONSIBLE PERSON** Wanted to own and operate candy vending route. Pleasant business with high profit items. Can start part time. Cash investment of \$3996 to \$12,996. **INVESTMENT GUARANTEED** by 100% REBATE! Call 1-800-328-0723. **EAGLE INDUSTRIES** 25 years of Service.  
 1-45t-2tp

**MARY KAY** Cosmetics, Shop now for your Christmas selections, Free gift wrapping, Free Complimentary Facial call Yolanda Bell Beauty Consultant 925-6664.  
 b1-45t-tfc

**OWN A HIGHLY** profitable and beautiful shoe store of your own. All first quality merchandise. Nationally known brands. \*Bandolino \*Jordache \*Bear Traps \*Marshmellows \*Naturalizer \*Candies \*Gloria Vanderbilt \*Caprizio \*Johansen \*9West \*Crawdads and many more. \$16,900.00 includes beginning inventory - training - fixtures and grand opening promotions. Have your store opened in as little as 15 days. Prestige Fashions 501-329-2362.  
 1-46s-1tpts

Custom Cabinet for your kitchen or bath room or any type of furniture making. We deliver and install anywhere J/S Wood works 605 Connelley Clovis, N.M. Phone 769-0020 any time. Jimmy Trujillo T1-42t-1mcts

**SHOP WITHOUT** going shopping - The Amway Way. Complete product line, fully guaranteed. Call 272-4663. L1-43t-10tc

**'CONCERNED** About Someone's Drinking **HELP IS AVAILABLE** through Al-Anon Call 227-2350 or 965-2870 or Call 227-2350 or come to visit Tuesday nights, 8:00 p.m. at 1116 W. American Boulevard, Muleshoe

**3. HELP WANTED**

**GOVERNMENT** Jobs. \$8,342-\$75,177 /yr. Call 805-687-6000 Ext. R-4000. 3-44t-4tpts

**SEEKING MULESHOE** area resident for employment as Auto Salesman. Must be stable & reliable. Contact Terry Yell 272-4588. Robert D. Green, Inc. g3-45s-4tc

**GOVERNMENT** Jobs. \$16,559-\$50,553 /year. Now Hiring. Your Area. Call 805-687-6000 Ext. R-3000. 3-44t-4tpts

**WANTED HOUSE-KEEPER** wanted for elderly lady. Call 272-3400. References needed. f3-46s-2tc

**CLERK - TYPIST.** 50wpm required. Mail resume to 'Clerk-Typist' Box 449, Muleshoe, Tx. 79347.

**WANTED** Highest Cash Paid For "Texas Buster" and other Old Fire-cracker packs William Scales  
 130 Fordham Circle Pueblo, Colorado 81005  
 Phone (303) 561-0603. 3-45t-4tp

**8. REAL ESTATE FOR SALE**

2700 Sq. Ft. 320 W. Ave. J., 3-2-2 basement etc. 272-4737. w8-28t-tfc

**FOR SALE:** 3200 sq. ft. brick home on 5 acres. 3 bdrm, 2 1/2 bath, kitchen with builtins & dining area, 26 x 24 ft. den w/fireplace & large built in bookcase, sun-room & basement. 2 car garage, block fence & timed sprinkler system, 2 barns & lighted roping arena. Call for appt. 272-3913 or 272-5697. v8-44t-1mc

**\$4,000 BELOW** appraisal. Richland Hills 3-2-2. Large den, with fireplace, Living room, Large Kitchen with all new appliances. Large fenced yard and covered patio. \$65,000. 1903 W. Ave. H 272-5002. z8-41t-tfc

**2 BEDROOM,** 1 bath house for sale. App. 900 sq. ft. on 59' by 140' lot. Fenced back yard. Good location. 1530 W. Ave D. Will consider reasonable offer. Ana 272-4152. g8-45s-tfc

4-3-2 study, basement, large dining. Priced to sell. Call 272-3531 or 272-4782 after 5 p.m. 8-45t-7tp

**1981 MF 860,** 1000 hrs. 30 ft. table, like new. \$45,000 272-3913 or 272-5697 v8-44t-1mc

**FOR SALE in Sudan:** Nice three bedroom. Two full baths, fireplace, storage house and carport. If interested call 227-2124. l8-46s-8tc

**FOR SALE** Two bedroom house. Carpet, 1 bath, one car garage. Glaze and Goforth. 272-4208. g8-46s-2tsc

**TWO BEDROOM** house for sale to be moved. Located at Bailey County Feed yards. Call 272-7555 or 272-7556. w8-46s-2tc

**FOR SALE BY OWNER** 2-1-1 on 2 lots. All fenced yard, storage building, fruit trees. \$17,500. Call 965-2320. l8-41s-stfc

**KREBBS REAL ESTATE** 1004 W. 6th Phone--272-3191 Appraisals We Specialize In Farms And Ranches

20A Native Grass - Hwy 84 \*\*\*

150A Good Red Land-Lariat area. \*\*\*

Hog farm-completely automatic, E. of Muleshoe-Terms. \*\*\*

Builders Dream - Plotted lots - Ready to build on - Hwy 84 \*\*\*

Large tract of dry land - S of Muleshoe. 8-45s-stfc

**J.B. SUDDERTH REALTY INC.** Drawer 887 Farwell, Tx. 79325 Ph. 806-481-3288

Very nice 3 bdrm, 1 3/4 bath, brick home on corner with 2 car garage, spacious yard, sprinkler system, storage shed, good neighborhood in Muleshoe.

Excellent 396 a irrigated two 10 inch wells, one 8 inch well approximately 180 to 200 feet of water, located 5 miles N.E. of Muleshoe on Hwy with 2 bdrm, stucco house owner says sell and will finance.

80 Acres, 2 wells, 1 electric motor, West of Muleshoe on highway. Owner says Sell!

480 Acres Irrigated with Circle Sprinklers, lays good, on highway-West of Muleshoe. Owner says Sell!

160 acres, 8 in well, lays nearly perfect, 5 miles South, 1 mile East of Clays Corner. Owner will finance.

Good 320 acres with 2 circles 2-8 in wells on highway South East of Lazbuddie. \$975 per acre cash with circle sprinkler included.

Excellent 160 acres with circle sprinkler 2-8 in wells Southeast of Clays Corner. Possible owner financing

130 acres 1-8 in well on road from property, nearly perfect possible owner financing. 8-42s-tfc

**American Valley Investment** West Highway 84 Max C. Crim 965-2742

320 A. 2-8" wells 2-6" wells, nearly 2 mi. of Underground pipe. Sprinkler could go with one quarter. \*\*\*

**NICE MOBILE** Home 2 bed rooms with stove & ref. & dish washer. \*\*\*

**GAS STATION,** nice location on American Blvd. wide frontage, Priced to Sale. c8-44t-tfc

**SMALLWOOD REAL ESTATE** 232 Main 272-4838

3 B.R. Brick, 2 Bath, 2 Car Garage, 2 Storage Bldg. Central heat Refrigerated air, Fireplace, Electric Garage door openers, fenced back yard, good location, Priced to Sell! \*\*\*

8-23s-tfc

**DAVIS COMMERCIAL PUMPING SERVICE** Cess pools, Grease pits, Dipping vats, Mud pits, Septic Tanks. "if it's part liquid and not over 20 foot deep we'll try to drain it." 806-272-4673 806-272-3467 Muleshoe, Texas 15-39s-stfc

15-39s-stfc

**HENRY REALTY** 111 W. Ave. B Muleshoe, Texas 272-4581

320 Acres with large beautiful 3 - Bedroom, 3 bath, 3 car garage, spacious gameroom, central heating and air, underground sprinkler for yard 30' x 50' shop for building. 5 wells. \*\*\*

80 ACRES with 6" well and 8" well, under ground pipe owner financing available. 7 miles west of Muleshoe. \*\*\*

160 ACRES with 2 wells and 7 tower sprinkler near Lazbuddie. \*\*\*

38 Acres West of Muleshoe, 6 Inch Well, Sideroll, All Wheat. \*\*\*

One Acre Sites for Home Construction. 3 Miles of Muleshoe on HWY, 3 lots remain. \*\*\*

Completely remodeled 2 Bedroom home. Id. a first home. See to app. Nice location, with F.H.A. loan. \*\*\*

Apartment complex, mobile home park, vacant land for expansion. Terms available. 8-23t-tfc

**JIMMIE CRAWFORD** Real Estate & Insurance 1725 W. Ave E. Muleshoe, Texas Phone 272-3666

**9. AUTOMOBILES FOR SALE**

1973 **CHEVROLET** Impala \$700 or best offer. Contact 927-5555. h9-44s-4tc

**PRICE REDUCED, MUST SELL!** 15 ft. 1973 Red Dale Travel Trailer. Sleeps six, 3 way refrigerator, used very little, must see to appreciate. \$1800.00 Call 272-4343 after 6 p.m. or come by 302 W. 7th.

**10. FARM EQUIP. FOR SALE**

283 **JOHN DEERE** Stripper for sale. Stripped only 600 acres. Call 965-2160. m10-40t-tfc

**FOR SALE** Ten all steel 8x9x24 ft. "Big 12" Cotton trailers. Five wood-wire, 8x8x20 "Big 12" Cotton trailers. Excellent condition. Call 965-2693 at night. w10-42t-tfc

**FOR SALE** 1976 Hale 6x16 stock trailer, Good Condition. Call 946-3429. b10-44s-3tsc

**11. FOR SALE OR TRADE**

1983, 33 FT. Wilderness Travel Trailer. Fully self contained-Air cond. heat, sleeps 6 adults. Used less than 2 months. Reese equalizer hitch. \$11,500.00. 272-3913 or 272-5697. v11-44t-1mc

**FOR SALE** 1981 Way-side Mobile Home. Just take up payments at \$347.35 per month for 11 1/2 years. Must see to appreciate. 227-2520. m11-45t-4tc

**FOR SALE** Firewood, Dry Oak. 272-3987. w11-45s-tfc

**13. PROPERTY FOR LEASE**

**IRR. land** with sprinklers for rent. Please call 965-2798 at noon or night. 13-46s-8tp

25 BY 140 ft. building on Main Street in Muleshoe for rent. Will remodel to suite. 385-6237 10 to 5 p.m. Littlefield Health Food Center. h13-43s-stctcs

**15. MISCELLANEOUS**

**BRUCE & MATTHEWS** Inc. Refrigeration & Electrical Contractor's Heating, Cooling, Appliance Service. 424 N. First. 272-5114. 15-44t-tfc

**WANT TO BUY** used 3 bdrm house to be moved. Call Roy Whitt office 272-3611. home 272-3058. w15-44s-stfc

**HOME REPAIRS.** F.M. Saldana Construction Licensed and bonded plumber. Specialize in cement, carpenter work, remodeling, painting, acoustical ceilings. 272-4955. 15-16s-tfc

**REGISTERED CHILD** care. The kind of care that every parent wants for their child. After school pick up for grade school children, learning activities, art and hot meals. During gin season night time and Sat. are available. Debbie Tillman 272-5822. t15-46s-3tc

**To Late To Classify**

**COYOTE LAKE** Feed Yard has opening for feedlot cowboy. Call 946-3321 between 8:00 and 5:00 tltc

**TRERC study shows** condominium owners want detached homes

Owners of apartment-style condominiums are generally less satisfied with their housing than owners of townhouses with yards, but neither are as satisfied as people who have houses, says a Texas A&M University professor.

In a study for the Texas Real Estate Research Center headquartered at Texas A&M, Dr. James Leigh said apartment-style condominium owners aren't as satisfied partly because they may have wanted to buy a house but couldn't afford one. "More than 60 percent of those studied were first-time buyers who preferred to purchase a single-family detached home on the next round," said Leigh. "In other words, the condominiums were serving as starter homes, allowing the household to build equity."

Too many people claim to know all the answers. \*\*\*\*

Selfishness is the main cause of bad manners. \*\*\*\*

Money is important only in that it buys things we want. \*\*\*\*



A device invented as a primitive steam engine by the Greek Engineer Hero almost 2,000 years ago is used today as a rotating lawn sprinkler.

**BINGHAM & NIEMAN REALTY**  
 116 E. Ave. C  
 272-5285\*\*\*272-5286  
**WE CAN HELP OUR BUYERS WITH**  
 10/7/8 % A.R.M. INTEREST RATES ON  
 30 YEAR LOANS!!!!

**RICHLAND HILLS**

3-1 3/4-1 Brick, Cent. A&H, stove DW, fenced yard. 40's...

3-1 3/4-2 Brick with corner fireplace in den, built-ins, large sunny dining area with built-in planter...

**LUXURY LIVING** in this 3-2-2 Custom-built brick, loads of built-ins, wet bar, Jacuzzi whirlpool, atrium, basement, Cent. A&H, & more...

3-1 3/4-2 carport Brick, Cent. A&H, built-ins, gas log fireplace, fenced yard!!!

**COUNTRY CLUB**

3-1 3/4-2 Brick, Cent. A&H, built-ins. \$40's!!!!!!

3-1 1/2-1 Brick, repainted inside & out, built-in range, gas grill, storage bldg. Low 40's!!!!

**LENAU ADD.**

**JUST LISTED--**3-1 1/4-1 carport home, nice carpet, fireplace, covered patio, storage bldg., isolated master bdrm. \$30's!!!!!!

3-1-1 home on corner lot, Cent. heat, Evap. air, fenced yard, \$30's.

3-1 3/4-1 carport, nice carpet, fenced yard. a neat well-kept home. 30's!!!!

**NEAR TOLK STATION**-3-1 home on 5 acres, horse barn, fenced areas, & other barns & storage bldgs. \$30's!!!!

**ENJOY COUNTRY LIVING**-3-1 1/4 home on 2 1/2 acres on pavement close to town, Cent. A&H, built-ins, & other extras!!!!!!

3-1 3/4-2 home on corner lot cent. A&H, built-ins, nice carpets, utility, fenced yard, & more!!!!!!!!!!!!!!

3-1-1 home, Cent. A&H, paneling, nice carpets, fenced yard, storage bldgs. \$20's!!!!

3-1-1 home, corner lot, built-ins, Cent. A&H, nice carpet. 30's....

**OWNER FINANCING**-2-2 1/2 carport Mobile home, built-ins, Cent. A&H, utility, covered porch, storage bldg., shop, fenced yard. Close to schools!!!!!!

3-1 home, built-ins, fireplace, wall furnace, fence yard, close to hospital. \$20,000...

2-1-1 home on corner lot, close to schools. Priced to Sell!!!!

**EXTRA NICE**-2-1 1/4 carport home, new paint, countertop, fenced yard & storage bldg. \$19,500!!!!

2-1 3/4 Mobile Home + 2 carport, covered porch, built-ins, cable TV, large barn & corrals on approx. 2 acres on pavement close to town. 30's....

4-1 on 5.3 acres, 5 hp. sub. pump, tractor & equip., barn & more. 40's....

Building on 2 lots, approx. 2350 sq. ft., paved parking!!!!

**FARMS**

60 acres dryland, close to town.....

80 acres, Stegall area. Good productive dryland farm....

2-1 home on 20 acres, 20 hp. sub. pump, domestic well, large barn & corrals, 1/4 mile sprinkler pipe, & more. \$42,500....

2-1 home on 32 acres, 6" well, close to town on pavement....

120 acres- good 6" well, good farm, close to town. \$700 per acre....

1062 acres, 3 wells, 2 circles, large metal barn, 9% Owner financing....

160 acres, well with 40 hp. Elec. motor. \$400 per acre....

**JUST LISTED**-320 acres good cultivated land, near Stegall area in Roosevelt County, N.M.-\$250 per acre....

We have numerous other farms, commercial property, & lots listed. Contact us for details on these and other listings.

**"WE APPRECIATE YOUR BUSINESS"**  
**GEORGE NIEMAN, BROKER**  
**DIANNE NIEMAN, BROKER**  
 8-40s-stfc

# Close Out On Furniture

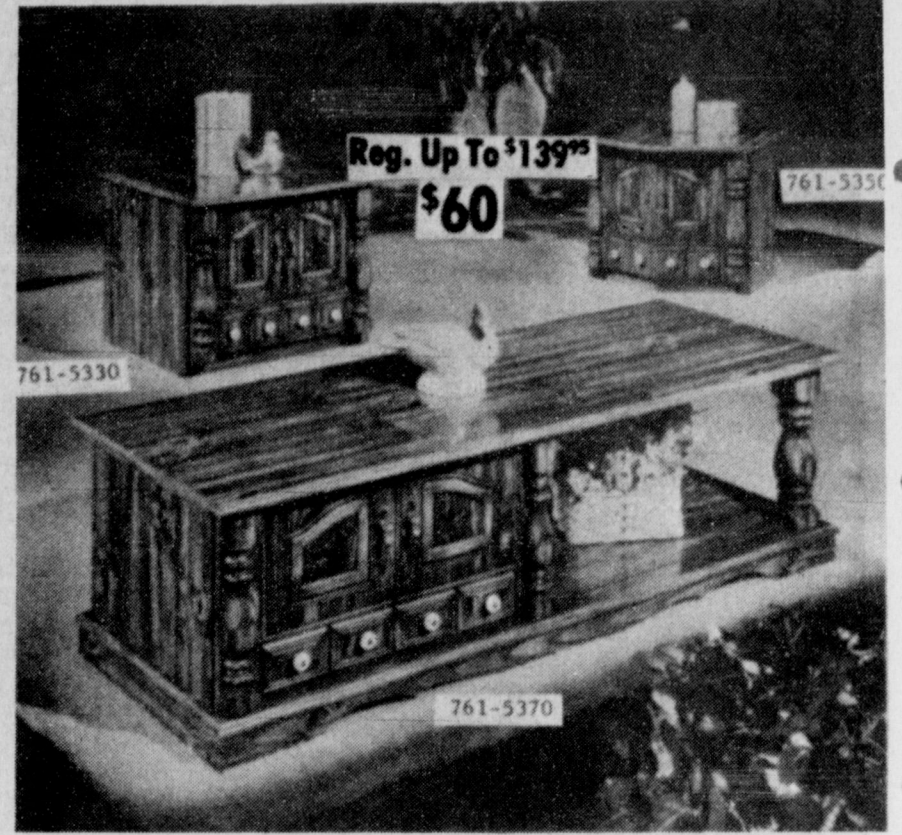
White's Is Closing Out Their Furniture Department Nation wide.



The Murfield collection features colonial styling in a light pine finish with floral accents. Functional self-closing doors of high impact polystyrene, antique brass finish hardware. Table in foreground not available.



The "Heatherdowns" Table Group features Traditional styling with an engraved pecan finish on all wood products. Oval cocktail table features sliding doors, square commode and hex commode have opening doors. Antique brass pulls.



The "Pinelands" Table Group features: Colonial styling with rustic pine finish. All wood construction with stain resistant top. Cocktail table has sliding door, square and hexagon have opening doors. Accented with antique brass hardware and round porcelain pulls.



Colonial pillow arm design, high back, reversible foam cushions, tailored skirt. Cover: 947 Autumn - 100% nylon center match quilted print.



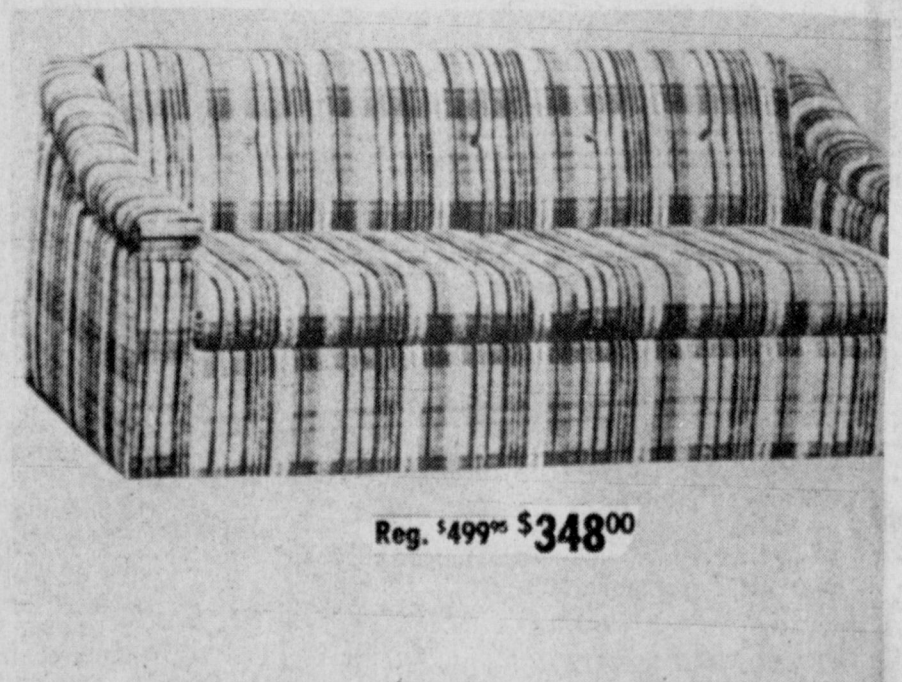
Contemporary design with attached divided back, thick padded rolled arms and reversible foam seat cushions. Cover N737 Beige. Chair and Sofa available only.



Traditional styling with divided back, reversible "T" cushions, tailored skirt, padded Lawson arms. Sofa and chair only.



Contemporary styling with divided attached back, reversible "T" cushions, padded arms with decorative panel. Sofa and chair only.



Contemporary design full size sleeper with foam mattress.

And Poynor's Whites Are Passing On The Savings To The Customers!

No Approvals

All Sales Final

No Layaways

**P O Y N O R ' S**

103 Main Street

WHITE'S STORES, INC.

Muleshoe, Texas 79347