

BIG SALE

at
Higginbotham's
your favorite
girdle in
the
SLIM
tube is on
SALE!
PLAYTEX® GIRDLES



- Garter Girdle
- Panty with Garters
- Panty "Brief"

Sizes Small to Extra-Large

3.99
Were
\$4.95
\$5.95
\$6.95



What a wonderful opportunity to stock up on one of America's favorite girdles — Playtex Fab-Lined and SAVE! Every one is first quality, fully fabric-lined. And designed without a seam, stitch or bone for unbelievable comfort! But don't wait — quantities are limited and first come, first served!

\$3.50 and \$3.95 Values
On sale
at only **\$1.99**

Higginbotham Bros. & Co.

© 1954 by International Latex Corporation Printed in U.S.A.

Please send me the following Playtex Girdles (based according to your waist and hips, in Pink and White.

STYLE	Your waist and hip (fullest part) measurements	Color

Name _____
Address _____
City _____ State _____
 Charge Check C.O.D. Money Order

SOUTH BALLINGER HOME DEMONSTRATION CLUB

Mrs. Archie Wallace, president, was in charge of the business for the regular meeting of the South Ballinger home demonstration club, held in the home of Mrs. John Cody Tuesday afternoon.

An all-day meeting, to be held on November 15 in the home of Mrs. B. M. Batts, was planned. Members will be given instruction in the making of hats, gift wrapping and making of centerpiece arrangements for holiday tables. A covered dish luncheon will be served at noon.

A candy making program was

presented at the meeting. Each member brought samples of her favorite candy and exchanged recipes.

At the social hour a gift shower was presented Mrs. Jack Fry. Punch was served with the home-made candies.

Others present were: Mmes. Neuman Smith, Andrew Flint, Ed Farley, V. L. McShan, Roy Holstead, J. W. Jones, Austin Williams, B. M. Batts, Dick Holstead, Tom McEntire and Joe Thomas.

Card of Thanks

We wish to thank our friends for the many kindnesses shown us during the illness and at the death of our loved one, Mrs. P. P. Holton. We especially appreciated the flowers, cards, food and each expressions of sympathy.

The Children of Mrs. P. P. Holton

Deposit Slips for Banks, Sales Books and Business Forms for Stores—anything printed will receive special attention here **BALLINGER PRINTING CO.**

The first vaudeville theater was the Gaiety Museum at Boston, in 1883.

Life Insurance
Perpetuates
Pay Days

Call your **Southwestern Life** man

JACK NIXON

Phone 3444 First National Bank Bldg. Ballinger, Texas

Representing **SOUTHWESTERN LIFE INSURANCE COMPANY**

See Red
Reckless Red
and Aquamarine
The eye-catching colors that dare you!
Higginbotham's has them in new fall lingerie by ARTEMIS! Exquisitely trimmed with "illusion smocking" and nylon val lace.

ARTEMIS
Reckless Red and Aquamarine lingerie is fashioned of opaque nylon tricot that washes like a dream... needs no ironing. You'll love Reckless Red and Aquamarine by ARTEMIS, the provocative yet practical new lingerie colors in slips, petticoats and sleepwear.

Higginbotham's

Here are
Exciting Savings on



SHORTY COATS

Toppers

10.95

Values to 19.95

Don't miss this special Selling!

misses' womens' juniors

DON'T MISS THESE VALUES!

Sizes 7-15 8-16 38-44

in a Great Array of Colors



Lowest coat prices of the year!

NYLON 100% nylon fleece MACHINE Washable

WOOL 100% Wool Moth Proof

ORLON Orlon-Wool Blend Orlon for Luxury

HEIDENHEIMER'S

Notice of Sale
THE STATE OF TEXAS
COUNTY OF RUNNELS

By virtue of an order of sale issued out of the District Court of Runnels County, Texas, on a judgment rendered in said court on the 12th day of September, A. D. 1955, in favor of R. B. Guiley, Roy Guiley, Nell Griggs, Gladys Riley, Murrell Waits and Curtis Guiley and against George S. Robinson and Gertrude Ellen Robinson, in the case of R. B. Guiley, Roy Guiley, Nell Griggs and husband, T. J. Griggs, Gladys Riley and husband, Tom Riley, Murrell Waits and husband, N. E. Waits, and Curtis Guiley versus George S. Robinson and Gertrude Ellen Robinson, No. 6571 in such court, I did on the 2nd day of November, A. D. 1955, at 9:00 o'clock A. M. levy upon the following described tracts and parcels of land situated in the County of Runnels, State of Texas, as the property of said George S. Robinson and Ger-

trude Ellen Robinson, to-wit: 75 feet by 70 feet of Lot No. One (1) in Block No. One (1) of the Highland Heights Addition to the City of Ballinger, Runnels County, Texas, and being the same land described in the deed executed by R. B. Guiley, et al. to George S. Robinson, et ux, now of record in Vol. 259, Page 40, Deed Records of Runnels County, Texas; and General Electric refrigerator located in the dwelling situated on the above describe real estate; and on the 6th day of December, A. D. 1955, being the first Tuesday of said month, between the hours of 10:00 o'clock A. M. and 4:00 o'clock P. M. on said day, at the courthouse door of said county, I will offer for sale and sell at public auction, for cash, all the right, title and interest of the said George S. Robinson and Gertrude Ellen Robinson in and to said property.

this the 2nd day of November, A. D. 1955.

DON F. ATKINS
Sheriff of Runnels
County, Texas.
By Mildred Massey
Deputy

CARDBOARD, roll sheets, nail sheets, heavy and light weights Ballinger Printing Co.

Valencia, near El Paso, was in Mexico when it was founded, but the Rio Grande changed its course, putting the town on the American side.

BURIAL INSURANCE
for \$100 to \$600

See Us for Complete Information
Newby-Davis Burial Assn.
BALLINGER, TEXAS

Drive it at your Plymouth dealer's — the car that's going places with the Young in Heart!



FABULOUS AERODYNAMIC STYLING!

The look that goes with Push-Button Driving and 90-90 Turbo-Torque in the new Plymouth '56

Here is a car more truly representative of our jet air age than any you have ever seen... in bold new concepts like Push-Button Driving. There's 90-90 Turbo-Torque Power and the great new Hy-Fire V-8 or new PowerFlow 6 to give you Top Thrust at Take-Off. And Plymouth is larger and longer outside... roomier inside. It's all breath-takingly ahead of its time. See your Plymouth dealer today!



PUSH-BUTTON DRIVING

With a finger-tip touch on a button you select your driving range. As easy as flicking a light switch! Then Plymouth's fully automatic PowerFlite—the world's smoothest, most advanced transmission—takes over. You'll find it the ultimate in driving convenience.

All-new Aerodynamic **PLYMOUTH '56**

200 V-8 hp available with PowerPak in all 4 lines—Belvedere, Savoy, Plaza and Suburban. Or choose 187 hp in Belvedere and Suburban lines. In Savoy and Plaza lines you get 160 V-8 hp. If you prefer the super-economy of Plymouth's PowerFlow 6—also available in all 4 lines—you get 125 hp, or 131 hp with PowerPak.

Lovelady's Food Market

THE BEST FOR THE LEAST

FREE PARKING

FREE DELIVERY

Phone 9326

JUST OFF BROADWAY

BY DAIRY BARN

Sweet Milk	GANDY or BORDEN	1/2-Gal. 47c Quart 24c
Fryers	FRESH DRESSED	Lb. 43c
Crisco		3-Lb. Can 79c
Apples	RED DELICIOUS	Lb. 15c
Lettuce	FIRM, CRISP	Lb. 19c
Pumpkin Pie Mix	KUNER'S	1-Lb. Can 21c
Pumpkin	LIBBY SOLID PACK	1-Lb. Can 2 for 25c
Tomato Juice		6-Oz. Can 3 for 19c
Northern Tissue		2 Rolls 15c
Trend	GIANT SIZE	Pkg. 49c
Candy	SATIN FINISH FILLED CENTERS	2 1/2 Lbs. \$1.69
Dog Food	SWIFT'S PARD	2 Cans 27c
Tuna	WHITE MEAT GRATED	Can 19c
Bacon	CORN KING	Lb. 43c

SOCIETY

"Early Church Music" Program for Music Club

J. C. Chapman, public school music teacher and high school choral club director, presented a program, "Early Church Music," at the regular meeting of the Ballinger Music Club Tuesday evening, at which Mrs. Alex McGregor was hostess in her Eleventh Street home.

Mr. Chapman sketched early church music and pointed out the right principles of an art in the service of the liturgy which have been a benefit to the clergy and laity in helping make the music in our churches what it is primarily intended to be, an act of divine worship blending mind, heart and voice in adoration, praise and thanksgiving to Almighty God.

Several recordings were played as illustrations—Plain Chant, Anglican Chant, Gregorian Chant and "Jesus, Dearest Master," by Robert Shaw.

Mrs. A. B. Stobaugh, president, directed the business period. Mrs. Arthur Giesecke, program chairman, stated a few changes in the programs and presented the guest speaker.

Others present were: Meses. Bob Bartlett, Joel Bates, R. E. Bruce, Earl Cope, Slim Cottelle, Joe Forman, I. B. Funderburk, Charles Hambrick, F. M. Pearce, Horace Murphy, Wayne Reynolds, J. O. Satterwhite, E. A. Saunders, Troy Simpson, H. H. Wagners, W. R. Bogle, Eugene Ioka, John Guion, J. R. Lusk, L. R. Tigner; Meses Marryatt Smith, Lola Eubank, Hattie Mae Dunlap and Olga Schawe.

Ballingerites Attend O. E. S. Grand Chapter

Mrs. Gay Edwards, local worthy matron Ballinger Chapter, No. 296, Order of Eastern Star, was the delegate who attended the Grand Chapter of O. E. S., held at San Antonio last week. Accompanying her were Mr. and Mrs. H. F. Largent, Mrs. Henry Moody, Mrs. J. O. Satterwhite, Mrs. M. C. Broussard and Mrs. Marvin Clark, all of Ballinger; and Mrs. Ed Mosteller, of Paint Rock.



Closes with tiny self-covered buttons from velvet collar to hem of its 18-gore skirt. Sizes 10 to 18.



Full skirted and .m waisted, with tie of random-striped tafeta. Sizes 10 to 20.

French Room

Only \$14.95

STYLES BY Parkland OF DALLAS



Altogether beautiful, altogether practical day-into-evening dresses—styled and timed for the busy holidays ahead. Each is generously cut and carefully tailored of deep-lustered rayon faille—the fabric of fashion—in five rich colors: Candlelight Beige, Red, Brown, Navy and Black. All copies of famous couturier dresses which originally sold for as much as \$79.95! You'll wear them and love them! They're terrific values!

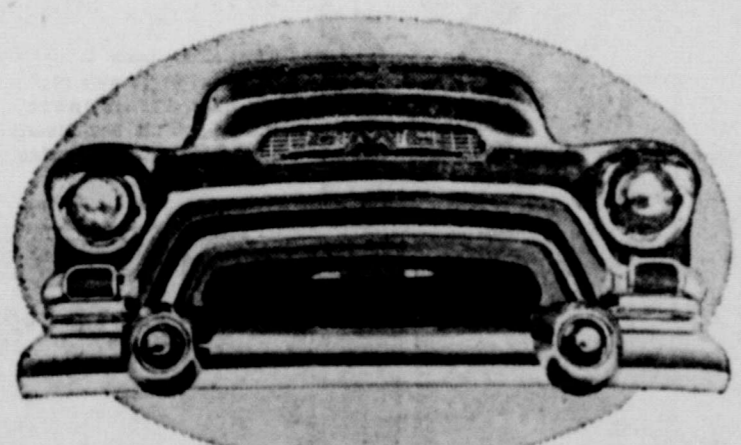


YOU'RE INVITED TO USE OUR EASY LAY-AWAY PLAN



Why pay more for less?

NOW the all-new Blue Chip GMC trucks underprice competition—and still lead in years-ahead features and styling. Why pay more for less? See us today!



See us, too, for Triple-Checked used trucks

McBride Pontiac

Ninth St. and Strong Ave. Ballinger, Texas

Gulf's New Super-Refined GAS-OIL TEAM

...for more miles per gallon



DIRTY-BURNING TAIL-END



NEW GULF NO-NOX

Gulf No-Nox burns clean. Here's proof: Note the black deposit, on plate at left, caused by the "dirty-burning tail-end" of gasoline—the part which Gulf refines out in making New Super-Refined NO-NOX. But see how clean new NO-NOX leaves the plate at right.

Prove it in your own car. Now—on the road in your own car—see for yourself how New Super-Refined Gulf NO-NOX can give you the best in motor performance and protection... plus more miles per gallon in the kind of short-trip, stop-and-go driving you do most.

...for more miles per quart



A B C



Gulfpride Select works clean. Here's why: Most oils are refined only to the stage shown in Graduate A. Gulfpride Select is further refined by the Alchlor Process, removing up to 15% more of the carbon-formers, shown in Graduate B. Graduate C contains new super-refined oil.

Prove it in your own car. This new oil can give you more miles per quart because it has natural viscosity (body)—contains no artificial thickeners that break down in service.

REMEMBER: No gasoline alone can give you today's finest performance... no oil alone can give you today's finest protection. Get the super-power Gas-Oil Team...

Gulf No-Nox Gasoline

Gulfpride H.D. Select Oil



CAL ADAIR, Distributor
Gulf Products

PENNEY'S
ALWAYS FIRST QUALITY!

Penney's outdoes itself with **BARGAINS** to honor a man and his dream! Shop! Save!



FOUNDER'S DAY

NOVEMBER 5th

The items below will go on sale Saturday Morn. at 8:30... We can not sell them until then as all Penney Stores are Dedicating this Day to Mr. Penney. Be here Early... All Items First Quality... No seconds, no irregulars.

Sat. 8:30

8 Each
8 dinner knives
8 dinner forks
8 soup spoons
16 teaspoons
2 serving spoons
plus pastry server

"Lucerne" Stainless Steel 43-Piece Service for 8!

Designed exclusively for Penney's by International Silver! Ever-bright flatware you never need polish. Elegant in pattern, perfectly balanced pieces. A full service for 8 at Penney's low, low price!

790
Set

HURRY!
SATURDAY, 8:30
Fine Quality Prints

FOUNDER'S DAY ONLY... **29¢** yd.

Discontinued patterns of 2 well-known brands. Full bolts, first quality, 36" wide.

NOT ONE... TWO PAIRS OF STRETCHABLE NYLONS

Buy 'em by the drawer!—Penney's stretchable nylons, specially priced for Founder's Day! They fit as no other stockings can—never sag or bag. Dark seams. Sizes Midge, Norm, Long.

2 pr **1.35**

Packed in a Cellophane Envelope

Matching Dacron-filled Pillows & Comforters... Nylon Covered!

Comforter

FOUNDER'S DAY ONLY... **\$10**

- Airlight, Superbly Warm
- Fluffy • Odorless • Non Allergic
- Dry in One Hour!
- Machine Wash in Luke-Warm Water!
- Size 72"x84" • Pastels in Pink, Blue, Maize

BOTH WITH ROSEBUD PRINT NYLON COVER!

Dacron-Filled Pillows

FOUNDER'S DAY ONLY... **\$4** each

Founder's Day Special! Dacron-filled pillows—airlight, permanently fluffy, odorless, non-allergic. Covered in rosebud print nylon. Hand washable, dry quickly. Corded edges. Pastels. 19 by 16 inch size.

Boys' Corduroy Sport Shirts

FOUNDER'S DAY ONLY... **1.88**

Save on machine washable corduroy sport shirts! This terrific special value features regular Penney styling and tailoring. Red, teal, other new Fall fashion colors. Sizes 2 to 18.

The Above Items go on Sale
Founder's Day
SATURDAY, NOVEMBER 5, 8:30 A. M.

All Wool Blankets

FOUNDER'S DAY ONLY... **6.99**

- First Quality
- Richly Napped
- Firmly Woven for Warmth, Wear
- Decorator Colors
- Size 72"x84"

Nylon Can-Can

FOUNDER'S DAY ONLY... **\$1**

- Wide Sweep
- Tops of Woven Nylon
- Skirts are Double-Tiered Taffetized Nylon
- Lace-Trimmed
- Sizes 1 to 12

SUEDE SPORT SHIRTS

BIG PENNEY SAVINGS!

Wow! What a shirt value! Penney's regular top-fit patterns! Up-to-date styling! Terrific construction! Lined sport collar, adjustable cuffs. Sanitized printed cotton suede!

SPECIAL 1.50

Sizes Small, Medium, Large

PENNEY'S
ALWAYS FIRST QUALITY!
Penney **QUALITY**
is your greatest s...

Hurry to Penney's!
Thursday, Friday, Saturday!

PENNEY'S IMPORTS!
EXTRA FINE COTTONS

Penney's tremendous buying power brings you these beauties imported from Japan! Pastel or dark tone solids, woven gingham plaids, Sanitized and detailed like much more expensive blouses.

Just **\$1**

Sizes 32 to 38
Maximum Shrinkage 1%

BRENTWOOD

Cotton Dresses

ONLY... **2.79**

Many styles in washable cottons.

Juniors 9 to 17
Misses 12 to 20
Half 14 1/2 to 24 1/2
Women's 46 to 52

WOMEN'S CORDUROY

FASHION BRITCHES

HURRY! **2.44**

Your famous Penney fashion britches, now specially priced! Fine combed cotton corduroy, classic tailored lines with side zipper, tie leg bows. Washable in black, turquoise, flame, moss, geranium. They're sensational for sizes 10 to 16.

TODDLER CORDUROY

Fashion Britches

SIZES 2, 3, 4

Bargains! Washable. Cute style. Assorted colors.

Chenille Dusters

FASHION COLORS! **3.98**

New! Glorious fashion colors never before in chenille—in Penney's budget-priced duster! See pink whisper, sea green, charcoal, flame, helio, others—spiced with more colors at the giant cherry-and-leaf overlays on the pockets. Push-up sleeves, 5-button front. Sizes 10 to 18.

LITTLE GIRLS

Chenille Robes

TODDLERS' **1.98**

SIZES 2, 3, 4
GIRLS' 3 to 6x

Save 1 able! They're able li robe—lookin side your good f or gold

Use Our LAY AWAY

GIRLS' Rayon Briefs

BARGAINS AT... **3.91**

Elasticized Lace trims the leg bands of these soft rayon briefs for girls. Pretty pastels and white—get all her favorite colors at this special value price! Sizes 2 to 14.

Penney's... padded knee crawl-abouts of machine-washable pinwale corduroy, with 6-snap crotch, button side pockets. Sizes 1/2 to 2. **1.79**

handsome little shavers wear Penney orlon sweaters. Light or dark-hued 100% orlon cardigans with masculine Jacquard design. Sizes 1/2 to 4. **1.98**

A great Penney polo shirt value! 2 ply Durene cotton flat knits with gripper fasteners. Rainbow of colors. Sizes 1/2 to 4. **79¢**

Philippine hand-mades. Penney's dainty little dresses of fine cotton batiste. Large selection! White, pastels. Size 1/2. **98¢**

Infants' Eown's soft combed cotton knit, with mitt cuffs, gripper fasteners, drawstring bottom. White, pastels. Size 1/2 at Penney's. **98¢**

Face Wash
Candy
Towel
your
ing t
groun

CAN!

20"x4

IS PROVE IT...

LITY
reatest saving!

urday!

See Penney's
Collection of
Loma
Dresses

ONE OF A
STYLE!
12.90

Lovely after—
5 Styles...
JUNIORS—
MISSES—
Compare!
See how
you save!



Corduroy
Crawlabouts
1.98

Save plenty on toddlers' washable corduroy crawlabouts! They're practically indispensable in any little tyke's wardrobe—easy-on, rugged, good-looking, Snap-apart crates, two side plackets, front pleats for good fit. Red, open, bittersweet or gold.

Penney's gauze diapers will not ravel! They're special pinked edges to prevent it. 2 1/2 x 10 inch finished size double woven gauze.
2.98 doz.

Compare
with
Others
Selling
for
Much
More



Nylon Fleece Short Coats

WASHABLE & ONLY 16.75

• Nylon Linings • White • Many Pastels
• Misses' Sizes 10 to 18 • 2 Styles

New Brushed

Look

2.98

New Styles Arriving
Every Week!

Penney's brushes the cloche into fashion! The new brushed look... fluffy and soft... done for you in the pretty face-framing cloche... unexpectedly touched with a sparkle of rhinestones. In a luscious array of soft Winter hues and Penney-priced at a low \$2.98.



EXTRA SAVINGS!
On Winter Bedding



5% WOOL
Plaid Pair Blankets
3 LBS. 3.99
Penney best seller! Plaid pair blankets at a mighty low special purchase price. Soft, warm blend of cotton and wool, 3 pounds, 70 by 80 inches folded.

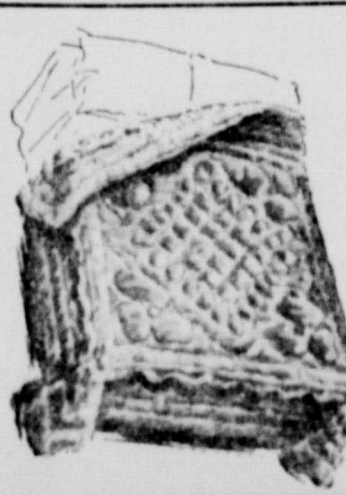
90% RAYON
10% NYLON
Jacquard Blankets
4.98
Blankets in Authentic Swedish Jacquard of soft, warm rayon and nylon, 72 by 84 inches, 3 pounds Rayon satin binding.



WHITE
Sheet Blankets
SIZE 70"x95" 1.98
SIZE 70"x84" - 1.77
Extra-large 70 by 95-inch White Cotton Sheet Blankets serve as winter sheets, light summer covers. Machine washable.

RAYON-NYLON
Jacquard Blankets
FOR FOOT-BALL GAMES! 3.39
Floral Jacquard Blankets double as daytime covers, serve as outing blankets too. Smooth, sturdy, rayon and nylon, 70 by 80 inches.

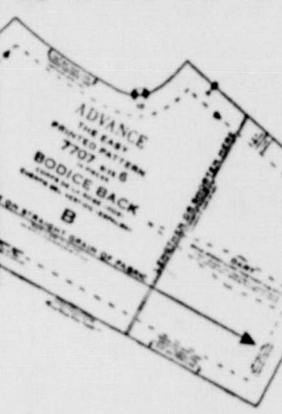
WOOL-FILLED
ACETATE SATIN
Comforters
7.90
Value! Penney's gleaming fortifier is filled with featherlight wool batting... keeps you cozy on coldest nights! In smart reversible acetate satin covered colors like hunter green with lime, rose with blue, others! 72" x 81".



JEWEL TONE GROUNDS
DESIGNER-LOOK PRINTS

Prints destined for your "best dress," for blouse and skirt ensembles. They stay fresh and pretty longer because they're crease resistant! Save on costly cleaning bills... you can wash these luxury fabrics at home!
98c
Yard

ADVANCE
PATTERNS NOW
10 WAYS EASIER!



Advance
Patterns Are
Now Printed!

Find them at Penney's with new easy-to-follow printed outlines, margins to simplify cutting, lettered pieces and many other easy-to-follow features!

PERFECT
CASUAL
HARMONY!



EXPERTLY MATCHED SETS
... SHIRTS, SLACKS, BELTS!

Natural Penney teammates! Get well-tailored slacks of crisp, practical Rayon-Acetate-Dacron gabardine, color-coordinated with a Towncraft sport shirt and belt of fine Galey & Lord combed gingham.
\$10
Gift-Boxed!
Waist Sizes
29 to 38



Vul-Cork
Sole Work
Shoes
4.98

Little Eoys Shoes
or Oxfords
2.98

Crafted for long wear, top value. Double tanned leather uppers resist moisture and soil acids, and soles and heels give long wear. Even have steel shanks! Sanitized, of course. Brown glove uppers.

A fine sturdy shoe that will give your healthy little fellow plenty of solid wear! Rugged slashdown construction. Sanitized for cleaner, better wear.

10 Oz. Big Mac Jeans

• Sizes 29 to 42
• Sanitized shrunk
• Heavy duty zipper
• Triple needle seams
• Compare at

1.69

HOSPITAL NOTES

Patients dismissed from the Ballinger Clinic-Hospital the past week included:
A. D. Korthauer, Winters, medical, Tuesday
J. R. Vaughn, medical, Friday
Mrs. L. W. Henniger, medical, G. O. McCorstin, surgical, Tuesday
J. M. David, medical, last Thursday
R. S. Giles, medical, last Thursday
J. L. Hill, medical, Wednesday
Miss Jo Crimin, surgical, Saturday
Mr. Tom L. King, Hatchel, medical, Saturday
Mrs. J. E. Tomlinson, medical, Saturday
Mrs. E. A. Adams, medical, Wednesday
Carla Jo Freeman, Dallas, surgical, Monday
Joe E. Merrifield, medical, Monday
Lee Bollier, medical, Monday
Mrs. Edgar Herring, Talps, medical, Tuesday

Births recorded at the clinic the past week were as follows:
Mr. and Mrs. Patricia Quezada, a daughter, October 27
Mrs. Charles Waller, a daughter, October 28
Mr. and Mrs. E. G. Hilliard, a son, October 29
Mr. and Mrs. Foy Watson, a son, October 29
Mr. and Mrs. W. L. Warren, Paint Rock, a son, October 30
Mr. and Mrs. H. D. Poe, Winters, a son, October 31.

Patients hospitalized at this time include:
James Midgley, medical, Hubert Parrish, medical, Mrs. Henry Klaus, Lowake, medical, Mrs. Angel Magana, medical, Joe Wanoreck, Rowena, medical, Mrs. J. K. Bowman, Paint Rock, medical, Austin Harper, San Angelo, surgical, Mrs. H. T. Russell, medical, Mrs. Adolfo Lugo, surgical, Sharon Lasso, Lowake, surgical, Austin Williams, medical, Joe Bubenik, Rowena, medical.

and Mrs. Albert McMillan, Mr. and Mrs. John McMillan, Mr. and Mrs. Jim McMillan, Ricky and Steve Cook, of Winters; Mr. and Mrs. Boyd Goodman, of Yorktown; Mrs. H. W. Doherty, of Ballinger.
Billie Mathis and family, of Abilene, and Miss Marguerite Mathis spent Saturday night with their father, W. C. Mathis. They also visited Mrs. W. C. Mathis, who is ill at the home of her daughter in Ballinger.
Mrs. Ola Miller, of Sweetwater, spent last week with her sister, Mrs. R. E. Burrus.
Ophelia Dietz spent the weekend with Barbara Smith, of Winters.

We are glad to have Mr. and Mrs. Jones, of Abilene, move to our community. They have moved into the house just vacated by her father, G. W. Harper. The latter has moved to his new home in Coleman.

Mancie King and family, of Abilene, visited the former's mother, Mrs. R. E. Burrus, Sunday afternoon.

Mr. and Mrs. W. H. Pape visited Ed Pape and Mrs. Luella Rumpy, of Ballinger, Sunday afternoon.

Mr. and Mrs. Owen Bragg and children visited Mr. and Mrs. Noel Hale and sons Sunday afternoon.

Mr. and Mrs. P. R. Dietz attended services at the Seventh Street Baptist Church of Ballinger Sunday night. They heard Rev. O. A. Morton preach. He is a former pastor of the Crews Methodist Church.

Mr. and Mrs. Orville Pearce attended the 50th wedding anniversary of Mr. and Mrs. John Sanders at Winters Sunday.

Mr. and Mrs. Will Baies, of Novice, and Mr. and Mrs. I. J. Burson were guests of Mr. and Mrs. Sam Mathis recently.

SEVEN COUPLES GET
MARRIAGE LICENSES
IN PREVIOUS MONTH

County Clerk Frankie Berryman issued only seven marriage licenses during October. This was considerably less than the total for any other month this year. Couples receiving licenses were:

Alfred Agala Flores and Miss Mary Carmona Alvarado
Federico Garcia Alvarez and Miss Idelfonso Salazar Mota
Cecil Emmett Daniel and Mrs. Wadve Marie Sleeker
Aubra Clarence Dodson and Mrs. Eddie Trammell
Lawrence Lawrence and Mrs. Analestel Lawrence
Don Robert Bryan and Miss Edna Fay Grace
Sammie Perrie and Mrs. Betty Lois Shields.

BALLINGERITES ATTEND
FUNERAL FOR RELATIVE

Mr. and Mrs. H. E. Cothran, of Ballinger; and Mrs. Minnie Smith, of Rowena, left Tuesday for El Paso to attend funeral services for Mrs. J. P. Sykes. Mrs. Sykes was a sister of Mr. Cothran and Mrs. Smith.
Mrs. Sykes died Tuesday and last rites are to be held today at El Paso.

DEATHS

Mrs. Ann Holton
Mrs. Ann Holton, 85, died at 2:30 a. m. Friday at the Ballinger Clinic-Hospital. She was hospitalized seven days before her death after breaking a hip in a fall at her home.

Decedent was born March 22, 1870, at Carthage, Mississippi. She came to Texas as a child and was married to the late P. P. Holton on January 12, 1890, in Robertson County. They moved to Rannels County in 1907 and for the past 48 years she had made home in or near Ballinger. She was a member of the Church of Christ.

Funeral services were held at 2:30 p. m. Saturday at the Eighth Street Church of Christ, Orland W. Rury officiating. Interment followed in Evergreen Cemetery.

Survivors include a son, A. R. Holton, Washington, D. C.; two daughters, Mrs. R. L. Boothe and Mrs. Ross Smith, Ballinger; and a brother, Sam Blackmon, Valley Mills.

Card of Thanks

Thanks to our friends for the cards, flowers, prayers and words of kindness during the recent illness of Wylie Hearn.
Wylie Hearn and family

Hunters Preparing
For Annual Jaunts
To Get the Venison

Ballinger hunters are shining up their rifles, making out lists of provisions and getting bedding rolls ready for their annual deer hunts. Most of the local parties have their leases already arranged for and plan to be on the ground November 15 to begin hunting early the next morning.

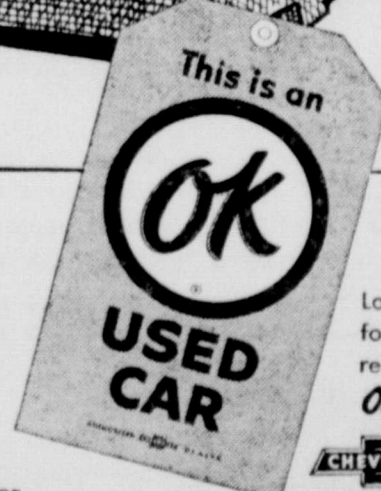
Indications are that eight to twelve local parties will make trips into the deer regions this month for their annual outing. Many of the local hunters have made trips to their leases within the past two weeks and report that indications are the best in several years for good hunting. Rains have provided good grass and deer have been seen on the leases in larger numbers than in a number of years.

LAY-AWAY
TOYS
NOW

See our large selection
3 ways to pay
Dallinger
Hardware Co.



Are you on the lookout for a star performer? See our OK Used Cars. They're lively performers and lovely to look at, too. And they're thoroughly inspected and reconditioned to merit the dealer OK warranty in writing. Choose your used car where volume trade-ins mean big savings on a wide variety of models and makes.



Look for the red OK Tag!

Sold only by an Authorized Chevrolet Dealer

1954 CHEVROLET 2-DOOR \$775.00	1951 FORD COUPE \$490.00	1952 CHEVROLET 1/2-TON PICKUP \$375.00
1951 CHEVROLET 1/4-Ton Pickup \$575.00	1954 CHEVROLET \$1,065.00	1951 FORD Business Coupe \$475.00
1952 CHEVROLET \$660.00	1952 CHEVROLET 1/2-Ton Pickup \$525.00	1950 GMC 1/4-Ton Pickup \$425.00

Ray Fuqua Chevrolet Co.

WANT ADS

TERMITES — TERMITES — TERMITES
Free Inspections
APEX EXTERMINATING CO.
1 Year Guaranteed on Roaches, Water Bugs, Moths, etc.
224-42 Phone 9504
Doug Williams
2508 Forest Park
San Angelo, Texas

WE BUY AND SELL Used Cars
Morgan Motor Co.

Bedford & Underwood
Attorneys-at-Law
Chandler Bldg., Across from Post Office
Phone 5633

Mrs. Gertrude Woods
COMPLETE INSURANCE SERVICE
Dial 3291
110 South Eighth Street
Ballinger, Texas

LOANS
FHA, G.I. and Conventional
Farm Loans
No Brokerage Fee
Let Us Refinance Your Present Loan
GRANT AGENCY
Talbot Bldg. Phone 7727

FOR SALE—Three bedroom, two bath home, corner, two lots. Large rooms, convenient. 500 Eleventh. Call 7135 for appointment. Mrs. J. W. Langonette. 11-17

PHOTOSTATS
Photostatic copies of deeds, discharges, oil leases or other valuable papers. Reasonable rates, fast service. **NIXON INSURANCE AGENCY**, First National Bank Bldg. 30-17

FOR RENT—Apartment, two rooms and bath, bills paid. Dial 6776 or 6205. 22-17

WANTED—Ironing at 502 Sully Ave., \$1.00 a dozen. 13-17

FOR SALE—8 room home, 2 complete baths, two story. On 10 ft. corner lot, both streets paved. Well located. Mack Bowden, 509 Broadway, phone 6400. 29-17

FOR your Goodyear tires see Mullin Motors. 21-17

FOR RENT
5 bedroom duplex apartment, 407 Largent. Dial 8845

GOLDFISH, Tropical and supplies. Novelty TV lamps in color and motion. Travelers Motel. 20-17

FOR SALE—40 barrel water tank 806 Thirteenth Street, phone 6331. 20-31

FOR SALE—17 acres, 3 room house, garage, 2 miles south of court house, to settle estate. See O. H. Reznick. 20-21

FOR RENT—Garage apartment, duplex apartment, three room apartment. See Sam Behr. Dial 9854. 11-17

FOR RENT—To young man, bedroom with adjoining laundry. Air conditioned. 409 Eighth Street. Phone 8273. 21-17

KODAK FILM, COLOR FILM, FLASH BULBS
SUNTAN LOTIONS . . . ALL VACATION NEEDS
HUNTING AND FISHING SUPPLIES AND LICENSES
L. C. DAUGHERTY DRUG STORE
Since 1925
816 HUTCHINGS AVENUE
We Appreciate Your Business

F. H. A. Homes
READY TO MOVE INTO
As low as \$675 Down, Including Closing Costs
Call 8111 or see
Clay Building Material Co.

US ROYAL We're Your Headquarters for **TUBELESS Tires**
Our mechanics are trained experts in tubeless tire service. We've got the most modern equipment to handle any tubeless problem. Just ask us!
Bradley's Tire Co.
DIAL 3541

New Location BEST TV & RADIO SERVICE
AT
119 EIGHTH STREET
Ballinger Appliance & Electric Shop
COMPLETE SERVICE ALL MAKES
All Work Guaranteed
Phone 5099
Night Phone 4881

Do You Need New **KITCHEN CABINETS** Built-In Furniture — any type Mill Work?
K. I. Sharpes, Jr.
604 Eleventh Street
Phone 6138

FOR RENT—Unfurnished house. Phone 4734. 27-21

BALLINGER A. F. & A. M. NO. 643
Stated Meetings Masonic Hall
Tuesday, Nov. 8, 7:30 p. m. Visitors Welcome
JOE PERRY, W. M. MELVIN PATTERSON, Acting Secretary

Listen
Bring Your Sewing Machine Troubles to
Harry Paschal
Phone 4734

Rubber Stamps made to order
1110 Eighth Street. 6-17

FOR RENT—Furnished apartment, 809 Eighth Street, phone 9291 or 8273. 25-17

1950 GMC 3/4-Ton Pickup \$425.00
RAY FUQUA CHEVROLET CO.

FOR RENT—Unfurnished 3 room modern house with garage James Wear, phone 2-1422 or 9875. 13-17

1954 CHEVROLET \$1,065.00
RAY FUQUA CHEVROLET CO.

FOR RENT—Furnished garage apartment. C. L. Armstrong, phone 8092. 22-17

FOR SALE—My equity in 2 bedroom home, newly decorated. Well furnished or unfurnished. Call 5734 or come by 307 East Avenue. 29-17

SAVE POWER
and do a better job by having your discs and sweeps sharpened.
Also U-bolts and end-gate rods made to order.
C. E. Vestal
All Business Appreciated
Railroad Ave., next to City Hall

FOR LEASE—The building we now occupy for lease about December 1. Kemp Feed and Hatchery. 6-17

REPAIR AND CLEAN
Septic Tanks and Cess Pools
Telephone 8092
C. L. Armstrong

1951 CHEVROLET 3/4-Ton Pickup \$575.00
RAY FUQUA CHEVROLET CO.

FOR RENT—Two bedrooms front upstairs offices in bank building. Air conditioned and steam heated. First National Bank. 21-17

1952 CHEVROLET 1/2-Ton Pickup \$525.00
RAY FUQUA CHEVROLET CO.

HY-LINE 934 THIRTY EFFICIENT WHITE EGG LAYER
Streamlined for greater profit. Hy-Line 934 @ 4 1/2 lbs. lays big white eggs with low feed intake per dozen laid. 934 lays 12 to 14 months and longer. Searched any slumps or broodiness. Fewer cults, better livability. Hy-Line 934 puts more profit in your laying flock. Put Hy-Line 934 or your list for the fall of 1953. We are hatching weekly.

WILSON POULTRY FARM & HATCHERY
Clyde, Texas Phone 3935

CHIROPRACTOR
X-Ray Spinal Analysis
Dr. J. LESTER OHLHAUSEN
Phone 4735
San Angelo Highway, Ballinger

FOR SALE
FHA HOMES
15% Down
1 and 2 Bedrooms
on Poe Avenue
Ed Kudlacek
Phone 8808

Salesman Wanted
WANTED AT ONCE—Rawleigh Dealer in Ballinger. See J. H. Shipman, 330 Wood St., Winters, Texas, or write Rawleigh's, Dept. TXJ-1240-R, Memphis, Tenn. 27-21

FOR RENT—Nicely decorated, air conditioned upstairs offices. P. Talbot. 1-17

LOOK!
Texans have been saving money with **STATE FARM MUTUAL**
More than 25¢ out of every \$1 has been returned to Texas policyholders by State Farm Mutual, the "Careful Driver Insurance Company."
For top notch protection call
Otis Power Agent
Phone 4040

Real Low Prices on Traded-in Furniture
Bedroom, Living Room, Dinette Suites, Refrigerators and Stoves
Right now we can furnish an entire house with this type furniture at very low prices and low payments.
King-Holt Co.
1953 CHEVROLET \$569.00
RAY FUQUA CHEVROLET CO.

PICTURE FINISHING
Bring all your film developing and picture printing to Keel Drug Store. We give one day service. 28-17

FOR RENT—Furnished duplex apartment, close in. All modern conveniences. 608 Eighth Street, Mrs. Laxson. 13-17

STATE FARM INSURANCE
"It pays to know your STATE FARM AGENT!"

Hurry!
Only 1-2 Bedroom Home Left
Interior Decorations are Distinctly Different. Insulated and equipped with Dual Heater.
Loans Arranged
Contact—
H. G. BURKHART
Phone 2-1755

Buy a Home
Monthly Payments are Cheaper than Rent!
Small Down Payment
Loans Arranged and FHA Approved
These houses are the last to be had on the FHA small Down Payment.
Also—
A nice 3 bedroom, bath and a half house, on corner lot, paved street.
One new portable house to be moved to your location.
Call or See
Wm. P. Carey Lumber Co.
Phone 7494 Night 7173

NANCE RADIO SHOP
SAVES YOU ONE-THIRD TO ONE-HALF ON CBS-COLUMBIA TELEVISIONS RADIOS
ALL KINDS OF MUSICAL INSTRUMENTS
ELECTRIC SHAVERS
HAIR CLIPPERS
CLOCKS, WATCHES
RINGS
WATCH BANDS
SAVE ON RADIO AND CLOCK REPAIRING!
Next Door to Higginbotham's

DR. J. L. HALE
OPTOMETRIST
Chandler Building
Phone 21481
Monday, Wednesday, Friday

Ask About Our Budget Plan.

FOR SALE
480 acres, 375 field, new modern home.
A. M. KING

1952 CHEVROLET 1/2-TON PICKUP \$375.00
RAY FUQUA CHEVROLET CO.

Baker's Market
S. SEVENTH "QUALITY FIRST" TEL. 21544

Fryers FRESH DRESSED	Lb. 43c
Veal Cutlets	Lb. 79c
Loin Steak CHOICE BEEF	Lb. 59c
T-Bone Steak	Lb. 55c
Seven Steak	Lb. 39c
Shoulder Round	Lb. 45c
Chuck Roast Beef	Lb. 33c
Ground Meat	Lb. 19c
Bacon HORMEL'S MIDWEST	Lb. 43c
Brick Chili	Lb. 49c
Lunch Loaves ASSORTED	Lb. 49c

We also carry a line of Staple Groceries, Fresh Vegetables, Fruits and Dairy Products.

BETTY BERRYHILL, DUKE NAMED QUEEN AND KING AT '53 SENIOR CARNIVAL

One of the most important school programs of the year, the senior carnival, was presented last Saturday night at the library building.
Bingo games were enjoyed by young and old and many prizes were won which had been furnished by local merchants. The fish pond attracted many of the youngsters and those who participated in the cake walk competed for 66 decorated cakes. Much excitement and Halloween fun was furnished for those who bravely visited the fun house. Cold drinks and snow cones were supplied at the concession stands and there were various games operated carnival style.
The main event of the evening was the coronation of a queen and king. Betty Berryhill and John Duke, senior candidates, were winners of the honors. Others in the court were: Virginia Harral, eleventh grade duchess, and her escort, Don Simmons; Lynn Herring, tenth grade duchess, and her escort, Wesley Stokes; Glenda Cook, ninth grade duchess, and her escort, Jerry Beaver; Patty Sweeney, eighth grade duchess, and her escort, Carlton Stow-

ers; Georgia Newby, seventh grade duchess, and her escort, Joe Davidson.
George McAulay, president of the senior class, was master of ceremonies for the coronation. Principal Joe Forester crowned the queen and king and presented them with silver brackets.
The carnival is an annual feature presented by the senior class. This year's sponsors were M. E. Sweeney, Mrs. T. L. Epling, Mrs. Josephine Stallings, Gary DeShazo and Joe Forester. The proceeds will go to the fund to help finance the annual senior trip and for other expenses in connection with graduation.

The carnival is an annual feature presented by the senior class. This year's sponsors were M. E. Sweeney, Mrs. T. L. Epling, Mrs. Josephine Stallings, Gary DeShazo and Joe Forester. The proceeds will go to the fund to help finance the annual senior trip and for other expenses in connection with graduation.



CAMEL MINE—Sgt. Herman H. Lee, right, takes time from duties with the United States Army Explosive Ordnance Disposal Unit station at Heidelberg, Germany, to check an alling circus camel with a mine detector for bits of stray metal which the animal might have swallowed along with his food. Its mind was indicated, and the animal's head was put down as plain, old-fashioned tummy-ache.

SALE OF 100% WOOL HAGGAR SLACKS
995
MADE IN TEXAS TO FIT TEXANS

- ◆ ALL-WOOL GABARDINES
- ◆ ALL-WOOL HERRINGBONE
- ◆ ALL-WOOL TWEEDS

Beautifully tailored by Hagggar, America's leading maker! Choose your slacks from our complete selection.

THE PICK of the FINEST FABRICS
HAGGAR SLACKS 5.95
◆ DACRON BLENDS
◆ ACETATE BLENDS

HEIDENHEIMER'S

SOCIETY

Coe-Thompson Wedding Solemnized at Abilene
 Mr. and Mrs. A. D. Elsworth are at home at 4045 South Seventh Street, Abilene, following their marriage October 22.

The ceremony was performed in the Central Presbyterian Church of Abilene, the church pastor reading the single-ring vows. The bride wore a pink tulle

dress with navy accessories. Mr. and Mrs. Troy Hyatt, of Abilene, attended the couple.

Mrs. Coe is the former Shirley Ann Thompson, daughter of Mr. and Mrs. Claud Thompson, and is a graduate of the Ballinger High School. She is a senior at Hardin-Simmons University, Abilene, majoring in Elementary Education. Mr. Coe is the son of Mr. and Mrs. E. H. Coe, of Kansas City, Missouri. He is a graduate of the University of Kansas and majored in Industrial Designing, and is now serving in the Air Force at Abilene.

Miss Parker Complimented at Gift Shower

As a pre-nuptial compliment for Miss Margarette Parker, who will be married November 11 to Frank H. Smith, was a gift shower given last Thursday afternoon when Mrs. Floyd Wimberley was assisted by Mrs. LeRoy Muller, Mrs. Carl Wood and Mrs. Pete Cowlishaw in entertaining at the Wimberley home, 299 Sharp Avenue, between 2:00 and 5:00 o'clock.

The bride-elect's colors, white and blue, were used in party rooms for decorations. The tea table was laid in lace and centered with a miniature bridal couple standing under an umbrella encircled with white carnations and blue satin bows.

Miss Maude Parker and Mrs. Wood served punch and cake squares decorated in blue florals. Miss Marlene Witt registered guests in the bride's book. Gifts from around seventy-five friends were opened by the honoree.

Garden Club to Hold Informal Flower Show

The Ballinger Civic-Garden Club will hold an informal flower show next Tuesday afternoon, from 2:30 to 5:00 o'clock, in the library building, including both natural and dried arrangements and pot plants.

Garden show directors are Mrs. A. O. Bartlett, Mrs. W. O. Irby and Mrs. Chester Cherry. Anyone outside the club who wishes to bring arrangements is invited to bring displays. The arrangements must be at the library by 11:00 a. m. Tuesday. A plant and seed exchange



CHICK CHECKS CHICKEN CHECKER—No dumb cluck, this chick keeps up-to-date on her weekly weight report at the Pfizer Agricultural Research Center, Terre Haute, Ind. She's one of many farm animals being raised on feed which contains antibiotics, mold-produced organisms well known for disease and infection-fighting qualities. Surprise significant additional effect of the experiment is that marketing date of animals can be speeded up. Broilers, for example, are said to be ready for the market after nine instead of ten weeks of feeding. Period necessary to bring cattle and swine to market weight is also said to be shortened.

will also be held at 4:00 p. m. In charge of the exchange are Mmes. Lillian Holt, C. D. Harris, E. L. Rampy and T. J. McCaughan.

A film, "The Glad Story," also will be shown. This is a beautiful film explaining the planting and cultivation of gladioli. The public is invited to attend the flower show.

Robinsons Celebrate Wedding Anniversary

Mr. and Mrs. C. J. Robinson, long-time residents of the Norton section, observed their 25th wedding anniversary Sunday with open house from 2:00 to 5:00 p. m. Children of the couple, Wyvonne and C. J. Robinson, Jr., and a sister of Mr. Robinson, Mrs. J. S. Stubble-

field, were in the receiving group. Wyvonne is a student at McMurry College, Abilene.

Presiding at the anniversary table were Mrs. Kirby Robinson and Mrs. Walter Morris. Displaying gifts were Mrs. J. S. Clements and Mrs. H. H. McPherson, while Mrs. Rube Virgen registered guests. Good-byes were said by Kirby Robinson, Walter Morris and H. H. McPherson.

Appointments of the anniversary table were imported china and silver. Flowers on the dining table and coffee table were

white mums arranged with silver leaves in a silver bowl. Decorations throughout the house were of queen's wreath and red rosebuds.

Mr. and Mrs. Robinson were married November 1, 1930, at the Methodist parsonage in Ballinger by Rev. R. B. Hooper. Mrs. Robinson is the former Hallie Duke, daughter of W. L. Duke and the late Mrs. W. L. Duke. Mr. Robinson is the son of Mrs. T. B. Robinson and the late T. B. Robinson. Ninety-four guests registered for the open house.

QUARTERBACK CLUB TO MEET TUESDAY

The Ballinger Quarterback Club will meet at 7:00 p. m. next Tuesday night at which time Coach Bill Scoggins will show pictures of the Ballinger-Brady game and will also talk football. All fans are invited to attend this meeting, whether they are members or not. The club has a membership of 193 at the present time and any others who wish to join are invited to send in their dues for the year.

The famous "robber baron" were Andrew Carnegie, Jay Gould, James Fiske, John D. Rockefeller, Cornelius Vanderbilt and J. Pierpont Morgan.

LOW COST PERSONAL LOANS

You Can Borrow
\$50.00 or More
on Your
SIGNATURE
Pay Cash for Your Needs.

See the
CITIZENS LOAN SERVICE
In the Sheppard Bldg.
Upstairs over Purifoy & Co.

Sale
Cultivator Dammers
Were \$35.00 Now **\$28.50**
Gann's Welding Shop
Railroad Avenue

Far beyond the Memory of Man

MANY LINES OF WORK which were unknown a generation ago are now commonplace. The automobile mechanic, the radio announcer, the airplane pilot—all are products of the present generation. Other occupations had their origin far beyond the memory of man. Take pharmacy, for example, with its four thousand years of recorded history. We take considerable pride in being associated with a profession with such fine traditions. Pharmacy must be of fundamental importance to have so long endured.

PEARCE-BAILEY DRUG
Where Pharmacy is a Profession

BROADWAY FOOD

1001 Broadway

Oleo HORMEL	Pkg.	18c
Dog Food PARD	Can	15c
Pickles DIAMOND	1 Qt.	23c
Sweet Potatoes KIMBELL'S	Can	23c
Modart Shampoo	Bottle	45c
Roast Beef LIBBY'S	12-Oz. Can	49c
Raisins SUN MAID	Pkg.	21c
Charmin Tissue 4-ROLL WHITE	Pkg.	29c
Apple Jelly KIMBELL'S	12-Oz. Glass	2 for 25c

FROZEN FOODS	VEGETABLES
Tamales PATIO Pkg. 42c	Spuds Lb. 5c
Fish Sticks THOMAS Pkg. 35c	Grapes TORAYS Lb. 10c
Mexican Dinner PATIO Pkg. 59c	Carrots Lb. 10c
Apple Pie 1-Lb. 8-Oz. MORTON'S Pkg. 49c	Apples DELICIOUS Lb. 15c
	Lettuce ICEBERG Lb. 15c

Finest MEATS Home-Killed

WE SPECIALIZE IN THE FINEST QUALITY MEAT

Roast SEVEN ROUND BONE	Lb.	39c
Bacon ARMOUR'S STAR	2-Lb. Pkg.	89c
Steak LOIN or T-BONE	Lb.	59c
Franks SWIFT'S	Pkg.	47c
Chili BOB'S SPECIAL	Lb.	45c

FREE PARKING AND COURTEOUS SERVICE

ONLY IN THE '56 FORD...

THUNDERBIRD POWER, THUNDERBIRD STYLING and LIFEGUARD DESIGN

In the low-price field
You can't buy safer!

And here's why. Ford alone brings you Lifeguard Design, a whole new family of safety features to give you extra protection in case of accident. There's a new Lifeguard deep-center steering wheel to help cushion the driver from the steering post. ★ new Lifeguard double-grip door latches to reduce the danger of doors springing open under impact. ★ new double-swivel Lifeguard mirror that "gives" for greater safety. ★ new optional Lifeguard padding material to cushion control panel and sun visors and lessen shock of impact. ★ optional floor-anchored seat belts to help hold passengers securely in their seats.

In any class
You can't buy better!

The '56 Ford inherited its beauty from the Thunderbird. It's long and low—a fine car in every graceful line. And you can have the Thunderbird's "lightning," too, at no extra cost for the new Thunderbird Y-8 engine is the standard eight in all Fairlane and Station Wagon models! Here's power that gives you split-second passing ability and hill-climbing "Go." Come in for your Test Drive! You're sure to find many more reasons why you can't buy better than when you buy Ford. New luxury interiors... fine exterior finishes... a quality "feel" throughout... all add up to make Ford the fine car at half the fine-car price.

It's the fine car at half the fine-car price!

'56 Ford

Frank & Lanham Flynt Motors

Eighth Street and Strong Avenue

GREAT TV, FORD THEATRE.

WANT ADS

(Continued from page 10)

FOR SALE

Several lots on easy terms
Insured Titles
A. M. KING

1951 FORD COUPE
\$490.00

RAY FUQUA CHEVROLET CO.

FOR SALE—2 gas heaters in
good condition. Mrs. Halley, 509
Fifth Street. 11

FOR RENT—Nicely furnished
apartment, reasonably priced.
Mrs. W. A. Forney, 905 Broadway.
3-4F

FOR SALE—3,000 bundles of
good grain hepari 5½ miles
southeast of Winters. J. O.
Phelps, Rt. 2, Winters, or call
6011 Ballinger, Texas. 11*-H

LOST—12 Typography maps of
Runnels County. Return to
Ledger office. 11

WANTED—Ironing at 906
Sealy Avenue. Mrs. Lee Edison.
25-11-H

FOR LEASE—Farm, for 1956,
four miles east of Hatchel, T.
E. K. Hammond, 5203 Valley Oak
Drive, Austin 3, Texas. 3-4L

HOMES FOR SALE

5 room frame house. Has 2
floor furnaces. Fenced back
yard. Located near Jr. High
School. Can be bought for
\$3,500.00.

3 bedroom home on corner
lot, \$7,000.00.

4 room home with attached
garage, in good location,
\$6,750.00.

Duplex, close to town,
\$3,750.00.

4 room frame, in need of
some repairs, \$3,000.00.

4 bedrooms and 2 baths,
very good location, \$9,000.00.

3 bedrooms and 2 baths,
\$8,500.00.

Large 2 story home in very
good state of repairs, 6 rooms
and bath downstairs and 6
rooms and 2 baths upstairs,
\$9,500.00.

4 room frame with attached
garage. Rock floor in back.
Carpet in living room. \$500.00
down, balance like rent.

GRANT AGENCY
Phone 7727

FOR SALE—Large 3 bedroom
home, built this year. One of
the best locations in town. Call
2-1822 for appointments. 11

Christmas cards, novelty gifts
and hand made gift items. Mrs.
E. F. Batts, 1068 Ninth Street,
Phone 3191. 3-2L*

**LATIN-AMERICAN CLUB
OBJECTIVES SET FORTH**

About 20 local Latin-Ameri-
cans met at the Acapulco Cafe
in September to form a civic
and service club. The main
objectives of the organization
are to better living standards,
promote educational interests
among the children and better
community affairs. Meetings are
held on the first and third
Wednesday of each month fol-
lowing a dinner. Membership
fees are paid monthly which
covers the two meals and puts
a balance in the treasury.
Officers are: Gilbert Armen-

FOR RENT—2 bedroom fur-
nished apartment in duplex,
central heating Mrs. R. E.
Bruce, phone 4181 or 4141. 3-1F

FOR RENT—Unfurnished four
rooms and bath, 1209 Ninth
Street. Call 5755. 3-2*-*

FOR SALE—Bendix Economat
washer in perfect condition.
Mrs. A. O. Bartlett, phone 4891
11

FOR RENT—Five room house
Also apartment and bedroom.
901 Eighth Street. 11

FOR RENT—Unfurnished
house, 1004 Fifth Street. See
Dick Ayers or call 6983 or 8721.
3-1F

FOR SALE—Nice selection of
evergreen shrubs. Ben Guin
Nursery. 3-11

FOR RENT—Furnished 3-room
guest house. Reasonable. 790
Broadway, phone 2-1853. 11*

1954 CHEVROLET 2-DOOR
\$775.00
RAY FUQUA CHEVROLET CO.

FOR SALE—Good Ford pickup
Buster Parrish, phone 7121. 3-1F

FOR SALE—Used piano. Cal
Winters, 4186. 3-1F

FIRST PRESBYTERIAN CHURCH

Broadway and Phillips
11:00 a. m. Worship Service Sunday will be broadcast over
Station KRUN

You are invited to listen.

Sermon by Rev. Felix W. Keys, Pastor

**LAY-AWAY
TOYS
NOW**

See our large selection
3 ways to pay
**Dallinger
Hardware Co.**

Another project the club
members hope to accomplish
with the help of the city com-
mission is erecting more street
lights in their section of the
city, making their streets better
and cleaning underbrush from
the area.

The organization began sizing
clothing for the needy at Christ-
mas time at the meeting
Wednesday. The club will be
glad to receive used clothing
which can be used in caring for
needy families in the Christ-
mas season.

**Lions' Program
On Tuberculosis**

The program for the 1955-56
Lions Club Friday was pre-
sented by the Runnels County
Tuberculosis Association. Dr. J.
E. Green told of the services
rendered by the county associa-
tion and of some of the accom-
plishments. He stated it was one
of 96 county organizations in
the state and one of 72 of those
affiliated with the state associa-
tion for all services offered.

He stated that there were
even patients from Runnels
County in various hospitals of
the state at this time for treat-
ment of tuberculosis.

Later in the year the club
will paint and remodel the
recreational hall adjoining St.

again this year. He urged coop-
eration with the chest X-ray
unit which will be brought to
the county in the near future.
He said that there were 10 to
12 thousand people eligible to
receive free chest pictures and
that last year only about 2,250
looked advantage of the offer. Joe

**Give Liberally to the . . .
SALVATION ARMY**

- Many people were given emergency assistance by the Ballinger Service Unit of the Salvation Army during the last twelve months.
- Your gift to the Salvation Army touches the heart and soul of humanity in need.
- When you are called on to give in this annual campaign, let your heart strings control your purse strings

. . . and YOU'LL BE GLAD YOU GAVE!

**BALLINGER SERVICE UNIT
THE SALVATION ARMY**

House for Sale

407 Sixth Street—6 Rooms with Double Garage—Lot 90'x140'
See local gas officer for key to inspect house.
All interested parties should send bids to:

Lone Star Gas Co.

Box 2354
ABILENE, TEXAS
Bids Close November 12, 1955

The RIGHT QUALITY at the RIGHT PRICE!



Complete Satisfaction at your PIGGLY WIGGLY



Chuck Roast Lb. **39c**

Pork Roast Lb. **39c**

Steak LOIN Lb. **55c**

Steak T. BONE Lb. **55c**

Beef Ribs Lb. **25c**

Bacon SUNVALE SLICED Lb. **39c**



KRAFT'S WISCONSIN LONGHORN Cheese Lb. **49c**
SWIFT'S PREMIUM Franks Lb. Cello Pkg. **43c**

Pillsbury's Flour SERVING TRAY FREE WITH EACH BAG 25-Lb. Bag **\$1.79**

Rio Margarine Lb. **21c**

Halfhill's Tuna GRATED LIGHT MEAT 6-Oz. Can **19c**

Black Pepper GARDEN CLUB 1½-Oz. Can **10c**

Tamales GERHARDT'S No. 300 Can **18c**
Apple Jelly KIMBELL'S 12-Oz. Glass **15c**

Potatoes IWAPCO WHOLE NEW Lb. **10c**
Milk GANDY'S ½-Gal. **47c**

Tomatoes DIAMOND 2 No. 203 Can **25c**
Pinto Beans 5 Lbs. **46c**

Apples RED DELICIOUS Lb. **16c**

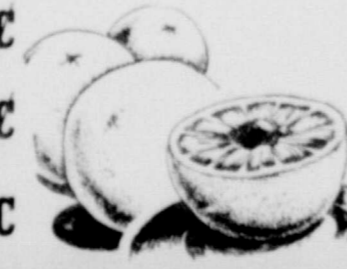
Grapes TOKAY 2 Lbs. **25c**

Oranges TEXAS 5-Lb. Bag **32c**

Grapefruit MARSH SEEDLESS Lb. **8c**

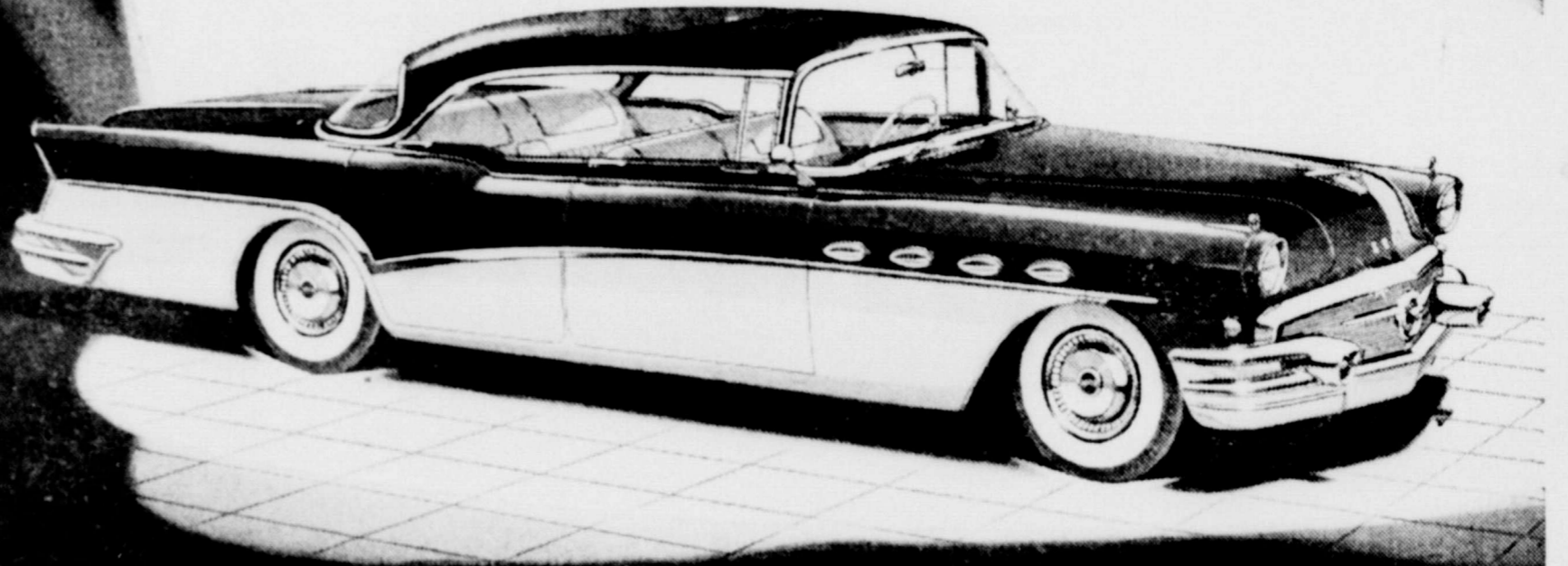
Bell Peppers Lb. **16c**

Lettuce FRESH, CRISP Lb. **15c**



Here it is for '56—

Best Buick yet



When better automobiles are built Buick will build them

It comes upon the heels of the most successful Buick in history—and beats it on every score.

In shimmering steel and solid sinew, it's Buick for 1956—and there's never been anything like it for pure automobile.

You get a good hint of what we mean when you take in the sweep-ahead styling of it—from the air-splitting prow of its V-front grille to the robust rake of its canted rear profile.

You get an even better hint when you open the doors and see the dazzle there—in the decorator fabrics and decors—in the jewel-like finish of the fittings—in the precisely shaped steering wheel and controls—in the rich new instrument panel with soft-padded top and glowing dials that detail your progress in changing colors.

But it's when you put this beauty to the city

streets and the open highways that you learn the best of it.

Performance Without Parallel

A new advance in Variable Pitch Dynaflo* goes airplanes one better—steps up your get-away in normal driving without switching the pitch. But when you need that extra surge, it's there, instantly—and in extra abundance.

The might of big 322-cubic-inch V8 engines in every Series brings new record high power to all Buicks—ROADMASTER, SUPER, CENTURY, and the bedrock-priced SPECIAL. Yet this is such high-compression power, such dynamic driving power, such completely usable power at the rear wheels—the whole rear end has been endowed with extra brawn and lefth and solidity to handle it.

We could spread before you an acre of blue-

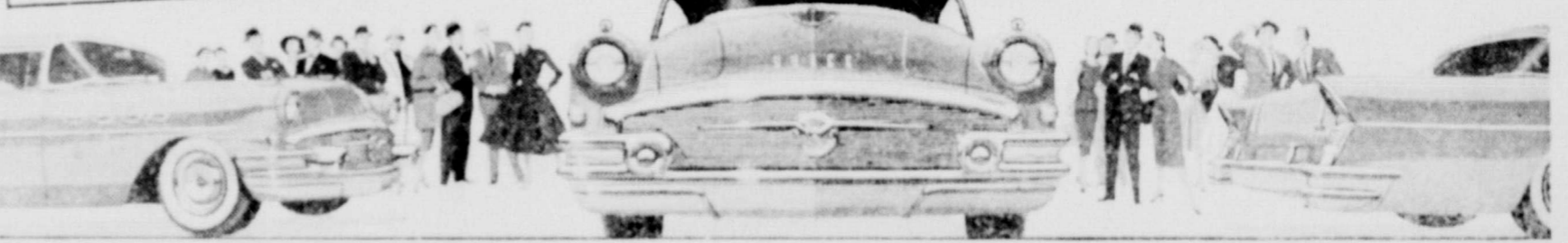
prints on the engineering gems that spark the spectacular performance and ride and handling and roadability of these great Buicks for 1956.

We could tell you about a new double-Y manifold of the engine for more usable power. And about a brilliant new front-end geometry that adds a whole new "sense of direction" to the car's travel. And about massive new direct-action shock absorbers that move three times more oil to cushion your all-coil-spring ride that much more buoyantly.

But you can get the full story right now, at our showroom, in a face-to-face meeting with the best Buicks yet—now on display, and setting a dazzling new pattern for 1956.

*New Advanced Variable Pitch Dynaflo is the only Dynaflo Buick builds today. It is standard on Roadmaster, Super and Century—optional at modest extra cost on the Special.

NOW ON DISPLAY



SEE JACKIE GLEASON ON TV Every Saturday Evening

Enjoy cooled, filtered air for less than you think with Buick's AIRCONDITIONER
It's a genuine Frigidaire

UNDERWOOD BUICK CO.

Tenth and Hutchings

Phone 6491

THE BALLINGER LEDGER

VOL. 70

BALLINGER, TEXAS, THURSDAY, NOVEMBER 3, 1955

NO.

More Comfort Wearing FALSE TEETH

Here is a pleasant way to overcome loose plate discomfort. **FASTEETH**, an improved powder, sprinkled on upper and lower plates holds them firmly so that they feel more comfortable. No gummy, sticky taste or feeling. It's alkaline (non-acid). Does not sour. Checks "plate odor" (denture breath). Get **FASTEETH** today at any drug counter.

DANCE BOOKED AT OLKEN ON THANKSGIVING NIGHT

Rev. Norbert F. Wagner was in Ballinger the past week-end and stated that the annual Thanksgiving dinner and festival at Olken would not be held again this year.

He stated, however, that a dance would be held in the

community hall on the night of November 24. The Pelzel Band will provide the music and admission will be \$1. Door prizes will be arranged and the public is invited to attend.

Eighty per cent of the fur seals in the world are found on the Pribilof Islands off the coast of Alaska.

Maureen O'Hara is 'Lady Godiva' In Reenactment of Famous Legend

The famed bareback ride of Lady Godiva down the streets of Coventry is a high point in Universal's Technicolor romantic adventure, "Lady Godiva," to be presented at the Texas Theatre Sunday, Monday and Tuesday, November 6, 7, 8. Maureen O'Hara has the title role and other stars are George Nader, Victor McLaglen and Rex Reason. Torin Thatcher, Edward Franz and Arthur Shields are featured players.

Colorful action is said to abound in this thoroughly entertaining film which opens with handsome young Saxon nobleman Lord Leofric marrying the beautiful Godiva, daughter of a Lincolnshire commoner, and thwarting unscrupulous Count Eustace, who secretly plots Norman conquest of England.

Miss O'Hara, in the title role, offers a fiery characterization of the Lady of Coventry, and Nader, in the role of the impetuous Leofric, proves both a swashbuckling and romantic husband and a devil-may-care warrior against the Norman enemies.

The story of the boldest double-cross in outlaw history provides the basis for "Rage at Dawn," new big-scale Technicolor outdoor drama on the double-bill at the Texas tomorrow and Saturday. Randolph Scott heads the cast in which

Forrest Tucker, Mala Powers and J. Carroll Nash have top roles. Supporting players include Edgar Buchanan and Kenneth Tobey.

Spine-tingling action, backgrounded by the spectacular beauty of the Pike's Peak region in Colorado, marks Universal's "The Looters" as one of the season's top outdoor dramas. Also to be shown at the Texas Friday and Saturday, the new film stars Rory Calhoun, Julie Adams and Ray Danton. Capable support is given by Thomas Gomez and Frank Faylen.

A daring break-out by three desperate girls who hold their artistic matron as hostage is a dramatic highlight of "Betrayed Women," Allied Artists' sensational expose of conditions in an antiquated prison for women, to be shown at the Texas next Wednesday and Thursday, November 9, 10.

The escape is led by Carole Mathews as the Kate of the story. With her are Beverly Michaels as Honey, a gun moll, and Peggy Knudsen as Nora, a girl serving time for theft she committed to help her younger brother. Tom Drake portrays a lawyer appointed by the state governor to investigate conditions in the prison, in which cruelty is the usual daily routine.

Washington's first employer was Lord Fairfax, whose lands he surveyed.

'Las Vegas Shakedown,' Joel McCrea Western Features at Hillcrest Friday

"Las Vegas Shakedown," a drama of the fabulous resort city starring Dennis O'Keefe, Colleen Gray, Charles Winninger and Thomas Gomez, is one of the two attractions at the Hillcrest Drive-In Theatre tomorrow and Saturday. All of the Allied Artists picture was "shot" in Las Vegas. Prominent in the supporting cast are Dorothy Patrick, Elizabeth Patterson, James Millican, Mary Beth Hughes and Robert Armstrong.

The struggle to impose law and order on a raw, reckless western frontier town supplies the plot elements of "Stranger on Horseback," United Artists production which makes up the other half of the twin-bill at the Hillcrest tomorrow and Saturday. Joel McCrea plays the leading role and co-stars are Kevin McCarthy and Miroslava. The large supporting roster includes John McIntire, Nancy Gates, John Carradine, James Bell and Emilie Meyer.

The Hillcrest will show for a first Ballinger run Sunday Monday and Tuesday, November 6, 7, 8, "Duel on the Mississippi," a Columbia picture in Technicolor. The stars are Lex Barker and Patricia Medina. On the same bill is "Tight Spot," starring Ginger Rogers and Edward G. Robinson.

When native justice, like a cold steel trap, closes on both the hunted and the hunter in "Escape to Burma," there is drama and action in abundance. There is romance, too, in this Technicolor production in SuperScope, with Barbara Stanwyck, Robert Ryan and David Farrar providing one of the season's most interesting triangles, as

The smouldering Argentina is only a few inches long.

PARTY NAPKINS—5 sparkling colors and white. The very best for printing, and ideal for cocktail parties, anniversaries, and other occasions. Ballinger Printing Co., Phone 6522.



REAL KICK—There's a real kick behind the boot-print-like air intake of this jet engine, billed as the most powerful ever built. It's DeLaval's "Geyon," designed for super-sonic flight. Shown at a London, England, airport, it develops an announced static thrust of 15,000 pounds.



ALMOST PRICELESS—That's the word for this luxurious Christmas card, designed by designer Alice Daley, in San Francisco, Calif. True, fashioned of snow-white silk is studded and bordered with pearls and precious stones. It's valued at \$25,000. Photo reproductions of her luxury cards are sold as greeting items for folks with modest pocketbooks.

County's Teachers Will Meet Monday

The Ballinger County Teachers' Association's first meeting of this school year will be held in Ballinger Monday night. E. B. Blackburn, president of the association, said the program was being arranged by the first vice-president.

All teachers of the county are expected to attend the meeting here, which will be part business and part program. The county organization holds three meetings each term, one of which is for a banquet.

More than 60 colonies of various foreign peoples are settled in different parts of the republic of Paraguay.

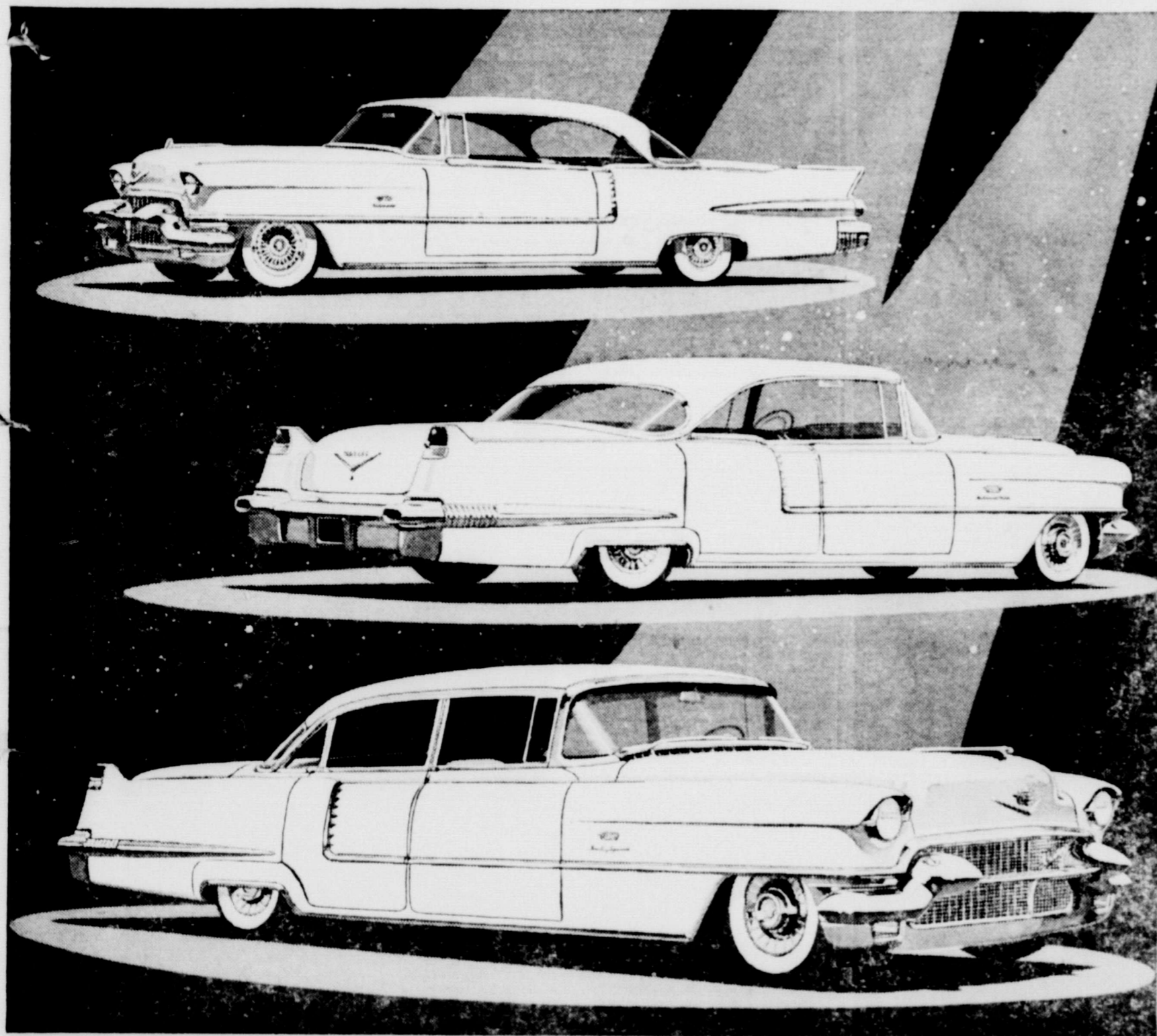
SALE

All Fall and Winter COTTONS 1/3 OFF

Wood's Dress Shop

905 1/2 Sixth Street

CADILLAC for 1956



Top to bottom—Eldorado, Seville, Sedan de Ville, Series Special

Presenting the Most Inspiring Motor Cars the World Has Ever Seen!

You are looking at three of the most magnificent and inspiring creations ever to issue from the drawing boards of Cadillac's designers and engineers.

These spectacular new Cadillacs—in company with the other Cadillac models for 1956—introduce a standard of automotive excellence that will find no counterpart on the highways of the world.

Where, for instance, could you find anything to match them for beauty and elegance? Their long, low, sweeping lines . . . their jewel-like grille and rear-fender designs . . . their brilliant new color combinations . . . their sparkling highlights of chrome and gold . . . all combine to create a beauty that is truly unique.

Where could you find anything to equal them in luxury? Inside are fabrics of rare richness and pattern . . .

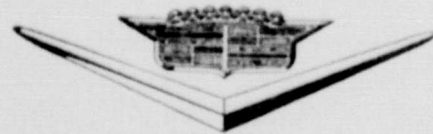
and features of comfort and convenience that will delight even the most experienced Cadillac owner.

And where could you find anything to rival them in performance? There's a completely redesigned Cadillac engine developing 285 and 305 horsepower . . . a new, controlled-coupling Hydra-Matic Drive . . . and advanced Cadillac Power Steering and Power Braking.

This extraordinary new Cadillac beauty . . . and this brilliant new Cadillac luxury . . . and this dynamic new Cadillac performance . . . have been interpreted in four separate series and in nine individual body styles.

We sincerely urge you to stop in for a personal inspection and demonstration at your earliest convenience.

We know you will agree that, in every way, they are the most inspiring motor cars the world has ever seen!



NIX OLDS-CADILLAC CO.

Ninth and Hutchings

Phone 9141

TEXAS theatre

BALLINGER TEXAS

Matinee at 1:30 on Saturday, Sunday
Open 6:30 Week Days

FRIDAY, SATURDAY

Big Double Feature

RANDOLPH SCOTT

RAGE AT DAWN

TECHNICOLOR

FIRST BALLINGER SHOWING

Rory Calhoun

Julie Adams

"The Looters"

Also Extra Cartoons Saturday Matinee

SUNDAY, MONDAY, TUESDAY

The First Startling Story of the
World's Most Famous Ride . . .

"Lady Godiva"

Starring Maureen O'Hara, Geo. Nader

Plus Latest News-- Funnies in Color

Wed., Thurs., Nov. 9-10

Female Devil Island

"Betrayed Women"

Starring Carole Mathews

HILLCREST DRIVE-IN

BRONTE HIWAY

FRIDAY, SATURDAY

LEONARD GOLDBERG PRODUCTIONS presents

JOEL MCCREA

"STRANGER ON HORSEBACK"

MIROSLAVA

Big Double Feature

DENNIS O'KEEFE

"LAS VEGAS SHAKEDOWN"

BARBARA STANWYCK

"ESCAPE TO BURMA"

Come Early and visit Our Snack Bar

SUNDAY, MONDAY, TUESDAY

DUQUENNE

ON THE MISSISSIPPI

LEX BARKER - PATRICIA MEDINA

GINGER ROGERS

EDWARD G. ROBINSON

BRIAN KEITH

"TIGHT SPOT"

Plus: No Parking Here--Cartoon

WED., THUR., November 9, 10

50c Carload Nights

MAN HUNT!

SUDDEN DEATH!

BARBARA STANWYCK

ROBERT RYAN-DAVID FARRAR

"ESCAPE TO BURMA"

MA KETTLES got a new feller!

"RICOCHET ROMANCE"

MARJORIE MAIN

CHILL WILLS

BOY SCOUT FINANCE

DRIVE SHORT OF GOAL
The annual Boy Scout fund campaign is still underway here and no report has come in from the special gifts committee.

Larger gifts are expected to come in from the special committee and were not included in the above report.

Workers hope to get about \$2,500 but to date are far short of this goal.

Any person who has not been contacted and who would like to help in this campaign is requested to mail a check to Herman Price, campaign chairman, or hand it to any of the known workers.

Soldiers break their step when crossing a bridge because the weight of their bodies and the impact of their feet would cause the bridge to swing and eventually to break.

The secretary of state becomes president of the United States in case of the death or removal of both the president and the vice-president.

Notice of United States Marshal Sale

Notice is hereby given that by virtue of the authority of an Order of Sale directed to me by the United States District Court for the Northern District of Texas, San Angelo Division, in Civil Action No. 485 in said court, I levied upon the 18th day of October, 1955, and will sell at public auction for cash at the county court house door in Runnels County, Texas, between the hours of 10 o'clock a. m. and 4 o'clock p. m., on the 6th day of December, 1955, to satisfy the judgment entered in said action, the following described land, located approximately six miles northeast of Ballinger in Runnels County, Texas, said land being generally known as a part of the E. B. Price property, to-wit:

(1) FIRST TRACT: Being 180 1/2 acres, comprising: (1) 3 1/2 acres of Block No. 36, a subdivision of the Day Land and Cattle Company Survey No. 1, Abstract No. 1117; (2) 81 acres of Block No. 36, a subdivision of the M. J. Parramore Survey No. 26, Abstract No. 834; and (3) 116 acres of Block No. 36, a subdivision of the Domingo Diaz Survey No. 532, Abstract No. 115, described by metes and bounds as follows: BEGINNING at the Northwest corner of said Block No. 36; THENCE South 71°05'41" East 1/10 varas to a rock mound at the intersection of the West line of said Block No. 36 with the Northern or Westerly line of the Ballinger-Crews public road; THENCE North 49 degrees 19' East with said line of road 218 varas; THENCE North 19 degrees 30' East with said line of road 1082 varas; THENCE North 25 degrees East with said line of road 755 varas to the intersection of said line of road with the East line of said Block No. 36, at the south corner of a 3-1/10 acre school tract; THENCE North 23 degrees West with the West line of said school tract 296 varas to the Northwest corner of said school tract on the North line of said Block No. 36; THENCE West with the North line of said Block No. 36, 796-1/10 varas to the PLACE OF BEGINNING, and being the same land described as 182-8/10 acres in a deed executed by W. L. McMillan and wife, Beulah McMillan, to L. H. Hamilton, now of record in Volume 121, page 431, Deed Records of Runnels County, Texas; SAVING AND EXCEPTING therefrom 3-1/10 acres described in a deed executed by W. L. McMillan to County School Trustees of Runnels County, now of record in Volume 159, page 294, Deed Records of Runnels County, Texas, leaving a net acreage of 180 1/2 acres; being the same land described in the deed executed by Mrs. R. E. Ashton, et al., to Joe Ashton, now of record in Volume 187, page 347, Deed Records of Runnels County, Texas; SAVING AND EXCEPTING therefrom 3-1/10 acres described in the deed executed by Joe Ashton and wife, to State of Texas, now of record in Volume 205, page 519, Deed Records of Runnels County, Texas; and

SECOND TRACT: Being 100 acres of land comprising: (1) 4-48/100 acres of Block No. 35, a subdivision of the M. J. Parramore Survey No. 26, Abstract No. 834; (2) 40-15/100 acres of Block No. 35, a subdivision of the Day Land and Cattle Company Survey No. 1, Abstract No. 1117; and (3) 55-37/100 acres of Block No. 35, a subdivision of the B. & M. Survey No. 25, Abstract No. 14, said 100 acres further described by metes and bounds in one body as follows, to-wit: BEGINNING at a stake in the North line of Block No. 37, of the subdivision of the Thomson-Casey Ranch, made for the Southwest corner of said Block No. 35, from which a monolith 9 inches in diameter bears South 68 1/2 varas; THENCE North 89 degrees 41' East with the North line of said Block No. 37, 830-1/10 varas to a stake in the Southeast corner of said Block No. 35; THENCE North with the East line of said Block No. 35, 680 varas to a stake made for the Northeast corner of this tract; THENCE South 82 degrees 41' West parallel with the South line of said Block No. 35, 830-1/10 varas to a stake in the West line of said Block No. 35, for the Northwest corner of this tract; THENCE South with the West line of said Block No. 35, 680 varas to the PLACE OF BEGINNING; being the same land described in the deed executed by A. D. Jones, et al., to Joe Ashton and wife, Clara Ashton, now of record in Volume 192, page 574, Deed Records of Runnels County, Texas; (2) Being 520 acres, more or less, of land, comprising: (1) 341 acres of the Austin and Williams Survey No. 262, Abstract No. 2; (2) 47 acres of the Wm. J. Smith Survey No. 60, Abstract No. 1135; and (3) 132 acres, all of the T. Williamson Survey No. 15, Abstract No. 856, described by metes and bounds as follows: BEGINNING at the Northeast corner of said Williamson Survey No. 15, at the Northwest corner of Survey No. 14, in the South line of said Survey No. 262, at a point 1084 varas North 75 degrees East of the Southwest corner of said Survey No. 262; THENCE South with the East line of said Survey No. 15, and the West line of said Survey No. 14, being the same land described in the deed executed by Mrs. A. S. Wilke to B. N. Wilke, now of record in Volume 181, page 62, Deed Records of Runnels County, Texas; (4) FIRST TRACT: Being 75 acres off of the East end of Day Land and Cattle Company Survey No. 14, Certificate No. 52, Abstract No.

1117, and being the same land conveyed by A. F. King, et al. to Jessie Wade, et vir, by deed dated July 30, 1947, recorded in Volume 209, page 435, Runnels County, Texas, to which deed and the record thereof reference is hereby made. Said sale will be made subject to the rights of the United States of America to redeem, pursuant to the provisions of Title 28, paragraph 2410, of the U. S. Code, all as provided in said judgment. This 18th day of October, 1955 /s/ HOBART K. McDOWELL, United States Marshal, Northern District of Texas. 27-46



FUTURE FARMERS' CHIEF - Don Dunham, 19, of Lakeview Ore., has been elected president of the Future Farmers of America, meeting in convention at Kansas City, Mo.

Oh-h-h! Those '56 OLDSMOBILES!

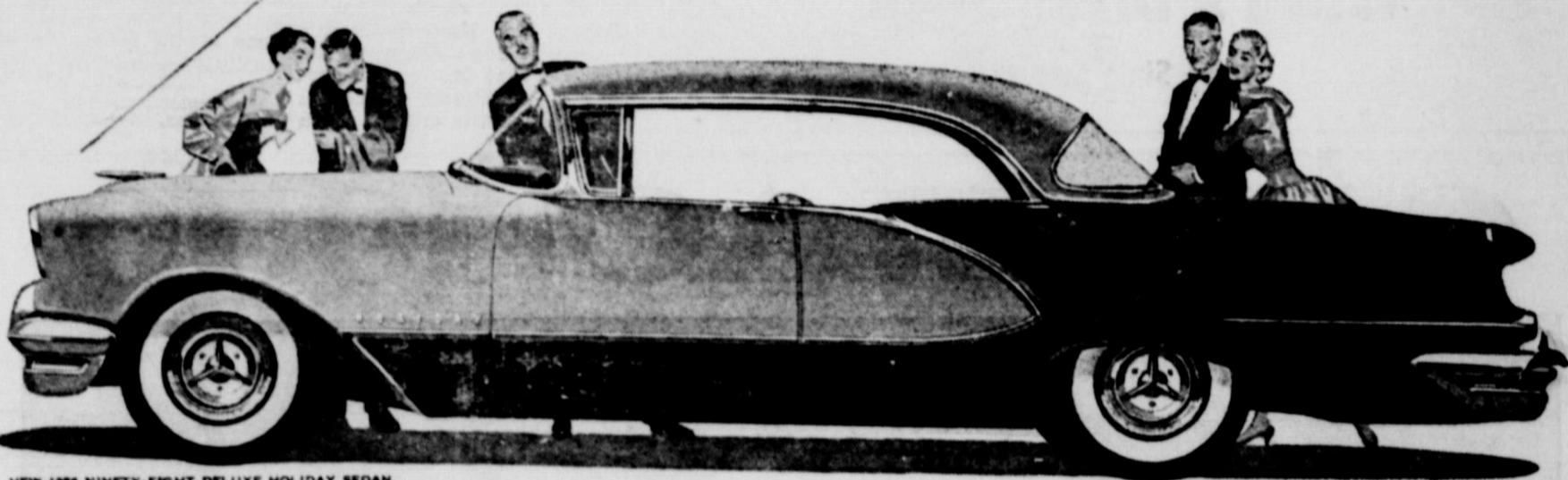


NEW 1956 SUPER 88 HOLIDAY COUPE

THE CAR WITH THE POWER PERSONALITY!

WITH NEW STARFIRE STYLING! NEW JETAWAY HYDRA-MATIC! NEW ROCKET T-350!

IT'S "OH" DAY... U.S.A.! Oldsmobile for '56 is here! The sensational Super '56... the car with the power personality!



NEW 1956 NINETY-EIGHT DELUXE HOLIDAY SEDAN

NINETY-EIGHT... The Fine Line of Distinction

ON GALA DISPLAY IN OUR SHOWROOMS NOW!

VISIT THE "ROCKET ROOM" ... AT YOUR OLDSMOBILE DEALER'S!

Nix Olds-Cadillac Co.

Ninth & Hutchings

Phone 9141

PATRICE MUNSEL, KEITH ANDES AND BERT LAHR STAR FOR OLDSMOBILE IN "THE GREAT WALTZ," SAT., NOV. 5, ON NBC-TV!

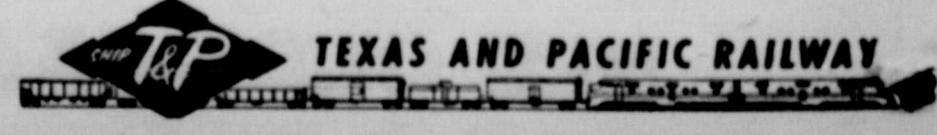
Advertisement for Lone Star Gas Company featuring a gas range. Text includes: 'never before so much for so little!', 'this superb Universal flame-fast gas range now only \$343.40', '3 full years to pay', 'Get the BIGGEST TRADE you've ever made!', 'ANNUAL OLD STOVE ROUND-UP SALE', 'LONE STAR GAS COMPANY'.



Good Neighbors

WHAT IS IT that makes a neighbor a "good neighbor"? Sometimes it's the thoughtfulness of a surprise cake handed over the back fence. Sometimes it's a smile, or a gesture that lets you know there's a friend near who's always ready to lend a helping hand just because it's the natural thing to do. In short, being a good neighbor is simply the business of putting the Golden Rule into everyday practice. Since it began operation in 1871, the Texas & Pacific Railway has been blessed with some of the finest neighbors anyone could want. During our eighty-four years we have received many surprise "cakes over the back fence" from our good neighbors who wanted to show their appreciation for the part T&P has had in the growing Southwest. We are grateful, too, for the friendly and understanding support of our neighbors through the years. Good neighborliness is a two-way track, however. As a good neighbor always should be, we have tried to be interested... in a practical and understanding way... in the well-being of those with whom we live and work. Down through the years, the folks at T&P have extended a hand of fellowship to their neighbors... in good times as well as in times of disaster. In 1953, for example, a prolonged drought parched farms and ranches of many areas of the West. Our farming and ranching neighbors needed help... and T&P joined with other railroads and the Federal Government in providing that help. The railroads of the West cut in half their rates on feedstuffs to the drought-stricken areas. This reduction was equivalent to a contribution of 20 million dollars, for that is the sum these railroads gave up as a result of the rate reductions. No other transportation agency made any contribution whatsoever... through rate reductions... to the farmers and ranchmen. Only the railroads heeded their call for help. We're proud of the way our Southwestern neighborhood has grown, and we're thankful that we've been able to grow with it. Even though the region we serve now has become an industrial and agricultural empire, the spirit of the good neighbor still exists... and is as important now as it was in the pioneer days.

W. G. VOLLMEER, President



THE SAN ANGELO FAT STOCK SHOW AND RODEO ASSOCIATION

Presents its Second Annual

Steer Roping and Branding

\$10,000 PURSE

2:00 P. M. SUNDAY, NOVEMBER 6
FAIR GROUNDS, SAN ANGELO

Tickets on Sale at B.C.D. Office, Cactus Hotel or write
Box 712

Grandstand: Adults, \$2; Children, \$1
General Admission: Adults, \$1.50; Children, 75c



FOR SHORT ORDERS—Mrs. Myrtle Gunsaulus, of Fort Scott, Kan., puts this miniature of an old-fashioned range to good use. Its electrically heated oven is just the thing for making breakfast toast, and two-element top can be used for at-the-table cooking.

Mrs. Buddy Peterson, Jean and Ella; Mrs. Ruth Jarrett, Karan and Sandy Wiesepape.

Dinner Honors Henry Wiesepape on Birthday Anniversary

Mr. and Mrs. Curtis Wiesepape and Mr. and Mrs. John Wiesepape were hosts at a dinner served in the Curtis Wiesepape home October 23 to honor Henry Wiesepape, who was celebrating a birthday. Barbecued goat with all the trimmings was

served at the noon hour.

Attending were Mr. and Mrs. Henry Wiesepape, Mr. and Mrs. Wallie Ehrig, Shirley and Charles; Mr. and Mrs. Albert Whochees, of Miles; Mr. and Mrs. Carl Manks and Beverly, of Kermit; Mr. and Mrs. Sid Chapman, Mr. and Mrs. Zid Herring, Jr. and children; Mr. and Mrs. Milton Redmon, Dickie and Kay; Miss Bertha Wiesepape, of San Angelo; Karan, Sandy and Ronald Wiesepape.

'Night of the Hunter,' 1st-Run Film, In 3-Day Engagement at Horseshoe

"The Night of the Hunter," a suspense film adapted from Davis Grubb's best selling novel and brought to the screen by the producing-directing team of Paul Gregory and Charles Laughton, is the first-run feature at the Horseshoe Drive-In Theatre today, tomorrow and Saturday. The United Artists suspense film tells the suspense-loaded story of a psychopathic killer and a woman too starved for love to see her life threatened. This is the Gregory-Laughton first motion picture venture, following decided success on the stage. The stars are of top stature—Robert Mitchum, Shelly Winters and Lillian Gish. Others in the cast include James Gleason, Evelyn Varden, Peter Graves, Gloria Castillo, Don Beddoe, Billy Chapin and Sally Jane Bruce.

To be shown on the same program on Saturday night only is "Wildcat," starring Richard Arlen.

An interesting 10-minute short, "Crash and Live," is an added feature on this program.

Jane Russell, Jeff Chandler and Dan Duryea star in Universal's "Foxfire," in color by Technicolor, a fiery love story of a young heiress who weds a half-breed Apache Indian

miner, scheduled on the twin-bill at the Horseshoe Sunday and Monday, November 6, 7. Featured players are Barton McLane, Frieda Inescourt and Mara Corday.

One of the country's most unusual location sites supplies the background for Columbia's suspense-filled "5 Against the House," the No. 2 feature at the Horseshoe Sunday and Monday. Starring are Guy Madison, Kim Novak, Brian Keith, Alvy Moore and William Conrad, and introduced is Kerwin Mathews. The setting is the richest gambling house in the world, Harold's Club in Reno, Nevada, and the story relates the efforts of four students and a girl to hold up the place successfully. The screen play is based on the Good Housekeeping Magazine story by Jack Finney.

"Anchors Aweigh," one of Hollywood's greatest musical productions, starring Frank Sinatra, Kathryn Grayson and Gene Kelly, is to be shown at the Horseshoe Tuesday and Wednesday, November 8, 9, as an M-G-M "hall of fame" release. The first picture to bring Sinatra to the Metro lot, it presents the popular star in a role combining singing, dancing and an acting opportunity



Ollie Chenoweth
John A. Barton
Jim Harralson

The Norton girls' 4-H club met on October 24 in the school lunch room. Frances Greger presiding at the business session. The club received state recognition in recreation. Awards also were made to Jane Bryan, recreation; Carolyn Gottschalk, clothing; Frances Greger, frozen foods; Patty Greger, canning; Nancy Minzenmayer, achievement; and Marie Niehues, poultry.

At the close of the program Miss Ollie Chenoweth, county home demonstration agent, assisted the girls in making pin-cushion bracelets.

which was to culminate in his winning an academy award. The musical also is memorable in being the film in which Gene Kelly does his remarkable cartoon dance with "Jerry Mouse," considered one of the most fascinating choreographic routines ever conceived for a motion picture.

On the same program is "The Cobra Strikes."

Horseshoe Drive-In Theatre

Paint Rock Highway
THUR., FRI., SAT.

ROBERT MITCHUM
SHELLY WINTERS



THE NIGHT OF THE HUNTER

LILLIAN GISH, PAUL GREGORY, CHARLES LAUGHTON

Added for SATURDAY



Wildcat
RICHARD ARLEN

SUNDAY, MONDAY



JANE RUSSELL
JEFF CHANDLER
FOX FIRE
DAN DURYEA



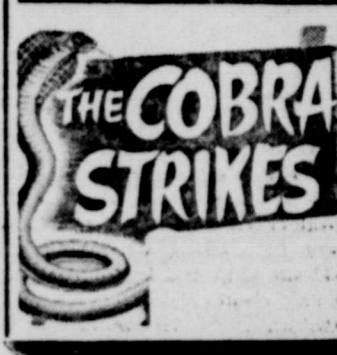
5 AGAINST THE HOUSE

TUESDAY, WEDNESDAY
50c per Carload

FROM M.G.M.'S HALL OF FAME!

FRANK SINATRA
KATHRYN GRAYSON
GENE KELLY

ANCHORS AWEIGH
TECHNICOLOR



THE COBRA STRIKES

"Pyorrhoea" May Follow Neglect

Did you ever see an attractive person with irritated "GUMS"? Druggists refund money if first bottle of "LETO'S" fails to help. Pearce-Salley Drug



HAVE YOU SEEN?—Hoping against hope, this German woman holds aloft a card bearing the photograph of her long-missing husband, Hermann Steinmetz. She seeks word of him from repatriated Germans arriving at Friedland, Germany, following their release from Russian prison camps. She is typical of those who hope when all but hope is gone, as crowds greet the flow of returnees from their years-long isolation behind the Iron Curtain.

MISS FORMAN GIVEN LEAD IN PLAY AT UNIVERSITY

Mary Jo Forman, student at the University of Houston, has been awarded the leading role in George Bernard Shaw's "The Devil's Disciple." The play, one of the major attractions of the drama department of the university, will be presented at Cullen Auditorium for three

nights beginning November 10. The daughter of Mr. and Mrs. Joe Forman, Miss Forman is a graduate of the Ballinger high school.



Here Friday and ready to roll!

The hot one's even hotter!

the '56 Chevrolet

New models—all with bold new Motoramic Styling. More models—including two new 4-door hardtops and two new 9-passenger station wagons. New excitement under the hood—up to 205 horsepower and 9.25 to 1 compression ratio. This—remember—is the car that broke the Pikes Peak record in a history-making, preproduction trial. Come on in, look it over and try it out!

They're sitting in our showroom right now champing at the bit. For these '56 Chevrolets were born with an urge to go places! But look 'em over first. Look at that bigger, wider, more massive grille. Follow that lower speedline of chrome back to those saassy, high-set tail-lights (the one on the left swings down to uncover the gas cap!).

V8 or 6—19 Models in 3 Series

Any kind of model anyone could want! Your choice of the new "Blue-Flame" 6 with 140 h.p. and new higher compression or Chevrolet's record-breaking V8 power ranging up to a new high of 205 h.p. and 9.25 to 1 compression ratio! Automatic, and comfort and safety features? If Chevrolet doesn't offer them, it's only because they haven't been invented yet.

Come in and drive the '56 Chevrolet!



Ray Fuqua Chevrolet Co.

GIVE YOUR HOME Lasting beauty

WITH FAMOUS MINNESOTA

PAINT

IN FRESH, MODERN COLORS



CHECK THESE VALUES!

FOR BEAUTY — COVERAGE — ECONOMY
THE PAINT THAT ADDS YEARS OF LIFE TO YOUR PROPERTY
You get more than outside beauty when MINNESOTA Paint is used. You get the penetrating, lasting coverage that means a longer time between paint jobs!
See us for reliable painters. Labor and material on one bill.
NOTHING DOWN • UP TO 3 YEARS TO PAY

Decorator Colors!

MINNCO WALL PAINT

More than 100 colors. Smooth, washable. MINNCO dries in a few hours.

\$485 gal.



MINNCOTE

RUBBER BASE PAINT FOR BRICK, STUCCO, CONCRETE, ASBESTOS SHINGLES

Withstands alkaline conditions common to masonry. 12 colors and white. Non-fading. Self-cleaning.

\$545 PER GALLON

WALLPAPER Choose from hundreds of distinctive patterns of America's fine wallpaper. Priced right.

Prices Are Always Right At

WM. CAMERON & CO.
BUILDING MATERIALS AND SERVICES

Money!
Featuring
Guaranteed
Best Beef!



Beef Week in Texas . . .

Can't blame the lady for being eager about wonderful beef buys like these! They're all top quality—all cut from top government-graded sides of beef. No matter which beef buy you choose (for example, ground beef, stewing beef or a big steak), you're sure of tender, juicy, flavorful meat. And every cut's a thrifty cut—guaranteed perfect eating, or your money back!

Pot Roast	Chuck Blade, U. S. Choice-Grade Heavy Beef	Lb.	35c
Sirloin Steak	U. S. Choice-Grade Heavy Beef	Lb.	89c
Round Steak	Top Boneless . . . U. S. Choice-Grade Heavy Beef	Lb.	79c
Round Steak	Bottom Boneless . . . U. S. Choice-Grade Heavy Beef	Lb.	73c
Ground Beef	Economy	Lb.	25c

Candy and Marshmallows

Chocolate Drops	Roxbury Candy	16-Oz. Pkg.	37c
Peanut Cluster	Roxbury Candy	16-Oz. Pkg.	53c
Peco-Nut Crisp	Blu-Hill	11-Oz. Pkg.	37c
Marshmallows	Fluffiest Miniature	8-Oz. Bag	19c
Black Pepper	Ground Crown Colony	4-Oz. Can	31c
Vanilla Extract	Crown Colony	1-Oz. Bot.	23c
Lemon Extract	Crown Colony	1-Oz. Bot.	20c
Vanilla Extract	Westag Imitation	8-Oz. Bot.	16c

More Good Meat Buys . . .

Chuck Roast	Blade . . . U. S. Government-Graded Calf	Lb.	33c
Rib Chops	U. S. Government-Graded Calf	Lb.	59c
Round Steak	or Swiss . . . U. S. Govt.-Graded Calf	Lb.	69c
Sirloin Steak	U. S. Government-Graded Calf	Lb.	59c
Fryers	Fresh Dressed Whole Only	Lb.	39c
Standing Rib Roast	Heavy Beef	Lb.	79c
Arm Roast	Heavy Beef	Lb.	49c
Rump Roast	Boneless, U. S. Choice-Grade Heavy Beef	Lb.	73c
Beef Brisket	Bone in, U. S. Choice-Grade Heavy Beef	Lb.	31c
Arm Roast	U. S. Govt.-Graded Calf	Lb.	43c
Short Ribs	or Brisket, U. S. Govt.-Graded Calf	Lb.	21c
T-Bone Steak	U. S. Govt.-Graded Calf	Lb.	69c
Pork Roast	Boston Butt	Lb.	43c
Spareribs		Lb.	53c
Sliced Bacon	Poppy	1-Lb. Pkg.	59c
Dry Salt Jowls		Lb.	17c
Picnics	Swift Prem., Ready to Eat, 3 to 5 Lb. Avg.	Lb.	49c
Turkey Hens	Fancy, Ready to Cook 8 to 16 Lb. Avg.	Lb.	59c
Turkey Hens	Manor House, Prem. Quality Ready to Cook 8 to 14 Lb. Avg.	Lb.	64c
Beltsville Turkeys	Small, Ready to Cook 4 to 8 Lb. Avg.	Lb.	63c

Farm Fresh Produce . . .

Red Delicious Apples	88s and Larger Crisp and Flavorful	Lb.	19c
Tokay Grapes	Luscious Clusters	2 Lbs.	19c
Texas Yams	Just Right for Baking	Lb.	5c
Red Potatoes	Economy	10-Lb. Bag	35c
Florida Oranges	Plump and Fresh	5-Lb. Bag	39c
Cranberries	Tangy Flavor	1-Lb. Bag	25c
Cabbage	Firm Heads	Lb.	7c
Pascal Celery	Crisp and Clean	Lb.	14c
Bartlett Pears	Plump, Sweet, Juicy	Lb.	19c
Yellow Onions	Firm and Delicious	Lb.	7c

Syrup

Waffle Syrup	Bud	12-Oz. Bot.	21c
Waffle Syrup	Bud	24-Oz. Bot.	41c
Syrup	Pure Honey Flavor, Bud	12-Oz. Bot.	25c
Syrup	Golden Bud	5-Lb. Can	61c
Syrup	Delta Blend	12-Oz. Bot.	22c
Syrup	Delta Blend	5-Lb. Can	57c

Remember that every cut of Safeway meat is a thrifty cut because all excess bone and fat are trimmed off before the meat is weighed and wrapped . . . and every item sold at Safeway is guaranteed . . . you're completely satisfied, or your money is cheerfully refunded.

Hormel Products . . .

Chili with Beans	15 1/2-Oz. Can	27c
Plain Chili	19-Oz. Can	37c
Tamales	15-Oz. Can	23c
Spam	12-Oz. Can	38c
Hams	1 1/2-Lb. Can	2.25
Beef Stew	Dinty Moore's 24-Oz. Can	41c

Sioux Bee Honey . . .

Honey Extract	5-Oz. Jar	21c
Honey Extract	16-Oz. Jar	36c
Honey Extract	32-Oz. Jar	67c
Honey Comb	16-Oz. Jar	41c
Honey Creme	12-Oz. Ctn.	30c
Honey in Servers	16-Oz. Jar	51c
Honey Extract	3-Lb. Ctn.	91c

Colgate Products . . .

Dental Cream	1-oz. Tube	23c
Dental Cream	6-oz. Tube	42c
Dental Creme	Economy Tube	55c
Halo Shampoo	Small Bot.	25c
Halo Shampoo	1-oz. Bot.	53c
Halo Shampoo	6-oz. Bot.	78c

Boraxo Cleanser	8-Oz. Can	18c
Borax	20 Mule Team 16-Oz. Box	20c
Margarine	Allsweet 1-Lb. Pkg.	28c
Oyster Stew	Hilton's 12 1/2-Oz. Can	33c
Puss-N-Boots	Cat Food 3 8-Oz. Cans	25c
Puss-N-Boots	Cat Food 2 15-Oz. Cans	27c

Frozen Foods . . .

Peas	Bel Air	10-Oz. Pkg.	18c
Brussel Sprouts	Bel Air	8-Oz. Pkg.	27c
French Fried Potatoes	Bel Air	9-Oz. Pkg.	19c
Orange Juice	Bel Air	12-Oz. Can	29c
Ocean Perch	Captain's Choice	16-Oz. Pkg.	39c
Cod Fillets	Captain's Choice	16-Oz. Pkg.	39c

Be Sure . . . Shop SAFEWAY

Coming!
 THE BAND WITH A BIG FRONT
Little JOHN BEECHER
 AND HIS ORCHESTRA

At the National Guard Armory in Ballinger
 Tuesday, November 8 at 8 p. m.
 Sponsored by NCO Club



HOW TO PLAY "SQUASH"—That's what you'd learn if you played opposite Herb Diedrich, Dundee, Ill., high school's 335-pound junior-year menace. Sports goods firm which outfits him says he wears the largest football uniform ever made—a claim nearly as hefty as is Herb. Statistics: Size 62 Jersey, 56 pants, 7 1/2-inch helmet. And all this mountainous threat to the opposition is hung on a five-foot, eight-inch frame.

Lake View Chiefs Spoil Bearcats' Record, 19-13

The Lake View Chiefs staged a fitting climax to their school's annual homecoming Friday night when they defeated the Ballinger Bearcats by the score of 19 to 13. It was the first time a Lake View team ever defeated the Bearcats.

The Bearcats lost a golden opportunity early in the third period when they rushed the ball downfield to the Lake View 6-yard line and bogged down. It looked like they were headed for pay dirt, a touchdown and the extra point that would have been sufficient to win. Three wide plays were thrown for losses and the ball went over.

The Chiefs started an offensive in the first quarter when James Urbantke passed to James Woodfin to put the ball on the Ballinger one-yard stripe. Urbantke carried over on the next play. The try for the extra point was blocked.

The Chiefs recovered a Ballinger fumble and started another drive which was climaxed with a 31-yard pass, Urbantke to Robert Gordon, accounting for a touchdown.

The extra point was missed. The third touchdown came in the second period when Gordon went up the middle for 35 yards and a score. The place kick for the extra point was good. The half ended with the score 19 to 0 for Lake View.

The Bearcats came back fighting in the second half and after taking the kickoff marched downfield. Dwayne Patton reeled off a beautiful broken field run and a moment later went over from seven yards out. The kick for the extra point was wide.

The Bearcats final score came when Patton went around left end and scampered 83 yards for a score. Charles Holloway ran the pigskin across for the extra point.

The Ballinger team looked like it was on its way again but time was running out. A fumble bogged the Bearcats down and the Chiefs ran out the clock with line plays.

Wedding announcements, wedding invitations—Ballinger Printing Co., Phone 6522.

SUBSCRIBE NOW!

Fall Bargain Offer

Abilene Reporter-News

(Regular \$18.00 value)

NOW ONLY

\$11.95

Daily & Sunday
 By Mail in
 West Texas

SAVE \$6.05

See Your Agent or
 Use This Handy Order Blank

THE ABILENE REPORTER-NEWS
 P.O. Box 30, Abilene, Texas

GENTLEMEN:

Please enter my subscription for one year to the
 Abilene Reporter-News

Daily & Sunday—Daily—Enclosed Check—M.O.—

NAME _____ Address _____

DAILY ONLY BY MAIL IN WEST TEXAS \$10.95

The Abilene Reporter-News

Ballinger Ledger

Published Every Thursday by
The Ballinger Printing Co.
Edition Offices, 711 Hutchings
Ballinger, Texas
Entered at the post office in
Ballinger as second-class
mail matter
Subscription, the year, \$1.50
(subscriptions payable in advance)
Telephone 6522



**WEST TEXAS
NOTES**

The Boy Scout fund campaign which was conducted last week only the first of eight or ten drives to be held here within the next five months. Eight of the drives are regular affairs which come every year on a certain date and require many workers. In these drives, Ballinger people will be asked to contribute approximately \$17.00. All are worthy causes and each year about the same amount of money is raised. There are a good many people who are called on to work in each of the campaigns who believe too much time is being wasted in making separate campaigns for each organization. They think some like a community chest could be organized and one drive made to raise the entire amount, then give each organization a check for its share when its annual fund solicitation is scheduled. During the next five months drives will be made here for the Salvation Army, local Christmas program, beruculous association, livestock show, March of Dimes, and Cross and Girl Scouts.

More and more people are becoming interested in a water conservation program in Runnels County which would provide adequate domestic supplies for towns of the area as well as water for irrigation. Runnels county has been designated a retail water conservation district but to date the governor has not appointed the nine men who are to direct the organization. Several irrigated lands in the county this year reduced crops that caused much interest. Irrigated cotton will make from one to two

**Worry of
FALSE TEETH
Slipping or Irritating?**

Don't be embarrassed by loose false teeth slipping, dropping or wobbling. You eat, talk or laugh. Just make a little PARTRETT on your teeth. This pleasant powder gives a remarkable sense of added comfort and security by holding plates more firmly. No gummy goop, sticky taste. Nothing. It's alkaline (non-acid). PARTRETT is safe for dentures.

The Miles Lions Club will sponsor a turkey shoot Sunday at the Weatherby ranch just west of town. A good opportunity is offered deer hunters to try out their guns and be sure they are right for the season. There will be targets for all types of guns from small rifles to shotguns. Ten people will shoot in each group, the one making the best score to get a dressed turkey. The proceeds will be used by the club in carrying on its work in the community.

The annual Boy Scout fund drive was held at Rowena last week and at the end of the one-day effort, W. O. Middleton, chairman, stated that practically every citizen had contributed. He also said the total

bales an acre and other irrigated crops set records for yield. Runnels County land will produce abundantly with sufficient moisture, but for a number of years crops have been near the failure stage because of lack of rain at the right time. If the run-off water could be stored in this county it would be sufficient to irrigate thousands of acres.

Ballinger civic leaders are perfecting plans for activities during the Christmas season. A number of merchants have already unpacked gift merchandise and are offering their customers a lay-away plan. Features to attract crowds to Ballinger have been planned and much effort will be put into events on November 25 and on December 10. In their planning leaders also remembered those who are unable to have Christmas without assistance from others. The "adopt a family" plan for the needy will be sponsored by the chamber of commerce and all church groups, organizations and individuals who wish to help are asked to cooperate with the chamber. Lists of those needing help will be compiled and left at the chamber office and committees from Sunday school classes and other organizations may go there to select families to care for this Christmas.

donated was as much as had been expected. Workers met at the City Cafe for breakfast and as soon as they received supplies began making calls.

The Winters Lions Club's first pancake supper was held last week, members cooking and serving more than 1,500 cakes during the evening. About 500 customers lined up at the school lunchroom and were served hotcakes, butter, syrup and bacon. The undertaking was a large one and included a complete clean-up of the lunchroom and kitchen after the supper. Club members are happy over the fine turnout and the amount of money taken in.

The Comanche Garden Club held its first flower show last week and members declared it was a success. Three homes were used to present the various features and many citizens joined in the tour. Included in the decorations destroyed were special street streamers purchased last year at a cost of about \$200 each, colored light streamers which had been in service many years and other pieces. Committee members said it was doubtful whether new decorations could be obtained on such short notice, even if financial arrangements could be made.

A called meeting of the Concho County drought relief committee was held at Eden last week, a large number of ranchmen attending. The ranchmen asked that an effort be made to have the county put on the emergency list to receive grain and hay at reduced rates. Most of those present declared that their pastures were in bad condition. Some said they were selling off foundation herds because of the poor range and lack of feed in the area. Joe Brosig, county chairman, pointed out that conditions were bleak for both ranchmen and farmers.

The Brady school board has filled the vocational agriculture teacher vacancy. E. L. Ross, of Lohn, was employed to take charge of the department at once and teach until mid-term. At that time W. R. Pence, a



MILK'S FORTIFIED WITH IRON — Veterinarian James A. Muffly, right, uses his electromagnetic invention to "prospect" for scrap iron this ailing bossy swallowed during her foraging on the Dale Spangler farm at Millinburg, Pa. Using a throat-and-stomach tube, also of his invention, Dr. Muffly removed the hardware with aid of a magnetized device. Owner Spangler, left, was delighted with the successful "scrap drive."

can Legion post and other organizations are assisting in the preparations.

Committees in charge of Yule activities at Coleman met last week to study plans for replacing decorations which were lost in a warehouse fire earlier in the week. Included in the decorations destroyed were special street streamers purchased last year at a cost of about \$200 each, colored light streamers which had been in service many years and other pieces. Committee members said it was doubtful whether new decorations could be obtained on such short notice, even if financial arrangements could be made.

A called meeting of the Concho County drought relief committee was held at Eden last week, a large number of ranchmen attending. The ranchmen asked that an effort be made to have the county put on the emergency list to receive grain and hay at reduced rates. Most of those present declared that their pastures were in bad condition.

Some said they were selling off foundation herds because of the poor range and lack of feed in the area. Joe Brosig, county chairman, pointed out that conditions were bleak for both ranchmen and farmers.

The Brady school board has filled the vocational agriculture teacher vacancy. E. L. Ross, of Lohn, was employed to take charge of the department at once and teach until mid-term. At that time W. R. Pence, a

Brady ex-student, will receive his degree at Texas A. & M. College and will become head of the department. Pence graduated at Brady in 1949 and for the past two years has been doing practice teaching at Coleman, a requirement for graduation at A. & M. Ross taught vocational agriculture for a number of years before he began farming.

A large crowd gathered at Mozelle last Saturday for the annual two-day homecoming. The program began Saturday night when the football game between the Mozelle and Brooksmith teams was played on the Mozelle field. Ex-students had charge of the services Sunday morning and Rev. Ray Martin, of Santa Anna, a former student, was the preacher. Another former student, M. C. Vickers, of Fort Worth, directed the singing. At noon a barbecue was served and in the afternoon entertainment was presented at the school auditorium.

Rev. Travis McNair, pastor of the Melvin Methodist Church, has been transferred to Robert Lee to serve the First Methodist Church as pastor. John Gilbert, a student at Southern Methodist University, Dallas, will supply at Melvin until his graduation next spring. At that time he will move to Melvin to take over the pastorate on full time. Rev. McNair has been pastor at Melvin since June, 1954. A professional baseball player at one

time, he is a graduate of McMurry College, Abilene.

Citizens of Colorado City will vote this week whether they will issue \$500,000 in school bonds for a building program. One of the proposed items would be the construction of a gymnasium which would offer facilities for a complete physical education program. This program has been restricted in recent years because of the lack of a modern gymnasium. The bond issue would also permit the remodeling of an elementary school and providing additional class rooms.

An estimated 1,500 to 2,000 visitors were on the Howard Payne College campus at Brownwood last week for a conducted tour of five buildings. One of the places of most interest

was the new million dollar girls' dormitory which was only recently completed. Officials were delighted with the many visitors and also for the compliments heard on the modern buildings which are now in service. Other places visited included the Thomas Taylor Hall, Walker Memorial Library, Mins Auditorium and Howard Payne Hall.

The Stephenville Chamber of Commerce has started a membership drive and 31 additions were reported in early calls. The committees conducting the campaign are striving to bring everyone engaged in business or profession into the organization on a paying and working basis. The chamber has scheduled a work program which includes many projects and has

informed citizens that it will take a bigger budget and more working members to accomplish these goals.

Deposit Slips for Banks, Sales Books and Business Forms for Stores—anything printed will receive special attention here. BALLINGER PRINTING CO.

Can't Get Rid of Your Cold?

Then try 666, the wide-activity medicine, for greatest effectiveness against all symptoms of all kinds of colds. 666 combines 4 potent, widely-prescribed drugs and gives positive dramatic results in a matter of hours. Its combined therapy covers the complete range of all cold symptoms. No other cold remedy can match 666 liquid or 666 Cold Tablets. **666**

NIGHT AND SUNDAY RATES APPLY FROM
6 P. M. TO 4:30 A. M. AND ALL DAY SUNDAY.

... and darling, the savings are simply terrific!



RATES ARE FOR 3 MINUTES
exclusive of Federal tax.

**LONG DISTANCE TELEPHONE
RATES FROM BALLINGER**

To	Week Days	Night & Sunday
Dallas	1.05	.85
Ft. Worth	.95	.75
Denver	1.40	1.10
Memphis	1.40	1.10
Oklahoma City	.95	.70
Los Angeles	1.80	1.45
San Antonio	1.00	.80
Tulsa	1.10	.85

CALL BY NUMBER

and your out-of-town calls will go through faster—often twice as fast.

Few things give you so MUCH for so little

THE SOUTHWESTERN STATES TELEPHONE CO.

**MERCURY'S OCTOBER SALES
SMASH ALL-TIME RECORDS**

Biggest October in Mercury history starts the big move to THE BIG M

On September 29th THE BIG M—the new 1956 Mercury—was unveiled for the first time in dealers' showrooms. By November 1st, actual sales figures indicated immediate, overwhelming public acceptance far greater than in any previous first month following the introduction of a new Mercury model. It's still another new all-time record month for one of the fastest growing cars in automotive history. Come in now—see why so many people are making the move to THE BIG M.

CHECK THE BIG M'S LEADERSHIP FEATURES!

- New 225-hp SAFETY-SURGE V-8 engines
- New high in usable power for pickup, passing, hill-climbing
- Ten big, new Safety-Engineered features
- Exciting, new Flo-Tone color styling
- 13 glamorous new models, including a whole fleet of low-silhouette hardtops
- New, wider price range
- Consistently higher resale value

The big move is on—

to **THE BIG MERCURY**
George Ford Motors

Corner Ninth Street and Hutchings Avenue

First-class way to do
your routine
BANKING



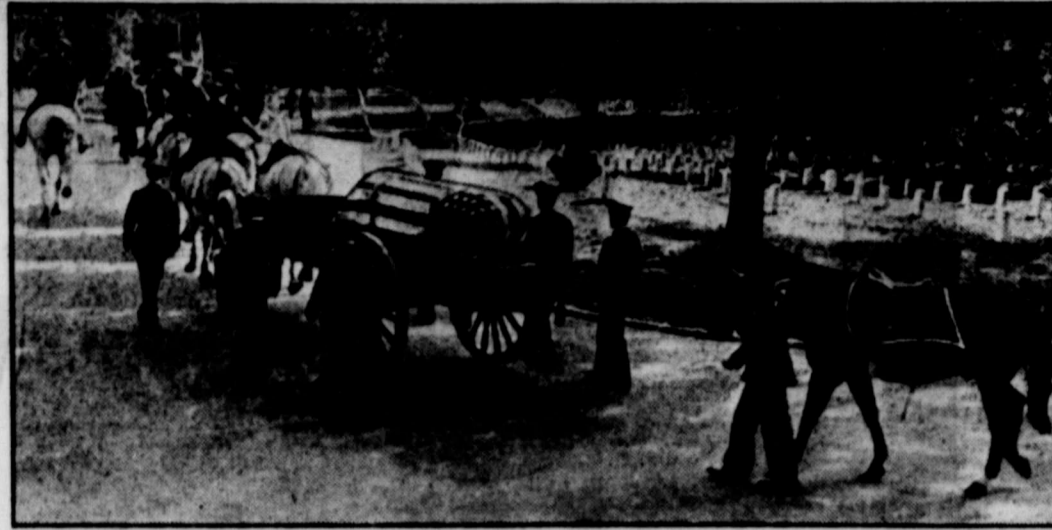
Almost every incoming mail brings us deposits from people who can't conveniently call here — and our outgoing mail acknowledges them. Ask us for details, and forms that make banking-by-mail an even simpler task than writing a letter!

**The First National Bank
OF BALLINGER**

SINCE 1886



Member Federal Deposit Insurance Corporation



Caisson bears body of Maj. Sam Woodfill to its final resting place beside that of his World War I chief, Gen. John J. Pershing, in Arlington National Cemetery. Termed by Pershing the outstanding soldier of World War I, his death and burial four years ago at Madison, Ind., attracted little notice nationwide. His interment at Arlington last October was the result of a request to the Defense Department for funds to erect a larger monument on his Indiana grave.

SOCIETY

Firemen's Auxiliary Officers Elected

At a regular meeting of the Ballinger Firemen's Auxiliary last Thursday evening at the city hall the election of officers was the main item of business.

Mrs. W. N. Selby, president, presided. The nominating committee, composed of Mrs. Chester Afferbach, Mrs. Bob Bartlett and Mrs. Jimmy McAden, reported the names of new officers, who were elected, as follows: Mrs. Morris Stokes, president; Mrs. Tom McEntire, vice-president; Mrs. Bill Bell, secretary-treasurer.

Members discussed the pot-luck supper, to be held this

(Thursday) evening. Firemen and their families, members of the advisory board, city officials and a few other guests will attend.

The decorating committee, Mrs. Chester Cherry, Lynn Candler, M. L. Forgy and Chester Afferbach, will be in charge of floral arrangements.

At the conclusion of the meeting, members served doughnuts and coffee to the firemen, who also were holding a meeting for the election of officers.

Miss Smart, Hal Dean Caskey Wed in Lueders Church The First Methodist Church of Lueders was the scene for a wedding ceremony Friday eve-

ning which united Miss Judith Ann Smart and Hal Dean Caskey. The bride is the daughter of Mr. and Mrs. L. H. Thomas, of Lueders, and the bridegroom is the son of Mr. and Mrs. Sidney E. Caskey, of Ballinger.

The Rev. C. B. Melton, pastor, officiated at the nuptial rites before an altar decorated in autumn colors of yellow and bronze. Floor baskets of yellow and bronze mums were banked with palm trees. Wrought iron candelabra holding tapers illuminated the scene.

Mrs. Reuben Nance, organist, played traditional wedding music and accompanied Miss Clarice Douglas, of Kermit, who sang "Through the Years," and Miss Douglas and Kenneth Mills, of Winters, who sang "Because." At the close of the ceremony Miss Douglas sang "The Lord's Prayer." Mrs. Nance

Shaleen
guarantees
90 days' wear!

Long Wear
STRETCH SHEERS

These all-purpose stretch-sheers are rugged. And they're sheer beauties on your legs. They're guaranteed to give you 90 days' wear from 2 pairs. You'll receive 2 new pairs free if 3 stockings develop runs before your Guarantee expires. They stretch to your exact leg proportion. Never wrinkle or droop. Keep your seams on the straight and narrow. Made of "CHADOLON" yarn. 5 sizes fit all—Petite, Average, Tall.

2 pairs, 3.85

Morgan's

played "Clair de Lune" as vows were repeated. The bride was given in marriage by her stepfather. Her wedding costume was a chocolate brown velvet suit accented with a white satin ascot and rhinestones at the throat. Her veiled hat was a small white satin shell trimmed with rhinestones and cut beads. Other accessories were in brown suede. She carried a white Bible, a family heirloom, also carried by a cousin at her wedding. The Bible was topped with gardenias encircled with white carnations and white satin streamers.

The maid of honor, Miss Sylvia South, of Abilene, wore a moss green wool suit with brown accessories and her corsage was of bronze mums.

Reed Caskey, of Abilene, was his brother's best man. Candelights and ushers were Elroy Payne, of Ballinger; and Charles Mate, of Dublin.

Baskets of bronze and yellow mums were featured in decorations for the post-nuptial reception, held in the church fellowship hall. The bride's table, laid with lace over yellow satin, was centered with a silver apertine with bronze and golden mums and yellow tapers in silver holders. The three-tiered wedding cake was topped with a miniature wedding couple. The appointments were of silver and crystal.

Mrs. Caskey graduated from the Lueders High School and is a senior at McMurry College, Abilene. She is a member of the Future Teachers' Association and Delta Beta. Mr. Caskey graduated from the Ballinger High School, attended Texas Technological College, Lubbock and served four years in the Air Force, three years in England. A senior at McMurry, he will enter Perkins Seminary, Southern Methodist University, Dallas, following graduation in June.

Black Friday was on September 24, 1868.

Card of Appreciation to Friends of Runnels County From the depths of our hearts we thank each of you who had a part in the wonderful presentation to use at the banquet in our honor; for all who had a part in their planning and for your presence. Above all, we thank you for your wishes and the kind things you said.

You have been wonderful to us all through the twenty years we have lived here and we cannot have words in which to express our appreciation. We love you and invite each of you to come to see us in Comanche upon you all.

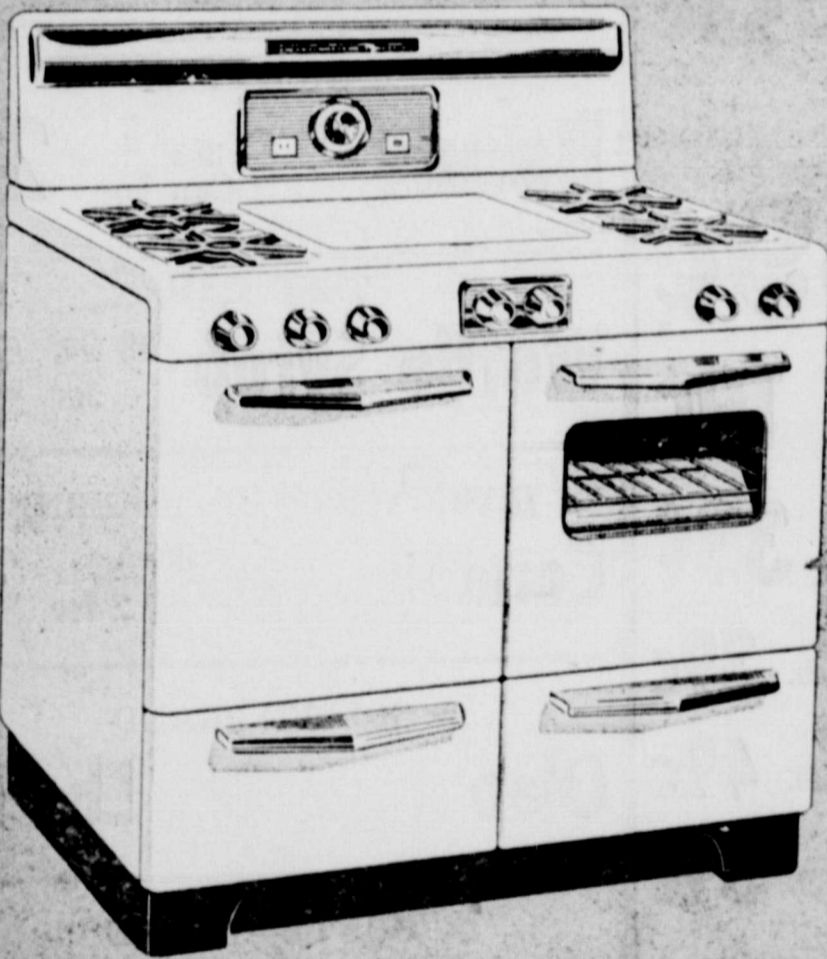
John and Ruby Burton

SAVE AT THE ANNUAL OLD STOVE ROUND-UP SALE!

MERRY MODERN says: if your old stove doesn't have all the modern features . . .

it's time to trade and save on really modern

automatic gas ranges



everything you've always wanted in a wonderful new

flame-fast gas range

. . . and no wonder!

Now so much more than ever before

— automatically!

Every satisfying look . . . every exciting new automatic feature tells you here's the only really modern way to cook! Replace that outmoded stove with the magnificent new flame-fast gas range of your choice. Naturally, it's wise to buy and save now while trade-in allowances are greater and terms are so very, very low. It's wonderful to know you'll turn out better meals faster and easier. More economically, too.

don't be fooled . . . gas costs 4 times less to use

You may have heard the average cost of cooking by a non-flame method is only \$2.00 or so a month. We do not know for how many meals or how many persons, but we do know flame-fast gas in most areas costs less than one-fourth as much to use as any non-flame cooking method. This means: If you can cook by an artificial non-flame method for \$2.00 per month — you can do the same amount of cooking with gas for only 50¢ a month! What's more, an automatic gas range costs less to buy, less to install, and less to operate and maintain.

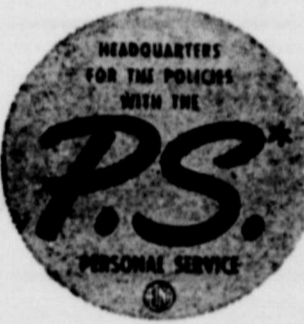


For what it costs to cook with non-flame, artificial methods for ONE YEAR you can cook more than FOUR YEARS with flame-fast GAS!

come in now—trade and save during ANNUAL OLD STOVE ROUND-UP SALE

see your gas range dealer or

LONE STAR GAS COMPANY



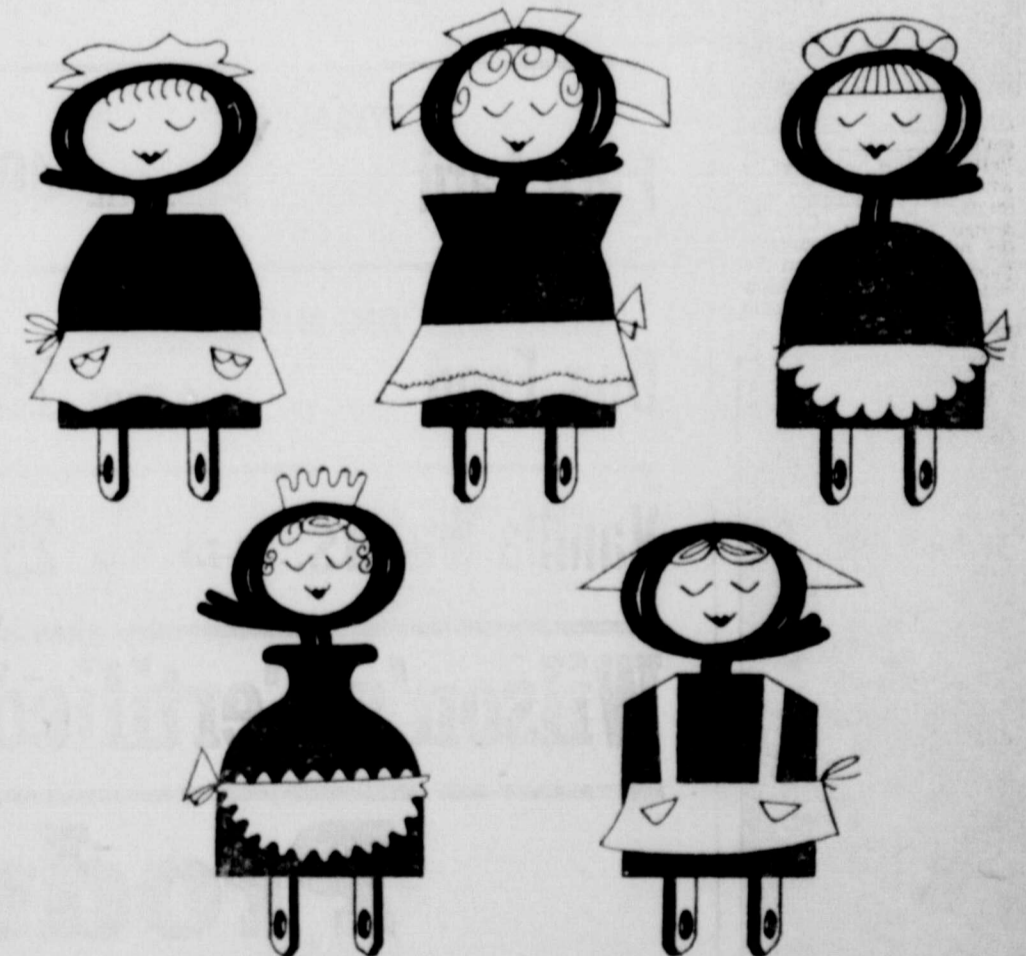
Representing Etna Casualty and Surety Company

John Purifoy Albert C. Purifoy

Purifoy and Co.

Phone 3481

Yes Ma'am, you can have a housefull of servants for pennies a day!



Yes Ma'am, they're your electric servants, and you pay their wages with your electric service bill. Total cost—just a few pennies a day for the average family!

You know, you've about doubled your use of electricity in the last 10 years. So your monthly service bill is

more than it used to be. But the average cost of a kilowatt-hour of electric service in homes served by WTU is 22% less than it was 10 years ago.

And when you think of all the things your electric service does for you—don't you agree, it's the biggest bargain in your family budget?

West Texas Utilities Company

SPORTS

The schedule for Ballinger football teams is:
 Bearcats at Brady tomorrow night
 B team to play the Winters team here Saturday night
 Juniors at Colorado City tonight.

Reserved seats for the Brady game are on sale at Pearce-Alley Drug Store and will be here until noon tomorrow. All persons who intend to witness this contest are urged to purchase tickets here.

The Brady team still looms as the favorite to win in the district this season. By defeating the Winters Blizzards Friday night 0, the Bulldogs proved their power and the Bearcats are expected to win against them by considerable odds.

Brady has one of the largest stadiums in the district and out-weighs the Bearcats in practically every position. In addition the entire team has experience and much power on the ground and in the air.

The game with the Coleman Bearcats will be played at night on November 11. Reserved seats will be on sale here all the week before the game and his Veterans' Day tilt is calculated to draw one of the biggest crowds of the year.

The junior high boys will wind up their season tonight at Colorado City. The B team will finish its season on November 10, playing the Coleman B team here.

EXTENSION WORKERS TO COLLEGE STATION
 All farm agents, assistant farm agents and home demonstration agents are at College Station this week for a special planning meeting. Jim Haralson, assistant county agent, and Miss Ollie Chenoweth, county home demonstration agent, are attending the meeting, which will continue through tomorrow (Friday).

James Russell Lowell was the first editor of Atlantic Monthly.

Deposit Slips for Banks, Sales books and Business Forms for stores—anything printed will receive special attention here.



BELLE OF THE BRAWL—It isn't Kathy Wilson, Stockton College, Calif., cheerleader, for whom this bell tolls. Cast in England in 1858, its sonorous clangor peals out a requiem for the loser and joy for Stockton every time her football team makes a touchdown.



PRICELESS—That's almost literally true of these Christmas cards, displayed by Mrs. Claude McFaddin of Long Beach, Calif. They're samples of some 220,000 which she found on a city dump. They were junked by a greeting card firm to make room for new inventory. She acquired the cards for \$25—about 10 cents per thousand. Courts ruled she could keep them when card firm impounded the lot in an effort to keep them off the market.

BELL'S Food Specials For Week-End

Flour Gold Medal
 25-Lb. Bag \$1.98
 10-Lb. Bag .79c

Beans PINTO 5 Lb. Bag 45c

Apple Butter WHITE SWAN Qt. 25c

Zee Napkins 80-COUNT 2 for 25c

Zee Tissue 4-ROLL PACKAGE 29c

Shortening MRS. TUCKER'S 3-Lb. Can 69c

Crackers WORTZ BRAND 2 Lb. Box 39c

Grapefruit Juice KIMBELL—46-Oz. Can 19c

Chili AUSTEX 1 1/2-Lb. Can 55c

Pure Lard WILSON'S 3-Lb. Ctn. 49c

Dog Food BIG MIKE 4 Cans 25c

Vanilla Wafers 1-Lb. Bag 29c

Market Specials For Texas Beef Week

In Support of Texas Cattle Industry

Steaks

Round CHOICE CUTS Lb. 65c

Sirloin CHOICE CUTS Lb. 55c

Club Steak CHOICE BEEF Lb. 45c

Seven GOOD, TENDER Lb. 39c

Shoulder Round BONELESS TENDERIZED Lb. 55c

Roast

Chuck GOOD, TENDER Lb. 37c

Shoulder Round CHOICE CUT Lb. 43c

Rump WELL TRIMMED Lb. 45c

Pikes Peak NO BONE Lb. 53c

Bacon

ARMOUR'S STAR 2 Lb. Pkg. 89c
HORMEL'S
WILSON'S CERTIFIED
GOOCH'S BLUE RIBBON

Ground Meat GOOD LEAN Lb. 19c

Pork Sausage MARKET MADE Lb. 33c

Wieners SWIFT'S ALL MEAT CELLO PACK Lb. 39c

Pork Chops GOOD LEAN Lb. 49c

Pork Roast GOOD LEAN Lb. 39c

Fryers or Hens FRESH DRESSED Lb. 43c

Wilson's Certified Picnic HAMS, 4 to 6 Lb. Avg. Lb. 33c

Produce for this Week-end

Fancy Red DELICIOUS APPLES - - - 2 Lbs. for 25c

Oranges TEXAS 5-Lb. Bag 33c | **Fresh Tomatoes** CALIFORNIA Lb. 19c

Celery Large Stalk 19c | **SPUDS** POLLY BAG 10 Lbs. 39c

Green Beans FRESH 2 Lbs. 35c

ADMIRATION
Coffee 2 Lb. Can \$1.69

CARNATION, PET, WHITE SWAN
Milk, 2 Tall Can for 25c

HONEY BOY, MAC
Salmon Dinner Tall Can 29c

CONCHO—No. 300 Can
Pork & Beans, 3 for 25c

Coca Cola 6-Bot. Ctn. 19c
Dr. Pepper Plus Deposit

DIAMOND BRAND
Tomatoes Size 303 Can 10c

FOREMOST ICE CREAM
Big Dip 1/2-Gal. 49c

RANCH STYLE
Beans 303 2 Can for 25c

TEXO MAID
Waffle Syrup 38 Oz. Jar 39c

ROSEDALE—WHOLE KERNEL
Corn 303 Can 2 for 33c

GOLDEN BRAND
Oleo Lb. 19c

HUNT'S—WHOLE
Apricots 2 1/2 Can 25c