



## SWCD Election; Cotton Meet Combine

### around muleshoe

\*\*\*  
Tuesday at noon, the Jenny-slippers will hold a regular meeting at noon in the Muleshoe Area Library.

Members are asked to remember this is a "Brown Bag luncheon."

\*\*\*  
Moonlight Homemakers Club has announced their Twelfth Annual Arts and Crafts Bazaar to be held Friday, November 30 and Saturday December 1, at the Bailey County Civic Center.

Application are being accepted until November 23 for booth spaces. Booth information can be obtained by contacting the Moonlight Homemakers Club, 902 West Eighth Street, Muleshoe, Texas 79347.

\*\*\*  
School Night for Scouting will be held Tuesday, September 25, 7:30 p.m. in the DeShazo cafeteria.

Boys from first through fifth grades are invited to Join in the Fun.

\*\*\*  
Cadet Robert E. DeLoach, son of Robert E. and Patty R. DeLoach of Sudan, has completed a U.S. Air Force ROTC field training encampment at Vandenberg Air Force Base, Calif.

The cadet is a student at Texas Tech University, Lubbock.

\*\*\*  
Army Pvt. Scottie L. Miller has arrived for duty at Ferris Barracks, West Germany.

Miller is an armor crewmember.

He is the son of Marlan J. and Veta L. Miller of Earth.

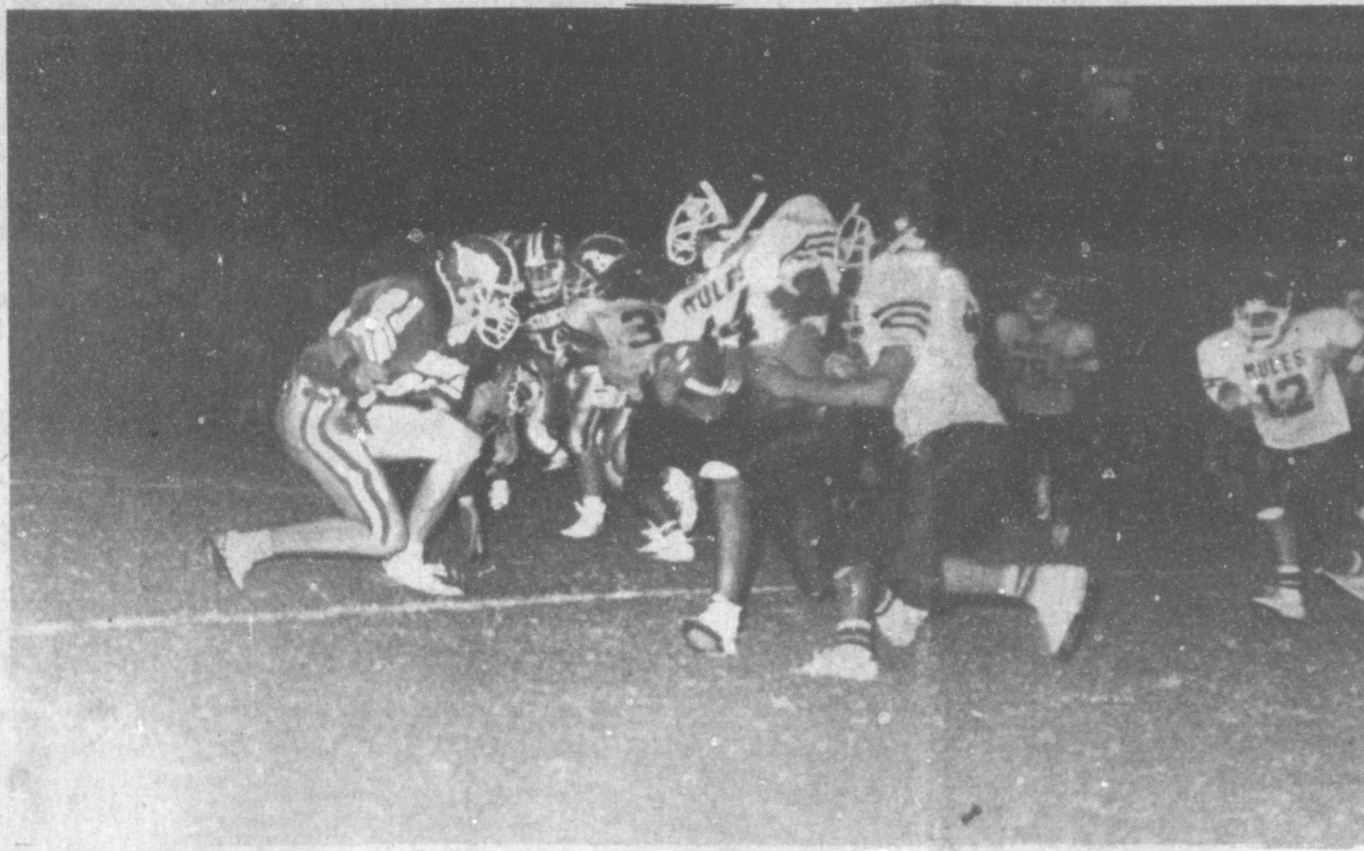
\*\*\*  
Army Spc. Kevin L. Nuttall has participated in exercise "Team Spirit '90" in the Republic of Korea.

He is an equipment records and parts specialist in South Korea.

Nuttall is the son of Lynda R. Tarter of Friona and Lee Roy Nuttall of Weatherford. He is a 1985 graduate of Littlefield High School.

\*\*\*  
Navy Seaman Recruit Jeffrey S. Willebrand, son of David E. and Melynda K. Willebrand of Route 2, Muleshoe, has completed recruit training at Recruit Training Command, Great Lakes, Ill.

During Willebrand's eight-  
Cont. Page 6, Col. 4



**THE WRONG KIND OF HELP!**--Ramiro Alarcon, No. 44, is trying to make a runback from a kickoff when he is inadvertently tripped up by Danny Rodriguez, No. 42, in the Muleshoe-Denver City football game Friday night. Coming up from the right to try to help is Luis Avina, No. 12, and in the background is Mule Mike Friend, No. 78. The Mules lost the game in the second half, after leading 14-11 at halftime.

## Mules Halftime Lead Melts In 32-14 Loss To Denver City

Last year, the Denver City Mustangs 'tromped' the Muleshoe Mules, 49-6. This year, when the Mules traveled to Denver City, it was with the full realization that Denver City usually is a formidable team to face.

However, the Mules found themselves in the lead by a slim three points, 14-11, at halftime in a game that was "all Mules" during the first half.

Although the Mustangs took the first possession of the ball, they bogged down after making one first down and then a fake punt resulted in the ball being turned over to the Mules.

Then, with 9:30 showing on the scoreboard clock in the first, Michael Chavez received a broken elbow, and the Mules stalled out, having to punt the ball away.

Denver City then started a sustained march downfield, and after grinding out yardage in 16 plays, went over from the two for the first TD of the game. At that time 1:48 was showing in the first. They made their two points good and the Mules took over.

At the end of the first, penalties were hurting the Mules, and after five plays, the Mules punted the ball away.

Then, the Mustangs fumbled, and it was recovered by the Mules on the Mustangs' 23-yard line.

After three plays, Mule quarterback Larry Gonzales found Michael Hardwick, who scored on a 12 yard pass on a fourth

down play. Junior Olivarez booted in the extra point, and the Mules were trailing by just one point, 8-7.

With the kickoff, the Mustangs tried to put a drive together, and managed six plays  
Cont. Page 6, Col. 1

## CareLink Helicopter Makes Tour Friday

Friday morning, around 11:30 a.m., CareLink Aeromedical Service landed a helicopter on the parking lot behind Muleshoe Area Medical Center, and as it was "Open House" the parking lot quickly filled with people wanting to check out the helicopter and ask questions.

From junior high school students to patients from the nursing home in wheel chairs, and personnel from the hospital, people responded to the opportunity to see the helicopter that makes many emergency medical flights in and out of Muleshoe.

Two pilots and two paramedics were aboard the helicopter when it landed, and they quickly and cheerfully visited with the people.

Although the helicopter was delayed by two hours because of low-hanging clouds, many peo-

ple waited patiently for it to arrive here.

The CareLink helicopter was asked to come to Muleshoe by the Bailey County EMS organization as part of EMS Week.

Some of the facts they explained included:

• In a life-threatening situation, every second counts. CareLink's experienced team provides specialized care on site and in the air.

• CareLink is an emergency aeromedical helicopter service that links communities and hospitals throughout West Texas and Eastern New Mexico with the most comprehensive array  
Cont. Page 6, Col. 1

Blackwater Soil and Water Conservation District will conduct an election for District directors for Zones One and Two in Bailey County on October 4, at the Bailey County Civic Center at 8:30 a.m.

Both of these zones are located in the north part of Bailey County.

Zone One's south boundary is Farm Road 746 and the Arch Highway (mailing, West Camp and Progress Communities). Zone Two has a south boundary of Rabbit Road Number Two and a west boundary of Riverside pavement.

A cotton educational program will be presented at this meeting by Dr. James Supak, Extension specialist in cotton.

Topics to be covered by Dr. Supak will be harvest aid chemicals and fall weed control for cotton. The program should serve as an excellent opportunity for area cotton producers to receive timely information on preparing cotton fields for harvest before a killing freeze occurs, said Bailey County Extension Agent Spencer Tanksley.

To be eligible to vote in a soil

and water conservation district director election, a person must live and own agricultural land within the county and must be at least 18 years of age. A person who is being elected as a director to the county soil and water conservation local board must own land in the zone, be 18 years of age, and be actively engaged in farming or ranching. Soil and water conservation district directors serve four-year terms.

Tanksley said the purpose of the Blackwater SWCD is to promote sound soil and water conservation programs on farm and ranch lands within Bailey County and to serve as a voice for other farmers and ranchers on conservation practices conducted in the county. The district board of directors coordinates the conservation efforts of various local, state and federal agencies and other organizations and has the authority to enter into working agreements with these governmental agencies.

The meeting is open to every land owner in the county, added Tanksley, and all are encouraged to attend.

## City Sales Tax Rebate Check Reflects Decline

State Comptroller Bob Bullock said Monday that his office sent checks totaling \$84 million in monthly sales tax rebates to cities and counties in Texas.

"Merchants reported healthy sales statewide so the sales tax money they collected shows a good increase over last year," Bullock said.

Checks to cities totaled almost \$76 million, an increase of five percent over last September's rebates. So far this year, rebates to cities are running eight percent ahead of last year, Bullock added.

Muleshoe's share was \$17,306.70 for the current period, down by 4.99 percent from the \$18,216.48 received for the same period a year ago. This brought current payments to date to \$158,866.02, down 8.35 percent from the \$173,333.36 at this time last year.

In Cochran County, Morton received a check for \$3,967.64, down 13.19 percent from the \$4,570.50 they received for the same period last year. To date for the year, Morton has

received \$42,038.29, a decrease of 5.05 percent from the \$44,276.29 they had received at this time last year.

Littlefield's total payments for the year are decreased 13.51 percent. The current total to date for the year is \$170,385.84 compared to \$197,001.64 received by this time last year. Their current payment was reduced 4.74 percent. They had received \$17,641.64 on this date last year, and their current payment was \$16,804.82.

From Parmer County, Friona reported a decrease in current payments of 15.21 percent. They received \$6,692.92 for their current payment, compared to \$7,893.45 for the same time last year. Payments to date show an increase of 2.45 percent, however. Their payments to date at this time a year ago were \$80,692.86, and this is compared to \$82,670.74 received to date this year.

Houston received \$12.8 million, the state's largest payment while Dallas received the state's  
Cont. Page 6, Col. 3



**SORORITY PRESENTS HERITAGE FOUNDATION CHECK**--On Friday morning, Xi Omicron Xi officers presented the Muleshoe Heritage Foundation with a check, representing their Spring Home Tour proceeds to the Foundation. Homes on the Spring Home Tour included the homes of the Terry Huttos, the Tom Bonds, the C. L. Myers and the Charles Lewis home. From left are Heritage Foundation officers Cara Juan Schuster and Norman Head. Making the presentation are Ginger Caldwell, right center, treasurer and Dawn Williams, president of Xi Omicron Xi.  
(Journal Photo)

## Memorial Park Cemetery Meeting Scheduled Tuesday

The first annual meeting of the Muleshoe Memorial Park Cemetery Association will be Tuesday, September 25, at 8 p.m. in the Ellis Funeral Home Chapel of the Chimes.

A report on the first year of operation by the local board will be given, followed by a question and answer session.

Terms of two directors, Pat Moore and Clifton Finley, will expire.

Present directors include Mrs. Pat Moore, president; Ruby Spurlock, vice president; Mrs. Erald Gross, secretary; and Clifton Finley, treasurer; with Lewis Wayne Shafer, J. R. Johnson and James Glaze as directors.

Mary Frances Holt has been hired to manage the Muleshoe Memorial Park office, located at Smallwood Real Estate's office at 232 Main St. Telephone numbers are 272-5727 or 272-4670.

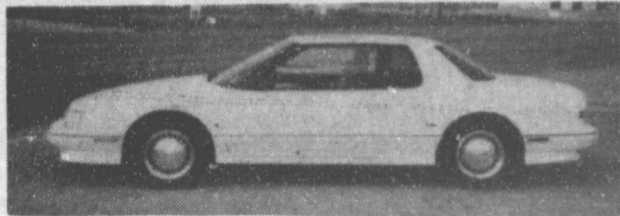


**CARELINK CREW VISITS MULESHOE**--It is a rare occasion when an aeromedical helicopter can make a public relations trip in the area, but Friday morning, a crew from CareLink brought their Dauphin to Muleshoe for area residents to tour. They were hosted by the Bailey County EMS Organization, as a part of EMS Week. The crew, shown from left are Mark Holcomb, head flight nurse; Bonnie Jackson, paramedic; Scott Bass, chief pilot; and Maurie Goughnour, pilot. A large crowd checked out the helicopter behind Muleshoe Area Medical Center.  
(Journal Photo)

# FINAL NOTICE!

## CLOSEOUT HEADQUARTERS

Robert D. Green, Inc.



Stock #30-510 - White

**1990 Oldsmobile Trofeo**

"Loaded With Everything Imaginable"

List - 28,793.00

Dealer Discount - 4,626.59

Rebate - 2,500.00

★ Your Cost **\$21,666.41**



Stock #30-511 - White

**1990 Oldsmobile 98 Regency**

Loaded With Power Doors, Windows, Tilt, Cruise, A/C -Plus Much More!

List - 23,796.00

Dealer Discount - 2,971.16

Rebate - 1,000.00

★ Your Cost **\$19,824.84**



Stock #30-514 - Lt. Antelope

**1990 Oldsmobile 98 Regency**

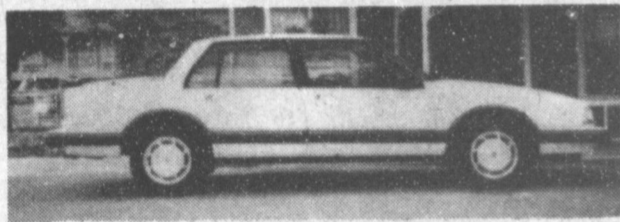
Loaded With Power Seats, Power Antenna, Remote Lock Control Plus The Basic Driver-Conveniences

List - 23,680.00

Dealer Discount - 2,954.76

Rebate - 1,000.00

★ Your Cost **\$19,725.24**



Stock #30-515 - White

**1990 Oldsmobile 88 Royale**

Loaded With Power Seat, Doors, Windows, Antenna, Plus All Other Conveniences!

List - 19,009.00

Dealer Discount - 2,382.66

Rebate - 1,500.00

★ Your Cost **\$15,126.34**



Stock #40-430 - Blue

**1990 Buick Park Avenue**

This Car Is Loaded With Everything You Could Desire

List - 24,866.00

Dealer Discount - 3,364.65

Allowance - 1,215.80

★ Your Cost **\$20,285.55**



Stock #10-719 - Sandstone/Brown

**1990 Chevrolet Silverado**

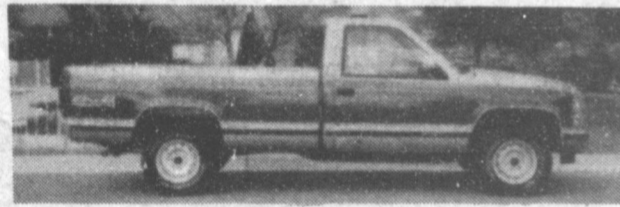
Loaded With Power Doors, Windows, Tilt, Cruise, A/C Best Stereo Offered

List - 16,860.00

Dealer Discount - 2,132.96

Rebate - 600.00

★ Your Cost **\$14,127.04**



Stock #10-720 - Sandstone/Brown

**1990 Chevrolet Silverado 4x4**

Loaded With Power Windows, Doors, Tilt, Cruise, A/C, H.D. Coolers Plus The Nice Stereo

List - 18,859.00

Dealer Discount - 2,385.18

Rebate - 600.00

★ Your Cost **\$15,873.82**



Stock #10-721 - Silver/Blue

**1990 Chevrolet Silverado**

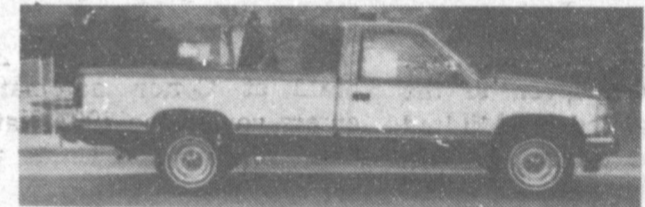
Loaded With Power Window, Doors, Tilt, Cruise, A/C, H.D. Coolers Plus The Nice Stereo

List - 16,860.00

Dealer Discount - 2,132.96

Rebate - 600.00

★ Your Cost **\$14,127.04**



Stock #10-734 - Blue/White

**1990 Chevrolet Silverado**

Loaded With Power Windows, Doors, Tilt, Cruise, A/C, H.D. Coolers And Nice Stereo

List - 16,882.00

Dealer Discount - 2,136.26

Rebate - 600.00

★ Your Cost **\$14,145.74**



Stock #50-039 - Sandstone

**1990 GMC SLE Pickup**

Loaded With All the Conveniences You Need!!!

List - 16,678.00

Dealer Discount - 2,103.84

Rebate - 600.00

★ Your Cost **\$13,974.16**



Stock #50-040 - Flame Red

**1990 GMC SLE Pickup**

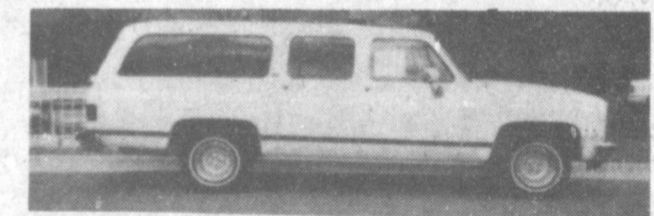
Loaded With All Conveniences You Need In A Pickup

List - 16,678.00

Dealer Discount - 2,103.84

Rebate - 600.00

★ Your Cost **\$13,974.16**



Stock #50-047 - White

**1990 GMC SLE Suburban**

Loaded With Rear Heater, A/C, Power Windows, Door, Tilt, Cruise Plus More

List - 23,368.00

Dealer Discount - 2,980.62

Rebate - 1,000.00

★ Your Cost **\$19,387.38**

These Are Only A Few Of The Great Deals Going On.

Call Buddy Howard Or Jack Nuttall  
On Any - Vehicle We Have In Stock

# Robert D. Green, Inc.

Offer Ends  
September 26, 1990

GMAC Financing  
GMAC Smart Lease  
First Time Buyer Program  
College Graduate Program  
★ Dealer Retains Rebate

2400 W. American Blvd.  
Muleshoe, Texas  
806-272-4588



## Women In Texas History Conference Begins Oct. 4

They have been pioneers, farmers, doctors, artists, writers, politicians, educators and even prison reformers. Yet, not until the 1980s has there been a statewide surge of interest in these women of Texas history.

Women and Texas history will be the subject of a three-day conference Oct. 4-6 at The University of Texas at Austin's Thompson Conference Center. The conference, which will include talks on topics ranging from Mexican American women in the work force to the status of women in professional rodeo will be the first of its kind since the awakening of interest in the history of women in Texas began, said Nancy Baker Jones, the coordinator.

"The link between women and Texas history is as old as the place itself," Jones said, adding that the first known

history of Texas written in English was by a woman, Mary Austin Holley, and was published in 1836. "The study of women in Texas history, however, has a much more modern lineage."

Highlighting the conference will be a panel discussion Oct. 4 on Texas women and politics. It will be held from 7 to 8:30 p.m. in the Lyndon Baines Johnson Auditorium and is open to the public. Panelists include Liz Carpenter, journalist; Frances (Sissy) Farenthold, attorney; Lena Guerrero, state representative; Hazel Obey, presidential campaign adviser for Jesse Jackson in 1988; and Kathy Whitmire, mayor of Houston. Elizabeth Fox-Genovese, well known scholar of women in history, will act as moderator.

"In addition to the academic importance of the conference, we will be linking the impor-

ance of history to what is going on today in the area of women and politics," said Jones.

Fox-Genovese, professor of history and director of women's studies at Emory University, also will give the keynote address on "Texas Women in Southern Women's History" Oct. 5 at 11:30 a.m. Fox-Genovese is the author of several books including "Within the Plantation Household: Black and White Women of the Old South." Her book "Feminism

Without Illusions" is forthcoming.

"We will reveal to the public what an active roll women have had in all areas of Texas history," said Jones. "There's virtually no area of life--public or private--that women haven't had some part in".

Another purpose of the conference is to generate interest, specifically about women in Texas history, for the Handbook of Texas revision, the standard reference work in Texas history.

## Country Club Report

Marlene St. Clair

Sixteen members of the Ladies' Country Club Association held a regular meeting on Wednesday, September 19.

It was reported that 12 members attended the High Plains Golf Tournament in Farwell on September 12; and that the Hi Plains Golf Tournament for October will be hosted by the Muleshoe Association on October 10.

A report was also given on the Muleshoe Jennyslippers' Ladies' Tournament, hosted by the Ladies' Country Club Association on Saturday, September 16.

Linda Elder, Denise Atkins and Jo Timberlake were chosen as a nominating committee for a new slate of officers to be installed during the October meeting.

Attending the meeting last Wednesday were Georgette Isaac, Marilyn Young, Jo Timberlake, Jerry Mayo, Mary Frances Holt, Denise Atkins,

Linda Elder, Dorothy St. Clair, Yolanda Bell, Charlotte Field, Kay Field, Argilee Millen, Helen Templeton, Cookie Bamert, Sherry Shipman and Ruby Hart.

## 'People's Choice'

### Season Kicks

### Off In Style

Amarillo Little Theatre's "People's Choice" season kicks off in style September 27 when the "hit" Broadway musical "Anything Goes" takes the stage.

"Anything Goes" made its Broadway debut in 1934, but the wit of the script and the sheer delight of the Cole Porter songs and accompanying dances keep it fresh and perhaps more fun than ever. The story is just the sort of crazy fantasy Depression-weary Americans needed in the 1930's.

A live orchestra will accompany the cast as they perform such hits from the show as "You're the Top," "Its Delovely," "Friendship," "I Get A Kick Out Of You," "Let's Misbehave," "Blow Gabriel, Blow," and "Take me Back To Manhattan." In addition, dance routines accompany 11 members (including a couple of "Tap" numbers.)

Performances are scheduled for September 27, (K.L.S. preview night all tickets are 97 cents) 28,29, 8 p.m. September 30, 2:30 p.m. October 5 and 6, 8 p.m. and October 7, 2:30 p.m.

For reservations and/or ticket information call the Theatre Box Office at 355-9991.

For Your  
Mary Kay Cosmetics  
Josie Flowers  
272-3865  
8 a.m. - 12 noon  
& after 6 p.m.

Bailey County Journal USPS 040-200  
Established March 31, 1963. Published by Muleshoe Publishing Co., Inc. Every Sunday at 304 W. Second, Box 449, Muleshoe, TX 79347. Second Class Postage paid at Muleshoe, TX. 79347.

MEMBER 1990  
TEXAS PRESS ASSOCIATION

L. B. Hall, Publisher  
Sammy Hall, Vice President/Controller  
Cleta Williams-Jacobson, News  
Evelene Harris, Society  
Holly Millsap, Advertising  
Dora Toscano, Classified

SUBSCRIPTIONS  
Muleshoe Journal and Bailey County Journal  
Bailey and surrounding counties  
Muleshoe Journal and Bailey County Journal  
Elsewhere in Texas \$14.75  
Muleshoe Journal and Bailey County Journal  
Outside Texas, \$16.50  
Yearly By Carrier  
\$12.50

Advertising Rate Card on Application  
Advertisers should check their ads at the first day of insertion. The Journal will not be liable for failure to publish an ad or for a typographical error or error in publication except to the extent of the cost of the ad for the first day of insertion. Adjustment for errors will be limited to the cost of that portion of the ad where the error occurred.

Registration information can be obtained by calling (512) 471-1525.

There's A Difference  
Uncle Sam reports more than 75 million are employed. He didn't say how many are working.

-Courier, Ia.

### Wrong Advice

The trouble with good advice is that it usually interferes with our plans.

## Happy Anniversary Bo

You Deserve To Get  
The Nobel Peace Prize

For Putting Up With

## Mooner

All Those Years!!

## Annual Maid Of Cotton

### Deadline Nears

Applications for the 1991 South Plains Maid of Cotton are now being accepted. All applications must be submitted to the Lubbock Chamber of Commerce, 14th Street and Ave K, P.O. Box 561, Lubbock, Texas, no later than 5 p.m. Tuesday, September 25, 1990. For applications or if you have any further questions, you may call Tonda Petteway, 745-1963, or Melissa Southerlan, 763-4666.

The final selection process will begin Thursday, October 11

### Rebekah Lodge

Eleven members of the Muleshoe Rebekah Lodge met at the lodge hall Tuesday night, September for their regular meeting.

Dorothy Browning, Noble Grand, opened the meeting. The pledge was given to the American Flag, led by Mildred Kendrick. Fern Davis, chaplain gave the opening prayer.

Louise Allen, chairman of the 45th Anniversary, Oct. 16 committee said "we would designate the month of October as "Round up of Former Members," we invite them to join with us again and enjoy our fellowship." She also appointed her committees for the night of Oct. 16.

It was voted to again sponsor a community dinner on Oct. 1. Happy Birthday was sung to Dorothy Browning.

Lodge was closed by singing the Altar Song and a prayer by Fern Davis.

Refreshments of ice cream and cake was served by Mildred Kendrick.

## Mums By Doris



Muleshoe Homecoming Friday,  
September 28

Reserve Your Mum Today

Deadline To Order Is  
Wednesday, September 26

# PERRYS

303 Main

272-4620

# ANTHONY'S

## 3 DAY SALE

# 50% OFF



Entire Stock!  
Women's, Juniors' and Girls' Dresses  
Now 50% off

Save now on all our fashion dresses. Choose from a wide variety of styles and colors. Women's sizes 8-18. Junior sizes 3-13, S,M,L. Girls' sizes 2-4T, 4-6x, 7-14. Styles may vary by store. Excludes jumpsuits and party pants.

Entire Stock!  
Lee® Fleece Tops for the Family  
Now 50% off

The long sleeve crewneck top by Lee® is perfect for all your casual fun! Made from an easy care blend in a wide array of fashion colors. In sizes for men, ladies, and children.



Large Group!  
Women's Fashion Coordinates  
Now 50% off

Mix and match a new look for fall with savings on coordinates by Donkenny® and Alfred Dunner®. Women's sizes 8-18. Styles may vary by store.



Entire Stock!  
Women's and Juniors S/S Knit Tops  
Now 50% off

Made from easy care fabrics in popular styles and colors. Sizes S,M,L.

Large Group! Men's Knit and Woven Shirts  
Now 50% off

Includes solid colors and patterns. Styles may vary by store.

Large Group! Women's Hagger® Skirts and Pants  
Now 50% off

Assorted styles and colors. Women's sizes 8-18. Styles may vary by store.

Entire Stock! Men's Short Sleeve Dress Shirts  
Now 50% off

Choose from solid colors and patterns. Men's sizes 14"-17".

Entire Stock! Women's and Juniors S/S Knit Tops  
Now 50% off

Made from easy care fabrics in popular styles and colors. Sizes S,M,L.

Large Group! Men's Fashion Ties  
Now 50% off

Reg. 6.99 to 18.50. Silk and silk blends in an array of colors and patterns.

Entire Stock! Children's Short Sleeve Knit Tops  
Now 50% off

Top off fall with savings on all short sleeve knit tops for boys and girls.

Mon. - Sat. 9:00 a.m. - 6:00 p.m. 272-3478 321 Main

# Creative Living

By Sheryl Borden



Information on preparing children for kindergarten, making delicious gifts, and lowering salt in the diet will be the featured topics on "Creative Living" on Tuesday, September 25 at 12 noon and Saturday, September 29 at 2 p.m. (All times are Mountain.)

Anne O'Malley, representative of World Book, Inc. in Chicago, IL, will tell about a program called Early World of Learning. The program, which is a new self-paced learning readiness program for children, addresses 105 different skills and concepts desirable for kids to learn before entering kindergarten--skills such as recognizing shapes and counting to 10. The program is designed to give parents the tools they need to work and play creatively with children in order to instill self-confidence and positive attitudes toward learning while having fun.

Connie Moyers, Marketing Home Economist with Southwestern Public Service, Co. in Clovis, is going to share some delicious gifts that can be made in the kitchen. Ms. Moyers always has interesting ideas and recipes.

Dr. Armand Brodeur, medical consultant to Armour Lower Salt, will discuss the effects of salt in the diet. Dr. Brodeur is from St. Louis, Mo.

On Tuesday, September 25 at 2 p.m. "Creative Living" will present information on kitchen gadgets and new developments in the area of diabetes treatment.

Mary Ellen Payne, former Extension Home Economist in Clayton, N.M., will demonstrate new and useful kitchen equipment on the market. Some of these so called "kitchen gadgets" are more for looks than for use, but some are very helpful to have in the kitchen. Ms. Payne will show an array of items, from a salad spinner to a green bean slicer to a garlic machine.

Dr. Lois Jovanovic-Peterson, research scientist in Santa Barbara, CA, serves as a spokesperson for Boehringer-Mannheim Diagnostics. She will discuss three major new areas for diabetes treatment and explain the role of self blood glucose monitoring for all diabetics.

"Creative Living" is produced and hosted by Sheryl Borden. The show is carried on more than 100 PBS stations in the United States, Canada, Guam and Puerto Rico and is distributed by Pacific Mountain Network, Denver, CO. Viewers can request copies of materials offered on the show by sending one 25 cent stamp for each handout requested. Send the stamps, along with your name, address and booklets requested to:

"Creative Living" Requests  
% KENW-TV Station #52  
Eastern New Mexico University  
Portales, N.M. 88130

\*\*\*\*\*  
FESTIVE FOODS  
Asparagus Roll-Ups

1 pkg. (16 ozs.) thinly sliced sandwich ham, rectangle shaped  
1 carton (8 ozs.) spreadable cream cheese

1 can (15 ozs.) asparagus, drained thoroughly

Spread one slice ham with cream cheese; place on asparagus spear in the middle and roll. Secure with a toothpick. Refrigerate for at least 1 hour and then slice into bite-sized pieces. Secure with a toothpick.

Olive Appetizers

1 can (4 1/4 ozs.) black olives, chopped

1/2 cup Cheddar cheese, grated

1 cup Colby cheese, grated

2 tablespoons onion, chopped

2 to 3 tablespoons mayonnaise, enough to hold olives together

3 or 4 slices bread

Mix olives, mayonnaise, Colby cheese, and onion. Spread mayonnaise on bread slices; spread olive mixture on top and sprinkle top with Cheddar cheese. Place bread on cookie sheet and broil until cheese melts and serve hot. Cut in strips if smaller pieces are desired.

Hide-A-Treat

Appetizers

1 pkg. (8 oz.) refrigerated crescent rolls

Suggested fillings: Ripe olives, Pimento-stuffed olives, Cube of cheese, Slice of smoked sausage, Strip of bacon, Water-cress

Separate crescent rolls into flat rectangles. Pinch together perforations. Slice each rectangle into four lengthwise strips. Roll each strip around your choice of filling. Place on a baking sheet. Bake in a 400 degree oven about 8 minutes or until golden. Serve warm.

Easy

Vacations are easy to plan: The boss tells you when and the wife tells you where.

-Houghton Line.



KRISTI HENRY AND EMANUELE DIMATTIA

## Bridal Shower Honors

### Miss Kristi Henry

The Old Depot was the scene of a wedding and get acquainted shower Wednesday Sept. 19 honoring Kristi Henry, bride elect of Emanuele DeMattia. Guests called between the hours of 7:30 and 8:30 p.m.

Sherbert punch and thumb-print cookies were served from crystal and brass appointments.

The serving table was covered with a cream linen with lace table cloth and accented with a silk floral arrangement in shades of cream and eggplant, in a brass planter. The honoree's corsage consisted of eggplant and cream silk flowers.

Special guests included: Marsha Henry, mother of the bride, of San Angelo; Mr. and Mrs. Clyde Henry, grandparents of the bride elect, of Canyon; Rhonda Bookout and Sarah Mobley of Clovis, N.M. and Curly Mardis of Hereford.

The hostesses gift was an Oster Kitchen Center.

Hostesses for the occasion included: Kay Mardis, Janette Burden, Bobbi Dunham, Freida Long, Sandy Peterson, Shirley Hicks, Jan Pierce, Suzie Sterling, Darla Rhodes, Glenda Dale, Nancy Barnhill, Susan Puckett, Sherri Shipman, Phyllis Angeley, Doris Scoggin, Jeanine Gunstream, Francis Bruns, Donna Shaw and Pat Deal.



### BEST OF PRESS

Excellent Advice  
Never argue with a fool.  
Onlookers may not be able to tell who is which.  
-Grit.

**ENGAGEMENT ANNOUNCED**--Mr and Mrs Charles Edward King of Amarillo wishes to announce the engagement and approaching marriage of their daughter, Sheri Tyree King to Kern Alton Arrott, son of Mr and Mrs Milton Yates Arrott of San Angelo. Vows will be exchanged at 4 p.m. Dec. 29 in the Polk Street United Methodist Church in Amarillo. Miss King is a graduate of Texas Tech University with a degree in Elementary Education. A member of Kappa Kappa Gamma social sorority. She is currently teaching in the Hurst-Eules-Bedford School District. She is the granddaughter of Mr and Mrs J.E. McVicker and Mrs Elizabeth "Lib" King of Muleshoe. Arrott graduated from Texas Tech University with a BS degree in Exercise & Sports Science. He is currently attending the University of Texas at Arlington. He is a member of the Saddle Tramps. (Guest Photo)

**Knew Him Well**  
An executive is a guy who walks around with a worried expression on his subordinates' face.  
-Gazette, Kan.

A blow with a word strikes deeper than a blow with a sword.  
-Robert Burton.

Deliver your words not by number but by weight.  
-H.G. Bohn.



14 Karat

(Located in Damron Drug)

Lay-A-Ways Welcome

Come See Our Precious Stone Rings

New Shipments Arriving Daily In 14K Gold and Sterling Silver

**Damron Drug**

Rhonda Anglin - 927-5113

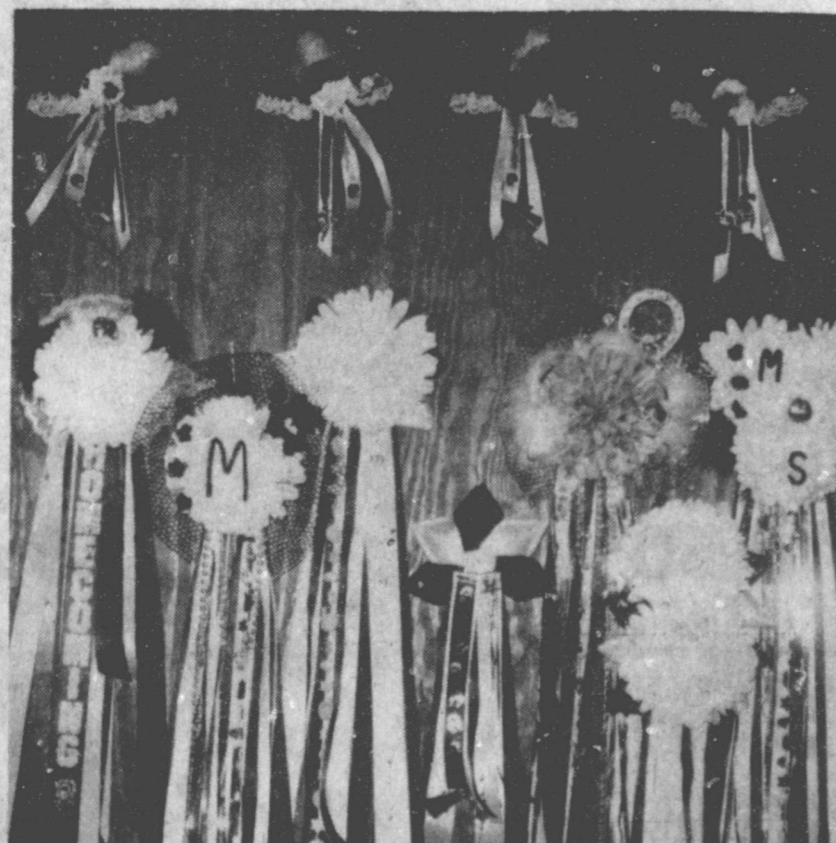
308 Main

272-4210

Order Your Sweetheart A Mum Today!

Homecoming Is Sept. 28th

Various Size Mums To Choose From  
Deadline To Order Is Wed. Sept. 26th



For More Information Call Robert At: 272-4536 (Day) or 272-3867 (Night)

# True Value HARDWARE STORES

## Autumn Days Specials

GE Soft-White Bulbs  
Reg. 7.49  
Sale **4.99**  
Special 8-Pack Of 60, 75 or 100W Soft-White Bulbs w/BONUS 3-Way Bulb.

by SoundDesign  
  
**44.95** 1.5 Gal.  
Ultrasonic Humidifier offers adj. mist.

Master MECHANIC  
  
Anti-Freeze  
**3.89** Gal.

Each Lady Who Comes In To Check Out Our New Ultra Satin Paint Receives A Free Kitchen Towel  
TRU-TEST  
Ultra Satin Acrylic Wall Finish

All Fencing Materials On Sale Now!

International Super 98.....	\$68 <sup>00</sup>
International Super 100.....	\$78 <sup>00</sup>
Hol-Dem SP83 Solar-Power .....	\$125 <sup>00</sup>
Hol-Dem 50 .....	\$105 <sup>00</sup>
Farm-Test 2057 Weed Clipper ....	\$43 <sup>00</sup>
Gallagher M800.....	\$292 <sup>50</sup>
MPE2 .....	\$156 <sup>00</sup>
M120 .....	\$107 <sup>00</sup>

**Fry & Cox, Inc.**  
401 S. 1st Muleshoe 272-4511

## Partnership Tournament Draws Large Crowd

The Ladies Golf Association held their annual invitational partnership tournament Saturday, Sept. 15 at the Muleshoe Country Club. There were 32 teams entered, making up five flights.

Beginning the day around 8 a.m., the guests and members were served coffee, juice, and home-made breads. The golf rounds began at 9:00 o'clock. The ladies played in a light drizzling rain for a few holes, but then later the sun shown through beautifully.

At the end of eighteen holes, the ladies met in the restaurant where they were welcomed by the club president, Cookie Bamert. They were served a lovely meal by our new club manager, Jack Wilson, his wife, Barbara and their staff. Then the winners were recognized and given their awards.

The tournament committee, Dorothy St.Clair, Charlotte Field and Kay Field, did a wonderful job. They used a "South-western" theme for decorations, using hand carved wooden howling coyotes and cactus scattered down the center of the luncheon tables. Throughout the dining room were attractive floral arrange-

men's and pictures.

The howling coyotes, were also displayed on the tee boxes as markers.

A special thanks goes to our new pro, Jeff Fontanilla, for all his help, also to all the men who were so helpful. They carried the ladies golf clubs to the carts and got all the carts ready to go.

We appreciate the cash donation given by Nichols Gin to help sponsor the tournament. Also we thank the local farmers who donated vegetables for the luncheon, and all who donated to help fray tournament expenses.

The tournament winners were: Championship Flight: Marian Baker, Ursula Friedrich, first; Lisa Wood and Helen Templeton, second; and Jan Fontanilla and Gerry Payne, third; First Flight: Janetta Precure and Polly Harrison, first; Carol Harmon and Mary Zoe Owens, second; and Clara Hay and Donna Alexander, third.

Winners in the Second Flight were: Carol Ashmore and Berna Alaniz, first; Jo Timberlake and Dorothy St.Clair, second; and Evelyn Riley and Terri Collins, third; Third Flight: Beverly Lockmiller and Connie Bailey, first; Ann Johnson and Arlene Malone, second; and Janie Suddeth and Sandy Ware, third; Fourth Flight: Betty Wiseman and Pat Mason, first; Mary Holt and Ruby Hart, second; and Betty Corss and Paula Leighton, third.

Prizes were also given to the ones who hit closest to the pin on No. 18 and they were: Championship Flight, Ersila Friederich; First Flight, Sue Ward; Second Flight, Cookie Bamert; Third Flight, Elinor Yerby; and Fourth Flight, Mary Holt.

Other prizes were given to the ones who had the longest drive on No. 11. They include: Championship Flight, Marian Baker; First Flight, Beverly Obenshain; Second Flight, Berna Alaniz; Third Flight, Arlene Malone; and Fourth Flight, Betty Cross.

### GOLDEN GLEAMS

Trust, like the soul, never returns, once it is gone.  
-Publius Syrus.



JENNYSLIPPERS GARDEN SPOT--This week's garden spot is on the North side of the First Bank, where all the flowers are in full bloom. (Journal Photo)

### United Methodist Women Meeting Held

The United Methodist Women of Sudan held their annual fall meeting Monday evening, Sept. 10 in the fellowship hall of the church.

Hostesses for the salad supper were Thelma Lewis, Anna Black and Caroline Hawthorne. The tables were decorated with brass appointments and candelabras.

Janie Sims of Petersburg was a special guest. It was reported that she serves the Methodist Church in many appointments, from local level to National level. Dorothy Drake, president, introduced Ms. Sims, who spoke a few minutes on her church involvements and activities.

Ms. Drake introduced the speaker of the evening, Margaret Smith, who gave a book review on Dr. Robt Schuler's book titled "Believe in the God who believes in you." The book was based on the Ten Commandments.

The president presided over a short business session. Joan Gaston, chairman of the nominating committee, presented the report for incoming officers. All nominations were accepted for the coming terms.

Other committees were heard from. It was reported that the repairs on the kitchen is to begin immediately.

An invitation to attend the district meeting to be held in Floydada on Oct. 6 was read. A reminder of the upcoming bazaar was noted. The bazaar will be held Thursday, Nov. 8. Those present included: Mary

Tollett, Ruth Newman, Bert Vensin, Nelia Williams, Eloese Curry, Anita Wallace, Hazel Gaston, Ramona Engram, Frances Patter, Grace Lopes, Mae White, Patty Vincent, Jackie Markham, Glyna Harrison, Jackie McAlpin, Jone Netherland, Thelma May, Nell Lorie, Laverne Harper, Gil Rogers, Mary Testerman and Mary Olds.

### IN FASHION

Young school children and adolescents accept wearing eyeglasses due to the popular styling of small, round frames and a classic preppy look. Metal and lightweight frames are available in exciting colors.

No-name denim jeans gain popularity as well as name brand favorites among both boys and girls of school age.

Shop  
**Muleshoe**  
First!

### Tops Club

TOPS chapter No. 34 met at 6:30 p.m. Thursday, Sept. 20 in the Heritage Thrift Shop with Laverne James in charge.

The TOPS pledge and prayer was led by Laverne James with Alma Robertson leading the fellowship song.

Betty Jo Davis called the roll with 19 members responding with the amount they had lost or gained.

Aurora Mata, secretary, read the minutes of the previous meeting, and they were approved as read.

Joy Radford was given a gift by the chapter for the second week weight loss.

The weekly report was given by Evelene Harris. Lucille Harp was the week's best loser. First

runner-up was Aurora Mata and second runner-up was a three way tie between, Joy Radford, Evelene Harris, and Alene Bryant.

Mrs. James gave a program on "You are a Winner". She gave tips on remembering yourself at your best building on what is good and setting goals. Individual members read the winner's rights and Mrs. James concluded her program with the poem "Winners Don't Quit."

Members challenged each other with Mrs. James issuing a challenge to the chapter of a "no gain week."

The meeting was closed with the goodnight song.

In the quest of success, just remember there is no substitute for character or service.

Book learning is not all of education, but it is an essential part and there is no substitute.

## Ben Franklin

Better quality for less

2104 W. Amer. Blvd. 272-3855

Mon. - Sat. 8 a.m. - 8 p.m. Sun. 12 - 5 p.m.

### Create Your Own Homecoming Mum

For Only  
**\$6.00**

In 15 minutes or Less

(Come In and Let Us Show You How)

We Have A Large Selection Of  
Mum Supplies To Choose From



Buy Meat  
Today, We Need To  
Pay Our Taxes!



Raised & Fed Locally

**1/2 Beef**

**\$1.59**  
Lb.

Processed & Cut  
To Your Specifications

Raised & Fed Locally

**1/2 Hog**

**\$1.09**  
lb.

Cut & Wrapped To Your Specifications  
We Will Cure & Smoke It!

Winkler's  
Homemade Breakfast

**Sausage**

**\$1.50**  
Lb.  
2 Lb. Pack

Whole Loins

**Pork Chops**

**\$1.89**  
Lb.

Cut & Wrapped To  
Your Specifications

Homemade  
**German Sausage**

**\$1.99**  
Lb.

While They Last

**KC Strips**

**\$3.75**  
lb.

By The Whole Loin  
Approx. 10 - 12 lbs.

Cut & Wrapped To Your Specifications

**Winkler Meat Co.**

401 Main Let Us Cater Your Next Party! 272-4703



# Rip's

## WESTERN WEAR

OPEN 8:00 A.M. - 6:30 P.M. CDT

314 Wheeler • Texico

482-3363 or 800-748-2459

### 47th Anniversary

# SALE-A-BRATION

## CONTINUES

LOTS OF IN STORE SPECIALS

NEW! Just Arrived

Rocky Mountain Footwear For Ladies

30% Off

Introduction Special



REGISTER FOR

\$100

GIFT CERTIFICATE

TO BE GIVEN AWAY

OCTOBER 31, 1990.

COMPLIMENTARY GIFT WRAPPING

LAYAWAYS WELCOME

OPEN 8:00 A.M. - 6:30 P.M. C.D.T.

WE ACCEPT:





**LOCAL AREA RESIDENTS TOUR HELICOPTER**--As Scott Boss, far left, and Richard Murphy, administrator for Muleshoe Area Hospital District, look on, a large group of residents, including junior high students, homemakers, nursing home residents and hospital personnel, check out the CareLink helicopter, making a public relations trip to Muleshoe as a part of EMS Week. The helicopter then left for another P.R. trip to Carlsbad, N.M. (Journal Photo)

### Muleshoe Mules

Cont. from Page 1

before running into penalty trouble, losing 15. Getting into field goal distance, Denver City took another three point lead on a field goal on a fourth and nine situation.

John Orozco broke loose for the Mules and had runs of eight, 63 and four yards, with Danny Rodriguez adding five;

then after another 13 yards ground out by Orozco in two plays, he made it in from the nine for another Mule TD. Olivarez again toed in the extra point.

The rattled Mustangs again took over the ball, and tried to put another drive together, but no avail.

### CareLink Helicopter

Cont. from Page 1

of medical specialties available in the region. The service is provided through the combined efforts of Methodist Hospital and University Medical Center, both of Lubbock.

Two twin-engine helicopters are used to provide 24-hour emergency patient transport. The primary helicopter is the SA 365N-1 Dauphin II. This particular aircraft was chosen because of its size and ability to carry up to three critically ill or injured patients and up to three medical attendants.

The Dauphin has established itself as one of the safest and most sophisticated aeromedical helicopters in use today. While this aircraft is fully instrument equipped, complete with autopilot system, CareLink has taken the extra step and safety measure to be one of only a few programs in the nation to fly all Dauphin transports with two professional pilots at all times. It exceeds all professional and Federal Aviation Administration standards for safety.

The Dauphin II has a maximum cruising speed of 195 miles per hour, and is certified

by the Texas Department of Health as a Mobile Intensive Care Unit.

In addition to two pilots, each CareLink flight is staffed with an experienced flight nurse and flight paramedic. Other specialty crew members may also be on board, based on the patient's medical needs.

The second helicopter, an Aerospatiale TwinStar, is also certified as a Mobile Intensive Care Unit and is used as a backup when the Dauphin is in for scheduled maintenance. It is also used to provide additional coverage to the region when both helicopters are in service.

CareLink was established in April, 1988, and has transported more than 1600 patients since that time. Requests for on scene or interhospital transport of patients are received at the Communication Center in Lubbock via a nationwide toll free hot line.

CareLink can be activated by a physician, hospital staff, emergency medical services personnel, or local, county and state officials.

As the clock ran out in the second, it was Muleshoe Mules 14, Denver City Mustangs 11.

Going back into action in the third, Denver City had possession of the ball, and 21 plays and over seven minutes later, put another TD on the scoreboard. They scored from two yards out, with the PAT good, and again took the lead, a lead they never relinquished for the rest of the game.

With the score at 18-14, the Mules failed to put together a drive, although they maintained possession of the ball for seven plays before having to punt the ball away.

By the end of the third, Denver City had managed four more plays, and the score remained at 18-14.

After a couple of incomplete passes, the Mustangs punted the ball back to the Mules.

Despite efforts by John Orozco and Danny Rodriguez, the holes closed up quickly, and the Mules again were forced to punt the ball back to the Denver City Mustangs.

Penalties and fumbles, along with mental mistakes began to plague both teams, and neither team sustained a drive until less than three minutes was left in the game.

Then, Denver City broke loose on a 33 yard TD with the PAT and the gap widened in the score to 25-14.

Denver City's final TD came on an interception that was good for 33 yards for the Mustangs.

Lubbock Cooper will be in Muleshoe next Friday night to take on the Mules. Gametime is 8 p.m. in Benny Douglass Stadium.

### Rebate...

Cont. from Page 1  
second largest with \$7.8 million. San Antonio received \$4.5 million and Austin received \$3.2 million.

Rebate checks to counties totaled \$8 million this month for an increase of 18 percent over last year's payments to date. The sizeable increase is partly due to more counties collecting sales tax now, Bullock said.

This month's checks reflect taxes collected on July sales and reported in late August by businesses filing monthly tax returns.

Merchants collect the state and local sales taxes and send them to the Comptroller's office with their tax returns. The state keeps six and one-quarter percent share and each month sends cities and counties their portion of the sales tax.

All local sales taxes must be approved by local voters and may be used for any legal city or county expenses. Most areas put the regular one percent city sales tax in their General Fund and use it for operations like fire fighting, maintaining roads and law enforcement. Cities use additional one-half percent city sales taxes to help fund local economic development; and to reduce property taxes.

In addition to this month's sales tax checks are quarterly payments totaling \$138 million for the state's six metropolitan transit authorities and September's payment for El Paso's city transit department. The payments to MTAs reflect taxes collected in May, June and July.

### 3-Way Eagles Down New Home Last Friday

New Home got on the scoreboard first last week, when the Three Way Eagles tangled with New Home.

Scott Fillingham dashed over from the two, and Leandro Hernandez ran over the extra point.

The TD did not go unanswered as Mario Guillen made it in from the 10 for the Three Way Eagles, and the kick failed, leaving it a 6-8 game.

New Home came right back with another TD, a 56-yarder by Jessie Rodriguez, and their kick was good.

At the end of the first quarter New Home was leading the Eagles 16-6.

Mario Guillen broke loose for the Eagles in the second, and with 7:12 left before halftime, Mario passed to Jesse Haros, who tabbed a 32 yard TD. Roy Guitron kicked the extra points.

At 4:24, the Three Way Eagles pulled ahead on an 11 yard run to paydirt by Mario. At this point, it was a 20-16 ball game.

It was Mario again at 2:21 of the second. He scampered for 25 yards and again Guitron booted in the extra points.

With :30 left in the second, Mario completed a 15-yarder to Efrain Guillen, and the Eagles were leading 34-16 at halftime.

In the third, the Eagles managed two more touchdowns, while holding New Home out of the end zone.

Mario lobbed an 11-yarder to

### Muleshoe...

Cont. from Page 1

week training cycle, he studied general military subjects designed to prepare him for further academic and on-the-job training in one of the Navy's 85 basic fields.

His studies included seamanship, close order drill, Naval history and first aid. Personnel who complete this course of instruction are eligible for three hours of college credit in Physical Education and Hygiene.

\*\*\*  
Educator of the Week at Watson Junior High was Steven Hatfield, who coaches and teaches P.E.

Principal's awards went to Claudia Mendoza, sixth grade; Chris Garcia, seventh grade and Christa Trussell, eighth grade.

Efrain for six; then Roy Guitron galloped in from the one at 3:44 of the third.

It was a 46-16 ballgame when the third stanza ended.

Going into the fourth, Bobby Sarli slammed through for 10 yards and paydirt, with 9:01 left in the game.

Final TD of the game was a 70 yard pass play from Mario to Jesus Flores with 1:53 left in the game.

The final score was Three Way 58 and New Home 16.

Mario completed 15-21 passes for 360 yards, four touchdowns and one interception.



**ROTARY HOSTS MID-EAST SPEAKER**--Bob Starkey, a resident of Clovis was introduced by Sam Harlan and Buck Campbell as guest speaker for Rotary on Tuesday. He spoke about mid-east cultures and customs and showed a series of slides, depicting life in North Yemen, where he resided for a year. North Yemen is adjacent to Saudi Arabia, and the speaker compared the two countries during his discussion. (Journal Photo)



**Show Your Support!**  
**Wear a Spirit Badge From Decorators!**

*Come See Our New Copper Gifts and Carousel Horses*  
**Decorator's Floral and Gifts**

616 S. 1st Muleshoe 272-4340

## CLOVIS LIVESTOCK AUCTION CUSTOMER APPRECIATION DAY AND SPECIAL CALF AND YEARLING SALE

Dear Cattleman:

On behalf of all of us here at Clovis Livestock Auction, we would like to invite you to attend and participate in our annual Special Calf Sale & Appreciation Day on October 6, 1990.

This Special Sale will include many consignments of weaner calves. They will be mostly native New Mexico and West Texas calves weighing from approximately 250 lbs. - 650 lbs.

Our hope is to do a better job of selling your calves by being able to advertise in a larger area, and the buyers being able to buy loads of cattle of similar weight and quality.

If you have calves of any size or quality, we certainly would appreciate you bringing them in for the Special Calf Sale. Our regular commission rate of 1 1/2% on cattle sold in bunches of 15 head or more will apply for this Special Sale.

The personnel at Clovis Livestock is striving to serve you better. Hopefully this will be one of the ways and your help will certainly be appreciated. Whether you have calves to sell or not, we would like for you to come by and have lunch with us. We will provide lunch on sale day in appreciation to all our sellers and buyers.

Please call us for more information on the sale and any ideas you might have to make this sale and future sales better for you.

**CLOVIS LIVESTOCK AUCTION, INC. PHONE (505) 762-4422**  
**SCHEDULE OF ACTIVITIES**

<b>FREE BARBEQUE</b>	<b>11:30 A.M. - 1:00 P.M.</b>
<b>SALE STARTS PROMPTLY AT 1:00 P.M.</b>	
<b>RUSTIN ROWLEY</b> 763-7959	<b>CHARLIE ROGERS</b> 762-1070
<b>JOE ROWLEY</b> 356-5943	<b>DICK MOORE</b> 276-8347
	<b>POTTER CRAIG</b> 762-2365

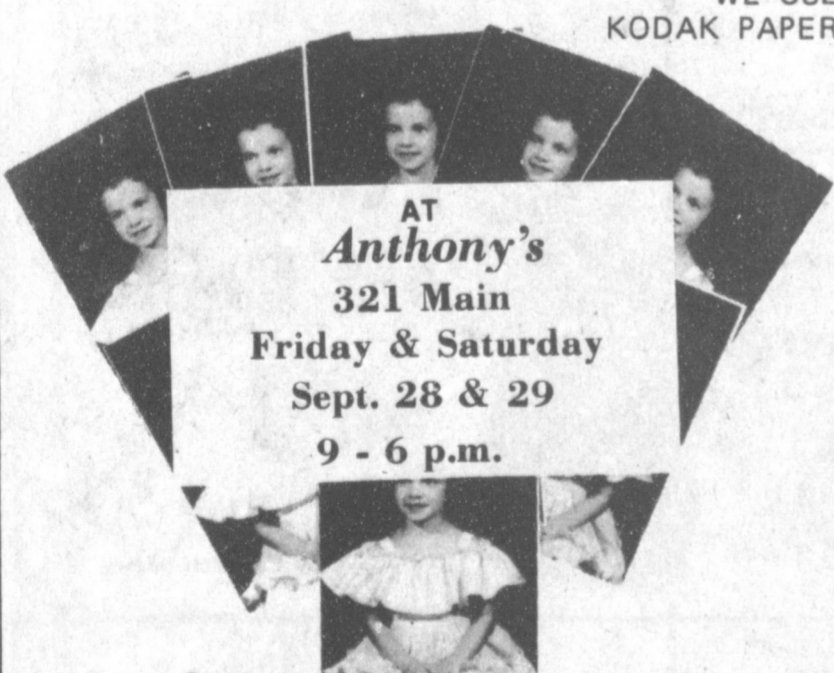
1- 10x13 (Wall Photo)  
1- 8x10  
2- 5x7  
2- 3x5  
16- King Size Wallets  
8- Regular Size Wallets

**30 Color Photos**


99¢ Deposit  
**\$10.00 Due at Pick up (plus tax)**

**\$10.99**

WE USE KODAK PAPER



**AT Anthony's**  
**321 Main**  
**Friday & Saturday**  
**Sept. 28 & 29**  
**9 - 6 p.m.**



**Shugart's inc.**

Group charge 99¢ per person

**Kodak PAPER**  
FOR CREATIVE COLOR PORTRAITS

# Winners From Annual Ladies Partnership Tournament

## Held, Saturday, September 15, 1990



**CHAMPIONSHIP FLIGHT**--The Ladies Golf Association hosted their annual Invitational Partnership Tournament Saturday at the Country Club. Winners of the championship Flight were: Marian Baker and Ursula Friederich, first; Lisa Wood and Helen Templeton, second; and Jan Fontanilla, third.



**FIRST FLIGHT**--Winners of the first flight at the Partnership tournament Saturday included: Janette Precure and Polly Harrison, first; Carolyn Harmon and Mary Zoe Owens, second; and Clara Hay and Donna Alexander, third. (Journal Photo)



**SECOND FLIGHT**--Thirty-two teams entered the annual Partnership Tournament Saturday at the Country Club. Winners of the Second Flight were: Carol Ashmore and Berna Alaniz, first; Jo Timberlake and Dorothy St. Clair, second; and Evelyn Riley and Terri Collins, third. (Journal Photo)



**THIRD FLIGHT**--Beverly Lockmiller and Connie Bailey took first place in the Third Flight, during the annual Ladies Partnership Tournament Saturday. Other winners in the Third Flight included: Ann Johnson and Arlene Malone, second; and Janie Suddeth and Sandy Ware, third. (Journal Photo)



**FOURTH FLIGHT**--The Ladies Country Club Association hosted their annual partnership tournament Saturday and had 32 teams playing. Winners in the Fourth Flight included: Betty Wiseman and Pat Mason, first; Mary Holt and Ruby Hart, second; and Betty Cross and Paula Leighton, third. (Journal Photo)

## Nursing Home News

by: Joy Stancell

Ernest Kerr's family hosted a room birthday party for him Tuesday. Ernie received many nice cards from friends and family to wish him a Happy 76th Birthday.

Homer Milsap also celebrated his birthday Tuesday.

Friday afternoon Dennis Hayes from the Nazarene Church showed a slide presentation on Missionary work in Hong Kong by the Nazarenes.

Thursday ladies from W.M.U. presented us with several rag dolls that they had made. We really do appreciate them doing this for us.

Thursday afternoon Winnie Berry, Rue Kimbrough, Mrs. Nieman, J.E. Embry, Grace Scarbrough, Lois Baldwin, Irene Splawn, and Noah Splawn came to play Skip-Bo and dominoes with the residents.

Clara Weaver was visited recently by her sister, Dicie Maser, her brother and sister-in-law, Mr. and Mrs. S.R. Wilson and her daughter, Pat. Also Mrs. Patterson and Mrs. Earl Peterson.

Tuesday morning Lona Embry and our residents families hosted a celebration of the U.S. Constitution and a tribute to our service men in Arabia.

After a presentation, songs led by Pat Clements, ringing our bells, Maxine Ragsdale lead us in prayer. Refreshments of juice, fruit and breakfast roll

were served.

Our thanks to the Jenny-slippers for making us the beautiful red, white and blue buttons.

Effie Smith was visited last weekend by Arby and Thelma Lummus.

Mamie Askew was visited by Mr. and Mrs. Noah Askew last week.

Tuesday afternoon Olive Cox, Bonnie Warren, Claudine Embry, Beth Watson and Laverne Cox came to shampoo and set the ladies hair.

Sunday afternoon the New Covenant Church came for church services.

Thursday morning Pastor Mike Doyle conducted our weekly devotional. Clara Lou Jones played the piano for us.

## BIBLE VERSE

And unto man he said, Behold the fear of the Lord, that is wisdom; and to depart from evil is understanding.

1. Where is this verse found in the Bible?
2. Who is the author?
3. What land does the book describe?
4. Was Job a real person?

### Answers:

1. Job 28:28.
2. The author is unknown.
3. The Arabian desert, south east of Palestine.
4. He is mentioned in Ezekiel 14:14 and James 5:11.

### Definition

An optimist is a bridegroom who thinks he has no bad habits.

-Scoop, Winter Harbor.

## CPR Program Beneficial To State's Wildlife

The Conservation Reserve Program (CRP), in existence since 1985, has proven beneficial to wildlife across the state, particularly in the High Plains.

The voluntary U.S. Department of Agriculture program was designed to conserve and improve soil and water resources by taking highly-erodible croplands and wetlands out of crop production. Under the program landowners and Operators receive annual payments for the 10-year life of the CRP agreement and up to 50 percent of the cost of installing approved conservation practices.

Hunting is allowed on CRP lands and landowners may lease the land to hunters, buy grazing or harvesting crops is not allowed.

"One option allows up to 10 percent of the CRP land to be put into wildlife food plots annually, thus adding food and cover and diversity to improved grass plantings," said Trey Carpenter, Texas Parks and Wildlife Department wildlife technician in Abilene. "This 10 percent can be incorporated as a border around a CRP field, put into strips or planted as plots (no larger than 10 acres) throughout the field."

CRP lands in Texas total more than 3.9 million acres. CRP lands in the High Plains produce secure, high-quality nesting habitat and winter cover for birds, said Gene Miller, TPWD wildlife biologist in Amarillo. Ringnecked pheasant populations in the High Plains often are limited by a lack of nesting vocer, travel lanes and winter habitat, but CRP can satisfy these needs.

Miller said pheasant use of playa basins is known to increase during the harvest season as farming practices reduce vocer availability and

deplete the available habitat. Current research projects evaluating CRP fields as wintering habitat for birds in the High Plains are locating pheasants in the cover provided by CRP fields especially where a variety of wildlife practices are used.

A study covering 101 randomly selected CRP contracts in 24 High Plains counties was conducted recently by TPWD and U.S. Fish and Wildlife nesting habitat suitability.

In March, 73 percent of these 101 fields were totally undisturbed by mowing, an encouraging number, Miller said. But biologists are concerned about reports of more than 60 percent disturbance in some counties caused by excessive mowing for weed control. Extensive mowing when performed in early summer, can harm wildlife by direct mortality and nest destruction.

Miller said during grass-establishment years, some mowing or spraying may be required to control undesirable vegetation, but thereafter, mowing, spraying or other

## Seminar On Whole Language Learning Set

The South Plains Speech-Language-Hearing Association will present a seminar entitled "Whole Language-Learning That Makes Sense" on Friday, October 12 and Saturday, October 13. Guest speaker will be Dr. Jan Norris, Assistant Professor at Louisiana State University and well known writer and consultant on language and learning disorders in children. Dr. Norris has developed and coordinated programs for language and learning disordered children from preschool through high school for 15 years and has consulted extensively with speech-language pathologists, special education and regular education teachers. Dr. Norris has written many articles which have appeared in national journals on whole language learning and is an editorial consultant for several national publications.

Teachers, parents and individuals who deal with language and learning disorders in the young child and the adult will want to attend this two day seminar to be held at Methodist Hospital, 3615-19th Street in the 8th Floor Brewer Room. Registration or further information can be made by contacting Beth Ann Linville at 798-2537.

The seminar begins at 8:15 on Friday, October 12th with registration and continues until 5:30 in the afternoon. The Saturday, October 13th session begins at 8 and ends at 12:30. Attendees to the seminar will understand whole language-theory and how it differs from traditional theory and practice, how to use pictures to develop narrative and expository language, how to assess language from language samples, how to understand how written language can be used to teach complex language, while simultaneously improving reading and writing. Additionally, attendees will be able to analyze the complexities present in contextual language. Attendees will earn 10 Texas Speech-Language and Hearing Continuing Education Units and 6 AAT hours.

## Health Matters To Explore Pregnancy After 35

Millions of women are delaying motherhood and having healthy babies after 35. Saturday at 5 p.m. on Channel 11, "Health Matters," underwritten by Methodist Hospital, explores this new trend on "Pregnancy After 35."

Obstetrician / Gynecologists John Dickey, M.D., and Brent Nall, M.D., will talk about the new information and technology that makes pregnancy after 35 safer for both mother and baby. Viewers will learn how to minimize the risks of waiting, one of which is premature delivery, and will visit a state-of-the-art neonatal care unit to see what can be done when the baby is born prematurely. They also will witness surgery on an unborn child for a life-threatening condition.

"Health Matters," a community service of KCBT-TV and Methodist Hospital, airs each Saturday at 5 p.m. on Channel 11.

## Patients in Muleshoe Area Medical Center

SEPTEMBER 17-20 MONDAY

Kelsey Jones, Tanner Parish, Becky Williams, Shane McAlister, Diana Medina, Gil Lamb, Lubertha Steptoe, Joyce Gist, Jenaro Heredia, Jewell Perry, Carolyn Grand, and Jack Martin.

TUESDAY

Kelsey Jones, Tanner Parish, Josie Romero, Becky Williams, Diana Medina, Ethel Chitwood, Gil Lamb, and Jack Martin.

WEDNESDAY

Kelsey Jones, Fernando Romero, Josie Romero, Becky Williams, Ethel Chitwood, Gil Lamb, Ruth Grinstead, Craig Hunt, and Carolyn Craddock.

THURSDAY

Kelsey Jones, Fernando Romero, Josie Romero, Becky Williams, Ethel Chitwood, Gil Lamb, Ruth Grinstead, Craig Hunt, and Carolyn Craddock.

disturbances should be kept to a minimum, particularly during the April-August nesting period. He added, though, that if grass-dominated CRP plantings are not renewed by some type of disturbance every few years, wildlife habitat quality will eventually decline. "While wildlife might be better served by carefully controlled, prescribed burning during the winter

instead of mowing, it cannot be denied that an occasional, property-timed mowing, is better than no disturbance at all," he said. "Of course, the best mowing would occur no more often than every three to five years, be done in early fall in mosaic patterns within individual fields and be followed by raking to reduce and loosen litter."

## Aid To Locating Vital Records

In this age of bureaucratic documentation, everyone has need of copies of records of birth, death, marriage or divorce. An application for benefits from the Veterans Administration or Social Security, a passport or marriage license requires not only the information in the records but usually copies of the records themselves.

All these records are stored permanently by municipalities, counties, states and the Federal government. We all know this, but where each document is kept is frequently unknown.

The Consumer Education Research Center, a national non-profit consumer group, found there was little uniformity on where the records were available and the costs. In some states, birth records are kept by the city and in others by the county or state. To further complicate matters, often older records are held in different places than current ones. In addition, the addresses where the records are kept are changed quite often.

The consumer group found many people had difficulty in locating the records they needed often, it was necessary to make expensive long distance calls just to find out where to write, what information was required and how much money to send. For that reason CERC has been publishing a book entitled WHERE TO WRITE FOR VITAL RECORDS which contains a state-by-state listing of the addresses and telephone numbers of the archive where each record can be found, the cost of a copy of the document and sample form letters containing all the information needed to get these and other vital documents.

CERC has just released the 1990 update. For those needing information from foreign countries, the book contains a list of government offices where you can get help in locating vital records kept in almost every country. Even U.S. citizens born overseas, on a ship or aircraft can locate the place where their records are kept. The organization found that many people have used previous editions to locate their family trees or roots. For those, the book includes information on the Mormon Church. This library contains over 200,000 volumes of family history records and a list of almost a

quarter-million people who are willing to share information to help you find family roots.

To get a copy of this useful book, send \$6.50 to CERC Documents, 350 Scotland Rd., Orange, N.J. 07050.

Robert L. Berko, executive director of CERC says that originally the book was published to satisfy the needs of persons applying for various benefits but many others have found it useful. He has received letters from libraries, coroners, law enforcement, social agencies, credit grantors, collection agencies, stock ownership tracers, lawyers, persons searching for missing heirs and even those interested in searching their family roots. All these and others have found use for a book that helps them locate and prove the status of individuals.

Many times documents can be used to prove things other than what they record. For instance, one woman wrote to the group telling them that a birth certificate for her child proved her residence at that time in the United States and helped her become eligible for legal residence and citizenship.

## Special License Plates For Veterans

Commander Earl McCain of the High Plains Chapter of American Ex-Prisoners of War, reminds the veterans that for an annual fee of only \$3.00 they are eligible for tags in the following categories:

- (1) Purple Heart recipients.
- (2) Survivors of Pearl Harbor.
- (3) Prisoner of War.
- (4) Disabled Veteran.

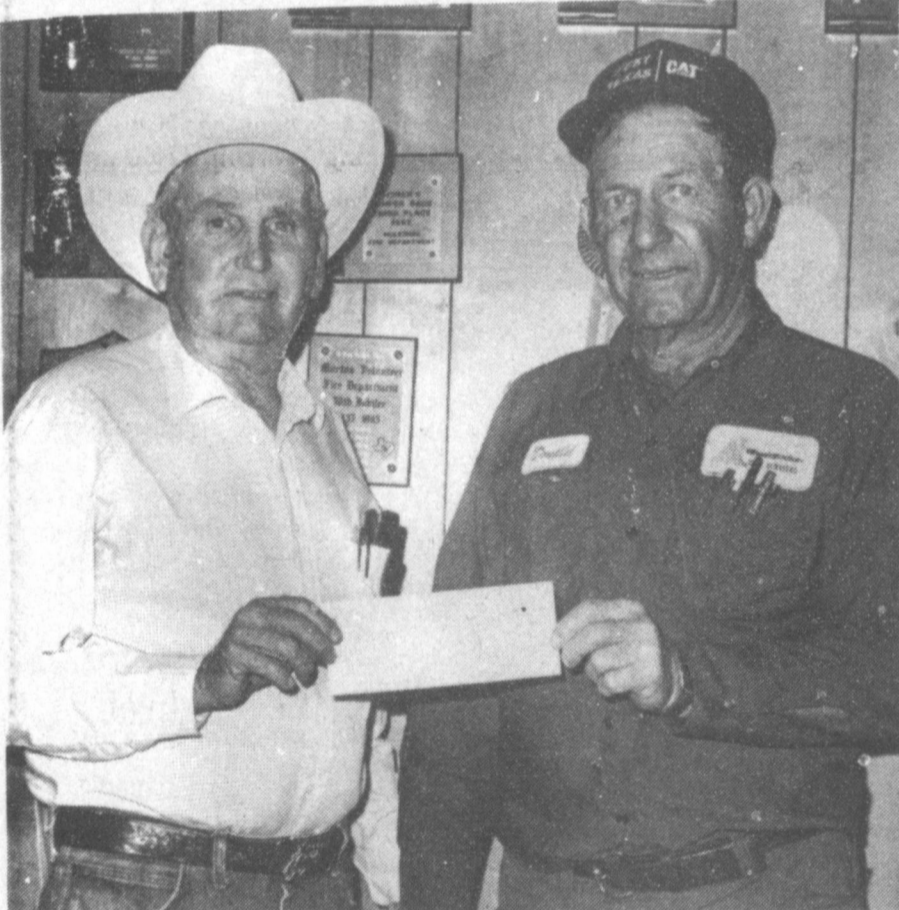
Application forms can be obtained at the Tax Assessor's office in the county of the veteran's residence. When the new tags are issued, the veteran then relinquishes his old set of tags and is eligible for a refund for the part of the year remaining until his old tags expired.

The veteran may receive tags for more than one vehicle if he qualifies in more than one category.

### Candid Comment

All too often the clever girl who knows all the answers is never asked.

-Wall Street Journal



FIRE DEPARTMENT RECEIVES CHECK--Bob Dodd, (Left), Representative of the Germania Farm Mutual Ins. presented Donald Harrison, (Right) Chief of the Muleshoe Fire Dept., a \$100.00 check for their efforts in putting out the fire at the Herman Morrison Home. (Journal Photo)

## FIGHTING THE WHEEL?

0505

If your car shimmies at highway speeds, and pulls to the left or right, chances are you need a front-end alignment. Our Mr. Goodwrench specialists will give it a thorough front-end alignment at a special price:

**NOW ONLY \$28<sup>00</sup>**

Includes:

- Camber adjustment • Caster adjustment • Toe adjustment
- Tire check • Shock absorber check • Steering linkage check
- Visual check of all other components •

GM Cars and Pickups

**Robert D. Green, Inc.**

2400 W. Amer. Blvd. 272-4588

It's not just a car, it's your freedom.

**Mr. Goodwrench**

1990 Crop

	Flat	1990 Contract Basis	Month
Feed Corn.....	4.23,0.11cz	No Bid.....	Dec.
White Cobb Yellow.....	4.66,0.35cz	No Bid.....	Dec.
Red Cobb Yellow.....	4.35,0.18cz	No Bid.....	Dec.
White Food Corn.....	5.80,0.99cz	No Bid.....	Dec.
Milo.....	3.82,-0.12cz	No Bid.....	Dec.
Soybeans.....	5.43,-0.69sz	-0.95.....	Dec.
Wheat.....	2.39,-0.34kwz	.....	KC Dec.

96% %  
Prices effective Sept. 21, 1990

**Farmer's Co-Op Elevators**

272-4335

ACCREDITED BY THE AMERICAN COLLEGE OF RADIOLOGY

## BREAST CANCER DETECTION UNIT

available to area women!

MONDAY, SEPTEMBER 24TH  
MULESHOE AREA MEDICAL CENTER  
708 SOUTH 1ST  
MULESHOE, TEXAS

Call 272-4524 for appointment

According to the American Cancer Society, one out of ten women will develop breast cancer sometime in her lifetime. It is currently estimated that over 37,000 women die each year as a result of breast cancer.

Ninety percent of breast cancers are diagnosed by women or their physicians finding a lump in the breast. Women who are diagnosed with a lump large enough to feel have a 50 percent five year survival rate. A woman who is diagnosed as having breast cancer by mammography, before a lump can be felt, has a 97% five year survival rate and a 90% 10 year survival rate. The cost is only \$60.00 ± \$4.50 S&H. A mammogram can detect a cancer this small, even before it can be felt.



### Muleshoe Menu

SEPT. 24-28  
**MONDAY BREAKFAST**  
 Milk, Cereal, Toast and Fruit  
**LUNCH**  
 Milk, Chicken Nuggets, Gravy, Creamed Potatoes, Green Beans, Hot Rolls and Fruit  
**TUESDAY BREAKFAST**  
 Milk, Blueberry Muffins and Juice  
**LUNCH**  
 Milk, Hamburgers, Lettuce & Tomato, Pickles & Onions, French Fries, and Pudding  
 HS/Jr. High Combo Line Steak on a Bun  
**WEDNESDAY BREAKFAST**  
 Milk, Peanut Butter Sandwiches, and Fruit  
**LUNCH**  
 Milk, Frito Pie, Cheese, Beans, Crackers and Fruit  
**THURSDAY BREAKFAST**  
 Milk, Cheese Toast and Fruit  
**LUNCH**  
 Milk, Corn Dogs, Veg. Beef Soup, Crackers, Cinnamon Rolls and Fruit  
**FRIDAY BREAKFAST**  
 Milk, Biscuits, Gravy, Sausage and Fruit  
**LUNCH**  
 Milk, Bar-B-Que Beef, Potato Salad, Corn Bread, and Fruit

### Three Way Menu

SEPT. 24-28  
**MONDAY BREAKFAST**  
 Buttered Rice, Juice, Toast and Milk  
**LUNCH**  
 Macaroni Beef/Tomatoe Casserole, Green Beans, Ckra, Hot Rolls, Grande Bars and Milk  
**TUESDAY BREAKFAST**  
 Gravy/Biscuit, Juice and Milk  
**LUNCH**  
 Chicken Pot Pie, Salad, Cake and Milk  
**WEDNESDAY BREAKFAST**  
 Hawaiianna Pineapple Breakfast Rounds, Juice and Milk  
**LUNCH**  
 Pinto Beans, Brussel Sprouts, Corn, Cornbread, Peach Cobbler and Milk  
**THURSDAY BREAKFAST**  
 Waffles/Sausage, Juice and Milk  
**LUNCH**  
 Beef Chalupas w/Beans, Salad, Brownies and Milk  
**FRIDAY BREAKFAST**  
 French Toast, Juice and Milk  
**LUNCH**  
 Cheeseburger, French Fries, Pineapple and Milk

### Lazbuddie Menu

SEPT. 24-29  
**MONDAY BREAKFAST**  
 Toast, Bacon, Juice and Milk  
**LUNCH**  
 Pizza, Corn, Green Salad, Pudding and Milk  
**TUESDAY BREAKFAST**  
 French Toast, Fruit and Milk  
**LUNCH**  
 Tacos, Corn, Green Salad, Fruit and Milk  
**WEDNESDAY BREAKFAST**  
 Biscuits, Sausage, Juice and Milk  
**LUNCH**  
 Chili Dogs with Cheese, Potato Chips, Pickles, Cheese, Cake and Milk  
**THURSDAY BREAKFAST**  
 Cereal & Toast, Juice and Milk  
**LUNCH**  
 Steakfingers, Potatoes & Gravy, Green Beans, Hot Rolls, Fruit and Milk  
**FRIDAY BREAKFAST**  
 Cinnamon Rolls, Fruit and Milk  
**LUNCH**  
 Hamburgers, French Fries, Salad, Cobbler and Milk  
**SALAD BAR WILL BE SERVED MONDAY THRU THURSDAY**

### Arnold Shelby Funeral Services Held At Earth

Funeral services for Arnold Shelby, 75, of Earth were held at 10 a.m. Friday, Sept. 21 in the Earth First Baptist Church with the Rev. Joe Vernon, pastor, officiating.  
 Burial was in Earth Memorial Cemetery under the direction of Parsons-Ellis Funeral Home of Earth. Shelby died at 12:10 a.m. Wednesday in the Methodist Hospital at Lubbock following a sudden illness.  
 Born June 30, 1915, in Reed, Okla., Shelby had been a resident of Earth since 1936, moving there from Reed, Okla. He was a farmer, a member of the Earth First Baptist Church,

Masonic Lodge No. 1277, A.F. A.M. in Earth and had served as Master. He married Ruby Birge on January 3, 1940 in Clovis, N.M.  
 Survivors include his wife, Ruby; and several nieces and nephews.

**Cash Rewards Up To \$1,000 For Information!**  
 Call **Bailey County Crime Line 272-HELP**

### Trinidad Sabala Funeral Services Held At Morton

Funeral services for Trinidad Sabala, 85, of Morton were held at 3 p.m. Saturday, Sept. 22 in St. Ann's Catholic Church with Father Elbert Fadallan, pastor, officiating.  
 Rosary was celebrated at 7:30 p.m. Friday.  
 Burial was in Morton Memorial Cemetery under the direction of Ellis Funeral Home of Morton. Sabala died at 2:30 a.m. Thursday in Cochran Memorial Hospital.  
 Born June 28, 1905, in Sabino, TX, she had been a resident of Morton since 1940, moving there from Coleman. She was a homemaker and a

member of St. Ann's Catholic Church. She married Espirion Sabala in 1921, in Dickens. He died in 1944.  
 Survivors include two sons, Augustin Sabala and Espirion Sabala, Jr., both of Morton; five daughters, Patsy Gonzalez of Beayard, Neb., Concha Bautista of Phoenix, AZ, Annie Flores of Muleshoe and Pilar Soliz and Dominga Arteaga, both of Morton; a sister, Benina Morales of Morton; two brothers, Fred Martinez of Morton and Niebes Martinez of Ft. Worth; 58 grandchildren; and 68 great grandchildren.

Words are the most powerful drug used by mankind. -Rudyard Kipling.  
 As fire is kindled by bellows, so is anger by words. -Thomas Fuller.

### Enochs News

by: Mrs. J.D. Bayless

Guests in the home of Mr. and Mrs. Jack Stanley Saturday was their daughter, Darlene, and husband, Alton Jones, of Shallowater Sunday. Other guests were Mrs. Stanley's sister, and husband, Audys and Dan Hovell of Hereford. The Stanleys and Novell's were dinner guests in the home of their brother, Mr. and Mrs. Bud Huff.

The rains were spotted, it ranges from three tenths to nearly four inches at Bud Huff's Sunday afternoon. I received four and half tenths of an inch.

### Immaculate Conception Catholic Church

Father Patrick Maher Northeast of City

### First Baptist Church

220 West Ave. E. Barry Bradley, Pastor

### Emmanuel Baptist Church

Iglesia Bautista Emmanuel 107 East Third Isaias Cardenas, Pastor

### Trinity Baptist Church

314 E. Ave. B. Rev. Dale Berry

### Circle Back Baptist Church

Intersection FM 3397 & FM 298 Pastor, Glen Price 946-3676

### Calvary Baptist Church

1733 W. Ave. C. Rev. Rick Michael

### Victory Baptist Church

605 West 8th James Williams, Pastor

### Progress Baptist Church

Charles Fisk, Pastor Progress, Texas

### Richland Hills Baptist Church

17th and West Ave. D. Allen Petersen, Pastor

### St. Matthews Baptist Church

Corner of West Boston & West Birch M.S. Brown, Pastor

### Progress Second Baptist Church

1st and 3rd Sunday Rev. Arthur Hayes

### Primitive Baptist Church

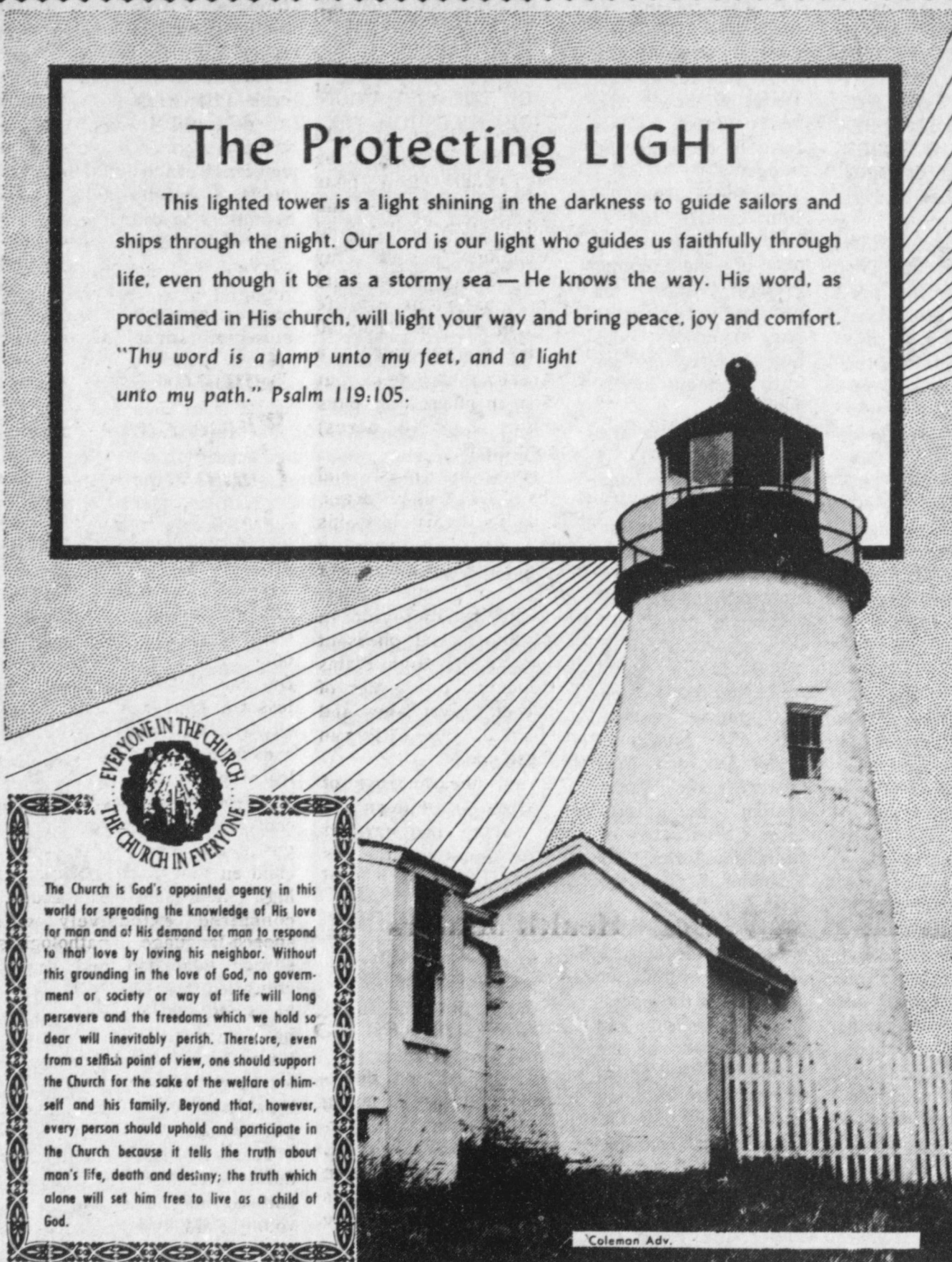
621 South First Elder Cleveland Bass, Pastor

### 1st Baptist Church

Lazbuddie, Tx. Gary Wilcox, Pastor 965-2126

## The Protecting LIGHT

This lighted tower is a light shining in the darkness to guide sailors and ships through the night. Our Lord is our light who guides us faithfully through life, even though it be as a stormy sea — He knows the way. His word, as proclaimed in His church, will light your way and bring peace, joy and comfort. "Thy word is a lamp unto my feet, and a light unto my path." Psalm 119:105.



**EVERYONE IN THE CHURCH**

**THE CHURCH IN EVERYONE**

The Church is God's appointed agency in this world for spreading the knowledge of His love for man and of His demand for man to respond to that love by loving his neighbor. Without this grounding in the love of God, no government or society or way of life will long persevere and the freedoms which we hold so dear will inevitably perish. Therefore, even from a selfish point of view, one should support the Church for the sake of the welfare of himself and his family. Beyond that, however, every person should uphold and participate in the Church because it tells the truth about man's life, death and destiny; the truth which alone will set him free to live as a child of God.

- Primera Iglesia Bautista**  
223 E. Ave. B. Roy Martinez, Pastor
- Lariat Church Of Christ**  
Sunday School 10:00 a.m. Worship 11:00 & 6:00 p.m. Wednesday Services 7:00 p.m. Sam Billingsley, Minister
- Muleshoe Church Of Christ**  
Clovis Hwy Bret McCasland, Minister 16th & Ave. D.
- Church Of Christ**  
Sunday 10:30 a.m. Evening 6:00 p.m. Wednesday 8:00 p.m. Curtis Shelburne, Minister
- Lazbuddie Church Of Christ**  
Minister, Keith Courmier Sunday School 9:30 a.m. Morning Services 10:00 a.m. Evening Services 6:00 p.m. Wednesday Night 7:00 p.m.
- First Assembly Of God**  
Rev. G. Dean Reid, Pastor Sunday School 9:45 a.m. Morning Worship 11:00 a.m. Evening Services 6:30 p.m. Mid-Week Services 7:30 p.m. 272-3984
- Spanish Assembly Of God**  
East 6th and Ave. F. Mike Doyle, Pastor
- First United Methodist Church**  
507 W. 2nd Street Richard Edwards, Pastor
- El Divino Salvador Methodist Church**  
5th and Ave. D. Jose M. Fernandez, Pastor
- United Pentacostal Lighthouse Church**  
207 East Ave. G. Rev. N.W. Thompson 272-3258
- Truth Tabernacle Pentecostal Church**  
200 E. Ithaca & Fir Pastor, Les James 272-3391

- The Community Church**  
Morton Hwy Mort Cross, Pastor 272-5992
- St. John Luthern**  
Sunday School and Bible Classes 9:30 a.m. Church Services 10:30 a.m. Rev. Mac Bearss, Pastor
- Lazbuddie Methodist Church**  
965-2121 Doug Chapman, Pastor
- New Covenant Church**  
Plainview Hwy Sunday 10:00 a.m. Wednesday 7:00 p.m. Jimmy Lowe, Pastor
- Jehovah Witness**  
Friona Hwy Jack Tiffin, Minister Warren Meeks, Minister
- Templo Calvario**  
507 South Main Sunday 10:00 a.m. Sunday Evening 7:00 p.m. Evangelistic Services J.L. Soto, Pastor
- Church Of The Nazarene**  
9th and Ave. C. Dennis Hayes, Pastor

## Attend The Church Of Your Choice!

<b>Western Drug</b> 114 Main 272-3106	<b>Wes-Tex Futures, Inc.</b> 1910 W. Amer. Blvd. 272-5585		<b>Serv-All Thriftway</b> 401 W. Amer. Blvd. 272-4585	<b>American Valley, Inc.</b> W. Hwy 84 272-4266	<b>Dairy Queen</b> 1204 W. Amer. Blvd. 272-3412
<b>Bob Stovall Printing</b> 221 E. Ave. B. 272-3373	<b>Combination Motor &amp; Salvage</b> 272-4458	<b>Farmer's Co-Op Elevators</b> Muleshoe 272-4335	<b>Bobo Insurance</b> 108 E. Ave. C. 272-4264		
<b>Main Street Beauty Salon</b> 115 Main 272-3448	<b>W.T. Services, Inc.</b> 319 E. Amer. Blvd. 272-4888	<b>Bratcher Motor Supply</b> 107 E. Ave. B. 272-4288	<b>5-Area Telephone Cooperative, Inc.</b> 302 Uvalde 272-5533		
<b>Irrigation Pumps &amp; Power</b> West Hwy 84 272-4483	<b>Wes-Tex Feed Yards, Inc.</b> 272-7555	<b>Muleshoe Lawn &amp; Leisure</b> 522 W. Amer. Blvd. 272-3162	<b>Richland Hills Texaco</b> 1914 W. Amer. Blvd. 272-4875		

18. Legals

ORDINANCE NO. 309A

An ordinance amending the code of the city of Muleshoe, Texas, by revising the charges for water service and declaring an effective date.

Now therefore be it ordained by the City Council of the City of Muleshoe, Texas:

A. THAT Article 1 of Chapter 17 of the Code of Ordinances, consisting of Section 17-10, is hereby repealed and supplanted, and shall hereinafter read as follows:

ARTICLE I.  
WATER SYSTEM  
SECTION 17-10.  
WATER RATES

a. The following uniform monthly rates shall be charged all persons, firms or corporations for the use of City water within the corporate limits of the City of Muleshoe.

1. \$6.00, which shall constitute a minimum charge.

2. For all water, not more than 10,000 gallons during any calendar month, being the next 10,000 gallons at \$1.05 per 1000 gallons.

3. For all water furnished in excess of 10,000 and not more than 20,000 gallons during any calendar month, being the next 10,000 gallons at \$1.30 per 1000 gallons.

4. For all water furnished in excess of 20,000 gallons during any calendar month at \$1.45 per 1000 gallons.

B. THAT if any section, subsection, paragraph, sentence, clause, phrase or word in this ordinance, or application thereof to any person or circumstance is held invalid by any court of competent jurisdiction, such holding shall not affect the validity of the remaining portions of this ordinance, and the City Council of the City of Muleshoe, Texas, hereby declares it would have enacted such remaining portions despite any such validity.

C. THAT this ordinance shall be effective on and after the 1st day of October, 1990, and the City

18. Legals

Secretary is hereby directed to publish the caption of this ordinance twice in the Muleshoe Journal within fourteen (14) days of its passage.

PASSED AND APPROVED THIS THE 18TH DAY OF SEPTEMBER, 1990.

/s/ Darrell Turner  
Mayor, City of Muleshoe

ATTEST:

/s/ Mary Hicks  
City Secretary, City of Muleshoe

ORDINANCE NO. 305A

AN ORDINANCE APPROVING THE ADOPTING OF A BUDGET FOR THE FISCAL YEAR BEGINNING OCTOBER 1, 1990 AND ENDING SEPTEMBER 30, 1991

WHEREAS, the City Manager of the City of Muleshoe has prepared and submitted to the City Council a budget estimate of the expenditures and revenues for the City of Muleshoe of the fiscal year beginning October 1, 1990 and ending September 30, 1991, which has been approved and adopted

NOW THEREFORE BE IT ORDAINED BY THE CITY COUNCIL OF THE CITY OF MULESHOE, TEXAS.

Section 1. That the budget estimate of the revenues of the City of Muleshoe and the expenses of conducting the affairs thereof for the ensuing fiscal year, beginning October 1, 1990 and ending September 30, 1991, as submitted to the City Council by the City Manager of said City, and as changed or amended by the City Council, be and the same is, in all things, adopted and approved as the budget estimate of all the current expenses as well as the fixed charges against said City for the fiscal year beginning the 1st day of October, 1990, and ending the 30th day of September, 1991.

Section 2. That the sum of \$1,368,176 is hereby appropriated out of the General Fund for payment of operating expenses

18. Legals

and capital outlay of the City Government, as set forth in detail in the budget.

Section 3. That the sum of \$-0- is hereby appropriated out of the General Debt Service Fund for the purpose of paying the accruing interest and redeeming the serial bonds and warrants as they mature, on the general debt service bonds and warrants as listed in detailing the budget.

Section 4. That the sum of \$635,183 is hereby appropriated out of the Water & Sewer Revenue Fund for the paying of operating expenses, capital outlay, and debt service for the Water & Sewer Revenue Fund, as set forth in detail in the budget.

Section 5. That the sum of \$287,500 is hereby appropriated out of the Capital Projects Fund for payment of the operating expenses and capital outlay as set forth in detail in the budget.

Section 6. That the sum of \$123,700 is hereby appropriated out of the Waterworks and Sewer System General Obligation 1986 Interest and Sinking Fund for the purpose of paying the accruing interest and redeeming the serial bonds and warrants as they mature, on the City of Muleshoe, Texas Tax and Waterworks and Sewer System Subordinate Lien Certificates of Obligation, Series 1986

Section 7. That the sum of \$47,500 is hereby appropriated out of the Sanderosa Well Field Fund for payment of the operating expenses and capital outlay of the Sanderosa Well Field, as set forth in detail in the budget.

Section 8. That the sum of \$18,200 is hereby appropriated out of the Hotel/Motel Tax Fund for payment of operating expenses as set forth in detail in the budget.

Section 9. That the sum of \$6,305 is hereby appropriated out of the Airport Fund for payment of

18. Legals

operating expenses and capital outlay of the Municipal Airport, as set forth in detail in the budget.

PASSED AND APPROVED THIS THE 18TH DAY OF SEPTEMBER, 1990.

/s/ Darrell Turner  
Mayor, City of Muleshoe

ATTEST:

/s/ Mary Hicks  
City Secretary, City of Muleshoe

ORDINANCE NO. 310A

AN ORDINANCE AMENDING CHAPTER 9, SECTIONS 9-5 AND 9-7 OF THE MULESHOE CITY CODE OF 1974, REVISING GARBAGE CHARGES FOR RESIDENCE AND BUSINESSES IN THE CITY OF MULESHOE AND CHARGES FOR THE USE OF THE LANDFILL.

NOW THEREFORE BE IT ORDAINED BY THE CITY COUNCIL OF THE CITY OF MULESHOE, TEXAS:

Section 1. THAT Chapter 9 of the Muleshoe City Code of 1974 is hereby amended by repealing Section 9-5 and adopting a new Section 9-5, which shall read as follows:

Sec. 9-5. Service Charge.

In order to defray the cost and expense of collective garbage, trash and rubbish in the City of Muleshoe, Texas, there is hereby levied and assessed, and there shall be charged and collected from each and every person, firm or corporation, owning, leasing, managing, occupying or operating any premises within the business and residential districts, for making such collection and removals of garbage, trash and rubbish, the following monthly service charges, to-wit:

(1) Residential service charges shall be computed according to the applicable residential category as set out below:

DESCRIPTION  
Single family residence  
MONTHLY CHARGE  
\$10.50

DESCRIPTION  
Multi-family residences or trailer houses  
MONTHLY CHARGE  
10.50 per unit

(2) The service charge per month for collection and removal of garbage and trash from houses, building and premises used for commercial and business purposes shall be computed according to the applicable category as set out in the table below:

(A) Single offices (Insurance, Real Estate, Attorneys, etc.) Auto-mobile Dealer (sales only), Barber Shop, Beauty Shop, Boot & Shoe Repair, Drug Store (small), Finance Companies, Jewelry Store, Plumbing Shops, Recreation Clubs, Service Stations, Ready-to-wear Shops, Cleaners, Radio & T.V. Repair Shops, Shoe Stores, churches, etc.--\$12.00 monthly charge.

(B) Hotel, Appliance (small), Drug Stores, (large), Hardware Store (small), Mail Order Stores, Stamp Redemption Stores, Tire Repair and Recapping, Laundries, Public Garages, Clinic, Blacksmith, Upholstery Shop, Machine Shop, Body Shops, Utility Office, Office Supply, Theaters, Bakeries, Restaurants, Post Office, Florists, Petroleum Wholesalers, etc.--\$15.00 monthly charge.



Poor Dad!

Mother announced that a prize would be given every Saturday to the most obedient member of the family during the week.

Almost with one voice the five children protested: "Oh, that isn't fair. Daddy will win every time."

18. Legals 18. Legals

(C) Appliance Dealers (large), Auto Supply (large), Department Store (small), Hardware Store (large), Variety Store (small), Implement Dealers, Meat Processing Plants, Farm Supply (feed & seed), Newspaper Publishing, etc.--\$17.00 monthly charge.

(D) Lumber Yards, Furniture Stores, Office Buildings, Banks, Department Stores (large), Variety Stores (large), Auto Sales and Service, etc.--\$19.00

(E) Special Accounts- if a customer has special conditions which require that individual container(s) be placed at a special location(s), the following rates will be charged:

Each 3 Cu. Yard Container--\$30.00  
The above charges allow for five (5) pick-ups per week. Any additional pick-ups in excess of five (5) per week will be charged at the rate of \$7.00 per pickup.

Those customers generally requiring special accounts shall include, but shall not be limited to: Grocery Stores, Schools, Motels, Drive-in Food and Drink, Hotels, Furniture Stores, Restaurants, Court House, Hospitals, Electric Co-op Associations, Seed Cleaning and Delinting, etc.

(3) The service fees herein provided for shall be billed by the City Utility Billing Department and collected from the owner, occupant, tenant or lessee in whose name the water account is carried. Where the owner, occupant, tenant, or lessee has no water account with the City, then billing for garbage and trash collection service shall be rendered to the person, firm or corporation receiving such service. It shall be the duty of the City Utility Billing Department to notify each resident user and bill them for service each month with their water bill and said bill shall be due on the 1st day of each month and payable in the same manner as the water bills are paid, and subject to the same penalties as the water bills. Failure to pay any monthly bill when due shall authorize the City to discontinue the service, and such discontinuance of the service shall not relieve any person from the duty and obligation to remove trash, rubbish and garbage at least once each day in the business districts, and refusal to so remove shall constitute a violation of this article.

SECTION 9-7. Fees for use of City disposal area.

(a) The following fees shall be charged for use of the City garbage and trash disposal area:

(1) Pickup trucks or trailers having a capacity of two cubic yards or less--\$15.00 per load.

(2) Trucks or trailers having a capacity of between two and six cubic yards--\$30.00 per load.

(3) Trucks or trailers having a greater capacity than six cubic yards--\$45.00 per load.

(b) The only persons exempt from charges for use of garbage disposal area shall be householders disposing of garbage and trash from his own family unit on which there is a sanitation charge currently being paid.

PASSED AND APPROVED THIS THE 18TH DAY OF SEPTEMBER, 1990.

/s/ Darrell Turner  
Mayor, City of Muleshoe

ATTEST:

/s/ Mary Hicks  
City Secretary, City of Muleshoe

Wayland Record Enrollment

Wayland Baptist University has posted another fall semester enrollment record with 2,082 students registered for the current term. This represents an increase of 30 students, or 1.5 percent, above the former mark of 2,052, set last fall.

University President Lanny Hall also reported records of 16,688 credit hours, a gain of 2.0 percent or 324 more than last fall's standard of 16,364, and 1,265 full-time equivalent (FTE) students, 26 or 2.1 percent ahead of last fall's 1,239.

"While we feel the Middle East crisis trimmed our rate of growth for the fall semester, we are pleased that we continue to show record growth at Wayland," said Hall, who has seen three consecutive semesters of enrollment increase since becoming WBU's 10th president in January, 1989.

"Increased enrollment indicates the confidence that parents and students continue to show in Wayland Baptist University and the quality of its programs. As we move forward into a new decade, we will strive to extend this trend of enrollment increase by offering an outstanding educational opportunity."

Plainview campus enrollment increased 2.5 percent to 908, up 22 from last fall's 886 and just 49 short of Wayland's all-time high of 957 in 1985. Plainview credit hour totals jumped 353 from 10,570 in fall, 1989, to 10,923, a 3.3 percent gain.

The number of full-time equivalent students in Plainview was also at a record high of 780, 30 more than last fall's previous mark of 750. FTE formulas, convert part-time and full-time credit hour totals to full-time only, meaning that the university has the equivalent of 780 full-time students currently enrolled.

Growth at most Wayland off-campus centers continued to be well above the three percent statewide average. The Amarillo campus led the way at 21.4 percent, followed by Lubbock at 20.2, Wichita Falls at 17.2, San Antonio at 7.1, and Anchorage, Alaska, at 4.7.

Enrollment decreased by 17 students, or 16.5 percent, in Fairbanks, Alaska, and by 37, or 26.8 percent, in Hawaii. University administrators attribute this decrease in part to the hesitancy of military personnel to enroll, given the uneasiness and uncertainty of the Middle East crisis.

"As with many of our off-campus centers, Hawaii and Fairbanks are tied closely to military installations," explained Hall. "We do not feel that these decreases in enrollment indicate waning popularity in Wayland's degree program, but rather the impact of the U.S. military presence in the Middle East."

San Antonio remains Wayland's largest off-campus center with 258 students, followed by Anchorage with 244, Lubbock 220, Wichita Falls 143, Hawaii 138, Fairbanks 103, and Amarillo 68.

NOTICE OF SHERIFFS SALE

THE STATE OF TEXAS  
COUNTY OF BAILEY

By virtue of an Order of Sale issued out of the Honorable 287th Judicial District Court of BAILEY County, on the 31st day of August, 1990 by the Clerk thereof, in the case(s) styled as follows:

Cause No.	Styling	Legal Description
5910	BAILEY COUNTY APPRAISAL DISTRICT V. JOHN W WILLIAMS, JR.	LOT 10, (NW83' OF 10) BLOCK 1, LAKESIDE #3 ADDITION TO CITY OF MULESHOE, BAILEY COUNTY, TEXAS
5982	BAILEY COUNTY APPRAISAL DISTRICT V. ERNEST HURTADO	1.13 ACRES OUT OF PART OF SURVEY 54, BLOCK 7, WD&FW JOHNSON SURVEY, TO THE CITY OF MULESHOE, BAILEY COUNTY, TEXAS.

and to me, as Sheriff, directed and delivered, I will proceed to sell, at 4:00 O'clock P.M. on the 2ND DAY OF OCTOBER, 1990 which is the first Tuesday of said month, at the EAST door of the Courthouse of BAILEY County, in the City of MULESHOE, Texas.

Levied on the 31st day of August 1990 as the property of said defendants,

to satisfy the judgment rendered in the above styled and numbered cause, together with interest, at 10 percent, per annum, and all costs of suit in favor of each jurisdiction.

GIVEN UNDER MY HAND THIS 31st DAY OF August, 1990

Jerry N. Hicks  
SHERIFF, BAILEY COUNTY, TEXAS

AIDS Tip

The debate continues to rage about how the fatal disease AIDS can be transmitted, and one is often confronted with conflicting statements by apparently authoritative experts.

What is the average layman to believe?

One recent news item which might be a help comes from the Center for Disease Control. The CDC has now classified open mouth kissing with an infected person as

"unsafe sex." That should tell one something.

Need help out on the road?  
1-800-525-5555

A message from this newspaper and the Texas Department of Public Safety

**New Cancer Risks**  
NEW YORK--High levels of cancer and lung damage have been found in the wives and children of asbestos workers and others who don't work directly with asbestos.

**New Five Pound Note**  
LONDON--Britain introduced a smaller five pound note that includes a new engraving of a gracefully aging queen and other changes to combat high-tech forgeries.

**Yeltsin On Economy**  
MOSCOW--Russian Federation President Boris N. Yeltsin promised to improve the economy in the Soviet Union's largest republic within three years.

**To Reduce Arsenal**  
COPENHAGEN, Denmark--Soviet Foreign Minister Eduard Shevardnadze said the Soviet Union is prepared to withdraw 1,500 nuclear war-weapons from Central Europe.

NOTICE

The Board of Directors of Plains Cotton Cooperative Association (PCCA) has declared a cash payout of dividends and stock retirements totalling \$9.3 MILLION plus book credit allocations. Included in the approved allocations was the 1989 crop TEXTILE MILL OPTION dividend as follows:

CASH	\$ 4.00
BOOK CREDITS	8.71
TOTAL PER BALE	\$12.71

For more information on these patronage dividends or about PCCA'S TEXTILE MILL OPTION Program, contact your local coop gin or PCCA.



Serving cotton producers since 1953

# CLASSIFIEDS 272-4536

### CLASSIFIED RATES

15 Words & Under  
Minimum Charge \$2.30  
Thereafter \$2.00  
16 Words & Over  
1st Insertion 15 cents per word  
2nd Insertion 13 cents per word

CLASSIFIED DISPLAY RATES \$1.75  
Per Column Inch

DEADLINES  
12 noon Tues.  
For Thursday Paper  
12 noon Friday  
For Sunday Paper

To receive the reduced rate after the first insertion ad must run continuously.

We reserve the right to classify, revise, or reject any ad. We are not responsible for any error after ad has run once.

### 1. Personals

**CONCERNED**  
About Someone's Drinking?  
HELP IS AVAILABLE through Al-Anon  
Call 272-2350 or 965-2870, or come to visit Tuesday and Thursday nights, 8:00 p.m. and through AA call 965-2870 or come visit Tuesday nights, 8:00 at 620 W. Second, Muleshoe.

### 1. Personals

**EARN MONEY** at home stuffing envelopes. Send a self-addressed stamped envelope to AMS, PO 839, Sand Springs, OK 74063.  
1-38s-1tp

### 3. Help Wanted

**WANTED:** Experienced machinist and gearhead man. Call (806) 238-1596 days or 238-1328 nights-after 9 p.m.  
B3-25s-tfc

**HELP WANTED**  
Full time or part time hairdressers. Come by Ana's House of Beauty.  
A3-37t-tfc

**NEED LVN** Charge Nurse for 7 to 3 or 3 to 11 shift. Excellent benefits. Apply to: Jo Blackwell, Administrator, Prarie Acres Nursing Home, 201 E. 15th in Friona, Texas 79035. (806)247-3922.  
P3-37t-4tc

**NEED RN** for director of nursing at superior rated intermediate care facility. Excellent benefits and excellent staff. Call for appointment or information. Jo Blackwell, Administrator, Prarie Acres Nursing Home, 201 E. 15th, Friona, Texas 79035 (806)247-3922.  
P3-37t-4tc

### 3. Help Wanted

**NEEDED:** LVN. Canterbury Villa in Dimmitt. Competitive salary. Call Linda at 647-3117.  
C3-37t-4tc

\*\*\*  
Challenging position for qualified person. Office Manager; Parmer County Counseling Center, Friona, Texas. General secretarial skills and high school diploma required. Management in Public relations experience preferred. Must have excellent interpersonal and communications skills and the ability to respond to crisis situations. Apply at Texas Employment Commission, 112 E. Ave. B. Muleshoe, Texas. Closing date is 5:00 p.m. Sept. 26. Ad paid for by employer.  
EEO-AAE  
C3-38t-2tc

\*\*\*  
**TOWN & COUNTRY FOOD STORES**  
We are seeking career minded individuals for part time and full time employment. Must be dependable, have good customer relations, work, learn, and contribute. Applications available at both stores. Drug test required.

### 4. Houses For Rent

**FOR RENT:** 2 bedroom, 1 bath, fireplace. Call Gene Atkins at 272-3292 or 272-5813.  
G4-38s-4tc

### 9. Automobiles For Sale

**FOR SALE:** 1977 Ford Maverick. Call 272-5234 or see at 1424 W. Ave. C.  
S9-38s-tfc

### 11. For Sale Or Trade

**TOMATOES AND GREEN PEPPERS.**  
965-2471.

**1979 R MODEL** Mack. New paint, extra clean \$9,500. 285-2127.  
S11-38s-4tc

**PIANO FOR SALE**  
Wanted: Responsible party to assume small monthly payments on piano. See locally. Call credit manager 1-800-447-4266.  
J11-35s-8tp

**FOR SALE:** 16' tandem axle Donahue grain trailer; hydrolic lift, 10,000 lb. Capacity, 5th wheel hook-up. Call 272-4708.  
P11-37t-tfc

**PIANO for sale:** Spinnet size. \$500. Call 272-3288 after 6 p.m.  
E11-36s-8tc

### 15. Misc.

**TOMATOES, peppers** and other vegetables on the 84 bypass in Littlefield. Call B.E. Turner at 385-5980.  
T15-36s-8tc

Shop  
Muleshoe  
First!

### 8. Real Estate

**FOR RENT OR SALE:** 3 bedroom house in the country. Call 946-3417.  
K8-34s-tfcs

**FOR SALE:** By owner. 24X50 metal office building on half acre. Formerly "Photography By Lonnie." Call 247-2512.  
M11-38s-2tc

**BAILEY COUNTY LAND FOR SALE**  
Owner will finance the following size blocks: 2.40 acres, 3.160 acres, 1400 acres, and 1.277 acres. Wheat, milo and cotton allotments. 1/4 circles of permanent grass. 7 Center Paved. A Sweet Cattle Set-Up.  
If interested, contact T.J. Thompson  
806-985-4487 806-925-6486  
(Day) (Night)

**HCR REAL ESTATE**  
3-1 3/4 Brick, 2 ceiling fans, large den, lots of storage space, fenced back yard, large lot.  
**Thursie Reid**  
272-5318

**BY OWNER - House** for sale or rent. 3-1-1 covered patio, big back yard. Large storage building. 806-272-3321.  
Y8-35t-4tcs

**J.B. Sudderth Realty, Inc.** REALTOR  
109 Fifth Street Farwell, Texas  
Realtors/Certified Appraisers  
Sold all our farm land-Call if you have farm land to sell.  
\*\*\*  
3200 Acres grassland and cultivated with improvements.  
\*\*\*  
Beautiful Country family home, Room for animals & pets. 15.4 Acres. 3 Bedroom, 1 3/4 Bath, Brick, 2 Car Garage, Irrigation Well with Pipe, Domestic Well, TV Dish, Fruit Trees, Box Cars, Barns, Steel Pens; Located on Hwy. Owner says sale-priced to sell.  
**J.B. Sudderth Broker.**  
**Daren Sudderth Broker**  
Master Senior Appraiser  
806-481-3288

### Bingham & Nieman Realty

116 E. Ave. C George Nieman, Broker 272-5285 or 272-5286

**RICHLAND HILLS**  
IMMACULATE 3-2-2 Brick, Cent. A&H, built-ins, FP, sunken lv. area with cathedral ceiling, ceiling fans, earthtones, storage bldg. \$50's!!!  
\*\*\*  
NICE RESIDENTIAL LOTS-\$5,000 UP...  
\*\*\*  
3-2-2 Brick, large corner lot, Cent. A&H, built-ins, basement area, & more!!!!  
\*\*\*  
PRICE REDUCED-Nice 3-2-2 Brick, Cent. A&H, FP, earthtone carpets, fenced yd. \$60's!!!!  
\*\*\*  
3-2-2 Home, heat pump, built-ins, FP, earthtone carpets, fenced yd., & more. PRICED TO SELL!!!\$30's  
\*\*\*  
3-2-2 Brick, corner lot, Cent. A&H, built-ins, FP, patio. \$60's...  
\*\*\*  
HIGH SCHOOL  
3-2 Home, remodeled, heat pump, storm win. & doors, fans, stor. bldg.; fenced yd. \$20's!!!  
\*\*\*  
PRICE REDUCED 3-1-1 Home, earthtone carpets, workshop, cellar, fenced yd....  
\*\*\*  
IMMACULATE 2-1-1 Home, Cent. A&H, nicely remodeled, storm win. & doors, fenced yd., cellar. \$20's!!!!  
\*\*\*  
2-1 1/2-1 Brick, fl. furn., Cent. Air, fenced yd., & more. \$20's!!!!  
\*\*\*  
FmHA FINANCING to qualified Buyer - 3-1-1 Brick, Cent. heat, earth-tone carpet, ceiling fans, miniblinds. \$20's!!!!  
\*\*\*  
HIGHLAND AREA  
VERY NICE 4-2-1 Brick, Cent. A&H, built-ins, earthtone carpets, util., encl. patio, storm win. & doors, grill, spktr. sys., stor. bldg., fenced yd. \$60's!!!!  
\*\*\*  
3-2-1 Brick, Cent. Heat, evap. air, fenced yard, & more!!!!

### 18. Legals

ORDINANCE NO. 306A

AN ORDINANCE LEVYING TAXES OF THE USE AND SUPPORT OF THE MUNICIPAL GOVERNMENT OF THE CITY OF MULESHOE TEXAS, AND PROVIDING FOR THE INTEREST AND SINKING FUND FOR THE YEAR 1990-91, AND PROVIDING FOR THE TIME AND MANNER OF PAYING THE AD VALOREM TAXES LEVIED.

NOW THEREFORE BE IT ORDAINED BY THE CITY COUNCIL OF THE CITY OF MULESHOE, TEXAS:

SECTION 1. That there is hereby levied and there shall be collected for the use and support of the Municipal Government of the City of Muleshoe, Texas, for the year Nineteen Hundred Ninety (19-

90), upon all property, real, personal and mixed, within the corporate limits of said City subject to taxation, a tax of \$0.6113 cents on each One Hundred Dollars (\$100.00) valuation of property, said tax being so levied and apportioned to the specific purpose here in set forth:

For the maintenance and support of the General Government OF THE City Government to be placed in the General Fund, of the total amount received, being \$0.6113 cents on each One Hundred Dollars (\$100.00) valuation of property.

SECTION 2. All monies collected under this ordinance for the specific items therein named, be and the same are hereby apportioned and set apart for the

specific purpose indicated in each item and that the Assessor & Collector of taxes, the City Treasurer and the City Secretary shall keep these accounts so as to readily and distinctly show the amount collected, the amounts expended and the amount on hand at any time, belonging to such funds, it is hereby made the duty of the Tax Assessor & Collector and every such person collecting money for the City of Muleshoe to deliver to the City Secretary and the City Treasurer at the time of depositing any monies, a statement showing to what fund such deposit should be made and from what source received. All receipts for the City not specifically apportioned by this ordinance are hereby made payable to the General Fund of the City of Muleshoe.

SECTION 3. That the ad valorem taxes herein levied shall become due on the 1st day of October, 1990, and may be paid up to and including the following January 31st, without penalty, but if not paid, such taxes shall become delinquent on the following day, February 1st and the following penalty shall be payable thereon, to-wit: if paid during the month of February, six percent; during the month of March, seven percent; during the month of April, eight percent; during the month of May, nine percent; during the month of June, ten percent; and on and after the 1st day of July twelve percent. Such unpaid taxes shall bear interest at the rate of twelve percent per annum from February 1st, 1991.

SECTION 4. All taxpayers shall be allowed discounts for the payment of taxes under the following conditions: (a) three percent (3) discount on ad valorem taxes due, if such taxes are paid ninety (90) days before February 1st; (b) two percent (2) discount on ad valorem taxes due, if such taxes are paid sixty (60) days before February 1st; (c) one percent (1) discount on ad valorem taxes due, if such taxes are paid thirty (30) days before February 1st.

SECTION 5. The taxes herein levied shall be a first and prior lien against the property upon which they are assessed and the first lien shall be superior and prior to all other liens, charges and encumbrances, and this lien shall attach to personal property to the same extent and with the same priorities as to real estate.  
SECTION 6. The liens

provided herein shall attach as of January 1, 1991.

SECTION 7. Should any part of this ordinance be declared invalid, for any reason, that invalidity shall not affect the remainder of the ordinance, which remainder shall continue in full force and effect.

PASSED AND APPROVED THIS THE 18TH DAY OF SEPTEMBER, 1990.

/s/Darrell Turner  
Mayor, City of Muleshoe

ATTEST:

/s/Mary Hicks  
City Secretary, City of Muleshoe

LEGAL NOTICE  
The city of Muleshoe will be accepting bids on new vehicles. Bids will be opened Tuesday, October 9, 1990, at 10:00 a.m. at the City Hall. Bids will be awarded at the council meeting on Tuesday, October 16, 1990 at 8:30 a.m. Specifications may be obtained in the office of the city secretary during normal business hours. The city reserves the right to accept or reject any or all bids.  
L18-2tc

ORDINANCE NO. 308A

AN ORDINANCE BY THE CITY COUNCIL OF THE CITY OF MULESHOE, TEXAS, AMENDING THE BUDGET FOR THE FISCAL YEAR 1989-90.

PASSED AND APPROVED THIS THE 18TH OF SEPTEMBER, 1990.

/s/ Darrell Turner  
Mayor, City of Muleshoe

### 3. Help Wanted

**MULESHOE AREA HEALTH CARE Center**  
NOW ACCEPTING APPLICATIONS FOR:  
★ Registered Nurse for Educational Director, Part-Time  
★ Registered Nurse for Assistant to Director of Nurses, Part-Time  
APPLY IN PERSON PERSONNEL OFFICE  
8:00 a.m. - 12:00 a.m.  
and  
1:00 p.m. - 5:00 p.m.  
Equal Opportunity Employer


### 8. Real Estate

### 8. Real Estate

### 8. Real Estate

### 8. Real Estate

**IRWIN REALTORS**  
806-792-6373 806-879-2348  
160 Acres - West of Muleshoe. Lays perfect, two wells, with lovely home. 3-3-3, large game room, loads of closets and storage, sunroom, central heat and refrigerated air, covered patio, gas grill, auto-sprinkler, fenced back yard. Nearly new shop building-much more! On pavement.

**Smallwood Real Estate**  
232 Main Muleshoe 272-4838  
  
On pavement in Country. 3 bedroom, 2 bath, large kitchen and dining area, living room, large den, and playroom. 1 acre.  
\*\*\*  
All electric energy efficient, central heat and air, 2 Bedroom, 1 1/2 Bath, living room and den, 1 car garage with storage. Corner lot.  
\*\*\*  
3 Bedroom, 2 Bath, living room and dining area, large den, utility and large play room. Corner lot. Priced to sell.  
\*\*\*  
3 Bedroom, 1 Bath, 1 car, carport, large kitchen, nice living room. Stove and dishwasher.



# Shop Us For VALUE & VARIETY

## SPECIAL SAVINGS

- FRESH LEAN BEEF
- GROUND CHUCK** LB. \$1.79
- BONELESS CENTER CUT
- CHUCK STEAK** LB. \$1.79
- BONELESS CENTER CUT
- CHUCK ROAST** LB. \$1.79
- LEAN BONELESS BEEF
- STEW CUBES** LB. \$1.99
- HEAVY GRAIN FED BEEF BONELESS
- ARM ROAST** LB. \$1.89
- JENNIE-O-HEN TURKEY
- HINDQUARTERS** LB. 49¢
- CORN KING REG./POLISH
- SMOKED SAUSAGE** LB. \$1.99
- PRICE'S PIMENTO/JALAPENO
- CHEESE SPREAD** 7 1/2 OZ. CTN. \$1.39
- PRICE'S PIMENTO
- CHEESE SPREAD** 14 OZ. CTN. \$2.39
- HASH BROWN POTATOES FROM THE FRESH MEAT CASE
- TATER PATTIES** LB. 89¢



HEAVY GRAIN FED BEEF  
BLADE CUT  
**BONELESS**  
**CHUCK ROAST**  
LB. **\$1.59**

WRIGHT'S HICKORY SMOKED SLICED  
**SLAB BACON** LB. **\$1.39**

ENRICHED FLOUR	ASSORTED PAPER	CHICKEN OF THE SEA	GRANULATED	ALL TYPES
<b>GOLD MEDAL</b>	<b>BOUNTY TOWELS</b>	<b>CHUNK TUNA</b>	<b>SHURSAVING SUGAR</b>	<b>COCA-COLA</b>
5 LB. BAG.	JUMBO ROLL	6 1/2 OZ. CAN	5 LB. BAG	2 LITER BOTTLE
<b>79¢</b>	<b>69¢</b>	<b>48¢</b>	<b>\$1.69</b>	<b>99¢</b>
	FIRST 4 ROLLS AT 69¢ EACH THEREAFTER EACH ROLL 79¢	FIRST 4 CANS AT 48¢ EACH THEREAFTER EACH CAN 59¢		

**SAVE \$2.00 AT THE CHECKOUT**  
when you buy 3 different General Mills products of those shown.  
Good week of **OCT. 3, 1990**  
Only at **THRIFTWAY/LA TIENDA**  
Supplier code **112720**

ASSTD. VARIETIES TUNA/CHICKEN/  
**HAMBURGER HELPER** BOX **\$1.49**

CORN/VEGETABLE  
**WESSON OIL** 48 OZ. BTL. **\$2.29**

**\$1.00 off ANY INSTANT QUAKER OATMEAL**

QUAKER ASSTD. INSTANT OATMEAL 12-16 OZ. BOX **\$1.99**

QUAKER ASSTD. INSTANT OATMEAL 12-16 OZ. BOX **\$1.99**

QUAKER ASSTD. INSTANT OATMEAL 12-16 OZ. BOX **\$1.99**

**SuperMoist** BETTY CROCKER ASSTD. SUPERMOIST CAKE MIXES 18 OZ. BOX **88¢**

BETTY CROCKER ASSTD. RTS. FROSTINGS 16 OZ. CAN **\$1.29**

BAKING MIX **\$2.99**

ASSTD. MICRO. POPCORN **\$1.99**

CHEERIOS 15 OZ. BOX **\$2.89**

HONEY NUT CHEERIOS 14 OZ. BOX **\$2.89**

CINNAMON TOAST CRUNCH 14 OZ. BOX **\$2.89**

TOTAL 12 OZ. BOX **\$2.89**

ICEBERG LETTUCE LB. **39¢**

SNO-WHITE CAULIFLOWER HEAD **99¢**

FRESH CRISP CELERY STALK **49¢**

CELLO PACK CARROTS 4 1 LB. PKG. **\$1.00**

GARDEN FRESH GREEN ONIONS 4 BUNCHES **\$1.00**

NEW CROP WASHINGTON DELICIOUS GOLDEN APPLES LB. **59¢**

RED RIPE **TOMATOES** LARGE SIZE 3 LBS. **\$1**

QUAKER ASSTD. INSTANT OATMEAL 12-16 OZ. BOX **\$1.99**

AJAX FAMILY LAUNDRY DETERGENT 112 OZ. BOX **\$3.99**

HEAVY DUTY DETERGENT 64 OZ. BTL. **\$2.49**

AJAX LIQUID LIQUID DETERGENT 22 OZ. BTL. **99¢**

LEMON AJAX LIQUID CLEANER 28 OZ. BTL. **\$1.99**

AJAX POWDERED CLEANSER 14 OZ. CANS **\$1.00**

SUNSHINE TRU-BLU CHOCOLATE/VANILLA/LEMON COOKIES 24 OZ. BOX **\$1.89**

FOR THE BATHROOM PAGE TISSUE 4 ROLL PKG. **69¢**

FAMILY FACIAL PUFF'S TISSUE 250 CT. BOX **\$1.39**

FACIAL TISSUE PUFF'S PLUS 150 CT. BOX **\$1.39**

SHURFINE HOT COCOA MIX 10 CT. PAK **99¢**

SHURFINE ORANGE JUICE 6 OZ. CAN **69¢**

BANQUET DINNERS KID CUISINE 6-9 OZ. BOX **\$1.59**

**SAVE \$2.00 AT THE CHECKOUT**  
when you buy 3 different General Mills products of those shown.  
Good week of **OCT. 3, 1990**  
Only at **THRIFTWAY/LA TIENDA**  
Supplier code **112720**

THRIFTWAY presents Great American Breakfasts

VELVEETA REG./EX-THICK SLICES 12 OZ. PKG. **\$1.69**

MARGARINE SPREAD PARKAY 3 LB. TUB **\$1.99**

PHILADELPHIA REG./LIGHT CREAM CHEESE 8 OZ. BOX **99¢**

LOG CABIN SYRUP 36 OZ. BTL. **\$3.69**

**FREE 1/2 GALLON SHURSAVING Homo Milk**  
at checkout when you purchase any 3 of these items:

OFFER GOOD AT THRIFTWAY/LA TIENDA STORES ONLY

TO THE RETAILER: Mail to: General Foods Corporation, P.O. Box 401, Northville, MI 48902

GORTON'S FISH STICKS 32 OZ. BOX **\$2.99**

DOWNY FLAKE WAFFLES 12 OZ. PKG. **\$1.19**

ASSORTED ULTRA SLIM FAST 15 OZ. CAN **\$5.79**

CORN CHIPS FRITOS® 12.29 SIZE **\$1.69**

HUNT'S TOMATO SAUCE 8 OZ. CANS **\$1.00**

HUNT'S TOMATO PASTE 6 OZ. CANS **89¢**

**thriftway**

**AF AFFILIATED FOODS INC.** MEMBER STORE

WE ACCEPT FOOD STAMPS... WE RESERVE THE RIGHT TO LIMIT

PRICES EFFECTIVE SEPTEMBER 23-29, 1990

EX-STRENGTH CAPLETS TYLENOL 50 CT. BTL. **\$3.49**

ORIGINAL ALKA-SELTZER 36 CT. PAK **\$2.89**

ASSTD. DEOD. GLIDE-ON ARRID 1.5 OZ. SIZE **\$1.99**

ASSTD. DEOD. SOLID ARRID 2 OZ. SIZE **\$2.49**

ASSTD. SPRAY DEOD. ARRID 4 OZ. CAN **\$2.49**

ASSTD. TOOTHPASTE ULTA BRITE 6 OZ. TUBE **\$1.19**