

WEATHER

November 26	61	22	.00
November 27	48	17	.00
November 28	61	20	.00
November 29	68	22	.00

BAILEY COUNTY JOURNAL

'The Community Of Opportunity-Where Water Makes the Difference'



Vol. 24 No. 48

10 Pages Today

Published Every Sunday at Muleshoe, Bailey County, Texas 79347

20¢

Sunday, November 30, 1986



A PENALTY ON THE WAY--It became penalty time Tuesday night, as a Mule was letting go of the basketball at Watson Junior High School, only to have it slapped down by a player from Spade. In the process, Norman Perez was slammed aside by the player from Spade. The Mules lost, but gained a lot of playing time and experience on the way to district games in the near future.

Strict Farm Program Affecting Eligibility

With the implementation of new farm programs, growers who turn highly erodible grassland into cropland without an approved conservation plan may find themselves ineligible for

the soil from blowing and preserve the natural resources," said the spokesman.

According to The Sodbuster provision of the 1985 farm bill, farmers are required to notify their local Soil Conservation Service Office prior to 'busting' our highly erodible grassland to produce agricultural commodities.

With implementation of the new law, a farmer will lose program eligibility if he farms on highly erodible land that was not already cropland from 1981 to 1985, but was cropped after December 23, 1985, and did not have a conservation plan designed to control excessive soil erosion.

Local SCS officials said according to the provision, growers could lose United States Department of Agriculture benefits such as price supports, FmHA Loans, Commodity Credit Corp. storage payments, farm storage loans or other related commodity payments, if they do not have an approved conservation plan.

A farmer considering breaking out of soil bank land or native grass should contact the SCS office and provide a legal description. Should the land be deemed highly erodible, a conservation plan can be developed within two or three weeks, said the local SCS office. "Basically, the plan will keep

Chamber Of Commerce

Christmas Parade

Set December 6

The Muleshoe Chamber of Commerce and Agriculture is reminding everyone of the Christmas Parade for December 6. Toni Eagle, manager, said parade entries are still being taken at this time.

Divisions in which awards will be presented are: floats, antique cars, and unique vehicles, riding clubs, commercial, individual riders or walkers, and mules.

Parade line-up is scheduled for 9 a.m. on Saturday, December 6, at the Boy Scouts Grounds on South Main.

Santa Claus will make his first official appearance at this time.

The CofC will be taking pictures of boys and girls with Santa Claus following the parade. The pictures will be available at a small charge. Pictures will be taken in the Southwestern Public Service building from 11 a.m.-2 p.m.

Sixth, Ninth Graders Due Spine Tests

A new statewide screening program is being offered students at all public schools according to the Muleshoe School Nurse's office.

The legislature passed a new law in 1985 that requires all sixth and ninth grade students to be screened for spinal deformities, said the nurse. Early detection of spinal curvature can prevent serious health problems, she said.

She further explained, this is a problem they may begin during the early adolescent years (from 10-14 years of age), with an estimated one in ten adolescents having some degree of abnormal curvature.

Curves that are detected early may only require periodic observation by a specialist. Moderate curves may require the wearing of a brace, which is usually supervised by an orthopedic specialist. In most cases, the need for major surgery for this deformity can be eliminated through early detection.

Spinal screening for Muleshoe high school ninth grade students has been scheduled to begin on Tuesday, December 9, for the girls and Wednesday, December 10 for the boys. Spinal screening for Watson Junior High School sixth grade students has been scheduled to begin on Thursday, December 11 for the girls and Friday, December 12 for the boys.

Children will be screened for two types of spinal deformities: scoliosis and kyphosis. Scoliosis is a condition in which the spine is twisted, causing misalignment of the upper body or lower back. This condition can worsen and lead to much pain, as well as complications of the heart and lungs.

Kyphosis is a type of spinal deformity in which the upper spine shows a pronounced 'curve.' This condition is also referred to as 'round back' and can be corrected if detected early.

State Water Board Will Propose New Water Conservation Guidelines

The Texas Water Development Board yesterday directed its staff to publish for public comment a proposed rule

change that would require Board approval of an applicant's water conservation plan before the release of Board funds to build a water-related project, but not as part of the Board's

initial commitment to provide financial assistance to build the project.

The state water plan legislation approved last year by Texas voters requires a local government applying for financial assistance from the Board to develop and implement a water conservation program.

Under provisions of the proposed rule change, an applicant would have the option of submitting its water conservation plan to the Board for approval when the application is first considered, or at a subsequent meeting of the Board after the Board has made the initial commitment but before funds are actually released.

The Board also directed that the rule amendment should allow the Board the opportunity to change the amount of its initial financial commitment to a project if the conservation plans shows that a smaller commitment is adequate.

The Board also directed its

Annual Holiday

Blood Drive

Here Tuesday

Muleshoe annual December blood drive will once again be sponsored by the First United Methodist Church on Tuesday, December 2, from 10 a.m.-8 p.m.

According to a spokeswoman from the church, "This is the time in which our community can join in what has come to be termed a 'holiday tradition.'

"The holiday season brings on an added use of blood, and because of this, large scale blood drives are needed."

She continued, "Last year's December blood drive brought in 170-plus units, which is a great response for a community our size. We hope to increase that number this year.

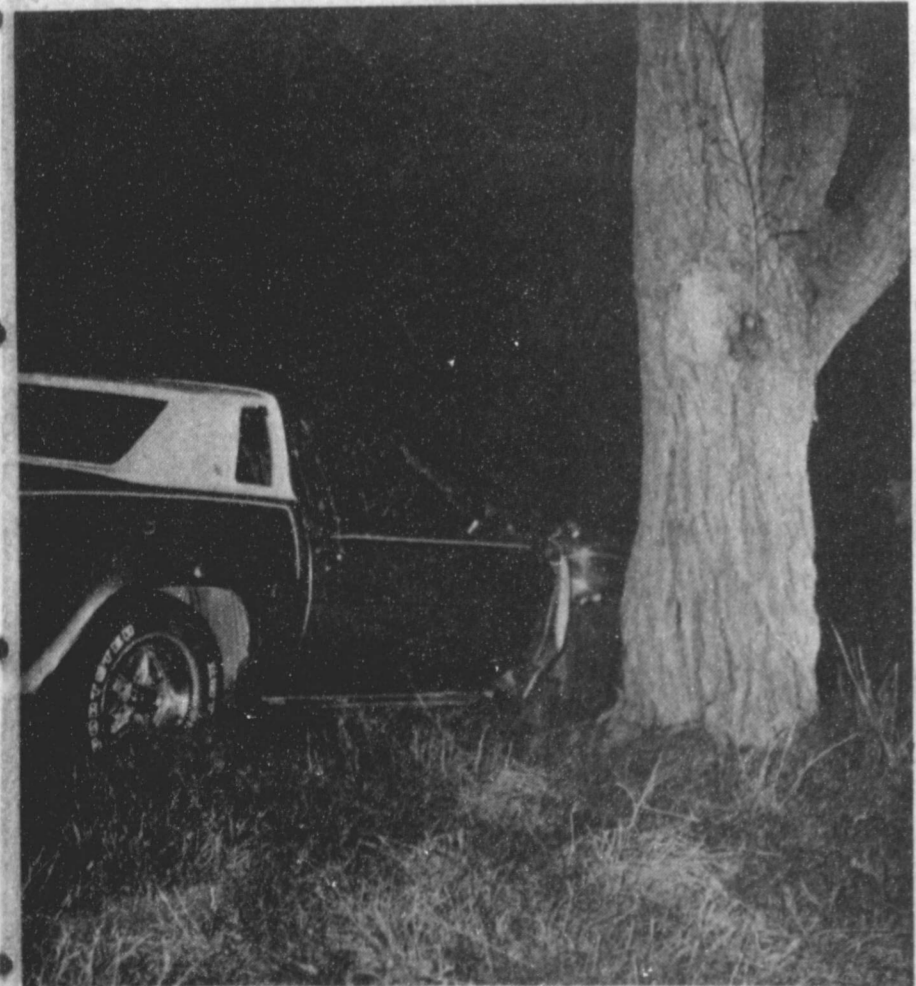
"If you have not been contacted for an appointment time and would like to donate, please call 272-5846."

AROUND MULESHOE

Rick Copp said the Lazbuddie Senior Class is sponsoring a Trap Shoot on Sunday, December 7 at 1 p.m. behind Sherley-Anderson Grain at Lazbuddie. For additional information, call Rick Copp at 965-2152.

Bailey County commissioners will be meeting in special session at 10 a.m. on Monday, December 1, in the Bailey County commissioners courtroom.

Items on the agenda will include payment of routine county bills; consider Petition for Redress of Grievances filed by Texas Rural Legal Aid, Inc., review status of Bailey County Ambulance Service and consider emergency purchase of equipment; review county treasurer report for October and review departmental reports; as well as miscellaneous items.



WRAPPED AROUND A TREE--Georgia Castorena was taken to South Plains Hospital at Amherst by ambulance following this Thanksgiving Eve accident east of Muleshoe on Highway 70. She told DPS Troopers from Littlefield that she was meeting two cars running side by side on the two-lane highway, and took to the ditch in evasive action. She lost control of her car, and wrapped the front around a tree in the ditch.

Tax Workshop

Slated Soon

At Lubbock

The Texas Agricultural Extension Service is cooperating with the Internal Revenue Service in offering many Tax Practitioner Workshops across the state, reports Spencer Tanksley, Bailey County Extension Agent.

He said 26 General Workshops will be held in all major Texas cities. The General workshop nearest Bailey County mostly on personal taxes--the Advanced Workshops' emphasis will be on business tax problems.

In addition to the General and Advanced Tax Workshops, there will be three Partnership Workshops, four Estate Planning and Tax Form Preparation Workshops, four Problem Resolution Workshops, and--new this year--three workshops dealing with Income Taxation of Trusts and Estates.

Tanksley reminded that the Tax Practitioner education program has been highly successful. He said last year, about 4,400 people participated in this state-wide series.

These practitioners reported filing more than 519,000 tax returns.

For additional information, please contact the Bailey County Extension Office at 272-4583 for a brochure explaining more about the program and registration information.



MULETTES IN ACTION IN MULESHOE--Tuesday night, the Muleshoe Mullettes took to the arena in their first home basketball game for 1986-87 against Spade. With a 2-2 season record, the Mullettes found the area of the basketball goal congested. Here, a Mulette goes for two in a crowded situation. The Mullettes are coached by Jerry Johnson. Debbie Brown is the player in control of the ball.

Stocker Cattle

Meet Slated

Here Tuesday

"Most of the stocker cattle have now been placed on wheat pasture," said Spencer Tanksley, Bailey County Extension agent. "Would you like to know how to get better gains and market heavier stocker cattle? If so, you should plan to attend a stocker cattle meeting to be held Tuesday night, December 2, at the Bailey County Civic Center, beginning at 7:30 p.m."

Dr. John McNiel, area beef cattle specialist with the Texas Agricultural Extension Service in Amarillo, will be in Muleshoe to present a program on stocker cattle nutrition, management, computer programs, and marketing outlook.

Tanksley added, "This program has been designed to assist producers in realizing more profit from stocker cattle that are grazing on wheat pasture and stubble fields.

"Producers will be able to ask any questions they would desire. The meeting is free and open to the public. We hope you will attend."



24 Shopping Days Til Christmas

SHURFINE CUT GREEN-16 OZ./
C.S./W.K. GOLD CORN-17 OZ.

VEGETABLES

4 \$1

MIX OR MATCH

SHURFINE PAPER BAG
ALL PURPOSE

25 LB. BAG \$2.99

FLOUR

69¢

5 LB. BAG



THE Holiday Season IS HERE!

- STUFFING MIX TURKEY/CORNBREAD/CHICKEN 6 OZ. BOX **89¢**
- STOVE TOP \$1.50 OFF LABEL LAUNDRY DETERGENT 147 OZ. BOX **\$5.49**
- FAMILY CHEER SHURFINE LIQUID 6 GAL. JUG **69¢**
- BLEACH SHURFINE POLY BAG POWDERED/ 2 LB. BAG **89¢**
- BROWN SUGAR SHURFINE ALL VEGETABLE 3 LB. CAN **\$1.29**
- SHORTENING SHURFINE PURE 48 OZ. BTL. **\$1.49**
- VEGETABLE OIL BAKER'S REAL SEMI-SWEET 12 OZ. PKG. **\$1.29**
- CHOCOLATE CHIPS SHURFRESH REG./WAVEE/BBQ 7 OZ. BAG **69¢**
- POTATO CHIPS SHURFINE DINNERS 5 7 1/2 OZ. BOXES **\$1.00**
- MACARONI & CHEESE SHURFINE FANCY 48 OZ. CAN **69¢**
- TOMATO JUICE SHURFINE 8 OZ. CANS **\$1.00**
- TOMATO SAUCE SHURFINE 32 OZ. BTL. **79¢**
- TOMATO CATSUP SHURFINE SALTINE 2 1 LB. BOXES **\$1.00**
- CRACKERS SHURFINE TALL 15 CT. BOX **79¢**
- KITCHEN BAGS SHURFINE 30 CT. BOX **79¢**
- GARBAGE BAGS ALUMINUM HEAVY DUTY 18 x 37' ROLL **99¢**
- SHURFINE FOIL JOHNSON'S 32 OZ. BTL. **\$2.19**
- LIQUID SHOUT ASSORTED KINDS 7 OZ. CAN **\$1.19**
- GLADE AEROSOL FRESH SCENT OR LEMON 10 OZ. CAN **\$2.09**
- DUSTER PLUS NAT. WOOD/ORIG./LEMON 7 OZ. CAN **\$1.39**
- PLEDGE POLISH FOR NO WAX FLOORS 16 OZ. BTL. **\$1.69**
- BRITE LIQUID SHURFINE RATION 15% OZ. BEEF/ LIVER OR CHICKEN 4 15 OZ. CANS **\$1.00**
- DOG FOOD SHURFINE 100 CT. BOX **39¢**
- COFFEE FILTERS SHURFINE 100 CT. BOX **\$1.79**
- TEA BAGS EVAPORATED 12 OZ. CANS **89¢**
- SHURFINE MILK SHURFINE COFFEE 16 OZ. JAR **89¢**
- CREAMER SHURFINE ASSTD. FLAVORS 2 LITER BTL. **69¢**
- SOFT DRINKS SHURFINE BLUEBERRY 13 OZ. BOX **89¢**
- MUFFIN MIX

SHURFINE ASSTD./DECORATOR
PAPER TOWELS

2 JUMBO ROLLS **89¢**

SHURFINE ASSTD./WHITE
BATH TISSUE

4 ROLL PKG. **79¢**

SHURFINE THROWN MANZ. STUFFED OLIVES 10 OZ. JAR **\$1.29**

SHURFINE WHOLE SOUR OR SWEET PICKLES 22 OZ. JAR **\$1.19**

SHURFINE SALAD MUSTARD 16 OZ. JAR **49¢**

SHURFINE SALAD DRESSING 32 OZ. JAR **89¢**

SHURFINE VAC PAK
ALL GRINDS
COFFEE

1 LB. CAN **\$2.49**

SHURFINE PURE
GRANULATED
SUGAR

5 LB. BAG **\$1.39**

HEAVY GRAIN FED BEEF

ROUND STEAK

\$1.69

LB.

SHURFRESH HICKORY SMOKED SLICED BACON 1 LB. PKG. **\$1.59**

BONELESS FULLY COOKED HAMS 93% FAT FREE 4-8 LBS. AVG. SHURFRESH HALF OR WHOLE 1 LB. **\$2.59**

LEAN BONELESS SIRLOIN TIP \$2.19

SHURFRESH SLICED MEAT BOLOGNA 12 OZ. PKG. **99¢**

SHURFRESH QUALITY MEAT FRANKS 12 OZ. PKG. **89¢**

SHURFRESH WHOLE HOG REG./HOT SAUSAGE 2 LB. \$3.47 1 LB. ROLL **\$1.79**

STEAK OR ROAST BONELESS CENTER CUT ROUND STEAK GOOCH'S GERMAN BRAND SMOKED SAUSAGE

ALL PURPOSE UTILITY RUSSET

POTATOES

99¢

10 LB. BAG

NEW CROP SWEET TANGERINES 49¢ LB.

- DUNCAN HINES ASSTD. REG./DELUXE 18 1/2-19 OZ. BOX **79¢**
- DUNCAN HINES CHOC./VAN./MILK CHOC. FROSTING RTS 16 1/2 CAN **\$1.39**
- MARSHMALLOW SHURFINE CREME 7 OZ. JAR **59¢**
- SHURFINE 10% MINI OR REG. MARSHMALLOW 2 10 OZ. PKGS. **\$1.00**
- PANCAKE MIX SHURFINE WHITE FLAKE 32 OZ. BOX **79¢**
- COCONUT SHURFINE DRY ROASTED/UNSALTED 16 OZ. JAR **\$1.69**
- PEANUTS SHURFINE MANDARIN 11 OZ. CAN **59¢**
- ORANGES SHURFINE FRUIT 16 OZ. CAN **69¢**
- COCKTAIL SHURFINE HAL/SLI. YELLOW 16 OZ. CAN **59¢**
- CLING PEACHES SHURFINE HALVES 16 OZ. CAN **69¢**
- BARTLETT PEARS SHURFINE CHUNK/CRUSH/SLICE 20 OZ. CAN **69¢**
- PINEAPPLE SHURFINE IN GLASS 64 OZ. JUG **\$1.59**
- APPLE JUICE SHURFINE CRANBERRY JUICE/ CRANAPPLE- DRINK CRAN-RASPBERRY 48 OZ. BTL. **\$1.59**
- SHURFINE PINEAPPLE JUICE 46 OZ. CAN **99¢**
- SHURFINE SPINACH 2 15 OZ. CANS **79¢**
- SHURFINE EARLY HARVEST SWEET PEAS 2 17 OZ. CANS **79¢**
- SHURFINE WHOLE IRISH POTATOES 2 16 OZ. CANS **79¢**
- SHURFINE WHOLE PEELED TOMATOES 2 16 OZ. CANS **79¢**
- SHURFINE PIECES & STEMS MUSHROOMS 4 OZ. CAN **59¢**
- SHURFINE 48 CT. MED./32 CT. LGE. ELASTIC LEG DIAPERS BOX **\$5.99**
- SHURFINE CRUNCHY/SMOOTH PEANUT BUTTER 18 OZ. JAR **\$1.39**
- SHURFINE SQUEEZE BTL. WAFFLE SYRUP 24 OZ. BTL. **99¢**
- SHURFINE LIGHT CORN SYRUP 32 OZ. BTL. **99¢**
- SHURFINE PITTED LARGE RIPE OLIVES 6 OZ. CAN **99¢**
- SHURFINE RED MARASCHINO CHERRIES 6 OZ. CAN **89¢**
- SHURFRESH COTTAGE CHEESE 24 OZ. CTN. **\$1.09**
- SHURFRESH CRESCENT ROLLS 8 OZ. CAN **89¢**
- SHURFRESH CINNAMON ROLLS 9 1/2 OZ. CAN **89¢**
- SHURFRESH LONGHORN CHEESE COLBY. CHEDDAR 10 OZ. PKG. **\$1.39**
- SHURFRESH CREAM CHEESE 8 OZ. PKG. **79¢**

HEALTH & BEAUTY

COLOGNE OLD SPICE 4 1/2 OZ. BTL. **\$4.99**

CONDITIONER/LOTION AFTER SHAVE OLD SPICE 4 1/2 OZ. JAR **\$3.69**

SHURFRESH ASSTD. FLAVORS ICE CREAM 1/2 GAL. SQUARE CTN. **\$1.39**

SHURFINE FROZEN ORANGE JUICE 12 OZ. CAN **69¢**

SHURFINE FROZEN CONCENTRATE JUICE APPLE OR GRAPE 12 OZ. CAN **69¢**

SHURFINE FROZEN SLICED STRAWBERRIES 10 OZ. PKG. **69¢**

SHURFINE FROZEN WHIPPED TOPPING 8 OZ. CTN. **49¢**

SHURFINE CUT CORN/BROCCOLI CUTS/ GREEN PEAS 16 OZ. PKG. **79¢**

SHURFINE FROZEN KRINKLE CUT POTATOES 32 OZ. PKG. **99¢**

SHURFINE DEEP DISH PIE SHELLS 12 OZ. PKG. **79¢**

SHURFRESH QUARTERS MAGARINE 3 1 LB. BOXES **\$1**

OLD FASHIONED/BUTTERMILK SHURFRESH BISCUITS 7 8 OZ. CANS **\$1**

If You Don't Buy Muleshoe You Can't Save Muleshoe

PRICES EFFECTIVE NOV. 30 thru DEC. 6, 1986

Nursing Home News

by Joy Stancell

Our heart felt thanks to our families, friends, and employees who helped make our Thanksgiving Supper a success. We feel that it was the best one that we ever had. We just can't say enough to express our appreciation to you and to the Kings Kids for their beautiful songs and Music. God bless each one of you.

The residents enjoyed the special Thanksgiving Service brought by the Progress Baptist Church Sunday afternoon.

Recent visitors of Lynn Bratcher were Mr. and Mrs. H.E. Wimberly of Amarillo, Mr. and Mrs. C.W. Wilhite and S.W. Inman.

Among those visiting Ora Roberts this week were Rosie Martin, Mrs. Blair, Connie Haight, J.D. Duncan, and Ruby Clark.

Girl Scout leaders Mary Franklin and Renee' Rudd brought their troops to visit the residents sing, and do a skit Monday afternoon. These girls have adopted a resident for a grandparent. The girl scouts visiting were, Gloria Martinez, Connie Olivas Sandy Olivas, Kristina Soto Kourtnee Magby, Amber Nickell, and April Franklin.

Our deepest sympathy goes to the families and friends of Alpha Laney, Myrtle Sullivan, and Martin Vinson.

Ruth Hall came Tues. to

Sudan Hornets Win 21-10 Over Lorenzo Hornets

by Karin Whitten
The Sudan Hornets played the Lorenzo Hornets Friday night November 7 and beat them 21-10. Sudan's Ronald Williams carried the ball 74 yards to a TD with 11:39 left in the first quarter and Adam Torres kicked a good PAT making the score 7-0.

In the second quarter Lorenzo's Rik Swetnam carried the ball 1 yard, with 5:56 left, to make a TD and Jerel Beaty's PAT was good tying the score at 7-7. Later in the second quarter Lorenzo's Beaty kicked a 34 yard FG putting them ahead 7-10.

Sudan's Brent Kirkland, with 10:47 left in the fourth quarter, ran the ball 1 yard to make a TD and again Torres kick was good and the score was 14-10. With 6:44 left in the fourth quarter R. Williams ran 64 yards to score once more. Torres' PAT was good and the score was 21-10.

Leading in rushing was R. Williams carrying the ball 27 times for a total of 254 yards. Next was John Taylor carrying the ball 10 times for 73 yards; David Wood carried 2 times for 7 yards; Donald Williams carried the ball 1 time for 4 yards; and Kirkland carried the ball 5 times for 10 yards.

Kirkland attempted 11 passes completing 5 of them for a total of 74 yards and he had 1 interception.

The Sudan Hornets' total yardage was 452 yards.

The Lorenzo Hornets carried the ball 29 times for a total yardage of 103 yards. They attempted 19 passes and completed 7 of them for a total of 110 yards and they had 1 interception. Lorenzo's total yardage was 213 yards.

visit, and have a group reading with the residents. She also brought Spudnuts to serve.

Fri. afternoon members of the Assembly of God Church came to share a Devotional with the residents. Refreshments of home made apple and pumpkin pies, topped with cream-angel food cake strawberries, and whipped cream and Hot special punch were served from a beautifully decorated table in the new dining room.

Edith Goucher was visited by Annie Floyd Mon.

Among those visiting Effie Smith this week were Curtis Shelburne, Mr. and Mrs. Scarborough, Mr. McCormick, Lula Maye Shanks, and Lana Embrey.

Roy Anzaldua from Violas Restaurant, is making pumpkin pies for our residents Thanksgiving dinner. We are unable to express our gratitude for all the kind and wonderful things our friends do for us.

Farm Debt Tax Relief Available

Farmers with taxable income from debts discharged are eligible for some tax relief.

Such farmers will not have to wait until the new tax law takes effect to complete a debt forgiveness plan, points out Dr. Wayne Hayenga, an economist and attorney with the Texas Agricultural Extension Service, The Texas A&M University System.

Under final language in the new law, the Internal Revenue Service will treat farm debt discharged after April 9, 1986, as if the farmer was insolvent. In general, that means debt relief will reduce a farmer's basis in earnings or assets down to the level of his total liabilities but won't trigger an immediate tax bill, Hayenga explains.

Thus, in most cases, a farmer who faces capital gain recognition from liquidating a farm under a restructuring plan should now get it done before year-end, advises the economist. Also, a farmer can still benefit from the old 60 percent capital gain exclusion which will be eliminated after 1986.

If a farmer is insolvent before the restructuring, he can also avoid the alternative minimum tax on capital gain, adds Hayenga. This provision applies to any sale after 1981.

The new law lifts the statute of limitations on filing an amended return if a farmer is stuck with the alternative minimum tax for post-1981 sale while insolvent.

For further details relating to the taxable income from debts discharged and to the alternative minimum tax on capital gain, Hayenga advises producers to consult an accountant or tax specialist.

If you are wise, laugh. -Martial.

Bailey County Journal USPS 040-200

Established March 31, 1963. Published by Muleshoe Publishing Co., Inc. Every Sunday at 304 W. Second, Box 449, Muleshoe, Texas, 79347. Second Class Postage paid at Muleshoe, Texas 79347.

TEXAS PRESS ASSOCIATION AWARD WINNER 1986

L.B. Hall, President & Publisher
Sammye Hall, Vice President & Controller
Cleta Williams, News Editor
Erickson Harris, Sales
Holly Millsap, Advertising
Lillie Nimo, Bookkeeping

SUBSCRIPTIONS:
Muleshoe Journal and Bailey County Journal
Bailey and surrounding counties \$14.75
Muleshoe Journal and Bailey County Journal
Elsewhere in Texas \$14.75
Muleshoe Journal and Bailey County Journal
Outside of Texas \$16.50
Yearly by Carrier \$12.50
Advertising rate card on application.

Mr. and Mrs. Shanks took Ora Roberts and D.J. Gage to the Sr. Citizens meeting at the Methodist Church Monday.

Ruby McCamish was visited this week by several of her family members. Among those were her sons, Frank and Clark McCamish.

The Pastor and his wife of the Nazarene Church came recently to have a Devotional with the residents. We thank them for coming and for the gift of the nice and inspiring book.

Census Bureau predictions about Texas' growth may prove to be wrong

COLLEGE STATION — While the U.S. Census Bureau says Texas will become the second largest state by the year 2000, a Texas A&M University demographer says it may not happen unless the state's economy picks up.

"It's going to be a close call, but it won't be what the Census Bureau says unless there's a rapid turnaround in the Texas economy and related population increases," said Dr. Steve Murdock, head of Texas A&M's Rural Sociology Department.

The Census Bureau estimates the Texas population will surpass New York by the turn of the century, making Texas and Florida the second and third most populous states in the nation. California is first.

Murdock pointed out that the Census Bureau used the growth rate in Texas between 1970 and 1982 as a basis for its projection. If the projection was based on the growth rate between 1984 and 1985, the projected population for Texas would be much lower, he said.

"Net migration, or the difference between the number of people who moved to Texas and those who moved out, was responsible for most of the growth during the 1970s and the first part of this decade, but net immigration is down significantly," Murdock said. "The present rate of growth is about half of what it was in the 1970s."

Three-Way News

by Mrs. H.W. Garvin

Rev. and Mrs. David Graves and children were in Lubbock one afternoon last week to take little David to the Dr. and they met Mrs. Graves brother and wife, Mr. and Mrs. Eddie Thomas, in town and had supper together.

Mrs. Etta Layton and Mrs. J.D. Bayless were in Muleshoe, Mrs. Layton visited her sister, Mrs. Juanita Snow, and Mrs. Bayless visited a sister-in-law, Mrs. Clara Coffman.

Mr. and Mrs. Johnny Morgan of Portales, N.M. stopped at the elevator to visit their cousins,

Mr and Mrs. E.N. McCall.

Sam Patterson, 78 of Hereford formerly of Enochs died 5:30 p.m. Sunday Nov. 23, 1986 in the Deaf Smith County General Hospital. Our sympathy to Mrs. Patterson and family.

Brittany and Monty Kirby spent Sunday with their grandparents, Mr. and Mrs. Goldman Stroud, while their parents went

to visit a friend who had a pickup accident and was in a hospital in Lubbock.

Mrs. Minnie Byers drove to Lubbock and spent the night with her daughter, Mrs. Nadean Parr, to be at the Methodist Hospital when a sister-in-law Mrs. Alene Byars of Roaring Springs underwent knee surgery Tuesday morning she spent two nights at the hospital after her surgery.

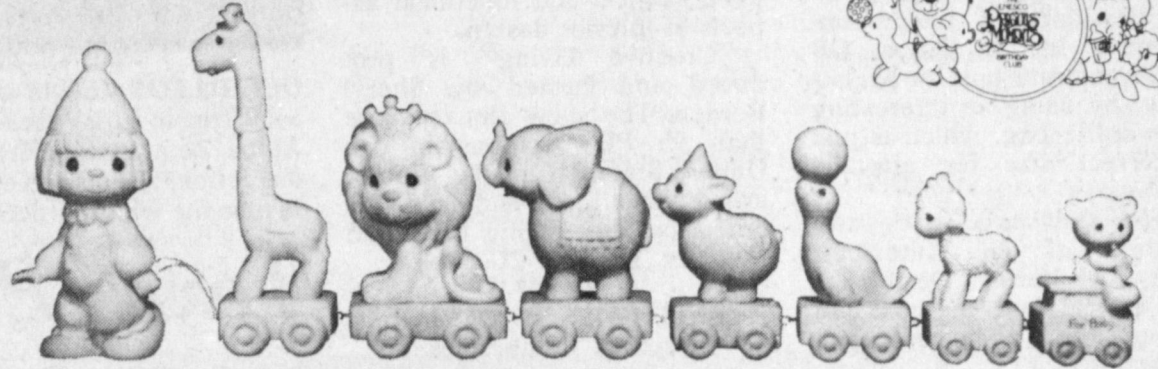
Now Taking Piano Students

Beginners-Intermediates

Call Fran Hamilton

272-4759 or 272-4663

THE ENESCO PRECIOUS MOMENTS BIRTHDAY TRAIN IS HERE!



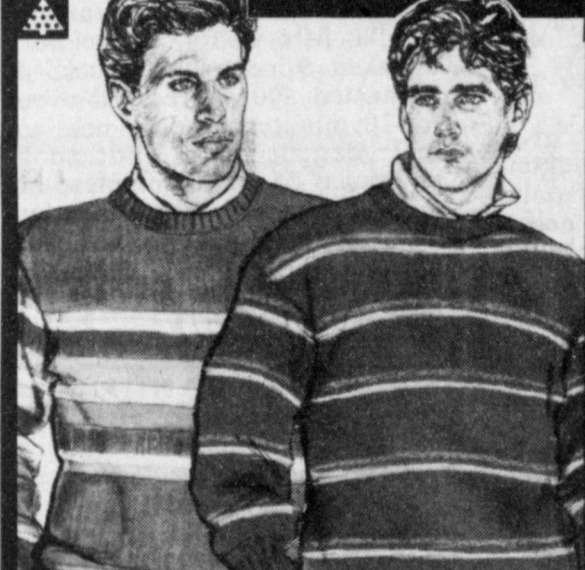
All the laughter and joy of a child's birthday is captured in Sam Butcher's inspired new PRECIOUS MOMENTS™ Collection — THE ENESCO PRECIOUS MOMENTS BIRTHDAY TRAIN. These finely sculpted circus animals and their clown leader will capture the hearts of children of all ages.

If you want to introduce your child to PRECIOUS MOMENTS, give the ideal birthday present, or just treat yourself to an exquisite new collectible. Why not stop in today and see The Birthday Train and find out about the exciting new Birthday Club.

© 1985 Samuel J. Butcher, Licensee Enesco Imports Corp., All rights reserved worldwide.

Poynor's Home & Auto
103 Main 272-4552

PRE-HOLIDAY Savings!



Save up to 35% Men's warm holiday sweaters

sale **12⁹⁷**

Reg. 19.99. Choose from a wide variety of styles and colors. All in easy care fabrics. Sizes S,M,L,XL. Selected groups of sweaters:
Reg. 24.99 Sale **17.97**
Reg. 29.99 Sale **22.97**
Reg. 39.99 Sale **29.97**



Save 40% Juniors' pull-over and woven tops

sale **9⁹⁷**

Reg. to 16.99. Look your best this holiday season with fashion tops for juniors. Choose from a wide variety of pullover and woven styles in fashion colors. Junior sizes S,M,L and 3-13.

Save 25% Fun toys for children

sale **14⁹⁷** Each

Reg. 19.99 each. Enchant kids of all ages with this musical bear that plays Christmas carols when you press his paw. Or give your child the Toddle-Tune Rocker, Easy Ride Pony or Tap-a-Tune Piano by *Time* *Tricks*®

Save 20% Walt Disney® "fur" pile throws

sale **19⁹⁷**

Reg. 24.99. Children will love the fun prints and soft warmth of these big 60x80" fur throws. Made from acrylic-polyester. Choose from "Bambi and Butterfly," "Donald Duck," and "Mickey and Minnie."

Women's Activizer™ gloves

sale **12⁹⁷**

Reg. \$20. Grandoe® Activizer™ gloves soothingly massages your hands with a blend of nylon and Lycra® spandex. Trimmed in leather with gold tone "G" clasp for dash. Assorted colors.

FREE Gift Wrapping
Gift Wrapper Will Be Present

Family Shop Night

Tues. Dec. 2

We Will Open 8 a.m. - 5 p.m.

We will Reopen 6 p.m. - 10 p.m.

We Will Have Drawings At

7 p.m. - 8 p.m. - 9 p.m.

1st, 2nd, and 3rd Drawings Will Be At 7 p.m.

For 10% Discount Off Total Purchase

20% Discount Off Total Purchase

30% Discount Off Total Purchase

4th Drawing Will Be At

8 p.m. For \$15 Gift Certificate

5th Drawing Will Be At

9 p.m. For \$20 Gift Certificate

Must Register For Drawings When Doors Open

At 6 p.m. And Must Be Present To Win!

AquaSpa

Now In Stock

Irrigation Pumps & Power Inc.

Muleshoe W. Hwy. 84 Muleshoe 272-4483 Earth Hwy. 70 Earth 257-3855

ANTHONY'S

321 Main Mon. - Sat. 8-6 Sun. 1-5 272-3478

VISA MasterCard

Creative Living

by Sheryl Borden

A display of interesting Christmas gift ideas and collectibles, a demonstration on suitcase packing, and a discussion of interior design as a career will be presented on "Creative Living" on Tuesday, December 2 at 12 noon and repeated on Saturday, December 6 at 2:00 pm. (All times are Mountain).

Observing special holiday traditions is important to most families, and it's never too late to add new traditions for your families' enjoyment. Peggy Gikas is the owner of Twin Oaks in Farwell, TX, and she will show us several collectible items, as well as lots of interesting gift ideas -- for Christmas or for anytime of the year.

We'll learn how to make suitcase packing a fun experience -- and arrive at our destination with everything we need, with few wrinkled clothes and with a real sense of accomplishment. Joanne Wallace, President of Image Improvement, Inc. in Salem, OR will demonstrate how to pack a suitcase by using an interesting double-duffle bag, which is just the correct size for airplane traveling.

We'll also talk with the President of the American Society of Interior Designers, Janet Schirn, and she will tell us how to go about selecting interior design as a career. Janet is from New York.

On Tuesday, December 2 at 9:30 pm, Cathy McCreery, home economist with Reynolds Metals Co. in Dallas, TX, will demonstrate using cooking bags in the microwave oven.

Connie Moyers, Marketing Home Economist with Southwestern Public Service Co. in Clovis, N.M. will show how to make your own homemade squeeze margarine, and save money at the same time.

Jane Kuoni, a food stylist from Chicago, IL, will demonstrate how easy it is to make food garnishes the professional way. She will use a number of different food items to demon-

M.L. Carpenter

Will Celebrate

100th Birthday

The children of M.L. Carpenter will honor him with a celebration of his 100th birthday, on Sunday, Dec. 7th in the fellowship hall of the Trinity Baptist Church. It was reported that family and friends are invited to attend the worship service at 11 a.m. and dinner will be served from 12:30 to 1:30 p.m.

Those planning to have dinner with the Carpenter family are asked to take a covered dish. The children of M.L. Carpenter will be welcoming guests until 4:30 p.m.

Carpenter was born on Dec. 10, 1886, in Wise County and has been a resident of Bailey County since 1926, moving here in a covered wagon.

strate the techniques and show how to use various garnishing tools.

Three additional topics will be presented on "Creative Living" on Thursday, December 4 at 12 noon. Jean Benson is the owner of Critter Crafts in Pasco, WA, and she has authored a Farm Journal Craft Book called *Stuffed Toys to Stitch and Stuff*. She will show how to make several stuffed toys for gifts -- for adults and children alike.

What's a party without food? We'll learn some quick, simple recipes for party foods to serve during the holidays or any time you want to make a hit with family and friends. Janel Franklin, is the co-author of a popular cookbook called *Calf Fries to Caviar*. She'll demonstrate some of her favorite party food recipes from the cookbook.

To conclude the show, Janet Schirn, President of A.S.I.D., will discuss some of the psychological and functional aspects of interior design.

"Creative Living" is produced and hosted by Sheryl Borden. The show airs on more than 95 PBS stations in the United States, Canada, Guam, and Puerto Rico, and is distributed by the Pacific Mountain Network, Denver, CO.

CALF FRIES TO CAVIAR

Caviar N' Pumpernickel

Blend together...1 pkg. cream cheese, 2 cartons sour cream, 1 bunch fresh onions, chopped fine (tops, also), Dash pepper

Have on hand...1 round Pumpernickel loaf

Cut top out of pumpernickel. Pull bread from the middle of loaf to make indentation to hold cream cheese mixture. (Reserve bread for dipping.) Sprinkle 1 jar Black Caviar over mixture inside bread. Serve with chunks of Pumpernickel and crackers.

SAUSAGE PINWHEELS

Set sausage out of refrigerator for 30 minutes for easier mixing.

Make dough of...4 cups Bisquick, 1 stick margarine, melted, 1 cup milk

Refrigerate 30 minutes. Mix together...1 pound hot Pork sausage, 1 pound regular Pork sausage

Divide dough into 3 batches. Put a batch on a floured board or waxed paper. Roll into a rectangle. Spread with 1/2 of the raw sausage mixture. Roll as for a jelly roll. Do the same with the remaining dough and sausage. Wrap each roll in waxed paper or foil. Put in the freezer or refrigerator. Bake all at one time, or just as many as you need. May also bake, and then freeze. Reheat in a warm oven or microwave.

To bake, slice 1/4-inch thick, place on an ungreased cookie sheet and bake in a preheated 350-degree oven for 15 minutes.

YIELD: 4 or 5 dozen. VARIATION: Omit 1 cup of sausage and add 1 cup grated sharp cheddar cheese.

We're of the opinion there are too many leaders for the followers available.



OFF TO LOS VEGAS---Lola Pylant, left, was the lucky winner of a \$500 trip to Los Vegas (two nights and three days) given away by Alpha Zeta Pi Sorority. The trip may be taken at Ms. Pylant's discretion. Denise Keeling, Alpha Zeta Pi member, sold Ms. Pylant the winning ticket.

Texas Pecans-- Part Of Holiday Traditions

Texas holiday baking just wouldn't be the same without Texas Pecans. Texas gives pecans as gifts, serve them at parties and bake them in fruitcakes and other holiday cooking traditions.

The Texas pecan tradition goes back a long way. Indians who roamed Texas first ate the fruit of these native trees and were helped through many a long hard winter by its supply of protein, minerals and oil. As settlers arrived, they too incorporated the rich tasting nuts into their diet. Since harvest took place during the autumn, pecans naturally became a part of the holiday traditions. This custom has continued to present time.

Many people have great family stories and traditions about pecans. Whole families would sit and crack open pecans roasting them in the fireplace. They would usually go out before Thanksgiving to gather the pecans for their holiday cooking.

This season more than 60 million pounds of pecans are being harvested. The Texas harvest will have pecans from both native and improved trees. "Improved" does not necessarily mean better. It refers to the varieties that have been developed and cultivated in recent years for the commercial market.

Native pecans originated here. More than half of this year's crop is expected from native trees. They produce a nut that is high in oil which gives pecans their rich taste. They are harder shells.

When selecting whole pecans look for nuts that are free of mold, holes or cracks. They should not rattle when shaken. A rattle indicates that the nut meat has shriveled. Shelled nutmeats should be plump and uniform in size and color.

Because pecans are high in polyunsaturated fat, they should be stored carefully to prevent shrinkage and drying out. Refrigeration and freezing helps pecans retain flavor and freshness. Whole pecans will keep two years or more when frozen. For more information on Texas pecans or a free "Get Cracking" pecan cookbook write the Texas Department of Agriculture, 3652 N. Dixie, Odessa Texas 79762.

TEXAS PECAN PIE

1/2 cups brown sugar, firmly packed
1/2 cup granulated sugar
1/4 cup water
2 tablespoons all-purpose flour

1/2 tsp. salt
2 eggs
1/2 cup evaporated milk
1 1/2 cup pecan halves
3/4 tsp. vanilla
1 unbaked 9-inch pastry shell
Combine first five ingredients in small bowl and mix well. Beat in eggs, one at a time. Add evaporated milk and mix well. Stir in pecan halves and vanilla. Mix well and turn into unbaked 9-inch shell. Cook in preheated 400 degrees F. oven for 10 minutes. Reduce heat to 350 degrees F. and cook additional 35 to 40 minutes, or until filling is puffed in center and well browned. Let pie cool before cutting.

MICROWAVE PECAN BRITTLE

1 cup sugar
1/2 cup white corn syrup
1 cup pecans
1/8 tsp. salt
1 tsp. butter
1 tsp. vanilla
1 tsp. baking soda

In a 1 1/2-quart casserole, stir together the sugar, syrup, pecans, and salt, mixing well. Microwave at high for 6 to 9 minutes until light brown. Add butter, vanilla and stir well. Microwave at high for 1 to 2 minutes more. Pecans will be light brown and syrup will be very hot. Add baking soda and gently stir until light and foamy. Pour onto lightly-buttered cookie sheet. Let cool 1/2 to 1 hour.

PTA Sponsors Santa's Workshop

Once again this year the Muleshoe PTA will sponsor Santa's Workshop. Santa's Workshop is a rare opportunity for the children to do their own shopping. Envelopes will be sent home with the children early in the week, and parents can specify a dollar amount for each gift.

The envelopes should be returned with the little shopper so he can make his own gift selections from the specified amounts. Gifts for mother, father, brother, sister, grandparents, teachers and friends may be purchased.

The idea is to allow the children to do their own shopping in secret, so the gift will be a surprise.

All proceeds will go to the Muleshoe PTA, who in turn returns the money to the

elementary school at the end of the school year.

Shopping days will be Friday, Dec. 5 for students at DeShazo and Saturday, Dec. 6 at Dillman. Shopping times at DeShazo will be conducted during gym classes, with a preview day on Dec. 4.

Both Dillman and DeShazo students may shop Saturday morning at Dillman from 9 a.m. to noon.

Parents who would like to preview gift selections may go by Dillman gym Friday afternoon after 3 p.m.

"We would encourage all children to come and participate in the shopping adventure," says Kay Graves PTA president. "Each child who shops will receive a free gift. Children that have specially marked envelopes will receive five or ten percent off their total purchase price."

Miss Carroll, Richardson

United In Marriage

Laura Lynn Carroll and Gari Donald Richardson were married on Saturday, Nov. 8 in the home of the bride's aunt and uncle, Rev. and Mrs. Lindell Ferguson in San Antonio. The Rev. Ferguson officiated.

Mr. and Mrs. Almon R. Carroll of Victoria are the parents of the bride. Richardson's parents are Mr. and Mrs. Leland Boyd and Jack Richardson of Pinedale, Wyo.

Mr. and Mrs. Richardson will reside in Austin.

Best of Press

Wisdom

The sum of wisdom is that time is never lost that is devoted to work. —Grit

Work Saver

Tomorrow has been defined as "today's greatest labor-saving device." —Record, Columbia, S.C.

Interesting

You'll never witness a more exciting and unpredictable race than the human. —Opinion, Decorah, Ia.

Out Patient After Hours Clinic

Provided By Doctors Of Muleshoe For

The People Of The Muleshoe Community

Open Monday-Friday 6 p.m. 11 p.m.

Saturday-Sunday 1 p.m. - 9 p.m.

Services Began

Friday, Nov. 14, 1986

Muleshoe Family Medicine Clinic

701 S. 1st.

Muleshoe

272-7531

Physicians Attending:

Dr. Bruce Purdy

Dr. Jack McCarty

Dr. Homer Allgood

Dr. Enrique Muyschondt

All Services Strictly Cash

Ed Scarbrough

Is now handling

all Hochheim Prairie Farm Mutual

& Casualty Insurance

formerly handled by Barbara Scarbrough.

For More Information Call:

Ed Scarbrough

806-293-5485

Introducing

Michelle Lane

Is Now Associated With

Main Street Beauty Salon

She Specializes In Hair Cuts,

Styling, Color & Perms.

All Friends & Customers Are

Invited To Call Or Come By.

Helen Lopez, Jose Gonzalez, Sherry Pugh

Sherry Wisian

Main Street Beauty Salon

112 Main

272-3448



ON PUBLIC TV!

A Holiday Prelude

Friday, Dec. 5th—Sunday, Dec. 14th
on KENW-TV, Channel 3 during
winter pledge week.

Music... From Country to Big Bands...
Musicals... Dance... Classical

Public Affairs • Business • Drama
Holiday Foods & Decorating
Nature • Documentaries

"Judy Garland: The Concert Years" Fri., Dec. 5th, 9:00 pm & Sun., Dec. 7th, 3:00 p.m.

Hank Williams in "A Country Music Special" Sat., 6th, 7:00 pm

"Christmas at Pops" Tues., 9th, 8:30 pm

"The Nutcracker" Ballet Wed., 10th, 7:00 pm

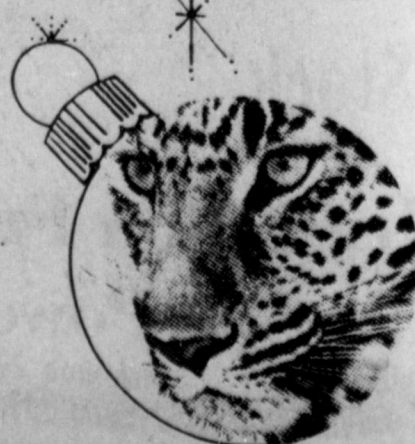
"Benny Goodman: A Tribute" Sat., 13th, 7:00 pm

kenw 3
EASTERN NEW MEXICO UNIVERSITY
PORTALES, NM

Help Keep Public TV the Best!

Call & become a KENW-TV "Friend"

NM 1-800-432-2361 TX 1-800-545-2359



Across The Fence

By Deana Finck

County Extension Agent

More than 465,000 Texas families include an employed mother with children under age six. The numbers of employed women will continue to increase as more women become wage-earning partners in dual income marriages or the sole in single parent families.

While the number of working mothers has increased, the availability of quality child care has not kept pace.

Child development experts characterize quality child care as that which provides small groupings of children; the service of trained caregivers; a high staff to child ratio, especially for infants; continuity of caregiver-child relationships; and a healthy, safe and developmentally appropriate environment. Many child care situations are lacking in one or more of these standards for quality.

When parents can find quality child care, then the issue becomes one of affordability. The cost of child care varies according to the community, the location and the type of care available.

One national study found the average cost in a child care center ranged from \$50-\$60 per week for full-day care for children ages three to five. Care for infants and children under three usually costs more because it requires additional staff. Child care providers are faced with the increasing costs of staff salaries, facilities, food, program materials, and insurance, so fees are not likely to remain stable. Families in financial need are less likely to be able to afford quality child care when they need it the most.

The child care crisis is occurring because more working families want and need quality child care that is affordable. When it's not available, we all lose. The community loses the buying power of the employed mother who may have to leave

Toys For Tots

Sponsored By

Young Homemakers

The Sudan Young Homemakers are again sponsoring the "Toys For Tots" program this year and boxes will be set up at the First National Bank in Sudan and Higginbotham Bartlett Lumber Company on Main Street.

They are asking for good toys or new toys but reported that cash donations will be happily accepted also, to help purchase new toys.

The toys will go towards bringing a happy Christmas to needy children in Sudan from birth through school ages.

If you wish more information on this project or other ways to help you are asked to call Pam Maxwell at 933-4419 or Julie Rigsby at 227-2245.

work to care for her child. Business experiences increased labor costs due to work interruption, absenteeism and turnover among working parents. And most critically, young children do not receive what they need for healthy growth and development.

Crowson Family

Honored

With Reception

Mr. and Mrs. Sammy Crowson and family were honored recently with a reception held in the community room of the Sudan First National Bank.

The serving table was covered with a beige linen cloth and accented with a "money tree", which was a gift to the Crowson family from the hostesses and other residents of the community.

The Crowsons will soon be moving to Littlefield where he was recently promoted to office manager at SPS.

Hostesses for the event were Julie Rigsby, Lisa Walser, Mechelle Edwards, Susan Donnell, Ann Gaston, Jonelle Bandy, Jodee Tennyson, Ruth Lance, Kim McClanahan, Linda Summer, Kay Wiseman, Denece McDonald, Mary Ann Gordon and Gloria Humphreys.



MARTIN CAMARILLO

Martin Camarillo

Named SHS

Student Of Month

Martin Camarillo, son of Jesse Camarillo, was chosen as the Sudan High School October student of the Month. He is a senior at Sudan High School this year and is active in the drafting aspects at SHS.

Camarillo was chosen because of his conduct in class-toward teachers and other students. The teachers chose him because he was outstanding in this area.

He has been very active in track for three years. He has also been active in the Industrial Arts Club for two years. Camarillo is a member of the Sudan Church of Christ.

Baby Shower Honors

Mrs Dyke Gaston

Mrs. Dyke (Ann) Gaston was honored with a baby shower Saturday in the home of Mrs. Julie Rigsby.

The serving table was covered with a blue cloth and accented with two teddy bears and other baby toys.

Breads, fruit plate, hot punch and coffee were served from crystal and brass appointments.

A&M booklet can help significantly reduce landscape water usage

COLLEGE STATION — Homeowners and groundskeepers can reduce water use on lawns and parks by as much as 25 to 40 percent by following the advice of scientists at Texas A&M University and the Texas Agricultural Experiment Station (TAES).

"The landscape areas around homes, businesses and institutions are good places to begin curtailing water uses," said Dr. Wayne Jordan, director of the Texas Water Resources Institute, who believes that more than a fourth of all water currently applied to urban landscapes may be wasted.

The institute has released a new publication entitled "Water Conservation in Urban Landscapes" offering advice on reducing the waste.

Mindy Humphreys, niece of the honoree, assisted in opening of the gifts and Pam Humphreys, sister of the honoree, registered the gifts.

Other Special guest included: Mrs. Olin Nix of Sudan, mother of the honoree; Mrs. Mary Gaston of Earth, mother-in-law of the honoree; the honoree's sisters-in-law, Mrs. Shelly Keeli and Keeli and Mrs. Roberta Thompson and Arielle, all of Lubbock, and also Judy Lounsbury of Amarillo, Jam McCrary of Littlefield, Donna Green of Muleshoe and Mrs. Shawni Nix and Melissa of Sudan.

The hostesses gifts were two car seats and a diaper pail.

Hostesses for the occasion included: Carolyn Crowson, Patsy Fisher, Marley Hall, Jimmy Humphreys, Nell Lane, Doris May, Denece McDonald, Kim Messamore, Pam Morris, Margaret Williams, Gloria Humphreys, Neil Klemm, June Pierce, Mandy Chester, JoAnn Chester and Julie Rigsby.

WMU Weekly Meeting

WMU of the Trinity Baptist Church met Tuesday, Nov. 25 at the church for Bible study. Wenona Spears led the opening prayer.

The lesson for the day was on "He Strengthens My Gift" with each one present taking part in the Royal Service.

Those present included Rosie Martin, Ms. Spears, Eva Ashford and Pearl Dunlap. Ms. Martin dismissed the group and Ms. Spears reported that they had a very good time.

Next week's program theme will be We Must Make Christ Known.

The Creamiest Fudges You've Ever Tasted

America is going "goat gourmet." Goat milk is fast becoming America's number one gourmet food. Recipes using goat milk impart a creamy texture and subtle shading of flavor unlike anything else you've ever tasted. It is a delicious and versatile cooking ingredient and can be substituted for cow's milk in any recipe.

Nutritionally, goat milk provides more calcium, vitamin A, potassium, phosphorus and niacin than cow milk and it is lower in cholesterol. Because goat milk is easier to digest, it also increases the absorption of nutrients. To receive a copy of "The Goat Gourmet," featuring delicious recipes and nutritional information, send \$1.00 for postage and handling to: Jackson-Mitchell, Box 5425, Santa Barbara, California 93150. Goat milk is available in supermarkets, health food stores and drug stores.

Here are two fudge recipes made with goat's milk that are delicious and different.

Creamy Marshmallow Fudge

2 cups sugar
5 fluid oz. Meyenberg Evaporated Goat Milk
16 large marshmallows
1/4 tsp. salt
1 cup (6 oz.) semi-sweet chocolate chips
1/2 cup chopped nuts (optional)
1/4 cup butter
1 tsp. vanilla
Butter bottom and sides of 9-inch square pan. In heavy saucepan, combine sugar, evaporated goat milk, marshmallows, and salt. Heat mixture over medium heat until boiling, stirring constantly. When bubbles cover entire surface, continue to boil 5 additional minutes, stirring constantly.

Remove from heat, and beat in chocolate chips, nuts if desired, butter, and vanilla. Continue to beat until chocolate is completely melted. Spread mixture into buttered pan. Chill until firm. Keep refrigerated until ready to serve. Makes 6 squares.

Peanut Butter Fudge

1 cup golden brown sugar,

Sudan Young

Homemakers

Host Tea

On Sunday, Nov. 9 the Sudan Young Homemakers hosted a tea for the members of the Sudan FHA.

Punch and cookies were served from a table decorated with fall colors.

FHA members present included: Brenda Newman, Brenda Testerman, Karen Whitten, Mitzi Glasscock, Kay Lynn Gordon, Linda Wiseman, Gina McKillip, Melanie McKillip, JoAnn Wooley and Nicole Newsom.

Young Homemaker members attending were: Kathy Gatewood, Ann Gaston, Deanny Humphreys, Pam Maxwell, Ann Carson, Julie Rigsby, Denece McDonald and June Pierce, who is sponsor for both organizations.

On Monday Nov. 3, the group met for their regular meeting at the community room of the First National Bank. A program on holiday cooking was presented by Christey Waters from Southwestern Public Service Company.

Guests present included: Gwen West, Anna Kinnie, Angie Carson, Norma Burnett, and Rita Conley. Members present were: Ann Gaston, Julie Rigsby, Ann Carson, Pam Maxwell, Denece McDonald, June Pierce and Kathy Gatewood.



packed
1 cup granulated sugar
3/4 cup Meyenberg Evaporated Goat Milk
1 Tbs. light corn syrup
Dash salt
1/2 cup creamy peanut butter
1 Tbs. butter
1/2 tsp. vanilla
Combine sugars, evaporated goat milk, corn syrup, and salt. Mix well.

Place on medium heat and bring to boil. Place thermometer in mixture and cook, stirring occasionally to 236°F (soft ball stage).

Remove from heat and add peanut butter and butter. Cool to luke warm 115°F without stirring. Add vanilla and beat until it thickens and begins to lose its gloss. Pour into buttered 8-inch square pan. Cool and cut into squares. 49 pieces, about 1 1/4 lbs.

ABOUT YOUR HOME

To stimulate the formation of flower buds on Christmas cactus, allow to dry considerably between waterings this month.

Does your camper need winterizing? Remove bedding, clothes and food. Drain all water and add antifreeze (as recommended by dealer) to toilet, holding tank and sink traps.

Be sure to clean off any accumulated dirt and rub the metal parts with oil to prevent rusting before storing your small yard tools.

Walking briskly is an excellent exercise. It can be most enjoyable at this season when mother nature has displayed so much beauty.

For Your Ben Franklin Shopping Better quality for less
2104 W. Amer. Blvd. 272-3855
Weekdays Hours 8 a.m. - 9 p.m. Sunday 12-5:30
SPECIAL GIFT SELECTIONS

Gold Star w/Wireless Remote Control VCR \$299.99	Black/White Gold Star TV \$599.99 13 inch
Savings up to \$97.50 Namebrand Men & Womens Watches 50% off	Fashion Watches Lorus Wristers \$9.99 Reg. \$24.95
Lynx 35 mm W/ Electronic Flash Neckstrap Case Included Camera \$1288	AnSCO Disc Camera HR10 \$999
Boys Huff Racing 10 BMX 20" Bicycle \$599.99	Kraco Auto Sound System Am/Fm 5" Slimline speakers Stereo Cassette \$69.97
50 Sq. Ft. Gift Wrap 99¢	16 Tunes Musical Christmas Bear \$15.97 Heart Lights Up
Canadian Pine Christmas Tree \$37.97 6 1/2 Ft	Boxed Christmas Cards 20 cards per box w/ matching envelopes Cards \$2.99

A&M FivePoint
\$9.00 50 Lb. Bag
HI PROTEIN DOG FOOD
• A 26% crude protein dog food
• Formulated for hard working dogs
• For Peak conditioning and performance.

Dr. Carol D. Haire cordially invites you and your guests to an Open House to celebrate the opening of the new Haire Speech, Language, and Learning Center at 1925 Hospital Place, Abilene, Texas 79606 on Sunday, December 7, 1986 from 2:00 p.m. until 4:00 p.m. (915) 691-5190

Public Notice
Those Who Have Had Their Prescriptions Filled At West Plains Pharmacy.
You Can Now Get Those Prescriptions Refilled At Damron Drug.
Call Sam At 272-4210
Damron Drug
In Business In Muleshoe Since 1932

Kidd Named To Cooperative State Board

Hubert Kidd, general manager of Five Area Telephone Cooperative, Inc., headquartered in Muleshoe, has been elected to the Board of Directors of the Texas Statewide Telephone Cooperative, Inc.

Kidd was named to the position during the organization's annual fall meeting in Galveston.

"We are pleased to have an individual of Hubert's talent and abilities serving with us on the TSTCI Board of Directors," said Bob Hackett, president of the organization.

"Hubert's expertise in rural telecommunications will be of tremendous assistance in helping us to provide leadership with our state organization for the protection of quality telecommunications services to the rural areas of Texas," he added.

TSTCI is an organization of 35 of the state's small telephone companies and cooperatives which serve primarily the vast rural areas of Texas. It was formed several years ago to provide joint resources and representation.

They make joint appearances before the Public Utility Commission of Texas, as well as on the federal level in Washington, explained Hackett. They address legislative agendas on matters which affect rural telecommunications.

"TSTCI is prepared to take the lead to insure that rural America is not left behind in the rapid advancement of technology," concluded Hackett.

"Hubert's being named director, will lead to TSTCI the expertise that he possesses on rural telecommunications. With assistance from leaders like Hubert, TSTCI will be able to insure continued quality telecommunications service into the rural areas of Texas and the nation."



EMPLOYEE FOR NOVEMBER--Dolores Harvey, left, was named Employee of the Month for November by the Muleshoe Chamber of Commerce and Agriculture, with the plaque and certificate being presented by CofC president, Charles Moraw. Mrs. Harvey, who has been an employee of Decorators Nursery and Floral for nearly 14 years, and her husband, Charles, are the parents of five children.

Farm Program

Cont. from Page 1.

cotton, peanuts or potatoes, which may be grown for one-third of the time.

In the second practice, crop residue management, emergency tilling may be required to bring clods up and keep the soil from blowing.

Also, farmers who apply for USDA benefits must certify they have not broken out highly erodible land for the production of agricultural commodities, since December 23, 1986.

Growers who are farming highly erodible land, have been encouraged to sign up with the Conservation Reserve Program, where they, in effect, rent their land to the government and keep it out of production for 10 years.

Those farmers who were accepted into the 1986 CRP have already put their land out of production, and those for the 1987 program will harvest this

year's milo crop then retire their land from production for 10 years.

Participants in the CRP cannot graze their land, and must convert the total acreage signed up to grassland. Growing of wheat or milo to protect the land is allowed, but the crop cannot be harvested.

Lease of the land for hunting is the only way the participant can derive any revenue from CRP acres.

In the future, farmers who have entered into the CRP will be required to comply with a required conservation plan before putting their land back into production at the end of the 10 year lease.

Conservation plans for dryland are expected to be easier to develop, because much of the required residue is turned under or destroyed on irrigated land.

Additional information on the conservation programs can be obtained by contacting the Blackwater Valley Soil and Water Conservation District office at 111 E. Ave. D., phone 272-5124.

Coming Soon:

Custom Homes For You:
1750 SQ FT Brick 3 Br- 1 office;
2 1/2 Bath; 2 car garage;
Fireplace \$62,800 + Lot; VA; FHA;
Conventional 10 yr. HDW
Warranty-Achievement Homes,
Inc. 745-0234

STATE CAPITAL



HIGHLIGHTS

By Lyndell Williams
TEXAS PRESS ASSOCIATION

AUSTIN--During the last weeks of the campaign, Mark White often warned black voters that Bill Clements would effectively do away with two black colleges by merging them with other schools.

Now it appears that White's people are pushing ahead with a program they accused Clements of hiding, and it promises to become one of the key irritants during the next session of the Legislature, and one that could wind up before the Supreme Court if the battle is waged hard enough.

Larry Temple, chairman of the Select Committee on Higher Education and appointed by Mark White, last week recommended three university mergers to save state dollars.

Temple wants to merge Texas Southern University with the University of Houston system, Texas Woman's University with North Texas State University in Denton, and Corpus Christi State University with Texas A&I in Kingsville.

Already, members of the Black Caucus are circling the wagons to defend predominantly black Texas Southern, a school created in 1947 under the old "separate-but-equal" doctrine.

Panel Divided

Temple waited until after the election, but he may not have the votes on the panel, which will grapple with his plan this week.

Guidelines...

Cont. from Page 1

staff to include in the rules a requirement that a member of the Board's water conservation staff meet with a potential applicant in the pre-application process.

The changes in the water conservation requirements were suggested by the Board's staff in an attempt to help streamline the application process. The staff attempts to provide loan commitments to local governments as soon as possible to avoid delaying the construction of needed water supply and wastewater treatment projects.

At yesterday's meeting, Board Chairman Thomas Dunning stressed the Board's continued belief that water conservation will play a vital role in helping Texas meet its increasing demand for water.

The plan is opposed by TWU. Some black officials who want to protect TSU's heritage are also fearful that someone is waiting in the wings with a plan to integrate Prairie View A&M, their other predominately black state college, deeper into the Texas A&M University System.

Temple may have an ally in powerful state Rep. Wilhelmina Delco, D-Austin, because she has tentatively pointed out some of the benefits the merger may bring.

Fund The Promise?

Delco, who chairs the House Higher Education Committee and is considered the most powerful black on that side of the Capitol, said the merger could enhance TSU's role in urban education.

But she wants the Legislature to come up with the bucks to fund the promises that come with a merger.

Delco knows that for years other legislators have tried to close TSU on the grounds it perpetuates segregation, and they will try again.

She defends Texas Southern and Prairie View as no more racist than The University of Texas and Texas A&M.

The possibility exists that in the next battle for college appropriations, the two schools could fare poorly and might be better off funding-wise if the mergers occur.

Other Highlights

• Texas Attorney General Jim Mattox filed a lawsuit last week to stop the U.S. Forest Service from tree-crushing a 2,600-acre portion of national forest near Huntsville.

The feds plan to burn the pine-beetle infested area with a napalm-like gel and replant with pine trees.

Mattox said that would destroy the unique plant and animal life there.

• Texas Land Commissioner Garry Mauro disputes a recent court ruling in the lawsuit involving Mobil Oil Co. and South Texas oil leases. He may go to the Texas Supreme Court with it.

The appellate court gives \$2 million to Exxon Corp. and rancher Clinton Manges instead of the state Permanent School Fund.

Mauro and Mattox also plan to retrieve millions in oil royalties from investors who failed to pay the state its share.

• Supreme Court Chief Justice John Hill said a poll of the state's lawyers and judges shows they favor repealing the present system of electing judges along political party lines, but do not demonstrate support for an appointment system favored by Hill.

• Texas unemployment jumped to 9.5 percent in October, while the national rate remained stable at 7 percent.

PERRYS

Movie Rental Center

SAVE 75¢

when you buy two

KODAK Video Cassettes



Regular Price for 2	10.00
Sale Price	8.88
Coupon	-.75
YOUR PRICE for 2	8.13



75¢ MANUFACTURER'S COUPON EXPIRES 75¢

SAVE 75¢

when you use this coupon to buy two KODAK Video Cassettes at (DEALER NAME).

CONSUMER: Redeem this coupon ONLY by purchasing KODAK Video Cassettes (I, either VHS T-120 or BETA L-750 size with coupon value deducted from retail selling price. Coupon may not be reproduced. Void if transferred to any person, firm or group prior to store redemption. You pay any sales tax. Any other use may constitute fraud. LIMIT ONE COUPON PER PURCHASE. Cash value 1/20 of 1¢. Offer good in USA only.

RETAILER: Eastman Kodak Company will reimburse you for the face value of this coupon plus \$4 handling allowance provided you properly redeem it on your retail sales of KODAK Video Cassettes. Coupon reimbursements are not to be deducted from Eastman Kodak Company invoices. Upon request you must furnish proof-of-purchase of sufficient product to cover all redemptions. Coupon is void where taxed, prohibited, or restricted by law and may not be assigned or transferred by you. Customer must pay any applicable tax. Failure to observe terms for proper redemption may void all coupons submitted or constitute fraud. For redemption mail to: KODAK Video Cassettes, P.O. Box 730228, El Paso, TX 79973. Copies or facsimiles not accepted. Coupons should be redeemed no later than February 28, 1987.

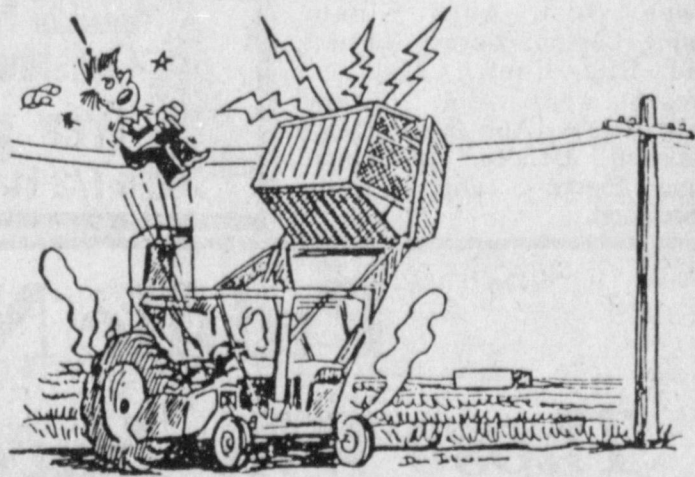


41771 102443

LOOK UP AND LIVE!

Cotton harvest is here and the Coop urges extreme caution when operating farm equipment near electric lines.

In recent years, many incidents have involved cotton module builders. The extended portion of the cotton module builder can easily come into contact with overhead electric lines if the operator is not careful. The same problem exists with overhead baskets on cotton strippers.



We urge farmers and their employees to be alert to these potential hazards and take every possible precaution to avoid serious injury or death. When moving a module builder, be sure the packer arm is lowered as far as it will go. When using a stripper with an overhead basket, be sure to check for overhead lines before dumping.

If some piece of equipment does contact these 7200 volt overhead lines, it is important that you or the operator not try to simply back away.

The line could break, or if it is already broken it could tangle in the equipment and break again, compounding the problem and increasing the danger.

Jump clear of the machine, being sure not to touch the ground and the machine at the same time. Move quickly away at a right angle to the power line. Then call Bailey County Electric Cooperative at (Area Code 806) 272-4504 whether the line is broken or not.



Lower packer arm as far as it will go before moving module builder.

Bailey County Electric Cooperative Association

Muleshoe, Texas

Morton, Texas



A Clogged Fuel Injector Or Dirty Carburetor Can Cost You Time And Money.

Clean Up!

SUPERCLEAN™ UNLEADED GASOLINES

The Clean-Up and Keep Clean Gasolines



Available At:

Western "66" Co.

Earth Hwy.

Muleshoe

Card Stop At 715 W. American Blvd. And Needmore

Call 272-4552 For Farm Delivery

Ten Commandments Of Firearm Safety

Accidents with firearms don't just happen. They are caused by ignorance, carelessness or disregard for safety rules.

With hunting season at hand, now is a good time to review firearm safety rules, says Spencer Tanksley county Extension agent with the Texas Agricultural Extension Service, The Texas A&M University System.

He lists these "Ten Commandments of Firearm Safety:"

1. Treat every gun with the respect due a loaded gun.
2. Watch that muzzle! Be able to control the direction of the muzzle even if you should stumble.
3. Be sure the barrel and action are clear of obstructions

New heat-pump system could reduce energy use by as much as 60 percent

COLLEGE STATION — Replacing watt-eating electric heaters and air conditioners with a new type of earth-coupled heat pump system can save on energy costs, a Texas A&M University project has demonstrated.

William H. Aldred, associate professor of agricultural engineering, has operated an earth-coupled water-source heat pump for more than a year, using it to heat and cool a campus classroom. The system uses water, circulated through closed-looped pipes, called heat exchangers, to extract heat energy from the earth during the heating cycle and inject heat into the earth during the cooling mode. The plastic pipe heat exchangers are installed in a bored hole 225 feet deep.

"The typical energy consumption could be reduced by 40 to 60 percent when earth-coupled heat pumps are installed in homes and buildings that must otherwise rely on an electric resistance or LP-gas furnace for heating," he says. They have a higher cooling efficiency than conventional air conditioners and could reduce energy consumption by 10-30 percent, as well, he said.

Water-source heat pumps are more efficient than air-source heat pumps, Aldred said, because the air-source units are limited in the heating mode by the outside air temperature and revert to resistance heat as temperatures approach freezing. However, temperatures 30 feet underground stay a constant year-round 70 degrees in Central Texas, he said.

Laught not too much; the witty man laughs least.

-George Herbert.

and that you have only ammunition of the proper size for the gun you are carrying.

4. Be sure of your target before you pull the trigger; know identifying features of the game you hunt.

5. Unload guns when not in use. Take down or have actions open; guns should be carried in cases to the shooting area.

6. Never point a gun at anything you do not want to shoot; avoid all horseplay with a

firearm.

7. Never climb a fence or tree or jump a ditch with a loaded gun; never pull a gun toward you by the muzzle.

8. Never shoot a bullet at a flat, hard surface or water; at target practice be sure your backstop is adequate.

9. Store guns and ammunition separately beyond the reach of children and careless adults.

10. Avoid alcoholic beverages before or during shooting.

Check Safety To Make The Holidays Bright



- Before hanging strings of lights, spread them on the floor and check for frayed or bare wires, cracked insulation, loose connections, and damaged plugs or light sockets.
- Check extension cords for wear or damage and don't run them across walking areas.
- Test lights before putting them on the tree. Unplug them before making repairs or replacing bulbs.
- Overloading circuits with too many lights can cause fire. Follow manufacturer's instructions about the number of lights allowed on one circuit.
- Choose a fresh, green tree, trim its base and keep it in plenty of water. If the needles are brown and break off easily, it could be a fire risk.
- If you buy an artificial tree, make sure it has been tested for flammability by Underwriters Laboratories (UL).
- Place your tree away from the fireplace or other heat sources and out of the traffic pattern.
- Never string lights on a metallic tree. Light strings with damaged insulation can electrically charge a metallic tree. Instead, shine unattached colored floodlights or spotlights on the tree.
- Always turn off lights before leaving home or going to bed. You'll save money and be safer, too.
- Never use lighted candles on a tree or near evergreens. And don't burn evergreens in the fireplace.
- Do not use inside lights on the outside. All outside lighting equipment, including lights, cords and plugs, should be waterproof and made for outdoor use. Also, hang sockets downward and don't leave a socket empty.
- When hanging lights on the rooftop or in tall trees outdoors, stay clear of electrical lines. Make sure you or your decorations don't come in contact with them.
- Should you receive a CB radio or television this Christmas, let a qualified serviceman install the CB base unit or television antenna for you. This delicate job is best left to the professionals.
- Be sure electrical toys are tested for safety. Look for the UL mark.

Wishing You A Safe, Happy Holiday



SOUTHWESTERN PUBLIC SERVICE COMPANY



GOING FOR TWO—One of the Muleshoe Mules leaped high in the air Tuesday night in an attempt to add two points to the score in the Mules' first home basketball game for the season. Surrounded by Spade players, Norman Perez is oblivious to the traffic situation surrounding him in the gym at Watson Junior High School.

Sudan Hornets Keep Their Record Clean

by Kendra Whitten

The sudan Hornets managed to keep their record clean by keeping Farwell out of the end zone with :37 left in the game.

The Hornets total yardage for the game was 183 yards. These yards were split between three players. Johnny Taylor rushed for 40 yards and Ronald Williams for 52 yards. Brent Kirkland rushed for 26 yards and passed 9 times, completing 3 for 2 touchdowns and 1 interception for a total of 65 passing yards. David Wood received 3 passes for 65 yards. He received on touchdown pass for 21 yards and another for 28 yards. Adam Torres kicked both pat's and both were good. Farwell's total yardage was 225 yards!

At the end of the 1st quarter the score was 0-0. At 7:12 in the 2nd quarter Farwell scored a touchdown and at 2:22 Sudan scored a touchdown and made the Pat following. At half time the score was Sudan 7, Farwell 6. In the 3rd quarter Sudan made another touchdown and the PAT with 1:30 remaining. This made the score Sudan 14, Farwell 6. Farwell scored with :37 left in the 4th. An excellent defensive effort by Sudan kept Farwell from scoring their 2 point conversion. This ended the scoring and left the Hornets with a 14-12 victory over the steers.

The J.V. Hornets beat Farwell 46 to 0 Tuesday, November 13. Joe Gonzales scored the first touchdown with 7:20 left on the clock in the 1st quarter. The Pat, kicked by Kyle Maxfield was good. Frederick Hernandez blocked Farwell's punt after the Steers failed to make a first down.

Three-Way Menu

THREE-WAY MENU
DECEMBER 1-5
BREAKFAST
MONDAY

Oats, Juice, Milk

TUESDAY

Toast/Jelly, Juice, Milk

WEDNESDAY

Cinnamon Toast, Juice, Milk

THURSDAY

Biscuit / Bacon / Gravy / Jelly, Juice, Milk

FRIDAY

Pancakes/Syrup, Juice, Milk

LUNCH

MONDAY

Bar-B-Que Wieners, June Peas/ Salad, Hot Rolls, Milk, Honey/ Butter

TUESDAY

Sloppy Joes, Corn/Salad, Buns, Milk, Cake

WEDNESDAY

Pinto Beans, Greens/Tomato Relish, Corn Bread, Milk, Fruit

THURSDAY

Pizza, Blackeyed Peas/Salad, Milk, Jello

FRIDAY

Hamburger & Cheese, Frys/Lettuce / Tomatoes / Pickles

Buns, / Onions, / Milk,

Cookies

With 3:45 in the 1st quarter Joe Gonzales made another touchdown and the Pat that followed. Maxfield threw to Hernandez for a touchdown with 1:46 remaining in the 1st quarter. Joe Gonzales tried for a field goal at the end of the 1st quarter, but it was not good.

Eliot King intercepted a pass and scored at 8:31 in the 2nd quarter. The Pat was not good. Joe Gonzales passed to King for another touchdown with 1:02 left before the half. Joe Gonzales made the Pat.

Ricky Martinez made a touchdown with :46 remaining in the 3rd quarter. King's Pat was not good. In the 4th quarter Ronnie Gonzales made a touchdown at 6:37. The Pat was not good. The J.V. Hornets finished the year 7-3.

A&M medical researchers' heart hormone studies may benefit space travelers

COLLEGE STATION — Future space travelers may benefit from a better understanding of a hormone present in the heart of all warm-blooded animals, say Texas A&M University College of Medicine researchers.

Astronauts returning from extended zero-gravity conditions have lower blood volume levels than people on the ground, said Texas A&M physiologist Dr. Bruce Benjamin, a former NASA research scientist.

Until space travelers' systems readjust to the pull of gravity, they often are unable to perform strenuous tasks such as exercising, and they tend to faint easier, explained Benjamin.

The heart hormone, called ANF, was discovered only a few years ago by scientists in Canada. Its role in how the body detects and reacts to changes in blood volume is uncertain, the scientists explained.

ANF, which stands for atrial natriuretic factor, is produced in the heart and secreted into the bloodstream. The secretion rate varies as blood volume changes, suggesting that ANF may be involved in the kidney's ability to increase excretion of salt and water through the urine whenever the body's blood volume rises, say the researchers.

Benjamin and physiologist Dr. Thomas Peterson have embarked on a new series of studies to determine just how important ANF is to the body's system of controlling blood volume by challenging that system in various ways.



Nothing is sillier than silly laughter.

-Catullus.

Sudan Hornet Bzzz

The Varsity Hornets beat Farwell 14-12 in the final District game.

BZZZ-

The JV Hornets beat Farwell 46-6 in the final game of the season.

BZZZ-

The junior high Hornets were defeated 0-34 by Farwell.

BZZZ-

Krista Kirkland Placed 9th at the State Cross Country Meet Saturday, November 15.

BZZZ-

The District, FTA Convention was held Saturday at Plainview, and two members of Sudan's chapter were elected to District offices. Cheri Ford was elected chaplain, and Donice Holley as parliamentarian.



Caison Auction Service
Licensed & Bonded

We Are Proud To Announce
The Newest Members
To Our Staff
Roy Farley
Scotty Farley

They will be handling accounts in the area. We are now taking auction bookings for Muleshoe & the surrounding area. Questions about commission rates can be directed to:

David D. Caison
Sales and Service
806 El Paso Street
Wellington, Texas 79095
806-447-2672

Roy Farley Scotty Farley
110 W. 20th Muleshoe, Tx. 79347
Day 806-965-2257
806-965-2262
Night 806-272-4169

Aluminum Can Special

At A & M Stores

One Day Only - 8:00 - 5:30 at each store

TUES., DEC. 2 - PORTALES
THURS., DEC. 4 - MULESHOE
SAT., DEC. 6 - CLOVIS

PAYING 25¢ Lb.

PLUS 5¢ Extra (Total 30¢ Lb.) in Gift Certificate redeemable at any A & M Store

This is a special value from A & M. Just in time for extra Christmas money & savings "For You"!



4. Houses For Rent

4. Houses For Rent

The Muleshoe Housing Authority

Is Now Taking Applications For The Farm Labor Housing Project To Find Out If You Qualify To Live In The Housing Project Apply At The Office

301 E. 6th St.

Monday-Friday

8 a.m.- 5 p.m.

Muleshoe, Texas



8. Real Estate

8. Real Estate

SMALLWOOD REAL ESTATE BROKER

232 main 272-4838

3 Bedroom, 2 Bath, Beautiful Kitchen Central Heat, Evaporative Cooling, Nice Carpet. \$24,500.

RENTAL PROPERTY

2 Bedroom, 1 Bath, New Carpet in Living Room.

1 Bedroom, Furnished with carpet...Priced to sell, and make money under the New Tax Law.

REAL ESTATE AUCTION

Auction to be held at 10:04 A.M., Thursday

DEC. 4, 1986

Color Slide Auction To Be Held At Lubbock Plaza Hotel, 3201 S. Loop 289

LUBBOCK, TX

FARMS

Terms Available on Following Farms

YOAKUM COUNTY - 640-Acre Farm. All of Section 343, Block D, John M. Gibson Survey, Yoakum County, Texas. Located 8.4 Miles West of Plains, Texas on the South Side of S.H. 380 Fenced, 2 Wells, Small Frame House.

YOAKUM COUNTY - 850-Acre Farm, North Side Pasture, No Improvements.

BAILEY COUNTY - 85-Acre Farm Located just East of Progress, Texas, 2 Irrigation Wells, Currently in Wheat.

PARMER & CASTRO COUNTIES - 200-Acre Farm located on West Side of Summerfield, Texas.

OTHER PROPERTIES include: Commercial & Residential Bldgs. & Houses, Over 100 Lots, Acreages, in Lubbock, Farm at Crosbyton, Lots in Idalou, Bldg. & Land in Tahoka.

FOR FURTHER INFORMATION:

HENDRIX AND ASSOCIATES, INC. Joe Heflin (806) 763-8138, Jim Heister (806) 745-7117, Ron Hendrix (806) 764-0649. Lic. No. TxE-107-0689.

11. For Sale Or Trade

FOR SALE: New posts and rails for wood yard fence. Call after 6 p.m. 965-2732. p11-31t-tfc

15. Misc.

ZENITH DISC player and over 100 movies. Also 2-24 bot steel and wire cotton trailers. Call 272-5109 after 6:00 p.m. or before 8:00 a.m. b15-47s-2tc

WATERLESS Cookware heavy home demonstration kind. Brand new - \$395. Normally, \$795. 1-918-865-4644. 15-46s-5tp

FREE PUPPIES, 1/2 Labrador, call 272-4585 after 6:00 call 965-2886. s15-46s-tfc

17. Seed & Feed

ATTENTION FARMERS We are buying corn, Birdwell Cattle Feeders. Phone 946-8321. b17-36s-tfc

Who Knows?

What is a gazebo? Answers to Who Knows? A turret, windowed balcony, or summer-house for gazing at scenery

18. Legals

PUBLIC NOTICE MULESHOE NURSING HOME POLICY

It is the policy of the Muleshoe Nursing Home to admit and to treat all residents without regard to race, color, or national origin. The same requirements for admissions are applied to all residents and all residents are assigned within the Nursing Home without regard to race, color or national origin. There is no distinction in eligibility for or in the manner of providing any resident service provided by or through the Nursing Home. All facilities of the Nursing Home are available without distinction to all residents and visitors regardless of race, color or national origin. All persons and organizations having occasion either to refer residents for admission or to recommend the Nursing Home are advised to do so without regard to the residents race, color, or national origin.

Muleshoe Nursing Home 106 West Ave. H Muleshoe, Texas 272-3861 m18-48s-1tc

FOR YOUR CLASSIFIEDS CALL THE MULESHOE & BAILEY COUNTY JOURNALS 272-4536

Junior High Basketball Teams Beat Amherst

The Sudan Jr. High teams took on the Amherst Bulldogs in Amherst on Monday night.

The first quarter of the 7th grade boys game started our explosive! Both teams were ready to play. At the end of the first quarter, the score was Sudan 12, Amherst 8. During the second quarter Sudan scored 8 more points and the Amherst boys scored 10 more, bringing the half time score to Sudan 20, Amherst 18. During the third and fourth quarters Sudan scored 21 more points and Amherst scored 17, bringing the final score to Sudan 41, Amherst 34.

The 7th grade team roster included two 8th grade boys, Charlie Smith and Danny Conley, due to a lack of players. The leading scorer in the game was Shannon Fisher with 14 points and 1 foul. Second high scorer was Clay Carr with 13 points and 4 fouls. Next were Charlie Smith with 10 points and 1 foul, and Jamie Gatewood with 4 points and 4 fouls.

In the second game, the junior high girls dominated Amherst immediately. The Sudan girls scored 14 points and held Amherst to only 2 points at the end of the first quarter. By half time the Sudan girls had scored 32 points and Amherst had scored only 4 points. In the third quarter Amherst came out fighting, but Sudan again held them to 2 points while scoring 12 points more themselves. During the fourth quarter the girls were still going strong. In the end Sudan had 52 points and Amherst only had 11 points.

The leading scorer for the team, which includes both 7th and 8th grade girls, was Tanya Fisher with 14 points and 1 foul. Suzanne Reid scored 11 point and had no fouls. Next was Michelle Tamplin with 10 points and 3 fouls, followed by Nichole Maxfield with 9 points

Sudan Varsity Hornets Beat Tahoka Tuesday

The Sudan Varsity Hornets beat Tahoka Tuesday night 69-43. Krista Kirkland led the Hornets in scoring in the first quarter with ten points. Wooley put in two baskets, and Nix and S. Peck each got a basket to make the score at the end of the first quarter 19-8.

In the second quarter Kirkland again led the scoring with eight points. Nix, Wooley, and Henley each put one through the hoop to bring the score to 33-17.

The second half started off great with Wooley and Newman making six points a piece. Henley shot for four points, while Crowson and Kirkland each got a basket for the score of 55-32.

The final quarter started off slowly. Wooley put in two points for the Hornets to start them off, then four more for a total of six. Peck, Nix, and Newman all made a basket each to bring the final score to 69-43 Sudan.

and 1 foul. Other scorers included Gayla Rasco with 8 points and no fouls; Ambyr Donnell with 2 points and 2 fouls; and Mandy Davis and Dianne Williams both with 2 point and 1 foul.

The last game was the most exciting game of all. It was the battle between the 8th grade boys teams. The Amherst boys scored 6 points between the 8th grade boys teams. The Amherst boys scored 6 points and held the Sudan team to 4 points in the first quarter. In the second quarter they were still at it strong, and by the half Sudan had brought in 8 more points, and the Amherst boys managed to bring in 14 points. At the beginning of the third quarter Sudan came out fighting and tied the score at 20 points apiece. During the fourth quarter Sudan brought in 9 unanswered points, bringing the final score to Sudan 29, Amherst 20.

The top scorer was Bryan Baker with 8 points and 0 fouls. Quintin Lee had 6 points, as did Gary Boyles, who had 1 foul. Jody Dodson scored 4 points and 1 foul, and Monty Edwards had 4 points and 4 fouls.

Sudan BZZZ

-BZZZ-

The JV and Varsity Hornets won against Tahoka Tuesday night.

-BZZZ-

The Varsity and JV Hornets played Roosevelt at Sudan Thursday.

-BZZZ-

The Sudan Hornets, District Champs, played Sunray at Tulia at 7:30 Friday night for the Bi-District title.

-BZZZ-

The FFA Area Contest is at Clarendon today.

Lazbuddie School Lunch

LAZBUDDIE MENU

December 1-5

MONDAY BREAKFAST

Cereal, Juice, Milk LUNCH

Enchilada Casserole, Green Salad, Pinto Beans, Pudding, Milk

TUESDAY BREAKFAST

Doughnuts, Juice, Milk LUNCH

Barbeque on a Bun, Baked Beans, Potato Chips, Pickles, Cookies, Milk

WEDNESDAY BREAKFAST

French Toast, Bacon, Juice, Milk LUNCH

Fish Strips, Macaroni and Cheese, Green Beans, Hot Rolls, Fruit, Milk

THURSDAY BREAKFAST

Cinnamon Rolls, Fruit, Milk LUNCH

Beef Stew, Cheese Toast, Crackers, Peach Halves, Milk

FRIDAY BREAKFAST

Biscuits, Sausage, Juice, Milk LUNCH

Hamburgers, Tator Tots, Lettuce, Pickles, Cake, Milk

The salad bar is served daily.

Too Late To Classify

FOR RENT: 1 Bedroom house, bills paid, 902 West 6th, 272-3410. 4-48s-2tp-ttc

NICE 2 bedroom mobile home for rent on Pasadena inquire 112 Pasadena. 8-48s-3tp-ttc

Muleshoe School Menu

MULESHOE MENU

DECEMBER 1-5

BREAKFAST

MONDAY

Milk, Toast, Cereal, Fruit

TUESDAY

Milk, Toast, Jelly, Fruit

WEDNESDAY

Milk, Blueberry Muffins, Juice

THURSDAY

Milk, Pancakes, Syrup, Sausage, Fruit

FRIDAY

Milk, Toast, Cooked Cereal, Fruit

LUNCH

MONDAY

Milk, Bar-B-Queed Franks, Blackeyed Peas, Whole Potatoes, Corn, Bread, Fruit

TUESDAY

Milk, Hamburgers, Lettuce & Tomato, Pickles & Onions, Tater Tots, Cobbler

WEDNESDAY

Milk, Enchalladas, Beans, Corn, Corn Bread, Fruit

THURSDAY

Milk, Corn Dogs, Veg. Beef Soup, Crackers, Cinnamon Rolls, Fruit

FRIDAY

Milk, Fish, Macroni & Cheese, Eng. Peas, Hot Rolls, Fruit Jello

COMBO LINE

MONDAY

Milk or Tea, Meat Loaf, Black-eyed Peas, Whole Potatoes, Corn Bread, Fruit

TUESDAY

Milk or Tea, Hamburgers, Lettuce & Tomato, Pickles & Onions, Tater Tots, Cobbler

WEDNESDAY

Milk or Tea, Enchalladas, Beans, Corn, Corn Bread, Fruit

THURSDAY

Milk or Tea, Corn Dogs, Veg. Beef Soup, Crackers, Cinnamon Rolls, Fruit

FRIDAY

Milk or Tea, Fish, Macroni & Cheese, Eng. Peas, Hot Rolls, Fruit Jello

Let never day nor night unhal-low'd pass, But still remember what the Lord hath done.—Shakespeare

Aluminum Can Special

At A & M Stores

One Day Only - 8:00 - 5:30 at each store

TUES., DEC. 2 - PORTALES THURS., DEC. 4 - MULESHOE SAT., DEC. 6 - CLOVIS

PAYING **25¢** Lb.

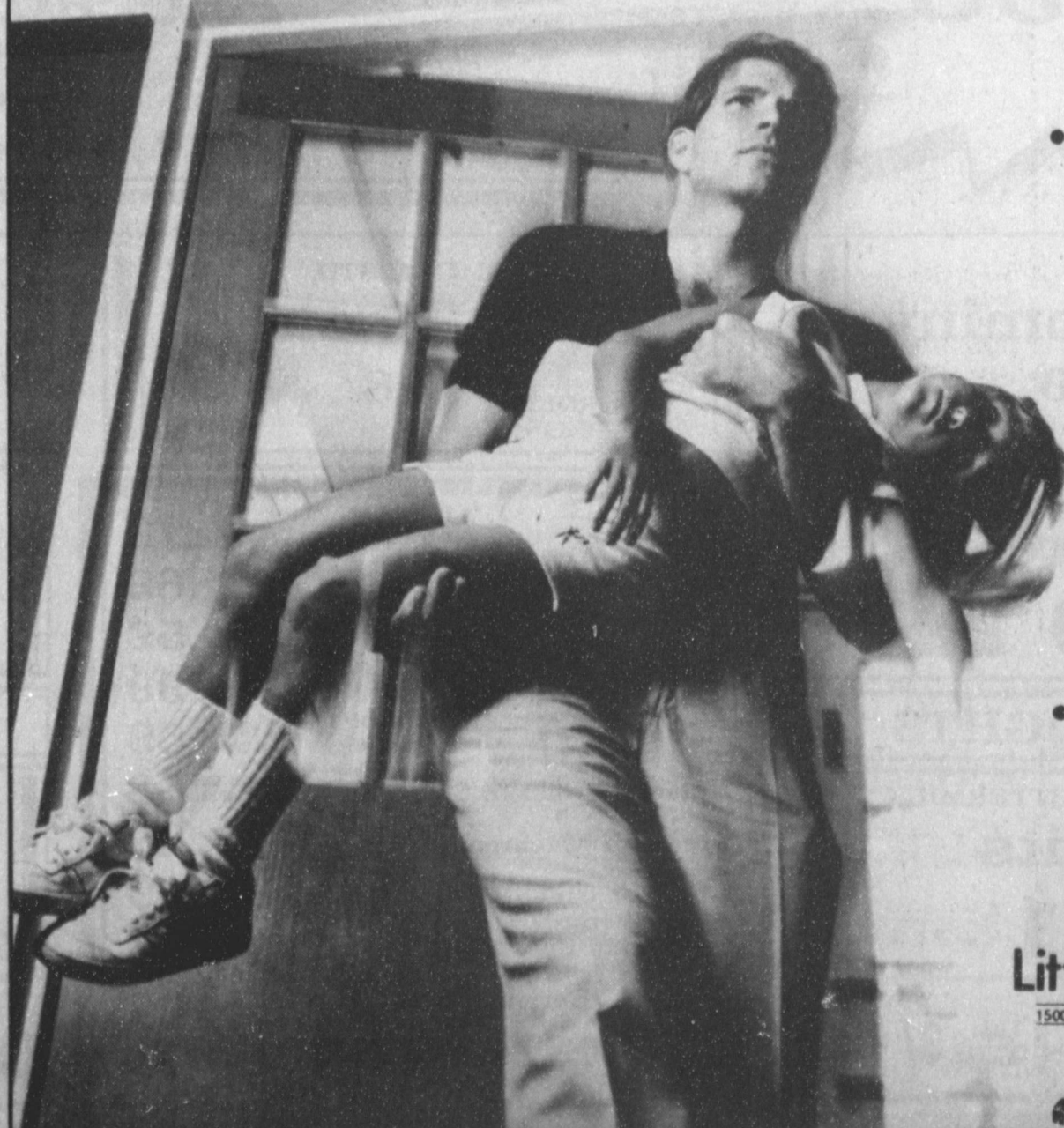
PLUS 5¢ Extra (Total 30¢ Lb.) in Gift Certificate redeemable at any A & M Store



This is a special value from A & M - Just in time for extra Christmas money & savings "For You"!



Find help fast with 24-hour emergency care.



• Prompt attention for major and minor emergencies.

• Immediate access to our fully equipped hospital, if needed.

• Graduated pricing system. You are charged less for problems that require less complicated care.

• Prices competitive with walk-in clinics.



Littlefield Medical Center

1500 South Sunset (806) 385-8411 Littlefield, TX 79339

An American Healthcare Management Hospital