

WEATHER

September 20	84	52	.00
September 21	84	52	.00
September 22	82	53	.52
September 23	74	44	.00

BAILEY COUNTY JOURNAL

'The Community Of Opportunity-Where Water Makes The Difference'



Vol. 27, No. 39

12 PAGES TODAY

Published Every Sunday At Muleshoe, Bailey County, Texas 79347

20^c Sunday, September 24, 1989

Police Major Item In New '90 City Budget

around Muleshoe

Alton Parker, reporter for the Muleshoe Athletic Booster Club, said the Boosters have adopted a noise maker for all football games.

He said it is a plastic one gallon jug with enough small rocks in it to make a noise--and is painted black and white.

The Booster Club says to make a noise maker and bring it to the games and *Back the Mules* no matter what team is playing.

On Tuesday, September 26, the seventh grade players will be honored by the Booster Club. Be sure to be there to meet the future MHS athletes.

A 'double meeting' is scheduled by the Board of Trustees of Muleshoe Independent School District Monday, September 25 in the school administration building.

The first meeting will be at 7:30 p.m. to set the 1989-90 school tax rate.

This meeting will be followed by a second meeting at 7:45 p.m.

Following the formal opening of the meeting, items include to set the criteria for the 1989-90 Career Ladder.

Under informational reports are the board president; superintendent; assistant superintendent of business and assistant superintendent of instruction.

Also included is an executive session.

Glen Williams of the Bailey County Aging and Health Care office issued the following reminder:

The Panhandle South Plains Fair at Lubbock will have the Senior Citizens Day on September 28. All persons over the age of 60 are admitted free.

For those requesting transportation by the Senior Citizen Van, please contact Edd Harp at 272-4693 or Bailey County Aging Department at 272-3647.

Cont. Page 6, Col. 2

1989-90 Disaster Program Similar To Last Year

Disaster provisions dominate the report of Danny Noble, county executive director for the Bailey County ASCS office for the latest report:

Three Way Eagles

Down Wellman,

Two Are Injured

Victory has its price! The Three Way Eagles soundly defeated Wellman Friday night, 38-12, but at the expense of losing two players to injuries.

Coach Greg Jeffcoat said Efrain Guillen received a hip injury and Sammy Belez received a shoulder injury. They had already lost Chris Locke last week to an injury.

And, in a team that barely could field a team at the beginning of the season, Coach Jeffcoat said he is now down to seven healthy players for a six-man team.

In the first quarter, Mario Guillen scored two TDs, the first a three-yarder, followed by an 18-yard gallop.

In the second, shortly before Efrain was injured, he latched onto a 20-yarder from Mario Guillen and the halftime score was Three Way 18, Wellman 12.

Mario scored three more times in the third, on a seven-yarder; a three yarder; and a six yard TD

Cont. Page 6, Col. 4



MULE QUARTERBACK FINDS IT ROUGH GOING--Larry Gonzales, No. 11, quarterback for the Muleshoe Mules, found it rough going Friday night, as he was stamped by the Denver City Mustangs on the Mules' home field. Coming in from the background to try to help the Mule quarterback are Colin Tanksley, No. 54, and Brandon Mullins, No. 67. The Muleshoe Mules lost the game, 49-6 to the Denver City Mustangs, who are the ninth ranked football team in the state. (Journal Photo)

Morris Awarded Kiwanian Of The Year

Tuesday night, it was time to 'exchange the gavel,' as a new slate of officers were installed for the Muleshoe Kiwanis Club.

Kiwanians, their wives, and special guests attended the annual Kiwanis Officer Installation Banquet at the Bailey County Civic Center.

One of the highlights of the evening was the award to the "Kiwanian of the Year." This year, the honor went to what outgoing president Keith Turner called, "A very special person. A person who helped the Kiwanis

Club in every way, all through the year -- Glen Morris."

Incoming Kiwanis Lt. Governor Bobby Owen of Hereford, was a special guest and presented several remarks prior to installing the new officers.

As he installed incoming president Jim Lutz, Owen commented "Muleshoe is proud of you for the work you have already done."

The incoming lieutenant governor gave his goals for the coming year, and talked about the local membership, which he said he expected to be up to 35 members by the end of his year. "There are a lot of prospects in Muleshoe," he said, as he assigned various members to bring in one or two new members to Kiwanis.

He also assigned the local club to have one new service project. He said this is not to be a fundraiser, but something to help somebody in Muleshoe.

Young Longhorns

Remain Unbeaten

For '89 Season

Coach Mark Scisson, who coaches the Lazbuddie junior high school football team, is very proud of the 2-0 record by his young 'Horns.

So far, they have held both Silverton and Bovina out of the end zone.

During their first action, they downed Bovina by 21-0 and Thursday night, defeated Silverton, 34-0.

In the first quarter Thursday night, Chris Cozby broke open the scoring for Lazbuddie when he ran a punt back 50 yards to the end zone. Jonas Hernandez made the conversion, leaving the score at 7-0.

After the first TD, Jonas Hernandez made a 20-yard dash to paydirt, with Colby Miller making the conversion.

At the end of the first, it was a 14-0 game.

In the second, Jonas Hernandez was again the carrier, when he made a 10-yard TD run, with the conversion by Craig Smyer.

Cont. Page 6, Col. 1

Owen also said he expected the Muleshoe Kiwanis Club to have a 90 percent attendance at all meetings.

In closing his remarks, he reminded all the Kiwanis mem-

Cont. Page 6, Col. 1

Denver City Mustangs 'Kick' Muleshoe Mules

Although the Muleshoe Mules looked better offensively Friday night in Benny Douglass Stadium than they have so far this young football season, they were unable to overcome the powerful, state-ranked Denver City Mustangs. The Mules fell to the Mustangs by 49-6.

Denver City didn't wait very long before striking for the first time, when power tailback Kenny Samaniego barreled into the end zone from 15 yards out to paydirt. Brent Chamberlin booted in the extra point with 11:37 left to play in the first.

On their first possession, Herbert Olivarez slammed into an open zone and made the Mules' first 'First Down' for the night, but the play stalled and the Mules were forced to punt the ball away.

Coming back, it took the Mustangs just four plays, including a long 20 yard gallop by Samaniego before he raced 12 yards into the end zone again, with 9:01 left in the first quarter. Again, Chamberlain kicked the extra point.

The Mules ended a long drive with a fumble at the 13 yard line, however, toughened up Mule defense kept the Mustangs from adding another first quarter score.

Early in the second, with 11:52 left to play, Mustang tailback David Gonzales scored from 18 yards out, with Chamberlain again adding the PAT.

Grinding out yardage foot by foot at times, the Mules continued to slowly move the ball, and at the same time, keep the Mustangs out of the end zone. The Mule defense kept the Mustang aerial attack almost nil,

'Safety' for the residents of the City of Muleshoe is the biggest item in the budget for 1989-90. In the proposed budget, the figure is shown to be \$423,581. Their budget closing out 1988-89 is forecast to be \$394,048. In 1987-88, it was \$370,520 and the previous year, it was \$390,147.

Next biggest item is the street department. In the budget just adopted, the cost is expected to be \$240,273, compared to \$223,362 for 1988-89. This compares to \$217,484 for 1987-88; \$198,533 in 1986-87 and \$234,882 in 1985-86.

Next largest item is the refuse department. They will close out the current year with a budget of \$207,013.50, and have budgeted \$196,310 for the 1989-90 year; compared to \$204,122 for 1987-88; \$165,910 in 1986-87 and \$163,927 for the previous year.

Administration is next, with a budget of \$154,652 for 1989-90; compared to their current budget of \$143,849; it was \$140,669 for 1987-88; \$148,074 for 1986-87 and \$135,025 for 1985-86.

The library is next, with a proposed budget of \$70,447 for the next year. Their current budget is \$67,046; and was \$62,631 for 1987-88; \$64,797 in 1986-87 and \$68,422 for 1985-86.

Expenses for the fire department are expected to be \$54,943 for 1989-90; with a budget of \$57,505 for 1988-89. The fire department showed a budget of \$35,272 in 1987-88; \$34,695 for 1986-87 and \$43,306 in 1985-86.

The garage, where all city vehicles are serviced and maintenance is done has a budget of \$48,921 for 1989-90; and was \$44,014 for 1988-89. In 1987-88, the budget was \$41,933; \$32,180 for 1986-87 and \$36,214 for 1985-86.

The 1989-90 budget for the Parks Department is shown to be \$13,600, compared to the current budget of \$16,800. In 1987-88, the budget was \$23,406; was

\$50,931 in 1986-87 and \$14,526 in 1985-86.

A total of \$16,627 is budgeted for the Swimming Pool. It was \$13,549 for the current budget. In 1987-88, the budget was \$15,675; was \$16,765 for 1986-87 and \$12,161 for 1985-86.

Health services is budgeted at \$13,600 for 1989-90; it was \$16,800 for 1988-89; \$23,406 for 1987-88; \$50,931 for 1986-87 and \$14,526 for 1985-86.

Under other expenses, utility billing, water and sewer operations and fund expenditures are nearly the same, with \$491,407 for 1988-89 and \$493,179 for the 1989-90 budget.

Other expenses include a considerable decrease in street improvements. They were \$410,906 in 1988-89 and are expected to be \$287,500 for 1989-90.

Another large amount, which was carried on the 1988-89 budget was \$509,025 for the airport fund. That was reduced to \$6,825 for the 1989-90 budget.

The budget shows a total budget of \$3,332,326.50 for 1988-89, and a reduction to \$2,459,138 for the 1989-90 budget.

As usual, City Manager Dave Marr and the Muleshoe City Council are to be congratulated for their efficient handling of the upcoming budget for the City of Muleshoe.

Linda Turner

Gets Outstanding

FmHA Recognition

Linda Turner, who has been employed at the FmHA office in Muleshoe for the past 12 and one-half years, was honored this week by State FmHA Director J. Lynn Futch, "For meritorious performance in rural housing inventory property and farmer programming servicing responsibility."

Jay McKay, director of the local FmHA office, said he is very proud of Mrs. Turner, as he is his entire clerical staff in his offices here.

Linda Turner is FmHA county program technician, in charge of all clerical duties. She reviews all applications for completeness, reviews all housing loans and makes recommendations.

She also handles all non-real estate loan closings and disbursements and collects money.

First employed by Clinton Kennedy, who is now a district director, she also worked for Henry Taylor, who preceded Jay McKay.

Linda Turner and her husband, Keith, are the parents of two sons, Jon Keith, age eight, and a third grader; and five year old Cody, who is in kindergarten.



RECEIVES AWARD FOR OUTSTANDING SERVICE--Linda Turner, left, who has been employed with the Bailey County FmHA office for the past twelve and one-half years, received an award for 'Outstanding Service.' Shown with Mrs. Turner and making the presentation is Jay McKay, manager of the local FmHA office. Mrs. Turner is in charge of all clerical duties. (Journal Photo)



AUSTRALIANS VISIT ROTARY CLUB--Tuesday at noon, seven residents of Casino, New South Wales, Australia, were guests at the Muleshoe Rotary Club. They have been visiting in Muleshoe for the past eight days, and are part of a 22-member delegation from a Casino, Australia Baptist Church. Pictured at far right is Sam Harlan, who is one of the members of First Baptist Church who visited in Australia last year. (Journal Photo)

Retail Meat Counters Trimming The Fat

Grocery store meat departments are cutting back on beef. Not on selection, but on fat.

"There have been great changes in the retail beef cases," said Dr. Daniel Hale, a meats specialist with the Texas Agricultural Extension Service at Texas A&M University.

The movement began with producer-funded research into consumer attitudes about beef and what could be done to bring the consumer back to the beef counter, Hale said. The result was the lean beef movement that has included "quarter-inch trim" programs by retail grocery chains.

"More than 40 percent of the beef cuts sold have no outside fat," the specialist said. "The National Market Basket Survey showed that most cuts have no more than one eighth inch outside fat."

However, up to now most of the credit for the closely trimmed beef goes to the retailer. According to Hale, there is, as yet, no pressure on packers and little pressure on cattle feeders to provide leaner beef to the retail store.

"The packers are selling mostly boxed beef to retailers with up to one inch of fat," Hale said. "This is because the retailers don't want to pay the packer extra for the closely trimmed beef."

Without the pressure on the packers, they, in turn, don't pressure the cattle feeders.

"The genetics are out there to produce the 'ideal' animal," the meats specialist said. "More than 25 percent of the cattle slaughtered now are yield grade 1 or 2, Choice beef."

However, this "ideal" beef animal that is both Choice and lean enough to be yield grade 1 or 2 will not be the norm until the packers put pressure on the feeders.

Several technological changes may speed the movement toward leaner beef. First, packers are starting to ship some case-ready beef products that are trimmed to one eighth inch outside fat, Hale said.

Another innovation is an energy saving idea called "hot-fat trimming." This process allows packers to remove external fat from the carcass while it is still warm, the Extension specialist said. The advantages are that it takes less labor to pull the fat off the warm carcass and takes less energy to heat the already-warm fat for rendering.

The U.S. Department of Agriculture removed the remaining obstacle to this new process on April 9 when officials allowed packing plants to quality grade beef without requiring them to use yield grades too.

"Previous rulings made grading beef voluntary, but if a packer used one measurement, they had to use both," Hale said.

Although many consumers have already noticed changes in the beef case, they may see more

as industry innovations make leaner beef core profitable.

Texas A&M professor finds flattery will not get you everywhere

COLLEGE STATION — Flattering your bosses may improve their opinion of you and might even help improve employee performance evaluations, but too much of a good thing can backfire, says a Texas A&M University management professor who examines such behavior.

"It works best when you're sincere, but if you overdo it or if you are not sincere and the boss catches on, it can mean trouble," says Dr. Gerald Ferris.

But flattery is a tactic that can work. Workers anxious to make a favorable impression but who disagree with the boss on a number of points should restrict such disagreement to minor points or to ways of implementing policy on which overall agreement has been reached, said Ferris.

"Surely bosses like it when subordinates agree with their ideas, but they don't want their people to be 'yes-men' or to agree all the time. They want to be challenged by employees who might have other, better, ideas," Ferris said.

"If you really want to win a favorable impression . . . you have to know when to agree and when to back off," he said.

High Stress Levels Hasten Burnout

Burnout is a condition that occurs when aggressive motivated and successful people work too hard too long at their jobs, says a family specialist with the Texas Agricultural Extension Service.

"When stress levels stay high over a period of time, an employee will burn out," said Dorothy (eg) Taylor, Extension Service family life specialist at Texas A&M University. "They tend to have mental and physical health problems or begin to be accident-prone."

Employees suffering burnout often exhibit one or more symptoms. "High resistance to going to work and a negative attitude are two of the first symptoms," Taylor said. "Other symptoms are seeming angry all the time, blaming others for their problems, frequent clock watching, and little care or concern for their job."

Additional symptoms include withdrawing from co-workers, postponing client contacts, inability to concentrate, feeling helpless or immobilized, higher absenteeism, resisting any kind of change and having more health problems.

"Coping with job burnout is a challenge," Taylor said. "Before

any changes can take place, the burned out employee must be willing to change and be willing to work diligently at turning his or her life around. When burnout occurs, marital and family conflict are natural consequences."

Taylor lists eight recommended practices for keeping mentally and physically fit to prevent burnout:

- Get enough sleep every night;
- Keep physically fit, eat right

- and exercise regularly;
- Take regular vacations;
- Deal with stress realistically;
- Organize your life;
- Allow yourself a ten-minute 'down-time' each hour you work;
- Talk about your problem and
- Use your faith and values.

"Middle age is the period when both men and women experience the most depression and job burnout," Taylor said. "Middle age is also life's most successful period of life."



IT WAS MAGIC ALL THE WAY--Entertaining at the annual Kiwanis Officer Installation Banquet Tuesday night was Nick Black, with his magic and illusion show. He was assisted by his wife, Jatonne, shown in the background. (Journal Photo)



RONNIE HOLT INSURANCE AGENCY

SPECIALIZING IN CROP, LIFE & HEALTH INSURANCE

Ronnie Holt

P.O. Box 304
Western 66 Office Building
Muleshoe, Texas 79347
Office: (806) 272-3614
Residence: (806) 965-2842

Who Knows?

1. What is the wind velocity of a tropical depression before it's a hurricane?
2. What is a pentameter?
3. In what South American country is the Atacama Desert located?
4. For what was uranium first used?
5. What is a dobbin?

Answers:

1. Seventy-five miles an hour and under.
2. A verse in poetry having five metrical feet.
3. Chile.
4. Mainly for coloring glass.
5. A gentle family horse.



GARDEN SPOT OF THE WEEK--The Jennyslipper judges traveled to the west part of Muleshoe for this week's Garden Spot. The front yard of the home of Jim and Wilma Clements, 1801 W. Ave. B, proudly displays the Jennyslipper sign. (Journal Photo)

HERE'S WHAT YOU FIND IN THE CLASSIFIEDS:

ONE-OF-A-KIND SALE!



- HOUSES FOR SALE • WANTED TO BUY • MISC. MERCHANDISE • GARAGE SALES
 - REAL ESTATE OFFERINGS • APARTMENTS FOR RENT • FOR LEASE
 - JOB OFFERS • LOST & FOUND • PROFESSIONAL SERVICES • AUCTIONS
 - TRUCK RENTALS • RESORT CABINS • YACHTS • PERSONALS
- WHO COULD ASK FOR ANYTHING MORE???**

CLASSIFIED DEPARTMENT

Muleshoe & Bailey Co. Journals

272-4536

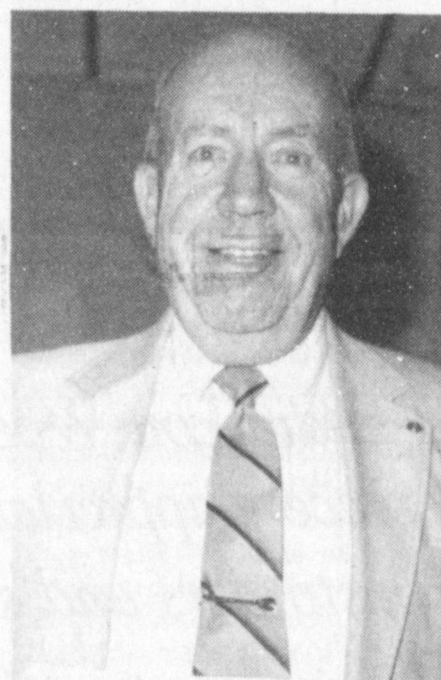


NEW KIWANIS OFFICERS AND DIRECTORS INSTALLED--Tuesday night, during the annual Officer Installation Banquet for the Muleshoe Kiwanis Club, new officers and directors were installed. Officers are seated from left, Jim Lutz, president; Glen Morris, vice president; Reggie Johnson, secretary; and J. O. Parker, treasurer. Standing from left are Keith Turner, immediate past president; and directors Scott Churchman and Eddy Morris. Directors not shown are Don Clapp and Don Martin. (Journal Photo)

Muleshoe Menu

SEPTEMBER 25-29
MONDAY BREAKFAST
 Milk, Cereal, Toast and Fruit
LUNCH
 Milk, Steak & Gravy, Creamed Potatoes, Green Beans, Hot Rolls and Fruit
COMBO
 Milk, Pizza, Mixed Vegetables, Pickles and Fruit
TUESDAY BREAKFAST
 Milk, Breakfast Burritos and Fruit
LUNCH
 Milk, Hamburgers, Lettuce & Tomato, Pickles & Onions, Tater Tots and Cobbler
COMBO
 Milk, Hamburgers, Lettuce & Tomato, Pickles & Onions, Tater Tots and Cobbler
WEDNESDAY BREAKFAST
 Milk, Toast, Peanut Butter-Honey Whip and Fruit
LUNCH
 Milk, Cheese Nacho's, Beans, Salad, Crackers and Fruit
COMBO
 Milk, Enchalladas, Beans, Salad, Corn Bread and Fruit
THURSDAY BREAKFAST

Milk, Pancakes, Syrup, Sausage and Fruit
LUNCH
 Milk, Corn Dogs, Veg. Beef Soup, Crackers, Cinnamon Rolls and Fruit
COMBO
 Milk, Corn Dogs, Veg. Beef Soup, Crackers, Cinnamon Rolls and Fruit
FRIDAY BREAKFAST
 Milk, Oatmeal, Cinnamon Toast and Fruit
LUNCH
 Milk, Baked Ham, Scaloped Potatoes, Blackeyed Peas, Corn Bread and Cake
COMBO
 Milk, Bar-B-Que'd Franks, Scaloped Potatoes, Blackeyed Peas, Corn Bread and Cake



DISTINGUISHED SERVICE-----
 R. A. Bradley, charter member of the Muleshoe Kiwanis Club was presented a Distinguished Service Award Tuesday night during the annual Kiwanis Club Officer Installation Banquet. (Journal Photo)

John F Kennedy Jr. named New York City assistant district attorney.

Nursing Home News

by: Joy Stancell

Ruth Williams went to Lubbock with her husband Riel, last week.

Lois Ethridge was given a new perm by Chubby Douglas Monday.

Birdie Warren was visited by

Three Way News

by: Mrs. H.W. Garvin

Mr. and Mrs. Obie Standard and son spent the weekend in Midland visiting his sister.

Mrs. Jack Lane and grandchildren attended the fair at Muleshoe Saturday. Mrs. Lane brought home several blue ribbons.

The Kindle families all had dinner in the Cliff Heinrich home Sunday.

Mr. and Mrs. Robert Kindle was in Lubbock Monday for Mrs. Kindle's check-up.

Mr. and Mrs. Bill Dolle and Darla were in Littlefield Tuesday on business.

The community received heavy rain Monday and again Tuesday with a lot of damaging hail.

Mr. and Mrs. Ralph Davis from Lubbock spent Wednesday visiting their daughter, the Bill Dolle family.

Mr. and Mrs. H.C. Toombs were in Lubbock Wednesday for medical check-ups.

Mr. and Mrs. Bill Dupler and Eugena spent the past week camping at Ute Lake.

Three Way football team played Midland Christian Friday night on the home field with Three Way winning. The senior class served supper before and after the game.

Mrs. Robert Kindle visited Mrs. H.W. Garvin Monday afternoon and also visited Mr. and Mrs. George Tyson.

Mr. and Mrs. Bill Dolle and Darla spent Friday and Saturday in Lubbock on business and visited their daughter, Mr. and Mrs. Scott Austin.

Mr. and Mrs. Rodger Hatcher and girls from Clovis were supper guests in the Jack Lane home Wednesday.

Mrs. Nettie Quesenberry and Jana Benett from Muleshoe attended the football game Friday night.

The Maple Church of Christ members went to Morton East side Church Sunday for lunch and afternoon singing.

her son and daughter-in-law, Mr. and Mrs. James Warren.

Effie Smith, Ora Roberts, Pat Franklin, Pearl Cox, Beryl Hollis, Mamie Askew went riding around town Friday afternoon looking at the pretty homes and yards. Our thanks to Clara Lou Jones for helping take some on the ride and to Dustie Moynihan for going with us. Clara Lou treated us all for an ice cream cone at the Sonic.

We appreciate Pastor Mike Doyle for conducting our communion service in the Day Room Thursday. We also thank Zora Mae Bellar for leading us in Gospel songs.

Ona Coffey was recently given a new perm by Tammy of Honey Comb. Terry assisted her.

Recent visitors of Pearl Cox were her great grandsons of Lubbock. Mrs. Cox spent the day Saturday visiting in the home of her daughter, Holly Millsap.

Lynn Bratcher was visited by his granddaughter Deanna and her four children Tuesday afternoon.

Ruby McCamish went out with her daughter, Barbara Bilbrey Saturday and her son Frank McCamish Sunday.



KIWANIAN OF THE YEAR--- Glen Morris was presented the Kiwanian of the Year award Tuesday night during the annual Kiwanis Officer Installation Banquet. (Journal Photo)

We wish to extend our heartfelt sympathy to Mrs. Wesian, on the recent death of her son.

We have a new resident. She is Una Mae Finney, she was born in McCashill, Ark., May 27th, 1909. She is a Baptist. Please help us to make her feel welcome. She is in room 99.

Emma Schuster went out over the weekend with her daughter-in-law, Anna Lee Schuster. They traveled to Tucumari, N.M.

Eric Smith has been feeling somewhat, "under the weather." We are happy to report that he is improving.

Texas A&M researchers trail tourists traveling to Texas hot spots

COLLEGE STATION -- Researchers are tracking tourists in Texas -- who comes, who goes, how much they spend -- as Texas A&M University's part of a state effort to promote Texas as a hot spot to travel.

In fact, one of every 11 foreign travelers to America includes Texas as a stop. Texas captures 6.3 percent of the U.S. tourism market and tourism expenditures in the state are annually about \$17 billion.

The university's Recreation and Parks Department, home of the Texas Tourism and Recreation Information Program (TRIP), and other parts of The Texas A&M University System are working with six state agencies in a concerted effort to bring America and the world to Texas.

Plans are to increase Texas' share of the U.S. tourism market to 5.5 percent by the year 2000, to raise the state's share of U.S. foreign visitors from 9.3 percent to 11 percent by December 1991, to increase tourism-related jobs in the state by 15 percent and to increase travel expenditures from the 1986 level of \$17.3 billion to \$20 billion by December 1991.

"People should know that tourism is extremely important to the state as a means of diversifying the economy and creating more jobs for Texans," said Dr. Turgut Var, TRIP.

Bailey County Journal USPS 040-200
 Established March 31, 1963. Published by Muleshoe Publishing Co., Inc. Every Sunday at 304 W. Second, Box 449, Muleshoe, TX 79347. Second Class Postage paid at Muleshoe, TX 79347.

Member 1989
TEXAS PRESS ASSOCIATION

Er. Hall, Publisher
 Sammie Hall, Vice President Controller
 Cleta Williams, News
 Evlene Harris, Society
 Holly Millage, Advertising
 Dora Trosano, Classified

SUBSCRIPTIONS
 Muleshoe Journal and Bailey County Journal
 Bailey and surrounding counties
 Muleshoe Journal and Bailey County Journal
 Elsewhere in Texas \$14.75
 Muleshoe Journal and Bailey County Journal
 Outside Texas, \$16.50
 Yearly By Carrier \$12.50
 Advertising Rate Card on Application

"Advertisers should check their ad the first day of insertion. The Journal will not be liable for failure to publish an ad or for a typographical error or error in publication except in the extent of the cost of the ad for the first day insertion. Adjustment for errors will be limited to the cost of that portion of the ad where the error occurred."

Patients in Muleshoe Area Medical Center

September 19-21
TUESDAY
 Kevin Harris, Luther Hall, Robert Holder and L.H. Lewis
WEDNESDAY
 Keving Harris, Luther Hall, Maria DeLaO, Robert Holder Lucy Rocha, L.H. Lewis, Angela Cash and Carolyn Kirby
THURSDAY
 Ernestina Bara, Felipa Fabela, Beth Bermea, Luther Hall, Maria DeLaO, Elizabeth Tipps, Lucy Rocha, L.H. Lewis Angela Cash, Carolyn Kirby and Baby Girl Kirby.

Lazbuddie Menu

SEPTEMBER 25-29, 1989
MONDAY BREAKFAST
 French Toast, Juice and Milk
LUNCH
 Burritos, Green Salad, Cake and Milk
TUESDAY BREAKFAST
 Cereal, Juice and Milk
LUNCH
 Chicken Fried Steak, Potatoes/Gravy, Green Peas, Biscuits, Fruit and Milk
WEDNESDAY BREAKFAST
 Jelly Donuts, Juice and Milk
LUNCH
 Bar-B-Q Sausage, Potatoe Salad, Pinto Beans, Corn Bread, Pudding, and Milk
THURSDAY BREAKFAST
 Toast, Oatmeal, Juice and Milk
LUNCH
 Enchilada Casserole, Corn, Green Salad, Chips, Fruit and Milk
FRIDAY BREAKFAST
 Cinnamon Rolls, Fruit and Milk
LUNCH
 Hamburgers, French Fries, Lettuce, Tomatoes, Pickles, Cherry Cobbler and Milk
SALAD BAR SERVED MONDAY-THURSDAY

Cash Rewards Up To \$1,000 For Information!

Call **Bailey County Crime Line 272-HELP**

CATTLE FEEDERS GRAIN COTTON TRADING & HEDGING FUTURES & OPTIONS

Wes Tex Futures, Inc.

P.O. Box 324 • 114 East Avenue C
 Muleshoe, Texas 79347
 Telephone 806/272-5585

Roderick Moss

The Jean Junction

- Men's and Student's 13MWZ's \$14.98
- Colored 13MWZ's \$19.98
- Denim Work Shirts \$16.98
- Children's Pro Rodeo Wranglers - Indigo starting at \$11.98
- Children's Pro Rodeo Colored Wranglers starting at \$13.98

Rip's IN TEXICO
 314 Wheeler
 482-3363
 We Accept: 1-800-748-2459
 Always Welcome
 Complimentary Gift Wrap
 Attention

OFFICIAL DEALER
Wrangler
 Official Licensed Products
pro rodeo WESTERN WEAR

Experience — We consider it money in the bank.

A face lined by dry, hot summer days, harsh winter, and seven-day work weeks. But there is sparkle, too, remembering warm spring sun or gentle rains and acres of cotton.

Back when he started farming, a man's labor represented the majority of his investment in the farm. Over the years, when he's had to invest in land and equipment, he's turned to his Land Bank Association for competitive, long-term financing. At the Land Bank we not only place value on a man's farm, but his experience, too.

So, if you need help growing, talk to a neighbor you can bank on —

Federal Land Bank Association
 316 S. Main Muleshoe 272-3010

Creative Living

by: Sheryl Borden

Information on barbecuing, mustard, and making gifts from the kitchen will be featured topics on "Creative Living" on Tuesday, September 26 at 12 noon and on Saturday, September 30 at 2 p.m. (All times are Mountain.)

In this age where time and convenience counts, barbecuing fits the way we live. In fact, seventy-nine percent of American families own barbecue grills. Betty Hughes, representing Weber-Stephen Products in Palatine, IL, will discuss the difference between gas and charcoal grills, and talk about different methods of cooking on grills as well as the variety of foods that can be cooked outdoors.

Charlie Powell, chef and restaurant owner representing the American Spice Trade Association, will demonstrate a recipe for making your own mustard along with other tips on using this fascinating spice.

The flashback segment will feature making gifts from the kitchen. Linda Behrends, home economist with the American Soybean Association will share several culinary creations—all from the kitchen that can be used for a friend's birthday, a housewarming gift, a hostess thank you, or a welcome gift to a new neighbor.

On Tuesday, September 26 at 9:30 p.m. and repeated on Thursday, September 28 at 12 noon, "Creative Living" will

present information on a new breadmaking machine, stuffed toys to stitch and stuff, and recycling.

Connie Moyers will demonstrate a very unique breadmaking machine called the Automatic Bread Maker which mixes, kneads and bakes the bread all in the same unit. Connie is the Marketing Home Economist with Southwestern Public Service Co., in Clovis, N.M.

Jeanne Bakelar represents the Pro-Environmental Packaging Council, Inc. in Sparta, New Jersey. Jeanne is recognized across the country as an expert in the field of recycling and solid waste disposal and has taken her crusade into the supermarket.

The flashback segment will feature Jean Benson who will demonstrate several stuffed toys you can make yourself. Jean has authored a Farm Journal Craft Book called *Stuffed Toys to Stitch and Stuff* and has her own business called "Critter Crafts" in Pasco, WA.

"Creative Living" is produced and hosted by Sheryl Borden. The show is carried on more than 100 PBS stations in the United States, Canada, Guam and Puerto Rico and is distributed by Pacific Mountain Network, Denver, CO. Viewers can request copies of printed materials offered on the show by calling on KENW-TV's toll-free telephone lines between 8 a.m. and 5 p.m. In New Mexico, the number is 1-800-432-2361, out-of-state: 1-800-545-2359 and Portales and Roosevelt County: 562-2112.

RAISIN BRAN MUFFINS

1 pkg. (15 ozs.) raisin bran cereal
3 cups sugar
5 cups flour
2 teaspoons soda
1 teaspoon salt
3 large eggs
1 quart buttermilk
1 cup oil
1 stick margarine, melted
1 cup pecans, chopped
Mix dry ingredients in a large bowl. In a separate bowl, mix liquids and add all at once to dry mix. Bake in greased muffin pans at 375F for 20 minutes. Mixture will keep 6 weeks in refrigerator.

BLUEBERRY COFFEECAKE

1 cup margarine
2 cups sugar
2 eggs
½ cup blueberries, fresh or canned, (well drained)
1 5/8 cups flour
1 teaspoon baking powder
¼ teaspoon salt
1 cup sour cream
½ teaspoon vanilla

FILLING

½ cup packed brown sugar
1 teaspoon cinnamon
½ cup nuts, chopped
Cream margarine and sugar; add eggs one at a time, mixing well. Add sour cream, vanilla, and dry ingredients; fold in blueberries. Grease and flour a tube pan or bundt pan. Pour one-third of batter in pan. Combine filling mixture and sprinkle one-half of filling in pan. Add another third of batter and sprinkle on remaining filling; add remaining batter. Swirl gently with a spatula. Bake at 350F for 55-60 minutes. Cool in pan. Remove from pan and sift powdered sugar over top if desired. Freezes well.

Due For It Boarder: "Hey, I found a nickle in my hash!"

Landlady: "Yes, I put it there. You've been complaining about the lack of change in your meals."



NEW SORORITY PLEDGES--Alpha Zeta Phi met Tuesday night in the home of Pam Atwood. New pledges include: (L-R) Lori Bearden, Tammy Ramm and Linda Wood. Not pictured: Tricia Campbell and Darla Poyner. (Journal Photo)

Sudan High School Class Reunion Held At Lubbock

Members of the Sudan High School graduating class of 1941-42 along with the football boys who played for Coach Harmon, held a reunion at the Lubbock Plaza Inn Friday and Saturday, August 25 and 26. The group held a reception and a dinner and also visited. The dinner was held Saturday night.

Attending were Leonard and Genevieve (Wilkerson) Kerr of Mississippi; Earnie and Nell (White) Prater of Midland; Jack and Billy (Martin) Brooke of Lamesa; Carl Hammock of Oregon; Doris (Hammock) Brandon of Shawnee, Okla.; Eula Mae (Garvin) Clarke of Denver, Colo.; Bill and Carol Fulcher of Pampa; Taylor and Joy Benton of Clyde; H.A. (Red) and Thelma (Wiley) Jones of Arvado, Colorado; and Leroy and Jean (Gibbs) Miller of Lancaster, Tex.

Also James and Sylvia Masten of Wellington; L.B. Price of Cashion, Okla.; Joe E. and Velma Fowler of Burkburnett; Johnny and Patsy Fagan of Stephenville; Coach Phillip and Catherine Harmon of Montego, Calif.; Arnold and Juanita (Moses) Parrish; Kenneth and Mary Ellen White, Bill and Joyce Lance, Leroy Garvin, Bill and Eleanor Lyle, Frieda and Jim Shutlesworth, Duane and Clo Parker, Jesse Lee (Parks) Sharp and Claud and Wanda Patton, all of Lubbock; Ruth (Moore) Kent of Las Alamedas, Calif.; Ray and Ernestine (Pennington) White of San Antonio; Paul and Jerry (Fagan) Astin of Fort Worth.

And T.A. and Mary Evelyn (Bereen) Henson, Lillian (Alexander) Cook, Gordon and Vera Taylor, all of Littlefield; and Virginia (Moore) Anderson of Abilene.

Those attending from Sudan included Eugenia (Chatwell) Muller, Mary Lena (Parmer) Maxwell, Pete and Pee Wee

Innocence

A puzzled small girl watched a party of anglers putting off in their boat. "But, Mummy," she asked, "do the fishes like all that beer?"



GOLDEN WEDDING ANNIVERSARY CELEBRATION--Mr. and Mrs. Don Bruns will be honored at a 50th Wedding Anniversary reception on Sunday, October 1, from 2-4 p.m. at The Depot, West American Blvd., Muleshoe. The event is being hosted by their children, Mrs. Donna Pittman of Amarillo; Bud Bruns, Mrs. Debbie Kemp and Mrs. Tammy Black, all of Muleshoe. Don Bruns and Francis Robertson were married September 30, 1939 in Clovis, New Mexico. The former Francis Robertson is the daughter of the late Maggie and J. C. Robertson. The wedding was witnessed by Don's sister, Ruth, and her husband, Kenneth Briscoe. (Guest Photo)

Hobby Club

The Muleshoe Hobby Club met Thursday at the Senior Citizens Complex with 11 members present.

Glenda Morris, Laura Mae Stansell, Frances Bruns, Jan Williams, Edith Fox, Hazel Reeder, Loma Baker, Betty Griswold, Sammie Ethridge and

Myrtle Chambliss.

Roll was called and minutes of the last meeting were read and approved.

The group discussed meetings in December and decided to have only one meeting which will be on Dec. 7, also a Christmas party.

Sammie Ethridge won the hostess gift, a swan with two kitchen towels to match the swan.

The next meeting will be on October 5.

Thank You

A.V. and Eddie Lou Wood wish to express their sincere appreciation to all their friends, customers and supporters during their 27 years operating Muleshoe Auto Parts.

"It was very hard to sell our business, but encourage you to continue to support the new owners."

Thank you all for helping make Muleshoe Auto Parts so successful.

A.V. & Eddie Lou Wood

INCE FINA KICKS IN FOR THE MULES.



Ince Oil Company is proud to support the Muleshoe Booster Clubs. To show our support, for every gallon of gas sold at Muleshoe Fina, Ince Fina will donate a penny to a Muleshoe Booster Club. The donation for September will go to the Football Booster Club, and October the Fine Arts Booster Club.

Show you're backing the Mules - Fill up with Fina Quality.

Your friends at Ince Fina, supporting the Mules!

MULESHOE FINA

102 W. AMERICAN BLVD. • MULESHOE • 272-5278

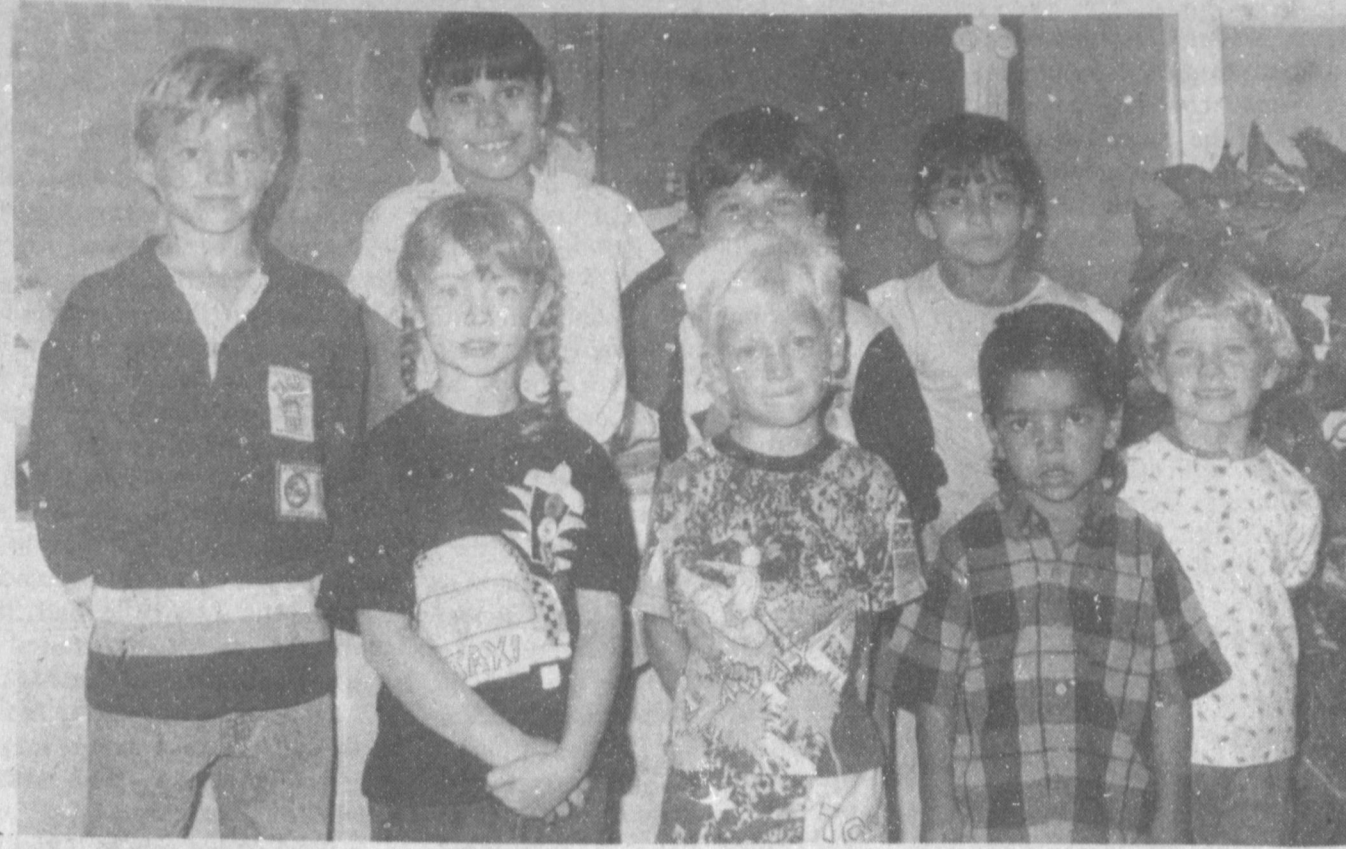
Special! \$3 Treatments!

Minimum of 25 Treatments Come In For Details

Pat Walker's
Figure Perfection Salons International

Offer Expires September 29th, 1989

2401 N. Main Suite C 769-2105



SEPTEMBER SUPER KIDS--Super Kids for September at Dillman Elementary were named, including, (L-R Back Row) Judd Glover and Rudy Camerena, second grade; Jamie Mendoza and Olive Alarcon, first grade; (Front Row L-R) Shani Rasco, Early Childhood; Brandon Mount, Kindergarten; Nathan Duran, Pre-Kindergarten; and Terrill Herington, Kindergarten. (Journal Photo)

Texas 4-H Council Elects Officers

A new set of young leaders has been elected to represent the state's 388,493 members of 4-H Clubs. Four-H is the youth leadership development organization of the Texas Agricultural Extension Service.



Latest Arrivals

Cassandra Dawn Kirby

Craig and Carolyn Kirby are the proud parents of a new baby girl. She was born Wednesday, September 20, 1989 at 9:47 a.m. The young lady weighed 8 lbs. at birth and has been named Cassandra Dawn. Cassandra has 3 brothers and sisters waiting for her at home, Brittany, Monty and Cody.

Grandparents include Mr. and Mrs. Reuel Kirby of Sudan, Mr. and Mrs. Goldman Sroud of Enochs and great grandparents, Mr. and Mrs. J.G. Arnn of Muleshoe.

Joseph Matthew Kessler, Jr

Mr. and Mrs. Joseph Kessler are the proud parents of a son, Joseph Matthew, Jr., who was born at 3:47 p.m. Wednesday, Sept. 6 at the South Park Medical Center in Lubbock.

The young man weighed five pounds and 12 ounces.

Grandparents are Mr. and Mrs. Raymond Espinosa, Sr. and Mr. and Mrs. Louis Keasler, Sr. all of Sudan.

Jacey Ann Davison

Mr. and Mrs. Mart Davison are the proud parents of a daughter, Jacey Ann, who was born Wednesday, Sept. 13 at 4:37 p.m. in the Methodist Hospital at Lubbock.

The young lady weighed seven pounds and four ounces and was 18 and three fourths inches long. She has a sister, Ashley.

Maternal grandparents are Mr. and Mrs. Raymond Harper of Muleshoe and paternal grandparents are Mr. and Mrs. Norman Humphreys of Sudan, and Mr. and Mrs. Bob Davison of Lazbuddie.

Maternal great grandparents are Mr. and Mrs. T.M. Harper of Sudan, Holt Kamp of Littlefield. Paternal great grandparents include Ruth Dunlap, and Mr. and Mrs. Earl Davison, all of Sudan.

President of the 32-member Texas 4-H Council, which guides and coordinates activities across 14 districts, is 17-year-old Chance Brooks of Meadow.

Other officers are: Chad Lee, Stephenville, first vice president; Melode Chance, Ralls, second vice president; Joe Willie Lee, George West, secretary, and Christi Spain, Sonora, public relations officer. They were elected by the council at a

Brownie Scout News

Brownie Troop No. 200 met Tuesday, Sept. 12 at the Girl Scout Little Hut. The meeting opened with the Girl Scout Promise. The girls began working on their first Try-It Puppets, Dolls and Plays in the World of the Arts. They made a yarn doll. Each girl cut several pieces of yarn about 14 inches long and took a ping pong ball and tied a piece of ribbon at the top of the strips of yarn and under the ping pong ball to make the head. Then they made the arms and legs. They used buttons for the eyes and ribbon for the mouth. After the girls made their dolls they had chocolate cupcakes and Kool Aid for refreshments.

Brownies attending were Lela, Marissa, Kristal, Latisha, Leesa, Kara, Bobbie and Chelyn. Troop leaders were Cherie Maddox and Pam Hancock.

The group also met on Sept. 19 at the Girl Scout Little Hut with the meeting getting under way with the girls having a certain duty assigned to them. Each week one girl will take and serve the refreshments, one girl will call the roll, one will take the dues, one will welcome everyone, one will lead in the songs, one will lead the friendship circle for the closing and two will make sure the hut is clean.

Refreshments were provided by Lela. After refreshments the girls started their activity. This week the girls made a paper bag puppet.

The Brownies that attended were: Lela, Marissa, Chelyn, Latisha, Leesa, Bobbie, Kara and Kristal. Troop leaders were Cherie Maddox and Pam Hancock.

weeklong leadership workshop at Trinidad in August.

Brooks, son of Mrs. Nelda Brooks, is a senior at Meadow High School. He plays football and basketball and is active in student organizations and his church. In 4-H nine years, he has served as a club officer and on the Terry County and South Plains District 4-H councils. He has been junior leader for swine and beef projects and recreation leader at county 4-H camps.

Chad Lee, son of Dr. and Mrs. T.A. Lee, is a senior at Stephenville High School and plays varsity football. A member of 4-H for seven years, he is very active in 4-H shooting sports.

He has been president and county council delegate for the Erath County Shooting Sports 4-H Club and earned district and regional shooting awards. He has chaired the Erath County and North Central District 4-H councils and the county Junior Leaders Association.

Melode is the daughter of Mr. and Mrs. Kenny Chance. A graduate of Ralls High, she is a freshman at Texas Tech University. In 4-H 11 years, her activities have ranged from public speaking and consumer education to foods and nutrition, horse, sheep and clothing. She has been an officer in her club and in the Crosby County and South Plains District 4-H councils.

Joe Willie Lee is the son of Mr. and Mrs. Terry Lee. A senior at George West High, he is on the student council, active in sports and FFA. A 4-H member for eight years, his projects include beef, swine, foods and nutrition, and arts and crafts. He is active in his church and a member of the Live Oak County and South District 4-H councils.

Christi is the daughter of Mr. and Mrs. Matt Davis. She is a senior at Sonora High, secretary of the student council and a National Honor Society member. Active in speech and dramatics, she has won state and regional awards in University Interscholastic League contests in poetry and dramatics.

As a 4-H member for 10 years, she is a Gold Star Award winner with projects from foods and nutrition to citizenship and recreation. She took part in a recent Citizenship Washington Focus to the nation's capital.

Whatever necessity lays upon thee, endure; whatever she commands, do.

Country Club Report

By Claudine Elliott

The Muleshoe Women's Country Club Association met Wednesday, Sept. 20th, for their monthly meeting.

Dorothy St. Clair, our president, presided over the business meeting. She recognized and welcomed our guests, Donna Zackoski, sister of Yolonda Bell, and Sharon Angley, daughter of Marlene Martin.

Our birthday ladies for September were Analita Haley, Shirley Hicks, Jeanetta Precure and Jo Rempe.

The winner of our raffle was Claudine Elliott.

All committees made their

reports. Ruby Hart, our Hi-Plains director, reported that the Hi-Plains meeting this month was cancelled due to the weather. It was to have been in Dimmitt, Sept. 13th. The next meeting will be October 11th in Clovis.

Analita Haley, our Tournament Chairman, reported on our annual Partnership Tournament held Saturday, Sept. 16th. It was one of our best tournaments. Everyone really enjoyed the day with the weather perfect, the course was so pretty, thanks to our pro, Gearold Phipps. Gearold also had a group of our men to help the ladies as they arrived taking their clubs to the club house. It was really appreciated by our guests. Some of our men also cooked fajitas for our luncheons. They really made our day! Analita also thanked all the ladies that helped her so much with the preparations for this tournament. Darlene Henry and Marlene Martin registered our guests as they arrived. A lot of fun was had with everyone thinking they were seeing double. Helen Templeton decorated the tables with pumpkins filled with fresh flowers. They were lovely. Analita also thanked some that donated money toward some of our extra costs - Nickels Gin, Bamert Seed, Dorothy St. Clair, and Tommy Haley. Analita was complimented on a job well done with our tournament.

Our nominating committee reported on the officers for next year. President, Cookie Bamert, Vice-President, Jeanetta Precure, Secretary, Argilee Millen, Treasurer, Carelean Hamilton, Reporter, Marlene St. Clair, Hi-Plains director, Analita Haley, Tournament Chairman, Dorothy St. Clair, Ways and Means, Yolonda Bell, Playday Chairman, Claudine Elliott. Our

nominating committee was Yolonda Bell, Charlotte Field, and Kay Field. They really did a good job getting our officers for next year.

Playday awards were given to Helen Templeton, Analita Haley,

and Tommy Haley. Analita was complimented on a job well done with our tournament.

Playday awards were given to Helen Templeton, Analita Haley,

Ruby Hart, Mary Holt, and Kay Field.

After the meeting, the ladies divided into teams of five and played a scramble. The team winning with a score of 70 was Yolonda Bell, Donna Zackoski, Analita Haley, Argilee Millen, and Claudine Elliott.

Those attending our luncheon were: Yolonda Bell, Jo Rempe, Jerry Mayo, Ruby Lee Kerr, Argilee Millen, Helen Templeton, Jeanetta Precure, Ruby Hart, Mary Holt, Marlene St. Clair, Charlotte Field, Analita Haley, Laverne Winn, Martha Young, Cookie Bamert, Sherri Shipman, Marlene Martin, Dorothy St. Clair, Kay Field, Claudine Elliott, Donna Zackoski, and Sharon Angley.

Enochs News

by: Mrs. J.D. Bayless

Mrs. Wanda Layton and Mrs. Oleta Buris came home last Monday from a week visit with their brother, Cleo and wife, Leta Hall at Show Low, Az.

Guests in the home of Mr. and Mrs. Edward Crume Friday and Saturday were her sisters, Mrs. Lily Hazard of Eastland, Mrs. Vida Cash and her daughter, Mr. and Mrs. Chubby Black and son of Hereford. They attended the funeral of Mrs. Juanita Snow. We express our sympathy to all the relatives of Mrs. Snow.

We have several sick folks in our community, Clifford Snitker has been a patient in Methodist Hospital. Sidney Graves is sick in bed and several have colds and bronchitis.

Rain received north of Enochs last week was two and a tenth inches. It was really appreciated.

Goldman Stroud went to Duncan, Oklahoma Saturday to attend the funeral of a brother-in-law, Jess Gillispie.

Lee Check of Borger, Mr. and Mrs. Harold Layton and Robert and Stacy Layton and baby of Dell City came for the services of Mrs. Juanita Snow at the First United Methodist Church in Muleshoe at 2 p.m. Saturday.

BENTLEY'S MULESHOE

QUITTING BUSINESS!

**Less Than 10 Days Left
Last Day Is Sat. Sept. 30**

Prices Have Been Slashed

Merchandise Is Cut To Rock Bottom
Several Racks At 3.99, 4.99, 5.99 And 7.99
Several Racks a At 75% Off Regular Price
Everything Storewide Now

50% to 75% Off

One Special Rack Priced At 1.99

Hurry In For The FINAL FEW DAYS

Going...Going...It Will Soon Be Gone!!

Bentley's

Personal Checks Smart Fashion Open Mon.-Sat. 9-6

All Sales Final - No Layaways 110 S. MAIN ST. MULESHOE, TX. PHONE 272-4119 No Approvals - No Holds

Newton Appliance & Telephone Service

Repairs on all Makes & Models of Major Appliances!

Telephone Repair Service on Customer owned phones & equipment.

House Wiring & Jacks Installed

Used Appliances For Sale

"All Work Guaranteed"

1202 W. Amer. Blvd. 272-3272

Disaster Program

Cont. from Page 1

percent loss
 Non-participating program crops - 50 percent loss
 Non-program crops - 50 percent loss

Producers will be required to purchase 1990 FCIC crop insurance if 1989 losses exceed 65 percent.
 Advance deficiency payments will be forgiven on losses up to 35 percent of the expected production if the advance deficiency is not earned.

In order to prevent duplicate benefits, production used in computing deficiency payments will be reduced by the quantity of production for which disaster payments were made.

Farm stored production must be measured by this office prior to disposal or seeding.

Producers who had failed acres on CU for pay acreage under the 0/92 and 50/92 program will be allowed to change that acreage to disaster acreage and apply for disaster payments. Further instructions will be issued later.

Producers whose gross income exceeds \$2,000,000 are ineligible for disaster benefits.

There will be a \$100,000 **Kiwanis...**

Cont. from Page 1

bers that the emphasis for Kiwanis was on youth programs.

Outgoing president Keith Turner also presented an "Outstanding Service" award to R. A. Bradley; Committee Chairman awards to Robert Montgomery, for the scholarship award committee and Reggie Johnson for the flag project. Also, Glen Morris was given the treasurer plaque and Jim Lutz received the secretary plaque.

Nick and Jatonne Black were well received with their magic and illusion show. The duo, who started their show about five years ago, are now performing an average of more than once a week now, and Black continually adds new acts to their mysterious show.

Incoming president Jim Lutz had few words to say, except to accept the challenge of being president for the next year, and working toward the goals set by the incoming lieutenant governor.

Officers installed included Jim Lutz, president; Glen Morris, vice president; Reggie Johnson, secretary and J. O. Parker, treasurer.

Board members for 1989-90 include Eddy Morris, Don Clapp, J. O. Parker, Scott Churchman, Reggie Johnson, Don Martin and immediate past president, Keith Turner.

Also recognized were honorary members Chad Johnson and Lacy Morris. Honorary members not present were Jon Keith Turner and Robbie Clapp.

Longhorns...

Cont. from Page 1

Coming Back in the third, Brett Thomas connected with Craig Smyer for a 10 yard TD pass with Chris Cozbey making the conversion.

Final score came in the fourth when Jody Copp latched onto a 30 yard pass from Brett Thomas.

Next Thursday, Coach Scisson will match his junior high school players against Whitharral, at Whitharral, at 5 p.m. on Thursday.

limitation on total 1989 disaster payments.

Signup began September 15, 1989 and will continue through April 2, 1990.

1989 Disaster payments shall be issued in CCC-6's, if the amount is \$200 or more.

The date for refunding overpayments of 1988 deficiency payments, because of 1988 disaster payments, has been extended to July 31, 1990. Overpayments of 1989 deficiency payments, because of 1989 disaster payments, are also due on July 31, 1990.

ACTUAL PRODUCTION.

Producers that have both eligible acres for program benefits and ineligible acres (ghost acres), need to keep the actual production separate and apart for future loan purposes, disaster benefits, and yield purposes.

FAILED ACRES

Any crop that has failed due to drought, excessive moisture, hail, or any other natural disaster beyond the producers control, MUST be certified and an ASCS-574 (Disaster Application) filed before the crop is disturbed and/or replanted to a different commodity. All required ACR must be maintained for the failed acreage. These requirements must be met to be eligible for program benefits.

DIVIDING CRP PAYMENTS

Any producer who becomes a successor-in-interest to a CRP contract after July 24, 1989, must divide the annual rental payment earned with the original CRP signer.

The COC shall determine the payments based on the period of time that each applicable participant had control of the land during the fiscal year.

This means that if you purchase a farm that is enrolled in the CRP program after July 24, 1989, you and the original owner will receive an annual rental payment based on the period of time each one of you had control of the CRP contract.

MEASURING SERVICE

Remember!!! As soon as the ASC gets your farm measured, you will be notified of the measured acreage and you only

Muleshoe...

Cont. from Page 1

Funeral services for Blanche Kent, of Dallas, mother of Rev. Bill Kent, former pastor of the First United Methodist Church in Muleshoe, were held Friday at Restland Funeral Home in Dallas.

Mrs. Kent died Wednesday following an illness.

Address for Rev. Kent is 5228-91st St., Lubbock. His phone number is 794-6902.

Principal's Awards for the week for Watson Junior High School were presented Dennis Reeder, sixth grade; Marcos Reyes, seventh grade and Stephanie Gilliam, eighth grade. Educator of the Week was Counselor Geneva Alvis.

Sgt. Charlie Simmons of the Lubbock District Highway Patrol office from Plainview said, "In Bailey County, our troopers investigated no fatal accidents, two personal injury accidents and three property damage accidents in the month of August.

have five workdays in which to adjust (if any) and certify your acres in the ASC office.

Please notify the ASC if you have to adjust prior to plowing anything up. If you requested measurement service on grain sorghum, please be sure that the ASC office has completed the measurement service before harvesting the crop. Failure to certify prior to harvest could cause your farm to be out of compliance.

MAINTENANCE OF ACR AND CRP
 Weed control measures MUST be carried out in a timely manner

Good Fall Weather Would Help Cotton Crop

Weather conditions from now until the end of September will pretty well tell the fate of this year's cotton crop on the Texas South Plains, says a cotton specialist with the Texas Agricultural Extension Service.

A week of cool, wet weather which began September 9 wasn't what was needed on the approximately two million acres of cotton in the 25 counties around Lubbock. This area normally produces about half of the state's \$1.3 billion cotton crop.

Roughly one-third of the standing crop is irrigated cotton planted in late April to mid-May, said Dr. James R. Supak, cotton agronomist. "Most of that survived the adverse conditions we had in late May and early June, and is now our best cotton," he said.

"Much of that crop is nearing maturity, and in another week to 10 days should be pretty well out of harm's way. In fact, much of it will be ready for crop termination work with harvest-aid chemicals," Supak said.

The remainder of the crop is either dryland or late-planted irrigated cotton.

"The majority of the dryland crop went through severe drought stress during the year and consequently its yield potential is very limited," the Extension Service specialist said. There will be some dryland production, he predicted, since some of these areas had scattered rains which permitted a reasonably good fruit set.

But recent rains are actually hindering, causing the plants to resume growth at a time they should be devoting their energy to maturing the bolls. These plants are setting additional fruit that has no chance of maturing, Supak said.

The late-planted irrigated crop made pretty good progress during August and is generally carrying a heavy fruit load, he said.

"But its main problem right now is that the fruit is immature and we're fast running out of growing season," Supak said.

"We started off September in very good fashion. We had good, open conditions and temperatures were running somewhat above normal," he said. This helped the late-planted crop and was conditioning the early crop for maturity and termination.

But on September 9, the first of the seasonal fronts rolled in. The area stayed cloudy and cool for about a week.

"Beginning September 13, the temperatures actually dipped down into the 40s," Supak said. "We had very low readings again

on acreage designated as ACR and through the calendar year. Weed control measures also MUST be carried out timely on CRP land throughout the lifespan of the CRP contract. Failure to control noxious weeds will result in total loss of the farm benefits and/or your CRP contract.

INTEREST RATE
 The loan interest rate for September is 8.000 percent.

OFFICE CLOSED
 The ASC office will be closed Monday, October 9, 1989 in observance of Columbus Day.

Eagles...

Cont. from Page 1

pass from Roy Guitron. There was no scoring in the fourth quarter.

Jesse Haros showed his power with four punts that averaged 50.7 yards to be outstanding defensively.

Mario Guillen carried 34 times for 189 yards and five touchdowns and had one TD reception for 35 yards.

Jesse Haros carried 10 times for 31 yards.

Before being injured, Efrain received five passes for 70 yards and 1 TD. Jesus Flores was 1-7.

Mario completed 7-18 passes for 77 yards, had one interception and one TD pass.

Muleshoe Mules

Cont. from Page 1

in from the two, seven plays later with 7:25 left in the third. Chamberlain's kick made it a 28-6 game.

Again, the Mules ran into trouble trying to move the ball, as they were swarmed by Mustang defensive players, and turned the ball back to the Mustangs.

One more time, the Mustang aerial attack failed them, so they had to depend on their runners to grind out yardage. The Denver City team took advantage of a fake punt to move the ball 45 yards, and within striking distance again. Two plays later, Chance McLeroy made it over from the two with 3:05 left in the third. They then made a two point conversion.

The Mules were still digging in and trying to grind out yards as the third quarter ran out.

Going into the fourth, the Mules were moving the ball despite being surrounded by Mustangs, and swarmed all over by the larger players.

Again, early in the quarter, the Denver City Mustangs scored. This time, at 10:58 of the fourth, the Mustangs' David Gonzales scored from the six, with Chamberlain making the point after kick good.

Mustang mistakes proved to cost them yards all through the game, both through penalties and through losing a couple of fumbles to the Mules. However, the Mules failed to gain many

yards against the solid wall of Denver City Mustangs, getting 2-3-7 yards per carry. They had some good carries for the night, and through the evening added more rushing yards against Denver City than they have had in either of the two previous games.

At 1:38 of the fourth, Chad Sefcik added DC's final TD on a 43 yard dash. Chamberlain's sure toe added an extra point.

The Mules had the ball until the final buzzer but failed to move it against the Mustangs.

Another player for the Mules went out of action Friday night. Ad Godinez received a separated shoulder in the game.

A good crowd was on hand for nearly perfect football weather. Next Friday night, the Muleshoe Mules will take on Midland Greenwood, at Midland.

The support shown by parents, students and football fans is very much appreciated by both the players and the coaching staff, and they encourage your continued support as the season progresses.

BRIEFS

Catastrophic Medicare plan to cost more.

First woman named to Japanese Cabinet.

Brewers urged to stop aiming ads at minorities.

FDA inspecting generic drug firms.

1989 Crop				
	Pool Cash Advance	Sale Flat	Sale Basis	Month
Feed Corn	4.35	4.40
White Cobb Yellow ...	4.10	4.85
Red Cobb Yellow	4.00	4.60
White Food Corn	5.00	6.00
Milo	3.75	3.68
Soybeans.....	No Pool	5.15
Wheat.....	No Pool	3.51

103%
 Prices effective September 22, 1989

Farmer's Co-Op Elevators
 272-4335

Mr. Corn Farmer



We are now accepting feed & food corn at 215 E. Amer. Blvd. or the Main Elevator in Muleshoe.

Come by either location in Muleshoe and discuss our food corn program today.

Farmer's Cooperative Elevators



ANTIFREEZE

Reg. 7.99

Sale

\$6⁹⁵



401 S. 1st Muleshoe 272-4511

Sudan News

by: Evelyn Ritchie

Mr. and Mrs. Matt Nix were in Ruidosa, N.M. recently when their daughter, Debbie Norwood and Fawn of Lubbock accompanied them.

Mr. and Mrs. Waymon Gordon have returned home from a mission trip at Counselor, N.M. near Farmington where they helped build a church building there.

Mr. and Mrs. Billy Chester have returned home from Durango, Colorado where they visited during the weekend with their daughter, Mr. and Mrs. Dale Masten and family.

Mr. and Mrs. James Mike Nix were in Dallas during the weekend when they visited their daughter, Jeanna and also attended the wedding of one of the SMU Coaches while there.

Mr. and Mrs. Pete Phillips have returned home from vacationing at Branson, Mo. the past several days.

Mr. and Mrs. David Quisenberry and family visited Saturday in Tahoka with her parents, Mr. and Mrs. Jerry McKibbin and family.

Mr. and Mrs. Ken Williams, Jon Ann Ford and Jackelyn and Charles Ann Williams and her mother, Mrs. Estelle Lowe were in Chillicothe during the weekend to visit John's father, J.A. Williams who has been seriously ill. It was reported that Mr. Williams died late Monday evening. The family returned there for the funeral services.

Mr. and Mrs. Waymon Bellar have returned home from vacationing the past several days.

Jackelyn Ford has returned home from San Angelo where she visited with her dad, Jay, and grandparents, Mr. and Mrs. Bob Ford.

James Wallace is recuperating at home after being a patient in the Littlefield Health Care Center last week.

Ho Bingham, grandfather of Ron Smith, is a patient in the Methodist Hospital in Lubbock.

Mr. and Mrs. Tommy Cate have been vacationing recently in Branson, Mo.

Misty Bartley is a student this year at Angelo State University, Kristi Lambert is attending Tulsa Junior College and Star Tennyson is attending Baylor. Stacy Williams is attending N.M. Junior College while Kim Brotherton, Tracie Williams are among those attending South Plains as well as Chris Harper, Elliot King, Teena Newman, Melanie Peck, Kenna Richards and George Salinas.

Mr. and Mrs. John Robertson of Hale Center visited recently with Mr. and Mrs. L.D. Terrell and Mr. and Mrs. D.C. Terrell.

As of Thursday, 398 students are enrolled at Sudan schools. Of the previously reported 401--three have moved from Sudan.

Brad Pierce of Sudan was among the 1,052 Southwest Texas State University students who were candidates for degrees awarded in summer commencement ceremonies Aug. 11 and 12.

Pierce, son of Mr. and Mrs. Leonard Pierce of Sudan, received a master of education degree with a major in agricultural education.

Visiting with Mrs. Nell Epps this week has been her daughter, Norma Bradley and her son in law, Howard, both of Houston.

Bro. Cliff Hargrove, Wayne Powell, Patsy Kent and Frances Gardner were in Chillicothe Thursday to attend funeral services for J.A. Williams, father of John Williams.

The Sudan Hornet Booster Club met Tuesday night at 7 when some 25 booster club members and the six coaches attended.

A discussion was held on items

to be sold this year that includes caps, ladies sun visors and seat cushions.

The coach gave a report on the seventh grade, eighth grade and Junior Varsity games and gave a scouting report on the Anton team. The film between Sudan and Van Horn was viewed.

Also discussed was ways to improve on this year's membership. Son has sold approximately 120 cards Thursday.

Cadet John D. Harlan has completed a U.S. Air Force ROTC field training encampment at Lowry Air Force Base, Colo.

Field training, attended by cadets normally between their second and third year of college, gives an opportunity to evaluate each student's potential as an officer.

The summer curriculum consists of orientation on jet aircraft career opportunities, human relations education and equal

opportunity training. Physical fitness and survival training is also emphasized.

Harlan is the son of Mr. and Mrs. Nolan H. Harlan of Sudan and a 1987 graduate of Sudan High School.

Eighty-two band students piled into two chartered buses on September 8. The buses, provided by the school, were destined for Big Springs for the Friday night's game.

Comfort was the main benefit of the buses. Since most of the storage was under the bus, the band students got to recline in their own chairs. "Those other buses we usually ride, make the long bus trips uncomfortable," said Mitzi Glascock, "We all end up being gripy by the end of the trip."

After an hour and half delay because the Lubbock High Westerners bus broke down,

Sudan JV Hornets were defeated in a defensive battle by the Lubbock Westerners 6-0. "We played real good considering they were 5A but we made some mistakes" said Andy Roberts.

The American Heart Association's Lamb County Affiliate Board met for an orientation session, Thursday, September 7 at 4:30 p.m. in the atrium of the Lamb County Healthcare Hospital.

The next meeting of the board will be on Oct. 17.

The Sudan Square came alive with cheers, music and shouts of encouragement at the first ever Town Pep Rally on Thursday, September 7, following the JV football game.

The cheerleaders led students, parents and members of the community in cheers to show their support of a team picked to win district and advance much

further. Varsity football players arrived atop a fire truck with lights blazing and sirens blaring.

Shop
Muleshoe
First!

Think
Classifieds
Call
272-4536

Dear Friends,

Words cannot express our heartfelt thanks for the many prayers, beautiful cards, and the delicious food brought to our home while Olen was sick and after he passed away.

Our loss has been made bearable because of your prayers and love.

We Love You

The Cleo Webb Family

Immaculate Conception Catholic Church

Father Patrick Maher
Northeast of City

First Baptist Church

220 West Ave. E.
Barry Bradley, Pastor

Emmanuel Baptist Church

Iglesia Bautista Emmanuel
107 East Third
Isaias Cardenas, Pastor

Trinity Baptist Church

314 E. Ave. B.
Rev. Dale Berry

Circle Back Baptist Church

Intersection FM 3397 & FM 298
Pastor, Glen Price
946-3676

Calvary Baptist Church

1733 W. Ave. C.
Rev. Rick Michael

Muleshoe Baptist Church

8th and Ave. G.
Bob Dodd, Pastor

Progress Baptist Church

Charles Fisk, Pastor
Progress, Texas

Richland Hills Baptist Church

17th and West Ave. D.
Allen Petersen, Pastor

St. Matthews Baptist Church

Corner of West Boston & West Birch
M.S. Brown, Pastor

Progress Second Baptist Church

1st and 3rd Sunday
Rev. Arthur Hayes

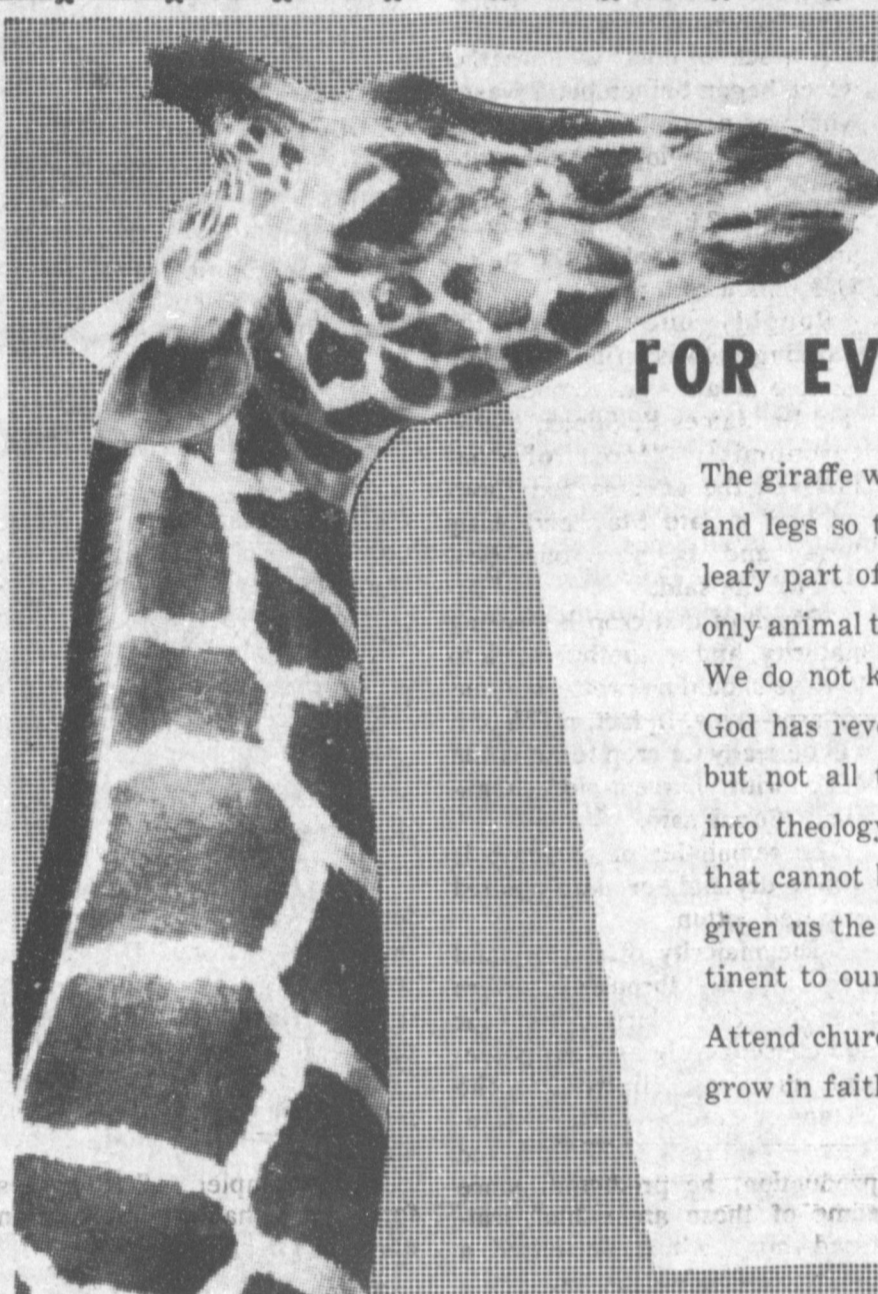
Primitive Baptist Church

621 South First
Elder Cleveland Bass, Pastor

1st Baptist Church

Lazbuddie, Tx
965-2126

Gary Wilcox, Pastor



A REASON FOR EVERYTHING

The giraffe was given a very long neck and legs so that he could feed on the leafy part of trees. The giraffe is the only animal that can not make a sound. We do not know the reason for this. God has revealed many things to us, but not all things. Men delve deeply into theology and find many things that cannot be answered, but God has given us the answer to all things pertinent to our salvation.

Attend church, study God's word and grow in faith.

The Church is God's appointed agency in this world for spreading the knowledge of His love for man and of His demand for man to respond to that love by loving his neighbor. Without this grounding in the love of God, no government or society or way of life will long persevere and the freedoms which we hold so dear will inevitably perish. Therefore, even from a selfish point of view, one should support the Church for the sake of the welfare of himself and his family. Beyond that, however, every person should uphold and participate in the Church because it tells the truth about man's life, death and destiny; the truth which alone will set him free to live as a child of God.



St. John Luthern

Sunday School and Bible Classes 9:30 a.m.
Church Services 10:30

Rev. Mac Bearss, Pastor

Lazbuddie Methodist Church

965-2121

Larry Reid Farris, Pastor

New Covenant Church

Plainview Hwy
Sunday 10:00 a.m.
Wednesday 7:00 p.m.

Jimmy Lowe, Pastor

Jehovah Witness

Friona Hwy
Boyd Lowery, Pastor.

The Community Church

Morton Hwy
Mort Cross, Pastor
272-5992

Truth Tabernacle

Pentecostal Church

200 E. Ithaca & Fir
272-3391

Les James, Pastor

Templo Calvario

507 South Main
Sunday 10:00 a.m.
Sunday Evening 7:00 p.m.

Evangelistic Services
J.L. Soto, Pastor

Western Drug
114 Main 272-3106

Dairy Queen
1204 W. Amer. Blvd. 272-3412

Wes Tex Futures, Inc.
114 E. Ave. C 272-5585

Serv-All Thriftway
401 W. Amer. Blvd. 272-4739

American Valley, Inc.
W. Hwy 84 272-4266

Superior Med-Equip
623 W. 2nd 272-3767 or 965-2622

Bob Stovall Printing
221 E. Ave. B. 272-3373

Combination Motor & Salvage
272-4458

Farmers Co-Op Elevators
Muleshoe 272-3988

Bobo Insurance
108 E. Ave. C. 272-4264

Main Street Beauty Salon
115 Main 272-3448

Lenau Lumber
202 E. Ash 272-4222

Bratcher Motor Supply
107 E. Ave. D. 272-4288

5-Area Telephone Cooperative, Inc.
302 Uvalde 272-5533

Irrigation Pumps & Power
West Hwy 84 272-4483

Wes-Tex Feed Yards
272-7555

Muleshoe Lawn & Leisure
522 W. Amer. Blvd. 272-3162

Richland Hills Texaco
1914 W. Amer. Blvd. 272-4875

Town & Country Review

Copyright 1989 by Connie Logan Advertising Company, Inc., Oklahoma City, Oklahoma
T.M. Rig. U.S. Patent Office, Washington, D.C.
Newspaper Accounting Services is solely responsible for sales & collections of this review.



Vaughn's Country Cafe

Willis & Corene Vaughn - Owners

For a place that is friendly and a meal that is delicious, visit Vaughn's Country Cafe in Clovis at 221 N. Prince -- Phone 505-762-1487. Here you will find a homelike atmosphere together with courteous service that you will like. They offer Home Style Cooking - steaks, chicken, and seafoods -- Breakfast anytime - open 24 hours. If it is just a snack you want, you will find sandwiches, salads and soups - also homemade pies and delicious coffee that's just the thing to take away that hungry feeling. If you a person who wants the best in food when you eat out, you'll find that Vaughn's is the place to go. We suggest you take your family or friends to Vaughn's - it's worth the drive!

Western Steel Buildings

Ed Wallace-Owner

Western Steel Buildings is located 3 miles West on Hwy. 54 & 1 mile North of Littlefield - Phone 385-5381 and offers this area a complete line of Western Steel Buildings for commercial, residential and office purposes. Complete buildings - steel frames, steel hoist - beam lines & open web joist. Call them for free estimates on specially designed buildings to meet your requirements. These steel buildings have many advantages over other types of construction. They can be quickly and easily erected at any location and are more economical, are weathertight, permanent and of coarspan construction. Ed Wallace offers a complete turnkey operation. Before constructing a new facility, call Ed Wallace & avail yourself of a preliminary plan at no cost to you.

Portales Locker Plant

New Owners - Lance & Mandy Caviness

Portales Locker Plant is located on Hwy. 206 (Lovington Hwy.) in Portales - call for an appointment at 505-356-5431. We would like to call the attention of our readers to the advantages of having a custom-processing firm in our vicinity. They have all the latest equipment to process your meat so that you may get the most out of your hog or beef. They work on the principal that every customer must have the most expert service they can give them. Sanitary conditions are maintained at all times. Take them your beef or hog and they will slaughter & process it the way you prefer it to be done. They offer locker rentals, too that are available the year around. The new owners - Lance & Mandy appreciate their customers. Open 7:30 - 5 p.m. - Mon.-Fri. -- Sat. 9 a.m. to 11 a.m.

Plains Convalescent Center And Heritage Home

Vickie Hutton-Administrator

Lee Hawkins-Administrator

Residents of this area can find the best care for those they care for the most when they learn first hand of the extensive facilities at Plains Convalescent Center in Plainview at 2813 W. 8th -- phone 293-2581 and Heritage Home in Plainview at 2510 W. 24th -- phone 296-5584. For care beyond compare, your choice should be one of these outstanding facilities. Their patients care is their first concern. They have a well trained staff, rooms well furnished, bed patients receive special attention and care, tasty and nutritious food. A healthy diet for all residents including special diets and 24 hour nursing care. These are just a part of the services featured at these homes - where they add years to senior citizen's lives. and LIFE TO THEIR YEARS. Programmed activities available for those able and desirous of participating. You will find that your loved ones will receive the best care.

Quality Decor

Eva Weber-Owner/Interior Designer

Quality Decor is in a new location at 7th & Gidding - in Clovis - phone 505-762-2607, for estimates. This establishment is one of the most prominent drapery houses in this entire area. They carry a full line of beautiful fabrics from which to choose. They design draperies for all types of windows. Beautiful window fashions, draperies, blinds, custom bedspreads, accessories and drapery hardware. Their prices are most reasonable, and it will pay you to call them before having draperies made. They handle only the finest in quality goods, and their expert workmanship cannot be excelled. NEW Location - 7th & Gidding!

William Parker, D.D.S

When people go through life without smiling it makes the whole world glum for everyone. Good dental hygiene enables everyone to light up the world with a smile and it begins when you see your dentist regularly. Visit Dr. William Parker in Littlefield, at 320 E. 8th, phone 385-4434. Dr. Parker offers a comprehensive range of personalized dental services for the family, including: fillings, crowns, bridge work, dentures, orthodontics, cosmetic bonding and a full range of other dental services in a relaxed atmosphere. Their emphasis is on PREVENTION and they endeavor to make your visit comfortable and affordable. With the aid of modern X-Ray techniques, they can quickly pinpoint problem areas in your mouth and begin the necessary work. Improve your dental hygiene by contacting Dr. William Parker for all your family dentistry work. Insurance, Visa & Mastercard are welcome. Hours: 8:30-5:00 Mon.-Thurs. -- 8:30-12:00 Friday and Sat. by appointment.

Central Plains Regional Hospital

Plainview

Central Plains Regional Hospital in Plainview "Modern Medicine, Old Fashioned Care" - located at 2601 Dimmitt Rd -- phone 296-5531. Here the best medical and surgical skill can be obtained at a moments notice. When it is necessary to be under the care of a physician with attending nurses, think Central Plains Regional Hospital. The value of this local hospital is being appreciated by more people every day. The family at home is relieved of a heavy burden when they know the patient is receiving the care and kind attention needed to help regain health and strength. They are continually making changes in order to keep abreast of the rapid developments in the scientific field of medicine in order to better meet the ever increasing demands that are being placed on it for its services. They offer 24 hour emergency room service and complete health care services.

West Texas Truck Center Of Lubbock

Where does the smart truck driver take his rig for service in our area? WEST TEXAS TRUCK CENTER OF LUBBOCK has been repairing and maintaining trucks for years and the men who know quality keep going back again and again! WEST TEXAS TRUCK CENTER OF LUBBOCK is located at 4901 Ave. A-Phone 765-7555 or 1-800-888-1405 (Nationwide). This outstanding service depot caters to the needs of the professional driver with lubrication, tune-ups, alignment, general welding, rear ends, transmissions and most any other repair needed. They are the acknowledged experts in the field! The skilled technicians know that down time costs you money, and they make every effort to get you rolling again in a minimum of time. Whether it's Freightliner, Kenworth, GMC, Peterbilt, Mack, White or any other brand. Don't let just anyone service your truck...See the experts at WEST TEXAS TRUCK CENTER OF LUBBOCK and drive away with a perfectly repaired rig!

Gib's Drive-In Cleaners

Dan & Martha Koelzer-Owners

Gib's Drive-In Cleaners located in Friona at 622 Main -- phone 247-3150 is famous for the quality of work done. For many years they have featured the finest in dry cleaning. People are often judged by their appearance. Our clothes mean a great deal in making that first impression the right one. It is wise to keep our clothes neat and clean at all times. It is an accepted fact that fabrics wear a great deal longer that have been cleaned often. It is not the cleaning that wears out clothes, but the dirt and perspiration that collects in them as they are worn. Be thrifty and have that dirt removed completely by this outstanding cleaner. They offer leather & suede cleaning, drapery cleaning, water proofing, wedding gown preservation and alterations.

R. Randolph Nieves & Co.

"Since 1969"

Today's Certified Public Accountant is more than just a tax professional. A CPA is a business advisor, keeping abreast of legislation which affects the businessman and woman, the individual, and the professional. He is an invaluable "SILENT" partner in helping you improve your business and financial status. Laws effecting your business can change yearly and forms required by various agencies are overwhelming to most of us. R. RANDOLPH NIEVES & CO. is competent in matters that could be beneficial to your business. They can be reached Monday thru Friday between 8 a.m. and 5 p.m. and also for special appointments. R. RANDOLPH NIEVES & CO. in Clovis is located at 901 Colonial Parkway - Phone 505-762-4433.

Hilliard Chiropractic Center

"Health Through Advanced Chiropractic"

No profession has made greater and more rapid strides in recent years than Chiropractic. The efforts and results are being recognized by more people each day. Hilliard Chiropractic Center in Portales located at 112 E. 4th, phone 505-356-6982. Dr. W.K. Hilliard is a Chiropractor of long experience. It is stated that if your health has not been the best, you owe it to yourself to go to his office and let him show you how their treatments will remedy the existing cause. It is stated that the nerve system is so constructed that it leads to and conveys life to every distant part of the body. If there is the slightest interference with the balance of this delicate nerve system, painful ill health will probably set in. Dr. Hilliard can analyze & treat this interference, which, is stated removes the cause, thus restoring normal conditions, and permitting nature to take its natural course to heal.

Travel Center

American Express

WHEN PLANNING A TRIP anywhere in the world, consult the experts at the Travel Center in Clovis, at 121 W. 7th (7th and Mitchell), phone 505-762-4566, your dealer in dreams. This firm will arrange your entire trip throughout the U.S. or abroad at no additional cost to you. They offer escorted, independent and custom tours, full schedule and reservation service, complete passport and visa information. All hotel, motel, car rental and resort reservations can be scheduled for your convenience. The superior service offered by this agency has been proven by their past record of expert travel arrangements. Their vast knowledge of travel industry is at your disposal.

Eastern Telecommunication Services Company

With the fast-paced and rapidly changing communications industry, you need an experienced and reliable firm that can give you honest and dependable answers to your questions about telephone equipment and systems, as well as FAX machines. Eastern Telecommunication Services Company located at 415 Mitchell in Clovis, phone 505-769-1823, has been serving the commercial and residential needs of this area. They will custom design and install a system that will meet your communication requirements. They provide complete sales, service and installation for all applications. Their experienced service technicians can be depended upon to make sure your equipment and system is always in the best working condition. We suggest you call ETSC for all your telecommunication needs and we direct your attention to them as one of the most reliable business firms in the area.

Pack 'N' Mail

Duane Chase-Owner

One of the most outstanding business firms has to be PACK 'N' MAIL in Clovis - dedicated to providing area residents with the ANSWER to all your mailing problems. No more standing in long lines - they offer: packing, wrapping, mailing, gift wrapping, greeting cards, gifts - such as "Cut-up" (photo sculptures), bulk mailing and presort, overnight mail & package service, stamps, certified mail, package pick-up, mail box rental - 24 hours, FAX - instant mail - (sending & receiving - and much more) PACK 'N' MAIL in clovis is located at 1501 N. Prince - phone 505-769-0910 or 763-6985. They have earned the respect and admiration of all those who have done business with them. Their honest and straight forth manner of dealing on a one-to-one basis with people of all walks of life has made them a leader in their field. We suggest area residents and businesses make PACK 'N' MAIL your mailing center - "The Packaging Pros." Let them take care of your TRAVEL Needs - Complete Travel Packages at the BEST Discounts available and no additional cost to you.



Cecil's Interiors

Cecil & Harve Gardner -Owners

Interior design isn't something that just anyone can do! A properly designed interior requires the services of an expert in the field -- such a firm is CECIL'S INTERIORS in Lubbock at 2845 - 34th -- phone 795-0609 and serving our area since 1950. Here is one interior decorator who believes in complying with your wishes and will offer suggestions to further enhance your basic decorating ideas. They offer you many lines of distinctive products to choose from in the way of draperies, upholstery, shades, quilting, wallpaper, fabrics, bedspreads, pillows, mini-blinds and woven woods. Their biggest contribution, however, is the seemingly endless flow of ideas for the beautification of your home and office. CECIL'S INTERIORS demands the best! They are not satisfied until you are - they will go out of their way to insure a decorating scheme of versatile beauty and easy upkeep for your home. We suggest you contact this well respected firm of interior designers when you redecorate or remodel.

Clovis Vacuum Center

Tommy Burkett

When you are looking for the most dependable service on your vacuum or you're looking for someone that has the experience in vacuums to give you the assurance you are getting the most for your money and a machine that will give you the years of dependable service you expect, you should go to CLOVIS VACUUM CENTER - located at 703 E. Grand (1/2 blk. W. of Prince) in Clovis - Phone 505-762-6580. They carry a fine selection - such as: Filter Queen, Eureka, Kirby, Hoover & Riccar. They offer Sales & Service - new - used and rebuilt - they will service the vacuum you already own & have it performing the way it should. They have been serving our area for years and will no doubt continue to do so for many more, because of their dependable & economical service and outstanding products. They have a complete line of replacement parts. If you don't already own a vacuum or it's time to buy a new one - Go to Clovis Vacuum Center - they will have a machine just right for you & your budget.

Dr. Steven D. Smith

In today's society the practice of high tech vision care is a way of life. When you find a doctor who practices high tech eye care with an understanding of the patients needs as well, you are more than fortunate. Dr. Steven Smith located in Littlefield at 406 Lfd. Dr. - Phone 385-5147, this outstanding professional specializes in family eye care including - the fitting and prescribing of contact lenses, daily wear and extending wear, eye diseases, learning disabilities, sports vision, childrens vision and senior citizens vision. Where your eyes are concerned there is no substitute for quality care. Many times eye problems can interfere with learning, driving and your feeling of general well being. Don't put off your visit for an eye examination. Phone 385-5147 today for an appointment to see the professional that can give you a better and clearer outlook on life.

Charter Plains Hospital

"Specializing in the care of Mental Health & Substance Abuse Problems"

Alcohol and drug abuse is a quick road to a long playing tragedy and the only answer is to stop and get help. Charter Plains Hospital in Lubbock has been providing that help for many years. They are located at 801 N. Quaker - phone 744-5505 -- toll free 1-800-692-4606 (out of state) and 1-800-872-1433 N. Mex. People who were once wiped out by alcohol and other drugs are back into the real and living world. If you suspect someone you care about has turned to alcohol or other drugs to solve life's problems, call Charter Plains Hospital. In addition they specialize in other mental health problems - such as: depression and eating disorders. They have an experienced, caring staff who know exactly where that road to recovery starts. We know that so many of life's worst problems ride in on the coattails of a bad alcohol or drug disease. Charter Plains Hospital specializes in making those problems solvable, not just for the drug abuser--but for everyone related to that person. We salute Charter Plains Hospital!

Town & Country Review

Copyright 1989 by Connie Logan Advertising Company, Inc., Oklahoma City, Oklahoma
T.M. Reg. U.S. Patent Office, Washington, D.C.
Newspaper Accounting Services is solely responsible for sales & collections of this review.

Earth Co-Op Gin, Inc.

Earth Co-Op Gin is located on N. Hwy 1055 in Earth - phone 257-3395. They have served the farmers of our area faithfully and honestly for years. This fine cotton gin is capably operated, placing the welfare of the customer above all else. Honest weights, efficient handling and modern methods combine to result in the best and fastest service for the cotton producer. The ginning of your cotton can best be handled by this experienced co-op gin. Through their expert service to the cotton industry, your profits will grow. Earth Co-op Gin has added to the prosperity of the area and has contributed to the cotton industry by their service to the cotton producer.

Roosevelt General Hospital

Robert G. Timmons, M.D. Executive Director

Roosevelt General Hospital in Portales is well known as a major factor in the growth and development of the area. They are dedicated to providing the finest medical care of which modern science is capable. They have been prominent in caring for the health of local and area residents and are widely acclaimed for their staff of general practitioners and specialists -- General, Medical, Surgical, Obstetrics, Pediatrics, Coronary and intensive care -- "YOUR FULL SERVICE HOSPITAL" -- Special services include Home health care, Women's health program, Mammography, Outpatient surgery program, Sports medicine program and 24 HOUR EMERGENCY CARE. ROOSEVELT GENERAL HOSPITAL IN PORTALES is located at 1700 S. Ave. O--Phone 505-356-4411 and offers a full range of services from outpatient to surgery, from maternity to specialties. There's no better place to receive the type of care that only modern medical science can provide.

Excel Corporation



EXCEL CORPORATION located 4 miles W. of Friona on Hwy. 60 -- phone 295-3201 and North of Plainview - phone 293-5181, are distributors of high-grade meats and allied meat products. They are enjoying an ever increasing patronage from this part of the state. Because of the great volume of business transacted through their extensive wholesale establishment and because of their up-to-date business methods and high-quality products Excel Corporation has gained for this area a commercial prestige as an excellent market for retailers that could be gained in no other manner. Their meat processors work under the most sanitary conditions and they are USDA inspected & approved.

Clovis High Plains Hospital

Dedicated to providing the finest medical care of which modern science is capable, Clovis High Plains Hospital is well known as a major factor in the growth and development of the area. They have been prominent in caring for the health of local and area residents and widely acclaimed for their staff of physicians and specialists -- offering general surgery, coronary care, intensive care, CT scanning and ultrasound, hemodialysis, mammography, obstetrics and gynecology - 24 hour emergency service. Clovis High Plains Hospital - located at 2100 N. Thomas -- in Clovis - phone 505-769-2141, offers a full range of services from outpatient to surgery, from maternity to specialties. There's no better place to receive the type of care that only modern medical science can provide.

Clovis Honda-Nissan

Considering a new car this year? Careful consumers in the area have come to regard Clovis Honda-Nissan as one dealership where deals are made to the customer's satisfaction! Clovis Honda-Nissan located at 3000 Mabry Drive in Clovis, phone 505-762-3701, carries the complete line-up of famous Honda & Nissan automobiles. If your budget isn't quite ready for a new car, select from one of the area's finest assortments of quality used units. Either way, you get their famous service after the sale! They feature a complete repair department as well as parts and accessories. They're the area's "fully equipped dealership"! When you're out looking for a new car, make them your first stop...it just might be your LAST!

Sudan Livestock & Feeding Co.

MR. RANCHER! You know that times aren't easy for the LIVESTOCK GROWER. Smart Cattlemen are utilizing the services offered by Sudan Livestock & Feeding Co. to cut down on their costs and increase their profits. This scientifically managed feed lot is located on Hwy. 84 S.E. of Sudan -- phone 227-2421. They're ready to help you get the most from your cattle. You're assured of getting TOP DOLLAR for your beef investment when you turn your livestock over to this custom cattle feeding operation. Like to know more about what's involved in cattle? TALK Livestock with an expert at this dependable feed lot. Their lot is the perfect answer for the best market price in the shortest possible time.

Queens N' Teens

Personalized Service Since 1962'

Queens N' Teens in Clovis is located at 500 main, phone 505-763-7153, here quality reigns and style is paramount in ladies wear. They feature individual and distinctive garments and accessories for the most fashionable ladies at reasonable prices. Their quality wear is the very latest in smartness and the styles will distinguish the wearer as a well dressed woman. For any one firm to assume the fashion responsibilities of this area is rather a large undertaking, but through their desire to represent only the finest and the best, they have become known as fashion headquarters for ladies in this area. The principle upon which this store is operated is to sell individual and distinctive garments and to meet any and all competition in quality, style and price. We wish to compliment Alice Bell, the owner and suggest you visit them soon. They are always courteous, friendly & eager to help you!

London Feedyard

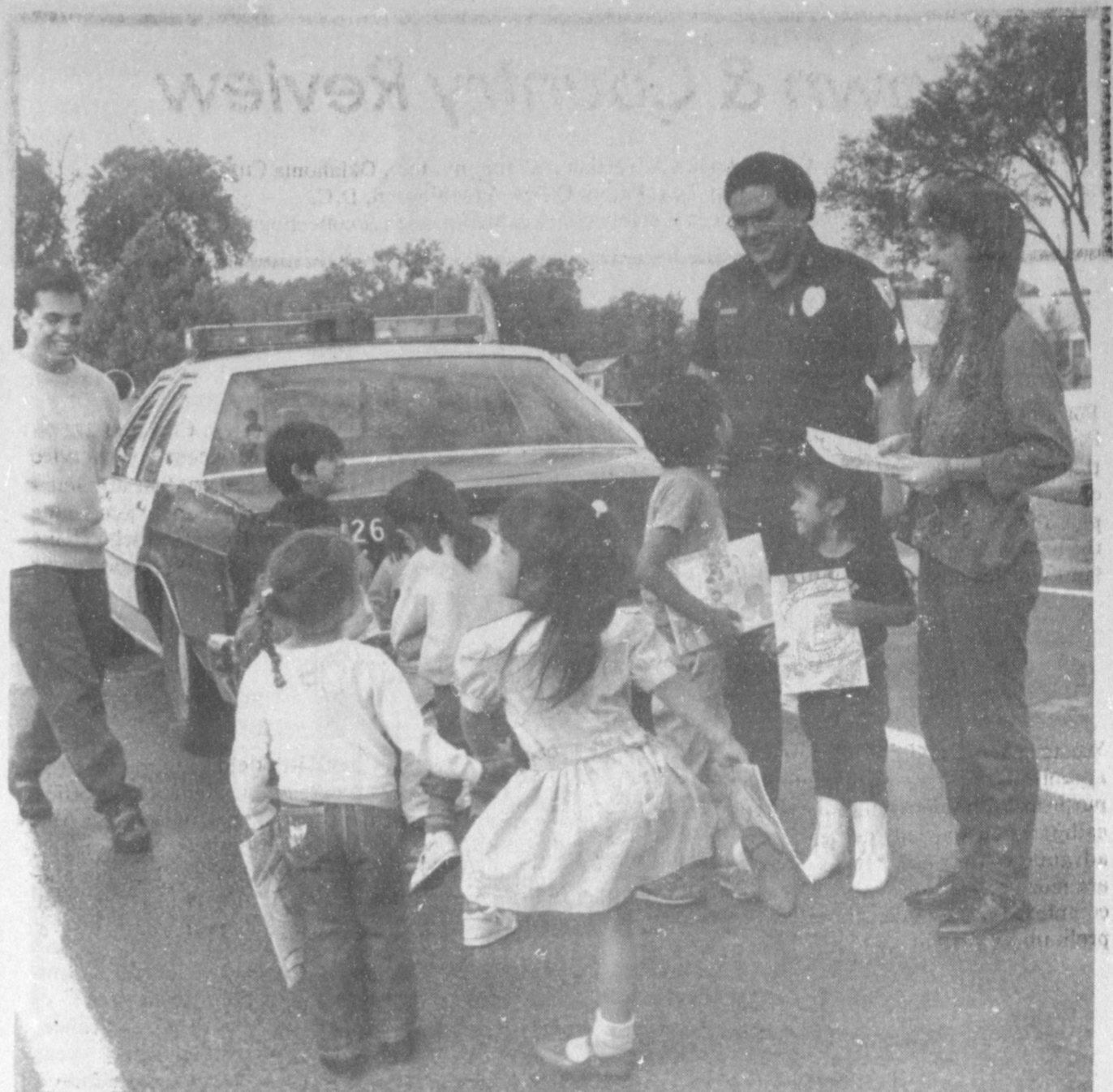
London Feed Yard is located 4 1/2 miles S.E. of Friona on FM297 at Hub, phone 265-3395. This FEED LOT specializes in cattle feeding the year around and boasts a capacity for feeding 4,000 head of cattle. Their reputation has been built through reliable service. They feature modern feed lots and experienced hands who are more than qualified to handle your stock. They feed only the best feed to insure you the MORE WEIGHT on your beef in the shortest period of time. Farmers and ranchers have been using the service rendered at this lot with the greatest satisfaction, knowing they can rely on London Feed Lot to fatten their beef for market year after year.

Furrow's Home Lumber

Residents of this area can find a one-stop purchasing center for their town and country building and remodeling needs when they stop at Furrow's Home Lumber located in Clovis at 1201 East 1st, phone 505-763-4437. They can assist you in new home planning or remodeling and willingly give free estimates. They feature top lines of well known brand names including paints, building hardware, tools & saws, roofing supplies, wood paneling, storm doors, garage doors & automatic openers, insulation, pre cut construction lumber and much more - including floor coverings so that your building can be completed from the ground up from their inventory. Furrow Home Lumber is for the contractors and do-it-yourselfers. We recommend Furrow's in Clovis for all your building needs & suggest you make this your first and only stop. Visa and Mastercard welcome.

Stokes Farm Supply

Here is a firm that has added in no small way to the general welfare of our area. Stokes Farm Supply has been serving Eastern N.M. & West TX. since 1959 - offering New & Used Equipment, water supplies, repairs, parts, Marliis drills & planters, Bear Cat parts, electric motors, single phase - 10hp, Tub Grinders, Domestic pumps and all kinds of sweeps. Take your problems to them and they will readily assist you. Stokes Farm Supply in Portales is located on the Clovis Hwy (Hwy 70) -- phone 505-356-6251. This is a concern that has continued to excell in their field, maintaining high standards, fair policies, and reasonable prices. Robert Stokes appreciates you and looks forward to serving you in the future.



MIGRANT COUNCIL TAKES TOUR--The Journal photographer caught up with a group of students from the Texas Migrant Council Friday morning as they toured various local facilities. Here, they are being shown city police cars by Sgt. Julian Dominguez and patrolman Jay Livingston. They also toured the courthouse, Bailey County Law Enforcement and other facilities. (Journal Photo)

Clovis Glass & Mirror

Clovis Glass & Mirror is located at 400 Commerce Way in Clovis - Phone 505-762-4789 or toll free 1-800-748-2729, has long been recognized as this section's leading glass company, featuring glass for every need or requirement. They are always pleased to have you call or stop in and inquire about any glass problem, either residential or commercial. This firm offers a complete line of glass and glazing service. For the very best service in quality glass for every purpose, plate glass, store front construction, custom mirrors, stained glass & supplies, auto glass installed and repair on stone damaged windshields, shower doors, also storm windows and doors. The manager of this glass company is thoroughly familiar with all phases of the glass business. Clovis Glass & Mirror where insurance claims are welcome, as well as Visa & M/C.

Parmer County Community Hospital

One of the mainstays of any community is its hospital. Such a hospital is Parmer County Community Hospital in Friona at 1307 Cleveland Ave., Phone 247-2754. It is completely equipped and prepared to render appropriate hospital care for medical, laboratory, X-ray and the allied services with 3 excellent family practitioners on staff. The nurses and attendants give careful, efficient attention to all patients entrusted to their care, thereby relieving the family of additional worry and responsibility in the time of necessary hospital confinement. We commend the management of this hospital for the excellent service they render to the community. No more public spirited citizens could be found anywhere than the members of the administration and staff of this fine hospital, Parmer County Community Hospital in Friona.

Valley Electric Co.

Make Valley Electric Co. in Portales at 700 E. 2nd, phone 505-356-8372, YOUR IRRIGATION HEADQUARTERS. A Lockwood Pivot irrigation system benefits you in many ways. The dependability and economy is outstanding. This firm is ready to serve you. Let one of their representatives help you develop an irrigation system tailor-made to fit your needs. A properly developed irrigation system can reduce the gamble concerning rainfall, giving you your share of assurance in production results. These experienced people will advise you where irrigation is practical and recommend an efficient, economical system using just the right combination of pump and power for your needs.

Glaze Monument Company

When you are faced with the problem of selecting a monument or marker, you will be wise to visit Glaze Monument Co. They will courteously help you in selecting a memorial of quality, embodying both durability and good appearance. Here you will find a large selection of finished work ready to be lettered or you may submit designs of your own choice. They carry a wide and varied stock on hand at all times. See their creative work of rare beauty at reasonable prices. They have a reputation for service and reliability and have been serving this area for many years. Glaze Monument Company in Clovis is located at 716 N. Edwards -- Phone 505-763-7284. They are open Monday thru Saturday, 8 a.m. to 5 p.m. for your convenience.

Palace Transfer & Storage

Regardless of distance, Palace Transfer & Storage in Clovis - located at 119 S. Main -- Phone 505-762-4709, can offer you guaranteed satisfactory, dependable handling of your valuable household or business goods and articles. They maintain a modern fleet of transfer and moving vans as further insurance to you. You will find these experienced movers courteous and polite in serving you every moving need. They also specialize in the storage of household and business goods. The cost is low, the protection is guaranteed. These superior long distance and local movers will be more than happy to give you a free estimate of the cost with no obligation to you. For prompt and careful delivery, for courteous, efficient drivers, for experienced packing and crating, call Palace Transfer & Storage in Clovis. Call 505-762-4709 First!

Peerless Pump

Throughout the world thousands of pumps and pumping units carrying the name Peerless Pump are serving the oil industry, agricultural, industrial and commercial enterprises with quality construction and trouble-free operation. Many thousands of these pumps, including centrifugal and turbine have a history of satisfactory service for many years. Such achievement has earned Peerless Pump an enviable reputation for design and production of the most dependable, top quality pumps that money can buy. To engineer superior designs and build efficient pumps for long years of economical service, Peerless Pump in Plainview at 23rd & Columbia has maintained a continuing program of scientific research and field testing. For years now, this firm has originated many scientific improvements in design, which extends pump life and cuts maintenance costs. Call them at 296-5581 or call your local Peerless distributor.

American Commercial College

Are you in a rut? Does your job bore you? Doesn't it pay enough? Do you wish you had a skill or more education? Contact American Commercial College in Lubbock at 2007 34th, phone 747-4339 and find out just how easy it will be for you to get the additional education you need. They offer courses in secretarial, computer and accounting - with financial aid available and placement assistance. This progressive college is under the capable direction of a faculty that is well qualified to teach you these courses and make you eligible for the job of your choice. Call them or write for complete information. Day and night classes are available Monday thru Thursday.

CLASSIFIEDS 272-4536

CLASSIFIED RATES

15 Words & Under
Minimum Charge
\$2.30
Thereafter
\$2.00
16 Words & Over
1st Insertion
15 cents per word
2nd Insertion
13 cents per word

CLASSIFIED DISPLAY RATES
\$1.75
Per Column Inch

DEADLINES
12 noon Tues.
For Thursday Paper
12 noon Friday
For Sunday Paper

To receive the reduce rate after the first insertion ad must run continuously.

We reserve the right to classify, revise, or reject any ad. We are not responsible for any error after ad has run once.

1. Personals

Call your local used cow dealer for 7 day a week dead stock removal. 965-2903 or 1-800-692-4043. cl-371-tfc

CONCERNED About Someone's Drinking? HELP IS AVAILABLE
through Al-Anon
Call 272-2350 or 965-2870 or come to visit Tuesday nights, 8:00 p.m. or Saturday mornings at 10:30 a.m. and through AA call 965-2870 or come visit Tuesday nights, 8:00 at 620 W. Second, Muleshoe.

PAINTING: Interior & Exterior. Call 272-4874 H1-30s-tfc

Mary Kay Cosmetics
Josie Flowers
272-3865
Call 8-12 a.m. and after 6 p.m.

3. Help Wanted

3. Help Wanted

ATTENTION: Earn Money Reading Books! \$32,000/year income potential. Details. (1) 602-838-8885 EXT Bk10191. 3-39s-4tp

ATTENTION-Hiring! Government jobs-your area. Many immediate openings without waiting list or test. \$17,840-\$69,485. Call 1-602-838-8885. EXT R10191. 3-39s-4tp

LICENSED Beauty Operator wanted. Call Helen at Main Street Beauty Salon, 272-3448.

NEEDED: Assistant Manager. 45-50 hrs. weekly. Start at \$4.00 per hour. Neat in appearance. Must be mature and responsible. Good personality. Apply in person to Stacy Davis at Pizza Hut in Muleshoe. P3-38t-2tc

11. For Sale Or Trade

SMALL deer chihuahua. Recently won Best of Show at Bailey County Fair. Stud service available. Call 946-3654 or 272-3607. D11-38t-4tc

PIANO FOR SALE
Wanted: Responsible party to take on small monthly payments on piano. See locally. Call Manager at 800-635-7611 anytime. M11-38s-7tps(ts)

FOR SALE: Tomatoes, Bell Peppers, Okra on Highway 84 By-Pass-Littlefield. B.E. Turner. (806) 385-5980.

15. Misc.

ROUND-UP APPLICATION

Pipe-wick mounted on high-boy. Row Crops. CRP. Vol. Corn, 30" or 40" rows. Roy O'Brian, 265-3247.

15-20s-tfc

3. Help Wanted

15. Misc.

Ernie's Roofing

Specializing in flat roofs, shingles and Build-up roofs. Residential-Commercial Free estimates. References, work guaranteed. L1s-33s-tfc
Bus. 505-762-6510

FOR RENT: TRAILOR lot, located at 406 W. 8th. Call 272-3015. B15-38s-tfc

17. Seed and Feed

SELECT-TAM 105 Wheat Seed. Call 965-2695 or 965-2266. 17-38s-6tp

18. Legals

LEGAL NOTICE

AN ORDINANCE APPROVING THE ADOPTING OF A BUDGET FOR THE FISCAL YEAR BEGINNING OCTOBER 1, 1989 AND ENDING SEPTEMBER 30, 1990.

WHEREAS, the City Manager of the City of Muleshoe has prepared and submitted to the City Council a budget estimate of the expenditures and revenues for the City of Muleshoe of the fiscal year beginning October 1, 1989 and ending September 30, 1990, which has been approved and adopted.

NOW THEREFORE BE IT ORDAINED BY THE CITY COUNCIL OF THE CITY OF MULESHOE, TEXAS.

Section 1. That the budget estimate of the revenues of the City of Muleshoe and the expenses of conducting the affairs thereof for the ensuing fiscal year, beginning October 1, 1989 and ending September 30, 1990, as submitted to the City Council by the City Manager of said City, and as changed or amended by the City Council, be and the same is, in all things, adopted and approved as the budget estimate of all the current expenses as well as the fixed charges against said City for the fiscal year beginning the 1st day of October, 1989, and ending the 30th day of September, 1990.

Section 2. That the sum of \$1,300,954.00 is hereby appropriated out of the General Fund for payment of operating expenses and capital outlay of the City Government, as set forth in detail in the budget.

Section 3. That the sum of \$-0- is hereby appropriated out of the General Debt Service Fund for the purpose of paying the accruing interest and redeeming the serial bonds and warrants as they mature, on the general debt service bonds and warrants as listed in detailing the budget.

Section 4. That the sum of \$493,179.00 is hereby appropriated out of the Water &

18. Legals

Sewer Revenue Fund for the paying of operating expenses, capital outlay, and debt service for the Water & Sewer Revenue Fund, as set forth in detail in the budget.

Section 5. That the sum of \$287,500.00 is hereby appropriated out of the Capital Projects Fund for payment of the operating expenses and capital outlay as set forth in detail in the budget.

Section 6. That the sum of \$131,600.00 is hereby appropriated out of the Waterworks and Sewer System General Obligation 19-86 Interest and Sinking Fund for the purpose of paying and accruing interest and redeeming the serial bonds and warrants as they mature, on the City of Muleshoe, Texas Tax and Waterworks and Sewer System Subordinate Lien Certificates of Obligation, Series 1986.

Section 7. That the sum of \$220,800.00 is hereby appropriated out of the Sanderosa Well Field Fund for payment of the operating expenses and capital outlay of the Sanderosa Well Field, as set forth in detail in the budget.

Section 8. That the sum of \$18,200.00 is hereby appropriated out of the Hotel/Motel Tax Fund for payment of operating expenses as set forth in detail in the budget.

Section 9. That the sum of \$-0- is hereby appropriated out of the Revenue Sharing Fund for th payment of operating expenses and capital outlay of City Government, as set forth in detail in the budget.

Section 10. That the sum of \$6,825.00 is hereby appropriated out of the Airport Fund for payment of operating expenses and capital outlay of the Municipal Airport, as set forth in detail in the budget.

PASSED AND APPROVED THIS THE 19th DAY OF SEPTEMBER, 1989.

Darrell Turner
Mayor
City of Muleshoe
Mary Hicks
City Secretary
City of Muleshoe
M18-39s-ltc



SMILES

Howdy
Two guys were sitting on a bench. One turned to the other and said, "I'm aching from neuralgia."
"Howdy!" replied the other, "I'm slim lacson from Oakland."

You Gotta Look
A man seated on a park bench watched a chap about five wind what appeared to be his most prized possession—a dolar watch.

"My what a pretty watch," said the man. "Does it tell you the time?"
"No, sir," replied the little fellow, "You gotta look at it."

8. Real Estate

WHITT - REID
Muleshoe 272-3611
201 Main Real Estate Insurance
Sales & Appraisals

"OLD JOHN DEERE BUILDING"
For Sale at a very reasonable price
Home Phones
Roy Whitt, C.R.E.A. 272-3058
Certified Real Estate Appraiser
Thursie Reid George Poteet Sandra Chaney
272-5318 272-4047 925-6727
We have buyers for farm land...

James F. Hayes & Co.
Agricultural Real Estate Vic Coker Agent
Sales & Appraisals
310 Main Street, Suite 103

Double Wide Mobile Home for sale. During day 272-4613 and after 8 p.m. 272-4081. Scoggin Ag Center. P. O. Box 452. S8-37s-tfc

FOR RENT OR SALE: Double Wide, 3 bedrooms, 2 baths, formal dining, extra large living room. Call 965-2856 after 8 p.m. 8-36s-8tp

FOR SALE: Charming 3 BR house; new carpet; 1 bath; covered patio; shop; single garage. 272-3262. 405 E. Dallas. 8-37s-8tp

4 BRDM. TRAILER 3 lots, 2 car garage, \$22,000 Call Carl Houston, 385-4605. 8-31s-21tp

8. Real Estate

8. Real Estate

Jo Ann Chester Realty
Rt. 1 Box 202A 227-2368
Sudan, Tx.
ADVANTAGES of Country Living - Options - 19 1/2 ac. w/house, or 1/2 ac. w/house. Stucco - 3 Bd, 1 1/2 B, L. R., Den w/F.P., Kit. & Ut., grg., Ct. Lt-air, c. fans, strm. wind., well w/sub. pump. Strg.-shop w/corral - 1 1/2 mi. NW MULESHOE.
MOBILE HOME & LOT - 2 Bd., L.R. Kit.-Dn, Lg. B., ct. ht, Strg. hs., 311 W. 8th HOMES available - Sudan, Earth, Littlefield HUD-FmHA - homes available
806-227-2368

Smallwood Real Estate
232 Main Muleshoe 272-4838
Lenau Addition-3 Bedroom, 1 Bath, Wood stove in den, living room, 1-car Garage, Storage bldg., Fenced Yard NICE. Priced to sell.
Longview Area-1 Labor of red, sandy, dry land. This is productive land.
1 Block South of Hospital-2 Bedrooms, 1 Bath, \$500.00 Closing cost. \$170.00. Monthly payments include taxes, and insurance.

FOR SALE: 3-1-1 House. Heat Pump. Fenced Yard. Excellent condition. Asking \$28,500. 305 Avenue K. During working hours, call 272-4528. Nights & weekends, call 272-4346. W8-39s-tfc

FARM LAND FOR SALE: 177 acres dry-land with full allotment. 177 acres irrigated with full allotment. 946-3474. C8-35t-tfc

Think Classifieds Call 272-4536

Bingham & Nieman Realty

116 E. Ave. C 272-5285 or 272-5286

RICHLAND HILLS
BEAUTIFUL COUNTRY VIEW OVERLOOKING AREA - 3-2-2 Brick, Cent. A&H, built-ins, FP, 2000+ sq. ft. of lv. area, loads of storage, auto, spkrl., fenced yd., & MUCH MORE. \$70's!!!!!!

4 NICE RESIDENTIAL LOTS PRICED FROM \$5,000.00!!!!!!

JUST LISTED-Nice 3-2-2 Brick on large corner lot, Cent A&H, built-ins, storm windows & doors, large basement, much more!!!!!!

IMMACULATE 3-2-2 Home, corner lot, Cent. A&H, built-ins, FP, loads of storage & closet space, much more!

VERY NICE 3-2-3 Home, Cent. A&H, built-ins, FP, fans, spkrl. sys., fenced. PRICED TO SELL!!!!

HIGHLAND AREA
NICE 3-2-2 Brick home (2 story), on corner lot, Cent. A&H, built-ins, and much more. LET'S LOOK TODAY!!!!!!60's

NICE 3-2-1 Brick Home. Cent A&H, built-ins, large den w/fireplace. Fenced yard, storage bldg. \$50's!!!!!!

PRICE REDUCED 2-2-2 Brick, corner lot, Cent. A&H, spacious rooms, utility, cov. patio, fenced yard, & much more. 40's!!!!

VERY NICE 3-2-1 Brick, Cent. A&H, built-ins, FP, storm windows & doors, covered patio, fenced yard, corner lot. 50's!!!!!!

HIGH SCHOOL
JUST LISTED-COZY 2-1 Home, nicely remodeled, fenced yard, & More \$17,000!!!

2-1 1/2-1 Brick, fl. furnace, CA, fenced yard & more. \$20's!!!!!!

NICE 2-1 1/2-1 Home, corner lot, built-ins, nice carpet, heat pump, fenced yard, storage bldg. & more!!!!

\$600 TOTAL MOVE-IN POSSIBLE to qualified Buyer on this 3-1-1 Brick, Cent. Heat, Evap. Air, built-ins, fenced yard. \$27,000!!!!!!

PRICED REDUCED FOR QUICK SALE! Nice 2-1-1 Home, Cent. Heat, carpets, workstorage area, and much more. \$19,950.00!!!!!!

DIANNE NIEMAN, BROKER

JUST LISTED-IMMACULATE 3-2-2 Home, Cent. A&H, earthtone carpets, loads of closet & storage space, covered patio, beautiful fenced yard with large trees. Don't miss this one!!!\$40's!!!!!!

PRICE REDUCED-IMMACULATE 3-2-3 Brick Home, Pump Sys., built-ins, fenced basement w/FP, spkrl. s. much more. \$50's!!!!!!

PRICE REDUCED- 3-1-1 Home earthtone carpets, fenced yard, storm cellar & workshop!!!!

NICE 3-2-1 Brick, Cent. A&H, built-ins, fenced yard, covered patio, earthtone carpets, & much more. \$30's!!!!!!

3-1 1/2-1 Brick, Cent. A&H, DW, fenced yd. & more. \$30's!!!!!!

LENAU ADD.
Very nice 3-1-1 Home, WB stove enclosed patio, storm windows & doors, well insulated, beautifully landscaped. LET'S LOOK TODAY!!!!

JUST LISTED - 3-1-1 Home, nicely remodeled, fenced yd. & more. \$30,000.00!!!

COUNTRY HOMES
\$4,250.00 CASH, "AS IS, WHERE IS" - 2-1 Stucco on .21 acre at edge of town!!!!!!

JUST LISTED-3-2-2 Brick on 25 acres, close to town, Cent. A&H, built-ins, shop, barn, new 4 wire fence all around, much more!!!!

3-2 Home on 1 acre, Cent. A&H, built-ins, & much more!!!!!!

VERY NICE-3-2-1 Home on 1 acre, close to town, Cent. Heat, Evap. air, nice carpets, nicely remodeled. \$30's!!!!!!

2-1 home, 20 acres, sub. pump, sprinkler, barns & corrals. \$40's!!!!!!

EXCELLENT COMMERCIAL TRACT 175' x 100', Hwy. 70 & 84, railroad spur access at rar, approx. 1200 sq. ft. bldg. PRICED TO SELL!!!!!!

NICE 3,500 sq. ft. office bldg. across from Courthouse. PRICED TO SELL!!!!!!

JUST LISTED-NICE COMMERCIAL BLDG. ON MAIN HIGHWAY, Approx. 2800 feet of area, suitable for various types of business. Possible Owner Financing to qualified Buyer. \$20's!!!!!!

GEORGE NIEMAN, BROKER

EXCEL CORP WANTS YOU

Now available, full time production positions in the slaughter and fabrication divisions. As an EXCEL employee you are eligible for:

- (1) Competitive and Progressive Wages
- (2) Paid Holidays
- (3) Free Medical, Dental & Vision Insurance
- (4) Prescription Drug Card
- (5) Aggressive Safety Program
- (6) Quarterly Incentive Pay Plan
- (7) Employee Involvement Groups
- (8) Employee of The Month Program
- (9) Company Funded Pension Program

Applications will be processed at Texas Employment Commission in Plainview, TX. Interviews are Tuesday - Thursday from 9am - 11am & 5pm - 6pm, Saturdays 9am - 10am.

EXCEL
127 North • Plainview, TX • (806) 293-5181
Excel is an Equal Opportunity Employer

SELL-RENT-TRADE OR BUY THROUGH the CLASSIFIEDS!