



## Lions Club To Host Weather Specialist

On Wednesday, during their regular noon meeting, the Muleshoe Lions Club will host a special speaker. Guest speaker will be Dr. Donald R. Haragon,



Bailey County Sheriff Dee Clement was showing some improvement at presstime at St. Mary's Hospital in Lubbock. He has been a surgical patient in the hospital for slightly more than two weeks.

Also showing improvement at presstime was Mrs. Bub Shafer who underwent heart surgery Tuesday afternoon at Methodist Hospital in Lubbock.

Mrs. Shafer recently was hospitalized in Muleshoe following complications of earlier heart surgery in the Lubbock hospital.

Brent Tanner, son of Mr. and Mrs. V.T. Tanner, graduated from the University of Texas Nursing School on Saturday, May 6.

He completed his training in Houston and will take his State Board examination in June, which will entitle him to become a registered nurse.

Mr. and Mrs. Tanner went to Houston for the graduation. He is a graduate of Muleshoe High School.

Bill Durham, a junior at Texas Tech with a double major in Theatre Arts and English received the annual award for "Best Performance by an Actor in a Major Role" at the Alpha Psi Omega Awards dinner held April 29 at the University Theatre at Texas Tech.

At the dinner, he was also named as the recipient of the Linda M. Scholarship for the outstanding junior or senior theatre student. In addition, he was presented an award for Outstanding Achievement in Theatre Arts, an honor given by the department faculty.

At a business meeting before the dinner, he was elected vice president of Alpha Psi Omega, a theatre honorary, for 1978-79. He is the son of Mr. and Mrs. Cont. Page 2, Col. 7

a renowned meteorologist. He will speak on "The Potential for Weather Modification on the Texas High Plains.

Interested persons are invited to attend the luncheon meeting and hear what is considered an outstanding speaker well-versed in his subject. If you wish to have lunch at the meeting, a home-cooked meal will be available at the American Legion Hall for only \$3. If you only want to hear the speaker, you may attend without charge. He is expected to speak around 12:30.

A native of Houston, Dr. Haragon graduated from M.B. Lamar High School and attended the University of Texas at Austin where he received the B.S. degree in meteorology in 1959. In 1960, he received the M.S. degree in Meteorology from Texas A&M University then returned to the University of Texas as a Research Scientist in the Electrical Engineering Research Laboratory.

For the next five years, his research efforts were focused on upper-atmosphere meteorology in conjunction with the Meteorological Rocket Network based at White Sands Missile Range, N.M.

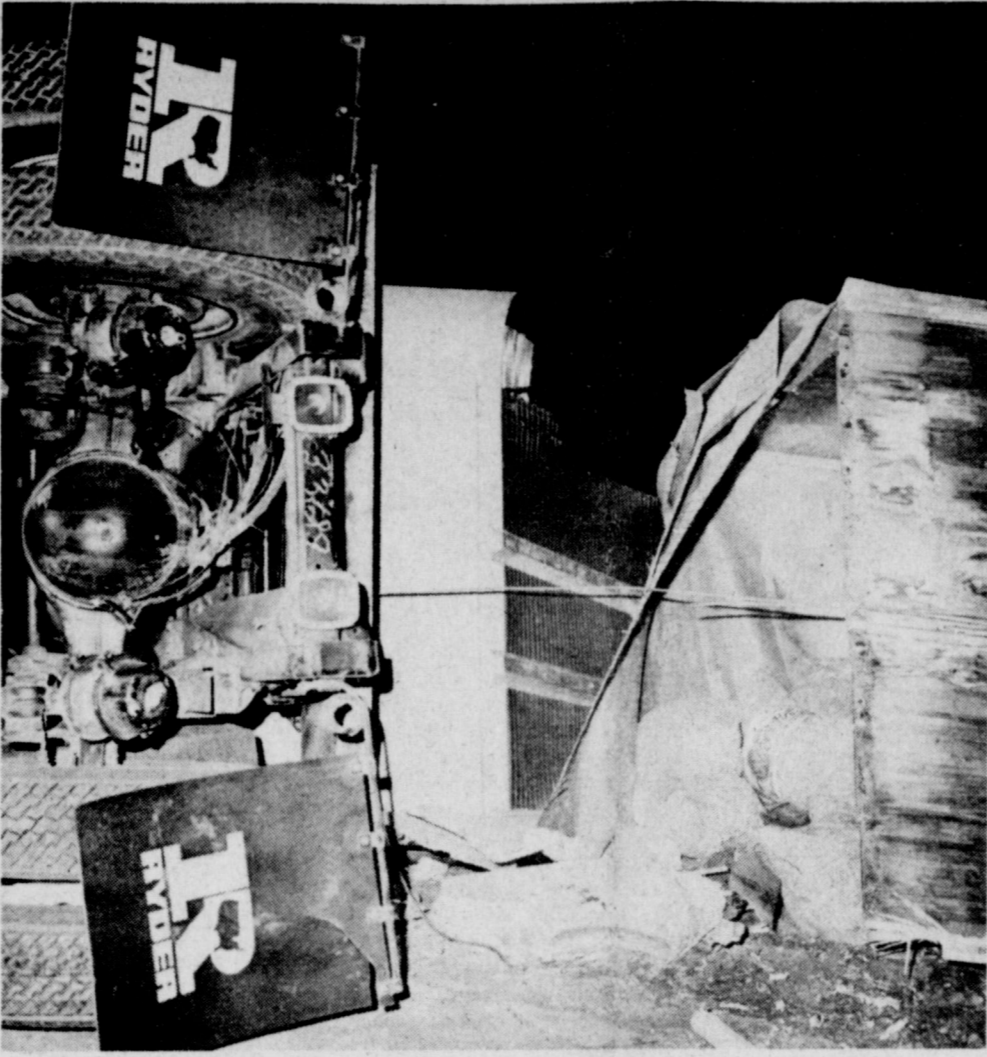
In 1966, his research interested turned to atmospheric water resources with particular emphasis on cloud and precipitation in the arid and semi-arid regions of West Texas and New Mexico. His research in this area led to his receiving the Ph.D. degree in Atmospheric Science from the University of Texas at Austin in 1969.

Upon completion of the Ph.D. degree, Dr. Haragon moved to Texas Tech University as an Assistant Professor of Geosciences in September, 1969. Since that time he has been involved in the development of an atmospheric science program at Texas Tech.

Cont. Page 2, Col. 5

## Public Service Asks Area Rate Increase

Southwestern Public Service Company announced Friday that it has filed for a general retail rate increase in the cities and counties served by the company in Texas, which would



**INSTANT PEANUT BUTTER**—It wasn't planned that way, but large sacks of freshly roasted peanuts spilled from a split trailer on an overturned truck just west of Muleshoe early Wednesday morning. Driver G.W. Womack of Portales was hospitalized with a head injury. An undetermined amount of damage was sustained by the tractor/trailer and Lloyd Killough of the highway department said around \$275 in damages was done to five signs, a concrete culvert and reflectors damaged or destroyed by the truck.

## Duo Grabs Golf Tourney Title

Betty Wardell and Lynn Kimbrough from Amarillo snatched out the Championship Flight title after a sudden death playoff in the Ladies' Partnership Golf tournament at the Muleshoe Country Club on Thursday.

They came in with a 66 as did the team of Ruth McCallen and Bernice Teeters, however, Wardell and Kimbrough came back on the second hole to take the Championship title.

Third place in the flight went to Alice and Carol Vinton of Far-

well at 67. Janet McPhail and Neva Abell had a 69; Tabby Moore and Frances Doyle also had 69 and Joyce Valandingham and Bain Gardner also turned in 69 for their score. Helen McCuen and Helen McDanile turned in a score of 71 and Ruth Biggers and Beryl Schun had 72.

Joyce Spencer and Lillian Keith had 63 to win the First Flight. Close behind were the second and third place winners. Two strokes back in second place were Juanita Gary and Madelin Johnston with 65 and Terri Collins and Co Maryfield at 67.

Other First Flight scores were Betty Brown and Charley Zeigenfuss, 69; Billie Norfleet and Shirley Roberson, 69; Betty

Mickey and Maylene Mickey, 68; Bobby George and Audrey Shatterkirk, 70 and Beverly Obenshain and Doris Herrington, 72.

The team of Mary Watkins and Pearl Gunstream won the Second Flight and had the lowest score of the tournament. They had a low 59. In second place following playoff action was the team of Ruby Hart and Mary Sweatman at 63. They played for second place against Dorsi Zinser and Thelma Marsh, who also had a 63. Cookie Bamert and Claudine Elliott had 65; Evelyn Riley and Marlene St. Clair, 66; Anailta Haley and Jeanetta Precure, 66; and Ponice Smith and Aileen Baker, 70.

Dorothy St. Clair and Barbara Strength were first in the Third Flight at 61; After a four-way playoff, Susie Mannscheck and Sherri Sargent were second at 67 and Jeri Wagnon and Shirley Walker were named third, also at 67. Others in the playoff were LaVern Winn and Helen Templeton and Pat Brooks and Nelda Lowder, who also all had 67 for a team total. Other scores were Martha Young and Anita Foster, 69 and Greta Hillin and Cont. Page 2, Col. 8

## Death Claims One Defendant In Drug Case

District Attorney Jack Young was notified Thursday of the death of 25-year old Randall S. Jorde of Clovis, who was under indictment from Bailey County in connection with an alleged methamphetamine laboratory operation in this county.

John Paternoster, assistant district attorney from Curry County, N.M., notified Young by telephone Thursday that Jorde was found dead in his apartment around 9 a.m. Thursday.

He was pronounced dead at 9:15 a.m. by Deputy Medical Examiner Joe Thomas of Clovis, who was summoned to the death scene by a Clovis Fire Department ambulance crew.

Jorde's roommate told officials he left the apartment for a short time to go to a grocery store, and when he arrived back at the apartment, found Jorde dead.

Thomas said an autopsy was planned to determine the cause of Jorde's death. He did say Jorde had visited a physician on Wednesday and that a prescription for valium was found near his body.

The Clovis assistant district attorney said he had been preparing extradition papers for Jorde in connection with the Bailey County indictment. Jorde was to have appeared at an extradition hearing on June 1 in connection with the case.

Jorde was charged with conspiracy to distribute and manufacture a controlled substance, to wit, methamphetamines. The man was one of 30 persons charged in the case following activities in December, 1977. First scheduled for trial in March, the case had been delayed until May; and last Monday, was postponed until September 18.

## MHS Speech Group Win Honors At State

Eleven members of the Muleshoe High School Speech Department accompanied by seven sponsors and parents travelled to Austin to participate in the UIL State Tournament.

Of over 200 AA One-Act Plays throughout the state of Texas, Muleshoe High School's production of "Twelfth Night" under direction of Mr. Kerry Moore was judged second runnerup. Ernie Vela was selected to the All-Star Cast and Lavayne Lloyd was given Honorable Mention Recognition.

Muleshoe completely dominated the Persuasive Speaking Contest by taking the two top honors. Brad Baker, senior at MHS, barely edged out fellow student Fran Berryhill for the first place position. Fran, only a sophomore, was given second place.

Both were required to speak two rounds, a semi-final round that was held on Friday afternoon and the final round which took place Saturday morning. Both of them had placed in the top three of their first round enabling them to compete the following day.

The One-Act Play Contest took place all day Thursday. Of the

eight plays at the competition, Muleshoe performed second. They were allowed a 50 minute rehearsal on the stage that morning and then put on the actual performance that afternoon. Bastrop High School with their version of "Once Upon a Clothesline" were given top honors, and Lubbock Cooper's "Haunted House" was selected as runnerup.

## Work Starts On Project For Elderly

Recently, approximately 20 persons attended a meeting of the City Planning Commission to ask for a housing project for senior citizens on a fixed income.

After referring the request to the Muleshoe Housing Authority, Harmon Elliott, chairman of the Housing Authority, gave a statement Thursday to The Journal.

Elliott said, "We are concerned about our senior citizens, and certainly want to see them have adequate and reasonable housing. We are considering the project, although no formal meeting of the Housing Authority has been conducted since the request was made."

He added that the Housing Authority Board is in the process of gathering information from area towns who are participating in the program, and said there are numerous programs of this type in this part of the state.

Elliott said the experience the Housing Authority Board received while working on the Farm Labor Housing will be very helpful in working on the new program.

He added, however, that as soon as they can receive the information and determine the need and desire for such a program in Muleshoe they will set the machinery in action. "At that time we will be in a position to see how broad the scope of need is, what funding is available and get started."

Elliott did caution that such a program cannot be done overnight, but added that he and the other board members will proceed as much speed as they can to get the program underway.

Other board members include Jim Cox, Buck Campbell, Myron Pool III and Jesse Leal.

The students stayed at the Hilton Hotel and managed to find time to have a little fun while they were there. Swimming pools, Shopping Sprees at the Austin Mall, "Roman Orgies" at the Magic Time Machine, and other hotel extracurricular activities were only a small part of the entertainment at the mercy of these students.

All in all, the students went a lot of places, lost a lot of sleep, and had a lot of fun. Many hours of hard work were spent in preparation for this tournament and for the most part it all paid off. Congratulations on the super effort and best of luck next year as well!!!!

## Little League Season Starts

### With Ceremony

Sammy Gonzales, president of the Muleshoe Little League, said the 1978 season will get underway tomorrow (Monday) with opening ceremonies at 5 p.m. at Roger Miller Park.

Master of Ceremonies for the opening will be Howard Watson, with Mayor Ken Henry throwing out the first ball. Opening ceremony minister will be Terry Bouchelle of the 16th and D Church of Christ and Cub Scouts from Pack 620, Den Three will do the flag ceremony. Muleshoe High School Bandmaster Charles Faulkner will play the National Anthem. All scouts are asked to attend the opening day ceremonies in full uniform as pictures will be taken.

## New Softball Girls League To Be Formed

As interest has been shown in forming a girls' softball league for girls between the ages of 13-16, it has been announced that 40-45 girls will need to sign up in order to form teams.

Any girl in the above age group interested in playing with a girls' softball team is asked to pick up forms at the school office. Deadline for applying to play on a team is Monday, May 15.

Coaches for the new league will also be needed. For further information call Mrs. John Harris at 272-4475 after 5 p.m.



**TOURNAMENT WINNERS**—Lynn Kimbrough, left, and Betty Wardell won the Championship Flight at the Ladies' Partnership Golf Tournament at the Muleshoe Country Club Thursday. A total of 32 teams entered the all-day tournament.



**NATIONAL TRANSPORTATION WEEK**—Thursday morning, Muleshoe Mayor Ken Henry, seated, signed a proclamation designating the week of May 14-20 National Transportation Day in Muleshoe. Looking on as the Mayor signs the proclamation are at left, C.W. Nail, Jr., assistant district engineer for District Five, from Lubbock and Lloyd Killough, foreman of the Bailey County office for the Texas Department of Public Transportation.



# Transportation Week Highlights Highways

The modern transportation system of the United States, including air, water, rail, highway and pipeline, affects every American while at home, at work, in the marketplace or at play, according to the State Department of Highways and Public Transportation. Perhaps no other function of society

plays such an important part in the life of each American. About 20 percent of the nation's annual expenditures for goods and services is for transportation.

In Muleshoe, Mayor Henry signed a proclamation Thursday designating the week of May 14-20 as National Transportation Week. The proclamation

was presented by C.W. Nall Jr., assistant district engineer from Lubbock, and Lloyd Killough, foreman of the Bailey County highway department office.

The proclamation "call upon all citizens to observe the period with especial concern for safe, economical use of our transportation facilities; and call upon all providers and planners of transportation to take special care and exercise respect for the state's social, environmental, and economic well-being." The proclamation says in

part, "Whereas, transportation is the life line that ties together the production, marketing, and distribution that determines the worth of our state and national economy; and

"Whereas, the facilities and services that comprise our transportation system vitally affect not only our economy but the environmental and social fiber of our total existence..."

Muleshoe is a part of district five, with its headquarters in Lubbock. As a part of the State of Texas' recognition of this observance of National Transportation Week, the District Five office will sponsor a display of its functions at the South Plains Mall beginning on Monday, May 15, through 20.

The display will be located in the corridor from the Mall's east entrance to Court B (The Fountain Area), adjacent to the south entrance to Hemphill-Wells. Everyone is urged to drop by to visit this display while at the South Plains Mall in Lubbock.

A representative from the Lubbock District office will speak to the Muleshoe Kiwanis Club during their regular meeting on Friday, May 19.

The representative said, "We welcome each individual to participate in the observance of National Transportation Week."

## Cheerleaders Fete Seniors At Cook-Out

The 78-79 cheerleaders honored the senior cheerleaders with a hamburger cook-out at the home of Mrs. Dorine Harbin Wednesday night.

Food and more food was enjoyed by all there! Gifts were presented to the out-going cheerleaders.

Those present were Dani Dunham, Shae Penna, Beverly Biggestaff, Gina Burden, Glenda Rasco, Becky Turner, Shelly Dunham, JoRonda Rhodes, Sandy Dunbar, Mrs. Harbin, Mr. and Mrs. Mark Gist, and Shawn.

The cheerleaders would like to express their deepest gratitude to Mrs. Harbin, Mrs. Gist, and Coach George Washington, for all the time and work they devoted to the cheerleading squad.

\*\*\*\* Petty honors appeal to small minds.



FFA BRINGS HOME TROPHIES—Seven trophies were brought home by the Muleshoe FFA boys from the AG Mechanics contest at Texas Tech University. Gayland Strayhan, left, placed first in small gas engines and was awarded high point individual and tied for first in arc welding with Mike Dale, second from left. Keith Hawkins, second from right, received first in tool identification and Dean Estep, far right, placed first in electricity. The chapter will receive a \$50 check for their first place award.

## Wedel Attends Conservation State Meeting

Jimmy Wedel from the Muleshoe area, will be attending a statewide conservation meeting in Stephenville on Tuesday, May 16.

Doug Bales, chairman of the board of directors of the local Blackwater Valley Soil and Water Conservation District, said that the meetings are being held as a result of the Resources Conservation Act of 1977.

"The Act recognizes the need for public participation to ensure that conservation programs are responsive to public needs," Bales said. "However, districts have always assisted landowners with voluntary conservation programs, and we do not advocate any other approach." Subsequent meetings will also be held in each local soil and water conservation district. In-

## Lions Club ...

Cont. from P 1

His research interests have remained in the area of atmospheric physics, hydro-meteorology and weather modification. In addition he has done some preliminary work on air pollution potential in the High Plains. From September 1972 to September 1977 he was chairman of the Department of Geosciences at Texas Tech.

At the present time, Dr. Haragan is Associate Professor of Geosciences. He is the author or co-author of more than twenty technical reports and publications on various aspects of applied meteorology and is a registered professional engineer in the state of Texas.

It won't be necessary to be a member of the Lion's Club to visit the meeting Wednesday at noon and hear the special weather speaker.

Interested persons are being encouraged to bring written, or oral, statements reflecting the direction they think conservation programs should take in the future. Such statements will be accepted, made a part of the record, and considered fully, added Bales.

The date for the Resources Conservation Act meeting in Muleshoe will be June 1, according to Bales, who added that further details will be announced at a later date.

## Kiwanis Plan Scholarship For Graduates

Members of the Muleshoe Kiwanis Club elected to look into the possibility of presenting a graduating senior with a two part scholarship to help with additional schooling. The decision was made during the regular Friday morning meeting.

A film was presented by vice president Raymond Schroeder on "The Drinking Driver," as the program for the morning. Melvin Griffin, who had the friendship coin for two weeks, presented the coin to reporter R.A. Bradley. "After last week's fine article about him and the friendship coin, he said the reporter needed a friend more than anyone and presented me the coin," said Bradley. "He said the reporter may want to keep the coin for two weeks also."

Guest at the meeting was Keith Bizell, son of Gail Bizell, Kiwanis member.

\*\*\*\* BEGIN ON TALKS JERUSALEM -- U.S. Envoy Alfred Atherton met with Israeli leaders for more than three hours and Prime Minister Menahem Begin proposed an immediate resumption of Israeli-Egyptian peace talks in Cairo and Jerusalem.

## Muleshoe ...

Cont. from P 1

C.W. Durham of Nash, former Muleshoe residents and graduated from Muleshoe High School in 1976.

Danny G. Franks of Muleshoe was among the 384 candidates for Eastern New Mexico's spring graduation.

Baccalaureate and commencement services were at 8 p.m. on Thursday, May 11 in Greyhound Arena near Portales.

He received a bachelor of business administration degree in agricultural business and business administration.

\*\*\*\*

Jr.-Sr. Mothers will meet Monday night at 7:30 in the Fire Department to finish decor-

\*\*\*\* A hard task is eased by the application of immediate energy.

ations for the Jr.-Sr. prom. All mothers are asked to help as there is a shortage of help and the prom is only one week away.

## Golf...

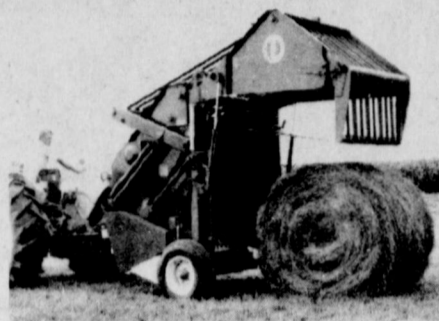
Cont. from P 1

Karen Wilson, 72.

Muleshoe Country Club Golf Pro Jeff Smith said 32 teams were entered in the tournament from Muleshoe, Clovis, Amarillo, Hereford and Farwell. Approximately half of the teams were local players.



5800 Rounder



5500 Rounder



4500 Baler

## Big bales or small, Hesston design and dependability preserve hay quality.

5800 Rounder — new, fluted-steel compression roll improves feeding in tough crop conditions. Delivers tight, weather-resistant giant round bales 6' in diameter and weighing up to 1500 lbs.

5500 Rounder — open-throat feeding makes this baler easy to operate. And this exclusive design feature has also proven to be one of the most productive, with all the aggressiveness and capacity needed for a variety of crops.

4500 Baler — continuous-flow feeding keeps more quality in the bale. Unique design keeps crop in its windrow structure from pickup to baling chamber ... reduces shattering and retains leaves in the finished bale.

## Barry & Young Equipment

803 W. Amer. Blvd.

272-4236



## It's Annual Meeting Time

# See You There At The Annual Stockholders Meeting Of Muleshoe Cooperative Gins

Muleshoe High School Cafeteria  
May 16 7:30 p.m.

Enjoy Our Bar-B-Que Dinner Business Meeting

Dividend Checks To Be Given

## BOARD MEMBERS

R.L. Scott  
President

F.H. Franks  
Vice-President  
Gene McGuire  
Secretary  
Earl Richards  
Mgr.

## DIRECTORS

James Warren  
David Stovall  
Elvis Powell  
James Brown

MAY...1978

# GOOD YEAR



A. J. Foyst, Four-Time Winner of the Indianapolis 500

A.J. FOYST SAYS: 'Be A Winner...Go Goodyear'

## Rain Tire Sun Tire One Tire Tiempo

The Double Steel Belted Radial That Puts Stability, Firmness And Feel Back In Your Driving

Starting At \$42

P185/75R13 whitewall (fits BR78-13), plus \$1.93 F.E.T. and old tire

Whitewall Metric Size	Fits	OUR PRICE	Plus F.E.T. and old tire
P195/75R14	ER78-14	\$56.00	\$2.35
P205/75R14	FR78-14	\$61.00	\$2.56
P215/75R14	GR78-14	\$65.00	\$2.61
P225/75R14	HR78-14	\$69.00	\$2.67
P205/75R15	FR78-15	\$63.00	\$2.68
P215/75R15	GR78-15	\$66.00	\$2.74
P225/75R15	HR78-15	\$71.00	\$2.90
P235/75R15	LR78-15	\$77.00	\$3.00

Here's all the handling you're likely to need... for almost any road, in almost any weather. As a rain tire, Tiempo has a well-grooved tread designed to resist hydroplaning. As a tire for slick pavement, Tiempo gives you 10,000 hard-working tread edges for traction. As a sun tire, Tiempo gives you a whisper-quiet ride, plus the stamina of two steel belts. Radial construction offers a dividend in gas-savings economy, and there's even a scuff bar to help keep whitewalls white. Tiempo is the one tire that does it all! See Tiempo today.

RAIN CHECK — If we sell out of your size we will issue you a rain check, assuring future delivery at the advertised price.

# GOOD YEAR

See Your Independent Dealer For His Price. Prices As Shown At Goodyear Service Stores In All Communities Served By This Newspaper.

## James Crane Tire Co.

322 N. 1st

Muleshoe

272-4594





LLANO ESTACADO CIVIC CLUB NEW OFFICERS...Pictured above are the Llano Estacado Civic Club new officers for the next term. President, Betty Hopper; Vice President, Nita Burreson; Recording Secretary, Myra Kiggins; Treasurer, Betty Carpenter; and Historian, Aurelia Morris. Not pictured are Linda Turner, corresponding secretary; and Margaret Clements, parliamentarian.

### Epsilon Chi Holds Annual Banquet

Epsilon Chi chapter of Epsilon Sigma Alpha International held their annual Mother-Daughter banquet on Friday, May 5, at the 16th and D Church of Christ.

A Mexican food dinner, prepared by the chapter members, was served buffet style. Invocation was given by Mrs. Maxine Mulliken from Santa Rosa, N.M., and Mrs. Derrell Matthews, mistress of ceremonies, gave the opening ritual. The welcome and response were given by Mrs. Terry Hillin and Mrs. Rudolph Moraw.

Mrs. Matthews presented Mrs. Larry Gulley with her charm for her First Pearl Award. Also receiving Pallas Athene Charms were Mrs. Terry Hillin, First Degree and Mrs. Charles Moraw, First and Second Degree.

Mrs. Harry Waddle was recognized as the 1977-78 Diana Award recipient. This special award was presented by Mrs. Allen Smyer and she gave a brief account of Mrs. Waddle's activities in the community.

Mrs. Phil Farr recognized the 1977-78 scholarship recipient. This young lady will receive a \$100 scholarship to help further her education and training. Attending the banquet was the recipient, Miss Melody Mauldin and her mother, Mrs. Mike Pugh.

Receiving recognition by the chapter president was Mrs. Eric (Lucy Faye) Smith. She was selected by the chapter to be a nominee for the Texas Panhandle Distinguished Service Award. The banquet for this award was held in Canyon on April 22. Mrs. Smith attended the banquet for this award was the banquet with chapter members and thus was honored at the local Mother-Daughter banquet.

Mrs. Charles Moraw presented the 1977 Outstanding Spring Pledge Award to Mrs. Larry Gulley and the 1977 Outstanding Fall Pledge to Mrs. Robert Montgomery. Highlight of the evening was the presentation of the 1977-78 Outstanding ESA Member Award to Mrs. Derrell Matthews. This award was presented by last year's recipient, Mrs. Charles Moraw.



SCHOLARSHIP RECIPIENT...Mrs. Phil Farr recognized the 1977-78 scholarship recipient, Melody Mauldin will receive a \$100.00 scholarship to help further her education and training.



OUTSTANDING ESA MEMBER AWARD...The highlight of the evening was the presentation of the 1977-78 Outstanding ESA Member Award to Mrs. Derrell Matthews. This award was presented by last year's recipient, Mrs. Charles Moraw.

### Artist Of The Month

Mrs. Floyd Embry, of Farwell, has been selected Artist of the Month of May.

Mrs. Embry has been a member of the Muleshoe Art Association for two years. She had never had art lessons of any kind until four years ago when she started taking lessons from Dickie Magness, of Farwell.

After studying under Dickie Magness, she began studying with Merle Doose, and Dani Tupper, both of Clovis, N.M. She has taken workshops in portraits and pastels.

Mrs. Embry has painted all her children's portraits including her daughter-in-law's. Her next goal is learning to work with watercolors.

Mrs. Embry and her husband, Floyd, live east of Farwell, and have three children, Eldon, who is at home and is engaged in farming; Weldon, who is married and is also engaged in farming. He and his wife, Sherry, live in Farwell. Estelle is attending ENMU. She will graduate in May with an Associate of Arts degree in two year clerical.



OUTSTANDING MEMBER OF 1978...Outstanding Member of 1977 presents Llano Estacado Civic Club Outstanding Member of 1978 to Sandi Hopper in the picture above.

### Progress 4-H Holds Meeting

The Progress 4-H Club met May 9, at 8:00 p.m. at the Muleshoe State Bank with Curtis Wheeler presiding. Tamara Gilliland, play leader, led the 4-H motto, Kim Farmer led the pledge and prayer. Secretary, Brenda Flowers, reported 11 in attendance.

Visitors attending were: Mrs. Flowers, Mrs. Sue Claunch, Wayne Tunnel, Mrs. Randa Spies, Mrs. Jessie Robertson, Mrs. Della Puckett.

The 4-Her's discussed who would run the 4-H Horse Show Concession. They elected the adult leaders, and told who will judge the Horse Show.

Intelligent adults are kind to the children they meet in life.

### West Plains Medical Center Briefs

#### ADMISSIONS

May 9 - Willie Mae Walker, Virginia Green, Debbie Puente, Josephine Garth.

May 10 - J.W. Womack, Harvey T. Totem, Otis Blaylock, Ruben Leal, Jr.

May 11 - Jay Beaton, Juanita Puente, Alpha Laney.

May 12 - Martha Haire, Debbie Drake.

#### DISMISSALS

May 9 - Mattie L. Shafer, Iva Vinson, Torrie Davis, Debbie Nickels.

May 10 - Nancy Cochran, Socorro Gomez, Cecil McMath, Gomez, Cecil McMath, Holly Milsap, Violet Mendoza.

May 11 - J.W. Womack, Willie Mae Walker, Fred Horn, Ruben Leal, Jr.

May 12 - Deborah Puente, Euna Reed.

Not every man who makes money is a real success.

Good farmers are those preparing to live at home.

Every citizen complains about the taxes that he has to pay.

Expect little and you will spare yourself disappointments.

# Sundae Sale

## Half Price



### "Twice as nice"

Choose any delicious Dairy Queen Sundae — any available size or flavor — all with luscious whipped topping, crunchy pecans and half a juicy cherry AT ONLY HALF PRICE

Tuesday thru Sunday May 16 thru 21 only

Offer: Good only at Texas Dairy Queen Trade Association Participating Stores.



### Tops Has Weekly Meeting

The TOPS club met May 11, with 22 members weighing in. The Weekly Queen was Mrs. Lewis Shaffer, first runner-up, Mrs. Ronald Patton, second runner-up, a tie between Mrs. Claude Don Homes, and Mrs.

J.M. Hefner. Mrs. Ronnie Garner, Mrs. Glynn Stroud, Mrs. Owen Jones, and Mrs. Buria Vinson received material for three week consecutive weight loss. Mrs. Glynn Stroud, Mrs. Ronnie Garner, and Mrs. Owen Jones received a hair set for six consecutive week weight loss. Mrs. Harvey Whittenburg drew the can-can. Side II is still way ahead in our present contest, come on side I.

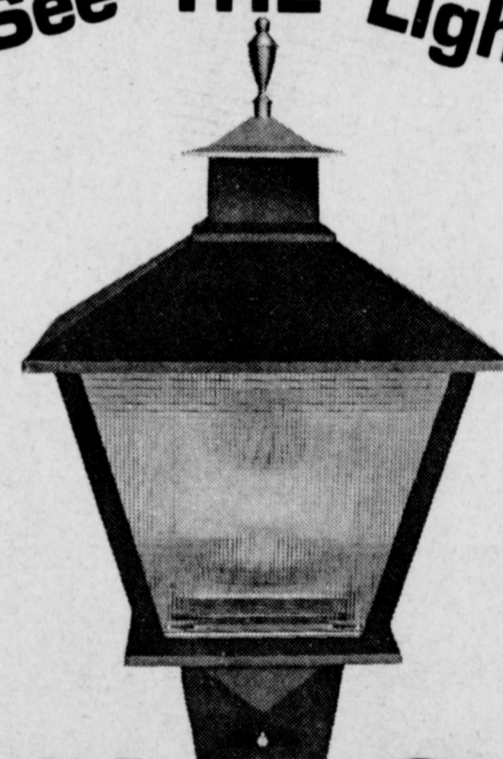
### Congratulations Class of '78!

Latest Fashions For Your Grads... Many Styles To Choose From Complete List Of Senior Sizes Albertson's Shop For Men 228 Main 272-3000



OUTSTANDING SPRING AND FALL PLEDGE AWARDS...Mrs. Charles Moraw presented the 1977 Outstanding Spring Pledge Award to Mrs. Larry Gulley and the 1977 Outstanding Fall Pledge Award to Mrs. Robert Montgomery at the banquet Friday, May 5.

See THE Light



## LAWN GLOW READY-LITE

Energy-Wise Protection

The Lawn Glow Ready-Lite is the perfect night light... made of heavy cast aluminum, with either a black or white durable finish, for longer life and lasting beauty. The Ready-Lite is the automatic electric yard light. A photo electric cell turns it on at night when you need it... turns it off in the daytime. And you can control the amount of energy used. The Ready-Lite may be used with a variety of bulb sizes to get just the degree of brightness you desire. Just put it on your electric bill. No down payment and you may take as long as 24 months to pay.

\$129.50 PLUS TAX INSTALLED

You Can Put It On Your Electric Bill!



SOUTHWESTERN PUBLIC SERVICE





**YOUNG HOMEMAKERS HOLD SOCIAL...**The Lazbuddie Young Homemakers held a Senior Citizen social honoring eight senior citizens from the Lazbuddie community. The young homemakers attending this social were: Mrs. Dale Vice, Mrs. Bill Morris, Mrs. Robert Gallman, Mrs. Skip Magby, Mrs. Clay Mimms, Mrs. Jimmie Dale Seaton, Mrs. Harroll Redwine, Mrs. Jim Collum, and Mrs. Lloyd Bradshaw. Not pictured was Mrs. Loy Dale Clark.

**Lazbuddie Young Homemakers Honors "Special Senior Citizens"**

The Lazbuddie School Cafeteria was the gathering place for a very special event Tuesday, May 9th. The Lazbuddie Young Homemakers were the sponsors for an afternoon social honoring eight "Special Senior Citizens" from the Lazbuddie community. They are: Mrs. Dixie Barnes, Mrs.

Betty Bewley, Mrs. Mary Floyd, Mrs. Vivian Ham, Mrs. Effie Jennings, Ed Clark, Alfred Scott and Willie Steinbock.

Upon arrival guests were greeted at a registration table by Mrs. Harroll Redwine. The "honored guests" were presented with a yellow silk corsage of boutonniere and name tag.

After a time of visiting, renewing old friendships and making new acquaintances, refreshments of assorted fruit breads, lime sherbert punch and coffee were served from a table covered with a bright yellow cloth. Spring flower patterned paperware and crystal appointments were used in serving. An arrangement of spring flowers graced the center of the table. Mrs. Clay Mimms attended the refreshment table. Pastel colored streamers twisted down each table throughout the room. Another table was covered with a yellow cloth holding eight Prayer Plants in green and red-orange pots. These plants surrounded the Young Homemakers Scrapbook for each to view. Mrs. Jim Collum gave a short welcome and presented each Honored Guest with a Prayer Plant. Four of the eight honored Senior Citizens were unable to attend due to illness. Those present were: Mrs. Vivian Ham, Ed Clark, Alfred

Scott, and Willie Steinbock. Unable to attend were: Mrs. Dixie Barnes, Mrs. Betty Bewley, Mrs. Mary Floyd, and Mrs. Effie Jennings.

The Young Homemakers have discovered that each of these Senior Citizens have a special talent or enjoy a variety of hobbies. Mrs. Dixie Barnes is active inside her home with quilting. She makes dacron and silk quilts and turns small pieces of material into a masterpiece. Outside, she enjoys raising flowers, caring for her fruit trees and working in her yard and garden. Mrs. Betty Bewley enjoys the out of doors when her time is spent in caring for her garden. Indoors is also a flower garden. She likes reading magazines and newspapers while indoors whenever she's able. Mrs. Mary Floyd in the past enjoyed spending time working in her yard. But more so enjoyed caring for the potted plants inside her home. She also enjoyed trying her hand at crocheting. Mrs. Floyd is currently in Littlefield Hospital. Mrs. Vivian Ham is the painter. She enjoys very much sharing her talents of painting. Her home is full of reproductions and her own creations. Mrs. Effie Jennings is creative with her crocheting. In her home is a display of several afghans and

spreads she has made. She's proud of her fruit trees and enjoys visiting with people. She also enjoys reading. Ed Clark enjoys a good game of dominoes almost more than anyone. He also enjoys telling of settling the Lazbuddie area many years ago. Alfred Scott has an unusual hobby, that of woodworking or any type of work using his tools. He enjoys going places and loves visiting with people. He also works in his yard and already has part of his garden planted for this year. Willie Steinbock will beat anyone to a T.V. to watch a good boxing match. He also enjoys playing dominoes and talking farming. Mr. Steinbock and Mr. Clark enjoy on another at the Muleshoe Nursing Home.

The Lazbuddie Young Homemakers take special pride in these "Special Citizens" and are looking forward to another good year with them. A special thanks to all who helped make this event possible. Young Homemakers attending were: Mrs. Lloyd Bradshaw, Mrs. Jim Collum, Mrs. Loy Dale Clark, Mrs. Robert Gallman, Mrs. Skip Magby, Mrs. Clay Mimms, Mrs. Harroll Redwine, Mrs. Jimmie Dale Seaton, Mrs. Dale Vice, and Mrs. Bill Morris.

**Muleshoe 4-H Holds Meeting**

On Monday, May 8, 1978 the Muleshoe 4-H Club met in the 16th and D Church of Christ for their monthly meeting.

The meeting was called to order by President, Eddie Black, and the motto and pledge were led by Tina Reid, pledge to U.S. flag was led by Rachelle Hardage, and prayer was given by Ronnie Logsdon. Secretary, Meichelle Logsdon, called the roll and read the minutes of the previous meeting.

The following reports were given by Mandy Plank on County Council meeting, Justin Helton on Leathercraft II project, Jodi Burgess on Leathercraft I, and Kevin Harris reported on Rifle Safety. Kevin reported that he and Tim Sain of Muleshoe Club and Jimmy Holmes of the Progress Club represented Bailey County in one area of Rifle competition at district in Lubbock and placed fifty.

Meichelle Logsdon and Mandy Plank gave their demonstration on Temperature Controlled Gardening to the club members, and Tim Sain gave his illustrated talk on Natural Resources which emphasized Water Resources.

New officers for the upcoming 4-H year were elected. They are President, Tim Sain; Vice-President, Ronnie Logsdon; Secretary, Shelly Sain; Treasurer, Mandy Plank; Reporter, Rachelle Hardage; Parliamentarian, Justin Helton; Song Leader, Kristi Taylor; Game Leader, Lauri Kinard; and County Council Delegates are Eddie Black, and Zanna Huckaby. New Adult leaders for the year are Mr. and Mrs. Doug Logsdon.

The meeting was then adjourned, and Miss Mullins led the club in games and songs. Refreshments were served.

Members present were Eddie Black, Mitch Black, Jodi Burgess, Rachelle Hardage, Hustin Helton, Zanna Huckaby, Lauri Kinard, Meichelle Logsdon, Ronnie Logsdon, Jayna Harris, David Reid, Tina Reid, Shelley Sain, Tim Sain, Mandy Plank, Kevin Harris, Cristi Taylor, Tisha Cox, Jeremy Combs, and visitor, Pam Williams.



**HONORARY TEA FOR SENIOR CITIZENS...**Pictured above are some of the participants of the Lazbuddie Young Homemakers Tea held for the Senior Citizens of their community. Mrs. Harold Redwine, Jimmy Dale Seaton, Russell Redwine, Mary Hargett, and Alfred Scott were a few who attended the tea. There were around 40 people attending.



**FIRST ANNIVERSARY CELEBRATED...**The girls at Ana's House of Beauty are celebrating their first Anniversary this week. The cake was made and given to the girls by Mrs. Ruby Ward. Pictured above are, left to right; Lidia Guzman, Ana Gonzalez, Noami Owens, Jonie Cannon, and Josie Gonzalez. Not pictured was Jana Bruns.

**Creative Wedding Service**  
We Do The Complete Reception For Weddings And Anniversaries Cakes With Hand Molded Flowers. Brass And Silver Appointments. Assortment Of Cloths, Draped And Tailored  
Owner: Johnnie Battey Martha Lytal  
515 Star St. Hereford Ph. 806/364-6711

**Courthouse News**

Morrison Improvement and Development Co., Inc. to Joe L. Smallwood; W80', Lots 11,12, Block 2, Golf Course Addition. Callie Waxler, to John Prudy; Lots 10, W 1', Lot 9, Richland Hills Addition. Pat R. Bobo to Rex Black; Lot 6, Block 7; Warren Addition. Ray Garcia to Joe L. Smallwood; East 20', Lot 12, W 40', Lot 13, Block 1, Harvey Addition.  
**MARRIAGE LICENCES**  
Jack Edward Benham, and Nancy Lanette Robertson. Finley Woodule, and Juanita Pearl Woodul. Manuel Salazar Alafaro and Maria Anita Olibas.

\*\*\*\* Rumors are often an effort by one person to destroy the popularity of another.  
\*\*\*\* A racket is the other man's formula for making a living without too much work.

**WE SALUTE Our Graduates ...THE CLASS OF '78**  
St. Clairs Has A Complete List Of Muleshoe Senior Sizes  
St. Clairs  
110 Main 272-4453

**LATEST ARRIVALS**  
**Kelly Gomez**  
Mr. and Mrs. Manuel Gomez are the proud parents of a new baby girl born May 8, 1978 at 5:29 p.m. in the West Plains Medical Center, in Muleshoe. The baby weighed eight pounds and 13 ounces and was named Kelly Gomez. The couple have one other child, Olivia.  
**Buster Haus DeLeon**  
Mr. and Mrs. Ruben DeLeon are the proud parents of a new baby boy born May 2, 1978 at 8:48 p.m. in the West Plains Medical Center, in Muleshoe. The baby weighed seven pounds and 14 ounces and was named Buster Haus DeLeon. Grandparents are: Mr. and Mrs. Ruben DeLeon, Sr., of Friona, and Mr. and Mrs. S.R. Pena Sr., of Tahoka.

**GIBSON'S DISCOUNT CENTER SUPER SALE**  
Prices Effective May 14-17 Open: 9 am - 7 pm 1 pm - 6 pm Sunday

<b>KODAK FILM</b> 110 or 126 CART. 12 EXP. \$1.13	<b>KODAK FILM</b> 20 EXP. 1.45	<b>HEAD &amp; SHOULDERS SHAMPOO</b> 11 oz. \$2.19	<b>AQUA NET</b> 13 oz. 83¢
<b>AJAX LAUNDRY DETERGENT</b> 15¢ OFF LABEL \$1	<b>TICKLE ROLL-ON ANTIPERSPIRANT</b> \$1.65	<b>SAFEGUARD BATH SOAP</b> 3/\$1	
<b>SPRAY &amp; WASH</b> \$1.09	<b>ALL RECORDS 8-TRACK TAPES &amp; CASSETTES</b> 15% OFF	<b>BOUNCE FABRIC SOFTENER</b> 20 ct. 89¢	<b>1/2 X 50' WATER HOSE</b> \$2.69
<b>TEXAS INSTRUMENTS TI-1025 MEMORY CALCULATOR</b> \$8.99	<b>HI-DRI BATHROOM TISSUE</b> 4 pk 65¢	<b>EVERY DAY LOW PRICES</b>	
<b>POND'S COLD CREAM OR MOISTURIZER</b> Reg 1.19 99¢	<b>PEACH OR LEMON</b> Reg 1.43 \$1.09	<b>DRY SKIN MOISTURIZER</b> Reg 1.49 \$1.25	
	<b>1/2 GAL HOMO MILK</b> \$1.83	<b>1/2 GAL HOMO MILK</b> 93¢	<b>1/2 GAL LOWFAT MILK</b> \$1.57
	<b>1/2 GAL LOWFAT</b> 87¢	<b>1/2 GAL BUTTERMILK</b> 87¢	<b>1 LB COTTAGE CHEESE</b> 67¢
	<b>2 LB COTTAGE CHEESE</b> \$1.33	<b>WHIPPING CREAM</b> 53¢	<b>SOUR CREAM</b> 45¢

**True Value TOOL of the Month**  
Quantities Limited  
Tools not included  
now 2.99  
**CAREY-McFALL Hang-A-Tool**  
Fifty-inch, heavy-gauge steel rack holds 6 large tools — rakes, shovels, mops, brooms, etc. Installs with 4 mounting brackets. 8850  
**Ery Cox**  
401 South First MULESHOE, TEXAS 79347

**Save your pay where saving pays**

Annual Rate	Savings Plan	Minimum	Annual Yield*
7.75%	6-Year Certificate	\$1,000	8.06%
7.50%	4-Year Certificate	1,000	7.79%
6.75%	2½-Year Certificate	1,000	6.98%
6.50%	1-Year Certificate	1,000	6.72%
5.25%	Regular Passbook	10	5.39%

When interest is accumulated and compounded. On certificate amounts withdrawn prematurely, federal regulations require interest reduction to passbook rate and forfeiture of up to 90 days' interest.

**Tri-County SAVINGS AND LOAN ASSOCIATION**  
Offices in MULESHOE / FARNELL / FRIONA / LITTLEFIELD





# MULE'S TALE

Editor, Cherylee Bryant

Official Publication of Muleshoe High School Written and Edited by Students of the Muleshoe Schools



Volume 13, Number 27

Sunday, May 14, 1978

## 1977-'78 Annual Dedicated To James Jennings

### Connie Harmon Receives Award For Science

Connie Harmon, daughter of Mr. and Mrs. Don Harmon was named winner of the annual Bausch & Lomb Science Award at Muleshoe High School. The Science Award -- a handsome bronze medal -- is presented each year to winners at more than 8,600 participating schools throughout the United States and Canada.

Award is especially significant," according to Eric Smith, science teacher, who made the presentation, "because it recognizes the senior student at our school who has attained the highest scholastic standing in science subjects."

As winner of the Award, Connie is eligible to compete for one of several four-year Bausch & Lomb Science Scholarships at the University of Rochester, Rochester, N.Y. Scholarship winners are selected on merit, and stipends, based on need, could range up to \$4,500 per year. Surveys indicate that the

Award has encouraged more than 30 percent of the winners to follow scientific careers.

Bausch & Lomb, with headquarters in Rochester, New York, is a world-wide manufacturer of ophthalmic products, analytical and scientific instruments and sports optics.

### Girls To Play Five Member Basketball

The Girls 880 relay team competed at the State Track Meet in Austin last weekend. The girls were disqualified for making the handoff outside of their zone. The disqualification was very unfortunate since they were running extremely well and probably would have placed 3rd or 4th. The coaches Bob Graves and Lester Kirkland are extremely proud of the 880 relay team and all of the track team for their hard work and dedication they have shown this year.

The basketball girls will be working on basketball drills and fundamentals until school is out. The five man game has been approved statewide and all girls in Texas next year will play boy's rules. The girls are working hard and are looking forward to next year.

### S.C. Sponsored Jr. Olympics Last Weekend

Student Council sponsored the Junior Olympics this past Friday and Saturday. Field events were held starting Friday afternoon at 4:00 p.m. All running events were held Saturday starting at 10:00 a.m. The 3rd, 4th, 5th, and 6th graders participated and ribbons were given to the first six places.

We would like to say "Thanks" to the Student Council sponsors and members who made the olympics possible, thanks to all the students who helped run it Friday and Saturday, and most of all thanks to all the wonderful students who participated in the events.



JAMES JENNINGS

### Crop Team Named First For District

Bryce Kutzli, Steve Claybrook, and Clifford Watson received first place in the District Crop judging contest at the Texas Tech FFA District Judging Contest. Cody Crittenden, Tommy Wheeler, and Monty Vandiver won first place in the Meat's division. Placing second in Poultry were Larry Nowell, Greg Harrison, and Kelly Harrison. The Dairy Product team, placing second, consisted of Johnny

Puckett, Tammy Buckner, and Benton Glaze.

Jimmy Gleason, Curby Brantley, and Derik Prater placed third in cotton judging. Placing third in land judging were Ben Harmon, Oscar Agundis, and Noble Killough. The Dairy Cattle Team are Keith Hawkins, Dennis Patterson, and David Patterson. They received fourth place.



FTA HONORS TEACHER--Lucy Faye Smith was honored by the FTA during a breakfast last week for sponsoring FTA activities during the year.

The highlight of the Annual Awards Assembly Friday was the dedication of the 1978 Muletrain to James Jennings, an MHS teacher. Stephanie Brantley and Dwayne Shafer made the presentation. The students cited the reason for the dedication is because Mr. Jennings is dedicated to the overall program and actively participates in and attends extracurricular activities involving the students.

After the Opening ceremonies led by Student Body President Brent Gunter and Chaplain Jo-Ronda Rhodes, Mr. Kerry Moore served as Master of Ceremonies.

The Valedictorian's award was presented to Brad Baker and the Salutatorian's award to Jane Green by High School Principal Mr. Wayland Ethridge.

The faculty's choice for Best All Around students were Stephanie Brantley and Martin Nowlin; and their awards were presented by Mr. Bob Graves. The Citizenship Awards were presented to Connie Harmon and Dwayne Shafer by Mrs. Cheryl Gist.

A special award was given by Muleshoe members of the Delta Kappa Gamma. The award for "Outstanding FTA Member" was presented to Dwayne Shafer by Mrs. Jack Obenhaus, Delta Kappa Gamma president.

Other awards presented and the recipient of each were the Journalism Award presented by Mrs. Lucy Faye Smith to Dwayne Shafer and the Book-keeping Award presented by Mrs. Smith to Lavayne Lloyd. Mrs. Johanna Wrinkle presented the Typing Award to Keva Roming.

The Agriculture Award was presented by Mr. Gentry Lynn to Kirk Lewis; and the Agriculture Cooperative Education Award was presented by Mr. Bill Bickel to Oscar Agundis.

The English award was presented by Mrs. Ruby Lee Kerr to Rhonda King. The History Award by Mrs. Janet Buske to Dwayne Shafer; the Girl's P.E. Award by Mrs. Lola Pylant to Sandra Palomin; and the Boy's

P.E. Award by Coach Raymond Schroeder to Curtis Hunt.

Mrs. Elizabeth Black presented the Art Award to Curtis Carpenter and Amarillo Regional Certificates of Merit to Dana Wilkinson, Mark Northcutt, Julia Shain, Linda Shafer, Curtis Carpenter, and Martin Lopez. Gold key winners were Dana Wilkinson, Martin Lopez, Mark Northcutt and Julia Shain. Dana Wilkinson was a key finalist, and her work was sent to New York.

The band award was presented to Royce Clay by Mr. Charles Faulkner; and the Speech Award was presented to Fran Berryhill by Mr. Kerry Moore, who also presented the Drama Award to Lavayne Lloyd. Mr. Moore recognized the One-Act play cast and stage crew that won first in District, Area, and Regional, and third in state. He recognized Ernie Vela who was named best actor in District, Area, and Region and to the State All Star Cast as was Lavayne Lloyd. Recognition was given to Royce Clay and Martin Nowlin, who competed at state in debate. Royce has competed at state all four years in high school and was last year's state champ. Brad Baker is state champion in Persuasive Speaking and Fran Berryhill, second. In the various districts, 651 contestants were eliminated and Brad and Fran were on top.

Eric Smith presented the Bausch and Lomb award to the outstanding senior science student, Connie Harmon, and the Chemistry Award to Mark Northcutt. The Biology award was presented to Andy Snell by Mr. Gail Bizzell.

The Home Economics Cooperative Education award was presented by Mrs. Wanda Gramling to Frances Brown; and the Home Management award, also presented by Mrs. Gramling, went to Josie Baca. The Home Economics award was presented to Pam Young by Mrs. Dorine Harbin.

Keith Taylor presented the Industrial Arts Award to Clifford Watson, and Nicky Landers presented the Math award to Dean Northcutt. The Suto Mechanics award was presented to Robert Lopez by Mr. Charles Shain.

Special awards included the Student Council award presented to Connie Harmon by Rodney Murphy and the Cheerleader award presented to Dani Dunham by George Washington.

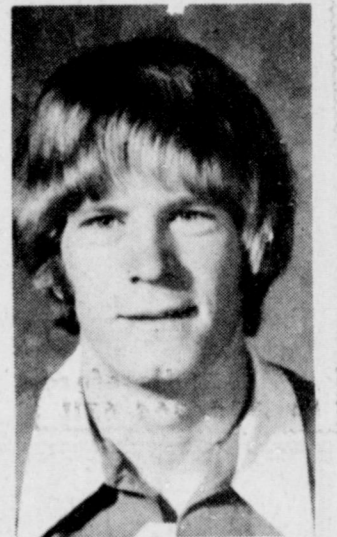
Mike Wartes gave athletic recognition to all district champions, All-District winners and those who had set school

records. He also recognized Karen Stovall and Martin Lopez for winning the Fighting Heart Award and to the award winners: Janie Posadas-Volleyball; Dean Northcutt-Football; basketball-Mark Washington and Evelyn Grace; Track-Lee Elder and Shelly Dunham; Golf-Dickey Sudduth and Traci Walker; Tennis-Stephanie Brantley, Danny Wilson, and Billy Vinson.

The Student Council Installation of Officers was conducted by Brent Gunter. 1978-79 officers installed were President Mark Harmon, Vice-President Melilssa Biggerstaff, Secretary Shelley Splawn, Treasurer Sandy Dunbar, Historian Linda Shafer, Chaplain JoRonda Rhodes, and Parliamentarian Carroll Precure.

The head cheerleader for 1978-79 Gina Burden received the megaphone from the 1977-78 head cheerleader Dani Dunham.

The program closed with the yearbook dedication.



LEE ELDER

### Thespians Of The Week

Lee Elder has been selected as this week's Thespians of the week. Lee has been outstanding in the Muleshoe High School track program this year and will be at the State Tournament this weekend.

Lee has won the mile run in both the District and Regionals Contests along with several other track meets, and will be competing against seven other milers for the State Championship.

Lee's other school activities involve Varsity Football and FTA.

Best of Luck this weekend and throughout your career!!

### Calendar For The Week

MONDAY, MAY 15 - Senior class meeting-5th period 7:00-9:00 practice.  
TUESDAY, MAY 16 - Senior Day Assembly-Annual signing party-Art Club party 7:00-XIT.  
WEDNESDAY, MAY 18 - 5th and 6th period finals-Seniors.  
FRIDAY, MAY 19 - 1st-4th period finals-Seniors, Senior meeting 1:00-Auditorium.  
SATURDAY, MAY 20 - Jr.-Sr. Banquet 8:00-Cafeteria-Jr. - Sr. Prom-Catholic Center.

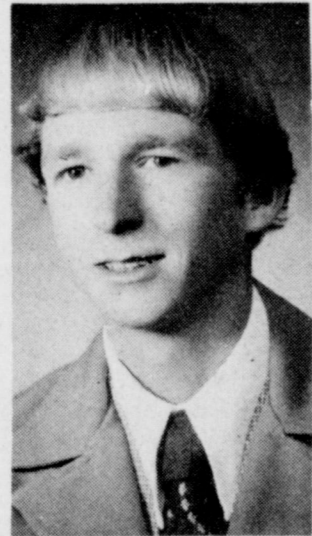
### Brad Baker Wins State Championship

Brad Baker won the state championship in persuasive speaking this past weekend in Austin. This was a sweet victory for Brad since he won second in state competition last year.

Fran Berryhill placed second in state in persuasive speaking. As a sophomore this was a tremendous finish for the year.

Muleshoe High's contest play, "Twelfth Night," placed third in the State One Act Play Contest. Ernie Vela was placed on the state all star cast and Lavayne Lloyd was named to the all star honorable mention cast. Royce Clay and Martin Nowlin competed in the state debate tournament, but did not place in the top three places.

Since 1963, this was Muleshoe High School's Speech and Theatre Department's thirteenth state championship.



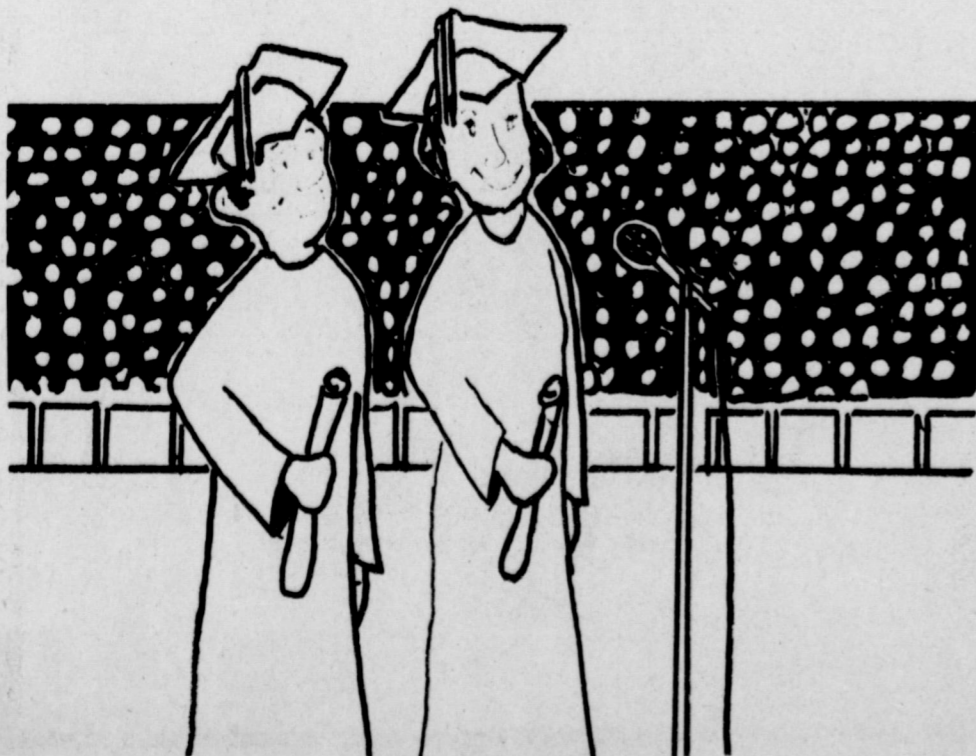
BRAD BAKER



FRAN BERRYHILL

# BEST

Wishes Seniors FROM DELTA



### Muleshoe School Lunch

MONDAY  
Milk  
Bar-B-Que Weiners  
Blackeyed Peas  
Buttered Potatoes  
Corn Bread  
Fruit  
TUESDAY  
Milk  
Hamburgers  
Lettuce and Tomatoes  
Pickles and Onions  
Tater Tots  
Cobbler  
WEDNESDAY  
Milk  
Burritos  
Corn on Cob  
Cole Slaw  
Cheese Sticks  
Frosted Brownies  
THURSDAY  
Milk  
Hot Dogs  
Veg. Beef Soup  
Crackers  
Cookies  
Fruit  
FRIDAY  
Milk  
Fish Krispies  
Cream Potatoes  
English Peas  
Hot Rolls  
Jello

### FTA Fetes Teachers At Breakfast

The annual FTA Teacher's Breakfast was given Wednesday, May 10. Four officers prepared the feast starting at 6:30 a.m. The meal was served from 7:30 a.m. until 8:20 a.m. to teachers of M.H.S.

Martin Nowlin, President of the Chapter, presented a plaque to Lucy Faye Smith for being the Teacher of the Year. Mrs. Smith has taught at Muleshoe High School for thirteen years and has been one of the most active teachers here. This year she is the Muletrain-Mules' Tale Advisor, National Honor Society and Senior class sponsor. She teaches typing and accounting, she sponsored the trip to Dallas with the FTA State Delegates, and she is a part of many school-connected clubs and organizations.

The Blackburn-Moore FTA Chapter extends its thanks and congratulations to Lucy Faye Smith for her dedication to the school, to her fellow teachers, and most of all to the students of M.H.S.

Arms programs jump \$17 billion in total costs.

### Judging Teams Win At Texas Tech

Mike Dale, Keith Hawkins, Dean Estep, and Gaylon Strahan received first place honors for the Muleshoe FFA chapter Wednesday, May 10, at the Texas Tech Ag Mechanics contest. The contest was sponsored by Bailey, Deaf Smith, and Lamb Counties Electric Co-op's.

Dean Estep placed first in electricity, Mike Dale tied Gaylon Strahan for first in Arc Welding. Strahan also placed first in small gas engines and was awarded High Point Individual.

Keith Hawkins received first in tool identification. The contest is divided into identification, small gas engines, welding, and electricity. The FFA chapter will receive a fifty dollar check from the Co-op's.

Budget request for VA care called inadequate.

U.S. calls for tough A-satellite curbs.

Califano suggests higher excise tax on cigarettes.



FRESHMEN FHA FETED--Last week, the Rose Chapter FHA honored all incoming freshmen FHA members at a picnic in the park. Rose officers explained activities of the FHA to the incoming members.

### Rose Members Host Incoming Frosh Group

Rose FHA members treated next year's incoming Freshmen to a party in the park from 5 until 7 Tuesday, May 9.

Julie Barnhill directed "get acquainted" games before a hot dog supper.

After supper, the games continued. Guest were given a booklet containing information about FHA which included emblem, flower, creed, color, opening and closing ceremonies, and general information about FHA activities for 77-78 year.

Pam Young, President, and Sharla Henry, Treasurer, explained each officer's duties and encouraged girls to review the booklet during the summer so they might be prepared for next fall's election.

Mary Graves, Debbie Whalin, and Sharla Henry assisted in the clean up and Young Home-maker Nursery after the party.





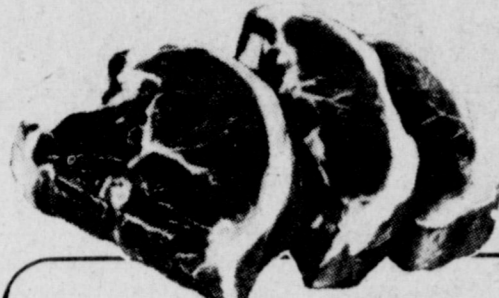
# PIGGLY WIGGLY BRAND SPRINGTIME SALE!!

"Each of these advertised items is required to be readily available for sale at or below the advertised price in each store, except as specifically noted in this ad."

Prices good thru May 17, 1978. We reserve the right to limit quantities. None sold to dealers.

**WE GLADLY REDEEM USDA FOOD STAMPS**

**WE GIVE DOUBLE S & H GREEN STAMPS**  
Every Wednesday with \$2.50 or more purchase excluding



Combination  
10 Chops, 4 Centers, 4 Ends  
**PORK CHOPS**  
**\$1.28**  
Lb.

Farmer Jones (2-Lb. Pkg. \$2.95)  
**SLICED BACON**  
**\$1.49**  
1-Lb. Pkg.

Farmer Jones  
**Tasty Franks** 12-oz. Pkg. **89¢**  
Piggly Wiggly Halfmoon  
**Longhorn Cheese** 8-oz. Pkg. **89¢**

Whiting or Mai-Mai, Frozen  
**Fish Fillets** Lb. **99¢**  
Kraft, All Varieties  
**Cream Cheese** 4 3-oz. Pkgs. **\$1.00**

**ON SALE THIS WEEK**  
A TUMBA COLLECTION  
STONEWARE  
SANIBEL DINNER PLATE  
WHEAT FLOWER WILDWOOD  
Only **79¢**

Piggly Wiggly  
17-oz. Can Whole Kernel or  
Cream Style Corn, 16-oz. Can  
Sweet Peas or Cut Green Beans  
**CANNED VEGETABLES**  
**4 \$1**  
SAVE 5¢ per can

PIGGLY WIGGLY  
Whole Kernel Cream Style  
Sweet Corn  
PIGGLY WIGGLY  
Cut Green Beans  
PIGGLY WIGGLY  
Very Young Seed  
Early Peas

Plus Deposit  
**DR PEPPER**  
**6 \$1.49**  
32-oz. Btls.

Piggly Wiggly  
**TOMATO SAUCE**  
**7 \$1**  
8-oz. Cans  
SAVE 14¢ ON 7 CANS

Piggly Wiggly  
**BATH TISSUE**  
**4 Roll 69¢**  
SAVE 6¢

Sweetmilk or Buttermilk  
**PIGGLY WIGGLY BISCUITS**  
**8 \$1**  
10-Ct. Cans  
SAVE 36¢ ON 8 CANS

Piggly Wiggly  
**ICE CREAM**  
**\$1.09**  
½-Gal. Ctn.

Tide's In...Dirt's Out  
**TIDE DETERGENT**  
**\$3.99**  
171-oz. Box  
SAVE 98¢

Ripe **BANANAS** Lb. **29¢**  
California **AVOCADOS** For **3 \$1**  
Crisp **Cucumbers** 2 For **39¢**  
Baker Russet **Potatoes** 4 Lbs. **\$1.00**



## STATE CAPITAL HIGHLIGHTS

By Lyndell Williams  
TEXAS PRESS ASSOCIATION

AUSTIN—Record spending was reported as the 1978 primary election campaigns ended.

Nearly \$6 million went into the governor's race alone, and more than \$1 million more into the U.S. Senate campaigns.

Gov. Dolph Briscoe headed the list of big money raisers. His campaign treasurer, David Dean, said the total outlay probably will be around \$3 million. Of that amount, \$1,170,000 was borrowed from eight Texas banks.

Republican gubernatorial candidate Bill Clements came in second with \$1.7 million borrowed or raised (\$1.3 million in loans) and \$1.4 million spent.

Attorney General John Hill, in opposing Briscoe for the Democratic gubernatorial nomination, reported contributions of \$1.4 million and expenditures of \$1.3 million.

Ray Hutchison, seeking the GOP nomination for governor, took in \$138,617 and spent \$161,050.

Former Gov. Preston Smith took in only \$68,199 and spent \$62,129.

Three candidates for attorney general also did pretty well financially.

Mark White, Democrat, showed \$530,440 in contributions and \$577,090 in expenditures. Price Daniel Jr. reported donations of \$277,570, an \$8,000 loan and expenditures of \$295,440.

The Republican candidate for attorney general, Jim Baker, took in \$313,974 and spent \$205,241, though he was unopposed in his primary.

### Ad Rules Studied

Rules to protect insurance buyers from deceptive advertising were reviewed last week by the State Board of Insurance.

A public hearing will be held before the vote on adoption.

Rules under study for a year include:

—A provision requiring that exclusion or exemptions from advertised benefits be detailed in all ads.

—Specification that buyers have 10 days to look over and reject an accident and health policy.

—Prohibition against knocking competitors or using technical words.

—Definition of "pre-existing condition" for which health benefits can be refused.

—A ban against offering gifts in order to sell policies by a deadline.

—Extension of regulations to pre-paid legal service and health maintenance organization (HMO) ads.

### Legislature Changed

The Texas legislature will be somewhat different next year—but not much as far as personnel is concerned.

One of the smallest turnover of modern times resulted from Saturday's elections, in spite of retirements of Senate Dean A.M. Akin of Paris and his House counterpart, Rep. L. DeWitt Hale of Corpus Christi, and mandatory redistricting in Fort Worth.

Speaker Bill Clayton said his reelection as House presiding officer is secure, and Lt. Gov. Bill Hobby faced light opposition in his bid for a third term as Senate president.

Sixty-two incumbent representatives seeking reelection were unopposed, as were seven senators trying for new terms. Twenty-nine others, who drew no opposition in the primary will face challenges on the November general election ballot.

### Courts Speak

In a dispute over sale of Cameron County land for a state park, the Supreme Court declined to order a law firm to discontinue representing one of the parties in the action.

Relying on rulings growing out of auto cases, the

Third Court of Civil Appeals held in a suit for damage insurance a pilot was operating his airplane, even though he had stepped out of the plane to place wheelchairs. The plane moved forward and hit trees.

Horse race wagering opponents asked the Third Court of Civil Appeals to order a trial on the issue of whether the State Democratic Party legally placed a betting referendum on the May 6 ballot.

The Court of Criminal Appeals dismissed indictments of a Jefferson County man because they did not set out the amount of drugs he was charged with delivering.

### AG Opinions

Attorney General John Hill held the Texas Commission on Jail Standards lacks authority to promulgate a rule equalizing salaries of county jail personnel with those of law enforcement officers in the field.

The opinion noted commissioners courts have authority to fix salaries of jail personnel at a level lower than the pay of other county law enforcement officers of equal rank and seniority.

Hill also concluded two employees of Dallas County Community College accused of sexual harassment could see only part of a grievance filed against them by a female employee of the school. No violation of law was alleged.

In another opinion, Hill said the three-year statute of limitations for collection of unemployment contributions does not prohibit Texas Employment Commission from filing suit. The statute applies to a suit by the commission to recover an overpayment of benefits but does not apply to the deduction of overpayments from future benefits.

### Short Snorts

J. Michael Irish of Lubbock is new president elect of the Texas Young Lawyers Association. Irish defeated Eduardo Rodriguez of Brownsville in written balloting.

Texas stood third in the U.S. with \$6.6 billion in cash receipts for its farm goods in 1977. Texas also has the most acreage—139.8 million—devoted to farming and ranching and the largest number—197,000—of farms and ranches.

**Anthony's**  
**INSTANT SUN DRESS PANELS**

Anthony's newest introductions into the home sewing fabric market are a group of fabrics called the INSTANT DRESS COLLECTION. Features elasticized shirring or smocking already applied at the bodice or waist. No pattern is necessary. Easy as 1-2-3: 1. The secret is in the fabric! Buy it already shirred. 2. You just have to sew one seam... and 3. You've got a dress.

**SHOP CASH LAYAWAY**

**A. 3.97 or 3 For \$10.**  
45" smocked cotton and cotton blend fashion prints. A variety of patterns in many lovely colors.

**B. 5.97 or 3 For \$15.**  
45" smocked woven fancy fabric of 65% polyester and 35% cotton. Many patterns and colors in seersuckers, fancies and solids.

**SEE OUR NEW ARRIVAL - INSTANT SKIRTS**

**WASH CLOTH**  
3 For \$1.  
Prints, solids and jacquards. A terrific value when wrapped together in threes. Each is a good variety of beautiful designs and colors. If perfect 49¢ value.

**BATH TOWEL**  
Reg. 1.99 3 For \$5  
Jacquards, printed stripes, solids and prints. Bath towels that will accent any decor. 100% cotton fibers. Slight irregularities.

**Anthony's**



## se Safety Training or Farm Machinery

h spring land preparation planting activity increasing, is a good time to give inery operators the annual ing required under occupal safety and health stand- says the Texas cultural Extension Service. hough many required points seem simple and a matter ommon sense, failure to w the correct procedure ined causes the majority of or and machinery mishaps. nimum required points to r regarding tractor ration include the following: Securely fasten your seat if the tractor has a Roll Over tective Structure (ROPS).

Where possible, avoid rating the tractor near hes, embankments, and es.

Reduce speed when turning, ssing slopes, and on rough, k or muddy surfaces. Stay off slopes too steep for e operation.

Watch where you are going, ecially at row ends, on roads, f around trees.

Do not permit others to ride.

Hitch only to the drawbar d hitch points recommended e tractor manufacturers.

Operate the tractor smoothly o jerky turns, starts, or stops.

When tractor is stopped, brakes securely and use park if available.

Minimum required points to ver regarding farm machinery lude:

Keep all guards in place ten the machine is in eration.

Permit no riders on farm upment.

Stop engine, disconnect ver source, and wait until all achine movement has stopped fore servicing, adjusting, eaning, or unclogging equip- ent.

4. Make sure everyone is clear f machinery before starting gine, engaging power, or perating the machine.

5. Disconnect and lock out lectrical power before perform-

ing maintenance or servicing equipment.

Farm employers are required to cover additional specific points regarding the safe operation and servicing of all equipment which employees are likely to use during the coming year.

## Bentsen Says News Report 'Misleading'

Senator Lloyd Bentsen said Monday that a report by the Council on Wage and Price Stability saying his countercyclical beef import bill "would be moderately inflationary" is "misleading" and "inaccurate."

Bentsen's bill was approved by the Senat Finance Committee, by a 13-1 vote, April 19.

"The council clearly misunderstands the purpose of the legislation and clearly misunderstands the economics of the cattle industry," Bentsen said in Senate remarks Monday.

"Enactment of this legislation would be completely consistent with our nation's anti-inflation objectives. It would permit more beef imports next year, in fact, than would be permitted under the current law. The bill is pro consumer and pro cattleman and would help moderate the sharp swings in consumers prices-particularly for hamburger--that have occurred in recent years.

Bentsen noted that the recent Wage-Price Council report flatly contradicts Finance Committee testimony by leading economists from all sections of the country. He quoted Professor Herrel de Graff of Cornell University as testifying: The countercyclical proposal of H.R. 5052 (the Bentsen Bill) will definitely work in both the short-run and long-run interests of consumers.

Bentsen also listed several "misleading" statements in the report issued by the council.

"The Council said that imported meat only conditutes imported meat only constitutes one percent of domestic meat consumption. In fact, imported beef does not compete directly with American beef. This, too, is inaccurate. During the liquidation phase of the cattle cycle, old cows and old bulls go to slaughter and these animals have plenty of hamburger meat. This competes directly with imported beef.

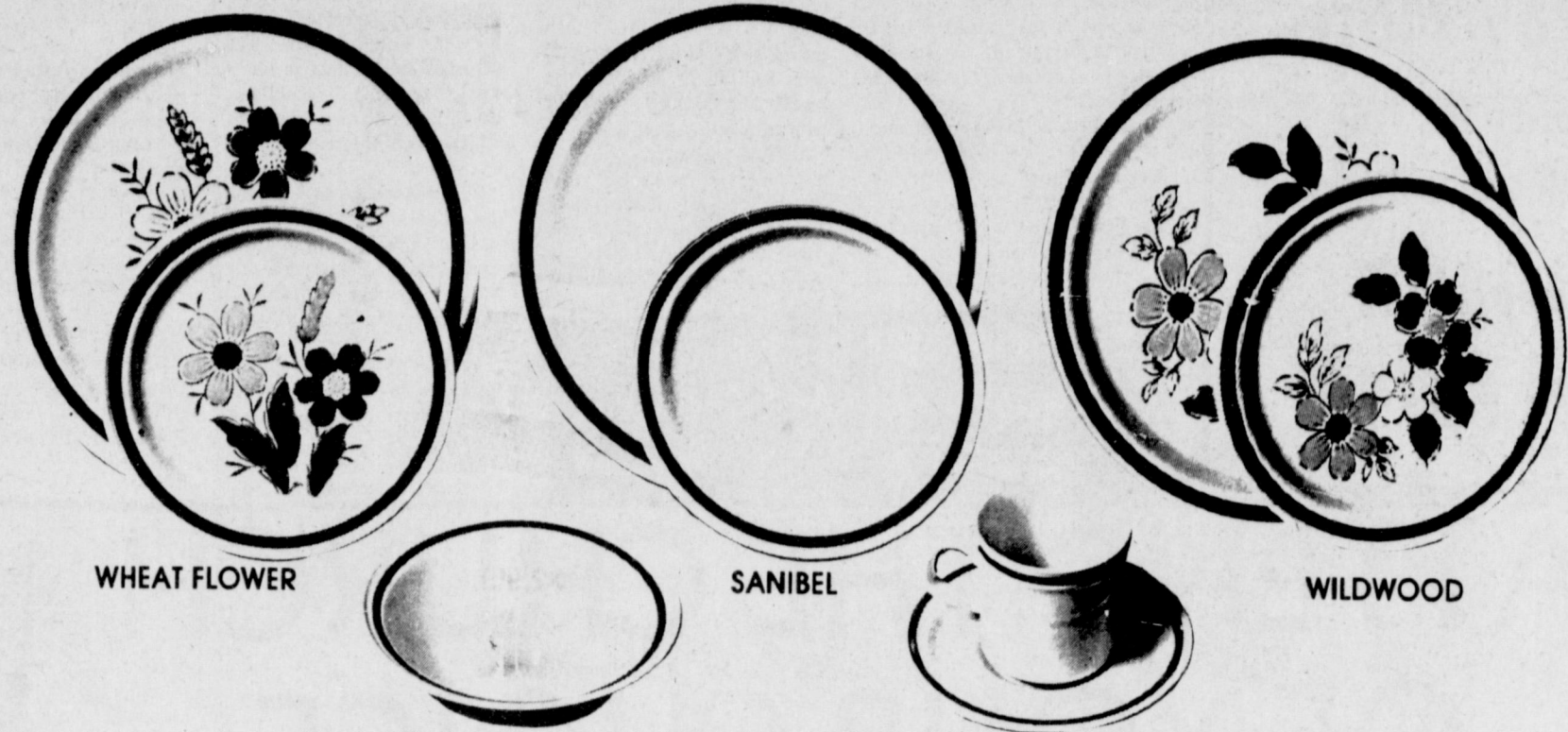
"The Council claimed that the International Trade Commission has concluded that imports do not constitute a threat to domestic producers. This is totally misleading. The ITC merely concluded that imports were not the single most important problem facing cattlemen."

"These misleading statements by the Council on Wage and Price Stability seriously cloud the conclusions they reach," Bentsen said.

"The fact is that a countercyclical formula--such as the one in my bill--would be deflationary, particularly for lower income families who consume relatively large amounts of hamburger," Senator Bentsen said.



# Offers you stoneware in the AUTUMN COLLECTION



## CHOOSE FROM 3 BEAUTIFUL PATTERNS.

Here's your chance to own one of these three beautiful imported stoneware patterns from the Autumn Collection.

These are serviceable, yet elegantly designed place settings. Oven to table, dishwasher and microwave oven safe.

Take advantage of these great savings on stoneware that will be admired and enjoyed for years to come.

# 79<sup>c</sup>

PER PLACE SETTING PIECE WITH EVERY \$3.00 PURCHASE



These completely coordinated accessory pieces will be on sale at discount prices throughout the entire program:

Dinner Soup (2)  
Gravy Boat w/Stand  
Covered Sugar Creamer  
Round Platter  
Vegetable Bowl  
Coffee/Tea Server  
Salt and Pepper Casserole w/Cover  
Butter Dish w/Cover  
Mug (2)  
Oval Bowl  
Individual Casserole

A different place-setting piece featured each week for...

## 15 BIG WEEKS!

FIRST SIXTH ELEVENTH WEEK	SECOND SEVENTH TWELFTH WEEK	THIRD EIGHTH THIRTEENTH WEEK	FOURTH NINTH FOURTEENTH WEEK	FIFTH TENTH FIFTEENTH WEEK
DINNER PLATE	CUP	SAUCER	SOUP/CEREAL BOWL	SALAD PLATE
<b>79<sup>c</sup></b>	<b>79<sup>c</sup></b>	<b>79<sup>c</sup></b>	<b>79<sup>c</sup></b>	<b>79<sup>c</sup></b>
With every \$3.00 purchase	With every \$3.00 purchase	With every \$3.00 purchase	With every \$3.00 purchase	With every \$3.00 purchase

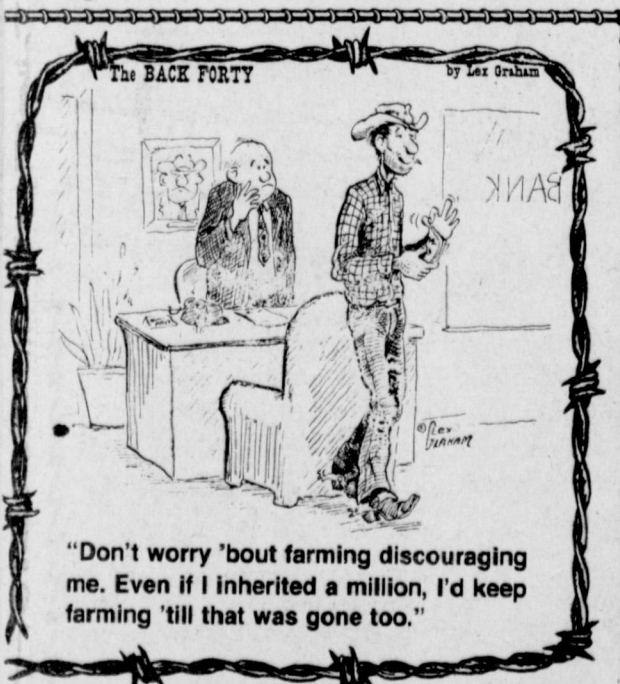
## THE AUTUMN COLLECTION AVAILABLE ONLY AT PIGGLY WIGGLY

### WHO KNOWS?

1. Who began the fight for "women's suffrage"?
2. When was V-E Day?
3. When is Armed Forces Day?
4. When was the first Defense Bond issued?
5. When was the penny postcard first sold?
6. When was the first American sent into space?
7. When was Minnesota admitted to the U.S.?
8. When is Ascension Day?
9. What is the significance of this day?
10. Define cynosure.

### Answers To Who Knows

1. Susan B. Anthony.
2. May 8, 1945.
3. May 20th (always the third Saturday in May).
4. May, 1941.
5. May 1, 1873.
6. May 5, 1961.
7. May 11, 1858.
8. May 4th.
9. It is observed as the bodily passing of Christ from earth to heaven.
10. Center of attention or admiration.



"Don't worry 'bout farming discouraging me. Even if I inherited a million, I'd keep farming 'till that was gone too."

Remember That Grad With A Western Gift From Lee's

Larry Mahan Shirts Now In Stock

Lee's WESTERN WEAR

Open Mon.-Sat. 9 a.m.-6 p.m.  
1910 W. Amer. Blvd. 272-4663



# Higher Food Cost Due To Inflation

More and more of the American paycheck is going to go for food "and we might as well get used to the idea," according to Dr. Willard F. Williams of the Texas Tech University agricultural economics faculty.

"But the thing to remember," he said, "is that higher food costs are by no means a cause of inflation but a result of inflation."

Williams, nationally recognized as an expert in agricultural marketing, particularly livestock, said that the American farmer has absorbed

as much of the increased costs of production and marketing as he can. He cannot look to any great increase in foreign markets, either, because world markets aren't rich enough to buy.

"The farmer can't grow it and give it away," Williams emphasized.

"Agriculture has been squeezed down to where the producer has to get higher prices, not as a cause of inflation but as a result."

Williams said he sympathizes with farmers who reluctantly accept government plans to give

the farmers money to breach the difference between costs and prices. The concept is to set a target price and pay the difference between what the farmer gets in the marketplace and the target price.

"While acceptable for the moment, it is not going to solve our excess supply problem in agriculture. Farmers want to get their income through the marketplace on the basis of 'you get what you pay for.'"

Williams attributed inflation, which has been in progress throughout the life of this country, to three factors: deficit government spending—which began in the Depression years; accumulated buying power on the part of the consumer for a limited supply of consumers goods—a situation that gave a particularly big boost to inflation after World War II; and a forced "cost-push" effect resulting from such things as the high costs of labor and energy, which push up the prices of consumer goods.

"These are the things that are

forcing food prices up. Once the basic forces of inflation, mainly union wage demands coupled with deficit spending, are set in motion, all other prices eventually must adjust accordingly.

For example, he said, food marketing costs trended steadily higher after World War II because the food marketing sector was no more immune to inflation than other sectors.

"For many years farmers absorbed these costs and continued producing in heavy volume despite acreage restrictions. Benefits of improved technology and management were passed along to consumers. Farm prices were lower in the late 1960s than during the early 1950s, and consumer prices of food rose much less rapidly than the general level of other prices."

Inflation, however, was affecting the producers' own costs. To get into farming now, Williams estimated, would cost easily a half-million dollars.

Labor not only is costly, but

you can't even find labor to work in some areas of agriculture such as swine production."

The cost of a tractor has doubled, and the costs of other machinery, farm chemicals and energy have all affected production costs. The farmer, he said, has absorbed these about as long as possible. He did so by mortgaging his land as its value has risen and by increased efficiency and by using new technology.

The producer cannot absorb any more of the costs.

The cattle producer, he pointed out, "went through the wringer" from 1973 to 1976, losing millions. Ranchers and feedlot operators were forced, partly by inflationary effects on costs, to reduce cattle inventories and sell fewer for slaughter. Higher beef prices, therefore, were inevitable. The increases are a direct result of supply-demand conditions which, in turn, were caused by earlier effects of inflation on the beef industry.

"It's ridiculous to call the upward trend in beef prices a cause of inflation. They are a result. Farm prices are just the last manifestation of inflation, and they'll probably have to go a lot higher."

"There is no escaped, and we might just as well make up our minds we are going to have to pay more."

Williams said it will make no difference in prices if some



LOS CHARROS—One of the floats featured in the Cinco de Mayo parade in Muleshoe last Friday was a float depicting Los Charros, The Cowboys. Wide colorful sombreros are worn by the youthful Charros.

**Why Pay More**  
See Randy Or One  
Of His Salesmen Today!

**Johnson Chevrolet**

201 Commerce 227-2050

**Singleton-Ellis Funeral Home**  
24 Hour Ambulance Service  
Ph. 272-4574 Muleshoe

**COTTON TALKS**  
FROM PLAINS COTTON GROWERS, INC.

farmers are forced out of business. The land resources are there and others will produce the food, but the prices still will go up.

Menachem Begin, Israeli

Prime Minister:  
"Israel exercised its inherent right of self-defense in capturing Palestinian bases in south Lebanon."

Farm law changes approved April 26 by a House-Senate Conference Committee have the solid support of Plains Cotton Growers, Inc., Lubbock-based cotton producer organization.

If passed and signed by the President the bill, in particular, would bring the method of setting the cotton loan much closer to the method called for in PCG legislative policy adopted in January of 1977, officials note. In addition the new measure would put a four-year 48-cent minimum on the base U. S. loan, "which is still too low but is certainly better than the 44-cent loan we have now," says PCG Executive Vice President Donald Johnson.

# ATTEND THE CHURCH OF YOUR CHOICE

- FIRST UNITED METHODIST CHURCH**  
Rev. David Hamblin  
507 West Second, Muleshoe
- UNITED PENTECOSTAL GOSPEL LIGHTHOUSE CHURCH**  
George Green, Pastor
- PRIMITIVE BAPTIST CHURCH**  
Elder Bernard Gowens  
621 South First
- FIRST ASSEMBLY OF GOD**  
Rev. Joe Stone  
517 South First
- JEHOVAH'S WITNESS**  
Boyd Lowery, Minister  
Frona Highway
- FIRST CHRISTIAN CHURCH**  
Rev. Walter Bartholf  
Sunday School 10:00 a.m.  
Worship 11:00 a.m.  
130 West Avenue G.
- LATIN AMERICAN METHODIST MISSION**  
R.O. Chavez, Pastor  
Fifth Street & Avenue D.
- NORTHSIDE CHURCH OF CHRIST**  
117 E. Birch Street
- THE COMMUNITY CHURCH**  
Rev. H.D. Hunter  
Morton Highway
- CHURCH OF THE NAZARENE**  
Pat Ridley, Pastor  
Ninth & Avenue C.
- CALVARY BAPTIST CHURCH**  
James Williams, Pastor  
1733 West Avenue C.
- TRINITY BAPTIST CHURCH**  
314 East Avenue B.  
Rev. Gene Prevo
- RICHLAND HILLS BAPTIST CHURCH**  
Roy I. Sikes, Pastor  
17th and West Avenue D.
- EMMANUEL BAPTIST CHURCH**  
Iglesia Bautista Emmanuel  
107 E. Third  
Isaius Cardenas, Pastor



*A Crown for Mother*

You, as a Mother, are honored by your children on a special day — Mother's Day. How the little things they make for you with their own small hands please you and warm your heart.

It warms and quickens the heart of God when you honor Him on His special day. "Remember the Sabbath Day, to keep it holy." Exodus 20:8. Worship God on this next Sunday in the church of your choice. We should honor our loving Heavenly Father even as we expect our children to honor us.

Attend church on Mother's Day.

The Church is God's appointed agency in this world for spreading the knowledge of His love for man and of His demand for man to respond to that love by loving his neighbor. Without this grounding in the love of God, no government or society or way of life will long persevere and the freedoms which we hold so dear will inevitably perish. Therefore, even from a selfish point of view, one should support the Church for the sake of the welfare of himself and his family. Beyond that, however, every person should uphold and participate in the Church because it tells the truth about man's life, death and destiny; the truth which alone will set him free to live as a child of God.

*EVERYONE IN THE CHURCH*  
*THE CHURCH IN EVERYONE*

Coleman Adv. Ser.

- SPANISH BAPTIST MISSION**  
Rev. Ynes Aleman  
East Third and Ave. E.
- MULESHOE BAPTIST CHURCH**  
Bob Dodd, Pastor  
8th Street and Ave G.
- PROGRESS SECOND BAPTIST CHURCH**  
Clifford Slay, Pastor  
First and Third Sundays.
- FIRST BAPTIST CHURCH**  
Rev. J.E. Meeks  
220 W. Ave. E.
- ST. JOHN LUTHERAN**  
Lariat, Texas  
Herman J. Schelter-Pastor  
Sunday School  
Classes 9:30 a.m.  
Worship-Services 10:30 a.m.
- ST. MATHEW BAPTIST CHURCH**  
E. McFrazier, Pastor  
West Third
- SPANISH ASSEMBLY OF GOD**  
Rev. Hipolito Pecina  
East 6th and Ave. F.
- PROGRESS BAPTIST CHURCH**  
Progress, Texas  
Rev. Gearld Aabers, Pastor
- SIXTEENTH & AVENUE D CHURCH OF CHRIST**  
Terry Bouchelle, Minister  
Sunday-10:30 a.m.  
Evening-6 p.m.  
Wednesday-8 p.m.
- IMMACULATE CONCEPTION CATHOLIC CHURCH**  
Father Timothy Schwertner  
Northeast of City in Morrison Edition
- MULESHOE CHURCH OF CHRIST**  
Royce Clay, Minister  
Clovis Highway
- LONGVIEW BAPTIST CHURCH**  
B.C. Stonecipher, Pastor  
Phone 946-3413

**Lazbuddie School Menu**

**MONDAY**  
Frito Pie  
Green Salad  
Cornbread  
Corn  
Peanut Butter Cake  
Milk

**TUESDAY**  
Westernburgers  
New Potatoes  
Baked Beans  
Tossed Salad  
Spice Cake  
Milk

**WEDNESDAY**  
Beef and Cheese Tacos

**THURSDAY**  
Tuna and Pimento Cheese Sandwiches  
French Fries  
Pickles  
Peaches  
Milk

**FRIDAY**  
Stew  
Crackers  
Buttered Rice  
Applesauce  
Cinnamon Rolls  
Milk

Patience is a gift that God gives only to those He loves.  
-Moroccan Proverb.

<b>BEAVERS FLOWERLAND</b> "Flowers For All Occasions" 272-3024 Or 272-3116	<b>ATTEND CHURCH</b>	<b>ATTEND CHURCH</b>	<b>WESTERN DRUG</b> 114 Main
<b>WATSON ALFALFA</b> 272-3552 272-4038	<b>MULESHOE CO-OP GINS</b>	<b>WHITES CASHWAY GROCERY</b> 402 Main "Where Friends Meet And Prices Talk"	<b>WESTERN SPRINKLERS INC.</b> , W. Hwy. 84 ZIMMATIC 272-4544
<b>BRATCHER MOTOR SUPPLY</b> 107 E. Ave. B. 272-4288	<b>ST. CLAIRS</b> 110 Mpin	<b>WHITT-WATTS-REMPE IMPLEMENT CO.</b> John Deere Dealer Muleshoe 272-4297	<b>Dairy Queen</b> Margie Hawkins, Manager 272-3412
<b>GIBSON'S DISCOUNT CENTER</b> 1723 W. American Blvd. 272-4306	Compliments Of <b>STATE LINE IRRIGATION</b> Littlefield-Muleshoe-Lvelland	<b>MULESHOE PUBLISHING CO.</b> Muleshoe 272-4536	<b>MAIN STREET BEAUTY SALON</b> 115 Main 272-3448

**Late Planting ?**

If you are late planting corn, plant Trojan Brand TXS-102. This corn produced better than 9,600 dry, last year locally. Have Trojan Brand milo seed, which is green bug tolerance. M56G and M60G for dry land and irrigated.

Am now dealer for Paymaster seeds. Have on hand Sweet Sioux, hybrid sudan seed.

Also have BULK garden seed, along with Ferry-Morse packet garden and Flower seed.

For Your Seed Needs See Us  
If We Don't Have It Will Get It

**BROWN SEED**  
2015 W Amer Blvd  
Ph. 272-3335 Muleshoe





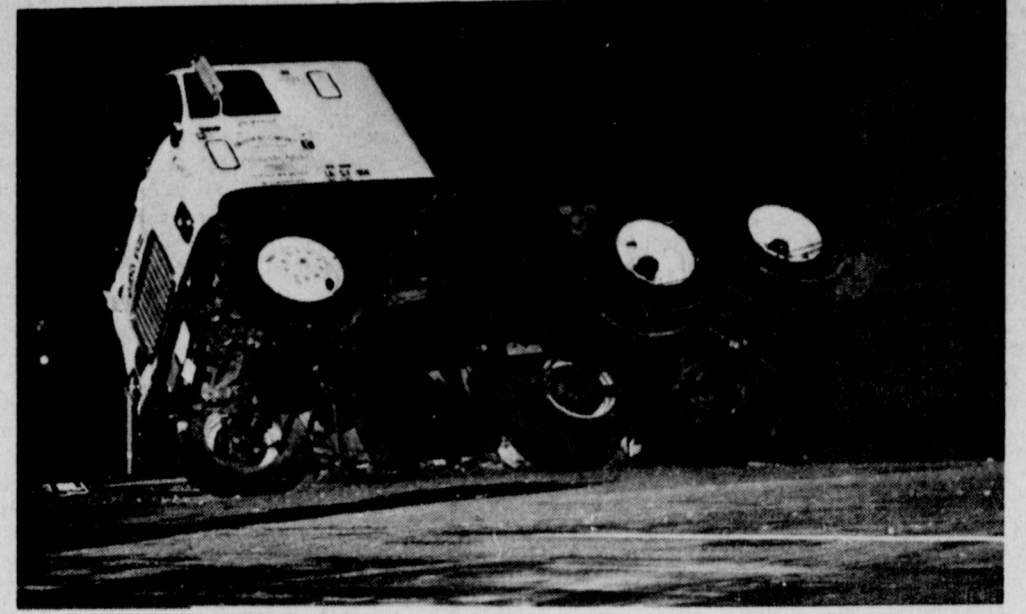
# CLASSIFIED ADS

## THE PLACE TO LOOK



**Deadline For Classified Ads Is At 11:00  
Tuesdays And Fridays**

### Soil, Water Program Discussed Statewide



**UPENDING TRUCK**--A large wrecker had to be called from Lubbock to turn a truck back onto its wheels after it overturned just west of Muleshoe Wednesday morning around 3 a.m. The accident occurred at the intersection of FM1760 and Highway 84.

**OPEN RATES**  
1st insertion, per word - \$.11  
2nd and add., per word - \$.09  
**NATIONAL RATES**  
1st insertion, per word - \$.11  
2nd and add., per word - \$.07  
Minimum Charge:  
1st insertion - \$1.65  
2nd insertion - \$1.35  
**CARD OF THANKS**  
30 words - \$3.00  
Over 30 words charged at regular classified rates.  
Classified Display - \$1.40 per column inch.  
Double Rate for Blind Ads.

**DEADLINE FOR INSERTION**  
11:00 Tuesday for Thursday  
11:00 Friday for Sunday  
**WE RESERVE THE RIGHT TO CLASSIFY, REVISE OR REJECT ANY AD.**

NOT RESPONSIBLE FOR ANY ERROR AFTER AD HAS RUN ONCE.  
Effective May 1, 1978.

**1. PERSONALS**  
**GARAGE SALE:** If you are interested in a real BARGAIN, come to AMERICAN BARGAIN CENTER, where you can buy new famous brand named clothing for the entire family at about half the regular price. We also have bedspreads, drapes, drapery rods and living room furniture. Located one half mile out of Portales on the Clovis Highway. **WE'LL HELP YOU BEAT INFLATION!**  
1-20s-8tp

**FOR YOUR Stanley Home Products, Jewel Broyles, call 965-2481.**  
1-16t-tfc

**3. HELP WANTED**  
Need operators at Main Street Beauty Shop. Call 272-3448.  
3-12t-tfc

**EXPERIENCED FEED TRUCKDRIVERS** wanted. Must have commercial drivers license. **KING'S FEED LOT.** 272-4410.  
3-19t-2tc

**WANTED:** Typist, must be able to type 50 words per minute. Apply in person at Muleshoe Publishing Company, 304 W. 2nd.

**NEED SOMEONE TO babysit.** Call 4492 or come by 904 Hickory.  
3-20s-tfc

**8. REAL ESTATE**  
**KREBBS REAL ESTATE**  
112 Ave. C  
See us for your real estate needs.  
Appraisals.  
8-13s-tfc

**FOR SALE:** New 3 bedroom, 2 bath, 1 car garage, all carpeted and built in appliances. 922 9th St. Call 272-4678 or talk to JOHN W. SMITH at TOWN & COUNTRY REAL ESTATE.  
8-15s-tfc

**FOR SALE:** 3 br., den, utility, fenced back yard, fruit trees, cellar. 272-3002.  
8-15-tfc  
8-13t-tfc

**DUPLEX FOR SALE:** 824 S 1st. Contact Phyllis Beavers 272-3116.  
8-18t-tfc

**FOR SALE:** Lot, 15 and 16. On 4th street. Ideal place for trailer house. 965-2633  
8-19s-2tp

**E.E. HOLLAND REAL ESTATE**  
113 W. Ave. D  
PHONE 272-3293  
DAY OR NIGHT  
Robin Davis, Salesman

**FOR SALE:** Brick 3 br., 1 1/2 bath, living room, dining room, fenced back yard, double garage, located at 913 Ivy. Call 272-4088.  
8-15t-tfc

**FOR SALE:** 3 bedroom, 13/4 baths, carpeted throughout, 2 car garage, fenced yard. Call 272-4683 after 4:30.  
8-12s-tfc

For all your real estate needs call:  
**GLAZE & GOFORTH**  
112 Ave. C  
272-4208  
8-11s-tfc

**FOR SALE BY OWNER:** 2,400 sq. ft. brick home, 2 bedroom (adaptable to 3), 2 full baths, formal living room, formal dining room, den, utility room, 2 cedar closets, carpeted throughout, 2 car garage, underground yard sprinkler system, fenced back yard. Call 272-3483 or 272-3320.  
8-15t-tfc

**E.H. HALL REAL ESTATE**  
505 Austin St.  
Muleshoe, TX  
272-4784  
Three bedroom house on 75' lot  
Two bedroom houses  
5 lots for sale  
10 acres in county with 4 bedrooms  
11 acres out in country with 2 bedroom house  
40 acres for sale  
8-18s-8tc

**FOR SALE:** Peanut, Candy, & Gum vending business in Muleshoe. requires \$1,435.90 cash & few hours weekly. **TEXAS KANDY COMPANY**, 1327 Basse Rd. San Antonio, Texas 78212 342-0930  
3-20s-4tp

**9. AUTOMOBILES FOR SALE**  
**SALE:** 1974 LTD electric and power, low mileage. See at 319 W 9th or Tri-County. Call 965-2467 or 272-3885.  
9-19s-4tp

**10. FARM EQUIP. FOR SALE**  
Custom Designed and Made-To-Order **RINGS-N-THINGS** BY JEROLLY 918 E Hickory  
Phone 272-3163

**STALKCUTTERS**, 8 row, bearings \$1160.00  
**BEDKNIFER**, 9 runners \$590.00  
**CHISLE**, 11 shank, 3-bars \$1495.00  
**CHISEL**, 9 shank, 3-bars \$1175.00  
**CULTIVATOR**, 8 row, 2-4x4's on botton \$1650.00  
**LISTER**, 9 shanks, 4x7 bar \$1250.00  
**COULTERS**, 28" BLADE, HEAVY DUTY \$126.00 each  
**GAGE WHEELS**, HEAVY DUTY \$105.00 each  
**TOOL BARS**, ALL 8 ROW SIZES IN STOCK  
**CLAMPS**, all sizes  
**SHANKS**, HIGH CARBON C 1080 STEEL  
**EXTENSION**, all sizes  
**KNIFING ATTACHMENTS**  
**ROD WEEDER ATTACHMENTS**  
**DEALER INQUIRIES INVITED**  
**Morton Manufacturing Co., Inc.**, Rt. 2 Box 40-A, Morton, TX 79346  
10-12t-tfc

**11. FOR SALE OR TRADE**  
**\$100 REWARD** Offered to arrest and conviction of anyone doing damage to paper stands. **Muleshoe Publishing Co.** 272-4536.  
-11t-15-tfc

**FOR SALE:** 15 ft. glass par Fiberglass Ski and Fishing boat, 75 HP Mercury Motor. Tilt trailer with new tires - good condition. Call Keith Menefee 965-2145.  
11-19s-3tc

**FOR SALE:** Lancer mobile home, 15 x 72. 1977 model - 1 year old. 2 bdr., 2 bath. 965-2667 after 5:30 or weekends  
11-19t-tfc

**12. HOUSEHOLD GOODS**  
**BURROWS** Upholstering. Reasonable rates. Also Furniture and Appliances bought and sold. Moved to 213 South 1st Street. Phone 272-4255.  
12-12s-tfc

**15. MISCELLANEOUS**  
**ASPHALT ROOFING, COMPOSITION** singles, new roof and repairs. Free estimates. Call collect **RON FOSHEE** 385-5680.  
**LITTLEFIELD ROOFING**  
15-42s-tfc

**FOR RENT:** Trailer space and overnight parking. 1304 W. Ave. B. Call 272-3448.  
15-6t-tfc

**tri-chem**  
965-2622  
15-16t-tfc

**SANDSTORMS** and Kirbys. They don't mix, but they do go together. Kirby rebuilds. As low as \$79.95.  
**LLOYD WHITE, LITTLEFIELD**, Call 385-3357. **KIRBY SALES & SERVICE.**  
15-12s-tfc

**FOR SERVICE ON T.V.** Call 272-5531.  
**WILSON APPLIANCE**  
117 MAIN  
MULESHOE, TX  
We stock parts and do service on Zenith, Sylvania, RCA, Catalina. Store Hours 8-6 Monday-Saturday.  
15-16s-tfc

All types of yard work done call 965-2903 or 965-2429  
Contact **DICK CARLSON**  
15-17t-8tp

**RENTAL SERVICE**  
Washers, dryers, televisions, refrigerators. By week or month. Call 272-5531.

**WILSON APPLIANCE**  
117 MAIN  
MULESHOE, TX  
15-16-tfc

**PHILLIPS HOUSE OF MUSIC**  
118 MAIN  
CLOVIS, NEW MEXICO  
Pianos, organs, band instruments, new and used. Professional repairs, sheet music, rentals, terms.  
Phone: 505-763-5041.  
15-30s-tfc

**EZ SEWER CLEANER** same day service. 272-4440.  
15-14t-tfc

**REBUILT MATTRESS BOX SPRINGS**  
2-Piece Set  
\$69.00  
Layaway Now!  
Western Mattress

### Legal Notice

**NOTICE OF LIQUIDATION**  
Notice is hereby given that, pursuant to the provisions of Title II, Section 207 (a) (2) of the Federal Credit Union Act, the Muleshoe Federal Credit Union, Charter Number 12549, has been placed into liquidation by the National Credit Union Administration, 515 Congress Avenue - Suite 1400, Austin, Texas 78701. All creditors having any claim or demand against said credit union are required to present their claims and make legal proof thereof to the National Credit Union Administration. Under the provisions of said Act, all claims not filed within four months from the date this advertisement first appeared shall be barred, and claims rejected or disallowed by the Liquidating Agent shall be

### Legal Notice

**LEGAL NOTICE**  
LOCATED IN: BAILEY COUNTY ON 3-9-78:  
1 WHITEFACE COW (SPADE ON LEFT SIDE) BRAND COW HAS 200# CALF.  
1 RED NECK HEIFER 600#. 'H' UNDERBIT IN RIGHT EAR.  
1 RED MOTLEY FACE STEER 400# 'K' RIGHT HIP (SEVEN CONNECTED)  
'JK' CONNECTED BEHIND LEFT SHOULDER  
IF YOU OWN THESE CATTLE CONTACT BAILEY COUNTY SHERIFF'S OFFICE, MULESHOE, TEXAS.  
2tc

Public meetings will be held next week at Stephenville and San Antonio to let interested persons give their views on present soil and water conservation programs and to propose needed changes or additions to present approaches.  
The Stephenville meeting will be held May 16 in the Humanities and Business Building on the campus of Tarleton State University. The San Antonio meeting will be in the Fiesta Room of the Convention Center on May 18. Both meetings will start at 9:00 a.m. with registration starting at 8:30 a.m. George C. Marks, state conservationist for the USDA Soil Conservation Service and Carl Spencer, executive director of the Texas State Soil and Water Conservation Board will co-chair the meetings.  
"The meetings are being held as a result of the Resources Conservation Act of 1977, which was signed into law by President Carter last November," Marks said. "The Act recognizes the need for public participation to insure that conservation programs are effective and responsive to public needs."  
"Soil and water conservation programs--from their beginnings--have sought public participation, and the RCA Act further insures that conservation programs will continue to be responsive to public needs," Spencer said. The Act re-affirms the need for public leadership and we hope to receive public input so that a meaningful appraisal of grass roots conservation programs will provide the means for their improvement.  
"However, the right to private ownership and management of land is one of the most cherished privileges of American citizenship," Spencer stressed. "As the general public becomes more involved with the growing shortage of soil and water resources we see more proposals in legislative form concerning what landowners ought to do in the way of erosion control, fold prevention, protection of wildlife habitat and providing public access to private property.  
"Any approach to soil and water conservation problems or issues must first consider that a high percentage of farm and ranch land is privately owned and that the interests and the welfare of the owners must be

served. Programs must be acceptable to them.  
"Laws pertaining to the organization and functioning of soil and water conservation district provide that their programs and plans of work be developed by local interests and be a voluntary program. No program is more acceptable to a landowner than a voluntary type and one in which he had a part in developing," Spencer said.  
Individuals or groups with an interest in conservation should attend one of the statewide meetings or a meeting in a local soil and water conservation district. Interested persons are being encouraged to be written or oral statements reflecting the direction they think conservation programs should take in the future. Such statements will be accepted, made a part of the record and considered fully.  
The date for the Resources Conservation Act meeting in Muleshoe has been set for June 1, 1978, 9:30 AM in the City Council Chambers, Jerry Wemmo, district conservationist for SCS, said.  
From information and suggestions received at public meetings as well as data collected from surveys and inventories, RCA calls for determining:  
---quality and quantity of soil, water and related resources,  
---ability of these resources to meet current and future demands,  
---changes in resource condition resulting from past uses,  
---costs and benefits of alternative soil and water conservation practices and  
---alternative irrigation techniques and their effects on conservation and the environment.  
Based on inventories, survey data and public input, the Soil Conservation Service will work together with soil conservation districts, state soil and water conservation agencies, local governments, and individual landusers to enhance present programs and set multi-year objectives. Accomplishments will be monitored at least annually.  
The appraisal and program provided for the newly enacted law will be presented to Congress by the end of 1979. This will be followed by the first evaluation report on existing services of the Soil Conservation Service which is to go to Congress by the End of fiscal year 1982.

of course wages, salaries, and other earnings will have to go up too.  
The only answer of course is to tie all earnings to the Cost of Living Index. The higher things go, the more you get paid.  
Thus in a few years despite the fact the average income will be about \$50,000 a year, everybody will have to be on welfare to get by.  
Yours faithfully,  
(s) J.A.  
Peasant blouses are quite popular. Some are long enough to tuck into skirts, others are gathered with a draw-string at the waist.

### The Sandhills Philosopher

Dear editor:  
According to several recent polls, inflation is the Number One problem in the U.S., or at least it's the one more people worry about. Actually the Number One problem may be something else, like something we're eating and scientists haven't had time yet to find out it's bad for us, although you know they're working on it.  
At any rate, the newspapers I've been reading reveal that inflation is not confined to just Muleshoe and the rest of the country, it's world-wide. For example, the rate of inflation in Argentina is now 60 per cent a year. It was double that but the Economy Minister shortened the yardstick it was being measured by. We could use that guy in Washington. He has discovered a handy device to improve a bad situation, like reducing speeding violations by increasing the speed limit, by purifying Congress by abolishing South Korea.  
I don't know what the exact rate of inflation is in the U.S. this week, but last week when I paid \$1.30 for a 15 cent tractor bolt I knew it was still holding its own, and I got to thinking.  
If inflation is world-wide and things keep going up and up to where a medium-size car costs \$10,000 and an average new home costs \$100,000, not to mention groceries, clothes, utilities, education, tractors, movies, speedboats, Congressmen and other essentials, then

### 10¢ Sunflower Contracts

\* Delivery By Sept. 9  
\* Top Producing Seed  
\* Seed & Spraying Can Be Carried By Note Till Harvest  
**Glen Watkins**  
925-6743

### Be Prepared... The Tornado Season Is Here!

**Mod-U-Shelter Storm Shelter**  
**Whitfield Construction**  
19 Pineway Blvd. Clovis, N.M. 88101 Ph. (505) 763-5360

### LEGAL NOTICE

**STATEMENT OF INTENT TO CHANGE RATES**  
Southwestern Public Service Company, in accordance with the rules of the Public Utility Commission of Texas and the Public Utility Regulatory Act of Texas, hereby gives public notice of its intent to change its general retail rates in the counties served by it in Texas effective on June 16, 1978.  
It is expected that the increase in rates for residential, commercial and industrial customers will result in an increase of 8.8 per cent in the company's gross revenue in Texas as compared to that furnished by the existing rate schedule.  
Complete copies of the new rate schedules have been mailed or delivered to the appropriate officer of each affected municipality at least 35 days prior to the effective date of the proposed change and copies of the new rate schedules have been furnished to the Public Utility Commission of Texas.  
20s-4tsc

### BIBLE VERSE

"A thousand shall fall at thy side, and ten thousand at thy right hand, but it shall not come nigh thee."  
1. Where is this verse?  
2. Who made the promise contained therein?  
3. To whom was the protection pledged?  
4. Where was their dwelling place?  
**Answers To Bible Verse**  
1. In Psalm 91, verse 7.  
2. The author of the Psalm, probably David.  
3. The godly.  
4. The secret place of the most high (as pointed out in verse 1.)

**Save With Our Low Overhead**  
**Come In Soon**  
**Johnson Chevrolet**  
201 Commerce Sudan 227-2050

**get a grip on yourself**  
**Alsport**  
The multi-studded sole of the Alsport by Osaga provides excellent traction for the athletic field or baseball diamond. The Alsport comes in nylon and Turftex in sizes 1-6 children's and 6 1/2-12 mens'. And for the youngest athlete, the Alsport comes in all-over Turftex, for maximum durability, in both white or black. No better value for the dollar in field sports athletic shoes than Alsport by Osaga.  
**\$10.00**  
**St. Clair's** 272-4453  
110 Main OSAGA





# WOW!

GET A LOAD OF THESE BUYS!

WRIGHT'S HICKORY SMOKED SLICED <b>Slab Bacon</b>	1 LB.	<b>\$1.39</b>
COUNTRY STYLE LOTS OF MEAT <b>Spare Ribs</b>	1 LB.	<b>\$1.29</b>
REGULAR MEDIUM <b>Spare Ribs</b>	1 LB.	<b>\$1.49</b>
FRESH LEAN SEMI-BONELESS <b>Pork Butt Roast</b>	1 LB.	<b>\$1.29</b>
TASTE WRIGHT FRESH PORK <b>Sausage</b>	2 LB. PKG.	<b>\$2.19</b>
SAN ANTONIO Old Fashioned Mexican <b>Chorizzo</b>	Large 1 LB.	<b>89¢</b>

WE RESERVE THE RIGHT TO LIMIT PRICES EFFECTIVE MAY 14 - 20, 1978

**Gracery Specials**

15¢ OFF LABEL FABRIC SOFTENER

**Downy**

64 OZ. BTL. **\$1.69**

BUY 3 GET 1 FREE

**Camay**

PKG. OF 4 BATH BARS **99¢**

13¢ OFF LABEL AUTOMATIC DISHWASHER DETERGENT

**Cascade**

35 OZ. BOX **99¢**

WILSON'S HICKORY SMOKED 6-8 LB. AVG. WATER ADDED

**Picnics**

**69¢**

1 LB.

FRESH LEAN **Pork Steak** 1 LB. **\$1.19**

SLICED HALF OR WHOLE WATER ADDED **Picnics** WILSON'S 1 LB. **79¢**

EXTRA LEAN TRIM CENTER CUT LOIN <b>Pork Chops</b> 1 LB. <b>\$1.79</b>	EXTRA LEAN TRIM CENTER CUT RIB <b>Pork Chops</b> 1 LB. <b>\$1.69</b>	QUARTER PORK LOIN FAMILY PACK <b>Pork Chops</b> 1 LB. <b>\$1.39</b>
---	--	---

HUNT'S WHOLE PEELED <b>Tomatoes</b> 14 1/2 OZ. CAN <b>35¢</b>
HUNT'S YC Sliced/Halves <b>Peaches</b> 29 OZ. CAN <b>53¢</b>
LE SUEUR MINI <b>Sweet Peas</b> 303 CAN <b>43¢</b>
SUNSHINE <b>Vanilla Wafers</b> 11 OZ. BOX <b>49¢</b>
WITH EGG <b>Gainsburger</b> 36 OZ. PKG. <b>\$1.29</b>
SCHILLING <b>Black Pepper</b> 4 OZ. CAN <b>89¢</b>

FOLGER'S **Flaked Coffee**

**\$2.39**

13 OZ. CAN

BORDEN ASSORTED FLAVORS **Ice Cream**

1/2 GAL. SQ. CTN. **99¢**

CARNATION **Tuna** 6 1/2 OZ CAN **59¢**

Paper Towel Sale

**Zee Gala II Spillmate**

**59¢**

25¢ OFF LABEL LAUNDRY DETERGENT

**Oxydol**

KING SIZE BOX **\$2.19**

GRANULATED **Shurfine Sugar**

5 LB. BAG **99¢**

WITH PURCHASE OF \$7.50 OR MORE EXCLUDING CIGARETTES THEREAFTER \$1.09

BODEN **Western Drink** 64 OZ ALL FLAVORS **2/98¢**

HUNT'S **Tomato Ketchup** 32 OZ. BTL. **69¢**

COME TO PAY 'N' SAVE FOR YOUR W I C CARD PURCHASES

WE GIVE DOUBLE GUNN BROS. STAMPS EVERY WED. & SAT.

Dairy And Frozen Food

CHEESE SPREAD **Velveeta** 2 LB. BOX **\$2.09**

KRAFT Stack Pack American **Cheese Singles** 1 LB. PKG. **\$1.39**

PATIO MEXICAN **Dinners** ASSTD. PKGS. **59¢**

GOLDEN RIPE **Bananas**

**4** **\$1**

LBS.

CALIFORNIA LARGE SIZE **Avocados** 4 FOR **\$1**

TEXAS NEW CROP **Cucumbers** LB. **25¢**

LARGE TIE GREEN **Onions** 2 BUNCHES **35¢**

We Welcome USDA FOOD STAMP COUPONS

**Kraft Salad Days**

KRAFT REAL <b>Mayonnaise</b> 32 OZ. JAR <b>\$1.29</b>
KRAFT SMOKE/PLAIN <b>Barbecue Sauce</b> 28 OZ. BTL. <b>\$1.09</b>
KRAFT MINIATURE <b>Marshmallows</b> 10 1/2 OZ. PKG. <b>29¢</b>
KRAFT <b>Grape Jelly</b> 2 LB. JAR <b>89¢</b>

PILLSBURY CS/BM **Biscuits** 6 CT. CANS **25¢**

Health And Beauty Aids

50¢ OFF LABEL MOUTHWASH **Signal** 24 OZ. BTL. **99¢**

20¢ OFF LABEL CONCENTRATE **Prell** 5 OZ. TUBE **\$1.39**