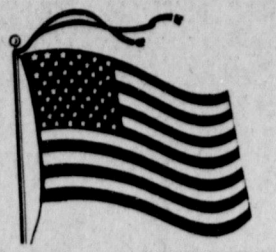


# Weather

	HIGH	LOW
Aug. 6	97	69
Aug. 5	101	67
Aug. 4	94	58
Rainfall to date	8.42	

# BAILEY COUNTY JOURNAL

'The Community of Opportunity-Where Water Makes the Difference'



Volume 15, Number 32

10 pages

Published Every Sunday at Muleshoe, Bailey County, Texas 79347

10 Cents

Sunday, August 7, 1977

## around Muleshoe

Mrs. Homer Millsap returned to her home Saturday to recuperate from surgery Wednesday at St. Mary's Hospital in Lubbock.

Mr. and Mrs. Buck Creamer visited their daughter and family, Mrs. and Mrs. Ray Kemp, in Amarillo late last week.

## Civil Trials Set To Begin This Monday

Of 12 civil trials scheduled to be heard before a jury this week, two have been passed and will not be heard at this time, according to District Court Clerk Nelda Merriott.

First trial scheduled is Rosemary Hutchinson vs. Muleshoe Publishing Company for personal injuries. The jury panel will report Monday at 1:30 p.m. and jury selection will be Monday afternoon.

Mrs. Merriott said testimony in the trial should get underway sometime late Monday and the trial is expected to continue through Tuesday.

Other cases scheduled to be heard include Don Dillard vs. Dr. Pepper-Seven-up Bottling Company of Lubbock, Inc. for products liability; Zane Ellison vs. A.V. Wood, partnership dissolution, accounting and receivership; Farmers Cooperative Elevator of Muleshoe vs. Jack Fore and Don D. Leaks, negligent installation or repair of pipelines.

Also, Bernardo Valdez vs. Douglas Bales, personal injuries; Muleshoe Independent School District vs. Jewell Strong, workmen's compensation; Tri-County Savings and Loan Association vs. Clem Peden, promissory note; Riverside Chemical Co., Inc. vs. Pete Plank, account; Texas Employers Insurance Association vs. Natividad Cabrera, workmen's compensation and Herman Vinson vs. The Fidelity and Casualty Company of New York, workmen's compensation.

A total of 72 prospective jurors have received notices to appear on Monday, and an additional 19 potential jurors are to report Wednesday morning.

## Commissioners Set Tax Rate On Monday

Meeting in regular session Monday, August 8, the Bailey County Commissioners Court will set the tax rate for the 1977 year. At the same meeting, they will discuss preparation of the county budget for the upcoming year.

In other action, the commissioners will pay routine bills, according to Bailey County Judge Glen Williams.



CHEERLEADERS WIN HONORS...Muleshoe's varsity cheerleaders were happy to show off their prizes won during cheerleading camp at Denton recently. The cheerleaders are from top, Susan Crittenden; Gina Burden; from left, third row, Shae Pena; Dani Dunham, head cheerleader; and Glenda Rasco; Shawna Eubanks, mascot and Beverly Biggerstaff, holding the spirit stick and pennants won.

## Marketing Specialist Gives Grain Outlook

By Ronald D. Smith  
Extension Grain Marketing Specialist

Sorghum and corn continue to be in a weather market, but the weather generally has been cooperating for production. Therefore, cash prices have weakened. Many parts of the corn belt were stressed in mid-June, but moisture generally was received prior to the critical tasseling stage.

Corn in very early this year and this implies a prospect for good yields. Rainfall in late July and early August is a major factor since subsoil moisture is still quite low. The USDA forecast for this year's corn crop on July 1 was 6.33 billion bushels. Texas is expected to contribute 184 million bushels, compared to 180 million last year. The first sorghum estimate will come in August. Good yields are reported for early sorghum areas, elsewhere dry, hot weather is

trimming prospects.

The June 1 acreage report was much more realistic than earlier reports for sorghum acreage, especially in Texas. The shift to cotton and corn was lowered. U.S. acreage is expected to be 17.4 million, compared to 18.6 last year -- a seven percent reduction. Texas acreage at 6.1 million will be down 16 percent instead of 25 percent estimated on April 1.

Corn acreage nationally is estimated at 82.7 million acres. This provides the basis for a very good crop in 1977 and could result in corn and sorghum trading at near loan rates. Texas corn acreage was pegged at 1.8 million acres, a nine percent increase over 1976.

Another factor related to low prices is availability of wheat for feed. Wheat will continue to move into feedlot rations, substituting for sorghum at prices near those for feedgrains. Wheat supply-demand imbalance points to a continued weakness in feedgrains into the fall.

Stocks of sorghum and corn on June 1 were well above a year ago levels, up 27 percents, and did not indicate any expanded feeding to livestock. Exports have been good, but slowed in late June. The average crunch that was expected for wheat cont. on page 3 col. 4

## County Gets Rebate On Mixed Drink Tax

Comptroller Bob Bullock said this week that mixed drink sales reported for the April-June quarter of 1977 totaled \$134 million, nearly a 25 percent increase over the same quarter a year ago.

## Youth Bible Study Group To Meet Here

"Many times young people are asked why they belong to different groups," said Rev. Kenny Carter. "But, they often do not have the answers. The time has come, however, for some straight, honest reasons to be given."

The youth minister for the Muleshoe First Baptist Church are urged said local youths are invited to attend a special three-night study of what Baptist believe.

He said the sessions will be Tuesday, August 9, through Thursday, August 11 at 8 p.m. and the basic text for the study will be the book "I Believe," by Lavonn D. Brown, pastor of the First Baptist Church, Norman, Okla.

"It is the desire of the youth minister of the First Baptist Church Kenny Carter, that all young people in Muleshoe be knowledgeable of why Baptist believe as they do," commented the minister, J.E. Meeks.

The study will be held in the Senior High Department room of the First Baptist Church each night at 8 p.m. Refreshments will be served during the study.

## Hot, Dry Weather Holds Grip On South Plains

### Muleshoe Mules Begin Workouts

"We're all excited," said Head Football Coach Don Cumpton Thursday. "The players, coaches and everyone is really up for this season."

Coach Cumpton was in the Journal office speaking about the upcoming football season, which gets underway unofficially tomorrow (Monday) with the annual workouts for players.

### John Hammock Died Thursday Of Heart Attack

John R. Hammock, 57, co-owner and manager of Irrigation Inc., was pronounced dead on arrival at West Plains Medical Center around 2 p.m. Thursday after suffering an apparent heart attack at his place of business on the Clovis Highway.

Funeral services for John R. Hammock were at 2:30 p.m. Saturday in the First Baptist Church of Muleshoe with Rev. J.E. Meeks, pastor, officiating. Burial was in Bailey County Memorial Park under direction of Singleton-Ellis Funeral Home.

He was born October 2, 1919 in Coolidge and moved to Muleshoe in 1946 where he had resided since 1922. On November 11, 1949, he married Ruth Briens in Muleshoe. A member of the First Baptist Church of Muleshoe, he attended Texas A&M University prior to enrolling in the Air Force in 1942. He spent five years in the Air Force during World War II. Survivors include his wife, Ruth; three sisters Mrs. Lee Pool, Muleshoe; Mrs. R.C. Brandon, Shawnee, Okla. and Mrs. J.W. Ray, Cleburne; four brothers, W.R., Gales Ferry, Conn.; Truett, Hurst; Carl, Dalles, Ore. and Ross, Maywood, Calif.

Coach Cumpton said 16 lettermen are returning this fall, and include seven who played on defense and six who were on offense last year.

He invited parents, fans, and anyone interested to come by the football field and watch the daily workouts which start tomorrow (Monday).

Shoes were issued this week to 106 players, and an additional 25-30 are expected to enroll in the football program during the workouts.

Physicals for players are being conducted at 2 p.m. today (Sunday) in the high school field house and all players need to be at the session, he added.

Pre-season workouts for the first week will be at 8:30 a.m. to 10:15 a.m. for varsity and junior varsity players, and again from 7 to 9 p.m. Freshman players will work out from 10:45 a.m. to noon during the first week.

The teams will go to one a day workouts during the second week, with the freshmen work-

cont. on page 3 col. 4

## Thunder, Lightning Tease Area Farmers

Bailey County farmers looked hopefully toward towering thunderheads, and watched brilliant displays of lightning Wednesday and Thursday, but rain eluded the area as hot, dry weather continued a pattern established the first part of the week.

Daily, clouds build up and move across the area, with apparent showers along the New Mexico border, however, the showers fail to move into the county as the clouds go around the county or are dissipated.

Muleshoe's Thursday temperature was 101, with 97 reported on Friday. The hot, dry weather was expected to hold in the area for the next several days, with no rain in sight.

A combination of Gulf moist air flowing up to a stalled front just north of the Texas Panhandle in Oklahoma and across the northeastern corner of New Mexico has failed to produce any measurable moisture despite the cloud buildups.

National Weather Service observers predict the hot, dry weather will continue for the South Plains through the major part of next week, although they do say the Panhandle may get more good showers.

Booming thunderclouds Thur-

sday night produced only a high, dry wind which left no precipitation on parched crops. Irrigation wells continue to run around the clock as producers attempt to keep adequate water on their growing crops.

Wind again accompanied the clouds Friday night as they cont. on page 3 col. 4

## Cheerleaders Win Honors During Camp

Muleshoe's cheerleaders went to cheerleading camp at Denton recently and came home with all the top honors.

Head cheerleader Dani Dunham said the group attended the cheerleader camp conducted by the United Cheerleaders Association.

They won three Superior ratings on evaluation of yells; one superior evaluation for Pom Pom routine; first in Pom Pom composition and the spirit stick for two nights. They brought a spirit stick home with them to commemorate their stay at the school.

Other cheerleaders are Susan Crittenden, Beverly Biggerstaff, Shea Pena, Glenda Rasco and Gina Burden. Mascot is Shawna Eubanks.

## Police Report

Several thefts and break-ins were reported late in the week to the Bailey County Law Enforcement Center.

Evans Oil Company reported as missing a calculator and a radio; Central Texaco reported change was missing from a break-in.

Bill Barlow reported the theft of 50 hogs, Hampshire, Duroc and Yorkshire; Owen Jones reported as missing an Oldsmobile hub cap and Charles Latimer reported as stolen a Motorola tractor radio.

Arrests this week include one for theft; two illegal aliens; one for shoplifting; one for driving while intoxicated and one on a warrant.

Justice of the Peace Ken Martin reported hearing three cases involving no driver's license; two for speeding; one each for no motorcycle headgear and no motorcycle driver's license.

## Marauders Win Tourney In Softball

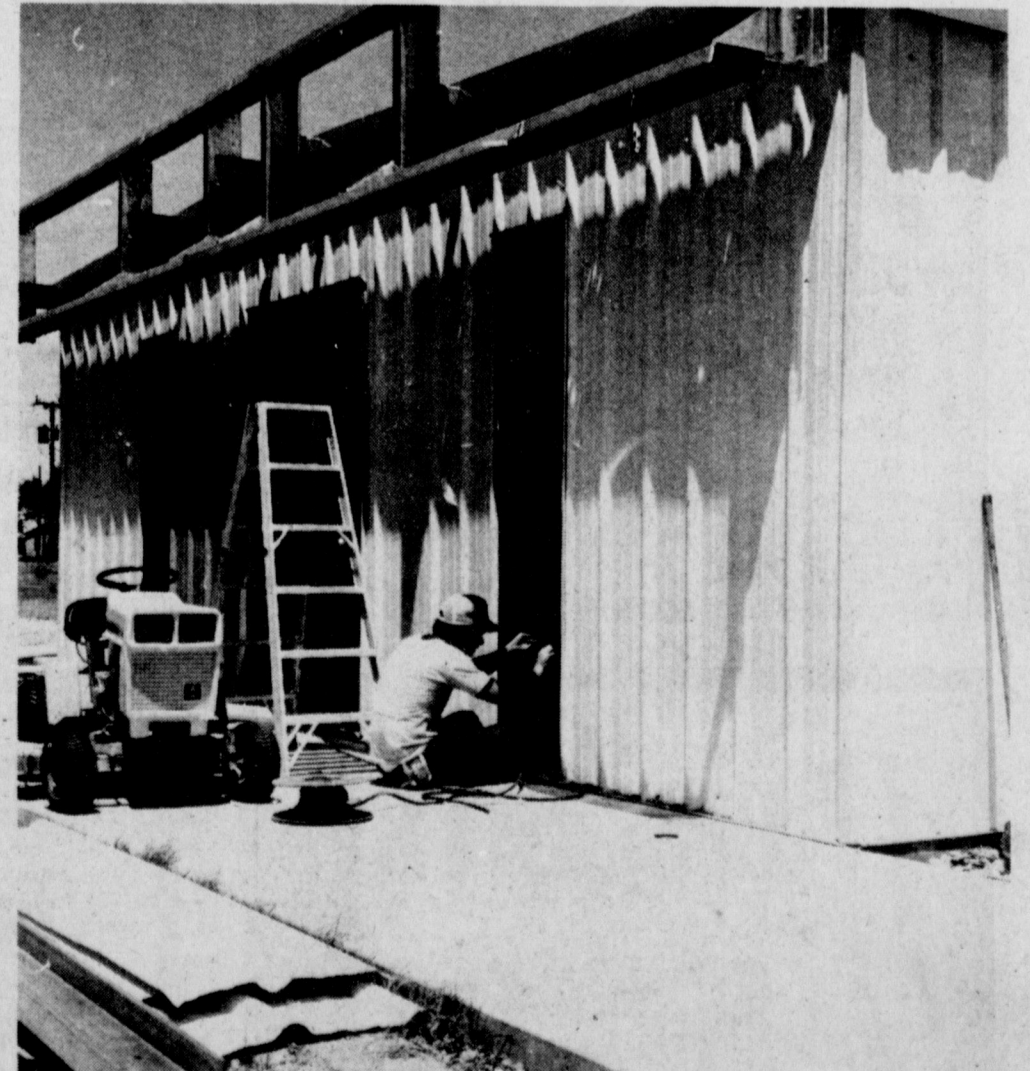
Muleshoe's strong men's softball team, the Muleshoe Marauders, traveled to Earth to compete in the Earth Jaycee Softball Tournament last weekend, and came home with the first place trophy.

Terry Fields, a Marauder, led the field of home runs as he became the 'Home Run King' with nine during the series.

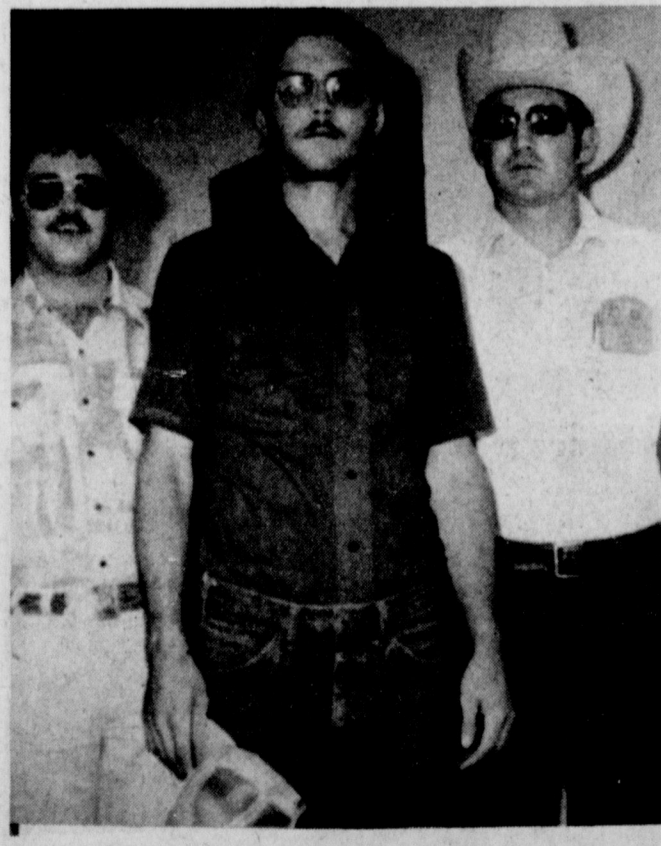
In their first game, the Marauders downed the Friona A's 12-11; then downed the Lubudie West Sprinklers, 19-17. In the final games, they defeated the Earth Jaycees 10-9 before taking a decisive victory with a 13-2 victory over the second place Plainview Rangers.

Third place team was the home town, Earth Jaycee team.

The Marauders had previously won the local title as they defeated all teams in Muleshoe to be the hometown champions.



NEW CONSTRUCTION...Wilson Drilling Co., northwest of Muleshoe on Highway 84, expects to be in their all new offices and shop building by mid-September. Construction by Hallmark Builders of Lubbock is well underway at this time. Stanley Wilson and D.W. Puckett said new lines of merchandise will be added when the building is completed.



## Dale Chosen 1977 Leader For Kiwanis

During the regular Friday morning meeting of the Muleshoe Kiwanis Club, Gary Dale was elected president for the 1977-78 year. Vice president electee is Raymond Schroeder with Allen Smyer, secretary; Tom Lobaugh, Treasurer; and directors, Terry Bouchelle and Ronnie Shafer, one year; Jerry Hicks and Ray Lynk, two years; Robert Montgomery and Weldon Stevenson, three years; Benetta Roming, sweetheart and Howard Watson, outgoing president, hold over director for one year.

The new officers and directors will be installed and take office at the installation banquet in September.

GETTING READY FOR ARRAIGNMENT...Douglas Bundy, 19, center, is on his way to appear before Bailey County Judge Glen Williams for arraignment on breaking and entering charges. He is accompanied by deputies Monte Phipps, left and James Williams, right.





# PIGGLY WIGGLY... YOUR People Pleasin STORE!

Prices good thru August 10, 1977. We reserve the right to limit quantities. None sold to dealers.

\*Each of these advertised items is required to be readily available for sale at or below the advertised price in each store, except as specifically noted in this ad.

Powder <b>TIDE DETERGENT</b> <b>\$1.99</b> 84-oz. Box	 PLAINS <b>HALF &amp; HALF WHIPPING CREAM</b> <b>3 \$1</b> FOR	Teksun <b>GRAPEFRUIT JUICE</b> <b>49¢</b> 46-oz. Can
--	---	---

Van Camp's  
  
**PORK & BEANS**  
**4 \$1**  
 15-oz. Cans


Toothpaste  
**Close-Up**  
 Peter Pan  
**Peanut Butter Cookies**  
 Mix or Match, Assorted Flavors Sunbeam

6.4-oz. Tube **89¢**  
 18-oz. Jar **89¢**  
**4 \$1.00**  
 8-oz. Pkgs.

SANTA ROSA  
**PLUMS**  
**39¢**  
 Lb.

375 Sheet, 2 Ply Piggly Wiggly, Bath  
  
**TISSUE**  
**59¢**  
 4-Roll Pkg.

  
 Heavy Aged Beef, Chuck  
**BONELESS ROAST**  
**98¢**  
 Lb.

  
 Whole, 6 To 8 Lb. Avg., Water Added  
**SMOKED PICNICS**  
**68¢**  
 Lb.

**CANTALOUPE**  
**3 \$1**  
 FOR



Golden Best  
  
**SHORTENING**  
**99¢**  
 42-oz. Can

Breaded Pre-Cooked  
**Beef Patties** 16-oz. Pkg. **98¢**  
 Lean Boneless  
**Stewing Beef** Lb. **98¢**  
 Lean "Chuck Quality"  
**Ground Beef** Lb. **98¢**

Heavy Aged Beef, Boneless "Shoulder Arm Cut"  
**Swiss Steak** Lb. **98¢**  
 Heavy Aged Beef, Chuck, Family Pak  
**Boneless Steak** Lb. **98¢**  
 ECKRICH Reg. or Beef  
**Smoked Sausage** Lb. **\$1.69**

California Valencia  
**ORANGES**  
**19¢**  
 Lb.



Piggly Wiggly Texas Style  
  
**BISCUITS**  
**5 \$1**  
 12-oz. Cans

FARMER JONES  
**Franks**  
**69¢**  
 12-oz. Pkg.

FISH FILLETS  
**Perch**  
**79¢**  
 Lb.

All Varieties, Except Classic, Totino's  
**PIZZAS**  
**79¢**  
 13-oz. Pkg.





## View From The Plain

by J.D. Peer  
I & E Field Officer

### 1977-78 HUNTING AND FISHING GUIDES

The 24-page "Guide to Texas Hunting and Sport Fishing Regulations" is now available at Texas Parks and Wildlife Department offices across the Panhandle and South Plains and most license vendors will be receiving copies soon.

The regulations which become effective Sept. 1, 1977 and continue through Aug. 31, 1978, are condensed for hunting and sport fishing in Texas. These booklets are designed as a guide only and specific questions about particular counties should be directed to Texas game wardens or P&WD offices. The guide does not include commercial fishing regulations of information on migratory birds such as ducks and geese.

To assist the sportsman, a county-by-county listing of basic game and fish laws are summarized. A locator map of the state showing all counties including those with special seasons on antelope, javelina, aoudad sheep, prairie chicken, pheasants, and chachalaca is located in the center of the guide.

Information on hunting and fishing licenses are included with the correct method of attaching tags and permits to various species of game. Other sections of the guide include information on lake regulations; minnows; furbearers; tropical fish and aquatic plants; various

protected species of wildlife and general saltwater fishing regulations including shrimp, crabs, and oysters.

A detailed drawing of white bass, striped bass and the hybrid bass is displayed on the back of the guide. The recent success in stockings of strippers and hybrids across Texas have created much interest in catching and identifying these fish by local anglers.

A thorough coverage of firearms, archery, falconry, dogs, and methods and means of hunting are listed under general hunting regulations. Shooting hours and bag and possession limits are also discussed in detail.

A list of regional and district law enforcement offices is located on the back of the guide. The name and phone number of your local Texas game warden can be obtained by calling the nearest P&WD office including Amarillo 806/355-9246, Abilene 915/673-3333, or Lubbock 806/744-0213.

### FINDING A PLACE TO HUNT

Trying to find a place to hunt takes both tact and luck and successful sportsmen know they have to start looking well in advance of hunting season to beat the onrush of hunters heading for the fields.

Most hunters know it is nearly impossible to pull off the road and hunt without getting permission from the landowner as nearly all of the state is owned by someone.

Provisions of the Texas Penal Code makes it a crime to trespass for the purpose of hunting. Landowners don't condone trespassing, and often call the law to remove the reluctant hunter.

If you find a place that you

want to hunt, ask the landowner. Tracking down the legal owner can be a real hunt itself but, someone in the area knows who owns the property and how to get in touch with him.

Most landowners want to manage wildlife on their property and past experience has taught them the most economical way is by hunting. Hunting has become a cash crop as grain and livestock prices fluctuate and both day and season leases are available to the hunter.

Since the landowner looks upon wildlife as a cash crop, hunters pay to try their luck at deer, turkey, and quail. Lease hunting has both disadvantages and advantages but, charging a fee to hunt is not always a one-sided proposition.

Most landowners catering to leasing hunting improve wildlife range with an eye toward better hunting. Lease hunters know who and how many hunters are on the property and landowners seldom overload a pasture with guns.

The hunting lease between the hunter and landowner can be for a day or the season. Seasonal leases allow the hunter to return for frequent hunts and a knowledge of the area increases his chances for success. Day hunting is more convenient for the hunter with limited time afield but, is usually less expensive.

The hunting lease between the landowner and sportsman should spell out the exact conditions of the hunt such as species to be hunted, areas open to hunting, and how many hunters will be allowed on each area.

All of these conditions written down before hunting season begins will eliminate a misunderstanding later in the season. There are still landowners who will let you hunt without charging a fee but, they are becoming fewer and fewer as hunting pressure increases and habitat decreases across Texas.

\*\*\*\*

What with corn on the cob, watermelons and peaches, this life isn't so bad.

\*\*\*\*

The man who flashes large bills at every opportunity is obviously not accustomed to much money.

\*\*\*\*

The proper method of reforming the world is by reforming yourself, not your neighbors.

## Grain...

cont. from page 1 may really materialize for feed-grains this fall.

Following the stocks report, USDA updated supply-demand estimates for the 1976-1977 crop year. Stocks-on-hand suggested a lower than expected feed use for sorghum and corn. Therefore, the estimate of feed use was reduced another 20 million bushels for sorghum and 50 million bushels for corn. Lagging cattle-on-feed numbers and the slow winter pig crop also are

## Mules...

cont. from page 1 ing out from 9-10:30 a.m. and varsity and junior varsity from 7-9 p.m.

Two scrimmages have been scheduled for the teams. On August 18, which a Thursday, the Muleshoe will scrimmage Petersburg at Olton and on Friday, August 26 will play Lockney at Lockney.

Coach Cumpton reiterated his appreciation for the backing of the Muleshoe teams by local fans, and said he hoped the support would continue through this year.

Meet the Mules night will be scheduled in the near future, and Coach Cumpton said he hoped a large crowd would be on hand to meet the Muleshoe athletic and football boys, and coaches.

## Hot...

cont. from page 1

drifted slowly across the county leaving only a sprinkle of moisture as it had on Thursday.

The National Weather Service spokesman said the hotter-than-usual temperatures will continue through the major part of next week, with night time lows reaching into the low 70s, for continued hot days and nights. He said he could not see any measurable precipitation during the next several days as the heat, and light wind hold in this area.

In meantime, the possibility remains for an afternoon build-up of clouds, but they are expected to dissipate and move out of the area without leaving measurable moisture for the dry crops in this area.

bearish factors. With no changes in export estimates, changes in supply-demand estimates imply a sorghum carry-over of 110 million bushels this October 1, a 100 percent increase over last year.

Again, all of this points to loan-level prices at harvest time. Farmers should begin now to make plans for storage and seek out storage availability for their sorghum crop. Also, they should consider using the loan for a part of their production. Late July and August expect to contain weather markets and a lack of moisture could send prices up for short periods.

## TARA Slates

### Special School

TARA Commodity Services of Lubbock plans to conduct a special school in Farwell concerning Agriculture Crop Marketing and Research. They have planned an organizational meeting on Friday, August 26 in the Farwell School Cafeteria at 8 p.m.

Conducting the classes will be Dr. Willard F. "Doc" Williams, president of TARA, assisted by Dr. Walt Rogers, both of Lubbock.

TARA Inc. is a commodity research and market analysis firm established in 1965 by Dr. Williams in Lubbock.

For applications to attend the classes, contact J.B. Sudderth Realty in Farwell at Box 627 no later than August 12. Or call the office in Farwell to make reservations.

Special classes will also be conducted for wives during the time of the school.

## Physicals Urgent For Football

Football season is here again. All over the nation American males are tossing and kicking and running with footballs, all the way from eight-year-olds in the backyard to junior and

## Earth Hires Two City Patrolmen

The city of Earth last week hired two new patrolmen for the Police Department. They will assist longtime Earth City Marshal Alvin Pittman.

Both were hired through CETA under the Manpower program, which is totally funded through the government. They were both hired for a period of a year under the program, which is for 12 months. At the end of the period, the city may hire permanently the officers, utilizing city funds, or the officers may seek work elsewhere.

One officer is Ronny Mull, formerly of Quiteque. A native of Plainview, he was a deputy sheriff in Briscoe County.

Comingo Estrada is a native of the Earth area. He was formerly in agricultural employment.

Both officers will be trained and certified while with the government program.

\*\*\*\*

We never harbor ill feelings against individuals who disagree with our views, although we regret that so many people can be wrong.

senior high and college teams to the big bruisers of the professional leagues.

Football is a rough contact sport and inevitably will produce its full quota of bumps and bruises, strains and sprains, cuts and gashes. Most of these aren't serious and the lads concerned are back in the game shortly.

A thorough medical examination is highly important for boys preparing to go out for football to make certain that there is no physical condition that should be noted before beginning the rigorous training and hard knocks of the game.

Proper physical conditioning hardens the body and increases resistance to fatigue, thus helping prevent injury. A minimum of three weeks of conditioning are recommended prior to the first game of the season. Coaches and team physicians are alert to the fact that many injuries occur when the player is tiring and thus less alert.

Good coaching enables the players to perform better and thus be less prone to injury.

Good officiating makes for better games and also helps protect players. Proper equipment and facilities are important to reduce injuries. Good first aid procedures and medical care, with a physician available during practice drills and on the bench during games are major factors in cutting serious injuries.

Precautions against the extreme heat of early season days also are important. Many coaches now schedule the hot weather workouts in early morning and late afternoon to avoid the heat of the day. The old rule against drinking water during drills and games has long since been proved invalid and dangerous. Water and salt is necessary to replace fluids lost through copious sweating.

If your boy is playing on an organized team, the chances are good that all of these safeguards are observed. If most of his playing is done on a vacant lot in the afternoons and on Saturdays, it becomes the parents' responsibility to see that the player has the benefit of the safety principles.

For The Greatest Buys In Town

Come To Williams TV & Appliance

206 Main 272-4118

## Bob Simpson Seeks State Senator Slot

Representative Bob Simpson, two-term member of the Texas House of Representatives, Thursday announced from the Randall County Courthouse Annex that he will be a candidate for state senator from the 31st District in the special election to be called after the impending resignation of Senator Max Sherman.

Simpson, in revealing his plans to seek the Senate post, said, "I believe I can utilize the experience I have gained in the House to provide an even more effective voice in the Senate."

"I have worked diligently to earn the respect of other members of the Legislature, as well as the constituents who elected me. This kind of respect is what the people of the 31st Senatorial District deserve."

Simpson said, "It has been an honor for me to be a member of the House of Representatives in the past two sessions, but that honor carries with it a responsibility to serve in the most effective way I can. It is this responsibility which has prompted me to seek a higher opportunity and challenge in the Senate."

He said, "The State of Texas has not enacted a tax increase in three sessions of the Legislature, including the two in which I have participated. During this time the economy of the state has led the nation in strength and stability."

"But," Simpson said, "we must plan for the future when revenues from our depleting oil and gas reserves begin to decline. We must begin setting aside a portion of our surplus, and we must not allow state government to grow unchecked. I am committed to making sure our tax dollars are used wisely."

"There are many problems facing the people of Texas. They are not easy, and I don't offer any quick solutions. But I have studied the issues, and have discussed them with many people from the 31st Senatorial District," Simpson said. "I will continue talking to people throughout the district, seeking their help and opinions," he said.

"With the experience and foundation I already have, I think I can provide the responsive representation to which this district is accustomed," he said.

During the last session of the Legislature Simpson was appointed by Speaker Bill Clayton to the highly prestigious Committee on State Affairs and the

Committee on Natural Resources. Simpson's legislative district includes Randall, Carson, and a portion of Potter Counties. "I am anxious to go to work for the people of the 31st Senatorial District," Simpson said. "Diligent, responsive and effective—that's how I hope my past service can be described, and that is how I want to serve this area in the Senate."

# It's better to give



# and receive



Remember all those childhood maxims . . . those bits of wisdom an all-knowing adult passed on to you. Like . . . you can't have your cake and eat it, too. Or . . . it's better to give than receive. Well, we believe that it's really best to give AND to receive. Because every time you put a little, or a lot, in your savings account, you'll receive even more in return. You can have your cake and eat it, too . . . and it is better to give AND to receive.

FIRST FEDERAL SAVINGS & LOAN ASSOCIATION

CLOVIS - PORTALES, NEW MEXICO

801 Pile St. 2nd & Abilene  
Clovis 88101 Portales 88130

# 1977 CLOSE OUT Sale!

## On Pickups & Cars

### Over 50 Models To Choose From

### All 1977 Units Drastically Reduced

### Save Up To \$1600



Custom Deluxe Pick-up

Custom Deluxe Pickup

As low As \$3595

Super Bargains On Several Used Pickups

SAVE



Silverado Suburban



Scottsdale Fleetside Pick-up

SAVE

Scottsdale Pickup

As Low As \$3995



Cheyenne Blazer w/Hard Top

# Johnson Chevrolet

201 Commerce

Sudan

227-2050

Bailey County Journal  
Published by Johnson Printing Co., Inc.  
1977 TEXAS PRESS ASSOCIATION





**SEPTEMBER WEDDING PLANNED...** Mr. and Mrs. Hub Cadenhead of Morton announce the engagement and approaching marriage of their daughter, Mary, to Johnny Furgeson, son of Mr. and Mrs. J.F. Furgeson of Maple. The couple plans a September 9 wedding in the First United Methodist Church of Morton. The bride-elect was graduated from Morton High School and will receive a degree in Home Economics Education in December from Texas Tech University. The future bride-groom was graduated from Three Way High School and received a degree in Finance from Texas Tech University in 1975.

\*\*\*\*  
Advertising is just another way of calling on customers.

\*\*\*\*  
Usually the victim of gossip has something others are jealous of.

## Bridge Marathon Deadline August 18

Xi Omicron Xi chapter of Beta Sigma Phi announces its Second Annual Bridge Marathon to be held from September 1977 through May 1978.

The marathon will consist of partners playing one match each month, with prizes being awarded to high, second high and slam in May. The prizes will be determined by the number of participants playing.

Rules for the bridge marathon are (1) Each person entering must choose a partner and keep the same partner for the entire marathon, (2) Entrance fee is one dollar per match per person

### Double Knit Scraps Needed For Bedspread

The Muleshoe Portales Childrens Home Associates met Thursday, August 4, in the Tri-County reception room for their regular monthly meeting with six members present.

Double knit quilt scraps were cut to make a "Round the World" bedspread for the gift sale. The proceeds will go to the Portales Christian Childrens Home. Double knit scraps are needed.

Those attending were Mrs. Ethel Julian, Mrs. Ruth Williams, Mrs. Billie Barnhouse, Mrs. Vickie Hendrix, Mrs. Modine Elmore and Mrs. Mabel Caldwell.

(or nine dollars per person for the marathon), (3) Partners will be assigned one match per month. A match will consist of three rounds of six hands. If it is not possible for a team to get together with their opponent for one month, they are urged to contact opponents for the oncoming months, so the teams will not get behind in their matches, (4) Partners will be given a choice of an afternoon or evening match. The evening marathon will be divided into two groups, mixed couples and women, and (5) Entrance deadline is August 18.

### ONE MINUTE SPORTS QUIZ

1. Who won the Canadian Open Golf Tournament?
2. Cesar Cedeño plays pro baseball for what team?
3. Name the winner of the U.S. Womens Open Golf Tournament.
4. Who holds the record for all-time switch hits?
5. Name the challenger of the next Muhammad Ali bout.

### Answers To Sports Quiz

1. Lee Trevino.
2. Houston Astros.
3. Hollis Stacy.
4. Pete Rose recently broke the record of Frank Frisch.
5. Earnie Shavers.

**Processed Thought**  
Some people never have reflections unless they're standing in front of mirrors.

-Tribune, Chicago.

### Miss Davenport Receives Diploma

Miss Pam Davenport, a 1975 graduate of Muleshoe High School, received her diploma after completing a course in "Operating Room Technology" at Methodist Hospital in Lubbock, Tuesday, August 2.

She is the daughter of Mr. and Mrs. Calvin Meissner of Muleshoe and Marvin Davenport of Needmore.

Attending the graduation were her parents, Mr. and Mrs. Calvin Meissner, Marvin and Michael, grandparents, Mr. and Mrs. Raymond Gage of Circleback, her aunt, Mrs. Dale Hanna and Mechele of Sudan and Ann Daniel of Lubbock. Miss Davenport will be employed at Methodist Hospital in Lubbock.

People wanting to enter the bridge marathon or for more information call Mrs. Ken (Lynne) Box at 272-3025; Mrs. Jerry (Francene) Wenmohs at 272-3063; Mrs. Monty (Alisa) Dollar at 272-3164; Mrs. Ted (Nancy) Barnhill at 272-4903; Mrs. Mike (Pam) Miller at 965-2834 or Mrs. John Neil (Sharon) Agee at 925-6773.

### Hobby Club Holds Meeting

Muleshoe Hobby Club met Thursday, August 4, at the Muleshoe State Bank community room. Mrs. Mabel Caldwell was hostess.

Hostess gift was drawn by Mrs. Levina Pitts. The meeting was conducted by Mrs. Ola Epperly, president. Treasurer's report was given by Mrs. Opal Robison, secretary-treasurer.

Articles shown by the members were plaques, pillows, string art, painted rock, presidential bottle, nail art, pot holders and drift wood basket.

Members attending were Mrs. Levina Pitts, Mrs. Dora Phipps, Mrs. C.E. Briscoe, Mrs. Allie Barbour, Mrs. Vickie Hendrix, Mrs. Mae Loyd, Mrs. Mabel Caldwell, Mrs. Ola Epperly and Mrs. Opal Robison.

## West Plains Medical Center Briefs

### ADMISSIONS

August 1: Bernice Holderman, W.F. Lancaster and Rosa Allison.

August 2: Tammie McIntosh, Klyde K. Krebs, and Anna Curry.

August 3: Grace Scarbrough, Ethel L. Sanderson, Angela Cruz and Cathryn Ann Yell.

August 4: Lula Kistler

DISMISSALS  
August 2: Sophia Vega and Mary Ann Bonilla.

August 3: Genrosa Knapp, Rosita G. Perez, Sylvia Reyes, Mary Jean Lucero, Charlie Villarreal, Tammie McIntosh and baby girl.

August 4: Kellie McNeil and Anna Curry.



### Anna Ruth Mendoza

Mr. and Mrs. Ramon Mendoza of Muleshoe are the proud parents of a new baby girl born July 27, at 4:04 a.m. in West Plains Medical Center. The baby weighed seven pounds and four ounces and was named Anna Ruth Mendoza. She is the couple's sixth child.

### Detria Ray-Don McIntosh

Mr. and Mrs. Dewey McIntosh of Muleshoe are the proud parents of a new baby girl born August 2, at 5:55 a.m. in West Plains Medical Center. The baby weighed seven pounds and eleven ounces and was named Detria Ray-Don McIntosh. She is the couple's first child.

Grandparents are Mr. and Mrs. Robert Clark of Muleshoe. Great-grandparents are Mr. and Mrs. H.D. Ruthardt and Mr. and Mrs. Sim Clark all of Muleshoe.

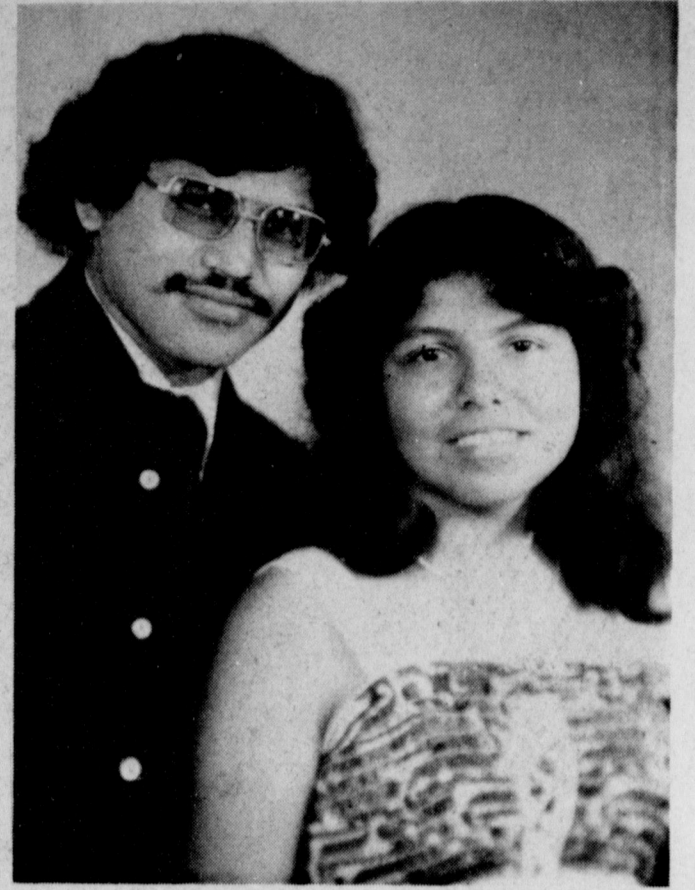
### WHO KNOWS?

1. When and where did the volcano Etna last erupt?
2. What is a young swan called?
3. What is the speed of a coyote?
4. When did Hitler become "fuehrer" of Germany?
5. Which state is known as the Volunteer State?
6. To what does anthology refer?
7. When did Japan capitulate to the Allies?
8. What are prunes?
9. When was the first atomic bomb dropped?
10. When was President Hoover born?

### Answers To Who Knows

1. In 1975, in Italy.
2. Cygnet.
3. Forty-three mph.
4. August, 1934.
5. Tennessee.
6. A collection of poems, stories, etc.
7. August 14, 1945.
8. Sun-dried plums.
9. August 6, 1945.
10. August 10, 1874.

\*\*\*\*  
Teaching is often the effort to persuade younger people to accept the conclusions of another generation.



**WEDDING PLANS REVEALED...** Mr. and Mrs. Cruz Luera, Sr. of Abernathy, formerly of Muleshoe, announce the engagement and approaching marriage of their daughter, Minerva, to Ralph Esquibel, son of Mr. and Mrs. Reyes Esquibel, Sr. of Abernathy. Miss Luera is a 1977 graduate of Abernathy High School. Esquibel graduated from Abernathy High School in 1976. The couple will exchange vows Saturday, August 27, in St. Isadores Catholic Church at Abernathy. They will make their home in Lubbock. She is the granddaughter of Rosalio Luero of Muleshoe.

## LOUISA'S LETTER



Dear Louisa,

I am eighteen years old and the boy I go with is nineteen. I love him very much and don't care about dating other boys. I think he likes me, but I don't know exactly how much. He gets jealous if he sees me with anyone else and goes with me whenever he has a chance, so therefore he must think something of me.

The only problem is he doesn't have a car, so I never go with him unless it's after a dance or in my car, but I just don't feel right picking him up when I'm driving because he doesn't like girls who chase boys and I feel as though that is what it would be. He's getting a car pretty soon, but he doesn't know it. Right now he feels left out, and that nobody cares what happens to him, that he's just a bum, but I care very much.

What should I do--sit around and wait 'till he gets his car, or go with other boys, or ask him to ride whenever

I'm in my car and see him in town.

M.P.--Ind.

Answer:

If you are sure that this boy is in love with you and is loath to ask you for a date because he has no way to take you places, it might be a good idea to talk things over with him and get matters straightened out. Tell him that if he would like to ask you to go places that he can come to your home and that from there you can go in your car, with the driving done by him--tell him that you know he will soon have a car, and that you can use yours temporarily.

Now I don't know what kind of boy this is, but whatever you do certainly depends on whether he is a dependable person or whether he is what he says he is--a bum.

Louisa  
Address letters: Louisa, Box 532, Orangeburg, S.C. 29115

**Peach Shortcake**

1 package (3 oz.) peach flavor gelatin	1 cup sweetened sliced fresh peaches
2 tablespoons sugar	Cake squares
1-1/2 cups boiling water	Prepared whipped topping
1 cup cold water	
1 teaspoon lemon juice	

Dissolve gelatin and sugar in boiling water. Add cold water, lemon juice and peaches. Place bowl of gelatin mixture in larger bowl of ice and water. Stir until slightly thickened. Spoon over cake squares; top with whipped topping. Makes 9 servings.

1978 Tournament of Roses Parade to be Jan. 2. Food, services costs boost consumer price index.

**Western Drug**  
114 Main  
Wednesday, August 10  
272-3106

**Richard R. Davila**

**"Try Before You Buy"**  
**LIVINGSTON HEARING AID CENTER**  
1913 A 19th St. - Lubbock, Tx. 7901  
762-2951

**ANNOUNCING.**

We are happy to announce the merger of Pool, Harmon-Field and J & J Insurance Agencies effective August 1, 1977. Our new name will be Smallwood-Harmon-Field Insurance Agency. Our office will be located at 232 South Main Street, across from Tri-County Savings and Loan Association. We will offer complete insurance service with qualified personnel

**Anthony's** SHOP ANTHONY'S FOR YOUR ENTIRE FAMILY'S NEEDS.

**SATIN LONG AND SHORT NIGHT SHIRTS** BY RUSSELL NEWMAN

**"CHECK-OUTS" SLEEPWEAR** by RUSSELL NEWMAN

**teen theme** BY BESTFORM

**PURSES FOR SCHOOL OR DRESS**

**OUTSTANDING PURSE VALUE**

**CASH OR LAYAWAY**

**Introducing Solar Hair**  
The New Trend For Fall-Winter 1977

**SOLAR, To Add Warmth During The Cold Winter Months.**

**SOLAR, For Longer, Free Flowing, Soft & Particularly Designed For The Self Assured Woman, Who Wants A Little Added Warmth & Excitement In Her Life.**

Come In Or Call Today For Your Hair Crimping, Redkin Products, Ear Piercing, Facials & Sculptured Nails.

**Ana's House Of Beauty**  
109 Ave. B. Muleshoe 272-4152





**SUMMER READING CLUB WINNERS...** Participating in the summer reading club program and reading the most books in their age levels were from left, Kim Carnes, 106 books, placing second in the second and third grade level; Chris Ferguson, 160 books, first place in the second and third grade level and overall winner of the program; Esperanza Gallegos, 40 books, tied for second place in the sixth grade level and up; and Melanie Blackwell, 88 books in the fourth and fifth grade level.

### Chris Ferguson Overall Reader In Summer Program

A Recognition Day was held at the Muleshoe Area Public Library Wednesday, August 3, for all participants of the 1977 Summer Reading Club program.

About 100 children attended. Three short films were shown to those attending. Zanna Huckaby won Curious George, a monkey. A balloon contest was held with 15 winners.

Mrs. Bernis Camp, librarian, presented awards to the highest readers in the three age groups. Reading the most and receiving a book each were Chris Ferguson, 160, Melanie Blackwell, 88, and Martina Valdez, 60. Jungle animal puzzles were given to second place winners Kim Carnes 106, Margarita Torres 60, and Ramona Murillo 60 (tying for fourth and fifth grade level) and a four-way tie for sixth grade and up level, Sammy Gonzales, Glen Johnson, Esperanza Gallegos and Gilberto Ybarra, all reading 40 books.

Chris Ferguson was the highest over-all reader. He was given a six foot giraffe wall hanging.

All those reading 20 books or more were Chris Ferguson, 160, Kim Carnes, 106, Sue Haire, 100, Lyle Burk, 81, Lloyd McCray, 80, Laine Miller, 70.

#### Historic houses

AUSTIN, Texas (Spl.) — Hasty restoration of historic buildings is a no-no, says Wayne Bell, a restoration architect from The University of Texas.

Historic houses can lose their significance and appeal if restoration proceeds without adequate research and documentation, he says. Mr. Bell is training students in those skills this summer at an institute at UT's Winedale Museum in Fayette County.

The students are learning to measure 19th Century structures, draw elevations of window treatments and wall decorations, scour tax, deed and census records, and interview the former occupants of homes or their descendants.

#### Chemist honored

AUSTIN, Texas (Spl.) — A new endowed professorship in The University of Texas Chemistry Department has been established to honor a chemist who long taught there.

Funds exceeding \$100,000 were raised by the Chemistry Department to endow the Norman Hackerman Professorship in Chemistry.

Dr. Hackerman, one of the nation's leading chemists and now president of Rice University, was at UT Austin for 25 years. He joined the faculty in 1945 and rose to become UT Austin president in 1967. He went to Rice in 1970. He is chairman of the National Science Board.

#### IRRIGATION GAS PRICES

The amount irrigation farmers can afford to pay for natural gas is of major concern. A recent study by economists of the Texas Agricultural Experiment Station presents estimates of producers' ability to pay for natural gas to raise corn, grain sorghum and cotton. Due consideration is given to different land tenure arrangements and irrigation well characteristics (lift and yield in gallons per minute.) As depth to water increases (lift), the ability to pay for natural gas diminishes rapidly. Also, renters and land purchasers are much more vulnerable to natural gas price increases than owner-operators. Lastly, the study shows that producers' ability to pay for natural gas is extremely sensitive to crop prices. Source: Ron Laceywell and Dan Hardin, College Station, Tel. 713/845-2333.

Steffany Roberts, 62, Monica Roberts, 62, Michelle Stevenson, 60, Paul Chamberlin, 60, Melissa Johnson, 56, Madison Sowder, 50, Emma Gallegos, 48, Brent Hill, 42, Jana Renner, 40, Walter Leck, 40, Kristie Taylor, 40, Peter Ybarra, 40, Deborah Lackey, 32, Pam Williams, 30, Diane Smith, 30, Scott Spies, 30, Chantel Robison, 25, Jeff Whately, 24, Lisa Hamilton, 23, J.B. Duncan, 21, Diane Groom, Lisa Bizzell, Guy Dale, Rosie DeLaCruz, Eddie Hernandez, Ruben Leal, Jr., Art Murillo, Raquel Acosta, Katie Crittenden, Charles Latimer, Tina Reid, Glenda Willoughby, Gary Duncan, Lance Wenmohs, Jana Milligan and Cynthia Lane, all read 20 books in the second and third grade level.

For the fourth and fifth grade level were Melanie Blackwell, 88, Ramona Murillo, 60, Margarita Torres, 60, Kristie Spies, 47, Fatima Leck, 40, Josie Ybarra, 40, Melonie Briscoe, 40, Mari Ybarra, 40, Chandra Engkeling, 40, Sheri Stovall, 23, Kelly Lynn, 20, Loy Triana, 20, Susan Whately, 20, Noemi Acosta, 20, Zanna Huckaby, 20, Ricky Lopez, 20, Vana Pruitt, 20 and Janna Wuerflein, 20.

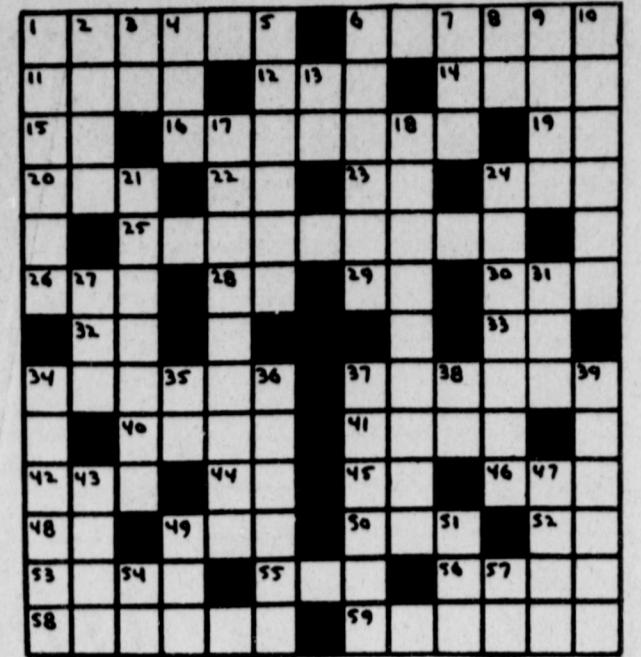
In the six grade level and up were Martina Valdez, 60, Gilberto Ybarra, 40, Sammy Gonzales, 40, Esperanza Gallegos, 40, Glen Johnson, 40, Jesse Beversdorf, 38, Tracy Lackey, 22, Sherri Bessire, 20, Mary Lou Franco, 20, Ramon Valdez, 20, Belinda Clayton, 20, Peggy Martin, 20 and Debbie Marth, 20.



**PLACING SECOND...** Tying for second place in the summer reading program in the sixth grade level and up was Glen Johnson. He read 40 books and was awarded a puzzle.

Leon Jaworski, Director of House investigation of Korean probe: "If I find a crook involved in this matter, I want to bring him out and I want the public to know about it."

Why worry about war, or disease, if you don't worry about automobile accidents.



**ACROSS**  
 1-Negligent  
 6-Sarcastic  
 11-Overlook  
 12-One of the continents (abb.)  
 14-Asiatic mountains  
 15-Mystic Sanskrit word  
 16-More uncomplicated  
 19-Pronoun  
 20-Knight of the Round Table  
 22-Neptunium (chem.)  
 23-Public notice  
 24-Boy's nickname  
 25-Enacting  
 26-Urge on  
 28-Preposition  
 29-Dental Technician (abb.)  
 30-Dolt  
 32-Exclamation  
 33-Roman deuce acts  
 37-Dance proudly  
 40-Stagger  
 41-Directs  
 42-Ardent  
 44-Sun god  
 45-Parent  
 46-Male nickname  
 48-Printer's measure  
 49-Query  
 50-European deer  
 52-Presiding Elder (abb.)  
 53-Food in general  
 55-Auricle  
 56-Always  
 58-Hold in affection  
 59-Becomes aware of  
**DOWN**  
 1-Novice  
 2-Girl's name  
 3-Music note  
 4-That thing's  
 5-Oriental skiff  
 6-Manhattan, for example  
 7-Pronoun  
 8-Close by (abb.)  
 9-In prosody, a foot  
 10-Golf clubs  
 13-Aloft  
 17-Accusers  
 18-Newspaper column  
 21-A cheese  
 24-Opposed to  
 27-Hood's gun  
 31-Thus (Latin)  
 34-Plot  
 35-Neon (chem.)  
 36-Assuager  
 37-Manuscripts  
 38-Exist  
 39-Church officials  
 43-A foreboding  
 47-Fencing foil  
 49-Dined  
 51-Know (Scot.)  
 54-Commercial announcement  
 57-In competition against (abb.)

#### STORAGE STABILITY OF CATFISH

Feeding studies were conducted by scientists with the Texas Agricultural Experiment Station on the effects of various levels of a-tocopherol in diets of channel catfish and subsequent effects on storage of fillets. Fingerling channel catfish 12 to 15 cm in length were fed semi-purified diets containing 0, 5, 10, 20, 40 and 80 mg of dl-&-tocopherol acetate per 100 grams of dry diet. After 97 days fish were slaughtered. Storage stability of fillets for the different treatments was determined after they were frozen for three months or after they were frozen for three months and refrigerated for three days. Results show that higher levels of &-tocopherol can be effective in increasing the storage stability of catfish fillets. Growth rates and production were found to be unrelated to dietary &-tocopherol level. Source: Richard L. Noble and Timothy M. O'Keefe, College Station. Tel. 713/845-6731.

### Childbirth Classes Planned In Amherst

A new series of classes will begin on Sunday, August 14, at 2:00 p.m. in the library at South Plains Hospital and clinic in Amherst.

The goal of the classes is to have the healthiest, safest and happiest birth experience for mother, father and baby.

The classes consist of a series of seven weekly meetings held informally in the eighth and ninth months of pregnancy. Most women choose to have a coach attend classes, usually a husband or friend. The Lamaze method allows the mother and coach to work together with the

doctor, preparing for a normal labor and birth.

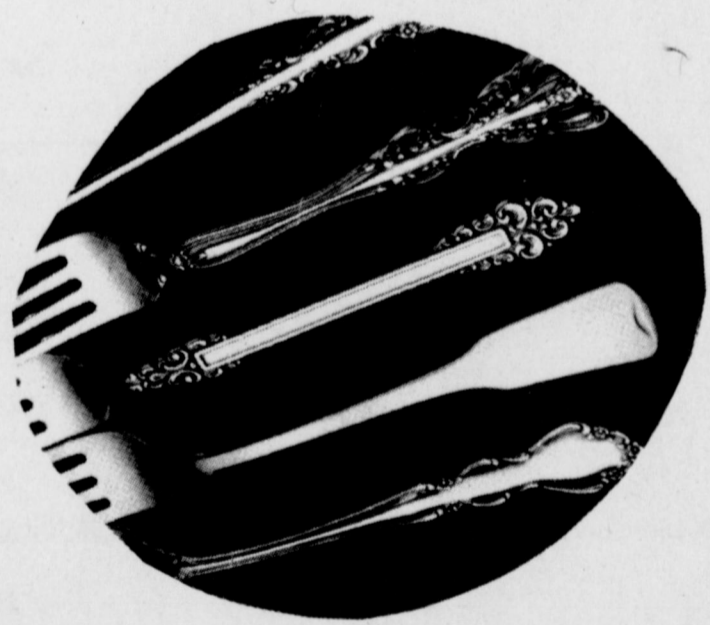
Through knowledge, training and work, childbirth can be a participating experience for a man and woman. Childbirth Without Pain Education League gives classes in the childbirth method developed by Dr. Fernand Lamaze. This preparation for childbirth is physical, intellectual and emotional training designed to make childbirth a more satisfying family experience.

For further information, contact Mrs. Landers, Administrator of the hospital, at 246-3536.

Howard H. Baker, Senate Republican Leader: "Public financing to congressional elections will change in a very basic way the political system."

Robert C. Byrd, Senate Majority Leader, on federal financing of elections: "I think it's an idea whose time has come."

## 30% off Heirloom Stainless



#### Open Stock

Michelangelo      Dover  
 Rembrandt      Schelley

#### American Colonial

	Reg.	Sale		Reg.	Sale
Teaspoon	\$4.00	\$2.80			
Place/Soup Spoon	\$4.75	\$3.32	Place Pistol Knife	\$7.00	\$4.90
Tablespoon	\$6.50	\$4.55	Butter Knife	\$6.50	\$4.55
Iced Drink Spoon	\$4.50	\$3.15	Sugar Spoon	\$5.50	\$3.85
Place Fork	\$4.75	\$3.32	Cold Meat Fork	\$8.50	\$5.95
Salad Fork	\$4.75	\$3.32	Gravy Ladle	\$8.50	\$5.95
Place Knife	\$6.75	\$4.72	Casserole Spoon	\$8.50	\$5.95

Other Items By Special Order

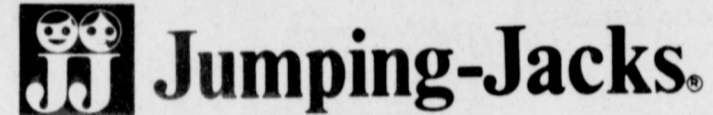
## Something Special

222 MAIN

MULESHOE

272-4933

# Back to School



Most feet are born perfect. They should stay that way.

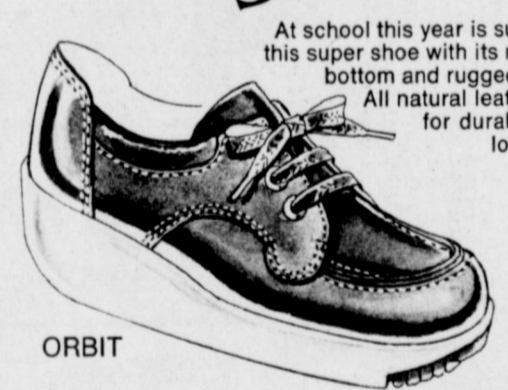
Layaway Now-School Starts August 29

## rugged and ready



8 1/2-12 ..... 15.00  
 12 1/2-3 ..... 18.00

## a favorite subject



12 1/2-3  
 N-M-W ..... 18.00

# St. Clair's

110 MAIN

272-4453

## Mulch to keep your tulips growing? Let your fingers go tiptoeing.





**Bula News**  
By Mrs. J. Blackman

Mr. and Mrs. Bob Suggs of Midland, visited over the weekend with her parents, Mr. and Mrs. V.C. Weaver.

Mr. and Mrs. Ed Crume and daughter, Diane, also Mrs. J.W. Layton attended the wedding Saturday night at 8:00 p.m. at the First Baptist church in Hereford for Gail Cash and

Sonja Jacks. Gail is a nephew of Mrs. Crume and Mrs. Layton.

Karla Withrow returned Saturday from spending a week at Camp Quartz, Church of Christ Camp, near Altus, Okla. She went with a group of young people from the Muleshoe and Olton Church of Christ.

Mrs. and Mrs. Nolan Harlan and John David enjoyed having their daughter, Mrs. Rodney Marshall and small daughter Melloni, of Levelland spend the past week with them. Rodney was attending a teachers work

shop at Abilene Christian University.

Weekend guests in the Fred Locker home were their son, Alvin Lee, and wife and son, Jeff, from Dallas.

John Blackman was able to return home Saturday after spending 30 days in the Lubbock Methodist hospital, following a broken hip he received from a fall. He is slowly gaining his strength each day.

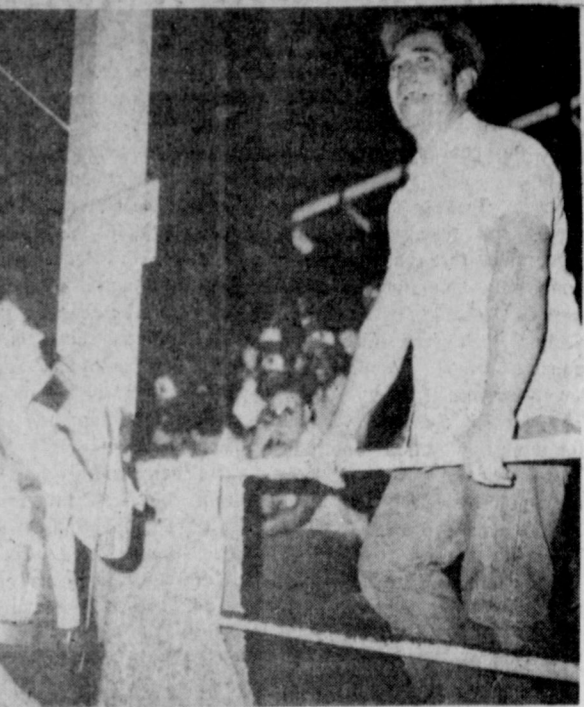
Mrs. Marie Aaron from Carlsbad, N.M. recently spent two

weeks with her mother Mrs. Pearl Walden. While here she and Mrs. Walden did a lot of canning and freezing, also some visiting. Another daughter, Mrs. Goldie Nixon of Lubbock came out and spent some time with them.

Mrs. John Hubbard accompanied by her daughter Mrs. Richard Stanley of Hereford, are in Grants, N.M. for a few days visit with another daughter JoAnn Oldfield and husband Barney and girls Kimberley, Jacque and Shannon.

Her daughter Mrs. Pauline Eaker of Lake Thomas was being dismissed from Lubbock Methodist hospital on Thursday and she was returning home with her.

Mr. and Mrs. Tom Bogard visited in Clarendon and McLean the past week with his four sisters. Mrs. Blanche Smith a resident of the Clarendon Nursing home also with Mr. and Mrs. Roy Blackman of Clarendon and at McLean with Mrs. Lena Pettitt and Mrs. Eva Peabody.



SURPRISE CHALLENGE ISSUED...A surprised Garry Pierce, right, heard Steve Slack approve a wrestling match between Pierce and Terry Funk. The local garage operator was unaware the match had been arranged until Slack said Funk had agreed to wrestle him. Think some of Pierce's friends had a hand in the arrangements.

**Introducing Solar Hair**  
By Chubbys

**Aim For The Stars With The New Solar Look.**  
Call 272-3976 For The Complete New Trend From The National Hairdressers & Cosmetologists Association.

**Chubby's Beauty Shop**  
214 W. 2nd Muleshoe 272-3976

**TELEX HEARING AIDS**  
CLOVIS HEARING AID CENTER  
★ Batteries ★ Molds ★ Free Hearing Test  
SERVICE ALL MAKES  
403 E. 14th Clovis, N.M. Ph. 763-6900

Mr. and Mrs. Lloyd Pollard visited Sunday afternoon with Mr. and Mrs. Carl Pollard at Stogall.

Mr. and Mrs. P.M. Nelson of Victoria, Texas visited over the weekend in the home of the Nolan Harlans. The women are sisters.

Guests Tuesday with Mr. and Mrs. J.C. Withrow were his cousin, Mrs. Dolores Ward and sons Jeff and Jim, from Holdenville, Okla. They were accompanied from Sudan with J.C. parents Mrs. and Mrs. J.W. Withrow.

Mr. and Mrs. Cecil Jones drove their grandson, Kelly Alexander, who has been visiting in their home for several weeks this summer, also Kelly's friend, Bobby Noonam, who had spent the past week with them, to their home in Fort Worth Saturday. They stayed until Monday with their daughter, Mrs. Darlene Alexander and sons.

Mr. and Mrs. Jimmy Cannon and Mr. and Mrs. J.R. Teaff, are spending this week fishing and resting in the cool mountains of New Mexico. Friday Timmy and Janice Cannon joined their parents for the weekend.

Happiness adds up to different things for every person.

**Altitude Sickness Can Ruin Vacations**

Planning a trip to the mountains to get away from the heat for a week or so? So are several million other American families at this time of year.

The American Medical Association cautions that if you're headed for some really high mountains—above 7,000 feet—it would be wise to make the change gradually if you wish to avoid high altitude sickness. Anyone who has made a trip to Mexico City can tell you of his troubles in this respect.

Try, if you can, to make the ascent over a span of days so that your body can adjust to the oxygen-poor thin air at higher elevations.

Symptoms of high altitude sickness are drowsiness; headache; blueness of the nails, lips and ears; a feeling of warmth and flushing of the face soon after arrival; troubled sleep; irritability, and shortness of breath.

If you must make the trip quickly by plane, before the trip get a good night's rest and avoid alcoholic beverages and heavy smoking. A good breakfast an hour or so before departure is all right, but no food should be taken during the rest of the climb. Reduce physical activity during the trip. Sit quietly as much as possible. After arrival in the high altitude area, go to bed for a few hours and eat very lightly.

Indulge in only light physical activity during the first 24 hours. Walk, don't run, if you have to climb steps to a hotel or lodge.

Patients with certain heart and respiratory conditions may encounter more serious discomfort by abrupt changes to high altitudes. However, physicians have noted that most patients with cardiac or pulmonary disease who can move around and engage in moderate activity at sea level most often can tolerate altitudes of 7,000 to 8,000 feet without serious effects.

If you have doubts as to whether you or someone in your family may suffer from a trip to the high mountains, consult your physician in advance.

**Women Victim Of Arthritis Called Lupus**

"One of the most serious forms of arthritis is primarily a disease of women," reports Bob Burbridge, Chapter Representative of the West Texas Chapter of the Arthritis Foundation. "Four out of five victims of lupus arthritis, also known as systemic lupus erythematosus or SLE, are women."

A form of arthritis that attacks the connective tissue, lupus arthritis usually strikes women in the prime of life. It can inflame, change and damage organs throughout the body, notably the kidneys, heart and lungs. Most patients also suffer from inflammation and pain in the joints.

"While SLE usually is a chronic, lifetime disease, America's 500,000 victims have new hope with a combination of drugs and close monitoring of patients with modern laboratory methods," said Mr. Burbridge.

Those interested in additional information about SLE should write for free leaflet available from the West Texas Chapter of the Arthritis Foundation, P.O. Box 3335, Lubbock, Texas 79410.

**NO CELEBRATION**  
CHARLESTON, W. VA. -- Church bells rang when a thunderstorm brought relief from drought and heat. Firemen reported that lightning had struck the steeples of St. John's Episcopal Church and Christ United Methodist Church during the storm.

**You can BANK on it!**

Bill Loyd, President Muleshoe State Bank

A realistic look at the money situation reveals that the rate of inflation will most likely increase until the end of next year. Economists predict accelerated price increases in the next 18 months, so that by the end of this year the rate of inflation will be 6½% or more. If their predictions hold true, in 1978 it will be 7-7½%. Then the rate will drop. A harsh winter caused the price index to advance 10% or more. Weather-damaged crops drove prices up, and frigid temperatures caused fuel shortages. Energy costs are certain to increase, and Agricultural Department economists are forecasting food price increases despite lower farm prices. The faster prices go up, the more attractive it is to borrow. More inflation argues for you to make necessary major purchases now instead of next year when prices will most probably be higher.

<b>GIBSON'S DISCOUNT CENTER</b>		<b>1977 SUPER SALE!</b>		<b>PANTY HOSE TWO FOR THE PRICE OF ONE</b>	
A LOS CLIENTES CON ESTAMPILLAS PARA ALIMENTOS Por Favor D'igale Al Cajero Que Ud. Tiene Cupones Para Alimentos Separe Los Alimentos Elegibles De Los Otros Art'culos.		★FOOD STAMPS★ Welcome!		BOYS SOCKS 30% OFF	
POCKET T SHIRTS \$1.99	MENS & BOYS BELTS 35% OFF	ATHLETIC SHIRTS REG. 3.69 TEE SHIRTS \$2.59	TEE SHIRTS REG. 4.69 V NECK \$3.29	BRIEFS REG. 3.47 \$2.39	BOXER REG. 4.79 \$3.19
MENS PAJAMAS \$4.22 REG. 6.33	TENNIS SHOES 35% OFF	TEE SHIRTS REG. 3.69 ROUND NECK \$2.59	MENS DICKIE JEANS 35% OFF	DIAPER STACKERS \$2.19 REG. 3.19	\$2.79 REG. 4.19
MENS BATHING SUITS \$2.50 CLOSE OUT	MENS DICKIE JEANS 35% OFF	CYRUS SCOTT MENS DOUBLE KNIT SLACKS \$7.99 REG. 9.97	WINDBREAKERS 30% OFF	LITTLE GIRLS PANTIES & SOCKS 30% OFF	LITTLE GIRLS GOWNS & P.J.s \$1.49 REG. 2.17
MENS HANDKERCHIEFS 75¢	BOYS UNDERWEAR \$1.99	MENS SHIRTS 35% OFF SMALL-EX LARGE KNIT, BAN-LON, SPORT SHIRTS	GYM SHORTS \$1	DIAPER STACKERS \$2.19 REG. 3.19	\$2.79 REG. 4.19
MENS SOCKS 30% OFF	BOYS T SHIRTS \$1.79 REG. 2.61	MENS CO-ORDINATE 35% OFF JACKET, VEST, PANTS	BOYS DICKIE JEANS 30% OFF	LITTLE GIRLS GOWNS & P.J.s \$1.49 REG. 2.17	\$1.59 REG. 2.29
MENS DICKIE CO-ORDINATE 35% OFF JACKET, VEST, PANTS	BOYS DICKIE JEANS 30% OFF	EVERYDAY LOW PRICES	ALL STRAW HATS AND SUMMER CAPS 1/2 PRICE	LADIES LIGHTWEIGHT HOUSECOATS 35% OFF	LADIES HANDKERCHIEFS 70¢
1/2 GAL. HOMO MILK 89¢	BOYS DICKIE JEANS 30% OFF	1 GAL. HOMO MILK \$1.73	LADIES SLIPS, BRAS, PANTIES, GIRDLES 40% OFF	LADIES & GIRLS PURSES 35% OFF	LADIES P. J. s & GOWNS 30% OFF
LARGE EGGS 67¢	LADIES FASHION JEANS, SKIRTS, VEST, GAUCHOS 30% OFF	1 LB. COTTAGE CHEESE 77¢		CHILDRENS SUMMER TOG-A-LONGS 35% OFF	
2 LB. COTTAGE CHEESE \$1.33		GIBSON BREAD 2/89¢			

**Chester Irrigation**  
104 E. First Sudan, Texas 227-2409  
For rent at less than 10¢ per acre per day.

Here are three new rental plans from Pierce that should make it possible for you to put a new Circle-Master center pivot on your farm.

**Plan A.** Rent a Pierce Circle-Master with a money use charge equal to 4.1% simple, per annum, based on a 7 year rent only program. No security deposit required.

**Plan B.** Same program for 10 years. The charge would be equal to 6.7%.

**Plan C.** Rent with an option to own with interest as low as 5.7%.

If these plans don't suit you, call us and we'll tailor a rental plan specifically for you.

For complete information on rental plans see your local Pierce dealer.

**PIERCE CIRCLE-MASTER**  
Eugene Demel  
Glenn Chester Ph. 385-3144 Curtis Chester  
Ph. 227-2368 Service Technician Ph. 227-2121



## Measles, Polio Show Immunization Needed

A measles outbreak this year and the first confirmed case of polio reported since 1975 should prick the conscience of many Texans.

Why? Because these are among the diseases that are preventable through immunization. And, immunizations do work as attested to by the sharp declines in disease since compulsory school immunization laws went into effect in 1971.

August will be observed as Immunization Action Month in Texas as part of a nationwide campaign this year to immunize those needing protection. The Texas Department of Health is spearheading Immunization Action Month, aided by Mrs. Dolph Briscoe's First Lady's Volunteer Program.

During August special efforts will be made statewide to protect all children against such immunizable diseases as polio, measles, rubella (German measles), pertussis (whooping cough), diphtheria, tetanus and mumps.

"This year we had the first confirmed case of polio in the State since 1975," said Dr. Jerome H. Greenberg, Deputy Director of Preventable Disease for the Department. "The case was in Eagle Pass, and the patient had visited relatives in Piedras Negras where polio cases are occurring. So, polio is still with us, and the easy travel between Mexico and Texas can lead to exposure and perhaps the spread of the disease in Texas."

The theme of this year's program will be, "Immunization Isn't Just Kid Stuff." Adults need immunizations just as children do, and special emphasis will be given them this year as well.

One of the three short term goals of IAM is to increase protection against measles by promoting immunizations for the unimmunized and "booster" shots for those who received immunization prior to one year of age.

"Measles has increased this

year more than tenfold above last year," said Dr. Greenberg. "This means there is a fairly large number of children who have not been immunized for measles, even though the vaccine has been available for years."

Dr. Greenberg said measles can be an extremely dangerous disease. Serious complications sometimes follow. Pneumonia, hearing disorders and brain damage can all result from measles. Deaths from the complications of measles were common before the vaccine was developed, and they still can occur in the unimmunized. We have already had three known deaths this year as a consequence of measles illnesses.

"Before there were vaccines for measles and polio, for many years measles killed a lot more children than polio did," Dr. Greenberg said.

A second short term goal for IAM is to increase tetanus immunization levels in the state, especially among senior citizens where the most deaths occur. Boosters for tetanus and diphtheria, which are usually combined into one shot, should be received every 10 years.

The third short term goal of IAM is to promote rubella (German measles) blood tests for unimmunized females of child-bearing age so that rubella immunizations can be received through physicians prior to pregnancy. "The disease is of very little consequence to adult

men and women, but it can cause severe birth defects if a pregnant woman gets rubella," said Dr. Greenberg. "If a woman isn't sure if she has had German measles or not, then she should have the simple blood test."

Special efforts will be made during IAM, as well as in September and October 1977 to test young females for rubella. Tests can be obtained from private physicians or participating health department clinics.

All children entering school for the first time this year, some 200,000 youngsters, as well as those previously attending (about 2.6 million), must be immunized. Those entering day care centers are also required to have certain immunizations, and new births should be started as early as age two months.

During August, special efforts will be made in child care facilities and institutions across Texas to bring immunization levels up among children attending these centers. Department of Public Welfare personnel will be instrumental in getting information to child care centers and in notifying welfare recipients of the need for immunization.

Local health departments and public health regional clinics will be cooperating with IAM activities to give immunizations. Most health departments give all immunizations free, or they can be received from a private physician at the usual fee.

## Protect Your Youngsters From Pesticide

"If you have an immunization record, it should show which shots you and your children have received and the dates," said Dr. Greenberg. "Your local health department may have a record if shots were received there. Check with your own physician also. In areas with no health department, public health regional clinics should be available." (Immunization records are required when your child enters Texas child care facilities and institutions.)

Dr. Greenberg said that although most immunizable disease levels are down, measles and rubella are on the increase this year. "Immunization is relatively simple, inexpensive, can be free, and prevents tremendous sickness, disability and even death. I think more people should take advantage of the IAM program."

Immunization Action Month had its beginning in Tampa, Florida in 1972 when officials of the American Medical Association and other health groups met to consolidate their efforts in raising the slumping immunization levels. In 1975 the Texas Department of Health joined the campaign with the assistance of Mrs. Dolph Briscoe. A statewide steering committee sponsored by the Texas Department of Health and the First Lady's Volunteer Program is composed of 28 major organizations which work towards increasing immunization levels.

The peak season for using pesticides is at hand, so home gardeners should give careful consideration to safe storage of these materials.

Pesticides are often stored in a garage or shed without thinking that this place is as dangerous as an unprotected medicine cabinet, says the Texas Agricultural Extension Service.

Curious youngsters often explore under kitchen sinks and low-to-the-floor places. These are the primary places to avoid for storing bleaches, pesticides and fertilizers.

High cabinets in the house or garage are suitable for storing pesticides if they can be locked. Often a symbol (skull and crossbones) that a child associates with "bad stuff" is helpful.

Poison Control Center reports reveal that children under five years of age are involved in more than half of all accidental

swallowings involving a variety of substances. But less than five per cent of all these poisonings are caused by pesticides.

Pesticides should not be kept in storage for more than a year to protect both children and plants from the aged chemicals. All containers used to store the pesticides should be non-breakable and closed securely.

Remember, pesticides are just as safe as the person using them.

Ali to defend title September 29.

**Carpet Cleaning**  
**\$22.50 Living Room & Hall**  
 Steam Or Shampoo  
 Available One Day A Week  
 Lubbock, Texas 765-9914

## Save your pay where saving pays

Annual Rate	Savings Plan	Minimum	Annual Yield*
7.75%	6-Year Certificate	\$1,000	8.06%
7.50%	4-Year Certificate	1,000	7.79%
6.75%	2½-Year Certificate	1,000	6.98%
6.50%	1-Year Certificate	1,000	6.72%
5.25%	Regular Passbook	10	5.39%

\*When interest is accumulated and compounded. On certificate amounts withdrawn prematurely, federal regulations require interest reduction to passbook rate and forfeiture of up to 90 days' interest.


**Tri-County SAVINGS AND LOAN ASSOCIATION**  
 Offices in: MULESHOE / FARWELL / FRIONA / LITTLEFIELD

**The hours are long, but that's O.K., the pay is lousy.**


But as a volunteer you'll get to help America stand a little taller. And you'll stand a little taller yourself. America needs your help or we wouldn't be asking. Your community needs your help. People 18 or 80; we don't care as long as you do. VISTA is coming alive again. Come alive with us. VISTA. Call toll free: 800-424-8580. **VISTA**

Price rises expected to be lower last half 1977.

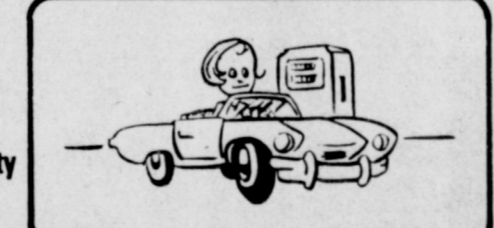
# be your own Meter Maid



You can add up your groceries while you're buying . . .



You can add up your gasoline while you're buying . . .

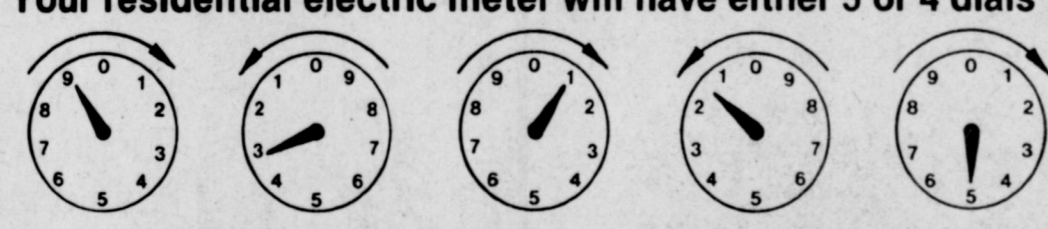


**But** can you add up your electricity while you're buying?

## Yes you can... Here's How!

Learn to read your electric meter. It will let you determine how many kilowatt hours you use in a given period of time . . . an hour, a day, a month or a year. That's how electricity is measured — by kilowatt hours used.

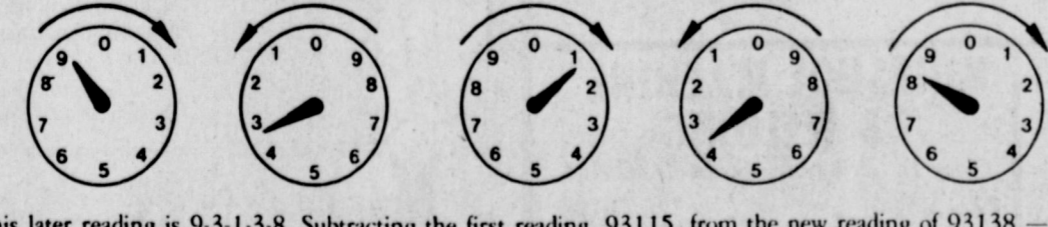
Your residential electric meter will have either 5 or 4 dials



Electric meters are easily read from right to left as you look at the meter. If the pointer on a dial is between two numbers, write down the smaller number. When the pointer is directly on a number such as one (1) (see center dial above) then read it as 1 if the pointer on the next dial immediately to the right has passed zero (0). However, read it as zero (0) if the pointer on that dial to the right has not reached zero.

The dials above read (from left to right): 9-3-1-1-5. If, however, the pointer on the second dial from the right above was between 9 and zero then the center dial would read as a zero.

Now let's read the same meter 24 hours later



This later reading is 9-3-1-3-8. Subtracting the first reading, 93115, from the new reading of 93138 — the answer is 23. Thus you would have used 23 kilowatt hours in the 24 hour period.

Now you can become a METER MAID and watch your meter like a miser if you choose. WE HAVE A BOOKLET CALLED "MANAGING YOUR ELECTRIC BILL," plus other WISE USE TIPS booklets that help keep you from wasting electricity and so help lower your cost. Any of these booklets are free for the asking at your Public Service office . . . come by and see us.

**ELECTRICITY—IT DOES SO MUCH GOOD**

**The ELECTRIC Company**

FOR SO MANY PEOPLE

Clip this message — Save for reference.

# If You Eat, You Are Involved In Agriculture

## Attend Agriculture Crop & Research School, Aug. 26, 8 p.m.

Farwell School Cafeteria

Pick Up Your Applications At J. B. Suddorth's Office Southeast Of Security State Bank Or You May Register By Phone: 481-3288, 481-3388, 481-3389, 481-9315, 481-3387 Or 481-9149

Applications Need To Be In Our Office No Later Than Friday, August 12, 6 p.m.

Wives Are Especially Invited To Attend.  
 There Will Be Courses Available If Need Arises For Wives.

Speaker Will Be Dr. Willard F. 'Doc' Williams Of Lubbock

'Doc' is world-known for his expertise in all phases of the commodity industry. His many successes as an economist, educator, publisher, analyst and advisor provide him with a broad base of well-balanced technical capabilities and experience. He knows agriculture and commodities.

He Will Be Assisted By Dr. Walt Rogers Of Lubbock

We Have Banks Interested In Financing Your Hedging Should Hedging Become Necessary.

Watch Next Edition For More Information



## Brandon Announces For State Senate

JAMES E. BRANDON, an Amarillo C.P.A. and attorney, today announced his candidacy for the State Senate represent-

ing the 26 counties of the Texas Panhandle, to fill the unexpired term of office to be vacated by Senator Max Sherman.

BRANDON served as Chairman of Ronald Reagan's campaign for the 33 counties of the 13th Congressional District of

Texas and was elected a Reagan delegate to the Republican National Convention in Kansas City, where he served as a floor leader for the 100 member Texas delegation. "If I had to pick one American today who clearly expresses my views on the issues and the role of government in our lives, it would be Ronald Reagan," stated Brandon.

"We are headed for a state income tax unless excessive state spending is halted," Brandon suggested. "The Texas legislature has increased its expenditures from \$8 Billion to \$16 Billion in its last three regular legislative sessions. It's time they realized it's our money and quit spending every dime they can get their hands on. The statement being made that there are no new taxes is but a half-truth because there has been a tremendous increase in the old taxes. Since I could never support a State income tax, I would devote my best efforts to reducing State spending."

"Our number one priority is to get all levels of government off the backs and out of the pockets of its producing citizens. The best mileage in a dollar has

always been obtained by the worker who produced it. The Federal government should not and cannot be allowed to interfere with those aspects of life which can best be dealt with at the state and local level."

"The entire energy problem can be placed at the doorstep of the Federal government because it has placed price controls and unnecessary restraints and regulations on our oil and gas industry and other energy sources. We will solve our energy problems when and only when a free market is restored and a free people allowed to do that which it can do best -- solve its own problems. Lawmakers may change the rules, but one fundamental economic law does not change -- savings (capital) always migrates to the highest return commensurate with the risk and its long term prospects."

"In my judgment, Texas has prospered because it has retained an environment favorable to the worker, savings and business. The working man, investor and the business community have all shared in this prosperity. As a State Senator, I would strive to protect that environment and to see that Texas does not repeat the

mistakes of England and New York City."

"Having been involved in cattle feeding, oil and gas production, real estate, and associated with people engaged in farming and ranching, I am personally acquainted with the serious problems facing major segments of the Panhandle economy."

Brandon was elected to the Amarillo College Board of Regents in 1970 and has served as secretary, vice-chairman and chairman. He was re-elected for a six year term in 1976.

He holds a degree in Accounting from North Texas State University and a Law degree from the University of Texas at Austin. He was a teacher while pursuing graduate studies at these Universities. "Considering that over one-half of our State budget concerns public education, I believe my time spent as a teacher, seven years as a college administrative board member, and nine years as a college student affords me some insight into the educational problem facing Texas."

Brandon and his wife, Peggy, are both native Texans, residing in Amarillo for 22 years. They live at 3001 Teckla with their two sons, Joe and David.

He holds membership in the American Business Club, Texas and American Society of CPA's, Texas Bar Association and Texas Society of Attorney-CPAs. He and his wife are members of Berach Bible Church.

## West Texas Chamber Asks OSHA Repeal

The West Texas Chamber of Commerce Board of Directors has adopted two position papers in regard to pending legislation in Congress.

One is needed legislation to abolish OSHA; the other is a revised position regarding the proposed wild and scenic river designation of the Rio Grande.

WTCC strongly supports the passage of H.R. 1348 (Symms) which states in its entirety that "be it enacted by the Senate and House of Representatives of the United States of America in Congress assembled, that the Occupational Safety and Health Act of 1970 be repealed."

WTCC has taken a position in support of the repeal of OSHA for many reasons, and some of the reasons expressed in the position paper are: (1) The Federal bureaucracy has demonstrated that it is incapable of understanding, administering and implementing the broad scope of the act as passed; (2) its lack of expertise and understanding has caused it to take advantage of the age-old refuge of bureaucrats everywhere of issuing a deluge of incomprehensible regulations written in a veritable unknown tongue; (3) the act has loosened a swarm of bureaucrats upon the citizens to devour tax money at an incredible rate, and has harassed the citizens in the private sector who are trying to make a living; (4) OSHA has impeded and restricted many successful safety programs that have been used and followed by many different segments of our society. WTCC believes that OSHA has in many cases actually decreased the safety of the people in the private sector rather than increasing it; and (5) OSHA, as it now stands and as it has been operated in the past, is another example of federal government intervention into matters of which it has almost no expertise or understanding and apparently refuses to acquire either.

"Since 1970, when the act was passed," says E. Bruce Street of Graham, WTCC President, the federal bureaucracy has demonstrated clearly, and sometimes disastrously, sometimes ridiculously, and sometimes pathetically hilariously that it is incapable of understanding, administering and implementing the absurdly broad and ambiguous scope of the act as passed. Because of its lack of expertise, common sense and understanding, it has issued a deluge of incomprehensible regulations written in a veritable unknown tongue."

In its revised position paper regarding the proposed wild and scenic river designation for the Rio Grande, WTCC strongly opposes the inclusion of any portion of the Rio Grande in the legislation as proposed by President Carter on May 23.

Bob Corkins of Alpine, Chairman of WTCC's Tourist and Travel Development Committee, says that "the inclusion of a 191.2 mile segment of the Rio Grande, as proposed, would effectively close a major portion of the southern boundary of West Texas to any future job and profit opportunities that might develop in the future."

"It would also be detrimental to the good neighbor policy between the United States and Mexico. WTCC's concern over the possibility of West Texas being forever barred from making any decisions or actions in the future for this area as a result of the proposed designation is certainly not new. WTCC has followed closely the efforts of the Interior Department and the Bureau of Outdoor Recreation to arbitrarily assert their will regardless of facts, wishes, future plans or the desires of the people whom the Federal Government is supposed to serve."

Joe A. Kloesel of Midland, WTCC's chairman of National Affairs Committee, says that "the West Texas Chamber of Commerce is deeply interested in the development of outdoor recreation resources, and also in the protection of the natural resources located in the region it serves."

"In fact, WTCC has had an important leadership role in the establishment of Texas' two national parks, Big Bend and Guadalupe Mountains. It is taking a leadership role in the continued development of these and other areas with the objective of providing enjoyment for the majority of the people without adverse impact on what nature has provided."

In its revised position paper WTCC again states that it is greatly concerned with the President's proposal, and believes that if the proposal is implemented in its present form, it will have a far-reaching and long-lasting adverse impact on both West Texas and Mexico, and will result in completely closing a major portion of the international border to any future development of vitally needed jobs and profit opportunities in areas on both sides of the river.

WTCC believes that OSHA has in many cases actually decreased the safety of the people in the private sector rather than increasing it; and (5) OSHA, as it now stands and as it has been operated in the past, is another example of federal government intervention into matters of which it has almost no expertise or understanding and apparently refuses to acquire either.

WTCC strongly supports the passage of H.R. 1348 (Symms) which states in its entirety that "be it enacted by the Senate and House of Representatives of the United States of America in Congress assembled, that the Occupational Safety and Health Act of 1970 be repealed."

WTCC has taken a position in support of the repeal of OSHA for many reasons, and some of the reasons expressed in the position paper are: (1) The Federal bureaucracy has demonstrated that it is incapable of understanding, administering and implementing the broad scope of the act as passed; (2) its lack of expertise and understanding has caused it to take advantage of the age-old refuge of bureaucrats everywhere of issuing a deluge of incomprehensible regulations written in a veritable unknown tongue; (3) the act has loosened a swarm of bureaucrats upon the citizens to devour tax money at an incredible rate, and has harassed the citizens in the private sector who are trying to make a living; (4) OSHA has impeded and restricted many successful safety programs that have been used and followed by many different segments of our society. WTCC believes that OSHA has in many cases actually decreased the safety of the people in the private sector rather than increasing it; and (5) OSHA, as it now stands and as it has been operated in the past, is another example of federal government intervention into matters of which it has almost no expertise or understanding and apparently refuses to acquire either.

In its revised position paper WTCC again states that it is greatly concerned with the President's proposal, and believes that if the proposal is implemented in its present form, it will have a far-reaching and long-lasting adverse impact on both West Texas and Mexico, and will result in completely closing a major portion of the international border to any future development of vitally needed jobs and profit opportunities in areas on both sides of the river.

WTCC believes that OSHA has in many cases actually decreased the safety of the people in the private sector rather than increasing it; and (5) OSHA, as it now stands and as it has been operated in the past, is another example of federal government intervention into matters of which it has almost no expertise or understanding and apparently refuses to acquire either.

WTCC strongly opposes the inclusion of any portion of the Rio Grande in the legislation as proposed by President Carter on May 23.

WTCC's chairman of National Affairs Committee, says that "the West Texas Chamber of Commerce is deeply interested in the development of outdoor recreation resources, and also in the protection of the natural resources located in the region it serves."

WTCC has had an important leadership role in the establishment of Texas' two national parks, Big Bend and Guadalupe Mountains. It is taking a leadership role in the continued development of these and other areas with the objective of providing enjoyment for the majority of the people without adverse impact on what nature has provided."

WTCC again states that it is greatly concerned with the President's proposal, and believes that if the proposal is implemented in its present form, it will have a far-reaching and long-lasting adverse impact on both West Texas and Mexico, and will result in completely closing a major portion of the international border to any future development of vitally needed jobs and profit opportunities in areas on both sides of the river.

WTCC believes that OSHA has in many cases actually decreased the safety of the people in the private sector rather than increasing it; and (5) OSHA, as it now stands and as it has been operated in the past, is another example of federal government intervention into matters of which it has almost no expertise or understanding and apparently refuses to acquire either.



**Hindquarter Of Beef**  
CUT & WRAPPED TO YOUR SPECIFICATIONS

**\$1 lb.**



**Home Cured Bacon**



**Home Cured Hams**

WE DO CUSTOM PROCESSING

## Muleshoe Locker Co.

401 Main
272-4703

Singleton-Ellis Funeral Home

24 Hour Ambulance Service

Ph. 272-4574 Muleshoe



# ATTEND THE CHURCH OF YOUR CHOICE



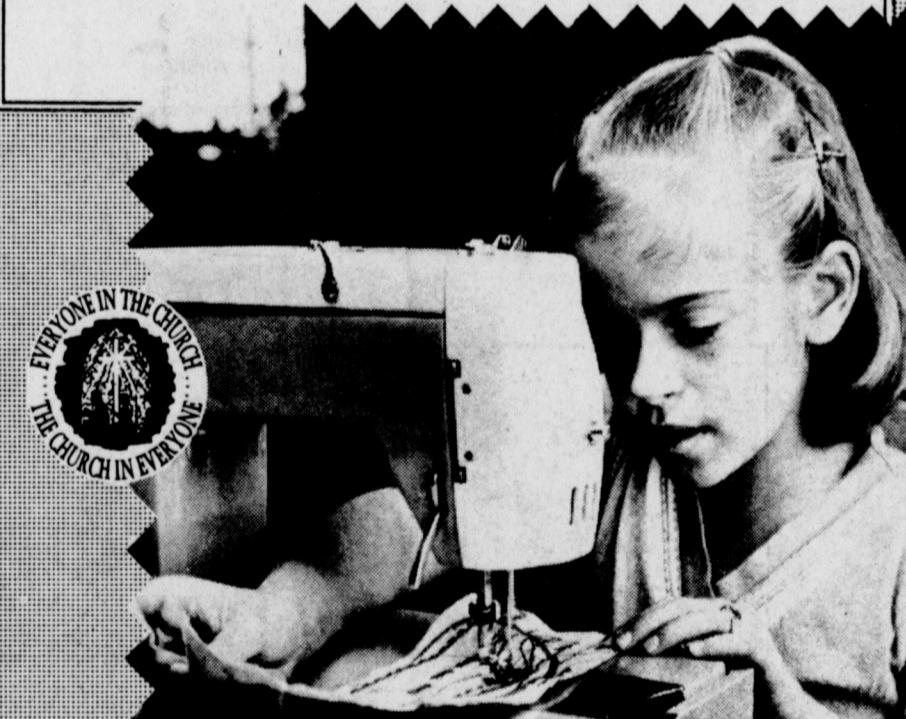
- FIRST UNITED METHODIST CHURCH**  
Rev. David Hamblin  
507 West Second, Muleshoe
- UNITED PENTECOSTOL GOSPEL LIGHTHOUSE CHURCH**  
George Green, Pastor
- PRIMITIVE BAPTIST CHURCH**  
Elder Bernard Gowens  
621 South First
- FIRST ASSEMBLY OF GOD**  
Rev. Joe Stone  
517 South First
- JEHOVAH'S WITNESS**  
Boyd Lowery, Minister  
Frona Highway
- FIRST CHRISTIAN CHURCH**  
Rev. Walter Bartholf  
Sunday School 10:00 a.m.  
Worship 11:00 a.m.  
130 West Avenue G.
- LATIN AMERICAN METHODIST MISSION**  
R.Q. Chavez, Pastor  
Fifth Street & Avenue D.
- NORTHSIDE CHURCH OF CHRIST**  
117 E. Birch Street
- THE COMMUNITY CHURCH**  
Rev. H.D. Hunter  
Morton Highway
- CHURCH OF THE NAZARENE**  
David Gray, Pastor  
Ninth & Avenue C.
- CALVARY BAPTIST CHURCH**  
James Williams, Pastor  
1733 West Avenue C.
- TRINITY BAPTIST CHURCH**  
Rev. David Evetts  
314 East Avenue B.
- RICHLAND HILLS BAPTIST CHURCH**  
Roy L. Sikes, Pastor  
17th and West Avenue D.

for a Better Tomorrow

Working, learning to sew... Now, something simple is being prepared and soon her own dresses, and in the future, clothing for her own family. Training is important in the lives of our children.

Spiritual training is a must in the lives of our young ones.

*"Train up a child in the way he should go; and when he is old, he will not depart from it."*



C. Coleman Adv. Serv.

- SPANISH BAPTIST MISSION**  
Rev. Ynes Aleman  
East Third and Ave. E.
- MULESHOE BAPTIST CHURCH**  
Bob Dodd, Pastor  
8th Street and Ave G.
- PROGRESS SECOND BAPTIST CHURCH**  
Clifford Slav, Pastor  
First and Third Sundays.
- FIRST BAPTIST CHURCH**  
Rev. J.E. Meeks  
220 W. Ave. E.
- ST. JOHN LUTHERAN**  
Lariat, Texas  
Herman J. Schelter-Pastor  
Sunday School  
Classes 9:30 a.m.  
Worship Services 10:30 a.m.
- ST. MATHEW BAPTIST CHURCH**  
E. McFrazier, Pastor  
West Third
- SPANISH ASSEMBLY OF GOD**  
Rev. Hipolito Pecina  
East 6th and Ave. F.
- PROGRESS BAPTIST CHURCH**  
Progress, Texas  
Danny Curry, Pastor
- SIXTEENTH & AVENUE D CHURCH OF CHRIST**  
Terry Bouchelle, Minister  
Sunday 10:30 a.m.  
Evening 6 p.m.  
Wednesday 8 p.m.
- IMMACULATE CONCEPTION CATHOLIC CHURCH**  
Father Timothy Schwertner  
Northeast of City in Morrison Edition
- MULESHOE CHURCH OF CHRIST**  
Rovee Clay, Minister  
Clovis Highway
- LONGVIEW BAPTIST CHURCH**  
B.C. Stonecipher, Pastor  
Phone 946-3413

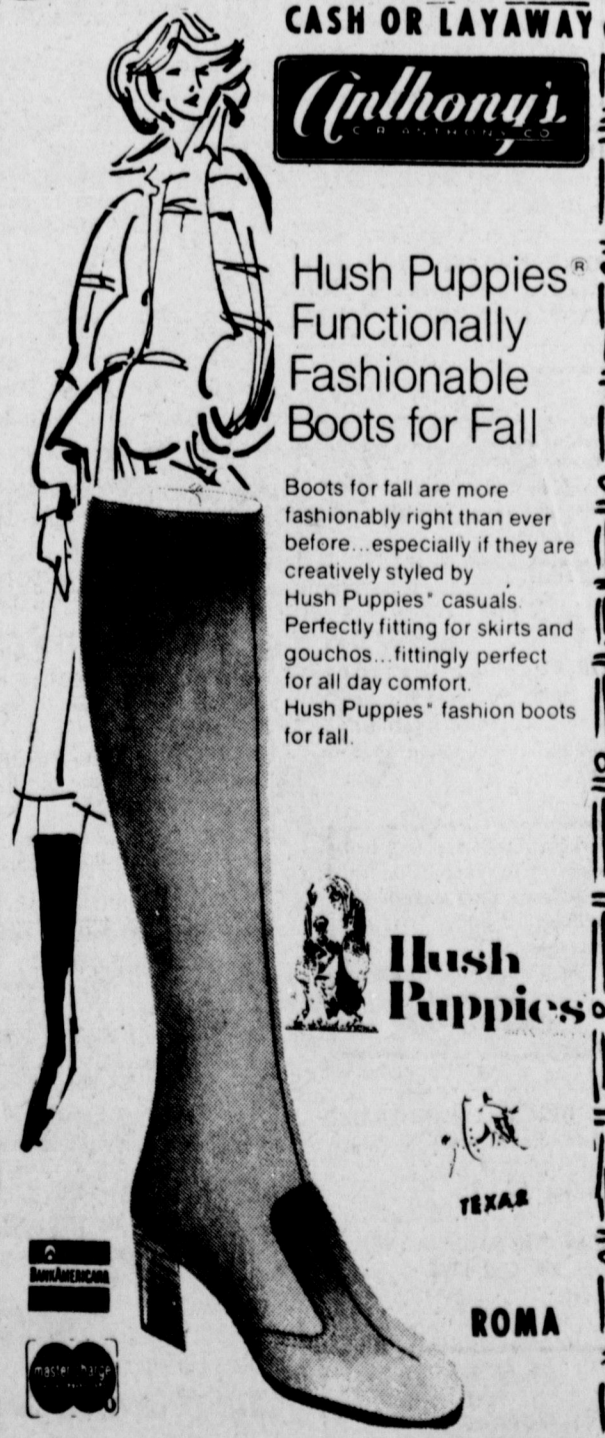
<b>BEAVERS FLOWERLAND</b> "Flowers For All Occasions" 272-3024 Or 272-3116	 <p style="font-size: 0.8em;">Margie Hawkins, Manager 272-3412</p>	<b>WESTERN DRUG</b> 114 Main	<b>MULESHOE MACHINE &amp; WELDING</b> Gear Head Repair, Sales & Service 272-3145 123 Fir St.
<b>WATSON ALFALFA</b> 272-3552 272-4038	<b>MULESHOE CO-OP GINS</b>	<b>WHITES CASHWAY GROCERY</b> 402 Main "Where Friends Meet And Prices Talk"	<b>WESTERN SPRINKLERS INC.,</b> W. Hwy. 84 ZIMMATIC 272-4544
<b>BRATCHER MOTOR SUPPLY</b> 107 E. Ave. B. 272-4288	<b>ST. CLAIRS</b> 110 Main	<b>WHITT-WATTS-REMPE IMPLEMENT CO.</b> John Deere Dealer Muleshoe 272-4297	<b>WEST 6TH TEXACO</b> 272-4633 Road Service W. 6th & W. American Blvd.
 <p style="font-size: 0.8em;">1723 W. American Blvd. 272-4306</p>	Compliments Of <b>STATE LINE IRRIGATION</b> Littlefield-Muleshoe-Levelland	<b>MULESHOE PUBLISHING CO.</b> Muleshoe 272-4536	<b>MAIN STREET BEAUTY SALON</b> 115 Main 272-3448

CASH OR LAYAWAY



Hush Puppies®

Functionally Fashionable Boots for Fall



Boots for fall are more fashionably right than ever before... especially if they are creatively styled by Hush Puppies' casuals. Perfectly fitting for skirts and gouchos... fittingly perfect for all day comfort. Hush Puppies' fashion boots for fall.

TEXAS ROMA



# CLASSIFIED ADS

## Enochs News

By Mrs. J.D. Bayless

Quinton Nichols and son, Richard, also Gary Nichols spent the weekend at Ruidoso, N.M. Nichols wife, Dorothy and son, Mike, joined them Sunday night.

Rev. and Mrs. Charles Vanlandingham of Raton, N.M. spent Thursday and Friday visiting his mother, Mrs. Josie Vanlandingham, and with his sister, Mr. and Mrs. Lawrence Hall from Anaheim, Calif., at their mothers home.

Mr. and Mrs. Loyd Pollard were guests in the home of an uncle, Mr. and Mrs. Carl Pollard Sunday at Steagall.

Mr. and Mrs. Claud Brown of Ropesville stopped in for a short visit with the Chester Petree's and the J.D. Bayless's Saturday.

The Baptist women met at their regular time Tuesday morning. The meeting opened with a song, "Break the Bread of Life" led by Mrs. Chester Petree with Mrs. Flo Nichols at the piano. Mrs. J.W. Layton led in prayer. This was business with Mrs. Dale Nichols in charge. Mrs. Flo Nichols read the Minutes and treasurers report. Mrs. Dale Nichols gave the devotional, "On Worry" and read Psalms 23 chapter. Mrs. Harold Layton gave the call to Prayer and Mrs. Alberta Bryant gave the benediction. Those present were, Mrs. Alma Altman, Mrs. J.D. Bayless, Mrs. Chester Petree, Mrs. Charlie Shaw, Mrs. Flo Nichols, Mrs. J.W. Layton, Mrs. Dale Nichols and two visitors, Mrs. Alberta Bryant of Littlefield and Sandra Bryant of Clayton, N.M.

Mrs. E.C. Gilliam was admitted to the Morton Memorial Hospital Monday and Mr. Gilliam was admitted to the hospital Friday.

Mrs. Flo Nichols visited her sister-in-law, Mrs. Jack Hardin, also Mr. and Mrs. Pat Morris in Littlefield Thursday afternoon.

Mrs. Kenneth Petree and children of Clovis, N.M. spent the weekend with her in-laws, Mr. and Mrs. Chester Petree, and the children stayed to spend the week.

Kerry Jay Rowden of Lubbock

spent the week with his grandparents, Mr. and Mrs. E.N. McCall and Mrs. McCall, Mrs. Alma Altman and Mrs. J.D. Bayless took him home Friday afternoon and visited in the Don Vanlandingham home and drove on to Idalou and visited in the home of Mr. and Mrs. Ray Seagler. She then visited in the home of the McCall's other daughter, Mr. and Mrs. Robert George.

Mrs. Charlie Shaw, and Mrs. Dale Nichols attended a Pastor's Wives luncheon at Friona Thursday in the home of Mae Magness. This luncheon was hosted by the officers of the Llanos Altos W.M.U. This luncheon is in conjunction with the centennial celebration of Texas W.M.U. in 1980.

Guests in the home of Mr. and

## The Sandhills Philosopher

Editor's note: The Sandhills Philosopher on his Johnson Grass farm on Sandy Creek finds what he considers some startling news this week.

Dear editor: As everybody knows, land prices have been going sky-high and as a result what a piece of land will produce and what it'll sell for have no connection. It's sort of like it is with some Congressmen.

This has been caused in part by the awakened desire of city people to own some land in the country, although after they get some I've noticed their enthusiasm frequently plays out. I'd say that on the average it takes about three or four years for a city dweller to find out that owning a second home in the country isn't as much fun as he thought it'd be. It takes some city people a while to figure out that paying two sets of mortgages and two sets of utility bills doesn't come out to being twice as much fun as paying one.

But what got me off on land was an article I read the other day revealing an absolutely new standard for selling the stuff. The city of Philadelphia, trying to recoup some of its lost industry, is offering to sell 1,300 acres of land valued at \$35,000 an acre for only \$3,500 and acre, a 90 per cent discount.

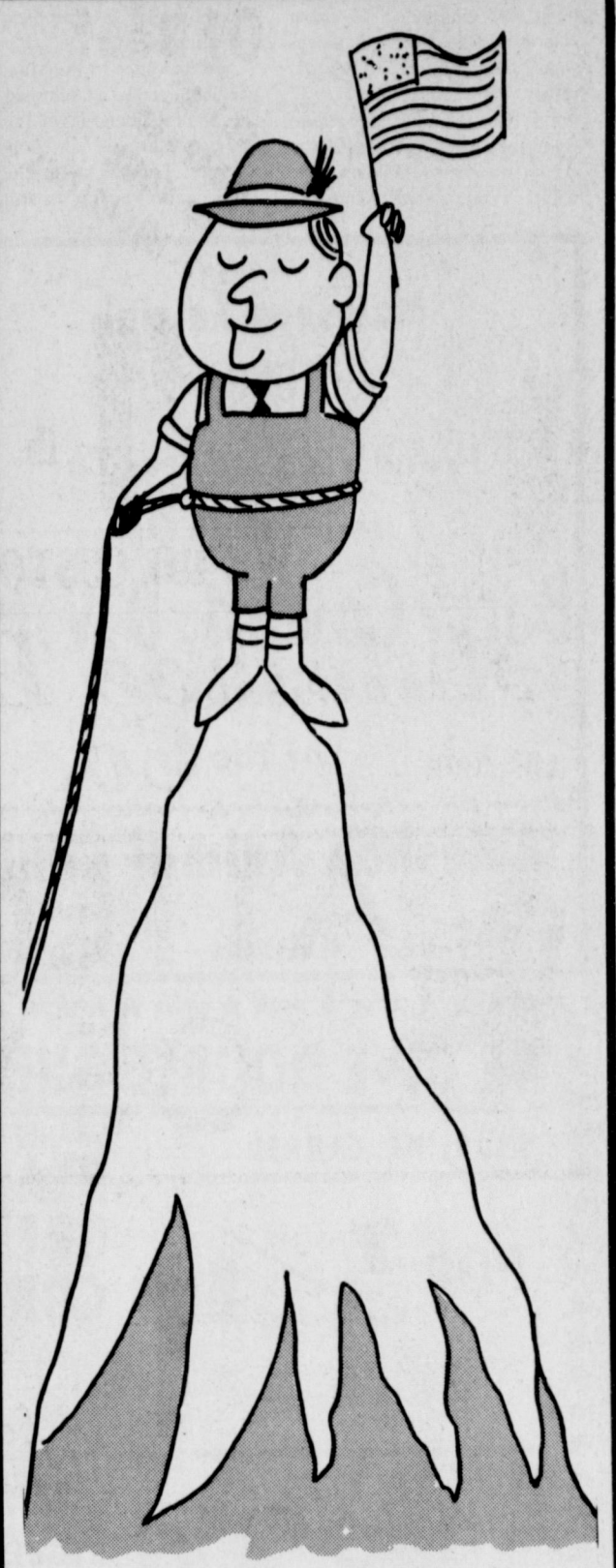
The terms of the sale however are that a buyer must agree to put up some kind of factory or business that'll produce 15 to 30 jobs per acre.

Selling land on the basis of jobs-per-acre is an absolutely new wrinkle and may be all right for Philadelphia, but I hope the idea doesn't spread. It certainly would reduce the market value of my farm and some of my neighbors' farms out here.

Yours faithfully,  
J.A.

Mrs. Harold Layton Sunday were her sister, Mr. and Mrs. Dennis Gutwald and children, April, Denny, Angela and Karen of Las Vegas, Nevada. Mrs. Layton's brother, Mr. and Mrs. Bruce Angel and girls, Stephanie and Leisha of Lubbock, Mr. and Mrs. John Cox and Mr. and Mrs. Jerry Nichols. The Gutwalds will be visiting the Laytons and Mr. and Mrs. Johny Cox till Wednesday.

The canning season is in full swing. Some are canning peaches, peas, beans and fixing okra and squash for the freezer.



### You're on top of things when you have ready credit

Ready Credit!! A new money-lending system. Instant cash when you need it. Stop by. Fill out an application. Activate your Ready Credit by mail, by phone or in person. Or, just push the button at the Ready Bank. Ready Credit's the easy way to stay on top of things.



**MULESHOE STATE BANK**

101 AMERICAN BLVD. 272-4561 MEMBER FDIC

**DROP IN** WE'LL BE GLAD TO HAVE YA.

**Johnson Furniture**  
Phone 272-4315  
2104 American Blvd.  
Muleshoe, Texas

## ONE MINUTE SPORTS QUIZ

- Who won the Pleasant Valley Classic?
- Name the winner of the All-Star Game.
- Name the managers for the All-Star Game.
- Joe Namath is to quarterback for what pro team?

## Answers To Sports Quiz

- Ray Floyd.
- National League.
- Billy Martin and Sparky Anderson.
- L. A. Rams.

**GLEN WATKINS**  
925-6743

**START LOSING WEIGHT TODAY**

The hardest part of losing weight is getting started. Super ODRINEX will give you the power that extra push it needs to start losing weight today.

Begin with this amazing tiny tablet. You'll eat less—turn food and excess fat into burned-up energy instead of extra weight as you follow the Plan.

Clinically proven effective, the Super ODRINEX Reducing Plan will enable you to lose pounds and inches without getting nervous—or money back. You can start losing weight today with new Super ODRINEX and see the difference in your mirror. You owe it to yourself.

**Western Drug Co.**  
114 Main St.

## Legal Notice

### NOTICE OF ELECTION AVISO DE ELECCION

To the Registered Voters of the County of Bailey, Texas: A los votantes registrados del Condado de

Notice is hereby given that the polling places listed below will

**PEAS AND BEANS** for sale. **ROBERT AND FRANKIE LUNSFORD.** 272-3748. 4 miles west on 1760, 1 mile north, 1/4 mile west. 11-29s-tfc

**\$100 REWARD** Offered for arrest and conviction of anyone doing damage to paper stands. **Muleshoe Publishing Co. 272-4536.** 11-15-tfc

**FOR SALE:** A lot at Lake Meredith harbor. **272-3440.** Call Monday through Friday. 11-30s-8tp

**FOR SALE:** 1976 22' RED DALE 5th wheel camper, fully self contained, air conditioner, and hitch. Excellent condition. **806-257-2070 or 257-2120.** 11-30t-tfc

**FOR SALE:** Sofa, chairs, 2 king size beds with head boards, dinette set, lamps, end table, coffee table, night stand, black and white portable TV, all in good condition. **CALL AFTER 7 P.M. 272-3249.** 11-27-tfc

**FOR SALE:** Corn fed locker beef, 1/2 or whole. 230 lb.-250 lb. carcass. Cut, wrapped and frozen. 83 cents lb. **CALL JEFF SMITH AT 965-2214, 965-2830 or 272-4588.** 11-25-tfc

## Miscellaneous

**PHILLIPS HOUSE OF MUSIC** 118 MAIN CLOVIS, NEW MEXICO  
Pianos, organs, band instruments, new and used. Professional repairs, sheet music, rentals, terms.  
Phone: 505-763-5041. 15-30s-tfc

**PEST CONTROL AND TREE SERVICE** spraying and feeding. Termite Inspections. 272-3723. 15-28t-tfc

**BUSINESS OWNER RELOCATING TO MULESHOE** will rent or lease 3 bdr. home in town or country, furnished or unfurnished. References. Call 273-3723 or collect Amarillo 372-7512. 7-28t-tfc

**PAINTING AND BUILDING REPAIR.** HOWARD GRIFFIN. 272-3838. 15-31t-8tp

Custom Designed and Made-To-Order RINGS-N-THINGS BY JEROLLY 918 E Hickory Phone 272-3163

**FURNITURE UPHOLSTERING:** Reasonable rates. 303 E Cedar. Phone 272-4255. 15-29t-12tp

## Legal Notice

A budget hearing will be held at the next regular board meeting of the Lubbock School Board on August 8th, 1977, 8:00 p.m. in the Superintendents office-board room. 32s-1tc

## Card Of Thanks

We wish to express our thank you to our friends and customers at the loss of our loved one, Joe Darnon. Thank you for the prayers, visits, cards, food and flowers.

May God bless you.  
Mrs. Joe Darnon  
Mr. and Mrs. Sam Darnon  
Mr. and Mrs. John Smith  
Mr. and Mrs. Jim Reese, Odessa and grandchildren:  
Mr. and Mrs. Gary Smith, Austin  
Mr. and Mrs. Larry Stallings, Amarillo  
Mr. and Mrs. Terry Hutton, Goodland  
Mr. and Mrs. Ben Maurney, Jackson, Miss.  
Miss Greta Reese, Sherman  
Mr. Ricky Reese, Richardson  
Miss Lori Jan Reese, San Marcos  
32s-1tc

**OPEN RATES**  
1st insertion, per word - \$.09  
2nd and add., per word - \$.06

**NATIONAL RATES**  
1st insertion, per word - \$.11  
2nd and add., per word - \$.07

Minimum Charge - \$.50  
CARD OF THANKS - \$.30  
Classified Display - \$1.30 per column inch.

Double Rate for Blind Ads - DEADLINE FOR INSERTION 11:00 Tuesday for Thursday 11:00 Friday for Sunday

WE RESERVE THE RIGHT TO CLASSIFY, REVISE OR REJECT ANY AD.  
NOT RESPONSIBLE FOR ANY ERROR AFTER AD HAS RUN ONCE.

**Personal**

**FOR YOUR Stanley Home Products,** Jewel Broyles, call 965-2481. 1-16t-tfc

**PREGNANT? Problems?**

Need someone to talk with? We serve people of all religions. Catholic Family Service can help. Texas State Licensed Agency. Call Collect (806) 376-4571

**FOR YOUR SHAKLEE PRODUCTS.** See or call Pete or Marieta Wilkinson. 272-3026. 1-28t-tfc

**PEST CONTROL AND TREE SERVICE** spraying and feeding. Termite Inspections. 272-3723. 1-28t-tfc

## Help Wanted

**STUDENTS, LADIES and/or RETIRED MEN or WOMEN.** Call on established Fuller brush customers. Part time or full time. High earnings. Requirements: neat appearance, car and phone. **WRITE BOX 1074, LEVELLAND, TEXAS 79336 or call 894-5879.** 3-27s-7tc

Need operators at Main Street Beauty Shop. Call 272-3448. 3-12t-tfc

Experienced line mechanic five day work week, other fringe benefits. **Town and Country Auto Muleshoe, Texas.** 3-14s-tfc

**HELP WANTED:** Bill's Drive In. Apply in person. 3-30t-tfc

**APPLICATIONS** now open for a nurse's aide class. 80 hours classroom and clinical instruction. \$25.00 tuition with books included. Openings for employment after satisfactory completion of the course. For more information call Mattie Hicks, R.N., Director of Nursing or Troy Turpen, R.N., In-Service Director. West Plains Medical Center. 272-4524 3-31t-2tc

**HELP WANTED:** someone to work at school store. **FLO LYNK. CALL 3881.**

**5. APTS. FOR RENT**

**Trailer spaces to rent. Water furnished. Own meters. Apts. Kitchensettes.** 272-4440. 5-19t-104tp

## Real Estate

**FOR SALE:** 3 bdr. brick home, 1 1/2 bath, 90 foot lot, newly painted, fenced back yard with 2 storage houses. Phone 3129 or 3589. 8-32s-4tc

**FOR SALE:** 10 acres, 4 bedroom brick home, 30 fruit trees, large shop and storage building, 3 1/2 miles NW from Muleshoe.

**Smallwood Real Estate** 116 E. Ave C Phone 272-4838 8-19t-tfc

**FOR QUICK SALE OR TRADE:** 2 bdr. house. 902 S. Main. Phone 965-2738. 8-31s-tfc

**HOUSE FOR SALE:** 614 W Ave C. \$15,500. Call 4714. 8-31s-tfc

**SALES, LOANS AND APPRAISALS** In Bailey County 30 Years **KREBBS REAL ESTATE** 122 W. Ave. C.

**FOR SALE:** need to sell small acreage with 2 houses.

2-2 bdr. houses to be moved. \$900 each.

25 A on hwy. 84. Reasonably priced.

We need your listings. Remember: **REID REAL ESTATE** 611 SOUTH MAIN PHONE 272-4693 LUCILLE HARP 8-30t-tfc

1/2 section, two 8" wells. 3 bdr. home. Other improvements. Wells on gas.

Wanted... Small acreage. **E.E. HOLLAND REAL ESTATE** 113 W. Ave. D PHONE 272-3293 DAY OR NIGHT Robin Davis, Salesman

**SACRIFICE OUR BEAUTIFUL HOME:** 4 bdr., 2 baths, large living-den, corner fireplace, formal dining, small office, sun room, walk in utility, all new drapes, attic storage, prime location. Phone 272-3848. 8-tfc-tfc

We need your listings. Some choice lots for sale. **POOL REAL ESTATE** 272-4716 214 AMERICAN BLVD.

**FOR SALE:** 3 bedroom, living dining room area. Refrigerated air. Nice yard, corner lot. Call Hagerman High School for Dave Lynn. 8-31t-4tc

**J.B. SUDDERTH REALTY, INC.** 481-3288 FARWELL, TEXAS

Beautiful 120 A, 2 wells, nice 3 bdr. house with out buildings, nw of Muleshoe on FM hwy. IMMEDIATE POSSESSION of growing crop. 8-31t-tfc

**9. AUTOMOBILES FOR SALE**

**FOR SALE:** 1974 vega, GT, 4 speed. Silver with black and white interior, tape deck. 27,000 miles. 272-4603 after 6. 9-30t-tfc

## 10 FARM EQUIP.

**FOR SALE:** 1974 GMC camper special 1 ton PICKUP. 3500 series GVW, 39,000 miles. **HESTON** gooseneck 60-A STACKOVER\* with power pack. **JOHN DEERE 200 STACKER** like new. Has made only 300 stacks. 272-4492 or mobile phone 965-2459. 10-30t-tfc

**FOULER SUNFLOWER ATTACHMENT** complete with tables stalk walker, reel and back board in good condition. For 10520' **JOHN DEERE** combine. Call 272-3978. 10-31s-8tp

**FOR SALE:** 11 wire type cotton trailers. **COBEY, JOHN DEERE, LUBBOCK MACHINE.** All heavy duty. 965-2265. 10-31s-6tc

**FOR SALE:** 7700 JOHN DEERE combine, 70 model with 5-40" row corn header, has 24' platform header. Complete overhaul on engine. Machine has been stored in barn. **Big 12 GRAIN CART.** 1 69 FORD TANDEM. F-600 with heavy frame and 24' steel grain bed and hoist. 1 61 model FORD TANDEM F-850 with 534 engine. 20' steel grain bed and hoist. \$40,000 for whole thing. 214-381-7789 or 806-965-2283. 10-31s-4tc

**11. FOR SALE OR TRADE**

**FOR RENT:** 46' x 24' storage room. Large back door. Back of 219 E. Ave B. 272-5052 or 257-3821. 6-32s-tfc

**FOR SALE:** 3 m (209) Copier. Letter, legal and book size. Has existing maintenance contract. Phone 257-2070. Earth. 11-32s-tfc

**FOR SALE:** Pulletts and roosters. 925-6474. 11-32s-3tc

**FOR SALE:** 3 bdr. trailer. Call 272-3805. 11-31t-tfc

**Save With Our Low Overhead! Come In Soon! Johnson Chevrolet**

201 Commerce Sudan 227-2050

**KEEP COOL THROUGH THE LONG, HOT SUMMER...**

With An Amana, Rudd Or Payne Central Air Conditioning Unit. Call Today For A Free Estimate, Terms Are Available.

**Wilson Appliances**

117 Main Muleshoe 272-5531



## Cotton Council Asks Voluntary Standard

The National Cotton Council has urged the Consumer Product Safety Commission to maintain, eliminate, or make voluntary its children's sleepwear, flammability standards, rather than modify them.

In a letter to chairman S. John Byington, the Council said the cotton industry believes the CPSC may soon consider

changes in the standards that would permit untreated man-made fibers to be used and thereby offer less protection to consumers.

Modifications in the standards are believed to be planned as a result of the banning of Tris as a flame retardant for polyester fabrics. This has been indicated as a cancer-causing treatment.



JAYCEES NEW CONCESSION WAGON...Proudly displaying the blue and gold Jaycees official color is this concession wagon or trailer, recently obtained by the Muleshoe Jaycees. They plan to have the new concession at all local functions. Here it is getting set up prior to wrestling in Muleshoe last Monday night.

Today's flame-retardant cotton fabrics used in children's sleepwear are "fully capable of complying" with the CPSC flammability standards, the Council told the Commission chairman, and use finishing chemicals that do not cause cancer.

In a statement submitted earlier to an Oversight and Investigations Subcommittee of the House Committee on Interstate and Foreign Commerce, the Council said cotton FR treatments have been "erroneously

implicated as possible tumor promoting agents on the basis of monomers used in them."

"It is paradoxical," the Council said, "that cotton FR treatments should tend to be associated with Tris when, in fact, the treated cotton fabrics are more like the inherent flame-retardant fibers than topically-treated synthetics."

Regarding monomer testing to determine the carcinogenicity hazard of FR products to consumers, the Council statement asserted that "the same reason-

ing applied to modacrylics, for instance, would disqualify them for use in apparel since some of the monomers used in the production of modacrylics (e.g., vinyl chloride and acrylonitrile) are known carcinogens."

The statement concluded, that "for the same reasons that monomer testing would have no significance as a measure of the carcinogenicity of inherent FR fibers to consumers, it has no significance as a measure of the carcinogenicity of FR-cottons to consumers.

### Regional change

AUSTIN, Texas (Spl.) — The "second war between the states" could emerge between the industrialized Middle West, North and Northeast and the emerging South and West over many issues of national concern.

A University of Texas symposium Sept. 24-27 will look at regional problems and perspectives and explore national policies that would unify rather than divide the nation. The symposium is entitled "Alternatives to Confrontation: A National Policy Toward Regional Change."

Among topics will be population shifts, energy policy, economic growth and decline, urban-rural problems and welfare reform.

### Coronary arteries

AUSTIN, Texas (Spl.) — A University of Texas scientist who does research on heart disease says the trouble with coronary arteries is that they are so small a wooden match stick would fit snugly inside one.

Dr. Walter K. Long says an obstruction does not have to be very large to block an artery. A common block is the formation of plaque, a complex growth of smooth muscle tissue and other constituents.

"Like scale in a pipe, the plaque slows down the flow of blood through the artery, and slowly flowing blood tends to clot," says the UT Austin scientist whose research involves the study of genetic factors in coronary artery disease.

### Courthouse News

#### MARRIAGES

Clyde Irvin McMahon of Muleshoe and Dorothy Jan Hayes of Lubbock.

Prentice Lee Griffiths of Muleshoe and Mary Colleen Royal of Muleshoe.

#### WARRANTY DEEDS

Margaret Mahon to Margaret Dale Haynie, Sally Ann Stewart, Durward D. Mahon, Jr., Mike Thomas Mahon and William Patrick Mahon, Part of Sec. 58, Block Y, W.D. & F.W. Johnson Subdivision, Bailey County.

Armando Porras and wife, Annie Porras to E.H. Gatlin and wife, Nellie Elizabeth Gatlin,

Lot 22, Gatlin Addition, Town of Muleshoe.

Muleshoe Developments, Inc., to Tri-County Savings and Loan Association Tract 1: NW 1/4 45' of Lot 23, All of Lot 24, NW 1/4 20' of Lot 62, All of Lots 63 and 64, SE 1/4 54' of Lot 83, SE 1/4 26' of Lot 155, All of Lot 156, NW 1/4 17' of Lot 157, All of Lots 185-192, All of Lots 225-242, NW 1/4 38.42' of Lot 243, All of Lot 249, NW 1/4 23.42' of Lot 250, Richland Hills Addition, City of Muleshoe. Tract 2: E line of Sec. 34 and W line of Sec. 39, Block Y, W.D. & F.W. Johnson Subdivision No. 2, Bailey County. Tract 3: W line of NE 1/4 and E line of NW 1/4 of Sec. 33, Block Y, W.D. & F.W. Johnson Subdivision No. 2, Bailey County. Tract 4: E line of SW 1/4 and W line of SE 1/4 of Sec. 33, Block Y, W.D. & F.W. Johnson Subdivision No. 2, Bailey County.

**Muleshoe Animal Clinic**  
Proudly Announces The  
**Association Of**  
**Barry Cowart, D.V.M.**  
In Practice  
At The  
**Muleshoe Animal Clinic**  
W. Hwy. 84 Muleshoe 272-3061

## WE GIVE DOUBLE GUNN BROS. STAMPS EVERY WEDNESDAY & SATURDAY

PRICES EFFECTIVE AUGUST 7-13

**Pay-n-Save**  
QUALITY AND SERVICE

STORE HOURS: 8 a.m.-10 p.m. MON.-SAT. 9 a.m.-9 p.m. SUNDAY

SHURFINE CANNED POP 7 <b>\$1</b>	SHURFRESH FROZEN PEAS & CARROTS GREEN PEAS CORN 3 <b>77¢</b> 10 OZ. PKG. MIX OR MATCH	MISS BRECK HAIR SPRAY <b>89¢</b> 11 OZ. CAN	SHURFRESH FROZEN LEMONADE <b>5/77¢</b> 6 OZ. CAN
SHURFINE COFFEES <b>\$2.89</b> 1 LB. ALL GRINDS	SHURFINE FLOUR REGULAR OR SELF RISING <b>39¢</b> <b>59¢</b> 5 LB. BAG	SHURFRESH ALL VEGETABLE SHORTENING <b>\$1.89</b> 3 LB. CAN	CHICKEN OF THE SEA TUNA GREEN LABEL <b>69¢</b> 6.5 OZ. CAN
HUNT'S TOMATO SAUCE <b>4/77¢</b> 8 OZ. CAN	BAN ROLL-ON <b>99¢</b> 1.5 OZ.	SHURFINE SPINACH <b>4/77¢</b> 15 OZ.	SHURFINE WIENERS <b>69¢</b> 12 OZ.
MACARONI & CHEESE DINNERS SHURFINE <b>3/77¢</b> 7 1/4 OZ.	KRAFT MACARONI & CHEESE DINNERS <b>3/77¢</b> 7 1/4 OZ.	SHURFRESH POPSICLES <b>89¢</b> 24 COUNT PKG.	SHURFINE POWDER CLEANSER <b>15¢</b>
AFFILIATED NOTE BOOK PAPER <b>77¢</b> 300 COUNT	M25B BIC REGULAR POINT PENS BLACK RED BLUE <b>7/77¢</b>	GLUE-ALL ELMERS <b>2/77¢</b> 4 OZ.	TONE MOISTURIZER BATH SOAP BATH SIZE BARS <b>3/77¢</b>
LETTUCE <b>\$1</b> 3 HEADS	SANTA ROSA PLUMS <b>39¢</b> LB.	SHURFRESH BISCUITS <b>6/77¢</b>	SHURFRESH MARGARINE <b>2/77¢</b> 1 LB. PKG.
RED GRAPES <b>79¢</b> LB.	BANANAS <b>18¢</b> LB.	PEACHES <b>3/77¢</b> 3 LBS.	SHURFRESH AMERICAN CHEESE FOOD <b>98¢</b> 12 OZ.
			DOUBLE VALUE COUPON Wednesday Only Double The Face Value Of All National Coupon On Merchandise Purchased At Pay & Save Except Coupons For Free Items EXAMPLE 10¢ Coupon is worth 20¢ 20¢ Coupon is worth 40¢ 30¢ Coupon is worth 60¢
			AFFILIATED TYPING PAPER 100 COUNT <b>59¢</b>