

# The Carbon Messenger

July 23, 1959

Volume 48

Carbon, Eastland County, Texas, Thursday, July 23, 1959

## Local News In Brief

Bernard Campbell and family of Morenci, Ariz. have been visiting his parents, Clyde Campbell and wife.

S. S. Sherrell is in the Veterans Hospital at McKenny where he underwent major surgery last week.

Jim Weaver and wife visited their son, J. W. Weaver, and family of Antelope Sunday. Mrs. Weaver remained with her daughter-in-law who is ill.

Mrs. Annie Reese of Cisco visited relatives and friends here recently.

A. L. Jackson and family of Hobbs, N. M. and Dwayne Jackson of Fort Stockton visited their parents, A. S. Jackson and wife, last week.

Mrs. Thelma Proctor of O'Donnell and her grandson, Ronnie Proctor, of Andrews spent Friday night with Mrs. Georgia Davis.

Visitors in the Wade White home recently were Mrs. Clifford Harter of Plainview, Jackie Clark and family of Lamesa, Mrs. Jim Everett of Cisco and Mrs. Bud Clark of Cisco!

Wayne Campbell and family of Azle visited his mother, Mrs. Dan Boatwright, and Mr. Boatwright Sunday.

Mr. and Mrs. Henry Collins spent the week end with their son, Bob Collins, and family of Waco.

Roy Ussery and family of Weslaco visited their parents, Mr. and Mrs. W. R. Ussery and Mr. and Mrs. W. E. Walker, this week.

Mrs. Connie Cloud of Abilene visited relatives here last week end.

How long has it been since you paid your subscription to the Messenger? We are very anxious to bring our mailing list up to date.

Bach, the composer, was the father of 20 children.

Charles Carraway and Jerry May attended the State Future Farmers Convention in Austin last week. Jerry was voting delegate from the Carbon Chapter and Charles received the Lone Star Farmers Degree. They were accompanied by their adviser, Mr. G. W. Mosier, agriculture teacher of Carbon.

Jack Stubblefield and family of Bartlesville, Okla. visited his parents, Mr. and Mrs. F. J. Stubblefield, this week. Also her mother, Mrs. Arbell Underwood, of Eastland.

Mrs. Heppy Jackson returned home Wednesday from Gorman Hospital where she is recovering from major surgery.

Mrs. Frank Park returned home Sunday from the Eastland Hospital where she had undergone minor surgery.

## Gorman Jaycees Sponsor Carnival

The Gorman Jaycees will hold a carnival at Bass Lake Saturday night, July 25. There will be several good entertaining booths and rides for the kiddies, including pony rides. All proceeds will go to civic improvement.

The evenings entertainment will be climaxed with a beauty contest, with around twenty entrants participating, and the winner will be chosen to represent Gorman at the De Leon Melon Festival. Everyone is invited. No charge at the gate.

## CCC Company Plans Reunion August 19th

Ex-members of CCC Company 835-F 11 N and families will hold their first annual reunion at their old camp site near Mimbres, New Mexico, on August 19, according to a report here. A basket lunch will be spread at noon. This company was organized May 19, 1938, at Camp Bullis, Texas. About 200 men and boys from Texas and New Mexico served in the company, and a large number from the cities of Cisco and Eastland were among the personnel, the report said. Silver City will be headquarters for the reunion.

## Little League Expresses Thanks

We have received a letter from W. L. Garner of Eastland, score keeper for the Little League games who has just closed a very successful season. Mr. Garner expressed thanks to the people of Carbon for helping to make this season the success that it was. He expressed special thanks to Colin Campbell for his fairness and faithfulness in umpiring the games and to Jimmy Hughes for managing and coaching the Lions and to Truet Norris for managing the Bulldog minor team.

Players on the teams were Jimmy Nelson, Danny Norris, J. R. Harle, Ronel Hughes, Ronnie Pack, Tim Stacy, Hayden Wilson, Gene Wilson, Ricky Pack, Larry Duncan, Stanley Underwood and Jerry Howle.

## Miss Phelps And Mr. Tucker Unite In Marriage July 18

Miss Dora Faye Phelps and Mr. Bobby Tucker were married July 18 at the home of the groom's parents, Mr. and Mrs. Robert Tucker, of Carbon. Rev. Mart Agnew, pastor of the Pleasant Hill Baptist Church, officiated. The bride is the daughter of Mrs. Vadis Phelps of Eastland.

Mrs. Winfred Lindley of Electra was matron of honor. Eargle Anderson of Wichita Falls served as best man. Danny Hogan, nephew of the bride, and David Anderson, nephew of the groom, lighted the candles.

The bride wore a street length dress of white brocade cotton in a sheath style with rhinestone and pearl trim. Her flowers were white gardenias.

A reception followed the ceremony. The serving table, carrying out the bride's colors of green and white, featured an arrangement of white flowers flanked by candles in crystal holders on a white lace cloth over green. Members of the house party were Mrs. Gwendol Hogan, sister of the bride, of De Leon and Mrs. J. B. Hicks, sister of the groom, of San Angelo.

After a short wedding trip the couple are making their home at 707 West Commerce in Eastland.

## Queen Contest Of Farm Bureau Slated August 21

The annual Eastland County Farm Bureau Queen contest will be held at the city park in Eastland Friday night, August 21, according to information released this week by Mrs. Bill Tucker, office secretary for the organization. A barbecue meal will be served that same evening in the park for members of the Farm Bureau and their families.

Girls between the ages of 16 and 22 (by September 1, 1959) who are single and have a father or brother in the Farm Bureau are eligible to enter the contest. The winner of the county event will be entered in the District 7 elimination. Daughters of state directors, county presidents and county secretaries will not be eligible to enter the contest.

Cisco girls wishing to enter the contest should contact Mrs. Henry Fry, Mrs. L. B. Jones, Mrs. Ellen Justice or Mrs. Carl Stroebel.

## MOTHER NATURE HAS MOVED TO PRODUCE GRASS

BY SCS WORKE  
Mother nature now has all set for a much needed grass seed crop this fall. Little bluestem especially is now shooting up seed stalks where none have been in many years. Side oats grama is in full bloom, and sand love grass is making seed in many protected places. Buffalo grass is continuing its spread over ground that was bare not too long ago.

A good seed crop of these better native grasses is essential for the natural reseeding of rangeland. Pastures must be repopulated with better grasses before we can again have the grass production which made this country famous for good stocker cattle. The early spring of 1957 was the beginning of the period of moisture build up now making range restoration possible. Since the drought broke most pastures have built up a heavy grass cover, but the cover consists mostly of second rate grasses. Few pastures have made a seed crop of the better grasses. With a few more summer showers and proper management of livestock a bountiful seed crop can be produced this fall.

Unfortunately when the better native grasses in this country begin to make seed if cattle are being run in the pasture they will invariably clip the seed heads. Cattlemen practicing good range management are aware of this fact. They know they must remove all their livestock from those pastures needing reseeding. This year many stockmen, keeping their eyes on their native

grassland for their temporary crops on cropland fields. As one travels about the country he sees fields of succulent sorghum, alfalfa, and johnson grass. These fields are ideal for being rested from a seed crop.



Little bluestem shooting up seed stalks. Seed stalks are being produced unusually early this year. Little bluestem is one of the better basic grasses needing reseeding in this area. Livestock relish the seed in the dough stage and must be removed from a pasture for seed production.

• Only Christ Does This... •

"As many as received him, to them he gave the power to become the sons of God."  
John 1:12

Welcome to REVIVAL SERVICES

The Baptist summer revival will begin Friday night, July 31, and run through August 9. Rev Ed Scarbrough, pastor of Second Baptist Church in Ranger, will be the evangelist and Rev Roger Butler, local pastor, will direct the song service. The public is invited to attend these services.

Don Martin and family of Odessa visited his father, Everett Martin, and family this week.

Simp Reese of Putnam visited recently with his brother, Luther Reese, and wife.

Mrs. B. W. Knight spent last week with her son, Carl Knight, and wife of Fort Worth.

Mrs. Jo Ella McGlothlin of Kermit was here on business last week.

## A General Store

Make Our Store Your Shopping Center

Our efforts are to have what you want when you want it, At competitive prices, in each department;

Groceries, Market, Feed, Drygoods,  
Notions, Hardware, Electrical,  
Paints, Glass, Etc.

**Carbon Trading Company**

## Queen Contest Of Farm Bureau Slated August 21

The annual Eastland County Farm Bureau Queen contest will be held at the city park in Eastland Friday night, August 21, according to information released this week by Mrs. Bill Tucker, office secretary for the organization. A barbecue meal will be served that same evening in the park for members of the Farm Bureau and their families.

Girls between the ages of 16 and 22 (by September 1, 1959) who are single and have a father or brother in the Farm Bureau are eligible to enter the contest. The winner of the county event will be entered in the District 7 elimination. Daughters of state directors, county presidents and county secretaries will not be eligible to enter the contest.

Cisco girls wishing to enter the contest should contact Mrs. Henry Fry, Mrs. L. B. Jones, Mrs. Ellen Justice or Mrs. Carl Stroebel.

## Friday and Saturday Specials

Tide Giant Size	69c
Milk, Tall Can 2 for	29c
Lipton Tea 1-2 lb	69c
Kimbell Oleo 1b	19c
Crisco 3 lb	79c

**Carbon Trading Company**

## Postage Stamp To Salute Soil Building In U. S.

COLLEGE STATION — A 4-cent postage stamp saluting progress in soil conservation in the United States will be issued August 26 by the Post Office Department, said Lynn Pittard, asst. extension soil and water conservation specialist.

The Nation's first soil conservation stamp will be formally released at the annual meeting of the Soil Conservation Society of America at Rapid City, South Dakota, August 26. It will go on sale the following day at post offices throughout the country.

The stamp, which was developed in cooperation with the U.S. Department of Agriculture, portrays a modern farmland setting signifying that conservation farming brings beauty as well as bounty to rural living. Soil conservation practices portrayed include contour stripcropping, terracing, pasture improvement, tree planting, and a farm pond. In addition, the silhouette of a city in the background symbolizes that urban as well as rural people are highly dependent upon the care and wise use of land as a principal source of food, water,

shelter and clothing. The stamp will be printed in three colors, yellow, green and blue.

Issuance of the stamp, Pittard said, is a tribute to farmers and ranchers, their local soil conservation districts and to the professional agricultural workers who have helped make the United States a world leader in soil conservation.

First day "covers" containing the stamp are available through the Postmaster at Rapid City, S. D. Upon request and receipt of addressed envelopes and a remittance to cover the cost of the stamps, the post office at Rapid City will place the new stamp on the envelopes, cancel them with a special cancellation mark used only on that day and at that place, and mail the envelopes on the first day of issue.

The Santa Gertrudis breed of cattle is a cross between the Brahma and Shorthorn.

**The Carbon Messenger Dated Thursday At Carbon Eastland County, Texas**

Entered as second class matter at the Post Office at Carbon, Texas as under the act of Congress March 3rd 1879  
W. M. Dunn, publisher

## HOME MAKERS

### Views and News

Andre Ethland  
Home Dev. Agent

Nancy Weathers  
Asst. Home Dev. Agent

Homemakers are sometimes puzzled over causes for improper jelling, sugar crystallization, "weeping" and cloudiness in homemade jellies. Some causes

for this are: Sugar crystallization may be caused by an excess of sugar, insufficient acid, overcooking or delay in sealing.

Weeping results when the juice used is too high in acid content. Cloudiness may be caused by imperfect straining, or by starch in underripe fruit — often found in apple and crabapple jelly.

Failure to form jelly is due to an improper balance of pectin, sugar, and acid. This improper balance may be caused by overcooking or undercooking the

jelly, but undercooking the fruit in extracting the juice, using too much water in extracting the juice or using fruit which is too ripe.

Make sure of good results in jelly-making by following recommended methods. Get a copy of MP-279, How To Make Jellies, Jams, and Preserves at Home, from your home demonstration agent. It gives directions for a variety of jellies, jams, preserves, marmalades and fruit butters.

## A NEW CONVENIENCE FOR OUR CUSTOMERS

**Budget Payment Plan for Residential Electric Service Now Available**

The convenience of budgeting your payments for residential electric service so that a pre-determined amount is paid each month now is available to our customers.

Under our new Budget Payment Plan, the residential customer will pay the same total amount for the electric service used during the year, but it will be paid in 12 equal monthly payments.

This plan, we believe, will appeal to those of our customers who enjoy lots of good cooling in their homes during hot weather, and would prefer to have their monthly payments averaged throughout the year to take care of their increased use of electricity during the hot summer months.

There are no additional charges of any kind for using our new Budget Payment Plan for residential electric service. Let us show you how it works, and how it might be applied to your account. Just telephone or come by our office for complete information.

*Electric Service is the Biggest Bargain in your Family Budget*

**TEXAS ELECTRIC SERVICE COMPANY**

T. J. HALLMARK, Manager

# Perry's

Eastland, Texas

## Thursday, Friday, Saturday Photo Special

All Work Guaranteed  
Size 5x7 Photograph  
**99c Each**

No Limit on Orders

**FOR SALE—Gadgets & Gismos**  
Canteens, cots, cot covers, gun cases, foot lockers, tarpaulins, tool boxes, mosquito nets, air mattresses, first aid kits, outboard motor covers, coveralls, 55 gal oil drums. Come in and browse. Army Surplus Store, Eastland, Texas.

### Spare Time

Radio and T. V. Repair after 5 p. m. and Saturdays. All work guaranteed. B. W. Robertson, pho. 773-J, Eastland

### Specials

Fall patterns of gingham 49c yd. Costume jewelry reg. \$1.00 value, 2 for 98c. Large selection of baby dresses and other items. Why not make your Christmas toys selection now? Small down payment will hold items till Xmas.

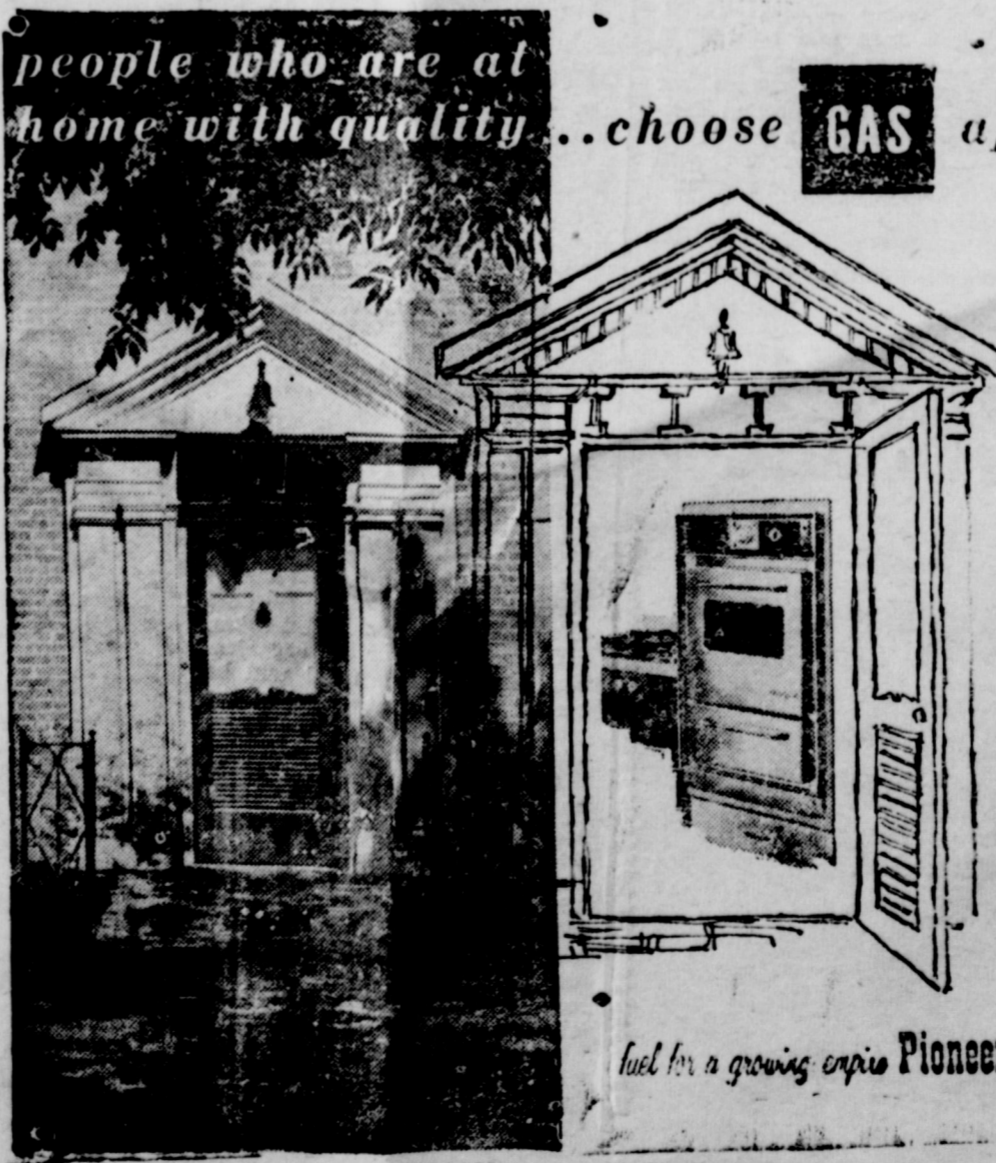
Henderson Variety Store

Henderson, Owner  
Gorman, Texas

**C. M. Cleveland**  
TOMETRIST

So. of Postoffice  
Co., Texas

people who are at home with quality...choose **GAS** appliances



Walk through an elegant doorway and you expect an elegant interior... and today, elegance in the kitchen is synonymous with GAS appliances. For example, the built-in range. Both in appearance and performance, it confidently maintains its place amidst the finest of home furnishings. Its sleek, luxurious beauty is always in perfect harmony with the most discriminating decor. Completely automatic from top burners to broiler, a Gas range makes the dull routine of cooking almost effortless... offers the perfect complement to cooking skill in creating meals that delight the eye, tempt the taste. And aside from the general excellence of its engineering, a Gas range offers a whole list of unduplicated advantages such as closed-door smokeless broiling, no warm-up wait, instant shut-off with no heat hang-over, and an absolute minimum of heat fluctuation. In every way—economy included—GAS gives you more! And where the finest is truly appreciated... GAS belongs.

fuel for a growing empire Pioneer Natural Gas Comp.

# Special

Limited Quantity



670x15 Black Nylon 17.50 Tax Included

670x15 White Rayon 17.50 Tax Included

All Number 1 Tires With Unlimited Road

Hazard Guarantee

A short drive to Eastland will save you money

Get our low prices on passenger, pick-up, and truck tires Regular or nylon. White or Black. Rejects or No. 1. You can save money at the reliable . . .

## Jim Horton Tire Service

Your Seiberling Dealer

\*East Main St.

Eastland Texas

## Fall Dresses

We have received a few Fall Dresses, Beautiful

Prints and Solids Also new year round

3 In-1 Can-Cans 2.98 to 5.95

Pre-Summer Clearance Sale on Ladies Shoes, Sandals

Flats, Wedges and Heels 9.95 value 2.95

8.95 value only 1.95

New Moorville Prints All Cotton Solids & Plaids

Make Our Store Your Headquarters for your

Hardware Needs Our Prices will Save you Money

### Furniture

Come On Lets Talk Trade, Yes We Take Trade-Ins

See our selection of Bed Room Suites, Living Room

Suites, Platform Rockers and other Furniture

You will find outstanding Specials

Throughout Our Store

## Higginbotham

Gorman, Texas

Sitting Bull is buried at Standing Rock Agency, Fort Yates,

If you find life is empty, try the father of American wrestling.

The first Postal Savings Bank in America was opened in 1911.

Net

See me for satisfaction, Your business is my business.

Floyd Jay, Gorman

## Used Cars

See our selection of Used Cars

Several Old and Late Model

Cars To Choose From

Muirhead Motor Company

Eastland, Texas

## Used Cars

See us for the best Used Car

Buy In Town

Also expert mechanics in our Shop

King Motor Company

Eastland, Texas

## EASTLAND NATIONAL BANK

"On The Square"

Member F. D. I. C.

Eastland, Texas

## Ambulance Service

Air Conditioned by Refrigeration

Wylie Funeral Home

Dial MI 2-2333

Cisco

## Complete Modern Funeral Home

Including New Chapel

Available Day or Night

Higginbotham Funeral Home

Day Phone 11 Night Phone 24J

Gorman, Texas

**Friday And Saturday  
Groceries & Meats**

# Specials

<b>Bacon Several Brands 1b</b>	<b>49c</b>
<b>Catsup Del Monte 14 oz</b>	<b>19c</b>
<b>Kimbell Spinach 2 for</b>	<b>27c</b>
<b>Frozan 1-2 gal.</b>	<b>53c</b>
<b>Ajax Cleanser 2 for</b>	<b>25c</b>

Visit Our Softgoods Display

**Hogan's Grocery And Market**

## Eastland Beauty Is Crowned As 1959 Texas Pecan Queen

Eastland County won its share of the honors when the Texas Pecan Growers Association held its 38th annual convention in Fort Worth Tuesday and Wednesday.

Highlighting the convention was the presentation of pretty Rebecca Graham, daughter of Mr. and Mrs. Lee Graham of Eastland, as the Texas Pecan Queen of 1959. She was crowned by Tabner Shelton of Gonzales, the association president.

Reserve champion pecan exhibitor honors went to B. B. Freeman of Ranger, secretary of the Eastland County Pecan Growers Association. Nelson Handler of Belton won the first place award.

The Gold Pecan Award, given each year by the National Shellers and Processors Association of Chicago to the person doing the most during the year for the pecan industry, went to Fred R. Brison of Texas A&M College, a professor of horticulture.

In other activities, Eastland County Agent J. M. Cooper joined Henry New of Seguin and Elmo Cook of Austin to give a panel discussion on county grower organizations. B. G. Hancock, A&M College extension service horticulturist, was the moderator.

The convention featured a number of demonstrations and discussions relative to the pecan business and orchard management, along with a tour of the O. P. Leonard Shelling Plant. Another highlight was the Casa Manana musical production of "Where's Charley?" attended by the convention goers Tuesday night.

In a meeting of officers and directors Wednesday at noon, the convention and tourist trade committee of the Cisco Chamber of Commerce appeared before the group to bid for the 1960 growers convention.

Brownwood was awarded the

next convention, however, to be held the second Tuesday and Wednesday next year.

Members of the local committee to attend included Roger I. Parker, Mrs. Roy Huffmyer, Mrs. Alma Philpott, Lloyd McGrew, Bill Austin, Bunk Gill and Winston Heidenheimer. Mrs. Austin and Mrs. Heidenheimer also made the trip.

L. D. Romberg of Brownwood was elected state president at the closing session Wednesday. Mr. Shelton of Gonzales is the new vice president, and Dr. Benton Storey of the horticulture department at Texas A&M College was named secretary and treasurer. John Speck of Plainview is a new director. C. E. Smith of Rising Star is a hold-over director.

Those attending from Eastland County were Cooper, Freeman, Miss Graham, Oscar Schaefer of Cisco, president of the county organization; Smith, Ben McGinnis of Eastland and Mr. and Mrs. Graham.

Ships sailing from the Atlantic to the Pacific Oceans via the Panama Canal travel from north

### King Theatre

Gorman, Texas

Show opens Monday thru Friday 7:30 p. m. Saturday & Sunday matinees 2 p. m. Sat evening 6:30 Admission 25c & 50c

Thursday Friday  
"Rally Round The Flag, Boys"  
Paul Newman  
Joanne Woodward

Saturday  
"Tonka"  
Sal Mineo  
Jerome Courtland

Sun. Mon.  
Walt Disney's  
"Shaggy Dog"  
Fred MacMurray Jean Hagen

Tues. Wed.  
"The Tunnel Of Love"  
Doris Day  
Richard Widmark

### Dixie Drive-In

Hi-way 80-2 mi. east of Eastland

Box office opens 7:15  
First showing 7:45  
Box Office closes 9:45  
Admission 50c  
Children under 12 Free  
Each Wednesday is Bargain Night-Adults 25c

Thurs.-Fri.-Sat.  
"Thunder In The Sun"  
Susan Hayward  
Jeff Chandler

Sun. Mon Tues.  
"The Sound And The Fury"  
Yul Brynner  
Jeanne Woodward

Wed.  
"The Last Blazkreg"  
Van Johnson

### First Baptist Church

Rev. Roger Butler, Pastor  
Sunday School 10:00 a. m.  
J. E. Jackson, Superintendent  
Morning worship 11:00 a. m.  
Training Union 7:00 p. m.  
Evening worship 8:00 p. m.  
W. M. U. Monday 2:00 p. m.  
Prayer meeting Wed. 7:30 p. m.

Note: The Brotherhood will be glad to take the elderly people home from church morning and night.

## We Have Moved

We have moved to new location  
And are now ready to serve your  
needs for Case Tractors, Bailers &  
Genuine Case Parts

### Keith Implement Company

Sales                      Parts                      Service  
De Leon, Texas                      Phone 2171

### For Sale

2 bedroom home, completely newly remodeled, 3 large lots in 2 blocks of school. Will sell or trade for land. Ray Williams, Gorman, Texas.

### Village Hotel Coffee Shop

Eastland, Texas  
E. R. Overstreet, Mgr.

Invites you to visit them when in Eastland. Newly remodeled. Open daily from 5 a. m. to 9 p. m. "Our specialty is good food at all times."

### B & G Butane Co

Wants to service and install your Butane System in your home, on your tractor or pickup. Thomas Butane Co in De Leon now owns interest in Butane Co in Gorman and invites their old customers to call 91 in Gorman.

### See Us For Your Cleaning & Pressing Needs

Expert and Courteous  
Service At All Times

## POOL

Cleaners  
Eastland, Texas

### See Us For Clearing & Construction

## Bobby Shuman

Clearing & Construction, Pox 151  
Phone 4913, De Leon, Texas

### Church Of Christ

Bible Study 10:00 a. m.  
Preaching 11:00 a. m.  
Lord's Supper 11:40 a. m.  
Preaching 7:30 p. m.  
Wed. Bible Class 7:00 p. m.  
You are invited to be with us at these services.  
Milton Underwood, Minister

### Watch Repair

Let me repair your watch or jewelry. Parts for most any make of watch, also a large selection of jewelry.

The Time Shop  
Oran Justice, Owner Gorman.

### Butane Service

Red Nelson is now employed by Graves Butane Co. and will deliver your Butane or Propane any time. They now have two-way Radio Contact System.  
Phone 2271, Carbon or Hi2-1010 Cisco.

NOTICE-Save up to 50 percent on renovating your old mattress at the bedding headquarters. If they're Western-Bilt they're guaranteed. Bedding at Factory-To-You prices. Western Mattress Co., San Angelo, Texas. Call 2461 Carbon, and leave address

### Methodist Church

Rev. Royce Gilmore, pastor  
Services 1st, 2nd and 3rd Sundays  
Sunday School 10:00 a. m.  
Morning Worship 11:00 a. m.  
Youth meeting 7:00 p. m.  
Evening Services 8:00 p. m.  
W.S.C.F. 2:30 p. m. Mon  
Prayer meeting 8 p. m. Wed.

### Laundry Service

Automatic coin operated washers and dryers  
open 24 hours every day  
WASHERS 20c per load  
DRYERS 25c for 2 washer loads

### LAUNDROMAT

In Old Tip Top Cafe Bldg.  
Eastland, Texas

# Lawn Mower

21 Inch-Recoil Starter, Gas lever on Handle 2 1-2  
Horse Power 4 Cycle Briggs Stratton Engine

## 48.50 Cash

4000 2 Speed Delux Air Conditioners only 107.50

## Higginbotham

Gorman, Texas