

WINTERS:  
Smile Capital  
of the U.S.A.

# The Winters Enterprise

BUY IT IN  
WINTERS!

VOLUME SEVENTY

WINTERS, TEXAS 79567 FRIDAY, JANUARY 17, 1975

PRICE 15

NUMBER 45

## HOME TOWN

### Talk

By R. C. THOMAS

The following, clipped from the Dallas Morning News recently, has "food" for thought, so to speak, and is worth a few moments' time:

#### MIND-BOGLING

So much gloom has spread, like fog, across America of late until it is difficult to see clearly what we really have. There are so many perspectives from which we examine our circumstances that we tend to see more shadow than light.

Take, for example, the somber notes emanating from a Washington outlook conference this week.

An economist for the Department of Agriculture reported that American housewives can expect food prices to continue climbing at the annual rate of 15 per cent during the first part of next year. They might go even higher if bad weather reduces farm harvests.

This immediately produced the cookie-cutter groan from the head of a national consumers' organization: "The prospect is mind-boggling."

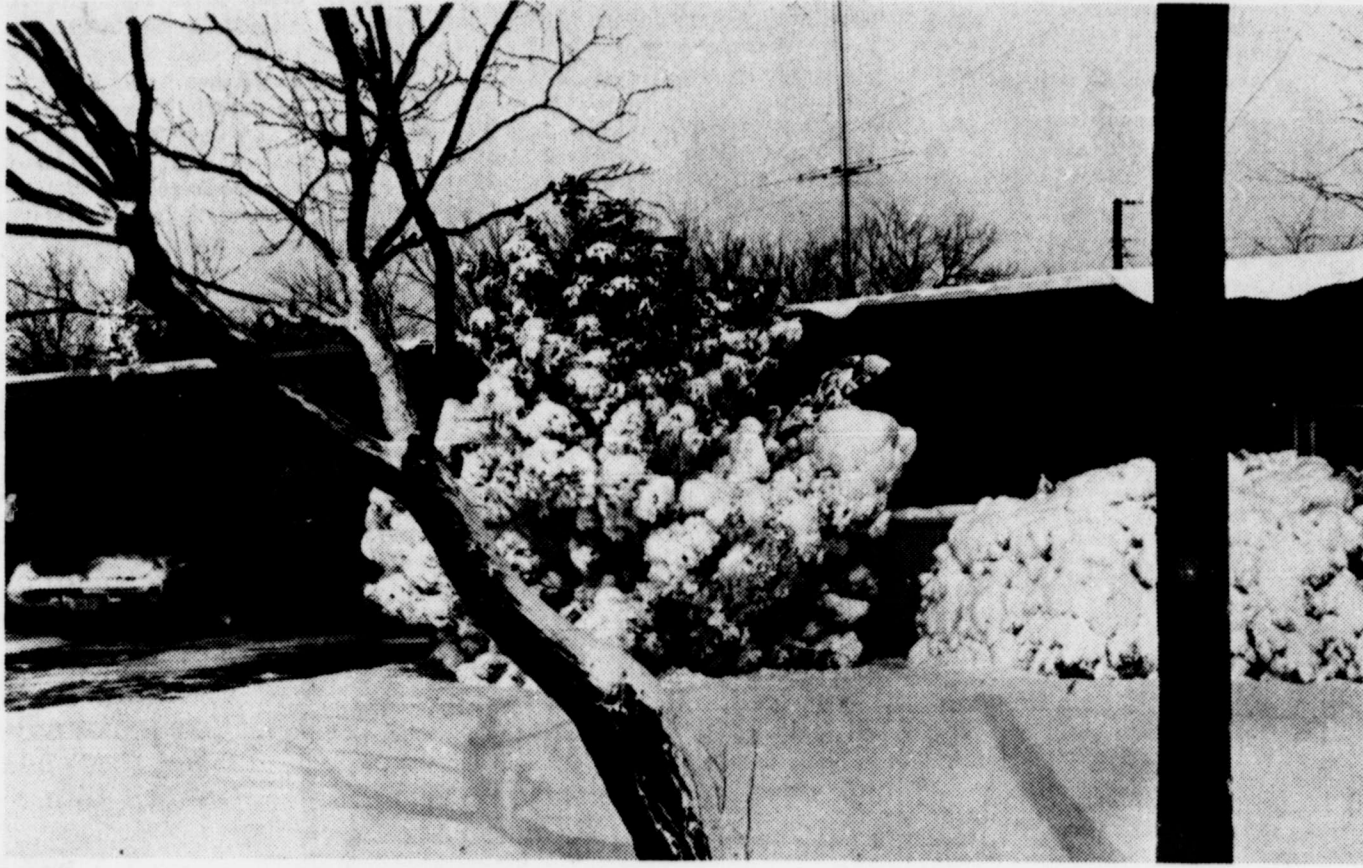
Mind-boggling indeed. What the so-called consumers' spokesman failed to do was to look at the prospect from other perspectives, so that it may be examined in focus.

One is to consider that the average American family spends only 16.8 per cent of its take-home pay today on food. Granted that is up about 1 per cent over two years ago.

But for a real mind-boggling view, compare that to the fact that in the 1950s, Americans spent 23 per cent of their take-home pay on food. What is more, each of us is consuming more food that we did even in the 1960s. And much of that comes into our kitchens mixed, sliced, seasoned, often partially cooked. We are paying for those services as well as for the food.

Another perspective, one which American don't often

(Continued on Page 6)



WINTERS WONDERLAND—Sunday's unannounced blizzard painted picture-cards about the area. About seven inches of snow

fell, and was blown into drifts to as high as five feet in some areas, and closed many rural roads for the day.

## Blizzardland Hit By White Blizzard Early Sunday

### High School Honor Roll For First Semester

The honor roll for the first semester of the 1974-75 school year has been released by the principal's office.

To be eligible for the honor list, a student must have no grade below a "B" in academic subjects and at least one "A."

The honor roll includes:

#### SENIORS

5 A's: Benji Alldredge, Paula Meyers, Mary Kay Bauer.

4 A's: Patty Smith, Denise Rodgers, Glen Colburn, John Parramore, Ronnie Stevens, Keri Lynn Laughon.

4 A's, 1 B: Jackie Underwood, Robert Englert, Sherri Collins.

3 A's: Martha Pritchard, 3 A's, 1 B: Ricky Grenwelge, Debby Smith, Steve Boykin, Lesa Giles.

4 A's, 2 B's: Randall Underwood.

3 A's, 2 B's: Robert Garza, Mitch Davis, Julie Spraberry.

1 A, 2 B's: David Voss.

2 A's, 2 B's: Betty Hood, Cathy Schwartz.

2 A's, 3 B's: Becky Gerhart, 1 A, 3 B's: Susie Spence.

#### JUNIORS

5 A's: Patricia Webb, Steve Esquivel.

4 A's, 1 B: Linda Cooper, Becky Bryan, Tonya Bahlman, Dana Davis.

4 A's, 2 B's: Alex DeLaCruz, 3 A's, 3 B's: Gwen Smith.

2 A's, 3 B's: David Waldrop, 1 A, 3 B's: Donna Barker, Jeannette Richards.

#### SOPHOMORES

5 A's: Malcolm Bredemeyer, 4 A's, Craig Gehrels.

1 A, 3 B's: Cy Buchanan.

#### FRESHMEN

5 A's: Duane Geistmann, Cheryl Bahlman.

4 A's: Jeff Russell, 3 A's, 2 B's: Chris Esquivel, Emilenda Cortez.

Like a playful puppy shaking an old slipper, the weather toyed with North Runnels and most of the Big Country from late Saturday night into mid-morning Sunday, dumping wind-blown snow over most of the area.

Blizzard-like conditions in North Runnels virtually halted traffic in the early Sunday morning hours, and piled drifts to as high as five feet in some

places. Main highways were almost blocked for a time, along with country roads and city streets.

For some time early Sunday morning, visibility was cut to almost zero as the blizzard winds whipped the falling and already fallen snow.

Prior to the snowfall, a light rain, which froze on the surface, and then some sleet, caused hazardous conditions for drivers and pedestrians alike. Many cars were reported stalled in high drifts, and many other reports were received of cars in ditches, after skidding on the slick streets and roadways. No injuries were reported, however. There were some instances of bent and crushed fenders and bodies as some cars slid into poles and other vehicles.

Hazardous conditions on the roads continued through mid-day Monday, and most schools of the area were closed because of the weather. Classes were resumed on regular schedule Tuesday, however, even though there still were patches of ice and snow, especially in sheltered areas and on bridges.

The blizzard hit during the same period of the month, almost to a day, as the one which paralyzed the area two years ago, and which sent temperatures plummeting to a record low of minus 15 degrees.

### Doctor Office Fund \$12,790

Total in the Doctor's Office Fund, being raised by the Winters Chamber of Commerce to furnish a doctor's office, has reached \$12,790, according to an announcement by the fund committee.

Latest contributors include: Heidenheimer's, Mr. and Mrs. Jim Bailey, Bob Loyd LP Gas Co., West Texas Utilities Co.

In memory of Mrs. Lou Helen McPherson by Mrs. Claude Stone, and Anonymous.

In memory of Mrs. Dora Hodnett, by Mr. and Mrs. Ray Laughon and Kerri Lynn.

RETURNED HOME

Mr. and Mrs. Stan Graczyk and Matthew left January 4 for their new home in St. Paul, Minn., after spending two weeks visiting here with her parents, Mr. and Mrs. A. O. Merck.

2 A's, 3 B's: Laura Walker, Yolanda Arispe.

2 A's, 2 B's: Leroy Jones.

The number of grades reported by each student may vary from three to as many as six, depending upon participation in band, athletics, physical education, which do not count toward the honor list. Also, Distributive Education students may be enrolled in only three classes while they work at jobs in town.

Hazardous conditions on the roads continued through mid-day Monday, and most schools of the area were closed because of the weather. Classes were resumed on regular schedule Tuesday, however, even though there still were patches of ice and snow, especially in sheltered areas and on bridges.

The blizzard hit during the same period of the month, almost to a day, as the one which paralyzed the area two years ago, and which sent temperatures plummeting to a record low of minus 15 degrees.

RETURNED HOME

Mr. and Mrs. Stan Graczyk and Matthew left January 4 for their new home in St. Paul, Minn., after spending two weeks visiting here with her parents, Mr. and Mrs. A. O. Merck.

2 A's, 3 B's: Laura Walker, Yolanda Arispe.

2 A's, 2 B's: Leroy Jones.

The number of grades reported by each student may vary from three to as many as six, depending upon participation in band, athletics, physical education, which do not count toward the honor list. Also, Distributive Education students may be enrolled in only three classes while they work at jobs in town.

Lions Club Chili Supper Jan. 28

The annual Winters Lions Club chili supper will be held in the school cafeteria Tuesday, January 28.

Serving will begin at 5 p. m. and continue until all have been served.

The chili supper is one of the several fund-raising projects of the Lions Club. Proceeds will be used in projects promoted by the service organization.

### Farm Film To Be Shown Here January 23

"Farming Frontiers '75", a film program devoted to the business of farming, will be presented January 23 at the State Theater beginning at 7 p. m., it was announced today by Mansell Bros., the John Deere dealer in this area.

The program includes "Furrow-on-Film" subjects which show the latest developments in farm management. These films provide guidance that could affect your plans today and in the years to come. Also included will be motion pictures showing new John Deere 4-Wheel-Drive Tractors, Planters, and other farm equipment being introduced for 1975.

Two John Deere Charcoal Kettle Grills and two John Deere Patio Bells will be given away as door prizes, G. W. Sneed, Mgr. said. He also said refreshments will be served.

## Good Weather Welcomes Annual Junior Stock Show

The weatherman cooperated with producers of the Winters Junior Livestock Show Saturday, providing beautiful almost spring-like weather before the weekend blizzard, an almost unusual occurrence for the annual event.

Spectators took advantage of the pleasant weather, while young exhibitors were in their glory showing their livestock without the uncomfortable situations connected with bad weather.

In the steer division, Jessie Whitlow took top honors with his animal, a Herford, winning the grand championship of the show.

Mark Belitz' Duroc was named grand champion in the swine show.

In the lamb show, where

grand champions were named in each breed or class, the Bredemeyer partners—Kathy and Bill—took the lion's share of the grand championships, winning the top honors in the finewool, medium wool and Southdown divisions.

Mark Bryan's lightweight crossbred took the grand championship honors in that division.

Young Robbie Dunlap's doe was named first place winner in the rabbit exhibit.

Bill Bredemeyer showed his buck to the top in that division and also won first in the fryer trio competition.

Trophies were won by Jessie Whitlow in the steer division; Mark Belitz in the swine division; and Bill and Kathy Bredemeyer, in the lamb

division. Overall showmanship award was presented to Cy Buchanan and Jessie Whitlow won that award in the steer division Paul Airhart took the showmanship award in the swine division. Mark Bryan won the showmanship award in the lamb division; and Bill and Kathy Bredemeyer won the husbandman's award.

Trophies were presented by individuals and businesses; rosettes were presented by the Winters Livestock Association, and the Winters Chamber of commerce provided cash awards for the young exhibitors, through a sale of "shares" in the show to businesses and individuals.

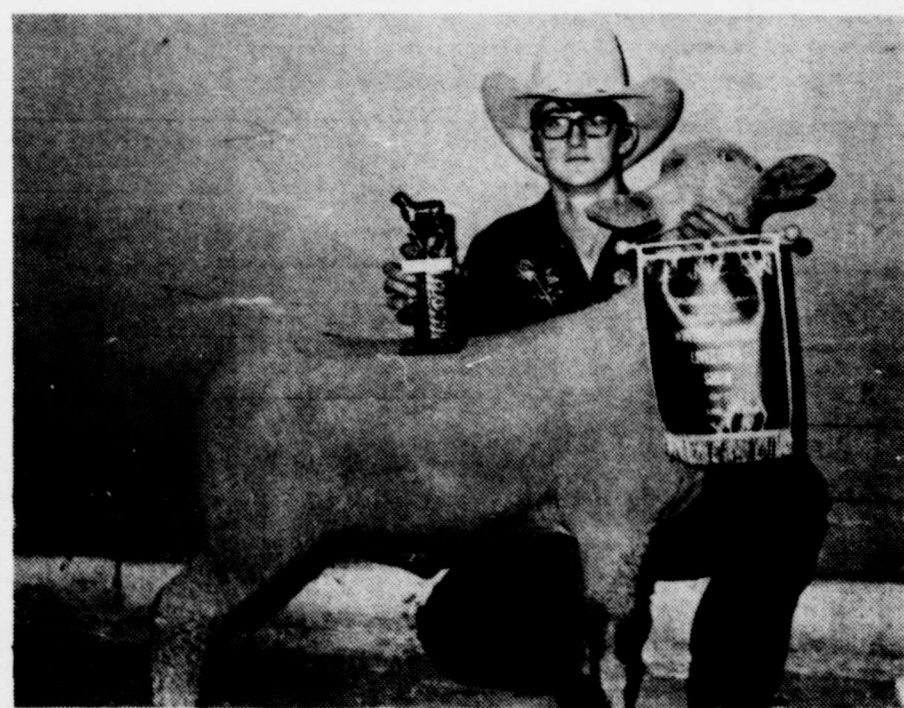
(Continued on Page 6)



CHAMPION—Mark Belitz' grand champion of the swine show, a Duroc, refused to cooperate with the photographer, but the banner and trophy are evidence of Belitz' success in the hog business.



GRAND CHAMPION—Jessie Whitlow showed his Hereford steer to the grand championship in the cattle division of the stock show. The 17-month old steer weighed in at 1145. He was bred by Weldon Davis of Coleman.



CHAMPION—Mark Bryan showed the grand champion Crossbred lamb judged by breed and no overall lamb show champion was chosen.



CHAMPION—Bill Bredemeyer is shown with another winner in the lamb division of the stock show, the grand



CHAMPIONS—Douglas Bryan had the champion capon. Robbie Dunlap showed the champion doe in the rabbit



CHAMPION—Bill and Kathy Bredemeyer are shown with their grand champion Finewool lamb judged in the

Junior Livestock Show here Saturday. The lamb was shown by Bill.



**TEXAS PRESS ASSOCIATION**  
MEMBER 1975

**The Winters Enterprise**  
RICHARD C. THOMAS, Publisher

Entered at Post Office, Winters, Texas (79567), as Second-Class Mail Matter.

**SUBSCRIPTION RATES**  
One Year, In Runnels and Adjoining Counties ..... \$4.50  
In Other Texas Counties ..... \$5.75  
Out of State ..... \$6.50  
Tax Inc.

Any erroneous reflection upon the character, standing or reputation of any person, firm or corporation which may appear in the columns of this paper, will be gladly corrected upon due notice of same being given to the editor personally at this office.

**Crews News**

The news this week is mostly concerning the snow storm we had over the weekend. Most people living between the highways have been snowed in on the roads.

Farmers have had a hard time trying to get a little hay out to the livestock. Mrs. Cora Petrie picked this time to run out of butane and the truck couldn't get in to her place.

There is a lot of flu in the community.

Mr. and Mrs. A. S. Allcorn

The Winters Enterprise  
Winters, Texas  
PAGE 2  
Friday, January 17, 1975

**PROFESSIONAL DIRECTORY**

**DR. Z. I. HALE**  
Optometrist  
Tuesday, Thursday, 9-12, 1-5  
Saturday 9-12  
Winters, Texas

**Jno. W. Norman**  
ATTORNEY-AT-LAW  
Winters, Texas

**Dr. C. R. (Dick) Bellis**  
CHIROPRACTOR  
407 N. Rogers - 754-5464  
Hours 9 - 5:30  
By Appointment:  
Wednesday, Saturday P. M.

**JIMMY SMITH, DVM**  
VETERINARIAN  
311 Jewel - Winters  
Ph. 754-5487

attended the stock show in Winters Saturday and visited the Charles Allcorn family.

Mr. and Mrs. Boyd Grissom and Mr. and Mrs. Raymond Kurtz attended the 50th wedding anniversary of the Monroe Kurtz in Winters. Mr. and Mrs. Kat Grissom had supper with the Raymond Kurtz Saturday.

Mr. and Mrs. Jerry Kraatz hosted a birthday supper for son Wayne.

Julian Metcalf visited the Marion Woods last week. Saturday night visitors were Mr. and Mrs. Peck Lee.

Visitors in the Walter Jacob home were Mrs. Sharon Bush-elehner from San Angelo.

**FUNERAL SERVICES FOR MRS. THOMPSON**  
Funeral services for Mrs. J. W. (Eunice Gray) Thompson were held Friday at 2 p. m. in the First United Methodist Church in Blackwell. Officiating was Paul Wallace, minister of the Winters Church of Christ. Burial was in the Blackwell Cemetery.

Mrs. Thompson died at 12:35 p. m. Wednesday after a long illness. She had been admitted to the Bronte Hospital Tuesday night.

She was born May 23, 1892, in Eastland County, and was married to J. W. Thompson Nov. 16, 1928, at Marfa. He died in October, 1972 at Overton, and she moved to Blackwell in January, 1973.

Survivors are one daughter, Mrs. Esa Leta Grammer of Blackwell; one grandson, Jack Lowery Grammer of Cutoff, La.; three sisters, Mrs. Sarah Kelly of Roscoe, and Mrs. Aera Whitaker of San Diego, Calif.; four great-grandchildren, three sisters-in-law and several nieces and nephews.

**COMMISSION SPURNED**—A Senate consumer affairs sub-committee balked (on a two-to-one tie vote) at recommending a statewide public utility commission.

Sens. Betty Andujar of Fort Worth and Bill Meier of Eules voted against the proposal, while Sens. Ron Clower of Garland and Lloyd Doggett of Austin supported it.

Clower and Doggett immediately pre-filed a bill to set up the commission, as Clower warned the committee vote demonstrated a stormy days ahead in the legislature over the issue.

**APPOINTMENTS**—Governor Briscoe named State Rep. John H. Poerner of Hondo executive director of the Committee on Aging effective February 28.

Other recent appointments by Briscoe include Norman L. Utter of Corpus Christi as 214th district judge, Gerald Alton of Lufkin as 159th district attorney and Herman Smith of Hurst as chairman of a special advisory council on housing.

Dorothy Davidson was named to head the new Texas Education Agency department of general education as an associate commissioner.

**INQUIRY SET**—Atty. Gen. John Hill announced he will ask District Judge James R. Meyers of Austin to convene a court of inquiry, probably next summer, into the 1974 Huntsville prison siege.

Hill delayed plans for the inquiry until after trials on criminal charges resulting from the July-August hostage seizure and shootout led by onetime narcotics kingpin Fred Gomez Carrasco.

One of Carrasco's confederates is set for trial next month, and trial of others accused of smuggling guns into the prison is expected to follow. Hill said judges strongly urged him not to call the court of inquiry until the trials have been completed.

**AG OPINIONS**—Jurisdiction over minors 14-17 years old for fish and game law violations is in juvenile courts, Attorney General Hill held.

**STATE CAPITAL Highlights AND Sidelights**  
by Lyndell Williams

**AUSTIN**—The 64th Legislature whipped into action Tuesday (Jan. 14) faced with a heavy agenda which lawmakers must strain to complete by the June 2 adjournment deadline.

Blessed with a revenue surplus estimated at well over the \$1 billion mark, legislators may still have a hard time avoiding new taxes due to record spending demands.

Most costly proposals of all deal with overhauling the public school finance formulas, regarded as a must job for the legislature this year.

Price tag on school finance reform ranges up to \$2.7 billion for the next two years. While a more-modest version probably will be adopted, any approach will take a big chunk of the available revenues.

Election of the new House speaker—Rep. Bill Clayton of Springlake—was the first major order of business for the session.

Only 30 new members took the oath of office in the House, only four in the Senate.

Gov. Dolph Briscoe is pushing for \$394 million in emergency appropriations to raise state employees pay by 10 per cent immediately, provide stopgap school aid and increase retirement benefits.

Matters which legislators will wrangle over during the next 140 days include constitutional revision, creation of a public utilities commission, election law reform, launching a presidential primary, environmental matters, prison and hospital reforms and property tax overhaul.

**COURTS SPEAK**—The Texas Supreme Court held parents of a Brewster County youth shot to death while allegedly stealing a battery from a car have a right to trial of a wrongful death suit against the man who killed him.

The Third Court of Civil Appeals held a woman whose only surviving son was killed in a Hays County car-train collision is entitled to \$15,850 damages. A jury verdict had held the 75-year-old woman should recover \$25,000.

**REVISION PROPOSED**—Two formal proposals for further efforts at constitutional revision have been prepared for legislative consideration.

Outgoing House Speaker Price Daniel Jr. announced a bill will be sponsored to provide for a 72-delegate constitutional convention to convene April 5, 1976.

Sen. Bill Patman of Ganado, meanwhile, pre-filed in the Senate a joint resolution proposing the 15,631-word product of the ill-fated 1974 constitutional convention be submitted to voters. Patman said his proposal will save time and money.

The legislature sitting as a convention in 1974 failed by three votes to agree on a document for submission to voters.

The issue of revision is expected to be a subject of major debate in the legislature this year.

**SALES TAXES REPORTED**—Texas cities received more than \$62 million in municipal sales and use tax allocations for the last reported quarter.

Of the total, Houston received \$12.5 million, Dallas, \$7.8 million, San Antonio, \$3.9 million, Fort Worth \$2.6 million; and Austin and El Paso, \$1.9 million each during the quarter.

New Comptroller Bob Bullock resumed release of the data without change to news media. The comptroller's office last year discontinued distribution of the reports.

**WATER REPORTS ACCEPTED**—Governor Briscoe accepted a short-range action program for guiding water development submitted him by a 32-member task force.

At the same time, he emphasized need to find a way to bring water to deficit areas from outside the state.

The program calls for \$1.7 billion worth of projects (many already under way) to meet Texas water needs and set priorities. It advises local management of ground water resources and endorses water importations for long-range needs.

Briscoe called on members of the task force to stay on the job and help implement the plan.

**AG OPINIONS**—Jurisdiction over minors 14-17 years old for fish and game law violations is in juvenile courts, Attorney General Hill held.

**Where minors are taken into court, they must be released promptly to parents on promise to bring them to court on request.**

In another opinion, Hill said the State General Land Office may pay for operation and maintenance of its airplane and two automobiles from the travel item of the current appropriations act.

Wildcat oil drilling increased by 42 wells in 1974 over 1973, but wildcat gas well drilling declined slightly.

**Disaster designation has been requested for Castro, Floyd and Hale counties due to prolonged drought and adverse weather conditions.**

**Merrill Nursing Home News**

We enjoyed watching the beautiful snow from our windows, but at the same time we were thankful to be in a warm building with all our physical needs cared for.

We have a new resident, Mr. Volie Irvin from Bradshaw.

We extend our sympathy to the family of Thomas Turner who died last week.

Rev. Swoyser conducted services Sunday. Kathy Eubanks played the piano. Rev. Swoyser's parents, Mr. and Mrs. Harry Swoyser from Bigville, Pa. were our guests.

Rev. Crooks has charge of the Wednesday morning Bible Study for January.

Ara Busher was high at bingo last week with 36. Beth Pumphrey had 29 and Carl Smith and Rachel Seldon tied with 28; Jose Overman had 27, Amanda Waldrop 26, Mattie Cook 23, and Nettie Hamilton 13.

**Thomas L. Turner Died In Rest Home Here**

Thomas Lee Turner, 80, died at 1:09 a. m. Wednesday in Merrill Senior Citizens Home in Winters, following a long illness.

Graveside services were held at 2:30 p. m. Thursday in the Wilmeth Cemetery with Masonic Services directed by the Norton Masonic Lodge. Burial was under the direction of Spill Funeral Home. Pallbearers were members of the Norton Masonic Lodge.

Mr. Turner was born at Millford, June 27, 1894, son of Richard and Mattie Sevier Turner. They came to Runnels County in 1907 and settled on a farm in the Norton Community where they lived for many years.

He married Clara Sharps at Norton in 1917.

He farmed until 1950 when he retired and moved to Ballinger.

Mrs. Turner died Nov. 15, 1953.

Mrs. Turner was a member of the Norton Masonic Lodge. Survivors are one brother, M. P. Turner of Wingate; a sister, Mrs. Ora Simpson of Ballinger; and several nieces and nephews.

Disaster designation has been requested for Castro, Floyd and Hale counties due to prolonged drought and adverse weather conditions.

**Band Boosters Meeting Monday**

A meeting of the Blizzard Band Boosters will be held Monday, January 20, at 7:30, in the Band Hall.

All members, and others interested in the school bands, have been encouraged to attend this important meeting.

**CARD OF THANKS**

The family of Joe H. Sheppard wish to express our appreciation for the many wonderful friends who have shown to us their love and kindness in our recent loss. Those who brought food, shared their homes and for all the beautiful flowers.

At a time like this the love that was expressed will always be remembered. It meant so much to us. To everyone thank you and our love always.—Jo H. Sheppard Family.

**Cholera Vaccine**

The first cholera vaccine was developed in the late 19th century by Dr. Waldemar M. Haffkine of the Pasteur Institute in Paris, who discovered that the cholera bacillus was harmless after infecting several animals in succession.

**Good Heavens!**

As far as science can estimate, the universe contains about 100,000 million billion stars — about as many grains of sand on all the world's beaches.

**SUBSCRIBE NOW TO Abilene Reporter-News**

Reasonable Subscription Rates —with the freshest news and features.

CALL LOCAL AGENT  
**Byron D. Jobe**  
PHONE 754-4683  
Winters, Texas

**Henry Block has 17 reasons why you should come to us for income tax help.**

Reason 8. H & R Block is a year-round service. We do not disappear after April 15th.

**INSURE WHAT YOU HAVE**  
(Property, time, life)

**JNO. W. NORMAN**  
The Insurance MAN

Form 649 (State)—(12-74)

State Bank No. 1876

**PUBLISHER'S COPY**

Consolidated Report of Condition of "The Security State Bank" of Wingate in the State of Texas and Domestic Subsidiaries at the close of business on 12-31-1974.

**ASSETS**

1. Cash and due from banks (including \$ 76,79 unposted debits) \$ 110,412.53 | Total (items 1 & 2) =

2. (a) U.S. Treasury securities \$ none | 2(a) & (b) =

(b) Obligations of Federal Financing Bank \$ none

3. Obligations of other U.S. Government agencies and corporations \$ none

4. Obligations of States and political subdivisions \$ none

5. Other securities (including corporate stocks) \$ none

6. Trading account securities \$ none

7. Federal funds sold and securities purchased under agreements to resell \$ 450,000.00

8. Other loans \$ 985,710.56

9. Bank premises, furniture and fixtures, and other assets representing bank premises \$ 8,308.27

10. Real estate owned other than bank premises \$ none

11. Investments in subsidiaries not consolidated \$ none

12. Customer's liability to this bank on acceptances outstanding \$ 1,427.56

13. Other assets (item 6 of "Other Assets") (including \$ none direct lease financing) \$ 2,057.48

14. TOTAL ASSETS \$ 2,057,484.32

**LIABILITIES**

15. Demand deposits of individuals, partnerships, and corporations \$ 785,608.63

16. Time and savings deposits of individuals, partnerships, and corporations \$ 9,157.01

17. Deposits of United States Government \$ 172,680.77

18. Deposits of States and political subdivisions \$ none

19. Deposits of foreign governments and official institutions \$ none

20. Deposits of commercial banks \$ none

21. Certified and officers' checks, etc. \$ 2,166.97

22. TOTAL DEPOSITS \$ 1,761,292.57

(a) Total demand deposits \$ 880,218.86

(b) Total time and savings deposits \$ 881,073.71

23. Federal funds purchased and securities sold under agreements to repurchase \$ none

24. Other liabilities for borrowed money \$ none

25. Mortgage indebtedness \$ none

26. Acceptances executed by or for account of this bank and outstanding \$ none

27. Other liabilities \$ 20,452.69

28. TOTAL LIABILITIES \$ 1,781,745.26

29. MINORITY INTEREST IN CONSOLIDATED SUBSIDIARIES \$ none

**RESERVES ON LOANS AND SECURITIES**

30. Reserve for bad debt losses on loans (set up pursuant to Internal Revenue Service rulings) \$ 5,291.42

31. Other reserves on loans \$ none

32. Reserves on securities \$ none

33. TOTAL RESERVES ON LOANS AND SECURITIES \$ 5,291.42

**CAPITAL ACCOUNTS**

34. Capital notes and debentures (specify interest rate and maturity of each issue outstanding) \$ none

35. Equity capital, total \$ 270,447.64

36. Preferred stock-total par value (No. shares outstanding none) \$ none

37. Common stock-total par value (No. shares authorized 525) (No. shares outstanding 525) \$ 52,500.00

38. Surplus \$ 52,500.00

39. Undivided profits \$ 165,447.64

40. Reserve for contingencies and other capital reserves \$ none

41. TOTAL CAPITAL ACCOUNTS \$ 270,447.64

42. TOTAL LIABILITIES, RESERVES, AND CAPITAL ACCOUNTS \$ 2,057,484.32

**MEMORANDA**

1. Average of total deposits for the 15 calendar days ending with call date \$ 1,672,255.92

2. Average of total loans for the 15 calendar days ending with call date \$ 979,352.86

3. Unearned discount on instalment loans included in total capital accounts \$ 2,500.00

4. Standby letters of credit \$ none

I, Peggy Friddy, Ass't. Cashier, of the above-named bank, do solemnly swear that this report of condition is true and correct, to the best of my knowledge and belief.

Correct—Attest: *Peggy Friddy*

Pat Fritchard  
Bobby Airhart  
Edna Ruth Self

State of Texas, County of Runnels

Sworn to and subscribed before me this 10th day of January, 1975, and I hereby certify that I am not an officer or director of this bank.

My commission expires 6-1-75.

**SATURDAY, JANUARY 25**

**9 99¢**

KING SIZE WALLET CREATIVE COLOR PORTRAITS FOR ONLY

Extra Charge for GROUPS

NO LIMIT

GET PICTURES MADE OF GRANDMA, GRANDPA, DAD, MOM AND ALL THE LITTLE ONES AT THESE SAME LOW PRICES!

**SHUGART COLOR PHOTOS**

ASK About Our FREE 8 x 10 OFFER

**Winn's**  
107 N. Main - Winters

**COW POKES** By Ace Reid

"There's a shortage of money, the economy's fallin' apart, now there's a shortage of balin' wire and my pickup's fallin' apart!"

**WESTERN AUTO ASSOCIATE STORE**  
Wes and June Hays



**Former Area Resident Died in California**

Grady Cottrell, 72, of Ker-man, Calif., died at 3 a. m. Sunday, Jan. 5, in California. He was reared in the Tuscola and Ovalo communities and was a brother of Mrs. Clifton Davis of Winters. Survivors include his wife, four children, four sisters, and ten grandchildren.

**Susie Baker Group Meeting**

The Susie Baker group of the First United Methodist Church met Tuesday with Mrs. Thad Traylor presiding.

Mrs. Gattis Neely was elected treasurer and Mrs. W. T. Stanley, secretary.

The group decided to meet in the library of the educational building during January and February.

The group discussed "Retirement." Those taking part on the program were Mesdames Anderson, Wilson, Stanley and Neely.

Others present were Mesdames Elois Davis and Edith Drake.

**Silver Lining**  
During the silver mining strike at Treasure City, Nev. in the 1870s, two miners built a house from rocks picked up at their claim. Later, when their mine gave out, the two "mined" their home for \$75,000 in silver.

**The Strong Sex**  
The wing muscles of some female mosquitos equal 35 per cent of their total body weight.

**The Winters Enterprise**  
Winters, Texas  
PAGE 3  
Friday, January 17, 1975



**AMBULANCE SERVICE DIAL**  
**754-4511**  
Day or Night  
Including Sundays or Holidays!

**Air Ambulance**  
WHEN DESIRED  
CAN BE ARRANGED  
ANY TIME - ANY PLACE

**SPILL BROS. CO.**  
Winters, Texas

**Adolph Chapik Died in Dallas**

Funeral services were held at 4 p. m. Monday, January 6, in Restland Memorial Chapel, Dallas, for Adolph Chapik, of Dallas.

He is survived by his wife, Mrs. Patsy Chapik, the former Patsy Paschal of Winters, and a son, Stanley; seven brothers and sisters.

**Be Busy Club Meeting Recently**

The Be Busy Sewing Club met recently in the home of Mrs. Nadine Smith, with Mrs. M. H. Hogan assisting with hostess duties.

The afternoon was spent doing handwork for the hostess.

Present were Mesdames Lewis Blackmon, Bill Millhorn, Bobby Airhart, Nadine Smith and the hostess.

The next meeting will be Monday, Jan. 27, in the home of Mrs. Vada Babston.

**Martha SS Class Meeting Recently**

The Martha Sunday School Class of the First Baptist Church met in the home of Mrs. Sam Cooke recently. Roll call was answered with Bible verses. Mrs. Parrie Carwile gave the devotional, and Mrs. Lady Rogers led the diversion.

Present were Mesdames Pearl Jackson, Vallie Brannon, Parrie Carwile, Eula Cook, Erna Marks, Thelma Mayo, Lady Rogers, Clara McAdams and Miss Eunice Polk.

**Episcopalians To Have "House Service" Jan. 19**

The Rt. Rev. Willis R. Henton, bishop of the Diocese of Northwest Texas (Episcopal), will celebrate Holy Communion at the Ballinger "House Church" January 19. Bishop Henton's diocesan headquarters are in Lubbock, and he will be making his second visitation to the "House Church" in two years. In 1974 he conducted Sunday services in the home of Mr. and Mrs. Leon Springer, 901 Manning in Winters.

The "House Church" is an informal group of Episcopalians who live in Winters and Ballinger. They meet three or four times each month, usually at 8:30 a. m., either at the Springer home or in Ballinger at the residence of Mr. and Mrs. Hilton Jack, 1409 Broadway. The Episcopal priest serving the two-city "house church" is the Rev. Stephen R. Weston, vicar of St. Mark's Church in Coleman.

Bishop Henton will confirm one person and celebrate the eucharist in Ballinger Sunday, Jan. 19, 8 a. m. at the Jack's home, 1409 Broadway. Interested persons are invited to attend.

**REGISTER NOW . . .**

FOR CLASSES IN

**Beginners & Advanced Borgello**

Fancy Needlepoint in regular or bulky threads!

Classes will begin Jan. 28, 1 to 4 p. m., 7 to 10 p. m.

**CHAPAL YARN & GIFT SHOP**

117 Soutr Main

45-2tc

**a good reason to INSURE with US.**



**Policy tailored to needs.**

Even though property may appear to be similar to your neighbors, chances are there is a great difference. Our Home-owners policy is tailored to fit the needs of the individuals. See us today.

For additional information, call us!

**BEDFORD INSURANCE AGENCY**

**Sommy's**

We Gladly Accept U.S.D.A. Food Stamps.      **GROCERY and MARKET**      We Give S. & H. GREEN STAMPS

PRICES EFFECTIVE.      Double on Wednesday With \$2.00 or More Purchase.

Thurs., Jan 16 thru Sat., Jan. 18

|  |   |   |
|--|---|---|
| <p><b>KIMBELL</b><br/><b>PINTO BEANS</b><br/>2 lb. Pkg <b>79¢</b></p>      | <p><b>CRISCO</b><br/>3 lb. Can <b>\$1.99</b></p>                | <p><b>PILLSBURY BUTTERMILK BISCUITS</b><br/>10 5-oz. Cans <b>\$1.00</b></p> |
| <p><b>OLEO</b> Kraft Miracle Bowl 16-oz. <b>79¢</b></p>                    | <p><b>FLOUR</b> BIG "K" 25-lb. Bag <b>\$3.49</b></p>            | <p><b>D. D. Medium EGGS</b><br/>Doz. <b>69¢</b></p>                         |
| <p><b>MORTON HOUSE OVEN BAKED BEANS</b> 16-oz. Can <b>3 for \$1.00</b></p> | <p><b>LONGHORN CHEESE</b> KRAFT HALF-MOON 10-oz. <b>79¢</b></p> |   |
| <p><b>Kraft 1,000 Island DRESSING</b> 8-oz. <b>49¢</b></p>                 | <p><b>COKE</b> 32-oz. Bottle Plus Deposit <b>33¢</b></p>        | <p><b>COFFEE MATE</b> 12-oz. <b>79¢</b></p>                                 |
| <p><b>KIMBELL DRIED BLACKEYE PEAS</b> 16-oz. pkg. <b>25¢</b></p>           | <p><b>Folger's INSTANT COFFEE</b> 10-oz. <b>\$1.99</b></p>      | <p><b>MOP &amp; GLO</b> FLOOR WAX 48-oz. <b>\$1.89</b></p>                  |
| <p><b>Kraft Deluxe MACARONI &amp; CHEESE DINNERS</b> 14-oz. <b>69¢</b></p> | <p><b>LYSOL LIQUID CLEANER</b> 28-oz. <b>89¢</b></p>            |   |
| <p><b>14-oz. Can LYSOL SPRAY</b> <b>\$1.39</b></p>                         | <p><b>BORDEN'S HALF GALLON BUTTERMILK</b> <b>57¢</b></p>        |   |
| <p><b>HEAVY BEEF Family STEAK</b> lb. <b>79¢</b></p>                       | <p><b>FRYERS</b> WHOLE ONLY lb. <b>49¢</b></p>                  | <p><b>DECKER'S BACON</b> 12-oz. pkg. <b>89¢</b></p>                         |
| <p><b>ARM ROAST</b> HEAVY BEEF lb. <b>89¢</b></p>                          | <p><b>FROZEN CHICKEN HENS</b> lb. <b>69¢</b></p>                |   |
| <p><b>PORK SAUSAGE</b> Market Made lb. <b>89¢</b></p>                      | <p><b>DECKER'S ALL-MEAT FRANKS</b> 12-oz. <b>65¢</b></p>        |   |
| <p><b>SPICED DECKER'S LUNCHEON</b> lb. <b>89¢</b></p>                      | <p><b>DECKER'S BOLOGNA</b> lb. <b>79¢</b></p>                   | <p><b>PICKLE LOAF</b> DECKER'S lb. <b>89¢</b></p>                           |
| <p><b>Yellow ONIONS</b> lb. <b>10¢</b></p>                                 | <p><b>ARIZONA TANGERINES</b> 4 lb. for <b>\$1.00</b></p>        | <p><b>CELLO RADISHES</b> 5-oz. pkg. 2 for <b>25¢</b></p>                    |

**a good reason to INSURE with US.**

**Policy tailored to needs.**

Even though property may appear to be similar to your neighbors, chances are there is a great difference. Our Home-owners policy is tailored to fit the needs of the individuals. See us today.

For additional information, call us!

**BEDFORD INSURANCE AGENCY**



# Classified Ads

## FLOWERS

FLOWERS for all occasions. Orders wired anywhere, any time. Mrs. Mamye Little, FTD Bonded Florist, Winters Flower Shop, Dial 754-4568. tfc

**BLOSSOM SHOP:** Bonded florist, Mrs. Floyd Grant Sr. Flowers for all occasions. Flowers wired anywhere. Phone 754-5311. tfc

## FOR SALE

FOR SALE: 1969 model Coupe de Ville Cadillac. Clean and loaded. Contact E. J. Bishop, 754-4324. Terms available. tfc

FOR SALE: camper for long, wide bed; ice box, stove, butane bottle, sink with water tank. Call 754-4691. 44tfc

FOR SALE: 3 bedroom brick home, fully carpeted. Contact Homer Briley 754-4905. 45tfc

FOR SALE: 1974 Dodge 3/4 ton pickup, all power and air 440 cu in. 1969 G-900 Moline tractor, butane, cab. 1970 John Deere Tandem Disc. 1972 Mohawk chisel plow, 4 row International cultivator. 754-5042. 45-2tp

FOR SALE: Winchester 410 single shot gun; 8 track tape player. Contact Charlie Eubank Jr. Wingate. 743-2322. 45-2tp

THE COMBINED Indiana-Michigan Annual Club Calf Sale was held by the respective Limousine Assn. Nov. 17. The top selling heifer and top selling steer were both sired by Dan C. CFM-32. Dan C is the purebred Limousine bull owned by Darrell Compton and E. J. Bishop, Winters, Tex. We have semen for sale; also custom breeding service. 45-tfc

FOR SALE: 8x38 mobile home. Air conditioned. R. L. Briley, 754-4764. 45-1tp

## FOR RENT

FOR RENT: Up stairs furnished apartment. 506 Lamar; 754-5249. Mrs. A. D. Smith. tfc

## LOST & FOUND

REWARD OFFERED: 10 speed bicycle, orange, with high handle bars, hand brakes, gray banana seat. Last seen Friday, Jan. 10 at 802 Concho. Contact Eddie Childress. 45-1tp

LOST SATURDAY, Dec. 28, a pair of men's black framed glasses in a case. 754-5179, G. W. Scott. 45-1tp

## WORK WANTED

HAVE BACKHOE and dump trucks, will dig ditches and cess pools. Haul yard dirt, sand, gravel. Will dig up pipe. Day or night phone, 754-4995, Roy Calcote. tfc

## BEULAH SCHAFFRINA

Income Tax Service  
In My Home, 607 Wood  
Phone 754-4652 44-16tp

SAW SHARPENING, scissors, and all other things that need sharpening. 4 guitars for sale \$18 each. Levi Smith, 754-4209. 45-2tp

## REAL ESTATE

183 A. stock farm N. of Winters, tank, well, home. 1400 A. highly improved ranch, plenty water, good grass, equity and assume existing loan.

183 A. NE of Winters, all pasture, 4 tanks, corrals, fenced, cross fenced. Will consider equipment as trade in. 155 A. near Bradshaw, nice 2 story home, tanks, wells, barns. 29 per cent down. Owner finance balance. 2, 3 and 4 bedroom homes in Winters.

Franklin Real Estate  
243 S. Main, Winters, Texas.  
Phone 915-754-4725; Nights 554-7783, 754-4588.

## MISCELLANEOUS

QUARTER HORSE STALLION: Go Eagle Man Go. He was bred for speed. Contact Willard Herrington, Rt. 3, Abilene 79605 or call 692-3993. Stud fee \$100. 42-11tp

## CARD OF THANKS

I would like to thank all the many friends and relatives for all the visits and get well cards and gifts I received while I was in the hospital. Especially do I thank all the hospital staff and Dr. Rives for the care I received while in the hospital. May God bless each of you. My family joins me in saying thank you to each and every one. Sincerely, Mrs. Pat Pritchard. 1tp

## MISCELLANEOUS

**LIMOUSIN BREEDERS OF TEXAS AND BISHOP BOYS LIMOUSIN**  
Winters, Texas  
Phone 915-754-4324  
offer custom AI breeding services to the bull and breed of your choice. We furnish room, board and spotter bulls. We have Dan-C CFM 32, son of Dandin C, the \$176,000 bull, that we use to hand breed. For Sale: 3/4 Limousin club calves; bred 1/2 Limousin cows with calves at side; bred 1/2 Limousin cows. 36-tfc

WANTED: Scrap Iron, cables, metals. Ballinger Salvage Company. tfc

WESTERN MATTRESS SERVICE: Pick up and delivery. Save up to 50% renovation. Box springs to match. Guaranteed customer satisfaction. Phone 754-4558. tfc



FOR COMPLIMENTARY FACIALS and MARY KAY COSMETICS. Call MARVA J. UNDERWOOD 754-5128. 200 N. Sanders.

## OWN YOUR OWN HOME

At Factory Discount Prices  
3 bdrm 1 1/2 bath under \$95.00 per month.  
2 bdrm front kitchen under \$88.00 per month.  
Low down payment FHA loans approved.  
Abilene Mobile Homes  
4618 N. 1st  
Abilene, Tex. 915-672-6466 38-5tp

## OUR WASHINGTON NEWSLETTER

By Congressman O. C. Fisher 21st District

This will be our last weekly Newsletter. For 32 years, during sessions of Congress, I have sent these releases to constituents who requested them. My purpose has been to report accurate news accounts of Capitol Hill and related activities, touching of course, only a few high spots. The total number on our Newsletter list now approximates 1,000.

This has been one of the many ways I have attempted to serve and keep in touch with my constituents. Another method, which I initiated on Capitol Hill was the use of Questionnaires which were sent to every registered voter in the district every other year. Responses were extremely gratifying, usually percentage-wise above the average reported by others who adopted the practice. The results were very helpful.

In addition, for a long time I made brief weekly radio and TV reports, at my own expense, which reached the mainstream of my constituency.

The old 27-county 21st district, created in the early 30's, is still fairly intact, with several additions and a few unfortunate losses of counties I did not like to give up. But as reconstituted the 21st has been and is a truly great district, and it's the people who do that.

In retirement I will keep busy, with several irons in the fire. Since my files and accumulated memorabilia

are presently stored at my place near Junction, for the immediate future that will be my post office address. There's a lot of sorting and processing to be done. If you come that way, drop by for a visit.

In conclusion, my everlasting gratitude goes out to my friends who have sustained and supported me throughout my tenure in the Congress. As an old sheepherder put it, "Leave us altogether stick." Here's wishing all of you a wonderful 1975!

## Lunchroom Menu

**Monday, Jan. 20**  
Western spaghetti, tossed green salad, green beans, garlic buttered French bread, white cake with orange topping, milk or chocolate milk.

**Tuesday, Jan. 21**  
Hot dogs or combination sandwiches, French fries, cat-up in cups, fruit salad, devil's food cake, milk.

**Wednesday, Jan. 22**  
Fried chicken, buttered mashed potatoes with cream gravy, seasoned green beans, peanut butter cookies, hot rolls, butter, milk or chocolate milk.

**Thursday, Jan. 23**  
Baked ham, potato salad, mixed vegetables, apple sauce, chocolate no-bake cookies, hot rolls, butter, milk or chocolate milk.

**Friday, Jan. 24**  
Grilled cheese sandwiches, chili beans, hawaiian salad, dill pickles, Chinese chews, milk or chocolate milk.

## Carroll Stoecker Died In Abilene Hospital Friday

Carroll H. Stoecker, 74, died at 6:20 p. m. Friday in West Texas Medical Center in Abilene following an illness of two weeks.

Funeral services were held Monday afternoon from St. John's Lutheran Church in Winters, with the Rev. Mel Swoyer, pastor, officiating. Burial was in the Lutheran Cemetery under direction of Spill Funeral home.

Mr. Stoecker was born at Navasota March 1, 1900, the son of August and Emma Stoecker. The family moved to Round Top, and to Runnels County in 1906, settling at Lowaky. In 1911, they moved to the Winters area and Mr. Stoecker had lived on a farm eight miles southeast of Winters since 1925.

He married Mayme Mathies, Dec. 13, 1925, at Winters.

He was a member of St. John's Lutheran Church. Survivors are his wife of nearly 50 years; two sons, Herbert and Paul Stoecker, both of Abilene; three daughters, Mrs. Naomi Romans of Lubbock, Mrs. Ruth Shriver of Abilene, and Mrs. Nadine Bedford of Winters; two brothers, Newt and Homer Stoecker, both of Winters; three sisters, Mrs. W. F. Minzenmayer and Mrs. Erwin Ueckert, both of Winters; 20 grandchildren; and six great-grandchildren.

Pallbearers were Dale Eubanks, George Fruser Jr., Roy Masthies, Elton Goetz, Frank Brown and Weldon Minzenmayer.

## SKI TRIP

Debbie Lloyd, daughter of Mr. and Mrs. Raymond Lloyd, returned Saturday from an ACC ski trip in northern New Mexico, on the Red River slopes. College instruction and awards were given through the physical education department of ACC for the 60 attending.

## FROM SAN ANGELO

Mr. and Mrs. Darrell Gresham of Edmonson and May Sanders of San Angelo visited with Elsie Sanders over the weekend.

The Winters Enterprise, Winters, Texas  
PAGE 4  
Friday, January 10, 1975

## Business Services

**MERLE NORMAN**  
Cosmetic Studio  
**BEAUTY CENTER**  
COMPLETE LINE OF COSMETICS.  
CALL TODAY FOR YOUR APPOINTMENT!  
754-4322

**BURGER HUT**  
COLEMAN HIGHWAY 754-4181  
Open 11 a. m. to 11 p. m. Daily.  
HOME OF THE QUARTER POUNDER

**RCA TV**  
Authorized Dealer  
SALES & SERVICE  
WE SERVICE ALL MAKES

**BARNES RADIO-TV**  
754-4223 135 N. Main

**SWATCHSUE ELECTRIC CO.**  
Electrical and Air-Conditioning Contractor  
Fredrich Air Conditioners  
Refrigeration Sales-Service  
Homelite Chain Saws  
J. J. SWATCHSUE, Owner  
Jose De La Cruz  
Phone 754-5115 - Box 307

**Custom Spraying**  
JOHN DEERE HI-BOY  
Contact  
H. Q. SHARP  
Winters Gin - Ph. 754-5066  
or  
JOE RODRIGUEZ  
904 N. Cryer - Ph. 754-4668

**Television**  
SALES & SERVICE  
**Radio-TV Service**  
We Service All Makes!  
Satisfaction Guaranteed!  
**Riess Radio & TV**  
Phone 754-4819 During Day  
After 6 P. M. 754-5054

Have Dump Truck and Loader  
HAVE LARGE & SMALL BACK-HOE  
FOR DITCH DIGGING!  
Will Haul Sand & Gravel, Caliche & Top Soil.  
**Lonnie Fowler**  
Phone 754-4282

**MANSSELL BROTHERS**  
BALLINGER - WINTERS  
"Your Authorized John Deere Dealer"  
Ballinger Ph. 365-3011  
Winters Ph. 754-4027  
Parts & Service  
Complete Shop Facilities  
904 North Main, Winters

BUY YOUR NEXT **Watch** from your JEWELER!  
**BAHLMAN JEWELERS**  
106 South Main Phone 754-4057

## ABSTRACTS

GENERAL TITLE SERVICE  
on all lands and lots in RUNNELS COUNTY  
**J. W. Purifoy**  
ABSTRACTER  
701 Hutchings  
Tel. 365-3572  
Ballinger, Texas



... AND YOU'LL FIND THOSE SAVINGS REALLY ADD UP WHEN YOU

## SHOP AT HOME

... Not only do Winters merchants offer outstanding values... in practically everything you need and want... you'll find you save in so many other ways!

... You don't have to spend money for gas to drive long distances to do your shopping—when you shop at home... in Winters.

## SHOP AND SAVE IN WINTERS

IT PAYS TO SHOP AT HOME



## THE BANK

... where business and pleasure do mix ...



We can help you with a checking account:

1. Good records
2. Safeguard cash
3. Pay by mail
4. Deposit by mail
5. Automatic receipts
6. Save time
7. Good money management

OPEN YOUR ACCOUNT TODAY!

For Every Financial Service In 1975!

## THE WINTERS STATE BANK

Each depositor insured to \$40,000  
**FDIC**  
FEDERAL DEPOSIT INSURANCE CORPORATION



## C. T. Parker's Weekly News Column

One of the most common, yet least understood, aspects of home gardening is pruning. Pruning can be a simple process; the "basics" are few and once understood can be mastered quite easily.

Proper pruning can turn a tree or shrub into a beautiful plant specimen; improper pruning can result in headaches, heartache, and "butchered" plants. Nearly any tree or shrub must from time to time be pruned in order to maintain a desired size or shape, or for the removal of dead or diseased branches. The questions which arise in the mind of the home gardener when the time comes to prune are endless.

One of the most questions often heard is, "Why should I prune?" That's a good question, and here are some familiar problems which you can solve by correct pruning:

**1. Dead or injured limbs:** Dead, broken or diseased branches should be cut out as soon as possible with a sharp saw. Be sure to paint the wounds with a tree wound dressing.

**2. Shaping:** Shrubs, trees, roses, etc., may be shaped by pruning to conform to the original idea you had when you planted them. This is especially true in the case of "specimen" shrubs (topiary plants) and espaliers. They must be regularly pruned or trimmed to maintain the desired shape.

To encourage a tree to spread widely remove its leader; to grow more upright prune its side branches; to grow more open in the center, remove some of the branches back to the interior of the trunk; and to grow

more compact, clip the ends of all branches.

**3. Increased bloom:** A plant can be made to bloom more abundantly by pruning. Deciduous shrubs, for example, should be pruned after flowering to encourage vigorous bloom for next season.

**4. Light and air:** If a plant is too thick in the center, so that little light and air reach the interior, thin it out by selectively pruning some of the interior branches.

**5. Large flowers:** Remove the small buds which have come out beside the larger ones. The strength goes into the remaining larger bud. When you do this you are forcing all of the plant energy into the production of a single flower or blossom. This procedure is commonly called "disbudding."

**6. New growth:** You can bring about new stem growth by heading back, which means pruning so that the outward growth is cut back toward the main stem. Pruning on top will tend to increase the foliage and branches toward the sides. If you prune the roots, the plant will stop growing somewhat, but will develop more fruit and blossoms.

Another question most frequently asked is, "When to prune?" There are a number of general rules which you can apply safely. For example, the time to prune any shrub or tree depends on when the plant blooms. Spring-blooming deciduous species are pruned after the blooming period, as are some evergreen types. When you prune one of these you are inducing the formation of flower buds for the next season.

Summer and fall-blooming shrubs are usually pruned in the late fall and winter. New growth comes out by spring, bearing new flowers.

Evergreens, such as ligustrum, pittosporum, euonymus and others where flower production is not important can be pruned anytime, but always remember that there should be a reason or need before any plant is pruned.

**CARD OF THANKS**  
I would like to thank all of the business and individuals who purchased shared to provide the bonus prizes in the Junior Livestock Show.

Special thanks to the Chamber of Commerce for their part in the show and to each person who helped us in getting the show barn and our animals ready. —Robert Snell 11p

The Winters Enterprise  
Winters, Texas  
PAGE 5  
Friday, January 17, 1975



Registry Service  
For Your Wedding  
GIFTS!

BAHLMAN  
JEWELERS

## WINGATE NEWS

The Wingate Sew and Sew Club met January 8. The 17 members present quilted.

Those on the sick list include Ruby Bryan, Mrs. Duncan Hensley, Mrs. Wheat, and Mrs. H. O. Polk.

Guests in the Cloy Allen home were their daughter and family from Abilene.

Gene Wheat was injured in an accident involving a butane truck. He had surgery and received some lacerations on his face.

If you feel like you own the earth — shake off the feeling; it's just the weight of the mortgage.

## Funeral Held In Abilene For Bradshaw Native

Graveside rites were held in Elmwood Memorial Park, Abilene, Friday for Malcolm A. Hardy, 52, a native of Bradshaw.

Mr. Hardy was found hanged Wednesday of last week in his home in Abilene.

He was born at Bradshaw and moved with his family to Abilene in 1936. He graduated from Abilene High School, and worked for Western Union for two years before he joined the Navy in 1943.

Survivors are a twin sister, Mrs. Joe Sharrard of Abilene and another sister, Mrs. Jim Lough of Oregon.

## Blackwell News

Mr. and Mrs. Ernest Ware visited during the holidays in Midland with her aunt and her husband, Mr. and Mrs. Bob Knott, and other relatives and friends.

Mr. and Mrs. Jerry Ware and children, Don, Angelia and Lisa visited during the holidays in Bronte with her parents, Mr. and Mrs. Joe Hester and with other relatives and friends.

Mrs. Maxine Barney of San Antonio visited over the New Years holidays with her mother and brother, Mrs. M. L. Barnes and Jake, and with other relatives and friends.

Mrs. Daisy Henderson has as visitors her sons, Oscar Henderson of Monument, N. M., and Mr. and Mrs. Leonard Snow of Carlsbad, N. M.

Visiting Mrs. Flora Sander-son Monday and Tuesday of last week were her grandson and family, Mr. and Mrs. Ike Langston and Patsy, Jimmy and Debbie of Aransas Pass.

Mrs. Lula Palmer, Mrs. John Sparks and Vernon Harrist are patients in the Bronte Hospital.

Feel free to do what you care to: it's the doing that runs up bills.

Driving under the influence is what happens every time we go out with the wife.

For that run-down feeling, there's nothing like stepping in front of a tractor-trailer.

## SHUGART COUPON

WINN'S - 107 N. Main  
SATURDAY, JANUARY 25



9  
WALLET SIZE  
COLOR PORTRAITS  
99¢

ASK  
ASK  
ASK  
8 x 10  
OFFER

Extra charge  
for  
GROUPS

WE GIVE WE GIVE

# Shop For PIGGLY WIGGLY Warm Values

|   |   |  |
|---|---|--|
| <p><b>FOLGERS COFFEE</b> 1 lb. Can <b>99¢</b></p> <p><b>JEWEL SHORTENING</b> 42-oz. <b>\$1.63</b></p> <p><b>BETTY CROCKER CAKE MIX</b> Box <b>59¢</b></p> <p><b>BORDEN'S BUTTERMILK</b> 1/2-Gal. <b>53¢</b></p> <p><b>NORTHERN PAPER TOWELS</b> JUMBO ROLL <b>47¢</b></p> | <p>10.75-oz. Campbell's <b>TOMATO SOUP</b> 2 Cans <b>39¢</b></p> <p>16-oz. Van Camp <b>PORK &amp; BEANS</b> 2 Cans <b>57¢</b></p> <p><b>WILSON'S CHILI</b> 24-oz. <b>79¢</b></p>  | <p><b>KING SIZE TIDE</b> 84-oz. <b>\$1.69</b></p> <p><b>SHURFINE CATSUP</b> 32-oz. <b>69¢</b></p>  |
| <p>5-oz. <b>HORMEL VIENNA SAUSAGE</b> Can <b>33¢</b></p> <p><b>HEINZ BABY FOOD</b> Jar <b>13¢</b></p> <p>13-oz. <b>Jeno's Frozen PIZZA</b> Ea. <b>83¢</b></p> <p>12-oz. <b>Shurfine Frozen ORANGE JUICE</b> 2 Cans <b>85¢</b></p> <p>Quantity Rights Reserved</p>         | <p><b>LIQUID IVORY</b> 32-oz. <b>95¢</b></p> <p><b>SCOTT MIXED NUTS</b> 13-oz. <b>79¢</b></p> <p><b>Del Monte Pineapple-G'fruit DRINK</b> 46-oz. <b>43¢</b></p> <p>20-oz. <b>Pet Ritz PIES</b> Each <b>53¢</b></p> <p><b>Patio Mexican DINNERS</b> <b>37¢</b></p> | <p><b>U.S.D.A. HEAVY BEEF</b></p> <p><b>ROUND STEAK</b> lb. <b>\$1.19</b></p> <p><b>RUMP ROAST</b> lb. <b>99¢</b></p> <p><b>PIKES PEAK ROAST</b> lb. <b>\$1.09</b></p> <p>Decker's Tall Korn <b>SLICED BACON</b> lb. <b>\$1.19</b></p> <p><b>DANKWORTH GERMAN SAUSAGE</b> 12-oz. <b>89¢</b></p> <p>Decker's All-Meat <b>BOLOGNA</b> lb. <b>79¢</b></p> |
| <p><b>THRIF-TEE FOOD STORES</b></p> <p></p> <p>Yellow <b>ONIONS</b> lb. <b>9¢</b></p>   | <p>Sweet Juicy Texas <b>ORANGES</b> 5 lb. Bag <b>39¢</b></p>  | <p>Fresh <b>CARROTS</b> 2 lb. Bag <b>33¢</b></p> <p>White <b>GRAPES</b> lb. <b>29¢</b></p>   |

# attend Farming Frontiers

Farming Frontiers '75—the year's most outstanding farm-oriented film program—is coming your way. See the latest in agricultural developments, and new John Deere Tractors and equipment. These films were made in many parts of the U.S. and Canada. Be sure to come.

STATE THEATRE  
THURSDAY, JANUARY 23  
7 p. m.  
**MANSELL BROS.**  
WINTERS, TEXAS



