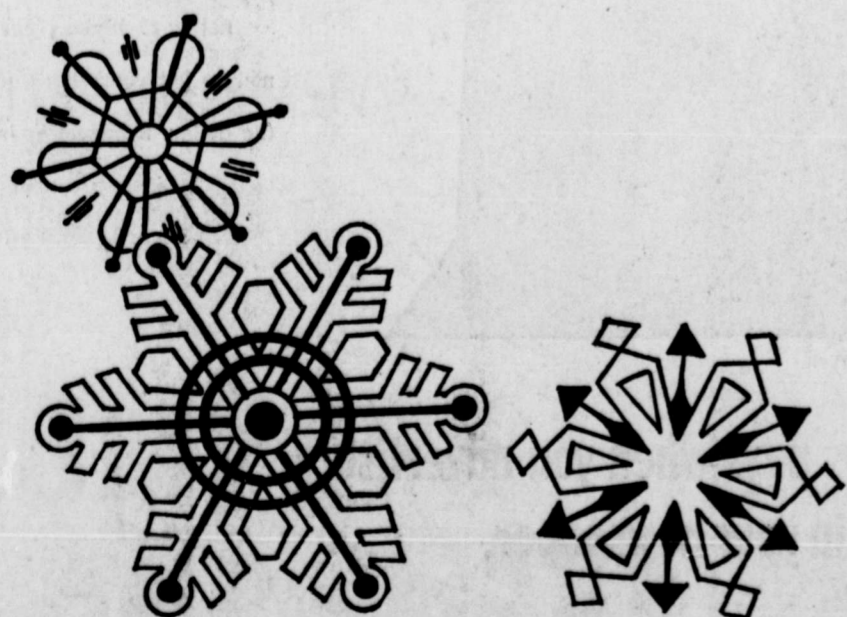


AN OLD FASHIONED CHRISTMAS WISH

Remember what fun it was to "help"
Dad cut down the tree? . . . When you
got home you'd pop corn and string
it while logs blazed and crackled
on the hearth. Mother would
be baking gingerbread cookies
and throughout the house
the sound of happy, eager
voices would tell each
visitor the holiday season was
here. Times have changed
but the special joy that
youngsters know at
Christmas is still the same —
we wish that joy to you!



Donald C. Chapmans Sign Contract For Organ Gift To U-M Church

A contract was signed on December 15, between Casavant Freres, Limited, pipe organ builders of St. Hyacinthe, Quebec, Canada and Mr. and Mrs. Donald C. Chapman of Columbus, Ohio, to build a custom designed two-manual organ for the new sanctuary of the First United Methodist Church of Winters, planned to be completed in early 1971.

The organ will be a classical instrument costing \$40,000, and will be dedicated as a memorial to the families of Mr. and Mrs. H. L. Chapman and Mr. and Mrs. W. D. Donham, pioneer residents of Winters. It will be constructed in three sections consisting of 989 pipes. Pipework in the great and pedal sections will be exposed. The swell section will be under expression.

The console will be detached, all electric, with drawknobs, and casework will match the interior finish of the chancel. The contract calls for completion of the instrument within eighteen months at the latest, or earlier, should the new church be ready to receive it.

Lawrence I. Phelps, Vice President and Tonal Designer represented Casavant Freres, Limited in these transactions. Spokesmen for the Winters United Methodist Church said it is hoped that ground can be

Mr. and Mrs. Bill Harman Honored On 50th Wedding Anniversary

Mr. and Mrs. Bill Harman were honored on their 50th wedding anniversary with a surprise party hosted by their friends in their home on Tuesday night December 16th.

Smith, Mrs. Truett Smith, Mrs. Becky Poe, Miss Mildred Patton, Mr. and Mrs. Griff Brown, Mr. and Mrs. Ed Kinard, Jim Patton, and W. A. Mitchell.

Cookies, candies, punch and coffee were served to the following friends: Mr. and Mrs. Virgil Low, Mr. and Mrs. Tab Hatler, Mr. and Mrs. Jack Patton, Mr. and Mrs. David Bryan, Mrs. Carl Green, Mrs. L. R. Hancock, Mrs. Nadine

SUPERVENDER
A new type of office vending system consists of centrally located production and storage facilities with beverages directed to each floor in nickel stainless steel pipes.

Poinsettias Demand Careful Attention

Poinsettias, favorite Christmas flowers, demand careful attention to survive the entire holiday season.

High-quality plants, Janne says, have large colorful bracts and flowers just starting to open. Poinsettias with open flowers and shedding plumes indicate maturity and may not last through the holiday season.

Poinsettias are grown during Christmas for their red and green colored bracts, says Everett E. Janne, Extension landscape horticulturist at Texas A&M University. New varieties with pink or white bracts are now available.

Being subject to cold damage, poinsettias should be placed away from drafts and opening doors to prevent sudden temperature changes. Drafts from circulating air furnaces are especially harmful to these Christmas plants due to rapid drying effects, the horticulturist says.

The colorful part of the poinsettia is its modified leaves. The actual flower, above the modified leaves, is hardly noticeable.

Cotton can take high heat. Cotton will not "pill up."

Husband of Winters Woman Medical Officer for "Biggest Aircraft" Unit

Helping support operations of the world's largest aircraft will soon be the job of Doctor (Captain) Richard W. Pearce, son of Mr. and Mrs. Richard W. Pearce Sr., Jacksonville, Fla.

MD degree in 1968 from Tulane University School of Medicine. He is a member of Phi Sigma and Alpha Epsilon Delta.

The first operational C-5 Galaxy, huge jet transport that experts say will revolutionize military air transportation, was delivered December 17 to the Military Airlift Command (MAC) at Altus Air Force Base, Oklahoma, where Doctor Pearce is a flight medical officer. He will provide essential service for MAC aircrew training operations at Altus.

Dr. Pearce participated in the acceptance ceremonies that also commemorated the December 17 anniversary of the first power flight by Orville Wright at Kitty Hawk, N. C., in 1903.

The Galaxy is so large that the first time Dr. Pearce walks the length of the cargo compartment, he will have traveled farther than Orville Wright flew on his historic first flight of 120 feet. The C-5's main cargo section is 121.1 feet long.

Dr. Pearce's wife, Barbara, is the daughter of Mr. and Mrs. Buford Baldwin of Winters. He is a 1960 graduate of Andrew Jackson Senior High School, received his BA degree in 1964 from Emory University and his

If moved into the center of an average open-end college football stadium, crews would have to be very careful. The Galaxy's 247-foot length would overlap the 10-yard lines, its 223-foot wing span would extend beyond the front row seats of both sides and the top of the 65-foot tail section would be above the eye level of upper deck fans.

Use of the Galaxy by MAC will mark the first time the Air Force will have the capability of airlifting Army units with all their combat equipment, including tanks, heavy equipment and vehicles. The C-5 is capable of transporting nearly 99 per cent of the equipment of an Army division. For rapid deployment around the world, the Galaxy can carry 350 fully equipped troops and, with the addition of a third deck, can double this number.

Persons Receiving Disability Money To Report Change

Thousands of people receive social security benefits because they are disabled. However, Ted F. Moellering, social security district manager, says that many people are not aware of the provisions that cause disability benefits to stop.

Incorporating some of the most advanced technology in aviation history, the C-5 has an automatic trouble-shooting system that monitors some 900 check points to forewarn of possible malfunction. It can be operated from short unimproved airfields. Landing gears on the 28-wheel aircraft can be retracted so that the plane can "kneel" in three different angles for easy cargo loading and unloading. An automatic terrain-following radar system permits "tree top level" flight to avoid enemy radar and assure safe approach to and departure from air drop and landing zones in rough terrain, even at night and in bad weather.

According to Moellering, these payments end when the earliest one of three events occur.

Powered by four gigantic new engines that produce a combined 44,400 pounds of thrust, compared with the 3,000 pounds thrust of early U. S. jet fighters, the Galaxy can carry a maximum payload of 132.5 tons, utilizing both upper and lower decks. It can speed 110 tons a distance of 3,000 nautical miles in seven hours or 56 tons, 5,500 miles in 12 and one-half hours. The C-5 has a cruising speed of more than 500 miles an hour and is capable of being refueled in flight.

First, disability benefits, as such, stop when the disabled person turns age 65. In this case, explained Moellering, the benefits end with the month before the month the beneficiary is 65. However, Moellering points out that nearly always the disability benefit is converted to retirement benefits in the same amount, so that payments continue without interruption.

Moellering went on to explain that eligibility to benefits also ends with the month before the month of the disabled person's death.

Second, disability payments stop when the person's disabling condition ceases. This happens when the person recovers, or is able to work in spite of his condition. In this event, Moellering states, there is a grace period so that disability benefits stop the second month after the month in which the disability ceases. In many other cases a person getting disability benefits who finds he can do some work even though his disability has not improved is eligible for a trial work period of nine months during which his benefits continue. Moellering says, however, that the Social Security Administration must be informed of any work for pay undertaken by a disability beneficiary.

Moellering advises anyone who has any question about disability benefits to contact the Social Security Office at 3000 West Harris Avenue in San Angelo, Texas, or see the representative when he is in your area.

Personal Appliances Gain In Popularity

Personal care and grooming appliances are the fastest growing segment of the housewares appliance industry. Selection, which 10 years ago was limited to shavers, sun and heat lamps, piston-type hair dryers, heating pads, massagers and a few curling irons, has tripled.

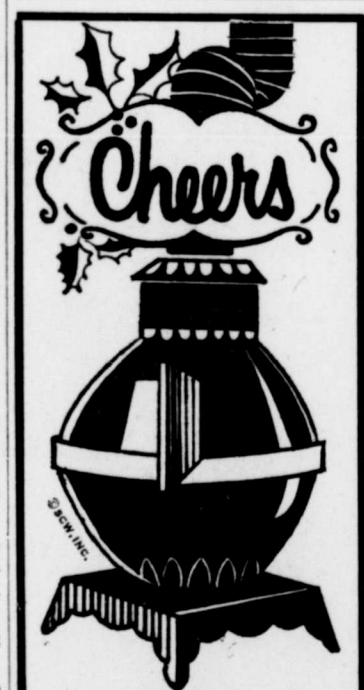
Products on the market today include manicure sets, lighted make-up mirrors, electric rollers, facial saunas, electric toothbrushes, oral irrigators, automatic clothes brushes, a touch-up pressing device and many others.

When purchasing these appliances, understand what the item will and will not do, advises Linda Jacobsen, Extension home management specialist.

Beauty aids can produce harmful effects if incorrectly used. To get the best results from appliances, follow this list of do's and don'ts.

1. Do follow instructions carefully.
 2. Do maintain good health habits for best results.
 3. Do learn about allied products which are used with the product.
 4. Do instruct children on the proper use and care of the electric toothbrush and other appliances they may use.
- Miss Jacobsen suggests these cautions:
1. Don't yank on the cord to disconnect. Grip the plug instead.
 2. Don't leave rollers or other appliances on all day.
 3. Don't leave power handle of toothbrush lying in a puddle of water on the bathroom vanity.
 4. Don't store cord with knots or kinks.

Cotton can take fast dyes.



Warmest Greetings of the Season to all our Customers
BEAUTY CENTER
LEONA MATTHIES



Shop At Home and You Needn't Fear . . .
Your Neighbors are your Merchants Here!

You have chosen this community to live in because you preferred the calmer, more tranquil life of an area in which you know and are known by those about you . . . where your grocers and merchants are your neighbors and friends. When you spend your shopping dollar here at home, you are casting a vote for our community way of life!

SHOP AT HOME

Ponder This . . .

"ADVERTISING DOESN'T COST . . . IT PAYS!"

Many of our community's long established and most reputable businesses have relied heavily on display advertising in this newspaper to get greater profits. Why not you? Make plans now to get your share of the dollar. Schedule your business-producing advertising now!

It always pays when you advertise in your newspaper.

THE WINTERS ENTERPRISE

O HOLY NIGHT

A Merry Christmas To All Our Patrons

JUANITA'S BEAUTY SHOP

Oh Holy Night

The Blessings of the Season to Our Friends

BLOSSOM SHOP

"PEACE ON EARTH"

Joy To All at Christmas!

LAMKIN HARDWARE

Joy to all

Let us All Rejoice on this Happy Day!

RUNNELS COUNTY FARM BUREAU

Christmas Greetings

May all Yuletide Joys be Yours

WINTERS TIRE & SUPPLY

GET READY FOR THE
NEW YEAR

WITH THESE *Savings*

FROM YOUR **FOODWAY**



Week Long Specials Good Friday Dec. 26th thru Wed. Dec. 31st



START YOUR NEW YEAR LUCKY!
SERVE THE TRADITIONAL
BLACK EYE PEAS and SALT JOWLS

SALT JOWLES 29^c

The Luckiest Brand Going

KIMBELL BLACK EYE PEAS 8 For \$1

15-oz. Size Cans

- DEL MONTE CATSUP 26-oz. Bottle **39c**
- WOLF BRAND CHILI No. 2 Size Can **59c**
- KIMBELL DRY BLACK EYE PEAS 2-lb. Bag **39c**
- KIMBELL BIG "K" FLOUR 25-lb. Bag **\$1.89**
- KIMBELL CAKE MIXES Assorted Varieties 3 For **88c**

PREM COFFEE CREAMER
69c

20-oz. Bottle

Gold MEDAL FLOUR

5 LB. **49^c**

Fruit Drinks
ORANGE - GRAPEFRUIT PUNCH or CHERRY
3 for 88c

46-oz. Size Cans

- FLAVOR FUL STEAK LOIN **lb. 89^c**
- TENDER "T" BONE STEAK **lb. 99^c**

ROUND STEAK lb. 99^c

RUMP ROAST lb. 79^c

PIKES PEAK ROAST lb. 89^c

Morton CREAM PIES
14 OZ. CRTN

3 for 89^c

- FROZEN FOOD**
- PATIO BURRITOS ALL FLAVORS 6-OZ. PKG. **59c**
 - CHUN KING EGG ROLLS 6-OZ. PKG. **69c**

GANDY'S MELLORINE Half Gallons **3 For \$1.00**

GANDY'S WHIPPING CREAM Half Pint Carton **29^c**

GANDY'S EGG NOG Quart Carton **59c**



NEW YEAR PARTY SUGGESTIONS
MEADS POTATO CHIPS
REG. 49c - 11-OZ. BAG **45^c**

New! Breeze GIANT SIZE BOX

69^c

- KRAFT'S PHILADELPHIA CREAM CHEESE 8-oz. Pkg. **29c**
- SOUR CREAM GANDY'S 8-oz. Carton **39c**
- FRITO BEAN DIP 10-oz. Can **29c**
- MIXED NUTS TOM SCOTT 13-oz. Can **59c**
- PAPER PLATES DIXIE WHITE 40-Ct. Pkg. **49c**
- GINGER ALE - CLUB SODA - COLLINS MIXER WHISKEY SOUR - QUININE WATER CANADA DRY 28-oz. Bottle **29c**

- POTATOES RUSSET 10-lb. Bag 49^c**
- JUICY ORANGES 5-lb. Bag **45c**
 - FRESH BUNCH Radishes or Green Onions **10c**
 - FANCY LEMONS **lb. 29c**
 - D'Anyou PEARS **lb. 23c**

- PILLSBURY INSTANT BREAKFAST 7 1/2-oz. Box **49c**
- BETTY CROCKER FROSTING MIXES 6 1/2-oz. Pkg. **39c**
- VERMONT MAID SYRUP 24-oz. Bottle **79c**

We Give S&W GREEN STAMPS

KIM Assorted Colors FACIAL TISSUES
4 200 Count Boxes For 88^c

- HEALTH and BEAUTY AIDS
- HAIR DRESSING BRYLCREAM 3-oz. **95c**
 - SPRAY DEODERANT SECRET Family Size **\$1.39**
 - WILLIAMS AQUA VELVA 4-oz. Bottle **77c**

Alka Seltzer TABLETS **49c**

25 Count Bottle

COMPARE AND SAVE

Save more S&W Green Stamps now



FOODWAY
the Friendly STORES



**Christmas Season
Extra Employees
Must Pay SS Tax**

To meet the demands of the holiday trade, many business establishments are hiring extra and part-time employees. Ted F. Moellering, social security manager, reminds area employers of the importance of correctly reporting these wages.

He observed that most employers correctly report their regular employees, but may not always make accurate reports for part-time employees. Many errors are caused because employees give an incorrect social security number from memory. Everyone should show his employer his social security card when he is hired, to make sure the number is reported accurately.

Another major cause of error is the employee who works under a name different from that on his social security card. If an employee insists on using a different name, he should change his name on his social security records.

Mr. Moellering cautioned that an employee can fail to receive credit for his wages if they are not correctly reported. He invites employers and employees to contact the Social Security Office at 3000 West Harris Avenue in San Angelo, Texas, or see the representative when he is in your area if they have any questions about wage reports.

Age Limit For Blood Donors Raised to 66

A new age limit for blood donors has been set by the American Red Cross and the American Association of Blood Banks. Blood now will be accepted from donors up to the 66th birthday. The old age limit was 61.

SS REPRESENTATIVE SETS WINTERS VISITS

Jules Gipson, field representative for the San Angelo Social Security Office, has scheduled his January visits to Winters. He will be at the Chamber of Commerce on Tuesday, January 13 and 27 from 9:30 a. m. to 11:30 a. m. Anyone who wants to file a claim for benefits, get information, or transact other business with the Social Security Administration may contact him at this time.

HEALTH COLUMN

Some diseases can be stopped in the early stages. Before they begin.

Tuberculosis is one of those diseases. A tuberculous infection can be checked by taking pills called isoniazid—before active disease has a chance to develop. Everyone who has a tuberculous infection does not develop active TB. But some do. And an ounce of prevention pays.

There are no symptoms with a tuberculous infection. It can linger on undetected for years. How can anyone find out if he is infected with TB germs? By taking a tuberculin test.

Preventive medicine is familiar to almost everyone these days. People know they do not have to be sick to see a doctor. For many people—but not all, unfortunately—medical check-ups are part of an annual routine.

Tuberculin tests should be part of the annual checkup. If the results of the tests are positive—that is, they indicate the presence of TB germs—other follow-up tests are necessary to confirm the findings. If the results are negative—no TB germs present—the tests should be repeated at the next annual checkup.

Anyone can pick up a tuberculous infection at any time. Just by breathing in the germs. But daily doses of isoniazid, taken for months, can handle the infection.

For more information about tuberculin tests and TB, see your local tuberculosis and respiratory disease association.

**Yule Customs
Date Back To
Fourth Century**

Why do children hang up a stocking?

The first St. Nick was a real person, Nicholas, a bishop in Asia Minor in the Fourth Century.

According to legend the bishop heard of a poor man who was about to sell his 3 daughters into slavery because he could not provide a dowry for them; this was not only customary in those days, but obligatory, to avoid disgrace.

St. Nicholas saved them by gifts of gold. Each time, he threw the gift into the house, in order not to be recognized.

One version tells it that he threw the gold down the chimney, where it fell into a stocking hung there to dry.

And so to this day children hang up their stockings for gifts from this real Saint.

Why are mince pies and plum pudding traditional as desserts? Mince pie has been traditional for as long as history records. It is usually full of spices and fruits, representing the exotic treasures of the East, the home of the Wise Men. Originally it was made in a loaf shape, to simulate the manger.

Plum pudding, to the contrary signifies the humbler virtues. Legend has it that in the early days of England a king and his men were lost in the forest on Christmas Eve.

Not having provided for this delay in their journey, the cook threw everything he had to make one dish for all... thus the plum pudding! We're just guessing, but we are sure plums have had some good reason to be part of the name.

**Christmas Tree Lites
Can Be Source
Of Great Danger**

Indoor lighting, when properly used, can enhance the entire home during the Christmas season. But, if electricity safety rules are ignored, it can cause serious accidents, loss of life and property.

For a good start, Mrs. Jane Berry, Extension home furnishings and housing specialist with Texas A&M University, suggests to check old strings of lights carefully for chipped sockets, cracked connections and frayed wires. Throw out badly damaged ones. Tape the frayed wires carefully and separately.

If new lights are on the shopping list, buy only UL-approved lights. They may cost a bit more than non-approved lights, but the additional cost may mean saving your home from fire.

Mount sockets on Christmas trees so bulbs will not touch foliage, paper or cotton. Mrs. Berry suggests. Use only fire-proof decorations.

After the tree is trimmed, inspect it regularly to see if foliage near the lights has started to turn brown. Change the position of the lights slightly to avoid burns.

Bright twinkling lights attract children, so warn them of the dangers of hot lights and extension cord connections. Never leave sockets empty or run cords under rugs. Always disconnect lights at the outlet when not in use or when the family is asleep or away.

A dry tree is a nuisance since it sheds, loses its color and aroma and poses a serious fire hazard. Be certain the tree receives plenty of water. When needles start falling, take the tree down.

Keep tree away from heaters, television sets, electric trains and other heat producing sources, the specialist adds. Flood or spot lighting is safer and more beautiful than strings of lights for metallic trees. While they are non-flammable, metallic trees will conduct electricity.

Some of the plastic and metallized trees available to consumers will burn just as readily as a natural tree. So, take the same precautions with them as you would a natural tree.

Cotton is extremely strong.

Happy Holidays
begin at **Piggly Wiggly**



TURKEYS

Armour's Famous **GOLD BAND**

16- to 22-lbs. **43¢** lb.

Also featuring Swift's Butterball Turkeys.

ARMOUR'S STAR
Cooked, Lean, Boneless
CANNED HAM
5-lb. Can **\$5⁵⁹**

AFFILIATED

BACON lb. Pkg. **85¢**

EGG NOG Qt. Size **59¢**



Shank Portion SUGAR CURED **lb. 65¢**

Butt Portion SUGAR CURED **lb. 69¢**

Shurfine MEAL

5 lb. Sack 39¢

DOUBLE STAMPS

Tuesday & Wednesday

DECEMBER 23
DECEMBER 24

- TOMS
- MIXED NUTS 13-oz. Can 53¢
 - DEL MONTE MANDARIN ORANGES 11-oz. can 25¢
 - DEL MONTE PINEAPPLE Flat Can 17¢
 - TOWIE OLIVES 5-oz. Jar 39¢
 - MARASCHINO CHERRIES 9-oz. Jar 33¢

Folger's COFFEE

1 lb. Can 75¢

KRAFT'S MIRACLE WHIP Qt. 49¢

303 DEL MONTE Cut Green Beans 3 CANS 69¢

Chocolate Chips 12-oz. pkg. 49¢

SNOWDRIFT SHORTENING 3-lb. Can 69¢

303 Del Monte **CORN** 5 CANS \$1.00

303 White House **APPLE SAUCE** 2 CANS 39¢

LIGHT CRUST FLOUR 5-lb. SACK 49¢	303 DEL MONTE Whole Beans 3 CANS 69¢	GALA Paper Towels JUMBO ROLL 33¢	BORDEN'S WHIPPING CREAM ½-PINT CARTON 33¢	BORDEN'S SOUR CREAM ½-PINT CARTON 39¢	PITTED DATES 1-lb. BOX 49¢
--	---	--	---	---	--

BANQUET FROZEN TV DINNERS ... Pkg **39¢**

SHURFINE-12-oz. Can ORANGE JUICE 39¢

COOL WHIP Large Ctn. **53¢**

MORTON'S FRUIT PIES . . . **2.59¢**



ORANGES **lb. 10¢**

TEXAS JUICY

FRESH CRISP CELERY Large Stalk **19¢**

TEXAS YELLOW **ONIONS** **lb. 9¢**

RED DELICIOUS APPLES Pound **15¢**

**We Will Be Closed
For Christmas
December 25 and 26
SPILL BROS. CO.**

Great Plains Conservation Act Is Extended

The 10-year extension and broadening of the Great Plains Conservation Program in legislation recently enacted by Congress can mean a doubling of the needed soil and water conservation work on Texas farm and ranch lands. State Conservationist Clyde W. Graham of the USDA Soil Conservation Service said this week.

The law extending the program, which was launched in 1957 to give land owners in the Great Plains help in building greater stability in farming and ranching enterprises, was signed by President Nixon on Nov. 18, 1969. The program had been scheduled to end December 31, 1971 but has now been extended to 1981.

The legislation authorizes an additional \$150 million in Federal funds for the cost-sharing of conservation measures.

In addition to cost-sharing regular soil and water conservation work, the broadened program will provide for the enhancement of fish, wildlife and recreational resources on farms and ranches where it will improve the economic condition of landowners. It will also provide assistance on agriculture-related pollution problems in keeping with the program's overall objectives.

It also authorizes the Secretary of Agriculture to enter into contracts on land not generally considered to be agricultural but where erosion is so serious that conservation work is needed to protect farm or ranch holdings.

Graham pointed out that the law brings the responsibility of soil and water conservation districts more sharply into focus stipulating that "approved con-

servations plans developed in cooperation with the soil and water conservation district in which their lands are situated shall form a basis for contracts."

In Texas, 10,908 farmers and ranchers have signed contracts covering 13.7 million acres and obligating \$37 million in cost-share funds. Nearly 1,200 Texas farmers and ranchers have applications on file to take part in the program.

Woodrow Hoffman, District Conservationist for the local SCS said in the Runnels Soil and Water Conservation District, 135 farmers and ranchers have signed contracts covering 57,485 acres. He said, 51 of these have completed their contracts on 18,833 acres.

Hoffman went on to say that 15 producers on 9,539 acres have applications on file with the local SCS office to take part in the program.

Hoffman said anyone interested in this program can come by the local SCS office and we will be glad to explain it to them.

The seeding of unsuitable crop land to grass, development of water resources, reduction of the soil erosion hazard through various conservation techniques, control of invading brush on rangeland, improvement of irrigation systems to use available water most efficiently, and better grassland management are among steps taken by landowners in the program to create resistance to drought and other emergencies and thereby reduce suffering and financial stress once common in the Plains. Plains farmers and ranchers have returned nearly 2 million acres of hazardous cropland to grassland uses in the program.

Graham said that although the program in Texas has reduced dust storms on the Plains, the job is far from complete. He said a recent survey showed that only 15 percent of all needed conservation work on the Plains has been done.

TO SELL those extra odds and ends, use The Enterprise Classified Columns.

Resolutions Are Made To Be Kept

Don't go through the motions of making New Year's resolutions unless you have serious intent of making them work. In fact, according to psychologists, you may be doing your psyche harm by experiencing another defeat. You'd be better off not making resolutions at all.

One expert suggests we make resolutions aimed at self-improvement, rather than promising to do things which would require a sharp change in our habits or activities.

Here is a 4-point guideline:

1. Never let pressure of a

calendar date or friends' well-meaning nudges cause you to make a resolution.

2. Stop and take inventory of your problems. (Oh, yes, you have them). Try to trace the source of the trouble, not merely the symptom. If necessary, get professional advice.

3. When you have located the source of the problem, find out how important a change is to you. Do you really want to effect this change? Would you really work at it? If you cannot honestly say "yes" to both these questions, you probably won't achieve the change.

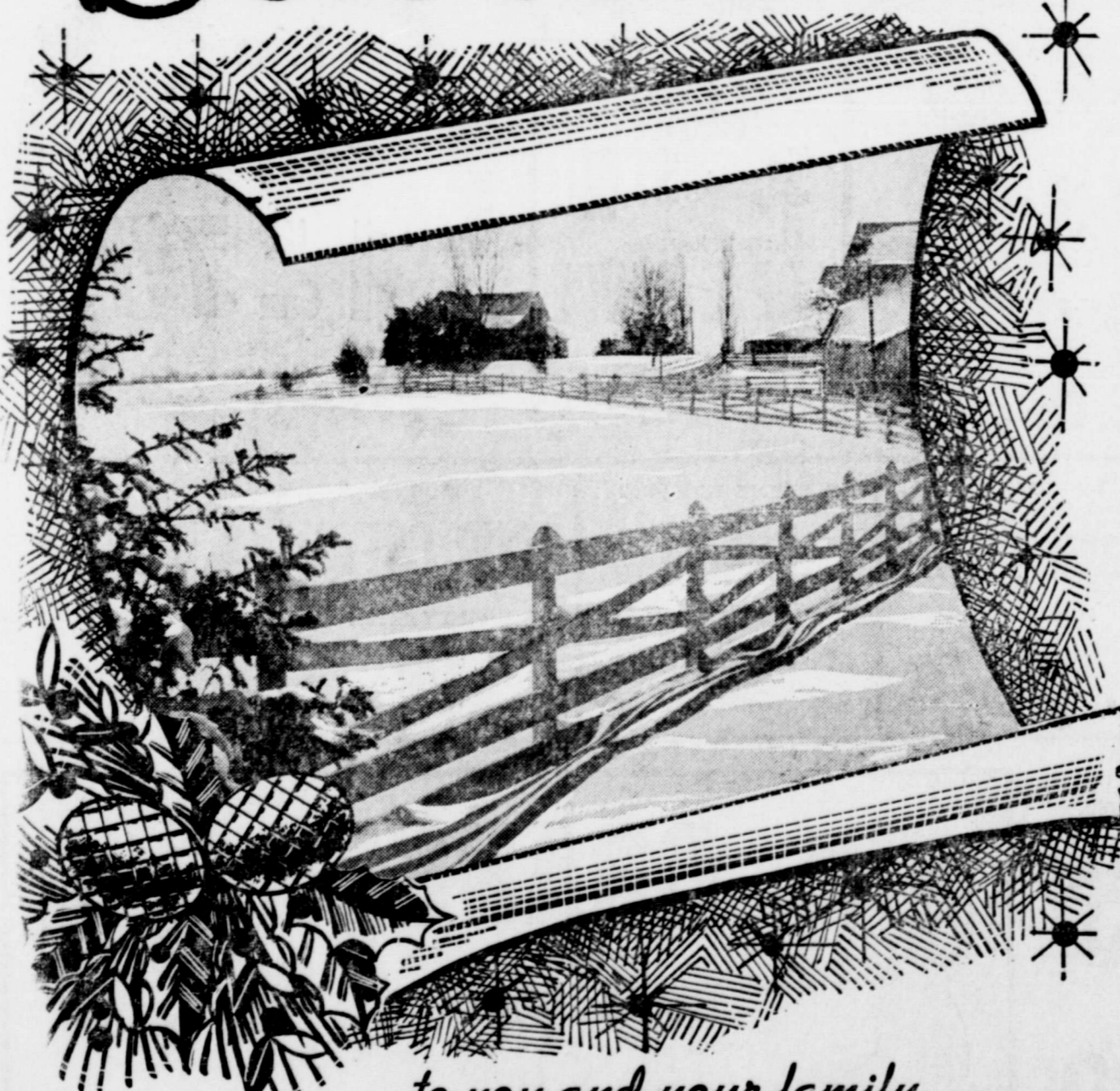
4. Don't set too high standards for yourself. Keep your goals reasonable. Keep in mind that many mental problems as well as last resolutions are due to your making unreasonable, unattainable demands on yourself.



Our very best holiday wishes to you

BEDFORD INSURANCE AGENCY

Best Wishes



... to you and your family.
May the beauty of the season be reflected in the hearts of all men.

SPILL BROTHERS CO.

Last Minute Gift Suggestions!



BEDSPREADS

Spreads reduced! Bates Clover Chain, reg. \$17.95 spreads that are wash fast, spot resistant, machine wash & dry in decorator colors.

\$14⁹⁸

ACME BOOTS

Cowboy style boots with slightly higher heel, leather soles. Bottom part is ruff side out and the upper smooth leather. Reg. \$16.95, NOW—

\$12⁸⁸

NOCONA & ACME BOOTS

REDUCED FOR CHRISTMAS! Fancy styles up to \$49.95!

\$35.00

BUFFALO CALF & BROWN RAWHIDE. Suggested retail \$41.00, NOW

\$32.50



SPORT COATS

New styles in fine all wool Sport Coats! We are proud to recommend our 1969 selection!

39⁹⁵ TO 59⁹⁵

PANTY HOSE

Special for holiday gifting!

\$1.39 PAIR

3 pairs in box for \$3.00

COZY CHRISTMAS ROBES

the always gift **\$5.95 to \$12.95**



The Gadget Table

We have selected dozens of gifts in the

\$1⁰⁰ TO \$3⁰⁰

price range, for the last minute gifts that we all have to think of . . . Something that you do not have to know the size to buy . . . Key Rings, Wallets, Brushes, Wrench Sets, English Leather Colognes, After Shaves, and Deodorant Sets . . . Select from this Big Table! All items gift wrapped free!

Real "Cowhand" Comfort



The Ft. Worth

\$17.88

The Westerner who chooses a horse that sits well also demands a Western hat that fits nice and easy. RESISTOL is his natural choice, as the exclusive "Self-Conforming"™ suspended sweat-band gives instant comfort from the first time it's put on. Try one on today—see how real comfort should feel.

RESISTOL WESTERN HATS

P. S. — IF YOU DON'T KNOW THE SIZE, GIVE A GIFT CERTIFICATE!



Costume Jewelry

Again a Christmas Stocking Gift! New styles in Earrings, Pins, Rings—

\$1 - \$2

WRAPPED FREE IN JEWELRY BOX!

CORDUROY

CAR COATS

The hottest coat of the 1969 fall season . . . heavy duty corduroy pile lined with mouton collar. We have a new shipment!

\$22⁹⁵



MEN'S

House Shoes

A gift that he will always appreciate. Warm and Cozy . . . lined with pile.

SOFT SOLES

\$4.95

LEATHER SOLES

\$5.95

If you don't get the right size we will exchange it later.



Hope Santa is good to you! Greetings from

HEIDENHEIMER'S

VISITS IN EL PASO

Mr. and Mrs. Joe Irvin spent the past week end in the home of their son, Mr. and Mrs. Jerry Irvin and their daughter, Joy in El Paso. They attended the 8th birthday party for their granddaughter, Joy.

**24 HOUR
AMBULANCE
SERVICE**

**DIAL
754-4511**

**Day or Night
Including Sundays
or Holidays!**

**WHEN DESIRED
Air Ambulance
CAN BE ARRANGED
ANY TIME! — ANY PLACE!**

SPILL BROS. CO.
Winters, Texas

**Poet, Scholar
Has Collected
Data On Angels**

If you want to get to know angels better (without resorting to the obvious) you should seek out a "Dictionary of Angels" that deals with the heavenly creatures. As a matter of fact, all are not so heavenly, since the author has catalogued more than 300 demons, seraphim, avatars and others dwelling in the spirit world.

According to this expert, a typical angel is winged, male, immortal and speaks Hebrew. Their main job is to serve the Creator, but they have also been known to serve Man by acting as "guardians, counselors, guides, judges, interpreters, dragomen, cooks, matchmakers and gravediggers." Who among us doesn't have an angel of some type he communes with from time to time?

Most of the denizens are not connected with a Bible. There is Gavreel, who keeps people from "going crazy in the night," and Mammon, a fallen angel who serves as a "horrible example" to us weak mortals.

According to George Bernard Shaw, "In heaven, an angel is nobody in particular." Which only supports the promise that there are occasions and situations where you can have too much of a good thing.

The Maci? They were wise men, as you know, who brought gifts to the Babe in the manger. Being wise, their gifts were no doubt rooted in wisdom; possibly their gifts bore the privilege of exchange.

**Bells Have
Special Magic
At Christmas**

Medieval people considered bells almost living beings. They were dedicated before being hung and the dedication was almost like a baptism. During the ceremony prayers were offered that the sound of the bell might summon the faithful, stimulate devotion, drive away storms and banish evil spirits. One document of days long ago comments: "in those dark chambers, high above the turmoil and strife of human life, dwelt the apostles of peace, whose salutations were never so welcome as at the time of the great Winter feasts of Christmas."

The novelist Victor Hugo calls the ringing of the bells "the opera of the Steeples."

Bells come in all shapes and sizes. Their moods span the ages. . . from the rattle of the

African chieftain to the sweet-toned church bells.

Bells were originated according to legend by Bishop Paulinus, in Nola, in Campania, in the fifth century.

From his town and district are derived the name Campanula, the Latin for bell.

**City Employees
Christmas Party**

Employees of the City of Winters, their wives, and members of the City Council, attended the annual Christmas party at the Fireside Restaurant Friday evening.

Classified Advertising Gets Sure and Prompt Results!

**Foxworth-Galbraith
Lumber Company**

We encourage state educators and local school district officials to sponsor more patriotic activities in our extra curricular school program.

RUNNELS COUNTY FARM BUREAU

**WE WILL BE CLOSED
DECEMBER 26 AND 27
FOR INVENTORY
HIGGINBOTHAM LUMBER CO.**

40-2tc

**A world of
GOOD
WISHES**

Merry Christmas

Thanks, customers, for your loyal trust and support.

Waddell Chevrolet Co.

STATE

112 SOUTH MAIN — DIAL 754-4212

Doors Open 7:00 p. m. Week Nights, 2 p. m. Saturday & Sunday

CONTINUOUS SHOWING!

**ADMISSION:
Adults \$1.00 — Children 50c**

Hope your holiday menu includes all the joys of the season! Best wishes for health, wealth, and happiness to all our good friends!

Friday, Saturday & Sunday
December 26, 27, 28

**THE MAGNIFICENT SEVEN ARE BACK
— AND THEY DON'T AIM TO PLEASE.**

THE MIRISCH PRODUCTION COMPANY
presents
**"Guns of the
Magnificent Seven"**

PARAVISION COLOR United Artists
Starring George Kennedy and James Whitmore

Also Color Cartoon

*Merry
Christmas*

*We hope that Santa's good to you &
brings you the best of everything!*

MANSELL BROS.

NOEL

May the spirit of holiday
joy burn brightly in your
home and in your heart!

Smith Drug Co.

Father of Local Residents Died In Sweetwater

James Crenshaw, father of two Winters residents, died at 2:40 p.m. Tuesday of last week at Edge Cliff Manors, Sweetwater.

Funeral services were held at 10 a.m. Thursday in Patterson-McCoy Chapel of Memories in Sweetwater with the Rev. Raymond Dunn officiating. Burial was in Wilmeth Cemetery with graveside rites at 1 p.m. Thursday.

Mr. Crenshaw was the father of Mrs. Vera Lindley and James H. Crenshaw, both of Winters. He was born July 9, 1894.

Surviving are four daughters, Mrs. B. F. Kirkendall of Haskell, Mrs. Lindley of Winters, Mrs. James Cagle of San Angelo and Mrs. Willard Perry of Brownwood; four sons, Clifford L. of Sweetwater, James H. of Winters, Curtis H. and James M., both of Roswell; four sisters, Mrs. Barney Campbell of Sweetwater, Mrs. Fannie Hass,

THE WINTERS ENTERPRISE
Winters, Texas
Page 2-B
Monday, December 22, 1969

5587 Bales In To Warehouse

Ras Gideon, manager of Winters Warehouse Co., reported Thursday afternoon that 5587 bales of cotton from the 1969 crop had been ginned and delivered to the local warehouse.

This compares with a total of 13,700 bales reaching the warehouse by December 20, 1968.

Because of sporadic weather conditions during much of the fall harvest season, completion of stripping the 1969 cotton crop will come much later than has happened in many years, according to growers.

Winters Schools Will Resume On Monday, Jan. 5

Regular classes at Winters High School will resume Monday, January 5, following a two-week Christmas and New Year holiday period. Classes were dismissed at 3 p.m. Friday.

Mrs. Claude Esslinge and Mrs. Claudine Belton, all of Roswell; a brother, Joe of California; 25 grandchildren, 31 great-grandchildren and one great-great-grandchild.

WINGATE

Sorry to report about the car accident Mr. and Mrs. Raymond Dunn had enroute to Sweetwater Sunday. Mrs. Dunn is in Hendrick Memorial Hospital, Abilene, for treatment of injuries she received.

Bro. Hollis Swafford of Abilene was a dinner guest in the home of Mr. and Mrs. Clarence Talley Sunday.

An error was made in last week's news. It is Mrs. Myrtle Gannaway who is a patient in Hendrick Hospital, and Mrs.

Myrtle Allen is in Merrill's Rest Home in Winters.

In the Edwin Voss home were Mr. and Mrs. Henry Vogler and daughter and Mrs. Emma Galle of Abilene, Mrs. Nitsch and Nancy and a sister, Mrs. Williams of Winters.

Mrs. Charlie Polk is visiting in the home of her son, Mr. and Mrs. Pete Polk.

Farmers are real busy stripping cotton these last few days and both gins are running night and day.

CREWS

Visiting Mrs. Effie Dietz have been Mrs. Evelyn Hillard of Norton, Mr. and Mrs. Curry of Houston, Dr. and Mrs. Thomas Curry and son of Dallas, Mrs. Dietz's son, Dr. Gerald Dietz and daughter Stephanie of Dallas, Mr. and Mrs. G. A. Clevenger of San Angelo, Cecil Hambright, Mrs. Lillie Osborne and Selma of Winters, Mr. and Mrs. Marvin Hambright, Miss Clara McKissack and Mrs. Nancy Causey.

The Hopewell WMS met in the home of Mrs. Effie Dietz for the regular Christmas social. A program of Christmas songs, the Christmas Story in the form of questions and answers was presented. Gifts were exchanged. Present were Mesdames O. Z. Forman, Elzie Kirby, Vivian Brevard, Tilda Morrison, Ollie Stovall, Helen Alexander, Penny Porter, Sallie Mae Gerhart, Flora McWilliams, Alice Traylor, Tennie Campbell, Thad Traylor, and Lillie Osborne of Winters.

Visiting Mr. and Mrs. A. S. Allcorn Sunday were Arnold Allcorn and Bennie, Mrs. Floy Brevard, Miss Willie Hale and Mrs. Janie Landrom.

Attending Mr. and Mrs. Otto Spreen's golden wedding anniversary Sunday at First National Bank reception room were Mr. and Mrs. Calvin Hoppe, Mr. and Mrs. Wilmer Gerhart, Mrs. Gus Gerhart and Mr. and Mrs. Raymond Kurtz.

Mr. and Mrs. Raymond Kurtz visited Mr. and Mrs. J. M. Pyburn in Ballinger Sunday afternoon.

Mr. and Mrs. Calvin Hoppe and children had supper Friday night with Mr. and Mrs. Bill Hoppe. It was Bill's birthday.

Visiting Mr. and Mrs. S. J. Morrison over the weekend were their daughter, Mrs. H. B. Campbell and John Mark, and Mrs. Jimmie Putman and children of Fort Worth.

Mrs. Lemma Fuller and Mr. and Mrs. M. S. Hale visited over the weekend with Mr. and Mrs. Lowell Fuller and Amy Leigh at Kerrville.

Mr. and Mrs. L. C. Fuller Jr. visited her brother, D. W. Giles in an Abilene hospital.

Mr. and Mrs. Lyndon McBeth of Midland visited his parents, Mr. and Mrs. Chester McBeth

and Dennis Sunday.

Doyle Jayroe of Pecos visited Mr. and Mrs. Chester McBeth Tuesday.

Mr. and Mrs. Chester McBeth visited Mrs. Greda Schwartz Thursday in Abilene.

Mrs. Cora Petrie attended a Christmas party of the China Porcelain Art Guild in San Angelo Saturday.

Mrs. Owen Bragg and Mrs. Cora Petrie attended the Cantata Sunday night at the Methodist Church in Winters, and following the program visited in the Cecil Hambright home.

Bro. James McGlothlin had lunch Sunday with Mr. and Mrs. Marvin Gerhart and children.

Sunday afternoon Mr. and Mrs. Marvin Gerhart visited her mother, Mrs. Barney Wright in Ballinger hospital. They also visited Mrs. Gerhart's grandmother, Mrs. Parker, at Twilight Arces.

Mr. and Mrs. Robert Hill visited his aunt, Mrs. W. T. Sharpton and his cousin, Mrs. John Parker, in Santa Anna.

Exhibitors Are Poised for Annual Livestock Show

Exhibitors have completed entry requirements and work is progressing to have the show barns in readiness for the annual Junior Livestock Show, scheduled here Saturday, January 10.

December 15 was the deadline for entering animals in the show, and according to officials of the Winters Livestock and Agricultural Association, 55 lambs, 44 calves and 88 pigs.

The show is open to members of the Winters chapter, Future Farmers of America, 4-H Club members and other high school students in the Winters Independent School District.

Judges for this year's show will be Fred Igo, vo-ag teacher at Sterling City, sheep; Dr. Edwin DuBose, professor of agriculture, Abilene Christian College, steer division; and Mack Heald, assistant county agent, Floyd County, swine division.

READ THE CLASSIFIED ADS



Merry Christmas to All!

EVERY GOOD WISH FOR THE HOLIDAYS

BUFORD OWENS



YULETIDE GREETINGS!

Loads of Cheer!

MELVIN MAPES
County Commissioner Precinct No. 2

St. John's Evening Circle Monthly Meeting Monday

Regular monthly meeting of the St. John's Evening Circle was held Monday night at 7 o'clock in the Educational Bldg. with Mrs. R. C. Jr. Kurtz, hostess.

Mrs. Kurtz, Bible Study leader, opened the meeting with group singing Christmas Carols. She also led in a discussion and closed the program with prayer.

Mrs. Walter Spill read the offering meditation and a free will offering was collected. Minutes were read and roll call was answered with Bible verse.

Mrs. Erwin Schroeder, secretary of Education gave an outline for Mission Study to be held February 23 and March 2.

The meeting closed with the reading of Jesus' birth from Luke by Mrs. Walter Spill. Prayer was led by Mrs. Kruse and gifts were exchanged.

The table was decorated with Christmas holly and greenery and delicious refreshments were served by Mrs. Kurtz to Mesdames Charles Kruse, Edward Bredemeyer, Walter Probst Sr., M. D. Wright, Walter Spill, Spill, Erwin Schroeder, Miss Minnie Beliz, and four visitors, Misses Teresa Wright, Joann Blackmon, Kathryn Bredemeyer, and Mr. Darrell Kurtz.

Nineteen states grow cotton.

Sgt. M. England In Brooks Army Hospital, Santone

SSG-Monty L. England arrived at Brook General Hospital, Tuesday, December 16, having been transferred from a Field Hospital in Japan. The Doctor

now has hopes of saving his badly mangled left foot. He has been placed in the Beach Pre-villion Orthodontic Division. His stay will be for several months. His wife, Christa, arrived from West Germany, Saturday, December 13th and will be residing in San Antonio while Monty is recovering.

A cotton plant is a shrub.

THREE-CENT NICKEL
The U. S. Three-cent "nickel" piece was introduced in 1865, one year before the five-cent "nickel." Both coins were made of an alloy of 75% copper and 25% nickel.

Cotton is static-free.
Cotton is 7,000 years old.

IT'S YOUR FUTURE SO MAKE THE MOST OF IT . . .

Open a **SAVINGS ACCOUNT**

4 3/4% PASSBOOK SAVINGS per annum — compounded or paid quarterly No Minimum	5% 90-DAY NOTICE SAVINGS per annum — compounded or paid quarterly No Minimum	5 1/4% 6-MO. SAVINGS CERTIFICATES per annum — compounded or paid quarterly \$1,000 Minimum
--	---	---

FIRST SAVINGS & LOAN ASSOCIATION

WINTERS / 102 SOUTH MAIN



Christmas Greetings

To all our good friends.

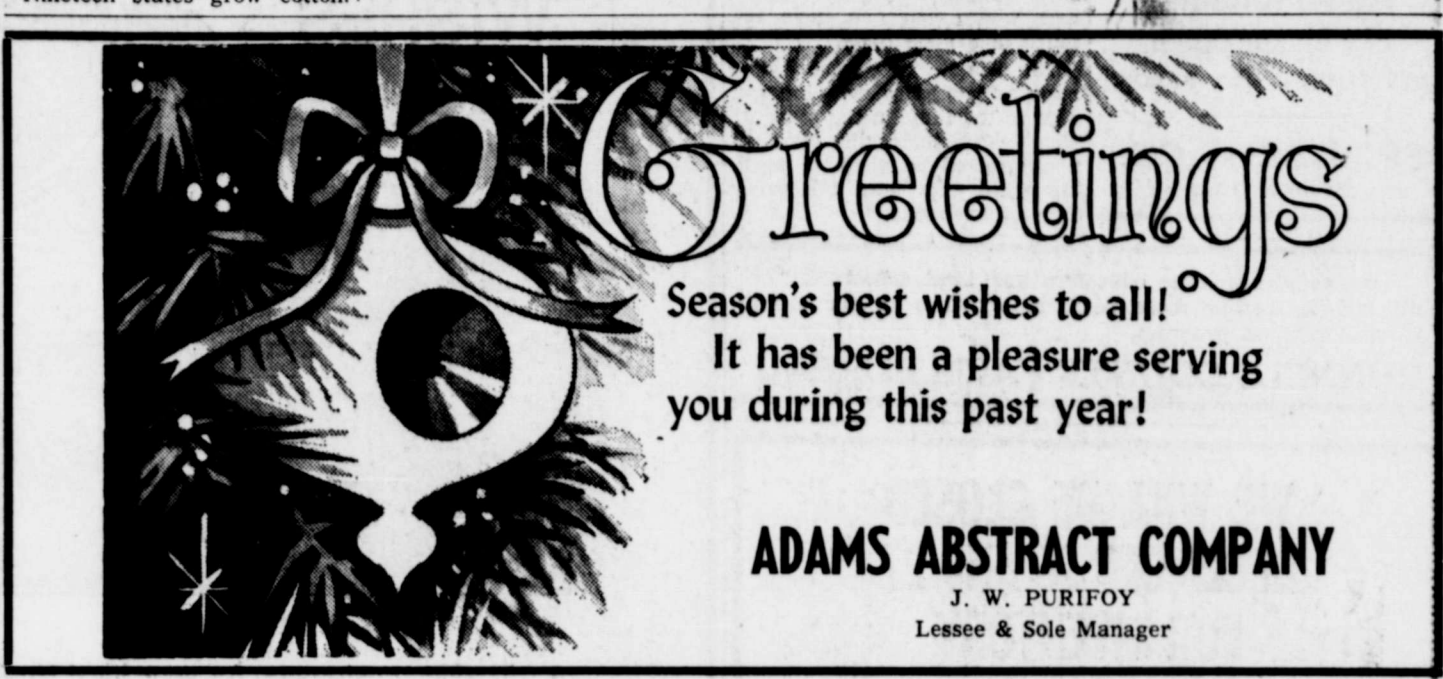
JUDGE AND MRS. W. H. RAMPY



YULETIDE WISHES

MAY THE SEASON GLOW WITH GOOD CHEER FOR ALL!

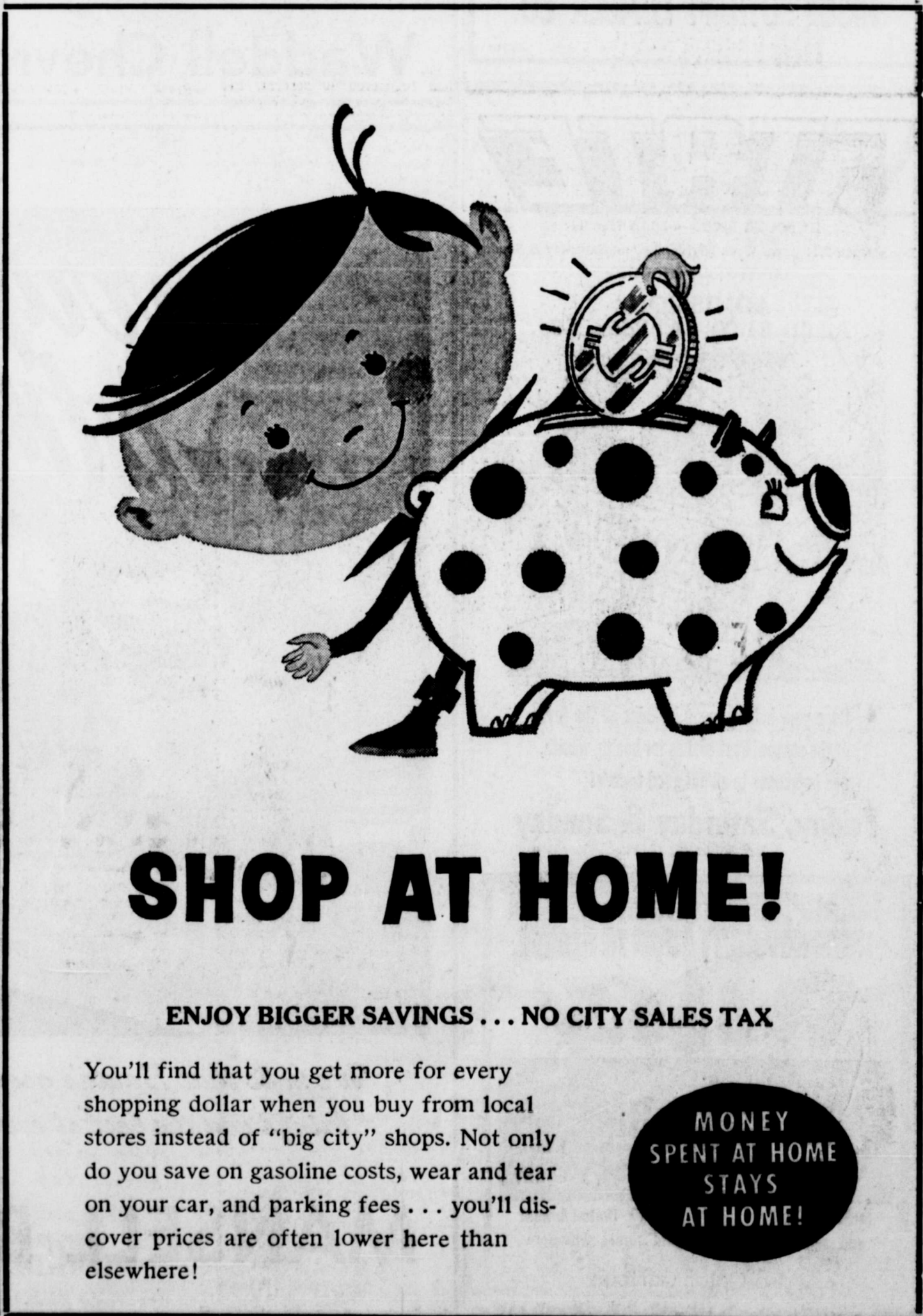
FRED YOUNG'S ECONOMY FOOD STORE



Greetings

Season's best wishes to all!
It has been a pleasure serving you during this past year!

ADAMS ABSTRACT COMPANY
J. W. PURIFOY
Lessee & Sole Manager



SHOP AT HOME!

ENJOY BIGGER SAVINGS . . . NO CITY SALES TAX

You'll find that you get more for every shopping dollar when you buy from local stores instead of "big city" shops. Not only do you save on gasoline costs, wear and tear on your car, and parking fees . . . you'll discover prices are often lower here than elsewhere!

MONEY SPENT AT HOME STAYS AT HOME!

AUSTIN — Even though the State of Texas has been given a year's reprieve by the federal government, and the new meat plant inspection law will not become effective here until Dec. 15, 1970, State Department of Health inspectors are making visits to all plants which process meat and poultry.

Since October, they have contacted 2,200 plants, including locker plants. Report is that only 916 of those had even seen a health inspector before.

Each plant operator is advised of the basic cleanliness standards which must be met before a meat plant even can be inspected. Rules range from "keeping all pets and lose livestock out of the plant" to "remove all insecticides, pesticides or rodenticides" from the areas in which food products are stored, processed or retained.

THE WINTERS ENTERPRISE
Winters, Texas
Page 3-B
Monday, December 22, 1969

Next year, the processing plants will have to pass inspections or be closed. So far, no plant has been put out of business, but some have folded up voluntarily when they saw the sanitary requirements they will have to meet.

So, if your favorite locker plant operator told you he couldn't process your deer this year because of the State Health Department, he was wrong. But he may be right in the future.

LOUISIANA
Texas Atty. Gen. Crawford has filed suit in federal court against the State of Louisiana in a boundary dispute.

Question is where the Texas-Louisiana border is physically located on Sabine Lake and River, as well as Sabine Pass, from the Gulf to the 32nd degree North longitude.

Louisiana claims the whole Sabine—meaning all the oil royalties—while Texas claims the boundary is in the middle of the lake. Texas would gain perhaps

\$2 million in royalties if it wins the suit.

COURTS SPEAK
A Bexar County teenager challenging Texas laws permitting longer sentences for juvenile offenders than for adult criminals on similar offenses last his appeal to the State Supreme Court. Court emphasized the civil nature of juvenile proceedings and that the aim is to train and rehabilitate rather than punish erring youngsters.

High court concluded that the Driscoll Foundation of Corpus Christi is not eligible for a tax reduction under a constitutional amendment permitting farm and ranch land on fringes of city to be taxed at agricultural value where farming is the owner's chief occupation.

Austin federal court has set the deadline for filing a brief in a case in which conservationists want to block construction of a golf course at Meridian State Park. Their purpose: to preserve the habitat of birdlife (the golden-cheeked warbler).

Third Court of Civil Appeals in Austin reversed a Beaumont district court's ruling and reinstated the teaching permit of the Beaumont Barber College Branch in Beaumont. State Board of Barber Examiners had revoked the school's license since it didn't meet a law which requires 2,800 square feet of space and 20 of each kind of chair. Court said the law was not valid, and was "arbitrary, unnecessary and unreasonable and has no relation to the public health or welfare."

Bottle club operators have appealed to the Third Court of Civil Appeals seeking an injunction to prevent the Texas Liquor Control Board from enforcing its new rule allowing guests in private clubs only where they are accompanied by or introduced by the member.

Bell County district court enjoined Central Texas Airlines from operating without a Texas Aeronautics Commission certificate but will permit flights from Killeen to Dallas until January 12 for benefit of Fort Hood GI's.

VOTERS
Nueces, Wichita and El Paso Counties presently have about the lowest voter registration figures among major Texas counties.

A survey on December 4 of voter registration for 1970, compared with 1968, showed that Harris County already has re-registered 400,000 of its 590,000—or 69 percent.

By contrast Nueces County had registered 10 percent, El Paso 25 percent and Wichita about 5 percent.

State law permits county tax assessor-collectors to mail out postcards which the previous year's registrants can sign and mail back to re-register.

Most major counties are following this permissive procedure. As a result, the big city counties of Harris, Dallas, Tarrant and Bexar have high percentages of their voters ready to vote in 1970. But counties where local officials do not choose to do so have re-registered only a few. Registration deadline is January 31.

APPOINTMENTS
Gov. Preston Smith has named three psychologists to the new Texas State Board of Examiners of Psychologists. They are Dr. Alvin John North of Dallas, Dr. John Ingraham Wheeler of Houston and Dr. Carl Finley Hereford of Austin.

Other recent appointments by Smith include:
Attorney for 110 judicial district—George Wayne Miller of Floydada.

State Board of Veterinary Medical Examiners—Dr. Roy Albert Riddels of Sherman and Dr. Gordon Spillman Yeargan Jr. of Gainesville.

Law Study Committee, Mental Health and Mental Retardation—Don Wooten of Snyder, Hale County Judge C. L. Abernathy and Mrs. Helen Jane Farabee of Wichita Falls.

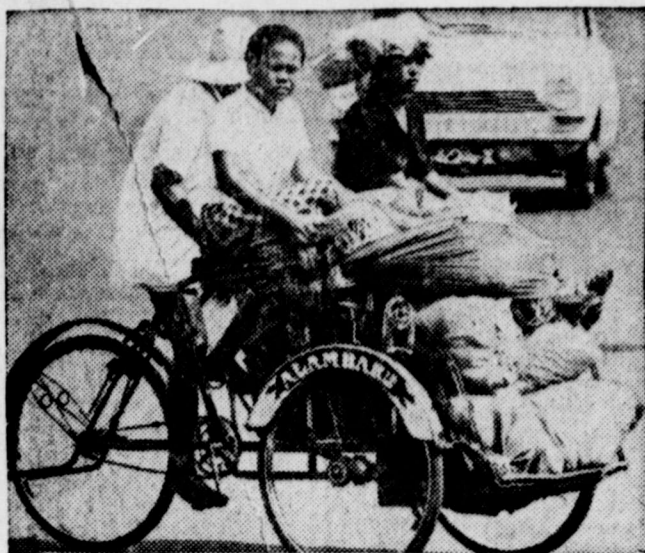
State Board of Health named James L. Bearden of Andrews and Henry H. Sprouls of Tyler to State Sanitarian Advisory Committee.

Speaker Gus Mutscher appointed Reps. Bob Salter of Gatesville; Russell Cummings, Houston; James D. Lole, Greenville and Malouf Abraham, Canadian, to work with Rep. James W. Stroud of Dallas on a Texas Election Code study committee.

HOSPITAL FUNDS LET
State Board of Health allotted \$992,902 to Port Arthur for construction air on new St. Mary Gates Memorial Hospital and \$227,125 in Hill-Burton federal assistance to the Central Plains General Hospital, Plainview.

State Commissioner of Health Dr. James E. Peavy says the 1970 state plan for construction and modernization of hospitals and related medical facilities is available for public review. Thirty-three applicants seek \$23.6 million in Hill-Burton funds for projects to cost \$66 million.

LOAN BONDS SOLD
Student loan bonds totaling \$15 million were sold at 6.2510 percent interest to Harris Trust



BICYCLE BUILT FOR THREE is just the thing for getting around in Jakarta. There are 125,000 of the vehicles, called betjaks, in the Indonesian capital.

and Savings Bank and Associates of Chicago. Total interest on the bonds, over a 15-year period, will run to more than \$16.5 million.

Coordinating Board, Texas College and University System, is mulling a proposal to require co-signers on student-loan applicants to assure better paybacks.

Board approved petition for junior college election in Wilbarger County (Vernon) but rejected similar appeals for junior college votes in Yoakum County (on Texas-New Mexico line) and Hardeman County (Quanah).

ATTORNEY GENERAL SPEAKS

A trial court is not authorized to commit a criminally-accused person to a state mental hospital for examination with the consent of the hospital head, Atty. Gen. Martin said in a recent opinion.

In other new opinions, Martin concluded that:

—A Texas Tech University professor is eligible to serve on Texas Air Control Board and draw \$25 a day travel pay.

—A school bus driver who fails to see that his vehicle is properly marked with eight-inch letters can be fined up to \$200 and jailed up to 90 days.

—A \$40,000 annual appropriation to Texas Fine Arts Commission can be spent in sharing costs of cultural programs in communities and neighborhoods over state.

—Law directing Houston to operate harbor fire boats and to enforce fire regulations on waterways and turning basins is unconstitutional.

—Pecos River Commission

had authority to adopt "Report on Review of Basic Data to Engineering Advisory Commission" nine years ago, though it was incomplete.

—County commissioners can make administrative, but not final judicial, determination as to whether a road is a county road or has been abandoned.

—Earmarked public welfare appropriation can be used for aid to state graduate schools of social work—for programs offered all students.

—New law does not eliminate common law defenses against injury suits for counties which have not taken steps to subscribe to workmen's compensation insurance.

—Attorney General Crawford Martin ruled that the Texas Fine Arts Commission may spend money to encourage cultural programs in small communities.

SHORT SNORTS

Governor Smith said he does not intend to call a special election in Bexar County to fill the Senate seat left by the late Sen. V. E. (Red) Berry, since no special legislative session is expected.

Speaker Gus Mutscher has requested the Texas Legislative Council to undertake a study of the use of DDT and other persistent pesticides in Texas.

Texas Water Rights Commission has opened offices in Laredo and Eagle Pass to help persons using water from the Middle Rio Grande file their claims in the first procedure for adjudication under the new Water Rights Adjudication Act.

Receipt Books available at The Enterprise Office.

SP5 Richard Lett In From Germany, To Return Jan. 14

Specialist Fifth Richard Wayne Lett, U. S. Army, son of Mr. and Mrs. F. F. Lett of Winters, arrived home December 18 from Germany. He has been stationed in Augsburg, Germany for the past year.

Following his leave, he will depart January 14 for Germany to serve another year.

Cotton is "breathable."

WHS Bandsters Won Seats On All-Region Band

Five members of the Winters High School band won coveted seats on the All-Region Band, Region VII, in contests at Brownwood last weekend.

Named to the band were Randy Stevens and Leslie Bishop, percussion; Lynda Musick, contra bass clarinet; Roger

Nichols, cornet; and Rhanae Hoppe, clarinet.

Randy Stevens made first chair, Percussion II, earning the right to participate in the all-area tryouts in January, the final step to the All-State concert band.

Dr. Joe Bellanah, band director at Aexas A&I, directed the All-Region Band Saturday. Following rehearsal, the All-Region presented a concert Saturday evening in the Brownwood High School auditorium.

Cotton is comfortable.



As we celebrate the birth of the Infant King, let us rededicate ourselves to the goal of peace on earth among all men.

BAHLMAN CLEANERS

Mr. and Mrs. Nelan Bahlman and Family and Staff



HAPPY HOLIDAYS
Heartiest thanks to our customers

HUFFMAN HOUSE



Star Bright



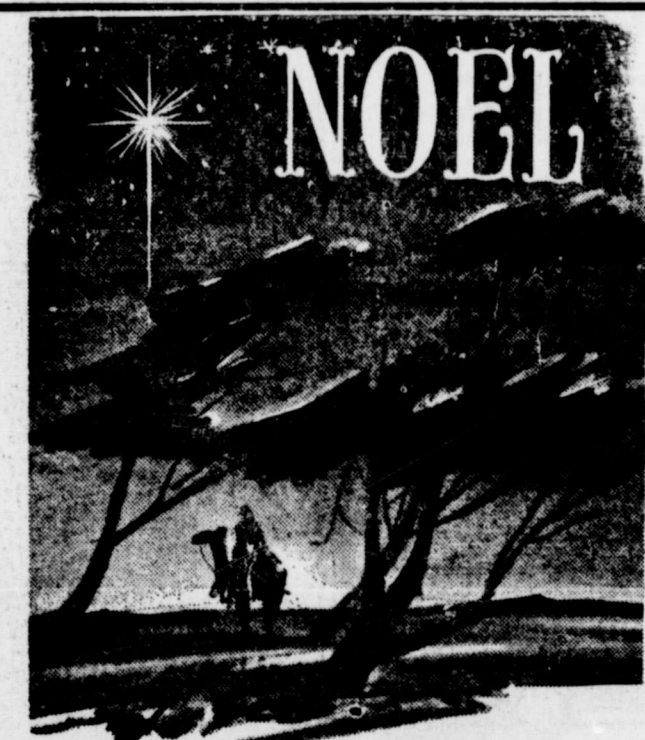
May Christmas blessings be with you

TRIPLE 'J' STORE & BAKERY



May the season bloom with joy!

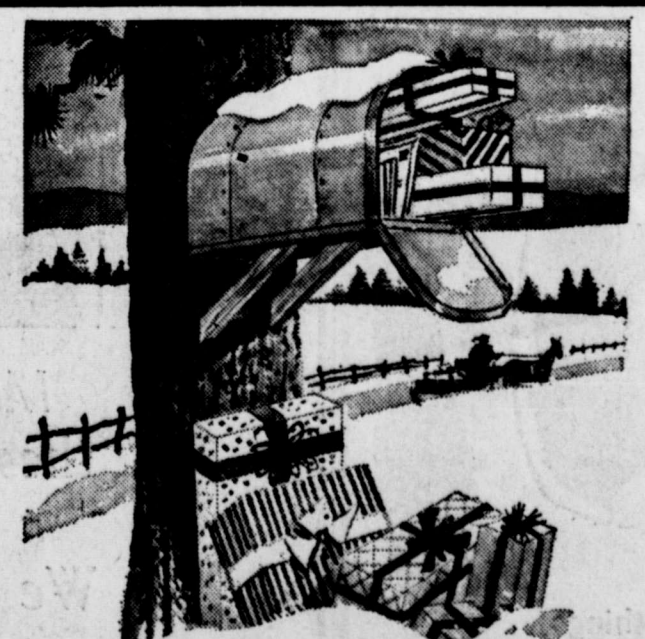
WINTERS FLOWER SHOP



May Christ's peace abide with you

MOTEL WINTERS

MR. AND MRS. W. H. LOCKHART



HOLIDAY GREETINGS!

And a very sincere thank you

VIRGIL AWALT

ENCO SERVICE STATION



It's the season to pause and think about friends old and new ... and to wish them health and happiness!

MORGAN MOTORS



Holy Night

The Saviour is born; the world rejoices. May every joy be yours this holy season.

FARM EQUIPMENT

E. E. THORMEYER, Owner

Mr. and Mrs. Jack Pritchard of Wingate Observe 25th Anniversary

Mr. and Mrs. Jack H. Pritchard of Route 2, Wingate were honored Sunday, December 21, in observance of their 25th wedding anniversary.

Their children hosted the celebration which took place at 2 o'clock Sunday afternoon. They are Mr. and Mrs. Larry Pritchard, Rex Madison Pritchard, both of Winters High School and Steve Dale Pritchard of Wingate Elementary School.

The couple married December 24, 1944, in Runnels County and have lived in the area since their marriage. Mr. Pritchard is engaged in farming. He is married to the former Lucille Albright.

Guests were greeted by Mr. and Mrs. Neland Robinson, Mrs. Larry Pritchard, and Steve Pritchard registered the guests. Larry, Johnny, and Rex and Mrs. Pat Pritchard, Sr. served coffee, cake and punch.

THE WINTERS ENTERPRISE
Winters, Texas
Page 4-B
Friday, December 19, 1963

WANT TO BUY something?
Put an ad in the Enterprise Classified Wanted Column.

Season's Greetings



Yuletide greetings to one and all! May your holidays be filled with gladness.

HERMAN'S MEN'S STORE

Home Employees Are Covered By Social Security

One of the most frequently overlooked requirements of the social security law is the reporting of earnings for domestic employees who earn \$50 or more in a calendar quarter.

According to Ted F. Moellering, social security district manager, maids, cooks, housekeepers, gardeners, and other employees of private households are covered by social security if they are paid wages of \$50 in any of the four 3-month quarters of the year (January-March, April-June, July-September, or October-December). "Payment of the tax is not optional," Moellering stressed. If the earnings are \$50, the tax must be paid, and the wages reported to the Internal Revenue Service.

Moellering pointed out that a maid or cleaning woman who works only one day a week for the householder, but is paid \$4.00 or more a day, will earn in excess of \$50 if she works in each of the 13 weeks of the quarter. The householder, as employer, is responsible for reporting the wages and turning in both the worker's share of the tax which he has withheld and his own share.

If the earnings are not reported promptly at the end of the quarter, Moellering said, it is the householder who is liable for any subsequent penalties or

interest due on delinquent reports.

"The most important aspect of this social security for household workers is the protection it gives the employee and her family," Moellering observed. "Very often the domestics has young children in her care. If she should become disabled or die, her social security credit, if properly reported by her employers, would provide cash income for the children, thus saving them from becoming a charge on the community. Or, if the worker reaches retirement age, she may be able to receive old-age benefits from social security and still continue working. Thus, social security tends very definitely to stabilize the employment picture for household workers."

Mrs. J. R. Woodfin Hosted Sew and Sew Club Last Tuesday

The Sew and Sew Club met with Mrs. J. R. Woodfin as hostess Tuesday afternoon, December 9, in the First United Methodist Church annex. Ten members and one visitor were present. Each member brought handwork.

Following a business session a Christmas social was held and gifts exchanged.

Refreshments of cookies, candies, served tea and coffee were served to Mesdames O. D. Bradford, Nellie Adcock, John Byrd, L. R. Hancock, Ed Kinard, Elmer Pritchard, Marvin Smith, Minnie Williams, J. R. Woodfin, C. Alexander and Mildred Patton.

15th Century Christmas Prayer

And go to Mary and make covenant with her, to keep her child, not for yer need but for thine. And take to thee the sweet child and sweetly swathe

it in his cradle with sweet love bands. Put from thee the cradle of self love and draw to thee the cradle of true love, for that liketh this child to rest him in, and so in thy soul sing lovelike and say:

Lovely little child, fairest of hue, have mercy on me, sweet Jesu.

And the while thou singest, be sorry and think how oft thou hast received thy God and laid him in a foul common stable to all the seven deadly sins. . . and seldom fully cleansed to God's liking; therefore oft sigh and sorrow and shrive thee to God as thou rockest the cradle, and sing and say:

The easiest way to sell that "white elephant" of yours is to advertise it in The Winters Enterprise Classified Column.

Lovely little Child.

—Anonymous



a wreath of best wishes to all our wonderful loyal friends.

BOB LOYD LP GAS. CO.

Bob Loyd Gene Wheat



GREETINGS



To all our friends, a merry Christmas!

JAY'S LOCKER



to all our loyal friends!

BAHLMAN JEWELERS

SEASON'S JOYS



May all the good things of the season come your way!

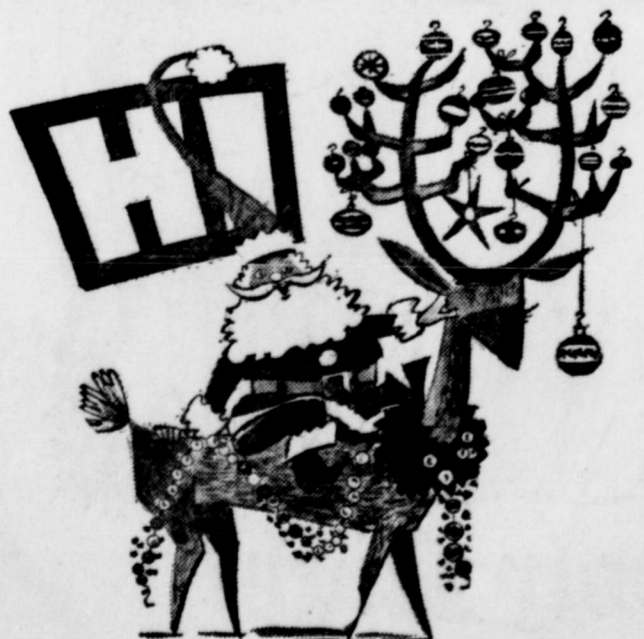
WESTERN AUTO ASSOCIATE STORE



good times!
good cheer-
at Christmas!

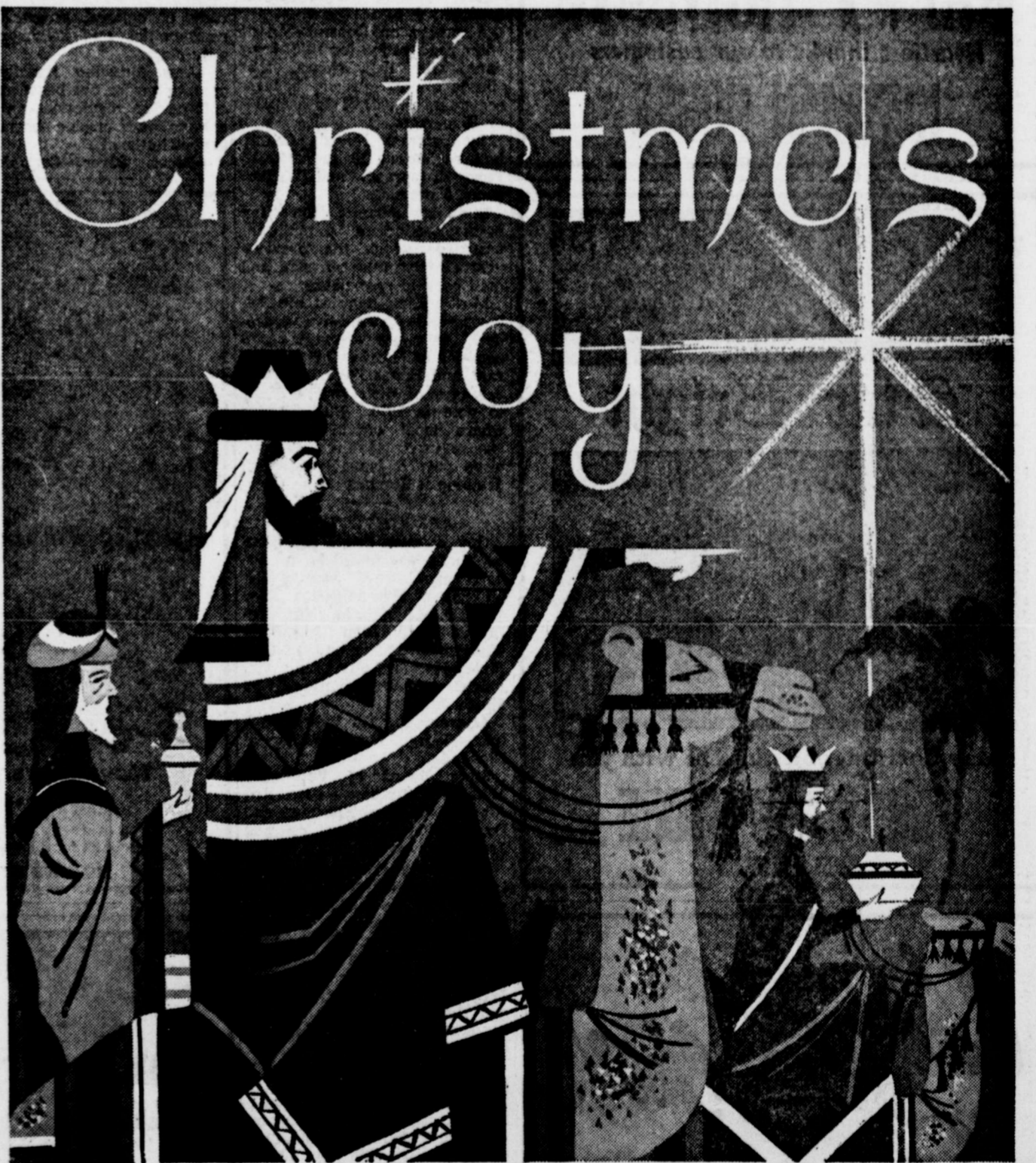
To our very good friends,

best wishes for the holiday season
WINTERS SHEET METAL & PLUMBING



A JOYOUS GREETING TO ONE AND ALL!
MAY YOUR HOLIDAY RING WITH LAUGHTER!

ROACH ELECTRIC & FURNITURE



May God grant you and your family these joyful gifts of this holy season . . .
Love, Peace and Understanding.
We thank you for your loyal patronage.

Main Drug Co.--Main Radio & TV

★ MOVIES ★

"Guns of the Magnificent Seven"
The Magnificent Seven ride again!

So enormously successful was the sequel to United Artists' "The Magnificent Seven" called "The Return of the Seven," that Mirisch Productions, producers of some of the greatest film triumphs in recent years ("West Side Story" is one) has made a third in the saga, "Guns of the Magnificent Seven" and it shows Fri., Sat. and Sun. at the State Theatre in Panavision and Color by DeLuxe and as an offering by United Artists, an entertainment enterprise of the Transamerica Corporation. It is described as a "big" production in every way. Instead of being led into Mexico to right some long festering wrongs by Yul Brynner as they were in the two previous sequences, the seven are led in the new offering by rugged George Kennedy, whose brilliant performance in the recent "Cool Hand Luke" won him an Oscar. His saddlemate and swing leader is portrayed by James Whitmore of "Planet of the Apes" and "Madigan" fame who gets star rating in the new action western.

Like its predecessors, the action of "Guns of the Magnificent Seven" takes place in Mexico and the time is the end of the 19th Century. It was filmed in Spain with Antonio Macasoli in charge of the cameras.

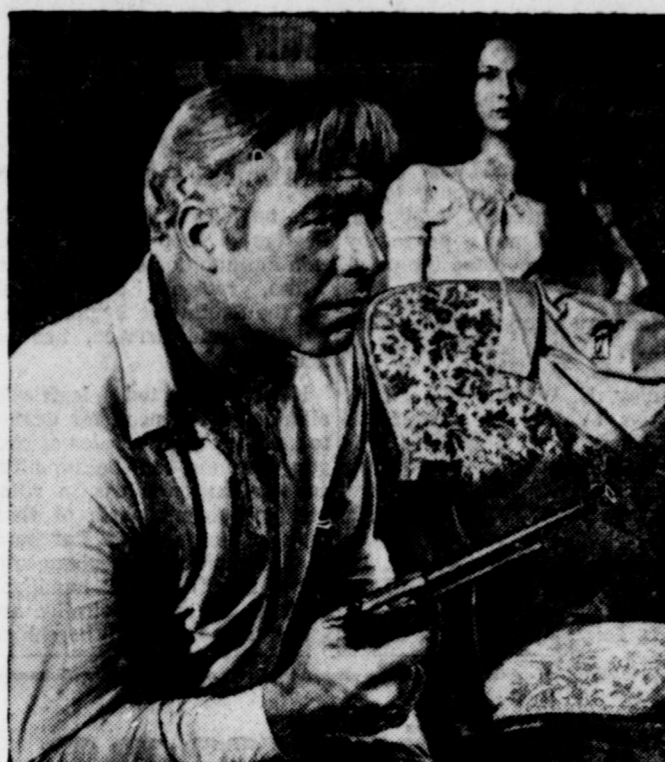
Dickens Story: Mr. Pickwick's Christmas ...

It was a very pleasant thing to see Mr. Pickwick in the centre of the group, now pulled this way, and then that, and first kissed on the chin and then on the nose, and then on the spectacles, and to hear the peals of laughter which were raised on every side; but it was a still more pleasant thing to see Mr. Pickwick blinded shortly afterwards with a silk-handkerchief, falling up against the wall, and scrambling into corners, and going through all the mysteries of blindman's buff, with the utmost relish for the game, until at last he caught one of the poor relations; and then had to evade the blind-man himself, which he did with a nimbleness and agility that elicited the admiration and applause of all beholders.

The poor relations caught just the people whom they thought would like it; and when the game flagged, got caught themselves. When they were all tired of blindman's buff, there was a great game of snap-dragon, and when fingers enough were burned with that, and the raisins gone, they sat down by the huge fire of blazing logs to a substantial supper, and a mighty bowl of wassail, something smaller than an ordinary wash-house copper, in which the hot apples were hissing and bubbling with a rich look, and a jolly sound, that were perfectly irresistible. Up flew the bright sparks in myriads as the logs were stirred, and the deep red blaze sent forth a rich glow, that penetrated into the furthest corner of room, and cast its cheerful tint on every face.

CARD OF THANKS
We wish to express our sincerest thanks to the friends and neighbors for the many kindnesses shown us during my recent illness in North Runnels Hospital and in Galveston. For the cards and letters we are deeply grateful and to those who were so concerned during my illness, we are grateful.
—Mrs. Richard Hamilton and Family.

EVEN IF the power goes off, your ad in the Enterprise Classified Ad columns gets results.



Burley George Kennedy steps to screen stardom in the Mirisch Production presentation "Guns of the Magnificent Seven" which United Artists, entertainment enterprise of the Transamerica Corporation, brings to the State Theatre Fri., Sat. and Sun. in Panavision and Color by DeLuxe. Sara Lezana is the Mexican girl in the background.

Caution Urged In Grazing Chemically Treated Fields

College Station — It is a well established fact that pesticides and other chemicals are essential for cotton production in Texas.

Agricultural chemicals, points out John T. Thomas, Texas A&M University Extension entomologist, are commonly used as herbicides, insecticides, defoliants and dessicants. They are very effective, he adds, for the purposes intended but producers should also be aware of certain limitations and hazards associated with their use.

Fields treated with most defoliants, dessicants and insecticides and some herbicides should not be grazed by livestock following the harvest of the cotton crop, reminds Thomas.

Some of these chemicals are highly toxic and death losses can occur when treated fields are grazed. Besides causing direct death of animals, chemical residues from treated fields may contaminate meat or milk making them subject to seizure under state and federal regulations, explains the entomologist.

It is the producer's responsibility, emphasizes Thomas, to

adhere to the specific restrictions on grazing fields treated with any pesticide or harvest-aid chemical.

Label directions for usage, limitations and restrictions need to be studied and understood and the material should be used only in accordance with container label instructions. If any

doubt exists concerning use of grazing restrictions, Thomas suggests a visit with the local county agent or a representative of the chemical company from which the material was purchased.

READ AND USE The Enterprise Classified Columns.

APPRECIATION

I would like to express deep appreciation and thanks to the members of the Winters High School Band and Choir for the beautiful watch they presented me.

—Kirke McKenzie, Band and Choir Director.

THE WINTERS ENTERPRISE
Winters, Texas
Page 5-B
Monday, December 22, 1969

PROFESSIONAL DIRECTORY

W. G. BEDFORD
ATTORNEY-AT-LAW
General Practice
Winters, Texas Phone 754-4919

DR. Z. I. HALE
Optometrist
Tuesday, Thursday, 9-12, 1-5
Saturday 9-12
Winters, Texas

Jno. W. Norman
ATTORNEY-AT-LAW
Winters, Texas

Bellis Chiropractic Clinic
Dr. C. R. Bellis
Dr. Lois L. Bellis
Winters, Texas
Phone 754-4326, 142 West Dale

Read The Enterprise Classified Ads!



Here's a wish that true merriment
will be yours through the holidays!

Higginbotham Lumber Co.

Peace on Earth



May the spiritual gifts of
love and understanding be
with you and yours this Christmas.

FIRESIDE RESTAURANT



We would like to thank you, our loyal friends, for your patronage this year. It has been a real pleasure serving all of you.

ALDERMAN-CAVE MILLING & GRAIN CO.



GREETINGS

It's our favorite time of year — when we have the opportunity of wishing all our good friends a very merry Christmas!

Swatchesue Electric Co.



Good cheer to our wonderful friends and customers

Only 3 Days--!

... Let us simplify your Last-Minute Shopping!

Wrap your packages while you wait!

Register for FREE DIVAN THROW—
\$25 value to be given away
Christmas Eve!

Fashion Shop

HILL & THOMAS, Publishers

Entered at Post Office, Winters, Texas (79587), as Second-Class Mail Matter

SUBSCRIPTION RATES

One Year, in Runnels and Adjoining Counties \$3.00
Other Counties and States \$4.50

Any erroneous reflection upon the character, standing or reputation of any person, firm or corporation which may appear in the columns of this paper, will be gladly corrected upon due notice of same being given to the editor personally at this office.

BABSON'S POINT OF VIEW

By Babson's Reports, Inc. the properties of loomed fabrics and the reasonable price and easy handling of paper—are expected to be one of the fastest growing product groups in the forced paper materials having 1970's.

COMPLETE FURNITURE UPHOLSTERY SERVICE

Qualified and Experienced Workers

SATISFACTION GUARANTEED

PICKUP and DELIVERY

Complete Line of Fabrics

FURNITURE RE-STYLED

ROBERT K. ROSSON

Route 1, Novice
Phone (915) 723-2385

EXPANDING HOSPITAL MARKET

Sparking the quickening swing to disposables are these two key factors — cost and convenience. An example of the cost factor is provided by the hospital market where, in an effort to offset rapidly rising labor and laundering expenses, hospitals are turning more and more to the use of disposable sheets, pillowcases, surgical gowns, drapes, and masks. In addition to lowering labor costs, disposable hospital supplies reduce the danger of cross-infection. Already, hospital disposables have risen from next to nothing in 1960 to \$246 million last year, and it has been estimated that this market will increase to as much as \$900 million by 1978.

The second factor prompting increased use of disposables is convenience. The diaper business provides a good example of the convenience factor. It has been estimated that from 23 billion to 25 billion diaper changes are made every year. Obviously, washing dirty diapers is not the most appealing part of motherhood, and many women are eager to pay extra for the convenience of using non-woven diapers that can be flushed away after use. The rate of growth of the total disposable diaper market has tripled in less than a year, and studies show that the potential of this market is \$1 billion!

APPLICATIONS MANY AND VARIED

Nonwoven material can be made to produce unusual strength, softness, bulk, absorbency, drape, or a combination of these qualities. It can be embossed and laminated with plastic films to impart water resistance. This versatility, combined with relatively low cost, makes an ideal application for use of non-woven disposables in critical hospital areas such as operating rooms, maternity wards, and emergency wards. Also, as mentioned previously, in hospital housekeeping, disposable sheets and pillowcases, cubicle curtains, tablecloths, and napkins can reduce labor and laundry costs.

Nonmedical applications also offer a fertile market for non-woven disposables. In addition to diapers, uses in the home can include curtains, everyday sheets, pillowcases, disposable low-cost drapes, fashion and sportswear, and inexpensive disposable rainwear, as well as sporting goods such as tents and sleeping bags.

Among the growing number of commercial and institutional applications are included uniforms, aprons, tablecloths, and linens for food service industries.

Methodist WSCS Met At Church Tuesday Morning

The Women's Society of Christian Service of the First United Methodist Church met at the church 10 a.m. Tuesday for the Christmas program.

The meeting opened with a song, "O Little Town of Bethlehem," and prayer by Mrs. H. O. Abbott.

Mrs. John Schaffrina and Mrs. Roy Crawford were presented membership pins from the WSCS.

Mrs. Glenn Bowman presented the program, and Christmas hymns were sung, led by Mrs. Roy Crawford and accompanied by Mrs. M. E. Leeman at the piano.

Mrs. Nan Wright gave the meditation.

A playlet was presented by Mrs. Schaffrina and Mrs. M. L. Dobbins. Mrs. Dobbins read the scripture and the group presented gifts of money to be used where needed. A hymn, "Silent Night," and a prayer by Mrs. Wright concluded the program.

INVESTMENT OPPORTUNITIES

Although many firms, including some of the country's foremost corporate names, are involved in the field of nonwoven disposables, generally only a small portion of their business comes from this area. An investor seeking a major company for a "pure play" in nonwovens is going to be disappointed.

The Babson staff feels the best way to "play" this fast-breaking field is to hold a position in a well-established company that is involved to some extent in nonwoven disposables. A representative list of such companies would probably include Associated Baby Services, International Paper, Kendall Co., St. Regis Paper, Proctor & Gamble, Scott Paper, Westvaco, Borden Co., Colgate-Palmolive, Crown Zellerbach, Johnson & Johnson, and American Hospital Supply.

Gun Control Act Change Eases Record Keeping

It no longer is necessary for dealers to keep records of certain ammunition sales, B. Frank White, regional commissioner for the Southwest Region, Internal Revenue Service, has announced.

Newly enacted legislation eliminates the need for dealers to keep records on sales of shotgun ammunition, ammunition suitable only for use in rifles, and component parts of these types of ammunition. Purchases of ammunition interchangeable between rifles and handguns, such as .22 caliber rimfire ammunition, continue to be subject

THE WINTERS ENTERPRISE

Winters, Texas
Page 6-B
Monday, December 22, 1969

prohibited from purchasing ammunition of any type.

"The change in the law affects only shotgun and rifle ammunition, and their component parts. Dealers still are required to keep records on the sales of other ammunition, specifying the type and quantity of ammunition and identifying the buyer," White said.

Persons engaged in selling ammunition still are required to be licensed under the act.

Anyone under 21 years of age cannot purchase handgun ammunition. However, individuals at least 18 can buy rifle and shotgun ammunition. Dealers must still require purchasers to identify themselves if there is doubt about their age.

Felons, persons under indictment for a felony, fugitives from justice, unlawful users of drugs, mental incompetents, and persons under 18 continue to be

For COLDS take 666

Christmas

Joy

MAY IT ABOUND WITH GOOD CHEER AND HAPPINESS!

DALE'S FORD SALES

VOEL

May your holidays be bright & gay

MARIE & ERCAL VAUGHAN

The Gift of Light Makes Christmas Bright

We in WTU land are glad to help brighten your holidays. Merry Christmas!

West Texas Utilities Company Equal Opportunity Employer an investor owned company

Wishing you a Merry Christmas

... and New Year filled with Happiness, Good Health and Prosperity!

The Winters State Bank

A FULL SERVICE BANK