



# BAILEY COUNTY JOURNAL

"The Community of Opportunity Where Water Makes the Difference"

VOL. 50 No. 29

8 PAGES

Published Every Sunday at Muleshoe, Bailey County, Texas - 79347

10 CENTS

SUNDAY, JULY 16, 1972

## Weather

	HIGH	LOW
July 12	88	61
July 13	91	61
July 14	93	63
July 15	95	63
Rainfall to date:	6.79	

### around muleshoe with the journal staff

Miss Faith Tally from Henderson, Kentucky, has been visiting in Muleshoe with her grandmother, Amanda Bergstrom and her aunts, Mildred Morrison and Lois West.

Mr. and Mrs. M.E. Lee of Muleshoe took their grandsons, Chanse and Chris Ivy of Lazbuddie, to Red River on the July 4 weekend. They visited Taos, Red River, Eagle Nest and other points of interest in New Mexico. Chanse and Chris are the sons of Mr. and Mrs. Ronald Ivy of Lazbuddie.

Val Moore reports that several people are wanting to start an adult swimming class to be held in the evenings. More people are needed to start this class. If anyone is interested, contact Miss Moore at the City Swimming Pool. The class will be for persons 16 years old or over.



LEROY CARVER

### Church of Christ Hosts Vacation Bible School

Vacation Bible School at the Muleshoe Church of Christ will be in session this week. The classes, for ages 18 months through adult, will be studying "Jesus Never Changes." Services will be held Monday through Friday, July 17-21, from 9 to 11 a.m. on Friday a picnic will be held from 11 a.m. until noon.

Also in progress this week at the Church of Christ is a singing school with E. Leroy Carver of Temple, Texas. This began Friday, July 14, and will continue through Friday, July 21. Services are held weekdays at 8 p.m.

Carver graduated from Abilene Christian College with a Bachelor of Arts degree with a religious education major in 1950. In 1951 he received his Master of Arts Degree in Religion from Eastern New Mexico University.

He has been a minister of the Southside Church of Christ in Whitharral; Minister of the Riverside Church of Christ in Wichita, Kansas; Minister of Vine Street Church of Christ in Abilene, Texas; Minister of the South Delaware Church of Christ in Irving; Minister of Education and Youth for Vine Street Church of Christ, Abilene, and Minister of Education for Western Hills Church of Christ in Temple.



MISS FORD COUNTRY IN MULESHOE...Miss Ford Country, Sandy Lankford, visited in Muleshoe Thursday at Muleshoe Motor Company. Glen King, Chamber of Commerce and Agriculture manager presented her with a gold mule shoe on behalf of the chamber. She was in town for the Earth rodeo this weekend. Pictured with Miss Lankford and King are Robert Hooten, owner and manager of Muleshoe Motor Company and Donna Howard, Ambassadorette. Miss Ford Country makes personal appearances for Ford at local rodeos and civic events across the nation as well as making radio, television and billboard commercials.

### Home Administration Gives Yearly Report

Home Administration has just completed their fiscal year and reports that new records have been reached in the amount of loans approved. John C. Kennedy, the agency's local supervisor, reports that the Bailey County FHA approved loans amounting to approximately \$2,220,000 during the period from July 1, 1971 to June 30, 1972. This compares with \$1,880,000 loaned the previous year, and \$1,500,000 the year before that.

Farmers Home Administration, an agency of the U.S. Department of Agriculture, supplements conventional sources of credit in rural areas.

### Crime Rate Increase Lowest In 11 Years

Attorney General Richard G. Kleindienst announced today that serious crime in the nation during the first quarter of 1972 registered the lowest percentage increase in 11 years--one percent. A year ago, the rate of increase was six percent, and in 1970 it was 13 percent.

He also said that 89 of the nation's largest cities reported actual reductions in serious crime in the first three months of 1972. Fifty-nine cities showed a decrease in the same period of 1971 and 22 cities in 1970.

One city which continued to show a decrease in crime was Washington, D.C. The nation's capital reported that the number of serious offenses had been reduced by 30 percent in the first quarter of 1972 compared with the first quarter of 1971.

The agency has three objectives: first, build the family farm system; second, provide adequate housing in small towns and rural areas; and third, finance water and sewer systems for small communities. These objectives are accomplished by advancing credit for farm operating expenses, farm equipment, and livestock; to purchase farms; to build houses; and to finance water and sewer systems.

The Bailey County office is located at 115 E. Avenue D in Muleshoe.

A year ago, the decrease was 18 percent. The most significant change in this reporting period occurred in the six cities with more than a million population. In the first quarter this year, the number of serious crimes in these cities was actually reduced six percent compared with last year's reporting period. This reverses a 12 percent increase registered in the report for the first quarter of 1971.

"These statistics are very heartening to us, and should be to all law-abiding citizens," Mr. Kleindienst said. "None of us will be satisfied, however, until we see an overall reduction in the crime rate. With the increase down to one percent, we hope that the day is

Cont. on Page 3, col. 1

## Bank Deposits Up Over \$3 Million

### Local Banks And Tri-County Show Increases In Assets

Bank deposits in the Muleshoe area showed a marked increase over deposits at this same time last year.

The total amount of increase on the June 30 report was \$3,949,384.11 for the Muleshoe State Bank, First National Bank and Tri-County Savings and Loan.

Total deposits at the First National Bank as of June 30 were \$8,326,910.32 as compared to last year's figures of \$7,901,676.65 for a total increase in deposits of \$425,233.67.

Total assets at the First National were also up from the December 31, 1971 statement by \$544,580.92. Total assets also showed an increase over the same period of \$805,984.88 for a total increase of \$7,164,977.15. Tri-County is now in the eighth year of operations since opening for business February 17, 1965.

Another category which showed growth over the past year was the loan departments in the banks. The total increase of both banks in loans was \$997,001.60. In 1971, the Muleshoe State Bank had loans totaling \$5,550,965.19 and in 1972 this number had increased \$409,753.31 for a total this year of \$5,960,718.50.

At the First National Bank Loans increased from \$4,288,202.36 in 1971 to \$4,875,250.65 in 1972 for an increase of \$587,048.29.

In other areas around Muleshoe, the Friona State Bank also showed an increase in deposits and assets. Total deposits as of June 30 stood at \$12,256,683.22 which was up from the previous June 30 figure which was \$10,363,772.24. The increase amounted to \$1,892,910.98.

The increase in assets was \$2,050,712.60. In 1971 the total assets at Friona were \$11,797,732.60 and in 1972 they had increased to \$13,848,445.56.

The First National Bank of Sudan also reported an increase

Cont. on Page 3, col. 2

Cont. on Page 3, col. 2

Cont. on Page 3, col. 2

Cont. on Page 3, col. 2

Cont. on Page 3, col. 2

Cont. on Page 3, col. 2

Cont. on Page 3, col. 2

Cont. on Page 3, col. 2

Cont. on Page 3, col. 2

Cont. on Page 3, col. 2

Cont. on Page 3, col. 2

Cont. on Page 3, col. 2

Cont. on Page 3, col. 2

Cont. on Page 3, col. 2

Cont. on Page 3, col. 2

Cont. on Page 3, col. 2

Cont. on Page 3, col. 2

Cont. on Page 3, col. 2

Cont. on Page 3, col. 2

Cont. on Page 3, col. 2

Cont. on Page 3, col. 2

Cont. on Page 3, col. 2

Cont. on Page 3, col. 2

Cont. on Page 3, col. 2

Cont. on Page 3, col. 2

Cont. on Page 3, col. 2

Cont. on Page 3, col. 2

Cont. on Page 3, col. 2

Cont. on Page 3, col. 2

Cont. on Page 3, col. 2

Cont. on Page 3, col. 2

Cont. on Page 3, col. 2

Cont. on Page 3, col. 2

Cont. on Page 3, col. 2

Cont. on Page 3, col. 2

Cont. on Page 3, col. 2

Cont. on Page 3, col. 2

Cont. on Page 3, col. 2

Cont. on Page 3, col. 2

Cont. on Page 3, col. 2

Cont. on Page 3, col. 2

Cont. on Page 3, col. 2

Cont. on Page 3, col. 2

Cont. on Page 3, col. 2

Cont. on Page 3, col. 2

Cont. on Page 3, col. 2

Cont. on Page 3, col. 2

Cont. on Page 3, col. 2

Cont. on Page 3, col. 2

Cont. on Page 3, col. 2

Cont. on Page 3, col. 2

Cont. on Page 3, col. 2

Cont. on Page 3, col. 2

Cont. on Page 3, col. 2

Cont. on Page 3, col. 2

Cont. on Page 3, col. 2

Cont. on Page 3, col. 2

Cont. on Page 3, col. 2

Cont. on Page 3, col. 2

Cont. on Page 3, col. 2

Cont. on Page 3, col. 2

Cont. on Page 3, col. 2

Cont. on Page 3, col. 2

Cont. on Page 3, col. 2

Cont. on Page 3, col. 2

Cont. on Page 3, col. 2

Cont. on Page 3, col. 2

Cont. on Page 3, col. 2

Cont. on Page 3, col. 2

Cont. on Page 3, col. 2

Cont. on Page 3, col. 2

Cont. on Page 3, col. 2

Cont. on Page 3, col. 2

Cont. on Page 3, col. 2

Cont. on Page 3, col. 2

Cont. on Page 3, col. 2

Cont. on Page 3, col. 2

Cont. on Page 3, col. 2

Cont. on Page 3, col. 2

Cont. on Page 3, col. 2

Cont. on Page 3, col. 2

Cont. on Page 3, col. 2

Cont. on Page 3, col. 2

Cont. on Page 3, col. 2

Cont. on Page 3, col. 2

Cont. on Page 3, col. 2

Cont. on Page 3, col. 2

Cont. on Page 3, col. 2

Cont. on Page 3, col. 2

Cont. on Page 3, col. 2

Cont. on Page 3, col. 2

Cont. on Page 3, col. 2

Cont. on Page 3, col. 2

Cont. on Page 3, col. 2

Cont. on Page 3, col. 2

Cont. on Page 3, col. 2

Cont. on Page 3, col. 2

Cont. on Page 3, col. 2

Cont. on Page 3, col. 2

Cont. on Page 3, col. 2

### Ag. Teachers Will Attend Convention

Vocational Agriculture Teachers, some 1300 strong, will meet in Ft. Worth, August 1-4, 1972, for the Annual Conference and In-service Workshop sponsored by the Agriculture Education Department of the Texas Education Agency in Austin.

The Sheraton-Fort Worth Hotel will be the site for the meeting which will begin Monday, July 30, with registration for the conference beginning at 3 p.m., according to J.A. Marshall, Director, Agricultural Education, Texas Education Agency.

The First General Session of the Conference will begin on Tuesday at 9 a.m. with keynote speaker Herb True, PhD, President, Educational Motivators, South Bend, Indiana. Dr. True will address the group on "Psychodynamic Motivation and How to Use It." True is a well-known author, teacher, philosopher and research psychologist.

Appearing on the program with True will be John R. Guemple, Associate Commissioner for Occupational Education and Technology and Vernon Baird, member of the State Board of Education, Ft. Worth. Guemple is employed with the Texas Education Agency in Austin.

On Wednesday and Thursday the teachers will take part in Area Meetings and will attend workshops in Electric Safety and Controls, Oxy-Acetylene Welding Safety, Beef Cattle, New Brake and Lighting Regulations for Trailers and Pre Employment.

The committee appointed by the Secretary is composed of the following men: Robert W. Anderson, arwell, Texas; Clifford E. Adams, Canton, Okla.; Charles B. Anderson, Great Falls, Mont.; Harold Beins, Aurora, Neb.; John R. Block, Gilson, Ill.; Gene F. Cottle, Decatur, Ill.; Carleton Dennis, Syracuse, N.Y.; Richard W. Goldberg, West Fargo, N.D.; Paul S. Ives, Wapella, Ill.; Robert Joslin, Clarence, Iowa; Alvin Kenner, Leed, N.D.; Sherman Kessler, New Rosa, Ind.; Floyd Marsh, Williams, Calif.; William McGregor, Hooper, Was.; Frank McKenzie, Winner, S.D.; Gerald Michaelson, Dawson, Minn.; Mel Middents, Minneapolis, Minn.; Harold Iner, Watska, Ill.; Fred Opitz, Binger, Okla.; Zeno O. Ratcliff, Jr., Pantego, N.C.; Robert L. Rawlins, Holton, Kan.; Steve Reimers, Carrington, N.D.; Donald Riffe, Stratford, Tex.; Floyd Root, Wasco, Oreg.; Orville Shockman, Berlin, N.D.; Charles E. Stadler, Urbana, Ohio; Richard P. Stone, Springfield, Ill.; Ray Uehling, Ness City, Kan.; and Charles E. Woolever, Millsville, Pa.

Cont. on Page 3, col. 2

Cont. on Page 3, col. 2

Cont. on Page 3, col. 2

Cont. on Page 3, col. 2

Cont. on Page 3, col. 2

Cont. on Page 3, col. 2

Cont. on Page 3, col. 2

Cont. on Page 3, col. 2

Cont. on Page 3, col. 2

Cont. on Page 3, col. 2

Cont. on Page 3, col. 2

Cont. on Page 3, col. 2

Cont. on Page 3, col. 2

Cont. on Page 3, col. 2

Cont. on Page 3, col. 2

Cont. on Page 3, col. 2

Cont. on Page 3, col. 2

Cont. on Page 3, col. 2

Cont. on Page 3, col. 2

Cont. on Page 3, col. 2

Cont. on Page 3, col. 2

Cont. on Page 3, col. 2

Cont. on Page 3, col. 2

Cont. on Page 3, col. 2

Cont. on Page 3, col. 2

Cont. on Page 3, col. 2

Cont. on Page 3, col. 2

Cont. on Page 3, col. 2

Cont. on Page 3, col. 2

Cont. on Page 3, col. 2

Cont. on Page 3, col. 2

Cont. on Page 3, col. 2

Cont. on Page 3, col. 2

Cont. on Page 3, col. 2

Cont. on Page 3, col. 2

Cont. on Page 3, col. 2

Cont. on Page 3, col. 2

Cont. on Page 3, col. 2

Cont. on Page 3, col. 2

Cont. on Page 3, col. 2

Cont. on Page 3, col. 2

Cont. on Page 3, col. 2

Cont. on Page 3, col. 2

Cont. on Page 3, col. 2

Cont. on Page 3, col. 2

Cont. on Page 3, col. 2

Cont. on Page 3, col. 2

Cont. on Page 3, col. 2

Cont. on Page 3, col. 2

Cont. on Page 3, col. 2

Cont. on Page 3, col. 2

Cont. on Page 3, col. 2

Cont. on Page 3, col. 2

Cont. on Page 3, col. 2

Cont. on Page 3, col. 2

Cont. on Page 3, col. 2

Cont. on Page 3, col. 2

Cont. on Page 3, col. 2

Cont. on Page 3, col. 2

Cont. on Page 3, col. 2

Cont. on Page 3, col. 2

Cont. on Page 3, col. 2

Cont. on Page 3, col. 2

Cont. on Page 3, col. 2

Cont. on Page 3, col. 2

Cont. on Page 3, col. 2

Cont. on Page 3, col. 2

Cont. on Page 3, col. 2

Cont. on Page 3, col. 2

Cont. on Page 3, col. 2

Cont. on Page 3, col. 2

Cont. on Page 3, col. 2

Cont. on Page 3, col. 2

Cont. on Page 3, col. 2

Cont. on Page 3, col. 2

Cont. on Page 3, col. 2



## Muleshoe Rebekahs Install Officers

The Muleshoe Rebekah Lodge met in the Lodge Hall at 308 W. Second, Tuesday evening, July 11, for the installation of officers for the coming term. After a salad supper served to visitors from Earth and Morton and the local members, Mrs. Clinton Busby, Noble Grand, called the meeting to order. Bertile Pyburn, District president, was introduced, along with her installing team: Faydell Turney, deputy Marshall; Car-

rie Scott, Deputy Chaplain; Eunice Hancock, deputy musician; Lennie Doyle, deputy Inside Guardian; Mrs. H.H. Snow, deputy Warden; and Mrs. Albert Davis, acting Past Noble Grand. The following officers were installed: Mrs. Clinton Busby, past Noble Grand; Mrs. Frank Snyder, Noble Grand; Mrs. Ray Quesenberry, vice Grand; Mrs. George Gross, Right Support to Noble Grand; Mrs. J.W.

## Market Report

COLLEGE STATION-- Check food tips in local markets to lower weekly food costs, reminded Gwendolyn Clyatt, Houston consumer marketing specialist for the Texas Agricultural Extension Service. At meat counters, retail beef prices match those of the past two weeks. Most markets feature cuts of mature and baby beef at special prices. In general, Mrs. Clyatt said to look for best beef values on chuck roasts and steaks, ground beef, round steaks and roasts. Pork prices, about the same as a week ago, mark cooked hams, picnics, shoulder roasts

and steaks, end-cut loin roasts and pork chops as best buys. Look for larger fresh vegetable supplies this week. Cabbage, lettuce, cooking greens, white and yellow onions, carrots and potatoes present thrifty vegetable buys now. "Watermelons are arriving in greater quantity--they're offered by the half or by the quarter in some stores," Mrs. Clyatt noted. "Fresh pineapple is another item for your enjoyment and convenience. Remember apples, oranges, tangerines, grapefruit, lemons and cantaloupes when buying."

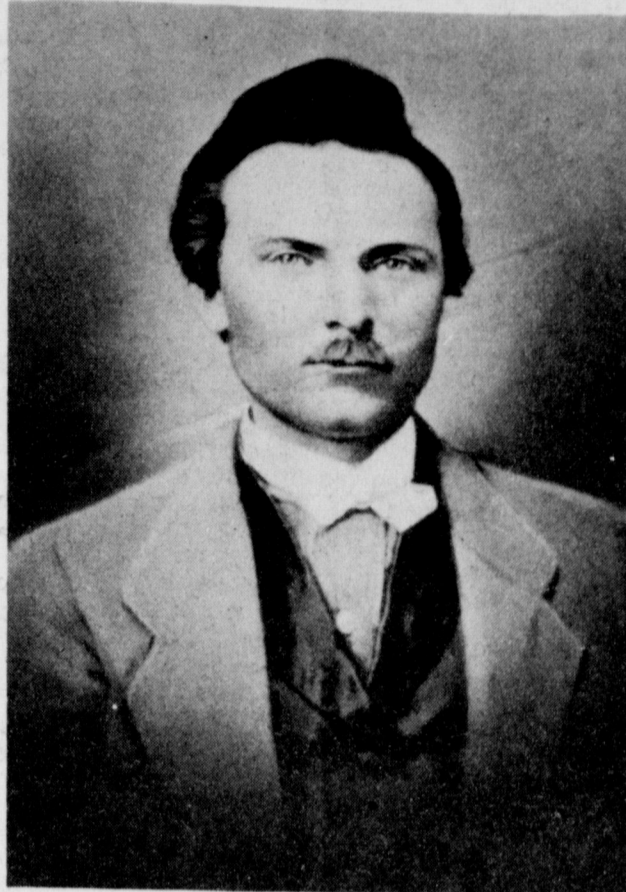
Holmes, Warden; Mrs. Harold Maxwell, Conductor; Mrs. Zeb Robinson, Color Bearer; Mrs. Joe Carroll, Right Support to vice Grand; Mrs. Joe Smith, Left Support to vice Grand; Lena Hawkins, musician; Mrs. Luskus Green, Chaplain; and Mrs. Claude Wilemon, Outside Guardian. Visitors present from Morton were Carrie Scott, Eunice Hancock, Faydell Turney, Bertile Pyburn and Lennie Doyle. Visitors from Earth were Mary

## Farwell Hosts Hi-Plains Ladies Association Playday

The Hi-Plains Ladies Golf Association met for their monthly play day with Farwell as the host club Wednesday, July 12. Medalist of the field was Kay Renner of Friona, 80; and low net of the field was Jane Miliken, Clovis, 70. In the championship flight, low gross was Gayle Kenyon, Clovis, 84; low net, Joanne Embry, Clovis, 73; and low putt, Dorothy Bender, Clovis 29. Anna Crook of Clovis was low gross in the first flight with an 84; Mary Frances Holt of Muleshoe and Polly Holland of Dimmitt tied for low net with scores of 79; and Polly Holland

had a low putt of 29. In the second flight, low gross was Alice Jacobs, Farwell, 101; low net, Analita Haley, Muleshoe, 88 and low putt, Dessie Hardwick, Clovis 31. Low gross in the third flight was Pat Jacobs, Clovis, 107; low net, Judy Mobley, Clovis, 77; and low putt was a tie between Judy Mobley, Clovis, and Carolyn Posey, Dimmitt, both with 35. In the fourth flight, low net was Reba Bonds, Farwell, 92 and low putt, Reba Bonds, 39. Clovis won the traveling trophy with an average score of 88. The next playday will be August 9 at Olton.

## A History Of Bailey County Pioneer Families



CHRISTIAN D. BUHRMAN

## Christian D. Buhram

Christian D. Buhram was born August 7, 1843, in Auldenburg, Germany. When he was 12 years old, he came to the United States in a sailboat on a trip that took six weeks. He was married to Willamina Weger in Sprague, Nebraska. Buhram and two of his children, Ben and Emma, came to Bailey County by train in 1913 and settled on land that is presently the Kenneth Hanks farm in the YL Community. Buhram died on Dec. 12, 1913, shortly after moving to the Bailey County. Ben and Emma stayed until the crop was harvested that year, Emma returned to Nebraska to attend business college. Ben also returned to Nebraska and married in 1917. Buhram's other children were Charlie B. of Lincoln, Nebraska; Kayte of Scotts Bluff, Nebraska, and Edwin and Clara, both Bailey County pioneers.

Clara Buhram was married to I.F. Willman and moved to Muleshoe from Nebraska in 1914 and farmed the land inherited from Christian Buhram. On the way to Texas, traveling in a 1912 Chelmer, the pioneers encountered several transportation difficulties. The story was told by their children that "when the Willmans started up a hill in the car, they had to back up the hill as the car would not make the hills going forward. The casings (tires) were filled with grain and at one point during the trip, the Willmans noticed one of the casings rolling along in front of the car with grain scattering in all directions."

The Willmans built a pond on their farm which was used as a swimming pool by the whole community. Mrs. C.E. Moore, one of the Willmon's daughters, remembers "we had a boat tin canoe type on the pond and the community gathered for July 4 picnics and other occasions."

Mrs. Moore related "Dad did custom threshing with an old threshing machine and a Rumley tractor. With his tractor, Dad helped move part of the old Methodist Church to Muleshoe."

The Willmans had three children, Kathleen of Graham, whose husband is Dr. K.P. Green; Dick (deceased); and Mrs. C.E. (Jean) Moore of Muleshoe. Willman died in 1945 and Clara moved to Muleshoe, where she lived until her death. The Willmans had eight grandchildren and eight great-grandchildren.

Edwin (E.H.) Buhram was born in 1882 in Sprague, Nebraska. He was married to Sinnie Vanderhook in 1904 in Lincoln, Nebraska. Mrs. Buhram was born in Sprague in 1888 and currently lives in Muleshoe. Buhram died in 1928. The Buhrams came to Bailey County by train in 1908 with their two oldest sons, Russell and Cecil, and settled in the YL community. Russell and Cecil still live in the Muleshoe area. The Buhrams other children are Donald of Manhattan Beach, Calif.; Luther of San Diego, Calif.; Edwina Eubanks of DeKalb; and Dale, Cline and Gladys Maddox, all of Muleshoe. Mrs. Buhram also has 15 grandchildren and 15 great-grandchildren. (A history of the E.H. Buhram family appeared in an earlier edition of the Journal.)

This is one in a series of historical biographies of Bailey County pioneer families who arrived here prior to 1930. The great pleasure in life is doing what people say you cannot do. The quarrels of friends in the latter part of life are never truly reconciled. -Walter Bagehot. -William Shenstone.

**GIBSON'S DISCOUNT CENTER**  
WHERE YOU ALWAYS BUY THE BEST FOR LESS  
These Specials Good Thru Wednesday  
Muleshoe, Texas  
Open 9 am to 8 pm Mon thru Sat

**NEW GLEEM II**  
with GREEN SPARKLES  
with Fluoride and Brighteners in One Toothpaste  
Family Size **64¢**

Nestea Instant **TEA**  
3 oz. Jar **93¢**

**SCOPE**  
Mouthwash  
18 oz. Family Size **83¢**

**FOIL WRAP**  
Gibson Aluminum **FOIL**  
12" X 25' **17¢**

Sweetheart **FABRIC SOFTENER**  
1/2 Gallon **53¢**

Prell Liquid **SHAMPOO**  
16 oz. Imperial Size **89¢**

Jergens **LOTION**  
1/3 More 20 oz. Size **99¢**

Tame **CREME RINSE**  
16 oz. Size **99¢**  
Gibson's Special

Ball **MASON JARS**  
Regular Mason #61 Pint **\$1.39**  
Case of 12

Ball **CANNING SUPPLIES**  
Wide Mouth #66 Pint **\$1.59**  
Case of 12

Ball **MASON JARS**  
1 1/2 Pint #67 **\$1.79**  
Case of 12

Mennen "E" **DEODORANT**  
4 oz. **59¢**

Ball **MASON JARS**  
#62 Quart **\$1.59**  
Case of 12

Ball **MASON JARS**  
Wide Mouth #67 Quart **\$1.79**  
Case of 12

Ball **MASON JARS**  
Wide Mouth #67 Quart **\$1.79**  
Case of 12

Irish Spring **BAR SOAP**  
Bath Size **18¢**

Ball **DOME LIDS**  
THE LID WITH... the FEATURES!  
WHITE ENAMEL LINING  
RED RUBBER  
#3L Reg. 12's **19¢**  
Widemouth 12's #4L **29¢**

Ball **DOME CAPS**  
With Lids  
#03 Reg. 12's **39¢**  
Widemouth 12's #04 **57¢**

Ball **DOME CAPS**  
With Lids  
#03 Reg. 12's **39¢**  
Widemouth 12's #04 **57¢**

Diamond **VINYL GARDEN HOSE**  
5/8" X 75' #601 **\$2.99**

Ball **DOME LIDS**  
THE LID WITH... the FEATURES!  
WHITE ENAMEL LINING  
RED RUBBER  
#3L Reg. 12's **19¢**  
Widemouth 12's #4L **29¢**

Ball **DOME CAPS**  
With Lids  
#03 Reg. 12's **39¢**  
Widemouth 12's #04 **57¢**

Ball **DOME CAPS**  
With Lids  
#03 Reg. 12's **39¢**  
Widemouth 12's #04 **57¢**

**PRESTO CE CUBE TRAYS**  
Product of General Motors  
Just flip the "Magic Touch" lever and cubes pop free instantly. No prying. No thawing. Faster freezing all-aluminum. Fits all refrigerators. Buy several!  
#88/034 **\$1.33**

**HARNESS BOOTS**  
Boys  
Sizes 4 1/2 to 8 **\$4.99 pr.**  
Sizes 8 1/2 to 3 **\$5.99 pr.**  
Sizes 3 1/2 to 6 **\$6.99 pr.**  
Mens  
Sizes 7 1/2 to 12  
Our Reg. \$18.97 **\$13.99 pr.**

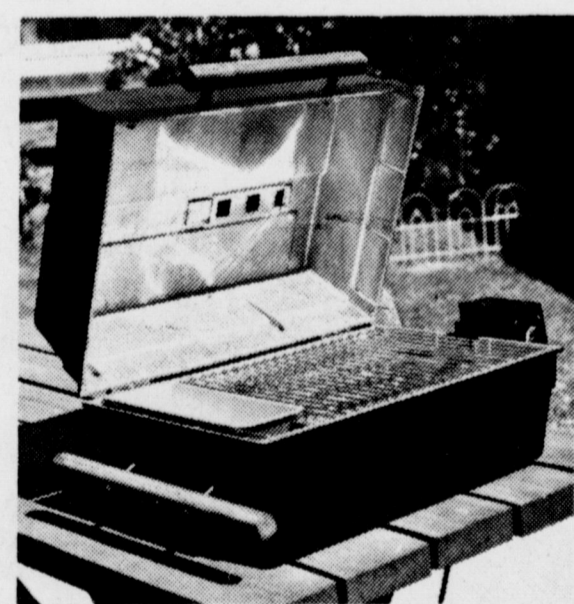
**PRESTO COOKER-CANNER**  
Cooks meals for crowds - fast!  
Canning basket and complete recipe book included  
Perfect for canning low acid foods with Maximum convenience and safety  
CA16 16 Qt. **20.99**  
CA21 21 Qt. **22.99**

Smokey Dan **CHARCOAL GRILL**  
#175 **\$7.77**  
Gibson's Special

**PLASTIC FREEZER CONTAINERS**  
Pint **6¢** 1 1/2 Pint **8¢** Qt. **10¢**

An easy way to get fruit into your family's daily menu is to serve it with the meat. Peach, pears, or apricots are great heated at the last moment and used to garnish the meat plates; they add color and flavor and important nutrients. Spiced fruit is another good addition to any meat platter. Spicy applesauce, chilled or warmed, is a natural with ham or pork, but equally interesting with corned beef or hamburger. Of course, cranberry jelly always goes well with chicken, but, for added nutrition, serve it on slices of fresh oranges. Instead of mint jelly with lamb, spiced pear halves would enhance the nutrition of this entree.

**SAVE! SAVE! SAVE!**  
**Now SAVE \$12.00**  
on this easy-to-use portable table-top Char-O Electric barbeque grill



Model 1340

regular price \$49.50  
**Inventory reduction sale**

**NEW LOW PRICE \$37.50** (PLUS TAX)



**ACT NOW**

**while they last**



### Crime...

Cont. from Page 1

close at hand." The latest figures were contained in the FBI's Uniform Crime Reports released today by the Acting Director of the FBI, L. Patrick Gray, III. The report of nationwide crime statistics is made possible by the voluntary cooperation of local, county, and state law enforcement agencies, Mr. Gray said.

The report divides serious crime into two categories--violent, which includes murder, forcible rape, robbery and aggravated assault, and property, which includes burglary, larceny \$50 and over and auto theft.

Violent crime, which makes up about 13 percent of the total index offenses in the crime report, increased two percent in the first quarter of 1972, compared to the same period of 1971. A 13 percent increase was registered in the first quarter of 1971. A 13 percent increase was registered in the first quarter of 1971 compared to 1970. Property offenses increased

### Course...

Cont. from Page 1

of real estate. The two-part program consists of one session, 30 hours of instruction over a period of one week. Part II will consist of 69 hours over a period of 2 weeks. A total of 90 hours is needed to satisfy the educational requirements for a Broker's License and 30 hours for a Salesman's License in the State of Texas.

Certificates of completion will be awarded to those who successfully complete the course or courses.

Those enrolled in the real estate course include: Wilburn Bailey, LaQuita Cargill, William D. Dugger, Bernice F. Legham, Tanya P. Harlan, and Alvin E. Mirill, Brownfield; Johny Booth, Robert E. Byrne, Frank Bass, C.G. Connell, Frankie Farmer, L.D. Fletcher, Sue Hickman, Winford L. Ham, James R. Hobbs, Jean James, Juanita K. Olive, Geraldine Oliver, Nelson Parsons, Patti Storr, Jacki Thompson, Bill Ed Watson, Lennart F. Wid, and Clyde Day, Lubbock; Jean Anderson, Sharon Hicks, Rohlin E. Sullender, and Gwyneth Wood, Levelland; Mary Nell Bleeker, Muleshoe; Neil Duffy III, Amherst; Danny J. Fletcher, Wolfthor; Don Joyner, Fieldton; Andrea Murphy; Slaton; Betty Switzer, Seagraves; O.L. Tilgar, Morton; Boyce T. Vermer, Meadow; and Laura Baker.

**Bailey County Journal**  
 Established March 11, 1903  
 Published by Muleshoe Publishing Co., Inc.  
 Every Sunday at 304 W. Second Box 449  
 Muleshoe, Texas 79347  
 Second class postage paid at Muleshoe, Texas  
 Muleshoe, Texas, 79347.

**TEXAS PRESS ASSOCIATION**  
 Member 1972

L.R. Hall, President  
 Jessica J. Hall, Sec. Treas.  
 L.R. Hall, Managing Editor  
 Nellie Puffer, News Reporter  
 Jessie Gilliland, Society  
 Jan Halonen, Advertising  
 Polly Crowl, Office  
 SUBSCRIPTIONS:  
 Zone 1-Bailey-Parmer-Cochran-Lamb  
 counties: \$4.00 per year, \$4.50 per year by  
 carrier. With Thursday Muleshoe Journal,  
 both papers \$5.50 per year, \$6.00 per year  
 by carrier.  
 Zone 2-Out-of-Territory: \$4.50 per year  
 With Thursday Muleshoe Journal, both  
 papers, \$5.25 per year.  
 Monthly, by carrier-55¢, single copies-10¢  
 Advertising rate card on application

**SCHEDULE OF EVENTS**

MONDAY, JULY 17  
 Progress WSCS  
 8:00 p.m. - School Board

TUESDAY, JULY 18  
 Progress HD Club  
 8:30 a.m. - City Council,  
 City Hall  
 10:00 a.m. - BAC, City Hall  
 7:30 p.m. - Order of East-  
 ern Star,  
 Masonic Hall  
 7:30 p.m. - Alcoholic Anon-  
 ymous  
 8:00 p.m. - Rebekahs, Odd-  
 fellows Lodge

WEDNESDAY, JULY 19  
 8:00 p.m. - DeMolay  
 Masonic Hall

THURSDAY, JULY 20  
 Hobby Club  
 8:00 p.m. - Planning  
 Commission  
 City Hall  
 4:30 & 7:30 p.m. - Weight Watchers  
 7:30 p.m. - Catholic Church  
 7:00 p.m. - TOPS - REA  
 Meeting Room

Any upcoming community  
 event for Schedule of Events  
 please report to the Journal  
 office.

Compliments of:  
**MULESHOE STATE BANK**  
 MEMBER FDIC

one percent during this reporting period, compared with a five percent increase in 1971 and a 13 percent increase in 1970.

Suburban police agencies reported a four percent increase in serious crime, which was slightly lower than the five percent increase in the first quarter of 1971, and substantially less than the 18 percent increase in 1970.

Crime in rural areas increased eight percent in the first quarter, compared to a six percent increase in 1971 and a 19 percent increase in 1970.

### Teachers...

Cont. from Page 1

news media and individuals who have contributed to the program of Vocational Agriculture in Texas.

Keith Bray, vocational agriculture teacher in Muleshoe will receive a ten year tenure award.

The Second General Session will begin at 8:30 a.m., Thursday with the following people to address the group: John C. White, Commissioner, Department of Agriculture, Austin; L.V. Ballard, Director Public School Occupational Programs, TEA, Austin; W.T. Crouch, member of The Advisory Council for Technical-Vocational Education in Texas, Arlington; Stanley White, President, Texas Young Farmers Association, Stephenville; and Lee D. Herring, Vice-President, Grand Prairie State Bank.

Herring is also a member of the Board of Directors, Texas Tech University Foundation and a member of "The Regents' Council for the Future" at Texas Tech. He is a past president of the Grand Prairie Rotary Club, Chairman of the United Fund, Chairman of Grand Prairie's Mentally Retarded Children School Fund Drive, served six years on the Grand Prairie School Board and was voted Citizen of the Year, Grand Prairie, 1970.

Entertainment and activities are planned throughout the meeting for the ladies and guests who will attend the Convention. Approximately 1500 Vocational Agriculture Teachers and friends are expected to attend the meeting.

### Accident...

Cont. from page 1

summary for the 60 counties of the Department of Public Safety Region 5 for June, 1972 shows a total of 527 accidents resulting in 20 persons killed and 347 persons injured as compared to June, 1971 with 524 accidents resulting in 10 persons killed and 308 injured.

The 20 traffic deaths for the month of June, 1972 occurred in the following counties: Daltam and Lubbock, three each; Arche, Armstrong, Bailey, Childress, Floyd, Hale, Jack, Montague, Parker, Terry, Wichita, Wiltarger, Wise, and Young, one each.

**No More**  
 "Since I bought a new car, I don't have to walk to bank to make my deposits."  
 "Now you drive over."  
 "No, I just don't make any."  
**Modern Lessons**  
 The class-pin of the School of Experience is the safety pin.

### Economic Stabilization

### Questions and Answers

Q. Does the Internal Revenue Service have a publication that tells you what to do when you discover a rent violation?

A. Yes, IRS Publication S-3026, "Rent Violations," explains what rent increases are legal and what a tenant should do when he believes he has found an illegal increase. You can obtain a free copy by writing your Internal Revenue district office.

Q. I signed a two-year lease for my apartment in August, 1970. How large an increase can I expect when my lease expires?

A. As far as rent controls are concerned, a tenant in a situation such as yours has two options open to him:

1) He may sign a new lease for one year or less in which any rent increase will be restricted to no more than eight percent plus allowable costs and increases resulting from capital improvements begun before June 1, 1972; or

2) He may sign a new lease of the same or longer duration than the expiring lease with the rent calculated under the existing regulations.

Your landlord is required to figure out for you the effect of each option and to notify you of your rights under the rent regulations.

Q. Who can represent an individual or business before the IRS in economic stabilization matters?

A. Any person, 21 or over, may represent others before IRS in economic stabilization matters upon filing a properly executed power of attorney with the IRS office.

Form S-68, which will be available in late July, will be used to file a power of attorney in stabilization matters. In the meantime, Form 2848, Power of Attorney, may be used. Forms may be obtained from IRS offices.

Q. If an employer who previously did not qualify for the small business exemption fires some employees to bring his total employment level below 60, does the employer gain exempt status?

A. No, the employer does not gain exempt status because for purposes of the exemption, stabilization regulations look toward the number of employees in past pay periods. Similarly, if an employer who previously qualified for the small business exemption hires more employees to bring his total employment level above 60, he does not lose his exempt status.

Q. When an individual "rents" beach cottages on a weekly basis, may he qualify for the small

**Bank...**

Cont. from Page 1  
 in deposits and assets. Total resources this year were \$4,246,094.63 which was up \$167,928.28 from last year's statement. Deposits also increased \$159,174.02 from \$3,770,124.66 in 1971 to \$3,929,298.68 this year. Loans decreased from \$1,674,865.23 in 1971 to \$1,623,479.91 this report.

### Drug Survey Results

Last October, the Central Plains Comprehensive Community Health/Mental Retardation Center started a survey in the nine county catchment area. The survey was given to Junior High and High School students in a 13-school district area. Over 1,400 people answered questions covering the use and distribution of drugs, educational and socio-economic questions were also answered.

The information obtained from the survey is now being tabulated. Roy Nickell, director of Drug Abuse and coordinator of the Drug Abuse Survey, says that all information gathered in the survey will be formulated by the end of this summer.

The information from this area is being correlated with a similar survey made last year in Houston. This comparison of a metropolitan area with a basically rural area will help the drug abuse workers by making a general trend known. They will be better able to educate the public about the abuse and

dangers of drugs.

The following is a partial listing of information being obtained from the survey:

The tenth grade reports the highest incidence of drug use at present. Overall the twelfth grade reports the greatest number of having ever used drugs. Males report a greater percentage of drug use.

Anglos reported a higher incidence of use than Black or Mexican American.

Students with brothers and sisters report greater drug use than students who are oldest or only children in the family.

Those students whose parents are college graduates reported the greatest percent of users.

Those students whose mothers did not work reported less drug use than other categories.

Reported drug use is highest for those students whose parents use both alcohol and tobacco.

Students living with one real parent and one step-parent re-

ported the highest incidence of drug use.

Those students with an A average reported the least drug use and those with an F average the greatest drug use.

Those students with an allowance of \$5.00 to \$10.00 per week reported the greatest percentage of drug use.

Those students who reported no school activities reported the greatest percentage of drug use.

Students who never attend religious activities reported the greatest percentage of drug use.

Most reported drug users obtain their drugs from friends.

Of those using drugs, most reported parents are not aware of their usage.

Of those presently using drugs, most reported parents are not aware of their usage.

Of those presently using drugs, the greatest percentage of them report using drugs as a form of escape from pressure.

Drug users report dating on week nights and weekends.

Those who report to own their own car also report the greatest percentage of drug use.

Most drug users report they

obtain knowledge of drugs from friends.

The greatest percentage of users plan to go into the Armed Forces after school.

The majority of students feel that panels with professionals and/or former users are the best forms of drug education.

### GOLDEN GLEAMS

Too much rest becomes a pain.

-Homer.

I like to rest, whether sitting or lying down, with my heels as high as my head, or higher.

-Michel de Montaigne.

Sleep after toil, port after stormy seas, Ease after war, death after life.

-Edmund Spenser.

Labor is held up by the hope of rest.

-Robert Herrick.

**Shop in comfort and SAVE**

STORES COOL... PRICES HOT!

**Shurfresh ICE CREAM**  
 1/2 gal. 59¢

**Golden Ripe BANANAS**  
 5¢ lb.

**On Sale This Week FOR HER**  
 Family Circle COOKING Volume 11 \$1.69

**FOR HIM**  
 The Family Handyman Do-it-Yourself Encyclopedia Volume 11 \$1.69

**Center Cut CHUCK ROAST**  
 lb. 89¢

**Mr. Pig Pure Pork SAUSAGE**  
 2 lb. bag \$1.25

**Food Lot Beef CLUB STEAK**  
 lb. \$1.09

**Food Lot Beef RIB STEAK**  
 lb. 98¢

**Blade Cut CHUCK ROAST**  
 lb. 79¢

**Cello Pak CARROTS**  
 ea. 10¢

**Alabama Full Ears Sweet CORN**  
 ears 35¢

**White GRAPES**  
 lb. 39¢

**California Ruby Red GRAPEFRUIT**  
 lb. 15¢

**Fresh Firm LETTUCE**  
 lb. 19¢

**Extra Large TOMATOES**  
 lb. 33¢

**California Long White POTATOES**  
 10 lb. bag 69¢

**Shurfine COFFEE**  
 1 lb. can 79¢

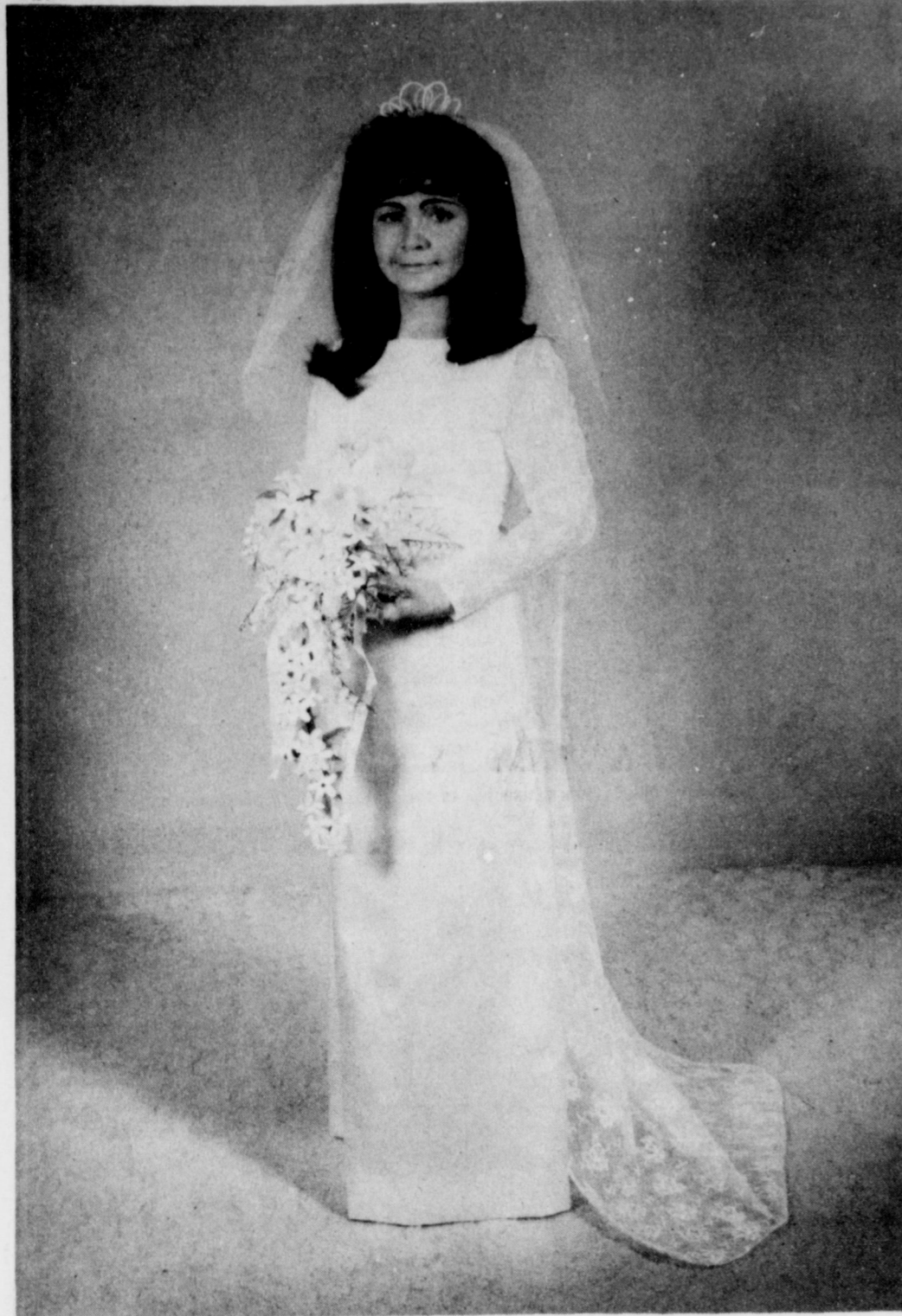
**QUALITY MERCHANDISE AT LOWEST PRICES**

**Jim's Pay N' Save**  
 FRIENDLIEST STORE IN TOWN

Specials Good  
 Sun., June 16 thru Sat., June 22  
 8 a.m. till 10 p.m. 6 Days A Week  
 Sundays 9 a.m. till 10 p.m.

201 S. 1st. Street





MRS. JERRY DALE MICK, the former Dorothy McMahan

## Double Ring Vows Pledged By Pair

A June 25 ceremony in the 16th Street and Ave. D. Church of Christ united in marriage Dorothy Jean McMahan and Jerry Dale Mick, Ivan Woodard read the double ring vows.

Parents of the couple are Mr. and Mrs. C. McMahan and Mr. and Mrs. Ellis Mick, all of Muleshoe.

The altar was decorated with twin candelabra holding white tapers accented with flat fern and blue bows. Centering the setting was an "open Bible" arrangement featuring white gladiolus and a white Bible belonging to the bride. Flanking the candelabra were bouquets of white gladiolus and blue tinted carnations.

Taped musical selections of "Twelfth of Never" and "Oh Perfect Love" by Pat Watson, organist and Dean Sprayberry, soloist, were played.

Maid of honor was Sharon Harris, niece of the bride, and matron of honor was Mrs. Jerry Lancaster of Midland, sister of the groom. The attendants wore formal length dresses of blue satin designed with Empire waists accented with ribbon and bows at the center fronts. The sleeveless bodices were overlaid with blue Chantilly lace. They wore veils of imported blue silk illusion attached to crowns of seed pearls and carried cascading bouquets of white carnations.

Candlelighters were Jerry Raney, nephew of the bride, and Jerry Lancaster of Midland, brother-in-law of the groom. Clyde McMahan of Hereford, brother of the bride served as best man, Groomsman was Clay Mick of Amarillo, brother of the groom.

Ushers were Clarence McMahan, brother of the bride; David Watts, brother-in-law of the groom; Jerry Mick and Jerry Lancaster.

Escorted and given in marriage by her father, the bride wore a formal length gown of white bridal satin fashioned with an Empire waist. The bodice was overlaid with white Chantilly lace and accented with tiny covered buttons extending to the waist. The long fitted sleeves and detachable train were of Chantilly lace. The veil of white imported silk illusion was attached to a crown of small white pearls. The bride carried a cascading bouquet of white carnations which was designed by her brother.

For something old the bride wore a pin which was worn by her grandmother when she was married. Something new was the bride's dress. She borrowed a blue handkerchief from her mother and wore the traditional blue garter. She also had a sixpence and pennies minted in the years of the couple's birthdates in her shoes.

Guests were registered by Mrs. David Watts, sister of the groom. The register table was centered with a white memory candle trimmed with silver wedding bells surrounded by an arrangement of blue tinted carnations. The candle burned throughout the ceremony.

A reception was held following the ceremony in the home of

the bride's sister, Mrs. Cleo Ward, at 224 West 4th Street. The serving table was covered with a white lace cloth over blue and centered with a candelabra arrangement of blue roses and white tapered candles entwined with ivy. The third tier of the four tiered wedding cake, baked by the bride's sisters, was topped with white wedding bells nestled in blue tulle. The top tier, supported by columns, was topped with a miniature bride and groom. Blue roses decorated the cake. A large white basket of rice bags completed the table decor. Cake, punch, nuts and mints were served by the bride's sisters, Mrs. Cleo Ward, Mrs. Wayland Harris and Mrs. George Raney.

For a wedding trip to points of interest in Colorado, the bride wore a blue knit dress featuring a long torso with a circle flounce skirt. White accessories and a white corsage completed her ensemble.

The bride, a graduate of Muleshoe High School, is employed at Perry Bros. The groom graduated from Muleshoe High School and is employed by Singleton-Ellis Funeral Home.

Out of town guests included Mr. and Mrs. Paul McMahan and children of Abilene; Mr. and Mrs. Clay Mick of Amarillo; Mrs. Eunice Crume of Farwell; Mrs. Mary Curd, Carolyn and Walter, Jr. of Texico, N.M., and Mr. and Mrs. Jerry Lancaster of Midland.

A rehearsal party was hosted by the groom's parents at their home following the wedding rehearsal on Saturday night.



AUGUST WEDDING PLANNED...Mr. and Mrs. H.M. Black of Route 1, Sudan announce the engagement of their daughter, Helen Louise, to David F. Driskill, son of Mr. and Mrs. Forest Driskill of 3102 South Grand, Amarillo. Miss Black is a 1971 graduate of Sudan High School. She is attending Wayland Baptist College, majoring in elementary education with a minor in art. Driskill is a 1968 graduate of Caprock High School in Amarillo. He is also attending Wayland College, majoring in religion with a minor in history. The couple will be married August 19 at 6 p.m. in the Bula Baptist Church.

## Swim Party Honors Bears

A swimming party held Friday, July 7, from 6 to 8 p.m. at the Muleshoe Swimming Pool honored the Bears baseball team. After swimming, the group had a picnic supper at the City Park. Sandwiches, chips, punch and cookies were served.

Team members attending were Joel Bratcher, Manuel Garcia, Curby Brantley, Kenny Chancey, Jamey Chancey, Benny Pena, Mike Rodriguez, David Garcia and Albert Lopez. Parents attending were Mr. and Mrs. Charles Bratcher, Mr. and Mrs. Curby Brantley,

Mr. and Mrs. R.G. Bennet, III, Mrs. Lindy Chancey and Mrs. Garcia.

Special guests were Stephanie Brantley, Tammy Bratcher, Joey Chancey, Darrell Chancey, Sonny and Lisa Bennett.

Charles Bratcher is manager and R.G. Bennett is coach for the time.

*In Fashion*

A white wool jacket, hip length, will be a favorite this fall to wear over day or evening dresses.

Colorful plaid seersucker and other washable fabrics are seen for daytime and after dark wear.

## Goodland Bible Study Meets In Tarlton Home

The Goodland Bible Study Club met July 11 in the home of Chloris Tarlton with nine members present.

The president's thought for the day was "To help stay young, fill each wrinkle with intelligence."

The white elephant gift went to Kay Kindle.

Those present for the meeting were Lyndell Galt, Drucilla Hutton, Rosemary Johnson,

Kay Kindle, Chloe Klutts, O-pal McCelvey, Maxine Ragsdale, Sammie Simpson and the hostess, One visitor, Sally Robinson, also attended.

The next meeting will be July 25 in the home of Rosemary Johnson. The group will study Daniel, Chapter 5.

He is a good man whom fortune makes better. -Thomas Fuller.

**Tri-County SAVINGS AND LOAN ASSOCIATION**

MULESHOE, TEXAS

Assets and Liabilities		
Assets	June 30, 1972	December 31, 1971
First Mortgage Loans	4,258,933.94	4,088,267.68
Loans on Savings Accounts	130,082.91	159,053.89
Improvement Loans	221,442.06	174,081.81
Other Loans	1,554,604.64	1,174,354.87
Stock in FHLB	34,000.00	33,600.00
Accrued Interest Receivable	69,316.21	69,191.64
Cash and U. S. Governments	723,831.96	564,583.37
Land, Building & Equipment	90,003.75	14,527.35
Deferred Charges to Expense	7,564.09	2,989.38
Other Assets	75,197.59	78,342.28
<b>Total Assets</b>	<b>7,164,977.15</b>	<b>6,358,992.27</b>
<b>Liabilities and Capital</b>		
Savings Capital	6,131,182.42	5,586,601.50
Borrowed Money	300,000.00	100,000.00
Loans in Process	22,651.79	12,587.31
Borrowers' Trust Fund	33,824.22	17,735.44
Other Liabilities	7,393.38	11,785.37
Unearned Discounts	236,514.00	209,818.55
Reserve for Payment of Dividends-Savings	-	-
Capital, Surplus & Reserves	433,411.34	420,464.10
<b>Total Liabilities and Capital</b>	<b>7,164,977.15</b>	<b>6,358,992.27</b>

**OFFICERS**

DONALD W. HARMON  
President & Chairman  
of Board

CLEM PEDEN  
Vice President  
& Secretary

**DIRECTORS**

FRANK H. ELLIS  
DONALD W. HARMON  
LINDAL MURRAY  
CLEM PEDEN  
ALEX H. WILLIAMS

SAVING TODAY . . . . . SECURITY TOMORROW

# STATEMENT OF CONDITION

## Report of Condition of the FIRST NATIONAL BANK of Muleshoe County of Bailey In The State Of Texas

at the close of business on April 18, 1972 Published in Response to call made by comptroller of the currency, under Title 12, United States Code, Section 161, Charter No. 14745 National Bank Region No. 11

ASSETS	
Cash and due from banks (including unposted debits).....	\$1,216,912.80
Obligations of States and political subdivisions.....	\$3,164,250.27
Other securities.....	\$19,500.00
Federal funds sold and securities purchased under agreements to resell.....	None
Loans.....	\$4,875,250.65
Bank premises, furniture and fixtures, and other assets representing bank premises.....	\$99,195.02
Real estate owned other than bank premises.....	\$10,032.00
Other assets (including None direct lease financing).....	None
<b>TOTAL ASSETS.....</b>	<b>\$9,385,140.74</b>
LIABILITIES	
Demand deposits of individuals, partnerships, and corporations.....	\$3,555,732.07
Time and savings deposits of individuals, partnerships, and corporations.....	\$3,905,135.22
Deposits of United States Government.....	\$29,841.37
Deposits of States and political subdivisions.....	\$753,440.54
Deposits of commercial banks.....	\$10,000.00
Certified and officers' checks, etc.....	\$72,761.12
<b>TOTAL DEPOSITS.....</b>	<b>\$8,326,910.32</b>
(a) Total demand deposits.....	\$4,033,722.44
(b) Total time and savings deposits.....	\$4,293,187.88
Other liabilities.....	\$109,083.11
<b>TOTAL LIABILITIES.....</b>	<b>\$8,435,993.43</b>
RESERVES ON LOANS AND SECURITIES	
Reserve for bad debt losses on loans (set up pursuant to IRS rulings).....	\$116,239.97
<b>TOTAL RESERVES ON LOANS AND SECURITIES.....</b>	<b>\$116,239.97</b>
CAPITAL ACCOUNTS	
Equity capital-total.....	\$832,907.34
Common Stock-total par value.....	\$300,000.00
No. shares authorized.....	15,000
No. shares outstanding.....	15,000
Surplus.....	\$350,000.00
Undivided profits.....	\$143,493.38
Reserve for contingencies and other capital reserves.....	\$39,413.96
<b>TOTAL CAPITAL ACCOUNTS.....</b>	<b>\$832,907.34</b>
<b>TOTAL LIABILITIES, RESERVES, AND CAPITAL ACCOUNTS.....</b>	<b>\$9,385,140.74</b>
MEMORANDA	
Average of total deposits for the 15 calendar days ending with call date.....	\$8,426,671.46
Average of total loans for the 15 calendar days ending with call date.....	\$4,888,402.14
I, Harmon Elliott, Cashier of the above-named bank do hereby declare that this report of condition is true and correct to the best of my knowledge and belief.	
signed: (s) Harmon Elliott	
We, the undersigned directors attest the correctness of this report of condition and declare that it has been examined by us and to the best of our knowledge and belief is true and correct.	
<b>DIRECTORS:</b>	
M.D. Gunstream James Glaze Rufus Gilbreath	

## REPORT of CONDITION of MULESHOE STATE BANK

Consolidated Report of Condition of "Muleshoe State Bank" of Muleshoe in the State of Texas and Domestic Subsidiaries at the close of business on June 30, 1972

ASSETS	
Cash and due from banks (including unposted debits).....	\$1,318,717.06
U.S. Treasury securities.....	\$698,695.58
Obligation of other U.S. Government agencies and corporations.....	-
Obligations of States and political subdivisions.....	\$2,045,487.03
Other securities.....	\$1,000.00
Federal funds sold and securities purchased under agreements to resell.....	\$5,960,718.50
Other loans.....	-
Bank premises, furniture and fixtures, and other assets representing bank premises.....	\$134,610.41
Real estate owned other than bank premises.....	\$2.00
Other assets.....	\$175,794.03
<b>TOTAL ASSETS.....</b>	<b>\$10,334,025.61</b>
LIABILITIES	
Demand deposits of individuals, partnerships, and corporations.....	\$4,187,138.99
Time and savings deposits of individuals, partnerships, and corporations.....	\$3,870,183.39
Deposits of United States Government.....	\$48,285.71
Deposits of States and political subdivisions.....	\$771,882.77
Deposits of commercial banks.....	None
Certified and officers' checks, etc.....	\$29,802.30
<b>TOTAL DEPOSITS.....</b>	<b>\$8,907,293.16</b>
(a) Total demand deposits.....	\$4,708,933.40
(b) Total time and savings deposits.....	\$4,198,359.76
Federal funds purchased and securities sold under agreements to repurchase.....	\$200,000.00
Other liabilities.....	\$83,224.57
<b>TOTAL LIABILITIES.....</b>	<b>\$9,190,517.73</b>
RESERVES ON LOANS AND SECURITIES	
Reserve for bad debt losses on loans (set up pursuant to Internal Revenue Service rulings).....	\$214,437.79
<b>TOTAL RESERVES ON LOANS AND SECURITIES.....</b>	<b>\$214,437.79</b>
CAPITAL ACCOUNTS	
Equity capital, total.....	\$929,070.09
Common stock-total par value.....	\$400,000.00
(No. shares authorized.....)	20,000
(No. shares outstanding.....)	20,000
Surplus.....	\$300,000.00
Undivided profits.....	\$229,070.09
<b>TOTAL CAPITAL ACCOUNTS.....</b>	<b>\$929,070.09</b>
<b>TOTAL LIABILITIES, RESERVES, AND CAPITAL ACCOUNTS.....</b>	<b>\$10,334,025.61</b>
MEMORANDA	
Average of total deposits for the 15 calendar days ending with call date.....	\$8,778,419.16
Average of total loans for the 15 calendar days ending with call date.....	\$6,033,041.50
CORRECT-ATTEST:	
<b>DIRECTORS</b>	
B. E. Loyd	
James A. Cox	
Charles L. Lenuu	
I, Robert E. Finney, Cashier of the above named bank, do solemnly affirm that this report of condition is true and correct, to the best of my knowledge and belief.	
signed: (s) Robert E. Finney	
STATE OF TEXAS COUNTY OF BAILEY	
Sworn to and subscribed before me this 14th day of July, 1972, and I hereby certify that I am not an officer or director of this bank.	
(SEAL) Lanetta Small	
Notary Public	
My commission expires June 1, 1973	





REV. AND MRS. CHARLES KENNETH HARVEY

## Rev., Mrs. Harvey Honored On Birthdays

Rev. and Mrs. Charles Kenneth Harvey were honored on the occasion of their birthdays Thursday night at the Church at 7:30 p.m. Rev. Harvey, pastor of the Calvary Baptist Church was born on July 13 and his wife

celebrates her birthday on August 1.

A cake, shaped like an open Bible, centered the serving table with Psalm 122: "I was glad when they said unto me, Let us go into the house of the Lord." The other side read, "Happy Birthday, Preacher and Mrs.

Harvey." Homemade ice cream, cake, punch and coffee were made and served by ladies of the church.

They each received a gift certificate and a pounding (gift of food) from members of the Church and friends.

Rev. Harvey has been pastor of the church for one year and comments that "he really likes the people and the Muleshoe area, especially the good water."

## Colt 45's Have Ice Cream Party

The Colt 45's were honored with a cake and ice cream party in the Jim Stafer home on Saturday, July 1, after their final game.

Team members present were Brad Baker, Joe Don Prather, Robbie Young, Doug Cowan, Terry Shafer, Jerry Wheat, Darrell Chancey, Wayne Ware, Scott Baker, Jimmy Don Ware, Michael Davenport, Terry Pinkston and Marvin Davenport.

Jim Shafer is team manager and Dixon Ray is coach.

Parents present were Mr. and Mrs. Donald Prather, Mr. and Mrs. Jim Shafer, Mr. and Mrs. Baker, Mrs. Davenport and Mrs. Lindy Chancey.

## Evans Family Holds Reunion In Park

Last weekend the family reunion of the family of Mr. and Mrs. Carl Evans was held in the Muleshoe City Park. The Evans came to Muleshoe in 1925 and have lived in and around Muleshoe since that time. This is the second reunion the family has had at the Muleshoe City Park with each family bringing campers, trailers or tents to spend the weekend together.

Mr. and Mrs. Evans and their four small daughters came to Muleshoe and settled about five miles north of town in the YL community. The reunion group visited the house where the family lived when the three younger daughters were born.

At the reunion this year each

family brought grills and cooked together, with a hamburger supper served Saturday night and a picnic dinner Sunday. Thirty eight members of the family attended, including six of the daughters. One daughter, Mrs. Dwayne Curtis of Big Fork, Montana, was unable to attend. Daughters and their husbands attending were Mr. and Mrs. Bill Hamblin of Muleshoe; Mr. and Mrs. Glenn Yonaka of Tucson, Ariz.; Mr. and Mrs. M.R. Thurman of Jacksboro; Mr. and Mrs. Clinton Holmes of Plainview; Mr. and Mrs. Melvin Morton of Edmonson; and Mr. and Mrs. Talmadge McKillip of Amarillo.

Grandchildren attending were Mr. and Mrs. Johnny Simmons,



ART SHOW...Art students of Beth Black presented an art show exhibiting the work they had done the past four weeks in an art workshop. Emphasis was placed on the students expressing their own tastes while learning basic techniques. Most of the students, ages 7 to 16, were taking their first art lessons. The lessons were held in the loft of Williams Bros. Office Supply. From left are Tammy Nesbitt, LaShelle Lewis and Tracy Buhrman with their paintings.

Canyon; Mr. and Mrs. Carvel Farmer and children, Jacksboro; Mr. and Mrs. Clement Shook and children, Jacksboro; Mr. and Mrs. Richard Thurman and children, Jacksboro; Mr. and Mrs. Bob Faus and Bill, Lubbock; Dennis McKillip, Amarillo; Cindy and Marsha Morton, Edmonson; Richard Arlen Burnett, Rota, Spain, where he is stationed with the U.S. Na-

vy; and a friend, Elsie Givens, Trinidad, Colo.

Plans were made to have the family reunion next year at the same place the first weekend following July 4.

## Couple Wed In Enochs Ceremony

Nelita Kay Holloway of Enochs and Ronnie Eugene Davis of Searcy, Ark., were married in a ceremony at the Enochs Baptist Church on July 7 at 8 p.m.

Parents of the bride are Mr. and Mrs. Quinton Nichols of Enochs. Mrs. Jewel Davis of Kensett, Ark., is mother of the groom.

The double ring vows were read before an archway covered with greenery and white carnations centered with wedding bells and a blue and white bow. A blue memory candle flanked the archway.

Musical selections were provided by Mrs. Ann Sinclair of Bula, organist, Buford Peterson of Enochs and his daughter, Mrs. Kay Abney, Plainview, sang a duet.

Maid of honor was Vickie Freeman of Kensett, Ark., cousin of the bride. She was attended in a light blue double knit floor length gown featuring an Empire waistline and short puff sleeves. Blue and white trim

encircled the Empire waistline. The maid of honor carried a long stem white carnation with blue ribbon streamers.

Paula Nichols was flower girl. She wore a blue A-line dress with blue and white trim and carried a basket filled with blue and white flower petals.

Candlelighters were Michael Nichols of Enochs, brother of the bride, and Donny Nichols of Maple.

Charles Holloway of Kensett, Ark., brother of the bride, served as best man.

Ushers were Jerry Nichols of Maple and Richard Nichols of Enochs, brother of the bride.

Given in marriage by her stepfather, the bride wore a formal length A-line gown of white bridal satin. The dress, belted at the waist, was trimmed with lace down the front and around the bell sleeves. The veil of white flowered net was attached to a tangle of white roses. The bride's bouquet of white carnations with blue and white

ribbon streamers was placed atop a white Bible.

A reception followed the ceremony in the fellowship hall of the church. The serving table was covered with white net over blue and centered with the bridal bouquet, wedding cake and blue punch were served to the guests attending.

For travel, the bride chose a two piece blue and white knit dress complemented by a corsage lifted from her bouquet. The couple will be at home at Route 1, Searcy, Ark.

The bride is a student at Kensett High School. The groom, a graduate of Kensett High School, is a student at Foot-hills Tech in Searcy.

Special guests attending the ceremony were the bride's great-grandmother, Mrs. George Hobbs and her grandparents, Mr. and Mrs. E.B. Cooper, all of Kensett, Ark., and Mrs. L.E. Nichols of Enochs.

## NEW ARRIVALS



### Heather Diane Hutton

Mr. and Mrs. Terry Hutton of Maple are the parents of a daughter born Wednesday, July 12, at 8:15 p.m. in Lubbock's Methodist Hospital. The baby girl weighed six pounds 14 ounces and was 21 inches long. She has been named Heather Diane.

Grandparents are Mr. and Mrs. Sam Damron and Mr. and Mrs. Horace Hutton, all of Muleshoe. Paternal great-grandparents are Mr. and Mrs. Joe Damron of Muleshoe. The maternal great-grandmother is Mrs. Iona Hutton of Shallowater.

# URGENT!

## LADIES--Looking for a Good Job?

A CLOTHING MANUFACTURER WHICH EMPLOYS A LARGE NUMBER OF WOMEN THROUGHOUT THE UNITED STATES MAY OPEN A PLANT IN THE CLOVIS AREA

The major factor in making the decision is the number of people available for employment as sewing machine operators. YOU can help by completing this survey form.

1. NAME: Miss \_\_\_\_\_  
Mrs. \_\_\_\_\_  
Mr. \_\_\_\_\_ First Middle Last

2. ADDRESS: \_\_\_\_\_  
Street number or box number & route City State Telephone

AGE: (Check one)	MARITAL STATUS (Check one)	EDUCATION LEVEL (Check one)
Less than 18 _____	Single _____	0 - 5 _____
18 - 24 _____	Married _____	6 - 8 _____
25 - 34 _____	Divorced _____	9 - 12 _____
35 - 44 _____	Widowed _____	12 + _____
45 - 54 _____		
55 - 64 _____		
65 + _____		

Would you consider working as a sewing machine operator? (Previous experience not necessary).  
Yes \_\_\_\_\_  
No \_\_\_\_\_

How long have you lived in the area?  
Less than 1 year \_\_\_\_\_  
1 - 2 years \_\_\_\_\_  
3 - 5 years \_\_\_\_\_  
Over 5 years \_\_\_\_\_

Are you working now?  
Yes \_\_\_\_\_  
No \_\_\_\_\_

Number of children at home:  
0 \_\_\_\_\_ 3 \_\_\_\_\_  
1 \_\_\_\_\_ 4 \_\_\_\_\_  
2 \_\_\_\_\_ 5 \_\_\_\_\_  
Over 5 \_\_\_\_\_

LEAVE AT A N. M. or Texas Employment Commission Office in Clovis, Portales, Muleshoe, or Friona

OR MAIL BEFORE JULY 24, 1972 TO:  
Clovis Chamber of Commerce  
P. O. Drawer C,  
Clovis, New Mexico 88101

LAST DAY TO SUBMIT FORM IS JULY 24, 1972

THIS IS NOT AN APPLICATION FOR EMPLOYMENT

## It's Co-Opportunity Week

### State Line Butane Co-Op Assn.

Maple July 17-22

# Capri 78



wide wrap-around tread  
strong nylon construction  
4 BLACKWALL TIRES

4 for \$74<sup>60</sup>

F78-14, 4-ply nylon cord construction. Blackwalls. Plus \$2.39 F.E.T. and trade-in each tire.



### 4 WHITEWALL TIRES

4 for \$85<sup>80</sup>

F78-14, 4-ply nylon cord construction. Whitewalls. Plus \$2.39 F.E.T. and trade-in each tire.

Size	Ply	Suggested Exchange Price 4 Blackwall Tires	Plus F.E.T. Each
E78-14	4	\$ 80.80	\$2.24
F78-14	4	85.80	2.39
G78-14	4	93.80	2.56
H78-14	4	102.80	2.75
J78-14	4	116.80	2.95
F78-15	4	87.40	2.43
G78-15	4	95.60	2.63
H78-15	4	104.80	2.81
J78-15	4	119.00	3.01
L78-15	4	123.40	3.16

All prices plus trade-in.

Size	Ply	Suggested Exchange Price 4 Blackwall Tires	Plus F.E.T. Each
E78-14	4	\$70.40	\$2.24
F78-14	4	74.60	2.39
G78-14	4	81.60	2.56
F78-15	4	76.00	2.43
G78-15	4	83.20	2.63

All prices plus trade-in.



FARMLAND INDUSTRIES, INC.  
KANSAS CITY, MISSOURI 64116

P4147-C

### Co-Op Low Sudsing Detergent

10 LB. - \$2.19

25 LB. - \$5.25

50 LB. - \$10.40

DOOR PRIZES

Register for Drawing Saturday - 6:00 p.m.

State Line Butane Co-Op Assn.  
Maple Needmore



# LCC Will Sponsor Music Camp July 16

Dr. Wayne Hinds, head of the Lubbock Christian College Music Department and Director of Music Camp, has set registration for Sunday, July 16, between 2 and 4 p.m.

A fine staff of talented musicians will teach: song directing, chorus, band, drum majoring, theory and sight-singing, vocal quartets & sextets, sectional rehearsals, stage band and Bible.

Dr. Hinds, Dr. Maxwell, Charles Cox, Eddie Chance, Tex Stevens, Horace Coffman and newcomer, Paul Epps will make

up the faculty for the summer of '72. Epps, of Seymour, Texas, will teach singing.

All junior high and high school students 12 years or older are invited to attend and live in the college dormitories and eat in the cafeteria. Tuition for room and meals is only \$55, and \$25 for students who live off-campus. Students staying in the dorms need to bring their own pillow, lines and blanket.

A full schedule of recreational activities for the music campers has been planned. There will be a variety show featuring student talent, movie, an

all day picnic, swimming, volleyball, skating and miniature golf.

The LCC bus will pick up students at Houston, Dallas, Fort Worth and various points between. Anyone living in the Houston area should contact Tex Stevens, 6502 Enid, Houston, for the bus schedule. Persons living in the Dallas-Ft. Worth area and all other stops should contact Dr. Wayne Hinds, LCC Music Department, for the bus schedule for their area.

Music Camp not only advances the students in their knowledge of music and Bible, but it gives

them a first-hand view of campus life at Lubbock Christian College.

\*\*\*\*  
Most people are limited by their inability to appreciate others.

**NO ARGUMENT**  
Grants Pass, Ore. -- Mrs. Shirley Shealy, meter maid, shows no partiality in her duties. When her husband rushed up and explained he was getting change for the meter, she replied, "I've heard that before," and handed him the ticket.

## BIBLE VERSE

"I have fought a good fight, I have finished my course, I have kept the faith."

1. Who is the author of the above declaration?
2. To whom was he writing?
3. Where was he at the time of this writing?

### Answers to Bible Verse

1. Paul the Apostle.
2. To Timothy, a young preacher.
3. In prison in the city of Rome.



HONORARY CITIZEN...Miss Ford Country, Sandy Lankford, center, was presented an official document declaring her an honorary citizen of Muleshoe Thursday afternoon by the City of Muleshoe. Making the presentation was Robert Hooten, left, and Donna Howard, Muleshoe Ambassador, Miss Lankford was in Muleshoe at the Muleshoe Motor Company Thursday afternoon for a personal appearance and later appeared in Earth at the rodeo and parade.

## Manufacturer Is Considering Clovis For New Location

One of the nation's three largest garment manufacturers is considering establishing a manufacturing plant in Clovis, with the final decision resting partially on the results of a labor survey in the Clovis area.

### Chamber Corner

By Glen King

The Muleshoe Chamber of Commerce and Agriculture was on hand Thursday morning to welcome Miss Ford Country, Sandy Lankford, to Muleshoe. Chamber manager Glen King presented her with a gold mule shoe on behalf of the Chamber.

Wednesday morning, July 12, Glen King was officially elected secretary for a six-month term for the South Plains Association of Chamber Executives (SPACE). Earl Bartley was elected president for a six-month term.

The program encompasses all of the South Plains counties plus adjoining counties. Boundaries run from Tulia on the north, to Lamesa on the south, to Floyd on the west and to Floydada on the east.

The Muleshoe Chamber of Commerce and Agriculture also entered their float in the Earth Rodeo parade Thursday afternoon.

Riding on the float were Muleshoe Ambassadors Becky Milner, Tracy Cowan, and Donna Howard. Frank Ellis drove the car pulling the float.

At least four civic clubs or other individual citizens are needed to sponsor booths at the BAC Carnival to be held in Muleshoe the last of July and first of August. If interested contact Curtis Wellborn.

A big thanks goes to all participants and helpers at the July Fourth Celebration.

the area in which the labor survey will be conducted. Questionnaires will be available in this newspaper and from employment commission offices in Muleshoe, Bovina and Clovis survey area.

After the questionnaires are filled out, they should be mailed to the Clovis Chamber of Commerce, Drawer C, Clovis, N.M. 88101. Chamber officials emphasize the need for immediate response. The survey will end July 23.

The plant proposed for Clovis will initially employ approximately 300 people, with

90 per cent of that number being women. The vast majority will work as sewing machine operators.

Virtually all the workers employed by the plant will be hired from the area in a 30 to 40 mile radius around Clovis. Past experience for this type of work is not necessary. The manufacturing company will have complete training facilities for the work force at the Clovis plant.

The Clovis Chamber and the chamber's industrial commission are directing the labor survey.

## MACH IV

DRY 250-600 BU.  
PER HOUR WITH  
10 POINT REMOVAL



THE SPACE AGE CONTINUOUS FLOW CROP DRYER DRIES, CLEANS AND CONVEYS THE GRAIN WITH AIR. THE GRAIN IS THE ONLY MOVING PART IN THIS DRYER. YOU CAN PROFIT BY THE HIGH QUALITY OF THE GRAIN FROM MACH IV.

AVAILABLE WITH PTO OR ELECTRIC POWER  
NATURAL GAS OR L.P.G. BURNER

WE ALSO HAVE BULK STORAGE TANKS AND AUGERING EQUIPMENT.

OLTON ROAD & ENNIS STREET, 806-293-5321  
PLAINVIEW, TEXAS 79072



# IT'S A SCORCHER

But you'll find food prices real cool here!

THESE SPECIALS GOOD JULY 17 THRU JULY 22

3 Lb. Tin Bakerite  
**SHORTENING**  
**59¢**

2 Lb. Pkg. Wilson's Certified Thick Sliced  
**BACON \$1.69**

Sunray Fancy Beef  
**ROUND STEAK lb. \$1.29**  
Sunray Fancy Beef  
**SIRLOIN STEAK lb. \$1.29**  
Sunray Fancy Beef Lean  
**GROUND CHUCK lb. 89¢**

Fresh Firm Green  
**CABBAGE**  
**5¢ lb.**



Quart Bottle Wagner Breakfast  
**DRINKS 3 for 89¢**  
Del Monte Fruit and Pudding  
**CUPS ctn. of 4 cups 49¢**  
15 oz. Can Eagle Brand  
**MILK 2 for 69¢**  
8 oz. Box Dream Whip Dessert  
**TOPPING 79¢**  
Quart Can Emergene Charcoal  
**LIGHTER FLUID 33¢**

California Le-Grande  
**NECTARINES lb. 29¢**  
Creamy Ripe 84 count size  
**AVACADOS 4 for \$1.49**  
Large Golden C A  
**BANANAS lb. 10¢**

32 oz. Bottle Del Monte  
**CATSUP 49¢**  
40 oz. Box Dry Bleach  
**CLOROX 2 69¢**

WE NOW HAVE ICE  
PACKED IN 10 LB.  
BAGS. THIS ICE IS  
SMALL CUBES AND CLEAN.

#300 Can Ideal  
**DOG FOOD 2 for 29¢**  
4 Roll Pkg. Charmin  
**TISSUE 49¢**  
2 Roll Pkg. Bounty Paper  
**TOWELS 49¢**  
24 oz. Can Wilson  
**CHILI 79¢**

Canning season is just about here. We at Waggon Grocery are prepared to fill your needs for canning supplies. We have good stocks of plastic bags and boxes for your freezing needs, as well as Kerr or Ball jars, lids and caps. Schilling spices and Morton canning or pickling salt are items you can depend upon.

SAVE VALUABLE COUPON SAVE  
TIDE ONLY \$2.49  
GOOD ONLY AT Waggon's  
OFFER EXPIRES July 22  
LIMIT 1 COUPON PER PURCHASE

CLIP & SAVE  
This coupon good for 100 FREE BUCCANEER STAMPS with a purchase of \$2.50 or more.  
NAME \_\_\_\_\_  
ADDRESS \_\_\_\_\_  
CITY \_\_\_\_\_ PHONE \_\_\_\_\_  
This Coupon Good, July 17 thru July 22

**Waggon Grocery & Mkt.**  
515 W AMERICAN BLVD. MULESHOE PHONE 272-4406

WHERE YOU ALWAYS BUY THE BEST FOR LESS  
**GIBSON'S PHOTOGRAPHER**  
Will Be In Store  
at MULESHOE  
**TUESDAY, JULY 18**  
9:30 a.m. to 7:30 p.m.  
Beautiful 5"X7" Color Portrait Plus 5 King Size Color Wallet Photos **ONLY \$1.49**  
**SPECIAL!!**  
Beautiful 8X10 Color Portrait Plus 2 - 5"X7" Color Portraits Plus 10 - King Size Color Wallet Photos **\$6.99**  
**ONLY Star Studios**





# READ and USE

# CLASSIFIED ADS

## WANT ADS PH. 272-4536

### CLASSIFIED RATES

#### OPEN RATES

First insertion, per word-9¢  
Second and additional insertions-6¢

#### NATIONAL RATES

First insertion, per word-11¢  
Second and additional insertions-7¢  
Minimum Charge-

CARD OF THANKS.....\$2.00

Classified Display \$1.12 per col. inch

Double rate for Blind Ads \$1.15 per col. inch for Reverses

### DEADLINE FOR INSERTION

Thursday's Muleshoe Journal-Noon Tuesday  
Sunday's Bailey County Journal-Noon Friday

The Journals reserve the right to classify, revise or reject any classified ad.

Check advertisement and report any error immediately. Journals are not responsible for error after ad has already run once.

meets every Tuesday at 12:00  
**DINING ROOM**  
XIT Restaurant  
**Muleshoe Rotary Club**  
Kerry Moore, President

meets every Monday, 12 Noon  
**Jaycees**  
Jeff Smith, Pres.

meets the second Tuesday of each month practice night each Thursday  
**Masonic Lodge**  
Ross Mick WM  
Elbert Nowell, Sec.

meets each Wednesday, 12 Noon  
**Lions Club**  
XIT RESTAURANT  
J.W. Coppedge, President

Post #8570  
**VFW**  
Water A. Moeller  
8:00 p.m. 2nd & 4th Mondays  
Old Priboth Skating Rink  
George Tompkins, Commander

meets each Thursday 7:30 p.m.  
**Muleshoe Oddfellows**  
Lobby Green, Noble Grand

**PERSONALS**  
\$100 reward offered for information leading to conviction of anyone damaging Journal Newspaper Stands.

American Pit Bulldog puppies papers & shots, 933-2310 Bala, Tex.  
15-29s-ltp

Reliable baby sitter, Reasonable rates, 219 W. 11.  
1-28t-3tp

**HELP WANTED**  
WANTED: Beautician at once. Apply at Main Street Beauty Shop.  
3-23t-tfc

**FARM HELP WANTED:** To operate sprinklers, good housing, full time, Dial 272-4842.  
3-15s-tfc

Need dependable reliable maids who like to work. This requires several hours a day, Daily and year around. Will train if not experienced. Apply at Ranch House Motel.  
3-28s-2tc

Leveling and dozer work, Grubbing, Deep braking. Phone Pete Amerson at 592-2271 or J.C. Patton at 592-2415, Denver City, Tex.  
3-28t-4tp

**APTS. FOR RENT**  
Frona apts, now have available 1, 2, & 3 bedrooms, Call 247-3666 or come by 1300 Wallace St.  
5-29s-tfc

FOR RENT: Unfurnished Apartments, Ph. 272-4491, 28t-5tfc

**ROOMS FOR RENT**  
FOR RENT: Bedroom at 410 West 2nd, Phone 272-3928, 6-16s-tfc

**REAL ESTATE FOR SALE**  
HOUSE FOR SALE: 413 Austin Phone: 272-3613, 11-27t-6tp

HOUSE FOR SALE: New 3 bedroom, brick, fully carpeted small equity, assume loan, 807 Avenue J. Call 965-2645 or 965-2617, 8-9t-tfc

FOR SALE: 3 bedroom brick house, fully carpeted, 2 baths, 1910 Ave. G, Ph. 272-5585, 8-25s-tfp

**JAMES GLAZE COMPANY**  
REAL ESTATE AND FARM & RANCH LOANS  
Phone 272-4549 219 S. 1st, 42t-tfc

IF YOU WANT TO SELL OR buy see Lee Pool or Woody Goforth  
**Pool Real Estate**  
Ph. 272-4716  
214 East American Blvd, 8-44s-tfc

**KREBBS REAL ESTATE**  
210 WEST FIRST  
PHONE 272-3191

FOR SALE: Dining room tables and chairs. Inquire at XIT Steak House.  
12-28t-9tc

It's inexpensive to clean and upholstery with BLUE LUSTRE Rent electric shampooer \$1. Perry's, 128 Main.  
12-50t-tfc

Lost bright carpet colors... restore them with BLUE LUSTRE. Rent electric shampooer \$1. Hugginbotham - Bartlett 215 Main.  
12-50t-tfc

Free-expensive sample wig plus style. Pay handling fee only. Send color wanted to: Advertising 1115 E. Rittenhouse-Philadelphia, Pa. 19138.  
1-29s-6tp

**FOR RENT:** Nice 1 and 2 bedroom apartments. Furnished and unfurnished. Bills paid. Smallwood Real Estate, 272-4838.  
5-5t-tfc

## MISCELLANEOUS

\*Expert and Colorful Weddings  
\*Family Groups Anywhere, Anytime  
**PHOTOGRAPHY by Oecia**  
CALL 385-6083, Littlefield 409 W. 2nd

**GARAGE SALE:** July 23 & 24, at 1308 W. Ave. B, 15-29s-tfp

**CARRIER**  
In Muleshoe for Clovis News Journal Racks & Delivery.  
Contact: Clovis News Journal Ph. 763-3431; Box 806

**FOR SALE:** Camper Trailer, 15 X 18', Completely equipped, \$800 Muleshoe Mobile Home Sales, 15-28t-tfc

**GARAGE SALE:** July 13, 14, 15, 823 W. Ave. D. Furniture, children's clothes and miscellaneous items, 15-28t-tfc

**FOR SALE**  
New & Rebuilt Kirby's  
Carolyn Duncan Ph 272-4182 220 W. 10th

**FOR SALE:** Pickup camper, 10 1/2 feet. Cab over, Sleeps four. C.J. Tiller - 946-2627, 15-24t-6tp

**MULE SHOE MOBILE HOME, INC.,** 1807 W. Amer. Blvd, Phone 272-3574, Craft-made Quality Homes, All Sizes and Decors, Hours 10-7 p.m. Monday - Friday, 1:30-5:30 Weekends and Holidays.  
15-25t-tfc

**FOR RENT:** 2 Gulf Service Stations. One at 5th St. and Amer. Blvd. And one at 20th and Amer. Blvd. Contact John Smith, Gulf Oil Distributor, Ph. 272-4678.  
15-24s-tfc

Records, Sheet Music, Accessories, Guitar Lessons  
PH. 272-3616  
**VENABLE MUSIC CO.**  
213 Ave. B, Muleshoe  
Young parakeets for sale: \$1.50 each, Ph. 272-3390, 218 W. Fifth, Muleshoe.  
15-27s-ltp

**FOR RENT**  
25' X 70' building for rent on Main Street  
Call Vance Waggon, 272-4703.  
15-1t-tfc

**NOTICE**  
We will not be responsible for any debts incurred by Pete Hernandez as July 4.  
(s) Doyle Turner  
28s-3tc

**WILL BUY**  
Your Used Furniture & Appliances Before You Sell  
Call 272-3074  
Muleshoe or 247-3718  
Frona

**GARAGE SALE:** Sunday 1-6 p.m. at 309 W. 7th. Cheap prices, 15-29s-ltc

## LEGAL NOTICE

**NOTICE TO CONTRACTORS**  
Sealed bids for constructing a metal warehouse for the City of Muleshoe, Texas, will be received by the City Manager at the City Hall, Muleshoe, until 8:00 a.m. August 1, 1972, and then at said place publicly opened and read aloud.

All proposals shall be accompanied by a cashier's or certified check upon a national or state bank in the amount of five percent (5%) of the total maximum bid price payable without recourse to a reliable of surety company, as a guarantee that bidder will enter into a contract and execute performance bond within ten days after notice of award of contract to him. The bid security must be enclosed in the same envelope with bid. Bids without check of bid bond will not be considered.

The successful bidder must furnish performance and payment bonds upon the forms which are attached hereto in the amount of 100% of the contract price from an approved surety company holding a permit from the State of Texas to act as surety or other surety or sureties acceptable to the Owner.

The right is reserved to reject any and all bids and to waive any informality in bids received.

Plans, specifications and bidding documents may be secured from the office of the City Manager, City Hall, Muleshoe, and Bill R. McMorries & Associates, Inc., 6300 Canyon Dr., Amarillo, Texas 79109, on deposit of Twenty-Five Dollars (\$25.00) per set, which sum so deposited will be refunded, provided: (1) All documents are returned in good condition to Bill R. McMorries & Associates, Inc. not later than 48 hours prior to the time for receiving bids; or (2) The Contractor submits a bid and all documents are returned in good condition to Bill R. McMorries & Associates, Inc. not later than five (5) days after the time that bids are received.

CITY OF MULESHOE, TEX.

AS By: L.I. St. Clair, Mayor  
308-2stc

STATE OF TEXAS, COUNTY OF BAILEY, CITY OF MULESHOE.

**NOTICE**  
Petitioner, Robert Hooten, the owner of the following described property, to-wit: Tract Numbers Two (2) and Three (3), Hart's Acres to the Town of Muleshoe, Bailey County, Texas.

has filed his Application and Petition with the City Council of the City of Muleshoe, Bailey County, Texas, to cancel, revoke, vacate and abandon a certain portion of the Plat and Dedication of Hart's Acres to the Town of Muleshoe, Bailey County, Texas, insofar as the same dedicates an alley between said Tract No. 2 and Tract No. 3, Hart's Acres to the Town of Muleshoe, Bailey County, Texas.

Hearing on such Application will be held before the City Council for the City of Muleshoe at the City Hall in Muleshoe, Bailey County, Texas, on the 18th day of July, 1972, at 8:30 o'clock a.m.

That such Application is made under the authority of Article 1175, Section 18, of the Revised Civil Statutes of the State of Texas and under Section 3.07 (p) and Section 8.01 of the Home Rule Charter of the City of Muleshoe, Bailey County, Texas.

(s) Robert Hooten  
Robert Hooten

## ONE MINUTE SPORTS QUIZ

1. What horse won the Preakness?
2. Who won the Danny Thomas Open?
3. For whom does Denny McLain pitch?
4. For whom does Don Wilson?
5. For whom does Sparky Lyle pitch?

## Answers to Sports Quiz

1. Bee Bee Bee.
2. Lee Trevino.
3. Birmingham of Southern League.
4. The Houston Astros.
5. The New York Yankees.

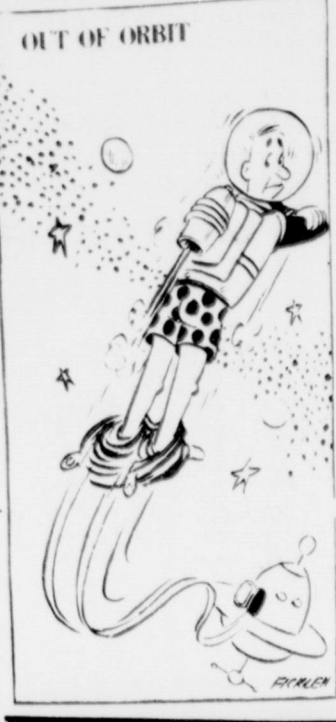


**MULESHOE FLOAT IN PARADE...**The Muleshoe Chamber of Commerce and Agriculture Float was entered in the Earth Rodeo Parade Thursday afternoon. Ambassadors riding on the float included Donna Howard, Tracy Cowan and Becky Milner. Frank Ellis drove the car which pulled the float down Main Street in Earth.



**ZIP CODE IN EARTH...**Spencer Beavers drove his little car, Zip Code, in the annual Earth Rodeo Parade held there Thursday, July 13. He was one of several entries from Muleshoe.

Tokyo agency urges stronger action on pollution.



The first rule of getting a head is to protect what you have. Cover your risks and exposures with adequate insurance from the POOL INSURANCE Agency, to reimburse you for any loss you may sustain.

**TELEX.**  
Hearing Aids  
**Clovis Hearing Aid Center**  
Batteries & Molds. Free Tests.  
Service All Makes.  
416 Mitchell Phone 763-6900  
Clovis, N.M.

**POOL Insurance Agency**  
Joe Smallwood  
Bob Blackwood  
MULESHOE Ph 272-4531

# FIRST FEDERAL

## SAVINGS & LOAN ASSOCIATION of CLOVIS

JUNE 30, 1972

ASSETS		LIABILITIES			
	1972	1971	1971		
First Mortgage Real Estate Loans	\$45,734,897.03	\$41,925,961.67	Capital (Savings Deposits)	\$48,084,035.48	\$44,251,454.75
Home Improvement Loans	54,189.38	22,686.02	Advances, Federal Home Loan Bank	NONE	NONE
Loans to Members, Secured by Their Savings Deposits	130,314.30	145,160.85	Loans in Process	947,704.59	582,398.28
Cash and U. S. Government Bonds	6,219,331.72	5,553,612.67	Payments by Borrowers for Taxes, Insurance, etc.	484,920.27	421,144.76
Stock in Federal Home Loan Bank	435,900.00	435,900.00	Other Liabilities	76,041.97	53,782.97
Office Sites and Buildings	780,314.95	760,393.78	Reserve for Unearned Discount	165,679.07	91,715.26
Furniture and Fixtures	189,874.73	180,831.15	Reserves and Surplus	4,449,194.02	4,268,227.09
Prepaid Federal Insurance Premium	441,806.17	455,279.47	<b>TOTAL</b>	<b>\$54,207,575.40</b>	<b>\$49,678,723.11</b>
Other Assets	220,947.12	198,897.50			
<b>TOTAL</b>	<b>\$54,207,575.40</b>	<b>\$49,678,723.11</b>			

SECOND LARGEST & ONE OF THE OLDEST FEDERALLY CHARTERED SAVINGS & LOANS IN NEW MEXICO SINCE 1934

<b>DIRECTORS</b>		<b>OFFICERS</b>	
K BARNETT, Jr. Chairman	DONALD R BONNER	CLYDE RAYL President	DWAYNE R YOUNG Controller
ERNEST WHEELER, Jr. Vice-Chairman	DON WILLIAMS	LYNN L MARTIN Exec Vice President	DIXIE HOGG Sec. Asst V P
ROY KEETER	REESE CAGLE	CHARLES RUTLEDGE Vice President	FAYE FARROW Treas. Asst Sec
SCOTT McGEHEE	LYNN L MARTIN	BILL BOONE Y P (Branch Manager)	HAZEL B TRAUGHER Asst Sec (Branch)
E C KELSO	CLYDE RAYL	RUFUS FREEMAN Vice President	PEARL GLIDEWELL Asst Sec
CARL RODOLPH			

**ATTORNEY**  
ESTHER SMITH VAN SOELEN





SPEECH PARTY...Mr. and Mrs. Kerry Moore hosted a party Thursday night at their home for speech students and Thespians. Homemade ice cream was served and then the approximately 30 present played games of volleyball.

### News of Our SERVICEMEN

#### E.L. Winegeart

VALPARAISO, Fla.--Robert H. Haseloff, son of Mr. and Mrs. Henry Haseloff of Rt. 1, Farwell, Tex., recently completed a U.S. Air Force Reserve Officers Training Corps (AFROTC) field training encampment at Eglin AFB, Fla. During the encampment, cadets become familiar with the life and activities on Air Force bases and can examine careers in which they may wish to serve as officers. Additionally, they receive survival training, aircraft and aircrew indoctrination, small arms training and visit other Air Force bases.

#### Three Way News

By Mrs. H.W. Garvin

Mr. and Mrs. Dan Swart were in Slaton Saturday on business. Mrs. Glenn Campbell and girls from Baytown spent last week visiting her parents, the Earl Bowers.

Mr. and Mrs. Carrol Fleming and son from Post visited in the George Tyson and H.W. Garvin homes Sunday afternoon.

Mr. and Mrs. John Shepard from Eastland spent the weekend visiting their daughter and family, the Bill Welchs.

Mrs. W.H. Eubanks and Joy spent part of last week in Ft. Worth on business.

Mrs. Doyle Dansby and girls from Early spent the week visiting in the T.D. Davis home.

Mrs. Ena Gordon from Austin spent the last weekend visiting her sister, Mrs. Bulah Toombs. Others visiting are Mr. and Mrs. Buford Toombs from Austin. They visited Mrs. Bulah Toombs and Mr. and Mrs. D.V. Terrells.

Mrs. Merlan Roberts from Leham and Mr. and Mrs. Bob Vinson and boys from Morton visited their mother, Mrs. Bulah Toombs, Monday.

The Three Way community has had rain the past weekend with some hail damage to some of the crops.

Mr. and Mrs. W.H. Eubanks left Sunday for Dallas, helping their daughter, Joy, move to Dallas where she will work.

### Hospital Briefs

West Plains Memorial

ADMISSIONS: Louis Manasco, Mrs. C.F. Garth, Robert Warner, Mrs. Opal McNabb, Ernest Denny, Archie Scarlett, Mrs. Anna Conley, Mrs. W.A. Woodell, James A. Harvey, Robert Burreson, Mrs. Charles Fingh, Ottis C. Petree, Mrs. Alva Shofer, George Flores, Jimmy Shafer, Melvin A. Gerner, and Henry F. Cody.

DISMISSALS: John Watson, Mrs. Lupe Flores, Mrs. Bob Wilson, Mrs. Eugene Hawkins, Miss Norma Moser, Kenny Heathington, Mrs. Bill Hall, Mrs. Robert Applegate, Glen T. Maltby, Mrs. Glen T. Maltby, Mrs. C.F. Garth, Robert Burreson, John R. Hightower, Mrs. Blas Cavazos, James A. Harvey, O.C. Petree, Mrs. Charlene Finch, Ernest Denny, S.T. Slinger.

Texas A&M University. He is a 1970 graduate of Farwell High School.

#### R.H. Haseloff

VALPARAISO, Fla.--Robert H. Haseloff, son of Mr. and Mrs. Henry Haseloff of Rt. 1, Farwell, Tex., recently completed a U.S. Air Force Reserve Officers Training Corps (AFROTC) field training encampment at Eglin AFB, Fla. During the encampment, cadets become familiar with the life and activities on Air Force bases and can examine careers in which they may wish to serve as officers. Additionally, they receive survival training, aircraft and aircrew indoctrination, small arms training and visit other Air Force bases. Cadet Haseloff is a member of the AFROTC unit at Texas A&M University. He is a 1970 graduate of Farwell High School.



R. H. HASELOFF



M. D. PHILLIPS

#### M. D. Phillips

SAN ANTONIO-- Airman Morris D. Phillips, son of Mr. and Mrs. Morris A. Phillips of Rt. 5 Muleshoe, Tex., has completed his U.S. Air Force basic training at the Air Training Command's Lackland AFB, Tex. He has been assigned to sheppard AFB, Tex., for training in aircraft maintenance. Airman Phillips attended Bula (Tex.) High School.

WHERE EVER YOU GO THERE'S FRIENDSHIP

When You Stay at Owner-Managed

**FRIENDSHIP INNS**

In MONTERREY, MEXICO

Your Friendship Inn is THE EL PASO ATEL

Vacation in Monterrey, and see interesting places like the Monterrey bullring and the Governor's Palace. The EL PASO ATEL, your Mexican holiday home, features inside parking, gift shop, delightful restaurant, kitchenette apartments and soda fountain.

Zaragoza N. 130 (on Hwy. 85 & 40) at Zaragoza and Huerto Martinez. Phone: 40-06-60 x 13 24

There is a difference in attitude and personal attention when you stay at a Friendship Inn and many luxury features for you to enjoy.

• Sparkling Clean Rooms • Free TV • Free Ice • Wall to Wall Carpeting • Swimming Pools • Fine Restaurants on premises or close by

USE ANY OF THESE WORLD FAMOUS CREDIT CARDS TO CHARGE YOUR ACCOMMODATIONS

Now more than 800 FRIENDSHIP INNS COAST TO COAST plus Canada - Alaska & Mexico

If You Are Planning A Trip WRITE FOR COMPLIMENTARY TRAVEL GUIDE Or pick one up and a FRIENDSHIP INN FAMILY DOLLAR at your nearest Friendship Inn.

FRIENDSHIP INNS INTERNATIONAL 245 West on North Temple Street Salt Lake City Utah 84103 Please send me COMPLIMENTARY TRAVEL GUIDE NAME ADDRESS CITY STATE ZIP Please include self-addressed-stamped #10 envelope

### Courthouse News

#### NEW CARS:

J.L. Calvert, 1972 Oldsmobile, Brock Motor Co. Bill Hunt, 1972 Ford pickup, Muleshoe Motor Co. Robert W. Phillips, 1972 Ford pickup, Muleshoe Motor Co. Edith Palmer, 1972 Ford, Muleshoe Motor Co. Fry & Cox, Inc., 1972 Oldsmobile, Muleshoe Motor Co. Johnny St. Clair, 1972 Pontiac, Brock Motor Co. Delbert Watson, 1972 Ford pickup, Muleshoe Mo.

Elisio Jurado, 1972 Ford, Muleshoe Motor Co. Keith W. Taylor, 1972 Ford, Muleshoe Motor Co. Boyd Mabby, 1972 Buick, Brock Motor Co. Jimmy L. Rowland, 1972 Chevrolet, Crow Chevrolet. Glenn Willoughby, 1972 Chevrolet, Hudberg-Jones Chevrolet. J.R. King, 1972 Ford, Polard Friendly Ford Co. Thomas J. Merritt, 1972 Pontiac, Grindell Pontiac. John David Hamblen, 1972 Buick, Brock Motor Co. L.B. Peugh, 1972 Ford, Muleshoe Motor Co. A.M. Carpenter, 1972 Mer-

cury, Muleshoe Motor Co. Barrett Produce, 1972 Ford pickup, Muleshoe Motor Co. Ranza B. Boggess, 1972 Mercury, Muleshoe Motor Co. Clarence E. Woodall, 1972 Ford, Muleshoe Motor Co. Jim Claunch and Sons, 1972 Chevrolet pickup, Armes Chevrolet. MARRIAGE LICENSES: Reynaldo E. Garcia, Alvin Texas, and Susan Gloria Vela, Muleshoe. Benny Sena Pacheco, Muleshoe, and Maria Hilda Montez, Muleshoe. Darrell Ray Elliott, Muleshoe, Kathy Sue Vaughn, Muleshoe. Warren Arline Givens, Muleshoe.

shoe, and Susan Marie Wood, Muleshoe. Gary Michael Little, Muleshoe, and Betty Lylane Harbin, Muleshoe. Ronny Eugene Davis, Enochs, and Nelita Day Holloway, Enochs. WARRANTY DEEDS C.W. Ramage and wife, Pauline Ramage, to A.J. Webb and wife, Lexie Webb, a rectangular tract of land 75 feet by 140 6, Warren Addition, Muleshoe.

feet being more particularly described as all of Lot 13 and the westerly half of Lot 14 in Block 8, Highland Addition, Muleshoe, John Smith and wife, Billie Joan Smith, to Roy L. Bryant and wife, Nima Modess Bryant, a rectangular tract of land being 80 feet by 150 feet and being more particularly described as all of the northwesterly 80 feet of Lots 10, 11 and 12, in Block 6, Warren Addition, Muleshoe.

Singleton-Ellis Funeral Home 24 Hour Ambulance Service Ph. 272-4574 Muleshoe

**PIGGLY WIGGLY** This Week's Jackpot: **\$100.00** Get your jackpot card punched today!

Farmer Jones Grade A Medium Eggs 3 \$1 Dozen

10 Oz. Bottle Coca Cola or Dr Pepper 29¢ Plus Deposit

Carol Ann Salad Dressing 29¢ Price Thereafter 39¢ Qt. Jar

THESE VALUES GOOD July 17- July 22 501 W. American Blvd. Muleshoe, Texas

Morton's All Flavors Cream Pies 14 Oz. Pie 29¢

Low Prices from Piggly Wiggly

10c Off Label Tide Detergent 49 Oz. Box 69¢ Price Thereafter 79¢

California Seedless Grapes 49¢ Lb.

Long Green Slicers Cucumbers 19¢ Lb.

Piggly Wiggly Pear Halves	4 16 Oz. Cans	\$1
Piggly Wiggly Fruit Cocktail	4 16 Oz. Cans	\$1
Del Monte, Cr. Style or Whole Kernel Golden	5 16 1/2 Oz. Cans	\$1
Golden Corn	5 16 1/2 Oz. Cans	\$1
Soft-Ply, White or Colors Bathroom Tissue	3 4 Roll Paks	\$1
K-V or Oakburn Charcoal	10 Lb. Bag	59¢
Piggly Wiggly Pink Grapefruit Juice	46 Oz.	39¢
Taste-T-Chew Dry Dog Food	5 Lb. Bag	59¢
Piggly Wiggly Assorted Flavors Fruit Drinks	46 Oz. Can	25¢
Piggly Wiggly Fabric Softener	64 Oz. Jug	49¢
Piggly Wiggly Liquid Detergent	3 32 Oz. Bottles	\$1
Piggly Wiggly Liquid Bleach	Gal. Jug	39¢
Marshmallow Puff Cookies	3 7 Oz. Pkgs.	\$1
Carol Ann Pork & Beans	7 15 Oz. Cans	\$1
Hunt's All Varieties Skillet Dinners	Each	79¢

USDA Choice Beef Chuck Steak 78¢ Lb. Valu-Trimmed

USDA Inspected Cut Up Fryers 35¢ Lb.

Lean & Meaty Pork Spareribs 89¢ Lb.