

BAILEY COUNTY JOURNAL

"The Community of Opportunity-Where Water Makes the Difference"

Weather

	High	Low
Jan. 6	23	-7
Jan. 7	25	-3
Jan. 8	28	13
Jan. 9	43	15
Moisture		
Total for Year 0.02		

VOL. 9 NO. 2

10 PAGES

PUBLISHED EVERY SUNDAY AT MULESHOE, BAILEY COUNTY, TEXAS 79347

PRICE 10 CENTS

SUNDAY, JANUARY 10, 1971

No Gas Shortage Here, Says Pioneer Schools, Businesses Closed By Shortage

Schools, Businesses Closed By Shortage

"We have no pressure problems here or anywhere on the Pioneer Gas System," said Jess Winn, manager of the Muleshoe office of Pioneer Natural Gas Co. His comment was made in reply to questions following stories during the week about gas shortages and low pressures in many areas, including a wide area of the North Plains of Texas.

"Part of the last rate increase we had was used to update our equipment and give our customers the best of service," continued Winn, "and as we have had no real problems during the cold spell during the past week, and we anticipate no real problems, our customers can be assured of adequate gas and service."

"We have a 20-22 year reserve of gas and as we increased the size and number of gas lines transporting to our customers, we don't have, haven't had, nor do we anticipate any real problems," continued the local gas company manager.

He added that the only problems locally have been three instances where water apparently got inside a gas meter and froze up the regulator, but no real problems developed due to the intense cold during the week.

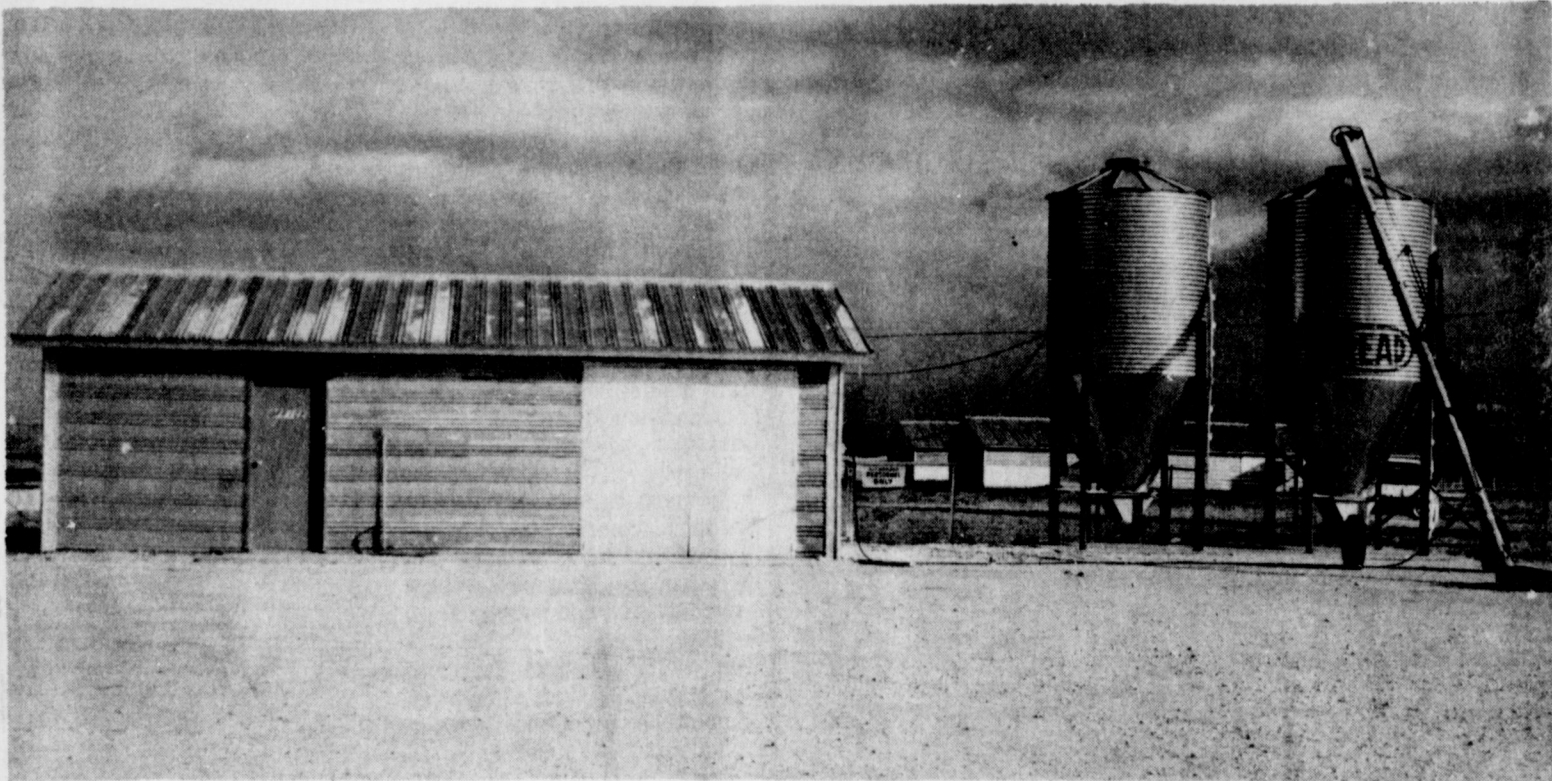
This has not been the case in North Texas part of Oklahoma and parts of New Mexico. An announcement was made Thursday by several school officials in Texas, Oklahoma and New Mexico.

The schools in Perryton, Booker and Higgins in the North Texas Panhandle and Shattuck and Gage in Oklahoma were closed because of low or no gas pressure. Spearman, who had a gas shortage Thursday, tied into a Trans-Western Natural Gas Co. pipeline late Thursday and alleviated the shortage there. Canadian schools were closed because of a basketball tournament, so the gas shortage was not noted at that school.

Principal of the Higgins High School, G.L. Detrixhe, said he was notified by officials of Northern Natural Gas Co. that distribution of gas would be curtailed in an effort to reserve most of the supply for homes. Because of the heating problems it would pose for the Higgins Schools, Detrixhe said the Higgins Schools would be closed on Friday.

According to Sam Ballen, president of High Plains Natural Gas in Santa Fe, his company received a telegram early Thursday ordering it to immediately discontinue receiving gas.

Cont'd. on Page 2, Col. 7



NEW SWINE BREEDER--The Parmer County Swine Breeders' office and feed bins are pictured here, as the new operation goes into full swing. Five men opened the operation on September 20, and began with 280 sows. The newest SPF operation in the area is approximately 10 miles north of Muleshoe on Highway 214.

Highway 214. The five men in the operation include Gene McGlaun, Ridge Priest, Leon Grisham, Jerry London and Richard London. Wayne Priest is manager of the swine operation and Smitty Clark is an employee.

Flying Queens To Play In Muleshoe

Muleshoe has something "special" coming up on February 2. The number one girls' basketball team in the nation, the Wayland Baptist College Flying Queens, will be playing

Hospital Board New Member To Be Sworn

The board members of the Bailey County Hospital District will meet Tuesday night, January 12 in regular session. This meeting was to have been held on Tuesday, January 5, but was postponed for a week because of the holidays.

One of the items on the agenda will be to swear in Marvin Drake, who was elected to the hospital board during the December meeting. Drake is a resident of southern Bailey County.

The board meeting will be held in the director's meeting room at West Plains Memorial Hospital at 7:30 p.m.

Dumas Demons Dump Mules Here Friday

In the first district game for the 1970-71 basketball season, the Dumas Demons dumped the Muleshoe Mules, 63-40.

It was a nip and tuck ball game until late in the third quarter. With 3:25 on the clock, the score was 32-29 for Dumas. The Dumas coach disagreed with a call by the referees and ended up with a technical. Leroy Medlock hit the basket to take the score out to 32-30.

This, however, proved to be the turning point in the game, as the Demons widened their lead and in the final analysis, there was the 16 point spread between the two teams.

Leroy Medlock led the scoring for the Mules with 16 points; second was Jerry Putman with 11; Don Heathington and Randy Field, each seven; Mike Riley, four and Johnny Hayes, three points.

Pacing the Demons was Ken McClintock with 25; Randy Willis, 13; Bobby Laughry, 12; Sherman Moore, nine; and Mickey

Cont'd. on Page 2, Col. 7

around muleshoe with the journal staff

Pork Production Continues Growth

Mrs. Irving St. Clair and son, Johnny St. Clair, are both patients in Methodist Hospital at Lubbock. Both are reported doing well after undergoing surgery Tuesday.

Mrs. Lillie Jones suffered a slight stroke recently, but is reported doing well in Methodist Hospital at Lubbock.

Mrs. Elizabeth Barnett is in University Hospital at Lubbock where she underwent foot surgery Thursday.

Mr. and Mrs. Buck Taylor, accompanied their granddaughter, Linda Osborn and two of her friends, Hazel Strong and Linda Watson, to their home in Billings, Mont. for the Christmas holidays. The three girls are all students at Wayland College in Plainview.

Spending Christmas with the Taylors were Mr. and Mrs. Cecil Osborn Jr. and another granddaughter, Karen Osborn. The Taylors returned to their home on December 31. They reported seeing a lot of snow as they were traveling in the big storm section of the United States.

Lynn E. Francis, daughter of Mr. and Mrs. E. G. Ericson, is among the 180 students who received degrees during commencement exercises December 31.

Cont'd. on Page 3, Col. 7

Five men have joined the evergrowing list of pork producers in this area. Gene McGlaun, Ridge Priest, Leon Grisham, Jerry London and Richard London have begun a SPF hog operation near Clay's Corner in Parmer County, approximately 10 miles north of Muleshoe on Highway 214.

The newest SPF operation in the area opened on September 20, 1970 with 280 sows. The Parmer County Swine Breeders have started with two combined farrowing houses and nurseries with 18 farrowing crates and 64 nurseries in the houses.

McGlaun said their litters are averaging eight pigs at a time.

He expresses optimism with the upturn he feels will come from the recent decline in hog prices.

Hale County leads the Texas hog producer market at the present time, according to surveys, with 3,035 sows and gilts and this is followed by Lubbock County with 2,727. Lubbock County led a 37-county survey with 197 boars, 15,310 baby pigs, weaners and feeders on hand, 5,089 weaning pigs sold and 452 cull sows and boars sold.

In the 39 county survey area in portions of Kansas, Texas, Oklahoma and New Mexico, there were 29,474 sows and gilts tallied. Of this survey, 75 were in Kansas; 3,300 in New Mexico; 1,248 in Oklahoma and 24, 851 in Texas.

A total of 453 million pounds of grain are expected to be used in the production of swine during 1971. This awesome amount represents about the total sorghum production in Bailey County or half the grain produced in Castro or Lamb County during one year.

Packers are importing about 50 percent of the total number of hogs killed in Texas, according to the survey. And 75 percent of the pork is brought from other states from across the country for use here.

Several major packers are located in the swine area according to the survey.

Valentine is of the opinion that this soil was sufficiently deep and heavy to prevent appreciable nitrogen loss through leaching, but had the same demonstration been conducted in the more permeable soils in the Muleshoe area, he said the single early application of nitrogen would have shown more reduction in yield.

Cont'd. on Page 3, Col. 6

Nitrogen Corn Test Results Are Given

Dr. Bob Metzger, area agronomist, Jim Valentine, area soil chemist and extension agents of Parmer and Bailey Counties worked with Bob Jones, who farms 10 miles northwest of Muleshoe, on corn tests during 1970.

The specialists applied 180 pounds of nitrogen to corn, using eight different systems. Each system had the same amount of nitrogen, 180 pounds, applied. The results were as follows:

One: 60 pounds of nitrogen as a pre-plant, plus 60 pounds more at the eight leaf stage and the remaining 60 pounds at the late blister stage produced 8,848 pounds of corn per acre; Two: 60 pounds of nitrogen as a pre-plant, 60 pounds more at the eight leaf stage and the remaining 60 pounds at the pre-tassel, produced 8,680 pounds of corn per acre; Three: All 180 pounds of nitrogen applied pre-plant produced 8,512 pounds of corn per acre; Four: 120 pounds of nitrogen applied pre-plant and remaining 60 pounds applied in late blister stage produced 8,288 pounds of corn per acre; Five: 120 pounds of nitrogen applied pre-plant and remaining 60 pounds applied in eight leaf stage produced 7,952 pounds of corn per acre; Six: No pre-plant nitrogen, 60 pounds at eight leaf stage, 60 pounds more at pre-tassel and

remaining 60 pounds at late blister stage produced 7,896 pounds of corn per acre; Seven: 60 pounds of nitrogen pre-plant, plus 60 pounds more at pre-tassel and final 60 pounds at late blister stage produced 7,616 pounds of corn per acre and Eight: 120 pounds of nitrogen applied pre-plant and remaining 60 pounds applied in pre-tassel stage produced 7,504 pounds of corn per acre.

Valentine is of the opinion that this soil was sufficiently deep and heavy to prevent appreciable nitrogen loss through leaching, but had the same demonstration been conducted in the more permeable soils in the Muleshoe area, he said the single early application of nitrogen would have shown more reduction in yield.

Cont'd. on Page 3, Col. 6

Jaycees Report On Activities And Projects

The Muleshoe Jaycees met at 7:30 p.m. Monday in the Bailey County Electric Co-operative meeting room in their weekly session.

Main topic of discussion was led by Leon Wilson, chairman of the upcoming Jaycee Week. James Brown reported on the Outstanding Young Farmer, who will be named on January 16 at the Bosses Night Banquet and Derrell Oliver gave a report on Radio Day, which will be held in conjunction with Jaycee Week.

Mac Brown reported on the Jaycee-sponsored Volleyball Tournament which will be held during the last of February.

Members attending the meeting included Mac Brown, James Brown, Duane Calvert, Dick Chitwood, Clarence Chitwood, Chitwood, Clarence Christian, Larry Combs, John Gentry, Gene Paul Jarman, Dick Johnson, Max King and Marshall Lee.

Also Marlin Mills, Derrell Oliver, Wayne Peterson, Ronnie Spies, Bob Stovall, Doyce Turner, Glen Watkins and Leon Wilson.

Prospective Jurors Called For Session

A total of 72 prospective jurors have been notified that they are to report to the Bailey County District courtroom at 9:30 a.m. on Tuesday, January 19.

The prospects called include J.K. Adams, John Bellar, Bob Byrd, Mrs. D.O. Burelsmith, J. G. Arnn, John Blackman, Mrs. W.H. Flowers, Ance Ashford, Jimmy Cannon, Arvis Grogan, Mrs. E.O. Baker, Jerry Cox, M.E. Little, Jacques Baker and Carrol Ford.

Lloyd Miller, Douglas Bales, Mrs. Billy Gore, Donald Grunsdorf, Laldoa Phillips, Delbert Barry, F.W. Hall, Carl Hall, Ernest Ramm, Billy Bayless, Mrs. Lester Howard, Leo H. Holt, Lewis Sanders, Spencer Beavers, C.G. Lewis, H.B. King, Ronald Scott, Mrs. V.L. Benedict, Billie Marlow, D.M. McBee and Kearney Scoggins.

Also Roland Bigham, Mrs. Rudolph Moraw, J.H. Milsap, Jimmie White, Vernon Bleeker, Oscar W. Newell, R.T. Newton, Don Seals, Louis Henderson, Terry Hutton, Mrs. Baker John-

son, E.B. Julian, R.R. Kindle, F.E. Knox, Jack Lane and Mrs. J.T. Lemons.

New Restaurant Construction Is Underway

A new restaurant is in the making for Muleshoe. Preliminary construction is underway on a restaurant which will be located at 2105 West American Blvd.

The 2350 square foot frame building is being constructed by Fred Payne, who is the owner of the Muleshoe Motel. He said the building is expected to be ready for occupancy in mid-February.

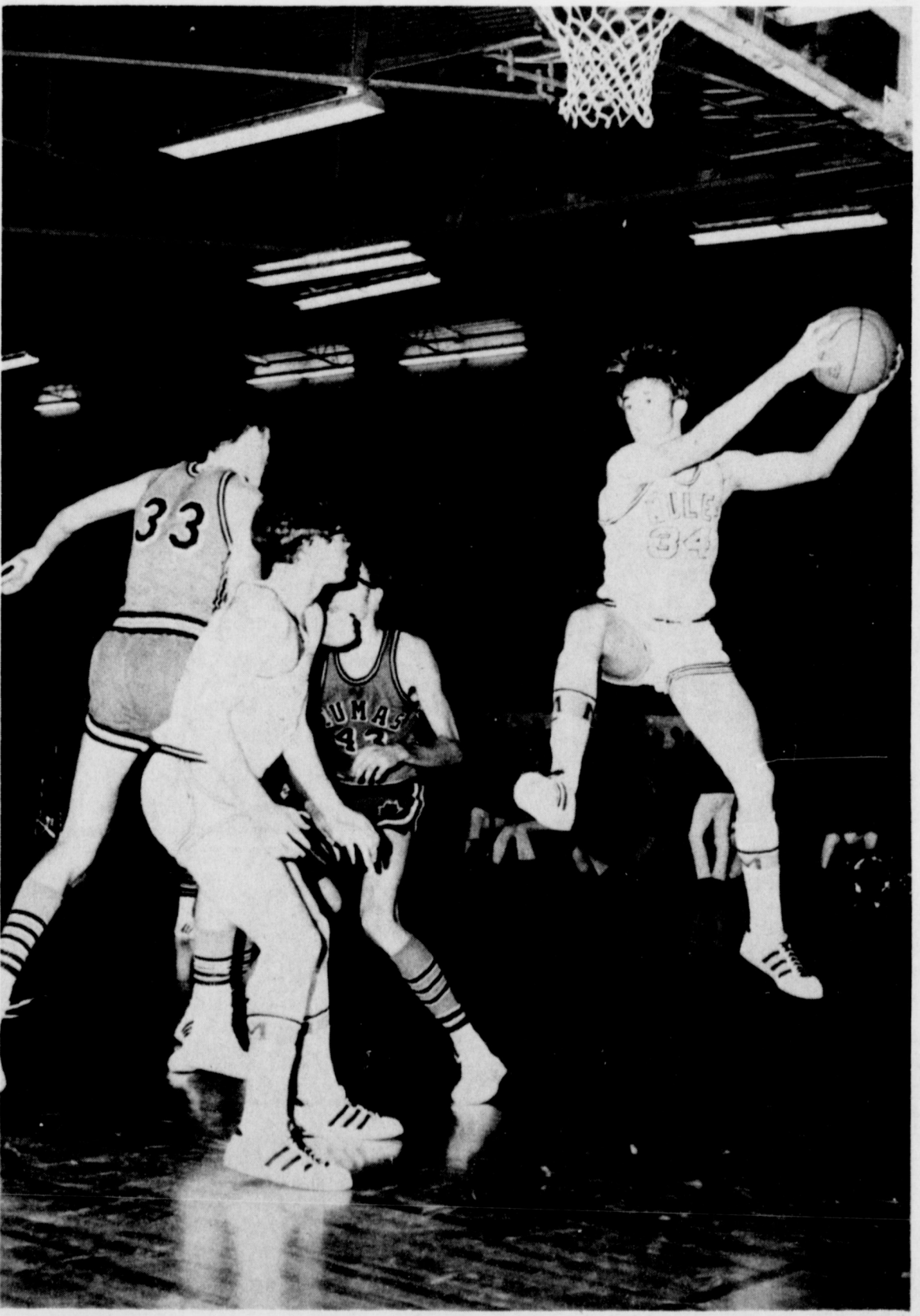
Payne, who purchased the Muleshoe Motel in 1967, said he has owned property in Bailey County for the last 40 years. He formerly lived in Sudan, Morton, Whiteface and other surrounding areas.

Dr. Ray Santos New Director Of Easter Seal

The Texas Easter Seal Society for Crippled Children and Adults, has announced the appointment of Dr. Ray E. Santos to their state board of directors.

He is one of two orthopedic surgeons from the State of Texas serving on the board. Dr. Santos is an orthopedic surgeon with the Lubbock Orthopedic Surgery Clinic in Lubbock.

Dr. Santos is a former resident of Muleshoe where he had a medical practice until the early 60's, and is well known to a number of local residents.



REBOUNDER--Don Heathington seems to be in the middle of some type of wierd dance when he went up for a rebound in the first district game of the 1970-71 basketball season Friday night in Muleshoe. The Mules defense held off the number one district team, the Dumas Demons, although they could not find the key to defeat the Demons and take their number one slot away from them. Going into the action, Dumas was first in the district and the Mules were sitting in second place.

MERCHANDISE IN ALL DEPARTMENTS MARKED DOWN FOR CLEARANCE. MANY ITEMS REDUCED 50% & OVER



LADIES & TEENAGERS
CAR COATS
CORDUROY, FAKE FURS & SUEDE CLOTH

33 1/3 OFF

LADIES KNIT PANTS
REG. & TALLS ASSORTED FALL COLORS
REDUCED 1/3

SHORT & LONG SLEEVES
BLOUSES
REG. LENGTH & TUNICS WITH BELT. IDEAL FOR PANTS.

1/3 TO 1/2 OFF
TEENAGE & LADIES
FRINGED VESTS
ASSORTED COLORS
1/3 OFF

GIRLS SWEATERS
SKIRTS
PANTS
BLOUSES

GROUP SELECTED FROM HOLIDAY LINE
REDUCED 1/3

FABRIC SALE



LARGE ASSORTMENTS OF BOYS
SCHOOL TYPE PANTS
DOUBLE KNEES OR REGULAR CUT
GOOD SELECTION OF SLIMS OR
REGULARS PRE-TICKETED \$5-\$6-\$7
CLEARANCE AT **\$3.77**

ITEMS AT GREAT REDUCTION
DISH CLOTHS,
PILLOWS, TOWELS & SHEETS COLORED OR WHITE

NO REFUNDS, OR CREDIT ON RETURNS
NO EXCHANGE OR LAY-A-WAY, NO GIFT WRAPPING, OR HOLD ITEMS
REGULAR TAILOR SHOP PRICES CHARGE FOR ALTERATIONS OF SALE MERCHANDISE

ST. CLAIR'S SEMI-ANNUAL

Clearance

TUESDAY, JANUARY 12 9 a.m.

WILL BE CLOSED MONDAY, JANUARY 11 MARKING DOWN MERCHANDISE

LADIES DRESSES

HALF SIZE, JUNIORS & REGULARS
ALL LATE FALL & HOLIDAY ARRIVALS.
BRANDS LIKE HOWARD WOLF, NARDIS, LOIS YOUNG, & JOE LESTER.
THESE ARE WOOLS & EASY CARE KNITS. TWO & THREE PIECE ENSEMBLES.

REDUCED 33 1/3% TO 50%

EXTRA-EXTRA SPECIAL! COMPLETE CLOSE OUT on nurses uniforms, nylon or cotton
REG. \$10 ONLY \$2.99

LADIES PANT SUITS
KNITS & WOOLS LATEST COLORS
TWO-THREE PIECE SETS

1/3 OFF

LADIES & GIRLS WRANGLERS SPORTSWEAR
BLOUSES, PANTS, & WESKETS
CORDUROYS, WOOLS, BLENDS
ALL WASHABLE
REDUCED 1/3

LADIES PURSES

VARIOUS COLORS
SIMULATED LEATHER.
ALLIGATOR & METALS
50% OFF

LADIES' SPORT & FASHION SHOES

PATENTS & LEATHERS.
VARIOUS HEEL HEIGHTS
LIFE STRIDE, JAQUILINE & CONNIE
ALL THIS SEASON SHOE VALUES TO \$17.98
NOW \$8.88

MEN'S SHOES

SLIP ON STYLES, BLACK, BROWN, OR SUEDE
VALUES FROM \$10.98 to \$19.98

REDUCED TO \$5.99

SELECTED GROUP TIES 50% OFF

SPORTS COATS

MEN & BOYS MARKED DOWN

33 1/3% TO 50%

MEN'S SUITS

SIZE 35 to 48
REGULAR OR LONG

1/3 OFF OR MORE

MEN'S WOOL & BLENDS
DRESS SLACKS REDUCED 1/3



SAVE MEN'S WHITE SHIRTS 50% OFF

LADIES SWEATERS & KNIT BLOUSES
LEROY
REDUCED 50%

GIRL'S & TODDLER'S DRESSES
AGE 1-6
7-14
SELECTED GROUPS
REDUCED 33 1/3



GIRL'S CAR COATS
SCHOOL TYPE, SOME HOODED, CORDUROY OR VELOUR
1/3

TABLE OF MEN WORK TYPE GARMENT

BLANKET LINED JUMPER REG. 7.50 NOW \$2.99
COTTON SWEAT SHIRTS NO LIMIT REG. 1.98 NOW \$.99
WALL COVERALLS LOGAN GREEN BROKEN SIZES REG. 8.98 NOW \$4.99

MEN'S DRESS & SPORT SHIRT
LATE HOLIDAY ARRIVALS, CURRENT COLLAR STYLE, FRENCH & PLAIN CUFFS
REDUCED 1/3

TABLE OF ASSORTED MEN'S DRESS & SPORTS SHIRTS
SOLID & STRIPED SOME WITH FRENCH CUFFS
VALUES TO \$5-\$6-\$7 NOW \$3.77

GROUP OF MEN'S FELT HATS
DRESS & WESTERN
50% OFF

MEN'S NYLON PAJAMAS & ROBE SETS
WOOL C.P.O. SHIRTS JACKETS OF MANY STYLES, WEIGHTS
REDUCED 1/3

LARGE GROUP MEN'S
JEAN STYLED PANTS
SOLIDS, PLAIDS, & CHECKS
VALUES FROM \$7 to \$9
JUST \$4.99

MEN'S SWEATERS UP TO 50% OFF

MEN'S CORDUROY COATS

CASUAL & WESTERN
REDUCED 1/3

BOYS' WEAR SPORTS COATS
DRESS SUITS
SPORT SHIRTS
JACKETS
SWEATERS
TAKEN FROM REGULAR STOCK

MARKED 1/3 OFF



GROUP BOYS
DRESS SHIRTS
SOME FRENCH CUFFS
SOME WITH TIES TO MATCH
REDUCED 50%

Gas...

Cont'd, from Page 1

from one connection point. He said that Northern blamed cold weather nationwide and equipment failures for the outback.

Perryton had reported that gas supplies were cut by a third just after noon on Thursday, and they had received no word of restored gas supplies several hours later. The Ochiltree County courthouse in Perryton was another place to feel the bite of the cold as they closed down because of the gas shortage.

Perryton city officials had asked city residents to keep their home thermostats set at 60 degrees and asked business places to set their thermostats on 50 degrees to conserve gas supplies.

Plainview reported minor gas outbacks in pressure and Borger said they apparently had no shortage there. Dumas was another place reporting no shortage of gas in their area.

Some 200-400 homes in Albuquerque were without heat during a three day record cold in that area. The outback of gas service in New Mexico was felt in Santa Fe, where even the state capitol was closed, Tesuque and an downstate as far as Carlsbad where service was curtailed.

Southern Union Gas Co., the major gas company in New Mexico, said the gas demand had increased by 50 percent since the cold wave entered the state Sunday.

In Santa Fe and Tesuque, New Mexico, 300 families were completely without gas service Wednesday. A spokesman for Southern Union Gas Co. said the gas was turned off in that area "reluctantly" when pressure dropped below 90 pounds per square inch. The usual level is 250-275 pounds.

The homes were receiving gas service again late Thursday. Santa Fe's County Council had issued a request Wednesday that only essential businesses such as grocery stores and pharmacies remain open.

Southern Union Gas Company officials said the extreme cold had caught them unprepared and said they would re-evaluate the capabilities of their system.

All county, state and federal offices, shopping centers, private businesses, private, public and parochial schools in Santa Fe, Albuquerque and Moriarty had been closed to alleviate the shortage and build

up pressure in the gas line.

The zoo at Albuquerque expressed the fear that many of \$75,000 in animals would die from the extreme cold and said at least two expensive animals and birds had already succumbed to the cold.

Friday, temperatures had begun a slow rising process in this area, with the noon temperature being 37, the highest temperature recorded in five days.

Pork...

Cont'd, from Page 1

cording to Sam A. Thomas Jr., manager of the Southwestern Public Service Company's agriculture development department, He listed Blue Morrow and Sunray at Amrillo; Farm Pack and Sunray in Lubbock and Glover Packing Company in Roswell, N.M.; along with one of the larger packing companies in the area for pork, Jimmy Dean Meat Co. of Plainview.

Thomas predicted that feed businesses for swine, equipment construction firms and specialized building companies could grow in proportion to the increase in the area's hog production. This would follow the same pattern set within the last few years by the custom cattle raising business.

The agricultural manager said investment costs would be about \$600-\$700 per sow unit on the Golden Spread. This would include the animals, buildings and necessary land.

When the Texas Department of Agriculture studied the feasibility of commercial hog marketing in the Lone Star state last year, they found that a 500-sow farrow-to-finish hog operation, marketing operation, marketing approximately 8,000 finished animals per year, will require \$237,600 for fixed facility investment, Outlay for livestock demand, the TDA said, was another \$17,750, for a total capital investment of \$255,350.

Production and marketing costs during the first 12 months will necessitate cash or a credit line up to \$100,000, with a declining amount needed during the next 12-month period, the TDA survey said. With average management and a 21 1/2 cent market, a 24-month operating pay back can be expected, with total capital pay back in 60 months of finished hog marketing.

Cattle feeding on a custom basis started spreading in this area a few years ago in sufficient strength to attract large packing plants and other related industries. It has developed into a six billion dollar business.

Instead of shipping beef carcasses out of the region by rail for slaughter, the packing plants kill the animals and break the meat into a table ready product before shipment to other sections of the nation for sale.

Queens...

Cont'd, from Page 1

ball, so the coach and the best of his team moved to Parsons College and joined their already strong team to make an extra special, strong competitive team. The game is expected to be one of the top basketball games for the year in this area.

A 1970 fed cattle resources survey prepared last year by Thomas shows a lot capacity of 2,182,615, compared to the total number on feed in 1969 at 2,932,354. Thomas projected fed cattle for 1970 at 4,452,535 head, based on an experience factor of 2.04 times the present one time capacity.

"Swine producers," Thomas said, "can control quality from conception of the animal right on through to the packing rail and are not at the mercy of feeder pig producers much like beef raisers are."

Of his latest survey, Thomas said it was the "first of many, I hope."

Let Us Finance Your MOBILE HOME

We're Doing Something About Low Cost Housing See Us Today!

Tri-County SAVINGS AND LOAN ASSOCIATION
P.O. Box 528 - Phone 272-4521, Muleshoe, Texas

Bailey County Journal
Established March 31, 1963
Published by Muleshoe Publishing Co., Inc.
Every Sunday at 504 W. Second Box 449
Muleshoe, Texas 79547
Second class postage paid at Muleshoe, Texas
Muleshoe, Texas, 79547.

TEXAS PRESS ASSOCIATION Member 1971

L.B. Hall, President
Jesse Perry Hall, Secretary-Treas.
L.B. Hall, Publisher & Managing Editor
Cleta Williams, News Reporter
Katie Foster, Society Reporter

SUBSCRIPTIONS:
Zone - Bailey-Parker-Cochran-Lamb counties: \$4.00 per year; \$4.50 per year by carrier. With Thursday Muleshoe Journal, both papers \$5.50 per year; \$6.00 per year by carrier.
Zone II-Out-of-Territory: \$4.50 per year With Thursday Muleshoe Journal, both papers, \$6.25 per year.
Monthly, by carrier-55¢; single copies-10¢
Advertising rate card on application.

Dear Editor:

Dear Editor:
Most towns are very concerned about what others are thinking about them. Most "going" towns have active Chambers of Commerce, employ a dedicated Chamber manager and also have a Junior Chamber that does everything it can to improve their community and its image. Yet it is so easy for one person, even unknowing and unintentionally, to wreck many hours of work of others in a few minutes.
There is an interesting column in The Canyon News of Nov. 19, 1970, page 2, written by Troy Martin, the paper's publisher. He gives an account of his troubles with Mr. Neal Dillman, the Muleshoe School Superintendent.
He writes that two years ago when Canyon played Muleshoe in football, he was refused admission to the press box and covered the game as best he could from the stands. This year, he decided to call before the game. He writes that Mr. Dillman was a little ne-

gative even on the phone.
Mr. Dillman said that Muleshoe had been having their lumps with pseudo-newspapermen arming themselves with nickle notebooks and sneaking in free. Mr. Martin assured Mr. Dillman that he knew that Bailey County's crops had been poor and that he had no intention of cheating the Muleshoe school system out of a buck. He was more than happy to pay for a ticket but he had to get into the pressbox to cover the game. Even then, the publisher was almost barred from his seat for a second time.
I will spare you the other details, except for his closing remarks. Should you be interested in the entire column, you should have no problem, since there are 30 or 40 copies circulating Muleshoe. Mr. Martin wrote that he talked to Mr. Dillman after the game. "Don't jump on me," was Mr. Dillman's reply. Mr. Martin closed with "I didn't get to town in time to see the noble creature, but I can certainly understand why the folks there erected the statue of the Mule to

symbolize their community." Should the Hospital Board build the proposed hospital, and should it be nailed up as it is sure to be, and should you question Mr. Dillman about it, I can hear his reply. "Don't jump on me."
Yours truly,
(s) Richard E. Black
(Editor's Note: It is our understanding that in the future, visiting schools will be sent game and press box passes to be given to their local news media.
This should help alleviate a crowded press box problem.)



PARMER COUNTY SWINE PRODUCERS--Although the Parmer County Swine Producers, Inc. is near Clay's Corner in Parmer County, it still carries a Muleshoe address as shown here on the sign at the entrance of the area's newest SPF hog operation.

A Radical
A radical is a person who the youngsters, if it exists, can outtalk you on any subject.
-Pilot, Brunswick, Ga.

Dumas...

Cont'd. from Page 1
Hartman and Johnny Kimbley, each two points.
The Muleshoe B team went down in their first loss of the season preceding the varsity game, when the score swung madly back and forth during the final minute and a half of the preliminary action.
After several consecutive fouls kept adding single points, one after the other, Dumas B team basketball boys finally led by 48-47 and another foul put an additional two points on the board to end the game.

Corn...

Cont'd. from Page 1
Bailey County Agent J.K. Adams said this was one of the corn test series carried out annually in Bailey County. It was his opinion that corn growers and prospective corn producers would benefit from the findings of the specialists in this particular series of tests.

50-47.

Charles Ray Young led Muleshoe scoring with 16 points; Ray Deavenport, 11; Bruce Bruns and Billy Riels, each seven; David Faver, four and Ricky Faver, two.

The two games for the Muleshoe next week will be Friday, January 15 in Canyon against the Eagles and Saturday in Perryton against the Rangers.

Muleshoe...

Cont'd. from Page 1
ber 18 at the University of Puget Sound in Tacoma, Wash. Mrs. Francis received a Bachelor of Arts in Education during the commencement services.

SP College

Has Classes On Welding

A half-time program in Welding is being offered at South Plains College during the spring semester. Registration began Thursday night and will continue through Jan. 21. Registration may be made at the beginning of a class session in Room 114 of the Technical Arts Building.
The course will be the same as the full day course and classes will be held from 6 to 11 p.m. each Monday, Tuesday and Thursday throughout the semester.
The course carries eight semesters hours for credit. Instructors will be Clyde Morgan and Willie Morris.
Students may also enroll from now through January 22 in the full day welding classes.

Wide bottoms are usually a result of overloading.

ON DOCTOR PROGRAM

The House has passed a \$225 million bill that would set up a program to train more family doctors. The Senate has passed a similar bill. The House version would authorize \$50 million for the current fiscal year, \$75 million in fiscal 1972, and \$100 million for fiscal 1973.

GIBSON'S DISCOUNT CENTER
1723 W. AMERICAN MULESHOE, TEXAS
Prices good thru Wed.

Lustre Creme SHAMPOO
#8917
10 1/4 oz.
\$2.65 val. **79¢**

PAMPERS-NEWBORN 30's
\$1.49 value **\$1.14**

Cepacol Anesthetic TROCHES
16 Tablets **49¢**

Just Wonderful HAIR SPRAY
16 oz. Imperial Size **49¢**

Cepacol-14 oz. MOUTHWASH **63¢**

Men's Long Sleeve SWEAT SHIRTS
S-M-L-XL \$1.98 value **1.27**

Men's Long Sleeve Hooded SWEAT SHIRTS
S-M-L-XL \$3.98 value **\$2.77**

STEREO RECORD ALBUMS
Values \$1.98 **\$2.97**
Values \$5.98 **\$3.47**

Ladies CRUSH NYLONS
One Size **37¢**

LADIES' FALL SHOES
Entire Stock Popular Styles Val. to \$7.87 **\$2.99**

Hankcraft Cool-Vapor VAPORIZER HUMIDIFIER
#255A **\$15.97**

FIREPLACE SCREEN
Brass #33 **\$14.97**

Sunbeam Electric PERCOLATOR
No. AP 83 **12.47**

ANDIRON SET
#V **\$6.77**

Hoover-7 Speed BLENDER
#8951 \$35.95 value **\$19.97**

E-Z Foil Aluminum BROILER PANS
#1817-\$1 val. **49¢**

ALUMINUM POTATO SHELLS
E-Z Foil 20 per pkg. \$1 value **49¢**

5 per pkg. BROILER PANS **49¢**

E-Z Foil-Super Aluminum TV DINNER TRAYS
8 per pkg. #1826-\$1 val. **49¢**

January Food Values

SHURFINE CANNED HAMS
3 Lb. Can **\$2.59**

WILSON ALL MEAT FRANKS 12 oz. pkg. **49¢**

PRODUCE OF PLENTY CABBAGE
Fresh Firm **lb. 5¢**

YAMS NEW MEXICO **lb. 15¢**

TURNIPS PURPLE TOP **12 1/2¢**

POTATOES 20 Lb. Bag **69¢**

CHARMIN-4 ROLL PKG. BATHROOM TISSUE **49¢**

GOLDEN WEST FLOUR 25 lb. bag **\$1.98**

ARROW PINTO BEANS 4 lb. bag **49¢**

TIDE giant size **73¢**

BACON PEYTONS 2 Lb. Pkg. **98¢**

YOUR BEST FOOD BUY! Dairy Products

BORDEN'S BUTTERMILK 1/2 gal. **49¢**

SHURFRESH ICE CREAM 1/2 gal. **59¢**

SHURFRESH EGGS grade A med. **DOZ. 45¢**

FOOD KING 1/2 lb. **EACH 10¢**

OLEO PATTIES **EACH 10¢**

MIRACLE WHIP SALAD DRESSING 49¢ QT.

NESTLE'S QUIK 2 lb. box **79¢**

FIRESIDE MARSHMALLOWS 5 oz. pkg. **10¢**

SHURFINE PEACHES #2 1/2 can **3/\$1**

Jim's Pay N' Save
FRIENDLIEST STORE IN TOWN

Specials Good Sun Jan. 10 thru Sat. Jan. 16 8 a.m. till 9 p.m. 6 Days A Week Sundays 9 a.m. till 7 p.m.

201 S. 1st. Street

Holmes, Redwine Crowned TOPS Queens



TOP TEN IN TOPS FOR 1970 . . . Pictured are the top ten members in the Muleshoe TOPS Club for 1970. Shown left to right are Mrs. Cliff Griffiths, ninth runner-up; Mrs. Roy Clark, fourth; Mrs. Jean Whalin, eighth; Mrs. Roy White, third; Mrs. Dan Vinson, seventh; Mrs. Selma Redwine, second; Mrs. J.M. Hefner, sixth; Mrs. Tom Berry, first runner-up; Mrs. Ed Harp, fifth; and the 1970 yearly queen, Mrs. Claude Don Holmes. Each of the ten were presented gold charms and Mrs. Holmes presented the first runner-up, Mrs. Tom Berry, with a gift.

Cubans start annual effort to harvest sugar. Subsidy for makers of unleaded gas proposed.

The Muleshoe Jenny TOPS met Thursday, January 7, at 6:00 p.m. in the Bailey County Electric meeting room. The meeting was called to order by Leader Mabel Wolfe. The members recited the pledge and Mrs. Claude Don Holmes led the group in singing the club song.

Selma Redwine called the roll with 31 members weighing in. One new member, Mrs. Garland Young, was added, and Mrs. Jerrell Otwell renewed her membership in the club. Guests present were Mrs. Elmer Downing and Mrs. Robert Hunt, both daughters of Mrs. Selma Redwine, and Dana Holmes, daughter of Mrs. Claude Don Holmes.

A salad supper was served and each member brought a low-calorie salad in honor of the six-months and the yearly queens.

Mrs. Jeff Peeler, Mrs. Dee Clements and Mrs. J.M. Hefner were in charge of the decorations which were in red, white and gold.

After the salad supper, Mrs. Walter Sain read the minutes

from the previous meeting. Jenny Mitchell was queen for the week. First runner-up was Mrs. D.E. Vernon and second runner-up was Mrs. J.M. Hefner.

The monthly queen was Mrs. Tom Berry who received a basket of fruit. First runner-up was Mrs. Roy White, and second runner-up was Mrs. Walter Sain.

Mrs. Selma Redwine received a charm for losing 10 pounds. Mrs. Roy White received a charm for losing 20 pounds, and Mrs. Jewel Peeler was presented a charm for attending 52 consecutive meetings. Mrs. Peeler joined the Muleshoe Club in March of 1965. She has been a dedicated member, missing only one meeting during this time.

The top ten for six months were Mrs. Mabel Wolfe (10); Mrs. Wayland Harris (9); Mrs. Johnnie Ivy (8); Mrs. Raleigh Mason (7); Mrs. Cliff Griffiths (6); Mrs. Jenny Mitchell (5); Mrs. Ed Harp (4); Mrs. Tom Berry (3); Mrs. Roy White was second and received a five dollar check from the club.

Mrs. Selma Redwine was crowned Six-Months Queen and received a gift from each member of the club and the fines money in the bank which amounted to \$45.55. This money is collected from the members who gained weight during each week. The fine is ten cents a pound. Mrs. Redwine joined TOPS April 23, 1964.

Mrs. Claude Don Holmes was crowned the yearly queen and also received a gift from each member. First runner-up was Mrs. Tom Berry; second, Mrs. Selma Redwine; third, Mrs. Roy White; fourth, Mrs. Roy Clark; fifth, Mrs. Ed Harp; sixth, Mrs. J.M. Hefner; seventh, Mrs. Don

Vinson; eighth, Jean Whalin; and ninth runner-up was Mrs. Cliff Griffiths.

Mrs. Roy White received a hair set from the club for losing weight for six consecutive weeks.

The club was dismissed with the singing of the goodnight song.

SIX-MONTHS QUEEN AND COURT . . . The TOPS six-months queen and her nine runners-up are pictured after they were named at the TOPS meeting and salad supper Thursday night. Left to right in the back row are Mrs. Mabel Wolfe, tenth; Mrs. Wayland Harris, ninth; Mrs. Johnnie Ivy, eighth; Mrs. Raleigh Mason, seventh; and Mrs. Cliff Griffiths, sixth. In the first row, left to right, are Mrs. Jenny Mitchell, fifth; Mrs. Ed Harp, fourth; Mrs. Tom Berry, third; Mrs. Roy White, second; and the six-months queen, Mrs. Selma Redwine. They each received a gold charm and the first runner-up, Mrs. Roy White was presented a gift by the new queen.



Hobby Club Meets Thursday

The Muleshoe Hobby Club met Thursday, January 7, at the Muleshoe State Bank Community Room with Allie Barbour as hostess. The hostess gift, towels, was drawn by Levina Pitts. The members drew names for secret pals and hostesses.

Members attending the meeting and showing items were Bernice Amerson, pin cushion; Dora Phipps, camode set; Verma Dement; Ola Pesch, doll made of tea towels; Jewell Barry; Delle DeLoach; Ruth Bass; Zula Carlyle; Blanche Cash; Euna May Oswalt; Juanita Snow; wine bottle; Eva Dell Gillis; Mabel Caldwell, antique charm and candy clown; Myrtle Wells, pillow and sweater; Edith St. Clair; Levina Pitts; Allie Barbour; and Hallie Briscoe.

The Next meeting will be January 27 with Maud Robertson as hostess.

Muleshoe OES Plans Friendship Night

Mr. and Mrs. Wyle Bullock, Worthy Matron and Worthy Patron of Muleshoe Chapter No. 792, Order of the Eastern Star, presided at the stated meeting, of the Chapter, Tuesday evening, January 5, in Masonic Hall.

Routine business was transacted, and plans were made for the annual Friendship Night, to be held February 20th, at 7:00 p.m. in the banquet room of Masonic Hall. A program and supper will be enjoyed. All past Matrons are requested to wear the formal they wore when they served as Worthy Matron. Area Chapters are invited.

Invitations to Friendship Night at Petersburg, February 1, and to Plainview February 5 were received.

The Chapter approved the following Eastern Star members

to serve on the Advisory Board of Muleshoe Assembly No. 161, Order of the Rainbow for Girls, for the ensuing year: Alex Williams; Beth Boren; Jack Young; John Lee Dunbar; Mr. and Mrs. Murrill Brown; Mr. and Mrs. Ernest Kerr; Mr. and Mrs. Alton Epting; Mrs. Benny Sue Free and Mrs. Betty Cowan. A Memorial service was observed for deceased members. The Altar was draped and the Broken Column entwined with ivy. This is an annual observance for all Eastern Star Chapters in Texas.

At the close of the meeting, refreshments were served by Mrs. Pat Johnson and Mrs. Lois Norwood to approximately 25 members.

Big Four adjourn Berlin talks for holidays.

Art Association Will Feature Dr. Caballero

The Muleshoe Art Association will begin the year 1971 by meeting Tuesday, January 12 at 10:00 a.m. in the Community Meeting Room of the Muleshoe State Bank. The guest artist will be the well-known Dr. Caballero of Canyon, who has held several workshops in Muleshoe and surrounding towns.

Dr. Caballero, a native of Newark, New Jersey, has been Chairman of Art at West Texas State University since 1955. He did undergraduate work at Am- arillo College and West Texas State University and took his Master's and Doctorate at Columbia University in New York. He is listed in "Who's Who in South and Southwest"; "Who's Who in Texas"; "2000 Men Achievement of England"

and "The Dictionary of International Biography", 8th Royal Edition, London, England. He holds life memberships in the Lubbock Art Association; Texas Fine Arts Association and the Fellow of Royal Society of Arts, founded in 1754, London England. His awards, commissions and recognitions have come from all over the United States for he has exhibited nationwide in numerous shows.

Dr. Caballero served in the U.S. Infantry in Europe and the Pacific. He and his wife, Mary, live in Canyon where he is a faculty member at West Texas State University. They have two children, a daughter, Mrs. Gary Shell of Houston and Lt. Charles Thomas Caballero of the U.S. Air Force. His paintings are in numerous private and public collections.

Anyone interested in art is invited to come and hear Dr. Caballero at this meeting.

Members with pictures hanging at the Corral Restaurant are reminded to pick them up on this day.

U.S. warns 3 cities on water pollution.

HARVEY BASS and CURTIS WELLBORN ANNOUNCES

Old Fashion Malt Shop
705 S FIRST PHONE 272-4413

NOW OPEN FOR BUSINESS

NEW OPERATORS
Mr. & Mrs. Lee Lewis

OPEN 10 a.m. to 7 p.m.
CLOSED ON SUNDAY

INSIDE SERVICE OR ORDERS TO GO

Anthony's C.R. ANTHONY CO.

WINTER CLEARANCE SALE!

MULESHOE OPEN 8:30 AM TO 6 PM MON. THROUGH FRIDAY 8 AM to 7 PM SAT. NOW IN PROGRESS

CONTINUE THROUGH SAT. JAN. 16th.

SPECIAL GROUP MARTEX BATH TOWELS \$3
Values to \$2.50 2 For

MATCHING HAND TOWELS \$1.25
Reg. 99¢ 2 For

MATCHING BATH CLOTH \$1.00
Reg. 49¢ 3 For

FRINGED BAGS \$2.67
TEENS OR LADIES Values to \$4.99

LADIES & MISSES SHOES \$2.77
Values To \$14.00

100% DACRON DOUBLE KNIT \$3.87 yd.
Values To \$4.99

BOYS OR MENS FAMOUS BRAND JEANS \$2.47
BOYS Values To \$9.00 MENS \$4.77

CHILDRENS C.P.O. SHIRTS NYLON COVERALLS COAT & PANT SETS SUITS

1/2 PRICE

MENS & BOYS SWEATERS SUITS SPORT COATS DRESS SHOES BELTS TIES BAR SETS WOOL C.P.O. SHIRTS

LUGGAGE GIFT SETS

LADIES & GIRLS WOOL SUITS SPORTS WEAR PURSES ROBES VESTS

DRESS COATS PONCHOS GOWNS SWEATERS PANTS

TOPS

CASH BANKAMERICA MASTER CHARGE SAVE 50%

PERMANENT PRESS Values To \$6.99



TOPS SIX-MONTHS QUEEN . . . Pictured with the gifts she received is Mrs. Selma Redwine, the six-months queen of the Muleshoe Jenny TOPS. Mrs. Redwine was presented with a gold crown charm and a gift from each member of the club. Mrs. Redwine lost more weight than any other member during the last six-months period.

INTRODUCING Mrs. Joe Smallwood

BEAUTICIAN AT REBA'S BEAUTY SHOP

MRS. SMALLWOOD WELCOMES ALL HER CUSTOMERS TO CALL FOR APPOINTMENT THURSDAY FRIDAY SATURDAY

Reba's Beauty Shop
1614 W. AMER. BLVD. PHONE 272-4730

SCHEDULE OF EVENTS

MONDAY, JANUARY 11
10 a.m. - County Commissioners, Bailey County Elstioners, Bailey County Courthouse.
4 p.m. - Richland Hills P-TA, cafeteria.
7:30 p.m. - Wesleyan Service Guild.
7:30 p.m. - Rainbow Girls, Masonic Lodge.
8 p.m. - Llano Estacado Civic Club.

TUESDAY, JANUARY 12
10 a.m. - Muleshoe Art Association, Muleshoe State Bank.
YL WSCS.
7:30 p.m. - Bailey County Hospital District Board-WPMH.
7:30 p.m. - Alcoholics Anonymous, So. Main.
8 p.m. - Rebekahs, I.O.O.F. Hall.

THURSDAY, JANUARY 14
2:30 p.m. - Muleshoe Young Homemakers.
4 p.m. - Muleshoe Study Club, Mrs. Ed Johnson.
8 p.m. - Lubbock Christian College Associates, Muleshoe State Bank.
6 p.m. - TOPS, Bailey County Electric.

SATURDAY, JANUARY 16
7 p.m. - Jaycees Bosses Night Banquet.

Any upcoming community event for Schedule of Events, please report to the Journal office.

Compliments Of: MULESHOE STATE BANK MEMBER FDIC



1970 TOPS QUEEN . . . Mrs. Claude Don Holmes was named the 1970 TOPS Queen Thursday night at a special salad supper. This is the second time she has won this honor as she was the 1969 TOPS Queen. This year, to be the yearly queen, a member must be a KOPS in good standing. She will represent the Muleshoe Club at the State Convention in Amarillo in April, Mrs. Holmes received a gift from each member and a crown charm.

Progress Home Demonstration Club Meets

The Progress Home Demonstration Club met Tuesday, January 5, at the home of Mrs. J.L. Crawford.

The new club president, Mrs. Harold Mardis, presided over the business meeting. The club prayer was read by the club members. Roll call was answered with "What I like about today's fashions".

The Progress Home Demonstration Council will meet Wednesday, January 13, at 2:00 p.m. in the First National Bank. The new yearbooks were filled out by the members for the new year.

Mrs. W.B. Myers gave the program on redesigning the old wardrobe. She explained how to decide on an old garment to remake, how to choose a pattern, and how to design it for the younger person.

Members present at the meeting were Mrs. E.W. Bass, Mrs. Albert Davis, Mrs. George Gross, Mrs. Harold Mardis, Mrs. W.B. Myers, Mrs. O.M. Self, Mrs. J.C. Wells, Mrs. J.L. Crawford and one visitor, Mrs. Kay Crawford.

The next meeting will be held Tuesday, January 19, in the home of Mrs. E.W. Bass.

Alpha Zeta Pi Hears Program On Collecting

Alpha Zeta Pi Chapter of Beta Sigma Phi Sorority met Tuesday, January 5, in the home of Mrs. Tom Flowers.

Preston Scott Born To Millers

Mr. and Mrs. Mike Miller of Muleshoe are the parents of a new son born Thursday, December 31, at 11:22 p.m. at West Plains Hospital. He was named Preston Scott and he has a brother, Kurt, two and a half years old, and a sister, Kristine, 18 months, at home.

Mrs. Mike Miller is the former Pam St. Clair. Grandparents of the new boy are Mr. and Mrs. John Miller and Mr. and Mrs. Irving St. Clair all of Muleshoe.

ESA Hears Panel On Generation Gap

Epsilon Chi Chapter of Epsilon Sigma Alpha had its regular business meeting Tuesday, January 5, in the home of Mrs. Jerry Hutton. Hostesses were Mrs. Jerry Hutton and Mrs. Leon Wilson.

The program was on the generation gap and featured a panel consisting of Mrs. Bernard Phelps, Miss Lindy Kerr and Gus Taylor.

The members discussed the district meeting to be held in Muleshoe January 17, and plans were made for the meeting. A beauty queen was selected for the district meeting. She is Mrs. Jim Young and will compete in the district nine contest.

The sorority will help with the Mothers March of Dimes January 25 by providing transportation for the FHA girls who will do the marching. The sorority also voted to give a scholarship to someone this year.

Rush will start February 13 with a semi-formal Valentine dance.

Those members attending the meeting were Mrs. Cecil Campbell, Mrs. Jack Rennels, Mrs. Hugh Young, Mrs. Dick Chitwood, Mrs. Cooper Young, Mrs. Eugene Howard, Judy White, Mrs. Kenneth Lowe, Mrs. Mac Brown and Mrs. Ronnie Johnson.

Richland Hills P-TA To Meet

The Richland Hills P-TA will have its executive meeting at 3:00 p.m. Monday, January 11, in the Richland Hills Library. The regular meeting will be at 4:00 p.m. Monday.

The program will be a drama directed by Kerry Moore. All parents are urged to attend this monthly meeting.

Atkinsons Have New Son

Mr. and Mrs. Johnny Wayne Atkinson of Lubbock are the parents of a son, Jeffrey Wayne, born at 1:57 p.m., December 30, in West Texas Hospital at Lubbock. He weighed eight pounds and two ounces, and was 20 1/2 inches long.

Grandparents are Mr. and Mrs. Theo Atkinson of Muleshoe and Mr. and Mrs. Russell Bryant of Friona.

Mrs. Atkinson is the former Diane Bryant of Muleshoe and the father is attending Texas Tech Law School and is employed at Draughon's Business College.

WEEKLY RECIPE

By Sarah Anne Sheridan

Legend has it that the hush puppies originated around the campfire when they were tossed to the hounds to keep them quiet. They are a must to complement fried seafood dishes.

However, they are enjoyed quite often in our home as the main bread served with vegetables, especially cooked salad greens.

Hush Puppies

2 c. corn meal
1 t. soda
1 t. salt
6 T. chopped onion
2 T. flour
1 T. baking powder
1 egg
2 c. buttermilk
Red pepper, to taste

Mix all dry ingredients, add chopped onion; then milk and egg, beaten together. Drop by small teaspoonfuls into very hot, deep fat. They will float when done. Drain on brown paper. Recipe will make 8 generous servings.

JANUARY DRAFT

The Defense Department has announced that 17,000 young men will be inducted into the Army in January, the highest monthly draft call since last April. Officials are hopeful, however, that the 1971 total draft will fall below this year's 163,500.

The world's easiest method of ACTIVE EXERCISE "SLIM GYM" For a demonstration see Lucille Cherry Muleshoe Beauty Salon Office 272-3258 Home 272-3632

passed a book around showing all types of old and valuable glassware.

Following the program, the hostesses, Mrs. Wayne Gregory and Mrs. Tom Flowers, served refreshments of frosted grape juice cocktails, vanilla wafer cake, hocus-pocus buns, marbled peanut butter dessert and lemon cake bars from a table decorated in a New Year's theme.

Members present were Mrs. C.J. Feagley, Mrs. Tom Flowers, Mrs. Wayne Gregory, Mrs. Bill Harmon, Mrs. Joe King, Mrs. Max King, Mrs.

Don Remepe, Mrs. Benny Sp-lawn, Mrs. Doyce Turner, Mrs. Travis Bessire, Mrs. Dick Johnson, Mrs. Merlyn Neel, and Mrs. Glen Watkins.

Couple To Wed

Mr. and Mrs. S.H. Pierce of Route 2, Muleshoe announce the engagement and approaching marriage of their daughter, Cherry Adene, to Johnnie Lee Estep, son of Dwayne Estep of Friona, Texas, and Mrs. Doyle McEndree of Two Buttes, Colorado. The couple are planning a February wedding.

Friendship Club Meets In Home Of Mrs. Johnson

The Friendship Club met in the home of Mrs. Blanche Johnson Thursday night, January 7. Hostesses were Mrs. Johnson and Mrs. Lois Witherspoon.

After dinner, the new officers for 1971-72 were installed by Mrs. Sibyl Johnson. The new president is Billy Mathis; vice-president is Audie King; secretary is Pet Wingo; treasurer, Jewell Griffiths; reporter, Glady Darsey; and program chairman is Hattie Griffiths.

The club presented the outgoing president, Blanche Johnson, with a handmade, hand painted wall plate.

Members present for the meeting and installation were Blanche Johnson, Sibyl Johnson, Mildred Andrews, Mrs. Dameron, Jewel Griffiths, Mae Busbice, Inez Kennedy, Audie King, Billie Mathis, Erma Ray, Adelyn Swafford, Jackie Tate, Pet Wingo, Lois Witherspoon, Mary Young and Maude Young.

Economists doubt 1971 will be good year in U.S.



NAPOLEON CURLS

- * SATISFACTION GUARANTEED ON ALL PERMANENTS
- * BODY PERMANENTS AND PERMANENTS FOR TINTED HAIR
- * EXPERT HAIR SHAPING INCLUDING WITH ALL PERMANENTS

JUST WANT BODY IN YOUR HAIR? TRY OUR BODY PERMANENT WITH ALL ITS CONDITIONERS

SPECIAL PERMANENTS FOR BLEACHED, TINTED OR EXCESSIVELY DAMAGED HAIR

Dee Dee's Coiffure Fantasies

924 W. AMERICAN BLVD. (next to Carral Restaurant)

PHONE 272-4375
ASK FOR
DIXIE OR DIANA



COME IN SOON!

Be An EARLY BIRD

on your **INCOME TAX**

The "worm" in this case is likely to be an early refund. When BLOCK does your return, you'll know it's done right. Prepare your return NOW, for an early refund—or for the time needed to budget any additional expense. See H & R BLOCK.

COMPLETE RETURNS **\$5 UP**

GUARANTEE: We guarantee accurate preparation of every tax return. If we make any errors that cost you any penalty or interest, we will pay that penalty or interest.

H & R BLOCK Co.

AMERICA'S LARGEST TAX SERVICE WITH OVER 5000 OFFICES

NO APPOINTMENT NECESSARY

210 SOUTH FIRST

Weekdays 9 a.m. - 6 p.m.
Sat. 9 a.m. - 5 p.m.

NO APPOINTMENT NECESSARY

COUGAR COUNTRY

IN COLOR

A FILM FOR THE ENTIRE FAMILY

FOLLOW "WHISKERS," an independent and curious young cougar, through two exciting years in a mountain wilderness known as "COUGAR COUNTRY"

A true wildlife adventure story

TUESDAY ONLY

Wallace Theatre

Show Times: 4:30-6:30-8:30 p.m.

Adults: \$1.75
Children Under 12-75¢

A PRODUCT OF AMERICAN NATIONAL ENTERPRISES, INC.

GOLDEN ANNIVERSARY

50 YEARS

1921-1971

They say that the first 50 years are the hardest but for us the next 50 will be even harder — it's our intention to make it so. It's our intention to work even harder than ever to continue bringing to you the finest electric service at the lowest possible cost and in a socially responsible manner.

So long as we do that you'll continue to be a valued and satisfied customer.

GOLDEN ANNIVERSARY

The ELECTRIC Company

1921-1971

Muleshoe, Texas

Cobb's

JANUARY CLEARANCE

ALL SALES FINAL
*Sorry-No Exchange or Refunds
*No-Lay-A-Way on Sale Merchandise
*No-Phone or Mail Orders, Please
*No-Alteration Without Charge
*No-Gift Wrapping on Sale Merchandise

drastic reductions in every department

STARTS Tues., JANUARY 12..9 a.m.
We Will Be Closed Monday, Jan. 11
To Prepare For This Gigantic Sale.



fashion CLEARANCE

LADIES' DRESS & CASUAL COATS

These Groups Represent Our Finest Coats and Wonderful Values.

VALUES TO \$ 28.00.....	\$16.99
VALUES TO \$ 30.00.....	\$17.99
VALUES TO \$ 33.00.....	\$19.99
VALUES TO \$ 35.00.....	\$22.99
VALUES TO \$ 40.00.....	\$24.99
VALUES TO \$ 50.00.....	\$29.99
VALUES TO \$ 60.00.....	\$34.99
VALUES TO \$ 70.00.....	\$40.99
VALUES TO \$ 75.00.....	\$42.99
VALUES TO \$ 80.00.....	\$44.99
VALUES TO \$ 90.00.....	\$49.99
VALUES TO \$100.00.....	\$57.99
VALUES TO \$110.00.....	\$64.99
VALUES TO \$120.00.....	\$69.99
VALUES TO \$140.00.....	\$79.99
VALUES TO \$150.00.....	\$82.99

LADIES' DRESSES & SUITS

Consists Of Blends, Wools, Dacron Knits, And Many Other Fabrics. Shop Early!

VALUES TO \$13.00.....	\$7.99
VALUES TO \$16.00.....	\$8.99
VALUES TO \$18.00.....	\$10.99
VALUES TO \$20.00.....	\$11.99
VALUES TO \$22.00.....	\$12.99
VALUES TO \$25.00.....	\$13.99
VALUES TO \$28.00.....	\$14.99
VALUES TO \$30.00.....	\$16.99
VALUES TO \$34.00.....	\$17.99
VALUES TO \$38.00.....	\$19.99
VALUES TO \$40.00.....	\$22.99
VALUES TO \$45.00.....	\$24.99
VALUES TO \$50.00.....	\$28.99
VALUES TO \$56.00.....	\$32.99
VALUES TO \$60.00.....	\$34.99
VALUES TO \$70.00.....	\$37.99
VALUES TO \$75.00.....	\$42.99
VALUES TO \$80.00.....	\$44.99
VALUES TO \$95.00.....	\$54.99

SUIT CLEARANCE FOR MEN

Groups Include All Wool & Wool Blends All Famous Brands Be Early For Best Selection

VALUES TO \$60.00.....	\$39.99
VALUES TO \$75.00.....	\$49.99
VALUES TO \$85.00.....	\$54.99
VALUES TO \$90.00.....	\$59.99
VALUES TO \$95.00.....	\$62.99

SPECIAL GROUP 1/2 PRICE OR LESS



SWEATER REDUCTION

MEN'S SPORT COATS & ENSEMBLES

Latest Styles & Fabrics Large Selection Of Colors. All Well Known Brands.

VALUES TO \$40.00.....	\$27.99
VALUES TO \$49.95.....	\$29.99
VALUES TO \$55.00.....	\$34.99
VALUES TO \$65.00.....	\$39.99
VALUES TO \$70.00.....	\$44.99
VALUES TO \$75.00.....	\$49.99
VALUES TO \$85.00.....	\$52.99
VALUES TO \$95.00.....	\$57.99

SPECIAL GROUP 1/2 PRICE

MEN'S COATS & JACKETS

Groups Consist of Nylons, Wools, Corduroy & Blends. Also Group Of All Weather

VALUES TO \$10.00.....	\$5.99
VALUES TO \$12.00.....	\$7.99
VALUES TO \$16.00.....	\$9.99
VALUES TO \$26.00.....	\$14.99
VALUES TO \$30.00.....	\$18.99
VALUES TO \$40.00.....	\$26.99
VALUES TO \$45.00.....	\$29.99
VALUES TO \$50.00.....	\$32.99
VALUES TO \$80.00.....	\$49.99

MEN'S CASUAL PANTS Dressy & Jean Cut

Styles In Wide Selection Of No-Iron Fabrics. Discontinued Numbers.

VALUES TO \$7.50.....	\$4.29
VALUES TO \$9.00.....	\$4.99
VALUES TO \$11.00.....	\$5.99
VALUES TO \$12.00.....	\$6.99

SPECIAL GROUP 1/2 PRICE AND BELOW

MEN'S DRESS SLACKS

Large Selection of Fabrics and Colors.

VALUES TO \$14.00.....	\$7.99
VALUES TO \$16.00.....	\$8.99
VALUES TO \$18.00.....	\$10.99
VALUES TO \$22.95.....	\$13.99
VALUES TO \$25.00.....	\$14.99

SPECIAL GROUP 1/2 PRICE

MEN'S DRESS SHIRTS

White No-Iron Special Group \$1 White No-Iron Special Group 1/2 Price

VALUES TO \$6.00.....	\$2.99
VALUES TO \$6.50.....	\$3.99
VALUES TO \$9.00.....	\$4.99
VALUES TO \$12.00.....	\$6.99

LADIES' DRESS & CASUAL SHOES

These Groups Have Been Reduced To Clear. Large Selection of Colors and Styles
SPECIAL GROUP 1/2 PRICE & BELOW
OTHER GROUPS VALUES TO \$20
PRICED FROM \$1 to \$14.90

MEN'S & BOY'S SHOES

Selection of Casual Loafers, And Dressy Type Shoes.
SPECIAL GROUP VALUES TO \$24
1/2 Price & Below
OTHER GROUPS PRICED FROM \$2 to \$20

JANUARY FABRIC SALE

Good Selection of Materials, Printed Cottons, Blends, Orlon & Wool, Dacron Knit, & Many Other Types.

SPECIAL GROUP-1/2 PRICE & LESS

VALUES TO \$1.49.....	\$.89
VALUES TO \$1.99.....	\$1.29
VALUES TO \$2.29.....	\$1.49
VALUES TO \$3.29.....	\$1.99
VALUES TO \$3.99.....	\$2.49
VALUES TO \$4.49.....	\$2.79
VALUES TO \$5.49.....	\$2.99
VALUES TO \$5.99.....	\$3.49
VALUES TO \$7.99.....	\$4.49

GIRL'S SPORTSWEAR

Large Selection Of Sportswear. Blouses, Skirts, Pants, And Sets.

VALUES TO \$ 3.50.....	\$1.99
\$ 4.25.....	\$2.49
\$ 5.00.....	\$2.99
\$ 5.50.....	\$3.49
\$ 6.50.....	\$3.99
\$ 8.00.....	\$4.99
\$10.00.....	\$5.99
VALUES TO \$12.50.....	\$6.99
VALUES TO \$14.00.....	\$7.99
VALUES TO \$18.00.....	\$9.99
VALUES TO \$22.00.....	\$12.99



GIRL'S WINTER COATS

Selection of Styles and Fabrics. Casual and Dressy Type Coats.

VALUES TO \$10.00.....	\$5.99
VALUES TO \$12.00.....	\$7.99
VALUES TO \$15.00.....	\$8.99
VALUES TO \$18.00.....	\$11.99
VALUES TO \$20.00.....	\$12.99
VALUES TO \$25.00.....	\$14.99
VALUES TO \$30.00.....	\$16.99

GIRL'S AND TODDLERS DRESSES

Large Selection of Styles and Fabrics. All Washable

VALUES TO \$ 5.00.....	\$2.99
VALUES TO \$ 6.00.....	\$3.99
VALUES TO \$ 7.00.....	\$4.49
VALUES TO \$ 9.00.....	\$4.99
VALUES TO \$10.00.....	\$5.99
VALUES TO \$14.00.....	\$7.99
VALUES TO \$16.00.....	\$8.99
VALUES TO \$18.00.....	\$9.99
VALUES TO \$20.00.....	\$11.99

INFANT'S & TODDLERS PLAY CLOTHES

Terrific Bargains. Stock Up Now!

VALUES TO \$ 2.29.....	\$1.49
VALUES TO \$ 5.00.....	\$2.99
VALUES TO \$ 7.00.....	\$3.99
VALUES TO \$ 9.00.....	\$4.99
VALUES TO \$12.00.....	\$6.99

LADIES SPORTSWEAR

Groups Consists Of Blouses, Pants, Vests, Skirts, & Pant Suits. Shop Early!

VALUES TO \$ 4.50.....	\$2.49
VALUES TO \$ 5.00.....	\$2.99
VALUES TO \$ 7.00.....	\$3.99
VALUES TO \$ 8.00.....	\$4.99
VALUES TO \$10.00.....	\$5.99
VALUES TO \$12.00.....	\$6.99
VALUES TO \$14.00.....	\$7.99
VALUES TO \$16.00.....	\$8.99
VALUES TO \$18.00.....	\$9.99
VALUES TO \$20.00.....	\$11.99
VALUES TO \$22.00.....	\$12.99
VALUES TO \$25.00.....	\$14.99
VALUES TO \$28.00.....	\$16.99
VALUES TO \$30.00.....	\$17.99
VALUES TO \$36.00.....	\$20.99
VALUES TO \$45.00.....	\$24.99
VALUES TO \$50.00.....	\$28.99
VALUES TO \$70.00.....	\$38.99

BOY'S WINTER COATS

Good Selection of Winter Coats & C.P.O. Jackets.

VALUES TO \$ 9.00.....	\$5.99
VALUES TO \$11.00.....	\$6.99
VALUES TO \$16.00.....	\$9.99
VALUES TO \$18.00.....	\$11.99
VALUES TO \$22.50.....	\$12.99
VALUES TO \$25.00.....	\$14.99

BOY'S SPORT SHIRTS

Large Selection Of No-Iron Sport Shirts. Including Knits and Broadcloth. Sizes 2 to 20

VALUES TO \$2.60.....	\$1.69
VALUES TO \$3.00.....	\$1.99
VALUES TO \$4.00.....	\$2.49
VALUES TO \$5.00.....	\$2.99
VALUES TO \$5.50.....	\$3.49
VALUES TO \$7.00.....	\$3.99
VALUES TO \$8.00.....	\$4.99

BOY'S CASUAL PANTS

Shop Early For Best Selections

VALUES TO \$4.00.....	\$2.49
VALUES TO \$5.00.....	\$2.99
VALUES TO \$6.00.....	\$3.49
VALUES TO \$7.00.....	\$3.99
VALUES TO \$7.50.....	\$4.49

SPECIAL GROUP 1/2 PRICE & BELOW

BOY'S SUITS & SPORT COATS

Large Selection of Colors & Fabrics. SPECIAL GROUP

VALUES TO \$22.95.....	\$9.99
OTHER GROUPS	
VALUES TO \$8.00.....	\$4.99
VALUES TO \$13.00.....	\$6.99
VALUES TO \$15.00.....	\$7.99
VALUES TO \$16.00.....	\$8.99
VALUES TO \$18.00.....	\$9.99
VALUES TO \$20.00.....	\$11.99
VALUES TO \$22.00.....	\$12.99



LADIES' LINGERIE

Groups Consists of Slips, Panties, Gowns, P.J. & Sets.

VALUES TO \$ 1.50.....	\$.99
\$ 2.75.....	\$1.69
\$ 4.00.....	\$2.99
\$ 5.50.....	\$3.49
\$ 6.00.....	\$3.99
\$ 7.00.....	\$4.49
\$ 8.00.....	\$5.49
\$10.00.....	\$5.99
\$11.00.....	\$6.99
\$15.00.....	\$9.99
\$27.00.....	\$16.99

LADIES' ROBES

Groups Consist of Fleece, Quilted and Cotton Fabrics.

VALUES TO \$10.00.....	\$6.99
\$14.00.....	\$7.99
\$16.00.....	\$8.99
\$18.00.....	\$10.99
\$20.00.....	\$11.99
\$25.00.....	\$12.99
\$28.00.....	\$15.99
\$30.00.....	\$17.99
\$32.00.....	\$18.99

LADIES' Bras, Girdles Hose GREATLY REDUCED

Clearance On Groups Of:

LADIES	
Bras & Girdles, Handbags, Scarfs, Jewelry, Gloves	
GIRL'S	
Sleepwear, Handbags, Gloves, Socks and many other items.	
BOY'S	
Gloves, Caps, Socks, and Play Clothes.	
INFANT & TODDLERS	
Play Clothes, Sets and many other items.	
MEN'S	
Belts, Socks, Caps, Jump Suits, and other items.	

MEN'S SPORT SHIRTS

Large Selection of Knits, Cottons, and Dacron Blends. All No-Iron

VALUES TO \$4.50.....	\$3.29
VALUES TO \$5.00.....	\$3.49
VALUES TO \$6.00.....	\$3.99
VALUES TO \$7.50.....	\$4.49
VALUES TO \$8.00.....	\$4.99
VALUES TO \$10.00.....	\$5.99
VALUES TO \$13.00.....	\$6.99
VALUES TO \$14.00.....	\$7.99
VALUES TO \$17.00.....	\$8.99

TALL MEN'S SPORTS SHIRTS

Groups Consists of Knits, Dacron & Cotton Blends In Long Or Short Sleeves.

VALUES TO \$5.00.....	\$3.49
VALUES TO \$6.00.....	\$3.99
VALUES TO \$7.00.....	\$4.49
VALUES TO \$8.50.....	\$4.99
VALUES TO \$9.00.....	\$5.49

BOY'S SWEATERS GREATLY REDUCED!

Bula News

By Mrs. John Blackman

Both boys and girls basketball teams played Whittarral for 6B district game Tuesday evening in the Whittarral gym. Bula boys won by a score of 56 to 35 with Ron Risinger making 31 points. The girls score was 49 to 25 with Bula winning. High scoring girl for Bula was Pam Layton with 18 points.

Mr. and Mrs. E.O. Battles visited over the holidays with her brothers and families Mr. and Mrs. R.H. Estes at Hollis, Okla. and Mr. and Mrs. Wayne Estes at Wellington.

Edd Crume and daughter Donna visited over the weekend with his relatives at Eldorado, Okla., Mr. and Mrs. Jimmy Crume and Mr. and Mrs. Leo Newberry.

Mr. and Mrs. Donald Williams and son Dewayne are visiting with Mr. and Mrs. John Autry and children at Eagle Lake this week. John is a goose hunter guide and they are having lots of fun.

Mrs. W.H. Zedlitz and daughter Christian of Dallas spent several days recently with her mother, Mrs. E.W. Black.

While here they enjoyed a family get-together and dinner at the home of Mrs. Black. Others of the family present besides Mrs. Zedlitz and daughter were Mr. and Mrs. Kenny Black and children Rocky, Kenny, Diane and David from Lubbock; Mr. and Mrs. Houston Black and children; and Mr. and Mrs. Richard Black and children all of Bula.

Guests over the holidays in the Nolan Harlan home were Mr. and Mrs. Wade Britt of Lovington; Mrs. Adalee Cole of Farmington; Mr. and Mrs. Don Britt of Slaton; Mrs. Marnie Mitchell from Abernathy; Mrs. Mary Britt of Amherst; Mr. and Mrs. Roger Britt and sons, Gary and Donald of Littlefield; and Mr. and Mrs. Douglas Yarbrough and small son of Austin.

Mr. and Mrs. Jerry Boleyn and children Jerry and Tina of Sweeney, Tex., visited over the holidays with his father Doc and Mrs. Boleyn.

Mr. and Mrs. Buck Medlin

spent New Years Day, along with other relatives, at the home of Mr. and Mrs. Billy Gage in Lubbock.

Mr. and Mrs. Cecil Jones spent the weekend with his brother, Mr. and Mrs. R.D. Jones at Quail. Mrs. Earl Shields and children returned to their home at Leila Lake with them after a weeks visit with her mother, Mrs. Lorella Jones.

Mrs. B.S. Setliff returned home with her daughter, Miss Gladys Setliff to Hereford Saturday to spend a few days.

To visit in the home of his grandmother, Mrs. Lula Harlan, during the holidays were Major and Mrs. John Allan Corder and children, Teri, and David, from Montgomery, Alabama.

Jamie Lancaster of Dumas has been visiting with his grandparents Mr. and Mrs. Earl Lancaster since Christmas. They returned him to his home this weekend.

Superintendent McDaniel is in Austin this week attending a conference.

Mrs. Clara Childres of Dumas spent Tuesday with her brother Mr. and Mrs. E.O. Battles; they all drove to Dimmitt to visit another sister, Mrs. Ethel Lowe.

Mr. and Mrs. C.A. Williams returned Monday night from a short visit with their daughter and family, Mr. and Mrs. James Couder and Steve in El Paso. They also spent a night with the Ray Spence's in Ruidoso on their return home.

Advanced helicopter designs offer a solution to congested city-center to city-center passenger transportation. Experts estimate that by 1975 just 40 compound helicopters operating in the Northeast Corridor could carry nearly 8,000,000 passengers annually.

Each school child should have a hearing test as part of his annual physical examination. Sending a child to school with an undetected hearing loss and expecting the child to compete with other children is equivalent to asking the youngster to run a foot race while wearing lead shoes.

Obituaries

Arthur Davis

Arthur Davis, 66, was dead on arrival at West Plains Memorial Hospital Wednesday, December 6, at 6:30 p.m., following a heart attack at his home at 505 East Fifth Street. He was born December 11, 1904 in Boswell, Okla. and was a retired truck driver for a gas and butane company. Davis moved to Muleshoe in 1943 from Boswell. He was a Baptist.

Funeral services for Arthur Davis were held at 2:30 p.m. Saturday in Singleton Funeral Home Chapel of the Chimes with Rev. Bill Swope of Calvary Baptist Church officiating. Burial was in Muleshoe Cemetery under direction of Singleton Funeral Home.

Survivors include his wife, Thelma; three sons, S.F. and Bill, both of Hereford and Alvin of the U.S. Army in Vietnam; a daughter, Mrs. L.D. Shaw, Hereford; his father, S.C. Davis, Bonham; three sisters, Mrs. A.B. Baugh, Telephone; Mrs. Bill Gholson, Aspermont and Mrs. Earl Lowry, Fort Worth; one brother, Tommy of Fort Worth, six grandchildren and five great-grandchildren.

D. Littlefield

Don Littlefield, 36, died at 7:35 p.m. Thursday, January 7, in the Littlefield Hospital. He was a native of Lazbuddie, and was born June 25, 1934. He was a farmer.

Services for Don Littlefield will be held at 2:30 p.m. today (Sunday) in the Lazbuddie Church of Christ with Andy Rogers, minister of the Lazbuddie Church of Christ and Gaither Vanderveer, Church of Christ minister from Abilene officiating. Burial will be under direction of Singleton Funeral Home.

Survivors include his wife, Wanda; two children, Donnie Joe and Karla Mae, both of the home; his parents, Mr. and Mrs. John Littlefield, Friona; two sisters, Mrs. Max Steinbock and Mrs. Gene Smith, both of Lazbuddie and one brother, Carrol Littlefield, Friona.

Money multiplies the power of man, either for better or for worse.

VA Director Urges Complete Questionnaires

Jack Coker, Director of the Veterans Administration Regional Office in Waco, today reminded 800,000 recipients of monthly pension checks to carefully fill out, sign and promptly return their annual income questionnaires--by January 15, at the latest.

He noted that two-thirds of the veterans and dependents, including parents of deceased veterans drawing dependency and indemnity compensation,

have returned the questionnaires by filled out accurately and completely, signed, and returned no later than the January 15, deadline, Coker explained. He stressed that if they are

not returned, beneficiaries under the law will not only lose next year's benefits, they may also be required to refund payments received in 1970. Coker urged veterans and dependents who need help with annual income questionnaires to contact the nearest VA office.

73rd Semi-Annual Financial Statement

FIRST FEDERAL SAVINGS & LOAN ASSOCIATION of CLOVIS

DECEMBER 31, 1970

	ASSETS	LIABILITIES
OFFICERS		
CLYDE RAYL President	First Mortgage Real Estate	Capital (Savings Deposits) .. \$42,344,078.27
LYNN L. MARTIN Exec. Vice President	Loans .. \$40,759,746.15	Advances, Federal Home
DIXIE HOGG Ass't. Vice President-Secretary	Home Improvement Loans .. 18,689.42	Loan Bank .. 1,000,000.00
RUFUS FREEMAN Vice President	Loans to Members, Secured by Their Savings Deposits .. 221,972.85	Loans in Process .. 47,858.56
CHARLES RUTLEDGE Vice President	Cash and U. S. Government Bonds .. 4,831,827.72	Payments by Borrowers for Taxes, Insurance, etc. 233,128.14
NEIL McBRIDE Ass't. Vice President	Stock in Federal Home Loan Bank .. 435,900.00	Other Liabilities .. 73,632.48
BILL BOONE V.P. (Branch Manager)	Office Sites and Buildings .. 765,240.44	Reserve for Unearned Discount .. 84,179.13
FAYE FARROW Ass't. Sec. - Treas.	Furniture and Fixtures .. 185,626.02	Reserves and Surplus .. 4,208,334.29
HAZEL B. TRAUGHBER Ass't. Sec. (Branch)	Prepaid Federal Insurance Premium .. 460,390.09	
DWAYNE YOUNG Controller	Other Assets .. 311,818.18	
ATTORNEYS		
ESTHER SMITH VAN SOELEN		
DIRECTORS		
REESE CAGLE, Chairman CARL RODOLPH, Vice-Chairman CLYDE RAYL ROY KEETER LYNN L. MARTIN E. C. KELSO SCOTT MCGHEE K. BARNETT, Jr. ERNEST WHEELER, Jr. DONALD R. BONNER DON WILLIAMS		
TOTAL	TOTAL	
\$47,991,210.87		\$47,991,210.87

SECOND LARGEST & ONE OF THE OLDEST FEDERALLY CHARTERED SAVINGS & LOANS IN NEW MEXICO SINCE 1934

IN NEW LOCATION
Dale Dudley
 (FORMERLY DALE'S GULF)
218 N. FIRST
 PLAINVIEW HIGHWAY

- ★ COMPLETE RADIATOR SERVICE
- ★ OIL CHANGE & GREASE
- ★ MUFFLERS REPLACED
- ★ MOTOR TUNE UP

Dale Conoco Service

218 N FIRST MULESHOE

Storewide January Clearance SALE

SALE CONTINUES THROUGH JAN. 16

SAVE

DURING OUR '70
MONEY SAVING '71

ZENITH Clearance

SALE

SAVE! . . . Terms to fit you, of course!

CHROMACOLOR

the dramatic difference you can see in color tv!

KITCHENAID DISHWASHERS

Many of the KitchenAid dishwashers introduced in 1949 are still going strong! That's the kind of dependable performance that has earned KitchenAid its reputation for being the best.

Our newest KitchenAid dishwashers maintain this tradition. They're built with good old-fashioned quality -- and provide the latest innovations in automatic dishwashing. Come in soon. There's a KitchenAid dishwasher for every kitchen and every budget. And there's never been a better time to buy!

GREATLY REDUCED FOR THIS SALE

\$249.95

Enjoy the outstanding convenience of a KitchenAid built-in.



Buy a KitchenAid portable today! Use it tonight!

No installation needed. Big capacity. Exclusive KitchenAid washing and drying systems. Porcelain enamel inside and out.

KitchenAid front-loading convertibles can be built in whenever you're ready.

KitchenAid DISHWASHERS

20 years of good old-fashioned quality

Built-ins as low as \$249.95

KitchenAid Food Waste Disposers

Built better to grind finer, faster, quieter, and last longer.

Put one in when you're installing your dishwasher and save on installation cost.



SYLVANIA ANTENNAS ALL CHANNEL

Reg. \$79.95
Reduced to **\$49.95**

Reg. \$54.96
\$32.95

ROTORS
Reg. \$42.95

Now



\$499.95 W/T

Compare: You'll buy

Westinghouse

SAVE \$30

"FROST FREE 14"

Regul ar \$329.95
Model 143L **\$299.95** W/T

Completely frost free . . . with big 7-day fresh meat keeper that keeps meat for a full week without freezing. 131 pound full width freezer.



DON'T MISS THESE MAYTAG SPECIALS!

MAYTAG washers and dryers


Your Last Chance to Buy Maytag dependability at

LOW 1970 PRE-INVENTORY CLEARANCE PRICES!!!

USE YOUR CREDIT DON'T MISS THESE FABULOUS CLEARANCE BARGAINS!!!

NOTICE!!!
If You Are Going To Buy A Washer, Dryer or Dishwasher This Year . . . Now Is Your Chance To Save!

We'd Rather Sell Them Than Count Them!



MAYTAG Porta-Pair

USE YOUR CREDIT

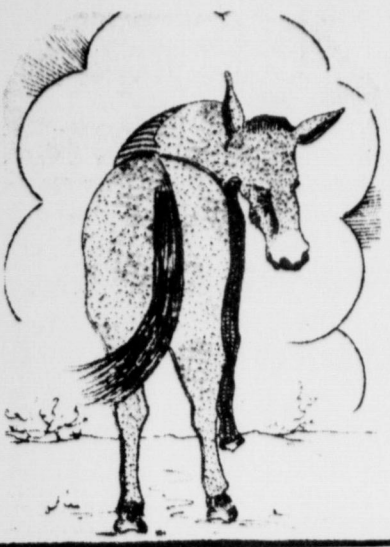
Maytag Washers • Complete All-Purpose Washing • Hot Water Wash • Hot Power Rinse • Automatic Water Level Control

Maytag Dryers • Hot-Air Drying • Pester, Safer Drying to All Fabrics • Electronic Control • Stops Overdrying, Less Wrinkling, No Shrinkage

Maytag Dishwashers • Portable or Built-In • Increased Loading Capacity by Unique Rise Building System • Heavy Cleaning Power with Water Moving Power from More Sides!

GORDON WILSON APPLIANCE

PHONE 272-3138 MULESHOE 202 MAIN



MULE'S TALE



Official Publication of Muleshoe High School Written and Edited by Students of the Muleshoe Schools

Vol. 6 NO. 13

EDITOR Betty Chandler

SUNDAY, JANUARY 10, 1971

MHS Students, Teachers Travel During Holidays

Junior And Senior Favorites Selected

By Cathy Mardis
The upper classmen of MHS have selected their class favorites. Senior favorites this year are Jeanene Freeman and C.L. Myers. Jeanene has been on the Annual Staff the past two years, is a member of F.H.A. and F.T.A., is D.E.C.A. Secretary, was the 1970-71 Powder Puff Queen, the 1969-70 attendant for F.H.A. Sweetheart and was the Junior Class vice-president. She is very active in all school activities and is presently serving as the Secretary-Treasurer for the Pep Club. C.L. is the President for the Muleshoe Chapter of F.F.A., has been a member of F.F.A. for the past four years, the 1970-71 Powder Puff King, a member of F.T.A., the Junior Class Favorite, served on the Annual Staff in 1969-70, and is now the photographer for the Mules' Tale.

The Junior favorites are Karen Locker and Danny Noble. Karen has been in band for the

past three years, is presently serving as a band librarian, and made the All-Region Band her freshman year. She has been in F.H.A. for two years and F.T.A. for three years. Danny has been in F.T.A. for the past three years and is serving as the Secretary. Danny has also been a member of F.T.A. for three years.

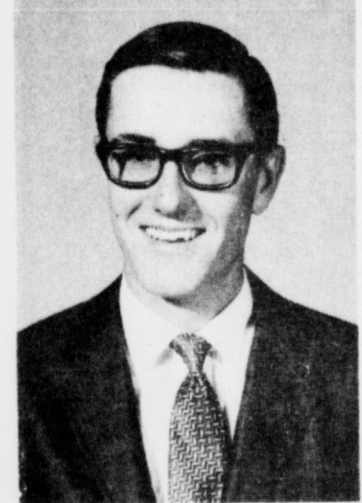
The Mules' Tale Staff would like to congratulate these four deserving students.

School Menu

- MONDAY
Milk
Chicken Fried Steak and Gravy
Green Beans
Creamed Potatoes
Hot Rolls
Applesauce
- TUESDAY
Milk
Hamburgers
Pickles and Onions
Lettuce Leaf
Tater Tots
Buns
Peach With Prune
- WEDNESDAY
Milk
Hot Tamalie with Chili Sauce
White Pea Beans
Tossed Green Salad
Corn Bread
Ginger Cookies
Tangerine
- THURSDAY
Milk
Corn Dogs with Mustard
Cheese Sticks
Vegetable Beef Soup
Cinnamon Rolls
Pineapple Tidbits
- FRIDAY
Milk
Meat Potato Burger
Buttered Spinach
Fruit Cup
Whole Wheat Muffin
Chocolate Pudding with whipped Topping.



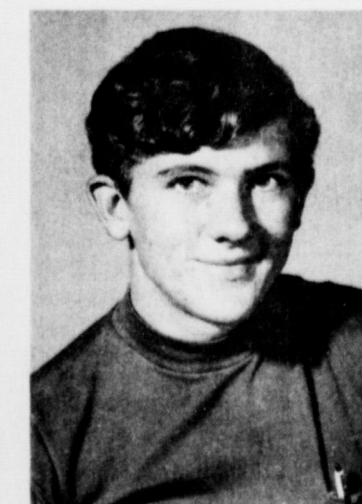
Jeanene Freeman



C.L. Myers



Karen Locker



Danny Noble

Girls B-Team Has 50-50 Season Record

The Muleshoe High School girls basketball teams are now in the last six weeks of their present season. This year has been far from a success as far as a win-loss record. The year has been a season of young players and new ideas. Coach Pollard is in his first year as the Mullettes mentor.

The Varsity has won twenty-seven percent of their games including a trophy from the Friona tournament. The low winning percent is not totally indicative of the caliber of playing. The Mullettes have lost six games by an average of three points. The Varsity has eight games left in the year including four district contests.

The girls B team has a far better record with a fifty percent of their games being victories. The team has consisted of mainly Freshmen which speaks even higher of their record. They too lost two games by a total of two points. The B team has played teams mainly composed of Sophomores and Juniors. The B team has six games and the Springlake Tournament left in their schedule.

The Freshman girls have won sixty percent of their games including second place in the Muleshoe Tournament. The Freshman have five games and the Dimmitt tournament remaining on their schedule.

The main concern facing the girls' teams for the rest of the year is a good performance against all remaining rivals, but especially Tulia and Canyon.



NATIONAL HONOR STUDENTS FOR DECEMBER--Named to the National Honor Society as students of the month at Muleshoe High School were from left, Joe Bob Fudge, sophomore;

Gary Kincannon, senior; Marilyn Pool, junior and Leesa Sanderlin, freshman. These students were named on the basis of their scholastic abilities and high grades.

Athletic Trainer Duties

There are three young men of the MHS athletic department whose skills as managers and trainers contribute much to help the coach and team. These boys are Charlie Chandler, Chuck Smith, and Eddie Ellington. Their jobs include filming the games, giving the Mules medical attention when it is needed, and assisting the coaches.

our team even more. I think we have a very good chance for a district bid!"



EDDIE ELLINGTON
Eddie Ellington, son of Mr. and Mrs. Carl Ellington, is one of the two managers for the MHS Basketball, Football, and Track teams. He has one sister, Carla, and they reside near Carl's Meat Co. Eddie is a member of the First Methodist Church and of the Thespians. His special interests include medicine, biology, and playing the guitar. When asked to comment on this year's basketball team he said, "We have a very good team. We are strong and have a lot of desire. We have a great coaching staff that helps

Seniors Plan For Graduation

By Becky Sain
The Senior class met Tuesday, January 5, for its regular class meeting. Class favorites were selected during the meeting. C.L. Myers and Jeanene Freeman received these honors.



CHUCK SMITH
Chuck Smith, who resides at 402 West 9th, is a trainer for the Muleshoe Mule's Basketball, Football, and Track team. He is an active member of DeMolays, enjoys debating especially in speech contests, and likes to play tennis and to hunt.

NHS Students For December Were Chosen

By Babs Haire
The National Honor Society Students of the Month have been chosen for December. The senior honor student is Gary Kincannon. He is in FTA and on the Historian Committee, Art Club Historian, Chaplain of the National Honor Society and a member of the Dusty Pages.

Marilyn Pool is the junior honor student. She is a twirler for the MHS Band and was a candidate for Homecoming Queen. She is in FTA, secretary of the Rose Chapter of FHA, and a member of the Spirit Club.

The other honor students are sophomore Joe Bob Fudge and freshman Leesa Sanderlin. Congratulations to these students.

Muleshoe. When asked for comments on this year's team, Chuck said, "We've improved a lot from last year. They're more experienced, more relaxed and think better on the floor. They're faster and play better defense than last year. We're scoring pretty good and getting



Coaches
O
m
m
e
n
t
l

The boys now have a record of 10 wins and six losses. These boys have done an excellent job and need to be complimented for the effort they have given. The one factor which has helped us the most this year has been our depth. We have six boys who are averaging between six and eleven points a game. These boys are Randy Field, Don Heathington, Leroy Medlock, Mike Riley, Jerry Putman, and Johnny Hayes. Not only are these six boys doing a good job, but I'm also real proud of the remainder of the boys. They have come in and done a real good job and this has given these boys a chance to get some rest. These boys are Rand Baker, Tommy Clements, Donnie Wheat, Larry Mitchell, and Jerry Scoggin.

The aspect of our game which I have been the most pleased with the last few weeks has been our defense. We have gone to a man-to-man defense. In the last four games we have held our opponents to less than 48 points per game. If we can hold our opponents to less than 50 points, we feel that we will win. I am real proud of all of these boys and would like to encourage you to come out and support these boys in district play.

Safety First
"Some of you pedestrians walk as if you owned the streets."
"Some of you motorists drive around just as if you owned the streets."

better. I think we have a good chance at district this year."



CHARLIE CHANDLER
"I think our team has a strong chance of winning district this year with an even better chance next year. I also hope and believe our Junior Varsity can go undefeated this season," says Charlie Chandler, video man for the athletic department. He also assists Chuck Smith and Eddie Ellington during workout in basketball.

MHS Council Competing For State Offices

By Becky Sain
The MHS Student Council held its regular meeting Monday, January 4. Special discussions were held.

The MHS Council is planning to run for an office in the state. A committee was selected to organize and plan projects to be made for competition for the office.

All students are reminded to sign the appropriate class list for spirit contest scores at all home basketball games. The Council wants to congratulate the Mules and Mullettes for the fine job they are doing this year.

Short, Long Trips Enhance Christmas

By Babs Haire
Several MHS students and teachers went out of town during the Christmas vacation. Kim Cowan visited her grandparents in Hobbs, N.Mex.; Linda Lambert went to Lubbock; Mr. Marshall visited relatives in Littlefield, Abernathy, and Floydada; and Mr. and Mrs. Eric Smith went to Dallas.

Raymond Villalobos traveled to San Antonio; Mrs. Young went to Clovis; Rhonda Embry went to Canyon and Anton; and Raymond and Daniel Guzman journeyed to Old Mexico. Barbara Gray went to Plainview; Rhonda Manasco and Donna Campbell traveled to Sweetwater; Tina Gutierrez went to Lubbock and Clovis; and Kipp Layne and Brad Davis went to Snyder.

Jack Lasiter got snowed in at Albuquerque; Steve Glover went to Vernon, San Antonio and Big Bend; Lynal Ashford also went to Big Bend; and Johnnie Henderson went to Graham; Ricky Smallwood traveled to Houston; to New Mexico, and Oklahoma; and Mr. and Mrs. Gist went to Odessa, El Paso, and Juarez, Mexico. Jennifer Davis went to Tulsa, Oklahoma, and Pampa; Terry Burchel journeyed to Lawton, Okla.; and Eugene Clemmons went to Littlefield.

Deborah Wagon went to Ruidoso; Ricky Black went to Odessa; Ricky Faver traveled to Bowie; and Sherry Wagon went to Roaring Springs. Linda Langer traveled to Lufkin; Becky Sain went to Decatur; Pam Copeland visited Tahoka; and Babs Haire was welcomed by her grandparents when she visited Cotton Center. Coach Washington went out of state to Fredricksburg, Oklahoma. Margie Silquero and Erlinda Lopez traveled the country visiting their relatives in San Marcos and saw sites at Aquarena Springs and the Wonder Cave.

Geraldine Gray enjoyed Christmas at home and afterwards visited her brother and family in Marshall. Connie Red-

wine visited her grandfather in Douglass, Arizona; Jimmy Mills took trips to Lazbuddie and Clovis; and Jolene Rempe journeyed to Rio Grande Valley; Santiago Lozano went to Mexico. Cathy Mardis went to Childress and Big Spring, and Barbara Harper visited in Dallas. Eren Sacramento went to Mexico City. Mr. and Mrs. Ben Gramling and Ann went to Juarez and Ruidoso. Mrs. Ma-Juarez and Ruidoso. Mrs. Martha McCormick and Cathy visited relatives in Slaton. Terry Gunter visited relatives in Dallas and in Louisiana.

Freshman Boys Gain Victory Over Plainview

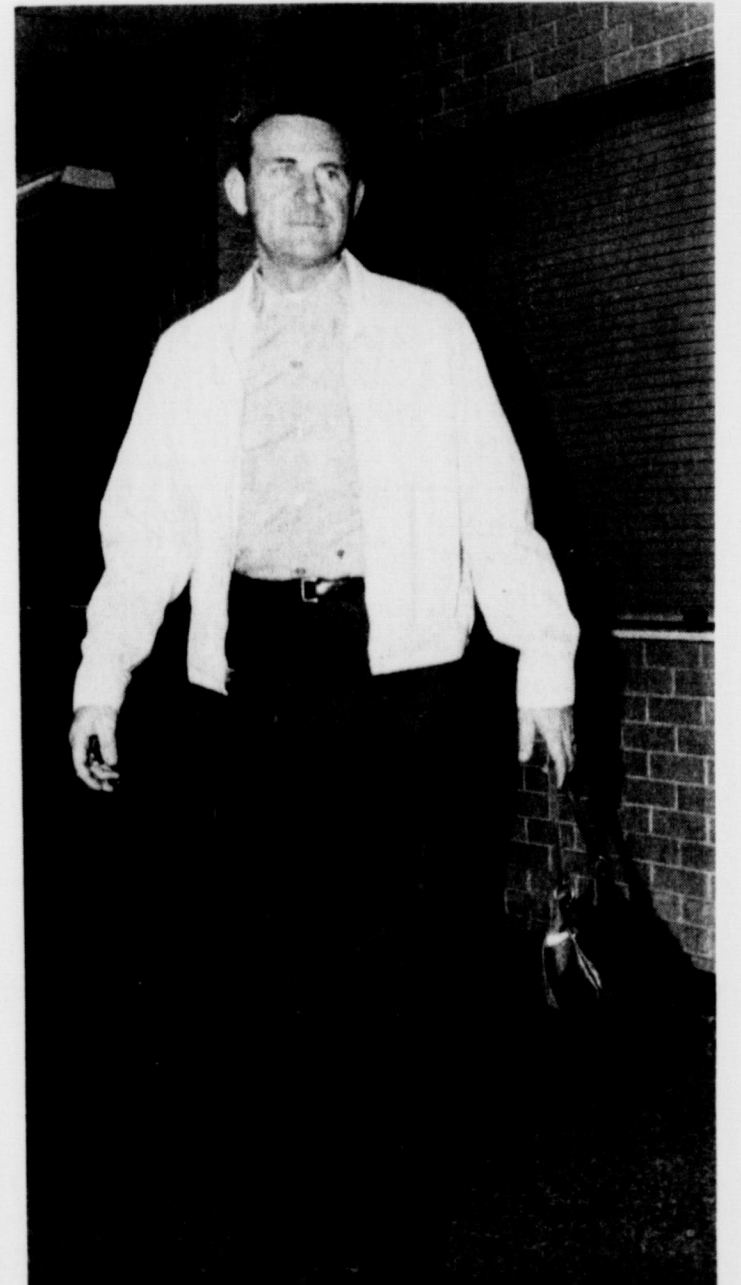
By Betty Chandler
The Freshmen basketball team of MHS had a smashing victory over Plainview, Thursday, Jan. 7, with a score of 44-26. Larry Mitchell was high scorer with 16 points. The Freshmen season record consists of seven wins and one loss. Their next game is with the Dimmitt Bobcats, here, Monday, Jan. 11, at 7:00 p.m.

The Mules' Tale staff would like to congratulate the Freshmen team for their victory over Plainview.

Show And Tell Scheduled By Home Ec III

By Brenda Tiller
The Home Economics III classes have completed their garments. There will be a "show-and-tell" day Friday. The girls will bring the sewing they have done during this semester to display before the other girls.

The Home Economics II classes are studying home nursing. The Chapter Project this month will be collecting clothes for the needy of the community.



HUH!--If it's a surprised look you see on the face of Ben Gramling, counselor for Muleshoe Junior High and High School, it is because he got 'caught' with this purse Friday night. Actually, he said someone found it and turned it in to him at the ball game.

WANT ADS DO THE JOB FAST!

WANT ADS PH. 272-4536

CLASSIFIED RATES OPEN RATES

First insertion, per word- 7¢
Second and additional insertions-5¢

NATIONAL RATES

First insertion per word- 9¢
Second and additional insertions- 6¢
Minimum charge- 75¢

Card on Thanks - 1.50 Double rate for blind ads

Classified Display- 95¢ per col. inch
\$1.05 col. inch for reverses

DEADLINE FOR INSERTION

Thursday's Muleshoe Journal- Noon Tuesday
Sunday's Bailey County Journal- Noon Friday
The Journals reserve the right to classify, revise or reject any classified ad.
Check advertisement and report any error immediately Journals are not responsible for error after ad has already run once.

FOR SALE: 3 bedroom home refrigerated air conditioning, Ed Nickles, 8-42s-tfc

EXCLUSIVE 80 acres, level. Small down payment, good loan, low interest. Well located, E.E. HOLLAND REAL ESTATE 121 W. Am. Blvd. Ph. 272-3293, 8-48t-tfc

Would appreciate listings. Have buyers waiting. KREBBS REAL ESTATE, Phone 272-3191, 8-50s-tfc

FOR SALE: in Richland Hills, 3 bedroom, den, utility room, bath and 3/4 fully carpeted, dishwasher and fireplace, Equity \$1,000 payments \$125 monthly. Phone 272-3594, 8-49t-tfc

EXCLUSIVE 3 bedroom home with living room, den, kitchen and dining area. Lots of built ins, two baths, fenced yard. HOLLAND REAL ESTATE Phone 272-3293, Will Trade 8-42t-tfc

WANTED: WAITRESS, apply in person, Corral Restaurant, 3-40s-tfc

BEAUTY OPERATOR WANTED: full or part time IMMEDIATELY. Reba's Beauty Shop, 3-53t-4tc

5, APTS. FOR RENT

FOR RENT: Furnished apartments large or small, Traylor space, Bills paid, Phone 272-3465, Briscoe Apartments, 5-34t-tfc

6, ROOMS FOR RENT

FOR RENT: Bedroom, 807 W. 7th, Call 4166 or 4903, 6-1s-tfcs

8, REAL ESTATE FOR SALE

FOR SALE: 80 acres of land, All in Alfalfa hay. One half mile drag type sprinkler line. Contact Ernest Ramm, Phone 925-3122, 8-1s-3tp

FOR SALE: Elderly out of state owner: 320 A. - 2 unimproved quarters. 2-8" irrigation wells on each quarter. All tillable, level, flood irrigated, 12 miles West of Muleshoe, Texas. Good feed grain & Cotton base. Outstanding proven yields. Possession March 1, 1971. Will sell on contact. - 29% down, Contact, Dick Shea, Ph. 402-866-4521, Sterling, Nebraska, 68443, 8-1s-4tc

640 ACRES, \$300 per acre. No down payment, 7% interest, 7 full 8" wells. Underground pipe, natural gas, 400 acres of alfalfa hay, 175 acres corn. Government payments, 2,000 head feed lot lease, good depreciation, ideal cattle operation, 4 miles west of Muleshoe, Dial 806-763-5323, 8-51t-tfc

FOR SALE: 72 acres - 8 in, well located at Clay's Corner. Engine and pipe goes with land. \$475 an acre, Call 385-3373 Littlefield, Tex. or write Box 547, 8-47s-tfc

FOR SALE: 160 acres irrigated land, 3 bedroom home, 8 miles N.W. of Muleshoe, Call A.G. Taylor after 6 p.m. 965-2646, 8-52t-tfc

Brain damage tests urged for crime suspects.

FARM FOR RENT: 380 acres, 200 cotton, good base. 946-2738, 3 miles west of Enochs, M.C. Street, 14-1s-tfc

When the world entirely fits your notions, you will be the only person in it.

15. MISCELLANEOUS

WANTED TO DO: Custom listing, Call: 272-4869, 15-1t-4tp

TAKE OVER PAYMENTS: 1968 Model Singer Sewing machine in Walnut console. Will zig zag, blind hem, fancy patterns etc. Assume three payments at \$7.96. Will discount for cash. Write Credit Manager 1114 19th St. Lubbock, Tex. 15-7s-tfc

FARM FOR SALE and equipment. 15 acre - 12 in hay. 2 miles from Portales, 2 bedroom house, 8 inch well (20 horse electric) under ground pipe. 420 John Deere tractor on butane. New Holland rake and baler. Forney Welder, cutting torch. Area code 505-356-8771.

WANTED: PASTURE, Sudan grass Native grass for cows or yearlings. Call Randy Johnson 272-3056, 3-30s-tfc

Three Way News

By Mrs. H.W. Garvin
E.T. Bateas spent Christmas in Pampa visiting his brother who is ill.

H.C. Nickels was in the Goodland Community Monday on

HORSE SHOING: Call 806-285-2518 or 806-983-2291 in Floydada, Mike Smith, 16-43t-tfc

\$25.00 Reward for the finding of my black, brown and white small beagle. Answers to the name of Sam. Bob Palmer, 272-3734, 15-2s-2tp

SINGLETON FUNERAL HOME
24 Hour Ambulance Service
Ph. 272-4574 Muleshoe

business, Nickels is from Littlefield.

Mr. and Mrs. Earl Bowers and daughter spent the past few days in Baytown visiting their daughter and family the Glen Campbells.

Our sympathy goes to Mr. and Mrs. Chester Petree on the death of his brother who was buried in Morton Thursday afternoon.

Mrs. R.L. Reeves is a patient in Cochran Memorial Hospital in Morton.

Mr. and Mrs. Nelson Carlisle and girls visited in Lovington, N.M. Friday.

Mr. and Mrs. R.G. Benton

from Scottsdale, Arizona spent the past weekend visiting his sister and family, the Rayford Mastens.

Mr. and Mrs. Leon Dupler and girls spent the past weekend visiting her sister and family, the J.W. Wartons, in Dumas.

Mr. and Mrs. Billy Sokoro from Lubbock spent the weekend visiting her parents the Rayford Mastens.

Sweden is pressing curbs on pollution.

Mrs. E.T. Bateas spent the Christmas holidays in San Antonio visiting her daughter and husband, the Jonnie Harris family.

No Mathematician
Little Johnny's father found him shaking his pet rabbit and demanding, "Five and five, how much is that?"
"What's the meaning of this?" the father demanded.
"My teacher says that rabbits multiply rapidly, but this dumb bunny can't even add."

TELEX
Hearing Aids
Clovis Hearing Aid Center
Batteries & Molds. Free Tests.
Service All Makes.
416 Mitchell Phone 763-6900
Clovis, N.M.

Lions Club
meets each Wednesday, 12 Noon
FELLOWSHIP HALL Methodist Church
Don Harmon, President

Muleshoe Oddfellows
meets each Thursday 7:30 p.m.
H.H. Snow, Noble Grand

Jaycoos
meets every Monday, 12 Noon
Darrell Oliver, Pres.

Muleshoe Rotary Club
meets every Tuesday at 12:00
FELLOWSHIP HALL Methodist Church
Harvey Bass, President

VFW
Walter A. Moeller Post # 8570
8:30 p.m.
2nd & 4th Moods
Old Pribble Skating Rink
D.T. Garth, Commander

Masonic Lodge
meets the second Tuesday of each month
practice night each Thursday
Ray Cline, W.M.
Elbert Nowell, Sec.

Fine Art Booster
Meets Every Fourth Monday 8:00 P.M.
MULESHOE HIGH SCHOOL BAND HALL
DON BRYANT, President

1. PERSONALS

BASENJI PUPPIES, champion sired, home reared, Inquires welcome. Ruth Hammock, Muleshoe 272-3109, 1-53t-4tp

SEWING WANTED, ladies, boys, and girls, Call 272-3670, 1-2s-2tc

Mary Myers Income Tax Preparation and quarterly reports, 107 W. Ave. D., 1-1t-tfc

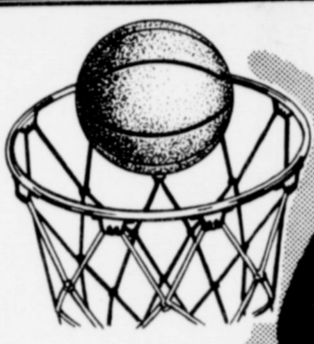
Bras & Girdles By PENNYRICH AT Main Street Beauty Salon

3. HELP WANTED

WANTED TWO BOYS, Must be 12 years or older for paper routes in the East part of town. Apply in person at the Journal Office, 3-48t-tfc

Experienced Farm and Ranch hand. One that knows farming machines. Will furnish living quarters and transportation. Call Randy Johnson, 272-3056, 3-9s-tfc

NEEDED IMMEDIATELY: Full or part time hair stylist, Main Street Beauty Salon, Phone 272-3448, 3-34s-tfc



Game Time!

"SUPPORT THE MULES and MULETTES"

We wish you a Successful
1970-1971 Basketball Season.

Basketball Schedule

MULESHOE HIGH BASKETBALL SCHEDULE 1970-1971

Varsity and B Team Boys

Date	Opponent	Time	Location
Dec. 10, 11, 12	Tulia Tourney *		There
Dec. 15	A & B Brownfield	6:15	Here
Dec. 18	A & B Friona	6:15	There
Dec. 22	A & B Dimmitt	6:15	Here
Dec. 31	A Muleshoe Tourney		Here
Jan. 2	A & B Plains	6:15	There
Jan. 5	A & B Dumas *	6:15	Here
Jan. 8	A & B Canyon *	6:15	There
Jan. 15	A & B Perryton*	4:00	There
Jan. 16	A & B Tulia *	6:15	Here
Jan. 19	A & B Levelland*	6:15	There
Jan. 29	A & B Dumas *	6:15	There
Jan. 30	A & B Perryton *	4:00	Here
Feb. 5	A & B Canyon *	6:15	Here
Feb. 9	A & B Tulia *	6:15	There
Feb. 12	A & B Levelland*	6:15	Here

*District Games
COACHES:
Raymond Schroeder, Boys Varsity
James Morgan, Boys B Team
Curtis Didway, Boys Freshmen
Fred Hedecoke, Athletic Director

Varsity and B Team Girls'

Date	Opponent	Time	Location
Dec. 10 - 12	A Tulia Tourney *		There
Dec. 17-19	A Hale Center Tourney		There
Dec. 22	A Dimmitt	5:00	Here
Jan. 8	A & B Olton	5:00	There
Jan. 15	A & B Canyon*	5:00	There
Jan. 19	A & B Tulia *	5:00	Here
Jan. 22	A & B Olton	6:30	Here
Jan. 26	A & B Friona	6:30	There
Feb. 2	A & B Wayland Queen Bee	5:30	Here
Feb. 5	A & B Canyon	5:00	Here
Feb. 9	A & B Tulia *	5:00	Here

*District Games
COACHES:
Mike Pollard, Girls Varsity & 9th Grade



SPONSORED BY THE FOLLOWING "BASKETBALL SUPPORTERS" OF MULESHOE HIGH SCHOOL :

Art Craft Printing	Cobb's	Dr. B.R. Putman
John's Custom Mill	Dari Delite	First National Bank
Eddie's Food Market	Texas Sesame	Muleshoe Co-Op Gins
Ruth's Corral Drive In	Spudnut Shop	Whitt, Watts & Rempe
Muleshoe Livestock Auction	King Grain Co.	Muleshoe Publishing Co.
Bailey County Electric Co-Op Assn.		Muleshoe Implement Supply

FROM THE NATION'S
GREAT POTATO COUNTRY

NORTH DAKOTA
certified
SEED POTATOES

They're Ready Now!

This hardy seed is grown in the far north. It has the vigor needed to make BIG crops in all commercial producing areas. The finest quality you can find. Now at its prime.

CALL YOUR DEALER SOON.

State Seed Department
University Station, Fargo, North Dakota

Where MJHS People Went During Holidays

By Vicki Redwine
It is very interesting when you ask a bunch of people what they did over the holidays. You get so many different answers. For instance Tracy and Max Buhrman went to California. Mr. and Mrs. Mack Moore also went to California and Mrs. Moore's little sister got married. Mrs. Moore said they

went to San Jose where they had campus rioting but still met many extremely fine kids. Linda Hernandez had her fifteenth birthday and in Mexico every girl who reaches the age of fifteen has a big celebration. Janet Hopper was in Amarrillo to see her sister. She also went to her grandmother's apartment and had a New

Year's party. Mrs. Kimbrough stayed at home and had a visit from her folks. Mrs. McKillip was gone to Albuquerque. When they got ready to come home there was a bad snow storm and they were quite scared about getting back. These are just a few of the people who did something interesting. I am sure there are many more.

Let us permit nature to have her way; she understands her business better than we do.

-Michel de Montaigne.

MJHS Worried Students Study For Mid-Term

By Prisca Young
The halls at Muleshoe Junior High are crowded with students who walk around with worried looks upon their faces. Wonder why? Mid term tests are swiftly approaching. You'll find

students carrying books, books and more books home. Even students who don't usually take books home (yes, there are some) will be. They are trying with a last effort to bring their grades up to a decent average. So if you're driving along and come upon a student crossing the street with a bewildered look and a book in his hand, please just wait patiently for him to cross. Your effort will be deeply appreciated. The time to be on the watch

for these confused teenagers will be the week of the 11th through the 15th. But beware especially on the 14th and 15th because that is the date of the tests. After the hard work put out by the students they will then receive a time to recuperate. On Monday the 18th they may catch up on all of the sleep they lost studying for tests. The teachers however are not so fortunate. They will come to school and finish their semesters work. Everyone will

then be back in school on Tuesday the 19th. The report cards will then be given out on Wednesday and the hard work for averages known.

MJHS Annual Sets Deadline For Ordering

By Linda Hernandez
The Journalism class would like to announce that the deadline for buying annuals will be January the 12th. The students who are paying on the installment plan have until February the 24th to finish paying for their annuals.

Mack Moore Introduced As New Teacher

One of the new teachers this year at MJHS is Mr. Mack Moore. Mr. Moore teaches English and reading for the seventh grade. Mr. Moore was born in Lockhart, Texas and moved to Houston when he was four. Before he came to MJHS he taught at McKinney Junior High in McKinney, Texas and A.C. Jones High School in Beeville, Texas. He has lived in Muleshoe for one and a half years. Mr. Moore got a B.S. at North Texas State. Mr. Moore likes MJHS because of the friendliness of the kids and close companionship with the fine faculty and administration. Mr. Moore's hobbies include hunting, fishing, reading and music.

Carey Sudduth, Photographer For Junior High

By Trent Stewart
Carey Sudduth, son of Mr. and Mrs. David Sudduth, is one of the MJH Journalism students. Carey is one of the photographers. The other one is Trent Stewart. Carey is in the seventh grade and he is 12 years old, but his birthday is not far off. It is February the 23. Carey has a smaller brother Dickey who is in the fourth grade. He also has a younger sister Jonette who is in kindergarten. Carey was born in Lubbock, Texas. He lived in Lubbock for five years and then moved to El Paso, Texas and lived there for two years. When he finally moved to Muleshoe he was seven years old. He has lived here for five years. Carey attends the Church of Christ. Carey is a real good student and his hobbies are sports of all kinds.

Seventh Grade Students Win Toy Contest

By Judy Dearing
In the contest for toys for tots a seventh grade room won. Mr. Mack Moore who teaches English, spelling, and reading had the most toys with 134 items. All home rooms participated and a lot of toys, food and usable items were collected. We would like to say congratulations to Mr. Moore and his home room.

Chamber Corner

Jerry Hutton
C of C
Manager
In two weeks we will have the 21st Annual Chamber of Commerce Banquet. The theme for the banquet is "Muleshoe Progressing With the West". The banquet will be held at the High School cafeteria on Saturday night, January 23rd and the Chuck Wagon Gang from Odessa will cater it. The Banquet Committee is doing a fine job; they are Bob Stovall, Don Harmon, Mildred Howell and Pat Keese. Tickets are on sale at the Chamber of Commerce at \$3.50 per plate.



UNBEATABLE STAMPS, PRICES, & SERVICE ... GET THESE EVERYDAY at PIGGLY WIGGLY!

CAT FOOD
Kal-Kan, Chicken, Kitty Stew, Bits of Kidney, Bits of Heart
6 1/2-Ounce Can **18¢**

FOLGERS, All Grinds, Including Electric Perk
Extra Bonus Special
88¢
Pound Can

UNBEATABLE PRICE
Borden's Ice Milk
All Flavors **56¢**
1/2-Gallon Carton
PLUS STAMPS

UNBEATABLE PRICE
Wolf Brand Plain Chili
19 oz. can No Beans **65¢**
PLUS STAMPS

Scott, Jumbo **Paper Napkins** 160 Count Package **43c**
Northern, Assorted Colors **Toilet Tissue** Single Roll **12c**

PORK & BEANS
Libby's, Deep Brown 2 14-Ounce Cans **27¢**

Blackburn's, Maple Flavor **Waffle Syrup** 20-Ounce Bottle **48c**
Frito, Jalapeno **Bean Dip** 3 1/2-Ounce Can **15c**
Carol Ann, Cut **Green Beans** 5 No. 303 Cans **\$1.00**

Carol Ann, Whole Kernel or Cream Style **Golden Corn** 5 No. 303 Cans **\$1.00**
Mountain Pass **Tomato Sauce** Buffet Can **11c**
Suzan, Creamy Rich **Salad Dressing** Quart Jar **39c**

Cock of the Walk **Tomatoes** No. 303 Can **22c**
Ranch Style **Blackeye Peas** No. 300 Can **19c**
Carol Ann Mashed **Instant Potatoes** 15-Ounce Box **49c**

PIGGLY WIGGLY MEATS ARE GUARANTEED TO PLEASE OR DOUBLE YOUR MONEY BACK!

SLICED BACON First Grade Quality, Farmer Jones **59¢**
Pound Package
2-Pound Package **\$1.17**

SWISS STEAK USDA, Choice Beef Round Bone Arm Cut **78¢**
Pound

FRYING CHICKENS USDA, Grade A, Whole, (Taste the Difference) **28¢**
Pound
CUT-UP FRYERS **35c**

Fryer Parts
CUT from USDA Grade A Fryers, Buy your Favorite Part At These Low Prices:
FRYER BREAST **59c**
FRYER THIGHS **55c**
FRYER DRUMSTICKS **49c**
DUMPLING PAK Wings, Backs, and Necks **18c**

BONELESS CHUCK ROAST
USDA Choice Beef, Valu-Trimmed, Waste-Free
89¢
Pound

Tomato Catsup
Libby's, Family Size **25¢**
20-Ounce Bottle
Extra Bonus Special

Unbeatable Meat Specials!

Pot Roast USDA, Choice Beef Blade Cut Chuck **58c**
Short Ribs Lean USDA, Choice Beef, Excellent for Braising or Boiling **38c**
Ground Chuck Dated to Assure Freshness **79c**
Sliced Cheese Farmer Jones, American or Pimento **63c**
Longhorn Cheese Farmer Jones, Hall Moog **53c**
Pork Chops Family Pack **69c**

DOUBLE S&H GREEN STAMPS EVERY WEDNESDAY WITH A \$2.50 PURCHASE!

Cal Ida **FRENCH FRIES** 9-Ounce Package **10¢**

CORN ON THE COB Birdseye 4-Pack **59¢**
CHOCOLATE PIE Johnston's 38-Ounce **92¢**

Carol Ann **ORANGE JUICE** 6-Ounce Can **13¢**
12-Ounce Can **25¢**

VALUES GOOD
JAN. 11, 12, 13
MULESHOE, TEXAS

Buttermilk Bell's, Quality Chek 1/2-Gallon Bottle **49c**
Chocolate Milk Quart Carton **41c**
Biscuits Pillsbury's, Sweetmilk or Buttermilk 10-Count Can **10c**
Margarine Fleischmann's, Soft, Tub Pack Pound Carton **49c**
Sour Cream Bell's 8-Ounce Cup **43c**
Floor Polish Johnson's, Future Acrylic 27-Ounce Can **\$1.32**

Paper Towels Gala, Assorted Jumbo Roll **39c**
Axion Pre Soak Laundry Detergent Giant Box **79c**
Chow Mein LaChoy, Beef or Chicken No. 303 Can **72c**
Black Pepper Schilling's, Fresh Ground 4-Ounce Can **49c**
Johnson's Pledge Dusting Wax, Regular or Lemon 14-Ounce Can **\$1.35**
Room Deodorizers Johnson, Sun Country 9-Ounce Can **65c**

UNBEATABLE PRICE
FREESTONE PEACHES
Three Ring, Sliced Irregulars No. 2 1/2 Cans **41¢**
PLUS STAMPS

UNBEATABLE PRICE
PINEAPPLE JUICE
Carol Ann 46-Ounce Cans **31¢**
PLUS STAMPS

UNBEATABLE PRICE
KLEENEX FACIAL TISSUE
Assorted Colors 200-Count Box **25¢**
PLUS STAMPS

UNBEATABLE PRICE
GREEN BEANS
Stokely, Tender Cut No. 303 Can **51¢**
PLUS STAMPS

UNBEATABLE PRICE
LAUNDRY DETERGENT
Carol Ann Giant Box **49¢**
PLUS STAMPS

Unbeatable Produce Values at Piggly Wiggly!

Bananas Golden Ripe **9¢**
Pound

Grapefruit Texas, Ruby Red **10¢**
Pound

Non-Food Specials!

Ultra Brite Toothpaste
New Mint Flavor or Regular, Manufacturer's Suggested Price 98c
66¢
LARGE Tube

Sucrets Lozenges Package of 24's **55c**

Right Guard Spray 4-Ounce Size **79c**

Cremolusion Cough Syrup Only **79c**

Contact Nasal Mist Only **99c**

1st in Savings!

Shop Rite... Shop Piggly Wiggly!