

The Plains Pride



PLAINS, YOAKUM COUNTY, TEXAS

VOLUME 4, NUMBER 41

SUNDAY, JANUARY 15, 1989

30¢



4th CAVALRY REGIMENT from Lubbock will march in the Inaugural Parade.

Fire Guards Okay For CRP Acres

Persons having land in the Conservation Reserve Program who are interested in installing a fire guard are reminded that there are ways to do so without violating the contract.

Edwin Livengood, district conservationist for the USDA Soil Conservation Service at Plains, said that he understands that the rules for installing them are fairly simple. The contract requirements are set by the ASCS.

"First, you need to protect the fire guard from excessive erosion," Livengood said. "The fire guard also needs to be next to a road and be written in the CRP plan."

"To prevent excessive erosion, farmers may want to plant annual wildlife strips in lieu of bare ground. Or the producer may prefer to merely keep the guard mowed or shredded closely."

For more information about fire guards on CRP land, persons may contact any USDA agency.

Superintendent's Contract Renewed

Plains School Board members met Monday, Jan. 9 in regular session with Melvin Lowrey, president; Jack Palmer, vice president; Stanley Ashburn, Eddie Earnest, Edwin Livengood, Ty Earl Powell and Jack Spears present.

Appointed to the 1988-89 Textbook Committee were Dean Andrews, J.B. Wilson, Jimmy Conner, John Nance, Cynthia Blair, Reta Nance, Sue Banfield, Israel Martinez, Joyce Moore, Paula Cullins, Brenda Canada, Richie Cullins, Regina Meeks, Lela Warren and Joyce Pierce.

Board approved the 1987-88 annual performance report as presented.

Reports were heard from Wanda Ashburn, business manager; and Larry Devitt, administrative assistant, who gave a transportation cost report, a review of various projects, comparison of utility costs and summary of football gate receipts.

Principals reported to the board on attendance, personnel evaluations, TEAMS tests, ACT tests and other activities.

Supt. Andrews presented

information concerning future board meetings, enrollment comparisons, election procedures for E.S.C. Board of Directors, TI-IN schedules, and State Board of Education workshop.

The board entered into executive session to discuss administrative staff

evaluations and superintendent's evaluation. After the session was opened, the Board extended Supt. Andrews' contract through June 10, 1991, with Palmer, Earnest, Powell and Spears voting FOR and Ashburn, Livengood and Lowrey, AGAINST.

Resignation Of Ag Commissioner Called For By Farm Organization

The president of the state's largest farm organization recently called on Texas Commissioner of Agriculture Jim Hightower to resign because of what he called the "damage" Hightower had caused livestock producers through public statements about the European ban on U.S. meat imports.

S.M. True, a grain, cotton and beef cattle producer from Plainview, said in a letter to Hightower, "I am extremely disappointed at your press response to the European Economic Community ban of U.S. meat imports. The damage you have done to the state's \$6 billion livestock industry warrants your immediate resignation

as Texas Commissioner of Agriculture."

In a statement to the press Dec. 27, Hightower said the European Community, in opposing meat treated with growth hormones, "is not expressing the views of a group of hippies. The reality is a concern that is growing worldwide about chemicals and drugs in feed products."

Hightower said there is a "clear trend among consumers who are concerned about food."

In his letter to the Commissioner, the Farm Bureau president said the agricultural industry in Texas and the nation has united over the years to support exports for meat and other products.

Vegetable Growers Meeting Postponed

The Vegetable Production meeting, sponsored by the Yoakum County Extension Office, which was scheduled Monday, Jan. 16 has been postponed.

New date and time is Wednesday, Feb. 22 at 10 a.m.

"The Texas Commissioner of Agriculture should be aware of and help promote the point that no scientist - on either side of the Atlantic - has provided any evidence that current methods of hormone use provide a health hazard.

"In your quest to oppose mainstream agriculture to chase self-promoting political headlines, you have either ignored or misunderstood the basics of international trade policy. You have created unnecessary embarrassment and economic difficulty for livestock producers.

"Your immediate resignation will provide relief to U.S. trade negotiators who must now face European counterparts armed with supportive remarks from an agriculture official."

Extension Council Meets Tuesday

Turner and State Line Home Extension Clubs were represented at the Yoakum County Extension Homemakers Council Tuesday, Jan. 3, which was held in the clubroom at noon.

Sidney Murphy served as chairman in the absence of Margaret Box. Mary Dale Williams, extension agent, gave devotion thoughts.

Dorothy Jones, secretary-treasurer, read the November minutes, which were approved as read. She also gave a financial report.

Mrs. Williams gave a demonstration on holiday gifts and

Plains 42 Club Hosts Supper

Claude and Marsene Beattie and Ann Chadwick hosted the Plains 42 covered dish supper, which was held Jan. 7 at 6:30 p.m. in the clubroom.

The serving table was centered with a large poinsettia plant.

Playing games of 42 and Skip Bo were Glenn and Otie Morehouse, Carl and Marie Lowrey, Bert Bartlett, Bob and Rhuely Edward, Sherm Tingle, Norman Carr, Mae Collum, Edna Chambliss, Esther Holland, Joe and Sudie Thompson, Dick McGinty, Bill and Burve Overton, A.B. and Irene Chitwood, Joe and W.O. Harbour and the host and hostesses.

Next meeting will be held Jan. 21.

Secret Pals Told, New Ones Chosen

Secret pals were revealed by members of the State Line Extension Homemakers Club at a dinner meeting held at the Fifty Yard Line in Lubbock, Saturday, Jan. 7 at 6 p.m.

New secret pals names were drawn for the new year.

Those attending were Margaret and Royce Hartman, Carol Beth and Lee Roy Box, Sidney and Preston Murphy, Margaret and Tom Box, Mary Dale Williams, Clara Williams, Dolores Davis, Sheri and Alton Earl McGinty, Toni Jones, Dena and Richard Rafferty, Gale and Jackie McDonnell, Diane Hurst of Iceland and Pam Redman.

—*Filmtime*—
at Yoakum Co. Library



The study of "Seasons" was continued at children's Filmtime Wednesday with "Spring" by Kathy Holster.

Two clowns, named Teddihonker and Norm O'Nippy appeared to help celebrate Elizabeth Clanahan's fifth birthday.

THE PLAINS PRIDE

The Plains Pride (USPS 757-130) is published weekly at 716 Main Street, Olton, Lamb County, TX 79064. Second Class Permit paid at Olton, TX 79064. POSTMASTER: Send address changes to THE PLAINS PRIDE, P.O. BOX 774, OLTON, TEXAS 79064-0774.

Any erroneous reflection upon the character or standing of any person or firm appearing in this paper will gladly and promptly be corrected, upon being called to the attention of the management.

painting sweat shirts to members of the Turner Club. The State Line Club met to plan for three banquets, setting their Christmas Party for Saturday, Jan. 7 at the Fifty Yard Line in Lubbock for members and spouses.

Council projects recently include furnishing hot chocolate for the Plains Lions Club to serve at the annual Christmas Tree Lighting in Pioneer Park in November. They also decorated the tree with lights as a community project.

The annual Christmas party for all council members was held Dec. 2. Gifts were given Mrs. Williams. Each member brought a gift for a man and woman, who are residents in the Canterbury Nursing Home in Denver City. Toilet articles for each person in the home were wrapped by Jerri Lollar and paid for by the council.

Clara Williams was selected as vice chairman for 1989. The Christmas Party for 1989 was set for the Council and Clubs for Dec. 16.

A leader training meeting will be held Jan. 18, 1:30 to 3 p.m. in the clubroom. Topic will be "Fiber in the Diet."

TEHA contributions and messenger dues are now due and need to be turned in by the March meeting.

Plans for Yoakum County Livestock Show concession stand were completed. The show is Feb. 16, 17 and 18. All clubs will help clean the stands, Wednesday, Feb. 15 beginning at 3 p.m.

Needy Families Receive Food, Etc.

Approximately 1,000 pounds of food was distributed to 14 families here in Plains Dec. 23 by concerned citizens.

Food and money was made available through drives by Plains schools, Christmas Tree Lighting participants, Plains Art Association, Dirt Gardeners, State Line Extension Club, Salvation Army and American Legion.

Toys and clothing were made available by Plains area county employees exchanging toys in lieu of

gifts at their Christmas party, in Ga and residents of Plains. They distributed to 32 children.

All items were greatly appreciated, according to a spokesman for the concerned citizens.

All expired subscriptions will be pulled Jan. 31, 1989. See listings on Page

Wild flowers have been known to bloom in the Arctic—even at the edge of glaciers.

GREAT PRICES on all Auto Parts

Air Filters, Booster Cables, Battery Chargers, Head Lamps & Much More!

Buy 5 quarts of EXXON 1030, Trop Arctic, or Havoline 1040 Oil & Get Oil Filter for \$2.79 at Plains Variety & Clothing



You'll take it off here.

We'll take it off here!

Take off *Fast* in 1989 with WEIGHT WATCHERS® New Quick Success® Program

- Last year, Weight Watchers members lost weight 20% faster than ever. This year, it's even easier.
- Our New Quick Success Program lets you enjoy the foods you like most so you'll never feel hungry.
- We've simplified our optional exercise plan and made our weekly meetings even more exciting.
- This is the weight loss program that you can really count on in 1989. Come discover it for yourself!



Sheila Falk, Area Director

JOIN NOW FOR ONLY... \$8

Registration Fee \$17.00
First Meeting Fee \$ 8.00
Regular Price \$25.00

YOU SAVE \$17.00
Offer Ends January 29, 1989

Come to the Weight Watchers meeting nearest you.

PLAINS
Plains Library
Heritage Room
901 Avenue E
Wed: 5:15 pm

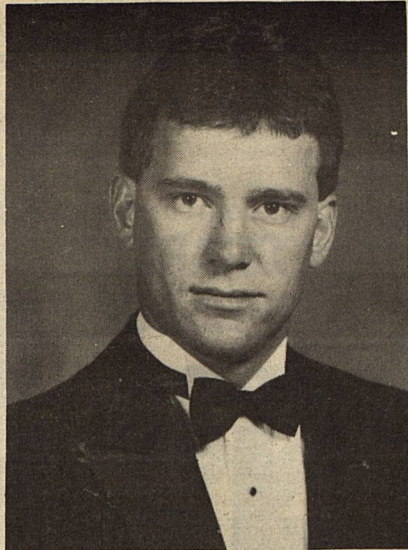


JOIN WEIGHT WATCHERS NOW!

Offer valid January 2 through January 29, 1989. Offer valid at locations listed (Areas 37, 96, 107) only. Offer valid for new and renewing members only. Offer not valid with any other offer or special rate.
Weight Watchers and Quick Success are trademarks of WEIGHT WATCHERS INTERNATIONAL, INC. ©WEIGHT WATCHERS INTERNATIONAL, INC., 1989

TOLL FREE

1-800-692-4329



BRENT ROWE STEPHENS



LEA ANN STEPHENS

Brother, Sister Receive Degrees From Texas Tech, Angelo State

Brent Rowe Stephens received a BS degree from Texas Tech University in food technology with a specialization in dairy production, in commencement exercises held in Lubbock Municipal Coliseum Dec. 17.

Lea Ann Stephens received a BS degree in Physical Education, with a minor in English, from Angelo State University recently. She is a 1984 graduate of Plains High School.

While at Angelo State, Lea Ann was a member of Kappa Delta Pi, the educational honor society; Sigma Tau Delta, the English honor society; and Phi Epsilon Omega, the physical education organization. She served as a volunteer coach for a YWCA girls basketball team and with the help of her sister, Cristi, coached their team to a championship season this past spring.

A 1983 Plains High School graduate, Stephens attended South Plains College where he was graduated with an associate degree. While attending SPC, he was named to the Dean's list for his academic achievements.

As a student at Tech, he was a member of Alpha Gamma Rho fraternity and he served on the intra-fraternity council.

Lea Ann completed her education requirements by serving as a student-teacher at San Angelo Central High School, where she taught junior English and helped with girls volleyball, basketball and off-season track programs. She will continue her

Concession Stand To Be Operated

Thursday, Feb. 16, Turner and State Line will open the concession stand at 9:30 a.m. It will remain open all day. Friday, State Line Club will open it at 7:30 a.m. and it will remain open all day, with volunteers helping. Turner Club will open the stand Saturday, Feb. 18 at 9:30 a.m. Clean up will be done that night.

Brownies, homemade pies, barbecue, candy and gum, Rice Krispie bars, hot chocolate, coffee and soft drinks will be sold.

TEHA, Sidney Murphy, Margaret Box, council chairman and Mrs. Williams will attend a leader training meeting in Lubbock Jan. 31.

education at Texas Tech, where she plans to obtain her Masters degree in P.E.

Stephens began work in Dallas Jan. 3 for Americana Foods, producers of TCBY Yogurt, in a management trainee position.

They are the children of Rowe and Sonnie Stephens and the grandson of Maurine Smith and the late I.L. Smith, all of Plains, and grandson of Verl Stephens and the late W.L. Stephens of Brownfield.

Free Enterprise Is Topic Of Speech

Mrs. Linda Powell spoke on "Free Enterprise and Economic and Business Education for High School Students" at the Jan. 9 meeting of GFWC Tsa Mo Ga Club which was held in the clubhouse.

Mrs. Ed Hunter served as program leader and introduced Mrs. Powell. Purpose of the meeting was to encourage GFWC members to become actively involved in the legislative process pertaining to free enterprise.

Mrs. Powell has taught government at Denver City High school for the past 20 years and has received numerous awards for her contributions in the field of education.

Roll call was answered by each member asking Mrs. Powell a question. Mrs. Sit Jones read scripture preceding the program. Acting as hostesses for the meeting were Mrs. Joe Henry Thompson and Mrs. Edna Chambliss. Those present included Sarah Shelton, Mattie Field, Wilma Powell, Mary Lee Swann, Rita Mae Snodgrass, Helen Hunter, Oattie Morehouse, Janie Crawford, Toni Jones, Hazel Lowrey, Mary Jo StRomain, Kathy Jones, Peggy Squyres, Barbara Brown, Dolores Davis and Mmes. Jones, Thompson and Chambliss. Two guests, Homer Shelton and Linda Powell, were present.

The next meeting has been scheduled for Jan. 23 with Mrs. Dwayne Canada serving as program leader and members of the social committee serving as hostesses. The program will be on education and the 1989 senior class of Plains High School and sponsors will be honored.

Musical Program Presented At Meet

"National Federation of Music Clubs Founder's Day Observance" was held by Plains Fine Arts Club Thursday, Jan. 5 as they met in fellowship hall of First United Methodist Church. Hostesses were Beth Ann Cain and Karen Bearden.

Dolores Davis was program director. The club collect was followed by the history of the NFMFC, which was given by Lois Miller. The official NFMFC invocation was given by Mrs. Davis.

"Name That Tune" was played by those present as Melba Crutcher played about 30 songs on the piano as the group listened to identify them.

President Cain conducted a business meeting in which plans were

made to sponsor a bake sale in the hallway of the courthouse Tuesday, Jan. 24 beginning at 8 a.m.

Those present included Mary Dale Williams, Jerri Ellis, Lois Miller and Mmes. Cain, Davis, Crutcher and Bearden.

The next meeting will be Thursday, Feb. 2.

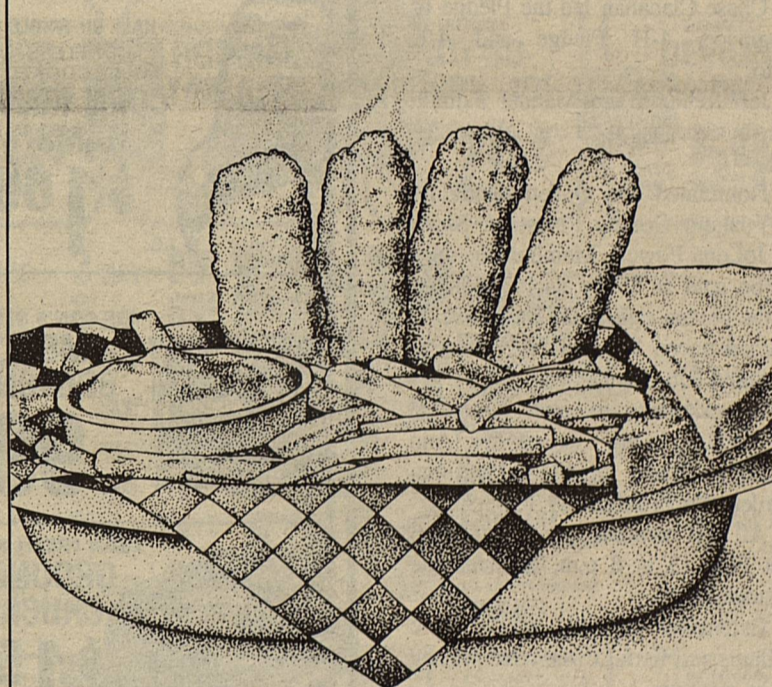
Birthday Honored

C.C. Copeland of State Line was honored with a fish fry Friday night in observance of his birthday, which was Jan. 5.

A white sheet cake trimmed with blue was lettered "Happy Birthday, C.C."

Those present were the honoree's wife, Carol; Mae and Mike Brinkley, Ed and Helen Hunter; and Raymond and Earlene Crain and Tisha.

BARGAIN BASKET!



\$1.99* Regular Size

The COUNTRY BASKET is a genuine legend in DQ Country! With four steak fingers, golden fries, Texas toast, and DQ's own special country gravy. All yours, with a basket full of savings! ON SALE JANUARY 16-29, 1989

THIS IS **DQ** COUNTRY

Funeral Services Held For Mrs. Lane

Funeral services for Imogene Lane, 90, of Lubbock were held at 2 p.m. Sunday in First Baptist Church of Rotan, with the Rev. Vernon Gee, minister emeritus of Lubbock's Trinity Baptist Church, officiating.

Burial was in Rotan Cemetery under direction of Weathersbee Funeral Home.

She died Thursday afternoon in Lubbock's Methodist Hospital following a lengthy illness.

Born in Fisher County, she moved to Lubbock in 1951. Her husband, Otis Lane, died in December 1945. She retired from Lubbock County Tax Assessor-Collector's office. She was a Monterey High School athletic booster and a member of Trinity Baptist Church.

Survivors include two daughters, Dorothy Foster of Lubbock and Martha Sullivan of Breckenridge; and four grandchildren, one of which is Sandra Foster of Plains.

Jo Lena Powell Is Queen Candidate

Members of Plains 4-H Club met Tuesday, Jan. 10 at 7:30 p.m. in the clubroom. Conducting the business meeting was Brandon McGinty, with Jo Lena Powell, secretary, reading the minutes.

Chase Clanahan led the Pledge of Allegiance, 4-H Pledge and 4-H Motto.

Jeff Redman and Manuel Estrada gave a demonstration on electricity safety.

Nominated for Queen candidate for Yoakum County Livestock Show was JoLena Powell. Membership dues will be sold at \$5 by each candidate and the person selling the most will be crowned queen Feb. 18. The show is scheduled Feb. 16, 17, 18.

Refreshments of pink lemonade and cookies were served by Ann McGinty, Kathy Six and Karen Bearden to approximately 30 persons.

All 4-H members are reminded to meet Feb. 13 at 6 p.m. to clean the livestock barns.

Extension agents, Mary Dale Williams and Kirk Lewis, were present for the meeting.

Soil Organizations Host Xmas Dinner

Yoakum County Soil Conservation Service and Yoakum County Soil and Water Conservation District held a belated Christmas dinner Monday, Jan. 9 in the clubroom in Plains, serving brisket, salads, coleslaw, beans, cobbler, rolls, tea and coffee.

Attending were Edwin and Pat Livengood, Bobby and Brian; Mike and Patsy Howard, Victoria, Belle Marie and Colleen; Charles and Paula Oswalt, Clayton and Katie; Mario Morales, Darrell and Beverly Lowrey; David and Vi Turnbough; L.J. and Virginia Sanders; Dick McGinty; Bob and Myrna White and Bob and Irene Jones.

REFRESHING
COCA-COLA
\$1.99
3 Liter

RUFFLES BRAND
POTATO CHIPS
89¢
REGULAR \$1.49

ASSORTED COLORS
CHARMIN TISSUE
\$1.09
4 ROLL PKG.

REGULAR OR NO SA
16 OZ. CUT GREEN BEANS
17 OZ. WH. KER
CR. STYLE GOLD
DEL MONTE VEGETABLE
2.89
CANS FOR

BOUNTY
PAPER TOWELS
79¢
JUMBO ROLL

HUNT'S
KETCHUP
\$1.19
32 OZ. BTL.

66 SMALL/48 MEDIUM/32 LARGE
PAMPERS ULTRA DIAPERS
\$9.99
BOX

DEL MONTE
SLICED/CRUSHED/C
IN ITS OWN JU
PINEAPPLE
3 \$1
8 OZ. CANS

HAVE A SUPER BOWL PARTY

HALF OR WHOLE BONELESS FULLY COOKED
CORN KING HAMS
\$1.69
LB.

WILSON'S MEAT FRANKS
89¢
12 OZ. PKG.

WILSON'S SLICED MEAT BOLOGNA
99¢
12 OZ. PKG.

80% LEAN FRESH FAMILY PACK
GROUND BEEF
\$1.39
LB.

LEAN FRESH BEEF
GROUND CHUCK
\$1.59
LB.

SELECT SLICED YOUNG
BEEF LIVER
89¢
LB.

WILSON CERTIFIED
SLICED BACON
\$1.39
1 LB. PKG.

PRICES EFFECTIVE JANUARY 15-21, 1989. WE RESERVE THE RIGHT TO LIMIT QUANTITIES.

DOUBLE STAMPS WEDNESDAY

FROZEN FOODS & DAIRY

BORDENS HI-PRO MILK	GAL JUG	\$2.09
BORDENS ORANGE JUICE	1/2 GAL. BTL.	\$1.69
BORDENS NUTTY BUDDIES	6 CT. PKG.	\$1.09
BORDENS ASSORTED EAGLE BRAND ICE CREAM	1/2 GAL. CTN.	\$2.69
BORDENS ASSORTED DIPS	8 OZ. CTN.	59¢

ASSORTED JENO'S PIZZA
99¢
PKG.

SWANSON TAKE-OUT FRIED CHICKEN
\$2.79
28 OZ. PKG.

SWANSON PLUMP & JUICY FRIED CHICKEN
\$2.79
2 LB. PKG.

DOUBLE COUPONS TUESDAY

Subject to the following policies and limitations.
 *Not honored on advertised specials.
 *Coupons will not double on cigarettes or tobacco products.
 *Free coupons will not double.
 *Coupon when doubled cannot exceed price of item redeemed.
 *Only one coupon per item will double. Other coupons on same item purchases will be redeemed at face value (Subject to manufacturers specifications.)
 *Coupons valued at 90¢ will not be doubled. Coupons above 90¢ will be face value.

Pay-n-Save
QUALITY AND SERVICE

AMERICAN OWNED AND OPERATED

STORE HOURS
8:A.M. - 7:00 P.M.
MONDAY - SATURDAY

WASHINGTON EXTRA FANCY GOLDEN DELICIOUS APPLES
59¢
LB.

FRESH SWEET LARGE PINEAPPLES
\$1.19
EACH

FRESH SELECT CUCUMBERS
49¢
LB.

MEXICO LARGE SIZE BELL PEPPERS
49¢
LB.

Home Town Thanks for shopping at Pay-n-Save Home Fair

REGULAR OR NO SALT

16 OZ. CUT GREEN BEANS OR 17 OZ. WH. KERNEL/CR. STYLE GOLD CORN

DEL MONTE VEGETABLES

289¢

CANS FOR

DEL MONTE SLICED/CRUSHED/CHUNK IN ITS OWN JUICE PINEAPPLE

3 \$1

8 OZ. CANS

GLAD Trash Bags

GLAD FAMILY TRASH BAGS

\$2.99

20 CT. BOX

GLAD LARGE KITCHEN GARBAGE BAGS

\$2.69

30 CT. BOX

GLAD-LOCK Storage Bags 25

GLAD-LOCK QUART STORAGE BAGS

\$1.39

25 CT. BOX

GLAD TALL KITCHEN GARBAGE BAGS

\$1.49

15 CT. BOX

GLAD Trash Bags

GLAD 30x37 TRASH BAGS

\$1.79

10 CT. BOX

OLD EL PASO MILD/MEDIUM/HOT PICANTE SAUCE

\$1.09

16 OZ. JAR

12 OZ. CAN COCKTAIL PEANUTS, 12 OZ. JAR DRY ROASTED PEANUTS, 12.5 OZ. JAR UNSALTED DRY ROASTED PEANUTS

PLANTERS PEANUTS

\$1.89

EACH

ASSORTED HOT POCKETS

\$1.79

10 OZ. BOX

ASSORTED PATIO DINNERS

\$1.19

11 TO 13 OZ. PKG.

BEEF & BEAN PATIO BURRITOS REGULAR/HOT/GREEN

3 \$1

5 OZ. PKGS.

DISINFECTANT LYSOL SPRAY

\$3.19

18 OZ. CAN

TEXSUN UNSWEETENED ORANGE JUICE

\$1.39

46 OZ. CAN

NEW PATIO BRITOS

BEEF & BEAN PATIO BRITOS 7 OZ. PKG.

99¢

MEDIUM/HOT/ MACHO CHEESE

CHUN KING EGG ROLLS 6 OZ. PKG.

97¢

CHICKEN SHRIMP MEAT & SHRIMP

SOFT SPREAD BLUE BONNET

\$1.49

3 LB. BOWL

NABISCO NILLA WAFERS

\$1.49

12 OZ. BOX

BETTY CROCKER ASSORTED POPSECRET POPCORN

\$1.39

3 CT. BOX

ELBO-RONI/LONG SPAGHETTI/LARGE SHELL RONI/VERMICELLI/THIN SPAGHETTI

AMERICAN BEAUTY

2 \$0.99

10 OZ. PKG.

REGULAR LONG GRAIN COMET RICE

99¢

28 OZ. BOX

SPAGHETTIOS FRANCO AMERICAN

49¢

15 OZ. CAN

REGULAR OR HOT HORMEL TAMALES

69¢

15 OZ. CAN

HORMEL NOT-SO-SLOPPY JOE

79¢

14.5 OZ. JAR

HORMEL DEVILED HAM

59¢

4.5 OZ. CAN

DEL MONTE PNAPL-ORNG/APL-CHRY FRUIT BLENDS

\$1.59

48 OZ. BTL.

DEL MONTE 17 OZ. REG/16 OZ. LITE FRUIT COCKTAIL

73¢

CAN

DEL MONTE REG/LITE, SLI/HLV YELLOW CLING PEACHES

73¢

16 OZ. CAN

DEL MONTE REG HLV, LITE SLI/HLV PEARS

73¢

16 OZ. CAN

DEL MONTE FRENCH SLICED GREEN BEANS

2 \$0.89

16 OZ. CANS

DEL MONTE REGULAR OR NO SALT SPINACH

2 \$0.89

15 OZ. CANS

DEL MONTE SEEDLESS RAISINS

97¢

15 OZ. CTN.

DEL MONTE MEDIUM PRUNES

87¢

16 OZ. PKG.

JANUARY 15-24, 1989

STAMPS SUNDAY

HEAVY GRAIN FED BEEF BONELESS

ROUND STEAK

\$1.99

LB.

GOLDEN RIPE BANANAS

4 \$1

LBS.

EXTRA FANCY GOLDEN DELICIOUS APPLES

59¢

LB.

\$1.19

EACH

49¢

LB.

49¢

LB.

HUNT'S TOMATO SAUCE

3 \$0.69

8 OZ. CANS

HUNT'S TOMATO PASTE

2 \$0.69

8 OZ. CANS

HUNT'S TRAD/MT/MSHRM SPAGHETTI SAUCE

97¢

27 OZ. CAN

ORVILLE REDENBACHER ORIGINAL POPCORN

\$1.99

30 OZ. JAR

ORVILLE REDENBACHER REG/BTR MICROWAVE POPCORN

\$1.59

10 OZ. PKG.

REGULAR OR CORN OIL WESSON OIL

\$1.99

48 OZ. BTL.

CREAMY OR CRUNCHY PEANUT BUTTER PETER PAN

\$1.79

18 OZ. JAR

GEBHARDT REFRIED BEANS

2 \$0.89

15 OZ. CANS

HOT CHOC. MIX REG. OR MARSHMALLOW SWISS MISS

\$1.29

12 CT. BOX

SOLO PARTY CUPS

97¢

20 CT. PKG.

SOLO PARTY PLATES

\$1.19

15 CT. PKG.

HOME COOKIN' SOUP

2 \$0.89

10.75 OZ. CANS

CAMPBELL'S MINESTRONE COUNTRY VEG. TOMATO GARDEN

\$1.19

19 OZ. CAN

CAMPBELL'S CHUNKY BEEF, VEG. BEEF, SIRLOIN BURGER

\$1.19

19 OZ. CAN

REGULAR/UNSALTED/NO SALT ZESTA CRACKERS

97¢

1 LB. BOX

DEL MONTE PNAPL-ORNG/APL-CHRY FRUIT BLENDS

\$1.59

48 OZ. BTL.

DEL MONTE 17 OZ. REG/16 OZ. LITE FRUIT COCKTAIL

73¢

CAN

DEL MONTE REG/LITE, SLI/HLV YELLOW CLING PEACHES

73¢

16 OZ. CAN

DEL MONTE REG HLV, LITE SLI/HLV PEARS

73¢

16 OZ. CAN

DEL MONTE FRENCH SLICED GREEN BEANS

2 \$0.89

16 OZ. CANS

DEL MONTE REGULAR OR NO SALT SPINACH

2 \$0.89

15 OZ. CANS

DEL MONTE SEEDLESS RAISINS

97¢

15 OZ. CTN.

DEL MONTE MEDIUM PRUNES

87¢

16 OZ. PKG.

Gillette SUPERBOWL SPECIAL PLUS/PIVOT PLUS RAZORS

GOOD NEWS

\$2.69

10 CT. PKG.

TRAC II PLUS/ATRA TWIN GILLETTE RAZORS

\$3.69

1 CT. PKG.

ATRA REGULAR/TRAC II GILLETTE CARTRIDGES

\$4.69

10 CT. PKG.

SUPER BOWL SAVINGS SPECTACULAR

ASSORTED TOOTH PASTE

AQUA FRESH

\$1.69

6 OZ. TUBE

ASSORTED CALGON FOAMING BATH

\$1.69

7 OZ. BTL.

ASSORTED CLAIMIST HAIR SPRAY

\$1.19

8 OZ. BTL.

MENTHOL/CHERRY CHLORASEPTIC LOZENGES

\$1.89

18 CT. BOX

EXTRA STRENGTH TYLENOL TABLETS

\$4.59

60 CT. BTL.

ASSORTED CALGON FOAMING BATH POWDER

\$1.69

15 OZ. BOX

ORIGINAL ALKA-SELTZER

\$1.89

24 CT. PKG.

MENTHOL/CHERRY CHLORASEPTIC LIQUID

\$2.89

6 OZ. BTL.

* UP TO \$2.00 CASH REFUND BY MAIL WITH PROOF OF PURCHASE ON ANY TWO PARTICIPATING GILLETTE PRODUCTS; OR \$1.00 REFUND ON ANY ONE PARTICIPATING GILLETTE PRODUCT (SEE THE GILLETTE AD IN YOUR JANUARY 8 SUNDAY NEWSPAPER FOR DETAILS)



Plains Independent School District

'Home of the Cowboys & Cowgirls'

From The Superintendent's Desk

Dean Andrews



We are all aware of the growing drug abuse problem in our nation today. The wrongful use of alcohol and other mind-altering drugs constitutes chemical abuse. Recently, our junior and senior high school students participated in a Pride questionnaire. The Pride questionnaire is a drug use survey circulated during Drug Awareness Week. Our position for the purpose of establishing school policies and developing school based programs is that the most effective stance is one of the "use is abuse".

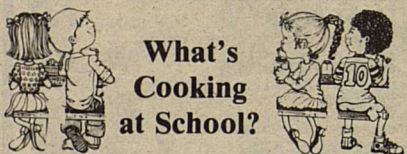
A WEEKLY READER survey of 100,000 children nationwide measuring attitudes and behavior related to drugs and alcohol found:

- *One fourth of all fourth graders feel pressured to try alcohol and other drugs.
- *One half of seventh and eighth graders feel pressured to try liquor and marijuana to "fit in" with peers.
- *Seventy-five percent of high school students use alcohol and forty-four percent are using other drugs of abuse, often in combination with alcohol.
- *Twenty percent of these between the ages of 14 and 17 have serious drinking problems.
- *Five percent of high school seniors smoke marijuana daily.
- *Five percent of high school seniors drink alcohol daily.

I think you might find the following facts informative:

1. Ethnic Origin:	White	Hispanic	Male	Female
Junior High School	54.1%	43.2%	47.3%	52.7%
Senior High School	57.0%	42.1%	61.9%	38.1%
Total	55.9%	42.6%	55.9%	44.1%

2. Do your parents live together?	Together	Apart
Junior High School	86.5%	13.5%
Senior High School	82.3%	17.7%
Total	84.0%	16.0%



What's Cooking at School?

BREAKFAST

- MONDAY - Toast, oatmeal, grape juice and milk.
- TUESDAY - Cinnamon roll, apple juice and milk.
- WEDNESDAY - Toast, scrambled eggs, orange juice and milk.
- THURSDAY - Waffles, syrup, butter, tomato juice and milk.
- FRIDAY - TEACHER WORK DAY - STUDENT HOLIDAY.

LUNCH

- MONDAY - Super dogs w/mustard, French fries w/catsup, combination salad, gingerbread, butter and milk.
- TUESDAY - Burritos w/taco sauce, Spanish rice, crackers, peanuts, pears and milk.
- WEDNESDAY - Hamburgers, lettuce, pickles, onions, potato chips, fruit, Harvest prune cake and milk.
- THURSDAY - Beef and vegetable stew, pinto beans, beet and dill pickles, cornbread, apple cobbler and milk.
- FRIDAY - TEACHER WORK DAY - STUDENT HOLIDAY.

School Events

- MONDAY: Basketball - Tatum -G-H, B-T, - 7th/8th,9thB - 5 p.m.
- TUESDAY: Basketball - Sudan - H - gbGB - 5 p.m.
- THURSDAY: Basketball - Junior High B & G Tournament begins, School Dismisses at 1:15 p.m.
- FRIDAY: Teacher Work Day - Student Holiday; Basketball - Amherst - T - gGB - 5 p.m.
- SATURDAY: Basketball - Plains Junior High Tournament continues

Randy Asebedo
Gary Ritter
Motorplex

Tate at 5th Street
Brownfield, Texas 79316
Brownfield (806) 637-3517
Lubbock (806) 763-5200
Res. Phone (806) 793-8380

FREQUENCY OF USE BY SUBSTANCE

Substance	Population	Never	Daily	1 Weekly	1 Yearly
Cigarettes	Plains I.S.D.	84.7%	1.6%	.5%	7.4%
	National	70.0%	9.0%	3.0%	8.0%
Beer	Plains I.S.D.	57.4%	0%	6.3%	14.2%
	National	37.0%	1.0%	12.0%	16.0%
Liquor	Plains I.S.D.	69.7%	0%	4.3%	10.6%
	National	55.0%	1.0%	7.0%	12.0%
Marijuana	Plains I.S.D.	95.8%	0%	0%	3.7%
	National	81.0%	2.0%	2.0%	5.0%
Cocaine	Plains I.S.D.	100%	0%	0%	0%
	National	96%	0%	0%	1.0%

The statistics presented here are taken directly from a survey of our students and other students nationwide. Students were guaranteed that they would not be identified individually. For the "sometimes user" our desire is to do a better job of educating to the dangers of drug abuse. To the students who never use, we extend congratulations.

Cowgirls Lose

The Cowgirls were defeated 50-47 in their district opener with Three Way Friday night in the Cowboy gym. High point Cowgirl was Lynda Jimenez with 17 points. Juhree Stowe finished the game with 10 points.



Start the New Year off right with a Special Bouquet for your loved one.

Coffee Cup
Mixed Bouquet
.....\$15

Basket
Mixed Bouquet
.....\$25

1 Dozen Roses
.....\$45

Many new silk arrangements starting at \$19.99

Order Your Valentine Bouquet before Feb. 1st and receive a 10% Discount!

Yoakum County
Florist & Gifts

Hwy. 214 & Broadway
Denver City

592-8067
After Hours: 592-8450

Notice

WILL BABYSIT in my home from 8 to 5 Monday thru Friday. Reference available. Call Sylvia Martinez at 456-7135 or come by at 607 7th St. 40/2tc

FOR SALE: 5 Piece Pit Group, chocolate brown. Call 456-6575 after 5 p.m. 41/4tc

PLAINS FINE ARTS CLUB will have a **BAKE SALE** on Tuesday, Jan. 24 in the hallway of the courthouse beginning at 8 a.m.

FOUND: Black and white kitten on northwest side of town. Call 456-2772. 41/1tp

Regal Theatre

206 South 5th in Brownfield

SCREEN I
"The Naked Gun"
RATED PG 13

SCREEN II
"SCROOGED"
RATED PG 13

FOR RECORDED SHOWTIMES:
Call 637-2848

The first bowling tournament for women was held in St. Louis, Missouri in 1917.

Ryburn's Muffler Shop

Custom Exhausts
Oil, Filters, & Lube

1320 Tahoka Road
Brownfield
637-8291

Furniture, Appliance & Sewing Service

New & Used

R.B.'s

117 N. 5th Street
Brownfield
637-6684



FARMERS INSURANCE GROUP
Symbol of Superior Service

RICHARDSON INSURANCE AGENCY
Box 558, 503 3rd St.
Plains, Texas 79355
A. C. 806 456-8888

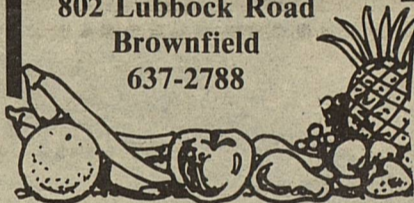
AUTO • FIRE
• LIFE • COMMERCIAL

CITY FRUIT STAND

OPEN 8 A.M. til 7 P.M.

The Cox Family

802 Lubbock Road
Brownfield
637-2788

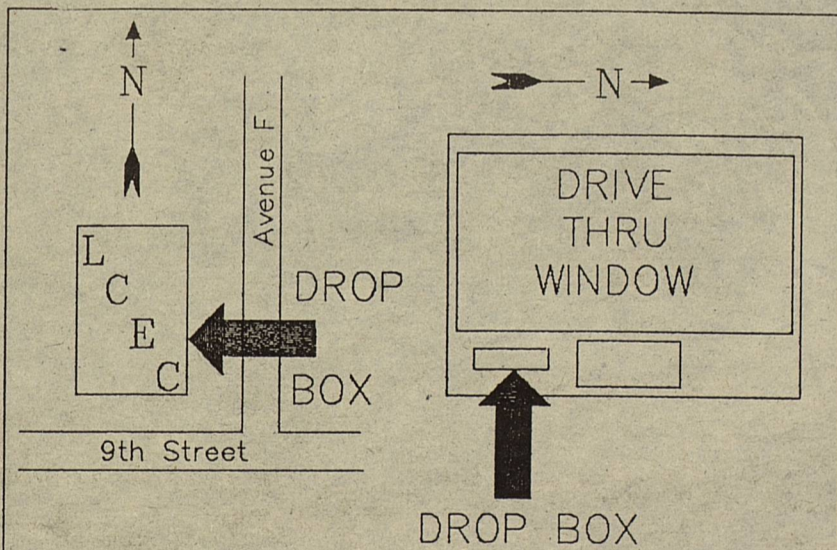


Expiring Subscriptions

- | | | |
|----------------------|--------------------|-------------------|
| Mary Dale Williams | Bill Harris Powell | Thomas W. Barnes |
| Durward Willis | Royce Randall | Melba Bearden |
| Billy Winn | Steve Randall | Neal Bearden |
| William Worsham | Leon Simpson | Harry Bilbrey |
| Yo. Co. Co-op Gin | Hershel Smith | Donald R. Booth |
| Yo. Co. Ext. Office | Jim Story | Tommy Burrus |
| Howard Andrews | Joe H. Thompson | Robert Canon |
| Norman A. Carr | Robert Wauson | Allene Carnohan |
| Thelma Cheatham | Ronny Wall | Beth Clanahan |
| E.V. Dooley | | Bill Cheek |
| R.S. Faulkenberry | A.B. Williams | Jim Rudd |
| Charles Fisher | Matt Williams | H.W. Culwell |
| C.R. Gayle | Clyde Trout | Leland Ellison |
| John Gray | Rhuey Edwards | Diana Flores |
| Roger Harvey | Pearl Ellison | Louise Goehry |
| Althea Lipsey | Morris Rushing | Robert Haines |
| Oma McCargo | T-TEX Inc. | Mary Lou Hamilton |
| Sherry Melecki | Kenneth Hale | Gary Jones |
| Travis Mires | Jackie McDonnell | Oscar Lewis |
| Mabel Pharr | Shane McMinn | Melvin Lowrey |
| Carl Rains | A.J. Moore | Kay McClure |
| Delia Ramoz | New-Tex Gin | W.L. McCravey |
| Curt Randall | Alma Poe | J.B. Ashburn |
| Verna Randall | L.J. Sanders | Lola Bryan |
| Andy Richardson | Brian Smith | Linda Cole |
| Mague Romero | Don Young | J.A. Hayes |
| Neoma Taylor | Douglas Patton | Pat Henard |
| Gilbert Pierce | Mary Wilmeth | Wayne House |
| | Jan Lester | Dub Nelms |
| | | Jack Palmer |
| Dick McGinty | Bob Jones | Jerry Parrish |
| Fred Maple | Bob Johnson | Danny Shearman |
| Marjorie's Coiffures | Collette Hanna | Cecil Thompson |
| Byron Morgan | Jim Barron | |
| Larry Morrow | Barry Green | |
| Preston Murphy | Michael Earnest | |
| Harris Nursery | Dennis Casey | |
| Don Parrish | Roy A. Edwards | |
| Joe Pierce | Tim Addison | |
| Plains Motel | Stanley Ashburn | |

**All expired subscriptions
will be pulled
from our mailing list
January 31, 1989**

(This list includes our January expirations)



Lea County Electric Coop.
NOW has a DROP BOX to enable our consumers to make payments before or after normal business hours.

We are pleased to offer our members this new convenience.

"OWNED BY THOSE WE SERVE"

Lovington/Tatum, N.M. Plains, TX

BAYER LUMBER & HARDWARE

PLAINS, TEXAS
456-4800

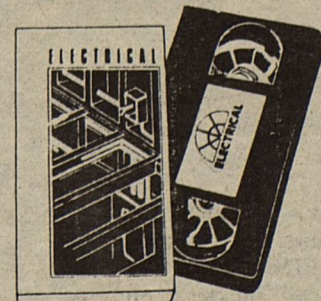
- AMMUNITION
- ART SUPPLIES
- PAINT SUPPLIES
- HOUSEWARES
- PLUMBING
- ELECTRICAL
- WINDMILL SUPPLIES
- PHONE SUPPLIES
- INSECT KILLERS
- CARPET
- VINYL FLOORING
- TOOLS
- CARPET CLEANERS

Home Projects Made Easy with Hometime "How To" Videos

Step-by-Step Video Instructions for a variety of home projects including:

- Plumbing
- Electrical
- Drywall
- Decks
- Kitchens
- ...and more

Each tape is 30-80 minutes in length.



99¢
A DAY



ALL DISTRICT ACADEMIC - VOLLEYBALL:
Melissa Welch and Heather McGill



ALL DISTRICT ACADEMIC CROSS COUNTRY
Lacy McAdams and Nieves Garcia.



ALL DISTRICT ACADEMIC - BAND: Jason Smith, Lacy McAdams, Wendie Alexander, Justin Redman, Jo Lena Powell, Vee Ann Fitzgerald and Nikki McGinty.



ALL DISTRICT ACADEMIC - FOOTBALL: Back row, ltr. are Chris Gayle, Blake McWhirter, Chad Guetersloh, Lebert Powell; front row, John Harris, Daniel Canada, Henry Gonzales, Brian Livengood. (Not pictured: Chad Wall)

Congratulations from:

**Pay-n-Save Grocery
Yoakum County Co-op Gin
Melvin & Linda Lowrey
Plains Insurance Agency**

**Chamber of Commerce
Yoakum County
Federal Credit Union
The Plains Pride**