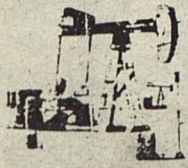


Plains Library  
Box 419  
Plains, TX 79355



# The Plains Pride



PLAINS, YOAKUM COUNTY, TEXAS

VOLUME 4, NUMBER 20

SUNDAY, AUGUST 21, 1988

30¢



SHYLOH WINN CAPTURES the 1988 National Championship in trampoline and tumbling in the 1988 AAU Junior Elite and American Trampoline and Tumbling Association National Championships held July 22-23.

## Drug Task Force Formed To Educate Yoakum Youth

Yoakum County's Task Force on Drugs and Alcohol met Aug. 16 in Heritage Room of Yoakum County Library in Plains. Co-chairmen of the group are L.J. Sanders and Joe Kay of Denver City.

Nancy Wolf, secretary of Sheriff Jimmie Rice, presented an informative program on drug use in Yoakum County. She exhibited paraphernalia used in sniffing, injecting and orally using drugs. These were taken from youths and adults in Yoakum County by the Sheriff's and police department of Plains and Denver City.

The Committee was organized because of concern for young people who are tempted by or using drugs and alcohol.

Ms. Wolf pointed out that drugs and alcohol contribute to physical and emotional illnesses, brain damage and death.

A goal of the Committee is to get educational materials before the school children of Yoakum County. Most of the introductions to drugs are made by friends, peers and relatives.

Ms. Wolf is available for programs for any organization, school or civic group. Her services are free and may be scheduled by calling the sheriff's office in Plains or Denver City.

The Committee will meet Tuesday, Aug. 30 at 7 p.m. in the Denver City Community Building. All interested persons are invited.

### New Band Booster Calendar Is In!!

Please check at the library if you have not received yours.

**Cost is \$5**

(unless paid in advance)

## Young Winns Continue To Excel In Competition

Shyloh Winn captured the 1988 National Championship in both tumbling and trampoline and finished second in double-mini trampoline in the eight and under division, after competing in the 1988 AAU Junior Elite and American Trampoline and Tumbling Association National Championships.

Also competing in the July 22-23 meet were her sister and brother, Ashlee and Ladd Winn and six other Acro-Spirit teammates. Accompanying the group also were their coach, Sherry Arnwine of Levelland.

Shyloh has competed in three National Championships; in Mobile, Al. in 1986 and Rockford, Illinois in 1987.

Ashlee and Ladd competed in their first Junior Elite Meet, open competition for ages 18 years and under, with no age breakdown. Ashlee placed fourth in tumbling and eighth in trampoline. Ladd placed first in synchronized trampoline with his partner, Rod Scard of Oklahoma. He also placed sixth in tumbling and third in trampoline and double-mini.

"Competing against the 'big kids' was a new experience for Ladd and Ashlee and they learned a lot," reports their mother, Lynne Winn.

"They will be competing next year in some other elite meets along with their age-group competition."

## Evangelism Meet Slated Aug. 25-26

Crescent Park Baptist Church at 3002 E. University in Odessa will host a West Texas Evangelism Conference Aug. 25-26. Sessions are slated for 7 p.m. each evening and 9:45 a.m. Friday.

Sponsors of the conference are six associations of Southern Baptist Churches, Castle Gap, Big Bend, Pecos Valley, Big Spring, Midland and Odessa.

Featured speakers will include Dr. Darrell Robinson, pastor of Dauphin Way Baptist Church of Mobile, Ala.; Dr. Bill Tisdale, pastor of First Baptist Church of Henderson; and Dr. Carlos McLeod, director of Evangelism for the Baptist General Convention of Texas. Dale Durham of First Baptist Church in Hobbs will be platform musician.

A nursery will be provided for children up to age three.

For verification contact Dr. Jimmy Law, Director of Missions, Midland-Odessa-Pecos Valley Baptist Area, 2401 W. 16th, Odessa, TX 79763, (915) 332-6781.

## Fund Raising Event Set In Yoakum County Park

Yoakum County supporters of State Representative Jim Rudd will sponsor an ice cream social fund raiser Tuesday, Sept. 13 in Yoakum County Park. The event gets underway at 6:30 p.m.

Musical entertainment will be provided by students from South Plains College.

Tickets are \$10 per person. Parents are urged to bring their children and make the event a family affair. Tickets are available in Denver City and Plains.

Linda Lowrey is coordinating the ice cream social in Plains; Edith Kidd in Denver City. Volunteers interested in bringing a freezer of

cream should call Mmes. Lowrey or Kidd. Ms. Lowrey may be reached at 456-7404 during the day, 456-7474 after 6 p.m.

Local supporters believe Rudd is a highly effective spokesman for West Texas issues and hope to see him win election to the office of Speaker of the House in the near future.

Rudd began serving his first term as representative for District 77, consisting of eight counties, in January 1977. He is running unopposed for a seventh term. He chairs the House Appropriations Committee.



**THE PLAINS PRIDE**

The Plains Pride (USPS 757-130) is published weekly at 716 Main Street, Olton, Lamb County, TX 79064. Second Class Permit paid at Olton, TX 79064. POSTMASTER: Send address changes to THE PLAINS PRIDE, P.O. BOX 774, OLTON, TEXAS 79064-0774.

Any erroneous reflection upon the character or standing of any person or firm appearing in this paper will gladly and promptly be corrected, upon being called to the attention of the management.

telephone no. (806) 285-3177

Yoakum County & Surrounding Counties, tax included .....\$15  
Elsewhere, tax included .....\$16

**SCS To Assist  
In Weed Control**

Weed control is an essential part of establishing grass on CRP land. Whether the producer chooses chemicals or a shredder to control weeds it must be done in a timely manner to insure the success of the grass stand.

The Soil Conservation Service staff at Plains will be assisting and recommending weed control on farms that need treatment in Yoakum County.

If you have any questions concerning CRP or any other USDA program please call or come by the SCS office located in the Old Courthouse.

**SPC Schedules  
Fall Registration**

Fall 1988 registration dates at South Plains College have been announced by Bobby James, SPC registrar and director of admissions.

Registration at the Levelland campus will be Aug. 29-30 in the SPC Student Center.

Returning students who have pre-registered for classes at the Levelland campus will complete the registration process Aug. 29 and pay tuition and fees between 9 a.m. and 4 p.m., said James.

Evening registration for the Levelland campus will be 5:30 to 7:30 p.m. Aug. 29. Open registration is scheduled from 9 a.m. til noon and 1:30 til 4 p.m. Aug. 30. Interested persons need to contact SPC for a registration time.

Sign-up for classes at the SPC Lubbock campus will be 9 a.m. til 1 p.m. and 4 til 7 p.m. Aug. 24-25 at Lubbock campus headquarters, 1302 Main Street.

Classes at SPC's Levelland and Lubbock campuses and an extension facility at Reese Air Force Base begin Aug. 31. Late registration is scheduled for Aug. 31-Sept. 8 at the Levelland and Lubbock campuses.

Registration at Reese Air Force Base will be Aug. 23-24. Military personnel and government employees can register from 2-5 p.m. and 6:30-8 p.m. Aug. 23. Open registration is scheduled from 6:30-8 p.m. Aug. 23 and 2-5 p.m. and 6:30 til 8 p.m. Aug. 24.

Late registration at Reese will be 5:30-7:30 p.m. Aug. 31-Sept. 1.

A \$10 late registration fee will be charged.

Fall 1988 bulletins and catalogs for the 1988-1990 school year at SPC are now available. For more information, contact the SPC registrar's office at (806) 894-9611, SPC Lubbock at 747-0576



RICHARD ALCORTA SR.

**Services Held For  
Richard Alcorta Sr.**

Funeral services were held Saturday, Aug. 13 at 10 a.m. in Elliott Harmon Funeral Chapel in Abilene for Richard Alcorta Sr., 75, father of Rico Alcorta. Burial was in Abilene Cemetery.

Mr. Alcorta died Thursday morning, Aug. 11 in Hendricks Hospital in Abilene, following a brief illness.

Born Sept. 12, 1912 in Rhome, he was married to the former Maria Quiros on Nov. 17, 1931 in Sweetwater. Before moving to Abilene in 1965, he had lived and farmed in the Olton area for 15 years. Alcorta was employed with Abilene I.S.D., retiring in 1978. He was Baptist.

Preceding him in death were two sons, one daughter, two grandsons, one granddaughter and one great-grandson.

Survivors include his wife; three sons, Rico of Plains, Joe of Abilene and Sammy of Groves; seven daughters, Julia Gloria, Rachel Smith, Martha Willis and Sarah Smith, all of Abilene; Luisa Anzaldua of Cuero, Margaret Romero of Houston, and Irene Garcia of Garland; 27 grandchildren and 12 great-grandchildren.

**Haram Services  
Held In Seattle**

Funeral services were held Aug. 16 with graveside services at 11 a.m. and memorial services at 1 p.m. in Lutheran Church in Seattle for Karen Marie Haram, sister-in-law of Margaret Box and Carol Beth Box.

She died Aug. 10 in Ballard Hospital in Seattle after a lengthy illness. Born Jan. 20, 1931 in California, she married Dale Hughes Sept. 10, 1954. He died Oct. 11, 1981. She married John Haram Feb. 26, 1983.

A member of the Church of Christ, she was a practical vocational nurse.

She was also preceded in death by a son, Mike Hughes, a former Plains resident, in 1979.

Survivors include her husband; two daughters, Karen Kimborowicz of Redmond, Wash. and Cindy Alvarez of Moses Lake, Wash.; a brother, Jerry Miller of Atlanta, Ga.; two step-daughters; six grandchildren and four step-grandchildren.



THESE SENIOR 4-H MEMBERS show-off their shopping skills in the tailored daywear buying division of the South Plains District 4-H Fashion Show. From left are Billy Robertson, Yoakum County; Cody Stone, Borden County; and Robin Moore, Lynn County.

**Top Fashion Show Winner  
Advances To State Finals**

Four-H members from the South Plains District matched their fashion awareness and sewing skills at the recent South Plains District 4-H Fashion Revue. The eight top winners will represent the district's 20 counties at the State 4-H Fashion Show, Aug. 21-23, in Corpus Christi.

Billy Robertson of Denver City,

son of Olivia Robertson, was winner of the Tailored Daywear in the Buying Division.

**Baptist Youth  
Attend Camp**

Six members of the First Baptist Church youth department attended the second week of area youth camp at the Circle 6 Baptist Encampment in Stanton. Attending were John Harris, Glenda Harris, Leslie Patton, Rene McElroy, MaDawn Sherin, Kemi Cobb and Ragan Shierry of Odessa.

**Duo Shares  
Brazil Memories**

Sidney Murphey and Jo Ann Barron were hostesses Tuesday evening in fellowship hall of First Baptist Church for a Brazilian meal and fellowship. Forty-three persons attended.

Menu for the typical Brazilian meal was black beans served over rice, marinated tomato slices, beef strips, fresh pineapple slices and bread.

The two women shared their experiences as members of an International Crusade to Brazil in July. Fifty-seven lay people and pastors made the trip. Ken Horn, pastor, was also a member of the crusade team.

Approximately 5300 people were reached through the efforts of the Crusade team during a two week period. Their primary center of witnessing was in Rio de Janeiro.

The women displayed gifts they received from Brazilian people along with numerous pictures taken during the Crusade.

**Card of Thanks**

*To the Community of Plains, I would like to thank each and every one of you whom purchased saddle chances from me this year. Each of your tickets added up and made me the 1988 Rodeo Queen. Each ticket purchased was greatly appreciated. Thanks to the Lions Club members who helped support me.*

*Thanks again,  
Michelle Lowe*

 **Contact Dan or Linda Wall**

SHOP WITHOUT GOING SHOPPING

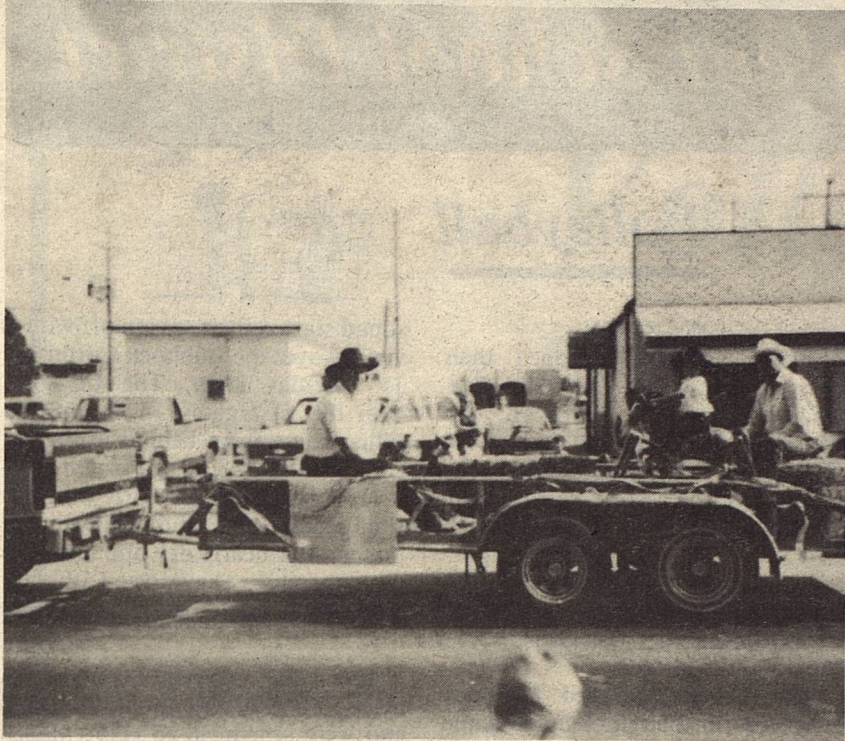
  
**FARMERS INSURANCE GROUP**  
Symbol of Superior Service

**RICHARDSON INSURANCE AGENCY**  
Box 558, 503 3rd St.  
Plains, Texas 79355  
A. C. 806 456-8888

**AUTO • FIRE**  
**• LIFE • COMMERCIAL**



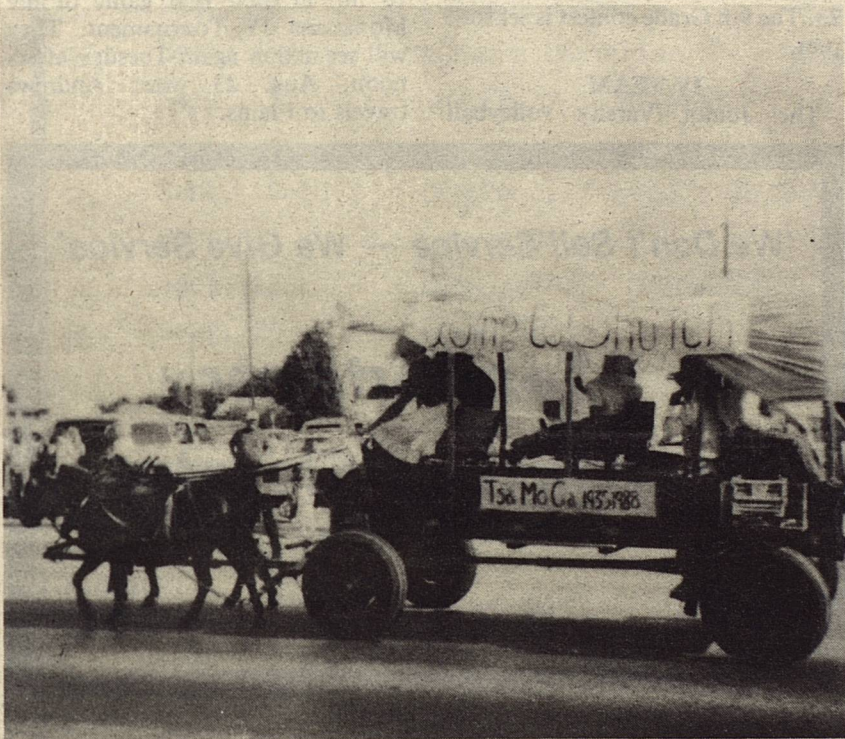
Rodeo Parade Float Entries...



ROPING CLUB ENTRY



LIBRARY FLOAT



TSA MO GA ENTRY



LIBRARY FLOAT

*Wedding Gift  
Selections  
Now Available*



We have PLENTY OF STOCK  
and  
we're GETTING MORE SUPPLIES EVERYDAY!!

*Come In & See Our New Store Today!*

---

**BAYER LUMBER & HARDWARE**  
Milton Bayer/Owner      456-4800      Plains, TX

**GET THE NEW  
CHICKEN  
FILLET BASKET.  
CHEEP,  
CHEEP, CHEAP.**

**\$2.99\***

Four tender n' delicious chicken fillet strips.  
Plenty of fries. Texas toast. And creamy country gravy. That's the new  
CHICKEN FILLET BASKET from Dairy Queen.  
And it's on sale now—cheap!  
EXPIRES AUGUST 28, 1988

**THIS IS  COUNTRY**

\*Reg. TM Tex. D.Q. Op. Coun. © 1988 Tex. D.Q. Corp. © 1988 Tex. D.Q. Op. Coun. \*At participating Dairy Queen stores





# Plains Independent School District

## From The Superintendent's Desk

Dean Andrews



I recently received the following information from Joey Lozano of the Texas Education Agency staff and thought it would be of interest to you:

More than 3.4 million children will flock to public school classrooms throughout Texas in early September when the state's public education system begins another school year.

An estimated 3,425,407 students -- up by nearly 75,000 from the previous year -- will attend more than 5,900 school campuses operated by nearly 1,100 public school districts this year as the state begins its fourth consecutive year under school reforms mandated by the Texas Legislature in 1984.

While Anglo students still account for a majority of the state's student population with 1,796,626, the largest enrollment increase occurs among Hispanic students, who number 1,074,208 -- 34,163 more than last year. Anglo students recorded the second largest increase, up 31,498 from 1987-88. Black student population is up 8,410 to 492,916, while all other ethnic groups account for 61,657 students, up 675 from last year.

These students come from different family and socio-economic backgrounds and the schools they attend range from large sprawling districts in the state's major metropolitan areas to small, rural schools located near oil fields and cotton patches.

In spite of the differences between schools and students that occur in a state as vast as Texas, all of these schools and students must abide by the same laws and rules which govern the public school system. All students must attain a minimum grade of 70 in order to pass a course and all districts must follow a uniform, statewide system of reporting grades. This system, part of the 1984 education reform bill known as House Bill 72, stipulates the following grading system: 90-100, A; 80-89, B; 75-79, C; 70-74, D; and 69 and below, failing.

Most districts operate on a six-week grading system, which means that parents can expect their children to bring report cards home about every six weeks.

State law also requires every school district to provide at least 175 days of instruction for students. Districts have the option of operating on a two- or three-semester basis. If a district chooses to use two semesters, each semester must consist of 86-89 days, while a three semester calendar must consist of approximately 58 days per semester.

While state law mandates a minimum number of instructional days, the holidays a local district observes are established by each district's board of trustees. Most districts honor traditional holidays such as Thanksgiving and Easter by scheduling additional days off around those holidays, and virtually all schools close for at least one week during the Christmas and New Year's holiday period.

In addition to periodic, semester and final examinations they take in their specific school courses, Texas public school students in odd-numbered grades must also take a statewide minimum skills test to determine how well they are mastering the basic skills of reading, writing and mathematics. These tests, known as the Texas Educational Assessment of Minimum Skills (TEAMS) exams, are given to students in grades 1, 3, 5, 7 and 9 each spring.

These tests are diagnostic in nature and students are not required to pass them in order to be promoted to the next grade level. However, every student must pass the TEAMS exit-level test in order to be eligible to receive a high school diploma. Students have four opportunities to pass the exit-level test, beginning in their junior year.

While recognizing the need for new statewide, minimum level requirements and regulations for Texas schools, the Texas Legislature has also recognized the plight of school children with special needs and circumstances. Programs such as pre-kindergarten for four-year-olds help provide a basic education for children who are either unable to speak and understand English or who come from financially disadvantaged families. Compensatory education provides instruction in areas of deficiencies and additional time on task to help students master the essential elements of courses and subject areas. Special education provides instruction for handicapped children as well as those with learning disabilities.

**SCHOOL STARTS SEPT. 1st**

## Volleyball



### VARSIITY

Plains Cowgirls dropped their season opener to Lubbock Coronado Tuesday night in the Mustang gym. Defeated 15-8 in the first game, the Cowgirls grabbed a 6-2 lead in the second game before the Fillies rallied to take the match 15-9.

Leading server was Marsha Farnham with six service points. The Cowgirls recorded ten kills, seven blocks and four aces.

The Cowgirls played Lubbock Monterey in their first home game Thursday, Aug. 18. They will host Andrews Tuesday afternoon, Aug. 23. The 9th Grade contest is set for 3 p.m.

### JV TEAM

The Junior Varsity volleyball

squad started their season off with a victory over the Lubbock Coronado JV Tuesday night. The Cowgirls won the first game 15-12 but the Fillies came from behind in the second game to tie up the match with a 15-12 win. The Cowgirls won the final game 15-8 and claimed the match after nearly one and one-half hours of play. They posted 19 kills, nine blocks and 14 aces.

The JV hosted Lubbock Monterey Thursday night, Aug. 18 and were scheduled to play Odessa High JV Friday morning, Aug. 19 at 10 .m. in their first game of the Monahans JV Tournament. They will see action again Tuesday afternoon, Aug. 23 when Andrews travels to Plains.

*'We Don't Sell Service — We Give Service'*

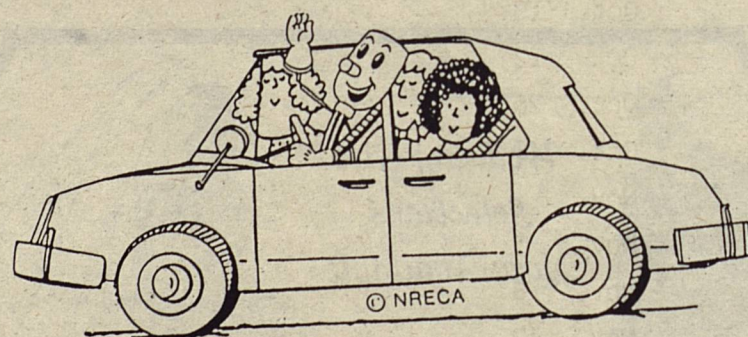
## T-Tex Fertilizer Goodpasture Elevator

Roswell Highway

Days  
456-8833

Bruce Lester/Mgr

Nights  
456-6575



### ENERGY TIP.....

Before rushing off on your vacation this year remember to turn off all electrical appliances and water faucets. Remove perishables from your refrigerator and turn to lowest setting.

LEA COUNTY ELECTRIC COOPERATIVE, INC.

"OWNED BY THOSE WE SERVE"

LOVINGTON/TATUM, NM

PLAINS, TX

AN EQUAL OPPORTUNITY EMPLOYER



# 19 PHS Cowgirl 88 Volleyball

## 1988 VARSITY VOLLEYBALL SCHEDULE

DATE	OPPONENT	PLACE	TIME	TEAM
Aug. 15	Kermit (Scrimmage)	Kermit	9:00 A.M.	JV, V
Aug. 16	Lubbock Coronado	Lubbock	6:30 P.M.	JV, V
Aug. 18	Lubbock Monterey	Plains	6:30 P.M.	JV, V
Aug. 19-20	MONAHANS JV TOURNAMENT			JV
Aug. 22	LUBBOCK DUNBAR TOURNAMENT			9th
Aug. 23	Andrews	Plains	3:00 P.M.	9th, JV, V
Aug. 25	Lubbock Estacado	Lubbock	6:30 P.M.	JV, V
Aug. 30	Lubbock Dunbar	Plains	6:30 P.M.	JV, V
Sept. 1	Lubbock Christian	Plains	5:00 P.M.	JV
Sept. 3	SNYDER JV TOURNAMENT			JV
Sept. 6	Snyder	Snyder	5:00 P.M.	9th, JV, V
Sept. 9-10	DENVER CITY VARSITY TOURNAMENT			V
Sept. 13	Denver City	Plains	5:00 P.M.	9th, JV, V
Sept. 17	WINK VARSITY TOURNAMENT			V
Sept. 20	Brownfield	Plains	5:00 P.M.	9th, JV, V
Sept. 24	COLORADO CITY VARSITY TOURNAMENT			V
Sept. 27	Jal	Jal	6:00 P.M. (CST)	JV, V
Oct. 1	Brownfield	Brownfield	10:00 A.M.	9th, JV, V
Oct. 4	Denver City	Denver City	5:00 P.M.	9th, JV, V
Oct. 8	Lamesa	Lamesa	10:00 A.M.	9th, JV, V
Oct. 10	Levelland	Plains	7:00 P.M.	9th
Oct. 13	Jal	Plains	6:00 P.M. (CST)	JV, V
Oct. 15	Wink	Plains	1:00 P.M.	JV, V
Oct. 15	SNYDER FRESHMAN TOURNAMENT			9th
Oct. 18	Floyd	Plains	5:00 P.M. (CST)	JV, V
Oct. 22	Crane	Crane	11:00 A.M.	9th, JV, V
Oct. 25	Kermit	Plains	5:00 P.M.	9th, JV, V
Oct. 29	Alpine	Monahans	5:00 P.M.	9th, JV, V
Nov. 1	Seminole	Plains	TBA	V
Nov. 5	Bi-District			
Nov. 8	Area			
Nov. 12	Regional			
Nov. 18-19	State			

**VARSIY ROSTER:**

<b>Seniors:</b> Lydia Jimenez Lynda Jimenez Heather McGill MaDawn Sherrin Melissa Welch	<b>Juniors:</b> Marsha Farnham Corie Spencer	<b>Sophomores:</b> Melissa Green Leslie Patton
--	--	--

Manager: Teresa Hinson

*Pay-N-Save Grocery*  
*Yoakum County Federal Credit Union*  
*T-TEX Fertilizer*  
*Yoakum County Co-op Gin*

*Melvin & Linda Lowrey*  
*Vaughn, Carolyn & Julie Culwell*  
*Ty, Mary, Elizabeth Wilmeth*  
*Plains Insurance Agency*



**This article appeared in a major Texas newspaper recently and is reprinted here for the sole purpose of informing Christian individuals of a protest being made against Universal Studios for the production of "The Last Temptation of Christ", which is to be released in September.**

## 'Last Temptation of Christ' Universal official: "Christians will not stop us from distributing this film"

Universal Studios has announced that they plan to release "The Last Temptation of Christ" on September 23. The script presents Jesus as a mentally unstable person who fights being the Son of God, a sinner who doesn't know who will pay for his sins, a person who angrily lashes out at the sick and poor, a traitor to the Jews, one who lusts after Mary Magdalene, and a bigamist. "It is absolutely the most perverted, distorted account of the historical and Biblical Jesus I have ever read," said Donald E. Wildmon, executive director of

AFA and a United Methodist minister.

AFA was told that Sidney Sheinberg, president of MCA which

### See Petition

(Petition Not Available)

owns Universal Studios, made the statement to a group of Universal officials that "Christians will not stop us from distributing this film." And Garth Drabinsky, chairman of Cineplex Odeon, a theater chain which plans to show the movie, said that if any of his theaters

received complaints about the movie they would dismiss those complaints as "cranks." Cineplex Odeon owns several hundred theaters in the U.S. (Cineplex Odeon's address is 1303 Yonge Street, Toronto, Ontario, Canada M4T-249. The phone is 416-323-6600. AFA suggests you call Mr. Drabinsky person-to-person.)

The film follows years of practice by the major studios in Hollywood of depicting Christians in negative stereotypes in movies and television productions. Universal's

*Continued on page 20*

## 'Last Temptation...'

*Continued from page 1*

decision making body is composed primarily of non-Christians. In fact, according to an indepth study made by the research team of Lichter/Rothman a few years ago, Christians are in a distinct minority in the top positions in Hollywood. Lichter/Rothman reported that only 37% of Hollywood's elite were raised in a Christian home. Lichter/Rothman said that between 44% and 55% of the Hollywood elite say they currently claim no religion. And the research team reported that 93% say they seldom or never attend any religious service.

"Universal would never, ever release a film so offensive to blacks, Jews or even homosexuals," Wildmon said. "But they have no reservations about releasing a film so offensive to the overwhelming majority of Christians."

Wildmon said should Universal proceed with the release of the film, Christians and others should boycott the Universal Studios tour in Hollywood, the new multi-million dollar Universal Studios entertainment complex similar to Disneyworld being developed in Orlando, Spencer Gifts, and other Universal owned businesses.

Two well-known public figures are deeply involved with MCA, the company which owns Universal. Robert S. Strauss, former Chairman of the National Democratic Party (phone 202-863-8000), is a member of MCA's board of directors and Donald Trump, a New York developer, is a major stockholder (phone 202-832-2000). Thomas V. Jones, Chairman of Northrop Corporation (phone 213-553-6262) is also a member of the board of directors. (AFA suggests you call each of them person-to-person.)

Universal Studios early this year promised Wildmon and a few other Christian leaders that if they would not protest the film, they would be invited to screen the film in early June. When the time came, Universal told Wildmon and the others that it would be July, probably August or even September before a screening would be possible. However, when Universal refused to delay the release of the film in proportion to the delay in the screening, Wildmon withdrew from the agreement. The studio did, however, later invite Wildmon and the other Christian leaders to screen what Universal called "a work in progress." Wildmon refused because a "work in progress" is not the final product and could be changed after the screening. Several liberal clergymen and rabbis, including MCA official Tom Pollock's rabbi, did attend the "work in progress" screening. Chrm. Lew Wasserman has turned over responsibility for "The Last Temptation of Christ" decisions to Mr. Pollock.

After Wildmon withdrew from the agreement with Universal, Tim Penland also cancelled his agreement with Universal and joined others in fighting the film. Universal had hired Penland, a Christian, to assure the Christian community that the film would honor our Lord. Penland quit when it became apparent that Universal had used him, Wildmon and the others.

AFA has learned that the movie closely follows the script, although some specific details in some scenes have been deleted. Here is a sampling of scenes and quotes from the script:

On the introduction page of the script is this quote by Nikos Kazantzakis, author of the book on which the movie is based: "It is not God who will save us—it is we who will save God, by battling, by creating and transmuting matter into spirit."

Jesus says to Mary Magdalene: "I've done a lot of wrong things. I'm going to the desert to be cleansed. The worst things I've done are to you. Forgive me."

When pressed by a crowd of poor and sick asking Jesus to heal and cure them, Jesus says, "Get away. You sicken me. You're selfish and full of hate. God won't help you."

Talking to Judas, Jesus begs Judas to betray him. When Judas refuses, Jesus says, "You must. Don't abandon me now."

"If you had to betray your master," Judas asks, "would you do it?"

Jesus answers: "No. I do not think I would be able to. That is why God pitied me and gave me the easier task: to be crucified."

The story has Jesus marrying Mary Magdalene and allowing His guardian angel to watch while Jesus and Magdalene engage in sex. According to the script, the guardian angel says to Jesus: "It's me. I wondered if I could watch (the couple engage in sex)? I'm lonely too." Jesus laughs and responds: "Yes, yes. Watch."

In another conversation, Jesus says to Mary Magdalene, "Now I know; a woman is God's greatest work. And I worship you. God sleeps between your legs."

After Magdalene dies, Jesus moves in with Mary and Martha, the sisters of Lazarus, and has children by them. Only a brief description at the very end identifies his relationships with Mary Magdalene, Mary and Martha as a dream.

"In the ten years we have been fighting the media's bias against our Christian values, I have never come across a more blatant attack on Christianity than that in 'The Last Temptation of Christ' script," Wildmon stated. "Never in all my life did I think that a major studio would propose such a movie.

While those in Hollywood responsible for our movies and television programs have been showing their anti-Christian bias and hostility for several years, I really didn't think they would propose such a movie about our Lord."

"The Last Temptation of Christ" was first begun by Paramount Pictures in 1983. However, after learning that the movie was being made, AFA urged supporters to begin writing and calling Paramount Pictures. Paramount, after investing \$2,000,000 in the movie, dropped the project because of the the calls and letters.

Here are action steps AFA urges supporters to take.

(1) Call Mr. Sidney Sheinberg, president of Universal, and protest the film. You are urged to call person-to-person. His number is 818-777-1000. Refuse to speak with anyone other than Mr. Sheinberg. That way, if you fail to speak with him, the call doesn't cost you a penny. If you fail to get to speak directly with Mr. Sheinberg, leave a message asking him to return your call. If he fails to return your call, continue calling person-to-person until he or someone at Universal returns your call. The line could be busy. If so, keep calling regularly until you get through and someone returns your call. Run a notice in your church bulletin and newsletter urging members to get involved. If the above number is consistently busy, call Mr. Sheinberg person-to-person at any of the following numbers: 818-777-2345, 818-777-5888, 818-777-4943, 818-777-3087, 818-777-2162 or 818-777-4780.

(2) Protest the film by writing Mr. Lew Wasserman, Chairman, MCA, Inc., 100 Universal Plaza, Universal City, CA 91608.

(3) Reproduce and distribute the PETITION TO LOCAL THEATERS CONCERNING THE LAST TEMPTATION OF CHRIST (page 14). Call your local theaters and ask them, out of respect to the Christians in your community, not to show the film in their theater. THIS IS VITALLY IMPORTANT!

(4) Boycott MCA, and encourage others to do the same. MCA owns Universal Pictures, Universal Studios in Hollywood (thousands of Christians take the tour of Universal Studios each year), MCA Music, Motown Records, MCA Development Company, MCA Publishing Company, MCA Television, Putnam Publishing Group, Berkley Publishing Corporation, Jove Publications, Coward-McCann Publishers, Grosset & Dunlap Publishers, G.P. Putnam's Sons publishers, Spencer Gifts, Universal Television, Universal Amphitheater, Womp's Restaurant Bar and Grill in Hollywood, and Yosemite Park and Curry Company at Yosemite Park.



## Teaff Reunion Held In Abilene

Milton and Jimmie Bayer and grandchildren, Vicki and Josh Bayer, attended the 42nd annual Teaff Family Reunion last weekend in Abilene.

One hundred twenty-eight descendants of the late Georgie Ann Isom and Nimrod Bartley Teaff attended. Announcement was made that 11 new babies were born since last year's reunion.

The Bayers also visited their daughters, Laine Dorman of San Angelo and Pam Burnett of Midland and her sisters and brothers, Lee Roberts of Abilene, Sybil Cagle of Coleman, N.B. Teaff of Roscoe, Roy Teaff of Post and Auda Teaff of Lubbock.

Cate Burnett returned home with her grandparents for a visit.

## Pink & Blue Event Slated Aug. 27

Mrs. Robert Wauson and infant daughter, Alisha Suzanne, will be complimented with a pink and blue courtesy Saturday, Aug. 27 in Heritage Room of Yoakum County Library. Calling hours are 10 to 11:30 a.m.

Friends and relatives are invited. Selections may be found at local businesses.

## Girls, Boys State Highlights Told

Highlights of their participation this summer in Girls State and Boys State were shared with Plains Lions Club Thursday by Nikki McGinty and Kyle Stephens.

The two PHS seniors stated they learned a lot about the state government and enjoyed their opportunity to visit with other youth from around the state.

The club's annual mop and broom sale was announced for Thursday, Sept. 1.

Other guests attending were Ann, Kelly and Reagan McGinty; Michelle Lowe, Vee Fitzgerald and Sheila Stephens.

Members attending were Ken Peterson, Wayne House, Pete StRomain, Murrell Thompson, Larry Mason, Dean Andrews, Dick McGinty, Frank Spencer and L.J. Sanders.

## Shower To Fete Johnna Brown

Miss Johnna Brown, bride-elect of Bob Summers, will be feted Saturday, Aug. 27 with a pre-nuptial shower in the home of Reta Nance.

Friends and relatives are invited to call from 10 to 11:30 a.m.

### OUT OF HOSPITAL

Ita Young is recuperating at home after a stay in Methodist Hospital in Lubbock.

## Notice of Effective Tax Rate

### 1988 Property Tax Rates in CITY OF PLAINS

This notice concerns 19 88 property tax rates for the CITY OF PLAINS. It presents information about three tax rates. Last year's tax rate is the actual rate the taxing unit used to determine property taxes last year. This year's *effective* tax rate would impose the same total taxes as last year if you compare properties taxed in both years. Compare it to the tax rate the taxing unit proposes for this year. This year's *rollback* tax rate is the highest tax rate the taxing unit can set before taxpayers can start tax rollback procedures. In each case these rates are found by dividing the total amount of taxes by the tax base (the total value of taxable property) with adjustments as required by state law. The rates are given per \$100 of property value.

<b>Last year's tax rate:</b>	
Last year's operating taxes	\$ 3356.
+ Last year's debt taxes	\$ 74,237.
= Last year's total taxes	\$ 77,593.
÷ Last year's tax base	\$ 16,526,660.
= Last year's total tax rate	\$ .4695/\$100

<b>This year's effective tax rate:</b>	
Last year's adjusted taxes (after subtracting taxes on lost property and taxes to correct appraisal roll errors)	\$ 77,522.
÷ This year's adjusted tax base (after subtracting taxes on new property)	\$ 16,281,760.
= This year's effective tax rate	\$ .4761 /\$100
× 1.03	
= Maximum rate unless unit publishes notices and holds hearings	\$ .4903 /\$100

<b>This year's rollback tax rate:</b>	
Last year's adjusted operating taxes (after subtracting taxes on lost property and taxes to correct appraisal roll errors and adding taxes lost in court suits)	\$ 3356.
÷ This year's adjusted tax base (after subtracting taxes on new property)	\$ 16,281,760.
= This year's effective operating rate	\$ .0207/\$100
× 1.08	
= This year's maximum operating rate	\$ .0213/\$100
+ This year's debt rate	\$ .4273/\$100
= This year's rollback rate	\$ .4486/\$100

## SCHEDULE A: Unencumbered Fund Balances

The following balances will probably be left in the unit's property tax accounts at the end of the fiscal year. These balances are not encumbered by a corresponding debt obligation.

Type of Property Tax Fund	Balance
Sinking Fund	- 0 -

This notice contains a summary of actual effective and rollback tax rate calculations. You can inspect a copy of the full calculations at City Hall, 601 11th Street, Plains, Texas

Name of person preparing this notice Ruth Murphree  
 Title City Secretary Tax Assessor/Collector  
 Date prepared 8/19/88



 <p><b>Dr. Pepper</b> 99¢ 2 LITER BTL</p>	 <p>VARIETY PAK &amp; CHEESE CHOOSER <b>Frito Lay</b> REGULAR \$1.99 <b>\$1.39</b></p>	 <p>48 MEDIUM/32 LARGE <b>Snuggems</b> BOX <b>\$7.49</b></p>	 <p>FAMILY SIZE LEMON <b>Dash</b> 147 OZ. BOX <b>\$4.99</b></p>
--	--	---	--

 <p><b>Nestea</b> 3 OZ. JAR <b>\$2.69</b></p>	 <p>BATH TISSUE-ASSORTED <b>Charmin</b> 4 ROLL PKG. <b>\$1.09</b></p>	 <p>PAPER TOWELS-ASSORTED <b>Hi-Dri</b> JUMBO ROLL <b>57¢</b></p>	 <p>BORDEN'S <b>Milk</b> ONE GALLON <b>\$2.09</b></p>
--	--	--	--

**GROCERY SPECIALS**

	DECAFFEINATED NESTEA 3 OZ. JAR	<b>\$3.29</b>
	LEMON NESTEA 4 OZ. JAR	<b>\$2.39</b>
	NUTRA SWEET NESTEA 3.3 OZ. JAR	<b>\$1.79</b>
	4.5 OZ. SOLID OR JET DRY LIQUID 4.5 OZ. SIZE	<b>\$1.59</b>
	COMBAT ROACH CONTROL 12 CT. PKG.	<b>\$2.98</b>
	LARGE COMBAT ROACH CONTROL 8 CT. PKG.	<b>\$3.19</b>
	COMBAT FLYING INSECT SPRAY 12 OZ. CAN	<b>\$1.89</b>
	OCEAN SPRAY REG. OR PINK GRAPEFRUIT JUICE 48 OZ. BTL.	<b>\$1.59</b>
	25¢ OFF LABEL IVORY LIQUID 22 OZ. BTL.	<b>99¢</b>
	DOW ZIPLOC SANDWICH BAGS 50 CT. BOX	<b>\$1.19</b>
	MRS. BUTTERWORTH'S PANCAKE SYRUP 36 OZ. BTL.	<b>\$2.89</b>
	25¢ OFF LABEL PETER PAN CREAMY/CRUNCHY PEANUT BUTTER 18 OZ. JAR	<b>\$1.69</b>
	AIR FRESHENER ASSORTED AIR WICK STICK-UPS 2 CT. PKG.	<b>\$1.09</b>
	50¢ OFF LABEL-DETERGENT WISK LIQUID 32 OZ. BTL.	<b>\$1.59</b>

Help Support The Purina® Pets For People Program™

	DOG FOOD PURINA 'MAINSTAY' 20 LB. BAG	<b>\$4.49</b>
	5 LB. FREE BONUS BAG-DOG FOOD PURINA 'HI-PRO' 30 LB. BAG	<b>\$8.99</b>
	ORIGINAL 1 LB. FREE BONUS BAG PURINA CAT CHOW 5 LB. BAG	<b>\$3.99</b>
	PURINA BEEF DOG SNACKS CHEESE DAWGS 5 1/2 OZ. PKG.	<b>79¢</b>
	PURINA CAT FOOD TENDER VITTLES 12 OZ. BOX	<b>99¢</b>
	TUNA OR ASSORTED PURINA 100 CAT FOOD 8 OZ. CANS	<b>4 99¢</b>

**SHELF SPECIALS**

	RALSTON COOKIE CRISP CEREAL 11 OZ. BOX	<b>\$1.79</b>
	RALSTON HONEY GRAHAM CHEX CEREAL 14 OZ. BOX	<b>\$1.79</b>
	RALSTON GHOSTBUSTERS CEREAL 14 OZ. BOX	<b>\$1.99</b>

LEAN TRIM FAMILY PAK



**Pork Chops**  
**\$1.48** LB.

8 TO 11 ASSORTED CHOPS

WE WILL NOT INTENTIONALLY SELL ANY GROUND BEEF UNDER 80% LEAN AND WE PLEDGE TO MAKE OUR GROUND BEEF AT LEAST TWICE A DAY.

	BAR S BRAND SLICED BACON 1 LB. PKG.	<b>\$1.48</b>
	BAR S MEAT FRANKS 12 OZ. PKG.	<b>98¢</b>
	BAR S MEAT BOLOGNA 12 OZ. PKG.	<b>98¢</b>
	OSCAR MAYER SLICED-P & P LOAF, LUNCHEON LOAF, LIVER CHEESE, OLIVE OR PICNIC LOAF	<b>\$1.58</b>
	COUNTRY STYLE-LOTS OF MEAT PORK RIBS LB.	<b>\$1.48</b>
	SELECT LEAN TRIM CENTER CUT PORK CHOPS LB.	<b>\$1.98</b>
	WAFER THIN BREAKFAST PORK CHOPS LB.	<b>\$2.18</b>

**FROZEN FOOD**

	VAN.-FUDGE/VAN.-STRAWBRY. BETTY CROCKER SOFT SUNDAE 6 PACK	<b>\$1.89</b>
	BETTY CROCKER VANILLA/CHOCOLATE BROWNIE SUNDAE 6 PACK	<b>\$2.19</b>
	BORDEN'S LITE ICE MILK 1/2 GAL. CTN.	<b>\$1.69</b>
	ORANGE/VAN./MINT CHOC. TREATS WEIGHT WATCHERS 12 PACK	<b>\$1.59</b>

**DAIRY SPECIALS**

	WEIGHT WATCHERS SKIM MILK 1/2 GAL. CTN.	<b>99¢</b>
	WEIGHT WATCHERS COTTAGE CHEESE 12 OZ. CTN.	<b>79¢</b>
	SHEDD'S CORN OIL MARGARINE 1 LB. PKG.	<b>69¢</b>

**HEALTH & BEAUTY**


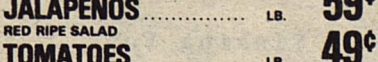

	TABLETS OR NUPRIN CAPLETS 50 CT. BTL.	<b>\$3.69</b>
	FINAL NET ASSTD. HAIR SPRAY 4 OZ. PUMP	<b>\$1.49</b>
	CHEWABLE FRUIT/GRAPE TYLENOL CHILDREN'S TYLENOL 30 CT. BTL.	<b>\$2.49</b>
	ANTISEPTIC SEA BREEZE 4 OZ. BTL.	<b>\$1.39</b>

NEW CROP BAKING

**Potatoes** 29¢ LB.

TEXAS SUPER SELECT CUCUMBERS 4 \$1 LBS.

PRODUCE SPECIALS

	CALIFORNIA FRESH GREEN ONIONS 4 BUNCHES	<b>\$1.00</b>
	FRESH HOT JALAPENOS LB.	<b>59¢</b>
	RED RIPE SALAD TOMATOES LB.	<b>49¢</b>

**Pay-n-Save**  
QUALITY AND SERVICE

WE RESERVE THE RIGHT TO LIMIT QUANTITIES

**SUPER SAVINGS**

	HORMEL CHUNK HAM 8 1/2 OZ. CAN	<b>99¢</b>
	NOT SO SLOPPY JOE 14 1/2 OZ. JAR	<b>79¢</b>
	DINTY MOORE BEEF STEW 40 OZ. CAN	<b>\$2.79</b>

**FALL KICK OFF TO BIG SAVINGS**

	30¢ OFF LABEL LIQUID CLEANER TOP JOB 28 OZ. BTL.	<b>\$1.79</b>
	SPIC & SPAN PINE LIQUID 28 OZ. BTL.	<b>\$2.19</b>
	30¢ OFF LABEL POWDER SPIC & SPAN 8 OZ. BOX	<b>89¢</b>
	LEMON SOFT CLEANSER MR. CLEAN 28 OZ. BTL.	<b>89¢</b>