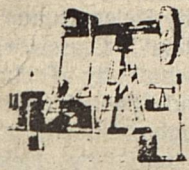


Plains Library  
Box 419  
Plains, TX. 79355



# The Plains Pride



PLAINS, YOAKUM COUNTY, TEXAS  
TUESDAY, AUGUST 11, 1987

VOLUME 3, NUMBER 18

30¢



1987 RODEO QUEEN MELISSA WELCH, center and runners-up, Nikki McGinty (left) and Sherry Rains (right).

## State Representative Jim Rudd Is Reappointed To Council

Texas House Speaker Gib Lewis, D-Fort Worth, today announced the reappointment of State Representative Jim Rudd, D-Brownfield, to the Texas Legislative Council for a term which will expire January, 1989.

The 17 member council consists of four Senators appointed by the Lieutenant Governor, nine House members appointed by the Speaker, the chairs of the House and Senate Administration committees, and the Lieutenant Governor and Speaker, who serve as chairman and vice-chairman, respectively. By law, the

chairman and vice-chairman act as the council during the regular sessions of the Legislature.

The council provides staff and bill drafting assistance to the Legislature and has the general responsibility of gathering information for the Legislator's use through studies, reports and investigations.

Rudd, a six-term legislator, is chairman of the House Appropriations committee.

In making the announcement, Lewis stated, "Jim Rudd continues to gain respect as an effective member of the Texas Legislature."



YARD OF THE WEEK is posted this week at the home of Tom and Sharon Willis at 104 First Street. Pictured with Mrs. Willis is grandson, John Moyers of Midland.

## Yoakum County Art Exhibit Held July 30-Aug. 1

Yoakum County Art Association's Annual Membership Show was held July 30-Aug. 1.

Betty Jo Estep won the People's Choice Award, presented by K & Kompany of Denver City for her entry, "The Chief". Door prize winners were Louise Goehry and Maxine Barton. Best In Show went to Carol Galenbeck for "Autumn Reflections".

Judges were Pat Krahn and Jay Foreman, both of Lubbock.

Purchase awards included "The Snow" by Jimmie Bayer and "Sudden Snow" by Thelma Cheatham, Andrews Savings and Loan; "Tranquil Waters" by Ruth Gooch, Dallas Brewer; "Mealtime" by Karon Willis, Jim and Jo Ann Barron; "Hill Country Bluebonnets" by Inetta Teaff and "Texas Bluebonnets" by Marguerite Barron, Carpenter Oil Field Service; "Country Church" by Linda Duecker, Cowboy Restaurant; "McKittrick Canyon" by LaVaughn Gooch, Jerry Corbin; "Shadow Rose" by Inetta Teaff, Dale's Venture Foods; "Delores" by Ruth Gooch, Toni Jones; "Memories" by Kay McClure, Hazel Lowrey; and "High Lookout" by Betty Estep, Yoakum County Coop Gin.

Also "New Mexico Vantage" by Linda Powell, Linda Lowrey; "Beginning Of Your Jeans" by Suzy Pal, "Grann's Porch", Suzy Pal and "Country" by Betty Estep, Macky and Connie McWhirter; "Chief" by Betty Estep, Plains Farm Supply; "A Little More Practice" by Thelma Cheatham, Plains Insurance Agency; "Woodland Hideaway" by Linda Duecker, Plains State Bank; "Iris" by Suzy Pal and "Water: Vital Necessity" by Burve Overton, Royce's Restaurant; "American Mirage" by Linda Powell and "Whiskey Barrel" by Susie Powell, L.J. and Virginia Sanders; "Swan Song" by Mary Nokes, Savoy Oil Company; "Spring Ice Breakup" by Burve Overton, Mustang Country Chevrolet and Trent Motors; and "Final Minutes" by Linda Powell, Johnnie and Melba Fitzgerald.

### Show Results

Original Still Life: first, "Autumn Reflections" by Carol Galenbeck; second, "Keri's Quilt" by Suzy Pal; third, "Guardian Of

The Pottery" by Vivian Rice; and honorable mention, "American Mirage" by Linda Powell.

Original Miniatures: first, "Pottery" by Vivian Rice; second, "Little Dinosaur" by LaVaughn Gooch; third, "Grady Calf" by Linda Powell; and honorable mention, "Pottery of Blue" by Vivian Rice.

Original Landscape: first, "Cloudcroft" by Vivian Rice; second, "Palo Verde" by Carol Galenbeck; third, "McKittrick Canyon" by LaVaughn Gooch; and honorable mention, "Thunderhead" by LaVaughn Gooch and "Fisherman's Cove" by Mary Nokes.

Original Animal Portrait: first, "Extra Ordinary" by Linda Powell; second, "Prairie Chicken" by Betty Estep and third, "Fancy Free" by Linda Powell.

Graphics - Classwork & Copies: first, "Taryn" by Thelma Cheatham; second, "Big Chief" by Marguerite Barron; third, "Age of Innocence" by Eileen Fillipp; and honorable mention, "Mountain Man" by Betty Estep.

Graphics - Original Portraits: first, "Earrings" by Margie Barron; second, "Granpa" by Thelma Cheatham; and third, "Pidgeons" by Margie Barron.

Graphics - Animal Portraits, Classwork: first, "Proud Mama" by Suzy Pal.

Graphics - Original Still Life: honorable mention, "The Diver" by Anthony Day and "Spurs" by Margie Barron.

Photography: first, "Ole Timer" by Louise Goehry; second, "Patterns Of Light" by Sue Holder; third, "Evening Calm" by Sue Holder; and honorable mention, "Twilight" by Sue Holder.

Crafts: first, Best In Crafts, "Crochet Collar" by Wilma McDonnell; second, "Angel" by Betty Estep; third, "Flower Garden" by Thelma Cheatham; and honorable mention, "Country Churn" by Vivian Rice.

Landscape, Classwork: first, "Tranquility" by Marguerite Barron, second, "Adobe" by Jimmie Bayer; third, "Slrsk's" by Jimmie Bayer; and honorable mention, "Misty Morn" by Wilma McDonnell, "The Snow" by Jimmie Bayer

Continued to page 2

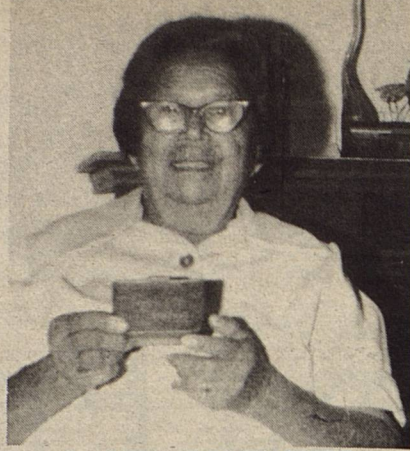


**THE PLAINS PRIDE**

The Plains Pride (USPS 757-130) is published weekly at 716 Main Street, Olton, Lamb County, TX 79064. Second Class Permit paid at Olton, TX 79064. POSTMASTER: Send address changes to THE PLAINS PRIDE, P.O. BOX 774, OLTON, TEXAS 79064-0774.

Any erroneous reflection upon the character or standing of any person or firm appearing in this paper will gladly and promptly be corrected, upon being called to the attention of the management.

—YEARLY SUBSCRIPTION RATES—  
 Yoakum County & Surrounding Counties, tax included .....\$15  
 Elsewhere, tax included .....\$16



ONOFRA DOMINQUEZ

**Services Held For Mother Of Anita D. Gonzales**

Services were conducted at 10 a.m. July 29 in Jerusalem Baptist Church in Runge for Mrs. Onofra V. Dominquez, 82, mother of Anita D. Gonzales.

Officiating were the Rev. Alfred Casanova and the Rev. Elijo Garza. Burial was in Runge Cemetery under direction of Janssen Funeral Home of Runge.

Mrs. Dominquez died July 25 in Kaiser Memorial Hospital in Kenedy after a brief illness.

Born in Rome June 12, 1905, she moved to Karnes County where she married Francisco Dominquez Sept. 22, 1921. He died Nov. 13, 1971.

Other survivors are seven sons, Daniel and Lupe Dominquez of Hillsboro, Ore., Robert Dominquez of Three Rivers, Sam Dominquez of

Midland, Raymon and Joe Dominquez of Runge and Frank Dominquez of San Antonio; two other daughters, Mary D. Mejia of Yorktown and Susie D. Gonzales of Aloha, Ore. She reared three granddaughters, Esther Martinez of Lubbock, Oralia Rosa of San Jose, Calif. and Audelia Dominquez of Salem, Ore.

Other survivors include 59 grandchildren; 64 great-grandchildren; 22 great-great-grandchildren; two sisters, Mencha Ortiz and Pauline Nayola, both of Runge; and one brother, Benjamin Villanueva of Runge.

Pallbearers were Daniel, Robert, Joe, Sam, Raymon and Frank Dominquez.

**Art Exhibit...**

Continued from page 1

and "Tub Of Petunies" by Jimmie Bayer.

Still Life, Classwork: first, "White On White" by Jimmie Bayer; second, "Morning Begins" by Vivian Rice; third, "Harvest Time" by Wilma McDonnell; and honorable mention, "Delores' Poppies" by Jimmie Bayer.

Novice Animal Portraits: first, "Bald Eagle" by Linda Duecker; and second, "Mountain Buck" by Linda Duecker.

Novice Landscape: first, "Out Of The Fog" by Linda Duecker; second, "Summer Meadows" by Linda Duecker; and third, "Country Church" by Linda Duecker.


Original Portrait: first, "Fran" by Carol Galenbeck; second, "A Kiss To Make It Well" by Marguerite Barron; third, "Granpa's Love" by Marguerite Barron; and honorable mention, "Ready" by Suzy Pal.

Portrait, Classwork: first, "Chief" by Betty Estep; second, "Mama" by Thelma Cheatham; and third, "A Little More Practice" by Thelma Cheatham.

Miniature, Classwork: first, "Iris" by Suzy Pal; second, "Praying Hands" by Suzy Pal; and third, "Texas Sweets" by Helen Hunter.

Portrait, Animal, Classwork: first, "Quiet Swim" by Theima Cheatham, second, "Mockingbird Hill" by LaVaughn Gooch; and third, "Spring Joy" by Helen Hunter.

Helping the Art Association make the annual show a big success were patron members, Harrison Well Service, Denver City Chamber of Commerce, Johnnie and Melba Fitzgerald, Ruby Bruton, Casey and Sit Jones, Warren New, Lee Kidd, P.W. and Mary Jo StRomain, Yoakum County Federal Credit Union, Mattie Field and Sarah Jane Field.



**PERSONAL LIFE INSURANCE**

*Life	*Educational Funds	*Cancer
*Health	*Major Medical	*Surgical
*Retirement Income	*Hospitalization	*Mortgage Cancellation

**— BUSINESS LIFE INSURANCE —**

*Key-Man	*Group Insurance	*Corporation
*Partnership		*Pension Plans

**L. CALVIN STEWART, CLU**  
 Chartered Financial Consultant  
 Denver City, Texas  
 Phone: 592-2878

**What Do You Call A New Off-Road Work Vehicle?**

What do you call something that can haul 600 pounds of stuff over all kinds of terrain? An ATV is not the answer because it doesn't have the cargo carrying capacity. A 4-wheel-drive truck isn't right either because it can't travel cross-country everywhere. That's why JOHN DEERE coined the term AMT to describe a new category of off-road work vehicles. So far the JOHN DEERE model AMT 600 is the only unit in this new class.

"AMT can stand for Almost a Truck or All Material Transporter," says Vaughn Culwell, owner and manager of Plains Farm Supply, Inc. "Either way it amounts to the same thing. An AMT can be hauled to the end of the road on a standard-size pickup truck. But when you get there, the AMT can keep traveling because of its unique configuration and drive system."

A 5-wheel configuration provides stability. Four wheels are powered by the engine; they support the cargo box. The front wheel is used for steering.

The drive system is composed of three elements. A variable-speed drive system transfers power from an 8.5hp gas engine through a centrifugal primary clutch and drive belt to a secondary sheave. The driver just squeezes a throttle control on the right handlebar and the machine moves forward without clutching. Speed can be varied from 0 to 20 mph. When the throttle is

released, the engine returns to idle.

The second element is a transaxle on the first set of wheels. The transaxle has three settings -- forward, neutral and reverse. The third element is case hardened chain that causes the second set of wheels to work in tandem.

The AMT can haul a 600-pound payload or 12.5 cubic feet of loose material.

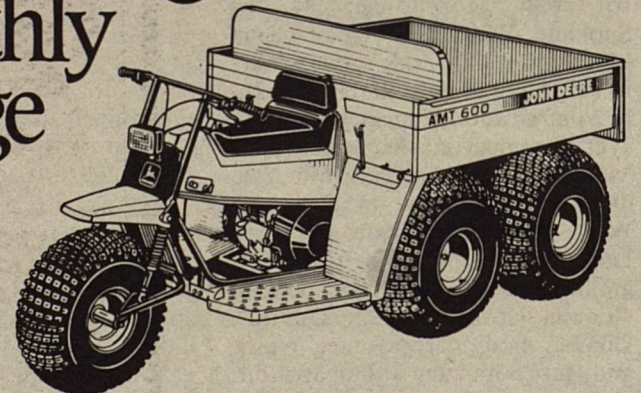
**Young Farmers Hold Meeting**

Sixty-two persons enjoyed a barbecue meal Thursday evening when Yoakum County Young Farmers sponsored an informational program. The meal was furnished by Monsanto Company and served by members of Stateline Extension Homemakers Club.

Presenting the program were Larry Stanberry, district manager of Monsanto; Eric Lamerito, sales representative for Monsanto; Gary Six, ASCS, and Edwin Livengood, SCS. Program topics included an informative review of herbicides and the ASCS and SCS programs.

**NEW AMT 600**

**Take charge for a small monthly charge**



**\$150 per/mo.\***  
 on the John Deere credit card.

- John Deere AMT® 600 All Materials Transport features 600 pound payload capacity on level ground.
- Adapts to many jobs.
- Landscaping.
- Plant maintenance.
- Construction.
- Hunting, trapping, fishing.
- Grounds care operations.
- High flotation, 5-wheel configuration for low ground pressure and stability.
- Four-wheel tandem drive for excellent traction.
- Locking differential for added pulling power.
- 1000 pounds of towing capacity.
- 8.5 hp (341 cc) gasoline engine.
- Tilting 43 x 48-in. box.

\*Payments based on 1/24 of the purchase amount, with interest applied to the outstanding balance. Subject to credit approval. No down payment. 18% APR. 50-cent minimum monthly finance charge.

 **Nothing Runs Like a Deere®**

**PLAINS FARM SUPPLY, INC.**  
 PLAINS 806-456-2877      DENVER CITY 806-592-5454



**Contact Dan or Linda Wall**

SHOP WITHOUT CASHING SHOPPING



## Mrs. Gladys Davis Rites Held In Morton Aug. 5

Services were Aug. 5 in First United Methodist Church of Morton for Gladys Davis, 84.

The Rev. Al Jennings, pastor, and the Rev. Garland Stueart, pastor of Bledsoe Baptist Church, officiated. Burial was in Morton Memorial Cemetery under direction of Ellis Funeral Home.

Mrs. Davis died Tuesday in Cochran Memorial Hospital after a lengthy illness.

Born in Haskell County, she married William Lester Davis Feb. 13, 1921 in Haskell. They moved to Morton in 1941. She was preceded in death by her husband in 1960; three sons, Roy, Wayne and William, and a daughter, Ruby.

She was a homemaker and a member of First United Methodist Church.

Survivors include two sons, Lenard of Morton and Terry of Plains; five daughters, Margaret Chapman of Lubbock, Alliene Hamilton and Billie Lasseter, both of Morton, Mildred Gunter of Mobile, Ala. and Patsy Coffman of Bledsoe; two sisters, Opal Andress of Haskell and Lois Nicholson of Clovis, N.M.; four brothers, Cecil Lackey of Haskell, Robert Lackey of Granbury, Jay Lackey and Lewis Lackey, both of Irving; 20 grandchildren and 28 great-grandchildren.

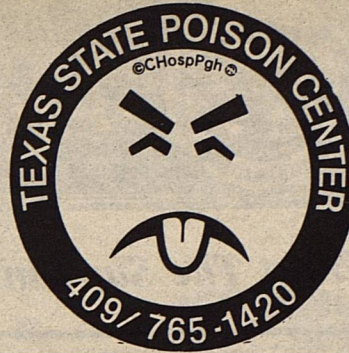
Pallbearers were grandsons, An-

dy Gunter, Ricky Gunter, Larry Chapman, Curtis Chapman Jr., Lonnie Hamilton, Wayne Lee Davis, Michael Davis, Butch Davis, Terry Wade Davis, Johnny Don Davis, Rodney Coffman and Randy Coffman.

## Arabs Subject Of Lions Film

P.W. StRomain showed a film, "The Arab Identity: Who Are The Arabs?" for Plains Lions Club at their regular luncheon meeting Thursday.

Next meeting will be Thursday, Aug. 20.



## Morehouse Rites Held Recently

Last rites were conducted July 27 for Van Morehouse, 94, of Spokane, Wash., brother of Glenn Morehouse. Graveside services were in Bristol, S.D. July 30. He died July 24 after a long illness.

Other survivors are a son, Dale Morehouse of Spokane, Wash.; two daughters, Shirley of Spokane, Wash., and Lois Carson of South Dakota; grandchildren, great-grandchildren and three sisters, Geneva Rausch and Genieve Dupree, both of Spokane, Wash. and Hazel Granzow of Hobart, Ind.

## County Librarians Attend Workshop

Library automation and technology was the theme for the library workshop held at the Texas Tech Museum July 8-9. Ann Greer and Latrell McDonnell participated in the workshop.

**FARMERS INSURANCE GROUP**  
Symbol of Superior Service

**RICHARDSON INSURANCE AGENCY**  
Box 558, 503 3rd St.  
Plains, Texas 79355  
A. C. 806 456-8888

**AUTO • FIRE • LIFE • COMMERCIAL**

*He's got low prices,  
free answers and  
dirty hands, your  
Bumper To Bumper  
Auto Parts man.  
If he can't help you,  
nobody can.*



**RESOURCE BATTERIES**  
50 MONTH WARRANTY  
**\$29<sup>95</sup>**  
60 MONTH WARRANTY  
**\$39<sup>95</sup>**

Fits most cars & light trucks.  
Group sizes 22, 24, 25, 71, 72, & 74  
Limit 1\*

**"Boxed Lightning"**

**CHAMPION COPPER PLUS®**  
A CHANGE FOR THE BETTER.  
REGULARS  
**89¢** ea.  
RESISTORS  
**99¢** ea.

For most cars & trucks.  
Limit 16\*

**CHAMPION**

**PEAK® ANTIFREEZE & SUMMER COOLANT**  
**\$2<sup>49</sup>** gallon

\$6.98 2 gal. sale price  
-2.00 mfg. mail-in rebate  
**\$4.98 2 gal. after rebate**  
Limit 2 gal.\*

Only Peak® gives you peak performance.

**MONRO-MATIC PLUS™ SHOCK ABSORBER**  
**\$12<sup>99</sup>** each

The number 1 shock at the number one price.  
Limit 8\*

**AMERICA RIDES MONROE**

**CHILTON REPAIR MANUALS**  
Save Money — Do It Yourself!  
1980-1987 Domestic or Import Manual  
**\$12<sup>95</sup>** ea.

**AC SPARK PLUGS**  
REGULARS  
**89¢** ea.  
RESISTORS  
**99¢** ea.

For most popular applications.  
Limit 16 total\*

**WD-40 SPECIAL**  
**\$1<sup>29</sup>** each  
9 oz. #40011

WD-40 It! Save Now!

**STP OIL TREATMENT**  
**99¢** net ea. after 50¢ mfg. mail-in rebate.  
Sale Price **\$1.49**.  
Limit 6\*  
#1015, 1016

**ROCKHILL BRAKE SHOES & PADS**  
SHOES **\$7<sup>87</sup>** set with exchange  
PADS **\$7<sup>87</sup>** set  
**\$12.87** set semi-metallic

For most popular applications.

**TURTLE WAX**  
Your Choice  
T-127 12 oz. Liquid or  
T-223 10 oz. Paste  
**\$2<sup>99</sup>** ea.

Super hard shell car wax.

Prices good at participating Bumper To Bumper Auto Parts Stores through August 17, 1987.  
\*Items in excess of the limits can be purchased at the regular purchase price. Details in stores.

87-11-LUB/ELP

# Buddy's Auto Parts

Brownfield Hwy  
806-456-2242



No Drinking and Driving

**CASH MERCHANDISE ONLY**



Fasten Your Seatbelt





# Plains Independent School District

## From The Superintendent's Desk

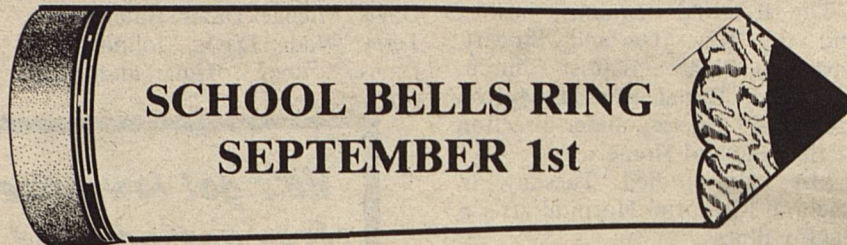
DEAN ANDREWS



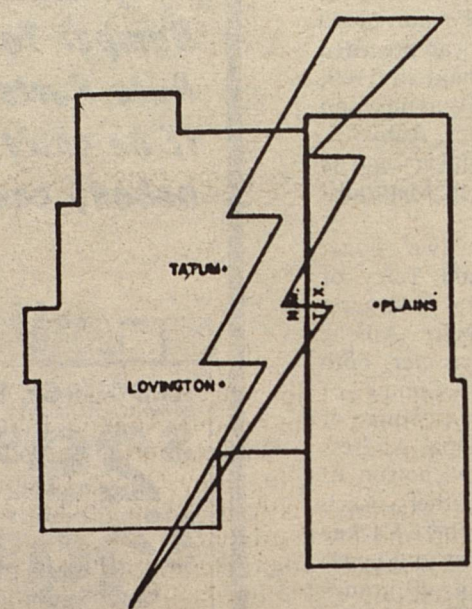
This past weekend was very pleasant for me in the fact that about forty-five or fifty former students came back for a tour of our school. Many people who had not seen the school for the past eight to ten years could hardly believe their eyes as to the facilities and programs offered to our students. As I told the group, our students still exhibit the pride that had been established and passed on by former students. We have quality people working with the young people and the expectations of success are greater today than ever before.

As we work toward building a budget for the 1987-88 school year, we see our values decrease to \$740,786,010.00. This is a decrease of \$104,203,840.00 from last year. Since 1982 we have lost \$267,506,580.00 in mineral value. Our budget for the 1987-88 school year will be approximately \$3,820,271.00, or a six percent increase as we follow the mandates of the State.

I started this article by expressing appreciation for former students coming back to see our school as a group, but if at any time you would like to have a guided tour, just give me a call. We will be happy to tour with one or with a bunch.



SCHOOL BELLS RING  
SEPTEMBER 1st



### ELECTRIC SAFETY....

Operating or touching a plugged in appliance when working in or around the kitchen sink is dangerous. Water faucets and sewer connections provide a path to the ground for electricity to follow. Don't let it pass through your body to get there.

LEA COUNTY ELECTRIC COOPERATIVE, INC.

"OWNED BY THOSE WE SERVE"

Lovington/Tatum, NM

Plains, TX

## Yoakum County Hospital

Providing the people of Yoakum County a well-rounded, modern health care program for 33 years

Quality Care For Neighbors,  
Not For Numbers

- |                                     |                                |
|-------------------------------------|--------------------------------|
| • Physical Therapy                  | • Radiology, to include:       |
| • Surgery, Recovery & Critical Care | Diagnostic                     |
| • 24 Hr Emergency Department        | Ultrasound                     |
| • Obstetrics                        | C.T. Scanning (by arrangement) |
| • Respiratory Therapy               | • Laboratory Service           |

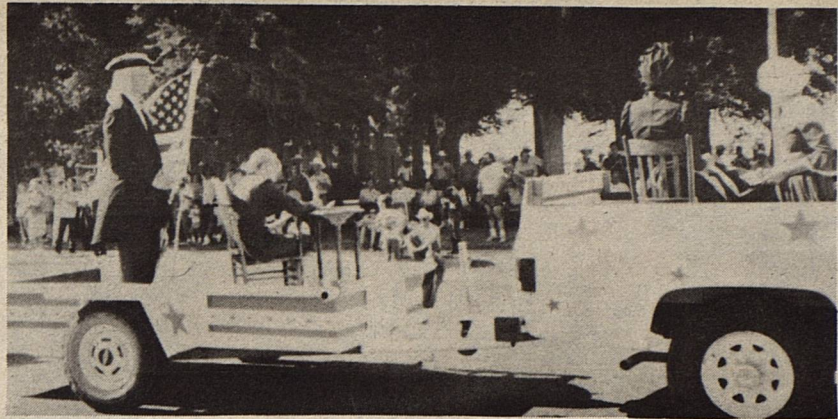
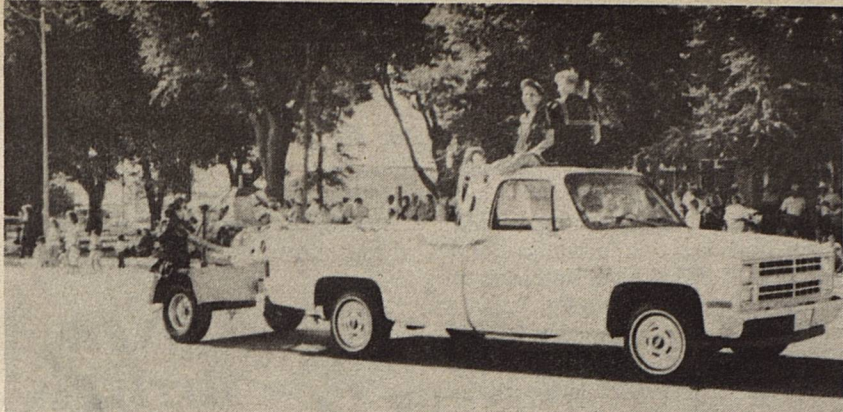
YOKUM COUNTY HOSPITAL is licensed by:  
The State of Texas; is a member of:  
American Hospital Assoc. & Texas Hospital Assoc.

MANY HAPPY THANKS from  
Yoakum County Art Assoc.

<b>Purchase Awards</b>		<b>Patron Members</b>
Andrews Savings and Loan	Linda Lowrey	Harrison Well Service
Dallas Brewer	Plains Farm Supply	Denver City C. of C.
Jim and JOAN BARROW	Plains Insurance Co.	Johnnie & Melba Fitzgerald
Carpenter Oil Field Service	Plains State Bank	Ruby Bruton
Cowboy Restaurant	Royce's Restaurant	Casey & Sit Jones
Jerry Corbin	L. G. & Virginia Sanders	Warren New
Dale's Venture Foods	Savoy Oil Company	Lee Kidd
Thriftway	Johnnie and Melba Fitzgerald	Mattie Field
Toni Jones	K and Kompany	Sarah Jane Field
Hazel Lowrey	Mustang Country Chevrolet	P.W. & Mary Jo St. Romain
Yoakum County Coop Gin	Trent Motor Company	Yoakum County Federal Credit Union
Mackay and CONNIE McWhirter		Inella Teaff - President

special thanks to student entries and Plains Pride





**1987 RODEO RESULTS**

**PARADE WINNERS:** first, Tsa Mo Ga Club; second, Bubba's Welding; third, Roping Club

**EVENTS:**  
**Bareback Riding:** (Belt buckle given by Bubba's Welding and T & B Exxon of Plains) first, Travis Howell, Portales, N.M.; second, (tie) Randy Davis, Idalou and Mike Butcher, Amarillo; third, (tie) Kelly Hanks, Canyon and Todd Bebb, Clayton, N.M.

**Calf Roping:** (Buckle given by Opal Perkins in memory of Noel Clanahan Sr. and Champ Perkins) first, Neal Dyson,

Roswell, N.M.; second, Freddie Hernandez, Abilene; third, Smitty Smith; fourth, Larry Cohorn; fifth, Shay Good, Tatum, N.M.; sixth, (tie) Leri Pollish and Jed Garrison.

**Team Roping:** (Buckle given by Plains Insurance Agency and Western Pump Service of Brownfield) first, Roy Stone and Flynn Farris; second, Ken Smith and Wes Smith; third, Jim Riemer and Kevin Sharp; fourth, Mike Jones and Kress Jones; fifth, Jimmy Leonard and Kenny Lemond; sixth, Jim Hill and Clayton Ward

**Bulldogging:** (Buckle given by Billy Winn) first, Roy Perchbacker, Hayden; second, Keith Berkenfield, Nazareth; third, Shawn McConnell, Hereford

**Bull Riding:** (Buckle given by Johnnie's Restaurant) first, Adam Brewster, Snyder; second, Pat Merrell, Canyon; third, (tie) Dale Giddeon, Odessa and Eddie Fisher, Australia; fourth, Kenneth McKee, Lubbock; fifth, Jason Harris, Amarillo

**Ladies Breakaway:** (Buckle given by Jim Barron) first, Jana Smith; second, Donna Segada,

Lubbock; third, Connie Bray, Lockney

**Barrels:** (Buckle given by Dick, Kenneth and Alton McGinty) first, Janie Riemer, Stinnett; second, Joy Terry, Southland; third place, Kay Boyles, Coahoma; fourth, Debbie Lewis, Hereford; fifth, Leann Nuckles, Canyon; sixth, Robin Pettigrew, Clovis, N.M.

**Membership Roping:** (Buckle given by Johnnie Fitzgerald and Gene Bennett) first, Tim and Donna Bowers



*This Page Sponsored By:*

**Plains Pride  
 Texas Farmers Union  
 Cowboy Restaurant  
 T-TEX Fertilizer  
 Plains Insurance Agency  
 Plains Appliance Center  
 Yoakum County Co-op Gin**

**Bayer Lumber  
 Lea County Electric  
 Pay-N-Save  
 Plains Farm Supply  
 Linda & Melvin Lowrey  
 Yoakum County Federal Credit Union  
 Turner's General Repair**





MRS. DAVID LEE SPILLER

## Ginger Nance, David Spiller Pledge Vows Saturday Evening

Wedding vows were pledged Saturday evening in First Baptist Church for Miss Ginger Kay Nance and David Lee Spiller.

Officiating was the Rev. Ken Horn, pastor.

Parents of the bride are Mr. and Mrs. John Nance. Mr. and Mrs. James Spiller of Jacksboro are parents of the groom.

Shari McCravey, organist, and Jan Horn, pianist, presented nuptial selections. Melba Crutcher sang "Through The Eyes Of Love" and "Evergreen". "The Lord's Prayer" was sung by Mike Holster. Raynee Davis of Abilene, flutist, played "The Wedding Song".

Vows were exchanged before an illumination of spiral, arched and tiered candelabras adorned with greenery, baby's breath and teal satin bows. Matching bows adorned the pews of the center aisles.

Escorted by her father, the bride wore a designer gown of white slipper satin fashioned with fitted bodice of princess lines, embellished with many rows of delicate shirring enhanced with heavy vineal satin whipped flowerette lace re-embroidered with seed pearls and iridescents. Matching trim adorned the sweetheart neckline, forming an off-the-shoulder effect. The long, straight sleeves of English net were highlighted with elongated lace appliques, tapering at the wrists, encrusted with seed pearls and iridescents. Pearl embellished lace medallions emphasized the basque waistline.

The softly gathered skirt cascaded into a chapel train with heavy satin whipped flowerette lace border

gracing the entire hemline. Dotted with pearls, her fingertip tiered veil of silk illusion drifted from a headpiece designed with braided pearl headband, dotted with suspended crystalines and pearls. The back featured a stand-up pouf with ball pearls and iridescent crystalines.

She carried a cascading bouquet of fresh rubrum lilies and stephanotis entwined with baby's breath and English ivy. She wore a strand of graduated pearls which were a wedding gift of her father to her mother. She also wore a gold bracelet which had belonged to her great-grandmother, Leola Johnson. It was designed of gold which had been mined by her father. Trio-pearl earrings belonging to her grandmother, Wilma Garrett, completed her ensemble. She wore the traditional blue garter.

Sonny Airhart of Plano was her sister's matron of honor. Bridesmaids were Traci Nance, sister of the bride, Karen Forbis of San Antonio, sister of the groom, and Stephanie Mangels of Lubbock, cousin of the bride. They wore tea length dresses of teal moire taffeta styled with fitted bodices fashioned with low v-necklines and elbow length puffed sleeves, and full gathered skirts accented with wide sashes. They carried bouquets of mauve flowers, baby's breath and greenery accented with flowing mauve and teal satin moire ribbons.

The groom was attired in a black tuxedo with tails, white vest and tie. He was attended by his brother, Scott Spiller of Jacksboro, and groomsmen, Greg Brooks of Dallas and Paul Taylor and Chris Forbis,

both of San Antonio. Ushers were Gary Oliver and Jason Scarbrough, both of Jacksboro, Marty McBride of Wichita Falls and Todd Airhart of Plano. Junior usher was Blaine McWhirter. Masculine attendants wore traditional black tuxedos, white vests, white wing-tipped collar shirts and teal cummerbunds and bow ties. They wore boutonnières of white roses and stephanotis.

The bride's mother wore a tea length dress of mauve silk and linen enhanced with wide lace at the neckline and hemline. The groom's mother chose an off-white tea length dress of chiffon enhanced with beading at the neckline. They wore corsages of pink alstroemeria.

Guests were registered by Stacey Brooks of Dallas and Kelly Gifford of Amarillo.

A reception was held in fellowship hall. Popular and traditional music was presented by Jeff Barron.

Laid with a floor length lace cloth, the bride's table was adorned with a gold candelabra with mauve candles and an arrangement of mauve and teal flowers. Appointments were crystal and gold. Serving the four tiered wedding cake, frosted in white and accented with white roses, punch, fruits, finger sandwiches, nuts and Irish cream coffee were served by Kim Andrews and Jamie Scarbrough of Jacksboro.

Rice bags of teal were distributed by Jennifer Earnest and Blaine McWhirter.

Members of the houseparty were Lorelei Andrews, Janelle Cobb, Dolores Davis, Bonnie Earnest, Sandra Foster, Ann Graham and Connie McWhirter. Martha Brooks of Dallas was wedding director.

The groom's parents hosted a rehearsal dinner Friday evening in the Crystal Palace in Brownfield.

The bride is a December candidate for graduation from Texas

Tech University. The groom graduated from the University of Texas and St. Mary's School of Law. He is a partner in the Jacksboro law firm of Spiller and Spiller.

Following a wedding trip to Jamaica, the couple will be at home in Jacksboro.



Tony and Gracie Lazos would like to announce the arrival of a daughter born Aug. 2 in Cook Memorial Hospital in Levelland. Weighing seven pounds six ounces, she measures 19 and a half inches long. She has been named Daniela Nicole. She has a brother, Tony Jr., six years old. Grandparents are Manuel and Juana Ramos of Plains, Marcela Amaya of Laredo and Oscar and Irma Lazos of Plains. Eularia Amaya of Laredo is her great-grandmother.

Marylou and Jesse Garza are the parents of a daughter born July 16 in Cook Memorial Hospital in Levelland. Named Jessica LaShea, the little lass weighed six pounds 11 ounces and is 19 inches long. She has a two and a half year old brother, Johnathon Rick. Grandparents are Marty Martinez of Lamesa and Mr. and Mrs. Fortino Garza.

## ABWA Chapter Meets Aug. 17

Texas Plains Charter Chapter of ABWA will meet at 7 p.m. Monday, Aug. 17 in the Heritage Room of Yoakum County Library. All interested persons are invited.



JOHNNY LEE CURTIS & ZETA DIANE THOMPSON

## Wedding Plans Announced

Mrs. Diane Thompson and Mr. and Mrs. John Dale Curtis of Tokio announce the engagement and approaching marriage of their children, Zeta Diane Thompson and Johnny Lee Curtis.

Wedding vows will be pledged in a 7:30 p.m. ceremony, Friday, Aug. 21 in First Baptist Church. Friends and relatives are invited.

Miss Thompson is employed with U.S. Cable of West Texas in Denver City.

The prospective groom is employed with T & C Tank Rental of Denver City.



# CLASSIFIED ADVERTISING

## FOR SALE

HOUSE FOR SALE ON TWO ACRES: Newly remodeled kitchen, 3 bedrooms, 1 bath, clean, located 5 miles north of Tokio on Highway 1780; also 30x40 barn and an above ground swimming pool, all for \$30,000. Call 522-6641. 17/2tc

HOUSE FOR SALE: 3 bedrooms, 2 baths. Owner will finance. In Plains. 456-6877. 17/1tc

FOR SALE: Hank's 1968 Chev. 1/2 ton pickup with camper shell, custom seat and saddle tanks, all new chrome to be installed, new motor in 1985; a 1942 Harley Davidson Motorcycle, very good shape; and metal garage door. Louise Goehry, 806-456-8558. 15/tfc

## For Rent

FOR RENT: 1 bedroom apartment. Call 456-6877. 6/tfc

## Miscellaneous

LOST: Black Tiny Poodle. Answers to the name "Gidget". She is wearing a red collar. If found, please call Brandi or Jacob Lester at 456-6575. REWARD OFFERED. 18/3tc



According to U.S. Bureau of Labor Statistics estimates, the job classification with the most openings likely between now and 1900 is that of computer service technician.

STATEMENT OF NONDISCRIMINATION  
"POKA-LAMBRO RURAL TELEPHONE COOPERATIVE, INC. has filed with the Federal Government a Compliance Assurance in which it assures the Rural Electrification Administration that it will comply fully with all requirements of Title VI of the Civil Rights Act of 1964 and the Rule and Regulations of the Department of Agriculture issued thereunder, to the end that no person in the United States shall, on the ground of race, color, or national origin, be excluded from participation in, be denied the benefits of, or be otherwise subjected to discrimination in the conduct of its program and the operation of its facilities. Under this Assurance, this organization is committed not to discriminate against any person on the ground of race, color or national origin in its policies and procedures relating to applications for service or any other policies and practices including rates, conditions and extension of service, use of any of its facilities, attendance at and participation in meetings of beneficiaries and participants or the exercise of any rights of such beneficiaries and participants in the conduct of the operations of this organization.

"Any person who believes himself, or any specific class of individuals, to be subjected by this organization to discrimination prohibited by Title VI of the Act and the Rules and Regulations issued thereunder may, by himself or a representative, file with the Secretary of Agriculture, Washington, D.C. 20250, or the Rural Electrification Administration, Washington, D.C. 20250, or this organization, or all, a written complaint. Such complaint must be filed not later than 90 days after the alleged discrimination, or by such later date to which the Secretary of Agriculture or the Rural Electrification Administration extends the time for filing. Identity of the complainants will be kept confidential except to the extent necessary to carry out the purposes of the Rules and Regulations."

## PLAINS INSURANCE AGENCY

Auto  
Home  
Life

Specializing In Your Insurance Needs

JIM WARREN  
Phone: (806) 456-3595

P.O. BOX 1020  
PLAINS, TEXAS 79355

## We Are A Full Line GASOLINE & DIESEL JOBBER

We Carry 9 Major Brands of Oil  
Quality Gasoline, Diesel & LP Gas

— IRRIGATION SUPPLIES —

24 HOUR SERVICE

WE ARE COMPETITIVE

# Eddins-Walcher

FIRST IN SERVICE SINCE 1937  
CELEBRATING OUR 50th ANNIVERSARY

Roswell Hwy. 456-5199

## Two J-S Flying Service

Aerial Applicators



806/456-3580

Jack Cobb  
456-7452

Yoakum Co. Airport

Plains, TX  
79355

## ADD LIVING

# SPACE



If you're adding a room, or expanding existing space, we can help! Expert advise & all the materials you'll need. Lumber, paneling, nails, insulation & tiles.

DO-IT YOURSELF CENTER

BAYER  
LUMBER & HARDWARE  
CO.

Plains

PRO-5

## PAYMASTER DEALER

Competitive Prices...Special Discounts

Custom Application \$2.25/Acre

- Dry Fertilizers
- Liquid Fertilizers
- Herbicides
- Insecticides
- Custom Application
- Many Select Cotton Seed
- Soil Testing
- Prompt Delivery Service
- Insect Scouting
- Nurse Tanks

• ConLee Milo & Haygrazer

Poly Tanks \$585 for 1600 gal.

45° Fertilizer Chisels \$14 each

Busters: 14" — \$13.50 each

15" — \$14.65 each

3 Hp. Banjo Pump \$220

## T-Tex Fertilizer Goodpasture Elevator

Roswell Highway

Days  
456-8833

Bruce Lester/Mgr.

Nights  
456-6575

TREFLAN

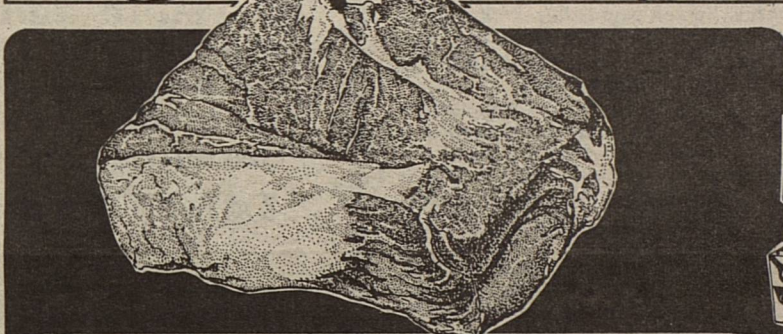


 <b>Coca-Cola</b> PLUS DEPOSIT <b>\$2.59</b> 6 PK. 32 OZ. BTL.	 <b>Fritos</b> <sup>®</sup> REG. \$2.39 <b>\$1.59</b> BAG	 <b>Bounty</b> PAPER TOWELS <b>69¢</b> JUMBO ROLL	 <b>Jeno's</b> ASSORTED PIZZA <b>99¢</b> 10 OZ. BOX
---	---	--	--

 <b>Charmin</b> BATH TISSUE <b>99¢</b> 4 ROLL PKG.	 <b>Pampers</b> 66 SMALL/48 MED./32 LG. <b>\$9.69</b> BOX	 <b>Surf</b> LAUNDRY DETERGENT \$1.50 OFF LABEL <b>\$6.29</b> 147 OZ. BOX	 <b>Crackers</b> SUNSHINE KRISPY <b>79¢</b> 16 OZ. BOX
---	--	---	---

 40% OFF LABEL DISH DETERGENT <b>LIQUID DAWN</b> 22 OZ. BTL. <b>\$1.09</b>
 75% OFF LABEL FOR LAUNDRY <b>ERA DETERGENT</b> 64 OZ. BTL. <b>\$3.39</b>
BUY 3 GET ONE FREE!  <b>ZEST SOAP</b> 4 BAR PK. <b>\$1.69</b>
 <b>DOW HANDI-WRAP</b> 200 FT. ROLL <b>\$1.39</b>
FOR SANDWICHES  <b>DOW BAGS</b> 59 CT. BOX <b>99¢</b>
FOR SANDWICHES  <b>DOW BAGS</b> 100 CT. BOX <b>\$1.79</b>
 <b>WELCH'S GRAPE JUICE</b> 64 OZ. BTL. <b>\$2.29</b>
 <b>JIF CREAMY/CRUNCHY PEANUT BUTTER</b> 18 OZ. JAR <b>\$1.79</b>
 <b>POTATOES &amp; SAUCE ASST. LIPTON MIX</b> PKG. <b>89¢</b>
LIQUID AUTOMATIC DISH DETERGENT  <b>SUNLIGHT</b> 60 OZ. BTL. <b>\$2.29</b>

# EVERYTHING for less



HEAVY GRAIN FED BEEF BONELESS BLADE CUT

## Chuck Roast

**\$1.59**

LB.

**SAVE!**

**Arm Steak**  
 HEAVY GRAIN FED BEEF BNLS. SHOULDER

**\$1.89**

H.G.F. BEEF BNLS. CENTER CUT	LB.	\$1.79
CHUCK ROAST	LB.	\$2.49
H.G.F. BEEF BNLS. FAJITA	LB.	\$2.49
SKIRT MEAT	LB.	\$2.49
BUTTERMILK STYLE BREADED CHICKEN	3 LB. BOX	\$8.88
BREAST TENDERS	3 LB. BOX	\$8.88
PRICE SAVER CHICKEN	1 LB. PKG.	79¢
MEAT FRANKS	1 LB. PKG.	79¢
COUNTRY SKILLET FARM GROWN CHANNEL	1 LB. PKG.	\$2.49
CATFISH FROZEN FRESH	LB.	79¢
SELECT SLICED YOUNG BEEF LIVER	LB.	79¢

 LEMON <b>DUSTER PLUS</b> 8 OZ. CAN <b>\$1.29</b>
 JOHNSON'S LEMON <b>FAVOR</b> 9 OZ. CAN <b>\$1.09</b>
 FLOOR CARE <b>STEP SAVER</b> 22 OZ. BTL. <b>\$1.59</b>

SOFT FROZEN

## Yoplait

**\$1.79**

6 CT. PKG.

ORE-IDA REG./BACON OR ONION

**TATER TOTS**

2 LB. PKG.  
**\$1.29**

EL CHARITO ASST.

**MEXICAN DINNERS**

13 OZ. BOX  
**\$1.09**

QUARTERS

**BLUE BONNET**

3 \$1

1 LB. BOXES

BUTTER BLEND	1 LB. PKG.	99¢
BLUE BONNET	1 LB. PKG.	99¢
BORDENS ASST. POPSICLES	6 CT. PKG.	49¢
BORDENS SHERBET	1/2 GAL. CTN.	\$1.49
BORDENS HOMO MILK	1/2 GAL. CTN.	\$1.05

REG. \$3.99 50 CT. X-STRENGTH

**TYLENOL CAPLETS** BUY ONE GET ONE.. **FREE**

FOR CLEAN SKIN

**SEA BREEZE**

18 OZ. BTL.  
**\$2.59**

DEODORANT

**BAN SOLID**

2 OZ. SOLID  
**\$2.29**

 CALIFORNIA FRESH <b>Peaches</b> <b>39¢</b> LB.	 CALIFORNIA SWEET <b>RED PLUMS</b> <b>39¢</b> LB.
--	--

**Fresh PRODUCE**

TEXAS FRESH GREEN CABBAGE	LB.	15¢
CALIFORNIA CRISP STALKS CELERY	2 FOR	89¢
GOLDEN SWEET CORN	7 EARS	\$1.00

**Pay-n-Save**  
 QUALITY AND SERVICE

PRICES EFFECTIVE: AUGUST 10-15, 1987  
 WE RESERVE THE RIGHT TO LIMIT