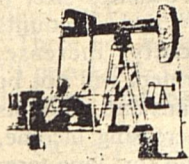


Plains Library  
Box 419  
Plains, TX. 79355



# The Plains Pride



VOLUME 2, NUMBER 42

Plains, Yoakum County, Texas  
TUESDAY, JANUARY 20, 1987

30¢



DAMAGED BY FIRE in 1947, then partially rebuilt, Plains Frozen Foods, owned and operated from 1946 until 1963 by Dick McGinty, the building has now been razed and the lot leveled and cleaned.

## Community Education Classes Slated, Woodworking Begun

Plains Independent School District will begin Community Education classes Feb. 2, offering welding, typing, beginning computer, calligraphy and tennis. A woodworking class got underway this week.

Adult Basic Education is a continuous program in Plains allowing individuals to enter at any time and stay as long as necessary to achieve their personal goals. Those 17 years or older who have been out of school for at least a year may enroll in the Basic Education course.

The class may be used for preparation for the GED test or to learn basic skills such as reading, arithmetic, writing and spelling. The class is available at no cost, including books and materials. A minimum number of students must be enrolled for the class to be offered and continue to the end of the school year. Classes are from 7 to 9 p.m. Tuesdays and Thursdays. Interested persons may contact the school for enrollment or additional information.

Community Education courses require a minimum of 10 participants in order for the class to be offered. In each class, there is a cost for the course and, in some in-

stances, additional material fees. Senior Citizens, age 65 and older, are invited to enroll in any course at one-half the regular fee. Additional material fees remain the same as for all participants.

Classes are open to both adults and children. One need not be a resident of the district in order to participate.

Welding is a six weeks course with a fee of \$15. Classes are 7 to 9 p.m. Mondays in the agriculture building.

Typing is an eight weeks course meeting in the high school typing room from 7 to 9 p.m. Tuesdays, beginning Feb. 3. Fee is \$16.

Beginning Computer will meet from 7 to 9 p.m. Tuesdays in the high school computer lab. Fee is \$16 for the eight weeks course.

Calligraphy will be taught in the Resource Center from 6 to 8 p.m. Mondays. The course is three weeks at a fee of \$6.

Tennis classes will begin May 19. The four weeks course, with a fee of \$16, will be from 7 to 8 p.m. Tuesdays and Thursdays.

Woodworking, which began Tuesday, is a ten weeks course. Fee is \$30. Classes are 6 to 9 p.m. Tuesdays in the high school shop.

## Plains Frozen Foods Razed, Lot Levelled Off

Once a busy spot in town, the building formerly housing Plains Frozen Foods was razed this week and the lot cleaned and leveled. Serving an era when deep freezers were not standard features of the average home, Plains Frozen Foods was operated by Dick McGinty and featured frozen food lockers and groceries.

Kenneth McGinty recalls his father operated the locker plant and

store from 1946 until 1963. "I feel like I grew up there, working in the store. Business was real good, lots of people used the lockers," he states.

The business was damaged by fire in 1947 and had to be partially rebuilt.

Work began Monday in tearing down the building owned by D.B. McGinty and R.B. Casey Jones.

## School Board Calls Election, Extends Andrews' Contract

School board members in their regular meeting Monday evening called an election to name new trustees.

Trustees accepted a bid of \$11,925 from TI-IN Network for the installation of a system with high school courses and staff development to be added as the program justifies.

A bid of \$4,329 submitted by Bruton Trailer Sales was accepted for a gooseneck trailer for the vocational agriculture department.

The board took no action but requested further study be made and information gathered for the board for a cowboy statue to be erected at the school.

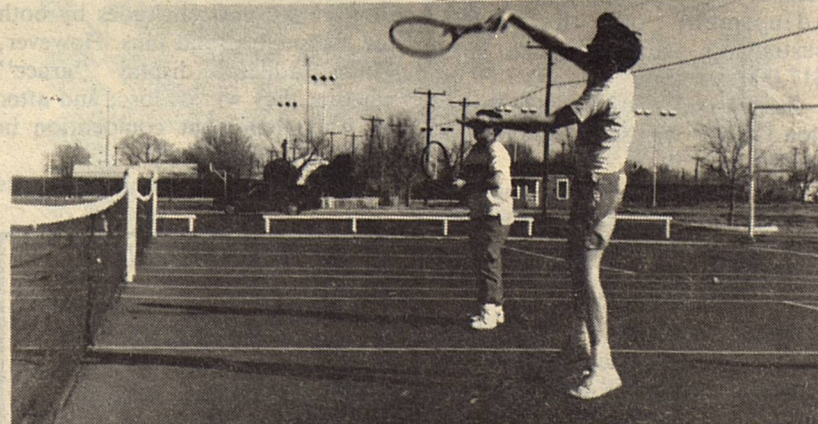
Insurance bids were opened and considered. The board accepted a bid from Texas Association of School Boards with \$1,000 deductible for building insurance for Plains ISD plus general liability. That motion was amended to \$5,000 deductible and passed with Jack Palmer, Terry Davis, Eddie Earnest, Melvin Lowrey and Edwin Livengood voting for; Ty Earl Powell and Jack Spears voting against.

Members voted unanimously to accept a bid of \$25,644 submitted by Texas Association of School Boards for insurance coverage including general liability with \$5,000 deductible for the period from Jan. 20, 1987 to Jan. 20, 1988.

In other action, the board adopted Honor Economics as submitted by PHS principal Robert Parks. The Plains ISD board policy was updated in accordance with recommendations of TASB. Local administrative policy (local) was also adopted.

December bills were approved for payment and financial reports for general operating, cafeteria, tax and transportation given by Superintendent Dean Andrews.

Entering executive session, the board considered the administrative staff evaluations and superintendent's contract. Resuming open session, the board approved extending the superintendent's contract through June 30, 1989. Voting for were Palmer, Davis, Powell, Earnest and Spears. Lowrey was opposed; Livengood, abstained.



"WOULD YOU BELIEVE 70° WEATHER?" -- Chris Andrews and Jeff Baum, members of the high school tennis team, were able to get out and practice Wednesday, Jan. 14, as temperatures were in the upper 60's. The following day a winter storm watch was posted and the temperature dropped into the teens.

**THE PLAINS PRIDE For Producers**

Joe & Debbie Alcorta - Publisher/Editor

The Plains Pride (USPS 757-130) is published weekly at 716 Main Street, Olton, Lamb County, TX 79064. Second Class Permit paid at Olton, TX 79064. POSTMASTER: Send address changes to THE PLAINS PRIDE, P.O. BOX 774, OLTON, TEXAS 79064-0774.

Any erroneous reflection upon the character or standing of any person or firm appearing in this paper will gladly and promptly be corrected, upon being called to the attention of the management.

—YEARLY SUBSCRIPTION RATES—  
Yoakum County & Surrounding Counties, tax included .....\$15  
Elsewhere, tax included .....\$16

## Three Financial Danger Signals

Many farmers who were forced out of business during the past few years did not have enough equity capital to finance a "capital hungry" farm operation, says David Kight, Yoakum County Extension Agent.

Some economists say that other producers also may be approaching the same situation without realizing it.

They note that farm operations

fitting these descriptions may be candidates for failure:

(1) Your lender owns more than half of your business.

(2) Your short-term loans and accounts payable have increased each year for the past three years.

(3) Your interest bill is more than 20 percent of your sales.

"You can easily determine if your lender owns more than half of your business by looking at the net worth statement entries of total assets and liabilities. This factor is critical because of earnings on the assets used in the business," they say.

Traditionally, the economists note, earning rates on agricultural assets are 4 to 6 percent. "A farmer earning the high rate of 6 percent on all assets, but paying 12 percent interest on half of his assets, has nothing left. If earnings fall below 6 percent or asset values decline, but interest rates stay at 12 percent, the owner's equity declines to the point he is unable to finance the business," they warn.

Economists suggest that producers look at their last three years'

net worth statements. Without a major increase in business size, if short-term loans and accounts payable consistently increase, sooner or later farmers will not be able to keep the loans and accounts current without increasing income, or refinancing land or long-term assets. When this happens, short-term debt will not be renewed and suppliers will demand cash before delivery, the economists caution.

Research indicates that when interest charges are more than 20 percent of sales, there is less than 20 percent chance the business will survive more than five years. "When interest charges are that high, there is not enough income from the business to pay off expenses, so losses occur. To continue in business, the farmer must finance the previous year's loss and loses even more in the second year. This cycle is repeated until the business is unable to be refinanced."

While the three factors may not apply to all businesses, if any one exists for any business, a detailed business analysis should be started.

## —Commissioner's Court—

Yoakum County Commissioners Court met in regular session Monday with all members present.

Unanimous approval was given a motion to advertise for applications to select a county depository. Bids are to be received Feb. 9.

As provided in "Texas Revised Civil Statutes Annotated," the court okayed an order placing officers for the County on a salary basis for the calendar year.

The Tax Assessor-Collector's report of taxes collected in December was presented and approved. Also approved were the County Treasurer's four quarterly reports for 1986. The County Auditor's annual report was also accepted.

Judge Dallas Brewer drew three names from the two previous grand jury lists to serve as Grievance Committee members. They are Armida Ybarra, Robert Parks and Sandra Wells.

Motion to set salaries as reflected in the 1987 budget was approved by a 3-2 vote. In favor were Jim Barron, Johnnie L. Fitzgerald and Dallas Brewer. Opposed were John Avara and R.W. Thurston.

Extra hire maximum salaries were approved to stay the same: clerical @ \$5.75 per hour and road hands @ \$6.75 per hour. Out of county travel rate was set the same as 1986: 20 and a half cents per mile. Car expense was also set at the 1986 rate.

Starting salary was approved to remain unchanged. Rates for jury services were okayed to remain at \$6 for reporting and \$12 per day for serving as juror.

Upon recommendation of the Denver City Civic and Youth Center Board, the Court approved a salary adjustment on the center custodian's salary to set it at \$17,000 per year.

Starting salary of Juvenile Probation Officer was set at \$24,675 annually.

The Court unanimously approved a motion to service notice of one full year to terminate Lyn Bauer as Agent of Record in insurance matters.

Judge Brewer read a letter dated Jan. 6 from Stephen C. McIntyre representing Texas Rural Legal Aid, Inc.

A motion was approved to send the City of Denver City their bill for half the bills of Denver City Civic and Youth Center by certified mail, return receipt requested.

Approval was given to allow South Plains Health Unit two rooms at the hospital to conduct a Prenatal Care Clinic and approved expense of \$400 on equipment for the rooms.

Bills were read and approved for payment including hospital bills in the amount of \$69,552.95.

District Clerk Mae Barnett's deputation of Barbara Thrash for the term beginning Jan. 1 was approved.

Approval was also given the Notice of Proposed Installation of Utility Line within the right-of-way of County Highway P-10 of Mabee Petroleum Corporation.

County Auditor Hazel Lowrey was given approval to interview two or three competent auditing firms, get their price on performing the 1986 county audit and report to the court.

A motion to advertise to receive proposals on hospitalization insurance according to provisions of the present policy with Blue Cross/Blue Shield was approved. Any alterations must be noted and proposals received Feb. 13.

### Dear Editor:

Dear Editor:

I would like to express my sincere thanks to all the athletes of Plains High School. Their display of sportsmanship during volleyball, football and basketball games is to be commended.

I also appreciate the coaches and the school personnel who have encouraged this fine quality in them. Too often today in sports competition we see poor attitudes by both the competitors and fans. However, Plains athletes display "grace" whether they win or lose; and after all isn't that what competition in athletics is all about.

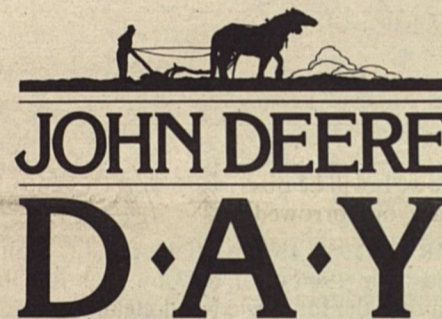
Sarah K. Burrus

### Winter Sale!

25% OFF *Carole Fabrics*  
50% OFF  
*Labor on Custom Bedspreads*  
50% OFF *Mini Blinds*  
35% OFF *Vertical Drapes*

CALL  
**J & L Draperies**

FOR FREE ESTIMATE  
456-6012 456-8902 456-6282



STOP BY OUR 1987  
JOHN DEERE DAY  
AND START A  
50-YEAR-OLD  
TRADITION

**F**ifty years ago John Deere welcomed farmers to the first ever John Deere Day, the forerunner to Farming Frontiers. Now we'd like to welcome you to the start of another 50 years of farmer appreciation meetings—John Deere Day '87. You're invited to catch scenes from 150 years of John Deere history, to see the latest in equipment and grab a peak at new, even more efficient farm tools from John Deere.

Thurs.  
Date Jan. 22nd Time 6:30 P.M.

Place School Cafeteria

## PLAINS FARM SUPPLY, INC.

Plains  
806/456-2877

Denver City  
806/592-5454

LEADERSHIP YOU CAN COUNT ON





**Filmtime**

Filmtime began again Wednesday at Plains Library after a long holiday break. Pre-schoolers viewed the films "El Groucho Goofy" and "Three For Breakfast". They sang "I'm a Little Teapot", "Ten Little Indians" and the "ABC" song.

Games played were Ring Around the Roses and Duck, Duck Goose.

Boys and girls attending were Skyler Johnson, Ragan McGinty, Tarren and Keenan Hancock, Kristen Gray, Lacey Crawford, Jennifer Phillips, Donita Richardson, Kimberly and Kayla Willis, Staci Tuggle, Joshua and Daniel Clay, Kyle Kight, Jordan Parr, Ty Shearman, Lensey Cullins, Nolan and Nichole Newsom, Scott Sears, Ann Palmer, Sharla Vantine, Kimberly Martinez and Lesli Rowe.

Library personnel have enjoyed having Randy Kennedy help during his vacation from school in San Angelo. Brad McWhirter has helped after school. We thank these who have helped with special jobs that have to be done at the beginning of each year.

Persons who are interested are welcome to join in exercise class which is held at the library each Monday, Wednesday and Friday morning from 8:30 to 9:30 in the Heritage Room.

Library personnel hope to be of service to many more patrons in 1987. Should anyone need a book, let the librarians know. It will be obtained for the library or borrowed from interlibrary loan. Interlibrary loan is a program that is participated in by all the libraries in the United States that are government supported. Libraries are given funds to buy books because of their participation in the Interlibrary loan.

Anyone with books overdue at the library should bring them in because others may be waiting to read those books.

**Former Plains Resident Sings On Cruise Ship**

Marla Norman, former resident of Plains, is now singing on a cruise ship in the Caribbean. She began a four months contract on the ship's maiden voyage during Christmas week.

Each week the cruise ship sails from Antigua on Sunday. Martinique, Barbados, St. Vincent and other islands are included in the cruises. Sailing only in good weather

**Farm Program Reviewed Monday**

Yoakum County Young Farmers Monday evening heard a review of the 1987 Farm Program and the 1986 Disaster Program. Presenting the program was Gary Six.

Other guests attending were David Kight and Pat Livengood.

Attending were Tommy Box, John Gray, Rickey Bearden, Kreg Keese, Charles Oswalt, Jet

Wilmeth, Danny Bell, Jeff Redman, Ron Craft, Tim Addison and Wayne Davis.

Next meeting will be at 8 p.m. Monday, Feb. 9 in the Ag Building.

and sunshine, each cruise may vary the islands visited.

Anyone wishing to write Ms. Norman may do so in care of Club Sea, 1175 NE 125th St., North Miami Beach, Fla. 33161.

**Sheriff Rice Leads Program**

Yoakum County Sheriff Jimmie Rice was guest speaker Thursday at the luncheon meeting of Plains Lions Club. He spoke on Law Enforcement Careers.

Guest of the club was Alma Lynn McGinty.

2241  
**THIS SAFETY BOOT HAS A WARM PERSONALITY. (IT'S INSULATED)**  
**ANTHONY'S**  
Denver City  
**Red Wings**

**Mildred Wenzel and Pat Corbin**  
with 3 years of income tax preparation experience are now open for your business as  
**Mildred And Pat**  
INCOME TAX SERVICE  
407 A Lubbock Rd. Brownfield 637-3622  
Check our competitive prices!  
Mastercard and Visa Accepted!  
"We strive to be a service...not an expense."  
**5% Discount** when we do your 1986 Taxes  
Ad must be presented for discount.

**FARMERS INSURANCE GROUP**  
Symbol of Superior Service  
**RICHARDSON INSURANCE AGENCY**  
Box 558, 503 3rd St.  
Plains, Texas 79355  
A. C. 806 456-8888  
AUTO • FIRE • LIFE • COMMERCIAL

**HOMESTYLE**  
**"Full Meal Deal"**  
only **\$2.59**  
Monday, Jan. 19 thru Sunday, Feb. 15  
The sweetest deal in town is the Dairy Queen Full Meal Deal. With a juicy quarter-pound Homestyle Hungr-buster. Golden french fries. Your favorite ice-cold soft drink. And a creamy 5-ounce Dairy Queen sundae with your choice of topping. The \$2.59 Full Meal Deal. It's a steal.



**Nothing lasts 150,000 years anymore... but you can make Old Appliances Last Longer... with NEW REPAIR PARTS.**

- We have parts for
- Dishwashers
  - Washers/Dryers
  - Refrigerators

**Plains Appliance Center**

Sue Randall, Mgr

Mon-Sat

456-3565

8-6



# Plains Independent School District

## From The Superintendent's Desk

DEAN ANDREWS



The seventieth session of the Texas Legislature convened this week and the very first issue addressed was the state's economy. Before this session is over there will be even more concern for funds to finance state government. There will probably be no new taxes during the 140 day regular session, but it is predicted that during a special session new taxing methods will be addressed.

How does this affect our school system? We have seen state mandated programs adopted during recent legislative sessions with no operating monies attached. This means that the local district is required to fund the mandated program with local funds. Some examples are bilingual education, the 22-1 teacher class size, and the four year old kindergarten program.

During the 1984-85 school year there were 1096 school districts and for the 1985-86 year, 1063 school districts in Texas. The consolidations are a direct reflection of the state mandated programs. It is estimated by the Texas Education Agency that if all districts of less than 1000 students were consolidated, it would save the state \$700,000,000.00 annually.

These are not easy times for Texas or for education but there are good things happening and we will survive.

## Basketball Team Gets Invitation

Plains High School has received a letter from Reese Air Force Base with an invitation to participate in the 13th Annual Reese AFB Christmas Classic High School Basketball Tournament to be held Dec. 17-19, 1987.

"We sincerely appreciate your participation in this year's Reese Air Force Base Christmas Classic Basketball Tournament," writes Charles R. Edwards, Colonel, Commander of the 64th Air Base Group. "Schools like yours help make this annual tournament a huge success. We hope you enjoyed your stay in Lubbock and at Reese AFB, and look forward to seeing you again for next year's tournament."

## SCHOOL EVENTS

TUESDAY - Basketball, Union, There, GB at 6:30 p.m.  
 THURSDAY - Plains Farm Supply meets in cafeteria at 6:30 p.m.  
 FRIDAY - Basketball, O'Donnell, Here, gbGB at 5 p.m.  
 SATURDAY - Math and Science Practice Meet at Lubbock Dunbar; Yoakum County Federal Credit Union meets in cafeteria at 7 p.m.

## KPLN SCHEDULE Channel 3

TUESDAY, Jan. 20 at 2 p.m.  
 -Plains vs Eunice  
 WEDNESDAY, Jan. 21 at 2 p.m.  
 -Plains vs Wilson  
 THURSDAY, Jan. 22 at 2 p.m.  
 -Plains vs Wellman JV Girls  
 FRIDAY, Jan. 23 at 2 p.m. - 1986 National Honor Society Induction

## Regal Theatre in Brownfield, Texas

Now Showing...  
 -Screen I-  
 "Stand By Me"  
 Rated R  
 -Screen II-  
 "Three Amigos"  
 Rated PG  
 held over for 2nd week  
 For Recorded Showtimes Call 637-2848  
 Regular Admission:  
 \$3 Adult \$1.50 Children  
 -TUESDAY NIGHTS-  
 "Bargain Nights"  
 \$2 Adults \$1 Children

## PLAINS INSURANCE AGENCY

Crop	Auto
Health	Home
Commercial	Life

Specializing In Your Insurance Needs

JIM WARREN  
 Phone: (806) 456-3595

P.O. BOX 1020  
 PLAINS, TEXAS 79355

## Plains Students On Honor Lists

Six students from Plains were among 457 students named to the President's and Dean's Honor Lists for the fall semester at South Plains College.

Julie Culwell and Traci Nance were named to the SPC President's Honor List. To be eligible for that honor, they had to maintain a "straight A" or 4.0 grade point average.

Russell Bagwell, Anna Gonzales, Michael McMinn and Rosalinda Morales were named to the Dean's Honor List. In order to be chosen for the honor, they maintained a minimum 3.25 grade point average.

"We are proud of these students and their outstanding scholastic achievements," said Dr. Robert Cloud, vice president for academic affairs. "They have proved themselves to be highly successful students at SPC."

## What's Cooking At School?



### BREAKFAST

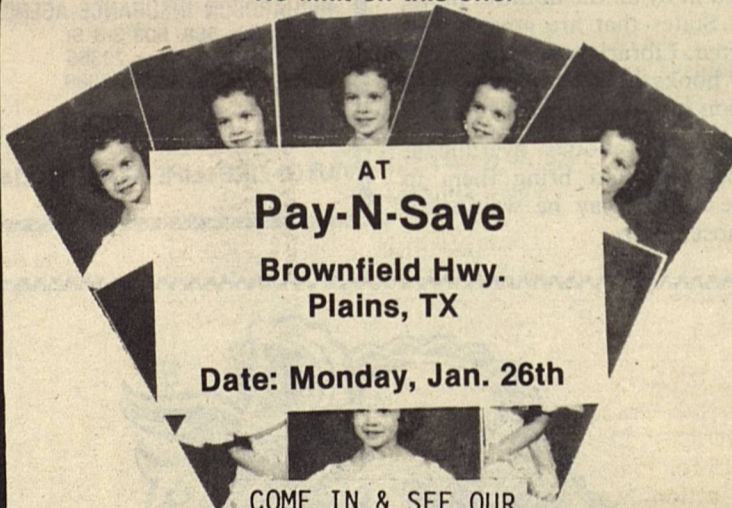
TUESDAY - Donut, apple juice and milk.  
 WEDNESDAY - Toast, sausage, orange juice and milk.  
 THURSDAY - Pancake, syrup, butter, tomato juice and milk.  
 FRIDAY - Corn Pops, pineapple juice and milk.

### LUNCH

TUESDAY - Fish w/tartar sauce, mashed potatoes, green beans, hot rolls, peanut butter, honey and milk.  
 WEDNESDAY - Hamburgers, lettuce, pickles, onion rings, potato chips, fruit, Harvest prune cake and milk.  
 THURSDAY - Spaghetti w/meat sauce, blackeyed peas, cabbage, carrot/raisin salad, hot rolls, pears and milk.  
 FRIDAY - Pork chops w/gravy, corn, carrots, hot rolls, spiced applesauce and milk.

**19** WALLET SIZE COLOR PHOTOS  
 WE USE KODAK PAPER **99¢**

No limit on this offer

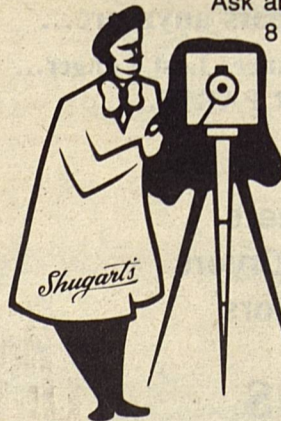


AT  
**Pay-N-Save**  
 Brownfield Hwy.  
 Plains, TX

Date: Monday, Jan. 26th

COME IN & SEE OUR MULTI-BACKGROUNDS

Ask about our FREE 8 x 10 offer



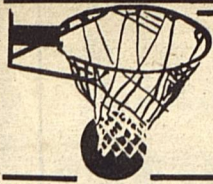
**Shugart's inc.**



Group charge 99¢ per person per 19 wallets



Kodak paper. For a Good Look at the Times of Your Life. TM



## ON THE HARD COURT

### JUNIOR HIGH GIRLS

Plains Junior High School hosted a basketball tournament Jan. 8-10. Seminole defeated the Seventh Grade "A" team 31-24. Rena McElroy led the scoring with 10 points; Daphne Lowe had 7.

Brownfield defeated the "B" team 30-9 but the team bounced back to take a 32-8 victory over Denver City "B" team. Leslie Brinkley scored 12; Leslie Gonzales, 10.

Plains Seventh Grade "A" and "B" teams played an intrasquad scrimmage for consolation.

The Eighth Grade team won third place in the tourney. Melissa Green scored 14 points; Michelle Lowe, 11, in the hometown's 33-14 win over Seminole.

Seagraves defeated Plains 38-25. Melissa scored 10; Michelle, 6.

Melissa was high scorer with 11 in the Plains 24-7 win over Denver City "B". Vee Ann Fitzgerald scored 7.

Seventh Grade Girls won 37-29 Monday when they took Seagraves down on the home court. Leading scorers were Rena McElroy with 14; Daphne Lowe, 9.

Seagraves stopped the Eighth Grade Monday, 36-27. Michelle Lowe and Melissa Green had 8 points each.

### NINTH GRADE GIRLS

Plains 9th Grade fell to Seagraves, 29-31 in overtime Monday. Scoring for Plains were Martha Rivera and Heather McGill, 9 each; Nancy Jimenez, 7.

### VARSITY GIRLS

Plains Cowgirls opened district play Friday on the home court and handed Wellman a 65-32 loss. High scorers for the Cowgirls were Lydia Jimenez with 26; Lynda Jimenez, 12.

Loop handed the Cowgirls their first district loss Tuesday. In the 34-54 loss, Lydia was leading scorer with 14. Vonda Fitzgerald had 12.

### JUNIOR HIGH BOYS

Seventh Grade Wranglers lost to Denver City, 27-47 Jan. 5. Martinez had 15 for Plains.

In action Monday, the Seventh Graders lost a heart-stopper, 21-22. High scorers were Martinez and Justin Stowe, 6 each.

Eighth Grade Boys fell to Denver City Jan. 5. Lance Morrow had 10 points in the 25-40 loss.

Losing 34-36 Monday against Seagraves, the Eighth Grade was paced by Dan Rushing and Mario Medina with 10 points each.

### JUNIOR VARSITY COWBOYS

Junior Varsity Cowboys brought home the championship trophy Jan. 10.

In action Tuesday, they took a

59-27 win from Loop. High scorers were Chad Guetersloh with 16; Morales, 13.

### VARSITY COWBOYS

Varsity Cowboys played 3A Friona Jan. 6 and almost returned home with a victory. After leading 31-23 at half time, the Cowboys finished the game with a 52-54 loss back of Shane McMinn's 17 points and 11 by Scott Lowrey. McMinn had 8 rebounds, Lowrey had 7.

The Cowboys hosted Wellman Friday in their district opener and emerged with a thrilling 69-68 victory. McMinn scored 28 points; Doug Green had 13. McMinn and Jeff Ashburn had 7 rebounds each.

"This was our first district game. It was a big win for us. Wellman defeated us in the Reese Classic so we knew they were a good team," says Coach Clay.

The Cowboys overall record is 6-8.

Loop gave the Cowboys a 64-47 loss Tuesday. Scott Lowrey led the scoring for Plains with 15. Rebounding were McMinn, Lowrey and Jody Harris with 7 each.



### RENEWABLE ENERGY SOURCES - GEOTHERMAL

This natural heat trapped within the earth is used in some locations to produce electricity commercially. Advantages: simple technology; inexpensive power source. Limitations: deep drilling may be required; initial cost can be high; environmental damage may be a problem.

LEA COUNTY ELECTRIC COOPERATIVE, INC.

### "We're Your Full-Service Station"

- We Fix Flats (Including front tractor tires)
- Sell New/Used Tires
- We Mount & Balance Tires
  - Unleaded - Regular - Prem. Unleaded
- Official State Inspection Station
- 4¢ Discount (Gas Cash Purchase)
- We Wash Cars



## T & B Exxon

"We Appreciate Your Business"

456-7141

RUFFLES® ALL VARIETIES

# Potato Chips

REGULAR \$1.39

NOW ONLY

# \$1.19

PRICES GOOD JANUARY 22,23,24,1987

WHILE SUPPLIES LAST

*Filled With Steaming Hot Coffee*

ALLSUP'S Coffee Mugs

REFILLED FOR ONLY 28¢

# 99¢

*Golden Brown and Delicious*

ALLSUP'S French Fries

ORDER

# 49¢

ALLSUP'S CONVENIENCE STORES

## Your Super Bowl Snack Headquarters

<p>IF IT'S BORDEN'S... IT'S GOT TO BE GOOD</p>	<p>BORDEN'S COTTAGE Cheese</p> <p>12 OZ. CTN.</p> <h1>79¢</h1>	
<p>BORDEN'S Homo Milk</p> <p>GAL. CTN.</p> <h1>\$2.29</h1>	<p>BORDEN'S Frosticks</p> <p>6 CT. PAK</p> <h1>\$1.19</h1>	

ALLSUP'S Hot Links

Perfect for 1/2 Time Snacks

# 69¢ EACH



SHOP WITHOUT CLOING SHOPPING

**Contact Dan or Linda Wall**

## Farm Loan Assistance Offered In 'Bootstrap' Operation

"Operation Bootstrap", an association of attorneys and agricultural loan counselors attempting to educate farmers on FmHA lending regulations and how to increase their chances of obtaining FmHA financing this year, began a series of area meetings Friday.

The tour will continue with visits across the South Plains, including a stop in Plains, Friday, Jan. 30. The meeting will be held at 6:30 p.m. in

the District Courtroom in the County Courthouse.

Operation Bootstrap has emphasized the impact on Lubbock and the surrounding rural counties of the South Plains of cutbacks in FmHA farm financing of \$91 million last year, even with the doubled amount of guaranteed loans.

"In 1985, direct loans (loans made directly by FmHA) were made at \$332 million, with guaranteed loans at \$35 million, for a total of \$367 million -- in 1986, \$206 million in direct loans and \$70 million in guaranteed loans made a total of \$276 million -- and this year's allocation for direct loans will be below \$100 million, so it will be hard for guaranteed loans to make up the difference," Magness concluded.

The new Chapter 12 Reorganization may be the only choice for some farmers who either cannot get direct loans or guaranteed loans this year, because of cutbacks in direct loan funding and bank reluctance to participate in the guaranteed loan program, according to Magness.

"The new Chapter 12 Reorganization may be the last train at the station for farmers who couldn't get FmHA loans last year and are facing foreclosure this year, as well as for those who get caught in the squeeze between FmHA and the banks over loans for this year," Magness said.

The meeting will feature John Crunk, Levelland farmer, and Bennie Pope, Spade farmer, who have set up a non-profit corporation for counseling FmHA borrowers on obtaining new loans, both guaranteed and direct, under the name of "Agricultural Loan Counseling, Inc." The corporation operates out of an office at 2229 34th Street, Lubbock, and accepts donations of \$25 per hour.

Videotapes on the new farm loan authority, Chapter 12, FmHA Regulations, and Land Banks and PCAs will be sold with proceeds going to Agricultural Loan Counseling Inc.

Magness said the non-profit corporation received computer analysis material from the non-profit corporation in Memphis, Mo. -- which gave the program for the Oct. 1 "Operation Bootstrap" Seminar in Lubbock at the Texas Tech Law School -- and this information can allow a farmer to have a prepared "Cash Flow Analysis" showing whether or not he can "cash flow" under FmHA Regulations before the farmer goes to his loan meeting.

The meeting will also feature some timely advice for farmers contemplating signing up for the ASCS program this year but who may face possible Chapter 12 Reorganization later in the year.

Magness reminded that "Operation Bootstrap" has changed from a 6:30 in the morning format to a 6:30 p.m. evening format. "That 6:30 a.m. was too early, and our thinking is...you can't get a farmer off that stripper anyway, if he needs to be on it, so let's go ahead and have it when the most people can attend."

## Obituaries

### Former Resident's Father Dies

Services for the Rev. A. Edwin Wilson, 85, of Lubbock are pending with Franklin-Bartley Funeral Home. He was the father of Mrs. Glenn Harlin, former resident of Plains.

He died at 9:56 a.m. Monday, Jan. 12 in his home after a lengthy illness. He had been under a doctor's care.

He was born in Brownwood. He lived in Lubbock the past five years. He married Corene Porter Oct. 23, 1933, in Brownwood. He was a retired Baptist minister, serving churches in Texas and Tennessee. He was executive director of the Southern Hebrew Mission in Chattanooga, Tenn. He was a member of Calvary Baptist Church.

Survivors include his wife, Corene; one other daughter, Mrs. Rip Lasater of Sundown; a sister, Mrs. Mary Russell of Amarillo; five grandchildren; and six great-grandchildren.

### Redman Services Conducted Friday

Services were conducted Friday afternoon in First Baptist Church of Ropesville for Mary Lee Redman, 94, of Brownfield, mother of James Redman.

Officiating were the Rev. Johnny Johns, retired Baptist minister from Lubbock, and the Rev. Jean Meacham, pastor. Burial was in Lubbock's Resthaven Memorial Park under direction of Brownfield Funeral Home.

Mrs. Redman died Wednesday in Brownfield Nursing Home after a lengthy illness.

Born in Pilot Grove, she moved to the Meadow area in 1928 and to Brownfield in 1978. She married T.J. Redman in 1912 in Hollis, Ok.

She was a member of Ropesville Baptist Church.

Preceding her in death was her husband, in 1969 and a son, T.J.

Other survivors include another son, Dalton Redman of Morton; three daughters, Sylvia Winslow of Portland, Ore., Arlene Wiley of Berryville, Ark. and Venida Fuller of Warrington, Ore.; 15 grandchildren; 23 great-grandchildren and a brother, Owen Gold of Oklahoma City, Ok.

# HANG ON!

There's always  
Plains State Bank  
for an end of your  
rope business loan...



Whether you're just starting out or long established, there'll come times when you'll need financial help to pull you through.

Our friendly loan specialists will be happy to discuss low-cost business loans with individual terms tailored to your special needs.

## PLAINS STATE BANK

# CLASSIFIED ADVERTISING

## HELP WANTED

**HELP WANTED: Full-Time Receptionist.** Need assistance for very busy medical practice. Typing required. Spanish speaking preferred. Call for more information 592-3558. Ask for Kathie. 41/1tc

## FOR SALE

**FOR SALE: 3 BR house on 2 choice lots** and small mobile home. Good price and owner financed to right buyer. Call 456-2989 or (915) 292-4416 after 6 p.m. 41/tfc-3tpd

## NOTICE TO BIDDERS THE STATE OF TEXAS COUNTY OF YOAKUM

Notice is hereby given that the Commissioners Court of Yoakum County will receive proposals at the Courthouse in Plains, Texas at 10:00 a.m. on the 13th day of February, 1987 for the purchase of Hospitalization Insurance with coverage similar to that of the present plan with Blue Cross and Blue Shield of Texas. Any differences to the present plan should be noted.

The present policy may be seen in the County Auditor's Office. The Auditor's Office may also be contacted for additional information.

Proposals must also be in writing. The Commissioners Court reserves the right to reject any or all proposals.

s/Hazel Lowrey  
Hazel Lowrey, County Auditor  
Published Jan. 20 & 27

## Notice

Notice is hereby given that the Commissioners Court of Yoakum County, Texas will receive applications at the Commissioners Courtroom in the County Courthouse in Plains, Texas, for the selection of a County Depository for a period of two years ending sixty days from the time fixed by law for the next selection of a depository. The applications are to comply with all of the requirements of both state and national laws covering the funds of the County together with such trust funds as may be under the jurisdiction of the Commissioners Court or the County and District Clerks of Yoakum County, Texas, for the term between the date of such bid and the next regular time for the selection of a depository. Such bids and proposals to be up to 10 a.m. Monday, February 9, 1987. Said applications shall be accompanied by a certified check for not less than one-half of one percent (1/2 of 1%) of the County revenue for the preceding year as a guarantee of the good faith on the part of the applicant, and that if the bid of the said applicant is accepted he will give bond and/or securities as required by law.

All applications shall be sealed and addressed to the Honorable Dallas Brewer, County Judge, P.O. Box 456, Plains, TX 79355.

The Commissioners Court reserves the right to reject any and/or all applications. Banking corporations, associations and individual bankers should consider the following in submitting their applications to the Commissioners Court:

- (1) This application will include Time Deposits of \$1,000.00 to \$99,999.00 and over \$100,000.00 for a period of 7 days to and including six (6) months, stating the amount of interest on each category.
- (2) Banks will pledge securities to secure all County Funds and will file these securities with the Commissioners Court of Yoakum County.
- (3) Bank will keep all accounts required by the County Treasurer and will provide bank statements for these accounts each month.
- (4) Bank will loan money to County at % interest.
- (5) Bank will provide, at no charge, the following services of goods as listed below:
  - a. Overdrafts
  - b. Payroll and disbursement checks as required
  - c. Cashier Checks
  - d. Deposit Warrants
- (6) 30, 60, 90 and 180 day CDs, based on T-Bill rate as of date of CD deposits, over and under \$100,000.00
- (7) Bank will provide applications for both with and without "Super Now" checking accounts.
- (8) No flotation within the CD time "locked in".

s/Dallas Brewer  
DALLAS BREWER, County Judge

41/3tc

## Subscriptions Expiring This Month

Buddy's Auto Parts  
Pansy Palmer  
Winford Patton  
Plains Shamrock  
Jack Spears  
T-TEX Inc.

Richard B. Brantley

Need  
House or Office  
Cleaned?  
  
Call  
**REESE CLEANING  
SERVICE**  
456-4725

**RICHARD CLARK**  
ATTORNEY AT LAW

810 E Brdwy      806/592-3039      Box 749  
First Nat'l Bank Bldg      Denver City, TX 79323

## PUBLIC NOTICE

Poka-Lambro Rural Telephone Cooperative hereby gives notice it has filed with the Public Utility Commission of Texas for authority to detariff all customer premises equipment and all premises wiring. These services include all telephones, jacks and the wire that connects the jacks to the protector, which is usually located on the outside wall of your business or residence. The changes are proposed to become effective 35 days after filing, which will be approximately January 20, 1987. These changes will eventually affect all of the approximately 3,284 customers of the Cooperative.

The result of the changes proposed will be that the Public Utility Commission will no longer set rates or other regulations for telephone leases and wiring installation and repairs. The rates and regulations for local exchange service will not be affected by the tariffs being proposed.

The proposed tariff changes will not cause any immediate change in revenues. Persons with questions or who desire more information about the requested rate changes are encouraged to contact the Cooperative at (806) 924-7234 or at P.O. Box 1340, Tahoka, TX 79373. A complete copy of the filing is available at the offices of the Cooperative.

Persons who wish to intervene or otherwise participate in these proceedings should notify the Commission as soon as possible. A request to intervene, participate or for further information should be mailed to the Public Utility Commission of Texas, 7800 Shoal Creek Blvd., Suite 400N, Austin, TX 78757. Further information may also be obtained by calling the Public Utility Commission Consumer Affairs Division at (512) 458-0223, (512) 458-0221 teletypewriter for the deaf.



### PERSONAL LIFE INSURANCE

- \*Life
- \*Health
- \*Retirement Income
- \*Educational Funds
- \*Major Medical
- \*Hospitalization
- \*Cancer
- \*Surgical
- \*Mortgage Cancellation

### BUSINESS LIFE INSURANCE

- \*Key-Man
- \*Partnership
- \*Group Insurance
- \*Corporation
- \*Pension Plans

### L. CALVIN STEWART, CLU

Chartered Financial Consultant  
Denver City, Texas  
Phone: 592-2878

*'We Don't Sell Service — We Give Service'*

## T-TEX Fertilizer Goodpasture Elevator

Roswell Highway

Days  
456-8833

Bruce Lester/Mgr

Nights  
456-6575

## ADD LIVING



SPACE

**If you're adding a room, or expanding existing space, we can help! Expert advise & all the materials you'll need. Lumber, paneling, nails, insulation & tiles.**

## DO-IT YOURSELF CENTER

**BAYER  
LUMBER & HARDWARE  
CO.**

Plains



**Towels**  
DELTA PAPER  
**39¢**  
ROLL



**Mixes**  
BETTY CROCKER ASST. CAKE  
**68¢**  
18 OZ. BOX



**Juice**  
SHURFINE ORANGE  
**59¢**  
12 OZ. CAN



**Sausage**  
HORMEL LITTLE SIZZLERS  
**99¢**  
12 OZ. PKG.



**Coca-Cola**  
PLUS DEPOSIT  
**\$2.59**  
6 PK. 32 OZ. BTL.



**Doritos®**  
ALL VARIETIES  
**\$1.59**  
REG. \$2.29



**Charmin**  
ASSORTED  
**99¢**  
4 ROLL PKG.



**Pampers**  
ULTRA 88 SML/48 MED/32 LG/28 X-LG.  
**\$8.89**  
BOX

**BRANDS ACROSS AMERICA™**



GOLDEN GRIDDLE SYRUP	24 OZ. BTL.	\$1.99
HELLMAN'S MAYONNAISE	QT. BTL.	\$1.69
NO-STICK MAZOLA	5 OZ. CAN	\$1.47
MAZOLA CORN-OIL	48 OZ. BTL.	\$2.07
QUARTERED MARGARINE MAZOLA	1 LB. BOX	87¢
NIAGRA SPRAY STARCH	22 OZ. CAN	87¢
RED LABEL KARO	PINT BTL.	89¢
PEANUT BUTTER CREAMY/CHUNKY SKIPPY	18 OZ. JAR	\$1.87

**MID-WINTER**  
**BLAHS BUSTER SALE!**

• WE PLEDGE TO MAKE OUR GROUND BEEF AT LEAST TWICE A DAY!  
• WE WILL NOT INTENTIONALLY MAKE ANY GROUND BEEF UNDER 80% LEAN!!

BETTY CROCKER  
**HAMBURGER HELPER**  
5 1/2-8 1/2 BOX  
**99¢**

KRAFT  
**MAC & CHEESE**  
7 1/2 OZ. BOXES  
**2.89¢**


GLADIOLA YELLOW/WHITE CORNBREAD MIX OR  
**BISCUIT MIX**  
8 OZ. PKGS.  
**3.69¢**

SQUEEZE  
**HEINZ CATSUP**  
28 OZ. BTL.  
**\$1.39**

18 OZ. ZESTY SALTINE CRACKERS...79¢  
**WOLF CHILI**  
19 OZ. CAN  
**\$1.29**

ORANGE, P-APPLE, APPLE/GRAPFRUIT, APPLE/ORANGE  
**TEXSUN JUICE**  
8 OZ. CAN  
**\$1.49**

HORMEL'S SUPER SELECT LEAN FRYING QUARTER PORK LOINS OR FAMILY PAK 9-11 ASSORTED CHOPS  
**Pork Chops**  
**\$1.69**  
LB.



**Pork Ribs**  
LEAN COUNTRY STYLE  
**\$1.69**



LEAN TRIM CENTER CUT PORK CHOPS	LB.	\$1.99
LEAN TRIM THIN CUT BREAKFAST PORK CHOPS	LB.	\$2.19
SUPER SELECT LEAN TRIM FRESH PORK STEAK	LB.	\$1.69
LEAN TRIM FRESH PORK BUTT ROAST	LB.	\$1.59
LOUIS RICH TURKEY MEAT FRANKS	12 OZ. PKG.	89¢
LOUIS RICH SLICED SMOKED TURKEY BREAST	6 OZ. PKG.	\$1.79

GLADIOLA FLOUR 5 LB. BAG **87¢**  
GIANT SIZE 40" OFF LABEL CHEER 42 OZ. BOX **\$1.89**

**FROZEN & DAIRY**  
**Velveeta**  
KRAFT LOAF  
**\$3.29**  
2 LB. BOX



ORE IDA CRINKLE CUT LITE  
**FRENCH FRIES**  
2 LB. PKG.  
**\$1.29**



PILGRIM'S PRIDE  
**CHICKEN NUGGETS**  
12 OZ. BOX  
**\$2.19**



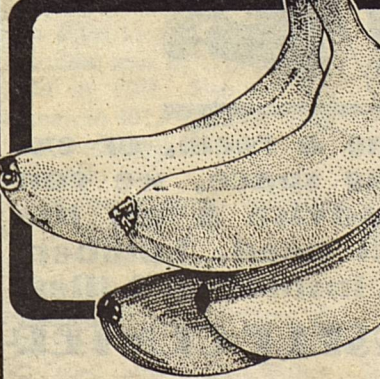
PILGRIM'S PRIDE  
**CHICKEN BREASTS**  
12 OZ. BOX  
**\$2.19**



BORDENS BUTTERMILK 1/2 GAL. CTN. **99¢**  
BORDENS ORANGE JUICE QT. CTN. **89¢**  
BORDENS RND. ICE CREAM 1/2 GAL. CTN. **\$1.69**  
BORDENS SOUR CREAM 16 OZ. CTN. **99¢**

*This Country's Best!*

**HEALTH & BEAUTY**  
PACQUIN DRY SKIN HAND CREAM 4 OZ. BTL. **\$1.89**  
ANTI-PERSPIRANT DEODORANT X-DRY/XX-DRY ARRID 4 OZ. CAN **\$2.48**  
EYEDROPS (PLASTIC) VISINE 1/2 OZ. BTL. **\$1.79**



**Golden Bananas**  
**3** LBS **\$1**



**BURBANK BAKING POTATOES**  
**3** LBS **\$1**

CALIFORNIA CRISP (HEARTS) CELERY EA. **69¢**  
RED RIPE CHERRY TOMATOES EA. **99¢**  
1 LB. IDAHO RED ONIONS LB. **19¢**

**Pay-n-Save**  
QUALITY AND SERVICE

PRICES EFFECTIVE: JAN. 18-24, 1987