



The Plains Record

Combined With The Yoakum County Review March 1, 1961
THURSDAY, SEPTEMBER 24, 1964

OUR 34th YEAR

NUMBER 39

Shell Viewpoint On Water flood

(EDITOR'S NOTE: In response to a request made by The Record and several other area newspapers, Shell Oil Co. has, out of their Midland office, put together a report which they requested be used as a fact-giving report to the citizens-- especially interested farmers and businessmen-- concerning the Wason Water Flood project. The report actually was written in letter form, addressed to Mr. Charles A. Guy, Editor of the Lubbock-Avalanche Journal in answer to a letter-to-the-editor from Mr. Charles E. Bruton of Lamesa which was published in the Lubbock paper on September 13. First a replica of Mr. Bruton's letter follows:)

Industry's demand for water throughout the High Plains. "Firstly, in Shell's application to the Railroad Commission to inject fluid in the Denver Unit at Wason, we estimated the maximum rate of injection to be 1500 barrels per day per well. The average injection rate per well will be much less than that, but even if this per well maximum figure was applied, only 441,000 gallons per well would be required weekly. Mr. Bruton's calculated figure of 1,108,800 is therefore 2500 times too high.

price of piping water from the Capitan Reef (done in Ector) was unreasonably high. Studies of recovering additional oil from Wason by injection of gas instead of water indicate that gas would be far less efficient.

Last Rites For Mother Of Local Resident

Services for Mrs. F. A. Sims, 94, of Ropesville, were held at 4 p. m. Sunday in First Baptist Church there, with the Rev. Wayne Perry, pastor, officiating.

Assisting was the Rev. Horace Hitt, retired Wolforth minister. Burial was in Ropesville Cemetery under direction of Franklin - Bartley Funeral Home of Lubbock.

Mrs. Sims died Friday afternoon in Brownfield Convalescent Home. She had been ill since August 2.

Born in Blueridge, she came to Lubbock and the South Plains in 1916 where she lived with her husband, whom she wed on December 24, 1888, and who preceded her in death Feb. 7, 1958, also at the age of 94.

She was the oldest active member of the First Baptist Church in Ropesville.

Survivors include four sons, Otto and Tony of Ropesville, Lester of Smyer and Tom of Bronco; three daughters, Mrs. Travis Tubbs and Mrs. Buck Cate of Lubbock, and Mrs. Roland Evans of Meadow; 26 grandchildren; 48 great-grandchildren; and 8 great-great-grandchildren.

Pall bearers were grandsons, Clark (Butch) Sims, Allen Cate, Ed Saunders, Jimmy Sims, L. J. Billy Lee Sims.

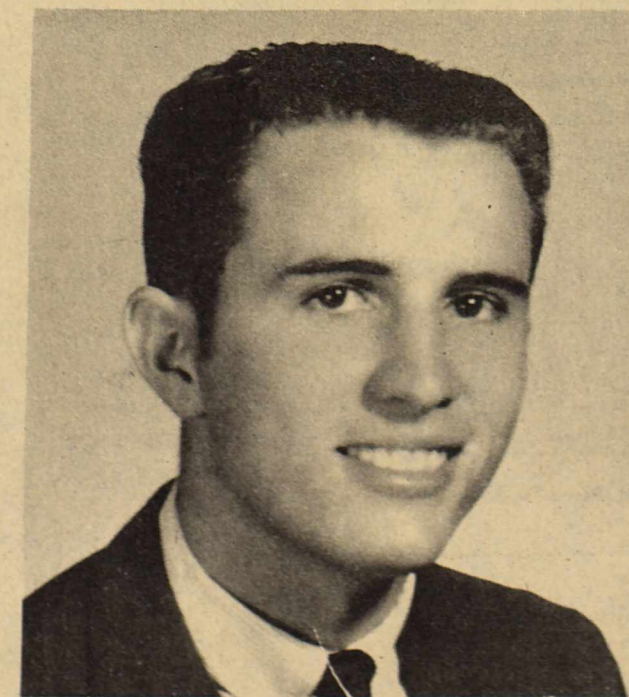
MS Saunders Rites Held

Funeral Services for Millard Steve (Red) Saunders, 48, of Route 1, Plains, were held at 3 p. m. today in Levelland.

Saunders, a resident here for the past three years, died about 7 a. m. Tuesday following a heart attack.

Surviving are his wife, Gladine; two sons, Jerry Don of Pettit and Steve of the home; a step-son, Kenneth Neher, Lubbock; parents, Mr. and Mrs. C. S. Saunders of Pettit; sister, Mrs. Mildred Perry, Stanton, Cal.; and three grand-daughters.

Youth Revival Starts Friday

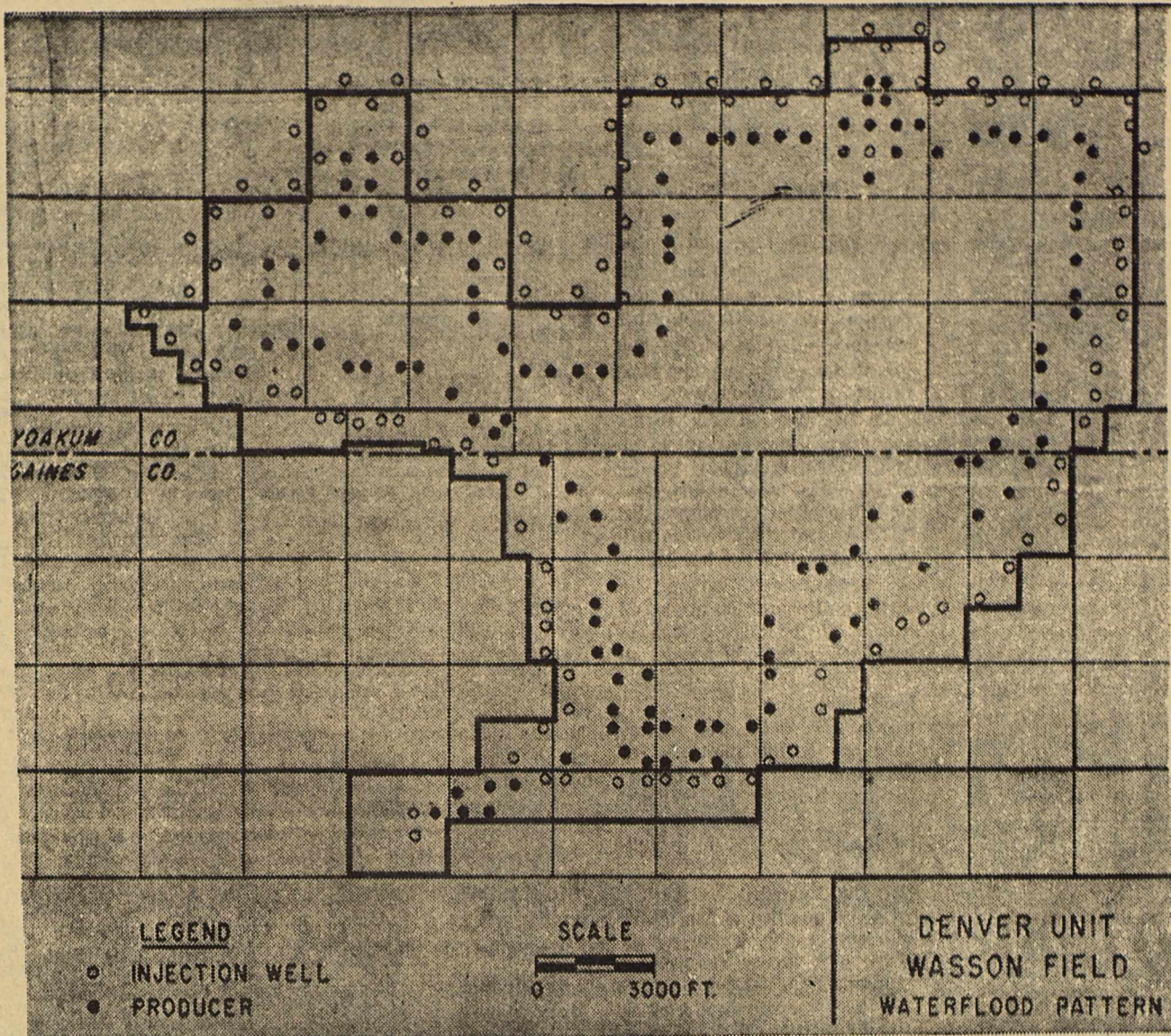


Dickie Hammonds, who is leading the singing for the revival at Plains Baptist Church, is a senior ministerial student at Wayland Baptist College and has served as pastor of Washburn Baptist Church near Amarillo during his student days.

The summer following his freshman year he was one of a group of students going to Ohio from the Mission Band of Wayland to assist in establishing churches and conducting revivals. One of his special assignments with this group was to assist in putting on skits and fun singing for youth fellowships. He has also preached and assisted with fellowships and singing for various meetings at West Texas Baptist Churches.

At Wayland he has been active in the Baptist Student Union and the Ministerial Alliance, and during 1964-65 he is vice-president of the Psychology Club. Last year he was vice-president of the junior class.

Hammonds, a psychology major, is a native of Victoria, Texas, and is married to the former Olivia Gregory of Victoria who is a junior at Wayland.



County Oil & Gas Income

DALLAS (MOGA) -- A \$44 million a year ingredient in the prosperity of Yoakum County is the production of oil and gas, the Texas Mid-Continent Oil and Gas Association says in its current survey of economic factors stemming from petroleum operations here.

Using just-published U. S. Bureau of Mines figures as a base, the Association has projected what oil and gas activities mean in this county. In 1962 Yoakum County was producing more than 14 million barrels of crude oil and 18 billion cubic feet of natural gas. The oil was valued at \$41.7 million; the natural gas at \$2.3 million.

Yoakum County ranks 22nd in the state as total value of oil and gas production. "Demand for Texas crude oil picked up enough last year to give us an increase of about 3 percent over 1962 on a state-wide basis. This slightly improving trend seems to be holding this year as more autos are put on the road and nationwide business conditions accelerate," said James L. Sewell, president of the Association. "It will be several months, however, before we know to what extent individual counties are participating in the current market."

The dispersion of oil dollars through Yoakum County business channels and the healthy effect given property values by petroleum industry activity are indicated by several figures published by the Association. It is estimated that royalty payments to Yoakum County landowners who are fortunate enough to have producing wells on their property create a "crop" worth about \$5.5 million annually. These and other farmers and ranchers who have leased acreage for exploration receive additional rental and bonus payments, but sufficient current data is not available for measuring the amount.

Oil and gas operators invested an estimated \$12.3 million in Yoakum County last year in the search for new fields and in the development of zones where production has been found. The Oil and Gas Journal reports that 170 wells were drilled in the county in 1963, resulting in 150 oil wells, and 20 dry holes.

Drilling operations included 3 wildcat wells in which operators hunted oil in new territory or at new depths. About \$1.5 million of the drilling expenditures was lost to dry holes, the Association estimated. Approximately \$350,000 was spent to conduct seismic explorations mapping underground formations which might contain oil.

Petroleum industry payrolls contribute about \$4 million a year to the county, according to Texas Employment Commission records. They show about 730 persons directly employed in oil and gas corporations.

The state government's financial interest in Yoakum Co. operations is measured by the \$2 million a year which the operators and royalty owners provide the state government in production taxes. These payments are in addition to those paid to local units of government and schools as property taxes. Oil and gas property taxes are reflected in local support of many Texas school districts. For example, 89.3 percent of the local taxes for the

Denver City School District comes from oil and gas operations; 78.6 percent at Plains.

Among the county's industrial operations is the processing of oil and gas. Two natural gasoline plants are operated here to recover butane, propane, natural gasoline and other liquids from natural gas. They have a capacity of 169 million cubic feet a day.

operations is measured by the \$2 million a year which the operators and royalty owners provide the state government in production taxes. These payments are in addition to those paid to local units of government and schools as property taxes. Oil and gas property taxes are reflected in local support of many Texas school districts. For example, 89.3 percent of the local taxes for the

Denver City School District comes from oil and gas operations; 78.6 percent at Plains. Among the county's industrial operations is the processing of oil and gas. Two natural gasoline plants are operated here to recover butane, propane, natural gasoline and other liquids from natural gas. They have a capacity of 169 million cubic feet a day.

operations is measured by the \$2 million a year which the operators and royalty owners provide the state government in production taxes. These payments are in addition to those paid to local units of government and schools as property taxes. Oil and gas property taxes are reflected in local support of many Texas school districts. For example, 89.3 percent of the local taxes for the

Denver City School District comes from oil and gas operations; 78.6 percent at Plains. Among the county's industrial operations is the processing of oil and gas. Two natural gasoline plants are operated here to recover butane, propane, natural gasoline and other liquids from natural gas. They have a capacity of 169 million cubic feet a day.

operations is measured by the \$2 million a year which the operators and royalty owners provide the state government in production taxes. These payments are in addition to those paid to local units of government and schools as property taxes. Oil and gas property taxes are reflected in local support of many Texas school districts. For example, 89.3 percent of the local taxes for the

Denver City School District comes from oil and gas operations; 78.6 percent at Plains. Among the county's industrial operations is the processing of oil and gas. Two natural gasoline plants are operated here to recover butane, propane, natural gasoline and other liquids from natural gas. They have a capacity of 169 million cubic feet a day.

operations is measured by the \$2 million a year which the operators and royalty owners provide the state government in production taxes. These payments are in addition to those paid to local units of government and schools as property taxes. Oil and gas property taxes are reflected in local support of many Texas school districts. For example, 89.3 percent of the local taxes for the

Denver City School District comes from oil and gas operations; 78.6 percent at Plains. Among the county's industrial operations is the processing of oil and gas. Two natural gasoline plants are operated here to recover butane, propane, natural gasoline and other liquids from natural gas. They have a capacity of 169 million cubic feet a day.

operations is measured by the \$2 million a year which the operators and royalty owners provide the state government in production taxes. These payments are in addition to those paid to local units of government and schools as property taxes. Oil and gas property taxes are reflected in local support of many Texas school districts. For example, 89.3 percent of the local taxes for the

Denver City School District comes from oil and gas operations; 78.6 percent at Plains. Among the county's industrial operations is the processing of oil and gas. Two natural gasoline plants are operated here to recover butane, propane, natural gasoline and other liquids from natural gas. They have a capacity of 169 million cubic feet a day.

operations is measured by the \$2 million a year which the operators and royalty owners provide the state government in production taxes. These payments are in addition to those paid to local units of government and schools as property taxes. Oil and gas property taxes are reflected in local support of many Texas school districts. For example, 89.3 percent of the local taxes for the

Denver City School District comes from oil and gas operations; 78.6 percent at Plains. Among the county's industrial operations is the processing of oil and gas. Two natural gasoline plants are operated here to recover butane, propane, natural gasoline and other liquids from natural gas. They have a capacity of 169 million cubic feet a day.

operations is measured by the \$2 million a year which the operators and royalty owners provide the state government in production taxes. These payments are in addition to those paid to local units of government and schools as property taxes. Oil and gas property taxes are reflected in local support of many Texas school districts. For example, 89.3 percent of the local taxes for the

Denver City School District comes from oil and gas operations; 78.6 percent at Plains. Among the county's industrial operations is the processing of oil and gas. Two natural gasoline plants are operated here to recover butane, propane, natural gasoline and other liquids from natural gas. They have a capacity of 169 million cubic feet a day.

operations is measured by the \$2 million a year which the operators and royalty owners provide the state government in production taxes. These payments are in addition to those paid to local units of government and schools as property taxes. Oil and gas property taxes are reflected in local support of many Texas school districts. For example, 89.3 percent of the local taxes for the

Denver City School District comes from oil and gas operations; 78.6 percent at Plains. Among the county's industrial operations is the processing of oil and gas. Two natural gasoline plants are operated here to recover butane, propane, natural gasoline and other liquids from natural gas. They have a capacity of 169 million cubic feet a day.

operations is measured by the \$2 million a year which the operators and royalty owners provide the state government in production taxes. These payments are in addition to those paid to local units of government and schools as property taxes. Oil and gas property taxes are reflected in local support of many Texas school districts. For example, 89.3 percent of the local taxes for the

Denver City School District comes from oil and gas operations; 78.6 percent at Plains. Among the county's industrial operations is the processing of oil and gas. Two natural gasoline plants are operated here to recover butane, propane, natural gasoline and other liquids from natural gas. They have a capacity of 169 million cubic feet a day.

operations is measured by the \$2 million a year which the operators and royalty owners provide the state government in production taxes. These payments are in addition to those paid to local units of government and schools as property taxes. Oil and gas property taxes are reflected in local support of many Texas school districts. For example, 89.3 percent of the local taxes for the

Denver City School District comes from oil and gas operations; 78.6 percent at Plains. Among the county's industrial operations is the processing of oil and gas. Two natural gasoline plants are operated here to recover butane, propane, natural gasoline and other liquids from natural gas. They have a capacity of 169 million cubic feet a day.

operations is measured by the \$2 million a year which the operators and royalty owners provide the state government in production taxes. These payments are in addition to those paid to local units of government and schools as property taxes. Oil and gas property taxes are reflected in local support of many Texas school districts. For example, 89.3 percent of the local taxes for the

Denver City School District comes from oil and gas operations; 78.6 percent at Plains. Among the county's industrial operations is the processing of oil and gas. Two natural gasoline plants are operated here to recover butane, propane, natural gasoline and other liquids from natural gas. They have a capacity of 169 million cubic feet a day.

Tell Football Contest Winners

Guessers in last week's edition of The Record's football contest did some really fine work, as the winners of all three places all missed only one of the 20 games and each place had to be selected on the basis of the tie-breaker score.

First place winner was Jack Pierce whose only wrong pick was Brownfield over Hobbs. He only missed the tie-breaker by 40 points.

Phillip Reeves also missed only one game. He picked Mississippi over Texas Tech. He, however, missed the tie-breaker by 12.

Third place was won by Mike Nix whose only wrong pick was TCU over Kansas U. He missed his guess on the tie-breaker by 14 points.

CARD OF THANKS

May we take this means and opportunity to express our many thanks to our friends who did so much for us in our recent time of loss and grief, when we lost our mother and grandmother.

May God bless each of you as we remember all the wonderful acts of kindness and sympathy extended to us.

Tom Sims and Jan James Mrs. Idris Smith Sue Billings Clark (Butch) Sims

Yoakum Farmers Aided By FHA

Yoakum County farmers are being helped with their credit problems through the U. S. Department of Agriculture's Farmers Home Administration.

FHA County Supervisor, Eddie Taylor with offices in the Old Courthouse here, reported that six farm families are being helped with the purchase, enlargement or improvement of their farms this year, with more applications being received regularly.

In addition, four farm families continued to use FHA farm ownership credit previously obtained. The Farm Ownership

loan program showed a 200 percent gain over last year in the County.

Farm ownership loans, tailored to the individual borrower's needs, are made only to an individual who will, after the loan is made, be a family farmer. He must also be unable to obtain credit from other sources at reasonable rates and terms.

The farm ownership loan program has been of particular benefit during the past year to the following types of Yoakum County families:

Farm families needing credit assistance to buy a farm.

Farm families needing financial assistance for development of their farm.

Farmers in financial difficulties, due mainly to causes beyond their control, who need long-term credit for restructuring their debts.

The interest rate for farm ownership loans is 5 percent with both interest and principle amortized into equal annual installments. Each loan is scheduled for repayment over a period not to exceed 40 years.

Complete information on any type FHA loan may be obtained from the County Office of Farmers Home Administration in Plains.

loan program showed a 200 percent gain over last year in the County.

Farm ownership loans, tailored to the individual borrower's needs, are made only to an individual who will, after the loan is made, be a family farmer. He must also be unable to obtain credit from other sources at reasonable rates and terms.

The farm ownership loan program has been of particular benefit during the past year to the following types of Yoakum County families:

Farm families needing credit assistance to buy a farm.

Farm families needing financial assistance for development of their farm.

Farmers in financial difficulties, due mainly to causes beyond their control, who need long-term credit for restructuring their debts.

The interest rate for farm ownership loans is 5 percent with both interest and principle amortized into equal annual installments. Each loan is scheduled for repayment over a period not to exceed 40 years.

Complete information on any type FHA loan may be obtained from the County Office of Farmers Home Administration in Plains.

loan program showed a 200 percent gain over last year in the County.

Farm ownership loans, tailored to the individual borrower's needs, are made only to an individual who will, after the loan is made, be a family farmer. He must also be unable to obtain credit from other sources at reasonable rates and terms.

The farm ownership loan program has been of particular benefit during the past year to the following types of Yoakum County families:

Farm families needing credit assistance to buy a farm.

Farm families needing financial assistance for development of their farm.

Farmers in financial difficulties, due mainly to causes beyond their control, who need long-term credit for restructuring their debts.

The interest rate for farm ownership loans is 5 percent with both interest and principle amortized into equal annual installments. Each loan is scheduled for repayment over a period not to exceed 40 years.

Complete information on any type FHA loan may be obtained from the County Office of Farmers Home Administration in Plains.

loan program showed a 200 percent gain over last year in the County.

Farm ownership loans, tailored to the individual borrower's needs, are made only to an individual who will, after the loan is made, be a family farmer. He must also be unable to obtain credit from other sources at reasonable rates and terms.

The farm ownership loan program has been of particular benefit during the past year to the following types of Yoakum County families:

Farm families needing credit assistance to buy a farm.

Farm families needing financial assistance for development of their farm.

Waste Of Water By Oil People Scored

EDITOR: The Avalanche-Journal: The Midland Reporter-Telegram last Monday carried an article concerning an announcement by Shell Oil Co. that an expenditure of \$40.6 million dollars is proposed to initiate a water flood program in Gaines and Yoakum Counties. This program, when completed, would inject water into the producing zones from 88 input wells around the periphery of the unit.

What should be of major concern to the general public is that this water flood program is to use fresh water as the injected fluid. Each of these 88 wells would pump approximately 1,108,800 gallons of fresh water every week. To understand just how much water a billions-plus gallons of water amounts to, consider that it would require a tank which covered a square block, and which extended upwards the equivalent of a building 165 stories high, to hold this amount of water. And this is for only one weeks operation.

Let me make it perfectly clear that I am in favor of recovering all of the oil which it is economically and technically feasible to do. My quarrel is in the use of fresh water to do this. Historically, the cost of discovering, purifying and delivering a gallon of water to a kitchen faucet has risen steadily, while at the same time the water table of these known sources continues to drop. Unless proper conservation is practiced, one of two things is going to happen; either we are going to run out of water, or we are going to have to go so far for new fresh water sources, that the cost of providing this water in West Texas will skyrocket. In a sense, the general public is unwittingly hearing part of the cost of this water flood program, by permitting the use of fresh water for such purposes.

I believe it is generally known and accepted that this water is the life blood of West Texas. Further, I believe that the executives of these oil companies know and believe this too. But they totally disregard the alternatives of using salt water, gas, etc., probably because using fresh water is the cheapest. Although this makes for a more favorable balance sheet at the present time, I believe that in the long run this callous disregard for public welfare will result in more expense and trouble, because if it continues, legislation should undoubtedly be passed to prevent it. This legislation would necessarily entail drilling and operational specifications which I feel sure would be more expensive to the oil companies in the long run.

So it seems to me that Shell and their associates would do well to realize that we country folks must have this fresh water to survive and that they would do well to act responsibly in their long range planning. Perhaps a letter to your elected officials would help to remind them of their responsibility.

Charles E. Bruton, 295, Lamesa.

Mr. W. E. Harpst, Production Manager for Shell in Midland wrote the following answer:

"We can understand Mr. Bruton's concern over such an important matter; however some of the figures and statements are grossly incorrect and misleading. I would therefore like to correct the charges and opinions which he expressed regarding the Wason Water Flood Project, as well as the Oil In-

Texas Water Commission record

Texas Water Commission records indicate that in 1961 over 95% of all the water pumped in the 8-county southern high plains area was used for irrigation. If the many farmers who now irrigate by flooding would change over to irrigation with a sprinkler system, they would use about 1/3 less water than is required to flood irrigate. For example, if only half of the farmers on the southern high plains are now flood irrigating, the change over to sprinklers would conserve in less than 3 years an amount of water equal to the entire million acre feet that the oil companies intend to use over the life of their waterfloods over the entire south plains. We, of course, realize that the cost of purchasing and operating such sprinkler systems is an economic factor which prevents many farmers from following the better conservation practice of sprinkling.

Lastly, Shell, as well as the other oil operators, intend to use backwash or saline waters for waterflooding wherever such use is reasonably economical. No supply of saline water was found near the Wason Field; and the

The Plains Record
 And The Yoakum County Review
JOHN W. MOORE, Publisher

PUBLISHED EACH THURSDAY AT PLAINS, TEXAS

Entered as second class matter at the Post Office at Plains, Texas, under the act of Congress, March 3, 1879

SUBSCRIPTION RATES: \$3 per year in Yoakum and Terry Counties; \$4 per year elsewhere.

Lone Star QUIZ

- In Texas, branch banking is:
 - Illegal by statute.
 - Unconstitutional.
 - Commonly practiced.
 - Limited to one county.
- The first Governor of Texas was:
 - Pickney Henderson.
 - Sam Houston.
 - Thomas Rusk.
 - Anson Jones.
- The Nueces River gets its name from:
 - An Indian word for river.
 - The Spanish word for nuts.
 - A Spanish word meaning new.
 - An early settler named Alphonso Nueces.
- American bison are:
 - Cattle.
 - Wild sheep.
 - Imaginary.
 - Buffalo.
- The first Texan to be Vice President of the U.S.A. was:
 - Lyndon B. Johnson
 - Sam Rayburn
 - Col. James Hauer.
 - John Nance Garner.

Lone Star QUIZ

- The Alamo was:
 - A fort.
 - A mission.
 - A stockade.
 - A seat of Government.
- The other famous massacre of the Texas Revolution was:
 - Goliad.
 - San Jacinto.
 - Sabine canyon.
 - Lamesa.
- Translated, Cabeza De Vaca's name means:
 - Explorer.
 - Cape Truth.
 - Head of a Cow.
 - Cabbage farmer.
- The first President of the U.S.A. born in Texas was:
 - Lyndon B. Johnson
 - Sam Houston.
 - Jack Garner
 - Dwight Eisenhower.
- The Rio Bravo is better known in Texas as:
 - Bronco River.
 - Rio Grande
 - Bullhide Creek.
 - Buffalo Bayou.

© 1964 The Johnson-Davis Syndicate, Capitol Station, Austin, Texas.

TEXAS PRESS ASSOCIATION
 MEMBER 1964

UNCLE ZEB
 CARL C. WOOD

Dear Curious:
 The one word answer is "YES." But, if you would have allowed me to explain, I would have said I am conservative with that which is wasted on the public in general, but liberal with that which is spent on the improvement of my own way of life. Signed, Uncle Zeb.

Life is a funny experience. Just about the time we find out "What's Cookin'," we discover that we have lost most of our appetite for such things.

Dear Uncle Zeb:
 I have always considered myself a conservative, but now that I have an out and outer running for President I just can't find the courage to take the plunge. I think of Goldwater I remember the days when we didn't even have hot water. Please help me. A Hot Water Conservative. Signed, Dear Hot Water:
 Just to take the chill off one of you a bit someone has said that a liberal is a conservative that has already spent his own money and started on the other fellows. Anyway, each administration since the cold water thirties and re-six-bits worth of loose talk in, regardless of party affiliation, has spent more money than his predecessor. He has also advocated more borrowing against the credit of our children than the one he has replaced. This can't go on for-grease out of the cracklings. ever... On second thought, this trend will likely continue regard- less of who is elected President, just so long as we open our bank accounts mouth and wait for the govern- mental worms to be dropped in. Signed, Curious.

Fill Cracks And Holes Better
 Handles like putty. Hardens like wood.
PLASTIC WOOD
 The Genuine - Accept No Substitute.

Grand Opening

Oct. 3 10:00 To 5:00

REFRESHMENTS

2 DOOR PRIZES

A \$50 ABSTRACT EACH

Yoakum County Abstract & Title Company

Harold Phelan
 Cleatus Phelan
 Gus Malmstem

Complete Yoakum County Records
 On Microfilm In Our Office

Issuing Agent For Lawyers Title Insurance

628 E. 10th Plains, Texas 79355 AC 806 Phone: 456-4353

Legal Notice
 NOTICE TO BIDDERS

PROPOSALS: Sealed proposals will be received by the County Judge and County Commissioners of Yoakum County, Texas, in the Commissioners Court Room, Yoakum County Court House, Plains, Texas, until October 13, 1964, 10:00 A. M., for the construction of a Public Park and Golf Course, including numerous Buildings and Related Facilities. At the above time and place the proposals will be publicly opened and read aloud. Any bid received after closing time will be returned unopened.

The principal items of work included in this project are construction of a nine-hole golf course, a park area, picnic units, watering system, roads, equipment, fencing, and several buildings.

Bids will be separate or combined in the following sections:

- Grading.
- Water System.
- Roads and Paving.
- Preparation and planting of surfaces.
- Buildings and Related Facilities.

Each proposal shall be enclosed in a sealed opaque envelope addressed to Stanley Duvall, County Judge of Yoakum County, Texas, and marked which section for work it is a bid.

CASHIER'S CHECK OR PROPOSAL BOND: A cashier's check or an acceptable proposal bond, payable, without recourse, to the order of County Judge, Yoakum County, Texas, in an amount not less than five (5%) percent of the amount of the largest total amount of bid, must accompany each bid as a guarantee that, if awarded the contract, the bidder will promptly enter into a contract and execute bonds on the forms provided.

BOND: The successful bidder will be required to furnish payment and performance bonds on the forms provided in the amount of 100 percent of the total contract price from a surety company holding a permit from the State of Texas to act as Surety, or other Surety or Sureties acceptable to the owner.

Plans and Specifications may be examined without charge in the office of the Architects, and may be procured from Cantrell and Burns - Architects, 4505 Avenue Q, Lubbock, Texas; or The County Court House, Plains, Texas, upon a deposit of \$25.00 as a guarantee of the safe return of the Plans and Specifications.

/s/ Stanley Duvall
 STANLEY DUVALL
 COUNTY JUDGE -
 YOAKUM COUNTY,
 TEXAS.

WORRIED? NERVOUS
 Over Change-of-Life?
 Ease your mind. Get welcome relief with special woman's medicine

Don't dread those seemingly endless years of misery and discomfort, of sudden hot flashes, waves of weakness and irritability. There is a special woman's medicine which can relieve those heat waves, weakness, nervousness, so that you can enjoy life again. So that you can once more be an affectionate wife and mother.

If you are going through the change, don't despair. Do as countless thousands of women do - take a special woman's medicine - Lydia E. Pinkham Vegetable Compound - developed by a woman - specially to help women by relieving such functionally caused female distress.

In doctors' tests woman after woman found that Pinkham's Compound gave dramatic help to all this without costly shots. Irritability is soothed, hot flashes subside. So don't sit and brood and feel unable to help yourself. You can feel better. Get gentle Lydia E. Pinkham Vegetable Compound today.

The gentle medicine with the gentle name LYDIA E. PINKHAM

Legal Notice
 FOR SALE BY SEALED BID

One 3-room house with bath. Corner lot - 125 ft x 62-1/2 ft. Bids to be opened 8:30 p. m., October 13.

School Board reserves the right to reject any or all bids. Plains Independent School District, Box 517, Plains, Texas, Phone: 456-8393.

YOU CAN GET RELIEF FROM HEADACHE PAIN

STANBACK gives you FAST relief from pains of headache, neuralgia, neuritis, and numerous other ailments. The reason? Because STANBACK contains several medically approved and prescribed ingredients for fast relief. You can take STANBACK with confidence. Satisfaction guaranteed!

Test STANBACK against any preparation you've ever used

10¢ 25¢ 69¢ 98¢

TAPPED
 Too much night life is positive proof that money doesn't grow on spruces.

HUMBLE TIPS

When your car is smoking like this, it's time for that Oil Change and Cartridge.

W.G. Lattimore

Legal Notice
 FOR SALE BY SEALED BID

One 3-room house with bath. Corner lot - 125 ft x 62-1/2 ft. Bids to be opened 8:30 p. m., October 13.

School Board reserves the right to reject any or all bids. Plains Independent School District, Box 517, Plains, Texas, Phone: 456-8393.

FRAME RESIDENCE
 Already Financed

3 BEDROOMS
 1 BATH
 ASBESTOS SHINGLE COMPOSITION ROOF
 NEWLY REPAINTED
 NEWLY REMODELED
 ACROSS STREET FROM PARK
 (NORTHWEST CORNER)
 NEAR SWIMMING POOL
 (1 BLOCK NORTH)

Don Hancock
 Box 280 Ruidoso, New Mexico
 Phone: 505-257-2313
 or
 505-257-2312 in evenings

Priced To Sell, Now

Classifieds
 WANTED: Baby sitter in my home. Call 456-8396 for information. 36-tfc

For Rent

FOR RENT: Furnished apartments. See Plains Motel. 52-5tp

FOR RENT: 4-room house. For details inquire at WOODY'S HARDWARE & "66" OIL CO. 20-tfc

Real Estate

FOR SALE BY OWNER:
 House with 3-bedrooms, Kitchen, Den, Living room, Utility room, 2 baths, all ceramic tile, refrigerated air and central heat, all professionally landscaped, double car-port, and setting on a full 1/4 blk. Shown by appointment only. Phone 456-4022. 35-tfc

FOR SALE
 4-Bedroom house, 2 baths, double garage, carpet and drapes.
 3-bedroom house, 2 baths, garage, carpet and drapes.
 3-bedroom house, bath, cellar, pool, yard fence, by appointment only, WAGON YARD Office 456-4103 Home 456-3448 35-1tc

MANAGEMENT PERSONNEL NEEDED

To keep pace with booming motel industry and our own growing chain of King's Inn Motor Hotel. See our ad under EDUCATION.

KING'S INN MANAGEMENT COMPANY 35-1tp

EDUCATIONAL OPP.

A TOP-PAY JOB FOR YOU!
 Our own expanding chain of KING'S INN motels and the entire industry need trained personnel. Cost of our home study course includes on-job training in one of our luxurious motels. No age limit. Employment assistance given. Men, women, couples. Write KING'S INN MANAGEMENT Co., Division 1, 11800 East Colfax, Denver, Colo. 80010. 35-1tp

ROUTE SALES

Wanted: men or women to call on Fuller Brush customers. Part or full time. Car required. Apply 908 S. Cedar, Brownfield 38-tfc

TAKE OVER PAYMENTS

1964 model Singer made sewing machine in walnut cabinet, will zig-zag, buttonhole, fancy stitches, etc. \$34.50 cash or 6 payments at \$6.76. Write Lubbock Sewing Center, 114 19th St., Lubbock, Tex. 20-2tc

WOMEN WANTED

Part-time typing at home, \$30 to \$60 weekly. Send background of yourself and hours available. P. O. Box 36177, Houston 36, Texas. 20-4tc

WANTED: Baby Sitter in my home on Tuesdays and Thursdays beginning Sept. 8. Phone 456-8522. 35-2tc

For Sale

FOR SALE: Business and Residence lots in Evans Edition in Plains. Call or write Al Wolfenbarger, Bol 311, Grayson, Oklahoma, or call 338-7550 or 338-6438. 30-tfc

FOR SALE: Repossessed 1955 Geo Truck Tractor, 5 ton, complete overhaul, new rubber. Will sell for \$4793 cash or will discuss credit terms. Contact Leonard Ellington at the First National Bank, Brownfield, Texas, ... 637-2531. 38-1tp

FOR SALE: 1958 Chevrolet. See it at Pic and Pay Grocery. 38-tfc

Services & Products

DIRECT MATTRESS CO.
 Mattresses rebuilt. Inner-spring, \$14.90; Cotton, \$9.90. Also new inner-springs, Orthopedics, Rubber foam and King Size. Call THE FIX-IT SHOP 456-2955, who is receiving calls for our company located at 1613 Avenue H, Lubbock. 25-tfc

Dr. J. U. Borum, Jr., Optometrist of Brownfield, has moved his office to his new building, 412 West Tate, East of Wilgus Drug. Phone 637-6434. 25-tfc

WE NOW GIVE GOLD BOND STAMPS with butane purchases, when account is paid by 10th of the month following purchase. BRONCO GAS CO. 25-tfc

FOR COVER CROPS See us for seed and custom planting. Barron Brothers, Phone 456-8321 or 456-4973. 36-3tc

SPINET PIANO (new) located in you vicinity. Will sacrifice, to party able to assume \$27.50 monthly. Write Channer's-Sterling, Colorado. 38-1tp

Barker's Variety
 Drygoods
 Toys
 Gifts
 Housewares

PLANNING A MEETING?

ALL CLUBS, CHURCHS, CIVIC AND SOCIAL ORGANIZATIONS ARE INVITED TO INFORM THE CHAMBER OF COMMERCE OF THEIR MEETING DATES AND PLACES FOR PURPOSES OF COMPILING A COMMUNITY ACTIVITIES CALENDAR

CALL 456-2929

State Capital News

By Vern Sanford

Austin—"Interbasin diversions," Cabinet meetings resumed the process of moving water from Governor Connally has resumed where it is to where it is needed his schedule of unofficial "cabinets" is being talked about more and more in Texas where half of the state's water supply is centered in the eastern one-seventh of the state.

It will be the topic of three speakers at the Association of Western State Engineers in Austin on September 21.

Speakers are Frank Raab of Oklahoma, David Hale of New Mexico and William Warner of California. All three are water officials in states which have turned to inter-basin diversions to solve some water problems.

Some moving already has taken place in Texas. In the Trinity watershed, for instance, Dallas is completing a pipeline and treatment plant for moving Sabine River water from Lake Tawakoni to Dallas. Also Houston has signed a contract with the Trinity River Authority to move Trinity water to Houston.

Interbasin diversion will become the subject of more conversations for Texans when the U.S. Bureau of Reclamation releases its pending report. It proposes a 400-mile canal to move surplus water from the Sabine and Neches basins, southward to link all major rivers in Texas and meet the needs of the Gulf Coast to a point below Corpus Christi.

Gov. John Connally has asked the Texas Water Commission to speed up water planning to seek alternatives to the Bureau of Reclamation's forthcoming proposal. But the commission is strapped by the bounds of a budget inadequate for such a study, unless the 1965 Legislature increases its funds.

Insurance interest charge upheld An effort by the Allstate Insurance Co. to knock out the State Board of Insurance order requiring a minimum charge of six percent interest on insurance premiums paid by installments has failed.

Board said it found nothing in the hearing to change its mind. It reported that abuses of Texas laws, prohibiting inducements to policyholders and prohibiting discrimination between policyholders, were taking place under deferred payment plans.

"Net costs of handling premium payments financed by insurance companies at cut-rate interest, or no interest, will ultimately be paid by all insureds," said Board Chairman Hunter McLean. "Those electing deferred payment plans should bear such costs."

A spokesman for one company charged that criticism of ruling by the National Association of Independent Insurers laid the groundwork for "an attack on the Texas rating system and policy control." NAII claimed the order discriminates against Texas policyholders and that the board had no authority to adopt it.

Out of the red State government ended its 1963-64 fiscal year on Aug. 31 with a fat general revenue fund balance of \$73,000,000.

It was the brightest year-end figure since 1949.

"It looks better than it has for a long time," beamed State Comptroller Robert S. Calvert. Five years of deficits still are fresh in his memory. One year the State ran \$110,000,000 in the red.

Calvert declined to speculate on the amount of surplus which will be available for legislative appropriation.

Governor Connally predicted earlier that the general revenue surplus may reach \$80,000,000 next year. Despite the abundance of federal highway aid has confused money, the Governor said the Legislature likely will have to pass a new tax bill or amend the existing rates in 1965. This because of demands for more spending in education and other areas.

Calvert noted three factors in the favorable fiscal 1964 close-out: a \$24,000,000 increase this year over 1963 in general sales tax revenues; an \$8,000,000 jump in the auto sales tax; and a \$3,000,000 crude oil tax increase.

Comptroller's report showed state revenue collections during 1964 were more than \$1,600,000,000 compared with \$1,500,000,000 in 1963. Expenditures totaled \$1,500,000,000, compared with \$1,400,000,000 the previous year.

General economic growth of the state; the federal income tax reduction designed to prime spending; and removal of the \$10 clothing exemption from the state sales tax were seen as largely responsible for the bigger yield from levy.

Short snorts

John C. White, Commissioner of Agriculture, advises that Flo Grande cotton farmers will vote Sept. 30 on whether or not to include an escrow program as part of pink bollworm controls during the 1965 season. Director Homer Garrison Jr. of the Department of Public Safety reminds motorists that the new auto inspection period began Sept. 1 and ends next April 15. Women now lead in drivers in Texas, specifically 2,642,756 women compared with 2,573,993 men. Longer terms for water district board members can be provided only by constitution amendment, says Atty. Gen. Waggoner Carr in a recent opinion from his office. Carr also concluded that the school land board has authority to reduce gas royalties from that provided in the original lease by entering into a unitization or pooling agreement at a lower royalty figure. Texas business activity, on a steady upswing for three and a half years, rose three percent to a new high during July says the UT Bureau of Business Research. State Board of Hospitals and Special Schools is expected to select a site for a new special school for mentally retarded in West Texas at a Sept. 14 meeting here. Latest Census Bureau headcount shows Texas has replaced Ohio as the fifth most populous state with 10,300,000.

Touch of Frost



Dwarf green curled kale is as pretty as parsley, tastes extra good after frost has touched it.

When the frost is on the pumpkin it's also on the kale, and that touch of frost is precisely what kale needs to be deliciously flavored. The young leaves have been growing since seeds were planted, not before the middle of June, and, for the variety shown, perhaps even later. But somehow, growth is not enough for full flavor. The frosty touch is what it takes.

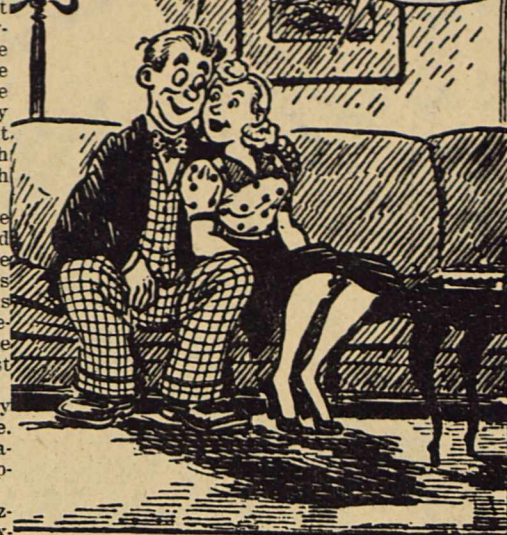
Great quantities of kale are grown in the Southern states and shipped to markets all over the country. While this kale tastes good, the home gardener knows that his kale tastes better—because he does not harvest the first leaves until after that first frost.

Kale is easy to grow, equally easy to prepare for the table. Leaves may be boiled, then seasoned with butter, salt and pepper.

Or, they may be boiled, squeezed almost dry, chopped, and mixed with that the French call a "roux," the Germans an "einbren" and Americans a "brown sauce," to which may be added some of the water in which the leaves were boiled. Cooked either way, kale is a delicious and different vegetable.

WHEN HE WAS A-COURTIN' YOU—

GOSH, HONEY—BUT YOU SMELL NICE! WHAT KINDA PERFUME DO YA USE?



BUT NOW THAT YOU'RE MARRIED—

GOOD NIGHT! I'M GETTIN' OUTTA HERE—YOU'VE GOT THAT CONFOUNDED PERFUME ALL OVER YOU AGAIN!!



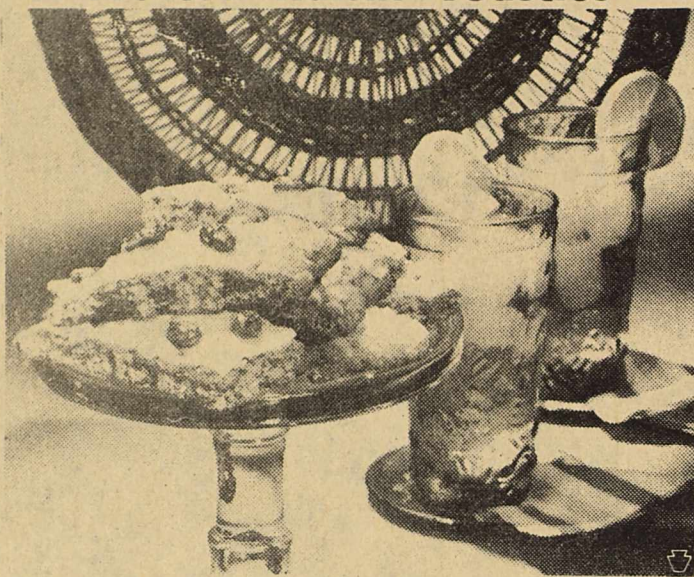
Mike Culwell On USS Savage

Michael W. Culwell, aerographer's mate third class, USN son of Mr. and Mrs. Henry W. (Punk) Culwell of Plains, is a crewmember of the radar picker destroyer USS Savage, operating out of Pearl Harbor, Hawaii. Savage is equipped with special radar facilities to detect the approach of enemy aircraft. She is also capable of acting as a navigational aid to trans-Pacific aircraft and is available for search and rescue missions.

Brownfield Funeral Home
Serving since 1920
Telephone 637-3555
Air Conditioned Chapek and Ambulances - Oxygen Equipped
Funeral Insurance
ROY COLLIER, President
100 West Tate St.
Brownfield, Texas

Easy Bar Cookie

Frosted Raisin Toasties



This very flavorful but not too sweet raisin bar cookie is perfect to serve with iced tea or lemonade. Its interesting new tasty flavor is achieved by baking the oats and walnuts in a hot oven before stirring them into the dough.

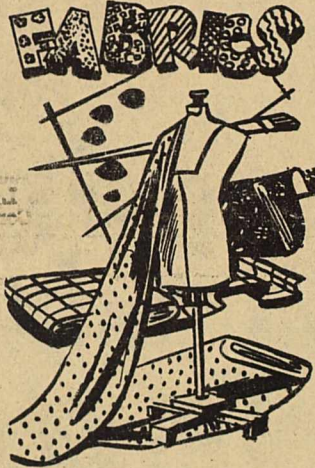
The California raisins are chopped lightly to let the taste surprising flavor distribute throughout the bars. Notice the simple directions for shaping and cutting the raisin toasties. If you prefer the same dough may be used for drop cookies.

- FROSTED RAISIN TOASTIES**
- 1 cup California seedless raisins
 - 2 cups rolled oats
 - 1 cup broken walnuts
 - 1 cup shortening (part butter or margarine)
 - 2 cups brown sugar (packed)
 - 3 eggs
 - 2 1/2 cups sifted flour
 - 1 teaspoon soda
 - 1/2 teaspoon salt
 - 1 teaspoon cinnamon
 - 1/2 cup milk
 - Glaze

Chop raisins lightly. Spread oats and walnuts on baking sheet; toast lightly in hot oven (300 degrees F.) about 8 minutes. Blend together shortening and sugar; beat in eggs one at a time. Sift together flour, soda, salt and cinnamon. Add to sugar mixture alternately with milk; stir in raisins, toasted oats and walnuts. Divide into 6 parts; chill dough. Roll each piece into long roll of 1-inch in diameter and about 15 inches long. Place two strips on each lightly greased baking sheet. Press to flat 4-inch strip with rolling pin. Bake in moderately hot oven (375 degrees F.) 12 to 15 minutes. While still warm brush with glaze made by combining 2 cups sifted powdered sugar with 2 tablespoons hot water. Sprinkle with raisins; turn raisins to coat with frosting. Cool. Cut each strip into 12 diagonal slices. Makes 6 dozen.

Piece Goods

Large Selection Well-Known Quality
At Prices You Can Afford **Pool** Work Clothes



We Have Many New Shoe Styles
See Our Large Selection Of Coats For The Entire Family

Streetman's

Autumn's in the Air

Thompson SEEDLESS **Grapes** 19¢ POUND

JUS-MADE **GRAPE JUICE** 1/2 GALLON 37¢

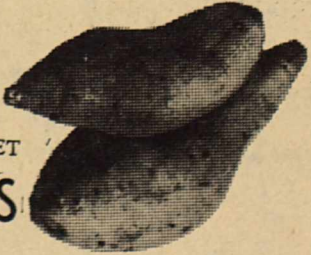
WILSON CERTIFIED **Bacon** \$1.09 2 pound package

PORK **Liver** 17¢ pound

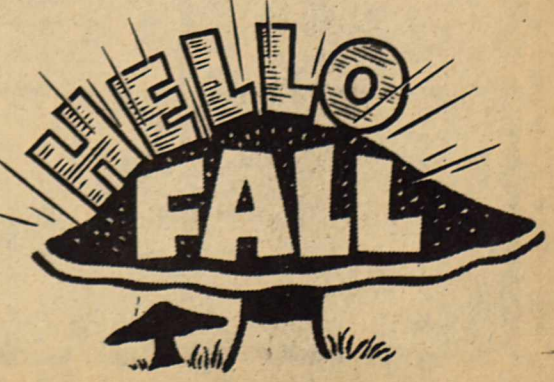
VINE RIPE **TOMATOES** 15¢ pound

PORTALES SWEET **POTATOES** 15¢ POUND

STEAK 79¢ pound



FROZEN **Rolls** 2/57¢



ELLIOTT & WALDRON Abstract Companies, Inc.
PLAINS, TEXAS
Abstracts Prepared Titles Insured
Vernon Townes — Paul New PHONES
Plains: GL 6-3377 Denver City: LY 2-8129

PLAINS FROZEN FOOD
Glenn Morehouse Sid Wade

football CONTEST

All You Do Is Pick

\$31

The Winners

One Game Will Be Found In Each Square. Just Circle Your Choices And Guess The Score On One "Tie-Breaker Game!

1st Prize \$3
2nd Prize \$2
3rd Prize \$1
\$25

Bonus Each Week Offered By Plains Record

If You Pick

Every Game Correctly

Tie Breaker * VS

TEXAS TECH

TEXAS U.

IN PRIZES

Offered Every Week

For 12 Consecutive

Weeks.

Exciting Fun!

Anyone Can

Enter!

Nothing To Buy!

Game Time 8 P.M.
Friday, Sept. 25
Cowboy Stadium

Support The Cowboys

This Week

ENTRY MUST BE IN RECORD OFFICE OR

POSTMARKED BY 5 p.m. FRIDAY

SIGN YOUR
ENTRY HERE

NAME _____

PHONE _____

SEPT. 4	SUDAN	HERE
SEPT. 11	FRIONA	THERE
SEPT. 18	FARWELL	HERE
SEPT. 25	OPEN	
OCT. 2	POST	THERE
OCT. 9	SUNDOWN	THERE
OCT. 16	TAHOKA*	HERE
OCT. 23	O'DONNELL*	THERE
OCT. 30	SEAGRAVES*	HERE
NOV. 6	WINK*	HERE
NOV. 13	STANTON*	THERE

These Merchants Are Top-Notch Cowboy Boosters:

Tumble Weed Drive In Guetersloh-Anderson Grain Co.
 Streetman's Dept Store Loyd Insurance Agency
 Alma's Restaurant Cotton Growers Delinting
 Marie's Fashions & Fabrics Horkey LP Gas & Shell Service
 Randall's Barber Shop
 George's '66' Service
 Bronco Gas Co.

THIS WEEK'S GAMES

SEAGRAVES VS EUNICE	BOVINA VS AMHERST	KRESS VS PETERSBURG	TEXAS A&M VS HOUSTON	RICE UNIVERSITY VS LOUISIANA STATE
TULLA VS DIMMITT	MORTON VS PORTALES	LEVELLAND VS DENVER CITY	TCU VS FLORIDA STATE	AIR FORCE VS MICHIGAN
SLATON VS CROSBYTON	POST VS ABERNATHY	BROWNFIELD VS ANDREWS	SLIPPERY ROCK STATE VS EDINBORO STATE	PENN STATE VS UCLA
TEXAS TECH VS TEXAS U.	O'DONNELL VS FRENSHIP	TATUM VS CARRIZOZO	RUTGERS UNIVERSITY VS PRINCETON	NORTHWESTERN VS INDIANA

D.C. Newsom Gin
 Latt's Humble
 City Of Plains
 Plains Oil Co.
 Plains Record

Honor Roll

The Following Individuals Have Donated The Sums Shown In The Interest Of Furthering Scouting And Its Effect Upon The Lives And Characters Of Boys. Money Toward The Construction Of The Scout Hut-Lions Den Presently Being Built In Plains

M. W. Luna	\$25.00	Pat Pierce	10.00
T. J. Bearden	20.00	Polly Rushing	10.00
Alvie Faulkenberry	Electric Range	Frank Whitlock	Electric Refrigerator
Olan Heath	10.00	Gy er's Cleaners	10.00
C. R. Addison	10.00	at Jones	20.00
Raymond Bookout	10.00	Woodie Swearington	Brownfield
Paul Cobb	\$25.00	E. O. Winkle	20.00
Walter Driver	10.00	James L. Bozeman	10.00
Johnny James	25.00	D. N. Taylor	10.00
Johnnie Fitzgerald	25.00	G. D. Kennedy	25.00
Archie Whitaker	10.00	Roy Edwards	20.00
Ross Irrigation	10.00	Plains Farm Supply	25.00
Woody Wilmeth	15.00	Mr. and Mrs. John E. Fitzgerald	25.00
Johnnie Brown	10.00	A. B. Carpenter	25.00
Vennum Fitzgerald	10.00	Bob Loe	25.00
Plains State Bank	25.00	Mrs. John Robertson	2.50
Jack Pierce	10.00	J. W. O. Aldredge	10.00
James Warren	20.00	E. W. Craig	10.00
Romain Telephone Co.	50.00	O. D. Smith	5.00
Moore and Oden	50.00	Elliott and Waldron	10.00
Dickie Green	20.00	Joe Curry	10.00
Cogburn-Young	25.00	Neil Parks	10.00
R. S. Faulkenberry	25.00	In Memory of Till W. Reed by an anonymous donor...	10.00
Murrell Thompson	10.00	Odus Walsler	10.00
Lewis L. Walker	10.00	Mr. and Mrs. H. F. Barnes	10.00
Employees of Goodpasture C rains	7.50	W. G. Lattimore	5.00
Charlie Stewart	10.00		

You may donate (any size gift is sincerely appreciated) by calling or mailing your donation to Johnnie Fitzgerald, Paul Cobb or Alf Carpenter. Following the receipt of your gift, your name will then be placed on the above list.

ROUGH 'N RUFFLED



Bobbie Brooks provides the makings for a 'barrow-full of fashion fun with its summer's harvest of "Country Looks". Eyelet ruffles take a fancy to blue denim as a bit of trim on a workman's shirt 'round the sleeve cuffs and shirt tail. The same feminine trim is found around the ankles. It's a "fun" combination for those who like "fun" clothes. of the classic slim denim pants.

28th Marks Start Of Tsa Mo Ga Year

Tsa Mo Ga Study Club is to open this year's club activities with their first meeting on the night of September 28 in their clubhouse here. A buffet supper will be served beginning at 7:30 p. m. Program director for the evening is Mrs. P. W. St. Romain and the program theme is "Wis-

dom Through Understanding." Mrs. Garland Swann will give the club calendar for the coming year and Mrs. Sammie Williams of Morton will speak on "The Road Ahead." Hostesses for the evening will be the members of the program and yearbook committee.

PAINFUL CORNS?
AMAZING LIQUID RELIEVES PAIN AS IT DISSOLVES CORNS AWAY
Now remove corns the fast, easy way with Perrine's Liquid Perrine relieves pain instantly, works below the skin line to dissolve corns away in just days. Get Perrine's... at all drug stores.

Cats and Kids

Cats make excellent pets for children. Once a child begins to cuddle a cat, to give and receive affection, a long and close friendship can be expected.

Just take a look at the glow that comes into a child's eye as he or she holds and pets a kitten. That's proof enough that cats and kids are naturally the best of friends.

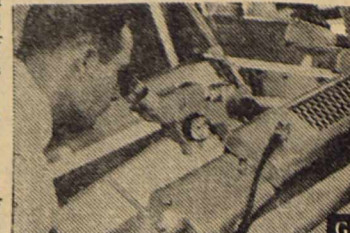
Just the same, children have to be taught to be gentle with their pet. Rough play is hard on Puss. Remember that even the smallest child is bigger and stronger than a feline playmate. Too much mauling can hamper a child-cat relationship.

At the Purina Cat Care Center we recommend a few simple lessons to teach kids and cats to get along. Children should be shown how to hold a cat properly, with firm support under the chest and forelegs and under the hindquarters. Lessons should emphasize that cats are not to be subjected to rough treatment, loud or sudden noises, or disturbances during mealtimes and naps. These are things which cats—as well as humans—find annoying or frightening. If youngsters avoid these disturbing habits and join in making their cat happy, Puss will show appreciation with warmth and affection.

Miss Warren Honoree

Miss Carolyn Warren, bride-elect of Ralph E. Townes, Jr., was honored Sunday, September 20 at a gift tea in the Tsa Mo Ga Club House. Mrs. Tom Warren, mother of the bride-elect, the honoree and Mrs. Ralph Townes, Sr., mother of the bridegroom, received guests. Miss Warren's chosen colors, orchid and white, were used in decorations. An orchid net cloth over orchid satin, appliqued with wedding bells and bows of sequin and pearls covered the serving table. An open Bible, accented with garden flowers and candles formed the centerpiece.

Hostesses for the courtesy were Mesdames Garland Swann, Vance Glover, Jack McCrary, L. D. Hamm, Jr., Gene Johnson, O. G. Lewis, Rusty McGinty, Jesse Hale, T. J. Murphy, Ty M. Field, and P. W. St. Romain. Wedding vows for the couple will be read October 3 at 7 p. m. in First Methodist Church of Plains.



Before a color TV tube leaves the Zenith factory, it gets more than 50 quality control tests. Employees who work with color tubes walk over a shoe-scrubber and through an air shower to remove dust!

SHOP

Hawkins Food Market

For Weekend Specials

GOLD BOND STAMPS
DOUBLE ON WEDNESDAYS

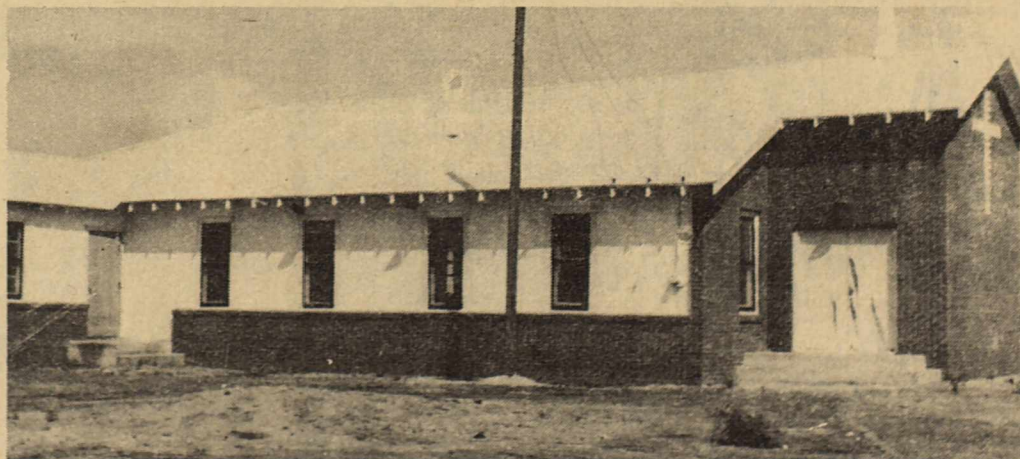
Time To Sow WHEAT RYE OATS

Let Us Furnish Your Seed And Fertilizer Needs

E.O. Winkles Grain & Fertilizer

Pho. 456 8505 Plains, Texas

OPEN HOUSE At Baptist New Life Temple



Templo Bautista Nueva Vida

We Want Our Entire Community To See Our New Facilities

Local Crusade Sept. 27-Oct. 4

LOCAL NEWS

Mrs. W. L. McClellan received word Tuesday night that she has a new great-granddaughter. She weighed 7 lbs. 7 ozs. and has been named Cheryl Jeanne. She is the daughter of Rev. and Mrs. Alvin Knox of Brownwood and granddaughter of Mr. and Mrs. M. E. McClellan of Dallas.

Mr. Joe McDonnell of Bellsflower, Calif. visited friends and relatives here over the weekend. # # #

Mr. and Mrs. J. W. Newsom and sons of Lubbock visited his parents Sunday. They are Mr. and Mrs. D. C. Newsom. # # #

Mr. and Mrs. James Anderson and children of Monahans visited friends and relatives here last weekend. # # #

Mr. M. S. Weed is a surgical patient in Terry County Hospital. # # #

Mr. and Mrs. Don McKenzie of San Pedro, Calif. visited Mr. and Mrs. Russell Faulkenberry for the past two weeks. # # #

Stork Stops

Mr. and Mrs. Melton Capps are the proud parents of a new daughter born September 17, in Yoakum County Hospital in Denver City. She weighed 8 lbs. and is 20 inches long. They named her Keta LaVoyce, and are to call her LaVoyce. # # #

Mr. and Mrs. T. J. Miller are the proud parents of a new daughter, born September 19, in Yoakum County Hospital. She weighed 6 lbs. and 10 ozs. They named her Betty Jay. # # #

CARD OF THANKS
I sincerely appreciate all the kindness shown me during my illness.

Thank you for the fruit, flowers, cards, good lunches, and above all the kind words of encouragement.

Good friends are worth more than their weight in gold. God bless and watch over each one of you.

Mrs. J. H. Jost

It might be said that couples who marry at high noon are taking a 12 to 1 chance.

CROSSWORD

ACROSS									
1. Tally	2. Meeting	21. Calcium (sym.)	Answer						
6. Small donkey	3. Cardinals	22. Beard of rye	W A N E R	E S N E I					
11. Paralyzing disease	4. Uprising	23. Extremely indigent	E N I R O	O I B N I					
12. Variety of willow	5. An age	24. Gaelic	W I D	S I A N O					
13. Negative ion	6. Songbirds	25. Voided escutcheon	E B	S I O D					
14. Trite	7. Custom	26. Work clumsily	S O N I X T A	W S H					
15. Camp bedstead	8. Encircle	27. European nurse	E N V	I N O C E N T					
16. Work clumsily	9. Genuine	28. European capital	E B V	O G G					
17. Mulberry	10. Indies (abbr.)	29. Tight	E S T	O I N O V					
18. Large bundle	11. Common contraction	30. French river	R E I S O	O I N O V					
19. Italian inventor	12. Unadulterated		O R R B	E R O D S					
20. Honest	13. Persia								
21. Of birds	14. American editor								
22. Fresher	15. Black								
23. Garment border									
24. Northmen									
25. Kettles									
26. Germanium (sym.)									
27. The present time (poss.)									
28. Brain membrane									
29. Palm cockatoo									
30. Dentist's drills (var.)									
31. Strip of rigging									
32. Silk veil (eccl.)									
33. Taut									
34. Nairobi is its capital									
DOWN									
1. Health resort									

Quick Macaroni Dish

Macaroni can be cooked "in its own sauce" with this simple recipe for one of America's favorite dishes. Serve it with green beans and sliced beets, or with a mixed green salad.

- QUICK MACARONI**
2 cups (7 or 8 oz.) uncooked elbow macaroni
1/2 cup corn oil
1/2 cup chopped onion
1/2 cup chopped green pepper
1 clove garlic, crushed
2 1/2 cups tomato juice
1 teaspoon salt
1/4 teaspoon pepper
2 tablespoons Lea & Perrins Worcestershire Sauce

Put macaroni in a sauce pan with corn oil. Add onion, green pepper and garlic. Stir and cook over low heat until macaroni turns slightly yellow. Add tomato juice, salt, pepper and Worcestershire Sauce. Bring to a boil over high heat. Cover. Reduce heat to low. Cook 20 minutes without stirring.

For FREE copy of the new "USA Original" Cook Book, write Lea & Perrins, Inc., Fair Lawn New Jersey.

Barrett's Funeral Home
24 Hour Ambulance Service
"We honor all Burial Insurance Contracts"
See us for Monuments
456-2233

Warm friend ... your druggist!
Such a comfort, to know that sick-room and health aids are so near!

You'll find everything you might need for the comfort of the family... in sickness, or in health... here, where shopping is as easy as a phone call. Prompt delivery!

Curry-Edwards

YOUR COSDEN DEALER
Wholesale - Retail
PROMPT DELIVERY

- GASOLINE
- OIL
- DIESEL FUEL
- KEROSENE

Plains Oil Company
JAMES WARREN, MGR. PLAINS, TEXAS.
PHONE GL6-3777



DEMO WOMEN ART SHOW

Yoakum County Democratic Women are sponsoring an "Art Exhibit" from October 19 through 30 in Yoakum County Court House, here. Exhibits should be received by Oct. 15, and must be matted or framed for display.

Any artist resident of Yoakum County within the age group of Freshman through Senior in high school, including 1964 graduates, and any amateur who does not derive more than 1/2 his income from the sale of art work, may compete.

Prizes will be offered to first, second and third place winners in each division; winners to be eligible for the district meet in November. Judging will be done during the display.

An entrance fee of \$1 for students or \$2 for amateurs will be charged. Fees that are collected will be used to pay fees to District for county winners.

Entrance blanks may be obtained from Plains High School Principal, D. N. Taylor, or from Mrs. Vicie Hinkle at the Courthouse.

Give School Victory Bell

At last Friday's pep rally, the Senior Class of Plains High School presented a victory bell to Mr. D. N. Taylor, principal, for use by the school.

The bell at present, is on a cart and can be pulled from place to place; however, in the near future, the bell will be permanently fixed on a brick foundation in front of the high school gymnasium.

The bell is to be rung one hour after a Cowboy victory.

Members of the class stated, "We all feel sure that there will be many occasions this year for the bell to be rung loud and clear."



Rev. ROBERT H. HARPER
MOON SHOT

THERE IS a story of a little black dog of growing age that was missed one night and was found outside, barking furiously at a glorious full moon. Perhaps the little dog had noticed the full moon for the first time, I do not know, but the story is that the moon kept shining.

As these lines are written on the day the pictures that have come from the widely-publicized moon shot, I am reminded that for all that has been done to the moon, the beautiful orb keeps shining on and shining on. And we may be thankful for that.

But we are left all the declared benefits of the moon shot and to wonder how the values of the effort can be computed in dollars and cents of the millions that have been spent in this moon-shot business.

Certainly we do not need to confirm that there is no "man in the moon" and that there ARE multiplied millions of men on our earth and that they are now acting up. "And slowly comes a hungry as a lion creeping higher, glares at one that nods and winks behind a slowly-dying fire."

Cowboy Grill
Free Coffee & Donuts
ALL DAY FRIDAY

ALL DAY SATURDAY 2 Eggs, Bacon Sausage & Coffee 79¢

Homemade Pies & Doughnuts
Reg. \$1.85
T-Bones 79¢
1/2 Fried Chicken 79¢
Hamburgers 19¢

NEW MANAGEMENT Jay Smith

Install Woman At State HD Meet

Mrs. Tom Box was installed as District 2 Director of the Texas Home Demonstration Association at a formal banquet in the Rice Hotel in Houston during the 38th State Convention September 16 and 17.

She will serve on the State Board for two years with 23 other women from over Texas.

Delegates from the County attending were Mrs. Melvin Gentry, Denver and Mrs. Preston Murphey, Plains. Mrs. John

E. Fitzgerald also represented the county and Mrs. Joe H. Thompson was the representative for the Home Demonstration Agents in District 2.

The group from District 2 left Lubbock on two chartered buses September 15 and returned September 19. The General Assembly opened with about 800 women in attendance.

Theme of the convention was "The American Woman—Her Changing Image."

John E. Hutchison, Director, Texas Agricultural Extension Service, highlighted the convention with the address, "Inescapable Leadership Responsibilities of Women."

Workshops of 4-H, Health, Safety, Civil Defense, Citizenship and Family Life were held during the two-day meeting.

If you are planning to store winter squash and pumpkins, leave them on the vines until they are thoroughly ripe. They will keep better if they are fully ripe before harvesting. Select the storage place for its moderately warm temperature.

REMOVE WARTS!

Amazing Compound Dissolves Common Warts Away Without Cutting or Burning. Doctors warn picking or scratching at warts may cause bleeding, spreading. Now amazing Compound W penetrates into warts, destroys their cells, actually melts warts away without cutting or burning. Painless, colorless Compound W, used as directed, removes common warts safely, effectively, leaves no ugly scars.

GUARANTEED

The incomparable Gillette STAINLESS STEEL BLADE

gives you more comfortable shaves per blade than any other brand. 6 for 89¢ 10 for \$1.49

*If you do not agree, return the dispenser and unused blades to The Gillette Co., Boston 6, Mass. for a full refund.

Green Thumb Tips

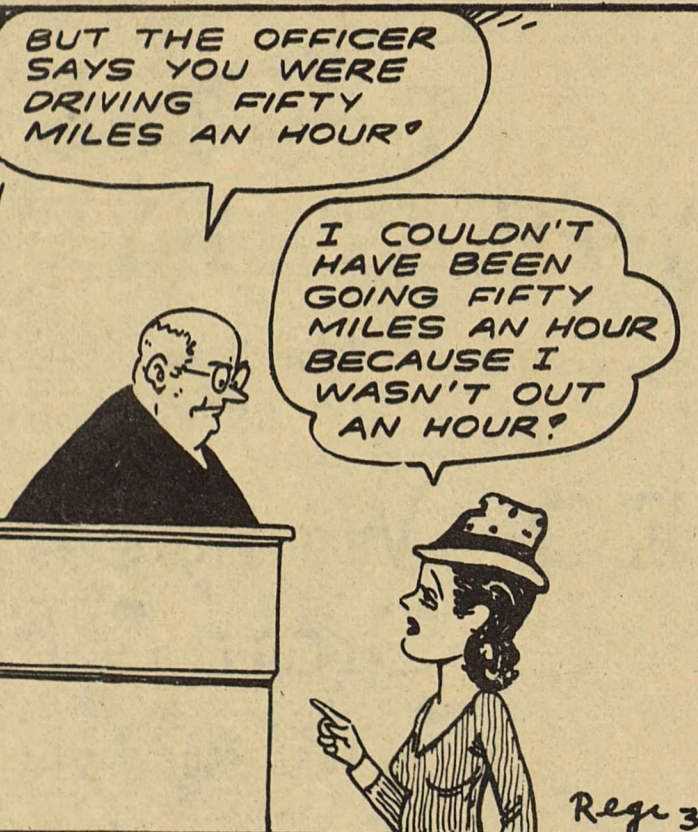
September is the time to control weeds in the lawn so you'll have a weed-free lawn in spring. Spray with 2, 4-D or spread a granular form of the same chemical over the infested areas. Remember that granular weed killers must be applied to moist leaves so they will adhere.

All spraying should be done on a windless day lest the spray drift to nearby ornamentals which are as readily killed as broad-leaved weeds by a chemical which does not discriminate between them.

The few weeds not controlled with 2, 4-D alone usually will succumb to a combination of 2, 4-D and 2, 4, 5-T. Ask your garden supply store operator for such a material.

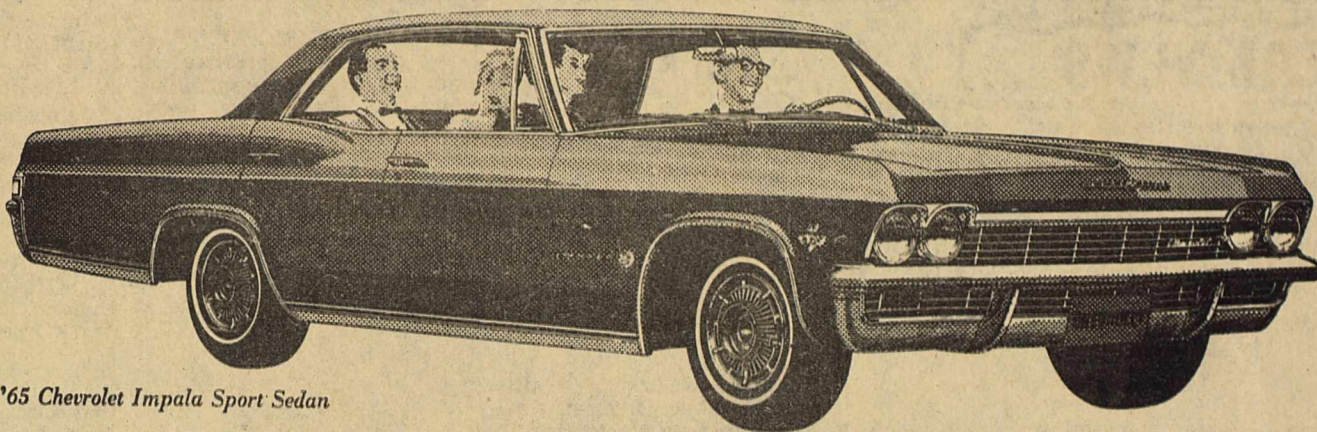
The sprayer used for any 2, 4-D product should be kept for weed killing only as it is almost impossible to clean the sprayer completely and even a tiny bit of this chemical will injure broad-leaved plants.

COURT CHUCKLES by S. M. REGI



Regi 3

now! the beautiful shapes for '65

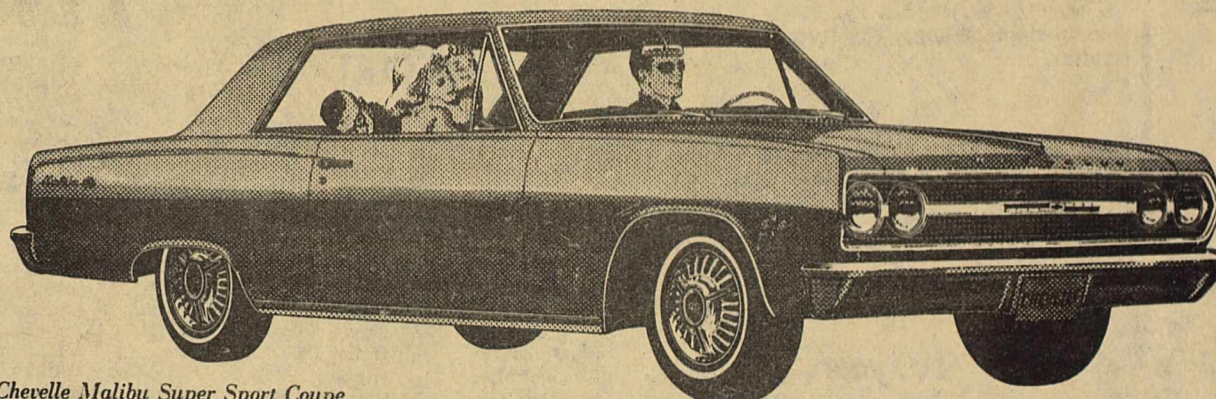


'65 Chevrolet Impala Sport Sedan

Chevrolet Impala '65

It's longer, lower, wider—with comforts that'll have many an expensive car wondering why it didn't think of them first. More shoulder room, more leg room up front. Curved side windows, an

instrument panel that's a conversation piece. In fact, just about everything's new right down to the road. And even that'll seem newer because the Jet-smooth ride is smoother than ever.

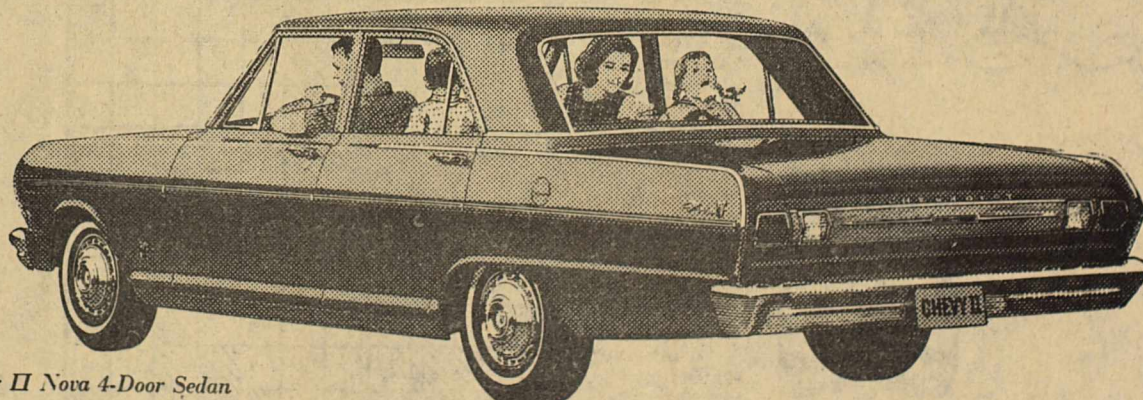


'65 Chevelle Malibu Super Sport Coupe

Chevelle Malibu '65

Here's all that made Chevelle America's most popular new-sized car—plus some new surprises. Like those cleaner, bolder lines. Like the silky way its new ride skims over the choppiest roads. Like

V8 power that'll make you think we stole some of Corvette's stuff—which we did. All told, five engines are available from a quieter six to a V8 that comes on 300 horses strong.

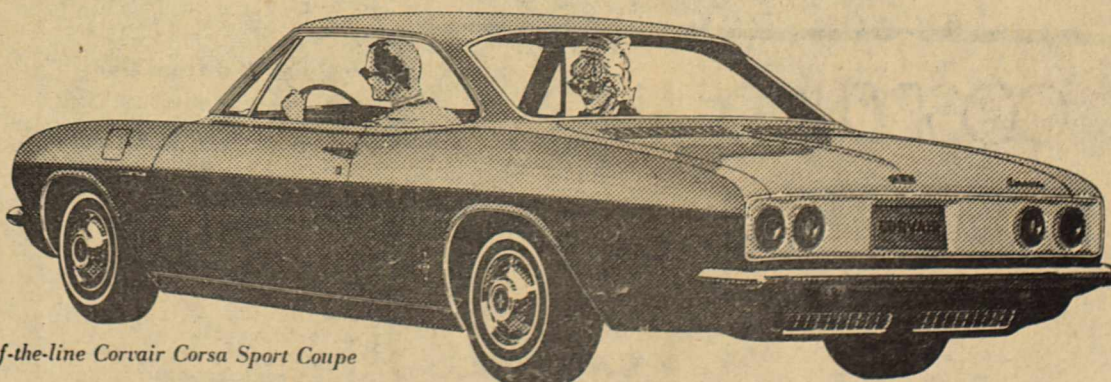


'65 Chevy II Nova 4-Door Sedan

Chevy II Nova '65

It may be the expensive-est looking thrift car you've laid eyes on. But thrifty it is. The big difference being that Chevy II's marvelous mechanical efficiency now wears a debonair new look. And

offers a new range of engines, including a new 300-hp V8. You could get the idea that saving you money was the last thing we had in mind—if it weren't for that price sticker on the window.



New top-of-the-line Corvair Corsa Sport Coupe

Corvair Corsa '65

How's this for sport with an international flair! The longer, wider design gives all closed models a hardtop roof, along with more shoulder and entrance room. And to go with the racier look,

there's up to 180 hp available in the new Corsa series, up to 140 hp in the Monza and 500 series. Also a flatter riding independent suspension, more responsive steering and a wider road stance.

CHEVROLET

See 5 beautiful shapes for '65—Chevrolet, Chevelle, Chevy II, Corvair & Corvette—at your dealer's

Short And Field Chevrolet
Denver City, Texas

426863

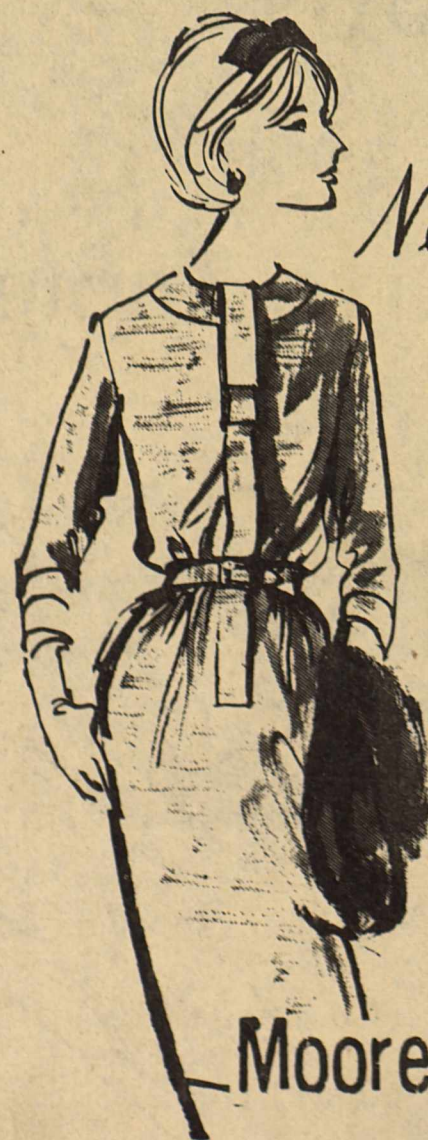
McGinty Abstract Co.

B. F. (Bert) Bartlett, Lessec

Complete Microfilm

Records of Yoakum County Lands And And Lots

Telephone-Gl 6-3311



Nelly Don

The beautiful basic leads a flexible accessory life... Nelly Don's slender but easy silhouette in a textured surrah blend of rayon and acetate. Jade green, dark carnation, blue, black, 10 to 20 and 10 1/2 to 20 1/2. 17.98

Moore & Oden