

Appreciation Drawing Now \$218

The Plains Record

Combined With The Yoakum County Review March 1, 1961

MOORE
or Less

By Johnnie Moore

VOLUME NO. 33

Thursday, January 24, 1963

Number 4

I see by the papers that the national deficit is now running at the rate of six billion dollars a year. You know, it takes a lot of patriotism to buy government bonds, investing in an organization that is losing money at the rate of \$500 million a month, \$16,666,666 a day or \$694,444, an hour. What I'd like for Christmas (or just any time) is for the Kennedy Boys to quit believing in Santa Claus.

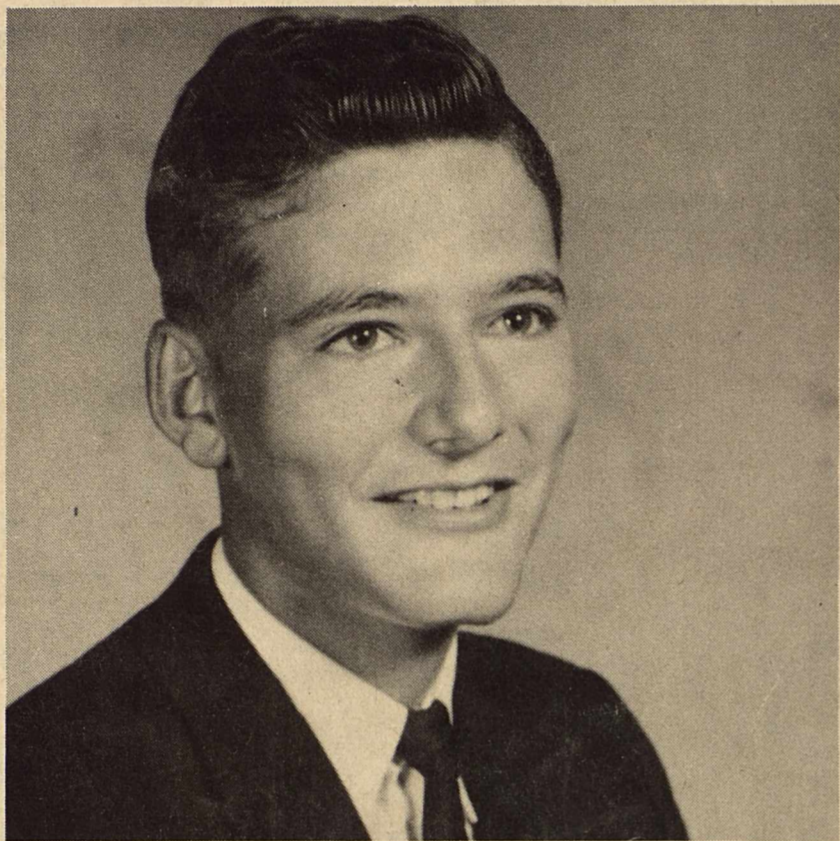
"I lived to be 100 by refraining from smoking, dancing and chasing women," says a centenarian.

Fellow I know says, "This explains how he lived that long, but it doesn't explain why."

An English doctor says that more girls are born to families that live better. But he's not talking about virtue, ladies; he's talking about the nutritional level.

The Merchants and Manufacturers Association of Los Angeles says that in the past six years, Social Security taxes have risen by 78 percent, not counting the increase of January 1. When the plan was instituted, it was forecast that the maximum cost would be \$90 a year for each employer and employee. Now, however, the figure is expected to reach \$222 each by 1968.

Commissioners' Suit Set Feb. 1



SCIENCE WINNER----James Tippitt, who, last year, won the first place award in the State Interscholastic Science Contest in class A, has received another honor. James, the 17 year old son of Mr. and Mrs. J. M. Tippitt, and Plains Senior was one of 7 Texas high school students named as the top ten percent in the nation in the 22nd annual Science Talent Search which is sponsored by Westinghouse. James had as his entry the possible correlation between Jupiter's 18 Megacycle radiation and its atmospheric features.

A great division of opinion is quite apparent in the area this week concerning the much talked about suit which the commissioners of Yoakum are to face here in a District Court hearing in just nine days. Case No. 2133, Gene H. Bennett, Et Al versus H. C. Cotton, Et Al, as the case is listed on the docket, is expected to create a very great amount of interest.

The allegations, as listed, are complaining of H. C. Cotton-Precinct 2, Vance Brown-Precinct 1, Raymond Bookout-Precinct 3, and Mrs. Paul Loe-Precinct 4, and lists them individually and in their official capacities as commissioners of the County for alleged "persistent and repeated use of county equipment and employees on private property for private purposes."

The allegations go on to say that the above described conditions are widespread and well known throughout the county, charging that there have even been some occurrences of same in the edges of Gaines and Lea Counties.

The plaintiffs, those who filed the suit are asking for a temporary writ of injunction, restraining the commissioners from using county equipment and employees on private property until such time as a hearing could be held and a permanent injunction given.

The plaintiffs, Gene H. Bennett, R. N. McGinty, L. T. Pate, Mr. and Mrs. Reeves Newman, Tom Lesh, Olin Cox, Glen Cleveland, G. Dub Cleveland, L. L. Pouncey, Leon Moore, Pete Smith, J. C. Reed and Gilbert Hornsberger, are being represented by the Midland law firm of Stubbeman, McRae, Sealey and Laughlin.

As of this date the defendants in the suit, the commissioners, have not officially secured counsel, but stated that at least two had been approached.

According to Mrs. Loe and Mr. Bookout, Commissioners of Precincts 3 and 4, answer to the charges will definitely be forthcoming at least to the extent of asking for exceptions in such areas as maintaining school bus roads, which have not been designated as county roads, and other items.

121st District Court Judge, M. C. Ledbetter, has set the hearing for 10 o'clock on the first day of February.

Commissioner Loe stated that as far as her precinct is concerned, "There definitely was no step up of such alled-

ged activities just previous to the election as was charged by the plaintiffs."

Commissioner Bookout also stated that he was unaware of any such stepped up pace.

Bookout also said that in regard to the use of county equipment in Lea County, New Mexico (Precinct 3 is on the New Mexico line, the only instance he is personally aware of is in the regular maintenance of the state-line road, which is half in Texas and half in New Mexico, that is, split right down the middle by the state line.

County Buys Two Graders

Yoakum County Commissioners meeting in regular session last Monday, attended to a great deal of routine business which included the following:

R. B. Woodward of Denver City was appointed as a member of the Community Building Board.

Bills as presented by the County Auditor were approved for payment.

A bid of \$300 made by Doc McCargo for shelving in the county library in Plains was accepted and a like one for "not more than \$250" for

shelving in the Denver City library was accepted from W. R. Banks.

Johnny Brown, Oma McCargo and Jim Brown were appointed as members of the County Welfare Board.

One major item was taken care of also.

A bid from West Texas Equipment Co. was accepted for the purchase of two No. 2 Motor Graders. Amount of the bid was \$45,042 less trade in allowance of \$5,542, making the balance to be paid for the equipment \$39,500.

Drops 5-A Opener To Seagraves Plains Cowboys Maul Wildcats

Plains Cowboys got off to something of a slow start in District 5-A play by giving away a 39-50 victory to the Seagraves Eagles in Seagraves last Friday night.

The Eagles seemed to have a lease on the basket and hit field goals from all over the floor, while the Cowboys, it seemed couldn't buy one.

Opinion is, though, that the Cowboys will be able to handle them real handily the night they come for the second go-around here.

Plains sure made up for dropping the season opener, though when they met the Wink Wildcats here on Tuesday night.

Wink wasn't even in the game during the entire 32 minutes of play.

The Cowboys jumped off to a commanding six-point lead at the start of the game, and widened the margin all during the remaining play.

All the members of the Plains traveling squad got in

on the action and most were responsible for scores.

Plains wound up by beating the Wildcats in a no-contest 61 to 38.

By switching to a completely unexpected man-to-man defense the Cowboys only allowed Wink to sink one field goal during the entire first half of the game.

The score, however, at half-time was Plains 30 and the Wildcats 14.

Plains will face Tahoka there on Friday night and the Eagles of O'Donnell there on Tuesday.

High point scorer in the Seagraves game for the Cowboys were Wilson and Anderson with nine points each.

In the Wink game Harris, with 19 points (14 in the first half) was atop the heap.

Plains "B" squad scored victories over both the Wink and the Seagraves "B" teams. Seagraves succumbed 34 to 30 and the Wildcats 29 to 46.

Odd Fellows Open House

Plains Odd Fellows, members of Lodge No. 61, are planning a big open house to be held on January 31.

Time of the big get-together is 8 p. m. in the local lodge hall.

Occasion for the meeting, to which the public is invited, is the celebration marking completely paying off the local Lodge Hall.

A chicken dinner, a special program and games of "42" are set for the big day.

Highlight of the entire evening will be the Note-Burning ceremony.

Chamber Of Commerce Progress Report

Is our president Frank Whitlock really modest or is he bragging? He was asked for some suggestions to use in making this annual report. He replied that we had a President that didn't get anything done. The fact and figures don't agree them. Anyway, some of our accomplishments are as follows:

We helped with the annual 4-H and FFA Clubs Junior Livestock Show in February.

Held our annual banquet in June, at which time John W. Moore Pastor of The First Christian Church and Editor of The Plains Record was presented a plaque for being "Man of the Year" for his contributions to Civic Work and Youth Guidance.

Co-sponsored the Annual Rodeo and Oldtimers get-together in August. This event is always the highlight of our years activities, both for entertainment and for profit. Due to stormy weather this year, we realized \$600.00, somewhat less than we did last year. Attendance on the good days however exceeded the attendance last year. It is a growing "institution". Good advertising for Plains and lots of fun.

4 new street lights were installed. 8 are now on order and should be here shortly. As you know the City is matching the Chamber, light for light. We have money on hand for 3, money promised for the 4th. This most important project must be continued, we must "let our light shine".

We presented \$50.00 to Roy McGehee, Rt. 1, Plains, for the first bale of cotton brought in. It was ginned at Newsom Gin in Plains.

A group of our members met at Brownfield, with the

Chambers of Commerce of the various cities and towns along Proposed Federal Highway 82, extending from Lubbock, through Brownfield, Plains, Lovington, Artesia, Cloudcroft and on west to Las Cruces. At this meeting officers were elected for the U. S. Highway Extension Association, and B. E. (Moneybags) Loyd, our banker, was elected to represent Plains as a member of the association. The sole function of the association is the furtherance of this highway, and we hope to have official

approval in June 1963.

1962 saw our brochures on Plains and the County compiled and they are now very widely distributed. They've reached the Tourist Division of the Highway Department in Austin, Wichita Falls, Lubbock and other cities. Many have been sent to students wanting information on our town and county.

Don Hancock, Attorney, and Joe Curry, druggist, at-

tended the regional conference in Amarillo this year, and came home with some excellent ideas for carrying on Chamber work.

Plains was host to the Bi-District play off game between Cooper and Dell City in Nov.

We are now Plains Chamber of Commerce, Inc., thanks to the time and effort of Don Hancock.

Appreciation Days began in December and response to date has been very excellent. We hope other merchants will join us now that the busy holiday rush is over, and make this snowball into a landslide.

P C G Sees Possible Cotton Raise

A survey of the acres now included in Zone 2 shows that in 1962 there were 182,173 acres released to the state ASC for re-apportionment within the present zone boundaries. Since the High Plains is always on the demand side, requesting more acres, and re-

leased acres come from other acres within the new zone, the estimate that the High Plains can get one-half, and possibly more, of these released acres is considered to be very realistic.

Indications are that there, will be as many acres up for

re-apportionment within the area of Zone 2 in 1963 as there were in 1962, even with the reduction in base allotments. As a result of an intensive educational campaign emphasizing the importance to the entire state, and to individuals in fully utilizing the cotton

Pay Your Poll Tax

It is reported that only 307 poll tax receipts have been sold in Plains to date, and only 206 in Denver City.

It was pointed out this week by Yoakum County Tax Assessor-Collector, E. W. Craig, that it will still be necessary, for this year, 1963, at least, to have a paid poll tax receipt to be eligible to vote in any elections which might be held during the year.

It is quite possible, he said, for such things as bond elections and other items to come up for vote even though this is an "off-year" election wise.

Many Texas citizens may have been confused by the item which appeared on the bottom of the ballot used in

the May 5, Primary elections.

The item asked for a vote of yes or no on whether or not to do away with the poll tax as a requirement for eligibility to vote in Texas.

The majority of Texans voted to do away with it, but it should be understood that this was only a referendum vote and did not do away with the poll tax.

It will be necessary, in order to do completely away with the tax for a proposed constitutional amendment to be passed by the state legislature and to be ratified by the people of Texas in the next General Election which won't be held until 1964.

Deadline on securing your Poll Tax is January 31.

allotments in the state, there were 19,843 more acres released for re-apportionment in 1962 than in 1961, even though there was a 2 to 3 percent cut in allotments in 1962.

The 23 counties served by Plains Cotton Growers received 40,000 bonus acres through re-apportionment in 1962 and 23,500 acres in 1961.

To be eligible to receive any of the bonus acres, individual farmers must make application to their county ASC committees before the deadline date and make application early. Released acre will be re-apportioned on Mar. 25. Additional acres received through the release and re-apportionment program do not figure in the history of the farm receiving seed acres.

As a result of a complete overhauling of zones by the Texas Agricultural Stabilization and Conservation Service State Committee the High Plains has a good possibility of receiving a sizable increase in bonus acres in 1963 through release and re-apportionment on the basis of past records, area cotton authorities have estimated that the "bonus" could be 100,000 or more acres for distribution with in the 23 counties serviced by the PCG. This would help offset the 244,983 acres lost this year in the base allotments as they now stand.

A law which went in to effect in 1960 permits farmers to release unplanted cotton acres to their county ASC committees and retain "history" for future allotments on their own farms. The county committee

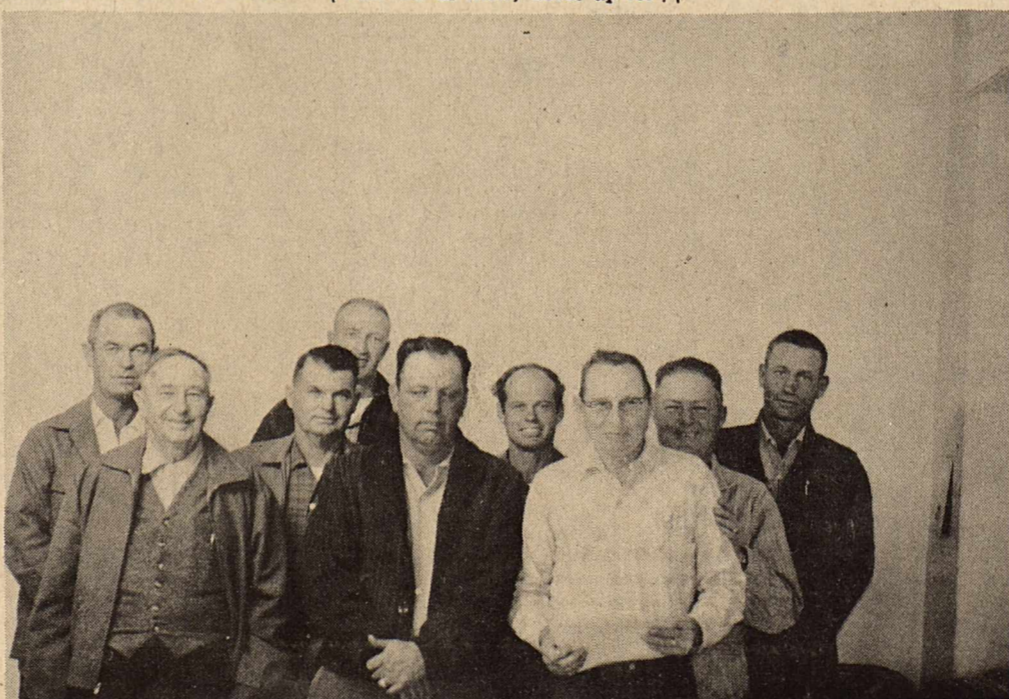
then re-distributes these released acres to farmers who have made application and who farms with the county in which the acres were released. If enough requests for additional acres have not been filled in the county office to absorb all the acres released within the county, the excess acre go to the state committee to be re-distributed in other counties within the zone in which the acreage was freed.

Since the state received its allotment based on the history of the individual farms within the state, when farmers follow the practice of releasing unplanted acres he retains history

for the state well as for the state as well as his own farm. Conversely, if farmers simply do not plant their full allotments and refuse to release the unplanted acres, both the individuals and the state lose history for allotments in future years. Since cotton is the state's top cash crop, these losses adversely affect the economy of the entire state.

Up to this year Texas was divided in to five zones for purposes of release and re-apportionment, and this, to some extent, restricted the free flow of unused cotton acres over the state. Under the new arrangement there are only two zones.

The High Plains is included in Zone 2 which covers, approximately, the north two thirds of the state.



MEMBERSHIP DRIVE----of the Farmers Union will begin with a breakfast at Alma's at 8 a. m. on Monday. After the breakfast the men pictured above will call on prospective members throughout the county.

Bobby Stroud Gets \$10

APPRECIATION DAYS
CASH DRAWING
FOR THIS SATURDAY
JANUARY 26
AMOUNTS TO
\$218.00

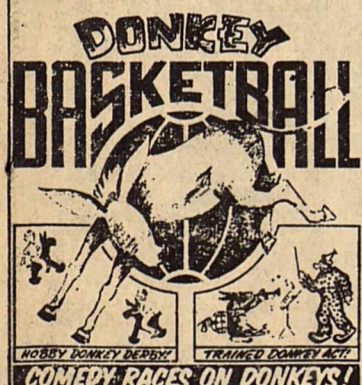
It is possible for the person whose name is drawn to win as much as 50 percent of that figure or \$109.00 if the coupon drawn is punched for that percentage.

There is always a winner, each and every week. Drawing continues each Saturday until the name of someone present is drawn.

Drawing will be at 4 p. m. on the Courthouse lawn.

Last week's winner was Bobby Stroud, who took home \$10 with a five percent coupon.

★COMING!
AMERICA'S
FUNNIEST GAME



ALSO
HOBBY DONKEY DERBY
RACES ON MECHANICAL
DONKEYS
BLACK DONKEY ACT
BETWEEN QUARTERS

Godfrey's Donkeys - Crescent, Okla.
GYMNASIUM
ADVANCE TICKETS
NOW ON SALE
50¢ and \$1
See any Lion Club Member

Cash Drawing Is Saturday

\$80 cash drawing, held by the Yoakum County Federal Credit Union will be held on Saturday, January 26, at 5 p. m.

Credit Union members, to be eligible to win, must have

purchased at least one share of stock during January, and must be present at the time of the drawing in order to win.

Drawing will be held at Woody's "66" Oil and Hardware this month.

The Plains Record

And The Yoakum County Review
JOHN W. MOORE, Publisher

PUBLISHED EACH THURSDAY AT PLAINS, TEXAS

Entered as second class matter at the Post Office at Plains Texas, under the act of Congress, March 3, 1879

SUBSCRIPTION RATES: \$3 per year in Yoakum and Terry Counties; \$4 per year elsewhere.

GAYLE ESSARY'S

YOU be the LEGISLATOR

A COLUMN TO PROMOTE LEGISLATIVE UNDERSTANDING AMONG TEXANS

EDITOR'S NOTE: Rap! Rap! Rap! Will this Legislature please come to order, and will members please take their seats. We are now in session. And as the Speaker of the house raps his gavel and a hush descends over the gallery, YOU take your seat in the House Chambers of the Texas Capitol to prepare to hear arguments for and against important legislation. After discussion pro and con, YOU will have to vote as you see fit.

The value of great numbers of out-of-state tourists travelling across the vast spaciousness of Texas, spending money with our businesses; buying gasoline from our service stations, eating at our restaurants, and buying gifts and necessities from our merchants.

And the spending of each tourist will become new money circulating in the state's economy. Establishing Padre Island as a National Seashore area would be a substantial investment in Texas' tourist, cultural, and economic future and a milestone in the development of the state's Gulf Coast Crescent as a recreational and tourist center.

Obviously the result would benefit all Texans.

Therefore the bill should be voted FOR.

OPPOSITIONERS of this legislation, led by Rep. Rayford Price in the House, say that making Padre Island a National Seashore area may or may not be a great tourist attraction for Texas.

At any rate, the question of whether or not Padre Island becomes a National Seashore is not an issue in the legislation under discussion. Congress has already established Padre Island as such an area.

The land suitable for recreational purposes belongs to private individuals and does not belong to the state.

This legislation, if it passes is designed to give the Federal Government title to the surface and control over oil and gas development of 89,000 acres of state-owned submerged land located between the island and the mainland.

S. B. No. "C"

By Sen. Bruce Reagan
Dist. 20, Corpus Christi
A BILL TO BE ENTITLED an act relating to the creation of Padre Island National Seashore and declaring an emergency.

PROponents of this legislation, led by Rep. Ronald Bridges in the House, say that the success of similar park projects in the nation indicate the establishment of a National Seashore Park on Padre Island would be the greatest single tourist attraction Texas could offer.

The nationwide publicity given the park--such as the New York Times has already given it--by the national publication concerned with tourism, vacations, and parks would spark Texas' economy and its image as a tourist state, and serve as a national memorial to Texas' vastness and heritage.

The National Parks Service testifies that hundreds of thousands of tourists travel each year through the nationally designated park areas.

There is no way to measure

ELLIOTT & WALDRON
Abstract Companies, Inc.
PLAINS, TEXAS

Abstracts Prepared Titles Insured
Vernon Townes — Paul New
PHONES

Denver City: LY 2-2129 Plains: GL 6-3377

Phillips 66

Butane..
Parts..
Tanks..
Service..

Woody's 66 Oil & Hdw.

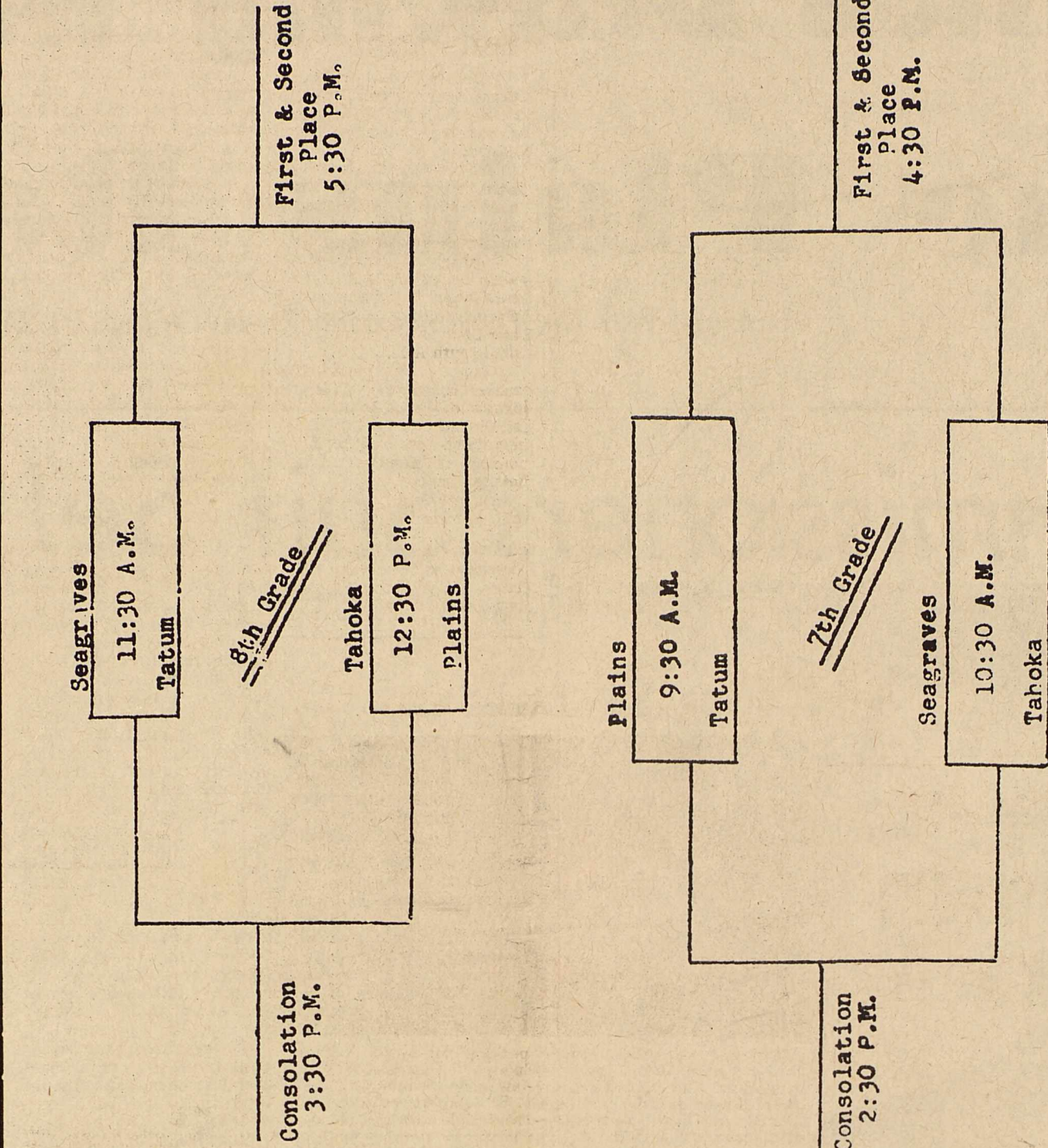
COSDEN PRODUCTS
PROMPT DELIVERY

- BUTANE
- GASOLINE
- PROPANE
- OIL
- DIESEL FUEL
- KEROSENE

Wholesale - Retail
US Royal Tires, Tubes, Batteries—AC Oil Filters, Spark Plugs

PLAINS OIL CO.

JAMES WARREN, MGR.
Phone GL 6-3777 Plains, Texas



BRACKETS OF PLAY----for the Junior High Tourney to be held here on Saturday of this week. Play will be held in the high school gymnasium and admission charges will be 50 cents per session. There will be two separate sessions, the first beginning at 9:30 a. m. and the second at 2:30 p. m.

The land is made up entirely of mud flats covered with a few inches of water. It cannot be used for swimming, boating or any other recreational purpose, and will not add anything to the park area.

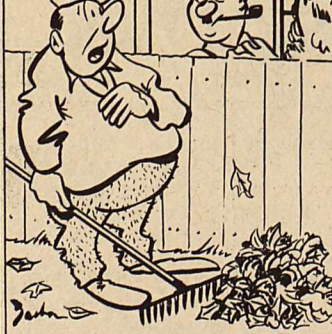
With these facts in mind, it is foolish to uselessly give away the control of 89,000 acres of some of the richest and most desirable oil and gas property in our tidelands which we have been fighting so hard to keep.

All income from this land goes to the Permanent School Fund which is an endowment for the public schools of Texas. From leasing alone, the fund has already received some \$14,000,000 from bonuses and rentals in the area.

This property can mean millions of dollars more for this fund if the State of Texas is left free to develop the minerals underneath it.

Therefore the bill should be voted AGAINST!

Now--YOU be the Legislator! Are you FOR OR AGAINST



Sidney Goodwin Killed In Africa

One month after he landed in Ghana to begin his first term of missionary service, Sidney Goodwin was seriously burned in a gasoline explosion. One week later he died in the Bawku hospital.

Son of veteran missionaries Homer and Thelma Goodwin, Sidney and his family sailed for Ghana in November, 1962. The accident occurred on Christmas Day and the second generation missionary went to his reward on January 1, 1963. He is survived by his wife, Sandra, and three-year-old daughter, Gwendolyn; his parents, Mr. and Mrs. Homer Goodwin of Kumasi, Ghana; a younger brother and sister who are with their parents in Africa and another sister (Mrs. Jerry Shepperd) in Plainview, Texas.

Only twenty-six years of age when he completed his missionary ministry, Sidney was a graduate of Southwestern Assemblies of God College, Waxahachie, Texas, and Wayland Baptist College, Plainview, Texas. Before applying for missionary appointment, Brother and Sister Sidney Goodwin pastored in Canutillo, Texas. He was ordained by the West Texas District in April 1960, and received missionary appointment October 9, 1962. The Rev. Goodwin was in Plains Assembly of God Church in August of 1962.

Association Cemetary Meeting

The Yoakum County Cemetery Association met in regular semi-annual session at 8:00 P.M., Tuesday, January 15, 1963 in the Commissioner's Courtroom with the president, M. W. Luna presiding and 14 members present.

The minutes of the previous meeting were read and the secretary-treasurer reported a bank balance of \$1,336.27.

The Plains Dirt Gardeners presented a check in the amount of \$215.00 which was derived from "Operation Christmas Card". This money is to be used for beautification of the cemetery. The Association expressed sincere appreciation for this contribution and a committee was appointed to replace the dead trees. Plans are also being made for some plantings at the entrance to the cemetery.

Sgt. Gibson Completes Course

Army Sgt. Lynual N. Gibson son of Mr. and Mrs. Ben Q. Gibson, Plains, Texas, recently attended an instruction conference at the 8th Infantry Division's Non-Commissioned Officer (NCO) Academy in Baumholder, Germany.

Sergeant Gibson received three days of refresher training in various military subjects with emphasis on leader

ship and combat tactics. The purpose of the academy is to

broaden the NCO'S professional knowledge and to install in him the self-confidence and sense of responsibility required of a capable leader.

Gibson, a squad leader in Company E of the division's 504th Infantry in Mainz, entered the Army in 1958 and arrived overseas on this tour of duty in July 1960.

He attended Midland High School.

We'll respond promptly to your

In time of need, it is comforting to know that a phone call (at any hour) will bring us promptly to your side, ready to relieve you of all details involved in final arrangements.



Faithfully serving families of all faiths.

Huffman-Barrett Funeral Home

Phone GL 6-2233

Changed Programing

Sign On: NEWS - WEATHER

Country

Western

12 noon

Pop Music 12-4

Rock & ROLL 4 to close-out

RADIO STATION

KKAL

Why Cuss Out Of Town Printers

When We're Available

Plains Quality Printers

Plains, Texas

Phone 4116

Everything piles up handsomely in a Chevy II including savings

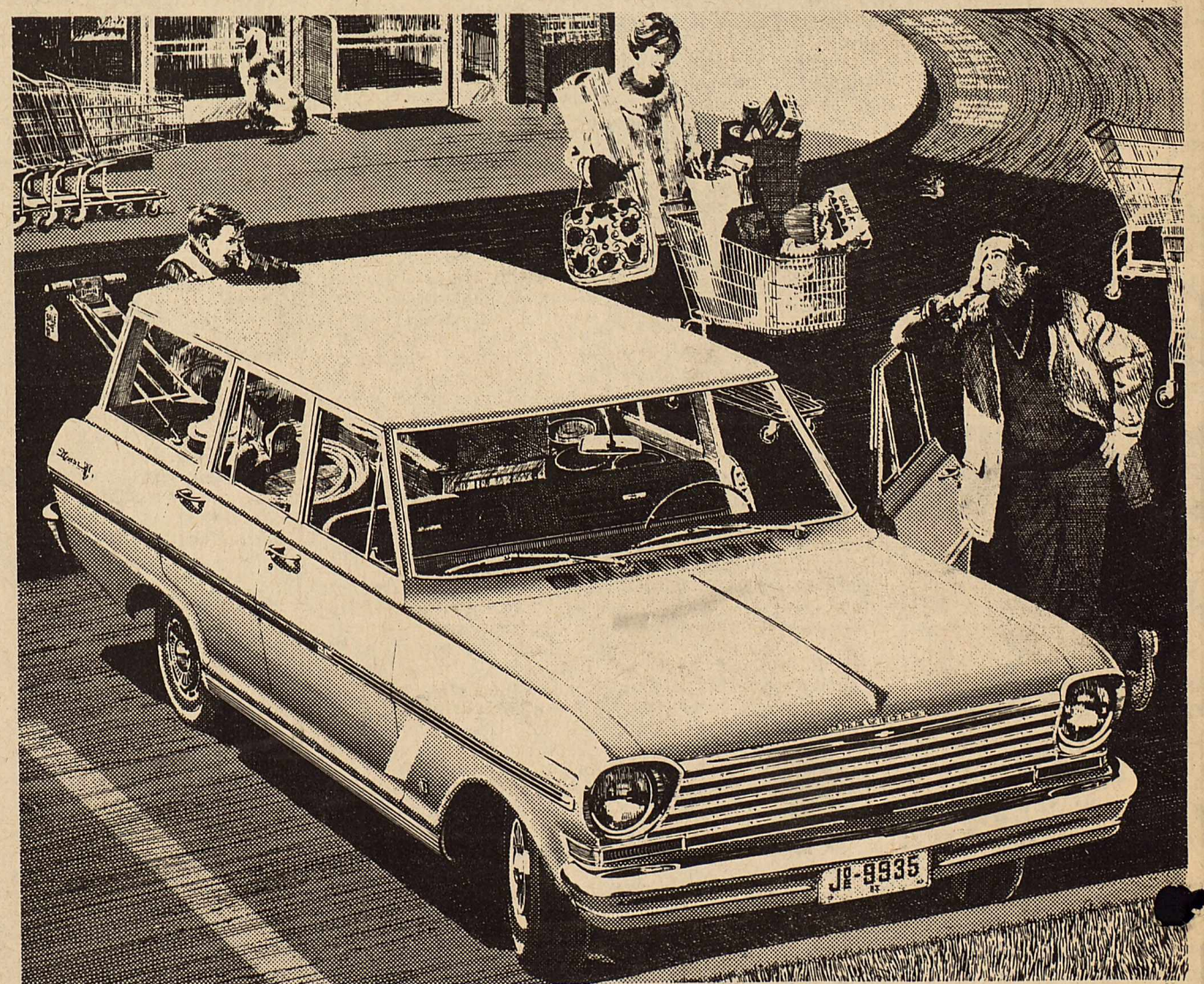
Imagine a low-loading wagon roomy enough to handle most anything you can heft—and still trim enough to slip into cramped parking spots. We imagined it, built it and called it Chevy II. Made it as dependable as a wagon can get. And made it so it'll keep piling up savings over the years. Those show up in the way

CHEVY II



Keeps Going Great

this one goes and goes on a gallon. They grow with brakes that adjust themselves. An exhaust system that lasts longer. And a Delcotron generator that keeps battery reserve power up. Want to hear more? How about a low price, natty interiors, Body by Fisher craftsmanship—and a talk with your Chevrolet dealer soon!



Nova 400 4-Door 6-Passenger Station Wagon

See four entirely different kinds of cars at your Chevrolet dealer's... Chevrolet, Chevy II, Corvair and Corvette.

Short and Field Chevrolet
Denver City, Texas



SUE STEVENS---donor of Museum "Bonue Shack." Also pictured are Mrs. M. W. Luna, president of the Yoakum County Historical Committee; Mrs. R. B. Jones, Mrs. J. M. Tippet, Mrs. P. W. St. Romain, and Rush, grandson of Mrs. Jones. Seen in background is the Medallion presented to the museum by the state historical society.

Peace Corps Tests Told

A new battery of Peace Corps Placement Tests will be given throughout the nation on Saturday, January 26, at 8:30 a. m.

The tests will be held at 823 U. S. Civil Service testing centers. This is almost twice the number of testing facilities previously used.

Those who take the tests will be considered for many new Peace Corps projects in Latin America, Africa, the Far East, and in the Near East and South Asia.

Peace Corps opportunities cover hundreds of different kinds of jobs. Most of them fall into the major fields of education, agriculture, health, construction and community development.

Applicants must be American citizens who are at least 18 years old. Married couples without dependent children may apply providing both qualify for service.

Support Program

The livestock auction markets of Texas are throwing their full support behind the financially-strained Southwest Screwworm Eradication Program by collecting and contributing funds to the project this month.

Most of the auction participation will come to a climax during the period of January 21-26 which has been designated as S-O-S Week or Stamp Out-Screwworms Week in Texas. Many of the more than 175 livestock auctions in Texas will turn part of their commissions on sales for that week over to the Southwest Animal Health Research Foundation, which represents the livestock producers in the program. The markets will also assist in collecting funds from individual

producers.

Participation in the fund raising drive by auction markets is an outgrowth of the October resolution of the board of directors of the Texas Livestock Auction Association wherein support for the pro-

gram was pledged.

The Foundation recently announced that the eradication program might have to be terminated if additional funds were not collected. At least half of the estimated \$12 million cost for the three-year program must be borne by non-federal sources.

Mac's Plumbing & Electric

Box 207
PLAINS, TEXAS
RALPH McCLELLAN, OWNER

Night Phone: GL6-4554 Day Phone: GL6-2601

Shop Our Store For

Further Reductions

On

Some Clearance Sale

Merchandise

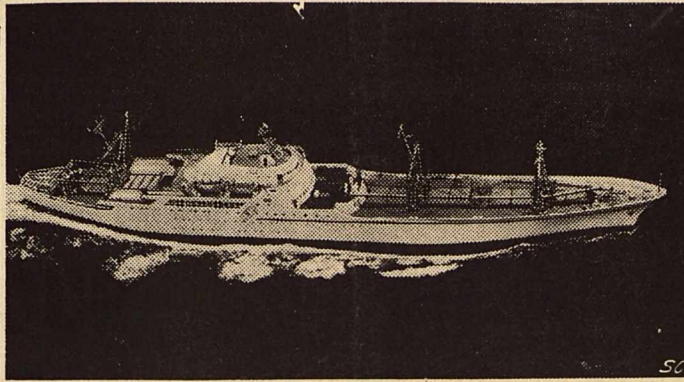
MOORE & ODEN, INC

BIGGEST SAVINGS

PLUS STAMPS TOO!

SHURFINE OLEO 2 POUNDS 35¢	SHURFINE CRUSHED PINEAPPLE NUMBER 2 27¢	SHURFINE CATSUP 14 OUNCE 2/37¢
SHURFINE Pork & Beans NUMBER 300 2/23¢	DEL MONTE WHOLE Green Beans NUMBER 303 25¢	
SHURFINE SHORTENING 3 POUND 65¢	RUTH CANNED HAM 1 1/2 POUND \$1.69	
PET DRY Milk 4 QUART 2/-69¢	SOFLIN NAPKINS 200 COUNT 23¢	DELSEY BATHROOM TISSUE 4 ROLL PKG 49¢
SHURFINE SLICED PINEAPPLE NUMBER 2 32¢	SHURFINE PEANUT BUTTER 18 OUNCE 45¢	
KRAFT Velveeta 2 POUND 89¢	PET MILK TALL CAN 2/27¢	TUNA VAN CAMP 2/43¢
GOLDEN HANDY ANDY PINT 35¢	WINESAP APPLES POUND 15¢	
GLADIOLA Flour 10 POUND PRINT \$1.05	GLOVER'S BACON 2 POUND \$1.00	

Our First Nuclear Ship



This is a photo of the 22,000-ton N. S. (for nuclear ship) Savannah, the world's first nuclear powered cargo-passenger ship. The Savannah is on a port-by-port schedule that will take the ship to major seaports throughout the United States.

The N. S. Savannah is named for the S. S. Savannah, the first vessel using steam to cross the Atlantic some 144 years ago. It took the original Savannah nearly a month to travel from Savannah, Ga., to Liverpool, England on this historic voyage back in 1819.

The nuclear Savannah is able to operate on longer runs at higher sustained speeds and is able to carry larger cargoes than conventional steamships today. Reason? Its reactors require much less space than conventional oil-burning equipment and fuel tanks.

The nuclear vessel was developed jointly by the U. S. Atomic Energy Commission and the Maritime Administration of the U. S. Department of Commerce. States Marine Lines of New York operates the ship as general agent for the Maritime Administration. States Marine has supplied the ship's crew, including deck officers and highly trained reactor engineers.

The N. S. Savannah is intended to demonstrate to the world (1) the intent of the United States to employ the power of the atom for peaceful productive purposes and (2) the feasibility of using nuclear energy to power merchant ships.

The Savannah is a 595 1/2-foot long single propeller ship. She has six full decks and is designed to carry 60 passengers and 10,000 tons of dry cargo.

The vessel will be open to the public at the various ports of call.

Gardeners Have Meet

Sixteen members of the Plains Dirt Gardeners met January 17, 1963, for their regular meeting in the Clubroom with Mrs. L. O. Smith, President, presiding.

The theme for the evening was "Aloha". Mrs. Mae Loyd gave selection and care of wind resistant trees and shrubs for this country and Mrs. W. M. Overton held an informative quiz on evergreen foliage.

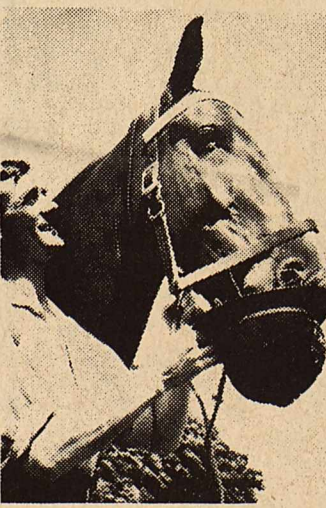
Mrs. L. L. Smith was welcomed as a new member.

Plans were made for Arbor Day to be observed by the club.

Mrs. W. M. Overton was elected to serve as president for the coming year. Others elected were Mrs. Wilson Duke vice-president; Mrs. Joy Cogburn, recording secretary; Mrs. T. J. Miller, corresponding secretary; and Mrs. J. M. Tippet, treasurer.

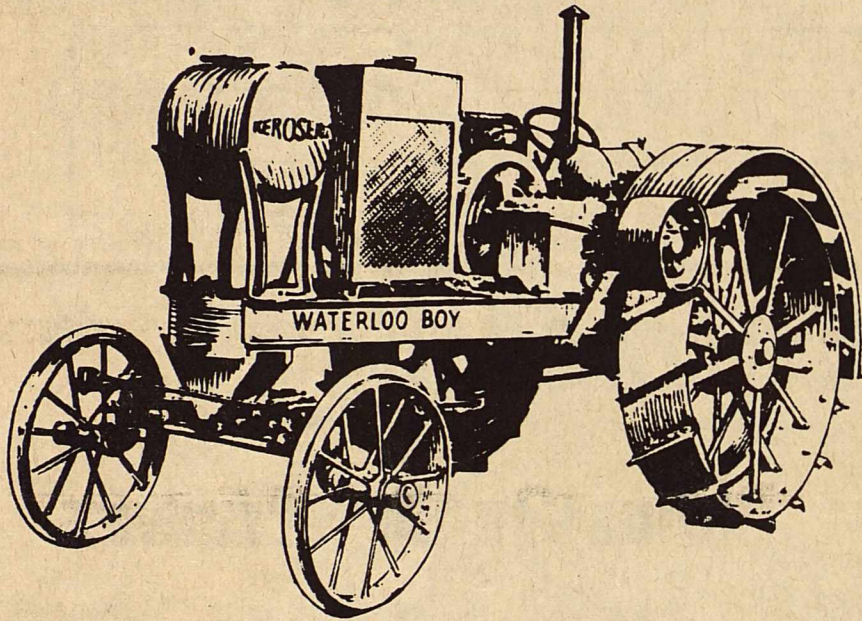
Arrangements and refreshments featured the land of Hawaii.

Hostesses for the evening were Mrs. Leon Lewis, and Mrs. Thelma Ellis.



FEEDBAG . . . English police constable Robert Campbell of Liverpool City Mounted Police feeds his nag with his hat. "Odine" was an entry in the "best trained police horse" event at a recent show.

ARE YOU TRYING TO DO TODAY'S JOB WITH YOUR YESTERDAY'S TRACTOR?

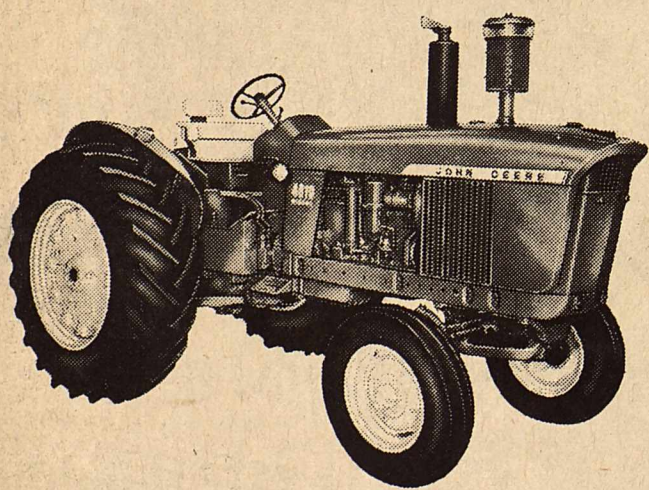


Shipping Wt. 5700 Lbs.

HP - 12 Drawbar - 25 Belt - @ 750 RPM
2 Speed Straight Spur Gear Transmission
Counter Shaft And Reverse Idler

JOHN DEERE'S 1918 WATERLOO BOY

WHAT YOU NEED IS THE NEW JOHN DEERE 4010



. Diesel

. LPG

. Gasoline

Shipping Wt. 7,400 Lbs.

HP - 73.4 Drawbar - PTO - 84 @ 2,200 RPM
Gears - 8 Speeds Forward - 3 Speeds Reverse

TRADE NOW

With

Plains Farm Supply



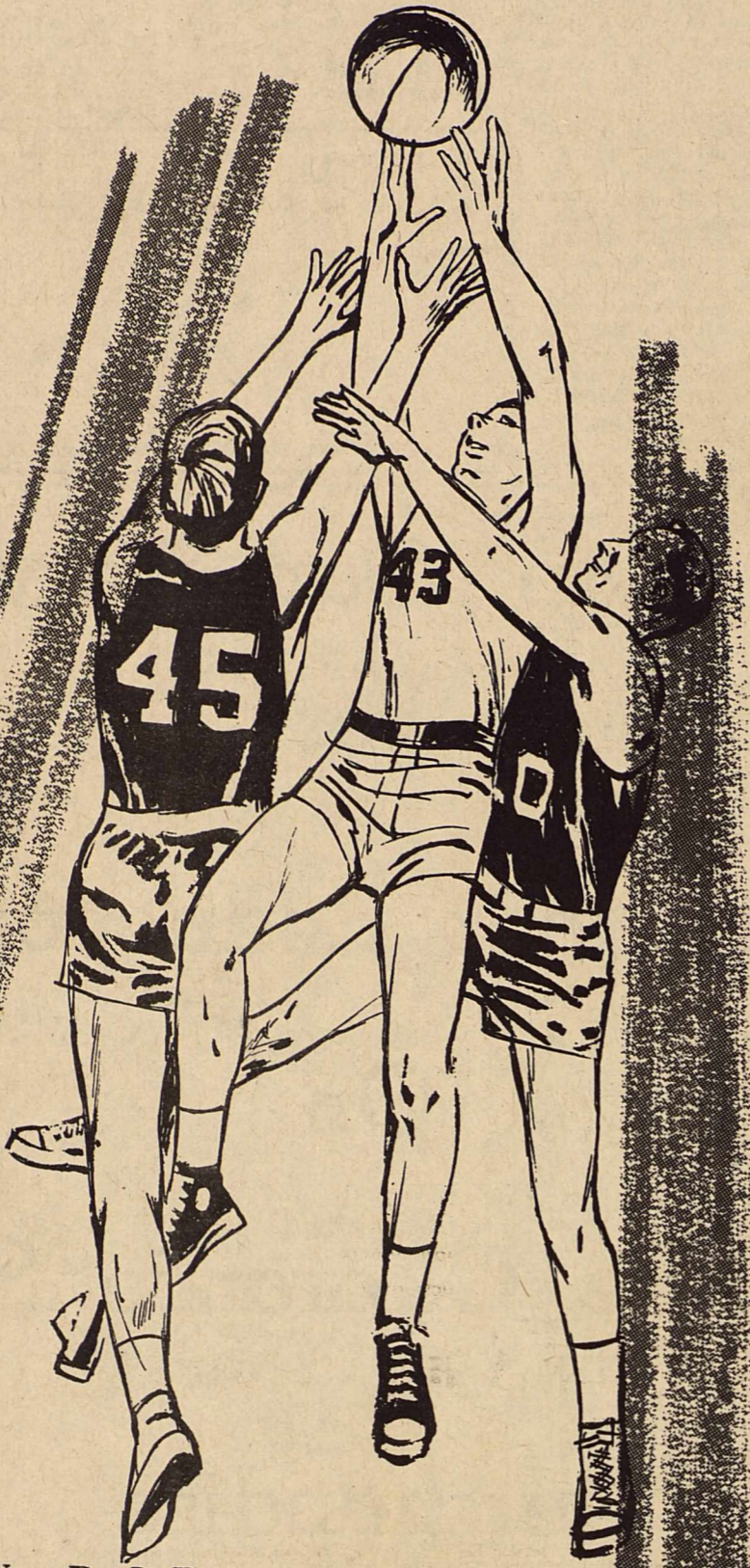
HAWKINS FOOD

We Give Double Thrift Stamps Double On Wednesday



BASKETBALL

We're with you Cowboys



\$35 IN PRIZES

Offered Every Week

November...	29	Leveland	
December	1	Eunice	
	4	Tatum	
	6-8	Wilson Trm.	
	14	Levelland	
	15	Eunice	
	20-22	Denver City Trm.	
January...	1	Ropes	
	5	Denver City	
	10-12	Seagraves Trm.	
	15	Denver City	
	18	Seagraves*	There
	22	Wink*	Here
	25	O'Donnell*	There
	29	Tahoka*	There
February...	1	Sundown*	Here
	5	Seagraves*	Here
	8	Wink*	There
	12	O'Donnell*	Here
	15	Tahoka*	Here
	19	Sundown*	There

All You Do Is Pick

The Winners

One Game Will Be Found In Each Square. Just Circle Your Choices And Guess The Score On One "Tie-Breaker Game!

Bonus Each Week Offered By Plains Record

If You Pick

Every Game Correctly

Tie Breaker * vs SEAGRAVES

1st Prize \$5.00
2nd Prize \$3.00
3rd Prize \$2.00
\$25

Exciting Fun!
Anyone Can
Enter!

Nothing To Buy!

SIGN YOUR NAME _____
ENTRY HERE PHONE _____

This Page Sponsored By

Buddys Auto Parts
Curry - Edwards Drug

Plains Electronics
The Elsorita Shop

Tumbleweed Drive In

George's "66" Service
Moore & Oden, Inc.

Pic & Pay Grocery

Randall's Barbar Shop

City Of Plains

Cowboy Grill

Cogburn - Young Hardware

Loyd Insurance

Latt's Humble

Goodpasture Grain & Milling

Plains Oil Co.

Plains State Bank

Woody's "66" Oil & Hardware

Bronco Gas Co.

Plains Barber Shop

THIS WEEK'S GAMES

SUNDOWN VS O'DONNELL	WINK VS SEAGRAVES	HOUSTON VS FLORIDA STATE	HARDIN-SIMMONS VS TEXAS WESTERN	GEORGIA TECH VS TENNESSEE
ARMY VS BOSTON	GEORGIA VS AUBURN	WICHITA VS AIR FORCE	TEXAS TECH VS U C L A	PLAINS VS TAHOKA
CLEMSON VS FURMAN	CINCINNATI VS ILLINOIS	PENN STATE VS BUCKNELL	NORTHEASTERN VS BROWN	ST. LOUIS VS BRADLEY
MARQUETTE VS DRAKE	DUKE VS WEST VIRGINIA	INDIANA VS DE PAUL	PITTSBURG VS DARTMOUTH	OHIO STATE VS CREIGHTON

Of Interest To The Women

Tsa Mo Ga 'Bonus Shack' Gets Award

The Tsa Mo Ga Club, with the assistance of the Yoakum County Historical Committee erected the Building Medallion on the Tsa Mo Ga Memorial Museum "Bonus Shack" January 22, at ten o'clock a. m. The awarding of the Texas Historical Building Medallion is an important part of a program of the Texas State Historical Survey Committee in preserving the historical heritage of Texas. The presence of the Medallion designates the structure as worthy of recognition of the State of Texas as an authentic house or building of historical and cultural significance to the State and community in which it exists, therefore meriting preservation. The Tsa Mo Ga Club made application for the building medallion for the Museum through The Yoakum County Historical Society. Final approval rests with the State Historical Survey Committee in Austin, Texas.

The Medallion was awarded August, 1962 in Amarillo at a regional meeting of the historical survey committees of the Panhandle South Plains. Mrs. M. W. Luna, Yoakum County Historical Committee President received the Medal-

lion in behalf of the Tsa Mo Ga Club.

The Medallion is fourteen inches in diameter and is made of cast aluminum with swedish steel effect. The stars are red, white and blue. Each Medallion has a separate number which is recorded and kept

with the complete history of the building in the official state records, in Austin.

The "Bonus Shack" is a two room wood frame building, built in 1906, one of the first houses built in Yoakum County. Miss Sue Stevens, member of both organizations of Allred, Texas, Mrs. Beatrice Phillips, and Ben Miller, Children of the late Annie Miller are donors of the "Bonus Shack". The house was moved in from the ranch and restored by the club and was dedicated as the Tsa Mo Ga Memorial Museum February 1960.

The Museum houses relics of Yoakum County pioneers. Anyone wishing to give or loan family treasures may contact the Tsa Mo Ga Club. The Museum is open to the public during the summer and will be shown at any time during the

winter months by calling club members.

A complete list of the members of the Yoakum Co. Historical Society are as follows: Plains: Mr. and Mrs. M. W. Luna, Mrs. R. B. Jones, Mrs. Mollie Courtney, Mrs. K. O. Hendricks, Mrs. J. A. McConnell, Mrs. P. W. St. Romain, Mrs. George Cleveland, Mrs. Marion McGivney, Miss Sue Stevens.

Bronco: Mrs. Ty Field Tokio: Mrs. P. M. William Seagraves: Mrs. Bob Long Odessa: Mrs. Ara Earnest Denver City: Miss Ozella Hunt, Mrs. Carrol Vernon, Mrs. Ralph Townes, Mrs. S. E. Campsey, Mrs. E. Lam, Mrs. Tom Lesh, Mrs. George Richardson, and Mrs. Willard Kidd.

Mr. Leonard Ellington, Vice President and Trust Officer, of the First National Bank in Brownfield, will speak Monday night January 28th before Tsa Mo Ga club members and their husbands.

Mr. Ellington's subject will be on the subject of Trusts. His speech will carry the title "Put Your Money in Trust". This is the annual public affairs meet-

ing for Tsa Mo Ga club, and will be in the club house at eight o'clock with Mrs. R. B. Jones acting as program director for the evening. She will introduce Mr. Ellington.

Mr. Ellington, a man of many talents, will also entertain the group with several spirited patriotic piano selections. The social committee will be in charge of the social hour with Mrs. Gene Payne acting as chairman of this committee. Husbands of all members are urged to attend this event as special guests.

SECURITY IN A NUTSHELL!

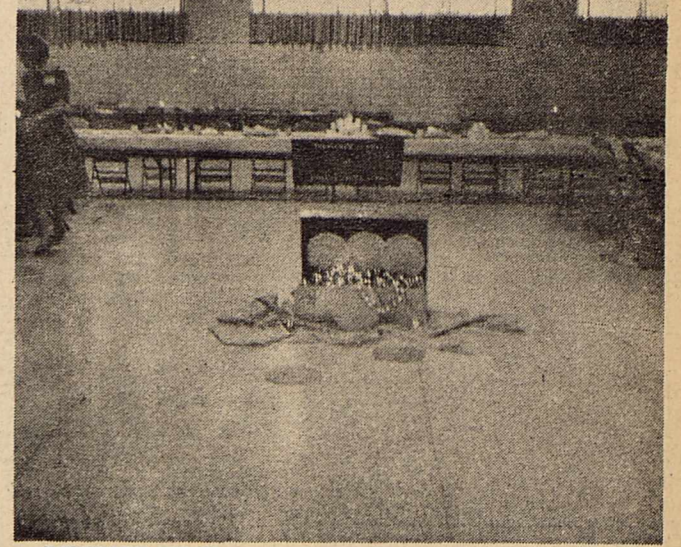


Buy U.S. Savings Bonds REGULARLY

Iota Pi Hosts District Nine ESA



DISTRICT and STATE OFFICERS---pictured above are Laverta Lovall, President of Post Gamma Mu; Clara Jones, President, Lubbock, Alpha Gamma; Hannah Cox, President of Denver City Kappa Tau; Patty Crawford, President Gamma Nu of Lubbock; Jean Craft, President of Plains Iota Pi; Bernice Cochran of Denver City, District President, and Coyita Booker of Santa Anna, who is State President.



DISTRICT NINE---meeting of Epsilon Sigma Alpha was held in Plains last Sunday with the local Iota Pi Chapter of the Sorority as hosts.

So little... but so important!

Baby's health and comfort needs are important, too. Get them all here!

Everything baby needs to stay happy, healthy and fresh as a daisy is here, in our big display of nationally-known baby-care products and supplies!

Curry - Edwards Drug

DISTRICT QUEEN---contest was judged by D. N. Taylor of Plains and Ralph Townes of Denver City. Picked as District Nine Queen was Mrs. Mac Strong of Lubbock's Alpha Gamma Chapter and at right is Mrs. Dixie Gentry of the Iota Pi.

Corrected Report

AFFIDAVIT OF COMMISSIONERS' COURT AS TO COUNTY FINANCES

IN THE MATTER OF COUNTY FINANCES
IN THE HANDS OF
SUSAN V. HINKLE
Treasurer of Yoakum County, Texas

COMMISSIONER'S COURT
Yoakum County, Texas
In Regular S
January Term, 1963

4th QUARTER RECAPITULATION OF FUNDS

FUND	Balance 9-30-62		Balance 12-21-62	
	Receipts	Disbursements	Receipts	Disbursements
Jury OD	\$ 178.47	\$ 4,280.71	\$ 1,217.43	\$ 2,884.81
Road & Bridg	5,278.06	17,132.86	4,831.77	17,579.15
General	9.28	236,679.10	117,027.89	119,660.49
Permanent Improvement	19.25	8,561.44	330.69	8,250.00
Officers Salary	311.57	54,488.35	34,615.17	20,184.75
R & B Special Prct. No. 1	10,213.50	21,379.15	12,511.02	19,081.63
R & B Special Prct. No. 2	OD 4,032.23	21,434.31	12,432.49	14,969.59
R & B Special Prct. No. 3	7,621.95	9,341.39	15,680.62	11,282.72
R & B Special Prct. No. 4	OD 8,977.95	17,791.36	10,563.54	OD 1,750.13
Lateral Road No. 1	19,589.84	-----	611.14	18,978.70
Farm-Market & Lateral Road	340.81	129,621.52	65,000.00	64,962.33
Hospital	595.74	60,709.25	61,304.99	-----
R & B Sinking	8,682.65	4,053.62	12,522.73	213.54
Road Dist. 1-A Sinking	7,430.07	77,926.32	-----	85,356.39
Perm. Imp. Sinking	30,242.68	77,069.98	33,000.00	74,312.66
Hospital Building	319,090.52	-----	42,910.25	276,180.27
TOTALS	\$396,237.271	\$ 740,469.36	\$ 434,559.73	\$ 712,146.90

BONDED INDEBTEDNESS - 4th QUARTER, 1962

The bonded indebtedness of the said County we find to be as follows, to-wit:

NAME OF ISSUE	Date	Amount	Amount Outstanding	Rate
Hospital Bonds	1953	98,500.00	10,000.00	2-3/4% & 3
Road District 1-A Bonds	1954	600,000.00	100,000.00	2% & 3
Hosp. Imp. Warrants	1954	50,000.00	12,000.00	3%
Exhibition Building Bonds	1954	165,000.00	30,000.00	2 & 2%
R & B Refunding Bonds	1955	125,000.00	70,000.00	2%
Library Bonds	1957	90,000.00	90,000.00	3%
Hospital Clinic Bonds	1958	60,000.00	60,000.00	3 1/2%
Paving Warrants, Prct. No. 1	1958	10,000.00	2,000.00	3 1/2%
Paving Warrants, Prct. No. 2	1958	10,000.00	2,000.00	3 1/2%
Paving Warrants, Prct. No. 4	1958	10,000.00	2,000.00	3 1/2%
Road Mach. Warrant Prct. No. 2	1958	13,856.00	3,464.00	3 1/2%
Road Mch. Warrant Prct. No. 4	1959	19,500.00	7,800.00	3%
Road Mch. Warrant Prct. No. 4	1959	6,000.00	2,400.00	3%
Jail Bonds	1960	40,000.00	40,000.00	3 1/2%
Park Bonds	1960	75,000.00	75,000.00	3 1/2%
Ball Park Bonds	1960	50,000.00	50,000.00	3.9%
Road Mch. Warrant Prct. 4	1960	15,000.00	9,000.00	3%
Road Bridge Warrant	1960	15,934.55	7,135.66	3%
Road Pavement Warrant Prct. 1	1960	5,854.95	2,927.48	3 1/2%
R&B Mch. Warrant Prct. No. 2	1961	11,000.00	8,000.00	3 1/2%
R&B Warrant Prct. 3	1961	19,000.00	10,000.00	3%
R&B Warrant Prct. 1	1961	14,654.00	12,154.00	3%
R&B Warrant Prct. 1	1961	13,244.00	10,744.00	3%
R&B Warrant Prct. No. 2	1961	12,000.00	8,000.00	3%
R&B Mch. Warrant Prct 1	1962	5,440.00	5,440.00	3%
Hosp. Imp. Bonds	1962	325,000.00	325,000.00	3 1/2%
Paving Warrants	1962	115,000.00	115,000.00	3.3%
R&B Warrants Prct. #2	1962	14,500.00	14,500.00	3%
TOTAL		\$1,989,483.50	\$1,215,065.14	

WITNESS OUR HANDS, officially, this 4th day of January A.D. 1963

Stanley Duvall County Judge

VANCE W. BROWN, Commissioner, Precinct No. 1

H. C. COTTON, Commissioner, Precinct No. 2

RAYMOND BOOKOUT, Commissioner, Precinct No. 3

PEARL LOE, Commissioner, Precinct No. 4

Attest:
J. W. O. ALLDREDGE, County Clerk & Ex-Officio Clerk of the Commissioner's Court of Yoakum County, Texas

PAY YOUR POLL TAX

Qualify Yourself To Vote During 1963

Deadline January 31

PAY YOUR STATE and COUNTY TAXES

Before January 31st and AVOID PENALTY

Payable at Offices in Plains and Denver City

Denver City Office Now Open During The Noon Hour—Office Hours 8:00 a.m. to 5:00 p.m.

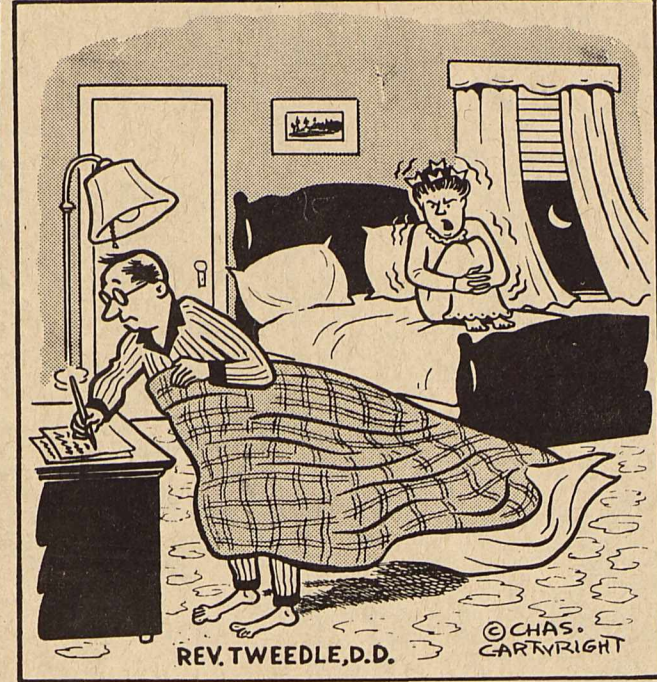
New Vehicle License Plates Go On Sale February 1, 1963

E. W. CRAIG, Tax Assessor-Collector, Yoakum County



GRASS----a good crop not only to hold the land, but to produce another cash crop and grazing for livestock. A. O. Williams uses Weeping Lovegrass for late winter and early spring pasture and as a good cover for sandy land.

Church Chuckles by CARTWRIGHT



"You and your sudden inspirations for sermons!"

School Menu

MONDAY 28th
Hot Pork Sandwiches
Creamed Potatoes
Buttered Carrots
Combination Salad
Fruit Cup
Coconut Cake
Milk

TUESDAY 29th
Beef Tacos with Tomato, Lettuce & Grated Cheese
Yellow Corn
Buttered Spinach
Pear and Lime Jello Salad
Hot Bread & Butter
Peach Preserves
Milk

WEDNESDAY 30th
Fried Chicken & Gravy
Cheese & Macaroni
Green Beans
Indian Cole Slaw
Hot Bread & Butter
Raisins
Milk

THURSDAY 31st
Barbecued Beef
Pinto Beans
Cabbage
Beet & Dill Pickles
Onion Rings
Hot Cornbread & Butter
Plum Cobbler
Milk

FRIDAY 1st
Salmon Croquettes
Spanish Rice
Buttered Green Peas
Cabbage & Pineapple Salad
Hot Bread & Butter
Pumpkin Custard with Topping
Milk

It should be noted that the menus as published each week in The Record are subject to change without notice because of unforeseen substitutes in food items received.

OFFICIALS OF THE West Texas Chamber of Commerce at Abilene report considerable interest in the third annual livestock feeding and grain market development tour scheduled for Feb. 17-23. This tour will feature a close look at some major feedlots in Arizona and California, where thousands of cattle are being fattened.

W. L. Stangel of Lubbock, dean emeritus of Texas Technological College, chairman of the WTCC livestock feeding committee, thinks the places visited this year will present a factual and realistic view of beef making in the West. Co-operating in the tour again this year will be the Grain Sorghum Producers Association of Amarillo, Texas Tech and Texas A&M College.

Last year's tour covered feedlot operations in Arizona and

California but new areas will be inspected on the 1963 tour. Feedlots in the Tucson area and in the Los Angeles and San Francisco sections will be inspected this year. In the Stockton area of California some of the nation's major grain storage facilities will be viewed. These grain storage plants are made important because of the fact they handled millions of bushels of grain shipped to foreign countries.

Reservations this year will be limited to 200 on the first come, first serve basis. The trip will be made by a special Santa Fe train. Price of the trip will be \$245 in the Lubbock area and \$255 in the Fort Worth-Dallas area. Address reservations or inquiry to the West Texas Chamber of Commerce, Abilene.

New Law Office

305 East 8th

2 Blocks North of Almas

Don Hancock

Macco Irrigation

HPC - Submersible & Turbine Pumps

Redi - Rain Sprinkler Systems

Pump Repair & Service

New Systems Financed

PLAINS, TEXAS

GL6-4318

WISE BUYS IN PLUMBING SUPPLIES DO-IT-YOURSELF and SAVE REAL MONEY

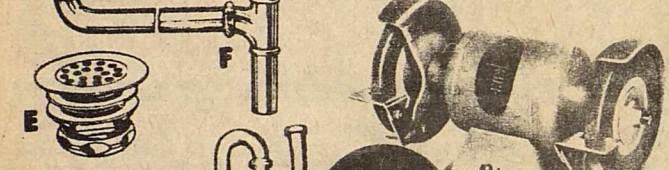
PAINT ROLLER SET



Special 1.29

Bargain priced for budget minded painters. Strong 1 quart metal tray with big 7 inch lamb's wool roller. Makes painting a snap. No. 23CC

BENCH GRINDER



39.95 A "MUST" FOR EVERY WORKSHOP

A sturdy grinder that will keep your tools sharp and bright. Runs true on vibration free. Equipped with two 6" grinding wheels, adjustable tool rest, safety wheel guards, and a 1/4 HP, 3450 RPM motor with switch. No. 25D

RURAL MAIL



Special 2.69

Made of rustproof galvanized steel. Approved by the U.S. Postmaster General. Standard size. No. 21T.



MAYTAG Washers



Dryers



Water Heaters

VISIT OUR STORE TODAY

Sales - Service

Cogburn - Young Hardware - Furniture - Appliances

Across from Courthouse - Plains

"WHERE YOUR \$\$\$ HAVE MORE CENTS"

See Us For

- DEEP BREAKING
- SHALLOW PLOWING
- LAND LEVELLING
- DOZER WORK

PAUL COBB

GL 6-3733

Complete Conservation Programs Seen

New interest in conservation in the form of District Plans, revisions of old ones, and applications for assistance in the Great Plains Program to help carry out a complete conservation plan can all be seen now in the County.

This past week Robert L. Heath, and W. O. Moore all made application for assistance to carry out their plan under the Great Plains Program.

Plans were completed on W.C. Patmen, Claude Truman and D. H. Kirby this week. Maps were received and work begun in the Claude Addison farm for a new district plan. Maps on the E. O. Winkle farm are now on hand and work will begin next week on a new conservation plan on this place.

Maps were ordered on the Lomas Freeman, A. B. Cockrell, J. M. Dereing and W. O.

Moore farms to be used in working out conservation plans.

Grass planting both bermuda and other grasses are becoming more popular. Side oats grama, sand bluestem, and other grasses planted on dry land and used as feed grain layout land in the growing season with limited grazing in the dormant season not only produces a cover on sandy or shallow soil but provides good winter pasture for livestock. This grass land farming can be used as good cropland also as a long time rotation. Crops following 3 to 4 years of grass have always shown good increase in yields and require less water.

Crop residue management is showing good results as a means to control wind erosion. Residues left on the surface help to break up wind and soil movement thus holding our soil and moisture.

How to help keep your country a good place to spend your savings in

It takes more than money to enjoy your savings. If you don't think so, ask a refugee from a communist country.

One way you can help make sure you'll enjoy your savings is to save with U.S. Savings Bonds.

The money you put into Savings Bonds grows fast and comes back to you 33 1/3% bigger. But while it's growing for your future, it's helping Uncle Sam stand up for

freedom wherever men want to be free. Without freedom, the growth of your savings would seem pretty small. That new home, or the retirement you're saving for, would offer little comfort.

Start buying U.S. Savings Bonds to



Can money alone give you a secure future? Millions of Americans are answering that question by buying U.S. Savings Bonds.

day. It's one of the best ways you can invest in a comfortable—and free—future.



Is this church in America? In 1960 we built 4,915 new churches in the U.S. The one above is St. Basil's Cathedral in Red Square, Moscow—once one of Russia's greatest churches, now a museum.

Keep freedom in your future with U.S. SAVINGS BONDS

The U.S. Government does not pay for this advertising. The Treasury Department thanks The Advertising Council, and this newspaper for their patriotic support.

McGinty Abstract Co.

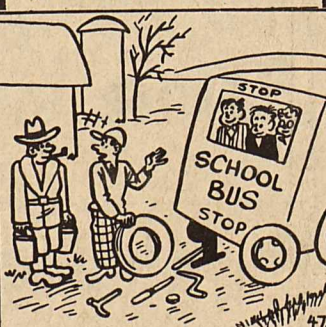
B. F. (Bert) Bartlett, Lessee

Complete Microfilm Records of

Yoakum County Lands And And Lots

Telephone GL 6-3311

HUMBLE TIPS



"I don't like changing tires, but I hate to write 34 excuses for being late."

Bad tires are often expensive, when a days work is lost through delay.

W. G. Lattimore.



GLOVERS			
FRANK	2 POUND PKG.	65¢	
PORK LIVER	POUND	15¢	
SLAB BACON	2 POUND	94¢	
VAN CAMP TUNA	CAN	23¢	
JUMBO ELLIS TAMALES		3 / \$1.00	
SHURFINE PEACHES	2 1/2 CAN	27¢	
KOUNTY KIST CORN	12 OUNCE	2 / 29¢	

FROZEN FOOD			
KIETHS CORN	10 OUNCE	2 / 29¢	
PATIO EACH TAMALES DINNERS		39¢	
UNDERWOODS BAR-B-Q CHICKEN PACKAGE		59¢	
UNDERWOODS BAR-B-Q BEEF PACKAGE		79¢	
POTATOES	10 POUND BAG	39¢	
Tomatoe	DIAMOND	2 / 25¢	
RUTABAGAS TURNIPS		7 1/2¢	
GRAPEFRUIT	ARIZONA	3 / 29¢	
GLADIOLA FLOUR		\$1.09	

PLAINS FROZEN FOOD

Where Customers Send Their Friends Free Delivery