

The Plains Record

And The Yoakum County Review

JOHN W. MOORE, Publisher

PUBLISHED EACH THURSDAY AT PLAINS, TEXAS

Entered as second class matter at the Post Office at Plains, Texas, under the act of Congress, March 3, 1879

SUBSCRIPTION RATES: \$3 per year in Yoakum and Terry Counties; \$4 per year elsewhere.



WIN TOP HONORS -- Plains Tsa Mo. Ga Study Club again this year won first place in the State contest with their year book. Shown holding the book is Mrs. R. B. Jones, program chairman and Mrs. Garland Swann, outgoing president.

Crossword puzzle section with 'ACROSS' and 'DOWN' clues and a 13x13 grid. Clues include 'Leather strip', 'Hit with palm', 'Belt', 'Jeweled crown', etc.

Answer to Puzzle No. 712. A crossword puzzle grid with filled-in letters and numbers 1 through 64 indicating the start of answers.

SOMETHING TO THINK ABOUT: A peasant with a troubled conscience went to a monk for advice, saying he had circulated a vile story about another, only to find it was not true.

May Charity Listings

The following named charity bills were approved by the Yoakum County Welfare Board which met in regular session June 7, 1962.

Ladies Softball Team Sought

Efforts are being made to organize an Outsiders Ladies Softball team in Plains. Announcement was made this week that any women of Plains or of the surrounding area who are interested in playing on such a team are invited to the Little League field in Plains northeast of the schoolhouse on next Thursday evening.

Machinist Is Artistic Too

SUNNYVALE, Calif. (UPI) — A California man swapped his vocation for his hobby — and found that both pay off.

Of Interest To THE WOMEN

Scouts Plan Special Meet

Scoutmasters of Plains Boy Scout Troop 778 have announced that there will be a special meeting scheduled for this coming Monday evening.

cal scouts who desire to pass their swimming requirements for the first class badge

will have opportunity to do so on Monday beginning at 1 p.m. at the local pool.

Further in this matter, it was pointed out that any scouts who would like to work on their swimming or life saving merit badges should also be on hand at 1 p.m. on Monday at the pool.

When Mental Illness Strikes NEW YORK (UPI) — Every year some member of one in about four families behaves so abnormally that he lands in a hospital where he can get psychiatric care.

Thought For Today

You are of more value than many sparrows. (Luke 12:7)

PRAYER: O God, who hast bought us at so high a price, may we gratefully and loyally respond to Thy grace and truth and ever glorify Thee.

Busy Stand-In HOLLYWOOD (UPI) — Lois James is claiming some kind of a record for stand-ins in the Columbia picture, "The Interns."

Card of Thanks

Words will never express my thanks, gratitude and appreciation for the acts of kindness my many friends showed me during my stay at the hospital.

I thank each and everyone of you for the visits, flowers, candy, cards, thoughts and interest.

May God bless each of you. Sincere thanks, D'Lynn McGinty



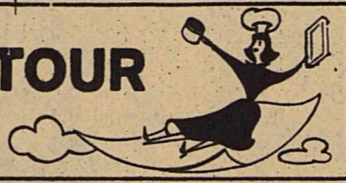
Janelle Parks

July Wedding Planned

Mr. and Mrs. H. M. Parks announce the approaching marriage of their daughter Janelle to Jack Cobb, son of Mr. and Mrs. Paul Cobb. The wedding will take place on Saturday July 7, at 7:00 p. m., at the First Baptist Church in Plains.

Everyone is invited to attend. Serving as the brides honor attendants will be Kittle Armstrong of San Angelo and Lela Warren of Abilene, sisters of the bride.

COOK'S TOUR



By JEANNE LESEM United Press International

NEW YORK (UPI) — The restaurant and hotel world has its own United Nations, with headquarters in Zurich, Switzerland.

Instead of world politics, Ho.Re.Ca. discusses the shortage of well-trained cooks and other help, credit cards, music, the language barrier and anything else involved in running hotels, restaurants, cafes and catering businesses.

The abbreviated name stands for Union Internationale D'Organisations Nationales D'Hoteliers, Restaurateurs Et Cafetiers.

Beale was in the United States to address the annual convention of the international group's American member organization, the National Restaurant Association in Chicago.

Beale said that the institute's student exchange program would like to enroll more Americans. Most exchange students currently come from Europe.

One European custom he would like to see Americans adopt is multi-lingual training for hotel and restaurant personnel.

The welcome would be warmer and more helpful if some members of the staff spoke the visitor's language.

SERVE POLISH HAM FOR QUICK 'N' EASY LUNCHEONS



American housewives are "smartening up." No longer is it considered essential to spend hours cooking an interesting luncheon menu.

The quality of this thoroughly lean fine textured meat is juicy rather than dry and all sinew and fat is carefully trimmed to enable the family chef to utilize every single slice of this canned Polish ham.

Ways to serve sliced cold ham are legion. In today's column we suggest a garnish of dill and crisp sliced cucumber with a Tropical sauce that will surely become a favorite of every guest.

COLD SLICED IMPORTED CANNED POLISH HAM 1 8-lb. imported canned Polish ham (cut 8 slices per pound) 2 medium-size cucumbers, peeled, sliced thin

TROPICAL SAUCE 1 cup water 1 teaspoon dry mustard 1 cup brown sugar 1 cup crushed pineapple 3 tablespoons ketchup 1 1/2 tablespoons cornstarch 1 tablespoon soy sauce 1 1/2 cup cold water

Mix together 1 cup water and brown sugar. Add ketchup, soy sauce, mustard, and pineapple. Bring to a boil; simmer for 10 minutes. Dissolve cornstarch in 1/4 cup water; add to sauce and cook, stirring until sauce is clear and thickens. Makes about three cups.

Remove ham from tin, smooth off the jelly (keeps ham from banging in can) save jelly for soup stock. With a sharp knife, cut 8 slices per pound. Allow two slices per person. If all ham is not sliced, wrap unused portion in metal foil, replace in refrigerator. Arrange on platter, garnish and place sauce around platter.



TODAY'S HOME

By SHELLY SINGER United Press International

CHICAGO (UPI) — The proper padding increases carpet durability and cuts noise, home furnishing experts say.

If the cushioning is porous, it's easier for the vacuum to suck up hidden dirt.

The most expensive carpet padding, foam rubber, is the most buoyant material known to man.

It is moth-proof, vermin-proof, mildew-proof and porous. It stores neither dampness or dirt.

Sponge rubber padding, though slightly less expensive than foam rubber, doesn't have foam rubber's natural air conditioning. It isn't porous.

Felted pads are available in all price ranges. Most expensive is felted cattle hair. Hard to find, it is more durable than the felted pads of jute, which are at the lowest end of the price scale.

Jute underlays tear easily and sometimes tend to bunch up under the rug.

MIDLAND BERMUDA SPRIGS FOR SALE CHILDRESS MIDLAND BERMUDA GRASS FARM RT. 5

BROWNFIELD, TEXAS PHONE 3090

OLD LAMESA ROAD CONTRACT PLANTING — PLANTERS FOR RENT



WHAT'S NEW

United Press International

Now — a contemporary version of the age-old shepherd's goatskin. It's a folding bottle that proves once more that the more things change, the more they are the same.

A new storage unit helps to turn the family bathroom into a neat place. The unit is a large cabinet with two sliding doors, topped by a tray with two close and open compartments flanked with shelf space.

JOB OF MAKING YOUR NEWSPAPER

NEW YORK Canada's newsprint producers who provide more than 70 percent of the American supply, have just finished a key phase of the job of making paper for next year's newspapers.

This is the annual Spring drive, in which millions of pulpwood logs cut in the backwoods last Fall and Winter are floated downriver to the mills. Most of the paper made from these logs will reach U.S. newspapers during 1963.

Details of the drive are explained by the Newsprint Information Committee, composed of a representative group of the Canadian mills.

Tossing one log in the river to float downstream is simple and costs nothing. Tossing in some 40 million logs is both complicated and costly.

From the air, a lake or river full of logs looks like a tub of bath water into which have been dumped twelve boxes of cornflakes. The latter eventually would present certain problems for the plumbing and these problems have their counterparts in the complex river drive.

Annual Push Records for one such river operation show that the annual push requires the services of 300 men to move a million cords 189 miles. It takes 150 days and almost a million dollars.

As the thaw builds up the head of water in the lakes and rivers, the logs are enclosed

in booms which are towed into position behind the dams. For this job and kindred work the inventory includes 20 power boats, 10 outboard motors, two derricks mounted on scows, ten other scows, and four houseboats.

Holding Ponds Men are posted at the dams day and night to open the sluice gates for passage of the logs when wind and water conditions are right.

Detailed arrangements are worked out with the power authorities so that there will be adequate water flow for both the log drive and generation of electricity.

On the trip downstream, eight power dams have to be passed by the logs. Intermediate holding ponds are set up where logs are again assembled behind dams at various stages of the trip so that they can be sent onward with sufficient momentum of wind and water behind them.

One company finds that Indian employees are especially good at understanding the ways of weather and river and turning them to best advantage for the drive.

PHILLIPS 66 WHOLESALE

HARDWARE BUTANE GASOLINE PROPANE DIESEL TIRES BATTERIES ACCESSORIES

WILMETH OIL CO. PICTURES BEDDING MIRRORS RADIOS HEATERS GAS RANGES ELECTRIC RANGES REFRIGERATORS SUBMERSIBLE PUMPS

RUBBERIZED WALLHIDE WALL PAINT. Wont chip...peel...or crack!

Come In And Look — SPECIAL PRICES "Have 3 Used Couches & Hide-A-Bed At A Bargain" Will Interest You. COGBURN - YOUNG. More Good Buys. Where Your \$\$\$ Have More \$\$\$ Ph. 8785

Bare No More!
NEW YORK (UPI) — Don't wear bathing suits to the supermarket.

The advice, from the Super Market Institute, is coupled with the following explanation: bathing suits in the market undermine everyone's morale.

A stretch yarn, similar to flexible fabrics used in undergarments and swimwear, now is being used for women's shoes. The sheer, light fabric provides a high degree of comfort for high-heeled shoes and is used as both the upper and the inside inner lining. Soles are of leather.

USDA Scientist Learn How Compacted Soil Restricts Plant Root Growth

Layers of compacted soil just below tillage depth restrict or halt plant root growth by interfering with root penetration, not by restricting air or moisture supply to the roots, the U.S. Department of Agriculture reports.

Scientists had thought that poor aeration or reduced water transmission rate in compacted soil might be a cause of restricted growth when roots reach these layers. However, the air and water supplies in compacted layers were adequate in experiments conducted by soil scientists of USDA's Agricultural Research Service.

Dr. H. M. Taylor, Dr. Earl Burnett, and N. H. Welch found root growth was hindered only

when layers of soil had so much resistance to penetration (strength) that roots could not force a passage through 2- to 8-inch compacted layers.

These findings were reported June 19 at the summer meeting of the American Society of Agricultural Engineers, in Washington, D. C.

Compacted soil layers are caused by passage of machinery across cultivated fields or by repeated tillage at the same depth. These layers, which occur on the southern Great Plains and elsewhere in the U.S., are variously called plowpans, hardpans, tillage pans, pressure pans, or claypans. Research to learn how compacted soil restricts plant growth is

needed before tillage systems can be designed for such soils.

The experiments were conducted on Amarillo fine sandy loam soil at Big Spring, Texas. The plots were artificially compacted in the spring with a farm tractor or road roller. Some plots were chiseled or sweep-tilled, leaving a compacted layer below tillage depth; other plots were not tilled after compaction. The plots were planted to guar, sesbania, mung beans, cowpeas, or sorghum.

The scientists determined soil strength with a force gage or penetrometer, which measures the force required to push a 3/16-inch-diameter tip three-sixteenths of an inch into the soil at the point of measurement. Measurements were made when the soil was holding the highest amount of moisture it could contain under conditions of free drainage.

In compacted untilled plots where soil strength measurements were 400 pounds per square inch or higher, root growth was severely restricted. Growth was satisfactory in uncompacted soil with strength measurements of 250 pounds per square inch or lower. In compacted tilled plots, with strength measurements between 250 and 400 pounds per square inch, roots failed to penetrate the compacted layer if the soil was dry but developed normally if the soil was wet.

Root growth patterns of the crops tested were similar.

Thomas Edwards--

June 1959 and arrived overseas the following November. Edwards attended Denver City High School. His mother, Mrs. Lois F. Edwards, lives on Route 1, Plains.

Tough Job

BALTIMORE, Md. (UPI) — Anybody who thinks his job is tough should consider that of a man responsible for setting up a new chemical plant.

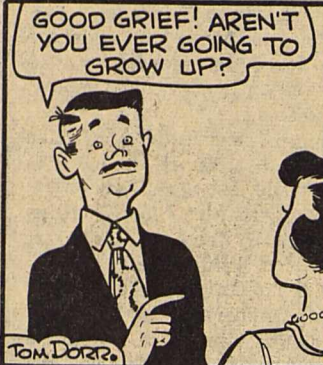
Robert N. Stapleton, training director of Union Carbide Chemicals Co., told a recent meeting of the American Institute of Chemical Engineers that his duties in starting a new company plant at Torrance, Calif., included: "juggler of schedules, builder of blackboards, consultant, purchasing agent, janitor and laborer, working 12 to 16 hours a day—and nights or midnights."

Grilled Chicken
Cook chicken breasts paprika on your backyard grill. Wash and dry 6 chicken breasts. Marinate them 3 to 4 hours in a mixture of 1 cup olive oil, 1/2 cup of melted butter, 3 garlic cloves, minced, 4 tablespoons of paprika and 2 tablespoons of bottled steak sauce. Remove from marinade, season to taste with salt and pepper and broil over hot coals, basting 10 to 15 minutes with marinade. Serves 6.

Play's the Thing
NEW YORK (UPI) — Joseph Lee, a Bostonian known as the godfather of play, is best remembered for his pungent quotations, the National Recreation Association reports.

Samples: "The boy without a playground is the father of the man without a job"; "we do not cease playing because we are old; we grow old because we cease playing."

CANDY by Tom Dorr



Is Or Is She Not Mona Lisa?

By ELVEZIO BIANCHI
United Press International

ROME (UPI) — Who is the enigmatically smiling lady whose portrait by Leonardo da Vinci has intrigued millions of visitors of the Paris Louvre, one of the world's great museums?

Is she really Mona Lisa as claimed by art historian Giorgio Vasari, who lived shortly after da Vinci, or a young princess of the House of Savoy, or a southern Italian heroine, as claimed by some other art scholars?

An allocation of 15 million lire (\$24,000) has just been voted by the government Agency for the Development of Southern Italy to solve the mystery.

Many southern Italian art scholars claim they hold enough evidence to support the theory that the Mona Lisa painted by da Vinci was Costanza Davalos, a Neapolitan gentlewoman of Spanish extraction.

The portrait of the woman with the mysterious smile was taken to France, according to tradition, by da Vinci himself when he went to the court of King Francis I in 1516.

Vasari in his art history said the woman painted by the versatile master was Mona Lisa, the wife of Francesco del Giocondo, hence the name "La Gioconda" by which the portrait is known to Italians.

Scholars who refuse to recognize the portrait as that of Mona Lisa say she wears a black veil on her hair, indicating she was a

widow. Mona Lisa was widowed at 49, an age much older than that of the woman in the painting, the scholars claim.

Years ago an art student from Turin, Carlo Pedretti, claimed the portrait was that of 19-year-old Princess Filiberta of Savoy, the niece of Pope Leo X and aunt of King Francis I of France.

Pedretti claimed da Vinci must have painted the portrait between 1515 and 1516, shortly after the death of Filiberta's husband, Giuliano de Medici, and before da Vinci went to the court of King Francis.

Filiberta also went to stay with King Francis and probably took the portrait with her, the student said.

The theory that the smiling woman could be Costanza Davalos is not new. But it never earned much credence among the experts.

Costanza was a fiery, warlike character who took up arms to defend the Isle of Ischia. To many critics she could not be the mild-looking woman portrayed.

What new evidence to support the Costanza theory has been lately uncovered by southern Italian scholars is not yet known. But the evidence must be somewhat convincing if the government agency has decided to take 15 million lire from much needed social projects to try to corroborate it.

FASHIONETTES

United Press International

The newest jacket for men looks like a coat and vest in one. But when the coat is removed, the vest turns out to be a mess jacket. Petrocelli of New York said the split personality topping is for the man who likes to receive guests in a normal-appearing suit and then tend bar for them in a mess jacket.

By fall, there will be relief for ligaments strained by huge handbags. Handbags on a smaller scale will be the rule for autumn. Sample: the pared down satchel, small but full-blown.

Question: what is a twist shirt? Answer: a pullover with either a pointed tail, fore or aft — or a modified jester. The latter has three pointed tails.

Opera Lighting Honors Engineer

NEW YORK (UPI) — In 1881, engineer Charles Batchelor helped spread the fame of Edison's new incandescent lamp by using it to illuminate the grand foyer of the Paris Opera.

Although Batchelor died in 1910, he will play a part in the lighting of the world's newest opera house in 1965.

The Charles and Rosanna Batchelor Memorial fund has granted \$500,000 to provide lighting for the new Metropolitan Opera House, now under construction in New York's Lincoln Center for the Performing Arts.

Batchelor was one of Thomas A. Edison's chief assistants. His steady hands mounted the filament of the first incandescent electric lamp, and he also participated in development of the phonograph and telephone.

Batchelor, who was born in England, began his career in science by answering a want ad in a Newark, N.J., newspaper.

He was one of the directors of the predecessor of General Electric Co.

BROWNFIELD FUNERAL HOME
Phone 2525
Air Conditioned Chapels and Ambulances — Oxygen Equipped
Funeral Insurance
ROY B. COLLIER, Owner
100 West Tate St.
Brownfield, Texas

RADIO STATION
KKAL
Serving Yoakum County
1580
On Air
Sunup Til Sundown
MUSIC NEWS WEATHER

FREE COKES ALL DAY
Saturday June 23
OUR FIRST BIRTHDAY IN PLAINS

White's Deluxe 24-INCH GRILL
With Hood and Spit

To Be Given Away At 8:00 P.M. Saturday

Register All Day Saturday

- Deluxe Metal Half Hood
- Electric Motorized Spit
- Height Adjustable Grill

We Take This Opportunity To Say "Thank You" To All Our Friends For Your Patronage This Past Year. We Have Enjoyed Serving You And Look Forward To Serving You In The Future.

FREE COKES REGISTER ALL DAY SAT.

AUTHORIZED DEALER
WHITE'S WHITE AUTO STORE

It's "Dinner Time" . . .

It's Time to Side-Dress With

SOL-U-PHOS

LIQUID FERTILIZER

"The SOLUTION For Your Fertilizer Problem"

Division of Goodpasture Grain & Milling Co., Inc.—Home Office . . . Brownfield, Texas

Side-dressing will really pay off when you side-dress with SOL-U-PHOS Liquid Fertilizer. SOL-U-PHOS will give your crops the plant nutrients needed at "dinner time," to carry them on into a fruitful harvest. Remember—every drop of SOL-U-PHOS is a chemical combination of plant nutrients in a neutral SOLUTION . . . this fact alone insures balanced fertilization for your crops. Don't deplete your land! Increase your crop yield, maintain high fertility with SOL-U-PHOS Liquid Fertilizers.

Everywhere you look, more and more farmers are "going modern"—they are switching to SOL-U-PHOS Liquid Fertilizer . . . why? They like the "filling station" type of operation . . . there is no heavy lifting needed . . . you get the correct analysis of plant nutrients without having to buy unwanted quantities of other nutrients . . . you don't have to have a field full of farmhands to get the job done . . . one man can easily side-dress up to fifty or more acres per day . . . you pay only for the plant nutrients delivered by your dealer . . .

E. O. Winkle of Goodpasture Grain & Milling Co. is dealer who have used SOL-U-PHOS . . . come in and get all the facts, for SOL-U-PHOS Liquid Fertilizer in the Plains area, Before then you will see why so many farmers are "sold" on you buy any fertilizer . . . talk to your friends and neighbors SOL-U-PHOS Liquid Fertilizer . . . the fertilizer "made" for farming.

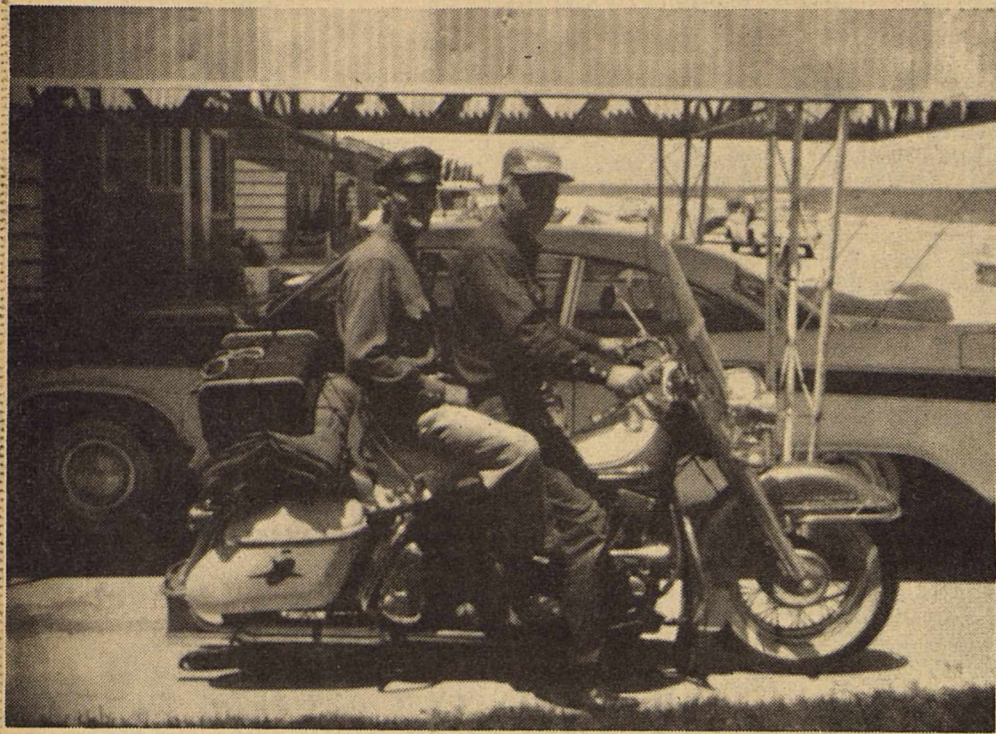
Go Modern . . . See The Man Who Sells

SOL-U-PHOS LIQUID FERTILIZER

"The SOLUTION For Your Fertilizer Problem"

Division of Goodpasture Grain & Milling Co., Inc.—Home Office . . . Brownfield, Texas

GOODPASTURE GRAIN & MILLING CO., INC.
Plains, Texas
GL 6-8833



OFF TO THE RACES -- Ralph McClellan and his father traveled some 350 miles on the conveyance pictured above to attend a family reunion in Liveville, Texas.

The Bureau of the Census was established as a permanent agency in 1902.

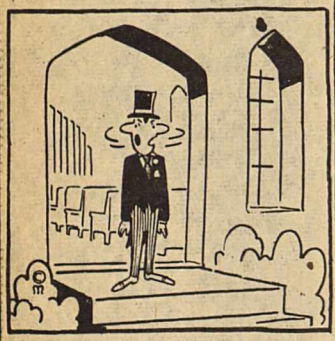


WHERE IS EVERYBODY?



They're Taking Advantage Of Our 2nd. Anniversary Sale

See Our Parade Of Fashion Values



WHERE IS EVERYBODY? At DORTHA'S STYLE SHOP

Huffman-Barrett Funeral Home
 AMBULANCE SERVICE FUNERAL INSURANCE
 Phone GL 6-2233
 We Honor All Burial Insurance

COSDEN PRODUCTS
 PROMPT DELIVERY

- BUTANE
- GASOLINE
- PROPANE
- OIL
- DIESEL FUEL
- KEROSENE

Wholesale - Retail
 US Royal Tires, Tubes, Batteries—AC Oil Filters, Spark Plugs
PLAINS OIL CO.
 JAMES WARREN, MGR. Plains, Texas
 Phone GL 6-3777

Daniel Asks Help In "Slow Down and Live" Effort

Governor Price Daniel today urged Texas' 5,000,000 licensed automobile drivers to "follow the fine example you yourselves have set on the past two Fourth of July holidays and do everything you can to keep the holiday happy with the fewest possible traffic deaths."

The Governor's plea signaled the opening of the annual Texas participation in the nation-wide "Slow Down and Live!" campaign, sponsored by the Association of State and Provincial Traffic Safety Coordinators. J. O. Musick, general manager of Texas Safety Association, is state coordinator for Texas. He is being joined by the Governor's Highway Safety Commission and numerous other traffic safety organizations in an effort to reduce highway deaths during the summer vacation period ending on Labor Day.

Opened simultaneously was the statewide traffic safety campaign to save lives in Texas traffic during the one-day Fourth of July holiday, designated by the Texas Department of Public Safety from 12:01 A. M. to 11:59 P. M. on Wednesday, July 4.

Governor Daniel announced the mailing of more than 60,000 pieces of safety materials to hundreds of law enforcement officers and traffic safety organizations throughout the State. He said the Texas Press Association, Texas Daily Newspaper Association, Texas Association of Broadcasters, Texas Council of Safety Supervisors and the trucking industry, members and officials of the Texas Safety Association were all assisting in the public education and law enforcement program to keep the holiday safe.

The Governor addressed a special request to the Department of Public Safety, all Texas sheriffs and chiefs of police in Texas cities, asking that they "patrol the streets and highways as closely as possible on the Fourth and maintain your steady pressure on two principal types of violations: speeding and driving while drinking." The Governor also asked the cooperation of district and county attorneys in the campaign.

The Texas Association of Broadcasters advised the Governor's Office that its members sponsor their "Drive Lighted and Live!" campaign on the Fourth of July, Labor Day and the Christmas-New Year's holiday. Cooperating radio and TV stations will suggest to their listeners that they burn their car headlights during the holiday daylight hours as a sign that they are driving safely and legally.

The Texas Council of Safety Supervisors, composed of Safety directors for the Texas trucking industry, said it would ask all commercial vehicle operators to join in the "Drive Lighted" demonstration on the Fourth.

For the fourth time in the past 11 years, the Fourth will be observed as a one-day traffic holiday in Texas because it falls in the middle of the week. In 1956, the DPS forecast 11 deaths, and 12 persons were killed in traffic. In 1957, the forecast of ten was exceeded when 15 traffic deaths were recorded. But in 1961, only six deaths were counted against a prediction of 11.

The Statistical Services of the DPS will announce its 1962 Fourth of July traffic death prediction on Sunday, June 24.

McGinty Abstract Co.
 B. F. (Bert) Bartlett, Lessee
Complete Microfilm
 Records of
 Yoakum County Lands And
 And Lots
 Telephone GL 6-3311

Classified Ads

EXCELLENT, efficient and economical, that's Blue Lustre carpet and upholstery cleaner. Shampooer for rent. Cogburn Young.

FOR SALE: 3-bedroom house in Plains. Low equity, \$67 monthly payment. Contact Don Cooke for details.

Air Conditioners new and used. Evaporative and refrigerated. Bargain priced. Woody's Hardware.

Dr. J. U. Borum, Jr. Optometrist of Brownfield, Texas has moved his office to his new building 412 West Tate, east of Wilgus Pharmacy. Ph. 3172.

PLUMBING: Plumbing repair, free estimates, work guaranteed. The Fixit Shop. GL 6-2955.

SAVE at Woody's Hardware. Located outside high rent district Plenty of Parking. 29-tfc

FOR SALE: 26'x38' 2 bedroom house with wool carpet and drapes to be moved. Phone 2143, Frankel City, Texas.

FOR SALE: Acid Delinted Cotton seed, Ginned in Big lots, located at farm two miles south-east of Lamesa, 6000 lbs. Vorrider Western storm proof at 8¢. 2600 lbs. Storm King at 8¢. 3500 lbs. Storm Master at 7¢. 2500 lbs. Blight Master at 7¢. also a few sacks of common Sudan seed at 7¢; See at farm or 1206 North 4 Lamesa

ATTENTION FARMERS: Butane and Propane now only 5 1/2¢. Call Bronco Gas Company. GL 6-2044.

The very, very finest for vinyl floors is Seal Gloss acrylic finish. It's non yellowing. Cogburn Young.

Roberts Returned-- been indicted by the current session of the Yoakum County Grand Jury.

Trial date has not as yet been set in local District Court, but authorities anticipate it will be in the very near future.

Local Deputy, Olan Heath and Plains Policeman, R. J. Van Liew traveled to Artesia on Monday and picked Roberts up and left his friend, Shockley in jail serving the balance of a 15-jail sentence for vagrancy.

The Local Angle

Visiting in the home of the P. W. St. Romain's this week were his brother and wife, Mr. and Mrs. C. J. St. Romain of Rosco. They were returning home after attending the World's Fair in Seattle.

Monday afternoon guest in the John Fitzgerald home were Mr. and Mrs. E. L. Caldwell of Brownfield. They also visited the Johnnie L. Fitzgeralds.

Mr. and Mrs. Rip Sewell and family returned from a short fishing trip to Colorado.

Mr. and Mrs. John Anderson and family left Monday for a vacation in Ranger and Rome, Texas.

W. L. and Ralph McClellan attended a family reunion in Liveville last week-end.

Mr. and Mrs. John Phillips and family from Midland, Mr. and Mrs. Weldon Creig and family from Casper, Wyoming and Andy Anderson of Riverton, Wyoming all visited in the home of the E. W. Creig's over the week-end.

Johnnie L. Fitzgerald is home from the hospital and feeling much better although his activities are still limited.

Rev. and Mrs. James L. Bozeman will leave this week for Houston where they will attend the wedding of her niece and from there they will attend the Pastors conference June 25-

29. Upon returning they will help celebrate the 55th wedding anniversary of his parents and attend the family reunion at Mexia, Texas.

Wheel Young son of Mrs. Joan Young is in the Midland Memorial Hospital in traction suffering from a broken arm. He is in room 104 and would enjoy any cards or letters you may send.



"She handles the cars that are hard to start."

OUR SERVICE COVERS MANY THINGS TOO. Give Us A Trial Soon.

"If you can't stop wave as you go by"
W. G. Lattimore

IT NEVER FAILS

THANK HEAVENS THAT'S FINISHED - I WASHED EVERY WINDOW IN THE APARTMENT - INSIDE AND OUT!!

WOW! JUST LOOK AT 'EM SPARKLE!

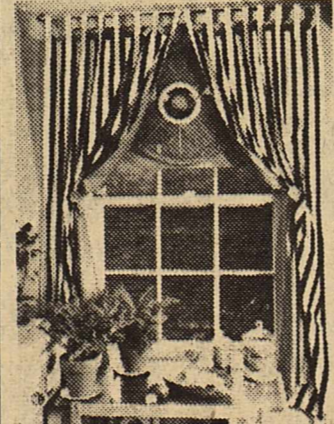
THANK TO MORTON JETT EAST ST. LOUIS, ILL.

THE PLAINS RECORD
 "Quality Job Printing"

Cool favorites FOR HOT DAYS

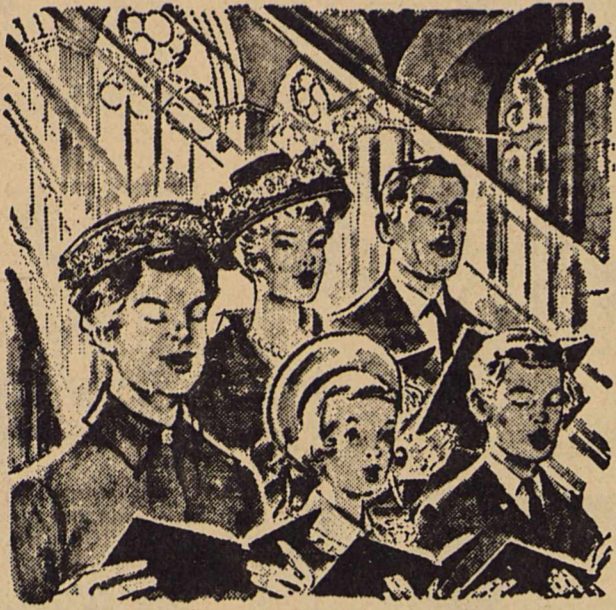
CHUCK ROAST Pound	49¢	LIMA BEANS Del Monte 303	2 for 49¢
BEEF RIBS Pound	29¢	SPINACH Shurfine 303	2 For 25¢
BOLOGNA Pound	49¢	TOMATO JUICE Shurfine 46 oz. Can	29¢
CHEESE Velveeta 2 lb. Box	89¢	CARNATION MILK 2 Tall Cans	27¢
OLEO Shurfresh 2	for 35¢	FRUIT COCKTAIL 2 1/2 Can	29¢
SUGAR 5 lb. Bag	53¢	TEA Instant Tender Leaf 1 1/2 oz. Jar	75¢
SHORTENING Bake-Rite 3 lb. Can	73¢	CANTALOUPE Pound	10¢
CRACKERS Shurfresh 1 Lb. Box	19¢	TOMATOES carton	23¢

HAWKINS FOOD
 We Give Double Thrift Stamps Double On Wednesday



WINDOW COVER-UP - Singer sewing experts suggest combinations of the white in a black and white striped all-cotton fabric by Waverly to button on the reverse side, hiding a kitchen window fan.

ATTEND CHURCH Every Sunday



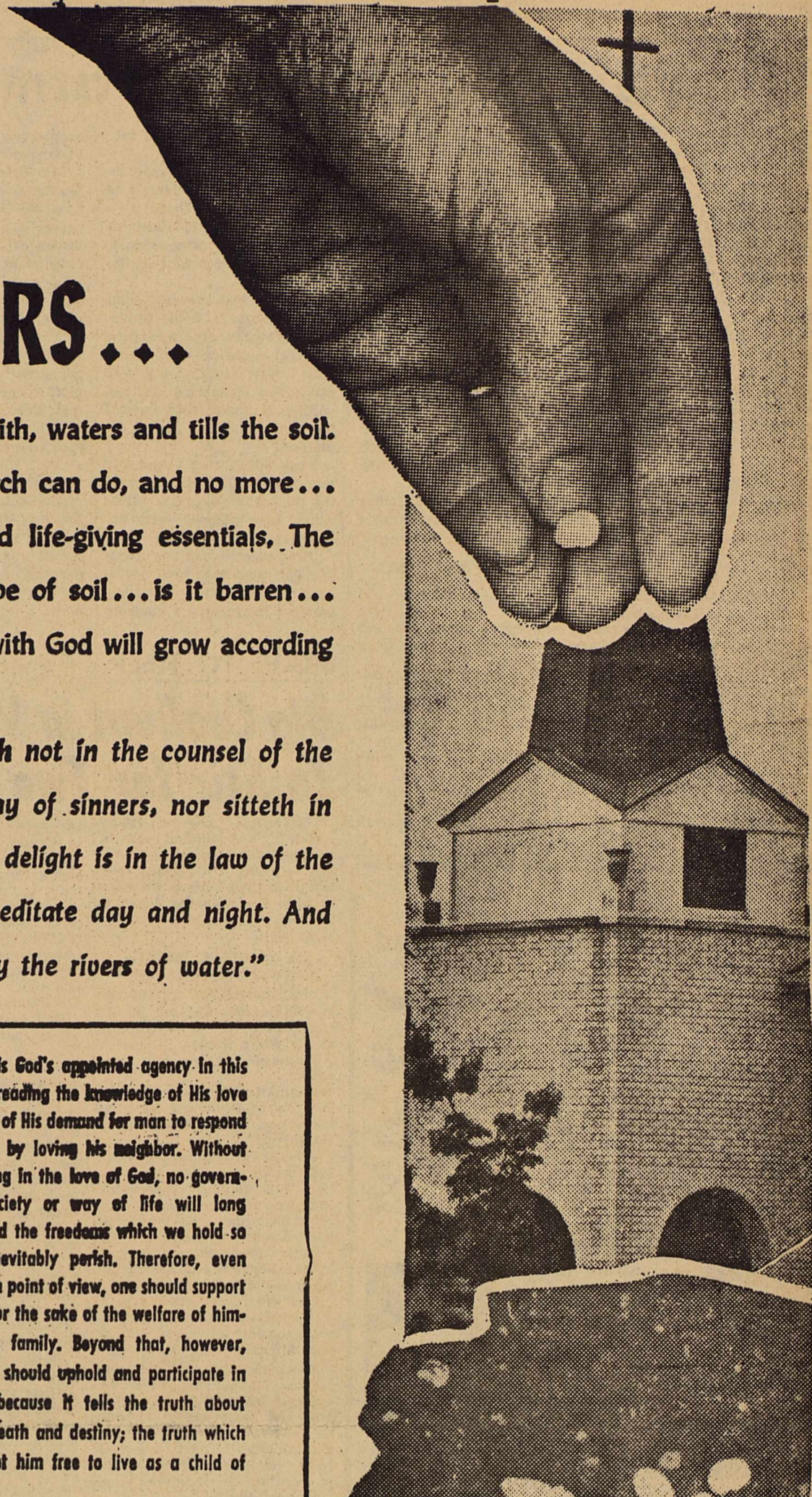
The Church Is Your Guide-Post To Better Living.

The Churches Of Plains Welcome You

The Church PLANTS and WATERS...

The church plants the seed of faith, waters and tills the soil. These are the things that a church can do, and no more... then God provides the love-and life-giving essentials. The growth then depends on the type of soil...is it barren... mediocre... or fertile. Your life with God will grow according to your will and desire.

"Blessed is the man that walketh not in the counsel of the ungodly, nor standeth in the way of sinners, nor sitteth in the seat of the scornful. But his delight is in the law of the Lord; and in his law doth he meditate day and night. And he shall be like a tree planted by the rivers of water."



Our Area Churches

Assembly Of God

E. L. WITT, PASTOR
 Sunday School 9:45
 Worship 11:00
 Evening 7:30
 Wed. Evening 7:00
 Womens Missionary - Tues. 1:30P. M.

First Baptist Church

JAMES L. BOZEMAN, PASTOR
 Sunday School 9:45
 Worship 11:00
 Evening 7:15
 Baptist Spanish Services 2:00

First Christian Church

JOHNNIE MOORE, PASTOR
 Sunday School 10:15
 Worship 11:15
 Evening 6:00
 C W F - 2 & 4th Tues. 9:30 A. M.

First Methodist Church

R. H. MELXNER, PASTOR
 Sunday School 10:00
 Worship 11:00
 Evening 7:00
 Choir Practice - Wed. Nite

Hillside Church Of Christ

JOE CHISHOLM, MINISTER
 Bible Study 10:00
 Worship 10:55
 Evening 7:00
 Wed. Evening, 7:00
 Ladies Bible Class - Tues. 10:00 A. M.

Plains Church Of Christ

MORNING WORSHIP 10:30
 EVENING 7:00

St. Williams Catholic

DENVER CITY
 MORNING MASS
 10:30

Catholic Spanish Service

IN PLAINS
 12:30 P. M. Sunday



The Church is God's appointed agency in this world for spreading the knowledge of His love for man and of His demand for man to respond to that love by loving his neighbor. Without this grounding in the love of God, no government or society or way of life will long persevere and the freedoms which we hold so dear will inevitably perish. Therefore, even from a selfish point of view, one should support the Church for the sake of the welfare of himself and his family. Beyond that, however, every person should uphold and participate in the Church because it tells the truth about man's life, death and destiny; the truth which alone will set him free to live as a child of God.

This church feature is published each week with the aim of fostering that which is good in family and community spirit. This page is a public service of these sponsors . . . contributed to the religious life of Yoakum County.

Plains Floral- Mrs. J.P. Robertson

"Flowers For All Occasions - Flowers By Wire"
 Phone GL 6-3535 & 8344

Slim Maynards Texaco Station

"We Specialize In Washing And Greasing"
 Phone GL 6-8166

Plains Oil Co.

"Your Wholesale & Retail Cosden Dealer"
 Phone GL 6-3777

Moore & Oden Inc.

"Something New Everyday"
 Phone GL 6-8011

Faulkenberry Builders Supply And Const. Co.

"Builders Of Fine Homes"
 Phone GL 6-4570

Pic & Pay Grocery

"We Give S. & H. Green Stamps-Double On Tues." GL 6-4211

Hawkins Food Market

"Your Friendly Cash Grocery"
 Phone GL 6-3434

Cowboy Grill

"Pleasing You Is Our Pleasure"
 Phone GL 6-8888

Flowerland

"Pleasing You Is My Pleasure"
 Phone GL 6-4133 - 3377

Plains Auto Service

"Let Us Solve Your Repair Needs"

Buddy's Auto Parts

"Automotive - Farm - Industrial"
 Phone GL 6-3355

The Plains Record

"Quality Job Printing"
 Phone GL 6-4116

D.C. Newsom Gin

"Toward A Better Community"

Latt's Humble Service

"If You Can't Stop Wave As You Go By"

Plains Farm Supply

"A New Generation Of Power"

Farm Bureau Opposes Farm Bill

WACO--(Spl.) -- Congress should defeat the Administration's proposed farm bill because it is bad for both farmers and consumers, the head of the state's largest farm organization asserted this week.

J. H. West of Bishop, president of the Texas Farm Bureau, charged that passage of the proposed bill, H. R. 11222, now awaiting action in the House, would:

- (1) Give farmers no reasonable choice in the referendum provided for in the bill.
- (2) Result in higher costs to consumers.
- (3) Copy failure of agriculture in regimented nations.

The TFB leader said farmers would be faced with an im-

possible choice in the referendum which the bill provides.

"Producers would be forced to choose between (1) complete government regimentation and (2) the withdrawal of all price supports in conjunction with a program of dumping government surpluses to destroy the market for current production," West said.

"We would have the choice of submitting to economic imposition or committing economic suicide," he explained. "Obviously, there is no choice involved, and farmers would be forced to accept the strictest form of regimentation ever imposed in this country."

West further charged that the bill would hit the consumer's

pocketbook with "both barrels."

"Costs of administering the program would necessarily be high," he said. "These costs include payments for land re-tirement, higher price supports and increased costs of administration."

He said that the real costs of the program would be reflected in the grocery store.

"Regimentation - type controls automatically decrease productive efficiency, thus resulting in higher food costs," the Farm Bureau leader explained.

West added that passage of the H. R. 11222 would be copying the failure of other nations which have planned farm economies.

"Regimented nations today are the ones with food shortages," the TFB president stated. "Government planners

cannot run farms as efficiently as farmers can.

"In Russia, a system of collective or regimented agriculture has failed to feed their people adequately," the farm leader explained. "It is no accident that in the Soviet Union today over half of the vegetables and livestock products are raised on approximately 5 per cent of the arable land where collective farm workers are permitted to tend their small plots free from government interference."

"This is proof positive that free farming works," West asserted. "Why copy failure?"

"West, who is a member of the American Farm Bureau board of directors, said Farm Bureau is for a positive, not punitive farm program which permits a maximum of freedom for the farmer with a minimum of cost to taxpayers."

Yoakum SCD News

The rain came and so did the applications for assistance under the Great Plains Program and the regular Soil Conservation District Program. This week and late last week we worked out Conservation Plans with H. W. Nelson, Bill Gray, Dick Ham, W. C. Patman, R. M. (Bob) Jones, C. C. Copeland, J. D. Jones and several others.

Grass planting on Neal White, Foye Powell, Olen Cox, H. M. Edwards, C. O. Head, C. C. Copeland and a host of others is going full blast or is completed. Bill Gray plans to plant about 310 acres of grass in rows for pasture. H. W. Nelson plans to plant some Bermuda for summer grazing and other grasses for fall and winter along with small grain grazing. J. D. Jones plans to put the sandy part of his farm to grass to provide both grazing for livestock and protection for other crop land.

The regular monthly meeting of the District Board was held Tuesday night of this week. Visitors included Co. Agent, Leo White and Aubry Darlymple of the State Soil Conservation Board from Lubbock. The board approved several Soil Conservation District plans presented by land owners along with reviewing several Great Plains contracts. The Board also added a supplement to their memorandum of understanding with the U. S. Department of Agriculture.

The Great Plains Conservation Program is now becoming big business in Yoakum Soil Conservation District. As of June 1 this year 80 contracts had been approved totaling \$268,268.84. This amount of money represents about 50% of the total cost of Conservation work that is to be applied in the next 2 or 3 years. Since June 1 there have been 4 more contracts signed.

This is a new farming country and it is good country, the way land owners are carrying out conservation programs it should stay good for a long time.



In quietness and in confidence shall be your strength. —(Isa. 30:15).

As we learn to make each day a time of returning to God, we develop new poise and serenity. We face life with quietness and confidence, for God's infinite love and wisdom are in control of all things.

DON HANCOCK
Announces The Removal of His Law Offices.
To
610 E. 10th --Brownfield Road
Plains
Due South of Courthouse

No Letup in School Bus Safety

RICHMOND, Ind. (UPI) -- Watch out for school children and school buses even if it is summer vacation time.

More and more youngsters and more and more school buses will be on the highway this summer because of the growth of day camp programs.

Many, if not most, of the children will be unused to out-of-the-city highway safety and motorists must be especially careful.

This warning comes from Divco-Wayne Corp., a builder of school buses. It offers these rules for city children riding school buses for the first time:

1. Seats are made to be sat upon. If the bus driver must make a sudden stop you can be seriously injured if you're not seated.
2. Always stand on the curb while waiting for a bus -- never in the street.
3. Board your bus in an orderly line. Moving traffic is no place for horseplay.

8,000 TO HELP

Big Cookout in Vermont To Stir for Two Weeks

(EDITORS: They're killing poison ivy and building roads in the wilderness in Vermont, readying for 8,000 Girl Scouts who will pitch their tents in the state in July. The following dispatch, the first of two, describes the camp plan.)

By ISABELLE McCAIG
United Press International
VERGENNES, Vt. (UPI)—The guest list reads like one of the "new society" soirées for the elite at the White House.

It's headed by President Kennedy.

Postmaster General J. Edward Day, Robert Frost, and Baroness Maria Von Trapp also are among the invited.

Officials arranging the huge 1962 Senior Girl Scout Roundup here July 18 don't expect the President to attend, but they're hopeful he may send Vice-President Lyndon Johnson.

Robert Frost, 86, has been ill, but is expected to read an original poem for the occasion.

Day will inaugurate the issue of a commemorative stamp honoring the 50th anniversary of the Girl Scouts.

Baroness Trapp, of the music-making Trapp Family of Stowe, will lead the multitude of 10,000 girls and scout leaders in song at a newly-constructed natural amphitheater which overlooks Lake Champlain and the rounded Adirondack Mountains of New York State.

The ceremonies will open a

two-week schedule of events which have been in the planning stages for two years. The scouts plan an encampment that is virtually a small city!

It will have a hospital, power plant, water system pumping 250,000 gallons a day from Lake Champlain, a full fire protection unit, police, drug stores, banking facilities, a post office, telephone and telegraph.

Unlike any city, it's population will be comprised of teenage girls from 14 to 17 from the 50 states and 31 other countries. They're a powerful drawing card.

Vermont officials anticipate 65,000 to 75,000 visitors during the two-week encampment.

Where to put the visitors and how to feed them is being handled by a special group working through 22 information centers. Hopefully, the influx of tourists will disperse and see something of Vermont.

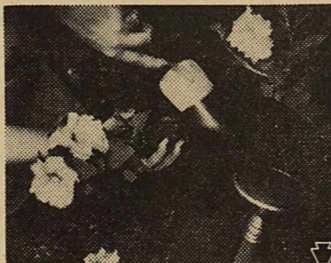
Thousands of queries to the Vermont Development Department, however, indicate the tourists, mainly parents and relatives of the scouts, desire proximity to the Button Bay site above all.

Button Bay State Park has undergone a transformation in preparation for the girls. The State Highway Department has built roads to the area; the forests and parks department has set up a special network of pipes to bring in water; state police have undertaken the most comprehensive security plans in their history.

Profitable Mixture
FT. LAUDERDALE, Fla. (UPI) — The unusual combination of oranges and missile parts has proven a successful diversification for Airtronics International Corp.

The firm built its plant on a 24-acre orange grove and for the first few years made more money selling oranges than electronics.

TRANSPLANTING



Dig individual holes for each annual plant, deeper and wider than roots spread. Set plants level with soil around them.

Whether you grew your own plants from seeds or bought them from a local greenhouse, transplanting methods are just the same. Watch the weather forecasts for one that says "cloudy day tomorrow" and begin the transplanting process the night before.

First, with a sharp kitchen knife cut lines between rows of plants in a flat, cutting through the soil until you feel the flat. When you have cut lengthwise and crosswise each plant will have its own "island" of soil around it. This makes it easy to lift from the flat.

Next soak the soil thoroughly. You can do this with plain water, with a solution of one of the wilt-preventing hormones (which also induces root formation) or with a solution of any complete fertilizer (which gets plants off to a good start).

After soil is soaked, set plants to drain and go to bed early. Awake to cloudy skies and prepare soil in the areas in which you intend to set the plants.

Borrow a pancake turner from the kitchen and use this to lift plants from the flat. It works even better than a trowel.

But do use a trowel when you dig a hole for each plant. Make each larger and deeper than the root system of the plant. Set each plant in its hole so the soil level around the plant is even with that in the garden. If necessary, push back some soil into the hole to insure this.

Fill in more soil around the plant, firm it with the fingers, leave a slight depression in the soil around the plant to hold water and then trickle in just enough water to settle the soil to the roots.

Of course, if plants were grown in pots you do not need to cut between plants in a flat, but otherwise transplanting is just the same.

No shading will be needed as long as clouds remain; otherwise use sheets of newspaper laid over the plants to keep off some of the sun for a few days.

Water the plants every other day for 10 days. This should keep them from wilting. After that water once a week.

FOOD BUDGET



CANTALOUPE Lb.	10¢	T-BONE STEAK Lb.	73¢
ORANGES Lb.	15¢	TEA 1/2 Lb. Morton	55¢
CUCUMBERS Lb.	10¢	Tender Leaf INSTANT TEA 1 1/2 oz.	85¢
PEACHES Lb.	19¢	COFFEE Shilling Lb.	69¢
LEMONADE 6 oz. Keiths Can	10¢	BISCUITS 3 For	25¢
OKRA Keiths Whole Baby	6 For 99¢	HAMS Half or Whole Not Sliced	44¢
GRAPE JUICE Birds Eye 6 oz.	6 For 99¢	SLAB BACON	49¢
BOLOGNA Lb.	39¢		

PLAINS FROZEN FOOD

Dick McGinty

GL6-8722

Be prepared for small "scrapes!"



Stock up on first-aid and grooming needs for the family.

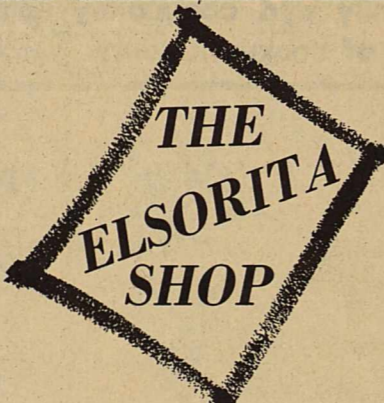
Especially where there are active youngsters, it's good to have your medicine cabinet well stocked with first aids for cuts, bruises, scratches and playtime casualties.

Curry and Edwards



Phone GL 6-2535

Plains Texas



ALL DRESSES And SPORTSWEAR REDUCED

JEWELRY 1/2 Price

CLOSE-OUT All Infants and Children's Wear

LINGERIE SWIM SUITS

1 RACK \$5.00

1 RACK \$3.00

ASSORTED TABLE \$.50 & 1.00

No Gift Wrapping
No Alterations
No Refunds
ALL SALES FINAL