

# MOORE Or Less

by Johnnie Moore

The Bible and Form 1040 show  
futility of gaining riches.

They say that in the spring,  
a young man's fancy turns to  
what the girls have been think-  
ing about all winter long.

Jamaica has forbidden the  
import of switchblades. At least  
one country has done some-  
thing about disarmament.

Will Rogers once said, "What  
this country needs are dirtier  
fingernails and cleaner minds."

Another one of the sage old  
cowboy's remarks said some-  
thing like this -- "Sure taxes  
are high, but thank God we're  
not getting all the government  
we're paying for."

I just wonder if we're not  
getting more than we're paying  
for in a lot of instances now-  
days.

I wonder exactly what sec-  
tion of our constitution dele-  
gates the power or even re-  
motely infers the power on a  
president of the United States  
to engage in price fixing. And  
yet, just look at the events that  
took place in the major steel  
companies of this country last  
week. They up and announce an  
intended boost in steel prices,  
that is intended until old John  
F. says, "Boys, you go through  
with that and I'll personally see  
to it that a big load of the gov-  
ernment orders for steel go to  
the little companies who aren't  
asking for a raise in prices."

Did he get away with it? You  
bet he did. It didn't take but a  
little over three days for the  
big steel boys to say, okay,  
"We were just fooling a little,  
we don't even really want a  
price raise anyway."

Is this one of the powers of  
a U. S. president? I don't think  
so. But, by golly, he did it.

No sir, I'm not a Republican,  
but if the things that are hap-  
pening in Washington nowadays  
are a sampling of what the  
Democratic Party intends to  
stand for in the years to come,  
then, I sure am not a Demo-  
crat anymore.

I can see a few individuals  
smiling to themselves and say-  
ing, "Well, just what are you  
then, there's not much choice  
left."

I for one think its high time  
we put a halt to the things that  
are going on in our nation's  
capital, heading us as straight  
toward socialism as anything  
could.

Possibly, the things Kennedy  
is doing are for the good though,  
after all, Under Eisenhower, we  
had what could be referred to  
as creeping socialism, in the  
farm programs and some other  
areas.

But now, under this admin-  
istration, its not creeping any-  
more. We've got galloping social-  
ism.

Maybe, enough of us will get  
(Continued on page 6)

## Plains Oil Damaged In Fire

A mid-afternoon fire man-  
aged to severely scorch the new-  
ly painted exterior of Plains Oil  
Co. service station in Plains  
last Thursday.

Mr. J. A. McConnell had just  
finished having his pick-up  
filled with gasoline when it  
caught fire and the fire spread  
almost immediately to the near-  
by gasoline pumps.

First efforts were to get a  
Plains Oil Co. truck loaded  
with butane out of the driveway  
where it had been parked to  
repair a flat tire.

At the time attempts could  
be made to move the pick-up, the  
pumps along with a portion of the  
newly painted surface of the sta-  
tion itself were suffering  
severely from the blaze.

Mr. James Warren, owner  
and operator of the service sta-  
tion stated that the very quick  
response and the know-how of  
the local Volunteer Fire De-  
partment made what could have  
been a very disastrous fire into  
a minor one.

Warren expressed a desire to  
publicly thank the fire depart-  
ment for their very fine and  
professional type actions in  
saving his place of business.

The service station is now  
back in repair and the pumps  
and station front have again  
been repainted and all is like  
new on the Plains Oil Co. prem-  
ises.

There were no injuries sus-  
tained in the fire.

# The Plains Record

Combined With The Yoakum County Review March 1, 1961

VOLUME 32

THURSDAY, APRIL 19, 1962

NO. 16

## \$325,000 Petition Presented To County Commissioners

### Would Provide Many Additions, Improvements To Denver City Unit



SIGNING IN -- Scene above is at last week's City Council Meeting at which all the councilmen were represented, both those whose terms expired and the newly elected ones. Mayor,

Buddy Hanna and Councilmen, Vance Glover and Ed Hunter are shown signing their pledges of office as they prepare to be sworn into office for their respective terms.

A petition, requesting the calling of a bond election, was presented to the Commissioner's Court of Yoakum County, last Monday, by a group of county citizens.

The petition, calling for the Commissioner's Court to call a special election in the near future to provide necessary funds for enlarging and equipping of Yoakum County Hospital in Denver City, was signed by about 450 Yoakum citizens.

Amount of bond issue listed in the petition is \$325,000.

Carefully checking the names signed to the petition was the County Clerk of Yoakum County, J. W. O. Alldredge. It was explained that to be eligible to sign a petition asking for a bond election or to be eligible to vote in the ensuing election, that it is necessary under Texas statutory law that the voter have paid his current year's poll tax and be a property holder who has correctly and currently rendered his property for taxation to Yoakum County.

The petition reads, in part, "Shall the Commissioners' Court of Yoakum County, Texas be authorized to issue bonds of said county in the amount of \$325,000 to become due and payable within any given number of years for the purpose of enlarging and equipping the county hospital located in Denver City, and for all necessary permanent improvements in connection therewith."

Plans of new and improved hospital facilities, as explained

and outlined by Mrs. Helen McMahan, hospital administrator, call for adding a total of 10,467 square feet of space to provide a 50-bed hospital and other facilities. At the same time, she added, the program will make possible the remodeling of 5,269 square feet of the present building to provide for rearranging of existing patient, maintenance and administrative facilities. As a possible part

of the plan is the addition to provide space for new and essential equipment, as well as storage and office space, said Mrs. McMahan.

Mrs. McMahan explained that surgery, delivery and labor rooms, laboratory and X-ray facilities would be shifted to the new addition which will essentially be a wing to run par-

(Continued on page 5)

## Dr. Goldberg Due In Plains In Two Weeks

As was reported in last week's issue of the Record, Dr. Marvin Goldberg, presently of Commerce, Texas, plans to set up an office practice in Plains within the next two weeks.

Word was received this week that Dr. Goldberg is presently in Chicago purchasing supplies and equipment for the office-clinic he plans to open in Plains within the next few days.

In explaining his plans for practicing in Plains, Dr. Goldberg has pointed out that he intends to set up an office practice for about three months,

after which time he intends and hopes to build an 18-bed clinic, to be equipped completely.

Due to some misunderstanding on the part of a great many people as to the exact nature of Osteopathy, as Dr. Goldberg is a D. O., the following is reprinted from an issue of the Michiana News:

And we quote, "The Osteopathic profession, with approximately 14,000 licensed physicians and surgeons throughout the United States, is making a continuing and important contribution to the health of the nation. Although most people are acquainted in some way with Osteopathic medicine, there remain segments of the public who have incorrect or misleading information concerning this branch of medicine. The purpose of this column is to shed some light on what Osteopathy is and on what it is not.

Osteopathy is not a system of rubbing or massage; nor is it chiropractic. It is not restricted to the treatment of certain ailments or diseases. It is not something learned at a short course in school.

It is not based on any theory of dislocation of spinal or other joints. It does not teach that bones press on nerves and cause disease.

Osteopathy is not opposed to surgery; but, from the beginning, has included this brand  
(Continued on page 4)

## Sunrise Services Set

Easter Sunrise Services will be held in Plains this year in the park, as has been the custom for several years.

Services will begin just as the sun begins to rise, estimated at 6:50 a.m.

Music will be provided by the Plains Assembly of God Church and the choir will be led by "Punk" Culwell of the local First Baptist Church. Choir members will be representatives of the four churches participating in the services, Plains Methodist Church, First Baptist Church, Plains Assembly of God Church, and First Christian Church.

Program will consist of the singing of about three hymns appropriate to the Easter season; and the balance of the program will be in the hands of the ministers of the four participating churches. The Pastoral prayer and reading of the scripture lesson will be performed by the Rev. R. H.

Meixner, a sermonette on the "Cross" will be delivered by The Rev. Johnnie Moore, a sermonette on the "Open Tomb"

by the Rev. James L. Bozeman and the Benediction will be brought by the Rev. E. L. Witt. All area citizens are invited

and extended a cordial invitation by each church in the Plains area to attend these Sunrise services.

## Caravan For Hancock Planned

Political activity and talk is rapidly coming to a head in the Plains area this week as candidates are going about passing out cards, kissing babies, and shaking hands with everybody in sight.

A great amount of interest in the up-coming May 5, Democratic Primary is being exhibited by the county citizens.

A slightly new, for local citizens, twist in political activities will be available Saturday morning. Yoakum County Judge, Don Hancock, will travel from Plains to Denver City, to Seminole, to Brownfield, and on into Lubbock on Saturday in a motor

caravan composed of his supporters in the various towns and counties.

Hancock has said that he will leave from Plains, in front of the county courthouse, at 10 a.m. Saturday morning and that anyone interested in going on the motorcade to the other towns is invited and that, their presence would certainly be appreciated.

Hancock, a candidate for the state senate from the 28th District, will then kickoff his Lubbock campaign from 3 to 6 p.m. Saturday at the barbecue pits in Mackenzie Park.

The rally will be hinged around the motorcade and the

graduates of Texas Tech and Lubbock High School, serving two purposes: (1) to get reacquainted with each other; and (2) to show support for Hancock, a graduate of the two schools.

Hancock is running against H. J. (Doc) Blanchard, Lubbock, and Wesley Roberts, Seminole, for the office which has been vacated by Preston Smith, Lubbock, who is running for Lieutenant governor.

Don invites any and all his local supporters to join with him in the motorcade and in the rally in Lubbock.

## Plains Students In State Meets

Plains students did themselves real proud last week in the regional Interscholastic League Contests held in Lubbock.

Placing first in this Region in volleyball was the Plains girls' team, coached by Mrs. Shirley Gross.

First in the region was James

Tippett in the Science knowledge contest.

Placing second in a track event, high hurdles was Jeff Smith with a time of 19.8.

Also placing second were Sarah Hunt and Weldon Spencer in Prose Reading and Larry Williams in Poetry Interpretation.

Jeff Smith and James Tippett will travel to Austin on May 5, to participate in the state meet.

Mr. Virgil Wade, local science teacher, pointed out that James was very far out in front of his closest competitor in the district science contest as well as in the regional contests, and that in fact, only one student out of all classes of entrants, class B, A, AA, AAA and AAAA made more points on the science quiz than did James. The same identical test is given to all entrants from all classes and the one person beating James' score did so by only eight points. The Plains High Volleyball girls will travel to Abilene on April 28, where they will engage in the state girls' Volleyball Tournament. It has not as yet been learned who they will be pitted against as the bracket has not been received.

In district play the Plains girls beat both Frenship and Sundown in the district tournament.

In regional play they drew a bye on the first round of the tournament and then had to play Big Lake in the finals, whom they beat.

The possibility exists that they might draw Big Lake in the state tournament, as both first and second place teams are eligible to attend the State meet.

## Credit Union Member Drive Is Planned

Directors and officers of Yoakum County Federal Credit Union, will meet Tuesday April 24th to "finalize" plans for a membership drive.

The meeting is planned for 7:30 p.m., for dinner, at Alma's Restaurant. Plans already tentatively discussed, will be formulated for an extensive membership drive.

Much interest has been evidenced already by members in the Credit Union, who plan to increase their shares, and many not now members have shown interest in the benefits to be derived from membership.

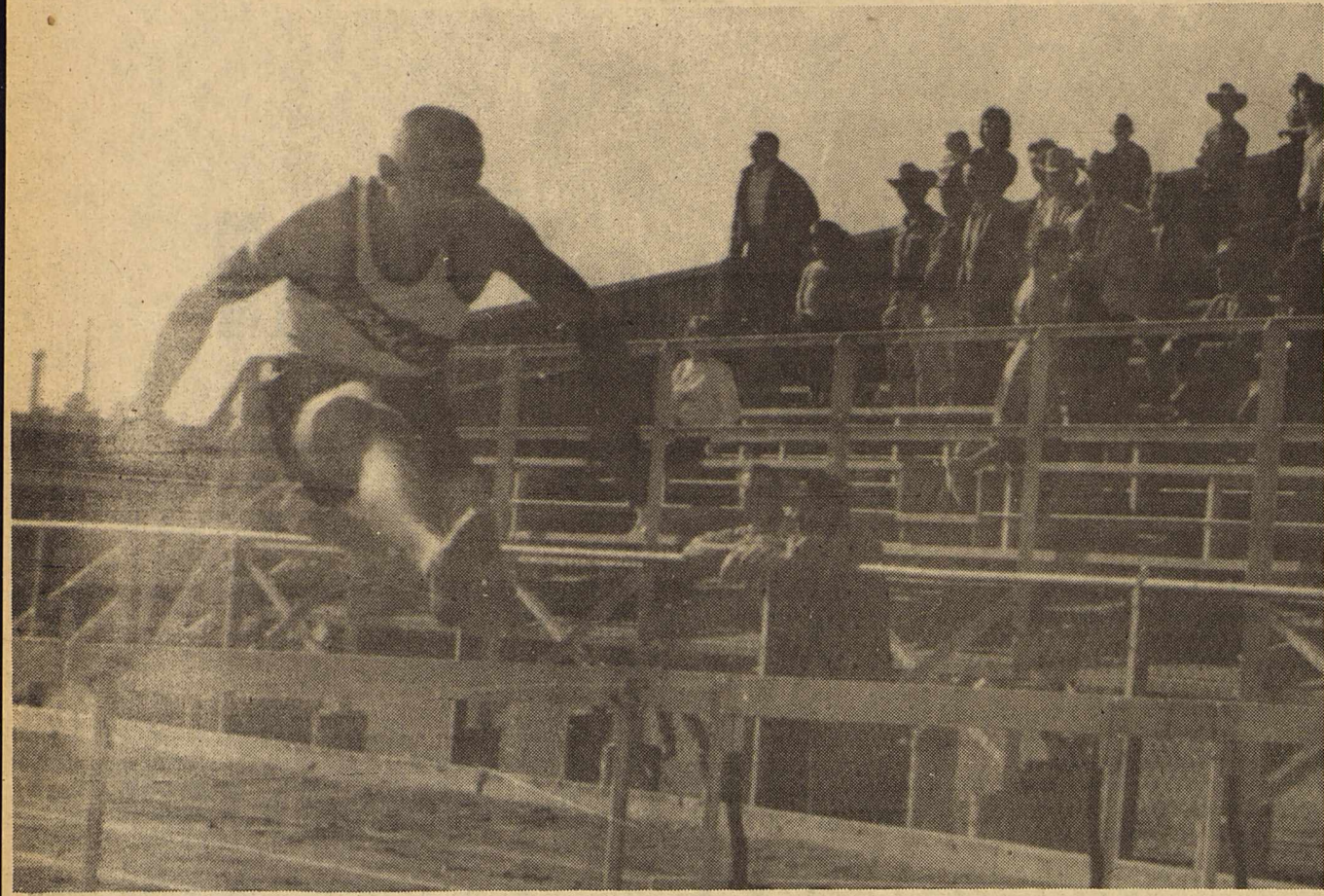
The Credit Union is an investment, where your money makes more money. It is a lending agency to members with attractive interest rates. Shares and loans are insured, life insurance is provided according to age at time membership is taken out.



REGIONAL WINNERS -- Plains High School Volleyball girls travel to Abilene next week-end, April 28 and 29 to take part in the state finals in volleyball.

They have been victorious this year, both in district and region play. Expectation are running high for them to win the state meet.





JEFF SMITH -- Will travel to Austin on May 5 to take part in the State track and field meet. Jeff placed in the High Hurdle

event at the Regional meet at Lubbock last week.



James also will travel to Austin to take part in that section of the state contests on May 5.

JAMES TIPPETT -- Is number one in the region as far as class A schools are concerned in the Science Knowledge division.

# The Plains Record

And The Yoakum County Review  
JOHN W. MOORE, Publisher

PUBLISHED EACH THURSDAY AT PLAINS, TEXAS

Entered as second class matter at the Post Office at Plains, Texas, under the act of Congress, March 3, 1879

SUBSCRIPTION RATES: \$3 per year in Yoakum and Terry Counties; \$4 per year elsewhere.

## Services Held For Father Of Minister

Harmon Melxner, 83, Concho County stock farmer and ranchman, died at 5:30 p. m. Sunday in Concho County Hospital following a heart attack Saturday night at his home between Eden and Paint Rock.

Funeral services were held

at 10 a. m. Tuesday in the First Methodist Church at Paint Rock with burial in Eden Cemetery under direction of Day-Loveless Funeral Home of Eden.

Mr. Melxner was born March 13, 1879, in Litacitchel, Germany. He had been a resident of Concho County since 1901, moving there from Bell County.

He married Miss Alice Armistead on Christmas Day 1905. She died in September 1953. Survivors include three sons, Frank Melxner of Junction, R.H. Melxner of Plains and Victor Melxner of Paint Rock; four daughters Mrs. J. T. Skipper of Brownwood, Mrs. W. R. Bush of Fort Worth, Mrs. Vernon Neve of Brady and Mrs. Jim Bob Cox of Paint Rock; one sister Mrs. W. W. Wheeler of Levelland; one half-brother, Rudolph Schleede of Belton; 13 grandchildren and one great-grandchild.

## Step Forward In Sesame Seed Growing

The Houston Hart Farm 4 miles West and 1 South of Muleshoe was the proving ground last week for a machine that will go a long way toward mechanizing the harvest of Sesame crops for Plains farmers.

The machine is a self-feeding combine attachment that picks up a dry Sesame shock and flips it onto a slowly moving conveyor chain. The conveyor chain feeds the Sesame bundles into a vicious looking string cutter that reduces the bundles into nice bites for the combine.

Roy Wrinkles Welding Shop in Muleshoe is building the self-feeding unit for Texas Sesame Growers, Inc. of Muleshoe and Paris. It is designed to operate on any standard self-propelled combine, and makes Sesame harvesting a one-man operation. Present harvest methods require a four-man labor crew, plus the combine operator.

Texas Sesame Fieldman, Ray Hodges, has guided the project and was at the controls of the combine on its successful test run last week. "It's mighty late in the season for harvesting Sesame" said Ray, "but Mr. Hart and Bill Whately kindly left us about an acre of shocked Sesame so we could keep testing the new attachment." Ted Allen's 101 International combine has been used throughout the test operations which started last October.

"Excessive hand labor at harvest time has limited Sesame production on the Plains more than any other factor," according to Robert L. Parker of the Sesame Growers Organization. "This new self-feeding combine attachment will completely mechanize more than half the Sesame harvest operation, and will make Sesame production much more attractive and profitable for Plains farmers."

Area men who have watched the machine in operation speculate that with some modifications, it can be used to harvest other important seed crops from the shock, such as millet, sudan, or sorghum album.

Texas Sesame is making color movies of the combine attachment in operation to show to interested farmers. Plans are also under way to build more of the attachments, to be ready for the 1962 fall Sesame harvest.

## Traffic Death Figures Shown

AUSTIN -- The Texas Department of Public Safety has officially closed the 1961 traffic "death book" and reported that last year 60 more persons died in Texas traffic than in 1960.

The motorcade total was 2,314, as compared to 2,254 in 1960, or an increase of 3 per cent.

The report, prepared by the Department's Statistical Services, indicates that although the number of motorcades increased, the death rate -- the number of deaths per 100,000,000 miles traveled -- decreased from 4.9 to 4.8, the lowest rate on record in Texas. In 1961, Texans traveled 47.9 billion miles, or 3.42 per cent more miles than they did in 1960.

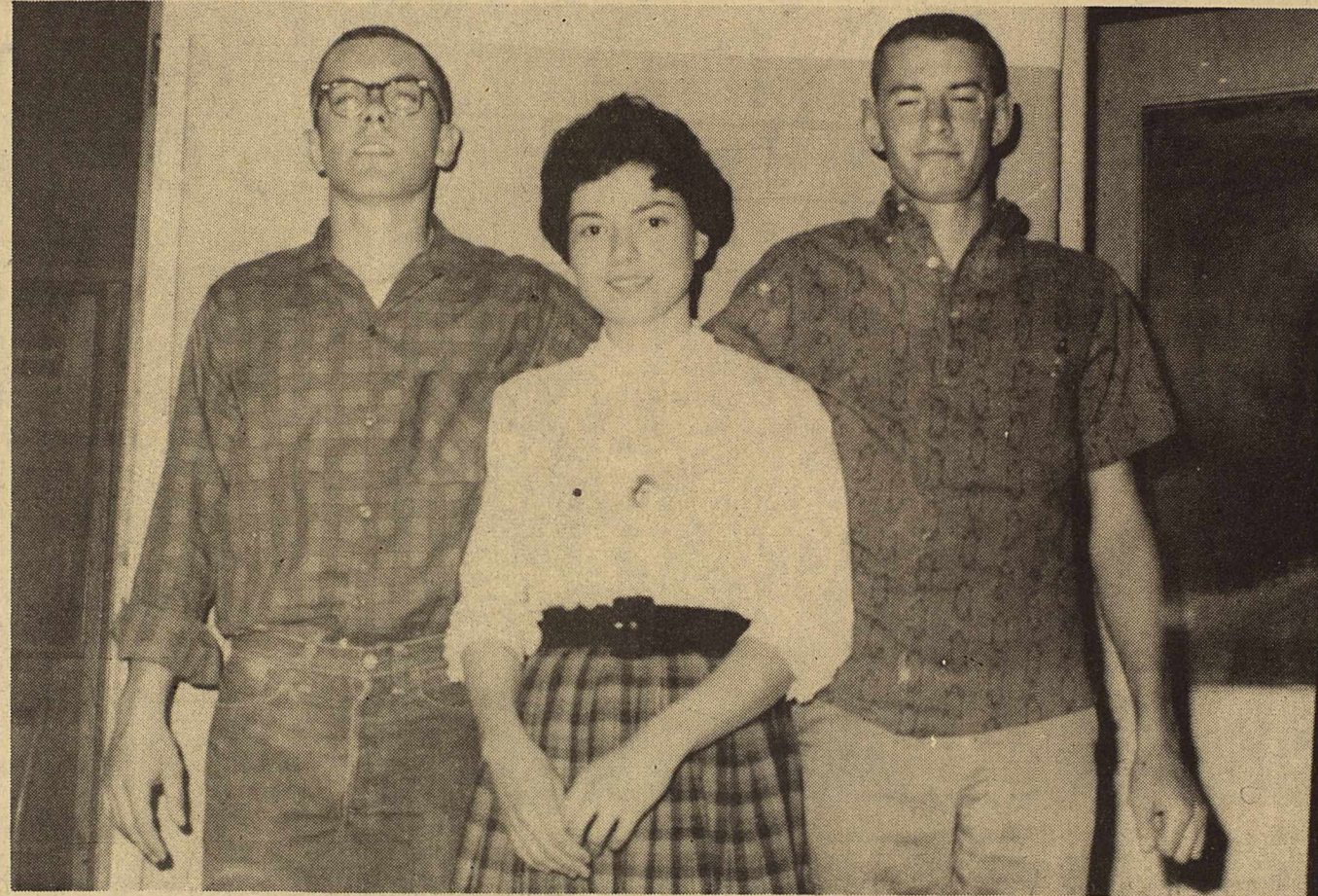
In addition to the 2,314 deaths, in 1961 there were an estimated 132,570 injuries sustained in 324,149 motor vehicle accidents.

On an average, last year in Texas traffic, a person was killed every three hours and forty-seven minutes, and a traffic accident occurred every 97 seconds.

Col. Homer Garrison Jr., Director of the DPS, said:

"It is a sobering thought to realize that the number of persons killed on Texas streets and highways was greater than the populations of most Texas towns, and that the number of injuries was more than the population of Lubbock. When the economic loss resulting from traffic accidents in 1961 -- over 356 million dollars -- is added to these losses, the problem we face is only too apparent."

"Texans must accept the challenge posed by these figures. The best way to do this is for every driver to obey the traffic laws, because



PLACE HIGH -- Pictured above, left to right, are Larry Williams, Sarah Hunt and Weldon Spencer who each placed second in one of the Regional Interscholastic League events in Lubbock

last week. Weldon and Sarah both placed in the prose reading section while Larry placed in the poetry interpretation section.

## Newman Makes His Formal Announcement

Reeves Newman is making his announcement to The Record had these words to say. "In making my announcement I have been asked by many friends to offer my services to the people of this county as Commissioner."

"I came to Denver City in 1946 after serving four years with the Marines in World War II.

"I have been in cafe business here for the past fifteen years, and have been active in civic affairs, served four years as a City Commissioner.

"I am now a member of the board of Chamber of Commerce for Denver City and a member of the Baptist Church.

"In placing my candidacy for the office of County Commissioner, I pledge myself to the people of this county a continued effort in the interest of the future development of this county, that our county may be financially sound, responsible and progressive.

"If elected I intend to devote full time to the Commissioner job and will have no other business interest.

"We have two sons, one a student here in Denver City and the other a pre Medical student in Baylor University."

in almost every accident at least one violation is involved."

Other observations made from the analysis include:

The 141 motorcades in February was the lowest number of any month since February 1950, when 140 were killed.

The most deadly day in Texas traffic last year was December 22, when 23 persons were killed in 15 fatal accidents.

There were only 4 days last year when no fatal accidents occurred in Texas.

14 counties -- Borden, Brewster, Kelta, Hansford, Hardeman, Kent, Lipscomb, Loving, Mason, Rains, Roberts, Somervell, Sutton, and Upton -- had no fatal accidents or deaths during 1961.

The largest increase in the number of deaths in 1961 over the previous 3 year average was 20.7 in Lubbock County,

## Peace Corps Placement Tests

Peace Corps Placement Tests will be given Saturday, April 21, in Civil Service Commission testing centers throughout the county.

All tests will begin at 8:30 a. m.

This new round of tests has special significance: Applicants are now being invited to train for 30 new Peace Corps projects in Africa, Asia and Latin America. Training will begin this summer on college campuses throughout the United States.

Many who take the tests will be applicants who have sent in a Peace Corps questionnaire available at Post Offices since the last round of testing.

But interested persons who have not yet filled out a questionnaire will also be permitted to take the tests. They will be accommodated on a "space available" basis at the testing centers.

Peace Corps opportunities abroad cover many fields -- teaching, nursing, engineering, plumbing, carpentry, agriculture, medicine, home economics, architecture, city planning, geology, physical education.

Applicants must be American citizens and at least 18 years of age. (There is no upper age limit; persons 60 and older are performing key Peace Corps jobs overseas). Married couples without dependent children may apply, providing both qualify.

At the testing centers, each person will be given his choice between two types of Placement Tests. One is for men and women who would like to be considered for positions as teachers. For this, a bachelor's degree is required, but you do not need to be an accredited teacher.

The other test is for everyone else who wants to serve in the Peace Corps. While some projects call for technical skills, many others require men and women without such formal or specialized training. Among these are liberal arts graduates for community development projects and people with general farming backgrounds for agricultural projects.

## Farm Facts

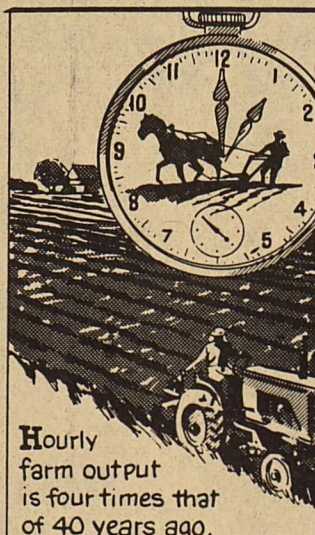
According to the U. S. Department of Agriculture, an hour of farm labor produces four times as much food and fiber as it did 40 years ago.

Productivity of farm workers increased by 6 1/2% a year during the 1950's -- about three times the increased output in non-agricultural industry, which went up 2% per year.

The average productivity per farm worker has more than doubled in the last 20 years. In fact, it has gone up more in the last two decades than in all recorded time prior to 1940.

Crop production is 65% greater per acre than it was 40 years ago, and output per breeding animal is 88% higher.

In 1910, it took a farmer 135 hours to produce 100 bushels of corn, 106 hours for 100 bushels of wheat, and 276



hours for a bale of cotton.

In 1960, it took about 15 man-hours to produce 100 bushels of corn, 13 for 100 bushels of wheat, and 57 for a bale of cotton.

Texas ranked first in the nation with 37,477 persons enrolled in Civil Defense adult education classes.

## Texas Farmers Union Plans Meetings

Texas Farmers Union's first annual series of conferences on farm income will commence at El Campo on Tuesday, April 24th. This meeting will be followed by similar meetings at Waco, on Wednesday, April 25th; Stephenville, Thursday, April 26th; and Lubbock, April 27th.

John A. Schnittker, economic analyst for Secretary of Agriculture Orville Freeman, will keynote the conferences with a discussion of the food and agriculture act of 1962, followed on the program by Dr. John Eklund, educational director for National Farmers Union, who will lead in the discussion of the effect the proposed legislation will have on Texas farm income.

Serving on a panel with Dr. Eklund will be leading farmers from each locality who will discuss farm income problems of direct interest to the particular area, and what effect the administration's farm bill will have on the farm income in that area.

Mrs. Juanita Wooten of Crosbyton, farm wife and insurance agent, will discuss the role farmers union must play in the implementation of farm legislation. She will also outline the total philosophy of farmers union, and its role in the community.

Mrs. Gail Brewer of Crosbyton, educational director of Texas Farmers Union, will discuss Farmers Union junior program, and the importance of education and information in the accomplishment of Farmers Union income goals.

The registration for the meetings will begin at 8 a.m., followed by the morning session at 9 a.m. Lunch will be made available at the meeting place in each locality, so that those in attendance can remain for the afternoon session which will include a question and answer period.

Farmers, businessmen and others who are interested in agricultural prosperity in their communities are invited to

## Views Of Candidates On Issues

The pari-mutuel referendum proposition finds no backers among any of the candidates for governor or lieutenant governor who answered a questionnaire submitted by the Department of Christian Social Relations of the Texas Council of Churches.

Personal information about candidates for statewide offices in the May 5 primaries and their views on such issues in addition to legalizing gambling as medical assistance to the aged, state juvenile parole, abolition of capital punishment, chemical testing for drunk driving, and 'precise delineation of all charges, including interest on small loans' are included in the traditional non-partisan voter's guide to be published Monday.

Four Democratic candidates for governor and one Republican candidate supplied data for the guide. All candidates for Lt. governor and attorney general are represented. All Democratic candidates for congressman-at-large and two of the three Republican contestants answered the questionnaire. All candidates for the other statewide offices responded. Only personal data were requested from aspirants for high court judgeships and purely administrative state offices.

An analysis of the answers of ten candidates for governor and Lt. governor indicates that five favor full state participation in federally-enacted measures to provide medical assistance to aged, three a qualified 'yes,' and two a qualified 'no.' Eight candidates were for a requirement to spell out interest charges on small loans. Two answers were indefinite.

Nine of the aspirants for governor or Lt. governor expressed themselves in favor of expansion of the state juvenile parole system, one against. All opposed legislation of betting on races. The candidates were sharply divided on the capital punishment and implied consent tests for suspected drunk-driving. Three were for abolition of the death penalty and two gave qualified affirmative answers. Four were definitely opposed to abolition. Three candidates favor the compulsory drunk driving test, one gives qualified endorsement, while four said, 'no.' Two candidates were undecided.

Of the eight candidates for congressman-at-large only one expressed himself in favor of medical aid to aged under the proposal in Congress for Social Security coverage. Four oppose any except local assistance, two favor only the present state-federal matching plan for indigent aged. One said that he would favor 'the best workable plan.'

The Council report is being published in the March-April number of its news bulletin called Texas Ecumenical Action. Harold Kilpatrick, executive secretary, said that a copy of this bulletin would be mailed free to anyone requesting it.

attend the farm income conference nearest them.

The meetings will be held as follows:

April 24, El Campo, American Legion Hall.

April 25, Waco, Holiday Inn

April 26, Stephenville, Tarleton State College-Auditorium.

April 27, Lubbock, Plains Coop Oil Mill, 2901 Ave. A, Lubbock.

## Adult Civil Defense Course

Those interested in taking the Civil Defense Adult Education course, "EDUCATION FOR SURVIVAL," are requested to report to the high biology laboratory at 7 p.m., Tuesday, April 24, it was reported by Plains School Superintendent, G. D. Kennedy, today.

Both men and women are invited to take this course, and attendance is the only requirement.

The course is twelve hours in length. It consists of some very informative films, slides, charts, demonstrations and lectures, it is reported.

Opinion of those having already taken the course is that every adult needs to take the course and have this information at his disposal.

A detailed breakdown of the course follows:

TEXAS EDUCATION AGENCY CIVIL DEFENSE ADULT EDUCATION "EDUCATION FOR SURVIVAL"

I. The Need for Civil Defense.

a. Introduction and purpose of course.

b. Conflict between ideologies

c. Historical development of weapons

d. Russian capabilities

e. United States vulnerability to attack

f. United States strength

g. Federal Civil Defense Act

h. Government emergency measures.

II. Effects of Nuclear Weapons

a. Introduction to nuclear weapons

b. Differences in nuclear and conventional weapons

c. Types of bursts

d. Destructive power

e. Areas of comparative damage

f. Radioactive fallout

g. Examples of extent of radioactive fallout

h. Nuclear radiation

i. Radioactive decay

j. Radiation sickness

k. Exposure criteria

III. Protection Against Effects of Nuclear Weapons

a. Introduction

b. Warning systems - near, other devices

c. Conelrad

d. Evacuation and shelter

e. Types of family fallout shelters

f. Shelters in apartment buildings

g. Improvised shelters

h. Radiological defense - Local, State individual programs

i. Radiological decontamination

j. Natural disasters

IV. Conventional, Chemical, and Biological Warfare

a. Introduction

b. Conventional weapons

c. Chemical weapons

d. Biological weapons

e. Protective measures

V. Plans for Civil Defense

a. Introduction

b. The National Plan

1. The State Plan

2. The Local Plan

3. Individual Family Plans

VI. Personal Survival Actions and Measures

a. Introduction

b. Community planning

c. Warning signals, local

d. Conelrad - its use

e. Family fallout shelter

f. Radiation measurement

g. Important survival requirements

h. Fire prevention and control

i. Home emergency action plan

j. Training courses

Space travel is what is going to separate the men from us cowards.



# 1962 Edition Of Plains Band Negro Minstrel

The 1962 Edition of the Cowboy Band's Negro Minstrel was very well attended by local citizens. Some 600 persons were on hand to view the local talent on display.

The Dominoes, Plains High's Stage Band, furnished the music and some of the foolishness for the night's performance.

End Men were Buddy Hanna, Paul Cobb, Jerry Stockton, Bob Gentry, Jack Hayes, and Rip Sewell.

Vocalists were Wilda Scott, Viva Hale, Karen Young, and Sara Hunt.

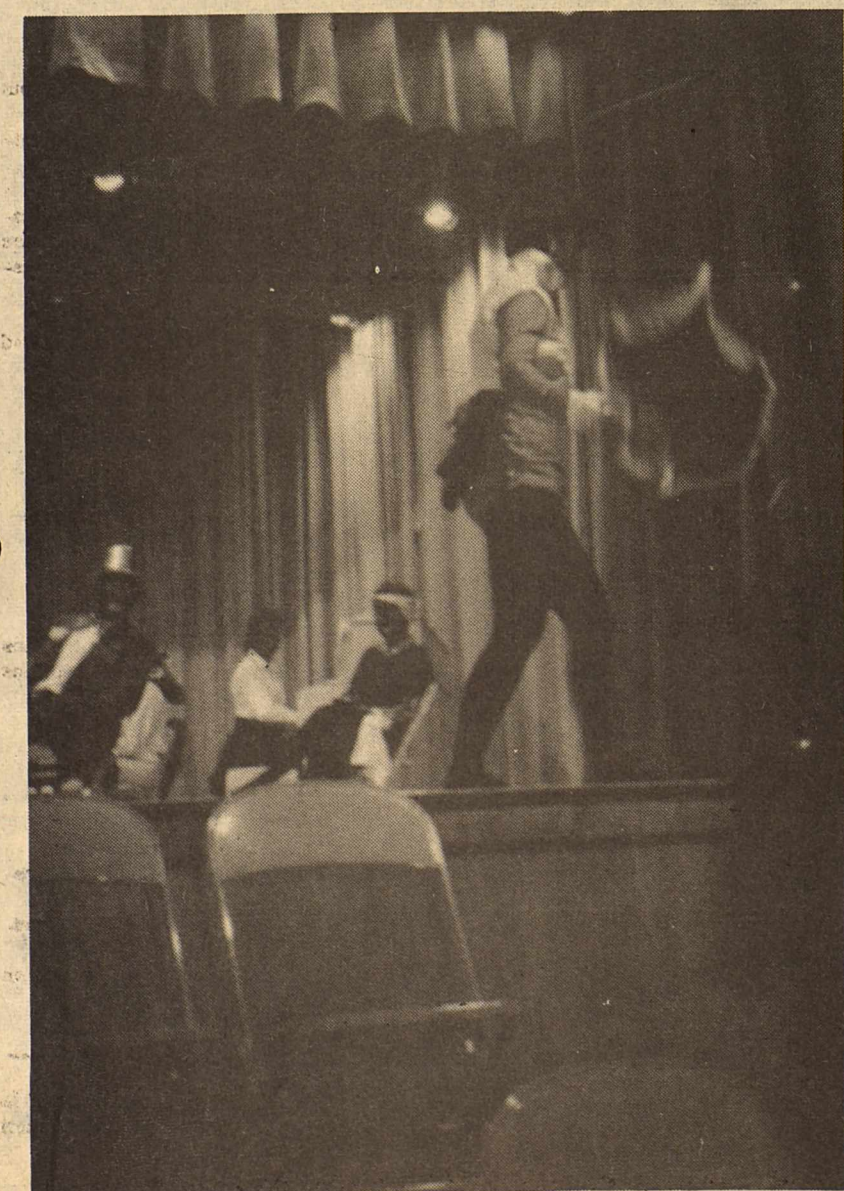
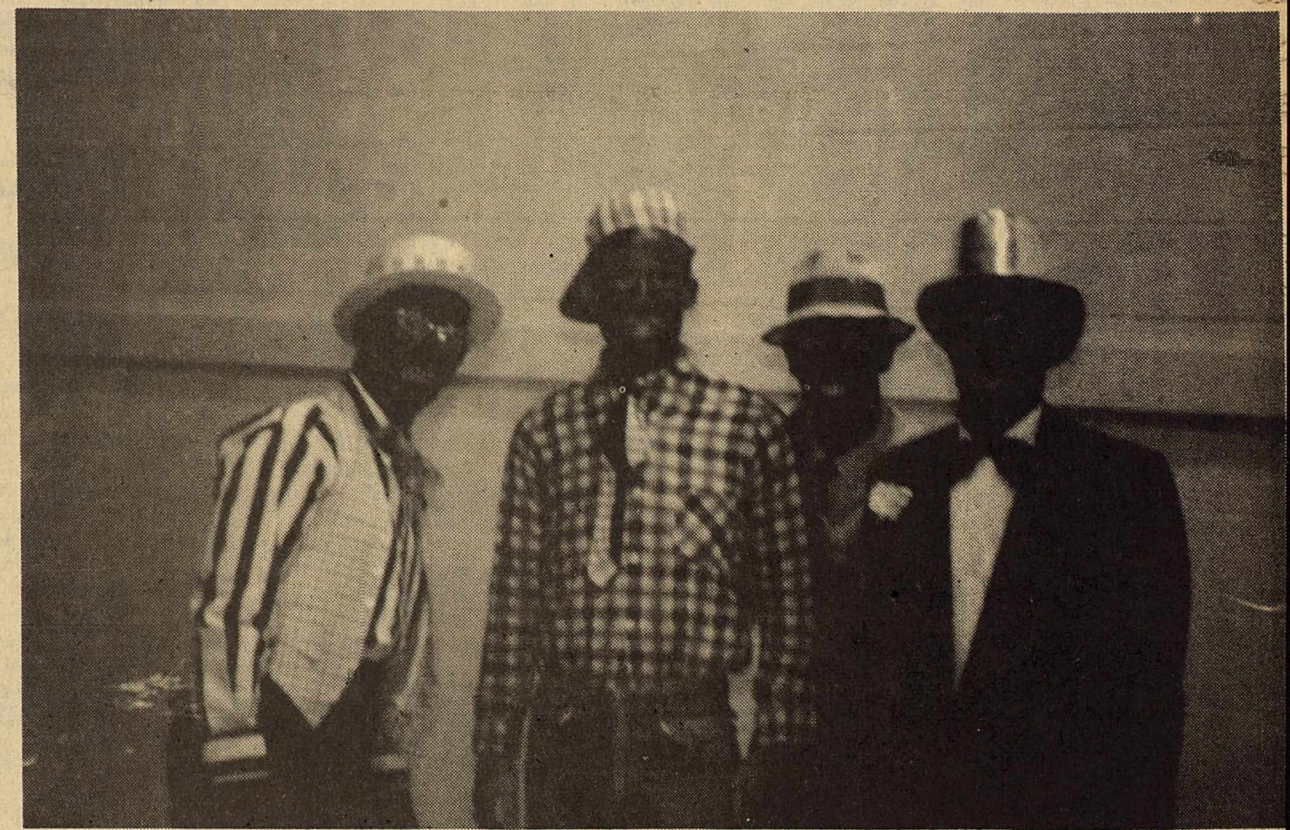
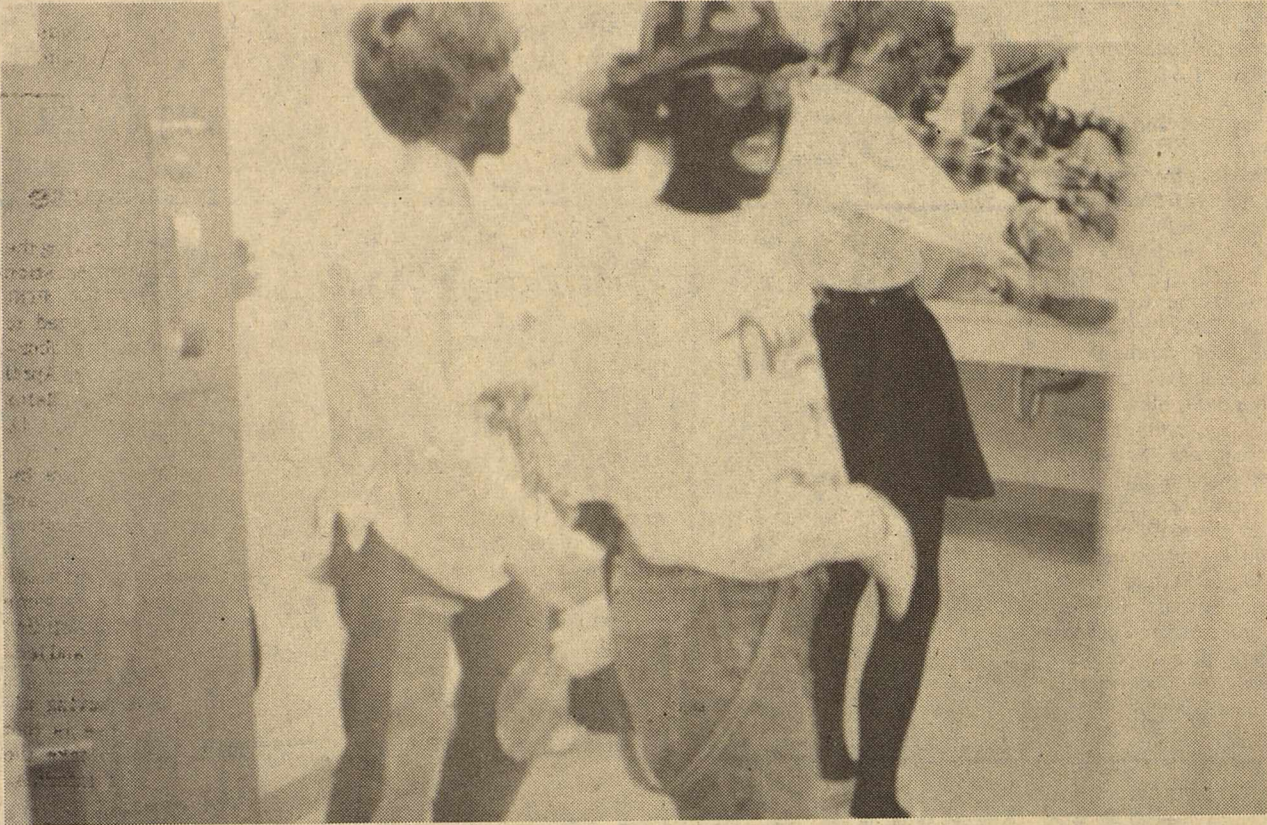
Other acts were taken part in by D'Lynn McGinty, Paula Tidwell, Dana Dyer, Clyde Lynn and Charles Lynn.

The show consisted of a group of musical and vocal numbers very frequently and humorously interrupted by the different End Men.

Also, a short play entitled, "Gimme Them Peanuts", directed by a Plains High student, Robert Snodgrass, was presented by the speech class. In the skit were Sandra

Williams, Kay Weatherford, Marsha Hunt and Roberta Snodgrass.

Gene Young, local band director reported that the band made about \$300 on the night's performance and expressed his thanks to the many area patrons who attended the presentation.





### Political Announcements

The names appearing below are those candidates for various political offices which have authorized The Record to officially make known their candidacy for those offices.

- U. S. Representative**  
George Mahon
- State Senator**  
Don Hancock  
H. C. (Doc) Blanchard
- State Representative**  
Olen R. Petty
- District Clerk**  
Blanche Dyer
- County Judge**  
Paul Cobb  
Stanley Duvall  
John Wise  
Garland Wheeler  
Leon Ward  
Walter Holland
- County Treasurer**  
Susan V. Hinkle
- County Clerk**  
J. W. O. Alldredge
- Commissioner Precinct No. 4**  
Mrs. Paul Loe  
T. J. Bearden
- Commissioner Precinct No. 2**  
Reeves Newman  
H. C. (Doc) Cotton
- Justice of Peace, Precinct No. 1**  
E. S. Bandy
- Constable-Justice Precinct No. 1**  
R. J. (Junior) Van Leiw

### Harold Smith Serving As Student Teacher

DENTON -- Harold Gene Smith of Plains is among 467 North Texas State University students serving as student teachers in Dallas-Fort Worth-Denton area schools this semester.

Included are 309 students preparing for secondary teaching positions and 158 for elementary. In the secondary group are 52 seniors who will receive an all-level certificate for both secondary and elementary teaching in music, art, physical education, speech, speech therapy or library service.

Each student teaches under one of five training plans for the semester. Some are teaching in area schools half a day for 18 weeks. Others will train during the first, second or third nine-week period of the semester. A fifth plan calls for slightly more than half a day's training for 12 weeks.

Smith, the son of Mr. and Mrs. James H. Smith, Plains, is teaching mathematics at Richland High School in Fort Worth.

HAVE ANY BAD WATER?

## Water Sampling Begins

Rod Duff, president of the Yoakum County Water Conservation Association, announced today that he had been contacted earlier in the week by Mr. Ed Reed, the Midland Hydrologist, retained for taking the survey of water pollution conditions in Yoakum County and learned that a crew would be in the county this week to take an estimated 100 samples of water and water conditions throughout the entire county.

Duff emphasized the fact that anyone in the county who has knowledge of a well that is contaminated or even has suspicions that they have a polluted well, should let it be known to the local conservation association, so that samples can definitely be taken from those wells. So, if you have such a well get in touch with Rod Duff, president of the association or G. W. Cleveland, secretary, or any of the other board members.

Reed also conveyed to Duff that topography and ground water charts for the county had been completed and that the proposed survey of pollution conditions was progressing as planned.

A great amount of urgency for getting the survey completed is in the minds of a good many county citizens in the face of a statement made by an official of the State Water Control Board, who said that Yoakum is one of three counties in the entire state of Texas, believed to have the worst potential pollution problem of the fresh water supplies of the county from surface pit disposal of brine water wastes. This, many point out, makes it imperative that the survey be completed and presented to the state board and Railroad Commission in an effort to stop surface disposal in unlined pits of these salt water wastes, which is taking place at what many consider to be an alarming rate.

### Four Candidates Fail To Sign Pledge

Only four of the 46 candidates with opposition for state-wide offices in the May 5 primary elections failed to sign the Code of Fair Campaign Practices that had been submitted to them by leaders of religious organizations representing Jewish, Roman Catholic, and Protestant-Orthodox bodies, it was announced today at the office of the Texas Council of Churches, one of the participating church groups.

Whether failure to sign the code was merely an oversight or an outright refusal was not learned. The initial request was made to all candidates by letter March 7 and a follow-up reminder mailed March 19 to those who had not responded.

The code, which has been used in the past several elections by the four-faith group, pledges the signatories to "condemn the use of personal vilification, character defamation, whispering campaigns, libel, slander, or scurrilous attacks on any candidate or his personal or family life." Also banned by the code is "any appeal to prejudice based on race, religion, creed, or national origin."

It was pointed out that the fair campaign code does not rule out hard campaigning, it expresses the right and duty of candidates to "present my record and policies with sincerity and frankness, and criticizing without fear or favor the record and policies of my opponent and his party which merit such criticism."

A spokesman for the code project of the religious groups expressed appreciation for the cooperation of such a large proportion of the candidates. He pointed out that many of the candidates warmly commended the code program and expressed hope that the office-seekers will abide by the letter and spirit of the code throughout the remainder of the campaign.



Eugene Francis Newman

### Wanted by FBI

Newman is the alleged machine gun-carrying leader of a gang that attempted the robbery of an armored car carrying \$498,500 in American and Canadian currency in Buffalo, New York, on August 3, 1955. He and his associates, wearing silk stocking masks, engaged in a running gun battle with the truck's guards and Buffalo Police, and a machine gun bullet, allegedly fired by Newman, seriously wounded a guard. Two bandits were quickly apprehended but Newman remains at large.

A complaint, filed before a U. S. Commissioner at Buffalo, New York, on August 5, 1955, charges Newman with fleeing the State of New York to avoid prosecution for robbery.

Heavily armed, with a violent temper, Newman has previously been convicted for theft of Government property, interstate transportation of a stolen motor vehicle, petty larceny, and burglary.

He is a white American, reportedly born on October 3, 1928, at Brooklyn, New York, who is 5' 8" tall, weighs 170 to 180 pounds, has blond hair, blue eyes, a medium build, and medium complexion.

He has scars near his right eye, on the back of his right hand and on the center of his left cheek. A birthmark appears on his left index finger. Tattoos include the name "Danny" and a heart on the outside of his right forearm, and the number "13" within a dotted circle on the back of his left hand. He has worked as a bricklayer, clerk, construction worker, counterman, and laborer.

Consider extremely dangerous. Please immediately notify the nearest FBI Office of any information concerning his whereabouts.

### Classing & Market Part of Summer Cotton School

College Station, April -- Plans for the 53rd annual summer cotton school at Texas A&M College have been released.

The school will be held from June 4 to July 13. Attendance for the full period is advisable, points out Professor J. M. Ward, Department of Agricultural Economics and Sociology and in charge of the school, but persons in the cotton business who are unable to remain for six weeks may enroll for two or four weeks of study.

Ward said the purpose of the school is to provide training for persons who expect to enter the cotton trade; for producers who would like to learn more about cotton marketing and for buyers who wish to review grade and staple standards or become more familiar with the elements of quality in cotton.

Such important phases of the cotton industry as grading, stapling and the determination of cotton properties and trade procedures will receive major attention, Ward said. Much of the time will be spent doing actual practice work and in discussions, but visiting specialists will lecture on various phases of production, marketing and processing of cotton, Ward added.

Detailed plans for the school may be obtained by writing Ward in care of the sponsoring department, College Station, Texas.

The Easter bunny was surely busy Wednesday afternoon hiding all those Easter eggs down in the park. However there were a lot of small children looking all over for them so maybe his time wasn't wasted as a good time was had by all!

### Hi-Plains Hi-Lights

Thirty-two varieties and hybrids of forage sorghum were tested under irrigation at the High Plains Research Foundation in 1961. There was no significant difference in the yield of the top four varieties. The yields of these four were Honey Sorgo, 27.12 tons dry weight and 39.35 tons green weight per acre; P. A. G. #3147, 26.24 tons dry and 39.68 green weight; Steckley F. S. 400R, 25.27 tons dry and 39.1 tons green weight; Sart, 23.96 tons dry and 33.99 tons green weight per acre. The dry weight yields were calculated at 12% moisture.

The four leading varieties in terms of pounds of crude protein per acre were Tracy with 5,813 pounds; P. A. G. #3147 with 5,772 pounds; Sumac M. D. 5,712 pounds; Lindsey 101F, 5,363 pounds per acre. The crude protein per cent analysis disclosed Sumac M. D. had 14.7%; Lindsey 77F, 13.7%; Tracy, 12.8%; Asgrow MXP 3367, 12.4% and Steckley FS 300R, 12.3%.

The percent mineral content analysis showed Sumac M. D. with 17.4%; H. P. R. F. #4, 16.5%; Tracy, 14% and Lindsey 77A, 12.3%.

Data showing the complete results in the 1961 forage sorghum tests is included in report No. 37 of the High Plains Research Foundation for 1961. The report of the tests conducted by Dr. Earl H. Collister and Paul Belcher at the Foundation included data on early vigor, bloom date, plant height, lodging per cent, moisture percentage at harvest, as well as the dry and green weight.

The chemical analysis were conducted by the state chemist, Texas A & M experiment station, College Station, Texas. The analyses included the percent total dry matter, percent crude protein, pounds per acre, percent crude fat, percent fiber and per cent carbohydrates.

### News From Sen. Preston Smith For Lt. Governor

State Senator Preston Smith, veteran Lubbock legislator who is seeking the Democratic nomination for Lieutenant Governor, noted this week "we hear reports all the time that our rural population is shifting to the urban areas, but Texas' rural residents still make up her backbone."

Smith, a 50 year-old businessman, campaigned for the Lieutenant Governor's office in 1950, placing third in a field of 12 candidates and leading the ticket in 68 counties.

He already has covered much of the state in the current campaign and said he "plans to shake every hand in sight." Smith also said in a speech in Houston last week he was "concerned about the possibility of the Big Labor Union bosses taking over in Texas. 'We don't want and don't need the Jimmy Hoffa and Walter Rether crowd down here,'" he said.

Smith served six years in the Texas House of Representatives beginning in 1944. In 1956 he was elected to the State Senate and was re-elected in 1960 without opposition.

Smith was raised on a farm and was graduated from Lamesa High School. He worked

his way through Texas Tech and settled in Lubbock in 1936 to begin his business as a theater owner.

He and his wife have two children, Mickey, 20 and Jan, 16. Smith announced earlier his platform would be to "work for a simpler general sales tax, to correct the auto insurance merit plan and to assure economical government without waste," among many other goals.

MIDLAND BERMUDA SPRIGS FOR SALE  
**CHILDRESS**  
MIDLAND BERMUDA GRASS FARM  
RT. 5  
BROWNFIELD, TEXAS  
PHONE 3090  
OLD LAMESA ROAD  
CONTRACT PLANTING — PLANTERS FOR RENT

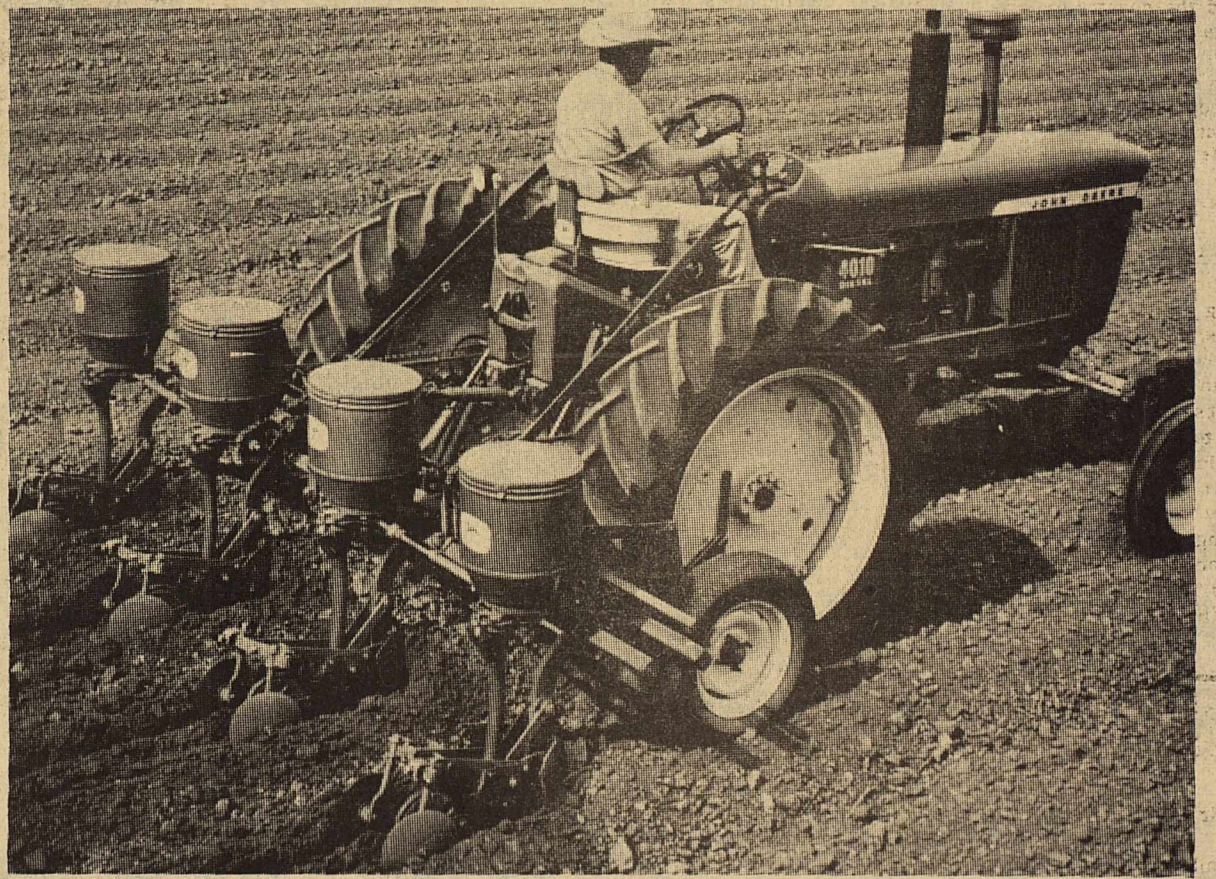
**RADIO STATION**  
**KKAL**  
Serving Yoakum County  
**1580**  
On Air  
8 - 12 A.M. 1 - 3 P.M.  
**MUSIC**  
**NEWS**  
**WEATHER**

**CUSTOM FARMING**

- DEEP BREAKING
- SHALLOW PLOWING
- LAND LEVELLING
- DOZER WORK

**PAUL COBB**  
GL 6-3733

## Get your crops early to bed... early to rise



### POWER AT A STEPPED-UP PACE

If you're farming additional acres this year, you'll need more power delivered at a stepped-up pace. You'll find it at the wheel of a New Generation Row-Crop Tractor: 45 h.p. "2010," 55 h.p. "3010," or 80 h.p. "4010" . . . gasoline, Diesel, or LP-Gas. See your John Deere dealer about a free, on-your-farm demonstration. Ask him for details on the John Deere Credit Plan.

Match your equipment to operate in the higher, more practical and economical

work gears of a New Generation John Deere Row-Crop Tractor. You'll take full advantage of every break in spring's fair-to-foul weather. You'll have lugging power aplenty to see you through the stiff requirements of sod, stubble, and gumbo tillage alike. You'll use John Deere's speed and accurate implement control system to get the best seedbeds with your tillage equipment. You'll put crops to bed on time in a seedbed that encourages faster, better germination.

## PLAINS FARM SUPPLY

**Farmer Proven New From P. A. G.**

**P-A-G 34 . . . A Sorghum-Sudangrass Hybrid** with rapid recovery after grazing or mechanical harvest — allowing continuous grazing or several cuttings of hay, silage, or green chop. Its red seed looks like grain sorghum. Plant it for top grazing potential.

**P-A-G 35 . . . Another Sorghum-Sudangrass Hybrid.** Similar to P-A-G 34 but with a sweet stalk and very juicy stemmed. This variety's red seed looks like Grain Sorghum. Plant it for high quality grazing.

**P-A-G 1 . . . A semi-sweet, medium maturing forage Hybrid** widely adapted to a variety of soil types. Non-grain producing unless blended with a pollinator — it produces exceptionally high tonnage in a shorter period of time than most standard varieties.

You too can **PLANT P.A.G. and PROFIT**

ORDER YOUR P.A.G. NOW FROM  
**Goodpasture Grain & Milling Co.**  
Plains, Texas

Come In And Look — SPECIAL PRICES Will Interest You.

# COGBURN - YOUNG

HARDWARE FURNITURE APPLIANCES  
More Good Buys  
Where Your \$\$\$ Have More \$\$\$ Ph. 8785

## SPRING SPECIALS LAWN AND GARDEN SUPPLIES

Hi Fi Latex Wall Paint As Low As 3.50 Gal. Paint- Up Now

**RUBBERIZED WALLHIDE WALL PAINT**

Wont chip...peel...or crack!



## TSA MO GA Club to Have "Public Issues Day Countdown" Program

Tsa Mo Ga Club members will meet Monday, April 23rd at 8 p.m. in that Club House for a group discussion on "Public Issues Day Countdown" program in fashion of New Town Hall Call to Action Meeting. Mrs. Harvey Stotts, program director will open the discussion with a quotation taken from Dr. Webster "The People's Government, made for the people, made by the people, and answerable to the

People." Mrs. Johnny Moore and Mrs. Ty Field will discuss the local and state issues. Mrs. Bill Loyd and Mrs. R. K. Field will discuss the National and International issues. Mrs. Jack Hayes will recite Ralph Beebe works, of "Fear Knocked At The Door, Faith Answered, No One Was There." Caprock Convention report will be given by Mrs. J. W. Moore Jr., delegate, assisted by

members attending the convention. Hostesses for the occasion will be Mrs. J. P. Robertson and Mrs. Bob Blundell.

### Schools for Cotton Gin Operators Announced

College Station, April-- Schools designed to give operators of cotton gins practical information which will aid in the ginning of highest quality cotton consistent with efficient machinery operation have been announced for Corpus Christi and Lubbock.

The Corpus Christi schools will be held on May 8 while August 21 is the date for the Lubbock sessions, said B. G. Reeves, extension cotton ginning and mechanization specialist. Sponsors for the one-day schools are the Texas Agricultural Extension Service, Texas Cotton Ginners' Association, Continental Gin Co., The Murray and John E. Mitchell Companies, Lummus Cotton Gin Co., Hardwicke-Etter Co. and Moss-Gordin Company.

Five schools will be held simultaneously on the announced dates and each of the cooperating companies will provide meeting rooms for their students. Reeves said participants would receive instructions on the operation, maintenance and repair of each piece of machinery used in a modern cotton gin, including stands, dryers, cleaners, bur machines, extractor-feeders, lint cleaners, and other auxiliary equipment. Experienced factory engineers will serve as instructors. Reeves said there would be no enrollment fee and added that either a letter or advance registration blank should be sent by the prospective student to the company in charge of the school he plans to attend. The registration should be made at least a week in advance of the school.

The specialist said that additional information is available from any of the sponsors and from local county agents who can also provide the registration blanks. Reeves said that out-of-state cotton ginners are welcome to attend the schools but should send in an advance registration.

## Screwworm Eradication Program Given Big Boost

The Southwest Animal Health Research Foundation, the Texas Animal Health Commission and the United States Department of Agriculture have signed a memorandum of understanding setting forth procedures which are expected to bring about eradication of the screwworm in the Southwest through cooperation of all segments of the livestock industry.

The memorandum was signed by C. G. Scuggs, SAHRF president, M. C. Puckett, TAHC chairman, and Dr. John Wilbur, veterinary in charge of USDA activities in Texas. Signing of the memorandum marked a milestone in a program which promises to save Southwestern stockmen millions of dollars a year. The screwworm program here is patterned after a similar program which was used to eliminate screwworms in the Southeast in the late 50's. The systematic release of sterilized

screwworm flies results in genetic suicide. Sterilized flies being raised at Kerrville are being released at this time, and construction of a much larger screwworm fly "factory" is underway at the abandoned Moore Air Force Base in the Rio Grande Valley. Funds for building this factory came from money contributed by sportsmen and livestock producers. The "factory" is expected to cost approximately \$600,000.

The SAHRF president said cooperation of the various groups participating in the screwworm eradication program was making history in agricultural circles. "The all-out efforts of thousands of people are involved in the outstanding progress which has been made, and their continued support promises to bring about the end of one of the Southwest livestock industry's most costly and troublesome pests," Scuggs said.

The SAHRF president said cooperation of the various groups participating in the screwworm eradication program was making history in agricultural circles. "The all-out efforts of thousands of people are involved in the outstanding progress which has been made, and their continued support promises to bring about the end of one of the Southwest livestock industry's most costly and troublesome pests," Scuggs said.

### Notice of Sale

LUBBOCK, Apr. 16 -- Texas Tech's Double T Association, composed of Red Raider lettermen, will man a ticket booth in the Pioneer Hotel in connection with the spring training football game here Saturday night.

Tickets, \$1 for adults, 50 cents for children, will be on sale from 8 until 5 p.m. Monday through Friday. The Association gets half of the proceeds of the advance ticket sale.

A girl talks more than she thinks, a woman thinks more than she talks.

### Petition--

allel, east and west, to the main patient wing of the present building, on the south side. With the new arrangements, she explained, medical patients would be separated from surgical as well as obstetrical patients. Kitchen and scullery facilities, at present crowded all into one room, would be entirely separated.

A few of the other proposed additional facilities would include a family room for close relatives and a prayer room. Mrs. McMahan further added that any county citizen wishing further information on the proposed additions should contact her or any member of the county Hospital Board.

Exact date for the special election is not as yet known, but it is not expected that the balloting will be concurrent with the voting in the Democratic Primary on May 5.



**Call us for  
AUTO GLASS**

We carry complete windshield and window replacement stocks for all popular make cars and trucks.

- Free Estimates
- Installed while you watch
- Insurance-Approved Service

**Jennings Glass Works** Brownfield, Texas  
1301 W. Main 1 Block East Of Blinker Light, Plains, Hwy.

## Texas Tech Spring Football

LUBBOCK, Apr. 16 -- If lettering lettermen may be used as a measuring stick, Texas Tech's Reds reign as favorites--by the narrowest of margins--over the Whites in the game winding up spring football training in Jones Stadium at 8 p.m. Saturday.

Twelve lettermen are in the Red lineup, 11 in the White. John Conley and Jim Wright are coaching the Reds, Merrill Green and Joe Blaylock the Whites. Head Coach J. T. King and Willie Zapalac will be on the pressbox telephones.

Red lettermen include ends David Parks of Abilene and Jerry Garrison of Levelland, tackles Ken Milliken of San Angelo and Nathan (Sonny) Armstrong of Sweetwater, guard Robert Foster of Sundown, center Jerry Elbert of Wellington, quarterbacks Johnny Lovelace of Farwell and Allen Shuler of San Antonio, fullback Coolidge Hunt of Lubbock, halves Bill Worley of Midland, C. W. Williams of McKinney, and Dean Byrum of Ysleta.

Among the Whites the lettermen are end Jim Hacker of Bowie, tackles Bill Shaha of Dumas and Dennis Watkins of McCamey, guards Kelly Mitchell of Hobart, Okla., and Bev Herndon of Sweetwater, center Dennis Grimes of Seagraves, quarterback Richard Mahan of Snyder, fullback H. L. Daniels of Marshall, halfbacks Roger Gill of San Antonio, David Rankin of Midland, and Charles McEntire of McKinney.

Rounding out the White squad are ends Jerry Don Balch of Lubbock, Jimmy Tollett of Brownfield, Charles Gladson of Snyder, Don Burch of Levelland, Carl Taylor of Anton, tackles Bill Malone of Phillips, Robert Reid of Dallas, R. L. Spivey of Olney, John McDaniels

of Borger, Tommy Hayes of Electra, Cril Payne of Denton, guards Buddy Putty of Highland Park, Glen Koch of Brownfield, Dan Hennig of Whitewright, Jackie Nichols of Lubbock, Jimmy Walker of Seminole, centers C. C. Willis of Bay City, Robert Lancaster of Bowie, Cary Miller of Vernon, quarterbacks Jim Black of Dallas, Larry Anderson of Stinnett, halves Wayne Scott of Marlow, Okla., Paul James of Midland, Ray Faught of Plains, fullbacks Kenneth Gill of McKinney and Butch Thompson of Lubbock.

Other Reds are ends Larry Doyle of Lamesa, Jerry Johnson of Eldorado, Ronnie Reeger of Merkel, Johnie Bentley of Fort Worth, Bill McLelland

of Ennis, tackles Bill Washerlesky of Bonham, Steve Tackett of Weatherford, Reg Scarborough of Snyder, Don Allen of Wichita Falls, guards Eugene Howard of Longview, Romie McWilliams of Littlefield, Joe Clark of Vernon, Richard Willis of Fort Sumner, N.M., Mike Quimby of Kermit, Rusty Owens of Fort Worth, Larry Carlisle of Levelland, centers Larry Peden of Olney, Jimmy Wells of Dumas, Joe Ayers of Friona, quarterbacks Jimmy Ellis of Lubbock, halves Joe Don Marrow of Plains, Sam Cornelius of Spearman, Jim Zanlos of Albuquerque, N.M., Don Anderson of Stinnett, and fullbacks Leo Lowery of Lovington, N.M., and Marcell Dorothy of Denver City.

## Proposed Legislation Opposed by Labor Group

Passage of the proposed national farm labor recruitment bill would tend to perpetuate rather than stabilize the migration of farm workers and it would give the Secretary of Labor powers that would make him "policeman, prosecutor, judge, jury and court of appeal."

That was the charge made today by Ed Dean, Lubbock, Secretary-Treasurer of the National Farm Labor Users Committee and Secretary of West Texas Agricultural Employers Group in voicing the opposition of his group to S. 1129 by Senator Harrison Williams of New Jersey.

The bill is one of a series by Senator Williams dealing with migrants introduced during the last session of Congress, the S. 1129 would authorize the Secretary of Labor to recruit people from all over the United States, transport them to centralized points, house, feed and provide medical care during this period and then attempt to place them in seasonal farm jobs.

Dean believes the William bill will tend to perpetuate migration of farm laborers because, as he says, "We have hundreds of examples to show that, once a bureaucracy becomes established, it is utterly impossible to curtail its activities. It would be only natural for the Department of Labor to stay in the business of moving vast numbers of people around the country to perpetuate its power and prestige." The National Farm Labor Users leader pointed out these other dangers in the proposed legislation:

1. It gives the Secretary of Labor unlimited and unprecedented power to write regulations which, in effect, would be more far-reaching than any laws passed by Congress affecting wages and working conditions for farm labor. And there would be no appeal, except to the Secretary himself.

2. It severely limits a farmer's right to determine a worker's qualifications.

3. It would require farmers to pay for the transportation, housing, food and medical care for workers and guarantee them wages and working conditions specified by the Secretary of Labor -- but it would not re-

quire workers to remain on the job even for a single day. The bill does provide that the Department of Labor will furnish replacements. But, as Dean points out, "A farmer's crop could ripen and rot on the ground before replacements arrive. The result would be not only a sinful waste of food, but also, in many cases, the loss of a farmer's entire yearly income."

4. It makes the Secretary of Labor the "sole judge" of what constitutes a labor dispute. Says Dean, "Under this bill, the Secretary could pull all federally-recruited workers out of a field without regard to the nature of justice of a dispute."

5. Nothing in the bill would prevent a person in say, Florida, from getting a free ride to Michigan and then quitting his job a day after arrival. "With thousands taking advantage of such a free tour service," Dean commented, "one can only imagine what immerse tax-devouring burdens this would place on the welfare and other services in the communities where these people would land."

6. With this almost unlimited government control and domination over the lives of virtually millions of people, they could be deported out of one area and moved to distant places by bureaucratic whim. It is only reasonable to expect that, in many instances their departure would leave some communities without adequate labor forces when they are needed. It would inevitably add to the cost of living and the cost of doing business in those depleted areas.

This could lead to the strange situation of an area both exporting and importing labor.

An area whose crops matured late in the year might have government recruiters descent upon it and deplete the labor force only to face the necessity later in the year of importing workers to harvest the local crops.

### Local Angle

Mr. and Mrs. Archie Whitaker traveled to Odessa Saturday evening to attend the birthday party of their granddaughter who was celebrating her 5th birthday.

Mrs. Raymond Moore and daughter of Fairview, New Mexico visited in the home of her sister and family Rev. & Mrs. Johnnie Moore for a few days last week. Mrs. Moore was in route to Ft. Polk, Louisiana where her husband is serving in the United States Army.

Mr. & Mrs. Chesley Bedford & Tom were in town Saturday visiting here from Tatum, New Mexico.

**BROWNFIELD FUNERAL HOME**  
Phone 2525  
Air Conditioned Chapels and Ambulances -- Oxygen Equipped  
Funeral Insurance  
ROY B. COLLIER, Owner  
100 West Tate St.  
Brownfield, Texas

**NOW OPEN**

**S And W**

**Machine Shop**

**Blacksmith & Welding**

Business Invited

Lovington Road GL6-2300

## IT TAKES TEAMWORK TO BUILD A GOOD COMMUNITY . . . . .



The City of Plains announces another step in the progress of our community. A new patrol car has been purchased and is now in operation. Mr. R. J. VanLiew has been hired as full time patrolman.

Patrolman VanLiew has been instructed by the council to give particular attention to the school crosswalks, parking around the Post Office, and Stop signs on city streets. Warning tickets will be issued for a few days after which all summons will be liable to fines.

We thank you for your cooperation in this matter, and know that it will make our community a safer better place in which to live.

# CITY OF PLAINS

Municipal Power And Light— GAS— WATER— SEWER





Mr. & Mrs. John Nance James

### Simms-James Vows Exchanged

Miss Jan Simms of Bronco and John Nance Gardner James of Levelland exchanged wedding vows in a doubling ceremony, Sunday afternoon April 15, at 4 p.m. in the First Methodist Church of Plains. Rev. O. F. DeWees read the ceremony.

Parents of the couple are Mr. and Mrs. Tom Sims of Bronco and Mr. and Mrs. Jeff James of Spur.

The bride given in marriage by her father, wore a street length dress of tulle and lace. The lace bodice featured a scooped neckline and long sleeves. Her short veil of silk illusion was attached to a crown of pearl and sequins. She carried a lace covered Bible topped with a blue carnation corsage.

Mrs. Earl Ellison of Levelland was her only attendant. She wore a street length dress of beige cotton. She carried a bouquet of blue carnations with white streamers.

Best man was Earl Ellison of Levelland. Ushers were Clark "Butch" Sims, brother of the bride and Mike Fields of Bronco.

Ring bearers were LaVonda Kay Billings and Ronda Trout of Bronco, nieces of the bride. Candlelighters were Reg Trout Nephew of the bride, and Kathy Anderson of Plains.

Mrs. J. A. M'Connell furnished the wedding music. She accompanied Mrs. Dorman Scott as she sang "Because" and "Oh Perfect Love."

A reception followed in the fellowship hall. The table was laid with a handmade Irish cloth

over blue. The center piece was made up of white candles on either side of a bouquet of blue carnations. Wedding cake and punch were served to guests by Mrs. Royce Trout and Mrs. Alton Bollings of Bronco, sisters of the bride. Guests were registered by Mrs. Travis Been.

Out of town guests -- Mrs. Elsie Rankin of Amarillo Aunt of the bride, Mr. & Mrs. Leo-

nard Winters of Canyon, Texas, Mrs. F. A. Sims of Ropesville, Mr. & Mrs. Otto Sims, Mr. & Mrs. Tony Sims, Mr. & Mrs. Ovinon Sims of Lubbock, Mrs. Wallace Saunders of Slaton, Mr. & Mrs. Jimmy Payne of Levelland, Mrs. Ann Winn also of Levelland.

Mrs. James is a 1958 graduate of Plains High School. Mr. James attended school in Spur. Mr. and Mrs. James plan to make their home in Levelland.

### Of Interest To THE WOMEN

#### Dixie McClellan Selected As Caprock Beauty

The staff of the CAPROCK, the South Plains College annual, has recently announced the selection of the ten Caprock Beauties for 1962. They are Miss Linda Wilks, Miss Donna Williams, Miss Betty Holt, Miss Claudine Campbell, Miss Linda Latham, Miss Susan Burks, Miss Joan Brown, Miss Sharladene Reeves, Miss Dixie McClellan, and Mrs. Joy Peacock Waggoner. Each of the beauties selected will be featured in a special section of the CAPROCK.

Miss Dixie McClellan, a freshman at South Plains College, is the daughter of Mr. and Mrs. W. A. McClellan of Plains, and is a 1961 graduate of Plains High School. While she was in high school, Dixie was a cheerleader, served as a class officer, and was a mem-

ber of F. H. A. At South Plains College this year, she is a member of the TEX-ANNS, the college drill team. Dixie plans to continue her studies at Texas Technological College.

#### Tech Summer Music Camp Announced

LUBBOCK -- Texas Tech's annual Summer Music Camp will provide two weeks of intensive musical instruction for students in elementary, junior and senior high schools.

Classes will be taught by members of Tech's music department. Junior and senior high school students will have an opportunity to enroll in the band, chorus or orchestra groups, while elementary students will receive instruction in strings.

The senior high division will be held June 4-15, followed by the junior high and elementary divisions running concurrently from June 18-29.

The summer camps will climax with a concert to be presented by each division and group on the last evening.

Fee for the junior and senior high divisions is \$20, while the fee for the elementary school is \$11. Room and board in the college dormitories is \$40.50.

Beginning at 9 a.m. each day, instruction will be given in band, chorus and orchestra. The band group includes training in marching, drum majoring, reed making, with instruction in woodwind, brass, percussion and theory.

If enrolled in the chorus group, students will attend classes in string and theory. All groups will have four full rehearsals each day.

Following classes and rehearsals, a planned program of supervised recreation will be conducted. This will include swimming, parties, bowling, miniature golf, concerts, movies, talent shows, and ice and roller skating.



Miss Dixie McClellan

#### WSCS Meets In Church

The Womens Society of Christian Service of the Methodist church met in regular session Thursday night, April 12, in the Fellowship hall at the church.

Mrs. Gracie Hale gave the Devotional "Christian Love." Kathryn Payne gave the study "Fellowship of Suffering."

The regular business meeting was held after the program with Nancy White president presiding. The next meeting will be May 4, at the First Christian Church for a combined Church Women Meeting.

The meeting adjourned with prayer. Refreshments were served to 13 members and 1 guest.

### Candlelight Communion Service Set by First Christian Church

First Christian Church of Plains is, again this year, having a special service of worship on Good Friday evening, Good Friday, this year, is April 20. The service is announced as being a Candlelight Communion Service, and is scheduled to begin at 7:30 and will last about 40 minutes.

Special Music for the worship will be supplied by the Young People's Choir of the church. This same group of young people has been asked by the First Christian Church of Seminole, to provide the music for their Candlelight service, being held tonight, Thursday.

Rev. Johnnie Moore, minister of the local church will have charge of the services, and has announced that the public is in-

cluded and urged to attend these special services. Rev. Moore pointed out that the highlight of the program will consist of a period of private and silent meditation and taking part in the communion service. He pointed

out further that any Christian desiring to partake of the communion emblems, is allowed to do so, in fact, is invited to do so in the service. Persons at-

tending need not be members of this local Christian Church, but may be members of any denomination.

Rev. Moore pointed out that this is the third year that this special service has been observed in the local congregation and that attendance has been very good in the past both from the local membership and members of other Plains and area churches.

#### Moore or Less--

alarmed enough to do something about it. Like return to a constitutional form of government, where the federal government is not "Big Government" and where the rights of states and individuals are not being eaten and taken away every day.

How many more restrictions, imposed by Washington, govern you in your business now, than did ten years ago?

And just look at a few of the things this administration has planned for you. Federal aid to education; a more strict and socialistic farm program; the beginnings of socialized

medicine in their fight to include old age medical benefits in the social security program.

How can we be so gullible. It's not too hard to see. Too many of us have our hands out to the government. We've gotten the idea into our minds that the government has an inexhaustible reserve of wealth from some place to pay for all the welfare, socialistic, programs that it is now sponsoring. And, I guess it does. How many dollars did you pay in income taxes this year? If we get a whole bunch of new programs, how much will you be expected to pay next year, or five years from now?

#### Garland Wheeler



For County Judge Of Yoakum County

Qualified - Dedicated - Dependable  
"Your Vote And Influence Appreciated"  
Pd. Pol. Ad.

## ELECT

### JOHN WISE

Yoakum County Judge

Qualified By Actual Experience

4 Years Experience As:

- \* Juvenile Judge
- \* City Judge
- \* City Council
- \* Mayor

Your Vote And Influence Are Honestly Appreciated  
"Vote Experience - Elect

### JOHN WISE "

(Pd. Pol. Adv.)

## COSDEN PRODUCTS

PROMPT DELIVERY



- BUTANE
- GASOLINE
- PROPANE

- OIL
- DIESEL FUEL
- KEROSENE

### Wholesale - Retail

US Royal Tires, Tubes, Batteries—AC Oil Filters, Spark Plugs

## PLAINS OIL CO.

Phone GL 6-3777

JAMES WARREN, MGR.

Plains, Texas

## WEEK-END SAVINGS

Pillsbury  
CAKE MIX

3 For 99¢ ICE CREAM CONES 12 For 15¢

HAWAIIAN PUNCH 46 Oz.

35¢ BOLOGNA 1 Lb. Pkg. 49¢

OLEO Food King

15¢ BACON 2 Lb. \$1.09

FRUIT COCKTAIL Libbys 303

20¢ HAMS Rath Honey 4 Lb. Glazed Canned \$4.19

JELLO

3 For 25¢ HAMS Wilson Canned 6 lb. \$5.19

GREEN BEANS Food King

2 For 25¢ PORK CHOPS Center Cuts Lb. 59¢

NAPKINS Soflin 80 Count

2 For 25¢ PORK CHOPS First Cut Lb. 45¢

PEACH PRESERVES Bama 12 Oz.

25¢ GREEN ONIONS 2 - 15¢

ICE CREAM Bell Gal.

69¢ RADISHES 2 - 15¢



## HAWKINS FOOD

We Give Double Thrift Stamps Double On Wednesday





# ATTEND CHURCH Every Sunday



The Church Is Your Guide-Post  
To Better Living.

The Churches Of Plains Welcome You

## Our Area Churches

### Assembly Of God

E. L. WITT, PASTOR  
Sunday School 9:45  
Worship 11:00  
Evening 7:30  
Wed. Evening 7:00  
Womens Missionary - Tues. 1:30 P. M.

### First Baptist Church

JAMES L. BOZEMAN, PASTOR  
Sunday School 9:45  
Worship 11:00  
Evening 7:15  
Baptist Spanish Services 2:00

### First Christian Church

JOHNNIE MOORE, PASTOR  
Sunday School 10:15  
Worship 11:15  
Evening 6:00  
C W F - 2 & 4th. Tues. 9:30 A. M.

### First Methodist Church

R. H. MELXNER, PASTOR  
Sunday School 10:00  
Worship 11:00  
Evening 7:00  
Choir Practice - Wed. Nite

### Hillside Church Of Christ

JOE CHISHOLM, MINISTER  
Bible Study 10:00  
Worship 10:55  
Evening 7:00  
Wed. Evening, 7:00  
Ladies Bible Class - Tues. 10:00 A. M.

### Plains Church Of Christ

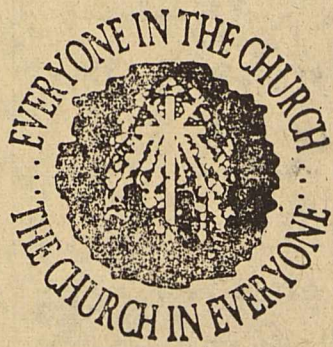
MORNING WORSHIP 10:30  
EVENING 7:00

### St. Williams Catholic

DENVER CITY  
MORNING MASS  
10:30

### Catholic Spanish Service

IN PLAINS  
5:00 SUNDAY



The Church is God's appointed agency in this world for spreading the knowledge of His love for man and of His demand for man to respond to that love by loving his neighbor. Without this grounding in the love of God, no government or society or way of life will long persevere and the freedoms which we hold so dear will inevitably perish. Therefore, even from a selfish point of view, one should support the Church for the sake of the welfare of himself and his family. Beyond that, however, every person should uphold and participate in the Church because it tells the truth about man's life, death and destiny; the truth which alone will set him free to live as a child of God.

## LOOKING HER BEST FOR

# Easter

Easter is a day of conquest . . . a day of new life . . . a day of beginnings . . . This is the day that our Saviour arose in a mighty triumph over the grave. This is a day of joy . . . a day to remember . . . a day to attend services in the church that our Lord loved so much, but even though we all want to dress up and look our best for this special day it is not the most important part, for God does not look on outward appearances, but looks on the heart.



This church feature is published each week with the aim of fostering that which is good in family and community spirit. This page is a public service of these sponsors . . . contributed to the religious life of Yoakum County

### Plains Floral- Mrs. J.P. Robertson

"Flowers For All Occasions - Flowers By Wire"  
Phone GL 6-3535 & 8344

### Slim Maynards Texaco Station

"We Specialize In Washing And Greasing"  
Phone GL 6-8166

### Plains Oil Co.

"Your Wholesale & Retail Cosden Dealer"  
Phone GL 6-3777

### Moore & Oden Inc.

"Something New Everyday"  
Phone GL 6-8011

### Buddy's Auto Parts

"Automotive - Farm - Industrial"  
Phone GL 6-3355

### Pic & Pay Grocery

"We Give S. & H. Green Stamps-Double  
On Tues." GL 6-4211

### Western Grill

"We Specialize In Mexican Food-Homade  
Pies-Good Food"  
24 Hr. Service.

### Faulkenberry Builders Supply

And Const. Co.  
"Builders Of Fine Homes"  
Phone GL 6-4570

### Curry-Edwards Pharmacy

"Your Store Of Friendly Service"  
Phone GL 6-2535

### Hawkins Food Market

"Your Friendly Cash Grocery"  
Phone GL 6-3434

### Cowboy Grill

"Pleasing You Is Our Pleasure"  
Phone GL 6-8888

### Flowerland

"Pleasing You Is My Pleasure"  
Phone GL 6-4133 - 3377

### Plains Auto Service

"Let Us Solve Your  
Repair Needs"

### Latt's Humble Service

"If You Can't Stop  
Wave As You Go By"

### The Plains Record

"Quality Job Printing"  
Phone GL 6-4116

### D.C. Newsom Gin

"Toward A Better Community"

### Plains Farm Supply

"A New Generation Of Power"

### Vivas Beauty Shop

"Beauty Unlimited"



### Race Is Unpublicized Congressman

AUSTIN -- (TCBC) -- The deceptively unpublicized race for congressman-at-large appears to be leveling out into a duel between moderate Judge Woodrow Bean of El Paso and Russell T. Van Keuren, Houston conservative.

Bean has been in front from the beginning. Van Keuren has only recently shown some strength. The latest poll by the Texas Committee for Better Congress--sampling opinions among county agents, small business men, and school teachers--indicates Manley Head, Austin conservative who started out as a front-runner with Bean,

has slipped in popularity. Head so far has failed to feature political issues that have caught public interest. He has stressed the need for more tourism, but this is not even a congressional issue. Van Keuren's following appears to be centered in the more conservative forces of the urban areas such as Houston and Dallas.

Judge Bean is a colorful campaigner and is the most experienced politician in the field. He has been a candidate for office 11 times, winning seven times and losing one previous bid for Congress by only 150

votes against the incumbent. This is the one statewide race that may be a sleeper. Up to now the congressman-at-large fight has been almost completely ignored by the Texas press and by the general public, but there is growing evidence now that this apathy is ending. It had been widely assumed at first that the position would probably last only one term, being done away with through redistricting by the next regular session of the legislature.

But Rep. C. W. Pearcy Jr. of Temple, head of the Texas House committee that handles this problem, only last week indicated doubts that the congressional re-districting would be done next session. "When you get into that business, you get into a lot of politics," he said.

Dallas is clamoring for the position, and with some numerical logic. Their only congressman, Bruce Alger, represents nearly a million people. The congressional average is less than half a million people. But the legislature last session showed its Democratic cohesion by refusing to give Dallas another chance to elect another Republican congressman. Future legislatures aren't likely to view that possibility with any more tolerance, so unless the legislature agrees to state-wide redistricting--and this would be a knockdown battle--the congressman-at-large will be safe.

Which gives more significance to this year's race. At this point in the campaign, Bean seems certain to make the run-off. Politically, he is a moderate. He is young (44) but a veteran campaigner, being elected for the first time at the age of 23 to the Texas House. He served two terms there, interrupted by two hitchhikes in the Marine Corps, for World War II and the Korean War.

Bean has no degree, although after he got out of the Masonic Orphans Home in Fort Worth, he studied at Texas A & M and Southern Methodist and at the University of Texas law school. He was licensed to prac-

tice law in 1943, and he has been judge of El Paso County since 1953. He was county Democratic chairman from 1954 to 1958 and was elected delegate to the national Democratic convention in 1956.

Bean has said his theme is "less stealing for bad programs and more spending on good programs. We can do it at half price." Bean was recently appointed to President Kennedy's committee to combat juvenile delinquency.

While Bean generally supports the Kennedy programs, Van Keuren does not. He has said the farmers get too much help from Washington. Van Keuren also has advocated fuller support than he feels is presently being given for the Landrum-Griffin act.

Head is a former state representative and former state senator who now is an Austin attorney. He was briefly a bit actor in Hollywood in the early 1930s and, reportedly, was offered a screen contract which he turned down. He runs a cautious campaign, emphasizing the need for tourism and more labor-management harmony. He is an avowed strict conservative, as is another of the candidates, Joe Pool of Sour Lake. Pool also used to be in the legislature. Pool has stressed the need to continue the oil depletion allowance.

Warren G. Moore, a moderate like Bean, is not campaigning extensively. He has the endorsement of the Brotherhood of Railroad Engineers.

Texas ranks fourth among the 50 states with 1,175 credit unions.

### Snake Bite Fatal To Hicks Infant

John Frank Hicks, twenty-months old son of Mr. and Mrs. Allen Hicks, was fatally bitten by a rattlesnake near their home southwest of Plains last Friday.

The small child was playing near the house when it was bitten twice on the knee and once on the arm by a rattler.

He was rushed to the Yoakum County Hospital in Denver City after being bitten, about 1 p. m., but died of the bites about 5 p. m. that same day, April 13.

Funeral services were held in Denton, Texas, under the direction of Huffman-Barret Funeral Home in Plains.

John Frank is survived by his parents, one brother, Allen Jr., and his grandparents, Mr. and Mrs. A. E. Hicks of Keller, Texas, and Mr. and Mrs. Loyd Willingham of Denton, Texas.

On slippery roads it always takes careful driving and adjusted brakes.

**McGinty Abstract Co.**  
B. F. (Bert) Bartlett, Lessee  
**Complete Microfilm Records Of**  
Yoakum County Lands And Lots  
Telephone GL 6-3311

### Walker Article To Appear In Saturday Evening Post

The plan to advertise Texas as a tourist attraction and a place to locate industry has prompted native son Stanley Walker to ask: "What Has Texas Got to Brag About?"

That question is the title of an article by Walker in the current (April 21) issue of The Saturday Evening Post, in which the author notes that the proposal to spend money is a switch from dependence upon endless oral dissemination of free brags.

"Texas would have a plausible case if it contented itself with a platform proclaiming that it has done fairly well with the material at hand, including the human beings," Walker writes.

"The state highway system is not at all bad. Much ordinary courtesy--a neglected human quality in many states--may be found. The state has much to reward the leisurely traveler..."

Walker relates that the campaign to appropriate funds for

promoting tourism brought some unsettling things to light, including the fact that the state park system is run down, that most of the old missions of San Antonio are difficult to locate and that the San Jacinto Monument is in poor shape. It is his opinion that "if Texans would only view themselves with a little more realism, and pipe down a bit, they would have a state which would attract many persons who do not insist upon superlatives."

And Walker goes along with

A group of foreign manufacturers, who were being shown through an American plant, saw a machine that took a piece of sheet steel and in one operation stamped, punched, and shaped it into a finished product. After they had watched it for a time, an apparently bitter argument broke among them, with much arm-waving and finger-shaking. The guide asked the interpreter accompanying the party what all the shouting was about. "Some of them," replied the interpreter nonchalantly, "insist it can't be done!"

the remark of one booster, who said: "I think it might be a good idea to fix up the joint a little before we invite people in for dinner."

## Vote For



THOMAS J.

## BEARDEN

For Commissioner  
Precinct No. 4

Subject to Democratic Primary  
(Pd. Political Ad.)

### Report of Condition of

## PLAINS STATE BANK

of Plains, Yoakum County, Texas,

at the close of business on Mar. 26, 1962

State Bank No. 1859

Federal Reserve District No. 11

### ASSETS

Cash, balances with other banks, cash items in process of collection	\$ 386,507.00
United States Government obligations, direct and guaranteed	710,081.22
Obligations of States and political subdivisions	152,026.59
Loans and discounts (including \$ 5,055.47 overdrafts)	1,341,131.86
Bank premises owned \$64,000.00 furniture and fixtures \$22,290.50	86,290.50
Other assets	2,689.27
<b>TOTAL ASSETS</b>	<b>2,628,726.44</b>

### LIABILITIES

Demand deposits of individuals, partnerships, and corporations	1,381,514.11
Time and savings deposits of individuals, partnerships, and corporations	449,131.34
Deposits of United States Government (including postal savings)	30,162.6
Deposits of States and Political subdivisions	518,802.74
Certified and officers' checks, etc.	24,915.67
<b>TOTAL DEPOSITS</b>	<b>2,404,526.47</b>
Total Demand Deposits	1,900,395.13
Total Time and Savings Deposits	504,131.34
Other Liabilities	
<b>TOTAL LIABILITIES</b>	<b>2,404,526.47</b>

### CAPITAL ACCOUNTS

Capital: Common stock, total par value \$75,000.00	75,000.00
Surplus certified \$100,000.00	100,000.00
Undivided profits	49,198.97
<b>TOTAL CAPITAL ACCOUNTS</b>	<b>224,198.97</b>
<b>TOTAL LIABILITIES AND CAPITAL ACCOUNTS</b>	<b>2,628,726.44</b>

### MEMORANDA

Assets pledged or assigned to secure liabilities and other purposes including notes and bills rediscounted and securities sold with agreement to purchase) 732,000.00  
Loans as shown above are after deduction of reserves of 25,260.00

I, J. D. Brown, Vice President & Cashier, of the above-named bank do solemnly swear that this report of condition is true and correct to the best of my knowledge and belief.

Correct--Attest:  
Roy Fitzgerald  
B. E. Loyd  
A. B. Carpenter, Directors.

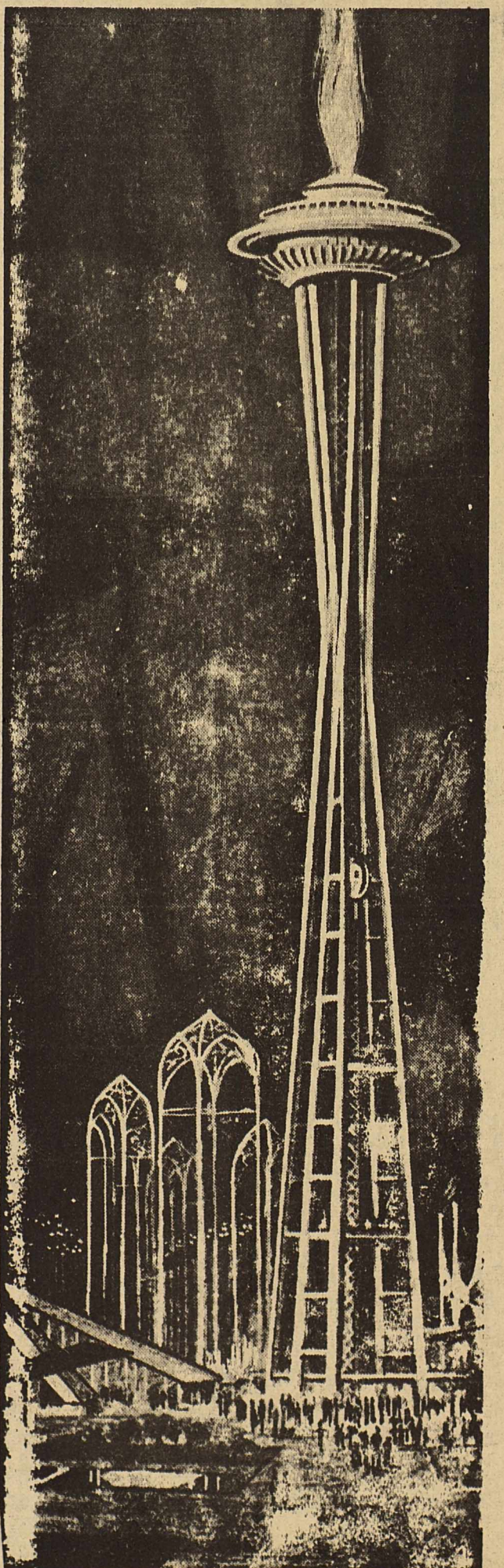
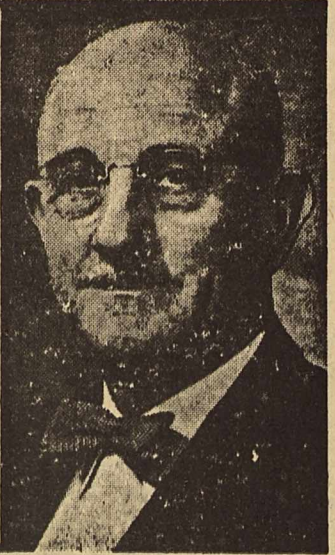
STATE OF TEXAS, COUNTY OF YOAKUM ss:  
Sworn to and subscribed before me this 5th, Day Of April, 1962, and I hereby certify that I am not an officer or director of this bank.

(SEAL)  
My commission expires June 1, 1963

MEMBER F.D.I.C.

### RE-ELECT Judge Meade F. GRIFFIN to Supreme Court PLACE NO. 1

Endorsed by the lawyers of Texas in their Bar Poll by a vote of 8,155 to 643. The lawyers in Judge Griffin's home county of Hale voted unanimously for him. Lawyers in his opponent's home county of Potter voted 75 to 17 in favor of Judge Griffin. Ask your attorney who is best qualified to serve on the Supreme Court.  
Pol. Adv. paid for by friends of Judge Griffin



Natural Gas tops a...

## TOWERING SYMBOL OF ENERGY

The towering "Space Needle" at the 1962 Seattle World's Fair symbolizes a new era of progress for man in space.

The 60-story needle, topped by a 40-foot torch of natural gas, also symbolizes an era of energy: energy which increasingly in recent years has given impetus to the economy of the Pacific Northwest, California, and other states of the West, served by El Paso Natural Gas Company.

Millions of visitors to the Seattle fair will see, during the next six months, what has been described as "the most extensive scientific display ever assembled."

More than that, they will visit--many of them for the first time--one of the nation's vital economic frontiers: a growing, vibrant, northwestern region, attracting new business and new industries, a land of the future.

The record total of more than 1.34 trillion cubic feet of natural gas delivered to the markets by El Paso's 18,000 miles of pipelines in 1961 is the equivalent of more than 10 times the electric power energy delivered by all the federally financed electric power generators (including the Bonneville Power Administration and Hoover Dam) in the 11 western states served by El Paso.

Our 1961 Annual Report, mailed to more than 10,000 stockholders throughout the nation, reports on El Paso Natural Gas Company's progress in providing energy from natural gas to the 11 states of the West. For more details, write for a copy of the annual report to: El Paso Natural Gas Company, El Paso, Texas.

And for a look at Century 21, in the land of the future, visit the Seattle World's Fair (April 21--October 21, 1962).



## EL PASO NATURAL GAS COMPANY

El Paso Natural Gas Company provides natural gas to industrial customers and distribution companies in Arizona, California, Colorado, Idaho, Nevada, New Mexico, Oregon, Texas, Utah, Washington, and Wyoming.



# OUR CONGRATULATIONS

## TO THE PLAINS VOLLEYBALL GIRLS

For Winning The District And Regional Titles . . . . .



# OUR BEST WISHES

As You Travel To Abilene To Vie For State . . . . .

**WE'RE PULLING FOR YOU AND WE KNOW YOU'LL  
DO YOUR VERY BEST . . . .  
YOUR FRIENDS & ROOTERS**

(This Page Sponsored By A Group Of Well-Wishers In The Plains Area)



**Classified Ads**

FOR SALE: Blonde TV with matching stand and sliding doors, metal ironing board, 2 white metal storage cabinets, reclining chair and matching hassock, G.E. electric roaster. Call Ruby Heald at 3377 before 5 and 8035 after 5 p. m.

Dr. J. U. Borum, Jr. Optometrist of Brownfield, Texas has moved his office to his new building 412 West Tate, east of Willgus Pharmacy. Pho. 3172.

OFFICE SPACE WANTED - in Austin. Vote for Don Hancock, Democrat Lawyer and Judge for State Senator.

GERT'S a gay girl -- ready for a whirl after cleaning, carpets with Blue Lustre, Shampooer for Rent. Cogburn Young.

**HUMBLE TIPS**



"His wife leaves her here while she goes shopping."  
OUR SERVICE COVERS MANY THINGS TOO.  
Give Us A Trial Soon  
"If you can't stop wave as you go by"  
**W. G. Lattimore**

PLUMBING: Plumbing repair, free estimates, work guaranteed. The Fixit Shop. GL 6-2955. 30-tfc

SAVE at Woody's Hardware. Located outside high rent district Plenty of Parking. 29-tfc

FOR SALE: Three bedroom and den, brick home in nice part of town. Contact Roy Stockstill at GL 6-3883. 4-tfc

G.I.'s; 8 1/2 sections, known as south half Bedford Ranch. Above average raw land with mixed mesquite, cat-claw and shinnery, in water belt. \$90.00 per acre. J.A. Pebsworth Jr. Box 368-a Tahoka, Texas Phone 998-4091. 14-3tp

FOR SALE: Three bedroom house. Call after 5 p.m. GL6-8575.

FOR SALE: Paint mare with nearly new saddle, \$250.00, Call GL6-3585.

"Take on payments Singer zig zag equipped cabinet model sewing machine \$7.42 per month for 7 months or contract balance of \$50.40, write Credit Manager, 1114 19th Street, Lubbock, Texas.

WANTED: Your vote for WESLEY ROBERTS, the proven consistent conservative Democrat. For State Senator for the 28th District, vote for WESLEY ROBERTS.

FOR SALE: Midland Bermuda grass sprigs. Sprigger available, 4 miles south of Higingbotham Gin. Call O. B. Whiteside, Plaza 8-4782, Seminole.

PLUMBING: plumbing supplies, water heaters, commodes, repair parts. The Fixit Shop. GL 6-2955 33-tfc

FOR SALE: Three bedroom and den brick home with 1725 square feet floor space. Call GL 6-2911 6-tfc

CARD OF THANKS  
I want to take this means and opportunity to express my heartiest thanks to the many thoughtful people of this community and county.

Your many kindnesses, your letters and cards of well-wishing meant so much to me during my recent illness. It is wonderful to know that we have friends like you. Again I say, "Thank You." Each and everyone of you.

J. W. O. Alldredge

FOR SALE: Clean used G. E. refrigerator, 7 ft. Woody's Hardware. 51-tfc

ATTENTION FARMERS: Butane and Propane now only 5 1/2¢. Call Bronco Gas Company. GL 6-2044.

LOST: Siamese cat, almost full grown, child's pet. If found call GL 6-4232.

HAY FOR SALE: Baled green. Located 3 mi. north and 1 mi. east of Plains. See or call John Inman, Muleshoe, Texas, Phone 3-9850 Muleshoe.

The recently developed non-yellowing Seal Gloss for vinyl floors ends frequent waxing. Cogburn Young.

NOTICE OF SALE:  
The City of Plains has for sale two (2) four (4) inch turbine pumps, approximately 140" depth equipped with 10 horse power electric motors. The City will accept bids until 8:00 p. m. May 4th, at the City Hall.  
These pumps may be inspected at City Well No. 1, and the motors may be inspected at the City Power plant warehouse.  
/s/ L. R. Hanna, Mayor  
/s/ Bob Loe., Secretary

**STRENGTH FOR THESE DAYS**  
from The Bible  
Peace be unto you.  
—(John 20:21).  
Through resurrected ideas and ideals, through resurrected faith, we accept His divine commission and we joyously let the Father's good will be done in and through us.

**Don Hancock Announces Platform**

Briefly and alphabetically, according to major subject, I, as candidate for the State Senate, pledge to support the following:

1. ADULT EDUCATIONAL OPPORTUNITIES;
2. CONSTITUTIONAL REVISION; should be submitted for vote of the people.
3. ECONOMY; very important;
4. EDUCATION; increased and improved;
5. FARMING; the life-blood of this district;
6. FREEDOM; for each individual maximized, with responsibility;
7. GOVERNMENT; the less the best, but whatever necessary to serve the demands of the people;
8. HONESTY; indispensable in any public official;
9. INSURANCE; Eliminate the unjust parts of the "merit rating" plan and require liability insurance before car can be licensed;
10. JUVENILE DELINQUENCY; crash program with emphasis on detecting and preventing delinquency by setting up regional diagnostic centers and establishing boys' ranches through existing school districts;
11. LAWS; should be in plain language, fair and modern;
12. LOAN SHARK CONTROLS; enacted immediately;
13. LOBBY CONTROL; Legislation enacted immediately;
14. OIL; new look at policies of Railroad Commission in regard to proration and allowances;
15. PENSIONS; to offset paying sales tax, increase from 1 1/2% sales tax across the board;
16. POLL TAX; to be decided by the people, voting without paying same;
17. RESPONSIBILITY; placed on local government and individuals;
18. ROADS; farm-to-market, program continued and improved;
19. SPECIAL INTEREST; none, except the people of this district; and independent candidate;
20. SPEED LIMITS; changed to suit each road or highway;
21. TAX; revision of sales tax to 1 1/2%, with offsetting increase in old-age pensions, and others;
22. WASTE; found and cut;
23. WATER; program for conservation;
24. WOMEN; EQUAL LEGAL RIGHTS.

I am a graduate from Lubbock High School and Texas Tech, where I was selected to Who's Who in American Colleges and Universities. I was a member of Kemas Social Fraternity (now Phi Gamma Delta), Alpha Chi, and honor society selected from students with grades in the top 10% of their class, and the Saddle Tramps. I was a student assistant in the Government Department and was a cheerleader. I received a Bachelor's Degree in Government from Tech.

I attended the Southern Methodist School of Law on a regional scholarship and received a law degree from that school. While there, I was elected to the Student Bar Association.

I am a member of the Texas, New Mexico and American Bar Association, the Denver City and Plains Lions Clubs, the Chambers of Commerce and Jaycees in both towns.

Serving as City Attorney of both Plains and Denver City before my election as County Judge, I have since been associated with Claude C. Freeman, Jr., in the law firm of Hancock and Freeman.

As secretary-treasurer of Central Communications, Inc., I have been active in the community Antenna television field for several South Plains towns, including Denver City and Seminole. I am married to the former Miss Shannon Rutherford of Levelland and we have three children, Kim, Scott and Steve.  
As a product of Lubbock Schools, Texas Tech (government major) and SMU Law School, living and working as County Judge and attorney in a small town, where oil, farming, and ranching are vital to the people, I submit that I am qualified in all respects to fairly and diligently represent you as State Senator from the South Plains.

**SOIL Conservation NEWS**

C. Murrell Thompson Wallace Randolph says he has finally got his under-ground irrigation pipe line completed and working.

New interest in Conservation this week was shown by additional landowners applying for assistance in Conservation work. Dick Hamm who is moving to Plains says he wants to plant some grass and install some under-ground pipe on his place section 777 S. W. of Plains. Leo Holmes of Brownfield has a 1/4 section N. E. of Plains. Holmes wants to plant some Bermuda grass, about 30 acres and install some under-ground pipe to re-organize his irrigation system.

Work is due to get under way in planting Bermuda grass this week on several farms. C. A. Duin, Rollin McCord and several others are making arrangements to have this work done.

Several land owners and operators have plans to spray Shin-Oak and are making arrangements with aerial applicators to do this type work. Cost per acre is averaging about \$2.50 with the Great Plains Conservation Program sharing half of the cost. Johnnie Fitzgerald, Ty Fields and several others have had very good results with this Conservation practice, if you are interested contact one of them or your S. C. S. office for further details.

Work continues in writing of conservation plans. A new plan has been completed on the John B. King place S. E. of Plains. The plan on the A. N. Norman place west of Denver City was completed this week and the plan sent to the area office for typing. Maps have been ordered for several other places, Dick Hamm, Truit Jones, Bill Gray, all for new plans and several sets of maps to revise old plans that are out of date.

Woman to husband: "Well, the Smith's had a baby girl last night. Mrs. Smith is..."  
Small son, interrupting: "Boy, will Mr. Smith be mad! He had a 'Boy Wanted' sign in his store window all week."

**Outsiders Tournament Is Next Week**

Final plans are taking shape for the outsiders volleyball tournament to be held in Plains beginning on Tuesday, May 1.

The Plains Lions Club is sponsoring the tourney in behalf of their Little League and Boy Scout Programs. All proceeds from the gate will be divided between the two programs with the exception of the money needed to buy trophies for the tournament place winners.

Plains, at present, plans to enter four teams, two women and two men, in the tournament and several other south plains towns and communities will have entries, although the full list and schedule was not known.

Games will be played at the old gym at Plains Schools and the general public is urged,

by Lions Club members, to attend these sessions.

Play is expected to be fast and furious as a goodly number of excellent teams have already entered, so that plenty of fast paced play will be available for the fans attending.

When Jesus had spoken these words, he went forth with his disciples over the brook Kidron, where was a garden, into which He entered, Himself and His disciples. (John:18:1 ASV.)  
Prayer: Our heavenly Father, we thank Thee that Thou didst come to earth in Thy Son, the Lord Jesus Christ. Glory be to Thee for the love Thou didst have for us while we were yet in our sins, and for the love Thou has for those who love Thee. In Christ's name. Amen.

**Huffman-Barrett Funeral Home**

AMBULANCE SERVICE FUNERAL INSURANCE

Phone GL 6-2233

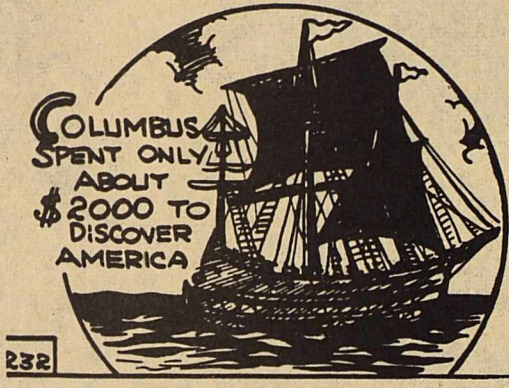
We Honor All Burial Insurance

**IT'S AMAZING!**

**THE BELLS ATOP THE METROPOLITAN TOWER, NEW YORK, HAVE A HIGHER MOUNTING THAN ANY IN THE WORLD... 650 FT. ABOVE THE SIDEWALK! SEA VOYAGERS 30 MILES AWAY HAVE HEARD THEM!**



**MOURNERS OF ANCIENT EGYPT GATHERED THEIR TEARS IN TEAR BOTTLES, PLACING THEM BESIDES THE ASHES OF DEPARTED RELATIVES!**



**COLUMBUS SPENT ONLY ABOUT \$2000 TO DISCOVER AMERICA**

**ROSTAND... FRENCH DRAMATIST, DID MUCH OF HIS WRITING IN HIS BATH... A DEVICE INTENDED TO SECURE HIMSELF FROM INTERRUPTIONS!**

See Us For Quality Job Printing

**The Plains Record**

**EASTER SPECIALS**

<b>HAM</b>	HALF OR WHOLE	Pound	<b>49¢</b>
<b>MELLORINE</b>	BORDEN'S	1/2 Gal.	<b>39¢</b>
<b>FRYERS</b>	FRESH	Pound	<b>35¢</b>
<b>OLEO</b>	SURFRESH	Lb.	<b>18¢</b>
<b>APRICOTS</b>	FOOD KING	2 1/2 Can	<b>25¢</b>
<b>PEACHES</b>	HD 303	5 For	<b>\$1.00</b>
<b>ORANGES</b>	VALENCIA	Pound	<b>10¢</b>
<b>RADISHES</b>	2 Bags		<b>15¢</b>
<b>AVOCADOS</b>		3 For	<b>25¢</b>
<b>LEMONADE</b>	KEITH'S	6 oz.	<b>4 For 49¢</b>
<b>OKRA</b>	KEITH'S	3 For	<b>49¢</b>
<b>POT PIES</b>	BANQUET	5 For	<b>99¢</b>

**PLAINS FROZEN FOOD**

Dick McGinty

GL6-8722

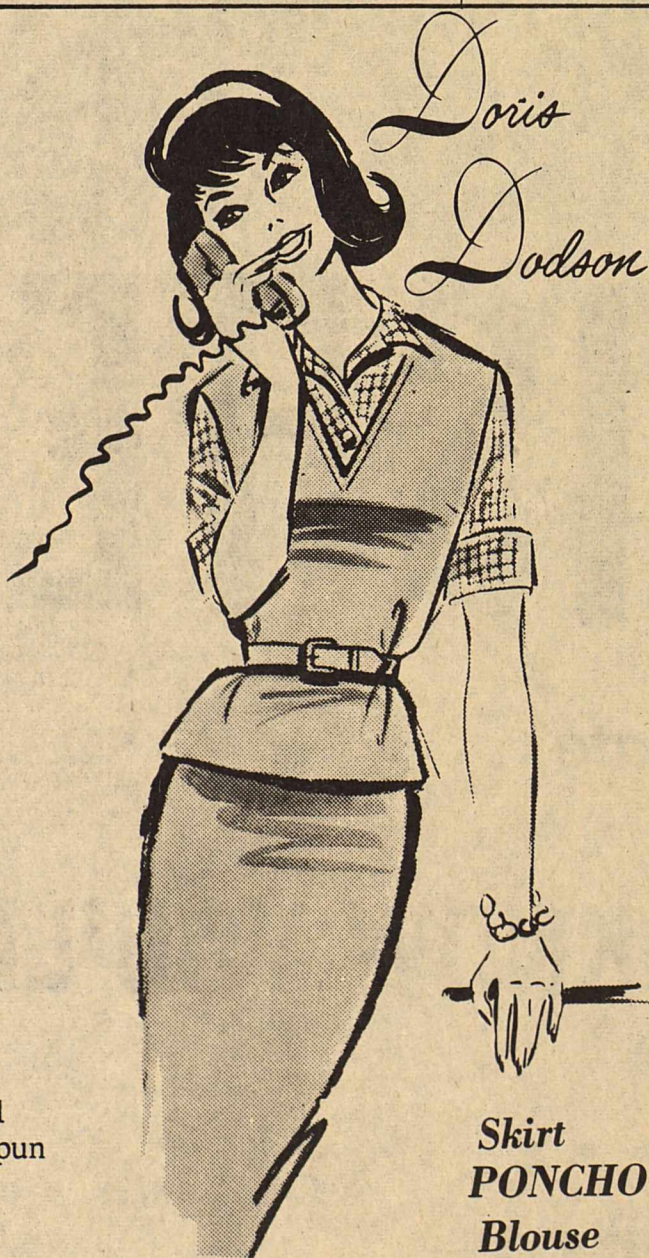
"Science is organized knowledge..."  
Herbert Spencer



The study of pharmacy is over 4000 years old, and the demands made upon the scientific knowledge of pharmacists have steadily increased in our modern age. We serve you with these highly technical skills, plus precision, speed, and the unseen ingredient, courtesy. Thank you for your patronage. You can always depend on us.

**HARMACEUTICAL SERVICES**

**CURRY EDWARDS**



Natural Homespun

Skirt 7.98  
PONCHO 6.95  
Blouse 5.95

**MOORE & ODEN INC.**