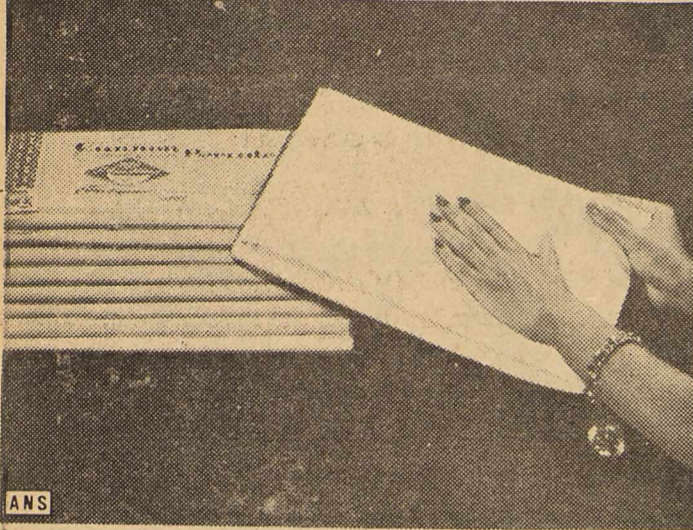


How to Buy Sheets at White Sales



IN SHOPPING for percale sheets at this year's White Sales, make this interesting test: run your fingers over sheet or pillow case (ask salespeople for an opened package). If it feels unusually smooth and soft, the chances are it is combspun percale woven with Pima blend.

According to Cannon Homemaking Service, Pima blend in the yarn of these combspun percales makes the sheet softer, finer and longer wearing. The long staple of Pima cotton blended with regular upland cotton, overlaps or coils farther, creating a yarn of unusual strength.

This yarn is so fine that a twin size combspun percale contains over twenty-five miles of smooth silky thread. Yet Pima blend sheets cost no more than regular upland cotton ones.



Serious-minded John F. Kennedy becomes president Friday

ABUNDANT LIFE



by ORAL ROBERTS

HOW TO BEAR THE LOAD

I heard an unusual and beautiful story a few days ago about two children. I think I shall never forget it.

It was a dark, dreary, cold night, so the story goes. The night patrolman in a large city pulled his overcoat collar up over his ears to protect them from the biting wind that was hurling snow down the bleak alleys and frozen streets. As he

trudged down the barren, windswept avenue, covering his beat, he saw a small, shivering girl inching her way along the sidewalk. He hurried to catch up with her and found that she was carrying a little boy almost as large as she was.

"Hello, Little Miss," said the policeman. "Isn't that boy too heavy for you to carry? Why don't you make him walk?"

"Oh, Sir," answered the little girl through cold-numbered lips. "He's too tired and cold to walk; and besides, Sir, he's really not too heavy. He's my baby brother."

This story touched my heart. I knew that what the little girl meant was, "I don't notice how heavy he is, Sir, because I love him and want to help him. I really don't mind carrying my little brother, because when I carry him, the load doesn't seem heavy at all." The little girl in the story reminded me of a Person who has changed my life, and more important, has changed the world just because He loves it.

This Man was born at a time when the world was being swept by the icy blasts of indifference and covered by the snows of religious tradition. He was one Man against the evil and sin of an entire world that was enveloped in a spiritual winter. But He began ministering to people in need, with deep compassion and love. This Man spent most of His life doing things for people whom He didn't have to help.

He is the One who died for the sins of the world—for all mankind. The cruel, jeering mob that stood nearby as He was nailed to a rough, wooden cross and hoisted into the air became strangely silent as He

REMEMBER US FOR

ALL KINDS OF



Yes, to make a good impression see us for business, direct-mail, social and personal printing. We do the job quickly, accurately, and our rates are reasonable. Call.

GL 6-4116



THE PLAINS RECORD

Salt Halts Urinary Calculi

Among nutritional diseases of livestock, it is stated that urinary calculi is exceeded only by bloat and poisonous plants as a cause of death. Feeding extra salt in rations has proved helpful.

The calculi, or stones, are deposits of single stones or aggregates of large and small stones in the kidneys and bladder. When they are so large as to block the flow of urine the accumulation may lead to the condition of "water belly," more frequently seen in males than in females, among both cattle and sheep.



Dr. Bohstedt

Canadian and State of Washington workers have observed that feed-lot calculi are mostly of the calcium-and magnesium-phosphate variety. These result from feeding good quality legume hay rich in calcium. It is alkaline and produces an alkaline urine.

The calculi found in range cattle and sheep is composed mostly of silica; a simple form of this is common sand. Range grasses are high in silica and produce an acid urine. The Canadian experimenters speculate that the silica can come out of urine solution and form calculi.

It seemed that an answer to the calculi problem would be to feed something to the animals on feed lot rations to make their urine acid, and something to range animals that would make their urine alkaline.

This theory, when tried, has

began to die. This man didn't glare at them, cursing and screaming. Instead, His eyes held a strange look of love. As He hung there, His attitude and manner seemed to say, "I don't mind the agony, pain and heavy burden I bear now because this suffering is for all mankind. I don't mind the hardship, for it will bring abundant life to all the people of the earth."

That Man, of course, was Jesus Christ, who lives eternally today. He offers to share every heartache, solve every problem and meet every need that you and I ever encounter. He offers abundant life.

had some measure of success, but it needs further study.

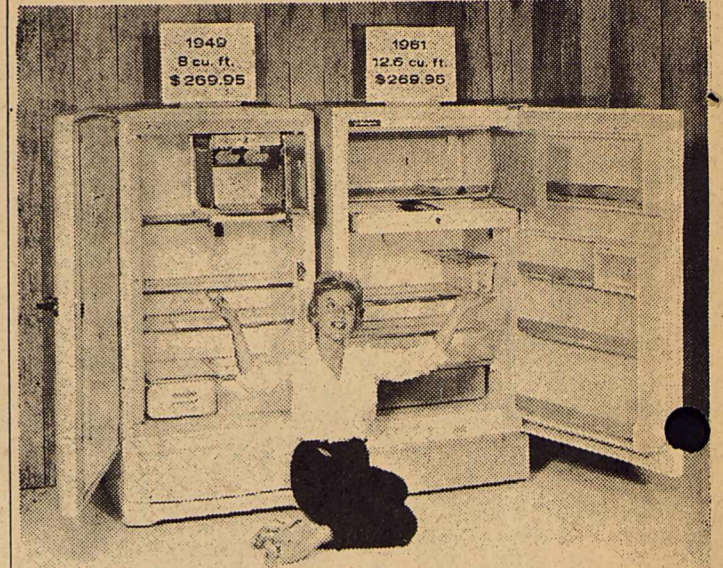
Acidity or alkalinity of urine and its high concentration largely determine whether calculi are formed and grow to a size that will give trouble. To help prevent a high concentration of urine, the research workers have suggested constant access to clean drinking water of moderate temperature to encourage liberal consumption of water for dilution of the urine.

To further encourage adequate water intake State of Washington workers, and many others, tested high salt rations. At Washington they found a 10 percent salt level in the grain part of the ration favorable. Later work indicated even a 5 percent level of salt effective in reducing the number of afflicted animals.

Where these practices are adapted to feed-lot conditions, the self-fed salt-olmeal mixtures on range pastures can be depended upon to stimulate a generous water intake, at least during the period of the year when such mixtures are used.

Walter Coffman, student at Hardin-Simmons, spent the weekend with his parents, the Rev. and Mrs. C. J. Coffman.

More For The Money



If refrigerators cost as much per cubic foot today as the 1949 model, the suggested list price on a unit like the 1961 RCA Whirlpool, right, would be \$422 instead of the \$269.95 actually recommended. In addition to offering nearly five more cubic feet of food storage space at the same price, the 1961 refrigerator provides full-width, 87 lb. freezer section, chiller tray and porcelain enamel crisper; door shelves, egg bin, magnetically sealed door closing, and thin-wall insulation. By contrast, the typical refrigerator of 1949 offered, in very nearly the same outside dimensions, only eight feet of storage space, practically no frozen food storage, a small crisper, and no door shelves. Moral of this story: whereas most commodities cost more today than they did 11 years ago, refrigerators and other appliances cost less and offer many more conveniences.

COSDEN PRODUCTS

Prompt Delivery



- * BUTANE
- * GASOLINE
- * PROPANE

- * OIL
- * DIESEL FUEL
- * KEROSENE

Wholesale - Retail

US Royal Tires, Tubes, Batteries - AC Oil Filters, Spark Plugs

PLAINS OIL CO.

PHONE GL6-3777

JAMES WARREN, MGR.

PLAINS, TEXAS

FARMING FOR A PROFIT?

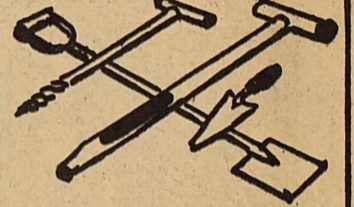
Soil Testing Is Important Tool!

Farming is a business. And like any successful business many factors of management are involved. In farming a very important one of this is soil management. Good soil management is simply using each acre of land within its capabilities and treating the land in accordance with its needs to keep it permanently productive so as to yield the greatest continuous profit.

How To Take A Soil Sample



1. Divide farm for sampling purposes into areas of similar soil types.



2. Use a spade, trowel, soil tube or other suitable instrument to take sample.



3. Take a thin, vertical slice or core of soil to plow depth from at least 12 different places within the field.



4. Break up cores or slices and mix well in bucket. Take a sample from bucket and place in a soil sample bag.



5. Fill out information sheet. Give past cropping and fertilization practices and crops to be grown on fields sampled.



6. Take samples to County Agent's office. Samples will be analyzed and recommendations returned to you.

Why Should You Have a Soil Test?

A soil test will not answer all fertility problems. It does give information about the soil that will help in planning and maintaining a good soil management program. The results of a soil test will aid in determining whether there is a deficiency of one or more plant nutrients, and give the information needed to help you plan and carry out a balanced fertility program. Together, all this information will help to make sound fertilizer recommendations and to point out problems where they exist.

To get correct soil samples, follow the recommendations of the illustration shown here. See your County Agent for additional information about soil testing. Take your soil samples to your County Agent and he will send them off for you.

A PUBLIC SERVICE ADVERTISEMENT BY

Goodpasture Liquid Fertilizer

DIVISION

Goodpasture Grain & Milling Co., Inc. Plains, Texas

for the finest in
Photography
° GROUPS ° WEDDINGS
° COMMERCIAL
NOJOB TOO LARGE OR SMALL
Frogge Studio

PAY YOUR
POLL TAX
QUALIFY YOURSELF TO VOTE
Deadline Jan. 31

PAY YOUR
State & County Taxes
Before January 31—AVOID PENALTY

PAYABLE AT PLAINS OR DENVER CITY
E. W. Craig, Tax Assessor-Collector

Eunice Here Saturday

ARRIVING DAILY

"I" APPEAL



At an all time high in this button-back 100% cotton check dress by Jo Junior. Tiny, tiny sleeves match a tiny, tiny waist look. In gold or blue with a flash of Spring flowers all around the skirt. Sizes: 3-15.

SEE OUR SELECTION
THE ELSORITA SHOP

Another New Mexico team will furnish the opposition as the Plains Cowboys again play a Saturday night basketball game at home.

Opposition comes from Eunice, always a power in the neighboring state. Last year, the Cowboys divided a pair of contests with the fast-stepping Cardinals.

On Tuesday, the Cowboys again will be at home, this time playing hosts to the Tahoka Bulldogs of district 3-AA.

COWBOYS

boys dumped a highly regarded Dora team by a 57-37 score.

Coach Sewell has expressed satisfaction over the way his team is progressing. Highly encouraging is the extra scoring punch which is being provided.

Through the first few games, about half of the scoring was coming through the efforts of the talented Meixner. But, of late, Mike Culwell, Dick Cooke and Ronnie Hendricks have been scoring in the double figures.

Classified Ads

FOR SALE--- Airplane, Cessna 172, flown only 642 hours. No accidents, factory maintained, equipped with high frequency radio transmitter, receiver and navigation instruments. Low frequency receiver, automatic pilot, air ambulance stretcher kit, basic instruments, plus turn and bank indicator, sensitive altimeter and clock. Sale price \$6,500. Appraised at \$8,200 three months ago by Cessna factory engineer. Must sell because hangar space not available in Yoakum County. May be seen east of Dr. Lynn's house in Plains, Texas. Dr. Clyde Lynn. (4tfc)

ATTENTION--- Will the person or persons who backed into my automobile the night of Jan. 18 at the Church of Christ please contact me as I need my insurance papers signed. Roy Stockstill. (1tc)

HELP WANTED --- Typist for part time highly detailed work on electric machine. Call Friday or Saturday, GL 6-4116.

Mr. and Mrs. R. J. Van Liew transacted business in Lubbock Monday.

Mr. and Mrs. Emery Longbrake, Harry and Terry, were Sunday visitors in the home of Mr. and Mrs. Roger Curry of Lubbock.

Merchants to Help Project

Several Plains merchants have agreed to contribute supplies for the street marking project of the city and Chamber of Commerce.

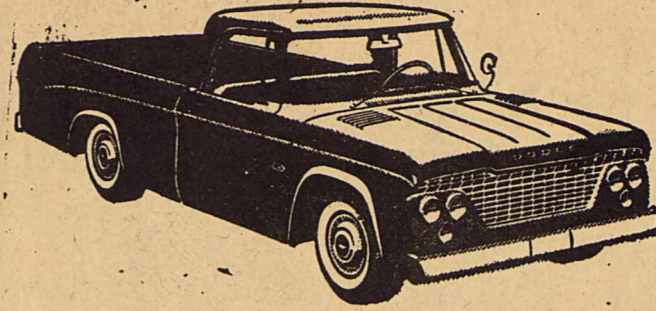
Cogburn-Young will furnish the stencils to make the numbers and letters. J. E. Cooke will supply the lumber to build the forms. Plains Blacksmith and Welding has agreed to provide the metal, to be used for caps. E. O. Winkles will contribute the concrete and pour the forms and Billie Joe Campbell will build the forms. Plans call for every street in Plains to be marked with a concrete marker.

Still needed is some reinforcing steel in about 7-foot lengths. Anyone having some he would like to donate to the project should call the Chamber of Commerce.

CHAMBER

tion. These, often with the help of other organizations, were accomplished.

The Plains Chamber of Commerce has many, many duties and functions. It is as strong as the people whose memberships comprise it.



Dodge **DART**

The Finest Pickup for 1961

See it now at

719 WEST BROADWAY — Brownfield.

CRAIG MOTOR CO.

DODGE ° CHRYSLER ° IMPERIAL ° DODGE TRUCKS ° LANCER ° DODGE DART

Junior Gridders Post 6-2 Record

Somewhat overshadowed by the brilliant record of the high school varsity during this past football season was an outstanding mark posted by the Plains junior high grid team.

Coach Sam Mosley's hustling Cowhands posted a sparkling 6-2 record for the year in a season which saw them close out with three consecutive shutouts.

During the year, Plains juniors amassed a total of 172 points, while holding their eight opponents to a meager 50. Only O'Donnell was able to score more than once on the team.

Both losses were administered by O'Donnell, one coming in the opening game of the season and the other midway through the campaign.

Plains opened with a 0-18 loss to O'Donnell, but then came back with three impressive victories, 20-0 over Seagraves, 28-6 over Sundown and 37-6 over Tatum.

O'Donnell again measured the Cowhands in the season's fifth game, this time, 0-20.

Plains finished in a blaze of glory with smashing victories over Seagraves, Sundown and Tatum by respective scores of 22-0, 26-0 and 39-0.

Scoring leaders for the team were Larry Coffman and Dennis Crutcher, each of whom had 58 points. Coffman got his total on nine touchdowns and two two-point conversions while Crutcher had eight touchdowns

and five two-point bonuses. Jack Lowe was next in line with four touchdowns and eight extra points by kicking for a total of 32 points.

Freddy Carnley scored two touchdowns and two bonus points for 14 points. Joe Cooke had the team's other touchdown. Jimmy Smith totaled two points with a successful conversion.

Lowe threw two touchdown passes and connected on two more passes for extra points. Bobby Taylor had one TD pass.

Team members were: Jack Lowe, Bobby Taylor, Larry Coffman, Freddy Carnley, J. E. Todd, Carroll Curry, Charles Tucker, Dennis Crutcher, Coy Lowrey, Joe Cooke, Ralph Meixner, Sidney Pippin.

David Lusk, Bobby Stroud, Billy Beggs, Joe Wagley, C. L. Faubus, Butch Gayle, Sherm Henard, Richard Spencer, Jimmy Smith, Harold Swann, Billy Stewart and Rip Walser.

Travis Boyd Accepts Position at Acuff

Mr. and Mrs. Travis Boyd and family are leaving this weekend for Acuff where he will become minister of the Acuff Church of Christ.

Boyd has been minister of the Hillside Church of Christ in Plains for the past two and a half years.

Visiting speaker Sunday will be Max Love of Dumas.

Yoakum County Airport

Announces

Get-Acquainted Party

Sunday

Beginning at Noon

(Weather Permitting)

FREE RIDES

(Children must have permission of parents)

FREE COFFEE

FREE DONUTS

come and bring the family

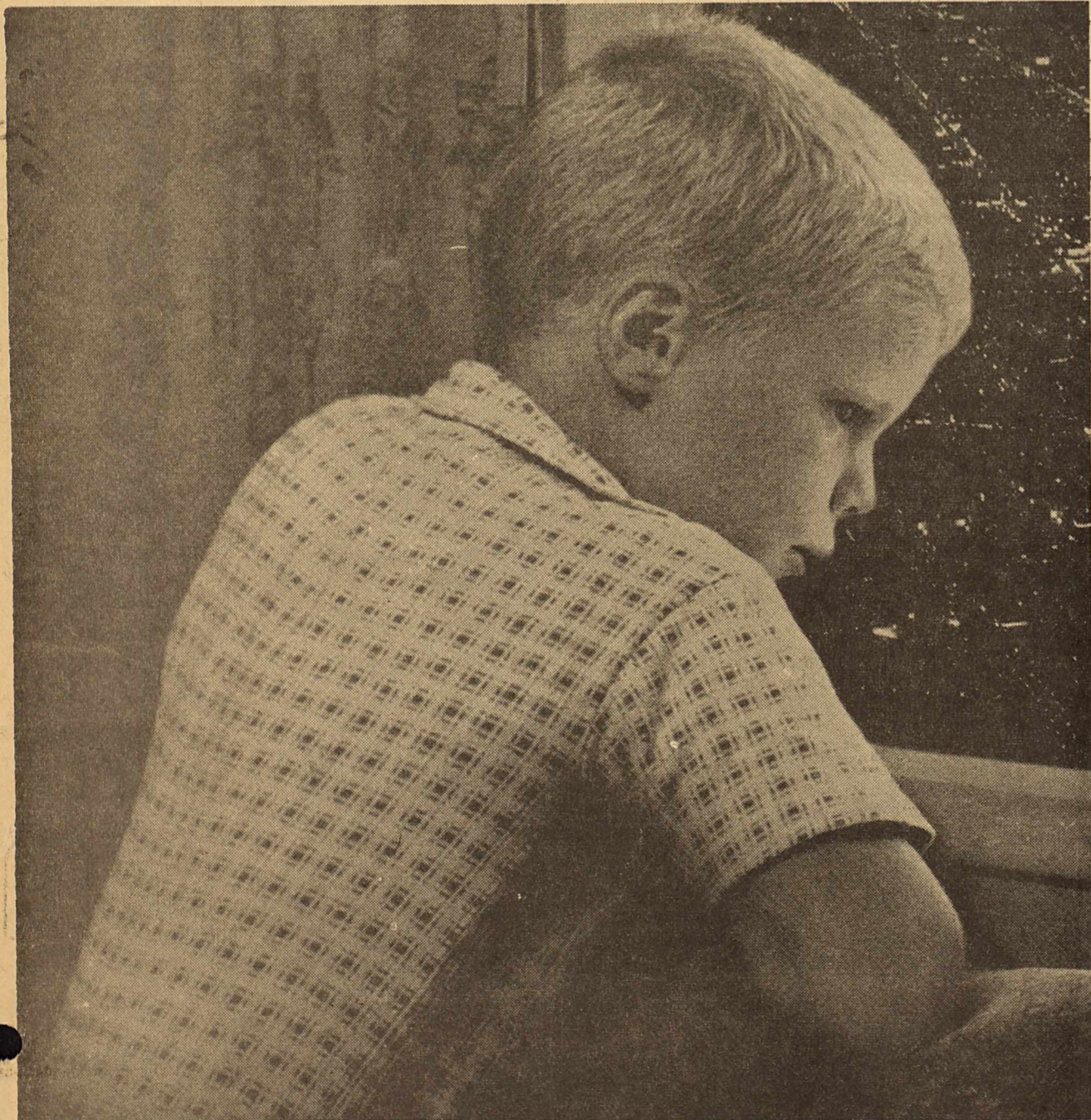
B & D Flying Service

Buddy Uselton
GL 6-3585

Deryl Hobbs
GL 6-8125

Flying Service - Charter Service

Why a new newspaper for Plains?



A boy looks down from the sky at the rights of a free nation.

He sees a land of plenty. America's abundance of good things was developed by people free to work and plan and build—alone or with their fellows. This principle

of independence is the strength of our country. It inspires people to make the most effective use of their personal abilities.

THE PLAINS RECORD

HIT THE SPOT Specials

COFFEE Shurfine, Lb. **63**

Round Steak lb. **83¢**

Crackers, Shurfine lb. 19¢

Jolly Giant Big Carton of 12

Pies 39¢

BACON Slab 2 lbs 95¢

Winesap APPLES LB. 19¢

TOMATOES LB. 19¢

CARROTS 2 LBS. 19¢

FROZEN FOODS

Keith's Frozen 10oz. pkg.
CUT CORN 6 for 89¢

Keith's 6oz.
LEMONADE 6 for 59¢

Keith's 10oz.
OKRA 6 for 89¢

PLAINS FROZEN FOODS

McGINTY BROS

GL 6-8722

HOW IS YOUR CITY'S BUSINESS

vote for a growing, progressive city

vote for a new generator

AT THE END OF THE LAST FISCAL YEAR, JUNE 30, 1960, THE COMBINED UTILITIES, ELECTRIC, GAS AND SEWER, SHOWED A NET EARNING OF \$42,510.00. THIS IS 1.72 TIMES THE AMOUNT REQUIRED TO MEET INTEREST AND PRINCIPAL PAYMENTS AFTER \$6,000 HAD BEEN PAID INTO A RESERVE ACCOUNT.

THERE WAS A SURPLUS OF \$11,856.00 NET AVAILABLE INCOME AFTER PAYMENT OF PRINCIPAL, INTEREST AND RESERVES. THIS REFLECTS 2.02 TIMES THE AMOUNT REQUIRED (\$5,857.00) TO MEET PAYMENTS ON THE \$70,000.00 JUNIOR LIEN BONDS ISSUED LAST SUMMER TO PAY FOR A 500 KW GENERATOR.

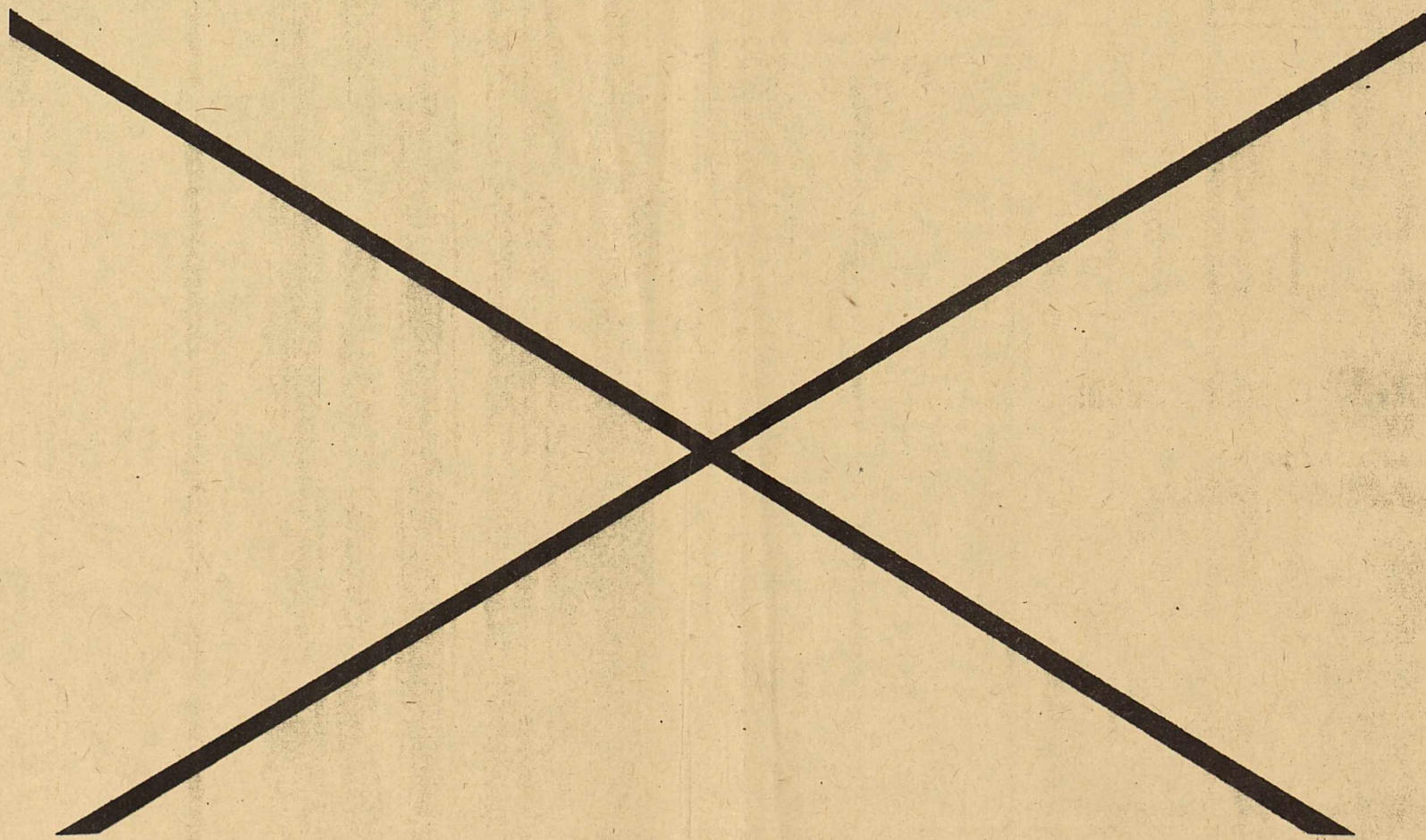
THE NET AVAILABLE INCOME FOR THE FIRST SIX MONTHS OF THE CURRENT FISCAL YEAR IS SUBSTANTIALLY ABOVE LAST YEAR'S FIGURES, AND WILL PROBABLY EXCEED LAST YEAR'S NET AVAILABLE INCOME BY 30 % OR MORE, AT THE END OF THE CURRENT YEAR.

THIS WILL REFLECT "TWO TIMES AVERAGE" ON BOTH SENIOR AND JUNIOR LIEN BONDS, AND LEAVE A SURPLUS OF AROUND \$18,000.00 FOR CAPITAL IMPROVEMENTS AND CONTINGENCY FUNDS AFTER ALL REQUIREMENTS HAVE BEEN MET.

THESE FIGURES SHOW A TREMENDOUS GROWTH FOR THESE THREE UTILITIES, WITH THE LARGEST EXPANSION BEING IN THE ELECTRICAL DEPARTMENT. THE ELECTRIC DEPARTMENT BILLED 60 % MORE K.W.H. IN DECEMBER 1960 THAN IN DECEMBER 1959.

NOW, STILL MORE POWER IS NEEDED. NOW, BY VOTING FOR THE ISSUANCE OF THE \$75,000.00 JUNIOR LIEN REVENUE BONDS, ON TUESDAY, JANUARY 24, 1961, YOU WILL TRIPLE THE ORIGINAL CAPACITY OF THE PLANT. AND IT WILL NOT COST ONE SINGLE TAX DOLLAR. AS THE ABOVE FIGURES SHOW, YOUR REVENUE IS TO PAY FOR THE NEEDED GENERATOR.

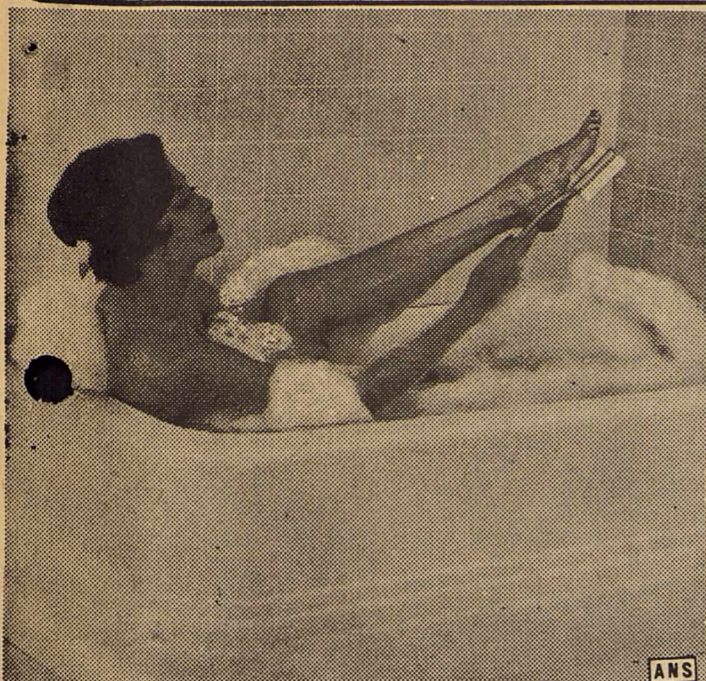
IN THEIR DEMAND FOR MORE POWER, AND DEPENDABLE POWER, THE CITIZENS HAVE NECESSITATED THE EXPANSION OF THE POWER PLANT, THUS DOUBLING THE CAPACITY IN 1960.



VOTE TUESDAY JANUARY 24

CITY OF PLAINS

Tsa Mo Ga Studies Civil Defense



TO BOOST MORALE at the end of a long, hard day, try a soothing, relaxing bath, followed by brisk massage with a long-handled nylon brush.

Tsa Mo Ga Club members were informed of US global strategy at their meeting held Jan. 9.

The program was directed by Mrs. P. W. St. Romain, division chairman of Civil Defense of the Caprock District of Texas Federation of Women's Clubs.

Mrs. St. Romain stressed that the best protection is not good enough if you can't stay in your shelter area until you are told to come out.

"The more effective our Civil Defense, the greater is the deterrent power of this country against the outbreak of any war," she said.

Home Preparedness folders were distributed to club members by Mrs. St. Romain.

Mrs. Paul Cobb gave an alarming talk on the newest and most deadly neutron bomb. "Hopes vs. Hoax" was given by Mrs. St. Romain in the absence of Mrs. E. W. Craig who was confined to her home. The topic dealt in disarmament talks with Russia.

Mrs. Virgil E. Wade told of "The Defense that \$41 Billion Buys," Mrs. Gene Payne gave a report on the Cancer Society meeting and asked for white bed sheets to be used for making bandages.

Mrs. C. F. McCargo accepted the chairmanship of the Mothers' March to be held the latter part of the month. Club members will stage a basketball game against members of the Iota Pi Sorority with Tsa Mo Ga proceeds going to the March of Dimes.

Selected as "The Mother of the Year" was Mrs. Murphy W. Luna, a charter member of the club who has served in various elective capacities.

Mrs. Luna's three daughters, Mrs. Sherm Henard, Mrs. B. H. Powell and Mrs. St. Romain, are members of the club, two of them being charter members.

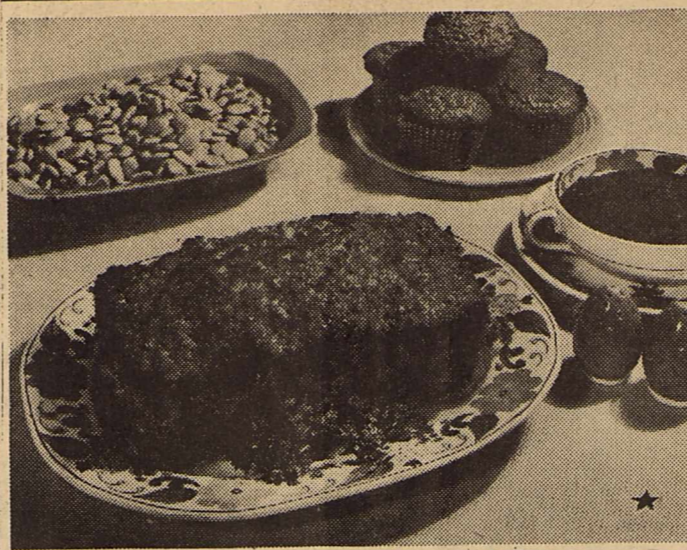
Mrs. Garland Swann, president, presided over the business meeting. Mrs. Gus Malmsten presided over the refreshment table, assisted by Mrs. J. E. Cooke.

Club members enjoyed refreshments of chocolate pie, coffee, hot tea and mints, served from a table cleverly decorated with a white winter scene.

Two new members were welcomed, Mrs. Gene Young and Mrs. Bill McCollough.

Mrs. C. F. McCargo and her daughter, Mrs. H. Copeland of San Angelo, will leave Friday for Liberal, Kans., where they will visit in the home of Mr. and Mrs. Carroll Light. From there, they will go to Farmington, N. M., for a visit in the home of Mr. and Mrs. Bob McCargo.

It's An Unusual Dish



Cream-style corn and corn meal are added to ground pork and beef for this unusual and tasty Indian Meat Loaf.

Meat loaf recipes are more numerous than anyone can name. You probably have your particular favorite. But why not try a new recipe for a change . . . perhaps one with ingredients you've never tried in meat loaf?

Indian Meat Loaf is a new idea for a ground meat dish. The unusual ingredients are corn meal and cream-style corn which give the meat loaf its name. The herb, sage, adds zest to the flavor.

Both ground beef and ground pork are used. Reba Staggs, expert on meat cookery, states that meat loaves prepared with different meat combinations provide a wide variety of delicious meat flavors.

Indian Meat Loaf makes a savory, economical dish for those everyday meals between holiday and company dinners.

Indian Meat Loaf

- 1 pound ground beef
- 1/2 pound ground pork
- 1 egg
- 1/2 cup corn meal
- 2 teaspoons salt
- 1/4 teaspoon pepper
- 1/2 teaspoon sage
- 1/2 cup chopped onion
- 1/4 cup chopped green pepper
- 1/2 cup cream-style corn
- 1 1/4 cups canned tomatoes

Combine all ingredients, mixing well. Pack into a 5x9-inch loaf pan. Bake in a moderate oven (350° F.) for 1 1/2 hours. 6 to 8 servings.

Anniversary Observed

Mr. and Mrs. Jesse H. Snodgrass of Tokio were honored with a lovely silver Anniversary reception Sunday afternoon in the County Club Room.

Hosts and hostesses were their children, Darlene and Carter Snodgrass of Lubbock and Rita Jo and Roberta of the home, and their parents, Mrs. Lucretia Cheek and Mr. and Mrs. Hugh Snodgrass.

Mr. and Mrs. Snodgrass, who were married Jan. 11, 1936, in Brownfield, greeted about 100 guests as they were registered by Rita Jo.

The beautiful white-tiered anniversary cake, decorated with silver bells and a miniature bridal pair beneath a silver leafed archway and an arrangement of white glads bedecked with silver bells and a large silver "25" were focal points of the white linen-covered serving table, complimented by crystal and silver appointments and white napkins etched in silver.

Roberta, Darlene and Carter, assisted by a cousin, Zada Snodgrass of Lubbock, served the cake, frosty sherbet punch, mints, nuts and coffee.

Among out-of-town guests were:

Mr. and Mrs. L. V. Jones of Lamesa, Mr. and Mrs. Arvel Snodgrass and Mr. and Mrs. W. B. Snodgrass of Lehman, Mr. and Mrs. Coleman Williams and Anita, Mrs. Caroline Ellington and Leonard Ellington of Brownfield, Mr. and Mrs. Guinn Casey and Paul of Bula, V. G. Latham of Petersburg, Mrs. Ellison Carson and James and Ken Sylvester of Lubbock, Mr. and Mrs. Lavon Smith and Alton of Littlefield, Mrs. Dorothy McAdoo and Mr. and Mrs. Harold Ramage of Denver City and Mrs. R. K. Field and Robert of Bronco.

Mr. and Mrs. Max Love of Dumas were weekend guests in the home of Mr. and Mrs. S. Streetman.

Mrs. Duke Hostess

Iota Pi Chapter of Epsilon Sigma Alpha met Tuesday in the home of Melba Duke.

"Take time for playing and laughter" was the theme carried out for the social to "come as you are and do as you like." Feb. 2 was the date set for

the Iota Pi and Tsa Mo Ga basketball game. Iota Pi proceeds will go to the Student Loan Fund and community welfare.

Hostesses Melba Duke and Virginia Lindt served refreshments of crackers filled with

SHOP AT HOME

cheese and dips, Fritos, relish, coffee and Cokes to:

Archie Glover, Velma Warren, Margaret Taylor, Idell Murphy, Mary Lee Swann, Lavern Newsom, Jeanne Stroup, Billie Blundell, Mary Jo St. Romain, Pat Faight, Ann Green, Emma Lewis and Lois McGinty.

COMPLETE SELECTION

Looking For Nursery Stock?

LANDSCAPING SERVICE . . .

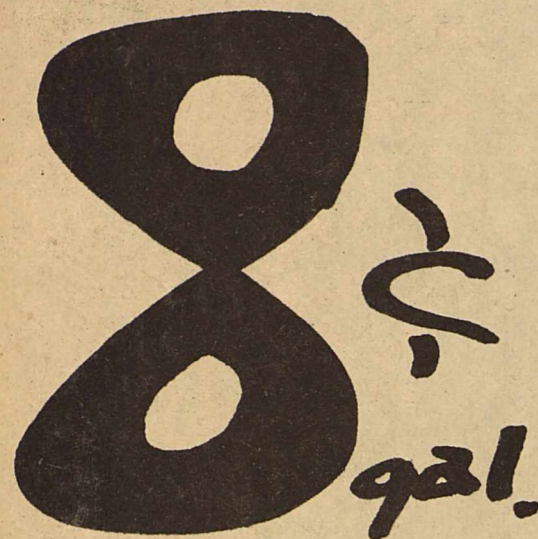
Feel free to call (phone 3737) when you have landscaping problems. Bill Bond and his staff at Western Gardens are eager to help you — whether it's planting one tree or designing an entire landscape. Free estimates on any job!

- Fruit Trees
- Shrubby
- Evergreens
- Shade Trees

- Fruitless Mulberry
- Weeping Mulberry
- Italian Cypress
- Lombardy Poplars
- Pecan Trees
- English Walnuts

WESTERN GARDENS

Nursery Division of Western Grain ★ 5th & Stewart ★ Phone 3737



PROPANE

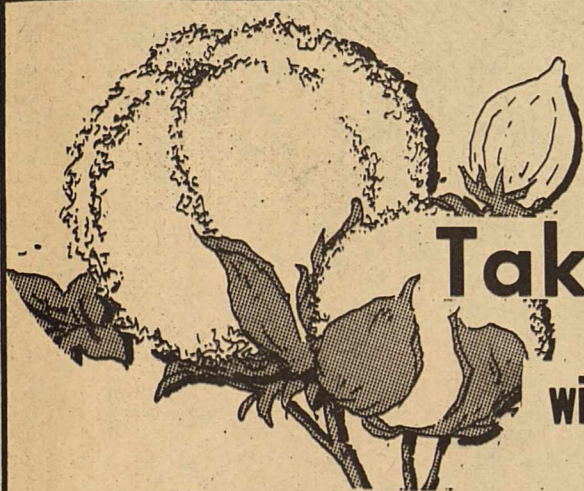
Call

GL 6-2044

Day or Night

Prompt Delivery

Bronco Gas Co.



DON'T Take Chances

with your planting seed!

WET ACID DELINTING

USE WET ACID for precision planting.

*USE WET ACID for better germination.

*USE OUR GRADER TABLE for elimination of weak plants.

*TAKE ADVANTAGE OF RESEARCH on cotton seed for higher yields.

BOOK YOUR ORDERS NOW FOR HIGH VITALITY & GERMINATION PLANTING SEED!

COTTON GROWERS DELINTING CO.

1/2 MILE WEST OF PLAINS ON LOVINGTON HIGHWAY

Phone GL 6-18420

Nite Phones GL 6-2585 or GL 6-3282

Our New Spring Stock

is now arriving

wide selection

DORTHA'S style shop



WE GUARANTEE TO SAVE YOU MONEY

On All Your Hardware Needs

WE POSITIVELY WILL NOT BE UNDERSOLD

Plains Tractor & **HARDWARE**

Serve meat patties in this caserole combination. In a baking dish, first arrange a layer of sliced raw potatoes, then a layer of canned or frozen whole kernel corn. Top with meat patties which have been lightly browned. Add a can of diluted condensed tomato soup and bake in a 300° F. oven for 1 hour.

Here's a tasty main dish with a crispy topping. Brown ground beef and combine with cooked macaroni and a medium thick cheese sauce. Place in a baking dish. Sprinkle the top with a mixture of one cup bran flakes browned in melted butter and lightly mixed with 1/4 cup grated cheese.

A repair in time may save you "9"!
SEE US FOR EXPERT TV REPAIR SERVICE

Have minor repairs made before they become serious ones. Our service is fast, rates are low; we get to the source of trouble in a hurry! Call 0000.



PHONE 6-8374

Plains Electronics

A Complete Hardware-Housewares

Stock For Your Shopping Convenience

Fair Prices

Full Value For Your \$\$\$

Watch for the News story of our dealer-owned Wholesale Co.

SAVINGS, SERVICE with our dealer-owned Wholesale Co. of over \$50 million buying power and over 1,000 stores. We have TOP VALUES at all times. This is our appreciation to YOU, our valued friends and customers. A business built on HONEST and FAIR dealings.



LIBBEY 16-OUNCE Aqua Ripple GLASS TUMBLERS
USUALLY \$2.50 **1.59**
GIFT BOXED WITHOUT BOX
Extra heavy base. The circular "Ripples" are blown on the inside of the glass. Guaranteed against chipping. (No. 6).

Cogburn Young Hardware-Furniture

Our Big Mid-Winter

CARNIVAL

of Savings

Continues Through Saturday

Dozens and Dozens of Big Bargains throughout the store

SEE OUR CIRCULAR FOR VALUABLE COUPONS

Curry Edwards Pharmacy

GL 6-2535

People, Spots In The News

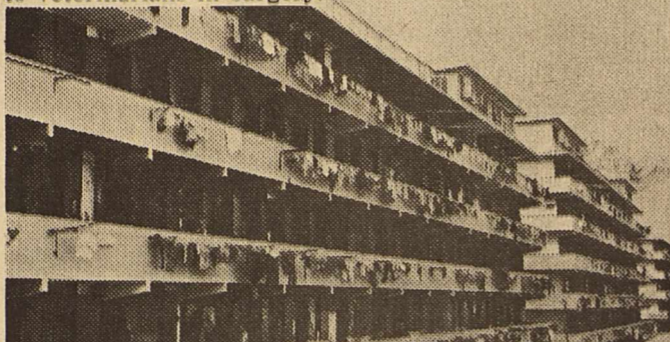
SUNBONNET SUES line up for a bit of log-rolling between aqua-planing shows at Cypress Gardens, Fla.



CHOSEN for part of 100-year-old grandma in new play is elderly Lylah Tiffany, longtime sidewalk accordionist outside New York's Carnegie Hall.



PUP HEARS own heartbeat "beeped" by new Veling heart monitor, product of NCG Division of Chemetron Corp., an aid to veterinarians in surgery.



'GARMENT DISTRICT'—Ultra-modern new apartments in Hong Kong are given a homey touch by residents' festooning their wash along the balconies of Shek Kip Mei resettlement project.

Credit Union Meet Set

Annual meeting of the Yorkum County Federal Credit Union will be held in the district courtroom Saturday night, Jan. 28, President C. J. Coffman said the session would begin at 7:30 p. m.

Several Plains merchants now are contributing merchandise which will be given away as door prizes during the meeting. Reports of various committees will be made, committee assignments made and officers and directors elected.

Officers at the present time are Coffman, president; P. W. St. Roman, vice president, and Mrs. E. E. Longbrake, secretary and treasurer. The credit union now has about 300 members.



A LITTLE TOUCH OF ERIN
... Old country influence blends with the new world of test tubes in Blairmoor's Zefran and linen sweater. The natural color and diamond patterned panels are fashioned after Gallic fisherman's knits. This new blend keeps the sweater soft and in shape through long hours of wear.



SHIRLEY JONES, co-star of the Columbia Pictures release "PEPE," inspired this sheer wool easy hip length jacket suit to wear in her new film. An Edith Head original Advance Pattern No. 9691, it features fashion's perfect finishing touch, a 7" Magic-Zip skirt zipper to assure a smooth fit. It can be copied so easily by home seamstresses with the added help of complete instructions in the zipper package on how to apply it and a sewing guide line on each side of the chain.

County Farmers Show Big Interest In Conservation

By MURRELL THOMPSON

C. A. Stewart signed his Great Plains Program contract Tuesday of this week. Charlie says he likes the program because it will make his farm a better farm.

Considerable interest is being shown in the conservation program.

Ty Field is really sold on spraying shinnery on rangeland and plans to spray about 6,000 acres this spring.

Bill Gray who farms and ranches northeast of Plains says he wants to do some range improvement work. Maps to revise the conservation plans of Robert Chambliss and Ray C. Mowery have been ordered.

Now that folks are beginning to prepare their land for another crop is a good time to check up and see what we are putting back on the land. How much residue in the form of stalks, straw and other material are we returning?

Gilbert Pierce, local technician with the Soil Conservation Service, found that ungrazed Weeping Lovegrass returned over 6,000 pounds per acre. Sorthum Almun, ungrazed, returned 11,000 pounds per acre, dry weight, while 1500 to 3000 pounds of maize stubble was the normal residue left. These tests were made clipping and weighing.

While the rancher knows that it takes grass to grow grass, it also takes organic matter in crop land to grow crops. Deep breaking will loosen a plowpan or hard pan but crop residue will keep it from forming so fast.

Cooking in Liquid

Here are some easy directions for better results when cooking meat in liquid. (1) Brown meat on all sides in own fat or lard. Some larger cuts, such as cured pork, corned beef and fresh or cured tongue, are not browned before adding liquid. (2) Season with salt and pepper unless meat is cured. (3) Cover with liquid, cover pan, and simmer (cook below boiling point) until tender. (4) Add vegetables just long enough before end of cooking time to be cooked.

SHOP AT HOME



DOGS AND CALORIES

By Dr. E. M. Gildow
Director, Friskies Research Kennel

Are your dog's hips bulging? Is his stomach sagging? Has he lost the indentation behind his ribs? If so, he's suffering from one of today's most common canine complaints... overweight. And you, the dog's owner, are solely responsible for your pet's extra poundage, for he can't raid the refrigerator himself. Those extra weight-adding portions or handouts come from you.

Veterinarians consider this a major health problem. Not only do surplus pounds rob a dog of



pep and stamina, but those extra layers of internal fat interfere with surgical procedures should an operation be needed. What's more, excessive fatness increases the labor of the heart.

Prevention and cure can be summed up in one word... calories. Simply see that your dog gets fewer calories by feeding him less. Be sure, however, when you cut down on his daily fare that he gets a balanced ration.

This presents no problem today when you can feed him a top quality prepared dog food such as Friskies in either the canned or dry form. Such foods contain all the vitamins and nutrients needed to maintain a dieting dog in good health.

Once your dog has reached the ideal shape, that's the right weight. With short-haired dogs you should be able to see his ribs when he inhales. Now keep him at the right weight by feeding him only the amount needed to maintain this weight.

Weigh him at the same time of day each week. If his weight remains constant over a period of, say, a month, you know that you've arrived at the proper amount of food. If he gains a little or loses a little adjust the size of his meals accordingly.

Chipped Beef Breakfast

Chipped beef and scrambled eggs make a real winter morning breakfast. Lightly brown the chipped beef, then add beaten egg and milk mixture. Cook over low heat, stirring occasionally. Serve with hot biscuits or muffins and jam.

Vary your ways of serving stew. Serve it over hot fluffy rice, split squares of corn bread or hot biscuits. Or give it a meat pie topping of pastry, biscuit dough or mashed potatoes.

Don't throw away the appealing flavor found in the drippings from roasts. These drippings make delicious pan or cream gravies, and the nutrients found in gravy contribute to the food

a very special

THANK YOU

for making our

10th anniversary

sale a whopping success.

A FEW ITEMS

will remain on sale until sold.

MOORE & ODEN

Dry Goods—Ready-to-Wear

SAVE! DURING OUR BIG LIBBY'S SALE
FEAST for the LEAST!
Jan. 20 & 21

FRUIT COCKTAIL, 303 can 4-89¢	SOUR OR DILL PICKLES, 29¢
Pineapple Grapefruit Drink, Qt. can 4-89¢	CRUSHED PINEAPPLE, NO. 2 can 3-89¢
Y. C. HALVES OR SLICES PEACHES, NO. 2 1/2 can 3-89¢	WITH SNAPS BLACKEYED PEAS, 300 can 3-49¢
PINEAPPLE JUICE, 46oz. can 3-89¢	GARDEN SWEET PEAS, 303 can 5-\$1.00
TOMATO JUICE, 46oz. can 3-89¢	OLIVES, NO. 9 can 39¢
DEEP BROWN BEANS, 14oz. can 7-\$1.00	Spaghetti & Meatballs, 15 1/2 oz. can 4-\$1.00
SPINACH, 303 can 7-\$1.00	SAUERKRAUT, 303 can 3-49¢
WHOLE GREEN BEANS, 303 can 4-\$1.00	VIENNA SAUSAGE 5-\$1.00
APPLESAUCE, 303 can 3-59¢	CUT GREEN BEANS, 303 can 5-\$1.00
	CATSUP, 14 oz. 5-\$1.00

HAWKINS FOOD MARKET

Phone GL 6-3434

"Your Friendly Cash Grocery"

PLAINS, Texas