

Bailey County Journal

"The Community of Opportunity — Where Water Makes the Difference"

VOL. 3 — NO. 52

8 PAGES

Published Every Sunday At Muleshoe, Bailey County, Texas — 79347

SUNDAY, DEC. 26, 1965

Plans Completed For Victory Dinner, Lubbock Man to Speak

Muleshoe Area United Fund will celebrate a "most successful" fund campaign with a dinner at Methodist Church's Fellowship Hall Friday, Jan. 7, Mrs. Thurman White, president, announced Saturday. The dinner at \$2 per plate, will be open to the public.

Speaker for the jubilee dinner will be Bob Brummel, division manager of Southwestern Public Service Co., noted for his work throughout West Texas with United Fund organizations. Brummel has headed a number of United Fund campaigns and before moving to Lubbock, headed the organization's drive in Borger.

Master of ceremonies at the dinner will be Gil Lamb, campaign chairman of the year's successful campaign for \$13,500.

Muleshoe High school's stage band, "The Blue Mules" will provide dinner music, and a feature of the dinner will be the presentation of awards to various division leaders, Mrs. White said.

Mrs. J. G. Arns is decorations chairman and Mrs. Horace Hutton is general chairman of arrangements. Dinner will be served by Mrs. Vernon

Bleeker, hostess at First Methodist Church.

In announcing the dinner, Mrs. White listed three purposes for the victory celebration.

WANNA WIN \$25?

Guess Bowl Scores

Can you figure out in advance what teams are going to win in New Year's bowl games — and by what scores?

If you can, then you may win \$25 in the Journal's annual End-of-year, "Back the Mules" football contest. Only one prize will be given, \$25 cash, and the person coming nearest to picking the right scores for the game. The official entry blank will be found on page 5 of this issue.

Rules are simple: Contest is open to everyone except employees of the Journal. Entries will be judged by the staff of this newspaper, and decision of the judges will be final.

Entries must be brought or mailed to the Journal and must be postmarked not later than noon Friday, Dec. 31, 1965. Only one entry per person is allowed. (See SCORES Page 8)

Want Kino-Size Turnips? Plant On Cotton Land

There's probably nothing in the agriculture books on what kind of fertilizer to use on turnips, but Orby Jarman, who farms north of Muleshoe, has his own ideas of a good fertilizer program.

And to back it up he has some whopper turnips to boot. He had a half-acre of turnips half a mile north of Muleshoe. In late August, he plowed up a couple of rows of cotton and planted the turnips and went right ahead with his watering program.

The cotton had been fertilized, but Jarman used no additional fertilizer on the turnips. But what's good for the goose (cotton in this case) apparently also is good for the gander (turnips in Jarman's case).

Jarman was in downtown Muleshoe this past week with a couple of turnips that weighed more than five and a half pounds each. Biggest weighed 50 pounds, 9 ounces.

Jarman raises the turnips only for his own use.

1. To celebrate reaching and passing the year's goal.

2. To give recognition to campaign leaders and workers.

3. To give recognition to firms and employee groups who made outstanding contributions to the 1965 drive.

Organizations which are included in this year's campaign include these 10 agencies: Bailey County Junior Livestock Show, The Salvation Army, Girl Scouts of America, American Red Cross, Muleshoe Area Youth Center, Babe Ruth League, Texas Medical Research, 4-H Youth Development Corporation, and United Fund Organizations (USO).

Muleshoe Area United Fund, Mrs. White will point out in her report at the dinner, is one of the few such organizations that covers rural areas. "The ambitious program here involves a territory of some 1000 square miles of rural territory surrounding Muleshoe.

The organization here is only three years old, and has met its quota each of those three years, it was pointed out.

This has put Muleshoe in a position of leadership among small towns of Texas which conduct United Fund campaigns, it was explained.

All division chairmen and their workers will be honored at the dinner. To be recognized will be Robert Alfred as head of the professional group; Mrs. David Stovall, Progress area; Mrs. Bill Miller, YL area; Mrs. D. O. Burelsmith, West Camp.

Lyndal Murray, commercial division; Johnny Shelton, advance division; Neal Dillman, school division; and Kenneth Henry, employees division.

Muleshoe was listed in fourth spot for the state among 100 centers in this past week's "United Campaign Reporter" publication of the Texas United Fund, Austin. The Reporter showed Muleshoe to have passed

Mahon Protests Cotton Features, 'Faith Broken'

Congressman George Mahon of Lubbock has filed official protest with Secretary of Agriculture, Orville Freeman, as to the administration of the 1966 Feed Grain Program. The Congressman charged that the Secretary had broken faith with members of Congress who had been assured that the program would be administered in such a manner as to "maintain farm income" of producers if Congress would give wide authority allowing for administrative decisions in view of the rapidly changing world situation.

Specifically, Mahon pointed out expected income losses to Southwestern grain sorghum producers ranging from \$3 to \$12 per acre. Information as to the Congressman's action came in the form of a telephone call

(See MAHON Page 8)

ed its goal by 15.3 percent, a total of 115.3 percent.

Percentage-wise, Muleshoe was exceeded only by Wortham, Celina and McGregor.

DINNERS SET

Club's Coffers Empty

This business of trying to provide the needs for Muleshoe's booming fine arts department runs into somewhat of a problem now and then, and the Fine Arts Boosters are hard put to keep up with the expanding department.

So says Mrs. Horace Hutton, the very busy public relations chairman for the club. "Now," says the PR chairman, "the Fine arts department is needing a number of things and the only way we can provide them is by just making money. And that's what we are going to do."

Let's see, the department needs four things: The art department needs a kiln, and the choir needs a new piano, and the speech department needs a tape recorder for playing back speeches and plays. And then the whole outfit needs new lighting. Well, we're going to try to raise funds for those needs right away."

This will be the first in the money-raising series: The club will serve salad suppers — all three evenings in advance of the department's presentation of "The King and I," Jan. 4, 6 and 8.

Oratory Again To Pay Off For Area Students

All expense paid trips to the nation's capital city will be awarded to winners of an oratorical contest was announced this week by D. B. Lancaster, manager of Bailey County Electric Cooperative.

The contest is open to any boy or girl at least 16 years of age but not 18 years of age prior to Sept. 1, 1966. Lancaster said. Winners will join winners of similar contests sponsored by other electric cooperatives across Texas on the second annual Texas Electric Cooperative Government — in Action Youth Tour to Washington, D. C. All expenses of the 13-day trip beginning June 2, will be paid by Bailey County Electric Cooperative. Lancaster said.

Each entrant will be required to give a 5 to 8 minute talk on the subject "How Members Benefit from Ownership of their Electric Cooperative" and answer one or more of 50 questions. The oral contest will be judged on the basis of (1) knowledge of subject — 40 percent; (2) speaking ability — 30 percent; (3) poise — 10 percent; (4) personality — 10 percent; (5) appearance — 10 percent.

Interested young people may obtain an official entry blank from their school or the offices of Bailey County Electric Cooperative. The deadline for submitting entries will be Jan. 14, 1966. D. B. Lancaster said.

As participants in the Texas See STUDENTS Page 6



CHRISTMAS MORNING Christmas morning at the home of Roy Whitt and his family (Just to mention one out of millions of American homes), and Whitt children, Jan, Rusty and Beth

in muleshoe

With the Journal Staff

Jesse George, State Representative who serves Bailey County, has been nominated as one of the top five young men of Texas to be picked at the Texas State Jaycees banquet in Dallas Jan. 29. George's name was submitted by Gary Stacy, president of the Levelland Jaycees.

Mr. and Mrs. J. W. Witherspoon left Thursday by plane to spend the Christmas holidays in California.

Tri-Co Bowling Center is now offering 32 games for \$4, a regular \$23.99 value, as a means of boosting beginners' bowling interest. With the bargain rate, free lessons also are included, according to R. N. Egan, Phoenix, a professional bowling promotion man who is putting on the bargain sale here.

Muleshoe basketball fans were informed Friday that advance ticket sales for the Pioneer basketball game and Mexico National team slated for Plainview Jan. 10, are on sale. Prices are \$1.50 for adults, and may be had at Wayland College or from the college's pep organizations.

Mr. and Mrs. John Sain from California are visiting here with John Sain and his sisters, Mrs. George Province, Nan Gatlin and Mrs. Clarence Jones and brother, Walter Sain.

Ten persons are to be called for physicals in the three-county Local Board No. 4 area in January, local offices have announced. On a state basis, the January call will be 1475 as compared with 1525 in December and 1456 in November.

Visiting in the J. W. Johnson home over the Christmas holidays is his daughter, Sue, from Austin. She is the sister of Lynda, Mrs. Bob Hardaway, Kenneth Jim and Bill Johnson.

Farwell's Benji Bell finished the 1965 season by setting a new record for individual points in a game among Texas players. National Association of Professional Football Athletes. He played quarterback for ENMU this season.

Temperatures

	High	Low	Rain
Dec. 22	37	29	
Dec. 23	62	31	.07
Dec. 24	64	35	.02
	Sunrise	Sunset	
Dec. 26	7:50	5:46	
Dec. 27	7:51	5:46	
Dec. 28	7:51	5:47	
Dec. 29	7:51	5:48	

Puzzled About '66 Cotton Program? ASCS Here Now Has The Answers

ASCS personnel now have the information needed to answer most producer questions on the new cotton program, Charles Daniel, ASCS manager here, said Saturday.

From Washington ASCS has instructions, definitions and revision 1) — 132 pages of information and pointers on how to receive Handbook 1-CN (fill it in).

It's called a "Short Reference." There's a similar document for feed grains and wheat, cropland adjustment etc. So don't push county ASCS managers too fast.

Dick Carter, District ASCS Supervisor, Plainview, confesses that the regulations pertaining to landlord-tenant relationships may prove the most ticklish to administer.

The law itself states: "The Secretary shall provide adequate safeguards to protect the interests of tenants and sharecroppers, including provision for sharing diversion payments on a fair and equitable basis."

Handbook 1-CN sets rather lengthy guidelines for those safeguards, but leaves final decisions up to county ASCS committees. Generally, it is the intent of the Secretary that landlord and tenant are to share in both price support and diversion payments in the same proportions as they share in the crop.

Payments may be withheld if the county committee determines that the landlord has, "in anticipation of or because of participating in the program," reduced the number of tenants or sharecroppers on the farm.

A county committee may also disapprove payments if it determines that any "scheme or device" has been adopted to deprive a tenant or sharecropper of payments to which he would otherwise be entitled under the program.

Carter said both tenant and landlord would in all probability be asked to appear before county committees to help them in rendering decisions where disagreements occur.

The cotton handbook also revealed that only half of the diversion payment (10.5 cents a bushel) is projected yield from domestic allotment in advance. He is declining to exercise that (See COTTON Page 8)

Agriculture fared well in 1965 and should do even better in the year ahead.

John G. McHaney, Extension economist at Texas A&M University, said SAT, net farm income in 1965 reached the highest total since 1952 and may be up another quarter to a half billion dollars in 1966.

McHaney's report was given to J. K. Adams, Bailey county farm agent.

"The nation's realized net farm income for 1965 is now estimated at \$14 billion. Realized net income, explains the economist, is income above production costs.

Three factors are listed by McHaney for the bright outlook for 1966.

1. The production and price

Bay Wilson Dies After Suffering Heart Attack

Funeral services were held at the Muleshoe Church of Christ Friday afternoon at 4 o'clock for Bay Wilson, 59, who was dead on arrival at West Plains Hospital Thursday afternoon after suffering a heart attack while working at the Jake Diel home north of Muleshoe.

The rites were conducted by the minister of the Northside Church of Christ, Frank Duckworth, and interment was in Bailey County Memorial Park with Singleton Funeral Home in charge of arrangements.

Wilson, who was a driller, was born in Lipan, Texas, Aug. 9, 1906 and lived at 121 W. Ave. D. He had lived here since 1943 moving to Muleshoe from E. Rath county.

Survivors include his wife, Gladys Wilson; four sons, Gordon, Stanley, Roger and Mickey Wilson all of Muleshoe; five daughters, Mrs. J. L. Thomas, Morton; Mrs. Bob Teeter, Arlington; Mrs. Wyman Prater, Canadian; Dianne Wilson and Cathy Lynn Wilson, both of Muleshoe; his mother, Mrs. C. P. Wilson, Lipan; four sisters, Mrs. Bessie Jackson, Lipan; Mrs. Frank Moore, Cotton Center; Mrs. Seward Holloway, Lubbock; and Mrs. Claude Tipton, Levelland a brother, Billy Don Wilson, Lubbock and 10 grandchildren.

outlook looks favorable for livestock producers.

2. The new food and agricultural act of 1955 will provide some increases, especially for crop farmers.
3. He expects the domestic demands for farm products and exports to continue their expansion.

A growing economy, rising incomes and population gains will result in increased consumer expenditures for food.

However, he does not expect the increase to equal the six percent gain of 1965.

Commercial food purchases in 1966 again will be supplemented by such programs as national school lunch, special milk, direct distribution and food

Farm Expert Looks in Crystal Ball, Sees Good Year for 1966

The per capita food use is expected to hold near the 19-65 figure but there'll be more people to feed, he said.

Exports have played an increasingly important role in American agriculture over the past 15 years, and sales abroad in 1964-65 amounted to \$5.3 billion. While the value of exports may be up only moderately in 1966, McHaney expects the volume to increase by four or five percent. Larger exports are expected for Texas feed grains and wheat but smaller for cotton.

Cotton farmers, he said, will get much of the increase in government payments, about \$1 billion, to offset the income effect from the reduction in

price-support loan rates, to competitive world price levels. Some increase to wheat farmers will result from the new legislation and the Cropland Adjustment program will also add to increased farm income in 1966.

The economist expects production expenses to continue their upward trend and to offset much of the indicated gain in gross farm income. Prices paid for commodities, interest, taxes, and wages are expected to increase but the rise will be less than the increase from 19-64-65.

Net income per farm in the nation in 1965 is now estimated at over \$4,000 — 10 percent above 1964 and 40 percent above

1960 and the best in over a decade. With the continuing decline in farm numbers and farm people, per farm and per capita incomes of farmers should reach new highs in 1966.

The total value of farm assets continue to rise with most of the increase due to higher farm real estate values. Farm debts rose sharply in 1965 and will probably increase more in 1966, but the dollar increase in debt will be much less than gains in farm assets, the economist said.

And finally, McHaney said farm equities rose in 1965 and prospects are good for a further improvement in the financial position of farmers in the year ahead.

When Orby Jarman grows turnips on his place just north of Muleshoe, he GROWS turnips, and here are two proofs — each weighing more than 5 1/2 pounds. (Journal Photo)

price-support loan rates, to competitive world price levels. Some increase to wheat farmers will result from the new legislation and the Cropland Adjustment program will also add to increased farm income in 1966.

The economist expects production expenses to continue their upward trend and to offset much of the indicated gain in gross farm income. Prices paid for commodities, interest, taxes, and wages are expected to increase but the rise will be less than the increase from 19-64-65.

Net income per farm in the nation in 1965 is now estimated at over \$4,000 — 10 percent above 1964 and 40 percent above

1960 and the best in over a decade. With the continuing decline in farm numbers and farm people, per farm and per capita incomes of farmers should reach new highs in 1966.

The total value of farm assets continue to rise with most of the increase due to higher farm real estate values. Farm debts rose sharply in 1965 and will probably increase more in 1966, but the dollar increase in debt will be much less than gains in farm assets, the economist said.

And finally, McHaney said farm equities rose in 1965 and prospects are good for a further improvement in the financial position of farmers in the year ahead.



SANTA VISITS BROWNIES — Santa visited with the Brownies Tuesday afternoon at the Girl Scout Hut. Santa is

shown here talking to the Brownies and taking orders for Christmas eve. (J.P.)

Mary Wedel, Paul Stanton Exchange Vows in Arkansas

The First Christian Church in Mountain Home, Ark., was the setting for the Dec. 19 wedding of Mary Ellen Wedel, daughter of Mr. and Mrs. James Wedel, Muleshoe, and Paul Albert Stanton, son of Mr. and Mrs. Harold Stanton, Mountain Home, Ark.

The Rev. Robert Bell performed the double ring ceremony in which the bride was given in marriage by her father before baskets of carnations and snapdragons on either side of the altar. She wore a fitted gown of white satin with lace and beaded trim. She also carried a bouquet of white carnations.

Wanda Wedel, sister of the bride, and Harold Stanton, father of the groom, were honor attendants for the couple. Sisters of the bride wore green brocaded empire dresses

with ribbon trim and carried white carnation corsages.

James Leon Wedel, brother of the bride, served as ring bearer and sisters of the bride, Carolyn and Charlotte were pianist and soloist respectively.

Kathy McGuire registered the guests while Jimmy Fain and Eugene Norrell ushered them. The former Miss Wedel will graduate from North Texas State University. She graduated from Muleshoe High School in 1962.

The groom is a 1965 graduate of North Texas and is now teaching in Irving. The couple will continue to be at home in Irving.

Classifieds Get Results!

Hobby Club Has Annual Party

Hobby club met in the club house here Tuesday for their annual Christmas party at 2 p.m.

Each member brought her favorite Christmas cake, cookie or candy.

Lois Norwood and Euna Mae Oswald led the group in playing two games.

Secret pals were revealed and the ones that couldn't guess who their pal was had to sing, dance or pay a dime.

Each woman received a present from her secret pal and also brought a present to exchange by drawing numbers.

Christmas was brought out in the club house with a net tree decorated with tiny ornaments of different colors.

Next meeting for the club will be at 3 p.m. in the club house on Jan. 4. Present for the party were Hallie Briscoe, Euna Mae Oswald, Mary Ewins, Lucille Har-

Brownie Troops Have Yule Party

Brownie troops 288 and 328 enjoyed an afternoon of visiting with Santa and opening gifts Tuesday at the Scout Hut.

Assisting with hospitalities other than the leaders of both troops, Mrs. Ted Milsap and Mrs. Don Harmon were Mrs. Doug Haynes, Doris McKimney and Gienna Shelton, troop mothers; Mrs. Cliff Rogers and Mrs. Ronald Stinson.

Red punch and Santa Claus cup cakes were served from a table covered with a red cloth and featured red candies and other Christmas decorations.

Santa Claus distributed gifts and candy among the children and also gifts from the troop leaders of book marks and necklaces.

Approximately 37 Brownies and 10 mothers attended the party.

per. Eva Dell Gillis, Verna De ment, Dora Phipps, Elsie Jey, Ethel Harding, Ollie Barbour, Altha Hanks, Zula Carvly, Myrtle Chambliss, Vada Bartlett, Virgie Harding, Lou Matthews, Zora Mae Beller, Lois Norwood, Ola Pesch, Jewel Barry, Zona Boydston, Gerlie Kirk, Edith St. Clair, Mae Pattie, Mae Adkins, Myrtle Anders, Frances Bruns, and Vickie Hendricks.

Christmas Party Given in Church

Women's Society of Christian Service and Wesleyan Guild of Muleshoe had their annual Christmas party Tuesday in the parlor of the First Methodist Church.

A time of devotion in the chapel followed the refreshment hour.

Approximately 50 women listened to the devotion given by Mrs. Robert Hooten on "Symbols of Christmas Art".

Mrs. J. Frank Peery led the group in several Christmas hymns.

Tallent, Stancell Exchange Vows

Miss Carolyn Tallent, daughter of Mr. and Mrs. Floyd Tallent and Bennie F. Stancell, son of Mr. and Mrs. J. V. Stancell, were united in marriage Dec. 7 at 7:30 p.m.

The wedding was performed in the home of Mr. and Mrs. Kenneth Dye, minister of the Lariat Church of Christ, who also performed the ceremony.

The bride wore a white brocaded suit of Jacquard Taffeta. The bride carried a white Bible with a bouquet of carnations. Cieta Obenhaus was the bridesmaid, her dress was of red brocade taffeta.

Duane White, Oklahoma Lane, served as best man. For her daughter's wedding, Mrs. Tallent chose a navy dress with white. Stancell chose winter white.

Following the ceremony a reception was held at the minister's home.

The couple are at home at Ft. Ord, Calif.

HOSPITAL Notes

Green Memorial

Admitted Mrs. Effie Davis Jimmie Lee Hicks Mrs. Jerry Dan Holley Israel Huerta

Dismissed Lisa Higginbotham

Tracy Lackey

Blondie Puckett

Liana Estex

Danace Estep

Kenny Heathington

Albert Felt

Mrs. J. D. Haley

Joe Truigas

Mrs. Odell Green

Mrs. Cecil Osborne

Mrs. Jerry Sexton and

Baby boy Sexton

Mrs. A. O. Mitchell

Mrs. R. J. Klump

M. H. Meason

Miles Gibson

Ted Milsap

West Plains

Admitted Eugene Horner

Sidney Prover

Cecil Dale Tanner

Baby Richard Gonzales

A. C. Bryant

Mrs. Vernon Conner and

Baby boy

Mrs. Bill Felts

Mrs. Larry Adkins

Damon Lumpkin

Paul Bel

W. E. Ray Jr.

Baby Girl Woodson

Baby Girl Robinson

Baby Boy Felts

Dismissed

Mrs. Joe Guerra and Girl

Mrs. Moses Bryan

Lester Brown

Billy E. Shaw

J. A. Young

W. A. Wilkerson

T. G. Craft

Mrs. Herbert Minor

Margaret Green

Marcelino Garcia

Mrs. Otis Blaylock

Modesta Gutierrez

Mrs. W. V. Terry

Mrs. Lupe Gonzales

Mrs. Woodrow Reed

Mrs. James Wood

Everett Talley

Lloyd Edwards

Bill Aldridge

Mrs. Stanley Robinson

and Baby Girl.



MR. AND MRS. BOBBY BORDEN . . . the former Sheryl Stevens

Sheryl Stevens, Bobby Borden Are United in Church Ceremony

Sheryl Stevens, daughter of Mr. and Mrs. Elmo Stevens, Muleshoe, became the bride of Bobby Borden, son of Mr. and Mrs. R. L. Borden, Portales, in a double ring ceremony in the First Methodist Church here at 5 p.m. last Saturday.

Given in marriage by her father, the bride wore a floor length sheath of lace with detachable train of white silk peau de soie. Her veil of silk illusion was secured by a crown of pearls. She carried her sorority Bible covered with white orchids. For something old, the bride wore a pearl necklace belonging to her grandmother.

The Rev. Charles Grow officiated at the ceremony.

Mrs. Allen Haley served her sister as matron of honor. She wore a floor length sheath dress of pale green velvet with matching gloves and shoes, and carried a bouquet of white carnations.

Mrs. Jan Borden and Marilyn Borden, sisters of the groom, and Miss Linda Wells, Muleshoe, and former room mate of the bride; and Sandy O'Cheskey, Carlsbad, room mate of the bride, served as bridesmaids. They wore floor length sheath dresses of emerald green velvet with pale green gloves and shoes. They carried long stemmed spider mums.

Sandra Haley, Muleshoe, and niece of the bride was junior bridesmaid. She wore a gown identical to the other bridesmaids. Kim Calton, niece of the groom from Las Cruces, N. M. was the flower girl. She wore a dress of pale green velvet. Gary and Dickie Hanks, Muleshoe, were candlelighters. They wore red coats with their black trousers and black bow ties. Blake Stevens, nephew of the bride, served as ring bearer. Fred Borden, cousin of the groom from Portales, was best man.

Roland Stevens, brother of the bride, Dimmitt, Duane Stevens, brother of the bride, Muleshoe, Allen Haley, brother-in-law of the bride also from Muleshoe and Billy Calton, brother-in-law of the groom from Las Cruces, N. M. were ushers.

Ricky Stevens, brother of the bride; from Muleshoe and Jim Harper, Johnny Hooper and Billy Brown from Portales were groomsmen.

Susan Birdsong provided traditional wedding music with

Veta Allison as pianist. Soloists were Joe Pat Wagon and Mrs. Marshall Wintberley.

Following the ceremony a reception was given in the home of the bride's sister and husband, the Allen Halesys, 1902 Ave. E.

Cake and punch were served by Della Foster, Marsha Clark, Roswell, Ilene Platt and Laverne Caltion, sister of the groom from Las Cruces. The table was laid with white cutlery and centered with a wedding candle and white lily of the valley. Silver coffee service and crystal punch bowl was used. Bows of white satin fastened the corners of the table.

The new Mrs. Borden chose a three-piece suit of wool with black accessories for a wedding trip to Portales.

The bride is a Muleshoe High School graduate and a sophomore at Eastern New Mexico University majoring in home economics. She is a member of the student council, Alpha Delta Pi Sorority and was 1963 rodeo queen of Portales.

The groom is a graduate of J. Redwine.

Portales High School and is a junior at ENMU majoring in industrial management. He is a member of the board of activities.

The couple will continue to go to college in Portales.

A rehearsal party was held at Paul's Cafe Friday night.

A dinner of turkey, dressing and all the trimmings were served to about 30 people in the wedding party.

Redwine Family Has Annual Yule Dinner

Sixty-six members of the family of Mrs. Minnie Redwine met for their annual Christmas dinner Sunday. The meeting was held in the Littlefield Community Center. Following the dinner which featured the traditional turkey and ham, gifts were exchanged and the group sang and played games.

Eleven of Mrs. Redwine's children were in attendance. Mrs. Ellen Moore and members of her family called on the family during the noon hour enroute to Ft. Worth. Mrs. Moore is the sister of the late J. J. Redwine.

CLEARANCE SALE OPEN 9 A. M. N. M. TIME

WED., DECEMBER 29 ALL FALL & WINTER SALE

CO-ORDINATES

- SKIRTS
- SWEATERS
- SLACKS
- BLOUSES
- DRESSES
- SUITS
- COATS

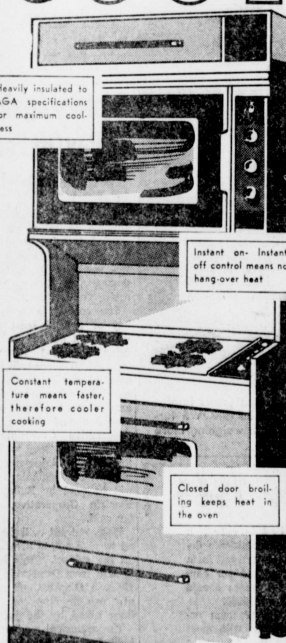
AND

QUEENS N' TEENS DRESS SHOP

SIZES TEENS 5-15 QUEENS 8-18

500 MAIN CLOVIS, N. M. PH. PO. 3-7153

MODERN GAS COOKING IS SO COOL



A modern Gas range can do anything any range can do... and a lot more, too. And, GAS cooking is clean, easy, dependable... and 5-times more economical.

Gas Makes The Big Difference, Costs Less, Too. Pioneer Natural Gas Company

NOEL, NOEL!

Season's greetings to our many fine patrons from the staff and management.

AAA GRAIN

IRA THOMAS DOYLE EVANS



CHRISTMAS HOLIDAYS — Pictured here are members of the Mary DeShazo and Richland Hills first grade anxiously awaiting the distribution of gifts and the party which will mark the last of school for the Christmas

holidays. Pictured at left are members of Richland Hills; Claudette Faus, Kip Garth, Alma Leal, Norman O'Dell, Terry Mick and their teacher, Mrs. Wilson Witherspoon. Right are Susan Puckett, Laura Beene, Rebecca

Gonzales, Eddie Nash and Eddie Castorene from Mrs. Jack Obenhaus' first grade at Mary DeShazo. (JP)

Kindergarten Class Enjoys Christmas Party

Mrs. Cecil Tate's kindergarten class had their annual Christmas party at the Tate home here Wednesday morning. Santa made his arrival at the scene and passed out gifts among the children, who drew names for their gifts. A program was given which consisted of each child giving a poem or taking part in some way on the program. Following the program the game of pin the beard on Santa Claus was played by the children. Refreshments of cookies and punch were served to approximately 20 persons and gifts consisting of fruit, candy and nuts in a white knit sack were given the children by the hostesses. Hostesses for the party

were Mrs. William Dean, Mrs. John Gunner, Margie Frisbie, Pat Shaffer and Mrs. Rey Whitt.



Band Directors Feted at Dinner

By Janie Crane
Friday night at 9 o'clock the "Mighty M" band members and their directors, Bill Bradley and Bob Breckenridge were honored with a banquet by the band member's parents. The theme, "Music, The Universal Language," was carried out in the table decorations. Each table was decorated by the symbols of different countries. To start the program, Neil Finley gave the invocation. Then Hal Anderson, master of ceremonies, presented Jan Landers, who told of the theme. After this, the meal was served. Turkey, dressing, cranberry salad, beans, fruit salad, hot rolls and strawberry shortcake made up the menu. As soon as the meal was over, Pam Kerr presented the special guests who were Mr. and Mrs. Bradley, Mr. Bill

Lamb and Bill McDonald, from KMUL, Mr. and Mrs. Ray Martin, from the Muleshoe Journal; Mr. Morris Nowlin, from the Annual staff and Duane Hood, from Littlefield.

Next Janie Crane told the band about the activities they have participated in this year. To Bradley and Breckenridge's surprise, they were presented with Christmas gifts from the band by Sonja Bass and Linda Griffiths. Bradley's gift was a statue of a Siamese dancer. Breckenridge's gifts were a sportcoat, tie, shirt and socks.

The entertainment was presented by the Littlefield choir group directed by Duane Hood. The banquet was thoroughly enjoyed by all who were present. Mrs. Lonnie Bass gave her thanks to the mothers and the 6th, 7th and 8th grade band students for their help.

Bankers' Rites Set for Today

Funeral services will be held in Earth this afternoon, probably at 2 p.m., for William Rufus Stockard Jr., 47, who died Thursday after a four-day illness. He was vice-president of Citizens State Bank in Earth.

Burial will be in Earth cemetery with Parsons Funeral Home of Olton in charge of arrangements. Surviving are his parents, Mr. and Mrs. William Rufus Stockard Sr.; his wife; and three sons, Mike Stockard, Dallas; Jim Stockard, Canyon; and Wayne Stockard, Earth.

Stockard was born in Mertons April 13, 1918 and had lived in Earth for 14 years, moving to Earth from Frost.

He had been vice-president of the bank since 1951. Stockard was married to Miss Georgia A. McCraw Sept 20, 1941 in Fort Worth. He was a member of the First Methodist Church and of the Masonic Lodge.

Sinking Scaless

MANCHESTER, Tenn. (AP)—City officials here that sinking feeling. Mayor C. V. Myers says the City Hall is unsafe for human use. Unless a new one can be built, he says, he will declare it hazardous and won't let people enter. Myers says the roof sags about 10 inches. The building once was used for a livery stable and a service station.

The first U. S. naval ship to be christened by a woman was the sloop-of-war Concord, launched in 1828.

Sees Ace Then Gets One — WHITESULPHUR SPRINGS, W. Va. (AP) — John C. McCormack of Washington, D. C., looked on as Donald West of Washington sank a hole in one on the 9th hole of the Greenbrier course.

playing in a foursome, tied the 18th hole of the Old White course. He used a 5 iron for the 149-yard shot.

Marine Corps infantrymen were provided carrier-based Marine air support for the first time in history during the invasion of Iwo Jima.

Christmas Wishes to All
MERLYN NEEL TV
220 West Second

WALLACE THEATRE
GENERAL ADMISSION
75c ADULT 25c CHILD
SUN., MON., TUES. DECEMBER 26-27-28
THIS IS A BIKINI MACHINE
Just push the button and it'll GO-GO-GO!
FROM AMERICAN INTERNATIONAL PATHECOLOR
DR. GOLDFOOT AND THE BIKINI MACHINE
VINCENT PRICE
FRANK AVELON
FRANKIE HICKMAN
DEAN HART
WED. THUR. FRI. DECEMBER 29-30-31

DEAN MARTIN ASKS "Who's Been Sleeping in My Bed?"
THE HOTTEST QUESTION OF THE DAY
TECHNICOLOR PANAVISION
A JACK ROSE Production
ELIZABETH MONTGOMERY BALSAM ST. JOHN
CONTE NYE SUE MERLIN TANI FOSTER RED BURNETT
FRIDAY, DECEMBER 31 MIDNIGHT SHOW NEW YEAR'S EVE

3 NUTS IN SEARCH OF A BOLT
IT'S FUN!
and new ambitions in "The Sincerest Comedy of the Year!"
STARRING MAMIE VAN DOREN TOMMY NOONAN
A Harbucol International Picture
SATURDAY, JANUARY 1

M-G-M Presents A SEVEN ARTS-HAMMER PRODUCTION
H. RIDER HAGGARDS
URSULA ANDRESS
CINEMASCOPE TECHNICOLOR

Blondie Puckett, Long-Time Area Resident, Dies
Funeral services will be at 2:30 p.m. Sunday in First Methodist Church for John H. (Blondie) Puckett, 71, 293 E. Fir, who was dead on arrival at Green Memorial Hospital at 7:30 Thursday night. The rites will be conducted by the pastor, the Rev. J. Frank Peery. Burial will be in Bailey County Memorial Park Cemetery with Singleton Funeral Home in charge of arrangements. Survivors include his widow, Myrtle; three sons, B. W. Puckett, Muleshoe; John H. Puckett Jr., Graham; and Eddie, of a veteran.

New Years Eve and No date!

Make a date to stop in at Western Drug so we can wish you a HAPPY NEW YEAR. Let us help you to keep healthy and happy during the year ahead.
Western DRUG
Your Walgreen Agency
PHONE 3-1050 MULESHOE, TEXAS

WANT ADS
FOR SALE: 1950 Chev. Cal. 272-3658 after 6. Jim Shafer. 9-328-21c

BEGIN THE NEW YEAR RIGHT!
ENJOY SAVINGS REALLY WORTH CROWING ABOUT!
You can provide safety, stability and earnings for your savings dollars. Deposit any convenient amount in a savings account and with your dollars grow. Your funds are insured to \$10,000 and are available whenever needed. Join the many thrifty people of our community who have placed their savings with us. Savings placed by the 10th earn interest from the 1st.
4 1/2% CURRENT RATE
On Savings -- Compounded Quarterly
With an interest rate of 4 1/2% your savings will increase rapidly. You'll never be "down to your last dollar" when you save regularly with us.
Tri-County SAVINGS AND LOAN ASSOCIATION
DONALD W. HARMON President
P.O. BOX 528 — MULESHOE, TEXAS

Wheeler Attend Co-op Dinner In Muleshoe

By Mrs. H. W. Garvin
THREE WAY — Mr. and Mrs. Johnnie Wheeler attended the annual Christmas Party for the Bailey County Electric Co-operative directors' and employees dinner in Fellowship Hall of First Methodist Church in Muleshoe Friday.

All the children of Mrs. Perry Fort were home Saturday. Bill Key, Fort Smith, Ark.; Mrs. Garlin Fort, Midland; Mr. and Mrs. J. P. Meeks, Canadian; Mrs. Bonnie Long, Muleshoe; Mr. and Mrs. Carol Fort, and Mrs. Bud Huff, Three Way.

Mr. and Mrs. Foy Lewis were in Lubbock Friday.

Mr. and Mrs. Harold Sanders, Akin, S. C., spent a few days with his mother, Mrs. A. H. Robinson. She accompanied them to Hempstead to visit another daughter.

The Three Way basketball

girls played Muleshoe and on Friday night, Bovina came to Three Way for boys and girls' games.

Cotton harvesting is going fine in the community with a few farmers finished with picking.

The WMS of the Maple Baptist Church met Tuesday in the home of Mrs. D. L. Tucker for a Christmas party. The meeting opened with the reading of the prayer calendar for missions. Mrs. Robinson led the prayer.

Christmas gifts were exchanged and secret pals revealed.

Drawing for new secret pals was held.

Refreshments of coffee, cake and ice cream were served to Mrs. A. Y. Robinson, Mrs. E. A. Wright, Mrs. C. A. Petree, Mrs. Dennis Heard, Mrs. E. M. Lowe, Mrs. Carsile, and Mrs. Fine.

Mr. and Mrs. Garlin Beard and Mr. and Mrs. Jess Tomlinson, Dumas, spent Sunday night in the E. M. Lowe home. The Beards were former residents of Maple.

They were here to attend the funeral of Mr. Beard's mother Monday at Morton.

Good Thinking

LEXINGTON, Ky. (AP) — Bob Fain recalls the time a friend, who travels extensively, came home late and without his keys.

He rapped at the door but couldn't raise anyone; the wife and children were asleep.

He even pecked at his wife's bedroom window but got no response.

Finally, he stood at the window and called softly, "Mama."

She awoke.

Classified Get Results

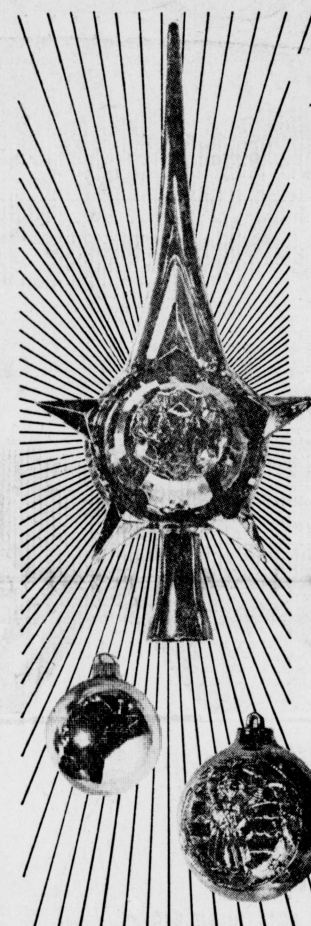


KINDERGARTEN CLASS — Joannah Green's kindergarten class had their annual Christmas party Wednesday morning.

Members of the class are shown here before their Christmas tree preceding their party. (J.P.)

ATTEND THE CHURCH OF YOUR CHOICE THIS SUNDAY

- Muleshoe Assembly of God**
517 S. First
J.W. Farmer, Evangelist
- Spanish Assembly of God**
East 6th and Ave. F.
Rev. Enock Ramirez
- Calvary Baptist Church**
1733 W. Ave. C.
Rev. Bill Felts
- First Baptist Church**
220 W. Ave. E.
Rev. Don Murray, Pastor
- Richland Hills Baptist Church**
17th & West Ave. D.
Rev. Ira Waddell, Pastor
- Primitive Baptist Church**
621 S. First
Afton Richards, Pastor
- Trinity Baptist Church**
314 E. Ave. B.
Troy Walker, Pastor
- St. Matthew Baptist Church**
W. Third
Rev. E. McFrazier, Pastor
- Spanish Baptist Mission**
409 E. Ave. F.
- Immaculate Conception Catholic Church**
(Fr.) Clifton J. Corcoran
Northeast of City
- First Christian Church**
130 W. Ave. G.
Charles M. Grow, Minister
- Jehovah's Witness**
Frona Highway
Boyd Lowery, Minister
- Muleshoe Church of Christ**
Clovis Hwy.
D. L. Thompson, Minister
- Northside Church of Christ**
117 E. Birch Street
Frank Duckworth, Evangelist
- Church of Christ**
West Birch and Chicago
H.R. Stevens, Minister
- First Methodist Church**
507 W. Second
J. Frank Peery, Pastor
- St. John Lutheran**
Lariat, Texas
Herbert E. Peiman



the Star

CHRISTMAS tree ornaments are made to resemble snow, unusual patterns of ice, and frost; however, the most beautiful ornament and symbol is the star for the top of the tree. This is to remind us of that wonderful day when the child Jesus was born in a manger and the star shown the way... "for we have seen his star in the east, and are come to worship him." Let the star on the tree remind you to attend church and worship him too.

The Church is God's appointed agency in this world for spreading the knowledge of His love for man and of His demand for man to respond to that love by loving his neighbor. Without this grounding in the love of God, no government or society or way of life will long persevere and the freedoms which we hold so dear will inevitably perish. Therefore, even from a selfish point of view, one should support the Church for the sake of the welfare of himself and his family. Beyond that, however, every person should uphold and participate in the Church because it tells the truth about man's life, death and destiny; the truth which alone will set him free to live as a child of God.



The D. Haynes Give Yule Party

Mr. and Mrs. Douglas Haynes hosted a dinner of turkey, ham and all the trimmings at their annual Piggly Wiggly store party at the American Legion Hall Thursday at 8 p.m.

The hall carried out the Christmas motif with the tables being decorated with blue and green Christmas balls entwined with greenery among candles and lights. The tables were laid with green cloths.

A tall tree stood on the band stand and music was furnished by stereo. Gifts were exchanged among the people and a gift was presented to the manager of the Piggly Wiggly Store here, Dung Haynes.

Approximately 40 employees and their wives and husbands attended the affair.

Wildlife Does Out 1966 Funds

Funds from excise taxes on fishing and hunting equipment will provide approximately 25 million during the 1966 fiscal year for wildlife work, Melvin Evans, manager of the Muleshoe Wildlife Refuge said Saturday. He had received a report from Secretary of the Interior Seward Udall who said total appropriations will run to \$6,810,000 for fisheries, and \$19,236,000 for wildlife.

The secretary said the funds will be used "for fish and wildlife restoration projects involving the purchase of land, im-

provement of areas of land or water for fish and wildlife, and to conduct research for the restoration and perpetuation of these resources."

He said that under the federal aid program, "the state initiates the projects, and if they meet the requirements of the Department of Interior, the funds allocated are used to reimburse the states up to 75 percent of the cost of the completed projects. Appropriations are made to the 50 states, to Juan, Porto Rico and the Virgin Islands.

Scientists Set Yule Sermons

The Christmas service to be read in Christian Science churches this Sunday will emphasize the rich blessings which an understanding of Christ Jesus' mission brings to mankind. The Lesson-Sermon begins with the prophecy from Isaiah (9:6): "Unto us a child is born, unto us a son is given, and the government shall be upon his shoulder; and his name shall be called Wonderful, Counselor, The mighty God, The everlasting Father, The Prince of Peace."

Among the correlative readings will be the first tenet of the Christian Science Church "As adherents of Truth, we take the inspired Word of the Bible as our sufficient guide to health with Key to the Scriptures, by Mary Baker Eddy, p. 497."

The Lesson-Sermon subject is "Christian Science."

The air-conditioning capacity of the Navy's newest attack carriers would be sufficient to accommodate four buildings the size of the Empire State Building.



Christmas blessings to you and yours!

PATZER CHIROPRACTIC CLINIC

— SHOP MULESHOE FIRST —

Heathington Lumber Co. 814 W. American Blvd.	Higginbotham Bartlett Co. 215 Main	First National Bank 1st. & Ave B	Piggly Wiggly Super Mkt 4th. & American Blvd.
Muleshoe State Bank 304 Main	Muleshoe Antenna Co Muleshoe	Charles Lenau Lumber Co. 202 E. Ash	Brock Motor Co.
Main Street Beauty Salon 115 Main	St. Clair's Cashway Gro. 402 Main	Ben Franklin 128 Main	Tri-Co-Bowl Clovis Road
Western Drug 114 Main	Western Auto Store 228 Main	Spudnut Shop 328 Main	Fry & Cox 401 S. 1st.
The Fashion Shop OF MULESHOE	Pool Insurance Agency 114 E. Ave. C.	James Jennings Insurance 115 E. Ave. D.	L & H Gro. 414 W. American Blvd.
Muleshoe Motor 106 S. 1st.	King Tire Co. 2015 American Blvd.	Dari Delite 210 N. 1st.	Muleshoe Co-Op Gins Muleshoe
Bovell Motor Supply		Bub Shafer Clovis Road	Cobb's
		Bell Service Clovis Road	Cox Drive-In Theatre, Frona Hwy.
		Church of the Nazarene Ninth & Ave C. Alvin Keswater, Pastor	First Presbyterian Church Morton Highway Don Boles, Pastor
	Latin American Methodist Mission Ave. D & 5th St. E.C. Puqueno, Pastor		

Order Your Trousseau of Wedding Stationery

Exquisitely Thermographed by **Coronet**

You'll be so proud of your lovely stationery, done in beautifully correct taste... and you'll be pleased at the sensible price made possible by famous Coronet Thermographing.

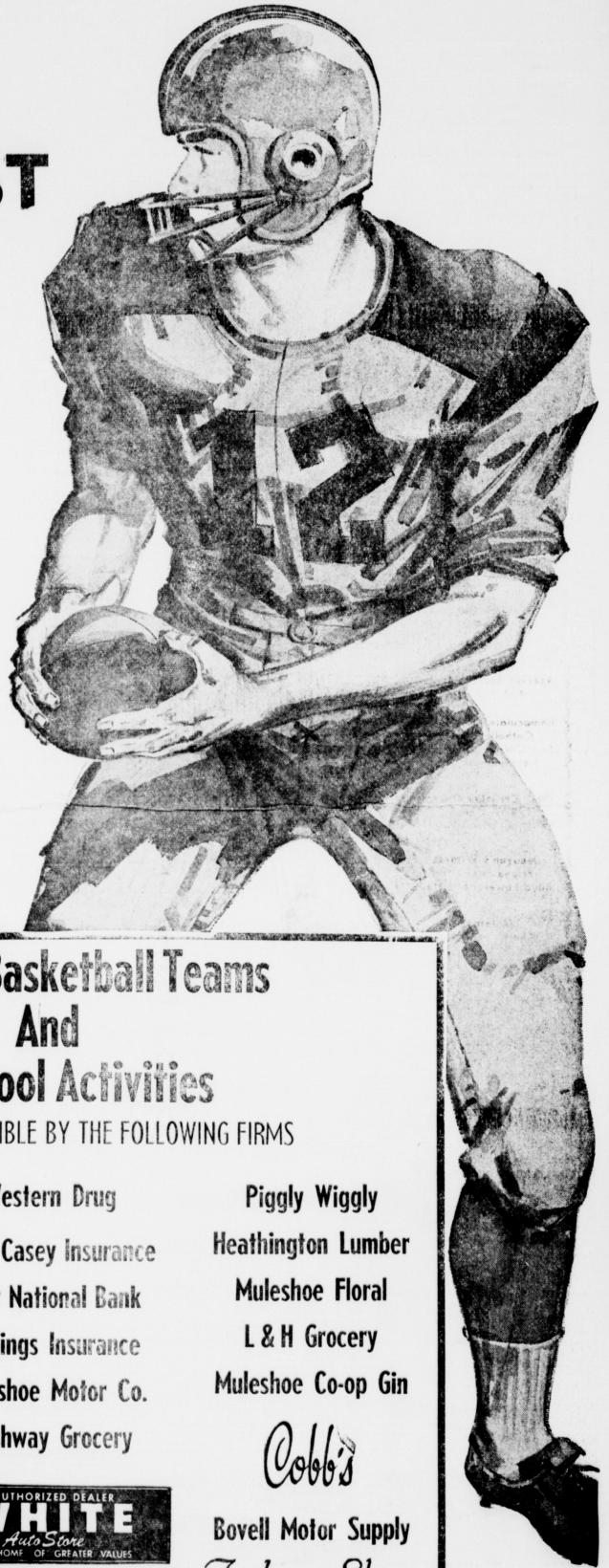
Wedding Invitations and Announcements
Luncheon Invitations
Gift Acknowledgments At Home
Announcements

Calling Cards
Personalized Stationery
Informal Notes
Monogrammed Napkins
Monogrammed Matchbooks

A complete selection of correct styles
PROMPT DELIVERIES

MULESHOE PUBLISHING CO.
304 W. 2nd — Ph. 272-4536

NEW YEAR'S DAY SPECIAL FOOTBALL CONTEST



**WIN
\$2,000**

END OF YR ANNUAL

BACK TO MULES

FOOTBALL CONTEST

FIL IN SCORE FOR
EACH TEAM

DELINE IS 12 NOON

DAY FOR ENTRIES

ONE WINNER ONLY

SPECIAL CONTEST RULES

MULESHOE PUBLISHING COMPANY
BOX 449 — MULESHOE, TEXAS

- Contest open to everyone except employees and family of this newspaper.
- Entries will be judged by the staff of this newspaper. All decisions are final.
- Bring or mail your entry to Journal office. Mailed entries must be postmarked not later than 12:00 noon, Friday, December 31, 1965.
- Scores must be placed in spaces indicated.
- Only one entry per person allowed.

OFFICIAL ENTRY FORM

ORANGE BOWL		
Score	Missouri vs Florida	Score
COTTON BOWL		
Score	Arkansas vs LSU	Score
SUGAR BOWL		
Score	Alabama vs Nebraska	Score
GATER BOWL		
Score	Texas Tech vs Georgia	Score
SUN BOWL		
Score	TCU vs Texas Western	Score
ROSE BOWL		
Score	Michigan State vs UCLA	Score
Name	PH	
Address	T	

Back Our Basketball Teams And All School Activities

THIS CONTEST MADE POSSIBLE BY THE FOLLOWING FIRMS

Brock Motor Co.
James B. Glaze Co
E. R. Hart Co.
Beavers Flowerland
Ladd Pontiac
Ben Franklin Store
Muleshoe State Bank
D & G Grocery

Western Drug
W. Q. Casey Insurance
First National Bank
Jennings Insurance
Muleshoe Motor Co.
Cashway Grocery

Piggly Wiggly
Heathington Lumber
Muleshoe Floral
L & H Grocery
Muleshoe Co-op Gin



Pool Insurance
Farmers Co-op Elevator
Johnson Furniture
Muleshoe Auto Parts

Cobb's
Bovell Motor Supply
Fashion Shop
OF MULESHOE
Johnson-Pool Furniture
and Appliance
Dari Delite



King Bros. Grain & Seed Co.

SEE "THE KING AND I", JANUARY 6 and 8
HIGH SCHOOL AUDITORIUM

SHOP MULESHOE FIRST

COW POKES

By Ace Reid



© Ace Reid 1-16

"Jist think, if fences hadn't been invented, we might be unemployed!"

MULESHOE MOTOR CO.

"CAR CAPITAL OF THE WEST PLAINS"

AT THE CROSSROADS

PHONE 272-4251

THREE WAY NEWS

THREE WAY — Mr. and Mrs. John Hednett and daughters, Muleshoe, Mr. and Mrs. Clifford Dupler and sons, Morton, and Mr. and Mrs. Loyd Warren spent Sunday with their parents, Mr. and Mrs. Bud Warren.

Mr. and Mrs. Bill Dupler and daughter spent Saturday with the Rev. and Mrs. Sammie Sower at Lingo.

Mr. and Mrs. Jake Burkett and Mr. and Mrs. C. L. Taylor have been at Tahoka at the bedside of Mrs. Burkett's and Mrs. Taylor's mother. She has been seriously ill.

The 4-H girls met Thursday in the home of Alice Gish for their Christmas party. Also it was Vanessa Powell's birthday.

The club had 100 percent attendance. Those on hand were Patty and Susan Carpenter, Loretta, Vanessa and Christine Powell, Maxine Gant, Marilyn Mann, Rena Neutzler and Faye Fine. Mothers attending were Alice Gish, Mary Powell and Pauline Carpenter.

Mr. and Mrs. Jack Ferguson moved into their new home west of Maple last week.

Mr. and Mrs. Jack Lucas, Albuquerque, spent Saturday night in the home of her uncle and family, the George Tysons.

Mr. and Mrs. Bill Dupler spent Sunday in Muleshoe with her parents, Mr. and Mrs. Esten Sower.

Mrs. Joe Wheeler, West Camp, were in Clovis Friday and Saturday.

— SHOP MULESHOE FIRST —

IRRIGATION SYSTEMS

Fully Guaranteed — Prompt Service

- PLASTIC
- CONCRETE
- ASBESTOS-CEMENT
- PORTABLE ALUMINUM

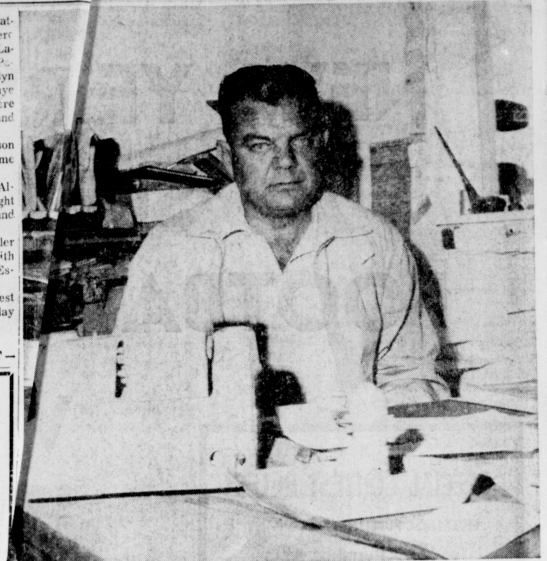
Contact the Friendly Folks at
STATE LINE IRRIGATION

T. L. TIMMONS, General Manager

General Office and Plant — Phone 385-448
Box 326 — 1601 Houston Ave. — Littlefield

Don Messer — Phone 762-4557
1916 W. 7th St. — Clovis, New Mexico

Muleshoe — Ph. 272-3109 — John Hamrick



HEADS PIONEER FIRM — Houston Her is president of E. R. Hart Co., Inc., one of Muleshoe's long-time business establishments. The company deals in Berkeley pumps and water systems, and Coleman Heating and Air Conditioning units.

Hart Company Long Active As Muleshoe Business Firm

One of the oldest and best known business firms in Muleshoe is the R. Hart Co., Inc., dealer in Berkeley pumps and water systems, and Coleman Heating and Air Conditioning units. This establishment installs pump and irrigation systems and does turn key jobs. They also have wells drilled through connections well drilling rig.

Berkeley pumps come in several sizes up to 100 horsepower. These pumps are famous all over the United States and have been on the market many years. They are known for giving many years of excellent service, for either shallow or deep wells.

The company mechanics that overhaul any type of pump and install them. They do all the plumbing work connected with Water service. Otis Blaylock is the head mechanic and pump in this area in 1938. Seven employees operate this organization.

Berkeley pumps can be bought on easy terms and his firm handles the financing for pumps and heating and air-conditioning units. They are familiar with the water problems of farmers in this area and know how to solve them. They have all the equipment necessary to bring the water to the surface and distribute it over the land.

The E. R. Hart Co., has a complete line of plumbing supplies and pump parts. Practically any item a farmer needs for his irrigation system can be bought here.

Houston Hart is president of this firm and his brother Bill is Vice-president. E. W. Tucker is Secretary and Assistant manager. The business is located at 219 East 3rd St. in Muleshoe and the phone number is 272-3330. Call this number when you need pump or irrigation service or heating and air conditioning units. They operate four service trucks to give prompt service to customers.

— SHOP MULESHOE FIRST —

BUSINESS SERVICES DIRECTORY

"FIRST IN FASHIONS"

Permanents — Styling
Tinting — Shaping
Revlon Cosmetics

MAIN STREET BEAUTY SALON

Bernice Holdeman
115 Main — Muleshoe
Dial 272-3448

E. R. HART CO.

DOMESTIC PUMPS & SMALL IRRIGATION WELLS

COLMAN HEATING EQUIPMENT

FARM SUPPLIES

212 E 3rd
Phone 272-4907

Dial 272-4536

For Classified Ads

COTTONSEED DELINTED

Phone 272-3251 — Muleshoe

WILLIAMS SEED CLEANING CO.

Filter Queen Sales - Service
Call 272-3163 after 6:00 p.m.

J. R. Otwell
Muleshoe, Texas

INSURANCE

COMPLETE INSURANCE SERVICE

AUTO
 LIFE
 FIRE
 INSURANCE

Jennings Ins.
115 E. Ave. D. - 272-3491

MISS YOUR PAPER?

Call 272-4536

Weekdays 8 to 5

BEAVER'S FLOWERLAND

Real and Artificial Flowers — Corsages
Pot Plants — Banquets
Funeral Designs
520 S. First St.
Ph. 272-3116—Muleshoe

MULESHOE MOTEL

— 22 UNITS
— APARTMENTS WITH KITCHEN
— TV
— PHONES

Rates DAY or WEEK
2105 W. Amer. Blvd.
Phone 272-4440
Muleshoe

HEATHINGTON LUMBER COMPANY

Lumber, Paint, Builders Hardware
Clovis Rd.—Ph. 272-4797

BERRY ELECTRIC CO.

ELECTRIC WIRING and REPAIRS

REFRIGERATION SERVICE
104 E. AVE. B
Phone 272-3375

MULESHOE COVER SHOP

SEAT COVERS

All Types Furniture Work
All Types Auto Work
All Types Canvas Work

CLOVIS ROAD
Phone 272-3586
MULESHOE, TEXAS

Phone 272-3078

— the number to call to save money on your new office, store, warehouse

Headquarters for attractive Inland steel buildings. Pre-engineered in any length, any width. Enclosed with colorful metal wall panels, glass, or other materials. Fast erection saves money.

INLAND STEEL BUILDINGS

B & C BUILDERS, INC.
217 E. Ave. B Muleshoe, Texas

FOR A CLASSIFIED AD

Ask For Polly Or
Liz. Ph. 272-4536

— SHOP MULESHOE FIRST —

SHOP MULESHOE FIRST

Save Money On Auto Parts!
BOVELL MOTOR SUPPLY
107 East Ape. B — Dial 272-4288
W. T. BOVELL, Owner

SINGLETON FUNERAL HOME

24 HOUR AMBULANCE SERVICE
PHONE 272-4574 — MULESHOE

FOR FHA., GI and FARM LOANS AND THE

BEST INSURANCE

SEE—
POOL INSURANCE COMPANY

Phone 272-4531 — Muleshoe
W. M. POOL, JR. — LEE R POOL

A & B PLUMBING

WE DO ALL TYPES OF PLUMBING

- * INSTALLATION
- * REPAIR
- * FREE ESTIMATES
- * 24 HOUR SERVICE

WE ARE DEALERS FOR
PAYNE HEATING & AIR CONDITIONERS
CALL 272-3734

202 E. CEDAR AVE.

W. O. CASEY GENERAL INSURANCE

Let Our Complete Coverage Take Care of All Your Insurance Problems

Muleshoe State Bank Bldg. — Ph. 272-4571

WELCOME TO MULESHOE

Amos Jones

We welcome the Amos Jones family of 409 E Dallas to Muleshoe. The Jones' moved from Clovis where he was associated with Bob Harper, formerly the Gateway Auto Co. Jones is a mechanic at Muleshoe Motor and has been commuting until his family could move. He and his wife, Golda Ruth, have two sons: Jimmie Lee and Kenneth Ray, 15. They attend the Baptist Church. Following merchants extend a cordial welcome to the Joneses.

CASHWAY GROCERY
402 Main Phone 272-44

DAMRON DRUG CO. REXALL
308 Main Phone 272-4210

James B. Glaze Insurance - Real Estate - Loans

MULESHOE STATE BANK
304 Main Phone 272-4571

MULESHOE MOTOR CO.
"At Crossroads"

TRADE CLASSIFIED ADVERTISEMENTS BUY ADS LEASE

WANT ADS - PH. 272-4536

1 time per word — 4c
2 times per word — 7c
After 1st issue, 3c per word each additional time.
Minimum charge 50c
Card of Thanks \$1.00

3 times per word — 10c
4 times per word — 13c
After 1st issue, 3c per word each additional time.
Minimum charge 50c
Card of Thanks \$1.00

DEADLINE FOR CLASSIFIED ADVERTISING PAGE:
For Thursday's Issue: Monday, 12 Noon
For Sunday's Issue: Thursday, 12 Noon
TO LATE TO CLASSIFY
Thursday Issue — Tuesday 5 P.M.
Sunday Issue — Friday 3 p.m.
Double Rate for Blind Ads.

1. Personals
AVON. Phone 3510
1-461-4tc

WANTED: Baby sitting in my home nights. Will do ironing. Day call 3060, after 6:30 p.m. call 4606.
1-475-4tc

FOR RENT: 15 ft. camper by day or week, call 272-3163.
1-535-4tc

HOUSES FOR SALE
Redi-Built or BRICK, 3-BEDROOMS, 2-BATHS, 90-FT. LOT APARTMENTS FOR RENT CALL—
BILLY MORRISON
Ph. 272-3421 or 272-3213

An interested in making loans and buying first and second lien notes secured with farm and ranch lands. J. J. Steele, Box 835, Clovis, N. M.
1-501-4tc

Sewing wanted especially lit the girls and Barbie doll clothes for Christmas. Also baby sitting with small children during day hours. 401 Ave. E.
1-501-8tc

LOSE WEIGHT SAFELY with DEX-A-DIET TABLETS. Only 98 cents. Dannon Drug.
1-405-12tp

198 A in Parmer County with 10' well, 3600 feet of underground tile, 3 bedroom modern home, good allotments. \$500.00 per acre, good terms, available 240 A 2 good wells, underground pipe, well located. Priced to sell.
1-501-4tc

80 A 23A cotton allotment, 2 bedroom house, 10' well. Easy terms.
1-501-4tc

318 A 75 Acres cotton, 164 Acres grain, 3 wells \$275.00 per acre. 1/2 Section dry land priced to sell.
1-501-4tc

We have in your area an extremely fine (Spinnet Piano, No down payment) required. Write immediately to SCHROEDER ORGAN & PIANO CO INC 1436 East McDowell Rd. Phoenix, Arizona.
1-528-2tp

Harry — I's too late now. Besides you would never buy me anything I wanted.
1-528-1tc

1440 A. of choice New Mexico farm land 6 wells, underground pipe, 2 self propelled sprinkler systems, 2 B-droom home, pumps, motors and sprinklers all go. \$175.00 per acre. This land will all row water and worth the money.
1-528-2tp

430 A in Lamb County, 155 A cotton, 212 A grain base, 5 wells, 2 bedroom house, underground pipe, wells on natural gas. Well located.
1-528-2tp

4. Houses for Rent
Furnished Apt. 323 West Ave. E. Mrs. Melendy. Call 272-4812.
4-501-4tc

1 bedroom house with utility for rent. Call Lewis Blaylock, 946-2688 or 272-4373.
4-488-4tc

House for rent, 304 W 7th. Call 272-3478.
4-528-1tc

EDDIE LANE REAL ESTATE
PHONE 272-4429
Residence
Eddie Lane 272-4568
Buddy Lane 272-3774
Jimmie Pitcock 272-4454
8-598-1tc

For Sale: Brick 2 bedroom and den — 3 bedroom frame house — 2 bedroom frame house — all close to school. Call 272-3365.
8-431-4tc

5. Apts. for Rent
For rent: Trailer space and furnished apartments. Phone 272-3465.
5-481-4tc

For Rent: 3 room and bath furnished house. See Sam Ghoson or Sam's Auto Store.
5-441-4tc

For rent: furnished apartment at 319 W Ave. E. Adults only.
5-501-4tc

For sale: 1600 acres West Camp Community, 2 wells. Natural gas, 45 acres cotton, terms. Arch Fowler, 306 W 7th. 8-491-8tp

For sale: 3 year old house 3 bedroom, living room, 15' by 30' den, double garage, fenced in yard, storage garage. Should see inside to appreciate. Over 1900 square feet besides garage. House on 10' lot. Only \$17,500. Hershel Ward, 1013 West 2nd. Phone. 272-3579.
8-491-4tc

6. Rooms for Rent
Bedroom for rent — See Ida Tapp, Last house north of Calvert's grocery.
8-441-4tc

8. Real Estate for Sale
For Sale: Southside Golf Service Station. Call 272-3571. 506 South First.
8-405-4tc

For Sale: 50' x 130'. Lot plumbred for two trailer houses. Small down payment will carry balance. Phone 4932.
8-515-4tc

For Sale: Nice three bedroom, 2 baths and den. Well located. Close to schools, town and church. Brand new. See Pool Ins. or call 272-4453, or 272-3139.
8-475-4tc

640 or 2-320 acres. 7 full 8' wells with pumps, underground pipe, 200 acres Burmuda grass, 18 acres cotton, 90 acres grain all fenced house, 4 miles West 1 mile south of Muleshoe, 20 percent down, 15 years at 5 3/4 percent. \$350 per acre, area code 806-PO 3-5323 for owner.
8-511-4tc

For Sale or Rent: 3 bedroom house, 902 Fig. Call Arvin Stroud Y U 3-2887 Floydada.
8-501-4tp

FOR SALE: Immediate possession for our 3 bedroom home, 413 East Dallas. Carpets, drapes, and built-in electric stove. 1 1/2 baths, central air, conditioning and heating; back yard fenced, plenty of closets. G.I. 4 1/2 percent loan covering purchase price. A good buy for quick sale. Contact or phone L. B. Hall at 272-4749 or 272-4536.
8-441-4tc

Prompt Buyer on this Love Nest to be in by Christmas Eve. Three and Den with 2 car garage, all the built ins, fenced, air conditioned in Richland Hills, 1923 Ave. F. Offered by "The Firm That Sells".
Eddie Lane Real Estate
8-508-4tc

For Sale — good 160 acres near Muleshoe. Improved, all cultivated. Possession Jan. 1966. Terms if desired. Owner James W. Jennings. Road 2, Phone 925-3327.
8-458-4tc

Be gentle be kind, to that expensive carpet, clean it with Blue Lustr 81 Higginbotham — Bartlett.
15-528-1tc

17. Seed & Feed
For sale: Cane Bundles, Call Gene Fox, 965-2411. 17-451-4tc

By federal law, doctors and nurses of the U. S. Public Health Service became the Coast Guard's "medical arm" in 1914.

The U. S. Coast Guard has 17 82-foot patrol boats operating in Vietnamese waters, helping to prevent arms and supplies.

Texas is 29% 'Poor,' Survey At A&M Reveals
COLLEGE STATION — Poverty in Texas is the topic of a recent study prepared by Dr. William P. Kuvlesky, sociologist in the Department of Agricultural Economics and Sociology, Texas A&M University.
Kuvlesky said 29 percent of all Texas families, nearly 700,000, had annual incomes of less than the \$3,000 figure used as an indication of poverty. This is a larger proportion of low-income families than for the United States, Kuvlesky said.

The study, "Poverty in Texas: The Distribution of Low-Income Families," was conducted with David E. Wright, a senior student assistant at A&M. The study is the first effort of this kind to provide distributions of low-income families for Texas counties and rural and urban places, said Kuvlesky.
The amount of poverty varied greatly from county to county, showed up in the location of low-income families, he said. Most of the counties in East and South Texas have high levels of low-income families, while in the Panhandle and West Texas, high levels are not common, said Kuvlesky.

Poverty, a serious problem in both rural and urban areas in Texas, appears to be a more pressing problem in the countryside than in the city, the sociologist concluded.

SHOP MULESHOE FIRST

FOR LEASE SERVICE STATION
INQUIRE AT MOBIL OIL CO. OR CONTACT J. W. KELLY

NOEL
Let peace and harmony reign!
Big N Fertilizer—Continental Oil

OTWELL'S VACUUM CLEANER REPAIR
Filter Clean Distributor Disposable Bags For All Makes
SALES SERVICE
All Vacuum Cleaners Repaired New and Used Cleaners
After 6 p.m. or before 8 a.m. 918 East Hickory
Phone 272-3163

Television Schedule For Muleshoe Area

	KGNB-TV (4) Amarillo Muleshoe Cable 4	KVII-TV (7) Amarillo Muleshoe Cable 5	KFDB-TV (10) Amarillo Muleshoe Cable 6	KCBD-TV (11) Lubbock Muleshoe Cable 2	KBLK-TV (13) Lubbock Muleshoe Cable 3	
Higginbotham	Mon, thru Fri. Daytime Viewing	Mon, thru Fri. Daytime Viewing	Mon, thru Fri. Daytime Viewing	Mon, thru Fri. Daytime Viewing	Mon, thru Fri. Daytime Viewing	
Bartlett	7:00 - Today 8:00 - Today 9:00 - Frac. Phrases 9:25 - News 9:30 - Concentration 10:00 - Morn. Star 10:30 - Para Bay 11:00 - Jeopardy 11:30 - Post Office 11:55 - NBC News 12:00 - News 12:10 - Weather 12:15 - Ruth Brent 12:30 - C-Tel's Mals 1:00 - Days of 1:30 - The Doctors 2:00 - Another World 2:30 - C-Don't Say 3:00 - Match Game 3:25 - NBC News 3:30 - Sheriff Bill 4:30 - Laramie 5:30 - Hunt-Brink 6:00 - News 6:15 - Sports	7:00 - Crop-Stock 7:15 - Weather 7:20 - News 7:30 - Wells Fargo 8:00 - Matinee 10:00 - Super Sweep 10:30 - Dating Time 11:00 - Donna Reed 11:30 - Father Know 12:00 - Ben Casey 1:00 - Nurses 1:30 - A Time 1:55 - News 2:00 - Gen. Hospit. 2:30 - Young Marri 3:00 - Young Justice 3:30 - Action 4:00 - Beaver 4:30 - H. Patrol 5:00 - P. Jennings 5:15 - B. Masters 5:45 - Rifleman 6:15 - News 6:25 - Weather	6:25 - Sign On 6:27 - Meditation 6:30 - Film 7:00 - Farm & Ranch 7:20 - News 7:30 - News 7:30 - News 8:15 - Cap. Kang 9:00 - Lucy 9:20 - McCoys 10:00 - Andy 10:30 - D. Dyke 11:00 - Love of Life 11:30 - Search Tomon 11:45 - Guiding Light 12:00 - News 12:10 - Weather 12:20 - Farm & Ran 12:30 - As World Tur 1:00 - Password 1:30 - Houseparty 1:45 - Truth 2:25 - News 2:30 - Edge of Nigl 3:00 - Secret Storm 3:30 - Variety 4:00 - Proud Eagle 5:00 - Cartoons 5:30 - News 6:00 - News 6:30 - Weather Monday Evening 6:30 - 12:00 O'clock 7:30 - J. James 8:00 - Shenandoah 8:30 - Peyton 9:00 - Ben Casey 10:00 - News 10:10 - Weather 10:20 - Crop 10:30 - Cinema 10:55 - News 11:00 - Cinema Tuesday Evening 6:30 - Combat 7:30 - McFale 8:00 - F. Troop 8:30 - P. Place 9:00 - Fugitive 10:00 - News 10:10 - Weather 10:20 - Crops 10:30 - Cinema 10:55 - News 11:00 - Cinema Wednesday Evening 6:30 - Oz. and Har 7:00 - Paddy Duke 7:30 - Gidget 8:00 - B. Valley 9:00 - A. Burke 10:00 - News 10:10 - Weather 10:20 - Crop 10:30 - Movie 10:55 - News 11:00 - Flicker	7:00 News 7:05 - Farm Report 7:25 - Weather 7:30 - Today 8:25 - News 8:30 - Today 9:00 - Fr. Phrases 9:25 - News 9:30 - Concentration 10:00 - Morn. Star 10:30 - Par. Bay 11:00 - Days of 11:30 - P. Office 11:55 - News 12:00 - Noon Report 12:15 - C. Closeup 12:30 - C-Make Deal 12:55 - Early Report 1:00 - Days of 1:30 - The Doctors 2:00 - Another Wor 2:30 - C-Don't Say 3:00 Match Game 3:25 - Edge of Night 3:30 - Variety 3:30 - Nurses 4:00 - Father Know 4:30 - Col. Carniva 5:00 - Rifleman 5:20 - CBS News 6:00 - News 6:10 - Weather 6:20 - News	5:55 - Sign On 6:00 - S. Semester 6:30 - Carl. Circus 7:00 - Farm & Ran 7:20 - Second Cup 7:30 - News 7:55 - News-Wea. 8:00 - Captain 8:00 - Donna Reed 9:30 - McCoys 10:00 - Andy 10:30 - D. Dyke 11:00 - Love of Life 11:25 - CBS News 11:30 - Search 11:45 - Guiding 12:00 - WTTN News 12:10 - P. & Ranch 12:25 - Weather 12:30 - World Turns 1:00 - Password 1:30 - Housepart 2:01 - Gen. Hos. 2:30 - Edge of Night 3:00 - Secret Storm 3:30 - F. Casey 4:30 - Col. Carniva 5:00 - Rifleman 5:20 - CBS News 6:10 - Weather 6:20 - News	
Building Needs	7:00 - Today 8:00 - Today 9:00 - Frac. Phrases 9:25 - News 9:30 - Concentration 10:00 - Morn. Star 10:30 - Para Bay 11:00 - Jeopardy 11:30 - Post Office 11:55 - NBC News 12:00 - News 12:10 - Weather 12:15 - Ruth Brent 12:30 - C-Tel's Mals 1:00 - Days of 1:30 - The Doctors 2:00 - Another World 2:30 - C-Don't Say 3:00 - Match Game 3:25 - NBC News 3:30 - Sheriff Bill 4:30 - Laramie 5:30 - Hunt-Brink 6:00 - News 6:15 - Sports	7:00 - Today 8:00 - Today 9:00 - Frac. Phrases 9:25 - News 9:30 - Concentration 10:00 - Morn. Star 10:30 - Para Bay 11:00 - Jeopardy 11:30 - Post Office 11:55 - NBC News 12:00 - News 12:10 - Weather 12:15 - Ruth Brent 12:30 - C-Tel's Mals 1:00 - Days of 1:30 - The Doctors 2:00 - Another World 2:30 - C-Don't Say 3:00 - Match Game 3:25 - NBC News 3:30 - Sheriff Bill 4:30 - Laramie 5:30 - Hunt-Brink 6:00 - News 6:15 - Sports	7:00 - Today 8:00 - Today 9:00 - Frac. Phrases 9:25 - News 9:30 - Concentration 10:00 - Morn. Star 10:30 - Para Bay 11:00 - Jeopardy 11:30 - Post Office 11:55 - NBC News 12:00 - News 12:10 - Weather 12:15 - Ruth Brent 12:30 - C-Tel's Mals 1:00 - Days of 1:30 - The Doctors 2:00 - Another World 2:30 - C-Don't Say 3:00 - Match Game 3:25 - NBC News 3:30 - Sheriff Bill 4:30 - Laramie 5:30 - Hunt-Brink 6:00 - News 6:15 - Sports	7:00 News 7:05 - Farm Report 7:25 - Weather 7:30 - Today 8:25 - News 8:30 - Today 9:00 - Fr. Phrases 9:25 - News 9:30 - Concentration 10:00 - Morn. Star 10:30 - Par. Bay 11:00 - Days of 11:30 - P. Office 11:55 - News 12:00 - Noon Report 12:15 - C. Closeup 12:30 - C-Make Deal 12:55 - Early Report 1:00 - Days of 1:30 - The Doctors 2:00 - Another Wor 2:30 - C-Don't Say 3:00 Match Game 3:25 - Edge of Night 3:30 - Variety 3:30 - Nurses 4:00 - Father Know 4:30 - Col. Carniva 5:00 - Rifleman 5:20 - CBS News 6:00 - News 6:10 - Weather 6:20 - News	5:55 - Sign On 6:00 - S. Semester 6:30 - Carl. Circus 7:00 - Farm & Ran 7:20 - Second Cup 7:30 - News 7:55 - News-Wea. 8:00 - Captain 8:00 - Donna Reed 9:30 - McCoys 10:00 - Andy 10:30 - D. Dyke 11:00 - Love of Life 11:25 - CBS News 11:30 - Search 11:45 - Guiding 12:00 - WTTN News 12:10 - P. & Ranch 12:25 - Weather 12:30 - World Turns 1:00 - Password 1:30 - Housepart 2:01 - Gen. Hos. 2:30 - Edge of Night 3:00 - Secret Storm 3:30 - F. Casey 4:30 - Col. Carniva 5:00 - Rifleman 5:20 - CBS News 6:10 - Weather 6:20 - News	
Lumber	1:00 - Days of 1:30 - The Doctors 2:00 - Another World 2:30 - C-Don't Say 3:00 - Match Game 3:25 - NBC News 3:30 - Sheriff Bill 4:30 - Laramie 5:30 - Hunt-Brink 6:00 - News 6:15 - Sports	1:00 - Days of 1:30 - The Doctors 2:00 - Another World 2:30 - C-Don't Say 3:00 - Match Game 3:25 - NBC News 3:30 - Sheriff Bill 4:30 - Laramie 5:30 - Hunt-Brink 6:00 - News 6:15 - Sports	1:00 - Days of 1:30 - The Doctors 2:00 - Another World 2:30 - C-Don't Say 3:00 - Match Game 3:25 - NBC News 3:30 - Sheriff Bill 4:30 - Laramie 5:30 - Hunt-Brink 6:00 - News 6:15 - Sports	1:00 - Days of 1:30 - The Doctors 2:00 - Another Wor 2:30 - C-Don't Say 3:00 Match Game 3:25 - Edge of Night 3:30 - Variety 3:30 - Nurses 4:00 - Father Know 4:30 - Col. Carniva 5:00 - Rifleman 5:20 - CBS News 6:00 - News 6:10 - Weather 6:20 - News	1:00 - Days of 1:30 - The Doctors 2:00 - Another Wor 2:30 - C-Don't Say 3:00 Match Game 3:25 - Edge of Night 3:30 - Variety 3:30 - Nurses 4:00 - Father Know 4:30 - Col. Carniva 5:00 - Rifleman 5:20 - CBS News 6:00 - News 6:10 - Weather 6:20 - News	
Houseware	1:00 - Days of 1:30 - The Doctors 2:00 - Another World 2:30 - C-Don't Say 3:00 - Match Game 3:25 - NBC News 3:30 - Sheriff Bill 4:30 - Laramie 5:30 - Hunt-Brink 6:00 - News 6:15 - Sports	1:00 - Days of 1:30 - The Doctors 2:00 - Another World 2:30 - C-Don't Say 3:00 - Match Game 3:25 - NBC News 3:30 - Sheriff Bill 4:30 - Laramie 5:30 - Hunt-Brink 6:00 - News 6:15 - Sports	1:00 - Days of 1:30 - The Doctors 2:00 - Another World 2:30 - C-Don't Say 3:00 - Match Game 3:25 - NBC News 3:30 - Sheriff Bill 4:30 - Laramie 5:30 - Hunt-Brink 6:00 - News 6:15 - Sports	1:00 - Days of 1:30 - The Doctors 2:00 - Another Wor 2:30 - C-Don't Say 3:00 Match Game 3:25 - Edge of Night 3:30 - Variety 3:30 - Nurses 4:00 - Father Know 4:30 - Col. Carniva 5:00 - Rifleman 5:20 - CBS News 6:00 - News 6:10 - Weather 6:20 - News	1:00 - Days of 1:30 - The Doctors 2:00 - Another Wor 2:30 - C-Don't Say 3:00 Match Game 3:25 - Edge of Night 3:30 - Variety 3:30 - Nurses 4:00 - Father Know 4:30 - Col. Carniva 5:00 - Rifleman 5:20 - CBS News 6:00 - News 6:10 - Weather 6:20 - News	
Hardware	1:00 - Days of 1:30 - The Doctors 2:00 - Another World 2:30 - C-Don't Say 3:00 - Match Game 3:25 - NBC News 3:30 - Sheriff Bill 4:30 - Laramie 5:30 - Hunt-Brink 6:00 - News 6:15 - Sports	1:00 - Days of 1:30 - The Doctors 2:00 - Another World 2:30 - C-Don't Say 3:00 - Match Game 3:25 - NBC News 3:30 - Sheriff Bill 4:30 - Laramie 5:30 - Hunt-Brink 6:00 - News 6:15 - Sports	1:00 - Days of 1:30 - The Doctors 2:00 - Another World 2:30 - C-Don't Say 3:00 - Match Game 3:25 - NBC News 3:30 - Sheriff Bill 4:30 - Laramie 5:30 - Hunt-Brink 6:00 - News 6:15 - Sports	1:00 - Days of 1:30 - The Doctors 2:00 - Another Wor 2:30 - C-Don't Say 3:00 Match Game 3:25 - Edge of Night 3:30 - Variety 3:30 - Nurses 4:00 - Father Know 4:30 - Col. Carniva 5:00 - Rifleman 5:20 - CBS News 6:00 - News 6:10 - Weather 6:20 - News	1:00 - Days of 1:30 - The Doctors 2:00 - Another Wor 2:30 - C-Don't Say 3:00 Match Game 3:25 - Edge of Night 3:30 - Variety 3:30 - Nurses 4:00 - Father Know 4:30 - Col. Carniva 5:00 - Rifleman 5:20 - CBS News 6:00 - News 6:10 - Weather 6:20 - News	
Paint	1:00 - Days of 1:30 - The Doctors 2:00 - Another World 2:30 - C-Don't Say 3:00 - Match Game 3:25 - NBC News 3:30 - Sheriff Bill 4:30 - Laramie 5:30 - Hunt-Brink 6:00 - News 6:15 - Sports	1:00 - Days of 1:30 - The Doctors 2:00 - Another World 2:30 - C-Don't Say 3:00 - Match Game 3:25 - NBC News 3:30 - Sheriff Bill 4:30 - Laramie 5:30 - Hunt-Brink 6:00 - News 6:15 - Sports	1:00 - Days of 1:30 - The Doctors 2:00 - Another World 2:30 - C-Don't Say 3:00 - Match Game 3:25 - NBC News 3:30 - Sheriff Bill 4:30 - Laramie 5:30 - Hunt-Brink 6:00 - News 6:15 - Sports	1:00 - Days of 1:30 - The Doctors 2:00 - Another Wor 2:30 - C-Don't Say 3:00 Match Game 3:25 - Edge of Night 3:30 - Variety 3:30 - Nurses 4:00 - Father Know 4:30 - Col. Carniva 5:00 - Rifleman 5:20 - CBS News 6:00 - News 6:10 - Weather 6:20 - News	1:00 - Days of 1:30 - The Doctors 2:00 - Another Wor 2:30 - C-Don't Say 3:00 Match Game 3:25 - Edge of Night 3:30 - Variety 3:30 - Nurses 4:00 - Father Know 4:30 - Col. Carniva 5:00 - Rifleman 5:20 - CBS News 6:00 - News 6:10 - Weather 6:20 - News	
Higginbotham	Mon, thru Fri. Daytime Viewing	Mon, thru Fri. Daytime Viewing	Mon, thru Fri. Daytime Viewing	Mon, thru Fri. Daytime Viewing	Mon, thru Fri. Daytime Viewing	
Bartlett	6:30 - Hullabaloo 7:00 - J. Forsythe 7:30 - Dr. Kildare 8:00 - Kraft Music 9:00 - Run For 10:00 - News 10:15 - Weather 10:25 - Sports 10:30 - C-Tonight 12:00 - Sign Off	6:30 - Hullabaloo 7:00 - J. Forsythe 7:30 - Dr. Kildare 8:00 - Kraft Music 9:00 - Run For 10:00 - News 10:15 - Weather 10:25 - Sports 10:30 - C-Tonight 12:00 - Sign Off	6:30 - Hullabaloo 7:00 - J. Forsythe 7:30 - Dr. Kildare 8:00 - Kraft Music 9:00 - Run For 10:00 - News 10:15 - Weather 10:25 - Sports 10:30 - C-Tonight 12:00 - Sign Off	6:30 - Tell Truth 7:00 - A. Secret 7:30 - Lucy Show 8:00 - A. Griffith 8:30 - Hazel 9:00 - Wrestling 10:00 - News 10:15 - Weather 10:25 - Background 10:30 - Big Flicker 10:55 - News 11:00 - Big Flicker Tuesday Evening 6:30 - Rawhide 7:30 - R. Skelton 8:30 - P. Junction 9:00 - Movie 10:00 - News 10:15 - Weather 10:25 - Background 10:30 - Big Flicker 10:55 - News 11:00 - Flicker Wednesday Evening 6:30 - In Space 7:30 - Hillbillies 8:00 - Green Acres 8:30 - D. Van Dyke 9:00 - D. Kaye 10:00 - News 10:15 - Weather 10:25 - Background 10:30 - Big Flicker 10:55 - News 11:00 - Flicker	6:30 - Tell Truth 7:00 - A. Secret 7:30 - Lucy Show 8:00 - A. Griffith 8:30 - Hazel 9:00 - Wrestling 10:00 - News 10:15 - Weather 10:25 - Background 10:30 - Big Flicker 10:55 - News 11:00 - Big Flicker Tuesday Evening 6:30 - Rawhide 7:30 - R. Skelton 8:30 - P. Junction 9:00 - Movie 10:00 - News 10:15 - Weather 10:25 - Background 10:30 - Big Flicker 10:55 - News 11:00 - Flicker Wednesday Evening 6:30 - In Space 7:30 - Hillbillies 8:00 - Green Acres 8:30 - D. Van Dyke 9:00 - D. Kaye 10:00 - News 10:15 - Weather 10:25 - Background 10:30 - Big Flicker 10:55 - News 11:00 - Flicker	6:30 - Tell Truth 7:00 - A. Secret 7:30 - Lucy Show 8:00 - A. Griffith 8:30 - Hazel 9:00 - Wrestling 10:00 - News 10:15 - Weather 10:25 - Background 10:30 - Big Flicker 10:55 - News 11:00 - Big Flicker Tuesday Evening 6:30 - Rawhide 7:30 - R. Skelton 8:30 - P. Junction 9:00 - Movie 10:00 - News 10:15 - Weather 10:25 - Background 10:30 - Big Flicker 10:55 - News 11:00 - Flicker Wednesday Evening 6:30 - In Space 7:30 - Hillbillies 8:00 - Green Acres 8:30 - D. Van Dyke 9:00 - D. Kaye 10:00 - News 10:15 - Weather 10:25 - Background 10:30 - Big Flicker 10:55 - News 11:00 - Flicker
MULESHOE	6:30 - Hullabaloo 7:00 - J. Forsythe 7:30 - Dr. Kildare 8:00 - Kraft Music 9:00 - Run For 10:00 - News 10:15 - Weather 10:25 - Sports 10:30 - C-Tonight 12:00 - Sign Off	6:30 - Hullabaloo 7:00 - J. Forsythe 7:30 - Dr. Kildare 8:00 - Kraft Music 9:00 - Run For 10:00 - News 10:15 - Weather 10:25 - Sports 10:30 - C-Tonight 12:00 - Sign Off	6:30 - Hullabaloo 7:00 - J. Forsythe 7:30 - Dr. Kildare 8:00 - Kraft Music 9:00 - Run For 10:00 - News 10:15 - Weather 10:25 - Sports 10:30 - C-Tonight 12:00 - Sign Off	6:30 - Tell Truth 7:00 - A. Secret 7:30 - Lucy Show 8:00 - A. Griffith 8:30 - Hazel 9:00 - Wrestling 10:00 - News 10:15 - Weather 10:25 - Background 10:30 - Big Flicker 10:55 - News 11:00 - Big Flicker Tuesday Evening 6:30 - Rawhide 7:30 - R. Skelton 8:30 - P. Junction 9:00 - Movie 10:00 - News 10:15 - Weather 10:25 - Background 10:30 - Big Flicker 10:55 - News 11:00 - Flicker Wednesday Evening 6:30 - In Space 7:30 - Hillbillies 8:00 - Green Acres 8:30 - D. Van Dyke 9:00 - D. Kaye 10:00 - News 10:15 - Weather 10:25 - Background 10:30 - Big Flicker 10:55 - News 11:00 - Flicker	6:30 - Tell Truth 7:00 - A. Secret 7:30 - Lucy Show 8:00 - A. Griffith 8:30 - Hazel 9:00 - Wrestling 10:00 - News 10:15 - Weather 10:25 - Background 10:30 - Big Flicker 10:55 - News 11:00 - Big Flicker Tuesday Evening 6:30 - Rawhide 7:30 - R. Skelton 8:30 - P. Junction 9:00 - Movie 10:00 - News 10:15 - Weather 10:25 - Background 10:30 - Big Flicker 10:55 - News 11:00 - Flicker Wednesday Evening 6:30 - In Space 7:30 - Hillbillies 8:00 - Green Acres 8:30 - D. Van Dyke 9:00 - D. Kaye 10:00 - News 10:15 - Weather 10:25 - Background 10:30 - Big Flicker 10:55 - News 11:00 - Flicker	
SEE US FOR YOUR EMBOSSED BUSINESS CARDS \$6.50 PER. M 10 DAY DEL. ENGRAVED & EMBOSSED ANNOUNCEMENTS INVITATIONS MULESHOE PUBLISHING CO.	SEE US FOR YOUR EMBOSSED BUSINESS CARDS \$6.50 PER. M 10 DAY DEL. ENGRAVED & EMBOSSED ANNOUNCEMENTS INVITATIONS MULESHOE PUBLISHING CO.	SEE US FOR YOUR EMBOSSED BUSINESS CARDS \$6.50 PER. M 10 DAY DEL. ENGRAVED & EMBOSSED ANNOUNCEMENTS INVITATIONS MULESH				

MAHON

Continued from Page One

directly from his to the Grain Sorghum Producers Association whose officers had just returned from Washington where actual case studies proving the lower income position of sorghum growers had been presented to USDA officials as well as to Administration farm policy advisors, members of Congress and Washington staff of other farm organizations.

Elbert Harp, Hale County farmer and President of the Grain Sorghum Producers Association, immediately commended Congressman Mahon for his fast action and insistence that farm income to the sorghum producers be restored. Congressman Walter Rogers of Pampa earlier had expressed similar indignation with the Secretary of Agriculture and assured Association members of his strong support in attempting to get corrective action in USDA.

The Grain Sorghum Producers Association's efforts and those of Congressman Mahon follow an earlier announcement by the Secretary of Agriculture that provisions of the 1966 Feed Grain Program were being altered even though Congress had passed the law similar to previous years which provided a system of price support payment, price support loans, and diverted acre payments. Current provisions call for producers in 1966 to receive no diversion payments on the first 20 percent diversion and a maximum of price support payments on only 50 percent of the base acres. In addition, the price support loan has been lowered from \$1.65 on sorghum in 1965 to \$1.52 in 1966. The price support payment has been

increased from 35 cents to 33 cents per hundred.

The combination of these changes resulted in the expected net income loss to producers, according to Harp. Harp hastened to point out while Grain Sorghum Producers Association and other organizations are striving to affect a change in the program provisions, that at this time, farmers should make no production plans for grain sorghum in 1966 based on any assumptions other than the implementation of feed grain program as already outlined by local ASCS offices.

SCORES

Continued from Page One

Games to be scored include: Orange Bowl — Missouri vs. Florida.
Cotton Bowl — Arkansas vs. Louisiana State.
Sugar Bowl — Alabama vs. Nebraska.
Gator Bowl — Texas Tech vs. Georgia.
Sun Bowl — Texas Christian vs. Texas Western.
Rose Bowl — Michigan State vs. UCLA

COTTON

Continued from Page One

authority on the grounds that sufficient funds will not be available at sign-up time.
The final bill of diversion payments and the price support payment will be made at a later date yet to be announced by the Secretary. Most expect, and certainly hope, that total payments will be made on proof of compliance.

SHOP MULESHOE FIRST

State Line Buys Hydro Conduit

State Line Irrigation Company has purchased the assets of Hydro Conduit of Littlefield, T. L. Timmons, one of the new owners, announced recently.

The other owners of the irrigation firm are Verney Towns, Carleton Davis and Wallace Lockmiller.
Timmons is well-known, from 15 years of experience in the irrigation pipe business in this area and is to be general manager of the company. The main office and plant of State Line Irrigation Company is located at 1601 Houston Avenue in Littlefield, with another office at Clovis.

Under the new ownership, many of the present employees will be retained and other experienced men, many of whom were former employees of Timmons, are being added to make up one of the most experienced groups of employees available.

State Line Irrigation is engaged in the manufacturing, selling and installing of irrigation systems, and additional products and services will be added as the demand warrants.

Timmons, formerly of Muleshoe, is living in Lubbock with his wife, Margaret and their three children, Linda, Curtis and Glenn.
James Macha and his wife, Patsy, both reared at Littlefield, have been living in Muleshoe for the past eight years, but will move to Littlefield soon. They have three children, David, Tammy and Shelly. He has worked for Timmons for nine years and will be construction supervisor.

Earl Pierce, a long-time re-

Brother, Father Of Local Woman Killed in Crash

The father and a brother of Mrs. Jack Wood, Muleshoe, were killed in a two-car crash west of Lamesa at 11:30 Thursday night while enroute from Seminole to Lamesa.

Killed were Jent Carr, Lamesa, the father, and Ernest Carr, Dallas, his son.

Mrs. Jent Carr is a patient in a Lamesa hospital. She suffered a heart attack two weeks ago and a daughter, Mrs. Kathryn Robinette, Lamesa, also is a patient in the same hospital, suffering from a heart ailment.

Mrs. Robinette was stricken while visiting her mother in the hospital.
Mr. and Mrs. Jack Wood left early Friday for Lamesa. Funeral arrangements for the two men were pending.

resident of the Littlefield area, has been in the irrigation business the past three years and resides in Littlefield with his wife, Barbara and son, Monnie. He will be in charge of sales at the Littlefield office.

Fawnette Burnett of Lubbock is office manager, and plans to move to Littlefield soon.
At the Clovis office, Don Messer will be manager. Kathy Gillkas will be office manager. Bo Hammett is sales engineer.

John Hammock and his wife, Ruth, live in Muleshoe where he is sales engineer for State Line Irrigation in Bailey and Parmer counties. He has lived in this area all of his life except while attending Texas A&M and during five years in the service. He was salesman for Curtiss Candy Company for thirteen years, before being employed by Timmons nearly five years ago. At the present time, he may be contacted at either of the State Line Irrigation offices or at his home here in Muleshoe.

Other expansion plans and new employees for this area will be announced in the near future.



BRANDS & BEST STAMPS BEST

ALWAYS AT PIGGLY WIGGLY

WIN UP TO \$1000.00
JOIN PIGGLY WIGGLY'S CASH CLUB. GET YOUR CARD PUNCHED TODAY!!

Deodorant Bar Soap Reg. Bar SAFEGUARD 6 for \$1
All Purpose Liquid Cleaner King Size MR. CLEAN 99c

Instant Potatoes GOOD-N-RICH 7 Oz. Box 19c

FRESH PRODUCE FROM PIGGLY WIGGLY!

APPLES	ORANGES
Washington, Red Delicious LB. 19c	California Novel Pound 12 1/2c

HEAVY DUTY DETERGENT	
TIDE	GIANT BOX 73c
KRAFT CHEESE FOOD	
VELVEETA	2 LB. BOX 79c
SUZAN	
SALAD DRESSING	QT. JAR 29c
CAMPFIRE	
Pork & Beans	3 No. 300 Cans 25c
ELLIS, WITH BEANS	
CHILI	24 Oz. CAN 39c

Renown Cut GREEN BEANS, No. 303 Can	15c
Wilson BIF LUNCHEON MEAT, 12 Oz. Can	49c
Libby Blackeye With Snaps PEAS, No. 300 Cans	2 for 37c
Renown Vertical Pack GREEN BEANS, No. 303 Cans	27c
La Chay BAMBOO SHOOT, No. 348 Can	41c

MR. LAND OWNER . . .
WE CAN FIGURE YOUR BASIS FOR GROUND WATER DEPLETION.
CONTACT . . .
DAVID CUNNINGHAM BOX 594
MULESHOE, TEXAS CALL 272-3305

STUDENTS
Continued from Page One
Electric Cooperative Youth Tour, local contest winners will travel by chartered bus to Washington, D. C., where they will spend four days visiting places of historical interest and seeing the nation's government in action.

JOB PRINTING

COMMERCIAL PRINTING

Social PRINTING

EVERY JOB WELCOME

NO JOB IS TOO LARGE OR TOO SMALL

LET US PUT OUR PRESSES TO WORK FOR YOU!

MULESHOE PUBLISHING CO.

304 W. 2ND PHONE 2350

FROZEN FOODS!

Orange Juice
Seald Sweet 6 Oz. Can 15c
Banquet, 15 Oz. Pkg. Mexican Dinner 2 for 89c
Hill-O-Home, 10 Oz. Pkg. OKRA 2 for 39c
Seabrook, 10 Oz. Pkg. Peas & Carrots 2 for 45c

Turn Your Meal Into A Feast With Piggly Wiggly Meat!

GROUND BEEF	PARTY SNACKS
LEAN, 100% ALL BEEF DATED TO ASSURE FRESHNESS 3 lbs. \$1	Hormel's Salami, Thuringer Tany, Summer Sausage, Or Kosher Salami 4 Oz. Pkg. 49c
USDA Choice, Aged, Heavy, Beef, Valu-Trimmed ROUND STEAK, Lb. 89c	Kraft's Philadelphia 8 Oz. Pkg. CREAM CHEESE 29c
For Your Party Snacks, Kraft's Five Flavors, 8 Oz. Pkg. CHEESE DIPS 49c	Peeled and Deveined, Trade-winds, 12 Oz. Pkg. SHRIMP \$1.39
USDA Grade A, 10-14 lb. Avg. HEN TURKEYS, Lb. 43c	Hormel's Bologna, Pickle, Olive or Spiced Luncheon, 6 Oz. Pkg. LUNCHEON MEAT 43c

BLACKBURN'S WAFFLE SYRUP Quart Btl. 39c
HI-PLAINS TOMATOES No. 303 CAN 12 1/2c
BESSIE LEE, ALLVEGETABLE COOKING OIL 24 Oz. Btl. 39c
E. Z. TIME LIQUID DETERGENT 32 Oz. Btl. 33c

HEALTH AND BEAUTY AIDS!

Alka Seltzer
Reg. 63c Retail 25 Ct. Btl. 45c
Listerine, 67c 14 oz. Btl. MOUTHWASH 66c
Right Guard, \$1.49 Reg. Family Size DEODORANT 99c
Reg. \$1.25, 100 Ct. Btl. ANACIN \$1.09
Bayer H. A., Reg. 79c 4 Oz. Btl. HAIR DRESSING 49c

Lowest Prices . . . Greatest Variety . . . always at . . .

Piggly Wiggly

We Reserve The Right To Limit Quantities! Double S & H Green Stamps Every Wed. With \$2.50 Purchase Or More!