

Santa Anna News

One Section — 8 Pages

"He Profits Most Who Serves Best"

Single Copy—10c

VOLUME LXXX

SANTA ANNA, COLEMAN COUNTY, TEXAS, NOVEMBER 17, 1966

NUMBER 46

Fire Dept. Slates Annual Chili Supper Dec. 10

The Santa Anna Fire Department's annual chili supper will be held Saturday, Dec. 10, department officials announced this week.

The supper will be held in the Lions Club building, and serving hours will be from 11 a. m. until 7 p. m.

Proceeds from the event will be distributed to needy residents in Santa Anna at Christmas-time.

MOST LOCAL BUSINESS FIRMS TO CLOSE

It was announced this week that most local business firms will close their doors at 5 p. m. Saturday in order to allow owners and employees ample time to arrive at the Santa Anna-Ranger bi-district game in Abilene which begins at 7:30.

Post Office Helps Count Area Livestock

Rural mail carriers from the Santa Anna Post Office will leave some livestock survey cards along their routes beginning November 20.

"The information reported on these cards is used to set the yearly inventory of livestock and poultry on Texas farms," Acting Postmaster John C. Gregg, explained.

Rural carriers distribute the cards at random in boxes along their routes.

"This means that not every box will get a card," Mr. Gregg said. "For this reason, it's important for everyone who gets a card to return it filled out so that USDA can get a true sample of the State's livestock holdings."

Carriers assisting with the survey are: M. L. Guthrie, Jr., Routes 1 and 2; Ann Allen, Rockwood Route; and D. H. Moore, Trickham and Whon Routes.

Facts and figures secured in this survey are the basis for Texas and National pig crop report and inventories of livestock and poultry on farms as of the first of the year. Stockmen and many others use this information in making business decisions.

Survey results will be widely distributed through Texas Crop and Livestock Reporting Service releases, newspapers, farm magazines, radio and television.

— Beat Ranger —

MRS. JOHN PERRY TO REPORT NEWS

Mrs. John Perry has assumed the responsibility of reporting happenings in the Cleveland Community for The News.

Her first report came in this week, and all residents of that area are asked to please contact Mrs. Perry when they have visitors, visit someone, or the old grey mule falls in the cistern.

Our thanks to Mrs. Perry and residents of the community for their assistance and cooperation.

— Beat Ranger —

DR. EMIL PETERSON SPEAKS TO LIONS

Dr. Emil Peterson, a major in the Air Force stationed at Lackland AFB, San Antonio, was a visitor at the Lions Club's regular meeting Tuesday and spoke briefly to the group about the use of automation in diagnosis of various tests taken on patients. Dr. Peterson is assigned to Wilford Hall Hospital at the base.

— Beat Ranger —

TEACHERS TO ATTEND LIBRARY CONFERENCE

Mrs. Kathleen Lacy and Mrs. Ruth Dodson, teachers in the local school system, will be in Weatherford Nov. 29 - 30 and Dec. 1 to attend a conference on operation and maintenance of libraries, announces Supt. Cullen Perry.

— Beat Ranger —

Happy Birthday . .

- NOV. 18 Mrs. Kittie Haynes Benny Diaz
- NOV. 19 Vernon Parker James Keeney Reuben Jean Claude Valdez
- NOV. 20 Ford Barnes Patricia Beard
- NOV. 21 Mrs. Jane Campbell Mrs. Winnie McQueen Dora Guerrero
- NOV. 22 Mrs. W. F. Trull Milton Drake
- NOV. 23 Verma Nell Talley

Mountaineers Take District Crown

Play Ranger In Bi-district

9-A champion Santa Anna and 10-A champion Ranger will tangle in a bi-district tilt Saturday at 7:30 p. m. in P. E. Shotwell Stadium in Abilene.

The Mounties earned the right to represent District 9-A by defeating the Goldthwaite Eagles, 7-6, in a hard-fought battle here last Friday night, while the Ranger Bulldogs bested the Dublin Lions, 23-20, and wound up in a tie with the Lions for the 10-A title but earned the right to represent the district in play-offs by virtue of the win.

The Bulldogs, although owning a non-impressive 6-4 season record, are a tough, aerial-minded crew and will have their sights aimed at cutting down the Mountaineers from further competition.

The Mountaineers own a 9-1 season record and have compiled 299 points while allowing their opponents only 57.

The Bulldogs racked up 209 points, while allowing opposition 133.

According to school officials the football squad will leave at 4 o'clock by bus, with a large aggregation of supporters following. Band students will depart at 5 p. m., also by bus.

Tickets to the game will be \$2 for adults and \$1 for students. Tickets are not being sold locally and may be obtained at the game.

Coaches and officials of the two schools met in Brownwood last Saturday to transact business and set rules for the event.

Ranger won the coin toss and will be classified as home team. They will wear dark jerseys, and Santa Anna will wear white jerseys.

Ranger fans will occupy the west stands and Santa Anna the east, so local fans should keep this in mind when entering the stadium.

The Abilene Chamber of Commerce extended a very nice gesture in agreeing to furnish the game ball, trophy to winner, playing field, field house, competent clock and sideline marker men, announcer, law enforcement officials, marking off the field, printing of tickets and programs, selling and taking up tickets, ushers if needed, parking, ambulance service and operate concession stands, all free of cost to the schools.

Winner of the game will be allowed to keep the ball. Four officials from the Dallas Chapter will be used, with no official who has been rated under 2 and none who officiated the Santa Anna-Goldthwaite game.

According to Supt. Cullen Perry, the players and band students will take the Baird highway out of Coleman to the intersection of Highway 36, turn left and arrive at the stadium which is on the east side of Abilene, near the West Texas Fairgrounds.

— Beat Ranger —

Schools To Observe Upcoming Holiday

Santa Anna schools will be closed Thursday and Friday of next week in observance of Thanksgiving, according to Supt. Cullen Perry.

Classes will be dismissed at the usual time Wednesday and resume studies Monday morning, thus giving students and teachers a four-day holiday week end.

— Beat Ranger —

CASEY HERRING & SONS ELECTED TO MEMBERSHIP IN ANGUS ASSOCIATION

Casey Herring & Sons, Santa Anna, have been elected to membership in the American Angus Association at St. Joseph, Mo., announces Glen Bratcher, secretary.

There were 457 memberships issued to breeders of registered Aberdeen - Angus in the United States during the past month.

— Beat Ranger —

Melvin Pollock, who has been living in Canada for the past two years, arrived Monday to be with his wife and family. Mrs. Pollock and family have been here the past few weeks.

— Beat Ranger —

The early Puritans celebrated only one holiday, Thanksgiving.



THE CHAMPION MOUNTAINEERS of Santa Anna High School are pictured here. They are, from left, front row: Phil Huggins, Don Fitzpatrick, Butch Makuta, Danny Williams, Dale Herring and Tommy Wardlow; second row: Ray Valdez, Roy Joe Harvey, Ted Ford, Gordon Copeland, David Yancy, Jerry Horner, Ronnie Cooper; third row: Steve Valdez, Dale Little, Dickie Horner, Bob Rutherford, Larry Rutherford, Eddie Jones, Jimmy Eu-

bank; back row: Larry Williams, Davy Beal, Nolan Perry, Korky Wise, Dale Hicks, Lin Wristen, Ricky Abernathy, and Tommy Blanton. Raymond Valdez was not present when the picture was taken. Also not pictured are coaches Wendell Robinson, Bert Gravitt and Dwight Hudson, managers Billy Don Cupps and Ronnie Hartman, and trainer Eddie Voss. (Photo courtesy Democrat-Voice.)

Defeat Eagles By 7-6 Score

And the crowd went WILD! That about sums up the reaction of Santa Anna fans when the final whistle had blown and the Santa Anna Mountaineers wrapped up the District 9-A title by defeating a highly-touted Goldthwaite Eagle crew to the tune of 7-6 here last Friday night.

The Eagles, picked as three-touchdown favorites by football prognosticators, fell with a thud when their two ace running backs, Bobby Rountree and Charles Blackburn, were contained by the Mountie defense and failed to display their power and speed which had been the life-blood of the Eagles this season.

The Eagles drew first blood on the last play of the second quarter when Blackburn skirted right end for 62 yards and a TD. Rountree's extra point kick was off to the left and the visitors held a 6-0 lead until the fourth stanza.

Downfall of the Eagles started early in the 4th when they took possession of the ball on their own 29 yard line. Two penalties, a strong Mountie defense and a short punt gave the ball to the Mountaineers on the Eagle 27 yard stripe. After netting only 2 yards in three plays and facing a 4th and 8 situation quarterback Roy Joe Harvey hit Butch Makuta with a 17-yard aerial for a first down on the 8. Again facing a 4th and goal situation Harvey rolled to his right on a keeper but was pushed out of bounds on the 1-yard stripe, where the Eagles took over. Rountree picked up one yard on the first attempt, and WHAM went the Eagles' chances when big Korky Wise recovered a fumble on the four for the Mounties.

It took the Mounties three plays to hit paydirt with fullback Eddie Jones going over from the one, after picking up one on his first carry, and 2 on the second attempt, with 2:02 remaining in the tilt.

Tommy Blanton, who had kicked 15 of his last 18 extra point attempts, put the icing on the cake with a perfect boot to put the Mountaineers out front 7-6.

On the second play following the kickoff to Goldwaite, Mountie defender Larry Williams made a key interception of an Eagle pass, running it back to the Eagle 30 from which point they ran out the clock.

Then pandemonium really broke loose as fans swarmed over the players and coaches congratulating them for their outstanding achievement.

Story in Figures

Santa Anna	Goldthwaite
1	9
145	167
17	0
1 of 7	0 of 7
1	0
6 for 24	3 for 37
4 for 26	6 for 60
1	3

— Beat Ranger —

HPC Homecoming Kicks Off Today

Annual Howard Payne College homecoming program will kick-off Thursday evening (Nov. 17) with the crowning of the homecoming queen in Mims Auditorium.

The queen will reign over the entire weekend, and will be honored with Dr. E. Lamar Cole, the HPC Man-of-the-Year at a coffee in the student center following the traditional parade Saturday morning.

Dr. Cole, who established the only Southern Baptist hospital in Mexico, will be proclaimed the Man-of-the-Year at the annual banquet Friday in Veda Hodge Hall.

Dr. Cole will also deliver the main address and share honors during the weekend with former members of the Life Service Band and reunion classes.

Saturday will see McMurry College furnish the opposition for the Yellow Jackets in a Lone Star Conference football tilt. Game times is 2:00 p. m.

A performance of "Guys and Dolls," to be presented by students of the music and drama departments of the college will wind up the weekend. The show will be held in the Brownwood Coliseum, starting Saturday at 8:00 p. m.

Colorful Parade Scheduled to Open Christmas Season Here December 2

The Christmas season in Santa Anna will officially kick-off Friday, December 2 with a big street parade starting at 2 p. m.

The Santa Anna High School Band, numerous floats, a Christmas Queen representative, plus several other attractions will be represented in the parade festivities.

A large Christmas tree will be erected in front of the old telephone building, complete with lights and decorations. Downtown business windows as well as residential sections are expected to be gaily decorated in the Christmas theme.

According to the committee in charge of plans, prizes will be awarded the four best floats in the parade, and prizes will be awarded for best decorated window in the business district. First place float will receive \$50; 2nd place, \$35; 3rd place, \$25, and 4th place, \$10. First place window will receive \$5; 2nd place, \$3, and 3-4-5-6-7 will each receive \$2.

First drawing in the merchants big Christmas trade-at-home campaign will be held Saturday, Dec. 3, at 4 p. m. near the downtown Christmas tree. Other drawings will be held on Dec. 10th, 17th and 24th.

— Beat Ranger —

Lee McMillan Buried Tuesday

Final rites for Edward Lee McMillan, 69, retired Rockwood farmer, were held at 2 p. m. Tuesday in Rockwood Baptist Church with the Rev. Donnie Melton and the Rev. W. B. Morton officiating. Burial was in Rockwood Cemetery under direction of Stevens Funeral Home of Coleman.

Mr. McMillan died at 7:25 Sunday in the Veterans Hospital in Temple after a long illness.

Born May 7, 1897 in Brazoria County, he was married to IVE Ward in 1924 in Rockwood. He had lived in the area since 1914, and was a member of the Presbyterian Church and a veteran of World War I.

Survivors include his wife; two stepdaughters, Mrs. Carl Buttry of Rockwood, and Mrs. Luther Crutcher of Bangs; a sister, Mrs. L. C. Brock of Coleman; two brothers, Charlie McMillan of Coleman and W. C. McMillan of Brady.

— Beat Ranger —

Cotton Classing Samples Increase

The volume of samples received at the USDA Cotton Classing Office in Abilene picked up this week. Officer in charge, B. B. Manly Jr., reports 29,950 samples were classed for the week ending November 11 as compared to 21,000 for the previous week. This brings the seasons total classed to 70,500. Grades from District 2 were about the same as last week.

Micronaire readings were 4 per cent in the 3.0-3.2 range, 4 per cent 3.3 - 3.4, 7.1 per cent in the desirable 3.5 - 4.9 range, 14 per cent 5.0 - 5.2, and 7 per cent 5.3 or higher.

Demand for cotton picked up sharply this week due to damage done by an early freeze in the Lubbock area.

— Beat Ranger —

Mrs. Martin Jetton, Arthur Vynn and Sue of Mineral Wells spent the week end with Mr. and Mrs. John Gregg.

— Beat Ranger —

Mr. and Mrs. Byron Gilbreath and family of Lubbock spent the week end with their daughter and family, Mr. and Mrs. Bill Day and family.

COATS FOR THE COACHES

It is well known in our community that our coaches have done a superior job with our young men. We have all enjoyed participating in the results of their labors.

With this in mind, several, who certainly have enjoyed the task of raising funds with which to buy sport jackets for the coaches.

Many have expressed their desire to contribute to this show of appreciation. It doesn't make any difference how much you give. You may give your expression of appreciation for a job well done to Joyce Early, Glen Copeland, Junior Wristen, Jim Rutherford, Bobby Weathers, and Dick Wood.

A list of contributors—not the amount given—will be supplied with the jackets.

— Beat Ranger —

Coleman Man Gets Army Commission

Charles R. Wilson, son of Mrs. Rosa K. Cobb of Coleman, has been commissioned a second lieutenant in the U. S. Air Force upon graduation from Officer Training School (OTS) at Lackland AFB, Texas.

Lieutenant Wilson, selected for OTS through competitive examination, is being assigned to Tyndall AFB, Fla., for training as a weapons controller.

The lieutenant, a graduate of Coleman high school, received his BA degree in physics from the University of the South, Seawance, Tenn. in 1964. He has done graduate work at the University of Texas.

— Beat Ranger —

Albert Brown of Ennis, former Church of Christ minister here, attended the ball game Friday night.

Houston Show Opens February 22

Premium lists are available for the 1967 Houston Livestock Show and Rodeo to be held Feb. 22 through March 5.

The show will be held in the Houston Livestock Show Exposit-

tion Building, the most modern, complete, and plush livestock facility in the world. The building is completely air-conditioned and covers approximately 12-acres, all under one roof. It is adjacent to the famed Harris County Domed Stadium, often referred to as "the eighth wonder of the world," which is also air-conditioned and covers nine and a half acres. The domed stadium will house the rodeo, and performance classes in the horse show. The entire complex, including the stadium, exposition building and parking area, covers 260 acres.

Record premiums, in excess of \$200,000 will be divided among exhibitors of nine beef breeds, four dairy breeds, eleven sheep breeds, five horse breeds, five rabbit breeds, Angora goats, 22 poultry breeds and six swine breeds.

All spiders do not spin webs.

VOLUME SELLING

3-pc. Bedroom Suite
With box springs and
mattress. Regular \$259.85

Special \$149.95

Coleman Furniture
313 Commercial
Coleman, Texas

SAVE MORE ON LUMBER AND BUILDING SUPPLIES

SEE J. C. HALMON AT

COLEMAN VENETIAN BLIND
HOME IMPROVEMENTS

715 South Concho

625-5320

CONGRATULATIONS!

SANTA ANNA MOUNTAINEERS

CHAMPIONS
OF DISTRICT 9-A

WE HOPE YOU WIN YOUR PLAY-OFF GAME SATURDAY
AGAINST THE RANGER BULLDOGS!

GRAMMER'S

106 Commercial

Coleman

Thanksgiving Specials

OCEAN SPRAY — 300 SIZE CAN

Cranberry Sauce 2 for 49c

NONE-SUCH — 9 OZ. PKG.

MINCE MEAT 2 for 59c

KRAFT'S

Salad Dressing qt. only 65c

MEAL, Gladiola 5 lb. bag 39c

DEL MONTE — 14 OZ. BOTTLE

CATSUP 14 oz. btl. 2 for 45c

DEL MONTE — 303 CAN

GREEN BEANS 2 for 49c

DEL MONTE

CORN 303 can 2 for 45c

DEL MONTE — 303 CAN

Fruit Cocktail 2 for 49c

WHOLE

Spiced Peaches No. 2 1/2 can 25c

COUNTRY STYLE

Sausage - Pure Pork lb. 69c

DECKER'S

PICNICS - Short Shank lb. 39c

DECKER'S QUALITY

BACON 1 lb. sliced 65c

Double SCOTTIE STAMPS Every Wednesday, With
Purchase of \$2.50 or More

Hosch Grocery

Rockwood News

By Mrs. John C. Hunter

We extend our sympathy to the family of Mr. Lee McMillan, who passed away in the V. A. Hospital in Temple Sunday night.

Mrs. F. E. McCreary returned home Sunday after some three weeks with Mr. and Mrs. Glen Jones and boys at Waco, and Mr. and Mrs. Frank McCreary Jr. in Palestine.

Mr. N. J. Buttry was dismissed from the Santa Anna Hospital Friday.

Mrs. Jack McSwane visited Saturday afternoon with Mrs. Kate McIlvain.

Mrs. M. D. Bryan was admitted to the Santa Anna Hospital last Friday.

Sunday guests with Mr. and Mrs. Darwin Lovelady and Randal were Mrs. Vera Lovelady of Brownwood, Mr. and Mrs. Ted Lovelady of Fort Worth, Mrs. Myrtle Robertson of Los Angeles, Calif., and Oscar Lovelady of Santa Anna.

Judy and Jodie Brusenhan visited Sunday afternoon with Randal Lovelady.

Mrs. Elec Cooper spent Friday night in Santa Anna with Mr. and Mrs. Denny Densman and Dorinda. Mrs. Robert L. Estes visited Sunday afternoon.

Mr. and Mrs. Clinton Estes of Houston visited Saturday and Sunday with his parents, Mr. and Mrs. Drury Estes. Mrs. Maggie Fare of Stamford visited Friday to Sunday. Mrs. Shirley Watson and Cynthia of Andrews, Mrs. Wayne Thompson of Cedar Hill and Mrs. Dee Mankins of Coleman were Saturday guests. Billy Matt McIntire of Fort Worth and Mr. and Mrs. Matt Estes were Saturday callers. Mr. and Mrs. Robert L. Estes of McGregor spent Sunday.

Thursday guests of Mrs. A. L. Crutcher were Mrs. Iru Bray, Mrs. R. E. Briscoe and Mrs. Lester Bryan and Paul.

Mr. and Mrs. James Estes and children visited in Granbury over the week end with Mr. and Mrs. Junior Thomas.

Mr. and Mrs. Ted Cox of Yucata, Calif., visited Thursday to Saturday with Mr. and Mrs. Kenneth Brusenhan.

Mrs. Jake McCreary, Sharon and Leslie of Santa Anna and Mrs. Aubrey McSwain visited Friday to Sunday with Mr. and Mrs. Bob Mobley and Greg in Odessa.

Mrs. Bruce Snodgrass of Killeen spent Saturday night with Mrs. Rosa Belle Heilman. They were Saturday supper guests with Mrs. Sam Estes and all spent the evening with Mr. and Mrs. Edwin Fowler in Coleman.

Mrs. Forest Beaver of Snyder visited briefly Saturday afternoon with Mrs. Sam Estes.

Mrs. Frank Bryan has really enjoyed her birthday anniversary; besides the party last week, the members of the WMS have served dinner each day this week for her and Mr. Bryan.

Miss Colleen Wise of Fort Worth came Friday to spend this week of vacation with her parents, Mr. and Mrs. Hilton Wise.

Mrs. T. B. Hallford and son, Lloyd, of San Antonio spent the week end with Mrs. C. H. McCarrell and family. They all visited in Santa Anna with Mrs. Andrew McCarrell and family and with Mrs. John Kemp.

Mr. and Mrs. Matt Estes are announcing the birth of a great-grandson, born to Mrs. Martha Carr in Virginia. Mr. and Mrs. Estes visited last Sunday in Santa Anna at Ranger Park Inn with Mrs. Lee McMillan and Mr. and Mrs. Zack Bible.

Octopodes are baby octopi.

The Mayflower brought 102 Pilgrims to America in 1620.

ENCO

Sign of Happy
Motoring

Complete One-
Stop Service

CRUSHED OR
BLOCK ICE

Horner Humble
Service Station

WE GIVE S.&H.
GREEN STAMPS

Shield News

By Mrs. E. S. Jones

A much-needed floodlight has been installed at the Community Center and everyone is invited to attend the annual Thanksgiving supper Saturday night, Nov. 19, at 6:30.

Bring food for the meal, card tables and dominoes. Come and enjoy the supper and recreation afterwards.

Chuck Logan of ACC was guest speaker Sunday at the Church of Christ, and visited with Mr. and Mrs. A. D. Eppler. Mr. and Mrs. Tommy Watson and Tracy of Coleman visited Sunday afternoon with Mrs. E. S. Jones.

Santa Anna High football team played Goldthwaite at Santa Anna last week and won District. They will play Ranger at Abilene this week for bi-district title. Larry and Donnie Williams of our community are members of the Santa Anna team.

Mr. and Mrs. Riley Fitzhugh recently moved from San Francisco, Calif., to Dallas. Last week they visited his parents, Mr. and Mrs. Troy Fitzhugh.

Mr. and Mrs. Lester Strawn of Lake Brownwood visited Sunday with Mr. and Mrs. Bill Price.

Mr. and Mrs. Bert Fowler went to Pleasanton, Tex., Saturday and visited with their son and family, Mr. and Mrs. Larry Fowler, and with her parents, Mr. and Mrs. H. E. Bickley. Larry was on a three day leave from Keesler Air Force Base, Biloxi, Miss. The Bert Fowlers came home Sunday.

Mrs. Alma Bryan of Santa Anna and Mrs. O. H. Watson of Leedy attended the morning service at the Baptist Church Sunday and were dinner guests of Mrs. E. S. Jones.

Mr. and Mrs. Riley McFarlen visited over the week end in Belton with her brother and wife, Mr. and Mrs. Carl Smith.

Mr. and Mrs. Aubrey Scarborough visited in San Angelo Monday.

Any farmer who has an employee who earns \$150 during a calendar year or who works more than 20 days on a time basis must report social security taxes on such an employee.

TIRES ARE ALWAYS
A BARGAIN
at
RUDOLPH'S
Coleman, Texas

Weah McCulloch, Sec.-Treas.
Bettle McCulloch, Mgr.
Standard
Abstract Co.
City & County Maps For Sale
405 Bank Bldg. Coleman

FOIL WILL PROTECT PANS

There's one chore nobody likes in camp. That's cleaning charred pots and pans.

Here's how to prevent it: Just wrap the bottoms with alumin-

um foil.

When you're finished cooking, throw away the foil, and the bottoms of your camping utensils will be as clean as before you started cooking.



Unusual DIAMOND VALUE

Compare the brilliance, the beauty of these fine diamonds... and they're all set in 14K Gold. Yet, we've gone all out to bring this unusual value to you. See it for yourself, today.

now only \$98.00

\$1.00 a Week

FOR HER
CHRISTMAS



Coleman, Texas

PRESCRIPTIONS

Owl Drug Store

"Where Friends Meet"

Telephone 625-4514

312 Commercial Ave.

Coleman

Congratulations...

MOUNTAINEERS

ON WINNING THE

DISTRICT 9-A

FOOTBALL CHAMPIONSHIP

We Wish You LUCK In Your Game With
Ranger Saturday

Coleman Butane Gas Co.

Burkett Hiway

Coleman

Congratulations...

Santa Anna Mountaineers

on winning the

Dist. 9-A Championship

GOOD LUCK SATURDAY!

YOUR FRIENDLY

Santa Anna National Bank

Member FDIC and Federal Reserve Bank Of Dallas

Austin—School teachers are moving boldly forward with their drive for an \$85,000,000 a year pay raise. This, despite the fact that they don't have the support of the governor's committee on education needs.

Texas State Teachers Association seeks salary increases ranging from \$61 to \$100 a month. This would cost the state \$68,000,000 and local school districts \$17,000,000 annually. TSTA says it has rounded up

considerable support in the Legislature and among education-support groups.

But the governor's committee voted not to make any reports on any phase of its far-reaching study until it has completed its research into all areas of public schools.

Chairman Leon Jaworski expressed confidence that Gov. John Connally will call a special session of the Legislature in 1968 to consider the committee's final recommendations.

A committee resolution recognized that salaries are important to staffing schools but added that other factors are just as vital in determining the effectiveness of teachers and administrators.

Without a committee recommendation, there will be sentiment among lawmakers to tell teachers they will have to wait another year for pay adjustment. Teachers will bring pressure on legislators to act immediately. This will be one of

the toughest problems legislators will face during the 1967 session.

Decision is all the more difficult in view of an anticipated tax bill of well over \$100,000,000 that is exclusive of the teacher pay question.

COLLEGE LOANS APPROVED
A total of \$9,535,000 in federal loans has been approved for Texas colleges and universities under federal higher education facilities. They will help finance \$23,000,000 worth of new buildings.

AIR STANDARDS HEARINGS SET
Air Control Board set January 5 for public hearing on the proposed regulations to control pollution from smoke and particulate matter.

Tentative regulations would outlaw burning of burrs, trash, lint and other wastes from cotton gins and require mechanical dust collectors for asphalt portable plants. They cover fumes, grading of smoke density, combustion and distance of pollution sources from neighboring property.

TEXTBOOKS ADOPTED
The State Board of Education has adopted \$6,400,000 worth of new textbooks for 11 subjects.

The Board also authorized development of state plan to support \$2,500,000 federal loan application for educational services to children of migrant agricultural workers.

FEDERAL LANDS
Texas Land Commissioner Jerry Sadler has gone on record as favoring a plan to give to the individual states control of the revenue from federally owned lands within the states.

Sadler said he will make that recommendation to the federal Land Law Review Commission, of which he is a member.

His plan would be to give the state in which the land is located 40 per cent of the revenue from that land. Other 60 per cent would be divided among the other 49 states. Texas has no federal lands.

Proposal would exclude national parks and military reservations, but Sadler feels that all the other federally owned land could be put to better use, since state agencies and state officials could do a better job of supervising the use of the land.

SHORT SNORTS
U. S. Department of Agriculture said the killing freeze of

November 2 will cut the yield of late-planted cotton fields, particularly on high and low plains.

Texas Liquor Control Board warned licenses may be suspended for night clubs featuring "topless" dancers.

Interscholastic League has voted a committee study of the controversial rule which forces high school athletes to lose a year of sports eligibility if they change schools.

The Texas motor vehicle registration increased 3.6 per cent this fiscal year.

Most Effective Control of Mildew Is Prevention

Only mildew resistant paints and stains should be used on exterior wood in most areas of Texas, says Paul Kramer, associate director, Texas Forest Service.

The desire for a "natural" or "rustic" look in residential buildings today is creating an increasing demand for rough-textured wood siding. Natural beauty wood, its durability and economy are reason for its popularity with American home buyers.

All too often, Kramer claims, home builders cut corners by using cheaper grade finishing materials. Later, the homeowner is faced with serious maintenance problems. One such problem, Kramer says, is the bluish-black discoloration of exterior paints and stains. Cause of the discoloration is a fast-growing fungus called mildew.

Easiest and most effective control of mildew is to prevent it. Better exterior paints and stains on today's market contain a fungicide, such as phenylmercury-oleate, which prevents mildew.

Mildew staining can be removed temporarily. According to Kramer, the affected areas should be scrubbed with a mild solution of household bleach and water, allow the solution to set a few minutes, then rinse with water.

For a lasting relief, Kramer recommends that the wood surface be refinished with a quality paint containing a recognized fungicide.

Trickham News

By Mrs. J. E. York

Mr. and Mrs. R. C. Smith and family of Valley Mills were Sunday dinner guests of Mr. and Mrs. Grady McIver.

Mr. and Mrs. Bill Smith of Brownwood visited Sunday afternoon with her aunt, Mrs. W. L. (Bill) Vaughn. Mr. Vaughn spent the week end down in deer country and it is understood he was lucky.

Etoile Cozart of San Angelo visited on Thursday with Mr. and Mrs. Fred Haynes. Mr. and Mrs. G. K. Stearns were Sunday night visitors. Mr. and Mrs. Haynes were Sunday dinner guests of Mr. and Mrs. Jim Lineberry of Midland at their farm in the Cleveland community.

Mrs. Lea Mock and Gennie of Post spent the week end with her parents, Mr. and Mrs. Buck Mitchell. A little granddaughter, Angella Miller, of Austin came Sunday to spend a week with them.

Mr. and Mrs. W. C. Lewallen of Sweetwater spent the week

end with Mr. Rankin McIver and Sherrie. Mr. and Mrs. O. R. Boenicke visited with them on Saturday night.

Mr. and Mrs. Oscar Boenicke visited in Brownwood Sunday afternoon with Mrs. Ernest Boenicke at the Golden Age Nursing Home, and with Mrs. Pearl Ford in Memorial Hospital.

Mr. and Mrs. Grady James and boys and Mr. and Mrs. Tommy McIvain and Terecea of Fort Worth and Stanley James of Ranger Junior College spent the week end with their parents, Mr. and Mrs. Eugene James. Mr. and Mrs. August Richardson of Fort Worth were Monday visitors.

HEART O' TEXAS AUCTION

Foot of Bangs Hill

We Sell Anything of Value, Large or Small
Bring your unneeded, but still useful items

Sale Every Saturday Night 7 P. M.

Open Daily to Receive Your Consignments

20% Commission thru \$20.00
15% Above \$20.00

1109 W. Commerce
Ph. 643-4534 - Brownwood

FLOOR COVERINGS
DRESS FABRICS
MOBIL PAINTS
ARTISTS SUPPLIES
UPHOLSTERY MATERIAL
WALLCOVERINGS

McMinn's House Of Color
West of Post Office-Coleman

OPTOMETRIST
Dr. E. H. Henning, Jr.
117 Commercial Avenue
Coleman, Texas
Phone 625-2228
OFFICE HOURS
9:00 A. M. to 5:00 P. M.
SATURDAYS, 9 to 12

WE HAIL THE MIGHTY

SANTA ANNA MOUNTAINEERS

DISTRICT 9-A FOOTBALL CHAMPIONS

"We're With You All The Way"

J. E. Stevens Co.
Hardware Department Coleman, Tex.

Congratulations ...

SANTA ANNA MOUNTAINEERS

FOR HAVING WON THE

District 9-A FOOTBALL CHAMPIONSHIP

★ ★ ★

We Know You Have Enjoyed A Successful Season, And We Wish You The Best Of Luck In Your Bi-district Play-off Game Saturday.

★ ★ ★

COLEMAN COUNTY STATE BANK

Member FDIC Coleman, Texas

Expert Service
—WITH—
PREMIER PRODUCTS
Good Year Tires
We Appreciate Your Patronage
McCRARY
Premier Station
We Give S.&H. Green Stamps

USE BOILED GAS

- Clean and Safe
- Best For Heating
- Higher BTU Rating
- Best For Cooking
- Approved By Architects
- No Muss
- No Fuss

PHONE 625-2925
Night Pho. 625-2849

Coleman
Butane Gas Co.

DON'T TURN A HAND ...TURN A DIAL

WALTZ THROUGH WASHDAY

The days of hand washing are gone forever! Now, electricity does it for you. See the automatic home laundry equipment at your electric appliance dealer now during Waltz Through Washday time. Prices are low and terms are available to make owning your own electric washer and dryer easy. You have plenty of things to do with the time you save, and plenty of things to do with the money you save. Take advantage of the savings—and Waltz Through Washday.

Free 220-volt Wiring to WTU Customers Who Buy an Electric Dryer or Combination from a Local Dealer or WTU

for FRIGIDAIRE Electric appliances visit WTU

West Texas Utilities Company
an investor owned company

THE SANTA ANNA NEWS
Established January 1, 1886

Business Address Telephone
607 Wallis Ave.—Box 337 348-3545
Santa Anna, Texas 76878

PUBLISHED EVERY THURSDAY AT SANTA ANNA,
COLEMAN COUNTY, TEXAS 76878

NOVEMBER 17, 1966

—STAFF—

John C. Gregg Publisher-Manager
Billie J. Gregg Advertising
Clyde Bunnell Editor-Mechanical
Grady H. Steen Mechanical

SUBSCRIPTION RATES

One Year in Coleman County \$3.00
One Year in Texas (Outside Coleman County) \$5.00
One Year Outside State of Texas \$7.00
One Year Outside United States \$10.00
Service Personnel Anywhere, Per Year \$3.00
Single Copies 10 cents

The publisher is not responsible for copy omissions or typographical errors that may occur, further than to correct them in the next issue. All advertising orders are accepted on this basis only.

NOTICE TO THE PUBLIC: Any erroneous reflection upon the character, standing or reputation of any person or firm appearing in these columns will be gladly and promptly corrected upon calling the attention of the editor or publisher to the article in question.

Second Class Postage Paid at Santa Anna, Texas

DISPLAY ADVERTISING RATES ON REQUEST

CLASSIFIED ADVERTISING

CLASSIFIED ADVERTISING RATES

First Insertion — Per Word 4c
Each Additional Insertion — Per Word 2c
MINIMUM CHARGE — 50c PER WEEK
COPY DEADLINE — 10:00 A. M. WEDNESDAYS

FOR SALE OR TRADE

FOR SALE: Arkwin Oats, best for grazing and combining. \$1.00 bu. C. E. Kingsbery. 35tfc

FOR SALE: Good used refrigerators, automatic washers, wringer washers, clothes dryers and gas cook stoves. Terms to suit YOU. Geo. D. Rhone Co., Coleman, Texas. 48tfc

FOR SALE: Several used TVs in good condition. Geo. D. Rhone Co., Coleman, Texas. 48tfc

WE BUY and sell used furniture. 602 South Houston. Phone 348-3802. 24tfc

FOR SALE: Signature wringer-type washing machine. Good condition. Mrs. S. R. Squyers, 305 S. 6th St. p46-47

FOR SALE: 1965 Chevrolet, 4-door, 7,000 actual miles. (The Guy Lovelady car). Contact Jim Lovelady after 1 p.m. 348-3501. 46-c

JUST ARRIVED, Orion and Dacron 60 to 70 in. wide. Best prices. \$2.98 to \$4.98 yard. Estelles Ladies Shop, Coleman, Texas. 46-c

MISCELLANEOUS

WHEN YOU THINK of grinding, mixing and pelleting think of Hollingsworth Feed Mill, Coleman, Texas. 50tfc

FOR Tire Service, See Sye. 41tfc

REDUCE safe, simple and fast with GoBese tablets. Only 98c. Phillips Drug. 45-4c

JUST ARRIVED, Orion and Dacron 60 to 70 in. wide. Best prices. \$2.98 to \$4.98 yard. Estelles Ladies Shop, Coleman, Texas. 46-c

WHAT DO false teeth, Pierre Rowe moving a balky horse and S.A.H.S. football team have in common? — They all Click. Joe's Pharmacy

Congratulations...

SANTA ANNA MOUNTAINEERS

DISTRICT 9-A

FOOTBALL CHAMPS

"BEAT RANGER — SATURDAY"

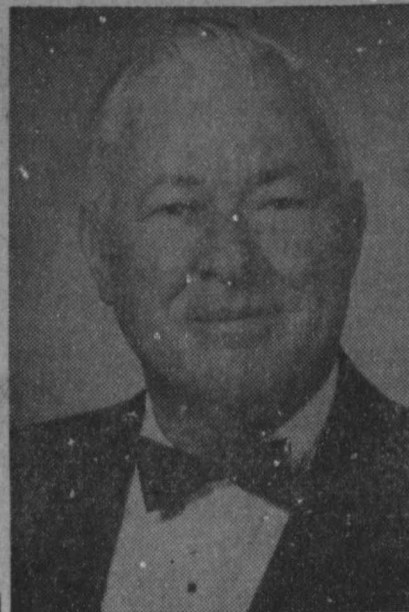
Taylor Motor Co.

Coleman, Texas

140 Attend OES School of Instruction



MRS. MILDRED SHARPE
... grand officer



HERSCHEL HARRINGTON
... grand officer

One hundred and forty members of Eastern Star attended the "Melody School of Instruction" in Santa Anna last Monday.

Chapters of District 3, Section 5, participating were Santa Anna, Coleman, Bangs, Zephyr, Indian Creek, Brownwood, Cross Plains, Blanket and Comanche.

Mrs. Mildred Sharpe, worthy grand matron, of Dallas, Mrs. Aliene Houston of Arlington, Mrs. Patsy Sawyer of Arlington and Mrs. Blanche Grantham of Santa Anna were school officers, with Mrs. Rose Bass of Santa Anna as co-chairman.

Activities began with a coffee hosted by Santa Anna chapter. The "Rainbow of Promise" luncheon was held in the Methodist Church with 74 in attendance. "The Symphony of Nature" banquet was also held in the church fellowship hall with about 85 in attendance.

Mayor Ford Barnes presented a key to the city to Mrs. Sharpe. Mrs. Charles Henner, soloist, sang "Trees" and "Over the Rainbow," accompanied at the piano by Miss Ruth Ann Walker. Dr. Charles Henner was guest speaker, outlining some rules for living.

Brownwood Chapter gave a special drill which was followed by the Fraternal visit of Mrs. Sharpe. There were 24 chapters, one

jurisdiction, 14 grand officers, 10 worthy matrons and worthy patrons, and 51 past matrons and past patrons represented at the session.

Grand officers, other than the above, were Gene Nation, Azle, secretarial committee; Mildred Tarter, Ft. Worth; Hal Barnett,

Alpine, past worthy grand patron of Texas; Virginia Zaret, Odessa; C. B. Carthen; Vera Kirkland, Dallas; Carmen Donham, Santa Anna; T. B. Johnson, Arlington; Ella Mae Adcock, Lamesa; Nina Jones, Hamilton, and Exa Lane, Bangs.

Following the meeting, Indian Creek was host to a reception honoring the grand officers. Refreshments of pink punch and pink and white coconut ball cookies were served from a table laid with pink cotton and overlaid with a pink ruffled net cloth. A large autumn arrangement, using shades of pink, brown, and candles were used on the table.

Delta Omicron Chapter Meets

Delta Omicron Chapter of Epsilon Alpha met at the Library Building on Monday, Nov. 14 at 7:30 p.m. for the regular meeting.

Mrs. C. D. Bruce was guest speaker and gave an educational report on "Safety in Automobiles."

Mrs. Patsy Brook and Charlotte Moseley served refreshments to fourteen members and Mrs. Bruce.

WSCS Begins New Study Course

The Women's Society of Christian Service of the local First Methodist Church met Monday to begin a new study course, "Affluence and Poverty." Mrs. Hardy Blue is teacher of the course.

The devotion was taken from Deut. 8. A play "Two in a Trap," was presented by Mrs. Dale Smith and Mrs. Roy Horne.

Others attending were Mrs. Tom Hays, Mrs. O. L. Cheaney, Miss Xuma Myers, Mrs. Joe Baker, Mrs. Maud Harris, Mrs. John Bray, Miss Ruby Harper, Mrs. Jennie Ladd, Miss L. Lee Harper, Mrs. Bobby Weathers, Mrs. J. B. Pirtle of Coleman, Guild member, Mrs. Arch Hull, and Mrs. Dan Blake.

T.E.L. Class Meets

The T.E.L. Class of the First Baptist Church met in the home of Mrs. Keetie Haynes Tuesday.

The opening prayer was given by Mrs. Dovie Chapman.

During the meeting it was decided to hold their Christmas Party December 15 in the church annex.

Refreshments were served to the 12 members in attendance.

HEY LOOK!

The Truck Harbor Service Station will service your car, regardless of the make or model, while you eat at the Steak House before traveling to the game at Abilene between the Mountaineers and Ranger Saturday night.

FOR YOUR CONVENIENCE

We will be open after the game to service your car and have it ready for you to attend Sunday School and Church.

WE'LL BE SEEING YOU.

Truck Harbor Service Station
Harvey Holland

Our food buys are big

Will close Saturday at 5 p. m. for ball game!

GOOCH'S

Bologna lb. .29

DECKER'S

WIENERS lb. .49

DECKER'S QUALITY

BACON lb. .65

BEEF

CUTLETS lb. .59

DECKER'S HAMS half or whole lb. .59

All Size Turkey and Chicken Hens-Special Price

CATSUP DEL MONTE 4 BOTTLES .89

DEL MONTE TUNA FISH 3 CANS 1.00

Pineapple-Grapefruit Drink DEL MONTE 46 OUNCE 4 cans \$1

GLADIOLA MEAL WHITE OR YELLOW 5 LB. BAG .39

FRESH BARBECUE DAILY

WE GIVE FRONTIER TRADING STAMPS

Harvey's Grocery

MEMBER INDEPENDENT GROCERS, INC.

PHONE FI8-3632

CHAMPIONS

District 9-A, 1966

— THE TEAM —

Tommy Blanton	Roy Joe Harvey	Dale Herring	Dale Little
Lin Wristen	Dickie Horner	Ronnie Cooper	Raymond Valdez
Steve Valdez	Butch Makuta	Ray Valdez	Phil Huggins
Bob Rutherford	Eddie Jones	Ted Ford	Jimmy Eubank
Larry Rutherford	Danny Williams	Gordon Copeland	Nolan Perry
Korky Wise	Larry Williams	David Yancy	Jerry Horner
Davey Beal	Don Fitzpatrick	Ricky Abernathy	Tommy Wardlow

COACHING STAFF: WENDELL ROBINSON, BERT GRAVITT and DWIGHT HUDSON
MANAGERS and TRAINERS: BILLY DON CUPPS, RONNIE HARTMAN and EDDIE VOSS

We Are Proud of Each of You!

And Now As You Enter The STATE PLAY-OFF For The First Time In The History Of
Santa Anna Schools — We Want You To

Beat The Ranger Bulldogs

This Message Sponsored by These Mountaineer Boosters

Clover Grill	Ladies Shop	Abernathy - Cooper Garage, Rockwood
City Cleaners	Piggly Wiggly	Hartman Plumbing & Electric Co.
Hosch Brothers	E. O. Rider Garage	McCrary Premier Service Station
Joe's Pharmacy	Santa Anna Cable T.V.	Coleman County Telephone Co-Op
G & E Hardware	Santa Anna Co-Op Gin	Bryan's General Store, Rockwood
Brown's Grocery	Santa Anna Lumber Co.	Benge Premier Service Station
Jane's Beauty Shop	Santa Anna News	Western Auto Associate Store
Bobby's Beauty Salon	Moore Mercantile Co.	Post Office Department Employees
Burden Mobil Station	Speck's Barber Shop	Sam H. Collier Insurance Agency
Harold Cupps Electric	Turney's Beauty Shop	Tradewinds Restaurant, Coleman
Harvey Grocery & Market	White's Variety Store	B. A. Parker Recreation Center
Herring Flowers & Gifts	Wylie's Flowers	Truck Harbor Service Station
Horner Humble Station	L. A. Welch Garage	Talley Sinclair Service Station
Santa Anna Motor Sales	Steak House	Santa Anna Medical Center
Santa Anna Tile Co., Inc.	Fords Welding Shop	Santa Anna Insurance Agency
West Texas Utilities Co.	Phillips Drug Store	Santa Anna National Bank
	Modern Beauty Shop	Candler Seed & Feed, Fisk

BE SURE TO ATTEND THE

BI-DISTRICT FOOTBALL GAME

SATURDAY, NOV. 19 - 7:30 P. M.

P. E. Shotwell Stadium

ABILENE, TEXAS

THE HUNTER'S CREED

A composite word picture of the model deer hunter-sportsman as prepared by the Texas Parks and Wildlife Department goes something like this:

He makes supreme safety a top target;

He is never careless with fire in any form, afield or in camp;

He is considerate of the land owner at all times, meticulously closing gates, never firing toward buildings or livestock;

He practices conservation even to painstakingly dressing his kill and protecting the meat;

He makes certain that his kill is properly tagged;

He leaves a forwarding address to spare authorities in the hunting country from trying to locate him during home emergencies;

He is particularly alert about NOT littering someone else's property with bottles, cans, paper or other debris;

He practices good sportsmanship and does NOT try to claim another's kill;

He shares his hunting privileges with his boy, all things being equal, with his wife;

He never inspects, much less demonstrates, another's gun unless permitted to do so;

He faithfully makes a maximum effort to retrieve a wounded deer;

He carries adequate emergency equipment and supplies for first aid for tiding over in the event of becoming lost;

He chooses his hunting companions carefully, for the protection of all;

He never permits his loud nighttime carousing to disturb companions bent on hunting daytimes rather than on nocturnal nonesense;

He always remembers that Department field personnel are there primarily to help him as well as future generations enjoy a great sport.

Covered Dish Dinner

A covered dish luncheon is scheduled at 7 p.m. Nov. 22 in the Breeder-Feeder Barn at the Coleman Rodeo grounds, according to announcement this week.

During the meeting the Coleman County Republican Committee will be heard, plus a film and other entertainment. Dale Herring of Talpa, County chairman, invites the general public to attend, and all supporters of Sen. John Tower are cordially invited to be present.

The pacemaker, a transistorized device which stimulates the normal rhythm of the heart beat for victims of heart trouble, was developed by medical researchers at the Buffalo, N. Y., Veterans Administration hospital.

AN ODE TO A CUR

They say that
Dog is man's
Best friend;
And that his
Bark is worse
Than his bite.
And an old
Cliche is to
Say yet it's
A dog's life.
Now all these
Sayings, I'm sure
Are true, but
Among the old
There will be
A new:
Don't get a
Mountaineer into
a dog fight.

Joe's Pharmacy 46-c

For Tire Service, See Syc.

HERRING JEWELER

SELECTED DIAMONDS
REASONABLY PRICED
209 Commercial — Coleman

Best Prices On Floor Coverings

Carpet - Linoleum
We Also Do
Carpet Cleaning
M. L. Marrs
Phone 625-5322
Coleman, Texas

Go Roller Skating

Open
Friday and Saturday Nights
7 p. m. to 9 p. m.
Sunday Afternoon
2 to 4 p. m.
Private Parties Any Time
THOMPSON
ROLLER RINK
COLEMAN, TEXAS
Located at Airport

NEWS FROM

RANGER PARK INN . . .

Joe Simmons of Miles visited his cousin, Mrs. Clara Kryder, on Sunday.

Mrs. Bill Curry and Mrs. Geo. Simmons visited with Eula Mitchell.

Mr. and Mrs. Joe Cathy of Fisk were visitors of Mrs. Eula Mitchell.

Mrs. Alvin Wilkinson of Coleman visited Mrs. Dera Dibrell. Mrs. Joyce Armstrong of Texas City also visited Mrs. Dibrell.

Mrs. Lucien Vaughn of Coleman visited Mrs. Clara Kryder.

Mrs. Henry Doss of Ft. Worth visited on Friday with Mrs. Eula Mitchell.

Mrs. Opal Densman of Coleman, Mrs. Don Fitzgerald of Irving, and Mrs. B. A. Parker were visiting friends at Inn on Sunday.

Mr. and Mrs. Buster Woodard, Mrs. Virgie Loudermilk and Mrs. Clara Traylor visited Mrs. Lillie Archer and others at the Inn.

Bobbie Strickland of Coleman, Mrs. Anita McCoy and Venita of Rotan visited at the Inn Sunday.

Mrs. Lola Williams of Abilene visited with her mother, Mrs. Lillie Archer, and took her for a short outing.

Mr. and Mrs. Frank Ellis of Three Rivers visited with Mrs. Lillie Archer.

Mrs. Gray and Miss Ruby Harper visited Mrs. Archer and others on Wednesday.

Mrs. Pearl Binson of Coleman visited Mrs. Archer on Friday.

Mrs. J. W. Haynes and Miss Xuma Myers visited with Mrs. Archer.

Mr. and Mrs. Rufus Farris of San Angelo visited Sunday with her parents, Mr. and Mrs. Cal Fuller Sr.

Karol Buse, Louise Densman and Opal Stockard visited a number of residents at the Inn.

Mrs. Sandra Walker visited with her grandmother, Mrs. Sam Moore. Mr. and Mrs. D. H. Moore and Mr. and Mrs. Pete Moore also visited Mrs. Moore.

Mrs. Lucien Vaughn of Coleman visited Mrs. Rose Niell. Mrs. Roy Parker also visited with Mrs. Niell and Mrs. Zemer Griffin.

Mrs. Alice Boardman of Lamesa is visiting with her brother, Homer Burden. H. A. also visited with his father.

Mr. and Mrs. Jay Simmons and daughter visited his parents, the Geo. Simmons.

Mrs. Hazel Reed of Andrews visited her parents, the Geo. Simmons.

Mrs. Mabel Fitzgerald visited with Mrs. Nancy McCoy.

Ruth Ann Walker and a friend Miss Horton, also visited at Inn on Sunday.

Mrs. Otis Bivins visited with Mrs. J. J. Horner, Mrs. Lula Harvey and Mrs. Rose Niell.

Sidney Fitzgerald visited with friends.

Mr. and Mrs. I. P. Burroughs of Novec visited Mrs. Ada Deakins.

Mrs. Jack Hollanquist of Pasadena visited Mrs. Zemer Griffin.

Terry Goodwin, Gloria Witt, Sharon Mills, Kathy McCaleb, James McGlothion, and Stephen Mercer of Howard Payne College and Rev. Williams Crews of Woodlawn Baptist Church of Brownwood conducted the Sunday afternoon service.

Mrs. Nora Goen, Mrs. Myrtle Grey and Good Woodridge visited at Inn Sunday afternoon.

Mrs. Edd Jones visited on Sunday with residents at the Inn.

Mr. and Mrs. A. A. Bertrand visited on Sunday.

Mr. and Mrs. Dennis Smith visited their parents, the Turney Smiths and Mrs. J. J. Horner.

Charles Weardon of Winters visited Mrs. Lydia Weardon.

Mrs. Bert Simmons visited with Mrs. Eula Mitchell and Geo. Simmons.

B. F. Mitchell visited his mother, Eula Mitchell.

Nancy Spencer visited her parents, Mr. and Mrs. Edd Spencer.

Mrs. Lillie Brown's children visited with her.

Mrs. Ben Herring is in the Santa Anna Hospital. All are looking for her return.

R. H. Stainback visited his mother, Mozelle.

Mr. and Mrs. A. O. Deakins of Abilene, Mr. and Mrs. Homer Deakins of Longview visited Mrs. Ada Deakins.

Claude Hodges attended services at the Seventh-day Adventist Church. Mrs. Clara Kryder and Hallie Leach also attended.

Mrs. U. S. Brannon visited at the Inn.

Mrs. Blanche Boyd attended services Sunday at the United Presbyterian Church.

Mrs. Recie Sawyer of Brownwood, Nonie Simpson and granddaughter visited Mrs. Myrtle McDonald. Mrs. Pat Warren was also a visitor.

Mr. and Mrs. Zack Bible have returned to Inn from Santa Anna Hospital. Their children, Mrs. Juanita Branch and Orville Bible visited with them.

Mrs. Harry Bremmer visited the Frank Crowders.

Richard Horner and Lawanda Horner visited Mrs. J. J. Horner.

Mrs. Joe C. Mathews visited at Inn Sunday.

Mrs. Hallie Leach will celebrate her birthday Nov. 18. Mrs. Emily Crowder will have a birthday, Nov. 20.

Mr. Calvin Fuller received a pot plant on his birthday.

Doc Barkley presented a contribution to the piano fund.

Mrs. Roy Horne, Mrs. Mary Frances Williams, and Mr. Bill Curry came to Inn and took some of the residents to vote on Tuesday.

Mrs. Mabel Burrage is spending many hours at the Inn with

her mother, Lula, and is writing letters for residents and doing other nice things. Thank you Mabel.

The following residents enjoyed a Bible game Monday, Miss Flanche Boyd, Mrs. Ella Stiles, Mrs. Stella Watson, Mrs. Mozelle Stainback, Mrs. Clara Kryder, Mrs. U. S. Brannon, Mrs. J. J. Horner and Mrs. Lillie Archer.

Last week Mrs. C. M. Moseley and Mrs. Arthur Casey came out and demonstrated use of feathers. They used chicken feathers, peafowls, guinea, turkey and commercial ones.

On Wednesday night the Fireman's Auxiliary came for a gospel sing-song.

Thursday Mrs. Burgos showed 300 color pictures of the Tallas Zoo.

The Sunshine Band entertained on Friday.

Monday, Nov. 14, will be time for Bible games again.

Tuesday, Mrs. Morris of Coleman will return.

Residents will go to the Baptist Church Wednesday for the Get-together Luncheon.

On Thursday, Nov. 17, Eddie Jones, Norma Jo Eubank and Jana will entertain with the 4-H Club program they presented at the Round-up at A&M.

Miss Beth Irick will also be here.

The Seventh-day Adventist minister will be in charge of services Sunday, Nov. 20.

Senior citizens will be interested in a new tax booklet called "Tax Benefits for Older Americans." It explains new tax laws as they apply to citizens 65 years of age and older. Tax-saving information includes an explanation of benefits for a surviving spouse and head of a household, added exemptions for age and blindness, and the amount of tax credit which is allowed for retirement income.

NEW TAX BOOKLET

Senior citizens will be interested in a new tax booklet called "Tax Benefits for Older Americans." It explains new tax laws as they apply to citizens 65 years of age and older. Tax-saving information includes an explanation of benefits for a surviving spouse and head of a household, added exemptions for age and blindness, and the amount of tax credit which is allowed for retirement income.

Senior citizens will be interested in a new tax booklet called "Tax Benefits for Older Americans." It explains new tax laws as they apply to citizens 65 years of age and older. Tax-saving information includes an explanation of benefits for a surviving spouse and head of a household, added exemptions for age and blindness, and the amount of tax credit which is allowed for retirement income.

Senior citizens will be interested in a new tax booklet called "Tax Benefits for Older Americans." It explains new tax laws as they apply to citizens 65 years of age and older. Tax-saving information includes an explanation of benefits for a surviving spouse and head of a household, added exemptions for age and blindness, and the amount of tax credit which is allowed for retirement income.

Senior citizens will be interested in a new tax booklet called "Tax Benefits for Older Americans." It explains new tax laws as they apply to citizens 65 years of age and older. Tax-saving information includes an explanation of benefits for a surviving spouse and head of a household, added exemptions for age and blindness, and the amount of tax credit which is allowed for retirement income.

Senior citizens will be interested in a new tax booklet called "Tax Benefits for Older Americans." It explains new tax laws as they apply to citizens 65 years of age and older. Tax-saving information includes an explanation of benefits for a surviving spouse and head of a household, added exemptions for age and blindness, and the amount of tax credit which is allowed for retirement income.

Senior citizens will be interested in a new tax booklet called "Tax Benefits for Older Americans." It explains new tax laws as they apply to citizens 65 years of age and older. Tax-saving information includes an explanation of benefits for a surviving spouse and head of a household, added exemptions for age and blindness, and the amount of tax credit which is allowed for retirement income.

Senior citizens will be interested in a new tax booklet called "Tax Benefits for Older Americans." It explains new tax laws as they apply to citizens 65 years of age and older. Tax-saving information includes an explanation of benefits for a surviving spouse and head of a household, added exemptions for age and blindness, and the amount of tax credit which is allowed for retirement income.

Hunters Warned On Fire Hazard

An unusually heavy growth of vegetation could provide a dangerous range fire hazard if the weather continues dry, cautioned the Texas Parks and Wildlife Department as the major hunting season begins.

It particularly asked for the cooperation of deer hunters camping out and hunters accustomed to flicking a lighted cigarette away.

The Department emphasized that a raging range fire would destroy game and livestock forage and could destroy farm and ranch property as well as the

hunter's own camp. Loss to wildlife habitat from careless started fires sometimes is heavy during hunting seasons.

Scent is the best-developed sense in most animals.

Napoleon turned the Louvre in Paris into a museum.

Fast Efficient Service
Joe K. Cervenk
Electric
111 Commercial - 625-4212
Coleman, Texas

QUICK
Pest Control
Bruce Cleveland
BROWNWOOD, TEXAS
P. O. BOX 115
PHONE 645-9049

YOUR KIND OF GAS HEATER

Modern, low-cost gas heating with a beautiful Crest by Dearborn. You'll love its Cool Safety Cabinet and instant heating with Forward Heat Flow. Sizes for every need.



Dearborn

Priced from \$21.95
Hosch Furniture Co.

CAR-TUNES



JOE'S SERVICE STATION

It's A Custom Job . . . My Home Is At The Top of A Steep Hill . . .

If your home is at the top of a steep hill (or even if it isn't) you'll want to be sure that your car's engine has the pep and power to "make the grade" smoothly, surely, safely. Our Mobil products will give you this assurance . . . help you get more miles per gallon of gas, too. Try our service today, you'll be glad you did.

We Give SCOTTIE STAMPS
Burden Mobil Station
510 Wallis Ave. Phone 348-3191

For Finer Monuments
COLEMAN MONUMENT WORKS
1301 East 9th St.
Coleman, Texas

SERVICE CALLS
ANYWHERE - ANYTIME

Electric Motor
Refrigeration
Water Pump
SERVICE



Prompt, Expert Service
On All Your Electrical Needs. Give Us A Call.


Bozeman
Electric Shop and Refrigeration Service
513 Park St.
Coleman, Texas
Service Calls 625-4623
Night: 625-4037 or 625-5144

WE SALUTE THE
Santa Anna Mountaineers District 9-A Champions

Coleman County Electric Co-op. Inc.

In the Coleman-Santa Anna Area, who's the In Crowd talking to? Buick dealers, mostly.

Daugherty Motor Co. 401 Commercial Ave. Coleman, Texas



'67 Special Deluxe. Let its low price talk to you.

IN '67 BUICK

Get in with the In Crowd at your Quality Buick dealer's now.

Cleveland News

Mrs. John Perry

(Mrs. John Perry will be our Cleveland news correspondent in the future. If you have an item of news, please turn it in to her. The Editor.)
Congratulations to Tommy

**TIRES ARE ALWAYS
A BARGAIN**
at
RUDOLPH'S
Coleman, Texas

Blanton and his teammates on winning the football game Friday night.

Mr. and Mrs. Cecil Ellis were visitors of Mr. and Mrs. Earl Ellis Saturday night.

Mrs. John Perry and Mrs. Jewel Clifton were visiting in LaMarque and Galveston this past week.

Mr. and Mrs. Melvin Pollock of Ft. Churchill, Manitoba, Canada, are parents of a baby son, Weston Alan, weight 8 lbs., born Nov. 7. They have two other children, twins Tracy and Theron. Grandparents are Mr. and Mrs. C. T. Moore and Mr. and Mrs. M. R. Pollock. Great-grandmothers are Mrs. Nola Moore and Mrs. R. M. Lykins. Jerry and Anita Ellis of Sam

Houston State College were home for the week end with Mr. and Mrs. Cecil Ellis and Tammy.

Visiting with Mr. and Mrs. Dick Baugh and Nancy were Mr. and Mrs. J. C. Bible and Jamie Joe of San Angelo.

Mr. and Mrs. Ross White of Early visited in the home of Mrs. Bula Fleming Monday.

There was a good attendance at the Methodist Church Sunday when Rev. Bobby Weathers filled the pulpit.

Mr. and Mrs. John Perry visited with Mr. R. C. Perry, who is ill in Memorial Hospital in Brownwood, Sunday.

Mrs. Jewel Clifton, Judy and Kippy were supper guests of Mr. and Mrs. Donnie Clifton and children Wednesday night.

Mrs. George Wells visited Saturday in the Cecil Ellis home.

Whon News

By Mrs. Tom Rutherford

Lynda Rutherford of Abilene was home over the week end. Sunday dinner guests with the Tom Rutherfords were Mr. and Mrs. Hilary Rutherford and children, Rocky and Dena, and Mr. Sammie Shields.

Mr. and Mrs. Aaron Avants were dinner guests of Mr. and Mrs. Buster Wynn in Coleman Monday. Mr. Avants attended the sheep sale in Coleman.

Mr. Gus Fiveash of San Angelo, Mrs. Nettie Blackwell of Iraan, Mrs. Ruth Fiveash and daughter of Ballinger were in our community Tuesday afternoon visiting. They also visited the Whon Cemetery and the Fiveash Cemetery near Trichham.

Winmy Watson and his grandson, Byron Sherrod, of Lubbock spent the week end

on the Watson's farm here.

Douglas Avants and children Jacky Lynn and Dougy of Brady visited his parents, Mr. and Mrs. Aaron Avants Sunday afternoon. Mr. James Avants and son, Jimmy, of Santa Anna were with the Aaron Avants Saturday and Sunday morning.

Mr. and Mrs. Rex Turney of Santa Anna, Mr. and Mrs. Leonard Matassie and boys of Dallas, Mrs. Hettye Turney of Santa Anna, Mr. and Mrs. J. D. Loyd of Brady visited with Mr. and Mrs. Thomas Switzer and children Sunday.

Miss Linda Abernathy of San Angelo spent the week end with her parents and brother, Mr. and Mrs. Lee Abernathy and Ricky.

Mr. Sammie Shields visited with Mr. and Mrs. Fred Shields and Mr. and Mrs. Sam Rutherford in Santa Anna Friday afternoon. Sam Rutherford was admitted to a Brownwood hospital Saturday morning. His condition is not so good.

Mr. and Mrs. Bill Williams and baby daughter of near Dallas were week end guests with his parents, Mr. and Mrs. Roland Williams.

Mr. and Mrs. Homer Schulze of San Antonio spent the week end on their farm near here.

Mr. and Mrs. Randy Brown and son, C. W., of Brownwood were Sunday visitors with her parents, Mr. and Mrs. Cleburn Stanley.

SAVE TINFOIL PLATES

Those foil plates that TV diners come in make perfect eating utensils for camp. Once you use them at the campground, you can discard them or save for another trip.

ABOUT BACON

Had you realized that there is more difference in bacon than just thickness of slice? There are several things to consider. Regular bacon comes from the underside of the hog, is sliced and packaged in 1 and 2 pound packages and is priced in three different ranges. Irregular bacon comes from the ends of the bacon slabs. It's less expensive because the slices aren't as uniform and attractive, but the flavor is the same. Bacon square is cut from the jowl of the hog.

It is fatter than regular bacon. Leanest of all is Canadian-style bacon which isn't bacon at all, but one of the most expensive cuts of pork, the loin.

**SEE US FOR YOUR
UPHOLSTERY NEEDS**
Free Pickup and Delivery
Work Guaranteed
SHIRLEY UPHOLSTERY
1504 N. Nueces
Coleman, Texas

**For Prompt
PLUMBING & ELECTRICAL SERVICE
HEATING & AIR CONDITIONING
DITCH DIGGING MACHINERY**
Hartman Plumbing & Electrical Co.
DIAL 348-3344
AFTER HOURS PHONE — 348-3481
617 Wallis Ave. Edd Hartman, Owner

**Big travel
bargains
are back
on the Santa Fe!**



**What's the
gimmick?**

Simple. It's the off-season. Now through May 15th, you can save up to 20% (sometimes even more) on round-trip rail fare.

First class or coach, either way it's a travel bargain. And not just on special days, but any day of the week. Your return ticket is good for 30 days—on any Santa Fe train. There's no tax on Santa Fe tickets.

So you see, there's really no gimmick. Just savings. This time, why not take a vacation on the way? Travel Santa Fe. And save.

Ask your local Santa Fe agent for full details on Bargain Fares—and other Santa Fe travel bargains.

Give a trip as a gift with Santa Fe Gift Certificates



WINNERS

MRS. LEONARD JAMESON —
\$75.00 Gift Certificate

L. H. TRAYLER —
\$75.00 Gift Certificate

HURRY — Come Make A Wish
Only TWO (2) More Drawings Left

Nothing to buy -- Wish Free

Gray Mercantile Co.

109 W. PECAN

COLEMAN

CARAVELLE
is made
like an
expensive watch

yet
it's only
\$12.95

Although it looks fragile and delicate, don't let its looks fool you. The Caravelle Princess has the stamina of shock-resistant Caravelle construction plus a jeweled-lever movement. A very expensive watch for only \$12.95.

CARAVELLE
division of BULOVA

**LAY-AWAY NOW
FOR CHRISTMAS**

50c A WEEK
PAY NEXT YEAR!

EARLE SMITH'S
Coleman, Texas

WE SALUTE THE

District 9-A Champion

**SANTA ANNA
MOUNTAINEERS**

★ ★ ★

We Are Proud Of You And The Record You Have
Achieved, And Wish You Luck In Your Play-off Game

★ ★ ★

Be Seeing You at the Game Saturday Night!

First Coleman National Bank

Member FDIC

Coleman, Texas

Congratulations ...

Santa Anna Mountaineers

ON WINNING THE

Dist. 9-A Football Championship

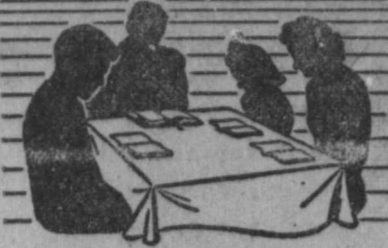
Berry's Ford Sales

415 Commercial Ave.

Phone 625-2163

Coleman, Texas

Today's MEDITATION
from
The World's Most Widely Used
Devotional Guide



The Upper Room
© THE UPPER ROOM, NASHVILLE, TENNESSEE

Read Acts 16:6-10.

I feel myself under a sort of universal obligation, I owe something to all men. (Romans 1:14, Phillips).

At the closing service of an annual missionary conference in June 1965, at Greencastle, Indiana, nineteen missionaries retired. Together they represented more than 700 years of service overseas. As they stood in the sanctuary, there were no words adequate to express our appreciation for the rich lives of these dedicated people.

Looking at them from the congregation, one felt a great sense of loss to the Christian world mission... a loss of their experience and leadership, their understanding of other cultures and religions, their facility with difficult languages.

Then the new missionaries were presented. Sixty-five men and women stood up; all of them deeply committed, highly educated, and carefully selected. Their assignments were read: Argentina, Pakistan, Japan, the Congo, and other countries. Our concern for the missionary work of the church was filled with new confidence.

PRAYER: O Lord God, holy Father, we take upon ourselves with joy the yoke of obedience and engage ourselves, for love to Thee, to see and to Thy perfect will. Strengthen us in Thy service. For the sake of Jesus. Amen.

THOUGHT FOR THE DAY
Constrained by Jesus' love, the church goes into all the world to serve Him.

Gerald H. Anderson
(Philippines)

Lunchroom Menu

- Monday 21**
Roast with gravy, green beans, candied yams, banana pudding, rolls with butter, milk
- Tuesday 22**
Fish sticks, steamed rice, cabbage, blackeyed peas, apple salad, cake squares, rolls and milk
- Wednesday 23**
Turkey and dressing, cranberry sauce, english peas, buttered carrots, pumpkin pie, rolls and milk

ABILENE CHURCH SETS DEDICATION SERVICES

The Brook Hollow Christian Church of Abilene will dedicate its new sanctuary in a special service at 3 p. m. Sunday, Nov. 20. Rev. George M. Gibbs, pastor, will deliver the dedication message.

The church, located at South Willis and 23rd Streets, was built at a cost of \$180,000. The public is invited to attend the service.

DR. M. O. SOWELL
CHIROPRACTOR
Phone 625-4824
615 Commercial, Coleman

Cole - Anna
Drive-In Theatre
Coleman, Texas

THURSDAY - FRIDAY
AND SATURDAY
NOVEMBER 17-18-19

"Renfro Valley
Barn Dance"

— PLUS —

JOHN DREW BARRYMORE
"War of the Zombies"

SUNDAY - MONDAY
AND TUESDAY
NOVEMBER 20-21-22

ELIZABETH TAYLOR
LAURENCE HARVEY
EDDIE FISHER

"Butterfield 8"

— PLUS —

ELIZABETH TAYLOR
PAUL NEWMAN

"Cat On A Hot
Tin Roof"

**Parcels Travel
Faster When ZIP
Code Is Used**

ZIP Code will help Santa and his helpers deliver Christmas presents this year.

Acting Postmaster John C. Gregg today emphasized that the proper ZIP Code in the address will help assure on-time delivery of Christmas presents sent through the mail.

"Every Christmas several million of Santa's presents travel through the mails. In a great many instances, ZIP Coded parcels travel by shorter routes and are handled fewer times because the five digits help postal clerks choose more direct transportation routes," the Postmaster said. "This means there is less chance for damage to the gifts because they are handled fewer times."

Zip Codes often help deliver a package that otherwise would be sent to the dead parcel office because the address can't be read.

"There is nothing more unpleasant for postal employees than not being able to deliver a Christmas package and knowing that some youngsters won't receive the gift because the address was illegible," Acting Postmaster Gregg said.

"The key to the best possible postal service is ZIP Code. If you don't have the Zip Codes for any addresses on your mailing list, they can be obtained through the Post Office."

REMOVING THE GLARE FROM GUNSIGHTS

Having trouble with glare from sun on your front and rear iron rifle sights?

A match will solve your problem.

Just run a lighted match over each sight. The carbon deposit will eliminate the glare and not harm the sights.

**Rockwood HD Club
Hosts Council Meet**

The County Home Demonstration Council met in the Hospitality Room of First Coleman National Bank Thursday, Nov. 10, with the Rockwood HD Club serving as host.

Mrs. Jack Cooper, president of Rockwood club, gave the "Thought for the Day," and introduced club members.

Mrs. Ivan Hill, Council Chairman, presided during reports of committees.

Miss Bernice Johnson of the Rockwood club directed recreation.

Nine of the County HD clubs were represented with three officers and 17 members in attendance.

There are 231 cubic inches of water in a gallon.

The Pony Express lost only one mail pouch in its history.

**RANCER IS ADDED
TO MOUNTAINEER SLATE**

A contract has been signed between Santa Anna and Ranger school officials whereby the Ranger Bulldogs will be added to the Mountaineers football schedule for the next two years, according to announcement by Supt. Cullen Perry.

Blanket is being taken off the regular varsity schedule and the game next year will be played by the Mountaineer "B" team.

Contract calls for the Mountaineers to play Ranger there next year on Oct. 6. The following year Ranger will play here.

Burton Gregg of San Antonio spent Friday with his mother, Mrs. J. J. Gregg. Her daughter, Mrs. Mary Jo Schulle of Wadonga, Okla., visited Saturday and Sunday.

At birth a kangaroo is only one or two inches long.

TAX MAN SAM SEZ:

Over the years we have advised you to save on your tax bill by keeping good records. There is no better time to start than right now. One way to keep records is to get a supply of large envelopes or folders, label them according to the types of income and deductions you have, and accumulate the information. Any kind of records help you start to work on your tax return.

Attend church regularly.

OES Meets Monday

The Santa Anna Chapter No. 247, Order of Eastern Star, will meet Monday, Nov. 21, in the Masonic Hall.

Grand Chapter report will be given and plans for Christmas will be made.

All members are requested to be present. Mrs. Blanche Grantham, and Mr. and Mrs. Cliff Herndon will be hosts.

Andrew Jackson was the first Democrat to become President.

REG'S TRADING POST
118 E. Pecan Coleman, Texas

WE SALUTE THE . . .
**SANTA ANNA MOUNTAINEER
FOOTBALL TEAM**
District 9-A Champs
White's Auto Store
203 Commercial Soleman

FREE OFFER
Unicap Chewable
MULTIVITAMIN
Upjohn
Free offer
24 FREE WHEN YOU BUY 100
\$3.11
Delicious, orange-flavored Unicap Chewables contain nine essential vitamins growing children need...including the important "B's". Buy now at substantial savings.
WE GIVE S&H GREEN STAMPS
Phillips Drug
"Prescription Specialists Since 1886"

SANTA ANNA
Piggly Wiggly's ready...
Let's Talk Turkey
WE WILL CLOSE AT 5:00 P. M. SATURDAY FOR THE FOOTBALL GAME

FROZEN PUMPKIN PIES	- .49
FROZEN MINCE MEAT PIES	- .49
SHANK OR BUTT END	DECKER'S
HAMS - lb. .49	PICNICS lb. .39
Dressed Turkeys lb. .39	
Turkey Stuffing pkg. .31	
FRESH	LARGE STALK
CRANBERRIES lb. .29	CELERY - .17
KIMBELL'S - 9 OUNCE	BIG 2 1/2 CAN DEL MONTE
MINCE MEAT - .29	PUMPKIN can .27
Pitted Dates lb. .49	Yams pound .9