



Santa Anna News

One Section — 8 Pages

"He Profits Most Who Serves Best"

Single Copy — 5c

VOLUME LXXIX

SANTA ANNA, COLEMAN COUNTY, TEXAS, SEPTEMBER 9, 1965

NUMBER 36

MOUNTAINEERS WIN, 14-6

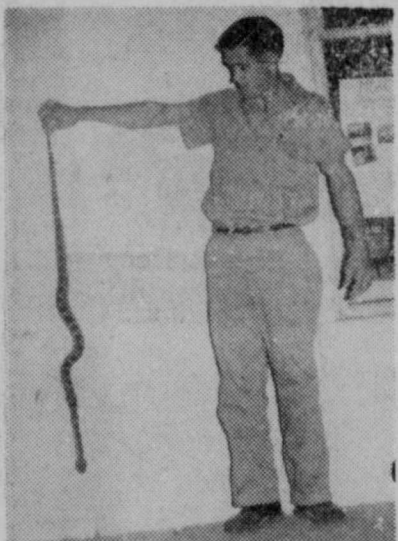
A recent item in the daily newspapers has us worried. You probably read about former President Eisenhower coming back to Denton, Texas, the town in which he had been born, for a visit. In his honor, it was decided to name the local high school in honor of the former President and military hero. However, a group of people protested, saying that Denton County was a traditional stronghold of the Democratic Party, and it therefore would not be right to name the school for a former Republican President. It was decided, in view of this protest, to name only the new auditorium in honor of President Eisenhower.

It is obvious the problems that this opens up. From now on, schools cannot be given names until surveys have been conducted into the voting habits of the area. We couldn't have a Woodrow Wilson High School, for example in a predominantly Republican area; nor could we have a Calvin Coolidge Public Library in a city that habitually votes Democratic.

This could create all sorts of difficulties. What about an area that has been voting Democratic say, for the past several years, and which has a Harry Truman Junior High School. This region gradually switches its allegiance to the Republican Party at the polls. Do we rename the school? Perhaps the answer will be to give every new school two names, one Democratic and one Republican. Whichever party captures the district at the polls will have the school named for the President from its party for the next two years. Of course, this could be extremely confusing, particularly to newspaper sportswriters, who have enough trouble keeping the various high schools straight now.

About the only really safe course, we suppose, if you are going to name a school or other public building for a President, would be to name it Washington, since he was a member of neither party, or Roosevelt, since that could represent either Republican President Teddy, or Democratic President Franklin Delano.

The Welcome Wagon was never like this. Former resident Eddie Hartman wonders about his welcome upon his return to Santa Anna. Eddie, who has been living and working in Coleman, recently returned to Santa Anna to live. A couple of days after he moved in, he found a rattlesnake on the walk in his front yard, obviously having stopped by to welcome the prodigal son back to the Mountain City. Eddie didn't appreciate the hospitality, and killed the welcomer (see photo).



We ran into something that makes us curious during a Labor Day weekend trip to Corpus Christi. Coming back to Santa Anna, we noticed that there are highway mileage signs all over the place telling how many miles it is to Johnson City. This seems strange, since Johnson City has a population of less than 600, and while Santa Anna has more than twice that many people, when you get three or four miles from the city limits you never see a sign telling how far it is to the Mountain City. Wonder what Johnson City has that we don't have?

We also noted a highway sign, as we were coming back Monday, north of Fredericksburg. It warned "Watch For Ice On Road." Of course, the temperature at that time was only about 98 degrees. Apparently someone either forgot to take down the warning sign from last winter, or they are getting an early start on next winter.

Since Baird has no pressbox in their football stadium, we were sitting in the grandstand last Friday, directly behind some Bear supporters. Moaned one, as the last seconds of the game ticked off, "It looks like this is going to be a long season!"

Wonder where we heard that same thing last year?

EDITOR'S NOTE: As a matter of good journalistic practice, it is not the policy of this newspaper to print accounts of football games on the front page. Such stories belong on the sports page. However, due to the widespread interest in this game, and the effort put forth by the Mountaineers, this policy is being waived for the account of the Santa Anna-Baird game, which follows.

Santa Anna's head coach, Rufus Cobern is a big man and wears big shirts, but he probably popped several buttons off of the one he was wearing Friday night, as he watched his underdog Mountaineers whip the favored Baird Bears, on the Bruins' home field, and do it in a decisive manner. There was no doubt which was the better team on the field Friday.

Not only did the Mountaineers, coming back from one of the most disastrous football seasons in their history, beat the Bears by a 14-6 score, but they also topped their District 10A opponents in most categories in the statistics—in yardage, first downs, punting average. The only statistics in which they yielded to the Bears was in the fumbles recovered department.

The Mountaineers came to play football Friday night, and two factors were important in their win—one was an excellent defense that was exceedingly stingy when it came to giving up yardage, and downright nasty about stopping Baird drives when they got too close to paydirt. Standouts on defense were old reliable center linebacker Ronnie McCarrel, who made a couple of the decisive plays of the game; Billy Don Cupps, another dependable defender at guard; Tommy Blanton, a 170 pound end, who kept the lid on Bear endruns around his side; and tackle Corky Wise, who almost took the head off of a couple of Baird ballcarriers with his vicious tackles.

The other major factor in the Mountaineers' first win in two seasons was a very slick and confident backfield, one that seemed in midseason form. With only a few exceptions, the ballhandling in the Santa Anna backfield was firstclass. Eddie Jones, Gary Rider, Butch Makuta, and Roger Beard were most effective carrying the mail, and Roy Joe Harvey did a good job of quarterbacking.

FIRST QUARTER
Playing before a crowd of about 700, with a light to gusty breeze blowing from the south end of the field, and light sprinkles of rain falling at times, the Mountaineers got the 1965 season underway by taking the Baird kickoff and moving it back to their 49 yard line on several plays before losing it on the first of two fumbles that proved costly during the first quarter. Baird took over, but could only move back to the Santa Anna 37 before punting. The kick was partially blocked, carried only to the Mountaineer 20. The Mounties then mounted their best effort of the first half, moving down to the Bear 15, using up 20 plays to do so, before losing the ball on their second fumble of the period. Baird took over on their own nine yard line as the first quarter ended.

SECOND QUARTER
Santa Anna dominated the first quarter, picking up five first downs to one for their opponents and outgaining them 70 yards to 12, but the Bears fought back in the second period. They entered the quarter in possession of the ball, and moved to the midfield stripe before losing it to the Mountaineers on a bobbled pass from center

Santa Anna Frosh Elect Class Officers

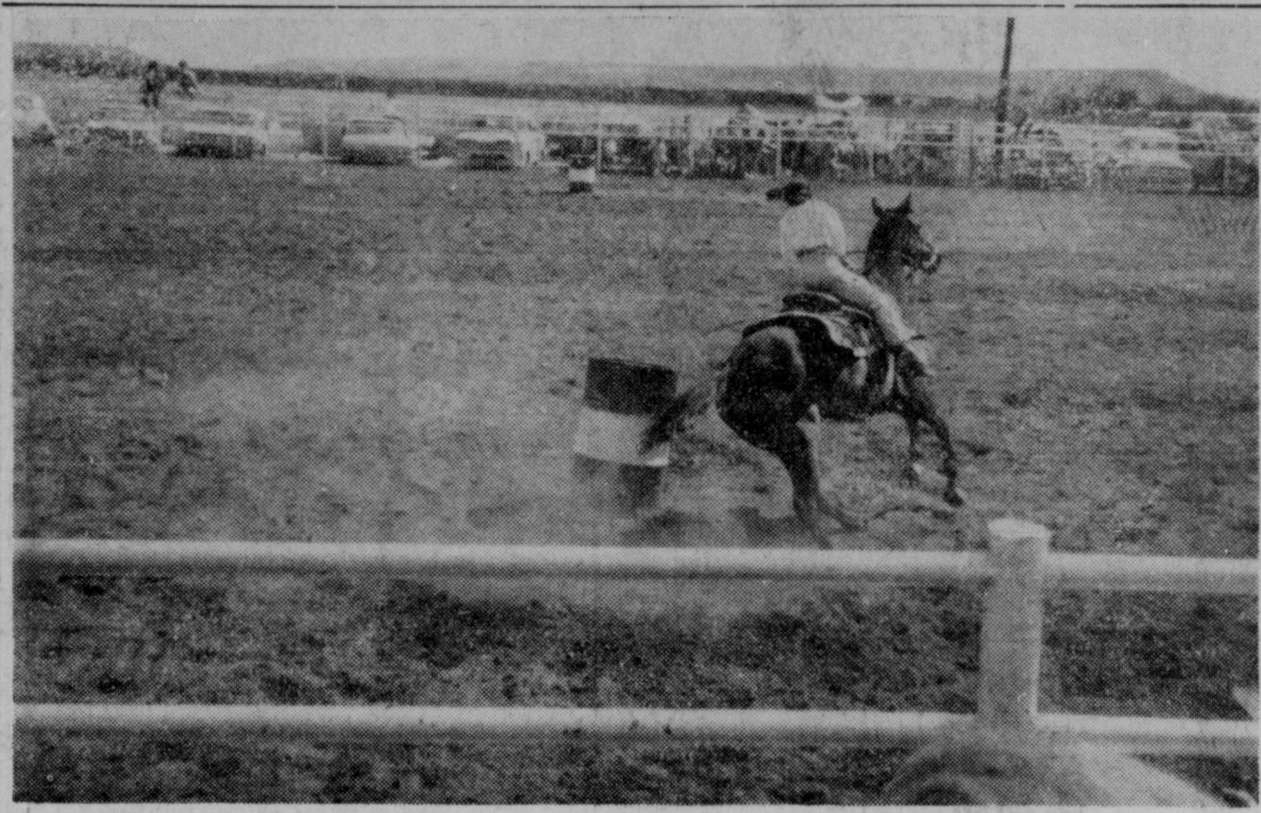
The freshmen class at Santa Anna High School elected officers this week. Picked to the office of president was Bill Herring, with Anita Pollock assisting as vice president. Emily Wells is the new secretary-treasurer of the class. Ricky Abernathy is the class reporter, and Darlene Jones was chosen as parliamentarian. Roy Mathews and A. D. Pettit are sponsors of the freshman class.

on what was to have been a punt. The Santa Anna footballers moved only to the enemy 43 before losing the ball on downs, hindered by the first of a rash of illegal procedure penalties that bothered them all evening. Baird didn't do much better, picking up one first down on a drive that carried to the Mountaineer 42. Again the Santa Annans were able to move only to the Bear 43, being slowed by another backfield in motion penalty. They punted to the Bruin 20 yard line. The Bears moved only seven yards before kicking to the visitors' 32 yard line, and Santa Anna was throwing the ball in an attempt to get on the scoreboard before the clock ran out, which it did before they did.

The halftime statistics showed the Mountaineers to be leading in most categories. They had five first downs and 93 yards rushing, compared to three and 50 for Baird. The Bears passed four times and the Mountaineers three, neither team completing an aerial. Baird punted three times in the first half, for an average of 24 yards, while Santa Anna kicked once for 37 yards. The Mountaineers had received four penalties of five yards each, and Baird was still to receive their first penalty.

THIRD QUARTER
There had been no scoring in the first half, and with the exception of the one Santa Anna drive, little threat of it, but things changed quickly and drastically in the third period. Taking the Mountaineer kickoff that opened play, Bear Alan Towler, a 130 pound freshman back, angled to his left, ran through most of the Santa Anna team, hit the left sideline, and went all the way for the first tally of the season. Last Mountaineer to try for Towler was kicker Lyndon Wells, who pursued the speedy Bear down the sideline, but room ran out and Towler reached the double stripe before Wells reached Towler. At this point, the Mountaineers showed the stuff of which they are made. Instead of caving in following the Bear tally, they came storming back, took the Baird kickoff, and moved 62 yards in 13 plays for a touchdown of their own. Eddie Jones and Butch Makuta did most of the ballcarrying during this drive, with Jones going in from the two yard line. Makuta then skirted end for a two point conversion, and the Mountaineers were ahead for the first time in two seasons. They apparently liked the feeling, for they allowed the Bears only four downs, taking over on a blocked punt on the Baird 34 yard line, and tallying again three plays later. Gary Rider and Makuta moved the ball to the five yard line, and Jones took it over again. A kick attempt at the conversion went awry, and the Mountaineers led by 14-6. Santa Anna then used some excellent strategy, coming up with an onside kick and recovering same to put themselves in possession of the pigskin on the enemy 48 yard line. They couldn't do a whole lot with it, however, and punted to the Baird 19. The Bears moved back to their own 25 as the quarter ended.

FOURTH QUARTER
On the third play, the Bears took to the air, which turned out to be a mistake as Mountaineer John Hensley gathered it in and toted it to the Bear 30 yard line. The Bears dug in, and the Santa Annans could move only four yards in four downs. When they got the ball back, the Bears from Baird mounted their biggest scoring threat of the evening, gaining four first downs as they moved to the Santa Anna 16. But a key fumble recovery at that point by McCarrel put an end to Bear hopes, and the Mountaineers ran out the clock for their upset victory.



CUTTING THE CORNER, Vicki Brown takes her mount around one of the barrels in the competition during the second annual Santa Anna Library Board Junior Rodeo, Monday, at Buddy Neff Arena. About 90 young people competed, and several hundred spectators watched.

Second Junior Rodeo Draws Good Crowd; Makes \$300

With several hundred spectators on hand, and about 90 contestants participating, the second annual Santa Anna Library Board Junior Rodeo was considered a success. The 1965 event took place on Labor Day, Monday, September 6, at the Buddy Neff Arena, north of Santa Anna.

Approximately \$300 was raised for improvement in the Santa Anna City Library.

A spokesman for the Library Board said that this year's rodeo was a "faster, better show," and expressed particular appreciation for the efforts of Buddy Neff, in providing his rodeo facilities and stock, and the work and donations by a number of other persons who cooperated in making the event a success.

Linda Campbell was selected as queen of this 1965 Junior Rodeo.

The Cross Plains Riding Club and the Coleman County 4-H Horse Club also participated, with the 4-H Club horsemen riding through Santa Anna on their way to the arena, providing a mounted parade prior to the event.

Events and winners:

STATISTICS

Santa Anna dominated the statistic sheet as they dominated play on the field. They led in first downs, 11 to eight; and in yards rushing, 220 to 118. Neither team completed a pass all evening, so neither had any passing yardage. Baird tried six aeriels, the Mountaineers four, and Santa Anna gathered in the only pass interception of the night. The Bears led in fumbles recovered, covering two Mountaineer miscues while the Santa Annans picked up one Baird fumble, although it was a critical one. Santa Anna punted twice for an average of 38 yards, and Baird kicked four times, averaging 18 yards per boot. The Mountaineers were penalized six times for a total of 40 yards, and their opponent drew one penalty for 15 yards.

The Mountaineers indicated they were playing to win early in the game, when they ran a fourth down play with about one yard needed for the first down, on their own 41 yard line, instead of playing safe and punting. They won the gamble, picking up the down.

Coach Rufus Cobern came to Santa Anna with a reputation for building winners out of losers. If the first game of this season is any indication, he is well on his way to doing exactly that in the Mountain City.

Pole Bending (12 years of age and under): 1. Terry Kent, Coleman; 2. Neil Fitzpatrick, Whon; 3. Becky Allen, Santa Anna.

Pole Bending (ages 13 to 19): 1. Vicki Gamblin, Rochelle; 2. George Spiller, Brady; 3. Terry Moseley, Blanket.

Calf Riding (age 8 and under): Jody Payne, Coleman.

Boot Scramble (ages 9 to 12): 1. Sue Kingsbery, Santa Anna; 2. Tony Allen, Santa Anna; 3. Gary Wilson, Voss.

Boot Scramble (ages 13 to 19): 1. Vicki Jo Neff, Santa Anna; 2. Monte Garrett, Novice; 3. Don Fitzpatrick, Whon.

Steer Riding (ages 9 to 12): 1. Russ Allen, Bangs; 2. Terry Garrett, Novice; 3. (tie) Fred Knight and Cris Connelly, both of Burkett.

Barrel Race (ages 9 to 12): 1. der): 1. Becky Allen, Santa Anna; 2. Melodie Allen, Bangs.

Barrel Race (ages 13 to 19): 1. Tony Allen, Santa Anna; 2. Sue Kingsbery, Santa Anna; 3. (tie) Carol Kingsbery, Santa Anna, and Suzie Koenig, Cross Plains.

Barrel Race (ages 13 to 19): 1. Vicki Gamblin, Rochelle; 2. Vicki Jo Neff, Santa Anna; 3. Sharon Jones, Brady.

Cow Milking: 1. Tommy Penn, Mercury; 2. Tommy Connelly, Tarleton State College; 3. Buddy Corder, Brady; 4. Tim Parrot, Coleman.

Constitutional Amendment Carries Here; Loses Across State Tuesday

Although Santa Anna voters approved it by more than six to one, and County voters favored it by more than a four to one margin, the proposed amendment to the state constitution to increase the number of state senators from 31 to 39 was defeated by the big city vote. State totals were 126,163 against, 77,049 for the adoption of the amendment.

Santa Anna voters approved the amendment by a vote of 71 to 11, and Coleman County favored its adoption by a vote of 537 to 129.

Santa Anna election judge Roy Stockard pointed to the small turnout of voters here. Only 82 persons went to the polls out of approximately 400 that were qualified to vote. This pattern, repeated across the state, allowed blocks of votes in the large cities opposed to the proposal to defeat it.

Purpose of the proposed amendment was to provide adequate representation in the

Girls Goat Tying: 1. Sonja Neff, Santa Anna; 2. Sue Kingsbery, Santa Anna; 3. Vicki Jo Neff, Santa Anna; 4. Tony Allen, Santa Anna; 5. Lindi Rann, Rochelle.

Cow Riding: 1. (tie) Vicki Jo Neff, Santa Anna, and Deral Coats, Novice; 2. Danny Edmond, San Angelo; 3. Jerry Damron, Blanket.

Rescue Race (age 12 and under): 1. Terry Kent, Coleman; 2. Gregory Sikes Brownwood; 3. Bobby Sikes, Brownwood.

Rescue Race (ages 13 to 19): 1. George Spiller, Brady; 2. Susan Kemper, Coleman; 3. Jerry Damron, Blanket.

Calf Roping: 1. George Spiller, Brady, 20.2 seconds; 2. Tommy Penn, Mercury, 23.2 seconds; 3. Miles Allen, Bangs, 26.7 seconds; 4. Jackie Horne, Coleman, 30.0 seconds.

Bull Riding: 1. Jimmy Owen, Anson; 2. (tie) Mike Smith, Zephyr, and Tommy Connelly, Tarleton State College; 3. Booker T. Edmond, San Angelo; 4. Ken Pope, Coleman.

Baptist Brotherhood Plans Meeting

The Baptist Brotherhood will meet Monday, September 13, at 7:30 p.m. at the First Baptist Church Annex.

state senate for the rural and small city areas of the state. Under the reapportionment rulings of the United States Supreme Court, practically all of the state senators will represent large city areas under the present arrangement, whereas with the additional eight state senators, representation could also have been extended to rural areas and the smaller cities of the state.

Voting totals from Houston, Dallas, Fort Worth, Waco, Austin, Wichita Falls, and other big cities showed overwhelming opposition to the proposed amendment. The light voter turnout in the less populated areas allowed these margins to carry the election.

Labor unions mounted a strong lastminute attack against the proposed amendment. Most union strength lies in the metropolitan areas, and the unions were interested in obtaining the greatest amount of political power possible.



'I PLEDGE ALLEGIANCE'—This is a scene that was often repeated in Santa Anna this summer as many local youngsters attended vacation Bible schools in the various churches. This group is pictured at the vacation Bible school sponsored by the Seventh Day Adventist Church.

Trickham News

By Mrs. J. E. York
Telephone DU2-3336

Mr. and Mrs. Bryan Elder from Midland visited over the weekend with his aunt and uncle, Mr. and Mrs. Oscar Boenicke. Other visitors were Mrs. Grady Banister and Mrs. Wilder from Houston and Mrs. Bond Featherston visited a little while Saturday afternoon. Rankin and Sherrie McIver had dinner with the Boenickes on Sunday. Also Mr. and Mrs. Marvin Whitley visited them Sunday afternoon.

Mr. and Mrs. Morris Stranghn and son of Conroe spent the weekend with her parents, Mr. and Mrs. Marion Ford. Other Sunday visitors were Mr. and Mrs. Dayton Jackson and baby and Rev. James Ford and family of Santa Anna and Mr. and Mrs. Jimmy Lancaster and children of Blanket.

Terry McIver returned to Abilene last Sunday where he will attend McMurry College for his second year.

Mr. and Mrs. Marvin Whitley spent Thursday and Friday in Abilene visiting Mr. and Mrs. Julian Whitley and children.

Sherrie McIver and Ann and Janice Martin spent Sunday night in the Jim Rutherford home at Rockwood.

Mr. and Mrs. Robert Earl Lancaster of Silsbee spent the weekend with his parents, Mr. and Mrs. Lige Lancaster. Other visitors on Sunday were Mr. O. L. Oaks, Robert, Linda and Charlotte and Miss Donna Pruitt of Brownwood, Mr. and Mrs. Homer Shultz of San Antonio and Mr. and Mrs. A. L. King of Rockwood and their daughter and children of Houston.

Mr. and Mrs. O. T. Stacy and Janice spent Monday with his parents, Mr. and Mrs. Walter Stacy.

Mrs. C. D. Reed of Brady spent Wednesday night with Mrs. Bill

Vaughn. Miss Jo Anna Woods and Mr. Bill Smith of Brownwood were Sunday dinner guests of Mr. and Mrs. Vaughn.

Mr. and Mrs. Damon Miller and girls of Austin and Mr. and Mrs. Buck Mitchell visited last week at Post with Mr. and Mrs. Lloyd Mock and baby.

Mr. Etoile Cozart of San Angelo spent Friday and Saturday night with Mr. and Mrs. Fred Haynes. Mrs. Cozart is in the Santa Anna Hospital and reported to be pretty sick. We wish her a speedy recovery.

Mr. and Mrs. Arvil Bolton and Pat of Dallas spent Friday and Saturday with her parents, Mr. and Mrs. Robert Stearns. Stanley Calcote visited with them on Saturday.

Mr. and Mrs. Stearns visited in

Abilene on Sunday with Mr. and Mrs. Charlie Ray Fleming and Monday Mr. and Mrs. R. C. Stearns and family of Abilene spent the day with them.

Mrs. Jewell Stearns and Willie, Miss Joyce McClure, Mr. and Mrs. Cecil Dupree and boys and Mr. and Mrs. Floyd Key and son, all of Fort Worth were weekend visitors with Mr. and Mrs. Eugene James and Stanley.

Shields News

By MRS. E. S. JONES

An error in last week's items, the Quilting Club will meet Tuesday, September 21, instead of Tuesday, September 14 as stated.

Mr. Joe Will Fowler of Kansas City, Missouri, Mr. B. B. Fowler and son of Ft. Worth visited Wednesday and Thursday with Mr. and Mrs. Bert Fowler. Weekend visitors were Mr. and Mrs. Larry Fowler of Fort Worth, Mr. and Mrs. John McClelland of New Braunfels, Mr. Lonnie McClelland of Denton.

Mark and Roxie Orr of Ft. Worth are spending the week with their grandparents, Mr. and Mrs. Rastus McClure.

Mr. and Mrs. Geo. Cobb spent Sunday in Brownwood with his sister and husband, Mr. and Mrs. Will Bowen.

Visitors with Mrs. Ura Dillingham and Richard on Monday were Mr. and Mrs. Martin West of Fort Worth, Mr. and Mrs. Herbert Slinger, Pat, Sherry and Vicki of Lubbock, Mr. and Mrs. Duane West, William and Lisa and Mr. and Mrs. Morris Pistokache and Randy of Fort Worth.

Mr. and Mrs. Jesse Williams and boys spent Labor Day in Bangs with her father, Mr. E. R. Eppler and other relatives.

Glenn Gilbreath of Seminole spent the Labor Day Holidays with home folks and on Sunday, Glenn and Rev. David Wigger were guests of Mr. and Mrs. Otis Powers.

Mr. and Mrs. Collins Price of Abilene and Mr. and Mrs. Buster Woodard visited with Mr. and Mrs. Bill Price on Sunday.

Sunday, Mr. and Mrs. G. C. McDonald and Richard Dillingham and his mother attended the West family reunion at the Coleman Park.

Mr. and Mrs. Wimpy Watson and Mr. and Mrs. Hilton Sherrrod, Mitch and Steve of Lubbock and Mrs. Jim McNeely of Doole attended services at the Church of Christ Sunday.

Mr. and Mrs. A. D. Eppler and Dwight visited with relatives at Pottsville Saturday and Sunday.

Mr. Kenneth Heallen of Lavonia and his sister, Mrs. Allen Paschal of Austin spent Sunday with Mr. and Mrs. Otis Bivins.

Susan and Elaine Newman of Sierra Blanca spent several days this week with their grandparents, Mr. and Mrs. R. A. Milligan.

Miss Ruby Harper and Mrs. John Bray of Santa Anna, ambassadors for the Methodist Church visited Thursday afternoon with Mrs. E. S. Jones.

Leland Williams was in Cameron Thursday and was best man at the wedding of his classmate, Bill Winger.

Mrs. Dock Skelton's parents, Mr. and Mrs. Jim McNeely of Doole came Monday. Mr. McNeely is sick and they will be in the Skelton home for an indefinite stay.

Our community extends sympathy to the family and relatives of Mr. Lester Newman of Santa Anna. Mr. Newman's sudden death was Monday, August 30.

Vick McElrath recently had surgery in the Coleman Hospital and is improving.

Visitors in the Grady Williams home on Sunday were Mr. and Mrs. Emmett Lowe and Miss Mabel Williams of Coleman, Monday Mr. and Mrs. Bill Lowe and children enroute home from Corpus Christi visited with them.

daughter, Paula of Brady were Sunday guests of Mr. and Mrs. Thomas Switzer and children.

Mr. and Mrs. Tom Vinson of Benbrook, visited with Mr. and Mrs. Bert Turney Sunday morning briefly, and brought Mr. and Mrs. Turney a nice fish.

Mr. and Mrs. Henry Smith visited with Mr. and Mrs. Tom Rutherford and Lynda Monday morning.

Lynda Rutherford spent Saturday night with Mr. and Mrs. Loyd Rutherford in Coleman and with Mr. and Mrs. Hilary Rutherford and children Sunday morning.

Jimmy Avants of Santa Anna has been visiting his grandparents, Mr. and Mrs. Aaron Avants during the weekend.

Mr. and Mrs. Snowden of Lohn visited their daughter, Mr. and Mrs. Greham Fitzpatrick and children, Monday afternoon.

We are sorry to report Mrs. Etoile Cozart quite ill in the Santa Anna Hospital. We wish her a speedy recovery.

Loyd Rutherford of Coleman was assisting his father with farm work Saturday.

Mr. and Mrs. Zack Bible are back at their home here following some 2 or 3 weeks in Houston. Their daughter, Juanita Branch brought them home Friday.

Whon News

By MRS. TOM RUTHERFORD

Mr. and Mrs. Wimpy Watson and Mr. and Mrs. Hilton Sherrrod and two boys from Lubbock spent the weekend holidays on the Watson's farm here.

Mr. and Mrs. Paul Jennings of Bangs visited with Mr. and Mrs. Tom Rutherford and Lynda and Mr. Sammie Shields Sunday afternoon.

Mr. Douglas Avants and children, Dougie and Jacky Lynn of Brady, visited his parents, Mr. and Mrs. Aaron Avants Sunday afternoon.

Mrs. Florence Carter and son, Leon, spent Sunday night with Mr. and Mrs. Jack Black in Brownwood.

Mr. and Mrs. Greham Fitzpatrick and boys attended the Buddy Neff Arena Rodeo today (Monday). The boys, Don and Neil, participated in different events in the rodeo.

Mr. and Mrs. J. D. Loyd and

DR. M. O. SOWELL
CHIROPRACTOR
Phone 625-4824
615 Commercial, Coleman

Protect Against Disease Loss!

Authorized Dealer
FRANKLIN

VACCINES and SUPPLIES
for CATTLE, SHEEP
HORSES, HOGS and POULTRY

Our Livestock Supply Department is Designed to Serve You - - Visit Us Today.

Owl Drug Store
312 Commercial Av.
Coleman, Texas

TOM KINGSBERY
PRESIDENT

GRADY MCIVER
VICE PRESIDENT

FRANK GILLESPIE
SECRETARY-TREASURER

Coleman County Telephone Cooperative, Inc.

ALLYN W. GILL, MANAGER

215 NORTH SECOND STREET

DIRECTORS
GLEN COPELAND, SANTA ANNA
FRANK GILLESPIE, BURKETT
TOM KINGSBERY, SANTA ANNA
GORDON MONSEY, MOZELLE
C. H. WISE, ROCKWOOD
GRADY MCIVER, TRICKHAM
W. T. NIXON, VALERA

Santa Anna, Texas 76878



P. O. BOX 607
TELEPHONE
FIRSIDE 8-3124

NOTICE OF ANNUAL MEETING

The annual meeting of the members of the Coleman County Telephone Cooperative, Inc., will be held at the Santa Anna Football Stadium (in case of bad weather, the High School Auditorium) at Santa Anna, Texas, on Saturday, September 11, 1965, at 8:00 p.m. to take action on the following matters, to-wit:

- Report of officers
- Election of four directors of said Cooperative
- All other business which may come before the meeting or any adjournment thereof

FRANK GILLESPIE,
Secretary

REGISTRATION AND ENTERTAINMENT FROM
7:00 P.M. UNTIL 8:00 P.M.

Entertainment ★ Drawing For Gifts

Door Prizes To All Members

Free Cold Drinks

ALL MEMBERS URGED TO ATTEND
VISITORS WELCOME

SCOTTIE STAMPS Low Food Prices

FOLGERS		
COFFEE	2-lb. Can	\$1.59
LIBBY'S — 303 CAN		
CORN	2 for	35c
NON-SUCH		
MINCE MEAT	9 oz. box	19c
SNOW FLAKE		
COCONUT	7 oz. bag	35c
SALAD DRESSING		
MIRACLE WHIP	Qt.	59c
GREEN CUT SPEARS		
ASPARAGUS	303 can	25c
VAN CAMP'S		
TUNA	2 cans	45c
GIANT SIZE		
CHEER	box	69c
KIMBELL'S		
TEA	1/4 lb. pkg.	25c
MISSION BRAND — 303 CAN		
PEAS	2 for	33c
ALL FLAVORS		
HANDI DRINK	1/2 gal.	33c
GANDY'S — 1/2 GALLON CARTON		
MELLORINE	3 for	\$1.00

Double Scottie Stamps Every Wednesday
With Purchase of \$2.50 Or More

Hosch Grocery

FOOTBALL



SANTA ANNA



MOUNTAINEERS



vs.

CROSS PLAINS



BUFFALOES

Mountaineer Stadium

Game Time 8:00 P. M.

Friday, Sept. 10

1965

SUPPORT THE MOUNTAINEERS

SANTA ANNA HIGH SCHOOL FOOTBALL SCHEDULE

September 3 — Baird 6; Santa Anna 14
 September 10: Cross Plains, here
 September 17: Clyde, here
 September 25: Bangs, there
 October 2: Bronte, here (Homecoming)
 October 8: Dublin, there
 October 15: Burnet, here *
 October 22: Marble Falls, there *
 October 29: Goldthwaite, here *
 November 5: Open
 November 12: Early, there *

* District Games

SANTA ANNA JUNIOR HIGH SCHOOL FOOTBALL SCHEDULE

September 7: Open
 September 14: Blanket, here
 September 21: Early, here
 September 21: Cross Plains' there
 October 5: Bangs, there
 October 12: Goldthwaite, here
 October 19: Rising Star, there
 October 27: Open
 November 2: Open



Santa Anna Medical Center
 ALL THE WAY, MOUNTAINEERS!

Taylor Motor Company
 DODGE, PLYMOUTH, CHRYSLER, RAMBLER

Coleman County Electric Cooperative, Inc.
 OWNED BY THOSE WE SERVE

Coleman Butane Company
 SERVING THE SANTA ANNA AREA

West Texas Utilities
 REDDY KILOWATT BACKS THE MOUNTAINEERS

Santa Anna Jaycees
 YOUNG MEN FOR A BETTER SANTA ANNA

Radio Station KSTA
 YOUR COLEMAN COUNTY STATION

The Ladies Shop
 BEHIND THE MOUNTAINEERS

Wylie's Flowers
 FOR YOUR GAME CORSAGES

Candler Feed & Seed
 SEED FOR YOUR FALL PLANTING

Coleman County State Bank
 THE FRIENDLY COLEMAN COUNTY BANK

R. T. Caperton Chevrolet-Cadillac
 CHEVROLET & CADILLAC IN COLEMAN COUNTY

Speck's Barber Shop
 BACKING THE MOUNTAINEERS

Santa Anna Co-op Gin
 SUPPORTING THE MOUNTAINEERS

Smith Humble Service Station
 GO TO THE GAME WITH ENCO

Clark's Auto Parts
 108 EAST PECAN COLEMAN

Tradewinds Restaurant
 COLEMAN — OPEN AFTER THE BALL GAME

Santa Anna National Bank
 YOUR FRIENDLY HOMETOWN BANK

Santa Anna Lions Club
 SUPPORT THE MOUNTAINEERS

Western Auto Associate Store
 SPORTS SUPPLIES AT WESTERN AUTO

Burden Mobil Service Station
 ALL THE WAY WITH THE MOUNTAINEERS

Herring Flower & Gift Shop
 FOR YOUR GIFT AND FLORAL NEEDS

Poco, Incorporated
 WORKING FOR A BETTER SANTA ANNA

Coleman Gas Company
 SERVING COLEMAN AND SANTA ANNA

Bob Turner's
 GOOD MERCHANDISE — GOOD PRICES

Santa Anna Cable TV
 THERE'S MORE TO SEE ON CABLE TV

Mathews Motor Company
 FOR MORE THAN 40 YEARS

Santa Anna Quarterback Club
 ALL THE WAY WITH THE MOUNTAINEERS

Coleman County Telephone Co-op, Inc.
 OWNED BY THOSE WE SERVE

G&E Hardware & Appliances
 HARDWARE HEADQUARTERS IN SANTA ANNA

CLASSIFIED ADVERTISING

CLASSIFIED ADVERTISING RATES

First Insertion — Per Word 4c
 Each Additional Insertion — Per Word 2c
MINIMUM CHARGE — 50c PER WEEK
COPY DEADLINE — 10:00 A. M. WEDNESDAYS

FOR SALE OR TRADE

FOR SALE: Good used refrigerators, automatic washers, wringer washers, clothes dryers and gas cook stoves. Terms to suit YOU. Geo. D. Rhone Co., Coleman, Texas. 48tfc.

FOR SALE: Several used TVs in good condition. Geo. D. Rhone Co., Coleman, Texas. 48tfc.

FOR SALE: Arkwin Oats, best for grazing and combining. Carroll Kingsbery. 36-39p-tfc

MISCELLANEOUS

IF YOU ARE thinking about improving your home ask us for free estimates on the following: Insulation to make your home easier to heat and cool; all types of siding including the new plastic, insulated, asbestos and aluminum in lovely colors and quality roofing to top it all. Call 643-4314 Collect. Smith Roofing Company, Brownwood. 51tfc.

WHEN YOU THINK of grinding, mixing and pelleting, think of Hollingsworth Feed Mill, Coleman, Texas. 50tfc.

BUSINESS OPPORTUNITIES

DISTRIBUTOR WANTED: No competition. To service and set up new accounts in exclusive territory. Investment secured by fast moving inventory of amazing plastic coating used on all types of surfaces interior or exterior. Eliminates waxing when applied to wood, metal or floor. Eliminates all painting when applied to wood, metal or concrete surfaces. Minimum Investment-\$500. Maximum Investment-\$12,000. For details write or call: Phone: 314 AX-1-1500, PENGUIN PLASTICS CORP. 3411 North Lindberg Blvd. St. Ann, Missouri 63074 33-39c

CARD OF THANKS

Adequate words are not to be found to completely express our appreciation for all the loving kindness shown to us, by our many friends and relatives, dur-

miracle
 Pest Control  Termite Control
 Division of Miracle Laboratories, Inc.
 2415 Vine St.
Termite & Pest Control
 Ph. 642-9575
 Brownwood, Texas

FOOTBALL

SANTA ANNA
 MOUNTAINEERS

— VS —

CROSS PLAINS
 BUFFALOES

Mountaineer Stadium
 8:00 P. M.
 Friday, Setember 10, 1965

ADMISSION
 RESERVED \$1.40 GENERAL \$1.25
 STUDENTS .25

ing the recent loss of one we loved so dearly.

Mrs. Lester Newman, Mr. and Mrs. A. L. Freeman, and children, Mr. and Mrs. Tom C. Newman and girls. 36p

We wish to express our appreciation for the many kindnesses, visits, flowers, food by our dear friends during the illness and loss of our loved one.

Mrs. James L. Harris and Mrs. Rebecca Medlin and Boys 36p

My sincere thanks to each of you for the lovely gifts, flowers, cards and visits during my stay in the hospital. Mrs. John W. Taylor. 36c

Thanks—to all individuals, organizations, and their members, who donated or helped in any way, with the Junior Rodeo on Labor Day. The successful event could not have been produced without this fine community cooperation.

The City Library Board. 36c

SPECIAL NOTICES

Non-discrimination: Coleman County Electric Cooperative, Inc. of Coleman, Texas has filed with the Federal Government a Compliance Assurance in which it assures the Rural Electrification Administration that it will comply fully with all requirements of Title VI of the Civil Rights Act of 1964 and the Rules and Regulations of the Department of Agriculture issued thereunder, to the end that no person in the United States shall, on the ground of race, color, or national origin, be excluded from participation in, be denied the benefits of, or be otherwise subjected to discrimination in the conduct of its program and the operation of its facilities. Under this Assurance this organization is committed not to discriminate against any person on the ground of race, color or national origin in its policies and practices relating to applications for service or any other policies and practices relating to treatment of beneficiaries and participants including rates, conditions and extension of service, use of any of its facilities, attendance at and participation in any meetings of beneficiaries and participants or the exercise of any rights of such beneficiaries and participants in the conduct of the operations of this organization.

Any person who believes himself, or any specific class of individuals, to be subjected by this organization to discrimination prohibited by Title VI of the Act and the Rules and Regulations

Deadline For Entries Nears In First Week Of Santa Anna Football Contest

Time is running out for football experts who want to match their skill against the scoreboard in the football contest now being published in The Santa Anna News, sponsored by three local merchants.

To enter, the football fan picks the winners in the five games involving District 9A teams this Friday, using the entry form in last week's newspaper. When the entry form has been filled out, including a prediction of the Santa Anna-Cross Plains

score to serve as tiebreaker in case more than one entrant picks the top number of winners, it is deposited in the boxes provided for this purpose at the sponsoring merchants: The Steak House, Horner's Premier Service Station, and Phillips Drug Store.

The five games to be picked before the deadline at 5:00 p.m., Friday, September 10, are Fredericksburg at Burnet, Early at Jim Ned, Goldthwaite at DeLeon, Marble Falls at Blanco, and Cross Plains at Santa Anna.

In addition to providing himself (or herself) to be a real football expert, the top predictor each week will win a five dollar merchandise certificate from one of the sponsoring merchants. Second prize is a pair of reserved seat tickets to the next Santa Anna home game, and third prize is one year's subscription to The Santa Anna News.

This week's entry form, on page 7, lists the games for one week from Friday, September 17, allowing the contestant more than a week to make his selections.

Remember, the deadline for competing in this week's contest is 5:00 p.m., Friday, September 10. Get those entries in. You might see your name in next week's issue of The News in the list of winners!

County 4-H Clubs Seek Members Here

Coleman County 4-H Clubs are in the process of reorganizing this month. Programs are being planned and new officers are being elected for 1965-1966.

Youngsters between the ages of 9 and 19 are encouraged to enroll now. As in the democracy in which they live, 4-H'ers themselves largely run their clubs, elect officers, help plan and hold their meetings, and select their projects. The variety of projects is almost unlimited.

The main requirement of joining 4-H is a willingness to "learn by doing," which is the club slogan, and "to make the best better," which is the club motto.

Character development and good citizenship are the goals of 4-H.

To guide 4-H'ers, thousands of public spirited men and women, mostly parents, serve as unpaid volunteer local leaders. Leaders are trained, counseled, and assisted by the county agents of the Cooperative Extension Service, who have available to them the vast stores of scientific knowledge in the state land grant colleges of the United States Department of Agriculture.

September is the month to enroll, just as more than 20,000,000 other young citizens have in the past half century. Enrollment will end on October 2. Those interested should contact your local 4-H leaders for enrollment details.

Mrs. Chick Watson of Irving, came Saturday to spend a week, and to care for her parents, Mr. and Mrs. W. E. Vanderford, who have been in the Santa Anna Hospital for a week. Mr. Watson and son Joe, and grandson, Jackie, and a friend, G. W. Moffett, brought Mrs. Watson to Santa Anna, and did some bird hunting before returning to Irving Sunday night.

ANNOUNCEMENTS

LODGE MEETING
 Mountain Lodge No. 661 AF&AM will meet on Third Thursday each month at 7:30 p. m. Visitors are welcome. James F. Martin, W.M., D. H. Moore, Sec.

Former Rockwood Family Die In Crash

By Mrs. John C. Hunter

The lives of former residents of Rockwood were snuffed out last week in a train-car wreck at Lewisville, Arkansas.

Killed were David A. Harrison, 36, his wife, Lequita Harrison, 26; Mrs. Harrison's two children by a previous marriage, Rodney Hogue, 8, and Reatha Hogue, 4; a son of Harrison's by another marriage, David Wyman Harrison, 15; and the Harrison's infant daughter, Davette, 6 months.

The car was struck by a Cotton Belt freight train as the vacationing family left Lewisville about 9:30 p.m.

The train, called the Blue Streak, which was traveling about 60 miles per hour according to investigators, had originated in Fort Worth.

The spot at which the accident occurred was the death-scene some years ago of an uncle of Harrison's, a retired railroad man who was killed when he was struck by a train.

Harrison's 8 year old son by his former marriage, Roger Dean Harrison, missed the trip due to a visit with his mother, Mrs. Jimmie Jones, of 1328 Cameron.

Mrs. Harrison is the former Lequita Richardson, daughter of Mr. and Mrs. Elmer (Pete) Richardson of 6033 Graham; a brother, A2c Elmer L. Richardson Jr. of Wheelus Air Force Base in Libya, and a sister, Mrs. Paul Sagers of Houston.

The Richardsons are former Rockwood residents, Mr. and Mrs. Joe Richardson, of Coleman, are grandparents of Mrs. Harrison.

Use the News want ads. They get results.

Masonic Workshop Set In Novice

A workshop has been scheduled for the officers and members of Atoka Lodge 573 at 7:30 p.m., September 20 at the Masonic Temple, in Novice.

The workshop is part of a statewide semiannual program authorized by the Grand Master of Masons in Texas, J. Carroll Hinsley, of Austin. The program is conducted for nearly 1,000 Texas Masonic lodges with a membership of 250,000 men. The Masonic Order is the state's largest fraternal organization.

The purpose of the workshop is to enable Masons to study common problems of Masonic lodges and their operations. The workshop will be conducted by M. V. Baker, of San Angelo, who is chairman of the Masonic Workshop Area F-3.

Grand Master Hinsley stressed the importance of attendance by all lodge officers and emphasized that other Masons are welcome.

Small Business Representative Here

A field representative of the Small Business Administration's Dallas Regional Office will visit the Brownwood Chamber of Commerce Office, Wednesday, September 15, 1965, from 9:00 a.m. to 4:00 p.m.

Any small businessman interested in obtaining information about SBA's business loans or other services may call for an appointment at MI5-2646 or contact the SBA Field Representative on September 15, 1965, at the Brownwood Chamber of Commerce Office, 201 North Fisk Street, Brownwood.

The Assembly of God Church will hold their Second Sunday Singing, at the Assembly of God Church, Sunday, September 12, 1965. Time will be from 2 p.m. to 4 p.m. Everyone is invited to attend.


Mr. and Mrs. Doug Moore spent the Labor Day weekend visiting on the coast. They attended ball games at Houston while away.

Mr. and Mrs. R. L. Bertrand of Houston, spent the past weekend in Santa Anna, with his parents, Mr. and Mrs. A. A. Bertrand.

We can order a rubber stamp for you at the News Office.


Social Security beneficiaries can earn more in 1966 and keep all their checks — get the facts from your Social Security office.

TIRES ARE ALWAYS A BARGAIN
 at
RUOLDPH'S
 Coleman, Texas

USE

BOTTLED GAS

- Clean and Safe
- Best For Heating
- Higher BTU Rating
- Best For Cooking
- Approved By Architects
- No Muss
- No Fuss

PHONE 625-2925
Night Pho. 625-2849



Prompt Delivery
Coleman
 Butane Gas Co.

Dr. J. Ray Martin
 Announces the association of Dr. Clay Stubbs in the general practice of Veterinary medicine.
 Office Phone 625-5176
 Home Phone 625-5694




ALL YOU NEED IS MONEY FOR A PATIO? SEE US!

For any home improvement, whether you want to add a patio, breezeway or extra room ... redecorate your home inside or outside ... repair or modernize it in any way: See us about a low-cost, easy-to-repay bank home improvement loan. You'll be glad you did!


Full Service Bank

Coleman County State Bank
 Member FDIC 118 West Pecan, Coleman

Our Heritage



A DEDICATION TO THE SERVICE OF ALL FAITHS

STEVENS
 FUNERAL HOME

400 WEST PECAN, COLEMAN PHONE 625-2175



Mary Ann Harris Becomes Bride Of Larry Donham In Coleman Rites

Miss Mary Ann Harris became the bride of Larry Calvin Donham on Friday evening, August 27, at 8:00 p.m., in the Central Baptist Church, Coleman.

The bride is the daughter of Mrs. Jess Harris and the late Mr. Harris, of Maverick. The bridegroom is the son of Mrs. A. D. Donham, Jr. and the late Mr. Donham, of Santa Anna.

The double ring ceremony was performed by the Rev. N. T. Gault, pastor of Valley View Baptist Church, before an ivy and jade entwined arch, topped by a cluster of white satin wedding bells and lilies of the valley. Tall baskets of gladioli, mums and greenery and multi-tapered candelabra were on either side of the altar. Candles were

lighted by Susan Herrin, of Logan, Oklahoma, and Bobby Culp, of Maverick. Organist was Donnie Neff, and Mrs. Sharon Hoke Ragsdale, of Arlington, was soloist.

The bride, given in marriage by her brother, Jimmy Harris, wore an empire styled silk organza gown, fully lined with French taffeta. The bateau necklined bodice, had a million motif of re-embroidered Alencon lace, encrusted with seed pearls and iridescents, with long fitted sleeves extending to a point over the hand. A fold of the gown material marked the empire waistline, and tapered to a point in the back with a Dior bow. The controlled, bell shaped skirt flared into a chapel length train and had wide panels of the re-embroidered lace fanning to the floor in front. Her shoulderlength tiered, pure silk illusion veil was held by an illusion petaled crown. She carried a white Bible, topped by a cascade of feathered carnations, lilies of the valley, and English ivy tips, and a white orchid.

Miss Sally Harris, maid-of-honor, sister of the bride, wore a petal pink satin, floor length gown with matching all over lace jacket encrusted with seed pearls. Her full circle, noseup veil of pink illusion, was held by a pink chiffon rose, and she wore matching lace mitts.

Bridesmaids were Miss Ona Lee, of Maverick; Miss Linda Campbell, of Santa Anna; Miss Janice Price, of Baird; and Miss Billie Powell, of Abilene. They wore gowns, mitts, and headpieces identical to that of the maid of honor, and carried pale pink flowers.

Gaye Harvey, of Santa Anna, and Cynthia Cozart, of Lubbock, were flower girls. They wore floor length pink all over lace gowns, with fluffs of pink illusion and baby rose buds in their hair, and carried white lace baskets of petals.

Edward (Buddy) Wylie, of Abilene, was best man, and Jerry Fitzhugh, of Abilene; Eddie Bradshaw, of Friona; David Osburn, of Abilene; and Marty Donham, of Santa Anna, were groomsmen.

Ushers were Don Brown, Dallas Lee, and Bailey Lee, all of Maverick.

The newly married couple will live in Lubbock, where he is enrolled in Texas Technological School of Architecture.

Barbara Baucom, Lawrence Osborne Married Thursday

Miss Barbara Lynne Baucom, daughter of Mrs. A. M. Baucom of Santa Anna, and Lawrence Dale Osborne, son of Elder and Mrs. Ray R. Osborne of San Antonio, were married Thursday, August 26, at 7:30 p.m.

The bridegroom's father officiated for the ceremony in the United Presbyterian Church before an arched candelabra. Candelabra was flanked on either side by baskets of white gladioli, pompoms and greenery.

Mrs. H. B. Petry was organist. Mrs. Harry Spring, sister of the bridegroom, and the bridegroom's mother brought the songs.

The bride was given in marriage by her brother, Brian Baucom. She was attired in a floor-length gown of peau de sole designed with a scalloped neckline, long fitted sleeves of Chantilly lace and a bouffant skirt. Her fingertip veil was held by a crown of pearls and sequins. Her bouquet of feathered carnations and greenery was centered with a white orchid.

Miss Linda Horner was maid of honor. Bridesmaids were Miss Karen McCluskey and Miss Carol Jasper. They wore ballerina length dresses of pink peau de sole. Their small pillbox hats matching short veils. They carried bouquet of gladioli.

Ted Potter served the bridegroom as best man. Other attendants were Sonny Truitt and Douglas Habenicht.

Deedra and Leslie Baucom, nieces of the bride, were flower



girls. Candelighters were Virginia and Jo Ann Petry.

Immediately following the ceremony, a reception was held in Fellowship hall. Bride's table was laid with white lace and centered with bouquets of the attendants. Miss Joyce Jasper ladled punch from a crystal bowl, and Miss Mary Jo Quinn served the wedding cake, which was topped with a miniature couple. Miss Lawanda Horner presided at the register.

After a wedding trip to Fort Worth, the couple will be at home in Keene.

Bride is a 1965 graduate of Santa Anna High School. Bridegroom, a 1964 graduate of Southwestern Union Academy, is in his second year at Southwestern Union College.

Houston spent last week with his parents, Mr. and Mrs. Drury Estes.

Mr. and Mrs. Winifred Weaver and family of San Angelo, Mr. and Mrs. Bob Mobley and Greg of Odessa, Billy Joe Smitherman and Rex of Midland visited with Mrs. Kate McIlvain and did some hunting.

Weekend guests with Mr. and Mrs. Jack Cooper were Mr. and Mrs. Troy Sheffield of Gatesville, Mr. and Mrs. Charles Sheffield and boys of Midland, Mr. and Mrs. Arlen Allen and Elizabeth Ann of Brownwood. Sunday guests were Mr. and Mrs. Alfred Cooper of Snyder, Mrs. Elec Cooper and Ronnie, Mr. and Mrs. Denver Ellis and Sissy Stewart.

Mr. and Mrs. R. J. Deal spent Sunday in Abilene with Mr. and Mrs. C. A. Poe. Other guests were Mr. and Mrs. Johnny Deal and family of Denver, Colorado, Mr. and Mrs. Gene Deal and family and Mr. and Mrs. J. C. Deal of Abilene.

COLEMAN, TEXAS
RUDOLPHS
at
GUARANTEED
THREE ARE

ELECTRIC
RAZORS
WIDE
SELECTION

IT'S A FACT
DRUG TOPICS FEATURE POST M TELL

AN OLD FORMULA FOR STRENGTHENING THE HAIR CALLED FOR THE PULVERIZED TOOTH OF A DONKEY, MIXED WITH HONEY...

... signs of the past

"THE GOOD OLD DAYS?"
A physical check-up, made while you're well, can keep you that way! See your doctor. See us for medicines.

Phillips Drug
WE GIVE S.&H. GREEN STAMPS

Be sure you are getting a quality roof by a reliable and qualified roofer. You are sure if you have a

15 YEAR BONDED ROOF BY SMITH ROOFING CO.

See Our ad In Your Phone Directory
Call 643-4314 Collect Brownwood Free Estimates
Commercial and Residential Roofing
All Types of Siding and Insulation

Rockwood News

By MRS. JOHN C. HUNTER

Mr. and Mrs. Gaylon Mankins of Coleman and Mrs. Wayne Thompson of Cedar Hill visited Sunday afternoon with Mr. and Mrs. Drury Estes.

Weekend guests with Mr. and Mrs. Johnny Stewart were Mr. and Mrs. Olin Horton and children of Andrews, G. T. England of San Angelo, Mr. and Mrs. James Stewart and Jamie Kay of Brady.

Enjoying an outing at the Rockwood Lake with Mr. and Mrs. Carl Buttry were Mr. and Mrs. Wayne Sheets and family, Mr. and Mrs. Leroy Casey and children and Wallace Johnson and Tony of San Angelo, Billy Ward of Midland, Mrs. Bill Rehm and Mr. Buttry.

Mr. and Mrs. Clinton Estes of

A New Shipment Of Sweaters - Just In Time For Cool Weather. ... LAY YOURS AWAY NOW!

See The Newest Styles in Levis
MOORE MERCANTILE

WILLIAMS FOOD STORE

CARROTS lb. 7c	LARGE MEATY Watermelons 29c each 4 for \$1.00	MARYLAND CLUB COFFEE 1 lb. 79c 2 lbs. . . . \$1.57
HONEYCUP MELLORINE 1/2 gallon 29c	ROUND STEAK lb. 79c	CARNATION Instant Breakfast 75c
SIRLOIN STEAK lb. 69c	DEL MONTE PEACHES 29c	EL FOOD - NO. 303
T-BONE lb. 69c	PORK & BEANS . . . 2 for 29c	MARIGOLD MILK, gal 79c
CLUB STEAK lb. 69c		
BEEF LIVER lb. 29c		
Frozen Pies 3 for \$1.00	COOKIES SUPREME Old Fashion Sugar 39c NABISCO Cinnamon Sugar 39c SUNBEAM Chocolate Creme 29c	NEW CROP SYRUP 1/2 Gallon \$1.00
LIPTON TEA 1/4 lb. 37c		
GIANT FAB 69c	EGGS Doz. 39c	46-oz. HI C DRINK 3 for \$1.00
		KEY STAMPS DOUBLE STAMPS ON WEDNESDAY

HELP!! HELP!!

Don't Hurry But Rush Down To Capertons Now. They Need Your Help In Getting Rid Of Their 1965 Models.

R. T. Caperton Chevrolet-Cadillac

1400 Commercial Ave. — Phone 625-4145 — Coleman, Texas

SPORTS

Local Entries Take Two Firsts, Two Reserve Winners In Corpus Dog Show

Three beagles from Santa Anna's Rio Poco Kennels competed in the 34th annual American Kennel Club allbreed dog show held in Corpus Christi, Sunday, September 5.

The three Mountain City hounds brought home two first places, a second place, and two reserve winners (runnerup in finals) ribbons.

Competing in the 13 inch variety, Rio Poco Morenito won the blue ribbon in the Bred by Exhibitor Class, then went on to take the reserve winners spot in the judging among the first place winners of the various classes. In 15 inch variety, Rio Poco Pancho also took the first place ribbon in the Bred by Ex-

hibitor Class, and also took the reserve winners ribbon in that variety. Rio Poco Tigre, competing in the 13 inch Open Class, won second place.

The local show dogs will compete at Big Spring next Sunday, September 12, in a sanction (nonpoint) show, and will begin the fall show circuit with the El Paso show late this month.

Two Rio Poco beagles are close to completing requirements for the title of Champion. Rio Poco Tigre, a 22 month old puppy, has nine of the required 15 points, and Williamson's Sullmo Rocky, a 15 inch beagle, has 12. Both dogs are considered excellent prospects to bring championships back to Santa Anna this fall.

tie Guthrie could only pick three of five, for 600.

Last Week's Results: Burnet loses to Llano, picked correctly by the Old Prophet, Guthrie, and Horne; Early loses to Cross Plains, picked correctly by Guthrie and Minyard; Goldthwaite beats San Saba, picked correctly by the Old Prophet, Horne, and Minyard; Marble Falls loses to Rockdale, picked correctly by Horne and Minyard; Santa Anna beats Baird, picked correctly by all four predictors.

Standings: Horne 800, Minyard 800, the Old Prophet, 600, Guthrie 600.

District 9A teams lost three, won two last week. Here are the selections for this week:

Fredericksburg at Burnet: Although Fredericksburg is weaker than last season, it is still the pick in a tough district. Should win by two or three touchdowns.

Early at Jim Ned: The Broncos didn't show much against Cross Plains last week, and always-tough Jim Ned is picked to win their class B district. Jim Ned is our choice.

Goldthwaite at DeLeon: DeLeon is picked to win District 10A, with such competition as Albany and Clyde. This will be the big test of Goldthwaite's potential as a contender for the state title. We pick Goldthwaite in a tough one.

Marble Falls at Blanco: The Mustangs should be able to beat little bitty Blanco.

Cross Plains at Santa Anna:

Weah McCulloch, Sec.-Treas.
Bettie McCulloch, Mgr.
Standard Abstract Co.
City & County Maps For Sale
405 Bank Bldg. Coleman

Two teams that haven't tasted victory too often in the past couple of years, both working on one game winning streaks, will be battling desperately to keep in the win column. On their home field, and if they can overcome the nervousness that bothered them last week, we pick Santa Anna by one TD.

The assistant prophets have their say:

Monte Guthrie: Fredericks-

burg over Burnet, Jim Ned over Early, Goldthwaite over DeLeon, Marble Falls over Blanco, Santa Anna over Cross Plains.

Roy Horne: Fredericksburg over Burnet, Jim Ned over Early, DeLeon over Goldthwaite, Marble Falls over Blanco, Santa Anna over Cross Plains.

Ken Minyard: Burnet over Fredericksburg, Early over Jim Ned, Goldthwaite over DeLeon, Marble Falls over Blanco, San-

ta Anna over Cross Plains.

Consensus: Fredericksburg at Burnet—three to one for Fredericksburg; Early at Jim Ned—Jim Ned is the favorite, three to one; Goldthwaite at DeLeon—another three to one vote, this time in favor of Goldthwaite; Marble Falls at Blanco—Marble Falls is the unanimous choice; Cross Plains at Santa Anna—staying with the winner, four votes for Santa Anna.

GOOD VISION IS VITAL TO YOU



Regular check-ups make sure you're not neglecting eye defects you may be unaware of. Don't delay... make an appointment with us, soon.

Dr. E.H. Henning Jr
Optometrist



117 Commercial Avenue
Coleman, Texas
Phone 625-2228

OFFICE HOURS

9:00 A. M. to 5:00 P. M.
Saturdays — 9 to 12

Picks of the Week

Prophecy, Incorporated posted a percentage of .700 on the first week of prognostications, which is not bad at all. The Old Prophet got shown up by a couple of the assistant prophets. Roy Horne and Ken Minyard each compiled a four out of five record, for an .800 percentage, while the Old Prophet and Mon-

PRESCRIPTIONS Owl Drug Store

"Where Friends Meet"

Telephone 625-4514

312 Commercial Ave.

Coleman



Best Banking In The World

YOUR FRIENDLY

Santa Anna National Bank

Member FDIC and Federal Reserve Bank of Dallas

FOOTBALL CONTEST

THIS IS A WEEKLY FOOTBALL CONTEST SPONSORED BY THE MERCHANTS LISTED BELOW. PICK THE WINNERS IN EACH WEEK'S DISTRICT 9A GAMES, AND WIN VALUABLE PRIZES.

Each contestant must select the winner in each game listed on the entry form in this advertisement. Indicate the team you think will win each game by circling or underlining the winning. DO NOT MARK OUT THE LOSING TEAM—UNDERLINE OR CIRCLE THE WINNING TEAM.

All entry forms must be placed in the collection boxes provided for this purpose in the four businesses listed below. No mail entries can be accepted. Each entry must be on an entry form from this newspaper.

In addition to selecting the winning teams, contestants must predict the score of the Santa Anna game in the space provided. This will be used to decide ties in case two or more contestants select the same number of winners. In such case, the contestant coming closest to actual score of the Santa Anna game will be declared winner.

First prize in each week's competition will be a \$5.00 gift certificate from one of the sponsoring merchants. Second prize will be two reserved seat tickets to the next Santa Anna Mountaineer home game. Third prize is a one year subscription to The Santa Anna News.

No employees of the sponsoring merchants or of The Santa Anna News, or of their immediate families, will be eligible to compete.

Entry forms will be collected from the collection boxes at 5:00 p.m. on the Friday of the games, and no entries can be accepted after that time. Only one entry per person.

OFFICIAL FOOTBALL ENTRY FORM

Pick the winner of each District 9A game by circling or underlining the team you think will win. Then write in your prediction of the score of the Santa Anna game to be used in case of ties.

Games of September 17, 1965

Clyde at Santa Anna

Lometa at Marble Falls

Burnet at San Saba

Bangs at Early

Johnson City at Goldthwaite

Name _____

Address _____

Phone _____

TIE BREAKER:

Santa Anna _____

Clyde _____

DEPOSIT IN COLLECTION BOX AT ONE OF THE SPONSORING MERCHANTS BEFORE 5:00 P.M., FRIDAY, SEPTEMBER 10.

Sponsored By These Merchants

Phillips Drug Store

This Week's Football Special
\$39.95 Electric Timex
Wristwatch Special for \$29.95

The Steak House

Open 24 Hours A Day
COME BY AFTER
THE GAME

Richard Horner Premier Station

Premier Products
Premier Service

The Santa Anna News

Coleman County's Award
Winning Weekly Newspaper



Bright Idea for back-to-school

PROPER LIGHTING FOR STUDY

Correct lighting for reading and study doesn't just happen. It's planned. Back-to-school should be backed up by lighted study areas planned to protect the student's eyes. Vision specialists caution: "You have only one pair of eyes.

Take care of them."

Ask a WTU representative to advise you about proper lighting for your family's needs. Then visit your local store where lighting equipment is sold and make your selections.

Electric lighting... a bright idea for better living



Telephone Co-op Plans Membership Meeting Saturday

The annual meeting of members of the Coleman County Telephone Cooperative, Inc., will be held in the High School auditorium, Saturday, September 11.

On the agenda are the election of directors, reports of officers of the Cooperative, and any other pertinent business that may come before the meeting.

The business session will begin at 8:00 p.m., preceded by a period of entertainment. Drawings for gifts, door prizes, and free refreshments, and other activities are also planned.

Four directors will be elected to the Cooperative's board of directors. Candidates for the four directorates are listed, with the incumbent listed first in each case:

Burkett Area: Frank Gillespie and Jack DeBusk. **Mozelle Area:** Gordon Monsey and H. E. Bell. **Rockwood Area:** C. H. Wise and Bill Bryan. **Valera Area:** Bill Nixon and Tippy Beaver.

All members of the Cooperative can vote on all of these candidates, not just the ones from the area in which the member lives.

Allyn Gill, manager of the Coleman County Telephone Cooperative, urged that all members, all persons who subscribe to telephone service through the Cooperative, attend the annual meeting. He also said that visitors are welcome.

Crop Survey Card To Be Distributed

Santa Anna Postmaster John C. Gregg announced today that Rural Mail Carriers will begin distributing 1965 Acreage Survey Cards to patrons on their routes about September 14.

The Post Office Department assists the United States Department of Agriculture in making this survey each year. These reports, directly from farmers, are the basis for official estimates for Texas acreage of all crops harvested in 1965.

To be sure this community is well represented in the survey, Postmaster Gregg urges each patron receiving a card to fill it out and return it to his mailbox.

Rural mail carriers working on this project are: M. L. Guthrie, Jr., Routes 1 and 2; D. H. Moore, Whon Star Route; and Mrs. Ann Allen, Rockwood Star Route.

Mr. and Mrs. Earl Eaton spent Sunday night with Mr. and Mrs. W. E. Vanderford. The Eatons also visited with Mrs. Maud Smith, before returning to their home in Fort Worth Monday.

Santa Anna JAYCEES MEETING TONIGHT
LIONS CLUB BUILDING
Thursday, 8:00 p.m.

Cole-Anna

Drive-In Theatre
Coleman, Texas
THURSDAY - FRIDAY SATURDAY
SEPTEMBER 9, 10, 11
Sophia Loren — In Color
Operation Crossbow
In Color
"Back Door To Hell"
SUNDAY - MONDAY AND TUESDAY
SEPTEMBER 12, 13, 14
Starring Annette — In Color
"How To Stuff a Wild Bikini"

OAK

Drive-In Theatre
Coleman, Texas
Sat. - Sun.
SEPTEMBER 11, 12
Elvis Presley
"Girl Happy"
In Color
"Attack Of Jungle Women"
In Color



SHOPPING LIST SPECIALS!

Seven STEAK lb. .49	Seven ROAST lb. .49
Club STEAK lb. .79	Fresh PORK CHOPS lb. .69
Swift's Longhorn CHEESE lb. .55	Gooch FRANKS pkg. .45
Armour's Star Sliced BACON pkg. .69	Fine For Baking or Barbecuing BEEF RIBS lb. .39

LOOK

Imperial Pure Cane

SUGAR 10 lb. .98

14-oz. Del Monte CATSUP .17	300 Kimbells Blackeye Peas 2 for .29
300 Kimbells Pork & Beans each .12	1 qt. Kimbells Salad Dressing each .37
8-oz. Wishbone Tahitian Isle DRESSING .31	303 Red Dart Green Beans 2 for .25
Giant BREEZE .69	Tall Can Honey Boy SALMON .49
VANILLA WAFERS, 11-oz. Supreme 39¢	Kimbells BISCUITS 3 for .25
HONEY GRAMS, 1-lb. Nabisco 39¢	
LEMON COOKIES, 1-lb. Sunshine 45¢	

S.A. GREEN STAMPSAT PIGGLY WIGGLY