



Santa Anna News

One Section — 8 Pages

"He Profits Most Who Serves Best"

Single Copy — 5c

VOLUME LXXIX

SANTA ANNA, COLEMAN COUNTY, TEXAS, AUGUST 26, 1965

NUMBER 34

Point Rows

In this column, we try to include the lighter side of things, a little nonsense and foolishness being good seasoning for the daily round of life, but this week we are going to start off on a more sober tack. We want to tell you about a family who had a dream, and then lost it because a few other people were more interested in revenging their own personal and political feuds than in the growth and progress of our community.

Mr. and Mrs. Wesley Holmes had the dream of owning a motel, a small business of their own. It was not an extravagant dream—a dream shared by many people, that of having their own business—but it was important to them. So they scrimped and saved, went into debt, and put up property they owned in San Antonio as security, and they had a nice, new motel in Santa Anna. Not only had they realized their dream, but they helped their new home town, giving it a very valuable new asset.

As with any new business, going was rough at first. Travelers needed time to learn of the existence of the fine new motel in Santa Anna. In the meantime, there were payments to meet and overhead costs to pay. It was rugged, but they kept at it, sustained by the fact that their dream was becoming a reality.

When things began to look darkest, a ray of hope burst through, as is often the case. The contractors who are to install the new sewer and water improvements, voted for by the people of Santa Anna, told the Holmes that they would reserve all the rooms in the motel for the duration of the project, for their employees, just as soon as it got underway. Here was the boost that was needed to get the motel operation over the financial hump. Things might not be easy after that, but at least they could see daylight ahead.

But then a small group of malcontents decided that the bond issue would make a good battleground for venting their personal and political dislikes against some of the city leaders, and a few more saw this issue as a fine opportunity for getting in a few licks on the side of religious prejudice (isn't it strange that we can look at examples of religious prejudice in Nazi Germany, for instance, and wonder how in the world people could act like that, while at the same time we put up with the same type of prejudice here in our own city today?)

You know the rest of the story. An election contest suit was filed, charging, among other things, that the men who give hours of their time each month to represent you on the City Council, without pay or remuneration, were guilty of fraud. In due time, the case came to court and of course the judge declared that there was no fraud, no reversible error, and that the election should stand as the will of the people.

But this was not enough. More trouble could be caused, more delay could be created in providing these needed improvements for our city, and so the case was appealed. The appeal, which we have been told by reputable attorneys of our acquaintance has such a small chance of success as to be ridiculous, will probably not be heard until sometime in November.

And you can only fight the wolf from the door for so long. The breaking point came, and the Holmes, who only wanted to realize their private dream of their own small business, and who wanted to help Santa Anna in the process by providing something here that we did not have before, have lost that dream, and the property in San Antonio. The Holmes will move to Greenville, where Mr Holmes will be employed as a metalworker.

If there is a Hell, we think that a special lower section of it must be reserved for people that are responsible for killing dreams.

—9—

Pierre Rowe seems to be in an expansive mood recently over the prospects for the Coleman County cotton crop, so everyone who doesn't like smoke is forewarned to purchase their Army surplus gasmask early this year.

Pierre was saying recently that things couldn't be much worse than last year, when there was so little cotton to gin that the crew stood around pitching washers all day. He said it was bad enough to have to pay the men for pitching washers, but the crowning blow came when he discovered that they had bought the washers at the hardware store and charged them to the gin!

Oil And Gas Revenues Add More Than \$8.5 Million To County Last Year

Coleman County's producers and royalty owners are marketing some 8.5 million dollars in crude oil and natural gas a year, according to statistics released by Texas Mid-Continent Oil & Gas Association this week.

Ranking 98th among Texas' oil and gas producing counties, Coleman County in 1963 received some \$7.2 million from wellhead sales of oil and an estimated \$1.3 million from natural gas. County production of oil was approximately 2.4 million barrels; natural gas, 10.8 billion cubic feet.

Farmers, ranchers and other mineral owners share in a \$1.1 million distribution of oil and gas royalty payments annually.

The Association based its annual study of this County's oil and gas output on statistics compiled by the US Bureau of Mines, for 1963. Production data for 1964 would be approximately the same.

Statewide, Texas oil and gas wells produced an estimated \$3.6 billion in income: \$2.9 billion from oil, \$730 million from gas.

Data from the Texas Employment Commission indicate direct employment in oil and gas industry jobs for more than 280 Coleman County citizens, with a payroll of approximately \$1.2 million a year. Because oil operations require such a large number of service contractors and supply firms, which are not included in this figure, direct employment figures are only part of the story of local economic impact.

An important indicator of activity is the amount expended on drilling of wildcat wells seeking new fields and those wells drilled to develop fields already located. The Association estimates that in 1964 approximately

\$1.7 million was risked by Texas oil and gas operators on drilling ventures in Coleman County. About 49.1 percent of this expenditure, or \$837,000, went into dry holes.

A tabulation by the Oil and Gas Journal shows 112 wells were drilled in the County in 1964: 38 oil, 10 gas, 55 dry holes, and nine service wells. A total of 224,000 feet of hole were drilled—159,000 for development wells and 65,000 for wildcats.

In addition to local school and county property taxes by oil and gas operators, taxes on production from Coleman County flowed into the state treasury at the rate of about \$425,000 a year.

An upgrading of the County's gross economic output is contributed by the operation of four plants which can process some 18.3 million cubic feet of natural gas a day to remove liquids such as butane and propane.

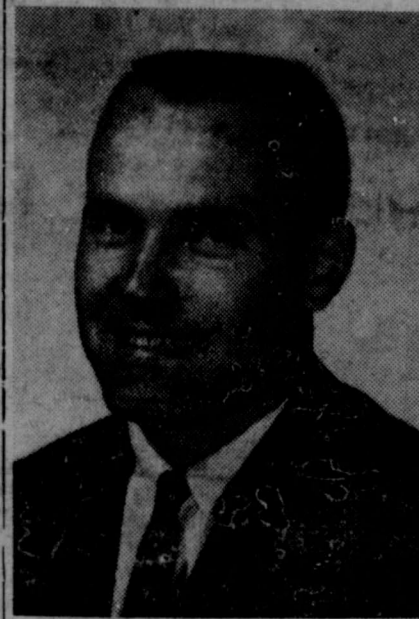
Federal Agent Checks Housing Sites Here

Jerra Wilcox, chief of the regional land office of the US Public Housing Administration, was in Santa Anna Tuesday, August 24, to look over proposed sites for the 18 new housing units expected to be built here.

It is expected that the sites chosen will be announced within a week to 10 days, according to Mrs. Henry Newman, secretary of the Santa Anna Housing Authority.

The new units will bring to 34 the total of housing units in Santa Anna. Eight of the present sites are designated for elderly persons, and 12 of the new units will be so designated.

The housing projects are financed through loans from the Federal government, which are repaid from rental income from the units.



Don Simmons New Abilene Principal

Don Simmons, a 1953 graduate of Santa Anna High School, and the son of Mr. and Mrs. M. R. (Bud) Simmons, of Coleman, has been appointed principal of Lamar Elementary School, in Abilene. The Abilene School Board announced the selection last week. Simmons resigned from his position as a vocational rehabilitation counselor with the Texas Education Agency to accept the principalship.

Simmons attended Howard Payne College, receiving his degree there in 1957. He obtained a master of education degree from McMurry College, of Abilene, in 1962. He served as a teacher and coach in the Coleman Public Schools for two years after his graduation from Howard Payne. In 1959 he moved to Abilene and was an employee of the Abilene School System until his employment with the Texas Education Agency in January of this year.

Mrs. Simmons is the former Carol McClellan, daughter of Mr. and Mrs. J. W. McClellan, of Santa Anna. She is also employed in the Abilene schools, teaching music at Bowie Elementary School. They live at 2017 Oakwood Lane, in Abilene.

School Board Hires Teacher; Approves Tentative Budget

In two meetings during the past seven days, the Board of Trustees of the Santa Anna Independent School District hired a new high school English teacher, and approved the preliminary budget for 1965-1966 school year.

Meeting Thursday, August 19, the Board elected Mrs. Kathleen Lacy to fill the position of teacher of English and Speech.

Mrs. Lacy, a widow, will come to Santa Anna from Brownwood. She holds the bachelor of science degree in education from Daniel Baker College, and the masters degree from Howard Payne College. She also attended Tyler Commercial College, where she later taught.

Mrs. Lacy, who will reside at 303 South First Street with her mother, taught in schools at Granger, Olden, and Sidney. She is a member of Kappa Delta Pi, the American Association of University Women, the Texas State Teachers Association, and the National Education Association.

Monday night, the Board of Trustees adopted a preliminary budget that totals \$213,881.20, an increase of approximately \$19,000 over the budget for the 1963-1964 school year.

Peace Corps Tests In Brownwood Soon

An opportunity for Santa Anna area residents to offer their abilities to the Peace Corps will come at 9 a.m. Saturday, September 11, at the Main Post Office, in Brownwood.

The opportunity is the Peace Corps Placement Test, which is not passed or failed and you can't study for it. It measures general aptitude and the ability to learn a language. If, for example, test scores indicate limited language acquiring ability, the Peace Corps tries to place the applicant in an English speaking area. The test is used by the Peace Corps only as a tool in the matching of Volunteers and jobs. The Peace Corps application is the most important indicator of suitability for Peace Corps service. It must be filled out and brought to the exam unless previously submitted.

Applicants should plan on about one and a half hours at the testing centers, unless they wish to take the Spanish or French language achievement test, which requires an additional hour.

Included in the proposed budget, which is only tentative and is pending final approval, will be \$22,000 for payment of bonds outstanding against school buildings. Only \$8,000 is set aside annually as the minimum that must be paid on these bonds, and the additional \$14,000 will allow the District to pay off the bonds earlier than would otherwise be possible, saving the local school system more than \$600 per year in interest payments.

Against the projected expenditures, the expected income totals \$219,338.12 for the coming fiscal year. This revenue is based on a collection rate of 92 percent for school taxes. During the past fiscal year, 95.8 percent of school taxes were collected.

As a result of the tax reevaluation conducted recently by the District, tax values of \$4,718,380 are carried on the books, compared to valuations of approximately \$3,850,000 prior to the reevaluation.

Major totals in the preliminary budget approved Monday night include, on the expenditure side of the ledger, \$16,310.00 for administrative costs; \$124,966.20 for instructional costs and salaries; \$2,850.00 for health services; \$14,245.00 for pupil transportation; \$10,220.00 for operation of plant (school building operation); \$3,300.00 for maintenance of plant; \$1,448.00 for fixed charges (such as insurance, rentals, interest on loans, retirement payments); \$1,800.00 for student body activities; \$60.00 for community activities; \$2,200.00 for capital outlay (for sites, buildings, furniture and equipment); and \$36,482.00 for debt service (retirement payments on bonds and short-term loans, interest on bonds and loans, and other debt obligations).

Estimated revenue sources include \$87,016.00 from local sources; \$420.00 from county sources; and \$116,700.00 from state sources. A total of \$15,202.12 in fund balances carried forward brings the total funds available to \$219,338.12.

The local District has been on the brink of operating at a deficit for the past several years, something that is not allowed by law. The only alternatives facing the District, according to Superintendent of Schools Cullen Perry, was to cut back on the quantity and quality of education offered to stay within the available resources, or to bring

tax valuations up to current levels from the evaluations last updated in the 1930's. With the additional revenues available under the new tax rates, the District will be able to maintain educational standards while putting the financial operation on firmer footing.

In other announcements concerning the upcoming school year, Perry stated that tentative bus routes would be run the first few days of school until it was determined exactly where the routes need to be located. "Buses will operate to serve all families the best we know of at the beginning, and changes will be made as needed as soon as possible," Perry said.

School hours this year will be from 8:30 a.m. to 4:00 p.m. High school students will be dismissed for lunch at 12:20 p.m., with elementary students being dismissed for the noon meal at varying times earlier in the morning.

Santa Anna Independent School District will initiate its 73rd year of classes on Monday, August 30, at 8:30 in the morning.

County Baptist Men To Furnish Barbecue

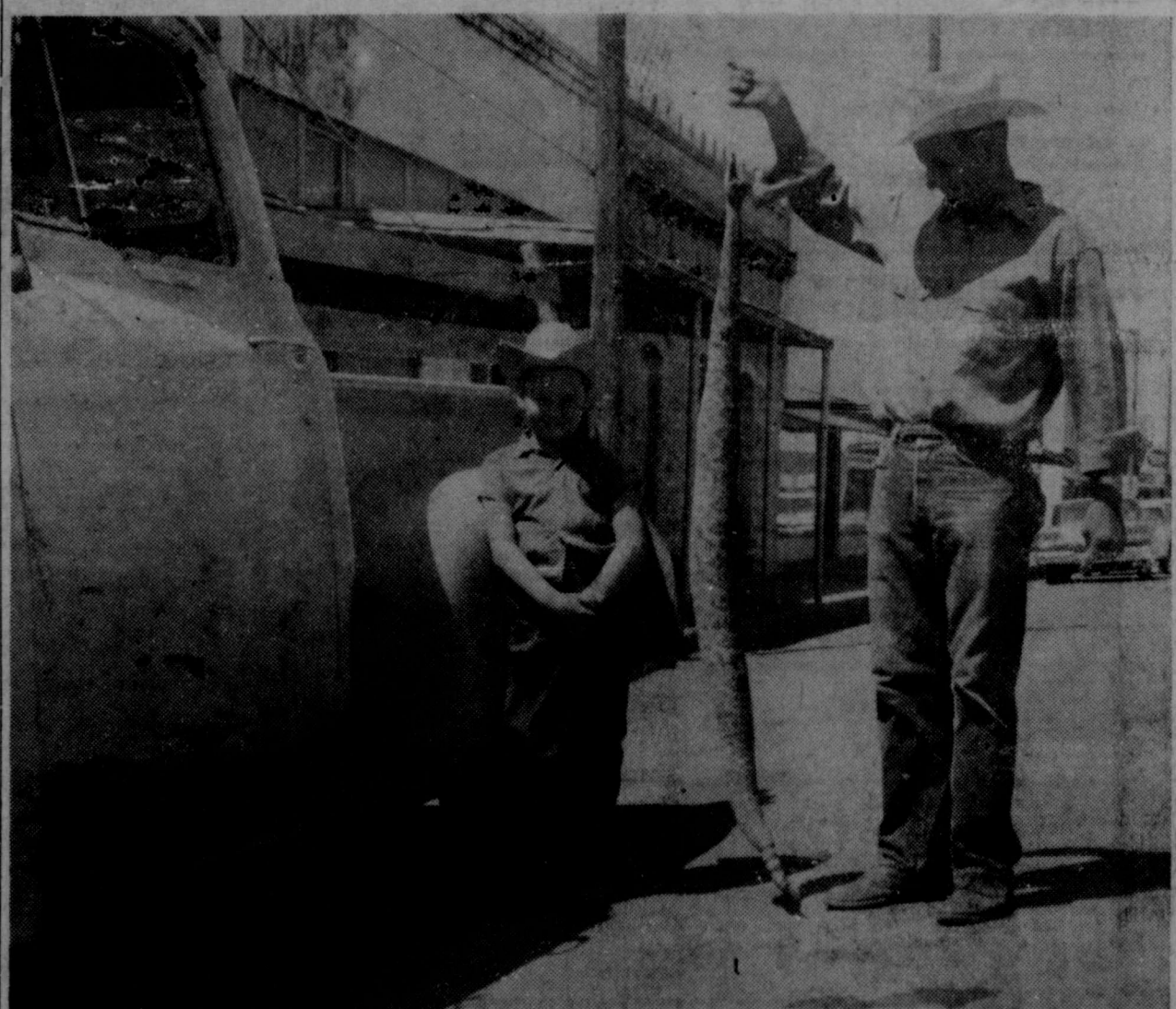
The Heart of Texas Baptist Brotherhood Encampment is scheduled this year for Monday and Tuesday, August 30 and 31, at the Baptist Encampment Grounds on Lake Brownwood.

Dr. Abner McCall, president of Baylor University, will speak to the assembly on Monday night, August 30, and Dr. W. E. (Bill) Thorn, of Wichita, Kansas, will bring the message.

Tuesday's program will feature the sermons by Bill Kinney, of First Baptist Church, Brady, and Earl D. Sherman, of San Angelo, and the message by Dr. Thorn.

Others participating in the program during the two days will include Pete Nunez, song leader; Frank O'Banion, pianist; Al Glenn and the Stephenville Chorus; Jack Kincaid, reporting on the State Brotherhood; Dr. Clifford Nelson, Brownwood, leading the testimony service; Gerald Lackey, who will lead the Ambassadors portion of the program; and T. W. Collier, of Dublin, and James Gibson, of Bangs, who will lead in prayers.

Men of the Coleman County Association will be responsible for preparing the barbecue dinner on Monday evening, August 30.



BIG MAMA RATTLESNAKE, being held by Carl Benton, who killed it on his place, three miles south of Santa Anna Sunday, is a female carrying young. The big rattler was five feet and one inch long and weighed slightly more than eight pounds, enough to make two or three of one Larry Benton, who doesn't seem too worried about the prospect.

Whon News

By MRS. TOM RUTHERFORD

Mr. and Mrs. Bert Turney invited their friends to their 50th wedding anniversary Saturday, August 28, 1965, from 5 to 7 p.m. at the Whon Community Center.

Mr. and Mrs. Bob Smith of Odessa came Thursday and visited Mrs. Smith's parents, Mr. and Mrs. Tom Rutherford, Lynda and other relatives. They joined their children, Deborah and Barry who had been here 2 weeks while their parents, were on vacation in New Mexico and Colorado. They returned to Odessa Sunday afternoon.

Mr. and Mrs. Troy Avants and son, Lanton, and Troy's mo-

ther, Mrs. Mollie Avants of Coleman were supper guests with Mr. and Mrs. Bert Turney Thursday. Mr. and Mrs. Thomas Switzer and children were recent visitors with Mr. and Mrs. Wayne Townsend and children in Abilene and making acquaintance with the Townsends new son, Donald Ray, who arrived August 10th.

Mrs. Tom Rutherford and daughter, Lynda, were business visitors in Abilene Monday.

Sunday dinner guests with Mr. and Mrs. Tom Rutherford and Lynda were Mr. and Mrs. Bob Smith and children, Barry and Deborah of Odessa. Mr. and Mrs. Hilary Rutherford and children, Dena and Rocky, Mr. and Mrs. Loyd Rutherford of Coleman, Mrs. Joe Langer and son, George Wayne, of San Angelo and Sammie Shields.

Mr. and Mrs. Randy Brown

and baby of Santa Anna were Sunday guests with her parents, Mr. and Mrs. Cleburn Stanley. Mr. and Mrs. Rex Turney and children, Mark and Becky of Santa Anna drove down Monday afternoon with a freezer of ice cream and all enjoyed homemade ice cream.

Dougie Avants of Brady and Jimmie Avants of Santa Anna are visiting their grandparents, Mr. and Mrs. Aaron Avants.

Mr. and Mrs. J. D. Kline and daughter, Jean of Coleman visited in the Thomas Switzer home Sunday afternoon.

Mrs. Bob Smith and children of Odessa and Lynda Rutherford visited with Mrs. Florence Carter Saturday morning.

Mr. and Mrs. Cleburn Stanley drove to San Saba Saturday afternoon and visited with Mrs. Stanley's sister, Mr. and Mrs. C. A. Harkey.

Mr. and Mrs. Aaron Avants reported an intruder at their house Sunday night, that was not welcomed. The dogs located a rattlesnake at their back door with 11 rattles and close to 40 inches in length. They were successful in killing the snake.

Mr. and Mrs. Zack Bible were dismissed from the Ranger Park Inn at Santa Anna on Friday

and left with their daughter, Juanita Branch, Sunday morning for Houston where they will be for a while.

Mrs. A. D. Eppler visited with Mrs. Tom Rutherford and Lynda Wednesday afternoon.

Rev. Jackson of Brownwood

visited with Mr. Sammie Shields and daughters of Brownwood Monday afternoon. Mrs. Kate Holmes of Santa Anna, Mr. and Mrs. Cecil King were looking over their property in the Whon Community Sunday afternoon.

PRESCRIPTIONS Owl Drug Store

"Where Friends Meet"

Telephone 625-4514

312 Commercial Ave.

Coleman

For
All
Your
Printing
Needs

PHONE FI8-3545

Santa Anna News



SCOTTIE STAMPS Low Food Prices

COFFEE Folger's 1-lb. can 79c

MILK Eagle Brand can 34c

White House APPLES Pie Sliced No. 2 can 25c

MILK, Instant Pet 4-qt. box 35c

Air King - 16-oz. Glass PEANUT BUTTER Only 39c

WESSON OIL extra large size 69c

PIE APRICOTS gal. can 98c

Swift Jewel SHORTENING 3-lb. can 69c

Kraft's New Tasty Imitation CHEESE LOAF 2-lbs. 69c

POTATOES, Russet 8-lb. bag 49c

Gandy's 1/2 Gallon MELLORINE 3 for \$1.00

Register For \$5.00 In Mdse. Given Away September 4th

Double Scottie Stamps Every Wednesday With Purchase of \$2.50 Or More

Hosch Grocery

Felt Tipped
Marking Pens
— All Colors —
THE
SANTA ANNA
NEWS

GOOD VISION IS
VITAL TO YOU



Minor defects, corrected now, can save your child from serious eye problems. Play safe...bring him in for regular, scientific eye examinations.

Dr. E.H. Henning Jr
Optometrist

117 Commercial Avenue
Coleman, Texas
Phone 625-2228

OFFICE HOURS

9:00 A. M. to 5:00 P. M.
Saturdays — 9 to 12



When A
FELLOW
NEEDS A
FRIEND

A perfect picture of dejection! Perhaps it's another rainy day. Even little children have their serious moments. "What is there to do next?" "Mommy, where did I come from?" Or, "Daddy, is God up in the sky?" Little questions of little children grow into big questions by big people. Sometimes the bigger the man, the more humble the question, and of course . . . directed to God.

The place for such questions is the Church. In church, ponder the imponderables, ask the old, old questions: receive the gentle answers. Church, too, is God's Home. He's waiting for you there.

THE CHURCH FOR ALL • ALL FOR THE CHURCH

The Church is the greatest factor on earth for the building of character and good citizenship. It is a storehouse of spiritual values. Without a strong Church, neither democracy nor civilization can survive. There are four sound reasons why every person should attend services regularly and support the Church. They are: (1) For his own sake. (2) For his children's sake. (3) For the sake of his community and nation. (4) For the sake of the Church itself, which needs his moral and material support. Plan to go to church regularly and read your Bible daily.

larily and support the Church. They are: (1) For his own sake. (2) For his children's sake. (3) For the sake of his community and nation. (4) For the sake of the Church itself, which needs his moral and material support. Plan to go to church regularly and read your Bible daily.

Sunday Psalms 25:8-18	Monday John 15:12-17	Tuesday Acts 2:37-47	Wednesday II Corinthians 1:8-14	Thursday II Corinthians 4:7-18	Friday James 4:1-9	Saturday I John 1:1-7
-----------------------------	----------------------------	----------------------------	---------------------------------------	--------------------------------------	--------------------------	-----------------------------

Wylie's Flowers
For All Your Floral Needs

R. T. Caperton
Chevrolet-Cadillac
1400 Commercial Coleman

Coleman Butane
Gas Company
Gerald Swann, Owner

Rio Poco Kennels
Home Of All-Round Beagles
Santa Anna

Santa Anna
Insurance Agency
Insurance
In All Its Branches

Mathews Motor Co.
GGeneral Automotive Repair
And Parts
Santa Anna

Santa Anna
Medical Center
And Ranger Park Inn

Phillips Drug Store
Your Hometown Druggist

Clark Auto Parts
Supply
108 East Pecan Coleman

Radio Station KSTA
Serving Coleman County At
1000 On The Dial

Coleman Gas
Company
Serving Coleman County

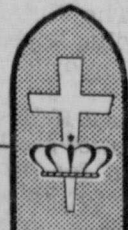
Bob Turner's
310 Commercial Coleman

Santa Anna
Cooperative Gin
For A Better Santa Anna

Poco, Incorporated
Helping To Build
Santa Anna

Coleman County
State Bank
Full Service Banking

Copyright 1965
Keister Advertising Service, Inc.
Strasburg, Va.



Rockwood News

By MRS. JOHN C. HUNTER

The Boss Estes family went back to San Antonio Monday, after spending the summer at their home here. They were in San Angelo last Friday to take grandson, Gordon, home after a visit with them. Oscar Lovelady was a Sunday luncheon guest. Mrs. L. Bryan and Kenneth of Santa Anna and Mrs. Sam Estes visited Sunday afternoon.

Mrs. Bill Rehm and Mr. Buttry were business visitors in Abilene last Tuesday and visited with Mr. and Mrs. Dick Inman and Mr. and Mrs. Raymond McNutt and children. They visited Sunday afternoon with Mr. and Mrs. Lee McMillan.

Mrs. M. D. Bryan visited Monday morning with Mrs. A. L. Crutcher and with Mrs. Bob Steward, who was marking her 88th birthday anniversary, enjoying all the beautiful cards and letters.

The Rev. Donnie Melton, pastor, will preach at the Baptist Church, Sunday, August 29, at 11:00 a.m.

The Rev. Bobby Weathers will preach at the Methodist Church at 9:15 a.m. on Sunday, August 29. The congregations usually do not have preaching on fifth Sundays.

Mr. and Mrs. Blake Williams visited Mr. and Mrs. Fox Johnson while they were here last week. Sunday guests in the Johnson home were Mr. and Mrs. Marcus Johnson, Jerry and Miss Bernice. Mr. and Mrs. M. A. Richardson of Coleman visited briefly Monday afternoon.

Mr. and Mrs. Blake Williams returned to Pasadena last Tuesday after visiting with Mrs. Kate McIlvain and other relatives.

Mrs. Roy Stafford, Charles and James and Mrs. J. P. Hodges visited Mrs. McIlvain Tuesday afternoon.

Mrs. Carl Buttry and Lana visited in Coleman last Tuesday with Bob Johnson.

Mrs. Leroy Casey of San Angelo spent the weekend with Mr. and Mrs. Carl Buttry. Jerry Carl and Lana returned home with her. Mrs. Casey is driving a new Chevrolet.

Rodney Martin of Coleman spent the week with Larry and Tommy McIntire. Saturday Mrs. Lucille Martin and children and Jamie Bowles of Dallas came for Rodney and Pam who had spent Friday night.

Linda and Judy McIntire spent the week with the Rev. and Mrs. Ray Martin and family in Coleman.

Monday Mrs. Billy McIntire and Barbara went to Coleman for Linda and Judy and Terry and Tammy Martin accompanied them home.

On Monday evening Mrs. Lucille Martin and children of Coleman and Janece and Kim Burleson of O'Donnel came for Terry and Tammy and Linda and Judy visited with them again.

Peggy McIntire of Austin and Matt McIntire of Brownwood spent the weekend at home and all enjoyed the fish the boys caught during the week of visiting.

Miss Sammie Stewardson of Coleman visited with Mr. and Mrs. A. L. King Thursday to Saturday. The Kings took her back to Coleman. Mr. and Mrs. King visited Sunday afternoon with Mr. and Mrs. Lee McMillan. Mrs. King visited with Mrs. Ray Caldwell and Mrs. Bob Steward.

Last weekend Mr. and Mrs. Weldon McCreary and family of Shallowater visited with his mother, Mrs. F. E. McCreary. Mrs. Stafford and sons visited with Mrs. McCreary Tuesday. Mrs. Edgar Spencer and Mrs. Joe Ed Spencer and children of Eldorado visited with her Tuesday afternoon. Other guests have been Mr. and Mrs. Victor Payne of Fort Worth and Mrs. Don Cox and Bret of Dallas.

Visiting with the McMillans were Mr. and Mrs. King, Boss Estes, Billy Ward and Lana Halmon, Mrs. Bill Rehm, Mr. Buttry, Mrs. Rosa Belle Heilman, Mrs. Kate McIlvain, Mrs. Mena Shuford, Mrs. A. L. Crutcher.

Local folks with Mr. and Mrs. Sam Estes were Mr. and Mrs. Boss Estes, Mrs. Crutcher, Mr. and Mrs. Drury Estes.

Mr. and Mrs. Miller Box and Mr. and Mrs. Doyle Stanford and girls of Fort Worth spent the weekend at their home here.

Mr. and Mrs. George Neil of Water Valley visited last Thursday with Miss Linnie Box.

Mr. and Mrs. Darwin Lovelady visited Sunday afternoon with Mr. and Mrs. Elec Cooper.

Mike Sheffield of Midland spent Sunday night with Ronnie Cooper.

Mr. and Mrs. Hilary Rutherford and children of Coleman spent Sunday night and Monday with Mr. and Mrs. Sherman Heilman. Other Monday callers were Mrs. R. J. Deal, Mrs. Tom Rutherford and Linda.

The Harper family has moved into the Billings house and the William Whites have moved to Mrs. Bill Rehm's house.

Mrs. Tobe Alford and Loyd of San Antonio are visiting with Mrs. C. H. McCarrell, Mrs. Goldie Milberger and Harold McCarrell. Mrs. Tommy Pollock of Abilene and Loretta Broadway were home for the weekend.

Mary Etta Broadway returned to Fort Worth last Thursday, where she is employed.

Saturday afternoon Mrs. Pollock, Mrs. Junior Brusenhan, Judy and Jodie visited in Brownwood with Mr. and Mrs. R. W. Emerson and Mr. and Mrs. Ray Gleaton.

Mrs. Mary Brusenhan, Joe McCreary and Mrs. Bill Polk and Candy were Sunday dinner guests with the Junior Brusenhan. Monday afternoon callers were Mrs. Lon Gray and Mrs. Henry Smith.

Mr. and Mrs. Matt Estes, Mrs. Stella Bolton and Juanita Valdez visited Friday to Sunday in Bovina with Mr. and Mrs. Herman Estes and family and Mr. and Mrs. Vernon Ester and family. Mrs. Herman Estes is a patient in a Fort Worth Hospital.

Mr. and Mrs. Orville Slate of Gouldbusk visited Thursday with Mr. and Mrs. Leffel Estes and family. Mr. and Mrs. Estes, Bruce and Geneva spent Sunday at Granbury with Mr. and Mrs. Junior Thomas.

Mr. and Mrs. J. A. Hunter recently visited relatives at Denver City and attended the Trent family reunion at Andrews.

Jimmy Hunter of Coleman visited with the J. A. Hunters and the Tommy Briscoes Tuesday to Friday when his Dad came for him.

Mr. and Mrs. Don Hunter of Brownwood and Mr. and Mrs. Tommy Briscoe and children of Waldrip were Tuesday supper guests. The Don Hunters visited again Friday. Randy Briscoe spent Tuesday night with his grandparents.

Mike Sheffield of Midland is spending the week with grandparents, Mr. and Mrs. Jack Cooper. Ronnie Cooper visited with him Tuesday.

Visiting in the R. J. Deal home Tuesday afternoon were Mr. and Mrs. J. E. Wilson of Quaniaco, Virginia; Leo Deal of Brownwood; and Oscar Lovelady.

Mr. and Mrs. W. F. Deal of Gouldbusk, were Sunday guests in the R. J. Deal home. Other afternoon callers were Mr. and Mrs. Gene Deal and family of Abilene, and the Rev. Donnie Melton.

Trickham News

By Mrs. J. E. York
Telephone DU2-3336

Mr. and Mrs. Buck Mitchell spent three days last week at Post with Mr. and Mrs. Lloyd Mock.

Mr. and Mrs. Damon Miller and girls of Austin spent the weekend with her parents, Mr. and Mrs. Buck Mitchell.

Mr. and Mrs. Virgil Lancaster of Woodville are spending this week with his parents, Mr. and Mrs. Lige Lancaster. Mr. O. L. Oaks and children of Brownwood visited with Mr. and Mrs. Lancaster on Sunday.

Mr. Gordon Stearns of Brooksmith, G. K. Stearns and Walter Stacy visited Sunday afternoon with Mr. and Mrs. Robert Stearns.

Mr. and Mrs. Marvin Whitley were Sunday night bedtime visitors with Mr. and Mrs. Grady McIver.

Mr. Hilburn Henderson returned home on Sunday night after being with his brother, Kenneth, who was injured at his work and is in a critical condition in a Lubbock hospital. Mrs. Hilburn Henderson

kept the two children of Mr. and Mrs. Kenneth Henderson over the weekend. We certainly wish for Kenneth a quick recovery.

Visitors with Mrs. Hilburn Henderson during the weekend were Mr. and Mrs. Artie Irby of Santa Anna, Mr. Ed Van Dalsom of Coleman, Mr. and Mrs. G. K. Stearns and Mr. and Mrs. Tal McClatchy.

Mr. and Mrs. Ed Featherston of Brownwood visited Sunday afternoon with Mr. and Mrs. Bond Featherston.

Mr. and Mrs. Marvin Whitley attended the Rutherford reunion at Lake Brownwood last week. There were 20 relatives present.

Mrs. Grady McIver visited Friday afternoon with Mr. and Mrs. J. E. York and boys.

Mrs. Jerry Haynes and Davie of Farmington, New Mexico, spent several days last week with Mr. and Mrs. Fred Haynes and Billy Don. Other recent visitors with the Haynes have been Mrs. Etolle Cozart of San Angelo, Mr. Gus Fuller of Brady, Mr. and Mrs. H. B. Dockery of Brownwood, Mr. and Mrs. G. K. Stearns, Mrs. Hilburn Henderson and Mr. and Mrs. John Haynes.

**TIRES ARE
GUARANTEED
at
RUDOLPH'S
Coleman, Texas**

Lots Of Bargains!!

GOOD SCHOOL CLOTHES, FURNITURE, HOUSEHOLD ITEMS.

Sale All Day, Saturday, August 28

MARSHA FULLER

101 Mesquite

Coleman

HELP!! HELP!!

**Don't Hurry But Rush
Down To Capertons Now.
They Need Your Help In
Getting Rid Of Their
1965 Models.**

R. T. Caperton Chevrolet-Cadillac

1400 Commercial Ave. — Phone 625-4145 — Coleman, Texas



Now! Scottie Saving Stamps

With Every Subscription To The SANTA ANNA NEWS

DOUBLE STAMPS FOR ALL NEW SUBSCRIPTIONS (FOR YOURSELF OR GIFT SUBSCRIPTIONS),
AND FOR ALL RENEWALS PAID ON OR BEFORE THE MONTH OF EXPIRATION. REGULAR
STAMPS FOR ALL OTHER RENEWALS. WE MAIL YOUR SCOTTIE STAMPS BACK TO YOU ON
ORDERS

CLASSIFIED ADVERTISING

CLASSIFIED ADVERTISING RATES

First Insertion — Per Word 4c
 Each Additional Insertion — Per Word 2c
MINIMUM CHARGE — 50c PER WEEK
COPY DEADLINE — 10:00 A. M. WEDNESDAYS

FOR SALE OR TRADE

FOR SALE: Good used refrigerators, automatic washers, wringer washers, clothes dryers and gas cook stoves. Terms to suit YOU. Geo. D. Rhone Co., Coleman, Texas. 48tfc.

FOR SALE: Several used TVs in good condition. Geo. D. Rhone Co., Coleman, Texas. 48tfc.

FOR SALE: A good well kept home on Wallis Ave. Six large rooms, two baths, large den, new roof, garage with large storage room. Call or write Neal Oakes, Winters, Texas. 31-34c

ATTENTION! We will be picking up a spinet piano in your area, small monthly payments, 1st payment in Oct. Write Credit Mgr., JENT'S HOUSE of MUSIC, 2650 - 34th, Lubbock, Texas. 32-34c

FOR SALE: Farmall 20, with equipment. 8 disc John Deere one way. Contact L. J. Clark. 34c

MISCELLANEOUS

IF YOU ARE thinking about improving your home ask us for free estimates on the following: Insulation to make your home easier to heat and cool; all types of siding including the new plastic, insulated, asbestos and aluminum in lovely colors and quality roofing to top it all. Call 643-4314 Collect. Smith

Roofing Company, Brown-Wood. 51tfc.

WHEN YOU THINK of grinding, mixing and pelleting, think of Hollingsworth Feed Mill, Coleman, Texas. 50tfc.

PAINTING: All types, inside and outside. Satisfaction guaranteed. Call Harper Wyatt at Higginbotham Lumber Co., call 645-9515. 31tfc

SPECIAL NOTICES

LAND BREAKING AND SOWING WANTED. \$2.00 per acre for breaking and \$1.00 per acre for sowing. Contact Dude Mangus, Box 654, Santa Anna, Texas.

BUSINESS OPPORTUNITIES

DISTRIBUTOR WANTED: No competition. To service and set up new accounts in exclusive territory. Investment secured by fast moving inventory of amazing plastic coating used on all types of surfaces interior or exterior. Eliminates waxing when applied to wood, metal or floor. Eliminates all painting when applied to wood, metal or concrete surfaces. Minimum Investment-\$500. Maximum Investment-\$12,000. For details write or call: Phone: 314 AX-1-1500, PENGUIN PLASTICS CORP. 3411 North Lindberg Blvd. St. Ann, Missouri 63074. 33-39c

New Social Security Payments Add To County Income

The first noticeable effect in Coleman County of the 1965 amendments to the Social Security Act, signed into law on July 30 by President Lyndon Johnson, will be the receipt of some \$65,584 in extra benefit checks, due about the middle of September, according to R. R. Tuley, Jr., District Manager of Social Security, in Abilene. The checks arriving October 3 will be in the new amounts, totaling some \$129,071 for Coleman County.

"That sum represents the 7 percent increase in benefits for the months of January through August," he added, "and will go to some 2,203 residents of Coleman County who are now receiving monthly social security checks by reason of age, disability, or the death of a parent or spouse."

Present beneficiaries will get that increase automatically, and need not write or contact their social security office.

Tuley believes the next early effect will be the securing of claims applications on behalf of unmarried students between 18 and 22 years of age who can be paid monthly benefits on the records of a deceased, disabled, or aged parent, who was insured under social security. The new law provides that these benefits will also be retroactive to January of 1965, but a formal claim will be needed as will evidence of

CARD OF THANKS

CARD OF THANKS
 Many thanks to everyone, for all the cards and visits during my recent stay in the hospital. Special thanks to the hospital staff. Miss. Cynthia Parker. 34p

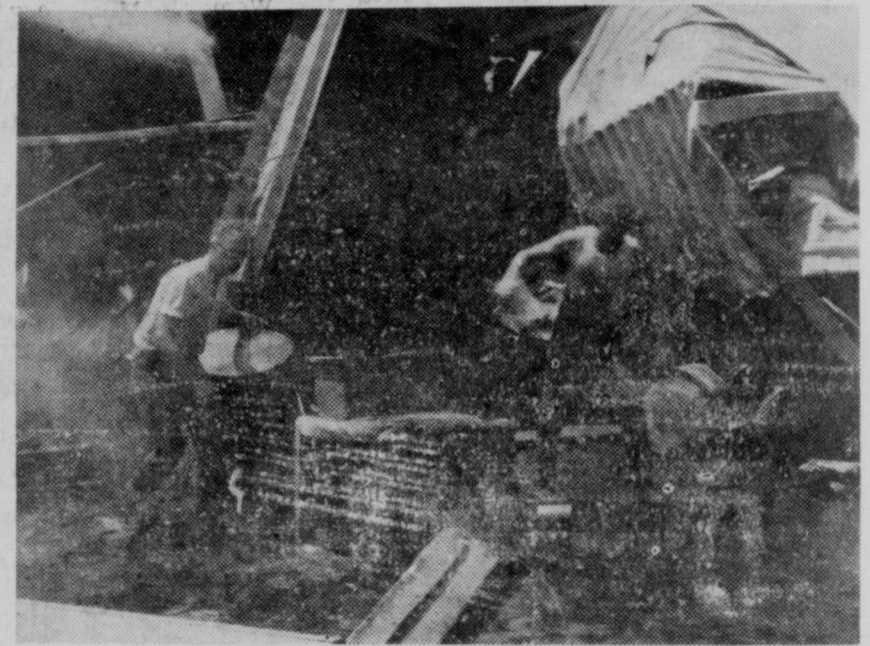
regular school attendance. The school may be high school or college; if college, it must be either state supported, accredited by a state or national body, or its credits must be acceptable to transfer to such an institution. Those students who previously received social security benefits to age 18, will not need to prove their age again. The Health Insurance Benefits (Hospitalization and Medical) will go into effect in July of 1966, and affect some 2,153 residents of this County who are past age 65. They, too, need take no immediate action; in fact Tuley hopes they'll wait a few weeks so that the claims of students may be taken.

A Santa Anna News Foto-Feature

BIG FIRE IN BANGS

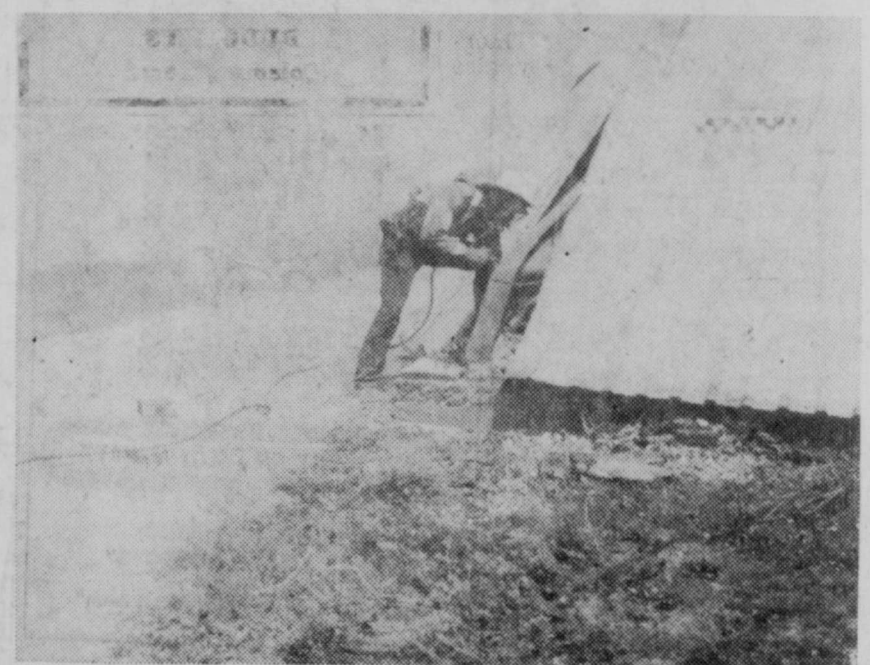


VOLUNTEER FIREMEN from Santa Anna helped battle the \$200,000 fire at the Texans, Inc. furniture factory, in Bangs, Saturday, August 21. In the top photo, one of the drums filled with paint and paint solvent that exploded from time to time to increase the hazard from the fire. Most of the building that burned was filled with lumber and with bales of corrugated cardboard.



LOOK OUT! And two Bangs firefighters, who had been attaching a cable to the building so that it could be pulled down to allow firemen to reach the flames, head for the hills as part of the building collapses.

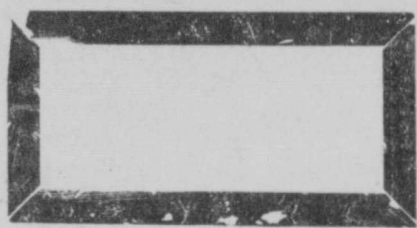
SANTA ANNA FIREMAN Junior Densman, equipped with an oxygen tank and mask, attaches a cable to one corner of the building, which was a total loss.



PUT SOME OVER THERE, says Santa Anna Volunteer fireman Jess Martin to Densman as they fight the flames. Units Brownwood, Coleman, and Early assisted the Bangs firemen, along with that from Santa Anna. Insurance covered only \$50,000 of the loss. The fire still smoldered Saturday night.



THE BIG INCH



The ruled box above is a one-inch ad. It measures one column wide by one inch deep. It costs advertisers 45 cents.

It looks kind of lonesome by itself. But look at it this way:

What you get when you buy a one inch ad in **The Santa Anna News** is not just a single space in the paper, but one inch multiplied by more than 1,000 copies each week. And by more than 4,000 readers each week.

So you are really buying 1,000 inches, which (at 120 column inches per page) would be some eight and one-third pages of printed newsprint.

That is a mighty big chunk of space to cost 45 cents. Just imagine trying to reach all those **Santa Anna News** readers by postcard. It would amount to more than \$160 just for the postage. But **The News** does it for just 45 cents.

So you can see that a little one inch ad is a big inch when it is advertising space in **The Santa Anna News**. And two inches will tell your story twice as well as one, and four will get your message across four times as well, and so on. It is the most effective and economical way possible to let people in this area know that you have wares and services they could use.

Call FI8-3545 and let our advertising representative show you how our big inches of advertising space can be a big salesman for you.

(Check on our classified ads too for another big bargain)

The Santa Anna News

SOCIAL NOTES

Shower Held Here Monday For Mary Ann Harris, Larry Donham's Bride Elect

Miss Mary Ann Harris, of Maverick, bride elect of Larry Donham of Santa Anna, was honored with an Introductory Gift Tea, Monday, August 23, from 7 p.m. to 9 p.m. in the Beginners Department, of the First Baptist Church. Mrs. Billy Joe Harvey greeted the guests and presented the receiving line. Miss Harris, Mrs. Carmen Donham, mother, Mrs. G. O. Lewis, grandmother of Oklahoma, Mrs. Jeff Harris of Maverick, honorees mother, Sally Harris, sister and Mrs. Jap Kelly of Coleman, aunt of honoree.

Miss Linda Campbell presided at the register, where guests were registered, in a white bride's book.

Mrs. Calvin Campbell, Mrs. Buddy Neff, Mrs. W. B. Griffin, Mrs. Kenneth Bowker and Mrs. W. B. Allison served pink punch, pink and white mints, nuts and white cakes, with pink bridal

Eastern Star Honors Founder At Monday Meeting

Bob Morris, founder of Order of Eastern Star, was honored Monday night, August 23, when Santa Anna Chapter No. 247, met for stated meeting in Masonic Hall.

Those taking part on the program were Mrs. Richard Bass, short history of order, and H. A. Burden, Mrs. Montie Guthrie, Mrs. Murray Cooper, and Mrs. Jack Bostick.

During the business session Mrs. Roy West associate Matron, assisted by H. A. Burden Worthy Patron, opened the meeting in short form. H. A. Burden lead the group in repeating the Pledge of Allegiance to the Flag. The minutes of the last two meetings were read and approved.

Mrs. Murray Cooper took the Time and Talent Report.

After the chapter closed with the Retiring March, the group assembled in Fellowship Hall for social hour, where Mr. and Mrs. H. W. Gray and Mrs. Nora Goen served ice cream and cake, to thirteen members and Mrs. Bessie Bowen, Mrs. Cloyce Strickland and Mrs. Marion Lusk of Coleman Chapter 360.

Decorations used was the Little Red School House, complete with horses, see saws, draw well, swing and tree, a replica of the Mississippi school of Bob Morris, red roses and greenery also used.

Automobiles Make Big Retail Sales

Automotive and truck sales, plus the fuel, oil and accessories to keep them running, took more than 28 percent of Texas' retail trade dollars in 1965.

Of the state's retail clothing sales in 1963, less than 36 percent was for men's and boys' apparel.

More than one fourth of retail trade business in Texas in 1963 was accounted for by food-groceries for home consumption and for meals and snacks eaten out. These are among statistics which appear in a new report on the 1963 Census of Business (Retail Trade) just issued by the US Department of Commerce Bureau of the Census.

The report presents data on the number of establishments, sales and percentage of sales accounted for by specific merchandise lines for the entire West South Central area consisting of Arkansas, Louisiana, Oklahoma, and Texas, for each of the four states, for each Standard Metropolitan Statistical Area and for parts of the states outside those areas.

For each the report presents data on sales of 25 separate classes of items in over 100 different kinds of retail establishments, making it possible to check on sales of various merchandise lines and the percentage which those lines account for in total sales of different re-

tail establishments. The report, one of 10 covering nine divisions of the United States and the nation as a whole, is "Retail Trade, Merchandise Line Sales, West South Central States." It is for sale by the Government Printing Office, Washington, DC, 20402 or by any US Department of Commerce field office. The price of the report is \$2.75 and the entire set is \$24.60.

The table was laid with white organza cloth centered with arrangement of pink and white Mums in cherub footed container, flanked by tall pink tapers. White napkins engraved with "Mary Ann and Larry," in pink, were used. Mrs. Richard Horner and Mrs. Carson Horner, were in charge of displaying the gifts.

Mrs. Norval Wylie made the floral arrangements.

Others in house party were Mrs. Pat Hosch, Mrs. J. L. Bogus, Mrs. Roy West, Mrs. Montie Guthrie, Mrs. Blanche Grantham, Mrs. Roscoe Hosch, Mrs. Glenn McClure, Mrs. Virgil Pridy, Mrs. W. F. Rutherford, and Mrs. H. A. Burden.

Arlen Allens Tell Of New Baby Daughter

Mr. and Mrs. Arlen Allen of Brownwood are announcing the birth of a daughter, Friday, August 13, in a Brownwood hospital. The baby weighed nine pounds and was named Elizabeth Ann.

Grandparents are Mr. and Mrs. Gene Allen of Santa Anna and Mr. and Mrs. Jack Cooper of Rockwood. Mr. and Mrs. Bert Allen of San Saba are great grandparents.

Rockwood WMU Meets On Monday

Mrs. Henry Smith was leader for the Royal Service program when the Woman's Missionary Society met at the Rockwood Baptist Church Monday afternoon. Mrs. Lon Gray was at the piano for group singing. Mrs. A. L. King gave the devotional and read the Prayer Calendar.

Mrs. F. E. McCreary and Mrs. A. L. King will host the social meeting Monday, August 30, at 2:30 p.m. at the Community Center.

A new member, Mrs. Darwin Lovelady, was welcomed. Others present were Mrs. R. J. Deal, Mrs. Henry Smith, Mrs. Lon Gray, Mrs. Evan Wise, Mrs. F. E. McCreary, and Mrs. A. L. King.

Use the News want ads. They get results.

TIRES ARE ALWAYS A BARGAIN at RUDOLPH'S Coleman, Texas

miracle
Pest Control M Termite Control
Division of Miracle Laboratories, Inc.
2415 Vine St.
Termite & Pest Control
Ph. 642-9575
Brownwood, Texas

Protect Against Disease Loss!
Authorized Dealer
FRANKLIN VACCINES and SUPPLIES
for CATTLE, SHEEP HORSES, HOGS and POULTRY
Our Livestock Supply Department is Designed to Serve You - Visit It Today.
Owl Drug Store
312 Commercial Av.
Coleman, Texas

Amateur Rodeo Set For This Weekend

An amateur rodeo will be held at the James Allen arena, on Friday and Saturday, August 27 and 28. The arena is located ten miles northeast of Santa Anna. Take farm to market road 568 out of Coleman, and if going from Santa Anna take farm to market road 1176. The show is scheduled to start at 8:00 p.m.

Admission will be 50c for adults and 25c for children.

Events will include, bare back bronc riding, calf roping, girl barrel races, team tying, wild cow milking and calf riding.

DR. M. O. SOWELL
CHIROPRACTOR
Phone 625-4824
615 Commercial, Coleman



Best Banking In The World

YOUR FRIENDLY
Santa Anna National Bank
Member FDIC and Federal Reserve Bank of Dallas

Want to . . .

- Buy a cow
- Swap a mule
- Sell a house
- Trade off your mother-in-law
- Find a mail order wife
- Get rid of the junk in the attic
- Locate a baby sitter
- Find a baby to sit with
- Hire a hall
- Rent a room
- Sell your house
- Buy somebody else's
- Find a home for a cat
- Sell a service
- Serve a seller
- Find lost articles
- Find a job
- Find an employee

Use Santa Anna News Classifieds
They Get the Job Done!

WILLIAMS FOOD STORE

SWEET POTATOES 3 lbs. 25c	RUSSET POTATOES 10 POUNDS 39c	LETTUCE 9c a head
Register For Free \$5.00 Gift Certificate To Be Given Away!		
ROUND STEAK lb. 79c	Hi-C Drink, 46-oz. 3 for \$1.00	
T-Bone or Loin Steak . . lb. 69c	Morton's Frozen Pies, 3 for \$1.00	
SEVEN STEAK lb. 59c	300 Size Van Camp	
Bacon, Decker's Quality lb. 79c	Pork & Beans 15c	
Hotlinks, Decker's . . . lb. 45c	Tuna, Bit of Sea . . 5 for \$1.00	
Decker's Solid Pack	Hershey Cocoa 8-oz. 35c	
OLEO 2 lbs. 35c		
1-Qt. Gulf Spray 49c	GOLDEN RIPE BANANAS LB. 10c	Como Tissue 4 rolls 25c Fireside Crackers 25c Eagle Brand Milk 39c
Maryland Club Coffee lb. 79c		
Honeycup Mellorine 3 for 89c	1 gallon Marigold Milk 69c	Hi Vi 50 - 26-oz. Dog Food 19c Giant Breeze 69c
		KEY STAMPS DOUBLE STAMPS ON WEDNESDAY

**PUBLISHED EVERY THURSDAY AT SANTA ANNA,
 COLEMAN COUNTY, TEXAS**

AUGUST 26, 1965

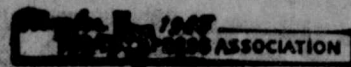
SUBSCRIPTION RATES	
One Year in Coleman County	\$2.50
One Year in Texas (Outside Coleman Co.)	\$4.00
One Year Outside State of Texas	\$5.00
One Year Outside of United States	\$8.00

Second Class Postage Paid at Santa Anna, Texas

DISPLAY ADVERTISING RATES ON REQUEST

STAFF

Bob Parker ————— Editor
 Nora Robinson ——— Advertising Manager
 Ken Minyard ————— Floorman



EDITORIAL

A Salute

The people who make up the Santa Anna Independent School District are to be commended. Recently, the Board of Trustees of the District decided that property evaluations would have to be revised from the valuations of the middle 1930's, on which the District had been operating, to an evaluation consistent with mid-1960 values, if the schools here were to have the funds needed to provide adequate educational opportunities for the young people of the area.

In some communities, such news would have been the sign for weeping, wailing, gnashing of teeth, and general complaining. These people might not take into consideration the fact that school taxes had not been raised in decades, while costs of everything else were skyrocketing; or that their rates might still be lower than those of surrounding districts. They would just complain and raise all kinds of disturbance.

This was not the case here. The people of the Santa Anna Independent School District realized that if they wanted topnotch educations for their children, they would have to pay for it—that the old law that you get what you pay for has not been repealed.

They were aware of the excellent job that Santa Anna Independent School District has been doing, and they want to continue that degree of excellence. And they realize that their District is providing a higher quality with less cost than any school district hereabouts, and that even with a small increase they will still be paying less in school taxes than if they lived in the Coleman or Brownwood districts, for instance.

So the people of the Santa Anna Independent School District deserve a sincere salute—for seeing what had to be done, and doing it.

Six Year Olds And Safety

Monday will be a red letter day in the life of a lot of Santa Anna six year olds. The first day of school is something they have been looking forward to for a long time, the signal that they are at last taking the first step in the long road toward that golden goal of being "grown up."

But they are not grown up, and if they are to reach that exalted status, it will require the care and cooperation of each of us that drives a car. We have to remember that a six year old (and sometimes a sixteen year old, for that matter) is not grown up, they lack the caution acquired with maturity. They often just do not stop and think before acting. And if that action is to dash across the street to greet friends on the way to school, or to run into the street after a wayward football, the results can be disastrous.

It is up to us to think for these new students, to provide the caution that they may lack, to expect the unexpected while driving through the streets of our city, particularly near the schools, or immediately before school begins in the morning, or at noon, or after school in the evening.

Each beginning student is like a blank book in which will be written the story of a life, a story that can possess great potentials. Let's help all of our new students realize the fullness of that potential, by taking the greatest care possible whenever we drive.

Yesterday's News

FIVE YEARS AGO

Ellis Densman was injured Friday of last week when a sign on which he was working at a service station in Santa Anna collapsed, hurling him about 12 feet to the pavement. He was taken to Santa Anna Hospital, then transferred to an Abilene hospital, where he underwent surgery to repair a broken bone in the upper leg.

Page Mays, longtime head of the English department of Santa Anna High School, resigned recently, according to the paper for August 19, 1960.

TEN YEARS AGO

The Coleman County Telephone Cooperative is staking lines in the southern part of the County preparatory to installing new lines to provide dial telephone service. Plans are to eventually convert all phones in the County to the dial system, reports The News August 16, 1955.

Mr. and Mrs. A. D. Donham and Mr. and Mrs. Bill Griffin spent the weekend fishing at Lake Buchanan.

TWENTY YEARS AGO

Mr. and Mrs. W. L. Mills, of Santa Anna, received word from two of their sons this week, according to the paper for August 24, 1945. Lieutenant W. C. (Curry) Mills sent home a captured German flag, measuring six feet by 11 feet, and the Mills' younger son, Eddie Vaughan, writes that he can now reveal what he has been doing with General Electric Corporation. Mills states

that secrecy has been lifted so that he can inform his parents that he has been working on the atomic bomb for the past 16 months.

L. A. Welch has been moving his auto repair facilities to a new location, on Wallis Avenue, and announces he will be open for business this week.

TWENTY FIVE YEARS AGO

A. J. Carter and Sam Nichols, farmers in the Santa Anna area, were killed Wednesday when their car was struck by a freight train at a crossing about two miles west of Santa Anna, notes the paper for August 23, 1940.

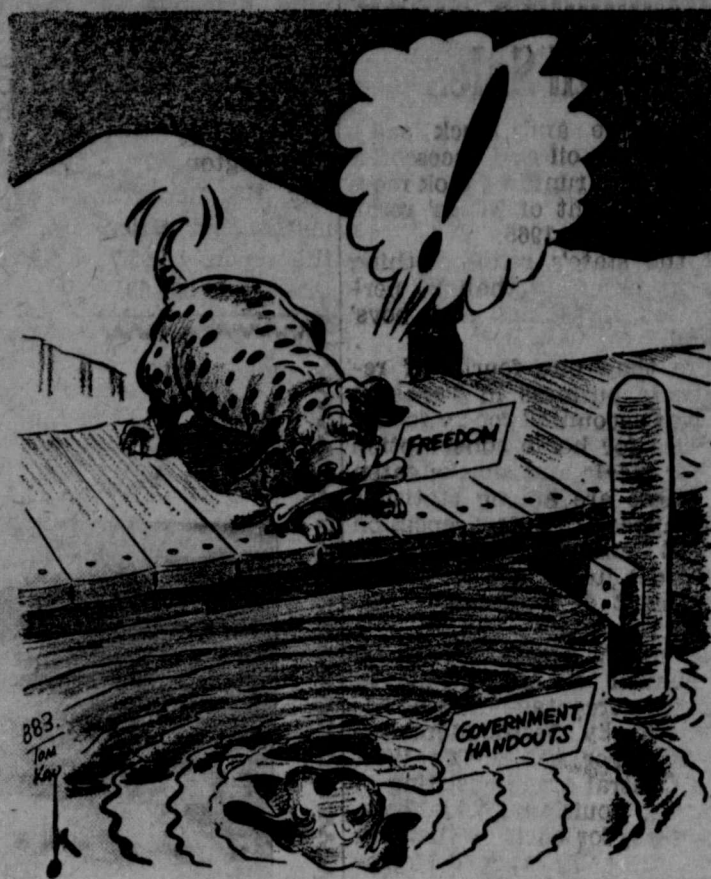
Two new businesses opened in Santa Anna this week. Florence Niell and Mrs. Lucian Niell will operate the Style Shop, carrying a complete line of ladies' ready to wear, clothing and accessories. B. L. Webb will open a general mercantile business in the Hays building.

THIRTY YEARS AGO

The Santa Anna National Guard unit, the Howitzer Company of the 142 Infantry Regiment, returned to the Mountain City Saturday from two weeks of summer camp at Camp Hullin, near Palacios, according to The News for August 23, 1935.

FORTY YEARS AGO

George England pitched the Santa Anna baseball team to a 1-0 victory over Shield, allowing only four hits during the nine innings, reports the paper for August 21, 1925.



"Beware Lest You Lose the Substance by Grasping at the Shadow."—AESOP.

LETTERS

Editor:

I am enclosing a check for the paper for a year. I don't want to miss it. I enjoy especially the happenings of years gone by because that is when I lived there. I also enjoy the present news and am always glad when nice things happen to Santa Anna.

Sincerely,
 Mrs. H. B. Thompson
 (Dorothy Baxter Thompson)

Editor:

Am enclosing a check for renewal of my Santa Anna News.

I noticed in this weeks issue they were expanding the Whon road, which recalled to my mind that my husband, Dr. L. O. Garrett, and E. M. Rainey, and M. J. Norrell circulated the petition to solicit the building of the Whon road from Santa Anna to Whon, many years ago. It was then the only good road in Coleman County.

Mrs. L. O. Garrett



BARGAIN DAY CROWDS

Just after World War II, in the heyday of scarcities, a grocery

Happy Birthday

"Happy Birthday" to all who have birthday during the next week. Below are listed the birthdays we have for this week.

AUGUST 26
 Bobby DeLeon
 Mrs. Robert Smith
 Vicki Smith
 Ralph B. Gregg, San Antonio
 Mildred Jones, Bishop

AUGUST 27
 R. C. Smith

AUGUST 28
 Mrs. Cora Bryan
 Mrs. Pat Hosch
 Mrs. Tommie Sue King
 Charles E. Benge
 Mrs. Jesse Williams
 Bernidine Culpepper
 Mrs. M. D. Bryan
 Kay Haynes
 Marsha LeAnna Anderson, Altus, Oklahoma

AUGUST 29
 Mrs. Morris Wallace
 Jesse E. York
 Gail Robinett
 Danny Ray Williams
 Ruth Poldrack
 David Avants

AUGUST 30
 Morris Wallace
 Mrs. Vernon Herring
 Donnie York
 Danita Reane Poldrack

AUGUST 31
 Fletcher Carter, Midland

SEPTEMBER 1
 John W. Gregg
 Mrs. Theo Kirkpatrick

Would you like your name to be published on your birthday? If so, please be sure to let us know when it is. Next week, we will publish the names of those having birthdays between September 2 and September 8.

store received a shipment of hard-to-get margarine. The manager dropped a carton in a narrow aisle and sang out: "Cleo! Come and get it!"

In the ensuing stampede, a woman shopper was injured. In due course she sued the market, pointing out that the manager should have known—from two previous stampedes—what to expect. And the court granted her substantial damages.

A store does not guarantee each customer absolute protection from the actions of other shoppers. But a store may be held liable if, by its own negligence, it permits a crowd to become dangerous.

In another case, a large crowd jammed the entrance of a department store on the opening day of a sale. The management let only a few shoppers in at a time, allowing the rest to surge impatiently against the glass show windows. There were no guards, no barricades, no warnings of danger.

Finally the glass cracked, and a woman was badly cut. Here, too, a court held the store liable for failing to prevent an accident that it could reasonably have averted.

However, the mere presence of a crowd does not necessarily make the store liable for mishaps. Not only must there be negligence on the part of the management but also there must be a sufficient cause-and-effect connection between the crowding and the injury.

For example:

A woman was seated at the hosiery counter of a department store that was swarming with bargain hunters. Suddenly she was bumped off her chair by another shopper, going past in a hurry. The woman sued the store, but to no avail. The court noted that the injury was not really caused by the crowd at all, but by the recklessness of one particular individual.

Besides, some discomforts must be tolerated as part of the shopping process. As one court put it:

"Crowds are often found in large stores at the time of special sales, and during holiday seasons. They are an unavoidable feature of mercantile life in large cities."

A public service feature of the American Bar Association and the State Bar of Texas. Written by Will Bernard.

Attend church regularly.

Typewriter paper at the Santa Anna News.



According to the Texas Forest Service, the forest regions of Texas embrace 26 1/2 million acres. This is more than the total acreage of the states of New Hampshire, Rhode Island, Vermont and Massachusetts. Accounting for the biggest share of acreage is the pine-hardwood area of East Texas, 12 1/2 million acres. The other 14 million acres of forests include the post oak, east and west cross timbers, cedar breaks, mountain forests of West Texas, coastal forests, and miscellaneous forests in stream bottoms.

State Capitol NEWS

As absentee voting gets under way for the September 7 election on the proposed constitutional amendment to increase size of the Texas Senate from 31 to 39 members, battle lines are drawn.

State AFL-CIO is leading the opposition. It charges that the proposal is a "pig in a poke" offering no grudges as to where the new districts will go.

"Committee for Fair Representation," made up primarily of trade and industrial association representatives, contends that Texans would get "proper representation without jeopardizing the interests of sparsely settled areas" by adding eight new members to the Senate.

Lobby groups acknowledge they favor the plan because increased membership would cut down a senator's work load somewhat and make it easier to communicate with him.

The enlargement amendment, which triggered one of the 59th Legislature's most bruising battles, was intended to take some of the sting out of legislative redistricting by making it possible for most incumbent senators to keep their jobs.

Big city forces are divided, while most rural interests tend to favor a 39-member Senate.

Whether either campaign affects the expected light voter turnout remains to be seen. Most predictions are that the amendment will fail.

CRIME NEWS STUDY

First three members of the Legislature's 11 member "Interim Committee To Study News Media on Proceedings in Criminal and or Civil Courts" have been named by Lieutenant Governor Preston Smith.

They are Senators Dorsey Hardeman of San Angelo, Culp Krueger of El Campo and Bruce Reagan of Corpus Christi. Yet to be named are three members from the House of Representatives, three from the news media and two from the State Bar of Texas.

Panel resulted from controversy over deletion of a provision from the new Code of Criminal Procedure which would have severely restricted pre-trial news coverage. New code takes effect January 1.

Study committee was authorized to take a sharp look at existing coverage.

OIL ALLOWABLE HELD

Texas Railroad Commission set September oil allowable at 28 percent of potential, same as the previous month.

Allowable amounts to more than 2,800,000 barrels a day, 41,000 less than for August. Commission emphasized this level would prepare industry for demands of peak winter months.

On September 1, Commission will set up District 8-A, composed of 21 West Texas counties. They are Bailey, Lamb, Hale, Floyd, Motley, Cottle, Cochran, Hockley, Lubbock, Crosby, Dickens, King, Yoakum, Terry, Lynn, Garza, Kent, Gaines, Dawson, Borden and Scurry.

Commissioners say the new district will promote efficiency in administering oil and gas conservation laws.

SCREWORM BATTLE INTENSIFIED

Federal-state air invasion against the screw worm fly was stepped up during July with the release of 632,000,000 sterile flies over Texas, New Mexico, Arizona, California and 12 Mexican states.

Dr. S. B. Walker, Director of the Texas Animal Health Commission, and Dr. John Wilbur, Veterinarian for the Animal Health Division of US Department of Agriculture, report that 115,800,000 sterile flies were released over Texas where 63 confirmed cases of screw worm were reported. Special "hot spotting" was directed in Texas and northern Mexico river beds.

Largest number of confirmed cases in Texas—25—was in Zavala County. New Mexico confirmed 29 cases; Arizona, 94; California, three; and Mexico, 800, where 438,600,000 sterile flies were released.

LABOR DAY TRAFFIC TOLL PREDICTED

Department of Public Safety estimates 35 will die in traffic accidents in Texas during the three day Labor Day holiday.

Violations of Texas traffic laws will be apparent in nine out of 10 of these accidents, says Colonel Homer Garrison Jr., DPS director.

As part of stepped up efforts to curb the toll, DPS will add 150 men from other uniformed services to supplant its regular Highway Patrol force.

INTERBASIN CANAL FUNDS ASKED

Funds for more planning on the proposed 418 mile interbasin canal along the Texas Gulf Coast from the Sabine River to the Lower Rio Grande

Valley are included in preliminary fiscal 1967 budget plans of US Bureau of Reclamation.

Budget calls for planning of Sinton and Baffin Bay diversion works and study of Lower Rio Grande Valley irrigation costs.

Funds also are sought for study of proposed pumping of water from the canal up the Colorado River and pipelining to West Texas cities.

SHORT SNORTS

Texas Employment Commission reports that a breakdown of 60,328 farm placements made during July showed 41,894 workers placed in cotton farming activities; 10,888 in vegetable harvests; 1,448 in grain; 811 in fruit and nut trees; 487 in livestock work; 2,652 in general field crops; 1,225 in nonseasonal farm work; and 923 in dairy and poultry jobs.

The 1,600 teenagers who attended the third annual Attorney General's Youth Conference on Crime will distribute their findings on causes of juvenile crime and school drop outs to youth and community organizations.

Texas Water Commission set October 25 for hearing on application of North Texas Municipal Water District, Wylie, to triple Lavon Reservoir conservation storage.

Federal water system loans totaling \$24,000,000 have been granted 213 Texas communities and 218 more are seeking loans, according to Senator John Tower.

Texas Hospital Association has received a US grant to conduct research on planning of community health resources for disasters.

Monday saw the last meeting of Board for Texas State Hospitals and Special Schools, now replaced by new State Department of Mental Health.

Texas Railroad Commission hearings are set September 8 on request of National Bus Traffic Association, Inc. for a 10 percent hike in local and interline rates and charter services.

Land Commissioner Jerry Sadler has announced that 531,000 acres will be offered at the third oil and gas lease sale of 1965 on October 5 in the General Land Office.

None of the 8,000 braceros who will be admitted from Mexico to the US between September 1 and October 1 will work in Texas, according to Texas Employment Commission.

Today's MEDITATION from The World's Most Widely Used Devotional Guide



The Upper Room - THE UPPER ROOM, NASHVILLE, TENNESSEE

Read Romans 12:14-21

Blessed are the peacemakers. (Matthew 5:9)

The novelist Dickens and Thackeray were great friends, but once they quarreled so bitterly that they would pass in the street without speaking.

Then one day Mr. Thackeray called on Mr. Dickens' daughter. "It is ridiculous," he said, "that your father and I should be placed in a position of positive enmity towards one another." Thackeray wondered that if he made the approach Dickens would meet him halfway.

"Oh, I can answer for him," said the daughter, joyfully. "Only try him, and you will see."

A day or two later, Thackeray called again. "I met him . . . and held out my hand, saying we had been foolish long enough . . . Your father grasped it very cordially, and we were friends again, thank God!" Only thirteen days later, on Christmas eve, Thackeray, the peacemaker, died unexpectedly.

Jesus came to make peace, to reconcile us to God and to one another. He expects us to do likewise.

PRAYER

O Prince of Peace, who hast given us the ministry of peace, we thank Thee that Thou dost forgive us when we wrong Thee. Make us humble to confess our faults to Thee and to those whom we have wronged, and make us generous in forgiving those who wrong us. Fill our hearts with love that perfects peace. In Thy name. Amen.

THOUGHT FOR THE DAY

A man of peace confesses his faults, forgives his offenders, and harbors no grudges. William G. Slade (New Zealand)

SPORTS

Mountaineers To Meet Rising Star In Scrimmage Game There Thursday

The Santa Anna Mountaineers test their 1965 prospects for the

first time Thursday, August 26, when they travel to Rising Star for a scrimmage session.

The practice sessions will begin at 7:00 p.m. at the Rising Star football field.

The public is invited to attend the scrimmage session, and there will be no admission charge.

Rising Star won its district competition last year, and is expected to win the title again this year.

Attend church regularly

Weah McCulloch, Sec.-Treas.
Bettie McCulloch, Mgr.
Standard Abstract Co.
City & County Maps For Sale
405 Bank Bldg. Coleman

JUST ARRIVED

A Complete New Shipment Of Bags And Shoes.
See These Today

MOORE MERCANTILE

Be sure you are getting a quality roof by a reliable and qualified roofer. You are sure if you have a

15 YEAR BONDED ROOF BY SMITH ROOFING CO.

See Our ad In Your Phone Directory

Call 643-4314 Collect Brownwood Free Estimates

Commercial and Residential Roofing
All Types of Siding and Insulation



PATTERNS FOR PROGRESS IN COMMUNITY DEVELOPMENT



The Industrial Team selling a community to industry

WTU area development representatives are available to assist growth-conscious communities in planning economic development programs

When a community prepares itself to attract new industry, a strong industrial team is essential. Industry representatives want all the facts. And only informed team members can sell a community's story accurately plus solving the industry's problems on a new location.

Team members must be thoroughly and completely informed on labor . . . taxes . . . utilities . . . transportation . . . sites . . . insurance . . . city commitments . . . and financing . . . thus indicating a minimum of seven members on the team.

As a PATTERN FOR PROGRESS a permanent Industrial Team is a definite requirement in a community's economic development program.

WTU's area development representatives have information about the organization and operation of an industrial team. This service is available to growth-conscious communities on request through your local WTU manager.

WEST TEXAS UTILITIES
AN INVESTOR OWNED ELECTRIC COMPANY

Niell Takes Second Place This Week In Bass Class

The catfish division remains calm this week in the Santa Anna Jaycees Fishing Rodeo, but there was quite a bit of action on the bass front again.

Woodrow Neill took over second place in the competition on Sunday, August 22, with an entry of four pounds eight ounces. Clarence Gilbert still leads in this division with his huge six pound 10 ounce fish.

Bobby Morgan was in the top three for exactly one day last week. He brought in a bass weighing four pounds and 10 ounces on Saturday, August 21, which was good enough for third place, displacing Larry Avant's entry, which weighed one ounce less. However, the Neill entry the following day dropped the former secondplace fish, entered by Mrs. Clarence Gilbert, weighing five pounds even, into third place, and bumped the Morgan fish out of the running.

The catfish are apparently taking the month of August off, since there has been no entry in this division since Bill Day's ten pounder took the lead on July 29. John Hensley is in second place, with an eight pound cat, followed by Don Pritchard, with an entry that weighed in at five

pounds 14 ounces.

The fishing competition continues through all of 1965. Entry tickets are still available from all members of the Santa Anna Junior Chamber of Commerce. Entrants must have purchased a ticket prior to catching the fish to be entered. One ticket makes the holder eligible to enter as many fish as he wants in either or both divisions of the contest. Three prizes will be awarded in each division at the end of the year.

Shields News

By MRS. E. S. JONES

Sunday Mr. and Mrs. Mac McCreight of Amarillo visited with Mr. Richard Dillingham.

Visitors for the morning service at the Church of Christ were Mrs. Loyd Taylor, her son, and family, Mr. and Mrs. Jess Taylor and daughters, all of Corpus Christi. The Taylor family, former residents, lived on the John Will Vance place some 30 years ago.

Sunday Mr. and Mrs. Dan Wheatley attended the McCulloch County Singing Convention at Melvin.

Mr. and Mrs. R. A. Milligan and Mr. and Mrs. Aubrey Scarborough, Mrs. John Stewardson, Mary Milligan and Mr. and Mrs. Glenn Scarborough, Sherry and Randy attended the Scarborough family reunion at San Angelo on Sunday.

Visitors during the weekend with the Rastus McClure family were Mr. and Mrs. Gene McClure and children of Abilene, Mr. and Mrs. Joe Peters, Mark and Michele of Plainview, and Rev. David Wigger.

Guests attending the ice cream supper at the Community Center were Mrs. Carl Williams, Mrs. Goen, Mrs. Hardy Blue, Mrs. John Brown and Mrs. Alma McNutt of Santa Anna and Mr. and Mrs. Donald Williams and Gaylon of Winters.

Mr. and Mrs. Gene Bell of Fisk visited Thursday with Mr. and Mrs. G. C. McDonald.

Saturday, Mr. and Mrs. W. T. Stewardson and Mrs. Bessie Stewardson attended the Munn reunion at Lampasas.

Mr. and Mrs. Douglas Milligan took their little granddaughter, Lea Meredith to her home in El Paso on Friday. Lea spent two weeks with them. The Milligans returned Monday.

Glenn Gilbreath of Seminole was home for the weekend and with Mr. and Mrs. Otis Powers, visited Mr. and Mrs. Leonard Williams in Brownwood Saturday evening.

Mr. and Mrs. Dale Shamblin of Fort Worth and Mr. and Mrs. Otis Bivins returned Sunday from a trip to Red River, New Mexico, and points of interest in Colorado.

Saturday and Sunday visitors with the Jesse Williams family were Kenneth Jones of McCamey, Mrs. Jesse Couly of Brownwood, Miss Mabel Williams

of Coleman, Mr. and Mrs. Donald Williams and Gaylon of Winters.

Mrs. Effie Dalton of Gouldbusk and Mrs. Carter Dalton and Lee of Irving visited Wednesday afternoon with Mrs. E. S. Jones.

Attend church regularly.

Use the News want ads. They get results.

I'M SPENDING THE MONEY I SAVED WITH A BANK AUTO LOAN!



Financing your next car with one of our popular bank auto loans will make a lot of sense . . . dollars and cents, saved on the over-all cost! Ask us for simple facts and figures today . . . without obligation, of course!



Coleman County State Bank

Member FDIC

118 West Pecan, Coleman

JUST IN! BRAND NEW 1965 ZENITH COLOR TV



It's Handcrafted for World's Finest Performance

The WARREN Model 5206YU full feature compact table model in Ebony color.

As Low As \$389.95

- ★ All 82 Channel Tuning! ZENITH'S Super Gold Video Guard Tuning System.
- ★ Full Performance Features
- ★ Finest Black and White Picture With ZENITH'S Automatic Color CUT OFF.
- ★ Built To ZENITH'S Highest Quality Standards To Give You The World's Finest Performance.

We Give And Redeem Gold Bond Stamps



J. E. Stevens Co.

111 W. Live Oak St.

REGISTER EVERY DAY FOR FREE DRAWING \$5.00 PRIZE

IT'S A FACT

DRUG TOPICS FEATURE POST 'N TELL



CENTURIES AGO, PEOPLE STRENGTHENED THEIR GUMS BY RUBBING THEM WITH ST. CHARLES ROOT...

... signs of the past

"THE GOOD OLD DAYS?" A physical check-up, made while you're well, can keep you that way! See your doctor. See us for medicines.

Phillips Drug

WE GIVE S.&H. GREEN STAMPS

Hospital Notes

ADMISSIONS

Dutch Campbell, Santa Anna
 Buster Watson, Coleman
 Mrs. J. E. Lowe, Coleman
 Mrs. Henry Sorrells, Santa Anna
 Mrs. R. B. Archer, Santa Anna
 Miss Betty Perkins, Coleman
 Henderson Knight, Coleman
 Ike Wilkins, Coleman
 R. B. Dillard, Cross Plains
 Mrs. Ronald Ratliff, Comanche
 R. B. Watson, Coleman
 Mrs. C. H. Douglas, Coleman
 Alan Wood, Coleman
 Mrs. Mike Ring, Coleman
 Mrs. J. P. Dean, Coleman
 Mrs. Edna Perkins, San Angelo
 Mrs. J. Y. Brannon, Santa Anna
 Mrs. J. B. Lowe, Santa Anna
 Mrs. C. N. Armstrong, Santa Anna
 Mrs. Dora Neff, Coleman
 Mrs. Ike Wilkins, Coleman
 Mrs. Buster Watson, Coleman
 Wayne Jenkins, Coleman
 Vernon Buse, Santa Anna
 Mrs. Blackie Knight, Coleman
 Mrs. W. A. Sutherland, May
 Mrs. Reyes Diaz, Santa Anna
 Charlie Slate, Coleman
 Mrs. Joe Dagley, Coleman
 Mrs. J. D. Slayton, Coleman

DISMISSALS

J. E. Atkins, Gouldbusk
 Albert Reasoner, Coleman
 Mrs. Callie Thompson, Coleman
 Mrs. M. D. Bryan, Rockwood
 Miss Cynthia Parker, Santa Anna
 Clifford Stephenson, Santa Anna
 James Hester, Coleman
 Mrs. Kenneth Minyard & baby, Santa Anna
 Mrs. Bill Hunter, (deceased) Santa Anna
 Dutch Campbell, Santa Anna
 Buster Watson, Coleman
 Mrs. J. E. Lowe, Coleman
 Mrs. Henry Sorrells, Santa Anna
 Mrs. R. B. Archer, Santa Anna
 Miss Betty Perkins, Coleman
 Henderson Knight, Coleman
 Ike Wilkins, Coleman
 R. B. Dillard, Cross Plains
 Mrs. Ronald Ratliff, Comanche
 R. B. Watson, Coleman
 Alan Wood, Coleman
 Mrs. Mike Ring & baby, Coleman
 Mrs. J. B. Lowe, Santa Anna

BIRTHS

A daughter, Elizabeth Gayle, was born to Mr. and Mrs. Mike Ring of 110 Cedar, Coleman, Texas, on August 20, 1965, weighing 7 lbs. 14 1/2 ozs.

Santa Anna JAYCEES
 NO MEETING TONIGHT
 GO JAYCEE GO-TO RISING
 STAR AND BACK THE
 MOUNTAINEERS

Cole-Anna

Drive-In Theatre
 Coleman, Texas

THURSDAY - FRIDAY
 SATURDAY
 AUGUST 26, 27, 28
 Jerry Lewis

The Family Jewels

Raiders From Beneath
 The Sea

SUNDAY - MONDAY
 TUESDAY - WEDNESDAY
 AUGUST 29, 30, 31
 SEPTEMBER 1

John Wayne - Kirk Douglas
 In Harms Way

OAK

Drive-In Theatre
 Coleman, Texas

FRIDAY - SATURDAY
 AUGUST 27, 28

Ferlin Husky - George Jones
 Country Music
 On Broadway

Frank Sinatra- Tatsuya Mishi
 None But The Brave

SUNDAY - MONDAY
 AUGUST 29, 30

Paul Newman - Laurence Harvey
 The Outrage

Suzanne Pleshette
 Youngblood Hawke

PIGGLY WIGGLY

Back To School Again!

NOTE BOOK PAPER 300 sheets **.39**

Imperial Pure Cane

SUGAR 10 lb. **.98**

1-lb. Folger's
COFFEE **.79**

2-lbs. Folger's
COFFEE **1.58**

No. 1 Russett
POTATOES lb. **.06**

8-lb. Russett
POTATOES **.39**

Large Firm Head
LETTUCE **.15**

Fresh Green
CABBAGE lb. **.04**

1/2 Gallon Borden
BUTTERMILK **.39**

8-oz. Kimbell's Imitation
VANILLA FLAVORING **.13**

3-lb. Can
CRISCO **.79**

FROZEN FOODS

12-oz. Coastal Lemonade 25c
 8-oz. Cut Green Beans 19c
 10-oz. Chopped Spinach 19c
 10-oz. Chopped Broccoli 19c
 10-oz. Peas And Carrots 19c

CANTALOUPEs 3 for **25c**

Large Red Meated
WATERMELONS each **39c**

12-oz. Ponds - Free Dispenser
ANGEL SKIN LOTION **.85**

Sirloin
STEAK lb. **.99**

T-Bone
STEAK lb. **.99**

Gooch
CUTLETS lb. **.69**

Borden's Longhorn
CHEESE pkg. **.49**

Shank End
HAMS **.49**

Gooch Rider Sliced
BACON **.59**

Armour's Solid Pack
OLEO 2 lb. **.35**

S.N. GREEN STAMPSAT PIGGLY WIGGLY