

Santa Anna News

One Section — 8 Pages

"He Profits Most Who Serves Best"

Single Copy — 5c

Point Rows

We spent most of Tuesday, January 12, over in Coleman, out at the Coleman County Rodeo Grounds, taking in the annual Countywide Junior Livestock Show.

The person who was apparently most impressed by the operation was Santa Anna's Monte Guthrie, who was representing several local merchants at the auction sale Tuesday afternoon. Monte had commitments from the Santa Anna businesses to buy livestock offered by Santa Anna FFA and 4-H members. But the prices soon became so astronomical that Monte was in a quandary most of the afternoon, and he ended the session with a slight case of shock.

The way this sale works, in case you are not familiar with it, is like this: The FFA and 4-H members may enter one animal in the sale (most of those entered this year were fat lambs, but there were also steers, hogs, and capons). These animals are purchased by civic-minded businesses and individuals in auction, with the purchase price ending up quite a bit higher than the current market price. Then the animal is consigned for sale to a packing house at this lower price, and the business or individual who bid the animal in absorbs the difference. They do this to help encourage the young folks who are spending lots of time and work in developing these animals as part of their 4-H or FFA projects.

We think the businesses and the individual who participates in this program in this way deserve a great big thank you for their willingness to dip into their pockets to help such a worthy program. About all they get for their investment is the satisfaction of helping the 4-H and FFA youngsters.

Despite the excitement generated by the fantastically high prices paid for lambs at the sale (some sold for more than \$1.00 per pound), the highest price per pound sale made all afternoon was overlooked by many. This was the sale of the top prizewinning pen of three capons shown and sold by Dwayne Jonas, whose family has recently moved to Santa Anna from Coleman, for \$40.00. Figure the weight of three chickens and divide that into forty dollars and Dwyane comes out the price-per-pound champ of the sale.

In case you are not familiar with current stock prices, the lambs sold for an average of about 60 cents per pound, while the market value is slightly over 20 cents per pound.

Bob Griffiths, of Radio Station KSTA, Coleman County's idol of the airwaves, was present at the auction, and was pressed into service as a substitute auctioneer. We wonder if there is any significance in the fact that they had Bob auction off the hogs?

Mrs. Cupps called Friday to tell us that her son, Raymond, received 35 cents per pound for his hog in the sale, not 25 cents, as reported in *The News*. We officially apologize for publicly shortchanging Raymond. We never heard of a newspaper being sued for liability for making a mistake in stock prices, but maybe we will be the first.

Last week we carried an item in this spot about the service rendered by the Coleman Police Department in meeting trains and taking disembarking passengers home at night after taxicab service was no longer available. We have been informed that Jim Lovelady performs the same service here in Santa Anna, so Coleman has no monopoly on courteous and considerate minions of the law.

Everyone connected with *The News* extends the deepest sympathy to our Rockwood correspondent, Mrs. John Hunter, on the recent death of her husband. We had the privilege of meeting Mr. Hunter on a few occasions, and he impressed us as a fine gentleman with a fine sense of humor, a combination all too rare these days.

School Census Scheduled By Santa Anna Independent School District

During January of each year, every school district in the state of Texas is required by law to compile a school census list of all children who will be of school age on September 1, 1965.

Matt Moore Added To Staff Of Paper

A new member has been added to the staff of *The Santa Anna News*. He is Matt Moore, who takes the place of Ruth Poldrack as compositor.

Moore, who is a resident of Brownwood, is a longtime printer, having worked on many of the daily and weekly papers in this part of the state. For many years prior to his retirement he owned and operated the Moore Printing Company, in Brownwood.

In commenting on the addition of Moore to the staff, News publisher Bob Parker said: "Mr. Moore is one of the most respected printers in this area, and we are very fortunate to have him working with us on *The News*."

Two Santa Anna Students Graduate From NTSU Soon

Two Santa Anna area students are among 455 seniors who have applied for bachelor's degrees at North Texas State University this semester.

Winter commencement exercises are scheduled for 2 p.m. January 31 in the Main Auditorium.

The local applicants are James K. Harris, of Santa Anna, and Mary Ella Rehm, of Rockwood.

Harris, the son of Mr. and Mrs. James A. Harris, of Santa Anna, is a candidate for the Bachelor of Science degree in Industrial Arts. He is a 1960 graduate of Santa Anna High School.

The daughter of Mr. and Mrs. Tony Rehm, of Rockwood, Miss Rehm is working toward the Bachelor of Science degree in Secondary Education. She graduated from Santa Anna High School in 1961.

County Farm Bureau To Meet Thursday

The Coleman County Farm Bureau will hold its January meeting Thursday, January 21, at 7:00 p.m., in the Recreation Building at the Coleman County Rodeo Grounds.

Each family attending is asked to furnish a vegetable and a meat, or a salad and dessert, for the covered dish supper.

That crochet needle you see in your buddy's tackle box is not a sign he has flipped. He uses it to dig out really bad backlashes. Works great too!

Farmers And Ranchers Can Be Big Help In Gaining Industry For County

Among approximately 99 applicants who registered at the Coleman County Livestock Show were many farmers and stockmen who indicated that they were available for work off the farm or ranch.

On the basis of this information, the Texas Employment Commission is making a special appeal to farmers and stockmen who are interested in maintaining their agricultural interests, but at the same time would like to go to work on a full or part time job, to register at the local Labor Survey Office at 204 East Pecan Street, in Coleman.

The availability of farmers and stockmen to a potential employer, willing to locate in Coleman County, is important. In many instances, production lines in peak periods need ma-

chine operators and tenders, crafts and trades. There are many farmers and stockmen in this area who possess these skills.

To be effective, to be specific, and to be in a position to supply background on past skills, farmers and stockmen are urged to participate in the Coleman County Labor Survey.

The survey office in Coleman is open from 8:00 a.m. to 5:00 p.m., Monday through Friday. Each Tuesday a night session is held from 6:30 p.m. to 9:00 p.m. at the temporary office of the Texas Employment Commission, located in the American Legion Building, 204 East Pecan Street, Coleman.

From 9:00 p.m. to 5:00 p.m. each Monday and Wednesday, in Santa Anna, the office is in the Lions Club Building.

Logs Available

Sorrells Well Makes Gas, Some Oil This Week

Elgean Shield, trustee, set two and seven-eighths inch slim casing in the Henry Sorrells Well number 1 at 1,975 feet during the past week. Sand was located between 1,903 and 1,907 feet. Electric log of the well will be released as soon as possible, Shield said.

In announcing that the log data would be made available to all interested parties in the Santa Anna area, Shield stated that he believes that all the subsurface information about wells in the city of Santa Anna should be made available to all royalty owners in the city. He said that copies of the Henry Sorrells number 1 well may be obtained from North Texas Well Logging Service, Abilene.

Shield said he expects the Sorrell well to make two to three million barrels of gas per day with a few barrels of oil.

Ten Apply Here For Postmaster's Position

Ten persons applied to take the Civil Service examination for the position of Postmaster of the Santa Anna Post Office.

The position is currently held by John C. Gregg, one of the examination applicants, who is serving as Acting Postmaster.

All candidates for the postmastership must take the Civil Service examination. The Civil Service Commission then grades

the examination, ranking the applicants in the order in which they scored on the test. The Commission then certifies the top three examinees to the Post Office Department as being eligible for the position, and selection for the final and permanent appointment is made from these three applicants.

In addition to the Civil Service examination, the three high-scoring applicants must pass loyalty and character checks conducted by the FBI.

Those applying for examination for the Santa Anna Postmaster job are:

Alton M. Bengel, of Santa Anna, an employee of the Santa Anna Tile Company; Albert F. Brown, former minister of the Northside Church of Christ, Santa Anna, and presently minister of the Central Church of Christ, in Greenville; Jackie P.

Dillingham, recent graduate of Howard Payne College, presently residing in Brownwood, where he is employed with a farm implement firm; John R. Dillingham, holder of a doctorate degree, a schoolteacher who also manages his mother's farm near Santa Anna; Duane T. Granad, formerly employed by the Santa Anna Silica Sand Company; John C. Gregg, present Acting Postmaster, former publisher and editor of *The Santa Anna News*; Raymond H. Lightfoot, Santa Anna resident employed in Brady; Jake McCreary, recently moved from Coleman to Santa Anna, former Texaco distributor for this area, now farming near Rockwood; Robert T. Smith, former superintendent for the Santa Anna Silica Sand Company; and Sidney A. Wheat, a farmer residing on Route 1, Santa Anna.

The written test has been tentatively scheduled for Saturday, January 23. All applicants will be notified of the exact time and location of the examination, which will be administered in Brownwood.

The Santa Anna Post Office is a second class post office, and the Postmaster receives a salary of \$6,650 per year, at PFS Level 8.

The permanent postmastership in Santa Anna has been open since the death of J. Lee Strother, Jr., March 13, 1964. John C. Gregg was appointed Acting Postmaster April 17, 1964.

New Premier Gas Station To Open Here Next Week

A. A. Wells, who operates a Premier Service Station in Bangs, has leased the new station just completed at the corner of Wallis Avenue and North Fourth Street, in Santa Anna.

The new station, which will also handle Premier products, was built by Preston Bailey of Santa Anna. It is located at the former site of the Bailey Lumber Company.

Wells announced that M. R. (Bud) Simmons would manage the Santa Anna station. Wells will continue to operate the station in Bangs.

In addition to gasoline and other petroleum products, the new station will handle a line of small accessories, tires, batteries, and will offer complete washing, polishing, and lubrication services, Wells said.

Present plans call for the station to be open on Monday, January 25. Wells reported that a grand opening would be held later.

Water Control District Election Set For Saturday

Coleman County Water Control and Improvement District number 1 will hold the annual election of directors on Saturday, January 23.

Polling place will be the Office Building and Community House in Trickham. Polls will be open from 8:00 a.m. to 7:00 p.m., with Bond Featherston serving as election judge.

Candidates for the three openings on the five-man board are Casey Herring, Wiley McClatchey, and Rankin McIver, all incumbents. Three directors are elected in alternate years, with two being elected in the intervening years.

E. R. Cupps, president of the board of directors, told *The News* that the board had considered phasing the District out of existence this year, since most of its work has been completed, but due to a few drainage facilities still needing construction, the board decided to continue operation for at least one more year.

You Can Work, Get Social Security, Too

"You don't have to retire completely to get Social Security benefits," Wayne Baker, Social Security claims representative for Santa Anna, said today.

"If you earn \$1,200 or less in a year, you are considered to be completely retired and would be entitled to all your benefits," he said.

If you earn over \$1,200 in a year, you may be considered partly retired and entitled to part of your Social Security benefits. For example, a worker would have only one dollar in benefits withheld for every two dollars earned between \$1,200 and \$1,700. For earnings over \$1,700 annually, one dollar in benefits is withheld for each dollar of earnings.

Boy Scouts Set Regular Meeting

Troop 30, Boy Scouts of America, will hold its regular meeting on Thursday, January 21, in the Santa Anna Lions Club Building.

Additional plans will be made for the two-day camp scheduled for the second weekend in February. Patrols, which were organized last week, will be officially named and patrol and troop officers will be installed.

All boys between the ages of 11 and 18 are invited to attend the 7:30 p.m. meeting.



PUTTING ON THE DOG, Williamson's Sullmo Rocky, on the table, new resident of Santa Anna, is pictured as he wins title in a show held last year in Missouri. Holding Rocky is Thomas Doughty, from whom Santa Anna's Rio Poco Kennels purchased the beagle recently. Holding trophies are the judge and the show supervisor.

Blueblood Beagle Added To Local Kennels' Mutt Menagerie This Week

An outstanding registered beagle with very outstanding ancestors has become a resident of Santa Anna. Bob Parker, owner of Rio Poco Kennels, announced this week the purchase of Williamson's Sullmo Rocky, an outstanding show beagle, from Thomas Doughty of Cape Girardeau, Missouri.

The new Rio Poco beagle arrived by air express Friday night to join the other top show beagles in the Santa Anna kennels.

Rocky, as he is known to his friends, has only been shown

twice, being picked as the best male beagle entered both times, winning three of the 15 points required for his championship. He is the grandson of International Champion Thornridge Wrinkles, considered by most experts to be the greatest show beagle of all time.

Rocky was purchased by Parker in partnership with Royce Pugh, of the Conejo Beagle Kennels, Corpus Christi. He will be shown at a non-point show in San Angelo Sunday, January 24, and in a point show in Abilene, Sunday, January 31.

Local Legislator Named State House Speaker, Works To Organize Session

Representative Ben Barnes, State Representative of Coleman, Brown, Comanche, and Runnels Counties, seems to have quickly familiarized himself with the important but difficult role of House Speaker.

The same energy and drive that propelled him into one of the state's top jobs at the age of 26 are still readily evident as the new Speaker moves into his new assignment.

For example, the job of organizing the House into committees was supposed to take at least three weeks. But by almost round-the-clock consultations with House members, it now appears Speaker Barnes will cut that estimate in half.

Already the House has completed such time consuming but necessary chores as hiring secretaries and research help; establishing individual offices for each member (this is the first session that all members have had separate offices); drawing for the order in which bills may be introduced; and canvassing the votes of the 1964 elections.

Members are now working on new legislation — the first of some 1,500 bills which are expected to be considered this session are already introduced.

The House under Speaker Barnes must face such major issues as redistricting, improvement of higher education, determination of a state budget for the coming two years, evaluation of a public teacher pay raise, furtherance of the Texas tourism program, and new emphasis by the State to attract new industry.

While Representative Barnes has occupied himself with the whirlwind of activity that surrounds the Speakership (he had to cancel plans to attend the Washington inaugural of President Johnson), Mrs. Martha Barnes has assumed major responsibility for moving the family into the Speaker's apartment in the State Capitol Building. The apartment is located immediately behind the House chamber and adjacent

to the Speaker's office. The Speaker is provided living quarters in the Capitol in order that he be available for his almost round-the-clock responsibilities and still have some time with his family.

Despite the pressure of official state appearances, complex problems of House organization, and difficulty of moving a family household, capitol commentators continue to refer to Speaker Barnes as affable, effective and energetic.

Spring Semester Registration Set At Howard Payne

Howard Payne College will hold registration for its spring semester, January 25 through 27, following a week of final examinations closing out the fall semester.

All students planning to enroll for the spring semester who did not attend Howard Payne this fall, must report to the campus at 8:30 a.m. Monday, January 25, for orientation and advisory sessions, said Mrs. B. O. Herring, registrar. These new students will then register at 2:30 p.m., Wednesday, January 27.

Students re-enrolling after the fall semester will register at 8:30 p.m. Tuesday and Wednesday in Walker Memorial Library. They will have completed some pre-registration procedures during the next two weeks.

Fire Damages Home Of Former Residents

The home of Mr. and Mrs. Daniel Gilbert, of Kimbell, Nebraska, was damaged recently by fire. The blaze occurred in the kitchen where a workman was installing a counter top and the adhesive compound used apparently broke into flames, possibly from a nearby gas range. The workman was burned on the hands, but was not seriously injured. Mrs. Gilbert and the children were home, but were outside when the fire occurred. Mr. and Mrs. Gilbert are former residents of Santa Anna, Gilbert's parents are Mr. and Mrs. Clarence Gilbert, and Mrs. Gilbert's parents are Mr. and Mrs. Doug Moore, all of Santa Anna.

The lighthouse at Oak Island, North Carolina has a brightness of 14,000,000 candle-power.

Notice of Annual Meeting of Santa Anna Cemetery Association

Time: January 28th, 1965, 7:00 p. m.

Place: Home of Mrs. W. E. Griffin, Santa Anna, Texas.

Projects accomplished this year:

1. Graveled two streets.
2. Curbed 150/40 lot.
3. Purchased lawn mower, blade and bucket for tractor.
4. Five members bought perpetual care.

Won't you consider perpetual care?

Fire Ladies Meet For First Time Here

The Ladies' Auxillary of the Santa Anna Volunteer Fire Department met for the first time, Monday, January 18, at the Fire Station. Mrs. Raymond Gary was elected president, Mrs. W. B. Griffin, vice president; Mrs. Richard Horner, secretary-treasurer; Mrs. Jerry Clark, reporter-historian, and Mrs. Lee Ray Huggins, chaplin. There were eleven members present.

It was decided to have a meeting every third Monday night.

Refreshments were served to the members and firemen.

Rockwood News

By MRS. JOHN C. HUNTER

Edward L. Epps, 57, died of a heart attack, at Hinkley, California, Monday, January 11.

Epps, son of the late Mr. and Mrs. M. L. Epps, was born at Rockwood, July 11, 1908. He moved to Waco with his parents in 1918, to California in 1929, and to Hinkley in 1941, where he was a building contractor. Survivors include the wife and one daughter; two brothers, Harry J. Epps of Corpus Christi, and Guy Epps of Rockport.

Mr. and Mrs. Richard Flores have returned to their home at Buena Park, California, after visiting their son Doyle and family in Denver Colorado, and here in Santa Anna with Mrs. Sam McCrary, they also visited in Bangs with her parents, Mr. and Mrs. G. W. Welch.



So That's Where They Were After The Old Church Belfry Blew Down . . .

Looks like this car hadn't been looked into for a long, long time. Which was good for the bats, but bad for the car. Best way to keep your car at peak performance is let us check it frequently.

We Give S.&H. Green Stamps

Burden Mobil Station

510 Wallis Ave.

Phone FI 8-3191

TOMLINSON

BOOT AND SADDLE SHOP

Boot Making

Shoe Repairing

Saddle Making

Saddle Repairs

In Our New Location

217 Commercial

Coleman, Texas

TIRES ARE ALWAYS A BARGAIN at RUDOLPH'S Coleman, Texas

LARGE STOCK

Of Tail Pipes and Mufflers for Ford, Chevrolet and Chrysler Products Installed at Reasonable Prices.

COMPLETE IGNITION SERVICE

All General Automotive Repairs Performed on All Makes of Automobiles.

Mathews Garage

L. K. WARDLOW, Manager
MARY FIELD (Mathews) DARR, Owner

BEST

Steaks

IN COLEMAN

COUNTY

CLIFF & RUTH GRILL

Orders To Go

BROWNWOOD HIWAY

FI8-9150

You Can BANK On Friendly Service From

YOUR FRIENDLY

Santa Anna National Bank

Member FDIC and Federal Reserve Bank of Dallas

Test Drive The NEWEST FORDS In 16 Years, And See Why This Is THE BEST YEAR YET To Go Ford. Go By Today And See For Yourself At

Berry's Ford Sales

415 COMMERCIAL

Phone 625-2163

COLEMAN, TEXAS

Whon News

By MRS. TOM RUTHERFORD

Our sympathy is extended to the bereaved neighboring community and to Mrs. John Hunter over the death of Mr. John Hunter. Mrs. Hunter is the Rockwood correspondent. Memorial services were conducted Friday afternoon at the Rockwood Cemetery. Several from our community attended memorial services.

Mr. and Mrs. Hilary Rutherford and children, Rocky and Dena, and Mr. and Mrs. Loyd Rutherford of Coleman, were Sunday dinner guests with their parents, Mr. and Mrs. Tom Rutherford and Lynda.

Mr. and Mrs. Douglas Avants of Brady brought their son, Doug Junior, to his grandparents, Mr. and Mrs. Aaron Avants Sunday, and he spent Monday here while his parents, Mr. and Mrs. Douglas Avants, attended funeral for an uncle, Mr. Ralph Steward, in Athens, Texas Monday afternoon. Mr. Ralph Steward was a brother of Mr. John X. Steward of Rockwood. Our sympathy goes to the bereaved relatives.

Mr. Oscar Lovelady spent Saturday and Sunday night with Guy and Alta Lovelady in Santa Anna.

Congratulations to Mr. and Mrs. Randy Brown of Santa Anna over the birth of a son January 14th. Grandparents are Mr. and Mrs. Cleburn Stanley of our community and Mr. and Mrs. William Brown of Santa Anna.

Mrs. Thomas Switzer and baby son visited with Mrs. Darwin Lovelady Monday afternoon.

Mr. and Mrs. Floyd Morris and Jamie Lee were guests of their son and brother, Mr. and Mrs. Joe Floyd Morris in Brownwood Sunday. They were joined there by another son, Mr. and Mrs. John David Morris of Coleman. Ronnie Switzer spent Sunday visiting with Randel Lovelady.

Cheryl Fitzpatrick and a girl friend of Abilene spent the week end with Cheryl's parents, Mr. and Mrs. Greham Fitzpatrick, Don and Nell.

Lynda Rutherford spent Sunday night with Mr. and Mrs. Loyd Rutherford in Coleman.

Mrs. Darwin Lovelady visited with Mrs. Floyd Morris Thursday afternoon.

We are sorry to report the se-

rious illness of Mr. Gus Fiveash in San Angelo. Our latest reports are he has been dismissed from the hospital but remains in serious condition, following a stroke. Mr. Fiveash is a former long time resident of the Whon community, operating a grocery store here several years.

Mr. and Mrs. Tom Rutherford visited with Mr. and Mrs. Henry Smith Sunday night. Glad to report Henry improving wonderfully following surgery in Medical Arts Hospital in Brownwood.

Mrs. Aaron Avant reports her sister, Mr. and Mrs. Bean Radle of Santa Anna made a trip to Tulsa, Oklahoma, this week end. Their son, Mr. Billie Radle, had back surgery in a Tulsa, Okla., hospital Friday. Last reports were Billie stood surgery fine and doctors think the operation was a success.

Ronnie Lowery of Santa Anna spent Friday night with Neil Fitzpatrick.

Shields News

By MRS. E. S. JONES

Twenty-two young people of West Hill Church of Christ, San Angelo, came Sunday afternoon for a sing-song at the Church of Christ from 5 to 6 o'clock, then attended the evening church service, and were served supper at the community center at 7 o'clock.

Mr. and Mrs. R. I. Evans and son, Hal, of Stephenville, were guests of Mr. and Mrs. Edgar Shelton on Sunday.

Several families of our community attended funeral services for Mr. John Hunter at Rockwood Friday afternoon.

Mr. and Mrs. C. A. Scarborough spent the week end in Enid, Oklahoma, with the Charles Scarborough family.

Rev. Sidney Baskins and Rev. David Wigger of Fort Worth, spent Sunday with Mr. and Mrs. George Stewardson. Rev. Baskin was speaker for the evening service at the Baptist Church.

Friday, Mr. and Mrs. James Hafner, and Jimmie were supper guests with Mr. and Mrs. Glen Scarborough and children.

Mrs. Jim Skelton and Mrs. E. S. Jones visited Friday in Santa Anna with patients in the hospital and with several friends.

Mr. W. O. Brehm's mother, Mrs. Willie Brehm, passed away Sunday in a San Angelo hospital. Funeral services were in San Angelo Tuesday, with burial in Coleman Cemetery, with graveside rites.

Mrs. Glen Scarborough's father, Mr. Manton Jamison, died suddenly Monday in San Angelo. Funeral services were held Tuesday at Leaday with burial

in Hill Cemetery. Our community offers sincere sympathy to each of these families.

Cleveland News

By Mrs. Sid Blanton

Mr. Ray Taylor was a visitor from New Mexico at the Church of Christ Sunday morning. Tommy Blanton read the lesson, which was the 11th chapter of Acts.

Mrs. Nora Blanton and Mr. Elmer Cupps attended a 42 party in the home of Mrs. Gladys Day in Santa Anna on Thursday night. Others attending besides those mentioned were Mrs. Etta Hall of Snyder, and Mr. Cleburne Riley.

Mrs. Etta Mae Hall, of Snyder spent the past week with Mrs. Nora Blanton.

Sp/4 Jimmy Hendrix of Fort Sam Houston at San Antonio, spent the week end here with his parents, Mr. and Mrs. R. V. Cupps.

Mr. and Mrs. Danny Bryan of Abilene, and Mrs. Ben Herring of Bangs Rest Home visited Sunday with the Casey Herring family.

Mr. and Mrs. Elgean Gilliam and Dale, of Abilene, spent Sunday night with Mrs. Jewell Powers.

Mr. and Mrs. John Howard visited in Brownwood Sunday with Mr. and Mrs. George Etheridge.

Billy Don Cupps, son of Mr. and Mrs. R. W. Cupps, was awarded the Medallion furnished by the Texas Sheep and Goat Raisers Association from A&M University of Texas. This award was for champion Fine Wool Breeding Sheep exhibitor of each county show.

Mr. and Mrs. C. T. Moore called on Mrs. Maggie Culver, Mr. and Mrs. Benjy Allison, Mr. and Mrs. Melvin Pollock, Traci and Theron. Melvin left for Mineral Wells where he will be a helicopter instructor.

Mr. and Mrs. R. W. Cupps attended a CB meeting in Brownwood on Saturday night.

Mr. and Mrs. Browne Brooke, Susan and a girl friend from Brownwood, visited in the R. W. Cupps home on Sunday afternoon.

Mr. and Mrs. Dick Baugh attended Mr. Hunter's funeral in Rockwood last week.

Mr. John Baugh visited with the Dick Baugh family part of last week. Mrs. Mae Flores of Bangs was a Sunday guest.

Trickham News

By Mrs. J. E. York
Telephone DU2-3336

Mr. and Mrs. Kenneth Haynes of Austin were recent visitors of his parents, Mr. and Mrs. Clyde Haynes.

Mr. and Mrs. O. T. Stacy and Jamie, of Abilene, spent Friday with his parents, Mr. and Mrs. Walter Stacy.

Mr. and Mrs. Wiley McClatchy were Sunday dinner guests of Mr. Rankin McIver and Mrs. Meek.

Mr. and Mrs. Grady McIver spent the week end with their children, the Doayne McIver family at Mansfield and Rev. and Mrs. Bruce Hornell at Alvarado.

Sherril James and a girl friend, Sharon Dye, of Graham, students of Ranger Junior College, spent Friday night with Mr. and Mrs. Eugene James and Stanley.

Mr. and Mrs. Hilburn Henderson visited Mr. and Mrs. J. E. York Sunday afternoon.

Mr. and Mrs. Richard Flores of Alameda, California, visited Mr. and Mrs. Willie McClatchy Thursday.

Mrs. Mary Boenicke and Mrs. Minnie Wilson visited Sunday afternoon with Mrs. Carrie Stacy and Mrs. Nan Vaughn.

Billy Don Haynes of Ranger College, spent the week end at home with his parents, Mr. and Mrs. Fred Haynes. Donnie York

INSURANCE
Life, Hospital, Accident
and Sickness
Phone 625-2540
Santa Anna Cut-off
STANLEY BLACKWELL



Sign of Happy
Motoring
Complete One-
Stop Service

CRUSHED OR
BLOCK ICE

Horner Humble
Service Station

WE GIVE S.&H.
GREEN STAMPS

and Stanley James were Sunday dinner guests. Mr. and Mrs. Jim Lineberry of Midland were afternoon visitors. Mr. and Mrs. O. R. Boenicke were Wednesday night visitors with Mr. and Mrs. Marvin Whitteley.

Light Wrecker Service

24 Hours a Day

WALLACE COLLINS, Jr., GARAGE
Guaranteed Used Cars

PRESCRIPTIONS Owl Drug Store

"Where Friends Meet"

Telephone 625-4514

312 Commercial Ave.

Coleman

Ranger Park Inn

Nursing Home Division
Of
Santa Anna Medical
Center

Opening in January

24 Hour Nursing Service
Registered Nurse Supervisor

State Licensed

Male and Female Patients

Special Diets Prepared

Bed and Ambulatory Patients

Private and Semiprivate Rooms

Physicians on 24 Hour Call

Phone FI8-3121

Buick Special V-6 goes easy on gas.

Its low price
goes hard on your resistance.



We put 6 big reasons to buy a Buick Special under the hood. And another small one on the price tag. The six are a set of the liveliest, thriftiest cylinders that ever zipped you merrily on your way. They're all arranged in neat, smooth V-fashion. They add up to 225 cubic inches and 155 horsepower, and make other arrangements of 6 cylinders seem primitive. That's not all. Special sports Buick comfort, Buick style and traditional Buick quality. The price tag? We saved the best for last.

\$2343.00

Manufacturer's suggested retail price for Special V-6 2-dr. coupé. Price includes Federal Excise Tax and suggested dealer delivery and handling charge (transportation charges, accessories, other optional equipment, state and local taxes additional).

Wouldn't you really rather go first class?

See your local authorized Buick dealer

BUICK MOTOR DIVISION

TUNE IN "LOWELL THOMAS AND THE NEWS"—CBS RADIO

Weah McCulloch, Sec.-Treas.
Bettie McCulloch, Mgr.

Standard
Abstract Co.

City & County Maps For Sale
405 Bank Bldg. Coleman

Kenneth Wise Steak House

Formerly Ranch House

Open 6 a. m. to 12 p. m. Daily

Charcoal Steaks

Lots of Parking

407 Fisk (Across from City Hall)

Brownwood, Texas

OPEN THURSDAY
FRIDAY & SATURDAY
7:30 to 9:30 p.m.
SUNDAY — 2 to 4 p.m.
For Private Parties
Call 625-5564

Free Skate on Your Birthday
THOMPSON ROLLER RINK
Old Air Port Road
Coleman, Texas



Double Top
Value Stamps
Every Wednesday
With \$3.00
Purchase or
More.

Brown's Grocery

MEMBER INDEPENDENT GROCERS, INC.

Prices Good Through Saturday, January 23rd

FRESH AND LEAN
HAMBURGER lb. 35c

RATH — MULBERRY
BACON lb. 29c

GANDY'S — 1/2 GAL.
Mellorine 3 for \$1.00

DOTTIES
BISCUITS 10 cans 75c

HUNTS LARGE NO. 2 1/2 CAN
PEACHES 3 for 79c

HUNTS 20 OZ.
CATSUP 3 for 79c

IMPERIAL
SUGAR 10 lb. bag 95c

FOLGER'S
COFFEE 1 lb. can 79c

FRESH
CABBAGE lb. 5c

5 LB. BAG
ORANGES 49c

5 LB. BAG
GRAPEFRUIT 39c

REGULAR
TIDE 35c

Home Baked Pies By Mrs. Tom Rushing

CLASSIFIED ADVERTISING

CLASSIFIED ADVERTISING RATES

First Insertion — Per Word 4c
 Each Additional Insertion — Per Word 2c
MINIMUM CHARGE — 50c PER WEEK
COPY DEADLINE — 10:00 A. M. WEDNESDAYS

FOR SALE OR TRADE

FOR SALE: Good used refrigerators, automatic washers, wringer washers, clothes dryers and gas cook stoves. Terms to suit YOU. Geo. D. Rhone Co., Coleman, Texas. 48tfc.

FOR SALE: Used Furniture and Antiques. W. M. Morgan, 602 South Houston, phone FI8-3802.

FOR SALE: Several used TVs in good condition. Geo. D. Rhone Co., Coleman, Texas. 48tfc.

FOR SALE: 1958 Chevrolet, four door, six cylinder, standard shift. Must sell. Will sacrifice at wholesale. C. R. Owen. FI8-3375.

320 acres with 3 gas wells, 1 oil well. One half minerals. 125

acres in cultivation.
 348 acres, 150 cultivated, close in. A good deal.
 242 acres, 132 cultivated. Nice home with all conveniences. Gas and water. Located close in. Also some nice lots.
 M. L. (RAT) GUTHRIE 1tfc.

FOR SALE: 1000 automobile stickers that must be attached by April 15. Have you gotten yours? L. A. Welca Garage 2-3-4-5-c

WANTED—TO BUY

WANTED: All kinds of sacks, burlap or cotton feed bags. Top market prices. Coleman Bag & Burlap Co., phone FI8-3604, Santa Anna. 4tfc

FOR RENT

FOR RENT: Four rooms and bath on Ave. B. Call J. R. Haynes, FI8-3839.

FOR LEASE: 368 acres eight miles south of Santa Anna on Whon Highway. Call or write P. H. Pettyway, 521 ix, Tyler, Texas; Telephone LYric 4-4578. 3c

SPECIAL NOTICES

REGISTERED SHETLAND Stud ready for service. Arthur Talley, Phone FI8-3130 or FI8-3354. 40tfc.

LODGE MEETING Mountain Lodge No. 661 AF&AM will meet on **Third Thursday** each month at 7:30 p. m. Visitors are welcome. James D. Rice, W.M., D. H. Moore, Sec.

MISCELLANEOUS

IF YOU ARE thinking about improving your home ask us for free estimates on the following: Insulation to make your home easier to heat and cool; all types of siding including the new plastic, insulated, asbestos and aluminum in lovely colors and quality roofing to top it all. Call MI5-8596 Collect. Smith Roofing Company, Brown-Wood. 51tfc.

WHEN YOU THINK of grinding, mixing and pelleting, think of Hollingsworth Feed Mill, Coleman, Texas 50tfc.

UPHOLSTERING Shirley Upholstering Co. 1504 North Nueces, Coleman

For that **SPECIAL ONE IN YOUR LIFE** give a box of **RUSSELL STOVER CANDY**. Phillips Drug. Phone FI8-3791.

LOST AND FOUND

FOUND: Strayed calf on my place. Call or see Grady McIver. 2tfc

CARD OF THANKS

Our deepest appreciation to all of our friends for the many kindnesses during the illness and death of our loved one. May God bless each one.
 Mrs. John Hunter and Family

Taxpayers Reminded: Returns Are Soon Due

The new Form 1040 for 1964 will be mailed out about January 1. The new form has been completely revised. Page 1 of the 1040 looks about the same although there are several changes, but page 2 has one column for the itemized deductions, and on the left side of the page is a column for listing the income. Internal Revenue hopes to cut down on the number of pages most taxpayers will have to file. Good free advice is to read those instructions just like your dollars depended on it — they do.

Attend church regularly.



IT'S A FACT



VENUS ADO, RURAL ALABAMA'S TREATED STOMACH TROUBLE BY GULPING A GLASSFUL OF WATER CONTAINING POWDERED, CHARRED STRAWS OF THE BROOM SAGE...

...signs of the past

"THE GOOD OLD DAYS?" A physical check-up, made while you're well, can keep you that way! See your doctor. See us for medicines.

Phillips Drug

WE GIVE S.&H. GREEN STAMPS

Local Girl Picked As Outstanding Homemaker In Scholarship Competition

Barbara L. Baucom has been named Santa Anna High School's 1965 Betty Crocker Homemaker of Tomorrow. She scored highest in a written homemaker examination taken by senior girls December 1, and is now eligible for state and national honors.

Test papers of all school Homemakers of Tomorrow in the state are currently being judged. The state's highest ranking girl will receive a \$1,500 scholarship from General Mills, sponsor of the annual Betty Crocker search for the American Homemaker of Tomorrow, with the state runnerup to be awarded a \$500 educational grant. In addition, the school of the State Homemaker of Tomorrow will receive a complete set of the Encyclopedia Britannica.

PTA Scholarship Program For Teachers Told

Ten scholarships will be offered in 1965 by the Texas Congress of Parents and Teachers in its program of summer study for career teachers, Mrs. W. J. Danforth of Fort Worth, state president, has announced.

The recipients of each scholarship will receive a grant of \$400 for study next summer in a college or university of the teacher's own choice, Mrs. Danforth said. Recipients will agree to take a minimum of six semester hours in departments which can contribute to the improvement of proficiency in their teaching fields; they also will agree either to teach in Texas the following year or to return the amount of the scholarship.

Last year, eight \$400 summer scholarships were offered by the Texas Congress of PTA to career teachers; there were 487 applicants. The growth of the Congress's endowment fund made it possible for the Board of Managers to increase to ten the number of scholarships offered in 1965, Mrs. Danforth said. She added that the Board's action was in response to "the overwhelming evidence of need" for the program.

First newsreel showed arrival of delegates to a French national photographers convention in 1895.

Later this spring, the State Homemaker of Tomorrow, together with a school advisor, will join first place winners and advisors from each of the 50 other states and the District of Columbia in a tour of colonial Williamsburg, Virginia, Washington, D. C., and New York City. Climax of the week long tour will be the naming of the Betty Crocker All-American Homemaker of Tomorrow. To be chosen on the basis of original test score and personal observation and interviews during the tour, she will receive an increase in her scholarship to \$5,000. Second, third and fourth place winners in the nation will have their grants raised to \$4,000, \$3,000 and \$2,000, respectively.

The Betty Crocker search for the American Homemaker of Tomorrow was initiated by General Mills in 1954 to emphasize the importance of homemaking as a career. Including this year's record enrollment of more than half a million senior girls in more than 14,000 high schools, the total number of participants during the program's 11 year history stands at four million. Scholarship grant exceed \$1 million.

CIVIL DEFENSE APPROVED FALLOUT SHELTER

\$5.00 up

No Charge for Children Under 18
 24-Hour Coffee Shop
 Radio-Television
 Completely Air Conditioned
FREE INSIDE PARKING

HOTEL Southland
 Commerce-Murphy-Main Streets
 Telephone: Riverside 2-6431
 Dallas, Texas

Well's Premier Service Station

OPENING SOON

At The Corner Of Wallis Avenue And Fourth Street

We will feature that Good Premier Gasoline at prices that will Save You Money!



Enjoy Dependable Service, Quality Products, and the Bonus of Frontier Stamps

We will carry a full line of automotive supplies. Specialize in good Washing and Lubricating; also Fix your Flats.

Signs Of Quality



R. T. Caperton Chevrolet-Cadillac

1400 Commercial Ave. — Phone 625-4145 — Coleman, Texas

SPECIALS

FRESH LEAN PORK CHOPS	lb. 49c
Fresh BACKBONE	lb. 29c
Fresh PORK LIVER	lb. 15c
GOOCH'S THICK SLICED BACON	2 lbs. 98c
GOOCH'S ALL MEAT WEINERS	lb. 49c
GOLDEN — SOLID OR STICK OLEO	2 for 33c
EL FOOD PRESERVES	3 Jars 98c
3 LB. CAN SNOWDRIFT	Reg. Size 69c
IMPERIAL SUGAR	10 lb. Bag 98c
TIDE	King Size \$1.19

HOME MADE PIES BY MRS. TOM RUSHING

Harvey's Grocery

MEMBER INDEPENDENT GROCERS, INC. PHONE FI8-3632

SOCIAL NOTES

Garden Club Meeting Features Talk On Foliage Plants, Color Slide Showing

The Mountain City Garden Club met Friday, January 15, in the home of Mrs. W. B. Griffin. The program was about the care of foliage plants. Color slides of New Mexico and Colorado were shown by Mrs. Arthur Casey and Mrs. Beatrice Garrett.

Mrs. Rex Golston had the arrangement for the meeting, and Mrs. Elton McDonald brought the horticulture specimen, an African violet.

Others attending the session included Mrs. Alma McNutt, Mrs. Lola Stephens, Mrs. C. M. Moseley, Mrs. A. C. Sparks, Mrs. C. L. Eeds, Mrs. John Murrell, Mrs. H. L. Zachery, and Mrs. Jess Howard.

To keep the points on hunting arrows sharp, dip the heads in paraffin before you store them for the long wait until next season. This way they will stay sharp without rusting.

Women's Missionary Union Holds Regular Meeting Thursday

The Women's Missionary Union of First Baptist Church, Santa Anna, held a meeting Thursday, January 14, in the Church Annex. Mrs. Robert Smith, president, was in charge of the 2:30 p.m. meeting.

The group sewed fitted sheets for the nursery beds as a community mission project.

Next meeting will be held on Thursday, January 21, and the circle program will be used.

Those attending, in addition to Mrs. Smith, included Mrs. W. F. Rutherford, Mrs. Raymond Jones, Mrs. Richard Horner, Mrs. John Brown, Mrs. Jim Dunn, Mrs. Elton McDonald, Mrs. Nick Buse, Mrs. Carl Autrey, and two visitors.

Anna
Mrs. Walter Stacy, Trickham
Mrs. Isaac E. Wilkins, Coleman

Mrs. J. D. Estes, Rockwood
Mrs. J. P. Dean, Coleman
Mrs. L. B. McDonald, Bangs
Mrs. Robert G. Malcar and Baby, Santa Anna
Mrs. E. E. Jones, Gouldbusk
Mrs. A. C. Casey, Coleman
Mrs. Moody Copeland, Santa Anna

Mrs. T. E. Goodwkin, Coleman
Mrs. Felipe Rosalez, Coleman
Mr. William A. Sutherland,

May
Mr. John W. Knotts, Coleman
Mrs. J. T. West, Gouldbusk
Mrs. Delfido Cavazos, Ballinger

Mrs. Carl Bagley, Bangs
Mrs. Thomas DeLeon, Santa Anna
Mrs. Vera S. Lucas, Brownwood

At the one day test session, a candidate may take the Common examinations, which include tests in Professional Education and General Education, and one of the 13 Teaching Area Examinations, which are designed to evaluate his understanding of the subject matter and methods applicable to the area he may be assigned to teach.

Bulletins of information describing registration procedures and containing Registration forms may be obtained from Office of the Dean of Students, Howard Payne College, or directly from the National Teacher Examinations, Educational Testing Service, Box 911, Princeton, New Jersey. Prospective teachers planning to take the tests should obtain their Bulletins of Information promptly, Mrs. Elsey advised.

were no longer earning as much as questions about the checks which would begin with the following January. The benefit scale at that time was to be a minimum of \$10 a month and a maximum of \$41.20 a month for insured persons over age 65 who visited this country rather in as \$15 per month. A total of \$85 per month could be paid to a surviving family with at least three persons eligible for monthly checks.

PERSONALS

Captain Kirby Hallmark and family, of Melbourne, Australia, have been visiting his mother, Mrs. Nora Hallmark, who is a patient in Santa Anna Hospital. Captain and Mrs. Hallmark and their two small children returned to Australia by air, via Los Angeles, Honolulu, Fiji Islands, and Sidney, Australia. While in Santa Anna they visited with several members of the family. The Hallmarks formerly lived in Doole, Texas.

EDITOR'S NOTE: Captain Kirby Hallmark and family left Monday to return to Australia after visiting with his mother, who was ill in Santa Anna Hospital. Tuesday, Mrs. Nora Hallmark, 76, passed away. Funeral services were held Wednesday at Stevens Funeral Chapel, in Coleman.

Stop the safety chain on your boat trailer from rattling by slipping a section of garden hose over it.

Eastern Star Has Chapter Meeting

Mrs. Richard Bass, Worthy Matron, presided when Santa Anna Chapter No. 247 met for a stated meeting, January 18, in Masonic Hall. Mrs. Bass was assisted by nine of her officers. The Flag was presented by Jack Bostick, with H. W. Gray leading the group in repeating the pledge of Allegiance to the Flag.

During the business session, Mrs. Bass announced a tea will be given, February 14, from 2 p.m. to 5 p.m. in First Coleman National Bank Hospitality Room, honoring Mrs. W. W. Polley, Deputy Grand Matron of District Three, Section 5, by Coleman Chapter No. 360.

The Obligation Program was presented by Mrs. Blanche Grantham, Mrs. Montie Guthrie, Mrs. H. A. Burden, Mrs. Jack Bostick, Mrs. ay West, and Mrs. Richard Bass. Mrs. J. T. Avants chose Mrs. Carmen Donham as her honor member; also, a memorial to A. D. Donham will be sent to Founders Day.

Refreshments were served by Mr. and Mrs. H. W. Gray to thirteen members.

Howard Payne To Give National Teacher Tests

Howard Payne College has been designated as a test center for administering the National Teacher Examinations on March 20, 1965, Mrs. Grace M. Elsey, dean of students, announced today.

College seniors preparing to teach and teachers applying for positions in school systems which encourage or require applicants to submit their scores on the National Teacher Examinations along with other credentials are eligible to take the tests. The examinations are prepared and administered by Educational Testing Service, Princeton, New Jersey.

The designation of Howard Payne College as a test center for these examinations will give prospective teachers in this area an opportunity to compare their performance on the examinations with candidates throughout the country who take the tests, Mrs. Elsey said.

Hospital Notes

ADMISSIONS

Mrs. T. E. Goodwin, Coleman
Mrs. Cenor Hallmark, Abilene
Mrs. Felipe Rosalez, Coleman
Mr. William A. Sutherland,

May
Mr. John W. Knotts, Coleman
Mrs. J. T. West, Gouldbusk
Mr. Edward L. Nelson, Bangs
Mr. Delfido Cavazos, Ballinger
Mrs. Carl Bagley, Bangs
Mr. Thomas S. DeLeon, Santa Anna

Mrs. Vera Lucas, Brownwood
Mrs. E. C. Kilgore, Coleman
Mrs. O. A. Myers, Coleman
Mrs. John C. Hunter, Rockwood

Mr. Tom M. Harding, Gouldbusk
Mrs. A. L. Smith, Santa Anna
Miss Paula Nicholson, Coleman

Mr. Oscar Calhoun, Coleman
Miss Bettie Blue, Santa Anna
Mr. William R. Donaldson, Santa Anna
Mr. Charles H. Douglas, Coleman

Mr. D. C. Kading, Santa Anna
Mr. Nestor DeLeon, Santa Anna
Mrs. J. D. Green, Coleman
Mrs. Willie R. Olinger, Coleman

Mrs. Billy G. Wilson, Coleman
Mrs. Annie L. Rollins, Santa Anna

Mrs. LeRoy Slayton, Coleman
Mrs. Mary Pearl White, Coleman

Mrs. Rose Ann Neill, Coleman
Mrs. C. P. Vaughn, Coleman
Mrs. Bertha A. Copeland, Coleman

Mr. A. C. Brown, Mercury
Mr. Charles E. Dickinson, Winters

Mrs. E. C. Kilgore, Coleman
Mrs. Jessie L. Lewis, Santa Anna

Mrs. Stanley E. Rudisalle, Santa Anna

Mrs. Jesse Elkins, Coleman
Mrs. J. P. Dean, Coleman
Mrs. W. M. Morgan, Santa Anna

Miss Ramona Clinch, Santa Anna

Mr. Luther H. Cullins, Coleman

Mr. Tony Max Harding, Gouldbusk

Mrs. Steve Valdez, Rockwood
Mrs. Cenora Hallmark, Abilene

DISMISSALS

Mr. Edward R. Purdy, Santa

You'll Find Our SAVINGS PLAN CONVENIENT and PROFITABLE

- You may start your account here with a convenient amount, and then add to savings whenever you wish.
- You can stop in for a personal visit to add to savings . . . or do all your saving by mail . . . and save time and steps, too.
- Your account may be in your name only, or held jointly with someone else such as husband and wife, parent and child, two or more partners, etc.
- Service here is prompt, friendly and helpful—you'll like the nice people who are here to serve you.

4 1/4 %

PER ANNUM

COMPOUNDED QUARTERLY

—And your account is insured against loss up to \$10,000.00 by a permanent agency of the United States Government.

Abilene Savings Coleman Branch

116 W. COMMERCIAL
— COLEMAN —
Home Office: Abilene, Texas

Weekend Specials

10 lbs. Russet Potatoes **79c**

RUBY RED GRAPEFRUIT 20 lb bag **98c**

CARROTS 2 lbs **15c**

EGGS 3 doz. **89c**

SWIFT'S MELLORINE 3 1/2 gal. **89c**

HUNTS — No. 300 CAN FRUIT COCKTAIL 5 for **\$1.00**

HUNTS No. 2 1/2 CAN — SLICED or HALVES PEACHES 4 for **\$1.00**

HUNTS — 46 OZ. TOMATO JUICE 3 for **79c**

HUNTS — 8 OZ. TOMATO SAUCE 5 for **49c**

Dottie Lee Biscuits 12 for **\$1.00**

7 STEAK lb. **49c**

— Home made Chili and Sausage —

Williams Food Store

MEMBER INDEPENDENT GROCERS, INC.

Subscribe to The Abilene Reporter-News Bargain Rates

By U.S. Mail

More Local News than Any Other Newspaper! Latest Sports!

One Year, Morning & Sunday **\$14⁹⁵**
7 Days A Week

One Year, 6 Days A Week **\$12⁵⁰**
Morning Without Sunday

Subscribe today through your local agent

The Santa Anna News

Your Abilene Reporter-News Agent
Phone FI8-3545

Social Security Office Passes 25 Year Mark

On December 18, 1939, a Social Security Field Office was opened in Abilene with Coleman County as part of its service area. At that time, no monthly benefit claims were possible, as such did not start until January, 1940.

The initial foursome that staffed the office, with the late William O. King as manager, were primarily concerned with the issuance of social security cards, investigation of tax returns containing incorrect or omitted account numbers for the employ-



For All Your Printing Needs
PHONE FI8-3545
Santa Anna News

Specials

Del Monte CATSUP 14 oz. **19c**

SMALL GOLDEN YAMS 303 can **19c**

TIDE Giant Size Box **69c**

OUR DARLING CORN 303 can **19c**

CUT RITE WAX PAPER Box **29c**

SWIFT'S PURE LARD 3 lb. Pkg. **59c**

KIM — 400 SIZE FACIAL TISSUE 2 for **45c**

BROOM Reg. \$1.39 — only **\$1.19**

GANDY'S MELLORINE 1/2 Gal. **35c**

LARGE . . . JUICY TEXAS ORANGES 2 lbs. **25c**

CABBAGE, Fresh Green lb. **5c**

PHILADELPHIA CREAM CHEESE 8 oz. Pkg. **35c**

Beef Arm Roast lb. **43c**

FALL KORN . . . THICK SLICED BACON 2 lbs. **98c**

Hosch Grocery

SPORTS

Mountaineers Lose Twice Tuesday In First District Games Here

After dropping a pair of games to Melvin, boys and girls, Friday, January 15, on the home court, the male and female Mountaineers hosted their counterparts from Goldthwaite in the first district encounters for the local basketballers, Tuesday night, January 19, in Santa Anna.

The local lasses lost to the girls from Goldthwaite, in the first contest of the evening, by a score of 47 to 23.

Lois Simmons took home the scoring honors for the tilt, pouring 20 points through the hoop. Loretta Broadway scored the other three Santa Anna points. Leading the Goldthwaite attack was Sandra Jordan, with 17 points, closely trailed by Linda Guslin, with 16.

In the second game of the evening, the male Mountaineers led the Eagles from Goldthwaite by a 7-1 mark early in the game, but could not hold the lead, and fell behind, ending up on the short side of a 72-32 count.

Butch Makuta scored a dozen points to lead the hometown contingent, with Floyd Carpenter garnering nine points. High

point honors for the game went to Goldthwaite's Jimmy Ball, with 26, followed by teammate Jim Childress, with 18.

The loss leaves the Mountaineers with a 0-1 record in District 9A league basketball play.

Expert Service

-WITH-

PREMIER PRODUCTS

Good Year Tires

We Appreciate Your Patronage

MCCRARY

Premier Station

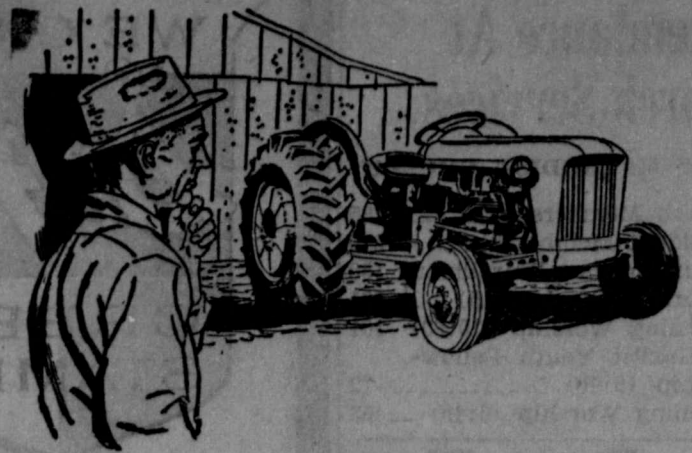


Protect Against Disease Loss!

Authorized Dealer
FRANKLIN VACCINES and SUPPLIES
for CATTLE, SHEEP, HORSES, HOGS and POULTRY
Our Livestock Supply Department is Designed to Serve You - Visit Us Today.

Owl Drug Store

312 Commercial Ave.
Coleman, Texas



PERHAPS FARMERS KNOW MORE ABOUT "LIFE"

A farmer probably is more conscious of the "life" of many things... of farm machinery, building roofs, cars and trucks... than the average man. He has to be realistic in his thinking ahead. That's why many smart farmers have savings accounts here; add to them whenever possible. For there's nothing like a savings reserve of "spare cash" when needed!

Open a savings account here NOW!

FULL-SERVICE BANKING

Savings • Checking • Business Loans • Auto Loans
Personal, Farm & Home Loans • Financial Counsel

Coleman County State Bank

Member FDIC

118 West Pecan, Coleman

WAKE UP NIGHTS? FOR KIDNEY RELIEF MAKE THIS 4-DAY TEST

Take BURKETS green tablets. Regularity, ease aches and pains, tea, sparingly. Increase re-drink plenty of water. Use coffee to functional kidney disorders your 39c back at any drug Store.

TIRES ARE GUARANTEED
at
RUDOLPH'S
Coleman, Texas

SPARKMAN'S Wash-O-Matic

COLEMAN'S FINEST LAUNDRY AND DRYCLEANING

AUTOMATIC CAR WASH
25c for 5 Minutes

Open Day and Night
Corner of Needham and Concho

All Business Appreciated

NOTICE

We now have a complete line of bulk and package garden and flower seeds. Sixty varieties in bulk and 120 in packages. Also, fertilizers, potting soil, insecticides, peat moss, cerasan, sprays, and many other garden needs. Located in hatchery building at farm. We will appreciate your business.

Bill and Doris Griffin



EXCLUSIVE! FOR OUR READERS ONLY!
MORE READING ENTERTAINMENT AND SAVINGS FOR YOU! CHOOSE FROM
2 BIG BARGAIN OFFERS!

OFFER NO. 1

CHOOSE ANY 3 MAGAZINES LISTED BELOW AND THIS NEWSPAPER

all for only

\$7.50

- American Girl
- American Home (10 Issues)
- Christian Herald
- Farm Journal
- Field & Stream
- Flower Grower
- Ingenu (Teen-agers)
- Ladies' Home Journal
- Look (26 Issues)
- McCall's
- Mechanix Illustrated
- Modern Romances
- Modern Screen
- Parents' Magazine
- Popular Mechanics
- Redbook
- Science & Mechanics
- True Story

OFFER NO. 2

TAKE YOUR CHOICE OF ANY ONE MAGAZINE LISTED BELOW AND THIS NEWSPAPER... BOTH FOR PRICE SHOWN

- American Home (10 Issues) \$4.25
- Argosy (For Meh) 5.75
- Catholic Digest 5.00
- Ellery Queen's Mystery Magazine 6.75
- Esquire 7.25
- Good Housekeeping 4.75
- Holiday 6.70
- House Beautiful 6.75
- Humpty Dumpty (10 Issues) 5.75
- Ingenu (Teen-agers) 5.00
- Ladies' Home Journal 4.50
- Life (Weekly) 7.50
- Look (26 Issues) 5.00
- McCall's 4.50
- Mobile Home Journal 5.75
- Modern Romances 4.75
- Popular Mechanics 5.00
- Redbook 4.50
- Saturday Evening Post (26 Issues) 5.00
- Sports Afield 5.00
- True (The Man's Magazine) 5.75
- TV Guide (Weekly) 6.75
- U. S. Camera 5.75

FILL OUT COUPON - MAIL TODAY

Please allow 4 to 6 weeks for first copies of magazines to arrive. Check magazine(s) desired and enclose form with coupon. Gentlemen: I enclose \$_____ Please send me the offer checked with a year's subscription to your newspaper.

NAME _____
STREET OR R.F.D. _____
POST OFFICE _____

ALL MAGAZINE SUBSCRIPTIONS ARE FOR 1 YEAR

The Santa Anna News
Post Office Box 697
Santa Anna, Texas

New Ease of Installation...

Economical, Convenient



No need to stand and wait for hot water to travel from a distant water heater. Flameless electric water heaters can be installed conveniently near the point of use. No flue or vent is required for clean, quiet, flameless electricity. And now, with WTU's new low rate, a separate meter is unnecessary.

SPECIAL 1¢ RATE

The 1¢ rate in effect for residential customers of West Texas Utilities using an electric water heater adds up like this—the first 300 KWH used are calculated at the regular rate. The next 400 KWH used are calculated at the special 1¢ rate. Ask for details at any WTU office.

* Plus Fuel Cost Adjustment and Sales Tax.

FREE WIRING — to customers served by WTU who purchase an approved Electric Water Heater from a local appliance dealer or local plumbing supplier. Ask about this FREE WIRING at your local WTU office.

West Texas Utilities Company
an investor owned company

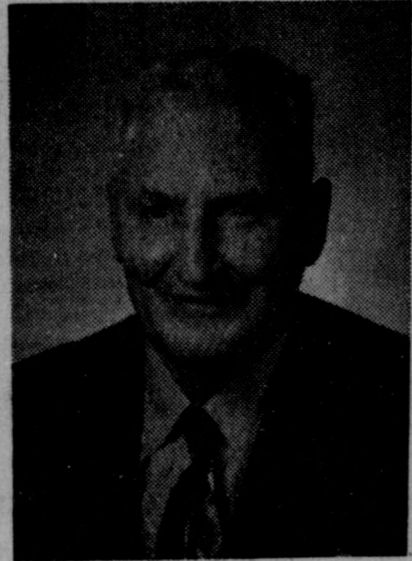
Attendance At Church Services

FIRST METHODIST CHURCH

Church Membership	285
Resident Membership	210
Church School Enrollment	158
Church School (9:45)	101
Morning Worship (10:50)	101
Methodist Youth Fellowship (5:00)	12
Evening Worship (5:45)	53

John Hunter Dies, Buried Last Week

John Crockett Hunter, 79, lifetime resident of the Santa Anna area, passed away Wednesday, January 13, in Santa Anna Hospital. Hunter was born in Trickham, in 1886, and had farmed near Rockwood for many years. He



JOHN C. HUNTER
Service For Longtime Resident

was a member of the Board of Stewards of the Rockwood Methodist Church. Survivors include his wife, several nieces and one nephew. Funeral services were held Friday, January 15, in Rockwood Methodist Church, with Rev. Bobby Weathers, minister of First Methodist Church of Santa Anna, Rev. W. B. Morton, retired Methodist minister from Coleman, and Rev. Claude Weingand, minister of First Christian Church of Coleman, officiating. Burial was in Rockwood Cemetery with Stevens Funeral Home, of Coleman, in charge of arrangements. Pallbearers included Carl Estes, Marcus Johnson, Jack Buttrey, Oscar Cheaney, Bruce McSwain, and Johnny Steward. Mrs. Hunter is Rockwood correspondent for The News.

Before you put your minnow seine into use, soak it in a bucket of linseed oil. This will waterproof the net and make it last longer.

Cole-Anna

Drive-In Theatre
Coleman, Texas

THURSDAY - FRIDAY
AND SATURDAY
JANUARY 21-22-23
Walter Slezak and Bryan Russell
"Emil and the Detectives"
"Escape By Night"

SUNDAY-MONDAY-TUESDAY
WEDNESDAY
JANUARY 24-25-26-27
Paul Newman in
"The Outrage"

Rancho

Downtown Theatre
Coleman, Texas

FRIDAY, JANUARY 22
Weird --- Dr. Jekyll
Stage Show
In Person—On the Stage
—Plus On the Screen

Mask of Red Death
9:30 p.m. --- Adm. 75c



where you save **DOLLARS** on your food bill!



- Gallon Fruit Sale -

G	Apricots	E	.98
A	Cherries	A	
L	Peaches	H	

Mrs. Tuckers
SHORTENING
3 Lb. Can
69¢



SIRLOIN
STEAK lb. **.79**

T-BONE
STEAK lb. **.79**

GOOCH SLICED
BACON lb. **.39**

GOOCH
FRANKS 3 lb. Pkg. **.99**

SWIFTS LONGHORN
CHEESE lb. **.55**

Meads
Biscuits
3 cans
25¢



Nolens
HONEY
1/2 Gallon
98¢
New Crop

Ready To Serve SOUPS

Chicken Noodle Soup
Vegetable Soup
Tomato Soup
10¢ Per Can



Imperial
SUGAR
10 Lb. Bag
98¢

GOOCH
Sausage
2 LB. BAG
89¢

GRAPEFRUIT ORANGES 5 lb. bag **.49**

SUNSHINE
SUGAR COOKIES 11 1/2 oz. Pkg. **39¢**

NABISCO
MINARETS CAKES 9 1/4 oz. Pkg. **39¢**

SUPREME
FIG BARS 1 lb. Pkg. **39¢**



PICNICS
Lb.
27¢