

Santa Anna News

One Section — 10 Pages

"He Profits Most Who Serves Best"

Single Copy — 5c

VOLUME LXXVIII

SANTA ANNA, COLEMAN COUNTY, TEXAS, THURSDAY, NOVEMBER 26, 1964

NUMBER 48

Point Rows

An advertisement in the Texas Almanac for 1911:

"Santa Anna, Texas: Situated at the base of Santa Anna Mountain, in Coleman County, on the main line of the Santa Fe between Galveston and San Francisco and in one of the best counties in the State, offers many advantages to the investor, homeseeker and those looking for a mild, healthful climate, where there is no malaria, where the elevation is about two thousand feet above sea level and the night are always cool and pleasant and the days in summer are cooled by the delightful gulf breezes. Ranches have given away to farms, and this is the chief occupation of the twenty-five thousand people who live in Coleman County.

"We have as yet to develop our other resources, which are crude oil of splendid quality, natural gas, coal, ochre, limestone, fire and other clays and the finest quality of glass sand, assaying 99.53% silica. The city is well supplied with churches, is represented by most of the lodges and boasts of the finest public school and waterwork system in West Texas. We extend a cordial invitation to everybody to come and see what is in our city and county, and any information desired can be obtained promptly from some member of the Commercial Club by addressing the Secretary of the same at Santa Anna, Texas."

Did they say gulf breezes?

Joe Robinson, 16 year old son of our advertising sales manager, Mrs. Nora Robinson, was in the hospital several years ago, at age four, for an operation. When the doctor came by to tell the young patient he could go home in a short time, he found Joe in a worried frame of mind. The doctor inquired about the cause of concern, and was told: "Everybody I know who went to the hospital came home with a baby, and I'm trying to decide whether I want a boy or a girl."

Good way to win a bet: Ask someone to name the largest industry in the United States in gross income. The answer? Gambling, with an annual gross of more than 50 billion dollars. And if you win your bet, you have just added to that gross.

One of our junior assistant printers devils, about a dozen years of age, was hanging around the shop the other evening. Production supervisor Morey Mast made some comment about "necking." "What's that?" the junior assistant printers devil wanted to know.

"Don't you know what necking means?" asked Mast. The junior assistant printers devil pondered a moment. "You mean like roughnecking?" he asked.

Brownwood will have an election shortly. Two different petitions have been circulated, and both questions will be on the same ballot. One will prohibit the sale of any alcoholic beverage, drying the area up. The other will okay the sale of liquor in addition to the beer now being sold.

This is called giving the voter a choice, not an echo.

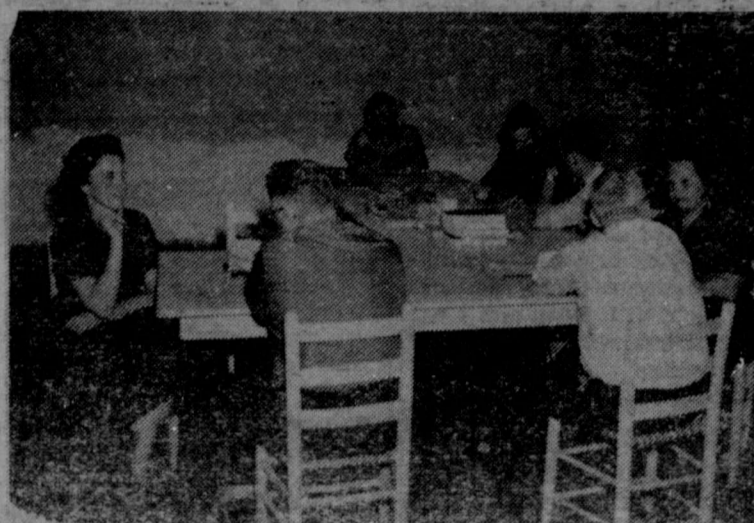
Then there's the one about the careless printer who got caught in the printing press. It made quite an impression on him.

One thing that impresses us about the business life of Santa Anna is the fierce and bitter competition existing between the various businesses.

Like the other day when we saw Billy Joe Harvey buying a couple of cans of coffee in the Hosch Grocery Store.

Know what the black, sticky stuff between elephants' toes is? Slow natives.

Mr. and Mrs. Ray Caldwell, of Rockwood, celebrate their 50th wedding anniversary recently. Mrs. Caldwell used to be our correspondent in Rockwood, several years ago.



LOOKING FOR A JOB? The staff of The Santa Anna News undergoes interviews during the first day of operations by the Texas Employment Commission survey office in Santa Anna. From left, those pictured are: Ruth Poldrack, News compositor; Sidney Dry, Texas Employment Commission; Kenneth Minyard, News floorman; Royce C. Rodden, TEC; Morey Mast, News production supervisor; Clifford Mills, TEC; and Nora Robinson, News advertising manager.

Santa Annans Top Coleman's Total For Support Of TEC Survey Offices

Despite the fact that the Texas Employment Commission survey office in Santa Anna is open only two days a week, Monday and Wednesday, and the office in Coleman is open five days a week, the attendance at the Santa Anna location has passed the total for Coleman.

Former Santa Annan Kills Record Buck

Alton Ray Bishop, of Nederland, formerly of Santa Anna, reports the killing of two deer on the Howard Ragsdale ranch, at Junction. One was a seven point, and the other a ten point buck. The seven pointer weighed a 145 pounds, and holds the record in Kimbell County for size, so far this year.

Math Group Being Organized In School

A slide rule and numbers sense organization is in the process of being set up at Santa Anna High School, according to Rufus Cobern, who will sponsor and coach the group. Cobern asked all students interested in these subjects to contact him.

Santa Anna Library Remodeling Nears Completion; Meeting Rooms Available

After many months of planning, and many hours of work, the City Library Building has been redecorated and improved for the use of local people as a community center and club room. Mrs. Eigean Harris, Library Board president, led the movement to improve the building.

The fundraising for the project began with the Junior Rodeo held on Labor Day at the Buddy Neff arena. With proceeds from the Rodeo, birch paneling was installed on the walls and white acoustical ceiling was placed. All woodwork in the club room was painted, and ceramic tile was installed in the kitchen by Charlotte Moseley. Other individuals volunteering their labor were Mrs. Harris, Mrs. Tom Kingsbery, Mrs. C. M. Moseley, Mrs. Arthur Casey, Mrs. Dovie Chapman, Mrs. Bruce Cammack, Mrs. J. F. Goen, Mrs. C. D. Bruce, Mrs. Rodney Dean, Mrs. Jess Howard, and Mrs. Roy

Gray Mercantile In Temporary Site

Gray Mercantile Company, will open their store in a temporary building at 115 Commercial Avenue, in Coleman, while waiting repairs on the building destroyed by fire several weeks ago. Announcement has been made that Mark Griffis has purchased the interest of James T. Hubbard in the mercantile company. The store will be open for business this week, and new merchandise will be arriving daily.

According to latest figures available at presstime, 165 persons had been processed through the Santa Anna office, while 133 had been registered in Coleman. Fifty five persons registered in Santa Anna during the office's first day of operation, on Monday of last week. On Wednesday, 38 more persons were processed, and on Monday of this week, 16 were handled by the local office.

In addition, 56 Santa Anna High School students registered and took the aptitude tests last Thursday.

A spokesman for the Santa Anna Chamber of Commerce praised the local turnout, and urged everyone above the age of 16, who has not registered, do so. This will allow a comprehensive report on the potential labor market in the Santa Anna area, a powerful tool in attracting new industry and business. All persons, employed or unemployed, persons who wish to work and those who do not, are urged to register, the spokesman said, providing a large base for the survey report to be prepared.

Santa Anna Library Remodeling Nears Completion; Meeting Rooms Available

Stockard, Merchants who have donated materials and services are Hosch Furniture Company, G&E Hardware Company, Good-join Lumber Company, and Harvey Grocery Store.

New draperies will be hung this week, and other minor jobs completed. Before the club room was completed, five meetings were scheduled for the Building during November and December, so it is apparent that the convenient, city owned, facility will be in great demand. The bookroom of the building has been rearranged and cleaning, and will be open for readers each Wednesday afternoon.

In order to complete payment on the materials used in the redecorating and remodeling, another fund raising project is underway. A clothes hamper filled with linens will be given away on December 24, with tickets on the hamper given with each 50 cent donation to the Library Fund. The hamper is on display at Hosch Furniture Store, and will be filled by members of the organization represented on the Library Board: Self Culture Club, Garden Club, Delta Omicron Chapter, ESA Sorority, P-TA, Lions Club, the City of Santa Anna, and the Santa Anna Independent School District.

In order that all local people may see the building and facilities, open house will be held at the City Library Building following the Christmas parade, on Friday, December 4. The building will be open until about 5:00 p.m. that afternoon so that everyone may visit.

County Electric Cooperative Cuts Rates For Next Year

NOTICE

Due to a sleep editor writing the item at three o'clock in the morning, an error of seven days was made in the notice appearing on the front page of last week's paper. The notice should have stated that the paper will be published on November 24 rather than November 26, regular publication date (last week's paper said November 17 and 19). And the information about the closing of The News offices should be moved back one week, reading: In order to give members of the staff of The News a Thanksgiving holiday, the office will be closed Tuesday, November 24 through Sunday, November 29. The News will be open for business as usual on Monday, November 30.

Security Seminar Scheduled For Abilene This Year

An informative seminar on national security, reporting US strengths and weaknesses, threats to the free world, and problems of survival is planned for December 7 through 18 at Hardin-Simmons University in Abilene.

Only one scheduled in Texas this year, the two-week lecture-ship is given by highly qualified military officers. Open to everyone, the seminar is an updated version of one given in Odessa during 1963.

More than 200 persons have already registered, with spaces left for possibly 1,300 more attendees.

No secret or classified information is divulged, but studies cover a broad field. Countries and continents discussed will include Captive Europe, Russia, Africa, the Far East, and Free Europe.

The course is a two week condensation of the ten month school given in Washington DC for selected officers by the Industrial College of the Armed Forces.

Lecturers are drawn from the Air Force, Army, Navy, and Marine Corps. Facts disclosed during earlier forums this year include:

Sixty two cents of each budget dollar goes to finance national security. In hard cash, that is \$51 billion for the military and \$10.2 billion for military assistance, NASA, Atomic Energy Commission, international programs and space.

A defensive weakness of the US lies in its population concentration — four out of five persons live in the cities.

Also, seventy one percent of our defense production is sited within fifty cities.

Most major Abilene motels and hotels have indicated they will offer reduced rates to conferees attending the seminar, to be held in the H-SU Chapel-Auditorium.

Purpose of the seminar is to inform America's citizens, and better educate her military reservists.

Registration costs \$10 for business and professional people, \$5 for women, ministers and educators, and \$1 for students.

Armed Forces members on active duty will be admitted free if they attend in uniform. Reservists in uniform may earn points toward retirement.

Checks should be mailed to the National Security Seminar, in care of the Abilene Chamber of Commerce, 341 Hickory. The seminar office telephone number is ORchard 3-8363.

C. L. Newton, manager of the Coleman County Electric Cooperative Incorporated, announced that the board of directors of the Cooperative approved a reduction in electrical rates to members as of the first of the year. This reduction includes both the farm and home rate and the commercial rate.

The minimum charge on the farm and home rate has been decreased from \$2.45 to \$2.00. Also, after the consumer-member passes into the 200 kilowatt-hour bracket, each additional kilowatt-hour used will now cost one and one half cent per kilowatt hour as compared to the old rate of one and three fourth cent per kilowatt hour. Members of the Cooperative will see the first effect of the rate reduction on their February 1 bill, which is for electricity used during the month of January.

This is the first rate change for the Coleman County Electric Cooperative since establishment of the rates by the first board of directors, in 1938. The rates are so calculated that the more electricity used, the less it will cost per kilowatt hour. This is because the electric lines will last only so long and must be paid for. The first 200 kilowatt-hours represents paying for the lines and setting up money to replace them as it gets old. All electricity after 200 kilowatt-hours represents the smaller extra cost of delivering power.

It is because of the continuing increase in electrical consumption that the board of directors approved the rate reduction. The kilowatt-hour consumption

of the Cooperative more than doubles every seven years.

The board of directors also approved the advance repayment of three loans to Rural Electrification Administration (REA) made to the Cooperative in 1946, 1949, and 1950. The total amount of the three notes was \$405,730.80. The Cooperative has already paid off ten additional notes in advance of their due dates bringing the total advance payments to over one million dollars.

Weather To Favor Deer Hunters, Wildlife Man Says

There's good news for deer hunters who have missed contacting that big buck, reports E. A. Walker, assistant director of wildlife for the Parks and Wildlife Department.

He said weather conditions are bound to improve since conditions for the opener "couldn't have been much worse from the hunters' viewpoint."

Walker noted that, despite the negative field situation, a substantial number of deer were taken on the opening weekend in the counties under regulatory authority of the Department. The later opening in the other counties, where dates are set by law, produced similar reports, he said.

The assistant director said hot, humid, often times wet, windy weather, plus the bright, moonlit nights, provided an ideal situation only for the deer.

"The hunters found gusty winds creating spooky conditions for the deer," said Walker. "Besides, in the rainy areas, the deer didn't move much. Also, there's lots of food almost everywhere and the deer didn't have to scrounge around and become exposed."

"Just as soon as it gets cooler and the bucks begin moving around both night and day, the hunter should be in much better luck. The dark of the moon also will encourage more day feeding."

The Department, responsible for game management problems, is strictly on the hunters side this fall because many sections have such a great deer overpopulation that only a good harvest will prevent danger of a winter dieoff.

There will be no meet of Boy Scout Troop 30 this week because of Thanksgiving, according to Scoutmaster Bob Parker. The Troop will meet for its regular weekly meeting on Thursday, December 3.

Band Recognizes Various Honorees At Halftime Show

During halftime activities in the last game of the season, against Early, the Band Sweetheart, Pep Squad Beau, and Football Sweetheart were named and presented.

Band Sweetheart was Linda Campbell, who is drum major of the marching Mountaineers this year.

Pep Squad Beau was the Mountaineers' offensive and defensive stalwart, Frank Valdez. Football Sweetheart was Karen McCluskey.

Band officers and graduating seniors were also recognized. Nelson Perry is president of the band, with Bobbie Niell as vice president, Lawanda Horner as secretary, and Lynda Rutherford as parliamentarian. Seniors include all of the officers plus Miss McCluskey, Miss Campbell, Dianne Copeland, Cynthia Parker, and Linda Horner.



FARM BUREAU County President Emzy Brown presents a check for \$75 to Leland Thompson, fire chief of the Santa Anna Volunteer Fire Department. The Farm Bureau pays the sum of \$75 to fire departments making rural runs to fight fires on property covered by Farm Bureau insurance. The check changing hands above covers the call to the fire in the Bill McIntire home in Rockwood last month.

ATTENTION!

TEXANS UP TO AGE 90

Available to All Texas Citizens

A Complete
MEDICAL CARE PLAN

Now Offered

TEXANS MODERN MIRACLE OFFERS

1. Hospital Room	\$24 per day	5. Medicine up to	\$200
2. Surgery up to	\$800	6. Death Benefit	\$1000
3. Misc. Expense No Limit		7. Nurse Benefit up to	\$1800
4. Doctor's Calls up to	\$8 visit		\$215 for Minor Items — No Limit on Other Items

PLANS — FR — MS — PAYMASTER

THESE PLANS UNDERWRITTEN BY BANKERS HEALTH & LIFE INSURANCE CO.
HOME OFFICE — DALLAS, TEXAS

NO OBLIGATION
Mail Coupon Today

Important Features

1. No Age Limit
2. No Medical Exam
3. No Waiting Period Sickness and Accident
4. Life Time Protection
5. No Limit to Number of Times You Collect On.
6. Pay In Addition to Other Insurance.

Be Fully Covered

For One Small Annual Premium — Hospital Bills HAVE GONE UP

BANKERS HEALTH & LIFE INSURANCE CO.

W. E. Youell Regional Manager
Executive Offices, Fort Worth
P.O. Box 13062, Fort Worth, Texas

Your Present Age

Please see that I receive complete FREE information about the Medical Plans I read about in The Santa Anna News.

Name

Address

City

State

Bride-To-Be Honored At Shower this Month

The Nitia Daniell Circle of the First Methodist Church honored Miss Charlotte Noah, bride-elect of Danny Wylie, with a gift tea Saturday, November 7, in the annex of the Church.

In the receiving line were Miss Noah, the honoree, Mrs. Leroy Curry, Mrs. E. W. Gober, Mrs. W. A. Brandon, mother, grandmother and great grandmother, of the prospective groom.

The refreshment table was covered with a white cutwork cloth over green, centered with a tier arrangement of white mums flanked by green tapers, on Magnolia leaves. The arrangements were made by Mrs. H. L. Zachary.

Refreshments of lime punch, cake squares and mints were served from crystal appointments. Madames Nap Watson, L. A. Welch, V. I. Deap and Opal Little assisted with the gifts.

Twenty five guests registered.

ROCKWOOD WSCS MEETS

The Woman's Society of Christian Service met at the Methodist Church Monday in a final session of approved study. The theme, "United States Responsibility in a World Community of New Nations" was directed by Miss Bernice Johnson, Missionary Education Chairman. Mrs. Marcus Johnson, president, called the meeting to order. Mrs. M. A. Richardson was pianist.

The meeting adjourned to join the Baptist WMS in observing Mrs. Frank Bryan's birthday anniversary at her home.

Present were Miss Johnson, Mrs. Marcus Johnson, Mrs. Crutcher, Mrs. Richardson, Mrs. Aubrey McSwain and Mrs. Jack McSwane.

Mr. and Mrs. L. J. Lovelady and family, of Texas City, visited from Wednesday night until Friday with his mother, Mrs. Kate Holmes, and other relatives. Mrs. Lovelady's father, Mr. A. E. Switzer accompanied them on their return to Texas City, where he will visit for a few weeks.

Also in the home of Mrs. Holmes for supper Thursday night was Mr. and Mrs. Cecil King, and girls, Susan and Cella, of Brownwood.

FTA Schedules Regular Meeting

The A. D. Donham FTA Chapter met Monday, November 16. Ruth Ann Walker, president, presided. The contestants trying out for Mr. and Miss FTA gave their speeches. Those who tried out were: Ruth Walker, Jack Walker, Lawanda Horner, and Chris Carrol. Lawanda Horner and Chris Carrol were chosen to represent our Chapter at the district meeting. Velda Collins was appointed chairman for decorating a Christmas window. Mary Haynes was appointed the December project chairman. Each member reported on the

work they had been doing. The meeting was adjourned and refreshments were served.

CHRISTIAN WOMEN FELLOWSHIP

The Christian Women's Fellowship of the First Christian Church, met Monday night to pack cookies for the Juliett Fowler Homes in Dallas.

They also made plans for a Thanksgiving lunch to be held at the church annex Sunday, November 22.

Attend church regularly.

Typewriter paper at the Santa Anna News.

WE JOIN WITH
ALL OUR FRIENDS IN
APPRECIATION FOR
THE BLESSINGS
OF THIS COUNTRY DURING
THE YEAR PAST.

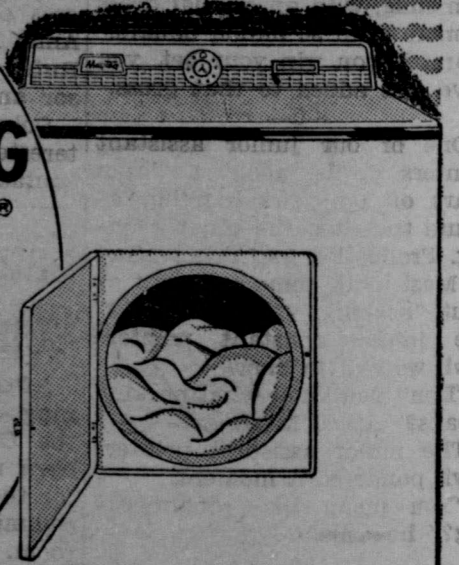
Santa Anna Tile Co.
And Staff

Thanksgiving Sale

MAYTAG
the dependable automatic

THIS WEEK'S
MAYTAG
SPECIAL

MODEL DE-100
FAMOUS
MAYTAG
HALO-OF-HEAT®
DRYER
3995



A \$189.95 Value With the Purchase of a 702 Washer and Your Old Washer.

Fast Dries
Clothes at SAFE,
Low Temperatures

LARGE
SIZE LINT
TRAP
• FULLY
automatic

FULL OPENING
DOOR

Gray Mercantile Co.
Coleman, Texas



THANKSGIVING

In The Great
American Tradition

THANKSGIVING

WE JOIN OUR FRIENDS
AND CUSTOMERS
IN THANKS FOR THE BLESSINGS
OF THE PAST YEAR.

Coleman County Telephone
Cooperative Incorporated
Serving the Santa Anna, Burkett, Mozelle,
Rockwood, Trickham, and Valera Exchanges

Shields News

By MRS. E. S. JONES

Gary Williams, son of Mr. and Mrs. Jesse Williams, was recently injured in football practice,

and was taken to Abilene Wednesday, to be checked for the back injury and was advised "no more school activities this term."

Mrs. Roy Bledsoe was hostess when the Quilting Club met Tuesday afternoon at the Community Center. Eleven members

and one visitor, Mrs. Leonard Williams, were present, and the quilt was finished. During the business hour, the club decided to work on a club quilt next meeting, December 1, and have a Christmas party December 15. On Monday Rev. and Mrs. Joa Hays and son, Kelby, of Valera, were supper and evening guests of Mrs. Ura Dillingham.

Mr. and Mrs. G. C. McDonald and their son, George, of South America, and their daughter, Mrs. Bert Fowler, were in San Antonio Wednesday visiting Mr. McDonald's mother and sister, Mrs. Nadine Bynum and with Mrs. McDonald's brother, A. F. Murrell and family.

Mr. George Cobb entered the Coleman Hospital Monday, having had a light heart attack and today (Thursday) he is doing nicely.

Mrs. Wanda Titworth and children and Miss Patsy Jones, of Brownwood, spent Wednesday night with the Jesse Williams family.

arrived late Thursday night for several days visit with her parents, Mr. and Mrs. R. W. Cupps and Billy Don, and other relatives.

Weekend visitors with Mr. and Mrs. Bruce Hibbetts were Mr. and Mrs. Buddy Benge and children, also Mr. and Mrs. Joe Wallace and family, all of Santa Anna.

Mr. and Mrs. Doug Penney, of Crane, came Monday to visit with Mrs. Sam Moore and Mr. and Mrs. Vernon Penney. They got in some fishing at Lake Brownwood, before returning home on Thursday.

Relatives here received word that Mr. John Baugh is in a Snyder hospital.

Terry Blanton and Bill Jennings will spend Thanksgiving here with their parents, if they don't get snowed in at Canyon.

Mr. and Mrs. J. D. Howard and Elaine spent the weekend with Mr. and Mrs. John Howard and other relatives.

Mrs. Ruth Hibbetts spent

Wednesday afternoon with Mrs. Theima Fleming. Mrs. Fleming will be able to have company in several weeks when she's feeling better.

Mrs. Sid Blanton visited Mr. and Mrs. John Perry Saturday night.

Garden Club Meets Friday Afternoon

Santa Anna's Mountain City Garden Club met Friday, November 7, in the home of Mrs. H. L. Zachary. Mrs. Vernon Herring, president, was in the chair. Program theme, "From Seed to Bouquet", was carried by Mrs. Rex Golston's discussion of transplanting perennials.

Mrs. John Murrell made a crescent-shaped arrangement, and Mrs. Lola Stephens exhibited chrysanthemum specimens.

Mrs. Jess Howard was cohostess for the meeting.

In addition to those mentioned, Mrs. C. M. Moseley, Mrs.

Alma McNutt, Mrs. Lee Hunter, Mrs. Ross Kelley and Mrs. Beatrice Garrett, also attended.

THANKSGIVING GREETINGS TO YOU AND YOURS

Expert Service
—WITH—
PREMIER PRODUCTS

Good Year Tires

We Appreciate Your Patronage

McCRARY

Premier Station

Here's a woman men notice... and women watch...



Uncturingly she puts her finger on excitement and stirs it. She's discovered the freedom of living in a Total Electric Gold Medallion home. She has time for civic duties without leaving her house and family unattended. She is a member of the young married set. Dozens of reliable electric servants stand ready at all times, and with their help, her home stays fresh and clean as spring-time the whole year round.

Total Electric Gold Medallion homes may be any size, style, or price, as long as they meet electrical requirements. Why not investigate the comfort and modern convenience that only flameless electricity makes possible. Remember that the Gold Medallion, like the Sterling mark on silver, is a sign of quality.

See your own home builder or WTU regarding the advantages of a Total Electric Gold Medallion home.



West Texas Utilities Company



Cleveland News

By Mrs. Sid Blanton

Our rain gauge here on the gas lease measured 5.02 inches for the week.

Mrs. C. T. Moore and Mrs. Melvin Pollock and some ladies from Santa Anna attended the Fred Waring and his Pennsylvanians show on Tuesday night in the Brownwood Coliseum.

Mrs. Ernie Covey and Jolinda, of Las Cruces, New Mexico, ar-

They'll Treasure



YOUR FAMILY

Portrait

Please friends and relatives with the gift only you can give! Have your family photograph taken now so it will be ready in plenty of time for Christmas giving.

CALL 625-5317

FOR APPOINTMENT

Hugh Capps Studio

213 West Pecan
Coleman, Texas

Good news for patient people.
The '65 Buicks are in production again.
And lots of new Buicks are on their way to us.
Help us send your favorite on its way to you.
Come in and order the Buick you want.



1965 WILDCAT 2-DR. SPORT COUPE

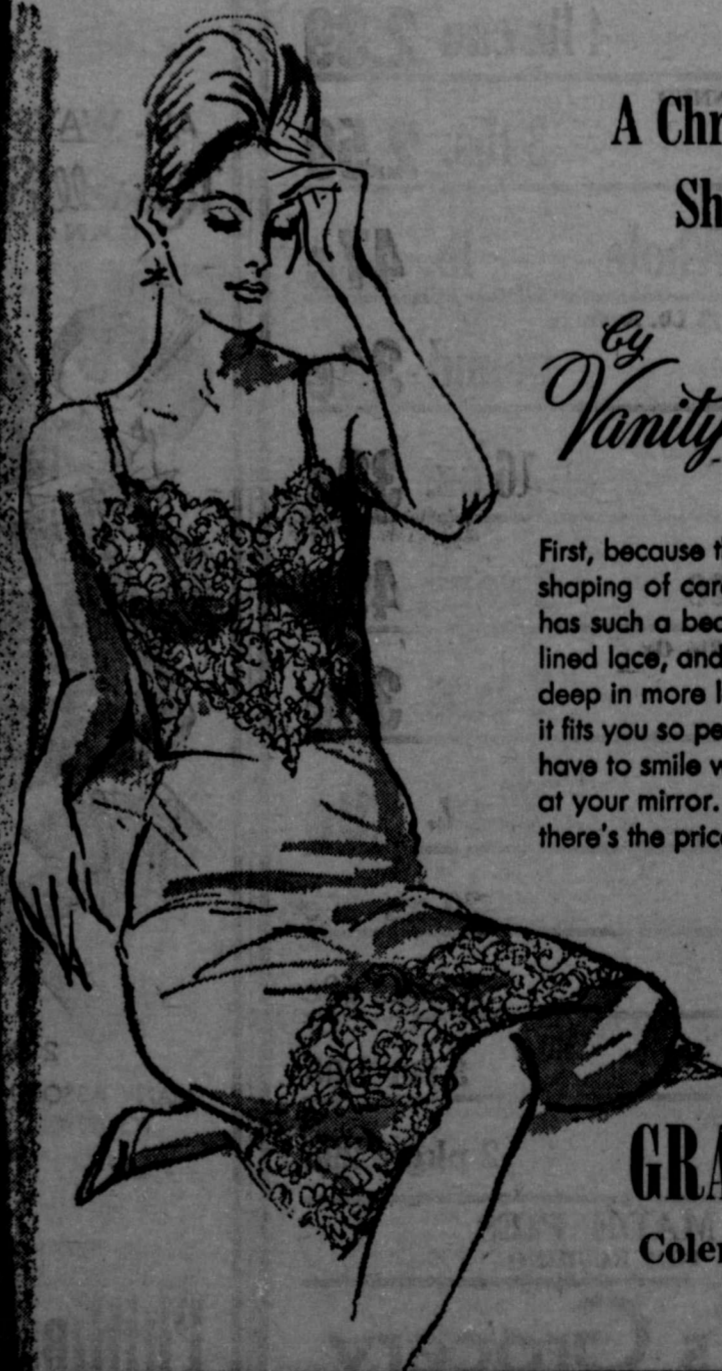
And you'll soon be driving the car you waited for.

SEE YOUR LOCAL AUTHORIZED BUICK DEALER. AUTHORIZED BUICK DEALER IN THIS AREA:

DAUGHERTY-PRICE PONTIAC-BUICK
401 Commercial Avenue, Coleman, Texas

A Christmas Gift
She'll Love

By Vanity Fair



First, because this smooth, slim shaping of carefree nylon tricot has such a beautiful bodice of lined lace, and a hem seven inches deep in more lace. Second, because it fits you so perfectly you'll have to smile with pleasure at your mirror. And then there's the price. \$8.95!

Sizes 30 to 40,
Short, Average, Tall,
In the colors
you love most.

GRAMMER'S
Coleman, Texas



Double Top Value Stamp
Every Wednesday With \$3.00
Purchase or More.

Brown's Grocery

MEMBER INDEPENDENT GROCERS, INC.

Prices Good Through Saturday, November 28

10 to 15 LB. AVERAGE

Turkey Hens lb. 34¢

GOOCH'S

Pork Roast lb. 34¢

BAKER'S ANGEL FLAKE

COCONUT 2 cans 39¢

MORTON'S MINCE or PUMPKIN

PIES 3 for 1.00

10 LB. BAG

SUGAR 97¢

YAMS

pound 9¢

383 CAN

Cranberry Sauce 2 for 39¢

MISSION — 303 CAN

Sweet Peas 2 for 29¢

HUNT'S — 300 CAN

Fruit Cocktail 2 for 49¢

DOTTIES

BISCUITS 10 cans 75¢

FRESH

CELERY 15¢

DELICIOUS

Apples 10c lb. or 10 lbs. 98c

Home Baked Pies By Mrs. Tom Rushing

CLASSIFIED ADVERTISING

CLASSIFIED ADVERTISING RATES

First Insertion — Per Word 4c
 Each Additional Insertion — Per Word 2c
MINIMUM CHARGE — 50c PER WEEK
COPY DEADLINE — 10:00 A. M. WEDNESDAYS

FOR SALE OR TRADE

FOR SALE: Good used refrigerators, automatic washers, wringer washers, clothes dryers and gas cook stoves. Terms to suit YOU. Geo. D. Rhone Co., Coleman, Texas. 48fc.

FOR SALE: Used Furniture and Antiques. W. M. Morgan, 602 South Houston, phone FI8-3802. 25fc.

FOR SALE: Several used TVs in good condition. Geo. D. Rhone Co., Coleman, Texas. 48fc.

SINGER ZIG ZAG SELECT-O-MATIC

Buttonholes, sews on buttons, embroiders, fancy, patterns, ect. Need party with good credit to assume payments of \$7.75, or \$68.48 cash. Still under guarantee. Write Department 11, in care of The Santa Anna News, Post Office Box 697, Santa Anna, Texas. 39fc.

REAL ESTATE BEST BUYS

FOUR ROOM HOUSE: With bath, on pavement, a bargain with small down payment. Also, two large lots located on pavement.

ANOTHER FOUR ROOM HOUSE: This one is a real bargain. Close-in and on pavement, this four room with bath, house can be purchased with a very low down payment, with the remainder in low monthly payments, like rent.
 M. L. (RAT) GUTHRIE 45fc.

LIFETIME TANK COAT: Stops all leaks. Prevents rust forever. For Steel, Concrete, and Wood. Three quarts, \$11.00, three gallons, \$39.00. Virden Permabilt, 4014 Bowie, Amarillo, Texas. 47-50c.

WANTED—TO BUY

WANTED: All kinds of sacks, burlap or cotton feed bags. Top market prices. Coleman Bag & Burlap Co., phone FI8-3604, Santa Anna. 4fc.

FOR RENT

FOR LEASE: The Kelley Farm. See Ross Kelley. 46-49c.

SPECIAL NOTICES

REGISTERED SHETLAND Stud ready for service. Arthur Talley. Phone FI8-3130 or FI8-3354. 40fc.

WANTED: Grain field pasture. Pasture needed for 20 head of mares for 30 to 60 days. John W. Taylor, Box 91, Santa Anna. FI8-3637. 48p.

PECAN tree feeding and spraying. Also all kinds of trees trimmed or topped. Henry B. Rice, Box 459, Santa Anna, Texas. FI8-3750. 48-50p.

MISCELLANEOUS

IF YOU ARE thinking about improving your home ask us for free estimates on the following: Insulation to make your home easier to heat and cool; all types of siding including the new plastic, insulated, asbestos and aluminum in lovely colors and quality roofing to top it all. Call MI5-8596 Collect. Smith Roofing Company, Brownwood. 51fc.

WHEN YOU THINK of grinding, mixing and pelleting, think of Hollingsworth Feed Mill, Coleman, Texas. 50fc.

UPHOLSTERING Shirley Upholstering Co. 1504 North Nueces, Coleman

BUSINESS OPPORTUNITIES

RECESSION - DEPRESSION PROOF BUSINESS EXCEPTIONAL HIGH EARNINGS PART-TIME WORK FOR ADDED INCOME

Reliable party or person, male or female, wanted for this area to handle the world-famous R.C.A. and Sylvania TELEVISION and RADIO TUBES sold through our latest modern type tube testing and merchandising units. Will not interfere with your present employment. To qualify you must have: \$1,895.00 or \$3,290.00 Cash Available Immediately. Car. 5 spare hours weekly. Could net up to \$600.00 per month in your spare time. This company will extend financing assistance to full time if desired. Do not answer unless fully qualified for the time and investment. ●Income starts immediately. ●Business is set up for you. ●We secure locations. ●Selling, soliciting or experience not necessary. For personal interview in your city, write — please include your phone number.

Mental Crises Can Be Like Broken Bones, Expert Says

Emotional crises are somewhat like broken bones — they may arise suddenly and not require hospitalization, yet they do need immediate treatment.

So says Patsy Reynolds, Extension Service specialist in family life education at Texas A&M University. "Prompt help will relieve pain, reduce complications and eliminate permanent damage," she says.

This immediate assistance is available only in a few Texas communities, however the specialist says. Many emotionally troubled people each year have no one to turn to and nowhere to go for treatment, according to a study by the State Mental Health Planning Committee.

"The concept of public health units to make health services available to all is not new. Texas has made much progress. Seventy five counties have established

such units, but that leaves almost 2.5 million people in 195 counties who do not have such services," Miss Reynolds says.

The situation is more dismal in the area of mental health, she adds. "There aren't enough clinics, hospital beds, and trained workers to meet the needs of the emotionally troubled who seek help. These resources are located in a few metropolitan areas," Miss Reynolds points out.

Mental health services are needed in local communities where troubled people are located. The Mental Health Planning Committee is preparing recommendations for action under the leadership of Judge J. C. Abernathy of Hale County.

Persons desiring further information about activities of the committee may request it by writing to the committee headquarters at 410 East Fifth Street, Austin.

MORE RECENT BIRTHS

A boy, Gregory Gilbert, was born to Mr. and Mrs. John D. Lingner, of Santa Anna, on November 4, 1964. Weight: eight pounds, two and one half ounces. Height: twenty one and one fourth inches.

A girl, Deanna Darlene, was born to Mr. and Mrs. Jimmy Wayne Smith, of Coleman, on November 5, 1964. Weight was eight pounds, twelve and one half ounces. Height: twenty inches.

A girl, Cherry Lynn, was born to Mr. and Mrs. T. W. Lewis, of Santa Anna, on November 6, 1964. Weight: six pounds, fifteen and one half ounces. Height: twenty inches.

A boy, Ricky Fernando, was born to Mr. and Mrs. Tony F. Sanchez, of Coleman, on November 8, 1964. Weight: seven pounds, three ounces. Height: twenty inches.

COLLEGE FUND PLAN ADOPTED

Texas Commission on Higher Education has adopted a plan for distribution of \$11,700,000 in federal building funds among 90 junior and senior colleges in 1965.

Forty five percent of points allocated to schools under the system must be based on projected enrollment increases and utilization of existing facilities.

Formal applications of schools can be submitted after the US Office of Education approves the state plan — probably about December 1. January 15 is deadline for applications.

Kenneth Wise Steak House

Formerly Ranch House

Open 6 a. m. to 12 p. m. Daily

Charcoal Steaks

Lots of Parking

407 Fisk (Across from City Hall)

Brownwood, Texas

Give Your Clothes Nine Lives

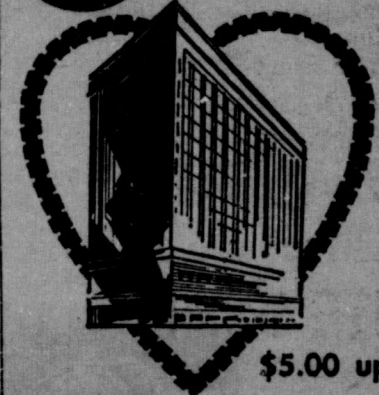
Bring Them To Switzer's Laund-O-Mat

Today



It's The Cat's Meow!

CIVIL DEFENSE APPROVED FALLOUT SHELTER



\$5.00 up

No Charge for Children Under 18
 24-Hour Coffee Shop
 Radio-Television
 Completely Air Conditioned
 FREE INSIDE PARKING



HOTEL Southland

Commerce-Murphy-Main Streets
 Telephone: Riverside 2-6431
 Dallas, Texas

ALL WAYS BEST Russell Stover CANDIES



\$1.60

1 lb.

2 lbs. \$3.15

MANY ASSORTMENTS TO GIVE AND ENJOY

Phillips Drug

WE GIVE S.A.H. GREEN STAMPS

THANKSGIVING, 1964



A Time To Stop and Say 'Thank You' For All Our Blessings.

R. T. Caperton Chevrolet-Cadillac

114 East College — Phone 625-4145 — Coleman, Texas

SPECIALS

DECKER CANNED PICNIC HAM	4 lb. can	2.39
DECKER'S JOWANA CANNED HAM	3 lbs.	2.59
GOOCH'S HAM - Half or Whole	lb.	47c
U.S.D.A. GRADE — 10 to 12 Lb. Average		
Turkey Hens	pound	34c
DROMEDARY Pitted Dates	16 oz.	39c
OCEAN SPRAY Cranberry Sauce	2 cans	49c
ANGEL FLAKE TINS — 3 1/2 Oz.		
COCONUT	2 cans	39c
MORTON Pumpkin Pies	20 oz.	29c
MORTON Mince Meat Pies	20 oz.	39c
LIBBY'S WHOLE GREEN BEANS	2 cans	49c
BETTY CROCKER Cake Mix	3 for	1.00
POWDERED SUGAR	2 pkgs.	29c

HOME MADE PIES BY MRS. TOM RUSHING

Harvey's Grocery

MEMBER INDEPENDENT GROCERS, INC.
 PHONE FI8-3632

SOCIAL NOTES

Getting Garden Prepared For Winter Essential For Good Spring Results

Since considerable planting will be done in Texas gardens during December and January, soil conditioning and watering well in advance of planting dates are important. This will not only avoid a last minute rush that usually results in poor preparation, but it often makes planting possible when the soil is too wet to work later in the winter.

Prepare the soil now in all areas where shrubs, hedges, shade and fruit trees or bare-root dormant rose bushes are to be planted.

It is a good practice to secure a supply of pine bark, peatmoss or other organic matter as well as some soil that may be required for later planting opera-

tions. Pile these materials so they can be covered with a sheet of polyethylene or other cover to keep them dry for future use.

Winter garden is often neglected. In Gulf Coast areas, long dry periods may cause severe dying back on the growth tips of broadleaf evergreens, especially azaleas and camellias. This is serious on such plants since many are winter flowering types, and rapidly developing flower buds require a steady supply of moisture.

Shallow rooted plants such as ferns and begonias and many plants in containers also dry out frequently during the winter. Such plants, especially those in an area exposed to the south or

west, need moisture to prevent winter injury.

Many gardens do not drain properly; these should be inspected before general watering. When soggy soil becomes cold, the root damage on plants in such locations may be more severe than any caused by frost to the above ground parts.

Where well-drained soil conditions are prevalent, light waterings can be applied. However, adequate drainage must be provided and water reservoirs such as watering basins and other retainers around established plants must be cleaned away.

Watering during cold weather should be done early in the day so the foliage dries off before nightfall. Soil will hold more water for longer periods when it and the atmosphere are cold and the air is calm.

Much planting damage blamed on insect and disease attacks

is due to excessively dry or moist soil during the winter months. Existing soil conditions and proper watering practices are just as important during this season of the year as in the hot summer months.

Hospital Notes

ADMITTED

Mrs. C. H. Douglas, Coleman
Mrs. Daniel Ramirez, Abilene
Mrs. A. L. Hollon, Grosvenor
Rev. Weldon Haynes, May
Mrs. H. J. Keith, Coleman
Edward E. Jackson, Coleman
Mrs. Wilson Sharp, city
Mrs. W. V. Ware, Brownwood
Mrs. Luther A. Clinch, city
George E. Wagley, Coleman
Luther A. Clinch, city
Mrs. Lacy H. Culpepper, city
Mrs. Fred Shuford, Rockwood

Mrs. Ione M. Caton, city
Gary Reeves Hubbard, Coleman
Mrs. E. J. Garcia, Ballinger
Herbert Foster, Coleman

DISMISSED

Mrs. C. V. Drennan, Coleman
Mrs. S. L. Cannon, city
Mrs. George J. Ragle, Coleman
O. B. Kitchen, Coleman
Marion V. (Buddy) Ray, Coleman
Thomas O. Nalley, city
Mrs. Jackie Smith, city
Mrs. E. J. Caraway, Brownwood
Mrs. Tony F. Sanchez and baby, Coleman
Gilbert (Hill) Nunez, Coleman
Mrs. Orene Peacock, Coleman
Mrs. C. F. Duus, Coleman
Mrs. C. H. Douglas, Coleman
Mrs. Daniel Ramirez, Abilene
Mrs. A. L. Hollon, Grosvenor
Mrs. H. J. Keith, Coleman
Mrs. W. V. Ware, Brownwood

Mrs. Luther A. Clinch, city

BIRTHS

A son, Ricky Fernando, born to Mr. and Mrs. Tony F. Sanchez of Coleman on November 8, 1964. Weight: seven pounds, and three ounces.
A son, James Edward, born to Mr. and Mrs. Lacy Culpepper of Santa Anna on November 14, 1964. Weight: seven pounds, and eleven and one half ounces.

Use the News want ads. They get results.

Weah McCulloch, Sec.-Treas.
Bettie McCulloch, Mgr.
Standard Abstract Co.
City & County Maps For Sale
405 Bank Bldg. Coleman

MENU FOR THANKSGIVING

Soup	Turkey	— .85	Salad
	Fried Chicken	— .85	
	(With Cream Gravy)		
	Swiss Steak	— .85	
	(With Tomato Sauce)		
	Baked Ham	— .85	
	(With Raisin Sauce)		
	Roast Beef	— .85	
	(With Brown Gravy)		
	Fillet of Catfish	— .85	
	Dinner Club Steak	— 1.25	
	Dinner T-Bone Steak	— 1.25	
	Two Grilled Lamb Chops	— 1.25	
	Combination Sea Food Plate	— 1.25	
	Choice Of Two Vegetables		
	Cream Peas	Mashed Potatoes	
	Whole Grain Corn	Candied Yams	
	Tea or Coffee	Hot Rolls — Dessert	
	Complete Mexican Dinners	— 1.35	

CLIFF & RUTH GRILL

Orders To Go
Brownwood Hiway
FIS-9150

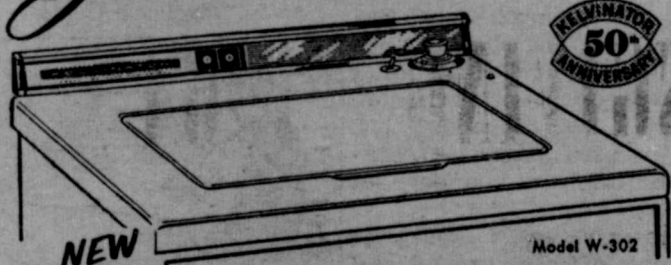
HEY KIDS!!!

After You've Seen and Talked To Santa, Come and See Our Complete Toy Selections

And Mom See The Latest Thing In Automatic Washers

\$188.00
only

and it washes with a Golden Touch!



KELVINATOR automatic washer

Now a remarkable and exclusive Golden Touch agitator action gives you both the cleanest possible washing and the gentlest possible washing. It saves you wear and tear on your clothes and saves you water and detergent. It prescrubs for you and never drains dirt, suds and scum back through your clothing. And it does all this without any gears to wear out or break down!

- "Magic Minute" Automatic Prescrubbing
- Normal and Small Load Cycles
- Lint Filter/Bleach Dispenser
- Porcelain Top, Lid, Tube
- Washes 1 to 12 lbs.
- 3 Water Temperatures
- 5-Year Parts Guarantee*

KELVINATOR BRINGS YOU GREATER VALUE!

Through a program of Constant Basic Improvement, Kelvinator concentrates engineering time and money to bring you appliances that are more useful, more dependable and more economical to operate.

*Kelvinator will repair or replace any defective drive-mechanism part for five years, and any other defective part for one year. Labor costs will be paid by the dealer for the first year.

WE GIVE and REDEEM GOLD BOND TRADING STAMPS

75 Years In Coleman
J. E. STEVENS CO.
Hardware Dept.
111 W. Live Oak Coleman, Texas

WE JOIN In Wishing Our Friends And Customers A Joyful Thanksgiving

Ladies Shop

McKee Cleaners

Santa Anna Insurance

Santa Anna National Bank

Santa Anna Hospital & Clinic

Mountaineer Recreation Center

Baker Gulf Service Station

Moore Mercantile Company

L. A. Welch Garage

G&E Hardware

Thanksgiving...

A TIME TO PAUSE AND SAY "THANK YOU"

Our Pilgrim Forefathers conceived Thanksgiving as a day to stop and take stock of all the good things in life. They had, as we do today, a constant threat of upheaval. They too, were beset by problems — economical and political — big and small — but they found time, once a year, to thank God and thank each other for all the good things they enjoyed. We, at First Coleman National, are thankful for the county, state and nation in which we are privileged to live.

We are thankful for the opportunity we have of being a part of this thriving area and for you, our friends and customers, whom we are privileged to serve. We pledge our continued efforts to be worthy of your patronage.

FIRST COLEMAN NATIONAL BANK

Always Willing — Always Prepared
Member FDIC & Federal Reserve System
100 Commercial — Coleman

Specials

Prices Good Tuesday through Saturday

GLADIOLA MEAL	5 lb. bag	39c
KRAFT'S Salad Dressing	quart	59c
LARGE 10 OZ. JAR Salad Olives		39c
NON SUCH — 18 OZ. JAR Mince Meat		39c
KIMBELL'S — Peach or Apricot, 18 oz. Preserves	3 for	1.00
LARGE 2 LB. BAG Popcorn	only	29c
BEST VALUE Toilet Tissue	4 rolls	25c
AUNT JEMIMA Pancake Mix	lb.	19c
KIMBELL'S WAFFLE — 24 Oz. SYRUP		39c
RED SOUR PITTED — 303 CAN Cherries	2 for	35c
KRAFT'S VELVEETA CHEESE	2 lb. box	89c
DECKER'S CHILI	lb. block	59c
LARGE, CRISP STALK CELERY		15c
BEEF Arm Roast	pound	45c

Hosch Grocery

THE SANTA ANNA NEWS

Established January 1, 1886
Published by
PARKER PUBLISHING COMPANY
Post Office Box 697 Dial Frieside 8-3545

PUBLISHED EVERY THURSDAY AT SANTA ANNA,
COLEMAN COUNTY, TEXAS

NOVEMBER 26, 1964

SUBSCRIPTION RATES	
One Year in Coleman County	\$2.50
One Year in Texas (Outside Coleman Co.)	\$4.00
One Year Outside State of Texas	\$5.00
One Year Outside of United States	\$8.00

Second Class Postage Paid at Santa Anna, Texas

DISPLAY ADVERTISING RATES ON REQUEST

STAFF

Bob Parker	Editor
Nora Robinson	Advertising Manager
Morey Mast	Production Supervisor
Ruth Foldrath	Compositor



BIG
TEX

EDITORIAL

Thanksgiving, 1964

O beautiful for spacious skies,
For amber waves of grain,
For purple mountain majesties
Above the fruited plain!
America! America!
God shed His grace on thee,
And crown thy good with brotherhood
From sea to shining sea.

O beautiful for pilgrim feet,
Whose stern, impassioned stress
A thoroughfare for freedom beat
Across the wilderness!
America! America!
God mend thine every flaw,
Confirm thy soul in self-control,
Thy liberty in law.

O beautiful for heroes proved
In liberating strife,
Who more than self their country loved,
And mercy more than life!
America! America!
May God thy gold refine,
Till all success be nobleness,
And every gain divine.

O beautiful for patriot dream
That sees, beyond the years,
Thine alabaster cities gleam,
Undimmed by human tears!
America! America!
God shed His grace on thee,
And crown thy good with brotherhood
From sea to shining sea.

Yesterday's News

FIVE YEARS AGO

The Vinson Grocery Store was closing this week in 1959. B. T. Vinson, owner of the store, was retiring due to poor health, according to a front-page story in *The News* for November 27, 1959.

The Mountaineer band was unhappy with the Division 4 rating they received at regional competition in Sweetwater, Saturday.

Mrs. Terry Sanders, the former Beth Barnes, daughter of Mr. and Mrs. W. F. Barnes, of Santa Anna, wrote to her parents from India, where Sanders was employed by the State Department.

Rev. and Mrs. A. J. Wall, of Texas City, announce the engagement and approaching marriage of their daughter, Carol Virginia, to Mr. Ray Switzer, son of Mr. A. E. Switzer, of Santa Anna, and the late Mrs. Switzer.

TEN YEARS AGO

The Mountaineers lost their last game of the season to the Mason aggregation by a score of 55-0. The Mountaineers won one game during the 1954 season, over Early, which team went winless for the year.

Mr. and Mrs. Cecil McCreary, of Sweetwater, spent the weekend with her mother, Mrs. R. F. Miller, and with her sister, Mrs. Jim Lovelady and family.

TWENTY YEARS AGO

Rodney L. Dean, son of Mr. and Mrs. A. H. Dean, of Santa Anna, is pictured drinking a mug of ale after giving blood in Italy.

"Our only path is to clearly recognize the beastly character of the American people and to renew our determination to crush America," according to a propaganda broadcast from Tokyo, which stated that the reelection of Franklin Roosevelt as President eliminated the possibility of "compromise peace negotiations."

Robert J. Cheaney, son of Mr. and Mrs. O. L. Cheaney, of Santa Anna, recently graduated from the aerial gunnery school at Kingman Air Force Base,

KINGMAN, ARIZONA.

TWENTY FIVE YEARS AGO

A new Willys and Pontiac automobile agency was opened in Santa Anna this week, managed by S. E. McCaskey, according to the paper for December 1, 1939. An ad for the firm offers used cars, accepting livestock in trade.

Purdy Mercantile Company advertises men's suits for \$12.95. Accompanied by coach Cullen Perry, members of the Mozelle High School football team Saturday attended the Southern Methodist and Baylor football game in Dallas.

THIRTY YEARS AGO

Santa Anna topped Coleman in football, 13-8, this week in 1934, to wrap up the season.

A Trades Day advertisement listed 78 firms in Santa Anna participating in the program. Among those in business here in 1934 and still around are O. A. Etheredge, Texaco Agent; Piggly Wiggly, Phillips Drug; Santa Anna National Bank; West Texas Utilities; Hosch Furniture & Undertaking; Mathews Motor Company; Coleman Gas Company, and The Santa Anna News.

FORTY YEARS AGO

B. S. Wilson, of Santa Anna, entered 13 chickens in the Coleman County Poultry Show, winning 12 ribbons, including four firsts, four seconds, three thirds, and one fourth place, according to *The News* for November 28, 1924.

Carroll Kingsbery, son of H. W. Kingsbery, of Santa Anna, killed a bear at a distance of 20 feet, according to a letter received by his father. The bear killing took place in Colorado, where the younger Kingsbery lives.

The Allen Motor Company, of Brownwood, advertises a used Franklin (that's a make of automobile in case you don't know) for \$200.

Featured at the Best Theatre this Saturday will be "Pals in Blue" starring Tom Mix.

Two businesses in Bangs burned this week.

KNOW OUR TEACHERS



RUFUS COBERN

According to an old saying, "A poor beginning means a good ending." Rufus Cobern, new head coach at Santa Anna High School, hopes that there is truth in this proverb. Coming to the Mountain City from Comstock High School, where he coached that school's six-man football team to a district championship, Cobern ran into a rebuilding situation in Santa Anna, and despite all the efforts he could expand, wound up with a winless season.

Does a coach go into such a situation knowingly? "Yes, I knew it would be a rebuilding situation in Santa Anna," Cobern says, "I like this type of situation. You know that whatever you accomplish is your own doing, and not something you inherited from the preceding coach."

Such a situation is not new for Cobern. When he arrived at Comstock, fresh out of Sul Ross State College, he found a football team that had never won a game. The first season, the Comstock squad tied one game and lost the rest. Before leaving Comstock, Cobern guided the school's teams to a district championship in football, another district crown in basketball, and two district titles in

Happy Birthday

"Happy Birthday" to all who have birthdays during the next week. Below are listed the birthdays we have this week.

NOVEMBER 29

W. R. (Bill) Brown
Mrs. Dorothy Wallace
Jerry Holt

Ray Switzer, Texas City

NOVEMBER 30

Mrs. S. F. Tucker
I. C. Collins
Frank Crum

Mrs. L. O. Garrett

DECEMBER 1

Lonnie Lowry
Elizabeth Henderson, Del Rio

DECEMBER 2

W. F. Trull
James Sluder
Denny Lynn Densman

Roy D. Henderson

Janice Langford

Mrs. Drisco Woods, Wickett, Texas.

DECEMBER 3

Mrs. H. M. Smith
Janice Kay Kenney
Mrs. Will Howard

Beverly Lee

Joe Guerrero, Jr.

Billy N. Woods, Monahans

Carolyn Jackson, New Bedford, Massachusetts

DECEMBER 4

Mrs. Ellis Densman
Brenda Densman
Mrs. Dorothy Watson

Mrs. H. H. Mitchell

Would you like your name to be published on your birthday? If so, please be sure to let us know when it is. Next week we will publish names of those having birthdays between December 5th and December 11th.

track.
Cobern played football (as a tackle) at Tarleton Junior College, playing on a team that was the top junior college team in the nation that year. At Sul Ross, unable to play football because he had signed a letter of intent to Howard Payne, he participated in track, tossing the shot, the discus and the javelin.
In addition to coaching, Cobern teaches mathematics, his minor subject in college. He is currently organizing a slide rule and numbers sense team at Santa Anna High School.

Mrs. Cobern, Lee by name, works as a secretary in the Santa Anna High School office. The Coberns have two children, a daughter, Vickilee, 4 and a boy, Rufus, Jr., 2.

The Coberns are members of the Northside Church of Christ. Both Rufus and Lee are natives of San Saba.

Cobern likes Santa Anna, he said, and appreciates the backing the people of the town have given him and the football team during the season just ended. "We expect to do a lot better next season," he says. Judging from the past record, he probably will.

LETTERS

Editor:

I am writing this letter as a means of thanking the people of Santa Anna for receiving me with such friendliness and concern for the purpose of my short stay in your town. God only knows how much you really contributed in the Crusada Bueta-Nueva Vida.
Again the best way I can convey my appreciation is by a simple "thanks."

Sincerely,
Lynn Izard

COTTON REPORT

Cotton harvesting was at a standstill last week. A few gins operated on Monday to clear gin yards of cotton harvested during the weekend.

Sample receipts at the USDA Cotton Classing Office in Abilene were down about 7,400 from the previous week. Receipts for the week ending November 20, 1964, totaled 11,150 which brought the season total to 109,500.

Grades of cotton from District 2 — Coleman, Rannels, Taylor, Nolan, Mitchell, Scurry, Fisher, Jones, Stonewall, Kent, and Dickens counties — were about the same as they were the two previous weeks. Eighteen percent of the samples were white, 72 percent was light spotted and 10 percent was spotted. About two percent of the samples were reduced in grade due to bark and grass.

Staple length showed a slight improvement and were: four percent 7/8; 34 percent 29/32; 56 percent 15/16; five percent 31/32; and one percent one inch and longer.

Eighty two percent of the mike readings were in the 3.5 to 4.9 range and 17 percent miked 5.0 and above. Less than one percent of the samples miked below 3.5.

Cotton market activity was steady last week. Gross price received by producers for Middling Light Spotted cotton ranged from 40 to 75 points over loan value while Strict Low Middling Light Spotted and lower grades of cotton bought 80 to 135 points premium. The demand for Middling Cotton was not good.

State Capitol NEWS

State Representatives who were sworn to the 1965 Legislature on Monday have military matters very much on their minds. Constituencies of those lawmakers with military bases in their districts stand to be affected by both Federal and state proposals.

Some lawmakers were sworn in with the knowledge that many Federal workers in their districts stand to lose their jobs by US Defense Department cutbacks. Operations will be cut out at James Connally Air Force Base, at Waco, and Amarillo Air Force Base, and cut down at Dyess Air Force Base, in Abilene, and Eagle Mountain Army maintenance facility, at Fort Worth.

San Antonio bases and Carswell AFB, at Fort Worth, stand to gain by the big shift. And that also will present new problems for State Representatives.

REDISTRICTING

Congressional redistricting, one of the major problems facing the 1965 Legislature, may cause a headache for legislators whose districts embrace bases.

Bob Johnson, executive director of the Texas Legislative Council, believes the Legislature could — if it chose — leave out military and State hospital populations in deciding the "population" of a county for redistricting purposes.

By state constitutional provision, persons in state mental hospitals cannot vote, nor can persons in military service who enlisted in other states. Therefore, they could be left out of population totals if the Congressional redistricting goal of "one man, one vote" is considered paramount.

However, Johnson conceded that the mathematics involved in paring down population in communities as heavily military as, say Bexar County might become so complicated that the Legislature would choose to proceed on full population figures.

BORDER DISPUTE

Governor John Connally, Land Commissioner Jerry Sadler, and Attorney Wilson Fox, of Taylor, members of the State School Land Board, filed a protest with Louisiana's Board of Mineral Development over the Sabine River border dispute.

Area in dispute is the Western half of the Sabine River and Sabine Lake and a pie-shaped wedge of the Gulf of Mexico pointed at the mouth of the Sabine and widening sharply until it reaches the line three miles out where Louisiana's offshore boundary lies. Beyond that point, the area extends to Texas' outer offshore boundary of 10.5 miles.

Controversy grew out of Louisiana's offer of two oil and gas lease tracts which lie in an area claimed by Texas, but also claimed by Louisiana. Governor Connally has requested Attorney General Waggoner Carr be brought into discussions, so he will be fully informed should the dispute travel to the US Supreme Court.

INDUSTRIAL GROWTH

A study of UT's Bureau of Business Research's monthly reports on industrial growth from January through November shows that a total of 611 new plant locations and significant plant expansions were announced for Texas in those 11 months.

The Houston metropolitan area led all others with 126 new plants and expansions; Dallas with 81 was next; and Fort Worth followed with 65. However, there were dozens of little towns which boasted big industrial boosts.

OIL ALLOWABLE

Texas Railroad Commission set December oil allowable at 29 percent of maximum for pro-rated wells, compared to 28.4 percent in November.

Increase is expected to be 29,914 barrels a day higher than the estimated November average of 2,541,909 barrels a day.

COURTS SPEAK

Third Court of Civil Appeals upheld most of a trial jury's verdict against three East Texas oilmen penalized \$304,800 for slant well drilling. Court held that the production penalty was in error because the State and Railroad Commission had not established number of production days from the slanted well, and reversed that portion of a district court's ruling.

Supreme Court held lower courts were wrong in refusing Fort Worth an injunction to block an apartment structure in an area zoned for single and two family dwellings.

Constitutionality of a 1963 law providing state regulation of Texas border liquor exporting firms was attacked in arguments before Third Court of Civil Appeals. Law set a stiff licensing fee and other requirements.

RIO GRANDE WATER ESTIMATED

Texas Water Commission has estimated Rio Grande Valley has water supplies to irrigate up to 680,000 acres over the requirement for municipal and industrial purposes.

Commission figured 124,000 acre feet annually would be needed for municipal and industrial uses. Report was written for the attorney general who is participating in a giant lawsuit over Rio Grande water rights involving Starr, Hidalgo, Cameron and Willacy Counties.

SHORT SNORTS — Uniform shell dredging regulations for Texas coastal bays may result from a Parks and Wildlife Commission decision on an application by Heldenfels Bros. of Corpus Christi to dredge for shell in Copano Bay.

School Land Board may increase royalty charged producers on mineral leases which it has extended, Attorney General Carr held in an opinion.

Land Commissioner Jerry Sadler announced a December 12 deadline for prospective lessees to submit nominations of tracts of State Permanent School Fund land to be leased by the state during the oil and gas lease sale on February 2, 1965.

State Health Department reports only six cases of paralytic polio in Texas this year, five of which were children four or under.

Parks and Wildlife Department is seeking men between 21 and 40 to fill 15 game warden openings, after completion of four-months' training at A&M University.

Typewriter paper at the Santa Anna News.

Today's MEDITATION

from
The World's Most Widely Used
Devotional Guide



The Upper Room

© THE UPPER ROOM, NASHVILLE, TENNESSEE

Read Galathians 3:21-29.

Ye are all the children of God by faith in Christ Jesus. (Galathians 3:26.)

Years ago when a wealthy rancher died, a neighbor said to my father, "His children — selfish, wasteful and ungrateful — are so unworthy to inherit his riches. They haven't earned a dime of his money.

"But they are his heirs," my father replied. "Worthiness doesn't count. An inheritance is bestowed, not earned."

No one through his own merit is good enough to become an heir of God. It is only through the grace of Jesus Christ that we may inherit salvation.

On the other hand, no one is so unworthy, so sinful, that he cannot accept Christ's salvation if he will believe.

As Paul wrote to the Colossians, God "hath translated us into the kingdom of his dear Son: in whom we have redemption through his blood, even the forgiveness of sins." This is the inheritance Christ gives us, even eternal life.

PRAYER

Precious Lord, take our hands and lead us into the everlasting kingdom prepared by Thy loving Son our Redeemer. Help us joyously to tell others of this wonderful gift of eternal life, the inheritance of all who will believe. In Jesus' name. Amen.

THOUGHT FOR THE DAY

"Every man...has an open gate to God in his soul."

—Claudia M. Higgins
(California)

Rockwood News

By MRS. JOHN C. HUNTER

Garland McSwain of Dallas is spending his vacation with his parents, Mr. and Mrs. Aubrey McSwain.

Mrs. Evan Wise visited Friday to Monday in San Antonio with Mr. and Mrs. Eddie Valcek and children and Mr. and Mrs. Bill Mueller and family.

Paige Patterson of Irving is visiting her grandparents, Mr. and Mrs. Bill Steward. Sonsy Steward, a student at Tarleton College, was home for the weekend.

Mrs. Marshall Campbell and Pat of Eastland spent Friday to Sunday with Mr. and Mrs. Claud Box.

Mr. and Mrs. Leffel Estes and family were in San Angelo Sunday afternoon to visit with Sam Alexander, who is a patient in St. John's Hospital, because of a mild heart attack.

Miss Peggy McIntire and a friend of Austin and Billy Matt McIntire of Brownwood visited in the Matt Estes home Sunday morning. Linda McIntire also was a visitor. Donnie Estes and family of Abilene were Sunday guests. Mr. and Mrs. Matt Estes were in San Angelo Friday and Saturday.

Last Wednesday afternoon, Mr. and Mrs. Billy Williams of Dallas visited with Mr. and Mrs. Kenneth Brusenhan. Dr. Ben Moore of Santa Anna visited Sunday afternoon.

Mr. and Mrs. R. J. Pederson and family of San Angelo spent

Saturday night and Sunday with Mr. and Mrs. Marcus Johnson and boys. Jerry Johnson of Abilene was with homefolks for the weekend.

Mr. and Mrs. M. A. Richardson visited Sunday afternoon with Mr. and Mrs. Fox Johnson. Jerry and Nikki Johnson and Mike and David White and Bal Peebles also visited.

Mr. and Mrs. A. L. King went to Moore, Oklahoma last Friday to visit with Mr. and Mrs. R. C. Arnold and Meri Jan. On Sunday they visited at Tulsa, Oklahoma with Mr. and Mrs. B. E. Harden and family. Mrs. Gerald Sitterle and girls of Houston were also guests with the Hardens. The Kings returned home Monday afternoon. Later in the afternoon Mrs. King visited with Mrs. Era Blackwell.

Mr. and Mrs. Denver Ellis, Miss Sissy Steward and Jack Cooper spent Sunday at Midland with Mr. and Mrs. Charles Sheffield, Mike and Butch and Mrs. Cooper. Mrs. Ellis stayed to visit and Mrs. Cooper returned home.

Mr. and Mrs. John Fulbright and boys of Coleman spent Sunday in the Sherman Heilman home.

Sunday callers with Mr. and Mrs. R. L. Steward were Mrs. F. E. McCreary, Mrs. Lon Gray and John X. Steward.

Mrs. Tommy Briscoe and Mrs. R. E. Briscoe of Waldrip, Mrs. Bray and Mrs. J. A. Hunter visited last Tuesday with Mrs. Frank Bryan.

Wednesday of last week Mr. and Mrs. J. A. Hunter and Mrs. Briscoe visited Mr. and Mrs. James Hunter and Jimmy of Coleman. Mr. and Mrs. Hunter visited Monday in Coleman with the James Hunters. Monday evening they were supper guests with Mr. and Mrs. Tommy Briscoe and children, Don Hunter, a

student in Howard Payne, at Brownwood was home Sunday.

Mrs. Frank Bryan, a shut-in, appreciated all the nice gifts, food and cards for her birthday. The WMS of the Baptist Church honored her on her birthday anniversary.

Prominent Rancher Buried Saturday

Hardy E. Stewardson, 62, prominent San Saba ranchman, died Thursday, in San Saba Memorial Hospital, after a brief illness.

Funeral was held Saturday, in Howell-Doran Funeral Chapel, San Saba, with burial in San Saba City Cemetery.

Mr. Stewardson was born January 24, 1902 in Santa Anna. He was married to Birdie Barton, October 4, 1920, at Brownwood. A resident of San Saba County since 1946, he moved to San Saba from the Shields community in Coleman County. He was a member of the Baptist Church.

Survivors include his wife; his mother, Mrs. J. L. Stewardson, of Santa Anna; two sons, Boyd

Stewardson, and J. L. Stewardson, both of San Saba; two daughters, Mrs. Sammie Skiles, of Weatherford, and Mrs. Marlis Barker, of Plainview; one brother, W. T. Stewardson, of Santa Anna; one sister, Mrs. Lillian Lewellen, of Santa Anna, and seven grandchildren.

Three Local Youths Judged Delinquent In Harvey Burglary Case

Three Santa Anna juveniles were adjudged delinquent in hearings before County Judge Frank Lewis last week, as a result of the Halloween burglary of Harveys Grocery Store.

Sheriff John Smith and Deputy Sheriff Nick Buse arrested

the three juveniles on Wednesday, November 4, four days after the breakin, and recovered almost all of the \$300 worth of cigarettes and ammunition taken.

Papers have been signed to admit one of the youths to a state school for mentally retarded, in Abilene. A second juvenile

has been released in the custody of his parents, and action on the third is still pending.

AUTOMATIC CAR WASH

25¢ 5 Min.

Open Day & Night

On Needham Street West of T. L. Sparkman's Wash-A-Matic

Coleman, Texas

ALL BUSINESS APPRECIATED

T. L. Sparkman, Owner and Operator

El-Food Products
BROWN'S GROCERY
HARVEY GROCERY
WILLIAMS FOOD STORE

DR. M. O. SOWELL CHIROPRACTOR

Phone 625-4824
615 Commercial, Coleman

GOOD VISION IS VITAL TO YOU



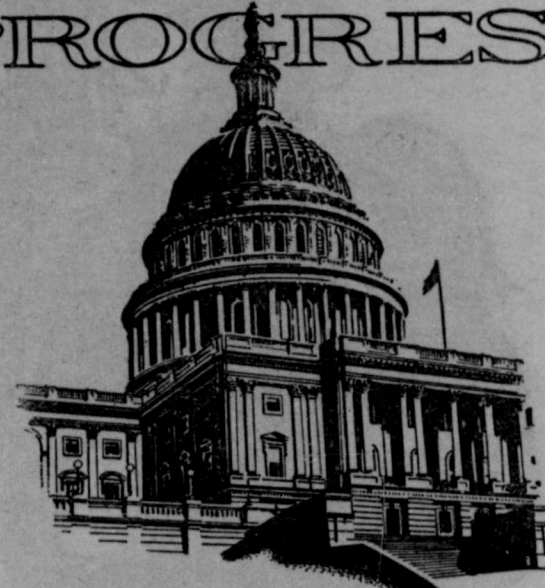
Minor defects, corrected now, can save your child from serious eye problems. Play safe... bring him in for regular, scientific eye examinations.

Dr. E.H. Henning Jr Optometrist

117 Commercial Avenue
Coleman, Texas
Phone 625-2228

OFFICE HOURS
9:00 A. M. to 5:00 P. M.
Saturdays - 9 to 12

PROGRESS



...HAS MADE US A GREAT NATION. WE, TOO, REALIZE THE IMPORTANCE OF KEEPING ABREAST WITH TIME.

STEVENS FUNERAL HOME

400 West Pecan, Coleman

Phone Enterprise 252



Sign of Happy Motoring Complete One-Stop Service

CRUSHED OR BLOCK ICE

Horner Humble Service Station

WE GIVE S.&H. GREEN STAMPS

TIRES ARE GUARANTEED at RUDOLPH'S Coleman, Texas

TOMLINSON BOOT AND SADDLE SHOP

Boot Making
Shoe Repairing
Saddle Making
Saddle Repairs

In Our New Location
217 Commercial
Coleman, Texas

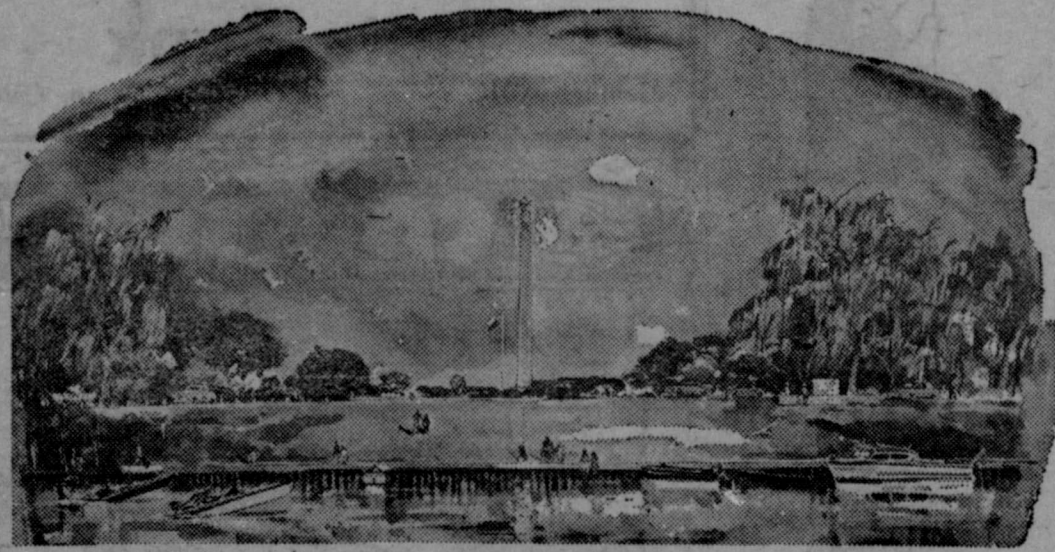
PRESCRIPTIONS

Owl Drug Store

"Where Friends Meet"
Telephone 625-4514

312 Commercial Ave.

Coleman



Monument at San Jacinto Battleground by E. M. Schwetz

SAN JACINTO . . .

in 18 Minutes—Blessed Freedom!

At 3:30 P.M. on April 21, 1836, General Sam Houston launched his attack. So sure was Mexican Army Commander Santa Anna of his troops' superiority that he did not even post sentries during the customary afternoon siesta.

The freedom-inflamed Texans, shouting "Remember the Alamo!", sprang upon the enemy. In the incredibly short space of 18 minutes Texas' freedom was won.

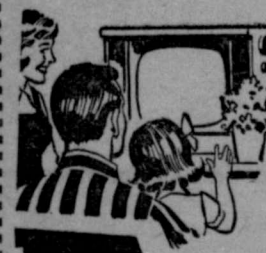
Santa Anna was captured. Six hundred and thirty officers and men were killed; the rest taken prisoner. Texas lost only nine men killed or mortally wounded, with 30 less seriously wounded. When the captured Santa Anna ordered his troop commanders to leave Texas, the last threat to peace was removed. Texas was free!

U. S. SAVINGS BONDS YOUR FRIENDLY

Santa Anna National Bank
Member FDIC and Federal Reserve Bank of Dallas

SANTA CLAUS SAYS: SHOP SANTA ANNA

Get Hometown Service, Top Quality, and Rock-Bottom Prices, Plus a Chance at Fabulous Prizes -



- 1st Prize — 21 Inch Color TV (\$550 Value)
- 2nd Prize — 16 Inch Portable TV (\$150 Value)
- 3rd Prize — 58 Piece, 8 Place American Dinnerware Dishes (\$40 Value)
- 4th Prize — Corning Ware Set (\$40 Value)

Tickets Available With Purchase of \$1.00 or More From Any Participating Merchant. Drawing Thursday, December 24.

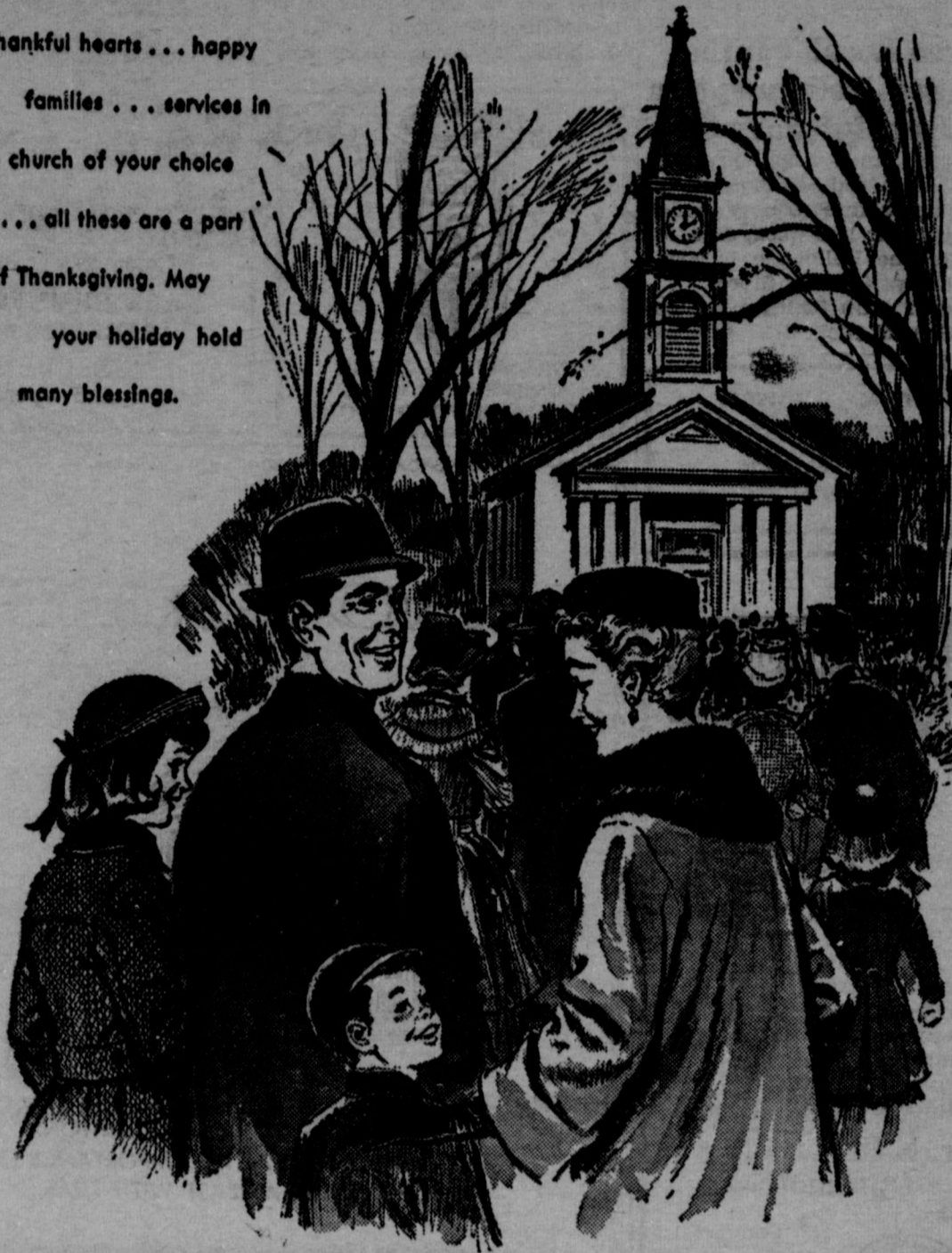
SPONSORED BY THESE PARTICIPATING MERCHANTS

- | | |
|---------------------------------|--------------------------------|
| Phillips Drug | Clover Grill |
| Brown's Grocery | Truck Harbor |
| Cliff & Ruth Grill | McKee Cleaners |
| Williams Fruit Stand | L. A. Welch Garage |
| Modern Way Laundry | White's Variety Store |
| The Santa Anna News | Burden's Mobil Station |
| Western Auto Associate | McCrary's Premier Station |
| Etheridge Texaco Station | C. F. Campbell Gulf Station |
| Santa Anna Insurance Agency | Coleman County Telephone Co-op |
| Sam H. Collier Insurance Agency | Santa Anna Silica Sand Company |
| West Texas Utilities Company | Santa Anna Lumber Company |
| Santa Anna Tile Company | Santa Anna National Bank |
| Santa Anna Lions Club | Horner's Humble Station |
| Coleman Gas Company | Talley's Sinclair Station |
| Linnie's Beauty Shop | Santa Anna Co-op Gin |
| Moore's Mercantile | Baker's Gulf Station |
| Harvey's Grocery | Hosch Brothers |
| G&E Hardware | Rider's Garage |
| Ladies Shop | Piggly Wiggly |

BIG CHRISTMAS PARADE - FRIDAY, DECEMBER 4

THANKSGIVING

Thankful hearts . . . happy families . . . services in the church of your choice . . . all these are a part of Thanksgiving. May your holiday hold many blessings.



COLEMAN GAS COMPANY

Coleman

Santa Anna

Lions Recommend Fire Survey Here

The Santa Anna Lions Club voted in its meeting for Tuesday, November 3, to recommend that Santa Anna invite the fire safety inspection teams, sponsored by a group of fire insurance companies, to carry on their program in the Mountain City.

The teams inspect businesses in town, tagging potential fire hazards for the information of the businessman. Participation is on a voluntary basis, and the service is completely advisory (the businessman is under no obligation to follow the survey team's recommendations).

Details of the program, including the invitation for the inspection teams to visit Santa Anna, will be handled by the Santa Anna Volunteer Fire Department.

Local Boys And Leaders Attend Brownwood Meet

Eleven boys and their four sponsors from First Baptist Church, Santa Anna, attended the Regional Texas Baptist Royal Ambassador Rally at Howard Payne College, Brownwood, October 24.

The program began with a tour of the Howard Payne campus and was followed by an assembly program featuring a dramatization, "What A Boy Gets Out of Royal Ambassadors."

Another program feature was a "Swap Shop" where the boys traded nearly every item but snakes.

The Royal Ambassador Rally is one of six meetings which are expected to attract about 8,000 persons throughout the State, said Robert Chapman, state RA director.

TIRES ARE ALWAYS A BARGAIN at RUDOLPH'S Coleman, Texas



Protect Against Disease Loss!

Authorized Dealer FRANKLIN VACCINES and SUPPLIES for CATTLE, SHEEP HORSES, HOGS and POULTRY

Owl Drug Store

312 Commercial Ave. Coleman, Texas

Light Wrecker Service

24 Hours a Day

WALLACE COLLINS, Jr., GARAGE
Guaranteed Used Cars

TO REALLY SAVE ON THE OVER-ALL COST OF YOUR NEXT CAR —



Choose the car you want, then get the loan you want... here! See how our economical, easy-to-repay bank auto loans can save you money on the over-all cost of your next car or truck.

FULL-SERVICE BANKING

Savings • Checking • Business Loans • Auto Loans
Personal, Farm & Home Loans • Financial Counsel

Coleman County State Bank

Member FDIC

118 West Pecan, Coleman

CAR-TUNES



"Give Me Regular Gas, Every Time I Use High Test, It Gets The Hives"

We've never had this complaint (or any other) about our hi-test gas. Same thing goes for our regular gas. In fact, complaints are a very scarce article around here. We always sell and do the right thing!

We Give S.&H. Green Stamps

Burden Mobil Station

510 Wallis Ave.

Phone FI 8-3191

Let Us Give Thanks For Our Blessings!

FREEDOM FROM WANT

Our Country Produces More Than We Can Consume

FREEDOM FROM FEAR

No Secret Police Knock On Our Doors At Midnight

FREEDOM OF WORSHIP

In America We Attend The Church of Our Choice

FREEDOM OF SPEECH

We May Voice Our Opinions Without Fear of Censorship

FREEDOM TO GOVERN

Every American Citizen May Cast His Vote In Secret

Let Us Keep America A Land For Which Our Children Will Still Give Thanks

Coleman County Electric Cooperative, Inc.

OWNED BY THOSE IT SERVES

SPORTS

Mountaineer Hoopsters Play Ballinger; Girls Win, 28-17; Boys Lose, 74-17

Basketballers from Santa Anna High School won and lost at Ballinger, Friday, November 20, in the season openers for both boys and girls teams.

The girls squad opened the season with a perfect score, defeating the distaff hoopsters from Ballinger by a score of 28 to 17.

Higher scorer for the local roundballers was Lois Simmons, with 16, followed by Helen Pinson, with 12, the two accounting for all the Mountaineer points. Among those seeing action in the winning effort, in addition to the two scoring leaders, were Virginia Voss, Sonja Neff, Lor-

etta Broadway, Jean Robinett, Bobbie Niell, Karen McCluskey, Velda Cullins, Linda Abernathy, Anita Ellis, and Beth Irick. The boys were not quite so lucky, getting swamped by their Ballinger opponents by a count of 74 to 17.

High point man for the Mountaineers was Eugene Dav-enport, with six, followed by Ed-die Jones, with five, and Floyd Carpenter and Dickie Horner, with three each.

High scorer for Ballinger, Jim Dankworth, tallied 18 points.

The Mountaineers take to the hardwood again Tuesday, Nov-ember 24, meeting the teams from Cross Plains on the Santa Anna court.

Patronize our advertisers

Goldthwaite Tops Baird Saturday

The Eagles from Goldthwaite, District 9A champions, took to the air to defeat the Baird Bears, 8-6, in the bidistrict clash, Saturday night in Cole-man.

The Eagles combined a stout defense that slowed down the Bears' vaunted running game, and a headsup pass defense that kept the pressure on the Bear passers all evening, to control the ball most of the game.

After Baird jumped off to a 6-0 lead early in the game, played in 33 degree weather, the Eagles came back, scoring on a 22-plus yard pass in the end zone, and adding the two extra points on another pass.

Baird's offense was built a-round 230 pound Richard Wind-ham, who ground out the neces-sary yardage whenever called upon, but while the Goldthwaite defenses could not stop the big fullback altogether, it did slow him down enough.

The Eagles, who were under-dogs in the bidistrict contest, meet Archer City, District 11A winners and victors over Keller, of District 12A, in their bidistrict game. The Goldthwaite-Archer City game is set for Abilene.

Picks of the Week

We have to brag a little this week, since The Santa Anna News was the only paper, daily or weekly, that predicted the Goldthwaite over Baird victory (with the possible exception of the Goldthwaite paper).

With a District 9A team still in the running, we will try to improve on our .763 percentage with the following selection: Goldthwaite and Archer City at Abilene: The Eagles looked as if they were keeping part of their attack under wraps against Baird. The Goldthwaite coach thinks his team can beat Archer City, and we agree with him. Goldthwaite by two touchdowns in a wide-open aerial game. Archer City relies heavily on its passing attack, and the Goldthwaite defenders were putting the rush on the Baird passers very well. Pass defense will be the margin of victory in this contest. If you like wide-open, razzle-dazzle football, we recom-mend this one.

HEARING AID CLINIC at SANTA ANNA

I Can Help You With Your HEARING PROBLEM

- Fitting (New Aids)
- Service (Cleaning & Repairing of All Makes)
- Batteries (20% Discount)



Robert C. Wortley

And New MAICO

All in the Ear Aid Hearing Glasses Behind the Ear Aids on the Body Aids

Come in for free consultation between 9 a.m. and 11 a.m. Friday, November 27

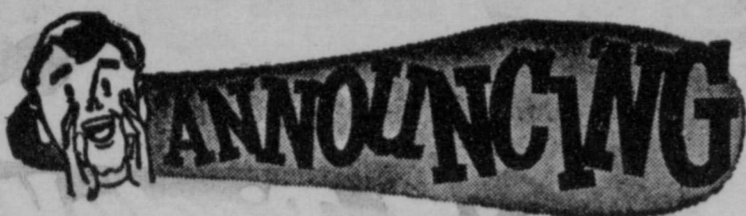
White's Variety Store or Call

F18-3472

For Home Appointment

MAICO Hearing Aid Service

305 B. N. Fisk Brownwood, Texas Phone MI 5-4184



Electrical Rate Reduction

By

Coleman County Electric Cooperative Incorporated

Effective January 1, 1965

The New Farm & Home Service Rate:

First 20 KWH or Less		\$2.00 per mo.
Next 30 KWH Per Month	@	5.5c per KWH
Next 50 KWH Per Month	@	4.0c per KWH
Next 100 KWH Per Month	@	2.5c per KWH
Over 200 KWH Per Month	@	1.5c per KWH

TEXAS WILDLIFE

Even the birds and the beasts get a vacation nowadays; that is the birds and the beasts in the Parks and Wildlife Department education exhibit. They are taken off the road and harbored in the comparative comfort of the San Antonio Zoo.

But August marks the end of the time out for the miniature animal kingdom which travels about the state, appearing at various public events and directly entertaining and informing an estimated one million persons each year.

INSURANCE
Life, Hospital, Accident and Sickness
Phone 625-2540
Santa Anna Cut-off
STANLEY BLACKWELL

Bob Turner Says: Welcome To Coleman During Coleman's Official Opening Of CHRISTMAS SEASON

Beautiful All Wool Blankets

4 lbs. - 72" x 90" With Bound Top Hem

REGULAR \$6.85
NOW \$5.98

Lee Rider Jeans In All Colors
Both Boys and Mens Sizes

Boys Lee Jeans For \$2.98 A Pair
Regular & Slim

Give the Men and Boys on Your Christmas List: Shoes, Boots, Knives, Billfolds, and Western & Dress Belts, This Year for Christmas.

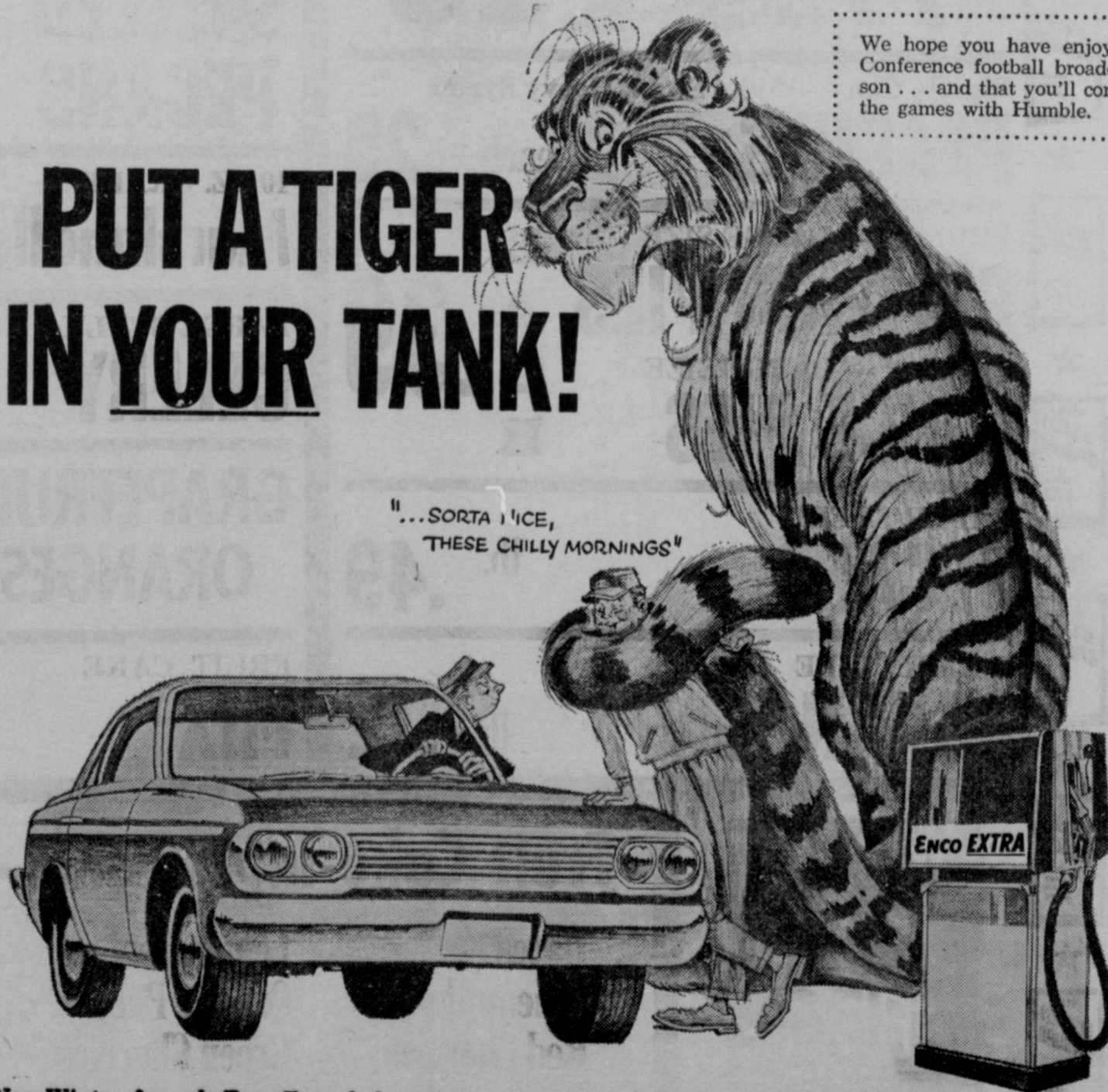
We Have Gift Certificates in Any Amounts You Wish, for The Hard to Buy For Person On Your List.

Use Our Lay Away Plan for Your CHRISTMAS SHOPPING

Bob Turner Army Store

Coleman, Texas

PUT A TIGER IN YOUR TANK!



We hope you have enjoyed Southwest Conference football broadcasts this season . . . and that you'll continue to go to the games with Humble.

New Winter-formula Enco Extra helps your car start easily and warm up fast, helps keep your carburetor free of ice. It's the High-energy gasoline that gives you the (1) clean-

ing power, (2) firing power, (3) octane power to really make tracks on the highway. For hot performance this winter, team up with the tiger at the sign of Happy Motoring!

HUMBLE

OIL & REFINING COMPANY

... AMERICA'S LEADING ENERGY COMPANY ... MAKERS OF ENCO PRODUCTS



Recent Births Make News Hereabouts

Mr. and Mrs. Gene Smith of Tyler announce the birth of a son, born Saturday, November 7, in a Tyler hospital. The boy weighed six pounds and 12 ounces and was named Richard Todd Smith. Mr. and Mrs. Tony Rehm of Rockwood and Mr. and Mrs. Richard Smith of Santa Anna are the grandparents.

Mr. and Mrs. Robert Perry, of Baytown, are announcing the birth of a daughter, born Monday, October 19. The baby was named Rae Anne and she weighed eight pounds. She has a brother, Gregg, two and one half years old. Grandparents are Mr. and Mrs. John Perry of Santa Anna and Mr. and Mrs. R. J. Deal of Rockwood. Mrs. Fannie Ellis of Woodson is the maternal great grandmother.

Monte Cooper Sheffield was born November 8, 1964, in Midland Memorial Hospital to Mr. and Mrs. Charles Sheffield, 414 Eastwood, Midland. The boy weighed eight pounds and eight and one half ounces. Grandparents are Mr. and Mrs. Jack Cooper of Rockwood and Mr. and Mrs. Troy Sheffield of Gatesville. Great grandparents are Mr. and Mrs. B. M. Griffith and Mrs. E. Sheffield, of McGregor.

Monte has a brother, Mike, age six.

WOMEN'S GROUPS MEET IN ROCKWOOD

The Woman's Missionary Society of the Rockwood Baptist Church met at the Church, Monday in a Royal Service program, with Mrs. Henry Smith as leader. The discussion was, "Korea Ready for Religious Change." Mrs. F. E. McCreary gave the devotional and Mrs. R. J. Deal conducted the business session. Mrs. Walter Yancy gave the closing prayer.

The Woman's Society of Christian Service of the Methodist Church joined the group and they adjourned to the home of Mrs. Frank Bryan, for the observance of her birthday anniversary.

Cole-Anna

Drive-In Theatre
Coleman, Texas

WEDNESDAY & THURSDAY
NOVEMBER 25 & 26
FRIDAY and SATURDAY
NOVEMBER 27 & 28

STEPHEN MURRAY in
"Master Spy"

SUNDAY and MONDAY
NOVEMBER 29 & 30

TUESDAY & WEDNESDAY
DECEMBER 1 and 2

"Captain Blood"
OAK

Drive-In Theatre
Coleman, Texas

THURSDAY - FRIDAY
AND SATURDAY
NOVEMBER 26-27-28

BRYANT HALIDAY in
"DEVIL DOLL"

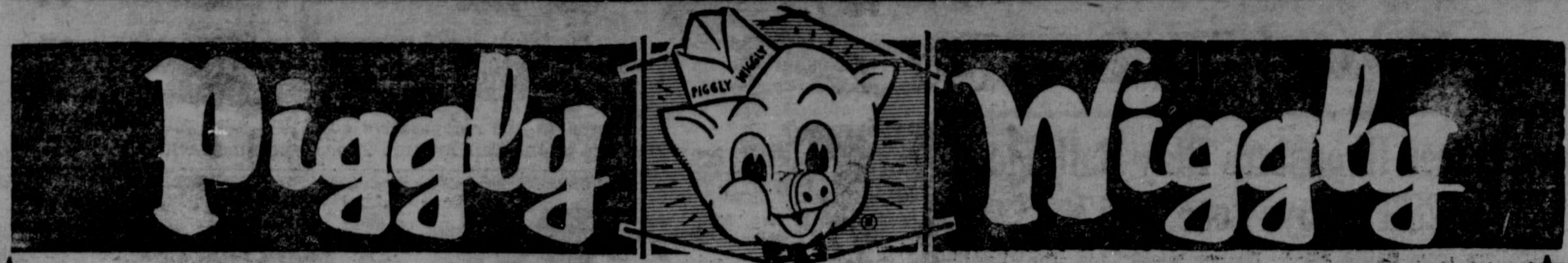
LAW of the LAWLESS

SUNDAY and MONDAY
NOVEMBER 29 & 30

QUOVADIS

WALT DISNEY'S

"The Hound That Thought He Was A Raccoon"



Double Stamps On Wednesday
With Purchase of \$3.00 or More

Order your TURKEY NOW!

Thanksgiving

IS JUST AROUND THE CORNER!



S.S. S.S. S.S. S.S. Piggly Wiggly

8 to 12 Lb. Average

TURKEY HENS lb. .34

Swift's Premium Thick Sliced
BACON 2 lb. box **.98**

HAMBURGER PATTIES lb. **.49**

CENTER CUT
PORK CHOPS lb. **.59**

PICNICS lb. **.27**

HAMS HALF OR WHOLE LB. .49

Delicious Rome Beauty
APPLES lb. **10¢**

NEW CROP
SHELLED PECANS SPECIALLY PRICED

Big 2 1/2 Can — White Swan, Heavy Syrup
PEACHES each **.25**

10 OZ. KRAFT
Marshmallows bag **.24**

FROZEN — LARGE SIZE
PUMPKIN PIES EACH **.39**

LARGE STALK
CELERY each **.12**

FROZEN — LARGE SIZE
MINCE PIES H **.39**

GRAPEFRUIT 5 lb. Bag **.49**
ORANGES

PAPER SHELL
PECANS lb. **.49**

FRUIT CAKE
MIX lb. **.59**

GOLDEN RIPE
BANANAS lb. **.12**



-Fruit Cake Ingredients-

- Dates
- Pineapple
- Red Cherries
- Lemon Peel
- Orange Peel
- Green Cherries

Specially Priced

