

THE TEXAS SPUR
IS WELL EQUIPPED
WITH MACHINERY
& PRINTERS FOR
COMMERCIAL PRINTING
Give us a Trial.

THE TEXAS SPUR

THE TEXAS SPUR
HAS THE BIGGEST
CIRCULATION, IS
THE PREFERABLE
ADVERTISING SHEET
All Kinds of Printing

A Paper For The Homes Of Spur And Dickens County

Volume Three

SPUR, DICKENS COUNTY, TEXAS, DECEMBER 1, 1911

Number Five

BETTER PRICES WILL BE PAID FOR CLEAN COTTON

Throughout the week cotton has been selling in Spur from eight to nine cents for the best grades, while in several instances only five and six cents have been offered for the staple on account of dirt, trash and inferior grade of staple. Since the recent high winds much of the cotton was blown from the bolls, farmers have had to pay from ninety cents to one dollar and twenty-five cents a hundred for picking, and the result is that for this trash cotton not more than six cents a pound is now being offered by the cotton buyers. Those who handle cotton prefer to handle only the best cotton, and for a dollar a hundred pounds those who pick it should take more pains and thus contribute to securing a price in the sale of the staple more consistent with the prices being paid for the picking.

We understand that the cotton of this section is a better staple on an average than the staple produced in other sections of the

country, and this being the case farmers should have a better price than is being paid elsewhere, and with clean staple we are confident that the top price will be secured.

See L. W. Davis for Cotton Insurance.

We Have Just Received

And have in stock a car of the justly celebrated Bain Wagons, in all the standard sizes, and both broad and narrow tires. If you are in the market at this time, we would be glad to give you prices on them.

Spur Hardware Com'y.

Everything in Hardware

Diamond Edge Tools.

2250 BALES COTTON GINNED IN SPUR

Up to the middle of this week the two gins of Spur had ginned 2250 bales of cotton. Although possibly the principal part of the crop has already been picked out at this time there are many bales of cotton yet remaining in the fields.

The gins of Dickens county have ginned to date between five and six thousand bales and before the end of the season will have ginned possibly eight or nine thousand bales.

The cotton now coming in makes a poor sample since the principal part of the crops in several sections was blown from the stalk recently and when gathered now is dirty and trashy, and as a result the price for such staple is considerably under the market price.

All farmers who can are holding cotton for a better price, and it is hoped that this holding will result in securing a better price for the staple of the whole country.

The farmer who diversified this year should be in the front rank of those who give thanks for benefits received.

Every loyal Texas owes it to his state and to his fellow Texans to do everything and anything he reasonably can to aid and encourage internal and industrial development.

Cooperation of effort is just as essential as concentration of energies. So let's all pull together for the uplift of town, community and state. It's get-together, stay-together and pull-together work that counts.

Texas has the greatest farming country in the world. But farms must have markets and the closer the market the better the price. Thus the farmer is vitally interested in the factory and its success. By buying the products of the Texas factories the Texas farmer is indirectly adding to his own prosperity.

Do you believe that we have one of the best towns on earth, or maybe you believe it is the best; if so, that is better, and do you occasionally let other people know that you believe it? To believe in one's own town, county and state is a requirement for success that is secondary only to the basic principle of belief in oneself and one's own ability. To let others know that you believe in it is the most effective advertisement a town can have.

George Cox, of Hamlin, was in Spur this week selling leather goods. George says that notwithstanding the grumblings of merchants and business men in every town of the country the people are generally prosperous. The cotton situation in his opinion is only delaying the big volume of business sure to be done later.

The Ladies Aid Society of the Presbyterian church, under the direction of Miss Douthitt, will present that very interesting comedy "Mrs. Briggs of The Poultry Yard" at the Electric Theatre on next Tuesday night, December, 5th. Miss Douthitt has taken much pains with this play, and is assisted by the best local talent in Spur. Your attendance will be appreciated and you are sure to spend a pleasant evening. Admission, children 15 cents, adults 35 cents.

Oscar Jackson returned Wednesday from Lockney and other Plains towns where he had been showing prospectors the country.

Chas. Durham, of several miles south of Spur, was in the city one day this week with a wagon load of hens to sell.

TEXAS NEEDS GREAT MEN

XIII. ABILITY

THOMAS JEFFERSON wrote the Declaration of Independence and founded a great nation on the western hemisphere. Benjamin Franklin taught wisdom, and he became the foremost American philosopher. Civilization has always responded to the inspiring touch of lofty natures and has given those who have led us up the mountain peaks of progress a prominent place on the pages of history. The hand of destiny is ever sifting the human race for a genius who can inspire us with ideas that will travel like light and shape the rising glory of our country.



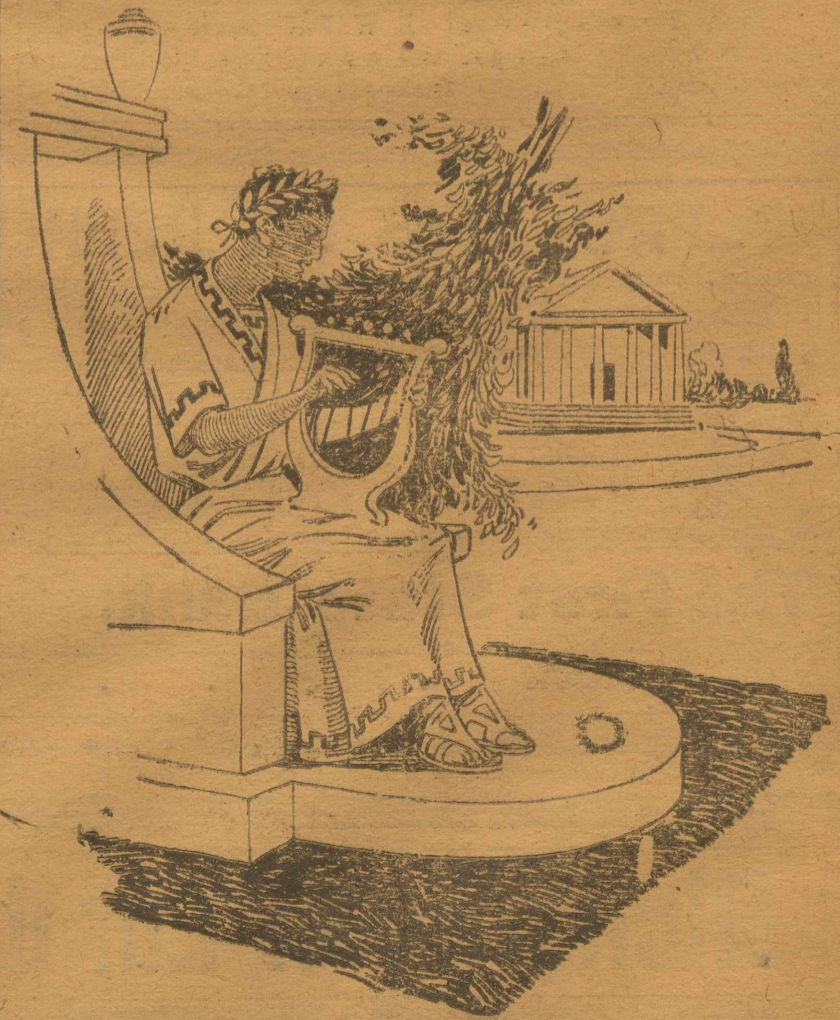
THOMAS JEFFERSON WRITING THE DECLARATION OF INDEPENDENCE

Let those who would walk down the aisles of greatness first dig a channel into which men's thoughts will flow like a torrent; make a key that will unlock the door of wisdom; plant a civilization that will unfold like a rose; weave a prosperity that will charm mankind and wave a magic wand over Texas that will finish the unshewn stuff in human nature. Texas needs great men.

TEXAS NEEDS GREAT MEN

XI. ENTERTAINMENT

WHEN Themistocles was asked by his host at a dinner party to entertain the guests by playing the lute he replied that he "could not play the fiddle, but that he could make a small town a great city." We have in Texas many politicians who are good "fiddlers," but they cannot make a small town a great city. We are overrun with orators who can play upon the passions of the people, but they can't put brick and mortar together. We need builders.



A FAVORITE PASTIME OF POLITICIANS.

Let those who hunger and thirst for power understand that the highest glory of the statesman is to construct, and that it is better for a man that he should build a public highway than that he should become Governor of the State, and that he start a plow that he become the author of a law. The true test of statesman hip is the plow and the hammer, and let those who would govern first build. Texas needs great men.

STEEL HILL

The farmers in this part are all about done picking cotton and have opened the field gates to the white-faced cows, and a few have said that they have planted their last 7c cotton.

Rev. Ingle of Abilene filled his regular appointment here Saturday and Sunday.

The Steel Hill School opened Monday morning, November 27, with Prof. Bridges teacher, the school will continue six months.

J. P. Gibson is attending court at Dickens this week.

Mr. Odis Evans of Snyder college is visiting his parents, W. D. Evans and wife. His grandmother Mrs. Smith will accompany him back to Snyder the latter part of the week.

M. A. Jordan has leased the Ollie Scott place also the quarter north of the Jack Maben quarter.

W. M. Randles and J. A. Neighbors went to Spur Monday on business.

Mr. Bill Neighbors has been on the sick list, but we are glad to report him better at this writing.

We hope that Tol Merriman will talk as little as possible this week while he is before the grand jury at Dickens.

Pat Prescott took a flying trip to Dickens Sunday to see his sweet heart but came back Sunday evening looking down the road. Come on Pat, you'll get there by and by.—Rip-Saw.

ADVERTISED LETTETS

Letters remaining in the post-office for the week ending December 2nd.

Gentlemen.

N. T. Gray, M. J. Hunter, Ronald Higgs, John H. Latham, Jake Middleton, James A. Rewlett, H. C. Walker.

Ladies.

Miss Maggie Allen.

When calling for above letters please say advertised.—Norton A. Baker, postmaster.

Mr. Rodgers, who recently came to Spur from Runnels county, was in the city Tuesday and reports that he has bought the Estes place about six miles west of Spur. He will improve the place immediately and make a crop next year.

TEXAS PEACH CROP SELLS FOR \$7,000,000

OVER 4500 SOLID CAR LOADS SHIPPED FROM STATE

TEXAS PEACH IS A WINNER

The Texas peach is the King of Fruits and the fruit of kings. It is invited into the parlors of the great and is welcomed in the hovel of the poor of both hemispheres. It has met its rival at home and abroad on most every table on the globe and by its natural beauty and delightful personality it has conquered all competitors and today its appearance in the market is an annual event of importance in every household in America and its disappearance is the consumer's regret. Public interest is so deeply centered in its arrival at the market that it travels in special trains running at full speed in order to relieve the anxiety of the waiting public and its welcome is so cordial that cold storage plants have been erected in order to prolong its stay in the community. Canneries and evaporating plants are run day and night during the peach season in order to preserve its eating qualities for the table of the nation during the entire year.

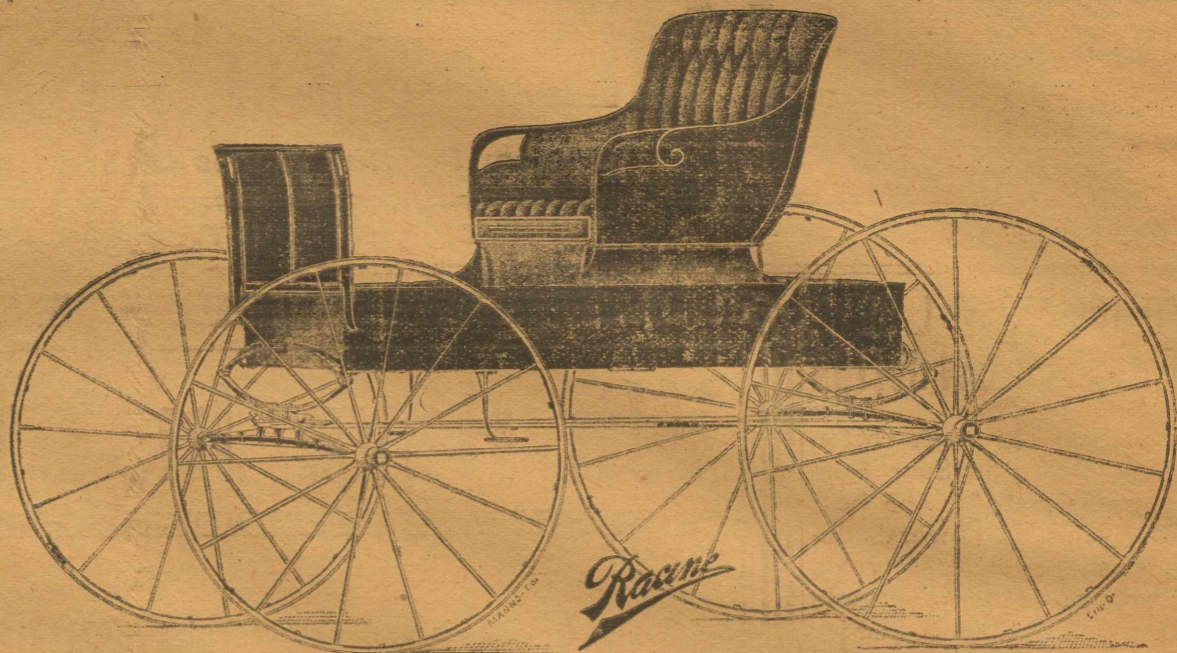
The family peach tree can be found in most every county in the State, but the commercial peach belt is confined largely to East Texas. The exact number of bearing peach trees in the State is not of record but competent authority estimates it at seven millions. During the peach season of 1910 we shipped to the market 4500 cars of peaches and supplied our local wants as well as run our canneries during the peach season.

The peach industry has been pouring into the channels of trade a golden stream of wealth. The farm value of the peach production in 1910 is estimated as high as \$7,000,000. The rapid growth of the industry during the past decade and the wide extension of the commercial peach belt has been one of the marvels of our development.

At first the Texas peach entered the market under an assumed name, masquerading as a California product, but it soon threw off its disguise and like all native Texans, outstripped its competitors and today it is master of the world's trade.

Virgil Davis, a prominent citizen of the Spur country, was in the city Tuesday and spent some time here on business.

L. W. Davis made a flying trip this week to Fort Worth where he spent several days.



The Racine Buggy, One of The Oldest Make and The Best on Earth
THIS IS THE BUGGY YOU GET WHEN YOU BUY FROM

Barber & Hancock

UNCLE ISAAC'S PHILOSOPHY
(BY FRED C. MENDECK)

There's a lesson, Joe, in grubbin' that I noticed long ago, When I sent you out one mornin' with ax and grubbin' hoe, It was in the misty winter when days were dark and cold, That I taught you how to labor with a spirit free and bold, It was in the valley yonder where the bushes grew in clumps That I sent you out that mornin' diggin' up the rugged stumps.

Boyish like you soon grew lazy and felt like gettin' done, So you dug the stumps up shallow but you left the roots alone.

But I told you, Joe, that mornin' that you'd better get the roots,

Else you'd find all spring and summer you'd be deviled with the shoots.

When the days grew long and yallar and the sun was shinin' warm,

You was killin' sprouts you planted with a boyish, lazy arm. Now, there's much to learn from nature, but remember as you grow,

Nothin' has a better moral than the ax and grubbin' hoe. Evil Habits start in boyhood, as you grow they will grow too, And they sap the human system of life's richest moist and dew,

If you wish to kill these evil habits that impair a sturdy brain You must dig their roots out, Joseph, else they'll sprout and grow again.

We want every lady that makes high bread to know we keek Split tilk, a flour for light bread only. Bryant-Link Co.

BUT ONE MAN IN A THOUSAND

Few There Are Who Can Stand Upright, According to Writer of Popular Play.

"Here is a curious paradox," said George. "If a thousand soldiers are drawn up in battle array on a plane—they understood him to mean 'plain'—'only one man will stand upright.'"

Nobody could see why. But George explained that, according to Euclid, a plane can touch a sphere only at one point, and that person only who stands at that point, with respect to the center of the earth, will stand upright.

"In the same way," he remarked, "if a billiard table were quite level—that is, a perfect plane—the balls ought to roll to the center."

Though he tried to explain this by placing a visiting card on an orange and expounding the law of gravitation, Mrs. Allgood declined to accept the statement. She could not see that the top of a true billiard table must, theoretically, be spherical, just like a portion of the orange peel that George cut out. Of course the table is so small in proportion to the surface of the earth that the curvature is not appreciable, but it is nevertheless true in theory. A surface that we call level is not the same as our idea of a true geometrical plane.—From the play, "A Paradox Party."

WHAT HE HAD PREACHED

Blox—I saw by the paper that Jim Ghorner was buried yesterday. Knox—So did I; and I hope he's satisfied now, he was always preaching "Back to the land."

FIGS A POPULAR FRUIT

EVE'S FAVORITE BECOMES GOLD IN TEXAS PROGRESS.

LARGEST ORCHARDS HERE

The fig was the early companion of man. Its leaves furnished the initial garments for our first ancestors, its fruit nourished early civilization and its foliage has shaded and sheltered man and beast since the beginning of time.

It has had more free advertising than any other fruit in the vegetable kingdom. It figured conspicuously in the episode that resulted in closing the Garden of Eden, the Savior used it in a parable and it is closely woven in ancient legends and in the history of nations. To mention the fig leaf makes mankind smile and to mention the fruit makes the whole world hungry.

It is the most sensational, romantic and popular of fruits. It threads its way through the literature of the world. It is a favorite with the sculptor and the painter; it is one of the most useful of medicines, and with the consumer it is the most popular fruit on the market.

The soil, climate and altitude of the coast country for one hundred miles inland is especially adapted to the hardy growth of the tree and the perfect maturity of the fruit and the skillful horticulturist has developed varieties especially adapted to natural conditions.

It responds generously to kind treatment, makes few demands upon its owner, its yield is reliable and abundant and the tree shows remarkable business instinct in making Texas its domicile.

The fig is the pioneer of Texas fruits and the numerous races of the tree have explored most every section of the State, but it has more thickly populated the coast country than any other part of Texas.

According to the Texas Almanac we have 3,710 acres now in commercial fig orchards on the coast country and the planting of an additional thousand acres is under contract. Galveston County leads in fig culture, having 1,225 acres. The largest fig orchards in the world are located in this county. The farm value of the annual output of one acre of bearing figs averages \$250 and the total value of the annual Texas output approximates \$1,000,000.

GRACE BEFORE MEAT.

An innovation in the Kansas penitentiary is the saying of grace, since November 1, in the woman's dining room. The matron began saying the grace and now the women take turns, sitting at the head of the table and saying the simple grace. The woman prisoners have taken kindly to the practice and there is no levity or sneering when the words are said. The official grace is very simple and seems to have a good influence upon the conduct of the woman prisoners.

...PROGRESS OR REPROGRADE...

In this day and time there is no such thing as standing still in business, one must go forward or backward

GUARANTY FUND BANK

The Farmer or Business man who does not have a bank account with a substantial progressive bank will find it more difficult to advance than will his neighbor who is in touch with the right kind of bank. -- Don't hesitate because your account may seem small to you—the largest accounts today were insignificant a few years ago. -- In the conduct of this business there will always be reserved for its patrons a gracious respect for their welfare and wishes. WE WANT YOU TO KNOW WE ARE APPROACHABLE, AND GLAD TO BE APPROACHED.

The First State Bank, Spur, Texas

CAPITAL STOCK \$50,000.00.

Richardson Lumber Co.

First Class Building material, as GOOD as the BEST and as CHEAP as the CHEAPEST. We Want Your Business.

S P U R, T E X A S

J. V. McCORMICK, Manager

CHRISTMAS IS COMING AND WE WILL

Soon Feel the Spirit of Cheer and Gladness it Brings

We will want to express the love and esteem in which we hold our friends by giving them some little present as a token of the love and remembrance. What shall the present be? Why not something of real value, and practical use.

We Have a Beautiful Line of Fur Sets

Ready for you to select from, Embroidery Patterns, Pure Linen Towels; Table Demask, Handkerchiefs, also Ladies' Tailored Suits at reduced prices. Leaders Scarfs, Muffles, Aviator Caps, Sweaters, Dutch Collars, Collar and Belt Pins, Hand Bags, and a thousand useful items for Xmas presents.

Schwab Clothing at Reduced Prices

Think about an all wool guaranteed suit of clothes at less than \$15.00. All we ask you to do is look at our clothing before you buy. We also have some special bargains to offer in dry goods, not below cost, but our buyer attended the great closing out sale in St. Louis and picked up some bargains to offer you and we want you to visit our Dry Goods Department before making your purchases.

Stoves, Stoves, Stoves

Cold weather tells us we must have better stoves. Wilson Wood and Coal Heaters, the best that can be had. Also Lilly Darling Cooks and Ranges. Make your wife happy by buying her a Lilly Darling for Christmas. Wagons, Buggies and Implements, the best lines on the market, give us a look.

Groceries Kept Clean and Fresh

Light Crust Flour, the best not the cheapest, and we are making prices in groceries to help you on low priced cotton. We want your business on the grounds of honest dealing and giving the best goods that can be bought and sold at the prices we mark. One price to all, full weight and measure given to your child as well as yourself. Make our store your headquarters when in town.

BRYANT-LINK COMPANY, Spur

The price of cotton in Galveston is quoted at nine and five-eighths cents this week, with limited sales at that figure. At the present price the cotton producers get but a few more dollars than its actual cost of picking and paying rent to the land owner.

Henry Clay Beattie paid the death penalty last week for the murder of his wife, his confession of the crime being made public after his electrocution. Beattie was convicted entirely on circumstantial evidence, and throughout the trial and to his death he maintained a nonchalant air, fearing neither death nor public sentiment.

Citizens and voters of Spur are beginning to talk politics to a certain extent at this time, and in connection therewith we understand that friends are soliciting J. V. McCormick to run for County Clerk, C. C. Tyler and Luke Davis have been solicited to enter the race for County Judge, and C. B. Cook, who is at present attending school at Dallas, has been solicited to also enter the campaign for County Clerk. This is only talk at the present time, and later we will be in a position to give more definite information as to the development of such political plannings. At any rate we are expecting an interesting campaign during 1912.

The present cotton situation should be forcible and effective demonstration to the farmers of this and other sections of the country that the diversification idea should prevail. Governors can resolute and financial interests furnish millions of dollars for mortgaged cotton but unless the individual farmer grows potatoes to eat and maize to fatten his hogs and cattle for home consumption the cotton speculators will continue to manipulate and control the prices of cotton.

In the settlement and development of a country a most important factor in its advancement and prosperity is a superior and convenient market place. Spur is centrally located with respect to the surrounding farms and farm lands, and every citizen as well as the business men should stand together and cooperate with the farmers and farm interests. The farmer who sends mail orders to distant cities for merchandise injures not only the home town and merchant but himself in that such trading practices build up a d prospers distant cities and citizens and thus decreases the value of community interests, his own property and impairs the possibility of a good home town and home market. The business man who fails to compete with foreign concerns in an advertising way not only injures his home town but is a burden to the live merchants who do reach out after business, in that the non-advertiser is indirectly benefitted from the advertising of other business men who are pushing the commercial interests of the town.

The Christmas holiday season is now on us, and we are expecting old Santa Claus to pay us his regular annual visit, filling our old sox with two new pair, a four-in-hand tie and probably a pair of cuff buttons if business picks up between now and the time of his arrival.

The Census Bureau report issued November 21st states that up to November 14th 11,269,986 bales of cotton had been ginned, and a market letter from a prominent cotton firm states that the South is holding its cotton and the spinners are waiting to make purchases, and the cotton situation has resolved itself into a waiting attitude, the Bulls and Bears attempting no aggressive attitude at the present nor for the future. The strength of either side will be tested in this waiting game, and the Southern cotton men are firm in the belief that under the prevailing condi-

tions the cotton farmers will be financially able to wait as long as the spinners and will be rewarded by better prices at no distant date. Prominent financial interests and bankers of New York have placed fifty million dollars for the purpose of assisting the Southern cotton growers to hold cotton, their plan being to advance twenty five dollars a bale on cotton at the prevailing price, making it compulsory to hold for eleven cents and to sell when it reaches thirteen cents, giving the New Yorkers one fourth of the advance in the price. Whether or not such a plan is acceptable to cotton farmers, it will make it possible to hold cotton by an agreement to divide the profits.

Did your wife ever tell you to buy a pretty good sack of flour. If she did don't buy Light Crust for its the best.
Bryant-Link Co.

G. A. HOWSLEY

Horseshoeing & General Blacksmithing

Hot and Cold Tire Setting a Specialty. Near the Gin

COAL WE HAVE IT NOW

Did you some of our last car?
If not, phone us your order
Now and save fifty cents per ton.

ARRIVING AND IN STOCK WE HAVE THE FOLLOWING FEEDSTUFF

Pure Bran, Corn Chops, Shorts, Best Oats, Shelled Corn, Screened Cake for "Range Cattle", Meal Hulls and Pressed Cake for Milk Cows, Special Horse Feed, Alfalfa and Prairie Hay, Seed Wheat, Best Winter Turf Seed Oats, Rye Johnson Grass, Millet, Threaded Maize, Blacksmith and Large Lump Coal

We have a complete stock and would appreciate your business

Terms Strictly Cash.

We buy Hides, Skins, Furs, Oat and Bran Sacks. Weighing for public solicited

SPUR GRAIN & COAL COMPANY.

W. C. BOWMAN

Lumber Comp'y

LUMBER, SASH
DOORS, PAINT,

And All Kinds Building Material

TEXAS SPUR
PUBLISHED EVERY FRIDAY

Entered as second-class matter November 12, 1909, at the post office at Spur, Texas, under the Act of March 3, 1879.

ORAN McCLURE, Editor & Prop.

Subscription Price \$1.00 a Year.

When not specified, all Ads will be continued until ordered out and charged for accordingly.

FOUR ISSUES ONE MONTH

Professional Cards

DR. MORRIS

PHYSICIAN & SURGEON
Office in Spur Drug Co. Phone No. 40.

J. H. GRACE, M. D.

General Practice of Medicine
Office at Red Front Drug Store.
Prompt response will be given to all calls, city and country, day or night. Res. both phones No. 93

DR. G. M. BACHELOR.

DENTIST
Office at Spur Drug Company.
Office, both phones 40.
Residence, both phones 80

DR. T. E. STANDIFER

PHYSICIAN & SURGEON
Diseases of women and children and Electrotherapy a specialty. Local Surgeon for Wichita Valley Railroad.
Residence phone 49. Office 39.

B. D. GLASGOW

ATTORNEY-AT-LAW
office over the Spur Nat'l. Bank.

STOCK HOLDERS MEETING

Of the Crosby-Southplains Railroad Company, to be held Wednesday, February 7th, for the purpose of authorizing the directors thereof to issue bonds, etc.

To the Stockholders of the Crosby-Southplains Railroad Company:

You and each of you are hereby notified that on the 28th day of October, 1911, at special meeting of the Board of Directors of said Company a resolution was unanimously adopted calling a meeting of the stockholders of said company to be held on Wednesday, February 7th, 1912, at the offices of the Company in Crosbyton, Texas at 10 o'clock a. m. for the purpose of authorizing the directors thereof to execute a mortgage upon the property of the Company and to issue bonds thereunder to be fixed by the stockholders at said meeting, and to authorize the directors to apply to the Railroad Commission of Texas for authority to issue such bonds; and to take such further and other steps as may be necessary under the laws of Texas for the final approval by said Commission of said bonds, and to obtain the authority of said Commissioner to register said bonds when issued in the office of the Secretary of the State of Texas.

Dated this 28th day of October, 1911, at Crosbyton, Texas.
[SEAL] R. M. Bassett, Secretary.

G. T. BRANDON,
Dentist

Over theoyal Hotel
Office hours from 8-12 and from 1-5
Residence Phone 142.

Texas Furniture Co.

UNDERTAKERS

Complete line of Coffins,
Caskets and Robes

Day Phone
LUZON 103

Night Phone
S. W. No. 92

**EXPERIMENTAL FARM
WORK FOR 1912**

The Spur Experimental Farm Station, under the supervision of Mr. Youngblood who succeeded Dr. Harrington as general superintendent of State Experimental Farm Stations, and under the direct management of I. S. York, has outlined the following special experimental work for 1912.

Alfalfa—Test of 12 varieties; in rows for seed; in close drill. Keeping record of times of cultivation and of cuttings of the respective yields.

Soy Beans—Variety test in rows and in close drill with record of time of sowing and yield.

Peanuts—Variety test and yields for hay, for pasture and seed.

Sorghum—Variety test in rod rows with record of seeding rates planted in rows for forage and seed produce; in close drill for hay.

Sorghum legume mixtures—Giving special attention to selection and breeding.

Corn—Variety test; determination of yield at different seeding rates, making test in regular rows alone and in alternate rows in connection with cow peas, and in double alternate rows with cow peas; selection and breeding having special consideration.

Cotton—Variety test; Keeping the record of rate of seeding with the effect on yield and the effect on earliness in opening.

Cowpeas—Variety test for forage and seed produced planting in rows and in close drill, also with a variety rod row test.

Grasses—Tenth acre plats of six selected grasses. Tenth acre plats of millets to make selection for better straw or hay a produce.

Soil Improvement test—Green manure; turning under legumes; turning under grasses; turning under legumes and grasses.

To commence rotation test on variety plants as follows—Cotton continuously; corn and cotton; corn; oats and cotton; corn, oats, cowpeas and cotton.

Test of yield under different treatment of soil—Preparing seed bed, early fall, late fall, winter, spring, etc. Test on deep and shallow breaking.

Tillage Test—Showing result of frequent and ordinary, deep and shallow.

Broom corn will be further experimented on although already demonstrated as a successful crop.

There will be a special test showing the result of dynamiting—one acre to be thus treated. There will also be a few trees planted in dynamited spots. One of the powder companies extensively advertising dynamiting soils, and the dynamiting will be done by an expert from the powder concern.

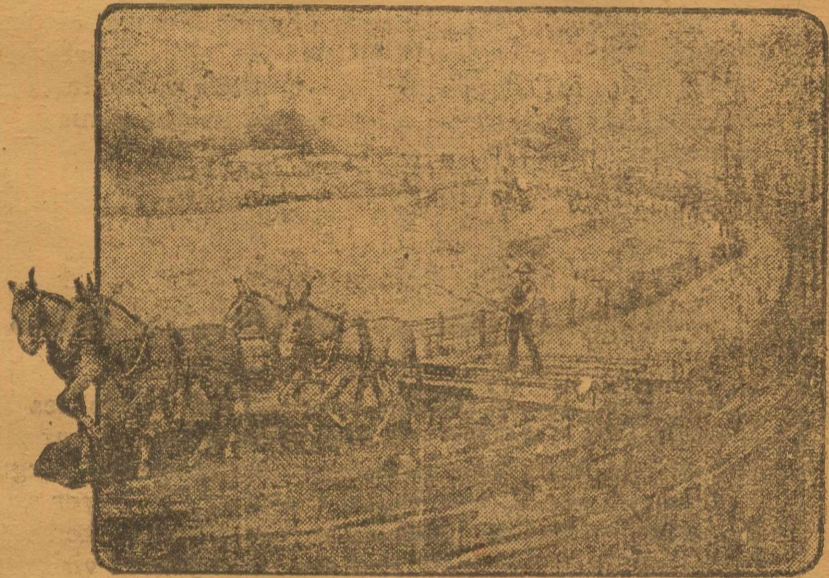
LAUNDRY NOTICE

To my former and present patrons. I am now agent for Ponds Laundry of Wichita Falls. My office is located at Pooles Restaurant. Phone 87, Luzon. All work guaranteed. Strictly up-to-date. All legitimate claims adjusted promptly. Will call Monday for laundry and deliver Friday. Please reserve your business for me, it will be appreciated.—W. N. Hughey.

Mrs. Ned Hogan, who has been visiting her parents in eastern Texas the past month, returned Thursday to her home at Spur.

The  Split
Log Drag
In Grand Old Texas

THE proper maintenance of a public highway is as important as its construction. It costs a few thousand dollars per mile to build macadam highways but by the intelligent use of a split log drag, dirt roads can be kept in good condition at a nominal expense. The drag can be built for five dollars, and operated at a cost of from \$4.00 to \$6.00 per day. The road mileage which a split log drag can keep in proper condition varies according to the character of the road and the amount of rainfall, but the average mileage assigned a split log drag is 12 miles. The average cost of operating the drags, according to the Federal Agricultural estimate, is \$3.20 per mile.



There Are 656 Split Log Drags in Operation in Texas.

In some cases the drags are built and operated at the expense of the county; in others the county furnishes the drags and the farmers along the route operate them.

Every County May not be able to permanently
improve its Public Highways, but every County
can operate Split Log Drags.

You Will Profit

BY SEEING OUR LINE OF MENS AND BOYS CLOTHING

We have just received a shipment of Boys Suits that can't be beaten, and to see them will convince you

School Shoes

We call your attention to the popular Tess and Ted Shoes for boys and girls. One pair will make you a lasting shoe customer for us.

Furnishings

We carry a most complete line of Furnishings for both men and women in which we have nothing but the better grade.

OUR CLOCK CONTEST

is becoming more interesting each week and as we only have a few more prizes we ask that you investigate it more thoroughly.

See the line of prizes in our window to be GIVEN AWAY ABSOLUTELY FREE

In the Grocery Line

We serve you with nothing but High Grade goods at reasonable prices and courteous treatment. We take great interest in our grocery customers and invite you to see us

1897 **SOL DAVIS** 1911

"THE BEST IS CHEAPEST"

Groceries!

ARE THE NECESSITIES OF LIFE

And in the purchase of anything necessary to life, health, happiness and peace one should give the most careful consideration, buying only such articles as are of highest quality and purity. In buying our groceries we select every item from the highest and best grades and brands on the market and in retailing such goods to the trade in Spur and surrounding country we may not make special red hot prices on occasions but we sell goods every day in the week at prices which cannot be beat by any substantial house which considers quality rather than quantity.

HIGHEST GRADE GOODS

At The Lowest Price.

We carry a complete line of both Staple and Fancy Groceries and are prepared to accommodate the public and supply the trade in every respect and on short notice.

Hisey Grocery Co.

BARBER SHOP

T. M. VERNER, Prop.

FIRST-CLASS WORK. HOT OR OLD BATHS

Located West Side Burlington Ave., Opposite Royal Hotel.

E. J. Cowan Abstracts Procured.
Notary Public.
**REAL ESTATE, FIRE, TORNADO
LIFE & LIVESTOCK INSURANCE**
Agent Union Central Life Insurance Company.

CENTRAL MEAT MARKET

FITE & KIESTER, Props.

Fresh and Cured Meats

Call or Phone us Orders. Your Patronage is Solicited.

Luzon Telephone Co.

Spur, Texas.

Best Local and Long Distance Service and Connections

THE VERY BEST SERVICES EXTENDED TO PATRONS AND THE PUBLIC.

Let us put a 'phone in your home or place of business.

See L. W. Davis for Fire, Tornado and Cotton Insurance etc.

Mrs. P. H. Miller attended the Cotton Palace Exposition last week in Waco.

Calico is cheaper than silk. Some flour is cheaper than Light Crust. Bryant-Link Co.

Wanted—A good, young work animal. A sorrel mare preferred, and will pay value received.—I. S. York, Spur Experimental farm

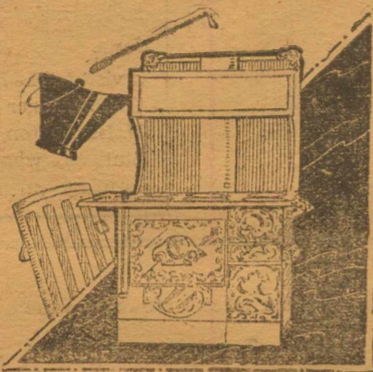
Boys, bring us down your empty oat and bran sacks. We buy them.

Spur Grain & Coal Co.

A. T. Odeneal left Saturday for the northern part of the county where he had an appointment to preach Saturday and Sunday.

NOTICE

Owing to the high price of cattle and high price of feed, we are forced to ask and require our friends and patrons to pay cash for meat.—Central Meat Market.



THE WANTS OF WINTER

are now asserting themselves, and among them are stoves, ranges and the scores of little things incidental to their proper fixing and running. We are prepared to show you a large new stock of

HIGH-CLASS STOVES AND RANGES in all the best and most popular makes and styles and with the very latest improvements. Also separate grates, bars, lifters, lids, coal hods, poker, etc., etc.

Riter Hardware Co.

Spur Dray and Transfer Co.

J. P. Simmons Prop

We do all kinds of heavy and light hauling and transfer work, and solicit your business in our line.

Phone Us at No. 128

and we will give you prompt and satisfactory service.

The Spur National Bank

Capital, 100,000.00

Prompt and Reliable Banking Service

MAKE OUR BANK YOUR BANK

OFFICERS:

R. V. COLBERT, President,
C. A. JONES, Vice-President

W. G. SHERROD, Cashier
M. E. MANNING, Asst. Cashier

DIRECTORS:

W. J. LEWIS A. J. SWENSON P. P. BERTHELOT F. S. HASTING
R. V. COLBERT W. T. ANDREWS C. A. JONES R. C. FORBIS
J. T. GEORGE W. G. SHERROD

**THE AMOUNT YOU MUST
SPEND ON ADVERTISING**

It may not occur to the average retail merchant that the proportion of his income being spent on advertising is so small that the effect is like trying to paint a big house with a ten cent can of paint. All this advertising is, of course, good for, even though it bring no results, it shows that the merchant has an open mind in the matter and is subject to reason. Retail advertising, or, indeed, any advertising, no matter how small, to get sure results, must be done on some scientific plan that has guided similar campaigns to success. The most important item in such a campaign is the minimum amount to be spent on it.

If 999 out of every 1000 retail advertisers will go into the question of their advertising, I believe they will find that it is not costing them one percent per annum of their incomes. In most cases it will be found to cost them much less.

How they expect to get results from that extraordinary percentage is known to themselves alone. Only in very exceptional cases will an expenditure like this even return the actual gross amount spent on the campaign.

The most successful retail stores in the world are the large New York, Philadelphia and Chicago department stores. These concerns are known all over the world, and particularly so to the men, women and children in this country. If any class of retailers could dispense with advertising it is they. Yet they spend from 5 to 15 per cent of their yearly income in advertising their goods. They are not spending that portion of their income on advertising as a mere matter of fun, you may be certain. Every red cent of outgoing is jealously watched. If one hundredth part of one per cent can be saved, it is saved. The expenditure is the result of careful experiment in all possible ways, and under all possible conditions and it has been found necessary to spend that amount of their enormous income to get the results that they now obtain.

The local retailer may learn a lesson from this. If great organizations like these stores have to spend such a percentage of their incomes to get results—large sums like that get proportionately greater results than small sums—what must the small merchant spend to get sure results from his advertising?

When next you consider advertising, Mr. Retail Merchant, figure out how much you are going to spend. If it is less than 5 per cent, sit down and think the matter over carefully and if you cannot persuade yourself to spend at least 5 per cent on a scientific plan that has brought success to others, get a mirror and have a good look at a bad merchant.

There is one other important thing about retail advertising.

After you have made up your mind to the amount you are going to spend on it, see that you put salesmanship into the space you buy. Salesmanship is just as necessary in your advertising as it is in your store. With it in both your store and advertising, success is certain, for your sales organization will be so strong that only bad goods or insufficient capital can kill it.

There are four principles to all salesmanship, whether in your store or in your newspaper:

**P. H. MILLER
Lumber Comp'y.**

**LUMBER, COAL, POSTS, BRICK, CEMENT,
LIME, BUILDING PAPER & DEVCO PAINTS.**

We carry a large stock of building material of all kinds and will be glad to figure your bills. We also sell the Best McAlister Coal at the lowest prices.

The Highest Prices Paid for dry Bones.

First—you must attract attention; second—you must secure the interest of the possible customer; third—you must create a desire to buy, and, fourth but by no means the least—you must induce the actual process of buying.

Did you have good buiscuit this morning? If you didn't don't fuss at your wife, just buy a sack of Light Crust.
Bryant-Link Co

STOCK NOTICE

Notice is hereby given to who ever it may concern that the practice of turning horses and cattle loose in the Spur Pastures must cease as we will gather all such stock and hold for pasture at the Public Wagon Yard at owners expense.

W. J. Lewis, Mgr.

KEEP IN TOUCH WITH HOME

Girls Who Live Elsewhere, If They Are Wise, Will Use the Mails Frequently.

Girls, who for any reason at all, are compelled to live away from home, should do anything to sweeten their lives and fill them with good cheer. One of the ways of accomplishing this is to keep in touch and sympathy with the folks at home.

Our greatest means of keeping interest in common with our home folks is correspondence. We should therefore use the mails freely. Write home often. Moreover, make your letters sunny and readable. If you have called on any relatives or friends of the family in the town or city where you are, tell the folks at home all about it. Tell them what you are doing, and how your work or studies are progressing. Inquire after all the folks at home. Remember to let love and good cheer form the keynote of your missive. You will find that the spirit of cheerfulness and kindness, in turn, will reflect on yourself, driving away and eradicating the sense of loneliness you perhaps experience at being separated from home and family.

The Texas Spur \$1.00 per year

Eastside Barber Shop

TIDWELL & WILSON, Props.

First Class Tonsorial Work. Hot and Cold Baths and Up-To-Date Service in Every Respect. Call and see us

All Kinds of Feed Kept

WE HANDLE HIGHEST GRADE & MAKE THE LOWEST PRICE.

See me Before You Buy. First-class Wagon Yard Accommodations Plenty water and good camp house. 1 Block west of Spur Hardware

J. B. CONNER

Read the Texas Spur, \$1.00 per year.

**MILLIONAIRES MADE
RAPIDLY IN TEXAS**

**ONE EVERY TWO DAYS RECORD OF
FATHER TIME.**

PER CAPITA WEALTH GAINS

Father time, single handed, has been making millionaires of the Texas property owners at the rate of one every two days (or its equivalent) and his mint is running along with increased momentum. No gold mine ever poured forth its stream of wealth with such volume and perpetuity as that of the increased values of property in Texas, and no prospector can stake out a claim more promising than a Texas real estate investment.

The assessed value of all property has increased during the past decade from \$946,320,258 to \$2,388,500,124, making a net increase of \$1,442,180,866 or 152 per cent. As the assessed value represents probably not over 50 per cent of the true value of property, we find an actual increase in wealth of approximately three billion dollars during the past ten years. This remarkable increase in wealth must be attributed to either one of two causes; first, increase in property values, such, for example, as land worth \$10 per acre in 1900 and worth \$20 per acre or more in 1910; second, increase in property such as money, building material, live stock and movable property coming into the State. However, a careful study of the figures justify an estimate of \$1,770,000,000 as an increase in property values and \$1,230,000,000 as an increase in property.

The amount shown as increase in property values is pure cream and measures, with reasonable accuracy, the unearned increment on investments in property and shows a daily ten year average net increase in property alone of \$485,000. The amount shown as increase in property represents the flow of outside capital into Texas and gives a net daily ten year average of \$337,000.

In 1900 our assessed wealth per capita was \$310 and in 1910 it was \$610, making an increase of \$300 per capita or 97 per cent. Our population during the past decade has shown an increase of 27 per cent and our assessed wealth an increase of 152 per cent. No more forceful evidence of progress and prosperity can be produced than the above comparison and it speaks the dialect of every nation.

SPUR FARM LANDS

We Offer You a Choice From 673 Square Miles of Texas' most productive Territory

Sold direct to the homeseeker, perfect title, no selling commission. We give full value for every dollar.

\$12 to \$17.50
Per Acre

With some additions when close to town

THE FARMERS' OPPORTUNITY.

To Secure a
HOME.

STATE EXPERIMENTAL FARM STATION AT SPUR

Recognizing the great possibilities and wonderful future of Spur Farm Lands, the state is now operating an Experimental Farm Station at Spur. This will be a great benefit to the settlers in this region, showing them by actual demonstration on the lands what crops can be most profitably raised; best methods of cultivation, and assisting in all the problems of the farm. This decision was reached after a visit to the lands by Judge Ed. R. Kone, Commissioner of Agriculture, and Dr. H. H. Harrington, Director of Experimental Stations, who recognized the unusual farming value.

To the first comers, ready to develop, we are willing to sell one-half our holdings of 673 square miles on easy terms and reasonable price. We reserve the other half for big increase sure to come with development. We stand shoulder to shoulder with the homeseeker. Cotton, no boll weevil, corn, alfalfa, all feed stuffs, grains, fruits, melons, vegetables. Great hog country—no cholera ever known. The hog farmer is king, and nowhere can hogs be matured so cheaply. Quick run to Fort Worth market. Delightful, healthful climate—altitude 2000 to 2,500. The greatest extent and variety of land insure the homeseeker such range of selection that the man early on the ground can find exactly what he wants. For further information as to land and lots, with free illustrated pamphlet, see

Chas. A. Jones, Manager for S. M. Swenson & Sons,
SPUR, DICKENS COUNTY, TEXAS.

Sheriff Cole came over and spent some time in the city this week on official business.

Deputy Sheriff Anderton is planning to make a "flying" trip during the holidays to his former home in Dallas and Tarrant counties.

Mr. Perry, who spent several days in Spur looking after business interests, returned the latter part of the week to his home at Stephenville.

C. E. Pearson returned the latter part of last week from a trip of several days to Anson, Hamlin, Abilene and other towns. Mr. Pearson is here in the interest of the Praetorian lodge.

On account of the weather the moving of the post-office has been delayed several days this week. High winds and extremely cold weather prevailed throughout the first of the week.

E. B. Shaw, a prominent citizen of Croton country, was in the city Saturday. Mr. Shaw said that in his section of the country the principal part of the cotton crop had been gathered. His crop, he said, will average nearly a half bale to the acre.

Wyatt Taylor, one of the oldest and most prominent citizens of the country, was in the city Saturday from his Silver Lake Farm on the Plains. He reports everything moving along nicely in his section of the country.

W. F. Godfrey, who has for several months been conducting a real estate and insurance business at Slaton, returned Monday to Spur and will again be personally identified with the firm of Godfrey-Tyler Realty Company of Spur. We are glad to have Mr. Godfrey with us again.

Lon Greer, of the Afton country, was in Spur Monday with a load of cotton which he had ginned here. He says that most of the cotton in his section of the country is now about all picked out and what cotton remains in the fields is on the ground, having been blown out by the recent high winds. Mr. Greer has our thanks for fifty cents on subscription.

NEW HOPE

T. J. Harrison and J. W. Clark are serving as Grand and Petit Jurors at Dickens this week.

J. T. Kelly has just recovered from quite a siege of sickness.

J. L. Law will live another year in Spur having rented his home place to A. A. Allen.

Onion had the pleasure of listening to Rev. A. T. Odeneal of Spur last Sunday at 11 o'clock.

Prof. M. D. King who will begin a school in Stonewall county, the first Monday in December, is in our midst.

W. L. Law has gone to Bowie, Texas on a business career.

Misses Emma Buchanan, Edna Shields and Anna Reynolds have been visiting in the New Hope community.

Mrs. Lillie Law visited the home of J. M. Jones Sunday.

The young ladies of our community have organized under the name of the Midway Ladies Club, and as gentlemen are not eligible to membership we do not know the nature of its workings.

Our old friend and comrade, Ned Richards, of Soldier Mound, attended church at New Hope Sunday.—Onion.

See L. W. Davis for Cotton Insurance.

John Davis, Madison Bachman and Louis Howsley, of Throckmorton, returned Friday to their homes after spending several days in the city with G. A. Howsley. They came to Spur in connection with visiting Mr. Howsley to also hunt, and as a result they spent several days shooting quail. They report success.

Oscar Jackson made a trip to the Plains country with a number of prospectors. Notwithstanding the prevailing conditions in every section of the state a number of prospectors are coming to Spur and many of whom are buying lands and will later settle and become permanent citizens and no doubt will prosper with the majority of citizens already permanently located.

Tom Grace and wife, of Waco, are in the city visiting at the home of Dr. Grace and family.

FOR sale cheap good span of mares and young horse. Cash or on terms.—See or write S. Power, Spur, Texas.

There will be a dance at the Dance Hall Friday night, December the 8th. Everybody invited to attend. J. M. Trout will furnish the music.—John Day.

Mrs. George a Stewart, of Sherman, is in the city to spend the holidays with her parents. Mr. and Mrs. R. R. Morrison.

A. M. Miller, a prosperous farmer of Garza county, was in Spur Monday trading with merchants.

Poet Hagins, of the Gilpin country, was in the city the latter part of last week and reports everything all right in his section.

The Spur Hotel

W. N. BLACKWELL, Prop.

RATES: \$1.50 Per Day.

See me for Weekly Rates

Nice, Clean Rooms and the Best Table the Market Affords.

Buy Your Lumber, Paints and Oils

FROM

BRAZELTON-PRYOR COMPANY

SPUR, TEXAS

W. F. Godfrey.

C. C. Tyler

**Real Estate
Fire Insurance.
Life and Live Stock Insurance.**

Godfrey-Tyler Realty Company.

Horse Dentistry!

W. H. Teague is prepared to pull or cut horses teeth, treat all diseases and prescribe for horses and cattle. Office at Teague's Blacksmith Shop, Spur, Texas.

Cold Weather Merchandise

These Initial Cold Waves are Always strong Reminders of What May Follow

Why not take advantage of the nearest suitable day and come in and let us show you the items most needed for your comforts. We are just in receipt of a shipment of mens and boys overcoats sizes 8 years to mens 40 size. These goods we are offering very cheap, quality considered. We have also just received another shipment of Ladies, Misses and Childrens cloaks. Of these above items we have special values to offer giving you the advantage of a very low cash purchase. The showing in sweaters for men, women and children is very extensive having just received another shipment in new and novel effects. All mens clothing, odd pants, Ladies coats, misses and childrens coats, shoes shirts, underwear and wool dress goods will be continued on sale until further notice. We have too much money invested in some lines of our business and for this "coupled" with a desire to reduce our stock to the lowest possible point causes the continuation of our Low Prices. Not in the history of our career in Spur have we been better equipped to serve your needs with better merchandise for the money. We assure the buyer who comes here that in each and every case you will spend your time to the best advantage for should you purchase any article from us that you find otherwise than represented in price or quality we will cheerfully refund your money.

300 Pairs of Ladies Shoes sizes 2, 2 1-2, 3, 3 1-2, 4, 6, 7, 7 1-2, 8, 9, and 10 to close out at half price in many instances and more cut less than 35 per cent.

We are showing the largest line of trunks, suit cases and bags shown in this section. Trunk prices run from \$1.50 to 15.00, Suit Cases from \$1.25 up. All prices in Telescopes from 35c up to 1.50

J. A. Lambdin & Company,

ASK FOR TICKETS ON OUR PREMIUM OFFER.

SPUR, TEXAS

WE ARE SAVING YOU MONEY ON ALL PURCHASES

GILPIN HAPPENINGS

A cold sand storm blew up Sunday night.

Rev. M. M. Young filled his regular appointment at Duck Creek Sunday.

P. E. Hagins started to Spur Monday Morning, but the wind blew so hard forced him to turn and go back home.

Rev. W. B. Bennett filled his regular appointment at the Bond School house Sunday.

Several of the Duck Creek people went to Girard Sunday night.

We wish to announce that W. A. Hawkins has gone out of the dental business and has gone to extracting mesquite trees.

Mr. W. B. Bennetts mother has gone to visit her daughter in Jones county.

Messrs. Elmer and Luther Hawkins have returned home from near Jayton where they have been picking cotton.

A. C. Buchanan of Temple, Texas is here this week. He reports everybody through picking cotton in his section.—Johnny Jump-Up.

TAP TELLINGS

Cold, cold, I recon we had the coldest spell first of the week since Adam was a yearling. Guess those fellows who've been fooling around the north pole let her slip south a few degrees.

J. A. Hinson was here a few days ago from the Plains on business.

Mr. Joe Kyser, of San Saba, is here visiting his sister, Mrs. John Self.

S. S. Allcorn returned Sunday from a business trip to Floydada.

Rev. T. F. Medlin filled his regular appointment here Saturday and Sunday.

Craig Parsons and sister, Miss Lottie of White River community, worshiped with the people here Sunday.

J. N. Self from several miles south, was here first of the week.

J. S. Neal, formerly of Spur, is now domiciled in his new home on the Hinson farm.

J. E. Sparks accepted an invitation to attend court at Dickens this week.

Mr. Gruben, the jeweler, of Spur, and Jeff Pirkle, were here Sunday.

C. W. Post, after a thorough test with a cotton picking ma-

chine on his farm at Post city, pronounced it a failure and shipped the machine back to the company, but Sam Smith has a machine that is a success in every respect in the person of Clarence Giddens. He picked 725 pounds one day the past week and quit before night—could easily have gathered 800. Now who can beat that and not tell a whopper?—Gadabout.

AMITY SCHOOL

School will be recontinued at Amity school house Monday, December fourth.

Parents are earnestly entreated to put forth every effort to have every child present each remaining day of the term. Our term is short at the best and your child's future welfare is dependent on the opportunities you give him now to secure an education.—Pioneer.

W. D. Evans, of the Steel Hill country, was in Saturday with Thanksgiving turkeys to supply the market of Spur.

Don't buy cheap flour its false economy. The best is cheapest What is best? Light Crust. Bryant-Link Co.

Mrs. L. W. Davis and children spent several days this week in Dickens with relatives.

Miss Pearl Stradley, of Dickens, is now employed in the J. A. Lambdin Company store.

A horse doctor has been in the city throughout the week. He has treated a number of horses for various complaints.

The stores and business houses were closed the greater part of Thursday on account of Thanksgiving. Many spent the day out after quail.

Mr. Walker was in the city Tuesday from his place near Spur. Mr. Walker intends to begin building more tanks for the Spur Ranch next week.

Editor Morris and family passed through Spur recently on their return to Jayton after spending several weeks in the new town of Ralls on the Plains. Mr. Morris established the Ralls Banner at Ralls, but says that the high altitude of the Plains does not agree with his health and as a result he is forced to remove to his former home at Jayton, leaving the paper at Ralls in charge of his son.

Henson & Poole

STAPLE & FANCY
GROCERIES

Successors to The White Front Grocery Store.

BOTH PHONES 28

SPUR, TEXAS

MORRISON'S BIG CARNIVAL SALE

Will Go on Until December the 24, 1911

GROCERIES

Our business for the past month, was the largest in the history of our business career in Spur. This is conclusive proof to us that we gave you a real "Bargain Carnival" and as an appreciation of your loyalty and confidence we are going to give you throughout the month of December the same prices on Dry Goods as made you during our sale. We realize the low price of cotton has held some of you back and we are going to meet you half way and give you the lowest possible prices when you need them the most.

100 lbs. Baker Boy Flour	\$2.90
25 lbs. Granulated Sugar	\$1.75
100 lbs. Granulated sugar	\$7.00
10 lb. Bucket Cotoleone	\$1.25
10 lb. " Swift's Compound	95c
10 lb. " White Cloud	95c
Large Bucket Coffee	\$1.00
5 Gallon Bulk Oil	50c
1 Case Oil per case	\$1.75
5 Gallon Keg Krout	\$1.35
14 lb. Navy Beans	\$1.00
14 lbs. Pink Beans	\$1.00
14 lbs. Speckled Beans	\$1.00
Potatoes per sack per lb.	2 1-2c
Smoked Bacon	13 1-2c
Dry Salt Bacon	12 1-2c

Come now while you can get a good selection in December at prices usually quoted in February. ∴ We bought ten cars Baker Boy Flour in September when the prices were the lowest and we want to make "Baker Boy" a house hold word in every buscuit loving family in Dickens county. In order to do this we are going to give you advantage of our good purchase and sell you throughout the month 100 lbs. "Baker Boy" Flour at \$2.90. Remember we retail groceries at wholesale prices. Read these.

COME AND DO YOUR TRADING NOW, AT A TIME AND PLACE WHERE YOU CAN SAVE MONEY

R. R. Morrison, Spur, Texas

J. P. Crump, of Garza county, was in Spur this week trading with the merchants.

C. H. McDonald for Christmas toys and everything in holiday line.

Mr. Edmondson, of the Tap country, was in the city Thursday and spent some time here.

A new line of ribbons, handkerchiefs for Xmas. Call and examine the line at W. B. Griffins.

H. P. Minihan has our thanks for a dollar with which to extend his subscription to the Texas Spur.

Sol Davis and family spent Thursday in Dickens with his parents, who had prepared a Thanksgiving dinner for the occasion.

Dock Edwards, of the Croton country, was in the city recently and reports everything moving along nicely in his section of the country.

Miss Glass, one of the teachers in the Spur School, is spending the week with her sister in Hamlin. During her absence Mrs. Tyler will teach in the school.

J. D. Martin came in Thursday from the ranch and while here was a pleasant caller at the Texas Spur office, having his subscription to the paper renewed, for which he has our thanks.

Mr. Carricer, who has been picking cotton in the Afton country, was in the city this week. He is figuring on putting in a hamburger stand here during the holiday season.

The Ladies Aid Society of the First Christian Church meets Monday, December 4th, with Mrs. Lire Squires at 3 o'clock.

ENTERTAINMENT

Mrs. J. D. Reagan and Mrs. Dr. Standifer on Tuesday November 28th, entertained the Ladies Aid Society of the Christian Church at the home of Mrs. Reagan with a pea-nut contest. The ladies report a very enjoyable afternoon. Delicious refreshments were served, consisting of a salad course and cake and coffee.

Mrs. L. W. Davis and children spent several days this week in Dickens with relatives.

Miss Pearl Stradley, of Dickens, is now employed in the J. A. Lambdin Company store.

Roy Brummell, of the Afton country, was in Spur trading with merchants this week.

Buy your Christmas candies, nuts and fruits at C. H. McDonalds.

J. O. Wooten, a prominent citizen of the Plains country, was in Spur trading this week.

A new line of Xmas goods just arrived at W. B. Griffins. Call and examine his line.

A new line of cut glass at W. B. Griffins.

W. C. Gruben, John Gruben and J. C. Pirkle spent last Sunday in the Tap country. They report having had a very pleasant time.

The Spur country needs more farmers, fruit growers and agricultural developers to develop the resources and extend our industries.

... BAZAAR ...

The Ladies of the Methodist Church will give a Bazaar at Wendell Bldg.

TUESDAY, DECEMBER 5th.
From 1 O'clock p. m. to 10 p. m.

Fancy work, ready to wear baby articles, delicious home made candies
Tea and coffee will be served free to our friends. Everybody invited.

Why Not Now?

With the near approach of the Holidays when perhaps you may want to make a visit and go and see your best girl, you want to look your best. "It's a good idea" too! Stop and let us show you the late Holiday Styles in suits and overcoats as well as odd pant samples. Bring us your clothes to press and clean.

Spur Tailoring Com'y.

PHONE 102

AGENCY STAMFORD STEAM LAUNDRY.