

Chamber Banquet entertainer a "wizard of comedy"

The Muleshoe Chamber of Commerce and Agriculture's annual banquet has become known for its combination of excellent food and quality entertainment.

Those traditions will continue in 1998 with the return of the all-you-can-eat steak and shrimp dinner and an unforgettable entertainment experience.

The banquet is scheduled for Saturday, March 28, at 6:30 p.m. The meal is held in the Muleshoe High School cafeteria, with the entertainment and awards following in the MHS auditorium.

The highlight of the evening is expected to be the performance of Ken Whitener, known internationally as the "Wizard of Comedy." Whitener has performed his hilarious stage hypnosis show for

over 20 years.

Whitener's audiences are spellbound with delight and doubled over with laughter. Everyone gets to participate and anyone can be the star of the show — with good taste and respect prevailing.

Whitener has been featured on Nickelodeon's "What Would You Do?" and has performed for a large list of discriminating clients, such as Disney World's Pleasure Island, Astro World, the Cunard and Holland American cruise lines. He has also performed for countless fairs, festivals, colleges, schools and comedy clubs, as well as major business conventions, receiving rave reviews.

And while Whitener is well-known for his stage hypnosis and comedy, he is equally recognized

as a leader in the science of personal development and peak performance. His "Program Your Mind For Success®" seminar is said to be powerful, fresh and exciting. It is designed to awaken, educate and motivate individuals and groups alike.

Whitener is a success coach and trainer, touching people's lives, communicating to their innermost needs and activating positive change.

In addition to Whitener, Chamber Banquet attendees will be treated to magician Mark Langford of Lubbock and the performance of a group of mimes, led by Muleshoe native Adrian King.

The banquet is the Chamber's

See CHAMBER, page 2



Ken Whitener

Primary election set for March 10

Political party members will go to the polls Tuesday, March 10 to make their choices for September's general election.

Democrats and Republicans around Muleshoe will have the opportunity to cast ballots, selecting general election candidates for a number of state and local positions.

Polls will be open from 7 a.m. - 7 p.m. Tuesday, March 10.

Bailey County voters participating in the republican primary, regardless of which precinct they reside, can cast ballots at the Earl Ladd Fire Station in Muleshoe. The convention will start at 7:30 p.m.

Although there are many state candidates on the Republican ballot, there is only one local candidate running on the ticket. Sherri Bessire Harrison, a certified legal assistant, is running unopposed for county clerk.

Voters participating in the democratic party's primary will need to vote at the polls designated to their precinct: precinct one, Bailey County Courthouse; precinct two, Bailey County Coliseum; precinct three, Three Way Schools or the agricultural extension office in Muleshoe; precinct four, Bula, Needmore, or Muleshoe City Hall.

After the polls close, the Democrats will be holding precinct conventions at each voting box, starting at 7:15 p.m.

Numerous local candidates are running on the democratic ticket with the majority being unopposed including: Gordon Green for district judge of the

See ELECTION, page 2

Cattle industry leaders featured in seminar

UVALDE — "A Cattleman's Gathering in the Southwest" is a special Extension program designed for beef producers who view change as an ally rather than an enemy.

The day-long program is set for April 3 in Southwest Texas Junior College Campus's Tate Auditorium. Registration starts at 8 a.m. The formal program begins at 8:30 a.m.

"The program is divided into four sessions and brings together some of the beef industry's top leaders—people with sharp minds and a vision for the future," said Dr. Rick Machen, Uvalde-based Extension livestock specialist. Programs like this are not a weekly occurrence in Southwest Texas. This is a real and rare opportunity to become better prepared for the beef industry's future."

The first session, "The Changing Beef Industry," features Dr. Bill Mies, associate professor and beef specialist at Texas A&M University, discussing the "why's and how's" of today's beef cattle scene. The first session's other two speakers and their topics are: "Lessons from Ranch to Rail," Dr. John McNeil, associate department head at Texas A&M's animal science department and "Successful Vaccination Programs" featuring Dr. Kynan Sturgess, with Bayer Animal Health, Amarillo.

Each session closes with ample time for visiting the trade show that's a part of the conference.

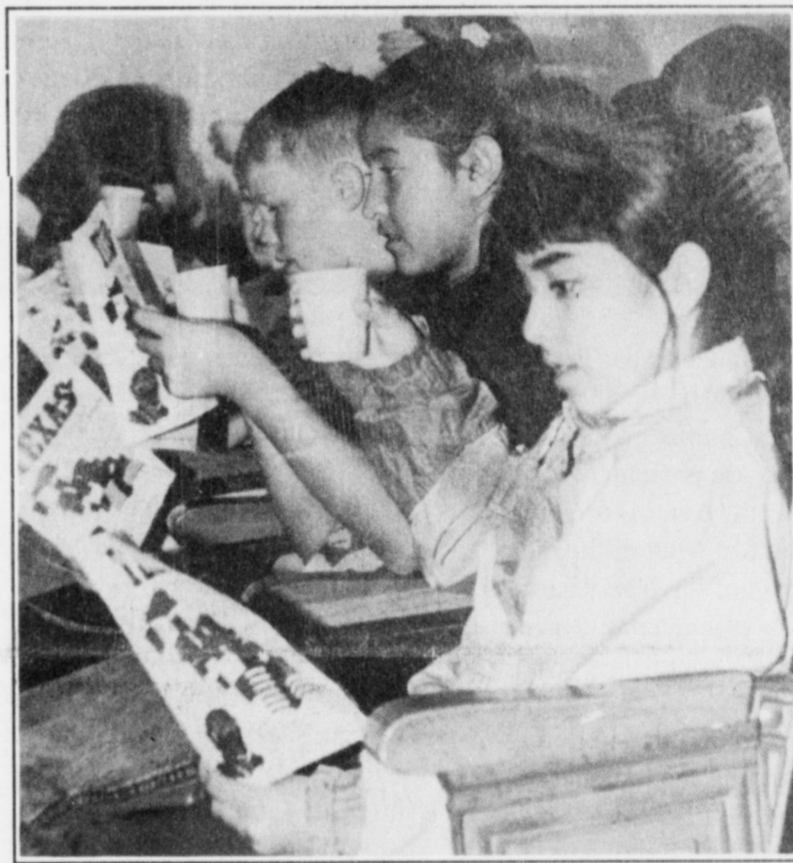
Session II deals with new avenues associated with marketing feeder calves. The first two presentations and speakers are: Machen presenting "TEX-VAC"-Is it for me?" and "Merchandising Healthy Calves" with Gary Smith, Friona Industries ProEdge Program manager from Amarillo and Ken Jordan, Owner/Operator of Jordan Livestock Auction Co. of San Saba. The session ends with a panel discussion manned by Don Baker, of the Mustang Ranch in Zavala

See CATTLE, page 2



Texas Traditon

Cliff Allen (left), a Muleshoe saddle maker, plays the fiddle during the Toast To Texas Tuesday at the Bailey County Courthouse. At right, students from DeShazo Elementary review Texas history during the presentations, sponsored by the Jennyslippers.



History on tap as Jennyslippers host annual Toast To Texas

Over one hundred people toasted the great state of Texas during the annual celebration of Texas Independence.

Students from DeShazo Elementary joined other local citizens in the "Toast to Texas," hosted by the Jennyslippers Thursday at the Bailey County Court-

house.

As everyone received a glass of pure Texas water, Judge Marilyn Cox welcomed the crowd and shared tidbits of Texas history.

In unison, the crowd raised their glasses as local resident and Jennyslipper, Donna

Kirk made the official toast "To Texas, joyous and sparkling, evergreen when it rains, enduring in drought, timeless, endless in boundaries, exciting, home to the adventurous of yesterday and today, with

See TOAST, page 3

Vegetable growers viewing crops from consumer standpoint

The Texas High Plains produces a wide variety of quality vegetables, but the successful grower must look at his crop from the consumer's viewpoint, speakers at the recent High Plains Vegetable Conference here told producers.

"We have to move from a selling mindset to a marketing

mindset," said Dr. Charlie Hall, economist and horticultural marketing specialist with the Texas Agricultural Extension Service of Texas A & M University.

"We can't continue to sell watermelons out of the field," echoed Dr. Frank Dainello, Extension Service horticulturist

and vegetable specialist. "There are no checks and balances" when a buyer rolls up to a melon field, loads his truck and offers the farmer a price," he said.

"You're strictly at the mercy of the buyer" on such a deal, he noted.

Dainello said watermelons can be a high-dollar crop, but

will require high inputs, good management and strong marketing efforts. He urged growers to think like a consumer and provide the type and size melon consumers want. He also suggested they study the type of consumer who buys watermelons, which now are available in supermarkets year

round.

"Historically, Texas has ranked a close third to Florida in terms of total U.S. vegetable and melon production," Hall said. But in 1966, Texas dropped to a distant fifth place, acreage of vegetable crops has

See VEGETABLES, page 2

Helping others helps three MHS students win state DECA contest

Three Muleshoe High juniors who decided to take an active roll in helping others have been selected to represent Texas.

Bobby Ellis, Becky Flores, and Katie Woodworth won first place in a statewide DECA civic consciousness event. The event was held in conjunction with the DECA state convention held last month in Austin.

The team was honored for the achievement in raising over \$600 to send two children with muscular dystrophy to summer camp.

As state champions they will be representing Texas at the national DECA convention in Denver Colorado in April.

The three DECA students started their project at the beginning of the year. "We knew we

wanted to do something. We talked about a lot of ideas, but finally narrowed it down to this (raising money for MDA camp) because we would be helping someone else," said Ellis.

With a decision made about what they were going to do, work was soon underway to motivate the community to donate to their cause.

The classmates put in many hours during and after school to make their project a success. They involved local business which donated prizes for over 20 winners.

"We learned how to do so many things," said Flores. "We felt like managers, in charge of getting this done." Woodworth agreed with her

See DECA, page 3



State Champs

Katie Woodworth, Becky Flores and Bobby Ellis teamed up to win first place in a statewide DECA civic consciousness contest.

AROUND MULESHOE

Mule batsmen win season opener, 11-7

BROWNFIELD — The Muleshoe baseball team built an early lead, then held off a Lubbock Christian rally for an 11-7 victory here Thursday in the first round of the Brownfield Invitational Tournament.

MHS starter Lane Kemp held LCHS scoreless for the first three innings and the Mule batsmen pounded their way to a 6-1 lead after four.

Rodney Alaniz relieved Kemp in the 5th, when LCHS cut the MHS lead to 8-4. The Mules matched Lubbock Christian run for run the rest of the way.

The Mules pounded out 12 hits and took advantage of six LCHS errors. B.J. Gonzales had a double and a triple to pace the Mules, while Matt Mason had a double and Matt McClanahan a home run.

The Mules were matched against District 1-3A rival Friona in Friday's semifinals at 3 p.m. The Chieftains advanced with a 7-4 first-round victory over Lubbock Roosevelt. In the other winner's bracket semifinal, host Brownfield, a 4-3 winner over Post, was matched against Littlefield, a 5-4 winner over Lamesa.

The tournament continued through Saturday.

Attention customers of 5 Area phone

Customers may be receiving solicitation calls from people identifying themselves as employees of Five Area Telephone Cooperative or West Plains Telecommunications company. Please be aware . . . they are not affiliated in anyway with Five Area Telephone Cooperative or West Plains Telecommunications. The local company is not doing any phone solicitation and have not contracted with anyone to do any solicitation on their behalf.

Please call the phone company at 272-5533 if you are contacted by anyone or if you have questions about your telephone service.

Donation to Bula/Enochs fire department

The Bula/Enochs Fire Department received a check for \$150

recently from Texas Farm Bureau Insurance Companies as an expression of thanks for the department's work on the property of Jim Cannon.

The money will be used for the department's new loss prevention program. Farm Bureau believes that fire departments such as Bula/Enochs have contributed to reduce the amount of loss involved by a fire and more importantly, to prevent fires.

Watson Junior high choir concert

The Watson Junior High choir invites everyone to an evening filled with patriotic songs performed by local sixth through eighth graders.

The concert is scheduled for 7:30 p.m., Thursday, March 12 in the high school auditorium. Admission is free.

MHS parents raise money for prom

Parents of Muleshoe High juniors and seniors are sponsoring a drawing for a Spring make-over valued at \$250. The funds raised will be used to defray the cost of the banquet and prom.

Tickets for the drawing are on sale for \$1 and will be sold throughout March. The drawing will be held April 6, 1998 at the Fine Arts Night to Shine. Tickets are available from any junior or senior parent.

Open house at MHS computer labs

Community members are invited to visit the computer labs at Muleshoe High School. Open House will be from 6:30-8:30 p.m. Tuesday, March 24, 1998.

A short organizational meeting to discuss future community computer classes will begin at 7:30 p.m.

Miller honored for academic achievement

LAWRENCE, KS — Jon Colby Miller of Lazbuddie was one of 308 student athletes named Jayhawk Scholar by the University of Kansas for academic achievement.

Miller, a junior in the College of Liberal Arts and Science and a member of the cross country and track teams, was honored for achieving a semester grade point average of at least a 3.0 during the spring or fall semesters in 1997, or both.

ELECTION

From page 1

287th judicial district; Elaine Parker for district clerk; Jan Pierce for county clerk; Marilyn Cox for County Judge; Coy Plott for Sheriff; Donna Kirk for County treasurer.

Two candidates are seeking election specifically to represent their precinct. Justice of the Peace Jack Bates is running for reelection in Precinct One while C.E. Grant is running for re-election to the Commissioner's Court for Precinct Two.

Precinct 4 voters will de-

side on the only locally contested race. County Commissioner Bennie Claunch, who has served two terms, is opposed by another long-time Bailey County resident Jerry Damron.

Christians Are Called To Be the Salt of the Earth

You are the salt of the earth," Jesus once said to his disciples.

A German theologian named Helmut Thielicke makes an important point regarding Christ's words when he notes that Jesus did not say, "You should be the salt of the earth."

No, Christ said, "You *are* the salt of the earth." Jesus is calling his disciples, Thielicke says, to

whip out a sword to defend him one moment and whip out a tongue to deny him in the next. He knew that they would scatter like frightened quail when he needed them most.

Those early disciples were, Thielicke points out, a wretched little troop. They looked an awful lot like his modern-day disciples, when you think about it. But Jesus looked at them knowing full well who they were and what they would do, and he proclaimed them to be the salt and the light of the world. Just like he does us.

Obviously, the power to become what he had called them to be lay not in them, but in their Lord. The greatness wasn't in them; it was in their Savior. What they had, Thielicke writes, was a "borrowed greatness, but it was greatness." And so those disciples of Christ became what their Lord had called them to be.

In affairs of state, in their homes, in prisons, even in the Roman Coliseum, all over the known world, they spread salt, sometimes the salt of their own blood, but they seasoned the whole world.

Today we still taste their influence. We still see traces of the reflected light they shared. They became what they were called to be. And so must we today if we wear His name.

Salt and light. Simple things. But they say a lot about the kind of people Christ's followers are to be and the kind of lives they are to lead in God's world.

Curtis Shelburne is minister of the 16th & D Church of Christ in Muleshoe.



Focus On Faith
Curtis Shelburne

become in real life what he has already proclaimed them by his power to be.

Jesus knew quite well what his disciples were by themselves. They were inconspicuous "nobodies" by the world's standards. Peasants, fishermen, rabble-rousers. They were "insignificant" people, a miserable little crowd. Only Jesus knew how miserable. He knew better than they where they would falter and fail, how they would sleep when they should have been watching, how they would deny when they should have been confessing.

Christ knew that the Twelve themselves would be fussing at the holiest meal they would ever eat with their Lord, and He would be the only one who would stoop to serve. He knew that Peter would

CHAMBER

From page 1

annual major fund raiser and since its format change a few years back, has ended the practice of the organization being forced to seek contributions from members all year long. Tickets for the meal and show are \$50 and are avail-

CATTLE

From page 1

Ranch in Zavala County; Don Keeling, Friona Industries, Pleasanton and Jay Gray, Graham Land and Cattle Co. feedyard manager, Gonzales.

Following a noon steak lunch, the program resumes with Session III. Speakers and their topics include: "Supplement Selection for Cows," Dr. Ted McCollum, Extension beef specialist, Amarillo and "Receiving Programs for Stockers," Dr. Andy Cole, research scientist, U.S. Department of Agriculture—Agriculture Research Service, Bushland.

Program registration is \$10 per person if received before March 20.

For further information contact: Kenneth White at (830)278-6661.

able from Chamber Board members.

The Chamber's annual awards are presented during the event. Awards are presented for: Man of the Year; Woman of the Year; Farm Family of the Year, Business of the Year and Employee of the Year.

For more information concerning the banquet or tickets, contact Susie Sowder at Landmark Label and Design, 272-6767 or Dawn Williams at Williams Athletics, 272-6853.

SIMNACHER NATIVE GRASSES

Experts in the sowing and harvesting of native grasses of the Great Plains

Most native grass seeds available at wholesale prices when purchased with turnkey sowing jobs.

We also have a large quantity of high quality Native & Hachita Blue Grama. All work done in compliance with Government specifications.

Please call:

Darwin Simnacher (505) 762-7817 Fax (505) 763-9115

Vince Simnacher (806) 946-3461 Fax (806) 946-3604

or

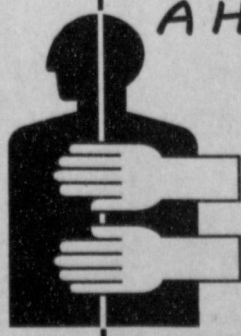
Thomas Simnacher (806) 285-2491

References provided upon request.

Precure Chiropractic Clinic

ARE YOU HURTING?

A HANDS-ON APPROACH TO . . .



- Headaches
- Tight, sore muscles in neck or back
- Athletic injuries
- Automobile or on-the-job injuries
- Fatigue, stress or soreness
- Chronic back or neck pain
- "Trigger points" in muscles
- Scoliosis
- "Subluxations" of the spine

There's no need to put it off any longer; you should see what chiropractic care has to offer. Dr. Mike Precure offers a wise choice for sensible, smart and effective care to keep you healthy and going strong!

Call 272-6784 today for an appointment or complementary consultation
Or come by Monday-Friday • 8 am to Noon, 1 pm to 5 pm
Located in Suite 4 in the Muleshoe Area Medical Center.

CROP INSURANCE WITH THE SERVICE YOU DESERVE

To Better Serve The Needs Of Our Crop Producers, We Will Be Adding An Extra Feature To Our Crop Insurance Program. We Will Be Mapping All Of Our Insureds' Crops. These Maps Are For Our Records And Will Be Available To Any Producer. These Maps Are Color Coded Showing Acres And Crops In Each Field.

It's All About Doing A Better Job For Our Clients. When You Insure Your Crops With Roosevelt County Insurance, You Are Putting A Massive Amount Of Resources To Work For You.

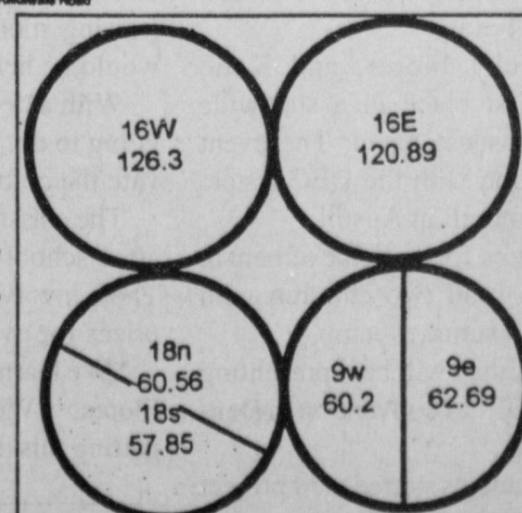
The Price Is The Same No Matter Where You Buy Your Insurance- It's The Service That Is Different! It's Very Easy To Transfer Your Crop Insurance To Roosevelt County Insurance. All You Have To Do Is Sign A Transfer Form. It Takes About 3 Minutes.

REMEMBER: MARCH 15, 1998 IS THE FINAL DAY TO MAKE TRANSFERS OR PURCHASE NEW INSURANCE!

Serving Eastern New Mexico and West Texas

Roosevelt County Insurance Agency

700 S. Ave. C • Portales, NM • (505) 359-1227 or Toll Free 1-800-748-2825



Writer questions vehicle tax

Dear Editor:

If we need new water facilities and we need new waste water facilities, how about contracting these services out. Just like the garbage, we can cut down on expenses and employees and possibly be a small enough city government to no longer need a manager. I wonder how much surplus we would then have?

If the hospital district is making enough revenue to afford to write off \$350,000 a year and still operate, why do they need vehicle tax monies?

Finally, and with much debate, how is it that the school district needs our vehicle tax money? Granted they have been a long time coming with capital improvements, but with \$80,000 for a baseball field, in addition to the various new building projects, do they really need our money?

I think we should all have such problems as these. Maybe we could all afford new things in life if we individually had our own tax district and taxed each other so we can all afford to do more.
Sean Epperson
Muleshoe



Rope tricks
"Wild Bill" Cathey of Dora, NM, does rope tricks for Dillman Elementary students during the school's annual Western Day, Monday, March 2.

VEGETABLES

From page 1

declined steadily and genetically improved crops with greater yield haven't been enough to offset the lost acreage, he said.

A variety of problems conform the state's vegetable growers, Hall noted. One, he said, is too much reliance on producing onions, melons and cabbage while neglecting a wide

array of other crops, thus reducing the ability to provide buyers mixed loads on a consistent basis. He also listed the neglect of niche markets and value-added markets, competition from South America, slowness in adopting new technology, concentration of major shippers, lack of coordination of marketing and promotion efforts, and

the perception of buyers that Texas produce is inconsistent in quality, volume, delivery and pricing.

None of these, Hall said, "is more devastating than poorly-planned selling strategies. In too many instances, Texas firms have been their own worst enemy in pricing in the marketplace. Prices have been slashed to break-even (if that much) too quickly, even in times of strong market demand."

He urged the growers to develop regional and statewide promotional programs, perhaps by forming partnerships with state agencies, grower-related commodity groups and others; to generate funds for promotion through commodity checkoff programs; attempt branding and trademarking at different levels of the value chain, and to initiate efforts to enhance the image of Texas-grown produce.

TOAST

From page 1

shrines from the past and space for the future. To Texas, everlasting in the hearts of your people."

The crowd then joined Sheriff Coy Plott and Chief of Police Don Carter, who posted the American and Texas flags, in the pledging allegiance to Texas and to America.

Trombonist Steven Madrid, a Muleshoe High School student, played the Star Spangled Banner as the DeShazo students quietly, yet confidently sang along.

Muleshoe resident Sharon Plott then led the audience in singing *Texas, Our Texas*.

The entertainment livened

up with guest fiddle player, Cliff Allen, a local saddle maker and leather worker.

With Allen's first stroke of the bow, students began shuffling in their seats to the rhythm of hoedowns, waltzes and tunes from olden days.

After the fiddling playing, Glenda Jennings of Lazbuddie and her cowboy puppet Billy Bob took center stage. As the puppeteer and her sidekick sang and danced, the audience eagerly joined in, singing and laughing along.

The celebration of the state ended with Sharon Plott leading the energized crowd of Texas patriots in a final song: *The Eyes of Texas*.

DECA

From page 1

teammate adding that she was forced to get over her shyness, talking to businesses, community members, and rallying fellow students for help.

Although excited about the national convention, the good samaritans are also excited about starting another community project. The team has already decided to work together again next year.

"It was a lot of work, but it was really fun," said Flores, "and kind of cool knowing that we made a difference in someone's life."

Twelve other Muleshoe High School DECA students joined the civic consciousness team at the Texas State Career Development Conference.

Competing were: Kaycie Cox in business and financial services marketing research; Melissa Lozano and Stephanie Sexton in food marketing research; Thelma Castillo, Angela Castorena and Lisa Garcia, in the learn and earn team event; and John Paul Bustillos in public relations team event. Voting delegates were Amanda Valdez and Yadi Marquez.

A variety of homestead exemptions could lower your property taxes!

A homestead exemption lowers the property taxes on your home by lowering its taxable value. If your home is valued at \$50,000 and you receive a \$15,000 homestead exemption, your home will be taxed as if it were worth \$35,000.

Who qualifies for an exemption?

Anyone who owned a home on January 1st (and used it as their primary residence on that date) is entitled to a \$15,000 homestead exemption to lower their school taxes this year...and it doesn't matter if your home is a house, condominium, or mobile home. (Counties, cities, and special taxing districts may also offer homestead exemptions.)

Are other exemptions available?

If you're disabled—or if you're 65 years old or older—you are entitled to an additional \$10,000 school tax exemption on your home. And if you qualify for the over-65 exemption, you're also entitled to a permanent, locked-in "ceiling" on the school property taxes on your home. (The ceiling does not apply to county or city property taxes, and those entities may offer other exemptions.) The over-65 homeowner's exemptions and school tax ceiling transfers to the surviving spouse, if the spouse is 55 years of age or older at the time of death and lives in and owns the home. Over-65 homeowners also may transfer the percentage of school tax paid, based on their former home's over-65 school tax ceiling, to a new home.

Do I have to apply each year?

No. If you had a homestead exemption on your home in 1997, you won't need to reapply for 1998 unless your chief appraiser requires it. However, if you haven't received an exemption on your present home—or if you've moved to a new home—you'll need to file for an exemption for 1998. If you are 65 this year, you may file for the over-65 exemption up to one year after the date you turned 65. And if you became disabled during 1997, you need to file for the disabled person's exemption.

When and where should I file?

File applications by April 30 at your appraisal district office. If you need more time, contact us at:

Bailey County Appraisal District
302 Main St., Muleshoe, TX • (806) 272-5501

For more information, stop in or call for a free copy of

"Texas Property Taxes: Taxpayers' Rights, Remedies & Responsibilities"

Or contact:

Comptroller's Property Tax Division
P.O. Box 13528
Austin, TX 78711-3528

Follow the Mules and Lady Mules every week in the Muleshoe Journal (806) 272-4536

Bailey County Journal USPS 040-200

Established March 31, 1963. Published by Triple S Publishing, Inc. Every Sunday at 304 W. Second, Box 449, Muleshoe, TX 79347.

Second Class Postage paid at Muleshoe, TX.

POSTMASTER: Send address changes to the Bailey County Journal, P.O. Box 449, Muleshoe, TX 79347.

We are qualified members of:

Panhandle Press Association, National Newspaper Association, West Texas Press Association and Texas Press Association

WEST TEXAS PRESS ASSOCIATION

PPA

Panhandle Press Association

TA

MEMBER 1997

TEXAS PRESS ASSOCIATION

Scot Stinnett, Publisher

Lisa Stinnett, Vice-President/Comptroller

Rick White, Editor

Mary Ann Dominguez, Classifieds

Leah Bell, Advertising

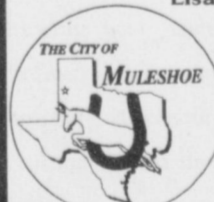
SUBSCRIPTIONS: Muleshoe Journal and Bailey County Journal

By Carrier Yearly - \$22.00

Bailey County - by mail - \$24.00

Elsewhere - \$26.00

Advertising Rate Cards on Application



Advertisers should check their ad the first day of insertion. The Journals will not be liable for failure to publish an ad or for a typographical error or errors in publications except to the extent of the cost of the ad for the first day of insertion. Adjustment for errors will be limited to the cost of that portion of the ad where the error occurred.



Are You Going Crazy Wondering What You're Going To Do With All That "Stuff" You've Gathered Since Last Spring?

Don't Worry...CITY WIDE SPRING CLEANUP IS COMING!



The City of Muleshoe and JC Duncan Disposal will begin a city wide Spring cleanup on **Monday, March 16th**. Please place all items to be picked up in the alley behind your property. The cleanup will end on **Friday, March 27th**. So, you had better spring into action!

ITEMS THAT CAN BE PICKED UP:

- Brush and yard waste
- Household furniture and appliances
- Construction material
- Bulky waste

ITEMS THAT CANNOT BE PICKED UP:

- Tires
- Batteries and oil filters
- Chemicals or paints
- Refrigerators or air conditioning units

If you have questions about the type of items that can or cannot be picked up, please contact the City at 272-4528.

Duo soar to Eagle Scout rank

Muleshoe High School students T.J. Hutto and Tyson Purdy were recently honored with the award of the Boy Scouts of America's highest honor, the rank of "Eagle Scout."

The two received their awards during a Court of Honor at the Fellowship Hall of the First Baptist Church.

Many family, friends and scouts attended.

T.J. is the son of Debbie Hutto.

Tyson is the son of Cindy and Bruce Purdy.

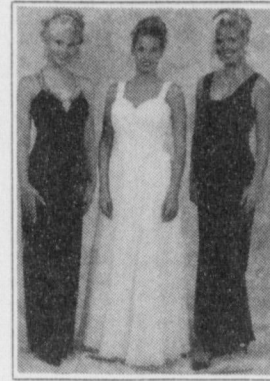
The pair has been active in Boy Scouts for more than 10 years and have attended the National Scout Jamboree in Virginia.

They have also participated in the High Adventure Trek at the Philmont Scout Ranch in New Mexico.

T.J. and Tyson are among the just 2% of scouts who through hard work and dedication attain the rank of Eagle Scout.



Eagle Scouts T.J. Hutto (left) and Tyson Purdy



Freeman's Bridal and Formal Wear Services

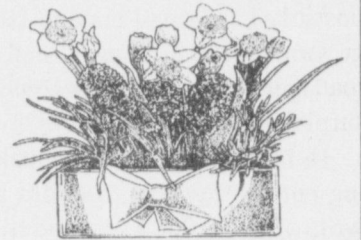
Get Ready for Prom!

520 N. Main St. • Clovis, NM • (505) 762-0474

Rheata White Studio

Floral Design Classes

Beginning March 10th
through April 14th
Tuesday Mornings
9:30 a.m. to Noon



Advance reservations need to be made for these classes!

For Information & Reservations
228 Main. St. Call Rheata at 272-3889

LAZBUDDIE HIGH SCHOOL STUDENTS OF THE MONTH

Josh Morris

Josh Morris is the 16-year-old son of Melvin and Vickie Morris. He was born March 4. He enjoys Mexican food and root beer and watching Drew Carey on television. Industrial Technology elevates his academic interests. Roping and playing sports are how he likes to spend his pastime. Maroon represents his favorite color. The Hobbit is an example of literature he benefits from.

Crystal Scott

Crystal Scott is the 14-year-old daughter of Terry and LaDonna Scott. She enjoys eating chicken strips and drinking Dr. Pepper. Her favorite movie and tune is Titanic and My Heart Will Go On by Celine Dion. Ally McBeal is an example of great TV entertainment. Science is her academic

pursuit. Travel is a fun way to relax. Red is her favorite color. Savage Gardens ranks as her top musical group. I'll be Seeing You represents literary enjoyment. Attending San Angelo University is a long range goal for her.

Cameron Colt Richardson

Cameron Colt Richardson is the 14-year-old son of Andy Richardson and Cathy Robertson. His date of birth is Sept. 8. Italian food and large amounts of black Folger's coffee are what he likes as food favorites. "Memory Remains" by Metallica is a favorite tune. Best picture is the Star Wars Trilogy. Sienfeld composes his special TV enjoyment. He excels in history. Football, reading, and studying history are what he does for fun. Green is a color that per-



Lazbuddie students of the month

sonifies him. Metallica typifies his musical group. Treasure Island by Robert Louis Stevenson represents his literary tastes.

Kesley Jones

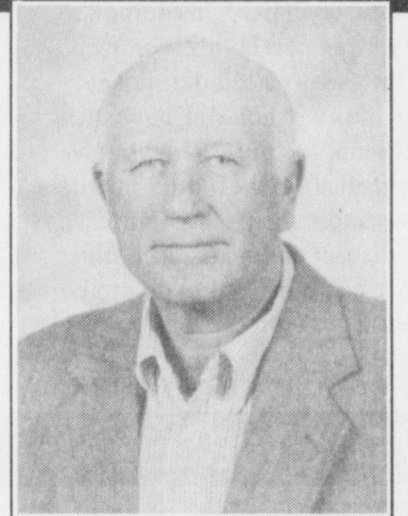
Kelsey Jones is the 13-year-old daughter of John and Becky Jones. Stir fry and apple juice are favorites. My Heart Goes

On represents her best song. Con Air is her best picture. E. R. exemplifies TV viewing at its best. Sports are her favorite academic activity. Red personifies her. The Face on the Milk Carton is her favorite book selection.

ELECT JERRY DAMRON

Bailey County Commissioner
Precinct 4

Vote For A Positive Change



"Thank you for your confidence and your vote on March 10th!"

paid political adv.

You Snooze, You Lose. Read the News

Ballet Hispanico returns to Lubbock

When Ballet Hispanico returns to Tech this spring, they'll be using their innovative brand of Hispanic dance to tell a story that has become a part of Southwestern American folklore — the tale of the legendary Tejano star, Selena.

The troupe will be performing March 12 at Texas Tech.

The ballet will open with George Faison's Idol Obsession, a piece based upon the life and death of Selena.

The ballet uses religious iconography and images of Mexican folklore with the lively, festive Tejano music that has come to represent the Texas-Mexico border culture.

Set to hip-hop and Afro-Cuban rhythms, the final piece scheduled to be performed at Tech is Ritmo Y Ruido. It is set to irresistible pulsing rhythms and turns the Ballet Hispanico dancers loose to swivel their hips as the revel in the slinky choreography.

Ballet Hispanico's March 12 program at Tech will showcase both the troupe's amazing virtuosity and their incredible ability to meld the cultural heritage of several Latin countries to create their own unique brand of dance, that is not singly flamenco or folklorico, ballet or jazz. For tickets or more information about the performance, call Nightlife at Texas Tech, 742-3610.

Plants Peculiar & Landscaping
"We specialize in Southwest Landscape & Design"
Start Sprucing for Spring Now!

- Tree trimming
- Shrub care
- Rose bushes
- Lawn raking
- Tilling
- Flower bed preparing

Ask about our FREE plant/tree offer!

A Christian business offering knowledgeable, personalized gardening techniques. Indoor/Outdoor Maintenance-Contracts Available

(806) 481-9319 or (806) 272-5536 E-mail: plants.peculiar@juno.com

The kindness to our family and friends has been such a comfort to our family during this time of sadness due to the loss of Edna, our mother and grandmother. We thank each of you for the flowers, food, calls and visits. Your prayers have been a special comfort. Our loss will change our lives forever, but we are assured by His word that we will see her again.

Thanks
The Family of Edna Howard

1633 AMERICAN BLVD. MULESHOE • 272-3998

HAPPY HOUR
Buy 1 Get 1 Free Fountain Drinks
2-5 p.m. Everyday

SONIC

SINGLE (#1 or #2) BURGERS 99¢
All Day Every Tuesday

Not valid with any other special offers. Available at Muleshoe location only. Offers good for a limited time, subject to change. Cheese on burgers extra.

The first around-the-world flight was made in 1924.

The Navajo are the largest Indian tribe in the United States.

Home Folks Caring For Folks At Home.

MULESHOE AREA HOME HEALTH Agency

Featured Nurse

Emily (Duncan) Hill is the daughter of Chris and Kathy Duncan of Floyd, NM (near Portales). Emily is a self-described "farm girl," spending all of her childhood in Floyd. So, she enjoys being in a small, rural town like Muleshoe. Her mother is a homemaker, and her father is an Ag. teacher in the Floyd school system. Mrs. Hill has one younger brother, Scott, who attends college at Southwestern Oklahoma State.

Emily moved to Muleshoe when she accepted a position at Muleshoe Area Home Health Agency in November of 1997. Emily just recently made another big change in her life- she married Portales native Brad Hill, head baseball coach at Muleshoe High School. The couple got married in December of 1997. Emily and Brad have no children, yet. However, they are the proud "parents" of a chocolate lab named Gus.

Emily attended Floyd schools until she entered college. She received her nursing degree from the Methodist Hospital School of Nursing in Lubbock. Mrs. Hill formerly worked in a critical care unit at Methodist Hospital.

In her spare time, Emily enjoys going to local sporting activities and cheering on her new husband's team. She is also very busy setting up their new household-decorating, painting, cleaning, rearranging, and all that fun stuff. Emily is a member of the First Baptist Church of Muleshoe.

Emily says that the work at M.A.H.H.A. is "challenging, but very rewarding." She also comments that the staff has made her feel welcome and has shown lots of support. About the patients, Emily says with a grin that "they add joy to my life."

Home Care

Home is where the heart is

Affiliated with
Lubbock Methodist Hospital Systems

24 Hour # 272-3346
Local Nurse on call 24 hours a day to offer prompt service.

New Out Of Hospital Advance Directives Now Available!

We accept Medicare, Medicaid and Private Insurance
It is Your Right To Choose The Home Health Agency You Prefer.

To receive Home Health Services, talk with your physician or talk with hospital personnel when you are hospitalized.

Counterman, Mickey to wed April 10

Mr. and Mrs. Charles Everett of Amarillo announce the engagement and approaching marriage of their granddaughter Pamela Mickey and Patrick Counterman, son of Mr. and Mrs. Clarence Woodson of Muleshoe.

The wedding will be held April 10, 1998, at the Paramount Terrace Christain Church Chapel in Amarillo. Ceremonies will begin at 7 p.m.

A reception will follow at the Paramount Terrace Christian Church Activity Center.

The bride is a graduate of Amarillo's Caprock High School and works at Northwest Texas Hospital, where she is an admissions clerk in



Pamela Mickey and Patrick Counterman

the emergency room

The groom is a Muleshoe High School graduate and is employed by the City of Muleshoe in the water department.

The couple plans to make their home in Muleshoe following the wedding.

Local karate students compete in tournament

Saturday, Feb. 28, 1998, West Texas Karate students and instructor, Danny Kelley, competed in "The Best of the West" 10th annual Karate tournament at the Fair Park Coliseum on the South Plains Fair Grounds, in Lubbock, Texas.

West Texas Karate, of Muleshoe took 1st place for tournament high point total for their division.

Students competed in traditional hard style, traditional soft style & weapons non-modified Katas. They also competed in "sparring" later in the afternoon.

All competitors entered according to belt level and age.

Students participating were Eric Sanchez, son of Mr and Mrs. Ralph Sanchez, Adam Ramirez, son of Mr. and Mrs. Albert Ramirez, Eric Washington, son of Mr. and Mrs. Mark Wahington, and instructor, Danny Kelley.

Gilbert Recio and Randy Anderson, black belts, were tournament officials.



Karate champions

Pictured left to right, back row, Gilbert Recio, instructor Danny Kelley, Randy Anderson. Front row, Eric Sanchez, Adam Ramirez, and Eric Washington.

Adam Ramirez placed 1st in Katas and 1st in Sparring. Eric Washington placed 1st in Katas and 2nd in Sparring. Danny Kelley, instructor placed 3rd in weapons and 1st in the Black Belt division of Sparring, Senior division. Disciplines from Tae

Kwon Do, Ju Jitso, Kung Fu, Kempo & Shorin Ryu were represented at the tournament.

Students from Lovington, New Mexico, Lubbock, Amarillo, Abilene, Midland and Odessa participated in the tournament.

REBEKAH NEWS

The Muleshoe Rebekah Lodge met for their regular meeting with Jane Green, acting noble grand opening Lodge. There were twelve members present.

Ruby Green and Patsy Chance gave a report on the Pre-South Plains Association meeting that was held at the Lodge Hall Saturday.

After the report final plans were made for the South Plains association meeting that will be April 18 in Muleshoe. Skating will be March 6 at 7 p.m.

The Rebekahs would like to thank everybody for their support and success of the Chili Dinner and bake sale. Thursie Reid, chaplain, closed the lodge.

Local news for local folks

The Muleshoe Journal

What If... YOU Could Retire With Tax-Free Dollars?

After contributing to a Roth IRA with after-tax, non-deductible contributions, you accumulate funds that may be available to you tax free at your retirement.*

And you can roll over your traditional IRA into a Roth IRA. Although your traditional IRA funds will become taxable to you at the time of conversion, you gain the advantage of tax-free distributions upon your retirement. Some restrictions apply.

For more information on how to apply, call

Bailey County Farm Bureau
1612 West American Blvd. • Muleshoe, TX
(806) 272-4567



Southern Farm Bureau Life Insurance Company
Jackson, Mississippi

* This policy must be in effect for at least five years, and you must be over age 59 1/2 to take tax-free withdrawals.

9801RT226

The Roth IRA is funded with Southern Farm Bureau Life's Flex II annuity policy, forms 6164, 6223.

TIGA

Texas Independent Ginners Association
&
Weil Brothers-Cotton, Inc.

WBCI

(806)998-5563 (806)762-0671

Proudly announce the formation of the
Texas Independent Ginners Marketing Association
an independent cotton marketing pool

Farmers & ginners interested in participating in this new and exciting marketing concept are invited to attend meetings at the times and locations listed below.
All meetings will serve a catered meal.

Mon., March 9 7:00 p.m. Southern Cotton Oil Mill 2300 E. 50th St. Lubbock, Texas	Tues., March 10 12:00 noon Carousel Restaurant US 84 Muleshoe, Texas 7:00 p.m. Plainview Country Club 2902 W. 4th Plainview, Texas	Wed., March 11 12:00 noon Gaines County Park Community Center Seminole, Texas 7:00 p.m. K-Bob's Steak House 2200 Lubbock Hwy Lamesa, Texas	Thurs., March 12 12:00 noon Holiday Inn 441 Rio Concho Dr. San Angelo, Texas 7:00 p.m. Big Spring Country Club S.E. on Driver Rd. Big Spring, Texas
--	--	--	---

TOPS NEWS

TOPS Chapter Number 34 met at 6 p.m., Thursday, March 5, 1998 at the Muleshoe Church of Christ.

Laverne James, leader, called the meeting to order.

The TOPS Pledge was recited and the fellowship song was sung. James led the group in prayer.

15 members weighed in. Minutes were read by Janie Hughes and were approved as read.

Best Loser for February was Lucille Harp. First runner up was Aurora Mata.

There was a tie for second runner up between Noemi Sanchez and Leah Bell.

Jewel Peeler was KOPS best loser.

Election of officers was held for the upcoming year. The meeting was adjourned with the goodnight song.

Anyone interested in losing weight the healthy way is invited to join us at the weekly meetings.



The Pledge of Allegiance was first published in Youth's Companion magazine in 1892.

1 - 10x13 (Wall Photo)
 1 - 8x10
 2 - 5x7
 2 - 3x5
 16 - King Size Wallets
 8 - Regular Size Wallets

30

 Color Photos

99¢ Deposit
 \$12.00 Due at Pick up (plus tax)

\$12⁹⁹

AT

LOWE'S MARKETPLACE
401 W. American Blvd.
March 13th & 14th
Friday & Saturday
9:30 a.m. to 6 p.m.

Group charge
99¢ per person

During this promotion you will receive
 4 FREE 3X5's
 with each 812.99 package purchased.

Shugart's
inc.

CAPROCK INDUSTRIES, INC.

225-4460

Located on Hwy. 60
3 1/2 miles southeast of Bovina

Caprock Industries in Bovina is looking for 1998 new crop high moisture corn for fall delivery to our feedlot.

Caprock Industries offers you the best opportunity for the best price for your corn. You can set the price now -- or any time between now and the expiration of December corn futures. The choice is yours!

The advantages of harvesting high moisture corn are many: early harvest means less weather risk; you get paid sooner; less field loss; and easier double cropping.

Selling your high moisture corn to Caprock Industries can mean more money in your pocket.

Call (806) 225-4460 to reach Nancy Norwood for the best deal in the country for your 1998 corn crop.

Caprock Industries in Bovina wants to be the home for your next corn harvest.

BAILEY COUNTY DEVOTIONAL PAGE

WES-TEX FEED YARDS, INC.
 Custom Cattle Feeding
 272-7555 Muleshoe, TX

FARWELL CONVALESCENT CENTER
"In Christ's Love, Everyone Is Someone Special"
 305 5th St.
 481-9027 • FARWELL, TX

OECIA SUSAN'S PHOTOGRAPHY
 Rt. 1 Box 120 • 2 Mi. N. Hwy. 214
 Susan Kerby
 (806) 272-5153
 Muleshoe, TX (806) 946-9524 mobile

MULESHOE COOPERATIVE
GINS
 P.O. Box 569
 272-4794 Muleshoe, TX

Risinger Plumbing
 Serving Muleshoe Area
 All Plumbing Repairs
272-6772

FIRST TEXAS FLBA MULESHOE
"Serving Farmer & Bailey Counties"
 272-3010 • Fax 272-5388
 316 Main • P.O. Box 424 • Muleshoe, TX

1315 W. American Blvd.
 272-3333
 Muleshoe, TX

SIMNACHER NATIVE GRASSES
 Darwin Simnacher (505) 762-7817
 Vince Simnacher (806) 946-3461
 Thomas Simnacher (806) 285-2491

PACO FEED YARD, INC.
 Commercial Cattle Feeders
 P.O. Box 956 265-3281
 Friona, TX
 Feller Hughes-Mgr.

MULESHOE AREA HEALTH CARE Center
"Committed to Caring"
 106 W. Ave. H Muleshoe 272-7578

MULESHOE LIVESTOCK AUCTION
 Muleshoe, TX • Sale Every Saturday
 Clayton Myers • 272-4201

"THE FIVE AREA TELEPHONE COOPERATIVE ORGANIZATION"
 West Plains Telecommunications Co.
 Five Area Systems, Inc., Plateau Cellular Network
 Five Area Long Distance - Five Area Internet
 302 Uvalde Muleshoe, USA (806)272-5533

MULESHOE MOTOR CO.
 1225 W. American Blvd. 272-4251

BAILEY COUNTY ELECTRIC COOPERATIVE ASSOCIATION
"Serving Our Members Is Our Main Priority"
 1-800-869-7049
 Muleshoe 272-4504 Morton 266-8600

BRUCE, INC.
 AIR CONDITIONING
 Hwy. 214 North 272-5114
 Muleshoe, TX

BAILEY GIN COMPANY, INC.
 946-3397
 Sudan, TX
 Peanut Hawkins, MGR

Muleshoe Area Medical Center
"Your Hospital"
 708 S. First St. • 272-4524
 Muleshoe, TX

Lowe's MARKETPLACE
 401 W. American Blvd.
 Muleshoe 272-4585

AMERICAN AVI INC.
 West Hiway 84
 272-4266
 Muleshoe

SHERLEY-ANDERSON LAZBUDDIE ELEVATOR
 965-2922 Lazbuddie, TX

Facts About The BIBLE BY JOHN LEHTI

THREE WISE MEN ?

ANY ONE WHO EVER ATTENDED A CHRISTMAS CELEBRATION, PUT ON BY THE SUNDAY SCHOOL KIDS, KNOWS THAT THE WISE MEN WHO FOLLOWED THE STAR FROM THE EAST TO WORSHIP THE INFANT JESUS WERE THREE KINGS NAMED MELCHIOR, GASPER, AND BELTHAZAR, RIGHT?WRONG!

...THEY WERE NOT DESCRIBED AS KINGS UNTIL THE 6TH CENTURY A.D. AND, SINCE THREE GIFTS HAD BEEN GIVEN—GOLD, FRANKINCENSE, AND MYRRH—SOMEONE DECIDED THE "KINGS" MUST HAVE BEEN THREE IN NUMBER! BUT NOT UNTIL THE 8TH CENTURY WERE THEY NAMED MELCHIOR, GASPER, AND BELTHAZAR—BY WHOM, AND BY WHAT AUTHORITY, WE'LL NEVER KNOW!

84

SAVE THIS FOR YOUR SUNDAY SCHOOL SCRAPBOOK

This devotional & directory is made possible by these businesses who encourage all of us to attend worship services.

This devotional & directory is made possible by these businesses who encourage all of us to attend worship services.

ASSEMBLY OF GOD
FIRST ASSEMBLY OF GOD
 521 South First Street • 272-3017
 Jack Stone, Min. • 272-3984
 S.S. 9:45 a.m., W.S. 11 a.m. & 6:30 p.m.,
 Wed. 7:30 p.m.

BAPTIST
CALVARY BAPTIST
 1733 W. Ave. C. Rev. Jeff Coffman
CIRCLE BACK BAPTIST
 Intersection FM 3397 & FM 298
 Jessie Shaver, Min. • 946-3676

FIRST BAPTIST
 220 West Ave. E.
 Stacey Conner, Min.
FIRST BAPTIST
 Lazbuddie • 965-2126

PRIMERA IGLESIA BAUTISTA
 223 E. Ave. B Roy Martinez, Min.
PRIMITIVE BAPTIST
 621 South First
 Elder Cleveland Bass, Min.

PROGRESS BAPTIST
 Progress, TX
PROGRESS SECOND BAPTIST
 Arthur Hays, Min.
 1st & 3rd Sundays

RICHLAND HILLS BAPTIST
 17th & West Ave. D
 George Malis, Pastor
ST. MATTHEWS BAPTIST
 Corner of W. Boston & W. Birch
 Floyd R. Monroe, Min.

THREE WAY BAPTIST
 927-5467
 James Sinclair, Pastor
TRINITY BAPTIST
 314 E. Ave. B
 Robert Brown, Min.

CATHOLIC
IMMACULATE CONCEPTION CATHOLIC
 805 E. Hickory
 Joseph Augustine, Min.

CHRISTIAN
THE CHRISTIAN CENTER
 Morton Hwy. • 272-5105
 Reydon Stanford, Min.

CHURCH OF CHRIST
LARIAT CHURCH OF CHRIST
 Sam Billingsley, Min.
 S.S. 10 a.m.; W.S. 11 a.m. & 6 p.m.,
 Wed. 7 p.m.

MULESHOE FEED BARN
 311 W. American Blvd.
 Muleshoe, TX
 272-5626

1ST BANK MEMBER FDIC
 202 South First 272-4515

LAZBUDDIE CHURCH OF CHRIST
 Nathan Crawford, Min.
 S.S. 9:30 a.m.; W.S. 10:20 a.m. & 5 p.m.;
 Wed. 7 p.m.

MULESHOE CHURCH OF CHRIST
 22nd & W. American Blvd.
 John Knox, Min.
 S.S. 9:30 a.m.; W.S. 10:20 a.m. & 6 p.m.;
 Wed. 7:30 p.m.

SIXTEENTH & AVE. D CHURCH OF CHRIST
 Curtis Shelburne, Min. • 272-4619
 W.S. 10:30 a.m. & 6 p.m.;
 Wed. 7:30 p.m.

LUTHERAN
ST. JOHN LUTHERAN
 Lariat, TX
 Richard Greenhaner, Min.
 S.S. 10:30 a.m.; W.S. 9:30 a.m.

METHODIST
FIRST UNITED METHODIST HISPANIC MINISTRIES
 E. 5th and E. Ave. D
 Pastor Benito Cavazos
FIRST UNITED METHODIST
 507 W. 2nd St.
 Pastor Brad Reeves

LAZBUDDIE METHODIST
 965-2121
EL DEVINO SALVADOR
 814 W. Ave. C, Muleshoe, TX
 Guadalupe Ballinas, Min.

NAZARENE
NEW VISION CHURCH OF THE NAZARENE
 814 W. Ave. C • 272-3622
 David R. McIntire

PENTECOSTAL
UNITED PENTECOSTAL CHURCH
 207 East Ave. G • 1-800-454-6051
 Pastor McKibben, 3 pm Sunday Service

INTER DENOMINATIONAL NEW COVENANT
 Plainview Hwy. Jimmy Low, Min.
 S.S. 9:30 a.m.; W.S. 10:15 a.m.;
 Wed. 7 p.m.

IRRIGATION PUMPS & POWER
ZIMMATIC CENTER-PIVOTS
 W. Hwy. 84 272-4483

I will instruct thee and teach thee in the way which thou shalt go: I will guide thee with mine eye.
 -Psalm 32:8

Leal's Tortilla Factory, Inc.
"Serving West Texas since 1957"
 107 E. Ash 272-5772 Muleshoe, TX

MOHAWK AUTO PARTS
 1701 W. American Blvd.
 272-4425 Muleshoe, TX

Bob STOVALL Printing
 The Wells & Janet Hall Family
 221 E. AVE. B • MULESHOE, TX
 (806) 272-3373

WESTERN DRUG
 114 Main 272-3106 Muleshoe

Henry Insurance Agency, Inc.
"Serving You Since 1964"
 111 West Avenue B 272-4581
 Muleshoe, TX

JAMES CRANE TIRE CO., INC.
 107 Main 272-4594
 Mike Hahn Muleshoe, TX

WINKLES TRUCKS, INC.
 Box 757 (806) 247-2724
 Friona, TX

Springlake Potatoes, Inc.
 P.O. Box 280 • Springlake, TX
 262-5542

Since 1957 - The Original
Leal's Mexican Restaurant
 1010 W. American Blvd. 272-3294
 Muleshoe, TX Victor & Debbie Leal

RONNIE HOLT INSURANCE AGENCY
 Specializing in Crop, Life & Health Insurance
 Western 66 Office Bldg.
 272-3614 Muleshoe, TX

TERRA DISTRIBUTION
 Hwy. 84 • 272-4203
 Muleshoe, Texas

SAIN IRRIGATION & MACHINES
 Complete Pump Service
 W. American Blvd. 272-4397
 Walt Sain Muleshoe, TX 272-4148

TINO'S
 104 W. American Blvd.
 272-7528 • Muleshoe, TX
 Daily Specials Owners: Tino & Linda Campoya

Shipman's Body Shop
 Auto Painting • Wrecker Service • Free Estimates
 Tractor Glass & Windshields
 410 N. 1st Muleshoe, TX
 272-4408 FAX 272-3366

BOBO INSURANCE AGENCY
 108 E. Ave. C 272-4264

MAPLE COOP GIN
 927-5501
 Maple, Texas

B/S & More Family Fun Center
 123 Main • Muleshoe • 272-3828

O & C OSONS
 Erection Sprinkler Ser. Repair & Assemble
 272-5018 909 W. American Blvd.
 Lupe Olivarez 272-3475

EASTER GRAIN, INC.
 Easter 276-5255 Labuddie 965-2817

Leal's Tortilla Factory, Inc.
"Serving West Texas since 1957"
 107 E. Ash 272-5772 Muleshoe, TX

Decorators Floral & Gifts
 616 South First 272-4340
 Muleshoe, TX

Students receive help with financial aid decisions for college

A good crowd of high school students and their parents attended the Annual Financial Aid Seminar February 24.

This was the 10th year the Jennyslippers have hosted the event which has inspired many students over the years to apply for financial assistance for college.

Financial institutions and college financial aid departments present included South Plains College, West Texas A&M University, Clarendon College, The Opportunity Plan, LEARN - Educational

Opportunity Center, and Eastern New Mexico University.

Nelda Merriott, president of Jennyslippers, gave the welcome to those attending. Billie Downing introduced the panel of presenters.

Each presenter gave the students a short review of what their college has to offer.

It was also explained to the students how each one can receive guidance in selecting their career and where to receive the education opportunity.

An additional feature of this year's seminar was a step-by-step guide to completing the Free Application for Financial Assistance led by Glenda Hensley from South Plains College.

Earlier in the day, several students were assisted by Ulises Gutierrez of LEARN in order to complete the application.

Jennyslippers who assisted with the seminar and provided hospitality for the students, parents, and speakers were: Nelda Merriott, Nancy Kidd, Glenda Powell,

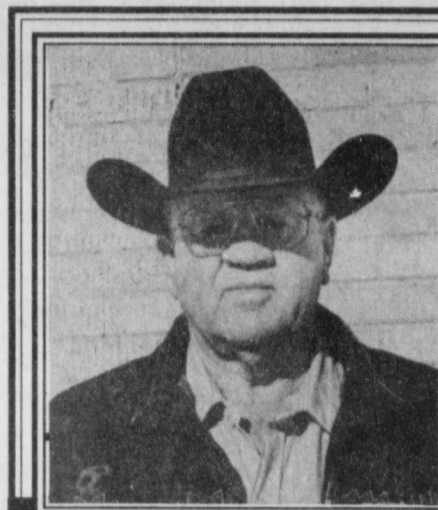
Donna Kirk, Ruby Green, and Billie Downing.

Students are encouraged to apply for local scholarships and to not give up on their dreams before they start!

Adults who were not able to finish high school also need to remember that it is never too late! Adults in Muleshoe have the opportunity to get a high school diploma by taking the GED.

Help studying and preparing for the GED is available.

Call your local high school for more information.



Bennie Claunch

"I thank you for your past support and would greatly appreciate your support in the upcoming election."

**Re-Elect Bennie Claunch
Bailey County Commissioner
Precinct 4**

paid political adv.

Dale & Pat Newsom celebrate 50th anniversary

Dale and Pat Newsom of Sudan were honored Saturday, Feb. 28, 1998 with a surprise party for their 50th wedding anniversary.

The party was given by their children: Captain Sonya King of Warener Robins, Georgia; Tatia Snell of Burleson; and Marissa Williams and Nicole Richards, both of Sudan.

The celebration was held at the Lubbock Regency Hotel.

Many family members and friends were there to help Dale and Pat celebrate the wonderful event.

BIRTH

AUSTIN DANE STANCELL

Steven and Elaine Stancell of Muleshoe announce the birth of their son, Austin Dane.

Austin was born at 3:07 a.m., Thursday, March 5, 1998 at University Medical Center in Lubbock. He weighed 7 lbs. 12 oz. and was 22 inches long.

Grandparents are Bennie and Carolyn Stancell of West Camp and Laverne and Shirley Vaughn of Muleshoe.

Great grandparents are Jessie and Lois Stancell of West Camp and Juanita O'Hair of Muleshoe.

OBITUARIES

BEN ROMING

Ben Roming, 57, of Muleshoe died Wednesday, March 4, 1998 east of Farwell on Highway 84 in an auto accident.

Memorial services were held Friday, March 6, 1998 at First United Methodist Church with the pastor, Rev. Brad Reeves, officiating.

Burial followed in Muleshoe Memorial Park Cemetery under the direction of Ellis Funeral Home.

Roming was born Sept. 24, 1940 in Temple, Texas. He married Judy Murrah Sept. 23, 1958 in Muleshoe.

Roming moved to the Muleshoe area in 1955 from Lorenzo, Texas. He was a farmer and a member of the First United Methodist Church of Muleshoe.

Survivors include his wife Judy; daughters, Jo Low of Amarillo, Benetta Cantrell of Amarillo, Keva Coffman of Canyon; brothers, Ralph Roming of Round Rock, Bill Roming of Austin, Chuck Roming of Carrollton; and seven grandchildren.

The family requests that memorials be made to the American Cancer Society, 2411 73rd St., Lubbock, Texas 79423.

QUALITY USED VEHICLES

1991 Chevy Cavalier	#76037A	\$129 Down	12.9% APR	48 mo	Price \$4,946.43	\$129 ⁰⁰ per mo.
1994 Pontiac Sunbird	#5141A	\$168 Down	12.9% APR	54 mo	Price \$6,995	\$167 ³¹ per mo.
1996 Chevy Corsica	7 to Choose From	\$179 Down	9.9% APR	60 mo	Price \$8,624	\$179 ⁰⁰ per mo.
1993 Buick Century	#86050B	\$195 Down	12.5% APR	54 mo	Price \$7,806	\$185 ⁰⁰ per mo.
1996 Olds Cutlass	#5116	\$197 Down	10.9% APR	66 mo	Price \$9,944.51	\$197 ⁰⁰ per mo.
1997 Chevy Cavalier	4 to Choose From	\$199 Down	9.9% APR	72 mo	Price \$9,995	\$199 ⁰⁰ per mo.
1994 Chevy Lumina	#5174	\$199 Down	11.9% APR	54 mo	Price \$8,500	\$199 ²⁸ per mo.
1995 Chevy Lumina	#5001	\$185 Down	11.9% APR	60 mo	Price \$9,500	\$206 ⁷³ per mo.
1992 Chevy Caprice	#72263A	\$200 Down	12.5% APR	54 mo	Price \$8,999	\$220 ⁴³ per mo.
1994 Chevy Lumina Euro	#5194	\$220 Down	12.9% APR	60 mo	Price \$9,995	\$221 ⁹¹ per mo.
1996 Cutlass Supreme	#5116	\$225 Down	10.9% APR	60 mo	Price \$10,839	\$225 ⁰⁰ per mo.
1995 Buick Regal	#5130	\$220 Down	11.9% APR	60 mo	Price \$10,500	\$229 ²⁸ per mo.
1992 Chevy Astro Van	#86406A	\$195 Down	12.9% APR	48 mo	Price \$8,995	\$234 ⁶⁴ per mo.
1992 Chevy Conversion Van	#86162A	\$199 Down	12.9% APR	48 mo	Price \$8,998	\$235 ³⁵ per mo.
1996 Buick Regal	#5172	\$250 Down	10.9% APR	66 mo	Price \$11,995	\$237 ³⁷ per mo.
1996 Chevy Lumina	2 to Choose From	\$250 Down	10.9% APR	66 mo	Price \$12,619	\$250 ⁰⁰ per mo.
1997 Chevy Lumina	#5177	\$279 Down	10.9% APR	72 mo	Price \$14,995	\$279 ³⁵ per mo.
1995 Olds Silhouette Van	#72323A	\$265 Down	11.9% APR	60 mo	Price \$12,995	\$282 ⁵² per mo.
1996 Chevy Tahoe	#5206	\$750 Down	10.9% APR	72 mo	Price \$23,995	\$441 ²⁵ per mo.
1995 GMC Suburban	#73440A	\$750 Down	10.9% APR	66 mo	Price \$23,500	\$459 ⁷⁹ per mo.
1996 Chevy Suburban	#86070A	\$750 Down	10.9% APR	66 mo	Price \$23,500	\$459 ⁷⁹ per mo.
1997 Chevy Suburban	#86090A	\$1690 Down	10.9% APR	72 mo	Price \$27,995	\$499 ³⁴ per mo.

1991 Ford Ranger #76459A \$4,995 \$3,995	1994 Chevy 1/2 Ton Pickup #5259A \$8,995	1994 Nissan P/U 4X4 Reg. Cab 4X4 #76209B Reg. 12,995 \$8,995	1993 Nissan Pickup 4x4 #76296A \$8,995	1995 Chevy P/U #76385A \$11,995 \$9,995	1992 Ford Explorer #86182A \$10,995	1996 GMC 1/2 Ton Pickup Reg. Cab #76050B Reg. \$16,995 \$14,995	1997 Chevy 1/2 Ton Pickup Reg. Cab #76028A Reg. \$17,995 \$16,500
1996 Chevy 1/2 Ton Pickup Ext. Cab #76384A Reg. \$18,995 \$17,500	1996 GMC 1/2 Ton Pickup Ext. Cab #76076A Reg. \$18,995 \$17,500	1995 Lincoln Town Car #86063A Reg. \$20,995 \$17,995	1997 Chevy 1/2 Ton Pickup Ext. Cab 2WD #86042 Reg. \$22,995 \$21,500	1997 Chevy 3/4 Ton Pickup Ext. Cab #5260 \$21,995	1997 GMC 1/2 Ton Pickup Ext. Cab 3 Dr. #5245 Reg. \$24,995 \$22,500	1997 GMC 1/2 Ton Pickup 4x4 Ext. Cab 3 Dr. #8607A Reg. 25,995 \$23,995	1998 GMC Yukon 4X4 #5308 \$31,995

BENDER

YOU'RE GOING TO LIKE OUR FAMILY!

**Chevrolet • Oldsmobile • Cadillac
2500 Mabry Drive • (505) 763-4465**

SCHOOL MENUS

March 9 - 13

MULESHOE HIGH & JR. HIGH

Breakfast

Monday — french toast sticks, fruit or juice, milk. **Tuesday** — breakfast on a stick, fruit or juice, milk. **Wednesday** — breakfast burrito, fruit or juice, milk. **Thursday** — ham biscuit, fruit or juice, milk. **Friday** — cinnamon roll, fruit or juice, milk.

Lunch

Monday — tacos, lettuce and tomatoes, corn, mixed fruit, milk. **Tuesday** — Szechuan chicken, egg roll, mixed fruit, hot roll, milk. **Wednesday** — chicken pot pie, scalloped potatoes, green beans, apple

crisp, milk. **Thursday** — grilled cheese, vegetable soup, cinnamon roll, pineapple tidbits, milk. **Friday** — fish filet, macaroni and cheese, black eye peas, peach cobbler, milk. **DILLMAN & DESHAZO**

Breakfast

Monday — French toast sticks, fruit or juice, milk. **Tuesday** — breakfast on a stick, fruit or juice, milk. **Wednesday** — breakfast burrito, fruit or juice, milk. **Thursday** — biscuit with gravy, fruit or juice, milk. **Friday** — cinnamon roll, fruit or juice, milk.

Lunch

Monday — hamburgers, lettuce

and tomatoes, french fries, mixed fruit, milk. **Tuesday** — hot dog, tator tots, baked beans, Fruiti Freeze bar, milk. **Wednesday** — burrito, chili, whole kernel corn, peanut butter cookie, milk. **Thursday** — grilled cheese, vegetable soup, cinnamon roll, fruit cocktail, milk. **Friday** — fish filet, scalloped potatoes, green beans, peach cobbler, milk.

THREE WAY ISD

Breakfast

Monday — pancakes, Lucky Charms, graham crackers, juice, milk. **Tuesday** — biscuit, gravy, Trix, graham crackers, juice, milk. **Wednesday** — Malt O Meal, as-

sorted cereal, toast, graham crackers, juice, milk. **Thursday** — cinnamon roll, Frosted Cheerios, graham crackers, juice, milk. **Friday** — ham and eggs, biscuits, Cocoa Puffs, graham crackers, juice, milk.

Lunch

Monday — tamales, pinto beans, salad, crackers, peaches, milk. **Tuesday** — Taco Bell burritos, salad, broccoli with cheese, apricot cobbler, milk. **Wednesday** — hamburger, fries, orange, milk. **Thursday** — chicken fried steak, gravy, baked potato, green beans, rolls, apple sauce, milk. **Friday** — pizza, salad, macaroni and cheese, carrots, oatmeal cookies, milk.

NURSING HOME NEWS

Thursday morning, our devotional and reflection time was directed by Pastor David McIntire, Zona Gatewood and J.C. Shanks. Clara Lou Jones who is recovering from eye surgery attended the event.

Thursday afternoon Rev. and sister Bobby Burris, Wanda and Jean Kemp entertained at the March birthday party. The entertainers sang a special song to Dee Clements, Lib King, Gladys Pierce and Edd Edmiston.

Lasting Impressions gave each birthday resident a corsage or boutonniere. Volunteers Plus, the activity department and resident's families hosted and assisted with the party.

Saturday afternoon, Melvin and Wanda Kittrell directed the bingo game. Clark Price paid a visit bearing gifts of his special homemade cookies.

Each Sunday morning the Muleshoe Church of Christ directs a communion service. Buster Kittrell taught the Sunday school class. Sixteen residents attended the study. Nancy

Kidd played the piano and Buster lead the singing.

Brad Reeves, Pastor of the United Methodist Church and Jay and Sally Messenger came Sunday afternoon for a communion service.

The Calvary Baptist Church came Sunday for church service and fellowship.

Frankie Daniells' family took her out Sunday for a surprise birthday dinner and party.

We are celebrating Texas Independence Day at the Care Center. No where else could you hear such interesting Texas stories than you can from our residents. To set the mood, Texas "things" are displayed in the day room and living room areas.

Tuesday morning, the residents baked Texas size biscuits with Texas butter and honey. Karen Cook lead the group in Texas exercises.

Thursday afternoon, Claudine Embry, Mary Jo Burge, Pat Watson, Beverly Wagnon, Holly Milsap, Ozel Cherry, Karen Cook and Jay Stancell shampooed and set the

ladies hair and gave manicures.

Elsie Kendall and Darla H. were guests of Guy Kendall for lunch Sunday.

Jeff Peeler's wife and daughter, Rheata White, had supper Sunday night.

Nettie Quesenberry was visited by her daughter Anna B. Lane, her grand-daughter, great-grand-daughter and grandson Monday.

The Muleshoe AARP gave a donation to the Care Center.

We wish to express our deepest sympathy to the family and friends of Agnus Moyer. She will be missed.

Elaine Stancell and Stephanie visited Sam White on Thursday.

Gladys Wilson made and brought Rice Krispie treats to the residents Monday.

The Lazbuddie Young Homemakers will host our St. Patrick's Day party March 16th at 10 a.m.

Wednesday morning, Buster and Wanda Kittrell, Harold and Mary Jo Burge and Jane Reeder served coffee, juice and doughnuts to the Coffee, Do-nut and

Table Talk Club. A discussion on Texas and a toast to Texas was included in the event. Harold Burge read interesting facts out of the Guinness Book of World Records. Buster contributed some of his tall Texas tales. Loyce Killingsworth, Glen Williams and Jim Claunch lead our sing-spiration devotional time.

Glenda Jennings came Wednesday afternoon. She lead the residents in a sing-a-long and entertained with her puppets.

Sarah Cordona, Veronica Mata, Zulema Marquez, Christina Martha, Blas Martinez and students from the Lazbuddie FHA visited Wednesday. They played dominoes and joined in the singing and assisted residents.

Happy March birthday to Frankie Daniells, Florence Harvey, A. Hernandez, Patricia Orozco, Otilie Wisian, Irene Splawn and Nettie Quesenberry. The March birthday party is scheduled for Thursday March 26 at 3 p.m.

Muleshoe Feed Barn & Hi-Pro Feeds
311 W. American Blvd. • 272-5626

HI-PRO

You did a great job representing Bailey County!

Congratulations to All Houston Livestock Show Winners!

Mary Kay Cosmetics

Josie Flowers

272-3865



Public NOTICE AUCTION

Our Next **CONSIGNMENT AUCTION**

March 13 & 14, 1998

If you wish to consign any equipment, vehicles, etc., please contact us as soon as possible so we will be able to properly advertise your merchandise.

WE APPRECIATE OUR CUSTOMER'S CALL DAY OR NIGHT!

LOCATION: 3 miles N.E. of Portales, NM on Hwy. 70

WHEN ONLY THE BEST WILL DO CALL

Bill Johnston Auctioneers

Portales, NM (505)356-5982 Days

Nights - Mike (505)760-6195 or Clint (505)356-5368

Follow the Mules and Lady Mules every week in the Muleshoe Journal

(806) 272-4536

HOSPITAL ADMISSIONS

The Muleshoe Area Medical Center has reported the following patients:

Feb. 26 — David Gradner, John Maddox, Lauranette Mason, Rosemary Silva, Ruben Uriegas, Erald Gross, Yiuliana Tarango, Phebe Gray.

Feb. 27 — Trini Benham, Phebe Gray, Erald Gross, Juanita Journey, John Maddox, Lauranette Mason, Yiuliana Tarango.

Feb. 28 — Phebe Gray, Martha Lopez, John Maddox, Edwin Salazar, Yiuliana Tarango.

March 1 — John Maddox.

March 2 — Emma Armstrong, Loma Baker, Dorothy Browning, John Maddox, Kaylie Morris, Judith Perez, Olgaline Pruitt, Cary Roberts.

March 3 — Emma Armstrong, Loma Baker, Dorothy Browning, John Maddox, Kaylie Morris, Olgaline Pruitt, Cary Roberts.

March 4 — Emma Armstrong, Loma Baker, Winnie Berry, Ramiro Bustillos Jr., John Maddox, Dolores Orozco, A. Taylor, Maira Trevizo, Callie Smith, Anna Clarkson.

March 5 — Emma Armstrong, Loma Baker, Winnie Berry, Dorothy Browning, Ramiro Bustillos Jr., Anna Clarkson, John Maddox, Dolores Orozco, Shayla Roland, Jesus Salcido, Callie Smith, A. Taylor, Maria Trevizo.

¡Varias exenciones de residencia pueden rebajar sus impuestos de propiedad!

Una exención de residencia reduce sus impuestos de propiedad. Por ejemplo, si su residencia tiene un valor de \$50,000 y Ud. recibe una exención de \$15,000, sus impuestos se calcularán como si el valor de su residencia fuera \$35,000.

¿Quién califica para una exención?

Cualquier dueño de una residencia principal el día 1 de enero tiene derecho a una exención de residencia de \$15,000 este año para rebajar sus impuestos escolares... y no importa si la residencia es casa, condominio, o casa móvil. (Los condados, municipios, y distritos especiales de impuestos también pueden ofrecer exenciones de residencia.)

¿Hay otras exenciones?

Si Ud. es incapacitado—o si tiene 65 años o más—tiene derecho a una exención adicional de \$10,000 en sus impuestos escolares de propiedad. Y si Ud. califica para la exención para los que ya cumplieron 65 años, también tiene derecho a un "cielo máximo" permanente en sus impuestos escolares de residencia. (El cielo máximo no tiene que ver con impuestos de propiedad de los condados o municipios, y esas entidades pueden ofrecer otras exenciones.) La exención para los que ya cumplieron 65 años y el cielo máximo se pueden transferir al esposo/esposa sobreviviente si el o ella tiene 55 ó más años de edad y es dueño/dueña de la casa en donde vive. También el dueño de una casa nueva que tiene más de 65 años puede trasladar un porcentaje de cielo máximo del los impuestos escolares que le tocaron en su domicilio vieja.

¿Debo solicitarla cada año?

No. Si Ud. recibió una exención de residencia en 1997, no hay necesidad de solicitarla de nuevo en 1998—al menos que se lo pida su jefe de valoraciones. Sin embargo, si no ha recibido una exención en su residencia actual—o si ha cambiado de domicilio tendrá que solicitar una exención para 1998. Si Ud. cumplirá los 65 años durante este año, tiene hasta un año de esa fecha para solicitar una nueva exención. Y si cumplió los 65 años o resultó incapacitado en 1997, tendrá que solicitar las exenciones adicionales.

¿Donde y cuando debo solicitar mis exenciones?

Su solicitud debe llegar en su oficina local del distrito de valoraciones antes del día 30 de abril. Si necesita más tiempo, favor de ponerse en contacto con nosotros antes: BAILEY COUNTY APPRAISAL DISTRICT • 302 MAIN, MULESHOE • (806) 272-5501 Si desea mas información, visítenos y obtenga una copia gratis de

"Impuestos Sobre la Propiedad en Texas: Derechos, Recursos y Responsabilidades del Contribuyente de Impuestos"

ó escriba a
Comptroller's Property Tax Division
P.O. Box 13528
Austin, TX 78711-3528

MARCH MADNESS SALE

Buy any new car or truck out of stock in the month of March and receive a **VACATION GET-AWAY!**

Your choice of over 120 places!

1998 Chevy Lumina

Several to choose from

\$295 DOWN \$295 MONTH

Air conditioning, AM/FM cassette, aluminum wheels

1998 Chevy Regular Cab Pickup

\$199 DOWN \$199 MONTH

Air conditioning, AM/FM/cassette, tilt, cruise, chrome bumper, aluminum wheels

1998 Chevy Extended Cab Pickup

3 to choose from

\$278 DOWN \$278 MONTH

Air conditioning, tinted glass, power door locks, body side molding, AM/FM cassette, tilt, cruise, chrome bumper, rally wheels

1998 Chevy Z71 Extended Cab Pickup

V-8 Auto Transmission

\$324 DOWN \$324 MONTH

Air conditioning, loaded, power windows/door locks, tilt, cruise, cassette, alum wheels, heavy duty chassis equipment, deep tinted back glass.

BENDER

High Country Dealers

You're going to like our family!

CHEVROLET • OLDSMOBILE • CADILLAC

2500 Mabry Drive • (505) 763-4465

NIGHT MAN IN THE HEIFER LOT



BAXTER BLACK

ON THE EDGE OF COMMON SENSE

I came on just after supper. Boss had fixed a little sheep camp with a bed and propane burner so a feller could have coffee in the middle of the night. On my first check it was quiet in my bunch of calvy heifers and the moonlight made the cedars look like postcards, I was thinkin' all was good and all was right. But at ten I found two mamas with their water bags a showin'.

They were off there in a corner so I left 'em to their business and went back to fill my mug. In an hour one slowed progress. Heifers take a little longer, but the other needed checkin' so I worked her to the calvin' barn and put her in a jug. Pullin' calves is always chancy like yer playin' slots in Vegas, Put yer hand in - pull the lever- double front feet

or the head back, nothin' comin' but the tail. But tonight my luck was runnin', head and feet were pointin' at me so I chained 'em up and gently help him make a change of address. Like deliverin' the mail. I administered a rub down, swung him upside down a second, stuck a straw up to his nostril, watched him fill his lungs unaided with his first taste of fresh air. Then I loosened the heifer's halter. She was quick to start his lessons. Soon her baby found the fountain, tail a ringin', he was suckin' in his calfskin underwear. By coincidence I noticed back behind in yonder corner that the other heifer also had her baby up and suckin' and was puttin' on a show. It was sorta satisfyin'. I admit I paused a minute to appreciate life's mysteries, although mostly I was thinkin' only ninety-six to go.

THROCKMORTON'S REFINISH MIRROR RESILVERING

319 E. American Blvd. • 272-5345 • Robert & Ann Johnson, Owners

We're OPEN and ready to help with all your furniture refinishing and repair!

WE DO

- Mirror Resilvering
- Chair Caning
- Veneer Replacement and Repair
- Trunk Renovations
- Antique Refinish and Repair



We Use "Dip Vat" It's SAFE!

Come In and Take A Look At the Finished Product

We have furniture FOR SALE!

Bring In Your Antique Hoosiers and Wooden Ice Boxes!

FREE Pick up of furniture within 5 miles of Muleshoe city limits. Mileage fee beyond city limits. Call for information.

Journal Classifieds

REAL ESTATE
AUTOMOBILES
HELP WANTED
GARAGE SALES

STOP & SHOP

Deadlines are 5 p.m. Monday and Thursday

Call 272-4536

Deadlines are 5 p.m. Monday and Thursday

FOR SALE

For Sale - 14 X 80 Mobile home 3 bedroom, 2 bath, on private fenced lot, 2 outside storage bldgs., 2 carports. Call 272-5394. 9s-6tpd

Grass Seed Services Inc.
"FOR YOUR CRP NEEDS"
High-Quality Seed, Available To Meet CRP Requirements!
Please Give Us A Call
Ph. 806-385-5229
Fax. 806-385-3017
PH-800-457-8742.
8s-8tch

60 acre ranch w/new mobile home, irrigated, barn, fenced, & much, much, more. Call (806) 965-2722. 11s-1tpd

HELP WANTED

OPENING SOON

The Headquarters Restaurant
2400 West American Blvd.
Muleshoe, TX 79347

Now Taking Applications For...

- Cooks
- Wait staff
- Other restaurant service positions

Contact:
Connie Dominquez at 272-6740 or come by 2400 W. American Blvd. to pick up an application/interview. (Monday-Friday between 9 am and 5 pm)

Taking applications
K&L Irrigation
for assemblyman-serviceman. 213 1st St., Olton. (806) 285-2607 or (806) 285-3139. 11s-2tch

HELP WANTED

Office Manager- A/R- Immediate opening for person experienced in accounting. Duties include- oversight of office operations with emphasis on accounts receivable. 4-year accounting degree preferred. We pay for experience. Apply to Farwell Convalescent Center, 305 5th Street, Farwell, TX; (806) 481-9027. For TDD contact, use TX relay system for hearing impaired (800) 735-2988 to contact the Center phone number above. FCC is an EEO employer. Pre-employment drug and physical tests will be required. 11s-3tch

Need person to sit with elderly lady. 7 days a week from 3 p.m. to 6 p.m. (806) 272-3182. 11s-3tch

"AVON", Representatives Needed Now! No Inventory Required, IND/ SALES / REP, Toll Free, 800-611-6892. 10t-4tpd

HELP WANTED

Wanted
Maintenance Person
Requires general knowledge of electrical and mechanical equipment, heating/air-conditioning, carpentry and plumbing. Contact Keith Harp, Director of Engineering, Muleshoe Area Medical Center, 708 South First Street, Muleshoe, TX 79347. (806) 272-4524 Ext. 3280. 11s-8tch

REAL ESTATE

REAL ESTATE

James F. Hayes & Co.

AGRICULTURAL REAL ESTATE SERVICES

390 Acres with 3 bdrm Austin stonehouse. Stegall area. 70 acres of native grass. 320 Acres of CRP just renewed for 10 yrs @ \$39.50 per acre. House and 70 acres can be sold separately.

240 Acres in north Lamb County near Bailey County line. Good soil, Lays good, 3 wells.

Parmer County 1 Section with new half mile sprinkler 600 gallon to 1/2 acre water. Immediate cash flow.

160 Acres in north Lamb County near Dodd. 280 Acres near Earth. 3 wells, strong water. center pivot.

Vic Coker, Agent

310 Main St. Suite 103 Muleshoe
Office 272-3100 Home 965-2468
WHEN LAND INVOLVES COWS AND PLOWS

SERVICE

Sewing and Alterations.
Peggy 272-6764.
Experienced, jeans, zippers, etc. 7s-ttc

REAL ESTATE

For Sale; 2 bedroom, 2 bath, 1 carport, central air and heat, storm cellar. 272-5291. 10t-9tpd

REAL ESTATE

REAL ESTATE

REAL ESTATE

REAL ESTATE

REAL ESTATE

REAL ESTATE

REAL ESTATE

REAL ESTATE

REAL ESTATE

REAL ESTATE

REAL ESTATE

REAL ESTATE

REAL ESTATE

REAL ESTATE

REAL ESTATE

REAL ESTATE

REAL ESTATE

REAL ESTATE

REAL ESTATE

REAL ESTATE

REAL ESTATE

REAL ESTATE

REAL ESTATE

REAL ESTATE

The following people have announced their candidacy for the **General Primary Election** Tuesday, March 10, 1998

DISTRICT 287TH JUDGE

- Gordon H. Green, Democrat

JUSTICE OF THE PEACE PRECINCT NO.1

- Jack Bates, Democrat

BAILEY COUNTY CLERK

- Sherri Bessire Harrison, Republican
- Jan Pierce, Democrat

DISTRICT CLERK

- Elaine Parker, Democrat

BAILEY COUNTY COMMISSIONER PRECINCT 4

- Jerry Damron, Democrat
- Bennie Claunch, Democrat

Paid political advertisement

Byrd Realty

Box 156 • 308 3rd St. Farwell, TX 79325

Price Reduced, Country Living at it's Best - 6 miles West of Muleshoe on Highway 1760. Approx. 3500 sq. ft. Gorgeous 3-3-3 Brick home with lots of builtins, fireplace, central heat, ref. air, sunroom with hot tub, lots of storage, large family room and utility room, every woman's dream. All on 2 1/2 acres. Also 30x50 metal barn with corrals. If you want it! This place has it!

- 320 ac. NE of Muleshoe, 2 story stucco house, very large barn, 2 sprinkler systems, 4 wells, lays well. Out of Area Owner says "Sell It!"
- 160 ac. SE of Lazbuddie. Excellent water area, Circulation, elect. Motor. Excellent cash lease in effect on this farm.
- 207 ac. NW of Muleshoe. 125 hp Elect Motor, electric sprinkler. Domestic well.

New Listing- Just west of Muleshoe on pavement. Nice 3 bedroom 1 3/4 bath brick home with attached garage. 30 X 40 insulated barn, corrals and lots of storage all on 4.4 acres. Must see to appreciate. Call for more details. Great Investment Opportunity- 25 acres with 3 rent houses, 6 complete mobile home hook-ups with electricity, water and cable. Just west of Muleshoe. Reasonably Prices!! Call for more details!!

(806) 481-3846 • Toll Free: 1-888-999-3846

Ronald Byrd, GRI Licensed Broker
Home: (806) 481-9318
Crista Bass, Sales Associate • Home: (806) 925-6464

Nieman Realty

116 E. Ave. C • George Nieman, Broker • 272-5285 or 272-5286

RICHLAND HILLS

- 3-3-1 Brick, cent. Heat, Evap. Air, built-ins, 2000' + lv. area, fenced yd., stor. bldg. MORE!! \$60K !!! RH-2
- PARKRIDGE - NICE 3-2-2 Brick, Cent. A&H, built-ins, FP, cov. patio, fenced yd. \$50's!!
- NICE 3-2-3 Brick, corner lot, Cent. A & H, built-ins, FP, 2 stor. bldgs., storm cellar, fenced yd., MORE !!! \$60K!! RH-1

HIGHLAND AREA

- 3-2-2 Brick, Cent. A&H, built-ins, gas log FP, fenced yd., stor. bldg., MORE!! Price Reduced!! HL-5

LENAU - COUNTRY CLUB AREA

- 2-1-1 Carport Home, wall furnace, nice carpet, storm shelter, stor. bldg., fenced yd. \$20's!!! CC-3
- 2-1-1 Home, Cent. Heat, built-ins, Hardwood floors! \$19,500! L-3
- 2-1-1 Home, floor furnace, win. ref. air, fenced yd, stor. bldg., \$19,500 !!! L-1

COMMERCIAL

- Established Business: Land, Bldg. & Equip., \$75K!!
- 175' x 140' tract, approx. 8500' bldg. on Main. \$35K!!!
- 56' x 140' tract, approx. 4700' bldg., \$35K!!!
- NICE R.V. STORAGE, 14' X 40' metal bldg. 12' doors, corner lot!!
- SNACKSHACK - Lot, Buildings, furniture, and fixtures!!!!
- LARIAT - 240 acres, 3 wells, underground tile, good productive land!!!

HIGH SCHOOL

- Nice 3-2-2 Brick, Cent. A&H, built-ins fenced yd., MORE !! \$40's !! HS-5
- Very Nice 3-1-1- Brick Home, cent. Heat & Air, built-ins, fans, woodburning stove, nice carpets, storage bldg., fenced yd., More !!! Price Reduced!!!! HS-7
- NEWLY REMODELED 3-1-1 Home, cent. A & H, new carpet & vinyl, fenced yd., MORE !! \$30's !!! HS-2
- VERY NICE 3-1-1 Brick, Heat pump, DW, nice carpets, fenced yd., MORE!!! \$30's !!! HS-1
- NICE 2-1-1 Brick, Heat Pump, nice carpets, well insulated, storm windows & doors. \$30's!!! HS6

RURAL

- 3-2-2 Home on .92 acre at edge of town, Cent. Heat, evap. air, DW, storage bldg., fenced yd., & MORE !! \$30K!!
- W. of SUDAN-NICE 3-3-2 Brick Home, 5 acre tract on Hwy. 298, Cent. Air & Heat, built-ins, large Quonset Barn, MORE!!!! \$95K!!!!
- JUST LISTED- NICE 4-1-2 Home, Heat Pump, Built-ins fenced yd., 2 Stor. bldgs., approx. 10 acre tract, on pavement close to town!! \$ 50's !!!
- 5 Acre tract on pavement close to town!
- NICE 3-2 Home, 40 acre tract, Geo-heat Pump, built-ins, 6' well, Hi-Pre. Lines, barns, corrals, tractor & equip.!!! \$75K!!!!
- LAZBUDDIE- NICE 3-2-1 CP Brick Home on pavement, DW, Geo. Heat Pump, 4.73 ac, barns, corrals, & MORE!! \$40's !!!
- NICE 3-2-2 Brick on pavement, 2200' t, built-ins, FP, large sunroom!! \$80's !!!

REAL ESTATE REAL ESTATE

Jb Sudderth Realty, Inc.

Daren Sudderth
Associate Broker • State Certified Appraiser
Res. (806) 825-3389

- 306 acres south of Lazbuddie with three 8" irrigation wells. 2 circle sprinklers and 2,500 head feed lot. Good water area.
- 550 acres south of Lazbuddie with 4 irrigation wells and 4 circle sprinklers. Good water area.
- 2 Quarters-CRP-SE of Muleshoe city limits. 10 - year contract in CRP. One Quarter on Highway.
- 404 acres NE of Muleshoe irrigation wells, 2 circle sprinklers. Good water area.
- 160 acres southeast of Muleshoe on Irma Lane crossroads, 1 irrigation well.
- 160 acres northeast of Muleshoe on Irma Lane crossroads, 1 irrigation well.

Do you have "something" you desperately need to sell?

Call the Muleshoe Journal 272-4536.

Advertise in the classifieds.

That "something" gets sold.

You get peace of mind.

APPRECIATION DAYS

Use these coupons to save on Classified ads! Must present coupon. Good thru March 29, 1998. No ad changes on 2nd notices. Second ad must run in the next issue after first insertion.

2 for 1
Garage Sale Ad Special
Receive two garage sale notices for the price of one. Limit 20 words.

2 for 1
For Sale Notice Special
Buy one For Sale Notice and receive the 2nd notice FREE! Limit 30 words.

Estate Sale Notices
Two for One Special
Receive two Estate Sale Notices for the price of One. Limit 35 words.

1/2 Price Special
Buy one notice Full Price, receive 2nd notice for 1/2 Price
Garage Sale-Limit 40 words
Estate Sale-Limit 70 words
For Sale-Limit 60 words

Say "Good-Bye" to Old Man Winter Say "Good Buy" to These National Brand Savings!

PRICES EFFECTIVE MAR. 4-10, 1998

MEAT

Pilgrim's Pride Grade A Whole FryersLB.	49¢
Boneless Half HamLB.	\$2¹⁹
Shurfine Quality Boneless Whole HamsLB.	\$1⁹⁹
Preferred Trim Beef T-Bone SteakLB.	\$3⁹⁹
Preferred Trim Boneless Beef Rump or Bottom Round SteakLB.	\$1⁵⁹
Preferred Trim Boneless Beef Bottom Round SteakLB.	\$1⁷⁹
Fresh Ground RoundLB.	\$1⁸⁹
Tenderized Beef Cube SteakLB.	\$2³⁹
Stack Pack Shurfine Bacon1 1/2 lb. pkg.	\$2²⁹
Shurfine Quality Sliced Bacon1 lb. pkg.	\$1⁵⁹
Shurfine Pork Sausage Links11 oz. pkg.	79¢
Shurfine Quality Whole Hog Regular or Hot Pork Sausage2 lb. roll.	\$2⁶⁹
Shurfine Quality Whole Hog Regular or Hot Pork Sausage1 lb. roll.	\$1³⁹
Shurfine Beef Wieners12 oz. pkg.	\$1⁰⁹
Shurfine Meat Wieners12 oz. pkg.	69¢
Shurfine P&P Loaf, Salami or Meat Bologna6 oz. pkg.	59¢
Shurfine Cooked Ham12 oz. pkg.	\$2⁵⁹
Shurfine Chopped Ham12 oz. pkg.	\$1⁷⁹
Shurfine Regular or Polish Smoked Sausage1 lb. pkg.	\$1³⁹
Shurfine Chicken or Ham Salad7 oz. ctn.	99¢
Farm Raised Catfish Filletslb.	\$2⁹⁹
Farm Raised Breaded Catfish Nuggetslb.	\$1⁶⁹
<hr/>	
Shurfine Homestyle Veg./Minestrone Soups19 oz. can.	99¢
Shurfine Vanilla Wafers12 oz. box.	\$1³⁹
Shurfine Homestyle Chicken Noodle/Chicken w/Rice Soups19 oz. can.	\$1³⁹
Shurfine Reg./Chewy Chip-A-Riffic or Pecan-A-Riffic16-18 oz. pkg.	\$1⁹⁹
Shurfine Spaghetti w/Cheese Sauce/Spaghetti Rings Plain Pasta15 oz. cans.	2/\$1
Shurfine Fudge Mallows, Fudge Grahams or Striped Shortbread12-16 oz. pkg.	2/\$3
All Types Dr. Pepper or Coca-Cola6 pk. 20 oz. btl.	\$2¹⁹
All Types Dr. Pepper or Coca-Cola12 pk. 12 oz. cans.	\$2⁹⁷
All Types Dr. Pepper or Coca-Cola3 liter btl.	\$1⁵⁸

PRODUCE

Fresh Crisp Head Iceberg Lettuceea.	69¢
Red Ripe Roma Tomatoes10/\$1	
Fresh Sweet Cantaloupelb.	49¢
Garden Fresh Broccolilb.	69¢
Full of Vitamin A Crisp Carrots1 lb. bags.	3/\$1
Washington Ex-Fancy Red Delicious Apples3 lb. bags.	2/\$3
Dole Salad Mix1 lb. bag.	99¢
Tropical Juicy Mangosea.	69¢
<hr/>	
Shurfine Regular or Natural Applesauce25 oz. jar.	\$1²⁹
Shurfine White Facial Tissue175 ct. box.	89¢
Shurfine Assorted Napkins120 ct. box.	89¢
Shurfine Creamy or Chunky Peanut Butter18 oz. jar.	\$1⁴⁹
Shurfine Tomato Ketchup28 oz. sq. btl.	69¢
Shurfine Assorted Soda3 liter btl.	79¢
Shurfine Evaporated Milk12 oz. cans.	5/\$2
Shurfine Oil or Water Pack Light Chunk Tuna6 oz. cans.	2/\$1
All Purpose Shurfine Flour25 lb. bag.	\$3⁴⁹
Shurfine Gravy or Chunk Style Dry Dog Food20 lb. bag.	\$3⁹⁹
Automatic Drip or Reg. Elec. Perc. Shurfine Coffee13 oz. can.	\$2¹⁹
Shurfine Reg., Lite or Fat Free Coffee Creamer16 oz. jar.	\$1¹⁹
Western Family Natural or w/Aloe Baby Wipes80 ct. ctn.-excludes pop-ups.	\$1⁹⁹
Western Family Natural or w/Aloe Wipe Refills80 ct. ctn.	\$1⁸⁹
Small, Medium, Large or Ex-Large Ultra Thins Shurfine Diapers18-36 ct. pkg.	\$3⁹⁹
Shurfine All Purpose Flour5 lb. bag.	69¢
Shurfine Mild, Med., or Hot Picante Sauce16 oz. jar.	99¢
Shurfine Pinto Beans4 lb. bag.	\$1³⁹
Shurfine Wavee or Assorted Potato Chips6 oz. bag.	69¢
Shurfine Nacho Cheese, Nacho or Restaurant Style Tortilla Chips40 oz. bag.	\$1⁹⁹
Shurfine Spag.w/Meatballs, Spag. Ring w/Meatballs, Reg. or Mini Beef Ravioli Meat Pasta15 oz. cans.	79¢
Shurfine Whole Kosher, Reg., Fresh Pk. Kosher, Polish or Reg. Dill Pickles32 oz. jar.	\$1⁷⁹
Shurfine Luncheon Meat12 oz. cans.	2/\$3
Shurfine Yellow Corn Meal5 lb. bag.	\$1¹⁹
Shurfine Whole or Diced Green Chiles4 oz. can.	69¢
Shurfine Apple Juice or Cider64 oz. btl.	2/\$3
Shurfine Squeeze Yellow Mustard16 oz. btl.	69¢
Shurfine Assorted Grapefruit Juice48 oz. btl.	2/\$3
Shurfine Select Group Regular or Lite Salad Dressings8 oz. btl.	89¢
Shurfine Assorted Cranberry Juice Cocktail64 oz. btl.	2/\$5
Shurfine Salad Dressing32 oz. jar.	\$1³⁹

FROZEN & DAIRY

Shurfine Pimento Cheese Spread7 oz. ctn.	99¢
Shurfine Pimento Cheese Spread12 oz. ctn.	\$1⁷⁹
Buttermilk, Fat Free Skim or Lite 1% Lowfat Shurfine Milk1/2 gal. jug.	\$1¹⁹
Shurfine Chilled Orange Juicegal. jugs.	2/\$5
Shurfine Cheddar or Mozzarella Shredded Cheese8 oz. pkg.	\$1⁶⁹
Shurfine Cottage Cheese24 oz. ctn.	\$1⁷⁹
Shurfine Soft Margarine Spread16 oz. tub.	69¢
Shurfine Buttermilk or Butter Flavored Jumbos Biscuits16 oz. can.	99¢
Shurfine Orange Danish or Cinnamon Rolls12-14.13.9 oz. can.	3/\$4
Shurfine IWS American Singles16 oz. pkgs.	2/\$5
Select Varieties Shurfine Halfmoon Longhorn Cheese16 oz. pkg.	\$2⁹⁹
Shurfine Old Fashioned Assorted Flavors Ice Cream1/2 gal. md. ctn.	\$1⁷⁹
Shurfine Ice Cream Bars or Ice Cream Sandwiches6 ct. pack.	\$1³⁹
Whole Baby or Shurfine Cut Okra16 oz. pkg.	\$1¹⁹
Shurfine Sliced Strawberries16 oz. ctn.	\$1³⁹
• Broccoli Cuts • Chopped Broccoli • Broccoli & Cauliflower • Mediterranean Blend • Oriental Blend • California Blend Shurfine Vegetables16 oz. pkg.	99¢
Shurfine Regular or Lite Whipped Topping8 oz. tub.	79¢
Shurfine 24 oz. Tater Tots, 32 oz. Regular or Crinkle Cut Friesyour choice	\$1²⁹
Shurfine Mini Corn on the Cob8 ear pkgs.	2/\$3
Shurfine Regular or w/Pulp Frozen Orange Juice12 oz. can.	69¢
<hr/>	
Shurfine 12 oz. Plastic Party Bowls12 ct. pkg.	69¢
Shurfine 30 gal. Reg. or Clear Trash Bags20 ct. pkgs.	2/\$5
Shurfine Tall Kitchen Bags30 ct. pkg.	\$1⁹⁹
Shurfine Lemon Automatic Dish Detergent50 oz. box.	\$1⁷⁹
Shurfine Breeze/Fresh Fabric Softener Sheets40 ct. box.	99¢
Shurfine Dry Cat Food3.5 lb. bag.	\$1⁶⁹
Shurfine Frosted Moons, Apple Rolls or Zany Fruits Cereals12-15 oz. box.	\$1⁹⁹
Shurfine Cereal Corn Crisps9 oz. box.	\$1⁵⁹
Shurfine Select Group Instant Oatmeal12-15 oz. boxes.	2/\$3
Shurfine Complete Pancake Mix32 oz. box.	\$1²⁹
Shurfine Assorted Pancake/Waffle Syrup24 oz. btl.	\$1²⁹
Shurfine Assorted Toaster Pastry Tarts11 oz. box.	99¢
Shurfine Red Plum or Grape Jelly18 oz. jar.	99¢

HEALTH & BEAUTY

Western Family Disposable Razors10 ct. pkg.	99¢
Western Family Cotton Swabs300 ct. pkg.	99¢
Western Family Hydrogen Peroxide8 oz. btl.	3/\$1
Western Family CF or DM Expectorant Tussin4 oz. btl.	\$1⁹⁹
Western Family Cold Capsules10 ct. btl.	\$1⁶⁹
Western Family Daytime or Nighttime Liquid Caps12 ct. pkg.	\$2⁴⁹
Western Family 5 gr. Non-coated Aspirin250 ct. btl.	\$1³⁹
Western Family Tabs or Caps Ibuprofen50 ct. btl.	\$1⁹⁹
Western Family 325 Mg. Tablets Non-Aspirin100 ct. btl.	\$1⁸⁹
Western Family Pain Reliever Antacid30 ct. pkg.	\$1⁹⁹
Western Family Reg. or Max. Strength Bis-Mate8 oz. btl.	\$1⁹⁹
Western Family Normal or Oily Dandruff Shampoo15 oz. btl.	\$1⁹⁹
Western Family Regular or w/Aloe Skin Care Lotion15 oz. btl.	\$1⁹⁹
Western Family Assorted Varieties Toothpaste5-7 oz. tube.	99¢
<hr/>	
Select Group • Reg./No Salt Cut Green Beans • French Sliced Green Beans • Wk Crisp'n Sweet Golden Corn • Reg./No Salt/Sweet/Wk Golden Corn • Reg. Cream Style Golden Corn • Reg./No Salt Sweet Peas • Diced/Reg.-No Salt/Whole Peeled Tomatoes Shurfine Vegetables12-15.5 oz. cans.	3/\$1
Granulated Shurfine Sugar4 lb. bag.	\$1¹⁹
Shurfine Fancy Tomato Sauce8 oz. cans.	8/\$1
Shurfine Tomato Soup10.75 oz. cans.	3/\$1
Fat Free, Regular, or Unsalted Shurfine Crackers15-16 oz. box.	69¢
Shurfine White Bath Tissue4 roll pkg.	69¢
Shurfine Decorator Paper Towelsbig roll.	69¢
Shurfine All Varieties Liquid Bleachgal. jug.	79¢
Shurfine Reg. or w/Bleach Ultra 2 Detergent39-44 oz. box.	\$1⁹⁹
Shurfine Blended or Reg. Vegetable Oil48 oz. btl.	\$1⁶⁹
Shurfine Fruit Cocktail or YC Halvs./Sliced Peaches29-30 oz. can.	99¢
Shurfine Trad., Mushroom or Flav. w/Meat Spaghetti Sauce26.5 oz. can.	79¢
Shurfine Elbow Mac. or Long Spaghetti24 oz. pkg.	89¢
Shurfine Regular Dinners Mac & Cheese7.25 oz. boxes.	5/\$1
Shurfine Deluxe Shells & Cheddar Dinners12 oz. boxes.	2/\$3
Shurfine 16 oz. Plastic Party Cups20 ct. pkg.	\$1¹⁹
Shurfine 9 Inch Plastic Party Plates15 ct. pkg.	\$1⁴⁹
Shurfine 7 Inch Plastic Party Plates15 ct. pkg.	79¢

See ya at
LOWE'S

WESTERN MONEY UNION TRANSFERSM
"The fastest way to send money"

Lowe's
MARKETPLACE

515 W. American Blvd.
Muleshoe 272-4585

Pay-n-Save
515 W. American Blvd.
Muleshoe 272-4406

WE RESERVE THE RIGHT TO LIMIT QUANTITIES IN TEXAS