

# The Borden Star

Borden ★ Dawson ★ Garza ★ Howard ★ Lynn ★ Scurry

Volumn XXXVI

June 18th, 2008

## USDA Ends 79 Year Prohibition On Cotton Price Forecasting In June 10 WASDE Report

By Shawn Wade

Since 1929 the United States Department of Agriculture has been prohibited from publishing forecasts for cotton prices except for its own internal use. That all changed with the passage of the Food, Conservation and Energy Act of 2008 last month, which removed the ban and allows USDA to resume the practice.

USDA's first Upland Cotton price forecast was included in this week's Economic Research Service's (ERS) World Supply and Demand Estimates report released June 10.

In the report USDA forecast the 2007/2008 Upland Cotton weighted average price received by farmers a t57 cents per pound, very much inline with the year-to-date weighted average price received for 2007, crop Upland Cotton calculated using the monthly sales and marketing information reported by USDA in the monthly National Agricultural Statistics Service (NASS) Agricultural Prices report.

The June 10 WASDE report also included a forecasted

range for 2008/2009 crop cotton prices of 58-72 cents per pound with a mid-point near the 65-cent level. According to the WASDE report the latest information available to USDA points to future reductions in both U.S. and world cotton stocks and a slight increase in overall cotton use that will be a net positive influence on 2008-crop cotton prices.

Recent weather events on the Texas High Plains, which accounts for almost a third of all U.S. cotton acres this year, could eventually impact these projections even further when the extent of this year's dry conditions and related losses are quantified.

USDA ERS provided a more detailed accounting of the process used to arrive at the cotton price forecast in their June 11 Cotton and Wool Outlook report.

In their explanation the agency noted that although prohibited from publishing a cotton price forecast, USDA has been forecasting cotton prices for internal use for many

## BHS Graduates Enjoy Senior Trip



The Borden County High School Class of 2008 got back this past week from their five day Senior Trip to the Daytona Beach/Orlando area of Florida. Pictured here outside of the Hard Rock Cafe on the Universal Studios Resort are all twelve members of the class including (left to right) Miller Valentine, Quentin Shafer, Michael Bullinger, Heather Brooks, Sharelle Gass, Hannah McConnell, Pascual Espinoza, Kate Wallace, Chelsea Minnick, Shelby Roberts, Rachel Wilson and Logan Howard. A detailed account of their adventures in Florida, along with some additional pictures will appear in next week's Borden Star.

years with the results documented in economic conference papers and ERS's Cotton and Wool Yearbook.

ERS notes that their research indicates cotton prices primarily respond to shifts in U.S. and global cotton supply and demand, changes in China's exports and imports, and exchange rates along with other macro-economic developments.

In summing up how they arrived at the cotton price forecast the agency says in its June 11 Cotton and Wool Outlook report that, "While USDA has developed formal quantitative forecasting models, ultimately, all USDA forecasts are final-

ized by an interagency process that brings together substantially more information than any one mathematical model or set of models."

For the inaugural Upland Cotton price forecast USDA ERS has decided to utilize conservative forecast range of plus/minus 11 percent. They note that this range compares well with the observed ranges they have seen over the past few seasons and also corresponds well the ranges they see in forecast and observed prices for many other crops.

While the 11 percent range is slightly above average compared with other field crops, USDA believes the approach

seems reasonable given errors observed in current forecasting models and the recent volatility of cotton market basis relationships.

As the season continues, USDA expects the forecast range to eventually narrow, and the agency says it will be continually evaluating its forecasting methodology to improve the accuracy of the data that is published each month.

By rescinding the ban on publishing cotton price forecasts, Congress has made another valuable tool available to U.S. cotton producers who need the best available price and supply date to make their indi-

(Continued to Page 4)





Borden County athletes participating in the South Plains College basketball camp are (back row left to right) Kayla Pepper, Taylor Richey, Krista Tarleton, (middle row left to right) Mattie Turner, Lexi Peterson, Teryn Soto, Kylie Voss, (front row left to right) Bayley Trevathan (cousin of Taylor and Tatum Richey), Tatum Richey, Taylor Gass and Shea Burkett.

## Borden County Athletes Shine at Lady Texan Camp

Borden County athletes shine at South Plains basketball camp

A dozen basketball players from Borden County traveled to Levelland last week to participate in the week long basketball camp hosted by South Plains College.

While there, the athletes learned many defense and offense techniques to improve

their playing skills. Throughout the week, several of the girls received awards based on skills and their improvement. Three players were named to All Star Teams. Mattie Turner and Kylie Voss were named to the Jr. All Star Team and Taylor Richey was named to the Sr. All Star Team. Congratulations on a great week!

STATE OF TEXAS )  
COUNTY OF BORDEN )

### ORDER PROHIBITING CERTAIN FIREWORKS IN SPECIFIED AREAS OF BORDEN COUNTY, TEXAS

WHEREAS, on the 10<sup>th</sup> of June, 2008, the Commissioners Court of Borden County has determined that conditions on certain uncultivated acreage in the county are extremely hazardous for the danger of fire because of high grass or dry vegetation;

NOW, THEREFORE, the Commissioners Court of Borden County adopts this Order prohibiting the sale or use of restricted fireworks in the following areas of Borden county:

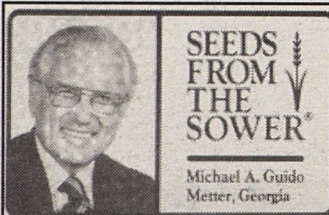
D. No person may sell, detonate, ignite, or in any way use fireworks classified under 49 C.F.R. part. 173.100@2) (10-1-86 edition), as "skyrockets with sticks" and "missiles with fins" in the specified area of Borden County.

E. This Order does not prohibit:  
3. common fireworks, small in size classified as Class C explosives;

4. large fireworks devices designed primarily to produce visible or audible effects by combustion, deflagration, or detonation and classified as Class B explosive by the U.S. Dept. of Trans. ( Tex. Occ. Code, Chapter 2154).

F. A person commits an offense if the person knowingly or intentionally violates a prohibition established by this Order. An offense under this order is a Class C Misdemeanor.

APPROVED THIS THE 10<sup>TH</sup> DAY OF JUNE, 2008. BY THE BORDEN COUNTY COMMISSIONERS COURT.



A man in Jacksonville, Florida, discovered a two-headed lizard. The heads are at opposite ends. When it tries to walk, its legs move in opposite directions.

That lizard reminds me of the Bible verse: "A double-minded man is unstable in all his ways."

He's a man with two heads. One believes, the other doesn't. One wants to do good, the other wants to do evil. One turns to God, and the other turns from Him.

Every decision he makes is uncertain. He turns first this way, and then that.

Believe wholeheartedly, yield completely, and avoid the frustration and failure of a double-minded person.



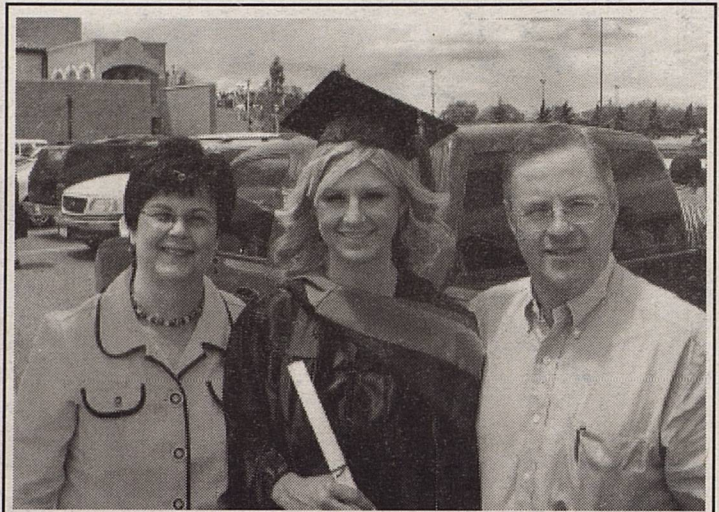
### Thought for the Day

Of all the things you wear, your expression is the most important.

Source: St. Louis Inspirational Christian Connection.

### Borden County Parents

We have several items, including outerwear and jewelry in Lost & Found. Please contact the school at 756-4313, if you think your any of these things may belong to your child.



## Hensley Graduates From Texas Tech

Commencement exercises for Texas Tech University were held Saturday, May 17, 2008, at the United Spirit Arena in Lubbock.

Receiving a Master of Phy-

sician Assistant studies degree was Micah Hensley. She is a 2003 graduate of Borden County and is the daughter of Randy and Donelle Hensley.

Grandparents are Don and Nelva Jones of Fluvanna.

### Have a Great Summer!



Moore-Rains Insurance  
Frances Rains Stephens  
O'Donnell, Texas  
806/428-3335

### Borden Co. Youth Horse Club

\*\*\*\*\*  
Every Thursday Night in June  
Finals-July 10, 2008

6:30 P.M. - Gail Arena

\*\*\*\*\*

#### Events

Western Pleasure  
Barrels - Poles - Flags  
Goat Tying/Ribbon Pull  
Dummy Roping

#### Age Groups

Lead Line -- 8 & under  
9-12 -- 13-18

Concession Stand Provided by Jr High Cheerleaders

Summer Fun!  
Bring your lawn chairs






**AgriLIFE EXTENSION**  
Texas A&M System

Heart and Home ...

by Julie Smith  
Borden County Extension Agent-Family and Consumer Sciences



Educational programs of the Texas AgriLife Extension Service are open to all people without regard to race, color, sex, disability, religion, age, or national origin. The Texas A&M University System, U.S. Department of Agriculture, and the County Commissioners Courts of Texas Cooperating

## Normal Is A Town In Illinois

Webster's Dictionary defines *normal* as "conforming to the standard or the common type; usual; regular; natural." We are often quick to dismiss many of the challenges we face day-to-day as "just growing older" or "normal aging." In fact, the only thing "normal" about aging is that all beings grow older.

As people age, a majority of them remain healthy and independent. In spite of this, some individuals begin to experience changes that are perceived as signs of deterioration or decline. Our society tends to focus on that decline, influencing our perception of "normal." We should forget stereotypes and look at all people, regardless of age, as unique individuals, each with a particular set of resources and challenges.

As the body ages, it may undergo gradual changes which may or may not be experienced by friends, family or acquaintances. How your body ages may depend on heredity; however, studies show that your lifestyle choices may impact how well your body ages - to the tune of 50% of health risk factors - normal is as normal does.

While the focus of this article is not to further the "normal aging" stereotype, there are some changes in body and function that you may look for as you grow older. Some of these changes may apply to you; others may not:

**• Hearing and Vision.** Changes in the ear may make some sounds harder to hear and changes in tone and speech less clear. Too, over time the lens of the eye may become less flexible or develop cataracts. Night vision and visual sharpness may decline and you may experience increased sensitivity to glare.

**• Skin and Bones.** Skin may become less elastic, more lined and wrinkled and/or bruise easily. Oil glands may produce less oil, making the skin drier than before. Over the course of a lifetime, it may be common to lose a couple of inches in height due to changes in posture and compression of joints, spinal bones and spinal discs. Bones may gradually lose some of their mineral content, becoming less dense and strong. In women, bone loss may increase after menopause.

**• Brain and nervous system.** Beginning in mid-life, the brain's weight, the size of its nerve network and its blood flow may begin to decrease. However, the brain adapts to these changes, growing new patterns of nerve endings. Memory changes are a not necessarily common in aging. Recall of names and details may slow and you may have more "tip of the tongue" moments but these may be offset by keeping the brain active throughout the lifespan.

**• Heart and Lungs.** The heart may become less efficient as it ages and may work a little harder than it once did during activity. In inactive people, the lungs may become less efficient over time, supplying the body with less oxygen. For these reasons, among others, physical activity remains important throughout life.

**• Kidneys.** The kidneys may decline in size and function causing wastes and medications to not clear the body as well and decreased tolerance for dehydration. This makes it increasingly important that you minimize alcohol and unnecessary medications and that you drink plenty of fluids.

The aging process may also bring social and emotional change and loss. Inevitably, older relatives and friends may

grow frail and die, individuals may lose a spouse. Physical and social losses that may accompany aging may be very difficult emotionally. Grief and sadness are common reactions to such situations, and we cannot and should not try to lessen these reactions. Just as the physical losses of later life may be compensated for, so can the social and emotional losses be overcome with time.

The physical aging process can be influenced in a variety of ways. The bulk of the changes that take place over the years may be strongly affected by physical activity and other lifestyle characteristics. Apart from heredity, people who live in areas with especially long life expectancy have the following characteristics:

- Regular physical activity
- Well-balanced diet
- Social involvement
- Moderate or no alcohol
- No smoking

By keeping respect for the immense differences between individuals, especially older adults, and not assume or stereotype based on health and function, we all can do a lot to further the "normal is as normal does" philosophy of aging and health.

For more information, contact your County Extension Agent. You may also test your "Normal Aging IQ" through the Mayo Clinic website: <http://www.mayoclinic.com/health/aging/QZ00073>.

Snyder  
National  
Bank



We're proud to be  
a part of the area  
since 1905.  
Member FDIC

1715 25th  
915/573-2681

## Go See Alice!




Don't miss the last weekend of the Garza Theatre's production of Tim Kelly's *Alice's Adventures in Wonderland*. Starring in the lead role of "Alice" is Tye Basquez (above), who recently completed fifth grade at Borden County Elementary. The final shows are Friday and Saturday, June 20th & 21st, at 8:00 p.m. and a Sunday matinee on June 22nd, at 2:30 p.m. at the Garza Theatre in Post. Take the whole family for an evening of enjoyable children's theatre!

Subscribe to the  
**Borden Star**  
"Your" Hometown  
Newspaper



Only \$12.00  
12 months  
P.O. Box 137  
Gail, TX 79738  
806/756-4313 ext. 275

Energize with 4-H



**Who:** Youth entering Kindergarten—3rd Grade  
**When:** Thursday, July 10 from 10:00 a.m. to 2:00 p.m.  
**Where:** County Show Barn in Gail  
**Cost:** \$5 per child to cover supply costs  
**Activities:** It will be filled with many fun activities related to energy! We will be making crafts and playing fun games.  
**Info to know:** Please bring a sack lunch—drink and dessert will be provided.

For more information, or to let us know that you will be able to attend, please call or e-mail the Extension Office at (806) 756-4336 or [borden-tx@tamu.edu](mailto:borden-tx@tamu.edu).

NOTE: You do not have to RSVP to participate, but it helps let us know how many to plan for.

We will seek to provide all reasonable accommodations for all persons with disabilities for any Extension program. We request that you contact the Texas AgriLife Extension Service office as soon as possible to advise of auxiliary aid that you will require.

AgriLIFE EXTENSION  
Texas A&M System

The Fun with 4-H Day is sponsored by Texas AgriLife Extension Service Borden County and Borden County 4-H.

Extension programs serve people of all ages regardless of socioeconomic level, race, color, sex, religion, disability, or national origin. The Texas A&M University System, U.S. Department of Agriculture and the County Commissioners Courts of Texas Cooperating.

The Borden Star (USPS or PUBLICATION No. 895-520) is published weekly except Christmas and New Year's week for \$12.00 per year by the Borden Star, PO Box 137, Gail, Texas, POSTMASTER: Send Change of Address to the Borden Star, PO Box 137 Gail, Texas 79738.



# Youth Horse Club Results

The Borden County Youth Horse Club held its third playday Thursday, June 12. We invite the community to come out and watch the kids improve each week. Everyone is having an enjoyable evening visiting, cheering on the kids and supporting the Borden Co. Jr. High Cheerleaders at the concession stand.

Special thanks to Travis Rinehart, Cody Hill, Gary and Connie Stipe and Tammy Simmons for their help each week.

Results for the June 12<sup>th</sup> playday are as follows:

**Lead Line Western Pleasure Participants:** Quinten Freeman, J. Tom Price, Luke Carpenter, Kaci Hudson and Macye Maben.

**Lead Line Barrels Placings:** 1<sup>st</sup>-Kaci Hudson, 2<sup>nd</sup>-J. Tom Price, 3<sup>rd</sup>-Luke Carpenter, 4<sup>th</sup>-Macye Maben and

5<sup>th</sup>-Luke Carpenter.  
**Lead Line Poles Placings:** 1<sup>st</sup>-J. Tom Price, 2<sup>nd</sup>-Quinten Freeman, 3<sup>rd</sup>-Luke Carpenter, 4<sup>th</sup>-Kacy Hudson and 5<sup>th</sup>-Macye Maben.

**Lead Line Flags Placings:** 1<sup>st</sup>-Luke Carpenter, 2<sup>nd</sup>-Macye Maben, 3<sup>rd</sup>-J. Tom Price, 4<sup>th</sup>-Quinten Freeman and 5<sup>th</sup>-Kaci Hudson.

**Lead Line Goat Ribbon Pull Placings:** 1<sup>st</sup>-Luke Carpenter, 2<sup>nd</sup>-J. Tom Price, 3<sup>rd</sup>-Quinten Freeman, 4<sup>th</sup>-Macye Maben and 5<sup>th</sup>-Kaci Hudson.

**9 - 12 Western Pleasure Participants:** Jacy Cabler, Jett Cabler, Swaize Lee, Avery Price, Tanner Freeman and Flint Roberts.

**9 - 12 Barrels Placings:** 1<sup>st</sup>-Jacy Cabler, 2<sup>nd</sup>-Avery Price, 3<sup>rd</sup>-Jett Cabler, 4<sup>th</sup>-Swaize Lee, 5<sup>th</sup>-Flint Roberts and 6<sup>th</sup>-Tanner Freeman.

**9 - 12 Poles Placings:** 1<sup>st</sup>-Jacy Cabler, 2<sup>nd</sup>-Flint Roberts, 3<sup>rd</sup>-Swaize Lee, 4<sup>th</sup>-Tanner Freeman, 5<sup>th</sup>-Jett Cabler and 6<sup>th</sup>-Avery Price.

**9 - 12 Flags Placings:** 1<sup>st</sup>-Jett Cabler, 2<sup>nd</sup>-Jacy Cabler, 3<sup>rd</sup>-Tanner Freeman, 4<sup>th</sup>-Flint Roberts, 5<sup>th</sup>-Swaize Lee and 6<sup>th</sup>-Avery Price.

**9 - 12 Goat Ribbon Pull Placings:** 1<sup>st</sup>-Tanner Freeman, 2<sup>nd</sup>-Jett Cabler, 3<sup>rd</sup>-Flint Roberts, 4<sup>th</sup>-Jacy Cabler, 5<sup>th</sup>-Swaize Lee and 6<sup>th</sup>-Avery Price.

## USDA Ends 79 Year Prohibition

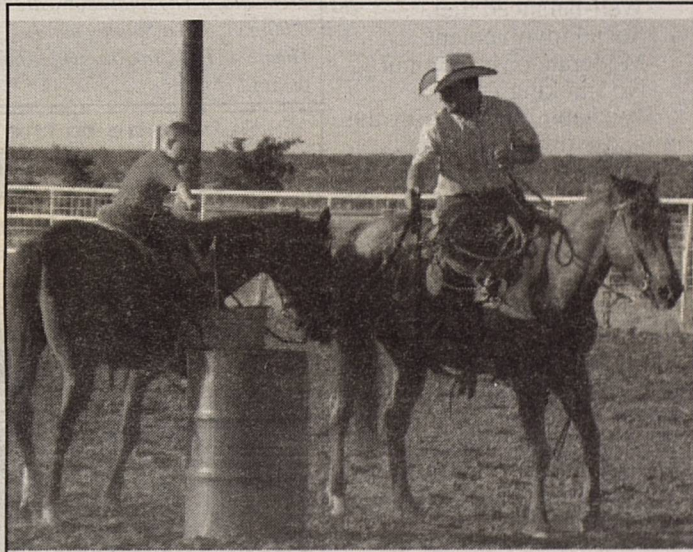
(Continued from Page 1)

vidual risk management plans. Regardless of the circumstances having a USDA derived Upland Cotton price forecast published each month is a welcome addition that is long overdue.

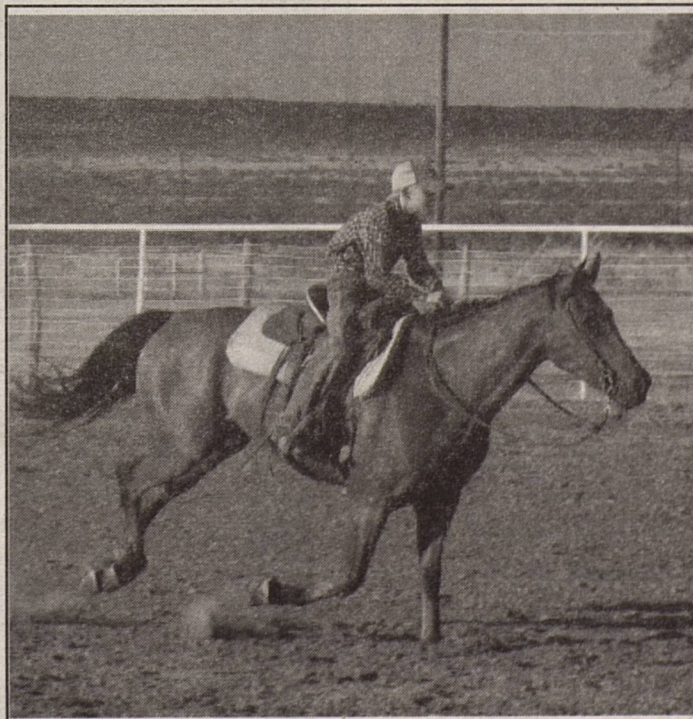
In discussing why the ban was originally implemented, USDA noted that the 79-year prohibition was the end result of a series of Congressional hearings investigating a September 1927 USDA cotton price forecast that members of the legislative branch believed triggered a massive market sell-off.

Having been created during a time of legendary market turmoil, which ultimately resulted in the Great Depression, it seems somehow fitting that the end of the ban has come at a similarly tumultuous time for U.S. commodity markets.

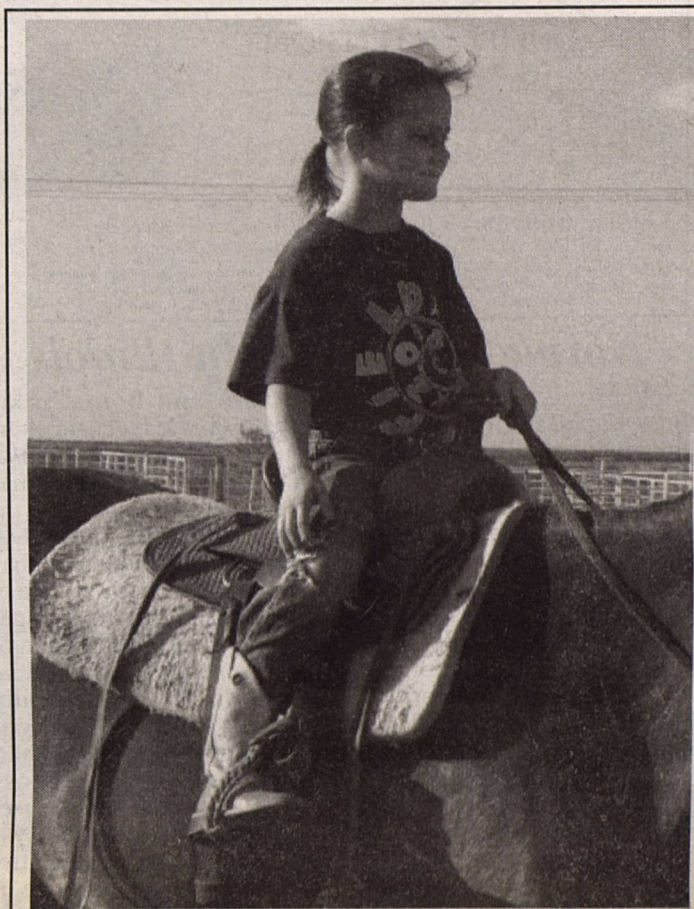
"Cotton News" is a weekly publication of Plains Cotton Growers, Inc. For additional information contact PCG at 806-7924904



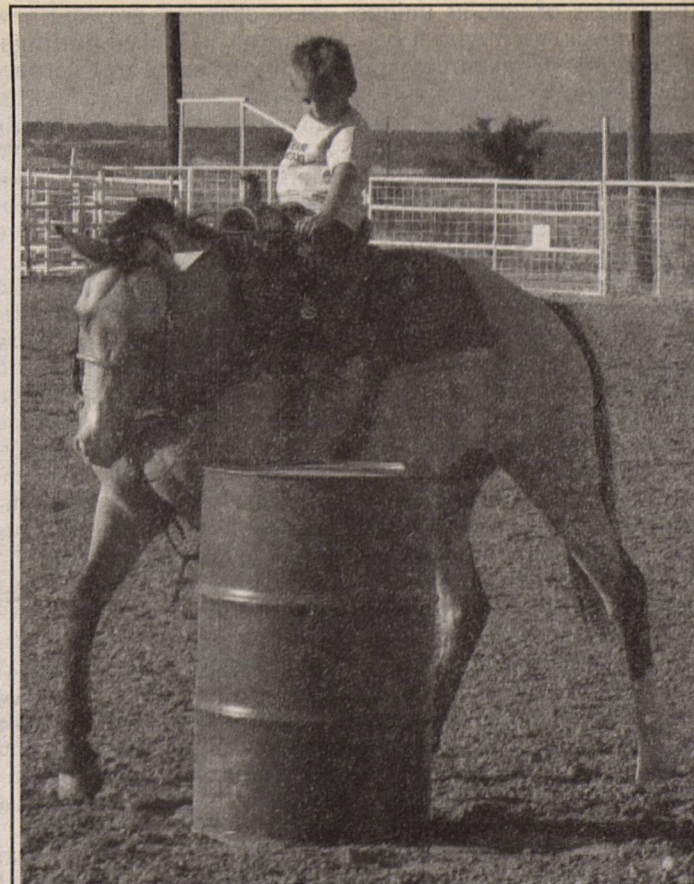
J. Tom Price is assisted by his dad, Cliff Price in the Flags.



Flint Roberts "on the home stretch" in the barrels. He is the son of Freddy and Lee Roberts.



Kaci Hudson, daughter of Andy and Leann Hudson of Gail, participates in the Western Pleasure



Quinten Freeman rounds a barrel in Saturday's Youth Horse Club meet. He is the son of Jason and Jill Freeman.

Drive Safely. Watch for Children