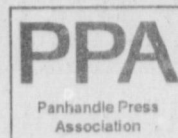




BAILEY COUNTY JOURNAL



Volume 40, No. 29

50¢

Published Every Sunday at Muleshoe, Bailey County, Texas 79347

50¢

Sunday, July 29, 2001

PAGE ONE

A QUICK READ OF THE NEWS

School flunks spelling

Diploma writers at the University of North Carolina at Charlotte could use a little more schooling themselves in basic English.

The university had to mail new diplomas to its May graduates this summer after learning the word "chancellor" was spelled with just one "L."

A student notified the chancellor's office of the mistake.

The school immediately printed new diplomas and mailed them to the 1,200 graduates.

Love triangle gets sticky

It could be called assault with a sticky weapon. A Dana Point, Calif., love triangle got nutty when a woman allegedly used a peanut butter sandwich to attack a challenger for the affection of a massage therapist.

"She shoved me and hit me in the side of the head with a peanut butter sandwich," one of the women said. "When I went out of the house, I still had it on the side of my head where she pounded it."

The other woman received a citation for assault and battery.

The women were arguing over the man at the center of the love triangle at his condominium.

Said the woman who received the citation: "All I did was sprinkle some bread crumbs on her head. ... She just wanted to get me in trouble because I'm stealing her boyfriend."



Drawing date: Wednesday, July 25
Winning numbers: 3-9-21-32-43-45
Estimated jackpot: \$16 million
Winners: 0
Next drawing: Saturday, July 28
Estimated jackpot: \$20 million

On this date in history

July 26 — San Felipe de Austin is established, starting a new wave of U.S. colonization in Texas (1823).

Also on July 26 — Sam Houston, the second and fourth president of the Republic of Texas and later governor of the state, dies in Huntsville (1863).

LOCAL WEATHER

The National Weather Service is predicting somewhat more moderate temperatures for the first half of the week — highs in the mid-90s and morning lows around 66 or 67. Tuesday may be partly cloudy; otherwise, expect sunny skies through Thursday. The danger of sunburn will remain extreme throughout the period.

Editor Ronn Smith can be reached at 272-4536 or ctyankee@fivearea.com

Missed your paper? Call carrier Bobby Flores at 272-6719 or the Journal during business hours, 8:30 a.m.-5 p.m.

Bailey County EMS joins regional network

JOURNAL STAFF REPORT

As of July 1, Bailey County's Emergency Medical Service became part of a regional umbrella group, South Plains EMS.

The group covers 18 counties and includes 48 EMS organizations as members.

Charla Mitchell, a SPEMS representative who met with county commissioners June 11, said the organization is "in no way a government or regulatory agency."

As a member, Bailey County will receive monthly visits from a SPEMS representative for continuing education and for evaluation of what is being done here, she said. A physician from the umbrella group will visit twice a year, she added.

The membership will cost the county \$3,500 a year, half of which pays for these visits by professionals, she said.

County Judge Marilyn Cox said the county did not intend this move as a negative reflection on Dr. Bruce Purdy, who

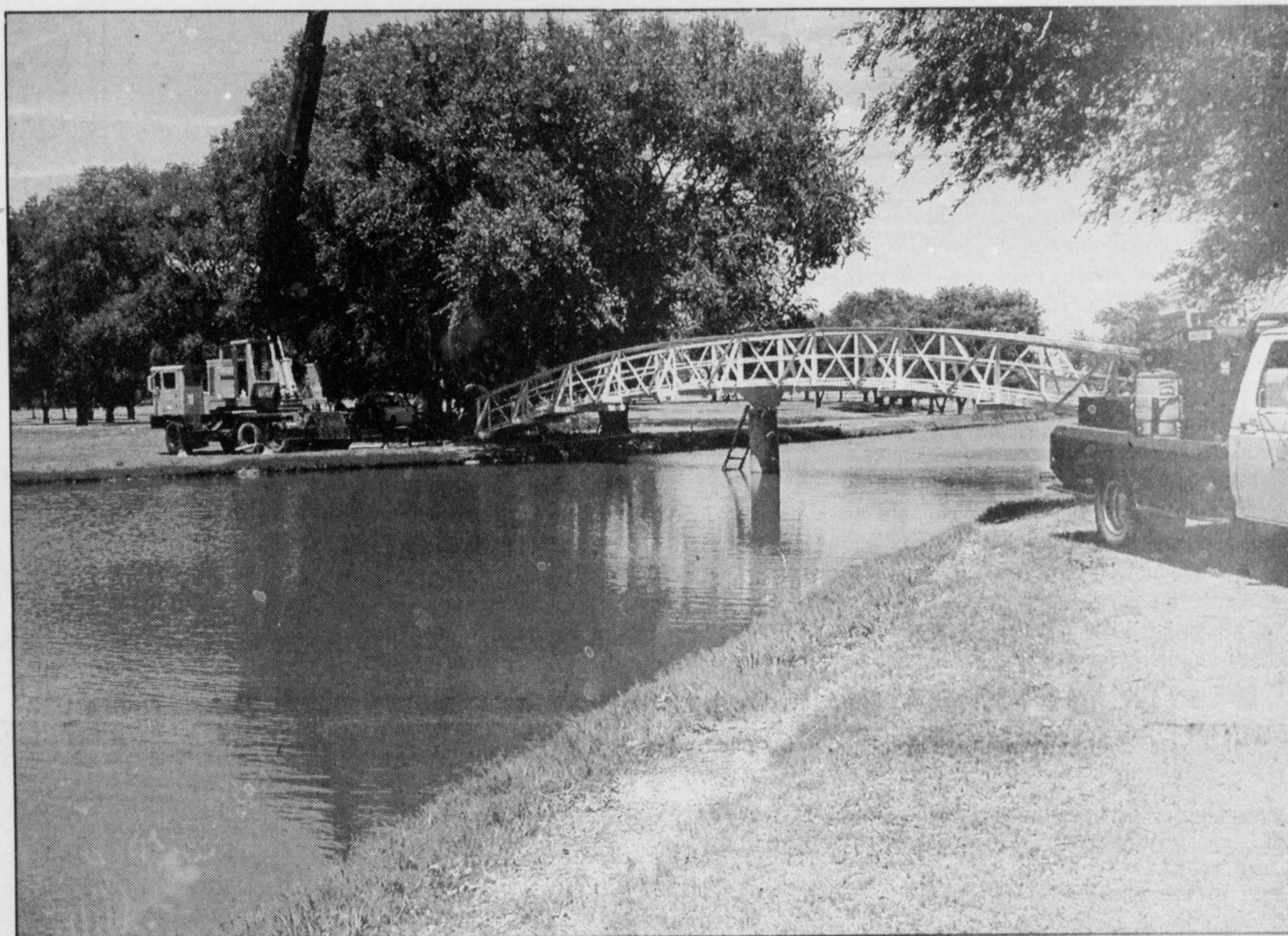
has served as medical director for the county's program, but rather looked upon it as a way to relieve some of Purdy's workload. She said that when he was approached with the idea, his response was "the sooner the better."

"We really appreciate Dr. Purdy because he has kept this service going," Cox said.

Chris Thompson, the county's EMS director, also supported the move.

see EMS on page 2

A place of peace



Journal photo: Leah Bell

Workers finish up an 85-foot-long footbridge at the Muleshoe Country Club earlier this week. The structure was built mainly with money donated by Carl Bamert in memory of his late wife, Cookie. Irrigation Pumps and Power of Muleshoe also contributed to the project. E.T. Ford, the contractor,

helped with design. Also involved in the construction were L. Howard and Sons of Lubbock and Treviño and Sons, who did the concrete work. A dedication ceremony was held Wednesday by the Muleshoe Country Club Ladies' Association.

Ag chemicals seminar set for Lubbock

SPECIAL TO THE JOURNAL

LUBBOCK — West Texas agriculture producers and agribusiness people can update their chemical use and application skills, and learn more about biotechnology, weedhead protection, conservation tillage and pest control Sept. 19 at the 49th annual West Texas Agricultural Chemicals Conference in the Lubbock Memorial Civic Center.

On-site registration over coffee and donuts begins at 7 a.m. and costs \$70 per person. Pre-registration costs \$50 per person but must be postmarked by Sept. 3. Advance registration should be sent to WTACI, c/o Randy Underwood, NRCS, 6113 43rd St., Suite A, Lubbock 79407.

The morning conference session will include presentations on equipment and application techniques for conservation tillage. Keynote speakers include Dan Baker; Jim Smart, USDA, Weslaco; and Charlie Thomas, director of pesticide programs with the Texas Department of Agriculture.

More than 500 people are ex-

see CHEMICALS on page 2

County's first Relay for Life scheduled

JOURNAL STAFF REPORT

Anyone wishing to participate in the first Bailey County Relay for Life is asked to notify Rachel López (272-3586) by Aug. 10.

The event is scheduled for 7 p.m. Aug. 17 at the Bailey County Coliseum. Team registration begins at 6 p.m.

Relays for Life are held nationally to raise funds for the American Cancer Society by having people walk, run or wheelchair

around a track. The first lap is reserved for cancer survivors.

The 10 p.m. lighting of luminarias outlining the track will highlight another tradition of the relays.

The luminarias, which are left burning throughout the event, are intended "to honor cancer survivors and to remember those who have lost their battle against cancer," according to promotional materials for the event.

Anyone who knows a cancer survivor is asked to make sure that person is aware of the relay, and the community is invited to come out and show support for survivors and those now fighting cancer.

While many of the relays go on all night, the Bailey County version will end with a victory lap at midnight.

More information is available by calling Vivian Menning at 272-4993.

Businessman charged with assault

JOURNAL STAFF REPORT

Muleshoe police arrested a local businessman Monday and charged him with assaulting the owner of a competing business.

According to records at the Bailey County Sheriff's Office, Robert Shafer originally was charged Monday with simple assault. That charge was dropped Tuesday, and Shafer was re-arrested and charged with aggravated assault.

Roger Clarkson, the man Shafer allegedly assaulted, was taken to Muleshoe Area Medical Center, where a spokeswoman said he was treated at the emergency room and released.

The Muleshoe Police Department had not

responded to a request for information as of press time Friday, but Clarkson said Friday that the injuries involved his back and that doctors were still taking a wait-and-see attitude on the extent of his injuries.

Other recent arrests include:

MULESHOE POLICE DEPARTMENT

July 7
Abel Barrón — assault (family violence);

July 8
José Angel Overa Alemán — DWI (second) and fleeing;

July 11

see ARRESTS on page 2

AROUND MULESHOE

Assembly of God schedules revival

The Rev. Kuris Ivey of Elk City, Okla., is scheduled to conduct a revival July 29-Aug. 1 at Muleshoe's First Assembly of God.



Ivey has been a travelling evangelist for the past year, after spending eight years in ministry at Elk City's Grandview Assembly of God and two years at Faith Temple Assembly of God in Dallas. While at Faith Temple, he was attending Bible school at Waxahachie.

He became youth minister at Grandview Ivey at the age of 16. He relates to young people as a member of a state championship basketball team on which the coach became a Christian during the title season.

Trinity sets vacation Bible school

Trinity Christian Center Church, 1723 W. American Blvd., has scheduled its Polar Exploration "On Jesus' Love" vacation Bible school for 6 p.m. to 9 p.m. nightly Aug. 1-3.

Children ages 4 to 12 will be treated to snacks, participate in making crafts, play games and have Bible lessons. More information is available by calling 272-3877.

CHEMICALS

from page 1

pected to attend.

Participants can earn up to six of the continuing education units required by the Texas Department of Agriculture for certification of commercial and non-commercial pesticide applicators, or as many as six CCA education units.

Four and a half of the continuing education units are also approved by the New Mexico Department of Agriculture.

The conference is sponsored by the West Texas Agricultural Chemicals Institute, an organization of scientists, educators, industry representatives and

agribusiness leaders.

The institute has sponsored and conducted research and educational programs focusing on safe ag chemical use since 1953.

A noon luncheon will feature presentation of institute awards and college scholarships totaling more than \$6,000.

The afternoon general session begins at 1:15 p.m. with presentations on public perceptions of biotechnology, wellhead protection, and point- and non-point source pollution.

Featured speakers include Leah Porter of the American Crop Protection

Softball tournament set for Aug. 4-5

Teams are being invited to enter the Tornado Fest Softball Tournament, scheduled for Aug. 4-5 at the Old Babe Ruth Park in Muleshoe.

The entry fee is \$110 and it will be 1-1 count with a 50-minute time limit.

First place will get baseball jackets while second and third will get T-shirts.

More information is available by calling Rosa Davis at 965-2455, Mona Martínez at 238-9779, Gloria Guillén at 965-2372 or Ramón Guillén at 272-5050.

Public calendar

July 30 — 10 a.m. Bailey County Commissioners'

EMS

Thompson said the service had been operating under guidelines that originally came from SPEMS but may be outdated.

Jim Bone of the Muleshoe Area Hospital District said recently that

some members of the hospital's medical staff had expressed concern that SPEM protocols might result in some emergency patients being kept overnight when that would not be the case presently.

Association and Monty Dozier, an Extension water-resource specialist.

Concurrent educational sessions on weed control and herbicides, insect identification and control, and crop diseases will be presented by Extension specialists, Texas Agricultural Experiment Station scientists and Texas Tech University and industry representatives after the afternoon general session.

Groups who plan to attend can receive a reduced hotel rate for the conference if reservations are secured by Aug. 18. This can be done by calling the

Four Points Hotel at (800) 325-3535 and ask for the ag chem group rate.

More information on the conference is available by calling Sheryl Smith at (806) 746-6101.

ARRESTS

from page 1

Israel Mata — driving with license suspended;

Larry Dewayne Ross — selling alcohol in a dry area;

July 12 Abraham Mendoza — possession of cocaine;

July 13 Shirley Gianta Gilliam — assault (family violence);

Sharon Genevieve Gilliam — assault (family violence);

July 14 Ralph Tarango — motion to revoke probation (possession of marijuana);

July 15 Richard Herrera Sigala — DWI;

July 19 Raven T. Hernández — no driver's license;

July 20 Felipe Morín Castro — warrant for assault with bodily injury of a family

member;

July 21 Ramón Mendoza Jr. — driving with license suspended;

Gregory Scott Williams — DWI (first);

July 22 Guadalupe Olivárez Jr. — driving with license suspended;

Barbara García — no driver's license, no insurance, fighting;

July 23 Corinne M. Fraide — sexual assault of a child;

July 24 Fabian Fabela — sexual assault;

Bernadito Vega Torres — sexual assault;

Eduardo Gómez — warrant from Lyon County, Kan.;

SHERIFF'S OFFICE

July 9 Sheila Ann Fitts — Mo-

tion to revoke parole on a Hale County warrant (theft by check);

July 13 Melvin Brown — motion to revoke probation;

July 18 Robby Lynn Armstrong — theft; manufacture of a controlled substance (methamphetamine);

July 20 Juan Peña Garza — motion to revoke probation (burglary, forgery);

STATE POLICE

July 13 Abel Barrón — blue war-

rant.

Court, in the commission room at the courthouse.

Also on July 30 — 10:30 a.m. Storytime at Muleshoe Area Public Library: "OINK!" for ages 2 to 10.

July 31 — 7:30 p.m. Muleshoe Senior Citizens Dance at the American Legion Hall.

Aug. 7 — 7:30 p.m. Muleshoe Senior Citizens Dance at the American Legion Hall.

The deadline for items to appear in Around Muleshoe is 5 p.m. Monday for Thursday's editions and 5 p.m. Thursday for Sunday's editions.

¡Se Habla Español! **Phone Applications Accepted** Mon.-Thurs. 9:00-5:30 pm, Fri. 9:00-6 pm

272-3673

LOANS \$100 TO \$467

CREDIT STARTER LOANS
LOANS WHILE YOU WAIT

CONTINENTAL CREDIT

206 S. Main Street
Muleshoe, Texas

SUBSCRIBE TO THE JOURNAL!
Call today! 806-272-4536

Best Buys of the Year!
5 Days Only!
It All Ends July 31!

\$1500 CASHBACK **0% for 60 Months APR**
That's Over \$7000 in Finance Savings

2001 Super Crew **2001 Expedition**

2001 Explorer Sport **2002 Explorer**

\$2500 CASHBACK **3.9% APR**
- All New -
- More Powerful -
- Smoother Ride -

Chuck Daggett - 1115 N. Chicago, Portales, NM • (505) 356-8581

NOT ALL BUYERS WILL QUALIFY FOR LOWEST APR. SEE DEALER TO SEE IF YOU QUALIFY. Residency restrictions apply. Savings based on financing principal at 0.9% APR for 60 months vs. average APR of 7.5% APR for 60 months. Take delivery on 2001 Expedition between 7/26/01 and 7/31/01. Limited Term financing on 2002 Explorer take delivery by 10/08/01. For \$1500 Cash Back on 2001 F-150 Super Crew take delivery by 10/08/01. For \$2500 Cash Back on 2001 Explorer Sport take delivery by 9/4/01. See dealer for details.

CELLULAR 2000 CELLULARONE
Authorized Dealer

Going to college doesn't have to mean leaving home!

2000 MINUTES FOR \$39.99

Partner Plans for just \$9.99 more!

These 2000 minutes are good from anywhere in our large HOME AREA to anywhere in the Continental United States.

Limited time offer. Some Restrictions Apply.

Special on Motorola StarTac & Nokia Models 918, 252, 282, 5100 & 6100 **CAR CHARGERS & CASES \$19.95**

605 W. AMERICAN BLVD. • 272-7523 or 272-5153

Bailey County Journal USPS 040-200
Established March 31, 1963. Published by Triple S Publishing, Inc. Every Sunday at 304 W. Second, Box 449, Muleshoe, TX 79347.

Periodicals Postage paid at Muleshoe, TX.
POSTMASTER: Send address changes to the Bailey County Journal, P.O. Box 449, Muleshoe, TX 79347.

We are qualified members of:
Panhandle Press Association, National Newspaper Association, West Texas Press Association and Texas Press Association

WEST TEXAS PRESS ASSOCIATION MEMBER 2001

PPA Panhandle Press Association

Scot Stinnett, Publisher
Lisa Stinnett, Vice-President/Comptroller
Ron Smith, Editor
Beatrice Morin, Classifieds
Leah Bell, Advertising

© 1990

SUBSCRIPTIONS: Muleshoe Journal and Bailey County Journal
By Carrier Yearly - \$22.00
Bailey County — by mail - \$24.00
Elsewhere - \$26.00
Advertising Rate Cards on Application

Advertisers should check their ad the first day of publication. The Journals will not be liable for failure to publish an ad or for a typographical error or errors in publications except to the extent of the cost of the ad for the first day of insertion. Adjustment for errors will be limited to the cost of that portion of the ad where the error occurred.

Brantley, Kerby marry in Amherst ceremony

Kylee Ann Brantley and Rhett Kane Kerby were married July 7 in the First United Methodist Church of Amherst.

The Rev. Benny Goss of Littlefield conducted the ceremony.

Entering to traditional wedding music were the maid of honor, Kendra Mote, friend of the bride, and bridesmaids Tamra Ward, sister of the bride, and Misty Brantley, sister-in-law of the bride.

The maid of honor and bridesmaids wore evening-length deep purple two-piece satin dresses. The shell tops featured a bateau neckline with covered buttons down the back. The bridal attendants carried hand-tied bouquets of ivory roses, lilacs and English ivy.

The best man, Leslie Kerby of Muleshoe, father of the groom, and groomsmen Landon Kerby, brother of the groom, and Jeffrey Bruns, friend of the groom, wore Avalon-style black tuxedos with black western bow ties, black vests and ivory rosebud boutonnières. The father of the bride wore a traditional black tuxedo with black vest. The groom wore a cutaway-style tuxedo with a black western bow tie and black vest.

Chesanie Brantley of Paint Creek, Texas, niece of the bride, was the flower



Mr. and Mrs. Rhett Kerby

girl. She carried an ivory basket trimmed with purple satin bows.

Hagen Brantley, also of Paint Creek, nephew of the bride, was the ringbearer. He carried the rings on an ivory satin pillow tied with sheer bows.

During the giving of the bride, "I Do" by Paul Brandt was sung by Charles Schovasja. After the bride and groom recited their vows, they lit the unity candle as Lessie Colling sang Shania Twain's "You're Still the One."

The altar was decorated with English ivy along with

deep purple and ivory wisteria. The altar also featured a gold heart-shaped arch entwined with ivy and deep purple and ivory wisteria. Two white doves were placed in the arch in memory of the bride's late great-grandmother, Allie Taylor.

Large gold candelabra entwined with ivy and wisteria stood at each side of the front of the church, and ivory tulle adorned with ivory satin bows was draped along the front of the church.

The window treatment had crystal ivy bowls en-

hanced with purple and ivory satin bows. Accenting floating candles were sprays of purple lilacs. The pews were decorated with ivory tulle and floor-length satin bows.

Ushers were Chadd Kelton, cousin of the groom, and Landon Black, a friend of the groom.

Pianist Margie Harmon played as guests were seated. Mothers of the bride and groom carried ivory tapers to the unity candle at the altar.

Escorted by her stepfather, the bride wore an ivory gown of Milano satin, tulle and lace. The princess-style bodice was adorned with Schiffler lace and featured a corset backing above the tulle ball-gown skirt with a satin-embellished hemline and cathedral-length train.

The lace was dusted with pearls, crystals and sequins.

Her elbow-length veil of candlelight silk illusion was trimmed with satin ribbon and the headpiece was adorned with ivory satin roses.

She carried a bouquet of sheer ivory roses surrounded by deep purple hydrangea and light purple lilacs, all entwined with sprays of English ivy.

In keeping with tradition, "something old" was a gold pendant watch belonging to her great-grandmother, the

late Allie Taylor. "Something new" was her wedding gown; "something borrowed" was a gold ring belonging to her sister-in-law; and "something blue" was her garter.

After the ceremony, a reception was served in the fellowship hall of the church.

The bride's table, covered with an ivory lace cloth, was surrounded by four marble pillars wrapped with ivory. Deep purple wisteria was draped atop the pillars.

The table featured a three-tiered wedding cake accented with sheer ivory roses, lilacs and English ivy. The top of the cake featured a crystal bride and groom embracing one another, and the table was enhanced with the bride's bouquet.

Mints and nuts were served on silver appointments.

Both the crystal cake top and toasting flutes were gifts from Shawn and Misty Brantley. Serving were Danielle Tooley and Kayla Bearden, both friends of the bride.

The groom's table, covered with a denim cloth, featured a German chocolate cake in the shape of

two cowboy boots with a heart joining them. The cake was surrounded by chocolate covered strawberries.

The table was enhanced with an old cowboy boot full of purple daisies, a grass rope and bandanas. The cowboy boot belongs to the groom's grandfather, Leck Kerby. Mints and nuts were served from small galvanized buckets. Serving were Terra and Whitney Payne, both cousins of the groom.

The bride is the daughter of Mr. and Mrs. Bobby Ward of Amherst and Mr. and Mrs. Mark Brantley of Medina, Texas. She is the granddaughter of Mr. and Mrs. Donald Garrard of Borger and Mr. and Mrs. Walter Brantley of Medina.

The groom is the son of Mr. and Mrs. Leslie Kerby of Muleshoe and the grandson of Mr. and Mrs. Leck Kerby and Mr. and Mrs. Bob Gist, all of Littlefield.

The groom's mother hosted a rehearsal dinner July 6 in the church's fellowship hall.

After the reception, the couple left in an array of lit sparklers for a honeymoon trip to Pagosa Springs, Colo. They live in Lubbock.

As a courtesy to our readers, wedding and engagement announcements are printed free of charge. Call 272-4536 for info.



UNDERGRADUATE CLASSES

** All classes meet from 5:30 - 9:40 p.m. unless otherwise stated.

Business

BUAD 3318	Business Law	Tue. CAFB	Eastham
ECON 4346	Survey of Economics	Wed. CAFB	Theophilus
FINA 3309	Principles of Finance (Acct I prereq)	Thurs. Clovis	Pearce
HLAD/BUS 335	Admin. & Org/Health Facilities	Thurs. CAFB	Routson
MGMT 3310	Managerial Communications	Thurs. CAFB	Huegel
MGMT 3324	Human Resource Management	Mon. CAFB	Robinson
MGMT 3339	Theory/Practice of Supervision	Wed. Clovis	Franklin
MISM 3301	Info Tech: Hardware/Software (Meets 8 a.m. - 2 p.m. for 8 weeks)	Sat. CAFB	Marnell
ACCT 3308	Managerial Accounting	Mon. CAFB	Palumbo

Education

EDUC 4303	Teaching Soc. Studies/Elem.	Mon. Clovis	Franklin
EDUC 4331	Computer Applications in Educ.	Mon. CAFB	Lay
EDUC 3301	Principles/Practices in Educ.	Tues. Clovis	Stanley
RDNG 4307	Children's Literature	Wed. Clovis	Nuttall
EDUC 3313	Cultural Diversity in Education	Thurs. Clovis	Hendershot

General Education

EDUC 4333	Statistics	Fri. CAFB	Hendershot
HIST 2301	U.S. History to 1865	Mon. Clovis	Green
POLS 2301	Federal & State Government	Tues. CAFB	Segars
GRAD 4101	Senior Seminar	Fri. Clovis	Bell

Human Services

CRJ/SOC 3300	Criminal Law	Mon. CAFB	Harris
PSYC 4304	Intro. to Psychotherapy	Tues. Clovis	Mitchell, J
SOCI 3304	Social Problems	Thurs. CAFB	Saylor

Religion

RLGN 1301	Old Testament History	Wed. CAFB	McCoy
RLGN 1302	New Testament History	Mon. Clovis	Vest
RLGN 4322	Life & Letters of Paul	Tues. Clovis	Mitchell, G

Internet

MISM 3311	Personal Computer Applications	Internet	Pineau, D
HLAD 4337	Health Care Law	Internet	Canady

Fall 2001 Schedule Cannon AFB/Clovis Campus

110 E. Sextant, Ste. 2090, CAFB
Cannon AFB Phone: 784-9750

121 E. 4th, Clovis
Clovis Phone: 763-0535

Email: greenc@mail.wbu.edu

www.wbu.edu/clovis

Dr. Carol Green, Dean

Wayland is a fully accredited, equal opportunity institution.

GRADUATE CLASSES

DIVISION OF EDUCATION

EDUC 5332	School Law	Wed. Clovis	Nuttall
EDUC 5303	Multicultural Education	Fri. CAFB	Johnson

DIVISION OF BUSINESS

MGMT 5309	Human Resource Mgmt	Tues. Clovis	Franklin
MGMT 5305	Organizational Theory	Internet	Hall
MISM 5306	Mgmt Info Systems	Internet	Pineau
BUAD 5304	Business Ethics	Internet	Tillman
BUAD 5312	Strategic Mgmt (Capstone)	Internet	Hall

Tuition and Fees

Undergraduate Tuition:	\$130/hr (\$390 per class - \$97.50 after TA)
Graduate Tuition:	\$155/hr (\$465 per class - \$116.25 after TA)
Admission Application Fee:	\$35 (non-refundable) Drop Fee: \$10/class

Calendar of Semester Events

July 23

Registration begins for Graduating Seniors & Bootstrap Students

July 24

Registration begins for all students

August 15

Last day of regular registration & 1st registration payment deadline

August 20

Classes begin: First day of the official semester

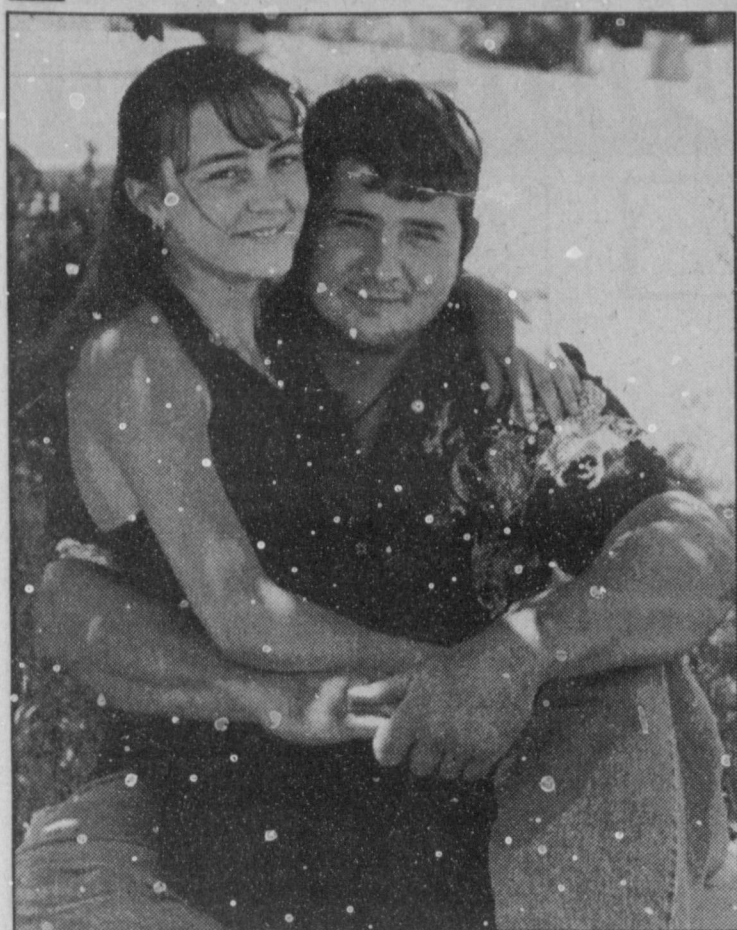
August 20-24

Late registration: late registration fees will apply

November 3

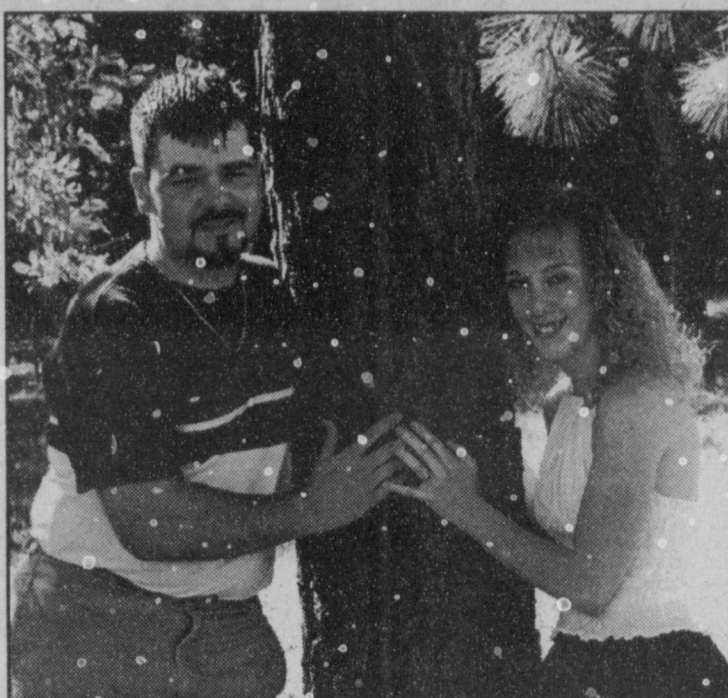
Last day of the official semester

ENGAGEMENTS



LEWIS-KINNIE

Lieford and Doris Lewis of Muleshoe announce the approaching marriage of their daughter, Elizabeth Jean, to Zachary Aaron Kinnie, son of Larry Kinnie of Sudan and Kathryn Moore of Red River, N.M. The bride-elect, a senior at Muleshoe High School, is employed at Fry and Cox. The prospective groom is a graduate of Sudan High School and is employed at Sain Irrigation. The wedding is scheduled for 6:30 p.m. on Aug. 3 at Lake Meredith. A reception will follow at Sanford-Fritch. The couple will live in Sudan after a honeymoon.



BOLIN-WHALIN

Cassie Bolin of Stonewall, Okla., and Chris Whalin of Silo, Okla., announce their approaching marriage. The bride-elect is the daughter of Jake Greenwood and Rita Johnson of Stonewall and is a 2001 graduate of Valliant High School in Stonewall. The prospective groom is the son of Herbert Whalin of Silo and the late Billie Jean Whalin, formerly of Muleshoe. He is a 2000 graduate of Silo High School and is employed at Hitchcock Distributors. The wedding is scheduled for 6 p.m. August 4 at Silo Baptist Church.

Internet mental-health help offered through Lubbock site

LUBBOCK — Lubbock Regional Mental Health Center is providing free public access to the Internet for people interested in health-related information on the World Wide Web. Public interest access is available at three of the center's locations — 1950 Aspen, 3804 Interstate 27 and 1602 Tenth St. Access is available on a first-come, first-served basis and time is allotted in 30-minute increments. Helpful links will be available that have useful information about general health as well as mental health, mental retardation and chemical dependency. The center provides free Internet access through a grant from the Telecommunications Infrastructure Fund Board. More information is available by calling Victoria Rivera at (806) 767-1747.



Black is Back!
Tax Free Holiday
Friday & Saturday
August 3 & 4
Plus, 15% Off Storewide
July 30 thru Aug. 4!
Including all sale items!

Here's what you'll save on this Holloway Windsuit:
Reg. price \$75.00
15% Disc. — \$11.25
Tax + \$0.00
(Aug. 3 & 4 only save \$5.25 in taxes)
Total \$63.75

Williams Athletics
1405 W. American Blvd. • 272-6853

Subscribe!

OBITUARIES

J.R. KING

Services were held Saturday at Trinity Baptist Church for J.R. King, 76, of Muleshoe. The Rev. George Malis officiated. Burial was in Muleshoe Memorial Park.

Ellis Funeral Home handled arrangements.

Mr. King was born Nov. 8, 1924, in Pampa. He died Thursday in Covenant Medical Center at Lubbock.

He married Emma Louise Gilliland on Dec. 20, 1946, in Muleshoe. She died Nov. 26, 1997.

He was a machine operator for Bailey County Electric Cooperative and a member of Trinity Baptist Church.

Mr. King is survived by four sons and daughters-in-law, James and Barbra King of Idalou, Kenneth and Toni King of Muleshoe, Gary and Joana King of Springfield, Mo., and Rick and Judy King of Plainview; a brother, Doyle King of Muleshoe; and four grandchildren, James King, Adrian King, Dalton King and Harrison King.

He also was preceded in death by two brothers, James King and Lloyd King.

MILDRED THURMAN JARA

Graveside services were held July 12 at Hillcrest Memorial Park in Dallas for Mildred Thurman Jara, 80, of the Dallas area.

Sparkman Hillcrest Fu-

neral Home of Dallas handled arrangements.

Mrs. Jara was born Nov. 12, 1920, in Burkburnett, Texas. She died July 9 in Dallas.

She graduated from Muleshoe High School in 1938 and lived in Muleshoe for many years before moving to Dallas. She married L.D. Chitwood in 1939 and later married Refugio Jara, who preceded her in death.

She enjoyed traveling with her late husband and cooking for family holiday gatherings.

Mrs. Jara is survived by three daughters, Jackie

Schimpf of Colorado Springs, Esther Azooona of Irving, Texas, and Mary Ann Jara of San Diego, Calif.; three sons, Jay Rufus Jara of Dallas, Gilbert Jara of Lenexa, Kan., and Ted Jara of Garland, Texas; five sisters, Pansey Welch of Shallowater, Betty Crew of Salt Lake City, and Bobbie Wilson, Linda McIntire and June Little, all of Lubbock; 15 grandchildren; and 13 great-grandchildren.

The family suggests memorials to VITAS Innovative Hospice Care (8585 Stemmons Freeway, Suite 700; Dallas 752247).

HOSPITAL NEWS

Muleshoe Area Medical Center reports the following patient load:

July 19 — John Ellis, Gezenia V. Herrera, Clara L. Jones, Clydetta Mitchell and James A. Robertson.

July 20 — Gezenia V. Herrera, Clara L. Jones, Jennifer Montiel, James A. Robertson, Anita Toscano

and Letisha Toscano.

July 21 — None reported.
July 22 — None reported.

July 23 — Craig D. James, Clara L. Jones, J. King, Maria D. Olivas and Juan Roldán.

July 24 — Clara L. Jones, Sandy Peterson and Jerald R. Stringer.

TOPS NEWS

TOPS No. 34 met July 26 at the Muleshoe Church of Christ, the club's regular meeting site.

Leader Laverne James presided, and led the prayer and pledge.

Both the opening and closing songs were led by Linda White.

A contest, "Gone Fishing," was introduced by Jewel Peeler, who explained that there were two sides, the gainer side and the loser side.

Each week, if the members on the gainer side haven't lost weight, then they have to stay on that side. When they lose weight, they are promoted to the loser side.

If those on the loser side gain weight, they are transferred to the gainer side.

Eleven TOPS No. 34 members were present for the roll call and weigh-in. The results were given by Linda White and Evelene Harris, weight recorders.

Harris was the best loser, Molly Davis was the first runner-up, and Elaine Coburn was the second runner-up.

A bouquet was presented to Peeler as the current sweetheart of the week on Channel 6.

The next meeting is scheduled for 5:30 p.m. Aug. 2 at the same site. Visitors are welcome.

Club news is printed free of charge!

Friena Rural Health Clinic
Announces the Arrival of
DR. JEFF DICKSON
Friena High School Graduate — 1987
Joining the practice of
Dr. Robert S. Alexander, Dr. Felipe L. Jubay, Jr., and
Cathy Hamman, A.N.P. (Advance Nurse Practitioner)
August 1, 2001
Appointment Hours
Monday-Friday: 9:00 a.m.-noon, 2:00 p.m.-5:00 p.m.
Saturday: 9:00 a.m.-noon
1-800-625-4981
1307 Cleveland Ave., Friena, TX (806) 247-2781
New Facility 250-2781 Opening (pending)

TINO'S
Mexican Restaurant
is making some **BIG** changes and will
Re-open Wed., August 1!
Tino & Linda proudly announce the arrival of...
Rusticam
Mexican Rustic Furniture
& Linda's Gift Store
Come see the "furniture that's elegant & comfortable!"

Also, visit our furniture booth at Antiques & Fine Things
Also Announcing New Hours:
Furniture & Gift Store M-F, 10 am - 8:30 pm
Restaurant..... M-F 11 am - 2 pm, 5 pm - 8:30 pm
Buffet..... M-F, 11 am to 2 pm
(Closed Saturday and Sunday)
104 W. American Blvd. • Muleshoe • 272-7528

BAILEY COUNTY DEVOTIONAL PAGE

THE TRINITY COMPANY

MULESHOE, TEXAS

McCormick Seeds, Inc.

400 East Ash • Muleshoe
272-3156
Tim McCormick Roland McCormick

Muleshoe Feed Barn

311 W. American Blvd. HI-PRO
Muleshoe, TX
272-5626

United Supermarkets

Antiques & Fine Things

of Muleshoe
2104 W. American Blvd. • 272-4217

"THE FIVE AREA TELEPHONE COOPERATIVE, INC."

West Plains Telecommunications, Inc.
Five Area Systems, Inc., Plateau Wireless
Five Area Long Distance - Five Area Internet
302 Uvalde Muleshoe, USA (806) 272-5533

Leo's Blacksmith & Machine Shop

"Family Owned Since 1966"
• WELDING - SHOP OR FIELD • REBUSH TRACTOR FRONT ENDS
• ALL TYPES OF STEEL • BOLTS • AGRICULTURAL BEARINGS
• FABRICATING PARTS & EQUIPMENT
310 W. American Blvd. • 272-4418 • Muleshoe

minsa corporation

P.O. Box 484 272-5545
Muleshoe, TX
FAX (806) 272-5135 (800) 852-8291

igginbotham- Best
artlett co. Manager Bruce Hartline
Since 1916 215 Main Muleshoe
272-3351 FAX 272-6860

Little Real Estate & Appraisal Services

Walter B. "Jack" Little
272-4805
MOBILE: 946-7965 Muleshoe FAX: 272-3729

MARTINEZ CAR WASH AND DETAIL SERVICE

502 S. 1st "Serving Muleshoe since 1980" M-F 8-6
Muleshoe 272-3251 Sat. 8-Noon

Henry Insurance Agency

"Serving You Since 1964"
111 West Avenue B 272-4581
Muleshoe, TX

BAILEY COUNTY ELECTRIC COOPERATIVE ASSN.

Muleshoe — 272-4504 Morton — 266-8600

IRRIGATION PUMPS & POWER ZIMMATIC CENTER-PIVOTS

W. Hwy. 84 272-4483

GOOD YEAR JAMES CRANE TIRE CO., INC.

Mike Hahn 107 Main 272-4594
Muleshoe, TX

SAIN IRRIGATION & MACHINES

Complete Pump Service
W. American Blvd. 272-4397
Walt Sain Muleshoe, TX 272-4148

MULESHOE MOTOR CO.

1225 W. American Blvd. 272-4251

FARMERS CO-OP ASS'N

of ENOCHS
"Your Farmers Owned Gin"
Chemicals • Seed • Fuel & Oil • Fertilizer
806-927-5511 Wade Baker, Mgr.

TEXAS FARM BUREAU INSURANCE CO.

1612 W. American Blvd. • 272-4567 • Muleshoe

MULESHOE ANIMAL CLINIC

GENERAL PRACTICE
MULESHOE VET SUPPLY
1430 US Hwy. 84 • Muleshoe Office: 272-4990

Facts About The BIBLE BY JOHN LEHTI

THIS IS A DRAMATIZED VERSION OF FACTS TAKEN FROM THE BOOK OF AMOS, CHRONOLOGICALLY AND AUTHENTICALLY CONSOLIDATED!

...BUT IN THE RUGGED HILL COUNTRY OF TEKOA, TO THE SOUTH, A HUMBLE SHEEPHERDER, NAMED AMOS...

AMOS • THE SHEPHERD TURNED PROPHET

BOTH KING UZZIAH OF JUDAH AND KING JEROBOAM OF ISRAEL HAD LED THEIR PEOPLE AWAY FROM RIGHTEOUS LIVING, DRAGGING THEM INTO A SINFUL LIFE....



...WHO, EVEN NOW, GUARDS HIS HERD, IS ABOUT TO BECOME A SPOKESMAN FOR THE LORD!



BUT THE ISRAELITES SEEM TO HAVE NO CARE FOR KEEPING THE WAYS OF THE LORD! THEY HAVE FOLLOWED THEIR KINGS WITHOUT THOUGHT OF THE FUTURE, THINKING ONLY OF KIDIOUS LIVING AND THE PLEASURES OF SIN, SO EASILY BOUGHT WITH THEIR WEALTH!

THEY HAVE NEVER HEARD OF AMOS, FAR TO THE SOUTH, WHO IS PREPARING A MODEST MEAL, WHILE HIS HERD SLEEPS, AND THE GENTLE EVENING BREEZES SEEM TO SPEAK TO HIM....



Next Week THE MESSAGE!

SAVE THIS FOR YOUR SUNDAY SCHOOL SCRAPBOOK

This devotional & directory is made possible by these businesses who encourage all of us to attend worship services.

- ASSEMBLY OF GOD**
FIRST ASSEMBLY OF GOD
521 South First Street • 272-3017
Jack Stone, Min. • 272-3984
S.S. 9:45 am, W.S. 11 am & 6:30 pm,
Wed. 7:30 pm
EL BUEN PASTOR
415 E. Ave. F • Pastor Felix Cadena
S.S. 9:45 am, W.S. 11 am & 6 pm; Wed. 7 pm

- BAPTIST**
CALVARY BAPTIST
1733 W. Ave. C. Rev. Jeff Coffman
CIRCLE BACK BAPTIST
Intersection FM 3397 & FM 298
Circle Back • 946-3676
FIRST BAPTIST
220 West Ave. E., Dr. Stacy Conner
FIRST BAPTIST
Lazbuddie • 965-2126
PRIMERA IGLESIA BAUTISTA
223 E. Ave. E., Rev. Greg Guzman
PRIMITIVE BAPTIST
621 South First,
Elder Cleveland Bass, Min.
PROGRESS BAPTIST
Progress, TX
PROGRESS SECOND BAPTIST
Arthur Hays, Min.
1st & 3rd Sundays
RICHLAND HILLS BAPTIST
17th & West Ave. D, Randy Tucker, Pastor
ST. MATTHEWS BAPTIST
Corner of W. Boston & W. Birch
Floyd R. Monroe, Min.
THREE WAY BAPTIST
927-5467
TRINITY BAPTIST
314 E. Ave. B, Robert Brown, Min.

- CATHOLIC**
IMMACULATE CONCEPTION
CATHOLIC CHURCH
805 E. Hickory, Joseph Augustine, Min.

- CHARISMATIC EPISCOPAL**
ST. CLEMENTS
1536 W. American Blvd. • 272-5954
Father Sergio Leal
Sun. W.S. 10:30 am

- CHRISTIAN**
TRINITY CHRISTIAN CENTER
1723 W. American Blvd. • 272-3877
Reydon Stanford, Min.

- CHURCH OF CHRIST**
LARIAT CHURCH OF CHRIST
Sam Billingsley, Min.
S.S. 10 a.m.; W.S. 11 a.m. &
6 p.m., Wed. 7 p.m.
LAZBUDDIE CHURCH OF CHRIST
Nathan Crawford, Min.
S.S. 9:30 am; W.S. 10:20 am & 5 pm;
Wed. 7 pm
MULESHOE CHURCH OF CHRIST
22nd & W. American Blvd.
Harry Riggs, Min.
S.S. 9:30 am; W.S. 10:20 am
& 6 pm; Wed. 7:30 pm
16th & AVE. D CHURCH OF CHRIST
Curtis Shelburne, Min. • 272-4619
S.S. 9:30 am; W.S. 10:30 am;
Growth Gr. 1:30 pm; Wed. 7:00 pm

- LUTHERAN**
ST. JOHN LUTHERAN
Lariat, TX-David Symm, Min.
S.S. 10:30 am; W.S. 9:30 am

- METHODIST**
FIRST UNITED METHODIST
HISPANIC MINISTRIES
E. 5th and E. Ave. D
Pastor Benito Cavazos
FIRST UNITED METHODIST
507 W. 2nd St.
Pastor Brad Reeves
LAZBUDDIE METHODIST
965-2121
EL DIVINO SALVADOR U.M.C.
619 E. 5th Street & Ave. G, Muleshoe
Raul Martinez, Pastor

- NAZARENE**
NEW VISION CHURCH OF THE NAZARENE
814 W. Ave. C • 272-3622
William Perhealth, Pastor-S.S. 10 &
11 am; W.S. 7 pm

- PENTECOSTAL**
UNITED PENTECOSTAL LIGHTHOUSE
207 East Ave. G • 1-800-454-6051
S.S. 10 am; Thursday, Bible Study 7 pm

- INTER DENOMINATIONAL**
NEW COVENANT
Plainview Hwy.
Steve Claybrook, Pastor
W.S. 10 am; Wed. 7 pm

Jarman Seed PIONEER.

801 W. American Blvd. Muleshoe, TX • 272-5985

MULESHOE PEA & BEAN, INC.

RR 2 Box 297 272-5589
Muleshoe, TX

MULESHOE VALLEY INC.

West Hwy 84 272-4266
Muleshoe

STEVE STANCEL - OWNER

FIRST AG CREDIT MULESHOE

"Serving Farmer & Bailey Counties"
272-3010 • Fax 272-5388
316 Main • P.O. Box 424 • Muleshoe, TX

AGRO DISTRIBUTION

Hwy. 84 • 272-4203
Muleshoe, Texas Bruce Bruns - Mgr.

Decorators Floral & Gifts

616 South First 272-4340
Muleshoe, TX

Lowe's MARKETPLACE

401 W. American Blvd. • Muleshoe • 272-4585

1315 W. American Blvd. 272-3333 Muleshoe, TX McDonald's

WINKLES TRUCKS, INC.

Box 757 (806) 247-2724
Frona, TX

MULESHOE LIVESTOCK AUCTION

Muleshoe, TX • Sale Every Saturday
Clayton, C.L. & Thurman Myers • 272-4201

- Two locations to serve you -

1900 W. American Blvd. 272-5337
107 E. American Blvd. 272-3978
Town & Country Muleshoe, TX

1ST BANK MEMBER FDIC

202 South First 272-4515

PACO FEED YARD, LTD.

Commercial Cattle Feeders
P.O. Box 956 265-3281
Frona, TX
Feller Hughs-Mgr.

Boehning Dairy DRINK MORE MILK.

Brian Boehning Earth, Texas

MAPLE COOP GIN

927-5501
Maple, Texas

Muleshoe Country Club

AG AVIATION

2 1/2 miles North on HWY 214
272-3066 FAX 272-3534
P.O. Box 68 • Muleshoe, TX

CENTRAL COMPRESS & WAREHOUSE SUDAN, TEXAS

WEST CAMP GIN, INC.

Better Ginning & Courteous Service
James & Phyllis Shepard Rt. 2 Box 1000 • 925-6681
Muleshoe, TX

WES-TEX FEED YARDS, INC.

Custom Cattle Feeding
272-7555 Muleshoe, TX

LUBBOCK BUILDING PRODUCTS
2901 West American Blvd. Ph# 272-4501
Muleshoe, TX FAX# 806/272-3053

Leal's Tortilla Factory, Inc. 107 E. Ash
Muleshoe, TX 272-5772

New Tex Truck Parts & Service
107 E. 5th St. • Muleshoe
272-4106 or 800-918-9048
4200 Mabry Drive • Clovis, NM
(505) 762-7186 or (877) 762-9112

WESTERN DRUG & Something Special Gifts
1411 W. American Blvd. 272-3106 Muleshoe

Rangeland will continue to suffer from years of drought

SPECIAL TO THE JOURNAL COLLEGE STATION — Ranch managers are being advised by range scientists at Texas A&M University to evaluate pastures to determine the impact of drought conditions experienced the past five years.

Reduced forage production, as well as the loss of trees and shrubs, are just a few of the problems ranchers are experiencing statewide due to previous droughts.

"Most of these died last year, but some of them are still showing stress and dying this year," said Dr. Charles Taylor, director of the Academy for Ranch Management at the Sonora Research Station.

Portales fair begins Aug. 8

PORTALES — The Roosevelt County Fair is scheduled for Aug. 8-11 with daily activities and nightly musical performances.

The carnival opens Wednesday night, after the junior livestock show begins with the dairy show at 2 p.m. (Mountain time) that day.

the show includes market swine, market steers, market goats, market lambs and a horse show.

Other scheduled events include a greased-pig chase, poultry and rabbit shows, the fiddlers' contest, fashion shows, barrel racing, a youth rodeo and the ranch rodeo.

There also will be a chili cookoff at 7 p.m. Saturday.

The cumulative effects of drought also have resulted in the death of many grass plants, Taylor noted, primarily those that grow during the summer months.

While much of the state has had adequate moisture in the late fall and winter, summer rainfall has been severely reduced.

"The rainfall pattern for much of Texas has favored the growth of cool-season forage more than the warm-season grasses that normally provide most of the forage for cattle," said Ray Hinnant, a senior rangeland research associate at Texas A&M. "This growth of cool-season

grasses and weeds have provided strong competition for the warm-season forage for soil nutrients, water and light during the spring.

"Several successive hot, dry summers have resulted in widespread death of warm-season grasses. Warm-season grasses provide most of the forage for cattle, while trees and shrubs provide much of the food for white-tailed deer."

Hinnant noted that the death of these plants not only reduces forage production this year, but production will be reduced when the pasture does receive adequate summer rains.

"Ranch managers need to evaluate the condition of their pastures and take appropriate actions to minimize future financial and environmental losses," Hinnant said.

Dr. Mort Kothmann, a rangeland ecology management specialist, noted that there is no quick fix for ranch managers who discover problems.

"Good grazing management will be required for several favorable growing

seasons for the forage to recover," Kothmann said.

"Excessive grazing will stress the remaining plants and retard recovery of the rangeland. Ranchers lacking knowledge of how to effectively manage their ranches to provide for plant rehabilitation may in fact make the problem worse," he added.

Ranchers wanting to develop a management program to restore depleted rangelands can take part in

basic rangeland management classes and advanced classes on rangeland ecology, grazing management and rangeland burning held throughout the year at the Texas A&M University Research Station in Sonora.

The next basic class is scheduled for Aug. 2-4. More information is available by calling Hinnant at (979) 845-5580 or go to rangeweb.tamu.edu/arm to register for one of the workshops.

TODAY'S RECIPE

FRENCH-FRIED ARTICHOKE

- 1 egg
- 1/2 cup milk
- 1/2 cup flour
- 1/2 cup buttermilk baking mix
- 1 tsp. salt
- 1 tsp. baking powder
- 1/2 tsp. garlic powder
- 1/4 cup minced onion
- 1 Tbsp. chopped parsley
- 12 to 15 baby artichokes, trimmed and halved
- Vegetable oil, for frying
- Salt

In a small bowl, beat egg and milk well. Then beat in flour, baking mix, salt, baking soda and garlic powder until well-blended.

Stir in onion and parsley.

Dip artichoke pieces in batter to thinly coat. (If batter is too thin, add

more flour.)

Heat oil to 350 degrees F; depth should be about 2 inches.

Fry artichokes, a few at a time, about six to eight minutes or until golden brown.

Remove from oil with slotted spoon and drain on paper towels. Sprinkle with salt.

Makes 6 to 8 servings.

Autumn Blessings Assisted Living

400 Sunset Boulevard in Logan, NM

Rural, peaceful atmosphere with great views.
Located near Ute Lake, NM.

Now accepting reservations.
Call (505) 461-7926
for more information.

GRAND OPENING

SUNDAY, AUG. 12
1-6 pm (MDT)

Ken and Dell Willis — Owners & Administrators



The Older I Get, the Wiser My Father Becomes

I am presently proving in my own life that the old adage about dads is true: The older I get, the wiser my father becomes.

Dad passed away over a year ago, and I have few, if any, regrets about what was said or left unsaid. Dad knew very well how much I loved and respected him.

But there are a few things I'd really like to tell him again. Once again, I'd like to say, thank you, Dad, for always giving exactly the wisdom and the love that I needed even when I was too young, inexperienced,

on so many medical and college and loan forms where it says simply, "Responsible Party." Did you ever feel that you might just crumble under the weight of one more form listing you as the "Responsible Party"?

You know what it's like to be the one charged with picking up the pieces when the car breaks, the dog bites, or the tuition's due.

You know all about paying to fix crooked teeth, saying a few words over the grave of a family pet, loving all your children but giving extra love at a particular moment to the child who particularly needs it most.

You were the strongest man I have ever known in all the ways that count, strong enough to be truly gentle.

You were the kindest man I have ever known, merciful even when those around you were being unfair and unmerciful.

You were big enough, wise enough, Christ-like enough to know . . .

when to laugh and when to cry (and to be unashamed of laughter or of tears),

when to direct and when to discipline,

when to speak and when to listen,

when to wait and see, and when to wrap up a child in a father's embrace.

I'd give a lot for your embrace right now, Dad. Just a hug from the man whose gracious life and whose unfailing love has given life to me, and to mine, and opened my heart to love.

So, Dad, I just wanted to say once more, thank you. And may the Father of us all give wings to this "thank you" and whisper in your ear once more my thanks for the gifts and the love you have given me, your son.

Curtis Shelburne is minister of the 16th & D Church of Christ in Muleshoe.

Focus On Faith

Curtis Shelburne

and immature to know how very young, inexperienced, and immature I really was. If I could, I'd say once again . . .

Thank you, Dad, for all the precious gifts you've given.

Thank you for loving my mother.

Thank you for loving God's people, Christ's church.

Thank you for loving God himself with all of your heart, soul, strength, and mind.

Thank you for the fact that your love of the Father colored beautifully every other love of your life.

Thank you, my earthly father, for your love which made it so easy to believe in the love of the Heavenly Father.

Yes, and I'm seeing, oh, so clearly, Dad, how that heavenly love translates into some very practical earthly obligations and duties.

I know now better than ever whose name goes on that blank

Factory-Authorized

2001

CLEARANCE KICKOFF

Brand new 2001 Ford CROWN VICTORIA

- 4.6L V-8 engine • Automatic overdrive transmission
- Power windows • Power locks • Remote keyless entry
- AM/FM stereo CD player • Anti-lock brake system
- 6-way power driver's seat • Much more!

\$1,170 CHUCK'S DISCOUNT
\$2,500 FACTORY REBATE
\$21,300 YOUR PRICE

\$7,605 FINANCE SAVINGS
\$8,775 TOTAL SAVINGS

Brand new 2001 Chrysler CONCORDE LX

- 2.7L 24 valve V-6 engine • 4-speed automatic transmission
- AM/FM premium stereo cassette/CD player with 8 speakers
- Power windows • Power door locks
- 50/50 cloth seat • Much more!

\$500 CHUCK'S DISCOUNT
\$1,500 FACTORY REBATE
\$21,890 YOUR PRICE

\$7,086 FINANCE SAVINGS
\$7,586 TOTAL SAVINGS

Brand new 2001 Dodge DURANGO

- 4.7L "Magnum" V-8 engine • Multi-speed automatic transmission
- Power windows • Power locks • High back bucket seats
- Third row seat • Rear air conditioning & heat
- AM/FM stereo cassette player • Much more!

\$1,014 CHUCK'S DISCOUNT
\$2,500 FACTORY REBATE
\$23,891 YOUR PRICE

\$7,719 FINANCE SAVINGS
\$8,733 TOTAL SAVINGS

Brand new 2001 Jeep EXPEDITION 4x4

- 5.4L V-8 engine • 4-speed automatic transmission • XLT package
- Power windows • Power locks • Illuminated running boards
- AM/FM stereo 6-disc CD changer • Trailer tow package
- Third row seat • Rear air conditioning & heat • Much more!

\$4,215 CHUCK'S DISCOUNT
\$2,000 FACTORY REBATE
\$32,130 YOUR PRICE

\$4,215 CHUCK'S DISCOUNT
\$10,714 FINANCE SAVINGS
\$14,929 TOTAL SAVINGS

THE BEST DEALS ARE RIGHT NOW - HURRY IN!

Need a truck?
CALL CHUCK!

Chuck DAGGETT

(505) 356-8581 1115 N Chicago Portales, NM

On the first curve from Clovis in Portales



All vehicles subject to prior sale. CAC, T&L. Rebates assigned to dealer. Special finance rates in lieu of rebates. *Finance savings compared to normal 9.99% APR for 72 months. †MSRP \$24,973. ‡MSRP \$23,890. §MSRP \$27,405. ¶MSRP \$38,345.

LADIES ASSOCIATION

The Muleshoe Country Club Ladies' Association met July 18 for its monthly luncheon and business meeting. President Anita Allgood presided. Pat Kirk called the roll and read the minutes from the June meeting. Linda Elder gave the treasurer's report.

Two guests - Marlene Martin and Heather Engelking, daughter of Sheryl Engelking, were welcomed.

Birthday wishes for July went out to Kirk, Darlene Henry and Marlene Martin.

Elder reported that four members went to Hi Plains Playday in Hereford this month. The next playday is scheduled for Aug. 8 in Tulia. Ronda Box gave out Playday awards to Allgood, Elder, Helen Templeton, Sheryl Engelking and Elinor Yerby.

Sheryl Engelking won the annual Memorial Tourna-



Courtesy photo

Honored July 18 at the Muleshoe Country Club were Sheryl Engelking (left), who won the annual Memorial Tournament with a net score of 64, and Jeanetta Precure, who had the low gross score at 85.

ment with a 64 low net score. Jeanetta Precure was honored for having the best low gross score of 85, and Laverne Winn won the door prize.

Those attending were

Yerby, Kirk, Precure, Elder, Allgood, Box, Winn, Sheryl Engelking, Judy Wilbanks, Neats Foster, Claudine Elliott, Analita Haley, Jeri Flowers and Deborah Noble.

HONORS

TECH HONORS

Twelve Muleshoe-area students were among more than 3,900 Texas Tech students qualified for academic honor lists for the spring semester.

Named to the president's list for earning a 4.0 grade-point average while enrolled in 12 or more hours was Alyssa Blair Saylor of Muleshoe, a junior majoring in family studies, and Marvin R. Kerr of Lazbuddie, a sophomore majoring in exercise and sports sciences.

The other 11 area students were named to the dean's

list, which means they earned grade-point averages of 3.5 to 3.9 while enrolled in at least 12 semester hours.



Bhakta

They are (from Muleshoe) Todd Allen Shipman, a senior majoring in multidisciplinary studies; Tera Nyssa Stamper, a senior majoring in accounting; Cassidy Ann Cleavinger, Allyson Nicole Field, a senior majoring in human development; a jun-

ior majoring in biology; Aaron Garrett Purdy, a junior majoring in zoology; Sarah Elizabeth Dickson, a sophomore majoring in English; Rhett Kane Kerby, a freshman majoring in agronomy; Kamal Dinkar Bhakta, a freshman majoring in pre-pharmacy; and Landon Robert Black, a freshman majoring in architecture.

Also named to the dean's list was Desirae Dawn Brakebill of Lazbuddie, a freshman majoring in early childhood development.

Water level decreased nearly a foot last year

Bailey County groundwater levels decreased an average of .96 of a foot last year in 104 privately owned wells in the observation network maintained by High Plains Underground Water District No. 1.

That was about the same yearly average declined for the decade since 1991 - .91 of a foot, meaning the water table fell about 9 feet during the 1990s.

The annual decline for the five years from 1996 to now was .99 of a foot, indicating

that the groundwater depletion may be accelerating.

Even at that, the district reported that only two counties saw a decline of less than a foot last year.

The district-wide average loss was 1.14 feet last year - considerably more than the .68 of a foot recorded in 1999.

Maps showing the location and well number of observation wells in each county has been published in the district's free newsletter, "The Cross Section."

RESOLUTIONS DEADLINE

Any resolutions that need to be presented at the Annual Meeting must be received no later than the September 4th board meeting.

Please bring all resolutions by the Bailey County Farm Bureau office or mail them to P.O. Box 408, Muleshoe, Texas 79347. This is required to get all the resolutions on the agenda for the Annual Meeting in September.

Due to the changes in the bylaws in 1998 that were passed by the County Board, there will not be any resolutions taken from the floor at the meeting.

Muleshoe Area Healthcare Center



Park View

Now accepting admission applications

1100 West Avenue J
Muleshoe, Texas 79347

New 90-bed facility overlooking Muleshoe City Park

- ◆ 16-bed special care (Alzheimer's) unit
- ◆ Physician exam room
- ◆ Physical therapy room
- ◆ Sun rooms and gazebo overlooking the park
- ◆ Fireplace in lobby and day room

Contact Teresa, Terri or Ruth - 806-272-7578

END OF GAME NOTICE

Scratch this batch before they're gone.



On August 30th, 2001, three Texas Lottery instant games will close - Cactus Cash (#150), Seasons Greetings (#119), and Jack O' Lantern Cash (#177). You have until February 26th, 2002, to redeem any winning tickets for this game. You can win up to \$20,000 playing Cactus Cash, up to \$40,000 playing Seasons Greetings, and up to \$1,000 playing Jack O' Lantern Cash. You can claim prizes of up to \$600 or more at one of the 22 Texas Lottery claim centers or by mail. Questions? Call the Texas Lottery Customer Service Line at 1-800-37-LOTTO (1-800-375-6886).



More prizes. More winners. More fun!

NOTICE: A Scratch Off game may continue to be sold even when all the top prizes have been claimed. For current information on prizes remaining in a Scratch Off game, call 1-800-37-LOTTO. Overall odds of winning any prize in Cactus Cash are 1 in 4.52 including break-even prizes. Overall odds of winning any prize in Seasons Greetings are 1 in 3.32 including break-even prizes. Overall odds of winning any prize in Jack O' Lantern Cash are 1 in 4.56 including break-even prizes. Must be 18 years or older to purchase a ticket. © 2001 Texas Lottery.

Journal Classifieds

STOP & SHOP

Deadlines are 5 p.m. Monday and Thursday

Call 272-4536

July 29, 2001

FOR SALE

Harley Davidson 1999 Heritage Softtail 15K miles, garaged, excellent condition, Aztec orange, diamond plated silver, lots of extras including T-bag, some riding leathers and one helmet. Call 806-895-4626 leave message.

1997 Chevrolet Silverado Pickup with Snugtop Camper, Third Door, Captain's Chairs, Towing Package. Fully Loaded. Great Truck! Call - 806-227-2325 Days 806-933-4347 After 6

Restaurant For Sale

The restaurant, known as *Main Street Cruise*, located at 112 Main Street, Sudan, Texas is for sale. The restaurant has easy access to U.S. Highway 84 with ample parking available. The building and all fixtures together with a Hot Bar and Steam Table are included. All interested parties should contact Clay Carr or Greg Lance at: First United Bank - Sudan P.O. Box 60 Sudan, Texas 79371 (806)227-2411

CHILDREN'S CLOTHING

I have little boys cloths for sale, sizes 5 thru 8. Call for appointment: 272-7523 or 272-5153.

CAR FOR SALE

Red 1999 Oldsmobile Intrigue. Loaded, \$17,000 Call 272- 3349 after 5 p.m.

Two miniature registered donkeys (jacks). One gray, one red. One two-year old male coon hound to be given away to good home. Call 965-2474, leave message.

1995 Kenworth T600 3406E CAT, 10 speed, Jakes, stand - up sleeper, virgin rubber, 60 % drivers, 80 % steering. Sold with Wilson hopper bottom, roll tarp, 80 % on brakes, new equalizers. Call 965 - 2474, leave message.

SCHWISS 4-WHEEL SPOT SPRAYER, 3-SEAT. LOCATED IN MULESHOE 806-788-1849

Have A Great Weekend and Smile!!!

HOME IMPROVEMENT

BOLDING BUILDERS

DESIGN & BUILD CUSTOM HOMES - COMMERCIAL LARRY BOLDING 806-773-0866 KIRK BOLDING 806-773-0867 WOLFFORTH, TEXAS

SUBSCRIPTION RATES

Carrier\$22/Yr Mailed in Bailey County \$24/ Year Mailed outside Bailey County \$26/Year College Student Rate...\$22/Yr Carrier: Bobby Flores call Weekends and Evening at 272-6719 or Weekdays at 272-4536 .

JOURNAL INFO... News You Can Use

1). For Classified Ads are located on the NEXT TO LAST PAGE OF THE NEWSPAPER.

These ads include (but are not limited to) For Sale, Legal Notices, Help Wanted, Garage or Estate Sales, Vehicles, For Rent, Real Estate, ETC...

2) Ad cost is based on number of words within the ad

or the Type of classified Ad.

Call Beatrice at 272-4536.

DEADLINES FOR CLASSIFIED ARE

Monday at 5 p.m for Thursday

and Thursday at 5 p.m. for Sundays paper.

Deadlines are 5 p.m. Monday and Thursday

Call 272-4536

July 29, 2001

LEGLS

Muleshoe Independent School District will accept sealed bids to purchase two (2) 65-passenger diesel powered school buses. The bids shall be in the Muleshoe School District's business office at 514 West Avenue G, Muleshoe, Texas no later than August 10, 2001 at 3:00 PM CDT. Bid envelopes must be marked in the lower left hand corner (School Bus Bid). Bids will be opened on August 13, 23001. Specifications may be obtained from Mr. Don Wood, Assistant Superintendent, at the school administration office, 514 West Avenue G, Muleshoe, Texas. Muleshoe Independent School District reserves the right to accept or reject any or all bids in the best interest of the Muleshoe Independent School District. Published in the Bailey County Journal July 22 and 29, 2001.

Muleshoe I.S.D. has a used school bus for sale. We will be accepting bids on a 1986 International Thomas bus, V8 diesel, automatic transmission, 59 passenger, serial #56525 has 135,224 miles. For more information contact Richard Hawkins at (806) 272-7329. Bids are due no later than 1:00 p.m., Thursday, August 9, 2001. Please send bids to Muleshoe I.S.D., 514 W. Ave. G, Muleshoe, TX 79347. Muleshoe ISD reserves the right to accept or reject any and/or all bids in the best interest of the District. Published in the Muleshoe and Bailey County Journal July 29 and August 2, 2001.

HELP WANTED

Now until Mid-October. Must be able to work weekends and long hours. Call 272-3066.

AGRICULTURE

GTM Custom Farming Tilling, Shredding, Planting, Drilling, Stripping and More! Reasonable Rates! Call Gene Rogers for more info. Home 806-272-5720 Mobile 946-7754

AUCTIONS

AUCTION

"THE ORIGINAL" 30th Annual SPECIAL HARVEST EQUIPMENT AUCTION AUGUST 7,8,9,10, & 11, 2001 Tuesday thru Friday Sale Time: 10:00 A.M. Saturday, August 11 Sale Time: 9:00 A.M. Located: Lubbock, Texas From Intersection of Interstate 27 & North Loop 289, North 5 miles on Interstate 27 (Take Exit 11 to west side Interstate 27 Service Road And FM Hwy 1294). Same Being 3 miles North of Lubbock International Airport on Interstate 27. * * * FIVE BIG DAYS * * *

CONSIGN NOW SO WE CAN HELP SELL YOUR EQUIPMENT!!! CALL NOW!!!

Cruce & Fletcher Auctioneers and Real Estate Brokers James G. Cruce (806) 296-9050 (806) 316-5050 Toll Free (806) 970-704 PO Box 609 - WOLFORTH, LUBBOCK COUNTY, TEXAS 79382

HELP WANTED

Newspaper carrier needed in Muleshoe for the Lubbock Avalanche Journal. Great P/T job, for someone willing to get up early. Looking for honest, dependable person with good Transportation. Call Customer Service at (806) 762 - 8855

The Muleshoe WIC Clinic in Muleshoe is accepting applications for a Nutrition Assistant to assess participants for eligibility to the WIC Program, and provide clerical assistance to the clinic supervisor, in accordance to WIC guidelines. Requirements; High School diploma or equivalent. Bilingual in English and Spanish preferred. Apply at 2807 W 7th, Plainview, TX 79072; Direct inquiries to WIC Director (806) 293-0182.

GREAT OPPORTUNITY! Now accepting applications for Cashier/Collector at Continental Credit in Muleshoe, TX. Retail, and Customer Service experience helpful, but not required. Starting Salary \$7.50/hr. with a raise to \$8.00 after 30 days. Benefits include: Health Insurance, paid holidays, vacation/sick time, and 401K. Apply in person, or send resume to CONTINENTAL CREDIT 206 Main Street Muleshoe, TX 79347

FOR RENT APARTMENT FOR RENT CALL 272-3711 OR 946-7668

FOR RENT APARTMENT FOR RENT CALL 272-3711 OR 946-7668

HEALTH REFLEXOLOGY Relief • Sinus • Back Problems • Diabetes • Many more health problems. Info. call 272-4119.

AUCTIONS

TWO AUCTIONS SAME DAY TWO DIFFERENT LOCATIONS REAL ESTATE AUCTION

HOUSEHOLD ITEMS Saturday August 4, 2001 - Sale Time: 10:00 a.m. 2nd Auction Approximately 12:00 Noon LOCATED: 822 WEST 7TH (7TH & G) - 1818 WEST AVE. D, MULESHOE, TEXAS MIKE CALDWELL AND BLANCHE LENDERSON - OWNER Preview of Homes: Sat., July 21 and Sat., July 28 from 2:00 till 4:00 P.M. And also Friday, Aug. 3 from 2:00 till 4:30 P.M. By Appointment only. Call Ronica 806-272-4658, leave message

Real Estate

FOR SALE Home at 519 W. 8th Excellent Condition 2 Bedroom, 1 Bath, with Large Closets, Central Heat & Air, Large 24 X30 Garage/Shop Call 272-3713

FOR SALE BY OWNERS

404 W. 20TH Richland Hill Area Excellent Location 3 bedroom, 2 bath, newly redone kitchen w/ dining area, large den w/cathedral ceiling, fireplace, utility, large double garage, heat pump heat & air system, covered patio w/cellar underneath, covered front porch, mechanical yard system, storage building, brick construction - (Chicago brick), Approximately 3200 Sq. Ft. This home is in excellent condition. Shown by Appointment Only. Phone: 965-2162 HM 262-2279 HM 946-8136 MB 272-4271 WK

Nice County Home

on 15 acres, 3 - 1 1/4 - 2 CG, 2 wells, barns, corrals, trees. Call to see. 806-272-3378

MOBILE HOME FOR SALE

96 Clayton Sonoma 16 x 60, 3-2, Central AC, Stove and Refrig. \$21,000 OROBO (806) 272 - 8942

AUCTIONS

FARM AUCTION MELROSE, NEW MEXICO

Saturday, August 4, 2001 - Time 9 a.m. LOCATION: FROM MELROSE, N.M. GO 14 MILES NORTH ON HWY 268, THEN 8 MILES EAST ON HWY. 288, THEN 8 MILES NORTH TO FARM SALE SITE. WATCH FOR SIGNS. LIMITED CONSIGNMENTS WELCOME - PLEASE CALL BEFORE CONSIGNING EQUIPMENT. OWNERS: DANNY & NINA STOCKTON - STOCKTON & STOCKTON INC. Phone (505) 458-6141

- 2-10,000 BUSHEL GRAIN BINS (TO BE MOVED) 1-8' X 6' FARM KING P.T.O. GRAIN AUGER 1-6' X 52 MAYRATH GRAIN AUGER W/16 HP GAS MOTOR 1-1997 MD CASE/II 8950 MFWO TRACTOR, CAB & AIR, STEREO, HTR, P.S. TRANS, WEIGHTS, L.A. 4 REMOTES, 18.4 R 42 REAR RUBBER W/VALS, 16.9 R 30 FRONT RUBBER, SN JX0007509 (326 HRS, LIKE NEW) 1-1992 MD JOHN DEERE 4560 MFWO TRACTOR, CAB & AIR, STEREO, HTR, P.S. TRANS., WEIGHTS, TRIPLE REMOTES, 18.4 R 42 REAR RUBBER, 14.9 R 30 FRONT RUBBER, W/LEE QUICK HITCH, 7300 HRS (CLEAN) SN 4659001423 SWATHER • BALERS • HAY EQUIPMENT 1-1997 MD N.H. 2550 SPEEDROWER - HAY BINE SWATHER, 2218 HEADER, CAB & AIR, DIESEL, CRIPPER, 1100 HRS LIKE NEW) 1-N.H. 575 W/REIT-HAY BALER SN864239 1-N.H. 855 AUTO WRAP ROUND BALE/RW MONITOR SN848127 1-HESSON 12 WHEEL HAY RAKE HYDRA FOLD WHEAT HAY • FEED TRUCK LIVESTOCK EQUIPMENT • STOCK TRAILERS 1-20' NECKOVER G.N. STOCK TRAILER, BOW TOP, BRUSH FENDERS, T/A 1-16' 1/4 TOP STOCK TRAILER, T/A 1-FILSON CATTLE WORKING CHUTE 1-FILSON ROUND BALE BUGGY 1-SHOW BOX W/SHOW EQUIPMENT 1-LIVESTOCK SUNBEAM CLIPPER 1-MICRO MIST SPRAYER ON TRAILER

- 1-12 VOLT GRAIN DRILL FILLER *JGER 2-MAYRATH GRAIN BIN AUGERS 1-PHARES & WILKINS GRAIN CART, P.T.O., 400 BUS-EL. FARM EQUIPMENT 1-BUSH HOG 2620 D.T. 6' ROW SHREDDER, HYDRA FOLD, CHAIN GUARDS, 1000 R.P.M. WAIRPLANE TIRE GAUGE WHEELS (LIKE NEW) 1-950 KRAUSE 32 TANDEM/OFFSET DISK, CENTER FOLD, SCRAPPERS, FLOATING G.W. (LIKE NEW) 1-GREAT PLAINS SOLID STAND 30' GRAIN DRILL, HYDRA FOLD, 10" SPACING, D.D.P.W. D.T., TRIPLE BOX, W/GRASS SEEDER ATT (CLEAN) 1-WATERLOO TOOL BOX 1-ROOT ROTO TILLER 1-LARGE PICKUP TOOL BOX (LIKE NEW) 1-B & S 26" LAWN MOWER 1-LOT OF SEMI TRUCK TIRES 1-LOT OF SEMI TRUCK EX. PIPE & COVERS 1-LOT OF SEMI TRUCK RIMS 1-4 TON PORTA POWER 1-LOT OF NEW 26" SWEEPS 1-LOT OF SPRING SHANKS 1-FOAM MARKER 1-LOT OF MISC. TOOLS

- 1-NEW SKY LIGHT 1-LOT OF METAL SHELVES 1-CERAMIC KILN 1-NEW QUICK HITCH 1-LOT OF TOOL BAR MAKE UPS 5-BUSINESS MAN G.E. 2-WAY RADIOS 1-BUSINESS MAN G.W. 2-WAY HAND HELD RADIO

- 50-BALES OF WHEAT HAY (ROUND BALES) 1-LOT OF SICKER RODS 1-LOT OF WIRE PANELS 1-ELECTRIC WIRE ROLLER 1-1980 MD. FORD FEED TRUCK W/B.J.M. FEED BOX, STAINLESS STEEL LINED VEHICLES • 4 WHEELERS • MOTORCYCLES 1-1985 MD. JEEP 5 SPD, 4 WD, STEREO, HARD TOP (CLEAN) 1-1953 MD. CHEV. PICKUP (NICE TRUCK TO RESTORE) 1-1995 MD. FORD 4 WD PICKUP, P & A AUTO (23,000 MILES, CLEAN) 1-POLARIS 250 TRAIL BOSS 4 WHEELER, E.S., REV 1-POLARIS 250 4 WHEELER, E.S., REV 1-YAMAHA ENDOUR 100 MOTORCYCLE 1-HONDA 3 WHEELER 1-1992 MD. FORD FANGER 2 W/PICKUP, AUTO, POWER & AIR GRAIN BINS (TO BE MOVED) GRAIN AUGERS • GRAIN CART

WHEN ONLY THE BEST WILL DO, CALL Bill Johnston Auctioneers WE ARE AGENTS AND AGENTS ONLY! MIKE ARCHIBEQUE - TX 11905 OFFICE (505) 356-5982 • HOME (505) 356-4052 • PORTALES, NM 88130 NOT RESPONSIBLE FOR ACCIDENTS. All Purchases must be paid for within one hour following conclusion of sale. Lunch will be available. Winch Truck available. All purchases must be paid on day of sale. While descriptions are believed correct, the Auctioneers or Owners make no warranties or guarantees as to genuineness, authenticity of, or defect in any and will not be held responsible for advertising discrepancies or inaccuracies. All sales are final, when awarded to the successful bidder. Buyer accepts full responsibility for all purchases made and holds the Auction Company and Owners free of any liability in the event of theft or disappearance of any items purchased. Announcements made by the auctioneer on the day of the sale take precedence over any printed matter pertaining to this auction. Despite our efforts to avoid withdrawal of sale items from the sale list after they are advertised, it may become necessary, therefore, the owner reserves the right to do so. ATTENTION: ALL EQUIPMENT MUST BE REMOVED FROM SALE SITE WITHIN 10 DAYS OR OWNERSHIP REVERTS TO AUCTIONEER FOR HIS DISPOSAL.

HOMES FOR SALE

I'M MAD...at banks who don't give real estate loans because of bad credit, problems or new employment. I do, call L.D. Kirk, Homeland Mortgages, (254) 947-4475.

ESTATE SALE

ESTATE OF MARGUERITE SELLERS 510 Gidding St. Clovis, NM Friday, July 27, 4-8 pm Saturday, July 28 and Sunday, July 29 9am - 6pm. Sale conducted by J. Patrick's - Brogan's Estate Sales.

FURNITURE

For Sale Solid wood diningroom suite. 4x6 foot table with two leaves, six chairs, \$250. Call 272-4634.

Have An Awesome Day!

Real Estate

For Sale - By Owner 2 bedroom, 1 bath, brick home east of Muleshoe on 0.7 acre. With 2 car garage, water well, large storage tank. Heat pump for air conditioning and heating. Fully carpeted. Other features. Call 806-481-3699.

For Sale By Owner

Richland Hills Area 3 bedrooms, 2 baths, living room, sunroom, 2 fireplaces, basement, carport, central heating & air, plus storage bldg. Approximately 3,000 sq.ft. By appointment only! Call 272-4943 or 272-4903

For Sale By Owner

County Club Addition 3 bedroom, 2 bath, brick home. Sprinkler system, fireplace, fully carpeted, 2 car brick carport, storage building, fountain, beautifully landscaped. 909 E Ivy. Call 272-4081 after 5 p.m.

You read this ad. Chances are your neighbors did, too. Sell it in the classified.

REAL ESTATE

House for sale in Muleshoe, Stucco, 3 bedroom, 1 bath. On one acre. Call 806-946-3360

310 Main Street, Suite 103

Muleshoe, Texas Office (806) 272-3100 Home (806) 965-2468

116 E. Ave. C • George Nieman, Broker • 272-5285 or 272-5286

- RICHLAND HILLS - PARK RIDGE AREA • NICE 3-3-1 Brick, Cent. heat, evapor. air, built-ins, fans, 2000' + lv. area, fenced yd., patio, stor. bldg.!! \$57.5K!! RH-1 • WE HAVE SEVERAL NICE LOTS, CALL FOR DETAILS!! HIGHLAND AREA • 3-2-2 Brick, Cent. Heat, built-ins, fans, fenced yd., large workshop/stor. bldg.!! \$52.5K!! HL-2 • NICE 3-1-1 Brick, Cent. heat & evapor. air, nice carpet, fans, 2 stor. bldgs., fenced yd., MORE!!! \$36.5K!! HL-1 • NICE 3-1-1+1 carport Home, Cent. Heat & Air, carpet & hardwood, 4 fans, fenced yd., MORE!! \$23.5K!! HL-4 LENAU - COUNTRY CLUB AREA • 2-1-1 Home, wall furn. heat, \$18K!! L-4 • 3-2 Brick, Cent. A&H, fenced yd., corner lot!! \$40K!! • 3-2-2 Brick, Cent. A&H, built-ins, fireplace, 2000' lv. area, cov. patio, fenced yd., \$85K!! • 3-2 Brick, corner lot, IN CONTRACT, shop/stor., 2 add. lots!! \$35K!! COMMERCIAL • An approx. 5.1 acre tract w/ approx. 144.5' frontage on Hwy. 84, approx. 1584' office, certified scales, 1320' shop, 4000' shop, & 2880' bldg., has railroad access, 2 mobile home hookups, MORE!! • Duplex (2-2 bdrm. 1 bath units) plus 1 (2 or 3 bdrm) for residence or rental. PRICE REDUCED \$25K!!! • GOOD INCOME PROPERTY - approx. 3490' bldg., paved parking, good net lease!! PRICED TO SELL!! • Established Business: Land, Bldg. & Equip., \$75K!! • 200 Main & E. Ave. B-4 rental units plus upstairs & basement or renovate for your own special use!! \$65K!! • VERY NICE 2300' bldg., Cent. A&H, 175' frontage on Hwy 84 & 70!! MUCH MORE!!
- 140' X 100' tract on Hwy. 84 & 70, 1760' bldg., 1500' storage, 2400' cov. area, paved parking!! \$49.5K!!! HIGH SCHOOL • VERY NICE 3-1-1 Brick, Heat pump, DW, nice carpets, fenced yd., MORE!!! \$30's!!! HS-1 • 3-2 Home, corner lot, fl. furn. heat, fenced yd. \$25K!! HS-10 • NICE 3-2 1/2 2-carport Home, Cent. A&H, built-ins, FP, 2650' + Lv. area, fans, storm windows & doors, new roof, cov. patio, concrete cellar, fenced yd. w/ add. 2 carport, large workshop, & stor. bldg. \$68K!! HS-7 RURAL • EXCELLENT DAIRY LOCATION-1120 ac., 7 circles, 20 wells, very nice 3-2-3 Home w/ basement, 40' x 60' barn w/ 30' x 40' shed, 3 mil. lb. grain facility, add. 3 bdrm. home, 2 mobile homes, on pavement convenient to Muleshoe, Clovis, Portales, & should have 5K head permit within 60 days!!! Could be split if needed!! • PLEASANT VALLEY, Approx. 160 acres, 2 bdrm home, 1 bath, 2 car detached garage, on pavement!! • W. of SUDAN-NICE 3-3-2 Brick Home, 5 acre tract on Hwy. 298, Cent. Air & Heat, built-ins, large Quonset Barn, MORE!!! \$95K!!! • PRICE REDUCED - 108 acres or 7 acre tract on Hwy. 70, approx. 2100' office area, 16,900' commercial bldg. w/ loading dock, 3,400' warehouse, new well, 2,800' runway!!! • EARTH - 4-2-2 carport home, Heat Pump, fans, storage-workshop!! \$35K • 3 Bedroom 2 Bath Home at edge of town on pavement, .8 acre, wall furnace heat, evapor. air, DW, FP, fenced yd., 20' x 24' gar./shop w/loft stor., 1 hp. dom. well!!! \$49,500!!! • 2-2-2 carport Mobile Home on 1.997 acres on pavement close to town, storage, 45' x 74' barn, pens, & fenced pasture!!!

Nieman Realty

116 E. Ave. C • George Nieman, Broker • 272-5285 or 272-5286 RICHLAND HILLS - PARK RIDGE AREA • NICE 3-3-1 Brick, Cent. heat, evapor. air, built-ins, fans, 2000' + lv. area, fenced yd., patio, stor. bldg.!! \$57.5K!! RH-1 • WE HAVE SEVERAL NICE LOTS, CALL FOR DETAILS!! HIGHLAND AREA • 3-2-2 Brick, Cent. Heat, built-ins, fans, fenced yd., large workshop/stor. bldg.!! \$52.5K!! HL-2 • NICE 3-1-1 Brick, Cent. heat & evapor. air, nice carpet, fans, 2 stor. bldgs., fenced yd., MORE!!! \$36.5K!! HL-1 • NICE 3-1-1+1 carport Home, Cent. Heat & Air, carpet & hardwood, 4 fans, fenced yd., MORE!! \$23.5K!! HL-4 LENAU - COUNTRY CLUB AREA • 2-1-1 Home, wall furn. heat, \$18K!! L-4 • 3-2 Brick, Cent. A&H, fenced yd., corner lot!! \$40K!! • 3-2-2 Brick, Cent. A&H, built-ins, fireplace, 2000' lv. area, cov. patio, fenced yd., \$85K!! • 3-2 Brick, corner lot, IN CONTRACT, shop/stor., 2 add. lots!! \$35K!! COMMERCIAL • An approx. 5.1 acre tract w/ approx. 144.5' frontage on Hwy. 84, approx. 1584' office, certified scales, 1320' shop, 4000' shop, & 2880' bldg., has railroad access, 2 mobile home hookups, MORE!! • Duplex (2-2 bdrm. 1 bath units) plus 1 (2 or 3 bdrm) for residence or rental. PRICE REDUCED \$25K!!! • GOOD INCOME PROPERTY - approx. 3490' bldg., paved parking, good net lease!! PRICED TO SELL!! • Established Business: Land, Bldg. & Equip., \$75K!! • 200 Main & E. Ave. B-4 rental units plus upstairs & basement or renovate for your own special use!! \$65K!! • VERY NICE 2300' bldg., Cent. A&H, 175' frontage on Hwy 84 & 70!! MUCH MORE!!



Lowe's Marketplace

401 W. American Blvd. Muleshoe, Texas 272-4585

WE RESERVE THE RIGHT TO LIMIT QUANTITIES IN TEXAS

WESTERN UNION MONEY TRANSFERSM
"The fastest way to send money"

AFFILIATED WITH FOODS INC. MEMBER STORE AT PARTICIPATING STORES



SPECIAL PRICING GOOD THRU AUGUST 7, 2001



5 LB. BAG
**CHICKEN LEG
QUARTERS**

(with 1 Reward Coupon)

1¢

ASSTD. VARIETIES
ECKRICH 16 OZ. PKG

**SMOKED
SAUSAGE**

(with 1 Reward Coupon)

1¢



ASSTD. VARIETIES 3 LITER

**COCA-COLA
SPRITE OR
DR. PEPPER**

1¢

(with 1 Reward Coupon)

ASSTD. VARIETIES
12 PACK CANS

**LOWE'S SOFT
DRINKS**

(with 1 Reward Coupon)



AISLE
of the week
Savings!

WEEKLY PRICES EFFECTIVE JULY 25-31, 2001

MEAT

X-TRA SAVINGS PAK REG. 73% LEAN GROUND BEEF	LB	97¢
X-TRA SAVINGS PAK BONELESS TOP SIRLOIN STEAKS	LB	\$2⁹⁹
X-TRA SAVINGS PAK ASSTD. PORK CHOPS	LB	\$1⁴⁹
X-TRA SAVINGS PAK CHICKEN THIGHS OR DRUMSTICKS	LB	69¢
X-TRA SAVINGS PAK FARM RAISED CATFISH NUGGETS	LB	\$1³⁹
OSCAR MAYER RED RIND MEAT BOLOGNA	16 OZ. PKG	3/⁴
BAR S REG., POLISH OR HOT CAJUN SMOKED SAUSAGE	12 OZ. PKG	\$1¹⁹

PRODUCE

SWEET JUICY PEACHES	LBS	2/¹
RED RIPE WATERMELONS	EACH	\$2⁹⁹
TROPICAL MANGOS		2/¹
FRESH GREEN CABBAGE	LBS	4/¹
FRESH GREEN, RED OR ROMAINE LEAF LETTUCE	MIX OR MATCH	2/¹

FROZEN & DAIRY

SHURFINE ASSTD. ICE CREAM	5 QT. PAIL	\$5⁹⁹
KRAFT INDIVIDUALLY WRAPPED SELECT VARIETIES CHEESE SINGLES	12 OZ. PKGS	2/⁵
TONY'S ORIGINAL (EXCLUDES RISING CRUST) ITALIAN PIZZA	12 INCH	2/⁴
6 PACK CANS OR 3 LITER BTLS. LOWE'S SOFT DRINKS	YOUR CHOICE	88¢
ASSTD. FLAVORS CAPRISUN OR TANG DRINKS	10 PK.-6.7 OZ.	2/⁴
LIPTON REG. OR COLD BREW FAMILY SIZE ICED TEA	24 CT.	3/⁵
ASSTD. 100 OZ. LIQUID OR 87 OZ. ULTRA POWDER ULTRA TIDE DETERGENT	YOUR CHOICE	\$5⁹⁹
PRINGLES ASSTD. POTATO CRISPS	5.13-6 OZ. CANS	4/⁵
KINGSFORD REG. OR MESQUITE MATCH LIGHT CHARCOAL	8 LB. BAG	\$3⁹⁹
ASSTD. 14.5-16 OZ. RITZ OR 8 OZ. RITS CRISPS NABISCO CRACKERS ...	YOUR CHOICE	2/⁵



**X-TRA SAVINGS
PRICING GOOD THRU
AUGUST 7, 2001**

Use Your Reward Coupons To \$ave Big! Our Prices Are LOWER!

Here's How It Works!

Lowe's is giving you deep discounts on many of the items you purchase everyday! For each dollar you spend at Lowe's, we will give you a point. After 50 points (or \$50), you will receive a Lowe's X-tra Savings Reward Coupon. This coupon can then be redeemed for deep discounts on selected items. Each month, Lowe's will select from our most popular items in the store and deeply discount them for our X-tra Savings Reward Coupon holders. Present your coupon and receive incredible savings on selected items.

X-tra Savings Reward Program

- Each Dollar You Spend Is Worth ONE (1) Point.
- After you earn 50 points, you will receive a Lowe's X-tra Savings Reward Coupon
- Use your Lowe's X-tra Savings Reward Coupon to get deep discounts on one of the selected items.
- Only ONE (1) item can be purchased with each Reward Coupon. • Items will be changed monthly.



GOLD MEDAL FLOUR	5 LB. BAG	1¢	LOWE'S GOURMET BBQ SAUCE	10 OZ. JAR	1¢
IMPERIAL PURE CANE SUGAR	4 LB. BAG	1¢	7 LB. BAG OF ICE	BAG	1¢
ASSTD. GRINDS FOLGERS COFFEE	11 OZ. CAN	1¢	BOUNTY PAPER TOWELS	BIG ROLL	1¢
AMERICAN BEAUTY SPAGHETTI	24 OZ. PKG	1¢	CHINET 10 INCH PAPER PLATES	15 CT.	1¢
BLUE BUNNY ASSTD. ICE CREAM	1/2 GAL. SQ	1¢	DASANI .5 LITER DRINKING WATER	6 PACK	1¢
SHURFINE LARGE EGGS	18 CT.	1¢	ASSTD. CAPRISUN DRINKS	10 CT. PACK	1¢
ALL VARIETIES LOWE'S OR SHURFINE MILK	GALLON	1¢	ASSTD. GATORADE DRINKS	64 OZ. BTLS	1¢
DOLE CLASSIC ICEBERG SALAD	16 OZ. BAG	1¢			
RED DELICIOUS APPLES	5 LB. BAG	1¢			

THE X-TRA SAVINGS REWARD PROGRAM GOOD AT LOWE'S MULESHOE, CANYON AND TUCUMCARI STORES ONLY! Points are not transferable between stores. No substitutions please on X-tra Savings Reward Items. Only one item may be purchased at the special deep discount per Reward Coupon.