
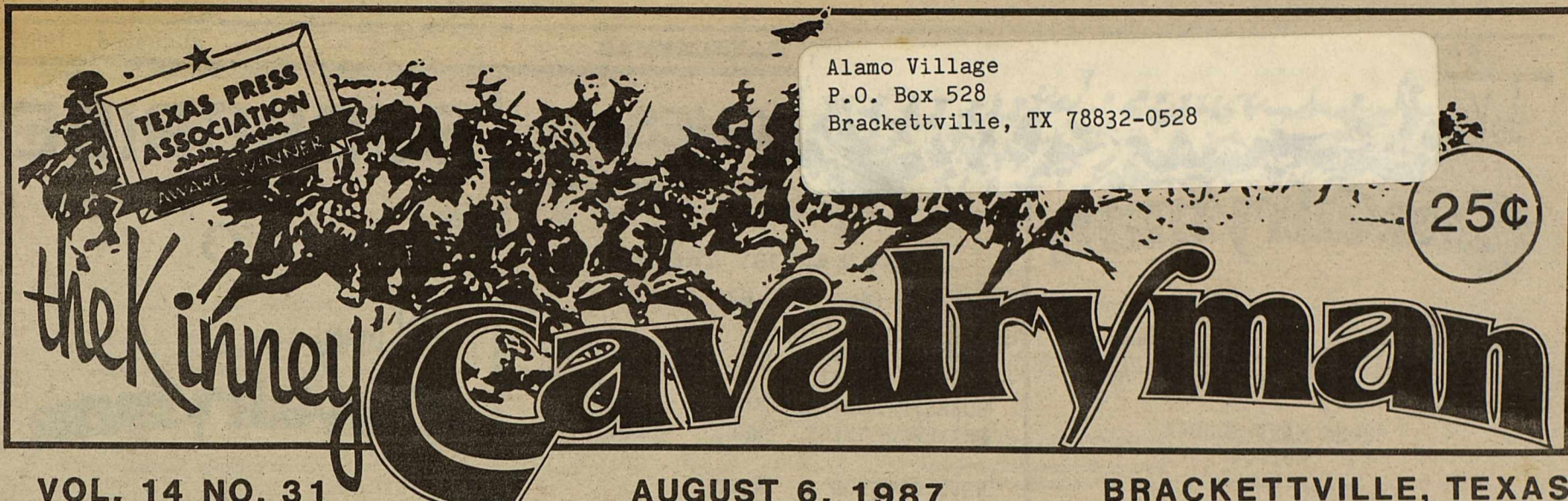


Alamo Village
 P.O. Box 528
 Brackettville, TX 78832-0528

25¢





the Kinney Cavalryman

VOL. 14 NO. 31 AUGUST 6, 1987 BRACKETTVILLE, TEXAS

LOCAL MOVIE STARS

POLICE CHIEF TERMINATED



Brackettville men who carried the flags of Santa Ana's army are from left Martin Sanchez, Silverio Resendez, Glen Morgan, Raul Morin, Frank and Manny Garcia.

LOCAL MEN TAKE PART IN GIANT SCREEN ALAMO MOVIE

Several Brackettville men will be seen marching across the six-story IMAX screen when "Alamo...The Price of Freedom" premieres on March 6, 1988 at the first Texas IMAX theater in Rivercenter Mall in downtown San Antonio. The local men were chosen to represent Santa Ana's esteemed color guard by carrying the Mexican national flags.

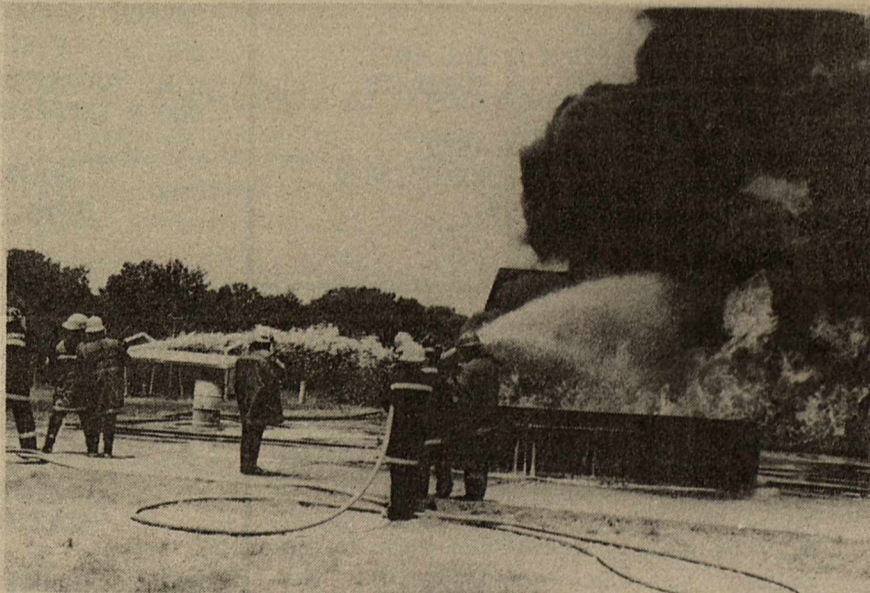
Like the other battle re-enactors from around the country at Happy Shahan's Alamo Village, the local men spent many long nights attacking and climbing the walls of the scale Alamo replica for the action-packed battle shots. Plans call for "The Price of Freedom" to finish filming at Alamo Village on August 15.

The Brackettville City Council convened in executive session at 7:00 p.m., Wednesday, August 4 at City Hall in order to review the performance of City Police Chief David Bohmfalk.

In the open meeting which followed, according to City Manager Charles J. Olsen, Councilman Stan Conoly made a motion asking for the resignation of Chief Bohmfalk. The motion was seconded by Councilman George Burks.

Following a refusal from Chief Bohmfalk to resign, Councilman Burks made a motion, which was seconded by Councilman Conoly, that impowered Mayor Mendeke to terminate the Chief.

Mayor Mendeke carried out the will of the City Council which stated that Bohmfalk had been terminated due to unsatisfactory performance.



FIREMEN'S TRAINING SCHOOL

(LOCAL FIRE FIGHTERS ATTEND 58TH ANNUAL FIREMENS TRAINING SCHOOL)

Five Brackettville Firemen were enrolled for the 58th Annual Firemens Training School which was held at the Brayton Training Field, located near College Station, Tx. The school is part of the Fire Protection Training Division of the Texas Engineering Extension Service from Texas A & M University.

CONT. ON PAGE 9

the Kinney Cavalryman

DENNIS SLUBAR
PUBLISHER

ROSE MARY SLUBAR
EDITOR

KITTY BUESTETON
TYPIST

PHOTOGRAPHERS
DUSTY SLUBAR
KARENE FISHER

COLUMNISTS
DORTHY PAYNE
MADGE HORN
KATHY BADER
RORY WOODSON

KENNETH MULLIGAN
SPORTS EDITOR

PRODUCTION
SARAH HOOVER
KARENE FISHER

ACCOUNT REPRESENTATIVES
JANIE SLUBAR
SARAH HOOVER

PUBLISHED EACH THURSDAY
USPS 100 - 610

DEADLINE FOR ALL COPY
5:00 P.M. ON TUESDAYS

P.O. BOX 1559
BRACKETTVILLE, TEXAS 78832
563-2991

SUBSCRIPTION RATES: PER YEAR
\$15.00 - OUT OF COUNTY
\$14.00 - IN COUNTY

" Any erroneous reflection upon the character of standing of any person or firm appearing in this paper will be gladly corrected upon being called to the attention of the Management and to the article in question".....

MEMBER
NNA
SINCE 1885
NATIONAL NEWSPAPER
ASSOCIATION

TA MEMBER
1987
TEXAS PRESS ASSOCIATION

CHURCHES

FIRST BAPTIST CHURCH (SOUTHERN BAPTIST)

SUNDAY SCHOOL 9:45 AM
WORSHIP SERVICE 11:00 AM
WORSHIP SERVICE (SUN) 7:00 PM
PRAYER SERVICE (WED) 7:00 PM

REV. PRESTON A. TAYLOR

FRONTIER BAPTIST CHURCH (SOUTHERN BAPTIST)

SUNDAY SCHOOL 10:30 AM
WORSHIP SERVICE 11:00 AM
PRAYER MEETING (SUN) 7:00 PM
PRAYER MEETING (WED) 7:00 PM

REV. JOE TOWNSEND

CHURCH OF CHRIST

SUNDAY SCHOOL 9:30 AM
WORSHIP SERVICE 10:30 AM
BIBLE STUDY (SUN) 6:30 PM
BIBLE STUDY (WED) 7:00 PM

FIRST UNITED METHODIST CHURCH

JAMES STREET 563-2823
REV. PHILIP A. BELL, PASTOR
"CATCH THE SPIRIT"
MORNING FELLOWSHIP 9:30 AM
CHURCH SCHOOL CLASSES 9:45 AM
SERVICE OF WORSHIP 11:00 AM
U.M. YOUTH FELLOWSHIP 6:00 PM
CHOIR REHEARSAL (THUR) 4:00 PM

SAINT ANDREW'S EPISCOPAL CHURCH

HENDERSON & FORT
SUNDAY-HOLY EUCHARIST 10:30 AM
VICAR: THE REVEREND WILLIAM D. KOONS
ASSISTANT TO THE VICAR: THE REVEREND RAYMOND TURNER

ST. MARY MAGDALENE CATHOLIC CHURCH

MASSES MONDAY & FRIDAY 7:00 AM
WEDNESDAY & SATURDAY 6:30 PM
SUNDAY 8:00 AM (SPANISH) & 10:30 AM
CONFESSIONS WEDNESDAY & SATURDAY 6:00 PM
RELIGIOUS CLASSES WEDNESDAY 7:00 PM
RELIGIOUS CLASSES SUNDAY 9:15 AM
PRAYER MEETING WEDNESDAY (SPANISH) 7:00 PM

FATHER DAVID G. ZUMAYA, PASTOR



SUBSCRIBE

TO

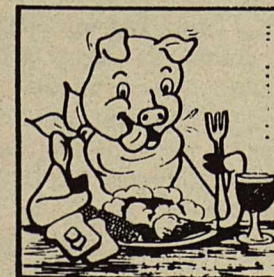
the Kinney Cavalryman



MAIL TO:

THE KINNEY CAVALRYMAN
P.O. BOX 1559
BRACKETTVILLE, TEXAS 78832

Please enter my one-year subscription to the Cavalryman. Enclosed is my check or money order: \$15.00 for Out-Of-County, \$14.00 for In-County.



Gluttony and drunkenness thwarts (frustrates) the body and soul. Proverbs 23:21

PUBLIC NOTICE

NOTICE OF 1987 EFFECTIVE TAX RATES

Notice of 1987 Effective Tax Rate for Kinney County

The purpose of this notice is to inform you about your taxes. The 1987 effective tax rate is a tax rate that would levy the same amount of operating taxes the county levied last year on property taxed in both years, plus the amount the unit needs to pay certain long term debts this year. The rate is calculated as follows:

	General Fund	Farm-to-Market/ Flood Control Fund	Special Road/Bridge Fund
1986 maintenance & operations tax levy:	\$ 390,748	\$ 47,036	\$ -0-
Less taxes levied to recoup 1985 appraisal roll errors and adjustments for lost value:	- \$ 5,825	\$ 672	\$ -0-
Equals adjusted 1986 maintenance & operations levy:	= \$ 384,923	\$ 46,364	\$ -0-
1987 total tax base:	\$ 78,795,327	\$ 77,802,979	\$ -0-
Less adjustments for value of new property:	- \$ 1,186,304	\$ 1,156,304	\$ -0-
Equals adjusted 1987 tax base:	= \$ 77,609,023	\$ 76,646,675	\$ -0-
The adjusted 1986 levy divided by the adjusted 1987 tax base and multiplied by 100 equals the effective maintenance & operations tax rate:	\$.49598 /\$100	\$.06049 /\$100	\$ -0- /\$100
Plus rate to correct for appraisal roll errors:	+ \$.01153 /\$100	\$.00154 /\$100	\$ -0- /\$100
Plus rate needed to pay debts and obligations:	+ \$.03173 /\$100	\$ -0- /\$100	\$ -0- /\$100
Equals 1987 effective tax rate for this tax:	= \$.53924 /\$100	\$.06203 /\$100	\$ -0- /\$100

1987 county effective tax rate: \$.60127 per \$100 of value

The maximum rate the governing body can adopt without publishing notices and holding a hearing is: \$.619308 per \$100 of value

The maximum rate the governing body can adopt before taxpayers can initiate rollback petitions is: \$.64937 per \$100 of value

This notice contains a summary of the calculations used to determine this year's effective tax rate. You can inspect the full calculations at Kinney County Appraisal Dist.

SCHEDULE A: Unencumbered Fund Balances

This taxing unit estimates that the following balances will be left in the unit's accounts at the end of the fiscal year. These balances are not encumbered by a corresponding debt obligation.

Type of Fund	Balance
None	None

SCHEDULE B: 1987 Debts Paid From Property Taxes

This taxing unit estimates that the unit will pay the following amounts out of property tax revenues for long-term debts that are secured by property taxes.

Description of Debt	Principal or Contract Payment to be Paid	Interest to be Paid	Other Amounts to be Paid	Total Payment
Impvmt. Bond	\$20,000	\$3,600	\$150	\$23,750
Total Amount Required for 1987 Debt Service				\$ 23,750
Less Amount That Will Be Paid From Funds Listed in Schedule A				- \$ -0-
Total To Be Paid from Property Taxes This Year				= \$ 23,750
Amount Added in Anticipation That the Unit Will Collect Only <u>95</u> % of its Taxes in 1987 +				\$ 1,250
Total Debt Tax Levy				= \$ 25,000

SCHEDULE C: Indigent Health Care Expenses (Counties with indigent health care expense only)

Total Required Expense to be Paid from 1987 Property Taxes	\$ 42,000
Less Amount Imposed Last Year in 1986 Property Taxes	- \$ 44,000
Less State Reimbursement Expected This Year	- \$ -0-
Net Increase for Required Services	= \$ -0-

Notice of 1987 Effective Tax Rate for BRACKETTVILLE, CITY OF

The purpose of this notice is to inform you about your taxes. The 1987 effective tax rate is a tax rate that would levy the same amount of operating taxes the taxing unit levied last year on property taxed in both years, plus the amount the unit needs to pay certain long term debts this year. The rate is calculated as follows:

1986 maintenance & operations tax levy:	\$ 91,927
Less taxes levied to recoup 1985 appraisal roll errors and adjustments for lost value:	- \$ -0-
Equals adjusted 1986 maintenance & operations levy:	= \$ 91,927
1987 total tax base:	\$ 15,173,772
Less adjustments for value of new property:	- \$ 74,567
Equals adjusted 1987 tax base:	= \$ 15,099,205
The adjusted 1986 levy divided by the adjusted 1987 tax base and multiplied by 100 equals the effective maintenance & operations tax rate:	\$.6088 /\$100
Plus rate to correct for appraisal roll errors:	+ \$ -0- /\$100
Plus rate needed to pay debts and obligations:	+ \$ -0- /\$100
Equals 1987 effective tax rate:	= \$.6088 /\$100

1987 effective tax rate: \$.6088 per \$100 of value

The maximum rate the governing body can adopt without publishing notices and holding a hearing is: \$.62706 per \$100 of value

The maximum rate the governing body can adopt before taxpayers can initiate rollback petitions is: \$.6575 per \$100 of value

This notice contains a summary of the calculations used to determine this year's effective tax rate. You can inspect the full calculations at Kinney County Appraisal Dist.

SCHEDULE A: Unencumbered Fund Balances

This taxing unit estimates that the following balances will be left in the unit's accounts at the end of the fiscal year. These balances are not encumbered by a corresponding debt obligation.

Type of Fund	Balance
None	None

SCHEDULE B: 1987 Debts Paid From Property Taxes

This taxing unit estimates that the unit will pay the following amounts out of property tax revenues for long-term debts that are secured by property taxes.

Description of Debt	Principal or Contract Payment to be Paid	Interest to be Paid	Other Amounts to be Paid	Total Payment
None	None	None	None	None
Total Amount Required for 1987 Debt Service				\$ -0-
Less Amount That Will Be Paid From Funds Listed in Schedule A				- \$ -0-
Total To Be Paid from Property Taxes This Year				= \$ -0-
Amount Added in Anticipation That the Unit Will Collect Only _____ % of its Taxes in 1987 +				\$ -0-
Total Debt Tax Levy				= \$ -0-

S.W.T.J.C. FRESHMAN ORIENTATION BEGINS AUGUST 10

Preparation for the fall 1987 semester at Southwest Texas Junior College will begin with the first of three freshman orientation sessions on Monday and Tuesday, August 10 and 11.

Subsequent sessions will be on August 13 and 14, and August 17 and 18 with regular registration beginning at the Eagle Pass Center on August 20 from 2 to 6 p.m.

Del Rio students will register on Monday, August 24, while Uvalde evening students will sign up for courses the next day at 6 p.m. in the Matthews Student Center on the Uvalde campus.

Day class registration on the Uvalde campus will be held on Wednesday and Thursday, August 26 and 27. Off-campus evening registration has been set for Carrizo Springs High School on the 27th; students who will attend classes in Devine and Leakey may register on Monday, August 31, at 6 p.m. at their local high schools.

All full-time first semester freshmen must complete an orientation session, according to SWTJC counselor Minda Kone. The program includes an introduction to SWTJC and college life in general, carries one-hour college credit as Education 111, and during the three early sessions, a chance to register for classes.

"These early orientation sessions

have become very popular since students can complete in two days what normally takes seven weeks during the regular semester," Kone said. "Now for the first time freshmen will be able to actually register for classes, too."

Prospective first semester freshmen who have not arranged to attend one of the sessions should contact the SWTJC Admissions Office as soon as possible.

During the two day course, students receive instruction on such topics as admission, housing, financial aid, test-taking, study skills, required and elective courses.

All other students must satisfy admission requirements and make arrangements for housing and financial aid independently, and should begin the process as soon as possible.

To be admitted to SWTJC, prospective students must submit a completed application for admission; a high school transcript, G.E.D. scores or a college transcript; and a health form completed by the student with an immunization record completed by a public health official.

All students must also take the ACT test before they complete 15 hours at SWTJC, but will be allowed to register with only the application completed and the

remainder of the requirements satisfied subsequently.

Dean of Students Ismael Sosa and Financial Aid Director Ismael Talavera urge all prospective fall 1987 students who need housing or financial aid to contact the Admissions Office.

A limited number of dorm rooms are still available and financial aid applications which take from two to six weeks to process should be submitted as soon as possible.

"For some types of aid it is already too late to complete the process before registration," Talavera said. "However, the application can be filled out now, and successful applicants will receive their assistance later in the semester."

In short, "as soon as possible" is the prevailing instruction given by college officials to fall 1987 students.

Admission and registration information is available on the Uvalde campus by calling 278-4401; in Del Rio 775-1612; in Eagle Pass 773-9238.



Every year, foreign visitors spend about \$14 billion in the U.S.

SUL ROSS ALLOWS INSTALLMENT PAYMENT OF TUITION

Students attending Sul Ross State University may take advantage of an installment payment plan for the payment of tuition and fees.

Under the installment payment plan, students may elect to pay for all tuition and fees in one of three ways. The first option is to continue as in the past and pay all fees and tuition at the time of registration. The second payment option allows the student to make two equal payments of the total charges, 50% at registration and 50% by October 14. A \$10 installment option fee is charged for the second payment. The third option allows the student to pay the total charge in four installments with 25% at registration and 25% of the total due on September 16, October 14, and November 11. A \$10 fee is charged for each of the three payments. Any student not making the required payment by the due date is also charged a \$15.00 late

fee. Students failing to remain current in the payment plan may be barred from classes until they have become current, and a student's registration may be cancelled for non-payment.

"We have had good success with the option plans since they began in 1985," stated Dean Frank W. Abbott. "Most of our students have paid on time, and we have not faced the problems of other universities in having large numbers of students defaulting on the payments. The state adopted this provision because of the recent tuition increases, and it does allow the student on a tight budget to attend college for as little as \$36.25 at registration and three payments of \$46.25 at one month intervals."

Students seeking more information on the optional payment plans should contact the center office and obtain a copy of the fees brochure for 1987-88.



**CARL'S
TRADING POST**
563-2003

706 NORTH ANN

OPEN

MONDAY THRU SATURDAY
7:30 A.M. - 6:30 P.M.

SPECIALS

ARMY PONCHO'S - \$14.95
MOSQUITO NETS - \$14.95
ARMY CAPS - \$6.95
ARMY 5 GAL. GAS & WATER CANS
\$11.95
200 GAL. SPRAYER FOR RENT

RENTALS ALSO

PUBLIC NOTICE

NOTICE OF 1987 EFFECTIVE TAX RATES

Notice of 1987 Effective Tax Rate for BRACKETT, TSD

The purpose of this notice is to inform you about your taxes. The 1987 effective tax rate is a tax rate that would levy the same amount of operating taxes the taxing unit levied last year on property taxed in both years, plus the amount the unit needs to pay certain long term debts this year. The rate is calculated as follows:

1986 maintenance & operations tax levy: \$ 558,357
 Less taxes levied to recoup 1985 appraisal roll errors and adjustments for lost value: - \$ 80,990
 Equals adjusted 1986 maintenance & operations levy: = \$ 531,647

1987 total tax base: \$ 74,867,699
 Less adjustments for value of new property: - \$ 1,186,304
 Equals adjusted 1987 tax base: = \$ 73,681,395

The adjusted 1986 levy divided by the adjusted 1987 tax base and multiplied by 100 equals the effective maintenance & operations tax rate: \$.721548 / \$100
 Plus rate to correct for appraisal roll errors: + \$.031800 / \$100
 Plus rate needed to pay debts and obligations: + \$.148606 / \$100
 Equals 1987 effective tax rate: = \$.901954 / \$100

1987 effective tax rate: \$.901954 per \$100 of value
 The maximum rate the governing body can adopt without publishing notices and holding a hearing is: \$.929012 per \$100 of value
 The maximum rate the governing body can adopt before taxpayers can initiate rollback petitions is: \$.974110 per \$100 of value

This notice contains a summary of the calculations used to determine this year's effective tax rate. You can inspect the full calculations at Kinney County Appraisal Dist.

SCHEDULE A: Unencumbered Fund Balances

This taxing unit estimates that the following balances will be left in the unit's accounts at the end of the fiscal year. These balances are not encumbered by a corresponding debt obligation.

Type of Fund	Balance
Gen. Oper	\$239,698

SCHEDULE B: 1987 Debts Paid From Property Taxes

This taxing unit estimates that the unit will pay the following amounts out of property tax revenues for long-term debts that are secured by property taxes.

Description of Debt	Principal or Contract Payment to be Paid	Interest to be Paid	Other Amounts to be Paid	Total Payment
Gen. Impr.	\$20,000	\$87,330	-0-	\$107,330
Total Amount Required for 1987 Debt Service				\$ 107,330
Less Amount That Will Be Paid From Funds Listed in Schedule A				- \$ -0-
Total To Be Paid from Property Taxes This Year =				\$ 107,330
Amount Added in Anticipation That the Unit Will Collect Only _____ % of its Taxes in 1987 +				\$ 5,649
Total Debt Tax Levy =				\$ 112,979

Notice of 1987 Effective Tax Rate for SPOFFORD, CITY OF

The purpose of this notice is to inform you about your taxes. The 1987 effective tax rate is a tax rate that would levy the same amount of operating taxes the taxing unit levied last year on property taxed in both years, plus the amount the unit needs to pay certain long term debts this year. The rate is calculated as follows:

1986 maintenance & operations tax levy: \$ 2,410
 Less taxes levied to recoup 1985 appraisal roll errors and adjustments for lost value: - \$ -0-
 Equals adjusted 1986 maintenance & operations levy: = \$ 2,410

1987 total tax base: \$ 911,231
 Less adjustments for value of new property: - \$ 11,884
 Equals adjusted 1987 tax base: = \$ 819,347

The adjusted 1986 levy divided by the adjusted 1987 tax base and multiplied by 100 equals the effective maintenance & operations tax rate: \$.2941 / \$100
 Plus rate to correct for appraisal roll errors: + \$.0207 / \$100
 Plus rate needed to pay debts and obligations: + \$ -0- / \$100
 Equals 1987 effective tax rate: = \$.3148 / \$100

1987 effective tax rate: \$.3148 per \$100 of value
 The maximum rate the governing body can adopt without publishing notices and holding a hearing is: \$.3242 per \$100 of value
 The maximum rate the governing body can adopt before taxpayers can initiate rollback petitions is: \$.3399 per \$100 of value

This notice contains a summary of the calculations used to determine this year's effective tax rate. You can inspect the full calculations at Kinney County Appraisal Dist.

SCHEDULE A: Unencumbered Fund Balances

This taxing unit estimates that the following balances will be left in the unit's accounts at the end of the fiscal year. These balances are not encumbered by a corresponding debt obligation.

Type of Fund	Balance
None	None

SCHEDULE B: 1987 Debts Paid From Property Taxes

This taxing unit estimates that the unit will pay the following amounts out of property tax revenues for long-term debts that are secured by property taxes.

Description of Debt	Principal or Contract Payment to be Paid	Interest to be Paid	Other Amounts to be Paid	Total Payment
None	None	None	None	None
Total Amount Required for 1987 Debt Service				\$ -0-
Less Amount That Will Be Paid From Funds Listed in Schedule A				- \$ -0-
Total To Be Paid from Property Taxes This Year =				\$ -0-
Amount Added in Anticipation That the Unit Will Collect Only _____ % of its Taxes in 1987 +				\$ -0-
Total Debt Tax Levy =				\$ -0-

FT. CLARK SHRINE CLUB NEWS

By: Bruce Clements

The Fort Clark Shrine Club held its monthly meeting on Tuesday, July 28th, in the members lounge of Las Moras Inn with 39 members and guests present.

Among the guests were four members of the Alzafar Temple Divan, Illustrious Potentate Terry McGuire and his lady Charlene, Chief Raban Jim Dockery, Assistant Raban George Labinski and his lady Verna, and Recorder Ken Rowe.

Special honored guests for this occasion were Nick and Genie Nixon, who were presented with a Certificate of Appreciation by the Potentate for their large contributions to the Houston Crippled Children Hospital and the Galveston Burn Center. The Potentate praised them for giving so freely of their time and effort for this great event and told them their names had been permanently inscribed in the Gold Books of each of these institutions for their generous contributions. After this presentation, all other guests were introduced. After the invocation given by Chaplain Horace Shackelford, a delicious Bar-B-Que dinner was served by the Las Moras Inn.

The Potentate also had a word of praise for the Scooter Unit for their accomplishment in winning the two 2nd place trophies at Las Vegas. This was something that had never been accomplished before, a new Unit less than a year old placing at an Imperial Meeting where the competition is so rough. Our final test however, will be when we meet in San Antonio on August 20 to 22, for the Texas State Obstacle Competition. I am sure the other Texas Units in our Class will be laying for us. They are much larger and more experienced, having ridden together for several years. However, we are still on cloud nine from our Las Vegas win, and if we keep the adrenalin flowing, they will definitely know we were there.

On Saturday, August 1, Jack and Marge Taunt, Bruce and Dorothea Clements, Lenny Mahefky and Jim Haga went to Campwood for the Scooter Unit to ride in the Nueces Canyon Old Settlers Reunion Day Parade. Bruce and Dorothea were accompanied by their daughter-in-law, Josie, and Grandchildren, Johnny, Billy, & Michelle Clements.

Even though the weather was rather hot, it was an enthusiastic crowd and a good time was had by all. After the parade, we enjoyed a Bar-B-Que dinner, then visited some of the Arts and Crafts booths before returning to Brackettville. This was our last parade before the Texas State Obstacle Competition. This competition will be held at the Alzafar Temple in San Antonio, and is a timed event, both as a group and also individually. I hope when I return I can publish good news on the results of this competition.

**VBS COMMENCEMENT
AUG. 7**

Vacation Bible School at First Baptist Church ends this Friday. Commencement is Friday, August 7, at 7:00 p.m. All children, parents, and friends are invited to see the work the children have done this week at VBS. The workers and children welcome you!

PUBLICATION COPY - COMMERCIAL BANK
CONSOLIDATED REPORT OF CONDITION (Including Domestic and Foreign Subsidiaries)

STATE 035 (3-86)
<93>

LEGAL TITLE OF BANK The First State Bank Box 385 Brackettville, Texas 78832				STATE BANK NO 128-04	
CITY Brackettville				FEDERAL RESERVE DISTRICT NO 11 49 09628	
COUNTY Kinney		STATE Texas		ZIP CODE 78832	
				CLOSE OF BUSINESS DATE June 30, 1987	

Dollar Amounts in Thousands	Bil	Mil	Thou	
ASSETS				
1. Cash and balances due from depository institutions				
a. Noninterest-bearing balances and currency and coin		1,033		1.a
b. Interest-bearing balances		3,094		1.b
2. Securities		3,159		2.
3. Federal funds sold and securities purchased under agreements to resell in domestic offices of the bank and of its Edge and Agreement subsidiaries, and in IBFs			525	3.
4. Loans and lease financing receivables				4.
a. Loans and leases, net of unearned income	3,516			4.a.
b. LESS: Allowance for loan and lease losses		84		4.b.
c. LESS: Allocated transfer risk reserve			0	4.c.
d. Loans and leases, net of unearned income, allowance, and reserve (item 4.a minus 4.b and 4.c)			3,432	4.d.
5. Assets held in trading accounts			0	5.
6. Premises and fixed assets (including capitalized leases)			272	6.
7. Other real estate owned			0	7.
8. Investments in unconsolidated subsidiaries and associated companies			0	8.
9. Customers' liability to this bank on acceptances outstanding			0	9.
10. Intangible assets			0	10.
11. Other assets			130	11.
12. Total assets (sum of items 1 through 11)			11,645	12.
LIABILITIES				
13. Deposits:				
a. In domestic offices			10,663	13.a.
(1) Noninterest-bearing	1,860			13.a.(1)
(2) Interest-bearing	8,803			13.a.(2)
b. In foreign offices, Edge and Agreement subsidiaries, and IBFs				13.b.
(1) Noninterest-bearing				13.b.(1)
(2) Interest-bearing				13.b.(2)
14. Federal funds purchased and securities sold under agreement to repurchase in domestic offices of the bank and of its Edge and Agreement subsidiaries, and in IBFs			0	14.
15. Demand notes issued to the U.S. Treasury			0	15.
16. Other borrowed money			0	16.
17. Mortgage indebtedness and obligations under capitalized leases			0	17.
18. Bank's liability on acceptances executed and outstanding			0	18.
19. Notes and debentures subordinated to deposits			0	19.
20. Other liabilities			186	20.
21. Total liabilities (sum of items 13 through 20)			10,849	21.
22. Limited-life preferred stock			0	22.
EQUITY CAPITAL				
23. Perpetual preferred stock (No. of shares outstanding)	0			23.
24. Common stock (No. of shares):				
a. Authorized	2400			24.
b. Outstanding	2400			24.
25. Surplus			250	25.
26. Undivided profits and capital reserves			306	26.
27. Cumulative foreign currency translation adjustments			0	27.
28. Total equity capital (sum of items 23 through 27)			796	28.
29. Total liabilities, limited-life preferred stock, and equity capital (sum of items 21, 22, and 28)			11,645	29.
MEMORANDA: Amounts outstanding as of Report Date				
1.a Standby letters of credit, Total			0	1.a
1.b Amount of Standby letters of credit in memo 1.a conveyed to others through participations			0	1.b

NOTE: This report must be signed by an authorized officer(s) and attested by not less than three directors other than the officer(s) signing the report.

We, the undersigned officer(s), do hereby declare that this Report of Condition has been prepared in conformance with official instructions and is true to the best of my knowledge and belief.

SIGNATURE OF OFFICER(S) AUTHORIZED TO SIGN REPORT <i>Wanda E. Schwandner</i>	DATE SIGNED July 22, 1987
NAME AND TITLE OF OFFICER(S) AUTHORIZED TO SIGN REPORT Wanda E. Schwandner-Vice President/Cashier	AREA CODE/PHONE NO. 512/563-2451

We the undersigned directors, attest the correctness of this Report of Condition and declare that it has been examined by us and to the best of our knowledge and belief has been prepared in conformance with official instructions and is true and correct.

SIGNATURE OF DIRECTOR <i>Henry Taunt</i>	SIGNATURE OF DIRECTOR <i>Vera B. Nash</i>	SIGNATURE OF DIRECTOR <i>Wanda E. Schwandner</i>
---	--	---

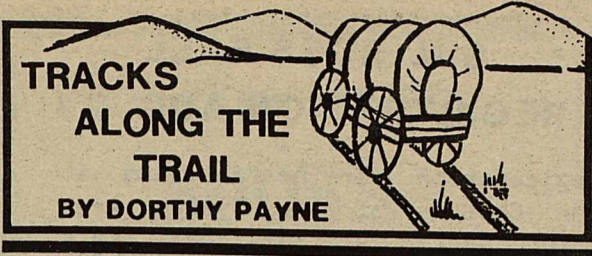
State of Texas County of Kinney ss

(MAKE MARK FOR NOTARY'S SEAL) Sworn to and subscribed before me this 30th day of July 19 87

and I hereby certify that I am not an officer or director of this bank.

My commission expires May 1 19 91

Francis E. Arber
Signature Notary Public



A pioneer in the manufacture of repeating rifles, Winchester products became known and used throughout the world.

The lives of the men and women on our western frontier depended upon machine made rifles and revolvers which enabled them to kill game and protect themselves.

Pioneer Americans with firearms, the axe and the plow built the nation. Prior to the 1800's firearms were brought from Europe or hand made in America.

In 1848, Christian Sharps invented a single-shot, breech-loading gun which became famous. Until the repeating rifle, the Sharps was the most widely used in America. John Brown used Sharps carbines at Harpers Ferry and during the Civil War one hundred thousand sharps were supplied to the Union Troops.

After the war the Sharps was used by the Buffalo hunters. With the Sharps, one could load and fire five times a minute. Between 1836 and 1873, over five-hundred and forty patents were issued in the U.S.A. for rifles similar to the Sharps.

Then Colt came along with a repeating revolver which became popular with the Texas Rangers and was used in the Mexican War in 1836. Colts rifles and shotguns, during this period, were not popular because of the escape of gas at the breech.

In 1849, Walter Hunt designed a repeating rifle but it was too complicated, although the tubular mag in the design was to become a part of the Winchester repeaters. Hunt sold out to George A. Arrowsmith who was in turn bought out by Palmer, a railroad man. Palmer later became associated with Horace Smith and Daniel B. Wesson, who founded the firm of Smith and Wesson. This firm perfected the old Jennings rifle which was a combination of the Hunt and Jennings patents. However, Smith and Wesson concentrated more on pistols than rifles.

Then Palmer and Smith and Wesson, with some other capitalists formed the Volcanic Repeating Arms Company, which made rifles, handguns, and ammunition. For lack of working capital, this company

failed. Two of the backers were Gaston and Winchester. Winchester bought out Gaston's heirs and became owner.

Oliver F. Winchester was already a wealthy man when he began the manufacture of the Winchester rifles. He became wealthy manufacturing mens shirts. Up until his shirt patent, mens' shirts pulled from the neckband, so he decided mens' shirts should be more comfortable and invented a fitted shirt that made him rich.

When Winchester went into the arms business he knew little about it but he was smart enough to acquire subordinates who knew a lot about it. He formed the New Haven Arms Co.

One of his most famous employees was Benjamin Tyler Henry as plant manager. Henry was a valuable man and brought to the Company many improvements of firearms. Under Henry's supervision, the company developed the metallic cartridge partly from an old patent of Daniel B. Wesson of the Smith and Wesson company. These cartridges were stamped on the head with the letter "H" in honor of Henry.

Henry then began experimenting with the old Volcanic repeating mechanism and adapted it to the use of the new ammunition and in October, 1860, Henry took out a patent on the Henry rifle which he assigned to the New Haven Arms Co.

Due to the contract Winchester made with Henry for the manufacture of this rifle for 5 years, Henry cleared \$15,000 for the Henry rifle. In the year 1861, Winchester dropped the manufacture of pistols and stayed with rifles, shotguns, and muskets.

In 1866 to 1867, Winchester Repeating Arms Co. became a cooperation.

In 1866, the model 66 was the first rifle to bear the name of Winchester. This gun could be fired thirty times a minute, and held seventeen cartridges. Soon Winchester had contracts all over the world and his company began to grow and became famous for the manufacture of arms and ammunition.

The model 1873 rifle put Winchester on the map of the west. It killed more game, more Indians, and more U.S. soldiers than any other type rifle. Buffalo Bill used this rifle.

In 1873, at sixty years of age, Winchester started loosening the reins to his son and son-in-law and by 1880 retired. A month after his seventieth birthday in 1880 he died in New Haven. From a bankrupt business in 1860, he left to his successor a cooperation valued at

over three million dollars. After 1880 the company developed further and hired the worlds greatest marksmen. Adolph and Elizabeth Topperwein, who traveled from 1901 to 1940 for the New Haven Arms Co., demonstrating the Winchester rifles and shotguns. Their exhibition was at the Texas Centennial in 1936. Among their feats Adolph, firing a blocks, tossed into the air, shot at 72,500 blocks and missed only nine. His wife held a record of 1,952 hits out of 2,000 targets, a worlds record for anyone, man or woman.

Buffalo Bill used Winchesters in his exhibits.

On Teddy Roosevelt's African Safari for Smithsonian Institute, Winchester guns and ammunition were used. From the beginning in 1860 to 1950, Winchester manufactured over one-hundred different models. The most valued today for collectors is the 1873 model. There are still nearly 100 unlocated, and they are valued at \$5,000 to \$7,000 apiece and maybe

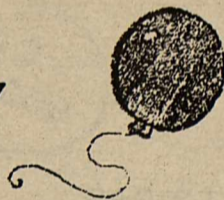
New Maximum Hold ORafix Special® holds all dentures securely in place.



ORafix® Get Free Gifts From ORafix. See package for details.

ORafix Special is now more special than ever. Its new improved formula helps prevent slipping and sliding. So all dentures, even older ones, stay in place longer.

HAPPY BIRTHDAY

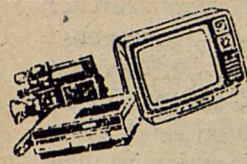


Dustin Slubar
We Love You!
Dusty, Janie, Bryan



WELCOME BABY

A son was born to Juanita and Jesus Talamantez on Friday, July 31, 1987 at 10:15 p.m. at the Val Verde Memorial Hcspital in Del Rio, Tx. Jesus Talamantez, Jr. weighed 8 lbs. 6 1/2 oz. and was 21 1/2 inches long. Grandparents are Raul and Santos Rivas and Luis and Manuela Talamantez.



VIDEO VIEWER
BY RORY WOODSON

Hi! This week, as promised, I'll review "Black Widow". I'll also review "Scorpion".

"Black Widow", starring Debra Winger and Theresa Russell, is a very suspenseful movie. Theresa portrays a very beautiful woman (considering how beautiful she is, sounds like she hasn't got much acting to do) who seduces wealthy men into marriage and then proceeds to kill them. Debra, plays a lonely federal agent, who is almost a complete opposite of Theresa Russell's character.

Debra's character's main objective in this movie is to catch the Black Widow and keep her from performing her rituals of mating and killing. I give this movie an 8 1/2.

"Scorpion", on the other hand, is well worth missing. It's main character Tonny Tulleners, is a one-time world karate champion whose karate talents are probably very good, but his acting ability could stand lots of improvement.

The movie's only highlight is when Tonny subdues four hijackers with a single kick. But this scene only lasts about five seconds and

is hardly worth sitting through the whole movie.

Since I'm in a generous mood, I'll give this movie a 3.

Three other movies should be out at least by Monday. (1) "Crocodile Dundee", (2) "Three Amigos", (3) "Nightmare on Elm Street, Part 3 - Dream Warriors".

'Till next week, Happy Viewing!

REGISTER NOW
TO ENTER THE
MISS KINNEY COUNTY
PAGEANT!

Attention all Brackettville girls over the age of 13!!! It's time to start getting ready for the 1987 Miss Kinney County Pageant. Entry forms are now available from Sharon White at 303 Third St. or from Wanda Schwandner at the First State Bank. The deadline for entry is August 26, and the pageant will be held September 26 at the Ft. Clark Amphitheatre.

The contestants will be judged on four categories; swimsuit, costume, evening gown, and personal interview. Scores are based on appearance, poise, personality and stage presence.

There are many personal benefits to be gained from participation in this type of pageant, the most important being walking, standing, sitting, and speaking before a group, along with correct make-up application, hair, nails and skin care. Knowledge in these areas is very necessary to a young lady who wishes to present herself with confidence, poise and style. Of course there are many prizes, including a \$500 scholarship, a \$250 gift certificate for clothes to the winner, a camera to Miss Photogenic, a cassette player to Most Talented, along with savings bonds, trophies, flowers, make-up and swimsuits that will make the competition worthwhile.

Anyone interested in becoming a contestant is urged to pick up an entry form.

SUL ROSS FALL
REGISTRATION AUG. 21

Registration for the fall term at the Centers of the Uvalde Area Study Center of Sul Ross State University will begin on August 21, from 2-6 p.m. in the center offices located in the Anderson Building on the campus of Southwest Texas Junior College in Uvalde, at 207 Wildcat Drive in Del Rio, and at 1980 Second Street in Eagle Pass. Registration for Laughlin Air Force Base will be held from 11 am - 12:30 pm that same day. Classes will begin at the Center on August 27.

"As in the last year," stated Dean Frank W. Abbott, "we are holding registration at all our Centers on one day rather than spreading them over three days."

Students should arrange to see an advisor prior to registration to discuss the courses for which they will enroll in the fall, but advisors will be available at registration.

Students not able to attend regular registration on August 21, will still have an opportunity to enroll in center classes during late registration which will begin on Monday, August 24, during regular business hours of the office. A \$15.00 late fee will be charged to all participating in late registration.

Schedules of classes for the fall semester are available in the Sul Ross Offices.

CALL
563-2630

LP GAS LP GAS

PROPANE BUTANE
PROPANE

ROADRUNNER
ENERGY INC.

IN
BRACKETTVILLE
HWY. 90 WEST AT
SEARGEANT'S CONCRETE

OVER 30 YEARS OF
DEPENDABLE SERVICE

NoSalt
The sensible "salt"

When common sense says "Avoid Sodium," use sodium-free NoSalt.

For a free 24-page NoSalt recipe booklet write:
Recipes
PO. Box 3884M
Stamford, CT 06905



B&S GROCERY
THE JUG STORE

563-2555

- MAGAZINES & FISHING LICENSES
- FRESH MEAT & VEGETABLES
- VCR'S & VIDEO TAPES FOR RENT
- LIQUOR & WINES

***** FRIENDLY SERVICE *****

"SERVING YOU IS OUR PLEASURE"
DON AND LINDA WOODSON
OWNERS
BRACKETTVILLE, TEXAS

LIBRARY NOTES
BOOKS
 BY:
FRANCES HERNANDEZ

When you visit the Library this week stop at the display case to enjoy another whittling display by Mary Koch. Mrs. Koch has added a few characters to her whittling, a buzzard, wolves, foxes and cactus all carved from pine wood.

Take home any of the books on display throughout the library.

New Books-include Bestsellers, mostly fiction

Lonely Books-all fiction

"Back to School Makeover Books"-Renovate yourself from head to toe with books on make-up, hair coloring & styling, clothes etc...



No part of Greece is more than 85 miles from the sea.



Save small amounts of jams and jellies in one jar; heat to make a thick syrup for pancakes.

**TIGER ALL-SPORT
 BOOSTER CLUB
 MEETS AUG. 13**

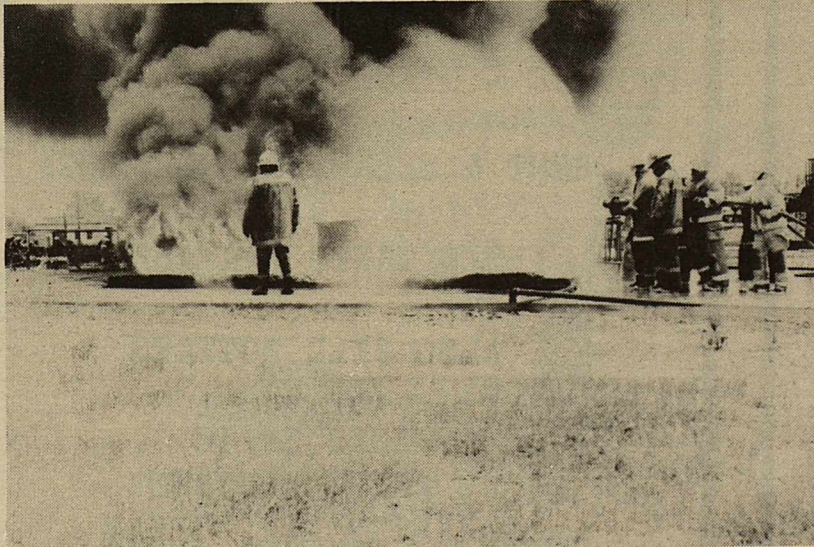
The first meeting of the Brackett Tiger All-Sports Booster Club is scheduled for next Thursday, August 13 at 6:30 PM in the high school library. A review of last year's program, election of officers for the coming year, and plans for the annual insurance premium barbeque for the football team are planned.

Ron Kelley, outgoing president, pointed to many activities which need to be continued in view of last year's successful program, and he encouraged all residents of the community to attend and join the club for the coming school year.

Last year the club turned over \$12,000 to the Board of Trustees to help pay for the new weight room at the high school, chartered a bus for one road game for football players, held football and basketball parent recognition nights, had three basketball hospitality rooms during tournaments, and purchased equipment.

Kelley was very appreciative of the individuals and businesses who joined last year. He pointed out that two long road games and the need for additional equipment would be priorities for the club during the coming school year.

CONT'D FROM PG 1



The firemen were registered Sunday, July 19, 1987 and training commenced on Monday, July 20 and continued through Friday, July 24, 1987.

The training field, said to be the largest in the world, consists of over 100 acres of combined classroom and hands-on training facilities. These range from small cottage fires to large butane refinery type fires, including multiple story dwellings, vehicle and various flammable liquid fires.

Other training included ladders, extinguishers, proper hose and water application.



Ancient Romans always entered the home of a friend on their right foot—the left side of the body was thought to portend evil.

**SAVE HOURS!
 DAYS!
 WEEKS!**



Let one of America's foremost quilting experts show you how to make your quilts more beautiful than ever, and faster and easier than you ever thought possible!

The Maggie Malone touch will give you hundreds of tips for finishing in just a few hours those projects that now take you weeks.

- You'll be amazed how easy it is to pick up so many shortcuts for every step, from cutting and piecing (strip, Seminole, unit, English) to all phases of quilting, applique and patchwork.
- You'll find time-savers for both hand and machine work, including ingenious ways to do machine-stitch patterns with elegance most quilters say can only be done by hand.
- You'll get ideas for both beginning and advanced projects, including tiny, intricate patterns you always thought were too time-consuming.
- You'll love the Maggie Malone shortcuts to dozens of your favorite patterns, including Double Wedding Ring, Cathedral Windows, Spider Web, plus many more.
- You can even learn to piece the ever-popular Lone Star quilt, with its nearly 400 separate diamond pieces, in only 20 hours—instead of the months most quilters need!

Beautiful designs, including 8 pages of gorgeous full-color, along with easy-to-follow diagrams and illustrations, make this an irresistible buy for anyone who loves to quilt.

These professional tips and tricks will make this book the most valuable addition to your quilting library—for hand and machine quilting alike.

TO ORDER: Send your name, address, zip code and \$9.95 plus \$1.25 postage and handling to American Melody, 123 South Street, Oyster Bay, NY 11771. NY residents add appropriate sales tax. Please print clearly.
SAVE! Order two for \$19.00 plus \$1.90 postage and handling.

MEMBER
 NATIONAL PEST CONTROL ASSOCIATION

ELO PEST CONTROL, INC.

**TERMITE & GENERAL PEST CONTROL
 TREES, SHRUBS, & LAWNS**

BOB COREY OFF. 278-5873
SERVICE TECH. RES. 563-2736

The firemen received between 6 and 9 hours of training per day with their final test being given on Friday, July 24, 1987. There were a total of 2,311 firefighters representing 823 Texas cities, 12 states and 12 countries. Attending from Brackettville were; Captain, Richard Wills, Secretary Adrian Reyes, Firefighters Richard Jaso, Mark Bland and Chet Puda.

Funding for our local firefighters to attend was provided by the City of Brackettville, Kinney County, Fort Clark Springs, Brackettville Lions Club, Burger and Shake and BVFD.

The Brackettville Volunteer Fire Department wishes to thank these sponsors for their generosity, giving us a better education so that we may provide for a safer community.

PUBLIC NOTICES

COMMUNITY COUNCIL OF SOUTHWEST TEXAS, INC. DISTRIBUTES COMMODITIES

The Community Council of Southwest Texas, Inc., will be distributing commodities on Tuesday, August 18, 1987 at the Civic Center on Spring Street, and on Wednesday, August 19, 1987 at the Community Council Office in the Courthouse Annex located on Ellen St., in Brackettville. Please bring your own bag.

All numbers will be served through the side of the building in Brackettville Center.

If you are not an applicant authorized representative and you are picking up commodities for someone, you are required to bring a dated authorized permission statement every time you pick up for any participant.

Rules for participation in the program are the same for everyone without regard to age, race, color, religion, sex, handicap, national origin, or political belief.

HOUSING AUTHORITY ACCEPTING APPLICATIONS

The Brackettville Housing Authority is accepting applications for a part-time secretary. Applicant must have some experience in filing, typing, consumption reports, and rent rolls.

All applications will be accepted between 9:00 a.m. and 12:00 p.m. at the Housing Authority office located at El Paso and Sweeney streets.

The Housing Authority is an Equal Opportunity Employer.

PUBLIC HEARING

NOTICE OF HEARING ON PROPOSED BUDGET FOR FISCAL YEAR 1987-1988

The Kinney County Commissioners' Court has set a public hearing on the proposed budget for fiscal year 1987-1988 on August 31st, 1987 at 10:00 o'clock A.M. in the County Courtroom of the Courthouse in Brackettville, Texas. The proposed budget will be filed with the County Clerk and made available for public review on August 14, 1987.

Witness my hand and seal of office this the 5th day of August, A. D. 1987.

Dolores Raney
Dolores Raney, County Clerk
Kinney County, Texas.

CITY ACCEPTING APPLICATIONS

The City of Brackettville is accepting applications for the position of City Police Officer. Applicants applying for the position must be certified. Applications can be picked up at the City Hall. The City will be accepting applications through 5:00 p.m., July 21, 1987. Applications will be reviewed at a Special Council Meeting to be held Friday, August 28, 1987 at 7:00 p.m. Salary is negotiable. Applicant hired will be on 6 month probation, and employee benefits will be given upon permanent employment. Applicants must be 21 years of age or older.

s/s William Mendeke
Mayor

PUBLIC HEARING.

The governing body of the City of Brackettville will be conducting a public hearing in conjunction with the regular City Council meeting, 7:00 p.m., Tuesday, August 11, 1987, at City Hall Council Chambers. The purpose of the meeting is to receive citizen input and to analyze and discuss the projected 1987-88 Annual Budget.

s/s William Mendeke
Mayor

DEL RIO GAS COMPANY

PROPANE - DIESEL FUEL - GASOLINE

RENT & SELL PROPANE TANKS

BULK TANKS AVAIABLE

ALSO FILL BOTTLES

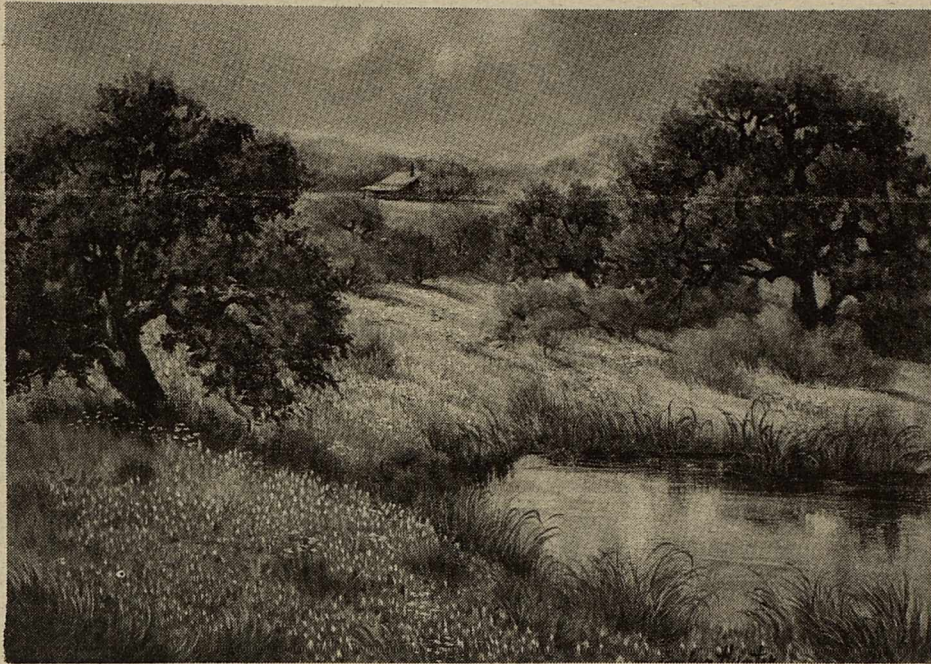
JAMES SMITH
300 PATRICK STREET
BRACKETTVILLE, TEXAS

CALL 563-9470 CR DEL RIO 775-3633



The sun is 330,330 times larger than the earth.

ARTIST'S SHOW



EVELYN HUNTER, Fort Clark Springs resident and artist, will be having a one-woman show of her oils and watercolors at the Firehouse in Del Rio August 4-14.

Evelyn and Harlan Hunter live in Unit 32 on the Fort. Harlan retired from U.S. Air Force (civilian) in May of 1986. They love it here.

Harlan sings with the Voices and they are active members of the Church of Christ in Brackettville.

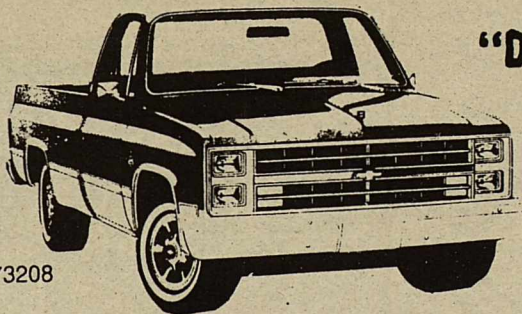
Evelyn studied in the School of Architecture at Auburn University, Alabama, taking many basic art courses. While overseas in Vietnam, she studied Chinese brush painting and during her stay in Saudi Arabia, she was awarded "Best of Show" and "Honorable Mention" in the ARAMCO competition in 1978. She recently won first place in an Air Force wide competition with a Texas bluebonnet oil painting.

Her style in oils is done in a water color fashion. She displays in San Antonio annually at the Western Art Show, and in Gallery II, and Thrashers Plano, Texas. She also displays on tours through Texas, New Mexico and Arizona.

IT NEVER FAILS



SALE THIS WEEK ONLY SALE



"DEMO"

STK No. 73208

NOW

FLEETSIDE P/U Reg. \$16,331
\$12,964.15*

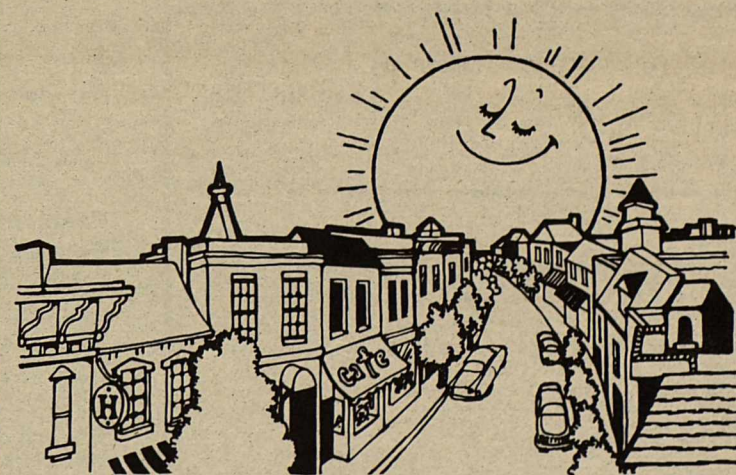
HOWARD
CHEVROLET DEL RIO, TX

2300 Hwy. 90 W 775-0566



*Plus Tax, Title & License

BEST DEALS
 IN TOWN!

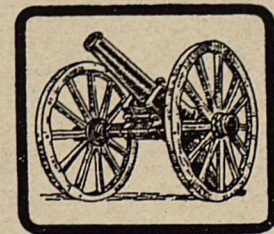


Your Money Stays at Home

The hard earned dollars you place in our care are not re-invested in some distant city where they will be of no benefit to our people. Your money allows a friend or neighbor to buy a car, improve a home or a businessman to carry a larger inventory.

Your savings are the lifeblood of this area. Because of your efforts, our hometown is a better place in which to live and do business. Come bank with us.

FIRST STATE BANK
 OF BRACKETTVILLE

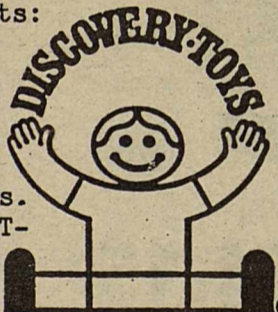


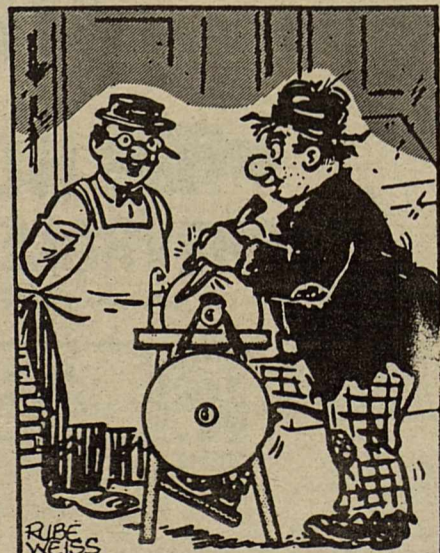


MEMBER F.D.I.C.

563-2451

CLASSIFIED ADS

ALL CLASSIFIED ADS ARE DUE BY NOON ON EVERY TUESDAY.
ALL CLASSIFIED ADS RUN 20C PER WORD OR \$2.00 PER WEEK FOR 10 WORD MINIMUM.

MISC.	MISC.	REAL ESTATE
<p><u>VOCATION BIBLE SCHOOL</u> graduation exercises Friday, August 7, 7:00 p.m. First Baptist Church. Parents night. All welcome.</p>	<p>**FOR SALE** 26 ft. 1972 Mobile Scout travel trailer. \$3,800. Phone 563-2807.</p>	<p>**FOR SALE** Ft. Clark Springs: 1978 12'x 60' two bdrm. Liberty mobile home and lot w/membership. Unit 15 - \$10,000.00. Call 563-2910.</p>
<p>**FOR SALE** 1978 GMC pick-up. A/C, automatic transmission. Phone Westley White at 563-9454.</p>	<p>QUEEN CITY ELECTRONICS & T.V. SERVICE Television Service at it's best 905 Ogden--Del Rio, Tx. Phone 775-1280 Sergio Garza, Manager</p>	<p>**FOR SALE** Ft. Clark Springs: 1980 14'x 80' 3 bdrm. Windsor mobile home and lot w/membership. Unit 15 - \$20,000.00. Call 563-2910.</p>
<p>**YARD SALE** Saturday, August 8, 1987. 8:00 am - 2:00 pm. Unit 15, Lot 148-Ft. Clark.</p>	<p>THE NEW SUNSHINE SELF STORAGE Located at 814 W. Spring Street All sizes, up to 10' x 30' Call Camillo Cruz Phillips U-Haul Service Station 563-2588</p>	<p>**FOR SALE** 7000 Sq.ft. building in down-town Brackettville. Priced to sell. Will finance. Phone 563-2751.</p> <p>SUNSHINE COMMERCIAL INDUSTRIAL PARK Hwy 90 and West Spring Steet Lots - all sizes, sale or lease 563-2725 - 563-2446</p>
<p>3 FAMILY GARAGE SALE At the Woodson's house on Thomas St. Saturday Aug. 8, 9:00 am - ?</p>	<p>AL-NON meeting weekly. For more information call 563-2007.</p>	<p>GOVERNMENT HOMES for \$1.00 (U Repair) BUY DIRECT! Repos & Tax Delinquent Properties. Get the FACTS TODAY! Call 1-518-459-3546 Ext. H-6606E (Toll-Refundable) 24 HRS.</p>
<p>**GARAGE SALE** Saturday, August 8. 8-12 noon. Fort Street, half block from Campwood Road.</p>	<p>CHAIR CANING FURNITURE REFINISHING (512) 278-1867</p>	<p>RENTALS</p>
<p>HELP WANTED</p>	<p>EARN - EDUCATE - ENJOY Teachers, Parents: We need your intelligence & caring to demonstrate quality educational toys. EXCEPTIONAL PART-TIME INCOME 512-298-3436</p> 	<p>**FOR LEASE** Mobile Home Lot w/utilities and carport. Phone Dale Borden at 563-2221.</p>
<p>Position of caretaker of Catholic Cemetery is open. If interested, submit bid to Cordelia Mendeke immediately.</p>	<div data-bbox="895 2009 1485 2508"> <p>MASON SHOES & BOOTS</p>   <p>OVER 350 STYLES FOR MEN & WOMEN</p> <p>USE OUR LAY-AWAY TO SUIT YOUR BUDGET</p> <p>ROBBIE ROBERTSON 563-2993</p> </div>	<p>JOSH BILLINGS Sez...</p>  <p>Experience iz a grindstun, and it iz lucky for us if we kan git brightened by it, not ground.</p>
<p>WORD SPOT® Punctuation Marks</p> <p>PEASREIHNTS <input type="checkbox"/></p> <p>NCOLO <input type="checkbox"/></p> <p>ICMOELSON <input type="checkbox"/></p> <p>REDIPO <input type="checkbox"/></p> <p>YHHPNE <input type="checkbox"/></p> <p>EPHORSTOPA <input type="checkbox"/></p> <p>RBCASE <input type="checkbox"/></p> <p>TENSIOUQ <input type="checkbox"/></p> <p>OTD <input type="checkbox"/></p> <p>ACMOM <input type="checkbox"/></p> <p>ESAPU <input type="checkbox"/></p> <p>HGTIAERTNS <input type="checkbox"/></p> <p>Answers</p> <p>Parentthesis, Colon, Semicolon, Period, Hyphen, Apostrophe, Braces, Question (center word) Ellipses Dot, Comma, Pause, Straighten (center word) Dash</p>		