

TEXAS PRESS
ASSOCIATION
AWARD WINNER

the Kinney Cavalryman

25¢

VOLUME 11, NUMBER 27

JULY 13, 1984

BRACKETTVILLE, TEXAS

LITTLE LEAGUE PHOTO FEATURE

COMEDY TO OPEN AT UVALDE GRAND OPERA HOUSE

UVALDE; You can't take it with you, the zany Moss Hart and George S. Kaufman comedy, will open at Uvalde's Grand Opera House July 26 for a four performance run. Curtain time for the 26, 27, and 28 performances is 8:00 PM, with a 2:30 matinee on the 29th.

The adventures and misadventures of Martin Vanderhof, his family and friends, have kept theatre goers laughing since the play opened on Broadway in 1938 and through its many revivals, including this year's smash.

Area theatre goers will have an opportunity to enjoy this long time favorite when tickets go on sale at the



Pictured above is the Board of Directors for United Medical Centers. They were recent guests of the Kinney Co. Clinic.



Thanks to the help of these community volunteers, our community swimming pool is now open for the enjoyment of all.

Opera House Box Office on July 10. Tickets are \$5 and may be ordered by writing P.O. Box 1451, Uvalde, TX 78801 or by calling 512/278-4082.

"You Can't Take It With You" is produced by the Uvalde Area Community Theatre and directed by Elizabeth McAninch who comes to Uvalde from the Mercy Center for the performing Arts in San Francisco.

Alex Kincaid will appear as Vanderhof the individualistic patriarch whose eccentric lifestyle has influenced that of his unpublished playwright and unsold painter daughter Penny Sycamore as portrayed by Margaret Rambie.

THE KINNEY CAVALRYMAN

USPS 100-610
P.O. DRAWER CQ
BRACKETTVILLE, TX. 78832
512-563-2696

J. George Loos ...Editor
Rosemary Slubar ..Production
Monea L. MeckProduction
Crystal LoosProduction

Published every Friday.
Entered by SECOND CLASS MAIL
at Brackettville, TX 78832.

Subscription Rates: per year
\$15.00Out-of-County
\$14.00In-County

DEADLINE:
TUESDAY AT NOON



..."Any erroneous reflection upon the character or standing of any person or firm appearing in this paper will be gladly corrected - upon being called to the attention of the management and to the article in question." ...

Crystal Sez...

"He who has begun his task has half done it." Horace

"The looker-on sees most of the game."
—English proverb

Mrs. Lady's Salon

your HAIR CONDITIONED
by professionals



563-2698

BRACKETTVILLE KNIGHTS OF COLUMBUS

Council # 8223
Brackettville, Texas

New Officers elected for the 84-85 year.
Grand Knight: Chris Gomez
Deputy Grand Knight: Tony Frerich
Chancellor: Jim Voss
Recorder: Manuel Pena
Financial Secretary: Lloyd Lee Davis
Treasurer: Jim Ballew
Lecturer: Allen Kreiger Jr.
Warden: Joe Cruz Sr.

KCs meet the 1st Tuesday of the month at 7:30 P.M. Father Jim Cashin from the San Antonio Archdiocese was officially welcomed on July 1, 1984 at St. Mary Magdalene's Catholic Church as the new resident priest at a social sponsored by the KCs. Father Cashin will replace Father Maurice Buckley who served St. Mary Magdalene's for the last seven years. Father Buckley will retire to San Antonio, Texas.

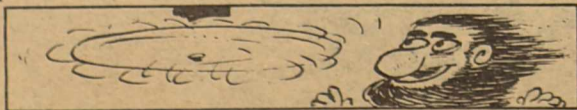
SENIOR CITIZENS INVOLVEMENTS

by Agnes Vondy

The site council members of the Kinney County Aging Services appeared before Commissioner's Court on Monday morning to request assistance for the upcoming fiscal year. Hope we hear good news.

Southwest Nursing & Health care will provide the Aging program with a courtesy call on July 27th, from 10:30 til 11:30 a.m., to take blood pressures and to answer any questions you might have.

July 18th will be a very special day for Senior Citizens of our community as we dedicate a Memorial for our departed friend Wayne Pierce. Presentation of awards will also be made for outstanding older Texan and also for volunteer services. We will also introduce our newly elected site council for 84 & 85 year.

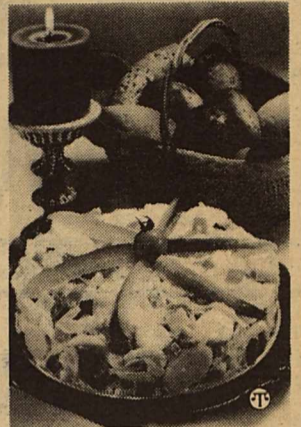


The first fan was made in 1886 by Schuyler S. Wheeler who placed a propeller on the end of a shaft which he turned with an electric motor

MEALTIME MAGIC

COOL 'N EASY SUMMER MEAL

The warmer the weather is, the less time you want to spend in the kitchen. That's why the home economists in the Wish-Bone test kitchens developed Dilly of a Deli Salad. This one-dish meal takes the idea of a typical cold cut and cheese sandwich platter and gives it a new twist.



Favorite deli meats and cheeses are cut up along with some garden-fresh vegetables and then tossed with a special salad dressing. The whole combo is packed into a spring-form pan or bowl and put into the refrigerator to chill... no cooking or heating up the kitchen!

Simply unmold and serve with a selection of bakery rolls to complete the meal.

The special dressing is what makes this salad so good. It's a combination of mayonnaise and convenient bottled Italian dressing. The special blend of seasonings in the Italian dressing adds just the right tang to this beat-the-heat meal.

So next time you need a cool dinner that's a snap to make, try Dilly of a Deli Salad. You'll find it's not only an easy family dinner, but also great to tote along on a summer picnic.

DILLY OF A DELI SALAD

- 1/3 cup Wish-Bone® Italian Dressing
- 3/4 cup mayonnaise
- 4 cups thinly sliced cooked potatoes or 3 cans (16 oz. ea.) sliced potatoes, drained

- Suggested Cold Cuts*
Suggested Cheeses**
1 medium tomato, coarsely chopped
1/2 cup chopped dill pickle spears

In large bowl, blend bottled Italian dressing and mayonnaise; add potatoes. Suggested Cold Cuts, Suggested Cheeses, tomato and pickles; toss until coated.

Pack into 9-inch spring-form pan or large bowl and chill 4 hours or overnight. Makes about 6 servings.

*Suggested Cold Cuts—Use any combination of the following, cut into 1/2-inch cubes, to equal 3/4 pound: salami, ham, turkey, corned beef, roast beef, bologna, or your favorite cold cuts.

**Suggested Cheeses—Use any combination of the following, shredded, to equal 1/2 pound: American, cheddar, Swiss, muenster, brick, or your favorite cheese.



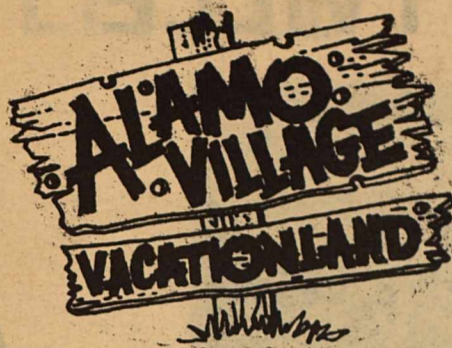
The koala bear is adapted to eat nothing but the eucalyptus tree. It does not need anything else — not even water.

THANK YOU

We cannot find the words to express our gratitude for your acts of kindness during the loss of our loved one.

Thank you for the flowers, cards, phone calls and all the delicious food that was brought to our home. Most of all we thank you for your prayers and Christian love.

The family of
T.H. Glover

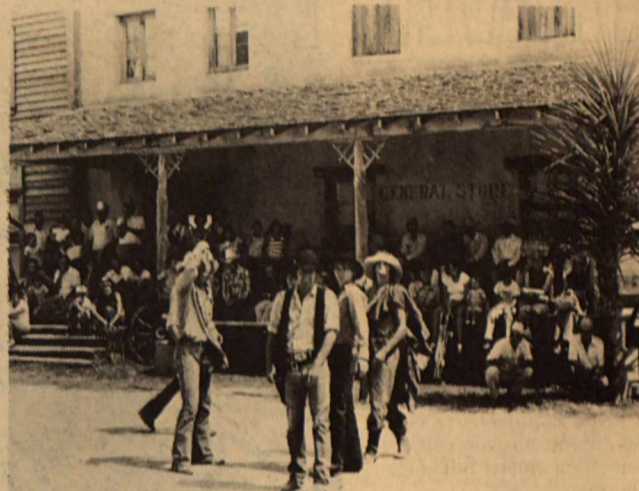


THE
**MOVIE CAPITAL
 OF TEXAS**

YEARLY HOUSEHOLD FAMILY PASS - \$35
 for Kinney County Residents

OPEN DAILY:
 9:00 AM TO 6:00 PM

FEATURING:
**OUTRAGEOUS
 COMEDY &
 ENTERTAINMENT**



512-563-2580

P.O. BOX 528 BRACKETTVILLE, TX 78832

CALENDAR OF EVENTS

- JUL 13** Miss Heart of the
 - 14 Border Pageant.
 Carrizo Springs,
 7:30 p.m.
- JUL 14** Image of the 80's Sem-
 inar, Dink Wardlaw
 Agri. Com. 9 a.m.
- JUL 14** Del Rio Expos NBC Zone
 -15 Tournament, Kerr-
 ville.
 Two Man Select Shot
 Golf Tournament. San
 Felipe Country Club.
- JUL 15** 15th Annual St. John's
 Festival, Hondo City
 Park, Hondo, 10 am
- JUL 16** Folk Art Lessons at
 -18 Art a la Carte,
 N. Getty St., Uvalde
- JUL 20** 15th Anniversary of
 First Manned Moon
 Landing
- JUL 20** "Godspell", Paul Poag
 -21 Theatre, Del Rio
 8 p.m.
- JUL 20** Kerrville Summer Music
 -22 Festival, Quiet
 Valley Ranch
- JUL 21** Del Rio Expos host
 -22 San Antonio Broncos
 Roosevelt Park, 8 pm
 Trailride and Campout,
 Terlingua Ranch

**FEELING GOOD MEANS BEING
 'HEALTH WISE'**

Feeling good physically and emotionally is an important part of a productive and enjoyable life. But people do not always do what they should to achieve good health in these areas.

Unfortunately, it often takes an illness or other health problem to motivate a person to become "health wise," according to the Texas Medical Association.

This term means learning how to prevent disease as well as to promote health. The key is maintaining a healthy lifestyle by focusing on areas such as exercise, stress, smoking, alcohol, weight control, medication, and accident prevention.

"Once you identify the risks you are taking, you can work to reduce or eliminate them," says a TMA pamphlet titled "Feeling Good Means Being Health Wise." It offers these suggestions on reducing health risks:

ALCOHOL; Frequent excessive drinking can lead to alcoholism, heart disease, cirrhosis of the liver, and accidents. When drinking alcohol, sip it slowly, and eat something before you drink. If you are upset or lonely, seek out a friend rather than a drink.

EATING; Being overweight can lead to such problems as heart attacks, high blood pressure, and diabetes. To help avoid overeating, eat slowly and eat less at meals. If you eat between meals, snack on low

calorie foods like fruits and vegetables. Avoid crash diets, and cut back on junk foods.

SMOKING; Don't.

STRESS; Prolonged stress can lead to both mental and physical ills. Stress can come from job pressures, responsibilities at home, or troubles with friends and family. To relieve stress, find time to relax, whether it's reading a book, exercising, or doing nothing.

MEDICATION; Avoid mixing drugs--prescription or over-the-counter--unless your doctor says it is safe. Never mix drugs with alcohol.

To obtain a copy of this pamphlet and seven others in the TMA healthwise series, call 512/477-6704 or write to the Texas Medical Association, Communication Dept., 1801 N. Lamar Blvd., Austin 78701.

FOLK ART LESSONS SCHEDULED

UVALDE: The Uvalde Arts Council has scheduled a series of folk art lessons for July 16-18 and July 23-25 at Art a la Carte, North Getty St. Theme of the lessons will be "Christmas in July." Teacher will be Donna Phipps of Uvalde.

Among the projects to be completed are an advent reindeer, a Santa Claus, and two painted angels with copper punch design. For more information on the folk art lessons, contact the Uvalde Arts Council, P.O. Box 1451, Uvalde, 78801, or call 1-278-4082.

THE BRACKETTVILLE

TRAVEL

NEWS & NOTES

One For The Roads

Many people are exploring America this summer with the help of a book considered the most complete travel planner for every budget and price range.

Here are a few of the fascinating finds it features:

- You can watch scientists uncover 140-million-year-old dinosaur bones near Jensen, Utah.

- If you hop over to Cooke City, Montana, you can see a towering glacier full of frozen grasshoppers.



- You might like to mosey on down to New Orleans for the World's Fair, using the Mobil Travel Guide for the "Southwest and South Central Area" for affordable places to stay in the U.S.'s "French City."

- You can catch a chicken-flying contest in Gallipolis, Ohio.

- If hot air's your bag, drift by the balloon championships in Bloomsbury, N.J.

If you're tired after rambling, you can rest for less at some 4,000 hotels and motels listed in the seven regional editions of the Mobil Travel Guide that charge \$35 and less a night, or save up to 50 percent with discount coupons on top tourist attractions and on rooms in major hotel and motel chains.

The Guide sells for \$7.95 each at numerous Mobil stations and bookstores across the country.



ASTROS

FREE POSTER



WOMEN ACHIEVERS—Send for a free 10th Anniversary poster of the Colgate Women's Games—designed by Milton Glaser. Colgate Women's Games, 300 Park Avenue, New York, NY 10022.

PROPANE

TANKS FOR SALE OR RENT

Carroll Spiller

FT. CLARK UNIT 15 LOT 65

Del Rio Gas Company

BOTTLES FILLED

BRACKETTVILLE, TEXAS 78832

512-563-9223

BRACKETT'S
"FULL SERVICE"
STATION!



T & A

SERVICE STATION

HWY. 90

563-9794

True Value
HARDWARE STORES

SPECIALS
ON EXTERIOR
HOUSE PAINTS



ALL 72 LINE
PITTSBURGH
EXTERIOR
HOUSE PAINTS
Regular

\$16.69 - \$17.69
per Gallon

SPECIAL:
\$12.96 per Gal.

DECORATOR LINE
OF JONES BLAIR
EXTERIOR
HOUSE PAINTS
Regular

\$11.98 per Gal.

SPECIAL:
\$9.98 per Gal.



BARGAIN !!!
- Mis-mixed Paints -
\$5.00/ Gal. \$2.00/ Qt.

DAVIS HARDWARE
& RANCH SUPPLY

512-563-2528

"The best way to cheer yourself is to try to cheer somebody else up."
Mark Twain

Awards For Asthmatic Athletes

Young people with asthma who engage in extracurricular sports may benefit from such activities more than they know.

In addition to the physical rewards, they might just win a college scholarship under a new program announced by the Asthma & Allergy Foundation of America.

In an effort to demonstrate dramatically that asthmatics need not sit on the sidelines, the Foundation has initiated the Asthma Athlete of the Year award program with \$21,000 in college scholarships.

Made possible by a grant from Schering-Plough Corporation, the Foundation will award six scholarships beginning in 1984. Top prize is a four year scholarship totaling \$10,000. The second place winner will receive a \$5,000 scholarship awarded over four years, and third place will receive a \$3,000 four-year scholarship. Three \$1,000 scholarships will also be given as a consolation prize to runners-up.

Young men and women in their sophomore, junior and senior years of high school are eligible to participate. The program stresses academic achievement as well as athletic talent.

According to the AAFA, many asthma patients participate in active physical lives.

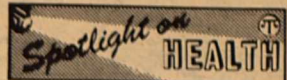


"With modern medical techniques and medications, it is possible for a physician—working closely with the patient, parents, educators and coaches—to design a program to help most asthmatic students control their asthma even when participating in physically demanding sports activities," said T.J. Schmidt, AAFA's National Director.

Allan J. Ryan, M.D., a member of the National Advisory Board of the Foundation and Editor-in-Chief of The Physician and Sports-medicine, a monthly medical journal, heads the scholarship program committee.

Nominating ballots will be available from physicians specializing in the treatment of asthma, and from local chapters of the Asthma & Allergy Foundation of America, or by writing either the Foundation's national headquarters, 1302 Eighteenth Street, NW, Suite 303, Washington DC 20036; or the Professional Services Department, Schering Corporation, 2000 Galloping Hill Road, Kenilworth NJ 07033.

LITTLE LEAGUE STARS



C
O
W
B
O
Y
S



CONGRATULATIONS ON A GREAT SEASON !!

L
I
O
N
S



Health and Science Briefs

The National Institutes of Health cautions older Americans to take care to prevent injury to their more fragile skin by not using water that is too hot, by wearing gloves when cleaning, and by avoiding the use of harsh products.

A skin-barrier cream is recommended for skin of all ages when using polishes, detergents or other products that may irritate the skin. A highly effective one, Kerodex, is made available by Ayerst Laboratories. The cream is smoothed onto hands (and arms, if they are to be involved) and acts like invisible gloves that do not interfere with finger dexterity.

Indigestion is often accompanied by gastrointestinal gas. Check labels for a combination of an effective antacid with simethicone. Simethicone is a substance with a defoaming gas-dispelling action. Riopan Plus has this combination and recently also became available as a rollpack for convenience. Antacids are one more item most people have found it's best not to leave home without.

Following a 10-year study conducted at 12 Lipid Research Clinics, the National Heart, Lung & Blood Institute of the National Institutes of Health presented its findings early this year. There is now conclusive proof that lowering elevated blood cholesterol can help to prevent heart attacks and heart attack deaths.

Camera Of The Year



Selected as "Camera of the Year" on two continents, the Minolta X-700 is the world's most advanced programmed 35mm single lens reflex camera. In the program mode, the camera automatically selects the correct shutter speed and f-stop (lens opening) for perfect exposures. The user simply points, focuses and shoots. The "Camera of the Year" is perfect for amateur and professional photography.



The first city to be illuminated by gas lights was Baltimore, in 1817.



THE SHERIFF'S CORNER

by Norman H. Hooten, Sheriff

Mr. Clyde Earwood a Kinney County rancher, reported that he had found several T-shirts in a culvert on ranch road 1572 on July 5th. Further investigation by me led to the recovery of 94 T-shirts valued at approx. \$500.00. The T-shirts are believed to be part of an order from a store in Concan in Uvalde County that was never received. Uvalde County authorities have been contacted and the case is under investigation. It is believed that thieves may have burglarized a Mistletoe Express truck and discarded the T-shirts because of the advertisement printed on the front of the shirts. It is unknown at this time the extent of other missing property and there are no suspects as of this writing.

A juvenile offender being held in the Kinney County jail for Val Verde authorities has been causing us serious problems. As of this writing he has done over \$1,675.00 damage to the cell he is being held in. Repeated requests by me to juvenile authorities and the District Judge to have him removed to another location have been denied. Del Rio has no certified juvenile detention cells and as we are the only jail within the 63rd judicial district with certified cells, we get the dubious honor of detaining the little darling.

I have been assured by both the juvenile department and the district judge that all costs of repairing the damage to the cell will be covered by

the Val Verde authorities and/or relatives of the young offender.

Late Saturday afternoon a car was noticed parked on the wrong side of the street across from the County jail and DPS troopers Buddy Burgess and Robert Cano ran a routine check on the license plate number to see if it had been reported stolen. The report came back negative. Later that evening Chief of Police Richard Dempkowski noticed the vehicle and also ran a stolen check on the plates. Results negative.

As the night wore on we became more suspicious of the vehicle and we met at the jail and discussed the vehicle and then decided to check it out more thoroughly. We discovered the car was not locked and while looking through the vehicle for clues as to the owner, etc. We found a new baseball style cap, shaving cream, two new disposable razors and a new set of expensive sunglasses. Further investigation led to the discovery of a set of keys to the ignition and \$100.00 in cash under a floor mat on the driver's side of the car and the fact that the car had a full tank of gas and new battery cables and connectors. All of these clues led us to believe that the car was to be used as a getaway car and that an escape from the county jail was planned for that night or early morning hours. We checked the prisoner roster and, as the car was registered to an Eagle Pass resident, special attention was given those prisoners we had in jail who had Eagle Pass addresses. It is strongly believed that one of those prisoners, who was recently arrested on local charges, was involved in the

escape plan. This prisoner is on federal probation and his arrest here is to cause revocation of his probation and he is facing 2 to 5 years in a federal pen for his previous crimes.

At any rate we staked out the car and I received valuable assistance from DPS troopers Buddy Burgess and Robert Cano, as well as Chief of Police Richard Dempkowski. We watched the car until well after day light Sunday morning with no results. Evidently our activity around the car earlier in the night had alerted the person or persons involved and no escape attempt was tried.

The owner of the vehicle came to claim it Monday afternoon and several hours of intensive questioning by those of us involved in the case led to negative results. A check on the owner did result in his arrest on outstanding traffic warrants and he and the vehicle were released later that day after his fines were paid. The prisoner who is believed to have been involved in the escape plan has been turned over to the U.S. Marshal's Service and transferred to another location.

My sincere appreciation is extended to those officers who assisted me in this incident and spent those long, dull, sleepy hours staked out on the vehicle.

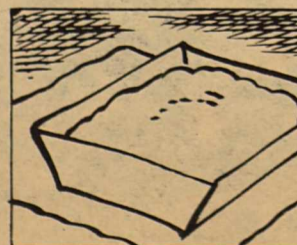
I feel that this is a good example of how good cooperation between various law enforcement agencies can work towards better protection and service to the people we serve.

KINNEY COUNTY APPRAISAL DISTRICT BOARD

THE KINNEY COUNTY APPRAISAL DISTRICT BOARD IS ACCEPTING APPLICATIONS FOR THE POSITION OF CHIEF APPRAISER UNTIL AUGUST 9, 1982, MUST BE PROFICIENT IN THE APPRAISAL PROCESS, SHOULD HAVE MANAGEMENT EXPERIENCE, SHOULD BE CERTIFIED AS PROFESSIONAL ASSESSOR OR BE INVOLVED IN THE PROCESS OF BECOMING CERTIFIED. SEND RESUME TO:

Mr. Bill Mills, Chairman, P.O. Box 813,
Brackettville, Texas 78832

High-quality buttons are perhaps the quickest tip-off about the quality of clothes. Good buttons are bone, leather, pearl or metal.



If a baked cake sticks to the pan, try placing the pan on a cloth wrung out in hot water. It may help remove the cake from the pan.

512-563-2006
**SHEPARD
MOTORS
AUTO SALES**
PAUL SHEPARD
P.O. Box 768
Brackettville, Texas 78832

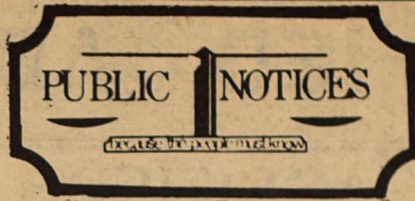
**DAVE'S
TOWING
SERVICE**
563-2987

ANNOUNCEMENT

SENIOR HIGH PICTURES

BRACKETT SENIORS OF 1984-85 WILL HAVE THEIR CAP AND GOWN AND FORMAL PICTURES MADE ON JULY 27TH. AT BRACKETT HIGH SCHOOL. STUDENTS MAY COME BY AT ANYTIME BETWEEN 9:00 A.M. AND NOON.

SENIORS WHO CANNOT HAVE PICTURES MADE ON THIS DATE, SHOULD CONTACT THE HIGH SCHOOL OFFICE FOR OTHER ARRANGEMENTS. BOBBY D. MCCALL, PRINCIPAL BRACKETT JR-SR. HIGH



PUBLIC NOTICE

The following city ordinances were read, passed and approved on third reading at the City Council Meeting Monday, July 9, 1984 and take effect this date.

CITY ORDINANCE 226:

Prohibiting animals from running at large in the city limits; Providing for annual vaccinations; impounding, Euthanizing, redemption and sale of animals; prescribing a

nuisance and other controls of animals within the city limits; prescribing a penalty of a fine of not less than \$1.00 nor more than \$1,000.00; and repealing all parts of ordinances in conflict herewith.

CITY ORDINANCE 231

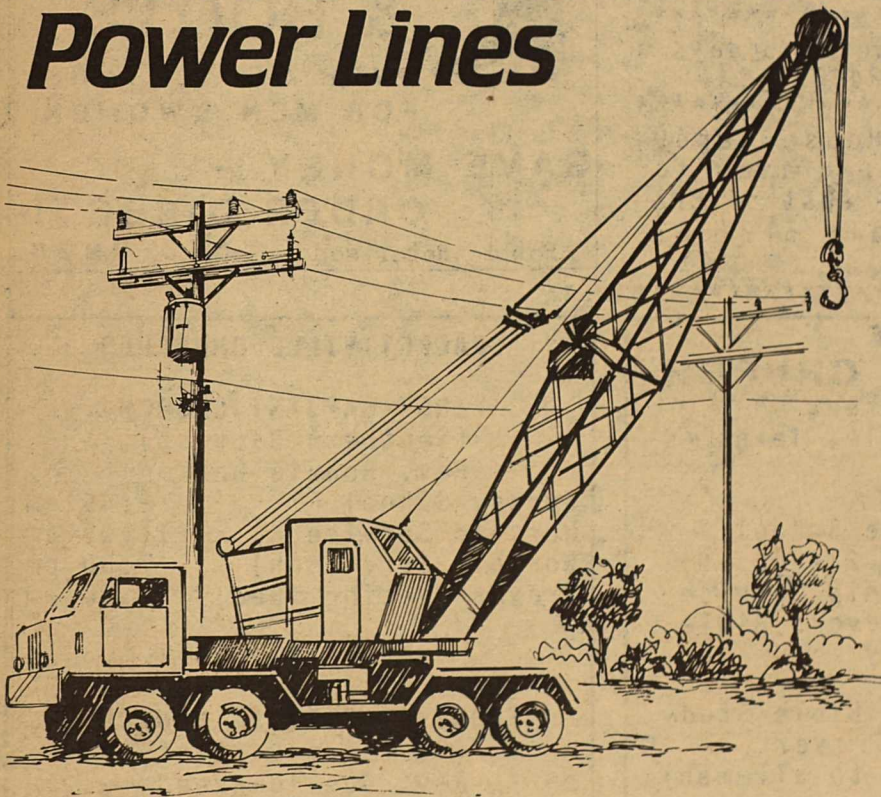
This ordinance fixes and establishes the monthly rates to be charged to all customers for water, sewer and natural gas services; provides for the establishment of connection and service charges for discontinuance of service; provides for the application of electric surcharges to water service; and provides for a late charge for bills paid after the 10th day of the billing month; repeals all ordinances or parts of ordinances prescribing different rates, connection fees, service charges, late fees, and surcharges; prescribes a fine of not less than \$1.00 nor more than \$1,000.00.

William Mendeke
Mayor

Attest:
W.M. Thurber - City Manager

Stay alert and stay clear—

Avoid Contact With Power Lines



Think twice about your clearance overhead—and check it out carefully—anytime you're operating high-rise equipment around electric lines.

Cranes, drilling rigs, cotton module builders, hay balers and other big equipment become dangerous conductors of electricity if they contact power lines. Any contact could result in serious burns (or even death) for the operator and others nearby.

Although electricity performs valuable services for us every day, it must *always* be treated with caution—especially if you're working with equipment tall enough to tangle with electrical wires.

Stay alert—and stay clear of power lines!



CENTRAL POWER AND LIGHT COMPANY
A Member of the Central and South West System



A squirrel has no color vision, it sees only in black and white.



Young rabbits are known as kits or kittens.

All The
Bank
You'll Ever
Need

When
You
Save

When
You
Borrow

THE FIRST STATE BANK
OF BRACKETTVILLE

563-2451

MEMBER F.D.I.C.

DEADLINE:
Tuesday
at NOON

CLASSIFIED ADS

All classified ads: \$.20 per word, 10 words minimum insertion ... \$2.00 per week. NO BILLING OF CLASSIFIEDS !!!

Voss Realty 563-2758

- *****
Ft. Clark
 * Ft. Clark Membership resales
 * Beautiful 3 bdrm., 2 bath home. Priced under appraised value.
 * 49er - 3 bdrm, 1 bath, large fenced lot. Good rental property.

Brackettville
 * 2 bdrm, 1 bath furnished mobile home.
 * Lot on Spring Street.
 * 3 bdrm, 2 bath home in good location, nice shaded lot.

\$5,000 CASH REWARD

FOR INFORMATION LEADING TO THE ARREST & CONVICTION OF POACHERS ON THE PIÑON RANCH!

ALL INFORMATION WILL BE KEPT CONFIDENTIAL.

563-2883

SEARGEANT CONCRETE COMPANY

CONCRETE REDI-MIX
SAND
GRAVEL 
MASONRY SAND

HOURS:
8:00 a.m. to 5:00 p.m.
Monday thru Friday

Hwy. 90 West P. O. Box 529
Brackettville, Texas
512-563-2405

CLASSIFIEDS SELL!!

- *****
FOR SALE: 1972 Mercury, 4 door, runs good. Good Condition. \$400.00 - Firm. 563-2146

FOR SALE: '82 Chevy 6.2 L Deisel Pickup. 4WD, Radio, CB, A/C, 2 Tanks, Shell oversized tires. Asking: \$8800. 563-2695

FOR SALE: 1976 Chevy Malibu, 2 dr., excellent cond. '75 Chevy Estate Wagon, Good cond. - Best Offer. 563-2868.

FOR RENT: available August 1st - 216 Sq. Ft. Air Conditioned office. 202 1/2 North St. call 563-9222 or 563-9250.

WANTED: Housekeeper - 5 days a week-- call 563-2443.

HELP WANTED: Housekeeper, cook, companion, driver for elderly rancher - east of Brackettville - call 512/563-2475.

THE COMMUNITY CHURCH

Ann Street
Brackettville, Texas

- SUNDAY**
 10:00 a.m. Bible School (age 2 - gd. 6)
 11:00 a.m. Worship Service
 7:00 a.m. Believers Bible Study
- TUESDAY**
 7:00 a.m. Mens Bible Study and Prayer (open to all men)
- WEDNESDAY**
 7:00 p.m. Prayer and Praise
- FRIDAY**
 10:00 a.m. Womens Tape Group (held at Debbie Esser's home: 3-2531)

GARY HOLCOMBE, Pastor
315 El Paso
3-9375

May we help you with:

- *Christian Counseling (Bible based for Adults, Youth, Deliverance, Inner Healing)
- * Physical Needs (Food, Clothes for Adults and Children)
- * Prayer Needs (Crisis, Family, Illness)

LIQUOR WINE

DEASON'S PACKAGE STORE

"LOW PRICES ...

FRIENDLY SERVICE!"

'Conaco Station' Hwy 90
512-562-2424



MASON SHOES & BOOTS

OVER 350 STYLES
FOR MEN & WOMEN

SAVE MONEY -
ORDER DIRECT!

Robbie Robertson 563-2993

BRACKETTVILLE CHURCHES

FIRST BAPTIST CHURCH (Southern Baptist) Rev. Ronnie Watson

- | | |
|----------------------|----------|
| Sunday School | 9:45 am |
| Worship Service | 11:00 am |
| Worship Ser. (Sun) | 7:00 pm |
| Prayer Meeting (Wed) | 7:30 pm |

FRONTIER BAPTIST CHURCH (Southern Baptist) Rev. Joe Townsend

- | | |
|----------------------|----------|
| Sunday School | 10:00 am |
| Worship Service | 11:00 am |
| Prayer Meeting (Sun) | 7:30 pm |
| Prayer Meeting (Wed) | 7:30 pm |

UNITED METHODIST CHURCH Ron Kelly - Pastor

- | | |
|---------------------|----------|
| Child. Sunday Schl. | 10:00 am |
| Adult Fellowship | 10:30 am |
| Worship | 11:00 am |

CHURCH OF CHRIST

- | | |
|-------------------|----------|
| Sunday School | 9:30 am |
| Worship Service | 10:30 am |
| Bible Study (Sun) | 6:30 pm |
| Bible Study (Wed) | 7:30 pm |
