



25¢

# the Kinney Cavalryman

VOLUME 10 NUMBER 40

NOVEMBER 4, 1983

BRACKETTVILLE, TEXAS

## GRANTS DENIED

### CITY HALL

BY: WM THURBER,  
CITY MANAGER

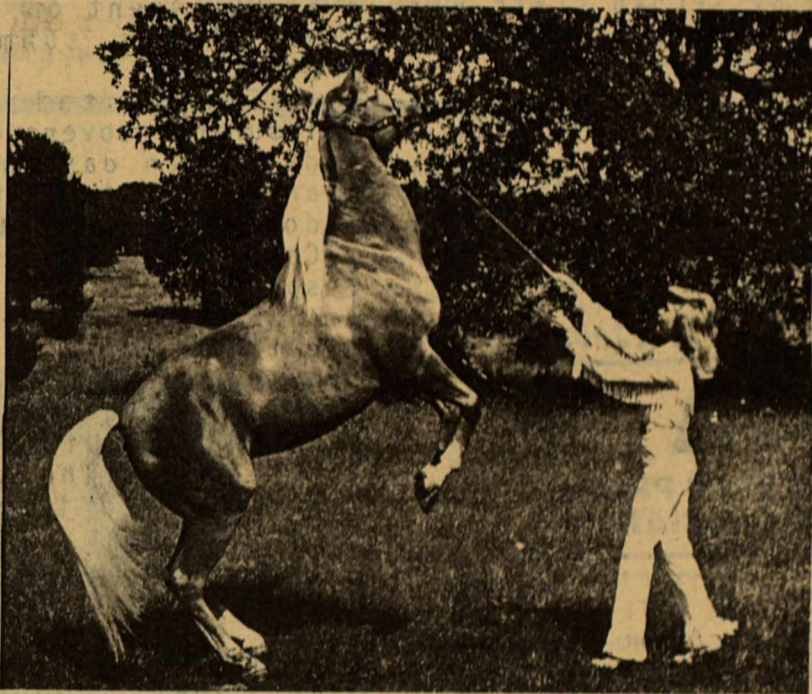
#### EDA AND CDBG REQUESTS DENIED

The City of Brackettville submitted two requests for grants this year on projects that would have benefited each and every resident of the City.

The CDBG application requested funding for a neighborhood center, paving of caliche roads and cleanup of City to help establish a City Parkway while the EDA request for repair/replacement of water tower and ground storage tank, emergency generator to provide water and continued sewage pumping capability after loss of electricity, and providing larger mains to allow extension of service to out-lying areas were denied for various reasons.

The unemployment figures for Kinney County immediately made us marginally qualified for the EDA grant and the CDBG request did not fall into category of life threatening or dire need.

The City Council will consider at their next regular meeting a re-submission plan based on growth potential, needs and long term planning. Kinney County was the only border County not supported by the loss of sales revenue and unemployment from funds appropriated by the Federal Government because of the Mexico peso devaluation.

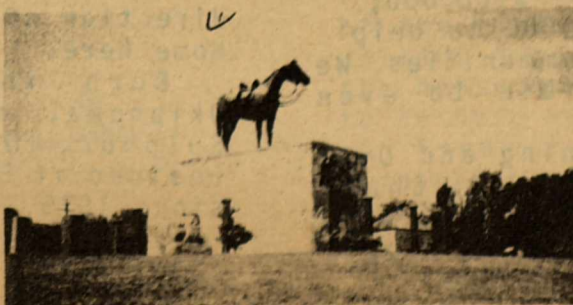


#### "EMPTY SADDLE" DEDICATION

Official dedication of 'Empty Saddle' (i.e. "The Horse") Fort Clark Springs' tribute to its Cavalry past--will be held on Saturday, November 12, at 10:30 am. Director Dorothy Haga was designated by the Association to organize the event and she advises that the 1st Cavalry of Fort Hood will be represented and that Ralph Beard--creator of Empty Saddle--will be honored with other members who built and donated the memorial to the Association.

Donita Y Rosita: Ain't that a good-looking pair? You can see them in the flesh at the "Empty Saddle" dedication on November 12. Donna, her husband, John and Children Tony, age 9 and Rachel, age 7 live in Brushy Creek North, near Rosita's stable.

\*\*\*\*\*



*Continued  
part 2  
col 1*

# THE KINNEY CAVALRYMAN

USPS 100-610

P.O. DRAWER CQ  
BRACKETTVILLE, TX. 78832  
512/563-2696

Judy Loos.....Publisher  
J. George Loos.....Editor  
J. George Loos.....Manager/Adv.  
Carol McKeever....Advertising  
Mary Valenzuela ....Production  
Rose Mary Slubar..Production  
Crystal Loos.....Production  
Sandy Herman.....School Food  
Service Manager

\*\*\*\*\*  
Published every Friday.  
Entered by SECOND CLASS MAIL  
at Brackettville, Texas 78832  
\*\*\*\*\*

Any erroneous reflection upon  
the character or standing of  
any person or firm appearing  
in this paper will be gladly  
corrected upon being called to  
the attention of the  
management and to the article  
in question.



\*\*\*\*\*  
SUBSCRIPTION RATES: PER YEAR  
\$14.00.....Out-Of-County  
\$13.00.....In-County  
\*\*\*\*\*

## CRYSTAL SEZ



"Keep your eyes wide open before

marriage and half-shut afterwards."

Val Verde County received  
\$100,000;; Del Rio--\$45,000;  
Maverick County---\$100,000;  
Eagle Pass---\$55,000 to help  
BEAUTIFY their communities. We  
were not eligible to even  
apply.

Life Threatening and Dire  
Need? How about those  
Communities that had no jobs  
to begin with so were unable

to lose them. Sorry not  
eligible. The City has been  
and will continue to be heard.

### INSURANCE COVERAGES--CITY--

Health Insurance provided by  
City to its employees has paid  
big dividends this past fiscal  
year. Thirty-One Thousand Two  
Hundred and Fifty-six dollars  
(\$31,256.00) was paid by the  
Prudential Insurance Company  
for health claims on City  
Employees and their families.

What did it cost the City to  
provide coverage: Seven  
Thousand dollars (\$7,000.00)  
The City was extremely  
fortunate again that NO, NONE,  
ZERO, work accidents were  
experienced this past year  
under Workmen's Compensation.  
This is one area in which the  
\$3,000 spent on coverage and  
NO claims submitted is a  
blessing.

The total employees  
insurance coverage (24-hours a  
day-seven days a week) at an  
annual cost of ten thousand  
dollars benefits the City  
Council and tax money well  
spent.

Each and every City  
employee is to be  
congratulated on the  
outstanding safety record of  
no lost time for work  
accidents. The type of work  
accomplished is based on high  
rate accident prone employment  
scale-streets, gas, water,  
sewer, etc., and to now have  
gone two years with no claims  
is remarkable. Our rate and  
cost has dropped from .96  
factor to .86. A hearty well  
done!!

## DEATHS

### JOSEPH H. OUTLER

JOSEPH H. OUTLER of Fort Clark  
Springs in Brackettville died  
Thursday in his home following  
a lingering illness. He would  
have 71 on October 30.

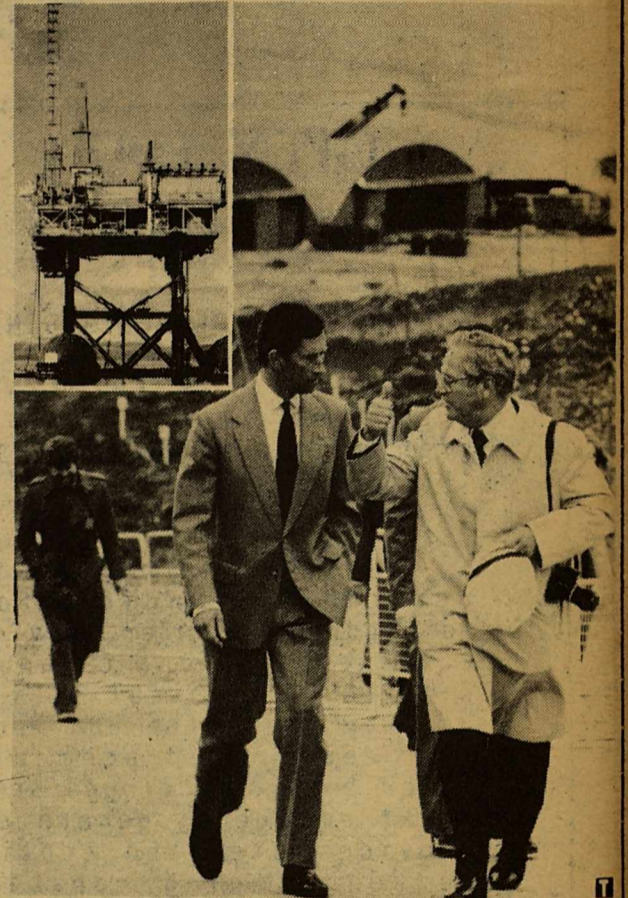
Memorial services were  
held Saturday at 2 pm in the  
First Baptist Church in  
Brackettville under the  
direction of Hillcrest Funeral  
Home here.

Born in Fort Towson,  
Oklahoma, he was reared in  
Sulphur, Okalahoma. He had  
resided at Fort Clark Springs  
since 1979.

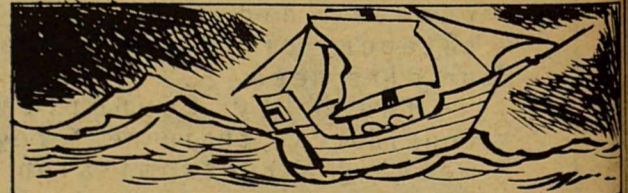
Survivors include his wife,  
Mrs. Jo Outler of Fort Clark  
Springs; a son, Harlie Joe  
Outler of Northridge,  
California; a daughter, Sharon  
Outler McDonald of Conoja  
Park, California; five  
grandchildren; a brother,  
Mitchell Outler of Conroe, Tx;  
and a sister Lila Klohn of  
California City, California.  
\*\*\*\*\*

## NEWS IN PICTURES

INVESTMENT: \$1.2 BILLION!



Prince Charles of Great Britain and C.M. Kittrell, executive vice president of Phillips Petroleum Company, compare notes after dedication of a huge oil platform in the North Sea (insert). Phillips heads a consortium which operates the \$1.2 billion structure in Britain's newest North Sea field. Gross production is expected to average 72,000 barrels a day within a year.



In 1610, Captain Samuel Argall was blown off course near a cape on our eastern seaboard. He immediately named it for his sponsor, Lord De La Warr. It became the state of Delaware.

HAPPY SHAHAN'S  
**ALAMO VILLAGE**  
**VACATIONLAND**

OPEN  
 9AM TO 6PM



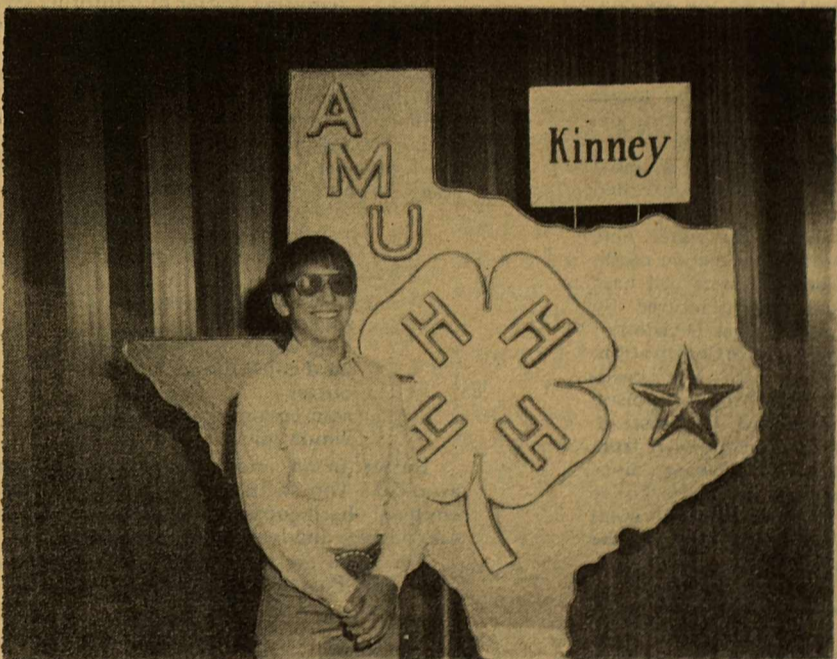
ALL 1983 ALAMO VILLAGE SEASON PASSES  
 WILL BE HONORED UNTIL DECEMBER 31, 1983

\*FINE MEXICAN FOOD  
 \*ROAST BEEF  
 \*BAR-B-QUE  
 Available 7 days a week at the Cantina

Alamo Village is available for private parties w/catering



## GOLD STAR BOY



Our 1983 KINNEY COUNTY GOLD STAR BOY is Toby Frerich, son of Mr. and Mrs. Tony Frerich.

### HARRISON APPOINTED CHAIRMAN

Representative Leroy J. Wieting, Chairman of the Committee on agriculture and Livestock, announced today the appointment of Representative Dudley Harrison as the Chairman of the House Interim Subcommittee to study the Cane Borer Infestation of South Texas. "Texas is fortunate to have a man of Representative Harrison's demonstration leadership ability to assume the chairman of this subcommittee," said Wieting. Representative Harrison will also serve on the subcommittee on Computers in Agriculture and the subcommittee on Water Efficient Crops and Dryland Farming.

\*\*\*\*\*

### MISS RODEO TEXAS AND MISS RODEO TEXAS TEEN PAGEANT TO BE HELD IN SAN ANTONIO MARCH 7TH-11TH, 1984

Over fifty young women from all over Texas will compete in the 1984 Miss Rodeo Texas and Miss Rodeo Texas Teen Pageant. The event, scheduled for March 7-11th, will be headquartered at the Sheraton San Antonio at 1400 Austin Highway, with the horsemanship competition to be held in the horse arena at Freeman Coliseum. The coronation will be held at the Pearl Jersey Lily.



Nebraska has the most one-room school houses in the nation.

*Continued  
 Page 6*



## This Land Is Your Land

*Garry Mauro*  
Texas Land Commissioner

The implementation of sound and innovative land management practices on all 12.5 million acres of state-owned land continues to be one of my priorities. Recent efforts at incorporating wildlife and land conservation measures into our land leases are resulting in increased revenues for the Permanent School Fund. The Permanent School Fund now totals over \$3.8 billion or \$600 for every public school student in Texas. Concurrently, these measures ensure that our lands are preserved and protected to meet the needs of future generations.

The General Land Office has worked with the Soil Conservation Service to inventory the terrain, vegetation, grazing capacity and other important characteristics of over 120,000 surface acres of state-owned land. Further surveys will be conducted in the future on other suitable tracts of state land. The resulting resource management plans will include recommendations for proper placement of water tanks, location of cross-fencing to allow for rotational grazing and sustainable grazing capacity on remaining state-owned land. It will provide for the maximum commercial development of the land consistent with environmental concerns, thus ensuring that state leases are not overgrazed and will continue to provide needed revenue to support the public schools in Texas.

In August the General Land Office accepted a \$53,405-a-year bid from L.N. Johnson of Lockney for a five-year lease of the 9,540-acre state-owned Hackberry Creek Ranch in Brisco County. This is the first surface lease to require guaranteed annual payments to the state for permanent improvements to the property. These improvements can include constructing and repairing windmills and fences, developing additional water sources and pipelines, brush control, establishing wildlife feeding

sources and erosion control. Requiring annual payments for permanent improvements to the property creates a built-in incentive to adhere to proper land and wildlife management techniques.

Another virtually untapped source of revenue we are vigorously pursuing is the addition of hunting lease provisions to current upland leases on state-owned land. Sam Brownley, a game management specialist in the Texas Parks and Wildlife Department, has joined our staff. He will identify public lands suitable for hunting, make recommendations for sound wildlife management practices and implement newly adopted game management plans.

As an example, the 5,600-acre South Texas (Harper) Ranch in Duval and McMullen counties is being studied to determine how best to complement grazing leases with hunting leases. As hunting leases bring in higher fees than grazing leases, we can triple the present revenue from these lands within five years. Vegetation studies are presently underway to ensure that the objectives of cattle grazing, hunting and other multiple-use programs are compatible.

In addition, selective culling of deer will provide for an optimal buck-doe ratio for that particular land. Revenue from bird hunting at the South Texas Ranch is being used to fund construction of deer fences to facilitate game management objectives. This is but one of many state-owned leases where increased revenue can be obtained through multi-use programs.

Innovative land management practices such as these are in keeping with my pledge to run the General Land Office in a sound, businesslike manner. I will continue to develop new programs and maximize the revenues from public lands while protecting every Texan's heritage from irresponsible and short-sighted development.

## NEWS

### OF HEALTH

#### Coping With The Mosquito Epidemic

The mosquitos are coming! Because of heavy rains and flooding in the U.S. this year, health officials predict that a dangerous mosquito epidemic could be with us. Although safe and effective methods of mosquito control are available, governmental agencies responsible for control report that they are hampered by inadequate budgets to cope with this epidemic.

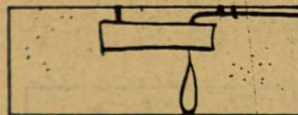


Mosquitos are responsible for much more than those itchy annoying bites. They spread some serious diseases including encephalitis, malaria and yellow fever.

Mosquito control involves an understanding of the mosquito's life cycle. They hatch from eggs laid in stagnant water and are confined to the water through their early larval and pupal stages. Reaching maturity, the adult mosquito leaves the water to spread its destruction to humans.

The mosquito is most easily and safely controlled in its early stages when it is confined to the water. One of the most effective methods uses a mineral oil base larvacide manufactured by the Golden Bear Division of Witco Chemical Corporation. Larvacides are not pesticides. They do not poison the mosquito, but instead, kill it by preventing it from breathing in the water. Since larvacides are non-toxic they do not harm the plant life and do not transfer poisons to fish and animals that feed on mosquitos. Mosquitos do not acquire immunity to larvacides over a period of time, so that larvacides are the most effective and persistent method of mosquito control.

Many Americans are writing or calling their legislators urging them to provide the additional funds needed to cope with the current mosquito epidemic.



Two cups of water weigh about one pound.

## naturally nutritious

Some Fresh Ideas For Tail-Gate Picnics



A refreshing new slant on tail-gate parties—sandwiches made with Maine sardines.

Crisp cool temperatures and bright blue skies turn many to thinking of rides in the country, football games and that great American favorite, tail-gate picnics.

Whether yours is a station wagon or a compact car, it's still fun to enjoy a delicious snack right from the car. Here are some ideas for picnic foods that are a refreshing change from the run-of-the-mill hot dogs, sandwiches and potato salad.

Serve a tempting platter of California style sandwiches, made especially flavorsome and nutritious with the addition of Maine sardines. Packed under the labels of Port Clyde and Holmes, they are rich in vitamins, minerals and other important nutrients.

Include a variety of "munchies" like cubes of hearty cheeses, hard-boiled egg halves and crisp crackers. Add a bowl of salad, mixed with your favorite greens, and beverages to suit everyone's preference.

#### CALIFORNIA SANDWICHES

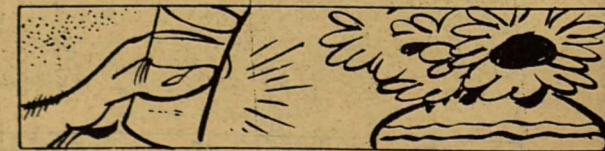
pumpnickel or dark rye bread  
lettuce  
sliced Swiss cheese  
sliced avocado  
Port Clyde or Holmes Sardines, drained  
hard-cooked eggs  
butter  
sour cream or mayonnaise  
lemon juice

Butter bread and arrange lettuce, cheese and sliced avocado. Top with whole sardines and garnish with chopped hard-cooked egg. Serve with sour cream or mayonnaise and lemon juice.

For more recipes, write to: Naturally Nutritious, P.O. Box 1769, Portland, ME 04104.



If you're separating eggs, do it when they are cold for better results.



Save the water from boiling eggs. It contains minerals and makes a beneficial drink for your house plants.



## SHERIFF'S CORNER

**NORMAN H. HOOTEN, SHERIFF**

Some of you may have noticed that this column did not appear last week, the reason being I simply did not find the time to get it ready for publication. Routine Business and miscellaneous investigations have kept us hopping the last couple of weeks.

Chief of Police Donnie Nance filed charges of Driving Without Headlights, No Liability Insurance, and Fleeing from a Police Officer against Ronnie Dean Loden, 22, of Malakoff, Texas, last week. On the night of October 24, at approximately 10:30 pm Chief Nance spotted a car driving East on Spring street without headlights. When an attempt was made to stop the vehicle the driver fled West on Spring Street at a high rate of speed, cut down an alley neat the intersection of Loop 166 and FM 2304. The car then hit a ditch as it was coming out on FM 2304 and careened across the road, crashed through a fence and came to a stop in heavy brush in the pasture. The driver fled on foot, leaving two male companions in the car. The men were taken to the jail, questioned and later released. Loden was later arrested at 2:55 am after turning himself in at County Jail. He was tried in Municipal Court and paid fines totaling \$208.00 assessed by Municipal Judge Louis Starzel.

Three DWI cases were tried in County Court by County Judge Albert Postell, Thursday, October 27. Benjamin R. Tovar, 25, of Brackettville and Terry J. Coleman, 32, of San Antonio each received fines of \$523.00 each with Tovar also receiving a 10 day jail term. Bernardo Granado, 32, of Del Rio received a fine of \$363.00. Tovar and Granado remain in jail at this writing in lieu of said fines and jail time. Coleman paid his fine and was released.

We recently made application with the Texas Department of Human Resources Food Division, for various milk products such as cheese, butter, etc. to be

used for county prisoners. These products can be obtained at an annual cost of \$9.50 plus a small storage fee. This application has been approved and we have already received our first shipment. This program will save the county quite a bit in funds that can be used elsewhere.

We also recently applied for some U.S. Marshal's Service and have received approval for our request of uniforms for prisoners, typewriters, a Xerox copier, and misc. equipment, all at no cost to the county. The copy machine has been badly needed at the jail and would have cost the county approx. \$3,200. had we had to buy one. We are most pleased to receive badly needed equipment with no cost to the county.

Brackettville Police Patrolman "Corky" McGuire had some bad luck with his patrol car Sunday night. He had been notified by the jail dispatcher to be on the lookout for an Eastbound bus that was possibly carrying a runaway child. As he was issuing a citation to a violator on the East side of town the bus came by. After completing the citation he gave pursuit of the bus. As he approached the bus from the rear and prepared to make the stop the engine in his patrol car suddenly lost oil pressure and blew. He was, of course, unable to stop the bus and check for the runaway.

This patrol car is a 1975 Chevrolet that has been used by five different Chiefs of Police and three different Patrolmen. It has been worn out and unsafe for use for several years and in fact was officially declared to be unsafe for police work by a Motor Vehicle Inspection station while I was Chief of Police. This car should have been replaced years ago.

It is a sad but true fact that repeated requests by at least three Chiefs of Police to replace this vehicle have been denied. A police officer lives from 10 to 12 hours a day in his patrol car. He must answer emergency calls of all types and is often required to transport sick and injured persons to a location where they can receive emergency medical treatment. A police officer is often required to drive at high rates of speed, around corners and brake hard of all the equipment vital to

the duties of a peace officer, his vehicle is most important, not only in the performance of his duties, but for the safety and welfare of the officer and the community he serves. I feel it is a disgrace for any state, county or city government to ask a peace officer to perform the often dangerous duties of law enforcement with defective, worn out equipment. Peace Officers sometimes wonder if this is an example of the esteem with which they are held by the respective government agencies for which they work.

Surely if other department can receive new pickups, dump trucks, etc. the Police Department can be allowed to replace old, worn out, dangerous vehicles with newer, safer ones in which they can perform their duties in a safe, professional manner.

The October issue of the FBI Law Enforcement Bulletin reports that over 3.4 million burglaries were committed in the United States last year with losses to victims estimated at three billion dollars or \$880.00 per incident. Of all burglaries reported, 66% were of residential property and 41% were known to have occurred at night. 73% involved forcible entry; 19% were unlawful entries (without force); the remainder were forcible entry attempts. The 1982 national burglary clearance rate was 15%. (The local clearance rate of reported burglaries stands at 50%) 77% of the burglary arrestees were under the age of 25.

## THANK YOU

We wish to express our sincere thanks and appreciation to our many neighbors, friends and relatives who expressed their sympathy with flowers, memorials, food, cards, letters, and offers of assistance at the time of the death of our loved one.

Mr & Mrs Alfred Pena and family

Mr. & Mrs Roland Palacios and family

\*\*\*\*\*

*Rodeo*

The contestants, aged 13-17 and 18-24, will be judged in three categories: Horsemanship, Personality and Western Attire. The winner of the Miss Rodeo Texas title will receive a \$1,000 educational scholarship, a trophy, a hand-tooled saddle, an engraved belt buckle, Western attire and the use of a new pick-up truck and two-horse trailer throughout her one-year reign. She'll appear in at least eight major rodeos, travel to eighty other rodeos, and make appearances at special events and on television. One of the highlights of her year as Miss Rodeo Texas is competing in the Miss Rodeo America Pageant in Oklahoma City in December. (In the past seven years, two Miss Rodeo Texas winners have captured the national title. For the past twelve years, all the Texas titlists have finished in the top ten in the national pageant.)

The new Miss Rodeo Texas Teen will receive a \$500 scholarship, a trophy, a hand-tooled saddle, an engraved belt buckle, and the use of a two-horse trailer for

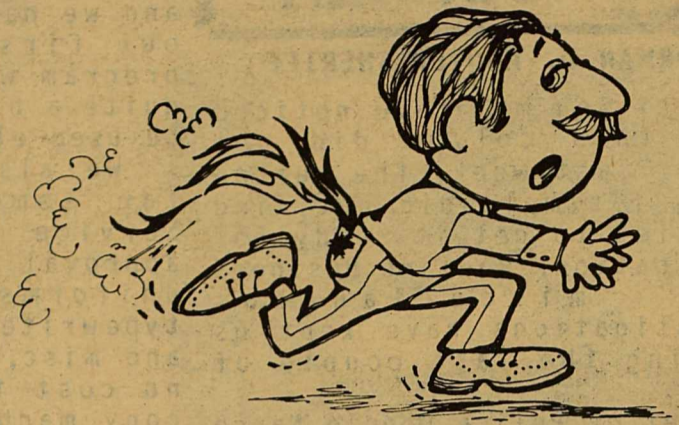
traveling to youth rodeos in Texas.

The Texas Pageant, which originated in the late 1950's in Wichita Falls, established San Antonio as its home in 1979, after several moves to Dallas, Mesquite and Stephenville. Financial support for the event comes from corporations, organizations and individuals in San Antonio and from across the state.

The reigning Miss Rodeo Texas is nineteen year old Linda Fox of Vernon, Texas. The current Miss Rodeo Texas Teen is Joan Batis of Joshua.

Candidates interested in participating in the pageant must be legal residents of Texas and never have been married. All contestants must have a sponsor and a current title. Information and entry blanks can be obtained by writing to: Miss Rodeo Texas Pageant, P.O. Box 906, Stephenville, Texas 76401. Deadline for entries is January 25th, 1984.

\*\*\*\*\*



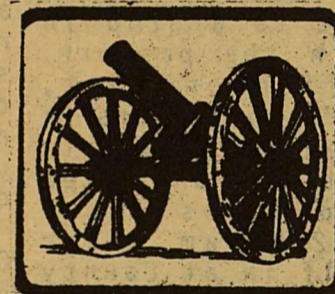
### Money Burning A Hole In Your Pocket?

It's a decision you face every payday. Should you spend it now or save the money for future security?

Placed in our care it's insured safe, constantly growing and readily available. Stop in the bank this week, won't you?

## THE FIRST STATE BANK

563-2451



MEMBER

F.D.I.C.

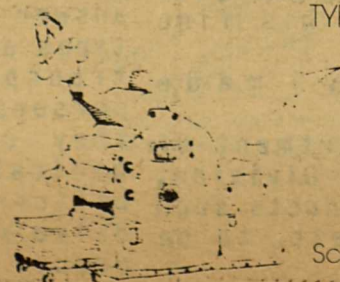
COMMERCIAL PRINTING AND PUBLISHING

### THE PRINT SHOP

117 South Getty Street  
Uvalde, Texas  
278-2955

ASK ABOUT OUR  
CREATIVE ADVERTISING SERVICE

QUICK COPY  
COMMERCIAL PRINTING  
TYPESETTING



Scottie Molloy, Owner

# BUSINESS SECTION

## GIVING A GUN FOR CHRISTMAS ?

LET US SAVE YOU 'BIG DOLLARS' WE WILL ORDER ANY GUN FOR YOU FOR 10% OVER DEALERS' COST PLUS POSTAGE AND SHIPPING.

### FRONTIER GUNS

202 NORTH STREET 563-9222



your HAIR CONDITIONED by professionals

### MI-LADY'S SALON

CALL APPOINTMENT: 563-2698

## DAVE'S TOWING SERVICE

# 563-2987

14K GOLD JEWELRY • 14K GOLD JEWEL

### Genie's Nugget



For all your summer party needs

- party goods, cards, candles rentals
- Diamonds, precious and semiprecious stones
- Unique gift ideas
- Next to the Country Store 563-9701

HWY 90 Brackettville

14K GOLD JEWELRY • 14K GOLD JEWEL

14K GOLD JEWELRY • 14K GOLD JEWEL

14K GOLD JEWELRY • 14K GOLD JEWEL

### PLUMBER

AND

### ELECTRICIAN

LICENSED AND BONDED

## VITO M. LAGIOIA 563-2673

### A.B.C. CLEANERS

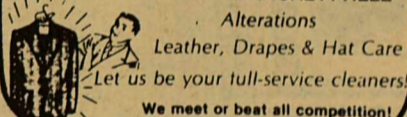
BRACKETTVILLE - PICK UPS

- A mistad • 124 Foster 775-3778
- B order Cleaners • 1014 S. Main 775-7814
- Comet 1-Hour • La Villita Shopping Center 775-0714

Tuxedo Rental and Bridal Gown Preservation Available

Ask for your free wedding guide

PICK UP STATION IN BRACKETTVILLE



Alterations  
Leather, Drapes & Hat Care  
Let us be your full-service cleaners!  
We meet or beat all competition!

### SMITH'S FLORIST

8 am to 6 pm

(Mon.--Fri.)

CLOSED 11:30-12:30

563-9216

## FINCH

VAL FINCH

HEATING Airconditioning Refrigeration Appliance

P.O. Box 765 Brackettville, Texas 78832

(512) 563-9303

## MASON SHOES & BOOTS

SAVE MONEY ORDER DIRECT



OVER 350 STYLES

For Men & Women

Robbie Robertson 563-2993

## ROGER'S ELECTRICAL CO.



Electric Wiring And Plumbing

Work Guaranteed Day or Night



Commercial - Industrial - Residential

Design Installation Repair "Free Estimates"

Wayne Rogers 563-2831

### CORREA'S CARPET CLEANING

Robert Correa, Owner

"FREE ESTIMATE"

- STEAM CLEANING
- UPHOLSTERY
- AUTO INTERIOR

774-7716 • 774-2207 •

DEL RIO

## OLD FORT GIFT SHOP

WHOLESALE PRICES TO MOVE THE LAST OF OUR STOCK

MANY CHRISTMAS ITEMS (TOYS, BRASS, WOOD, GLASSWARE)

WE NOW HAVE A PUBLIC PHONE

"If you utter insults you will also hear them."

563-2885

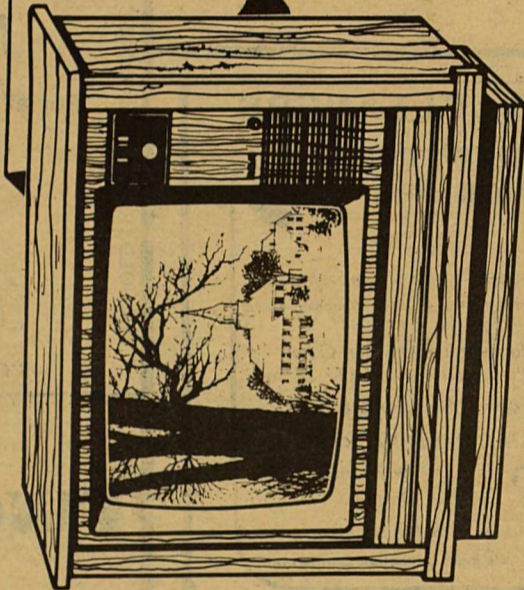
Hwy 90 East

# TEXAS SIZE

## SALE AND SWEEPSTAKES

### Win Great Prizes! Save on Great Prices!

Only at Lack's

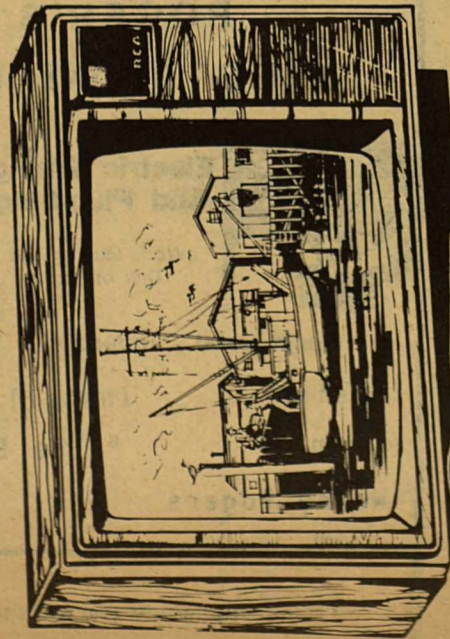


RCA 25" Diag. Color Console T.V.

Watch Lack's Texas Size Sale and Sweepstakes for savings of \$100.95 on RCA's color console TV! You'll enjoy colorful home entertainment with precision features: SignalLock electronic tuning, AFT, unitized XtendedLife chassis, super AccuFilter tube, ACC, big 6" oval speakers, and illuminated channel numbers. Add color to your world today, get an RCA console at Lack's! 70-123-0

**\$499**  
Reg. \$599.95

rca remote Control TV



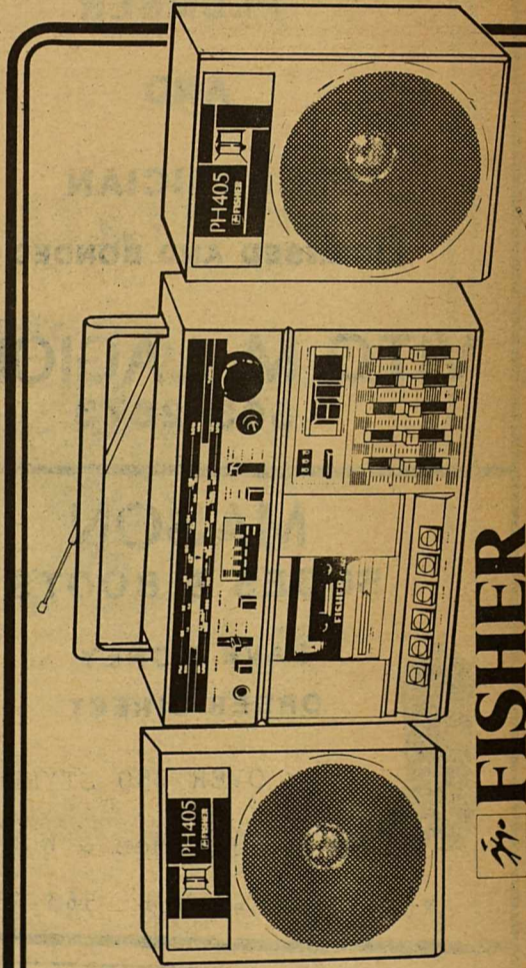
**RCA**

**\$499**  
Reg. \$499

Relax and let your fingers do the controlling with RCA's Color Trak TV featuring digital scan remote control. From the comfort of your chair, you can turn set on/off, adjust or mute the volume, select all channels on VHF/UHF or up to 57 cable channels. Plus, you get ChannelLock digital quartz crystal tuning, super AccuFilter black matrix picture tube, XtendedLife chassis, and ACC. See yours today at Lack's and save \$50.95! 70-122-1

Fisher's Portable "Hi-Fi to Go"

**\$149**  
Reg. \$199.95



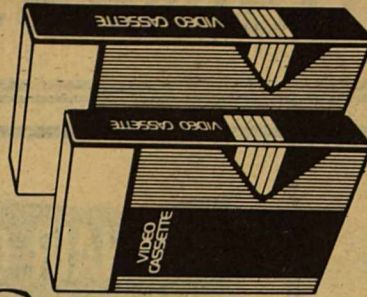
**FISHER**

Take along plenty of musical fun wherever you go with Fisher's "Hi-Fi to Go" system from

No purchase necessary to register to win Lack's great prizes, nor do you have to be present at drawing to win. You must be 18 years or older to register and win.

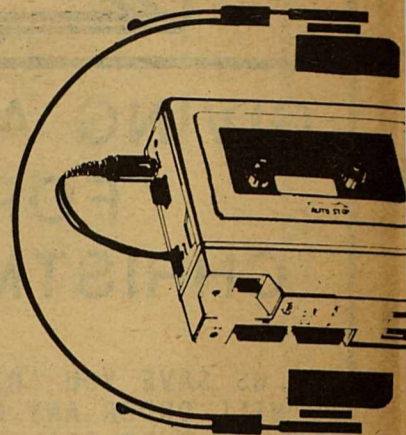
### Register to Win

- Trip for 2 to either Las Vegas or Cancun, Mexico which includes air fare and 3 nights (double occupancy) at MGM Grand in Las Vegas or The Sheraton in Cancun. Plus \$150 spending money. (10 will be given away)
- Vaughn-Bassett bedroom suite
- Broyhill bedroom suite (2)
- Broyhill dining room suite (2)
- Action recliners by Lane, excluding leather(8)
- General Electric TBFF22C refrigerator



6-Hour VCR tapes  
**\$7.77** each

Forever the memories are yours with quality video cassettes that recordplay up to 6 hours. Now you never have to miss your favorite shows or the enjoyment of a special event. Get yours today during Lack's Texas Size Sale and Sweepstakes! 72-100-4

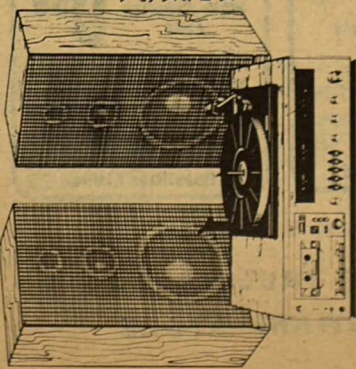




Lack's Texas Size Sale and Sweepstakes! In your living room or on the go, you can custom tailor your music with built-in 5-band equalizer, detachable 2-way speakers, 4-band tuning, cassette deck with metal tape capability, powered mechanisms, soft touch controls, and AC/DC power options. Pick one up from Lack's at savings of \$50.95 now!

### Fisher Stereo System

You won't believe your ears or the super savings of \$100.95 when you hear the impressive sounds of your new Fisher component stereo! Includes AM/FM stereo receiver, built-in cassette deck, automatic record changer, and 2-way speaker system. Hears yours today at Lack's!



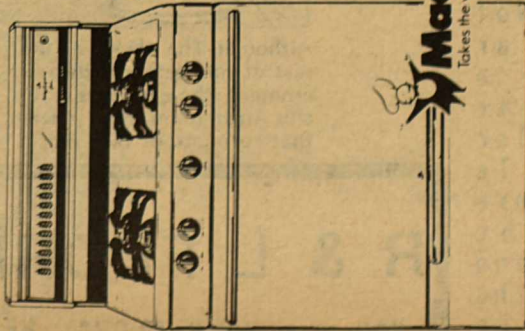
Reg. \$449.95

# \$349

Register at Lack's to Win Over

# \$20,000

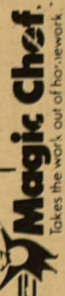
in Prizes to be Given Away!



### Magic Chef 30" Range

The ordinary cook becomes a chef when Magic Chef's 30" gas range is used! Features lift-up/lift-off cooktop, Uniburners, sensitive heat guard, spill-catching, seamless cooktop, porcelainized steel grates, chromed self-lock oven racks, thick energy-saving insulation, and more! Don your white hat today - chef!

# \$349



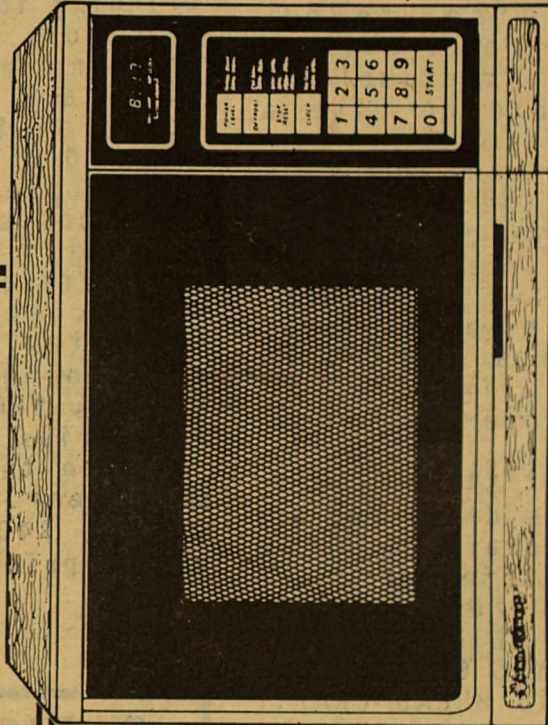
Also available in Electric

### Fisher Audio System

Get big sound performance at home or on the go with a Fisher "Hi-Fi to Go" from Lack's! Has detachable 2-way speakers, Dolby noise reduction, auto search function, cassette section, multi-band tuning, soft function controls, and magnetic phono input. Get yours now!

# \$199

Reg. \$229.95



### Magic Chef's "Little Big" Touch Control Microwave

Here's proof that big surprises come in small packages! Magic Chef's "Little Big" microwave oven measures only 22", yet is big enough to cook a complete meal! The exciting features continue with "Even-Cook Energizer" for even energy distribution, 10 heat levels, solid state memory, automatic defrost, automatic thermometer, automatic keep warm, lighted time of day clock, and so much more! Get yours today, Lack's low price is no surprise!

# \$379

Reg. \$419.95

600 E. MAIN

UVALDE

278-4573

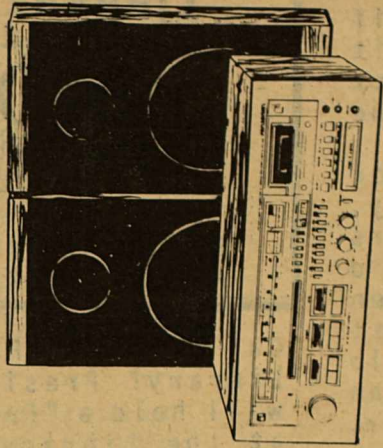
# Lack's

# \$19

Now Only

### Sheba Mini Cassette Player

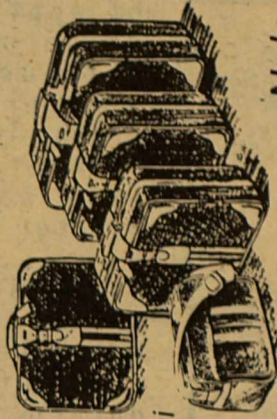
Mini in size, your new Sheba cassette player gives you maximum performance. Has talk line button, LED power indicator, fast forward/cue, volume control, and lightweight headphones. Fits nicely into your pocket. Now at a mini price, at Lack's!



### Soundesign Stereo

# \$249

Such harmony...a super Soundesign stereo at a super Lack's price! Includes amplifier section, AM/FM stereo receiver, cassette deck with metal capability, 8-track section, 2-way speaker system, and much more. Harmonize at Lack's today!



### Nylon Luggage Set

5 Pcs.!

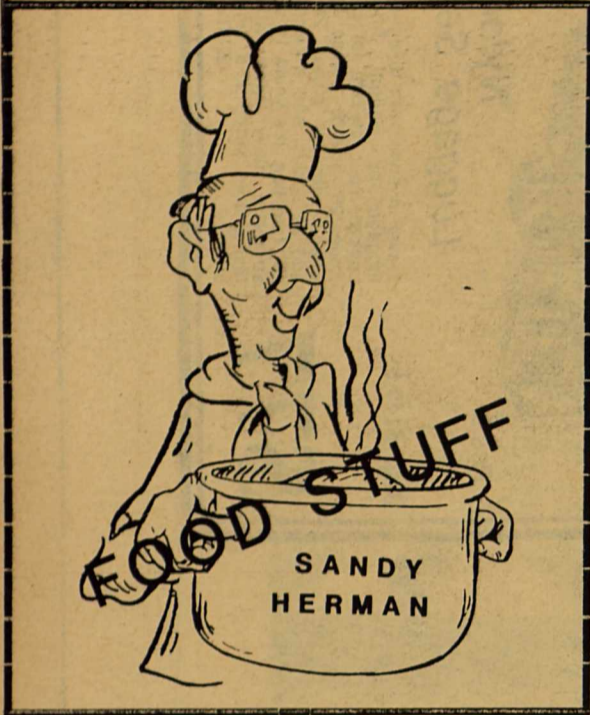
Reg. \$149.95

# \$77

Travel in style with designer luggage by Pabrini from Lack's! Your stylish set includes 28" and 26" pieces on wheels with pull straps, 24" and 22" sizes, and a handy 16" tote bag. It's yours in an attractive navy blue with fashionable stripe and vinyl trim.

22-101-0

# AROUND CAMPUS



- Breakfast  
 NOVEMBER 7....Capt. Crunch;  
 Pear halves;milk  
 NOVEMBER 8....French Toast;  
 syrup;peaches;  
 milk  
 NOVEMBER 9....Sugar Smacks;  
 fruit cocktail,milk  
 NOVEMBER 10....Frosted Flakes;  
 bananas;milk  
 NOVEMBER 11...Pancakes; syrup  
 apricot juice;milk
- LUNCH  
 NOVEMBER 7....Batter dip Fish;  
 potatoes;green bean  
 hot roll; peach  
 slices; milk  
 NOVEMBER 8...Soup 'n Sandwich;  
 fruit cocktail;  
 Oatmeal Cookie;milk  
 NOVEMBER 9...Corn Dogs; Tater  
 Tots;Peas 'N Carrot  
 Fruit Float; milk  
 NOVEMBER 10...Ravioli; Salad;  
 Orange Wedges;bread  
 sticks;cookie;milk  
 NOVEMBER 11...Hamburger;Fries  
 Lettuce 'N Tomato;  
 Apple Crisp; Milk  
 \*\*\*\*\*

This past week the School Office has sent out letters to people asking for explicit information to collaborate the information on their lunch program applications. Not everyone who filled out an application will receive a letter. The method used to select individuals is called the error prone profile system. Three questions are asked about how the application is filled out and point marked for whether the answer is yes or no. The reason for this verification

of applications is to see if the applicant has filled it out correctly and to check whether we have given it the proper validation.

Another bit of news for this past week. On Friday, October 28, the second graders were given an award certificate and a Halloween sticker and a piece of Halloween candy for their help in keeping the cafeteria clean during the month of October. The second graders are very good about cleaning their own spot at the table, pushing their chairs in and talking at a normal voice level. Hopefully, the other classes will follow their example. I hope to be able to give a prize again this month.

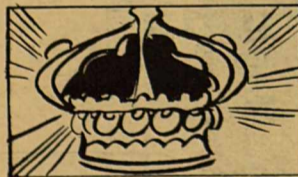
Letters were sent home this week inviting the parents to eat Thanksgiving dinner with their child/children and their class on November 23. A tear-off reply sheet was included so the cafeteria can get an accurate count in order to prepare the proper amount of food.

\*\*\*\*\*

As Christmas draws nearer, remember the craft books we have on hand, a few of which are : CRAFTS FOR FUN AND PROFIT; MAKING THINGS OUT OF STRAW; CHRISTMAS CRAFTS; AND INTRODUCTION TO BREAD CRAFT; MAKING PAPER AND FABRIC FLOWERS; CUSTOM MADE; WOODSTOCK CRAFTSMAN'S MANUAL; DOLLHOUSE DOLLS; CARVING WOODEN ANIMALS; CARVING FACES AND FIGURES IN WOOD;

Like I said, these are but a few to be found in our 700's collection! Get ahead start on adding the personal touch to this season--come in and check us out!

\*\*\*\*\*



Although The Hague is the seat of the Netherlands government, the capital is actually Amsterdam and it is here that coronations take place.

## R & L FLORISTS

FOR ALL YOUR FLORAL NEEDS !

Spring Street 563-9201

## LIBRARY NOTES

# BOOKS



Mrs. Charolette Corey  
Kinney County Librarian

Calling all Friends of the Library! President Tim Ward will hold a "friends" meeting at the Library next Tuesday night at 7:00 pm to discuss the up-and-coming fund-raising event this month. Please come bringing ideas and able hands. All those of you who are new in town come too!

We are trying to raise a total of \$4,000..... \$2,400 for a Panasonic photocopier that will even make posters; \$600 for a VHF video cassette player/recorder, so people may also check out the video cassettes available through out San Antonio District 10 Office, \$500 for Walt Disney filmstrips for the hundreds of children that watch out films each year and last, but not least, \$400 for purchasing out-of-print "Texana" books.

## DAVIS HARDWARE & RANCH SUPPLY

**True Value**  
HARDWARE STORES

**TOOL VALUE OF THE MONTH**

**Master MECHANIC**

**799**  
While Supplies Last

**30-Ft. Power Tape**  
Toggle lock holds 1-in. blade securely. High-impact Cyclocase. MMP430  
Quantities Limited

**True Value**  
HARDWARE STORES

**BARGAIN OF THE MONTH**

**WEST BEND**

**999**  
While Supplies Last

**12-in. Skillet w/High-Dome Cover**  
Extra-large for fried chicken, pot roast. Nonstick Rockcote™ interior. 16150  
Quantities Limited

"YOUR TRUE VALUE  
HARDWARE STORE"

563-2528

What's Your Opinion?

Do you agree with the opinions of other Americans on important issues? Compare your ideas with those of your compatriots as expressed in a recent poll.

Do you think our economy has started to improve?

In a poll conducted in March, 1983, for Time magazine, just about half those polled said they believe that it has. Most economists agree the recession ended in December, 1982. Some Americans have credited the strong leadership of President Reagan with the improvement and point to a number of signs of recovery.

First, the 3.9 percent that the cost of living went up in 1982 was the lowest increase in a decade. In 1980, the cost of living was rising at 12.4 percent a year.

Meanwhile, the prime interest rate (the interest rate that commercial banks can charge on loans to their borrowers with the best credit ratings) was down to 10.5 percent in early 1983—a dramatic decrease from the 21.5 percent high of late 1980. When the prime rate goes down, most interest rates soon follow and borrowing may become easier.

Other positive signs: more houses are being built; more money is being spent on construction; more products



Do you agree with most Americans about economic issues?

are being ordered from factories; industrial production is increasing; more people are buying cars.

With the upturn in the economy, factories and industries will be recalling many laid-off workers and creating new jobs.

Many civil servants are noting that keeping inflation and federal taxes down can mean more money available for local government services and that the economic recovery can be especially economic for them.

Some Americans of all walks of life are expressing their opinions by asking for free brochures on how they can help our President continue to fight for our economic recovery. They are writing to the Republican National Committee, 310 First Street SE, Washington, DC 20003.

"Have you had a kindness shown? Pass it on."

Henry Burton



The residents of North Carolina consume more soft drinks than any other state in the nation—an average of 39.9 gallons per person.

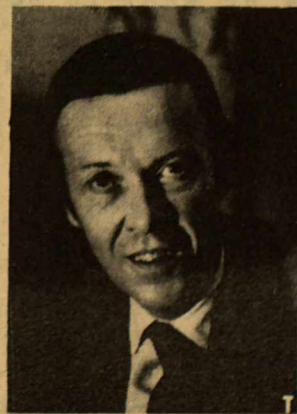


Minnesota produces the largest number of turkeys in the U.S.



One of the most lucrative markets in today's publishing field is in newsletters.

It's one of the fastest growing businesses in the U.S. More than 100,000 different newsletters are now in circulation with one for nearly any imaginable interest. Subjects range from a giant oil corporation's house organ or an insider's investment-tip weekly to PTA or church newsletters.



Howard Penn Hudson, veteran editor, is author of "Publishing Newsletters".

GRAPES, CHICKEN STAR IN MAIN DISH

Marinated Chicken With Grapes is a perfect main dish for lazy late summer and early fall meals. Featuring colorful grapes and strips of chicken melded in a cream sauce, this delectable main dish is wonderful served over hot cooked rice.

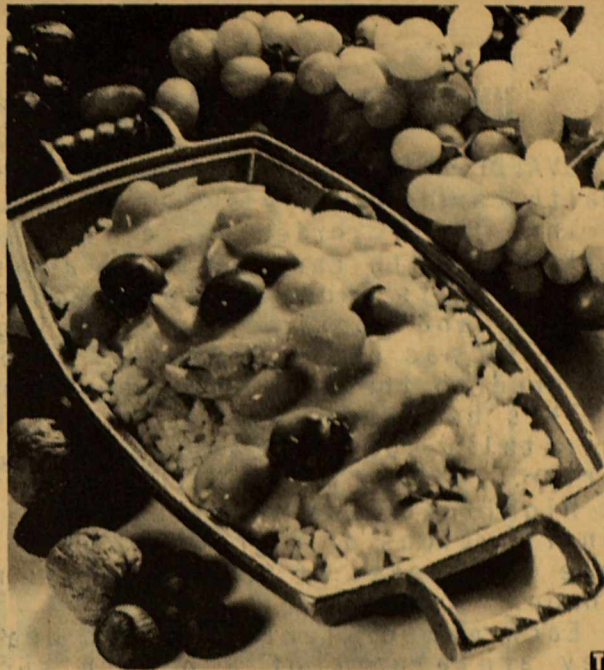
Tender chicken breasts are cut into strips, briefly marinated in a savory Soy Sauce Marinade, then quickly sauteed in this skillet main dish. Half-and-half and the remaining marinade cooks to a rich, slightly thickened sauce in which the sauteed chicken and grapes are heated for serving. Accompany with steamed fresh vegetables and a dry white wine to round out the main course.

Fresh California table grapes are available nearly year-round—in at least one color—to add appeal to a variety of favorite foods. Wonderful with poultry, grapes are also a delicious addition to salads, desserts and even appetizers.

When shopping for grapes, select berries that are firmly attached to pliable stems. Store in plastic bags in the refrigerator and wash just before serving.

MARINATED CHICKEN WITH GRAPES

- 2 (about 1 lb.) chicken breasts, halved, skinned and boned
Soy Sauce Marinade
2 tablespoons each butter or margarine and oil
1/4 cup water
1-1/4 cups half-and-half
2 cups green, red or blue/black grapes, seeded if necessary



Serve Marinated Chicken With Grapes over rice. Accompany with steamed fresh vegetables and a dry white wine to round out a simple main course.

- Salt and Pepper
Steamed rice
Parsley sprigs, optional

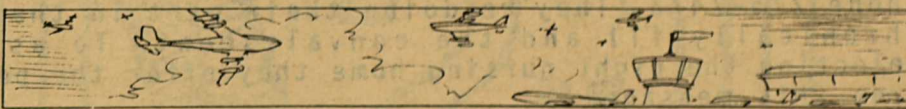
Cut chicken diagonally into 4 or 5 strips. Pour Soy Sauce Marinade over chicken; marinate 5 to 10 minutes. Remove chicken pieces from marinade; reserve marinade. Heat butter and oil in skillet. Saute chicken strips about 2 minutes on each side or until cooked; remove from pan and keep warm. Add water to pan; gently scrape bottom of pan. Stir half-and-half into reserved marinade; pour mixture into pan. Cook and stir over

medium heat until slightly thickened. Return chicken to pan; add grapes. Heat thoroughly. Salt and pepper to taste. Serve hot over steamed rice; garnish with parsley. Makes 4 servings.

Soy Sauce Marinade:

Combine 3 tablespoons dry sherry, 2 tablespoons cornstarch, 1 tablespoon soy sauce, 1/2 teaspoon grated ginger root\* and 1 small clove garlic, crushed; mix well. Makes about 1/4 cup.

\*One-fourth teaspoon ground ginger can be substituted for grated ginger root.



Chicago's O'Hare International Airport is the busiest commercial airport in the nation.

Wherever there is a specialized, identifiable interest group there's a newsletter market. The potential is immense, according to Howard Penn Hudson, an expert in the field, who's just written a book on the subject. Entitled Publishing Newsletters, it's a complete guide of "how to's" for those who'd like to start a newsletter or for the experienced who'd like to do it even better.

A person can make a comfortable living by publishing one or two newsletters, says Hudson. However, he cautions, it's plenty of work and takes a lot of expertise. One successful formula he cites is the combination of a journalist and a business-wise type as an editor/publisher team, sharing the work and the profits fifty-fifty.

# BUSINESS REVIEW

## SHAW'S MEAT PROCESSING PLANT

Carroll & Evelyn Shaw - Owners

### UVALDE MEMORIAL HOSPITAL

UVALDE MEMORIAL HOSPITAL has become an integral part of the health care delivery system in this part of Texas.

This family oriented facility offers a personalized framework of health care centered around each individual patient's needs. In its endeavor to be sensitive and responsive to the complex and continually changing demands, UVALDE MEMORIAL HOSPITAL has been successful in providing a mix of services tailored to the community requirements.

This hospital continuously seeks to improve itself. The hospital's success extends much deeper than the bricks and mortar. It goes much further than the sophisticated equipment. It highlights the intellect, the dedicated and the untiring contributions of a group of people co-ordinating efforts to make the spokes of this hospital revolve in a smooth running manner.

Each member feels a great deal of pride in knowing that they are a part of a health success story which has, to significant degrees, accomplished the commitments of rendering and developing a compassionate and competent courtesy toward the customer.

UVALDE MEMORIAL HOSPITAL is located on Gerner Field Road, phone 278-6251. this hospital is becoming more important each day to the people of this vicinity.

The editors of this 1983 Fall Review take this opportunity to compliment the Administration and people who work at UVALDE MEMORIAL HOSPITAL.

\*\*\*\*\*

### RETAMA MANOR

Janet Tennis - Administrator

The RETAMA MANOR is located at 100 Hermann Drive in Del Rio phone 775-7477. They're doing their part in the care of the chronically ill and the convalescent. To assist you in selecting the right nursing home they offer the people of this area this message.

"We Americans are not just living longer, we are living more useful and productive lives. But an increasing number of chronically ill, the old, and the convalescent need some place other than the hospital and their home where they can receive personal health care, around the clock attention and the opportunity to continue to live their lives with meaning.

As your community health care facility we want to help you make the right decision. Here are some guidelines:

See your family physician to determine the type of facility you need.

Feel free to visit and examine our facilities.

Ask us for cost in writing and financial advice about Medicare and Medicaid.

Check our food quality.

Verify our safety features.

Finally, observe how our residents spend their time.

There is a lot more to selecting the right nursing home. We want help, if you have any questions please call or visit us.

The editors of this 1983 Fall Business Review appreciate this message from RETAMA MANOR and highly recommend them to all our readers.

\*\*\*\*\*

ADVERTISEMENT

SHAW'S MEAT PROCESSING PLANT, located at 512 S. Wood in Uvalde, phone 278-6247, is well known in this area for their fine meats and excellent custom cutting work.

Regardless of what you have to be cut and wrapped, the experts at this meat processing company CAN handle the job in the most professional manner so that you get the most of each particular cut of meat, and cut the right way so it will be more tender. They will completely wrap it for you and freeze it. All of this will be done in the shortest time.

Through their interest to select only the highest grade meats this company is known for their delicious products at realistic prices, and always very tender.

The editing staff of this 1983 Fall Business Review suggest to our readers that they let this firm cut up their meat, and remember when looking for the best to buy they always select the fine meats from SHAW'S MEAT PROCESSING PLANT. We commend the management here for their efforts to serve our people honestly and fairly.

\*\*\*\*\*

### RYTEX INC.

Texaco Petroleum Products Distributor

Stephen Kowalski - Manager

Located at 512 E. Garfield in Del Rio, phone 775-7585,

RYTEX INC. is well known among the area's residents as being one of the leading oil companies in the vicinity. They handle the famous Texaco Petroleum products, some of the very best in the competitive gasoline and oil market.

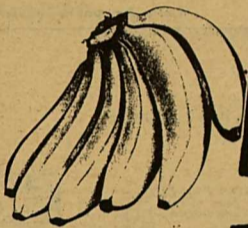
This full line distributor features bulk gas for farmers, ranchers, contractors, and, of course, service stations. Anyone needing bulk gas can do no better than to contact this reliable firm. They sell to recognized firms only and their wholesale prices are some of the lowest anywhere.

For all of your petroleum product needs, contact this fine distributor. They'll give you the kind of products you expect and the kind of service you want. As editors of this 1983 Fall Business Review, we know you'll enjoy doing business with RYTEX INC.

**H-E-B**  
FOODS - DRUGS

# DOLLAR DAYS

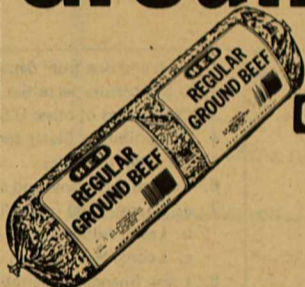
CENTRAL AMERICAN  
**Bananas**



Banana Pop Kits ..... 89¢

**5** \$**1**  
POUNDS FOR

REGULAR  
**Ground Beef**



(APPROX. 5-LB. ROLL)

**1** \$**1**  
POUND

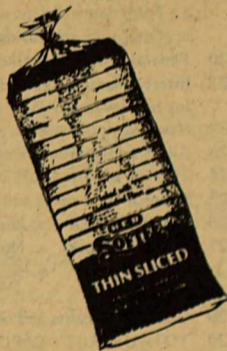
GREEN GIANT CANNED  
**Vegetables**



- WHOLE KERNEL OR CREAM STYLE CORN, 17-OZ. CAN
- CUT OR FRENCH STYLE GREEN BEANS, 16-OZ.
- SWEET PEAS 17-OZ. CAN

**3** \$**1**  
CANS FOR

H.E.B. SOFTEE  
**White Bread**



**2** \$**1**  
24-OZ. LOAVES FOR

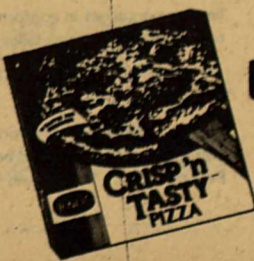
GOLDEN STATE 30-WT.  
**Motor Oil**



REG. 79¢ EACH (LIMIT - 12 CANS)

**2** \$**1**  
CANS FOR

ASSORTED VARIETIES, FROZEN  
**Jeno's Pizza**



**1** \$**1**  
10.1-OZ. PKG.

PRICES GOOD THURS. THROUGH WED., NOV. 3 - 5, IN: UVALDE

• LIMIT RIGHTS RESERVED •

**STOREWIDE BARGAINS!**

**THERE'S MORE!**

# Hints For Homeowners

## The Care And Repair Of Your Roof

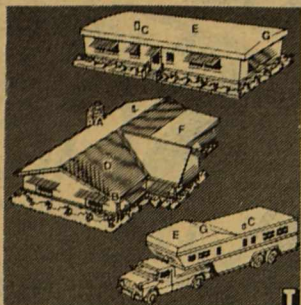
If a leaky roof is dampening your pleasure in your home or recreational vehicle, you might like to heed some hints from experts.

First determine if your roof just has "pinhole leaks" and, if so, it needs either an energy-cost-saving coat or a long-wearing weather coat; or if it has holes and cracks in seams, flashing, gutters, downspouts and valleys, in which case patching materials are your most reliable solution.

Before you apply any patching or coating, the roof surface should be brushed clean, particularly old coatings, to remove loose and flaking particles. Metal roofs should be sanded or wirebrushed to remove rust. Cracks and splits should be cleaned well; loose surfaces nailed in place; blisters and bulges opened, cleaned and treated.

If you're applying aluminum coating, you'll need a roof brush and a gallon of coating for every 100 square feet. Don't thin the coating but use it directly from the container. Mix it thoroughly before applying.

To apply an acrylic white roof coating, use a brush or long nap roller. Such coating is a waterbase material and should not be applied at temperatures below 50° F.



A leaky roof is all wet. Fortunately, there are many ways you can fix it.

or when the roof will be subjected to rain or heavy dew within four to six hours. Apply it at a rate of 150 to 175 square feet a gallon.

To plug a leak, use a black fibrous adhesive mastic. Brush or trowel a one-coat patch into the problem area. Flash patch comes with a backing paper to enable it to be pressed in place with fingertip pressure.

The experts are the people at Parr Inc., long a leading manufacturer of industrial building projects, which is now offering advice and products for do-it-yourselfers.

For a free booklet containing other tips and suggestions, you can write to Buck King, Parr Inc., 18400 Syracuse Ave., Cleveland, Ohio 44110.



## Our Public Workers

School teachers, hospital workers, police, fire-fighters and many other local government workers have been doing much more for their communities than many of their neighbors may realize.

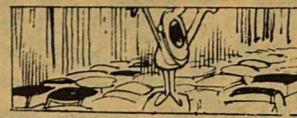
Fortunately, it seems, the federal government is taking some steps towards doing something for them.



President Reagan has helped improve the economy in ways that could improve the personal economics of many public workers.

Due, it's said, to his strong leadership, President Reagan's economic plan is providing a steady path for sustained recovery. His fiscal year 1984 budget proposal is another step toward that recovery. It ensures the continuation of the nation's social programs and works to reduce the federal deficit.

The inflation rate has already been reduced and economic experts realize, if inflation and national taxes rise very rapidly, there may be less money available for local government services. If the cost of living and the federal deficit are kept under control, there could be more money available for our public workers and just about everyone else.



There are a half a million more automobiles in Los Angeles than there are people.

The following heading and attestation statements (with the exceptions noted in the Instructions Booklet) should appear with the published Report of Condition when such publication is intended to satisfy only the requirements of the Federal Reserve.

### Consolidated Report of Condition of The First State Bank

of Brackettville, Texas And Foreign and Domestic Subsidiaries, a member of the Federal Reserve System, at the close of business September 30, 1983, published in accordance with a call made by the Federal Reserve Bank of this district pursuant to the provisions of the Federal Reserve Act.

		Dollar Amount in Thousands	
		Mil	Thou
Assets	1. Cash and due from depository institutions (From Schedule C, item 6)	1	952
	2. U.S. Treasury securities	1	561
	3. Obligations of other U.S. Government agencies and corporations		212
	4. Obligations of States and political subdivisions in the United States (From Schedule B, item 2, Column E)		475
	5. All other securities		15
	6. Federal funds sold and securities purchased under agreements to resell		700
	7. a. Loans, Total (excluding unearned income) (From Schedule A, item 10)	3	596
	b. Less: Allowance for possible loan losses		49
	c. Loans, Net	3	547
	8. Lease financing receivables		334
	9. Bank premises, furniture and fixtures, and other assets representing bank premises		-0-
10. Real estate owned other than bank premises		-0-	
11. Other assets:			
a. Intangible assets		-0-	
b. All other assets (From Schedule G, item 3)	9	060	
12. TOTAL ASSETS (sum of items 1 thru 11)	9	060	
Liabilities	13. Demand deposits of individuals, partnerships, and corporations (From Schedule F, item 1, Column A)	1	103
	14. Time and savings deposits of individuals, partnerships, and corporations (From Schedule F, item 1, Columns B & C)	6	671
	15. Deposits of United States Government (From Schedule F, item 2, Columns A & B & C)		-0-
	16. Deposits of States and political subdivisions in the United States (From Schedule F, item 3, Columns A & B & C)		436
	17. All other deposits (From Schedule F, item 4, Columns A & B & C)		-0-
	18. Certified and officers' checks (From Schedule F, item 5, Column A)		41
	19. Total Deposits (sum of items 13 thru 18)	8	251
	a. Total demand deposits (From Schedule F, item 6, Column A)	1	323
	b. Total time and savings deposits (From Schedule F, item 6, Columns B & C)	6	928
	20. Federal funds purchased and securities sold under agreements to repurchase		-0-
21. Interest-bearing demand notes (note balances) issued to the U.S. Treasury and other liabilities for borrowed money		-0-	
22. Mortgage indebtedness and liability for capitalized leases		-0-	
23. All other liabilities (From Schedule H, item 3)		125	
24. TOTAL LIABILITIES (excluding subordinated notes and debentures) (sum of items 19 thru 23)	8	376	
Equity Capital	25. Subordinated notes and debentures		-0-
	26. Preferred stock a. No. shares outstanding	-0-	
	27. Common Stock a. No. shares authorized	2400	
	b. No. shares outstanding	2400	
	28. Surplus		240
	29. Undivided profits and reserve for contingencies and other capital reserves		194
	30. TOTAL EQUITY CAPITAL (sum of items 26 thru 29)	6	84
31. TOTAL LIABILITIES AND EQUITY CAPITAL (sum of items 24, 25 and 30)	9	060	
1. Amounts outstanding as of report date:	a. Standby letters of credit, total		-0-
	b. Time certificates of deposit in denominations of \$100,000 or more (included in Schedule F, Column C)		1 328
	c. Other time deposits in amounts of \$100,000 or more (included in Schedule F, Column C)		-0-
	2. Average for 30 calendar days (or calendar month) ending with report date:		
	a. Total deposits (corresponds to item 19 above)	8	251

I, Wanda E. Schwandner, of the above-named bank do hereby declare that this report of condition

has been prepared in conformance with the instructions issued by the Board of Governors of the Federal Reserve System and is true to the best of my knowledge and belief.

Wanda E. Schwandner  
Signature of officer authorized to sign report

We, the undersigned directors, attest the correctness of this report of condition and declare that it has been examined by us and to the best of our knowledge and belief has been prepared in conformance with the instructions issued by the Board of Governors of the Federal Reserve System and is true and correct.

Vera B. Nash  
Zachry H. Davis  
Donald D. Ralston } Directors

# PUBIC NOTICE

## PUBLIC NOTICE

In accord with the General Revenue Sharing Regulations (31 CFR 51.12) RS-9B has been submitted to the office of Revenue Sharing.

This report outlining the expenditure of Revenue Sharing Funds received by the City from July 1, 1982 thru June 30, 1983 is available to the public for review at City Hall, City Manager's Office.

\$11,327 was received during the fiscal year with \$10,000 expended for operation of the City Landfill; \$1,000 expended on streets and alleys; and \$327 expended on Parks and Recreation.

ATTEST:  
W.M. Thurber  
City Manager

\*\*\*\*\*



A bedtime snack is very important to the kitten aged four to nine months. Broth thickened with crumbled bread or cereal will serve well to tide the kitten over till morning.

## ATTENTION GOLFERS

The Fort Clark Springs Golf and Tennis Club invites you to play its just-completed . . .

**BEAUTIFUL NEW PAR 70 (6300 yds.) 18-HOLE GOLF COURSE!**

— with Pro Shop, Tennis Courts and Clubhouse on scenic Las Moras Creek . . .

**GREEN FEES FOR 18-HOLES OF GOLF:**

**\$10. WEEKDAYS (CLOSED MONDAYS)**

**\$12. WEEKENDS AND HOLIDAYS**

**LADIES DAY—TUESDAY**

—Golf and pull carts available for rent—

Location: The private community of Fort Clark Springs is on Hwy. 90 at Brackettville. Security staff will direct you to Pro Shop.

For information, reservations and starting times:

Call Pro Shop (512) 563-9204

Now you—and your friends—can play the only full 18-hole regulation Golf Course between San Antonio and El Paso!

**FORT CLARK SPRINGS GOLF & TENNIS CLUB**  
Horace Wood Smith, Resident PGA PRO

P.S. Inquire at Pro Shop for rates on a limited number of club memberships open to non-members of Fort Clark Springs.

## ORA'S DRIVE-IN FOOD TO GO

**POLLO AL CARBON**  
(Char-broiled Chicken)

**FAJITA AL CARBON**  
(Charbroiled Tender Meat)

**PAPA AL CARBON**  
(Baked Potatoes)

No Fat/ No Breeding/ non-fattening/  
No Cholestral

"FINGER LICKING GOOD!"

Monday-Friday.... 10am--12MIDNIGHT  
Saturday..... 10 am--1 am  
Sunday..... 12NOON--12MIDNIGHT

\* CALL IN ORDERS 563-9703

## ROB'S MINI SHOP GROCERY & CAR WASH

(across from Fort Clark Entrance)

GROCERIES, PICNIC SUPPLIES,  
ICE, DRINKS, BEER TO GO!!!

"HOT" microwave sandwiches

"Fresh Hot Popcorn & Hot Dogs"  
\*\*\*\*\*

Sunday thru Thursday

7:30 am-- 11:00 pm

Friday and Saturday

7:30 am-- MIDNIGHT

## VOSS REALTY 563-2758

Beautiful and Spacious 3 bedroom, 2 bath, isolated Master Bedroom, large living area with fireplace. Much more.

\*\*\*\*\*

Charming 3 bedroom, 2 bath on Fort Clark, offers privacy.

\*\*\*\*\*

49'er, 2 bedroom, 1 bath, great rental property.

\*\*\*\*\*

## UVALDE AUTO PARTS "YOUR BUMPER TO BUMPER STORE"

COMPLETE LINE OF AUTO PARTS

COMPLETE RADIATOR SALES AND SERVICE

ONE DAY SERVICE ON RADIATORS

315 EAST MAIN

278-5608

BEER WINE  
LIQUOR

## DEASON'S PACKAGE STORE

"LOW PRICES--  
FRIENDLY SERVICE"

563-2424

Hwy 90

Conaco Station

# CLASSIFIED ADS

TUESDAY 12 NOON DEADLINE

All Classified Ads: 15¢ per word, 13 words minimum insertion -- \$2.00 per week. NO BILLING OF CLASSIFIEDS!!!

## KINNEY COUNTY LAND 512/563-2446

Lovely STONE HOUSE, close to Patton House on Fort Clark fireplace, screened porch, carport, workshop, hot tub.  
\*\*\*\*\*

2 bedroom, 1 bath, HOME on 2 corner Lots, Pecan Trees, Fruit Trees, near school, priced in the 30's.  
\*\*\*\*\*

RANCHES in Kinney County, 850--3500 ACRES.  
\*\*\*\*\*

10-300 ACRES of irrigated farm land in Quemado. Priced for quick sale.  
\*\*\*\*\*

### ### FOR SALE ###

\*\*\*\*\*  
MARY KAY COSMETICS.....  
CALL: Rose Mary Slubar, 563-2146.  
\*\*\*\*\*

\*\*\*\*\*  
FOR SALE.....  
55 gallon drums, \$7.50 each; with or without tops. Call: 563-2156, will deliver.  
Brackettville Lion's Club  
\*\*\*\*\*

\*\*\*\*\*  
LOST.....LOST.....LOST.....  
Small grey dog with short shaggy hair, strayed from Pinto Ranch. REWARD!!  
\*\*\*\*\*

\*\*\*\*\*  
FOR SALE.....  
1--Frost Free GE refrigerator;  
1--8 HP riding lawn mower  
2--Dearborn Space Heaters  
1--Electric Lawn Edger  
1--Lawn fertilizer spreader  
A few other items, may be seen at ROLAND WILLIAMS' on Ann St.  
\*\*\*\*\*

\*\*\*\*\*  
FALL SPECIAL.....FALL SPECIAL  
GE 10,000 BTU Air Conditioner, 110; cooled 3 room apartment, 1 year old. \$400, must sell in two weeks, Call: 563-9206.  
\*\*\*\*\*

\*\*\*\*\*  
FOR SALE.....  
Beautiful 2 bedroom frame home on Fort Street, nice neighborhood, choice Lots; ALSO, in Spofford, Lots 13 & 14, Block 35. 563-2564; 563-2295.  
\*\*\*\*\*

\*\*\*\*\*  
FOR SALE.....  
PECANS, 563-2531.  
\*\*\*\*\*

\*\*\*\*\*  
SEALED BID SALE  
1-1971 Ford, 3 ton, truck with Tel-E-Lect Captain, 1000 hydraulic derrick and digger license 2AE 601;  
1-1974 Chevrolet, 4 door Impala, License FAA 607;  
1-1980 Ford 1/2 ton pickup, license QD 8402;  
1-1981 Ford 3/4 ton pickup, license QD 8465;  
1-1981 Ford 3/4 ton pickup, license QD 8436  
\*\*\*\*\*

These Units are being sold (as is). Have your bid in this office on or before November 1, 1983. We reserve the right to reject any or all bids. These Units may be seen at the Rio Grande Electric Cooperative, 101 Spring St., Brackettville, Texas from 8:00 am thru 5:00 pm, Mondays thru Fridays. Contact Dale Borden at 512/563-2444.  
\*\*\*\*\*

\*\*\*\*\*  
WANTED.....  
Person to share rent on 2 bedroom, 1 1/2 bath Mobile Home at Fort Clark Springs. Must have job. Inquire at EXXON Station evenings after 3 pm.  
\*\*\*\*\*

\*\*\*\*\*  
FOR SALE.....  
Two Boys' BICYCLES, 20 inch Murray Top Cat; 24 inch Murray Ten speed. 563-9383  
\*\*\*\*\*

\*\*\*\*\*  
FOR SALE.....  
Products for EVERY need: Stanley, Tupperware, Avon. Save now for Christmas. Call: Mary at 563-2403.  
\*\*\*\*\*

### WANTED

\*\*\*\*\*  
WANT TO BUY.....  
Broken or junk guns in any condition for parts. FRONTIER GUNS, 202 North Street, Brackettville, 563-9222.  
\*\*\*\*\*

## BRACKETTVILLE CHURCH

### FIRST BAPTIST CHURCH (Southern Baptist)

Sunday School..... 9:45am  
Worship Service..... 11:00am  
Worship Ser (Sun)... 7:00pm  
Prayer Meeting (Wed) 7:00pm  
REV. RONNIE WATSON  
\*\*\*\*\*

### FRONTIER BAPTIST CHURCH (Southern Baptist)

Sunday School..... 10:00am  
Worship service..... 11:00am  
Prayer Meeting (Sun). 7:30pm  
Prayer Meeting (Wed). 7:30pm  
REV. JOE TOWNSEND  
\*\*\*\*\*

### UNITED METHODIST CHURCH

Sunday School..... 9:45am  
(adult & children)  
Worship Services.... 11:00am  
JOHN COLLINS  
Pastor  
\*\*\*\*\*

### CHURCH OF CHRIST

Sunday School..... 9:30am  
Worship Service..... 10:30am  
Bible Study (sun)... 6:30pm  
Bible Study (wed)... 7:30pm  
\*\*\*\*\*

### ST. ANDREWS EPISCOPAL

Church Services. (Sun) 6:00pm  
REV. EDWARD P. BUSH  
\*\*\*\*\*

### THE COMMUNITY CHURCH

Sunday Worship..... 9:00am  
Bible Study (Tues).. 7:00pm  
\*\*\*\*\*

\*\*\*\*\*  
TOO LATE TO CLASSIFY.....  
BEGINNING GUITAR, PIANO, OR VOICE LESSONS. \$3.00/1/2 HR. CALL LORI AT 563-9330.  
\*\*\*\*\*

## LOOK!

\*\*New-Used-Repo's  
\*\*October Special!  
Clearance prices on some units!  
Tomorrow's Housing Here Today!  
SOUTHWEST HOUSING  
2404 Hwy. 90 E.  
Uvalde, Texas  
Open Sundays, too!