



# the Kinney Cavalryman

Alamo Village  
Box 528  
City  
7

USPS 100-610

VOL. 8 NUMBER 10

APRIL 2, 1982

BRACKETTVILLE, TEXAS

## CP&L REQUEST RATE INCREASE

Central Power and Light Company announced today that it is filing application for a rate increase with the cities it serves and the Public Utility Commission of Texas. The company is requesting higher rates to cover a revenue deficiency of \$156 million. Several changes in the design of rates are also proposed for certain commercial customers and municipalities and some other customer classes.

Executive Vice President and Chief Financial Officer Bob Range explained that inflation higher interest rates, and the need for new capacity to serve the growing needs of South Texas were the main reasons the increase is needed. "It has been 30 months since our last increase," he said, "and since then inflation, interest rates and construction costs have climbed steadily."

Construction of new facilities is necessary because of the rapid growth in population and energy use in South Texas. The number of customers on the CPL system has risen by almost nine percent since the last increase request, and the peak demand placed on the CPL generating system is up 14.4 percent. The demand for electricity is expected to grow substantially during the next several years. This growth makes it essential that the company build the South Texas Project nuclear generating station. CPL needs to put the construction work in progress in its rate base and start earning a current cash return on its investment, according to Range.

"The need to include construction work in progress is the major factor in the rate increase," he said. "But the nuclear plant will mean lower fuel costs to our customers in the future, and more flexibility in our use of fuels." He pointed out that fuel now accounts for 60 percent of the average customer's bill. Utilities in the east which use nuclear and oil to make electricity report that their nuclear fuel cost is about half a cent per kilowatt hour while the oil costs over 5 cents per kilowatt hour.

Another major factor in the increase is taxes which the company must pay. Range said that the company's total tax expense last year was \$93.7 million, an increase of 52 percent over 1979. "Almost 45 percent of this rate increase will be paid out by the company in the form of taxes at the local, state and federal level," he said.

The requested increase would provide a 13.3 percent rate of return on money invested by CPL to serve its customers. This would keep the company in an adequate financial position to raise necessary capital and finance its operations.

According to Range a customer using 1000 kilowatt hours a month is now paying \$65.01. Under the proposed rates he would pay \$80.69. He added that different customer classes would be affected in various ways.

### TORTILLA TOSSING PICTURES:

More World Championship Tortilla Tossing  
Parade Pictures on Page 4.....  
\*\*\*\*\*

## HEADLINERS

A special City Council meeting will be held Monday, evening at 7:30 p.m., April 5, 1982, to canvass the election returns. The newly elected members of the Council will be sworn in and assume the responsibilities of passing ordinances and establishing policy guidance for the forth coming year. All citizens invited to attend this important meeting at the City Hall.

\*\*\*\*\*

The Annual Frontier Fair sponsored by the City of Brackettville's Chamber of Commerce was a great weekend. Many thanks to all the hard, dedicated work and participation of the Brackettville Chamber of Commerce members and to the citizens of Brackettville--a task well done. A special thanks to Ginger Dodson and Frank Sanchez for their dedicated work on the City Float. The 1st place award puts the icing on the cake for an outstanding event.

\*\*\*\*\*

Commencing April 1st, as a convenience to the citizens of Brackettville, the City will be accepting the payments of Central Power & Light bills at City Hall. This will enable our residents to pay all of their utility bills, except telephone, in one location. The added work load will be compensated for by Central Power & Light.

\*\*\*\*\*

For additional good news the telephone company has requested and received permission from the City to expand their present facilities in Brackettville. A building permit for a \$55,000 addition to the present telephone company building on Ann Street was issued and we look forward to their continued co-operation and their building expansion and service.

\*\*\*\*\*

The City of Brackettville is happy to announce they have hired Rose Mary Abrigo as Clerk-Bookkeeper. Ms. Abrigo is a Brackettville resident and attended school here from Jones Elementary thru Brackett High. Then she attended Southwest Texas Junior College, taking shorthand, typing and office machine course.  
Welcome to Rose Mary.

\*\*\*\*\*

SRSU BAND TRY-OUTS SET FOR  
APRIL 28

ALPINE--The Sul Ross State University Band will hold try-outs for drum major, twirlers, rifle team members and flag corps members April 28, and the try-outs are open to upper level students as well as incoming freshman.

CONTINUED PAGE 2, COL. 2....

# THE KINNEY CAVALRYMAN

USPS 100-610

P.O. DRAWER CQ  
BRACKETTVILLE, TEXAS 78832

(512) 563-2696

Judy Loos.....Publisher  
Geo. Loos.....Editor  
Geo. Loos.....Business Manager  
RoseMary Slubar.....Production  
Jean Hood.....Contrib. Editor  
Crystal Loos.....Production

\*\*\*\*\*

Published every Friday. Entered by  
Second Class Mail at Brackettville,  
Texas, 78832.

\*\*\*\*\*

Any erroneous reflection upon the  
character or standing of any person  
or firm appearing in this paper will  
be gladly corrected upon being called  
to the attention of the management  
and to the article in question.

\*\*\*\*\*

MEMBER OF THE TEXAS PRESS ASSOCIATION

\*\*\*\*\*

Subscription Rates:

\$13.00 .....Out-Of-County  
\$12.00 .....In-Kinney-County

\*\*\*\*\*

## CRYSTAL SEZ:

Little boy explaining why he wasn't  
putting any more money into his  
piggy bank: "It turns kids into misers  
and parents into bank robbers."

CLARK ELECTED PRESIDENT OF  
NATIONAL ASSOCIATION OF FORMER  
U.S. ATTORNEYS

Judge John Clark of San Antonio, an associate justice on the Fourth Court of Appeals was elected president of the National Association of Former United States Attorneys during the organization's annual convention March 20, 1982.

Judge Clark is a former federal prosecutor who served as U.S. Attorney for the Western District of Texas. He spearheaded a cleanup of official corruption in Duval County in 1972-1974, winning convictions of the late George Parr and his nephew, Archer Parr.

Judge Clark received a special commendation award from the Department of Justice in 1974 for his performance of duty.

The non-partisan organization is composed of some 200 persons who have served as U.S. Attorneys or in high positions of authority in the Department of Justice.

The U.S. Justice is the chief federal law enforcement officer in his district. His office tries virtually every federal criminal case, and most of the civil cases to which the U.S. is a party.

The association was formed several years ago to further the integrity and effectiveness of the office, to improve the administration of justice in the federal courts, and to promote continuing legal education for its members, particularly related to the federal judicial system.

Last year the association held its convention in San Antonio at which time Judge Clark was named vice president.

The try-outs will be held in the women's gym on the Alpine campus, and Dr. Alfred N. Green director of bands, urged all interested people to attend the try-outs.

Those students interested in competing for the positions should contact Green at Box C-23 Alpine, Texas 79830 or call 915-837-8215.

"Twirlers, drum majors, and experienced flag and rifle handlers should prepare a short two-to-five minute routine which demonstrates the student's abilities as fully as possible. Routines may be with or without music," Green said. "Inexperienced flag and rifle handlers may compete for these positions by attending a basic orientation session to test agility and dexterity."

Try-outs times on April 28 are 4 p.m. for twirlers, 4:30 p.m. for drum majors, and 5 p.m. for flags and rifles. The orientation session is set for 5:30 p.m.

The SRSU band, in its second year under Green's direction, performs at all home football

games and is expected to make at least one long road trip to an away game.

"The Sul Ross Lobo football team will be a top contender for the Texas Intercollegiate Athletic Association championship this year which means the band may have additional opportunities for performances in post-season play," Green said.

"The exciting nature of the band and the hope of a winning season means that those selected for these leadership roles will play a very important part in the progress of the band and the life of Sul Ross."

\*\*\*\*\*



Apples, grapes, cranberries, plums and cherries should be stored in the refrigerator immediately after purchase and are best eaten within a week.

## FINAMORE AND ASSOCIATES REALTY

FORT CLARK SPRINGS  
BRACKETTVILLE, TEXAS 78832

LOUISE FINAMORE  
LICENSED BROKER

(512) 563-2111



## TREND CONSTRUCTION CO. GENERAL CONTRACTOR

We are pleased to announce the merger of Trend Construction Co., General Contractor with F & L Enterprises. Trend will be operating in the Kinney County area as a subsidiary of F & L and are planning to build 15 to 20 single family dwellings in the next year as well as some commercial projects.

We will be recruiting most of our labor force from the Brackettville area. Anyone interested in seeking employment please call (512) 563-2111.

CONSTRUCTION BIDS FOR YOUR  
NEEDS ARE BEING TAKEN AT THIS TIME.

## FREE ESTIMATE'S

RON FALAN  
PHILIP WINDSOR  
TREND CONSTRUCTION

FRANK FINAMORE  
F & L ENTERPRISES

(512) 563-2111

**Be  
Prepared**

**For The Future.  
Start Saving...Here!**

**We make it easier than  
ever to save.**

**MONEY MARKET  
CERTIFICATE**

**26 WEEK \$10,000 MINIMUM BASED  
ON AN ANNUAL RATE OF  
13.493%**

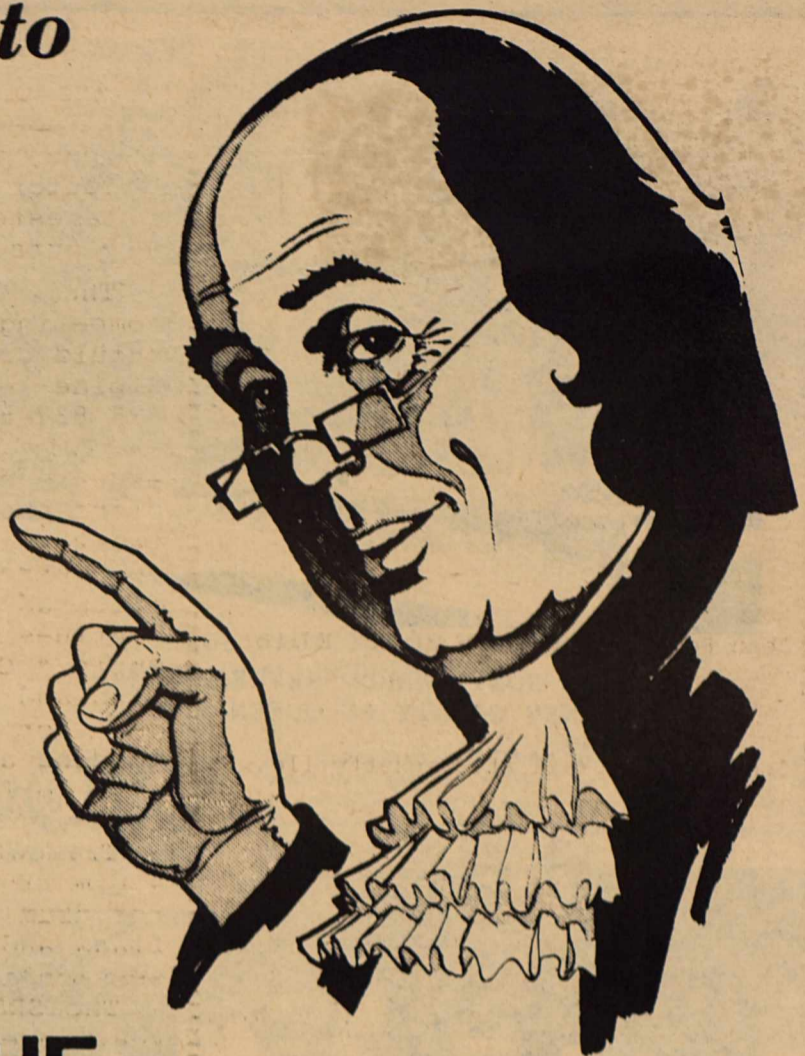
FEDERAL REGULATIONS PROHIBITS THE  
COMPOUNDING OF INTEREST AND REQUIRE A  
SUBSTANTIAL PENALTY FOR EARLY WITHDRAWAL  
RATE IS SUBJECT TO CHANGE AT RENEWAL.

**FDIC**

Your Savings Grows to \$100,000

**563-2451**

**A Word to  
The Penny-  
Wise...**



**THE  
FIRST STATE BANK**

**COMPLETE BANKING SERVICES**

**BRACKETTVILLE**

**1982 DISTRICT 13 FOOD SHOW**

The Civic Center in Uvalde came alive Saturday, March 20 as over 170 4-H'ers entered the 1982 District 13 Food Show. Kinney County was represented this year by nine winning contestants. They were among the first to be interviewed as judging began at 10:30 and continued through the noon hour. The awards program began at 2:00 and was conducted by various 4-H'ers and Gloria Schwarlose, District 13 District Director.

Melinda Meyer was this years outstanding Kinney County participant. She won third place overall in her preteen division of Fruits and Vegetables. Melinda prepared Tomatoes stuffed with a tasty Pea-Cheese Salad. Other Kinney County preteen participants were Michele Munoz, Lisa Frerich, and Marcus Saenz. Juniors were Elida Balderas, Nikki Smith, Kelley Hall and Anita Diaz. Alma Aguirre was the senior entry.

First, second, and third place ribbons were awarded each 4-H'ers. The top five winners in each Food Category were announced with the first place winners receiving a plaque. Each 4-H'r was interviewed separately by a panel of three judges. On the basis of their interview and their record book, the 4-H'er received a numerical score.

There was a slight alteration in this years food categories. They were Main Dish, Nutritious Snacks and Desserts, Fruits and Vegetables and Breads

and Cereals. The senior 4-H'ers were required to fill out a nutrient analysis sheet. This new form followed their daily menu and was in addition to their senior record books.

The contestants began cooking in Brackettville this past January in their 4-H Foods Projects. They first competed at the County level before advancing to the District. The four first place senior winners will advance to the State competition. There, they will be eligible to win scholarship prize money.

\*\*\*\*\*

**HORTICULTURE WORKSHOP/GRAFTING  
DEMO SLATED**

**DEL RIO--** A plant propagation-protection workshop for Val Verde County horticultural enthusiasts will be held Tuesday April 6 beginning at 2 p.m. It will be held at the Dink Wardlaw Agricultural Complex according to Carlton G. Dinsmoor, chairman of the countys horticultural subcommittee.

Disease and insect control recommendations will be discussed by three Texas Agricultural Extension Service specialists from Uvalde. Participating is encouraged. Participants are encouraged to bring insect or disease damaged plants for identification.

A grafting demonstration involving apples, walnuts, pecans peaches and apricots will be a feature part of the afternoon clinic.

Dinsmoor said all persons interested in horticulture are urged to attend the workshop and grafting demonstration.



Burglary occurs every two minutes in Texas, leaving behind losses that cannot be replaced. In Texas, burglary rings account for 245 million dollars worth of stolen goods annually, an average loss of 966 dollars per home.

Crime prevention is one answer to this growing problem. The simple act of locking one's home before leaving, reduces the chance of burglary by 20 percent. Asking your neighbor to pick up your newspaper when you are away from home and turning household lights on at intervals, can deter a prospective burglar. The Governor's Crime Stoppers Advisory Council is doing its part to see that those criminals who make their living by stealing from others are put

where they belong — behind bars.

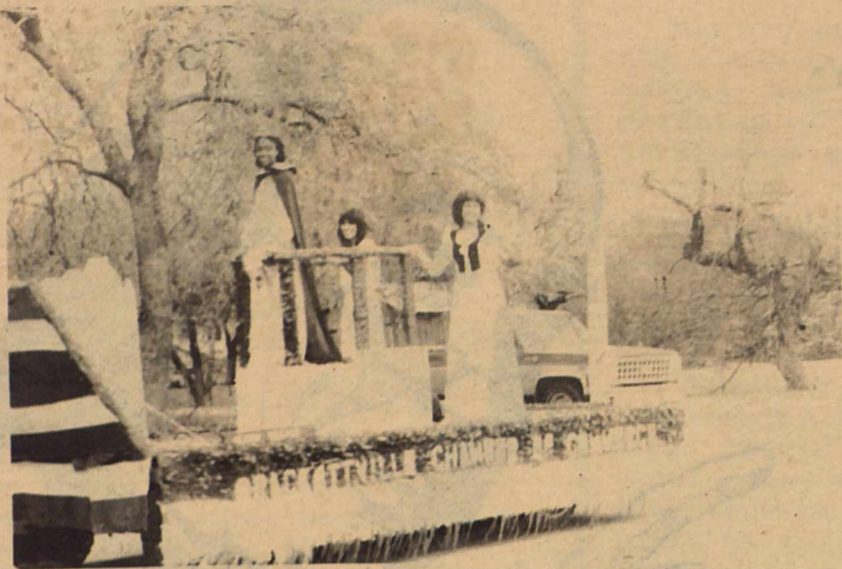
For the month of April, 1982, the Crime Stoppers Advisory Council is focusing its statewide "Crime of the Month" program on burglary. Any citizen having information about burglary is asked to call the anti-crime hotline at 1-800-252-TIPS. Cash rewards are available for information leading to the arrest and indictment of these criminals.

The Council's efforts to combat crime cannot succeed without active citizen involvement. Your support and participation in this program will be a formidable obstacle to any criminal.

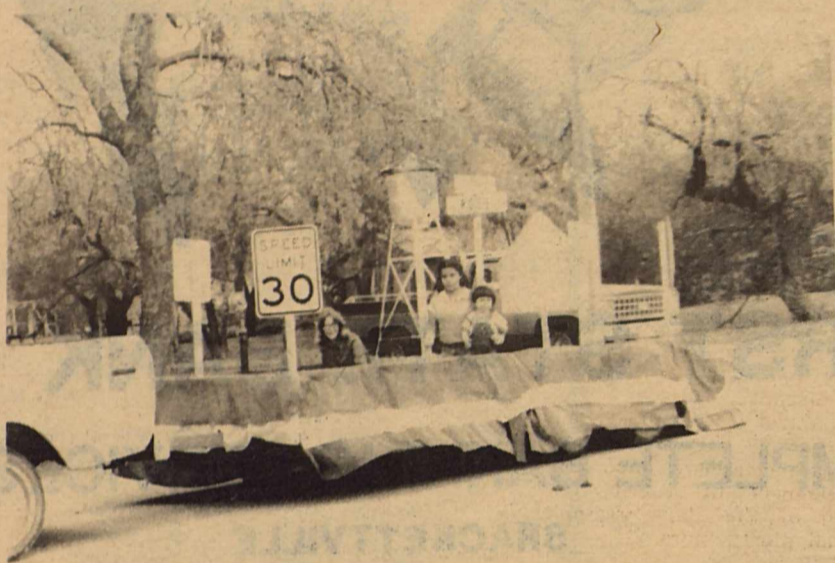
Call 1-800-252-TIPS today to help shut down burglary rings in Texas.

**SCHOOL MENU**

- APRIL 5.....Monday.....  
½ pint milk; Sugar Smacks;  
Orange Juice
- APRIL 6.....Tuesday.....  
½ pint milk; White Bread/  
peach halves
- APRIL 7.....Wednesday.....  
½ pint milk; Cereal Choice  
Banana
- APRIL 8.....Thursday.....  
½ pint milk; Raisin Bran;  
Fruit Cocktail
- APRIL 9.....Friday.....  
½ pint milk; Fruit Roll;  
Apple Slices



MISS SONYA WARD, REPRESENTING KINNEY COUNTY AS QUEEN FOR 1982.....



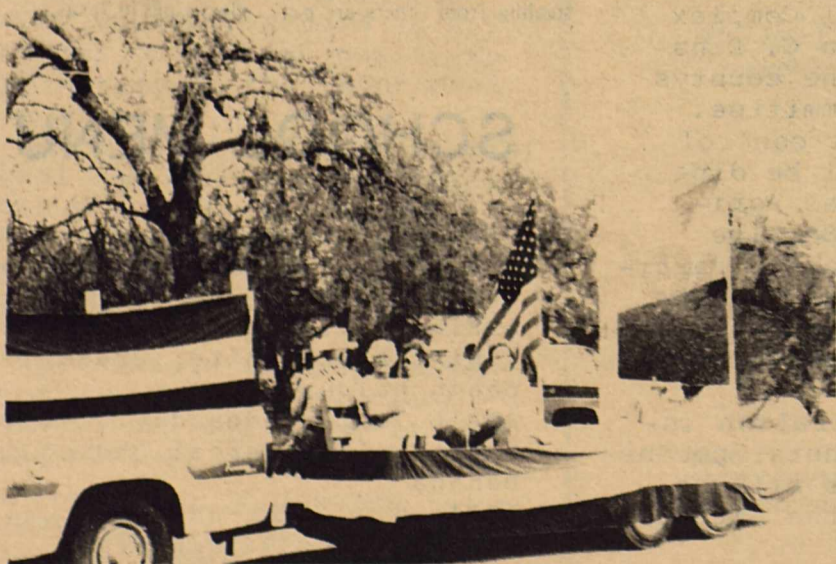
1st PLACE WINNER.....CITY OF BRACKETTVILLE.....



THE OLD & THE NEW....A modern communications antenna goes up in front of the Old Alamo Village Jail as the Radio Amateurs set up a simulated Emergency situation.



GAY 90'S REVIEW.....



FORT CLARK HISTORICAL SOCIETY FLOAT.....

ALAMO VILLAGE SITE FOR AREA AMATEUR RADIO SIMULATED EMERGENCY TEST

The Border Amateur Radio Society (B.A.R.S.) and the Uvalde Area Radio Club will hold their 2nd Annual "Alamo Village DX\_pedition" on April 17 & 18, at the famous movie site, seven (7) miles North of Brackettville

The group consists of area Amateur Radio Operators from Del Rio, Uvalde and Brackettville that are dedicated to supplying Emergency Communications in the event of "natural" disasters, such as floods, hurricanes, and tornadoes. They are members of the Amateur Radio Emergency Service, a nation-wide organization that supplies communications in emergency to State and Local Government Agencies and Relief Organizations such as the Red Cross and Salvation Army.

The organizations are members of the U.S.Weather Bureau's Skywarn Program and provides current weather information prior and during severe Weather conditions.

During the "Alamo Village DX-pedition" these "Hams" Operators will set up their stations in less than one hour and will begin operating at NOON Saturday and will operate theri stations continously for 24 hours till NOON Sunday. They will be contacting stations not only in the U.S. but all over the world. Last year 48 states and 15 countries were contacted.

Alamo Village will be open to the public beginning May 1st.

\*\*\*\*\*

## Bake A Bunny Shaped Carrot Cake For Easter

Baking at Easter is a tradition in many families; most use recipes that have been handed down from many different countries and cultures. Sweet breads are the most popular — the Russians bake Kirlich, a tall sweet bread baked in a mold rounded on top to represent the dome of a Russian church, and most European countries have a traditional egg bread with brightly colored hard cooked eggs baked in a sweet braided yeast dough.

Americans, too, have established Easter traditions. One uniquely American custom is the baking and decorating of an Easter cake which can double as a dessert and a centerpiece for an Easter dinner or buffet. Since carrot cake is a favorite, why not try a delicious carrot cake baked in the bunny shaped pan and start your own special Easter tradition? It's easy to bake and decorate, and sure to impress family and friends.

Professional results are easy to achieve with the Wilton Easter Bunny Pan because the bunny pattern is baked right into the cake. A decorating bag and tips are used to outline the contours made by the pan; then zigzags, dots and stars decorate the egg. The bunny's fur is simply fluffed out with a spatula. To make it even easier, Wilton includes complete decorating instructions and icing recipes with each pan.

The Easter Bunny Pan is available in your favorite department or discount store, cake specialty shop or directly from Wilton Enterprises, Woodridge, IL. 60517.



### CARROT CAKE

- 1-3/4 cups sugar
- 3 eggs
- 1 cup vegetable oil
- 1-3/4 cups sifted flour
- 2 tsps. cinnamon
- 1-1/2 tsps. baking soda
- 1-1/2 tsps. baking powder
- 3 cups grated carrots
- 2/3 cups chopped nuts

Generously grease Easter Bunny Pan with solid vegetable shortening. Dust pan with flour; tap bottom to remove excess flour. Preheat oven to 350°.

In large mixing bowl, beat sugar and eggs until thickened; add oil. Sift flour, baking soda, baking powder and cinnamon together; add to egg mixture. Fold in carrots and nuts.

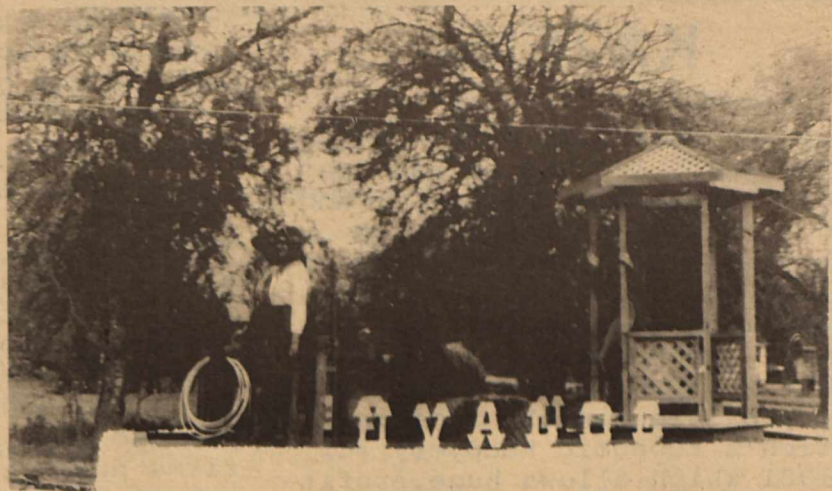
Pour batter into prepared pan and bake in preheated oven for 45 - 55 minutes.

Cool cake and remove from pan.

### BUTTERCREAM ICING

- 1/2 cup solid vegetable shortening
- 1/2 cup butter or margarine
- 1-1/2 tsps. vanilla
- 5 cups confectioners' sugar (there are 4 cups in a pound)
- 3 Tablespoons milk

Cream butter and shortening with electric mixer. Add vanilla. Gradually add sugar, one cup at a time, beating well on medium speed. Scrape sides and bottom of bowl often. When all the sugar has been mixed in, icing will appear dry. Add milk and beat at medium speed two to three minutes. Keep icing covered with a damp cloth until ready to decorate. For best results, keep icing bowl in refrigerator when not using.



UVALDE CHAMBER OF COMMERCE WITH UVALDE BEAUTIES.....



### April Is PAW Month

Did you know that merely petting a dog or a cat can lower your blood pressure? That pets play an important role in the development of positive personality traits in children? Or that in most U.S. families, the most popular family member is the one with four legs?

Scientists across the country are finding that dogs and cats are becoming increasingly important members of society—for all of the above reasons and plenty more.



Because of all the joys and rewards pets bring to everyone, April has been proclaimed National Pets Are Wonderful (PAW) Month. Joining in this first annual celebration

are humane organizations, veterinary groups, schools and libraries coast-to-coast. The Month culminates with the American Humane Association's "Be Kind To Animals Week."

Your local shelter, neighborhood animal hospital and community library will be scheduling numerous activities during each week of PAW Month. These activities range from humane education seminars at your local library, to pet care and training demonstrations at your neighborhood shelter or animal hospital.

If you would like further information about how you can participate in Pets Are Wonderful Month, contact your local shelter, animal hospital or library.

and tennis court. All this for under \$50 per person, per day, double occupancy staying two nights and three days.



Another golf option is the program at the Stratton Golf Academy, a 22-acre outdoor classroom and the only one of its kind in the U.S. Your plays are analyzed, corrected, video-taped and replayed for you, reinforcing instruction. Five day and weekend programs are available which include instruction at the Academy, all greens fees on the Stratton Mountain Course, and an informal tournament.

Other activities available at Liftline Lodge include hot tub, sauna, horseback riding, sailing and the John Newcombe Tennis Center.

Good news for health buffs, too, is the lodge's New Life Health Spa. The 6-day program includes yoga, slimnastics, aerobics, massage and low calorie gourmet menu.

For reservations and information call or write Liftline Lodge, Stratton Mountain, VT 05155: Tel: 802-297-2600.



Today's golfers are keeping an eagle eye open for golf "specials." Liftline Lodge at Stratton Mountain in the Green Mountain National Forest offers such a special. It includes breakfast and dinner daily, green fees at an 18-hole championship golf course, and use of the lodge's swimming pool



In one day the average person inhales 15,000 quarts of air.

## Crafty Ideas FOR EASY EASTER BUNNY ANYTHING GOES WITH STYROFOAM

Make this adorable bunny this Easter with STYROFOAM\* brand plastic foam. This furry creature is simple to make and the kids can help!



To make the bunny's face, glue a 1" ball of Styrofoam 2" down from the top of a 6" x 4" egg, for the nose. (Use 1" chenille stem to hold in place.) For cheeks, glue 1" balls on each side, slightly below the nose. Use a file or palette knife to tuck a 3" square of nylon hose around the nose and cheeks. Tuck fabric by holding firmly with thumb and use a palette knife to tuck it into Styrofoam 1/4" or more around each shape. Tuck the edges completely into Styrofoam. Glue plastic eyes on each side of the nose. Body: To the 6" x 4" egg, glue one half of a 1/2" x 2" egg of Styrofoam on either side for the "arms". (Cut egg with a plastic serrated knife.) For the hands, cut a 1" ball in half and glue at end of arms. Tuck a 3 1/2" circle of white fur around each arm and a piece of hose around each hand. Tuck 5" x 1" white fur across top of the face from cheek to cheek. To make the ears, fold a 6" white bump chenille in half with a 3" pink bump chenille in the middle, shape and push into the top of the head. Glue to hold. Repeat for other ear. Then tuck 4" x 5" white fur from back of ears down the back of the bunny. If material wrinkles, cut small darts to fit the shape of the egg. Tuck pieces of fur in front

and sides to cover the rest of the egg. Glue a white pom-pom on back for tail. To make the bunny's carrot, fold a green bump chenille in half and point open end upward. Lay an orange bump chenille downward and pin to the hand. Make the "feet" by cutting a 1 1/2" x 2" egg in half and cover with white felt.

Attach both to the body with T pins. Finally, cut 2 small teeth from white felt and attach under the nose.

For a Gallery of Gift ideas you can make with Styrofoam brand plastic foam, send 50 cents with a self-addressed, stamped envelope to: Gallery of Gifts, #172-1074-80, Inquiry Services, 1703 S. Saginaw Road, Midland, MI 48640.

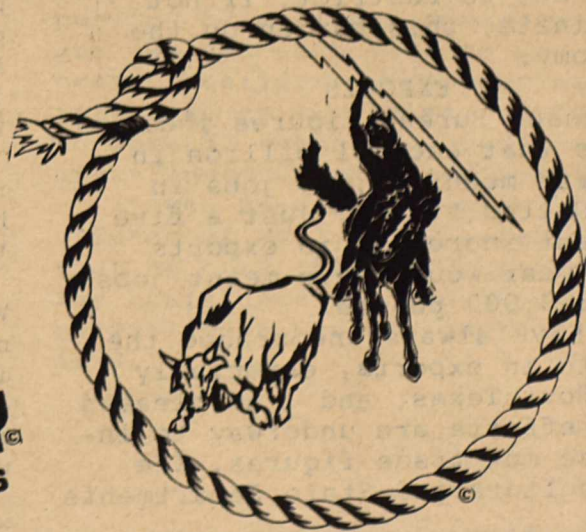
\* Trademark of The Dow Chemical Company.

NOTE: As a matter of safety, please remember that STYROFOAM brand plastic foam is combustible and should not be exposed to flame during storage, design stages, or its end use.

# NOW OPEN

## Electric COWBOY

#1 HONKY TONK IN TEXAS



105 Garner Drive  
Between Motel "6"  
And Savings & Loan.

## KAZEN

A man who called my office said he was angry because he had just opened his morning newspaper and read that a giant corporation with earnings in the billions of dollars would get a tax refund of \$90 million or more from the federal government.

The corporation had capitalized on a provision in the Administration's Economic Recovery Act of 1981 which allows huge, profitable companies to purchase tax credits and depreciation write-offs from others.

"It's more than ridiculous," the caller said. "It's immoral."

"The middle-class gets stuck for thousands of dollars in taxes while new tax breaks allow these big, healthy corporations to drain the federal treasury."

I have complained about these tax loopholes before, but it takes an example like this one to drive the point home.

### HOW IT WORKS

The provision was described by the Administration as a benefit to weaker companies, such as a new company just starting out. The record now shows that it is actually a bonanza for some of the largest, most profitable corporations in the countries.

It allows for transactions in which, for example, a corporation with more tax credits than it can use is allowed to "sell" its equipment to a corporation which wants to cut its tax bill. The new owner takes advantage of the tax benefits on the equipment, which is leased back to the original owner. It's all done on paper, of course, and it is one of the most popular tax shelters among wealthy large corporations.

It has been estimated that this leasing provision will cost the government \$29 billion over the next five years. The corporations prospering under it are not the nation's small business, which is in desperate need of relief, or the individual tax payers who are, like the man said, stuck with the tax bill.

The abuses must end and we must act to restrict, if not eliminate, this burden on the economy.

### EXPORTS

Census Bureau figures indicate that each \$1 billion in exports means 31,000 jobs in the United States. Just a five percent increase in exports last year would have meant jobs for 359,000 people.

I have always encouraged the growth in exports, especially for South Texas, and I am pleased that efforts are underway to increase our trade figures. The Agriculture and State Departments are working closely with our U.S. Trade Representative who is negotiating with the Japanese in an effort to convince them to lift their troublesome restrictions on American Products. It is patently unfair for Japan to restrict our products while the Japanese sell enough in the United States to give us an \$18 billion trade deficit.

This is a subject of great importance to us in South Texas because one of the worst problems areas with Japan is its restrictions on our beef imports.

In another development, the Commerce Department has published an extensive manual entitled "A Basic Guide to Exporting," with the expressed goal of setting forth a step-by-step approach to exporting for the small and medium size firms. The problem than many of our smaller firms have in getting into the export business is there has been a lack of sound information on how to go about it.

The guide ranges from tips on financing and selection of

foreign markets to chapters on documentation and export regulations and a list of common mistakes of potential exporters. It is available for \$5.50 at U.S. Commercial Service District Offices and through the Superintendent of Documents, U.S. Government Printing Office, Washington, D.C. 20402.

\*\*\*\*\*

It is difficult for me to see any validity in the report that the unemployment situation in this country has been blown out of proportion.

I can understand the Administration's anguish when the unemployed are interviewed on television night after night, but the fact remains that plants and businesses are closing and people are out of work.

I refer, of course, to the President's remark questioning whether or not "some fellow out in South Succotash" should be interviewed because he had lost his job.

There is no need to exaggerate the effects of our current economic problem--not when between nine and ten million Americans are out of work and our plants and commercial firms continue to go out of business on a daily basis.

### CLOSINGS

During the first three weeks of March, 29 plants have closed and 156 other businesses, such as grocery stores and department stores served notice they would cease operating. For the year, 86 industrial plants have closed and 533 other types of businesses have quit operating. An estimated 150,000 people lost their jobs due to these business failures this year.

If the closings continue at the same rate, the failure level will be the highest since the depression years of the 1930's.

Majority Leader Jim Wright of Fort Worth recently issued a partial list of 1981 plant closings and cutbacks identified from news stories. The list is too long to include all of it here, but the following is a sampling of what he found:

Snap-On Tools Corporation closed plants in Kenosha, Wisconsin and Mount Carmel, Illinois, leaving 1,140 jobless.

General Telephone and Electronic Corporation will shut down its southern regional telephone headquarters in Irving, Texas, but job losses are not known.

Chicago Title Insurance Company has laid off 130 persons.

Texas Instruments, Incorporated has laid off indefinitely 2,700 workers

at its plants in Dallas, Houston and Sherman.

General Motors Corporation planned to close down four of its car and truck assembly plants for one week idling 12,700 workers in Arlington, Texas, Framingham, Massachusetts, Baltimore, Maryland and Leeds, Missouri.

National Steel Corporation, Pittsburgh, ordered a six-month pay freeze for its 7,000 salaried workers, effective April 1, and cut the pay of senior management executives by 10 to 25 percent.

### CONSTRUCTION INDUSTRY

According to the Department of Commerce, the 1.1 million housing units begun in 1981 constituted the smallest number of housing starts in any year since 1946. In the first quarter of 1981 alone, 685 construction companies failed and since 1980 over two million housing and related jobs have been lost.

In 1981, an average of about six million persons were engaged in various aspects of construction, and approximately 1.2 million of them were self-employed.

Last summer, the peak construction season, 8 percent fewer construction workers were on private company pay rolls than the summer of 1979. Moreover, the average work week for construction workers declined and the industry unemployment rate rose from 9.5 percent to 16 percent on a seasonally adjusted basis.

### ACTION NEEDED

Large deficits, interest rates and unemployment feed on each other. Every time we open the newspaper or turn on the Television, we see that one or more of them have taken another bite.

The statistics are no secret to Congress or the Administration, and it does no good to complain about the messenger bearing the bad news. As I have said before, and as I will continue to emphasize, we must lay aside politics and begin to work together on a plan to reduce the federal deficit and decrease the role of government as the dominant figure in the money borrowing market in competition with small businesses, prospective home-buyers and consumers.

=====

## FACTS & FIGURES

The United States Army is the largest military service in the Free World. Army wartime strength now totals over 1.7 million soldiers.

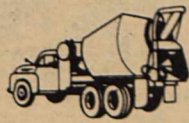
\*\*\*



Nearly 18 percent of the total Army wartime strength is in the Army Reserve.

\*\*\*

Many of those in the Army Reserve are former Active Army soldiers who have opted to remain part of the Army after they return to civilian life. Extra income and full-time benefits for part-time service were among the more popular reasons given by prior Active Duty soldiers for joining the Army Reserve.



# KINNEY COUNTY CONCRETE INDUSTRIES INC.

CONCRETE IN SMALL OR LARGE QUANTITIES

MASONRY

SMALL AND LARGE GRAVEL  
CRUSHED BRICK

## 563-2405

(HWY 90 WEST BRACKETTVILLE)

### BRACKETTVILLE LAUNDRY & DRY CLEANERS

OPEN

9:00 a.m. til 5:00 p.m.  
MONDAY, WEDNESDAY, FRIDAY

CLOSED For lunch  
11:30 -- 12:30

IN ADDITION TO LAUNDRY AND DRY CLEANING WE RENT TUXEDOS OVER 1,000 TO CHOOSE FROM 13 DIFFERENT COMBINATION.

Come by 112 North Street or  
Phone: 563-2193

On Tuesday, Thursday, Saturday you can drop your clothes at Amistad or Comet Cleaners in Del Rio for delivery in Brackett

"We confess to small faults only to convey the impression that we have no big ones." La Rochefoucauld

### FOR AREA ASSISTANCE AMBULANCE

563-2757

### SHERIFF'S OFFICE

563-2688

### COUNTY JAIL

563-2788

### MEDICAL CLINIC

563-2434

### CITY POLICE

563-2100

### FIRE DEPT.

563-2233

### TEXAS HIGHWAY PATROL

563-2788

## PUBLIC NOTICES

### PUBLIC NOTICE

NOTICE OF APPOINTMENT OF FANNIE B. SCHMIDT as Independent Executrix of the Estate of Frances G. Swift, Deceased.

Pending in the County Court of Kinney County, in Matters Probate No. 728

TO ALL PERSONS INTERESTED IN THE ABOVE ESTATE:

WEREAS, on the 23rd day of March, 1982, in the County Court of Kinney County, Texas, the undersigned duly qualified as the Independent Executrix of the Estate of Frances G. Swift, Deceased

Notice is hereby given that Letters Testamentary on this estate were granted and this is to notify all persons having claims against said estate to present the same to the undersigned within the time prescribed by law. Any person indebted to said estate is hereby notified to pay same to the undersigned.

FANNIE B. SCHMIDT  
Independent Executrix of the Estate of  
Frances G. Swift, Deceased  
% Hubbard S. Parks  
615 Soledad, Suite 300  
San Antonio, Texas 78205  
\*\*\*\*\*

### PUBLIC NOTICE

On April 12, 1982, at 7:30 P.M. in the Council Chambers of City Hall the Brackettville City Council will hold their first regular meeting of the year. One of the top priority agenda items to be discussed will be the requested rate hike of CPL. The electric company has requested an advertised pay hike of 20%. This rate hike request will increase the total cost of electricity to the citizens of Brackettville by \$93,664.00. Broken down into dollars this request would average \$56.00 per person--per year---\$56.00 for each man, woman, and child. The residential customers rate hike would be \$49,397; commercial and industrial rates would generate \$33,986 additional revenue with the remainder charged to municipal services, ie, street lights and water and sewage pump rates.

Attend the public hearing scheduled for Monday, April 12, 1982, at City Hall at 7:30 in the evening and let your Council know of your desires.

\*\*\*\*\*

### TEXAS CHAPTER OF U.S. SUBMARINE VETERANS SEARCH IS ON

The Texas Chapter of U.S. Submarine veterans of World War II is searching for all veterans of WWII who served on U.S. Submarines or in relief crews during the period of 7 December 1941 and 31 December 1946.

The Texas state convention will be in Corpus Christi, Tx May 14, 15 and 16, 1982. The national convention will be in Hartford, Ct., during mid-August with local and regional conventions during the year. All submarine veterans and their families are invited and urged to attend. For complete information contact J.A. Woodall, Texas State Secretary P.O.Box 1368, Galveston, Tx. 77553--phone: (713)765-7910. During World War II U.S. Navy Submarines operated under a news blackout and became known as "The Silent Service." Comprising less than 2% of all the military forces in action against Japan, our submarines accounted for more than 60% of all Japanese Naval, military and merchant shipping sunk or destroyed by all forces combined, while doing this

our submarine forces suffered the highest losses of any military branch in action against the Japanese.

In addition to erecting memorials to our shipmates who lost their lives during WWII, preserving and displaying WWII type submarine for the general public, 52 college scholarship are awarded each year to dependent children of submarine veterans, as living memorials to those 52 submarines and their crews lost during World War II.

If you know a submarine veteran of WWII, please see that he gets this information. Any assistance you can give us will be sincerely appreciated.



After cleaning a carpet stain, cover spot with a clean towel and place a heavy book on top of it. When the towel becomes damp, replace with a dry one until the spot is completely dry.

# classified ads

**TUESDAY 12:NOON DEADLINE**

All Classifieds—15¢ per word minimum insertion—\$2. per issue.

## KINNEY COUNTY LAND CO

(512)563-2446

2 Lots & Memberships in new Mobile Home Park on Fort Clark, complete with utilities, next to green belt area, only \$5,500  
\*\*\*\*\*

3 bedroom, 2 bath, Mobile Home on Fort Clark, \$18,000 including membership, owner financing available.  
\*\*\*\*\*

Lovely 3 bedroom, 2 bath home in Brackettville, fenced yard carport, \$35,000 with only \$5,000 down payment.  
\*\*\*\*\*

Rentals from \$150.00 per month on Fort Clark  
\*\*\*\*\*

### FOR SALE

\*\*\*\*\*  
FOR SALE.....  
1973 Ford Van, 1 ton, \$700-Firm. 563-2987, Ask for Dave.  
\*\*\*\*\*

\*\*\*\*\*  
FOR SALE.....  
1962 CHEVROLET IMPALA, 283 engine, standard transmission Call: 563-2446 and ask for "Mac".  
\*\*\*\*\*

\*\*\*\*\*  
FOR SALE.....  
94 ACRES, North of Uvalde, \$575.00 per acre, wooded, good hunting, owner financed, \$1,750 down, 15 years at 12%. AC 512-896-2525 nights and weekends AC 512-257-3001 or 257-7667.  
\*\*\*\*\*

\*\*\*\*\*  
WANTED.....  
Deer & Turkey Lease to accommodate 5 to 12 or more hunters. Contact: AL at 318-433-3317 or HUBERT at 318-369-6154. or write: Al Viator, 2122 Enterprise Blvd., Lake Charles, LA 70601.  
\*\*\*\*\*

\*\*\*\*\*  
WANTED.....  
Deer Lease Brackettville Area, Call: 512/392-5431 in San Marcos Texas.  
\*\*\*\*\*

### BUSINESSES

#### MASON SHOES & BOOTS

\*\*\*\*\*  
GUARANTEED LATEST STYLES, MEN'S AND LADIES' HIGHEST QUALITY, go FIRST CLASS, Reasonable Prices. Call: Robbie Robertson, 563-2993.  
\*\*\*\*\*

#### VANN'S SEAFOOD TRUCK

\*\*\*\*\*  
In Brackettville EVERY OTHER WEDNESDAY, 10 a.m. to 1 p.m. at EXXON STATION have a FULL LINE OF SEAFOOD.  
\*\*\*\*\*

#### SAGEBRUSH SHOPPE II

563-2735  
Send a beautiful Spring Basket arrangement to say "Thinking Of You" We have Lillies, Sweet William, Gerbers, Daisys,, Roses Carnations, etc. to fill your order.

DON HOOD



JEAN HOOD

512/563-2125

Very Large 2-story, Block Construction home on El Paso with 5 fenced lots, possible owner financing.  
\*\*\*\*\*

Small 2 bedroom home with 2 lots, fireplace, trees, also on El Paso Street.  
\*\*\*\*\*

6 PRIME LOTS in North Brackett  
\*\*\*\*\*

One Year Old, beautiful brick home, close to school. Extra Nice.  
\*\*\*\*\*

\*\*\*\*\*  
DIAMOND "N" WELDING SERVICE... Portable Equipment, REasonable Rates, Contract or Hourly, Call: 563-2134, 24 hours.  
\*\*\*\*\*

\*\*\*\*\*  
GARDNER WELL SERVICE.... Pump & Windmill Service, very reasonable rates, Free Estimates, 24-hour service. 7 days a week, 512/278-7330 answering service.  
\*\*\*\*\*

\*\*\*\*\*  
ATTENTION DEER HUNTERS..... Are you looking for a convenient Hunting Lodge in Brackettville, setting on 2 lots, all electric, stucco house, 3 big, big rooms, could be converted to 5 very easily, 2 full baths, complete kitchen, air conditioned carpet, completely furnished, \$39,000 with \$10,000 down, owner finance at low interest rates, Call: 512/563-2005, after 5 p.m. or weekends, ask for Owen.  
\*\*\*\*\*

\*\*\*\*\*  
FOR SALE.....OR RENT 19" Color TV, "SHARP", \$240.00 or \$35.00 per month, Call Dale Borden, 563-2221.  
\*\*\*\*\*

LOWEST PRICES!!

## SCHUBACH LIQUORS

Across from Fort Clark Springs entrance..next to EXXON station.

563-2322

## DAVE'S TOWING SERVICE

563-2987

## BRACKETTVILLE CHURCHES

### FRONTIER BAPTIST CHURCH

Sunday School	10:00 A.M.
Worship Service	11:00 A.M.
Prayer Meeting	7:30 P.M.
Wednesday Prayer Meeting	7:30 P.M.

### CHURCH OF CHRIST

Sunday School	9:30 a.m.
Worship	10:30 a.m.
Bible Study (Sunday)	7:00 P.M.
Study (Wed.)	7:00 p.m.

## UNITED METHODIST CHURCH

Sunday School (Children)	9:45 a.m.
Sunday School (Adult)	9:45 a.m.
Morning Worship	11:00 a.m.

BARRY COX  
Pastor

## ST. ANDREWS EPISCOPAL

Church Services 6:00 p.m.  
REV. EDWARD P. BUSH

"It takes two to speak the truth—one to speak and another to hear."  
Henry David Thoreau

## CANDIDATES FOR DEMOCRATIC PRIMARY

### STATE REPRESENTATIVE

DUDLEY HARRISON

### KINNEY COUNTY JUDGE

ALBERT A. POSTELL

ALVIN F. HALL

### KINNEY COUNTY TREASURER

CARLOTTA DE LA ROSA

### KINNEY COUNTY COMMISSIONER

PRECINCT # 4

JOE YORK, JR.

### JUSTICE OF THE PEACE

PRECINCT # 1

RAYMOND TALAMANTEZ

PRECINCT # 2

DARRELL PAUL FRANKS

LUPE FUENTES

PRECINCT # 3

LEONARD LUNA

CHARLES W. "CHUCK" HALL

PRECINCT # 4

ROSEMARY SLUBAR

GROVER NEUMAN

The above Political Advertisement was paid for by the Candidate or their Authorized Committee Chairmen.