



the Kinney Cavalry

Alamo Village
Box 528
City

25¢

USPS 100-610

VOL. 8 NUMBER 7

FEBRUARY 26, 1982

BRACKETTVILLE, TEXAS

GOV. CLEMENTS TO SPEAK

GOVERNOR CLEMENTS TO SPEAK AT ANNUAL BRACKETTVILLE CHAMBER OF COMMERCE BANQUET

Governor William P. Clements Jr. will be principal speaker at the Annual Brackettville Chamber of Commerce Banquet, March 4th, 7:00 p.m., at the Civic Center, Brackettville, Texas.

Governor Clements was born and raised in Dallas, he is a third generation Texan.

Bill Clements established SEDCO in 1947 and it is now a worldwide drilling contractor.

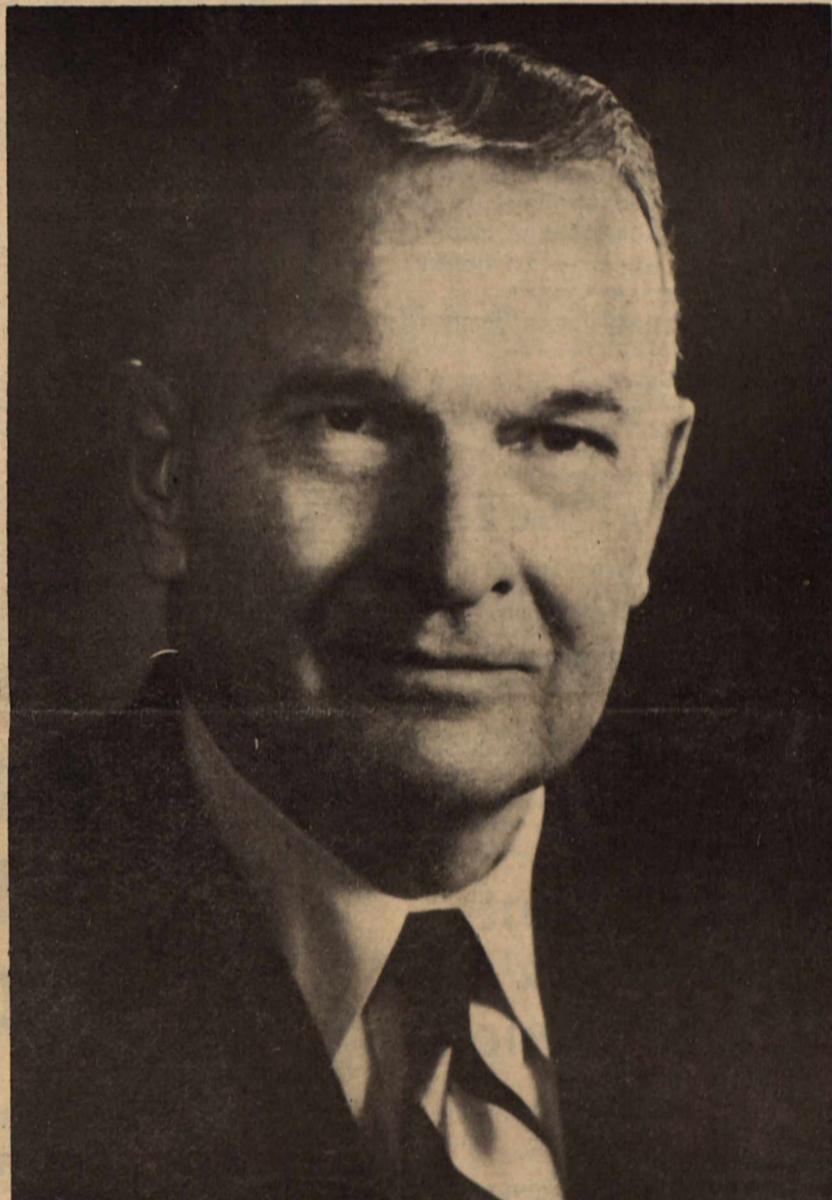
In 1973, he was appointed Deputy Secretary of Defense, a position he held under two (2) presidents. President Ford called him the best general manager of the Pentagon he had ever seen.

Throughout his career, Bill Clements has been deeply involved in community affairs. He serves on the National Executive Board of Boy Scouts of America and was chairman of the Board of Governors of Southern Methodist University.

In 1978, Bill Clements entered the political arena as a candidate for the first time, and on January 16, 1979, he was sworn in as the first Republican Governor of Texas in more than 100 years.

With the support of the Republicans, Democrats and Independents alike, he turned his talents toward State government and introduced a new brand of strong management and effective leadership to the State of Texas.

Brackettville Chamber is indeed fortunate and happy to have Governor Bill Clements as principal speaker at their annual banquet.



HEADLINERS

VALENTINO TO HEADLINE BENEFIT CONCERT

VALENTINO will perform at a benefit concert for the Boy Scouts of America in Brackettville at the Community Civic Center. The concert is slated for 9:00 pm to 1:00 A.M. on February 27th.

Appearing with VALENTINO is the Shahan Express. These artists are playing for Troop #234 at the fundraiser which is sponsored by the Brackettville International Rotary. Troop #234 is a newly organized Boy Scout Troop and has leader Bob Martinez and assistant Bob Corey as supporters and guidance.

TEXAS PUBLIC SCHOOL WEEK

The week of March 1-5, 1982 has been designated as Texas Public School Week. We would like to encourage parents to visit our schools. The goal of our district has been and will continue to be, to make our school the best. In order to do this we need your interest in the school system and to cooperate with the school board, superintendent, principals and teachers.

Please come and visit us on Our Open House night from 7 to 9 on March 2.

KINNEY COUNTY 4-H FOOD SHOW

The Kinney County 4-H Food Show was held Saturday, February 20, at the Brackettville Home Economics Cottage.

A total of twenty-six 4-H boys and girls completed for awards and a chance to represent Kinney County in the Dis-

trict Food Show on March 20, in Uvalde. Results of the different age groups and food categories were as follows:

PRETEEN--BREAD & CEREALS

Michelle Munoz-blue; will represent Kinney County 4-H at the District Food Show; Bonnie Frerich-blue; Josie Jackson-blue; Gus Garcia-blue; Kasey Hall-red;

PRETEEN--FRUITS & VEGETABLES

Melinda Meyer-blue; who will represent Kinney County 4-H at District Food Show; Stacey Mayfield-blue; Wendy Bailey-blue;

PRETEEN--MAIN DISH

Lisa Frerich-blue--will represent Kinney County 4-H at the District Food Show; Travis Smith-blue; Yvonne Luna-blue; Melissa Meyer-blue;

PRETEEN--SNACK & DESSERTS

Marcus Saenz-blue; who will represent Kinney County 4-H at the District Food Show; Tammy Frerich-blue; Amy Blackwell-red; Elena Young-red;

JUNIOR DIVISION--SNACKS & DESSERTS

Elida Balderas-red; who will represent Kinney County 4-H at the District Food Show; Robin Ward-red;

continued Page 3, Col.1

THE KINNEY CAVALRYMAN

USPS 100-610

P.O. DRAWER CQ
BRACKETTVILLE, TEXAS 78832

(512) 563-2696

Judy Loos.....Publisher
Geo. Loos.....Editor
Geo. Loos.....Business Manager
RoseMary Slubar.....Production
Jean Hood.....Contrib. Editor
Crystal Loos.....Production

Published every Friday. Entered by
Second Class Mail at Brackettville,
Texas, 78832.

Any erroneous reflection upon the
character or standing of any person
or firm appearing in this paper will
be gladly corrected upon being called
to the attention of the manage-
ment and to the article in question.

MEMBER OF THE TEXAS PRESS ASSOCIATION

Subscription Rates:
\$13.00Out-Of-County
\$12.00In-Kinney-County

CRYSTAL SEZ:

"The two greatest stimulants
in the world are youth and
debt." Benjamin Disraeli



VENUS FLYTRAP

The Verus Flytrap is an "insectivous perennial"--and quite a wonder! The trap of the plant will catch and digest small insects when they are available. (The native habitat of this plant is a small area of the southeast United States where the soil is low in nitrogen. Since nitrogen is necessary for growth, the plant has developed a digestive system to supply its' nitrogen needs.)

To zero in on its' needed food, the traps of the plant

are fringed with bristles and there are sensitive hairs on the inside surface. Anyhing touches these trigger hairs, they close suddenly and the bristles interlock to form a trap. A digestive fluid is secreted when the trap closes, and this fluid dissolves most of the insect or other food. If flies and instect aren't readily available, the plant can be fed a

tiny piece of raw hamburger once every two weeks.

Over working or overfeeding of the venus flytrap can damage or kill it, so resist the temptation to touch the sensitive bristles. Keep the plant in a warm sunny spot with plenty of moisture and humidity. Clip off any traps that turn brown, and new ones should sorm. As the trap mature, the inside color turns red if given enough sun. Small flowers that appear in the

summer should be removed, as they weaken the plant.

BOY SCOUTS TO HAVE CAKE WALK

Boy Scout Troop #234 will be having a cake walk, Saturday, March 6th, at 1:00 p.m. at the C & L Minimax. They will also be having a car wash, Saturday, March 13th, off Highway 90 at Kinney County Land Co & Schubach Liquors parking lots.

Both activities are to help support their Frontier Fair Queen Candidate: Nelli Saenz.

FORT CLARK HISTORICAL SOCIETY

Lawrence and Georgie Nuckles from Rockport, Texas will present a program for the Fork Clark Historical Society, Saturday, February 27th. The Nuckles resided at Fort Clark, 1936-1941 and will talk on life at the Fort during the period. The meeting will be held in the member's lounge at Las Moras Inn, at 10:00 a.m.

The Society would like to report that contributions are coming in on their membership giveaway program. The Society is giving a chance on a membership (value \$5,000) with each \$25.00 tax deductible contribution received be the Society between now and Fort Clark Days, April 17, 1982, when a drawing will be held. A maximum of 200 contributions will be accepted for this drawing so your chances are 1 to 200 of winning the Fort Clark membership.

Contributions may be mailed to the Historical Society, Box 1061, Brackettville, Texas, 78832, or contact Ron Buckles, Treasurer.

At First Savings of Uvalde - THE NEW 1982 INDIVIDUAL RETIREMENT ACCOUNT (IRA)*

If you are employed — you are eligible even if you are in another plan.
Up to \$2,000 tax-exemption.

The rate on First Savings' new 1982 IRA is tied to the 2½-year certificate which is based on the U.S. Treasury rate. No service charges. You're allowed annual tax deferred deposits up to \$2,000 — \$2,250 for spousal accounts. Tax penalty for withdrawals* prior to age 59½ and certificate penalty for early withdrawals.

If you are not now in a pension plan you may qualify for a 1981 IRA NOW. Up to \$1,500 — \$1,750 for spousal accqunts.

A FREE checking account with First Savings IRA account of \$2,000 or more.
*Effective January 1982



ASSOCIATION OF UVALDE

MAIN OFFICE:
Uvalde:
400 North Getty St.
278-7191



BRANCH OFFICES:
Eagle Pass: 370 Monroe - 773-9494
Carrizo Springs: 301 Pena St. - 876-5261
Leakey: Corner of Market & 4th - 232-6631
Hondo: 609 19th Street - 426-4325
Nueces Canyon: Hwy. 55 & 7th St. 597-3930



playing
it cool
comes
easy...

EARN UP TO \$2,000 INTEREST TAX-FREE

**"No Bank or Savings & Loan
Can Pay You More"**

Interest earned on your All Savers Certificate is exempt from income tax up to \$1,000.00 for an individual and up to \$2,000.00 on a joint return.

The All Savers Certificate is especially designed for taxpayers in the 30% or above income tax brackets.

If all of the new certificates and various interest rates have you confused, our employees can help you. There has never been a better time to invest.

MONEY MARKET CERTIFICATE

26 WEEK \$10,000 MINIMUM BASED
ON AN ANNUAL RATE OF
13.958%

Effective annual yield based on reinvestment of principal and interest at maturity. Federal regulations prohibit the compounding of interest and require a substantial penalty for early withdrawal. Rate is subject to change at renewal.

FDIC Your Savings Incentive to \$20,000

**THE
FIRST STATE BANK**
COMPLETE BANKING SERVICES
BRACKETTVILLE

563-2451

STOCK SHOW/RODEO.....

JUNIOR-BREADS & CEREALS

Sandra Green-blue; who will represent Kinney County 4-H at the District Food Show; Norma Aguirre-red; Anastacia Smith-red;

JUNIOR--FRUIT & VEGETABLES

Kelly Hall-red; who will represent Kinney County 4-H at the District Food Show; Yvette Buantello-red;

JUNIOR-MAIN DISH

Anita Diaz-blue; who will represent Kinney County 4-H at the District Food Show; Linda Sharp-red;

SENIOR DIVISION-FRUIT & VEGETABLE

Alma Aguirre-red; who will represent Kinney County 4-H at the District Food Show;

SENIOR DIVISION-MAIN DISH

Cindy Meyer-blue; who will represent Kinney County at the District Food Show

The Kinney County 4-H Club would like to thank the following businesses for donating the trophies for the 4-H Food Show: C & L Minimax; Hazel's Restaurant; B & S Grocery; Fuentes Grocery, Long horn Cafe; Stop & Shop; Mario's Grocery; Fort Clark Springs Restaurant; Kountry Store; Central Power & Light.

SAN ANTONIO LIVESTOCK SHOW & RODEO
EXHIBITORS REPRESENTING KINNEY COUNTY

Twenty-four Kinney County 4-H members exhibited a total of 82 head of market lambs at the recent San Antonio Livestock Show and Rodeo held February 12-19. Kinney County 4-H members and

their winnings included; Tammy Frerich-fifth place crossbred lamb; and 25th place finewool; Toby Frerich-29th place crossbred; Jodi Schermerhorn-19th place crossbred; Brad Gwartney-17th place finewool, Mark Frerich-18th place finewool, 20th place crossbred; Lisa Young-25th place crossbred; Brenda Foust-13th place crossbred; 19th place finewool; Ronnie Latham-17th place crossbred; Robby Latham-31st place finewool; Clinton Hobbs-19th place crossbred; Lashawn Wardlaw-3rd place finewool; 20th place finewool, 14th place crossbred; Leisha Wardlaw-2nd place finewool; 31st place crossbred.

Other 4-H Club members exhibiting lambs included; Dutch Wardlaw; Henry Schwandner; Will Risinger; Wesley Risinger; Kristy Gwartney; Seth Keplan; Curtis Kral; Elena Young; Ginger Hooten; Trey Stevens; Mitch Frerich; Jamie Schermerhorn, Kinney County 4-H members are now preparing themselves and their lamb projects for exhibition at the Houston Livestock Show and San Angelo Livestock Show in March.



The first public high school in the United States was opened in Boston in 1821.

LETTERS TO THE EDITOR

Mr. George Loos, Editor

RE: 1981 Progress Report
District Attorney
63rd Judicial District

Dear Mr. Loos:

I am pleased to advise you that in our five county 63rd Judicial District we were able to secure indictment in 257 cases. In that year, we obtained 228 convictions, and 54 persons were sentenced to serve time in the Texas Department of Corrections. Funds received from cases prosecuted by our office in 1981, included \$42,238.61 recovered as restitution for victims; \$72,225.00 in fines by persons convicted of crimes; \$18,894.75 recovered on bad checks; and \$18,607.00 recovered on bond forfeitures.

Our work in 1981 could not have been successfully accomplished without the cooperation of the officials of our five counties and all law enforcement agencies. In this regard, I want to express my appreciation to you for your encouragement and assistance.

Sincerely,
/s/ Thomas F. Lee
District Attorney
63rd Judicial District

GUEST EDITORIAL

Linda Martinez,
Committee Member Troop 234

Recently Boy Scout Troop 234 held a gymnastic event by which the boys collected pledges for an event they were going to do. I feel it is the responsibility of the person making the pledge to be aware of what they are committing themselves to. Apparently some of the pledges didn't.

One of the boys practiced when ever he could, to do well in the event he had chosen--sit ups.

On the day of the event he did extremely well and proudly went to collect his pledges. Due to the fact he did do so well, a couple of the pledges he received before the contest, his plddges reneged leaving the boy very disappointed.

The next time you make a pledge be aware of the contract you are making, that it's more than likely tax deductible, and going to a good cause.



A fiber 90 miles long can be drawn from one glass marble less than an inch in diameter.

When is \$2,000 not \$2,000? When you are promised it, and don't get it. Some people say that's what General Motors is doing.

Here's the scenario. General Motors is advertising rebates of up to \$2,000 on some new car purchases. Most of the rebate — 75% of it — comes from GM; the auto dealers pay the other 25%. The ads, though, don't go into who is paying what part of the rebate. Which is where the broken promise comes in, some say. Customers aren't actually getting the full 100% of the rebate advertised because in order for the dealers to give their share of the money back, they've got to make it up on some other part of the sale.

The auto dealers are mad. They feel they are in an impossible position — they feel they've got to participate in the rebate program, but they can't afford to. They think that since GM promised the rebate, GM should pay for it all. So, the Motor Vehicle Commission is proposing rules to make joint rebate programs between the auto makers and the auto dealers illegal, and to prohibit dealers from giving rebates at all.

Good, say auto dealers and others, that's what needs to be done. The type of promotion GM is running is deceptive. The customers don't know that the dealers have to pay part of the rebate. But since it comes out of the dealers' pockets, they have to manipulate their costs else-

Watchdog

The Texas Consumer Association
Education Fund's Report
from Austin

By Rebecca Lightsey, Director

where. For example, they aren't giving as much for trade-in cars as they would otherwise. In the end, it may work out that customers aren't actually getting the full refund; they may be only getting the 75% from GM.

That means customers aren't given all the facts they need to fully evaluate how good a deal they're being offered. In legal terms, that's a lack of material information — information that's necessary to adequately make a decision. To prevent this misleading practice from continuing, they say, rebate programs which involves the dealers should be outlawed.

We agree that buyers aren't getting all the information they need if they don't know the dealers are covering part of the rebate costs, others counter, and they should definitely be informed. But isn't there a better solution to this lack of information than totally outlawing dealer participation in rebate programs? Why not cure the lack of information with more information? Require the ads for joint rebates to state that the dealers are paying for part of it. This way, customers can take that fact into account when they're shopping, but the rebate will still be available to them.

We don't see why the Commission should completely outlaw rebates when the dealers pay the full amount either, they say. Customers should certainly be told who's giving the rebate, but once that's been disclosed,

buyers should be able to take advantage of that kind of offer. Why should a dealer rebate be prohibited when a big sale by the dealer isn't? In both cases, the buyers know they should shop around to see if some other cost associated with buying the car is going up to cover the "special deal" being offered.

After the Commission proposed its rules, but before they were finalized, the Attorney General's office brought suit against GM to the joint rebate program. The Attorney General asked the court to stop GM from making the dealers participate in the rebate, but to continue to honor the refund. GM has revised its ads, and is now letting people know that the dealers are responsible for 25% of the rebate.

Which solution do you think is best? Should rebates in which dealers participate be banned altogether, or should there simply be strict disclosure requirements in those situations?

Let the Motor Vehicle Commission know soon, write them at P.O. Box 2293, Austin, Texas 78768.

BENEFIT DANCE

FOR BOY SCOUT TROOP #234

Sponsored
By:



BRACKETTVILLE
ROTARY
CLUB

VALENTINO & SHAHAN EXPRESS

SATURDAY, FEBRUARY 27

BRACKETT CIVIC CENTER

9:00 -- 1:00

Statement Of Intent To Change Rates

General Telephone Company of the Southwest, in accordance with the Rules of the Public Utility Commission of Texas, hereby gives notice of the Company's intent to implement a new schedule of rates in Texas effective March 5, 1982.

The proposed changes in rates will affect all customer classes and are designed to increase the Company's intrastate revenue by 24 percent.

A complete set of revised rate schedules has been filed with the Public Utility Commission at Austin, Texas, and is available for public inspection in each of the Company's Business Offices in the State of Texas. A summary of the Company's rate filing has also been sent to the Mayor's Office of each affected Municipality.



energy saving ideas

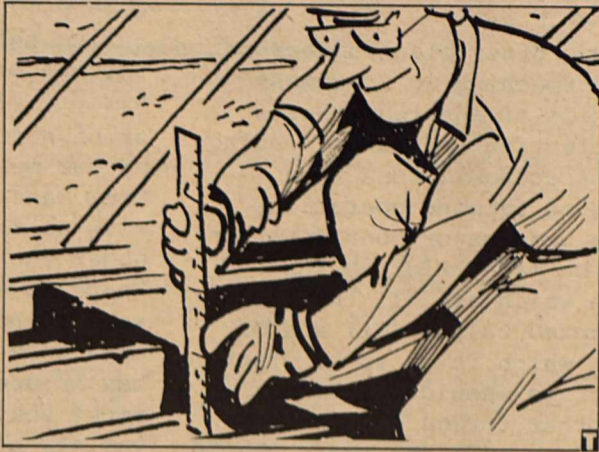
Don't let spiraling energy costs get you down, let them get you up — to the attic.

A properly insulated attic can cut your fuel bill 18 to 23 percent, according to U.S. Department of Energy (DOE) estimates.

The attic is one of four places that energy-conscious Americans should check for adequate insulation that the government says could result in savings of as much as 40 percent overall.

The other areas, according to Owens-Corning Fiberglas Corporation, a leading manufacturer of home insulation, are the walls, floors and basements or crawl spaces. With the exception of the walls, these areas can be made energy-efficient by the average do-it-yourselfer.

To determine if your attic is properly insulated, measure the thickness of the existing insulation with an ordinary ruler. Be sure to wear gloves when doing this job. Take the measurement and an insulation sample to your building supply dealer. He can tell you the R-value of your insulation. R-value is a measure of resistance to heat flow. The higher the R-value, the greater the insulating power. If your attic is below an adequate level, the dealer



can advise you how much more to add.

Properly insulated walls can save up to 20 percent, according to the DOE. To determine if your walls are insulated, turn off your home's electric power and remove the cover on an electrical outlet. If you don't see any insulation, call an insulation contractor. Special equipment is necessary to blow insulation into walls. Proper installation is essential for good performance. If walls show partial insulation, don't add more until you've made the rest of the house energy-efficient.

Floors and crawl spaces can be protected by installing insulation batts between floor joists with vapor barriers facing up toward

the warm-in-winter side. Install wire mesh to hold the insulation batts permanently.

Basements have taken on added importance in home heating since many families are converting the space from storage to living area in lieu of buying larger homes.

To insulate basement walls, furring strips or studs must be installed next to masonry surface. Batts of insulation are installed the same way as on an above-grade wall. Be sure to put insulation chunks in the area between the top of the basement wall and the beginning of the first floor.

Following these useful tips may help you keep down those spiraling energy costs.

The Active Consumer The Active Consumer
WHAT TO LOOK FOR IN QUALITY BOOTS

The cattle-driving cowboys of yesteryear knew the value of quality western boots. They depended upon them in their work.

While consumers today are not as dependent upon their boots, they do demand comfort, durability and style. Fine bootmakers take extra steps to ensure their boots have these qualities. Look for these characteristics in well-made boots:

The Leather

A quality boot begins with fine leather—from the inside out, from the top to bottom. No synthetics here, for even the lining is soft creme cow leather. Master bootmakers use about 13 square feet of leather in each pair of boots. When choosing exotic skins, they carefully select the grain patterns, so the boots match when set side by side.

Hand Lasting

Positioning the leather on the boot last is a crucial step in bootmaking and one that is best done by trained hands. A last is a wooden or plastic mold shaped like a foot on which the bootmaker stretches the leather to form the vamp of the boot. Master bootmakers like Nocona Boot Company hand-form the leather onto the lasts to ensure a great fit.

The Stitching

Well-made boots are sewn together, not glued. A sole which is glued is more likely to separate from the upper. Close inspection of the boot can reveal if it



Hand Pegging—Some quality bootmakers still use wooden pegs to hold the shank and instep together. Wood pegs will not rust or fall out as metal nails do.

was stitched or glued. From the first through the last bootmaking step, the leather that makes up quality boots is sewn together.

The Shank

The shank of the boot is a piece of spring steel inserted between the leather sole and the leather insole to provide arch support. Nocona, for example, uses its patented Thin-Line Cushion Shank with padded rubber for added comfort.

The Pegging

Nocona is one of the few companies that use wooden pegs to hold the shank and the instep together. While this requires more time and hand-labor, using wooden pegs is an essential step in making quality boots. Wood reacts

to moisture as leather does and allows for expansion and contraction of the boot. Wooden pegs will not fall out or react chemically with the leather as metal nails may.

The Fit

A well-made, properly fit boot won't hurt the foot, even when first worn. It should "thunk" when pulled on and should fit the foot snugly, with slight slippage in the heel when first worn. As the boots are worn, the slippage will lessen.

Quality western boots are an investment in comfort and durability. Look for all-leather construction, stitched seams, a wood-pegged shank, and a quality brand, such as Nocona, for the finest in western footwear.

TAXPAYERS' RIGHTS.

Don't overpay your Property Taxes.

The Texas property tax system provides certain rights and remedies for property owners. The law also offers tax relief measures to qualified taxpayers. But they do not go into effect automatically; you must apply for them by May 1. To help you understand your rights as a taxpayer, the State Property Tax Board has prepared a free pamphlet, *Taxpayers' Rights, Remedies, Responsibilities!*, available from your new county appraisal district or local tax office. The publication will help you understand the types of exemptions that are available and what you must do to obtain them if you qualify.

Rendition

One way to assert your rights as a taxpayer is to **render** your property. This means filling out a rendition statement at the appraisal district office, telling tax officials what you believe the value of your property should be. When you render, the appraisal district or appraisal review board must officially notify you if the value of your property is increased over the amount you rendered.

General Homestead Exemption

If you qualify for a residence homestead exemption, you are entitled to a \$5,000 exemption off the appraised value of your home for school tax purposes, and a \$3,000 exemption for the portion of county taxes levied for farm-to-market roads or flood control. Some jurisdictions may offer an additional exemption of a percentage of the value of your homestead.

Exemptions for the Elderly

If you are 65 or over, you are entitled to an additional \$10,000 exemption off the appraised value of your residence homestead for school taxes. And, when you apply and qualify for this exemption, the school tax bill cannot increase on your home, unless you make additions or improvements to it.

Disabled

If you are disabled and qualify for the residence homestead exemption, you are

entitled to an additional exemption of \$10,000 off the appraised value of your home for school taxes. Other taxing jurisdictions may offer optional exemptions. All jurisdictions offer an exemption for certain disabled veterans on one designated property.

Farmers and Ranchers

If you qualify, your agricultural or open-space land may be taxed at its productivity value instead of market value. Certain farming implements and machines may also qualify for exemption.

Tax exemptions and special valuations are not effective automatically. Applications should be made this year **before** May 1 to your new county appraisal district, or to local tax offices in appraisal districts which have postponed implementation. Check with the appraisal district or local tax offices to find out where to apply for tax relief.

While late applications for exemptions may be accepted in some instances, the burden and expense of proving a good reason for filing late rests on the taxpayer. You can avoid any inconvenience and fully protect your rights and access to remedies as a taxpayer by applying for exemptions and rendering your property before May 1.

Ask for a free copy of *Taxpayers' Rights, Remedies, Responsibilities!* at your appraisal district or local tax office. Or contact the State Property Tax Board in Austin.

A public service of this newspaper and the

State Property Tax Board



P.O. Box 15900, Austin, Texas 78761
(512) 837-8622



Some very common farm animals — cattle, sheep and goats — have no upper front teeth.

Soil Conservation

GRASS SEEDING

The optimum grass planting season is rapidly approaching in Southwest Texas. Selection of adapted grasses for pasture planting and range seeding can have major economic impact on your ranching or farming operation.

There are some major considerations that need to be made prior to the planting date which are (1) the grass should be adapted to the soil and/or soil types on which it is to be planted, (2) the grass should compliment and improve other forage resources on the ranch or farm, (3) the grass should be planted on a well prepared, firm seedbed, (4) the grass should be planted with equipment that will evenly distribute the recommended seeding rate. Such equipment as a grassland drill or Brillion seeder does an excellent job; however, this equipment may not be available or applicable in all situations. Good stands of grass have also been obtained by aerial seeding, (5) the grass should be planted early enough to receive full benefit of spring rainfall. Chances of receiving rainfall in April, May and June are good but not guaranteed, (6) high quality seed should be used. The seed should be purchased and applied on a pure live seed basis where possible.

Buffelgrass and Selection 75 Klein grass are two of our most productive perennial grasses and have been widely planted during the past few years. Both of these grasses are adapted to a wide variety of soil types and are capable of producing high quality forage. The recent availability of seed of the Nueces and Llano strains of buffelgrass allow producers the option of considering buffel in the northern portion of the Rio Grande Plain and the southern part of the Edwards Plateau.

Although Kleingrass has the potential of producing large quantities of quality forage, there have been a few cases of swellhead in sheep and goats, especially stressed lambs and kids grazing Kleingrass in some growth stages.

Other grasses for consideration are blue panicum, sideoats grama, green sprangletop, switchgrass, and several varieties of bluestems and lowgrassess.

Blue panicum, once widely planted in Southwest Texas, has not been used to a great extent in recent years; however, blue panicum is capable of producing large quantities of high quality forage with a good grazing management program. The seed of blue panicum, like the seed of Kleingrass, is also an excellent food source for quail and dove.

Sideoats grama and green sprangletop, native grasses to the Edwards Plateau and northern Rio Grande Plain, also have a place in range seeding and have the potential of complimenting seeding mixtures with other grasses in this region.

Switchgrass, a high producing native grass, deserves consideration in the Southwest Texas area receiving at least twenty four to twenty five inches of annual rainfall. The Alamo strain of switchgrass, recently released by the Soil Conservation Service Plant Materials Center, has tremendous potential for high quality forage production.

Several strains of introduced bluestems have been seeded in Southwest Texas for several years. Gordo bluestem has excellent potential for high quality forage production for the

late summer and fall months in areas receiving at least 24 to 25 inches of rainfall annually. Medio bluestem, adapted to clay and clay loam soils, also produces high quality forage during the late summer and fall months. K&eberg bluestem, adapted to a wide variety of soils, has the potential of high forage production and is one of our most drought tolerant grasses. King Ranch bluestem is not as productive as the other bluestems but grows under the most adverse conditions. There is a lot of truth in the old saying that King Ranch bluestem will grow on a flat rock. This grass still has a place on a very shallow and rocky soils. Old world bluestem, a new variety of the introduced bluestems developed by the Soil Conservation Service Plant Materials Center, shows tremendous promise for Southwest Texas in trail planting on the J.R. Hamilton Ranch near Carrizo Springs, Texas and the Jim Willingham ranch near Uvalde, Texas. Both Hamilton and Willingham have harvested seed from this grass and expanded their original acreage from trial plantings. Old world bluestem produces a large volume of high quality forage that cures exceptionally well and it is adapted to a wide variety of soil types. Very limited amounts of Old world bluestem seed will be available on the commercial

market in 1982, but additional seed should be available in the future.

Although the lovegrasses are not widely planted in Southwest Texas, they deserve consideration. Weeping and Ermelo lowgrass are adapted to sandy and deep sand soils and are capable of producing large amounts of grazing under an intensified management program.

Wilman's lovegrass is adapted to a wide variety of soil types. The leaf blade on this grass is broader than the other strains of lovegrass. The forage is palatable and it has good production potential. J.R. Hamilton has also used Boer's lovegrass to good advantage on deep sand and sandy soils.

Most perennial grasses require a full growing season deferment to become established and additional deferment is needed in some instances. Grazing newly seeded grasses too early can limit the productive potential of your grass and in severe instances can cause you to lose your entire investment in the seeding.

For additional information on soil adaptations, seeding rates and management of specific grasses, contact the Soil Conservation Service, providing assistance through your local Soil and Water Conservation District.

People love FirstChek!

More than 1,000 FirstChek (interest-earning checking) accounts opened in 1981.

We expect to do even better in 1982 with First Savings' customized checking, FirstChek. And why not! There is no minimum if you're over 65 or if you have \$2000 in a savings account or certificate. You earn 5¼% interest, compounded continuously, regardless of the balance.

First Savings has a host of other money-making plans including the new 1982 Individual Retirement Accounts. Get full details at the First Savings' Office nearest you now.


FIRST SAVINGS AND LOAN ASSOCIATION OF UVALDE

MAIN OFFICE:
Uvalde:
400 North Getty St.
278-7191



BRANCH OFFICES:
Eagle Pass: 370 Monroe - 773-9494
Carrizo Springs: 301 Pena St. 876-5261
Leakey: Corner of Market & 4th - 232-6631
Hondo: 609 19th St. - 426-4325
Nueces Canyon: Hwy. 55 & 7th St. 597-3930



KINNEY COUNTY CONCRETE INDUSTRIES INC.

CONCRETE IN SMALL OR LARGE QUANTITIES

MASONERY

SMALL AND LARGE GRAVEL
CRUSHED BRICK

563-2405

(HWY 90 WEST BRACKETTVILLE)



ORDER OF ELECTION

THE STATE OF TEXAS X TO ALL WHOM THESE PRESENTS SHALL COME
COUNTY OF KINNEY X

BE IT KNOWN that I, Albert A. Postell, Judge of Kinney County, Texas, DO HEREBY ORDER A LOCAL OPTION BINGO ELECTION TO BE HELD throughout the County on April 3rd, 1982; and

NOTICE THEREOF IS HEREBY GIVEN to the people as required by Article 4.02, Texas Election Code Annotated, as amended, and ORDER said election to be held at each precinct in the County on said date for the purpose of voting for or against the proposition: "Legalizing bingo games for charitable purposes as authorized by the Bingo Enabling Act in Kinney County, Texas," and authorizing a two percent gross receipts tax.

IN TESTIMONY WHEREOF, I hereunto sign my name and cause the seal to be affixed, this the 10th day of February, A.D. 1982, in the City of Brackettville, Texas.

/s/ Albert A. Postell
County Judge
Kinney County, Texas

PUBLIC NOTICE

NOTICE IS HEREBY GIVEN THAT RIO GRANDE ELECTRIC COOPERATIVE, INC. (THE "UTILITY") INTENDS TO CHANGE ITS POWER COST ADJUSTMENT EFFECTIVE MARCH 23, 1982 OR AS SOON THEREAFTER AS MAY BE PERMITTED BY LAW. THE PROPOSED POWER COST ADJUSTMENT CHANGES THE MANNER IN WHICH WHOLESALE POWER COSTS ARE COLLECTED FROM THE UTILITY'S RATEPAYERS. THE CHANGE IS APPLICABLE TO ALL AREAS TO WHICH THE UTILITY PROVIDES ELECTRIC UTILITY SERVICE. ALL CLASSES OF CUSTOMERS ARE AFFECTED BY THE PROPOSED CHANGE. THE PROPOSED POWER COST ADJUSTMENT IS NOT EXPECTED TO INCREASE THE ANNUAL REVENUES OF THE UTILITY.

IMPLEMENTATION OF THE PROPOSED CHANGE IS SUBJECT TO THE APPROVAL BY THE APPROPRIATE REGULATORY AUTHORITY. A STATEMENT OF INTENT INCLUDING THE PROPOSED REVISION IS ON FILE WITH THE PUBLIC UTILITY COMMISSION OF TEXAS AND THE MUNICIPALITY OF DELL CITY, TEXAS.

THE STATEMENT OF INTENT IS AVAILABLE FOR PUBLIC INSPECTION AT THE GENERAL OFFICE OF THE UTILITY LOCATED AT BRACKETTVILLE, TEXAS.

EARNEST C. CASSTEVENS.
ATTORNEY FOR THE UTILITY



You can send a message for as little as \$4.25. There is no charge for your name, organization affiliation (if any) or address.

You probably have many opinions about international affairs. But do you express them only to friends? There is a way to reach world leaders with your opinions.

If you phone your message to Western Union, delivery of your message in writing is usually completed in less than 24 hours. The phone number is listed in your telephone directory.

You can send a Western Union Personal Opinion Telegram to any foreign country's Embassy in Washington, D.C. or mission to the United Nations or to the Secretary General of the United Nations.

For more details on how to use Personal Opinion Telegram service, write for a free copy of Western Union's "Speak And Be Heard" Booklet to: Rusi Patell, Dept. PMS-N-12, The Western Union Telegraph Company, One Lake Street, Upper Saddle River, New Jersey 07458.

Timing is important if you want to affect decisions. Your opinion is more likely to gain attention if you send your message when the United Nations is holding hearings or voting on the subject.

Do-It-Yourself

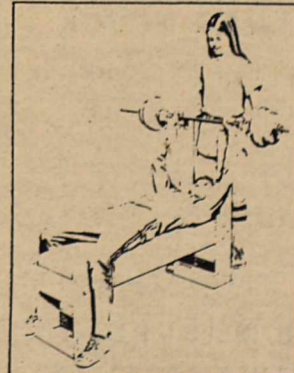
Tips from Stanley

Build Your Own Physical Fitness Center

Fitness is good for your mind as well as your body and an indoor fitness program can start right in your own home with equipment you can build. Developed under the supervision of a leading authority in



standard hand tools that you have around the house or that you can pick up are a saw, hammer, bit brace, rule, screwdriver, wrench, etc. are listed for you along with the materials in the plans.



physical education, John L. Neumann, Associate Professor of Physical Education at Springfield College, the Indoor Fitness Center is made up of three units: a Weight bench for developing muscular strength; an Aerobic Step-Up Box for cardiovascular build up; and a Slant Board for trimming the tummy.



To build them from the free plans available from Stanley, you'll need some screws, bolts, etc. and wood that's available from most lumberyards and home centers. A few stan-

Once you've completed building one or more units, you can follow the entire Indoor Fitness Program developed for people who would like to achieve a good level of physical fitness right in their own homes. It's all included in the plan set. Write for the free complete plans for the Indoor Fitness Center: The Stanley Works, Ad Services, Dept. PID-IFC, Box 1800, New Britain CT 06050.

IT'S A FACT!



According to data from the U.S. Department of Agriculture, a bowl of vegetable soup has more vitamin A than two heads of lettuce, 12 ears of corn, or four tomatoes. A bowl of chicken noodle soup has more protein and thiamin than peanut butter, or rye bread.



Experts from leading universities have recently confirmed what many people suspected all along—nutrition-wise, soup is super. In fact, some soups have more nutrients per calorie than other good foods you think are very nutritious. According to information appearing in a series of messages from Campbell's Soup in Reader's Digest, soup has been proven to be one of the most nourishing and easily digestible foods you can eat. It's been called the wholesome food that satisfies your appetite and your spirit.

GARDNER WELL SERVICE

WINDMILL REPAIRING

REASONABLE RATES

24-HOUR SERVICE

7 DAYS A WEEK

ANSWERING SERVICE

512/278-7330

FOR AREA ASSISTANCE

AMBULANCE

563-2757

SHERIFF'S OFFICE

563-2688

COUNTY JAIL

563-2788

MEDICAL CLINIC

563-2434

CITY POLICE

563-2100

FIRE DEPT.

563-2233

TEXAS HIGHWAY PATROL

563-2788

classified ads

TUESDAY 12: NOON DEADLINE

All Classifieds--15¢ per word minimum insertion--\$2. per issue.

KINNEY COUNTY LAND CO
(512)563-2446

Entire City Block in Brackettville, Priced for quick sale.

26 ACRE, fenced, 2 miles from Brackettville, excellent soil, assumable mortgage.

3 bedroom home on 2 lovely lots, storage building, newly decorated.

3 RESIDENTIAL LOTS, with full Mobile Home hookups, good location.

COMMERCIAL BUILDING with property, running from Highway 90 to Spring st.

Brackettville

DON HOOD JEAN HOOD

512/563-2125

Very Large 2-story, Block Construction home on El Paso with 5 fenced lots, possible owner financing.

Small 2 bedroom home with 2 lots, fireplace, trees, also on El Paso Street.

6 PRIME LOTS in North Brackettville

One Year Old, beautiful brick home, close to school. Extra Nice.

BRACKETTVILLE CHURCHES

FRONTIER BAPTIST CHURCH

Sunday School 10:00 A.M.
Worship Service 11:00 A.M.
Prayer Meeting 7:30 P.M.
Wednesday Prayer Meeting 7:30 P.M.

CHURCH OF CHRIST

Sunday School 9:30 a.m.
Worship 10:30 a.m.
Bible Study (Sunday) (7:00 P.M.)
Study (Wed.) 7:00 p.m.

UNITED METHODIST CHURCH

Sunday School (Children) 9:45 a.m.
Sunday School (Adult) 9:45 a.m.
Morning Worship 11:00 a.m.
BARRY COX
Pastor

FOR RENT

Grazing Land Available for Cattle and/or Sheep. Northwest of Comstock. Call: Alvin Albert, 915/291-3355 after 6 p.m.
***** *
FOR RENT.....
Brand new apartment, 1 bedroom 1 bath, furnished, Fort Clark O'ROURKE REALTY, 563-2713.

FOR SALE

ATTENTION DEER HUNTERS.....
Are you looking for a convenient Hunting Lodge in Brackettville, setting on 2 lots, all electric stucco house, 3 big rooms, could be converted to 5 very easily, 2 full baths, complete kitchen, air conditioned, carpeted, completely furnished, \$39,000.00, \$10,000 down, owner financed at low interest rates, Call: 563-2005, after 5 p.m. or weekends, ask for Owen.

FOR SALE.....
1973 Ford Van, 1 1/2 ton, \$700-Firm. 563-2987, Ask for Dave.

FOR SALE.....
1980 Chevrolet, 3/4 ton Pickup, for more information, Call: 563-2748.

NEW BUILDINGS AT FACTORY. ALL PARTS ACCOUNTED FOR. ALL STRUCTURAL STEEL CARRIES FULL FACTORY GUARANTEE. BUILDINGS 10,000 SQUARE FEET TO THE SMALLEST 1,200 SQUARE FEET. MUST SELL IMMEDIATELY. WILL SELL CHEEP. CALL TOL FREE 1-800-248-0065 OR 1-800-248-0421. EXT. 777.

LOWEST PRICES!!

SCHUBACH LIQUORS

Across from Fort Clark Springs entrance..next to EXXON station.

563-2322

WANTED

WANTED.....
Photographs and written documents concerning the Fort Clark-Brackettville area prior to 1945. The Fort Clark Historical Society would like to borrow these items for possible use in a pictorial history of this area.
If you have such items, please contact Lt. Col. Robert L. Convey, Historian, P.O.Box 1038, Brackettville, Texas 78832, or call collect: 512/563-2063. Do not sent items at this time.

WANTED.....
Hunting Lease-1500 to 4000 ACRES, Birds, Deer, Turkey, in Brackettville area. Please contact: Jerry Short, Dave Werner or Joe Hurst at (713) 932-6253 or mail information to Jerry Short, 800 Gessner, Suite 910, Houston, Texas 77024.

BUSINESSES

MASON SHOES & BOOTS
Guaranteed latest styles, Men's and Ladies' highest quality, go FIRST CALSS, Reasonable Prices. Call: Robbie Robertson 563-2993.

VANN'S SEAFOOD TRUCK
In Brackettville EVERY OTHER WEDNESDAY, 10 a.m. to 1 p.m. at EXXON STATION have a FULL LINE OF SEAFOOD.

WE HAVE PLANT STANDS IN SEVERAL SIZES AND PRICES TO GIVE YOUR FAVORITE PLANT A SPECIAL SPOT!!

SAGEBRUSH SHOPPE II

DAVE'S TOWING SERVICE

563-2987

ST. ANDREWS EPISCOPAL

Church Services 6:00 p.m.
REV. EDWARD P. BUSH



CANDIDATES FOR DEMOCRATIC PRIMARY

STATE REPRESENTATIVE
DUDLEY HARRISON

KINNEY COUNTY JUDGE
ALBERT A. POSTELL
ALVIN F. HALL

KINNEY COUNTY TREASURER
CARLOTTA DE LA ROSA

KINNEY COUNTY COMMISSIONER

PRECINCT # 4
JOE YORK, JR.

JUSTICE OF THE PEACE

PRECINCT # 1
RAYMOND TALAMANTEZ

PRECINCT # 2
DARRELL PAUL FRANKS

PRECINCT # 3
LEONARD LUNA
CHARLES W. "CHUCK" HALL

PRECINCT # 4
ROSEMARY SLUBAR
DOROTHY P. HAGA
GROVER NEUMAN

The above Political Advertisement was paid for by the Candidate or their Authorized Committee Chairmen.