



# the Kinney Cavalryman

25¢

USPS 100-610

VOL.7 NO. 43

NOVEMBER 6, 1981

BRACKETTVILLE, TEXAS

## NEW "DOC" FOR BRACKETT

### HEADLINERS

#### PTA EXERCISE CLASS

Mothers bring your daughters and exercise with us at the old gym on Mondays and Wednesdays from 3:30 to 4:30 p.m. Mrs Elsa O'Rourke will be the instructor and we will have babysitting provided for anyone who needs it while they exercise. The exercise classes are sponsored by the Brackettville P.T.A.

\*\*\*\*\*

#### PROPOSED SCHOOL BOND EXPENDITURES

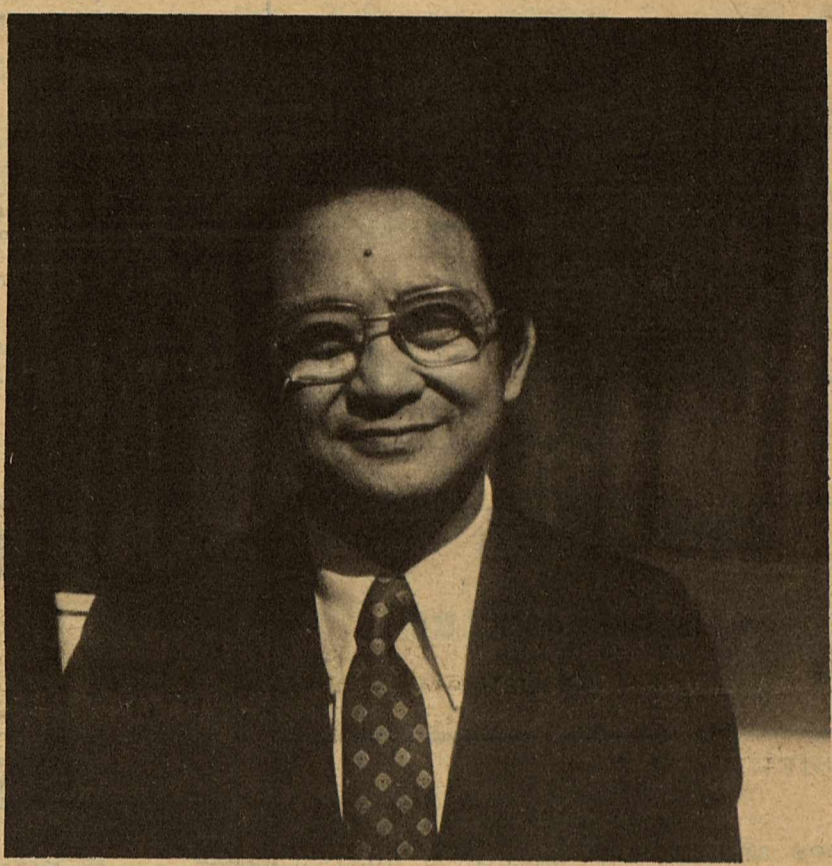
The following items are estimates of proposed expenditures from revenue of the recent School Bond Issue according to Brackett Schools Superintendent, M.H.Wills. Wills stated "These are only very rough estimates and could very substantially in the final results. The first "7" items listed are presently our priority."

Kindergarten .....	\$169,856
Junior High--Add 4 Classrooms.....	138,792
Remodel existing Junior High.....	157,345
Library & Administration Addition.....	153,686
Remodel Old Gym--Kitchen.....	38,993
Remodel Old Gym--Assembly Area.....	54,545
Insulate Ag. Building.....	4,600
Paving & Drainage.....	5,800
FieldHouse--extension & plumbing.....	19,500
Track Field--Conscession 7 Restrooms...	23,600
Lab. Equipment, Furniture & Fixtures..	83,233
Total	\$850,000

#### HOW KINNEY COUNTY VOTED UNOFFICIAL ELECTION RETURNS

##### HOW KINNEY COUNTY VOTED---UNOFFICIAL ELECTION RETURNS

1. TAX RELIEF FOR REDEVELOPMENT AREAS (SJR-8)  
In Favor: 86 Against: 77
2. AUTHORIZE SCHOOL LAND PATENTS (HJR-117)  
In Favor: 110 Against: 50
3. MANAGEMENT COMMITTEE FOR STATE FUNDS (HJR-38)  
In Favor: 52 Against: 104
4. STATE WATER FUND FROM EXCESS REVENUES (HJR-6)  
In Favor: 75 Against: 88
5. TAX EXEMPTION FOR LIVESTOCK & POULTRY (HJR-49)  
In Favor: 126 Against: 45
6. TAX RELIEF FOR RESIDENCE HOMESTEADS (HJR-81)  
In Favor: 119 Against: 43
7. VETERANS LAND FUND INCREASE (HJR-4)



Dr. Augustine Luz, M.D. began his practice in Brackett on Monday, November 2, 1981. Doctor Luz and his wife, Esmeralda, are residing at Fort Clark and plan to make their home in Brackettville. Doctor Luz graduated from Graduate School in the Philippines and served his residency in Detroit, Michigan. He has resided in the United States since 1954.

Welcome to Brackettville and Kinney County, Doctor Luz.

\*\*\*\*\*

#### LIQUIFIED GAS TAX

AUSTIN--State Comptroller Bob Bullock Tuesday warned that vehicles using liquified gas must display a new tax decal by January 1, 1982.

Bullock said legislative changes in the LP gas law will permit his office to tax vehicles on both weight and mileage and decals should cost less for those who drive fewer miles.

An LP-powered vehicle cannot legally be refueled or pass state vehicle inspection without a valid tax decal.

Fuel tax decals range in cost from \$24 a year for a vehicle driven less than 5,000 miles annually and weighing less than 4,000 pounds, to \$300 for a vehicle weighing over 43,501 pounds and driven more than 10,000 miles a year.

Bullock said renewal notices to owners of LP-powered cars and trucks are being sent out by his office, and decals are available from the Comptroller's field of-



# the Kinney Cavalryman

USPS 100-610

P.O. DRAWER CQ  
Brackettville, Texas 78832

512/563-2696

Judy Loos.....Publisher  
Geo. Loos.....Editor  
Geo. Loos.....Business Manager  
RoseMary Slubar.....Contrib. Editor  
Jean Hood.....Contrib. Editor  
Sammy Smith.....Contrib. Editor  
\*\*\*\*\*

Published every Friday. Entered by  
Second Class Mail at Brackettville,  
Texas 78832.

\*\*\*\*\*

Any erroneous reflection upon the  
character or standing of any person  
or firm appearing in this paper will  
be gladly corrected upon being called  
to the attention of the management  
and to the article in question.

\*\*\*\*\*

MEMBER OF THE TEXAS PRESS  
ASSOCIATION

\*\*\*\*\*

SUBSCRIPTION RATES:  
\$12.00 .....Out-of-County  
\$11.00 .....In-Kinney County

## CRYSTAL SEZ:

"The brighter you are, the  
more you have to learn."  
Don Herold

## LIQUIFIED GAS

ices and at the agency's Austin  
office.

Bullock estimated that there  
are more than 40,000 liquified  
gas powered cars and trucks in  
Texas.

The motor fuels tax on LP  
gas brings in about \$4 million  
a year in tax revenue.

\*\*\*\*\*



The doughnut was brought  
over to America from the  
Netherlands more than 300  
years ago by Dutch colonists.

## SCHOOL MENU

NOVEMBER 9-----Monday  
½ pint milk; sugar smacks;  
apricot nectar  
NOVEMBER 10-----Tuesday  
½ pint milk; cinnamon roll;  
peach slices  
NOVEMBER 11-----Wednesday  
½ pint milk; cereal (choice)  
apple juice  
NOVEMBER 12-----Thursday  
½ pint milk; hard boiled egg;  
apple sauce; honey wheat bread  
NOVEMBER 13-----Friday  
½ pint milk; fruit roll; peach  
slices

\*\*\*\*\*

## What's In It For You?

A better balance of trade  
for America—and a better  
chance at balancing the bud-  
get for many American  
citizens may be due to the  
sustained efforts of an old  
government bank.



The bank is the Export-  
Import Bank of the United  
States, known as Exim. It is  
a U.S. Agency created in  
1934. It helps finance  
American exports through  
direct loans to foreign  
buyers of American-made  
goods, loan guarantees to  
institutions engaged in ex-  
port financing and insurance  
services to exporters.

For many years, Exim  
borrowed money on the  
open market and usually  
lent it out at slightly higher  
rates. Other than this  
profit-making distinction, it  
was a government agency  
operating in a routine  
fashion and attracting little  
attention.

Then, soaring interest  
rates forced Exim opera-  
tions into a loss-making  
reversal. Instead of borrow-  
ing at rates lower than it  
loaned money, it had to  
borrow at very high rates  
and loan money out at very  
low rates in order to meet

A bank that helps American companies do business  
abroad can help American consumers do better at home.

increasingly tough foreign  
competition.

However, a study com-  
missioned by Westinghouse  
and the Budd Company  
shows the government gains  
more in tax revenues from  
loans than it pays in interest  
subsidies on the export  
loans. The subsidy is the  
difference between the rate  
at which the bank borrows  
and the rate at which it  
must lend money to meet  
competition.

The study was conducted  
by Wharton Econometrics  
Forecasting Associates, Inc.,  
and examines one export  
project—equipment for the  
Buenos Aires subway sys-  
tem. Wharton forecasters in-  
dicate that the government

could expect to gain more  
than nine dollars for every  
one dollar of interest sub-  
sidy incurred by Exim. The  
gain would come partly  
from increased tax revenues  
and partly from reductions  
in costs associated with un-  
employment.

As one economics expert  
points out, none of the  
money the Exim Bank loans  
for exports leaves the coun-  
try. It stays here to pay  
hundreds of American sup-  
pliers, both large and small  
throughout the United  
States for American-made  
goods. It helps keep Ameri-  
can businesses going... and  
the more businesses we have  
going, the more likely it is  
that their products are going  
to cost less.

# Looking for an INCOME TAX exemption? Ask about First Savings TAX-FREE certificate.

Yield  
**10.77%**  
Effective:  
**NOV. 2 THRU NOV. 27**  
Minimum \$500

The U.S. Congress has authorized a "AllSavers" Certificate that  
provides for Income Tax exemption up to \$2,000 (for a couple),  
\$1,000 (for an individual). The yield rate is based on Treasury Bill  
rates and the certificates are issued for a one-year period.  
A penalty is required for early withdrawal.

For full details regarding this new Tax-Free Certificate visit any  
First Savings office.



MAIN OFFICE:  
Uvalde:  
400 North Getty St.  
278-7191

BRANCH OFFICES:  
Eagle Pass: 370 Monroe - 773-9494  
Carrizo Springs: 301 Pena St. - 876-5261  
Leakey: Corner of Market & 4th - 232-6631  
Hondo: 609 19th Street - 426-4325



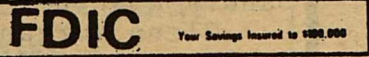


# MONEY MARKET CERTIFICATE

26-WEEK \$10,000 Minimum  
Based On Annual Rate of

13.659%

Effective annual yield based on reinvestment of principal and interest at maturity. Federal regulations prohibit the compounding of interest and require a substantial penalty for early withdrawal. Rate is subject to change at renewal.



\*\*\*\*\*CORRECTION\*\*\*\*\*  
At the last minute the Federal Authorities cancelled the increased interest rate allowable to be paid by Banks on Savings Accounts. Please disregard information in this ad as of last week. We will still be paying the maximum interest rate on Savings Accounts allowed.  
\*\*\*\*\*

# EARN UP TO \$2,000 INTEREST TAX-FREE

**"No Bank or Savings & Loan Can Pay You More"**

Interest earned on your All Savers Certificate is exempt from income tax up to \$1,000.00 for an individual and up to \$2,000.00 on a joint return.

The All Savers Certificate is especially designed for taxpayers in the 30% or above income tax brackets.

If all of the new certificates and various interest rates have you confused, our employees can help you. There has never been a better time to invest.

## THE FIRST STATE BANK COMPLETE BANKING SERVICES

BRACKETTVILLE

563-2451



The most common last name in the USSR is Ivanov.

### Pointers for PARENTS

A Time For Rethinking Attitudes

The overwhelming trend towards families with both parents working suggests parents are rethinking some basic attitudes in child rearing.

A new national study underlines the fact that the number of working women continues to increase. Half of today's children under 18 have two working parents.

The study—entitled *Families at Work: Strengths and Strains*—is the General Mills American Family Report 1980-81, the fourth in an ongoing series on attitudes of American families. Research was done by Louis Harris and Associates of New York.

A strong relationship between child rearing and work or career is evidenced by the fact that many parents say their work has had an effect on their decisions about how to rear children, when to have children and whether to have children.

A one-solution blueprint for the care of children of working parents does not emerge from the survey. However, many family members agreed that it would be helpful if employers could make it easier for working parents to balance the sometimes conflicting responsibilities of work and children.

About half of those interviewed felt that the trend toward both parents working has had negative effects on families in general. The reason most often cited for this negative feeling was that children need more parental guidance, super-

vision and discipline than can be given when both parents work.

On the other side of the coin, most feminists and many working women felt that working outside the home had some benefits

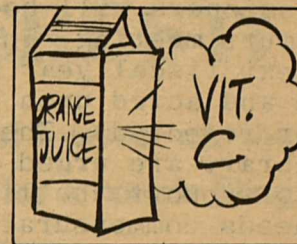


A working mother finds time for quiet minutes with her child.

that outweighed the possible negative effects. These included added fulfillment for the woman, greater financial security, improved family communications and independence for children.

There was strong agreement among most adults interviewed that both mothers and fathers should share equal roles in child care. Also, the quality of time spent with offspring is more important than the quantity, most adults agreed.

To obtain a free copy of the report, write: General Mills, Box 6, Dept. 760, Minneapolis, MN 55460.



Refrigerated orange juice retains its Vitamin C content even after a week. Fruit drinks lose their vitamin content at a faster rate than pure fruit juice.

### BURGER & SHAKE

563-2027

OPEN

11:00 AM 9:00 PM

11:00 AM 8:00 PM

KATHY BAUMANN, Manager

**GALINDO  
MINI-STORE**  
AT YOUR SERVICE  
"THE CONVENIENCE  
STORE  
AT A CONVENIENT  
LOCATION  
WITH CONVENIENT  
PRICES

1011 Margarita  
(Corner Bowie  
& Hwy. 277)

DEL RIO

MRS CONRAD GALINDO, JR  
OWNER/OPERATOR



# The Longhorn



563-2767

3 Miles West of  
BRACKETTVILLE, TEXAS

HOME OF THE WORLD FAMOUS

"LONGHORN CHICKEN FRIED STEAK"

"Bragged on From Paris to Tokyo"

## "THE WEEKENDERS"

FRIDAY &amp;

SATURDAY NIGHT

THE LONGHORN  
RESTAURANT, MOTEL & LOUNGE

Your Host TRAVIS &amp; LANETTE WILSON

## KINNEY COUNTY LIBRARY

BY: Marie Bixby

Dear K.C.,

Monday, November 9th at 10 am the Commissioners will hold their regular court meeting. The budget for the next fiscal year will be presented and acted upon (either adopted or rejected). The Friends of the Library are urged to be present to support the library and its needs commensurate with its share of the appropriations. The following evening the "Friends" will have its regular monthly meeting. The place has been changed to the Library and the time to 8:00 pm to accommodate the majority of its members. If you want to keep apprised of new developments and have your input, you need to attend these meetings.

Librarian Corey will attend the Texas Library Association District 10 meeting in San Antonio Saturday, November 7th. She attends the professional library meeting and workshops that you, the people of Kinney County, may be better served.

Mrs. Bunsen's high school English classes are using the Inter Library Loan System to supplement materials needed to fulfill a research assignment. This is an excellent example of how the ILLS can help in serving the community. If your library doesn't have what you want, it can get it by means of a simple request through this system. As Mrs. Bunsen has observed, just because we live in a small rural community doesn't mean we can't have available to us any material we might need or want.

Look for the cart of books for sale in front of the library. Many of these books are duplicates of best sellers in the recent past which were gifts to

the library and now are available to you for a small fraction of their original price.

New books on the shelf include Lawrence Sanders best book yet, and the most frightening, The Third Deadly Sin, and Martin Cruz Smith's Gorky Park, a novel whose plot is so skillfully executed and the premise so true that it reverberates long after the reader has finished its last page.

Come in and get acquainted with your library.

Yours truly,  
Friends of the Library  
\*\*\*\*\*

## SWTJC

The Wild West will return to Uvalde on November 12, 13 and 14 when the Southwest Texas Junior College drama department presents the miscal "Annie Get Your Gun" in the college's Tate Auditorium. Tickets for the evening performances may be purchased for \$1.00 in the SWTJC business office or at Bill's Shoe Tree at 102 N. Getty in Uvalde.

The play, set in the 19th Century, is based on the experiences of the notorious sharpshooters Annie Oakley, Buffalo Bill, and Frank Butler and their "Wild West Show".

"Annie Get Your Gun" is a biographical play that includes romance, comedy, drama and music," said Marie McCluskey, SWTJC drama instructor and the production's director. "There is something for everyone."

The main conflict in the play is between Annie, an independent self-sufficient "tough", female sharpshooter, and Frank Butler, a "macho-man" type fast draw expert, who has joined forces with Buffalo Bill in a traveling show.

Most of the action in the play centers around a performance by the troupe in a hotel owned

by a Mrs. Wilson. It is in the hotel where Annie and Frank have their showdown, which has a surprise resolution.

An unusual twist in the production is the double-casting of three of the female roles. In each role, the two performers will alternate nights, appearing every other performance.

The cast includes professional performers, members of the community and Susan McAnelly, SWTJC speech instructor, and Barbara Kessler will play Annie. Dolly, Frank Butler's assistant, will be played by Sharon Bendele and Sandra Howard.

Glenn Morgan will appear as Frank Butler; Jess Schweers is Buffalo Bill; and Kenneth Bostic will be Charlie, the Wild West Show promoter.

Cerise Winn and Suzanne See are Shwnee Sue; Suzanne Lange plays Mrs. Potter Porter; Maxine Mayer is Mrs. Wilson. Annie Oakley's siblings will be played by youngsters Diane Howard as Minnie, Kathy Biediger as Nelli, Shawn McAnelly as Jasper and David McAnelly as Jake.

Numerous other actors will appear as members of the chorus.

After "Annie Get Your Gun" appears at SWTJC, it will travel to Del Rio on November 15 for a performance sponsored by the Rotary Club, and will then return to Uvalde for a partial performance for high school seniors who will be visiting SWTJC during Community College Week.

\*\*\*\*\*

## Debate over farm bill ignores real problems

by Key Crawford  
Texas AAM Coordinator

Legislators in Washington are trying to formulate a farm bill for the next four years. The arguments being offered for and against increased price supports only scratch the surface and do not address the real problem.

As in the classic story of Nero playing the fiddle while Rome burns, the legislators and bureau chiefs are continuing past policies that are bankrupting agriculture and will eventually bankrupt the entire nation.

Editorial writers and others make noises about the total costs of the programs being considered, but fail to mention the cost to the nation of not passing a decent farm bill. The public gets stories that make the legislators look good to the voters but mask the real problems.

The arguments over pennies and nickels continue over issues that it will take dollars to cure.

No one has the insight or the courage to make public the fact that America is being destroyed from the inside by the underpricing of their prime natural resource - agricultural products. The only way we can survive today's economic crisis is to price America's products at a level that gives us an equity of exchange with the products we have to buy.

In short, America is being out-traded in the world and domestic markets because no one will see that the value of our products remains constant in relationship to other goods. No matter how much we produce and sell, if we continue to price it too low in relation to everything else, to both foreign and domestic consumers, the American economic system cannot survive.



The windiest city in the U.S. is Great Falls, Montana, where the average wind speed is 13.1 m.p.h. Chicago, the notorious "Windy City," actually ranks only 16th among the windiest U.S. cities.





# KINNEY COUNTY CONCRETE INDUSTRIES INC.

CONCRETE IN SMALL OR LARGE QUANTITIES

MASONRY

SMALL AND LARGE GRAVEL CRUSHED BRICK

## 563-2405

(HWY 90 WEST BRACKETTVILLE)

## KAZEN

By: Abraham (Chick) Kazen, Jr., M.C.

A columnist for a Chicago newspaper wrote recently that he disliked Texas because all Texans wear string ties and live in big cities.

The first reaction to such a statement is irritation, but upon reflection who can feel anything but pity for a resident of Chicago with winter coming on?

In any case, fewer and fewer people seem to share his animosity these days, judging by studies that show Texas gained more than one million residents through migration to our state between 1970 and 1979.

Texas has a population of more than 14 million now and is expected to reach 18 million by the turn of the century. This growth rate and our rate of in-migration are, of course, far above the national average, but we certainly are not all consigned to the big cities.

Until the sixties, more people moved to the South, but by the seventies our Southern states--Texas and Florida in particular--were swamped with newcomers looking for jobs. Texas has been able to accommodate most of them and still maintain a low statewide unemployment rate and a per capita income slightly higher than the national average, despite higher than average unemployment in some sections of South Texas.

The Southern Growth Policies Board, which made a study of population and growth trends, projects that by the year 2000 Texas will continue to rank among the national leaders in employment growth and that per capita income will remain near the national average.

### CHANGES IN THE SOUTH

Although many older people retire to the South, the Southern population is, on the whole, younger than the population of other regions, according to the Board's survey. The South--in

this case meaning the states from Maryland to Texas--in home to 35 percent of the total U.S. child population. At the other end of the scale, over 35 percent of all Americans 65 years and older live in the South, resulting in a relatively smaller portion of the so-called "working age" from 21-64 than elsewhere in the U.S.

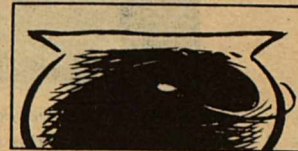
Total personal income for the Southern states grew from just over \$100 billion in 1960 to \$679 billion in 1980. Texas led the South in 1980 with \$134 billion in total personal income from all sources.

Total employment in the Southern states is projected to reach 47 million jobs by the year 2000, a 38 percent increase over 1978. Agricultural employment is expected to continue at an alarming rate of decline, however, and the entire nation should be mindful of this. Unfortunately, more and more families are leaving the farms, and corporate farming is taking over in many areas. Much of our productive land is becoming urbanized with mushrooming

shopping centers as farmers take jobs elsewhere. These are all trends that should alert us to the need for proper study and preparation as Texas and the South continue to move to the forefront in economic challenge and opportunity.

We in Texas are fortunate that we still have room to grow and time to make our plans to avoid the mistakes made by many areas in the North. Maybe we ought to think the Chicago columnist for reminding us of what we have--and what he doesn't.

\*\*\*\*\*



If you're the lucky owner of a cast iron pot or dutch oven, don't throw it out... use it! The available iron in food can increase up to 400 percent when iron cookware is used. Cleaning it will be good exercise as well.

## NEW CREDIT UNION ALL-SAVERS CERTIFICATES

# EARN UP TO \$2,000<sup>00</sup> IN TAX FREE INTEREST!

Starting October 1st, the first \$2,000<sup>00</sup> of interest on the New All-Savers Certificates is tax exempt for a couple filing a joint return, and \$1,000<sup>00</sup> for a single return.

In many instances the 6 month \$10,000<sup>00</sup> certificate maybe converted to the All-Savers Certificate without penalty.

Call or come in soon for more details. (There is a substantial penalty for early withdrawal of the All-Savers Certificate.)

Compare us with other financial institutions and save with your community credit union. Almost everyone in Val Verde, Maverick and Kinney Counties is eligible to join with few exceptions.

Accounts insured to \$100,000<sup>00</sup> by TSGCU.



Call 774-3503 Ask for Matt or Noel

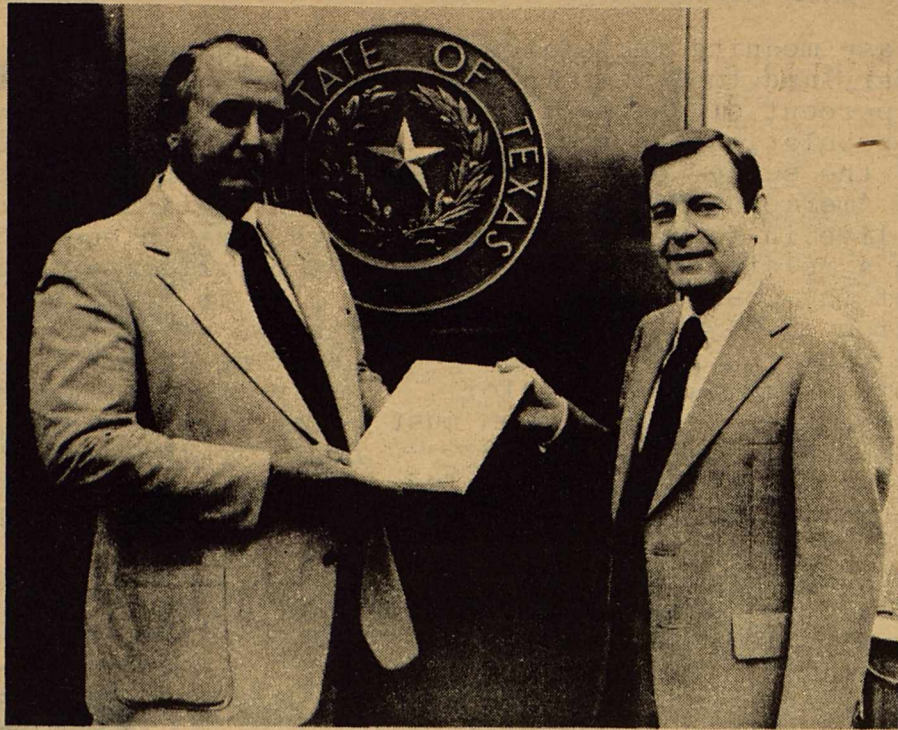
MAIN OFFICE 600 E. Gibbs 774-3503 9:00 a.m. - 4:30 p.m.

LAUGHLIN AFB BRANCH Bldg. 336 298-3171 9:00 a.m. - 4:00 p.m.

EAGLE PASS BRANCH 8:30 A.M. - 4:30 P.M.







A study of tobacco's contributions to the Texas state economy is presented to State Treasurer Warren G. Harding (left) by Joe Ratcliff, Executive Director of the Texas Association of Tobacco and Candy Distributors. The study, conducted by the University of Pennsylvania's Wharton Applied Research Center, shows Texas tobacco sales generate 107,000 jobs and more than \$309 million annually in state tax revenue.

## Study Shows Tobacco Boosts State Economy

AUSTIN — Distribution and sale of tobacco products in Texas generates 107,000 jobs and more than \$309 million annually in state tax revenue, according to a study by the University of Pennsylvania's Wharton Applied Research Center.

The study, conducted for The Tobacco Institute, an industry trade group, was presented to State Treasurer Warren G. Harding at a recent ceremony in Austin.

In accepting the report, Harding noted that tobacco is "one of the state's major sources of revenue." According to the Wharton study, the state eighteen-and-a-half-cent per pack cigarette tax accounts for 5.4 cents of every tax dollar collected in the state.

The study shows the tobacco industry directly provides the equivalent of 15,570 Texas jobs, with compensation totalling almost \$156 million. Measured by employment, the state ranks third nationally in tobacco retailing and vending with 11,510 jobs, and fourth in tobacco wholesaling and distribution with 2,890 jobs. Tobacco support industries in Texas, such as the makers of flavorings and

humectants, provide an additional 1,170 jobs.

In 1979, retail sales of finished tobacco products in the state totaled \$1.3 billion, or 6.2 percent of industry sales nation wide.

Wharton says tobacco's "spillover" effects on the state economy, as industry employers, their workers and major suppliers purchased the goods and services of other, non tobacco, industries, generate an indirect employment contribution of 91,800 jobs, with compensation totalling \$1.5 billion.

The Wharton estimates are based on a 1979 survey of all U.S. jobs, incomes and taxes directly related to the tobacco industry's business activity. The resulting figures were entered in a sophisticated economic forecasting model to determine the industry's indirect contributions.

In a national study released last year, Wharton estimated that the U.S. tobacco industry generates 2 million jobs, \$30 billion in wages and earnings, \$15.5 billion in capital investment and \$22 billion in taxes. In total, Wharton said, the industry accounts for \$58 billion, or 2.4 percent of the nation's Gross National Product.

KAZEN

The Department of Defense recently sent me an update on the status of our Armed Services which deserves to be thoughtfully considered--and which provides some interesting facts on the role of Texas in the total military picture.

The report serves to give us a better perspective on the size and scope of our defense force and should be a benefit to all of us as we consider defense goals and improvements.

As an example, we have more than two million members on active duty with the Army, Navy, Marine Corps and Air Force, a number which might lead to the image of a huge peacetime combat force. The report shows, however, that the greatest single segment of our enlisted personnel, 348,019, was employed in electrical and mechanical equipment repair at the beginning of this year.

This group was followed by a force

of 273,387 clerks and other administrative specialists, a figure which may suggest that we should examine the burden of military paperwork. In Third place are our 248,254 combat specialist followed by supply and service handlers, electronic repair experts, communications and intelligence specialist and others.

These figures give us some indication of the numbers of people and variety of efforts it takes to operate a modern defense force and keep the equipment in working order--and handle the traditional carbon copies of everything. We know that if the equipment is not in working order, it may be useless, and if we cannot retain the brightest and best qualified technicians to operate it, it is little better than useless.

The great majority of our enlisted personnel, about 1.3 million of them, have high school diplomas or their equivalent, and there are more than 24,000 college graduates. But the percentage of recruits with diplomas has decreased from 77 percent in 1978 to 68 percent in 1980, primarily among Army recruits, and this must be concern of all of us.

Career enlistment rates, although down some 10 percent since 1975, appear to be responding to recent improvements and incentives and were at 71 percent in 1980. This is a subject of continuing concern in the House Armed Services Committee, where I am a member of the Investigations and Military Installations and Facilities Subcommittees, and all of Congress.

I believe that re-enlistment rates are linked directly to the figures that show our two million service members have a total of 2.8 million dependents. I have often said that Congress and our military officials must recognize that many of our military men and women are responsible for the welfare of families. We simply cannot expect them to stay in the Service if it is a sacrifice for them or their families. We have taken some steps to make it easier for military families, but more work is needed.

### TEXAS FIGURES

Texas has a total of 46 military installations and properties--10 Army, 11 Navy, and 25 Air Force--not including Reserve Centers, on a total of 589,220 acres. As a late last year, there were 138,496 uniformed members of the Armed Services within our state borders.

It is significant to note that

Texas had the largest number of Army retirees of any state in the Union, 40,850, and the second highest number of Air Force retirees, 54,934 and total military retirees, 112,799.

### COMBAT FORCES

The defense report also pointed out that as of July 1, our major weapons and combat forces included 1,052 International Ballistic Missiles, 34 Fleet Ballistic Missiles Submarines and 544 Submarine Launched Ballistic Missiles 25 Strategic Bomber Squadrons, 12 Aircraft Carriers, 85 Navy Attack Submarines, 168 Patrol, Mine-laying, Amphibious Warfare and Logistical Ships, 16 Sealift Ships and 347 Airlift Aircraft.

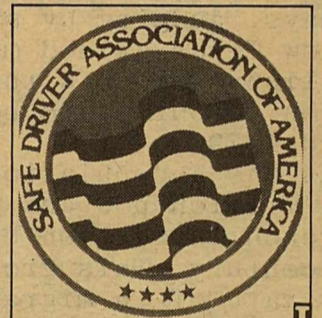
In addition, we have 17 Air Force and Air Guard Interceptor Squadrons, 24 Army and Army Guard Divisions, four Marine and Marine Reserve Division 37 Air Force and Air Reserve Tactical Fighter Wings, 14 Navy and Navy Reserve Carrier Air Wings, four Marine and Marine Reserve Tactical Air Wings and 647 Air Force and Guard-Reserve Tactical Airlift Aircraft.

Our total defense force, as of earlier this year, consisted of more than two million men and women on active and 1.3 million in our Guard and Reserve Units, supported by more than one million civilian employees. I hope that this report will help us all by giving us a better idea of what we are dealing with any time we take up the critical question of our U.S. Armed Forces.

\*\*\*\*\*

## 10 Tips For Lowering Auto Insurance

Although we live in times of high inflation, there are ways of lowering the cost of your auto insurance. The



following 10 tips are offered by the Safe Driver Association of America:

1. Pay premiums for the full policy period (installment plans cost more unless you have a group policy).
2. Join a group plan if your employer, union or professional group offers one.
3. Use a high deductible on collision and comprehensive insurance.
4. Consider cancelling unnecessary insurance, such as collision insurance on an older car (repair costs might exceed your car's value).
5. See if your insurance company offers "special" discounts.
6. Avoid buying an expensive or high-performance car.
7. If you must drive to work, see if your insurance company offers a car pool discount. If so, join a car pool.
8. Notify your insurance company if your annual mileage decreases or if someone in your household moves away or marries.
9. Shop around, comparing prices of three or more insurance companies.
10. Drive safely. Do everything you can to avoid an accident.

"Science is organized knowledge." Herbert Spencer



**PUBLIC NOTICES**

**NOTICE TO ALL PERSONS HAVING CLAIMS AGAINST THE ESTATE OF LINDEL FRERICH, DECEASED**

Notice is hereby given that original Letters Testamentary for the Estate of LINDEL FRERICH were issued on the 3rd day of November 1981, in Cause No. 723, pending in the Probate Court of Kinney County, Texas, to:

EDWIN FRERICH

The residence of such Executor is Kinney County, Texas. The post office address is:

P.O.Box 65  
Brackettville, Texas 78832

All persons having claims against this Estate which is currently being administered are required to present them within the time and in the manner prescribed by law.

DATED the 3rd day of November, 1981.

/s/ Tully Shahan  
Attorney for the Estate

\*\*\*\*\*

# HEALTHY ADVICE

by Fred Lucas, M.D.

## A Danger to the Elderly

With winter rapidly approaching, now is an excellent time to consider the problem of hypothermia, when the body's temperature falls below normal. Sometimes people, especially those over the age of 65, have bodily malfunctions that prevent them from noticing cold and hinder the regulation of their body temperature.

Hypothermia can be a real danger to the elderly. The Texas Medical Association estimates that as many as 1 in 10 older persons is in jeopardy during the winter because of an inability to feel cold.

When elderly persons remain in a consistently cool atmosphere (sometimes no colder than 65 degrees Fahrenheit) for long periods, their body temperature can drop low enough so that their bodily functions slow down until unconsciousness occurs. Ultimately, the heart will stop.



Since hypothermia's symptoms may be similar to those of some other diseases, no one knows how many people die from it each year.

Symptoms of hypothermia may include a bloated face, pale, waxy, or oddly colored pink skin, trembling in one part of the body, slurred speech, dulled awareness and slow response. However, a physician should be contacted to provide an accurate diagnosis.

For protection against hypothermia, a potential victim should wear warm, multilayered clothing, particularly around the head, hands and feet. Drinking warm liquids (not alcohol, which causes heat loss) and eating properly also are important.

The thermostat should be kept within a comfortable range. Then, to be doubly safe, someone should check the room regularly with a thermometer. Actually, these are good ideas for anyone during cold weather, but they are especially important for older people whose natural warming methods may not be functioning properly.

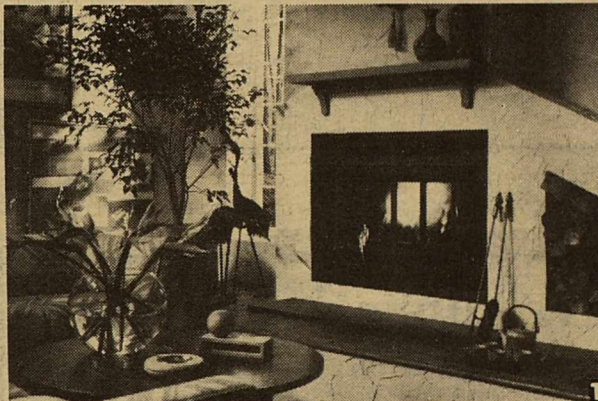
Sometimes the body loses the ability to shiver, plus the blood vessels may not distribute body heat properly. Losing these two natural warming methods may be especially serious for the aged who often have less muscle mass and slow chemical processes, both of which are heat producers. In addition, the aged sometimes cannot move around enough to stay warm. Adding to the problem is that they may not eat properly so less natural fuel is available for the bodily chemical processes that produce heat.

Serious as the problem may seem, most old people who are prone to hypothermia need only to observe a few common sense precautions, such as those we've mentioned above, to make it safely through the winter.

*Dr. Lucas is medical director of National Heritage Insurance Co. of Austin. National Heritage is a subsidiary of Electronic Data Systems Corp. of Dallas. EDS underwrites and administers the Texas Medicaid Program.*

## Tips For Homeowners

### Tips On Choosing A Fireplace



An increasing number of homeowners are warming to the idea of installing pre-engineered fireplaces as efficient and attractive supplemental heating sources.

Before buying a fireplace, though, the homeowner should consider four important points—efficiency, safety, beauty and the added value to the home that the product can contribute.

One recently developed product that scores high marks in all four areas is the Warm Majic heat circulating fireplace from Majestic Company, the leader in the factory-built fireplace industry.

The Warm Majic has been rated 41-43 percent efficient by the Wood Heating Alliance. In fact, recent tests at Majestic's headquarters in Huntington, Ind., show that the fireplace, with fan option, has about the same heating capacity as the typical gas furnace from a 1,500 sq. ft. home.

And the Warm Majic is designed so the handy homeowner can install it in an existing home in a single weekend. Detailed installation manuals accompany each unit and ordinary tools are sufficient. Of course, you can also have a professional install the unit if you prefer. Efficiency ratings and easy, inexpensive installation alone are attractive reasons for buying any factory-built fireplace when compared to the conventional masonry fireplaces.

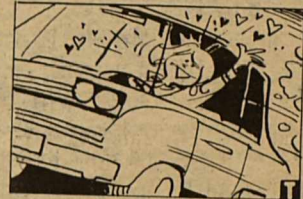
This fireplace, which comes with a 25-year limited warranty, is safety tested and listed by Underwriters Laboratories. Today, there are more than 1 million Majestic fireplaces in use.

There are many ways to decorate around a fireplace, from elaborate to simplistic. A few examples of rooms with the fireplace used as the focal point may range from formal and contemporary family rooms to a rustic bedroom.

Another important feature for homeowners to consider when choosing a supplemental heat source such as fireplaces is the added value the product may contribute to the home. McGraw-Hill's Housing Magazine conducted a survey recently that showed consumers would be willing to pay up to \$2,000 for a fireplace in the home.

## Avoid These Car Care Blunders

One smart way to put the brakes on car wear is to pay more attention to your car's care. Here are some common car care blunders you might want to avoid:



Smart car care can put you and your car on the road to economy.

- Use a gasoline that has an octane rating right for your car. Using too low an octane rating will produce a "ping" which, if sustained, will damage the engine. Using one that's too high wastes money and will not produce more power or improve fuel economy.



- Check your automatic transmission fluid level at every oil change. In addition, check your owner-manual instructions for changing the fluid. If it says cars in severe service should change at 15,000 miles instead of 100,000 in normal service — that may mean you.

- Keep your carburetor and air filter clean. Dirt could impede your car's performance. Mobil detergent gasoline can wash carburetor dirt away before it accumulates.

- If you are considering buying radial tires to increase the gasoline performance of your car, don't mix them with conventional tires. Mixing radial and conventional tires on a car could impair handling and be a safety hazard.

- Don't stint on car washing. One advantage of regular washing is that you spot scrapes and chips soon after they happen. Wherever the paint barrier is broken, rusting will start unless you seal it quickly.

By avoiding these common car care blunders, your car may take good care of you for an uncommonly longer time.

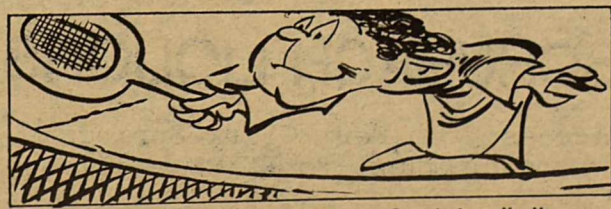
**Bugmobiles**

UVALDE BUGMOBILE COMPANY  
SCIENTIFIC PEST AND TERMITE CONTROL  
STATE LICENSE PTL 2619

DAVID KRAUSE      PH. 278-3914  
SERVICE REPRESENTATIVE      BOX 1457  
UVALDE, TEXAS 78801

SERVING BRACKETTVILLE EVERY TUESDAY.  
CALL MONDAY FOR TUESDAY SERVICE.

"We soon forget what we have not deeply thought about."  
Marcel Proust



Tennis developed from an ancient Greek handball game.

**DAVE'S**

**TOWING SERVICE**

**563-2987**



# classified ads

TUESDAY 12: NOON DEADLINE

All Classifieds--15¢ per word minimum insertion--\$2. per issue.

## KINNEY COUNTY LAND CO

(512)563-2446

Lovely 3 bedroom, 2½ bath home on 5 shaded lots, excellent location double garage.

\*\*\*\*\*

Historical Old Home for renovation situated on 2½ lots.

\*\*\*\*\*

Residential Lots in North Brackett

\*\*\*\*\*

5 Acre homesites, close to Brackett.

\*\*\*\*\*

NEW SERVICES AVAILABLE  
Notary Public Service  
Copy Machine  
\*\*\*\*\*

DON HOOD

## Brackettville Land Co.

512/563-2125

JEAN HOOD

6--Prime Lots in North Brackett.

\*\*\*\*\*

Large Deer Leases available

\*\*\*\*\*

One Year Old, Beautiful Brick home, close to School, Extra Nice

\*\*\*\*\*

Efficiency Apartment, Unfurnished

\*\*\*\*\*

It's As Simple As

## A.B.C.

To Get Your....

- Clothing
- Leather
- Furs
- Suedes

Cleaned and Pressed at one of our

## 3 LOCATIONS

**A MISTAD**  
Laundry & Cleaners  
124 Foster Dr. 773-3778

**B RACKETVILLE**  
Dry Cleaners  
Across from Jail & Bank 563-3193

**C OMET**  
1-Hour Cleaners

La Villita Center 775-0714

Also information regarding uniform rentals. Satisfaction guaranteed. Let us be your full service cleaners Buddy & Boots Love, owners and supervisors of cleaning.

### FOR SALE

\*\*\*\*\*  
TO TRADE.....  
400 acre Mule Deer Ranch in Utah to TRADE fro unimproved land in West Texas. Owner: 713/357-4877.  
\*\*\*\*\*

FOR SALE: Fort Clark Membership \$3,000 or \$1000 and assume Loan payments. Write C.E.Beck, 3117 Ashaway, Va Beach, Va. 23452. Or Call: 804-468-3343.  
\*\*\*\*\*

\*\*\*\*\*  
VANN'S SEAFOOD TRUCK.....  
In Brackett EVERY OTHER WEDNESDAY 10 a.m--1 p.m. at Exxon Station has FULL LINE OF SEAFOOD.  
\*\*\*\*\*

J & J ASSOCIATES.....  
In dependant SHAKLEE Dealer P.O.Box 261, PH. 512/563-2782, Brackettville, Texas 78832.  
\*\*\*\*\*

MASON SHOES & BOOTS.....  
Guaranteed, latest styles, men's and ladies' highest quality, go FIRST CLASS, Reasonable Prices. Call: ROBERTSON--563-2993.  
\*\*\*\*\*

RUDY'S CAR WASH SERVICE  
Will wash, clean inside upholstery and carpet, polish and was available. Reasonable Prices "For A Car You Will Be Proud To Drive." Call: "Rudy" 563-2140.  
\*\*\*\*\*

\*\*\*\*\*  
FOR SALE.....  
Unmounted mirrors, 4 sizes between 21X26 3/4 to 30X34, \$1 to \$3 each; Heavy imitation fireplace, electric "flame", mantel raises for hi-fi, speakers mount inside "firebox", \$75; marble top bar with 2 stools, padded, (bar 44" high X 22 X 52, \$95) Call: 563-2543 for appointment.  
\*\*\*\*\*

FOR SALE.....  
Citation 18 Freezer Refrigerator with ice maker. See at Screendoor Garden Center.  
\*\*\*\*\*

FOR RENT.....  
Furnished Apartment, 1 bedroom, kitchen and bath. Contact: 563-2221.  
\*\*\*\*\*

### WANT A NEW HOME

we did not have \$10,000, \$5,000, or \$1,000 for a down payment and did not want a big monthly payment. We called 1-512-396-2617, Miles Homes

### SAVE TIME, GAS AND MONEY

SHOP AT THE

## OLD FORT GIFT SHOP

WE HAVE GIFTS FOR EVERYONE

We Have Gifts For Everyone From All Over the World

We also have Chocolate Candy

Open: 9:00-5:30 Tuesday -Friday

9:00-5:00 Saturday-Sunday

( If Call will Open Monday: 563-2885)

Hwy 90 East

Brackettville

## Thom McAn

AIR STEP JOX

Shoes for Everyone in the family!!

La Villita Center DEL RIO

LOWEST PRICES!!

## SCHUBACH LIQUORS

Across from Fort Clark Springs entrance..next to EXXON station.

563-2322

### BRACKETTVILLE CHURCHES

#### CHURCH OF CHRIST

Sunday School 9:30 a.m.  
Worship 10:30 a.m.  
Bible Study (Sunday) 6:00 p.m.  
Study (Wed.) 7:00 p.m.

#### UNITED

#### METHODIST CHURCH

Sunday School (Children) 9:45 a.m.  
Sunday School (Adult) 9:45 a.m.  
Morning Worship 11:00 a.m.

BARRY COX  
Pastor

#### ST. ANDREWS EPISCOPAL

Church Services 6:00 p.m.  
REV. EDWARD P. BUSH

### FOR AREA ASSISTANCE

AMBULANCE  
563-2757

SHERIFF'S OFFICE  
563-2688

COUNTY JAIL  
563-2788

MEDICAL CLINIC  
563-2434

CITY POLICE  
563-2100

FIRE DEPT.  
563-2233

TEXAS HIGHWAY PATROL  
563-2788