

TEXAS PRESS ASSOCIATION
AWARD WINNER

25¢

the Kinney Cavalryman

USPS 100-610

VOL.7 NO.41

OCTOBER 23, 1981

BRACKETTVILLE, TEXAS

FIRE DESTROYS 'OLD HILLTOP'

HEADLINERS

FALL MINI-FESTIVAL SLATED

The Annual Sacred Heart Parish Fall Mini-Festival will be held this year on the last weekend of October. Festival activities are to be conducted on the Church grounds located at 418 Ft. Clark Road in Uvalde. Festivities begin with a couples Dance on Saturday night, October 24 from 9 P.M. to 1 A.M. Admission is \$10 pre-sale or \$12 at the door. Music will be by La Conexion Tejana.

Family fun, games and foods ranging from tamales to hamburgers can be had on Sunday, October 25 beginning at 11 A.M. and continuing until dusk. High light of the day's activities will be a raffle drawing for a 7 piece chrome dinnette set, a 200 pound hog and a 48 qt. Igloo ice chest. Also featured will be a bingo beginning at 2:30 P.M. in which fourteen prizes valued at \$960 will be awarded. All persons interested in good family fun and fellowship are welcomed.

93rd BIRTHDAY CELEBRATION

Along with many guests, ERNEST GAEBLER celebrated his 93 birthday. There were 85 people who attended the ranch style bar-be-cue on October 3rd, at the Gaebler ranch.

He enjoyed the presence of his friends and relatives. His sister, Ora, who is a resident at a Del Rio Nursing Home and a nephew, Lee Alirs and wife, Helen, from Yorktown, were among the out-of-town guests.

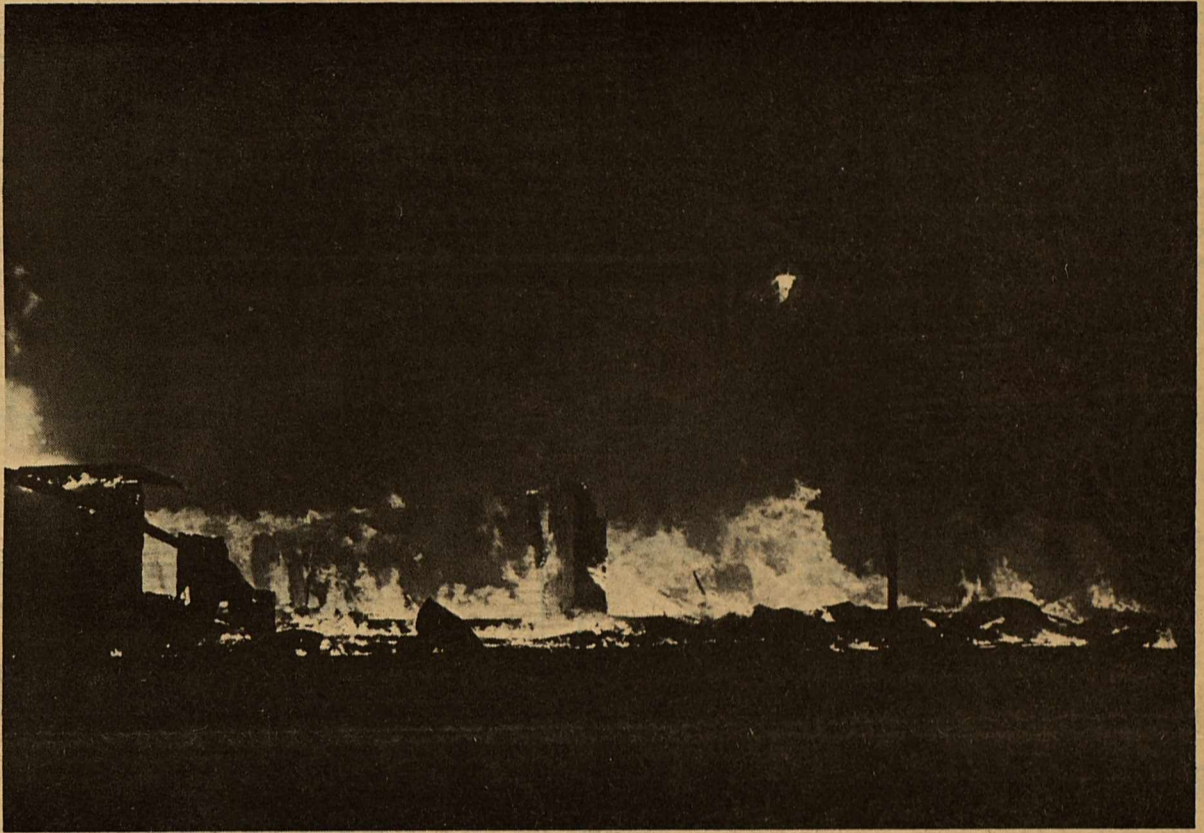
His formula for longevity is staying busy and for a long time has been accustomed of having a drink of wine before each meal and taking an afternoon nap.

Mr. Gaebler and guests were entertained with western music, played by Carolyn White, a very talented fiddler from Uvalde, accompanied by Mr. Martin and two out-of-town musicians.

"SHAKESPEARE, ANYONE?", Ask Brackett PTA

The Texas Shakespeare Theater, a subsidiary of the Shakespeare Festival of Dalls, embarks upon its first annual tour this fall. Portions of the tour are funded by ARCO Oil and Gas Company, Divisions of AtlanticRichfield Company. The remainder of the tour is made possible by the support of the Texas Commission on the Arts and the National Endowment for the Arts.

The Theater's preimer tour will feature THE HOLLOW CROWN, an entertain-

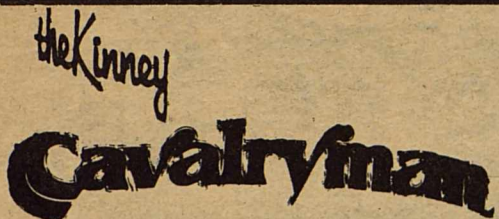


MANY RESIDENTS OF BRACKETTVILLE WERE AWAKENED AT 3:35 A.M. Tuesday morning by a loud explosion. Within minutes flames had engulfed the "Ole Hilltop" on Hwy 90 East. The property was being restored by Plunker Sheedy in anticipation of opening a restaurant.

Even though the Brackettville Volunteer Fire Department responded within minutes the entire building was in flames and a string of small explosions occurred over a several minutes period of time. Cause of the fire at this time is still unknown and has been investigated by the Del Rio Fire Department and a Deputy Texas Fire Marshall.

Portions of the destroyed building are seen smoltering after the second day following the fire.





USPS 100-610

P.O. DRAWER CQ
Brackettville, Texas 78832

512/563-2696

Judy Loos.....Publisher
Geo. Loos.....Editor
Geo. Loos.....Business Manager
RoseMary Slubar.....Contrib. Editor
Jean Hood.....Contrib. Editor
Sammy Smith.....Contrib. Editor

Published every Friday. Entered by
Second Class Mail at Brackettville,
Texas 78832.

Any erroneous reflection upon the
character or standing of any person
or firm appearing in this paper will
be gladly corrected upon being called
to the attention of the management
and to the article in question.

MEMBER OF THE TEXAS PRESS
ASSOCIATION

SUBSCRIPTION RATES:
\$12.00Out-of-County
\$11.00In-Kinney County

CRYSTAL SEZ:

"The brighter you are, the
more you have to learn."
Don Herold



**Plants
&
Posies**

Jeannie

ARANCARIT....Norfolk Pine

The Norfolk Pine is the only
Araucaria grown indoors as a
potted plant. In the wild, it
can grow 200 feet tall or more.
When grown as a pot plant, the
Norfolk pine seldom exceeds 6
feet in height. These conifers
grow very slowly-only about 6
inches per year. It's branches
are arranged in tiers, with 1/2
inch needles clustered in fan
shapes.

New growth produced in the
spring is a bright green color,
and generally darkens in the
fall.

Norfolk pines like a medium
light intensity, fairly close
to a window. Keep the potting
mixture moist during the active
growing period, and water less
frequently in cold weather.
Apply fertilizer regularly dur-
ing the active growing period.

KAZEN

Most of us are a little selfish
when it comes to choosing between the
best interests of the United States and
just about anything else. We know it is
plain common sense to look out for our-
selves, because no other country is go-
ing to do that for us.

I believe that this ame self-
interest was at stake when the House of
Representatives took up the question of
the sale of five airborne warning and
control systems (AWACS) aircraft and
F-15 enhancements to Saudi Arabia.

My overriding concern throughout
the debate was what is best for the na-
tional security interests of the United
States. The facts support the sale.

DANGEROUS AREA

The Middle East is the most vola-
tile staging areas and air space, com-
bined

The Middle East is the most vola-
tile area of the world right now. Stra-
tegic oil fields, ports and critical
waterways, military staging areas and
air space, combined with age-old rival-
ries and new influences on changing
governments make the Mideast a powder
keg which could explode into a world-

wide crisis, and make it imperative for
us to reatin a presence, political and/
or military, in that area.

Security threats to our allies in
the region and the vulnerability of cri-
tical oil supplies make it in our
national interest to play a major role
in the area and to prove ourselves as
an interested, trustworthy third party.

The worst thing we could do would
be to lead the Arab World to believe
that our word cannot be trusted, effec-
tively eliminating ourselves as objective
peace negotiators to the detriment of
the U.S. and Israel.

SAUDI ARABIA AND ISRAEL

Because of the dangerous situation
in the Mideast, the United States must
have the highest possible level of co-
operation with moderate Arab States.
While the Saudis have differed with us
at times, they have demonstrated a
commitment to a peaceful solution to
the conflict and were instrumental in
the achievement of a cease-fire in Leban
on last July. Beyond that, the sale of
AWACS enhances the prospects for con-
tinued Saudi cooperation as a price mo-
derator within OPEC. All this, again,
is in our national interest.

Israel's security, closely aligned
with our own, is actually improved
through AWACS by increasing Saudi defense

**Looking for an INCOME
TAX exemption?
Ask about First Savings
TAX-FREE
certificate.**

Yield
12.14%
Effective:
October 5 thru 31st
Minimum \$500

The U.S. Congress has authorized a "All Savers" Certificate that
provides for Income Tax exemption up to \$2,000 (for a couple),
\$1,000 (for an individual). The yield rate is based on Treasury Bill
rates and the certificates are issued for a one-year period.
A penalty is required for early withdrawal.

**For full details regarding this new Tax-Free Certificate visit any
First Savings office.**



MAIN OFFICE:
Uvalde:
400 North Getty St.
278-7191



BRANCH OFFICES:
Eagle Pass: 370 Monroe - 773-9494
Carrizo Springs: 301 Pena St. - 876-5261
Leakey: Corner of Market & 4th - 232-6631
Hondo: 609 19th Street - 426-4325

MONEY MARKET CERTIFICATE

26-WEEK \$10,000 Minimum
Based On Annual Rate of
14.045 %

October 20---October 26

Effective annual yield based on reinvestment of principal and interest at maturity. Federal regulations prohibit the compounding of interest and require a substantial penalty for early withdrawal. Rate is subject to change at renewal.



EARN UP TO \$2,000 INTEREST TAX-FREE

"No Bank or Savings & Loan Can Pay You More"

Interest earned on your All Savers Certificate is exempt from income tax up to \$1,000.00 for an individual and up to \$2,000.00 on a joint return.

The All Savers Certificate is especially designed for taxpayers in the 30% or above income tax brackets.

If all of the new certificates and various interest rates have you confused, our employees can help you. There has never been a better time to invest.

THE FIRST STATE BANK COMPLETE BANKING SERVICES

BRACKETTVILLE

563-2451

HANSEL AND GRETEL ON STAGE



"Hansel and Gretel" will be presented on stage in the Brackett High School Auditorium at 7 p.m. on Friday, October 30, by the professional touring Penguin Productions troupe of Dallas.

The Brackettville performance is being presented under the sponsorship of the PTA. Admission will be \$1.50 for adults and 50¢ for students.

Penguin Productions is a professional touring company that deals exclusively with quality theatre for children. This is the fifth season that the Dallas based company has brought original fairy tale musicals to children across the states of Texas, Oklahoma, and Louisiana.

"Hansel and Gretel" is a story about a brother and sister who become unhappy about having to do chores at home. They disobey their father and venture into the deep woods.

There, they meet a friendly woodpecker and enjoy the forest until they realize they are lost. Gretel tries to lead them home, but discovers a beautiful and delicious gingerbread house, instead.

The old woman who lives in the house is really a witch who throws Hansel into a cage. It is up to Gretel, Hansel and the Woodpecker to escape from the wicked witch.

This old fairy tale makes ideal fare for the Halloween weekend.

Penguin Productions is produced, directed and managed by the husband and wife team of Bryan Lake and Rena Newtown. Bryan is seen in two roles this season. He plays the father of Hansel and Gretel and also the witch's helper. Rena plays the part of Hansel.

They are joined in the cast by three capable and experienced actresses. Jan Romig of Amarillo has returned to Penguin Productions for the third season to brighten the stage as Gretel. In previous productions, she played the parts of Jackie Paper in "Puff the Magic Dragon" and Rumpelstiltskin in "Rumpelstiltskin."

Tricia Nobles of Garland plays the part of the witch. She was named Outstanding Drama Student during her schooling at North Texas State University and is active on the stage and in films in the Dallas area.

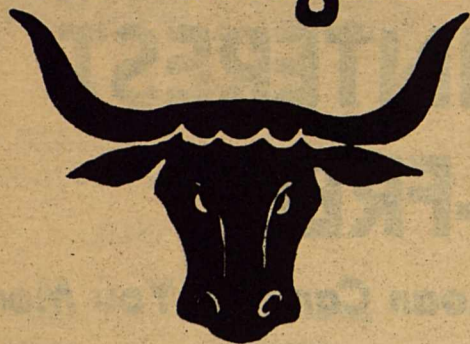
Gay Isaacs, who is from Denison, will be seen as the woodpecker. She has been active on Dallas stages, also as the executive assistant to Tom Hughes at the Dallas Summer Musicals.

The scenery was designed by Henry Smith of North Dakota. He has studied in the masters program at SMU and lists designing for the Lubbock Ballet as one of his professional accomplishments. Smith designed the sets for "Puff the Magic Dragon" and Rumpelstiltskin" for the Penguin Productions.



In ancient Rome, snails were raised on ranches. They were fed with spicy soups to pre-season them for the table.

The Longhorn



563-2767

3 Miles West of
BRACKETTVILLE, TEXAS

HOME OF THE WORLD FAMOUS

"LONGHORN CHICKEN FRIED STEAK"

"Bragged on From Paris to Tokyo"

*Live Music with
"The Three of Us"
Saturday Night*

**THE LONGHORN
RESTAURANT, MOTEL & LOUNGE**

Your Host **TRAVIS & LANETTE WILSON**

SCHOOL MENU

OCTOBER 26.....Monday
OFF--INSERVICE DAY-----
OCTOBER 27.....Tuesday
1/2 pint milk; wheat bread/jelly;
Apple Sauce
OCTOBER 28.....Wednesday
1/2 pint milk; Super Fortified Bun;
Orange
OCTOBER 29.....Thursday
1/2 pint milk; Fruit Loops; Peach
halves
OCTOBER 30.....Friday
1/2 pint milk; Cinnamon Roll; Apple

loss of technology or cr-tical intelli-
gence information in selling these air-
craft to Saudi Arabia. Frankly, I was
more concerned about this than any other
aspect of the sale.

What I learned is that the AWACS is
a Boeing 707 aircraft equipped with
radar and computer equipment that has
been available for years and that the
Soviet's CANDID airborne warning system
is expectd to be operational in the
near future.

What is sensitive is the software
the "machine language" unique to AWACS.
It is not required by the user and
would not be delivered to Saudi Arabia.
It is possible to decipher the software
system by examining the magnetic tape
program aboard the aircraft, but our
experts say it would take a team of
engineers several years to unscramble
the codes--and if this should fall into
enemy hands, our own people could change
the codes within days.

AWACS is a complicated system,
but the issue of the sale of AWACS to
Saudi Arabia is not all that complicated
It is plainly in our national interest
and we simply must look out for our-
selves if we are to maintain the ability
to look out for our allies



Rich ladies of ancient Greece seldom traveled without a she-donkey to provide the milk they used as a skin tonic.

ing two-hour production devised by John
Barton for The Royal Shakespeare Company.
THE HOLLOW CROWN tells the triumphs and
the tributions of the Kings and Queens
from the time of William I to Victoria,
and is directed by Shakespeare Festival
founder and producer Robert Glenn. Star
ring is the "first lady of the Dallas
stage", Martha Gaylord, along with
veteran Dallas Theatre Center Actor
Micheal Dendy, director Robert Glenn
and "young veteran" Stephen Kean, with
William Keck as pianist.

Theelegantly-clad actors recreate
historical moments from the lives of
English royalty, interspersed with some
of Shakespeare's most moving passages
and beautiful music from the classics.
Don Safran, critic for the Dallas Times
Herald, wrote: "The Shakespeare Festi-
val of Dallas had its most elegant hour
with THE HOLLOW CROWN.....a pleasant,
captivating artistic success." The New
york Post called it "A delightfully civ-
ilized evening in the theatre, humorous
touching and always warm human,

"Shakespeare was not an ivory tower
playwright but wrote for large, diverse
audiences," explained Robert Glenn,
founder and producer of the Festival.
"We have always sought to present Shake-
speare's plays in a lively, colorful and
entertaining format while maintaining
professional quality. New we want to
bring Shakespeare to people all over
Texas and the Southwest."

THE HOLLOW CROWN will be performed
at the Del Rio High School Little Theatre
on Saturday, October 31, at 8:00 p.m.
The performance is sponsored by the Del
Rio Council for the Arts. Tickets for
adults are \$4.00; children under 12 are
\$2.00. Tickets are on sale at the Fire-
house, 120 E. Garfield in downtown Del
Rio (call 775-0888). For an additional
cost of \$2.00 per person (\$6.00 per
adult total), the Brackettville PTA will
obtain tickets and provide bus transpor-
tation to and from the performance in
Del Rio. The PTA sponsored group will
also attend a gala reception with the
cast of THE HOLLOW CROWN to be held at
The Firehouse immediately following the
performance. Dress for the evening is
semi-formal. Reservations should be
made as soon as possible as seating is
imited. Make Plans to attend now by
Calling PTA Representative Jo Mayfield
at 563-2168.

capabilities against direst or indirect
Soviet threats. W.S. personnel are-re-
quired for effective operation and main-
tenance of AWACS, a fact which should
reassure Israel that the system would
not be turned against it.

Without AWACS, Saudi Arabia will
simply turn to Great Britain for the
Nimrod system, which is comparable to
AWACS, but which will have no joint-
operation strings attached. To comple-
ment Nimrod, the French have offered
their Mirage fighter and missile system
a comparable version of the F-15 Eagle
and infrared homing rockets.

If there is no AWACS, there may be
no warning network intelligence infor-
mation available to us andno cooperating
system in place for our own forces if
we are required to deploy in the area.

LOSS OF TECHNOLOGY

Finally, I was convinced that the
United States was not gambling with the



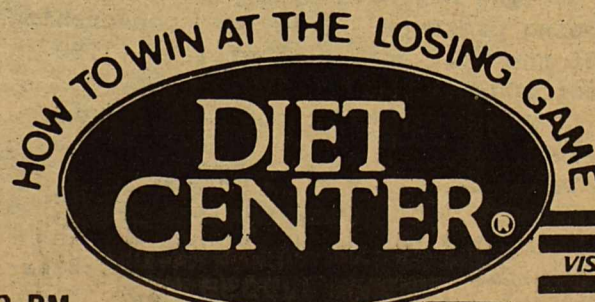
Make Diet Center a part of your game plan!

If you have some weight to lose, a little or a lot,
call Diet Center. We've been helping people get
slim and teaching them to stay that way for over
ten years now and we can do the same for you.

LOSE 17 TO 25 POUNDS IN JUST 6 WEEKS!

Our program is totally natural and based on
sound nutrition. You'll look better, feel better
and you won't be the only one who notices. Find
out how much more there is to life when you are
free of excess weight!

Call today for a free consultation



512/774-6262 7:00 AM TIL 2
901 BEDELL AVENUE 4:30 PM TIL 7:00 PM
DEL RIO 8:00 TIL 10:00 SAT



KINNEY COUNTY CONCRETE INDUSTRIES INC.

CONCRETE IN SMALL OR LARGE QUANTITIES

MASONRY

SMALL AND LARGE GRAVEL CRUSHED BRICK

563-2405

(HWY 90 WEST BRACKETTVILLE)

AMBULANCE CALL

BY: KAY SMITH

As residents of a rural County did you know how lucky we are to have an Ambulance at all? Not only are we lucky enough to have an ambulance, but we also have several hardworking friends who have volunteered countless hours of their time away from their families and jobs to drop whatever they're doing regardless of the time or weather in order to come to the aid of the sick and injured. In addition they stand by at football games, will give demonstrations to school and civic organizations and teach classes in first aid, and C.P.R. They really are a great asset to our community. However in order to maintain their high standards and quality care they must attend special training courses offered by local hospitals. Very often there is a tuition fee involved along with the cost of books, transportation, meals, etc. More often than not most of these expenses come out of the pockets of the Volunteer themselves. Donations to the Volunteer Ambulance fund are some times used to offset part of these expenses. But when this is done there is little left to replace or repair necessary equipment. The moneies allotted to the ambulance from the County's General Fund are just barely enough to cover general operating and repair expenses on the Ambulance its self and often run short.

During the next 3 to 6 months 10 ambulance crew volunteers will be in training as Emergency Medical Technicians and Paramedics. Tuition for Paramedics is \$325.00 and \$25.00 for books. Tuition for E.M.T. is \$75.00 and \$15 for books.

Remember if you choose to sponsor a student or just make a donation to the Volunteer Ambulance Fund it is tax deductible.

Should you or a member of your family need Emergency Medical Care wouldn't you want to know those who come to your aid and the equipment they use are the very best.

Donations can be made to:
K.C. Volunteer Ambulance Organization
P.O.Box 738
Brackettville, Texas 78832

Or contact any Volunteer by calling 563-2757 and leaving your name and phone number.

KINNEY COUNTY LIBRARY

BY: Marie Bixby

Did you know that the Library Board meets each third Tuesday of the month and that the public is invited? It is not a closed meeting.

Did you know on October 28 there will be a reference workshop held at El Progreso Library in Uvlade from 9:30 a.m. to 3:30 p.m.? You are invited.

Did you know that through our library special books and tapes can be obtained for the handicapped and blind? They will be delivered to your home at no expense to you. For those who desire to take advantage of this state sponsored program the service is entirely free. Call the library and get all the information. Then start to enjoy this fine opportunity.

October 19 the County Commissioners' tabled the County Budget discussion until next week, awaiting needed figures from the auditor. It is hoped that at that time we will receive encouraging

news concerning the library budget.

We are approaching the end of our 1981 fiscal year and it is time for the Friends of the Library to elect new officers for 1982. The nominating committee, Rozette Pingent and Joan Boutwell, will be happy to receive your proposals and hear from volunteers Call them. Rozetta--3-2195, Joan---3-2179. Also, our faithful and excellent reporter of one and one half year, Marie Bixby, has asked to be relieved of her post. We need someone to take her place. Could that someone be you?

The monthly meeting of the "Friends" on the second Tuesday of each month at 8:00 p.m. will be held from now on at the Kinney County Library.

WE need your interest and help. Come in and sign up for a committee of your choice. You can be a true helping hand. When we work together as Friends, many good things are accomplished. We yet have much to do.

Yours truly,
Friends of the Library

NEW CREDIT UNION ALL-SAVERS CERTIFICATES

EARN UP TO \$2,000⁰⁰ IN TAX FREE INTEREST!

Starting October 1st, the first \$2,000⁰⁰ of interest on the New All-Savers Certificates is tax exempt for a couple filing a joint return, and \$1,000⁰⁰ for a single return.

In many instances the 6 month \$10,000⁰⁰ certificate maybe converted to the All-Savers Certificate without penalty.

Call or come in soon for more details. (There is a substantial penalty for early withdrawal of the All-Savers Certificate.)

Compare us with other financial institutions and save with your community credit union. Almost everyone in Val Verde, Maverick and Kinney Counties is eligible to join with few exceptions.

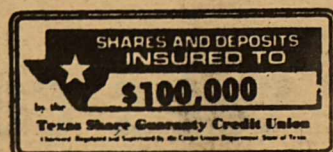
Accounts insured to \$100,000⁰⁰ by TSGCU.

BOBBER CREDIT UNION

MAIN OFFICE
600 E. Gibbs 774-3503
9:00 a.m. - 4:30 p.m.

LAUGHLIN AFB BRANCH
Bldg. 336 298-3171
9:00 a.m. - 4:00 p.m.

EAGLE PASS BRANCH
8:30 A.M. - 4:30 P.M.



Call
774-3503
Ask for
Matt or
Noel

TBD 79-2

PUBLISHER'S COPY

CONSOLIDATED REPORT OF CONDITION
(Including Domestic Subsidiaries)

LEGAL TITLE OF BANK			
THE FIRST STATE BANK			
CITY	COUNTY	STATE	ZIP CODE
BRACKETTVILLE	KINNEY	TEXAS	78832
STATE BANK NO.	FEDERAL RESERVE DIST. NO.	CLOSE OF BUSINESS DATE	
128	11	September 30, 1981	

ASSETS	Mil.	Thou.	
1. Cash and due from banks		605	1
2. Due from other depositories and all cash items in the process of collection		none	2
3. U.S. Treasury securities		799	3
4. Obligations of other U.S. Government agencies and corporations		none	4
5. Obligations of States and political subdivisions in the United States		545	5
6. All other securities		13	6
7. Federal funds sold and securities purchased under agreements to resell	1	100	7
8. Total loans (including overdrafts totaling \$ 7 M) (From Schedule A, Item 8)	3	839	8
9. Lease financing receivables		none	9
10. Bank premises, furniture and fixtures, and other assets representing bank premises		266	10
11. Real estate owned other than bank premises		none	11
12. Letters of credit and customers' liability on acceptances outstanding		none	12
13. All other assets		223	13
14. TOTAL ASSETS (sum of items 1 thru 13)	7	390	14
LIABILITIES			
15. Demand deposits of individuals, partnerships, and corporations		1 433	15
16. Time and savings deposits of individuals, partnerships, and corporations		3 807	16
17. Deposits of United States Government		5	17
18. Deposits of States and political subdivisions in the United States		485	18
19. Due to banks		none	19
20. All other deposits (N.O.W. \$ 719 M)		719	20
21. Certified and officers' checks		92	21
22. Total Deposits (sum of items 15 thru 21)	6	541	22
a. Total demand deposits	2	469	22a
b. Total time and savings deposits	4	072	22b
23. Federal funds purchased and securities sold under agreements to repurchase		none	23
24. Interest-bearing demand notes issued to the U.S. Treasury and other liabilities for borrowed money		none	24
25. Mortgage indebtedness for which the bank is directly liable		none	25
26. Unearned discount on loans		189	26
27. Letters of credit and acceptances outstanding		none	27
28. All other liabilities		119	28
29. TOTAL LIABILITIES (excluding subordinated notes and debentures) (sum of items 22 thru 28)	6	849	29
30. Subordinated notes and debentures		none	30
31. Allowance for possible loan and investment losses		4	31
EQUITY CAPITAL			
32. Common stock (No. of shares outstanding 2,400)		240	32
33. Certified surplus		190	33
34. Undivided profits		107	34
35. Uncertified surplus, reserve for contingencies, and other capital reserves		none	35
36. TOTAL EQUITY CAPITAL (sum of items 32 thru 35)		537	36
37. TOTAL LIABILITIES AND EQUITY CAPITAL (sum of items 29, 30, 31 and 36)	7	390	37

NOTE: This report must be signed by an authorized officer and attested by not less than three directors other than the officer signing the report.

I, the undersigned officer, do hereby declare that this Report of Condition (including the supporting schedules) has been prepared in conformance with the instructions and is true to the best of my knowledge and belief.

SIGNATURE OF OFFICER AUTHORIZED TO SIGN REPORT	AREA CODE/TELEPHONE NO.	DATE SIGNED
<i>William F. Aldridge</i>	512/563-2451	October 14, 1981

NAME AND TITLE OF OFFICER AUTHORIZED TO SIGN REPORT
 William F. Aldridge
 President & Chief Executive Officer

We the undersigned directors, attest the correctness of this Report of Condition (including the supporting schedules) and declare that it has been examined by us and to the best of our knowledge and belief has been prepared in conformance with the instructions and is true and correct.

SIGNATURE OF DIRECTOR	SIGNATURE OF DIRECTOR	SIGNATURE OF DIRECTOR
<i>[Signature]</i>	<i>Jama W. Baker</i>	<i>[Signature]</i>

(MAKE MARK FOR NOTARY'S SEAL)

State of Texas County of Kinney
 Sworn to and subscribed before me this 14th day of October, 1981
 My commission expires June 25, 1985 Wanda Schwab Notary Public.

PUBLIC NOTICES

PUBLIC NOTICE

Citizens owning property which has been officially designated as historical sites may meet with the Commissioners' Court of Kinney County, Texas, on November 9th, 1981 at 10:00 o'clock a.m. to present facts for possible tax exemption from Kinney County.

/s/ Albert A. Postell
County Judge
Kinney County, Texas

INVITATION TO BID

Kinney County Commissioners' Court is accepting bids for use of the Civic Center on Christmas Day (December 25, 1981), minimum bid is \$500.00. Sealed bids may be mailed to Kinney County Commissioners' Court, P.O.Box 128, Brackettville, Texas and will be opened November 9th, 1981 at 10:00 a.m.

/s/ Dolores Raney
County Clerk
Kinney County, Texas

NOTICE OF CHANGES AND NEW OFFICIAL LOCATION OF POLLING PLACES FOR THE CONSTITUTIONAL AMENDMENT ELECTION, NOVEMBER 3, 1981, KINNEY COUNTY, TEXAS

THE STATE OF TEXAS
COUNTY OF KINNEY

I, Dolores Raney, Clerk of the County Court in and for Kinney County, Texas, do hereby certify that the following are the official polling places for the November 3, 1981, Constitutional Amendment Election as designated by the Kinney County Commissioners' Court on August 10, 1981, and submitted to the Civil Rights Division of the U.S. Department of Justice for clearance, to-wit:

PRECINCT NUMBER:

- ONE
TWO
THREE
FOUR
ABSENTEE VOTING

(PLEASE NOTE CHANGES IN LOCATIONS FOR POLLING PLACES FOR PRECINCT NUMBER ONE AND PRECINCT NUMBER FOUR.)

POLLING PLACE LOCATION:

- COURTHOUSE
BRACKETT HIGH SCHOOL AUDITORIUM
FIRST BAPTIST CHURCH ANNEX
CIVIC CENTER
COUNTY CLERK'S OFFICE

Precinct No. 1: Old location at Kinney County Clinic Building changed to Courthouse
Precinct No. 4: Old location at Welfare Office Building changed to Civic Center

WITNESS my hand and seal of office, this the 14th day of October, 1981, at Brackettville, Texas.

/s/ Dolores Raney
County Clerk
Kinney County, Texas

NOTICE OF ABSENTEE VOTING FOR NOVEMBER 3, 1981, CONSTITUTIONAL AMENDMENT ELECTION

NOTICE IS HEREBY GIVEN THAT ABSENTEE VOTING BY PERSONAL APPEARANCE WILL BE CONDUCTED IN THE COUNTY CLERK'S OFFICE, COURTHOUSE, BRACKETTVILLE, TEXAS, FOR THE NOVEMBER 3, 1981, CONSTITUTIONAL AMENDMENT ELECTION AT THE FOLLOWING TIMES:

OCTOBER 14, 1981 thru OCTOBER 30, 1981 during regular Office Hours:
8:30 a.m.-----12:00 NOON
1:00 p.m.----- 5:00 p.m.

/s/ Dolores Raney
County Clerk
Kinney County, Texas

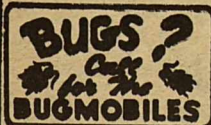
THANK YOU

The family of LIN FRERICH want to express their appreciation for the kindness shown us upon the loss of our loved one.

Edwin & Alan Frerich
Mr & Mrs. Leo Frerich
Patsy Cummings McKelvy

DAVE'S TOWING SERVICE

563-2987



Bugmobiles

UVALDE BUGMOBILE COMPANY
SCIENTIFIC PEST AND TERMITE CONTROL
STATE LICENSE PTL. 2619

DAVID KRAUSE PH. 278-3914
SERVICE REPRESENTATIVE BOX 1457
UVALDE, TEXAS 78801

SERVING BRACKETTVILLE EVERY TUESDAY.
CALL MONDAY FOR TUESDAY SERVICE.

classified ads

TUESDAY 12: NOON DEADLINE

All Classifieds--15¢ per word minimum insertion--\$2. per issue.

KINNEY COUNTY LAND CO

(512)563-2446

Commercial Building and Living quarters

4 Continuous HWY 90 LOTS. Priced below market value.

New 14 X 54 Mobile Home on Fort Clark Springs, equity to owner and pick up payments.

26 ACRES fenced, excellent soil and tree cover, close to Brackett financing available-

NEW SERVICES AVAILABLE
Notary Public Service
Copy Machine

FOR SALE

FOR SALE.....

RCA 23" Color TV, Record Player, AM/FM stereo in an all wood cabinet--needs repair; also "B-Flat" clarinet. Call: 563-2831 after 3:30 p.m.

FOR SALE.....

2 bedroom trailer----\$2500.00
1-bedroom trailer--\$1250.00

Perfect for Hunting Leases, at the corner of Ann and E. Thomas Streets. Call: 563-2467.

NOTICE.....

If you want anything from my shop in the next three weeks, please call Martha Blackwell, at 563-2781. DOT BURROW

TO TRADE.....

400 acre Mule Deer Ranch in Utah to TRADE fro unimproved land in West Texas. Owner:713/357-4877.

FOR SALE.....

COMMERCIAL BUILDING & GARAGE APARTMENT. 563-2224.

FOR SALE: Fort Clark Membership

\$3,000 or \$1000 and assume Loan payments. Write C.E.Beck, 3117 Ashaway, Va Beach, Va. 23452. Or Call: 804-468-3343.

VANN'S SEAFOOD TRUCK.....

In Brackett EVERY OTHER WEDNESDAY 10 a.m--1 p.m. at Exxon Station has FULL LINE OF SEAFOOD.

J & J ASSOCIATES.....

In dependent SHAKLEE Dealer P.O.Box 261, PH. 512/563-2782, Brackettville, Texas 78832.

MASON SHOES & BOOTS.....

Guaranteed, latest styles, men's and ladies' highest quality, go FIRST CLASS, Reasonable Prices.

Call: ROBERTSON--563-2993.

RUDY'S CAR WASH SERVICE

Will wash, clean inside upholstery and carpet, polish and was available. Reasonable Prices "For A Car You Will Be Proud To Drive." Call: "Rudy" 563-2140.



DON HOOD

JEAN HOOD

512/563-2125

6--Prime Lots in North Brackett. *****

Large Deer Leases available *****

One Year Old, Beautiful Brick home, close to School, Extra Nice *****

Efficiency Apartment, Unfurnished *****

WANT A NEW HOME

we did not have \$10,000, \$5,000, or \$1,000 for a down payment and did not want a big monthly payment. We called 1-512-396-2617, Miles Homes

DIANE TIMPONE (STYLIST)

Tues--thru--Friday...9 til 5p.m.
Saturday9 til 1p.m.

HAZEL'S STYLING SALON

563-9773

OCTOBER PERM SPECIAL

\$25.00 perm on special for 22.50
\$28.50 perm on special for 25.00
\$30.00 perm on special for 28.50
\$35.00 perm on special for 30.00
\$50.00 perm on special for 35.00

Thom McAn

AIR STEP JOX

Shoes for Everyone in the family!!

LaVillita Center DEL RIO

LOWEST PRICES!!

SCHUBACH LIQUORS

Across from Fort Clark Springs entrance..next to EXXON station.

563-2322

It's As Simple As

A.B.C.

To Get Your....

- Clothing
- Leather
- Furs
- Suedes

Cleaned and Pressed at one of our

3 LOCATIONS

A MISTAD
Laundry & Cleaners
134 Foster Dr. 775-3778

B RACKETVILLE
Dry Cleaners
Across from Jail & Bank 563-2193

C OMET
1-Hour Cleaners

La Villita Center 775-0714

Also information regarding uniform rentals. Satisfaction guaranteed. Let us be your full service cleaners Buddy & Boots Love, owners and supervisors of cleaning.

BRACKETTVILLE CHURCHES

CHURCH OF CHRIST

Sunday School 9:30 a.m.
Worship 10:30 a.m.
Bible Study (Sunday) 6:00 p.m.
Study (Wed.) 7:00 p.m.

UNITED

METHODIST CHURCH

Sunday School (Children) 9:45 a.m.
Sunday School (Adult) 9:45 a.m.
Morning Worship 11:00 a.m.

BARRY COX
Pastor

ST. ANDREWS EPISCOPAL

Church Services 6:00 p.m.
REV. EDWARD P. BUSH

FOR AREA ASSISTANCE

AMBULANCE
563-2757

SHERIFF'S OFFICE
563-2688

COUNTY JAIL
563-2788

MEDICAL CLINIC
563-2434

CITY POLICE
563-2100

FIRE DEPT.
563-2233

TEXAS HIGHWAY PATROL
563-2788