



# the Kinney Cavalryman

Alamo Village  
Box 528  
City  
7

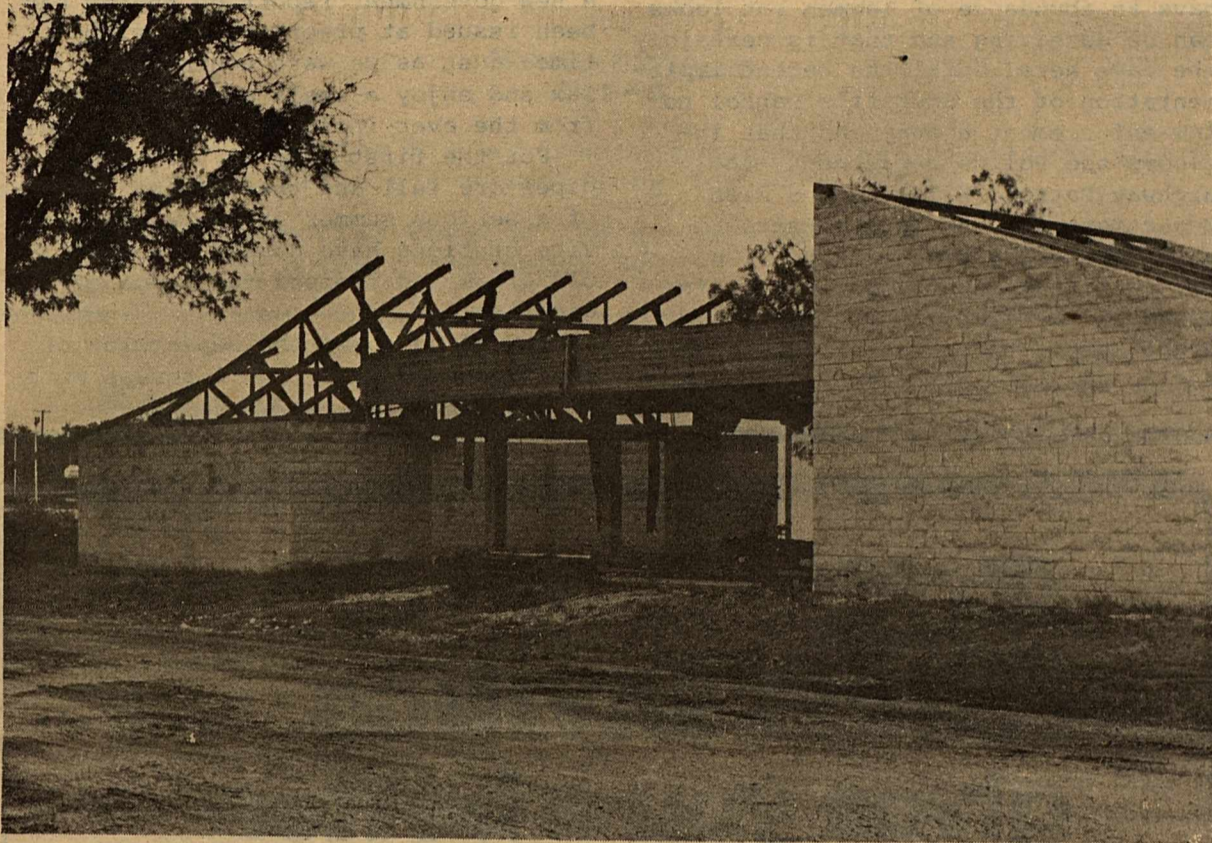
USPS 100-610

NUMBER 24

June 19, 1981

BRACKETTVILLE, TEXAS

## LIBRARY CONSTRUCTION BEGINS



CONSTRUCTION ON THE NEW LIBRARY BUILDING was resumed this week after a long delay. See additional information on page 3 Libray coulum.

### EMANCIPATION DAY--June 19, 1981

Emancipation Day will be celebrated by the Seminole Indians again this year. It is called their Second Annual "FREEDOM DAY".

Everyone is welcome to help celebrate the JUNETEENTH at Carver School grounds.

The activities will be as follows:

- JUNE 18----- Thursday  
School Reunion for all of those who went to Carver School (old and young).
- JUNE 19-----Friday  
to start the day will be a Parade at 10 o'clock  
11:00 a.m. Program with guest speaker Dr. Ian Hancock from the University of Austin.
- 11:45 a.m.-Presentation of float awards for first, second and third.
- 12 NOON-Bar-B-Que (lunch)
- 1:00 p.m.-get to know others on the grounds and clean up
- 6:00 p.m.-presentation of awards to deceased family.
- 7:00 p.m.-Crowning of the Second Annual Juneteenth Queen.
- 9:00 p.m.-dance at the Brackettville Civic Center at \$5.00 per person with music by THE UNIVERSAL FUNK!!

### JUNE 20-----Saturday

The Seminole Indians are planning on haveing Memorial Services at the Cemetery for those who wish to attend-----10:30 a.m.

Disco Dance at Claudie's Cafe for the Association at \$2.00 per person with music by DJ-Lloyd Hall from Laughlin Air Force Base out of Del Rio, will end the Juneteenth Celebration.

The SEMinole hasbeen asking that everyone bring their own picnic basket (voer dish) or give some kind of donations to help out with the meal.

## Letters to the Editor

TO THE CITIZENS OF KINNEY COUNTY

During the first six months as Sheriff of Kinney County several changes have taken place within the Sheriff's Department and I would like to take this opportunity to report to you the progress made and future plans for our Sheriff's Department.

After taking office I began negotiations with the Immigration and Naturalization Service on the possibi-

lity of houseing federal prisoners in the Kinney County Jail. As many of you are already aware, this was one of the selling points that was used to enable the construction of the new jail complex in 1975. After several weeks of discussions an agreement was reached with the federal officials involved and on Junary 17, 1981 this new service was implemented.

During the period from January 17, 1981 through May 31, 1981 this agreement has brought in \$13,872.00 in additional revenue. Of this amount expenses, including salary of one (1) additional jailer, amounted to approximately \$7,983.96 leaving the reamining \$5,889.00 deposited in the County General Fund. This is \$5,889.00 that the county desperately needs and due to recent arrangements with the U.S. Marshall's Service this revenue should increase noticably within the next six months.

Another improvement has been 24 hour, 7 day a week service at the jail. For the first time the Kinney County Sheriff's Department is now operating on an around the clock basis. This provides the citizens of Kinney County with a central contact point should they require the services of the Sheriff, Highway Patrol, Ambulance or Border Patrol. In case of emergency anytime of the day or night simply call 563-2788, and a radio operator will take the information and immediately contact the agency requested. This should increase the agencies response time and make the Sheriff's Department more responsive to the public needs.

Another service implemented by your Sheriff's Department has been the start of a Sheriff's Patrol during late night hours. Deputy Sheriff Dennis Slubar has been assigned to County Patrol during hours when normally all regular police protection has ended. This period is usually between the hours of midnight and 8:00 A.M. By the use of this patrol I hope to prevent some of the burglaries and vandalism that seems to have increased in recent months. I realize that one deputy can only cover so much area but hopefully the knowledge of his presence alone will alleviate some of the problems being experienced in our County.

By implementing the above mentioned programs an procedures I feel the Sheriff's Department can better serve all the citizens of Kinney County.

Unfortunately all of these programs have come under fire for some of our County Commissioners'. The federal prisoner program, the 24 hour Sheriffs Department and the night Sheriff's Patrol have all been subjected to scorn and disdain from the beginning. The resons for disapproval has been things

Continued Page 2, Col 2

# the Kinney Cavalryman

USPS 100-610

P.O.DRAWER CQ  
Brackettville, Texas 78832

512/563-2696

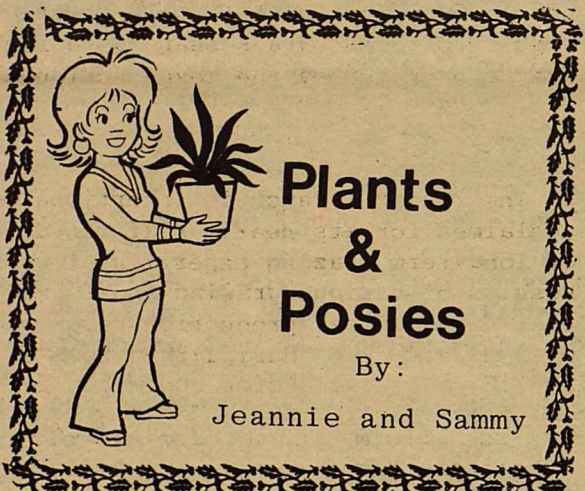
Judy Loos.....Publisher  
Geo. Loos.....Editor  
Geo. Loos.....Business Manager  
Sandy Herman.....Contrib. Editor  
RoseMary Slubar.....Contrib. Editor  
Jean Hood.....Contrib. Editor  
Sammy Smith.....Contrib. Editor

\*\*\*\*\*  
Published every Friday. Entered by  
Second Class Mail at Brackettville,  
Texas 78832.

\*\*\*\*\*  
Any erroneous reflection upon the  
character or standing of any person  
or firm appearing in this paper will  
be gladly corrected upon being called  
to the attention of the management  
and to the article in question.

\*\*\*\*\*  
MEMBER OF THE TEXAS PRESS  
ASSOCIATION

\*\*\*\*\*  
SUBSCRIPTION RATES:  
\$12.00 .....Out-of-County  
\$11.00 .....In-Kinney County



## Plants & Posies

By:  
Jeannie and Sammy

SAINTPAULIA.....Gesneriaceae.....  
Saintpaulias (African Violets) which  
are prized for their abundant and  
colorful flowers, are perhaps the most  
popular of all house plants. There  
are more than twenty species in the  
genus, but only a few are of interest  
to the average indoor gardener, who is  
likely to prefer striking modern vari-  
eties and hybrids to plants of this  
tupe of species. The kinds recommended  
below include outstanding modern  
forms as well as the five species from  
which most new kinds have been bred.

All have shallow root systems, and  
either a short stem topped by a ro-  
sette of leaves or s creeping,  
branching, trailing stem leaving al-  
ternate leaves.

There are 17 saintpaulias most re-  
commended..."Ballet; Bicentennial  
Rail; Confusa;Eternal Snow; Grandi-  
folia; Grotli; Ionantha;Little Delight;  
Midget Bon-Bon; Mini Ha-Ha; Optimara;  
Pink-N-Ink; Pixie Trail; Rhapsodie;  
Schumensis; Tommie Lou; Violet Trail."

Light: provide bright light without  
direct sunlight throughout the year.  
These plants flourish in 65-75 degree  
temperatures. Water plants moderately  
enough to make the potting mixture  
moist to each watering by allowing  
the top half-inch of the mixture to  
dry out before watering again.

At every watering give a one-quarter  
strength dose of liquid fertilizer.

### LETTERS cont. from Page 1

that range from "we've never done  
that before", in reference to housing  
federal prisoners to "we have plenty  
of night law" made in reference to  
the night patrol deputy. I cannot  
understand the attitude taken by these  
officials that were elected to SERVE  
the people of Kinney County. Why would  
these officials complain about a pro-  
gram that not only pays for itself,  
but provides a healthy profit for the  
county which is the case with the  
federal prisoner program. All excess  
funds generated by this program is  
placed in the County's General Fund.  
These same officials are certainly  
not bashful about spending these  
extra thousands of dollars.

As for the Sheriff's night patrol it  
is true that Kinney County appears to  
have an abundance of lawmen but looks  
can be deceiving and that is certainly  
the case here. Until the recent imple-  
mentation of the Sheriff's Patrol no  
law enforcement agency and that in-  
cludes the Police Department, the  
Highway Patrol, Wildlife and Fish  
Department and the Border Patrol  
have officers assigned 24 hours a  
day in Kinney County. So in reality  
up until the start of the Sheriff's  
Night Patrol there was no law on duty  
during the late night and early morn-

ing hours. This is exactly why I have  
pr ovided the patrol and the 24 hour  
jail service. It is simply a way to  
increase the service that I promised  
to provide when you, the people of  
Kinney County, elected me as your  
Sheriff.

Thank you for your support and please  
feel free to contact me if I can be  
of service to anyone at anytime.

Your Sheriff,  
/s/ Morgan P. Bailey


\*\*\*\*\*

A new government report on energy has  
been issued at precisely the right  
time--just as we were beginning to re-  
lax and enjoy a small measure of relief  
from the ever-increasing cost of fuel.

For the first time in years the  
pipes are full and there is no forecast  
of a serious summer shortage. Many ser-  
vice stations have dusted off their  
old signs and dropped the proce of  
gasoline.

Now along comes the Department of  
Energy Annual Report to Congress with  
cont. Page 4, Col.1

## FIRST SAVINGS gives you a better deal for your money:

 **FirstChek** -- First Savings customized check-  
ing account. Earn 5.25% interest, compounded  
continuously, regardless of balance.

There are no minimums if you have \$2,000 or more  
in any savings account or certificates here or if  
you are over 65 years of age.

Otherwise, you need only to maintain a \$500 mini-  
mum balance with check safekeeping, or a \$750  
minimum with return of checks. There is a \$3 service  
charge if minimum is not maintained.

 **FIRST SAVINGS AND LOAN**  
ASSOCIATION OF UVALDE



**MAIN OFFICES:**  
Uvalde:  
400 North Getty St.  
278-7191

**BRANCH OFFICES:**  
Eagle Pass: 371 Monroe - 773-9494  
Carrizo Springs: 301 Pena St. - 876-5261  
Leakey: Corner of Market & 4th - 232-6631  
Hondo: 609 19th St. - 426-4325

### Money Market Certificate

26-week \$10,000 Minimum  
Annual Yield Based on annual rate of  
14.071 13.606

Effective June 16----June 22

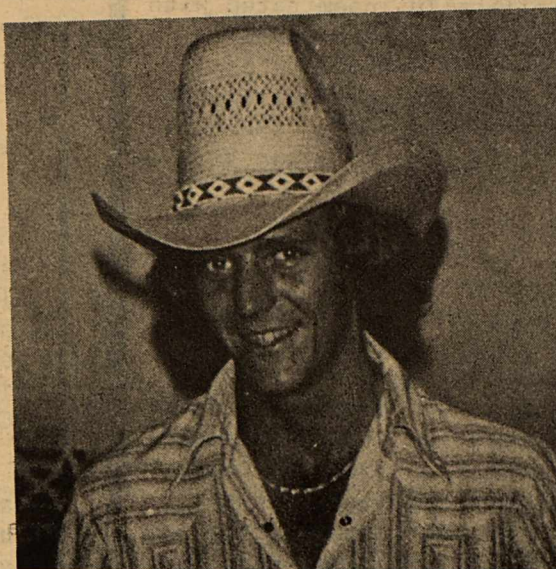
Effective annual yield based on reinvestment of  
principal and interest at maturity. Federal regula-  
tions prohibit the compounding of interest and  
require a substantial penalty for early withdrawal.  
Rate is subject to change at renewal.

### Treasury Rate Certificate

2½-year \$100 Minimum  
Annual Yield Annual Rate  
12.749 12.000

Effective June 9----June 22

The offered rate changes bi-monthly and is deter-  
mined by the U.S. Treasury. Once this type certificate  
is issued the rate does not change over the term of  
the certificate. Substantial penalty for early with-  
drawal of certificates.



THE DRUMMER FOR THE  
SUMMER FROM DEL RIO...  
BUBBA TREE

**BRACKETTVILLE  
TEXAS**

Season Passes for Kinney County Residents are available for \$20.00! Enjoy the fun and frolic at Alamo Village all summer long for only \$20.00.

Shows start Memorial Weekend and go thru Labor Day.  
Open May 1 ----Closed September 30

Hours: 9:00 a.m. --- 6:00 p.m thru MAY  
9:00 a.m. --- 8:00 p.m. thru LABOR DAY

## Kinney County LIBRARY

Dear K.C.,

It is good to see activity at the new library building site again. Fund raising continues to be the "Friends" top priority.

Rozetta Pingent, with Dorothy Drummond, has presented a plan for a V.I.P. Bar-B-Que to the fund raising committee, which has been accepted. Rozetta has been out making contacts to further these plans. She reports that Albert and Renee Alhadeff, the managers of the Las Moras Inn and Commissioner Alvin McClure of the Fort's Members' Service are cooperating beautifully so that the event can be held on the Fort around the pool area. Flo Stafford will be putting out media coverage to pro-

mote the event; and Bill Mills is heading up the "one to one" contacts for contributions and ticket sales. If you have not been contacted and would like to make a contribution call Bill Mills at 563-2903.

The New World Study Club, the organization that has nurtured the library form its inception to the present time, has taken on the responsibility to furnish cake for the Bar-B-Que. Many others, too many to mention, are working with the fund raising committee.

This fund raising effort we hope will bring the Friends to the Library to their goal of \$3,500 to pay the site foreman now working on the new library building.

Contributors who have not yet been thanked are: Lorene Buckles; Richard and Ma.Elena Pena; Peggy Coburn; Pat Packer; and Pozetta Pingent.

We are soliciting one and all to make contributions to this very worth while project. The library will be serving you for many years to come.

Yours truly,  
Friends of the Library  
by: Marie Bixby  
\*\*\*\*\*

### RANCH TOURS EXTRA Feature of Rancher's Roundup

Tours of progressively managed ranches in Southwest Texas and Mexico will be added features of the International Rancher's Roundup August 10-14 in Del Rio.

The tours are scheduled the first and last days of the Roundup. General group and concurrent educational sessions comprise the remainder of the week's activities.

The first stop on the Southwest Texas tour is scheduled at the Jack Brown Ranch in Val Verde County. Brown produces Rambouillet sheep, goats cattle, and white-tailed deer on rough terrain. Topography and drought must be considered in his management and breeding program.

Enroute to Sonora tour participants will pass by the Flying D Egg Ranch, the largest egg producing firm in South west Texas. Flying D operates several thousand hens on Dry Devil's River, a unique location for such an operation.

The tour will then stop at the Sawyer Ranch, 10 miles south of Sonora in the Edwards Plateau, where cattle,

sheep, Angora goats, deer and turkey are produced. This is a long-standing demonstration ranch in cooperation with Sutton County Extension agents and Texas A&M University. Goat feeding sheep production, range nutrition, and brush control are progressively pursued here.

The Sawyer Ranch operates a 4-pasture 3-herd grazing system.

Air conditioned, full comfort tour buses will then whisk the Roundup visitors to the Sonora Research Station Ranch, operated by the Texas Agricultural Experiment Station, for lunch and a visit with Dr. Leo Merrill, resident director, and his staff.

The research ranch is intertionally acclaimed for its nearly half century of long-term grazing experimental work. Results of various grazing and forage trails and animal production research will be discussed during this tour stop before heading for the woolhouse in Rocksprings.

There tour participants will observe preparation and grading of wool and mohair and hear how producers should prepare wool for marketing. Market outlook for wool and mohair in the area will be discussed. A demonstration in grading wool and mohair will conclude the Rocksprings visit.

The tour will then proceed to the Brackettville area where participants will be guests of Happy Shahan at Alamo Village after viewing Shahan's Longhorn Cattle crossbreeding and grazing management programs. Shahan is a long-time breeder of registered Longhorn cattle.

Alamo Village is world renowned as being the setting for numerous western movies such as the famous Texas Classic, "The Alamo", "Bandolero", "Two Rode Together", and many others. Caountless commercials, television shows, travelogs and documentaries were also filmed in this scenic area.

Tour visitors will be treated to a barbeque supper along with country-western musical entertainment in an "Old West" setting. After browsing through Alamo Village, tour buses will carry Roundup participants to Del Rio in preparation for educational sessions the following day.

Those on the August 14 Mexico tour will visit the 100,000-acre El Caballo Ranch which is operated as a corporation combining five ownerships under one management. The most advanced animal science technology and management practices are used.



IT HAS BEEN ESTIMATED THAT SEVERAL MILLION PEOPLE HAVE TAKEN TO THIS SPORT AND THE AVERAGE USER WILL FIND A DOLLAR AN HOUR FACE VALUE IN COINS.

**RUSSELL  
HARDWARE**  
506 E. Gibbs 775-3502

El Caballo Ranch operates 4,500 cows which are artificially inseminated with sex-separated semen. Their highly trained technicians inseminate about 200 cows per hour through four chutes or about one cow per minute. Extensive pasture improvements and forage program are utilized.

Next stop in the Mexico tour is a visit to the Zaragosa Experimental Station where researchers will discuss most recent work and cattle association representatives outline the Mexican cattle industry. Range research efforts and forage irrigation programs will be featured. After lunch at the research station the tour then moves to Agida San Fernando, a cooperative ranch operated on government land. Cattle and grazing management practices will be viewed.

That evening the tour returns to Ciudad Acuna on the Rio Grande, where tentative plans call for a Mexican rodeo and buffet supper, a festive climax to a week-long Roundup activity.

Although June 30 is the pre-registration deadline for registration fee discounts to Rancher's Roundup educational activities, that date is the last day persons can register for either of the tours. Hence, interested persons are urged to act prompt.

Pre-registration packets for the Roundup and Roundup tour are available by writing to Rancher's Roundup, P.O. Drawer 1849, Uvalde, Texas. 78801.

A nominal for each tour covers transportation, meals, refreshments, and entertainment costs. A local expert will serve as tour guide for each bus describing operation and ranching activities seen enroute.

Spanish and English interpreters will be provided along with booklets containing tour information.

\*\*\*\*\*

KAZEN  
cont. from Page 2

a sobering reminder that all of this is temporary and that the good old days of low-cost energy are over.

This is the case despite this nation remarkable response to the 1973-74 oil embargo and our realization that conservation efforts are in the best interest of all of us. Perhaps the most dramatic change was the decrease in consumption by 400,000 barrels of gasoline per day between 1979 and 1980, even though the total stock of U.S. automobiles had increased by 2.5 percent.

The crisis spurred new interest and incentives for domestic production, but, unfortunately, domestic oil and gas production is actually expected to decline, at least slightly, during this decade. We must be mindful that production grows more expensive each day and although our efforts to deregulate are paying off, we should continue to consider various tax incentives and whatever else is necessary to meet our important energy needs.

The report points out that by using conventional methods, only about 32 percent, on average, of the oil in existing fields can be extracted. There are ways to increase recovery rates, but they are much more costly. Moreover, the cost of finding new oil fields is increasing. Experience suggests that new fields will be smaller, deeper in the earth, in less favorable locations and harder to find. This adds up to higher costs. The problem is not that the world is quickly exhausting its supplies of energy, but that we are running out of an inexpensive source of energy.

The new energy technologies--solar nuclear, geothermal, biomass, fusion and others--have yet to fulfill promises of virtually unlimited and inexpensive energy. The Energy Depart-

ment projects that these source will contribute less than one percent of our domestic supply by 1990. Production of coal--drawing from the 440 billions tons of proved reserves--is forecast to double the amount produced in 1978. Nuclear power is expected to increase by 167 percent over the 1978 level, when 71 commercial generating units

were supplying about 13 percent of the electricity generated in the U.S.

However, barring an unexpected breakthrough, our nation will continue to depend upon oil for a large part of our energy needs. Although we may have learned our lesson that we cannot af-

cont. page 6, Col 1

## Public Notice

Southwestern Bell, in accordance with the rules of the Public Utility Commission of Texas, hereby gives notice of the company's intent to implement a new schedule of telephone rates in Texas effective July 21, 1981, unless otherwise determined by the Commission.

It is expected that the requested rate schedule will furnish a 15.8 percent increase in the company's intrastate revenues.

A complete copy of the new rate schedule is on file with the Public Utility Commission at Austin, Texas, and with each affected municipality served by Southwestern Bell, and is available for inspection in each of the company's public business offices in Texas.

### Notice to Customers of Other Telephone Companies

The filing includes, but is not limited to, proposals to increase rates for interexchange private line and foreign exchange (FX) service. Changes in such rates would also affect customers of other telephone companies because such companies provide interexchange private line and foreign exchange service in accordance with rates specified in Southwestern Bell's tariffs.

## Aviso Público

Southwestern Bell, en conformidad a las reglas del Public Utility Commission (Comisión de Servicios Públicos) de Texas, por la presente hace saber su intención de establecer un nuevo arancel para servicio de teléfono en Texas con vigencia a partir del 21 de Julio de 1981, a menos que la Comisión haga otra determinación.

Se espera que el nuevo arancel que se ha solicitado rendirá un aumento de 15.8 por ciento en los ingresos intraestatales de la compañía.

Una copia completa del nuevo arancel se ha archivado en las oficinas del Public Utility Commission en Austin, Texas, al igual que en cada municipalidad afectada y servida por Southwestern Bell, y cada una de las oficinas de la compañía para negocios con el público en Texas tiene una copia para lectura pública.

### Aviso a los Clientes de Otras Compañías de Teléfono

El registro incluye, pero no se limita a, propuestas para aumentar las tarifas para servicio de línea privada entre centrales telefónicas (interexchange private line) y servicio de central telefónica-extranjera (foreign exchange FX). Cambios en dichas tarifas de servicio también afectarían a clientes de otras compañías de teléfono porque dichas compañías proveen los servicios ya mencionados en conformidad a tarifas especificadas por Southwestern Bell.



# MONEY MARKET CERTIFICATE

26-week \$10,000 Minimum Annual Yield	Based on annual rate of
14.071	13.606

Effective June 16---June 22  
Effective annual yield based on reinvestment of principal and interest at maturity. Federal regulations prohibit the compounding of interest and require a substantial penalty for early withdrawal. Rate is subject to change at renewal.

**FDIC** Your Savings Insured to \$100,000

# THE FIRST STATE BANK OF BRACKETTVILLE

# Your State Representative

Susan McBee

The 67th Legislative Session is over, with a special session, unfortunately, looming on the horizon.

By now I'm sure you've read and heard more about the just-ended 140 days in Austin than you ever cared to, but sometimes those reports ignore some of the details of specific interest to us in District 70. So, in an attempt to rectify that, here is a final wrap-up of how we in Southwest Texas fared--or didn't fare, as the case might be--in the State Capitol.

\*\*\*\*\*

As a result of legislation passed during this session Eagle Pass and Del Rio can establish foreign trade zones if they like; Terrel, Kinney, and Edwards Counties are no longer required by law to have a county auditor; Sul Ross will be able to repair and remove some campus facilities; Crockett and Sutton Counties will remain in this legislative district instead of being lumped into the San Angelo district as was proposed; and Zavala and Brewster Counties got some badly needed road funds.

\*\*\*

Redistricting dominated every aspect of the legislative session and rightfully so, as it determines what kind of representation we'll have in Austin and Washington for the next ten years.

A battle royal developed pitting rural vs. urban, conservative vs. liberal, Republican vs. Democrat, and minority group vs one another. Somehow from this chaos, redistricting plans for both the House and Senate of Texas emerged and were sent to the Governor, with the threat of a veto by the Justice Department under the Voting Rights Act or a lawsuit by disgruntled groups hanging heavily over them.

Should the plans finally be enacted into law, the House for the next ten years will retain its conservation leanings, while the Senate will be a little more liberal-urban oriented than in the past. As for us, the new District 70 (and were we ever lucky to retain that old number and not have to get used to a new one! Only three of the 150 districts kept their former number.) remains relatively intact. Zavala County on the eastern edge is transferred into a largely new South Texas district. On the western side, Presidio and Jeff Davis Counties, which have been in an El Paso district, are added. The other eight counties remain the same. This will make the "new" District 70 a ten-county 27,000 square mile area with a population of 97,000.

Congressional redistricting is still unfinished and is one of the reasons for the special session. Maverick and Zavala Counties are safely in Congressman Kazen's 23rd District, but the remaining seven counties of our legislative district have become focal points in the redistricting battle. There is an attempt being

made by the Mexican American Legal Defense Fund to enlarge the 23rd District to include those rural Southwest Texas counties now in Congressman's Loeffler's 21st District. Since this area has historically been in a West Texas district, it should certainly continue to be so. In addition, the community of interest definitely lies to the west rather than the south. I've done, and will continue to do, everything in my power to keep us in the 21st Congressional District.

\*\*\*

And although there are lots and lots of critics of the 67th Legislature, some significant successes were achieved. Tough law and order measures were enacted, giving law enforcement personnel the tools to crack down on criminal activity. Teachers got a much needed pay raise. Mandatory liability insurance will protect the good drivers from the bad. Generic drug substitution should

mean some savings to consumers. The state inheritance tax was effectively abolished.

And, in keeping with the trend of fiscal restraint with taxpayer's dollars, the new two-year budget reflects the lowest percentage increase in the last decade.

\*\*\*

Look for the special session to begin July 13 and last for at least thirty days. Mrs. Jean Kindle will be handling office duties at (512) 475-2763 as usual and Mrs. Vonnie Lewis to taking care of committee work at (512) 475-3491. Both will be delighted to assist you in any way possible.

My mailing address remains the same: Post Office Box 2910, Austin, Texas 78769.

\*\*\*\*\*

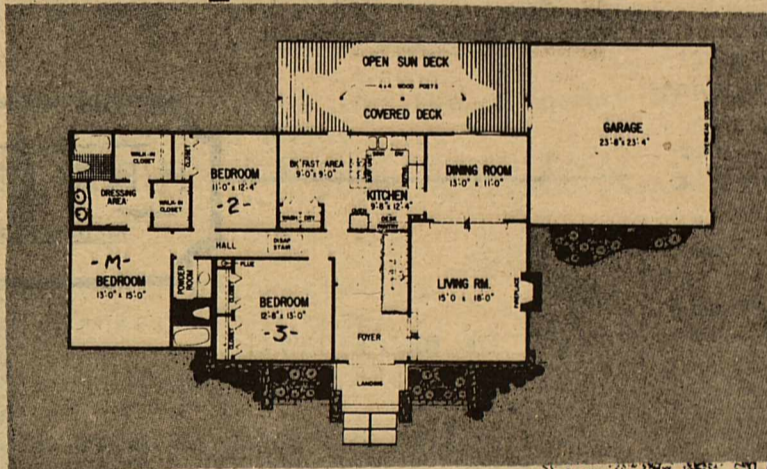


Of all of the Seven Wonders of the ancient world, only the three Great Pyramids of Egypt survive.

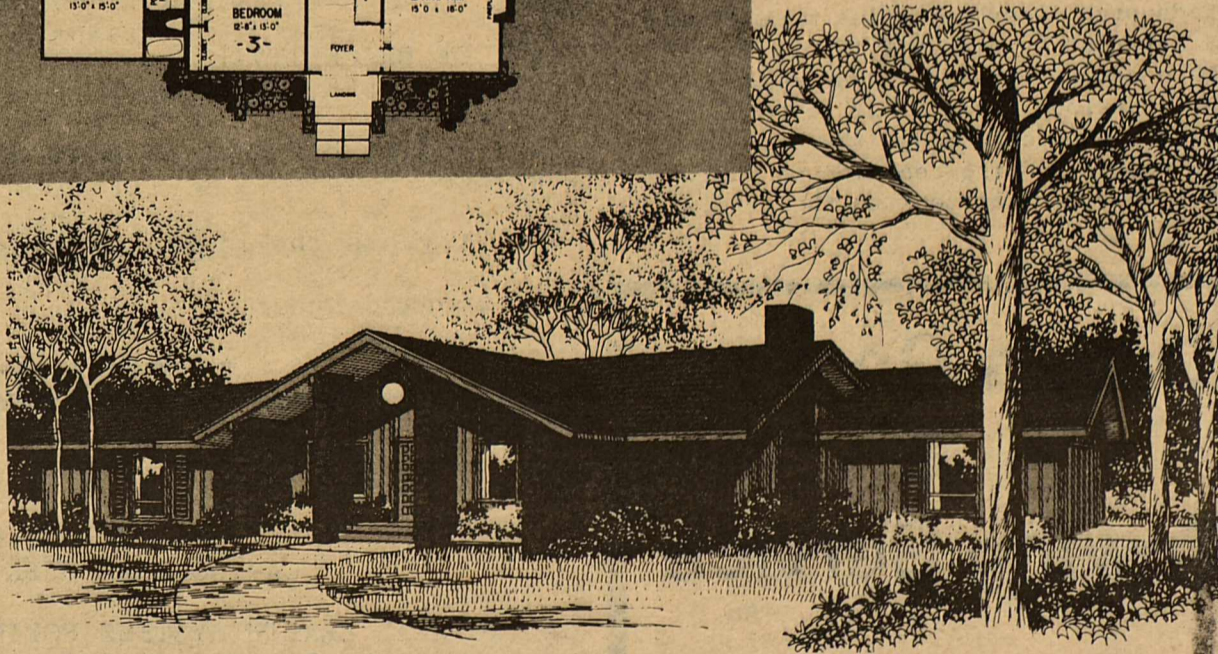
OFFERED BY

## FINAMORE & ASSOCIATES REALTY

- \* living Area Covers 1,769 Square Feet
- \* Dining Room Has Sliding Doors To A Deck And Steps That Go Down To The Sunken Living Room With Fireplace.
- \* U-Shap Kitchen Includes Build-In Desk; Adjacent Breakfast Area With Laundry Alcove Also Opens To The Deck.
- \* Master Bedroom Has Dressing Area, Separate Bath and Two Walk In Closets.
- \* Price: UNDER \$61,000.00



Phone: (512) 563-2111



CONTRACTOR

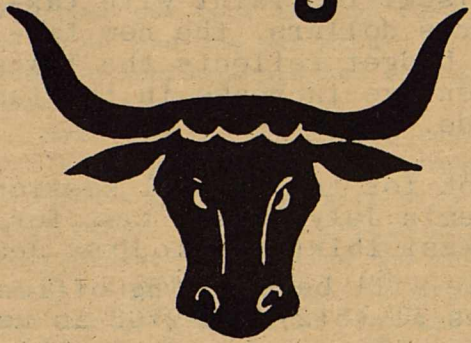
S & L CONSTRUCTION COMPANY

LARRY BURRESS

- \* WITH: Energy Saver Package and Custom-Engineered Central Heat & Air.

Finamore & Associates Realty, reserves the right to change pricing without notice

# The Longhorn



563-2767

3 Miles West of  
BRACKETTVILLE, TEXAS

HOME OF THE WORLD FAMOUS

"LONGHORN CHICKEN FRIED STEAK"

"Bragged on From Paris to Tokyo"

## SUNDAY BUFFET

THE LONGHORN  
RESTAURANT, MOTEL & LOUNGE

Your Host TRAVIS & LANETTE WILSON

### STATEMENT OF INTENT TO CHANGE RATES

General Telephone Company of the Southwest, in accordance with the Rules of the Public Utility Commission of Texas, hereby gives notice of the Company's intent to implement a new schedule of rates in Texas effective October 1, 1981.

On April 28, 1981, the Public Utility Commission of Texas issued its order in Docket 3630 creating a separate Docket 3861 to consider the impact and effect of the accounting changes ordered by the Federal Communications Commission (CC Docket 79-105).

The Federal Communications Commission has changed the method of accounting for inside wiring costs associated with the one-time station connection, move, or change activity. The new rate schedule will increase the Company's gross annual revenue derived from local service by no more than three percent.

The schedule of rates and charges is available for inspection at each Company business office in the State of Texas.



General Telephone

KAZEN  
cont. from Page 4

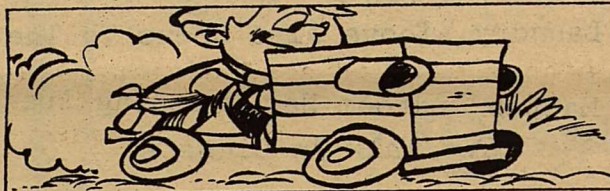
ford dependence on foreign oil, the fact is that we still do and we will continue to remain vulnerable to embargoes and foreign price increases. Although we hope to reduce the import oil percentage of total energy consumption from 21 percent in 1978 to 10-15 percent in 1990, international developments often beyond our control may play important roles in everyday life.

For example, if imported oil becomes even more expensive, domestic alternatives will be produced at higher domestic prices. If supplies of imported oil are disrupted, even with increased domestic production and larger reserves, the end effect would be higher prices for petroleum products. Even if the U.S. could weather disruptions by turning to domestic sources, our economy could be damaged by the loss of trade with other countries more adversely affected by a cutoff of oil supplies.

This new government status report, while serious, should not be considered gloomy. Our technology, the best in the world, and the reaction of individual American citizens to the crisis

of the 1970's have placed us in much better condition to face the challenges of the 1980's and beyond. We can do it--and we will. We just need to be reminded now and then.

\*\*\*\*\*



The first All-American Soap Box Derby was run in Dayton, Ohio, in 1934.

### HINDS WELL SERVICE

ALL MAKES & MODELS OF SUBMERSIBLES  
AND WELL SUPPLIES  
119 WILDWOOD

Richard Hinds  
108 Tomahawk  
DEL RIO, TEXAS 78840

775-1328  
775-9551

### PUBLIC NOTICES

CITY OF BRACKETTVILLE  
BRACKETTVILLE, TEXAS 78832

The City of Brackettville is now accepting bids on Trash Pickup Service.

The City has the right to refuse any or all bids.

/s/ Leonard Luna  
City Manager

\*\*\*\*\*

## Dave's Garage & Towing Service

portable welding  
expert mechanic

"Your car is a major investment  
don't trust it to an Amateur---  
bring it to the PROFESSIONAL!"

563-2987

### NOTICE CAMINO REAL SEEKS BOARD MEMBER

CAMINO REAL HEALTH SYSTEMS SOLICITS NOMINATIONS OF CANDIDATES TO A PROVIDER VACANCY ON ITS BOARD OF DIRECTORS. THE PERSON (S) NOMINATED MUST BE A PROVIDER OF HEALTH CARE WHO RESIDES IN DIMMIT, EDWARDS, KINNEY, LASALLE, MAVERICK, REAL, UVALDE, VAL VERDE OR ZAVALA COUNTIES. NOMINATIONS ARE BEING ACCEPTED FROM LOCAL GOVERNMENTS, HEALTH ORGANIZATIONS, AND PETITION OF 25 AREA RESIDENTS. NOMINEES MUST COMPLETE A BIOGRAPHICAL QUESTIONNAIRE. CALL (512) 225-4426 FOR INFORMATION AND INSTRUCTIONS.

THE DEADLINE FOR RECEIPT OF NOMINATIONS IS 5:00 P.M., THURSDAY, JULY 2, 1981.

\*\*\*\*\*



# classified ads

TUESDAY 12:00 NOON DEADLINE  
All Classifieds--15¢ per word  
minimum insertion \$2.00 per issue  
NO CARD OF THANKS OR CLASSIFIEDS  
WILL BE TAKEN OVER THE PHONE.....

## KINNEY COUNTY LAND CO. (512)563-2446

3bdrm, 2 bath home on 5 lovely lots, pens and storage buildings.  
\*\*\*\*

10 Acres adjacent to Brackett, all utlities easily accessible.  
\*\*\*\*

4000 Acres highly improved \$275 per acre, 33 miles North east of Brackett.  
\*\*\*\*

Fort Clark Springs membership \$900.00 equity to owner, take over \$1500.00 balance.  
\*\*\*\*

## Brackettville Land Co.

DON  
HOOD

JEAN  
HOOD

512/563-2125

6 PRIME LOTS  
IN NORTH BRACKETTVILLE  
\*\*\*\*

LARGE DEER LEASES AVAILABLE  
\*\*\*\*

ONE YEAR OLD BEAUTIFUL BRICK HOME, CLOSE TO SCHOOL, EXTRA NICE  
\*\*\*\*

## BRACKETTVILLE DRY CLEANERS

across from the Bank & Jail

New Hours:

9:45 to 12:45 Monday thru Friday  
1:15 to 4:15

Cleaning of Leather, Suede, Fur Available  
\*\*\*\*\*

LET US BE YOUR FULL SERVICE CLEANERS  
\*\*\*\*\*

TWO DAY SERVICE AVAILABLE  
ON CLEANING & LAUNDRY

SATISFACTION GUARANTEED  
\*\*\*\*\*

Buddy and Boots Love

Owners & Supervisors of Cleaning

## FOR SALE-ARTICLES

\*\*\*\*\*  
MASON SHOES & BOOTS.....

Guaranteed, latest styles, mens and ladies highest quality, go First Class, reasonable prices. Call: Robertson--563-2993.

\*\*\*\*\*  
SAGEBRUSH SHOPPE II.....

Come see our fans, brooms and wall hangings in new silk colors or made to order. 563-2735.

\*\*\*\*\*  
VANN'S SEAFOOD TRUCK in Brackett every other Wednesday, 10am-1pm at Exxon Station. has full-line of seafood.

\*\*\*\*\*  
NEW AND USED BUILDING MATERIALS...

must be sold by June 21st. vinyl siding; wood and metal trim and molding; 4'X 10' Pre-Fab Partitions by-folding doors, light fixtures, and much more. See at Lot 3, Unit 23 or Call: 563-2933.

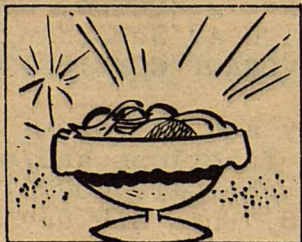
### SEALED BID SALE

- 1-1979 Chevrolet 3/4 ton auto-matic(cab & Chassis only) License MY155
- 1-1979 Ford 3/4 ton (4-speed) License MY163
- 1-1979 Ford 3/4 ton (4-speed) License MY 167
- 1-1979 Ford 3/4 ton (4-wheel drive) License MY 159

These may be seen at the Rio Grande Electric Cooperative 8:00 AM through 5:00 PM Mondays through Fridays. Bids must be in this office on or before June 30, 1981. We reserve the right to reject any or all bids. Contact Dale Borden, 563-2444 in Brackettville.

\*\*\*\*\*  
FOR SALE.....  
1977 Chevrolet Malibu door, hardtop, 6 cyl, standard trans mission, radio heater and condiction, as good as all. 563-2146 between 6 and 9 pm.  
\*\*\*\*\*

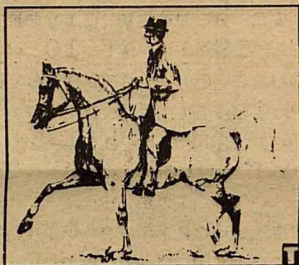
# SOLD



Chop some fruit flavored gelatin as a garnish to top fresh fruit cup. Gives it a frosty expensive look and taste.

## horse facts & fancies

The first known purebred Arabian in America was the stallion Ranger, brought to Connecticut in 1765. A son of this horse, was George Washington's mount in the Revolutionary War.  
\*\*\*



The purebred Arabian has a heritage at least 2,000 years old and is unmatched for its beauty, endurance, gentleness, intelligence and loyalty. These characteristics make it ideal for show and trail riding, jumping, dressage, driving, cutting or just plain having fun on horseback.  
\*\*\*

For free information on this proud and versatile breed, or for a list of breeders, write to the International Arabian Horse Association, 224 East Olive Avenue, Burbank, CA 91503.

For Area Ambulance District Assistance

563-2757

## BUSINESS DIRECTORY

Compare Our Prices  
**The JUG STORE**  
Liquor & Wine-Mixes

(NEXT TO B&S GROCERY)

563-2081

LOWEST PRICES!!!!!!

## Schubach Liquors

Across from Fort Clark entrance, next to EXXON station.....

563-2322

## Barker's Gift & Thrift Shop

"Across from the Bank"  
Something for Everyone.

A new experience in Shopping!!

Friday and Saturday  
break a balloon for up to 20% off....

## DEL RIO OFFICE SUPPLY DELIVERS!

EQUIPMENT, FURNITURE, OFFICE SUPPLIES, EVERY THURSDAY DELIVERY TO BRACKETTVILLE.

CALL COLLECT:

775-1566

## Thom McAn

AIR STEP JOX

Shoes for Everyone  
in the family!!

La Villita Center  
DEL RIO