



25¢

# the Kinney Cavalryman

USPS 100-610

Vol.7 No.35

September 5, 1980

BRACKETTVILLE, TEXAS

## CITY 'NIXS' CABLE CO.



CONSTRUCTION FOR THE MOVIE "BARBAROSA".....Began last week at Alamo Village. The Nueces Construction Company, owned by "Plunker Sheedy and Alvin McClure of Brackettville is shown above clearing the land in front of the Alamo. Country-western star, Willie Nelson will be one of the major stars in the up-coming movie.

At a special City Council Meeting on Thursday, August 28th. the Brackettville City Council not only rejected a rate increase request of the Brackettville TV Cable Company, they also directed the City's Municipal Attorney to give notice to the company that their franchise with the City would be cancelled in 90 days if service was not improved.

The council's action followed a public hearing on the rate question held at the Civic Center the previous Monday night. The majority of the approximately 100 residents that attended the meeting not only objected to the rate increase, but, raised the question of Brackett was not receiving more channels as other South Texas communities that were paying lower fees than the local company was charging. Many of those present complained of the poor service they were receiving from the company on the existing 4 channels that are supplied.

The CAVALRYMAN was informed that Mr. Ralph Brown, The City's Attorney, had prepared a letter that was being sent to Mr. Louie Younts and MR . Fred Brien (owners of the Brackettville Cable TV Company) who both reside in Del Rio, informing them of the Council's action.

### ★ Headliners ★

#### NEW DOC FOR BRACKETT

Dr. Eduardo Vinues will be moving to Brackettville in the next two weeks and will be opening his practice here, according to local sources.

Dr. Vinues, received his medical training in Spain and has passed the Texas Board of Medical Examiners test. He has resided in Houston.

The Doctor, his wife, Helen and 15-year-old daughter Lisa will be residing in Brackett.

#### CONTRIBUTIONS SOUGHT FOR SENIOR CITIZEN'S VAN

"Happy" Shahan has been appointed as fund raising chairman on the program to help procure a new senior citizen's van, according to County Judge Albert Postell. Approximately \$1200 needs to be raised to purchase a new 12-passenger, air conditioned van for our senior citizen's.

Anyone interested in assisting in this project is requested to contact Happy Shahan at 563-2580.

#### BRACKETT BAND BOOSTERS

The Brackettville Band Boosters will hold their meeting at the H.E.Cottage, on September 9th.

\*\*\*\*\*

#### NEW COUNTY ATTORNEY

At a special meeting of the Kinney County Commissioners' Court local attorney Tully Shahan was appointed as County Attorney to become effective October 1st.

\*\*\*\*\*

#### ELECTION JUDGES' SCHOOL SLATED

Mrs. Dolores Raney, County Clerk, announced this week that a school for election judges will be held September 15th at 7 p.m. in the County Court Room.

The school will be given by the Texas Attorney General's Office and further details for those interested may be had by contacting the Kinney County Clerk's Office.

\*\*\*\*\*

#### JONES ELEMENTARY BASIC INFORMATION

On September 2nd "Parents' Night" was held for the parents of Jones Elementary students. At this meeting the following information was given to parents present and the teachers and parents met and talked .

Talking with Mr. Koch, Principal of Jones Elementary, we have only one thing to say--he is a true professional in both being an educator and a very caring person. He stated during the conversation "Be concerned about your child --we want you to be!" There needs to be cooperation between the parents and educators, he stated.

Do you have a question or a problem at Jones Elementary call Charles Koch. Mr. Koch stated that if you do have a problem or question he is the one who can answer it and don't be afraid to call and talk with him.

#### SCHOOL CALENDAR 1980--81

First Day of School-----Sept. 2  
Inservice -----Oct. 27  
Thanksgiving Holiday-----Nov.27-28

# the Kinney Cavalryman

USPS 100-610

P.O. DRAWER CQ  
Brackettville, Texas 78832

512/563-2696

Judy Loos.....Publisher  
Geo. Loos.....Editor  
Geo. Loos.....Manager  
Betty Tidwell.....Contrib. Editor  
Lillie Mae Dimery.....Contrib. Editor

\*\*\*\*\*  
Published every Friday. Entered by  
Second Class Mail at Brackettville  
Texas 78832.

\*\*\*\*\*  
Any Erroneous reflection upon the  
character or standing of any person  
of firm appearing in this paper will  
be gladly corrected upon being called  
to the attention of the management  
and to the article in question.

\*\*\*\*\*  
MEMBER OF THE TEXAS PRESS  
ASSOCIATION

\*\*\*\*\*  
SUBSCRIPTION RATES:

\$12.00-----Out-of-County  
\$11.00-----In-Kinney-County

\*\*\*\*\*  
LOOSISM:

SEGAL'S LAW.....  
A man with one watch knows  
what time it is. A man with  
two watches is never sure...

\*\*\*\*\*

Jones Elementary.....  
Christmas Holiday -----Dec.22-Jan.2  
Holiday -----Jan. 16  
Spring Break -----March 19-24  
Holiday -----April 17  
Last Day of School-----May 29

\*\*\*\*\*  
Classes begin at 8:00 a.m.; Grades  
1-3 will be dismissed at 11:55 a.m.;  
Grades 4-6 at 12NCON. Recess at 9:45  
to 10:15 a.m. for grades 1-3; Classes  
resume at 12:55 p.m.; Classes dismissed  
Grades 1-3 at 2:30 p.m. and 4-6 at  
3:00 p.m.; The students will have a  
milk break every morning. The price of  
milk will be 20¢, this may be paid  
daily, weekly or monthly. Cokes will  
be 25¢.

\*\*\*\*\*  
Six Weeks Periods ending:  
1st six weeks -----Oct. 10  
2nd six weeks -----Nov. 21  
3rd six weeks -----Jan. 23  
4th six weeks -----March 6  
5th six weeks -----April 24  
6th six weeks -----May 29

Report cards will go out on the  
following Wednesday, each six weeks.

\*\*\*\*\*  
Each Class will have a set of rules for  
behavior. Parents will be informed as  
to those rules. Progress reports will  
be sent home in the middle of each Six  
Weeks period.

\*\*\*\*\*  
School Insurance will be available.  
\*\*\*\*\*

SCHOOL PARTIES  
The first, second and third grades may  
have two (2) parties each year which  
involves homeroom parents (at Christmas  
and Easter).

Continued Page 2, Col.1

In the fourth, fifth and sixth  
grades homeroom parnets may be involved  
only at Christmas time.

The will be no Birthday Parties  
given at school. NO invitations will be  
given at school.

\*\*\*\*\*  
DRESS CODE FOR FOURTH, FIFTH & SIXTH  
GRADERS

The following will not be acceptable:  
Clothes or dresses of a halter or halter  
type. Shirts and blouses that are  
of a translucent type material (any  
material that can be seen through).

Any type of clothes designed as a sun-  
dress or shirt, body shirt, muscle shirt  
crop-top, spaghetti straps, and those  
made of net or mesh material. The length  
of any attire worn must extend to a  
length of a tleast four inches above  
the knees. Shirts and blouses are to  
be worn inside of the skirts, slacks,  
pants or trousers unless they are tail-  
ored or designed to be worn outside.

Shirts, blouses, dresses, and any  
other top garment that buttons, must  
be buttoned, except for the collar  
button.

The length of the hair in front  
when combed is not to extend beyond  
the top of the eyebrow. The length of  
the hair on each side when combed is  
to be where the bottom of the ear lobe  
can be seen. The Hair in the back is

to be cropped or blocked and the length  
when combed is to be where the collar  
will be visible.

\*\*\*\*\*  
PARENTAL RESPONSIBILITY BEFORE 7:50 a.m.

Teachers are not required to be  
on duty until 7:50 a.m. The students  
are not allowed in the building before  
that time. It is not our responsibility  
if your child arrives before 7:50a.m.

\*\*\*\*\*  
LUNCHES

Students are to remain in their  
desk in their homeroom. If they misbe-  
have they will be put in the hall.

If they go to Chuy's to buy food--  
encourage them to buy complete meal--  
not junk food..(Candy, etc.)

Their names goes on the board so  
that the teacher on duty knows he or  
she is off campus.

Please make a special effort to  
send lunches, lunch money, books and  
everything your child will need for  
the day so we will not have to disturb  
classes.

\*\*\*\*\*  
Continued Page 3, Col 2

# First Savings pays you the most for your savings.

### Treasury Rate Certificate

2 1/2-year \$100 Minimum  
Annual Yield Annual Rate

12.187 11.500

Effective September 4----September 17

The offered rate changes bi-monthly and is determined by the U.S. Treasury. Once this type certificate is issued the rate does not change over the term of the certificate. Substantial penalty for early withdrawal of certificates.

### Money Market Certificate

26-week \$10,000 Minimum  
Annual Yield

10.777

Based on annual rate of

10.500

Effective September 4----September 10

Effective annual yield based on reinvestment of principal and interest at maturity. Federal regulations prohibit the compounding of interest and require a substantial penalty for early withdrawal. Rate is subject to change at renewal.

Main Office  
Uvalde: 400 North Getty Street 278-7191  
Branch Offices  
Eagle Pass: 370 Monroe 773-9494  
Carrizo Springs: 301 Pena Street 876-5261  
Leakey: Corner of Market & W.4th 232-6631  
Hondo: 609 19th Street 426-4325

  
**FIRST  
SAVINGS  
AND LOAN  
ASSOCIATION**



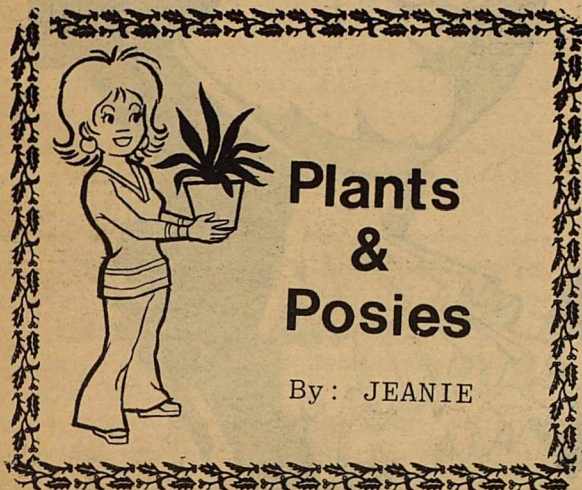
Welcome

# MARBLE ARCH PRODUCTION and ITC FILMS on their preparation

## of 'BARBAROSA'



"Home of Motion Pictures"



### Plants & Posies

By: JEANIE

Ferns are foliage plants unlike most plants, in that they reproduce by means of spores, not seeds.

Wild ferns grow throughout the world, and many of these are not suited to the home environment. Those that grow in the wild in the warmer regions are those that we are most familiar with as house plants.

Many ferns are epiphytes-- those whose roots grow into vegetation of crevices of trees for physical support. They thrive in humid, shady areas.

Ferns reproduce by means of the spores found on the underside of the fronds. Inside these spore cases are dust-size particles that scatter when the spore cases burst open. Some ferns also grow baby ferns on the fronds. These can be detached and used for propagation.

To properly care for your fern, give it medium light, and no direct sunlight, as this will scorch the tender fronds. However, early morning winter sun will not normally harm your plant. Normal room temperatures are ideal for most ferns--65--75 degree range. High humidity is important. Misting is helpful if your plant is in a low humidity room. Always keep the soil tho-

roughly moist, but not soggy. Use tepid or lukewarm water, never cold water for watering your fern. Fertilize at half strength to help your fern grow better and healthier.

\*\*\*\*\*

#### Jones Elementary..... CONFERENCES WITH TEACHERS

Check with teacher and make an appointment to have a conference concerning your child.

\*\*\*\*\*

#### HONOR ROLL

A and B Honor Roll--must have an "A" in Conduct. Same amount of "A's" as "B's" in major subjects not P.E. or Band. To be on the all "A" or "A-B" Honor Roll for the year and get a certificate, they must have made the Honor Roll every six weeks. Is not an average for the year. There will also be all "A's" Certificates for Conduct.

\*\*\*\*\*

#### BAND

5--6 Graders who enroll in band must stay in band for the remainder of the semester.

\*\*\*\*\*

#### SCHOOL PICTURES

Pictures will be taken on September 11th.

\*\*\*\*\*

#### BUS RIDERS

If a Bus Student is not to ride the bus, the office will need a note or phone call stating he/she will be put on the bus. If you wish to pick up your child off the play ground, please walk to the back of the building and notify the teacher on duty. Do not honk your horn.

\*\*\*\*\*

#### DISCIPLINARY ACTIONS

After Lunch and Recess  
1. Disruptive in line: (Pushing, shoving, talking in line, etc.)

FIRST TIME: Warning  
SECOND TIME: Corporal punishment or other punishment set by the principal.

2. Fighting On Playground

Vulgar Language:  
FIRST TIME: Warning  
SECOND TIME: Corporal punishment or punishment set by the Principal.

NOTE: After they have received corporal punishment three (3) times parents must come up to school.

During Lunch

1. Getting Out Of Their Chair!  
FIRST TIME: Warning  
SECOND TIME: Put them in the hall to eat their lunch.
2. Disruptive In Class:  
Each Teacher Has a Set of Governing rules for their Classes As they have been brought home and read by the parents.

#### Bus Duty

1. Disruptive in Line Inside or Outside  
FIRST TIME: Warning  
SECOND TIME: Same rule apply from after Lunch and Recess



DRIVE CAREFULLY AAA

# BURGER & SHAKE

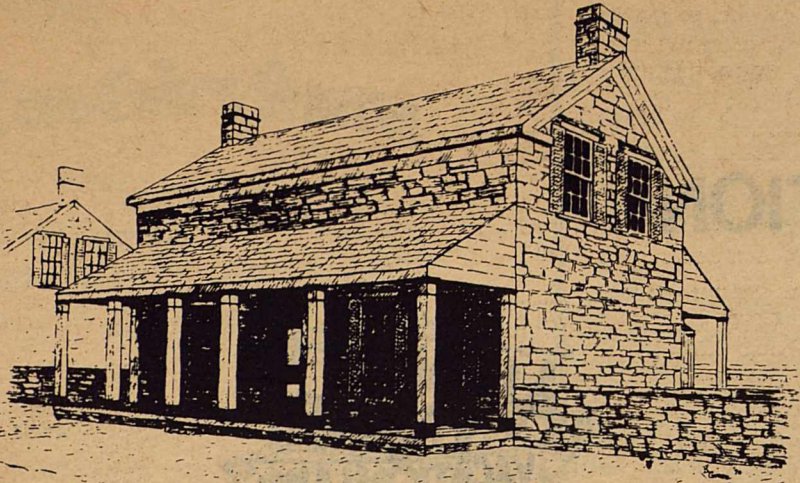
563-2027

# OPEN

10 am -- 9 pm  
DAILY

HOME GAME NIGHTS OPEN LATER

BOB BAUMANN, MANAGER



Officer's Quarters No. 3 as sketched at Fort Concho, San Angelo, Tx. The fort is one of the attractions for visitors in this West Texas city.

**San Angelo offers much for visitors**

**Travel News Service**  
 SAN ANGELO—This West Texas city is popular for both business and entertainment reasons. The business relates to sheep, cattle and oil, with San Angelo being the nation's largest primary wool market. Visitor attractions include Fort Concho, the restored fort of the 1860s, together with a museum. The Angelo State University Theater is noted for its productions, with presentations in a theater with a remarkable new design concept. The theater is pride to the university and the city, filling a cultural need. Fiesta del Concho is held each June. It is a summer fun week, with music, a river parade, races, art and crafts show and numerous entertainment offerings.

**Historic forts guide**

**Travel News Service**  
 Two of the historic forts of Texas are described in the new listing by Irvin Haas, "Citadels, Ramparts and Stockades." The two are Fort Davis and Fort Bliss. The former, of course, is near the town of Fort Davis, visited by thousands on their West Texas forays. The restored Fort Bliss with its fascinating museum is in El Paso, where it is one of the city's most-visited attractions. Haas' book is published by Everest House, 1133 Ave. of the Americas, New York 10036.

**A Word to The Penny-Wise...**



**Be Prepared For The Future. Start Saving...Here! We make it easier than ever to save.**

2nd NOTICE-----METTING TO ADOPT TAX RATE

**NOTICE OF TAX INCREASE**

COMMISSIONERS' COURT OF  
 The        KINNEY COUNTY, TEXAS        proposes

to increase your property taxes by THIRTY (30% percent).

A public meeting to vote on the increase will be held on SEPTEMBER 8, 1980, at 6:00 P.M. in COUNTY COURTROOM,

COURTHOUSE, BRACKETTVILLE, TEXAS

The KINNEY COUNTY COMMISSIONERS' COURT has considered the proposal and voted in a public hearing on the tax increase as follows:

**FOR** the proposal to increase tax rate:

- ALBERT A. POSTELL, COUNTY JUDGE
- DAVID LUNA, COMMISSIONER, PRECINCT NO. ONE
- JOHN AMOS SHEEDY, III, COMMISSIONER, PRECINCT NO. TWO
- G.C. TALAMANTEZ, COMMISSIONER, PRECINCT NO. THREE
- ALVIN S. McCLURE, COMMISSIONER, PRECINCT NO. FOUR

**AGAINST** the proposal to increase tax rate:

NONE

ABSENT and not voting:

NONE

**THE FIRST STATE BANK OF BRACKETTVILLE**

FDIC

563-2451

**4-H NEWS****4-H Club Meeting**

There will be a 4-H Club meeting Monday evening, September 8, at 7:00 p.m. at the Kinney County Courthouse.

This 4-H Club meeting will be for all new and old 4-H Club members parents and adults.

Election of officers for both the Las Moras and West Neuces 4-H Club will be conducted as well as planned for the 1980-81 4-H Club year.

Enrollment forms will be filled out and selection of 4-H Club show lambs will be discussed as well as the foods and nutrition projects.

Anyone wishing to participate in 4-H Club work in Kinney County this year should attend this meeting.

The Texas Agricultural Extension Service is an educational agency charged with the responsibility of providing useful and practical information in Agriculture and Home Economics to the people of Texas. Should you need information from the local county extension office please feel free to call 563-2442 or visit the local county extension office located at the Courthouse.

The Texas Agricultural Extension Service conducts programs in the following subject matter areas: Livestock Production; Crop Production; 4-H & Youth Work; Farm and Ranch Management; Gardening; Lawns and Ornamentals; Horticulture; Foods and Nutrition Clothing; Housing and Home Furnishing; Consumer Education; Health and Safety; Family Stability. Educational programs conducted by the Texas Agricultural Extension Service serve people of all ages regardless of socio-economic level race, color, sex, religion, or national origin.

**SCREWORM FIND IN KINNEY COUNTY, TEXAS, ENDS 102 DAY PEST FREE PERIOD**

MISSION, TX--Eight worms M.M. Nelson of Rafter L Cattle Co. at Brackettville took from wounds in the heads of two sheep have been identified as this year's second positive screwworm collection in the United States.

Dr. James E. Novy, director of the U.S. Department of Agriculture (USDA) Screwworm Laboratory, says the sample was collected in Kinney County, 22 miles northeast of Brackettville August 20. The only other known screwworm infestation in U.S. animals this year was identified April 15 in worms taken from lambs in Coleman County, Tx.

The Kinney County sample, collected August 20, arrived at the Animal and Plant Health Inspection Service (APHIS) operated Screwworm Lab and identified August 27. Entomologist Bob Richard and a team of fly trappers immediately drove to Kinney County to begin efforts to learn how many fertile or wild, screwworm flies, may be in the area, and to monitor effectiveness of screwworm fighting efforts.

Dr. A.A. Belcher of the Texas Animal Commission and several livestock inspectors immediately joined the effort to find and suppress the Kinney County screwworm population.

APHIS veterinary epidemiologist Dr. Steve Smith had been working in the Del Rio area and immediately began studying the year's second screwworm find.

At the Mission Lab Novy said preparations were made to disperse Screwworm Adult Suppression System (SWASS) pellets in the area of the case from aircraft August 28. First aerial release of sterile screwworm flies in the area was also set for August 28.

Adult female screwworm flies deposit their eggs on the edges of open wounds in warm blooded animals. As eggs hatch the tiny larvae (screwworms) enter the wound to feed on living flesh.

Since 1962 millions of screwworm flies have been reared each week on an artificial medium at the Screwworm Lab, rendered sexually sterile by exposure to radiation, and then released among wild populations. Eggs resulting from a sterile to fertile mating will not hatch, ending the screwworms' life cycle.

Since 1976 the U.S. effort has been matched by a joint Mexico-U.S. Program to eradicate the parasite from all the southwestern U.S. and most of Mexico. Successes this year had pushed the most northerly known edge of the wild screw worm population 200 and more miles south of the international border--until identification of this sample from Kinney County.

For some time no sterile screwworm flies had been distributed in the U.S. All flies produced at the Mission insectary had been released in Mexico.

With screwworms again known to be in the U.S., Novy urges pet owners and stockmen to carefully watch their animals for signs of screwworm infestation. He asks that samples of any worms found in wounds be sent to the Screwworm Lab for identification by specialists.

This is especially important now since almost the entire area at risk has received rain, says Novy. "This has greatly improved the habitat for screwworms."

\*\*\*\*\*

**Kinney County  
LIBRARY**

DEAR K.C.,

Demand is a strong governing factor in book selection. The public Library in the broad sense is an educational facility which leads in many directions to self improvement on the job, to help school children get better grades, to help business men make more money, and to help preachers write sermons that will keep their congregation awake (to name a few); but ultimately book selection must be tailored to the community's needs. A public library completely void of public interest would be a sterile, stereotyped mockery in its worst form. Obviously then, for our public library collection to grow and mature into its greatest potential--to be truly your library, your input is essential. Let the Librarian know of your wants and needs.

The 16mm films for Septemeber are here!! For more information on the film titles below call your library 563-2884: The Shot Heard Around The World; Gerald McBoing; People: Melody; Money On the Land; Children in Peril; Man Who Wanted To Fly; Fiddle and Whimmy Diddles; Portrait Of Grandpa Doc; The Impact Of Peter Max; Boston Tea Party; Paul Bunyon; Seal Island; Setting On Top Of the World: At the Fiddlers Convention; Yorktown: The World Turned Upside Down; Kayka; Face On The Barroom Floor.

Lillian Sheety has made a donation for a memorial to Mrs. Nipper.

Be seeing you in the Library!

Yours,  
Friend of the Library,  
Marie Bixby

\*\*\*\*\*

**Senator  
Lloyd Bentsen****Watching  
Washington**

The Senate Finance Committee, working with unprecedented speed and in unprecedented harmony, has finished work on a tax cut.

The committee completed in one week a process that usually takes over a month, approving a tax reduction that will amount to \$39 billion in 1981 and rise to \$75 billion a year by 1985.

Many people are amazed that committee Democrats and Republicans could cooperate on a politically volatile issue like a tax cut, especially in the middle of a national election campaign.

But, based on my experience as Chairman of the Joint Economic Committee, I was not surprised. When I took over the JEC Chair almost two years ago, many people warned me that it was a highly partisan committee. They pointed out that it hadn't issued a unified report in 20 years.

The average report, cynics emphasized, consisted of two versions, one Democratic and one Republican, with dissenting views by individual committee members tacked on at the end for good measure.

Yet since 1979, the Joint Economic Committee has issued four major reports—all of them unified. The most recent, the JEC Mid-year Report for 1980, came out a few days ago, in the midst of an election year.

Ever since taking the helm of the Joint Economic Committee, I have worked to unite members on the need to revamp this country's tax policy to stabilize our economy, end inflation and create the jobs required to keep Americans at work.

In its reports, the Joint Economic Committee has stressed the need for a tax policy that will spur savings and investment so we can put new tools in the hands of American workers. We must do this to gain a competitive edge on our trading partners in the world marketplace.

The committee has consistently called for an end to the traditional kinds of tax cuts that we've seen in this country since World War II. This traditional approach simply pumps money into the economy and kindles inflation.

Instead, we need a tax policy that will halt the unprecedented 18 months of declining productivity in the U.S. and will modernize this nation's productive capacity.

Recently we saw Democrats and Republicans on the Senate Finance Committee work hand-in-hand to craft just the kind of tax cut that Democrats and Republicans on the Joint Economic Committee have been advocating for several years.

I believe this indicates a broad agreement in this country on the need to stabilize our economy through bold, innovative action.

The Senate Finance Committee's tax bill will offer \$22 billion in cuts to individual tax payers, much of it along lines I had proposed. For example, it reduces the so-called marriage tax "penalty" and it helps compensate people whose Social Security taxes will be increased next January.

The measure also would enlarge the "zero bracket amount"—what used to be called the standard deduction—from \$2300 to \$2400 for a single taxpayer and from \$3400 to \$3600 for a married couple filing a joint return.

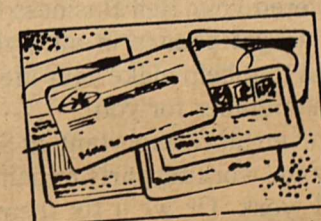
The committee also included in this tax legislation the Bentsen bill to encourage investment by allowing accelerated depreciation on equipment and machinery and on commercial structures.

This bill permits investors to depreciate equipment and machinery roughly 40 percent faster than they now can. It also vastly simplifies depreciation procedures in the tax code, something that will prove especially helpful to small businesses. This measure should go a long way in helping to lift our country's sagging rate of productivity.

And the bill would increase the capital gains tax exclusion for individuals from 60 to 70 percent. Back in 1978, I sponsored legislation which was enacted to raise this exclusion from 50 to 60 percent. So I'm pleased that we've prevailed again on this issue.

In short, the Senate Finance Committee has approved a carefully targeted, non-inflationary tax reduction designed to help restore prosperity and stability to our economy.

All this was achieved during an unusually heated election year, not by Democrats on the Finance Committee, nor by Republicans on the committee—but by members of the United States Senate working together in the best interests of their nation.



There are approximately 579 million credit cards in circulation in America today.

"He who serves his country well has no need of ancestors." Voltaire

## Chick Kazen

One of the major authorization bills of every congress, authorizing expenditures by the Department of Defense, won approval in the House last week by a vote of 360-49. The bill provides \$52.8 billion for fiscal '81 purchases of weapons, research and development of new military systems and sets military and civilian personnel ceilings. We acted on a conference report that was \$340 million below the House-passed figure and \$868 million above the Senate version.

Nearly \$37.8 billion was authorized for weapon and equipment procurement, including \$16.6 billion for aircraft and helicopters, \$8.4 billion for new warships, and \$2.3 billion for military tanks and other armored vehicles for the Army and Marine Corps. The authorization for military research, development and testing was \$16.9 billion, while \$120 million was authorized for civilian defense.

We included in the bill a number of

military pay and benefit programs previously approved in separate House bills and we raised the education requirements in another effort to improve the all-volunteer force.

### OVER-RIDE VA VETO

By an overwhelming vote of 401-5, the House voted to over-ride the President's veto of a bill that aims to maintain medical, dental and other health care services of the Veterans Administration. Our hearings had shown that we needed to increase pay rates to attract and retain skilled personnel who would provide the best possible care for our veterans, so we insisted on salaries that would insure VA hospitals had competent personnel.

The same sentiment obviously prevailed in the Senate, where the vote was 84-0 to reject the veto. It was the first over-ride action of President Carter's administration, but even those of us who generally support him wanted excellent health care provided by VA hospitals.

### MORE ENERGY BILLS

The House continued to advance our nation's energy program in actions last week. By a vote of 365-7, we approved an experimental laboratory to develop a fusion energy system. Nuclear fusion or the harnessing of hydrogen isotopes in a doughnut-shaped device called a tokamak, may have the potential to produce huge amounts of energy and while the project may cost \$10 to \$20 billion over the next 20 years, I am aware that oil imports will cost us \$90 billion this year alone. I voted for the bill as a wise investment in our nation's future.

We also passed by voice vote a bill providing greater federal attention to the safe operation of nuclear power plants. We know that nuclear plants are now safer than other significant power sources, but the Three Mile Island accident showed that more improvements can be made. We, therefore, directed careful study by the Department of Energy of the entire nuclear fuel process.

We also looked so another energy source when we passed the wind energy study bill, authorized federal aid to projects that may develop electric power from new systems that use the wind.

### NEW FIRE ANT WAR

The Department of Agriculture advised me that it would share the costs of a new war on fire ants in Texas and four other southern states. A new product, called Amdro, has been conditionally registered for aerial application, the only truly effective way to cover range lands, pastures and farm fields.

Colonies of these ants build large mounds that can damage farm equipment injure cattle, and cause human reactions ranging from discomfort to infection that may be fatal. I have supported efforts to develop an effective yet safe insecticide, and welcome the scientists' finding that we now have one.

\*\*\*\*\*

## Carl Esser Reports

### TAX PRACTITIONER WORKSHOPS

The Texas Agricultural Extension Service is cooperating with the Internal Revenue Service in offering 37 Tax Practitioner Workshops across the state reports Carl Esser, County Extension Agent. The nearest general workshop to our area will be held in Uvalde on 1--2 December. The nearest Advanced Workshop will be in San Antonio on December 18--19. These two day workshops are specifically designed for tax practitioners who work extensively

with farmers and ranchers.

Topics to be covered in the general workshops are: What's new-including the windfall profit tax; Divorce, Separation Child Support, alimony and property settlements; Capital gains and losses; Repossessions; Oil, gas and coal; Filing and processing; Corporations; Partnerships.

For the first time this year 8 Advanced programs will be offered stressing tax preparation for businesses. Topics to be discussed in the Advanced workshops are: What's new-including the windfall profits tax; 351 transfers; Dividends, Calculating earnings and profits account; The sub-chapter S election Fringe benefits; Pensions and profit sharing; Corporate Liquidations; Liquidations (continued); Questions and Answers.



A certain kind of person shops for quality *first*. And if something's a little unusual, a little different, so much the better. If that's you, then it's time you discovered your Bell Business Office.

We've got phones in all styles; antique, ultramodern, warmly nostalgic. Phones that help make your life easier. From a simple extension, to one that'll dial the number for you.

But even more important, at Southwestern Bell you'll get genuine Bell. That means the working parts remain phone company property, so you can be sure they'll work. Or we'll fix them free. It's a level of quality—and service—you've come to expect from Southwestern Bell.

So when it comes to phones, come to your Bell Business Office. Because although you love Mickey Mouse... why waste your time with mickey-mouse details?

**Southwestern Bell. We talk your style.**

# THE LONGHORN

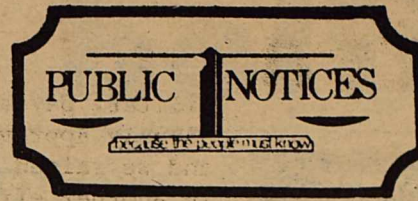
## TRY OUR SUNDAY BUFFET

THE LONGHORN  
RESTAURANT, MOTEL & LOUNGE

563-9790

3 Miles West of  
BRACKETTVILLE, TEXAS

Your Host TRAVIS & LANETTE WILSON



City of Brackettville  
Kinney County

Notice is hereby given that the City of Brackettville proposes to increase its' tax budget by (30%) thrity percent.

A public hearing on the increase will be held on September 11, 1980 at 7:30 P.M. and September 15, 1980, at 7:30 P.M. at City Hall Brackettville, Texas.

/s/ Tim Ward  
City Manager

\*\*\*\*\*

City of Brackettville  
Kinney County

Notice is hereby given that the Board of Equalization of the City of Brackettville will meet.

THURSDAY, SEPTEMBER 11, 1980 7:30 P.M.  
FRIDAY, SEPTEMBER 15, 1980 7:30 P.M.

Meetings will be at City Hall in the Fireman's Lounge.

/s/ Tim Ward  
City Manager

\*\*\*\*\*

### PUBLIC NOTICE

The Maverick County Out-Patient Clinic, Inc. is accepting applications for the position of Register Nurse and Licensed Vocational Nurse, for the staff of the Kinney County Clinic located in Brackettville, Texas.

Interested persons should send their resumes to the following  
Mr. Elias Lars-Lars, Administer  
Maverick County Out-Patient Clinic, Inc.  
P.O.Box 921  
Eagle Pass, Texas 78852

\*\*\*\*\*

### PUBLIC NOTICE

Notice is hereby given that the Board of Equalization of the Brackett Independent School District will meet, September 16, 1980 at 10:00 a.m.

Anyone wanting to have their new evaluation considered by the Board please make an appointment with Kathy Gulick prior to the meeting, so they can have their name listed on the agenda.

/s/ Kathy Gulick  
Brackett ISD  
Tax-Collector/ Assesor

\*\*\*\*\*

These are popular Extension programs last year the 2,995 people that participated in this state-wide series reported filing for 637,000 tax returns.

For additional information, please contact the County Extension Office for a brochure explaining more about the program and registration information.

\*\*\*\*\*

### COPING WITH FINANCIAL CRISIS

Texas farmers and ranchers continue to be caught in a severe cost-price squeeze points out Carl Esser, County Agent with the Texas Agricultural Extension Service Texas A&M University System.

They have had to deal with sharp increases in the cost of energy, interest and other production inputs while farm prices have continued under pressure. To add to their misery, the state is now in the grips of a severe drought.

To cope with this crisis situation of economic survival, producers need to take a close look at possible adjustments in the areas of financing, marketing and production economics, says Esser.

To curb rampaging inflation the Federal Reserve Foard and the federal government launched programs early this year to tighten money supplies and restrict credit. Resulting skyrocketing interest rates and tightening credit hit famers and ranchers hard.

However, interest rates have started down recently, with a prime rate of 11-12 percent forecast by November, notes Esser. But interest rates on farm loans will likely fall more slowly than the prime rate, just as they lagged behind the prime rate when interest rates were increasing.

While producers have generally been able to obtain loans to cover operating costs, loans to finance capital expenditures have been hard to come by. Now, through the Economic Emergency Loan Program, \$1 billion has been made available to states (\$31,859,000 to Texas) to help farmers and ranchers pay installments on existing debts, re-finance existing farm debts, re-organize farms to make them more viable, or pay farm operating expenses. Where drought has severely reduced farm income, emergency loan funds are being expanded for use by eligible producers. The availability of loan funds to finance capital

expenditures in 1981 will be influenced mainly by how well producers repay their 1980 debt commitments and by the projected farm income picture at that time, explains Esser. Many farmers may have a tough time qualifying for credit in 1981 due to their deteriorating net worth statement.

A side effect of the dry, hot weather, however, is less production and a higher price level for some commodities. This may contribute to a substantial improvement in 1981 income

for many Texas farmers.

To help obtain financing for the year ahead, producers must know how to prepare financial statements and how to apply for emergency credit. Key tools necessary to negotiate financing of any type are the cash flow statement, income statement and balance sheet, says Esser.

The cash flow statement provides a monthly summary of expected cash outflow (for operating expenses, debt service,

necessary capital expenses and family living) and cash inflows (from farm products sales, off-farm income and other available sources.)

The income statement provides a summary of operating expenses and income for the farm's operation over a specified period, usually one year.

Finally, the balance sheet provides a financial summary of all assets and liabilities of the farm business as of a specific date.

For in-depth information dealing with the current economic problems faced by farmers and ranchers, Esser suggests a copy of "Coping with Economic Crisis in Agriculture," available at the county Extension Office.

\*\*\*\*\*

# classified ads

TUESDAY 12:00 NOON DEADLINE  
 All Classifieds--15¢ per word  
 minimum insertion \$2.00 per issue.  
 NO CARD OF THANKS OR CLASSIFIEDS  
 WILL BE TAKEN OVER THE PHONE.....

## KINNEY COUNTY LAND CO.

(512)563-2446

4000 ACRES N.W. Brackett--5 wells  
 5 bdrm home--4 barns--pens, fin-  
 ancing available.

\*\*\*\*\*

Lovely 14 X 85 Mobile Home on  
 2 choice lots in Brackett--Fire  
 place, 3 bdrm and 2 baths.

\*\*\*\*\*

Hwy Lots for sale or lease....

\*\*\*\*\*

DEER HUNTERS..... 3 day Hunts  
 on Land that has not been hunt-  
 ed in years.

\*\*\*\*\*

\*\*\*\*\*  
 MASON SHOES--guaranteed, latest  
 styles, mens and ladies, highest  
 quality, go 1st class, reason-  
 able prices.  
 Call: 563-2993.

\*\*\*\*\*  
 WELDING...BY A PROFESSIONAL WELDER  
 Goose-neck hook-up installed, cat-  
 tle trailers, dump trucks, flat  
 dumps, lift gates, most any kind  
 of welding--electric or gas--  
 DC Portable, ranch work.

DAVE'S GARAGE, Brackettville  
 563-2716

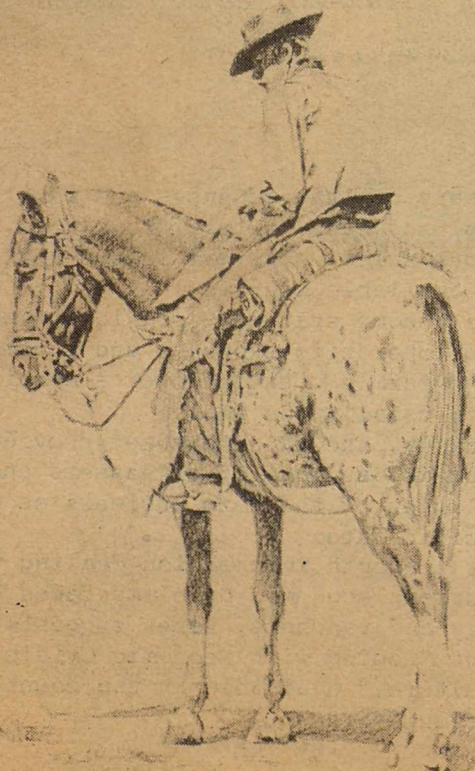
\*\*\*\*\*  
 FOR SALE.....

Fort Clark Springs Membership  
 \$4,200. 1/512/729-2391.

\*\*\*\*\*  
 1973 FORD SUPER VAN.....  
 partially customized, carpet  
 and paneling, power steering  
 and brakes, air conditioning,  
 V-8, automatic, Call: after 5  
 563-2005.

\*\*\*\*\*  
 SAGEBRUSH SHOPPE II.....  
 FRESH FLOWERS, NEW PLANTS,  
 BASKETS AND DRIED FLOWERS.  
 563-2735

\*\*\*\*\*



Texas cowboy as drawn by artist David  
 program for the musical  
 mer on an outdoor  
 yon, Tx.

## Brackettville Dry Cleaners

(across from Jail)

563-2193

"LET US BE YOUR COMPLETE  
 LAUNDRY AND CLEANERS."

Buddy & Boots Love---Owners  
 Peggy Eckert ---Manager

LOWEST PRICES!!!!!!

## Schubach Liquors

Across from Fort Clark  
 entrance, next to Exxon  
 Station.....

563-2322

## Thom McAn

AIR STEP---JOX

Shoes For Everyone  
 In The Family

Lavillita Center  
 Del Rio

## Wines & Liquors

### JIM'S LIQUORS

Across from Border Credit Union

611 East Gibbs  
 Del Rio

Clark & Pierce  
 Phone: 775-0822

## CAVALRYMAN MAIL SUBSCRIPTIONS

MAIL TO:

The Kinney CAVALRYMAN  
 P.O.Box 735  
 Brackettville, Texas 78832

Please enter my one-year sub-  
 scription to the CAVALRYMAN.  
 Check or Money Order enclosed--  
 \$12.00--Out-Of-County, \$11.00  
 In-County (NO BILLINGS)

NAME \_\_\_\_\_

ADDRESS \_\_\_\_\_

CITY \_\_\_\_\_

STATE \_\_\_\_\_

ZIP \_\_\_\_\_

Please print or type.

## Woodson & Sons Welding Service

563-2555

ANY TYPE OF WELDING  
 AND FABRICATION!!

REDA RED JACKET AERMOTOR

## HINDS WELL SERVICE

ALL TYPES WATER SYSTEMS  
 COMPLETE LINE OF SUBMERSIBLES AND WELL SUPPLIES

Richard Hinds

108 Tomahawk  
 DEL RIO, TEXAS 78840

775-1328  
 775-9551



### 8x10 Color Portrait - \$1.50

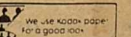
Your choice of Family Group or Individual  
 One special offer per family, one per person.

### GATEWAY MOTEL-LOBBY

Saturday September 6th

Photo Hours: 1:00 - 9:00 p.m.

BRACKETTVILLE, TX



### Church of Christ

Sunday School 9:30 a.m.  
 Worship 10:30 a.m.  
 Bible Study (Sunday) 6:00 p.m.  
 Bible Study (Wednesday) 7:00 p.m.

### Brackettville United Methodist Church

Sunday School (Children) 9:45 a.m.  
 Sunday School (Adult) 9:45 a.m.  
 Morning Worship 11:00 a.m.

BARRY COX  
 Pastor

### ST ANDREWS EPISCOPAL

Sunday Service 8:15 a.m.

MILTON BROWN  
 Rector