

THE BORDEN STAR

VOLUME XIX

NOVEMBER 21, 1990

Serving the Counties of Borden, Dawson, Garza, Howard, Lynn & Scurry

POSSIBLE CLOSING OF CHURCH

Borden County was organized in 1891 and the Doward Methodist Church in Gail, was organized on January 31, 1892, by Rev. T.L. Adams. Among the charter members listed in the original record book is the name of Elizabeth Kincaid, grandmother of Vivian Clark and Aubrey Rogers. Most of the other charter members have long departed from Borden County, but members of some families still hold an interest in the happenings of this church.

In November 1900, the Methodist Church in Gail, was reorganized with Rev. H.C. Jolly; who lived north of Gail, leading the movement. Among the charter members of

this reorganization were Lucy and Bell Kincaid. Lucy's son, Aubrey Rogers, continues to support the Gail Church as did Bell's son, Vivian Clark until his recent death. Other charter members were Minnie Russell, who married David Doward, and Mrs. J.D. Brown, wife of the man who ran the Gail Bank until it's failure following the drouth and blizzard of 1917-18.

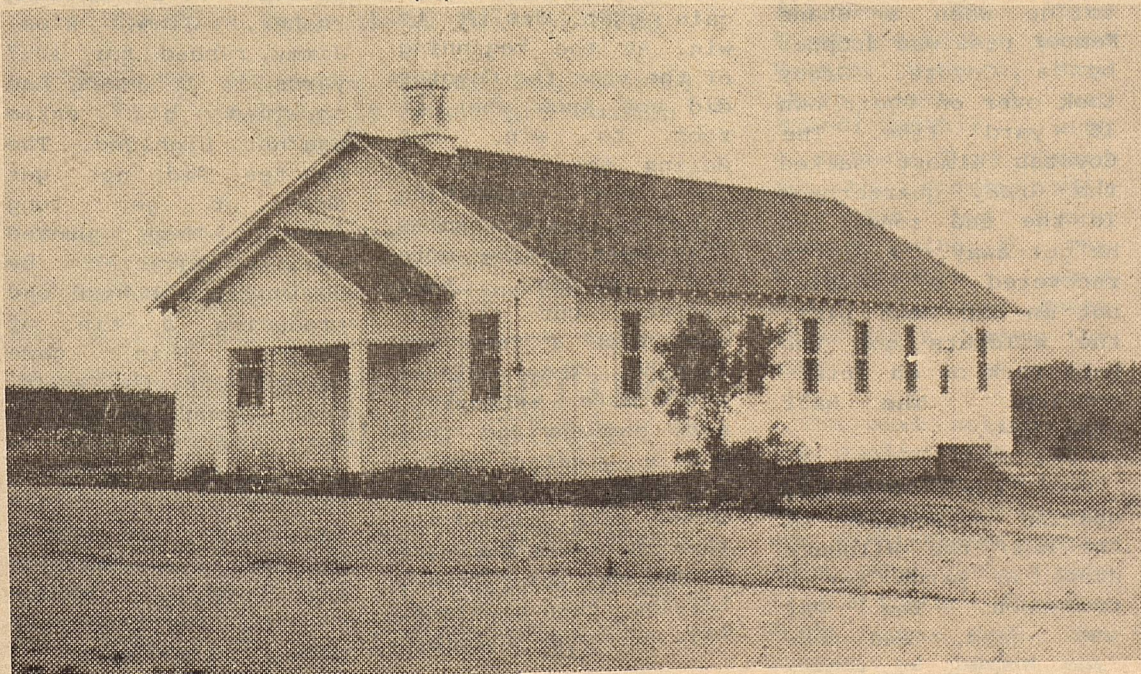
Also listed are five members of the James Dow family, including James Lorenzo Dow who published his first newspaper in Gail and went on to build the weekly Avalanche-Journal of Lubbock into a widely known daily paper. In the Peter

Hurd murals at Texas Tech, Lorenzo Dow represents the newspaper industry in West Texas.

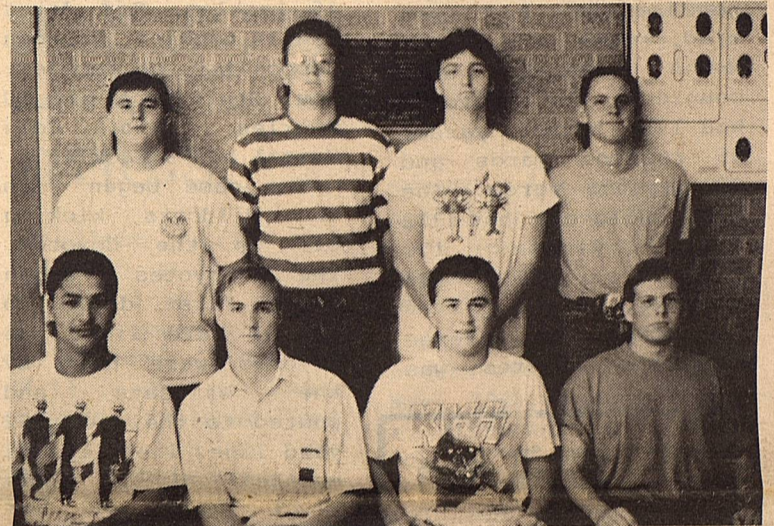
The Doward Methodist Church in Gail is the only Methodist Church in Borden County. On January 31, 1992 it would celebrate it's 100th year.

But this Sunday, Nov. 25, 1990, there will be a meeting at 8 a.m.--regular church time--to decide if the church should be closed. Is there no one interested in the preservation of a Methodist Church in Borden County? If so, please meet with us on Sunday at 8 a.m.!

/s/ Edna Miller



The Doward Memorial Methodist Church



Top row L. to R: KLINT KEMPER, COLE VESTAL, PAUL STURDIVANT and J.J. KINCHELOE. Bottom row JIMMY RIOS, JOHN PAUL HARRIS, SHANE KEMPER and ROD JETER. (STAR PHOTO)

ALL-DISTRICT SELECTED

The 5A coaches met to select the 1990 All District 6-Man football team. The Coyotes pretty well dominated the All-District team as appropriate. The All-District Honors for the Borden County Coyotes are as follows:

1ST TEAM ALL-DIST.

OFFENSIVE END:
Cole Vestal
QUARTER BACK:
Shane Kemper
RUNNING BACK:
Jimmy Rios

DEFENSIVE END:

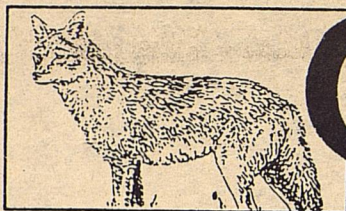
Paul Sturdivant
Cole Vestal
LINE BACKER:
Klint Kemper
SAFETY: Jimmy
Jimmy Rios
PUNTER:
Jimmy Rios
2ND TEAM ALL-DIST.

CENTER:

J.J. Kincheloe
OFFENSIVE END:
Paul Sturdivant
DEFENSIVE LINEBACKER:
Rod Jeter
HONORABLE MENTION
RUNNING BACK:
John Paul Harris

LOCAL LANDFILL FACES CHANGES UNDER NEW STATE LAW

The State of Texas, municipal landfills the Texas Department of (dumpgrounds) operate. Health and the Texas To comply with the Board of Health along latest rules passed by with the United States the Texas Board of Environmental Protection Helth, the Borden Agency are changing the County Commissioners' rules under which cont. to pg. 7



COYOTE NEWS

COYOTES STAY HOME, BUT AREN'T LOSERS!

The Borden County football team played a hard fought Bi-District football game Friday night to a 20-20 tie. The Coyotes did not lose the game, but they will conclude their bid for the state playoffs because the Grady Wildcats had 5 penetrations to the Coyotes 4. If the penetrations had been tied, then the first downs would have counted. The Coyotes had 175 total yards, 95 rushing yards and 80 passing yards. The Grady Wildcats had 312 total yards, 171 rushing, and 141 passing.

Leading the offense for the Coyotes was

Shane Kemper. He completed 5 of 14 passes for 80 yards and 1 touchdown.

Klint Kemper rushed 11 times for 59 yards and 2 touchdown's.

J.J. Kincheloe caught 1 pass for 15 yards.

Klint Kemper led the defense with 17 tackles, John Paul Harris had 15 tackles, Rod Jeter had 14 tackles, Brandon Adcock had 11 tackles, Paul Sturdivant had 10 tackles, and Cole Vestal had 9 tackles.

The game began with the Wildcats kicking off to the Coyotes. The Coyotes began their first drive to the 13 yard line. The Coyotes were held by the Wildcats and punted to their own 32 yard line. The Wildcats managed only 7 yards in 4 downs, and the Coyotes took over. The Coyotes next possession was aided by a Grady facemask penalty for 15 yards and a first down. An offside penalty was assessed on the next four downs. The Coyotes penetrated to the Grady 15 yard line before fumbling to the Wildcats. The Wildcats completed a pass for 29 yards and a 1st down. On 4th and 10 at the Coyote's own 25 yard line, Jeremy Mize tackled a Wildcat for a loss. On the next series of downs the Coyotes were forced to punt without a first down. On 4th and one a Wildcat ran 25 yards to the Coyote 14 yard line. The first quarter ended 0-0.

On third and goal at the 5 yard line the Wildcats picked up 3 yards. On 4th and goal at the 2 yard line the Coyotes held the Wildcats short. Klint Kemper was credited with the tackle. The

Coyote defensive team made a great effort in stopping the Wildcats on the goal line. On the first play from the Coyote's own two, a Coyote fumbled the ball right into the hands of a Grady defender. The Wildcat then ran the two yards for the touchdown. The PAT failed, and the score was 6-0 with 8:05 left in the half. Juve Balaque ran the kick-off to the 23 yard line. Brandon Adcock made a 32 yard run that was negated by off setting penalties. Cole Vestal caught a 12 yard pass, and John Paul Harris made a 10 yard run for a 1st down. Klint Kemper made 6 yards, and a Grady penalty gave the Coyotes a 1st down. John Paul Harris made 13 yards for a 1st down and Klint Kemper made a 3 yard plunge for the touchdown. The PAT was no good, and the score was 6-6 with 5:34 left in the half. The Wildcats took over at their own 12 yard line. They made a first down, but had to punt on the next four downs. After a 16 yard Grady punt, the Coyotes took over at their own 34 yard line. Klint Kemper got 23 yards and Brandon Adcock picked up 6 yards. The Coyotes were faced with 4th and 8 yards to go when a Shane Kemper pass was dropped by a Coyote. Grady took over on their own 16 yard line. The Coyotes almost sacked the Grady quarterback in the end zone, but he got away. A Coyote recovered a fumble, but on the next play, the Wildcats got the ball back on an interception. The half ended 6-6.

On the Wildcats opening possession of the half, the Wildcats drove 58 yards for a touchdown. The PAT was good, and the

score was 6-14 with 5:59 left in the 3rd quarter. The Coyotes first possession of the half resulted in a punt to the Grady 15 yard line. The Cats made 2 first downs, but lost 22 yards. On 4th and 30 yards, the Coyotes took over on downs. The Coyotes were held without a 1st down, and on fourth down Shane Kemper punted to the Grady 3 yard line. The quarter changed, and Grady tried to punt from their own 11 yard line. The Wildcats made a -5 yard punt, and the Coyotes took over on the Grady 2 yard line. On the next play Klint Kemper went over for the touchdown. The referee ruled the PAT by Shannon Smithie no good. The score was 12-14 with 9:12 left in the game. Grady was forced to punt to the Borden Coyotes 10 yard line. J.J. Kincheloe caught a 15 yard pass for a 1st down. On 4th and 6 yards Shane Kemper was dropped for a loss. The Wildcats

drove the ball on this possession for pay dirt. The PAT was no good, and the score was 12-20 with 2:56 left in the game. At this point the Coyotes could have given up, but instead they showed more courage than at anytime during the year. Cole Vestal caught an 18 yd pass for the first down, but the Coyotes had another interception. The Coyotes still did not give up and forced the Wildcats to punt. The Coyotes took over from 32 yards out. On 1st down Shane Kemper connected with Cole Vestal for a 32 yard touchdown pass. The score was 18-20. Shannon Smithies' kick tied the score 20-20 with 1:07 left in the game. The Coyotes attempted an on side kick but failed. The Wildcats just ran the clock out because the Coyotes were out of time outs and the Wildcats knew they were ahead in both penetrations and first downs.

The Borden Star
Publication No. 895520
(USPS 895-5200)

CO-EDITORS
Verna Adcock
Clarajane P. Dyess

Published weekly,
except for Christmas
and New Years, on
Wednesday at Gail,
Borden County, Texas
79738, Box 137 Kincaid
Street Second Class
postage paid at
Gail, Texas.

Any errors that we
make reflecting on
the reputation or
standing of any
Firm, Corporation or
individual that
appear in the columns
of the Borden Star
will be gladly cor-
rected when called
to the attention of
the staff.

Subscription Rates:
\$8.00 per year

Borden Star Owners:
Mr. R.D. Lewis, Mrs.
Rich Anderson, Mrs.
Pat Porter, Mrs.
Bob Dyess, Mrs.
Clarence Porter, Mr.
Nathan Zant, Mrs.
Joe Gilmore, Mrs.
Sonny Tucker, Mrs.
Doris Rudd, Mrs.
Glen Toombs, Mr.
T.L. Griffin, Mr.
Eddie Simer, Mrs.
Lorene Jones, Mr.
Martin Parks, Mrs.
Edna Miller, Mr. Dan
K. Turner, and The
Borden County I.S.D.



CHALK TALK BY COACH AVERY

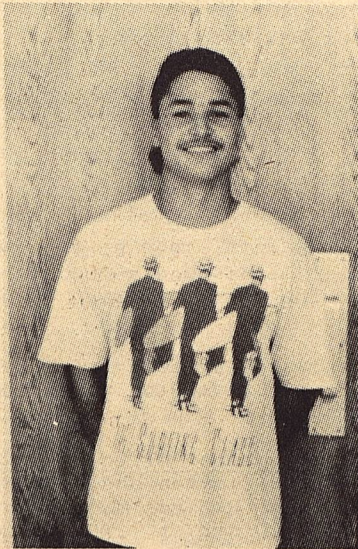
The Coyotes had a great year. I have really enjoyed coaching the football team. I have watched them become competitors and gain that desire to win. At the beginning of the year the Coyotes did not know what it took to win, but during the course of the year something happened to the Coyotes. They were having more fun playing they claimed, but at the same time a team was forming. They played with more intensity, more courage and they had a greater desire to win. I think it began with Klondike, then there was district. Hermleigh, Ira, Trent, Loraine, then Highland. All of them helpless

against the Coyotes. The Coyotes displayed their character by going into the Bi-District playoff game without their leading rusher, Jimmy Rios. Jimmy, rushed for 1097 yards in 9 games, had sprained his ankle against Highland. The Coyotes did not get down or get long faced. They proved their character by coming from behind and producing a tie of 20-20. This game capped off the year. Even though we could not advance, it is success like this that carries over into basketball and track and even into athletics next year. Good season Coyotes, now let's have even a better year.

COYOTE NEWS CONTINUED . . .

RIOS SELECTED AS ALL-STAR

The All-Stars were also recently selected. These young men will represent District 5A at the 1991 6-Man All-State game this summer in Stephenville. This district gets to send 2 athletes and it was hard to select. Our own Jimmy Rios was the top vote getter, and Trent's Jamie Masonheimer was the other All-Star. Cole Vestal was selected as the 1st alternate. If one of the two All Stars elects not to go to the game, Cole will have the first chance to attend.



JIMMY RIOS, SENIOR
RUNNING BACK
(STAR PHOTO)

BASKETBALL TIME IS HERE ! HIGH SCHOOL GIRLS

After opening the season with 2 fairly impressive scrimmages against Coahoma and Lamesa, the Borden County Lady Coyotes opened the season for real Saturday night in the Coyote Gym against the Lady Eagles from Sterling City. The game would be a see-saw affair all the way, with Sterling City leading 14-13 after one quarter and 25-21 at intermission. The Lady Coyotes came out strong in the 3rd

quarter, to take a 35-33 lead into the final quarter. Thanks to a good defense and some cold shooting by our girls, the Lady Eagles were able to take a 47-41 win back to Sterling City. Our scoring was pretty balanced, with Amanda Anderson and Shayne Hess scoring 12 each. Jeana Jones added 10, Kristin Monger 6, and Melody Harrison rounded out the scoring with 1. Kelly Ogden also played well for the

Lady Coyotes rounding out the team this year are Heather Armstrong and Mendy Hensley. With only 8 girls on the team this year, all of our players will have to contribute in order for us to have a good year. The girls all have a strong desire to win and have a tradition of winning, which should help us through a very tough schedule.

After a Thanksgiving break, we travel to Loop to play the Longhorns.

JR. HIGH GIRLS

The Borden Jr. High Missy Coyotes opened the 1990 season with a 34-18 victory over Grady. The contest was played at the Coyote Gym Nov. 12th. The Coyotes jumped out to a 13-3 lead after one quarter and led 21-10 at the half. A solid 3rd quarter made it 27-14 Borden County before the subs came in during the last quarter. Our second string played well, outscoring Grady 7-4 in the last quarter to make the final 34-18 in favor of the Missy Coyotes.

Leading scorer for the Coyotes was Bobbie Armstrong with 12, followed by Jana Kincheloe with, Laura Hensley with 5, Maya Sheen with 4 and Brandi Smithie with 4. Leticia Rios closed out the scoring with 2. Odom led Grady scoring with 9. The Missy Coyotes used their full-court press effectively during the game.

The next action for the Junior High Girls came over last weekend at the Sands Tourney. Our first-found opponents were the Grady Wildcats. As in the first game of the season, we jumped out to a nice 16-6 lead in

the first quarter and led 23-9 at halftime. We played well in the third quarter and built the lead to 33-13. Our younger players finished out the game as we won 35-16. Bobbie Armstrong led our scorers with 15 points followed closely by Jana Kincheloe with 12. Maya Sheen, Brandi Smithie, Shayla Jeter, Laura Hensley and Nadia Baeza added 2 each. Also seeing action were Leticia Rios, DeAnn Parks, Mandi Herring, and Erica Nance.

Madison led Grady scorers with 6. The girls were fired up going into the Championship game against the home Sands Mustangs, who had defeated Klondike easily in their game. Our pressure defense held Sands scoreless in the first quarter as we led 5-0. By halftime, Sands had taken a 14-10 lead, thanks to a good press of their own. The teams played evenly in the third quarter, but Sands outscored us 12-3 in the 4th to pull away with a 39-24 win and the championship. Scorers were Jana Kincheloe 7, Brandi Smithie 6, Maya Sheen, 4, Laura Hensley 3,

Bobbie Armstrong 2, Leticia Rios 2. Hodnett led Sands with 18. Overall, it was a good showing for our girls.

We paid Sands a second visit on Monday, Nov. 19th, hoping for a different outcome. For the first half, it looked as if we might pull off an upset, as our defense was giving Sands trouble. The score at the half was 13-12 Sands. We had a very cold 3rd quarter, however, as Sands moved out to a 24-12 lead. We emptied our bench in the 4th quarter as our reserves did a good job in a losing cause. Sands would up the game on top by a score of 33-18. Bobbie Armstrong and Jana Kincheloe led our attack with 6 each. Nadia Baeza, Erica Nance, scored 2 each, while DeAnn Parks and Maya Sheen scored 1 each. Leticia Rios, Mandi Herring, Laura Hensley, Brandi Smithie, and Shayla Jeter also saw action for Borden County. After 4 games, our record stands at a respectable 2-2.

O'Donnell will visit our gym on November 26th.

**GO-
FIGHT-
WIN!**

FFA NEWS

FFA FRUIT SALES

The Gail FFA began selling fruit November 13th. The sales will continue until Wed. Nov. 28th. The following is a list of items and prices:

RED DELICIOUS APPLES: (Washington)
Large Box----100 per box--\$20.00
Small Box----50 per box---\$13.00

CHOICE ORANGES: (California navel)
Large Box-----88 per box--\$18.00
Small Box-----44 per box--\$10.00

CHOICE RUBY RED GRAPEFRUIT
Large Box-----40 lbs.-----\$16.00
Small Box-----20 lbs.-----\$10.00

MIXED FRUIT (Oranges & Grapefruit)
One Size Only-35-40 lb.---\$18.00

COMBO BOX (Oranges, Apples, Grapefruit)
One Size Only-36 count per carton
\$15.00

Anyone wishing to purchase fruit, please contact Mr. Buddy Wallace at 915/856-4314 or 856-4478. Thanks to everyone for supporting the FFA.

**BOOSTER CLUB MEETING
MONDAY, NOV. 26th
IN CONFERENCE ROOM
AT 5:15 p.m. BEFORE
THE JUNIOR HIGH GAME
WITH O'DONNELL**

Peanut-Butter-Jelly Sandwiches, a Science Lesson ?

Peanut butter-and-jelly sandwiches in Barbara Tharp's fourth-grade classroom are not part of the lunch menu; they are part of the science lesson.

Tharp compares the layers of the peanut butter, jelly and bread to layers of rock beneath the earth's surface. She has students slice the sandwiches and move the pieces into different positions to see how the earth shifts, forming geological faults.

Each summer, 30 teachers spend six weeks learning new ways to present science lessons from the faculty of Baylor, Rice University and the University of Houston. The project

allows the teachers to learn by doing, just as their students will.

For a lesson on microbes, the teachers make yogurt in a thermos container. "Tree cookies", (slices of tree trunks), are used as a learning tool for determining a tree's age and climate.

Animal organs purchased at the supermarket are dissected for anatomy lessons.

"Hands-on is the best way to teach science so that kids experience and remember. They think they're having fun. They don't know they're learning.

The program encourages students to ask the 'how' and 'why' questions, resulting in higher test scores.

SPEAKS AT PEP RALLY

Mr. Bob Dyess, former football and basketball coach at Borden County School, was invited to speak at the pep rally held before the Bi-District playoff game with Grady.

He said he was honored to be asked by this year's winning team to give them a pep talk.

Mr. Dyess talked about having "fourth quarter character". Not only for athletic pursuits but to apply this to their future careers.

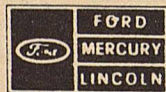
He began his coaching career in Abernathy, Texas, then went to Southland. He was hired to coach at Borden County in 1969.

During his years in Gail, his football teams won various honors, and 18 years ago was the last time Borden County reached the Bi-District play-offs. He said the way the team was progressing, he knew it would



BOB DYESS, FORMER COYOTE COACH!

not be 18 more years before Borden County came home with a trophy.



Whit Parks
Sales Rep. Wilson Motors
E. Hwy. 180 Snyder, Texas
Bus. 573-6352
Home 573-8305



The tallest woman basketball player was Juliana Semenova who played on the 1976 Russian Olympic team and stands seven feet two inches tall.

REGULAR SCHOOL BOARD MEETING NOVEMBER 19, 1990

The Board of Trustees of the Borden County Independent School District met in regular session on Monday, November 19, 1990 at 8:00 P.M. in the Board Room of the Borden County School.

Board members present were Jack McPhaul, Joel Dennis, Kenny Hensley, Scott Clayton, and Randy Adcock. Tom Ed Vestal was absent.

Superintendent, Jimmy Thomas was also present.

1. Call To Order:
The meeting was called to order by Board President, Jack McPhaul.
 2. Community Input:
There were no visitors present.
 3. Minutes:
The minutes of the October 15, 1990 Board Meeting were read. A motion was made by Joel Dennis and seconded by Randy Adcock to approve the minutes. The motion carried unanimously.
 4. Bills:
The bills for November were reviewed. A motion was made by Randy Adcock and seconded by Scott Clayton to approve the bills. The motion carried unanimously.
 5. Appointment Of Records Management Officer As Required By H.B. 1285:
A motion was made by Scott Clayton and seconded by Randy Adcock to appoint Jimmy Thomas as the Records Management Officer of the Borden County Independent School District. The motion carried unanimously.
 6. Gasoline Bid:
The five bids for school gasoline were reviewed, and a motion was made by Joel Dennis and seconded by Randy Adcock to accept the gasoline bid of Frank's Oil Company of Lamesa for the period of December 1, 1990 to November 30, 1991. The motion carried unanimously.
 7. Propane Bid:
The five bids for school propane were reviewed, and a motion was made by Scott Clayton and seconded by Kenny Hensley to accept the propane bid of Eddins-Walcher Company of Snyder for the period of December 1, 1990 to November 30, 1991. The motion carried unanimously.
 8. Appointment Of Appraisal Board Member:
A motion was made by Joel Dennis and seconded by Scott Clayton to appoint Randy Adcock to the Borden County Appraisal Board to fill the unexpired term of Jon Monger which will expire on December 31, 1991. The motion carried unanimously.
 9. Change Of Legal Firm To Address Delinquent Tax Collections:
No action taken.
 10. Review Of Rules And Regulations Pertaining To Borden County I.S.D. Senior Trips:
No action taken.
 11. Adopt and Rescind Policy Statements According To TASB Localized Update 38:
A motion was made by Joel Dennis and seconded by Scott Clayton to adopt and rescind policy statements according to TASB Localized Update 38. The motion carried unanimously.
 12. Superintendent's Report:
 - a. Financial Report- Superintendent, Jimmy Thomas gave a year-to-date financial report for the 1990-91 school year.
 - b. Attendance Report- It was reported that the K-12 enrollment for the District was 185 as of November 19, 1990.
 - c. Board Training Credit- A review of the current status of School Board Training Credit was given.
 - d. Borden County Invitational Tournament- It was reported that plans were presently being made to finalize details relating to the annual Borden County Invitational Basketball Tournament that will take place on December 13th, 14th, and 15th.
 - e. Basketball Officials- It was reported that Superintendent, Thomas had filed a complaint with the Permian Basin Basketball Official's Chapter as a result of the fact that basketball officials were not provided for the first two basketball games of the season as previously contracted and confirmed by the basketball official's association.
 - f. Inclement Weather- A brief review was given pertaining to the delay, early dismissal, and cancellation of school as a result of inclement weather.
- A motion was made by Randy Adcock and seconded by Joel Dennis to approve the superintendent's report. The motion carried unanimously.

13. Adjournment:
A motion was made by Kenny Hensley and seconded by Randy Adcock to adjourn the meeting. The motion carried unanimously.

HOLIDAY MARKET



EMS NEWS

The Extension Program Council and the Extension Home Economics Committee are sponsoring a Holiday Market on December 14th & 15th in conjunction with the Borden County Basketball tournament. We are looking for interested individuals and cottage industries to set up booths at our Holiday Market. The Market will be held from 1:00-7:00 p.m. on Friday, Dec. 14th and 10:00 -6:00 p.m. on Saturday, Dec. 15th.

The Holiday Market will be set up in the Borden County Show Barn directly behind the school. The show-barn is within walking distance from the school.

Please return the enclosed booth reservation form if you are interested in having a booth at our market. We will need you to return these forms or contact the Extension office in Gail at (915)856-4336 no later than Nov. 28th, in order to arrange for tables and booth spaces. After we receive your booth reservations, we will send you detailed information on time, location, etc.

We are requesting that you donate one item per booth to be auctioned off in lieu of a booth fee. We will begin booth set up on Friday, Dec. 14th. in the morning beginning at 10:00 a.m. Please share this information with interested parties. Hope you will join in the fun!

Please share this information with interested parties. Hope you will join in the fun!

Please share this information with interested parties. Hope you will join in the fun!

Hope you will join in the fun!

BOOTH RESERVATION FORM

Yes, I would like to participate in the Borden County Holiday Market on December 14 & 15.

Name _____

Address _____

Phone Number _____ home _____ office

I will arrive at _____ to set up a booth on Friday, December 14.
(time)

I will need an electrical outlet let yes _____ no _____

One item per booth will be auctioned off in lieu of booth fee. My item will be _____

I will have _____ at the Market
(type of booth)

I will need _____ tables.

Please describe booth for advertising purposes _____

DONATIONS:
Mary Cathey
Anonymous

MEMORIALS:

VIVIAN CLARK

Alvin Smith
Eva Doyle
Dennis, Sheri, Kaci,
Tanner & Kalli Poole
Bob & Cookie Dyess

IRMA COX

Mrs. J.W. Gray

K. T. REDDELL

Mr. & Mrs. Joel Dennis
Mr. & Mrs. Ralph Miller
Bob & Cookie Dyess

DIMPLE STOKES

Marge Mathis



According to U.S. Bureau of Labor Statistics estimates, the job classification with the most openings likely between now and 1990 is that of computer service technician.

THANK YOU

My thanks to all; Big or Small, phone calls, food, visits, prayers, kind words and cards.

Also thanks for the time and care from all EMT's

God Bless you,
Mary Cathey

Classified Ads

**** FOR SALE ****

1895 Double Wide Mobile Home. 3 bed, 2 bath in Gail, to be moved. Lived in 4 years. Like new. 1568 Sq. Ft. CALL: 817/647-1919.

LOST

LONG BLACK SWEAT-SHIRT JACKET. Left in show barn concession stand after last Jr. High Football game party. Please contact Teresa Cox: 573-2977 or at the school.

****PIANO FOR SALE****

Wanted responsible party to take on small monthly payments. See locally. Trade-ins accepted. Credit manager 1-800-233-8663.

EXTRA INCOME "90"
Earn \$200 - \$500 Weekly mailing Greeting Cards & Novelty Gift items. For more information, send a stamped addressed envelope to: GREETING CARDS, INC. P.O. BOX 2297 Miami, FL. 33261

HELP WANTED:
EASY WORK! EXCELLENT PAY! Assemble Products at home. Call For More Information. 504-641-8003. EXT. 6293

REAL ESTATE:

WHY RENT? HOMES FOR \$1.00, Repos, Gov't Give Away Programs! For Information Call 504-694-0670 EXT. R-6293

Drive safely. Don't wreck your life.

State Department of Highways and Public Transportation.

Farmers' share of Thanksgiving dinner declines over six years

(AUSTIN)--"Texas farmers can expect to receive 2.2 cents as their share of this year's average Thanksgiving dinner, the second lowest net return in the six years that the Texas Department of Agriculture has tracked holiday meal prices," Texas Agriculture Commissioner Jim Hightower said today.

"The farmers' net return has declined nearly five cents in six years from a total of seven cents per serving in 1985, the first year that TDA examined the consumers' cost and farmers' return for an average Thanksgiving dinner.

"This follows an overall trend toward a declining farmers' share of the consumer food dollar during the past six years. In 1985, the average farmer received just 26 cents of every consumer food dollar. In 1990 farmers received an average of less than 24 cents of every consumer dollar.

"Further declines are likely next year, as rising fuel prices triggered by the current international situation cause farmers' input costs to skyrocket and as drastic cuts in farm subsidies and a freeze in the federally mandated target prices for many farm products take effect," Hightower said.

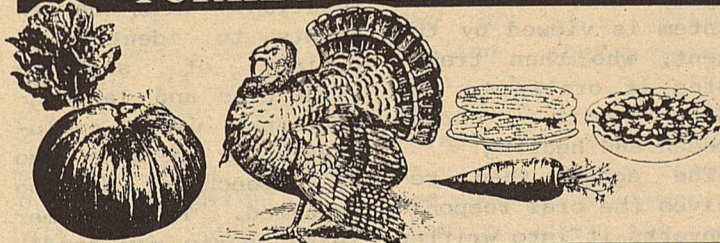
"Consumers, on the other hand, will pay an average of \$2.52 each for their Thanksgiving dinner, eight cents more than last year but 36 cents less than six years ago.

The TDA Thanksgiving Dinner Survey annually examines 10 common food items produced in Texas and found on typical holiday dinner plates. The cost to consumers is calculated by a

series of market basket surveys conducted across the state by marketing specialists. The return to farmers is calculated on the basis of

crop prices gathered by the Texas Agricultural Statistics Service, the Texas Agricultural Extension Service and the U.S. Department of Agriculture.

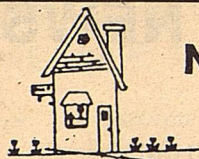
TURKEY DINNER 1990



	Prices Paid By Consumers	Texas Farmers' Net Return
Turkey - 8 oz.	59.5¢	2.1¢
Stuffing - 4 oz.	45.9¢	1.3¢
Rice - 4 oz.	10.2¢	.1¢ (1/10¢)
Whole kernel corn - 4 oz.	16.0¢	-.2¢ (-2/10¢)
Lettuce - 2 oz.	12.8¢	.1¢ (1/10¢)
Grapefruit - 4 oz.	14.5¢	-.2¢
Carrots - 4 oz.	9.8¢	.5¢ (5/10¢)
Milk - 8 oz.	22.2¢	1.6¢
Pecan pie - 2 oz.	44.9¢	1.4¢
Ice cream - 4 oz.	16.6¢	.8¢ (8/10¢)
TOTAL	\$2.524	2.2¢

Sources: Texas Department of Agriculture, Texas Ag Statistics Service, Texas A&M

Texas Department of Agriculture graphic



NOTES FROM HOME

BY DEBRA POLLARD

Home Demonstration/CEA

Some Calories Count More Than Others

If the number of calories consumed by Americans has dropped substantially since the early 1900, why has the average weight in the United States continued to creep upward throughout the better part of this century?

For many years scientists thought that weight loss was simply a matter of mathematics. If we ate fewer calories than we burned for energy, we would lose weight. Today, scientists are finding some interesting things about calories. Not only do they all count, but calories from fat seems to count more than others. Canadian investigators found new reasons why fat, not carbohydrate, in the diet is a major villain in obesity. The researchers found that men who ate high-fat food in a sampling of their normal diets were fatter. When 244 healthy men ate whatever they liked and recorded their food consumption for three days, those who had eaten foods containing more fat had more body-fat mass and a higher percentage of body fat, and their skinfolds in all locations were thicker.

Researchers also found that when people ate a high-fat diet, they consumed more calories than on a low-fat diet. When eight men had all they wanted from choices of high-fat foods, they consumed about 4,100 calories a day. When the men ate all they wanted from the same menu items prepared so that they contained less fat, they consumed 3,000 calories a day.

At nine calories per gram, fat packs more than twice the calorie punch of carbohydrates and proteins (each with four calories per gram). Beyond that,

researchers have learned that the body converts dietary fat to stored fat relatively easily. Fat ingested in the diet is converted into stored fat in the body at 97 percent efficiency compared to carbohydrate which is converted into body fat with an efficiency of only 77 percent.

Simply put, dietary fat is much more likely to become body fat than dietary carbohydrate. Carbohydrates have always had a lot going for them nutritionally, so why are we only now getting around to recognizing their virtues?

Some nutrition experts think we may have backed into renewing our appreciation for carbohydrates.

It's clear that people want to reduce the amount of fat in the diet. It's also clear that we have adequate protein in the diet. This leaves carbohydrates with their many benefits as a food group whose consumption can be encouraged.

Carbohydrate foods provide the feeling of satiety or fullness that comes from eating foods containing starch and fiber. Fiber from grains, fruits and vegetables has added benefits for gastric processes, such as preventing constipation. And recent evidence suggests that some forms of fiber may be effective in reducing serum cholesterol.

The bottom line: Fat calories that come from butter, sour cream, cream sauces, oils, pastries, fatty meats, and whole milk and dairy products are much more likely to end up as body fat than the carbohydrate calories from foods like bread, potatoes and pasta--all the more reason to heed the call to limit fat

in the diet and increase the consumption of complex carbohydrates for better health.

RELAY TEXAS SERVES HEARING AND SPEECH IMPAIRED CUSTOMERS

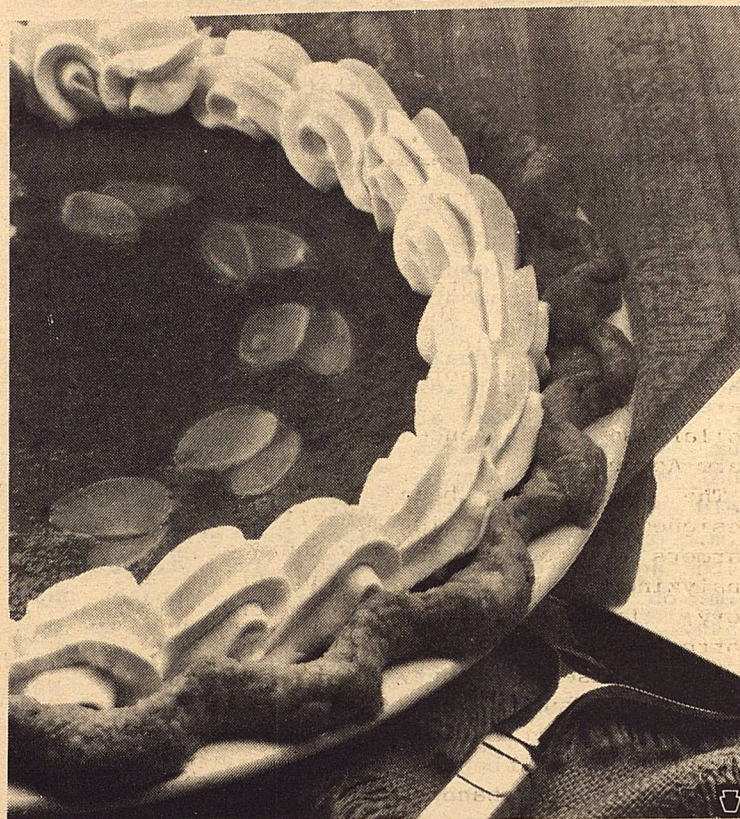
Communications services for the hearing and speech impaired are being provided throughout Texas. Known as RELAY TEXAS, the service allows Texas residents who are deaf, hard of hearing, or speech impaired to communicate over the telephone with persons who have normal speech and hearing. US SPRINT, long distance affiliate of United Telephone Co. of Texas, provides the service across the state.

The Public Utility Commission awarded the Relay Texas contract to US SPRINT. The confidential service operates out of Austin 24 hours a day, 365 days a year. To communicate with the center, persons who are speech and/or hearing impaired use a Telecommunications Device for the Deaf (TDD) or other compatible equipment.

TDD users dial 1-800-RELAYTX to be in direct contact with a relay center agent. The agent connects the call to the requested telephone number and remains on the line to serve as a conduit between the two parties. A message typed into the TDD system is viewed by the agent, who then translates it orally to the party with normal speech and hearing.

The agent then receives the oral response converts it into written form, and relays it back through the TDD system. Calls may be initiated by either a TDD user or a person

Almond Pumpkin Pie



Almond Pumpkin Pie is a delectable dessert for any occasion.

ALMOND PUMPKIN PIE (Makes one 9-inch pie)

- | | |
|---|-----------------------------------|
| 1 (9-inch) unbaked pastry shell | 2 eggs |
| 1 (16-ounce) can pumpkin (about 2 cups) | 1 1/2 teaspoons pumpkin pie spice |
| 1 (14-ounce) can sweetened condensed milk (NOT evaporated milk) | 1 teaspoon almond extract |
| | 1/2 teaspoon salt |
| | 1/4 cup sliced almonds |

Preheat oven to 425°. In large mixer bowl, combine all ingredients except pastry shell and sliced almonds; mix well. Pour into pastry shell; top with almonds. Bake 15 minutes. Reduce oven temperature to 350°; bake 35 to 40 minutes longer or until set. Cool. Refrigerate leftovers.

with normal speech and hearing. Callers with normal speech and hearing must dial 1-800-RELAYVV to access the center.

The agents have received extensive training in deaf awareness and sensitivity, as well as American Sign Language transliteration. This enables agents to identify a variety of sentence structures and language patterns used exclusively by persons who are speech or hearing impaired. The customer relay agents may handle as many as 175,000 calls a month.

There are no fees or charges for using the service within a local

calling area. Long distance calls made within Texas are billed at a 50 per cent discount of the rates in the contract. Rates are available upon asking. Long distance calls made outside Texas are not discounted and include a surcharge. Dialing instructions are available in braille or large type upon request. For more information, call 1-800-RELAYTX.



Many of the first houses in the American colonies were built from bricks used as ballast in the holds of ships.



Security State Bank

Big Spring, Texas

Member F.D.I.C.

1411 Gregg



LET ME GET MY HAT

BY DENNIS POOLE

Advanced Farm Accounting Software

Pioneer Hi-Bred International, Inc. has released for sale a new, proprietary software program known as DollarWise Advanced Farm Accounting.

The program has been designed to assist farmers in tracking and analyzing their inventory, loans and new worth.

"DollarWise" not only helps with such simple tasks as checkbook balancing and tax preparation, but handles such complex chores as adjusting inventory values to reflect market changes. Another benefit of the software is that it can be used as a double-entry, cash or accrual accounting system.

Designed with input from producers across the nation, "DollarWise" has the capability to provide up-to-date grain and livestock inventory levels by account for any given time period.

Other information generated by the program includes financial summaries, enterprise income and cash flow statements, transaction listings, tax reports, account number and vendor listings.

"DollarWise" uses a pop-up calculator, pull-down menus, help screens and pop-up windows to walk users through each step they need to take when entering their accounting information.

Time-saving features of the software include the automatic creation of income and expense accounts for farm enterprises, and the ability to copy recurring transactions from month to month. Users also have the flexibility of creating their own asset, liability, new worth, income and expense accounts.

Reports from "DollarWise" may also be transferred to other software programs where the information can be manipulated for further analysis.

Users can quickly and easily enter their withdrawal and deposit transactions and update inventory values. The software also saves time by allowing checks to be prepared during transaction entry. Another helpful feature is the program's electronic 'notepad' which allows producers to record up to a full page of facts and figures about each transaction.

For more information about the DollarWise Advanced Farm Accounting Program and demonstration diskette, farmers are asked to call Pioneer toll-free at 1-800-338-5878, Ext. 240, Monday through Friday, from 8 a.m. to 5 p.m. Central Time.

New Area Code

Telephone customers in 200 Northeast Texas communities are now being served by the nation's newest area code---903.

Customers in Dallas and in 33 Metroplex municipalities immediately surrounding the city will continue to use 214 area code.

But GTE has taken precautionary steps to avoid call completion problems for customers who have not made the changes. From November 4, 1990 to May 4, 1991, the switching equipment will still allow calls to the new 903 area code to be completed--whether the caller used the new, correct area code or the former 214 area code.

10th Annual Dawson County Pecan Show and Pecan Food

Dawson County's 10th Annual Pecan Show and Pecan Food Show will be held December 6 and 7 in the Lamesa National Bank Meeting Room at 112 Houston Ave. in Lamesa. Eddie Brown is the chairman for this year's Pecan Show.

Pecan growers from Dawson County and any adjacent county should save the best nuts from this year's crop for the show. Any grower in the area may enter a sample of 42 nuts from each variety he grows. Growers may enter only one county contest.

Nuts should be selected that are free of insect and disease damage. They should be uniform in size and shell color. Nuts should be cleaned but not altered in shape or color. Any alteration of pecans by marking, filing or excessive polishing will disqualify the entry.

Pecan entries must be from this year's crop and must have

The additional area code is needed because continued residential and business growth in the 214 area led to a shortage of available telephone number combinations.

After May 4, callers will not be able to complete calls to the new 903 area without dialing the correct area code. If they mistakenly use the former 214 area code, they will hear a recorded message instructing them to dial the new 903 area code.

been raised in Dawson County or any of the adjacent counties. Competition will be divided into three categories; Commercial Division, Classic Division and Native Division.

Entries in the pecan show should be delivered to the LNB Meeting Room on Thursday, December 6, between 11:30 a.m. and 5:00 p.m. The pecans should be in a paper sack with the name of the grower, the address, telephone number, and the pecan variety, if known. Anyone that does not know the variety of his or her pecans is still urged to enter, since variety can be determined by this year's judge, Earnest Kiker, CEA-AG, from Midland.

The food show is divided into six divisions: appetizers and snacks, breads, pies, cakes, cookies and candies. Pecans used in the foods can be from a variety of sources, since they are not required to be

home grown. Entries in the food show will be taken at the LNB Meeting Room, from 8:00 a.m. to 9:30 a.m. on Friday, December 7.

Plaques will be awarded to the champions of the pecan show and the food show. Ribbons will be awarded for first, second and third places.

Judging in both categories will take place from 9:30 a.m. to noon on Friday, December 7, with all entries on view for the general public from 1:00 p.m. to 4:00 p.m. that day.

this year or early in 1991 that will be more restrictive than those required by the State of Texas. The Borden County Commissioners' Court has joined other rural, arid West Texas counties to ask the E.P.A. to relax the requirements on these rural counties with small populations and arid climate, because the need for the stringent rules are not necessary to protect the environment. Some of the rules that the E.P.A. is considering is the lining of the pits, drilling of wells to monitor groundwater, the daily covering of waste, monitoring of methane gas and the monitoring of a closed site for 25 to 50 years.

If a county or city cannot comply with these rules, if passed by the E.P.A., the county or city will have to close their landfill and transport the waste to an approved landfill.

LANDFILL

cont. from pg. 1
Court has adopted the policy to accept no used or scrap tires at its landfills. These rules are required by Senate Bill 1516 passed by the 71st Texas Legislature in 1989.

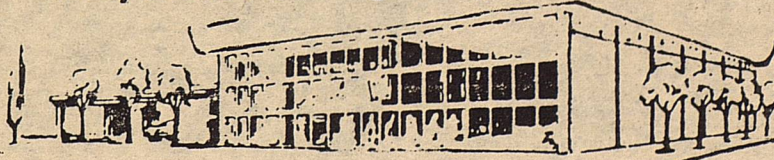
Some of the other rules that Borden County landfills must comply with is no burning of wastes, no dumping of pesticides and herbicides.

The E.P.A. will publicize rules later



THE FIRST NATIONAL BANK

The Symbol of Banking in Big Spring



FULL SERVICE BANKING

Member F.D.I.C.

400 Main Street

267-5513

BIG SPRING, TEXAS

Our National Cathedral

Majestically overlooking Washington, D.C., National Cathedral is a vision of Gothic beauty. The sixth largest cathedral in the world, it truly is a focal point of the nation's capital. And on Sept. 29, 1990, exactly 83 years after the laying of its cornerstone, the final piece of limestone was put in place. National Cathedral—officially, the Cathedral Church of Sts. Peter and Paul—is completed.

The inspiration behind the cathedral started more than 200 years ago. According to legend, Joseph Nourse, then secretary of the treasury, told President George Washington and city planner Maj. Pierre L'Enfant of his dream to have a church built on his homesite of Mount St. Alban, which commanded the highest spot in Washington, D.C.

Initially, little effort was made to pursue Nourse's dream.

L'Enfant had included a description of a "great church for national purposes" in his city plans, but distrust between church and state during the late 1700s caused the plans to be set aside. It was not until after the death in 1850 of Nourse's granddaughter, who left 50 gold dollars for a "free church on Alban's hill," that a fund was created to preserve the land for the cathedral. Many citywide planning meetings were held to rally support for the cathedral. In 1893, a congressional charter created the nonprofit Protestant Episcopal Cathedral Foundation to construct and operate the cathedral.

Although actual construction did not begin until 1907, the cathedral began its national ministry almost immediately. A new Episcopal diocese was created, and the first Bishop of Washington, Henry Yates Satterlee, was consecrated in

1896. The first service was held outdoors to celebrate the end of the Spanish-American War in 1898. And on Sunday, Sept. 29, 1907, President Theodore Roosevelt participated in the festivities to lay the cathedral's foundation stone from Bethlehem.

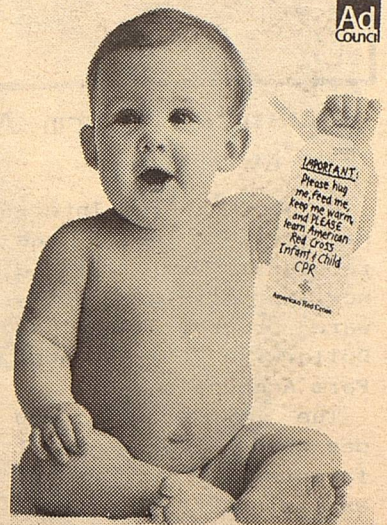
Dr. George Bodley, an Englishman, and Henry Vaughn, an American, were commissioned as the first architects. Their design was based on 14th-century English precedent: laid out from east to west, cruciform in plan with a curved apse, a two-aisled nave, a high tower above the crossing and a tripartite west front with two towers. Indiana limestone was selected for the stonework.

Building a Gothic cathedral in the 20th century challenged the ministry. Craftsmen were needed who still worked in stonemasonry and stained-glass design. Although the Bethlehem chapel inside the cathedral opened in 1912, construction was slow. During both

World Wars, building came to a complete standstill. For many involved, building the cathedral has been a lifetime mission. In fact, Peter Cleland, master mason at the cathedral, has three generations of the Cleland clan from Scotland working on its completion.

While based in Episcopal tradition, National Cathedral has from its inception strived to serve as "a house of prayer for all people." And as its more than 400,000 annual visitors and 200,000 worshippers can attest, once inside its towering nave, with soft, colored light streaming from the magnificent stained-

glass windows, any visitor would feel welcome.



Ad Council

IF ONLY THEY CAME WITH INSTRUCTIONS.

American Red Cross

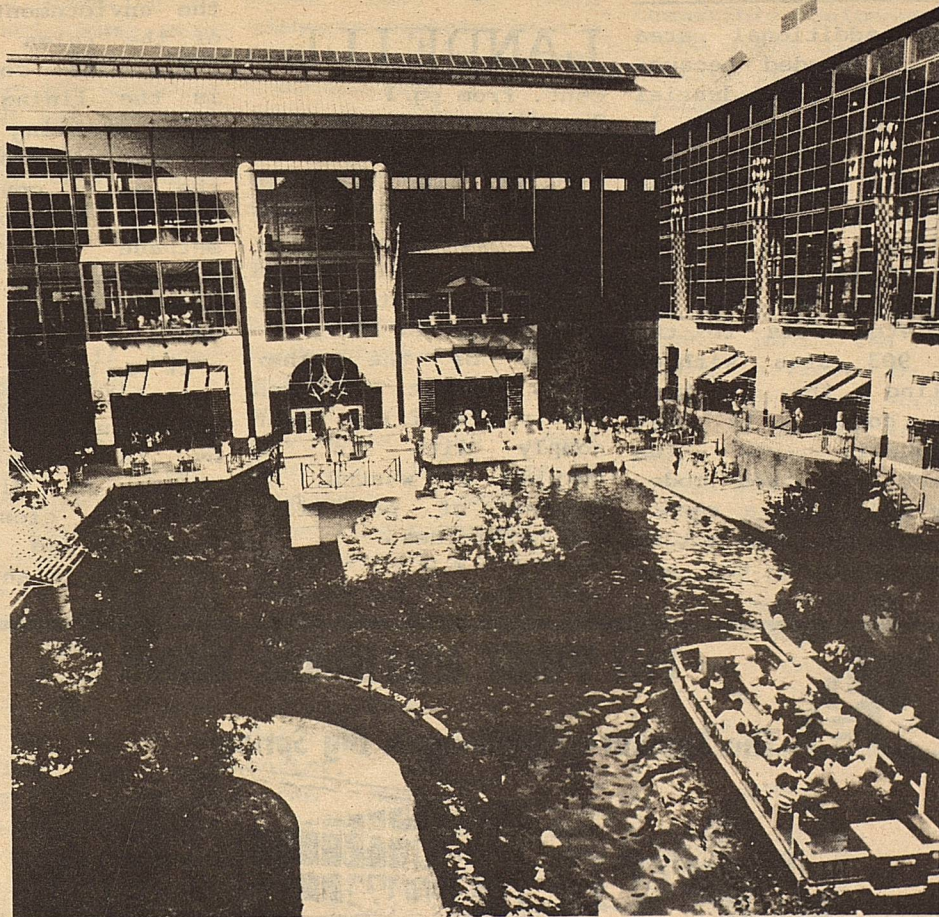


The young of an eel is called an elver.

Branon Funeral Home

Service in this area since 1922.

Phone 872-8335 403 N. Austin, Lamesa



More than 130 specialty shops and restaurants are featured at Rivercenter, a 10-acre shopping, dining and entertainment complex in San Antonio. Among the more prominent tenants of the downtown mall are a new 1,000-room Marriott Hotel, and the IMAX Theater which boasts a six-story high screen and features "Alamo...The Price of Freedom," a reenactment of the 13-day siege that sparked the Texas Revolution. Texas Department of Commerce photo.



Turtle Necks
Split Skirts
Sweaters



-H-

Western Wear

College Heights Shopping Center

