



25¢

# the Kinney Cavalryman

USPS 100-610

VOLUME 6 NUMBER 25

JUNE 22, 1979

BRACKETTVILLE, TEXAS 78832

## RING BROKEN

### headliners

#### PICNIC ENDS SUMMER READING PROGRAM

Friday's picnic at Ft. Clark Spriggs ended two weeks of exciting activities for the children attending the Summer Reading Program sponsored by the Kinney County Library. Reading certificates were given to all children who attended the program which consisted of movies, games, puppets, crafts, songs, stories and checking out books to read. Special thanks this week goes to Cathy Conrey of Ft. Clark Springs who led the children in songs accompanied by her accordion. Also, recognition is given to Chuy's, B & S, Nash's, Pena Hardware, Stop & Shop, and Western Auto for their donations toward the children's craft activities. The community gives special thanks to the involvement and participation to Mrs. Lois Forbes, Barbara Forbes and the extended efforts of Ms. Else Sauer, Librarian and Mrs. Charlotte Corey, Library Assistant.

#### SALVATION ARMY CAMP CHAIRMAN NAMED

CHARLES KOCH,, principal of the Brackettville Elementary School, has been named 1979 Camp Chairman for the Brackettville Salvation Army Service Unit. The announcement came from Service Unit Chairman Rev. Joe R. Townsend

The camp chairman will be in charge of selecting 2 boys from the ages 8 to 14 to attend the Salvation Army's Camp Hoblitzelle in Midlothian, July 14--July 21.

All Texas communities are invited to send selected youths who would not otherwise get a chance to attend a summer camp. The camp chairman is responsible for selecting the boys. The Service Unit furnishes them with any clothing, toiletries or other items they might need, arranging medical examinations and providing them with \$5.00 in cash. It also arranges transportation to and from the camp for them.

The local Service Unit guarantees local expenses in getting the boys ready. The Salvation Army Texas Division pays all costs of the camp itself, which offers swimming, hiking, athletic contests and many group activities in each of four one-week sessions.

#### CATTLE RAISERS CRACK \$300,000 THEFT OPERATION IN OKLAHOMA

FORT WORTH--A two-month-long investigation by inspectors for Texas and Southwestern Cattle Raisers Association and sheriffs of six Oklahoma counties climaxed recently with the break-up of what lawmen believe was one of the biggest livestock theft rings in the state's history.

An estimated market value of \$300,000 has been placed on the livestock and property recovered or accounted for, says Don King, TSCRA secretary-general manager. A partial list includes 11 registered horses, 70 head of cattle, 30 hogs, four stock trailers and four automobiles. The horses, including Tennessee Walking horses valued at more than \$10,000 each, were sold to a packing plant at Palestine, Texas.

Four suspects have been charged in the case, and investigators say more persons and more property may be involved. Charged with larceny of livestock are Harry Sherfield, 39, and Sylvester Hutchinson, 40, both of Oklahoma City; and Tommy Ellis, 35, of Spencer, Okla. James Smith, 50 of Henryetta, Okla. has been charged with possession of stolen property.

The alleged theft ring worked in Payne, Okmulgee, Seminole, Choctaw, Okfuskee and Oklahoma counties, Okla. for more than a year, King said. Statements to authorities by the suspects indicate livestock and trailers were brought to Smith's place and later sent to auction markets in eastern and central Oklahoma.

TSCRA filed inspectors breaking the case were Paul Wade, Joe Ramer, and Raymond Russell, Sheriffs Gene Rice of Okmulgee County, Louis Buchanan of Choctaw County, Sheriff Gene Wells and Deputies Carol Cain and Onnie Connors of Oklahoma County, Sheriff Charles Sisco of Seminole county Sheriff Frank Phillips of Payne County and Sheriff Roy Nichols of Okfuskee County.

Without a doubt, this case represents one of the biggest livestock theft operations in Oklahoma. Unfortunately, it is not an exception. TSCRA recently developed two other cases in Texas involving 113 head of cattle worth more than \$61,500. Livestock theft is definitely on the increase," King said.

The lawman urged cattlemen to brand their livestock as a preventive theft measure.

"A brand is like the return address on an envelope," he said.

TSCRA, a livestock producer group headquartered in Fort Worth has more than 102 years experience in theft in-

vestigation. Representing more than 13,000 cattlemen in Texas, Oklahoma and surrounding states, TSCRA employs 34 certified peace officers, living in Texas and Oklahoma. In Texas, it also has the responsibility for brand inspection at 185 auction markets.

###  
Don't wait Until Winter!

#### CATTLE GRUB CONTROL TIME IS SUMMERTIME

UVALDE-- Now that cattle prices are better many Southwest Texas livestock producers are interested in what can be done to prevent losses by cattle parasites.

One parasite that causes considerable loss in livestock productivity is the common cattle grub.

"This insect probably causes greater losses than any other pest of cattle," said J.W. Stewart, an area entomologist with the Texas Agricultural Extension Service in Uvalde. "Besides damaging meat and hides by their burrowing, they lower beef cattle gains and production throughout the year.

Beef cattle producers often fail to notice the hidden toll these insects take, but profit losses are estimated in the millions of dollars each year."

Stewart said the cattle grub is the larval stage of the heel fly and occurs in all areas of Texas. During late fall and winter, the cattle grub makes its appearance in the backs of animals.

"Every rancher is familiar with the knot-like warbles, cysts or 'wolves' that show up at this time of the year," the Texas A & M University entomologist said.

"The general tendency is to begin control measures for these pests when they appear in the back. But when grubs reach this stage, most of the damage has been done and controls are economically ineffective."

Stewart said the optimum time for control is during the summer months between May and September. Systemic insecticides (an insecticide applied externally to the animal which is absorbed into the blood system to kill grubs feeding on tissue.) are available to control this insect. Product names are available through chemical dealers.

The entomologist said the systemic insecticide should be applied either as "pour-ons" or as sprays. He said another benefit from these cattle grub insecticides is that they also control horn flies for a period of two or three weeks.

Stewart said several things happen in the life cycle of the grub attacking beef cattle. They are the following:

the Kinney Cavalryman

USPS 100-610

P.O.Box 735  
Brackettville, Texas  
78832

512/563-2696

Judy Loos.....Publisher  
J.George Loos, Jr.....Editor  
Joe Townsend.....Contributing Editor  
Lillie Mae Dimery. Contributing Editor  
Iola Jones.....Fort Clark Ed.  
Thelma Lee Sharp...Down Home Ed.  
Rosemary Slubar....Production Manager  
T.J.Hill.....Cartoonist  
Calvin Graf.....TECHbits  
Don & Catrina Crowder..People

MEMBER OF THE TEXAS PRESS ASSOCIATION

Published every Friday. Entered by  
Second Class Mail at Brackettville,  
Texas.

Any erroneous reflection upon the  
character or standing of any person  
or firm appearing in this paper will  
be gladly corrected upon being called  
to the attention of the management  
to the article in question.

SUBSCRIPTION RATES:

\$12.00-----Out-of-county  
\$11.00-----In-Kinney-County

LOOSISM\*LOOSISM\*LOOSISM\*LOOSISM\*LOOSISM\*

THE ONLY MAN WHO EVER GOT  
HIS WORK DONE BY FRIDAY  
WAS ROBINSON CRUSOE.....

IN SOUTHWEST TEXAS

HAY MAKING, HARVESTING PICKS UP AGAIN

Haying harvesting is in full swing  
in both Hill Country and Upper Rio  
Grande Plains counties as farmers and  
ranchers are reaping the benefits o  
excellent spring moisture.

Corn Crops throughout the region  
have progressed to late roasting ear  
stage. Vegetable harvests of onions,  
cabbage, and cucumbers continue in  
the Winter Garden area.

Peaches in southern counties of  
Frio and Dimmit are being harvested.  
Dimmit County Extension Agent Larry  
Weise said yeilds are good, but insect  
damage on peaches is great. Melon  
harvesting also in underway in Frio  
and LaSalle Counties.

Wheat harvesting in the region is  
all but complete. Darrell Smith,Uvalde  
County Extension Agent, estimates  
that 85 percent of the wheat in that  
county is harvested. He said the great  
est probelm with the remaining wheat  
in he field is sprouted kernels due to  
rain in the preceding weeks.

Soybean planting in Uvalde and  
Medina Counties continues. It should  
be complete within the next 10 days.

In addition to harvesting, main  
farm and ranch activities include  
water gap reappear and weed control  
in some crops.

###

Present Day Myths

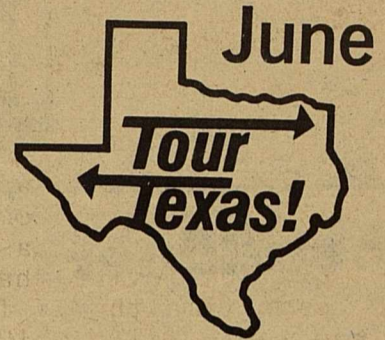
by: JOE TOWNSEND

Mr. Carter has done it again!  
Not many thinking people really  
believe President Carter's cam-  
paign promises but enough did  
to elect him. This was what he  
wanted. It's strange how one  
whose moral rationalize his cam-  
paign rhetoric with later prac-  
tice. Rosalyn can't understand  
why people feel that when he  
does something people feel he  
is keeping his eye on the next  
election. I guess love truly  
is blind.

When Mr. Cater promised that  
he would appoint to the judiciary  
only the most qualified with  
politics playing no part in the  
selection, it sounded real good.  
Trouble is it was all "sound"  
now proved to be "sounding brass"  
and "tinkling symbol" A cursory  
glance at judges recently sworn  
into the Federal judiciary in  
Houston reveal the most blatant  
display of raw politics in such  
an instance in the knowledge and  
memory of this writer. All of  
Texas continues to suffer from  
the judical legislation arbitrari-  
ly written by one politcally  
chosen federal judge in East Texas.

Now we can look forward to  
even more radical decisions from  
Mr. Carter's appointments, if  
past history is relevant. A casual

glance at the back ground of  
some of these appointees reveals  
attitudes not consistent with  
objective promotion of these:  
things that have made America  
great. To reward a negativest,  
a crusader of questionable causes,  
a person who reputation and liv-  
ing has not come from personal  
individualism but rather from  
the Federal trough and grants  
from tax dodging schemes with a  
life time federal judgeship  
signals a disregard for the  
general welfare and a catering  
to dissidents with votes in mind.

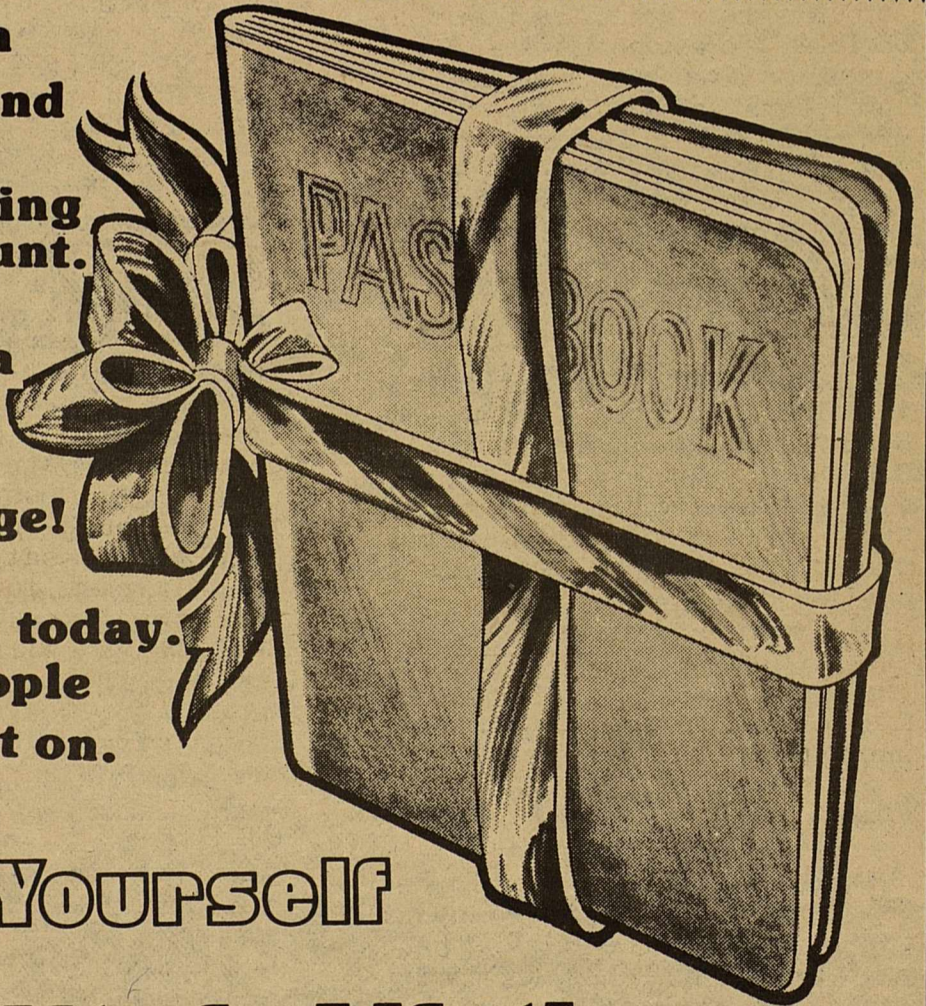


June 28-July 1 The 26th An-  
nual Watermelon Thump, Lu-  
ling. Carnival, street dances,  
melon judging, arts & crafts,  
seed spitting, golf tournament,  
bowling tournament, water-  
melon eating contests and fid-  
dlers' contest are among the  
activities. For a brochure con-  
tact the Chamber of Com-  
merce, Drawer 710T, Luling  
78648 (512-875-3214).

June 30 Cow Creek Champion-  
ship Cabrito Cook-Off, Waxa-  
hachie. In addition to cabrito  
cooking, there are numerous  
contests—cow chip throw, an-  
vil heaving and goat pill flip-  
ping to name a few—that  
make for a full day's activities.  
To get the details contact the  
Chamber of Commerce, Box  
187T, Waxahachie 75165 (214-  
937-2390).

Be your own  
"gift giver" and  
open a high  
interest earning  
savings account.

With regular  
deposits it's a  
gift that gets  
bigger and  
better with age!  
Come in...get  
yours started today.  
We're the people  
you can count on.



Give Yourself  
the Gift of a Lifetime

BOBBEER  
CREDIT UNION

LAUGHLIN A.F.B.

298-3503

Also our Branch office at 600 East Gibbs St. 775-9919

## The Visitor

By: T.J.Hill

Part 4

"What are you talking about?" Chet asked with a puzzled frown.

The Old man drummed his fingers on the counter, then sighed and answered. "Look. I don't like being laughed at, but it's obvious to me that you really don't know what you've gotten yourself into. Now usually, I mind my own business and I let folks do whatever they've a mind to; but well, for what it's worth; that place is haunted!"

Chet stared at him for a minute, then stifled a grin; remembering the fear that he had known during the night. "Come on, there's no such thing as ghosts! I quit believing that about the same time that I found out who the tooth fairy is!"

"Like I said," the man replied in that hollow booming voice, "You think any way you want but if I was you, I'd move into the motel until I could sell that old museum, and then I'd take whatever I could get, and never go near the place again."

Pusing the pistol across the counter toward Chet, the man continued, "but you do what you want. I know this much though, ever since old man Daniels died in there, I've seen lights moving around in the place, and I and others have been hearing a lot of strange noises in the wee hour of the morning. Noises like no human throat ever made! Rumor has it that the family had a curse on it, and that the old man was the last of the line. They say that he comes back in the shape of a monstrous beast, and that he will do so far all time, or until that house is gone!"

"Horsefeathers!" chet snorted. "I thank you for the entertainment, but you people must think that all us city people are complete idiots. When my prowler returns, if he does, I'll be ready."

Your funeral," shrugging indifferently, the old-timer rang up the sale on his antique cash register. "I just wish that I had some silver bullets to sell you."

As the sun receded behind the huge oaks that covered the lawn, Chet pushed his supper dishes aside, and walked down the rapidly darkening hallway toward the library. The heavy pistol a cold, comforting weight against his stomach. Complete darkness fell, plunging the hall into inky blackness, as he stepped into the room and bolted the door behind him. Mumbling to himself about the stupidity of local yokels, Chet crossed to the desk and poured himself a drink. Turning up the thermostat against the unusual chill in the room, he turned on the old brass floor lamp. The sudden brilliance was reassuring, and the ticking of the grandfather clock had a calming, almost hypnotic effect on his nerves.

Sometime later, as he nodded over the book that he had immersed himself in, the chiming of

summer season opens



Home of Motion Picture

Live Entertainment featuring

The

Shahan Express

&

Stagecoach Cuties



Memorial Day thru Labor Day

music, singing, & gun shows

9 to 8 daily

the clock brought him to a awareness of the time. Midnight, the witching hour. Angrily, Chet slammed the book shut, then froze. Beyond the door, there was.....

CONCLUSION NEXT WEEK

## Between Us

JOE TOWNSEND

It seems to me that if there is one overshadowing characteristic of people today, it is that they are lonely. It seems with the passing of years people as a whole become more lonely. There has never been such a search for enjoyment or personal satisfaction as now, and yet in spite of all efforts there seems to be more lonely people than ever. In casting about for an answer as to why this is true, I wander in a maze. It is certainly true that the basic reason a person is lonesome is to be found in his own being. One who is satisfied with himself has already found peace. One who practices being freindly will be blessed with friends. The one main ingredient in life that makes loneliness an impossibility is a warm relationship with God. One has not need to be constantly in search of something to bring sunshine into a drab life if he stays in good and close fellowship with God. Of one is thus emroched on his life he will naturally be the person who makes friends because he will be a friend. Lonliness and GOD just don't live in the same heart.

## ALAMO VILLAGE STARS

VALENTINO HERNANDEZ, son of Mr. and Mrs. Enrique Harnandez of San Antonio, is major spoke in the wheels of the "Shahn Express" band performing at Alamo Village. Valentino pickes lead guitar, plays the fiddle and occasionally sings harmony for the

"Stagecoach Cuties", K.K., Sherry, Terri and Penny; featured female vocalists of the band.

Valentino was born February 13, 1960, in Toledo, Ohio, and was reared in San Antonio. He acrobatic antics, at the of three landed him a part in, "Stop the World, I want to get Off," a circus fantasy, Billboard Theatre Playhouse Production.

In elementary school, Valentino actively participated in baseball, gymnastics, karate and judo. At the age of nine, he was accidently struck by an automobile. It was during those long days of convelescng that he learned to pick the guitar. Two years later, he was picking and singing a medely of Elvis tunes that helped him win many talent shows across the Nation. During the summer of '73, Valentino's merits and awards had him performing in Monterrey, Mexico.

While at Nimitz Junior high, Valentino became an Eagle Scout, of the Leadership Corps Troup 445, was a member of the golf team and went on to play trumpet in the Robert E. Lee High School band. Valentino organized the "Cosmic Armadillo" band and treamed up with the "Branded Men", performing for school, civic, government, inter-national and private organizations. Keeping up with his school work and playing as many as eight to twelve gigs a month is quite a feat for a yo-ng teenager.

Valentino was introduced to Happy Shahan in '75 and knows he is a man with a past history in developing and training young artists. Shahan's evaluation at this time is that, "Valentino is an organizer, inovator and activater," and "he is so young, has a good deal going for him, youth has it's advantages."

Valentino wastes no time with idleness. In between the five live shows performed daily at Alamo Village, he mans the shooting gallery, greets tourists in the parking lot and when he is not handling a six-gun, you will find him with his guitar working out a new song idea.

LET'S GO FISHING



**KEEP COOL**



WE'RE **AIR CONDITIONED**



**FAST FOODS TO GO**

TRIPLE-MEAT-BURGER \$1.95	HOT-DOG 60W-CHILI 70		SUNDAES 70 & 89	FREEZES
DOUBLE-MEAT-BURGER \$1.65	FT LONG .75W-CHILI 85		MILKSHAKE 74 & 99	FLOATS 74 & 99
HAMBURGER \$1.09	CORN-DOG 55		CHOCOLATE	BANANA SPLIT 99
CHEESEBURGER \$1.19	BURRITOS 80		STRAWBERRY	CONES 25 & 40
CHILIBURGER \$1.09	FRITO-PIES 60	3TACOS FOR \$1.55	PINEAPPLE	
JR.BURGER 75	BBO-ON-BUN \$1.20	NACHOS 89	BUTTERSCOTCH	
STEAK SAND \$1.09	FRENCH FRIES 50 & 85	CHICKEN-FRIED-STEAK \$2.25	SPECIAL SUNDAES	ICE TEA 33 & 43
HAM-CHEESE \$1.10	ONION-RING 55 & 99		SUPER 99	COFFEE 24
GRILL-CHEESE 60	STEAK-FINGER-BSKT \$1.89			PEPSI DR PEPPER 7 UP
FISH SAND \$1.09	CHICKEN-BSKT \$2.60			ORANGE 27 .37.50
JALEPANO-BURGER \$1.09	FISH-BSKT \$1.89			

**BURGER & SHAKE**

**BOB BAUMANN**  
manager

Call your order in  
**563-2027**

hours  
9 am - 10pm



**GREEN THUMBS**

by: JOE TOWNSEND

If you have a garden some of it is likely about gone. Early vegetables are probably about finished. This will mean you can easily plant something in place of these. You can still plant green beans, beets, peppers, cucumbers, okra and many other things. You should be thinking toward fall where you will probably want to put out tomato plants about August 1 and plant cabbage type vegetables and turnips or even spinach. Then are always things that can be planted and grown in a garden. A little fore thought will bring in vegetables fresh to the table the year around from your garden and at the cost of groceries this is worthy of consideration.

###

--The Cyscle begins when heel flies lay their eggs on cattle. "The heel fly has no mouth parts and causes no pain to cattle," Stewart said. "They do fright the animals and make cattle difficult to maage. When attacked by heel flies, cattle run wildly with their tails in the air."

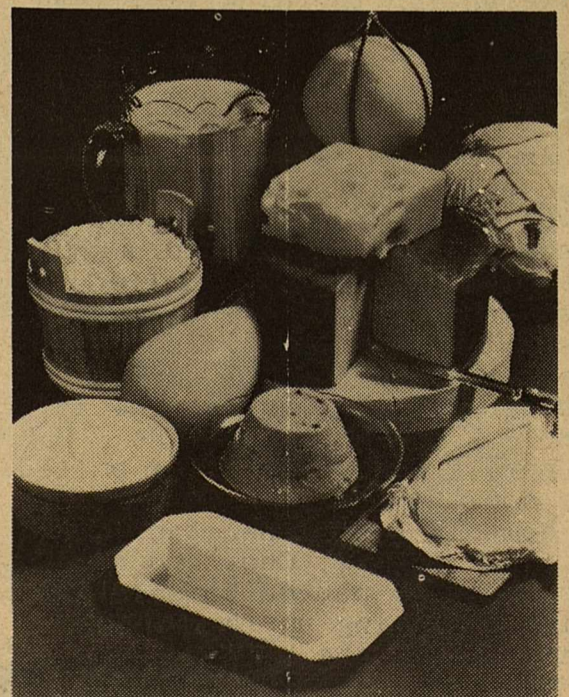
He said cattle find some relief from heel flies by standing for hours in deep shade or water. "Failure to graze during this period causes reduced milk production and subnormal weight gains," he said.

---The hell fly lays eggs in cattle hair. The eggs are glued to hairs and hatch in a few days.

---Once hatched, the larvae crawl down their hair to enter the skin at the hair base.

---In the body, the larvae begin a course of migration through the animals body for six to eight months. At the end of this period they eventually appear in the animal's back in the fall and winter to complete the cycle.

**America's bounty... dairy foods.**



Thanks to you, the dairy farmers, Americans enjoy some of the most healthful, delicious foods — dairy products.

We salute you during June Dairy Month for your contributions toward bettering the life of our community and our country. You work hard for us . . . we'd like to work for you.

The inexpensive  
 way to hire  
 a bookkeeper:  
 Open a checking account

(It will never let you down)

THE  
*First* STATE BANK

COMPLETE BANKING SERVICES

BRACKETTVILLE, TEXAS

563-2315

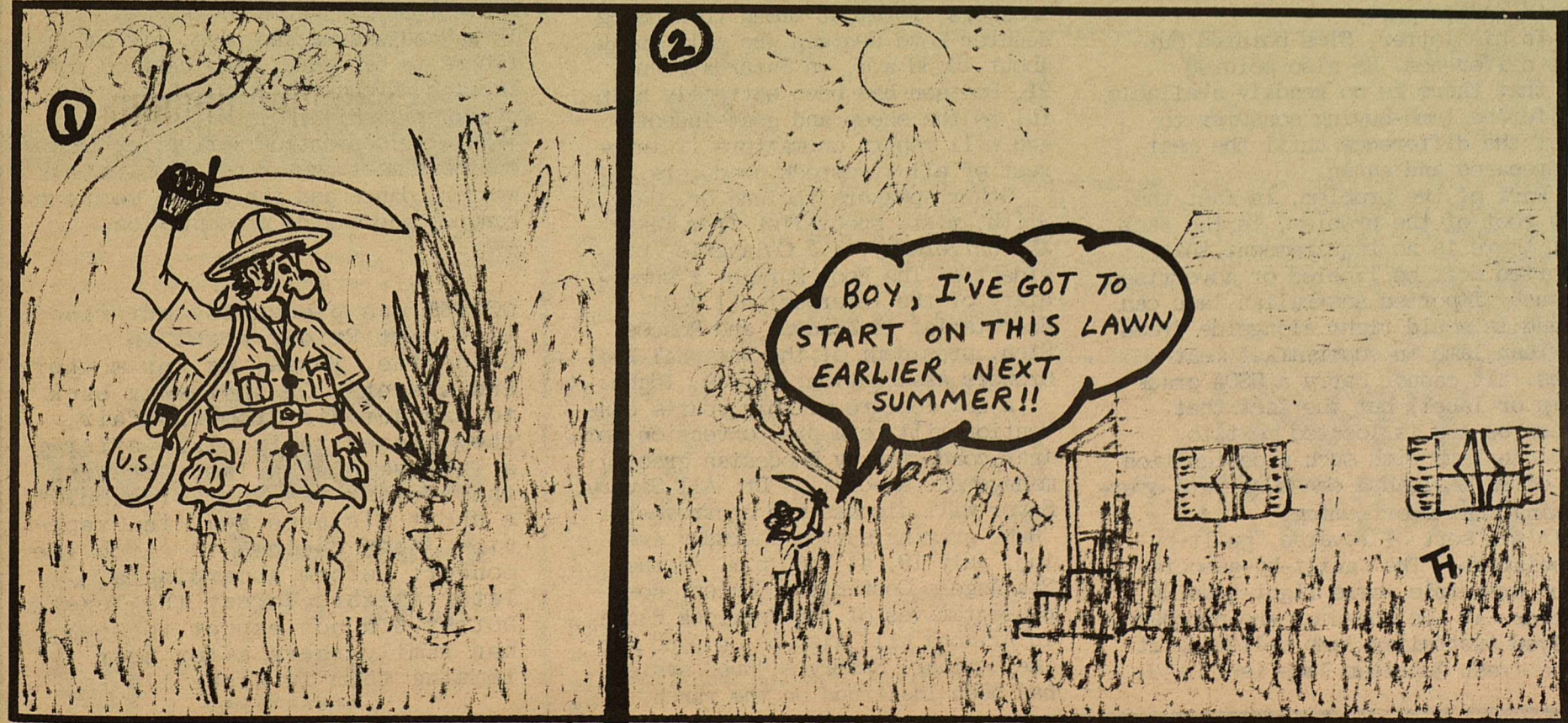


*Huge Selection*



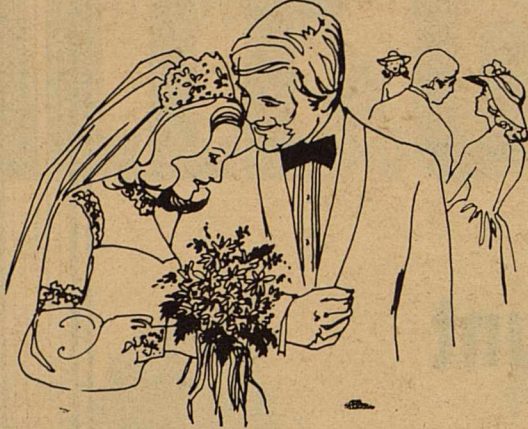
# HARD LUCK HARRY

By: Tex Hill



# Flowers

ARE  
A WELCOME  
GUEST AT ANY WEDDING!



Bouquets, floral arrangements and corsages add the finishing touch to any wedding, large or small. Let us help you choose the flowers for your wedding any-time of year.

## SAGEBRUSH SHOPPE



563-2735

## SHEEP & GOAT RAISERS NEWS

The Texas Sheep and Goat Raiser's Association executive secretary Bill Sims, in a recent letter to USDA assistant secretary Carol Tucker Foreman, pointed out a potentially grave problem facing both American consumers and the domestic sheep industry—a problem brought on by current handling procedures for chilled Australian lamb.

A relatively new product on the imported meat scene, chilled Australian lamb, is much more competitive with the domestic product than frozen New Zealand has been. The difference between frozen meat and "fresh" chilled meat is obvious. What's not so obvious, at least at the time of purchase, is the potentially vast difference in quality between the chilled Australian lamb and its domestic counterpart.

In his letter, Sims pointed out that difference. He also pointed out that there is no readily available way for the lamb-buying consumer to detect the difference until the meat is prepared and eaten.

Part of the problem, in fact the very root of the problem, is the fact that there is no requirement that imported meat be labeled or advertised as such. Imported Australian lamb can be and is sold right alongside fresh American lamb in supermarket meat cases. It cannot carry a USDA grade stamp or label, but the fact that it can be and is located next to American lamb with such a designation can often mislead a consumer into overlooking that shortcoming.

It's a sort of reverse "guilt-by-association." The "guilt-by-association" principle works right side up, however, if the consumer who purchases chilled Australian lamb believing it to be fresh American lamb is

unsatisfied with the results.

Why should she (or He) be unsatisfied Australian lamb is not necessarily a poorer quality product than American lamb, but it often works out that way. For one thing, the Australian "lamb" may not actually be lamb at all. As Sims pointed out in his letter, American lamb must pass a break joint or "lamb-joint" test before it can be classed as lamb. The break-joint is a joint above the knee that gradually ossifies or hardens as a lamb ages. When ossification is complete the joint can not be broken. Also, by this time, the lamb is no longer a lamb.

American lamb packers, to establish the classification of a carcass, are required to break the joint prior to inspection. Of one or both of the break joints will break, the carcass cannot be classified as a lamb. A very objective way of determining classification, but one of which Australian "lamb" is not subjected. In fact, Australian carcasses, by the time they arrive here, have long since had their break-joints cut off. There is, then no way of knowing whether an Australian "lamb" is even a lamb at all. It could well be a less desirable (and supposedly lower-selling) older animal.

Not all Australian lamb should be classified otherwise, but some undoubtedly should, as evidenced by reports of consumer dissatisfaction. The problem is that we don't know how much of the Australian "lamb" is really something older—and as long as the product can be sold without meeting the same standards as American lamb, we never will know.

Even, worse, the consumer has no way of knowing that the lamb she and her family soured on was an ungraded uninspected and unclassified imported product instead of the high quality American mean she probably thought she was buying and undoubtedly will blame.

If she buys a foreign can and does not like it, she knows immediately where the fault lies. The same with foreign stereo equipment, foreign cameras, and foreign clothes. The list of foreign product labeled as such by law is almost endless. Unfortunately, foreign meat is not on that list.

##

The Texas Sheep and Goat Raisers' 64th Annual Convention is nearing, and producers won't want to miss this one.

The convention set in San Angelo July 20-21, will feature several speakers, foremost among them being Senator Loyd Bentsen who will speak about 10:30 a.m. on Saturday, July 21. Bentsen has been extremely helpful to the sheep and goat industry and will report on matters of interest of all livestock producers.

Other speakers include Dr. Gary Smith, meats specialist from Texas A&M University, F.J. Colangelo, president of The Wool Bureau, a subsidiary of the International Wool Secretariat in London; and Roscoe Rich, president of the National Wool Growers Association, Burley, Idaho.

A new feature of this year's convention will be a pre-convention seminar conducted by Rhodesian grazing management specialist Dr. All Savory. Savory will discuss the controversial "Hub" grazing system Thursday evening, July 19, at 7:00 p.m. in the San Angelo Convention Center. Representatives of the Spurlock Ranch in Arizona will also be on hand for the seminar. Savory's "hub" system has been instituted on the ranch.

Friday's activities will include a panel discussion of the new system, featuring representatives from the U.S. Forest Service, Bureau of Land Management, Soil Conservation Service the Texas Agricultural Extension and Experiment systems and the sheep and goat industry.

Savory's system involves a wagon-wheel pasture arrangement with very small pie-shaped grazing areas. In its purest form it included livestock handling and watering facilities at the "hub" of the "wagonwheel" hence the system's name. Livestock are concentrated heavily on one small pasture at a time but rotated rapidly. In theory, the intensive grazing forces stock to utilize all forage evenly, the undesirable along with the desirable. Rapid pasture rotation insures that forage in any given pasture is protected from overgrazing.

Proponents of such high-intensity grazing point out that livestock allowed to choose their grazing preferences will almost always stress desirable forage over less desirable growth. This eventually leaves lightly grazed undesirable with a competitive edge and promotes grazing quality deterioration.

Opponents have contended that U.S. experiments with the principle have often failed to show range quality improvement, sometimes even turning out fewer pounds of stock production per acre than with traditional grazing methods. Proponents of the Rhodesian and South African systems counter that U.S. experiments producing less than desirable results have simply not been carried for enough—that the experimental systems were just not as intensive as they should have been. They point to other U.S. efforts more in line with their own methods and considerably more successful.

The TS&GRA Women's Auxiliary convention program will include an art show featuring craftsmen from within the industry, and an autograph party for Becky Crouch Paterson, author of HONDO, MY FATHER. Becky's father the late Hondo Crouch, was a TS&GRA director, and her grandfather, Adolf Stieler, is an honorary director for life. Her new book has hit the Top 10 in Texas list, and she will be the Association headquarters for the San Angelo autograph party. Other activities include a display and program on cloisonne and copper enamelling, and style show featuring natural fibers creations by Debbie Daniell of San Antonio. Ms. Daniell is a hand weaver who uses only natural fibers in her work, then carries her fabrics through to completion as designer fashions.

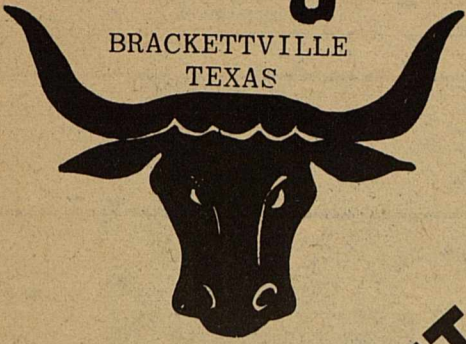
Regular convention activities include business meetings, receptions, a western dance and the annual membership banquet and awards presentation. ###

DOTTSY was pleasantly surprised this past Friday night in Grapevine, Texas, by her mother and sisters. On their way back to San Antonio from Fan Fair, they missed their plane after a lay-over in Dallas. Knowing that Dotsy was appearing only a short distance away in Grapevine, they decided to catch the concert before boarding a later flight. To say the least, Dotsy did not expect to see her family there after just leaving them in Nashville

\*\*\*\*\*

# The Longhorn

BRACKETTVILLE  
TEXAS



**LIVE  
ENTERTAINMENT**  
friday &  
saturday

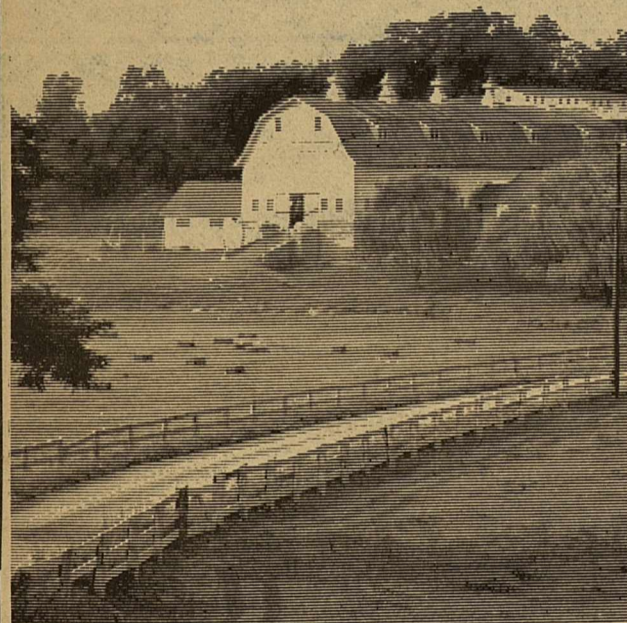
563-2767

3 Miles West of Brackettville

Your Host:  
TRAVIS AND LANETTE WILSON

Honor America June 14 - July 4

**"Thank you."**



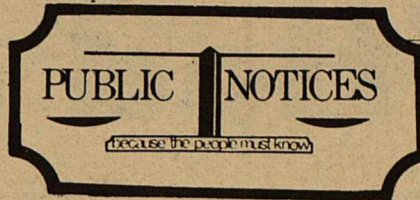
Dairy farmers and their families who live and work in our community deserve our thanks. They help our community remain stable and healthy. Their quality milk and dairy products improve the quality of our lives. We congratulate them during June Dairy Month, and thank them for their contributions.

**June is  
Dairy Month**

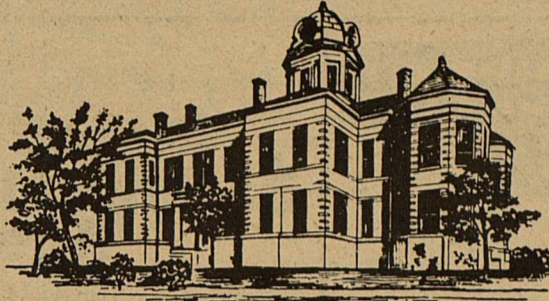
**Frank Gulick**

**775-5938**

**Del Rio**



## Kinney County



COUNTY SEAT

Brackettville, Texas 78832

ALBERT A. POSTELL  
County Judge

DOLORES RANEY  
County Clerk

J. A. SHEEDY  
Sheriff and Tax  
Assessor-Collector

MARY SCHWANDNER  
County Treasurer

ROBERT N. KENNEDY  
County Attorney

DAVID LUNA  
County Commissioner  
Precinct No. 1

PLUNKER SHEEDY  
County Commissioner  
Precinct No. 2

G. C. TALAMANTEZ  
County Commissioner  
Precinct No. 3

ALVIN S. McCLURE  
County Commissioner  
Precinct No. 4

October 1, 1979 through September 30, 1980.

A budget hearing will be held on July 9, 1979 for all interested citizens of Kinney County. The following budget is proposed for October 1, 1979 through September 30, 1980.

PROPOSED USE

REVENUE SHARING FUND

RECEIPTS:

Federal Apportionments (Estimated Allocation) \$49,310.00

EXPENDITURES:

Public Safety, Law Enforcement  
& Fire Department Vehicle Maintenance 1,200.00

HEALTH

Ambulance Maintenance 1,200.00  
Southwestern Van Program 500.00  
Kinney County Memorial Clinic 700.00  
Dental Program 700.00

RECREATION

Park, Pool & Civic Center Maintenance 5,500.00

LIBRARY

Utilities, Phone & Misc. 2,500.00

SOCIAL SERVICE

Indigent & Elderly Service 8,000.00

FINANCIAL ADMINISTRATION

Tax Rendition 1,900.00

MULTIPURPOSE GENERAL GOVERNMENT

Jail Building Renovation 23,600.00  
Capital Outlay Furniture & Equipment 3,500.00

TOTAL EXPENDITURES \$49,300.00

BUDGET SURPLUS 10.00

The meeting will be held at Courthouse for the purpose of discussion of the proposed budget at 10:00 a.m. The proposed budget may be examined on Weekdays at Courthouse bulletin board between 8:30 a.m. and 5:00 p.m. All interested citizens will have the opportunity to give written and oral comment. Senior citizens are encouraged to attend and comment.

During the recent 8th Annual Fan Fain, RCA recording artist, DOTSY was presented a stained glass window with the design of her signature/logo. The gift was given to her by her friends and public relations firm, The Berry Hill group.

Dotsy plans to display the handcrafted glass design among her other antique possessions at her home in San Antonio.

###

**HAPPY  
BIRTHDAY !**

JUNE 23-----John Jones  
JUNE 28-----Delores Raney  
JUNE 29-----Dorothy Glover  
JUNE 30-----Anna Martinez  
Bobby Gum

# classified ads

TUESDAY 12:00 NOON DEADLINE  
All Classifieds 10¢ per word minimum,  
insertion \$1.50 per issue. NO CARD  
OF THANKS OR CLASSIFIED WILL BE TAKEN  
OVER THE PHONE...All Cash in Advance.  
NO EXCEPTIONS PLEASE!

## REAL ESTATE

**KINNEY COUNTY  
LAND CO.**  
(512)563-2446

3bdrm, 2 bath house on 4 lots,  
close to school, large den-fire  
place.

\*\*\*\*\*

900 ACRES-2 dirt tanks, excellent  
hunting.

\*\*\*\*\*

5 to 10 ACRES HOMESITES close  
to Brackett. Financing available

\*\*\*\*\*

COLONY ROW HOMES, MOBILE HOMES,  
49'ers on Fort Clark Springs.

**Bizzell Realty  
Barnhart Insurance  
Agency**

Fire--Causality-Auto-HOME

ROSE BIZZELL  
solicitor

**Bizzell Construction**

Mike & Bill Bizzell

**563-2829**

A Full service Real Estate Co.  
offering Sales-Construction and  
now Insurance.

This means "ONE STOP FOR ALL!!"

Don Hood  
**Brackettville  
Land Co.**

(512) 563-2125

LARGE STUCCO, almost new home  
on 5 lovely lots-central heat  
and A/C-fireplace. Price to  
Sell!

\*\*\*\*\*

3 YEAR OLD-3 bdrm wood frame  
house on 2 nice lots with oak  
trees-nice neighborhood.

\*\*\*\*\*

HWY 90 LOT for sale. Priced low-  
good location for business.

\*\*\*\*\*

WE MANAGE RENTALS!! IF YOU WANT  
A HOUSE TO RENT OR IF YOU HAVE  
A HOUSE TO RENT CALL US!!!

### Real Estate

FOR RENT OR SALE  
2 bedroom Mobile Home and Lots.  
Contact Dale Borden, B&S Super  
Mart, 563-2555.

\*\*\*\*\*

### For Sale

FOR SALE.....  
Ludwig Drum Set with Zildjian  
Cymbals and cases, and Fender  
Stratocaster Electric Guitar.  
Call: 563-2676.

\*\*\*\*\*

\*\*\*\*\*  
12,000 BTU, 220 volt, Chrysler Air-  
Temp Window airconditioners, \$175.  
563-2696.

\*\*\*\*\*

### Help Wanted

\*\*\*\*\*  
MAID & cook evening meals,  
Call after 7:00 p.m. 563-2143.

\*\*\*\*\*

### Notices

\*\*\*\*\*  
STATE LISCENED BABYSITTER.....  
babysitting in my home, anytime  
day or night. 563-2800.

\*\*\*\*\*

**I BELIEVE THAT EVERYONE  
SHOULD LEARN TO WORK**

...especially those  
who have jobs!

The **BOSS** isn't  
always RIGHT   
but He is always BOSS

*Wines & Liquors*

**JIM'S LIQUORS**

Across from the Whites Auto Store

611 East Gibbs  
Del Rio

Clark & Pierce  
Phone: 775-0822

## Comet 1hr. CLEANERS

Brackettville Pick Up Station:

NASH'S DRY GOODS

IN: Thrusday-10am, back Friday  
5 pm.

IN: Friday-5pm, back Thursday  
following week

BOOTS & BUDDY LOVE

LaVillita Shopping Center

775-0714

Del Rio

## BRIGHTEN YOUR LIFE WITH

### THE GOLDEN RULE



### Frontier Baptist Church

A SOUTHERN BAPTIST CHURCH

Sunday School 10:00 am  
Morning Worship 11:00 am  
Evening Worship 7:30 pm  
Wednesday Prayer Meeting 7:30 pm

JOE R. TOWNSEND  
Pastor

### Church of Christ

Sunday School 9:30 am  
Morning Worship 10:30 am  
Evening Worship 7:00 pm  
Wednesday Worship 7:00 pm

### ST ANDREWS EPISCOPAL

Sunday Service 8:15 am

Milton Brown  
Rector

### Brackettville United Methodist Church

Sunday School (Children) 9:45 am  
Sunday School (adult) 9:45 am  
Morning Worship 11:00 am

BARRY COX  
Pastor

### First Baptist Church

Corner of Ann and Veltman Street

Cordially invites You:

Sunday School 9:50 am  
Sunday Morning Worship 11:00 am  
Sunday Evening Worship 7:00 pm  
Wednesday Prayer Service 7:00 pm

Other Activities Are:  
Brotherhood, Royal Ambassadors and  
W.M.U.