

the Kinney Cavalryman

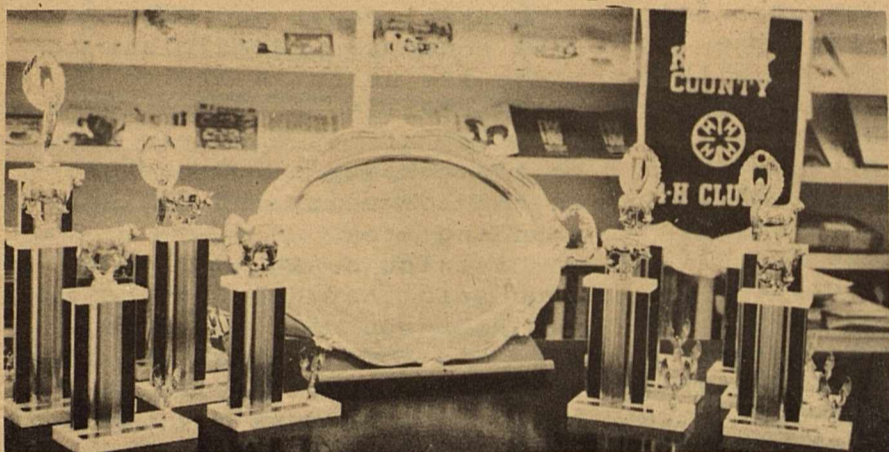
VOL. 3 NO. 3

JANUARY 23, 1976

BRACKETTVILLE, TEXAS

Twenty-First Annual

Kinney County FFA and 4-H Livestock Show Starts Today!



Above are some of the trophies that will be presented this weekend at the Stock Show. They were on display at the office of the County Extension Agent, Carl Esser.



STOCK SHOW GOODIES---the above group of Xi Rho Phi girls were at it "hot and heavy" making up cinnamon rolls for this busy weekend. Come on out and try them, after all the work (and fun) these following girls had making them: (Left to right) Golda Martin; Marty Miars; Nelda Gwartney; Mildred Borden and Paula Ragsdale.

C of C Elects Leaders

Emma Slaughter, Secretary of the Chamber of Commerce, announced today the following results of the election. The Officers of the Chamber are President, Travis Wilson; Vice-President, Jimmie Bader; and Secretary-Treasurer, Miss Charles Wilson. Also elected were the following Directors: Alfred Pena; Dr. Thomas Young; Rich Adams; and Dianne Pratt.

CP&L CAPER CONTINUES



Thursday, January 15th, thirty-two (32) infuriated citizens showed up at the City Council meeting at City Hall, after they summoned CP&L District Manager, Allan Wallace, regarding the rumors of closing the local office. (Mr. Wallace is the man with the tie on, in the center of the picture.)



Brackettville's Utility Attorney, Ralph Brown and Mayor Pro-Tem, C.H. McDaniels, discuss Central Power and Light's proposal to close the Brackettville office at an emergency meeting of the City Council on Monday, January 19th. (The Resolution adopted by the City Council is printed in this paper.)

EDITORIAL Dear Mr. CP&L,

BY
GEORGE!

Central Power and Light may consider us a village, However, after reading this news release, you must also consider us "Village Idiots".

This is supposed to be a cost cutting move...Yet CP&L will be employing exactly the same number of personnel, they will just be moved out of our area. You won't have the rent to pay here,

CONTINUED ON PAGE 2

the Kinney Cavalryman

J. GEORGE LOOS, JR.
EDITOR

PUBLISHER
JUDY LOOS

P.O. BOX 735
BRACKETTVILLE, TEXAS
78832
563-2696

Published each Friday
SUBSCRIPTION RATE: \$11.00 per year
APPLICATION TO MAIL AT SECOND
CLASS POSTAGE RATE IS PENDING
AT BRACKETTVILLE, TEXAS, 78832

"LOOSISM"

When two men in a business always agree, one of them is unnecessary.

Old Fashioned Ideas

People helping People

We don't like to brag, but when it comes to your financial matters, we're the guys to see! Our trained staff will give you friendly, personalized service in handling your banking needs

THE
First STATE BANK
COMPLETE BANKING SERVICES



Brackettville, Texas
563-2315

EDITORIAL
(CONTINUED FROM PAGE 1)

BUT, Mr. Wallace says we will have a direct line to Del Rio... If this is true, it will cost more than the rent you have been paying!

3rd, You claim you will have to hire a local collecting agency to collect your bills... (Mr. Wallace stated at 15¢ each). Multiply this times the 700 customers referred to in the news release. This is another \$105.00 per month expense that you don't have now... (If you can find a self respecting businessman to handle it after our shoddy treatment.)

4th, Mr. Robinson will not be here at all times, so a relief man will have to be on call. I am sure that you have volunteers standing in line to perform this duty at no cost.

Oh Well, you would be saving the electric bill at your local office.

If CP&L would really like to save some money, I have the following suggestion: Fire the mental giant that came up with this scheme (He was probably trying to impress someone with his expertise), and hire a 5th grader that can add and subtract.

Your news release stated: "The decision to close the office had been under consideration for some time". Then why in the Hell didn't your company have the courtesy to inform our citizens? Our City Council had to call your district manager... Your Public relations department wasn't quite on the ball either!

How many other locations that were located 30 miles from the next office have you removed a local office from? How many of them were County Seats?

Your franchise with the city states that you will supply "FIRST CLASS SERVICE". It does not say First Class Electric Service, It Says FIRST CLASS SERVICE! Mr. Wallace inferred that our service would be the

same. Buffalo Chips!

Rumors have spread that this is politically motivated and CP&L is making this move before the utilities commission gets into action... I hope this is not true.

Your present personnel (as of this minute), have been good friends of mine and the community. They are loyal people who have served us and your company well. They have, as loyal employees would, asked me repeatedly to down-grade this as a public issue. In all due respect to them, I have felt I also have a duty to publicize our predicament, even nationally if necessary.

We don't mean to be bitter but, HOW WOULD YOU FEEL IF YOU GOT KICKED IN THE ASS BY A FRIEND OF 48 YEARS?

NEWS FROM CPL-----

for immediate release-----

January 19, 1976

Central Power and Light Company today announced plans to close its business office in Brackettville, but said the move will not affect electric service to the company's 700 customers in the community and the surrounding area.

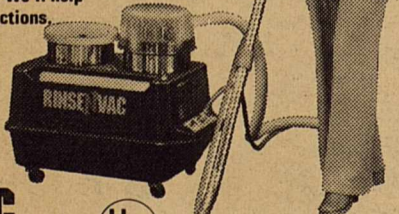
District Manager Allen Wallace said that CPL Serviceman Ray Robinson will continue to make his home in Brackettville, and handle service work in the area. One or more pay stations will be established in Brackettville for the convenience of local customers, Wallace pointed out.

Jake Royall, CPL's manager in Brackettville for the past three and one-half years, will move to a new post in the company's district engineering department in Uvalde, January 26, and CPL's Brackettville and Del Rio operations will be combined.

CONTINUED ON P. 3, COL. 3

STEAM CLEAN*
your own carpets
(At do-it-yourself prices)

RENT OUR RINSEVAC—the new compact carpet cleaning machine that lifts dirt, grime and residues out of carpets... and does the job professional cleaners charge up to a hundred dollars for. We have cleaning supplies which can be purchased at a surprisingly low cost. We'll help with easy operating instructions.



RINSEVAC
CLEANS CARPETS CLEANER...
KEEPS THEM CLEANER LONGER



Rent for only
\$1200 a day

Reserve RINSEVAC for the day you want to get your carpets really clean
Free Estimates Work Guaranteed

Del Rio Carpet

Specialist In

Carpets Sheet Vinyl Tile

RAY YOUNG
Phone: 775-0581

412 E. Gibbs
Del Rio, Texas

Brackettville

For Your Convenience Use Our Mobile Office

In Brackettville Every Thursday

NEW HOURS 3:00 P.M. To 4:15 P.M.

NEW LOCATION

IN FRONT OF SCHOOL

Think of us as
your Bankroll.
Come in for a
loan on anything.



BORDER CREDIT UNION

Laughlin A.F.B.

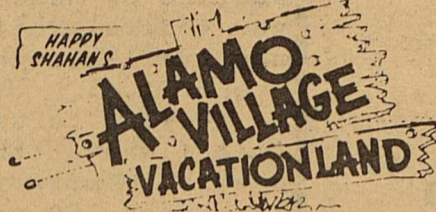
298-3536



Alamo Village Indian Store

Good Food & Cold Drinks
OPEN 365 DAYS A YEAR

SPECIALIZING IN:
TURQUOISE JEWELRY
SOUVENIRS
GIFTS



"MOVIE CAPITAL OF TEXAS"
NORTH OF BRACKETTVILLE
ON F.M. 674

BRACKETT HAPPENINGS

BY:
LILLIE MAE DIMERY

Saturday, January 17th, Sister Charlotte Wright and the members of Jerusalem Temple, honored their Pastor and wife, Elder and Mrs. Bridges, on their 16th anniversary.

The Welcome address was given by Mrs. Cirella Daniels; the Speaker for the evening was Elder Reed of San Antonio. Visiting choir were from the Bibleway of Del Rio and St. John Youth Choir, Brackettville. A lovely dinner was served after the service.

The Willie Warrior's and Tony, visited Miss Charles E. Wilson and the Dimery's. They were at the Civic Center, Saturday night.

To name a few seen at the dance, having a good time were: Bobbie Franklin, Dora Goodloe, Leo Brown, Hannah Daniels, the Alex Longoria's, the Victor Sanchez's and Yolanda Sanchez and many, many more.

Mrs. Beverly Wright has returned to her home in Las Vegas, Nevada.

Mrs. Hannah Daniels, Mrs. Martha Taylor, Miss Charles Wilson, Mrs. Mable Wallace and Mrs. L. M. Dimery went to Uvalde Monday, January 19, to the last rites for Mrs. Texana Gafford. Mrs. Gafford was an old friend and a "Sister Heriones" for many years.

S. Sgt. (Ret.) and Mrs. Pete Pierce and their son, Tracy, of Abilene, bisited the L. Dimery's, Mable Wallace and Arthur E. Bryant over the weekend.

CPL
CONTINUED FROM P. 2

When the office closes March 15, CPL's Brackettville cashier, Mrs. Gladys Fritter, will transfer her work location to Del Rio, where she will continue to assist with Brackettville accounts.

Wallace said the decision to close the office, which had been under consideration for some time, was made as part of the company's expense reduction campaign.

The company's service and construction crews from Del Rio will also be available to assist in repair and maintenance work in Brackettville, he pointed out.

"In these days of rapidly-rising costs, the company feels a responsibility to our customers to hold down costs whenever possible while maintaining quality electric service," Wallace commented.

CPL supplies electric service to more than 200 South Texas communities, but has offices in only about 70 towns.

FOR THE CONTINUED ADVENTURES OF GETTING YOUR PLUG PULLED, SEE PAGE 7.

Goof-Up!

We apologize for the mistake last week in the announcement of G. C. Talamantez and T. H. Glover who are running for County Commissioner instead of for the Chamber of Commerce.

Also to remind everyone to hurry and file as February 2nd is the deadline.

Still
the fairest
of them all!



Walt Disney's
Snow White
and the Seven Dwarfs

TECHNICOLOR

746 SOUTH MAIN

RITA

775-3443

A

WALT DISNEY

FAMILY SPECIAL



AND

LOST
BALLOON

**OLIVE-CANON
GARDEN CENTER**
Hwy 90 West
775-1332

MON. THRU SAT. 9:00 A.M. TIL 6:00 P.M.
SUNDAY-12:00 TIL 5:00 -- 775-1332

ANNOUNCING

TREES

**Pear Peach
Nectarine Apricot
Cherry Apple
Pecan Plum
Almond Fig
Walnut**

**All Fruit, Nut,
& Shade Trees**

**Guaranteed 100% for
one year**

SAT. & SUN.

Arizona Ash 7'-8' \$3.50
BR

Fan-Tex Ash 10'-12' \$5.95
BR

**SOIL BUILDING MATERIAL
CONDITIONERS**

Cow Manure FALL BULBS

Peat Moss PLANT NOW

Gypsum ROSES

Compost MANY VARIETIES

BUY NOW

**Community
Calendar**

January 23 & 24----- (Friday & Saturday)
Kinney County Stock and Pro-
ject Show at the Civic Center.

February 2----- (Monday)
Filing Deadline for Democratic
Primary.

Feb. 27---- Chamber of Commerce
Banquet at Civic
Center-8:00 p.m.
Tickets \$3.50
Door Prizes

**Report
TO
THE People**

AUSTIN---State Rep. Luther Jones announced today that a transcript of the meeting of the House Committee on Elections held on December 17, 1975, with officials from the U.S. Department of Justice on hand to explain the new federal Voting Rights Act is now available through the Committee office.

"I want to say how very gratified I was at the response to the meeting - more than 700 people from over 450 political subdivisions were able to attend," Jones said. "However," he added, "I am sure that many persons still have unanswered questions, and many others were unable to attend the meeting. The transcript will be especially useful to those people."

"The Committee had wanted to be able to distribute copies of the transcript free of charge," Jones continued, "but our appropriation just did not allow for such an expenditure. However, I have arranged to make copies available to any interested party for only what it cost the Committee to produce."

Anyone wishing to order a copy of the transcript may do so by writing:

Committee on Elections
P. O. Box 2910
Austin, Texas 78767

and enclosing a check or money order for \$3.00 for each copy requested.

"This transcript is a valuable source for both understanding the VRA and preparing the required submissions to the U.S. Department of Justice," Jones concluded.

around the campus...

The main order of business around BHS this week has been the Kinney County Livestock show today and tomorrow. As this is a joint venture of the Brackett High FFA and the county 4-H Clubs, just about everybody has been involved in one way or another.

The cast for the one act play, scheduled for April 3 in Uvalde, has been announced. Brenda Alston, Marion Johnson, Venita Gum, Bill Pratt, Mark Tidwell, and Tino Gomez have stage parts. Kenneth Carnley is charge of the stage crew and Kaye York and Lucy Lucas head the make-up department. Understudies are Steve Pena and Kaye.

The seniors have begun a study of careers and vocations. Though it seems strange, graduation is just around the corner. Seniors are reminded that cap and gown pictures will be retaken February 6.

There's an old song that says, "Baby, its cold outside." Well, for the BHS junior high students, it was just as cold inside this week. The boiler in the junior high building was scheduled for a maintenance check and the heat was turned off.

Basketball rolls right along and the district race is getting tighter. At Dilley, last Friday night, the boys lost a close one and the girls squeezed in under the final buzzer with a two point winning margin. Tuesday, in a non-conference game, the varsity boys were defeated by the Eagle Pass team.

Contrary to popular belief, teachers are not creaking robots, as was displayed Thursday night at the "old-timers" game against Sabinal. Will have more to say about it next week.

LATE-BREAKING BULLETIN!!!
Black Bart, the meanest, most low down scoundrel to live with will be at Brackett High Tuesday at noon for a showdown. Don't miss it, but keep out of range.



1971	Galaxie 500	LOADED	\$1,995
1974	Olds Cutlass	LOADED	\$3,895
1972	Chevrolet Station Wagon	LOADED	\$1,995
1971	Chevrolet Caprice	LOADED	\$1,995
1969	Mercury Monterey	LOADED	\$ 895
1974	Dodge Charger	LOADED	\$3,495
1972	Ford Galaxie 500	LOADED	\$2,295
1974	Grand Torino Braugham	LOADED	\$3,895
1972	Ford Courier	LOADED	\$1,000
1972	Ford Club Wagon	LOADED	\$2,495
1972	Wagoneer	LOADED	\$3,495
1973	GMC	LOADED	\$2,595

**All New 1975 Models
Reduced \$1000.00**

Demonstrators Reduced To Clear

**Town & Country Ford
Lincoln, Mercury**

SALES & SERVICE: 7 a.m.-7 p.m.-Mon.-Sat.

316 Pecan at Spring Del Rio, Texas 78840 512-775-7481

New Hours
8:00 a.m. - 6 p.m. Weekdays
8:00 a.m. - 12:00 noon Saturday

COUNTY AGENT REPORTS BY CARL ESSER

4-H REPORT

The Twenty-First Annual Kinney County FFA and 4-H Livestock Show will begin this Friday morning, January 23, at 8:00 A.M. at the Brackettville Civic Center. All livestock will begin moving in place with the weighing, tagging, and penning of livestock continuing till 12:00 noon. At 1:00 p.m. the sifting of lambs, steers, and hogs will begin, followed by the

judging of market hogs at 2:30 p.m. and the judging of commercial steers at 3:30 p.m. Judge for the hogs and steers will be Mr. James Bevel, Vo. Ag. teacher of La Pryor. On Saturday morning beginning at 8:00 a.m. the market lambs will be judged starting with Light Weight Fine Wool Fat Lambs, followed by Heavy Weight Fine Wools, Light Weight Crossbred and Heavy Weight Crossbred. Judging the market lamb will be Mr. George Ahlswede, sheep and goat specialist for the Texas Agriculture Extension Service at San Angelo. At 11:55 a.m. will be the presentation of the showmanship award. Beginning at

12:00 noon, a Ranch Style Bar-B-Que will be served under the direction of the 4-H and FFA mothers. The Junior Livestock Show Auction Sale will start promptly at 1:00 p.m., conducted by Joe Hargrove's Southwest Livestock Exchange.

On Saturday morning, a breakfast will be held from 6:30 a.m. till 7:30 a.m. for all livestock exhibitors participating in the stock show. The breakfast will be prepared by the FHA girls and their instructor, Mrs. Clara Ricks.

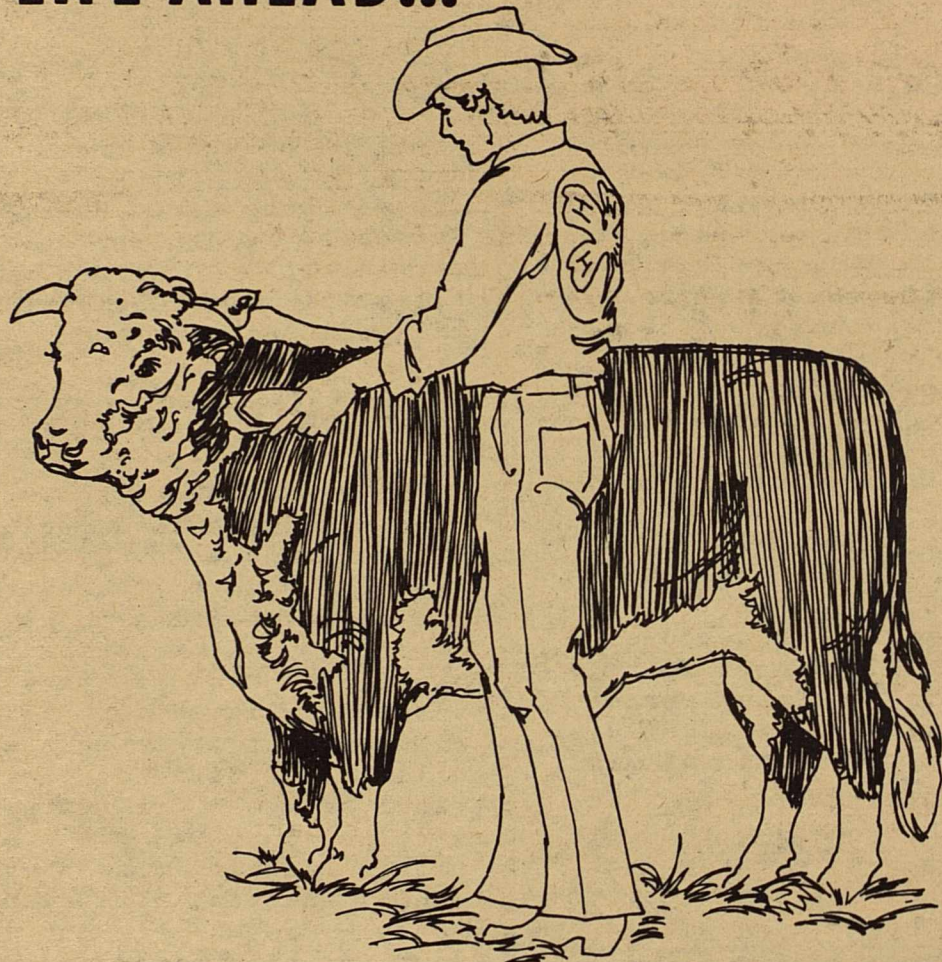
Superintendents in the livestock divisions are: Sheep-Pat Rose III; Calves-Jimmy Bader; Swine-Felix Lopez. A great deal of other people are helping and cooperating with the Kinney County Stock Show and a complete list of them will be in next weeks paper.

Also in conjunction with the Stock Show will be the Kinney County Project Show. All project show entries will be checked in Friday morning from 8:00 a.m. till 9:00 a.m. Judging will begin at 9:30 a.m. A large number of entries have been entered and the competition will be strong, reports Wanda Jennings, Overall project show chairman. The division in the project show and the chairman are as follows: Foods-Judge Burks; Clothing-Clara Ricks; Arts and Crafts-Laura Latham and Pam Mc Intoah; Metal Work-Jack Long; Photography-Jake Royal; and Educational Exhibits-Charles Koch.

Everyone has been working real hard in preparing for the show, which promises to be one of the best ever, states Carl Esser, Kinney County Extension Agent. All of the support shown to the FFA and 4-H boys and girls by the various firms, ranches and individuals, is greatly appreciated, says Esser.

The public is cordially invited and we are hoping to see all our friends and neighbors turn out for this annual event, adds Charles Foust, Vo. Ag. teacher at Brackettville.

TO EACH HIS OWN DREAM OF A LIFE AHEAD...



Let Us Help A Distant Vision Become A Certainty Tomorrow

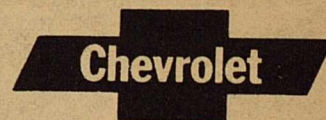
Your child's dream of the future can be an obtainable goal, aided with a savings account started today by you. Provide him with the financial help he'll need for that future. A well-planned, federally-insured savings account can earn top return from day of deposit to day of withdrawal. For expert guidance come in today and secure a dream. The child will thank you for your farsighted wisdom.

Service. You can find it at Del Rio National Bank, the bank that's here to help you.



Del Rio National Bank

P.O. DRAWER N □ DEL RIO, TEXAS 78840 □ (512) 775-7541
An Equal Opportunity Employer



Service

After
the
Sale

Howard Chevrolet, Inc.

2300 Highway 90 West
Del Rio 775-0566

BETA SIGMA PHI**Brackett Women Honored By Local Chapter**

The Xi Rho Phi chapter of Beta Sigma Phi met Monday evening in the home of Jane Young. Paula Ragsdale served as hostess.

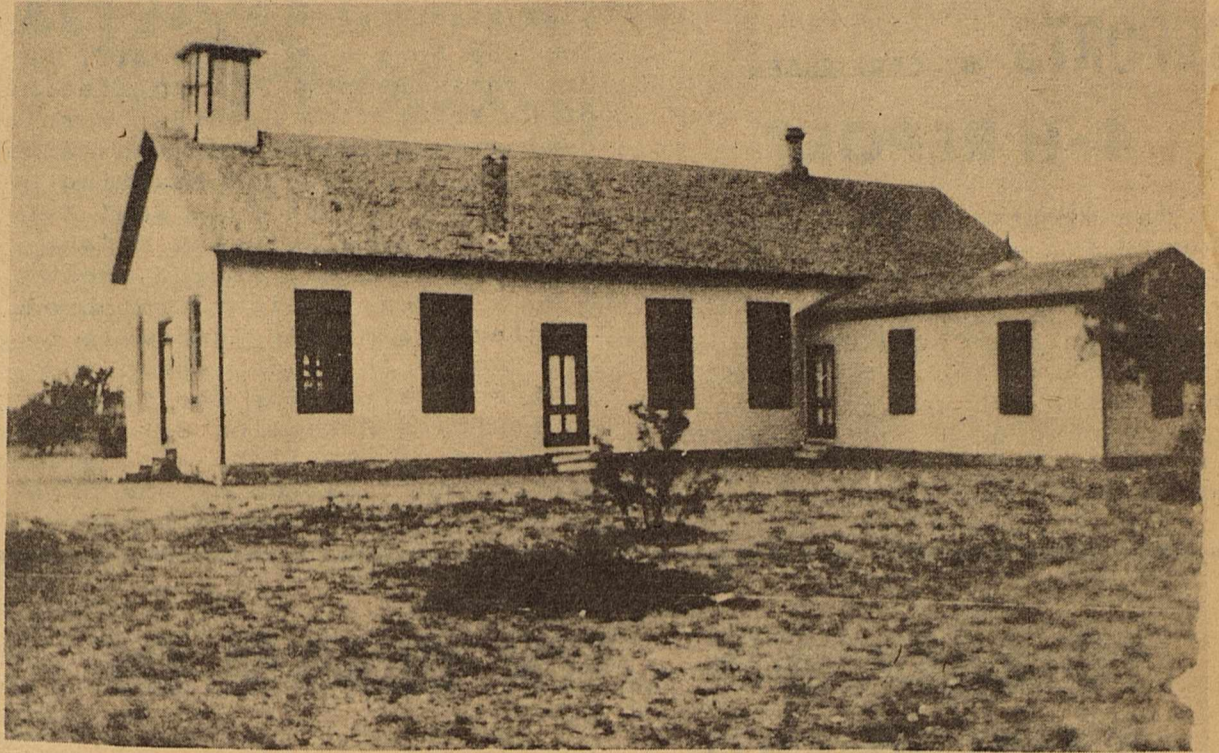
Marty Miers called the meeting to order and led the chapter in reciting the opening ritual. Nelda Gwarrney, chapter secretary called roll and read the minutes of the previous meetings. Communications from International were read by Nelda, Marty and Paula. Paula Ragsdale gave the treasurer's report.

The various chairpersons of the standing committees gave their reports. A discussion of the various ways and means projects was quite lengthy. The members signed up to work in the concession stand at the stock show Friday and Saturday. Xi Rho Phi and Alph Epsilon Psi chapters are making this a joint venture, and a percentage of the profits will be given to the 4-H Club.

During the next two months, chapter members will be selling tickets to two upcoming Beta dances to be held in Del Rio. The first is the annual Sweetheart Ball to be held on February 14 in the Del Rio Civic Center. The sweethearts of the various local chapters will be presented in formal ceremonies at the ball. Golda Martin is Xi Rho Phi's chapter sweetheart. The second dance will be held April 3, in the Del Rio Civic Center and will benefit the Val Verde Memorial Hospital. The dance is being called a "Dottsy" Dance and will feature music by Dottsy and the New Country Edition Band.

The chapter voted to send a letter to R. W. Hardy, Chairman of the Board of CPL, to express our support for the movement to keep the local C.P.L. office open and to retain Jake Royal as its manager.

After the business meeting,



PICTURED ABOVE IS ONE OF THE EARLIEST KINNEY COUNTY SCHOOL BUILDINGS. MANY PROMINENT BRACKETT CITIZENS LEARNED THEIR 3-R'S HERE AND WERE TAUGHT BY MISS MITTIE JONES. THE BETA SIGMA PHI PROGRAM HONORED MISS JONES.

Jane Young gave the program entitled "Women who have made a difference!" The emphasis was on local women who, according to the criteria given in the Beta Sigma Phi program book "have won attention because of something they were successful with, chosen to do, gifted at, struggled for, someone worth recognizing, emulating, and appreciating." Four ladies of distinction were honored in the program, Miss Mittie Jones, Miss Else Sauer, Mrs. Edith M. Bursey, and Mrs. Charlotte Goleman. The lives of each of these lovely, exuberant ladies are exciting and inspiring and they certainly had an impact upon Brackettville. In this, our bicentennial year, it is appropriate to pause and remember the contributions of these ladies who gave so much.

After the closing ritual the members enjoyed refreshments

provided by Paula Ragsdale and drew for the hostess prizes. Present were Marty Miers, Paula Ragsdale, Nelda Gwartney, Golda Martin, Mildred Borden, Orlean Riley, Lin Frerich, Jane Young and guest Beverly Hood.

Miss Mittie Jones

Miss Mittie, as she was affectionately called, was a native of Kinney County and contributed much to the education and welfare of the county's children. Her teaching career began when Miss Mittie was very young, and lasted for 53 years, all but 2 of these in Brackettville. She lived on the family ranch, now the Orr Ranch, and with her young, adopted nephew Martin Raehmer, rode bicycles to school each day for several years. Miss Mittie moved into town, and soon afterwards, adopted 3 more children, Julia, Henry, and Mary M. Jones after the death of her brother and sister-in-law. All of these adopted children graduated from Brackett High School. The two girls attended Sul Ross College in Alpine and later taught in Brackettville.

Miss Mittie was active in the Mary Magdalene Catholic Church and taught Catechism for many years. She established a local Camp Fire Girl's group and sponsored many of their field and camping trips.

During the summers, she attended college to keep up with the latest teaching methods, while she never earned a degree as such, she was awarded a Teacher's Permanent Certificate for Elementary grades in 1914.

Miss Mittie was a sister of Ben Jones, Sr. and of County Judge, Earnest Jones.

After many years as a teacher, Miss Mittie served very efficiently as the text book custodian. Before her death, the old two story brick school building was renamed for her, and in 1957 the new elementary school also bore her name.

CB Scene**Relaxed Rules.**

- Omnidirectional antennas can be raised to 60 feet above ground. All other antenna restrictions remain unchanged. Note these cover receiving as well as transmitting antennas.

- All channels except channels 9 and 11 can be used for communications between units of different stations.

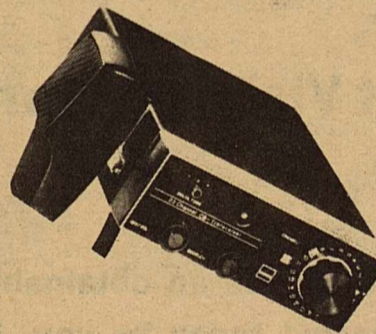
- Non-substantive (hobby) use is permitted on all "free" channels.

- Only your call letters need be broadcast at the beginning and end of each transmission. Handles (Chief Frog, etc.) can be used additionally for ID purposes, but are not substitutes for call letters.

- The 5-year license fee has been reduced from \$20 to \$4.

- Communications are still limited to 5 minutes duration, but waiting time between communications has been reduced to one minute. CB'ers can now relay messages for other operators up to a total distance of 150 miles.

- Uses of channel 9 which provide assistance to travellers have been clarified to include boats, aircraft, etc.

**New Stock of CB's,**

Base Stations, Antenna, Testers,

and Handie Talkies have just ARRIVED.

Come see us for the sweetest deal before you buy.

Get a Sweet deal from SWEET'S

SWEET'S PRESCRIPTION CENTER

WE FILL WELFARE PRESCRIPTIONS

NOSOTROS SURTEMOS PRESCRIPTION DEL WELFARE

B.E. SWEET REGISTERED PHARMACIST

24 HOUR EMERGENCY SERVICE CALL 563-2428

CITY OF BRACKETTVILLE

KINNEY COUNTY, TEXAS

BRACKETTVILLE, TEXAS

78832
January 20, 1976

Mr. R.W. Hardy
Chairman of the Board
Central Power & Light Co.
Box 2121
Corpus Christi, Texas 78403

Dear Mr. Hardy:

As Mayor of the City of Brackettville I present you with a resolution passed and approved on January 19, 1976 by the City Council.

I beg of you to review your decision to remove from Brackettville your office and service personnel, our citizens are quite perturbed as well as the Council and so far we have seen no reason or justification for the move. We can see nothing but a danger to the health, safety and welfare of our citizens.

The City Government of Brackettville feel some what embarrassed as we were the last to hear of this move. Several rumors had come to us, but nothing official and we had to call the District Manager to confirm the anticipated action. Now we hear that this has been in the mill for several months.

Again in the interest of all concerned, I beg of you to review and reverse your decision.

Sincerely,

C.H. McDaniel
C.H. McDaniel
Mayor Pro-Tem
City of Brackettville

A RESOLUTION OF THE CITY COUNCIL OF THE CITY OF BRACKETTVILLE OPPOSING THE REMOVAL OF CENTRAL POWER AND LIGHT FACILITIES AND PERSONNEL FROM THE CITY OF BRACKETTVILLE.

WHEREAS, for the past forty eight years Central Power & Light Company has supplied electrical service to the City of Brackettville, during which time it has continuously maintained an office personnel and equipment in the City of Brackettville capable and adequate to insure reliable and efficient electric service, and

WHEREAS, it has been brought to the attention of the City Council of Brackettville that Central Power & Light Company now intends to remove its office, personnel and equipment from the City of Brackettville, and

WHEREAS, Central Power & Light Company has heretofore contracted to provide "first class" service to the City of Brackettville and its inhabitants which will not be physically possible in the event such facilities are removed from the city, and

WHEREAS, the removal of such personnel and facilities will result in a deterioration of electric service to the City of Brackettville and will present a threat to the health, safety and welfare of the residents of the City of Brackettville.

NOW, THEREFORE BE IT RESOLVED by the City Council of the City of Brackettville:

1. That the City Council of the City of Brackettville is unalterably opposed to the physical removal of personnel and facilities of Central Power & Light Company from the City of Brackettville.
2. That the management of Central Power & Light Company is hereby specifically requested to reconsider its decision and to revoke such decision and to leave its existing equipment, personnel and facilities in the City of Brackettville so that the continuation of "First Class Service" to the City of Brackettville and its inhabitants will be assured.
3. That a delegation of the City Council be directed to personally deliver an executed copy of this resolution to the management of Central Power & Light Company.
4. That copies hereof be forwarded to appropriate members of the State Legislature and United States Congress.

PASSED AND APPROVED this 19, day of January, 1976.

C.H. McDaniel
MAYOR PRO-TEM

ATTEST:

Blaine
CITY SECRETARY

TOMMY SEARGEANT
County Judge

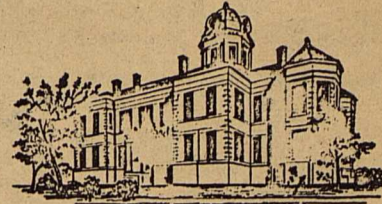
DOLORES RANEY
County Clerk

J. A. SHEEDY
Sheriff & Tax
Assessor-Collector

MARY SENNE
County Treasurer

TULLY SHAHAN
County Attorney

Kinney County



COUNTY SEAT

Brackettville, Texas 78832

January 20, 1976

T. H. GLOVER
County Commissioner
Precinct No. 1

MANUEL PUENTES
County Commissioner
Precinct No. 2

G. C. TALAMANTEZ
County Commissioner
Precinct No. 3

L. B. JOHNSON
County Commissioner
Precinct No. 4

Mr. R. W. Hardy, Chairman of the Board
Central Power & Light Company
P. O. Box #2121
Corpus Christi, Texas 78403

Dear Mr. Hardy:

I recently learned that your Company has decided to close its Brackettville office, and abandon this community for any reliable daily contact.

For many years, your company has been a valued corporate citizen. CP&L employees residing here have contributed much to our small city, and we also feel that Brackettville is a worthwhile part of your service area. I cannot believe it is in your economic interest to close this office, and it is self evident that such closing will be economically detrimental to Brackettville.

The relatively recent trend for utilities to regionalize their services and insulate themselves from their customers is deplorable. I am certain you are aware that this trend would be impossible if the utilities were in a competitive situation.

Utilities have learned they can have a total disdain for the public that serves them without a significant effect on their operational income simply, and only, because no competition exists or can practically and legally replace them.

I am optimistic that good corporate judgment will prevail, and your company will continue its basic responsibilities to this community.

Yours very truly,

Tommy Seargeant
Tommy Seargeant
County Judge

Area Lawmen Hold School Here



LAW ENFORCEMENT OFFICERS from Kinney, Uvalde, and Val Verde counties are presently holding a forty hour seminar in Brackettville at the Civic Center. Mr. Bill C. Cooksey of the engineering extension service of Texas A & M University is shown above instructing the first class of the intermediate criminal law penal code course. The course was started on January 19 and will conclude January 23.

The officers attending will cover such subjects as: offenses against property, offenses against public order and decency, and offenses against public health, safety, and morals.

In addition to Mr. Cooksey, speakers will be present from the district attorney's office, and the Texas Department of Public Safety.

SAVINGS PROFITS RESULTS THEY'RE ALL IN CLASSIFIED

RATES: 10¢ per word; phone, 2 words; address, 2 words. Payment must accompany ads. MAIL to CAVALRYMAN, P.O. Box 735; Brackettville, Texas, 78832. \$1.00 Minimum. Display ads this page regular rates. DEADLINE...MONDAY 9:00 a.m.

NOTICES LAS MORAS LODGE NO. 444, A.F. & A.M.



Brackettville,

Brackettville, Texas Regular Meetings the second Tuesday Evening of each Month, at 8:00 p.m.

David Winters, W.M. M.H. WINKENWERDER, SECY.

FOR SALE

Used Sucker Rods-"V" Mesh Wire- 2 in. x 4 in. Pipe Posts, 4 to 8 foot in length

First come first serve-Cash Only Contact: Charles Entrikin-Fort Clark Zoo Farm

30-30 Winchester Rifle, Model 94, almost new, \$90.00. Call: 563-2394.

HELP WANTED

Bilingual grocery clerk, Contact Don Hood, in person, at the Stop -N- Shop.

LOST & FOUND BHS Class Ring. Contact Johnny Fritter 563-2754.

SERVICES

WOULD LIKE TO BAKE, BIRTHDAY AND WEDDING CAKES, HOMEMADE BREAD AND PIES. Mrs. Jack Graham, 563-2759.

Would like to babysit in my home. Contact: Sherrie Collett, Rudman's Traylor Park, or phone 563-2851

AUTOMOTIVE

'73 Impala, 4 door, LOADED, exceptionally clean. \$2595.00 Private Owner 775-5581.

BUSINESS DIRECTORY

THE GOLDEN BRUSH

JEWELRY STORE CURIOS ART GALLERY & LIQUORS

HIDALGO 285 DTE. PHONE 311 CO. ACUÑA, COAH. TOURIST INFORMATION ACROSS FROM OWNERS DEL RIO, TEXAS PEPE & ALFONSO

Del Rio Hobby Center



model Planes Trains Rockets Cars



ARTS & CRAFTS

301 Spring St. 775-7920

OWNER PHILIP PROULX, JR. DEL RIO, TEXAS 78840

3802 HWY 90 WEST DEL RIO, TEXAS PHONE 775-7853 ACROSS FROM THE BIG RED ROOF

BRANDING IRON STEAK HOUSE

Featuring

MESQUITE BROILED TEXAS T-BONE and CLUB STEAKS BURGERS FOR THE YOUNGONS COCKTAIL, BEER & WINES REAL LIVE HONKY TONK PIANER PLAYIN MUSIC NITELY PROPRIETORS GEORGE & THELMA E. AUBRY

REAL ESTATE

30 Acres near Brackettville, just off Highway 90. House with 40 Acres in Spofford. 1600 Acres of Good Hunting Country. BIZZELL REALTY

563-2829

563-2627

CAVALRYMAN MAIL SUBSCRIPTIONS

THE KINNEY CAVALRYMAN P.O. Box 735 Brackettville, Texas 78832

Please enter my one-year Subscription to the Cavalryman. Check or Money Order enclosed for \$11.00. (NO BILLINGS)

NAME: _____

ADDRESS: _____

CITY _____ STATE _____

ZIP CODE _____ Please Print or Type.

NOW IS THE TIME!

We Sell, Plant, Trim, Spray, and Fertilize TREES

563-2735

SAGEBRUSH SHOPPE

COMMENTS from THE SAGEBRUSH

BY: JOE TOWNSEND



It's tree trimming and tree planting time. If you have a tree that is not doing well, trimming may be just the thing it needs. If it is an old tree or a nature tree of any age you can hardly hurt it by cutting it. Many times a tree that seems to be dying can be saved by topping it. When this is done you can safely cut off all the top of the tree leaving only the major branches to the length of 4 to 6 feet. When a limb is cut off it should be a clean smooth cut. If the limb is cut part way and breaks off the rest of the way the wound to the tree can be most

damaging. This can cause decay, disease or fungus infestation which could eventually work its way into the heart of the tree. If the limb is cut at an angle, not parallel to the earth, there is usually no need to treat or paint the cut. Most trees will heal over and seal themselves in this area. Mesquite and mulberry are exceptions. If these are not treated or painted they will "bleed" and cause damage to anything beneath the cut as well as the tree. By all means, all dead wood should be removed. For healthy, beautiful trees, give them a little care now.

