

THE

VOLUME XVIII

BORDEN

STAR

JULY 18, 1990

Serving the Counties of Borden, Dawson, Garza, Howard, Lynn & Scurry

4H NEWS

"FANTASY FASHION"

The Borden County "Fantasy Fashion" show was held July 10 in the Borden County District Courtroom at 4:00 p.m. Eight 4-H'ers participated in the judging and awards ceremony. Those participating were:

Kaci Poole-Cloverbud-Buying; Meg Parks-Jr. I-Construction-Casual; Sharla Miller-Jr. I-Buying; Dayna Parks-Jr. I-Construction-

Jr. I-Construction/Sports; Laura Hensley Jr. II-Buying; Deann Parks-Jr. II-Construction-Casual; Mendy Hensley-Sr.-Buying/Daytime and Shayne Hess-Sr. Buying/Active Sports.

These 4-H'ers and their parents spent many hours of their time preparing for the Fashion Show during a

hectic time of the year. They are to be congratulated for making the Borden County Fashion Show a success. All partici-

pants will be advancing to the district contest to be held Tuesday, July 24 at Lubbock Christian University. More pictures on page 2.



Fashion Show participants: Back row L. to R. Shayne Hess-Sr.; Mendy Hensley-Sr.; Laura Hensley-Jr. II; Deann Parks-Jr. I. Bottom row L. to R. Kaci Poole-Cloverbud; Sharla Miller-Jr. I; Meg Parks-Jr. I; and Dayna Parks-Jr. I.

HOWARD COUNTY 4-H SHOOT

Twelve Borden County 4-H Shooters attended the Howard County 4-H Shoot last Saturday in Big Spring.

Dayna Parks, Meg Parks, Deann Parks, Clint Miller, Sky Jones, Thad Isaacs and Jeffery Dennis participated in the Sub-Junior events, with Deann Parks winning 1st in Trap after a

shoot off hitting 40 out of 50.

In the Juniors, Guy Will Zant and Cody Cox did a good job with Cody winning 1st. in Skeet hitting 61 out of 75 and winning 1st in Trap hitting 69 out of 75. Cody also was High Over-All hitting 130 out of 150.

Guy Will Zant won 4th in Skeet hitting

59 out of 75, and 2nd in Trap with 66 out of 75.

Amanda Anderson and Fuzz Herridge participated in the Senior Division, with Amanda winning 4th in Trap with 95 out of 100.

The leaders would like to Congratulate each student for doing such a good job.

JUDGES ATTEND SEMINAR

One hundred two justices of the peace from around the state were certified at a 20-hour basic justice of the peace seminar May 22-25 in San Angelo. The seminar, conducted by the Texas Justice Court Training Center headquartered at Southwest Texas State University in San Marcos, is held in compliance with supreme court rule and statute (Art. 27.005) Texas Government Code. Topics covered included judicial demeanor, new legislation impacting the Justice of the Peace Court, code of judicial conduct, criminal trial procedure and simulations, forcible entry and detainer, emergency detentions (mental, drug and alcohol), judicial liabilities, juvenile law, alcoholic beverage laws, parks and wildlife laws, protective orders and peace bonds, rules of evidence, search and arrest warrants, duties of a magistrate, hot checks, inquests and financial management.



Pictured left to right: Joan Merket of Mitchell County, Pct. 1, Pl. 1; Willie Grant of Howard County, Pct. 2, Pl. 1; William H. (Bill) Shankles of Howard County, Pct. 1, Pl. 2; Carolyn F. Stone of Borden County, Pct. 2, and Dan E. Callaway of Scurry County, Pct. 1.

ANN RICHARDS ANNOUNCES CO-CHAIRS

Ann Richards Wednesday announced that Lt. Governor Bill Hobby, former Congresswoman Barbara Jordan and former San Antonio Mayor Henry Cisneros will serve as Co-Chairs of the Ann Richards for Governor Committee.



TEXAS
DEPARTMENT OF
COMMERCE

Is it the Caribbean or is it Del Rio?

by Cynthia Maddox

Heading west from Del Rio toward Big Bend country, something appears wrong with the surrounding vista. Perhaps it's a mirage, resulting from too many hours on the road, but there appears to be a huge body of azure water in the middle of near-desert brush country. Can't be. Granted, Mexico is just a stone's throw away, but not the lush Caribbean tropics.

Instead, it is the clear waters of **Lake Amistad**, a 67,000-acre reservoir fed by the Rio Grande. Pecos and Devils rivers and bordered by sheer limestone cliffs. Its name derived from the Spanish word for "friendship," Amistad forms an international boundary between the two countries.

The name "Amistad" seems quite appropriate for this Lower Pecos region, a favorite travel destination since 1590 when Spanish explorer Caspar Castano de Sosa visited. Travelers are attracted to the plentiful water supply, not only at the lake and rivers, but also at the headwaters of underground artesian springs. When they surface from the refreshing pools, they also discover the oldest aboriginal pictographs on the continent, Texas' oldest winery, colorful legends such as Judge Roy Bean and Dr. John R. Brinkley, and the excitement of crossing the border into Ciudad Acuna for good Mexican food and bargain shopping.

When Spanish missionaries stopped to rest near the headwaters of a gushing spring on the feast day of St.

Phillip in 1635, they naturally proclaimed it San Felipe del Rio (St. Phillip of the River) and conducted the first mass in Texas. One of the largest continually flowing artesian wells in the state, **San Felipe Springs** pumps about 90 million gallons of water daily.

"The springs are the reason for Del Rio's existence, providing water needed for crop irrigation by the town's founders," says Debbie Green, tourism director for the local chamber of commerce. "San Felipe has literally been an oasis in the desert for thousands of years."

In the 1850s, the springs was a designated watering hole for a caravan of camels, imported by Secretary of War Jefferson Davis for frontier outposts, on their journey to West Texas. It also served as a stop on the 1,470-mile mail route between San Antonio and San Diego.

No camel or pony express riders stop for water these days where a greenbelt known as the **San Felipe Creek Walk** now borders the springs. A system of hike and bike trails, along with playground areas, now occupies the spots where riders once sought rest from long, dusty trails.

The area's ample water resources drew settlers to the region long before history recorded the arrival of Spanish explorers. Evidence of civilization dating back 8,500 years is found along cave walls of Seminole Canyon, about 40 miles west of Del Rio.

The famous pictographs of **Seminole Canyon State Historical Park** rank as the oldest rock art in North America. The drawings chronicle the hunter/gatherer culture that inhabited the canyons. More than 40 pictographs cover the walls of rock shelters in the Lower Pecos area.

"These pictographs are much more than simple graffiti," explains Park Ranger Nick Chavez during a daily guided tour. "The details are so meticulous. They are the diaries of the ancient people who lived here."

He directs the group's attention to the pictograph known as the "Three Shamans," pointing to the middle winged figure. The diety appears to have a set of antlers atop his head and 10 sets of antlers below him perhaps symbolize trophies collected by this great hunter.

The next major settlement of the area began in the late 1800s with farmers seeking out fertile lands. One of those early pioneers was Italian immigrant Frank Qualia, who first stopped in San Antonio only to find all the prime land already taken. He continued west to Del Rio, where he planted Lenoir grapes to make wine for his family and friends. Then in 1883 Qualia established **Val Verde Winery** and it has remained in operation since, even surviving Prohibition by producing wines for sacramental

and medicinal purposes.

Thomas Qualia still harvests grapes from the vineyards planted by his grandfather to produce the original Lenoir, Herbemont, Chardonnay and award-winning Don Luis Tawny Port dessert wines.

A short distance away from the winery is **Whitehead Memorial Museum**, where historic buildings and an eclectic collection of exhibits recount the history of Del Rio and Val Verde County.

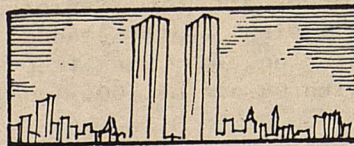
Judge Roy Bean, infamous as the "Law West of the Pecos," and his son are buried on the museum grounds. A replica of Bean's legendary Jersey Lilly saloon, still at its original site 60 miles away in Langtry, sits near the gravesite. Another exhibit highlights the equally controversial career of Dr. John R. Brinkley. His experiments in the 1930s with implanting goat glands in humans and advertising questionable patent medicines over a Mexico-based 200,000 watt radio station brought him fame and scandal.

A trip to Del Rio isn't complete without crossing the border into **Ciudad Acuna**. Local restaurants feature extensive menus of traditional Mexican dishes, seafood and steaks. Shoppers find good buys on liquors, embroidered folk dresses, handcrafted wood items and blown glass.

The Mexican government recently unveiled plans for a \$50 million resort project on Lake Amistad just below the dam. The government hopes to complete two hotels and restaurants, an 800-acre nature preserve and cliff diving attraction by 1994. The proposed site sits within view of **Tlaloc**, a likeness of the Aztec rain god that stares stonily from its perch atop Amistad Dam. While the dam was under construction townspeople, fearing the reservoir might never fill, commissioned the 23-foot sculpture. Tlaloc obviously worked his magic as torrential rains filled the lake in one year, creating one of the largest and most scenic recreation areas in the Southwest.

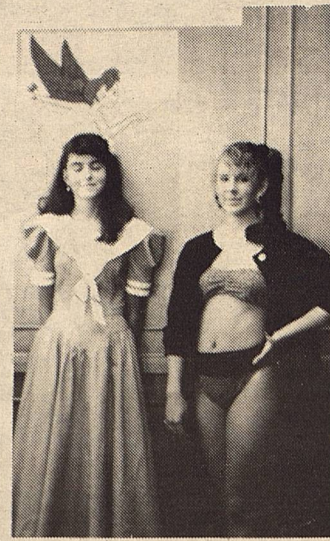
For information about lodging, recreational activities at Lake Amistad and other attractions in the area, contact the Del Rio Chamber of Commerce, 1915 Avenue F, Del Rio, Texas 78840; or call 512/775-3551.

For a free copy of the 248-page *Texas State Travel Guide*, call 800-888-8888-TEX. It's the most complete guide to Texas cities, parks, forests and lakes.



The two 1,350 foot towers of the World Trade Center in New York City occupy only two acres, but can accommodate 130,000 people.

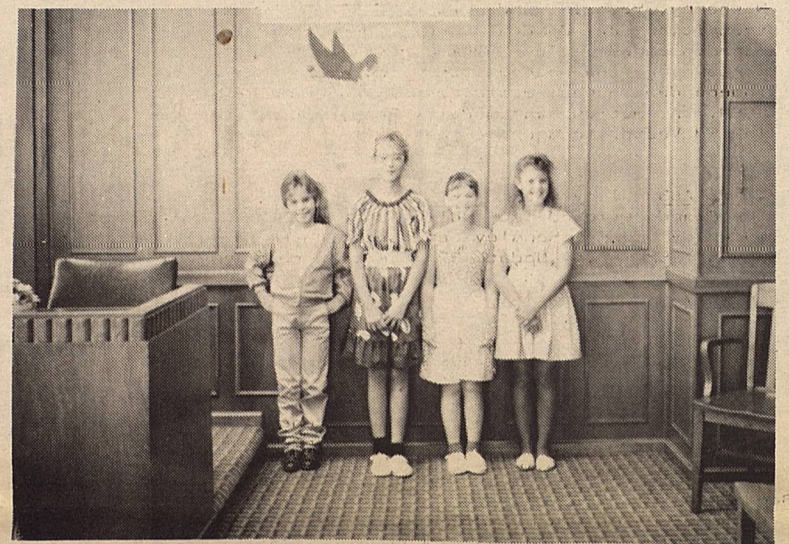
FASHION SHOW



Senior Buying-
MENDY HENSLEY and
SHAYNE HESS.



Junior II- LAURA
HENSLEY AND DEANN
PARKS.



KACI POOL-Cloverbud; MEG PARKS-Jr. I;
DAYNA PARKS-Jr. I and SHARLA MILLER-Jr. I

NOTES FROM HOME

BY DEBRA POLLARD

Home Demonstration/CFA

Helping Your Child Learn To Write

Learning to write is an important task of childhood. The U.S. Department of Education has noted that "children who are encouraged to draw and scribble stories at an early age will later learn to compose more easily, more effectively, and with greater confidence than children who do not have this encouragement."

Parents can assist their children in acquiring writing skills in a number of ways:

°Provide a special place for writing and drawing which is equipped with paper, pencils, crayons, felt pens, envelopes, tape and staples, so that children can explore writing at any time.

°Provide bank forms, memo pads, prescription pads and pads for taking orders in restaurants for make believe play. Make believe play of this type will stretch the child's imagination and broaden their experiences.

Cont. to pg. 5

The Borden Star
Publication No. 895520
(USPS 895-520)

CO-EDITORS
Verna Adcock
Clarajane P. Dyess

Published weekly, except for Christmas and New Years, on Wednesday at Gail, Borden County, Texas 79738, Box 137 Kincaid Street Second Class postage paid at Gail, Texas.

Any errors that we make reflecting on the reputation or standing of any firm, corporation or individual that appear in the columns of the Borden Star will be gladly corrected when called to the attention of the staff.

Subscription Rates:
\$8.00 per year

Borden Star Owners:
James McLeroy, Barbara Anderson, Doris Rudd, Pat Porter, Bob Dyess, Edna Miller, Sonny Tucker, Eddie Simer, Loreen Jones, Martin Parks, Dan Turner, Lela Porter and Marge Toombs.

Regular Board Meeting
July 16, 1990

The Board of Trustees of the Borden County Independent School District met in regular session on June 16, 1990 at 8:00 p.m. in the Board Room of the Borden County Schools in Gail, Texas.

Board members present were Jack McPhaul, Kenny Hensley, Randy Adcock, Tom Ed Vestal and Joel Dennis.

Administrators present were Jimmy Thomas, Superintendent and Mickey McMeans, Principal.

Board President Jack McPhaul called the meeting to order.

Community Input

No visitors were present at the meeting.

Minutes

Minutes of the June 18, 1990 Board Meeting were read. A motion was made by Tom Ed Vestal and seconded by Kenny Hensley to approve the minutes.

Motion carried unanimously.

Bills

Bills for June were reviewed for payment. A motion was made by Joel Dennis and seconded by Randy Adcock to approve the bills.

Motion carried unanimously.

Audit Report

The Board reviewed the audit report conducted by Wilton, Newberry, Heidel and Womack, CPA's concerning the transition of Borden County Independent School District Superintendent. The audit confirmed that information concerning the budget and inventory for Borden County Independent School District was correct ending June 30, 1990. A motion was made by Randy Adcock and seconded by Tom Ed Vestal to approve the audit.

Motion carried unanimously.

Review TASB Policy Update 36

The Board reviewed TASB Policy Update 36. A motion was made by Kenny Hensley and seconded by Tom Ed Vestal to adopt TASB Policy Update 36.

Motion carried unanimously.

Personnel

Superintendent Jimmy Thomas discussed personnel needed to fill vacancies at Borden County Independent School District. Superintendent Thomas recommended that Charles Jones, Bobby Avery, and Ann Jones be hired as professional personnel. A motion was made by Randy Adcock and seconded by Kenny Hensley to hire Charles Jones, Ann Jones, and Bobby Avery for positions in the Borden County Independent School District.

Motion carried unanimously.

Band Trip

Superintendent Thomas discussed the possibility of a band trip during the 1990-1991 school year. A motion was made by Kenny Hensley and seconded by Joel Dennis to allow the band students to take a band trip this school year.

Motion carried unanimously.

Budget

Superintendent Thomas reviewed the 1989-1990 proposed budget amendments with members of the Board and responded to questions from the Board concerning the budget.

No action taken.

Bids For School Car

The Board requested that Superintendent Thomas take bids on the school car. Bids will be officially accepted at the regular August Board Meeting. A motion was made by Joel Dennis and seconded by Tom Ed Vestal to take bids on the school car previously provided for the Superintendent.

Motion carried unanimously.

Superintendent's Report

1. Financial Report

Superintendent Thomas gave a year-to-date financial report.

2. Tribute

A discussion was held concerning naming a facility at Borden County Independent School District for Mr. and Mrs. James McLeroy.

3. Tax Rate and Budget

Superintendent Thomas explained the procedures the Board would need to follow in setting the tax rate and for adopting the budget for the 1990-1991 school year.

4. Plant and Teacherage Maintenance

The progress of summer maintenance on the school plant and teacherages was discussed.

5. Agriculture Farm Facility

A discussion was held on the possibility of building facilities (a barn for lambs and pigs) for the use of Borden County F.F.A. and 4-H youth. The 90ft. X 14ft. structure will be built by the Agriculture Science Department.

6. Playground Equipment

Mr. Thomas discussed the need to consider the addition of playground equipment for the elementary playground.

A motion was made by Randy Adcock and seconded by Kenny Hensley to accept the Superintendent's Report.

Motion carried unanimously.

Adjournment

A motion was made by Joel Dennis and seconded by Kenny Hensley to adjourn.

Motion carried unanimously.

our **HERITAGE****Benjamin Franklin**

Benjamin Franklin was one of the 18th century's most famous and innovative Americans. Many Americans are familiar with his role as a patriotic founding father, espousing the power of democracy and the will of the people. But Franklin also was a philosopher, educator, statesman and inventor.

Born the 10th of 17 children in Boston, Mass., on Jan. 17, 1706, Franklin was a quick learner. His formal education ended at age 10 with one year of grammar school and another under a private teacher. From then on he schooled himself through tireless reading. At age 12, he became an apprentice to his brother James, a printer, and as he mastered the trade, he also taught himself to write. He later authored such famous works as "Poor Richard's Almanac" and "Plain Truth."

Franklin also had a fascination with weather and science that led him to perform many innovative experiments — some successful, others less so. In fact, he nearly electrocuted himself trying to cook a Christmas turkey with the current from two charged glass jars. However, it is uncertain that he actually performed the experiment most often attributed to him — flying a kite in a thunderstorm to prove the relationship between lightning and electricity.

In recognition of his understanding of electricity, Franklin was elected to some of the most prestigious academies in Paris and London. In fact, some of the terms he coined in reference to electricity — "positive," "negative," "battery" and "conductor" — are still used today. As one historian wrote, "Franklin found electricity a curiosity and left it a science."

Some of Franklin's other inventions came as a result of an inability to accept things as they were. For example, he got tired of changing from one pair of spectacles to another, so he cut the glasses and put the different halves together in the same circle to form what we know as bifocals.

With the Philadelphia Club of the Leather Aprons, Franklin organized the first volunteer fire company and founded the first fire insurance company. In fact, he was so successful as a promoter that those with good causes often sought his help. However, that didn't always assure a victory. When the time came to select a national bird, Franklin promoted the turkey. He was outvoted, with the bald eagle the eventual choice.

Some view Franklin's participation in the 1787 Constitutional Convention to be his most important service. He believed that an executive committee would be better than a president as head of state, and didn't approve of parts of the Constitution. However, on the last day when he failed to win over his fellow delegates, Franklin urged those delegates who objected to the new form of government to unanimously support it. This motion was promptly approved.

Franklin died on April 17, 1790, at age 84. It has been said by his foremost biographer, Carl Van Doren, that when Philadelphia buried Franklin, the city buried more of itself than that of any other town and any other great man. ❧

One of a series of columns on the history and heritage of America.

©1990, PM Editorial Services

F.Y.eyes**Presbyopia**

Presbyopia is not an exotic tropical disease, but simply "aging eyes," say experts at the Better Vision Institute. Thirty million Americans, 12 percent of the population, are older than 65. As the 76 million baby boomers age, it's estimated that in forty years, 21 percent or 65 million people, will exceed 65. Common age-related vision disorders can be expected to be on the rise.

Presbyopia usually begins to affect people in their 40s and 50s. Its chief symptom is blurred near vision. It can affect your success on the job and make you irritable and

difficult. Fortunately, glasses or contact lenses are usually all that's needed to restore clear vision.

To preserve their vision, people over 40 should get an eye exam by a licensed eye care professional once a year, say experts at the Better Vision Institute.

**Pointers
For
Parents****Your Child's Development**

Parents and experts agree that children today spend far too much time in front of the television or video games. One step to encourage active pastimes is being taken by many parents.

That option is piano lessons. Playing the piano requires the child to simultaneously use brain, hands, eyes and feet. "Not only do physical and coordination skills get sharper, the child develops a tremendous sense of achievement," explained Don Dillon, director of the National Piano Foundation. "This self-confidence is then carried over into other areas of the child's life—school, social activities and relationships with friends and family."

Dillon points out that the non-profit National Piano Foundation (NPF) is associated with thousands of music educators nationwide who agree that music study often teaches children that working at something brings rewards. "Learning an instrument like piano can be very satisfying. It's relatively easy to begin learning, and children discover that with a little practice, they improve remarkably," he added.

Some musical instruments can be more difficult to learn initially, and children can get discouraged. Most non-percussive instruments require learning how to produce the proper note, pitch and tone. "But a piano's note is produced just



by striking the key. So beginning piano students start to develop a 'good ear' for music right from the beginning," Dillon said.

He added that virtually all children over age four can learn piano—large or small, even handicapped youngsters. Parents and teachers can make it fun for kids to learn with group lessons and lots of encouragement. "Parents don't need to have musical knowledge. Just a dedication to helping their child succeed."

A free brochure, entitled "How to Help Your Child Succeed at the Piano," is available by sending a self-addressed, stamped envelope to: The National Piano Foundation, 4020 McEwen, Suite 105, Dallas, Texas, 75244-5019.

The NPF is a non-profit educational organization dedicated to promoting the benefits of piano playing and music participation.

**Meet Your Future
With A Straight Face
Buckle Up**



Obituary

**Anthony "Tony"
Newby Curry**

1945-1990

Services were held for Anthony "Tony" N. Curry, 44, of Dallas on Friday, June 29, 1990. He died at 7:23 p.m. Wednesday, June 27, 1990, in Methodist Central Hospital in Dallas after a short illness.

He was born in Ballinger, Texas, on July 13, 1945, and he moved to Borden County in 1950. His parents, Bill and Juanita Curry, both now deceased, resided in the Vincent Community during the 1950's and 60's. He graduated from Borden County High School in 1963. He was employed by Lone Star Gas Company for 26 years.

Survivors include his wife, Jennifer; a son, Boyd of Radcliff, Kentucky; a grandson, Anthony, and a granddaughter, Barbara, also of Radcliff; a brother Zane Curry, of Tahoka; a sister, Karen Searcy of Dallas; 3 nieces, and 2 nephews.

EMS NEWS

IN MEMORY OF:

WANDA BAGWELL

Bill and Nell Wilson
Ronnie and Pam Gass

EUGENE LILLER

Bill and Nell Wilson
Ronnie and Pam Gas

WINNIE MILLER

Hugh and Alice Massey



Branon Funeral Home

Service in this area since 1922.

Phone 872-8335 403 N. Austin, Lamesa

THANK YOU

The Junior High cheerleaders would like to Thank JACKSON BRO. of Post N.J.N. COTTON of Lamesa and SHERI POOLE of Gail, for the donations and help in running the Concession Stand at the 4-H Play-Night, Monday. Your help was really appreciated.

THANKS,
THE JUNIOR HIGH CHEERLEADERS

Mandi Herring

Brandi Smithie

Jana Kincheloe

Reagan Smith



Sara Lusk

Nicole Lawrence

CLASSIFIED

FOR SALE
1985 DOUBLE WIDE MOBIL HOME. 3 bed, 2 bath, in Gail. Lived in 4 years. Like new. 1568 sq. ft. Call 817-647-1919.

ATTENTION: SEIZED GOVERNMENT VEHICLES from \$100. Ford, Mercedes, Corvettes, Chevys. Surplus Buyers Guide. Call 1-602-838-8885, Ext. A-19249.

ADDRESSERS WANTED immediately! No experience necessary. Excellent pay! Work at home. Call toll-free

Call toll-free: 1-800-395-3283.



SEEDS FROM THE SOWER
Michael A. Guido
Metter, Georgia

The United States Post Office Department has a Division of Dead Letters. There you'll find letters which have been missent and which have no identification of recipient or sender.

One year nearly fourteen million letters, one out of every one thousand mailed, went to the Dead Letter Office.

There are many Dead Letter Christians. Our Lord commanded, "Go into all the world and preach the Good News to everyone, everywhere." But many never arrive. Every Christian is sent, but not every one goes to those who need to hear the Gospel. They end up in the dead letter office of disobedience.

Don't be a Dead Letter Christian!

NEW RELEASES VCR

RENTAL AVAILABLE

"THE TRADING POST"
New Location
IN GAIL

YOU ARE CORDIALLY INVITED TO A WEDDING SHOWER HONORING CHRIS AND TRACY COOLEY
Sunday, July 22, 1990
at the School Conference Room
From 3:00 to 4:30 p.m.

IT'S A GIRL!!!

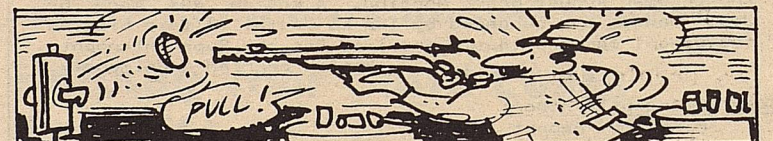
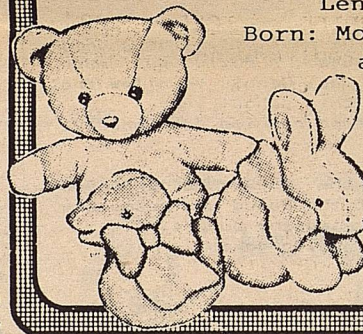
LAURA KATELYN WALLACE

Weight: 8 lbs. 9 ozs.
Length: 21 inches
Born: Monday, July 16, 1990 at 8:30 a.m.

Parents:

Buddy & Kip Wallace

KATE is welcomed home by BIG brother TYLER.



The oldest Olympic winner was Oscar G. Swahn of Sweden who won the gold in the 1912 Running Deer team shooting competition at 64 years, 258 days. He won a silver medal for shooting in the 1920 Olympics.



The youngest individual Olympic winner was American Marjorie Gestring who took the springboard diving title at the age of 13 years 268 days at the 1936 Olympics.

SPECIAL RATES FOR NINTENDO GAMES

2 DAYS---\$3 4 DAYS---\$5
7 DAYS---\$10

ONLY \$3.00 EACH

EMS NEWS

The Scenerio Of A Heart Attack

PERSON:

Male or female, generally a middle-aged male, between 45-65, slightly overweight. An MI, or heart attack can also occur in younger individuals. Any one can have an MI.

CHIEF COMPLAINT:

Substernal chest pain (pain that is located behind the breast bone) radiating to primarily the left, but sometimes the right arm and up into the neck and jaw. It feels as if someone is squeezing or crushing your chest. The pain usually last longer than 10 minutes and is unrelieved by rest. Rapid pulse, fainting, and feelings of your heart skipping a beat also preclude an MI.

SYMPTOMS:

Restlessness, anxiety, feeling or impending doom, nausea, vomiting, cold clammy skin, usually ashen in color, excessive sweating, dizziness, difficulty breathing, shortness of breath, profound weakness.

These are some of the primary signs and symptoms that you might generally see in a person that is having a heart attack. Some people can present with a different set of signs and symptoms. Elderly people may often just say that they do not feel well and be very disoriented and confused. They can have what is known as a "silent MI". They

have less defined symptoms because their reaction to pain is different. They do not feel pain like a younger person does.

Generally, after a person begins to exhibit these signs and symptoms it is usually 2-3 hours before they seek medical help. They deny that anything is wrong! If you are with someone that exhibits these signs and symptoms, you should first get them to sit down and rest. Try to get them to be calm and quiet. If they have angina (chest pain that is generally brought on by stress or exertion), they may have a prescription from a doctor called nitroglycerine. Ask them if they have taken their medication and if it relieved the pain. If the chest pain persists more than ten minutes despite rest and nitroglycerine, activate the EMS system. Do not wait! Act at once! Ninety percent of all deaths from MIs occur within 2 hours of the initial symptoms from cardiac dysrhythmias that are preventable if intervention is sought at once. Again, please do not wait!

Borden County EMS is equipped with a cardiac monitor, defibrillator, and other equipment that is needed to care for a person having a myocardial infarction, or in lay terms, a heart attack. We, the

Some People Should Avoid Uncooked Shellfish

Health officials have reminded the public that it can be hazardous for some people to eat raw seafoods or to expose injuries to the salt water of the Gulf of Mexico. By doing so, susceptible people risk serious infection and illness.

Already this year, at least two deaths in Texas have been linked to consumption of uncooked seafoods.

Richard Thompson, director of the Texas Department of Health's (TDH) Division of Shellfish Sanitation Control, said that the source of danger to some people is a microorganism which concentrates in Gulf waters during the warmer months. Its scientific name is Vibrio, particularly the bacteria's subgroup Vibrio vulnificus.

volunteers for Borden County EMS, are on call 24 hours a day. You can call any of us individually (a list was published recently in the Borden Star of all of our names), or you may call the Borden County Sheriff's office to activate us. If it turns out that the problem is not serious or life-threatening then we are extremely glad, but if it should be a heart attack then you may have saved someone's life by calling for help promptly. Early treatment and intervention may mean the difference between life and death.

When eaten uncooked, usually in shellfish such as oysters, mussels, and clams, Vibrio can cause serious illness, even death.

Persons most at risk of illness from Vibrio are those with existing health problems, such as liver disease and weakened immune systems, and people recovering from stomach or intestinal surgery.

Since Vibrio vulnificus and some related bacteria also can cause wound infections, people with open wounds or sores should not expose them to seawater. Anyone who is cut or otherwise injured at the seashore is warned to wash wounds immediately, liberally apply an antiseptic, and call a physician if signs of infection appear.

Thompson said, "Wounds infections, while they can be quite serious, are more obvious to the victim from the outset than are food-borne illnesses. A person with a cut or puncture stays aware of the injury, while a person preoccupied with dining and entertainment may be taken by

surprise, possibly after ingesting dangerous amounts of Vibrio-contaminated seafood. Therefore, most of our warning is aimed at the unsuspecting person who might be tempted to try raw seafoods."

Thompson explained that Vibrio bacteria occur naturally. The freshest seafood may contain the organisms, just as other meats or poultry contain other harmful bacteria if served raw, improperly cooked or mishandled.

Thompson said that normal cooking procedures easily kill Vibrio, and re-contamination of the seafood after cooking can be prevented with the same cleanliness precautions (hand and utensil washing) necessary to avoid other food-borne contaminants.

Thompson added that eating raw seafood species other than oysters, clams, and mussels is not generally popular in Texas. "But our growing ethnic populations, some preferring raw or lightly cooked seafood, have increased our concern about possible illness outbreaks," he said.

CHILD

Cont. from pg. 2

°Help the child in writing letters to grandparents, sick friend, authors of books and famous people.

°Put little notes in lunch boxes and back packs. these can be picture notes or simple messages like "Hi! I hope you are having a good day. I love you!"

°Help children write and illustrate their own books by stapling the pages together.

°Model writing for children so they will recognize the importance of writing. You can encourage this by

writing them private notes, writing letters to family and friends (be sure to allow the child to draw a picture or write a letter to include), letting them observe you writing grocery lists or recipes.

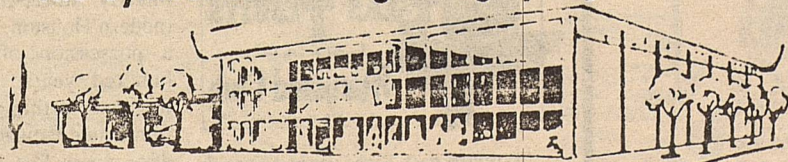
°Praise children's attempts to spell as these show they are learning the relationship between writing and speech. "Correct" spelling will come later.

°Avoid criticizing neatness, spelling or grammar. It is important that children learn that writing is communication and that it is fun.



THE FIRST NATIONAL BANK

The Symbol of Banking in Big Spring



FULL SERVICE BANKING

Member F.D.I.C.

400 Main Street

267-5513

BIG SPRING, TEXAS



Dennis Poole
County Extension Agent-Ag
Borden County

Scientist Says Don't Bug Some Insects

If, while sitting in the living room, you spy a couple of flies, a roach and a few crickets with you, the kid and your dog, that's about normal

Among all the animals in the world, about seven out of 10 are insects.

Most humans who find they share space with bugs, however, are moved to go on a killing rampage -- swatting, dousing and flusing the strange invaders.

Perish the thought, not the bug, Dr. Horce Burke would say.

"I don't kill them," said Burke, a long-time insect researcher at the Texas Agricultural Experiment Station. "Well, maybe if it's a flea, I would. Even for an entomologist there are certain insects we would rather not be associated with."

Except for the flea, Burke looks for the good in bugs -- and finds a lot of it. In fact, he would argue that humans could not exist without insects pollinating food crops, eating pesky bugs, feeding larger animals or devouring carrion.

"It's a possibility," Burke said of human-kind's ultimate need for insects. "When you take one group of organisms out, it changes another. Either we couldn't live without them or if we did, it would be a different world."

With some 750,000 known species of insects in the world--and some think perhaps another 10 million yet to be identified--biodiversity is exemplified in this class of animals.

"Regardless of whether they bite, transmit diseases, look pretty or suck

the blood of your dog, there is great diversity in the group," said Burke, who is a taxonomist at Texas A&M University's 1 million-specimen insect collection. "We always hear about the bad insects; the boll weevils, screwworms and mosquitos. We never hear the other side."

Most importantly, he said, insects pollinate billions of dollars worth of crops every year in the United States.

"Bees and other insects are valued at \$19 billion a year for their pollinating activities," he said, "I don't think anyone doubts the value of them."

Many non-crop plants also depend heavily on pollinating insects.

The yucca, for example, depends entirely on the yucca moth to reproduce, he said.

No dollar value has been determined for the predator and parasite insects, but such insects act as a natural control for more damaging insects, Burke said. Many species of flies and wasps grow up feeding on caterpillar bodies, for example. Complete control of the citrus blackfly and the sugarcane borer, both devastating pests in South Texas, was accomplished by parasitic insects.

Researchers now are looking for an effective parasite for wheat aphids and the boll weevil, he added.

"For some larger animals, insects are a very large percent of their food," Burke added.

Toads are worth about 25 cents apiece in home gardens for the number of insects they eat, according to Dr. Jim Dixon, wildlife researcher.

Insects also serve as scavengers, Burke pointed out.

"They are disposal units," he said. "They reduce carrion and garbage. They break down wood, too, and are decomposers of animal bodies. In this way, they serve humans."

Several types of beetles crave decaying animal or vegetative matter, Burke noted. People have used dung beetles because they bury cattle manure, which reduces fly problems.

Some insects are simply pretty, Burke said. A new trend in home landscapes is to establish butterfly gardens in which certain plants are used to attract colorful butterflies.

Commercial butterfly houses, similar to zoos, have been established in several U.S. cities.

"Insects are wonderfully complex regardless of what they do," Burke said. "A little gnat or fly has such a complex life. It's fascinating that they can be very small but unbelievably complicated."

Burke suggested that before automatically killing insects, proper identification should be made.

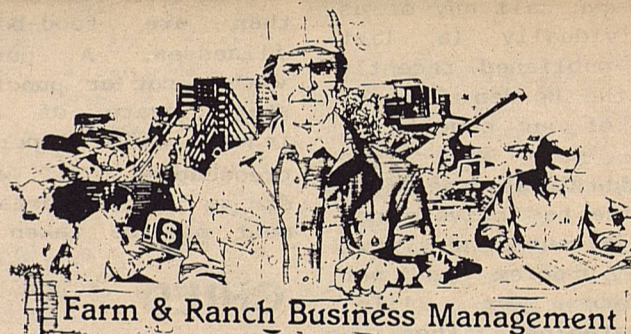
"Don't kill your friends," he said. "Determine what it is first. What does it do? What does it feed on? Is it injurious? You might find out it's not something you should be concerned about controlling."

CORKY OGDEN MEMORIAL

8 & UNDER, BOYS AND GIRLS
WORLD CHAMPION BARREL RACE
AUGUST 12, 1990--1:00 P.M.
SNYDER, TEXAS

2 GO ROUNDS--TOP 10 TO SHORT GO
\$40 ENTRY FEES--PAID BACK
PLUS \$200 ADDED MONEY
**AMMERMAN SADDLE TO WINNER OF
3-RUN AVERAGE **BUCKLE TO
RUNNER-UP **JACKETS TO TOP 10
ALSO:

19 & UNDER--1 GO & SHORT GO
ENTRIES CLOSE AUGUST 7TH--MAIL TO:
MRS. V.W. OGDEN, BOX 93, GAIL TX 79738
FOR MORE INFORMATION CALL (806)439-6633.
(915)573-5278, OR (214)935-6272



Farm & Ranch Business Management

Computer Applications in Farm and Ranch Management

Short Courses Offered By

The Texas Agricultural Extension Service
The Texas A&M University System

at

South Plains College - Levelland

In Cooperation With
Department of Continuing Education
South Plains College

August 14-15, 1990
August 16-17, 1990

Texas Agricultural Extension Service • Zerle L. Carpenter, Director
The Texas A&M University System • College Station, Texas



To guard east Texas against French incursion from Louisiana, the Spanish charted the region of Houston during the 1700s and founded a short-lived presidio-mission complex approx-

imately thirty-five miles east of modern Houston. Although Texas was a possession of Spain for three-hundred years, the Spanish never founded lasting settlements in the immediate Houston area. Established after Spain lost its North American empire, Houston never adopted the Hispanic traditions which mark Laredo, Nacogdoches, Goliad, San Antonio and El Paso.

ASCS NEWS BY Jerry Stone

MEASUREMENT SERVICE

July 16, 1990 was the final date to request measurement service on 1990 crop acreages. This takes the guess work out of certifying every acre, and you don't have to worry about being out of compliance and possibly out of the program, or paying a large penalty for being outside the 1.0 acre or 5% tolerance.

However, if we can not complete the measurement service by September 1st the producer will be notified and will be required to come in and certify his crops immediately. The cost for aerial measurement will be refunded.

If you have a measurement service request on file you need to make your adjustments now as we are scheduled to be flown July 16, 1990 or as soon as possible there after. It would also help us in measuring your farm if you could plow the turnrows out lining the crops.

LIMITED CROSS COMPLIANCE

Remember, if you do not have a wheat/barley base or a corn/grain sorghum base you can not harvest any acreage of these crops without losing all program benefits on your farm.

Also, if you do have a base established and have planted, please make every effort to see that the acreage is measured and reported correctly. A large percent of these bases are small enough that you only have a 1.0 acre tolerance on the planted acres. Being over planted above tolerance will cause you to be out of compliance under limited cross compliance rules and will cost you all program benefits (including cotton) on the farm.

There is not a provision that gives the committee authority to make a good faith effort and reinstate you in the program. All advance payments will have to be refunded along with liquidated damages.

FAILED ACREAGE

In order to receive program benefits on failed acreages you must have certified the total acreage of the crop then file ASCS-574, Request for Disaster Assistance, before making any other use of the affected acreage. In addition, you are encouraged to contact your insurance agent as in most cases an appraisal will need to be made by the insurance agency. An ASCS representative must make an on site inspection of the acreage to concur with the insurance appraisal or in the case of no insurance make the initial appraisal. Should the acreage be destroyed before taking these steps there will be no program benefits, including history credit, available for these acres.

HAYING AND GRAZING

The non haying and non grazing period for ACR and CU for payment acreage in Borden County is April 1, 1990 through August 31, 1990.

The County Committee has filed the required documentation for Emergency Haying and Grazing of these acres. However, at this time Borden County is NOT APPROVED. You will be notified as soon as this option becomes available.

AMERICA'S HEROES

Americans Choose Their 1990 Heroes

Who will win the 1990 National Hero Award? We'll soon know as thousands of Americans will cast

If we are approved please remember you MUST file a request in the County office PRIOR to taking any action on haying or grazing.

ACR MAINTENANCE

Producers are responsible for making sure that weeds and erosion are controlled on ACR acreage.

1989 DISASTER OVERPAYMENTS

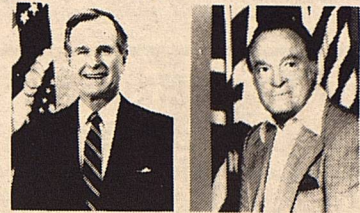
Overpayments that resulted because of the 1989 Disaster Program will be due July 31, 1990. We will officially notify you the week of July 16, 1990 of the amount and due date.

7. 3. THE BORDEN STAR, WED., JULY 18, 1990 HT

their vote via a poll in *People Magazine*.

The second annual National Hero Awards are sponsored by Prince Matchabelli, maker of Hero Cologne, and benefit Big Brothers/Big Sisters of America because they put a "hero" in a kid's life. This year, everyone can help this national youth organization continue their valu-

able work because with every ballot received, Prince Matchabelli will donate 50 cents to Big Brothers/Big Sisters, and \$1 if accompanied by a Hero Cologne proof-of-purchase.



Some of the 1990 National Hero Awards nominees are (clockwise from upper left) President Bush, Bob Hope, Gary Carter and Jerry Lewis.

Saddle Up It's Rodeo Time!

**Wrangler
Denim
Jeans**

\$17.95

Cowboy Cut
Boot Cut
Slim Fit

1/2 Price

Large Group
Long Sleeve
Western Shirts
Panhandle Slim
Wrangler

Just Arrived
New Colors
Wrangler
Brushpaper Shirts

All Short Sleeve
Western Sport Shirts

25% Off

All
Straw Hats

20% Off

ROCKY MOUNTAIN
and
Panhandle Slim
Jeans

30% off

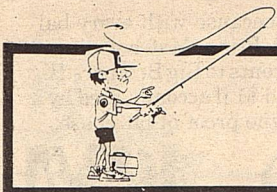
All Ladies
Summer Wear

Rodeo Tickets On Sale Here

Scurry County Rodeo
July 19th thru 21

**Western
Wear**

College Heights Shopping Center



Fishing with Mark Weaver

Plant Brush Piles For More Bass

If the fishing on your favorite body of water just is not as good as it once was, you should consider "planting" some brush piles. It is certainly a well known fact that bass relate best to some form of cover. While most ponds, rivers, and lakes do offer cover in one form or another, large areas of cover are lacking in many bodies of water.

Brush piles, while not a cure-all, can be at least a part of the solution. Brush piles are best defined as any submerged fish attracting cover. While it can be as little as a Christmas Tree, it can be as big as the tops of several large oak trees. One general rule of thumb is "bigger is better". Obviously, the larger the brush pile, the more fish it can hold. Many anglers feel they have done their job once they have tied a Christmas Tree to a cinder block and tossed it overboard. Effective brush pile planting, one that will attract big fish and big numbers of fish, requires more effort.

The primary job is to locate an area that is already attracting fish. Areas with sharp drop offs or where deep water is near by are good choices. Primary and secondary points are likely spots as well. Concentrate your efforts on areas that already regularly produce a fish or two. If an area is already drawing in bass, a brush pile will easily enhance the same spot, drawing in more fish.

Next take the necessary time to make your planted brush pile as large as possible.

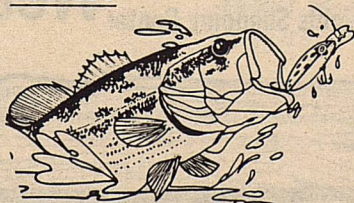
Larger trees with big far reaching branches work well. Also, mixing a couple of kinds of trees can be very effective. For instance, using oak trees along with large cedar trees can offer all the needed cover for a large quantity of fish.

Remember not to be to hasty when it comes to anchoring the trees. Very heavy rope used to tie the brush to one or more cinder blocks works well. Also remember that brush piles located off of main points will receive a lot more wind than those planted back up in secluded coves. Therefore, these will need a little extra attention and effort in anchoring. Otherwise you may return to find your brush pile has moved to the other end of the lake.

Once you have planted your fishing attracting brush be sure to find a good way to mark it. A "good way" is best defined as any way that allows you to find it and not other anglers.

Brush piles offer everything a bass needs to survive, cover from other predators, an excellent "draw" for baitfish, and an ideal ambush area from which to turn these baitfish into a meal. Try planting a few brush piles on your favorite pond, lake, or river. It can make the fishing a whole lot easier.

God bless you and thanks for going Fishing with Mark Weaver.



TRAVELING TEXAS

SCHLITTERBAHN Water Park Will Remain Open--Rain Or Shine

NEW BRAUNFELS, TX--Regardless of dry conditions in south Texas, Schlitterbahn Water Park will remain open all summer. That announcement was made by officials who are receiving calls from all over the state asking if the park is still open.

"Apparently the recent closing of a major river tube chute operated by the City of New Braunfels has led some people to believe that Schlitterbahn is closed too," said Jana Wilkinson, Director of Marketing for the state's largest water park. "I'd like to set the record straight: Schlitterbahn is not dependent upon river flow and will be open all summer," she said.

"Many of our attractions are on closed chlorinated water systems, including our family wave pool, hot tubs, kiddie pools, as well as several of our slides and swimming pools," Wilkinson explained. "The pools and hot tubs have been full since the beginning of the season and will require very little additional water."

According to Wilkinson, the rest of the park rides operate on recirculating reservoir system. Water from the old channel of the Comal River is pumped through the park's 17 water slides and 7 tube chutes and then is returned to the

Comal lake system. "This system does not rely on a flowing river," Wilkinson said. "It's a very efficient system which recycles and purifies the water, rather than wastes it. The only loss we have is through natural evaporation. Even if the worst

happens and the Comal springs stop flowing, we have back-up water systems to keep Schlitterbahn open.

"We remain optimistic that New Braunfels will continue to ride out the summer with a minimal impact on tourism," Wilkinson added.



Alabama-Coushatta Indians from the Big Thicket of East Texas are among the 30 ethnic groups represented at the Texas Folklife Festival in San Antonio. Dozens of exhibits and booths during the four-day event feature the food and wares, crafts and customs of the many cultures of Texas. The festival is sponsored by the University of Texas Institute of Texan Cultures and is held during the first week of August. Texas Department of Commerce photo.



Security State Bank

Big Spring, Texas

Member F.D.I.C.

1411 Gregg