

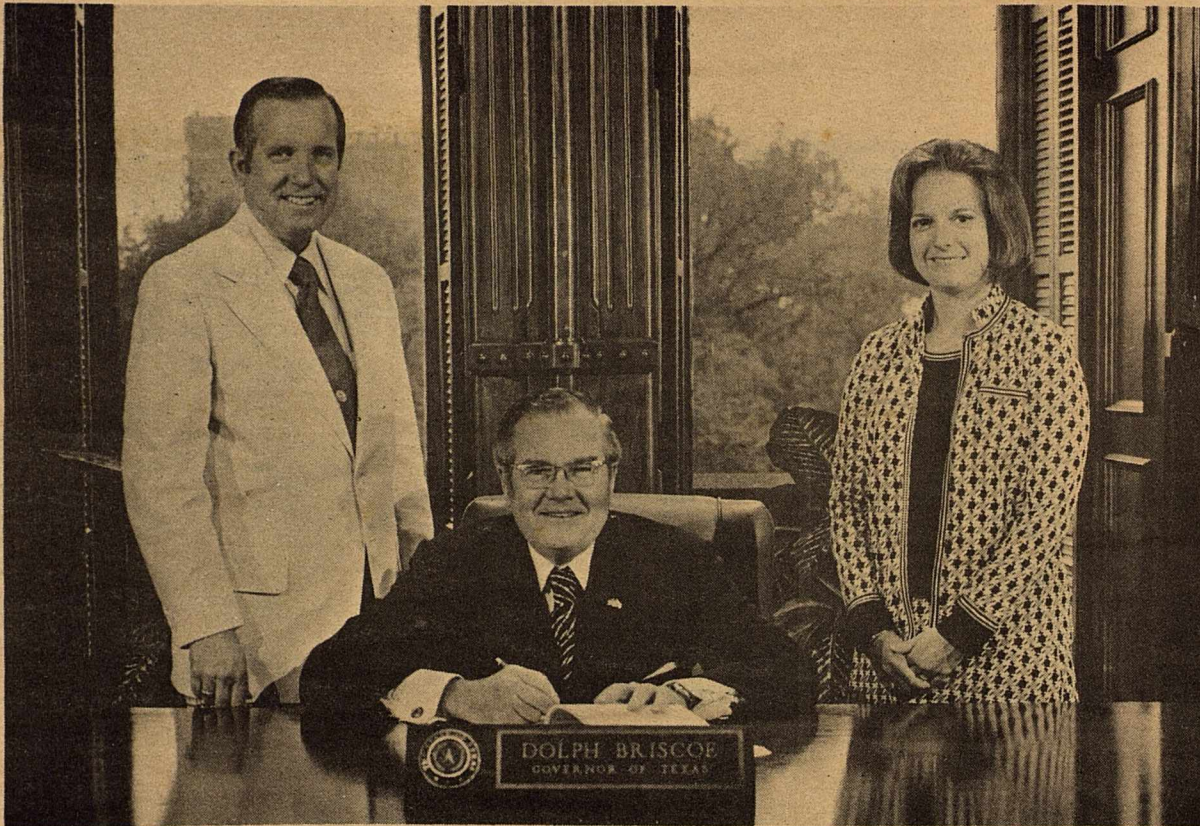
# the Kinney Cavalryman

VOL.2 NO.21 JUNE 6, 1975 Brackettville, Texas

## PUBLIC NOTICE

### YOUR REPRESENTATIVE REPORTS

by:  
Susan McBee



STATE REPRESENTATIVE SUSAN MCBEE AND SENATOR PETE SNELSON look on as Governor Dolph Briscoe signs into law a bill introduced in the House by Mrs. McBee and sponsored in the Senate by Snelson. The law provides that in sparsely populated counties that the Commissioners Courts may establish voting precincts of less than 100 voters. The law becomes effective 90 days after being signed by the Governor.

\*\*\*\*\*

### PLAYBALL



LITTLE LEAGUE IS IN FULL SWING -----  
COME OUT AND JOIN THE FUN.....

The following Public Notice has been printed several times in the Del Rio News-Herald's Classified Section, even though this was not submitted to our paper for publication it was felt that this is sufficiently important to the people of Kinney County for us to publish.

We know quite a few of our subscribers do not take the News-Herald.

We can find no record of this posted on the bulletin board in the Court House.

We hope in the future that the County will run their Notices in the Cavalryman since I'm sure that our circulation has wider coverage on local news than any other paper----- besides we need the business more than the Corpus Christi Caller or Playboy Magazine.

#### PUBLIC NOTICES

##### NOTICE OF BOARD OF EQUALIZATION MEETING

In obedience to an order of the Board of Equalization, regularly convened and sitting, notice is hereby given that said Board of Equalization will be in session at its regular meeting place in the Courthouse in the town of Brackettville, Kinney County, Texas, at 11 a.m., beginning on Monday, the 9 day of June, 1975, and from day to day thereafter, for the purpose of determining, fixing and equalizing the value of any and all taxable property situated in Kinney County, Texas, until such values have finally been determined for taxable purposes for the year 1975, and any and all persons interested or having business with said Board are hereby notified to be present.

(s) Dolores Raney  
County Clerk  
Kinney County, Texas

(SEAL)

Kinney County,  
Brackettville, Texas  
THIS 12th day of May, 1975.

#### BRACKETT VISITORS

Edith Miers from Houston visited with Mr. and Mrs. Bill Miers for about one week. Mrs. Miers was down for her grandson's Graduation.

\*\*\*\*\*

Mr. and Mrs. M. E. Hays from Manor, Texas visited with Mr. and Mrs. Bill Miers for a few days.

\*\*\*\*\*

*the Kinney*  
**Cavalryman**

J. GEORGE LOOS, JR.  
EDITOR

PUBLISHED EACH FRIDAY

DEADLINE FOR ALL COPY  
9:00 A.M. MONDAY

P.O. BOX 735  
BRACKETTVILLE, TEXAS  
78832  
563-2696

**"LOOSISM"**

HE WHO WALKS BACKWARDS  
CAN NOT FALL ON HIS FACE.



MR. AND MRS. ED PALMA ARE PRESENTED WITH SEVERAL GIFTS AT THEIR RECENT FAREWELL PARTY AT LAS MORAS INN AT FORT CLARK SPRINGS, GIVEN BY TRAVIS WILSON AND THEIR MANY FRIENDS.

**THE**  
*First* STATE BANK  
COMPLETE BANKING SERVICES



"YOUR FRIENDLY BANK"

Each depositor insured to \$40,000

**FDIC**  
FEDERAL DEPOSIT INSURANCE CORPORATION

Brackettville, Texas

563-2315



For "DAD"  
on

**FATHER'S DAY**

**JUNE 15th**

GIFT CERTIFICATES AVAILABLE

FREE GIFT WRAP

WE WRAP FOR  
THE MAIL

*the*  
**Guarantee**  
M. STOOL & SON  
DEL RIO, TEXAS



MR. PALMA HAS RECENTLY SOLD HIS AUTOMOBILE AGENCY IN DEL RIO AND WILL BE LEAVING THE AREA.

THE PALMA'S HAVE BEEN BIG BOOSTERS OF BRACKETTVILLE FOR MANY YEARS AND HAVE SUPPORTED MANY OF OUR CIVIC AND CHARITY ORGANIZATIONS.

WE CERTAINLY HOPE THAT THEY COME BACK FOR FREQUENT VISITS.

MR. AND MRS. PALMA PROUDLY DISPLAY THEIR BEAUTIFUL SILVER-ENGRAVED SERVING TRAY PRESENTED TO THEM AT THE PARTY.



# Alamo Village Indian Store

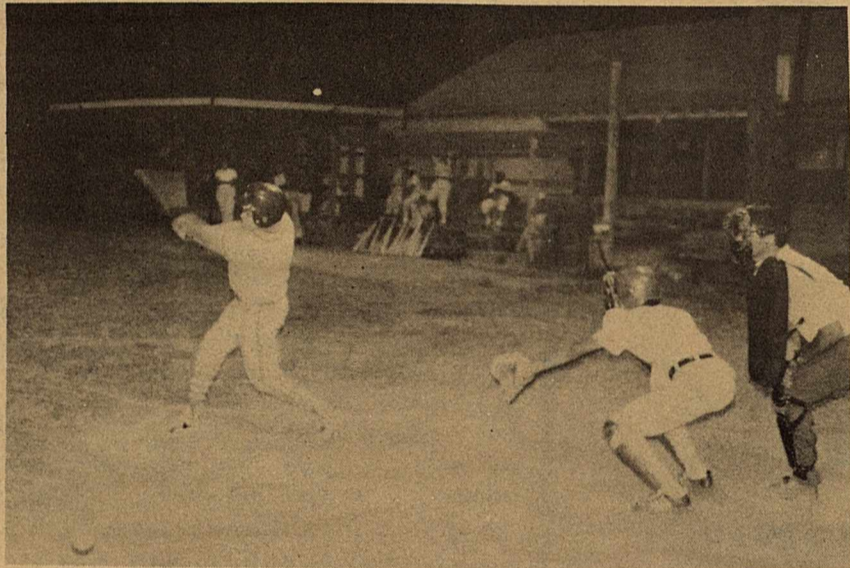
Good Food & Cold Drinks  
OPEN 365 DAYS A YEAR

SPECIALIZING IN:  
TURQUOISE JEWELRY  
SOUVENIRS  
GIFTS

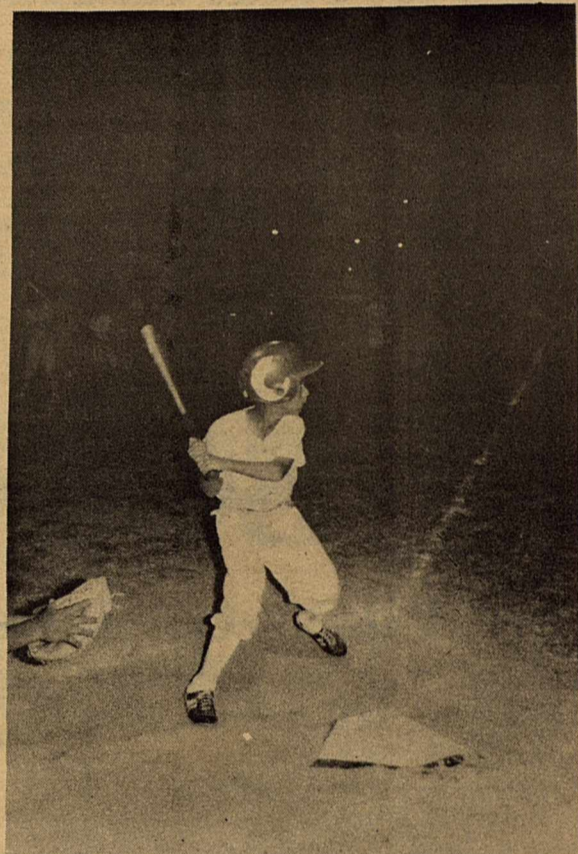
HAPPY SHAWAN'S  
**ALAMO VILLAGE**  
VACATIONLAND

"MOVIE CAPITAL OF TEXAS"  
NORTH OF BRACKETTVILLE  
ON F.M. 674

## LITTLE LEAGUE



KEVIN KAPLAN HITS A HOME RUN  
(ABOVE)



AS ANOTHER BATTER WARMS UP.....

HIGHWAY 90 EAST 775-4541  
**GAY 90**  
DRIVE IN THEATRE

746 SOUTH MAIN  
**RITA**  
775-3443

775-9828  
**CINEMA PLAZA**  
CANTU ROAD

WHEN THE 20th CENTURY MET  
THE PRIMEVAL WORLD FACE-TO-FACE!  
Edgar Rice Burroughs'



An AMERICAN INTERNATIONAL PICTURE  
STARRING DOUG McCLURE · JOHN McENERY · SUSAN PENHALIGON  
COLOR Prints by Movielab  
PG

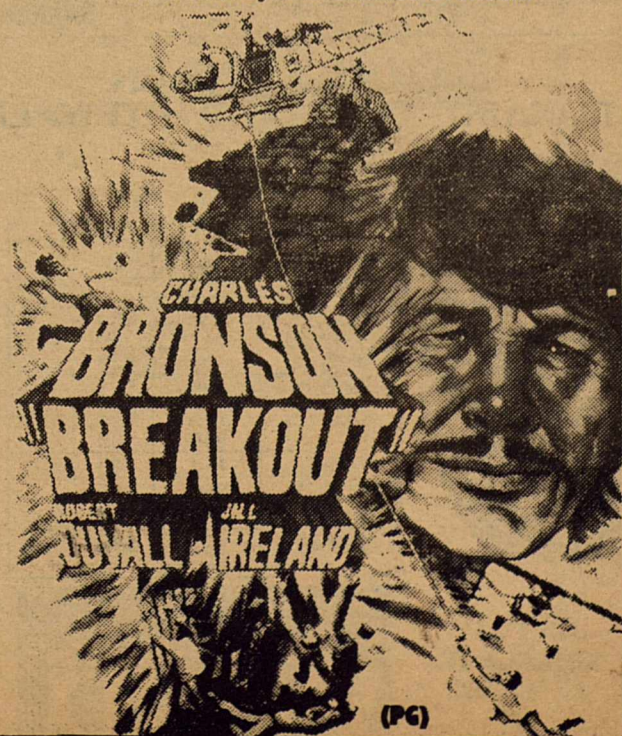


WALT DISNEY PRODUCTIONS'  
**ESCAPE TO WITCH MOUNTAIN**

TECHNICOLOR® G

Released by Buena Vista Distribution Co., Inc.  
©1975 Walt Disney Productions

Sentenced to 28 years in prison for a crime he never committed. Only two things can get him out - A lot of money and Charles Bronson!



CHARLES BRONSON  
**BREAKOUT**  
ROBERT DUWALL · JILL IRELAND

(PG)

### CITY HALL

According to City Officials the total amount of rainfall in May 1975 was 4.07 inches.

\*\*\*\*\*

The City Council will hold a meeting Monday, June 9th at City Hall.

\*\*\*\*\*

On Saturday, May 31st, there was an animal vaccination clinic held at the County Barn of which only 85 dogs were vaccinated-----Way below the expected number.

\*\*\*\*\*

### LITTLE LEAGUE

May 23rd  
Giants 13 vs Yanks 5  
Rams 7 vs Lions 3

May 27th  
RAINED OUT

May 30th  
Rams 12 vs Giants 11  
Lions 5 vs Yanks 2

June 3rd  
Rams 11 vs Lions 4  
Yanks 13 vs Giants 5

To make up for the Rained out game this week the games will be played Monday, Wednesday and Friday. EVERYONE IS WELCOME --- SUPPORT YOUR LITTLE LEAGUE.

\*\*\*\*\*

### COUNTY AGENT REPORT

BY: CARL ESSER

Tomato suckflies are active in Brackettville, notes Carl Esser, Kinney County Extension Agent. This small bug can destroy tomato plants in a short period of time if left unchecked. The adults appear as small, black insects (gnat like) under the leaves. The underside of the leaves exhibit a characteristic black speckled appearance from the insects excrement while the upper leaf surface will appear chlorotic. The greenish nymphs require about two weeks of reach the adult stage. One or two applications of Seven or Diazinon should provide good control for both the adults and nymphs.

\*\*\*\*\*

Certain environmental conditions will cause tomato blooms to shed, resulting in a poor fruit set. Partial failure of flowers to develop into fruit will result in abnormal fruits which may be mishapen or catfaced, points out Carl Esser, county agent for the Texas Agricultural Extension Service.

Blossom drop is most common in tomatoes which bloom late. The usual cause for poor fruit set is high temperatures-----thither at night or day. Nighttime temperatures above 72 degrees F. along with daytime temperatures above 90 degrees F. often result in heavy blossoms drop. On the other hand, unseasonably cool weather may also cause blossoms to drop in addition to causing abnormalities in fruits.

Other factors causing lack of fruit set or abnormal fruit include unbalanced nutrition, extended periods of warm, windy weather with low humidity, extended periods of showery, cool overcast weather in the early spring and insects and diseases.

Therefore, providing a balanced fertilizer and controlling insects and diseases will help in controlling blossom drop. Of course, little can be done about weather conditions.

Poor fruit set is most common in the large slicing types of tomatoes, notes Esser. However, such varieties as Early Giant, Spring Giant, Spring Set and Improved Summertime have the ability to set fruit during somewhat higher temperatures.

Smaller sized tomatoes that normally do not have the fruit set problem include such varieties as Small Fry, Red Cherry, Roma and the new Texas Agricultural Experiment Station variety, Saladette.

In areas where blossoms drop seems to be a common problem year after year, Esser suggests planting some of the smaller type tomatoes or those varieties that tend to be more tolerant to higher temperatures.



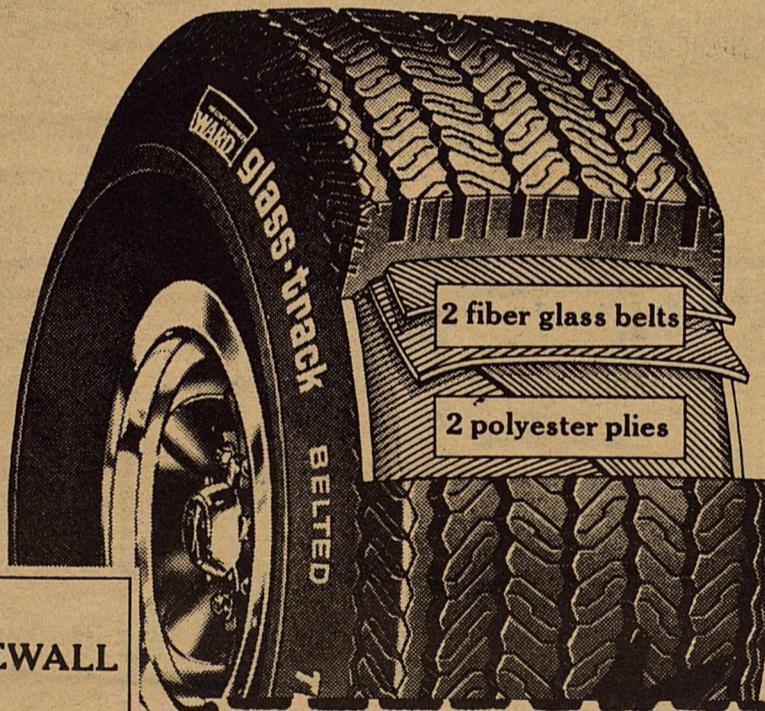
### VALUES FOR YOUR CAR

# \$28-\$62 off set of 4.

## Glass-track belted Twin Guards.

TUBELESS BLACKWALL SIZE	REGULAR PRICE EACH*	SALE PRICE SET OF 4*	PLUS F.E.T. EACH
A78-13	\$30	<b>\$92</b>	1.77
A78-15	\$34		1.93
E78-14	\$37	<b>\$114</b>	2.32
F78-14	\$40		2.47
G78-14	\$43		2.62
G78-15	\$44	<b>\$124</b>	2.69
H78-14	\$45		2.84
H78-15	\$46		2.92

\*With trade-in tires. Whitewalls \$3 more each. Pairs comparably priced.



### \$13 TO \$21 OFF EACH RUNABOUT RADIAL WHITEWALL

- 2 rayon plies†
- 4 rayon belts



TUBELESS WHITEWALL SIZE	REGULAR PRICE EACH*	SALE PRICE EACH	PLUS F.E.T. EACH
BR78-13†	\$42	<b>\$29</b>	2.07
ER78-14	\$51	<b>\$36</b>	2.51
FR78-14	\$54	<b>\$38</b>	2.68
GR78-14	\$58	<b>\$41</b>	2.88
HR78-14	\$62	<b>\$44</b>	3.04
BR78-15†	\$46	<b>\$32</b>	2.19
GR78-15	\$60	<b>\$43</b>	2.95
HR78-15	\$64	<b>\$45</b>	3.17
JR78-15	\$67	<b>\$47</b>	3.30
LR78-15	\$70	<b>\$49</b>	3.48

\*With trade-in tire. †Single radial ply

### \*\*BRACKETTVILLE

SPECIAL \*\*\*

This coupon is good for 10% discount on Automotive Service (including specials) thru June 30th. Brackett

Free mounting.

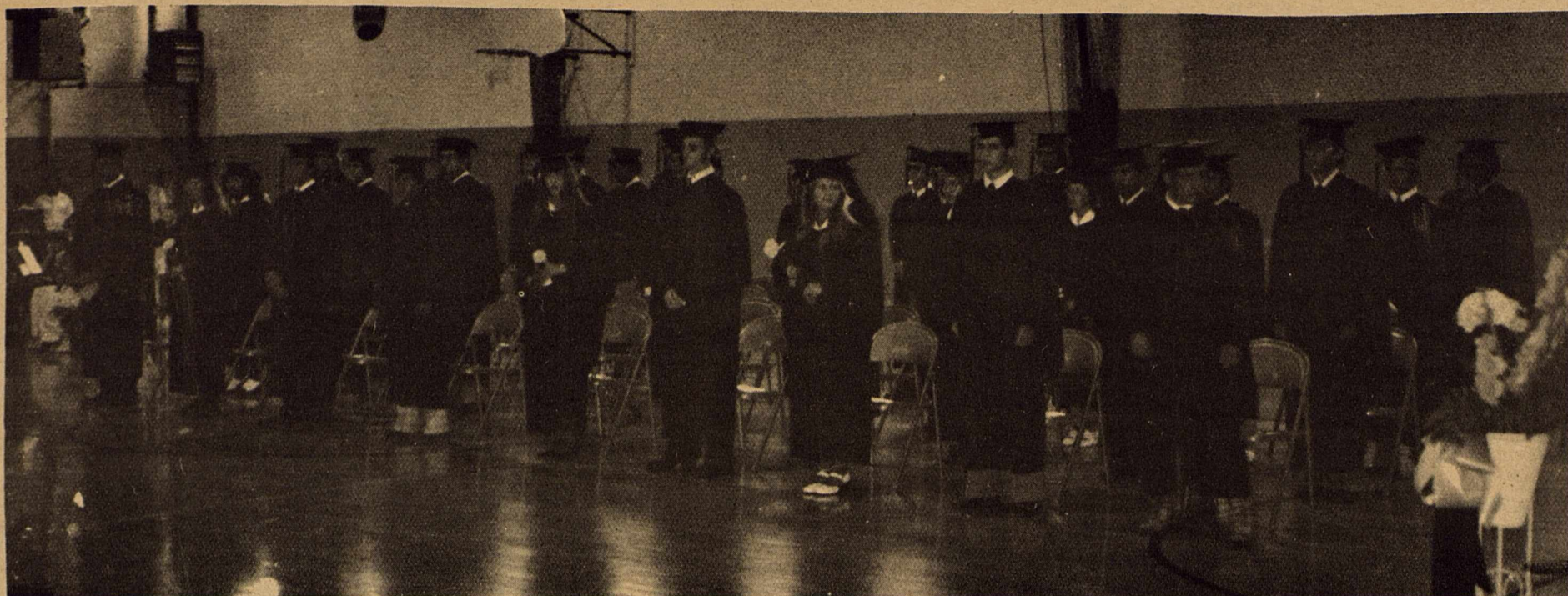
Mon. - Sat. 9a.m. - 5:30 p.m.

1403 AVE. F DEL RIO 775-9555

JUST SAY "CHARGE IT" AT WARDS



# GRADUATION



BRACKETTVILLE HIGH SCHOOL 1975 GRADUATING CLASS



THE GRADUATION DANCE



KINDERGARTEN LINE UP FOR THEIR GRADUATION (AT THE LEFT)  
STARTING CEREMONIES WITH THE PLEDGE OF ALLEGIANCE TO THE FLAG (ABOVE)

## COMMUNITY CALENDAR

The following Community Calendar, we hope, will be a help to the whole community in planning activities of the Organizations and Groups. So if your group or organization is planning something send the information to the CAVALRYMAN and we will be happy to put it in the paper.

- June 7: ---- (Saturday)  
Lion's Club Annual  
Mop and Broom Sale.  
ALL DAY SALE
- June 10: ----- 4-H Career Day,  
Field trip to San Antonio
- June 15: ----- (Sunday)  
FATHER'S DAY
- June 18: ---- (Wednesday)  
V.F.W. Meeting at Oasis  
Drive-In at 8:00p.m.
- June 28: ----- (Saturday)  
Dance at Civic Center  
featuring the "Boot-  
leggers" sponsored by  
the Chamber of Commerce  
Proceeds to buy furniture  
for the Civic Center.
- July 1: ----- Dr. Tom Young will  
open the Family Praticice  
Center for business.

## HONOR ROLL

SECOND SEMESTER of  
1974-75  
BRACKETT JR. - SR. HIGH SCHOOL

- " A "
- 12th: Robert Garza; Anne Seargeant
  - 11th: Jamie Davis
  - 10th: Mark Veltmann
  - 9th: Sandra Cardenas; Venita Gum; Paul Koch
  - 8th: Tommy Ham; Alfonso Rodriguez; Margaret Starzel
  - 7th: Bernie Cervantez; Jose Hernandez; Sherry Jefferson; Cathy Wills
- "A"--"B"
- 12th: Jimmy Ballew; Bird Breen Mary Hernandez; Kavin Johnson; Leslie Schafer; Joy Tidwell
  - 11th: Robert Crain; Tino Gomez Peggy Postell; Traci Roselle Mark Tidwell
  - 10th: Georgeanna Crain; Bill Pratt; Julian Soliz
  - 9th: Julia Esparza; Mario Fuentes; Emma Garcia; Adrian Reyes
  - 8th: Sara Cardenas; Ruben Esparza; Elva Garcia; Steve Kral; Grizel Martinez; Tom Taylor; Maxine Meyer; Maria Padilla; Oscar Pena; Lana Pullen
  - 7th: Elso Aguirre; Rebecca Benites; Eliberto Castillo; Ana Maris Esparza; Elida Gutierrez; Angelica Hernandez; Noemi Terrazas; Benita Villarreal; Kathy Weber

Honor Roll for the sixth six weeks for the Brackett Junior-Senior High School. Those students on this list are as following:

- " A "
- 12th: Anne Seargeant
  - 11th: Robert Crain; Jamie Davis and Peggy Postell
  - 10th: Georgeanna Crain; Mark Veltmann
  - 9th: Sandra Cardenas; Mario Fuentes; Venita Gum; Paul Koch
  - 8th: Tommy Ham; Maxine Meyer; Maria Padilla; Lana Pullen; Alfonso Rodriguez; Margaret Starzel; Tom Taylor
  - 7th: Eliberto Castillo; Bernie Cervantez; Sherry Jefferson; Patty Waddell; Cathy Wills
- " A " - " B "
- 12th: Jimmy Ballew; Robert Garza; Mary Hernandez; Leslie Schafer; Joy Tidwell
  - 11th: Tammy Foust; Tino Gomez; Velma Meyer; Traci Roselle; Mark Tidwell
  - 10th: Bill Pratt; Julian Soliz
  - 9th: Julia Esparza; Emma Garcia; Evangelina Garcia; Frances hernandez; Adrain Reyes
  - 8th: Mitchell Bryant; Sara Cardenas; Ruben Esparza; Elva Garcia; Richard Garcia Roman Garcia; Romelia Hernandez; Steve Kral; Tammy Lewis; Oscar Pena
  - 7th: Elsa Aguirre; Rebecca Benites; Joe Cruz; Rosa Flores; Joe Hernandez; Pat O'Rourke; Kimberly Leverett; Noemi Terrazas; Kathy Weber; Benita Villarreal

### WITH MOST OF TODAY'S USED CAR VALUES THE HIGHEST IN 15 YEARS, YOUR NEW CHEVROLET CAN BE A BETTER DEAL THAN EVER.

Take advantage of used car values while they're still high. From an extensive analysis, there are some reasons to own a 1975 Chevrolet right now. And high used car values are one of the reasons.

You see, the value of most Chevrolets used in 1975 is high compared to comparable models last year, and this can be the one of the reasons why.

with much more in a trade-in than you thought. Here's what we mean - and how we arrived at the figures below.

First, we took average used car values of 1974 models. Then we added the value of a 1975 Chevrolet. Next, we took the average used car value of 1974 models. And finally, we subtracted the 1974 value from the 1975 value. The result is the difference in value between a 1975 Chevrolet and a 1974 Chevrolet. Look at the figures again. Think about them.

These averages are based on all 1974 models as published in Automobile Market Reports. Then, we simply compared the 1975 value to the 1974 value.

See if you don't agree, with your own eyes. The highest used car values in 1975 are yours now. Chevrolet can be a better deal than ever!

CLASS	1974 VALUE	1975 VALUE	DIFFERENCE
CHEVROLET CLASSIC COUPE	\$1,800	\$2,200	+\$400
CHEVROLET SPORT COUPE	\$2,400	\$2,784	+\$384
CHEVROLET CHEVROLET COUPE	\$3,200	\$3,600	+\$400
CHEVROLET CHEVROLET COUPE	\$2,900	\$3,213	+\$313
CHEVROLET SPORT COUPE	\$2,700	\$3,092	+\$392

SEE YOUR CHEVROLET DEALER RIGHT NOW, AND FIND OUT HOW MUCH YOUR CAR IS WORTH AS A TRADE-IN ON A '75 CHEVROLET.



**VEGA NOTCHBACK. LOWEST-PRICED 4-CYLINDER CAR BUILT IN U.S.A.**

At only \$1,129, the Vega Notchback is the lowest priced 4-cylinder car built in the U.S.A. And it's packed with features that make it a real value. Like the new 1000 cc engine, 117 horsepower, 117 mph top speed, 22 mpg city, 28 mpg highway. And the new 1000 cc engine, 117 horsepower, 117 mph top speed, 22 mpg city, 28 mpg highway. And the new 1000 cc engine, 117 horsepower, 117 mph top speed, 22 mpg city, 28 mpg highway.

**VEGA. BEST OVERALL EPA GAS MILEAGE FIGURE OF ANY 4-CYLINDER CAR BUILT IN U.S.A.**

The September 4th Environmental Protection Agency report shows that the Vega Notchback has the best overall EPA gas mileage figure of any 4-cylinder car built in the U.S.A. And it's packed with features that make it a real value. Like the new 1000 cc engine, 117 horsepower, 117 mph top speed, 22 mpg city, 28 mpg highway. And the new 1000 cc engine, 117 horsepower, 117 mph top speed, 22 mpg city, 28 mpg highway.

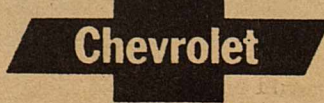


**CHEVROLET MAKES SENSE FOR AMERICA**

## Court House

In a called criminal docket in the County Court of Kinney County, Texas, from May 15, 1975 to June 4, 1975, Kinney County collected \$1,661.00 in fines and costs of court. Thirteen cases involving defendants charged with Driving While Intoxicated (DWI) and possession of Marijuana, during the 1972 and 1973 calendar years was heard. The \$1,661.00 represents nineteen percent (19%) of that amount collected in fines and costs of court for he entire year of 1974 in the same criminal docket, reported County Attorney Tully Shahan.

\*\*\*\*\*



**HOWARD CHEVROLET, INC**  
2300 Highway 90 West  
Del Rio, 775 0566

## Between Us

by:

JOE TOWNSEND

Thunder in the night, how miserably disturbing. When lightning strikes nearby and the sounds explodes in your ears. You unwittingly jump. When the thunder rolls through the sky ( as a child I heard it was the devil riding his chariot over the cobblestones) you can't help but hope each roll is the last. When it finally fades in the distant as the cloud passes on quietly resumes the calm and even breathing of sleep.

The sound of an insensitive "hot rod" who feels his inadequacies and wants to be a "big shot" as he roars with screeching tires and loudly protesting engine----no thinking person appreciates in daylight hours----- but in the wee hours of the nite--how disturbing !!

At our house we have something that makes one forget night time amplification of undesirable sounds. We have a mockingbird that sings with all his heart---through the long, slow dreary hours of darkness. When we are disturbed by noises alien to comfort we soon forget them under the blanket of beautiful singing by our feathered friend. He sings for the sheer joy of singing---no hope of reward---no pay check expected---not even a thought of an anticipated "thank you" We don't even feed him nor do we have a Bird-bath for his convenience, and yet he's happy-content and truly living life to the hilt. My how much we can learn from the birds they depend on "their heavenly father" and He watches over them.

\*\*\*\*\*

## Soil Conservation

by: Howard Ragsdale



JESUS PENA DISPLAYS TWO ANACACHO BAUHINIA PLANTS WHICH HAVE BEEN TRANSPLANTED AS ORNAMENTAL SHRUBS.

Rare or threatened plants are now getting the attention of many individuals and groups. Many plants fall into this category because they are highly palatable for wildlife and livestock grazing. Others probably have always been rare.

Engelman daisy is a good example of a plant becoming rare due to heavy grazing. This plant occurs in the deeper soil along Highway 90. It has a bushy dark green appearance with yellow flowers. The Engelman Daisy is very colorful in the spring and early summer. It is a very desirable plant for grazing. Due to this it is now primarily found in the more protected places. This plant will become re-established in pastures under a grazing systems providing frequent rests from grazing

pressure. Other plants in Kinney County which fall into this general category are eastern gamagrass; Indiangrass; Texas Kidneywood and little leaf lead-tree/

There is one plant in Kinney County that is truly rare. The only place it is known to occur in the United States is in the canyon bottoms in the Anacacho Hills. This plant is the Anacacho bauhinis. Observations indicate it is a very palatable browse plant as well as a very attractive ornamental shrub. It is a shrub growing up to about ten feet tall. The flowers are small and appear in clusters. The color ranges from white to light pink. The Blossoms are very fragrant. Several of these plants have been transplanted in the area as ornamentals.

## TOWN & COUNTRY

### SERVICES

PLUMBING - ELECTRICAL -  
CONSTRUCTION

APPLIANCE and FURNITURE REPAIRS

LICENSED and BONDED

Ron Curry

563-2337 or 563-2605

## KNIGHTS' PICNIC

The Knights of the Altar, usually known as Mass Servers of St. Mary Magdalene Church, were treated to their annual picnic by their Pastor, Father Edward B. Postert, the picnic was held on the beautiful picnic grounds on the James F. Bader Ranch. The Knights left for the picnic area at 1:00 p.m. All but four of the Knights attended, those attending were: Anthony Koch, President of the Local Knights; Joe H. Jaso; Ruben Fuentes, Jr.; Anthony Samaniego; Forentino Gomez; Nelson Payne; Moses Benites; Travis Meyer; Mario Fuentes; Paul Koch; Bernard Cervantes; Daniel Samaniego; John Samaniego; Roman Saenz; Joevl and Warren Voss; Oscar Pena; Thomas Meyer; Albert Fuentes; Alfredo Pena; Kevin Kaplan; Seth Kaplan, a guest; Flavio Talamantes; Felipe Benites; Enrique Flores; Edward Garcia.

The afternoon was spent swimming and fishing. The weather and the entire afternoon could not have been more beautiful.....

The dinner of barbequed cabrito and sausage with salad and plenty of cokes and other drinks was prepared and served by the following fathers of the Knights of the altar: Henry Fuentes, who did the barbequing Mecho Flores, his able assistants; Richard Garcia; Flavio Talamanes; Jim Voss; Jose N. Cervantes; Alfred Pena.

The Activities of the day ended at 8:00 p.m. Reports have it that all the Knights of the Altar had an afternoon full of fun. The boys and their fathers as well as Father Postert are deeply grateful to Mr. Bader for the use of the spacious picnic grounds.

### CLASSIFIED ADS

RATES: 10¢ per word; phone, 2 words; address, 2 words. Payment must accompany ads. MAIL to CAVALRYMAN, P.O. Box 735; Brackettville, Texas, 78832. \$1.00 Minimum. Display ads this page regular rates. DEADLINE...MONDAY 9:00 a.m.

#### NOTICES

LAS MORAS LODGE NO.444,A.F.& A.M.



Brackettville, Brackettville, Texas Regular Meetings the second Tuesday Evening of each Month, at 8:00 p.m.

DANIAL KRAL, W.M. M.H.WINKENWERDER, SECY.

#### AUTO

FOR SALE-- 1970 Cadillac, Sedan DeVille, air-conditioning, AM-FM Stereo Radio, Power Steering-Seats-Windows, Cruise Control, Automatic Headlight Dimmers, Electric Trunk. 563-2696.

#### EMPLOYMENT

WAITRESS WANTED: Apply in person, Tradewinds Restaurant. 563-9746. DISHWASHER Wanted: Apply in person. Tradewinds Restaurant. 563-9746.

MUSIC POOL

HAPPY HOUR DAILY  
5 p.m. - 8 p.m.

**LUNA'S LOUNGE**  
Owner & Manager DAVID G. LUNA

COLD BEER WINE

FAA CERTIFIED REPAIR STATION

**ROBERSON AVIATION**  
AERIAL APPLICATORS

BRUSH - GRAIN - VEGETABLES

PH. 775-1021  
775-7722

TOBY & BARBARA ROBERSON  
DEL RIO INT'L AIRPORT DEL RIO, TEXAS 78840

**ELECTRICAL WORK**

NONE-TO LARGE OR TO SMALL

KERMIT WATSON

P.O. Box 248 563-2629  
Brackettville, Texas

IF YOU HAVE  
**PECAN TREES.....**  
**THEY NEED TO BE**  
**SPRAYED!!**

CALL  
**SAGEBRUSH SHOPPE**  
**563-2735**

#### PUBLIC NOTICE

NOTICE TO ALL PERSONS HAVING CLAIMS AGAINST THE ESTATE OF JOHN STANLEY "KIZE" FRITTER, DECEASED

Notice is hereby given that original Letters Testamentary for the Estate of JOHN STANLEY "KIZE" FRITTER were issued on the 3rd day of June 1975, in Cause No. 665, pending in the Probate Court of Kinney County, Texas, to:  
GLADYS FRITTER

The residence of such Executrix is Kinney County, Texas. The post office address is:  
c/o Gladys Fritter  
P.O. Box 711  
Brackettville, Texas  
78832

All persons having claims against this Estate which is currently being administrated are required to present them within the time and in the manner prescribed by law.  
DATED the 4th day of June 1975.

Tully Shahan  
Attorney for the Estate

\*\*\*\*\*

DR. GRAHAM LANTZ  
OPTOMETRIST

ANNOUNCES THE OPENING OF HIS OFFICE FOR  
THE  
PROFESSIONAL PRACTICE OF OPTOMETRY  
AT  
612 BEDELL STREET  
DEL RIO, TEXAS

PRACTICE DEVOTED TO COMPLETE VISION CARE,  
INCLUDING  
CONTACT LENSES, VISUAL TRAINING  
AND INDUSTRIAL VISION

OFFICE HOURS:  
9:00-5:00 MONDAY-FRIDAY  
9:00-1:00 WEDNESDAY-SATURDAY


PHONE: 775-3141

### PICTURES TAKEN



- Commercial
- Parties
- Weddings
- Lynchings
- Shoot-Outs (at a distance)

CALL  
**GEORGE LOOS**  
**563-2696**

TYPewRITERS 

ADDING MACHINES

OFFICE FURNITURE

CALCULATORS SUPPLIES

#### SALES AND SERVICE

"DELIVERY TO BRACKETT"

Amistad Office Equipment 775-1566  
Eagle Pass Office Equipment 773-6672

116 W. LOSOYA DEL RIO, TEX. 78840  
221 JEFFERSON EAGLE PASS, TEX. 78852

 **Eagle**  
LUMBER COMPANY

**LUMBER**  
&  
BUILDING SUPPLIES

FOR  
ALL HOME IMPROVEMENTS  
"WE DELIVER TO BRACKETTVILLE"

416 South Main 775-3508  
Del Rio