

WEATHER SUMMARY

The weather this week has been cool and cloudy, but only light showers were reported from over the area. Temperatures have been unseasonably cool this week.

The Memphis Democrat



Hall County Herald, Established May 3, 1890, Absorbed by Purchase August, 1928

VOLUME LXXXVI *** Avalon Features *** MEMPHIS, HALL COUNTY, TEXAS, THURSDAY AFTERNOON, JULY 15, 1976 *** 15c (Inc. 1c sales tax) *** NUMBER 11



STATE QUALIFIER—Pictured above is Chris Molloy showing his Gelding which took Reserve Champion honors at the District 4-H Horse Show which qualified him to compete in the State 4-H Horse Show in Amarillo on July 21-24.

Little League All-Stars Play Clarendon Mon.

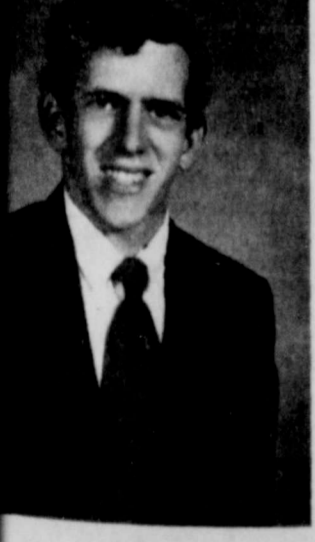
The Memphis Little League All-Stars will begin play in the 1976 District Play-Off on Monday, July 19 in Childress. The team plans to save from the Little League All-Star Manager Bill Lockhart said this week. "The team had several good work-out sessions and appears to be shaping up real well. We hope to work out the rest of this week, and possibly have a scrimmage Saturday, and rest on Sunday."

Because of the regulation that players must submit birth certificates before competing in the play-offs, three of the players announced last week will not be competing because their birth certificates were not available. These include Joe Hernandez, Benito Encenia and Cipriano Encenia.

These will be replaced by Juan Lopez, Mario Lopez and Manuel Perez, Manager Lockhart announced.

"The loss of these three players will weaken our team strength," Manager Lockhart said, "but we should have a good team. Especially have I been impressed with our batting during workouts."

Local fans are urged to be



JOHN TYLER

Rotary District Governor To Visit Memphis Club On Tuesday, July 20

Rotary District Governor John Tyler of Midland will make his official visit to the Memphis Rotary Club, holding a meeting with officers on Monday, July 19, and speaking at the regular Rotary Club meeting at noon on Tuesday. Rotary Ann's are invited to the Tuesday luncheon.

President Robert Spicer will host the District Governor and his wife, and officers and their wives at dinner Monday evening. A coffee is planned by the Rotary Ann's at the Spicer home at 10:30 a.m. Tuesday morning.

Tyler will discuss the program of the coming year for the 45 clubs in this 573rd District of Rotary International, which covers most of North-west Texas.

Tyler is a native of Southern California. He received a B. S. degree in Petroleum Engineering from the University of Oklahoma in 1957 and moved to Midland in 1967 where he is the District Production Superintendent for Union Oil Company

Funeral Services To Be Friday For Nathan Hughes

Funeral services for Nathan N. Hughes, 59, who died Wednesday morning at 7:40 a.m. in Hall County Hospital, will be held at 2:00 p.m. Friday at the Church of Christ in Estelline. Officiating will be Tom Anderson, minister of the Wellington Church of Christ, and J. D. Rothwell, local minister.

Burial will be in Newlin Cemetery under the direction of Spicer Funeral Home.

Mr. Hughes was foreman of the Maintenance Dept. of Ft. Worth and Denver Railroad. He had been with the company since 1952.

A native of Hall County, Mr. Hughes was born Sept. 27, 1916. He was united in marriage to Elma Belle Sweatt June 4, 1949 at Childress. He was a veteran of World War II.

Survivors include his wife of the home; two sons, Mike and Pat, both of the home; two daughters, Mrs. Anne Dumboski of Fort Worth and Mrs. Susan Doland of Jal, N. M., a brother, Jack of Lubbock and one grandson.

Pall bearers will be Wyman Davis, W. O. Clark, Robert Lee Clark, Ted Barnes, Arthur Clark and Lewis Contreras.

Funeral Services Held Monday For Bill James

Funeral services for Wm. T. (Bill) James were held Monday, July 12 at 3:00 p.m. at the Church of Christ with Minister Jeff Ellis of Gould, Okla., and Minister J. D. Rothwell of Estelline officiating.

Local arrangement was under the direction of Spicer Funeral Home. Burial was in O. M. Cemetery in Hollis, Okla.

Mr. James was born December 25, 1909 in Scott County Ark.

He is survived by his wife, Alice of the home; two daughters, Mrs. Norman Robertson of Dos Palos, Calif., and Miss Nora James of Memphis; two sons, Monty and Terry, both of Roseburg, Ore.; three sisters, Mrs. Harriett Dickerson of Shafter, Calif., Mrs. Roxie Brothers of Waldron, Ark., and Mrs. Lalar Johnson of Holdenville Okla.

Pall bearers were Andrew Power, W. D. Young, Lacey Montgomery, Gayle Gilreath, Gene Hughes, Jack Beavers, and W. M. Davis.

Contracts To Be Let To Build Five Lakeview Watershed Dams



INSTALLATION — The Memphis Masonic Lodge installed officers Saturday evening in an open installation. Pictured above, second from left is Worshipful Master Ray Evans receiving the gavel from installing officer Ferman Vincent of Flomot, Grand Senior Warden of the Grand Lodge of Texas. On the left is Memphis Lodge Senior Warden John Lemons, and on the right is Memphis Lodge Junior Warden Dennis Taylor. Other officers installed were: Hershall Pounds, secretary; Orville Goodpasture, treasurer; Lanier Foster, Senior Deacon; Jim Edd Wines, Junior Deacon; Hubert Dennis, Senior Steward; Jerry Burleson, Junior Steward; R. C. Lemons, Tiler and Joe Bob Browning, Chaplain.

Contracts for the construction of five floodwater retarding structures in the Lakeview Watershed are to be let according to Henry D. Gregory, District Conservationist with the Soil Conservation Service at Memphis.

The five dams are to be in two separate contracts with a completion time of five hundred working days. Lyles and Lyles Construction Company of Ballinger, Texas, was the apparent low bidder according to John Jackson, Construction Engineer from Stephenville, Texas, who attended bid openings at the First National Bank Building in Temple, Texas on Monday, July 12.

Lyles and Lyles bid \$672,645.99 for the construction of Site No. 7 located on the Hagey Ranch northeast of Lesley and Site No. 14 located on the Gilbert Young Ranch north of Lakeview.

Lyles and Lyles was also the low bidder on Site No. 107, 6, and 8 with a bid of \$713,968.40. Site No. 107 is located on the L. D. Gardener farm two miles west of Lakeview. Site No. 6 is located on the W. R. Scott farm two miles north of Lesley and Site No. 8 is located on the J. B. Byars farm two miles west and four miles north of Lakeview.

The contracts will be awarded on these five dams in the next week or so. Work should commence in approximately 20 days after the award is made.

Five structures have already been completed in the Lakeview Watershed, four located on the Hagey Ranch north of the Brice and Lesley areas, and one on the JA Ranch in the same area.

Presently, two survey crews, one from Bowie and the other from Stephenville, are here doing detailed surveys of five additional sites for floodwater retarding structures.

The Lakeview Watershed has a total of 25 floodwater retarding structures either constructed, under construction or being planned.

State 4-H Horse Show Set For July 21-24

AMARILLO — More than 600 horses are entered in competition in the 1976 State 4-H Horse Show at the Tri-State Fairgrounds here July 21-24. Events will be held at both the Bill Cody Arena and the coliseum.

The show will feature open invitational competition as well as the regular show for qualifying 4-H youth, announcements B. F. Yeates, horse specialist for the Texas Agricultural Extension Service.

Some 280 4-H boys and girls who have qualified through competition at the county and district shows will

(Continued on Page 12)

Farm Bureau Queen, Talent Show Is Friday

The Hall County Farm Bureau Queen Contest and Talent Find will be held at 7:30 p.m. Friday evening, July 16, in the Memphis Community Center, and everyone is cordially invited to attend.

A list of queen contestants and talent find entries were announced this week.

Queen contestants include: Sheryl Orcutt, Christi Whitten, Robin Hanvey, Debbie Hodges, Mary Lou Simmons and Loree Pound.

Talent find entries include: Steve Boney, Jackie Don Mar-

tin, a Quarter including Kim Wynn, Tammy Lockhart, Susanne Elliott and Jana Davis; a duet including Loree Pound and Audrey Pound.

Master of ceremonies for the show will be Jerry Courtney of Clarendon, and judges will be Alice Courtney and Jeff and Beth Walker.

Winners of this contest will participate in the District Contest to be held in Memphis on Friday, August 5, at the Memphis Community Center, it was announced.

Burger In Wins Softball Games During Week

Memphis has four Women's Slo-Pitch softball teams playing at the City Park this summer. The teams play on Monday, Tuesday, Thursday and Friday evenings.

The teams are the Burger Inn, coached by Judge Smith, Jr.; Carl's Grocery, coached by Tony Pate; Dairy Queen, coached by Jessie Reynolds and Memphis Compress, coached by Hector Olivias.

The teams play seven inning games or 15 point lead. On Tuesday evening Burger Inn beat Memphis Compress 21 to 6 and the Dairy Queen won over Junior High 10 to 8.

In previous games the past week, the Burger Inn defeated Carl's Grocery 16 to 1; Wellington defeated the Memphis Compress 11 to 10; Junior High defeated Memphis Compress 11 to 10 and the Burger Inn defeated the Dairy Queen 18 to 3.

Upcoming games include the following: Friday at 7:30 p.m. Dairy Queen vs. Carl's Grocery and Junior High vs. Burger Inn at 8:00 p.m.

On Monday evening at 8:00 p.m. the Dairy Queen will play Burger Inn.

Tuesday evening Junior High will play Carl's Grocery and Thursday July 22, Memphis Compress will play Wellington.

Hall County Picnic Plans Being Made

Hall County Picnic Assn. President Tom Seay of Estelline this week appointed chairman of many committees and called for an organizational meeting of the association for 8 p.m. Tuesday, July 27 in the Memphis Community Center.

"I am trying something different in that I am appointing a chairman on most committees then leaving it up to them to see that the job is done," President Seay said in making the announcement.

"Everyone is invited to make this meeting and express his or her ideas. Since this is a County-wide activity everyone must help. Let's all dig in a little deeper for donations and eliminate charging for the picnic this year," the President said.

Named as chairmen of the various committees are as follows:

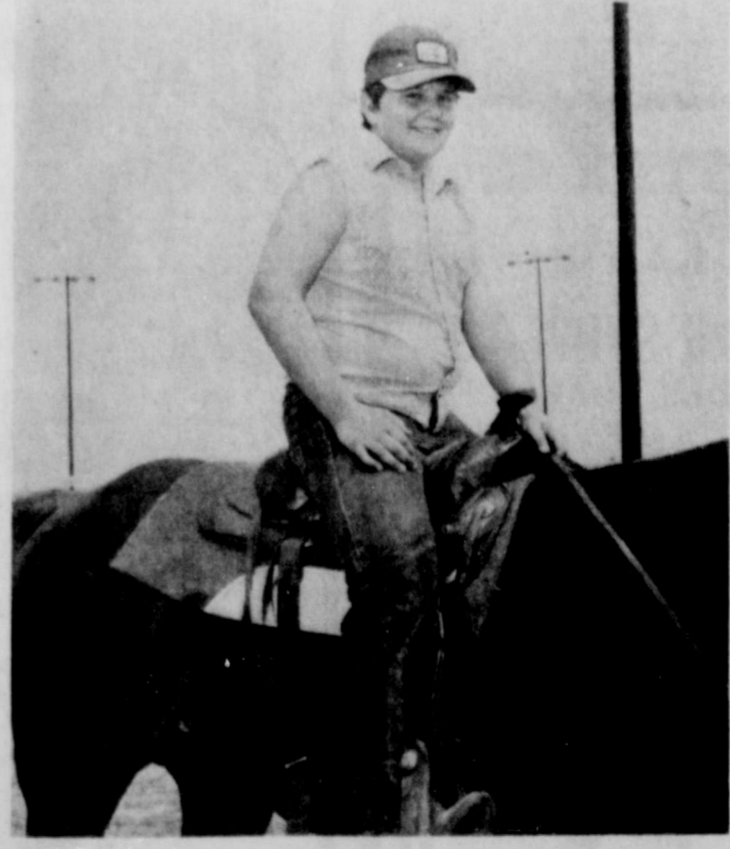
Nomination, Oren Jones; Program, Lee Vardy; Entertainment, Jim Edd Wines; Registration, Phillis Dunn; Invitation, Tops Gilreath; Also, beef, Roy Gresham;

Publicity and Printing, Bill Combs; Finance, Don Long, Haulby Dean and Jay Eudy; Treasurer, Haulby Dean; Clean Up, President of Rotary Club; Emergency, Pat Godfrey; Parade American Legion.

Also, Food services, Lions Clubs of County; Art Display, Mary Hudgins; Food Supplies, Alvin Phillips; Pots and Pans, John Ferrel; Aprons, Towels, Jars, and Wood, Dub Parker.

Also, Telephone, James H. Davis; Tables, Mackie Allen; Iced Tea, George Berry and Gentry Lynn; Coffee, Arthur Eddleman; Bar B. Q. Master, Pete Land; Cooking Meat, Memphis Fire Dept.; Grounds and Traffic, Elmer Neal; Selling of Extra Meat, Doc Bates; Reception, Joe Ballard; Dessert, Lena Mae Adeock; PA System, Clyde Smith; Passing Out Tickets, Don Ferrel.

All clubs, churches, and businesses are being asked to make plans now to enter a float in the parade this year.



OFF TO STATE—Pictured above is Stevie Molloy, who earned enough points in the riding events at the District 4-H Horse Show qualify to compete in the State 4-H Horse Show in Amarillo on July 21-24. Stevie and brother, Chris, are the first two Hall County 4-H horsemen to qualify for State since the county 4-Hers began competing three years ago.

W. L. Williams, Former Resident, Browns July 4th

Funeral services were held for Walter Lynn Williams, 77, Wednesday, July 7, at the First Mineola Baptist Church with the Rev. David Welch officiating.

Burial was in Roselawn Cemetery under the direction of English Funeral Home.

Mr. Williams was a July drowning victim when his

(Continued on Page 12)

The Memphis Democrat

Published on Thursday of each week at
617 Main Street, Memphis, Texas by
MRS. HERSCHEL COMBS Publisher
BILL COMBS Editor

(Hall County Herald absorbed by purchase August 7, 1928)
Subscription Rate: In Hall, Donley, Collingsworth and Childress Counties, per year \$6.90
Subscription Rate: Outside Hall, Donley, Collingsworth, & Childress Counties, per year \$8.90
Member of TEXAS PRESS ASSOCIATION and PANHANDLE PRESS ASSOCIATION
Entered at the post office at Memphis, Tex., as second-class matter under Act of March 3, 1879. Second Class Postage paid at Memphis, Texas. Telephone 259-2441

NOTICE — Any erroneous reflections upon the character, standing or reputation of any person, firm or corporation which may appear in the columns of The Memphis Democrat will be corrected gladly upon its being brought to the attention of the publisher.

Postmaster: Send Form 3579 to Memphis Democrat: Box 190, Memphis, 79245

EDITORIAL

Democratic Party Harmony!

The Democratic Party, in all its vastness, met this week at the National Convention in New York City, and to the amazement of this editor, and others, harmony and unity appeared to be the central theme of the entire show.

Newsmen covering the convention Tuesday evening, after a voice vote had approved the Democratic Party Platform, said that it was difficult to hear a rumor on the convention floor, a situation for different from the way it has been at past Democratic Party Conventions.

Democratic Party candidates have been defeated in the past two presidential elections, following two of the most turbulent conventions in the Party's history. The nation and the world witnessed this turmoil which certainly weakened the hopes of victory in November.

But it appears this week that the Democratic Party has settled upon a standard bearer in Jimmy Carter, a man the entire party with all its many factions can support. This reality in political life will make the job of the GOP extremely difficult, even if they come up with a Ford-Reagan, or a Reagan-Ford team. The fighting between the Ford forces and the Reagan forces has been too severe for any unity to come out of it, because who ever gets the Republican nomination for President, the losing side will not be satisfied with their man as vice-president.

The Democratic Party platform adopted by the convention Tuesday night is one of common sense and one few people can take exception to or even disagree with on most key points. One of the major points emphasized is a promise by the Party leaders to involve the Congress and the American People in matters of international policy where commitments of money, American troops and national honor are involved.

Although, at this writing, the Convention has not named a nominee, Jimmy Carter will be elected by the delegates, probably on the first ballot. His selection for a running mate is one of the best kept secrets at the convention. Whether or not the choice has been made, or whether it was made on Wednesday is subject of speculation.

One of the great values of national party conventions in this country, besides the obvious ones of selecting standard bearers for the parties, is the focusing of national attention on the major problems facing our nation both internally and externally. The Democrats point out the faults of the Republicans, and the Republicans point out the faults of the Democrats. This tends to force both parties to try and keep their own house in order, and gives the American people a two-sided look at the state of affairs.

Americans, with their abundance of entertainments, still respond to great speech makers and Rep. Barbara Jordan of Texas on opening night of the convention made a speech which will long ring in the hearts of those that heard it. The truth of her words prompted this response from one listener, "she told it the way life really is."

The political party conventions signal the beginning of the race for the office of President of the United States. One historian has said, "the most important event in 1976 will not be the celebration of the Bicentennial of this great nation, but the selection of a president." We feel this is true and accurate.



ACROSS & DISK

What Other Editors Say

DISTURBING TREND
There is a trend in this country that is disturbing to a lot of Americans. That is the trend to pay government people higher salaries than they could earn in private enterprise.

Government employees have long complained that they needed to have incomes on a par with people in private enterprise. They have now passed private enterprise workers in the matter of pay scales and far beyond them in the matter of fringe benefits.

Smart young people of today go into Civil Service jobs because not only do they command a higher beginning salary, but the retirement benefits are far beyond what most private businesses can pay.

Not only that, but Congress has altered the retirement pay of federal workers, and military retirees, so that they get an automatic boost in pension check as the cost of living goes up.

The people who retire from private business don't have the benefit of anything like this. Most of them have to get along with their Social Security check and whatever savings they may have been able to accumulate.

The U. S. government is a big and complex organization and no doubt needs well trained people to handle the paperwork that moves this nation.

But the government is competing far too well with private business these days and the trend is toward higher government pay because government workers have found out how to organize.

The thing about government pay is that the government doesn't have anything with which to pay until it first extracts it from the pockets

of taxpayers. And the government doesn't have to show a profit to stay in business like the businesses do. We think it's time to put a halt to government pay scales that are now out of line with private industry.

ECONOMY DRIVES FAILURES

The federal budget can be expected to show a deficit at least through 1978, even under the most favorable economic conditions, according to a study by The Conference Board, authoritative volunteer organization that conducts such studies three times a year.

Given a slightly less favorable than expected economy, deficits could extend until 1979 or 1980 with no new spending programs during the period.

"With defense spending on the rise and inflation remaining a major concern, the scope for initiating (major) new federal programs appears to be negligible over the next two or three years, and it remains limited over the next five (years) unless such new initiatives are financed either by cuts and cost reductions in existing programs or by tax increases," the report continues.

"The only alternative (for financing major new programs) is through accelerating inflation, the most arbitrary and inequitable of all taxes," it concludes. Another alternative, which is even less palatable under the present national attitude, would be accelerated deficits.

Major domestic economy drives proposed and supported in the congressional budget, including federal pay reform for civilian and military government workers, elimination

of excessive cost-of-living adjustments in federal pension programs and cost savings in the food stamp program, Medicare, Medicaid and public assistance have made little or no inroads on the deficit.

It's more important than ever before, then, to hold the line on new programs. Growth in Gross National Product, which ultimately will grow, in turn accounting for increased tax collections, is the nation's only hope for a balanced budget, given the mood of Congress regarding tax cuts and tax reform.

Wichita Falls Record News

Stripes Forever Fashionable

COLLEGE STATION — Stripes point to high fashion this season — in horizontals, verticals and diagonals, Mrs. Becky Culp, area clothing specialist, reports.

"From narrow to wide to bold to subtle, the stripe variety is endless. And often stripes combine with other patterns, such as prints or florals, in the same fabric design or as trim or separate companion garments," she noted.

Mrs. Culp is with the Texas Agricultural Extension Service, The Texas A&M University System.

"Stripes affect the way we look. They can make us appear shorter, heavier, taller or thinner, depending on the garment design, fabric texture and the stripe's color contrast, size, boldness, direction and placement on the body," she said.

She said that when choosing stripe fabric for sewing or when buying a garment ready made, visualize its effect. Ask yourself if it's the look you want.

"Stripes should match visually where seams or separate garment pieces meet. When buying a stripe garment, choose the one best matched if several are available."

MEMORIES

From The Democrat Files

40 YEARS AGO

Friday, July 17
Every land-owner, every tenant farmer and every other person interested in agriculture and the conservation of soil and water in Hall, Donley, Childress and Collingsworth counties is urged to attend a mass agricultural meeting in the county courthouse Saturday afternoon for the purpose of organizing a voluntary Soil Conservation Association.

Twelve Hall County common schools will be ranked as state standardized schools next year. They are Gammage, Ell, Newlin, Indian Creek, Brice, Salisbury, Weatherly, Buffalo Flat, Lesley, Plaska, Friendship and Fairview.

At Chitwood's Market — steak, lb. 20c; beef roast, lb. 15c; bacon, sliced, lb. 35c; fish, lb. 25c. Weekend Specials at Womack Grocery — Mayonnaise, pint, 18c; lettuce, per head, 5c; Gelatin, per box, 4 1/2c; grape juice, pint, 15c.

Fairview news by Mrs. R. Eller; Plaska news by Mrs. B. Burnett, Ell News by Mary Ellen Nelson, Harrell Chapel news by Mrs. Louis Richards; Newlin news by Mrs. Fred Hemphill; Webster news by Nell Cochran; Parnell news by Ruth Richards; Lakeview news by Daisy Wells; Giles news by Mrs. J. A. Lemon; Bethel News by Ernest Carter; Lesley news by Mrs. L. L. Mitchell; Estelline news by Mrs. H. M. Faulkner; Liberty news by Othello Yeary; Pleasant Valley news by Claudia Vandenter.

30 YEARS AGO

July 18, 1946
With daily temperatures soaring well above the 100-degree mark, and with hot winds instead of cooling moisture hitting the crops, farmers of Hall County and the remainder of this immediate area were hoping for a seige of cooling moisture, Sunday's high was 108.

Are prices up? Yes, and going up more and more. Butter is up to 85c per pound from 65, milk went up from 14 to 17 cents per quart; Oleomargarine, when you can find it, is selling for 35c per pound. Haircuts up from 50 to 65c shaves from 35 to 60c. Ground meat now 30c was 25c per pound. The advances listed here were made during the past two weeks and four days — since the death of OPA.

Approximately 300 people turned out last Thursday night for the all-family night at the city park in Memphis, brought their own picnic lunches, saw boxing and a movie, enjoyed several softball games and then drove to the Memphis school grounds for a grand finale in the form of another softball game.

20 YEARS AGO

July 19, 1956
Eight junior youths from the local Methodist Church attended the Junior Encampment at Ceta Canyon Monday through Friday of last week. They were Phillip Duncan, Larry Combest, Johnny Lavender, Joy Batem, Carol Smith, Neva Sue Koeninger,

Sara Jo Foxhall and Jone Ward.

Garment Factory Owner Inspects Buildings, Gathers Information Here Tuesday and Wednesday; Enjoys Barbecue Chicken Dinner, Confers With Chamber of Commerce.

Miss Melissa Barbee, daughter of Mr. and Mrs. J. H. Barbee, Jr., was entertained with a birthday party on her 6th anniversary July 10. Among those present were Camella Lemons, Janetta Batem, Claudia Gorley, Phyllis Dunn and Judy Burleson.

Mr. and Mrs. Douglas Shelton of Ashtola announce the birth of a son on July 19 in a local hospital. He has been named Douglas Stanford and weighed 7 pounds, 7 ounces.

R. C. Lemons and J. C. Ross returned Wed. morning from a three-day trip to Dallas, where Lemons attended the 33rd annual Southwest Furniture Market, and Ross received a medical checkup.

10 YEARS AGO

July 21, 1966
Eight Hall County girls have entered the annual Farm Bureau Queen's Contest and included are: Rosemary Harrison, Kathy Jones, Jo Ann Davis, Judy Bruce, Carolyn Hutherson, Ilene Hargrove, Gina Berry and Jane Helm.

Mr. and Mrs. E. D. Watson announce the engagement and approaching marriage of their daughter, Shirley Sue, to John M. Ferrel, son of Mr.

and Mrs. J. M. Ferrel.

The wedding will be an event on September 1 at the Trinity Baptist Church at 7 p.m.

Regina Hoover, graduate of the class of 1966, has been awarded several scholarships which will be applied toward her college education.

Memphis All-Stars Major League Baseball Team Tonight — The line-up will include Steve McCravy, Joe Baker, Tommy Lockhart, Ed Hillhouse, Daniel Smith, Jerry Jones, John Calmen, Larry Johnson and Barry Simmons. Other members of the team include: Dwight Clayton, Terry Wynn, Perry Studstill, Kenneth Jones, Betty Fowler, Kim Hutchins and Jerry Smith.

BIG TEXAS COTTON CROP

The 1976 Texas cotton crop may pass the billion dollar mark if market conditions continue strong and weather harvest prevail. The 1973 which tipped the scale at \$1.2 billion, notes an economist for the Texas Agricultural Extension Service, Cotton acreage on June 30 of this year is up from 4.3 million acres planted last year. Cotton farmers are expected to reap good profits due to strong domestic and foreign markets.

Don't Miss Our
1/2 Price Sale
BARGAIN TABLE, AT LESS THAN HALF PRICE
One Table Boy's Shirts
Sizes 8 To 18
Broadcloth & Knit **\$3.00**
NEW FALL MERCHANDISE
ARRIVING DAILY... LAY-AWAY NOW FOR BACK-TO-SCHOOL
THE TUMBLEWEED
320 S. Kearney
CLARENDON, TEXAS

DR. JACK L. ROSE
OPTOMETRIST
Contact Lenses
Closed Saturdays
415-A Main Phone 259-2216

PAULA'S CRAFTS & GIFTS
FEATURING
TOLE PAINTING SUPPLIES:
BRUSHES, BOOKS, BOARDS
MACRAME SUPPLIES:
CORDS, BEADS, BOOKS, RINGS
CERAMICS:
ANIMALS, PLANTERS, BEADS
Ph: 259-3424
Jim & Paula Powell
818 South 6th Street

JULY BICENTENNIAL SPECIAL
HOME OF BOB WILLS
COTTON CAPITAL
1975
OF THE PANHANDLE
25% OFF
On the sale of all 1975 Bob Wills Medals during the month of July Only!
Gold (24 karat) was \$50.00 NOW \$37.50
Sterling Silver was \$25.00 NOW \$18.75
3 Coin Sets was \$50.00 NOW \$37.50
2 Coin Sets was \$15.00 NOW \$11.25
ON SALE ALL DURING JULY
Branigan Jewelry Perry's Chamber Office
Peoples State Bank, Turkey, Texas
\$1.00 Off with proof of Coin Purchase for the books: "San Antonio Rose, The Life and Music of Bob Wills" and "My Years With Bob Wills." Available At The Chamber Office.

GENERAL REVENUE SHARING
ACTUAL USE REPORT
GENERAL REVENUE SHARING PROVIDES FEDERAL FUNDS DIRECTLY TO LOCAL AND STATE GOVERNMENTS. YOUR GOVERNMENT MUST PUBLISH THIS REPORT ADVISING YOU HOW THESE FUNDS HAVE BEEN USED OR OBLIGATED DURING THE YEAR FROM JULY 1, 1975, THRU JUNE 30, 1976. THIS IS TO INFORM YOU OF YOUR GOVERNMENT'S PRIORITIES AND TO ENCOURAGE YOUR PARTICIPATION IN DECISIONS ON HOW FUTURE FUNDS SHOULD BE SPENT. NOTE: ANY COMPLAINTS OF DISCRIMINATION IN THE USE OF THESE FUNDS MAY BE SENT TO THE OFFICE OF REVENUE SHARING, WASHINGTON, D.C. 20226.

(A) CATEGORIES	(B) CAPITAL	(C) OPERATING / MAINTENANCE
1 PUBLIC SAFETY	\$	\$
2 ENVIRONMENTAL PROTECTION	\$	\$
3 PUBLIC TRANSPORTATION	\$	\$ 715
4 HEALTH	\$	\$
5 RECREATION	\$	\$ 357
6 LIBRARIES	\$	\$
7 SOCIAL SERVICES FOR AGED OR POOR	\$	\$
8 FINANCIAL ADMINISTRATION	\$	\$
9 MULTIPURPOSE AND GENERAL GOVT	\$	\$
10 EDUCATION	\$	\$
11 SOCIAL DEVELOPMENT	\$	\$
12 HOUSING & COMMUNITY DEVELOPMENT	\$	\$
13 ECONOMIC DEVELOPMENT	\$	\$
14 OTHER (Specify)	\$	\$
15 TOTALS	\$	\$ 1072

THE GOVERNMENT OF ESTELLINE TOWN
has received General Revenue Sharing payments totaling \$ 1,072 during the period from July 1, 1975 thru June 30, 1976
ACCOUNT NO. 44 2 096 001 703
ESTELLINE TOWN MAYOR ESTELLINE TEXAS 79233

(D) TRUST FUND REPORT (refer to instruction D)
1. Balance as of June 30, 1975 \$ 1,072
2. Revenue Sharing Funds Received from July 1, 1975 thru June 30, 1976 \$
3. Interest Received or Credited (July 1, 1975 thru June 30, 1976) \$
4. Funds Released from Obligations (IF ANY) \$ 1072
5. Sum of lines 1, 2, 3, 4 \$
6. Funds Returned to ORS (IF ANY) \$
7. Total Funds Available \$ 1072
8. Total Amount Expended (Sum of line 15, column B and column C) \$ 1072
9. Balance as of June 30, 1976 \$

(E) CERTIFICATION: I certify that I am the Chief Executive Officer and have not been used in violation of either the priority expenditure requirement (Section 103) or the matching funds prohibition (Section 104) of the Act.
Signature of Chief Executive T. H. SEAY July 7 1976
Name and Title MAYOR

(F) THE NEWS MEDIA HAVE BEEN ADVISED THAT A COMPLETE COPY OF THIS REPORT HAS BEEN PUBLISHED IN A LOCAL NEWSPAPER OF GENERAL CIRCULATION. I HAVE A COPY OF THIS REPORT AND RECORDS DOCUMENTING THE CONTENTS. THEY ARE OPEN FOR PUBLIC SCRUTINY AT City Office next to Post Office

GIBSON'S
DISCOUNT CENTER
 MEMPHIS, TEXAS — CORNER 5th & NOEL

PRICE BUSTERS

OPEN: Sunday 1:00 To 6:00 p.m.
 THANKS FOR MAKING OUR CIRCULAR SALE SUCH A HUGE SUCCESS . . . SALE CONTINUES THROUGH JULY 17.



MISS BRECK
Hair Spray
69¢
 11-oz. Can

IMPERIAL GRANULATED
SUGAR
 LIMIT ONE

With \$5.00 Purchase
97¢
 5 LB. BAG

Friskies
Dog Food
 25 Lb.
\$3.99

TOMATOES
 LB. **39¢**

Mr. Coffee Filters
 BOX 200 **\$1.49**

LEATHER GLOVES
 BOSS COWHIDE, PERFECT FOR SUMMER WORK, BUY SEVERAL AT THIS PRICE, PR **\$2.69**



OUTDOOR PUSH BROOM
288 Reg. 3.99 16-inch broom.



New! Shoe Polish Kit from KIWI
 includes:
 • heavy-duty polishing cloth
 • new "ideal" foam applicator
 • famous Kiwi Shoe Polish with "built-in" reserve shine

only **39¢**

RAY-O-VAC C OR D CELL
Batteries
2 39¢
 HEAVY DUTY



33-OUNCE DOWNY FABRIC SOFTENER
 Reg. 1.19 Fabric Softener liquid. Price includes 15c off label. **69¢**
 LIMIT 1

FLICKER RAZOR
87¢
 Reg. \$1.49 Ladies' disposable, shaves close and smooth.

Pickwick \$1.99 COUNTRY JUKEBOX \$2.99
 OVER 100 COUNTRY STARS FROM FREDDY FENDER TO DOLLY PARTON, ELVIS PRESLEY TO JOHNNY CASH. AWARD WINNERS & COUNTRY HALL OF FAME TOO!
 THEY'RE ON THE COUNTRY CHARTS NOW. PRICED LOW SO YOU CAN PLAY YOUR FAVORITES AGAIN & AGAIN!



6-PACK CANNED COCA-COLA
 12-ounce cans
97¢

Hi-Dri Paper Towels
3 Single Rolls \$1
 Featured Special!



9-OUNCE PRINGLES POTATO CHIPS
 Reg. 99¢ Two can 4 1/2 oz. each.
69¢

GIANT SIZE
Palmolive LIQUID DETERGENT
59¢
 Reg. 79¢

NOXZEMA SKIN CREAM
1.77
 Reg. \$2.39 Greaseless, medicated skin care cream, 16 oz.

SHURFRESH **OLEO** 3 LB. **89¢**
 QUARTERS

SHURFRESH **BACON** 1 LB. **29**

JELL-O GELATIN
6 FOR \$1.00
 ASS'T. FLAVORS 3-OZ.

Tide
 KING SIZE
 5 Lb. - 4 Oz.
 REG. \$2.49
\$1.99¢

TEXAS SIZE TUMBLER
 30-OZ. SIZE ASS'T COLORS EACH **3 FOR \$1**

GIBSON'S **Buttermilk**
69¢
 1/2-GAL. CTN.

Summer Salad Days

Amarillo Dist. Collects More Taxes In June



Mr. and Mrs. Eddie Earl Gance announce the birth of a son, born on July 7. He weighed 8 pounds, 4 1/2 ounces. Grandparents are Mr. and Mrs. John McKay of Quitaque and Mr. and Mrs. Sammy Crawford of Memphis.

Mr. and Mrs. Mike Caldwell of Dallas announce the arrival of a daughter, born on July 13. She has been named Kelli Greene and weighed 6 pounds, 13 ounces. Mrs. Caldwell is the former Ginger Greene, daughter of Mr. and Mrs. Gayle Greene of Memphis.

Mr. and Mrs. James O. Neighbors of Temple announce the birth of a daughter on July 1. She weighed 5 pounds, 14 ounces and has been named Karen Suzanne. The paternal grandmother is Mrs. Una Vay Neighbors of Memphis and the maternal grandparents are Mr. and Mrs. Monty Alewine, also of Memphis.

Mr. and Mrs. Cecil C. Rich of Claude are the parents of a daughter born July 9. She has been named Susan Denise and weighed 7 pounds, 3 ounces.

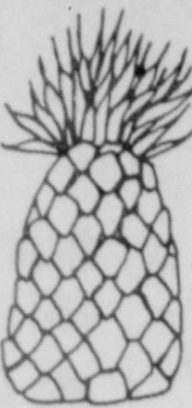
Mr. and Mrs. James Ervin Shaw of McLean announce the arrival of a son on July 10. Weighing 9 pounds, 6 1/2 ounces, he has been named William James.

Mr. and Mrs. Frank T. Hommel of Clarendon announce the birth of a daughter Christiana Dawn, on July 11. She weighed 6 pounds, 5 ounces.

Mr. and Mrs. Bobby J. Robinson are the parents of a son born July 11. He weighed 7 1/2 pounds and has been named Lewis Dee.

Mr. and Mrs. Billy Ray Wilson of Clarendon announce the birth of a daughter on July 11. She has been named Isabelle Anne and weighed 5 pounds, 9 ounces.

Clyde C. Jones of Denver, Colo., visited Saturday, July 3, with his brother and wife, Mr. and Mrs. Lynn F. Jones. Mr. Jones was in the process of moving to Bakersfield, California.



Main dish salad has entertaining ways

Celebrate the salad season with an outstanding main dish creation which couples good nutrition and economy with beauty. Polynesian Chicken Salad combines chicken with fresh fruit and coconut in a pineapple shell. This picturesque salad is set off with creamy mayonnaise dressing and topped with toasted almonds. For four servings you'll need only one pineapple, which is quartered and hollowed out to make a serving shell. When chopping chicken use both light and dark meat—it's more economical than using all white meat. To save personal energy when the thermometer rises, cook chicken on a cool day; chop and freeze for use during warm weather. Complement the main dish chicken salad by beginning the meal with a light cream of vegetable soup, served warm or cold. Rolls, bread and a beverage will effectively round out the menu.

POLYNESIAN CHICKEN SALAD

- 1 pineapple
 - 2 cups chopped cooked chicken
 - 1 cup strawberry halves
 - 1 cup grapes
 - 1 cup shredded coconut
 - 1 cup Miracle Whip salad dressing
 - 1 tablespoon milk
 - 1/2 cup slivered almonds, toasted
- Cut pineapple lengthwise in quarters. Remove fruit of each quarter leaving 1-inch shell. Core and cube pineapple. Combine with chicken, strawberries, grapes and coconut; toss lightly. Fill pineapple shell with mixture. Chill. Combine salad dressing, milk and almonds. Chill. Serve over salad. Garnish with additional almonds, if desired. 4 servings.

STATE CAPITAL Highlights AND Sidelights by Lyndell Williams TEXAS PRESS ASSOCIATION

AUSTIN — Land Commissioner Bob Armstrong has issued detailed recommendations for better management of the state's coastal area resources through existing agencies and programs.

Outgrowth of a three-year study, the preliminary proposals will be submitted to public hearings beginning next month.

Hearings during August will be held in Brownsville, Corpus Christi, Victoria, Bay City, Houston, Galveston and Beaumont. Later hearings are scheduled in Dallas, San Antonio and Austin.

Main recommendations include:

— Establishment of a process for assessing future economic, environmental and social effects of developments planned for coastal locations.

— Setting up an organized information system in the governor's office to help improve agency coordination on decisions for use of coastal resources.

— Restructuring the Interagency Council on Natural Resources and the Environment to review and coordinate coastal policies and activities.

— Focusing management processes on coastal waters and shorelands closely associated with the waters. Only a fraction of each coastal county would be included in the management area.

Armstrong said recommendations provide a framework for coastal growth and development.

Briscoe Cool

The idea of a special session to curb utilities bills left Gov. Dolph Briscoe cool, in spite of support from House Speaker Bill Clayton and other lawmakers.

Briscoe said ideas of House committees (including sales tax reductions and tax rebates) are "nothing basically new." He added he is not convinced they would substantially decrease bills or that they could be passed quickly by the legislature.

Meanwhile, Rep. Lane Denton of Waco came up with 14 recommendations which he claimed could reduce gas and electric bills 25 per cent if enacted. Denton proposed a ceiling on the wellhead price of natural gas, further restrictions on utility companies and tax adjustments or elimination.

He also recommended election of Railroad Commission members from six

geographic districts.

Party Fight Due

Angelina County Attorney John Henry Tatum of Lufkin set the stage for a state Democratic leadership tug-of-war with announcement as a candidate for Texas party chairman.

Tatum was the first to come out against Calvin Guest of Bryan, backed by Gov. Briscoe for a third term as state Democratic Executive Committee head.

Other liberals are considering the race which will be decided at the State Democratic convention September 18 in Fort Worth.

Texas Democrat leaders this week are attending the party's national presidential nominating convention in New York City.

Courts Speak

Texas Supreme Court will review a \$1.8 million judgment against General Motors in a suit blaming a fatal truck accident on a faulty carburetor. GM claims the verdict would discourage new products development and bring price increases.

The high court found error in a trial court dismissal of a Comal County couple's suit to prevent the State Highway Commission from taking 6.3 acres of land without adequate compensation.

Upholding lower courts, the State Supreme Court declared alimony judgments rendered in other states can be enforced in Texas.

The Supreme Court will review Houston court findings that part of the code of criminal procedure is unconstitutional.

A new trial was ordered by the Supreme Court in a \$200,000 Wichita Falls water district land condemnation case.

Court of Criminal Appeals reversed the 35-year prison sentence of a man who shot at a policeman in Snyder, because the jury was not charged on the issue of whether the defendant acted in self-defense.

An Austin district judge



Cool and crunchy for a sultry day supper is this Summer Seafood Salad with its subtle but lively homemade Russian dressing. Quick cooking, high protein, low fat North Atlantic filets go straight from freezer to pan — keep kitchen time to a minimum. In salads, on the grill or just simply sauteed, filets from the icy waters of the North Atlantic are the answer to light, relatively low cost satisfying summer eating.

Summer Seafood Salad

- 2 pounds frozen North Atlantic Pollock or Cod fish filets
- 1 1/2 cups water
- 1/2 teaspoon salt
- 1 medium head cauliflower
- Russian Dressing: 2 cups mayonnaise, 1/4 cup chili sauce, 1 garlic clove, finely chopped, 1 hard-cooked egg, finely chopped, Salt, Pepper

Poach the frozen filets in salted water until the fish flakes easily when tested with a fork, approximately 8 minutes. Remove from liquid with slotted spoon; cool and flake. Break cauliflower into flowerettes and slice very thinly. In a large bowl toss together cauliflower and flaked fish and chill while preparing dressing.

To prepare Russian dressing: Stir the chili sauce, garlic, egg, salt and pepper into the mayonnaise. Taste for additional seasoning. Toss the cauliflower and flaked fish with enough Russian dressing to coat generously. Serve on a bed of greens garnished with halved hard-cooked eggs. Serves 8.

dismissed a University of Texas effort to throw out a suit to invalidate a decision by regents to dismantle the UT system school of nursing.

AG Opinions

The Public Utility Commission is not required to issue certificates of convenience and necessity to gas utilities, since the Railroad Commission or cities have jurisdiction over those companies, Atty. Gen. John Hill held.

In another recent opinion, Hill concluded the abstract of a personal judgment rendered against a defendant by a court in a tax suit should be issued as by civil statute even though the judgement additionally forecloses a tax lien on property.

File of an attorney with the Board of Law Examiners is not available to the public, Hill stated in a third opinion.

Reconnection Allowed

Texas intrastate utilities which are members of the Texas Interconnected System can reconnect with interstate members without coming under Federal Power Commission Jurisdiction.

FPC allowed emergency reconnection of TIS without imposing its regulations on the system's intrastate members.

TIS provides electric utility member cooperatives emergency and peak-use energy capabilities. It was disconnected in early May when one member extended its system across the Texas-Oklahoma border, engaging in interstate business.

Public Utility members said the FPC decision to permit reconnection will be an increased factor of reliability to Texas electricity.

Short Snorts

Gov. Briscoe expressed opposition to a National Governors' Conference task

Bullock said the enforcement officers of his Amarillo district office revealed through audits \$145,926 in additional taxes owed the state and collected another \$453,955 in taxes during the month of June.

Bullock said the office conducted 78 audits during June, yielding an average \$152.32 in additional taxes owed per audit hour.

Of the \$152.32 collected by the office during the month, the Comptroller noted, \$89,185 had become delinquent.

Statewide field collections by the Comptroller's 36 district offices totaled \$4.6 million during June, including \$2.3 million in delinquent taxes, Bullock said. He said the combined audit efforts of the field offices turned up a total 73.6 million in additional revenue owed the state.

Bullock also announced that the Amarillo office will be open from 7:30 a.m. to 5:30 p.m. for the convenience taxpayers.

The Amarillo office, headed by Bill Teague, is located in Suite 101, 1309 W. 8th Avenue, Telephone 372-8156.

The Amarillo office serves Potter, Armstrong, Briscoe, Carson, Castro, Childress, Collingsworth, Dallam, Deaf Smith, Donley, Gray, Hall, Hansford, Hartley, Hamphill, Hutchinson, Lipscomb, Moore, Ochiltree, Oldham, Parmer, Randall, Roberts, Sherman, Swisher and Wheeler Counties.

Gary Grimes and Tod Grimes of Dallas visited here Sunday with their grandmother and great-grandmother, Mrs. J. S. Grimes.

force recommendation for a national minimum welfare level with regional variations funded by the federal government.

Speeding and alcohol were blamed for most of 48 Texas traffic fatalities over July 4 weekend.

Texas school districts will share a \$7.2 million federal grant earmarked for innovative programs.

State Rep. John Newton of Beeville reported spending \$478,178 on his Democratic race for Railroad Commissioner — outspending opponent Jerry Sadler about 50 to 1.

Summer FINAL CLEARANCE Close Out On '76 Models



1976 OLDSMOBILE TORONADO

LAST YEAR OF FULL-SIZED CARS

1977 Models will carry an increase of 6% in Price

If you are thinking about a new car, there is no better time to buy a full-sized General Motors car than during this Close Out Sale on 1976 models.

Large Selection Of Chevrolets, Oldsmobiles and Pickups

Low Bank Rate Financing

WARD MOTOR CO.

Your Authorized CHEVROLET And OLDSMOBILE Dealer

you can BANK on it! Don Long President

FIRST STATE BANK

Thomas Jefferson is back with us again — it is his visage that appears on the face of the new \$2 bills that returned to the monetary scene after an absence of some 10 years.

Some people at the Federal Reserve say that one of the reasons the \$2 bill never gained popularity is that there never were enough issued, and thus they were not circulated as widely as other denominations.

With their scarcity came suspicion, some Treasury officials say, and along with the suspicion came old wives' tales about the bill bringing bad luck. Old timers can recall when people tore the corners of a \$2 bill before they cashed them to break the spell.

Issued first in 1918, the Treasury is going to make sure this time there are enough of the bills available. They plan to issue at least 400,000,000 each year from now on. The Treasury says it expects to save \$30 million over the next five years in printing and handling costs with the new bill in circulation.

"The more you know about our business, the more we can help you!"

CONSOLIDATED REPORT OF CONDITION OF State Bank No. 1664

First State Bank

of Memphis in the State of Texas and Domestic Subsidiaries at the close of business on June 30, 1976.

ASSETS	
Cash and due from banks	1,725,000.00
U. S. Treasury securities	668,000.00
Obligations of States and political subdivisions	1,517,000.00
a. Loans, Total (excluding unearned income)	6,463,000.00
c. Loans, Net	6,463,000.00
Bank premises, furniture and fixtures, and other assets representing bank premises	93,000.00
Real estate owned other than bank premises	50,000.00
Other assets	227,000.00
TOTAL ASSETS (sum of items 1 thru 15)	10,743,000.00

LIABILITIES	
Demand deposits of individuals, partnerships, and corporations	3,317,000.00
Time and savings deposits of individuals, partnerships, and corporations	5,688,000.00
Deposits of United States Government	3,000.00
Deposits of States and political subdivisions	590,000.00
Certified and officers' checks	21,000.00
TOTAL DEPOSITS (sum of items 17 thru 23)	9,619,000.00
a. Total demand deposits	3,609,000.00
b. Total time and savings deposits	6,010,000.00
Federal funds purchased and securities sold under agreements to repurchase	300,000.00
Other liabilities	83,000.00
TOTAL LIABILITIES (excluding subordinated notes and debentures)	10,022,000.00

EQUITY CAPITAL	
Common stock a. No. shares authorized 10,000	100,000.00
b. No. shares outstanding 10,000	200,000.00
Surplus	402,000.00
Undivided profits	39,000.00
Reserve for contingencies and other capital reserves	741,000.00
TOTAL EQUITY CAPITAL (sum of items 32 thru 36)	741,000.00
TOTAL LIABILITIES AND EQUITY CAPITAL (sum of items 30, 31, and 37)	10,743,000.00

MEMORANDA	
Average for 15 or 30 calendar days ending with call date:	
a. Cash and due from banks (corresponds to item 1 above)	1,445,000.00
c. Total loans (corresponds to item 9a above)	6,447,000.00
d. Time deposits of \$100,000 or more (corresponds to Memoranda items 3a plus 3b below)	100,000.00
e. Total deposits (corresponds to item 24 above)	9,656,000.00
f. Federal funds purchased and securities sold under agreements to repurchase (corresponds to item 25 above)	264,000.00
Time deposits of \$100,000 or more:	
a. Time certificates of deposit in denominations of \$100,000 or more	100,000.00

I, Harold Moffitt, Asst. Vice Pres. of the above-named bank, do solemnly swear that this report of condition is true and correct, to the best of my knowledge and belief.

Correct—Attest: Harold Moffitt

Don Davis, John Kehr, Don Long, Directors

State of Texas, County of Hall, ss: Sworn to and subscribed before me this 13th day of July, 1976, and I hereby certify that I am not an officer or director of this bank. My commission expires June 1, 1977, Pat Goodnight, Notary Public.

Rep. W. S. (Bill) Heatly Named Man of the Year in Texas Agri.

COLLEGE STATION, — Representative W. S. Heatly of Paducah has been named a "Man of the Year in Texas Agriculture" for 1976 by the Texas County Agricultural Association.



REP. W. S. HEATLY

One of seven Texans selected for the honor, Heatly was nominated by county associations in District 3 (the Rolling Plains) of the Texas Agriculture and related industries. Dawson County Extension Agent Lee Roy Collins, president of the state association. The awards recognize the contributions made by these leaders in improving levels of living and economic growth in their communities, counties, state and nation.

Heatly will receive his award during the association's annual meeting August 1-3 at Knights Inn in Waco. Heatly, who has served as member of the Texas House of Representatives since 1954, owns a ranch with more than 300 Hereford cows and wheat, oats and grain on 1,000 acres in the county. He is also a practicing lawyer, and formerly was representative for the Memphis area before the state was re-districted several years ago.

The legislator has served on the Budget Board and is the only person to have served as chairman of the House Appropriations Committee for consecutive terms. He recently served on the House Stock Export Committee.

Heatly has been recognized for outstanding service to such organizations as the Texas Bar Association, Texas Alcoholic Commission, Texas Seal Society, Texas National Agriculture Teachers Association, Texas Pork Producers Association and the Texas Farmers Union.

In 1968 Howard Payne College awarded Heatly an Honorary Doctor of Laws degree, and he was named an "Outstanding Alumnus" of the college. Heatly is an honorary member of several 4-H and FFA clubs as well as the Texas FFA Association.

He has served as a resource person to the Cattle - King County Program Building Committee and has furnished cow calves for 4-H and FFA members. He has been a keynote speaker at many 4-H events.

The state government officials helped bring about improved care, treatment and training in the Mental Health and Mental Retardation Department of Texas and as a prime mover in the establishment of the Texas A&M University Agricultural Research and Extension Center at Vernon and the Texas A&M Vegetable Research

Safety Features For Matchbooks

COLLEGE STATION — The simple matchbook has come under fire for causing serious injuries, and new safety features have resulted, Claudia Mitzel, a consumer information specialist, reports.

She said that matchbooks were responsible for an estimated 9,500 injuries serious enough to require emergency room treatment between July 1, 1974 and June 30, 1975. Miss Metzel is with the Texas Agricultural Extension Service, The Texas A&M University System.

"The Consumer Product Safety Commission is now developing standards for matchbooks to protect consumers against unreasonable risk. The standard will apply to matchbooks made in the U. S. or imported but not to wooden matches packaged in boxes or 'strike anywhere' kitchen matches."

She explained that the new standard is aimed at reducing or eliminating these injuries. Burns resulting from improper use of matchbooks by children and others. Burns resulting from sparks or delayed ignition. Eye injuries from fragmenting matches. Burns resulting from unexpected ignition of entire matchbook.

"Some features required on future matchbooks include that the friction be located on the outside back cover to reduce the risk of a spark igniting the matches and that no part of the match when the cover is closed, she noted.

Hospital News

Patients

Eva Ibarra, Rhonda Fields, Ara J. Lamb, Bertha Gay, Octa Belle Durrett, Nell Land, Earl Thomas, Rose Marie Soto, Estell Foster, Stella M. Chadwick, Ruby L. Anthony, Laura Sikes, Gladys Hommel, Ethel Connors, Artie B. Martin, Cora Rasco, Laverne Williams, Raymond Foster, Joyce Bloxom, Pauline Lindsey, Myrtle Wood, Jess W. Smith and Mary Shields.

Dismissed

Jess Mann, Geneva Wilson and baby girl, Elizabeth Hernandez and baby boy, Terri Hommel and baby girl, Evelyn Shaw and baby boy, Cordia Levi, O. R. Goodall, Conrad Lohoefer, Mary Rich and baby girl, Saylore Clemons, Jeff Walker, Yvonne Maddox, Alvin Baty, Barbara Hudson, Mary Lockhart, Gary Alexander, Fox Bolton, Oscar Hammond, Ernest Kilgore, Anne Detwiler and baby boy, Vida Shields, Jetta Williams, William Mullins, Nora Hartwell, Nora Decker, Danny Collins, Martha Gardner and Nellie Stephen.

American Legion and Auxiliary Installs Officers at Dinner Meet

The American Legion and Auxiliary met Thursday evening at the legion hall for the annual installation of officers and dinner.

Officers were installed preceding the covered - dish meal, and Miss Terri Shadid gave a report on Girls State which she attended recently as a delegate from the local auxiliary.

Weldon Teague of Childress, 18th District Commander, installed the local officers.

Officers installed included Eldon McGinnis, commander, James Farley, first vice commander; Kenneth Rodgers, adjutant; Jim Barbee, finance officer; Richard Atkins, judge advocate; Charlie Morris, assistant Sgt. of Arms; Fidel Rocha, Sgt. of arms and Sammy Crawford, service officer.

Mrs. Beatrice McCauley, vice president of the 18th District Auxiliary, installed the Auxiliary officers.

Auxiliary officers include: Beatrice McCauley, president; Margaret Gregory, first vice

president; Lois Weatherly, second vice president; Beverly Maynard, secretary - treasurer; Ora Ritchie, chaplain; Faye Crawford, Sgt. at Arms and Terri Shadid, reporter and historian.

NEW AG EXTENSION DIRECTOR NAMED

Dr. Daniel C. Pfannstiel has been named director of the Texas Agricultural Extension Service of the Texas A&M University System. Pfannstiel, who has served as associate director of the agency since 1971, succeeds Dr. H. O. Kunkel, Texas A&M's dean of agriculture, who has been acting director since February when Dr. John E. Hutchison retired as director of the largest state Extension Service in the nation. Pfannstiel has served with the Texas Agricultural Extension Service for 27 years, coming up through the ranks as a county agent, administrative assistant and assistant director.

Out of Orbit



HAVE YOU SEEN MY SPACE HELMET?

LOYD ELLIOTT

Your **EXXON** Dealer
Wants, needs and appreciates your business!

Visiting in the of Mr. and Mrs. Marion E. Posey and family were Mr. and Mrs. Bill Clutter of Pottsboro. Mrs. Clutter is an aunt of Mrs. Posey.

Morris Sand & Gravel

Contact Us For Your

- Washed Material
- Pea Gravel
- Well Rock
- Concrete Rock
- Mortar Sand
- Concrete Sand

David Morris

1514 W. Brice - 259-2556
Memphis, Texas

LETTERS To The Editor

An Open Letter to the Mayor of Memphis.

Dear Sir:
Memphis is a town of exceptional people. Of course you know this. One especially will have a special place in my heart, I was stranded in Memphis this morning with three of my Explorers. We had been separated from our traveling companions and found ourselves short of funds.

We used the phone at Allsup's Drive In. A gentleman in the store heard us ask if there was a Western Union in town where we could have some money wired. When I came out of the store, he asked how much money I needed. I said "Enough to get back to Dallas on." He said, "I could lend it to you." I assured him that it was being wired. However, he went by the Western Union office to assure himself that we would in fact get the money. His last words to me were, "If for any reason the money doesn't get here have someone contact Pat Johnson, everyone knows me." I am sure they do, and probably think of him as fondly as we do. One person in a million would have even cared whether we made it or not. Praise the Lord for people like Pat Johnson. He should be commended.

Mrs. Bing Scherzer
Advisor
Explorer Post 555
Seagoville, Texas

SELECT CATTLE ON GROWTH PATTERNS

An animal scientist for the Texas Agricultural Experiment Station says to consider lifetime growth patterns for weight and other factors in Beef cattle selection programs. Such measures as weight at weaning, post-weaning average daily gain and yearling weight are commonly used. Since selection for weight at one age will affect weights at other ages, cattlemen should consider the lifetime growth pattern in deciding upon a specific selection program. Once the best growth patterns are identified, breeds should be chosen and combined, breeding stock selected, and the cattle managed to correspond to the optimal growth patterns.

CARE FOR THOSE YOU LOVE
Cousins Home, Inc.
520 North 18th St.
Phone 259-2767
Memphis, Texas

FIRST Anniversary ENTIRE STOCK REDUCED

MEN'S & WOMEN'S

LADIES' PANT SUITS

by Center Stage, Country Set, Donovan Galvani, & Ralph Originals

1/3 OFF

LADIES' SLACKS

Donovan Galvani, Center Stage, & Ralph Originals

1/3 OFF

MR. BEAN JUMP SUITS 1/3 OFF



MEN'S SUITS

WERE \$90-\$150

SALE PRICE \$45 TO \$112

Ratner, Johnny Carson, Clubman & Don Richards

SAVE ON MEN'S SUITS

SPORT COATS

REG. \$70 TO \$90 NOW \$25 TO \$55

Johnny Carson Ratner and Clubman



SAVE ON SPORT COATS

DRESS SHIRTS

NOW 20% OFF

ONE GROUP OF SHORT SLEEVE DRESS SHIRTS

REGULAR 8.50 3 FOR \$15

ALL MEN'S SLACKS 25% OFF



DRESSES

Junior & Misses Sizes

1/2 OFF

LADIES' DRESSES

By Nardis, Mr. Beau Donovan Galvani and Jennifer Lee

1/3 OFF

ENTIRE STOCK OF THERMO-JAC CO-ORDINATED SPORTSWEAR 1/3 OFF

MEN'S LEISURE & FANCY SHIRTS

Arrow, Joel, Jockey Philippe Venet REGULAR \$12 TO \$23

NOW \$8 TO \$17.25



IT WILL PAY YOU TO DRIVE TO CLARENDON TO

JOHN'S

306 KEARNEY CLARENDON, TEX. PHONE 874-3339

SHOES Florsheim and Nunn Bush

25% TO 50% OFF

ONE GROUP SHOES

YOUR CHOICE \$5

LEISURE SUITS

Johnny Carson, Ratner, Levi, Don Richards, Wrangler, & Other Famous Brands

REGULAR \$30 TO \$110

NOW \$22.50 TO \$82.50

BICENTENNIAL SAVINGS DURING JULY

FREE \$25.00 U.S. SAVINGS BOND

with purchase of any 2-door Philco COLD GUARD Refrigerator. When refrigerator is purchased, just fill in the Product Card and Special Bond Form—send both to Aeronutronic Ford. Your \$25.00 U.S. Savings Bond will be sent direct to you. Offer limited to one Bond per household. Offer good July 6 through August 31, 1976.

Features include big capacity freezer with Twist-Out ice cube trays and storage door. Refrigerator has adjustable cold control, big roomy shelves and vegetable crisper, plus deep-shelf storage door with enclosed butter keeper. Positive-Seal door gaskets with reversible doors.

DIXON'S



**MISS KELLI LINER
Kelli Liner
Wins Trophy
In Twirling**

Kelli Liner, daughter of Mr. and Mrs. Richard Liner of Memphis, won a trophy and was named fourth runner-up at the "Miss Firecracker" twirling and beauty pageant held July 3 at Canyon.

Kelli received 6th place in modeling, 3rd place in "T" strut, and 6th place in solo. In the open competition, she received 1st place trophy for basic strut. 2nd place medal in solo, and also a 2nd place medal in "T" strut.

Kelli has returned home from attending twirling camp at Cisco Junior College where she won the honor of "Cisco's Best Strutter." Kelli has a total of 11 trophies, 9 medals, 4 ribbons and one Baton won through competition. She has been taking twirling lessons for two years under the instruction of Mickey Fowler.

**Renee Wilson,
Edward Hamner
To Wed In Aug.**

An August 27 wedding is planned by Miss Susan Renee Wilson and Edward Leroy Hamner. The wedding will be solemnized at the home of the bride-elect's parents at 220 North Tenth Street in Memphis.

The bride-elect is the daughter of Mr. and Mrs. Ronald Wilson. Mr. and Mrs. Charles Hamner of Turkey are the parents of the groom-to-be.

**Nell Davis
Is Honoree At
Party Monday**

Mrs. Sue Hutcherson entertained Monday evening honoring Mrs. Nell Davis, who will be married on Sunday to E. E. Cudd.

The honoree was presented an array of gifts from her friends, some of which were humorous.

The dining table was laid with a white cloth and centered with an arrangement of daisies. Punch and decorated cake squares were served.

Enjoying the social were Bill Leggett, Pug Scott, Jo Carmen, Lois Taylor, Dixie Wynn, Martha Campbell, Elsie Hoover, Ilene Jackson, Viola Johnson, Lucy Gable, Owen Lindsey, Clara Davis, Patsy Jarrell, Opal Rothwell, Iris Davis, Sharon Rogers, Janie Farnsworth, Carolyn Staples and honoree, Nell Davis.

Friends unable to attend, but sending gifts were Honoria Helm, Athlee Backham, Wanda Montgomery and Nettie Gilliland.

**Memphis Home
Demonstration
Club Meets Mon.**

The Memphis Home Demonstration Club met Monday, July 12 at 1:30 p.m. in the Bronze Room at the First National Bank. Mrs. Lynn B. Jones presided over the meeting.

Members responded to roll call by giving their middle names.

The devotional was brought by Mrs. Estelle Barber. She read "The Ten Commandments, 'How to Get Along with People'" by Willard Green. Mrs. Jones led in prayer.

The program was on hair styling and a demonstration was given by Leda Hadaway from Jerry's Hair Styling Center. She used Mrs. Jones as her model, cutting and styling her hair, using curling irons.

Attending were Meses. Lynn B. Jones, Evelyn McWhorter, Stella Phillips, Lurcia Talley, Estelle Barber, Loreen Saunders, Florene Yarbrough, Eileen Atkins, and two visitors, Marie Barber Ward of San Angelo and Lolla Atkins of Florida and Leda Hadaway.



AUXILIARY OFFICERS—Beatrice McCauley, 18th District vice president, installed Legion Auxiliary officers at the annual dinner and installation service on Thursday evening at the Legion Hall. Pictured, left to right, are Mrs. McCauley, president; Margaret Gregory, first vice president; Lois Weatherly, second vice president; Beverly Manyard, secretary-treasurer; Terri Shaddid, reporter and historian; Ora Ritchie, chaplain and Faye Crawford, Sgt.-at-arms.

**Brunch Honors
Sheri Davis In
M. Posey Home**

A bridesmaids' brunch honoring Miss Sheri Davis, bride-elect of Jim Dixon, was held on Saturday morning, July 3, in the home of Mrs. Marion E. Posey and daughter Shari who served as hostesses for the affair.

Decorating the dining table was a bouquet of mums and baby's breath in the bride's chosen colors of blue and white in a crystal and gold bowl. On either side were blue candles in gold to complete the centerpiece.

Scrambled eggs and bacon bits were served in ham rolls. Accompanying the main dish was a summer fruit dish of pineapple and cantaloupe with dressing and blueberry muffins.

Attending were bride-to-be, Miss Sheri Davis, mother of the bride, Mrs. Carlton Howard of Abilene, mother of the groom, Mrs. J. O. Dixon, bridesmaids, Meses Debbie Johnson and Shari Posey.

Others attending were Mrs. Posey, MariAnn and Kari. Unable to attend were Meses Tonya Maddox and Debbie Roden.

**Dick Spoons, Long-Time Residents,
Will Be Married 50 Years Sun.**

Mr. and Mrs. Dick Spoon, who have lived in Memphis for the past 49 years, will celebrate their 50th wedding anniversary quietly at their home here Sunday, July 18. No special celebration is planned for the occasion. They reside at 1523 Walden.

Mr. Spoon and the former Lena McKnight were married July 18, 1926 in Amarillo and moved to Memphis the next year, in 1927, and have resided here since that time.

Now retired, Mr. Spoon is an expert mechanic. He was employed for many years with Tomie Potts Chevrolet Agency here and later operated his own garage.

Mrs. Spoon, who was employed with the Hall County Hospital for a number of years, is also now retired.

They are members of the First Christian Church. They keep busy around their home and visiting with the many friends they have made throughout the years.

They have two daughters, Dixie Rosson and Ann Molesworth, both of Amarillo, and two grandchildren, Donna Rosson and Vance Molesworth, also of Amarillo.

In talking with Mrs. Spoon, she said: "We think Memphis is a lovely town to live in and wouldn't think of living anywhere else."

**Susan Bradford
Receives Degree
From Texas Tech**

Susan Sams Bradford, daughter of A. C. Sams of Lubbock and Ellen Markgraf of Houston, received a Bachelor of Arts degree, with a major in English from Texas Tech University with the spring graduating class in May.

A graduate of Lakeview High School, Mrs. Bradford is the granddaughter of Mrs. T. E. Lenoir.

Mrs. H. R. Crawford and Mrs. Carl Harrison went to Lubbock Monday and Mrs. Crawford's grandchildren, Mike, Kelly and Cliff Ann Morgan, accompanied them home. Also arriving here Monday for a visit with his mother and children was the Rev. Bill Morgan of Pensacola, Fla. Mike, Kelly and Cliff Ann will accompany their father back to Florida for a visit, after visiting here for several days.

**Teresa Kilpatrick
Is Shower Honoree**

Miss Teresa K. Kilpatrick, bride-elect of Terry Fincher, was honored with a bridal shower on Saturday evening, July 10 in the home of Mrs. W. R. Parker.

In the receiving line were Mrs. Parker, Miss Kilpatrick and her mother, Mrs. W. M. Kilpatrick, Jr., and the groom-to-be's mother, Mrs. O. L. Fincher of Wellington.

Mrs. Betty Bast sat at the guest register table.

Miss Diane Clayton and Mrs. Debbie Clayton served guests from an attractive lace covered table, centered with a bride doll, fashioned by Miss Clayton.

**Baptist Women
Meet For Study
Tuesday Morning**

The Baptist Women of Travis Baptist Church met Tuesday, July 12, at 9:30 p.m. at the church for a missionary program.

Mrs. Lynn B. Jones, presided at the meeting. Mrs. J. I. Herndon read 1 Cor. 9: 19-23 and the prayer calendar. The missionaries were remembered in prayer led by Mrs. C. H. Davidson. The sick, bereaved and unsaved were mentioned and remembered in prayer led by Mrs. W. S. McQueen.

Mrs. Jones had charge of the program, "Missions Horizons '76." An arrangement of Historical Flag collections of our American Heritage was used as a center piece with Happy Birthday in red, white and blue placed below the flags. "Happy Birthday America. Baptist women salute you on this historic day in July, 1976. We're proud to be Americans. We came to celebrate your birthday," members said.

A candlelight program was given in honor of our pioneer foreign and home missionaries.

Those taking part were candlelighter one and flag bearer, one, Mrs. Davidson; candlelighter two and flag bearer two, Mrs. T. C. Stevens; candlelighter three and flag bearer, three, Mrs. Myrtle Dunn; candlelighters and flag bearer, four, Mrs. W. S. McQueen; candlelighter and flag bearer, five, Mrs. A. L. Rogers; candlelighter and flag bearer, six, Mrs. Rogers; candlelighter and flag bearer, seven, Mrs. Herndon; candlelighter and flag bearer, eight, Mrs. Grace Richardson and candlelighter and flag bearer, nine, Mrs. W. G. Wiggins. Mrs. Richardson led in prayer for all the missionary work and Mrs. Dunn led in the closing prayer.

Other than the ones mentioned above, Miss Joyce Richardson attended.

Gifts were attractively displayed in other rooms of the home.

Hostesses for the event were Meses. Parker, Sue Hutcherson, Bill Leggett, A. L. Garroll, Debbie Clayton, Owen Lindsey, Ruth Jones, Dixie Wynn, Irene Reed, Verna Lee Simpson, Betty Rose, Martha Lou Moss, Pug Scott, Phyllis Dale, Louise Jones, Fredna Bowman, Susan Davidson, Jean McQueen and Mildred Clayton.

Mr. and Mrs. Elmer Teal and Karen Crisman of Lubbock spent the weekend with Mr. and Mrs. Lynn B. Jones.

LEGAL NOTICES

PUBLIC NOTICE
Notice is hereby given that the City Council of the City of Memphis, Texas will receive sealed bids to be opened at 7:30 p.m. Tuesday, August 3, 1976, in the Council Rooms of the Municipal Building. The City of Memphis is selling by sealed bids one, 1974 Ford four-door sedan, with new steel-belted radial tires. This vehicle can be inspected at the City Hall. Sealed bids should be mailed to City Secretary A. L. Gailey, Kinard - Gailey Agency, 517 Main, Memphis, Texas 79245. The Council reserves the right to reject any or all bids.
KENNETH E. DALE, Mayor
City of Memphis, Texas
10-2c

PUT YOUR MONEY TO WORK NOW AT MEMPHIS OFFICE

Vernon Savings & Loan Assn.
Phone: 259-3384 119 S. 6th St.

5 1/4% Regular Pass Book Savings \$5 Minimum
A Year Compounded Daily For An Effective Annual Yield Of 5.39%. Savings In By The 10th Earn From The First.

5.75% A YEAR COMPOUNDED DAILY FOR AN EFFECTIVE ANNUAL YIELD OF 5.92% (8 Months, \$1,000 Minimum)	6.75% A YEAR COMPOUNDED DAILY FOR AN EFFECTIVE ANNUAL YIELD OF 6.98% (36 Months, \$1,000 Minimum)	7.50% A YEAR COMPOUNDED DAILY FOR AN EFFECTIVE ANNUAL YIELD OF 7.79% (4 Years, \$1,000 Minimum)
6.50% A YEAR COMPOUNDED DAILY FOR AN EFFECTIVE ANNUAL YIELD OF 6.72% (1 Year, \$1,000 Minimum)	FEDERAL SAVINGS AND LOAN INSURED UP TO \$40,000	7.75% A YEAR COMPOUNDED DAILY FOR AN EFFECTIVE ANNUAL YIELD OF 8.06% (8 Years, \$1,000 Minimum)

You Could Spend All Day on the Phone

... and you still may not reach the right party

If you made 20 calls every hour for eight hours every day this week, you would talk to only 1,120 people

You can make one phone call and you will talk to 2,300 Families

Whatever the occasion - selling, buying, renting, trading - your Democrat Want Ad is the easy, efficient way to get results.

Memphis Democrat



PLAN AUGUST WEDDING—Mr. Raymond E. Hall Lakeview announces the engagement and approaching marriage of his daughter, Gorinda Gaye to Mr. P. Hughes of Estelline, son of Mr. and Mrs. Nathan Hughes. The couple plan to be married Saturday evening, Aug. 21 in the Travis Baptist Church in Memphis. Miss Hall will be a freshman at Wayland Baptist College at Plainfield this fall. Mr. Hughes is a 1975 graduate of Estelline High School and is presently employed in farming and ranching.

after you see your doctor ...

HAVE YOU HAD YOUR ANNUAL CHECK-UP?

bring your prescription to
Lockhart PHARMACY
MEMPHIS PH. 259-3541

Full Line of Pantene Hair Care Products

FROZEN ASSETS:

America buys Alaska.

ONLY \$7 MILLION DOWN.

Ice cubes and penguins. That's what most folks thought Alaska had to offer back in 1867 when Secretary of State Seward suggested we purchase it.

But thanks to thousands of Americans who invested in U.S. securities, we had the down payment on hand. So we bought what was to become our 51st state.

Then came the furs. The fish. The forest products. And finally, the gold. By 1900, Alaska's natural resources had repaid many times the original purchase price.

Yep, Americans invested in their country, and it really paid off.

And it still does today. To you and your country. Just sign up for the Payroll Savings Plan at work. Then, a little is set aside from each paycheck to buy Bonds. Automatically. And what could be easier than that?

So buy U.S. Savings Bonds. They're a warm place for your cold cash.

Now U.S. Bonds pay 6% interest when held to maturity of 5 years (4 1/2% the first year). Lost, stolen or destroyed Bonds can be replaced if certain conditions are met. U.S. Bonds can be cashed at your bank. Interest is not subject to state or local income taxes and federal tax may be deferred until redemption.

Take stock in America.
200 years at the same location.

Dramatic Fruit Salad is Versatile, Easy

Fruits often reserved for desserts can inspire refreshing, nutritious summer salads.

Snow Topped Strawberry Salad is a luscious layered salad beginning with fresh strawberry slices molded in strawberry flavored gelatin. Spicy Miracle Whip salad dressing combined with real whipped cream tops the gelatin layer and fresh succulent blueberries crown this colorful, patriotic salad creation.

No need to unmold Snow Topped Strawberry Salad. A two quart glass serving bowl will show off this eye-appealing salad which can be made with ease a day ahead, covered and refrigerated until serving.

Snow Topped Strawberry Salad can be served as part of a salad buffet or as an accompaniment to a full summer meal. For a light lunch or supper, let it double for salad and dessert.

SNOW TOPPED STRAWBERRY SALAD

2 3-oz. pkgs. strawberry gelatin
2 cups boiling water
1 cup cold water
2 cups strawberry slices

1/4 cup Miracle Whip salad dressing
1 cup heavy cream, whipped
1 cup blueberries

Dissolve gelatin in boiling water; add cold water. Chill until partially set; fold in strawberries. Pour into 2 quart glass serving bowl. Chill until firm.

Combine salad dressing and heavy cream. Pour over molded layer. Top with blueberries.
8 servings.

The Scientists Tell Me...

Rising Energy Prices Are Hurting Irrigated Farming

Robert L. Haney
AES Science Writer

It will be ironic if farmers the major energy producing state of the nation are priced out of business by rising costs of energy.

For example, natural gas a major source of agricultural energy and supplies more than three-quarters of the energy used in irrigation crops.

This is especially significant since pumping irrigation water is the single largest use of agricultural energy in Texas, a state which produces and consumes more energy than any other state in the nation.

Unfortunately for farmers who irrigate their fields, increased demands upon limited energy sources have raised natural gas prices to a level, disproportionately affecting irrigated agriculture. Rising energy costs with higher costs for pesticides and fertilizers are also affecting most phases of dryland farming.

Irrigated crop production uses natural gas for energy to pump water out of the earth, as well as dry or process the crop, and is therefore very sensitive to changes in the price of natural gas. Since water is pumped over a large part of the growing season, a curtailment of natural gas supplies would greatly reduce output from irrigated lands.

Irrigation removes the annual variation in output that is caused by varying amounts of rainfall. It also increases crop yields con-

siderably — although only 35 percent of Texas' cropland is irrigated, production from the irrigated land accounts for more than 60 percent of the total.

Many arid regions, such as the Trans-Pecos region of Texas, do not receive sufficient rainfall for dryland crop production and are completely dependent upon irrigation for crop growth. When properly irrigated, such regions can be highly productive, as state rankings of individual crops show.

At present, Texas leads in the production of cotton, sorghum, beef cattle, several vegetables, sheep, wool and lambs, many of which are produced in the Trans-Pecos region.

Scientists with the Texas Agricultural Experiment Station (TAES) and Texas Agricultural Extension Service Specialists studied irrigation in the Trans-Pecos, where traditionally about 100,000 acres are irrigated. Higher natural gas prices in this area have contributed to a reduction in irrigated acreage. With reduced irrigated acreage there is less income generated in the area, thus affecting the regional economy.

TAES scientist Ronald Lacewell and Extension Specialist Gary Condra also analyzed a 700 acre farm on the Texas High Plains, a farm that had a plentiful water supply. They found that if natural gas prices continued to rise, area producers would be forced to do one of three things: acquire more land at a lower price, reduce their standard of living, or default on the land

payments. TAES economist Ron Lacewell and Extension specialist Gary Condra warn that local, state and federal policymakers should be aware of the serious problems that could arise from defaults in land payments.

"Widespread default could severely affect the economic base and employment of the area," Lacewell and Condra said.

They added that the High Plains region is one of America's most important agricultural areas, with almost 3.7 million acres under irrigation. The region produces 60 percent of the corn, sorghum and wheat of the Texas High Plains, plus 90 percent of the soybeans and 30 percent of the High Plains cotton. But Lacewell warns that such production may not continue for long.

"The High Plains and other irrigated regions are approaching a situation similar to that of the Trans-Pecos," Lacewell said. "If the price of natural gas continues to rise past the current \$1.30 per thousand cubic feet, it will likely result in a reduction of water pumped, irrigated acreage and agricultural production."

One possible way to keep cropland from being forced out of production and converted to rangeland might be to increase water pumping and utilization efficiencies, but scientists have found that upgrading pump efficiency can be very expensive.

The development of new integrated crop production systems promises to be an effective way to save energy. A short-season cotton production system developed by TAES scientists for South Texas Producers increased lint yield per acre by more than 30 percent and reduced energy use by 33 percent. The new system uses less fertilizer, pesticides, and

water and uses fewer field operations. In addition to the energy savings, profit to the farmer was increased.

Although the over-all outlook for irrigated farming is bleak in many areas, increases in energy costs need not cause great losses in production in arid regions. Improving present equipment and developing new cropping systems could give farmers the economic boost they need to keep them operating at a profit.

Editor's Note—Any questions regarding this column should be addressed to Science Writer, Dept. of Agricultural Communications, Texas A&M University, College Station, Texas 77843.

Mrs. Marion E. Posey and Mrs. Connie Davis went to Lubbock last weekend to enroll their daughters, MariAnn and Brenda, at Texas Tech Band Camp. MariAnn will serve as Asst. Captain while Brenda is a Captain. Their duties are to assist with the functions at the camp. Kari Posey and Debra Davis accompanied the group to Lubbock.

Glenn Downs of Panhandle visited over the weekend of July 4 with his daughter and family, Mr. and Mrs. Marion E. Posey, Shari, MariAnn and Kari.

Jay Campbell and Steve Eady of Turkey were Lubbock visitors on Saturday.

Foxhall Motor Co.

We Replace
AUTO GLASS
while you wait!
or while you do your shopping.
Every job guaranteed

LETTERS To The Editor

To Lakeview Postal Customers

During this Bicentennial Year, I want to thank each for your thoughtfulness, your kind consideration and smiles when you walk up to either of our windows in the Post Office, and we appreciate each one of you, regardless of your Postal needs, we strive to give you the best of service.

But I wonder if you really know what the Lakeview, Texas Post Office means to you. What each mail box, on the Rural Route means?

Each time the flag is raised at the Post Office you know this place is a part of the United States Government. That flag represents you, and what you believe in. We are a strong Political minded community, but sometimes we forget that our small town and rural area is a part of our government. Had you ever thought of what the flag on your rural mail box really stands for?

When you raise that flag, you are communicating with a Federal Employee, Your rural carrier, who is so 'mindful of each patron on his route, and when you see him stop and open your box to put your mail in or to take out mail, and he lowers that flag that was your signal for service, just stop and ask yourself what that little flag represents. So now, when you see this flag flying over your Post Office, feel proud that we have and are a small part of this great nation, great government and great community.

And when you go by the Rural Mail boxes with his wide machinery and knock a box down, please stop and fix it, and if you see a weed growing near a box, stoop down and pull it up. Keep those boxes in good condition, do a little beautifying give that box a coat of paint, this is a privilege, and is a law that you keep your boxes in good condition, the correct height, and easy to get to.

Your Postmaster, Pauline I. Thompson.

Mr. and Mrs. Jerry Gilmore and children, Danny, Susan and Chuck, of Dallas, spent Friday night here visiting with Mr. Gilmore's sister, Mr. and Mrs. Gene Lindsey. The Gilmore family was en route to Alaska.

Dr. O. R. Goodall is a patient this week in St. Anthony Hospital in Amarillo.

Jones Family Enjoys Reunion In Brownwood

The marquee of the Riverside Motor Hotel in Brownwood read "Keeping up with the Joneses" as 43 family members of the late L. F. and Phebe Jones met for the 5th annual family reunion.

Children, grand children, great - grandchildren, and great - great grandchildren of the late Mr. and Mrs. Jones began to arrive on Friday, July 9, continuing through Saturday, July 10. The reunion continued through Sunday afternoon, July 11.

At noon Saturday, a covered dish luncheon was served in a banquet room of the motel. The room was used for the rest of the day for visiting, picture making, and viewing of pictures made the years before, and games of dominoes and 42. The steady rain kept many from the swimming pool, but some of the youngsters ones did venture into the pool. Others shopped while others visited the MacArthur Academy of Freedom.

Following the evening meal, a brief business session was conducted by Margille Stroud in the absence of chairman Ladon Graham Spence. Cleo Tom Terry was elected chairman for the coming year while Willie Frank Ford was elected co-chairman. Both are daughters of the late Ernie Jones of Pampa.

Following breakfast at the motel restaurant Sunday morning, more visiting was enjoyed at the home of Ina Jones Sigler. The families had lunch at a Brownwood restaurant, and concluded the reunion with a visit at the home of Dr. and Mrs. Braswell Locker.

The group had one visitor, Elaine Young of Fort Worth.

Those attending included the two daughters of the late Mr. and Mrs. Jones, Ina Jones Sigler of Brownwood, and Gladys Jones Gilmore of Dallas. Others were Henry and Willie Frank Jones of El Paso, Cleo Tom Jones Terry of White Deer, Mark Francis of Dallas, L. F. and Louise Jones of Memphis, Brad and Ginger Locker and sons, Ty and Tim, of Cypress, Herlie and Biffie Grace Moreman of Hedley, Mildred Jones Stephens of Memphis, Billy and Ethel Jones Johnson of Garland, John W. and Margille Sigler Stroud of San Antonio, Verdine and Oscar Ketchum of Los Angeles, Calif., Richard and Julie Ford

and daughters, Meredith and Wendi, of Dallas, Sonny and Sandra Sigler Skipper and children, Sheryl and Scott of Atlanta, Ga., Owen Gilmore Lindsey of Memphis, Peff and Vicki Jones Moore and children, Vicki Lynn and Jeffrey of Arlington, Ronnie and Brenda Gilmore Price of Garland, Braswell and Billie Sigler Locker of Brownwood, David S. Locker of Del Rio, and Scotty and Mary Sigler

and daughter Kathy of Fort Worth.

Randall Hunt of Atlanta, Ga., arrived here Monday for a visit with his grandmother, Mrs. Mable Meacham. From here he will go to Pocatello, Idaho to visit his mother, Mrs. Diane Hunt and sister, Jill Hunt. Randall is a student at the Emory Seminary and is an ordained Methodist minister.

CARL'S GROCERY

Prices Good Thursday, Friday And Saturday

SUNSHINE	11 OZ.
Vanila Wafers	41c
A & W	6 PK. OF CANS
ROOTBEER	85c
CAREY	5 LB.
Ice Cream Salt	27c
DEL MONTE HAMBURGER	12 OZ.
RELISH	37c
NORTHERN ASSORTED	60 CT.
NAPKINS	19c
KRAFT	28 OZ.
Bar-B-Que	73c
PURINA	18 OZ.
MEOW MIX	42c
DEL MONTE CHUNKY LIGHT	
TUNA	50c

Plymouth Rock wasn't always as solid as it looked.



When the pilgrims first landed here from jolly old England, things weren't so jolly. There was sickness and disease. Starvation. And rough winters to fight.

But it was worth it because those early Americans were planting the seeds of freedom in this new land.

Today you can help those seeds continue to grow by buying United States Savings Bonds

through the Payroll Savings Plan.

All you do is arrange to have a little set aside from each paycheck to buy Bonds. It's safe, automatic, and no struggle at all.

Buy U.S. Savings Bonds. It's one investment that really is as solid as a rock.



Take stock in America.

200 years at the same location.

Now E Bonds pay 6% interest when held to maturity of 5 years (4 1/2% the first year). Lost, stolen or destroyed Bonds can be replaced if records are provided. When needed, Bonds can be cashed at your bank. Interest is not subject to state or local income taxes, and federal tax may be deferred until redemption.

GENERAL REVENUE SHARING ACTUAL USE REPORT

GENERAL REVENUE SHARING PROVIDES FEDERAL FUNDS DIRECTLY TO LOCAL AND STATE GOVERNMENTS. YOUR GOVERNMENT MUST PUBLISH THIS REPORT ADVISING YOU HOW THESE FUNDS HAVE BEEN USED OR OBLIGATED DURING THE YEAR FROM JULY 1, 1975, THRU JUNE 30, 1976. THIS IS TO INFORM YOU OF YOUR GOVERNMENT'S PRIORITIES AND TO ENCOURAGE YOUR PARTICIPATION IN DECISIONS ON HOW FUTURE FUNDS SHOULD BE SPENT. NOTE: ANY COMPLAINTS OF DISCRIMINATION IN THE USE OF THESE FUNDS MAY BE SENT TO THE OFFICE OF REVENUE SHARING, WASHINGTON, D.C. 20226.

ACTUAL EXPENDITURES (Include Obligations)			THE GOVERNMENT OF MEMPHIS CITY	
(A) CATEGORIES	(B) CAPITAL	(C) OPERATING / MAINTENANCE		
1. PUBLIC SAFETY	\$	\$	has received General Revenue Sharing payments totaling \$	38,619
2. ENVIRONMENTAL PROTECTION	\$56,471.89	\$1,676.87	during the period from July 1, 1975 thru June 30, 1976	
3. PUBLIC TRANSPORTATION	\$	\$	ACCOUNT NO. 44 2 096 003	705
4. HEALTH	\$	\$	MEMPHIS CITY	
5. RECREATION	\$	\$	SECRETARY TREASURER	
6. LIBRARIES	\$	\$	MEMPHIS TEXAS	79245
7. SOCIAL SERVICES FOR AGED OR POOR	\$	\$		
8. FINANCIAL ADMINISTRATION	\$	\$		
9. MULTIPURPOSE AND GENERAL GOVT.	\$	\$		
10. EDUCATION	\$	\$	(D) TRUST FUND REPORT (refer to instruction D)	9,454
11. SOCIAL DEVELOPMENT	\$	\$	1. Balance as of June 30, 1975	
12. HOUSING & COMMUNITY DEVELOPMENT	\$	\$	2. Revenue Sharing Funds Received from July 1, 1975 thru June 30, 1976	38,619
13. ECONOMIC DEVELOPMENT	\$	\$	3. Interest Received or Credited (July 1, 1975 thru June 30, 1976)	10,000.
14. OTHER (Specify)	\$	\$	4. Funds Released from Obligations (IF ANY)	none
TOTALS	\$56,471.89	\$1,676.87	5. Sum of lines 1, 2, 3, 4	58,073.
			6. Funds Returned to ORS (IF ANY)	none
			7. Total Funds Available	58,073.
			8. Total Amount Expended (Sum of line 15, column B and column C)	56,119.
			9. Balance as of June 30, 1976	76.00

(F) THE NEWS MEDIA HAVE BEEN ADVISED THAT A COMPLETE COPY OF THIS REPORT HAS BEEN PUBLISHED IN A LOCAL NEWSPAPER OF GENERAL CIRCULATION. I HAVE A COPY OF THIS REPORT AND RECORDS DOCUMENTING THE CONTENTS. THEY ARE OPEN FOR PUBLIC SCRUTINY AT 517 Main St. Memphis, Texas 70245

Signature of Chief Executive: Kenneth Dale Mayor Date: 7-9-76

TOTAL SAVER THRIFTWAY OFFERS YOU MORE!

RANCH STYLE
BEANS
4 15 OZ CANS **\$1.00**

DETERGENT-25¢ OFF LABEL
FAB
KING SIZE BOX **\$1.79**

SHURFINE VAC PAK-ALL GRINDS
COFFEE
1 LB. CAN **\$1.19**

GROCERY AND SELF SPECIALS

CARNATION Canned Milk 3 TALL CANS **\$1.00**
MILNOT FOR COOKING 13 OZ. CAN **33¢**

MORE HEALTH AND BEAUTY AID SAVINGS

MEDICAL CENTER Alcohol 16 OZ. BTL. **25¢**

TANNING LOTION
SEA AND SKI
4 OZ. BTL. **\$1.39**

DEODORANT BODY POWDER
SHOWER to SHOWER
8 OZ. BTL. **\$1.19**

SHURFINE CANNED
POP
12 OZ. CANS **7 \$1**

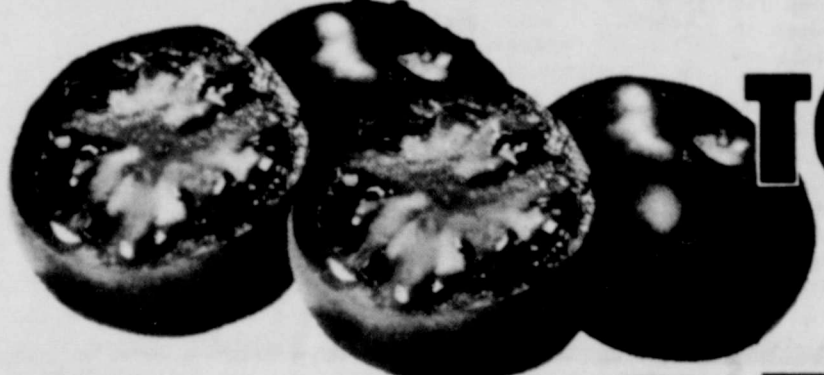
HI & DRI
Paper Towels
JUMBO ROLL **39¢**

INSTANT TEA
NESTEA
\$1.29



U.S.D.A. CHOICE BEEF BONELESS
ROUND STEAK
LB. **\$1.39**

- SHURFRESH Sliced Bologna 12 OZ. PKG. **89¢**
- U.S.D.A. CHOICE Chuck Steak LB. **69¢**
- U.S.D.A. CHOICE BEEF Tenderized Cutlets LB. **\$1.69**
- EXTRA LEAN GROUND BEEF OR 81% LEAN Ground Chuck LB. **99¢**
- EXTRA LEAN Boneless Beef Stew LB. **99¢**
- OSCAR MAYER WEINERS OR Beef Franks 1 LB. PKG. **\$1.39**
- OSCAR MAYER COTTO SALAMI, PICKLE, OLIVE, LIVER Luncheon Meat 8 OZ. PKG. **89¢**
- TURBOT Fish Fillets LB. **\$1.09**



- CALIFORNIA Santa Rosa Plums LB. **49¢**
- WASHINGTON RED DELICIOUS Apples 3 LB. **\$1.00**
- SWEET Yellow Onions LB. **10¢**

U.S.D.A. CHOICE BEEF
ROUND STEAK
LB. **\$1.19**

HEAVY GRAIN FED-IN THE BAG
BEEF BRISKETS
FINE FOR BAR-BE-QUE LB. **89¢**

GROUND BEEF
LB. **59¢**

TOP QUALITY
Shurfresh Franks
12 OZ. PKG. **79¢**

VINE RIPENED LARGE SIZE
TOMATOES
LB. **39¢**

CALIFORNIA SUN
Grande Nectarines LB. **39¢**

STRAIGHT NECK
Yellow Squash LB. **35¢**

**MORE QUALITY
MORE SAVINGS
MORE SERVICE
MORE VARIETY
ON ITEMS YOU
USE MOST OFTEN**

PURE VEGETABLE SHORTENING
CRISCO
3 LB. CAN **\$1.29**

MORE FROZEN FOOD SAVINGS
SHURFINE FROZEN
ORANGE JUICE
4 6 OZ. CANS **89¢**

CHEESE OR BEEF
PATIO ENCHILADAS
6 OZ. CTN. **59¢**

SHURFINE FROZEN
BROCCOLI SPEARS
3 10 OZ. PKGS. **\$1.00**

BUY YOUR CRUSHED OR CUBED ICE AT OUR STORE

40¢ OFF LABEL
FAMILY TIDE BOX **\$3.99**

SUPER SIZE ZEST
BEAUTY BAR 7 3/4 OZ. BAR **45¢**

GIANT SIZE
MR. CLEAN 28 OZ. BTL. **\$1.19**

REGULAR
SPIC & SPAN 16 OZ. BOX **47¢**

THRIFTY GROCERY BUYS

- FOR ALL YOUR BAKING IDEAS Schilling Vanilla 2 OZ. BTL. **69¢**
- AMERICAN BEAUTY-POLY BAG Elbo Roni 10 OZ. PKG. **35¢**
- GREAT SANDWICH IDEA Spam Spread 3 OZ. CAN **29¢**

MORE DAIRY SAVINGS

- SHURFRESH PURE CORN OIL Margarine 1 LB. CTN. **48¢**
- SHURFRESH Grade A Eggs DOZ. CTN. **59¢**
- ASSORTED FLAVORS Jello Gelatin 4 3 OZ. BOXES **76¢**

SHURFRESH ICE CREAM SPECIAL FLAVOR SHURFRESH SQUARE CTN. **89¢**

SHURFRESH SHERBET ASSORTED FLAVORS 1/2 GAL. **89¢**

SHURFINE CHUNK STYLE
TUNA 6 1/2 OZ. CAN **49¢**

DAVIS
THRIFTWAY

WEXFORD CRYSTAL ITEM OF THE WEEK
TABLE TUMBLER
WITH EACH AND EVERY \$3 PURCHASE **49¢**

VALUABLE COUPON NO. 58892
BREAKFAST CEREAL
Cheerios 10 OZ. BOX **49¢**
WITH THIS COUPON VOID JULY 17, 1976
LIMIT ONE COUPON PER CUSTOMER
THRIFTWAY

TOTAL SAVINGS DOWN EVERY AISLE

THRIFTWAY

SPECIALS GOOD JULY 12-17, 1976

B. B. Shots

By BYRON BALDWIN



Paducah To Host Softball Tournament

The Paducah J. C.'s will hold a mens and womens slow pitch softball tournament July 26 through August 1 at Paducah, according to an announcement this week.

No entry fee will be charged. Deadline for entering the tournament is July 19. Interested teams should contact Jim Farquhar, 806-492-3612, or Jimmie James 806-492-3635.

There were about 12,000 Texas youths representing 1500 Baptist churches in the Dallas Convention Center to pray for "National Revival and National Revival."

I noticed a quote in the Dallas News from David North, a 17 year old participant from Longview. "This is our Bicentennial and right now our government is all messed up," and he hoped the conference will help "this nation that was founded under God to stay under God."

The Rock and Roll sessions were slow this year from what they had expected and many were in attendance spent their \$10 for a ticket and left early. It may be that we are taking a turn with our young people to take over and make America better.

We received a letter from Mrs. J. Clonts McGraw of Pineville, La., a few days ago telling us of how she and her sister enjoyed their visit to Memphis, after being away so many years. They want to and will try to pay Hall County another visit this fall. On their way home, they visited their cousin Jessie Chancey who lived in the home that was 100 years old. They also found a Crump Street and a Chancey Street that were named for their relatives.

We hope they can make the Hall County Picnic this year and meet a lot of the old-timers of Hall County.

Word came to us a few days ago of the passing away of W. C. Davis of 632 West 16th St., San Bernardino, Calif. 92405. In checking the records of Memphis High School, we found that he was Supt. of our schools from 1935 to 1964 making a total of 29 years. I think I am right that he served longer than any other Supt. of our schools. His influence was felt by several hundred people who are now active leaders in our business, civic,

political and religious work. The first school superintendent of our schools in 1907 was T. A. Taggart, who commanded respect and discipline in the school and he had it or else!

A visitor I had last week was Anna Beth Short of Amarillo who graduated from MHS in 1936 which was 40 years ago and has lived in Amarillo the past 40 years. She will be remembered as the daughter of Mr. and Mrs. Roy Leverett, who operated a drug store here for a number of years. She had one brother, Joe Henry, who passed away several years ago. Anna Beth married George Short who was an architect. He passed away two years ago. They had three children, two are now living in Amarillo and the other one lives in Michigan. Anna Beth is now employed at the Medical Unit of Texas Tech in Amarillo.

Another guest I had the past week was Jo Ann Thompson of Dallas where she has lived the past 33 years, working for Braniff Air Lines, two insurance companies and the past 23 years, she has worked for General American Oil Co. Joan's parents will be remembered as Louie Thompson, son of the late Mr. and Mrs. Geo. M. Thompson, graduating from Memphis High School and attending college, he taught in the Indian Creek Schools and later was in the hardware business in Memphis, Hedley and Clarendon where he and his wife passed away several years ago. Mrs. Thompson will be remembered by some of you as Velma Neel who taught in our Memphis schools. She was the daughter of the late Mr. and Mrs. J. E. Neel who operated a grocery store in the sheet iron building located on the corner of 6th and Noel where Lockhart's Pharmacy is now located. Later he operated his grocery store in the east building of where John Deere recently moved from. I remember ways had the following upon his grocery ads, he added the ad, "Bread, Meat and Molasses." Louis and Velma had three children, Ernest who now lives in San Diego, Calif., after retiring. He worked for General Motors for 25 years. He married a Chicago girl. They have three daughters, two now married and one at home. And they have two grandchildren. Neel has been working with the United Steel Corporation for a number of years.

Word came to us a few days ago that our home-town boy, Sim Goodall, was recently promoted from Lt. Colonel

to full Colonel. Sim Goodall is now stationed at Newport News, Va.

I have been full of Bicentennial the past few days. I don't believe "Yankee Doodle" and "God Bless America" songs ever sounded so good before.

We noticed in the daily news that a number of people reached their 100th birthdays in 1976. The oldest living person that we heard of was the man who had reached his 124th birthday in Florida and he rode in the big parade.

Jimmy Lawrence, who has been spending the summer in Brady with his grandparents, Mr. and Mrs. W. B. Lawrence, returned home on the weekend. His uncle, Steve Lawrence accompanied him to Memphis. While in Brady, Jimmy was employed at the filling station, working for his grandfather.

Mr. and Mrs. Edwin Gilliam of Jackson, Tenn., are here visiting with relatives and friends. Former Memphis residents, Mr. and Mrs. Gilliam return to Memphis each summer while on vacation.



RED DEVILS—Pictured above is the Red Devils girls softball team which finished in second place in the summer league Tuesday. On the first row from the left are: Sheryl Lillard, Kay Johnson, Kelley Parr and Freddie May. On the second row from the left are: Coach Sheryl Orcutt, Barkelle Whitten, Kelli Fisher, Teresa Olivias and Melissa Lockett. Not pictured are Kelli McQueen and Rhonda Graham. Other coaches are Tammy Lockhart and Kim Wynn who are away at Cheerleaders School.

reading the story of Hoover's European trip, all the sights, I can see I slept 72 hours after in the States! I imagine felt like Rip Van after that long sleep.

God had his hand on these pioneers and furnished them with wild game for food and clothing and most of their scanty shelter. Man was furnished with a creative genius.

We witnessed the fireworks display in Boston, Washington, D. C., St. Louis, Mo., New York City and Philadelphia. The displays were very spectacular and especially around the Statue of Liberty in New York harbor; also the showboats on the Mississippi River were very interesting, as I remember riding one of these show boats down the Mississippi about 60 years ago.

A grandbaby can change the picture of life pretty quick. After several months of illness, I was the center of attention until James and Scarlet came from Dallas bringing our youngest grandchild, Barry Keith, age 4 months, I backed up a little and gave this young fellow the pedestal and center of attention.

This was a very interesting copy from London in the London Daily Mail, "What the World Needs Now is More Americans." Also, in this same paper was a quote from an Englishman Ferdinand Mount, "The United States was the first nation on earth deliberately dedicated to letting people choose what they want and giving them a chance to get it. We criticize, copy, idolize, insult. But we never doubt that the United States has a unique position in the history of human hopes. For it is the only nation founded solely on a moral dream. A part of our own future is tied up in it and the greatest of all the gifts the Americans have given us is hope."

The Democratic and Republican conventions to select a candidate for president have become pretty expensive as well as other things. I noticed some estimates of what the expense is of getting ready for the Democrats in Madison Square Garden, reworking the whole interior with sub - floors to carry the wires and cable. There was an estimate that the wires and cable would reach 35 miles and in this one building would be filled with televisions and telephones. If I remember

remember when P. T. and Ringling Bros. and their shows as Greatest Show on Earth After the great of the Bicentennial on July this year, advertisement would not be in thinking of this show with the many of America from Maine, Wash., through all states to Florida and Kansas, it is almost unbelievable that America with a science and equipment see the whole United States and foreign countries can have a part in ship services of 5 weeks, all in one day. Some things that were out to me were the red and patriotic songs were sung by Anita Bryant Smith and Ernie

happy expressions on faces in whatever county you were they could step on and over other people while they still had a and they were inspiring. Billy Graham Preacher in an auditorium of William College at Willburg, Va.

cattle drive depicted by boys of the 100 Longsters 400 miles from Antonio to Lubbock, was interesting. How I noticed they had a trouble in Stamford where the storm with and hall made the steers nervous on the main of the town.

inventions of America very outstanding and you wonder what ever happened to other countries if there had not an America with all of modern equipment that been invented here. Some early day inventions were outstanding were Mr. Deere came out that steel plow point to the wood plow, then Whitney with his gin and Singer with his sewing machine that changed industry the cloth world.

New York harbor was very ending with the 100 ships coming in from other countries and with 20 thousand other kinds of boats coming the Hudson River and only one accident and person losing his life in ant parade of boats.

report I had was that are only 19 countries have freedom of press speech and the United represented about 25 of the people in the who can have this free- very interesting to and hear old Thomas son inventing the light and also the record or talking machine it filled in its infancy. I ber one of the early models had a horn for the and with a dog's pic- at the end of the horn the sign by the dog, Master's Voice". After years, they removed and was wired to a inside the box of machine.

CONSOLIDATED REPORT OF CONDITION OF State Bank No. 1719

Peoples State Bank

of Turkey, in the State of Texas and Domestic Subsidiaries at the close of business on June 30, 1976.

ASSETS

Cash and due from banks	364,000.00
U. S. Treasury securities	600,000.00
Obligations of other U. S. Government Agencies and Corporations	100,000.00
Obligations of States and political subdivisions	222,000.00
Federal funds sold and securities purchased under agreements to resell	600,000.00
a. Loans, Total (excluding unearned income)	1,594,000.00
c. Loans, Net	1,594,000.00
Bank premises, furniture and fixtures, and other assets representing bank premises	14,000.00
TOTAL ASSETS	\$ 3,494,000.00

LIABILITIES

Demand deposits of individuals, partnerships, and corporations	\$ 1,469,000.00
Time and savings deposits of individuals, partnerships, and corporations	1,455,000.00
Deposits of United States Government	9,000.00
Deposits of States and political subdivisions	223,000.00
Certified and officers' checks	21,000.00
TOTAL DEPOSITS (sum of items 17 thru 23)	3,177,000.00
a. Total demand deposits	1,529,000.00
b. Total time and savings deposits	1,648,000.00
TOTAL LIABILITIES (excluding subordinated notes and debentures)	3,177,000.00

EQUITY CAPITAL

Common stock a. No. shares authorized 750	75,000.00
b. No. shares outstanding 750	125,000.00
Surplus	117,000.00
Undivided profits	317,000.00
TOTAL EQUITY CAPITAL (sum of items 32 thru 36)	317,000.00
TOTAL LIABILITIES AND EQUITY CAPITAL (sum of items 30, 31, and 37)	3,494,000.00

MEMORANDA

Average for 15 or 30 calendar days ending with call date:	
a. Cash and due from banks (corresponds to item 1 above)	359,000.00
b. Federal funds sold and securities purchased under agreements to resell (corresponds to item 8 above)	641,000.00
c. Total loans (corresponds to item 9a above)	1,532,000.00
d. Time deposits of \$100,000 or more (corresponds to Memoranda items 3a plus 3b below)	100,000.00
e. Total deposits (corresponds to item 24 above)	3,043,000.00
Time deposits of \$100,000 or more:	
a. Time certificates of deposit in denominations of \$100,000 or more	100,000.00

I, Linda Ferguson, Cashier, of the above-named bank, do solemnly swear that this report of condition is true and correct, to the best of my knowledge and belief.

Correct—Attest: Linda Ferguson
Lee Vardy, Homer Hawkins, Bob L. Russell, Directors.

State of Texas, County of Hall, ss:
Sworn to and subscribed before me this 9th day of July, 1976 and I hereby certify that I am not an officer or director of this bank.
My Commission expires June 1, 1977, Loetta Ferguson, Notary Public.

BYLOW

FOOD STORE

WHITE SWAN SALTINE, 1 Lb. 2 FOR

Crackers 89c

HI-V 50, 15 Oz. 5 FOR

Dog Food \$1.

PUNCH 49 OZ.

Detergent 89c

MARYLAND CLUB 1 LB.

Coffee 1.59

RANCH STYLE, 15 Oz. 3 FOR

Beans 89c

WHITE SWAN, 16 Oz. 3 FOR

Tomatoes \$1.

GOOD DAY 29 OZ.

Pears 59c

JOAN-ARK, 17 Oz. 3 FOR

Corn 89c

SOFT 'N LITE 5 POUNDS

Flour 69c

BEST MAID 48 OZ.

Pickles 69c

SAVORY, Peach or Apricot 32 OZ.

Preserves 99c

GLAD 20 CT.

Trash Bags 1.89

SCOTT SOFT 'N Pretty 4 ROLL PKG.

Tissue 79c

CLOVERLAKE 1/2 GALLON

Buttermilk 79c

CLOVERLAKE 1/2 GALLON

Ice Cream 1.19

Potatoes 39c

We've got MEATY SAVINGS

CLUB STEAK

98c Lb.

CHUCK ROAST

Lb. 69c

ROUND STEAK

Lb. \$1.29

Beef 59c

Bacon \$1.29

Franks 59c

Potatoes 98c

CANTALOUPE Lb. 25c

PEACHES Lb. 39c

NECTRINES Lb. 39c

Apples 25c

FROZEN FOOD

BANQUET

T.V. Dinners 49c

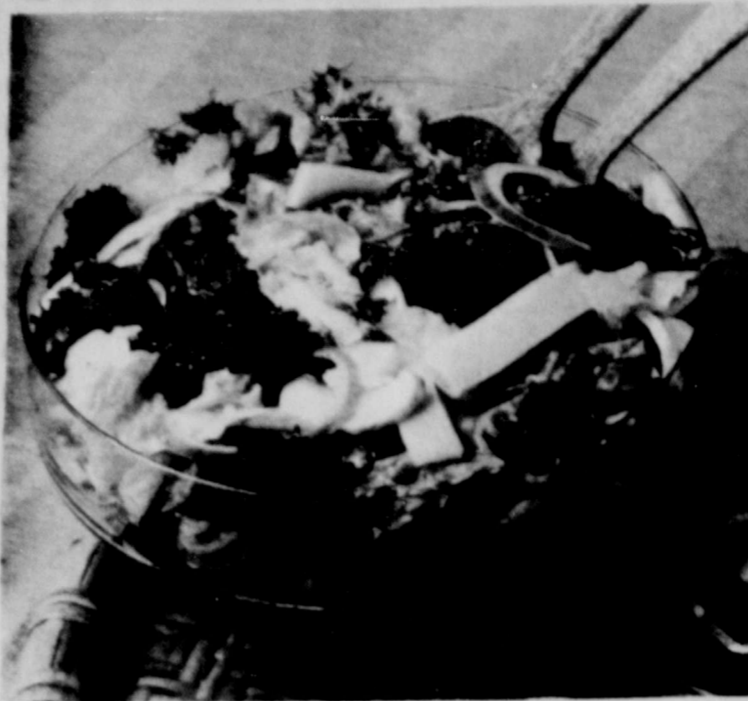
MORTON FROZEN

Honey Buns

59c

9 OZ. CTNS.

This salad makes a meal.



Salad days are with us again, making it a good time to make a meal out of a salad.

Salad Firenze, features an assortment of fresh crisp greens combined with cubed sausage, broccoli flowerlets, mushroom slices and red onion rings, topped with Mozzarella cheese strips. The special flavor enhancer is an Italian-style dressing that is zesty with garlic, lemon juice and spices.

The secret to the success of a tossed salad is to carefully prepare the greens, tearing them into bite-size pieces and draining them well on absorbent paper toweling. If the greens are crisp, well-drained and chilled, the dressing flavor will not be diluted.

For show, prepare the greens, place in a bowl, and bring them to the table along with separate bowls containing the marinated meat and vegetable mixture and reserved marinade. Then simply toss at the table to blend flavors and ingredients and add cheese strips to serve.

SALAD FIRENZE

- 1 8-oz. bottle Kraft Italian Dressing
- 2 cups (1/4 lb.) mushroom slices
- 1/4 lb. salami or summer sausage, cubed
- 1 cup broccoli flowerlets
- 1 cup red onion rings
- 2 qts. torn assorted greens
- 1 6-oz. pkg. Kraft natural low moisture part-skim Mozzarella cheese slices, cut into strips

Pour dressing over combined vegetables and meat. Cover. Marinate in dressing 3 hours. Drain, reserving marinade. Place greens in salad bowl. Add enough reserved marinade to moisten; toss lightly. Add vegetables, meat and cheese; toss lightly.

4 servings

By Robert L. Haney
TAES Science Writer

Present Beef Prices Are Confusing But Explainable

If you've been confused recently at the retail meat counter by what's been happening to beef prices, then you've got lots of company. "Good grade" beef prices have often equalled or exceeded those for "Choice" beef. But, there is a logical explanation by marketing economists.

"For the beef industry to perform well, a part of it must bid against the consumer," says Dr. Don Farris, Professor in Agricultural Economics with the Texas Agricultural Experiment Station. Farris is an authority on livestock and meat marketing.

"That's just what happened when light beef prices at retail went up and, in some cases, were as high or higher than Choice grade beef," Farris says. "With the good rains over much of the cattle country in May, producers with good pasture were not under pressure to sell their calves or continue to cull their cows."

Short term variations are often hard to understand unless you have time and opportunity to see what is happening to the large industry that markets, processes, and distributes more than 40 million head of cattle per year.

The beef industry has had three turbulent years due to high feed costs, the recession and USDA grade changes for beef, but stability is not a feature of the beef industry; it is forever changing in response to some economic pressure.

From the time calves are a few months old there is a continual selection and bidding process. Producers must adjust to the available grass and other feed supply,

and those that have extra grass are bidding for calves that might go to the feedlot or to slaughter.

Wholesalers and retailers, on the other hand, must adjust prices and cutting methods to fit the demand for more summertime cook-out cuts; in winter, roasts are more in demand.

"The cattle industry, faced with higher grain costs a couple of years ago, was very nervous about whether consumers would accept forage-fed beef," Farris says.

"It took very little time to find that at a more favorable price, many consumers would purchase it, just as they did 25 years ago.

"Now that acceptance of light beef and forage-fed beef appears to be good, a part of the cattle industry is bidding against the consumer for the light-weight cattle. The result is to delay marketings and make light beef a little more scarce in the retail store, but more total beef will finally be marketed as a result of this delay."

Currently retailers have little incentive to feature light beef because USDA Good carcasses are as high or higher than Choice steer carcasses in San Antonio wholesale distributive trade. Last year light beef was 16 cents per pound below Choice steer carcasses.

Utility cows, which provide ground beef, were about 10 cents per pound below the Choice steer carcass price May 16-22, 1976, but last year at that time they were 31 cents below. Due to these temporary market conditions in May, there was little difference in Midwest carlot wholesale market prices for all grades of beef carcasses from Choice steers to Utility cows.

Choice steer carcasses were about the same price

per pound as old bull carcasses that are used for processing. Yield grades made more difference in price than did quality grades.

Sales of light beef have declined sharply in some areas because there was no longer a price incentive to the consumer. Some consumers are willing to pay the same or slightly higher price, but others will switch to heavy beef when prices are about the same, while still others will demand heavy beef even when it is priced considerably higher.

"Alert retailers are constantly evaluating wholesale supplies and prices and adjusting their purchases and retail prices to provide customers with the cuts of beef that will sell. If the crop is as big this year as forecast, it may be somewhat before light beef is in plentiful supply again," Farris concluded.

Editor's Note—Any questions regarding this column should be addressed to Science Writer, Dept. of Agricultural Communication, Texas A&M University, College Station, Texas 77843.



NEW LEGION OFFICERS—Weldon Teague of Childress, 18th District officer standing left, installed the new American Legion officers here on Thursday evening. Pictured standing, left to right, are Eldon McGinnis, commander; James Farley, first vice president; Kenneth Rodgers, adjutant; Jim Barbee, finance officer; Richard Atkins, judge advocate; and Charlie Morris, assistant sgt.-at-arms; Kneeling, left to right are Fidel Rocha, Sgt.-at-arms; Sammy Crawford, service officer and Moses Gates.

Select Toys Suitable For Child's Age

COLLEGE STATION — "All work and no play makes Jack a dull boy" isn't just an old folk saying, Dorothy Taylor, a family life education specialist, contends.

She added that researchers have found that the time a child spends at play is not aimless or wasted — but is an important part of his development into mature adulthood.

Miss Taylor is with the Texas Agricultural Extension Service, The Texas A&M University System.

"Between infancy and age 2, it is play that does the most to bring out a child's natural interest in the world about him. With properly chosen toys as his 'tools', a child is encouraged to imagine, create and most of all — to have fun," she said.

Toys offer a variety of experiences. They give a child an opportunity to express his very own creativity and ideas. Toys foster imagination and invite a child to pretend.

"When a child dramatizes and imitates an adult, it helps him understand the world about him — it is sort of a trial or instant replay for children.

"But toys need not be costly nor numerous to provide constructive play. Probably the only useless toy is

the one a child is no longer interested in or one that is too advanced for his young age. It's important to select toys on the basis of interest and the ability of the child", she explained.

Parents often find it easy to buy toys for older children and grandchildren, but they are sometimes puzzled about buying for the small child of 1-3.

"What kind of toys are suited for the young child? The 1-2-year-old youngster enjoys creative toys such as a lacing book, simple puzzles, building toys such as a house, a boat or building blocks.

"Toddlers need simple toys to work out problems at very slow speeds. Pull toys help toddlers continue to develop the large muscles in their bodies and develop coordination.

"Toddlers and little children enjoy imitating mother in ironing, washing, dressing a baby, and make-believe household toys that are large enough to handle easily and big baby dolls are favorites of toddlers," she explained.

The infant enjoys a different kind of toy. He is learning everything. Toys of bright colors, shapes, textures and should appeal to the infant and help him discover colors, lines, forms, textures, shadows, space and sound. Care should be taken to eliminate the noises that are too harsh for young ears, she reminded.

The preschool child who is 3-6 years old has different needs in toys. A playhouse or telephones, that are life size and sturdy, and other

creative toys are favorites for preschool children.

When selecting toys, be sure to check these points: Is the toy strong, durable, safe, sanitary and attractive?

Can the child manage the toy by himself?

Is the toy suited to the child's age and development?

Do you have space to store the toys?

Does the toy require a minimum of adult supervision?

Local

LEGAL NOTICES

NOTICE OF BOARD OF EQUALIZATION MEETING, QUAIL RURAL SCHOOL DISTRICT

Visitors last weekend in the home of Mr. and Mrs. S. D. Posey were Mr. Posey's nephew and wife, Mr. and Mrs. Sam Pool. The Pool family live in the outskirts of Little Rock, Ark. Other visitors were Mr. and Mrs. Marion E. Posey, Shari, MariAnn, Kari and Terry P. Watson.

Mr. and Mrs. Chuck Jennings of Dallas and Mr. and Mrs. Randy Moss of Plainview visited here over the weekend with their parents, Mr. and Mrs. Olton Pate.

Mr. and Mrs. John Evans and family of Arlington visited here this weekend with his brother and family, Mr. and Mrs. Ray Evans and daughters.

In obedience to an order of the Board of Equalization of the Quail Rural School District, regularly convened and sitting, notice is hereby given that said board of equalization at its regular meeting place at the Quail Rural High School Monday, July 26, 1976 at 8 p.m., for the purpose of determining, fixing and equalizing the value of any and all taxable property, both real and personal, located in the Quail Rural School District of Collingsworth County, Texas. Any and all persons interested are having business with said board are hereby notified to be present. Wilford Arthur Supt. of Schools Quail Rural School District 11-1c

Miss Diane Welch left Sunday for her home in Austin after spending the past week here with her grandmother, Mrs. Herschel Combs. Mrs. Combs and Mr. and Mrs. Bill Combs and Jill and Joel took her to the plane in Amarillo.

MALT & SHAKE

49¢ SALE 49¢

STARTS NEXT SUNDAY!



Dairy Queen is having a super 49¢ sale on Malts and Shakes July 18 thru 22.

Just 49¢ for your choice of good old fashioned fudgy chocolate, or ripe strawberries, or golden chunky pineapple or delicious Dairy Queen vanilla. Each and every one has the thick, rich and creamy taste of the Malts and Shakes of the good old days.

Seems like good things never change at Dairy Queen.

At participating stores.

JULY 18 THRU JULY 22 SUNDAY THRU THURSDAY ONLY

OPEN 24 HOURS

ALLSUP'S CONVENIENCE STORES

OPEN 24 HOURS

WE'VE GOT DELICIOUS HOT COOKED FOODS FOR YOUR CONVENIENCE!

PRICES GOOD THURSDAY THRU SATURDAY, JULY 15-17, 1976

HOT COOKED FOODS

- BBQ CHICKEN
- HOT LINKS
- BURRITOS
- GERMAN SAUSAGE
- BBQ BEEF SANDWICHES
- BBQ RIBS
- MILD LINKS
- CORN DOGS
- BULK BBQ BEEF

TRY IT AT YOUR NEXT PARTY!
Party Ice 10 LB. BAG 65¢

SHURFINE PICKLE 32 OZ. 59¢
DILL SLICES

NESTEA 2 Oz. Jar 98¢

ON SALE REG. \$1.74
HOT SHOT 89¢

NORTHERN NAPKINS 4 for 89¢

We Have Canning Jar Rings & Lids

SHOP THE FRIENDLY, CONVENIENT ALLSUP'S STORE NEAR YOU!



FOLGER'S - ALL GRINDS
COFFEE \$1.49

1 LB. CAN

DEL MONTE 20 OZ. 59¢
CATSUP

HUNT'S 15 OZ. 79¢
Fruit Cocktail 3 for



GROUND BEEF

ARMOUR'S VERIBEST FROZEN

1 LB. PKG.

99¢



Hwy. 287 Memphis
Kenny Black, Manager

Texas Taxes



By BOB BULLOCK, State Comptroller

The Comptroller's office is still seizing businesses that refuse to pay state taxes. Little more than a year ago we started taking this action to collect back taxes from those businesses that have collected Sales Tax from Texas consumers but not sent it to the State. People think we've seized, but we haven't. When we started the program, we got a lot of publicity. We wanted it to those businesses which aren't paying the taxes they know that we would come down on them if they cheating on their taxes. The seizures were very successful. Between May, and December, 1975, the Comptroller's Office seized 205 businesses which a total of more than \$2 million in taxes. The seizures convinced other businesses which paid their taxes to up. We prefer it that we don't want to close any business unless we have to—unless there is no alternative—in order to get back taxes.

In fact, since the beginning of the year, we have had to close down 82 businesses whose owners apparently didn't quite understand that not sending in to the state the taxes they collect from their customers means trouble—big trouble. The businesses seized this year owed almost \$800,000 in back Sales Taxes.

Thus far, direct collections of back taxes which have resulted from the seizure of 287 businesses have amounted to approximately \$1.2 million. That doesn't even count the businesses which paid up as we started to change the locks on their doors or the establishments which have become current in their tax payments because they became convinced the Comptroller's Office meant business.

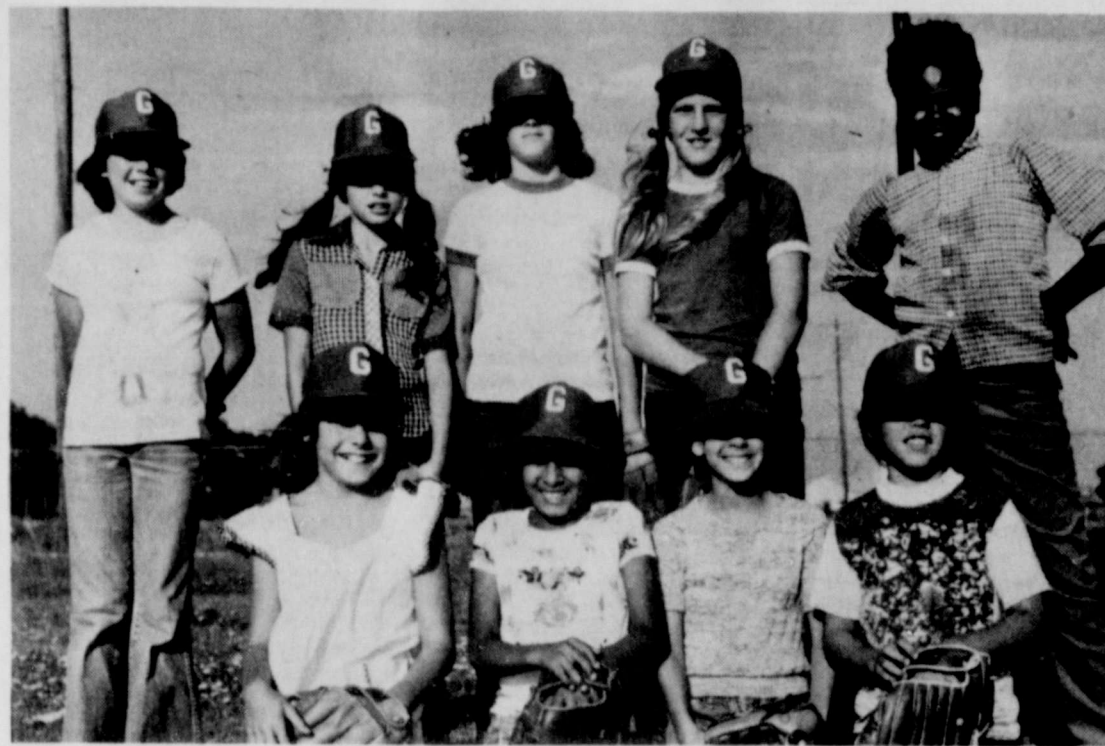
People who don't pay their taxes hurt the vast majority of people who do. The Comptroller's Office wants to insure that every taxpayer pays his or her fair share of the burden, but that no one pays more taxes than the law requires.

IF YOU HAVE ANY STATE TAX PROBLEM OR QUESTION, CONTACT YOUR LOCAL COMPTROLLER'S FIELD OFFICE OR CALL OUR TOLL-FREE TAX INFORMATION NUMBER, 1-800-292-9687 (AFTER AUGUST 1, 1976, THE NUMBER WILL BE 1-800-252-5555), WITHOUT CHARGE FROM ANYWHERE IN TEXAS.

Although some people think we have seized the businesses, we haven't. The seizures just haven't been getting as much news in the news media



GOLD MINERS—Shown above are the Gold Miners who won the girls softball league with five wins and one loss. On the front, left to right, are: Mary Hernandez, Denise Lemons, Danna Davidson and Debby Barbee. On the second row from the left are: Lavelle May, Michelle Montgomery, Jackie Montgomery, & Coaches Debra Moss and Kay Thompson. Coach Janice Adams is not pictured. Players not pictured are: Donna Lucas, Angula Davis, Sylvia Brock and Marci Metzger. The team picture of the Blue Jeans team will be published next week.



GO GETTERS—Pictured above are the girls softball Go Getters team which finished the season with a 2-4 record in a third place tie with the Blue Jeans. On the front row from the left are: Tammy Smith, Eva Lopez, Kari Posey, and Lisa White. On the second row from the left are: Lindy Maddox, Annette Chamberlain, Kathy Lemons, Karen Davis and Patricia Newsome. Not shown are LaBeth Williams, Nancy Pruitt, and Rhonda Gable. Coaches of the team are Jane Richardson and Sharon Penney who are out-of-town.

Farmers Urged To Get Grain Official Receipts

AUSTIN — Agriculture Commissioner John C. White today urged Texas grain farmers to request an official Texas grain warehouse receipt when depositing their crops for storage this year. "Don't depend on a mere weight ticket as proof of deposit in a warehouse," White warned. "Weight tickets should be exchanged for official receipts as soon as possible. This is a recommended business practice which offers maximum protection under the law."

Commissioner White noted that Texas Department of Agriculture fieldmen make frequent inspections of storage facilities and relicense the warehousemen annually. However, ownership of grain in storage is sometimes difficult to determine unless an official warehouse receipt has been issued on request of the farmer.

"In many cases a grain farmer has no legal document to prove he has an entire year's work in storage other than the simple ticket issued at the warehouse scales," he said.

"This can be very risky," White said. "All courts do not value a weight ticket in the same light as an official grain storage receipt."

In the event of a grain warehouse failure, a scale ticket holder could easily be inviting lengthy legal haggling before taking possession of his grain since scale tickets in themselves do not necessarily constitute legal proof of ownership.

On the other hand, White stated, warehouse receipts obtained upon request from any grain warehouse provide clearcut proof of ownership as legal negotiable instruments which, according to TDA officials, would have priority in any case of forced closure or bankruptcy.

"What we would really like to see is for every farmer to obtain a grain warehouse receipt in order to be fully protected," White explained.

Mr. and Mrs. Dean Cook and Jaycen and Jennifer returned to their home in Midwest City, Okla., Saturday after spending the past week here with her parents, Mr. and Mrs. Joe Montgomery and other relatives.

Mickey Fowler Listed in Who's Who in Twirling

Mickey Fowler is featured in the 26th consecutive edition of "Who Who in Baton Twirling," a 584 page column compiling biographies and pictures of the most prominent participants in the specialized art of twirling. Mickey is listed as a Twirling Teacher.

Mickey has been teaching twirling for 10 years, the past two in the Memphis area.

During the past two years, her students have won a total of 75 trophies for this summer are: six divisional 1 ratings at UIL state competition, first substitute twirler for the Texas Tech Twirler at Southwest Texas State, divisional 1 rating at Amarillo Southwest Festival, the beauty title of "Miss Big Country," Abilene, fourth runner-up to "Miss Firecracker Beauty Pageant," "Best Strutter" of Cisco Twirling camp and third runner-up to "All-Star Twirling camp" beauty pageant.

Mickey Fowler will be judging UIL contest this fall, and will soon be receiving her National Baton Twirling Judging certificate where she will be qualified to judge NETA contest.

Area Residents Invited To Square Dance

An invitation is extended local residents to attend the Texas Twister Square Dancing in Wellington on the First and Third Tuesday night of each month, Ann Wauer stated this week.

The square dance group meets at 8 p.m. at the American Legion Hall in Wellington.

CARD OF THANKS

We wish to thank each of you, our good friends, who were so kind at the death of our loved one, Walter Lynn Williams. We thank you for the flowers, cards, phone calls and visits, and especially for your prayers. We love each and everyone of you. May God's richest blessings be yours.

Mrs. Cynthia Williams, Stephanie and Walter Lynn Williams, Jr.

Mr. and Mrs. W. L. Williams, Joe, Pama and Sidney

Mr. and Mrs. Holly Williams and Michelle

Mr. and Mrs. Winfred McQueen, Christi and Andy

Mr. and Mrs. Lynn B. Jones

Mr. and Mrs. Joe Montgomery and Mr. and Mrs. Allen Dunbar were in Dallas last week to attend the Mills Bros. show at the Venetian Room, Fairmont Hotel.

TOWER DRIVE IN THEATRE



Thurs., Fri., Sat, July 15, 16, 17

They faced the ultimate test of courage and love... in a land that time forgot!



Againsta CROOKED SKY

RICHARD BOONE and STEWART PETERSEN HENRY WILCOXON · CLINT RITCHIE · SHANNON FARNON JEWEL BLANCH · BRENDA VENUS · FILMED IN 1930. AD 35

Sunday and Monday, July 18 and 19

"DEATH JOURNEY" R Wednesday and Thursday, July 21 and 22

1st ANNIVERSARY SALE

1/2 Price Sale

- Center Stage
- Jack Winter
- T. B. L. (The Bottom Line)
- Thermo Jack
- Barbizon Gowns
- Vanity Fair

THE GAZEBO

CHILDRESS, TEXAS

(Formerly Helen's Shoppe)

SALE LASTS THROUGH JULY

Movie House

Cloverlake Milk

Presents

KIDDIE MATINEE

Double Feature

The Bowery Boys

in

"HOT SHOT"

and

"JALOPPY"

Saturday, July 17

10 a.m. To 2 p.m.

50 cents a seat

FISHER - RED RIVER AGENCY

PHONE 259-3430
P. O. BOX 638
MEMPHIS, TEXAS 79245



PHONE 733-2591
P. O. Box 509
GRUVER, TEXAS, 79040

Dear Harry:

I appreciate your writing to ask about the cotton crop-hail rates for Mud Jenkins. You know the rates are based on the location of the crop and since I don't have the exact location I have to give you some general figures.

On the place near Lakeview the rate would be \$13.05 per \$100.00 of insurance, out at Brice it is \$12.50, at Memphis and Estelline it is \$10.75 per \$100.00 of insurance.

Please explain to Mud, that if he were to put \$50.00 per acre on the crop in Estelline it would cost him \$5.37 per acre, the same would go for any of the other communities. Since he hasn't written hail insurance before, be sure and remind him of the interest free note payable on December 15th and re-emphasize that the insurance is 100% in force midnight of the day he writes it.

Again let me thank you for recommending Fisher-Ped River Agency to Mud. We are sure proud of our adjusters and the job they have done adjusting the losses. With the price of cotton as high as it is, I know it's important that he feel satisfied about the way we have worked his loss and handled his insurance.

Best regards,

Zack B. Fisher

P.S. Be sure and tell Mud if I am not in to talk to Deb as she can handle the business just as well as I can.

We Depend On You To Depend On Us
AGENTS: Zack B. Fisher Bobby Brown-Burl Buchanan

SIMILAC
BABY MILK ... 53c

25 TABLETS
ALKA-SELTZER 57c

TABLETS 30's
ALKA-2 73c

4 OZ.
BACTINE \$1.49

BUGS BUNNY VITAMINS 90's
CHOCKS \$2.69

30's
PAMPERS \$2.11

FOWLERS

Rexall Drug

