

The Memphis Democrat

12 PAGES
This Week

Hall County Herald, Established May 3, 1890, Absorbed by Purchase August, 1928

WEATHER
High Temperature 75
Low Temperature 22
Rainfall .00
Relative Humidity 28.00
Rayford E. Hutcherson

MEMPHIS, HALL COUNTY, TEXAS, THURSDAY AFTERNOON, DEC. 13, 1973

15c (Inc. 1c sales tax)

Number 32

Memphis Cagers Win Opening Round District Play Games Over Clarendon

Next Tuesday night, the Memphis Cyclone teams will continue District 2-A action by hosting teams from Valley High in Cyclone gymnasium. These should be key games in the first rounds of district play.

The Memphis Cyclone during its past four ball games, has possibly established itself as District 2-A strongest challenger for the District basketball championship, which has pleased Cyclone Cager Coach Jimmy Pope.

The team did suffer one double blow against Sanford-Fritch last Saturday in the finals of the Panhandle tournament. Junior starter Jimmy Melton re-injured a knee on the court, while playing what Coach Pope describe as "Jimmy's best game of the season", and at that point in the contest, the Cyclone was leading on the scoreboard. Unfortunately, the Cyclone lost the contest 49 to 64.

Loss Heavy In Cotton Trailer Fire At Brice

Thousands of dollars of damage resulted from a fire at the Paymaster Gin in Brice Wednesday afternoon. Lost in the fire were 119 trailers and 410 bales of seed cotton, according to Ralph Grady, gin manager.

The fire started in a parked trailer line. How long the fire had been smoldering in the trailer or how it first started was not known. High winds whipped the burning cotton to other trailers in line. Both the Memphis and Clarendon Fire Departments were called to help extinguish the fire.

No damage was done to the gin plant, Mr. Grady said. The high wind made it extremely difficult to contain the blaze and added to the difficulty in fighting the fire. Cotton this season is extremely dry and burns more easily, it was reported. The loss is fully covered by insurance, it was reported.

Mack Richards Named To ASC Committee

Mack Richards, a well-known Hall County farmer, was named to a three year term on the county Agricultural Stabilization and Conservation (ASC) committee by delegates to the ASC county convention held Wednesday evening.

Mr. Richards was elected to replace Mr. Robert Hanvey, Jr., who has completed his second 3-year term and who chose to retire from the committee. Other committee members are James Richburg, Lakeview and Smitty Guest from Turkey.

The delegates elected J. E. Byars and Loyd Becker as first alternate and second alternate to the committee. Also, Mr. Richburg was elected to serve as Chairman for the coming year, Smitty Guest, Vice-Chairman, and Mack Richards, regular member.

The county ASC committee is responsible for local administration of government farm programs such as cotton, wheat and feed grains.

The vacancies were filled by farmer-delegates who are newly elected ASC community committeemen for 1974. Community committees assist the county commissioner.

V. C. Durrett Announces For Re-Election

V. C. (Zipp) Durrett of Lakeview announced this week he will be a candidate for re-election to the office of County-Precinct Commissioner of Precinct No. 2, subject to the action of the 1974 Democratic Primary.

In making the announcement Mr. Durrett said: "I would like to take this opportunity to announce to the voters of Precinct No. 2 my candidacy for re-election as your County Commissioner."

"It has been an honor and a privilege for me to serve you during this term; if re-elected, I will continue to carry out the duties of the office to the very best of my ability, in a manner that will merit your confidence and meet with your approval."

V. C. (Zipp) Durrett



TOWER ANNOUNCES FOR CONGRESS

State Senator Jack Hightower told a highly partisan group of over 200 citizens here Tuesday he is a candidate for U. S. Representative from the 13th Congressional District. "If I'm privileged to serve you, I'm going to do just that," the 10-year State Senator said in announcing his candidacy. Hightower's trademark, a tall Texas windmill tower, can be seen in the background, a symbol of the kind of candidate the Vernon lawmaker plans, facing the issues and problems of North Texas and the Texas Panhandle.

Committeemen, Delegates Are Elected

Small election ending Tuesday, the ASC Community Committeemen for 1973 and the delegates to the County Convention were elected, Larry B. Rogge, Executive Director, presided today.

The newly-elected Community Committeemen in the order of chairman, Vice-Chairman, member, first alternate and second alternate: J. B. Byars, Aubrey Martin, Charley Kent Byars, W. M. Terry B. Lemons.

J. B. Byars, Aubrey Martin, W. O. Clark, David D. Revel.

T. J. Spry, Jr., Loyd Herbert A. Holt, Richard Whitton.

Mack D. Richards, Smitty Guest, Clyde C. Colledge, W. Williams, Melvin Paul Collins, Edwin Harold Burk, Rayford E. Hood.

Bob Russell, B. J. Homer Hawkins, Jan James Fuston.

The ASC Community Committee convened, Wednesday at 7:00 p. m. at the Community Center in Memphis in a session open to the public. They elected one County Committeeman to serve a three-year term and two alternates to serve one-year terms.

After the vacancies are filled, the community committeemen determine which of the three regular members of the County ASC Committee will be Chairman and Vice-Chairman.

Baptist Choir Presents Cantata Sunday, 7:00 P. M.

The Sanctuary Choir of the First Baptist Church of Memphis will present the thrilling Christmas Cantata, "The Night the Angels Sang," this Sunday evening at 7:00 p. m. This musical by John W. Peterson, sets to beautiful music the dramatic events surrounding the birth of Christ. Beginning with the message of the angels to the shepherds on the hillside near Bethlehem, announcing the birth of the Savior, the choir in their music will retell the Christmas story unforgettably and melodically.

Rev. C. H. Murphy, Jr., Pastor (Continued on Page 12)

Citizens Asks To Cooperate With City Crews On Alley Cleanup

City of Memphis, street maintenance department, is asking for cooperation of Memphians on several matters to prepare for the solid waste system which will be installed in the future. Needed equipment already has been "cluttered" with all kinds of things, old tires, lumber, debris, etc., and city crews are going to be cleaning these alleys up in preparation for the new packer truck. This job is bigger than equipment being used.

Memphis Bands To Give Christmas Concert Sun.

Band Booster To Have Luncheon Sun.

The Memphis Band Booster Club is sponsoring a luncheon on Sunday noon, December 16, at the Community Center.

The meal will be served buffet style with four serving lines to promote faster serving. Delicious home cooked food will be a specialty including weight watcher's dishes.

Tickets are now on sale from any Cyclone Band Student. Prices for these tickets are \$2.00 for adults and \$1.25 for children under twelve. Tickets can also be purchased from Mrs. Ronald Wilson at the Big "O" or from Mrs. Raymond E. Martin and Mrs. Marion E. Posey.

Attend the church services of your choice then come and eat with us. Plan to attend the Christmas Concert at 3:00 p. m. in the High School auditorium. All three bands, Cyclone, Jr. High, and Beginners, will participate under the direction of Miss Carol Blain.

All proceeds from this luncheon will be used directly for the Memphis Bands.



LORAN DENTON

Loran Denton Announce For County Judge

Loran Denton of Turkey announced this week he will be a candidate for County Judge of Hall County, subject to the action of the 1974 Democratic Primary.

In making the announcement Mr. Denton said he would like to submit the following statement: "I was born March 25, 1914 at Iredell, Texas in Bosque County. I moved to Hall County on October 1, 1925 and have resided here for the last forty eight years."

"I grew up on a farm and attended Lesley High School, graduating with the class of 1932."

"I enrolled in college at West Texas State, Canyon, and earned both B. S. and M. A. Degrees. I married Erma Lee Rice of Lesley, June 1, 1935 and began a 39 year stretch as a Public School teacher and administrator, all of these years have been in the Hall County Schools. The first 7 years as Principal and teacher at Deep Lake. The next 16 years were spent at Lakeview as High School Principal-Coach and later as (Continued on Page 12)

Retail Stores To Remain Open on Fri. And Saturday nights Until Christmas

Shoppers are reminded this week that most of the retail stores downtown will remain open the next two weekends, Friday and Saturday nights, until 8 p. m., Jim Ed Wines, manager of the Chamber of Commerce, stated.

The stores are remaining open in order to make it more convenient for area shoppers to do their holiday buying.

Also on Friday and Saturday night, Santa Claus will be in the courthouse and all area children are invited to come by and pay Santa a visit. Children may bring their Santa letters and place them in the mail box, in the hall way on the second floor of the courthouse. Letters will be published in The Memphis Democrat on December 20.

An added treat for children this year are the matinees being shown at the Movie House. The matinee on Friday starts at 3:30

Santa Claus To Be Here Friday, Saturday Nights

Santa Claus will be at the Courthouse on Friday and Saturday evenings, Dec. 14 and 15, to visit with all area children.

Children are invited to come and visit Santa between the hours of 6 and 8 p. m.

'73 Cotton Harvest Hits 45,218 Bales

Harvesting of the 1973 cotton crop continues at a fast pace as 11,707 bales were harvested during the past seven days bringing the total to 45,218, or approximately 45 to 50 per cent of the crop.

With trailers stacked up around gin yards, the harvest will proceed at a rate comparable with the ginning capacity as empty trailers become available they will be filled and returned to the gins.

Cotton harvest reached maximum proportions over the Greenbelt area, W. E. Cain, in charge of the Agriculture Marketing Service Cotton Classing Office in Memphis, said last weekend. The office graded 28,300 sam-

ples for a total of 47,500. This compares to 35,100 on the same date last year. Predominant grade classed was 31 with 32 per cent. Predominant length classed was staple 31 with 43 per cent. Micronaire readings showed 83 per cent miked in the desirable range of 3.5 to 4.9 Pressley test showed 96 per cent tested 75,000 psi or higher.

Mr. Cain reports that the cotton market continued active in Memphis area. Demand for 31 & longer staples remained strong. Prices were steady to slightly higher on 32 and longer staples.

The average price paid farmers for cottonseed at the gin was \$100.00 per ton.

The Memphis Bands, 6th grade, Junior High, and Cyclone, will present a one-hour Christmas Concert Sunday beginning at 3 p. m. in Memphis High Auditorium, Carol Blain announced this week.

The 6th grade band, will begin first by playing "Three Christmas Carols", "Kum-Ba-La", and "Bells of Winter."

The Jr. High Band will play, "Let It Snow, Let It Snow, Let It Snow", "Little Christmas Suite", "I've Got Peace Like A River", "Yuletide Sketches." "I'll Be Home For Christmas."

The High School Band will play: "Hark the Herald Angels Sing," "Christmas Pastoral" (Good Christian Men Rejoice), "St. Nicholas Suite", "Australian Up-Country Song", "Carol of the Drum", "Great Songs of Christmas", "I Don't Know How To Love Him", and "Let There Be Peace On Earth."

Everyone is invited to attend the concert, and enjoy a luncheon prepared by the Memphis Band Boosters at noon Sunday in the Community Center. Tickets are \$2.00 for adults and \$1.25 for children.

Ruby Roden To Seek Office Of Justice Of Peace

Ruby Roden of Memphis, Justice of the Peace, Precinct No. 1, has authorized The Memphis Democrat to announce her candidacy for election to the office she now holds, subject to the action of the Democratic Primaries.

In making her decision known, she said, "As you know, I have been serving as your Justice of the Peace by appointment of the Commissioners Court. Now I have decided to offer myself as a candidate for election to a full term in this office."

I attended a 20 hour school in Amarillo in October for Justices of the Peace, and am scheduled to attend a 40 hour school to be held the last week in January. The experience I have gained in the office along with this schooling is proving of great value as time goes by.

The office is being kept open on a regular schedule, and it is my aim and desire to conscientiously fulfill my duties. I am proud of the record established by my office and invite you to examine it.

At this time I would like to publicly express my appreciation for the words of encouragement which I have received from the people of this area. I also want to thank the Officers and other County Officials for their help and cooperation since I assumed this office.

With this announcement, I seek your support in the months ahead, and solicit your vote when you go to the polls. Meanwhile, I will welcome your comments as I campaign for this office."

The Memphis Democrat

Published on Thursday of each week at
617 Main Street, Memphis, Texas by
MRS. HERSCHEL A. COMBS Publisher
BILL COMBS Editor

(Hall County Herald absorbed by purchase August 7, 1928)

Subscription Rate:
In Hall, Donley, Col-
lingsworth and Childress
Counties, per year —
\$5.18
Description Rate:
Outside Hall, Donley,
Collingsworth, and Chil-
dress Counties, per
year — \$6.30

Member of
**TEXAS PRESS
ASSOCIATION**
— and —
**PANHANDLE PRESS
ASSOCIATION**

Entered at the post of-
fice at Memphis, Tex.,
as second-class matter
under Act of March 3,
1879. Second Class Post-
age paid at Memphis
Texas, Telephone 258-
2441.

NOTICE—Any erroneous reflections upon the character, standing or reputation of any person, firm or corporation which may appear in the columns of The Memphis Democrat will be corrected gladly upon its being brought to the attention of the publisher.
Postmaster: Send Form 3579 to Memphis Democrat:
Box 190, Memphis, 79245

EDITORIAL

A Cotton White Christmas!

Hall County will have a white Christmas regardless of whether or not Mother Nature gets around to sending any snow flakes or not, for it seems that this county has turned to cotton. Cotton that is beautifully white, fields that actually "glitter in the morning and afternoon sunlight.

And what makes the whole thing take on a rosey glow is the fact that the cotton market quotations are holding firm, despite predictions of a big yield.

Also this area has been blessed with some of the finest weather for harvesting cotton that anyone could hope for considering everything.

In 1949, Hall County harvested 87,000 bales of cotton. That year, much of this crop was harvested by hand, and many gin crews found it necessary to gin smaller bales, because trailers were not designed to hold exacting amounts. Harvesting began that year in early September, and continued until March in some instances.

This is the 1973 cotton crop. Today, it is being estimated that the harvest is about 45 per cent completed, and if this accurate, it appears that the 1973 crop will go down in history as being the largest ever, exceeding the 1949 cotton crop. Secondly, few farmers can remember when a bale of cotton brought as much money as is being paid today for many of these bales. Good cotton, especially is bringing a high price.

Sure, inflated prices, shortages, higher costs of operation wages etc., will come out of the farmers pockets, as will interest (also high) on past loans, but even at that, with prices what they are, farmers generally feel it is a "white" crop in every respect.

Cattlemen, on the other hand, have been looking at declining markets with much alarm. This is the other side of the economic coin, the dimmer side.

Last year, Hall County harvested a big cotton crop. But the weather made all aspects of harvesting difficult and expensive. Wet, soggy fields and gin yards made things difficult, hurt the quality of the cotton, and caused many, many costly delays. Farmers began harvesting in late October and finished in late March.

This year, however, with nearly 50 per cent of the cotton already standing on gin yards to be processed, and fair weather holding it would be possible for this county to complete its harvest sometime in January. Since it was late Nov., before major harvesting began this year, it is remarkable that so much cotton has been gathered so quickly.

By checking with those closely involved in the harvest, it was noted that the major reason area farmers have been able to harvest so much of the crop, so quickly is the increase in cotton trailers. New trailers have been built, and others purchased from other areas. Secondly, this year's crop is a high lent crop. Much of the cotton was allowed to mature.

One other factor is evident. Bales being gathered and harvested this season, if the trend continues as in the past few seasons, will be large and heavier than those produced in 1949. Not only will Hall County probably produce the largest number of cotton bales in the county's history but these bales will have a net and gross weight heavier, on the average, than any bales.

Yes, it will certainly be a white Christmas, regardless of the snow.

after you see your doctor . . .

bring your prescription to
Lockhart PHARMACY
MEMPHIS PH. 259-3541

Cigarettes: All Reg. & King \$4.00 ctn. — All 100s \$4.10

For Holidays

Festive Cheesebread Special Treat

1 cup milk	2 pkgs., active dry yeast
3 tablespoons sugar	1 cup warm water
1 tablespoon salt	1 cup grated cheddar cheese
1 tablespoon shortening	4 1/2 cups sifted flour

Scald milk, add sugar, salt, and shortening; let stand until luke warm. Dissolve yeast in warm water. Combine with the milk mixture. Add cheese and flour; blend well. Cover batter and set in a warm place for 45 minutes. Stir the batter down and beat for half a minute. Pour into a greased 1 1/2 quart casserole or two 9x5 loaf pans. Bake uncovered at 375 degrees for one hour.



ACROSS THE DESK

What Other Editors Say

Trickle-down theory

Maybe The Problem is inherent in the Republican philosophy of government. Republicans never have known how to handle economic crises. Hoover couldn't do it, and neither could Eisenhower.

Lyndon Johnson called it "the trickle down theory", the idea that if big business and the major corporations are insured high profits, the prosperity will trickle down to the common folk at a rapid enough rate to keep them satisfied. He warned against it.

Marie Antoinette called it the "let'em eat cake" theory . . . but she was a Royalist, not a Republican.

Treasury Secretary George Schultz espoused it in a televised "Meet the Press" interview Sunday when he asserted the Administration belief that the best way to deal with critical shortages of gasoline is not to ration it, but to permit the producing companies to charge very high prices for it.

Schultz' idea is that if gasoline prices are sufficiently high, the long range problem will be solved because the oil companies will be able to invest their exorbitant profits in a starch for new sources of supply; and the short range problem will be solved because the people who can't afford to pay the high prices for gasoline will stop using it, thus relieving the immediate demand.

It's a neat solution, because the wealthy friends of the Administration can easily afford the high prices at the pump, since they'll be reaping plenty of money in dividends from the well-head.

On the other hand, rationing, which presumably would be intended to distribute available supplies on an equitable basis to everybody, is bad, according to Schultz, because it would inevitably develop a black market for those wealthy enough to pay black market prices.

He may be right on all counts.

SEE US FOR GRAIN FED BEEF

You can order Half Beef, Hind Quarters or Pork.

Before You Buy
Check Our Prices

We sell Country Sausage
Ham and Bacon

Custom Slaughtering on
Monday through Friday
of beef and pork

Clarendon, Texas
Phone 874-2154 Box 389

HOMEN MEAT CO

originate will all of those little businesses and individuals at the bottom, and when it is pumped at too rapid a rate, the well goes dry and the whole cycle collapses.

If the Republican Administration can't recognize the fallacy and change the theory . . . and apparently they can't or won't . . . then the people of the Republic had better recognize their failure and change the Administration. That, too, is a long-range solution . . . but maybe you can help speed it up by writing your own mandate to your Congressmen and Senators, and mail it without delay.

—The Canadian Record

Hudlow Art Gallery

Estelline, Texas

"Gifts of Distinction"



The "who-would-have-thought-of-it" Christmas gift.

Telephones are so useful, you start to think the only thing they can be is useful. And you forget how beautiful they can be.

That's why some people completely overlook phones as a Christmas gift.

Well, General Telephone has phones that are absolute knockouts—a joy to look at and to use.

For instance, that supermodern Style-line® phone. The dial is hidden till you pick up the phone; then it's right in the palm of your hand.

We have Candlestick phones with styling

straight out of the Roaring Twenties. We have old-fashioned phones. And phones that hardly look like phones. And phones so elegant they look like they belong in a castle.

Most likely you have their pictures in full color right in your own home. (They come in a variety of lovely colors.) Just look between the White Pages and the Yellow Pages of your phone book.

To order, call the Gift Specialist at your phone company's business office.

Give the kind of gift that makes people think only you could have thought of it.

GTE
GENERAL TELEPHONE

Memories

From
The Democrat Files



30 YEARS AGO Dec. 16, 1943

One of the coldest spells citizens of Memphis have experienced in some time and certainly the coldest to be felt this year has been continuing here for the past week. A low of nine degrees was registered Wednesday morning.

Dear Santa:
Please bring me a building set, plenty of nuts and candy and a gun and fruits.

Jimmy Gibson

Dear Santa:
I am nine years old and I am in the fourth grade. Please bring me a bicycle, bow and arrow, doughnuts.

Your Friend,
Bob Hutcherson

A girl, Barbara Gayle, was born December 9 to Mr. and Mrs. Aubrey Braidfoot.

The Agricultural Adjustment Agency program for 1944 again calls for an increase in the production of feed and feed crops needed in the war effort.

20 YEARS AGO Dec. 17, 1953

The annual banquet for members of the Memphis High School football team and their fathers was held Friday night in the high school cafeteria. The dinner was prepared and served by mothers of the boys.

The City of Memphis now has a police squad car for the first time in its history.

Memphis High School basketball team won the consolation trophy in the Hedley tourney. Betty Claude Hickey, a member of the local squad, scored 70 points during the tournament and was placed on the all-tournament team. Other members of the team are Mickie Murdock, Lois Ann Cifer, Betty Sue Spencer, Sharon Harrison, Beverly Crawford, Katherine Wright, Carol Ann Monzingo, Ann May, Joyce Jeffries, Mary Ann Eppers, Monta June Saye and Bobby Walsh.

Drought relief programs being carried out by the U. S. Department of Agriculture, under authority from President Eisenhower and Congress will have a beneficial effect in strengthening livestock markets, says W. B. Hooser, county agent.

The following pupils will take part in a Christmas recital presented by Mrs. L. G. Rasco: Joan

Hill, Nancy L. . . .
Donna Fowler, Marie
Gaylynn Hall, Patsy
Martha Reed, Katherine
Rita Durrett, Betty
ton Wells, Karen
Sherry Denton, Jane
Joey McKnight, Sherry
and Diana Fowler.

10 YEARS AGO Dec. 19, 1963

Dear Santa:
I am in the second grade. I want a lot of B-B's, M&M's.

Lynelle

Dear Santa:
I am in the Second grade. Please bring me a T doll, and a dresser. M&M's to you Santa Claus.

Love,
Betty Sande

Dear Santa:
Will you bring me a bicycle. Thank you.
Bobby Hall

Santa Claus:
Would you please bring me a Snowcone machine. I don't forget all of the girls and boys.

I love you,
Connie Edg

Dear Santa Claus:
Thank you for the gift I got me last year. I would like you to bring me a double decker doll bed.

Mary Ann

Dear Santa:
Please bring me a hat and boots. I get my little brother, De

Love,
Jon Collins

TV Service Co

609 Noel St.
Memphis, Tenn.
Phone 259-32

Dependable and
guaranteed service
Jesse Hernandez

Dept. of Public Safety Urges Attention on Highways During Holidays

of the most tragic wastes of natural resources may occur during Christmas and New Year period," said Major C. Regional Commander of the Texas Department of Public Safety in Lubbock. Major Bell said he was not to the fuel shortage but rather to the number of human lives that may be lost as a result of traffic accidents in Texas during the

idents noting that 39 per cent of all fatal traffic accidents during this holiday period last year involved the drinking driver while 27 per cent of these accidents were the result of unsafe or excessive speed.

One other suggestion made by the Major for avoiding holiday tragedy on the highway was for all motorists to use their seat belts. He cited statistics for this period last year pointing out that 97 per cent of all vehicle occupants killed in Christmas and New Year Holiday traffic accidents were not wearing any type of restraining devices. "There are no simple solutions to the traffic death problem," Major Bell said, "but if every motorist will obey all traffic laws and regulations, practice Defensive Driving and Drive Friendly, they will be doing their part to insure a safe holiday season for all this year."

Rubber Stamps

Made-To-Order

The

Memphis Democrat



TRIM—Dotted cotton in contrasting colors shapes a neat look for back-to-school. Crisply pleated and accented with white collar and cuffs, it's comfort-cut for young scholars. By Shutterbug.

Charles Fennell Announces For Texas Senator

HOLIDAY — State Rep. Charles Fennell of Holliday announced today as a candidate for State Senator, 30th Senatorial District, vacated by Jack Hightower of Vernon who has announced plans to run for the U. S. Congress.

Fennell praised Hightower's work and said that their team efforts over the past eight years, "have given me an understanding of the needs of the entire vast area of our district." The senatorial district, which includes Hall County, covers most of north west Texas.

Fennell was honored by friends from throughout this area last week with an appreciation dinner in Holliday which attracted more than 500 supporters.

Fennell, a veteran of four terms in the Texas House of Representatives, promised to wage an active campaign in all 29 counties of the district, even though he will be busy in Austin as a delegate to the Texas Constitutional Convention this spring.

A formal announcement will appear at a later date.

Baptist Women Meet Dec. 3, 4, 6, 7, For Week Of Prayer

Women of the First Baptist Church met in the parlor on Dec. 3, 4, 6, and 7 for the week of prayer for foreign missions programs.

Mrs. Frank Ellis presided at the meetings. The theme of the programs, presented by Mrs. W. R. Parker, was "God's Gift unspeakable," Scripture for the study was (Cor. 2, 9: 6-15). "He Touched Me" was the song presented at the programs by Mrs. C. H. Murphy, Geary Brogden, Joe Ann Shelton and the Gather Trio.

Mrs. Byron Adams told ways that God touches us. The call to prayer ended each program.

Attending during the week were: Mmes. Ellis, Parker, Murphy, Adams, W. R. Scott, Theodore Swift, Ida Hutcherson, Byron Baldwin, O. B. Ramby, W. E. Billington, Sylvia Lewis, Marvin Alexander, H. H. Lindsey, J. Fitzjarrald, Frank Goffinett, Geary Drogden, W. M. Kilpatrick, and one guest, Mrs. Emma Gene De Santis from Leesburg, Fla.

Let's Talk Memphis!

Pathfinders Meet In McIntush Home

The Pathfinder's Council held their Christmas Meeting in the home of Mrs. J. F. McIntush.

The president, Mrs. J. O. Cobb, opened the business meeting with the Pledge of Allegiance.

After the exchange of gifts, all assembled at the Recreation Hall of the Housing Unit with ladies of the unit as guests.

Mrs. McIntush gave a reading, "The Night Before Christmas" (Texas Style).

Mrs. W. D. Young presented "Yuletide Yippee-aye-oh", a true story of Christmas which is still celebrated in Anson, Texas. Mrs. Young also presented a poem, "Joe's in Trouble".

Mrs. Mary Lou Erwin gave the history of the Christmas Carols.

The meeting was closed with a prayer by Rev. Hazel House of Estelline.

The guests present were: Mrs. Frances Neeley, Lillie Davis, Annie Kercheville, Edna Elliott, Pearl Massey, Katie Scroggins, Mattie McBee, Miss Mae Paul and Rev. Hazel House.

Members present were: Mmes. Robert Breedlove, Otis Cobb, Joe Eddins, J. W. McMasters, Brown

Smith, Ora Ritchie, W. D. Young, Velmon Payne, Vera Gunstream, Elsie Gidden, Mary Lou Erwin, and the hostesses Mrs. Hester Bounds and Mrs. McIntush. Punch and cookies were served to all.

Estelline Seniors To Take Cruise On Caribbean

The seniors of Estelline High School have been approved by the school board to take a Caribbean cruise for their senior trip, according to Superintendent Chester Cunningham.

The senior class under the sponsorship of Mr. Tom Seay, has worked extremely hard to raise the money necessary to take this trip. The tentative schedule calls

for the Estelline Seniors to drive to Dallas on May 25, 1974, board a jet plane at Dallas for Miami, Florida. The students are scheduled to sail from Miami and to be at sea the following week visiting San Juan on Monday, St. Thomas Tuesday, Nassau Friday, and returning to Miami Saturday night. The students are very enthused about the trip, and the board was very happy to give its approval for the trip.

The Lonely Heart



DR. JACK L. ROSE

OPTOMETRIST

Contact Lenses

Closed Saturday Afternoons

415-A Main

Phone 259-2216

BYLOW FOOD STORE

BYLOW FOOD STORE

WITH THIS COUPON

1-pound Can of Maryland Club Coffee

79c

Limit one per customer

Coupon Expires 1-4-74



SAVE VALUABLE COUPON SAVE

3 1/2 LBS. GIANT SIZE

TIDE 69c

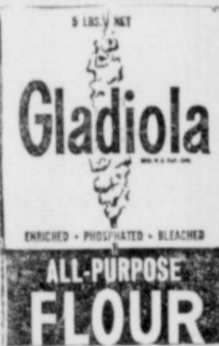
ONLY

O. C. 15

BYLOW WITH THIS COUPON

OFFER EXPIRES 1-18-74 WITHOUT COUPON 98c

LIMIT 1 COUPON PER PURCHASE



89c

5 lb. sack

APRICOT, PLUM, PEACH, 18 OZ. JAR 2 FOR

Preserves 79c

CALIRIPE, 2 1/2 CAN 2 FOR

Peaches 79c

FIRESIDE GRAHAM 1 LB. BOX

Crackers 39c

DEL MONTE 6 1/2 OZ. CAN

Tuna 49c

CLOVERLAKE ICE 1/2 GAL.

Cream 89c

ZEE, GIANT ROLL 3 FOR

Towels \$1.00

OUR DARLING, 303 CAN 3 FOR

Corn 69c

WHITE SWAN, 303 CAN 2 FOR

Pears 69c

WHITE SWAN LUNCHEON, 303 CAN 2 FOR

Peas 49c

We've got MEATY SAVINGS

CLUB Lb. **Steaks** 98c

RUMP Lb. **Roast** 89c

ROUND STEAK 1.19 Lb.

SAMMY PRIDE SLICED 12 OZ. PKG. **Cheese** 79c

TASTE WRIGHT 2 LB. PKG. **Sausage** \$1.29

DECKER QUALITY 1 LB. PKG. **Bacon** 99c

FROZEN FOOD FISHER BOY, 8 OZ. PKG. 3 FOR **Sticks** 89c

FLAV-R-PAK ORANGE, 12 OZ. CAN 2 FOR **Juice** 89c

PRODUCE COLO. RUSSET 10 LB. **Potatoes** 69c

RUBY RED 2 FOR **Grapefruit** 29c

WASHINGTON DELICIOUS Lb. **Apples** 25c

WISHING WELL WINNERS

CLYDE LEE
HAZEL HALL
DAISY WHITE

Farmer - Rancher - Businessman SAVE INCOME TAXES NOW

Continent Life; Andy Gardenhire will set up the Keogh or HR-10 Savings program with option to raise power premium each year to fit your needs.

IS MUST BE DONE BEFORE JANUARY 1, 1974 FOR TAX SAVINGS IN 1973.

Call for appointment:
259-3327 Home
259-3441 Office

COME IN
AND LET US
HELP YOU
WITH YOUR
GIFT
SELECTIONS



WEST SIDE STORE:

STILL HAVE A VERY GOOD STOCK OF CHRISTMAS TREES, TREE DECORATIONS, TOYS, ELECTRIC APPLIANCES, GIFTS FOR THE HOME, STEREOS, RECORDS, TAPE DECKS, 8 TRACK TAPES, STEREO RECORDS, RADIOS, REFRIGERATORS, CLOCKS, WATCHES AND MANY, MANY MORE ITEMS TOO NUMEROUS TO MENTION BUT IDEAL GIFTS.

WEST SIDE STORE:

SPORTING GOODS, GUNS (BOTH HAND AND LONG GUNS: SHOTGUNS AND RIFLES) HUNTING VESTS, AMMUNITION, CAPS, GUN RACKS, GUN CASES AND GUN CABINETS.

KINDS OF FISHING EQUIPMENT, RODS, REELS, LURES AND ALL THE FIXINGS.

WE HAVE CAMPING EQUIPMENT, SLEEPING BAGS, CAMP STOVES, LANTERNS, ICE CHESTS, WINTER WEAR.

WE HAVE A VERY LARGE STOCK OF TOOLS: HAND TOOLS, ELECTRIC TOOLS, ELECTRIC SANDERS, ELECTRIC CIRCULAR SAWS AND SABRE SAWS.

DO NOT FORGET THAT WE NOW HAVE McCulloch GASOLINE CHAIN SAWS. YOUR CHAIN SAW YOU CAN DEPEND ON AND GET REPAIR PARTS FOR.

WE WOULD CALL YOUR ATTENTION TO OUR STOCK OF AUTO, TRUCK AND MOTOR PARTS. WE HAVE THE LARGEST STOCK OF THIS KIND IN THIS AREA. ALL NATIONALLY ADVERTISED NAME BRANDS. AND AT PRICES YOU CAN AFFORD.

WE CAN GAIN INVITE YOU TO COME SHOP WITH US AND WE WILL BOTH BE HAPPY.

WE OFFER FREE GIFT WRAPPING AND GIVE BUCCANEER STAMPS ON ALL WEST SIDE STORE PURCHASES. THESE ARE REDEEMABLE AT YOUR LOCAL BUCCANEER STAMP STORE.

FERREL'S

Minnie Lue & John Ferrel

Viola Johnson, Blas Narvaez, Cleon Burleson

Once Again We Offer Our Annual
Christmas Special on
Cricket Rockers



You'll Want One For Your Home
Scotch-Guard Covers

Special at \$29.95

Thompson Bros. Co.

We Give and Redeem Gold Bond Stamps
"Lets Talk Memphis" Cotton Capital of the Panhandle

Atalantean Club
Meets Nov. 20

On November 20th, at 7:00 p. m. the Atalantean Club entertained the "Kings" in their life at their annual Gentlemen's Evening held in the Community Center. Hostesses for the evening were: Mmes. H. B. Estes, C. H. Murphy Jr., Henry Foster Jr., W. R. Scott, Jack Boney Jr., and Glynn Thompson. Each member brought a covered dish offering a variety of food.

Following the welcome by the President, Mrs. H. B. Estes, and return of thanks by Mr. Bob Douthit, everyone served themselves, buffet style to a sumptuous dinner fit for a king. At the conclusion of the meal, Mrs. C. H. Murphy Jr., Vice President, introduced the program on home life. Several musical selections were sung by club members' children: Meridith and Ricky Douthit, Mark Hutcherson, Steve Boney, Mike Murphy (on drums), and Wanda Montgomery accompanied on the piano. C. H. Murphy Jr. gave an enlightening talk and presented slides on home life in Japan. The program gave each person an insight into the devotion of the Japanese people to their families.

The following members and guests attended: Mrs. H. B. Estes with Mrs. Theodore Swift as her guest, Miss Gertrude Raseo with Miss Clara Pyeatt as her guest, Mrs. W. R. Scott, Mr. and Mrs. James Davis, Mrs. Robert Dagley, Mr. and Mrs. Bob Douthit, Mr. and Mrs. Henry Foster Jr., Mr. and Mrs. C. H. Murphy Jr., Mr. and Mrs. Dub Parker.

Also: Mr. and Mrs. Robert Sexauer, Mrs. Jerry Shields with Dr. George Stanley as her guest, Mr. and Mrs. Robert Spicer, Mr. and Mrs. Tom Atkisson, Mr. and Mrs. David Morris, Meredith Douthit, Mike Murphy, Steve Boney, Ricky Douthit, Mark Hutcherson, and Wanda Montgomery.

Also: Mrs. W. C. Dickey with her guest Mrs. Bray Cook.

CARD OF THANKS

I would like to take this opportunity to say thanks to Dr. Clark and all the nurses and hospital staff for their patience and good care for me while in the hospital; and all my good friends for their visits and prayers, and the beautiful flowers. May God bless each of you in my prayer.
Rev. E. G. Johnson

Gamma Kappa
Meets Saturday
December 8

Gamma Kappa Chapter of Delta Kappa Gamma met for a luncheon at the Goodnight Community Building Saturday, December 8.

Following the invocation by Miss Esta McElreath, the group enjoyed a program of Christmas music under the direction of Elena Ann Donald who presented her Pampa Junior High Chorus in several carols. Elbert Hensley, on the piano, presented a group of Gospel selections.

A short business session was held, and a gift exchange was enjoyed by all.

Nineteen members were in attendance including Alma Bruce, Esta McElreath, Margaret McElreath, and Helen Madden, Memphis members.

So says the VA... POPPETE by Bud Segendorf

WE MUST HURRY TO THE VA AN FILE YER APPLICATION FER EDJAMACATION ASSISTANCE!

For information, contact the nearest VA office (check phone book or write Veterans Administration, 212A, 810 Vermont Ave., NW, Washington, D.C. 20420)

W. M. U. Observes
Week Of Prayer
December 2-5

The W. M. U. of Travis Baptist Church observed the week of prayer for Foreign Missions Dec. 2-5 at the church. The overall theme for the week was "God's Gift—Unspeakable".

The women met at 9:30 a. m. Monday and discussed God's gift, Salvation. Seven women attended this meeting.

The Tuesday meeting opened at 9:30 a. m. with Mrs. J. I. Herndon in charge, and the discussion was "God's Gift, Growth."

Wednesday's program, "God's gift, opportunities for service," was given at 7:00 p. m. at the prayer meeting hour.

Mrs. J. I. Herndon opened Thursday's meeting at 9:30 a. m. The theme for the day was God's gift, fellowship.

Friday's program, God's gift, unspeakable was held at the church at 9:30 a. m. with Mrs. J. I. Herndon reading (II Cor. 9:6-15). Mrs. C. H. Davidson sang, "He Touched Me". Mrs. T. C. Stevens discussed God's gift—My gift. The Missionaries were remembered in prayer by, Mmes. Herndon, Davidson, Stevens and Lynn B. Jones.

For
OFFICE SUPPLIES
Call
The
Memphis Democrat

Friendship Class
Has Christmas
Dinner Tuesday

The Friendship Class of the First Baptist Church had a Christmas dinner Tuesday night, Dec. 11. A very delicious meal was served, with turkey and dressing and all the trimmings.

Attending the dinner were: Mr. and Mrs. W. M. Kilpatrick,

Mr. and Mrs. Robert Mc...
Mrs. Jim Davis, Mr. and...
Lenis Simpson, Mr. and...
Rose, Mr. and Mrs. Bob...
Mr. and Mrs. Gaylon Ar...
and Mrs. Billie Rae Jo...
and Mrs. E. L. McQueen...
Wayne Boney, Alma McK...
Ann Cofer.

Mrs. S. A. George of...
Christi visited Thursday...
noon, Dec. 6, with Mr. a...
Lynn B. Jones.

Lusk Cleaners
and
Hargrave Laundry

A Clean Pair

Next time bring your dry cleaning to Lusk Cleaners bring your laundry too! We'll take it to Hargrave Laundry in Childress for you. They offer a complete laundry service.

259-3031 or 259-3435 103 N.

THE Happiest
Holidays BEGIN at Vallance

FREE HAMS FREE TURKEYS
COME IN AND SIGN UP
DRAWINGS WILL BE HELD FOR A
TURKEY AND A HAM

SAT. DEC. 15
SAT. DEC. 22
and
CHRISTMAS EVE AT 5:00

White Swan Whole 2 FOR
GREEN BEANS 39¢
303 Size Can

White Swan W. K. or Cream Style 2 FOR
CORN 39¢
303 Size Can

Holiday Ham

WE HAVE A NICE SELECTION OF HAMS, TURKEYS and FRESH HENS

VALLANCE FOOD
1 POUND CAN OF
Maryland Club Coffee
79¢
Limit One Per Customer
Coupon Expires 1-4-74

Cash Value 1/200 Coupon No. 28

PIKES PEAK
ROAST 89¢
FRESH
Beef Ribs 45¢
SMOKED RITE 2 LB. PK
BACON \$1.8

Festive Fruit
APPLES
EXTRA FANCY FOR GIFTS OR STOCKING STUFFING!
Washington State
Extra Fancy
Starking
Delicious

Large Quantity
Holiday
Nuts

Oranges Lb. 15¢

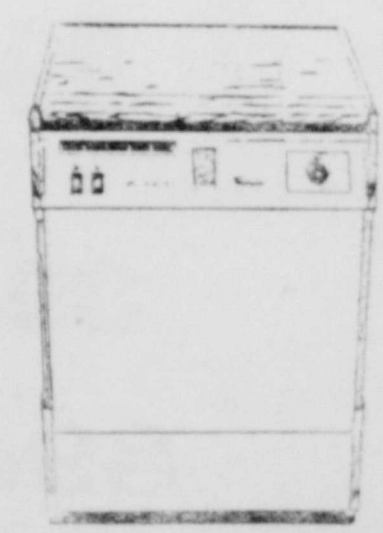
DEL MONTE, 303 Can 2 F
Pumpkin 39¢

OCEAN SPRAY 1 Lb. P
Cran Berries 31¢

COLO. RUSSET 10 Lb. B
Potatoes 69¢

FOR CHRISTMAS GIVE MOTHER A

Whirlpool



PORTABLE
DISHWASHER
Prices Start at
199.95

Consumer buying information for SXF-330 portable dishwasher

Heavy Electric Cord and Fill/Drain Hoses—Easy to retract into separate compartments at rear, out of sight.

Double Wall Construction—helps reduce sound and keep water hotter throughout cycle.

Durable Porcelain Enameled Tub—Smooth as glass, resists stains, acids and odors.

Choice of Colors—Available in edged copper, edged acocado, edged harvest gold or white.

Water Consumption—13.8 gallons SUPER WASH; 4.6 gallons RINSE-HOLD.

Water Pressure—Operates on line pressures from 15 to 120 PSI.

Radiant and Convection Drying—800-watt heating element provides fast drying

Stabilizer Front Panel—Helps prevent tipping even with rack fully extended and loaded.

Convertible—Can be installed as an undercounter model later if desired.

Specifications subject to change without notice

DIXON'S

We Reserve The Right To Limit Quantities—Double S&H Green Stamps Wed. With \$2.50 Purchase Or O

Vallance Food Store

ESTELLINE COMMUNITY NEWS

By MRS FRED NIVENS And THE GROWL STAFF

Mrs. Permela Timmons of Childress visited with her mother, Mrs. Crump, Tuesday. Mrs. Timmons returned home with Mrs. Crump for a short stay.

Mrs. Don Proffitt and Mrs. Proffitt shopped in Amarillo Wednesday.

Mrs. Lena Bell Martin of Childress, and Mrs. Artie Nance of Childress and Charles Davidson of Childress are here visiting with Mrs. C. L. Sloan's and the W. B. Sloan family.

Mrs. Joe Eddins and Rev. Hazel Eddins shopped in Childress Friday.

L. L. Cloan and Lena Bell Marshall shopped in Childress Saturday afternoon.

Mr. Stout of Memphis visited with Mrs. J. H. Wright Saturday afternoon.

Buck Campbell and Tiny Nivens shopped in Childress Thursday.

Crews and Pat Bell of Childress visited in the Fred Nivens home Thursday.

Mrs. J. D. Morris and Mrs. Osborn attended funeral services of John Goodson in Amarillo Tuesday.

Mr. and Mrs. J. Stigall of Dallas and Willie Stigall of Mesquite visited with Mr. and Mrs. Dude Merrell and Mr. and Mrs. Earl Pope this weekend.

Mr. and Mrs. Dude Merrell visited in Wellington Sunday.

Mrs. J. H. Hayes is home after visiting in Amarillo with her children.

Let's Talk Memphis!

Texas Shoots For No. 1 in U.S. Agriculture

Governor Dolph Briscoe has issued a challenge to Texas Agricultural leaders to become No. 1 in total agricultural income in the nation. Texas currently ranks third. However, officials of the Texas Agricultural Extension Service estimate that with the continued growth in Texas' Agricultural industry, the state could be on top of the heap by 1980, says County extension Agent Warren Mitchell.

A look at a few factors shows that the No. 1 spot is within reach. In the past five years Texas' total agricultural income has increased 48 percent, one of the highest in the nation. By comparison, Texas' total agricultural income increased only 18 percent during the period 1960-68. So the state's agricultural industry has tremendous momentum.

The state's agricultural income totaled \$4,057 billion in 1972 and is projected at \$6.519 billion by 1976, far surpassing the goal of \$3.76 billion by 1976 set by the Extension Service in 1969. By 1980 the total agricultural income of Texas from the sale of crops and livestock can be \$9.1 billion if the trend established during the period 1968-1973 can be maintained.

"The potential for Texas to be No. 1 in the nation in agricultural income is there," said Extension Director Dr. John E. Hutcherson, in announcing the new goal. "The key to reaching this goal depends on the profitability of agricultural production — whether or not farmers and ranchers will be able to get a reasonable return on their investments."

Hutcherson noted that Texas has available land resources plus emerging technology from agricultural research by the Texas Agricultural Experiment Station and U. S. Department of Agriculture to expand crop and livestock production and processing industries. Increasing domestic and foreign markets for food and fiber products should make it profitable to further increase production.

Total cooperation and mutual support of all agencies and groups — public and private — will be required to help make Texas the top agricultural state in the nation, industry representatives agree.

Among the leading agricultur-

Residents Of Hall County Heavily Insured

NEW YORK, Nov. 24 - Residents of Hall County are more heavily insured at the present time than they have ever been.

Despite the fact that they have better financial safeguards than they once had, thanks to social security and private pension plans, they have been increasing their insurance holdings, especially life insurance, in recent years.

The trend is attributed, in part, to the fact that most local families are earning more than before

and are in better shape, economically, enabling them to enlarge on this type of protection.

As a result, ownership of life insurance has reached an all-time high in Hall County. The total amount in force is now approximately \$38 million.

The basic statistics, for the nation at large and for each of the states, come from the Department of Commerce and from the Life Insurance Fact Book, recently released.

They show that the bulwark that Americans have set up for themselves in the form of life insurance has grown to the enormous sum of \$1,628 billion.

Of this amount, some \$87,069 million is on the lives of State of Texas residents. In 1963, by way of comparison, the total was \$35,824 million.

And this is exclusive of Federal insurance, provided for veterans and others, and insurance issued by fraternal organizations.

In terms of the individual family, the extent of its coverage is almost directly proportional to its income. Families with bigger earnings have more insurance, as a rule.

On average, ownership by the average family in the state is equivalent to 25.2 months of its net, after-tax earnings, the figures show.

In Hall County, based upon this yardstick and upon the average level of earnings locally per family, the amount of life insurance in force in the area comes to approximately \$18,240 per family.

As in the past, ordinary insurance is the type most widely held. Next in volume, and increasing most rapidly, is group insurance, which is generally job-connected.

R. H. (Bob) Butler of Cleburne, Texas, formerly of Esteline, Texas will undergo eye surgery January 8, in St. Joseph Hospital in Fort Worth.

Julie Sparboe returned home to Richardson after spending the week with her grandparents, Mr. and Mrs. Leo Fields, and other relatives.



Highway Patrol From All Over Have Local Meet

Last Tuesday, Highway Patrolmen from 64 stations throughout this portion of the state, attended a meeting on the changes in the new Texas Penal Code here in the Community Center.

In all 66 members of the Texas Highway Patrol were here to hear instructors, Lt. Bill Maley and Capt. J. W. Blackwell.

Patrolmen were from drivers license, license and weight communications, motor vehicle inspection and highway patrol assignments.

Towns with Patrol units represented include: Pampa, Dimmitt, Tulsa, Borger, Childress, Perryton, Panhandle, Groom, Amarillo, Canadian, Wellington, Paducah, Quanah, Stratford, Wichita Falls, Vernon, Clarendon, Matador, McLean, Perryton, Shamrock Canyon and Memphis.

Memphis was selected as the site of this training program because of the facilities we have

here," Highway Patrolman Don Collins said.

Memphis Public Schools Cafeteria Menus

Monday, December 17

Beans, Fresh fries, Mixed Greens, Corn bread, Pineapple upside down cake, White milk.

Tuesday, December 18

Chicken pie biscuit topping, Sweet peas, Carrot stick, Jello-whipped topping, Chocolate milk.

Wednesday, December 19

Italian spaghetti, Green beans, Tossed salad, Hot rolls, Butter, Jelly, White milk.

Thursday, December 20

Vegetable beef soup, Corn Bread, Apple crunch, Chocolate milk.

Friday, December 21

Turkey-dressing, Giblet Gravy, Green Beans, Sliced Bread, Cranberry sauce, Fruit salad.

A Frog

May

Frighten you . . .

But we'd venture to

Ask

That that small amount

Of life insurance on

Your loved one

Doesn't even concern you.

Wife insurance can be

Important, too.

Ask

Us.

Before the need

Arises.



Phone 259-3531
Memphis—Cotton Capitol
of the Panhandle

Dear Customers:

Here is your ticket to the TV Special
FTD Members are sponsoring on NBC
network December 17, 1973, from 7:00
to 7:30 P. M.

Be sure to tune in and share the pleasure
with family, and friends.

Sincerely,

Leslie's Flowers

LOYD ELLIOTT

Your EXON Dealer

Wants, needs and appreciates
your business!
Corner Main & Boykin Drive

SANTA HURRY!

SAYS

TO OUR
TOY DEPT.

THOMPSON BROS.

WE STILL
HAVE
TOYS
BUT
YOU DON'T
WANT TO
WAIT TOO
LATE.

COME IN TODAY!

We Give & Redeem
Gold Bond Stamps

"Let's Talk Memphis . . . Cotton
Capital of the Panhandle"



Question:
Is Lone Star doing everything it can to hold down costs?

Answer:
Yes!

We're operating more efficiently than ever before. But our costs are going up none the less . . . just like yours.

For instance, the interest rates on money we have to borrow for constructing new gas supply systems have increased dramatically. These rates have recently been at all time highs.

Within the last 18 months, we have invested nearly \$100 million:

- to build a large diameter, 400-mile pipeline from West Texas to the Dallas-Ft. Worth area,
- for other facilities along this pipeline,
- to attach major new reserves and
- to pay for well drilling by producers . . . all for the purpose of assuring continuing natural gas supplies to our customers.

These investments don't even include the cost of all the gas we must buy to fill the line. In 1960, natural gas

cost us about 19 cents per thousand cubic feet.

Recently we paid more than 85 cents for major new supplies. And the price is still rising.

Costs like these are the price Lone Star must pay for your continuing natural gas supplies. It's important that you understand our need for adequate rates so we can continue to deliver clean gas energy to your home for winters to come.

We're doing everything possible to hold down controllable costs. But even with gradual rate increases, natural gas from Lone Star will still be your most economical and efficient non-polluting fuel.

Lone Star Gas

Clean Energy for Today and Tomorrow

From The Chamber Corner

Voting ballots and a one page summary of the activities for this past year have been mailed out to each chamber member. Each member will cast four votes for four members to serve a three year term as director. This year's retiring directors are: Dick Fowler, Bob Hutcherson, Coy Miller, and Jim Markgraf. These men have done a wonderful job and have spent many long hours serving in this position of community service and leadership. Remaining directors are: John Kehr, Danny Scarbrough, Andy Gardenhire, and Johnny Farnsworth with one year terms; also Larry Parks, Frank B. Foxhall, John Lemons, and Bill Crain with two year terms. Encourage these people along with other community leaders to unite and work for a better and more active Chamber of Commerce.

The Chamber of Commerce is a purely non-profit corporation independent of any government, city, county, or state, organized to promote the progress and betterment of this community.

We want to remind everyone of the rental housing survey on the left bottom corner of the last page of last week's Democrat. We encourage everyone to answer the questionnaire and return to either bank in Memphis or the Chamber office. Deadline for this survey is Friday, Dec. 14th. This information will be compiled and used to forecast the practicality of a possible rental housing project in Memphis. Again, the informer will not be obligated in any way with the questionnaire, and all personal information will be held in confidence.

Voting ballots for four new directors should be sent in before Friday, Dec. 21st.

Santa Claus will be in the Hall County Courthouse again this weekend on Friday and Saturday evenings. Children from all over the surrounding area are invited to visit Santa. He will pass out candy canes. Letters to Santa for the Democrat's publication will be accepted at the courthouse during Santa's visit.

Last weeks helpers were: Syvilla Lemons, Jo Carmon, Myrtle Helm, Verna Lee Simpson, James Hansard, Jerry Burleson, Charles Walker, and Jim Wines. Next week Coy Miller will be in charge of arrangements for Santa's visit.

We have noticed several individuals who are decorating for Christmas, and we certainly welcome this. Some of the homes that were noticed early this past week were the homes of: Danny Scarbrough, Mrs. Henry Hayes, Buster McQueen, Larry Parks, Tom Posey and J. F. Neels.

The downtown section of Memphis has a variety of store decorations and some of these decorations are at: First State Bank, J. L.'s Western Wear, Greens, Sears, Branigan's, The First National Bank, and Baeme Fence

and Iron. These merchants along with the other downtown stores invite you to shop with them for your Christmas gifts. All of these stores are extending beautiful gift wrapping and have increased their stock to serve you better.

The atmosphere within Memphis is really great. People are alive and active, business is good, and the cotton harvest is excellent. Rev. Tom Posey said that we can thank the community leaders and members of the Chamber for the good business and activity in the community, but we can only thank God for the wonderful cotton crop this year.

Our churches and their pastors can also be given a lot of credit for the progress of this community. The church and its activity is the backbone of any community and its people. We are thankful for the churches and their pastors with their hard work and dedication to the people of Memphis.

Courty agent, Warren Mitchell invites everyone to the Income Tax education program this next Thursday, Dec. 20th with talks of various income tax procedures. New laws will be discussed at the Thursday meeting in the community center. The public is invited to attend.

Don Curl, administrator of Hall County Hospital and Chamber member, has been doing an excellent job with our fine hospital. The people of Hall County can be very proud of this facility, and its success of operation has been

made by its administrator, Don Curl. Don is active in many civic programs, and we appreciate his support for a better community through the Memphis Chamber of Commerce.

Everyone who would like to sing in the community choir for the Ministerial Alliance Christmas Program on Friday and Saturday evenings Dec. 21 and 22, should contact Gary Brogden at the First Baptist Church, or Charles Baker at the Travis Baptist Church. All youth and adults are invited to participate in the program which will be on the Courthouse lawn at 6:30 p. m. each evening.

Mrs. Henry Scott has returned home after spending 10 days in Fort Worth, Arlington and Everman where she visited relatives and friends. She went to Arlington to attend the wedding of her grandson, Robert Tension, son of Mr. and Mrs. C. E. Tension, and Miss Gloria Wile of Odessa. The couple were married in the First Baptist Church in Arlington on Dec. 8.

Lakeview P. T. O. To Meet Monday December 17

The Lakeview P. T. O. is scheduled to meet Monday, Dec. 17, in the afternoon rather than at their regularly scheduled meeting time. The meeting will be held at 2:00 p. m. in the Grade School auditorium.

The Lakeview grade school students will present a Christmas program. Everyone is invited to come.

Jerry Beasley's Football Team Wins District

Jerry Beasley, former Memphis resident and coach of the Needville Eight Grade football team, notified the paper this week that his team has won the District 20AA Football Championship for 1973.

The Blue Jays compiled a record of five wins, no losses, and one tie, while scoring 120 points and giving up only six points. The district championship was decided in the last game of the season with Needville scoring an 8-6 victory over previously undefeated Alief.

Jerry is the son of Mr. and Mrs. M. A. Beasley of Memphis and has been coaching at Needville since 1970.

Memphis Teams Are In Tour. At Wellington

Memphis varsity teams compete this weekend in the Wellington tournament playing opening round games today against Shamrock girls and Samnorwood boys. The girls game begins at 12 noon and the boys begin at 1:30 p. m. today.

The Memphis junior varsity boys are playing in the Childress JV tournament and are scheduled to meet Hollis JVs at 5:45 p. m. today. Should the local team win this game, they will play the winner of the Quannah JVs-Childress Freshmen at 7 o'clock tomorrow night. Shamrock, Seymour, Childress B and Wellington are the other four teams in this

tournament.

The Wellington tournament for the varsity teams teams will be a real tough one, considering the competition.

If the Memphis boys defeat Samnorwood they will go against the winner of the Paducah-Shamrock game Friday afternoon. Paducah has downed Memphis twice this season and is presently favored in the tournament.

Quannah, Clarendon, Quail and Wellington are seeded in the portion of the boys bracket. One of these four teams will win the finals.

The Cyclonettes will play Shamrock, and if they win one they play the winner of Quail-Wellington game at 7:00 tomorrow night. Losers play 12 noon Friday. Hedley, Clarendon, Paducah and Samnorwood are competing in the top portion of the bracket.

Thank You

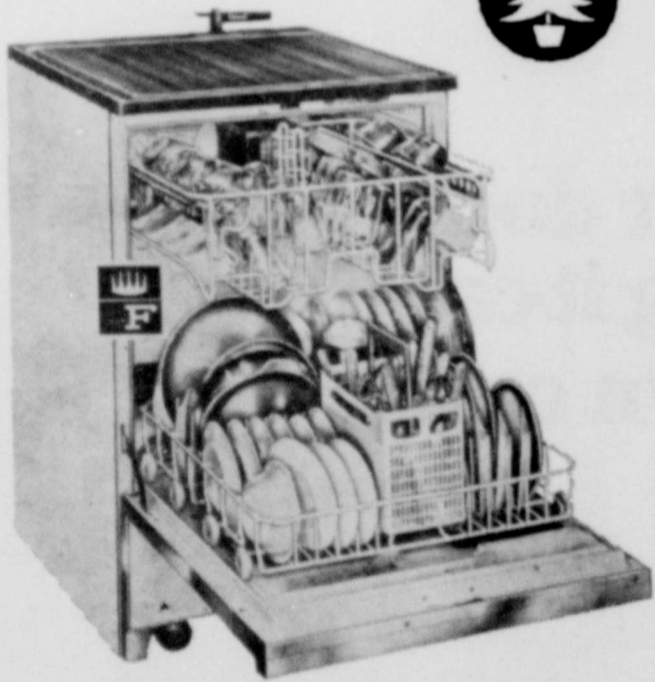
Effective immediately, I have sold my Barber Shop to Charles Walker, who will continue to operate the firm.

I want to thank all my friends and customers for their patronage. I will be engaged in other business activities and will continue to make Memphis our home.

Thank you again,
Jim Goldston

ANCHOR PAINT
For Inside and Out
Paints Start at —
\$3.39 per gal.
DIXON'S
120 S. 5th St.

Give a gift
Mom can
enjoy
for years
to come



A convertible FRIGIDAIRE DISHWASHER

She'll like these outstanding features:

- Vinyl covered racks roll all the way out for loading, plus vinyl cushion coating for dish protection and quietness.
- Automatic dual detergent dispensers, plus "spots-away" rinse injector.
- Quick, easy hook-up on convertible dishwashers. Connects to hot water faucet in seconds with snap-on, snap-off pressure relief connectors. A bypass lets you use the faucet while the dishwasher is hooked up.
- Frigidaire offers mobility and usability... plus it converts to under-the-counter installation with an optional kit.

West Texas Utilities Company
An Equal Opportunity Employer

Conserve & Save... use energy wisely!

THRIFTWAY

CHRISTMAS COOKING STARTS AT THRIFTWAY

<p>FOOD STAMPS</p> <p>Chick's Choice GILLETTE BRONZE RIGHT GUARD 10c OFF LABEL 4-oz. CAN 69c</p>	<p>USDA CHOICE STEAK SALE FULL CUT BONE-IN ROUND STEAK \$1.19</p>	<p>SHURFRESH CANNED HAM 3-LB. CAN \$4.29</p>
<p>CRISCO 3-LB. CAN \$1.19</p>	<p>MIRACLE WHIP 32-oz. JAR 79c</p>	<p>CUDAHY CHUCK WAGON THICK SLICED BACON 2-LB. PKG. \$1.79</p>
<p>GLADIOLA FLOUR 10-LB. BAG \$1.69</p>	<p>ELLIS PECANS HALVES OR PIECES 6-oz. PKG. 79c</p>	<p>CUDAHY BAR-S PURE PORK ROLL SAUSAGE 1-LB. 98c</p>
<p>MARYLAND CLUB COFFEE WITH COUPON 1-LB. CAN 79c</p>	<p>SCOTT FAMILY PAK ASST. BATHROOM TISSUE 4-BOLL. PKG. 39c</p>	<p>"MIX OR MATCH" CUDAHY BAR-S, PICKLE & PIMENTO LOAF, LUNCHEON LOAF, MAC. & CHEESE LUNCHEON MEATS VAC. PAK. 8-oz. PKG. 49c</p>
<p>OVEN CLEANER 16-oz. AEROSOL CAN \$1.09</p>	<p>NON-DAIRY COFFEE-MATE 16-oz. JAR 79c</p>	<p>MARYLAND CLUB COFFEE 3-LB. CAN \$2.59</p>
<p>CHARCOAL 10-LB. BAG 59c</p>	<p>SNACK CRACKERS 55c</p>	<p>DROMEDARY DATES 16 Oz. 59c</p>
<p>Farm Fresh Produce</p> <p>EXTRA FANCY RED ROME POLY BAG 3 LB. BAG 59c</p>	<p>WHITE POTATOES 10 Lb. Bag 69c</p>	<p>THRIFTWAY DAIRY Specials</p>
<p>TEXAS GREEN CABBAGE 9c</p>	<p>DETERGENT DASH 9-LB. 13-oz. BOX \$2.39</p>	<p>PILLBURY TENDERFLAKE BISCUITS SWEETMILK OR BUTTERMILK SOFT 8-oz. TUBS 29c</p>
<p>DETERGENT CASCADE FAMILY SIZE 50-oz. BOX 99c</p>	<p>CHOCOLATE FLAVOR BAKING CHIPS 12 Oz. 43c</p>	<p>ALGOL FOIL 18x25" ROLL 49c</p>
<p>THE LIVING BIBLES ADULT HARDBACK EA. \$6.99</p>	<p>THIS WEEK'S FEATURE Doverstone Dinnerware WITH \$5.00 PURCHASE SALAD/CAKE PLATE 49c</p>	<p>SHURFRESH CRACKERS 3 16-oz. BOXES \$1.00</p>
<p>TEENAGE PAPER BACK EA. \$4.88</p>	<p>FAMILY CIRCLE CREWEL KITS EACH \$2.88</p>	<p>PHILADELPHIA CREAM CHEESE 8-oz. PKG. 49c</p>
<p>CHILDRENS EA. \$3.88</p>	<p>NORTHERN 3 CONTROL HEATING PADS EACH \$3.77</p>	<p>MURSEY ELECTRIC BAKER BROILER EACH \$16.88</p>
<p> </p>	<p>MIRRO ELECTRIC CORN POPPER EACH \$7.99</p>	<p> </p>

Davis & Scott Thriftway

First State Bank Invites Children to Visit Santa

Cockrell, president of the State Bank, announced this morning that the bank will hold its Santa Claus Day on Wednesday, Dec. 19. Children of the area are invited to come in between the hours of 9 a. m. to 12 noon on Wednesday and visit with Santa Claus. While there the children will have their pictures taken with Santa Claus and talk with him personally. This is a treat for us and we will visit our bank on Wednesday morning," Mr. Cockrell said.

Living recently in the W. M. Mack, Jr. home were Mrs. E. Short and Robin of Tahoka, Short and Merle Kilpatrick, S. U. students, and Mrs. Stovall of Kress.

Let's Talk Memphis!

Discover the comfort

of a **LENNOX** heating system

Clean, quiet, efficient, dependable. For a great discovery in your home comfort call today

Messer Electric
Phone 259-3329

Cottonland Left Unprotected Is Erosion Prone

Cottonland left unprotected after cotton harvest leaves land very susceptible to wind erosion, according to David Seitz of Soil Conservation Service.

Due to the dry soil surface and absence of crop residues and cloddiness, Seitz believes that Hall County is more susceptible to "dust-bowl" type conditions than in several years.

Over 120,000 acres of cottonland in Hall County will need protection to prevent wind erosion this winter. The county's other 116,000 acres of cropland has ample cover of high residue crops and cover crops to prevent soil damage.

Seitz continued that the use of cotton burs at a rate of three tons per acre has proven very successful in preventing wind erosion.

Emergency tillage which is normally used to roughen fields to prevent wind erosion already has been much curtailed by the fuel shortage.



CRADLE ROLL CALL

Robert Dwayne Daniel was born Dec. 8, to Mr. and Mrs. Royce Van Daniel of Chillicothe.

Mr. and Mrs. Billy Allen Combs are proud to announce the arrival of a son, Joel Lee Combs, born Dec. 8. Joel weighed 7 lbs. and 6 oz. The Maternal grandparents are Mr. and Mrs. Lester Grimes, and the Paternal grandmother is Mrs. Herschel Combs.

Phillip Joe Whitten, son of Mr. and Mrs. Lonnie Joe Whitten Jr. of Wellington, was born Dec. 10. He weighed 10 lbs.



RUNNING FOR CONGRESS—Pictured above is Ray Ruffin, Democratic candidate for U. S. House of Representatives, 13th Congressional District. Mr. Ruffin kicked off his campaign last summer and was in Memphis recently speaking before the Memphis Lions Club. He spoke on the energy crisis and said he favors "helping America first". He said he is limiting his campaign contributions to \$100 per donation. His headquarters is in Amarillo.

Estelline School To Comply With Energy Program

In a regular board meeting Monday evening, the Estelline School Board voted to comply with the Governor's energy saving

program, Supt. Chester Cunningham said this week.

Supt. Cunningham said the board voted to adjust the Estelline school classes and school day for the purpose of conserving energy during the months of January, February and March, 1974, and that the adjustments be made according to the following criteria:

1. That one or more classes be reduced in time to a minimum of not less than 45 minutes in secondary school and on a pro rata basis in elementary school.
2. That the school classes be held between the hours of 8:20 a. m. to 2:30 p. m. central standard time or 9:20 a. m. to 3:30 p.

Hospital News

Discharged

Lee Wheeler, Cynthia Boney, William Mendenhall, Joadynne Lane, Daisey White, Clyde Fowler, Zuretta McQueen, Tressie Paris, Jimmy Shamlin, Jennie Stone, Ruby Martinez, Ellen Marcgraf, Belinda Stone, Cora Williams, Bonnie Waddell, Mary Beck, Newton Evans, Effie Moore, James Diggs, Pauline Ruiz, Grace Richerson, Florence Whitehorn, Diana Freitag, Clara Pritchett, Hill Wells, Ruby Howard, Charlie Wines, Vicki Hightower, Jimmie Stanford, E. S. Johnson, Billy Jackson, and Shanna Degam.

Patients

Debera Whitten, Jimmie Stanford, Nannie Newsome, Ike Rains, Kathy Davis, W. D. Stewart, Tom Beck, Alice Mitchell, Vickie Doss, Minnie Anderson, William Lucas, Matilda Eddleman, Brode Hoover, George Stone, Mark Hutcherson, Ester Wynn, Fannie Harris, Nora Smith, Lina Young, Charlie Hearn, Grace Monzingo, and Tom Ariola.

m. daylight saving time. The Estelline school will be closed on extremely cold days during January, February and March, 1974 All days in excess of five days will be made up.

The Governor's eight point program includes the following: A 15% reduction in energy consumption; set all thermostats at 68 degrees during cold weather and at 78 degree during warm weather, with the 76 degree variation for areas of high humidity; recede the setting of all thermostats to 65 degrees at half hour prior to the departure of students from a building and reset the thermostats to 68 degrees one hour prior to the arrival of students in the mornings.

Schedule for the months of January, February and March classes to end at 2:30 p. m. for all students (3:30 p. m. Daylight Saving Time.)

Schedule all student activities to the extent possible, including athletic events, in the afternoon during the months of January, February and March.

Turn off all unnecessary lighting; close off and reduce heat to a minimum in all portions of buildings not necessary to the instructional program.

Also during the session, Irma Lee Pepper was hired as Tax Assessor for 1974 and a kindergarten program to begin at mid-term was approved.

DeVile Restaurant

Monday	Thursday
Mexican Food Special	Salad
Meat Enchiladas, Spanish	Golden Brown Fried
Rice, Re-Fried Beans	Chicken, French Fried
Toast Tadaas, Chili, Macha	Potatoes, Cream Gravy
All You Can Eat	All You Can Eat
\$1.40	\$1.40
Tuesday	Friday
Salad	Big Fish Fry
Stewed Chicken, W/Butter	Hush Puppies, Tarter
Dumplings, The Best You	Sauce
Have Ever Eaten.	All You Can Eat
All You Can Eat	\$1.40
\$1.40	
Wednesday	Saturday
Real Italian Spaghetti	Mexican Food
W/ Rich Meat Sauce	Meat Enchiladas
Assorted Breads	Spanish Rice, Re-Fried
All You Can Eat	Beans, Toast Tadas, Chili
\$1.40	Macha — All You Can Eat
	\$1.40

All the above Budget Priced, Will Be Served Buffet Style, Every Day 11 A. M. until 9 P. M. Every One Is Invited to Try Our Budget Priced Menu. You Will Be Pleased.

SUNDAY BUFFET \$2.00

Choice of Six Salads, Four Meats, Three Vegetables, Five Desserts, Hot Rolls, Coffee or Tea.
Child's Plate (7 Years or Under) 1.25

Let Us Bake Your Pies and Cakes and Your Turkey & Hams For The Holidays
The Marshalls

GIFT SHOP NOW and SAVE!

On Morning Glory Mattresses and Box Springs

Posture Firm Set	Reg. \$109.95 Each Piece
Mattress and Spring	Now \$99.95 Each Piece
Champion Set	Reg. \$89.95 Each Piece
Mattress and Spring	Now \$79.95 Each Piece
Southern Living Set	Reg. \$79.95 Each Piece
Mattress and Springs	Now \$69.95 Each Piece
Good Niter Set	Reg. \$59.95 Each Piece
Mattress and Spring	Now \$49.95 Each Piece

John Lemons Furniture

Under New Ownership

Jackie Blum
Owner & Operator

Store Hours: Weekdays 7 a. m. to 9 p. m.
Sundays 12 noon to 6 p. m.

BANITA Tuna	3 FOR 98c	CLOVER LAKE Butter Milk	1/2 GAL. 65c
HUNTS, 2 1/2 Size Can Peaches	2 FOR 79c	FRESH PRODUCE	
HUNTS, 14 Oz. Catsup	3 FOR 79c	NAVELS Oranges	LB. 21c
DEL MONTE, 1 1/2 Size Can Pineapple	3 FOR 98c	RED DELICIOUS Apples	LB. 27c
FAB	5 Lb. 4 Oz. \$1.19	BAG Carrots	17c
TERI Towels	2 FOR 79c	YELLOW Onions	LB. 12c
GEBHARTS, 1 1/2 Size Can Chili with Beans	2 FOR 69c	MEATS	
MRS. TUCKER'S Shortening	3 LBS. 1.09	LB. Beef Ribs	49c
		LB. Club Sterk	89c

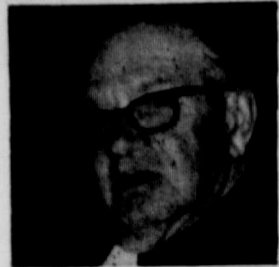
Memphis City Grocery

DOUBLE STAMP DAY - WEDNESDAYS



B. B. Shots

By BYRON BALDWIN



I had heard the name of Dr. Earl Gilmore, who is the head of the Science and Chemistry department in Amarillo College, and I found out a few days ago from Gene Lindsey that he was an offspring of our Hall County Gilmore family, who were early day residents of Turkey, Texas. Dr. and Mrs. Gilmore moved from Robertson County to Hall County at Turkey in 1909, where for sometime he was the only M. D. in that area. He made house calls traveling by horse and buggy in all kinds of weather. We have a photograph of Dr. Gilmore in his buggy with the gray mares hitched to it ready to travel. Dr. and Mrs. Gilmore had 4 sons and one daughter. Lee, Bailey and Carl are now deceased. Floyd and the one daughter, Pauline, are living at Turkey, where Floyd has operated a drugstore for a number of years. Dr. Ernest is the son of the late Lee Gilmore, who taught in public schools several years, before teaching at West Texas State. I remember that Lee wore a size 7 3/4 hat, and we usually had to make a special order for that size. Carl taught school for several years and Baily served as Hall County Tax assessor and collector, and was also in the

Whole-sale oil business. We like to keep up with our Hall County people. Lee Gilmore had one daughter, Helen, who is now living in Amarillo, Texas.

Mr. and Mrs. Cecil Stargel and Mr. and Mrs. Olton Pate must have written the same kind of letter to Santa Claus. Both of these couples have already received their Christmas gifts early, and it is something new to both of these families, as they have never had a gift like this before, (a daughter-in-law). The Stargel gift was out of Houston, and the Pate gift happened to be a Tennessee Belle.

Mr. and Mrs. Ben Parks donated a picture to Hall County Heritage Hall the past week. It is a historical picture painted by Clifford Farmer. It shows the last railroad Steam engine at the water tank filling up for the last run.

Mr. and Mrs. J. F. Neal bought new decorations this year for the outside of their home. They bought them before the energy crises was brought about. I would be tempted to turn the lights on for a short time with the 3 feet



CLASSIC—Cottonchintz gives fresh interpretation to the classic school dress for 1973. Styled with contrasting collar and cuffs, the long-sleeved dress swirls with a gathered skirt in a lively patchwork print. By Tiny Town.

Wendell left Atlanta, Ga. on Saturday night at 8:25 and Sunday morning at 2 a. m. he was in his own home.

Today's best laugh: Maek McGinnis reports on a very expensive perfume, it is called "Night In Arabia" and it smells like gasoline.

Mr. and Mrs. Durwood (Wimpy) Jones of Amarillo were visitors in Heritage Hall the past week. Wimpy will be remembered as the son of the late Mr. and Mrs. Wilbur Jones, who were residents of Memphis several years. Wimpy graduated from M. H. S. in 1933. He was the middle son of the Jones family. He remembered wor King for Waples-Platter Wholesale Co., the Farmers Union Store, and Hank Hankins in Memphis before moving to Amarillo in 1945, where he worked for Waples Platter until 1949. He has been working in the Amarillo Post Office since 1952. Wimpy married a Quanah girl in 1945. She was Miss Maydelle Butler, daughter of Mr. and Mrs. Oscar Butler. One of her brothers, A. J. Butler, worked for Hank Hankins in Memphis. Madelle graduated from Quanah High School in 1940. Wimpy and Madelle have 2 sons, 2 daughters, and 4 grandchildren. Wimpy is the brother of Elwanda who recently lost her husband in New York.

tall letters over the front porch reading "HOLIDAY GREETINGS".

I had the impression for many years that Georgia Tech was not a co-ed college until recent years. I thought I was wrong about this when I heard the conversation of Ed Foxhall and Wendell Harrison, reminiscing over their coffee cups. Wendell recently attended the homecoming of this college at Atlanta Georgia. Wendell was giving Ed the low down on some of the class mates he and Ed had when they attended college about 20 years ago. The reason I thought it could have been co-ed at that time was because I did not hear them mention many boys names; but I did hear them speak of Carolyn, Eunice, Mary, Patricia, Dot, Hortense, & others. I found out later in the conversation that these girls were not students in Georgia Tech, but were friends they had met on weekends at the spring street singing or some other social event. When these two young men were attending this school it would take 2 days to make the trip one way. In this fast age,

Other visitors in Heritage Hall were: Mr. D. R. Kelley of Littlefield, and Mr. and Mrs. Oscar Allen, who recently moved from New Mexico to Memphis. They were reared in Cottle and Baylor County, and have made their home at Lovington for a number of years. They have 5 children scattered from New York to Alaska. I asked them why they retired in Memphis and they said: "It is because we like the people here".

I had a short visit a few days ago with C. B. Downey of Lubbock. He formerly lived in Memphis where he worked for Hollis Boren for 20 years. He has been working for Bill Boren in Lubbock for the past 2 years.

While visiting the hospital a few days ago, Don Curl showed me a new piece of equipment they had just received. This is an x-ray developer. You insert the x-ray film, and in one minute it is developed. Our hospital board



SNAPPY—Cotton corduroy calls the fashion signals this fall. Here it's used for a zip-front short-sleeved jacket that tops off a long-sleeved turtleneck and plaid cotton skirt. Outfit by Girltown.

seems to keep in time with other operations.

Another fast operation I heard of last week was that there was a cotton trailer at one of the gins that was 40 ft. long and would hold 12 bales of cotton. That is getting it out by the dozen.

While visiting in our local hospital. I met Ike Rains, and I asked him if he was born in Hedley, and he replied: "I was born before Hedley at Rowe, Texas, a short distance from where Hedley was later born."

I have a habit of getting brother's name called wrong, even my own. Over the years I have known Paul and Gladys Montgomery's quadruplets, and I have continued to call them wrong.

CARE
FOR THOSE YOU LOVE
Cousins Home, Inc
520 North 18th St.
Phone 259-2767
Memphis, Texas

Last week I reported on their long hog operation, and I used Mike's name when in reality I was talking to Lacy. Since Jack Montgomery has grown up so tall I have trouble getting the triplets called the right name.

There are several people who belong to the Post office club that meet there about the same time each morning to get their mail. Most of us speak to each other by the right name, so they will be properly identified and will know what their name is when asking for their mail. One of these members, Stella Garrett, was telling me that the cotton was all out on her place. A few hours later I met Stella coming out of one of the local stores with Christmas decorations and she made the statement that after hearing of her good crop, she was throwing away some of her old decorations

and getting new ones. The good crops in Hall County are causing the cash register to sing, "When The Cash Register Comes In". This makes the merchants with a smile as they should be catching to everyone we have so much to be thankful for in our country this year.

If you have trouble finding a gift for an older person in the 70's, I think a combination of Bufferin, Vitamins, Bengay, Milk of Magnesia with Aspirin, Seltzer, would make a practical useful gift, with pads.

I had the pleasure of visiting for a short time last Friday Rev. David Hamlin of Littlefield, Texas. He will be remembered here as pastor of the First Methodist Church.

(Continued on Page 9)

MOST USED TEXAS REFERENCE TEXAS ALMANAC 1974-75 EDITION



Most used Texas Reference in the office, home or classroom. Recognized for more than a century as "THE AUTHORITY" on Texas Covers History, Government, Agriculture, Business, Education, Weather and all Texas subject matter from A to Z. A compact reference book, THE TEXAS ALMANAC, like having a whole library on Texas in a single volume.

ON SALE NOW AT NEWSSTANDS, BOOK STORES, DRUG STORES AND WHEREVER BOOKS ARE SOLD

ORDER FROM
The Dallas Morning News
THE TEXAS ALMANAC DIVISION
THE DALLAS MORNING NEWS COMMUNICATIONS CENTER
DALLAS, TEXAS 75202

Please send to:
NAME _____
STREET NO. _____
CITY, STATE, ZIP _____

Enclosed is remittance in the amount of \$ _____ covering:
—Copies Paperbound at \$2.50 per copy
—Copies Hardbound at \$3.00 per copy
Mail prices include tax, packaging and postage

Christmas Sale

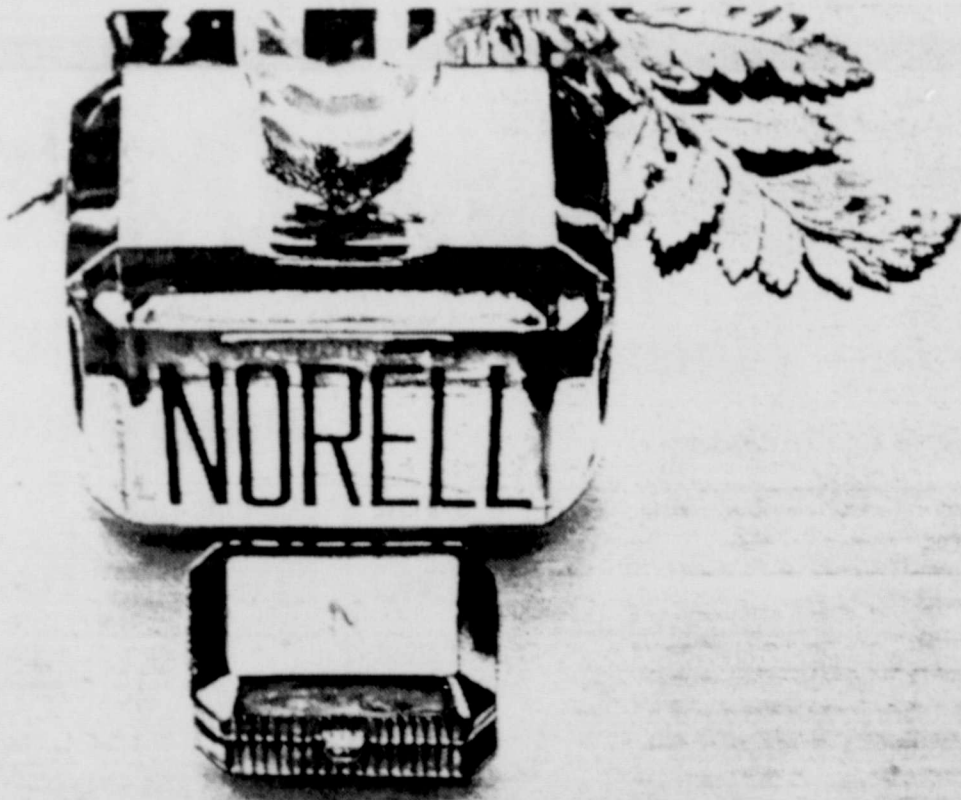
Handmade gifts; quilts (large, small); throw pillows; decorative pillow cases; novelties; doll furniture, and many miscellaneous items.

I will have pies, cakes, and cookies ready for your Christmas needs.

"Thanks, for your past support in your baking needs!"

Mrs. Paul Blevins

910 Montgomery St.
Dial 259-3056



One great Norell leads to another.

Get an elegant gold-tone pill-box filled to the brim with solid-concentrate Norell, the first great perfume born in America. 1.8 of an ounce of the famous fragrance, plus the jewel of a pill-box—a total \$21.00 value—for only \$4.00 with any purchase of Norell.



Send my gold-tone pill-box of Norell solid perfume, 1/8 ounce, \$4.00 (worth \$21.00) ... with the following Norell:

- | | |
|--|---|
| NORELL PERFUME. | NORELL COLOGNE. |
| <input type="checkbox"/> 1/4 ounce, 16.50 | <input type="checkbox"/> 2 1/4 ounces, 9.00 |
| <input type="checkbox"/> 1/2 ounce, 30.00 | <input type="checkbox"/> 4 ounces, 14.00 |
| <input type="checkbox"/> 1 ounce, 50.00 | <input type="checkbox"/> Spray Cologne, 2 1/2 ounces, 10.00 |
| NORELL PURSE PERFUMES. | NORELL FOR THE BATH. |
| <input type="checkbox"/> Perfume In A Pot, 1/8 ounce, 6.50 | <input type="checkbox"/> Perfumed Bathing Oils, 15.00 |
| <input type="checkbox"/> Perfume Roll-On, 1/5 ounce, 7.50 | <input type="checkbox"/> Perfumed Milk Bath, 12.50 |
| <input type="checkbox"/> Perfume Spray for the Purse, 1/5 ounce, 15.00 | <input type="checkbox"/> Perfumed Bath Soap, 9 Bars, 7.50 |
| <input type="checkbox"/> Refill, 1.5 ounce, 8.50 | <input type="checkbox"/> Perfumed Bath Powder, 10.00 |
| | <input type="checkbox"/> Perfumed Body Lustr., 8.50 |

Name _____
Address _____
City _____ State _____ Zip _____

Check or Money Order Charge Charge Account No.

Please add local taxes for all deliveries outside our area, and 75¢ handling charge.

Lockhart Pharmacy

Need A Christmas Tree? COME IN TODAY AS OUR SUPPLY IS LIMITED

2' GREEN PINE TABLE	1.99
4' GREEN SCOTCH PINE	8.22
6' GREEN SCOTCH PINE	13.97
7' GREEN SCOTCH PINE	21.50
7 1/2' SCOTCH PINE MOSS GREEN	28.95



Home Decorations:

CANDLES, CANDLE RINGS, TREE SKIRTS, NATIVE SCENES, MUSICAL CENTER PIECES, TREE TRIMMING ... THE ABOVE ARE JUST A SAMPLE OF WHAT YOU CAN FIND AT OUR STORE!

Thompson Bros. Co. True Value HARDWARE STORE

—WE GIVE AND REDEEM GOLD BOND STAMPS—

"Let's Talk Memphis Cotton Capital Of The Panhandle"

Shots

from Joy saying: "There is a lot to see in New Orleans, but I almost envy people who get to live in Memphis, Texas".

Another card from Becky and Ed Dyer of Atlanta, Ga. came with the note that said they would like to see Texas. Becky will be remembered as Becky Parker, daughter of Mr. and Mrs. Kenneth Parker, now of Haskell, Texas. They were former residents of Memphis. We appreciate the feeling of people who have moved away and still have love in their hearts for Memphis, Hall County and Texas.

In reading a daily paper I found a story from the Seattle Post classified section: "Since you left me my heart has felt a great loss. The house seems darker than ever before. No one to talk to at mealtime, the warmth that greeted me on coming home is no longer there. Never had I realized how lonely life could be. Knowing how much this has hurt me, Please stop my suffering and send the T. V. back." (signed) Rick.

Many of you will remember Gloria Swanson the famous actress, with her broad-brimmed hat. She is now age 74. The Los Angeles City council has cited her as "A Fabulous Living Legend". They honored her for "her unique ability & skill to successfully span the generations of change and for the genuine pleasure and entertainment she has brought millions of people all over the world."

I noticed in the daily paper a few weeks ago where the peace prize money had been awarded to Mr. Kissinger. I have continued to read the papers looking for headlines telling where there is peace, and so far I cannot find it. We better keep praying and singing, "Peace on Earth Good Will Toward Men".

There is one bird that flies around at all hours and seasons of the year. I guess this bird does not ever have a day off for Christmas. This bird was seen flying about over the west part of town a few days ago with a Memphis "Democrat" with headlines "SEASONS GREETINGS". With jingle bells ringing he dipped down over the Billy Comb's residence trying to give a sign of something to happen. From the manner of this bird I would predict that the Combs family will

have a real live Christmas doll that takes the bottle, wets, cries, and laughs. Our best wishes to this family.

A quote from R. Hull: "He who trims himself to suit everybody will soon whittle himself away".

"Unhappiness is not knowing what we want, and killing ourselves to get it."

A quote from D. Herold: "Babies are such a nice way to start people."

Mrs. E. H. Stanford Breaks Hip Wed. December, 5

Mrs. E. H. Stanford fell last Wednesday and broke her hip. She was rushed to Anarillo and surgery was done Thursday morning. She was returned to Hall County Hospital Monday morning and is doing as well as can be expected.

"Let's Talk Memphis"

ADA In County Schools Show Steady Climb

Hall County school's "average daily attendance", the figure the county's schools receive state aid upon, has been steadily climbing this decade, according to figures released by County Superintendent Tops Gilreath.

Naturally, ADA figures for the 1973-74 school year are not complete.

Beginning with the 1969-70 school year, Memphis, Lakeview, Estelline and Turkey school districts had a combined ADA of 1,195.57 students. During the 1970-71 year the figure rose to 1,291.20. The figure for 1971-72 was 1,265.86 and for 1972-73 it was 1,416.00.

Enrollment in the present four school districts, however, is uncomparable since Turkey district is now combined, figure-wise with Quitaque district but the total enrollment in Memphis, Lakeview, Estelline and Valley Schools total 1,581.

This year, enrollment in Estel-

Memphis Democrat—Thurs., Dec. 13, 1973 Page 9

line is 129, in Lakeview 161, Valley 479 and Memphis 812, according to figures released by the County School Superintendent.

Public Invited To Meeting on Income Tax Dec. 20

Warren Mitchell, Hall County Extension Agent, has arranged to have Mr. Norman Brints, Extension Area Economist-Management of Vernon, to be at the Memphis Community Center at 7:00 P. M. on December 20 to hold a meeting on income tax.

"There has been a number of changes in income tax laws this year," said the county agent. "This will be an open meeting for anyone who needs assistance in understanding the changes in the laws. I realize this is a busy time but in order that farmers, ranchers and the general public benefit the most from a meeting on this subject, it is necessary to have it at this time to more efficiently help individuals compile records for the purpose of estimating income tax to be paid for the year 1973."

Mr. Brints will discuss: 1—Tax

Management Tips for the End of the Year, 1973; 2—Deferred Sales; and 3—How to Handle the Cancelled Drought Relief Loans.

Mr. Mitchell stated that Mr. Brints would like to have a good question and answer session in order to help individuals save tax dollars.

Mr. and Mrs. Olton Pate had as weekend visitors Ronald Pate and Miss Cheryl Hill of Nashville, Tenn., Mrs. Chuck Jennings of Lubbock, and Jennifer Pate, who is a student at Texas Tech, Lubbock.

HARTMAN-BEEF

Grain-Fed Beef
Half-Fore or Hind Qt.
Phone: 447-5456
447-5660
447-5715

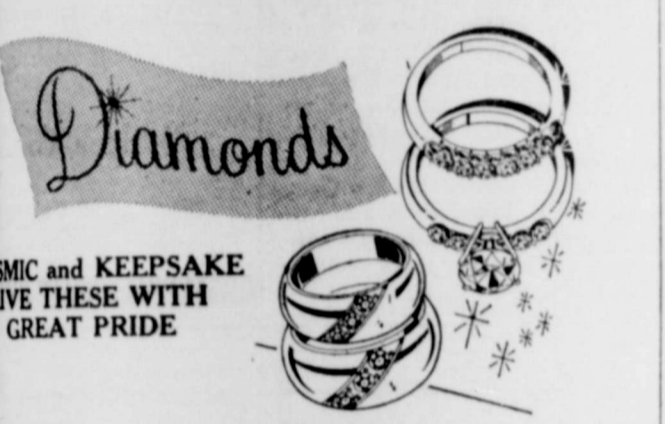
HOG MKT. Every Thurs.
9:00 to 3:00 p. m.
Phone: 447-5688
Wellington, Texas

CAMPBELL Insurance Agency
Ph. 259-3531



FINE Jewelry Gifts For CHRISTMAS

See in today and let us help you choose a gift of distinction for that loved one this Christmas!



See our supply of loose Diamonds and Mountings. You may want to have ring fashioned especially for you!



Bulova and Caravelle Watches make lovely Christmas Gift for that loved one. Come in today and make your selection!

CHECK THESE GIFT IDEAS

- Costume Jewelry
- Billfolds
- Speidel Watch Bands
- Parker Pen Sets
- Belts
- Tie Clasps
- Cuff Links

FOR THE HOME:

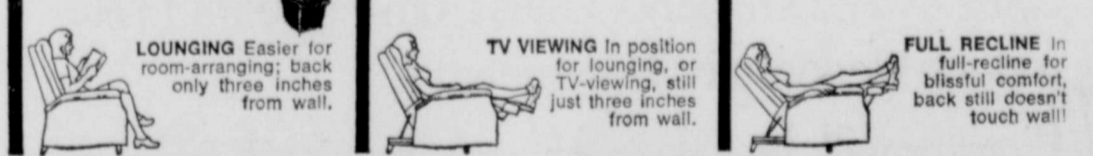
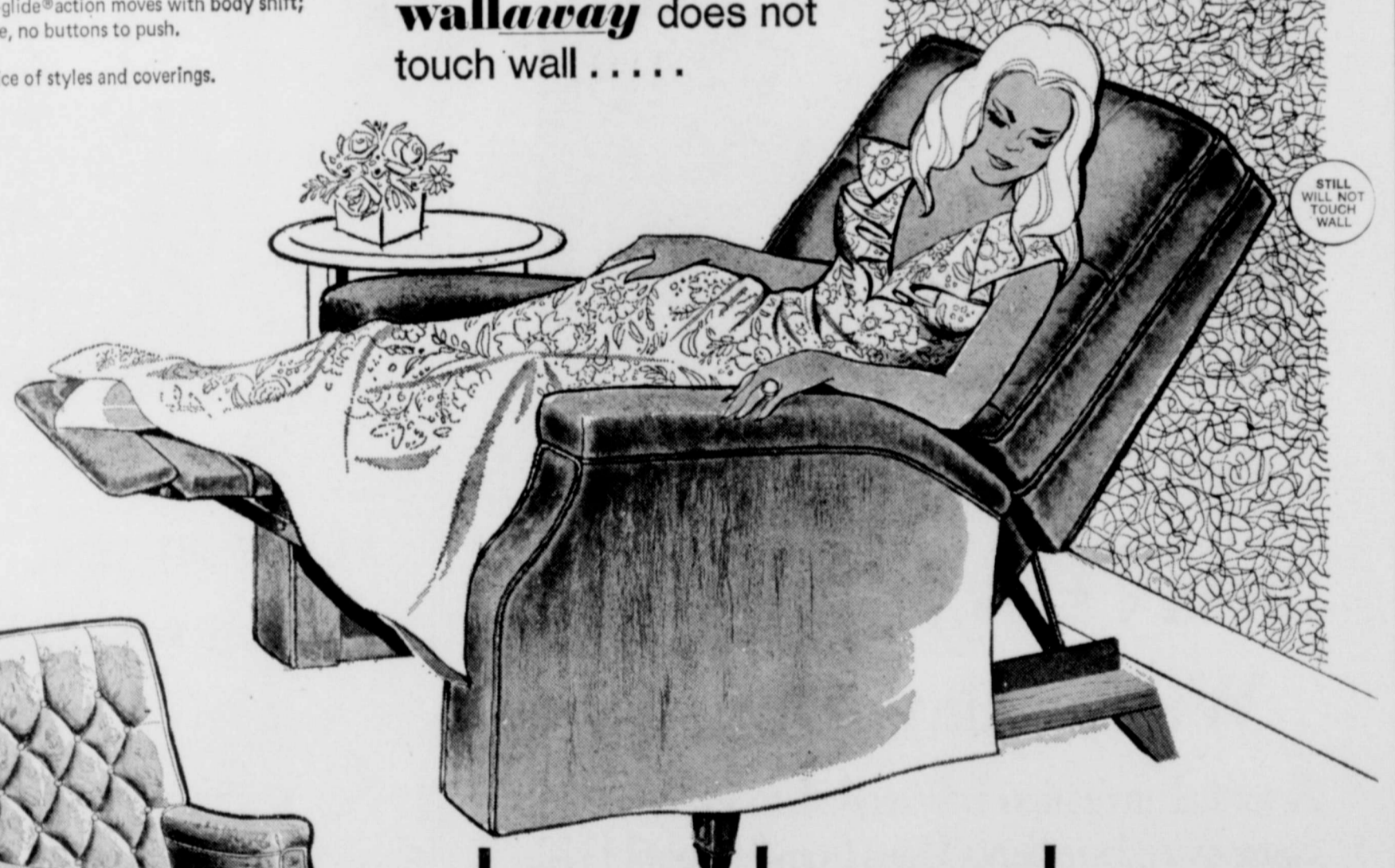
A Complete Line of
FOSTORIA CRYSTAL CHINA TABLE WARE SILVER HOLLOW WARE & DINNER WARE IN SILVER PLATE CLOCKS GIFT WARE

Branigan Jewelry
259-2023 West Side Square

PRESENTS THE
REVOLUTIONARY Berkline wallaway
SPACE-SAVER RECLINER

- ★ Doesn't have to be moved away from wall to become lounger or recliner.
- ★ Doubles as restful lounger or luxurious recliner without needing extra floor space.
- ★ A handsome, space-saving, decorator-styled chair for apartment, den, or any room in your home.
- ★ Smooth, feather-glide® action moves with body shift; no levers to move, no buttons to push.
- ★ Available in choice of styles and coverings.

Place **wallaway** **3 inches** from wall . . .
in full recline position **wallaway** does not touch wall



REMEMBER!
★ If you have room for a chair, you have room for the Berkline Wallaway recliner.
Where a regular recliner must be at least 20 inches from the wall to recline, the Wallaway needs only 3 inches. It gives maximum comfort . . . saves over three-fourths the space needed for other recliners!

Memphis Upholstery
Memphis, Texas

Cook Home Is Scene For B and PW Christmas Dinner Party Thursday

Members of the Memphis Business and Professional Women's Club enjoyed the annual Christmas Party in the home of Mrs. Edna Lee Cook on Thursday

Atalantean Club Enjoys Christmas Program Wed.

On December 5th at 3:30 p. m., the Atalantean Club met in the home of Mrs. Bob Douthit, for their Christmas program.

The Invocation was given by Mrs. Bryan Adams followed by the pledges to the flags led by Mrs. David Morris. After a short business meeting, Mrs. C. H. Murphy, Jr. introduced the program. Mrs. Robert Dagle played several Christmas selections on the piano, after which Miss Imogene King gave a talk on the "Art of Keeping Christmas". At the conclusion of the program, gifts were exchanged and refreshments served.

Those attending were: Miss Gertrude Rasco, Mrs. W. R. Scott, Mrs. W. C. Diekey, Mrs. James Davis, Mrs. Robert Dagle, Mrs. Bob Douthit, Mrs. H. B. Estes, Mrs. Henry Foster, Jr., Mrs. Raymond Hutcherson, Miss Imogene King, Mrs. C. H. Murphy, Jr., Mrs. Dub Parker, Mrs. Robert Sexauer, Mrs. Jerry Shields, Mrs. Robert Spicer, Mrs. Winifred Wilson, Mrs. Tom Atkinson, Mrs. David Morris and Mrs. Bryan Adams.

evening, Dec. 6. A delicious meal was enjoyed after which Mrs. Linda Branigan gave the Christmas story "The Night Before Christmas." To conclude the program, members sang Christmas carols.

Peggy Moreman served as Santa and distributed gifts to all present.

Enjoying the social was one guest, Mrs. Estelle Barber; and members: Sylvia Alewine, Helen Ballew, Linda Branigan, Lucile Burnett, Mollie Carlos, Edna Lee Cook, Phyllis Dale, Tops Gilreath, Betty Lemons, Wilma Leslie, Inez Mason, Peggy Moreman, Myrtle Helm and Juana Reyes.

Girl Scout Troop 163 Meets Dec. 6, In Fowler Home

Girl Scout Troop 163 met December 6, in the home of Mrs. Doyle Fowler for a Christmas party.

The girls entertained the mothers with a tea. Punch, cookies, and cake was served from the table by Kelli Fisher and Karen Davis. The girls enjoyed exchanging gifts and Doyle Fowler entertained with some magic tricks.

The following girls were in attendance: Kim Johnson, Kelli Fisher, Karen Davis, Kari Posey, Kelli Limer, Mary Alice Beasley, Sonise Maddox, Sandra Scott, Rhonda Gable, Debra Davis, Barbara Todd, Stacey Lemons, and Jackie Montgomery. These girls' mothers were also in attendance.



RECIPIENT OF INTERNSHIP—Nene Foxhall, senior journalism student at Texas Tech University, has been named recipient of a Sears Congressional internship and happily accepts it from Wendell Cherry, right, manager of the Lubbock Sears, Roebuck and Company store. Dr. Billy I. Ross, center, is chairman of the Department of Mass Communications at Texas Tech. Miss Foxhall, daughter of Mr. and Mrs. Lewis Foxhall of 900 S. 10th St., Memphis, Tex., will work in the congressional office of Rep. Edwin Forsythe of New Jersey during her three-month internship in the nation's capital.

Nene Foxhall, Tech Senior, Is Recipient of Sears Congressional Internship

LUBBOCK—Texas Tech University journalism major Nene Foxhall of Memphis, Tex., has been named recipient of a Sears Congressional internship and will spend February, March and April of 1974 in the Washington, D. C., office of Congressman Edwin Forsythe of the Sixth District of New Jersey.

Miss Foxhall, senior, daughter of Mr. and Mrs. Lewis Foxhall of 900 S. 10th St., Memphis, will complete requirements for a Bachelor of Arts degree in mass communications at the end of the

1974 summer session at Texas Tech.

A stipend of \$1,500 to cover living expenses while in Washington and travel to and from the nation's capital was delivered to Miss Foxhall by Wendell Cherry, manager of the Sears, Roebuck and Company store in Lubbock, Monday (Dec. 10).

The brief ceremony was conducted in the office of Dr. Billy I. Ross, chairman of the Department of Mass Communications. The Texas Tech recipient is scheduled to leave for Washington Feb. 1 to begin the internship Feb. 4 and she is scheduled to

return to Texas about May 1.

While working in the office of Rep. Forsythe, she also will be enrolled in a class in legislative reporting. She was one of 30 students selected for the Sears program which began in 1970.

The intern's primary responsibility is to the office in which he or she serves and to participate fully in the activity of a congressional office. The office is asked to use the intern as a working member of the staff, giving him exposure to the functions of a legislative office.

Key considerations taken into account in matching interns with congressmen include the party preference of the student, or past partisan activity.

"The selection of one of our students is a tribute to her as a scholar and to our department,"

Friendly Sewing Club Meets Tues. For X-mas Party

The Friendly Sewing Club met Tuesday afternoon in the home of Estelle Barber for a Christmas party.

Mrs. Emma Stevens lead in the opening prayer. Mrs. Myrtle Hammon presided at the meeting.

Mrs. Jean Lamb, program chairman, presented the program. Mrs. Florene Yarbrough lead in prayer, and Sabra Rice read a Christmas story (Luke 11).

Pauline Wilson read the poem "Each Christmas God Renews His Promise". Mrs. Larry Simpson told the story, "The Unexpected Christmas", and read the poem "Ready For Christmas".

Mrs. Jean Lamb gave the closing prayer. Members exchanged gifts, and hostess, Estelle Barber served a lovely plate to: Mmes. Larry Simpson, Alla Boswell, Jean Lamb, L. G. Yarbrough, Eula Moreland, Pauline Wilson, Emma Stevens, Sabra Rice, Myrtle Hammon, and Lori Beckham.

W. M. U. Of Travis Meets Tues. Dec. 11

The W. M. U. of Travis Baptist Church met Tuesday, Dec. 11 at 9:30 a. m. at the church. Mrs. Lynn B. Jones had charge of the meeting.

The names of the sick and un-saved were mentioned and remembered in prayer led by Mrs. L. G. Rasco.

Mrs. Wilburn Coffman taught the Bible Study from (John 20: 19-29), The Origin of Missions, discussing the Method for Missions sending.

Mrs. Coffman led in the closing prayer. Attending were: Mmes. Jones, Rasco, Coffman, Cap Eyars, and C. H. Davidson.

Dr. Ross said.

"We too, are pleased that one of the internships is going to a student of Texas Tech University," Cherry said. "We consider her selection an honor for her and for the Department of Mass Communications."

The entire cost of the program is borne by Sears, Roebuck and Co. as part of the company's continuing commitment to higher education, Cherry said.

Baptist Women Meet Tuesday

The Baptist Women met Tuesday, December 11 in the Baptist Church Parlor for study.

Mrs. Frank Ellis presiding the meeting. Special requests were given by Dan Lundschen led in prayer. Mrs. Nita Murphy sang, "I You".

Mrs. Byron Baldwin taught study, "Sending . . . the for Missions", using passage scripture from the book (John).

The study closed with led by Mrs. Jack Rose.

Present were: Mmes. Lundschen, Murphy, Rose, Myrtle Hammon, Adams, C. E. Voyles, J. Jarrald, H. H. Lindsey, B. Billington, Marvin Alexander, B. Rappy, Lesie Salmoe, Scott, W. M. Kilpatrick and Pycatt.

El Sombrero Cafe

U. S. 287 West (Near Cyclone Stadium)

Specializing in Mexican

Open 11 a. m. to 11 p. m.

Seven Days Each Week

Managed by

Mr. and Mrs. Noel Adams

20 years experience

Hotel Cooking

Orders To Go

Phone 259-348

PHOTOGRAPHY FOR ALL OCCASIONS
LIVING COLORS
CRYSTAL GLAZING
CUSTOM FRAMING
9:30 — 5:30 Tuesday — Saturday

Gussie Williams, Photography Studio at 820 Mendon St.

Complete Wedding Catering



Santa says visit--- SANTA'S BANK

Wednesday, Dec. 19

A cordial invitation is extended to everyone to come by and see Santa Claus from 9:00 until 12:00 o'clock Wednesday, December 19.

Pictures will be taken of each boy and girl on Santa's lap.

First State Bank

MEMBER FEDERAL DEPOSIT INSURANCE CORPORATION

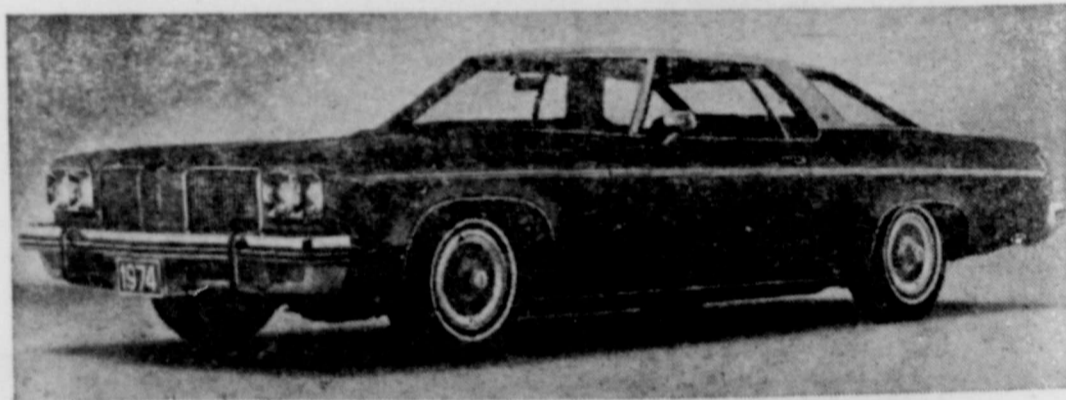
Memphis, Texas



Year - End Sale

To Reduce Our Inventory and to Give Our Customers a Savings Before

Factory Price Increases Take Effect!



NEW Delta 88 Royale By Oldsmobile

A LARGE SELECTION -

- Chevrolet Pickups & Trucks
- Chevrolet Cars
- Oldsmobile Cars

We have been notified that our next shipments from

General Motors will have factory price increases.

SO SHOP NOW! TAKE ADVANTAGE OF LOW BANK RATE FINANCING

Ward Motor Co.

Boykin Drive

Memphis

Public Notice

STATE OF TEXAS
COUNTY OF HALL
ORDINANCE NO. 461
REFUSE COLLECTION
ORDINANCE

ORDINANCE PROVIDING THE REGULATION OF THE COLLECTION OF REFUSE IN THE CITY OF MEMPHIS, TEXAS, BEING AN ORDINANCE ADOPTED FOR THE REGULATION OF THE SANITATION AND THE PUBLIC HEALTH FOR THE COLLECTION OF REFUSE WITHIN THE CITY OF MEMPHIS, TEXAS, REQUIRING ALL OWNERS, PARTS, TENANTS, LESSORS OR OTHER USERS OF PROPERTY WITHIN THE CITY OF MEMPHIS, TEXAS, TO USE RECEPTACLES FOR THE DEPOSIT OF REFUSE; SPECIFYING THE SIZE OF RECEPTACLES AND THE REMOVAL OF THE CONTENTS THEREOF AT REGULAR INTERVALS; PROVIDING FOR THE BURNING OF REFUSE WITHIN THE LIMITS OF THE CITY OF MEMPHIS, TEXAS, WITHOUT A LICENSE; PROVIDING REAL CHARGES TO BE PAID FOR REFUSE COLLECTION SERVICES; PROVIDING A STATEMENT OF SERVICES FOR SUCH SERVICES TO BE DUE AND PAYABLE WITHIN TEN (10) DAYS AFTER BILLING THEREFOR; PROVIDING FOR THE REMOVAL OF DEAD ANIMALS FROM THE CITY OF MEMPHIS, TEXAS; FIXING A PENALTY FOR THE VIOLATION OF THIS ORDINANCE; RESCINDING ALL ORDINANCES IN CONFLICT HEREWITH; AND PROVIDING A SAVINGS CLAUSE AND DECLARING AN EMERGENCY.

SECTION 1: (a) The term "waste material" as used in this ordinance shall be held to mean all trash and rubbish, including but not limited to: newspapers, paper, paper bags, glass, cans, animal manure, yard clippings, leaves, waste material, and other deleterious substances in the City of Memphis, Texas.

A single family unit as herein shall mean each side of a duplex, each apartment in a building, house, or any unit of space in which a single person or individual resides.

A commercial establishment as used herein shall mean any structure intended or used for the purpose of conducting a business enterprise.

This Ordinance is to cover the collection and disposal of solid waste material from the City of Memphis, Texas. The City of Memphis, Texas, hereby adopts and enforces a containerized trash collection service.

SECTION 2: Every owner, occupant, tenant, lessee or other person, firm or corporation owning, occupying any building, house, or structure or within the corporate limits of the City of Memphis, Texas, shall use receptacles as herein specified, to hold the refuse accumulated on the aforesaid premises. The receptacles will be provided and owned by the City of Memphis, Texas, and subject to the exclusive control of the City.

SECTION 3: Receptacles to be used hereunder will meet the following specifications:

Construction: metal
Capacity: 3 cubic yards
Dimensions: 58" x 48" x 48" (Approximately)

(d) weight: 560 pounds
(e) the exact location of all receptacles will be determined by the Tax Collector of the City of Memphis, Texas.
(f) variance: The City of Memphis, Texas, through the City Council, may by Resolution vary the foregoing specifications of Section 3 when it is in the best interests of the residents of the City of Memphis, Texas, to do so.

SECTION 4: The receptacle must be left in place in an upright position and the lid must be kept closed at all times except when refuse is actually being placed in or taken from the receptacle. All persons specified herein above are required to use said containerized trash system for the disposal of solid waste materials as set out herein. No person shall remove any of said containers from their designated locations as established by the City Council of the City of Memphis, Texas, or its agents and employees.

SECTION 5: The owner, occupant, tenant, lessee or other user of all premises within the City of Memphis, Texas, is required to allow the receptacle to be placed at a point on the premises where, in the discretion of the Tax Collector, or City Council, it may be easily accessible to the employee or employees of the City who are collecting and removing solid waste material. It is contemplated that most of the receptacles will be placed in the alleys but in the event it is not feasible to collect and remove the said solid waste material from an alley, the owner, occupant, tenant, lessee or other user of the premises shall allow the placement of the containers at such points as the Tax Collector or the City Council shall find and designate to be the most accessible for collection and removal of solid waste material.

SECTION 6: It shall hereafter be unlawful for any person to place in any receptacle used for storage of solid waste material, any dead animal, shotgun shells, rifle, pistol or revolver cartridges, or any other explosive. Any such prohibited articles taken to the City Dumpgrounds shall be disposed of under the direction of a member of the Police Department of the City of Memphis, Texas, or the person designated by the City Council of the City of Memphis, Texas, to be in charge of the City Dumpgrounds at such time. Solid waste materials which will not be collected and removed by the City of Memphis, Texas, as a regular service, shall include rock, scrap building material or other scrap resulting from construction, remodeling or destruction by fire, the elements, acts of God or other elements resulting from the general cleanup of vacant or improved property, brush and/or debris cleared from property in preparation for construction or occupancy shall not be collected or removed by the City of Memphis, Texas, as a regular service, but these solid waste materials must be removed at the expense of the owner or developer.

SECTION 7: The owner of any animal that dies within the corporate limits of the City of Memphis, Texas, shall cause such animal to be removed forthwith from the corporate limits of the said city.

SECTION 8: No person, firm or corporation shall burn solid waste materials within the corporate limits of the City of Memphis, Texas, without the express consent, in advance, of the Fire Chief of said city, and where permission is given for burning, it shall be done under Fire Department supervision.

SECTION 9: The collection and removal of refuse hereunder shall be made by the City of Memphis, Texas, and all receptacles shall be emptied by the

said City as often as necessary to protect the health, safety and environment of the citizens of the City of Memphis, Texas. The charge for such services shall be assessed and collected from each person, firm or corporation within the City limits of Memphis, Texas, as by said city on a monthly basis as follows:

Name	Minimum	Maximum
1. Individual family unit or residential unit	\$2.50	xxx
2. Commercial establishment	\$3.00	\$20.00
3. Retail grocery stores	\$3.00	\$30.00
4. Industrial and/or manufacturing plants	\$3.00	\$60.00

The monthly charges for service to each commercial establishment, retail grocery store, and industrial and/or manufacturing plant shall be fixed within the above said minimum and maximum limits, based upon the actual amount of time consumed in serving each unit as shown by the actual experience records of the City of Memphis, Texas, in servicing said unit. There shall be no pro-ration of service charges for a portion of a billing period. The initial billing shall be made concurrent with the initial sewage billing to a unit. No final billing for solid waste collection charges shall be rendered. Each single family or residential unit user shall be authorized to elect to pay one year's service charge of \$25.00 in advance, in lieu of said monthly payments of \$2.50 each, and the City Council may

approve and implement like deductions for advance yearly payments by users classified as commercial, industrial and/or manufacturing, as to the City Council shall deem just and reasonable.

SECTION 10: In the event the Solid Waste Collection Department is called upon to make an unscheduled collection and hauling of refuse, the City shall make an additional charge for such services based upon the actual manpower and equipment required and the expense to the City of Memphis, Texas, as determined by actual time and equipment experience study conducted by the City of Memphis, Texas, personnel.

SECTION 11: (a) A monthly statement for the charges of the collection of solid waste material together with a statement of the amount due for the sewage fee due the City shall be sent to the person whose name appears on the City records as contracting with the City for sewage services to the premises where such solid waste material is removed. Each individual family unit or residential unit shall pay a Pre-Payment of \$3.00 to the City of Memphis, Texas, and each commercial establishment, retail grocery store, industrial and/or manufacturing plant shall pay a minimum Pre-Payment not under \$3.00 to be ascertained and set by the Tax Collector based upon his estimate of what the monthly bill to said type of unit for such services will be. Said Pre-Pay-

ment shall be in addition to the initial and subsequent monthly service charges and shall be held on deposit by the City of Memphis, Texas, to the credit of the person, firm or corporation Pre-Paying same to guarantee the payment of the service charge for the last months use of said solid waste material collection rendered to such units by the City of Memphis, Texas. Such Pre-Payments shall be refundable to the persons, firms, or corporations entitled thereto, as soon as is reasonably possible after the discontinuance of the use of such services, the payments for same having been shown to be current by such users.

(b) In the event that there is no sewage connection to the premises upon which the services herein provided for are furnished, then the bill shall be sent to the owner or occupant of the premises where such solid waste material is removed.

SECTION 12: All refuse that is mixed with water or other liquid shall be drained and wrapped before being put into the receptacle. All animal matter that is subject to decomposition shall be well wrapped in paper or other combustible material before being deposited in the receptacle.

SECTION 13: The City of Memphis, Texas, will make the distribution of all receptacles hereunder. All receptacles presently in use in residential areas and not meeting the requirements of Section 3 of this ordinance will be removed from the alley or

collection point by the owner thereof, or the City of Memphis, Texas, will so remove such receptacles upon request if the owner desires and dispose of same for him. Trash will not be collected from receptacles not meeting the requirements of Section 3, after the receptacles described in Section 3 have been distributed. It shall be the responsibility of the users of said receptacles to maintain same in good condition and do nothing to harm or damage them.

SECTION 14: Any person, firm or corporation who shall violate any of the provisions of this ordinance shall be deemed guilty of a misdemeanor and upon conviction thereof, shall be fined in any sum not to exceed Two Hundred Dollars (\$200.00) and each offense and each day's continuance of failure to comply with any provision of the ordinance shall constitute a separate and distinct offense.

SECTION 15: Should any part, section, subsection, paragraph, sentence, clause or phrase contained in this ordinance be held to be unconstitutional, such holding shall not affect the validity of the remaining portion of the ordinance, but in all respects shall remain in full force and effect and the City Council hereby declares that it would not have passed the unconstitutional portion had it known that it was invalid and that it would have passed the remaining portion of

this ordinance that is not invalid.
SECTION 16: All ordinances or parts of ordinances in conflict with the provisions of this ordinance are hereby expressly repealed.

SECTION 17: The fact that the present system of solid waste collection and storage creates a serious hazard to the health and welfare of the citizens of the City of Memphis, Texas, creates an emergency and imperative public necessity and the rule requiring ordinances to be read at three different meetings is hereby dispensed with and this ordinance shall become effective and in full force and effect immediately after its passage and approval.

PASSED AND APPROVED this 11th day of September, 1973.
Ed Foxhall
Mayor Pro Tem
ATTEST:
Ace Gailey, city Secretary

31-2c

Foxhall Motor Co.
We Replace
AUTO GLASS
while you wait!
or while you do your shopping.
Every job guaranteed

HEY KIDS!

SANTA'S HERE!

Sat., Dec. 15

1:00 P. M. — 5:00 P. M.

BALLOONS and CANDY

FOR ALL THE
KIDS!



"Balloon Poppin" Sale on Everything in the Store

5% to 40% off

**Drawing For: \$25 Savings Bond
\$25 Gift Certificate**

(Do Not Have To Be Present for Drawing)

— Everyone invited To Come —

Donny & Fran's Place

**THE PERFECT
SUPER LIGHTWEIGHT**

THE ALL NEW STIHL
STIHL O20 AV
THE WORLDS FIRST and ONLY
"MINI-SIZE" CHAIN SAW
WITH BUILT-IN SHOCK ABSORBERS!

• AUTOMATIC CHAIN OILING • "LIFETIME" CYLINDER
• NEW "SAFETY" THROTTLE LOCK

SEE IT DEMONSTRATED AT
Thompson Bros. Co.

Cong. Bob Price Opposes Plans Allocating Oil

Congressman Bob Price voiced opposition today in Washington to Federal Energy Administration plans to allocate crude oil at the producer level.

Price said he had learned of plans to propose the new regula-

tions Tuesday, but he said in a letter to energy administrator William Simon that such action would discourage, rather than encourage, new oil and gas exploration.

Price said producer allocations would tend to freeze the level of crude oil a refiner could purchase and this would discourage the competition between refiners and new domestic crude.

This action, in turn, would tend to discourage exploration by independent producers. Price said while noting the independents have been responsible for some 80 per cent of this nation's exploratory oil and gas wells.

MovieHouse

SHOWTIME
Sat. 7:00 — 9:00 p. m.
Sun. and Week nights
at 8:00 p. m.

Thursday
December 13
"Charley One-Eye" "R"
Starring
Richard Roundtree

Fri. and Sat.
Dec. 14, 15
"Deaf Smith and
Johnny Ears"
Starring
Antony Quinn
and
Pamely Tiffin

Sun. and Mon.
Dec. 16, 17
"A Warm December"
Starring
Sidney Poitier

Tues. Dec. 18
"Jesus Nuestro Senor"
Starting Wed. Dec. 19
"Trouble Man" "R"

Political Announcements

The Memphis Democrat is authorized to announce the following as candidates for public office, subject to the action of the Democratic primary in May:

County Judge:
LORAN DENTON
For County and
District Clerk:
SYVILLA LEMONS
Justice of the Peace:
RUBY RODEN
County Precinct Commissioner,
Precinct No. 2:
V. C. (Zipp) DURRETT
County Precinct Commissioner,
Precinct No. 4:
RAY FARABEE
Texas Senate, 30th District:
HAROLD M. LANE

RUBBER STAMPS
Made to your order and copy
THE MEMPHIS DEMOCRAT

Kindergarten To Begin Jan. At Estelline ISD

The Estelline ISD will begin a kindergarten program January 2, 1974. The kindergarten program will be conducted on a full day basis for all of the second semester of school. Students residing in Estelline School District and who were five years of age prior to September 1, 1973, will be eligible to enroll.

Parents interested in enrolling their students in the kindergarten program should register their child in the superintendent's office prior to Dec. 22, 1973. Registration consists of filing with the school, a complete shot record, a birth certificate, and an AGR card.

Farmers Invited To Hear Brints On Income Tax

Area farmers are invited to hear Norman Brints, Extension Area Economist of Vernon, speak on income tax changes at a meeting in the Memphis Community Center, 7 p. m., Thursday, Dec. 20.

Warren Mitchell, County Extension Agent, urges all farmers to attend this helpful and informative session which could help individuals save tax dollars.

Mack Richards — (Continued from Page 1)

mittie in farm program administration and helps keep farmers informed of program provisions.

County committeemen are elected by the community committeemen to serve staggered three-year terms, so that ordinarily one vacancy occurs each year.

The newly elected county and community committeemen take office Jan. 1, 1974. Special recognition and a vote of appreciation was extended to Mr. Harvey for his superior service to the farmers and ranchers of this county.

Baptist Choir — (Continued from Page 1)

tor of the church, will narrate

the musical and soloists will be Mrs. Billy Darrell Roden, Mrs. C. C. Murphy, Jr., and Geary Brogden.

A recent addition to the music department of the Church is the beautiful gold colored choir robes. The public is invited to come and be a part of this wonderful experience Dec. 16.

Accompanying the choir will be Mrs. Jerry Montgomery and Mrs. Carl Smith. Directing the musical will be Geary Brogden, minister of music.

Loran Denton — (Continued from Page 1)

Superintendent. The next 14 years were spent as Superintendent of the Turkey Schools. The

last two years I have been independent of the Valley (Turkey-Quitque — Co. ed.)

"As a young man the two things that I wanted to be were a school teacher and a lawyer. I have had a most enjoyable career, now I would like to be your County Judge."

"If elected, I pledge my very best to act in the best interest of all the people of this county. My foremost concern would be to make Hall County a better place to live. I desire your vote and I shall make an effort to do so before election time. I vote."

Thanks,
Loran Denton

WANT ADS

CLASSIFIED AD INFORMATION

RATES ON CLASSIFIED AND LEGAL NOTICES ADVERTISING

Display in Classified Section, per col. in 98c
Minimum Charge 1.05
Per word, first insertion 7c
Per word, following consecutive insertions 5c

For Sale

FOR SALE—John Deere 280 Stripper with Tharis Wilkins Basket, & John Deere 4010 LTG-wide front, extra clean—Silverton 806-847-4765. 31-2c

FOR SALE: Our home at 1016 Brice Street, Memphis. 4 - bedrooms, 2 - baths. Price reduced to Sell. Call D. B. Keen, 259-3192. 31-2p

FOR SALE—Used electric Tappan range, eye level ovens, extra good shape. 259-2637 after 6 p. m. 22-tfc

FOR SALE—Two and three bedroom homes well located. Some farm land for sale. Also well located building lots. Ben Parks Co., Dallas, Texas, Byron Baldwin, salesman. 48-tfc

FOR SALE—New and used pianos. Will buy or trade for used pianos. See at old depot building, 211 Boykin, Call 259-3329. 10-tfc

FOR SALE—Good farm Northwest of Lakeview, Call 259-3468 after 5:00 p. m. 30-3c

See Edna Dobbs

for your hospital, medical and Life Insurance.
Box 773
Childress, Texas 22-tfc

LUSK CLEANERS

Complete Dry Cleaning
Carpet & Rug Steam Cleaning
Kirby Vacuum Cleaners-Sales & Service
Bison Vacuum Cleaners-Sales & Service
103 N. 10th 259-3031 6-tfc

DAVIS USED CARS

1970 Chevrolet Belair, loaded
1966 GTO, loaded
1972 International pickup, loaded
1959 Ford, extra sharp
17-tfc

FOR SALE: 5 Good Cotton Trailers 8 x 9 x 20 big 12 Chassis. Ph: 888-2888. Jim Hutchins. 32-2c

FOR SALE: 800 Case Tractor—on Butane Good Rubber. 30 Brush International Stripper mounted. New overhaul on tractor & Stripper & wide front end. \$4,500. Contact Bruce Ariola, Brice Rt, Clarendon. 32-3c

Home Made Peanut Brittle Made Fresh Every Friday By The United Pentecostal Church For Order Call 259-2674 or 259-2800 Any Time 32-2p

FOR SALE — Kohler-Campbell piano France provincial fruitwood. \$550.00 Call 259-2566. 32-1p

Fireworks Store

Open 10:00 a. m. Each Day Dec. 19 thru Midnight, Jan. 1 Shop with us & get in out of the cold to select your fireworks
BESS YARBROUGH
West edge of Memphis on Lakeview Hdy.. 256

ESTATE SALE—Approximately 1,000 acres near Turkey, Texas. Excellent grass and cotton land with water. Owner will finance. Contact City National Bank Trust Department, P. O. Drawer 60, Wichita Falls, Texas 76397. 32-3c

FOR SALE: New doors and screens. All sizes. J. D. Evans, 259-2304. 52-tfc

FOR SALE: SPACIOUS HOME IN CHOICE LOCATION, 3 or 4 bed room 2 bath-huge livingroom—Utility room-Completely Carpeted and draped. \$8,000 cash or terms. For details & appointment to see: Call 259-2274. 30-tfc

FOR SALE: Cowdog Pups, Blue Dingo, R. L. Salmons, Lakeview Rt. 1, 867-2241. 30-5p

FOR SALE: Steer manure ground & sacked for better plants, trees and lawns. Moore's Nursery. 29-4c

NEED A Pickup or car? Any kind or mode, even new '73's. Will save you money. J. D. Evans Phone 259-2304. 23-tfc

Special Notices

120 day automatic Bowl Cleaner removes rust, lime, minerals; deodorizes and sanitizes toilet bowls; prolongs life of fittings and fixtures. \$3.15 Thompson Bros. Co. 22-tfc

THE TREASURE HOUSE
Home of Fine Arts, Oils and China.
Will carry gift items.
And Frames
422 Main St.
PEARL WECKAR 51-tfc

Want to Buy, Sell or Trade Guns?? If you do bring your gun and come to see us. We will try to either sell you a gun, buy yours or trade give boot or take boot.
FERREL'S
Memphis Tire & Supply
516-18 Noel Street
Memphis, Texas
Phone 259-3595 & 259-3596 27-tfc

If you have land that needs clean up call Buck! Have all kinds of equipment; breaking plows, Hoemes, disk plows.
Contact
BUCK LEMONS
259-2238
Also have equipment to handle wheat ground. 16-tfc

FOR SALE: 3 bdr. home on large lot. Income producing trailer (hace) to help make your payments.
SMITH REAL ESTATE
Charlotte Mitchell, Salesman
Call 259-3456

ARCHER'S RED-MIX
Concrete
Contact Norman
Archer or Call
259-2682 1-tfc

NEW YEAR EVE DANCE
At the
American Legion Home
31-4c

Our File Pictures ARE STILL ON SALE
25 Cents Each
THE MEMPHIS DEMOCRAT 32-1fc

SAVE YOUR GASOLINE
Ride the Church Bus to Sunday School and Church Sunday
Phone Adrian Odom, Gene Collier or Church Office before 9:00 A. M. Sunday Morning
First Baptist Church Bus Ministry 32-1fc

TRASH COMPACTORS See at Messer Electric in the old depot building 259-3329. 10-tfc

Has your septic tank or cesspool shown any signs of sluggishness? Has there been any odor, back-up slow drain-off, bubbling in the toilet bowl, or overflow in the drainage field? If so, we recommend that you first use FA-11 to restore your system to normal. Thompson Bros. Co. 2-tfc

QUALITY LAMP SHADES—Glass Parts. Expert Lamp Repair. 8 ft. Fluorescent fixtures with 2 tubes \$19.45. Give our good service a try. Helping you solve your lighting problems is our goal. House of Shades and Lamp Repair, 2613 Wolflin Avenue in Wolflin Village, Amarillo, 352-7848 30-8c

SEE us for all your car engine and chassis parts, exhaust system parts and Monroe shock absorbers. Engine chemicals, hand tools and electric tools, drills, air and electric impact wrenches. FERREL'S 516 18 Noel Street, Memphis, Texas. 30-tfc

SEE Caterlin Nursery - Wellington, Texas for a complete line of fruit and Shade Trees. 31-4c

KEEP carpet cleaning problems small—use Blue Lustre wall to wall. Rent electric shampooer \$1 Perry Bros. 32-1c

FREE How about a kitten for Christmas, gentle, housebroke Jim Clarke, Phone 867-3311. 32-2c

LOST - Ring-Yellow Gold with Ruby Set-Lost at Post Office. Is 55 year old engagement ring—Reward Contact - Mrs. E. C. Rice Ph: 259-2934 113 E. Bradford. 32-3p

REDEEM your Gold Bond Stamps at Thompson Bros. Co. 21-tfc

FOR YOUR painting supplies, see Memphis Glass & Supply. Complete line of J. B. Paints. 49-tfc

PRE - FINISHED paneling and matching trim. Memphis Glass & Supply. 49-tfc

Will do custom plowing. Call after 3:30 p. m. 259-3238, Winfred H. McQueen. 10-tfc

NEED CHAIN LINK OR WOODEN FENCING
see
BACME FENCE & IRON CO.
(Old Depot Bldg.)
102 Boykin Dr. Ph: 259-2742 26-tfc

La-Z-Boy And Berkline Recliners
Riviera Sofa
Sleepers
MEMPHIS UPHOLSTERY
7th & Brice — Ph. 259-2026
Night Ph. 259-3079
Pick-up and delivery
Free estimate on all Upholstery Work 48-tfc

JAMES CANIDA
Only Authorized Kirby Dealer
Sales & Repair
South 16th St. Off Lakeview Hwy.
MEMPHIS, TEXAS 13-tfc

LINER'S TRAILER PARK
on Highway 287 North
8 spaces now vacant
All utilities available
Inquire at
O. K. TIRE STORE
Phone 259-2551 day or night 31-tfc

TYPEWRITER AND ADDING MACHINE REPAIR
Have several used typewriters and adding machines for sale.
ROY M. HORN
Typewriter Repair Service
Wellington, Texas 79095 16-tfc

WHIRLPOOL — KITCHEN SALES AND SERVICE
DIXON
120 S. 5th St. Phone 259-3468

SPICER FUNERAL HOME
PHONE 259-3468

Parker Floor Covering features one of the largest selections in Childress and serving areas of popular fixtures and multi-colored tiles. From \$9.95 and up by Installed Over Heavy Padding
EVANS-BLA CARPETS
by Armstrong
SEE IT AT
PARKER FLOOR COVERING
245 COMMERCIAL CHILDRESS, TEXAS

BOOT AND SHOE REPAIR
Leave at 102 South JL'S WESTERN WAY
For DOCK'S SHOE SHOP
Childress, Texas

CLIP OUT AND SAVE... CLIP OUT AND SAVE... PLASTIC LAMINATING Service
Preserve & Protect Valuable Papers Completely Sealed in Clear Plastic

DOCUMENTS ● PHOTOGRAPHS
● NEWSPAPER ARTICLES ● CARDS
● DIPLOMAS ● CERTIFICATES
● MENUS ● IMPORTANT PAPERS

Any Size up to 5 1/2 x 8 1/2 or Total of 48 Sq. Inches 50c
Any Size up to 8 1/2 x 11" or Total of 96 Sq. Inches 1.00
Any Size up to 12" x 17" or Total of 204 Sq. Inches 2.00
Maximum width is 12 inches x any length

REX'S STEEL BUILDINGS
Hay Barns-Carports-Shops & etc. Call Collect - 293-3081.
Plainview, Texas 30-3c

GRANDMA'S ATTIC—Corner of 5th and Main Will pay you more for your used furniture. Phone 259-2575. 29-tfc

FOR LEASE: 833 acres grass land in Hall County. Phone 259-2612. 31-tfc

I won't be responsible for any debts other than my own. Elsie Hoover. 31-tfc

Delicious Smoked Turkeys \$1.60 lb. Average 10 lbs. Ready to eat. Be here in time for Christmas. Call 867-2191 before 8:00 a. m. or after 4:00 p. m. 31-2c

MONUMENTS AT FACTORY PRICES
WILLIS — FELLOW BROS.
GRANITE QUARRY
GRANITE, OKLA
Phone 532-2184 Collect tfc

WHIRLPOOL — KITCHEN SALES AND SERVICE
DIXON
120 S. 5th St. Phone 259-3468

SEE Us For Your WHIRLPOOL — KITCHEN SALES AND SERVICE
DIXON
120 S. 5th St. Phone 259-3468

SPICER FUNERAL HOME
PHONE 259-3468

Parker Floor Covering features one of the largest selections in Childress and serving areas of popular fixtures and multi-colored tiles. From \$9.95 and up by Installed Over Heavy Padding
EVANS-BLA CARPETS
by Armstrong
SEE IT AT
PARKER FLOOR COVERING
245 COMMERCIAL CHILDRESS, TEXAS

BOOT AND SHOE REPAIR
Leave at 102 South JL'S WESTERN WAY
For DOCK'S SHOE SHOP
Childress, Texas

CLIP OUT AND SAVE... CLIP OUT AND SAVE... PLASTIC LAMINATING Service
Preserve & Protect Valuable Papers Completely Sealed in Clear Plastic

DOCUMENTS ● PHOTOGRAPHS
● NEWSPAPER ARTICLES ● CARDS
● DIPLOMAS ● CERTIFICATES
● MENUS ● IMPORTANT PAPERS

Any Size up to 5 1/2 x 8 1/2 or Total of 48 Sq. Inches 50c
Any Size up to 8 1/2 x 11" or Total of 96 Sq. Inches 1.00
Any Size up to 12" x 17" or Total of 204 Sq. Inches 2.00
Maximum width is 12 inches x any length

SATISFACTION ASSURED
Enclose Cash, Check or Money Order. Mail Orders Given Prompt Attention

MAIL TO LUCKY LABEL SALES CO.
4908 46th St.
Lubbock, Texas 79414
Or Contact Johnnie or Winnie Brewer
203 N. 10th St.—Memphis, Texas

CLIP OUT AND SAVE... CLIP OUT AND SAVE... PLASTIC LAMINATING Service
Preserve & Protect Valuable Papers Completely Sealed in Clear Plastic

DOCUMENTS ● PHOTOGRAPHS
● NEWSPAPER ARTICLES ● CARDS
● DIPLOMAS ● CERTIFICATES
● MENUS ● IMPORTANT PAPERS

Any Size up to 5 1/2 x 8 1/2 or Total of 48 Sq. Inches 50c
Any Size up to 8 1/2 x 11" or Total of 96 Sq. Inches 1.00
Any Size up to 12" x 17" or Total of 204 Sq. Inches 2.00
Maximum width is 12 inches x any length

SATISFACTION ASSURED
Enclose Cash, Check or Money Order. Mail Orders Given Prompt Attention

MAIL TO LUCKY LABEL SALES CO.
4908 46th St.
Lubbock, Texas 79414
Or Contact Johnnie or Winnie Brewer
203 N. 10th St.—Memphis, Texas

CLIP OUT AND SAVE... CLIP OUT AND SAVE... PLASTIC LAMINATING Service
Preserve & Protect Valuable Papers Completely Sealed in Clear Plastic

DOCUMENTS ● PHOTOGRAPHS
● NEWSPAPER ARTICLES ● CARDS
● DIPLOMAS ● CERTIFICATES
● MENUS ● IMPORTANT PAPERS

Any Size up to 5 1/2 x 8 1/2 or Total of 48 Sq. Inches 50c
Any Size up to 8 1/2 x 11" or Total of 96 Sq. Inches 1.00
Any Size up to 12" x 17" or Total of 204 Sq. Inches 2.00
Maximum width is 12 inches x any length

Christmas Gift

FOR HER FROM OUR BEAUTIFUL SELECTIONS

CHOOSE: COATS DRESSY DRESSES LONG DRESSES

Juniors 3 to 13
Misses 6 to 20
Half Sizes 14 1/2 to 20 1/2

PANT SUITS
ROBES
PAJAMAS
GOWNS
CAFTANS
HOUSE SHOES

MIX AND MATCH SETS

BLOUSES
BODY SHIRTS
CAPES
PEGNOIR SETS
SWEATERS
BAGS
HOUSE SHOES

The Lady Fair