

The Memphis Democrat

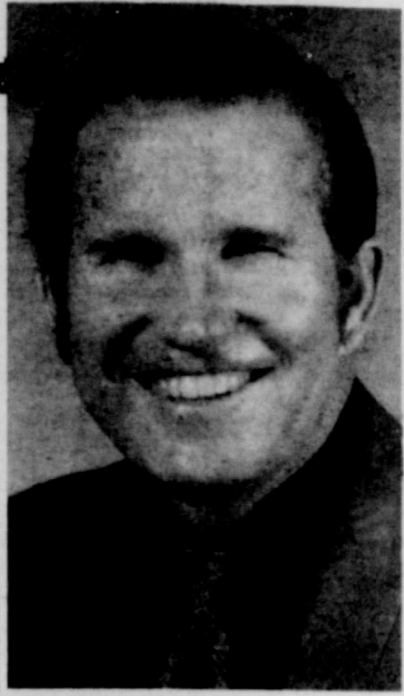
40 PAGES
This Week

Hall County Herald, Established May 3, 1890, Absorbed by Purchase August, 1928

LXXXIII *** Avalon Features *** MEMPHIS, HALL COUNTY, TEXAS, THURSDAY AFTERNOON, JULY 26, 1973 *** 15c (Inc. 1c sales tax) *** NUMBER 12

Key '73 Crusade For Christ To Begin Sat.

Memphis Key '73 Crusade begins this Saturday through Tuesday at City Park. Services will begin at 8:00 p. m. The crusade is a cooperative effort between the following churches: First United Methodist, First Baptist, First Christian, First Baptist, Travis Baptist, Assembly of God, Emmanuel Baptist, Sacred Heart, Mt. Zion and Mt. Carmel.



Rev. CARLOS McLEOD

Special music will be presented by the Boyds for each service along with music by a choir composed of singers from all the local churches. The crusade choir will meet at 7:30 each night for rehearsal. Anyone interested is invited to participate.

On Sunday, July 29, there will be a giant church picnic at 6:30 p. m. in the City Park. Everyone is invited and are asked to bring at least two covered dishes of food.

Transportation will be available for all the Crusade Services. If you would like transportation, please call 259-3267, and the bus will come to your residence.

A cordial invitation is extended to all Area churches to participate.

Larry D. Johnson Leaves Friday For All-Stars in Dallas

Larry Don Johnson of Memphis will join the ranks of the favored North Schoolboy All-Stars basketball team shooting for their third win in the last four years and their 16th in the series as one of the highlights of the annual Texas High School Coaches Association Coaching in Dallas, July 30 through Aug. 2.

Johnson will leave Memphis Friday for the Campus of Southern Methodist University in Dallas where he will be housed in a dormitory and work out in SMU facilities.

Coach Bo Snowden of Dallas Highland Park will direct the North All-Stars and he will have one of the tallest teams in North history to challenge the South Stars with 6-10 Ronald Taylor of Midland, 6-7 Tow Weir of Irvin, 6-7 Gene Flippen of Evant and 6-6 Grand Dukes of Leveland on the front line.

Other inside threats are 6-5 Ronnie Moreland of Grand Saline and 6-4 Larry Johnson of Memphis.

Johnson, interviewed Tuesday, and who has selected a Junior College on an athletic scholarship, has been shooting the basketball everyday this summer and working on his "wind" to be ready for the All-Star battle.

According to news releases by Texas High School Coaching Assn., the North's outside gunners are talented individuals also with Petrolia's Larry Spruiell, McAdoo's Jimmy Neff, Morton's Jimmy Harvey, Everman's Jesse Kemp, Hereford's Keith Kitchens and Spring Branch Spring Woods' Tate Armstrong.

Taylor, who led Midland to the state tournament in '73 has cat quickness and scored at a 24.0 points per game clip.

Johnson was the leading scorer for the District Champion Cyclones this past season and is one of the North All-Star squad.

Johnson is the second athlete (Continued on Page 12)

Funeral Services For Ed Orr To Be In Vernon

Ed Orr, 47, who was minister of the Church of Christ here from August 1970 to 1971, died at 4 a. m. Wednesday morning in Gatesville after suffering a stroke on Tuesday afternoon. Mr. Orr left Memphis to take the position as counselor for the State School for Boys in Gatesville.

Funeral services for Mr. Orr will be held at 2 p. m. Friday in the Wilbarger Church of Christ in Vernon with T. Larry Marshall, minister, officiating.

Interment will be in Wilbarger Memorial Park in Vernon.

Mr. Orr was born June 21, 1926, in Vernon and was a graduate of Vernon High School and Texas Tech University. He was united in marriage to Helena Wilson in Vernon in 1951.

Before taking the counselor position with the Gatesville school Mr. Orr has served as minister for numerous Churches of Christ in Texas. He came to Memphis from Houston.

He is survived by his widow; one son, John of Abilene; a daughter, Kathy of the home; his mother, Mrs. Jack Orr of Vernon; a brother, Jack Orr, Jr., Altus, Okla., and a sister, Mrs. Doris Anderson of Longview.



REV. TRUMAN LEDBETTER

Travis Baptist Church To Hold Revival Services

Revival services at the Travis Baptist Church will begin Wednesday, Aug. 1, and continue through Sunday, Aug. 5, Rev. Wilburn Coffman, pastor, announced this week.

Services will be held each evening, Wednesday through Saturday, at 8:00 p. m. Sunday services are Sunday School at 9:45 a. m.; morning worship 11:00 p. m.; church training at 6:00 p. m. and evening services at 7:00 p. m.

Rev. Truman Ledbetter, pastor of Faith Baptist Church of Hollis, Okla., will be the evangelist. Rev. Ledbetter is well known in the Travis Church and the Memphis area having been ordained Deacon of Travis Baptist Church. He moved to Memphis in 1964 and worked for the Cooper and Woodruff Highway Contractors until 1969 when he answered the call of God to enter the Gospel Ministry, it was stated. He is a graduate of South-

(Continued on Page 12)

Youth Revival In Progress At Church Of God

A Youth Revival will begin at the Church of God Wednesday, July 25 and will continue through July 29, it was announced this week.

Speaker for the services is Rev. Dennis Parish. Special singing will be presented during the revival by the Parish family, who accompanied minister Dennis to Memphis.

Services will be held each evening at 8:00 p. m. with services on Sunday at 10:00 a. m. The public is cordially invited to attend.

Donley Co. Feed Lot, Inc. Open House Set For Sat.



NEW LIFE SINGERS—Pictured above are the New Life Singers who will be featured at the Giant Youth Rally (Key '73) Saturday night at 7:30 p. m. in the City Park Amphitheater. The group members include Carolyn and Timothy Sparks, former Memphians, along with James Fulpon, Sherry Hoskins and Mike Eastes.

New Life Singers To Present Music For Saturday Night's 73 Youth Rally

A Key '73 event with the Giant Youth Rally in the Memphis City Park at 7:30 p. m. Saturday, July 28, it was announced this week.

"The New Life Singers" of Rowlett, Texas will be featured in a special musical concert to be followed by Youth Evangelistic services in the Park Amphitheater.

Youth from the First Assembly of God, First Baptist, First United Methodist, First Christian, and Travis Baptist are sponsoring this Rally and inviting youth from all over the area to come.

The New Life Singers and Rev. Carlos McLeod speaking especially to youth are the featured events.

The New Life Singers feature Carolyn and Timothy Sparks who are children of Rev. Sparks who recently moved from Memphis after serving as Minister of the Assembly of God Church here for many years.

Others in the group are James Fulpon, Sherry Hoskins and Mike Eastes.

Rev. Carlos McLeod is pastor of First Baptist Church of Plainview, Texas, and will be the featured evangelist for the full week of the Key '73 Crusade.

The Public is cordially invited to the services Saturday evening.

Services For Thelma Cudd Are Held Monday

Funeral services for Mrs. Thelma Durrett Cudd, 59, were held at 2:00 p. m. Monday, July 23, in the Memphis Church of Christ with Arthur W. Smith, minister, officiating.

Burial was in Fairview Cemetery under the direction of Spicer Home.

Mrs. Cudd passed away at 12:40 a. m. Saturday, July 21, in Hall County Hospital.

She was born Jan. 22, 1914, in Van Alstyne and moved to Hall County in 1926. Mrs. Cudd was a member of the Priscilla Club.

Survivors include: her husband, E. E.; two daughters, Mrs. Jack McGlothlin of Abilene and Mrs. Ed Heller of Dundee; one sister, Mrs. Lota Parnell of Amarillo; one brother, Paul Jones of Grand Prairie; and three grandchildren.

Pall bearers were Eddie Gable, Collin Craghead, Gene Hughs, Mackie Allen, Zeno Lemons and C. T. Chappell.

PRHC Committee Approves Request By Cousins Home

The Panhandle Regional Health Council of the Panhandle Regional Planning Commission on Tuesday, July 10, heard a report of expansion of facilities at Cousins Nursing Home of Memphis given by Jim Markgraf, representing Cousins Home.

The Health Council took the following action:

"Expansion of Cousins Nursing Home, Memphis, from 34 to 60 beds and make certain improvements in existing facility, presentation made by Mr. Jim Markgraf. The number of beds requested is justified by the formula used to establish bed needs; there was no objection stated to the request and the Review and Comment Committee unanimously requests favorable comment from the Panhandle Regional Health Council and approval by the Panhandle Regional Planning Commission."

Jim Markgraf said "This committee's recommendation now goes to the Texas Comprehensive Health Planning Commission in Austin and if it is approved there, we'll receive authorization to proceed with our project."

Cousins Home of Memphis plans, if approval almost double its beds and make certain to the existing fa-

City Council Accepts Bid On New Loader

The Memphis City Council Tuesday evening opened three bids the Council had received for a front-end loader to be bought with Revenue-Sharing funds earmarked for Environmental Protection.

The low bid was submitted by West Texas Equipment Co. of Amarillo and was \$17,880.00. The council voted to accept this bid. The high bid was for \$22,562.47.

The price of equipment the City is buying is a Caterpillar front-end loader with rubber wheels.

The City of Memphis is in (Continued on Page 12)

Mrs. Mabel Beach Dies In Colorado; Services In Hedley

Mrs. Mable Forrest Beach, 82, former Hedley resident, passed away Tuesday, July 24, in a Springfield, Colo., hospital.

Funeral services for Mrs. Beach will be held at 2:00 p. m. Friday, July 27, in the Hedley First Baptist Church with the Rev. J. J. Terry, pastor, officiating. Burial will be in Rowe Cemetery at Hedley under the direction of Spicer Funeral Home.

Mable Forrest Hightower was born Sept. 2, 1890, in Indian Territory, Okla. She was united in marriage to Robert Edgar Beach June 14, 1911, at Sadler and moved to Donley County in 1914. Mr. Beach preceded her in death in 1965. Mrs. Beach had resided at Utleyville, Colo., since November, 1965. She was a member of the Hedley Baptist Church.

Survivors include: two daughters, Mrs. Louise Humphrey of Utleyville and Mrs. Margaret Plunk of Sunray; three sons, Jess Beach of Hedley, Jack Beach of Ft. Defiance, Ariz., and R. L. of Freeport three half-brothers, Leo Hightower of Conroe, J. A. Hightower of Houston and Clifford Hightower of Odem; 17 grandchildren and 27 great-grandchildren.

Trailer House Burns Here Mon.

A trailer house, near the south end of 9th Street, caught fire Monday afternoon and the Memphis Fire Department was summoned at 2:20 p. m.

The home of Mr. and Mrs. (Continued on Page 12)

ASCS County Director Announces No Set-Aside Of Land In 1974

In order to assure adequate supplies for domestic and export markets, the Secretary of Agriculture has announced that there will be no governments set-aside of land during 1974 for feed grain, wheat, or cotton, according to Mr. Larry B. Rogers, County Executive Director of the Hall County ASCS.

Mr. Rogers explained that this announcement does not necessarily mean that there will be no price support or program payments for 1974. Mr. Rogers stated that it means farmers will not have to set-aside land or maintain conserving base land as a condition of eligibility to receive price support or program payments for 1974.

Farm legislation for 1974 and subsequent years is still pending in Congress.

Farmers must continue to maintain set-aside and conserving base land through 1973.

the Cropland Adjustment Program. Also, producers with existing CAP agreements which continue through 1974 and subsequent years will at their option, have the opportunity to terminate their CAP agreements.

Mr. Rogers explained that this announcement does not necessarily mean that there will be no price support or program payments for 1974. Mr. Rogers stated that it means farmers will not have to set-aside land or maintain conserving base land as a condition of eligibility to receive price support or program payments for 1974.

Farm legislation for 1974 and subsequent years is still pending in Congress.

Farmers must continue to maintain set-aside and conserving base land through 1973.



JAMES HOLMAN

Methodist Church Hold Revival Services Aug 1-5

In conjunction with the Key '73 Crusade for Christ in the City, a series of evangelistic services will be held at the United Methodist Church August 1 to 5. Rev. Tommy pastor, announced today.

James Holman, pastor of First United Methodist at Lorenzo, will be the evangelist for the services beginning Tuesday evening. Mr. and Mrs. Wesley Boyd, who are of Northern Ireland, will be the musical guests.

Services will be held at 7:00 o'clock on Wednesday and 7:30 o'clock on Thursday and Friday.

The concluding service will be Sunday morning at 10 o'clock.

Congregational singing and preaching will be featured. Rev. Nelson said. Everyone is invited to attend. A nursery will be available for all children.

James Holman, who will be the evangelist, is a graduate of College in Kankakee, Ill., Kansas City. He has been a pastor for 24 years and has been in full-time ministry for 30 years.

He is the father of two daughters and two sons. His wife, Mrs. Margaret Boyd, is a member of the Northwest Conference of the United Methodist Church for a number of years.

The Memphis Democrat

Published on Thursday of each week at 617 Main Street, Memphis, Texas by **MRS. HERSCHEL A. COMBS** Publisher and **BILL COMBS** Editor (Hall County Herald absorbed by purchase August 7, 1928)

Subscription Rate: In Hall, Donley, Coalingworth and Childress Counties, per year — \$5.15 Description Rate: Outside Hall, Donley, Coalingworth, and Childress Counties, per year — \$6.20

Member of **TEXAS PRESS ASSOCIATION** and **PANHANDLE PRESS ASSOCIATION**

Entered at the post office at Memphis, Tex., as second-class matter under Act of March 3, 1879. Second Class Postage paid at Memphis, Texas. Telephone 259-2441.

NOTICE—Any erroneous reflections upon the character, standing or reputation of any person, firm or corporation which may appear in the columns of The Memphis Democrat will be corrected gladly upon its being brought to the attention of the publisher. Postmaster: Send Form 3579 to Memphis Democrat: Box 190, Memphis, 79245

EDITORIAL

Saturday, Donley County Feed Lot, Inc., located just south of U. S. Highway 287 about three miles west of Hedley, is having a big, open house observance and is preparing 3,000 lbs. of cooked beef to serve at 6 p. m. that day to visitors.

An area under some trees is being cleared as a site for the meal and citizens of the area are invited. This is the biggest cattle feeding operation in our section of the state and the economic value of the operation is of vital importance for several reasons.

Consider these facts. The feed lot has the policy of using as much locally grown feed, hay and grain, as the area can supply and area farmers are willing to sell at the price offered. The lot has offered employment to 20 full-time and four part-time people.

Additional employment was brought about when the Donley County Feed Lot, Inc., contracted for the construction of metal and cement feeding pens which will increase the head capacity to 20,000. These pens are to be finished in about four weeks, at a cost of approximately \$175,000. The watering system in these new pens will be completely modern with electric thermostatic controls.

The feed lot has worked closely with the Texas Water Control Board in constructing ponds for waste control. About \$50,000 has been spent to date on the dirt work alone for this pollution control program.


Charles Payne started the Donley County Feed Lot, Inc., in late 1968 as a one-man operation. Charles designed and constructed the pen and facilities himself, and early 1969 he had placed 300 head of cattle on feed at the feedlot.

In late 1969 the feedlot was incorporated, and additional expansion planned. Mr. Billy Clubb, the manager of the feed lot, joined the firm in 1970. Since that time the feed lot has been expanded first to 2,000, then 5,000, to the current 7,000 head capacity. The staff has increased from a single employee to 20 full time and four part time employees.

The firm's second major expansion is the new \$600,000 batch plant where feed rations for the cattle are mixed and cooked. The plant has the capacity to feed 50,000 head of cattle, and will produce 100,000 lbs. of processed feed per hour.

Citizens are invited to make plans to attend this open house Saturday, to tour the facilities and enjoy the free barbecued beef meal and music by Al Hurts and his band from Amarillo.

after you see your doctor ...



bring your prescription to

Lockhart PHARMACY
MEMPHIS PH 259 3541

Cigarettes: All Reg. & King \$4.00 ctn. — All 100s \$4.10

When You're Needing To Buy Office Supplies Or Job Printing See or Call

THE MEMPHIS DEMOCRAT

7 Main



ACROSS THE DESK

What Other Editors Say

Passenger Searches

Rigid searches of airline passengers and their carry-on baggage has been in effect since January 5, and the results have been very satisfactory, even spectacular.

There have been no plane hijackings in the U. S. since this procedure was started.

It is a sad commentary upon law and order in this country that such measures had to be instituted in order to combat hijackers. But it has to be admitted that these measures are working.

At all air terminals, the passengers have to submit to a search, their briefcases and purses and other bags are handed over where the guards given them a thorough going-over.

The passenger then passes through a magnetic detector so sensitive that a set of car keys will usually set off the alarm, mechanism.

But the result in that passengers enter the airplane with a much greater sense of security than in previous years when one never knew whether or not one of his fellow passengers had a gun or knife on his person and had plan to hijack the plane.

The American Civil Liberties Union says that this search and seizure is unconstitutional under the Fourth Amendment to the Constitution. It may be, and there will soon be a court test to find out.

But in the meanwhile, the results are plain to see. In an 11-month period from June 1972 to May 1973, there were 1,826 guns, 11,956 knives and 5,289 other dangerous articles, ranging from explosives to backjacks, that were taken from passengers.

The worst hijacking year was 1969 when there were 33 successful attempts. Some 3,500 passengers had their lives endangered at the time.

We believe the results are worth the inconvenience. We are among those who have no desire to go to Cuba on a hijacked airliner.

—The Perryton Herald

lives in order that a particular person be elected President?

What was it about the goal that was so important to these Nixon supporters?

And in the fact of all these sacrifices so many were willing make, their idol didn't even know of their devotion! So most say.

Is Nixon so loved that casual admirers were willing to make these terrible sacrifices? Are giant corporations like American Airlines willing to go to jail and pay huge fines just because Nixon asked for an illegal donation?

There remain some questions as to details. But we are afraid most of the answers we seek are all too obvious.

—H. M. Baggarly in The Tulsa Herald

Memories

From The Democrat Files

30 YEARS AGO

July 29, 1943

Setting some kind of record was the weather man last Friday, when 109 1/2 degrees was recorded. Low for the past week was 70 degrees. Temperatures for the past week have ranged from 102 to the high of 109 1/2, with an average of 106 recorded.

Crowds are gathering for the Hall County Old Settlers Reunion being held here today at the City Park. Registration this morning was on the courthouse lawn and this afternoon at the city park with Murray Dial in charge. One of the main events of the evening's program at the park will be an address by Congressman Gene Worley.

Specials at Greene Dry Goods about 75 summer dresses ranging in price from \$5.98 to \$26.75. Paul-Sachs, Primma Donna, Nelly Don, Edlen and other well known makes, discount 1/3; Ladies Table Shoes, sizes 4 to 6 1/2 only. Non-rationed for the remainder of July at your choice—\$1.00.

Tuesday, another group of young men went to Lubbock for their physical examinations before possible entrance into the armed services. Among them was Huiert Ayres Jones.

20 YEARS AGO

July 30, 1953

Measuring of cotton land in Hall County has begun. Eight men are at work in various parts of the county checking acreages allotted to cotton this year. They are J. R. Mitchell, Jr. and T. J. Spry, Jr. of Memphis; Barney Joe Beavers, Lakeview; Elwyn Pate, Plaskin; U. F. Coker, Jr. and Billie Fuston of Turkey; Paul A. Meacham, Parnell; and J. P. Montgomery, Jr., Lesley.

Area Crops And Pastures Spring to Life Following Drenching Rain at Most Points.

Boosters for a dam on upper Salt Fork of Red River met in Hedley Tuesday night to study the preliminary report of the engineers of the project and to plan further strategy.

Announcing Change of Location—Hughes Battery and Is now Located at (Across the Street From Location).

Mrs. Mac Tarver and A. Hightower left Lubbock where they were the annual school of the Northwest Texas Co. of W.S.C.

Members of the Youth ship of the Methodist Church joyed a bicycle party on evening. Enjoying the party were Mr. and Mrs. J. Monte June Saxe, J. Queen, Joy Beth Fark, Frank Garrett, Dorelle Wayne Tiner, Cleve Orr, Jean Foxhall, Tom Fletcher, John Darn, Lemons, Bobby Lemons, Jerry Hill, Sarah Ann Stargel, Abner Burnett and Gay Borne.

10 YEARS AGO

Aug. 1, 1963

Sheriff Elmer Neal attended the Texas Convention in the Greenbelt San Antonio.

Four boys from Memphis are members of the Patrol at Children's Convention in the Greenbelt San Antonio.

Those who made up the guard included William Bob Alewine, David Jimmy Reynolds, all of Misses Tops Gilreath and lyn Williams were in the 1963 Convention of the Federation of Business Professional Women's Club.

W. C. Davis, supt. of Schools, announced this enrollment for seniors for the 1963-64 school will begin Tuesday, Sept. 3, first full day of school Thursday, Sept. 5. T. O. president of the Memphis Booster Club, announced week that advanced reserve tickets will go on sale for the five home games.

Car of the Year: Ford. Time of the Year: Clearance.

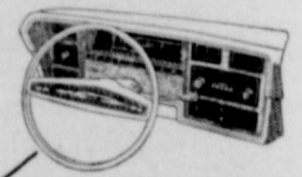
Your Ford Dealer is having a "Record Breaking" Clearance Sale.

It's the right time to check all the extras that aren't extra in a Ford. They're standard. Things like 351-cu. in. V-8 power, Cruise-O-Matic transmission, power front disc brakes, power steering. Plus Ford's famous quiet ride. So visit your Ford Dealer. And while you're there, check the Thunderbirds, Torinos, Mavericks, Mustangs and Pintos he has in stock. Remember, your Ford Dealer's prices have been frozen. That means they can't be raised. But that doesn't mean they can't be lowered!



Road Test Magazine named the 1973 Ford "Car of the Year."

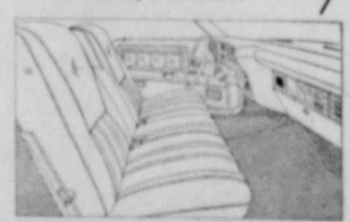
Power steering, the convenience feature that's in all big Fords, standard.



PRND1 SelectShift Cruise-O-Matic transmission, standard.

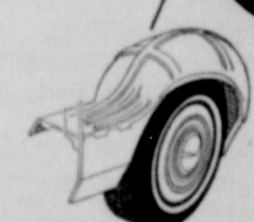


Security for you and your passengers: side-door Steel Guard Rails, standard.



Ford's famous Front Room, full-length door armrest, plush color-keyed carpeting, standard.

Ford LTD Brougham 2-Door Hardtop



Protective inner fenders that help fight rust and corrosion, standard.

Energy-Absorbing Bumper System, standard.

351-cu. in. 2V V-8 engine, standard.

Power front disc brakes for safe, sure stops, standard.

The closer you look, the better we look.

Foxhall Motor Co.

616 Noel Street

Memphis, Texas



B&PW Club Enjoys Picnic; Installs Officers

Members of the Memphis Business and Professional Women's Club enjoyed the annual picnic at the City Park on July 19.

The following members were present: Mollie Carlos, Betty Yarbrough, Nell Messer, Inez Mason, Lucile Burnett, Phyllis Dale, Wilma Leslie, Peggy Moreman, Sylvia Alewine and two guests, Jo Carmen and Syvilla Lemons.

Officers Installed

Officers for 1973-74 were recently installed for the B & P W Club by Edna Lee Cook, past president. Mrs. Cook used for the theme Doors with the following quotation: "I do not ask for more, than to be able to perform my task—serving others first, myself last."

Officers installed were as follows: Sylvia Alewine, president; Linda Branigan, vice president; Peggy Moss, secretary; Nell Messer, treasurer and Mollie Carlos, parliamentarian.

Tina of Abilene, Miss Debbie Nix of Odessa, Mr. and Mrs. Dewey Martin and Melissa of Abilene, Mr. and Mrs. Lonnie Stevens of Claude, Fred Koblich of Torrance, Calif., Miss Kristi Berry of Midland and Glenn Longworth of Canyon.

Blinda Cartrite Becomes Bride Of Lanny Crow In Sunray Rites Sat.

In a pretty church ceremony solemnized Saturday, July 21, in the Baptist Church in Sunray, Miss Belinda Rose Cartrite became the bride of Lanny Gene Crow, son of Mr. and Mrs. Henry Crow of Memphis. The bride is the daughter of Rev. and Mrs. Allan Cartrite of Shallowater.

Rev. Cartrite, father of the bride, read the double ring ceremony before an archway covered with greenery and flanked by baskets of palm leaves.

Music for the wedding was provided by Charlotte Cartrite of Sunray, organist, and Jean Shipp of Shallowater, soloist, who sang "Twelfth of Never" and the "Wedding Prayer."

Mrs. Charles Casey of Eula, sister of the bride was matron of honor and bridesmaids were Mrs. Ronnie Turner of Brownwood and Mrs. Guy Shults of Brownwood.

The attendans wore identical floor-length royal blue dresses fashioned with sheer long sleeves of floral pastel print.

Candlelighters were Tommy Cartrite and Sharon Cartrite, both of Sunray.

Paul Jay Smith of Lubbock was best man and groomsmen were Mike Crow of Perryton, brother of the groom and Sam Bruce of Memphis. Ushers were Coach Sharp and Coach Tipton, both of Sunray.

Given in marriage by her father, the bride wore a white dotehes satin floor-length gown styled with over-lay of white floral lace. She wore a chapel-length veil of white illusion edged with floral motifs of lace and she carried a cascade bouquet of white roses.

Immediately following the wedding, a reception was held in Fellowship Hall. The Bride's table was covered with a white cloth and appointed in crystal and silver.

For a wedding trip, the bride chose for travel a lime green dress complemented with jacket of blue and green floral print.

The bride is a graduate of Northwest Texas School of Nursing in Amarillo and is employed at the Dumas Memorial Hospital.

The bridegroom is a graduate of Texas Tech and is on the coaching staff at Sunray High School.

The Newlyweds will make their home in Sunray.

Mr. and Mrs. Marion E. Posey & daughters, Shari, MariAnn and Kari returned home last weekend from Lubbock where Shari and MariAnn had been attending Texas Tech Band camp for the last two weeks. While there they attended the concerts in which both girls played. Boyceno Bruce, also at camp, accompanied them home.



MRS. LANNY GENE CROW

MRS. MART BYRD

Kathy Miller-Byrd Vows to Wed Here Saturday

Kathy Miller of Memphis and Mart Byrd of Claude were joined in marriage in an impressive ceremony performed at 10:30 a.m. Saturday evening in the First United Methodist Church.

Rev. Tommy Nelson read the ring ceremony before a yellow gladiol, green-arched candelabra.

Members of the couple are Mr. and Mrs. Coy L. Miller, Memphis, and Mrs. M. C. Claude.

Ann Chamberlain presented traditional wedding music and sang "Twelfth of Never" the Wedding Prayer.

The couple were registered before the ceremony by Miss Connie Miller, the vestibule of the church.

Attendants: Monica Monzingo was maid of honor. Her dress was a tulle, dotted Swiss, floor-length, ruffled with tiny sleeves, ruffled shoulder and a full bow sash in the back. She carried a basket of daisies.

Jodie Miller, sister of the bride, was maid of honor and carried a floor-length, tulle, dotted Swiss dress with a full skirt, double-tiered sleeves and a full bow sash in the back. She wore a large straw hat decorated with daisies and also carried a basket of daisies.

Ushers were Ricky Claude, brother of the bride, and Bill Claude, brother of the groom.

The bride wore a gown of white tulle with a ruffled batiste bodice and a gathered skirt. Her veil of illusion edged with white daisies and baby's breath. She carried a bouquet of white daisies and baby's breath.

The bride presented her bouquet to the groom with a yellow rose and a white daisy.

Also Carl Byrd of Claude, Mr. and Mrs. W. Lee Byrd and Ellen of Abilene, Mr. and Mrs. Bill Miller and Terry, Teresa and

A reception honoring the couple was held in the Fellowship Hall of the church hosted by the bride's parents. The table was centered with a yellow and white floral arrangement flanked by tall yellow tapers in silver candleholders and held a crystal punch bowl, other silver and crystal appointments and a three-tiered wedding cake decorated with yellow roses and topped by a white wedding bell in a heart-shaped frame. Mrs. Darlene Pirtle, sister of the bride, and Mrs. Barbara Miller, sister-in-law of the bride, served yellow wedding punch, cake and nuts to the guests.

Mrs. Byrd is a graduate of Memphis High School, attended Cisco Jr. College two years, South Texas State University at San Marcos one semester, West Texas State University at Canyon one semester and will be a senior student there this fall.

Mr. Byrd is a graduate of Claude High School, attended Clarendon Jr. College and West Texas State University. He is presently employed at S&S Mfg. Co. of Claude and also engages in farming.

Following a wedding trip to Amarillo, the couple will reside at 410 Parks St. in Claude where they have purchased a home.

Mr. and Mrs. M. C. Byrd hostesses the rehearsal dinner at the Fellowship Hall of the First United Methodist Church on Friday evening, July 20.

Out of town guests included: Mr. and Mrs. Coy W. Miller and Coy, Jr., of Garden City, Kans., brother of the bride; Mr. and Mrs. Vaughn Pirtle and Matt and Misti of Colorado Springs, Colo., sister of the bride; Mr. and Mrs. Carl L. Nix of Midland, maternal grandparents of the bride; Mrs. A. F. Miller of Cisco, paternal grandmother of the bride; Mr. and Mrs. Denton Fox and Monica of Fort Worth, sister of the groom; Miss Joan Byrd of Redondo Beach Calif., sister of the groom; Mr. and Mrs. Bob Byrd and Amy and Steve of Claude, brother of the groom; Mrs. Naomi Byrd of Claude, paternal grandmother of the groom.

Also Carl Byrd of Claude, Mr. and Mrs. W. Lee Byrd and Ellen of Abilene, Mr. and Mrs. Bill Miller and Terry, Teresa and

Ushers were Ricky Claude, brother of the bride, and Bill Claude, brother of the groom.

The bride wore a gown of white tulle with a ruffled batiste bodice and a gathered skirt. Her veil of illusion edged with white daisies and baby's breath. She carried a bouquet of white daisies and baby's breath.

The bride presented her bouquet to the groom with a yellow rose and a white daisy.

Also Carl Byrd of Claude, Mr. and Mrs. W. Lee Byrd and Ellen of Abilene, Mr. and Mrs. Bill Miller and Terry, Teresa and

Ushers were Ricky Claude, brother of the bride, and Bill Claude, brother of the groom.

The bride wore a gown of white tulle with a ruffled batiste bodice and a gathered skirt. Her veil of illusion edged with white daisies and baby's breath. She carried a bouquet of white daisies and baby's breath.

The bride presented her bouquet to the groom with a yellow rose and a white daisy.

Also Carl Byrd of Claude, Mr. and Mrs. W. Lee Byrd and Ellen of Abilene, Mr. and Mrs. Bill Miller and Terry, Teresa and

NOTICE

will be closed on Sundays, effective

Sunday, July 29

PERKINS DEEP ROCK

Corner of Dover & Boykin Drive

MAKE YOUR BUDGET GO FURTHER
 SHOP YOUR *Check & Rated*

THRIFTWAY

PUNCH DETERGENT KING SIZE BOX **79¢**

FAB DETERGENT KING SIZE BOX **99¢**

AXAJ 13-OFF LABEL FOR DISHES WITH 7¢ COUPON IN THIS AD **29¢**

STEP SAVER FLOOR CARE 16-OZ. SIZE **59¢**

PINE SOL ORIGINAL PINE 15 OZ. **59¢**

PUREX BLEACH 1/2-GAL. PLASTIC BOTTLE **25¢**

FREE! BRIDGE TABLE

SINAREST TABLETS 20'S **99¢**

DRISTAN TABLETS 24'S **99¢**

GILLETTE BLADES 10'S **\$1.39**

MIRACLE WHIP 32-OZ. JAR **59¢**

MARGARINE SHURFRESH SOFT SINGLES 16-OZ. PKG. **39¢**

TUNA SHURFINE CHUNK STYLE 6 1/2-OZ. CAN **39¢**

SURE-JEL 1 1/2-OZ. BOXES **\$1.00**

KOOL-AID SWEETENED ASSTD. FLAVORS PKG. **10¢**

FOIL ALCOA ALUMINUM 18"X25" ROLL **39¢**

SUGAR WAFERS SUNSHINE ASSORTED 12-OZ. PKG. **39¢**

PRODUCE SPECIALS AT THRIFTWAY

TEXAS LARGE SIZE CANTALOUPE, 3 For **\$1.00**

CALIFORNIA PEACHES.....LB. **29¢**

CENTRAL AMERICAN BANANAS.....LB. **15¢**

CALIFORNIA BELL PEPPERS.....LB. **39¢**

GREEN ONIONS OR RADISHES.....BUNCH **10¢**

CALIFORNIA THOMPSON SEEDLESS GRAPES LB. **39¢**

BORDEN'S ROUND ICE CREAM 1/2 Gallon **89¢**

CANNED DRINKS SHURFINE ASST. FLAVORS 12-OZ. CANS **10 99¢**

BAYER ASPIRIN 100'S **79¢**

EXTRA-DRY SPRAY DEODORANT **99¢**

ARRID 8-OZ. CAN **99¢**

SINAREST TABLETS 20'S **99¢**

DRISTAN TABLETS 24'S **99¢**

DRISTAN NASAL MIST 150C EACH **99¢**

DRISTAN COLDS & FLU FEVER REDUCING CONGESTION 150C EACH **99¢**

SHURFINE FROZEN ORANGE JUICE 12-OZ. CANS **3 \$1.00**

FROZEN FOOD SPECIALS

FROZEN ECONOMY MORTON DINNERS, EACH **39¢**

FROZEN REGULAR MORTON DINNERS, EACH **39¢**

SHURFINE FROZEN CUT CORN 2 10-OZ. CANS **49¢**

SHURFINE FROZEN GREEN PEAS 2 10-OZ. CANS **49¢**

VALUABLE COUPON NO. 6325

25¢ OFF LABEL DETERGENT FAB... KING SIZE **99¢**

WITH THIS COUPON THRIFTWAY FOOD STORES VOID AFTER JULY 28, 1973

VALUABLE COUPON NO. 6328

15¢ OFF LABEL DETERGENT PUNCH... KING SIZE **79¢**

WITH THIS COUPON THRIFTWAY FOOD STORES VOID AFTER JULY 28, 1973

VALUABLE COUPON NO. 6304

13¢ OFF LABEL FOR DISHES AXAJ... 22-OZ. BTL. **29¢**

WITH THIS COUPON THRIFTWAY FOOD STORES VOID AFTER JULY 28, 1973

VALUABLE COUPON NO. 1232-4

35¢ OFF LABEL FOLGER'S COFFEE... 2-LB. CAN **\$1.69**

WITH THIS COUPON THRIFTWAY FOOD STORES VOID AFTER JULY 28, 1973

VALUABLE COUPON NO. 28939

10¢ OFF LABEL POST TOASTIES 12-OZ. BOX **25¢**

WITH THIS COUPON THRIFTWAY FOOD STORES VOID AFTER JULY 28, 1973

VALUABLE COUPON NO. 29193

50¢ OFF LABEL TASTER'S CHOICE FREEZE DRIED COFFEE... 8-OZ. JAR **\$1.79**

WITH THIS COUPON THRIFTWAY FOOD STORES VOID AFTER JULY 28, 1973

VALUABLE COUPON NO. 29193

40¢ OFF LABEL INSTANT TEA NESTEA... 3-OZ. JAR **79¢**

WITH THIS COUPON THRIFTWAY FOOD STORES VOID AFTER AUG. 4, 1973

OUTDOORS IN TEXAS

BY VERN SANFORD

Many black bass have been caught with a plastic worm but not many anglers have caught a black bass with a plastic worm already in its mouth.

Never in our experience had we ever seen this happen—until the trip from whence we've just returned.

It occurred on Lake Livingston when L. A. Wilke and I went out for a few action pictures during the recent tourney held solely for women anglers.

When Fishing Guide Phillip Rowe, who works out of Gallo-way's Marina, learned that we were seeking action shots of fish in the process of being caught, he said he could catch all the blacks we wanted "and right away too". Said he knew "exactly where to find them" and furthermore he would have us there as soon as the present storm clouds blew over. A more confident angler you've never seen.

In less than an hour we were on the water and within fifteen more minutes were at his favorite "hot spot".

Well, as luck would have it,

CORRECTION

Mrs. Lynn B. Jones, Helen Crisman and Karen did tour the capital at Washington, D. C. They didn't get to go into the Senate Chambers as the Senate was in session, as was incorrectly reported in a recent account of their trip published in the Democrat.

CARD OF THANKS

We wish to express our heartfelt thanks to all our neighbors and friends for your kindness to us in our recent sadness at the passing of our loved one. We appreciate your prayers, beautiful flowers, cards, letters, telephone calls and memorials. It is our prayer, when the hour of heart-ache and trial comes to you, that your friends and loved ones will comfort you as you comforted us. May God bless each of you.

Mrs. David May
W. B. Allen Family
D. D. May Family

Stop the simmer!



Enjoy **LENOX** Central Cooling NOW! Messer Electric

Phone 259-3329

Use the Classified Section of This Newspaper for Results

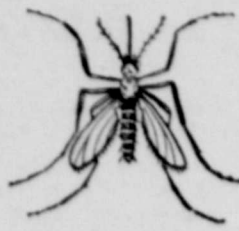
Most People just naturally think of The Memphis Democrat's want ad section when they think of buying or selling real estate . . . that's why you'll find you can always sell that property or find that home faster when you use our classifieds! They're the proven way of getting results — just ask our many satisfied advertisers. Only want ads give you so much advertising value for such a low cost!

Call 259-2441 and place your ad with our Classified Dept.

4-H Bug Hunters Prepare For Busy Season

WANTED

BY 4-H INSECT HUNTERS



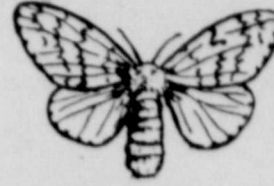
MOSQUITO

Harmful to Humans and Animals. Spreads harmful diseases.



17 YEAR LOCUST

Harmless. One of Nature's Phenomenal creatures. Appears every 17 years. (1956, 1973, 1990)



GYPSY MOTH

Harmful to foliage and plant life. "Bug Hitchhiker" Prevalent in Northwest and Northeast parts of U.S.

SPECIAL—The great insect hunt is on! And leading the brigade of hunters this summer are some 55,000 4-H boys and girls in the national 4-H entomology program sponsored by Hercules Incorporated.

This year is expected to be a particularly busy one for the young 4-H entomologists. With a wet spring through much of the nation, mosquitoes are promised in great numbers. And other insects are expected to provide good hunting for the young people armed with net and killing can.

Supervised by the Cooperative Extension Service, the 4-H entomologists start their study by making collections of insects common to their areas. They learn insect control and as much as possible about each species.

Along with the problems caused by a huge infestation

of mosquitos, the young entomologists are confronted with increasing numbers of gypsy moths, particularly the Northeast and Northwest sections of the country.

Gypsy moth larvae are particularly damaging to the foliage of trees and other plants. And as hitchhikers, they are unsurpassed as they travel from one area to another by car, truck, camper and rail.

Campers are particularly cautioned to remove insect larvae from their gear before travelling home or another destination.

Of a less pesty nature is the expected appearance of the 17 year locust during 1973. The locust population will be in the millions but fortunately, they do little or no harm to plants, animals and humans.

Lookings for the gypsy

moth, the 17 year locust and helping control mosquitos are just a few activities carried on by 4-H'ers in the 4-H entomology program.

Besides helping young people in their study of science and the appreciation of community for insect control, the 4-H'ers can earn other recognition provided by Hercules Incorporated.

Four young entomologists, in each county, can earn medals of honor and one \$50 U.S. Savings Bond is to be awarded the winner in each state. They are then eligible for one of 16 trips to National 4-H Congress, Nov. 25-29, in Chicago, and consideration for one of six national scholarships of \$700 each.

For more information on how to join the 1973 4-H insect hunt, contact the county extension office.

Out of Orbit

REPAIRS

COULD YOU FIX IT BEFORE MY HUSBAND RETURNS?

ANCHOR PAINT

For Inside and Out Paints Start at —

\$3.39 per gal.

DIXON'S

120 S. 5th St.

Democrats To Postpone Dinner In Amarillo

Tom Walker, Field Director of Texas Democratic Party, today informed Panhandle Democrat Party officials that the barbeque scheduled for the Tri-State Fairpark in Amarillo Saturday, July 28, has been postponed until October.

Mr. Walker stated that the unexpected hospitalization of the state Democratic Chairman, Calvin R. Guest of Bryan, has caused the delay.

Mr. Walker emphasized that the many tickets already sold will be good for the October barbeque. Anyone desiring a refund may obtain it from the seller or may write Andy Suuvalt, district attorney, care of the court house in Hereford.

CARD OF THANKS

We gratefully acknowledge the many expressions of kindness and sympathy extended to us during the illness and death of our loved one, particularly the flowers, memorials, food, cards, phone calls and prayers. Especially do we wish to thank the nurses, Dr. Stevenson and staff of the Hall County Hospital for their faithful service.

Mrs. O. B. Rampy
Mr. and Mrs. Ben Moss,
Laura Sue and Larry

Rev. and Mrs. Bill Mason of Sunrise Beach near Llano visited Monday evening with Mr. and Mrs. Lynn B. Jones.



BOSS SEZ NOTHING IMPOSSIBLE. HE ALLUS FIND SOMEBODY TO DO IT.

County Agents
Seven outstanding agents of the Texas Agricultural Extension Service have been named recipients of the highest honor given by the National Association of County Agents—the Distinguished Service Award for 1972. Charles R. Beedy of Clay County; Lawrence R. Winkler of Shackelford County; Rex A. Jones of Moody of Clarkville, East County; Rex A. Jones of Angelo, Tom Green County; George W. Rice of Nacogdoches County; J. Roll of Anahuac, Chambers County; and Thurman J. Kent of San Antonio, Bexar County.

DR. JACK L. ROSE
OPTOMETRIST
Contact Lenses
Closed Saturday Afternoons
415-A Main Phone 259-2216

HOOVER SPECIALS

Combination Hoover Service
Clinic And Scissors

FRIDAY AND SATURDAY
JULY 27 AND 28



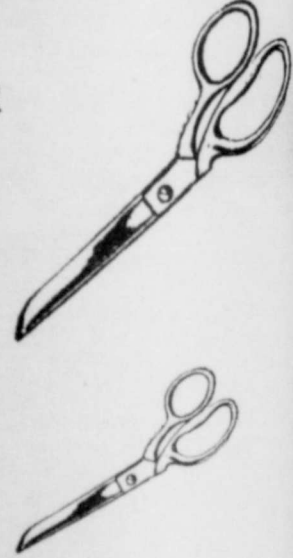
Scissors Sharpened

PINKING — SEWING — BARBER

Ground to a perfect uniform edge by experts with the finest commercial equipment available. Bring all your scissors. Your neighbors, too! All work done while you shop.

Scissors 49c

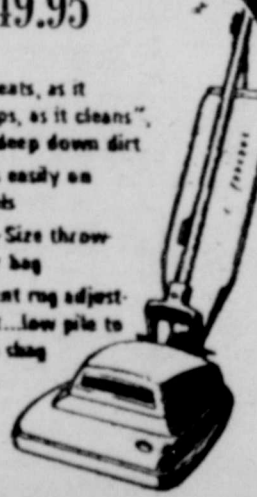
Pinking Shears 1.29



GREAT BUY on a HOOVER!

JUST \$49.95

- "It beats, as it sweeps, as it cleans", gets deep down dirt
- Rolls easily on wheels
- King-Size throw-away bag
- Instant rug adjustment...low pile to deep chag



LET A FACTORY EXPERT SERVICE YOUR HOOVER CLEANER!

We tear down and inspect motor bearings and brushes check agitator brushes, and replace if necessary, all for a low cost of \$5.95 plus parts . . . a regular \$7.95 value. All parts for Hoover Cleaners on hand. Replace that old handle, special bracker, light or bolt that our dealer does not ordinarily have on hand.

Vacuum Cleaner Bags for All Vacuum Cleaners

COMPLETE LINE HOOVER CLEANERS!

Thompson Bros. Co.

Mrs. Jack Miller and her family returned to their home in Memphis after visiting here several days with his mother, Mrs. Miller.

Angus Huckaby returned Saturday from High Plains Hospital in Amarillo where he underwent treatment for several days. Huckaby was in Amarillo with his wife.

Mrs. Jimmy Lindsey and Tommy visited in Memphis, N. M. over the past few days with Mr. and Mrs. Campbell and sons.

Glenna Roden of Louisville is visiting here with her mother, Mrs. W. D. Mabry, and her sister, Mary Lee Mabry and her husband, Yarbrough and Mr. Roden.

Miller of Abilene spent the weekend here with his wife, Mrs. Mike Branigan. Mrs. Miller has been here for several days.

**SEE US FOR
MIN FED BEEF**

can order Half
Hind Quarters

Check Our Prices
Before You Buy

Small Country Sausage
Ham and Bacon

Sm Slaughtering on
day through Friday
of beef and pork

Memphis, Texas
874-2154 Box 389
MEN MEAT CO

James Davis and Janet of Vega visited here Friday night with their mother and grandmother, Mrs. Garvis Davis.

Mr. and Mrs. T. E. Noel of Denton have been visiting here with Mr. and Mrs. Mac Tarver and other relatives and friends.

Mr. and Mrs. Hubert Jones had as weekend guests their son, Hoof Jones of Morton and Miss Roda Monroe of Lubbock.

Mr. and Mrs. Lloyd Robertson visited in Hedley Sunday with their daughter, Mrs. L. O. Messer and family.

Mr. and Mrs. Larry Crump of Hobbs, N. M. visited Saturday with Mr. and Mrs. Lloyd Robertson.

Mr. and Mrs. Roymond Jones of Canyon visited here Friday night and Saturday with her mother, Mrs. A. A. Smith.

**Friends Enjoying
Vacation In
Red River, N. M.**

A group of former Memphis High School friends are enjoying their annual vacation trip this week. The group left Memphis Thursday traveling on the Lester Campbell bus for Red River, N. M.

For several years, the group have met for a reunion and go to various vacation spots. This is the second year they have chosen New Mexico.

Enjoying the trip this year are Martha Campbell, Hattie Dem Thompson, both of Memphis, June Leary of Estelline, Tommy Noel of Denton, Annie Ruth Williams of Chillicothe, Anna Beth Leverett of Amarillo and Ann Watkins of Wichita Falls.

CARD OF THANKS
I want to take this means of thanking friends for the cards, letters, flowers and gifts while a patient in High Plains Baptist Hospital in Amarillo. The many kindness shown us, including the food brought to our home, is deeply appreciated. May God bless each of you.
Mrs. Angus Huckaby

THAT'S A FACT



ONE ON ONE!
FOR EVERY KERNEL ON EVERY EAR OF CORN - THERE IS A SEPARATE SILK STRAND!



FIRST COUSINS!
THE ONION IS A MEMBER OF THE LILY FAMILY... AND THE MOSS THAT GROWS ON SOME TREES IN THE SOUTHERN PART OF THE U.S. IS DIRECTLY RELATED TO PINEAPPLES!

**Men Of Year In
Texas Agriculture**

Six outstanding agricultural leaders have been named "Men of the Year in Texas Agriculture" for 1973 by the Texas County Agricultural Agents Association. They are H. L. (Hub) King of Brownfield, Charles E. Ball of Amarillo (formerly of Dallas), Gerald C. (Jerry) Puckett of Fort Stockton, Ross Wilson of Gorman, Lynn M. Griffin of Austin, and Joseph B. Finley of Laredo. The honorees will receive a special plaque during the agent association state meeting Aug. 5-7 at the Villa Capri Hotel in Austin.

TV Service Center

609 Noel St.
Memphis, Texas
Phone 259-3224

Dependable and
guaranteed service
Jesse Hernandez

**SPORTS
AFIELD**

By Ted Kesting

"The best way to get top performance out of a hunting dog is to send him to a good professional trainer," writes Jerome B. Robinson, Gun Dogs Editor of Sports Afield. "A good professional gun-dog trainer has the confidence, the experience, the training ground and the birds which make all the difference in whether a gun dog turns out sloppy performances in the field or thrills his owner with consistently classy work."

A good pro can get a dog to work at the height of its capabilities. He can get an average dog to turn out better than average work and can make a better than average dog look great. Because of his experience, his sense of timing and his knowledge of dogs, a good pro can make a few months of training really pay off.

But there is more to getting the most out of a pro-trained gun dog than simply sending your dog to a professional and paying

demands a good performance. The man who sends his dog to a professional trainer should realize that a three-way relationship must develop between himself, the trainer and the dog. Dog and owner must learn from the pro; owner and pro must each earn the dog's respect, and dog and pro must must each work for the owner.

An owner can learn a lot about how to handle his dog in the field if he is careful to choose a gun-dog trainer who is willing to teach him the do's and don'ts of handling his particular dog. The top gun-dog trainers encourage this sort of thing for obvious reasons—they want the owner to be satisfied with the job accomplished.

Too often, owners proceed under the mistaken belief that once a dog is trained by a professional, the dog will perform at peak capacity ever after. Nothing could be farther from the truth. When you send a dog to a pro, you inherit a responsibility both to the dog and to the trainer. To get the same performance the pro gets from your dog you must learn to handle the dog the same way the pro does. The dog will learn to respond to the trainer's commands and attitudes. You must learn the same commands and develop similar attitudes before your dog will respond to you with equal alacrity.

CARE
FOR THOSE YOU LOVE
Cousins Home, Inc
520 North 18th St.
Phone 259-2767
Memphis, Texas

BYLOW FOOD STORE

BYLOW
WITH THIS COUPON
12 Oz. Jar
Maryland Club
Instant Coffee
1.29
Without coupon **2.29**
Cash value 1/20c. Limit one per customer
Exp. 8-4-73 92



SAVE VALUABLE COUPON SAVE
20 lb.
HOME LAUNDRY SIZE DASH ONLY
60c Coupon
4.39
GOOD ONLY AT **Bylow**
WITH THIS COUPON PRICE WITHOUT COUPON **4.99**
OFFER EXPIRES 7-28-73
LIMIT 1 COUPON PER PURCHASE



WHITE SWAN
SHORTENING
3 LBS. **79¢**

DELSEY, 2 ROLL PKG.
TISSUE
2 FOR **59¢**

WHITE SWAN, 15 OZ. CAN
PINEAPPLE
3 FOR **89¢**

WHITE SWAN
INSTANT TEA
3 OZ. JAR **89¢**

WESTERN GOLD, NO. 2 1/2 CAN
PORK & BEANS
3 FOR **89¢**

We've got MEATY SAVINGS
CHUCK ROAST **79¢**
LB.
DECKER FRANKS **79¢**
12 OZ. PKG.

SAVE VALUABLE COUPON SAVE
2 KING SIZE
Thrill **1.44**
32 FL. OZ. (1 QT.) EACH
GOOD ONLY AT **Bylow**
WITH THIS COUPON ONE BOTTLE WITHOUT COUPON **97c**
OFFER EXPIRES 7-28-73
LIMIT 1 COUPON PER PURCHASE



FROZEN FOOD SAVINGS

BANQUET, 8 OZ.
POT PIES
4 FOR **89¢**

FLAV-R-PAK, 6 OZ. CANS
ORANGE JUICE
5 FOR **1.00**

KEITH, 8 OZ. PKG.
FISH STICKS
3 FOR **89¢**

BOOTH
PERCH FILLET
14 OZ. PKG. **98¢**

Fresh Produce

THOMPSON SEEDLESS
GRAPES
POUND **39¢**

CUCUMBERS
POUND **19¢**

Last Week Wishing Well Winners
Mrs. H. A. Holt
Yvonne Maddox
Sharon Wheatly

**Memphis KEY 73
CRUSADE FOR CHRIST**



EVANGELIST: CAROLS McLEOD
PLAINVIEW


MUSIC—MR. and MRS. WESLEY BOYD—OKLA., CITY

July 28-31 at 8 P. M.
City Park Amphitheater

SATURDAY: Youth Rally & Music Festival
SUNDAY: Family Recreation & Supper preceding service.
Special Music Groups each service

Sponsoring Churches:
First Baptist
First United Methodist
First Christian
First Presbyterian
Assembly of God
Emmanuel Spanish Mission
Mt. Zion Baptist
Mt. Pleasant Baptist
Travis Baptist
Sacred Heart Catholic

BYLOW
WITH THIS COUPON
2 Lb. Can of
Maryland Club Coffee
1.69
Without coupon **2.16**
Cash value 1/20c. one per customer
Exp. 7-28-73 16



WHITE SWAN — 1 LB.
SOFT OLEO
3 FOR **1.00**

OUR DARLING, 303 CAN
CORN
3 FOR **69¢**

TEX SUN, 46 OZ.
GRAPEFRUIT JUICE
2 FOR **89¢**

SWIFT'S
ICE CREAM
1/2 GALLON **79¢**

STATE CAPITAL Highlights AND Sidelights

by Bill Boykin
TEXAS PRESS ASSOCIATION

AUSTIN, TEXAS

Federal Environmental Protection Agency proposals to cut auto pollution smog in Texas ran into opposition in public hearings last week.

EPA proposes to put the smog control plans into effect August 15, unless convinced it should alter or delay them.

Here's what the controls would mean, with variations from area to area:

Special traffic lanes for buses and car pools on freeways.

Installation of anti-pollution

Young Golfers Compete In Area Junior Tourneys

Memphis junior golfers have had a busy time and several have captured trophies.

Tina Foxhall, 12-year-old daughter of Mr. and Mrs. Frank B. Foxhall, won first place (while she was still 11-year old over the weekend at Paducah in a club tournament for youngsters there.

She shot an 86 on the final day, Sunday, to win her flight. Taking second place was Lynn Monzingo, Son of Mr. and Mrs. Gayle Monzingo.

In the older (championship) flight of the Paducah tournament, Don Cofer won the flight and Matt Monzingo won second place.

Monday, Tina played in a West Texas PGA junior tournament at Vernon, competing in the 12-13 age bracket and she took second place after being edged out by one stroke.

Tuesday, several of the local young golfers competed in the West Texas PGA junior tournament at Childress, but none were able to finish in the top of their respective flights.

Tomorrow, Tina and others are planning to play in a West Texas PGA tournament in Clarendon.

Chuck Jennings Is Candidate For Tech Law Review

Chuck Jennings has been invited to be a candidate for Texas Tech Law Review. Only 23 of 148 members of the 1972-73 first year class at Texas Tech School of Law have been extended invitations to enter the candidacy program.

The Law Review is the official journal of the School of Law. It contains articles written by prominent members of the legal profession and by outstanding law students. The journal is published twice annually and has a nationwide circulation.

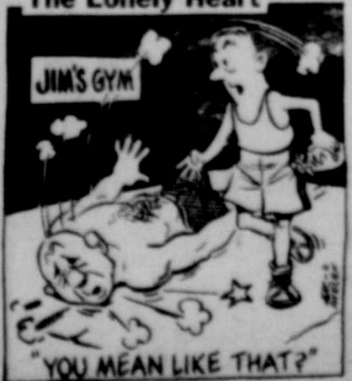
Participation in Law Review work is not only a recognition of superior academic achievement; it is also an unusual educational opportunity for students to develop skills in legal research and writing. During the student's candidacy he will be required to write two publishable legal writings. Upon successful completion of candidacy each student will become a member of the Staff.

Jennings graduated from Memphis High School in 1968. He graduated with Individual Honors from Texas Tech University in 1972 with a degree in Finance. Both as an undergraduate and graduate student he has been on the Dean's List.

Jennings is the son of Mr. and Mrs. Melvin Jennings, 4123 Shady Springs Drive, Seabrook. He is married to the former Lometa Pate, daughter of Mr. and Mrs. Olton Pate of Memphis.

Jennings is active in Welta Theta Phi legal fraternity and will graduate from the School of Law in 1975.

The Lonely Heart



devices on pre-1968 cars.

Elimination of downtown parking in major cities like Houston and San Antonio.

Gasoline quotas.

Reducing gasoline fumes in some areas (like Austin-Waco) by improved storage tanks and tighter gasoline delivery trucks.

A Texas Good Roads Association spokesman assailed the idea of special traffic lanes as potential contributors to all-time record traffic pile-ups.

A Texas Air Control Board representative also challenged constitutionality of EPA recommendations to require owners of seven-year-old (and older) cars to install anti-smog equipment.

The latter requirement, said the Board spokesman, places an undue and discriminatory burden on the poor and raises questions under due process and equal guarantees of the fifth and 14th amendments.

Air Control Board spokesmen have contended emission control devices would cost owners of old cars \$300 million and would affect one per cent of the total pollution problem.

Price Increases Continued

The Texas Department of Agriculture reports dramatic increases in prices of eggs, pork and other commodities throughout the state.

TDA estimated the egg price increase at 10 cents per dozen this week on the retail level, and said grade A large eggs could sell for 85 cents a dozen.

Potatoes are expected to increase from \$1 to \$2 per hundredweight.

Pork prices are up 10 cents a pound, and lamb prices are also soaring. The Agriculture Department said some smaller packers are contemplating discontinuing cattle slaughter. Distributors were said to be seeking additional supplies of vegetables since they are permitted to raise prices.

A major problem is a shortage of trucks to move grain.

Reimbursement For Cities

Cities which constructed sewage treatment plants between July 1, 1966 and July 1, 1972, without benefit of full federal construction grants can get reimbursements.

Texas Water Quality Board Executive Director Hugh C. Yantis Jr. said applications for the reimbursements should be made to the Environmental Protection by October 17. Yantis also suggested cities which constructed plants as far back as July 1, 1956, without full federal grants should make applications for reimbursements in case regulations are changed to qualify them.

Briscoe Wealth Estimated

Major Texas daily newspapers came up with estimates that Gov. Dolph Briscoe owns more than 300,000 acres of land in South Texas and has assets of over \$40 million.

The Governor paid \$113,309 in taxes on his land in 1972.

"What we assess him, he pays," said Dimmit County Tax Assessor-Collector Mrs. Jeanne John.

Through leases, in addition to his holdings, Briscoe is said to control a million acres of land.

Courts Speak

Third Court of Civil Appeals agreed with lower court that St. Mary's University of San Antonio owns the Laredo Archives and other documents in the Sebron S. Wilcox collection.

The same court dismissed South Texas' suit for hunting rights in Uvalde, Dimmit and Zavala counties river beds.

Affirming an intermediate court, the State Supreme Court backed a new trial for a candy flavoring mix company's suit to collect insurance on ice cream unfit for consumption.

The Third Court of Civil Appeals affirmed a district court verdict that a miscarriage by an Austin woman was not caused by an auto accident.

Oil Production Wide Open

For the 11th straight month, the Railroad Commission has directed 100 per cent oil production during August.

Crude oil buyers' request for more than 3.78 million barrels daily was slightly less than the record for July, however.

Exceptions to the wide-open order were allowed for East Texas field (86 per cent), Kelly-Snyder of West Texas (84 per cent) and Tom O'Connor Field (70 per cent).

Commission Chairman Jim C. Langdon said state crude reserves dropped 13.1 million barrels since

July, 1972.

AG Opinions

Atty. Gen John Hill conditionally approved the state's \$5 million tuition-equalization grant program for private college students but warned that rules must be framed to meet U. S. Supreme Court tests of aid to parochial schools.

In other recent opinions, Hill concluded:

A college professor cannot be employed simultaneously as an assistant state district attorney.

Residence of a minor for purpose of school attendance is normally that of his parents.

Texas Water Quality Board has authority to require feedlot owners to submit evidence that wastes from their operation will not cause pollution of ground or surface waters.

Appointments

Allen Eugene Richardson, a native of Bailey County, is new executive director of Texas Water Rights Commission, and Clinton R. Miertschin of La Grange will be the agency's acting chief engineer.

Governor Briscoe appointed Don Carroll of Tyler as district judge of the Seventh District Court in Smith County, replacing R. P. Power who resigned.

Briscoe named LeRue Dixon of Jacksonville as district attorney in Cherokee County.

Governor Briscoe placed Frank Barron of Forth Worth and Robert T. Mattox of Crockett on the Trinity River Authority and reappointed Guy C. Jackson III of Anahuac, and Amon G. Carter Jr. of Fort Worth.

Sam Damron of Muleshoe and Albert Hopkins of Houston were picked by Briscoe to serve on the Board of Pharmacy, succeeding John R. Fowler of Memphis and Eugene Wilson of Dallas.

Mrs. Blake Sparenberk of

Austin is the Governor's choice for the State Board of Canvasers.

Short Snorts

The State Board of Insurance set an August 2, public hearing here to consider adjustments in Texas Workmen's Compensation and Employers' Liability Insurance rates to meet new changes in law.

Harry Hubbard defeated Roy Evans for presidency of the State AFL-CIO, and Sherman

Fricks won his race for secretary-treasurer of the big labor organization over Lanny Rogers.

Hunting fees ranging up to \$10 a day for deer will be charged for public hunts at Parks and Wildlife Department game management areas.

Ronald Earle won a July 17, special election to fill an Austin House of Representatives vacancy Republican Maurice Angly and Democrat Lloyd Doggett went in to a runoff for the Austin dis-

trict 14 state senate vacancy.

House Speaker Price Daniel Jr. announced his availability for chairman of the 1974 constitutional convention, and Sen. Tom Creighton of Mineral Wells announced he will nominate Sen. A. M. Aikin Jr. of Paris for the post.

A House interim committee has recommended removal of the capitol press room to a nearby building and placing legislative reporters in the gallery instead of on the House floor. The same

committee recommended a \$7.3 million office and television coverage of proceedings paid for by money.

Former Rep. Hubert of Amarillo got a 18-month sentence on a charge of stealing \$5,000 worth of stamps.

Legislative lobbyists are spending more than \$100,000 a year to directly influence come of legislation.

GRAND OPENING

Sat., July 28-8:00-600 P.M.

COME BY AND REGISTER FOR FREE GARBAGE DISPOSAL

Drawing to be held at 4:00 p. m. You do not have to be present to win

WE WILL BE SERVING: SOFT DRINKS, COFFEE, DONUTS, COOKIES!

- Let us make an appointment to come and give you a FREE estimate for fencing your yard. Chain Link, Stockade (Western Red Cedar) Material or installed.
- Gym Dandy Swing Sets in Stock Soon Special Sale Price
- Check Roger New Pianos on sale 25% off
- For each New Piano Sold a Piano Lamp will be given away on Opening Day
- Lennox Air Conditioning and Heating FREE ESTIMATES!

BACME Fence And Iron Co. C. D. Bradshaw

Messer Electric Co. Roger Messer

102 Boykin - Depot Building

NOW, YOUR MONEY EARNS MORE THAN EVER!

FIRST FEDERAL NEW HIGHER RATES!



6.75%
A YEAR COMPOUNDED DAILY FOR AN EFFECTIVE ANNUAL YIELD OF

6.98%
(30 Months, \$10,000 Minimum)

6.50%
A YEAR COMPOUNDED DAILY FOR AN EFFECTIVE ANNUAL YIELD OF

6.72%
(1 or 2 years, 5,000 Minimum)

5.75%
A YEAR COMPOUNDED DAILY FOR AN EFFECTIVE ANNUAL YIELD OF

5.92%
90 day accounts, \$1,000 minimum (Applies also to existing accounts effective July 1, 1973)

5.25%
A YEAR COMPOUNDED DAILY FOR AN EFFECTIVE ANNUAL YIELD OF

5.39%
(Applies also to existing accounts effective July 1, 1973)

Please check with us about the best time to transfer your account. Federal regulations prohibit the transferring from existing certificates without forfeiture of interest.

Under the new rate provisions, withdrawals from certificates of deposit prior to maturity date will reduce earnings since the date issued to the passbook rate then being paid, and cause a forfeiture of 90 days' interest.

FIRST FEDERAL SAVINGS & LOAN ASSOCIATION



CHILDRESS, TEXAS

INTEREST ON ALL ACCOUNTS COMPOUNDED DAILY
Accounts Federally Insured To \$20,000.00

Why settle for less when you can save with complete insured safety and earn these highest interest rates.

Farmcast

Compiled From Sources Of The Texas Department of Agriculture
John C. White, Commissioner

All major crops in Texas show increases in acreage, the Texas Crop and Livestock Reporting Service notes. Wheat production as well as oat production are also estimated now at two to three times above 1972 production levels.

Upland cotton acres for Texas this year are estimated at 5,700,000 compared with 5,570,000 in 1972. Acres planted to American-Pima cotton are 35,000, unchanged from last year. All of the increase in the upland cotton is in the High and Low Plains and Edwards Plateau.

Grain sorghum acreage this year in Texas is estimated at 8,100,000 acres, up 19 per cent from the 6,800,000 started in South Texas. An excellent crop is indicated for Central Texas. Hot, dry weather is needed to mature the crop.

Corn planted for all purposes in Texas this year is estimated at 700,000 acres compared with 580,000 acres planted in 1972. Because of the weather, corn is in various stages of growth in every area of the state. Farmers in all parts of the state were able to get some early stands; most stands were about on schedule but cold, wet weather increased late plantings.

Peanut acreage for Texas in 1973 is up two per cent from 1972. Acreage now is estimated at 320,000 acres. Weather again delayed the progress, but moisture conditions now are favorable for the development of a good peanut crop.

Wheat production is now estimated at 95,200,000 bushels in Texas; this is more than double the 44,000,000 bushels produced in 1972.

Yield is expected to average 28 bushels per acre, a record, compared with 22 bushels last year. Harvested acres set at 3,400,000 compared with only 2,000,000 in 1972. Wheat harvest for the state is now virtually complete.

Oat production this year is estimated at 26,650,000 bushels, compared with only 9,720,000 bushels in 1972. Yield is expected to average a record 41 bushels per acre compared with 27 bushels in 1972. Acres for harvest are set at 650,000 compared with 360,000 in 1972. Harvest is

completed. Soybeans, a crop which is becoming more important in Texas, are estimated to total 450,000 acres this year, compared with 225,000 in 1972, and only 114,000 in 1971. Seeding for the state is complete; acreage is mostly in the High Plains and the southern half of the state.

Rice acreage in Texas this year is estimated at 553,000 acres compared with 469,000 acres in 1972. Harvest of the earliest stands is at hand.

Barley production is estimated at 3,510,000 bushels, compared with 1,980,000 bushels in 1972. Yield is expected to average 39 bushels per acre compared to 33 bushels in 1972. Harvested acres are set at 90,000 compared to 60,000 last year.

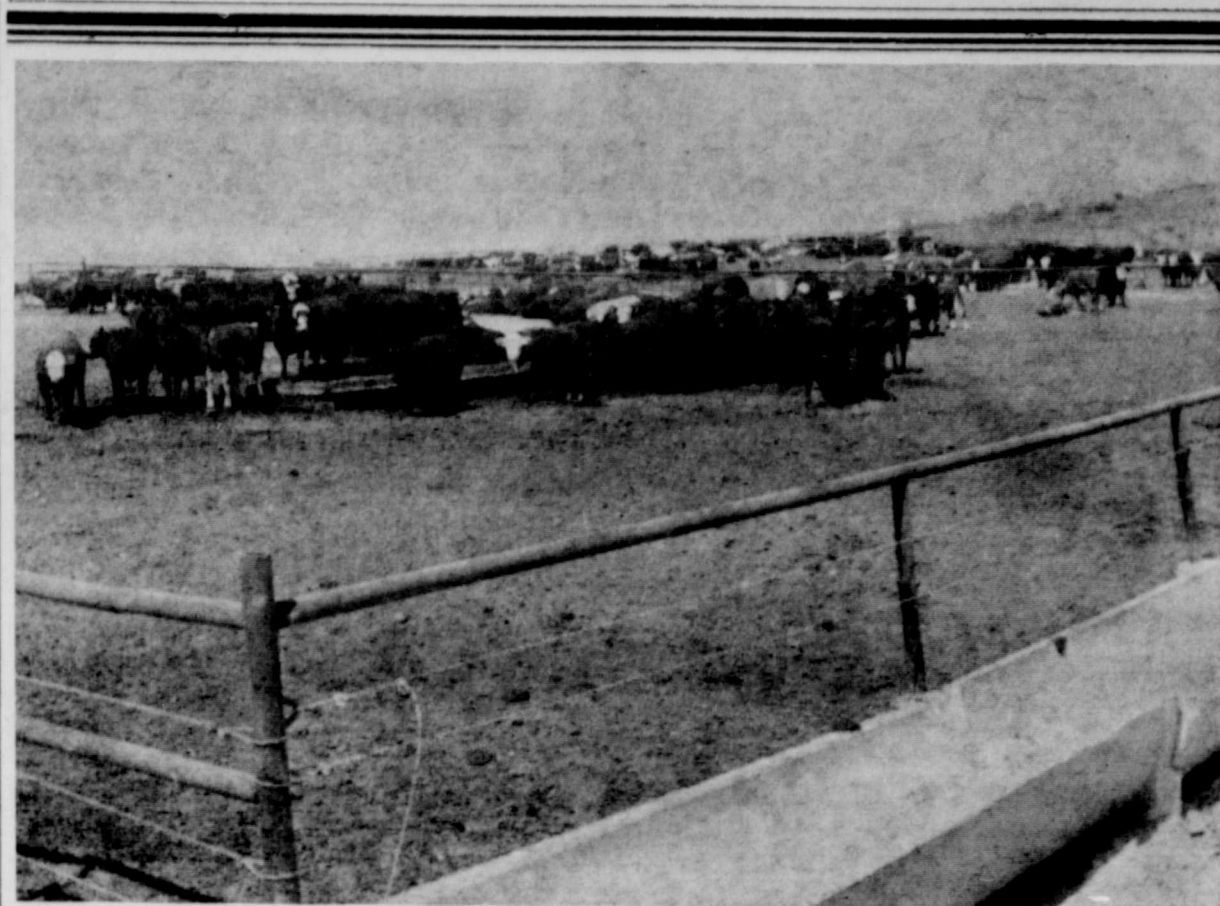
Rye production is estimated at 900,000 compared to 630,000 bushels in 1972. Average is 18 bushels per acre; harvested acres are set at 50,000 compared to 35,000 in 1972.

Only flaxseed, Irish potatoes and peaches are expected to be under 1972 production levels. Flaxseed planted acreage is estimated at 9,000 acres compared with 22,000 in 1972. Irish potato production is estimated at 2,991,000 hundredweight compared with 3,182,000 hundredweight in 1972. Peach production is estimated at 417,000 bushels compared with 604,000 bushels in 1972.

MILK production in Texas in June was up five per cent from a month ago, nationwide milk production was down 2.5 per cent from last year.

It has been estimated that more than 14½ million Americans suffer from handicapping hearing losses, according to officials of the Beltone Crusade for Hearing Conservation. This includes approximately three million hearing impaired school-age youngsters, the crusade officials add.

For
OFFICE SUPPLIES
Call
The
Memphis Democrat



Congratulations

We wish to take this opportunity to congratulate Donley County Feed Lot, Inc., as they plan their Open House Celebration and Barbecue Saturday, July 28.

We are proud of their rapid growth and offer our continued support in this vital cattle feeding operation in our area.



1ST NATIONAL BANK OF MEMPHIS

Serving This Community for 75 Years
MEMPHIS, TEXAS



Nene Foxhall Is Awarded Congressional Internship

Nene Foxhall, senior journalism student at Texas Tech University, has been awarded a Sears Congressional Internship for the summer to study the role of legislative affairs in Washington, D. C.

Miss Foxhall has been an intern on the staff of the Dallas Morning News for two summers and was on The Texas Tech University Daily last year. She is the daughter of Mr. and Mrs. Lewis Foxhall.

Scarbrough Team Wins Best-Ball Tourney Sunday

The Danny Scarbrough team of Danny and Neva Scarbrough, Lewis Simpson and Lester Campbell won the best-ball tournament Sunday with a 10-under par 58.

Tied for second and third were teams of Bill Combs and Dink Miller. On a 19th hole sudden death, the Combs' team with Clyde Smith doing the putting, holed a 15-ft. birdie putt to win the sudden death playoff.

Members of the Combs team were: Clyde and Scooter Smith, Chris Liner and Don Bridges.

Members of the Miller team were Dink and Yelive Miller, J. B. Scott, Johnnie Harrell and Chuck Jones.

Taking fourth place was the Mickie Daugherty team of Mickie, Gene, Dot and Darrell Daugherty, John Binkley and Harold Smith.

This team won a play-off against Melroy Cofer, Polly and Lee Brown, Phil Howard and John Ferrel.

Exposure to excessively loud noise, which can result in hearing losses, also can have other physical effects, including damage to the heart and blood vessels, warns the Beltone Crusade for Hearing Conservation.

Public Notice

It is hereby given that the Trustees of the Estelline Independent School District meet a Budget Hearing at 8:00 p.m. on Monday, August 13, in the Estelline School for the purpose of the 1973-74 school year and any and all persons having an interest in this business are hereby notified to be present.

BOARD OF THANKS

I would like to take this means of expressing my appreciation to the many friends who were kind and thoughtful to bring my recent stay in Estelline Baptist Hospital. I sincerely appreciate the flowers, phone calls, and letters. God bless each of you.

Mrs. Kate Johnson

**YOU ARE INVITED TO
EVANGELISTIC SERVICES**
at
First United Methodist Church
August 1-5
Services at 8:00 P. M.
Rev. James Holman
Evangelist
Mr. and Mrs. Wesley Boyd
Musicians



Family Groups Welcome

Friday and Saturday

July 27 and 28

DeVile Motel

MEMPHIS - ROOM 19

Professional Photography by
Palo Duro Studio of Amarillo

BRING THIS AD

1-8x10 Color

Portrait 98c Plus Tax and 50c Sitting



- Poses to Choose From
- No Appointments Necessary
- Eastman Kodak and Paper Used
- Extra Photos Available
- Limit One Special/Person
- Photographer on Duty—Noon to 9:00 P. M.

God's World

**"With my whole heart I seek thee; let me not wander from thy commandments."
-Psalms 119:10**

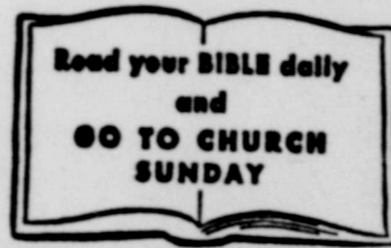
How often do you allow God to come into your life? Once a week? Once a day?

There is one God. And, there is one you. It is not possible for you to live a life pleasing to God unless God is a part of that life, day-to-day, sunrise to sunset, twilight until dawn. Belief in God is constant. You cannot forget about God in the pursuit of your business and social life, six days of each week, and give that seventh day over to an awareness that God exists and to the simple formality of visiting God's house.

God is everywhere, always. If you believe, your faith must be constant.



He restoreth your soul... Worship together this week



- Baptist Church Estelline**
10:00 a. m. — Sunday School
11:00 a. m. Morning Worship Ser.
6:00 p. m. — Training Union
7:00 p. m. Evening Worship Ser.
Mon., 3:45 — WMU
Wed., 7:00 p. m. Prayer Meeting
- Baptist Church Brice**
10:00 a. m. — Sunday School
11:00 a. m. — Morning Worship
5:00 p. m. — Training Union
6:00 p. m. — Evening Worship
Wed., 7 p. m. — Mid-Week Service
J. I. Herndon, Pastor
- West Side Church of Christ Estelline**
10:30 a. m. — Morning Worship
6:30 p. m. — Evening Worship
- Jehovah's Witnesses Memphis**
Sun. 10 a. m. — Bible Lecture
Sun. 11 a. m. — Watchtower Study
Tues. 8 p. m. — Bible Study
Fri. 7:30 p. m. — Ministry School
Fri. 8:30 p. m. — Service Meeting
Presiding Minister:
Robert Mikesell
- Assembly of God Church Memphis**
9:45 a. m. — Sunday School
11:00 a. m. — Worship Service
6:00 p. m. — Christ Ambassadors
7:00 p. m. — Evening Service
W. L. Sanders, minister
- Church of Christ Memphis**
9:45 a. m. — Bible Study
10:45 a. m. Morning Worship Ser.
6:00 p. m. — Evening Worship
Wed., 7:30 p. m. — Bible Study
Thurs. 9 a. m. — Ladies Bible Study
Art Smith, Minister
- Baptist Church Newlin**
10:00 a. m. — Sunday School
11:00 a. m. — Morning Worship
L. J. Crawford, minister
- Church of Christ Lakeview**
10:00 a. m. — Bible Study
11:00 a. m. Morning Worship Ser.
6:00 p. m. Evening Worship Ser.
Wed 7:30 p. m. — Bible Study
Kenneth Rhodes, minister
- East Side Church of Christ Estelline**
10:00 a. m. — Bible Study
11:00 a. m. Morning Worship Ser.
6:00 p. m. — Evening Worship
Wed., 7 p. m. — Bible Study
Steve Stewart
Coleman Lemons of Lubbock
- Baptist Church Lakeview**
10:00 a. m. — Sunday School
11:00 a. m. — Morning Worship
5:00 p. m. — Training Union
6:00 p. m. — Evening Worship
Wed., 7 p. m. Mid-Week Service
Burton L. Melancon, pastor
- Assembly of God Estelline**
10:00 a. m. — Sunday School
11:00 a. m. — Evening Service
6:00 p. m. — Bible Study
Thurs., 7 p. m. — Bible Study
Rev. E. G. Johnson, pastor

- First Christian Church Memphis**
9:45 a. m. — Sunday School
10:45 a. m. Morning Worship Ser.
6:00 p. m. — Youth Meeting
7:00 p. m. Evening Worship Ser.
Wed., 7:30 p. m. — Mid-Week Service
Tom Posey, minister
- Travis Baptist Church Memphis**
9:45 a. m. — Sunday School
11:00 a. m. — Morning Worship
6:30 p. m. — Training Union
7:30 p. m. — Evening Worship
Wed., 7 p. m. — Teachers Meeting
Wed. 7:30 p. m. — Mid-Week Service
Wilburn Coffman, pastor
- Church of God Memphis**
10:00 a. m. — Sunday School
11:00 a. m. — Morning Worship
7:00 p. m. — Evening Worship
Clyde W. Boyd, pastor
- First Baptist Church Memphis**
9:45 a. m. — Sunday School
11:00 a. m. Morning Worship Ser.
6:00 p. m. — Training Union
7:00 p. m. Evening Worship Ser.
Wed., 7:30 p. m. — Mid-Week Service
C. H. Murphy, Minister
- Methodist Church Lakeview**
10:00 a. m. — Sunday School
10:55 a. m. Morning Worship Ser.
MYF 7:00 p. m. — Wed. Evening
6:00 p. m. — Evening Worship
WSCS 7:00 p. m. 1st & 3rd Thurs.
John M. Dorn, Pastor
- Presbyterian Church Memphis**
11:00 a. m. — Morning Worship
7:30 p. m. Tues. — Study Group
7:30 p. m. Mon. 2nd & 4th Thurs.
Wed. — Mizpah Guild Meeting
Owen McGarity, pastor
- St. Mary's Church Clarendon**
7:30 a. m. — Sunday Mass
Sacred Heart Catholic Church
Memphis
10:30 a. m. — Sunday Mass
Rev. Ladislaus Wolko, S. Th. B.
Ph. M.
- United Pentecostal Church Memphis**
11:00 a. m. — Morning Worship
10:00 a. m. — Sunday School
7:00 p. m. — Sunday Evening
7:00 p. m. — Tuesday Evening
Rev. Gordon Pace
- Methodist Churches Estelline**
10:00 a. m. — Sunday School
11:00 a. m. Morning Worship Ser.
5:00 p. m. Evening Worship Ser.
Tell
9:30 a. m. Morning Worship Ser.
10:30 a. m. — Sunday School
6:15 p. m. Evening worship Ser.
- First United Methodist Church Memphis**
9:45 a. m. — Sunday School
11:00 a. m. — Morning Worship
5:00 p. m. — MTT
6:00 p. m. — Evening Worship
Tommy E. Nelson, pastor

These Memphis Business Firms Make This Page Possible in the Interest of a Christian Community . . . With the Hope That More People Will Go To Church Regularly

- | | | | |
|--------------------------|----------------------------------|--|---------------------------|
| Greene Dry Goods Co. | Nell and Jim Beeson | O. R. "Doc" Saye
Mobil Products Consignee | Simpson's Men & Boys Wear |
| Ferrel's | Donny and Fran's Place | Fowlers Drug | Campbell Insurance Agency |
| Memphis Tire and Supply | Kinard-Gailey Agency | John Lemons Furniture | Cablecom-General, Inc. |
| Dunbar and Dunbar | Clent's Barber Shop | Memphis Lumber Company | Ann's Shoppe |
| Brown Auto Supply | Dr. Jack L. Rose | Lockhart Pharmacy | Caprock Translator System |
| Bruce Bros. Mobil | Smith's Auto Store | Vernell's Drive-In | Hall County Farm Supply |
| Foxhall Motor Company | Patrick Chemical Company | 287 Restaurant | Ward Motor Company |
| Branigan Jewelry | Hall County Electric Co-Op., Inc | First National Bank | The Lady Fair |
| Williams Oil & Gas Co. | | Spicer Funeral Home | |
| Memphis Compress Company | | | |
| First State Bank | | | |

COUNTY AGENT Says

Sorghum Harvesting Tips Aired

Rainfall and humidity during harvesting and storing for sorghum problems begin harvesting when reaches a field moisture of 20 to 22 percent—if facilities are available.

Early harvest may be before or when sprouting head, suckering or tillage troubles, points out Extension Agent W. B.

moisture level not to 18 percent is preferred, drying facilities are for safe storage, transferring long distances, preserve quality.

Sorghum should be dried for long term storage can be handled at a higher level (1 or 2 percent) or turning facilities available. Care must be by the handler to be further deterioration in does not result from the moisture.

with moisture higher percent is subject to damage, mold and During high temper-

WILSON-GOLDEN

Red Beef
 or Hind Qt.
 447-5456
 447-5660
 447-5715

MKT. Every Thurs.
 10 to 3:00 p. m.
 Phone: 447-5688

Wilmington, Texas



WAY SOME FOLKS GAMBLE WITH THEIR TIME THEY'RE BETTIN' THE COIN'LL STAND ON END!

ature periods (85 degrees or more), potential damage is greater.

Grain that has sprouted, or has similar field damage, should be dried to 13 percent as quickly as possible to prevent further quality loss, notes W. B. Hooser. Damaged grain should be aerated quickly in storage by utilizing reduced depths and similar practices.

Check the grain often and thoroughly for hot spots, high moisture pockets and bug infestations. When the moisture has been cut to 13 percent, and the temperature lowered to 75 to 80 degrees, normal storage practices can be followed without fear of quality loss.

Grain held in long-time storage (six months or more) should be aerated until the temperature drops to 55 to 60 degrees.

Good storage management will pay off by assuring good quality, and the product will bring top dollar when sold or processed, Hooser adds.

Legion Auxiliary Elects Officers For Coming Year

Members of the American Legion Auxiliary met July 17, at Simmons Noel Post No. 175 for a regular monthly meeting.

Officers were elected for the 1973-74 year and included the following: Mrs. John McCauley, president; Mrs. Travis Maynard, vice president; Mrs. James Weatherly, second vice president; Mrs. Henry Gregory, secretary-treasurer; Mrs. Hazel Hall, historian; Mrs. Ora Ritchie, Sgt. at Arms; Mrs. Hulda Wilson, chaplain; Mrs. R. H. Perkins, reporter and Mrs. J. T. Stone, courtesy.

Plans were discussed for a family night to be held August 21. The new officers will be installed this same night by the 18th District President, Mrs. Beverly Holland.

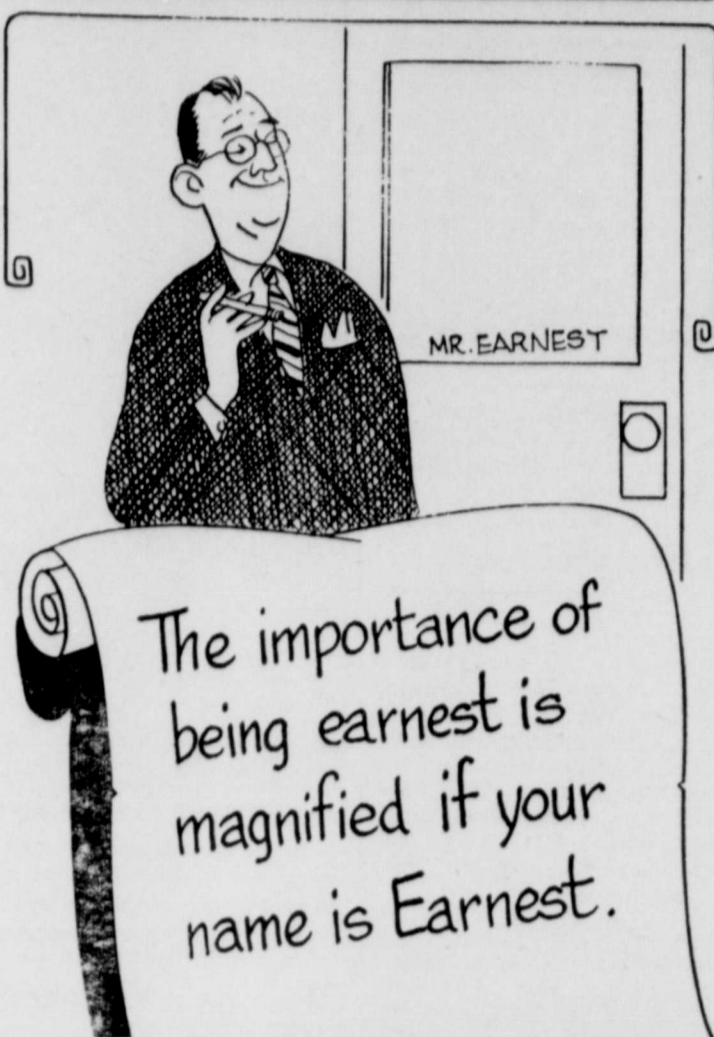
CARD OF THANKS

A very sincere thanks to our friends and neighbors for their cards, flowers, telephone calls and prayers while in St. Anthony's Hospital in Amarillo.

A very special thank you to the neighbors who cut our weeds and mowed our lawn while we were away. We hope someday we can be of help to somebody else. Thanks again.

Johnnie and Winnie Brewer

Punch Line of the Week



The importance of being earnest is magnified if your name is Earnest.

Clarendon Country Club To Have Partnership Tour.

Clarendon Country Club is having a Partnership tournament on Aug. 11 and 12 with 16-team flights. Players' handicaps must not be over seven strokes apart.

Play will be 18 holes each day, medal, low ball.

Prizes will be paid in each flight to four winning teams in gift certificates totaling \$150 for first, \$100 for second, \$75 for third and \$50 for fourth.

Entry fee is \$30 per team and deadline for entering with Jim Terry, Box 536, Clarendon, Texas 79226, (874-2166), is 6 p. m. Friday, August 10th.

Dr. and Mrs. Wm. J. McKenzie Jason and Jeni of Oakland, Calif., are visiting her parents, Mr. and Mrs. Perry Campbell of Lakeview.

Dr. L. B. Cooper of Lubbock visited with Mr. and Mrs. Glynn Thompson over the weekend. Dr. Cooper is Mrs. Thompson's brother.

Mr. and Mrs. Phaeton Alexander, Mr. and Mrs. Andy Gardenhire and Dena Gardenhire of Amarillo and Mr. and Mrs. Jerry Howard and Brad of Canyon have returned home after spending several days at Ruidoso, N. M.



WELL MIGHT AS WELL MAKE THE BEST OF THINGS!

LOYD ELLIOTT

Your **EXXON** Dealer

Wants, needs and appreciates your business!
 Corner Main & Boykin Drive



Conserve and save on electric air conditioning

Come in and get your free copy of our "CONSERVE & SAVE" REDDY TIPS booklet—tells you how to save on equipment and operating costs.

Central system or window units.

Stay cool at less cost!

Use the cool way with Famous **Frigidaire Electric Appliances** WTU

West Texas Utilities Company
 An Equal Opportunity Employer

VALLANCE'S



WHITE SWAN
BISCUITS
 6 CAN PKG.
49¢

WILSON GOLDEN
OLEO
 2 POUNDS
59¢

WIN FREE CASH
\$425.00

BIG JACKPOT DAY

Register just once... Get your card punched EACH week and YOU can WIN WONDERFUL CASH DOLLARS

Nothing to buy... You don't have to be present to win.

GET YOUR JACKPOT DAY CARD PUNCHED FREE THIS WEEK

SENSATIONAL SAVINGS WITH...

VALUE PRICES

Advertised because they're really **SPECIAL**

BORDEN'S 1/2 GAL. Round Carton

Ice Cream 89¢

OUR DARLING, 303 Size Cans 5 FOR
CORN 1.00

CANTALOUPE Lb. 12c

YELLOW POUND
SQUASH 15¢

CALIF. SUNKIST POUND
ORANGES 19¢

Save 16c on Purchase of Jean Lafoote's
Cinnamon Crunch Cereal
 Offer Expires August 27th
 Vallance Food Store—C527 DAL

Pikes Peak ROAST LB. 98¢	Family Style STEAK LB. 98¢	Boneless Roll Rump ROAST LB. 1.09
--------------------------------------	--	---

Jackpot Day Drawing
 (Will be split into two separate drawings)

Saturday July 28, 1973 250.00	Wednesday Aug. 1, 1973 200.00
--	--

Vallance Food

WITH THIS COUPON
3 lb. Can of Maryland Club Coffee

2.69

Cash value 1/20¢. Limit one per customer
 Exp. 8-4-73 64

CLOSED SUNDAY
 (See You In Church)

We Reserve The Right To Limit Quantities—Double S&H Green Stamps Wed. With \$2.50 Purchase Or Over

Vallance Food Store

From The Chamber Corner

Highway signs advertising the City Park have been approved and are in the stage of being processed. This information was received from Virgil McGee's office of the Texas Highway Dept. in Childress. In order to erect a highway sign advertising Hall County Heritage Hall a written request from Hall County Historical Society has to be filed.

Recognized county historical societies are required to the payment of an annual fee to the Texas Historical Council in Austin. This being upheld, Hall County does not have a recognized historical society. Therefore written request cannot be made and there will not be a highway sign advertising Hall County Heritage Hall or any historical marker sign provided by the state in Memphis and Hall County.

Stick-on name badges for the Hall County Picnic have arrived. The color of this year's badges are red and white.

The Memphis Chamber of Commerce Board of Directors will meet Monday, Aug. 6, in the Big O Restaurant at 12 noon. Among business matters to be discussed are: 12 x 50' highway sign, "Cotton Capital of the Panhandle", design of the chamber letter head, Cotton Boll National Endura Celebration and a review of the budget of 1973.

In a Community Audit furnished by West Texas Utilities Co. we find (under the Government: County section) there are five Peace Officers stationed in the county with a total of 5 radio-equipped cars; a total operating budget of \$313,485; total payments to bond sinking funds and capital expenditures from current revenues, \$27,430; bonds outstanding, general obligation, \$113,000; total tax collections, \$124,403 total percent collected, 97.

In the Government: City section it is noted that our government is of the type of mayor and council with nine councilmen including the mayor and we are governed by general state laws. We have three municipal police with one car radio-equipped. We have a total of 28 fireman with three paid firemen. Fire equipment includes a 1971 International Pumper; a 1951 Mack Pumper; a 1956 Chevrolet emergency van and a 1954 Dodge 4 wheel van. The Fire Insurance rating is: Key Rate, 31c, and credit, 5 per cent. For the year ending 1972, the total operating budget (including water, sewer and garbage expense) was \$156,324.38; total payments to bond sinking funds and capital expenditures from current revenues, \$61,870.62. Bonds outstanding: general obligation, \$225,000; total tax collections, \$106,167.76; total water, sewer and garbage fee collections, \$26,115.15. We do not have city zoning, building codes or a Master Plan.

The "Let's Talk Memphis" name badges can be seen all over town. The badges were furnished by the First National Bank and First State Bank of Memphis. The chamber office has just a few left and they are available to those who would like one.

Our congratulations to John Wolfe, owner of Tower Drive Inn and the Movie House, on his fifth anniversary of business in Memphis.

Memphis Upholstery can cover any of your desires when it comes to furniture. Whether it be new furniture, used furniture or just fixing up your own furniture; Eddie and Linda Gable can take care of it all. Shop the all furniture place, Memphis Upholstery, a member of the Memphis Chamber of Commerce.

Chamber member Johnny Brewer is just one more of the "Let's Talk Memphis" ambassadors. We appreciate his support of the community.

Let's Talk Memphis

'What's Up Doc?' To Show At Local Theatre

"What's Up Doc?" is an outrageous comedy, totally and intentionally without social significance, John Wolf, local theatre manager stated.

It stars Barbra Streisand and Ryan O'Neal.

With an Academy Award; four hit pictures and a rack full of smash recordings in her magic wake, Barbra Streisand has got to be numerous. As for Ryan O'Neal, what "Peyton Place" almost did "Love Story" completed. He is a big star now.

"What's up Doc?" relates the frantic adventures of an eccentric girl and an absent-minded professor who become irrationally involved with four identical traveling cases in San Francisco, whither the producer-director Peter Bogdanovich led his willing trope in a hair-raising comedy chase over the hills and trolley tracks and finally into San Francisco Bay.

"What's Up Doc?", a Sativco Production for Warner Bros., opens Thursday, July 26, at the Tower Drive In here.

CARD OF THANKS

We wish to express our heartfelt thanks to our friends and neighbors for your kindness to us in our sad hour.

We especially wish to thank Dr. Goodall, Dr. Stevenson, and the nurses and staff of Hall County Hospital for their faithful service.

We are indeed grateful for the beautiful service, flowers, memorials, words of sympathy, and for the food that was served. May God's blessing be upon you is our prayer.

The E. U. "Boots" Perkins Family

John T. Barber of Oklahoma City and his mother, Mrs. Estelle Barber, visited over the weekend in Aspermont and Rotan.



CRADLE ROLL CALL

Mr. and Mrs. David Shackelford of Childress are the parents of a daughter born July 20. She has been named Nikki David and weighed 7 pounds, 9 1/2 ounces.

Mr. and Mrs. Billy Joe Hall of Clarendon announce the arrival of a son, Charlie Eugene, on July 21. He weighed 6 pounds.

Michael Gene, son of Mr. and Mrs. Donald Gene Hearn, was born July 22. He weighed 8 pounds, 5 ounces.

Hospital News

Patients

Gwendolyn Martin, Freeman Butler, Jerry Byars, Labe C. Mitchell, Pearlie McWhorter, Louis T. Baker, James H. Howard, Sam B. Hillhouse, Lillie Furn Clardy, Katherine Standfield, Lena Keel, Harvey Chaw, Lance Leggett, Claude F. Mann, Nellie E. Leary, Ara E. Lowe, Kim Pate and Noel Clifton.

Dismissed

Mattie McQueen, Nellie Leary, Barto Jameson, Ben McElreath, Enel Clendennen, Matilda Eddleman, Pat McGinty, Emma Baskerville, Shirley Hall and baby boy, T. O. Pounds, Rhonda Green, G. W. Williams, Lana Hubbard, Steve Boney, Martha Shackelford and baby girl, Bettie Thrasher, Una Rampy, Linda Street and baby boy, Mal Miller, William Robertson, James Franks, Wesley Waites, Vicki Stark, Graham Bowen, Flora Mae Phillips, Louis Herron, Linda Brantigan and baby boy, Artie Martin, Edna Robertson, Michael Clouse, Vera Fuston, Patricia Allen, Irene Cheek, Mrs. Shirley Miller, Charles A. Williams, Leo Kizer, Alice Olivera and baby girl, Gwen Chappell, Royce Daniel and Audrey Neeley.

Mrs. VanAusdall Funeral Services Held In Hollis

Funeral services for Mrs. Florence VanAusdall, mother of Don VanAusdall of Memphis, were held at 2 p. m. Tuesday, July 24, in the First Baptist Church in Hollis, Okla.

Mrs. VanAusdall was born Aug. 7, 1899 and was 74 years of age at the time of her death.

Other than her son here, she is survived by one son and two daughters.

Attending the service from here were Mr. and Mrs. Hubert Jones, Mr. and Mrs. Ottie Ray Jones, Mr. and Mrs. J. B. Byars of Lakeview and Mrs. Foy Young.

Mr. and Mrs. Bob Young and Robert and Michael of Midland visited over the weekend with his parents, Mr. and Mrs. W. D. Young. Robert remained in Memphis to visit this week with his grandparents.



INSPECT RANGE PLANTS—Vocational agriculture teachers Ronnie Morris, Memphis High School, Memphis, left, and Milton Mann, right, Clarendon High School, Clarendon, listen as Texas Tech agronomy professor Cecil Ayers describes the characteristics of a basket flower specimen. The two are among some 20 vocational agriculture teachers participating in a two-day crops team training short course at Texas Tech University July 23 and 24.

Mrs. Roy Widener Is Hostess To 69ers Club July 17

Mrs. Roy Widener was hostess to the 69ers Club on Tuesday, July 17, in the afternoon at her home north of the city.

The afternoon was spent quilting for the hostess and in pleasant conversation. At the social hour, the guest, Martha Billington, was the lucky lady and Irene Reed was the birthday girl.

The hostess, Ina Widener, served Cokes and cookies to the guest, Martha Billington, and to members, Inez Aspren, Alice Beasley, Ruth Gardenhire, Faye Maddox, Ethel Lambert, Ruth Misenhimer, Irene Reed, and Mona Robertson.

It was announced that the next club meeting would be held Aug. 21, in the home of Mona Robertson and each member was urged to attend.

Mrs. Minnie Voyles has had as her house guest her niece, Mrs. Baker James Cauthen of Richmond, Va. Mrs. Cauthen was en route to Glorietta, N. M.

Gresham Family Enjoys Reunion Last Week

Mrs. Annie Hamilton and Inez McCraw entertain members of the Gresham family with a family get-together recently. The day was spent looking at family pictures, playing dominoes and visiting.

Enjoying the family reunion were Mr. and Mrs. W. F. Lowe of Abilene, Mr. and Mrs. A. D. Lowe of Floral Park, N. Y., Mr. and Mrs. George Pope of Flomot, Mr. and Mrs. Melvin Pope and sons, Bill, Jim, Ronnie, Kevin and Brian, Mr. and Mrs. Carroll Berryman, Mr. and Mrs. Gary Walker and Mendy, Miss Brenda Gresham, all of Lubbock; Mr. and Mrs. Leon Watson and Kally and Craig of Knox City, Mr. and Mrs. Ivan Gresham of Munday, Mr. and Mrs. Thomas Tippet and Cliff and Tracy, and Mr. and Mrs. Roy Gresham of Newlin, Mr. and Mrs. Wendell

Gresham and Mendy and Sheila of Friona, Mr. and Mrs. Britton Veteto and David, and Mrs. Gladys Gresham, all of Amarillo, Mr. and Mrs. Gary Wagner and Gary Ray, Karen, Ken and Gaylon of Wildorado and Mr. and Mrs. Hubert Well of Quanah.

Wiley Davis, Dave Merrell Share Birthday Party Tues.

Wiley Davis, son of Mr. and Mrs. W. M. Davis, and Dave Alan Merrell, son of Mr. and Mrs. James Merrell, shared in a twin birthday party Tuesday, July 24.

Twelve relatives and friends were present. Sandwiches, cake and ice cream were served.

The honorees were 19 years 4 months old. They each received many nice gifts.

Mr. and Mrs. Jim Baldwin of Dallas visited over the past weekend with their grandparents, Mr. and Mrs. Byron Baldwin. Mr. and Mrs. Baldwin were en route to Colorado Spring, Colo., for a week's vacation.

Brice News

Grace Baxley and Jim of Dallas came to Brice to attend the funeral of her aunt, Mrs. George at Tyler.

Pat Carille of Comanche visited here with his parents, Mr. and Mrs. John the past week.

Liz Gattis of Dallas returned home after visiting with her grandparents, the Gattises.

Mr. and Mrs. Merle and Mrs. G. W. Selmon Sunday evening in Groesdelma Lemons who is in the hospital there.

Max Johnson, Steve Stephanie visited Mrs. Johnson in Lubbock Sunday. Mrs. Johnson has gone surgery and is being left for his home Monday. Mrs. Johnson's wife remained for a long time.

Mrs. Roland Salmon and sister, Mrs. Oscar Bullock returned home from Austin they visited Mrs. Bullock's son.

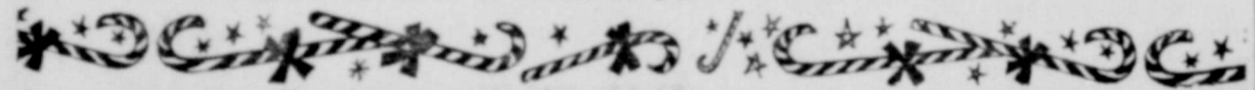
Mr. and Mrs. Paul and children have been here with his mother, Mrs. Smith and Mr. Smith. This week and are in the of moving from the Galveston where Mr. Smith will enter medical school. Mrs. Thompson will teach Galveston school system fall. Later in the week Mrs. Smith plan to go to ton for a few days visit.

New Extension Publications

Editor

Dr. Elizabeth R. Bryan has joined the staff Department of Agricultural Extension as an assistant Texas Agricultural Experiment Station publications. She will be in charge of the position held by Mrs. Bryan for the past four years. Dr. Turpin will be in-service training for Extension personnel.

CAMPBELL Insurance Agency
Ph. 259-3531



Thinking CHRISTMAS?

Please Read This Ad If It Is Not Too Early to Think About Shopping For ...

Christmas Gifts and Toys

We have just received one of the largest shipments of this kind of merchandise in our history. At the same time we have other shipments which will arrive soon.

Come in browse around, if you find what you want use our simple lenient Lay-A-Way plan to be sure you get what you want this season.

FERREL'S

516-18 Noel Street South Side of Square
Memphis, Texas



JOHNS 3-DAY ONLY SALE

<p>All Ladies Summer Dresses & Pant Suits 50% off</p>	<p>All Of Our Ladies Spring - Summer Merchandise Is Now On Sale for 1/2 Price or Less! Shop John's for Real Bargains</p>	<p>All Summer Slacks Blouses Skirts 1/2 Price</p>
<p>Juniors All Summer Dresses Pants, Blouses, Tank Tops Swimwear Now 1/2 Price</p>		<p>We Have Men's Suits - Sportcoats Slacks - Shirts On Sale from 25% to 80% Off</p>

Sale Lasts 3 Days - Thursday, Friday, Saturday, Only!

Check Our New Fall Goods Arriving Daily.

Great Back-To-School Happenings Can Be Found at ...

JOHN'S

CLARENDON

-We Appreciate Your Business-

TEXAS

B. B. Shots

By BYRON BALDWIN



she and her mother have never had another address besides Turkey, Texas. They seemed to have weathered the sand storms of Hall County real well.

Another visitor in Heritage Hall the past week was Mrs. Alice Stelly of Colorado Springs, Colo. Her car went out of commission a few miles from town and had to be towed in for repairs. She was very appreciative of all the kindness shown her while waiting to have her car repaired. This lady was born and reared in Houston. She liked our museum very much and is coming back again.

One day last week Jim Edd Wines was by Heritage Hall and showed me a check he had received which was issued on the Bank of America of Culver City, Calif., and signed by Mark Spitz, who won seven gold medals for the United States in the Olympics. The question in my mind was how Jim Edd deserved a check from this famous person. The first answer he gave me was that he gave Mark a few swimming lessons in his early days, but that answer did not hold water. The next answer he gave me was that he was Mark's romantic advisor since Mark had so many romances going after winning the medals. I finally got the truth out of Jim and found out that Schick Razor Co. had a contest on last March that was sponsored by Mark Spitz and Jim was fortunate in winning one of the cash prizes. Our congratulations to Jim Edd of being a winner. Anyway, he has some good wishful thinking on the answers he gave me. He may be capable of starting a Dorothy Dix column.

While driving down Bradford Street a few days ago when the thermometer was standing on 95 degrees, I happened to look up at a steep roofed home. I first thought of liberation in the roofing job, but I gave up on that idea as the two figures were lying perfectly still on this slanted roof with no ropes to hold them if they made the wrong move. The next day I asked the lady who lived in this house if she really got a good suntan. She denied being on the roof, but said she loaned the space to a couple of teenage girls to get their suntan. I guess you would call these two girls sugar cookies and hope they did not get cooked too brown. I would have called them "Fiddlers on the Roof", but I could not hear the fiddle music, but you could almost hear the heat waves moving up and down.

Another observation I made last Saturday morning was Bob Douthit was roofing his home and he got his wife to climb to the roof to hand him the shingles. He moved the ladder until noon so he could keep her working. I think she had athlete's foot trouble, the way Charlene was prancing around on that hot roof.

Mrs. Ray Evans had as her guests from out-of-town with her children, her nieces, Cindy Hubbard of Red Oak and Kathy Kelley of Perryton. Denise and Larry McWhorter of Canadian were visitors in Heritage Hall. They are the children of Frank who moved from Memphis about 10 years ago. Denise and Larry are grandchildren of Mrs. John McWhorter.

More Women's Liberation that I noticed the past week was in the picture in last week's Democrat showing County Judge Gip McMurry giving Mrs. Groven (Ruby) Roden the oath being sworn in as Justice of the Peace to serve out Roy Coleman's unexpired term.

In thinking back over the past 66 years, I think that this is the first lady in a Hall County office that I could speak to and say, "How are you?", Judge Ruby or any other feminine name. After Ruby studies up on Judge Roy

in this class were Arthur Eddleman and Virgil Payne. Lewis was a graduate of Clarendon College when Mr. George Slover was president of the college. There were 69 graduates in 1926 at this school. Lewis' first school to teach in was called Lone Star. He was superintendent of the school at Gilpin (east of Newlin) when Della Palmeyer was serving as principal. He served as Dean of Clarendon College for several years. He attended the University of Cincinnati, Ohio, where he received his doctor's degree. He attended the University of Florida and taught for a period of time in that state, then back to Texas in Fort Worth for a time and then on to Texas Tech where he taught for 27 years and now is retired. He spent a total of 51 years in the teaching profession. He served as director of research statistics and public relations for the Texas Teachers Assn. for 5 years and was author of the Teacher's Retirement Law. This retirement fund has grown from \$8 million to about a billion dollar fund now. Lewis married Carabel Elkins of Midland in 1926. They have one daughter, Delabeth, who now lives in Newberry, N. Y. Her husband is a colonel in the U. S. Air Force. They have three daughters. There were five sons and one daughter in the Dave Cooper family. The survivors now are Bill, now of Denton, Lewis of Lubbock and Mary Jane (now Mrs. Glynn Thompson) of Memphis.

Lewis did a little reminiscing of his early days when he and Arthur Eddleman did the janitorial work at school and he lived in Estelline with Dr. and Mrs. V. V. Clark. He drove the horses for Dr. Clark when making sick calls. He also remembered the Roman Candle and fire cracker fights with a cuckoo burr patch between the two teams.

Mrs. Albert Christian and daughter, Edna Earl Blaton of Turkey were visitors in Heritage Hall last week. Mrs. Christian, the daughter of H. S. Lane, moved to Hall County from McClellan County. They first lived on the Dave Cooper place south of Turkey in 1901. (She beat me to Hall County 6 years.) I asked Mrs. Christian if they lived in a half-dugout home when they moved to Hall County and she replied that she had a bachelor uncle who was already living in the county and they moved in the House with Uncle Charlie Lane. She could remember when there was only one store in Turkey. The first store she could remember making a purchase in herself was the Fred Lacy Store. I asked about their early day neighbors, and she said the cowboys on the Mill Iron Ranch were the only people they saw very often. That was when Jim Love was foreman of the ranch and Ben Prewitt was wagon boss. She remembered when the wagon and teams had a freight route from Turkey to Memphis where they sold their cotton and seed. Her father made two trips in the spring and two trips in the fall of the year, which would take at least four days for the round trip.

The Sid Christian family moved to Turkey in 1915 and after three years of living in Turkey, Frank made this lady his wife on Feb. 1, 1918. The Rev. C. B. Pipkin, pastor of the First Methodist Church, performed the ceremony. They have four sons now living and the one daughter, Edna Earl, Larry, now at Lockney, Ronnie at Matador and Jackie of Amarillo and Glynn of Memphis. They have 8 grandchildren. Edna Earl, who married U. E. Blaton, was born in Turkey and

Generation Gap U.S.A.



"Tomorrow Miss Smith is going to tell us about Stalin — whoever he was."

Bean's court and other court procedures, I think she can handle the office duties, even the matrimonial. She did a good job in the A. S. C. office and also painting her house.

Mrs. Elmo Kennedy has as her guests in Hall County Heritage Hall, her daughter, Mrs. Travis Griffin, and granddaughters, Brenda, Sandy and Diana of Globe, Ariz. Mrs. Griffin will be remembered as Mae Kennedy, daughter of Mr. and Mrs. Elmo Kennedy, who moved to Hall County in 1922. They have six children, all now living. Mae was born at Lodge (Plaska). She attended school at Lesley, Deep Lake, Lakeview and Memphis. She was in the graduating class of 1947. She remembers her teachers at Deep Lake were Mrs. W. J. Bragg and Loran Denton. She also remembered that Loran Denton who was principal of the Lakeview schools. Some of the schoolmates she remembered here were Jean Hammond Linie Brunton, Flora Bell McGuire, Corky Stinnett, Cotton Paschall and Curiy Sanderson. Mr. and Mrs. Travis Griffin have lived in Arizona the past 21 years. Mae has been working in the post office in Globe, Ariz., for the past 6 years. Travis works for the Inspiration Copper Mines. Travis and Mae have three children.

"Me In". I found out the reason when I met her husband with a load of fencing traveling toward his home.

A remembered quote: "Credit cards have revolutionized society, never before have so many people lived so well, so far behind."

From Earl's Pearls: "Writes Mack McGinnis, 'It was seething blouses, then topless dancers, then X-rated movies. It looks like the only place people are still covering up is in Washington.'"

A remembered quote: "Never try to make anyone exactly like you: you know and God knows that one of you is enough."

Thanks to Mrs. Cecil Lockhart and Mrs. Carl Hill for acting as hostesses in Hall County Heritage Hall last Saturday. I think we had about 30 register Saturday afternoon.

Mr. and Mrs. S. A. Gomez of Big Springs visited here Sunday with Mr. and Mrs. Elmont Brainigan, Mr. and Mrs. Mike Branigan and Mr. and Mrs. Dewey Simmons.

I overheard Deane Bradshaw humming the song, "Don't Fence



CITY GROCERY

WITH THIS COUPON
10 Oz.
Maryland Club
Instant Coffee
WITH COUPON
\$1.39

Without coupon: 1.69
Cash value 1/20¢. Limit one per customer
Exp. 7-28-73 92

GIANT 10c OFF LABEL

TIDE 79c

RANCH STYLE, NO. 300 5 FOR

BEANS 89c

15c OFF LABEL 1/2 GAL.

DOWNEY 1.39

HUNT'S TOMATO, SIZE 300 2 FOR

JUICE 31c

LIPTON'S INSTANT 3 OZ.

Tea 99c

28 OZ.
Pinesol 79c

CLOVERLAKE 1/2 GAL.

Buttermilk 59c

BIG TEX GRAPEFRUIT 46 OZ.

JUICE 98c

KOUNTY FRESH 5 FOR

Biscuits 39c

NO. 2 WHITE 10 POUNDS

Potatoes 98c

YELLOW 2 LBS.

Onions 29c

2 POUNDS

BANANAS 25c

CHUCK LB.

Roast 79c

MEMPHIS City Grocery

CORNER NOEL & 8TH PHONE 259-2014

WE ARE NOW
GIVING S & H
GREEN STAMPS



Plenty of Hot Water... Electrically!



NO FLUE. FITS ALMOST ANYWHERE!
NO PILOT, NO FLAME!
CLEAN, ODORLESS!
QUICK RECOVERY!

FREE WIRING

Free 220 volt wiring — in previously constructed residences — for a new Electric Water Heater (or larger) purchased from us. Ask for details.

Bill Ballew
Heating and Cooling
Memphis
Memphis Lumber Co.
Memphis



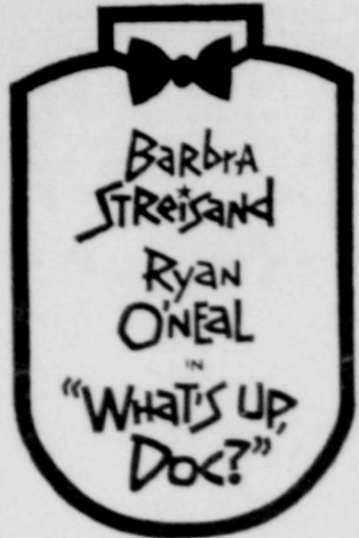
Freshest Bun for Fun!
MRS BAIRD'S

Sen. Hightower To Be On Panel Show On KVII-TV

Senator Jack Hightower of Vernon will be on the panel of KVII-TV's panel show at 1 p. m. Sunday, his mother, Mrs. W. T. Hightower learned this week. The show features newsmen interviewing Elected Officials of the State and National government.

TOWER Drive In Theatre
SHOW STARTS AT DUSK

Thurs., Fri, Sat, July 26, 27, 28



A PETER BOGDANOVICH PRODUCTION
TECHNICOLOR® From Warner Bros. A Warner Communications Company

Sunday and Monday July 29 and 30
Fred Williamson
in
"HAMMER" (R)
Tuesday, July 31
"LAS MOMIAS DE GUANAJUATO"
Wednesday, Aug 1
\$1.50 Carload
"THE BURGLARS"
Beginning Thursday
"WONDER WOMEN" (PG)

Punch Line of the Week



The executive never puts off until tomorrow what he can get someone to do today...

Larry Don Johnson

Larry Johnson this will be the largest crowd he has ever played before. Johnson was recommended by his Coach Jimmy Pope. Pope said, "Larry Don has been taking this honor real seriously and has been looking forward to playing in Dallas with the North team." For Coach Pope, Johnson's selection was a real thrill due to the nature of picking players for the teams. The Texas High School Coaching Assn. is the largest of its kind in the world and the attendance each year to the annual school has grown by leaps and bounds. For Larry Johnson, son of Mr. and Mrs. Tommie Johnson, the trip to Dallas will be long remembered. In store among other

things, is a Press Luncheon with the Basketball All-Stars and coaches on Monday, July 30, which will last one and a half hours, held on the SMU Campus. Newsmen will be able to interview any of the players they desire and take photographs. The Texas Sportswriters Assn. schedules its big annual get-together at the same time in conjunction with the Coaches School so there will be plenty of newsmen on hand.

Travis Baptist
(Continued From Page 1)

western Baptist Seminary of Ft. Worth. Carl Meyer of Berger, who is Music Director of First Baptist Church of White Deer, will be

leading the Gospel singing. Mr. Meyers has sang in Travis Baptist when visiting relatives. An invitation is extended to the public to come hear Mr. Meyer sing and Rev. Led preach God's word. The nursery will be provided for all services and a free bus transportation by calling 259-2656 said the pastor, Rev. Coffman.

Methodist
(Continued from Page 1)

country. The Boyds led a revival here in Memphis in 1971 with Mr. Boyd doing the preaching as well as the singing. Margaret, his wife, is an accomplished pianist, and will present special music as well during the meetings.

S. S. Man Is At Housing Authority Community Room

Once again Social Security Representative Curtis Watts calls to the attention of interested residents of the Hall County area the fact that he has changed his place of meeting from the American Legion Hall to the Community Building of the Memphis Housing Authority at 216 S. 5th St. Mr. Watts will be in Memphis on Aug. 7 and Aug. 21 and Sept. 11 and 25.

Mr. and Mrs. Steve Miller of Graham spent the weekend with their parents, Mrs. Charlotte Smehee and Mr. and Mrs. James O. Miller.

Trailer House
(Continued from Page 1)

Chris Liner was almost lost in the fire, which was to the family, apparently in the electrical wiring. Although much of the standing, the interior of the trailer house was heavily damaged to heat, water.

Rubber Stamp
Made-To-Order
The
Memphis Democrat

WANT ADS

CLASSIFIED AD INFORMATION

RATES ON CLASSIFIED AND LEGAL NOTICES ADVERTISING
Display in Classified Section, per col. in 98c
Minimum Charge 1.05
Per word, first insertion 7c
Per word, following consecutive insertions 5c

For Sale

FOR SALE—9 AKC registered Brittany spaniels Dew claws removed. Call 806-374-6954 in Amarillo. 11-2c
FOR SALE—1969 Buick Lesabre 4-door sedan, real clean. Elsie Hoover, Phone 259-3531; after 5 p. m. 259-2081. 11-tfc
FOR SALE—New 22 ft. Electra Camper, sleeps six, Fully self contained. Refrig, Air, tub and shower. \$1100.00 under list price. J. F. Neel, 259-2219 after 6 p. m. Memphis, Texas. 1-tfc
FOR SALE—American Trailer House, sturdy construction, storm windows, carpet with tie-downs. 719 S. 5th. Phone 259-2782. 1-tfc
FOR SALE—1971 Javelin SST, loaded, tachometer, air conditioner power brakes and steering. Don Davis, 259-2052 or 259-3231. 51-tfc
FOR SALE: 1970 100 CL Honda. Call 259-3535. 47-tfc
FISH BAIT: for sale. Worms, Waterdogs, Minnows, Stink Bait. Contact G. W. Blount. 816 Cleveland, Memphis. 49tfc
FOR SALE—1963 Ford pickup S W B V-S automatic. Call 259-2281 after 5 p. m. 52-tfc
FOR SALE—Two and three bedroom homes well located. Some farm land for sale. Also well located building lots. Ben Parks Co., Dallas, Texas, Byron Baldwin, salesman. 48-tfc
GARAGE SALE: Friday and Saturday, July 27, 28, At 1015 Bradford. 12-1p
FOR SALE—Beauty Shop Equipment for three chair beauty salon or will sell separately. Phone 447-5811 or 447-2878 Wellington. 12-1p
GARAGE SALE: 1116 Robertson, Friday noon, Saturday all day and Sunday after 12:00. 12-1p
FOR SALE: Boys Western Flyer Buzz Bike. Call 259-3105. 12-tfc
FOR SALE: 1972 16-ft. Chrysler Bass runner boat with 60 H. P. Johnson Motor. Lazy Troll electric trolling motor, swivel seats. Shoreline trailer. Lawrence fish locator. Call 259-2558 can be seen at 1016 Cleveland. 12-tfc
GARAGE SALE—Saturday at 1403 N. 16th home of Mary Stotts. Household goods, clothes and miscellaneous for sale. 12-1c
GARAGE SALE: Beginning 9 a. m. Friday, through Saturday; 1308 West Main. Miscellaneous items. 12-1c

FOR SALE: Standard electric lawn mower, used 3 times. Mrs. Ellis Rogers, 259-2119. 11-3c
FOR SALE—2 girls bicycles Very good condition. Sue Pride 259-2113. 11-1p
FOR SALE: Volkswagen Dune Buggy fiberglass body Willys Jeep, 4-wheel drive. Robert Hodges, 867-3251. 10-tfc
FOR SALE—Good store building with garage and basement on Highway 256. Call 867-2351, Lakeview, Mrs. J. B. Duren. 10-tfc
FOR SALE—New and used pianos. Will buy or trade for used pianos. See at old depot building, 211 Boykin, Call 259-3329. 10-tfc
FOR SALE: New doors and screens. All sizes. J. D. Evans, 259-2304. 52-tfc
FOR SALE: 1967 Ford Galaxie 500, clean. Phone 259-2522 Rickey Widener. 4-tfc
FOR SALE—Like investment with good income? Excellent retirement possibility. Or Will trade for land. J. A. Odum, Jr. 259-2179. 5-tfc
FOR SALE: 353 acres, 2 good wells with all irrigation pipe and motors goes with sale of land, good yields and good grain base; 70 acres alfalfa, 40 acres Midland Bermuda grass. Immediate possession. Cecil Stargel, area code 806-259-3147. 44-tfc
NEED A Pickup or car? Any kind or mode, even new '73's. Will save you money. J. D. Evans. Phone 259-2304. 23-tfc

For Rent

FOR RENT: Two bedroom apartments in Lakeview, furnished or unfurnished. Call Mrs. H. J. DuVall, 867-2621. 24-tfc
FOR RENT: Kitchenettes and rooms, by day or week, Alhambra Courts. 13-tfc

BUCK'S CUSTOM FARM SERVICE
Hay Baling
BUCK LEMONS
259-2238 Memphis 4-tfc

TYPEWRITER AND ADJCING MACHINE REPAIR
Have several used typewriters and adding machines for sale.
ROY M. HORN
Typewriter Repair Service
Wellington, Texas 79095
16-tfc

Parker Floor Covering

always features one of the largest selections in Childress and surrounding area of today's newest, most popular fibers, textures and multi-colorful carpets by

Evans-Black Carpets

From by Armstrong
6.95 and up
Installed over Padding
See it at
Parker Floor Covering
245 Commerce
Childress, Texas
12-4c

SPICER FUNERAL HOME
PHONE 259-3535
tfc

ARCHER'S REDI-MIX
Concrete
Contact Norman
Archer or Call
259-2682
1-tfc

Special Notices

House of Lloyd, Inc. needs Toy Demonstrators. Phone 669-7885 Pampa, Tex. 1101 Sandelwood Dr. 12-2c
NEED FOUR EMPLOYEES
Immediate employment, steady year-round work for four men. Mostly concrete work.
WALLACE MONUMENT CO.
phone 874-2442, Clarendon 12-2c
LOFTY pile free from soil is the carpet cleaned with Blue Lustre. Rent electric shampooer \$1. (Thompson Bros.) 12-1c
SORRY SALE is now a merry gal. She used Blue Lustre rug and upholstery cleaner. Rent electric shampooer \$1. (Perry Bros.) 12-1c
I am now home and can take care of your Plumbing needs. Call Huckaby Plumbing. 12-1c
TRASH COMPACTORS See at Messer Electric in the old depot building 259-3329. 10-tfc
Will do custom plowing. Call after 3:30 p. m. 259-3238, Winfred H. McQueen. 10-tfc

Has your septic tank or cesspool shown any signs of sluggishness? Has there been any odor, back-up slow drain-off, bubbling in the toilet bowl, or overflow in the drainage field? If so, we recommend that you first use FA-11 to restore your system to normal. Thompson Bros. Co. 2-tfc
REDEEM your Gold Bond Stamps at Thompson Bros. Co. 21-tfc
FOR YOUR painting supplies, see Memphis Glass & Supply. Complete line of J. B. Paints. 49-tfc
PRE-FINISHED paneling and matching trim. Memphis Glass & Supply. 49-tfc
LUCK CLEANERS
Complete Dry Cleaning
Carpet & Rug Steam Cleaning
Kirby Vacuum Cleaners-Sales & Service
Bison Vacuum Cleaners-Sales & Service
103 N. 10th 259-3031
6-tfc
THE TREASURE HOUSE
Home of Fine Arts, Oils and China.
Will carry gift items.
And Frames
422 Main St.
PEARL WECKAR 51-tfc
BOOT AND SHOE REPAIR
Leave at 102 South 5th
JL'S WESTERN WEAR
For
DOCK'S SHOE SHOP
Childress, Texas 14-tfc

Wanted to buy—Portable Closet in good condition 259-3285.
Wanted to buy—Portable lady. Reference required to box 190, or Call 806-53 Memphis.
Wanted to buy—Portable lady. Reference required to box 190, or Call 806-53 Memphis.

Tree, Shrub Spraying
Termite Control
Satisfaction Guaranteed
FRED COLLIER
510 North 11th St.

La-Z-Boy And Berkline Recliner
Riviera Sofa
Sleepers
MEMPHIS UPHOLSTERY
7th & Brice — Ph. 259-3031
Night Ph. 259-3031
Pick-up and delivery
Free estimate of upholstery work

LINER'S TRAILER
on Highway 287 N. 8 spaces now vac. All utilities available. Inquire at
O. K. TIRE STORE
Phone 259-2551 day

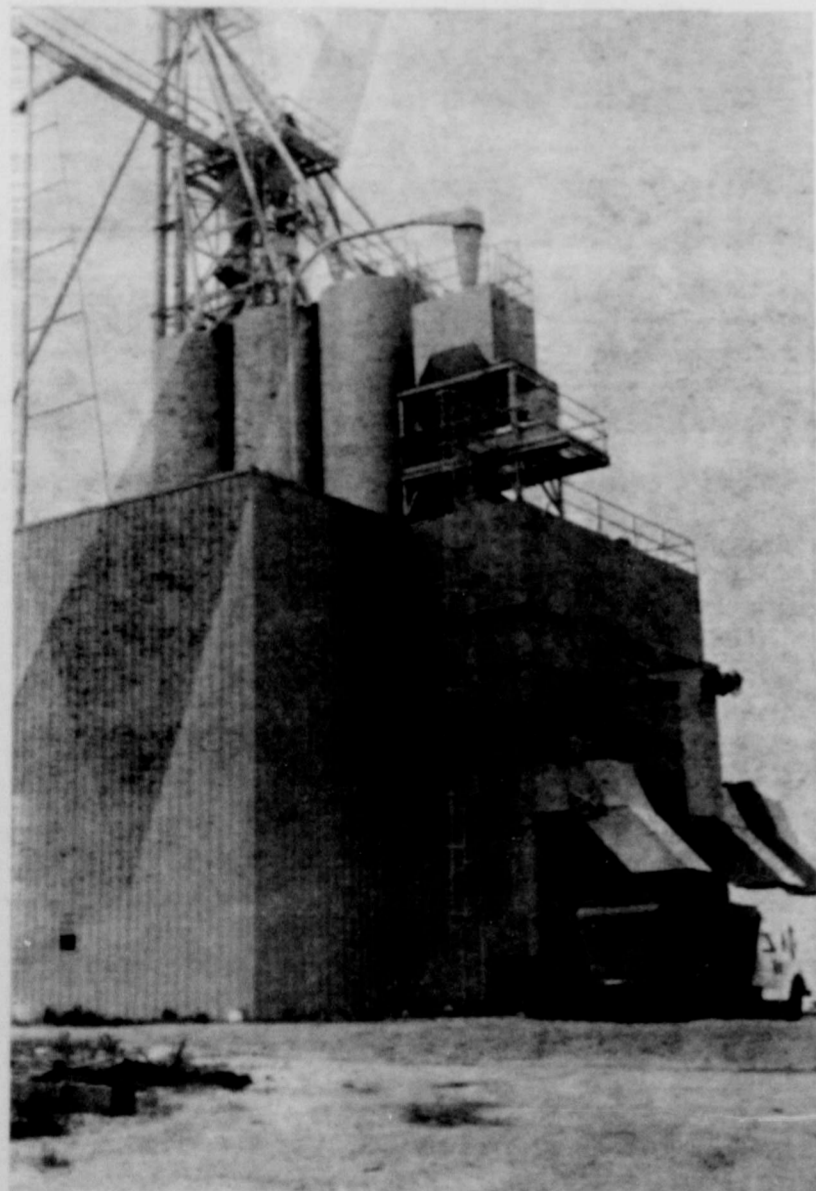
25% OFF ON
All Fence Materials
During July
BACME Fence Co.
Bradshaw And S. Old Depot Bldg. Memphis, Texas

Cesspool Problem
TOWN & COUNTY DRILLING SERVICE
Amarillo, Tex. 79107
Phone 383-0907

See Us For Your WHIRLPOOL — KITCHEN AID Sales and Service
DIXON'S
120 S. 5th St. Phone 259-2445
38-tfc
James Caniffa
Kirby Authorized Dealer
Sales & Repair
601 North 9th
Memphis, Texas
45-tfc

Bankers Life and Casualty
Life, Paycheck Income, and Medical, Retirement, and Edna Dobbs Best Childress, Texas

SALUTING Donley County Feed Lot, Inc.



You Have Our Support And Best Wishes

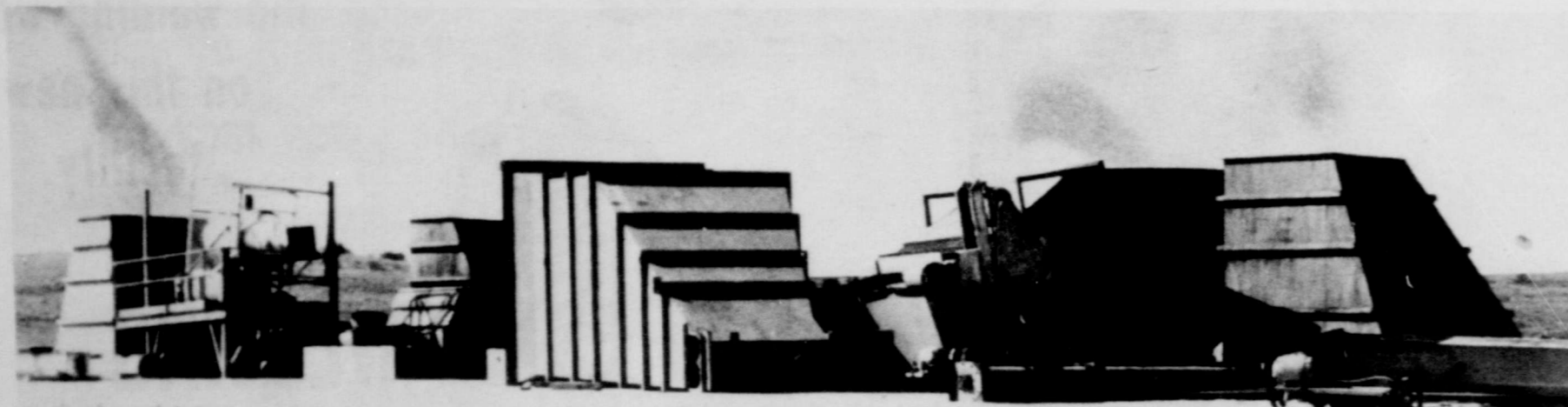
First State Bank

MEMBER FEDERAL DEPOSIT INSURANCE CORPORATION
Memphis, Texas

CONGRATULATIONS

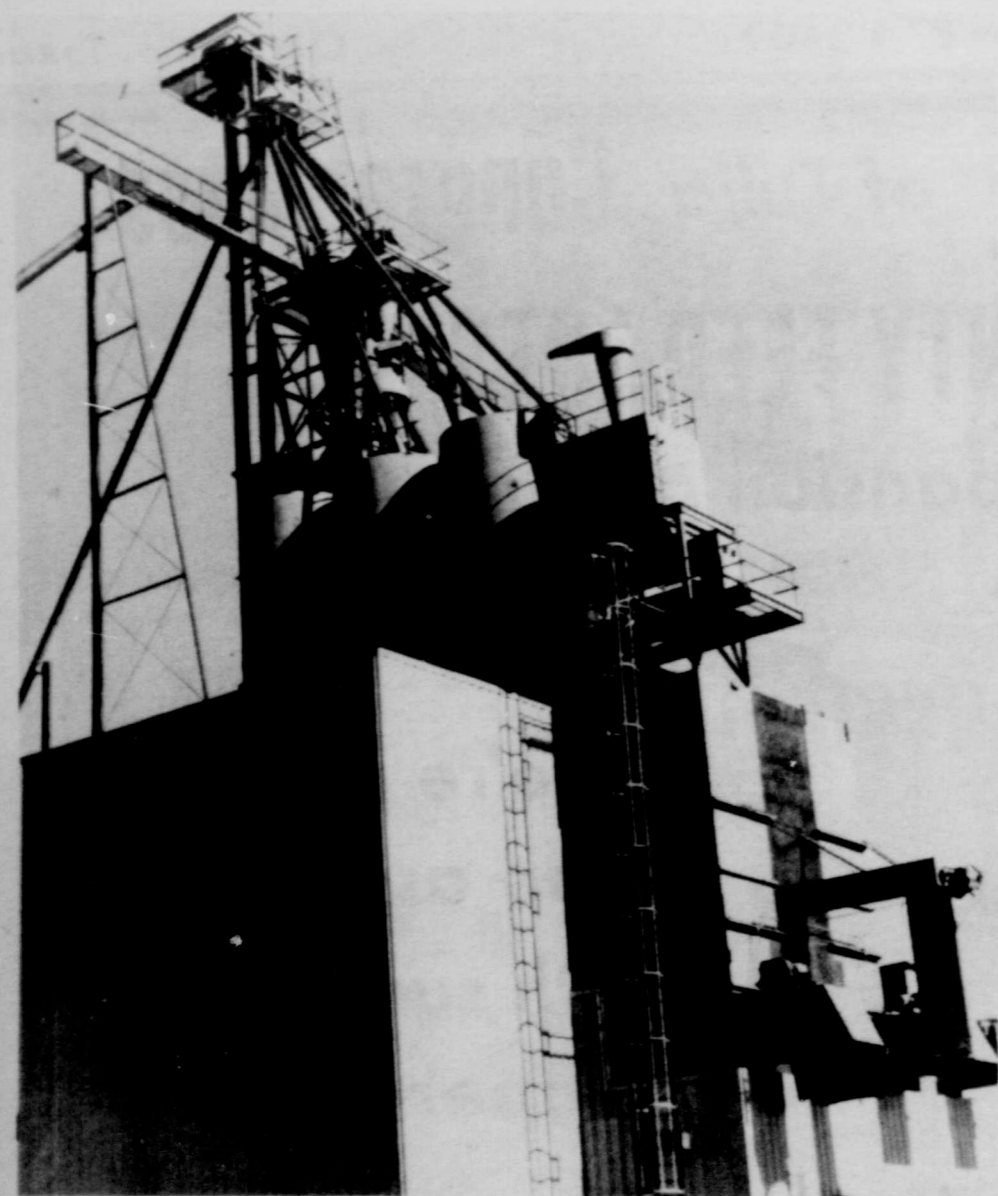
to

THE DONLEY COUNTY FEED LOTS



We congratulate the Donley County Feed Lots, Inc. for their major expansion. We're proud to have constructed their new feed batch plant. It's a job which we have taken pride in since the first day of construction.

We wish the Donley County Feed Lots the best of success in the future, & invite others to call on us for their construction needs.



Livengood Construction Company

407 Kentucky

Bakersfield, California

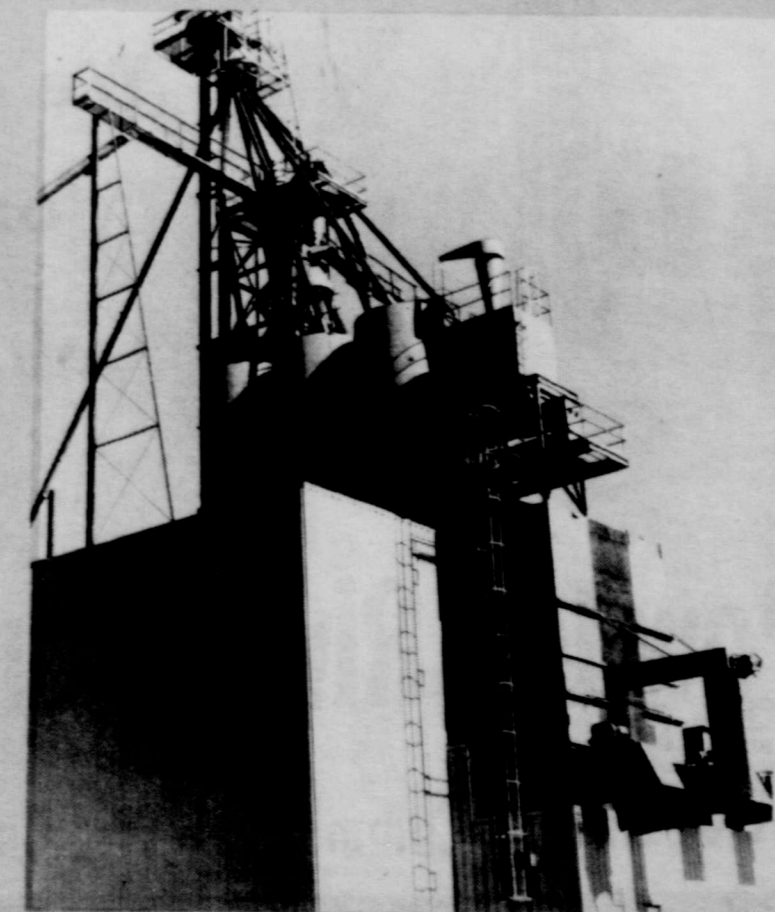
General Contractors---Barrel Top Concrete Warehouse, Feed Mills, Cold Storages

The Donley County Feed Lots-



a growing cattle industry
on the move.

Supplement to
The Clarendon Press
The Memphis Democrat
The Childress Index
The Childress Reporter
The Wellington Leader
The Cross Plains Review



Feedlot president experienced in cattle feeding

Charles Payne, president of the Donley County Feed Lots, Inc., has been in the cattle feeding business all of his life.

Payne, 29, grew up on a farm near Cross Plains, Texas. He was involved in the family agricultural operation through high school, then he enrolled in Texas Tech to study agriculture.

While at Tech, Payne fed cats on the side. He received an Animal Science degree in 1966 from Tech, and completed work for his Agriculture Education degree at Tech in 1968. All in all, he had 190 hours in college, which is quite a few.

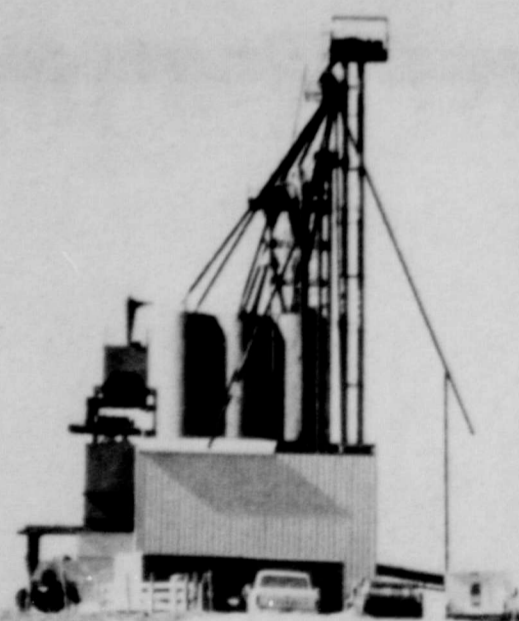
Payne married his wife, Lyna, five years ago. She is from Cross Plains, Texas. Payne met her while she was visiting relatives in Cross Plains. They have two children, Chase, 5, and Sheila, 4. Charles Payne grew up in the country, also, so they both have the love of agriculture.

"My wife is the woman behind all this," Payne admits. "She wanted a feedlot just as bad as I did." Mrs. Payne is active in the Wabells organization, a group of women which support the cattle industry. She recently helped organize a drive through the Panhandle supporting the cattle industry, and explaining that beef cattle aren't really so high.



CHARLES PAYNE poses with his family after a long, hard day at the feedlot. His family is composed of his wife Lyna and his children, Chase, 5, and Sheila, 4. Charles says his wife is "the moving force behind me." They live in Hedley.

**Another Mile-Stone for
THE DONLEY COUNTY FEED LOTS, INC.**
...And we're proud to have been a part of it.



*We did commercial welding
for the new, ultra-modern
feed batch plant.*

Powder River Commercial Welding

Amarillo, Texas

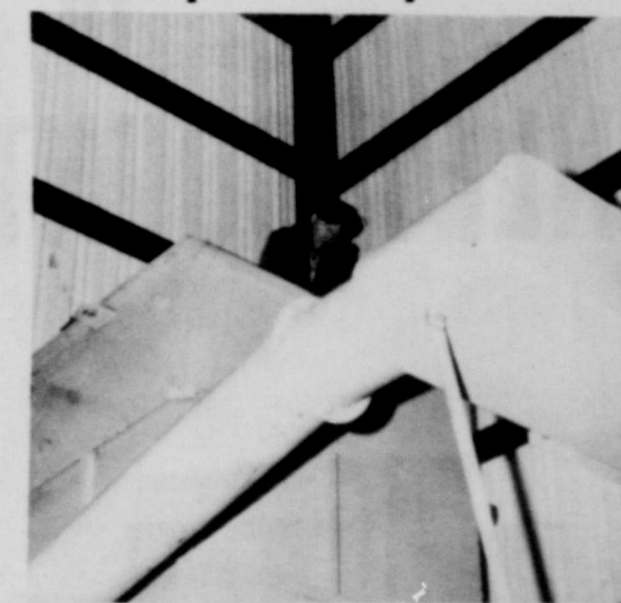
Specializing in Commercial Welding Work for Heavy Construction.



MIKE TURNER of Amarillo is the certified public accountant for the Donley County Feed Lots. Turner spends long days at the feedlot making sure that the books are in good order. It takes a lot of book-keeping to run a 10,000-head feedlot.

Congratulations

DONLEY COUNTY FEED LOTS
We take pride in your new feed batch plant.



*We helped with
the welding work
on this new
facility.*

BAILEY ESTES WELDING
Specializing in Welding Work.

Phone 874-2409

Clarendon, Texas

STAR GRAIN CO. of Tulia **Congratulates**
THE DONLEY COUNTY FEED LOTS, INC.
on its recent expansion program.



*We're proud
to be associated
with such a fine
operation.*

We furnish feed for The Donley County Feed Lots
STAR GRAIN CO.

Tulia, Texas

DONLEY COUNTY FEED LOTS

Congratulations

Congratulations

are in order for

THE DONLEY COUNTY
FEED LOTS, INC.

We're proud of your modern cattle facility,
and we look forward to furnishing grain
for your new batch plant.

WEEKS & BAGWELL
GRAINS, INC.

Claude, Texas



DIANE CARTER is a receptionist at the offices of The Donley County Feed Lots, Inc. Miss Carter lives in Clarendon, and is the newest addition to the office staff.

Congratulations,
DONLEY COUNTY FEED LOTS, INC.
on your recent expansion.

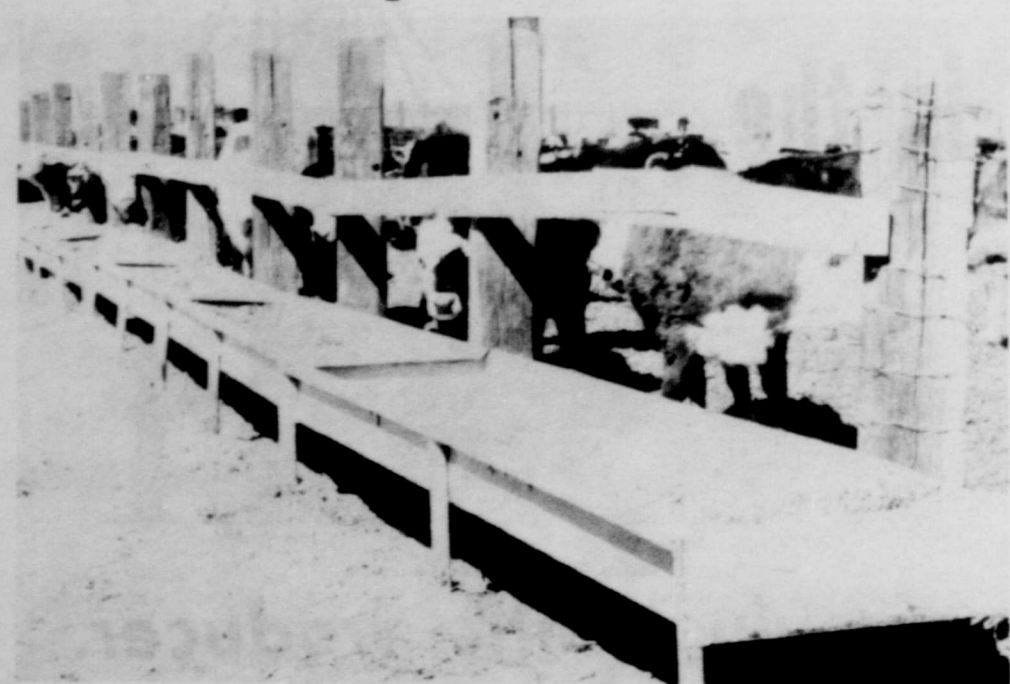
We're proud to have furnished your

feed and fertilizer
trucks.

We wish you the best
in the future.

OSWALT INDUSTRIES

Hereford, Texas



Feedlot president experienced in cattle feeding

A feedlot built with determination

In early 1968, a young man from Cross Plains, Texas, who was completing his degree in agriculture at Texas Tech, decided he wanted to build a feed lot. He looked around the state, and decided the place which needed a feedlot most was the area of the Panhandle around Donley County.

There were no feedlots in the immediate area, and this young man found a plot of ground which suited the needs for a feedlot.

He wanted a place where there was water, 3-phase electricity, a place with a lot of slope and a place with sandy soil. He found this area two miles northwest of Hedley.

Charles Payne managed to scrape up limited financial support and leased this plot of ground, with an option to buy it.

"I started with a hammer and nails and one set of post-hole diggers," Payne recalls. "I did most of the work myself, with the help of a few hired hands I could pick up from day to day."

He started out the poor way

Payne began digging post holes on July 1, 1968. He built enough pens to hold 300 head of cattle. By this time, area ranchers and business men realized that Charles Payne was serious about building a feedlot. People could see what a feedlot would do to the area's economy. Look what it did for Hereford, And Dimmitt, And Canyon. It could do the same thing for the economy of Donley County.

Payne put the first cattle in the small facility in the spring of 1969.

"We had some rough times to start with," Payne recalls. "It took eating some beans and cornbread for a few months while we were getting started on a limited shoe-string budget."

Things began to roll

In 1971, the feedlot received a \$75,000 Small Business Administration loan to purchase better feed equipment, build more and better pens, and drill more water wells. That's when the expansion and growth began for the Donley County Feed Lots, Inc. That's when it quit being a little feedlot and became a large feedlot.

Payne brought Billy Clubb into the picture as assistant manager to run the operation, while he himself got on airplanes and flew from the east coast to the west coast soliciting business for his growing feedlot.

Businessmen from across the nation began buying cattle and feeding them out at the Donley County Feed Lots. Money from all sections of the nation began to pour into Donley County, buying feed and cattle to make money for the respective owners.

What started out as a 1-man show turned into a 15-employee operation, with plans to expand to 30 employees under way.

In 1972, the feedlots received a \$350,000 SBA loan through the Security State Bank in Hedley for their major expansion program.

They made arrangements to build a \$600,000 ultra-modern batch plant to mix computer-ration feed. They contracted to build enough pens to hold 20,000 head of cattle.

The batch plant, which towers into the West Texas skies, is now complete and operational. The new pens will be complete in a few days. And thousands of head of cattle have already been contracted to bring into the feedlot. New equipment has been purchased. And an atmosphere of progress prevails around the feedlot.

On May 15, some 9,000 head of cattle were on feed at the Donley County Feed Lots. Some 175,000 pounds of feed per day, all of it locally grown, was being fed. A cash flow of \$7,000 per day was going out, just for feed and veterinarian care alone. A payroll at the rate of \$120,000 per year was being paid.

When the expansion is finished in the fall, Payne estimates some \$20,000 a day will be spent on feed and veterinarian care. He estimates a payroll at the rate of \$250,000 per year at that time, and a cattle capacity of 20,000 head.

Right now, Payne estimates that \$45,000 worth of finished cattle will be shipped out during 1973.

"It took a lot of determination and working night and day to create what we now have," Payne commented. "We got a lot of encouragement from community leaders."

"Our cattle lot has grown because of the repeat business we receive. We do the best, most honest job we know how for our customers. We put the customer first in all cases, because we want them to come back again and again."

The feedlot business has been good to Charles Payne and his staff. Charles Payne and his staff have been good to their customers. And the Donley County Feed Lot has been good for Donley County.

A lot of growth has taken place at the Donley County Feed Lots, but the biggest growth is yet to come.

"We want to keep growing from here on," Payne noted. "We want to have a capacity of 50,000 head someday."

And that may not be so far away.

Technical advances. Ideas. Hard work. That's progress.

And progress is important to us here at General Telephone. Because we know that through growth and development we can meet your communication needs for today and for the future.

Progress is a guideline in our continuing efforts to provide customers with the best communications.

There's more to progress than mere growth; there's service, too. And this, the people at General Telephone strive to provide. We are eager to meet the ever-increasing needs of our customers. And the very essence of our business is providing our customers with good service—on a highly personal "One to One" basis.

GTE
GENERAL TELEPHONE

The General Telephone Sound Of Progress



Congratulations
DONLEY COUNTY FEED LOTS
for your moves
toward progress.

We're happy to have
provided feed for
your cattle operations.

ACCO FEEDS

Amarillo, Texas

DONLEY COUNTY FEED LOTS, INC.

Donley County Feed Lot, Inc. is located at the southwest corner of the Texas Panhandle. It lies 10 miles west of Hedley, Texas Highway 287. Hedley is situated 65 miles southeast of Amarillo, and is in the center of a large grain surplus area. The feedlot has no local competition for the large crops of milo and alfalfa that surround it. The climate is moderate, with an average annual precipitation of about 20 inches. Usually there are only 2 or 3 snow storms each year, and they are moderate. A plan for handling pollution problems is in operation, taking advantage of the good rain drainage made possible by the feedlot's rolling terrain. The lot has an abundant water supply, with an even larger untapped supply available for future needs. Highway 287 is the main highway used for hauling southeast feeder cattle to West Texas. Donley County Feed Lot's eastern location on this main highway results in lower freight costs for feeder cattle, plus it gives easy access to a number of different slaughter cattle markets.

Agricultural Education from Texas Tech University, working his way through school by conducting a wide assortment of cattle research projects in the school's 1,200-head feed yard. Upon completing his education, he searched for the ideal location to build his own feed lot. After selecting a site near Hedley on the basis of its rolling terrain, moderate climate, and local surplus of grain, alfalfa, and water, he went about gathering a group of people that would share his goals and willingness to work. The resulting staff combines operational competence with a concern for the well-being of the cattle.

Bill Clubb, Vice President and Assistant Manager, was also raised in the cattle business. He spent 4 years working at a cattle sales yard before coming to the feed lot 3 years ago. Donley County Feed Lot has a concerned, highly-qualified staff of eight. One handles the accounting and cattle-record keeping, while the others work directly with the cattle.

Upon arrival, all cattle are carefully inspected, vaccinated, sprayed, de-horned, ear-tagged and given any necessary medication. These new cattle are

monitored day and night. Sick animals that do not respond immediately to medication are moved to adjacent pasture areas and allowed to graze. This technique has proven invaluable in treating sick young cattle. Under the supervision of Dr. Charles Deyhle, the yard's consulting veterinarian, sick cattle are separated, their temperatures and medications being monitored at least daily. All cowboys attend special health care workshops sponsored by the Texas Cattle Feeders Association. There, they are taught to recognize and care for sick animals. As a result, the feed lot's historic death rate has always been below the industry.

Normally the only cash investment required is 30% of the initial cost of the cattle. Donley County Feed Lot, Inc. has made arrangements with two banks to finance the balance of the initial cattle cost and all feeding expenses at competitive interest rate (e.g. an interest rate reduction of 1% will add about 8% to the expected profit). The customer need simply submit a current financial statement and bank reference. It is best to make

financial arrangements as soon as possible, to that when you decide to have some cattle purchased there will be no delay.

Dr. Nathan Reese, Consulting Nutritionist, uses the most modern computer techniques in formulating rations. All feed stuffs and finished feeds are sampled

and tested to maintain proper nutritional balances. The feed, which usually contains rolled milo, alfalfa, animal fat, molasses, and mineral concentrate, is weighed by electronic scales as it is delivered to each pen. The cattle are fed 2 or 3 times daily, and they are check-weighed at least every 60 days to determine their exact progress.



FERRIS MARTIN, assistant manager at the feedlot, poses with his wife.

P&H PACKING COMPANY

of Dallas

is proud to use cattle from
THE DONLEY COUNTY FEED LOTS, INC.
in our packing operations.

We use quality fed cattle
for quality beef.

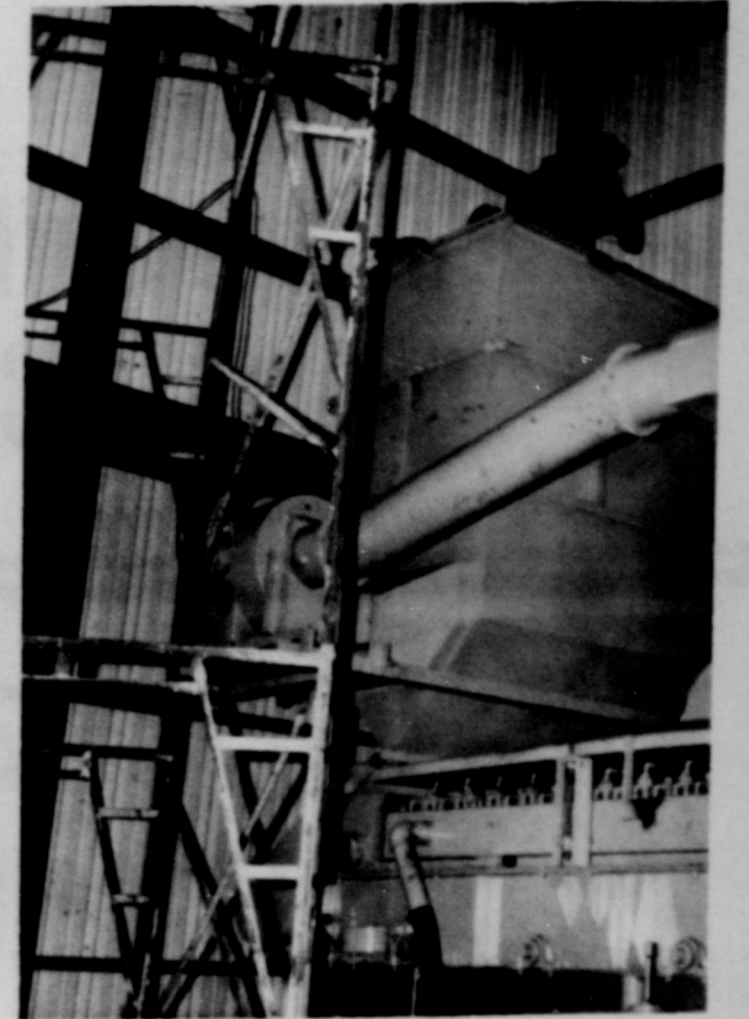
We look forward to using more & more
Donley County County beef.



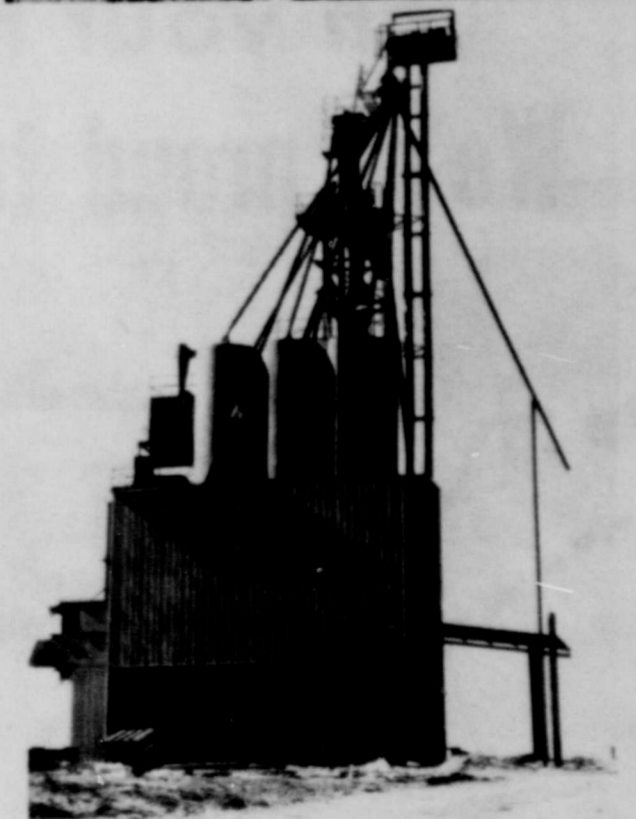
P&H PACKING COMPANY

Dallas, Texas

POLAN-VAYOR POPPERS of Hereford is especially proud of the ultra-modern feed batch plant at THE DONLEY COUNTY FEED LOTS, INC.



We furnished the
grain poppers used in the
feed production.



Congratulations to a growing cattle producer.

POLAN-VAYOR POPPERS

Hereford, Texas

*We're proud to have insured
the progress of*
THE DONLEY COUNTY FEED LOTS

*Wishing this fine company
success in the future.*

MILLER MUTUAL INSURANCE

The answer to all your insurance needs.

SHIELDS IMPLEMENT CO. *in Memphis*

Congratulates

THE DONLEY COUNTY FEED LOTS, INC.

*We sold the farm
machinery which is
used at the cattle
facility.*



SHIELDS IMPLEMENT CO.

Memphis

Specializing in Allis Chalmers Farm Machinery.

Rare steaks

COLLEGE STATION -- That next steak you eat may be "rarer" than you think. "Regardless of the way you like your steak cooked, you're getting a 'rare' commodity," emphasizes Dr. Ed Uvacek, livestock marketing specialist for the Texas Agricultural Extension Service.

Why is steak, or all beef for that matter, so rare?

"It's a simple matter of time," points out the Texas A&M University specialist. "It takes about two-and-a-half years to produce a steak."

Uvacek explains it this way. A cow produces only one calf in 12 months. The calf is weaned at six months of age and turned to pasture for another four to six months. Then it goes to a feedlot for six months to be fattened on a high grain ration. Finally, at about 1,000 pounds of weight, the animal is sold to a packer for slaughter.

Well, at least that's a thousand pounds of beef, you say?

"Not by a long shot," Uvacek hastens to point out. "A lot of weight from the animal is lost in slaughtering and processing. A 1,000-pound animal produces only about 48 pounds of sirloin steaks."

A 1,000-pound steer that grades "choice" will produce about 600 pounds of carcass. Take away the fat, bone and waste and only about 444 pounds of edible beef remains.

Clubb worked his way up to vice president

Perhaps the best way to know a business is to work yourself from the bottom to the top. This was the case with Billy Clubb, vice president and manager of the Donley County Feed Lots.

Clubb certainly knows his way around the facility. He started to work at the feedlot in early 1971. He quickly showed his abilities, and was promoted to assistant manager under manager Charles Payne.

When the firm expanded, Payne was forced to stay on the road much of the time, and Clubb was put in charge more and more. Recently, he was named vice-president and manager of the company.

Clubb ramrods the entire cattle operation. He knows every inch of the facility, and knows how to act quickly when problems arise.

"I depend on Billy an awful lot," Payne comments. "He really knows his business."

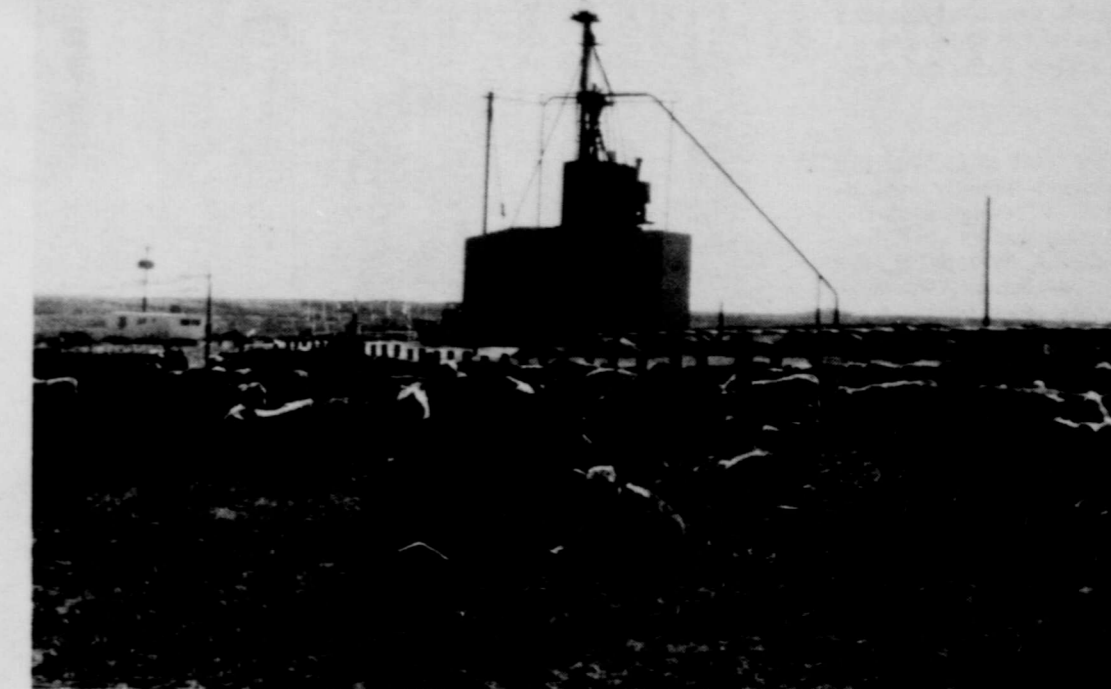
Clubb, who originally is from Wellington, now lives in Hedley with his wife, Mary Kaye, who is at home in Hedley. He has two children, Debbie and Billy Jr.



BILLY CLUBB, vice president and manager of the feedlot, is pictured with his family. They are wife Mary Kaye and children Debbie and Billy Jr. The Clubbs live in Hedley.

THE DONLEY COUNTY FEED LOTS buys its
lumber and hardware supplies from
MEMPHIS LUMBER CO. *in Memphis*

*Memphis Lumber
carries a complete
line of all lumber
and building
materials.*



Congratulations on your expansion program.
MEMPHIS LUMBER CO.

Memphis, Texas

Feedlots aren't big polluters

COLLEGE STATION -- Are cattle feedlots a major contributor to America's growing pollution problem?

The answer is an emphatic "NO!" in the opinions of Dr. Myron Paine and Dr. John Sweeten, who both have a good understanding of the situation.

Paine is located at Oklahoma State University and is a regional Extension Service feedlot waste management specialist serving a six-state area of the Southern Great Plains. Sweeten is an agricultural engineer in animal waste management for the Texas Agricultural Extension Service, Texas A&M University.

With some 25.5-million cattle fed in lots across the nation annually, and each animal producing about a ton of manure, the potential for waste management problems is there, admit the two engineers. But one very real reason why a mammoth problem has not been created is simply good public relations on the part of the operators.

Most operators keep the manure moved out as a matter of animal health. After they move out a load of cattle, they clean the pen. However, this soon results in a huge pile of manure, and here is the problem.

According to the specialists, most feedlot operators have solved this problem by developing close working relationships with local farmers.

They have convinced farmers to take the manure on the basis that it is valuable fertilizer. Some farmers are even paying as much as \$2 a ton. But in areas where the farmers are not convinced of the fertilizer value private deals to move the manure have been worked out in many ways.

Another reason the pollution potential of feedlots has not been reached and unlikely ever will is that only a small percentage -- research shows only about 2 percent -- of the solids reach a stream, explain Paine and Sweeten.

"If that total of 25.5-million tons produced annually went directly into a sewage system -- as do human wastes -- the effect would be devastating. But actually, one human contributes 10 times as much toward water pollution as one feedlot animal."

The specialists feel conflicting and misleading statements have posed an out-of-focus view of feedlots in the overall ecology picture.

"If all the animal wastes from one animal fell directly into a stream, that one animal would equal 16 persons in pollution contribution. But the actual fact is that manure falls on land and it's 85 percent water. This evaporates and the only way the manure gets into a public water system is in case of a rainfall in excess of one inch. Then, we

might get runoff into the stream."

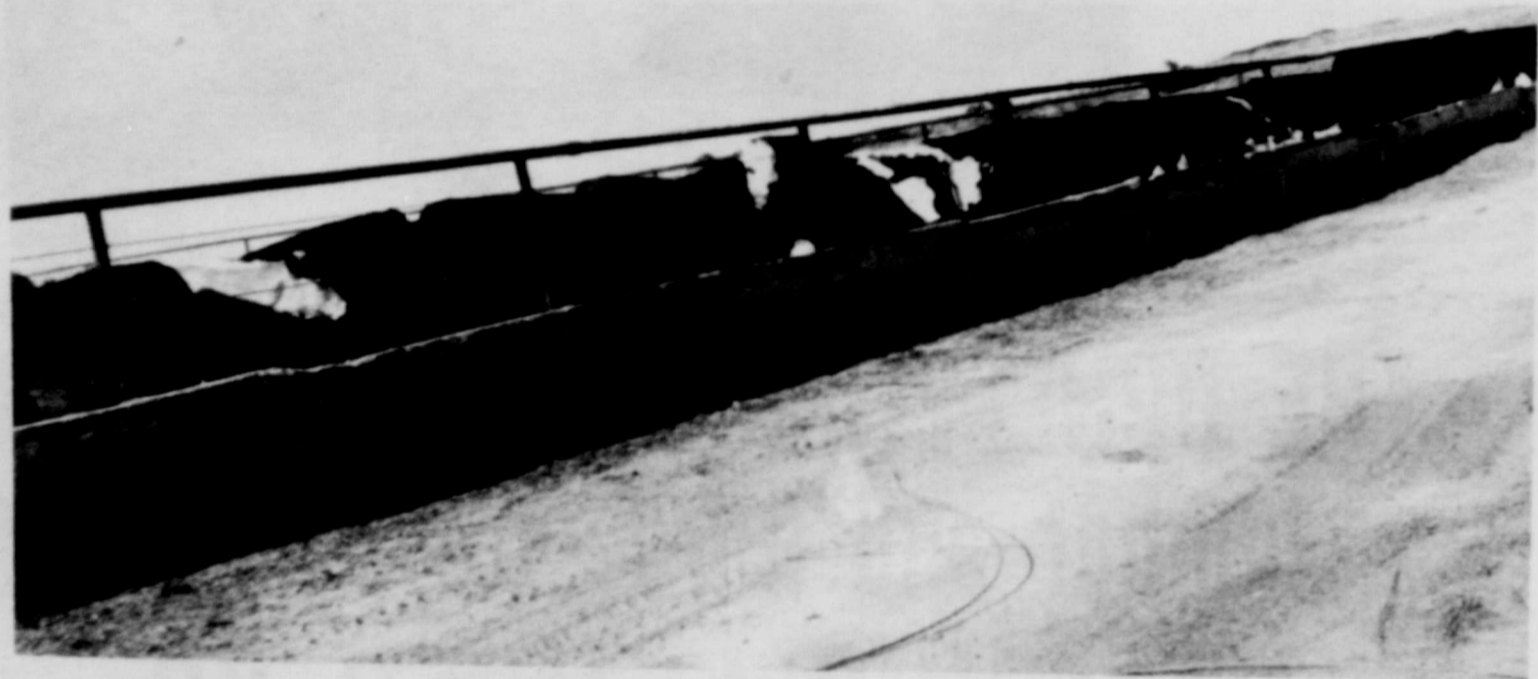
Most of the Southern Great Plains states now have laws requiring feedlots to have a system of runoff retention structures. About 90 percent of the cattle fed in Oklahoma are in lots that are in compliance with this law, and some 95 percent of Texas feedlots with a capacity of 1,000 head or more are in compliance or moving toward compliance.

On the federal level, guidelines are being established by the Environmental Protection Agency relating to feedlot pollution protection. A new federal water quality law will prohibit the discharge of pollutants into water courses by 1985.

All in all, Paine and Sweeten feel the feedlot operators of the Great Plains are doing a good job of housekeeping. "They're producing beef, not pollution."



THIS POLLUTION CONTROL tank keeps the drainage of wastes from polluting area water supplies.



A PEN of cattle crowd the feed trough at the feedlot.



DIRECTORS of The Donley County Feed Lots, Inc. include Gerald Foster of Amarillo, legal counsel Mike Sanders of Clarendon, secretary Terry Harris of Breckenridge, vice president Billy Clubb, president Charles Payne and Ray Womack of Riverside, California.



THIS GRAIN TRUCK hauls locally grown milo to the new batch plant daily for the making of the feed lot ration.



JOHNNY PATTERSON, owner of Patterson Construction, is in charge of all the new pen construction at the feed lots. When the pens are complete, the feed lots will have a capacity of near 2,000 head of cattle.

Contracts take guesswork away

COLLEGE STATION -- By contracting crops or livestock in advance, farmers and ranchers can take some of the guesswork out of their operations.

"But it's not all milk and honey," according to Wayne Hayenga and Don Parks, economists for the Texas Agricultural Extension Service.

"Forward contracting is a financial management tool that can be especially helpful to producers when prices are changing," contend the economists. "Forward contracting fixes the price of a product so that there is less financial risk to the producer."

Another advantage to the producer is that once a product is contracted, it gives him greater

financial leverage and may allow him to borrow more operating capital. Lending institutions are more willing to extend loans to producers who have a guaranteed price for their product.

On the negative side, forward contracting limits the producer's profit potential of a product since any increase in market price goes to the buyer rather than the seller. Product quality may also suffer, point out the economists since producers may just concentrate on producing as much as possible without regard for quality improvement. Of course, when quality standards are included in the contract, this problem is relieved.

Legal fees will be an added expense when contracts are written or reviewed by an attorney.

And, Hayenga and Parks advised producers to obtain a written contract "to prevent misunderstanding between buyer and seller."

Written contracts should include the following details: date contract is made, price of product or service or a formula to determine the price, delivery conditions, (date, place, quantity), consequences of non-performance of either buyer, seller, and signatures of persons involved.

According to the economists a written contract that includes these specifications can head off the two main problems in forward contracting -- buyers taking delivery at the set payment rate, and sellers not delivering the designated quantity and quality of product.

"Forward contracting can be a plus for farmers and ranchers if contracts are negotiated properly," say Hayenga and Parks. "However, before finalizing a contract, be sure you have the essential details and a clear understanding of all the provisions of the contract."



BILLY CLUBB looks over a pen of cattle which is about ready for market.

Texans benefit from Agriculture research

COLLEGE STATION -- All Texans benefit from quality agricultural research, reports Dr. Dudley T. Smith, assistant director for the Texas Agricultural Experiment Station.

Every citizen -- whether urban or rural -- is a consumer and has certain basic needs and concerns, he adds. "Quality agricultural research helps satisfy such needs as food, shelter, clothing, health and safety, recreation and income," Smith says.

He points out that the Texas Agricultural Experiment Station is by state law and federal statute the designated agency for agricultural and related research in the state.

"From its Main Station at College Station and its regional centers and stations across Texas, TAES serves every part of the state," Smith relates.

For example, agricultural research helps insure an adequate

supply of highest quality food at the lowest possible price, Smith says.

"Our Experiment Station researchers are working with improved varieties of crops that give higher yields, are of better quality, and are tailored to consumer wants and needs. For example, we've just released the TAMU Saladette, a new fresh market tomato that was developed by Horticulturist Paul Leeper of the Experiment Station at Weslaco. Leeper developed the superior tomato to satisfy changing consumer preference and demands.

"It is ideal for salads and has other unique quality and production advantages," Smith says.

Other researchers are working with improved livestock that gives faster gains and higher yields of more palatable meat, thus aiding consumers.

Still other Experiment Station scientists are at work to develop

better market practices to get products to consumers in top condition. Pre-market tests were conducted to determine consumer preference on the TAMU Saladette before we decided to release the new variety which is expected to boost Texas' fresh tomato industry, Smith points out.

Research by Experiment Station scientists also is monitoring meats and seafood to insure freedom from contamination. Control of disease problems in plants and animals and insect control in crops and livestock also are being researched in the interest of higher quality food at more reasonable prices for consumers, the TAES researcher adds.

In other research, improved cultural practices that obtain greater yields from a given amount of land and water -- while conserving both -- are under scientific study by our people, Smith explains.

Additionally, TAES research has helped increase efficiency of modern agricultural producers so that more than 50 people have food and fiber from the work of each individual grower on the land. "And agricultural efficiency helps hold down prices for buyers," Smith notes.

Current research also is using existing foodstuffs in innovative ways and in new combinations to make wholesome new food products, again designed to benefit all consumers, Smith emphasizes.

Timely research also is being conducted in the areas of shelter, clothing, health and safety, recreation and income areas, thus serving the basic needs of all, the TAES researcher concludes.

New approach in feedlot management

College Station -- A new approach in the graduate study program in feedlot management at Texas A&M University combines professional instruction with maximum industry exposure.

Dr. Lowell M. Schake, assistant professor in the Department of Animal Science and coordinator of the Master of Agriculture degree program in feedlot management, has developed a five-week residence course that allows the student and industry to work together.

"The new approach allows the student to receive top training from highly qualified instructors and takes advantage of the geographic location in which the cattle feeding industry of this state is centered," points out Schake.

The course will begin July 13 at the USDA Southwestern Great Plains Research Center at Bushland. Another course in feedlot diseases offered by A&M's Department of Veterinary Microbiology will also be taught at the Bushland Center using this new approach.

Students enrolled in the courses will reside in dormitory facilities at the Texas State Technical Institute in Amarillo.

Facilities of Texas A&M's Cushing Memorial Library will be available through a local computer terminal. Computer classroom training will also be used to demonstrate inventory control and ration formulation and pricing.

"Classes in feedlot management will meet at Bushland from 8:30 to 11:30 a.m. Monday, Wednesday and Friday," announces Schake. Instructors will include Jack Carrothers, former president of Texas Cattle Feeders Association and president of Friona Industries, Inc. Dr. Dale Furr, nutritionist for Hi-Pro Feeds, Inc., and David Goddard, controller and vice president of Friona Industries.

The feedlot diseases course will be offered on Tuesdays and Thursdays.

A tour of several feedlots, a packing plant, feed supplement firms, equipment dealers and a farming and ranching operation will provide an introduction to the feedlot management course.

According to Schake, the first area of study will concern the organization and management of commercial feedlots.

Nutritional considerations and requirements and drugs and ration systems will be featured as the second section of the course. A field trip to Hi-Pro Feeds will supplement this section.

Other segments of instruction will include factors influencing animal performance, feedlot equipment and location requirements, and sanitation and pollution control.

Discussions on service industries, routes to profitable cattle feeding and current cattle feeding research will conclude the five-week program.

Throughout the course, outside class assignments such as problem solving, reading and field trips will play an important role, points out Schake.

He anticipates the enrollment of at least 20 graduate students



THIS GROUP of cowboys makes several trips daily around to all the cattle pens to check on the condition of all the feed lot cattle. They are all top notch cowboys, and know their business well. Their careful attention of all the cattle is one reason why cattle do better at The Donley County Feed Lots.

in the three-hour credit course, which is open to anyone interested. A limited number of industry individuals may enroll just for the learning experience. Schake encourages anyone interested to contact him in the Department of Animal Science, Texas A&M University, College Station, Texas 77843.

A professional internship is a major facet of the 36-hour formal degree program in feedlot management, explains Schake. The student works approximately six months in any approved feedlot and is supervised by his committee chairman, feedlot manager and other A&M staff members in the field. Part of the internship involves developing a field research study.



THESE WORKERS unload hay which will be used in the carefully planned computerized ration at the feedlot.

Futures not a sure thing

COLLEGE STATION -- If you've wondered what cattle prices are going to be in the coming months, don't check the futures markets, says Dr. Ed Uvacek, livestock marketing specialist for the Texas Agricultural Extension Service.

"Unfortunately, futures prices are not very good forecasters of anticipated prices, although many cattlemen regard them as such," contends Uvacek. "Futures prices actually add little to the information available for price forecasting purposes."

A case in point is that the February, 1973 contract for live beef has ranged from a low of \$32 to a high of \$45 -- a mighty wide range and of little value as a forecast, contends Uvacek.

Cattle futures contracts have received much attention since they first came on the scene in 1965.

They have been credited as being trading actions by highly

informed individuals. "Whether or not those engaged in trading cattle futures are more knowledgeable, however, remains questionable," points out the specialist. "Futures trading has brought about, however, an increased amount of analysis and more rapid dissemination of key livestock statistics as cattle on feed, livestock slaughter levels, and receipts.

"When a price of \$43 is quoted as representing the last trade on a future contract, we must remember that it is a compromise price between two traders, each believing that the trading price is wrong. One thinks the price should be higher--the other, that it should be lower."

So futures prices really mean little to the livestock producer, believes the specialist. He is still dealing primarily with the age-old situation of supply and demand.

Rules apply to feedlots

COLLEGE STATION -- "Concern for people downwind from feedlots has resulted in the Texas Air Control Board issuing rules and regulations pertaining to confined livestock and poultry feeding operations," says Dr. John M. Sweeten of the Texas Agricultural Extension Service.

Sweeten, an agricultural engineer in animal waste management at Texas A&M University, points out that the permit program adopted by the Texas Air Control Board on Sept. 1, 1971 considers the proper location of facilities with respect to surrounding land use and proper handling of manure and runoff to minimize odors and dust. The permit system, established under an amendment to the Texas Clean Air Act of 1967, includes requirements for a feedlot construction permit, operating permit and feedmill permit.

"Proposed feedlots for more than 1,000 animals of any species and feedlots expanding by more than 100 percent of their present capacity must be approved by permit before construction begins," notes Sweeten.

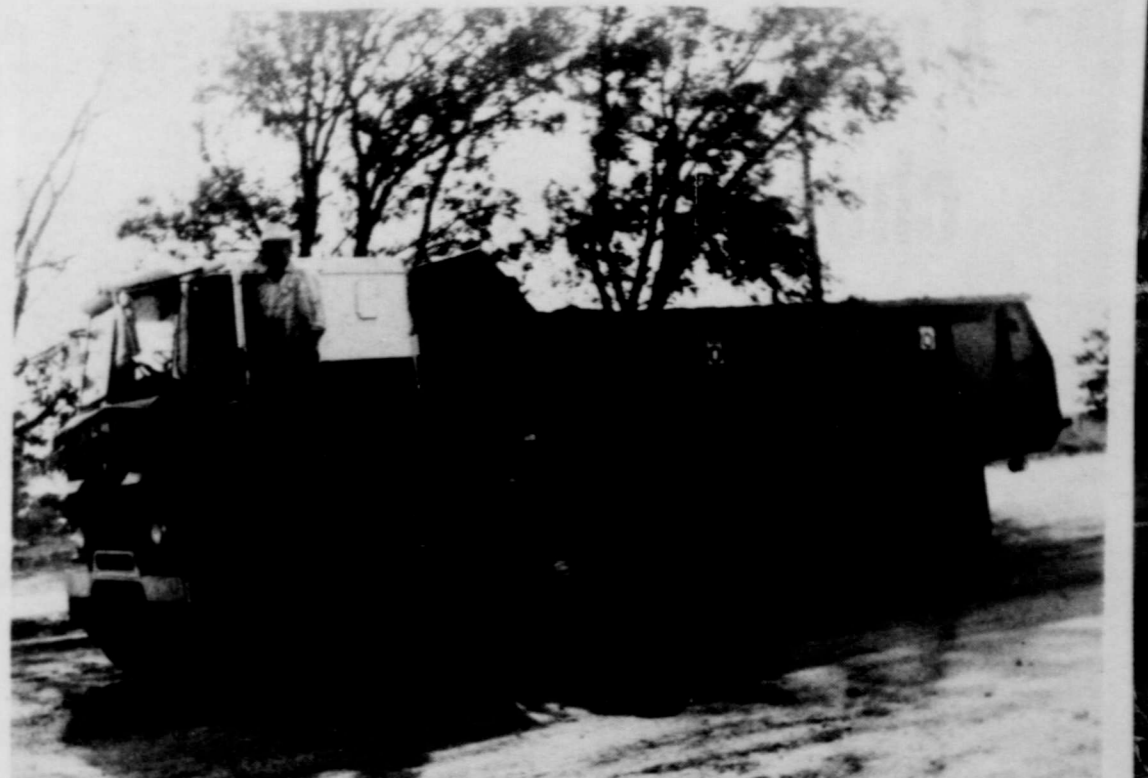
Information required in a construction permit application includes such things as capacity, plot plan, methods of manure disposal and dust control equipment. A typical permit restriction might state that adequate drainage be provided to prevent intense odors resulting from standing water on the feedlot surface.

"Then, operating permits must be applied for within 60 days of start-up," explains the engineer. "Such a permit is issued after all construction restrictions are met and when an operation is found free of air pollution problems."

Modern equipment make for smoother operation



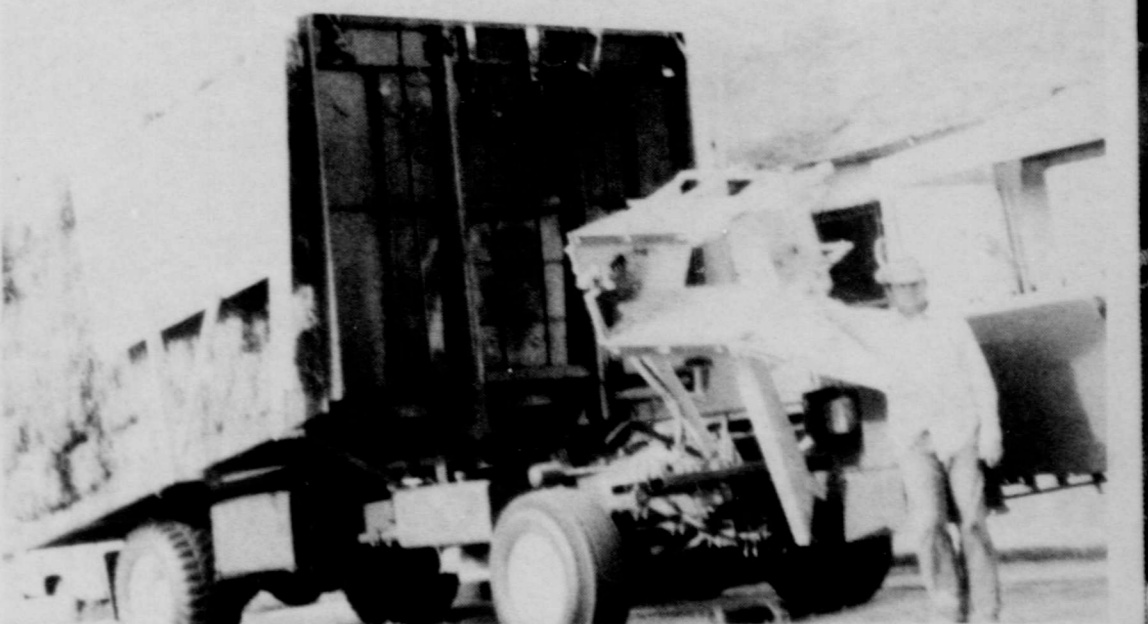
THESE MEN from the feed crew pose in front of their modern feed trucks just before making the rounds of the feedlot.



FERTILIZER TRUCKS like this one keep the feedlots in good, sanitary condition. These trucks make trips out of the facility, hauling manure to areas for fertilizer.



THIS COWBOY works a feeder steer back into the herd.



THIS NEW HAY HAULER hauls hay to the feed lots each day to help in making the feed ration.

THE CLARENDON PRESS

Congratulates

Charles Payne, Billy Clubb and their staff on their recent expansion program. This growing industry means much to Donley County. We're proud that Charles Payne chose Donley County to begin his very successful career.

We furnished office supplies and advertising.



We're proud to have helped in growth.

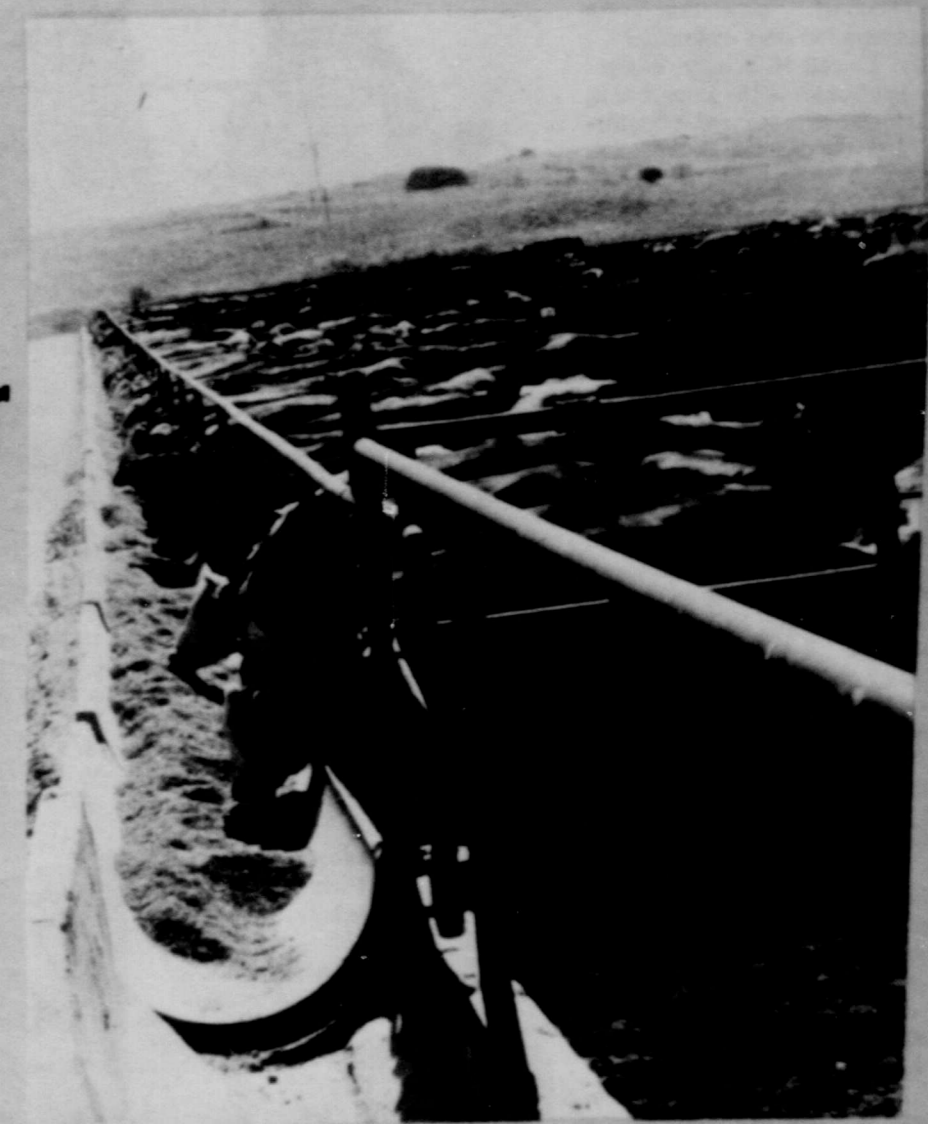
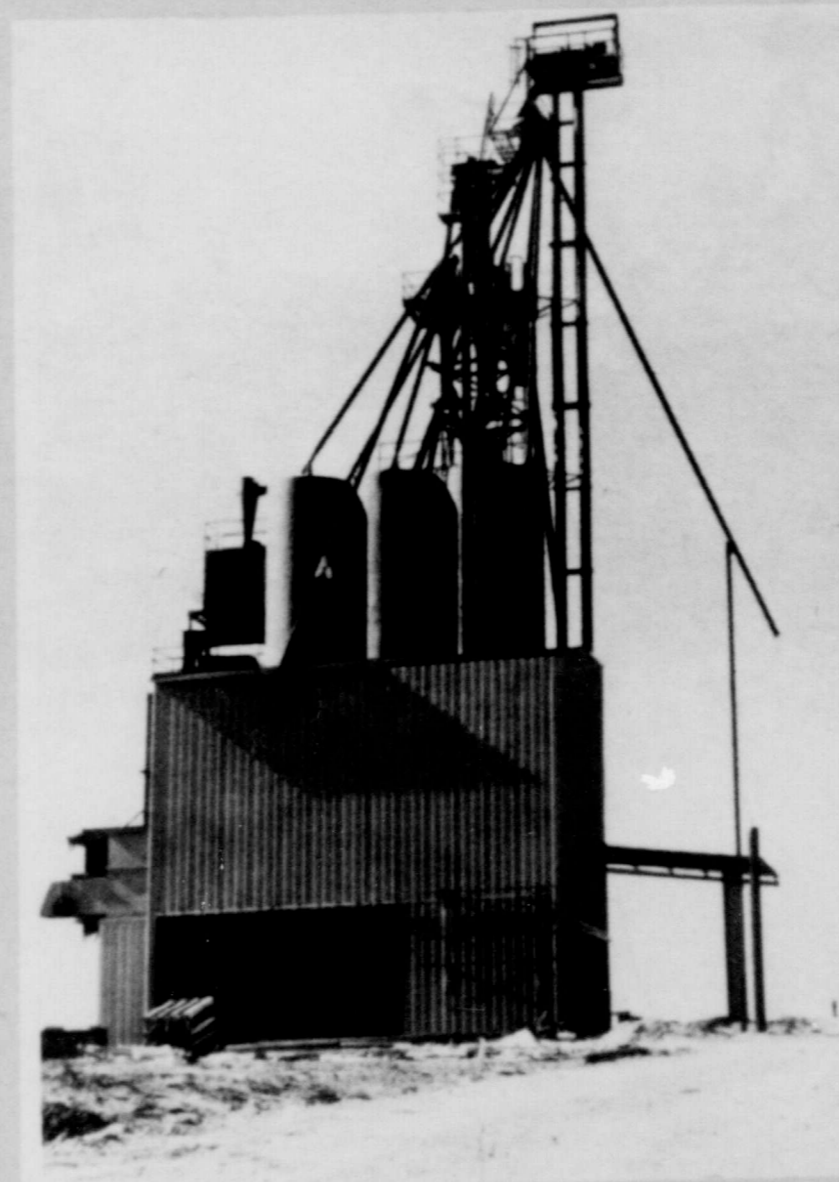
THE CLARENDON PRESS

What is a little bank in Hedley doing competing with larger banks in Amarillo, Clarendon, etc.

Doing Just Fine, Thank You.

**We may be different,
but..**

**We believe in loaning our
money to help
this area grow...**



**The Donley County
Feed Lot is ONE
reason this area
is growing...**

*And it was a
SECURITY STATE BANK
loan that financed this
growing industry.*

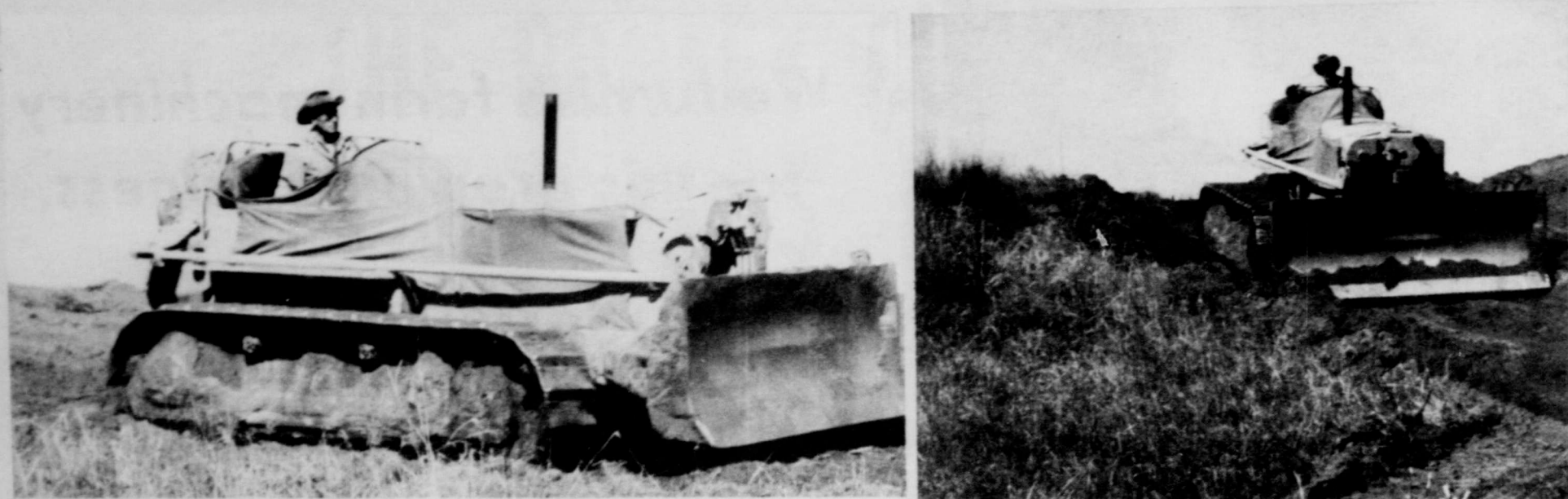
We're banking on this area's growth. Are You?

SECURITY STATE BANK

**Our 60th
Anniversary**

Hedley, Texas *Growing Old, But Thinking Young* Member FDIC

PAGE CONSTRUCTION COMPANY of Clarendon
Congratulates
THE DONLEY COUNTY FEED LOTS, INC.
on the completion of their expansion program.



We did all the
dirt work
for the feed lots.



We're proud to play a part
in our county's progress.

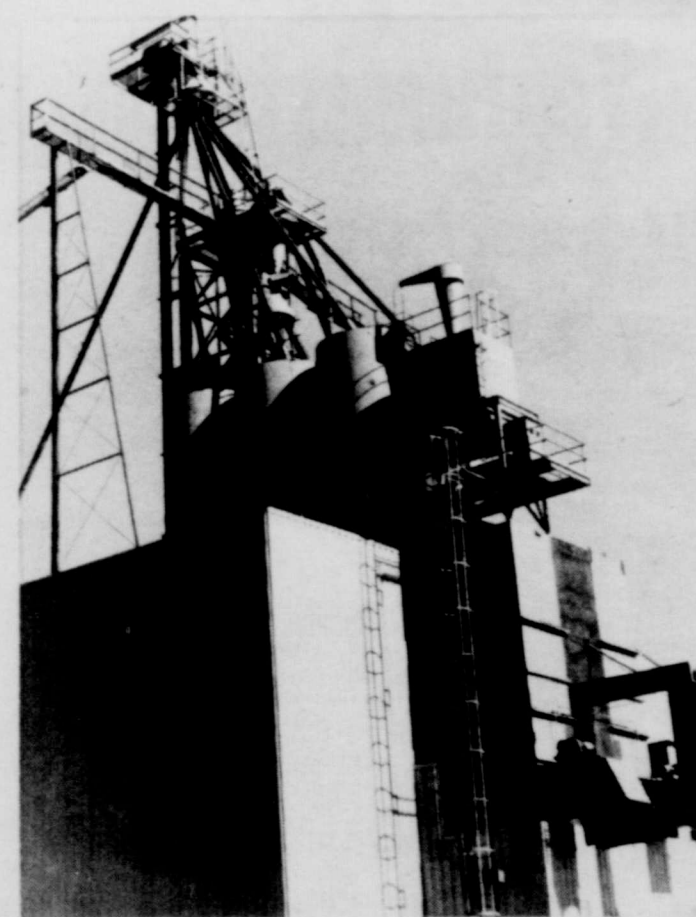
PAGE CONSTRUCTION CO.

Clarendon, Texas

Bulldozers, Dirt Work Our Specialty

874-2561

JOHNNY PATTERSON CONSTRUCTION
is playing a major part of the expansion of
THE DONLEY COUNTY FEED LOTS, INC.



We're building the new pens
for the 10,000-head expansion
of the facility.

We congratulate Charles Payne & the feedlot organization
for their progress in Donley County.

JOHNNY PATTERSON CONSTRUCTION

Hereford, Texas

Congratulations
DONLEY COUNTY FEED LOT

We're proud to have played
 a part in your success
 and progress.

DON RUTHERFORD

Claude, Texas



JON LEGGITT of Hedley is the chief bookkeeper at The Donley County Feed Lots, Inc. Jon runs the calculator and does the rough bookkeeping work.



BEVERLY HOLLAND is the "female mind" at the Donley County Feed Lots. Mrs. Holland helps with the books, works as a receptionist, answers the telephone, makes appointments, and "ties up loose ends" for all the feedlot staff. Her pleasant voice is always there to greet your call.

HARRISON HARDWARE
 of Memphis,
 your John Deere dealer and a supplier of
 all hardware items, Congratulates
THE DONLEY COUNTY FEED LOTS
 on their recent expansion.

*We furnish farm machinery
 for this growing business.*

HARRISON HARDWARE

Your John Deere Dealer
 Memphis, Texas

We furnish the most important part
 of a feedlot's operation... We furnish
 the feeder cattle that produces the beef.



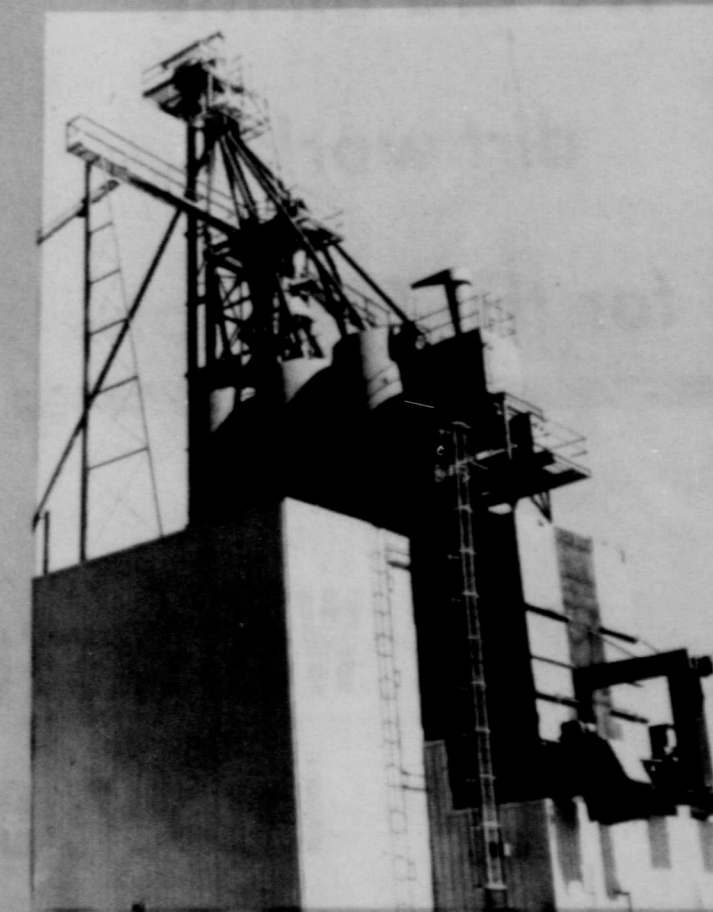
Congratulations, Donley Feed Lots,
 on your new facilities.

HUFFMAN CATTLE, INC.

Crockett, Texas

The Groom Wheat Growers
 furnish feed for
**THE DONLEY COUNTY
 FEED LOTS, INC.**

*We congratulate the company
 for its progress
 in Agriculture.*



We furnish quality feed for a quality feed lot.

GROOM WHEAT GROWERS

Groom, Texas

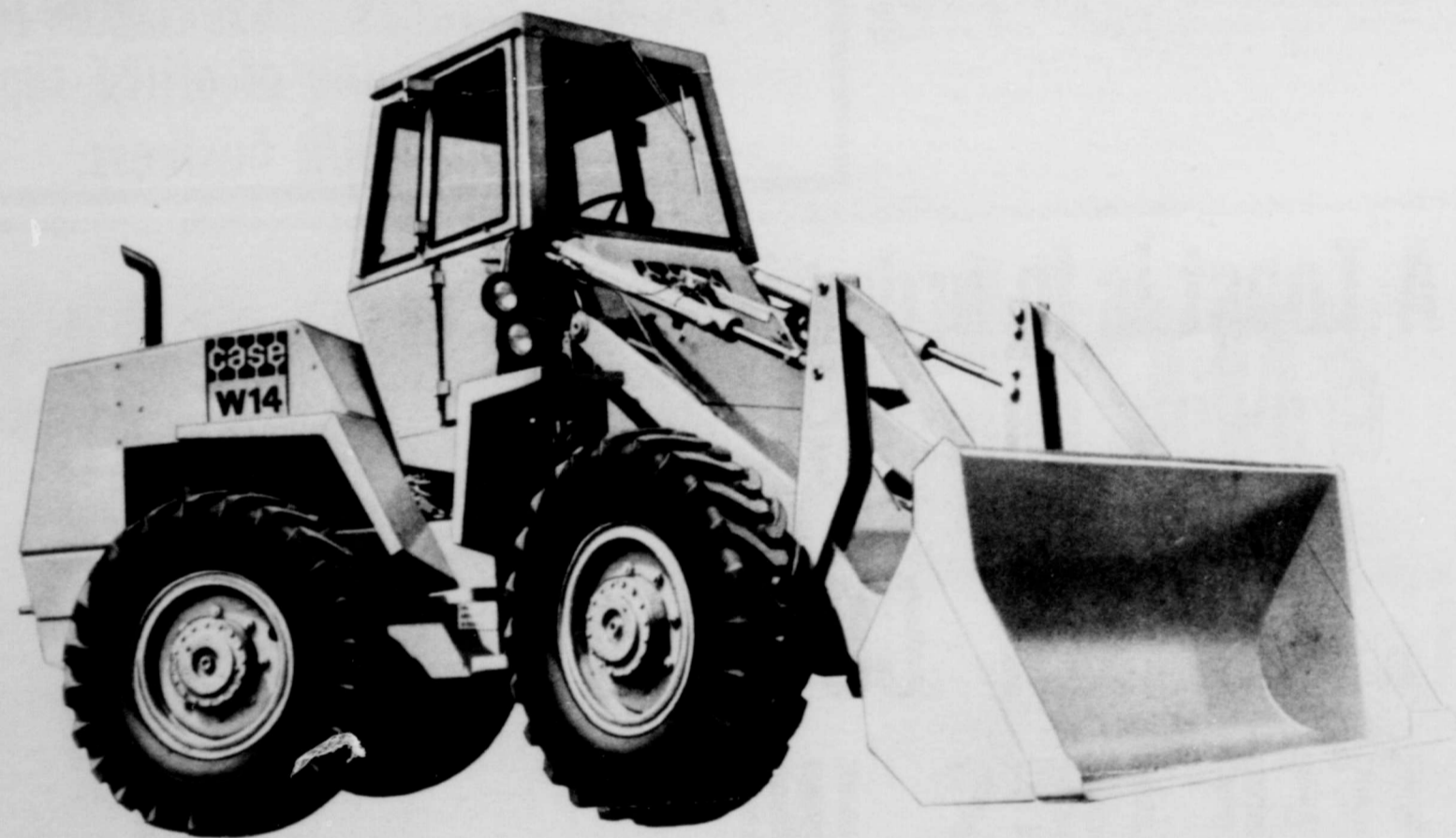
HARRISON HARDWARE

Congratulations

to

THE DONLEY COUNTY FEED LOTS, INC.

Hedley, Texas



We're proud to play a part in the
Donley County Feed Lot's growth and expansion.

CASE POWER AND EQUIP. CO.

I-40 East

Box 9153

Amarillo, Texas 79105

Phone 335-1624

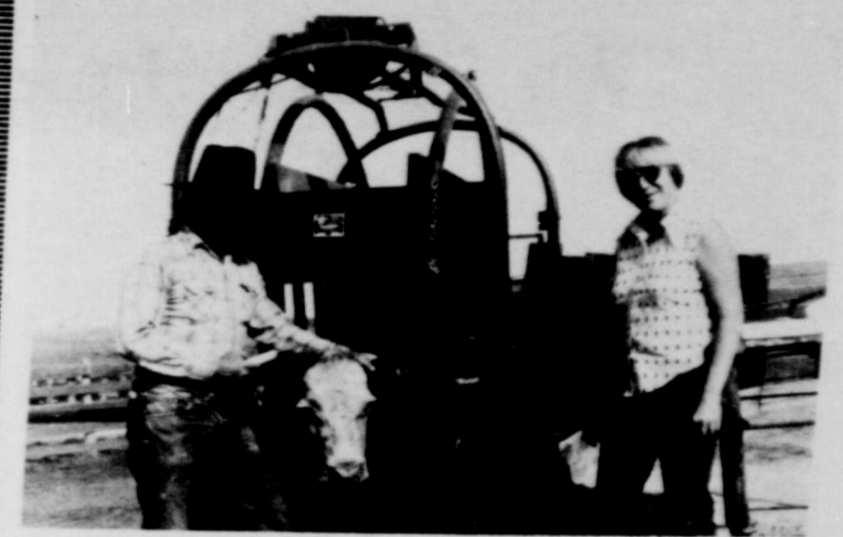
FRANKLIN LABORATORIES congratulate

THE DONLEY COUNTY FEED LOTS

for its major expansion program.

We're proud to play a part
in this growing industry.

We furnish
medical supplies



Continued Service for Stockmen for 50 Years
Pat Butler, representative *Amarillo, Texas*

FAIRBANKS-MORSE

is proud to have supplied the scales for
THE DONLEY COUNTY FEED LOTS, INC.



We congratulate this fine
organization for their
contributions to the
cattle industry.

FAIRBANKS-MORSE

Dan Mahony

See us for your scales needs.

Box 2962

Phone 806-747-4108

Lubbock, Texas

The New Feed Batch Plant at

TEXAS PIPE & METAL CO. Congratulates
THE DONLEY COUNTY FEED LOTS, INC.
on its recent expansion program.
We furnished pipe and metal material,



We're proud to play a part in Donley County's growth.
TEXAS PIPE & METAL CO.
Pampa, Texas

Donley Feed Lots part of a growing area

A profitable tax shelter

Most people become interested in cattle investing as a tax shelter. But good tax shelters should earn profits as well as reduce taxable income. A cattle investor must choose between maximizing either tax shelter or return on investment. Historically, cattle investing has proven to be very profitable when handled properly. Ample tax shelter benefits are available for the investor even when his goal is maximize profits. The following techniques have been proven beneficial:

Deal direct with feedlots that primarily cater to professional cattle investors.

If possible, feed cattle in more than one lot.

Have cattle on feed in various wide-spread locations to minimize the risks of local market and weather conditions.

Dollar-average cattle year-round to reduce the effect of market price variations.

Carefully work out a cattle investing program in advance.

Minimize the use of pre-paid feed by placing cattle on feed early in the year.

Carefully check the feedlot's references, making sure that customers are included.

Insist on detailed monthly reports on cattle and feed.

Even when following the above approach, an investor can expect to receive a 200 plus % first-year write-off. In addition, no income tax would have to be paid on this write-off by the investor's estate should he die while feeding cattle.

Let us, at Donley County Feed Lot, Inc. help work out a good investment program that will enable you to receive good tax shelter while maximizing your potential return on the investment.

BUD'S OFFICE SUPPLY of Amarillo

furnished office supplies and equipment for
THE DONLEY COUNTY FEED LOTS, INC.

Congratulations to one of Donley County's leading industries!

BUD'S OFFICE SUPPLY

Amarillo, Texas

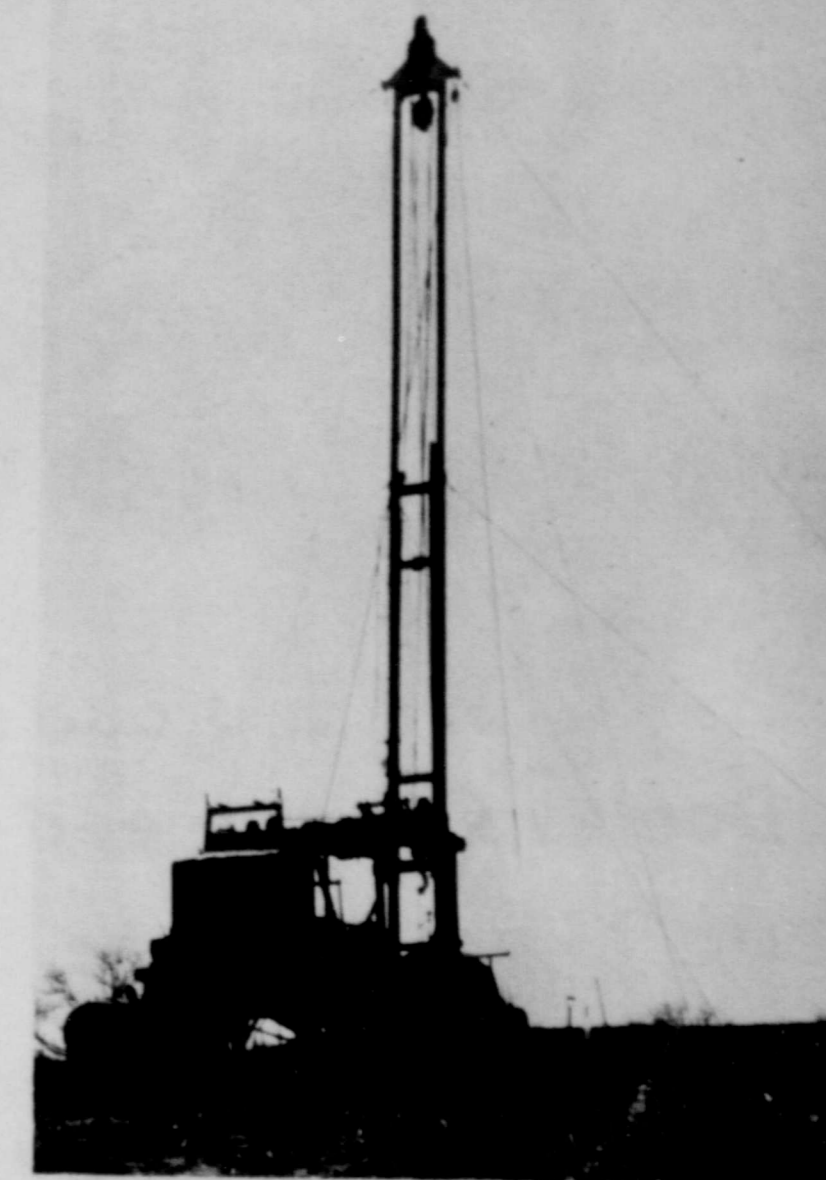
806-373-2963

Check our line of office supplies for YOUR business.

A Toast is in order for a Growing Industry...

THE DONLEY COUNTY FEED LOTS, INC.

We drilled the water wells for the expanded facility.



L. P. MOORE DRILLING CO.

Phone 874-3687 Specializing in Water Well Drilling & Service Clarendon, Texas

Donley Feed Lots part of a growing area



THESE TWO VET WORKERS doctor a steer which is ailing a bit. The vet crew keeps the cattle in good shape. The Donley County Feed Lot has a very low loss record. Even through the winter, the Donley County Feed Lot had one of the lowest loss records of any feed lot in the state. Good vet care is one of the main reasons why.

The Donley County Feed Lots is one of the highlights of a growing, progressing Donley County. The feedlot is perhaps the fastest growing individual business in the county, but there are some other area spotlights also.

Greenbelt Lake is the recreational center of Donley County and much of the Panhandle. The beautiful lake offers all kinds of water sports, fishing at its best, an 18-hole golf course, a luxurious country club, a night club, marinas, and various businesses.

Homesites are available around the lake, and a community of an estimated 900 people has sprung up around the lake. There usually are at least four new homes under construction at any one time, and the growth of the area has been enormous.

Also a growing industry for Donley County is Clarendon College, a liberal arts and more recently a vocational school. The college has an all new campus, and offers a lucrative curriculum. About 500 students were enrolled last year, and college officials are shooting for 700 next fall in a vocational and technical expansion program.

Donley County boasts three banks, with total deposits of near \$21 million. These banks include the Security State Bank at Hedley, the Donley County Bank in Clarendon and the Farmers State Bank in Clarendon.

The car industry is big in Clarendon, also. Four car dealers sell nearly \$7 million a year worth of automobiles in Donley County.

Other industries include Clarendon Manufacturing, a factory which makes farm machinery; Wallace Monument, which makes monuments and memorials and does concrete work; and several other light industries.

Ranching and farming is the chief industry in Donley County.

Round Barns!

Superstitious farmers once said of the few unusual round barns found in northern Vermont, "They built them round so the devil couldn't corner you."

Sneaky Worm?

New Zealand's glowworms use their lights to attract flying insects into sticky threadlike snares they exude from their bodies.

An American First!

America's first fog-warning device was included in the construction in 1808 of West Quoddy Light, the most northern lighthouse along the rockbound coast of Maine. Sixty dollars was added to the lighthouse keeper's \$300 yearly pay for beating a 500-pound bell with a hammer on frequent foggy days.

congratulations

to one of the Panhandle's most progressive feed lots...

THE DONLEY COUNTY FEED LOTS, INC.

We furnish grain by the tons to feed cattle at the new facility.

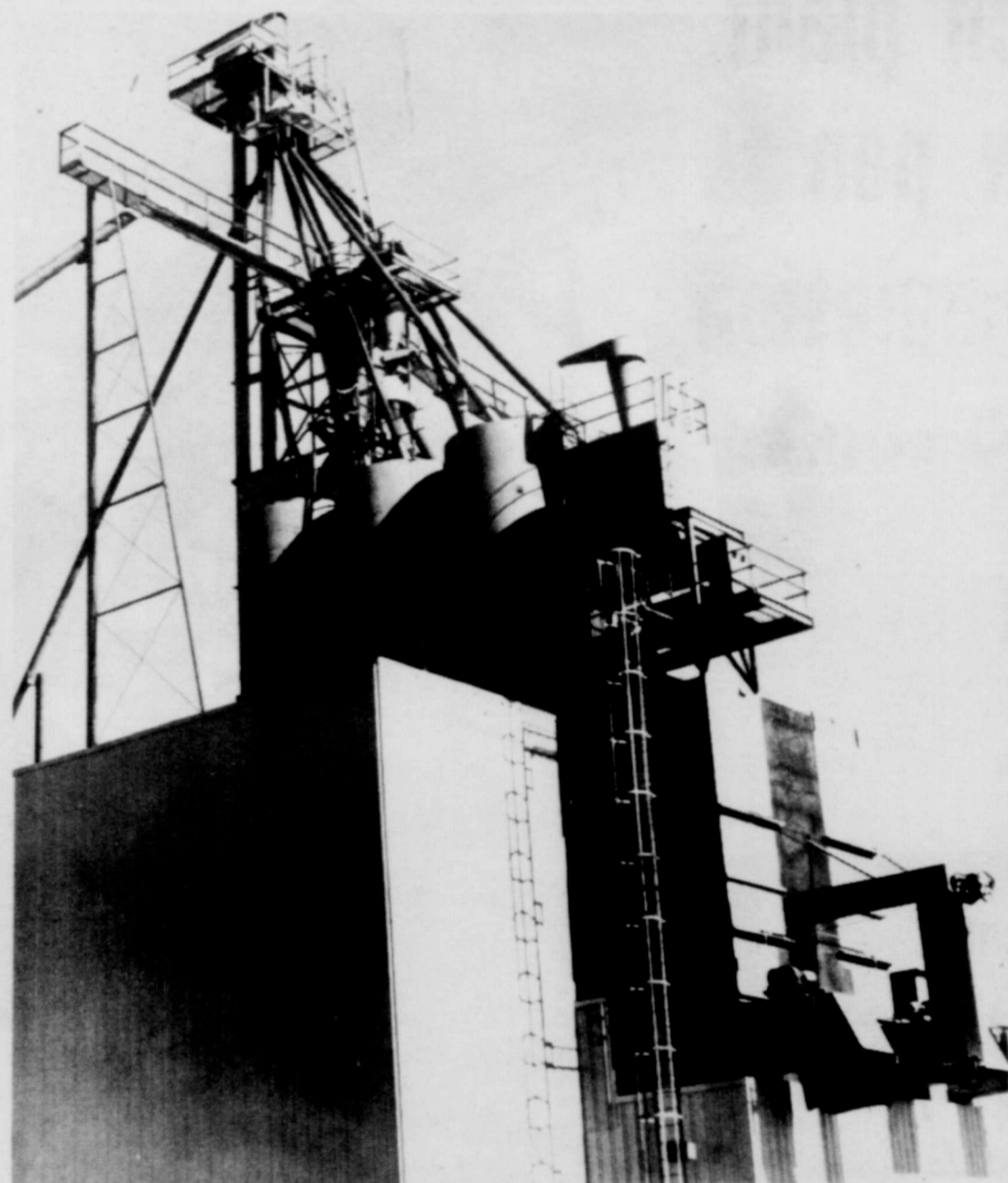
SILVERTON ELEVATORS

Silverton, Texas



The New Feed Batch Plant at THE DONLEY COUNTY FEED LOTS, INC.

is one of the most modern in the Southwest.



And we're proud to have helped construct it.

We furnished the inner machinery for the ultra-modern plant.

We congratulate Charles Payne and his company on their new modern cattle facilities.

Thompson Gill Company

Madera, Calif.

Hereford, Texas

It's a proud day for us at THE DONLEY COUNTY FEED LOTS, INC.

Our new modern batch plant
is complete. Our new pen
expansion is near completion
....a capacity of 20,000 cattle.

And the future
is still ahead.

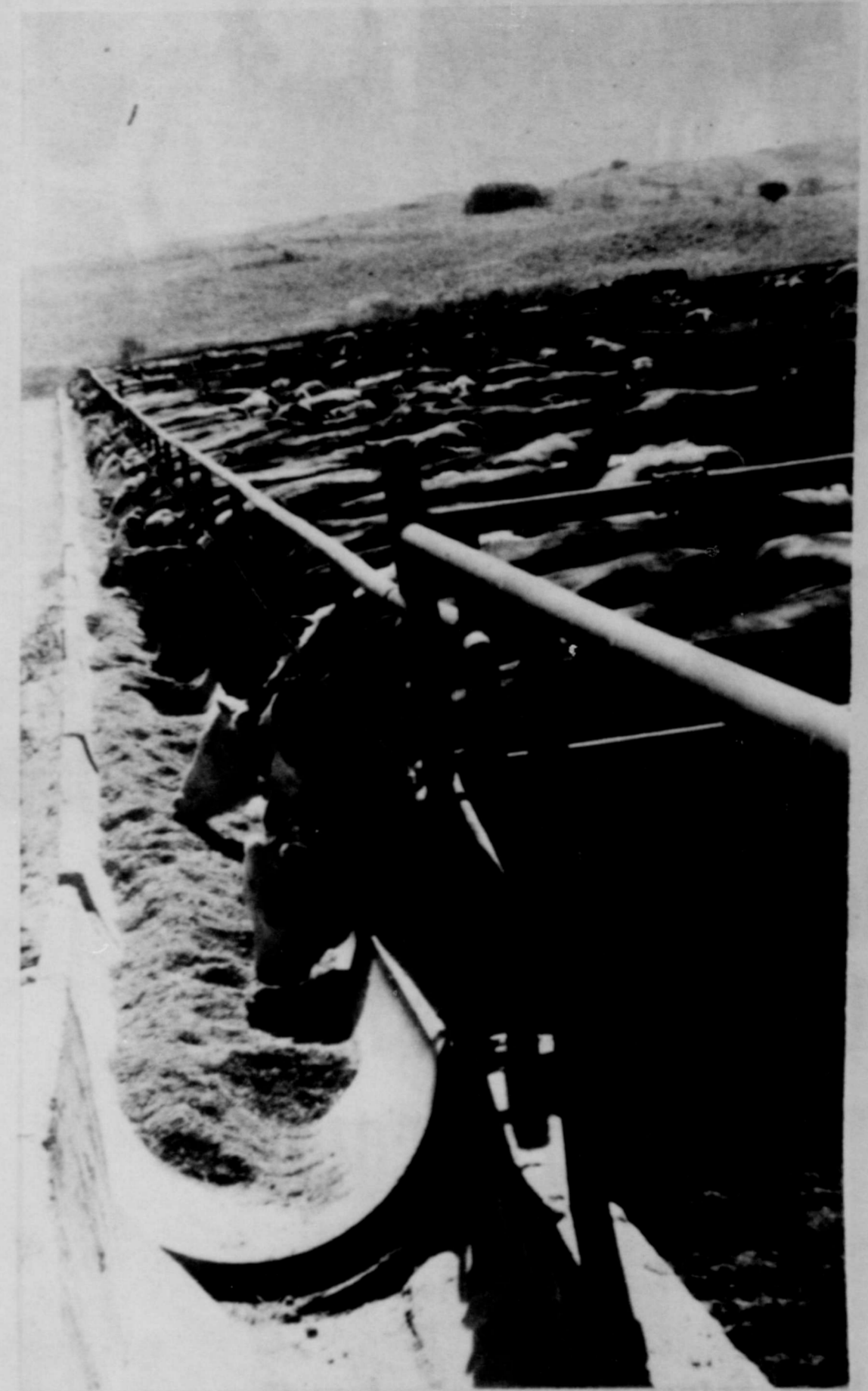
A message from the President...

*We're very proud of our expansion programs
and our steps towards progress. We're proud
of our accomplishments, and proud to have
been a part of Donley County's growth.*

*We urge you to come out and visit our
feedlot and see the modern, up-to-date
facilities.*

*And if you want to feed cattle, let us
make you more profit.*

Charles Payne



**THE DONLEY COUNTY
FEED LOTS, INC.**

Hedley, Texas