

# The Memphis Democrat

12 PAGES  
This Week

Hall County Herald, Established May 3, 1890, Absorbed by Purchase August, 1928

VOLUME LXXXI \*\*\* Avalon Features \*\*\* MEMPHIS, HALL COUNTY, TEXAS, THURSDAY, AFTERNOON, OCT. 28, 1971 \*\*\* 11 CENTS (Inc. 1c sales tax) \*\*\* NUMBER 25

**WEATHER**  
Week's High Temperature ... 75  
Week's Low Temperature ... 45  
Week's Moisture ... 60  
Year's Total Moisture ... 17.72  
Courtesy Rayford E. Hutcherson



**BAND FAVORITES**—On the right are pictured 1971-72 Band Favorites Ramona Ballew and Bobby Clark who were crowned last Friday during halftime ceremonies. Runners-up for the honor as shown on the left are Dena Gardenhire and Randy Davis. All four are NHS seniors.

## Cyclone Band Captures 1st Part Of Sweepstakes

The Memphis Cyclone Band brought home a Division I rating marching from the U. I. L. contest in Canyon Tuesday after overcoming wet, slick field conditions by turning in a near perfect performance.

Memphis Director Carol Blain said, "I just couldn't have been more pleased with the show; it was so close to being perfect."

The director indicated that the band before the band marched the field so slick that members of other bands had actually fallen down.

"We had two marchers slip on the field and we had some very serious problems, but other than that, it was a perfect show," Miss Blain said.

Weather conditions were poor. It rained off and on Tuesday morning in Canyon; also the wind blew, but the local band got a weather break as they came on the field, and the sun came out during a short portion of the band's show.

"We got a lot of wonderful comments from the judges and from those who saw our show," Blain said.

Judge Bruce Cook of U. of T. said, "Nice sound . . . very effective entrance. Chop step is very good; nice balance. You are to be congratulated on an outstanding performance."

Judge Joe Rogers of New Brunsfels said, "Fine appearing band . . . great posture . . . certainly some unusual ideas, overall fine sound, great ideas, great French horns . . . a very fine Class A band. A credit to director, school and community . . . my pleasure, congratulations."

Judge Dan Gibbs of Monahans said, "Band made fine appearance! This group has PRIDE in the stride. I am very impressed with your stride. Fine effect on the Alford March. You get some beautiful sounds at times. Fine French horns. Some very fine work."

The Memphis Band received Division I grades from all three judges, and, along with the Stratford Band, these were the only perfect marks registered in Class A. Gruver and Sanford-Fritch bands got Division I marks by split judges decisions.

The Cyclone twirlers, Mylina Miller, Dena Gardenhire and Diane Clayton, each twirled for the judges, and Dena and Mylina twirled a duet which was given a Division I rating.

Director Blain said the band will march the contest show at McLean Friday night, but twirlers will march in front of the band.

The next Friday night, the Cyclone Band, in honor of Homecoming, will put on a special musical show, completely unique in that the music will come from (Continued on Page 6)

## 1972 Upland Cotton Program Explained

Major provisions of the 1972 upland cotton program, aimed at increasing the progress achieved in 1971, were announced this week by Secretary of Agriculture, Earl Butte, and Assistant Secretary of Agriculture, Larry B. Rogers, executive director of Hall County.

The provisions of the 1972 upland cotton program follow those of the 1971 program by giving farmers the opportunity to use their acreage for a better overall use of their land. The interest of a balanced production of all crops," Secretary Hardin said. "Cotton is moving toward an improved position and is being encouraged by several encourage-

ing factors now being realized with this year's crop. In the first year under the new cotton program, production is higher . . . about 500,000 bales more than last year; market prices are averaging more than 5 cents above 1970; and cotton income to farmers should be up nearly \$200 million."

The 1972 upland cotton program provides for a national base acreage allotment of 11,500,000 acres, a national average loan rate of 19.5 cents per pound, a preliminary set-aside rate of payment of 15 cents per pound and a set-aside requirement of 20 percent of the farm base acreage allotment.

"Any cotton farmer may participate in the 1972 program by signing up and complying with the set-aside and conserving base requirements for his farm, Secretary Hardin said. "Also, through the set-aside provision cotton farmers will assist in the overall commodity supply adjustments authorized and contemplated by the Agricultural Act of 1970. As for cotton production in 1972, each participating farmer will have the opportunity to plant the acreage he decides upon after study of the outlook for supply, demand, (Continued on Page 12)

## Third Annual Cottonboli Enduro Scheduled For Sunday, Oct. 31

### Cyclone-Tigers To Clash At McLean Stadium Fri.

The spotlight of District 2-A action will be on the McLean-Memphis game at McLean Friday night with the opening kickoff set for 7:30 p. m.

The District 2-A championship race is narrowed to three undefeated teams, Memphis, McLean, and Clarendon. The game Friday night will determine which two of these teams will remain.

As far as Clarendon is concerned, the Bronchos will be favored over the Silverton Owls, while Wheeler is expected to defeat Claude, to get back on the winning road.

Although the Tigers are undefeated going into the Memphis game, McLean has played Claude and Silverton in the early portion of play, and face Memphis, Clarendon and Wheeler in their last three district contests.

Clarendon has Silverton, McLean and Memphis yet remaining, while the Cyclone hosts Claude next Friday and travels to Clarendon in the regular season finale.

Coach Clyde McMurray said of the upcoming game with McLean that the contest will be a "tough one."

"McLean has a good team, tough and aggressive on defense, and a good offense ball club with a good line and good backs," he said.

In addressing Cyclone boosters, the Cyclone mentor said, "Our offense must come through for us in this one, and our defense must have as good a night as we had last Friday against Wheeler."

The coach cited the Cyclone defense for playing their best game of the season against Wheeler in holding the Mustangs to 7 first downs and 115 yards total offense.

**Talented Tigers**  
Tommy Duniven, 192, senior quarterback and captain of the Tigers, will be remembered by Cyclone fans from last season when he led his team to a 27-0 victory over the Cyclone. Duniven is an all around football player, besides running and throwing the ball, he is the Tigers' punter and also is a key linebacker on defense.

The Tigers are one of those rare teams whose backfield outweighs the line, as FB George Danner, 178 lb. junior, and Tail-

back Randy Brown, 178-lb. senior, tip the scales at the average backfield weight. HB-WB Mike Griffin, 159 lb. senior, rounds out the Tiger backfield. Griffin is also a team captain.

The Tiger line is led by team Captain David Haynes, 190-lb. senior, a tackle, and Sophomore Guard Tony Henley, 178.

Recordwise, the Tigers have a 5-2 season mark, losing to White Deer and to Class AA Shamrock. The only district team McLean and Memphis have both played (Continued on Page 6)

### Scramble Races Also Planned For Saturday, 4 p. m.

Memphis, Saturday and Sunday, will be headquarters for two big motorcycling events, the Third Annual Cottonboli Enduro, 125-mile endurance run, and Saturday's Scramble, track racing.

Local motorcyclists are hosting the Scramble Saturday at the track south and west of Memphis, with the track opening at 2 p. m. and racing beginning at 4 p. m. Four classes will run: 0-100cc, 101-125cc, 126-250cc, and the Open, with there beautiful trophies offered class winners.

A local spokesman for the Scramble said, "we decided since so many cyclists come early for the Enduro that they would enjoy the Scramble racing on our safe, fun track."

Naturally, the big attraction is the Amarillo Track & Trail Sport Riders' 3rd Annual Cottonboli Enduro, sanctioned by A. M. A. which will headquarter at the De Ville Motel in Memphis.

This motorcycle race brings more out-of-towners to Memphis each year than possibly any other activity.

Participant ranks could swell over the 300 or 400 mark as the Enduro reaches portions of national events in motorcycle racing.

Two classes are set up, Class A, dividing cycles into 0 to 200cc, 201 to 300cc and 301 and up; and Class B, with the same cc (Continued on Page 6)

### Memphis Cotton Classing Office To Open Nov. 1

USDA's Memphis cotton classing office will begin receiving samples on Monday, Nov. 1. Mr. Wiley E. Cain will again be officer in charge.

Cotton ready for classing prior to the Nov. 1 opening date will be handled by the Altus, Okla., classing office.

This is the 13th season of operation, according to C. E. Cox, Cotton Division of Consumer and Marketing Service.

The Memphis office has installed two additional tables giving the office a 20 percent increase in classing capacity. Previously, the office has had eight tables but it is now equipped with ten tables, Mr. Cain announced this week.

**Lynn L. McKown Dies Unexpectedly Wed. Morning**

Lynn L. McKown, 66, former manager of the Agricultural Stabilization and Conservation Service here and representative of the Hall County Farmers Union, died unexpectedly at his home just before noon Wednesday of an apparent heart attack.

Funeral services for Mr. McKown were held at 4 p. m. today (Thursday) in the First United Methodist Church with Rev. Tommy Nelson, pastor, officiating.

Burial will be in the Crowell Cemetery at Crowell by Spicer Funeral Home.

Mr. McKown was born Oct. 16, 1905, in Crowell. He was united in marriage to Marguerite Calvin on May 20, 1934.

Mr. and Mrs. McKown moved to Memphis in September, 1945, at which time Mr. McKown assumed the position as manager for the local ASCS office. He continued with this position until his retirement in 1970. He had 31 years of service with the ASCS at the time of his retirement.

For the past several months, he was associated with the Farmers Union.

He served with the U. S. Army Medical Corps during World War II and was a member of the Disabled American Veterans. He was (Continued on Page 6)

### Lynn L. McKown Dies Unexpectedly Wed. Morning

**County Remains In Hightower's 30th District**

The 30th Senatorial District, represented by Senator Jack Hightower of Vernon, was enlarged by the Legislative Redistricting Board Friday, Oct. 15. It has been extended south to surround Abilene on three sides, and several counties in the western part of his district were removed.

The new District pairs Senator Hightower with Senator David Ratliff of Stamford.

New counties in the district are Clay, Kent, Stonewall, Haskell, Throckmorton, Scurry, Fisher, Jones, Shackelford, Callahan, Nolan, Mitchell and Howard. The census population of the new district is 368,807. Wichita County is the most populous with 121,862 citizens.

With the new redistricting, greater representation will now be centered in the metropolitan areas of the state.

### New Movie House To Hold Formal Opening Nov. 3

An extensive remodeling program reaches its climax Wednesday, Nov. 3, with the opening of the renovated Ritz-Capri theatre building, located on the south side of the square. John Wolf, owner, announced this week. The theatre will be known simply as the Movie House.

During the past few weeks, the 40 odd-year-old theatre has undergone a complete change which affected the shedding of old-fashioned architecture and decor and the emergence of a completely modern movie house.

The smart looking facade, of used bricks has been used below the attractive board with two lighted attractive panels mounted on this brick. The identification sign was painted on the upper facade and lighted with three flood lamps.

Inside the two new glass doors, (Continued on Page 6)

### Rites Held Here For Mrs. Perkins; Hedley Burial

Funeral services for Mrs. Florence Elizabeth Perkins, 75, who resided in the McKnight Community near Hedley, were held at 10:30 a. m. Tuesday, Oct. 26, in the Spicer Funeral Home Chapel in Memphis.

J. C. Stepp of Lakeview officiated. Burial was in Rowe Cemetery at Hedley under the direction of Spicer Funeral Home.

Mrs. Perkins died at 12:51 p. m. Sunday at her home.

Florence Elizabeth Lewis was born April 6, 1896, at Vasco in Delta County. She was united in marriage to Jackson Perkins Aug. 19, 1919, in Saltillo. The couple moved to Hall County in 1924 where they operated a grocery store, moving to Donley County in 1937, where they continued to operate a grocery.

Mr. Perkins was a member of the Church of Christ.

Survivors include: a foster son, J. C. Rickerson of Spearman; a foster daughter, Miss Olzma Rickerson of the home in McKnight; one foster grandchild; three sisters, Mrs. Sarah Barhan of La-Blanca, Mrs. Pearl Rhodes of Clarendon and Mrs. Annie Talley of Cooper.

Pall bearers were Jerry Burleson, Homer Burleson, M. D. Kennard, Hobart Moffitt, Bouge White and Roger Messer.

### Roy L. Brewer, Former Resident, Dies Monday

Roy L. Brewer, former long-time Memphis resident, died Monday in Mount Pleasant where he had resided since September, 1970.

Funeral services were held Wednesday in Smith-Bates Funeral Home in Mount Pleasant with burial in that city.

Mr. Brewer had been in failing health for several years.

A long-time employee of General Telephone Company of the Southwest, he served as district manager for the company here for many years. He had spent 38 years with the company when he retired here on July 31, 1967. Most of that time was spent in Memphis.

During the time he lived here, he was active in community work and was a charter member of the Memphis Lions Club.

He is survived by his wife, Mildred, of Mount Pleasant; two daughters, Mrs. Barbara Pyeatt of Lakeland, Fla., and Mrs. Nancy Roden of Memphis; one brother and two sisters and seven grandchildren.

### 'Haunted House' To Be Sponsored Sat. By Homemakers

The Memphis Chapter of Young Homemakers will present "House of Terror," a meeting place of ghosts, goblins, witches and "haints," Saturday night, Oct. 30, beginning at 6 p. m.

This ritual will be held on the north side of the square at 516 Main St., the building located between Kinard-Galley Insurance Agency and Memphis Glass and Supply.

Admission is 25 cents per person.

"If you are easily frightened or have a heart condition, do not attend," Mrs. Nadine Wheeler, president, stated.

However, she extended a cordial invitation to all hardy souls to come and enjoy good Halloween fun.

### Set Clocks Back One Hour Sunday

Clocks over the nation will be set back one hour on Sunday, Oct. 31, to Standard Time. This announcement was made last Thursday by the National Weather Service.

The federal law which established Daylight Saving Time calls for the change back to Standard Time "on the last Sunday in October."

The fact that October has five Sundays this year is not material to the change.

All persons are reminded to sets clocks "back one hour," and move all schedules to the old "Standard Time." The early morning lost hour will be no more.

### Hall County Is Moved To New State Rep. Dist.

Hall County has been moved into a new district in a State Representative redistricting plan adopted last Friday by the Legislative Redistricting Board. It no longer will be represented by State Representative W. S. (Bill) Healy of Paducah.

The new district, No. 66, now covers counties represented by Democrat Phil Cates of Lefors and Republican Tom Christian of Claude.

The new district includes Hall, Childress, Armstrong, Briscoe, Donley, Collingsworth, Floyd, Motley, Wheeler and Gray.

According to the 1970 Census of Population, published by the U. S. Department of Commerce, the 10-county House of Representative district contains 72,310 people. Gray County, with a population of 26,948, contains nearly half of the total, and will be a determining factor in any election.

### Cotton Guessing Contest Is Underway

Readers of The Memphis Democrat are asked to take note that the annual Cotton Guessing Contest is now underway. The contest will continue through Nov. 13.

All readers are invited to enter the contest. Guesses on the amount of cotton to be harvested in Hall County during the 1971 season should be mailed on a post card to Box 190, Memphis, 75245, or persons may come into the office and vote in person. No telephone guesses will be accepted.

Prizes in the contest will be a three years subscription to first place winner; two years for second place and one year for third place.

**Merchants' Gift Day Drawing For Sat.**

Memphis Merchants Gift Day drawing for gift certificates will be at 4 p. m. Saturday, Oct. 30, on the Court House steps in Memphis.

Winners are announced the Saturday afternoon of the drawing, and another Merchants' Gift Day will be held in November. Chamber of Commerce officials have announced.

Published on Thursday of each week at 617 Main Street, Memphis, Texas by HERSCHEL A. COMBS Publisher BILL COMBS Editor

NOTICE—Any erroneous reflections upon the character, standing or reputation of any person, firm or corporation which may appear in the columns of The Memphis Democrat will be corrected gladly upon its being brought to the attention of the publisher.

EDITORIAL

Psychiatrist Advises 'Let Husband Watch Football'

We read where a Washington, D. C. Psychiatrist, Dr. Wm. Garland Tompkins, advises wives to let their husbands watch football on television.

"I would take the stand that modern American man needs television football as an emotional release—one of the few remaining to him", he said.

His advice to wives is to join with their husbands in watching games or in attending games at the stadiums. His wife does this and she enjoys herself. When husband and wife can't reach some kind of compromise over the viewing, the results may be quite severe.

As far as following football teams, the Memphis Cyclone this season has been bringing the crowd out in full force, as the team has won 6 and lost 1 for the season.

Football is as much a part of the fall scene as is the turning of leaves, the harvesting of crops and the coming of cool weather.

Football fans have their favorite teams, high school, college and professional. Here in Memphis, with the Cyclone having its best season since 1967, anticipation is running high from Friday night to Friday night.

There is nothing that brings out the excitement, anxiety and thrill as a hard fought football game, especially when a championship is at stake. The excitement is even keener when it's the hometown team on the field.

The support fans give a team is all important. As the Cyclone goes to McLean Friday night for this crucial game, Memphis fans will exodus. Traffic will be bumper to bumper so drive carefully, this editor doesn't want to miss a second of the action due to someone's poor driving.

Punch Line of the Week

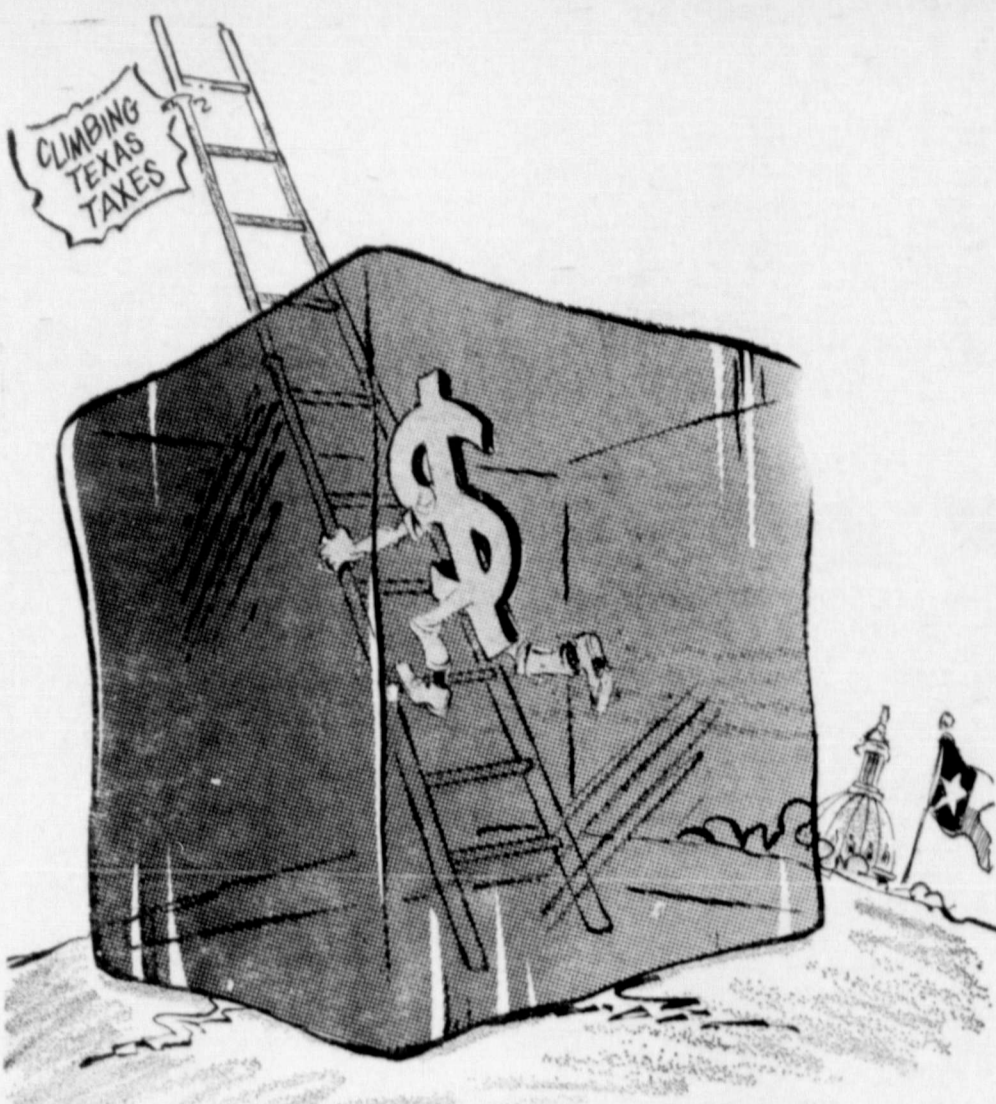


Russian TV is different - it watches you.

DR. JACK I. ROSE OPTOMETRIST Contact Lenses Closed Saturday Afternoons 415-A Main Phone 259-2216

Spell Quiz

Defillade defilade defalade (Definition: arrange troops advantageously) See Classified Ads for Correct Answer.



"ANOTHER FREEZE WED GO FOR —"

ACROSS THE DISK

What Other Editors Say

Service Is The Product

The Attitudes of workers who serve the general public has much to do with the success of any business. Maybe that's why so many establishments are having such a hard time these days.

What's happening to our "service professions" is a question that is being asked by many who survive the business scene today. Two-thirds of American workers employed in performing services & other Only one worker in three produces durable "hard" goods or non-durable "soft" goods.

A subtle new pattern is becoming obvious in this realm. When was the last time you really felt your business was appreciated by the big city hotel, restaurant, cleaning establishment, cab driver, custodial services, bus lines or even the retail sales clerk?

Services represent the major job market for the future. Although our educational system has trained people for specialization, it has too often ignored the training of human relations, or how to serve. In fact, the very term, "servicing class" rankles those who serve, because service connotes low prestige for them. But should it?

The American ideal of business has been established on service with a smile. To bring it back, we shall need a change of attitude



TESTED... APPROVED... GUARANTEED TO STOP BATTERY TROUBLE WITH VX-6

MAKE THIS 10-SECOND BATTERY CHECK TODAY Raise the hood of your car and look at the battery. A green or white formation around the battery or terminals means sulphation and sulphation means your car's battery is dying.

C. R. SMELSER Box C — Phone 888-2741 Estelle, Texas 79233

avenues of making more money from which the government could expect to benefit in the form of more taxes after, say, a ten year exploratory period. —Canadian Record

Jimmie Spruill Is Religion Major At Wayland College

PLAINVIEW texas special — Jimmie Dan Spruill, son of Mr. and Mrs. Jimmie Spruill of Memphis, has enrolled for the fall semester at Wayland Baptist College.

Round-Up Is Held Saturday By Molloy.

An old-time "round-up" was held Saturday, Oct. 23, on the Robert Sexauer ranch, now under lease by Roy Alvin Molloy.

Those attending were Mr. and Mrs. Joe Neal Berry and Jodie, Mr. and Mrs. Jerry Byars, Staria, Jerry Gwen and Moe, Mr. and Mrs. Mel Roy Cofer, David, Don and Daryl, Mr. and Mrs. Mack Cofer, Mrs. Billie Fay Molloy, Mr. and Mrs. Tony Molloy, Brent, Mark and Monica, and the hosts, Mr. and Mrs. Roy Alvin Molloy, Chris and Stevie.

Lusk Cleaners take pride in caring for your clothing in a professional manner and would appreciate the opportunity to serve your cleaning needs. Also, Lusk Cleaners has carpet cleaning machines for rental, complete drapery service, expert alterations, and clean only service for the new fabrics in clothing. Lusk Cleaners will block all kinds of knits and needlepoint. No item is too big or too small.

Lusk Cleaners in Memphis and Turkey

When You're Needing To Buy Office Supplies Or Job Printing See or Call THE MEMPHIS DEMOCRAT Phone 259-2441 617 Main

Memories

From The Democrat Files



30 YEARS AGO October 23, 1941

Leo Fields, who with E. E. Cudd and T. D. Weatherby made a deer-hunting trip to Colorado last week, donated half a deer to the high school cafeteria this week.

Harvesting of the 1941 cotton and feed crops in Hall County and the surrounding area were abruptly halted this week by heavy rainfall and by this morning at 7 o'clock, two and one-half inches of moisture had fallen in Memphis.

A new business was opened last week in Memphis under the name of Bass Fruit and Vegetable Stand, owned and operated by Hub Bass, proprietor of the Gridiron Drive-In.

Weekend Specials at City Grocery-Co., cola & Dr. Pepper 6 bottles, 22 cents; coffee, White Swan, 1 pound, 31 cents; Tuna fish, Gold Bar, can 18 cents; Sanka, 1 pound can, 37 cents; Post Toasties, 2 large loxes, 19 cents.

20 YEARS AGO October 25, 1951

Mill Iron Ranches, rich in the history of the old West, upheld the tradition of their colorful and dramatic sales as they sold 525 Hereford range bull calves, all registered in Estelle Monday.

Six students from Memphis are listed among the 2200 persons enrolled at West Texas State College for the fall semester. They are: Junior, Roger Monzingo and Marion Posey; freshmen, Eudine Gable, Minnie Jackson, Ann Spoon and Ann Young.

Mr. and Mrs. H. S. Maddox announce the arrival of twin girls born Oct. 12. Almada Raye weighed 6 pounds, 7 ounces and Omega Gaye weighed 5 pounds, 8 ounces.

Mr. and Mrs. Don Davis of Newlin are the parents of a daughter, Rhonda Diane, born Oct. 18. She weighed 8 pounds, 5 ounces.

G. D. Hall, a converted guard whose basic idea of football is to score touchdowns or help the other fellow score them, grabs the Panhandle's Class B football spotlight as the News-Globe's player of the week.

10 YEARS AGO October 26, 1961

As of noon Thursday, Hall County gins have ginned 22,019 bales of '61 cotton, setting a peak ginning week of 10,139 bales since last week's report.

Miss Linda Lou Campbell, the daughter of Mr. and Mrs. Perry

Campbell of Lakeview, has been named to the position of secretary on the Executive Board of the Student Union Board at West Texas State College.

Mr. and Mrs. Eddie Braidfoot of Estelle announce the birth of a son, Sammy Lee. Born Oct. 24, weighed 7 pounds, 5 ounces.

Winners Announced in Travis Elementary poetry contest: second and third grades: second place, Billy Edd Dixon; third place, Deblie Yarbrough; fourth place, Laqueta Burgess, fourth and fifth grades: first place, Carolyn Sparks; third place, Dayna Blakey; sixth and seventh grades: first place, Cathy Dale; third place, Liz Johnson.

CARD OF THANKS

We thank each and everyone who sent cards and words of comfort at the loss of our loved one. May God bless you.

The family of James M. Rice Box 36 Cedarville, Ark. 72932

Mr. and Mrs. Les Sims were in Dallas this week attending market.

GRAIN FED BEEF

Half Beef --- 61c Hind Quarters . 71c Fore Quarters . 53c

These prices include processing

We sell Country Sausage Ham and Bacon

Custom Slaughtering on Monday through Friday of beef and pork

Clarendon, Texas

Phone 874-2154 Box 389

HOMEN MEAT CO

Wednesday, November 3rd

8 99c KING SIZE WALLET CREATIVE COLOR PORTRAITS FOR ONLY

Order Pictures for Christmas Now



PHOTO HOURS 9 A.M. TO CLOSING

GET PICTURES MADE OF GRANDPA, GRANDMA, DAD, MOM AND ALL THE LITTLE ONES AT THESE SAME LOW PRICES!

SHUGART COLOR PHOTOS

FOWLERS REXALL DRUG

506 Noel St.

### Memphians Enjoy Bus Tour To New England

Mrs. Ira Lawrence and Mr. and Mrs. Johnnie Brewer recently enjoyed a Continental Trailways Bus Tour, "Autumn in New England."

The group of 40 people from the Golden Spread left Amarillo on Sept. 19, and returned home on October 9.

The first night was spent in Springfield, Mo., and from there on to Indianapolis, Ind. and to Detroit, Mich. where they enjoyed a tour of the city.

After leaving Detroit, the tour crossed over into Canada and a guide showed the group the city of Niagara Falls. Some of the outstanding sights here were Queen Victoria Park, the Ontario Hydro Floral Clock which was formed entirely of miniature living plants and chimed on the quarter hour. The falls also made a very impressive sight viewed under colored lights at night.

Two nights and one day were spent in Montreal. A beautiful sight here was the Notre Dame Church which seats 4,968 people and the exterior is inlaid with pure gold. Next came Quebec and a tour was made into the walled

city which is unusual because it is the only one on the North American continent except for Mexico. It shares the distinction of being the largest panoramic painting in the world and depicts the city of Jerusalem and the crucifixion of Christ in three dimensional effect. The basilica was visited here and on the way back to the city, the group stopped for slices of hot buttered bread which was baked in an open oven over 200 years old located in the side of a mountain alongside the road.

The flowers were gorgeous and the vegetable harvest was at the peak of production in Canada and the roadside stands showed an array of color and abundance of vegetables and fruit. The next stop was in Augusta, Maine, back to the good old U. S. A. after a goodbye to Canada.

Crawford Notch, N. H. was the next stop on the tour where the foliage was just beginning to turn. The group stayed at Crawford House in the White Mountains where the royalty of England had been entertained before the turn of the century. Next came Boston, Mass., where a number of historical sites were visited including the birth place of Benjamin Franklin, the home of Paul Revere and the Old State House. A visit to the Prudential Building where a tour was conducted and one of the highlights was an elevator ride to the Sky-

bove the city on the 50th floor. walk which is located 750 ft. at Harvard University and MIT in Cambridge, Mass., where also visited. The Statue of Liberty and Empire State Bldg., Bowery, China Town Rockefeller Center, United Nations, where a moon rock was on display, were included in the tour in New York City.

The International Art Gallery made an interesting stop and shopping on Fifth Ave. was enjoyed by all.

The nation's capitol, Washington, D. C., was the next stop where guided tour to points of interest was made including the White House, the Capitol Building, Arlington Cemetery, and the tomb of the Unknown Soldier where a changing of the guard was viewed; Kennedy's grave, Lincoln's tomb and on to Mt. Vernon through George Washington's home and to the tomb where he and Martha are laid to rest.

Another highlight was that the House of Representative and Senate were in Session when visited by the group. Natural

Bridge, Va., was the next stop, located in the Shenandoah valley, and surrounded by the Blue Ridge Mountains, the Natural Bridge is called one of the seven wonders of the world, carved by nature from 36,000 tons of limestone. A program, "The Drama of Creation", re-inacted nightly under The bridge, is a depiction of the creation of the world and is taken

from the book of Genesis. This soul stirring pageant tells the Biblical story of the dawn of the world in colored lights and music.

Leaving Natural Bridge, and continuing on through the mountains along the Shenandoah Valley, this beautiful scenery was enjoyed all day en route to Knoxville, Tenn. where the group spent the night. Then came an overnight stop in Memphis Tenn., and on the next day to Lake Eufaula, Fountainhead Lodge, in Checotah, Okla., a beautiful place, indeed, where the group had their farewell banquet.

Here, Mrs. Lawrence was surprised with a birthday party following the banquet. Then on to Amarillo the next day, arriving Sunday, Oct. 9, a tired but happy group of travelers who would readily recommend this trip to everyone.

Mr. and Mrs. Wendell H. Mitchell and Family

Sierra Nevada, in English means snowy range.

### Mrs. E. P. Thompson Undergoes Surgery In Dallas Tuesday

Mrs. E. P. Thompson underwent surgery in Baylor Hospital in Dallas Tuesday morning. She is reported to be doing nicely at this time. She is in room 7431.

In Dallas to be with their mother at the time of the surgery were Mrs. Lester Campbell, Ruth Thompson, and Edwin Thompson, all of Memphis and Mrs. Herschel Montgomery, who lives in Richardson.

Visiting in the home of Mr. and Mrs. Lynn B. Jones, 608 N. 13th Street, over the weekend were Mr. and Mrs. Clyde Jones of Talar, Peru, South America; Mr. and Mrs. Marschall Jones and Mrs. Angie Bradley of Abilene.

#### CARD OF THANKS

To our many neighbors and friends, we extend our sincerest appreciation for the many lovely floral arrangements and other acts of kindness shown us during the recent illness and death of our dear loved one, Cecil Dorman Mitchell.

Mr. and Mrs. Wendell H. Mitchell and Family

#### A. L. Rogers Cabinet Shop

sells Super Kim-Tone and Kim-Glo also does sheetrocking, finishing and painting A. L. ROGERS CABINET SHOP 615 N. 12th-Pho. 259-3012



CATTLE DOGS—Roland Salmon of near Brice is shown above with his Australian Cattle dog and her puppies. Salmon feels the breed is ideal for this area as the dog is like having an extra cowhand in working cattle. "They make nice pets also," he says.

### Australian Cattle Dogs Find Good Home With Roland Salmon In Brice

Here in the eastern Texas Panhandle, it is the practice of most cattle raisers to work their cattle in a modified "open range" situation.

Some cattlemen use pickups, some use horses, but for Roland Salmon in the Brice area, the Australian cattle dog has found a home and a work. Several citizens of this area have found these dogs to be the cattlemen's best friend.

Salmon reports his dog has a litter of puppies, 8 in all, and that, at the time he made his report, he had placed four of the puppies in new homes. Salmon has found his breed of dog in great demand.

The Australian cattle dog, often referred to as Queensland Heelers, stands about 18 to 20 inches at the shoulder, and weighs around 35 to 40 pounds. Its coat is short with a thick undercoat that protects in all types of weather.

The color is referred to as a blue merle or red mottle or speckle, ranging from very dark to light. Black spots may be found on the ears, head, eyes, and also on the body and tail head. The erect ears and eyes are extremely expressive, seeming to "talk" by winking the head to one side. The dog, with "cat-like" paws, are exceptionally strong, so necessary for a dog that must work hard all day long in all kinds of weather and terrain.

The breed is one of two working breeds developed in Australia, the other being the highly regarded "Border Collie" used mostly on sheep. The way the breed came about is most interesting. Early English Heelers brought their working dogs

along, but all failed to stand up to the rocks, thorns, long distances, and general hard conditions of Australia. After many breeding failures, a settler named Hall brought a Blue Merle Collie from Scotland and crossed it with the native wild dog of Australia called the Dingo. The Dingo is believed to be descendent of the Asiatic Dog of pre-historic man. Australian Aborigine has on occasion domesticated these wild dogs and used them to track and hunt food.

It is difficult to know what percentage of the dingo blood was still in these cattle dogs when they drew up the breed standard in the 1890's and started registering them as a definite breed. It is known that the original cross they infused the Kelpie blood for herding and the Dalmation for guard instinct, but when one observes these dogs, he can see the original reservedness and sagacity of his dingo forebearers.

Salmon is so sure of his breed, he says that he guarantees the Australia Cattle dogs he has will work cattle or he will refund the money.

Not only have these dogs won recognition as cattle dogs, but they are doing exceptionally well in obedience work and special classes have shown up in dog shows. A. K. C. dogs recognize this breed and with an indefinite listing privilege number these dogs may be shown in miscellaneous conformation classes and obedience trials.

Around a ranch or cattle operation, the dogs adapt to most any procedures that are routine on the ranch. They work silently around the out-skirts of the herd, nipping the heels of the lagging cows until they seek the security of the herd. They work along the chutes to keep cattle moving by sticking their heads through cracks and nipping.

As far as pets are concerned, many city dwellers have found the cattle dogs as ideal pets as they are not quarrelsome by nature, being rather reserved, but can look after themselves in a scuff better than most breeds.

Mr. and Mrs. R. C. Lemons visited in Childress Sunday afternoon with Mr. and Mrs. Carl Denny.

**TV Service Center**

609 Noel St.  
Memphis, Texas  
Phone 259-3224

Dependable and guaranteed service  
Jesse Hernandez

**Need a Stapler?**  
**Then Check With Us...**

Tackers -  
Pliers -  
Staplers -

Priced from  
**98¢ to \$9.50**

**ALL GUARANTEED!!!**

**The Memphis Democrat**  
617 MAIN

**Don't gripe at our employees. Gripe at us.**

General Telephone employees have a hard job to do. And, they are working harder than ever to get it done right.

The reason they're so busy is because there are so many more of you now. And, because everybody's constantly on the move.

For example, we average 9,000 visits a month just moving phones. Plus, we add 4,000 new customers a month.

So, if occasionally one of our men is late, it's not because he's taking an extra coffee break. It's because he's breaking his back trying to keep up with you.

However, we're not asking you to swallow all your anger.

Instead, take advantage of our recently established "One-to-One" policy. It's our new code for improving relations with you, our customers. It's intended to help us open up a direct, honest and

courteous communication that will bring about a mutual understanding between us.

Contact us if you want to get something off your chest. Or, if you want to find out how our plans for the future will affect your phone service.

In addition to improving our relations with you, we're also spending money to make your phone work harder. \$96,000,000 is going into new lines and equipment this year. That's a lot, and you'll see results soon.

Get in touch with us when you have a special telephone problem. Especially if it's a gripe. That's when a One-to-One relationship will really help us both get a grip on such things.

**GTE GENERAL TELEPHONE**

The people you can talk to One-to-One.

# FREE

## 6 PAK COKE



Plus Deposit



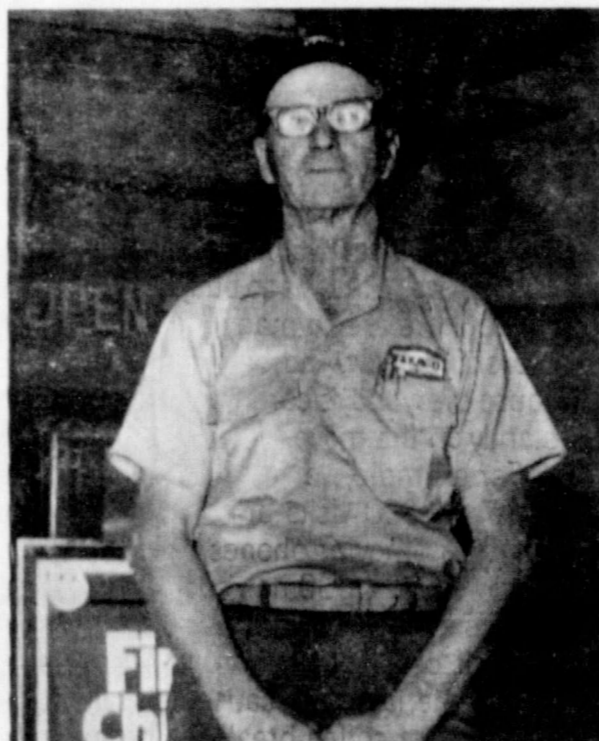
### WITH FILL UP - MINIMUM 8 GALLON PURCHASE WHILE QUANTITY LASTS



Herman Cross    Zeno Lemons    Gary Alexander

**LEMONS & CROSS**

Texaco Service Center  
Highway 287 North



Oscar Maddox

**MADDOX TEXACO**

201 Boykin Drive



Danny Garrett

Carrol Gardenhire

**CARROL'S TEXACO**

and Radiator Shop  
110 North 10th

## STARTS THURSDAY

### WHERE YOU ALWAYS GET THE BEST SERVICE IN TOWN

# Cyclones Take Crucial Win Over Wheeler Fri.

The Memphis Cyclone, passing for one TD and making three more on the ground, won a decisive 27 to 6 victory over the Wheeler Mustangs Friday night. This makes the Cyclone two in a row in district play and extended their season mark to 6-1.

Rain had fallen steadily from 3 p. m. until an hour before game time, but many fans turned out despite the rainy conditions to watch the important district game.

The game started out to be a punting contest, as neither offensive team could manage a first down. After the kickoff, the Cyclone went to the airways, but the wet football was difficult to catch.

The Mustangs had good field position near mid-field, but the Cyclone's ever improving defense raked running back Weatherly, Cole and Stevens, for a minus 5 yards, forcing the punt.

Memphis took over following the punt, with Louis Davis and Tommy Johnson trying to pick up a first down on three running plays, but Wheeler yielded only five yards so Mike Browning punted to the Mustangs' 26.

Cole carried the football three times, and made seven yards and Wheeler punted the ball into the arms of Larry Johnson who returned it to the home 46.

On the next play, HB Tommy Johnson stepped off 11 yards and the first, first down of the game to the visitors' 43. Here, however, a major penalty was stepped off against Memphis. Browning connected with Larry Johnson for an 8-yd. gain, but the Cyclone couldn't make a first down so Browning punted.

Again the Cyclone defense denied Cole Stevens the required

yardage for a first, and Weatherly booted the football into the Memphis endzone.

As the final minute of the first quarter ticked away, the Cyclone offense was on a see-saw, as QB Browning made seven yards, then a 5-yd. penalty was stepped against Memphis. On the next play, a fumble resulted in the Cyclone backfield and fortunately for Memphis, the Cyclone recovered but loss was substantiated. On the next play, Louis Davis battle his way up the west sidelines for 15 yards, but still shy of a first down.

On the fourth down, Browning went back and punted the football into Wheeler's end of the field, where Stevens tried to field the ball, it got loose, and after a scramble, Donnie Carroll recovered it for Memphis.

This break set up Memphis' first scoring opportunity HB Louis Davis made six tough yards on the first carry to get things going. Then, Browning carried on two consecutive downs making a first down to the Wheeler 17.

From here, Davis battled his way through Wheeler defenders and made six more yards. But two penalties, each for five yds., pushed Memphis back to the 21-yd. line.

On a second and 14 needed for the first, QB Browning passed the ball to End Terry Wynn for 19 yards and a first and goal on the 2.

HB Tommy Johnson got the call on the next play, and he found daylight into the endzone for the touchdown. Browning kicked the point after and Memphis lead 7-0 with 8:58 left in the second quarter.

The Mustangs offense came to life at this point, as Cole carried

for one first down to the home 45-yard line. Then QB Gary Fischer carried for 8 yards and Cole, on a 4th down, made another first to the home 32.

But here, the Cyclone defense came to life, and Fischer was stopped at the scrimmage line on two plays, and Cole could only manage six more in two attempts so Memphis took over on the home 28.

At this point in the game, the Memphis offensive line started dominating play. In first series, Davis, Johnson and Browning carried the football for yardage to the home 40. Then, Johnson made five yards, and Davis carried for nine more on two carries.

From the Wheeler 44, HB Johnson caught a Browning pass on the line of scrimmage, got a block from Flanker John Carmen fought his way past one tackler after another and was finally pulled down after a 22-yd. gain.

From the Wheeler 22-yd. line, Browning passed to End Terry Wynn on the east sideline. Wynn made a good catch on the ball, and with blocking assistance by Tommy and Larry Don Johnson, blasted his way across the goal line for the score.

Browning kicked his second

point after and Memphis led 14-0. The second quarter ended a few plays later.

Memphis kicked off starting the second half, and Wheeler had the ball on its own 36-yd. line. TB Cole made five yards, then, Wheeler fumbled the football and defensive lineman Terry Wheeler recovered it for Memphis, on the visitors' 40 setting up another scoring opportunity.

The Cyclone offense, after establishing a ground attack against the Mustangs defense, in the second quarter, were quick to exploit the advantage, as Johnson blasted for five yards, Ronald Canida knifed for four more, and QB Browning sneaked for the first to the Mustangs' 28.

In the next series, Johnson made four tough yards, and Canida carried for three and then six yards to the 16-yd. line.

Inside the 20, yards on the ground came tough, but crisp blocking and hard running by Johnson and Canida moved the football to the Wheeler 5 and another first down.

QB Browning on the belly option sprinted out to his left and dived for the goal line, only to come up one yard short. Then, Browning tried to sneak the ball over but Wheeler's front line held. On the next play, needing less than a yard, HB Canida got the handoff on the dive, Wheeler's No. 10 Rod Weatherly filed the hole at the goal line, there was a terrific crack as plastic met plastic, and the officials arms went up, Canida had scored. Browning

kicked the point after and Memphis stands went wild as it became evident that the local team had taken physical dominance of the game, leading 21-0.

Following the kickoff, Wheeler made a minus seven yards as the Mustangs tried to pass and Terry Wheeler dropped QB Fisher for a loss. A good punt by Wheeler gave Memphis the football on the home 8-yd. line.

From the 8, Canida carried on two plays and made good yardage, and a 15-yd. face masking penalty against Wheeler gave the Cyclone the ball on the home 33. But here, the Mustangs defense asserted itself and Browning went back to punt.

What followed is one of those breaks in the game, as the pass from center, a little low, slipped between Browning's hands, and Wheeler got the football on the Memphis 17.

The Mustangs, in the best field position of the night, sent Cole on the power play for three yards. Then, FB Weatherly battled his way for a first down to the Memphis 7.

The Cyclone's goal line defense came in, and held for three down, giving up four yards. On the 4th down, needing three, TB Cole carried on the power play, was hit twice and fell at the goal line. Officials ruled he was over for the touchdown. Cole tried the two points conversion, but this time he was met and downed short. The score was 21 to 6. The third quarter ended.

The Cyclone took the kickoff,

and marched to the Wheeler 31 before having to give up the football on downs. Highlighting this drive were two fine carries by HB Johnson, one for 10 yards and the other for 11 yards. Carries by Canida for eight, and HB Paul Fowler for three, made another first down.

Again the Mustangs were stopped short of a first down, attempting to make a first down on the fourth play, but Memphis took over on the Wheeler 41.

The Cyclone took advantage of this field position to score again.

Staying on the ground, Canida made 14 yards on two carries, then added three more, and Browning added four. Fowler then battled his way to the Wheeler 12.

On the first play, HB Canida was met for a two-yard gain. Then, Canida found daylight up the middle, and weaved his way into the endzone for the touchdown on a 10-yd. run. The wet football was difficult to handle on the point after try which failed. The score was 27 to 6.

The Mustangs mounted their offensive in the last stage of the game, but the Memphis 30 was a far as Wheeler could get before the final horn sounded.

Ronald Canida carried the ball 17 times for 75 yards for a 4.4 average, while Tommy Johnson carried 14 times for 65 yards for a 4.6. Louis Davis carried 9 times for 43 yards for 4.8, while Paul Fowler carried three times for 15

yards for a 5.0 and Mike Browning carried 8 times for 27 yards for a 3.4.

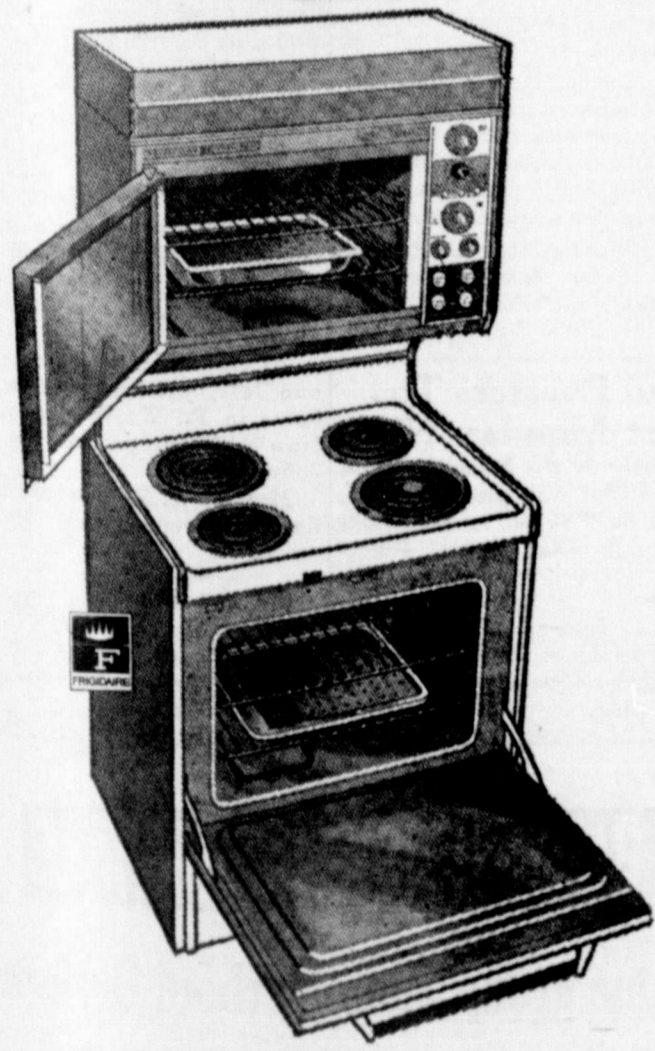
Receivers, Terry Wynn caught two for 41, Tommy Johnson caught 1 for 22 and Larry Johnson caught one for eight.

Statistics		Memphis	Wheeler
First Downs		18	7
Yards Rushing		225	102
Yards Passing		71	10
Inc. Passes		8	2
Interceptions		0	1
Fumble Lost		1	3
Yds. Penalized		55	20
Yds. Punting Av. 5 for 24		4	4

Mrs. Glenn Callahan a n d daughter and Mrs. J. P. Godfrey were in Canyon-Saturday evening to attend the homecoming football game and to visit with their daughter and sister, LuGay Godfrey, who is a student at West Texas State University.

**Foxhall Motor Co.**  
We Replace  
**AUTO GLASS**  
while you wait!  
or while you do your shopping.  
Every job guaranteed

**Frigidaire**  
helps you  
be the cook  
you want to be!



Frigidaire built-in helps help you cook better—automatically! Everything from an automatic on and off time and temperature control to automatic oven cleaning when the cooking is done. It's like having a maid. Find out about all the extra helps built-in by Frigidaire at West Texas Utilities. Better, yet—buy a Frigidaire and ENJOY the automatic help.

**FREE WIRING BONUS**

Normal FREE 220 volt wiring—in a permanently constructed residence served by WTU—for Electric Range, Dryer, Water Heater (40 gal. or larger) or a Room Air-Conditioner (1 hp or larger) purchased from a local dealer. Ask for details.

**WEST TEXAS UTILITIES**  
AN INVESTOR OWNED ELECTRIC COMPANY

Good Only at Vallance Food

With this coupon 1 Lb. Can  
**WHITE SWAN COFFEE**

Lb. Can **69¢**

Coupon Expires Nov. 6th

<p><b>WHITE SWAN BISCUITS</b> 12 Cans ..... <b>\$1</b></p> <p><b>WILSON GOLDEN OLEO</b> 4 Lbs. .... <b>89¢</b></p> <p><b>TOKAY GRAPES</b> Pound ..... <b>25¢</b></p> <p><b>Fancy Red Romes APPLES</b> Pound ..... <b>15¢</b></p> <p><b>White Swan Si. or Half 2 1/2 Size PEACHES</b> 3 FOR ..... <b>\$1</b></p> <p><b>WHITE SWAN Salad Dressing</b> Qt. Jar ..... <b>39¢</b></p> <p><b>SAMMY PRIDE HOMO MILK</b></p> <p><b>SOFT 'N LITE BREAD &amp; ROLLS</b></p>	<div style="text-align: center; border: 1px solid black; padding: 5px; margin-bottom: 10px;"> <p><b>DOLLAR SAVINGS &amp; GREAT STEAKS!!!</b></p> <p>USDA CHOICE PERSONALLY SELECTED</p> <p><b>Round Family Steak Steak</b></p> <p>Lb. <b>95¢</b> Lb. <b>69¢</b></p> </div> <p><b>WHITE POTATOES</b> 10 Lb. Bag . <b>39¢</b></p> <p><b>YELLOW SQUASH</b> Pound ..... <b>19¢</b></p> <div style="border: 1px solid black; padding: 5px; margin-bottom: 10px;"> <p><b>FREE CASH \$50.00</b></p> <p><b>BIG JACKPOT DAY</b></p> <p>LAST WEEK'S WINNER: J. E. Hudlow</p> <p>Card Not Punched</p> <p>GET YOUR JACKPOT DAY CARD PUNCHED ...FREE... THIS WEEK...</p> </div> <p><b>Pikes Peak Roast</b> Pound ..... <b>89¢</b></p> <p><b>Wilson Plaza Bacon</b> 2 Lbs. .... <b>69¢</b></p> <p><b>SWISS STEAK</b> Pound ..... <b>89¢</b></p> <p><b>SOFT N' LITE FLOUR</b> 5 Lb. Bag ..... <b>43¢</b></p> <p><b>W. P. DETERGENT</b> Giant Size ..... <b>59¢</b></p>
---	---

We Reserve The Right To Limit Quantities—Double S&H Green Stamps Wed. With \$2.50 Purchase Or Over

# Vallance Food Store





MRS. GERRY DWIGHT KNIGHT

## Dietz-Knight Vows Are Read In Canyon

United in marriage Thursday afternoon, Oct. 21, in the Chapel of St. Andrew in Canyon were Miss Charlotte Ann Dietz and Gerry Dwight Knight. The Rev. Jack Gist of Canyon officiated at the double-ring ceremony.

Parents of the bride are Mr. and Mrs. John H. Dietz of Canyon while the groom is the son of Mr. and Mrs. Gerald Knight of Memphis.

Given in marriage by her father, the bride wore a street-length dress of ivory peau de soi trimmed with brown velvet. The dress featured a scoop neck bodice and puffed sleeves and was accented at the back by a brown velvet sash with streamers the length of the dress. The bride carried three long stemmed gold roses. One she gave to her mother and one to the groom's mother.

Mrs. Robert Dalton, sister of the bride served as matron of honor. She wore a street-length beige dress trimmed with black and white, black patent accessories and carried a single long stemmed gold rose.

Jimmy Stewart of Memphis served as best man.

The altar was flanked by two men-branch spiral candelabra decorated with gold tapers and enhanced with greenery.

John D. Dietz, brother of the bride, sang and accompanied himself on the guitar. Selections chosen by the bride and groom, included "Till Someone Can Love Me" by Charles Pinzine, "The Wedding Song" by Paul Stookey and "Song of Love" by Milt O'Connell.

Orvil (Sport) Weddel of Canyon served as usher.

A reception followed the ceremony at the home of the bride's parents. The reception table was covered with white linen and was decorated with a bouquet of gold tapers and twelve tiny tapers. The

## Alpha Circle Of Methodist WSCS Covered Dish Luncheon Monday

The Alpha Circle of the Women's Society of Christian Service met Monday, Oct. 25, at 12:30 o'clock for a covered dish luncheon in the First United Methodist Church.

Rev. Tommy Nelson gave the invocation. The meal consisted of Bobotee, a South African meat casserole, yellow rice, vegetable, salads, and cake. The place mats, napkins and quiz folders lent interest to the African study.

The leader, Mrs. T. Nelson, told of current news events about Africa as an introduction.

Mrs. Clent Srygley reviewed an informative article from an address presented last year at the United Nations titled, "Peace with Justice in South Africa" by the president of the United Republic of Tanzania.

Mrs. Lee Brown discussed, in an interesting manner, African Art, focusing her talk on sculpture which is usually of wood but sometimes of ivory, bronze or stone. Nearly all of their art is religious and each sculpture is a highly trained workman. Mrs. Brown also told of the problems of women in Rhodesia where their every rights are long overdue for revision.

Mrs. M. G. Tarver gave a brief report on a Reader's Digest article concerning South Africa and the book titled "Soul Sister."

Mrs. Nelson asked the group to compare the racial situation in Africa with ours in the United States. In closing, she read from the 25th Chapter of Matthew and concluded with a prayer.

Those present, other than the above mentioned, were Mmes. W.

J. McMaster, J. J. McDaniel, W. V. Coursey, J. B. Lawson, J. B. Scott, Mary Lou Erwin, Ed Hutcherson, F. W. Foxhall and one guest, Miss Neville Wrenn.

## Culture Club Meets In Home Of Mrs. Frank Ellis

The Woman's Culture Club met Wednesday, Oct. 20, in the home of Mrs. Frank Ellis with Mrs. R. E. Clark, president, presiding.

Following the business session, an informative program was presented on Asia and South America. The speakers pointed out how relationship with these countries affect the U. S. today.

As a money making project, the club is selling scarfs which can be purchased from members for \$1.00 each.

Tasty refreshments were served to 17 members who were in attendance.

## Harmony Club Meets Oct. 13 In Sexauer Home

The Harmony Club met in the home of Mrs. Robert Sexauer on Oct. 13 at 4 p. m.

After a short business meeting, the members enjoyed the program entitled, "Music in Words," presented by Mrs. Sexauer. "The power of words is our tool with which we work" was brought out by Mrs. Sexauer. After giving some beautiful thoughts of her own, she read "Dangerous Dan McGrew," a poem written by Robert Service; a fable, "The Bear Who Could Let It Alone" by James Thurber; "Blood, Sweat and Tears and Wit's Bright Sabre," a poem by Jesse Brown Thomas. In closing, Mrs. Sexauer gave a hint of laughter to her lovely literature arrangement in reciting, "When speaking words, remember how to sweeten them; they'll taste much better if you have to start eating them."

Refreshments were served to Mmes. Bryan Cook, Henry Foster, Theodore Swift, T. L. Rouse, Gordon Gilliam, Dick Fowler, Carroll Gardinire, D. L. C. Kinard, Jerry Montgomery, Carl Smith and the hostess, Mrs. Sexauer.

## Legion Auxiliary Meets In Regular Session Oct. 19

Mrs. Jo Hawkins presided at a meeting of the American Legion Auxiliary held Tuesday, Oct. 19, at the Legion Home.

Led by Mrs. Ora Ritchie, the group recited the Pledge of Allegiance as an opening.

During the business session tentative plans were made for a Chili supper. A date will be announced later. Proceeds from the event will be used in the Christmas box for the Amarillo VA Hospital.

A family night supper was planned for Tuesday, Nov. 16, as a Thanksgiving celebration. Turkey and all the trimmings will be served. Mrs. Hawkins said that members will be notified as to what dish they are to bring.

## 1913 Study Club Considers Asia In Depth During Oct.

For the first of two October meetings, Oct. 6, the members of the 1913 Study Club gathered in the home of Mrs. T. M. Harrison. The president, Mrs. Paul Montgomery, called the meeting to order and presided during the business portion of the afternoon's session.

Mrs. Larry Votto, program chairman, presented the speakers. The overall title for the month of October was "A Woman Views Her World." This first meeting concerned "China . . . The Sleeping Giant" in particular. Developing the caption, "U. S. Reacquaintance With Red China," Virginia Browder pointed out the possible gains and risks for the United States in an alliance with Communist China and suggested that, "while we could not use the textiles which are China's chief export commodity, we just might procure some of her wheat business if our prices were lower than those of Canada and Australia and the terms of payment sufficiently attractive."

Mrs. Bob Hutcherson spoke on the subject, "Can Christianity Return To China," and left the feeling with her audience that such a thing seemed unlikely.

Eighteen members enjoyed the afternoon program and the delicious refreshments served by the hostess, Mrs. Harrison.

A continuation of the study of conditions in Asia was resumed at the second meeting in October, Oct. 20, in the home of Mrs. Byron Baldwin. The main items of business brought forward during the business session were three in number. The president, Mrs. Montgomery, presided. Mrs. M. G. Tarver reported six club members were present for the refresher course in the Eye Screening sponsored by the club. Miss Joanne Allen of Houston was present to conduct the training and was most appreciative of the concern by members in checking for ambliopia in the eyes of the preschool children. Six youngsters were there from the Travis Elementary kindergarten group for demonstration purposes.

Also, Mrs. Tarver reported only six bottles remaining in the last order of the very fine Supreme flavoring which has been selling so well. More of the flavoring is

on order. Mrs. Howard Richardson, as chairman this year for UNICEF Halloween campaign, sponsored by the 1913 Study Club reported all in readiness for the evening of Saturday, Oct. 30.

The counselors' reports were given and Mrs. Votto introduced the program. In the absence of Mrs. R. S. Greene who is out of town, Mrs. Sherron Lee gave the meditation entitled, "I Am A Builder." Taking material from the National Geographic, a most interesting program on Southeast Asia followed.

Mrs. Gayle Greene spoke on "Mosaic of Cultures," telling of the peoples and their customs. Mrs. Herschel Combs highlighted the religious mores of the peoples and Mrs. D. L. C. Kinard told of the country and conditions to be found along the lead from Mandalay.

Seventeen members with the hostess were present. Tasty refreshments were served before the meeting was adjourned.

## Mrs. Edna Lester Hosts Members Of 69ers Club

Edna Lester was hostess on Tuesday, Oct. 19, to members of the 69ers Club.

The afternoon was spent in doing needlework for the hostess. The president, Ruth Gardinire, called the business meeting to order and called on Martha Billington to offer prayer.

Following a brief business session, a devotional was given by Mrs. Lester.

Mrs. J. H. Martin was recipient of the hostess gift. Secret Pal birthday gifts were opened by Ima Widener, Ruth Gardinire, Ima Lawrence, Susie Coleman, Edna Lester and Mona Robertson. One was left for Carrie Dennis.

Plans for the Christmas party were discussed. Ima Lawrence volunteered to act as hostess for the party on Dec. 14.

Tasty refreshments, carrying out the Halloween theme, were served to one guest, Martha Billington, and members: Inez Aspreen, Mana Robertson, Opal Waites, Maggie Martin, Ima Widener, Ruth Gardinire, Ima Lawrence, Alice Beasley, Ruth Misenhimer, Faye Maddox and hostess, Edna Lester.

## Wesleyan Guild Meets Monday For Study Program

The Wesleyan Service Guild of the First United Methodist Church met Monday, Oct. 25, at 7 p. m. in the Victory Class Room.

The Guild president opened the meeting after which Mary Lou Erwin gave the invocation.

Ruby Compton, as leader, presented the program on the subject, "United Methodist Divided by Race?"

The purpose of the program as explained by the leader were as follows: first, to review the history of the United Methodist Church regarding its official attitude toward racism; second, to examine the discrepancy between the official attitude of the church and the human prejudice that continues to exist within many of its members.

Valmon Payne in her impressive manner discussed and explained the different action taken by the general conference to prevent or accomplish the transfer of negro churches from the separate negro annual conferences.

She encouraged each member of the Guild to look at her own prejudice.

Members present other than those mentioned were Mmes. Mazine Phillips, Pauline Wynn, Hester Bownds, Viola Morris, Ruth Fowler, Gloria Nelson, Lenora Greenhaw, Miss Neville Wrenn, one guest, Mrs. E. R. Orcutt.

Delicious refreshments were served by Mabel Lavender, hostess.

Radium is 3,000 times as valuable as gold.

## We Have Decided TO CLOSE OUR BUSINESS

Effective Saturday, October 30th

We want to thank the many people who have patronized us these many years.

Wines Laundry

# MONEY-SAVERS

DELSEY, 2 Roll Pkg. TISSUE	29c	CRISCO 3 Lbs.	79c
GALA, 2 Roll Pkg. TOWELS	39c	Campbell's SOUP	\$1
LIBBY CORN, 5 Cans	1.00	Chicken Noodle 6 Cans	1.00
ORANGE TANG, 18 Oz.	79c	ROXEY DOG FOOD 13 Cans	1.00
BORDEN'S BUTTERMILK 1/2 GAL.	49c		

OPENING HOURS: Week Days 7 a. m. to 10 p. m. — Sunday 8 a. m. to 9 p. m.

MARKET	PRODUCE		
LEE'S SAUSAGE, 2 Lbs.	1.09	BANANAS, Lb.	10c
PORK CHOPS, Lb.	59c	LEMONS, Lb.	19c
PORK STEAK, Lb.	49c	DELICIOUS APPLES, Lb.	17c
ARM ROAST, Lb.	63c	SWEET POTATOES, Lb.	12c
CHUCK ROAST, Lb.	53c	RUSSET POTATOES, 10 Lbs.	39c

Double Buccaneer Stamps Wednesdays—2.50 Purchase or Over

# VAN'S GROCERY

120 No. 10th St. Phone 259-3581

# & MARKET



## NOTICE

I Have Purchased

MODEL AUTO SERVICE

which was operated here for many years by Harry Aspgrén, and am now doing the same types of machine work.

Am also servicing and repairing Volkswagen engines and aircraft engines.

Also will continue to offer Briggs & Stratton sales and service.

## Superior Engines

GLENN CALLAHAN 706 Noel Street Phone 259-2245

## THANKS

To Our Former Customers

I have sold Model Auto Service and all machine tools, equipment and parts to Glenn Callahan, who is now operating the business as Superior Engines.

I want to thank all the people who have given us their patronage since the business was established here in 1934.

It is my hope that you turn to Mr. Callahan for your machine work and auto repairing in the future.

MRS. HARRY ASPGREN

# SEE THE ACTION IT'S KICK-OFF TIME at McLEAN 7:30 P. M. OCTOBER 29

## VARSITY SCHEDULE

Memphis 8 — White Deer 43  
 Memphis 53 — Chillicothe 0  
 Memphis 55 — Paducah 0  
 Memphis 47 — Wellington 14  
 Memphis 47 — Crowell 28  
 Memphis 35 — Silverton 7  
 Memphis 27 — Wheeler 6  
 \*October 29 — McLEAN ..... There 7:30  
 \*November 5 — CLAUDE ..... Here 7:30  
 \*November 12 — CLARENDON ..... There 7:30  
 \*District Games

## "B" TEAM SCHEDULE

Memphis 6 — Clarendon 13  
 Memphis 0 — Quanaah 8  
 Memphis "B" 12 — Wellington 6  
 Memphis 20 — Hollis 6  
 Memphis B-Fr. 48 — Clarendon B 14  
 October 28 — Hollis ..... Here 7:00  
 November 4 — CHILDRESS ..... Here 7:00  
 November 11 — WELLINGTON ..... There 7:00

## 9th GRADE SCHEDULE

Memphis 8 — Quanaah 8  
 Memphis 6 — McLean "B" 14  
 Memphis 35 — Claude "B" 6  
 Memphis 14 — Matador 12  
 October 30 — MATADOR ..... There 10:00 A. M.  
 November 4 — CHILDRESS ..... Here 7:00  
 November 11 — QUANAHA ..... Here 8:00

## 8th GRADE SCHEDULE

Memphis 6 — Paducah 12  
 Memphis 1st 26 — Clarendon 8  
 Memphis 2nd 0 — Wellington 36  
 Memphis 73 — Silverton 0  
 Memphis 14 — Wheeler 12  
 Memphis 21 — Claude 0  
 October 28 — McLEAN ..... There 6:00  
 November 4 — Childress ..... There 7:00  
 November 11 — WELLINGTON ..... Here 7:00

## 7th GRADE SCHEDULE

Memphis 0 — Turkey Jr. High 34  
 Memphis 8 — Wellington 28  
 Memphis 0 — Hollis Jr. High 20  
 Memphis 7th 22 — Clarendon 7th 0  
 October 28 — Hollis ..... Here 6:00  
 November 4 — CHILDRESS ..... There 6:00  
 November 11 — WELLINGTON ..... Here 6:00



## Memphis B & Freshmen Teams

Pictured above are members of the Memphis B team and Memphis Freshmen team, who joined together to give Clarendon B a sound thrashing last Thursday night 48-14. Pictured left to right by rows are: 1st row — Alvin Bullock fr., David Cofer fr., Jimmy Booth B, Buddy Ballew fr., Don Davis fr., Ed Hutcherson fr., and Fernando Garcia B. 2nd row — Duck Richards fr., Gary McKay fr.-B, Jose Serna fr.-B, Tony Salinas B, Ronnie Browning B, William Bullock B, George Wiggins fr., Mike Mowery B, and Audie Moore fr. 3rd row — Bobby Hall B, Ricky Kirkland B, Wyndal Orcutt B, Jay Campbell B, Mark McQueen B, James Beck fr., Candy Reyes fr., Jerome Spearman fr., Jimmy Melton fr., and Wayne Davis B. Not pictured are Ben Smith B, Issac Narvez fr., Terry Wells B and Harold Middleton fr.

**WE ARE PROUD OF THIS YEAR'S TEAM AND URGE EVERYONE TO SUPPORT THE PLAYERS BY ATTENDING EVERY GAME**

Foxhall Motor Co.  
 Memphis Lumber Co.  
 First State Bank  
 Memphis Compress Co  
 E. E. Cudd Oil Co.  
 Harrison Hardware Co.  
 Lockhart Pharmacy  
 Tribble Cleaners  
 Smith's Auto Store  
 Brown Auto Supply  
 Fisher-Red River Agency  
 Bruce Bros. Mobil Service  
 Simpson's Burger Hut  
 O. R. (Doc) Saye  
 Hughs Battery & Electric  
 Woody's Conoco Service  
 White Auto Store

Clent's Barber Shop  
 Shankle Furniture Co.  
 Dr. Jack L. Rose  
 DeVille Motel & Restaurant  
 First National Bank  
 Thompson Bros. Co.  
 Patrick Chemical Co.  
 Sim's Dept. Store  
 Dunbar & Dunbar Ins.  
 John Lemons Furniture  
 Dixon's Recreation Center  
 O. M. (Bill) Cosby, Jr.  
 Williams Oil & Gas Co.  
 Elliott Humble Station  
 Ritchie Florist  
 Carrol's Texaco  
 Miller Bros. Paint Contractors

Hall County Farm Supply  
 Cablecom-General  
 Messick Equipment Co.  
 Harvey's Service Center  
 Golden Spread Irrigation  
 Memphis Bell Station  
 Spicer Funeral Home  
 Ward Motor Company  
 Kinard-Gailey Agency  
 Parker's Dept Store  
 The Lady Fair  
 Lusk Cleaners  
 Morris Sand, Gravel & Redi-Mix  
 Maddox Texaco Service  
 Addie Lou's House of Beauty  
 Shields Implement Co., Inc.  
 Evans Electric

Big O Restaurant  
 JL's Western Wear  
 Monzingo Tractor Company  
 Frankie & Johnny Men's Store  
 Campbell Insurance Agency  
 Caprock Translator System  
 Greene Dry Goods  
 Branigan Jewelry  
 Ferrel's Memphis Tire & Supply  
 Memphis Glass & Supply  
 Hall County Electric Co-Op, Inc.  
 Leslie's Flowers  
 Jim Beeson Texaco  
 "287" Cafe  
 Carl's Grocery & Self Service Gas  
 O. K. Tire Store  
 Western Motel



# Prizes Are Announced For Annual Golden Spread Spelling Bee Contest

Globe News Publishing Company Amarillo and West Tex., University invite all school children in the Panhandle of Texas, Oklahoma, Kansas and New Mexico for 8th grade or lower and will not be 16 years of age at the end of this current school year to try for the 1972 Golden Spread Spelling Bee Championship.

Sponsors of the 1972 annual contest will send some lucky boy or girl (and an escort) to Washington in June of next year, assigned to the Golden Spread Spelling Bee for this year will be selected from the following counties: Armstrong, Armstrong, Castro, Childress, Cottle, Dalhart, Deaf Smith, Donley, Gray, Hale, Hall, Hartley, Hemphill, Hutchinson, Lipscomb, Moore, Moton, Ochiltree, Oldham, Parmer,

Potter, Randall, Roberts, Sherman, Swisher, Wheeler and Wilbarger.

Oklahoma counties are: Beaver, Beckham, Cimarron, Dewey, Ellis, Greer, Harper, Roger Mills, Texas and Woodward.

New Mexico counties are: Curry, Quay, Roosevelt and Union.

Kansas counties are: Morton, Seward and Stevens. Each of these counties will select a champion who will appear in the district contest in Amarillo on April 29, 1972.

The Director of Hall County Spelling Bee is Miss Tops Gilreath, Hall County Superintendent. The Washington trip will be the principal prize, offering the top speller a week in the most famous city in the nation, plus an opportunity to see many great monuments and historical places. Locally the Hall County Chapter

of Crippled Children donates a gold fountain pen and pencil to Senior winner and Junior winner of Spelling Bee. This is part of money spent for Educational Services by the Hall County Chapter, Miss Gilreath Stated.

Youngsters eager to begin their study in preparation for the 24th Golden Spread event may place their orders with the Globe-News for 1972 "Words of the Champions," the practice book used in most schools and county contests. This year's book contains more than 600 word changes.

The price of the word book is 20 cents, and it may be ordered by writing Jim W. Walker, Spelling Bee Editor, Amarillo Globe-News, Box 2091, Amarillo, Tex., 79105.

James H. Wagner, director of the National Spelling Bee, New York, advised the Globe-News that shipment of the books will begin on October 11.

Bee coordinator will be Jack Edmondson, head of the special services department, West Texas State University.

The dates of the contests are as follows:

County Contest on or before April 1, 1972.

District contest, April 29, 1972, in Amarillo at the Stephen F. Austin Junior High School.

National contest, June 5 through 9, 1972.

Miss Gilreath stated date for County elimination had not been set but it would possibly be last week of March 1972. Last year's winner of Junior Spelling Bee was Jana Davis of Memphis School. Jana was also the winner of the Senior Spelling Bee of Hall County. Jeff Crump of Turkey, was runner-up in Junior Bee and Debra Gragson, Turkey was runner-up in Senior Bee.

It is hoped youngsters who entered last year will try again this year, Miss Gilreath added.

Mrs. John McWhorter visited in Higgins over the weekend with her son, Frankie McWhorter and family, and also in Shamrock with another son, Gary McWhorter and family.

## Selective Service To Call 588 Men Through Dec.

AUSTIN—A draft call of 588 men for the remainder of 1971 was announced recently for the State of Texas by Colonel Melvin N. Glantz, the state director.

Glantz said none will be ordered for induction in October, 363 in November, and 195 in December, all from the extended or first priority groups.

Glantz said he had been advised by the director, Dr. Curtis Tarr, that the RSN cut-off for 1971 would be number 125 for men in the first priority group. Tarr advised that all men in a class available for service who have been found qualified mentally, physically and morally with 1971 RSN's of 125 or below can expect to receive an induction order. If men in the first priority group with RSN's up to 125

are not ordered for induction in 1971, they will be placed in the extended priority group and will be inducted in the first three months of 1972 ahead of men in the 1972 year group (born in 1952).

Orders for induction for this call are being mailed by local boards throughout the state, with 30 days notice being required in all cases. Orders for pre-induction physical examinations are also being mailed to registrants in the extended priority group, to men in the first priority group with RSN's through 125 of the 1971 year group, and to men in the 1972 year group with 1972 RSN's through 050. Approximately 6,400 men will be ordered for pre-induction physical examinations in October and November.

Texas Local Board No. 20 has a call for two registrants for induction and nine registrants for armed forces physical on Nov. 16, 1971.

## Ronnie Bailey Is New Golf Pro At Tule Lake Club

Ronnie Bailey, a 1957 graduate of Lakeview High School has accepted the position as head golf professional at the Tule Lake Country Club at Tulia.

Prior to going to Tulia, he was associated with the Hale Center Country Club for the past three years. In his new position he will be in charge of all golfing activities at Tule Lake Country Club.

His wife, the former Sue Daugherty of Memphis, will teach and instruct swimming at the Country Club pool, it was announced.

**CAMPBELL**  
Insurance Agency  
Ph. 259-3531

# Shurfine Carnival

**Happy Times are Here again!!!**

America's Largest Food SALE!

**Coffee** Shurfine, Vac. Pack, One Pound **79¢**

**BISCUITS** Shurfresh 13 Cans **1.00**

**Shortening** Pure Veg. 3 Lb. Can **79¢**

**Detergent** MC No. 2 All Purpose 49 Oz. Box **49¢**

**Flour** SHURFINE, 10 Lbs. .... 79¢  
25 Lbs. .... 1.99

**Foil** Aluminum Viking 12x25 4 For **1.00**

**HAM** Shurfresh Fully Cooked 5 Lb. Can **3.98**

**Cheese** Shurfresh Longhorn, Colby, 10 Oz. **59¢**

**Roast** Pikes Peak Lb. **79¢**

**Franks** 1 Lb. Pkg. **59¢**

**Sausage** Lee's 2 Lb. Bag **1.13**

**Ground Beef** Lb. .... **49¢**

### Fresh Produce

**Apples** Rome Lb. **19¢**

**Bananas** Lb. **9¢**

**Tomatoes** Lb. **23¢**

Apple Sauce, 5 for **1.00**

Apricots, 4 for **1.00**

Black Eye Peas, 6 for **1.00**

FROZEN Broccoli Spears, 3 for **89¢**

Cake Mix, 3 for **89¢**

Catsup, 3 for **1.00**

Cola, 12 oz can, 11 for **1.00**

w.k. or C. S. Corn, 17 oz., 5 for **1.00**

Crackers, 2 for **49¢**

Fruit Cocktail, 4 for **1.00**

Green Beans, Cut, 5 for **1.00**

Margarine, 4 for **1.00**

Milk, Evap. 14½ oz., 5 for **89¢**

Salad Oil, 24 oz. **59¢**

Frozen Orange, 5 for **1.00**

Peas, 4 for **89¢**

Pork & Beans, 7 for **1.00**

Irish Potatoes, 6 for **1.00**

Sweet Potatoes, 3 for **1.00**

Tuna, 2 for **75¢**

Vienna, 4 for **89¢**

**DAVIS & SCOTT**  
**THRIFTWAY**

# God and Truth

“With my whole heart I seek thee; let me not wander from thy commandments.”

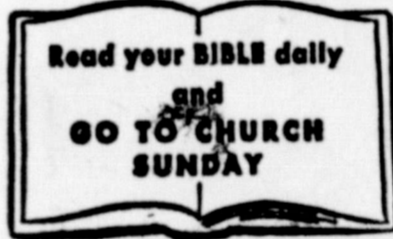
—Psalms 219:10



If you believe in God, you will live a life of truth. Try as you might, you shut out conscience. You cannot sit on the sidelines and watch the world go by. Your attitude toward business, toward your fellow man is not easily callous and indifferent.

If you believe in God, you recognize God's commandments. You do not wander from the rightful path; the step must be a deliberate one.

Let God and the truth that lies within your heart dictate your actions and you will share the rewards of a fruitful life.



- Baptist Church Estelline**  
10:00 a. m. — Sunday School  
11:00 a. m. — Morning Worship Ser.  
6:30 p. m. — Training Union  
7:30 p. m. — Evening Worship Ser.  
Mon., 3:45 p. m. — WMU  
Wed., 7:00 p. m. — Prayer Meeting  
Rev. E. E. Pitts
- Baptist Church Brice**  
10:00 a. m. — Sunday School  
11:00 a. m. — Morning Worship  
6:00 p. m. — Training Union  
7:00 p. m. — Evening Worship  
Wed., 7 p. m. — Mid-Week Service  
J. I. Herndon, Pastor
- West Side Church of Christ Estelline**  
10:30 a. m. — Morning Worship  
7:00 p. m. — Evening Worship
- Baptist Church Lesley**  
10:00 a. m. — Sunday School  
11:00 a. m. — Morning Worship  
6:30 p. m. — Training Union  
7:30 p. m. — Evening Worship  
Wed., 7 p. m. — Mid-Week Service
- Jehovah's Witnesses Memphis**  
Sun. 10 a.m. — Bible Lecture  
Sun. 11 a.m. — Watchtower Study  
Tues. 8 p.m. — Bible Study  
Fri. 7:30 p.m. — Ministry School  
Fri. 8:30 p.m. — Service Meeting  
Presiding Minister:  
Robert Mikesell
- Assembly of God Church Memphis**  
9:45 a. m. — Sunday School  
11:00 a. m. — Morning Service  
6:00 p. m. — Christ Ambassadors  
7:00 p. m. — Evening Service  
Rev. V. C. Sparks, minister
- Assembly of God Estelline**  
Rev. E. G. Johnson, pastor
- Church of Christ Memphis**  
9:45 a. m. — Bible Study  
10:45 a. m. — Morning Worship Ser.  
6:00 p. m. — Evening Worship  
Wed., 7:30 p. m. — Bible Study  
Thurs. 9 a. m. — Ladies Bible Study  
Ed Orr, minister
- Baptist Church Newlin**  
10:00 a. m. — Sunday School  
11:00 a. m. — Morning Worship  
8:00 p. m. — Evening Worship  
L. J. Crawford, minister
- Church of Christ Lakeview**  
10:00 a. m. — Bible Study  
11:00 a. m. — Morning Worship Ser.  
6:00 p. m. — Evening Worship Ser.  
Wed 7:30 p. m. — Bible Study  
Kenneth Rhodes, minister
- East Side Church of Christ Estelline**  
10:00 a. m. — Bible Study  
11:00 a. m. — Morning Worship Ser.  
6:00 p. m. — Evening Worship  
Wed., 8 p. m. — Bible Study  
Lynn Wolf
- Baptist Church Lakeview**  
10:00 a. m. — Sunday School  
11:00 a. m. — Morning Worship  
5:00 p. m. — Training Union  
6:00 p. m. — Evening Worship  
Wed., 7 p. m. — Mid-Week Service  
Rev. Roy D. Walden

- First United Methodist Church Memphis**  
9:45 a. m. — Sunday School  
11:00 a. m. — Morning Worship  
6:00 p. m. — MYP  
7:00 p. m. — Evening Worship  
Tommy E. Nelson, pastor
- First Christian Church Memphis**  
9:45 a. m. — Sunday School  
10:50 a. m. — Morning Worship Ser.  
6:00 p. m. — Youth Meeting  
7:00 p. m. — Evening Worship Ser.  
Wed., 7:30 p. m. — Mid-Week Ser.  
Tom Posey, minister
- First Baptist Church Turkey**  
9:45 a. m. — Sunday School  
10:45 a. m. — Morning Worship  
6:00 p. m. — Training Union  
7:00 p. m. — Evening Worship  
Wed., 7:30 p. m. — Prayer Service
- Travis Baptist Church Memphis**  
9:45 a. m. — Sunday School  
11:00 a. m. — Morning Worship  
6:30 p. m. — Training Union  
7:30 p. m. — Evening Worship  
Wed., 7 p. m. — Teachers Meeting  
Wed. 7:30 p. m. — Mid-Week Ser.  
Lloyd Riddles, pastor
- Church of God Memphis**  
10:00 a. m. — Sunday School  
11:00 a. m. — Morning Worship  
7:00 p. m. — Evening Worship  
Clyde W. Boyd, pastor
- First Baptist Church Memphis**  
9:45 a. m. — Sunday School  
11:00 a. m. — Morning Worship Ser.  
6:00 p. m. — Training Union  
7:00 p. m. — Evening Worship Ser.  
Wed., 7:30 p. m. — Mid-Week Ser.  
C. H. Murphy, Minister
- Methodist Church Lakeview**  
10:00 a. m. — Sunday School  
10:55 a. m. — Morning Worship Ser.  
6:00 p. m. — Jr. High MYP  
6:00 p. m. — Evening Worship  
6:00 p. m. — Jr. & Prim. Fellowship  
Wed., 7:30 p. m. — Meeting Commissions and Boards  
E. H. Martin, pastor
- Presbyterian Church Memphis**  
11:00 a. m. — Morning Worship  
7:30 p. m. — Tues. — Study Group  
7:30 p. m. — 2nd & 4th  
Wed. — Mizpah Guild Meets
- St. Mary's Church Clarendon**  
7:30 a. m. — Sunday Mass
- Sacred Heart Catholic Church Memphis**  
10:30 a. m. — Sunday Mass  
Rev. Ladislaus Wolko, S.Th.B., Ph.M.
- United Pentecostal Church Memphis**  
11:00 a. m. — Morning Worship  
10:00 a. m. — Sunday School  
7:45 p. m. — Sunday Evening  
7:45 p. m. — Thursday Evening  
N. J. Pope, Minister
- Methodist Church Estelline**  
10:00 a. m. — Sunday School  
11:00 a. m. — Morning Worship Ser.  
6:00 p. m. — MYP  
7:00 p. m. — Evening Worship Ser.  
C. R. Smelser, pastor

These Memphis Business Firms Make This Page Possible in the Interest of a Christian Community . . . With the Hope

That More People Will Go To Church Regularly

**Ferrel's**  
Memphis Tire and Supply

**Hughs Battery and Electric**

**Dunbar and Dunbar**

**Brown Auto Supply**

**Bruce Bros. Mobil**

**Foxhall Motor Company**

**Branigan Jewelry**

**Williams Oil & Gas Co.**

**Memphis Compress Company**

**First State Bank**

**SIMS Dept. Store**  
Les Sims

**Kinard-Gailey Agency**

**Clent's Barber Shop**

**Snider Insurance Agency**

**Shankle's Furniture**

**Dr. Jack L. Rose**

**Smith's Auto Store**

**E. E. Cudd Oil Company**

**Patrick Chemical Company**

**Hall County Electric Co-Op., Inc.**

**O. R. "Doc" Saye**  
Mobil Products Consignee

**Fowlers Drug**

**Lemons Furniture Company**

**Memphis Lumber Company**

**Lockhart Pharmacy**

**Simpson Burger Hut**

**Cafe 287**

**First National Bank**

**Spicer Funerals' Home**

**Campbell Insurance Agency**

**Cablecom-General, Inc.**

**D-Ann's Shoppe**

**Old Fashion Freeze**

**Caprock Translator System**

**Hall County Farm Supply**

**Ward Motor Company**

**The Lady Fair**

# B. B. Shots

by BYRON BALDWIN



Mrs. Carl (Finch) Harrison had her guests in Hall County Heritage Hall Mr. and Mrs. Candler and their baby son, who is not a baby any more. He is now 29 years old. With his wife, Wally, Sam Harrison in Hall County Oct. 15, 1947 where he completed his high school education and had his college education at the University of Missouri at Columbia, Mo. He joined the Army in 1966 spending one year in Germany and was in the defense command in Germany and was there for a year later. Wally Harrison in Wertheim, Germany, she finished her education. She is having a little trouble with our words in this country especially our slang, but I think she was catching on very fast. Sam and Wally are living in Houston where he is working in financing loans. I talked with him on interest rate and could not make a deal for 5 per cent money.

tire after they slow up too much on production. The operation calls this hen "a spent hen" and she is sold along with thousands of others and they are headed for the soup kitchen and "potted pies". So, I guess the finale of this hen would be "Gone to pot and pie". We need to respect the old faithful hen which is producing eggs for our country. I am very thankful I am not a "Spent Hen" and have to be put in the chicken pie pot.

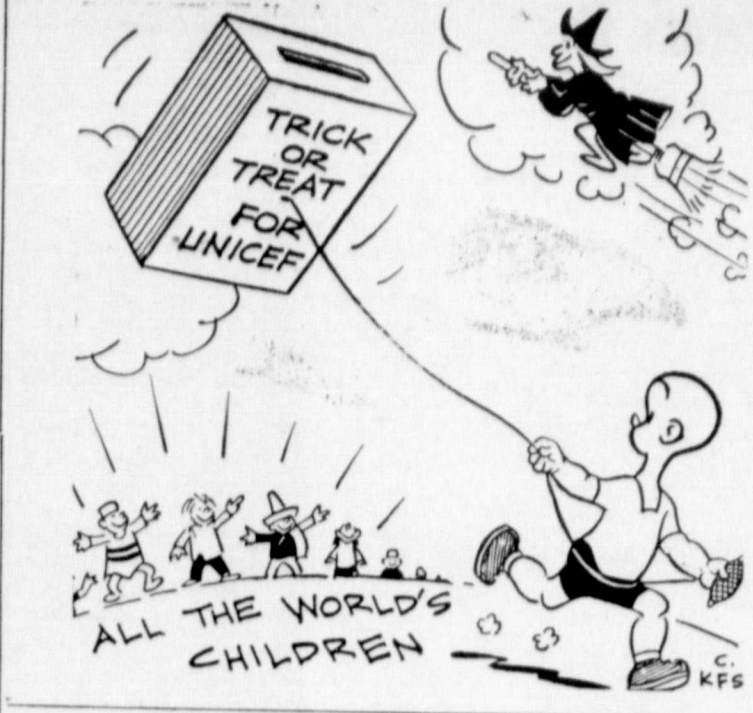
The older you get the more revelations you have. It must have been sometime ago that I looked in a mirror early in the morning when I first got up. A few mornings ago I did this particular thing, going in the bathroom turning on the light & glancing in the mirror. I thought there was another guy in the bathroom with me, but in checking around, I found out I was the only one there. After looking in the mirror again, I double-checked and still it was me. I believe it was Bring Crosby that said after looking in the mirror, he thought the mirror had wrinkles in it. I checked this mirror for cracks and wrinkles but it was still a good mirror. It did make me wash my face, shave and comb my hair early in the morning. I guess this goes with age along with a lot of other things. I remember a remark my friend, the late D. L. C. Kinard, made on our trip up the stairs to Rotary one Tuesday, quote, "The stairs are getting steeper and the newspaper print finer all the time."

The big state of Texas is still building big things. In reading the Dallas News the past Sunday, I found a Section of the paper, "Texas Stadium". The new stadium seemed to put more spirit in the Cowboys playing their first game in this new place and they won this game. I case you did not read this editive, I would like to give a few of the stadium facts—approximate cost 25 million dollars; stadium area, 10 acres; stadium length, 792 feet and width 633 feet. Steel used was 2600 tons; concrete used, 50,000 cubic yards; seating capacity, 65,000; and 130 acres are paved for parking area for 15,000 cars and 500 buses. There are a total of 86 restrooms, 155 drinking fountains with 168 places to get food and drinks; 6 escalators; the public address system has 565 speakers. I think J. B. Scott would like for his office to have the electric bill, as I noticed that their total wattage was 1,433,000 watts. This sounds like a pretty good size football field, the new home of the Cowboys located at Irving, Texas.

Another interesting story of what is big in Texas was about Tyler, Texas, the "rose capital of the world", with 4,000 acres of roses where they export 20 million rose bushes a year. The rose garden has 40 thousand bushes representing 518 varieties. Three hundred thousand people a year visit there to see the rose gardens.

We try to keep up with our Hall County boys and we find another has moved to Houston. Gaylon Wiley, son of Mr. and Mrs. Marion Wiley of Memphis. Gaylon is a native of Lakeview where he finished high school and received his other education from Wayland College and Southwestern Seminary. He has accepted the pastorate of Clay Road Church in Houston. He has been pastor of churches in Denton County and Salina, Madison and Stockton, Kans. The Wileys are now making their home at 9218 Clay Road in Houston.

In checking over a 1958 telephone directory that Sug Lemons brought in (that he found in the bottom of his desk drawer) in checking this 13-year-old directory with aid of my memory, I find that there have been about 115 changes in business here in ownership and operation. That is pretty fast operation in that length of time. In checking with the 1971 telephone directory, we find that Smiths lead with 14 tele-



phones, a gain of 3. The Jones have 13 telephones with a gain of 3. The Phillips Came in next with 12 telephones with a gain of 5. We will try to keep up with the race of the Smiths, Jones and Phillips.

Jimmy Harrison, son of Mrs. Carl Harrison, was visiting here the past week. He is living in Dallas and is helping keep Texas Industries going. I overheard a conversation of Jimmy and his brother-in-law, John Alderman of Midland, who is a geologist. He was telling Jimmy about a 90-foot snake in South America, so I moved over a little closer to hear more about this fantastic snake but found out that he did not see it but had heard of it and the report was that it swallowed 3 men before it was destroyed. That would be some snake even for Texas, almost a third of a city block long.

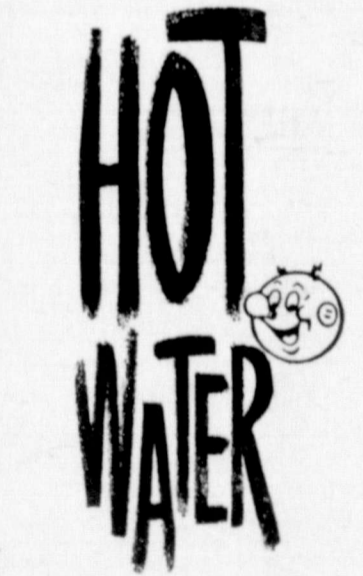
I found out from Mrs. Ronald Morris that they had about 300 sheep on pasture. She reported that the first fall lamb was born Oct. 21 and they named it "Thursday" as that was the day of the week it was born. It sounds like Mary ought to have a lot of lambs before school starts next year.

A quote from Barefoot Hollar, "A pore man is just one who ain't got nuthin but money."

## Jay Campbell On MHS Honor Roll

Jay Campbell, son of Mr. and Mrs. Lester Campbell, was listed on the honor roll among Memphis High School students, which was released last week by Principal Clinton Voyles. He was one of six sophomores named by Principal Voyles, which was determined by grades for the first six weeks of school. Young Campbell's name was inadvertently omitted from the list of students which was published in last week's issue of the Democrat.

Rev. V. C. Sparks joined his brother, J. G. Sparks of Pauls Valley, at Lake Texhoma last week where they enjoyed fishing. Mrs. Sparks went on to Dallas where she visited her daughter, Carolyn Sparks.



- NO FLUE. FITS ANYWHERE!
  - NO PILOT, NO FLAME!
  - CLEAN, ODORLESS!
  - QUICK RECOVERY!
- SPECIAL 1¢ RATE  
Ask for Details

**FREE WIRING**  
Normal FREE 220 volt wiring — in a permanently constructed residence served by WU — for a qualified Electric Water Heater (40 gal. or larger) purchased from a local dealer. Ask for details.  
Bill Ballew  
Plumbing and Heating  
Memphis  
Memphis Lumber Co.  
Memphis

## Cheri Rapp To See Action At Wayland Basketball Clinic

PLAINVIEW (Special)—Wayland Baptist College Hutcherson Flying Queens, internationally known and national championship women's basketball team, will move into action on Nov. 6 as they stage the 14th Annual High School Basketball Clinic.

Registration begins at 9 a. m. Saturday, Nov. 6 in Hutcherson Physical Education Center on the Wayland campus. Eight Plainview area high school teams will be matched in afternoon games. Basketball fundamentals will be presented throughout the morning by Coach Harley J. Redin. The Flying Queens will be on hand for demonstrations and performances during the day.

Seeing action during the day will be All-American Cheri Rapp, senior co-captain from Estelline, the daughter of Mr. and Mrs. Jerrel Rapp. She was a member of the Wayland team which won the National AAU Championship during the last two seasons.

## Plains Galleries To Feature Two Estelline Artists

Two area artists and a crafts expert will make their professional debut in an exhibit and sale at High Plains Galleries, 4535 Canyon Drive, Amarillo, November 4, 5, and 6th. The two artists are a Mother and daughter team, Earldine Hudlow of Estelline and her daughter Jan Hudlow Bell of Post. The crafts artist is Billie Collins of Estelline.

Mrs. Hudlow who has had extensive training and experience will be featured in paintings of children and pets while her daughter, Jan, who is working almost exclusively in pastels will feature children's portraits, western scenes and florals. She has been studying and painting since the age of ten.

A reception at which the artists will be present will be held Thursday evening, November 4 from 7:30 to 9:30 and on Friday and Saturday. The gallery will be

open from 9:30 A. M. to 5:30 P. M. each day.  
"These artists, we believe, have attained Professional status and it is a privilege for our Galleries to present their first Professional show," said John L. McCarty, High Plains Galleries owner.  
Mrs. Hudlow and her husband, Ted, have resided in the Estelline community for years and two years ago converted a roadside building into an art gallery and frame shop.

**COATS CHIROPRACTIC CLINIC**  
We are offering complete chiropractic health service.  
**J. R. COATS, D. C.**  
901 Noel Street  
Memphis  
Phone 259-3473

exquisite "Autumn Harvest"  
**DINNERWARE**  
Lifetime guarantee against crazing! Each piece ovenproof! Dishwasher safe!  
Here's How Our Plan Works  
With each purchase of \$3.00 you are entitled to buy one piece of dinnerware... with \$6.00 purchase, two pieces... and so on.  
Follow This Weekly Schedule

Oct. 25-Oct.	31 6" Salad Plate	.90 val.	29c
Nov. 1-Nov.	7 Dessert Dish	.95 val.	29c
Nov. 8-Nov.	14 Coffee Cup	1.45 val.	29c
Nov. 15-Nov.	21 Saucer	.90 val.	29c
Nov. 22-Nov.	28 10" Dinner Plate	1.35 val.	29c
Nov. 29-Dec.	5 6" Salad Plate	.90 val.	29c
Dec. 6-Dec.	12 Dessert Dish	.95 val.	29c
Dec. 13-Dec.	19 Coffee Cup	1.45 val.	29c
Dec. 20-Dec.	26 Saucer	.90 val.	29c

During this period you can build a complete dinner service. Don't miss a single week.

EACH PIECE ONLY **29c** WITH EACH \$3 PURCHASE

Matching completer pieces to be sold at special low prices.

WHITE SWAN POUND **Coffee 75c**

WHITE SWAN APPLE 5 CANS **SAUCE 1.00**

WHITE SWAN 7 CANS **Pork & Beans 1.00**

WHITE SWAN 5 CANS **Tomatoes 1.00**

WHITE SWAN BOX **Salt 9c**

WHITE SWAN FRUIT 4 CANS **COCKTAIL 1.00**

**\$UPER \$AVE MARKETS**  
PHONE 259-2014 — WE GIVE GOLD BOND STAMPS

WHITE SWAN, 303 3 CANS **Pears 89c**

BORDEN'S LITE-LINE 1/2 GALLON **Ice Milk 59c**

OREO 15 OZ. PKG. **COOKIES 45c**

GEHARDT'S, 303 CAN **TAMALES 29c**

U.S. NO. 1 **Potatoes 10 59c**  
WHITE  
-Lb. Bag

CELLO BAG, 16 OZ. 2 FOR **Carrots 19c**

**Bananas 10c**

WRIGHT'S BONELESS POUND **HAMS 95c**

WRIGHT'S 12 OZ. PKG. **Franks 49c**

GRADE A WHOLE POUND **Fryers 29c**

SMOKE-RITE 2 POUNDS **Bacon 98c**  
WE GIVE GOLD BOND STAMPS!

Specializing in:—  
• CORSAGES  
• FUNERAL DESIGNS  
• WEDDINGS  
• FLOWERS & PLANTS  
Delivery Service  
259-2070 Nites & Holidays  
**Ritchie Florist**  
320 Noel  
Memphis, Texas

