

PROMOTING THE PROGRESS OF HALL COUNTY

The Memphis Democrat

10 PAGES This Week

Hall County Herald, Established May 3, 1890, Absorbed by Purchase August, 1928

VOLUME LXXX *** NWN SERVICE *** MEMPHIS, HALL COUNTY, TEXAS, THURSDAY, AFTERNOON, FEB. 25, 1971 *** TEN CENTS *** NUMBER 42

WEATHER

Week's High Temperature	67
Week's Low Temperature	20
Week's Moisture	.32
Year's Total Moisture	.57

Unit of U.S. Army
Courtesy Rayford E. Hutcherson



NOW SHOVELING—Louis Goffinett on South 7th Street is shown shoveling snow at his home Monday morning. Snow drifts formed around the north and south sides of homes, whipped by 50 m.p.h. winds. Memphis received .32 of an inch of moisture and six inches of snowfall in what is being called the Blizzard of 1971.

City Has 3,227

1970 Census Figures List County At 6,015 Citizens

The final tabulations of the 1970 Census for Texas, advanced last week, were received by The Memphis Democrat last weekend. Hall County's census figure listed at 6,015, a decline of 2.6 per cent from the 1960 total of 6,162.

The population for the City of Memphis is listed at 3,227, a decline of 0.2 per cent from the 1960 total of 3,233.

The population for the City of Memphis is listed at 301, a decline of 1.3 per cent from the 1960 figure of 306.

The population for the City of Memphis is listed at 214, a decline of 2.3 per cent from the 1960 figure of 219.

The population for the City of Memphis is listed at 680, a decline of 6.4 per cent from the 1960 figure of 725.

The population of Hall County is divided into four divisions including: Memphis 3,227 off 9.2 per cent; Estelline 663 off 22.6 per cent; Lakeview 780 off 39.9 per cent; and Turkey 946 off 19.5 per cent.

The population figures are contained in a publication of the U.S. Department of Commerce, Bureau of Economic Analysis, published in January, 1971, containing the final

al census figures for the State of Texas. Editor Bill Combs wrote the Dept. of Commerce requesting the census figures, and received a prompt and courteous reply. Those desiring a copy can get one by writing: Bureau of the Census, Washington, D. C. 20233, or any U. S. Department of Commerce Field Office.

The population of the State of Texas is listed as 11,196,730. This represents an increase of 1,671,053 or 16.9 per cent from the 9,579,677 inhabitants of the state in 1960.

A tabulation of surrounding counties and cities indicate:

Childress County: 6,605 declining 21.6 per cent; City of Childress 5,408 declining 15.5 per cent.

Collingsworth County: 4,755 declining 24.2 per cent; City of Wellington 2,884 declining 8.1 per cent.

Donley County: 3,641 declining 18.2 per cent; City of Clarendon 1,974 declining 9.1; City of Hedley 439 declining 11.1 per cent.

Briscoe County: 2,794 declining 21.9 per cent; City of Silverton 1,622 declining 6.5 per cent; City of Quitaque 601 increasing 2.6 per cent.

Motley County: 2,178 declining 24.1 per cent; City of Matador 1,091 declining 10.4 per cent.

Annual Lakeview Talent Show To Be Held Mar. 5

The annual Lakeview Talent Show will be held Friday, March 5, in the Grade School Auditorium, according to a recent announcement. The show will begin at 7:30 p. m.

The contests will feature three divisions, grade school, high school and open, with trophies being awarded to first, second and third place winners in each division.

(Continued on Page 10)

March 1-5 Is Observed As Public School Week

Next week, March 1 through 5, will be observed as 1971 Texas Public Schools Week recognizing the 117th year of public schools in the State of Texas.

Estelline Supt. of Schools Aubrey Spear announced that the Estelline Schools will have a special program on Friday, March 5, at 2:30 p. m. put on by the Grades 1 through 6. All parents are invited to attend.

Memphis Supt. C. L. Chambless in announcing Public Schools Week, March 1 through 5, extended a cordial invitation to the public to attend any of the local schools any day next week.

"The faculty and administration of Memphis Public Schools are proud of our schools. We feel that the public should be aware of the fine program now being offered in the Memphis School system," he said.

On the high school level, the Texas Education Agency sets a minimum of 18 course units that must be offered. Memphis High School offers 37 various course units.

At the junior high level, Memphis offers five elective units plus one unit of required reading.

On the elementary level, Mem-

phis Schools offer music as a bonus unit to every grade.

Other course offerings that improve the overall educational program in Memphis are: four units of special education for exceptional children, one unit of remedial reading, and this year for the first time, a public free kindergarten program.

"The 1970-71 school year is a milestone in educational history in Memphis. This year we have made the first payment on the principal of the bond issue on the new high school building, and we have in operation the best maintenance program in the past two decades," the superintendent said.

"All of this fine educational program would not be possible except for the hard work of the school board members, both past and present, and the progressive attitude of the taxpayers of the Memphis Independent School District.

"The faculty and administration of Memphis Public Schools would like to express their thanks for your support, and to extend to you a cordial invitation to come and visit us during Public Schools Week," Supt. Chambless added.

Blizzard Causes 6-ft. Snow Drifts

Blizzard Causes Death Of Over 200 Pigs Sunday

The blizzard last weekend was costly to swine raisers in this area as over 200 deaths of young pigs were reported.

The hardest hit was Paul Thompson of Lakeview, who lost 200 small pigs, buried under snow drifts as high as six feet. He also lost a registered sow in the blizzard.

It was also reported that Guy Smith lost five, T. J. Spry lost 11, and W. M. Davis, Jr., lost from 40 to 50 pigs. Other swine raisers may have lost pigs, but these have not been reported.

Thompson tried all day Sunday to get to his pig barn, located one-fourth mile from his house. He stuck all his vehicles. Then, attempted to walk, but, due to the blinding snow, he got lost and only found his way back to his house by following a pipe.

A neighbor, Aubrey Robertson, also tried to help, but he, too, became lost and found his way back by following the pipe.

With the aid of a maintainer Monday, it was 1 p. m. before the pig barn could be reached, it was reported.

District 4-B Boys Basketball Tourney Begins Tonight In Local Gymnasium

The District 4-B Basketball Tournament for boys teams will be played Thursday night and Friday night in Memphis High School Gymnasium.

The Quitaque Panthers won the round robin portion of the district play, and are the top team in the district tournament.

The Panthers will play the Estelline Bears in the second game tonight. The first game, beginning at 7 p. m. features the second place Hedley Owls meeting the Turkey Turks.

Turkey and Estelline ended the round robin in a tie for third and fourth places, and settled this tie in a game two weeks ago with Turkey winning the contest.

Two games will be played both Thursday and Friday nights. The tournament finals will be played Friday night, beginning at approximately 8:30 p. m. Losers of tonight's games will play for the tournament third place Friday night.

The Panthers are favorite to win the tournament as they were undefeated in the round robin play.

Funeral Services To Be Held Fri. For Mrs. Molloy

Funeral services for Mrs. J. W. Molloy, 77, who died Tuesday evening in Hall County Hospital, will be held at 2 p. m. Friday at the Church of Christ with Ed Orr, minister, officiating assisted by Kenneth Rhodes of Lubbock.

Burial will be in Union Hill Cemetery in Lakeview under the direction of Spicer Funeral Home.

The former Miss Molly Ethel Watson, Mrs. Molloy was born July 3, 1893 in Beddee, Ark. She was united in marriage to John William Molloy on Oct. 12, 1912, in Childress.

The family resided in the Lakeview community where Mr. Molloy was engaged in farming until 1957 when he retired. Mr. and Mrs. Molloy moved to Memphis at that time.

Mrs. Molloy was a member of the Church of Christ in Memphis. Survivors include her husband; three daughters, Mrs. J. D. Lowe of Amarillo, Mrs. Frank Q. Ward of Westchester, Pa.; 12 grandchildren and 13 great-grandchildren.

Pall bearers will be Roy Rea, Reames Wakefield, Herman Yarbrough, Richard Ellis, Bernie Paul Watson and C. B. Craghead.

The Blizzard of 1971 will go down in the books as one of the worst of the century for the Panhandle area; however, Memphis and Hall County escaped a major portion of the storm.

The official weather station in Memphis recorded .32 of an inch of moisture, and six inches of snowfall during the storm which began about midnight or early Sunday morning. A line of thunder clouds dropped rain and sleet which turned to snow in the early morning hours, and had covered the ground by daylight.

The snow would have been a common six-inch fall had it not been accompanied by high winds which blew it into drifts of six feet or more in this area. Winds were clocked at approximately 50 miles per hour in gusts. They continued through Sunday and into the day Monday.

U. S. Highway 287 became closed and motorists were stranded in Memphis.

Memphis Mayor Kenneth Dale stated this week that the city officials and employees would like to express their appreciation to the many citizens who helped in a number of ways during the snowstorm.

"Citizens were very cooperative," Mayor Dale said. "Many helped with stranded cars, and several families took stranded travelers into their homes.

All the motels in Memphis were full and approximately 40 persons stayed in homes throughout the city, the mayor reported.

Some of the motels had to use extra facilities to accommodate the travelers.

Electric Power Failure

Sunday morning the West Texas Utilities Company power line between Memphis and Estelline went out, and power to the Memphis area had to be brought in from lines north of Clarendon. This limited electric power supply to only one way.

Local Manager J. B. Scott and Maintenance Man Judge Chappell left Memphis about noon Sunday in the blowing snow to find the trouble. Arrangements were made for a four-wheel drive vehicle to try to meet them south of Memphis several miles down the high-line in rangeland country.

The vehicle found snowdrifts too deep to penetrate in the canyons of the rangeland, so the two Memphis men walked to a farm house of Junior Welch and spent the night there Sunday night. The two men walked about 17 miles, and were leg weary but otherwise in good shape. They waded through some drifts waist deep.

"We certainly appreciate the concern expressed by local citizens and the efforts made to try and find us," Scott said. "We were sorry we could not notify the searchers we were all right."

Several other searchers were initiated for men who went out to see about livestock, but all were found or managed to get back safely.

Stalled, Stuck Vehicles

Many motorists tried to move about town Sunday during the blizzard and found their vehicles, two-wheel and four-wheel drive were not equipped to handle the conditions.

Many vehicles became stalled due to the fine snow, driven by high winds, clogging the air filters and moisture getting into the carburetors and ignition systems.

It took hospital personnel several hours to change shifts using four-wheel drive vehicles.

Monday, the big dig-out began, as schools in the area were closed. Thawing began Monday afternoon and road conditions improved so that highways opened and most city streets were cleared to traffic.

Crundy Street from 16th to 12th, got the honor for being the worst street in Memphis, as snow drifted four feet deep in spots, and three vehicles were abandoned on it Sunday.

The highest snowdrift was at the north end of the Cyclone Football Stadium at the intersection.

(Continued on Page 10)

Senior Class Starts Fund For MHS New Piano

The 1971 Senior Class of Memphis High School voted recently to purchase a new piano for the High School Auditorium as a class gift, it was announced this week.

A special account has been opened for this purpose, the president of the class stated. The United Daughters of the Confederacy has given the first contribution to the fund and other organizations have pledged donations.

The present piano has been serving MHS since 1924 and is damaged beyond repair.

The first class project for this cause will be a play, "Night of January 16th," which will be presented March 13 and 15 in the High School Auditorium. The play will begin at 7:30 p. m. and tickets will be \$1.25 in advance and \$1.50 at the door the nights of the performances.

The seniors ask for the support of the community in this project, and any contributions will be appreciated, it was stated.

Services Held Tuesday For Castro Infant

Funeral services for Gilbert Castro, infant son of Mr. and Mrs. Raymond Castro, were held at 4 p. m. Tuesday, Feb. 16, at the Sacred Heart Catholic Church. Funeral Mass was conducted by Father Ladislaus Wolko.

Burial was in Fairview Cemetery under the direction of Spicer Funeral Home.

Other than his parents, the infant is survived by his grandparents, Mr. and Mrs. Lucio Castro and Mr. and Mrs. Ceparino Rodriguez, all of Memphis.

Scenic Road Group Meets With Texas Hwy. Commission

A Panhandle delegation of the Palo Duro Scenic Road Assn. appeared before the Texas Highway Commission for a hearing on progress made toward the construction of the proposed road to connect with the Palo Duro State Park road.

The hearing was held early Wednesday morning, and meeting with the commission were Assn. President Sam Stewart of Claude, Assn. Secretary Clifford Farmer of Memphis, and Directors Charles Woodburn of Amarillo, Eddie Knowles of Canyon, and Jim Hayes of Clarendon, past president and currently a director.

A reception was held Tuesday evening in Austin to discuss the project with those individuals interested in the scenic road. Approximately 20 were on hand for this reception. Among those attending were State Representatives W. S. (Bill) Healy of Paducah and Tom Christian of

Claude.

President Stewart and Director Hayes were spokesmen for the Palo Duro Scenic Road group meeting before Chairman Dewit Greer's Texas Highway Commission.

The Panhandle delegation said they were well received by the Commission.

Almost a year ago, a delegation from the association reported to the Commission on the feasibility of such a scenic road. At that time, the Commission members requested the group to secure right-of-way easements along the route and to secure approval of the project from County Commissioners Courts in the counties in which the road would go.

President Stewart reported to the Highway Commission that the right-of-way easements have been secured on all the route except three-fourths of one mile.

Also he reported that the four County Commissioners Courts

have signed documents, and these were presented, supporting the proposed road. It was also reported that the commissioners favor the road so long as it does not count against the counties' farm-to-market road allocations.

State Highway Engineer Dingwall reported that the project would cost from \$3.5 to \$3.6 million dollars.

The Highway Commission indicated to the delegation that for the past three years it appeared that the Federal Government might make available for the states funds to construct scenic roads. So far, these funds have not been appropriated.

Should scenic road money from the Federal Government be made available in the near future, the Palo Duro Scenic Road would appear to receive top priority for construction since so much planning and preparation for it has been completed, a spokesman for the association stated.

The Memphis Democrat

Published on Thursday of each week at
617 Main Street, Memphis, Texas by
HERSCHEL A. COMBS
Publisher
BILL COMBS
Editor
(Hall County Herald absorbed by purchase August 7, 1928)

Subscription Rate:
In Hall, Dealey, Col-
linsworth and Childers
Counties, per year —
\$4.50
Subscription Rate:
Outside Hall, Dealey,
Collinsworth, and Child-
ers Counties, per
year —
\$5.50

Member of
**TEXAS PRESS
ASSOCIATION**
— and —
**PANHANDLE PRESS
ASSOCIATION**

Entered at the post of-
fice at Memphis, Tex.,
as second-class matter
under Act of March 3,
1879. Second Class Post-
age paid at Memphis,
Texas. Telephone 230-
2441.

NOTICE—Any erroneous reflections upon the character, standing or reputation of any person, firm or corporation which may appear in the columns of The Memphis Democrat will be corrected gladly upon its being brought to the attention of the publisher.
Postmaster: Send Form 3579 to Memphis Democrat:
Box 190, Memphis, 38245

EDITORIAL

What The 1970 Census Tells Us!

This newspaper now has a copy of the 1970 Census of Population for Texas, put out in January, 1971, and is entitled the advance report but is the final population counts of counties and cities in the State of Texas.

Hall County and the communities of Hall County followed the general trend of all rural oriented counties as a general rule, showing a decline in population.

All the southeastern counties in the Texas Panhandle showed a decline in population during the past decade. The decline averages approximately 20 percent in these counties.

During the past 10 years, Memphis and Hall County residents have waged a war with this decline, as it was apparent to all leaders that it was taking fewer laborers to handle the machinery of agriculture. Work of another nature was desperately needed if the dwindling population curve was to be stopped, or even reversed.

The big hunt started to attract industry. This is no easy chore when examined in the light that all other rural areas were doing pretty much the same thing and have just about the same to offer in natural resources.

How successful were the efforts? The 1970 census figures have the answer. Hall County declined in population from 7,322 in 1960 to 6,015 in 1970 for a decline of 17.9 percent in 10 years. This is certainly discouraging, but then, let us look at it another way. Hall County, percentage-wise, had a smaller decline in population than any county in the southeastern Panhandle. Donley County, even with its Greenbelt Dam Project, had an 18.2 percent decline in population.

Childers county's decline was 21.6 per cent, Collinsworth's decline was 24.2 percent, Briscoe's decline was 21.9 percent, Motley's decline was 24.1 percent, Wheeler's decline was 19.0 percent and Cottle's decline was 23.8 percent.

In light of this examination, it looks like whatever efforts have been put forth to stem the exodus from Hall County have been modestly successful. Further examination of city population figures bear this out even more clearly.

The city of Memphis has a population of 3,227, a decline of 3.2 percent in the decade. The 1960 population was 3,332. The decline was 105 persons.

Estelline has a 1970 population of 301 declining 13.0 percent; Lakeview population is 214, a decline of 2.3 percent; and Turkey population is 680, a decline of 16.4 percent.

How does Memphis compare with other county-seat towns in this area? Although Memphis shows a slight decline in population, the decline in other towns of comparable size all showed greater losses.

The reason Memphis did not decline as much as other towns is possibly two-fold. First, there have been several farm residents move into Memphis during the past decade as seen in the decline in rural population in Hall County.

The second is the opening of some industrial jobs in Memphis thanks to Postex Mills Hall Plant, the mobile home plant, and the retention of almost all agricultural oriented plants such as cotton compress and the cotton gins, plus the opening last year of an alfalfa plant with headquarters in Memphis.

Memphis has just about held its own with only 3.2 decline. Childers, on the other hand, shows a 15.5 percent decline. Wellington a decline of 8.1 percent. Paducah a 14.2 percent decline. Clarendon a decline of 9.1 percent. Silverton a decline of 6.6 percent and Shamrock a decline of 15.1 percent.

It would be logical to assume that all these communities have had rural citizens move into town at about the same proportion as rural citizens have moved to Memphis. This trend is being seen all over.

It is also logical to assume that if Memphis had not had a progressive effort to attract industry, then industry would have passed Memphis by, as it has so many places. If industry had passed Memphis by, it is also logical to assume Memphis would have had a decline of approximately 15 percent or more (like the other area towns) or a 1970 population of 2,832 instead of 3,227. This means Memphis has 395 people living here now due to industrial expansion, that would not be living here without the work, planning, and efforts to attract industry.

The 1970's are upon us. What will the 1980 census reveal? It's only nine years away. Will agriculture continue to decline? Will efforts to attract new industry and to preserve what industry we now have, be successful?

DR. JACK L. ROSE
OPTOMETRIST
—Contact Lenses—
Closed Saturday Afternoons
415 A Main Phone 259-2216

FURNITURE SALE
FEB. 25th THROUGH MAR. 6th
20% Off
On our entire stock of the following:
Living Room Suites Chairs
Dinette Suites Lamp Tables
Coffee Tables Lamps
SHANKLES FURNITURE
502 Noel St. Memphis, Texas



ACROSS THE DESK

What Other Editors Say

Something New In Politics

Something new, yet quite old as far as the nation is concerned, may develop next year in Texas. The U.S. Supreme is to decide whether party filing fees are unconstitutional. A lower court said Texas political parties cannot require candidates to pay high filing fees to get their names on primary ballots. Political parties use the fees to pay expenses of its primaries.

The Texas Legislature has not passed stand-by measures which would provide for alternate methods of financing if the Supreme Court agree with the 3-judge court.

Since the Supreme Court is expected to rule against the filing fees, the lack of legislation could result in Texas choosing party nominees in conventions instead of primaries next year.

This would please some high-ranking political leaders, who believe they could manipulate conventions but it would likely lead to numerous "rump" conventions, legal action to determine nominating the primary system.

Many people have forgotten that tax monies are not used for primary the total cost through filing fees when a person runs for office in either party. The Democratic and Republican party primaries are actually private elections to determine who will run for the party in the General Election in November. The tax payer in each county pays for the general election. In city and school elections the respective tax payer pays for the primary elections.

So next year may be an extremely interesting political year if the Supreme Court forces the political parties to stop charging a candidate filing fee.
—The Claude News

Farms Lost

The 1970 Census is being released in dribbles, but the information coming from it thus far indicates that the trend from rural area and small town to the cities is continuing unchecked.

Several thousand farms have been lost in Texas between the 1960 and the 1970 censuses. Farms have grown larger, by an average 13 per cent, and this trend continues.

Less than half of the land in the United States is now in farms. The remainder is occupied by cities, highways, railroad, wastelands, air-ports, parks, mountains, forests and rural non-farm residential and industrial development.

Less than a fifth of the rural population now consists of farm operators or farm worker families. This means that the term "rural population" doesn't mean farmers anymore.

Life on the farm has been

steadily upgraded and improved until there are few objections to the quality of living out from town. In fact, the advantages of life in town.

Electricity and telephones are generally available in rural areas. Paved roads and all-weather roads put the average farm family as close to the supermarket, the hospital, the shopping center as the city counterpart, perhaps even closer if measured in term of time it takes to get from home to one of these areas.

Farm families escape traffic congestion, air pollution, high taxes, and other city problems. They have problems of their own in providing their own water and sewage facilities, have less fire protection and other city advantages.

But big reason people are leaving the farm is that they are being squeezed out by economics. Farm products are at the low end of the totem pole in this country. Farmers have no control over the prices of what they produce and since those that buy from them are intent upon getting these products as cheaply as possible, it has worked that way.

In this county, we are more familiar with the wheat crop than anything else. The present price of wheat is about what it was 30 years ago, and the farmer who grows wheat for a living cannot help but notice that his clothing, medicine, transportation and everything else is nowhere near the price it was 30 years ago.

The price of cattle is now about what it was 20 years ago while everything else has zoomed in price.

Residents of the big cities don't understand this. They think that food comes into town by a system similar to that of the city water system and is just as available by turning tap.

—The Perryton Herald

MEMORIES

From
The Democrat Files

30 YEARS

February 27, 1941
Nineteen members of the Future Farmers of America chapter of Estelline exhibited their livestock at the annual show there Saturday, and grand champion calf honors were carried away by Jim Hutchins.

Mrs. Mary Owens entertained members of the Thursday Night Bridge Club with a dinner and bridge party at her home last Friday night.

Mr. and Mrs. G. J. Hinders held a family reunion last Friday at their home near Lakeview. Mrs. Hinders' three brothers and families and other relatives and friends, 40 in all, attended. It was the first time in 11 years they had all been together.

Miss Mary Helen Lindsey, daughter of Mr. and Mrs. H. H. Lindsey of Memphis, assisted in a song recital by Ernest Scheibagen, tenor, at WTSC in Canyon Thursday of last week.

The speech class of Lakeview High School is preparing another play to be presented this week, either Thursday or Friday night. The title is "Comin' Round The Mountain."

Hall County got its first snow Sunday, Monday, Tuesday, Wednesday, and altogether the flakes brought about three-fourths of an inch in moisture here in Memphis, according to a report from J. J. McMinkin, local weather observer. About 7 and Half inches of snow fell.

20 YEARS AGO

March 1, 1951
Miss Wanda Kennard, daughter of Mr. and Mrs. "Punk" Kennard of Lakeview, was recently elected Basketball Sweetheart of Lakeview High School. Miss Kennard is a sophomore at Lakeview High and also elected Most Popular Girl this year.

Hall county farmers are expected to plant a record crop of cotton during 1951 which will approximate 175,000 acres according to information released by the Production Marketing Administration office and the County Agent office.

Honoring the Estelline Senior class and young people of the church, the Estelline Baptist church entertained with a banquet on

10 YEARS AGO

February 23, 1961
Nine Girls Scouts from No. 193 and their leader, Boyce Bruce, toured the state plant Tuesday.

The Memphis Young Men's chapter will meet Tuesday, Feb. 28, at 7:30 p.m. in the Agriculture Building. The game warden from Memphis will present a program of "The program should be interesting and educational."

Slow rains here this week totaled 1.30 inches according to J. McMinkin, official weather server. Temperatures were wild for February, with mercury reaching 67 degrees Tuesday and in the high 70s Friday and Saturday.

A Radiosonde was launched eight miles south of Memphis by its paper Friday at 10 a. m. and released from Reese Base at Lubbock, Texas. It was a weather recording balloon. It was found by G. G. colored laborer on the ground by Buster Helm.



For people who can't decide between full-size comfort and small-car savings-

Oldsmobile introduces a new Cutlass Hardtop that gives you both.

There you are, caught right in the middle. You want to have your cake and eat it, too. You want a car with a lot of room, a lot of comfort, a lot of class, but you also want the kind of savings and economy you normally only get in a small car.

Where do you go from there? Straight to your nearest Oldsmobile dealer. He's got a new Cutlass Hardtop that gives you the best of both.

This new Cutlass model, the lowest priced hardtop Olds offers, gives you things like:

- A big, solid Body by Fisher with sporty Moroccan interiors and room for six grown-ups.
- A great coil-spring ride, computer-matched to each car's weight and equipment. Specially tuned body mounts for a quieter ride.
- A pollution-fighting engine that runs efficiently on no-lead, low-

- lead or regular gas (either six-cylinder or V-8).
- Aluminized exhaust system, front-fender inner panels, anti-corrosion battery that last longer.
- Flo-Thru Ventilation that brings in outside air for interior comfort, so you arrived refreshed and unruffled.
- Bias-ply, belted tires for improved traction, longer tread life.
- Side-guard beams in each door for extra security, plus a long list of other GM safety features.

So why compromise? Get full-size Olds comfort and everything that goes with it—plus low price and exceptional economy, too.

Now! Special savings during Olds Cutlass Step-Ahead Sale! Right now your Olds dealer is offering some very attractive financing for a very attractive car. During his Step-Ahead Sale on this Cutlass Hardtop, he's offering special savings on these six "extras": Vinyl top! Louvered hood! Wheel discs! Wheel opening moldings! Plush nylon carpeting! All yours at real savings right now.



Oldsmobile
ALWAYS A STEP AHEAD

MEMORIES
From
The Democrat Files
30 YEARS
February 27, 1941
Nineteen members of the Future Farmers of America chapter of Estelline exhibited their livestock at the annual show there Saturday, and grand champion calf honors were carried away by Jim Hutchins.
Mrs. Mary Owens entertained members of the Thursday Night Bridge Club with a dinner and bridge party at her home last Friday night.
Mr. and Mrs. G. J. Hinders held a family reunion last Friday at their home near Lakeview. Mrs. Hinders' three brothers and families and other relatives and friends, 40 in all, attended. It was the first time in 11 years they had all been together.
Miss Mary Helen Lindsey, daughter of Mr. and Mrs. H. H. Lindsey of Memphis, assisted in a song recital by Ernest Scheibagen, tenor, at WTSC in Canyon Thursday of last week.
The speech class of Lakeview High School is preparing another play to be presented this week, either Thursday or Friday night. The title is "Comin' Round The Mountain."
Halt County got its first snow Sunday, Monday, Tuesday, Wednesday, and altogether the flakes brought about three-fourths of an inch in moisture here in Memphis, according to a report from J. J. McMinkin, local weather observer. About 7 and Half inches of snow fell.
20 YEARS AGO
March 1, 1951
Miss Wanda Kennard, daughter of Mr. and Mrs. "Punk" Kennard of Lakeview, was recently elected Basketball Sweetheart of Lakeview High School. Miss Kennard is a sophomore at Lakeview High and also elected Most Popular Girl this year.
Hall county farmers are expected to plant a record crop of cotton during 1951 which will approximate 175,000 acres according to information released by the Production Marketing Administration office and the County Agent office.
Honoring the Estelline Senior class and young people of the church, the Estelline Baptist church entertained with a banquet on
10 YEARS AGO
February 23, 1961
Nine Girls Scouts from No. 193 and their leader, Boyce Bruce, toured the state plant Tuesday.
The Memphis Young Men's chapter will meet Tuesday, Feb. 28, at 7:30 p.m. in the Agriculture Building. The game warden from Memphis will present a program of "The program should be interesting and educational."
Slow rains here this week totaled 1.30 inches according to J. McMinkin, official weather server. Temperatures were wild for February, with mercury reaching 67 degrees Tuesday and in the high 70s Friday and Saturday.
A Radiosonde was launched eight miles south of Memphis by its paper Friday at 10 a. m. and released from Reese Base at Lubbock, Texas. It was a weather recording balloon. It was found by G. G. colored laborer on the ground by Buster Helm.

Shots

RON BALDWIN

Weeks ago we ran a column that Bill gave us about Della Hallmeyer. I had a letter from Della a few days ago. Your column of Bill Longshore's wild riding a bucking bronco to be Lorenas Hays. The over on Buck Creek close to the Bob Nelson slip out of school at horse until he pitched. Her brother was Shoe Nail range boss. later moved to Estel- will remembered as Hinton and lived husband, Sim Hinton, near Estelina. Della (Offield) Pall- gentle old plow mare saddle was my limit of Billy, as we called a little boy probably grade, and girls all to him then and I am illusion him. But getting out of a car is my missing bronc now. Miss Della is now in the other "Pea- nau Academy, Gains- 0501. Good to hear in Miss Della!

We have heard of foreign work in far away coun- all of our lives, but I never would carry the word to any of the planets. But did show us this "Bible on Higher than" which was as fol- ing microfilm copies of the

COATS
OPRACTIC
CLINIC
offering complete health service.
COATS, D. C.
Noel Street
Memphis
Phone 259-3473

MUTT and JEFF say:



scriptures was deposited on the Era Mauro highlands of the moon by Astronaut Edgar D. Mitchell. The packet prepared by the American Bible Society contained a complete Bible in the Revised Standard version, 16 different language versions of Gen. 1:1 and other scripture selections. Inscrubed on the packet was the symbol of the United Bible Societies in whose name the scriptures were sent. It shows the scriptures circling the globe. The first verse of Genesis was chosen for the translations because the astronauts on Apollo 8 read from the first chapter of the Bible on Christmas Eve, 1968. Over half of the world speaks one or more of the 10 languages the scriptures are translated in which include: Chinese, English, Spanish, Russian, German, Japanese, Arabic, Bengali, Portuguese, Urdu, Dutch, French, Hebrew, Hindi, Swahili and Welsh. We wonder which country will be the first to get benefit of this lay missionary journey.

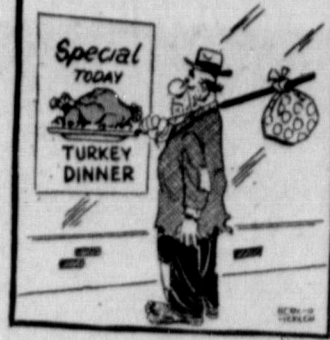
In reading "Happy Memories, Of Stored Treasures" by Dr. Chas. L. Allen, pastor of the First Methodist Church of Houston, he asked what is the most wonderful moment you have ever lived? Most of us would be reluctant to lift out any particular mo-

ment and say, "This is it!" because we have had so many wonderful moments. In response to that question, my own mind rushes back through the years. I think back when I heard my grandmother play on the organ and sing religious songs. When I was about four years old, the woman who had been helping my mother with the housework came outside the door and said, "You have a baby brother just born," and then when I first started to Sunday School, and then on to public school was a big day, especially when you received your first Valentine from the girl across the aisle. Then when you learned to swim, play ball and make a home run. Then you remember when you first joined the church and the first time you were called on to pray in public. You remember in the teenage when you had such a thrill and a tingle when what was then called holding hands. Then we think of our courtship and wedding and next was the thrill to see our little ones born into the world and then to see the look in their eyes as they ran to see what Santa Claus had put in their stockings and then seeing them go through the same phases of life that we had been and we would watch their reaction at each stage. Quotes from Dr. Allen, "When one stops to think, he recalls many moments which were wonderful and he thanks God for them." This question came to my mind as I was talking with a friend who had become very bitter and resentful. Life for him had turned sour. I asked him to tell me of his greatest moment. He paused for seemingly a long while and then began remembering some of his moments. As he remembered, he began to look differently toward life. "The angel of memory has helped many who were under a severe strain or temptation. The memory of a good father and a praying mother, the memory of a child at home who believed in you. As we enrich our memory, we are laying up treasures "where neither moth nor rust doth corrupt, and where thieves do not break through and steal." A very wise mother said, "I seek to give my children the blessing of happy memories." As Paul said, "Don't be chained to the memory of a bitter yesterday."

Well, I think last Sunday that most of the people enjoyed the seventh day of rest because we were sent a wonderful snow for

These berries until last as they do not want to get puckered up!

The Lonely Heart



A Colt muzzleloader was brought in for display by Loyd Robertson.

Several good school pictures were brought to Heritage Hall by Linda Estes which were very interesting. They included the West Ward Rhythm Band with Eddie Mae Scott director and Ray Crawford, student director. Also there was a picture of the third grade of Austin School of 1957 which included Carol Thompson, Diane Galley, Rosemary Harrison, Neil Tribble, Linda Alewine, David Lemons and Peggy Parker. It seems so short a time, but each of these are now married and have homes of their own. Another was a picture of the third grade of 1955 with Mrs. Estes as the teacher in Austin Elementary, and one of the rhythm band in

and Mrs. Estes, principal of West Ward School.

Overheard on a street corner: "You all don't know nobody that don't want to hire nobody to do nothing, does yuh?"

CARE
FOR THOSE YOU LOVE
Cousins Home, Inc
520 North 18th St.
Phone 259-2767
Memphis, Texas

PUBLIC NOTICE

Proposed CONSTITUTIONAL AMENDMENT

NUMBER THREE ON THE BALLOT (SJR 5)

Special Election May 18, 1971

BE IT RESOLVED BY THE LEGISLATURE OF THE STATE OF TEXAS: Section 1. That Article III, Section 51-a, of the Texas Constitution, be amended to read as follows: "Section 51-a. The Legislature shall have the power, by General Laws, to provide, subject to limitations herein contained, and such other limitations, restrictions and regulations as may be by the Legislature deemed expedient, for assistance grants to and/or medical care for, and for rehabilitation and any other services included in the federal laws as they now read or as they may hereafter be amended, providing matching funds to help such families and individuals attain or retain capability for independence or self-care, and for the payment of assistance grants to and/or medical care for, and for rehabilitation and any other services to or on behalf of: (1) Needy aged persons who are citizens of the United States or noncitizens who shall have resided within the boundaries of the United States for at least twenty-five (25) years; (2) Needy individuals who are totally and permanently disabled by reason of a mental or physical handicap or a combination of physical and mental handicaps; (3) Needy blind persons; (4) Needy dependent children and the caretakers of such children. "The Legislature may prescribe such other eligibility requirements for participation

in these programs as it deems appropriate. "The Legislature shall have authority to enact appropriate legislation which will enable the State of Texas to cooperate with the Government of the United States in providing assistance to and/or medical care on behalf of needy persons, in providing rehabilitation and any other services included in the federal laws making matching funds available to help such families and individuals attain or retain capability for independence or self-care, to accept and expend funds from the Government of the United States for such purposes in accordance with the laws of the United States as they now are or as they may hereafter be amended, and to make appropriations out of State funds for such purposes; provided that the maximum amount paid out of State funds to or on behalf of any needy person shall not exceed the amount that is matchable out of federal funds; provided that the total amount of State funds paid for assistance grants for needy dependent children and the caretakers of the children shall not exceed Fifty-Five Million Dollars (\$55,000,000) during any fiscal year. "Provided further, that if the limitations and restrictions herein contained are found to be in conflict with the provisions of appropriate federal statutes, as they now are or as they may be amended to the extent that federal matching money is not available to the State for these purposes, then and in that event the

Legislature is specifically authorized and empowered to prescribe such limitations and restrictions and enact such laws as may be necessary in order that such federal matching money will be available for assistance and/or medical care for or on behalf of needy persons. "Nothing in this section shall be construed to amend, modify or repeal Section 31 of Article XVI of this Constitution; provided further, however, that such medical care, services or assistance shall also include the employment of objective or subjective means, without the use of drugs, for the purpose of ascertaining and measuring the powers of vision of the human eye, and fitting lenses or prisms to correct or remedy any defect or abnormal condition of vision. Nothing herein shall be construed to permit optometrists to treat the eyes for any defect whatsoever in any manner nor to administer nor to prescribe any drug or physical treatment whatsoever, unless such optometrist is a regularly licensed physician or surgeon under the laws of this State. Sec. 2. The foregoing constitutional amendment shall be submitted to a vote of the qualified electors of this State at an election to be held on May 18, 1971, at which election the ballots shall be printed to provide for voting for or against the proposition: "The Constitutional Amendment removing the limitation on the total State appropriations for assistance grants for the needy aged, the needy disabled, and the needy blind, and setting a limitation on total State appropriations during any fiscal year for assistance grants for needy dependent children and the caretakers of such children."

PUBLIC NOTICE

Proposed CONSTITUTIONAL AMENDMENT

NUMBER TWO ON THE BALLOT (HJR 21)

Special Election May 18, 1971

RESOLVED BY THE LEGISLATURE OF THE STATE OF TEXAS: Section 1. That Article XVII, Section 1, of the Texas Constitution, be amended to read as follows: "Section 1. The Legislature by a vote of two-thirds of all the members elected to each House, to be entered by years and days on the journals, may propose amendments to the Constitution, to be voted upon by the qualified electors for the proposed amendments shall be duly published once a week for four weeks, commencing at least three months before an election, the time of which shall be specified by the Legislature, in one weekly newspaper of each county, in which such a newspaper may be published; and it shall be the duty of the several returning officers of said election, to open a poll for, and make returns to the Secretary of State

of the number of legal votes cast at said election for and against said amendments; and if more than one be proposed, then the number of votes cast for and against each of them; and if it shall appear from said returns that a majority of the votes cast, have been cast in favor of any amendment, the said amendment so receiving a majority of the votes cast, shall become a part of this Constitution, and proclamation shall be made by the Governor thereof." Sec. 2. The foregoing constitutional amendment shall be submitted to a vote of the qualified electors of this state at an election to be held on May 18, 1971, at which election the ballots shall be printed to provide for voting for or against the proposition: "The constitutional amendment providing that the Legislature may propose an amendment of the Constitution at any session of the Legislature."

PUBLIC NOTICE

Proposed CONSTITUTIONAL AMENDMENT

NUMBER FOUR ON THE BALLOT (SJR 17)

Special Election May 18, 1971

of funds and without regard to the provisions in Section 49-c that such financial assistance shall terminate after December 31, 1982. "(e) Texas Water Development Bonds are secured by the general credit of the State and shall after approval by the Attorney General, registration by the Comptroller of Public Accounts of the State of Texas, and delivery to the purchasers, be incontestable and shall constitute general obligations of the State of Texas under the Constitution of Texas. "(f) Should the Legislature enact enabling laws in anticipation of the adoption of this amendment, such Acts shall not be void by reason of their anticipatory character." Sec. 2. The foregoing constitutional amendment shall be submitted to a vote of the qualified electors of this State at an election to be held on Tuesday, May 18, 1971, at which election all ballots shall be printed to provide for voting for or against the proposition: "The constitutional amendment to authorize the issuance of One Hundred Million Dollars (\$100,000,000) bonds to provide financial assistance to cities and other public agencies for water quality enhancement purposes, providing for the improvement and continuance of the water resources program, and establishing an interest ceiling on Water Development Bonds at 6% per annum."

flameless ELECTRIC water heater

F&S Smith
GLASS-LINED WATER HEATERS
Permaglas

FULL 10 YEAR GUARANTEE!
FREE WIRING
Normal 220 volt wiring to WTU residential customers who buy an electric 40 gallon or larger water heater from a local dealer or WTU.

Bill Ballew
Plumbing and Heating
Memphis
Memphis Lumber Co.
Memphis

PUBLIC NOTICE

Proposed CONSTITUTIONAL AMENDMENT

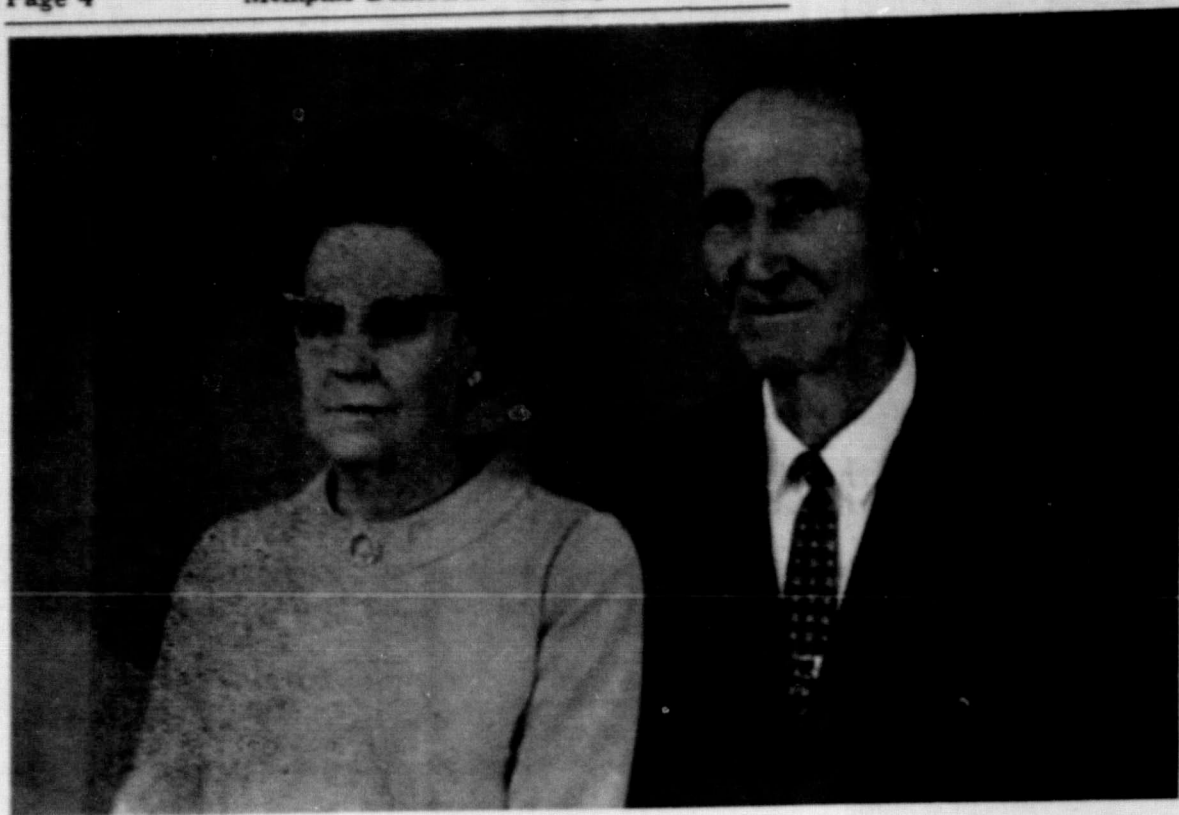
NUMBER ONE ON THE BALLOT (SJR 15)

Special Election May 18, 1971

BE IT RESOLVED BY THE LEGISLATURE OF THE STATE OF TEXAS: Section 1. That Article III, Section 24, of the Texas Constitution, be amended to read as follows: "Section 24. (1) The State Ethics Commission is created as an agency of the State. The commission consists of nine members. Three members shall be appointed by the Chief Justice of the Supreme Court of Texas with the advice and consent of the Associate Justices serving on the Court, three members shall be appointed by the Presiding Judge of the Court of Criminal Appeals of Texas with the advice and consent of the other Judges serving on the Court, and three members shall be appointed by the Chairman of the State Judicial Qualifications Commission with the advice and consent of the other members of the commission, of each group of three appointees no more than two shall be attorneys engaged in the active practice of law. In addition thereto there shall be two ex officio members, one from the House of Representatives and one from the Senate to be elected on the first day of each Regular Session of the Legislature by a majority of the membership of each House for a term ending on the first day of the next Regular Session. "(2) With the exception of the initial appointees, each member shall hold office for a term of six (6) years and until his successor is appointed and has qualified. In making the initial appointments, each appointing officer shall designate one (1) appointee to serve a term of two (2) years, one (1) appointee to serve a term of four (4) years, and one (1) appointee to serve a term of six (6) years. Interim vacancies shall be filled in the same manner as vacancies due to expiration of a full term, but only for the unexpired portion of the term in question. The membership shall designate one of its members to serve as chairman for a period of two (2) years. "(3) The members of the commission shall be reimbursed for actual and necessary expenses incurred in the performance of their duties. "(4) The commission shall recommend the compensation, per diem, and mileage allowance of members of the Legislature, and may recommend the salary of the Speaker of the House of Representatives and the Lieutenant Governor

at an amount higher than that of other members notwithstanding any provisions to the contrary of Article IV, Section 17, of the Texas Constitution. "(5) The commission shall promulgate rules of ethics to govern the conduct of all legislators, legislative officers and all officeholders, appointive or elective, of any office, department, district agency, commission, board or any governmental unit or branch established by or under the authority of the constitution and laws of the State of Texas and all persons who shall use any privilege of the floor in either House of the Legislature. The Texas State Ethics Commission shall further promulgate rules providing that each member of the Legislature and each of the herein named officeholders upon election and any appointee to any of these offices shall file with the State Ethics Commission a statement under oath setting out a complete financial statement in detail within 10 days after being elected or receiving an appointment. This information shall be privileged information to the State Ethics Commission to be used only by them to determine if there exists a conflict of interests or if there is or has been a violation of any of the rules of ethics promulgated by the Texas State Ethics Commission or any laws of the State of Texas. The Legislature shall enact statutes dealing with unauthorized disclosure or misuse of said privileged information. "(6) The commission may hold its meetings, hearings and other proceedings at such times and places as it shall determine but shall meet in Austin at least once each year to review existing rules of ethics, legislative compensation rates, mileage allowances and per diem rates, and make any changes deemed necessary. "(7) All rules of ethics, compensation rates, mileage allowances or per diem rates currently in force, as well as all changes and recommendations by the State Ethics Commission shall be promulgated before the convening of any session of the Legislature by filing a certified copy of the proclamation with the Secretary of State. "(a) Each rule of ethics or change thereof made by the commission shall take effect on the 15th day of the legislative session following the proclamation unless disap-

proved before that day resolution of either House of the Legislature. "(b) All rates of compensation, mileage allowances or per diem rates and all changes and recommendations made by the commission thereof shall not take effect until approved section by section by resolution of both Houses of the Legislature. "(c) All votes on these resolutions or parts thereof shall show the individual votes in the respective journals of both Houses. "(8) The commission shall investigate any alleged violation of any rule of ethics promulgated by it and report its findings to the appropriate State agency, official, legislative body, grand jury or district attorney. "(9) Until otherwise provided by the commission, each member of the Legislature shall receive from the public treasury an annual salary of Four Thousand, Eight Hundred Dollars (\$4,800) per year and per diem not exceeding Twelve Dollars (\$12) per day for the first 120 days only of each Regular Session and for 30 days of each Special Session of the Legislature. No Regular Session shall be of longer duration than 140 days. In addition to the per diem, the members of each House shall be entitled to mileage in going to and returning from the seat of government, which mileage shall not exceed Two Dollars and fifty cents (\$2.50) for every twenty-five (25) miles, the distance to be computed by the nearest and most direct route of travel, from a table of distances prepared by the Comptroller to each county seat now or hereafter established; no member to be entitled to mileage for any extra session that may be called within one day after adjournment of the Regular or Called session. "(10) The commission is further authorized to recommend to each Legislature changes which will update, improve, and effect economy in the legislative process." Sec. 2. The foregoing constitutional amendment shall be submitted to a vote of the qualified electors of this State at an election to be held on the 18th day of May, 1971, at which election the ballots shall be printed to provide for voting for or against the proposition: "The constitutional amendment to create a State Ethics Commission empowered to set rules of ethics for members of the Legislature, State officers and legislative officers, to investigate violations thereof, and to recommend compensation for members of the Legislature and recommend improvements and economy in the legislative process."



MR. AND MRS. VERNEY WADE

Mr. And Mrs. Verney Wade To Observe 50th Wedding Anniversary In Hedley

Mr. and Mrs. Verney Wade of Hedley will be honored with a reception in the Fellowship Hall of First Baptist Church in Hedley Sunday, Feb. 28, in observance of their Golden Wedding anniversary.

Hosts for the occasion will be their children and grandchildren. All their friends and relatives are invited to attend the reception between the hours of 2 and 4 p. m.

Gamma Kappa Chapter Meets At Goodnight

The Gamma Kappa Chapter of Delta Kappa Gamma met Feb. 12 in the Goodnight Community Center with the Clarendon members as hostesses.

The meeting was called to order by the president, Audrey Tribble.

The "Official Song" and the "Marching Song" were sung by chapter members. L. C. Swentz led in reading of the "Collect" for the opening prayer.

Committee reports were given by Ethel Hillhouse and Zady Belle Walker.

Since February was named as scholarship month, Margaret McElreath, chairman, introduced the program, "The Value of the Scholarship Program." She explained that the purpose of the scholarship program of Delta Kappa Gamma is "to endow scholarships to aid outstanding women educators in pursuing graduate study, and to grant fellowships to women educators from other countries."

"All scholarships are gifts and not to be repaid," reported Miss McElreath.

Lucille Naylor, Maudie Coffee and Mabel Mongole assisted Miss McElreath with the program. Following the program, donations from the members to the scholarship fund amounted to \$55.

The following attended from Hall County: Esta McElrath, Marietta Jones, Margaret McElreath, Ethel Hillhouse, Audrey Tribble, Zady Belle Walker, Carrie Belle King and Alma Bruce.

Parnell Community Club To Have Social, Supper Sat.

The Parnell Community Club met Wednesday, Feb. 17, with 11 members present.

The meeting was opened with the Lord's Prayer repeated in unison. Roll call was answered with "A Bit of Wisdom."

During the business session, it was voted to have a supper and social for their families on Saturday, Feb. 27. Supper will be served at 7 p. m. Six visits to the sick were reported.

The dismissal prayer was given by Nelda Ferrel.

Refreshments were served to Bessie Latham, Dorothy Dameron, Nelda Ferrel, Nell Burk, Cordye Hood, Hazel Lambert, Erlean Trapp, Leona Burk, Roxie Orcutt, Loeille Cope and Lena Hill.

A. L. Rogers Cabinet Shop
sells
Super Kim-Tone
and Kim-Glo
also does sheetrocking,
finishing and painting
A. L. ROGERS
CABINET SHOP
615 N. 12th-Pho. 259 3012

Atalantean Club Enjoys Program On Conservation

The former Iola Crawford and Verney Wade were married Feb. 23, 1921, in Hedley. They have lived at Hedley all but one year of their 50 years of married life.

Mrs. Wade is the daughter of the Rev. L. J. Crawford and the late Mrs. Lola Crawford of Hedley. She is a graduate of Hedley High School.

Mr. Wade moved to Donley County in 1904 from Claude and also attended Hedley High School. He is a farmer and rancher, and still farms three and one-half miles southwest of Hedley.

Mr. and Mrs. Wade are members of the First Baptist Church which he is serving as a deacon and she as a teacher of the T. E. L. Sunday School Class.

Their children are Mrs. Hoover Harrison, 3815 N.E. 14th St. in Amarillo and L. J. Wade of Panhandle. They have seven grandchildren and three great-grandchildren.

Mrs. T. J. Brock visited in Amarillo last week with her grandson, Bob Wheeler, and family.

There is no better lipstick remover than a teenage boy.



BRIDE-TO-BE—A May 15 wedding is planned by Miss Landa Beth Berry, daughter of Mr. and Mrs. Joe N. Berry, and John Christopher Murray, son of Mr. and Mrs. Dean Murray of Kress. Miss Berry is a 1968 graduate of Lakeview High School and is now a junior student at Texas Tech University. Mr. Murray will be a 1971 spring graduate of Texas Tech University. The wedding vows will be solemnized in the home of the bride-elect's parents near Lakeview.

Specializing In—
● CORSAGES
● FUNERAL DESIGNS
● WEDDINGS
● FLOWERS & PLANTS
Delivery Service
MRS. W. F. RITCHIE 259-2070 Nites & Holidays
320 Noel
Memphis, Texas
Ritchie Florist

Betty Stewart To Present Senior Students In Music Recital Sunday

"An Afternoon of Music" will be presented Sunday, Feb. 28, at 2 p. m. in the Community Center in Memphis. Varied selections of vocal and instrumental solos and ensembles will be presented by students of Betty Stewart.

Cathy Boney, daughter of Mrs. Jack Boney, and Susie Sams, daughter of Mr. and Mrs. A. C. Sams, will be the featured performers on the program.

Cathy, who is a senior student at Estelline High School, has been very active in church and school activities during the past several years. Presently, she is serving as editor of *The Growl*, which is the school newspaper. Also, she has been quite active in basketball and was selected two years to sing in the Area FHA Choir at Lubbock.

Susie is a senior student at Lakeview High School this year, and has also participated in numerous school and community affairs. She has been very active in basketball and tennis and has participated in the National Guild auditions for 10 years. She was awarded the Paderewski Gold Medal for her piano merits.

Others who will be appearing on the program are Mike Chappell, son of Mr. and Mrs. C. T. Chappell of Memphis, Jacky Martin, son of Mr. and Mrs. Jack Martin of Memphis, Mandy Hedrick, daughter of Mr. and Mrs. Frank Hedrick of Estelline, and

Culture Club Members Enjoy Fashion Show

The Woman's Culture Club held its February 17 meeting at 4 p. m. in the visual aid room at Memphis High School with Mrs. Jeanette Irons as hostess.

The opening prayer was given by Mrs. Irons. At the business session, presided over by the president, Mrs. May, Mrs. R. E. Clark was elected delegate to the district convention soon to be held here, and Miss Sybil Gurley was named as alternate.

The program, "The Short and Long of It" was introduced by Mrs. Lange, chairman, with the quotation by Thoreau, "Every generation laughs at the old fashions." Some homemaking students then gave a very colorful and attractive fashion show, featuring midi dresses, maxi coats and pants suits. Elaine Phillips, president of the F. H. A., acted as narrator for this entertaining event.

The models were Dena Gardenhire, modeling a red velvet jump suit; Audrey Wolfe, a midi dress; Carol Foxhall, pants suit; Diane Clayton, knickerbockers and peasant dress; Cindy Phillips, pants suit; Susan Chick, midi dress; Debbie Nunnally, poncho and pants; Anita Taylor, pants suit; Janis Vallance, maxi dress; Audrey Wolfe, also midi coat and maxi coat.

Refreshments were served by the hostess to the guests mentioned above and to the following members: Mmes. Grover Moss, Pat Lewis, Alvin Pyeatt, L. G. Raseo, David May, Jim Lange, Robert Moss, Ward Gurley, L. A. Stilwell; Misses Alma Bruce and Sybil Gurley.

Mrs. Inez Aspgrren Entertains 69'ers Club Tuesday

The 69ers Club met in the home of Mrs. Inez Aspgrren Tuesday, Feb. 16. President Ruth Gardenhire opened the business meeting with all members saying the Lord's Prayer. Inez Aspgrren read the devotional.

The afternoon was spent doing handiwork.

The next meeting will be held in the home of Ruth Gardenhire. Lovely refreshments were served to Mmes. Ruth Misenhimer, Mona Robertson, Susie Coleman, Ima Widener, Opal Waites, Maggie Martin, Edna Lester, Alice Beasley, Faye Maddox, Ruth Gardenhire, Ima Lawrence, Carrie Dennis, Inez Aspgrren and one visitor, Mrs. Lambert.

410 D MAIN MEMPHIS
Ph. 259-3531

Cheryle Foster Is Shower Honoree

The home of Mrs. Billy Thompson was the setting Tuesday evening, Feb. 16, for a lovely pre-nuptial shower honoring Miss Cheryle Ann Foster, bride-elect of Michael Barton Magri of Lynchburg, Va.

Guests who arrived between the hour of 7 to 8 o'clock were greeted by Mrs. Thompson and presented to the receiving line, composed of the honoree, Miss Foster; and her mother, Mrs. Henry Foster.

The bride-elect's chosen colors of antique white and burnt orange were used in party decorations. In the dining room, the refreshment table was laid with a lovely brown net cloth and applied in tones of orange. Table appointments were in brass. Decorated mints, open face sandwiches and nuts were served with punch.

A lovely array of gifts was on display in three rooms of the party suite.

Guests were regaled with a bride's book by Mrs. ... Other members of the ... Mitzie Lindsey, Mrs. ... rel, Mrs. Jimmy Roden, ... ny Lee and Elaine ... Hostesses for the ... Mmes. W. B. Scott, ... Herman Yarbrough, ... shaw, Kenneth Dale, ... sey, Joe Mothershead, ... Morris Davis, C. D. ... ert Spicer, Jack Boome, ... R. B. Phillips, ... Rasco and Mrs. Billy ...

For
OFFICE SUPPLIES
Call
The
Memphis Democrat

RCA AccuColor ACTION DAYS

Now—more color for your cash!



The CALHOUN New Vista® Model GP-592 23" diagonal picture



The MONTANA New Vista® Model GP-598 23" diagonal picture

Also look at this RCA portable Color value



The YODIE Model EP-602 14" diagonal picture

Enjoy Vivid Color Portable TV at a Budget Price

Affordable Color Portable gives true-to-life color pictures. Sturdy plastic cabinet wipes clean with a damp cloth. Built-in VHF and UHF antennas.

PS Parts and Labor Warranty—Basic Provisions. For 90 days from the date of purchase, RCA Corporation warrants to the first retail purchaser that it will pay all labor charges for repair of defects in these RCA New Vista models (and Models EP-602 and EP-603) and will make available replacements for any defective parts. (If the picture tube comes defective within two years, it will be exchanged for a rebuilt picture tube and labor charges only on a "carry-in" basis; transportation to and from the service agency of customer controls are not included. To obtain warranty benefits, contact your RCA service agency of your choice with your Warranty Registration Card.

Smith's Auto Store
118 South 5th St.

B&PW District Director Visits Local Club

The Memphis Business and Professional Womens Club was honored with a visit from the district director, Mrs. Nancy Rauschuber of Wichita Falls Thursday evening, Feb. 18.

Mrs. Shirley Binkley, president, presided at the meeting and Mrs. Wilma Leslie, program chairman, introduced Mrs. Rauschuber.

A teacher in the Iowa Park School, Mrs. Rauschuber is coordinator for the five units of Special Education for Mentally Retarded.

Born in New York, she has her

B. S. degree in education from Kansas State Teachers College in Emporia, Kans., and completed 30 hours of graduate work at Kansas University. She taught in Ottawa for 14 years prior to moving to Wichita Falls.

Mrs. Rauschuber talked to the group on "Era of Responsibility," stressing eras of membership, pol-

lution, crime prevention, culture, United Nations and drug abuse. The program was enjoyed by the members and the following guests: Mrs. Dorothy Braidfoot, Kay Sterling and Hester Bownds.

Memphis Youth Attend LCC High School Day Sat.

Mr. and Mrs. Y. Z. Taylor took a group of young people from the Church of Christ to Lubbock over the weekend to attend High School Day at Lubbock Christian College. Making the trip were Anita Taylor, Vicki Rea, Janis Vallance, Johnny Vallance and John Marck Orr.

While in Lubbock the girls were guests in the home of Mr. and Mrs. Ray Fulenwider and the two boys stayed with Gary Rea in the dormitory at L. C. C. Mr. and Mrs. Taylor visited with her sister and family, Mr. and Mrs. Ray Crawford and boys.

On Friday night the young people attended the movie, "Love Story," and on Saturday they visited Lubbock Christian College including different parts of the school and campus. Saturday evening they attended the homecoming basketball game at the college gymnasium between LCC and CCC.

The group started for home after the game Saturday night, and were stranded in Turkey at 2:30 a. m. Sunday morning, where they stayed at Turkey Hotel. They were not able to drive to Memphis until Monday morning due to the snow.

They expressed appreciation for the wonderful treatment they received in Turkey while stranded guests in that town.

M. B. Braddock Home Is Scene For Reunion Feb. 14

A family reunion was held Sunday, Feb. 14, at the home of M. B. Braddock of Memphis.

Those attending included: Mrs. A. P. Cardwell of Memphis; Mr. and Mrs. T. W. Pitts of Oakland, Calif.; L. H. Cardwell and family of Midland; Mr. and Mrs. Frank Dawkins of Midland; Mr. and Mrs. H. F. Cardwell of Colorado City; Mr. and Mrs. L. E. Cardwell and family of Austin; Mr. and Mrs. George Walkup and family of Childress; Kelsey James of Childress; Travis Pitts of Amarillo; and Tommie Pitts and son of Houston.

Mrs. Pitts remained here until Saturday when the Braddocks and Mrs. Cardwell took her to Midland where she and her husband were to return to Oakland by plane on Tuesday, Feb. 23.

Mrs. Cardwell remained in Midland to undergo treatment on her eyes.

Secretary of Agriculture Clifford recently announced that the Farmers Home Administration's rural housing program level has been increased to \$1.47 billion for this year. Current mortgage market conditions enabled the Federal program to be increased without a net increase in budget costs, he said.

Someone has said that we're only sure of two things, death and taxes. Anyway, the death rate doesn't increase every time Congress meets.



MRS. C. W. BARLEY

Betty Shira, C. W. Barley Are United In Amarillo Rites Saturday, Feb. 20

Miss Betty Ellen Shira and C. W. Barley were united in marriage Saturday, Feb. 20, at 4:30 p. m. in Amarillo.

The bride was attired in a white street-length dress and carried out the bridal custom of something old, something new, something borrowed and something blue with a six pence in her shoe.

The couple's only attendants were Mr. and Mrs. Charles Shira, other and sister-in-law of the bride. Mrs. Shira wore a mint green three-piece suit.

Mr. and Mrs. Barley are now

at home in Amarillo where they are both employed by Medley Equipment Company.

1913 Study Club Members Hear Prog. On Mexico

The 1913 Study Club met Wednesday afternoon, Feb. 17, at 3 p. m. at the Bronze Room in the First National Bank Building with Mrs. Larry Votto as hostess.

Mrs. Bray Cook, president, presided during the business session. Mrs. Paul Montgomery, incoming president, was named as a delegate to the Santa Rosa District Convention which will be held in Memphis March 18-19. Mrs. Larry Votto, incoming first vice president, was named alternate.

Mrs. Frank Foxhall, program chairman, introduced the afternoon's program. Mrs. Howard Richardson gave reflections, entitled "Words To Live By."

Mrs. Paul Montgomery gave an informative and entertaining program on Mexico. She showed colored slides of Mexico City, Acapulco and other interesting points in the interior of Mexico. Mrs. Montgomery and her sister, Mrs. Bill Greene of Clarendon, flew to Mexico City from Amarillo, and spent a week sightseeing there a few years ago.

During the social hour, tasty refreshments were served from an attractively laid tea table.

Members present were Meses. Byron Baldwin, Virginia Browder, Herschel Combs, Bray Cook, P. W. Foxhall, Gayle Greene, R. S. Greene, T. M. Harrison, D. L. C. Kinard, Sherron Lee, Clyde McMurry, Paul Montgomery, Bill Prince, Mack Richards, Howard Richardson, M. G. Tarver, Larry Votto, and Miss Neville Wrenn.

Rolling Plains Pork Producers Plan Paducah Meet

The Rolling Plains Pork Producers will meet Monday, March 1, at 7:30 p. m. in Cal's Restaurant in Paducah, Danny Davidson of Estelline announced this week.

The meeting in Estelline had to be postponed due to adverse conditions of the weather.

At the Paducah meeting, a specialist will speak on swine health problems. The meeting will be hosted and sponsored by Aeco Feeds and Brooks Grain Co. who will provide the refreshments.

Consumer expenditures for food in 70's decade could go up by as much as 70 per cent, including meals at home and away. This compares with the 50 per cent increase in the 1970's.

Delphians Hear Program Feb. 16 On Americanism

Mrs. Slim Reeves was hostess members of the Delphian Club Feb. 16 at 4 p. m. at Odum's Restaurant.

Mrs. B. A. Combs opened the meeting with the pledge of the club.

Mrs. Clyde Smith introduced the program on Americanism with a quotation, "He who loves not his country, can love nothing."

The inspirational thought was given by Mrs. G. Ariola.

"The Story of Old Glory" was given by Mrs. E. Schattel. Miniature flags of the United States from 1776 to the present flag were displayed as Mrs. Schattel told the story of each.

Members enjoyed the film, "The Band We Love," a beautiful travelogue telling the story of America's natural grandeur, its traditions, its heritage of history and its limitless opportunity.

Refreshments were served to the following members: Meses. G. Riola, J. L. Barnes, J. B. Boone, Robert Clark, B. A. Combs, K. Dale, John Deaver II, Mildred Stephens, Robert Duncan, F. A. Inch, Henry Hays, C. L. Smith, F. Jones, Lynn McKown, Emil Schattel and hostess, Mrs. Reeves.

Mrs. David Douthit Flies To Join Husband

Mrs. David Douthit and daughter, Stacy, flew from Amarillo to Germany the first of the month to join their husband and father, Mr. Douthit, who is serving there with the U. S. Army.

Mrs. Bob Douthit, mother of David, said they had received letters which stated that Mrs. Douthit and Stacy made the trip fine, and were enjoying the beautiful scenery in Germany.

Shurfine TURNS YOU ON **YOUNG MOTHER HUBBARD SALE** **SPECIAL Grapefruit 5 LB. BAG 39c**

If you have not received a copy of our 8 page color ad with valuable coupons inclosed we have one for you at our store.

Klondike Gold MELMAC DINNERWARE
TODAYS MOST POPULAR COLOR!

- * DISHWASHER SAFE
- * GUARANTEED BREAK RESISTANT
- * 1/2 HEAVIER & MORE DURABLE
- * NEW COLOR FASHION IN HEAVY DUTY GOLDEN MELMAC.
- * SMART NEW DECORATOR FLUTED PATTERN IS RIGHT FOR EVERY OCCASION.

39c EACH PIECE With \$5 Purchase

START YOUR "KLONDIKE GOLD" SET TODAY!

FLOUR 5 Lb. Bag	39c	Shurfine SPECIALS
SHURFINE COFFEE Pound	79c	CUT Green Beans 6-1.00
ENERGY, GIANT BOX DETERGENT	49c	SPINACH 6-1.00
CANNED HAM 3 POUNDS	2.49	CHICKEN Noodle Soup 6-1.00
CLUB STEAK POUND	79c	FROZEN Orange Juice 6-1.00
PORK SPARE RIBS POUND	59c	FRUIT COCKTAIL 4-1.00
BEEF RIBS POUND	33c	VIENNAS 4-1.00
FRYERS POUND	29c	R.S.P. CHERRIES 4-1.00
BACON TALL KORN, 2 LBS.	99c	20 Oz. CATSUP 3-1.00
POTATOES WHITE, 10 LB. BAG	39c	
SHURFRESH BISCUITS	13 for 1.00	

MANY ITEMS NOT LISTED ON SALE!

Davis & Scott Super Mkt **AFFILIATED**

CORNER 12th & NOEL WE RESERVE THE RIGHT TO LIMIT QUANTITIES PHONE 259-2052 DOUBLE STAMPS EVERY WED.

Turf Magic Crabgrass Control

CLOBBER CRABGRASS AND 26 OTHER TOUGH WEEDS. GUARANTEED 95-100% EFFECTIVE.

APPLY NOW!
In addition to hairy crabgrass and smooth crabgrass, you will get control on 25 other annual weeds including chickweed, green and yellow foxtail, lambsquarters, purslane, pigweed and spurge if Turf Magic Crabgrass Control is applied before these weeds germinate.

One application before germination gives full season control.

Contains no poisonous arsenics
40 Lb. Bag Covers 2,000 Sq. Ft. **\$4.95**

Thompson Bros. Co.

West Side Church of Christ Estelline
 10:30 a. m. — Morning Worship
 7:00 p. m. — Evening Worship

Baptist Church Lesley
 10:00 a. m. — Sunday School
 11:00 a. m. — Morning Worship
 6:30 p. m. — Training Union
 7:30 p. m. — Evening Worship
 Wed., 7 p. m. — Mid-Week Service

Jehovah's Witnesses Memphis
 Sun. 10 a. m. — Bible Lecture
 Sun. 11 a. m. — Watchtower Study
 Tues. 8 p. m. — Bible Study
 Fri. 7:30 p. m. — Ministry School
 Fri. 8:30 p. m. — Service Meeting
 Presiding Minister:
 Robert Mikesell

Assembly of God Church Memphis
 9:45 a. m. — Sunday School
 11:00 a. m. — Worship Service
 6:00 p. m. — Christ Ambassadors
 7:00 p. m. — Evening Service
 Wed., 7:30 p. m. — Mid-Week Ser.
 V. C. Sparks, minister

Assembly of God Estelline
 Rev. E. G. Johnson, pastor

Church of Christ Memphis
 9:45 a. m. — Bible Study
 10:45 a. m. — Morning Worship Ser.
 6:00 p. m. — Evening Worship
 Wed., 7:30 p. m. — Bible Study
 Thurs. 9 a. m. — Ladies Bible Study
 Ed Orr, minister

Baptist Church Newlin
 10:00 a. m. — Sunday School
 11:00 a. m. — Morning Worship
 8:00 p. m. — Evening Worship
 L. J. Crawford, minister

Church of Christ Lakeview
 10:00 a. m. — Bible Study
 11:00 a. m. — Morning Worship Ser.
 6:00 p. m. — Evening Worship Ser.
 Wed. 7:30 p. m. — Bible Study
 Kenneth Rhodes, minister

East Side Church of Christ Estelline
 10:00 a. m. — Bible Study
 11:00 a. m. — Morning Worship Ser.
 6:00 p. m. — Evening Worship
 Wed., 6 p. m. — Bible Study
 Lynn Wolf

Baptist Church Lakeview
 10:00 a. m. — Sunday School
 11:00 a. m. — Morning Worship
 5:00 p. m. — Training Union
 6:00 p. m. — Evening Worship
 Wed., 7 p. m. — Mid-Week Service
 Rev. Roy D. Walden

Baptist Church Estelline
 10:00 a. m. — Sunday School
 11:00 a. m. — Morning Worship Ser.
 6:30 p. m. — Training Union
 7:30 p. m. — Evening Worship Ser.
 Mon., 8:45 p. m. — WMU
 Wed., 7:00 p. m. — Prayer Meeting
 Rev. E. E. Pitts

Baptist Church Brice
 10:00 a. m. — Sunday School
 11:00 a. m. — Morning Worship
 7:00 p. m. — Training Union
 8:00 p. m. — Evening Worship
 Wed., 7 p. m. — Mid-Week Service
 Rev. Johnny Hoggatt

Of Truth

"This people honor me with their lips, but their heart is far from me." —Isaiah 29-13



In all aspects of living, in the world of business, in relations with fellow men, some people rely too heavily on lip service. These individuals forget that we are judged far more by what we do, and what we are, than we are for what we say.

The "habit" of going to church each Sunday makes one look like a Christian and a believer. Yet, it is still weighed against the actions and the activities of the other six days of the week.

We cannot properly honor God with mere words. We honor God when we live according to the commandments—when we live a life of truth.

Read your BIBLE daily
and
GO TO CHURCH
SUNDAY

First Baptist Church Turkey
 9:45 a. m. — Sunday School
 10:45 a. m. — Morning Worship
 6:00 p. m. — Training Union
 7:00 p. m. — Evening Worship
 Wed., 7:30 p. m. — Prayer Service

Travis Baptist Church Memphis
 9:45 a. m. — Sunday School
 11:00 a. m. — Morning Worship
 6:30 p. m. — Training Union
 7:30 p. m. — Evening Worship
 Wed., 7 p. m. — Teachers Meeting
 Wed. 7:30 p. m. — Mid-Week Service
 James Henry, pastor

Church of God Memphis
 10:00 a. m. — Sunday School
 11:00 a. m. — Morning Worship
 7:00 p. m. — Evening Worship
 E. R. Mitchell, pastor

First Baptist Church Memphis
 9:45 a. m. — Sunday School
 11:00 a. m. — Morning Worship
 6:00 p. m. — Training Union
 7:00 p. m. — Evening Worship
 Wed., 7:30 p. m. — Mid-Week Service
 C. H. Murphy, Minister

Methodist Church Lakeview
 10:00 a. m. — Sunday School
 10:55 a. m. — Morning Worship
 6:00 p. m. — Jr. High
 6:00 p. m. — Evening Worship
 6:00 p. m. — Jr. & Prim. Fellowship
 Wed., 7:30 p. m. — Meeting
 missions and Board
 E. H. Martin, pastor

Presbyterian Church Memphis
 11:00 a. m. — Morning Worship
 7:30 p. m. — Tues. — Study
 7:30 p. m. — 2nd & 4th
 Wed. — Mizpah Guild

St. Mary's Church Clarendon
 7:30 a. m. — Sunday School
 8:00 a. m. — Mass
 10:30 a. m. — Sunday Mass
 Rev. Ladislaus Wolko, S.T.D.
 Ph.M.

United Pentecostal Church Memphis
 11:00 a. m. — Morning Worship
 10:00 a. m. — Sunday School
 7:45 p. m. — Sunday Service
 7:45 p. m. — Thursday Service
 N. J. Pope, Minister

Methodist Church Estelline
 10:00 a. m. — Sunday School
 11:00 a. m. — Morning Worship
 6:00 p. m. — Training Union
 7:00 p. m. — Evening Worship
 C. R. Smelser, pastor

First United Methodist Church Memphis
 9:45 a. m. — Sunday School
 11:00 a. m. — Morning Worship
 6:00 p. m. — Training Union
 7:00 p. m. — Evening Worship
 Tommy E. Nelson, pastor

First Christian Church Memphis
 9:45 a. m. — Sunday School
 10:50 a. m. — Morning Worship
 6:00 p. m. — Youth Fellowship
 7:00 p. m. — Evening Worship
 Wed., 7:30 p. m. — Mid-Week Service
 Tom Posey, minister

These Memphis Business Firms Make This Page Possible in the Interest of a Christian Community . . .With the Hope That More People Will Go To Church Regularly

- | | | | |
|--|--|---|----------------------------------|
| Ferrel's
Memphis Tire and Supply | SIMS Dept. Store
Les Sims | O. R. "Doc" Saye
Mobil Products Consignee | Campbell Insurance Agency |
| Hugh's Battery and Electric | Kinard-Gailey Agency | Fowler's Drug | Cablecom-General, Inc. |
| Dunbar and Dunbar | Clent's Barber Shop | Ritchie Florist | D - Ann's Shoppe |
| Brown Auto Store | Snider Insurance Agency | Caprock Translator System | Old Fashion Freeze |
| Bruce Bros. Mobil | Shankle's Furniture | Lemons Furniture Company | Selby Shoe Shop |
| Foxhall Motor Company | Dr. Jack L. Rose | Memphis Lumber Company | Hall County Farm Supply |
| Branigan Jewelry | Smith's Auto Store | Lockhart Pharmacy | Phillips Machine Shop |
| Williams Oil & Gas Co. | E. E. Cudd Oil Company | Simpson Burger Hut | Ward Motor Company |
| Memphis Compress Company | Patrick Chemical Company | Cafe 287 | The Lady Fair |
| First State Bank | Hall County Electric Co-Op., Inc. | First National Bank | |
| | | Spicer Funeral Home | |

Vehicles Used Recreation Overloaded

WASHINGTON, D. C.—Near-fifth of the recreational traveling on the highways is dangerously overloaded, says the Tire Industry Safety Council.

The council bases its estimate on a study recently conducted by the Wisconsin Department of Transportation which found that 20 percent of the vehicles it inspected were carrying loads which exceeded the tires' maximum load capacity.

The council says the figure may be higher if the tires' air pressure had also been checked. "Because of time limitations," says R. Ornsby, chairman of the Wisconsin research team, "the Wisconsin researchers were not able to take air pressure into account; only gross weight."

Ornsby says that motorists who might be unaware of the serious problems of overloading and underinflating tires should take the following advice:

1. Never overinflate beyond recommended limits in an attempt to compensate for overloads. Instead of making matters worse, lighten the load of the vehicle. No one ever needs everything he packs.
2. Never drive on underinflated tires.

As owners are beginning to ready their vehicles for the warm months ahead, the Council recommends that now is time to carefully inspect the tires for excessive or abnormal wear, fabric breaks, cuts or other damage. Removing nails, small stones or bits of glass embedded in the tread will help prevent flats or costly tire damage which can lead to failure. Tires should be replaced when the tread is worn to 1-16th of an inch or less.

Ornsby says that excessive heat is a tire's worst enemy. "Its most common causes are underinflating, overloading, excessive speed and under conditions of overloading, will produce exaggerated problems and more control of a crack-up than a structural failure occurring under normal conditions of loading."

Ornsby says that excessive heat is a tire's worst enemy. "Its most common causes are underinflating, overloading, excessive speed and under conditions of overloading, will produce exaggerated problems and more control of a crack-up than a structural failure occurring under normal conditions of loading."

Small Motor Co.
We Replace
TO GLASS
while you wait!
while you do your shopping.
every job guaranteed

DON'T MISS THIS

True Value
HARDWARE STORES

BARGAIN

OF THE MONTH

INDOOR AND OUTDOOR

REG. 5.95
2.88

Taylor

DOUBLE THERMOMETER

Thompson Bros. Co



MISS PEACH says:



MELL LAZARUS

TV GLEE



CRADLE ROLL CALL

Mr. and Mrs. John Latham of Clarendon are the parents of a daughter born Feb. 16. She weighed 6 pounds and has been named Kelly Ann.

Mr. and Mrs. Cagle D. Davis of Lakeview announce the arrival of a daughter on Feb. 20. Weighing 5 pounds, 10 ounces, she has been named Jennifer Ann.

Mr. and Mrs. Donald Max Wolf of Clarendon announce the birth of a son, Bill Max, on Feb. 21. He weighed 6 pounds, 3 ounces.

visited in Sherman with Mr. and Mrs. W. W. Dunn.

Armadillo, once found only in the Mexican border region, have now migrated as far north and east as Oklahoma and Mississippi.

Hospital News

Patients
Patricia Floyd, Cleo Nichols, Orvil (Doc) Bell, Florence Floyd, Roland Salmon, Ike H. Rains, Mildred Clendennen, Nannie Newsome, Ora McMurry, Maudie Williams, James Lee Welch, Milton E. Tyler, Joshua L. Richburg, Hilario Ornelas, Lou E. Fraidfoot, Lena Smith, Sybil Gurley, Elvie Mae Davis, Willie Black, Edith James, Ruth Adams, Theoma Foster, Coy Dunbar, Tammy L. Mical, Charlie W. Wines, Bengy Godfrey, Roy Guthrie, Lee E. Seymour, Newton Evans, Ruby Compton, Susan McQueen, Zelpha Cooper, Dale Hill, George H. Parks, Eunice Buntin, Cella Koen, Lillie Elsie Jones, Kathleen Jefferies.

Dismissed
Clara Matthews, Selma Kennedy, Heckman, Julia Day, Julia Ellerd, Brenda Wolf and baby boy, Edith Bain, Ellen Austin, Barbara Coleman, Irene Bradley, Nancy Morris, Agnes Bailey, Minnie Gerda, Nellie Leary, Sonja Latham and baby girl, Inez Stephens, Elzie Kennedy, Myrtle Tate, Charlie Richerson, Jessie Hundley, Mary Bownds, Angela White, A. W. Taylor, Jim McMurry, Laetrea Leeper, Edith James, Frank Spry, Vivian Thomas, Dora Castro, John Burnett, Shirley Foster, Grace Parker, Nellie Devorce.

Zippers can never take the place of buttons—in the collection plate.

LOCALS

Mr. and Mrs. H. B. Bryan and Mrs. M. C. Ball of Lubbock spent the weekend visiting with Mr. and Mrs. Ike Bryan, Mrs. Carrie Bell King and Cora Lee.

Mr. and Mrs. Hubert Jones returned home Monday after spending the weekend in El Paso with their daughter and family, Lieut. and Mrs. Larry Helm, and son, Matthew.

Mr. and Mrs. Elmout Branigan left Monday for Dallas where they will attend market and while gone will also visit in Granbury with their son, Michael Branigan and family.

Mr. and Mrs. L. A. Stilwell visited in Dimmitt Saturday with their daughter and family, Mr. and Mrs. Bob Lindsey and Kim and Jeff.

her daughter, Mrs. R. T. Selle, and family and her son, J. W. McQueen, Jr., and family.

Mr. and Mrs. L. A. Stilwell visited in Dimmitt Saturday with their daughter and family, Mr. and Mrs. Bob Lindsey and Kim and Jeff.

Mr. and Mrs. L. A. Stilwell visited in Dimmitt Saturday with their daughter and family, Mr. and Mrs. Bob Lindsey and Kim and Jeff.

Mr. and Mrs. L. A. Stilwell visited in Dimmitt Saturday with their daughter and family, Mr. and Mrs. Bob Lindsey and Kim and Jeff.

Mr. and Mrs. L. A. Stilwell visited in Dimmitt Saturday with their daughter and family, Mr. and Mrs. Bob Lindsey and Kim and Jeff.

Mr. and Mrs. L. A. Stilwell visited in Dimmitt Saturday with their daughter and family, Mr. and Mrs. Bob Lindsey and Kim and Jeff.

Mr. and Mrs. L. A. Stilwell visited in Dimmitt Saturday with their daughter and family, Mr. and Mrs. Bob Lindsey and Kim and Jeff.

Mr. and Mrs. L. A. Stilwell visited in Dimmitt Saturday with their daughter and family, Mr. and Mrs. Bob Lindsey and Kim and Jeff.

Mr. and Mrs. L. A. Stilwell visited in Dimmitt Saturday with their daughter and family, Mr. and Mrs. Bob Lindsey and Kim and Jeff.

Mr. and Mrs. L. A. Stilwell visited in Dimmitt Saturday with their daughter and family, Mr. and Mrs. Bob Lindsey and Kim and Jeff.

Mr. and Mrs. L. A. Stilwell visited in Dimmitt Saturday with their daughter and family, Mr. and Mrs. Bob Lindsey and Kim and Jeff.

Mr. and Mrs. L. A. Stilwell visited in Dimmitt Saturday with their daughter and family, Mr. and Mrs. Bob Lindsey and Kim and Jeff.

Mr. and Mrs. L. A. Stilwell visited in Dimmitt Saturday with their daughter and family, Mr. and Mrs. Bob Lindsey and Kim and Jeff.

Mr. and Mrs. L. A. Stilwell visited in Dimmitt Saturday with their daughter and family, Mr. and Mrs. Bob Lindsey and Kim and Jeff.

Mr. and Mrs. L. A. Stilwell visited in Dimmitt Saturday with their daughter and family, Mr. and Mrs. Bob Lindsey and Kim and Jeff.

Mr. and Mrs. L. A. Stilwell visited in Dimmitt Saturday with their daughter and family, Mr. and Mrs. Bob Lindsey and Kim and Jeff.

Mr. and Mrs. L. A. Stilwell visited in Dimmitt Saturday with their daughter and family, Mr. and Mrs. Bob Lindsey and Kim and Jeff.

Mr. and Mrs. L. A. Stilwell visited in Dimmitt Saturday with their daughter and family, Mr. and Mrs. Bob Lindsey and Kim and Jeff.

Mr. and Mrs. L. A. Stilwell visited in Dimmitt Saturday with their daughter and family, Mr. and Mrs. Bob Lindsey and Kim and Jeff.

Mr. and Mrs. L. A. Stilwell visited in Dimmitt Saturday with their daughter and family, Mr. and Mrs. Bob Lindsey and Kim and Jeff.

Mr. and Mrs. L. A. Stilwell visited in Dimmitt Saturday with their daughter and family, Mr. and Mrs. Bob Lindsey and Kim and Jeff.

Mr. and Mrs. L. A. Stilwell visited in Dimmitt Saturday with their daughter and family, Mr. and Mrs. Bob Lindsey and Kim and Jeff.

Mr. and Mrs. L. A. Stilwell visited in Dimmitt Saturday with their daughter and family, Mr. and Mrs. Bob Lindsey and Kim and Jeff.

Mr. and Mrs. L. A. Stilwell visited in Dimmitt Saturday with their daughter and family, Mr. and Mrs. Bob Lindsey and Kim and Jeff.

Mr. and Mrs. L. A. Stilwell visited in Dimmitt Saturday with their daughter and family, Mr. and Mrs. Bob Lindsey and Kim and Jeff.

Mr. and Mrs. L. A. Stilwell visited in Dimmitt Saturday with their daughter and family, Mr. and Mrs. Bob Lindsey and Kim and Jeff.

Mr. and Mrs. L. A. Stilwell visited in Dimmitt Saturday with their daughter and family, Mr. and Mrs. Bob Lindsey and Kim and Jeff.

Mr. and Mrs. L. A. Stilwell visited in Dimmitt Saturday with their daughter and family, Mr. and Mrs. Bob Lindsey and Kim and Jeff.

Mr. and Mrs. L. A. Stilwell visited in Dimmitt Saturday with their daughter and family, Mr. and Mrs. Bob Lindsey and Kim and Jeff.

Mr. and Mrs. L. A. Stilwell visited in Dimmitt Saturday with their daughter and family, Mr. and Mrs. Bob Lindsey and Kim and Jeff.

Mr. and Mrs. L. A. Stilwell visited in Dimmitt Saturday with their daughter and family, Mr. and Mrs. Bob Lindsey and Kim and Jeff.

Mr. and Mrs. L. A. Stilwell visited in Dimmitt Saturday with their daughter and family, Mr. and Mrs. Bob Lindsey and Kim and Jeff.

Mr. and Mrs. L. A. Stilwell visited in Dimmitt Saturday with their daughter and family, Mr. and Mrs. Bob Lindsey and Kim and Jeff.

Mr. and Mrs. L. A. Stilwell visited in Dimmitt Saturday with their daughter and family, Mr. and Mrs. Bob Lindsey and Kim and Jeff.

Mr. and Mrs. L. A. Stilwell visited in Dimmitt Saturday with their daughter and family, Mr. and Mrs. Bob Lindsey and Kim and Jeff.

Mr. and Mrs. L. A. Stilwell visited in Dimmitt Saturday with their daughter and family, Mr. and Mrs. Bob Lindsey and Kim and Jeff.

Mr. and Mrs. L. A. Stilwell visited in Dimmitt Saturday with their daughter and family, Mr. and Mrs. Bob Lindsey and Kim and Jeff.

Mr. and Mrs. L. A. Stilwell visited in Dimmitt Saturday with their daughter and family, Mr. and Mrs. Bob Lindsey and Kim and Jeff.

Mr. and Mrs. L. A. Stilwell visited in Dimmitt Saturday with their daughter and family, Mr. and Mrs. Bob Lindsey and Kim and Jeff.

Mr. and Mrs. L. A. Stilwell visited in Dimmitt Saturday with their daughter and family, Mr. and Mrs. Bob Lindsey and Kim and Jeff.

Mr. and Mrs. L. A. Stilwell visited in Dimmitt Saturday with their daughter and family, Mr. and Mrs. Bob Lindsey and Kim and Jeff.

Mr. and Mrs. L. A. Stilwell visited in Dimmitt Saturday with their daughter and family, Mr. and Mrs. Bob Lindsey and Kim and Jeff.

Mr. and Mrs. L. A. Stilwell visited in Dimmitt Saturday with their daughter and family, Mr. and Mrs. Bob Lindsey and Kim and Jeff.

Mr. and Mrs. L. A. Stilwell visited in Dimmitt Saturday with their daughter and family, Mr. and Mrs. Bob Lindsey and Kim and Jeff.

YOU CAN ALWAYS COUNT ON P.S. BEEF

Corn King
BACON 1.09
2 Lb. Pkg.



Here's Why P.S. Beef is Better Beef!

P.S. Means "Personally Selected" For You! "P.S." Beef is the most flavorful and tender beef you can buy. It's the "choice of the choice"... Properly aged and personally selected by our skilled meat specialists. (Only one out of ten sides of U.S.D.A. Choice Beef is good enough to be labeled "Personally Selected.")

SERVE TENDER-JUICY ROAST...FOR A GREAT FAMILY MEAL...EVERYTIME!

Beef Roast
USDA CHOICE PERSONALLY SELECTED!
BLADE CUT CHUCK CENTER CUT CHUCK



53¢ | **65¢**
Lb. | Lb.

FAMILY STEAK
USDA Choice P.S. Beef With True Value Trim
Lb. **65¢**

SWISS STEAK
USDA Choice P.S. Beef With True Value Trim
Lb. **89¢**

W. S.
Shortening 69¢
3 Lb. Can

WHITE
Potatoes 39¢
10 Lb. Bag

Texas Ruby Red
Grapefruit 35c
5 Pound Bag

JELL-O 10c
3 Oz. Pkg.

Pecan Valley
Pork & Beans 10c
300 Size Cans

WIN FREE CASH
\$50.00

BIG JACKPOT DAY

Register just once. Get your card punched EACH week and YOU can WIN WONDERFUL CASH DOLLARS. Nothing to buy... You don't have to be present to win.

LAST WEEK'S WINNER: Winnie D. Franks Card Not Punched

GET YOUR JACKPOT DAY CARD PUNCHED... FREE... THIS WEEK...

Giant Box
CHEER 73c

W. S.
CORN 5 303 Size 1.00

W. S. Early June
PEAS 5 303 Size 1.00

W. S.
Spinach 6 303 Size 1.00

WHITE SWAN MILK 6 Tall Cans **1.00**

BORDEN'S ICE CREAM 1/2 GAL. S.J. CRT. **69c**

Vallance Food

THIS COUPON IS WORTH 30c

When you buy an 8 Oz. Jar of Maryland Club Freeze Dried Coffee Nuggets

1.65 with coupon
Cash value 1/20c. Limit one per customer

Exp. March 6th



We Reserve The Right To Limit Quantities—Double S&H Green Stamps Wed. With \$2.50 Purchase Or Over

Vallance Food Store

Sen. Hightower Will Serve As Governor April 3

AUSTIN.—State Senator Jack Hightower of Vernon, who was reared in Memphis, will serve as Governor of Texas for a day on Saturday, April 3, 1971.

Under provisions of the constitution, the President Pro Tempore of the Senate becomes Governor when the Governor and Lieutenant Governor leave the state. The honor is traditionally reserved for the President Pro Tempore because, under constitutional law, he is third in line for the Governorship.

It is customary for the President Pro Tempore to be sworn in early in the morning of the designated day to carry out gubernatorial duties as he deems suitable and to greet his constituents and other friends at designated times throughout the day.

All persons of the 30th Senatorial District are invited to the day's festivities which culminate in a dinner honoring Jack Hightower at the Austin Civic Auditorium that evening.

Mr. and Mrs. John Fowler returned home Monday after spending the past weekend in Dallas where they attended the Gift Market.

It seems that most fishermen catch fish by the tale.

HALF-PAST TEEN



Young Children Have High Rate From Poisoning

AUSTIN.—Young children have the highest rate of accidental poisoning; deliberate self-poisoning is more common among married women than any other group; the rate of drug poisoning is increasing; and tranquilizers outrank aspirin as the most common drug involved.

These are among the findings in a comprehensive study of accidental and self-induced poisonings in Galveston County, which is reported in the February issue of "Texas Medicine," published by the Texas Medical Association.

The annual poisoning rate for Galveston County increased gradually from 1963 through 1967, then there was a sharp increase from 160 to 180 per 100,000 population in 1967 and 1968, respectively. The rate of drug poisonings doubled between 1963 and 1968, whereas the rate for the next three leading agents (clean-

ing and polishing agents, pesticides, and gases and vapors) remained about the same.

Author Don W. Micks, Sc.D., noted that in this study tranquilizers were involved in more cases than aspirin; however, recent data from the National Clearinghouse for Poison Control Centers show aspirin in the top position. Although several factors could contribute to the difference, Dr. Micks pointed out that the intensive study in Galveston County led to discovery of many cases which probably would not be reported to a poison center. For example, in 1968 the poison control center for Galveston reported 25 per cent fewer cases than were found in Dr. Micks' study.

Two-year-olds accounted for more than twice as many cases as the next leading age group, 20-29 years; one-year-olds ran a close third. The prize for using enough common sense to avoid getting poisoned went to the bottom-ranked five-year-olds, and the 6-12-year olds were next lowest.

Accidental poisoning at home was the largest category of poisonings (60 per cent of cases). Most of these accidents happened because adults failed to keep medicines and other poisonous substances out of reach of young children. Over age 50, the usual cause was drug overdose, often resulting from a combination of multiple medications and forgetfulness.

Self-induced poisoning caused 22 per cent of the cases and was most common in the 20-29-year age group, although frequent in the 30-39 and 13-19-year groups as well. In all age groups, from two to four times as many females as males were involved. Self-poisoning was about six times as common in married women as in married men or divorced women, and three times as common in married women as in single women.

"The magnitude of the poisoning problem, as reflected in these and other findings, points out the desirability of a statewide report-

Specialist Gives Pruning Advice For Ornamentals

COLLEGE STATION.—Now is the time to inspect woody ornamentals for needed pruning, but do not prune just because it is that time of the year or because you need the exercise.

"If you cannot justify the removal of a limb or branch, you better put up your equipment and go spade the garden for exercise," says Everett Janne, Extension landscape horticulturist at Texas A&M University.

Some of the reasons for pruning include removing dead or the winter-killed growth or balancing the top with the root system when setting out new plants. Diseased or insect-injured wood, as well as storm or accident-damaged limbs, should be removed as soon as possible.

Older shrubs can be rejuvenated by pruning the older branches. Cutting can develop a desired shape or size; and sometimes can be used to produce better flowers and fruit.

Janne cautions against severe pruning and says that it is better to prune lightly and more often to prevent sunscald to the sensitive inner branches. He also says not to leave stubs that invite insects and disease. All wounds or cuts over three-quarters of an inch in diameter should be painted with a wound dressing which can be obtained at any nursery or garden center.

Janne says that plants which bloom in early spring with the appearance of new leaves should be pruned after they flower. Those that bloom later in the season may be pruned during dormancy.

More detailed information concerning pruning can be obtained from the publication, "Modern Pruning Methods," which may be obtained at the county agent's office.

Mr. and Mrs. Lane To Attend Meeting In Wichita Falls

Mr. and Mrs. Steve Lane will be among the 800 delegates attending a three-day convention in Wichita Falls this weekend along with several from this area who will assemble in the Hirschi High School Auditorium.

Mr. Lane described the session as Bible oriented and sponsored by the Watchtower Society which arranges three conventions every year.

"These are a valuable aid in helping parents and their children to solve the problems they face. Being a good parent is a big job, especially in these days, Lane said.

Conditions have changed. While the old-fashioned girl hesitated to hold a man's hand, the modern girl is afraid to let go.

ing system which would keep abreast of trends and provide the basis for poisoning prevention through health education," Dr. Micks concluded.

Dr. Micks is chairman of the Department of Preventive Medicine and Community Health at the University of Texas Medical Branch, Galveston.

PUNCH LINE OF THE WEEK



Memphis Y Homemakers Meet Mon.

The Memphis Y Homemakers will hold their regular meeting Monday at 7:30 p. m. in the department at the Joyce Todd, reported by Mrs. Robert A. subject will be on "Yarn Hoopoes for the be Fleta Adams and A door prize will be Fowlers Drug. All members attend. Baby-sitting ed by the club in the list Church nursery.

GRAIN FEED

Hind Quarter Fore Quarter Half Beef

These prices processing

We sell Country Ham and

Custom Slaughter Monday through of beef and

HOMEN MEAT

Clarendon, Phone 874-2134

Spring

PARADE OF FABRICS

JUST ARRIVED

250 Bolts of

Spring Knits

Plain . . . Stripes . . . Prints . . . Brocades . . . in high Fashion colors

COTTONS and BLENDS

Unusual designs . . . for the mod Miss . . . Tiny Tot . . . or their Mothers.

Sparkling Bright Colors

Complete line of sewing accessories and trims.

FABRIC & READY TO WEAR

Wellington, Texas

1/2 Gallon Borden's BUTTERMILK .. 55c

PETER PAN Peanut Butter, 12 Oz. . 40c

IVORY LIQUID, 22 Oz. 55c

TEA BAGS, 48 for 69c

ALL, 49 Oz. 69c

CHORE GIRL 10c

ALL FLAVORS SOUP, 2 for 39c

OPENING HOURS: Week Days 7 a. m. to 10 p. m. — Sunday 8 a. m. to 9 p. m.

PRODUCE SWEET POTATOES, Lb. 12c

YELLOW ONIONS, Lb. 7c

TURNIPS, Lb. 15c

CELERY, STALK 18c

CARROTS, Bag 10c

STORE-WIDE SPECIALS

VAN CAMP Vienna Sausage, 4 for 1.00

SOFT MIX COOKIES, 3 for 1.00

DELSEY, 2 Rolls 31c

DEL MONTE 14 OZ. CATSUP, 3 for 89c

SHURFRESH BISCUITS, 10 Cans ... 1.00

SHURFRESH OLEO, 2 Lbs. 45c

MARKET GRADE A FRYERS, Lb. 29c

CENTER CUT PORK CHOPS, Lb. 59c

SMOKE RITE BACON, 2 Lbs. 89c

CLUB STEAK, Lb. 79c

LEAN, MEATY BEEF RIBS, Lb. 39c

Double Buccaneer Stamps Wednesdays—2.50 Purchase or Over

B & V GROCERY & MARKET

JACKIE BLUM

DON VAN AUDALL



You get continuous service.

Most companies are financially strong and reliable. Most have a reputation of paying claims fairly. But a company such as ours is always by your side to help you. We take the worries away from you.

For additional information, call us!

Kimard-Sailey AGENCY
INSURANCE • LOANS
BONDS • REAL ESTATE
HALL COUNTY BANK BLDG.
PHONE 350 MEMPHIS, TEXAS



So useful and convenient

Use it in any room!

Portable Electric Room Heater

- PUT IT ANYWHERE
- HEATS INSTANTLY
- COMPLETELY PORTABLE
- LOW COST OPERATION

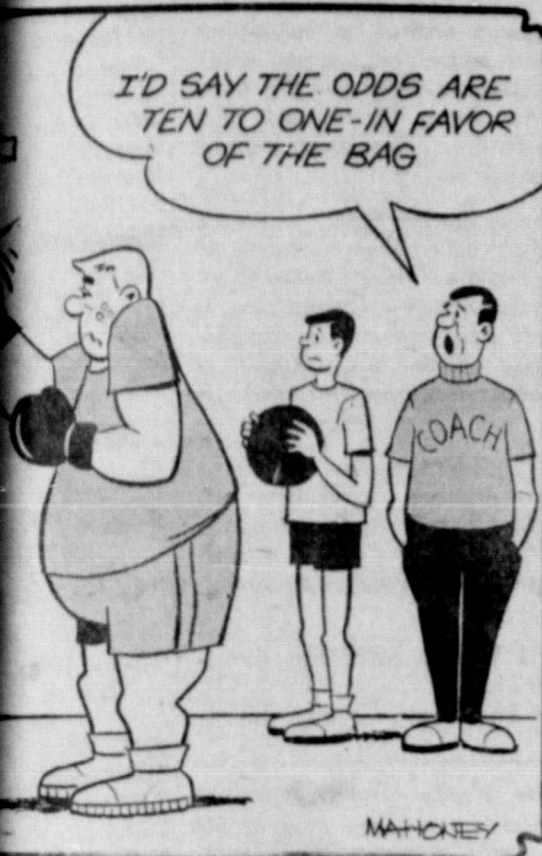
WARMS COLD SPOTS—OR A COMPLETE ROOM
Give yourself another comfortable room in winter—buy a portable electric room heater (Prices begin at less than \$20)



See your electric appliance dealer now

West Texas Utilities Company

F-PAST TEEN



dress spent Saturday with their Grandmother Freeze.

W. L. Curtis of El Paso is here to spend a few days with his mother, Mrs. Nell Curtis, and his sister, Sal Couch.

Mr. and Mrs. Clinton Richburg of Arkansas are here visiting relatives and friends. His father, Lee Richburg, is a patient in the Hall County Hospital.

Chuck Hood, son of Mrs. and Mrs. Harlen Hood, will be a member of the WT bowling team traveling to Southwest Texas State University at San Marcus, this weekend.

Hall Countians Are Graduates Of NTS University

DENTON—Mrs. Lynnette McGhee and Mrs. Cathy Aguilar of Memphis were among the 822 candidates receiving degrees at North Texas State University this winter.

Because of a change in the academic calendar which would have placed commencement on Christmas Eve, NTSU officials voted last fall to forego formal graduation exercises for the winter class, the public information office explained.

However, Dec. 22 was listed as the official graduation date for the 659 bachelor's, 143 master's and 20 doctor's degree recipients.

All students who are listed as winter graduates will be invited to join the spring graduating class in formal commencement exercises May 18 at the university.

Mrs. McGhee, daughter of Mr. and Mrs. O. B. Hoover, Route 2, received the bachelor of music degree with a major in music education.

Mrs. Aguilar, daughter of Mr. and Mrs. Kenneth E. Dale, 1103 Grundy, received the bachelor of science in education degree, cum laude, with a major in secondary education.

CARD OF THANKS

I would like to express my heartfelt thanks and appreciation to my friends for the lovely flowers and cards I received, and for the prayers in my behalf while I was a patient recently in High Plains Hospital in Amarillo. They were sincerely appreciated.

Mrs. G. J. Hinders

CARD OF THANKS

From the depth of my heart I wish to thank Dr. Goodall and the entire hospital staff for the good care and attention given to me while I was a patient there.

I especially wish to thank my pastor, wonderful neighbors, loved ones and friends for their prayers, visits, cards, flowers, gifts and telephone calls.

God bless each of you.

Mrs. W. F. McElreath

Driving with one arm around the girl friend is sure to end in a church ceremony—either a wedding or a funeral.

While we're ridding the country of radicalism, socialism, Bolshevism and Fascism, why not include rheumatism?

Advertised Food Specials Can Save Housewife Money

COLLEGE STATION—Do you take advantage of advertised food specials? If you do, you can definitely save money on your food budget. This question and answer was given recently by Gwendolyn Clyatt, Extension consumer marketing specialist at Texas A&M University.

A variety of beef and pork cuts at budget saving prices are available at the meat counter each week. Some features to expect are beef roasts, ground beef, T-bone, round or sirloin steaks.

"If it's pork you prefer, choose from ham, loin roasts or chops," she advises.

Fryers remain the number one bargain in the meat department, and Grade A large eggs continue to be the best egg value.

In the produce section, both grapefruit and oranges—two of the best sources of vitamin, C—are in abundant supply. A new crop of avocados is appearing; thus prices are somewhat lower than in recent weeks. Bananas

continue a good value, but quality and price may vary. Apples also remain a good buy; at this time of year, be sure to store them in the refrigerator. And for a special treat, some markets are featuring strawberries, the marketing specialist stated. Recent adverse weather conditions in many growing areas may cause higher prices and lower quality in some of the tender vegetables. However, good buys will be found on root vegetables: carrots, potatoes, sweet potatoes, radishes, rutabagas, and turnips. Dry yellow onions and green onions are also in plentiful supply. Other good vegetable choices include broccoli, celery and lettuce, Miss Clyatt reported.

The Lonely Heart



CARD OF THANKS

We want to express our sincere thanks to our many friends, the churches and citizens of surrounding communities for their help following the tragic fire which took our home. A special thanks to Mrs. J. A.

Stinnett who has been especially kind to us in so many ways.

May God bless each of you. Mr. and Mrs. Truman Mabry

One sure way to double money is to fold it and put it into your pocket.

Who else wants a simpler way to clobber crabgrass?

Turf Magic Crabgrass Control guaranteed 95%-100% effective



Crabgrass control is now much easier and more economical. Turf Magic Crabgrass Control makes it so. Dacthal in an excellent organic base, kills crabgrass seed before they can germinate. Simple! Users everywhere testify to its effectiveness. That's why the guarantee is so generous. Try it yourself and see.

Use it now
40 lb. bag \$4.95

THOMPSON BROS. CO.

LINE COMMUNITY NEWS

By HOPE HOOD and MRS. FRED NIVENS

Richardson and Mrs. Ruby visited in Amarillo over the weekend.

David Wayne family of New Mexico, were visiting in Amarillo over the weekend.

Mrs. Fred Nivens, Mrs. Paul Wright visited Lela Houston, who is in Turner Home in Childress.

They also visited Mary Jane in a patient in the Hospital.

Lions Club sponsored Tuesday night in

the cafeteria, honoring Mr. and Mrs. Joe Ballard.

Mr. and Mrs. J. H. Wright, Jr. of Lubbock visited his mother, Mrs. J. H. Wright, this week.

Mr. and Mrs. Carlos Cross and family visited in the Arch Bumpus home Saturday.

Mr. and Mrs. Toots Spradlin of Amarillo visited Mr. and Mrs. Arch Bumpus and Burl over the weekend.

Mr. and Mrs. Sechrist and children of Dallas visited her parents, Mr. and Mrs. Dude Merrell, over the weekend.

Mrs. Goundie of Wichita Falls visited Mr. and Mrs. Ross Freeze and baby this week.

Rene Proffitt of Lubbock was here visiting Wednesday.

The community was sad to hear of the death of Finis Curtis of Vernon. Rev. and Mrs. Smelser, Mr. and Mrs. Dick Delaney, Mr. and Mrs. Lonnie Richburg, Ada Jones and Tiney Nivens attended services Saturday. Pam and Christy Lang of Chil-

ELLIOTT

CO Dealer

and appreciates business! Boykin Drive

Car and Pickup Repair and Servicing

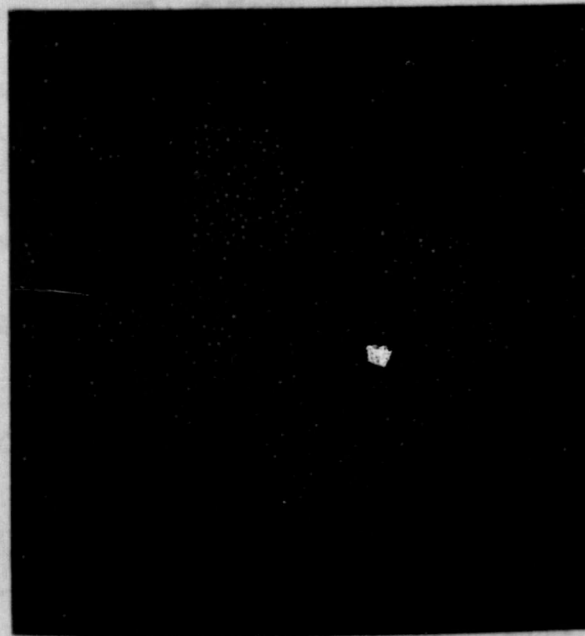
In our new location
10th 7th St. — Phone 259-3322

Open from 7:30 a. m. to 6 p. m.
and all day Saturday

B AUTOMOTIVE

ALAN AND BOBBY BOOTH

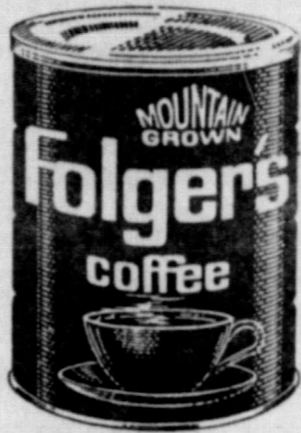
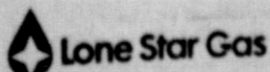
The stars still shine on Texas



In the beginning, the stars shined all over America. When something happened, the air slowly got dirtier and dirtier, the day came when you couldn't see the stars. In Pittsburgh, Los Angeles, New York, Detroit, Cleveland, the stars still shine on

Texas. Because Texas air is clean. And at Lone Star, we're doing our best to keep it clean. One thing we're doing is supplying the cleanest burning fuel known to man. Pure natural gas. And we've equipped 400 of our service trucks to run on liquefied petroleum gas. (This means 97% less pollution than if these same trucks were running on gasoline.)

And we're going into factories and plants and working with manufacturers to develop incineration systems that will drastically reduce industrial pollution. The stars still shine on Texas. Let's all work to keep the stars in the sky.



89¢ LB.

POTATOES



NO. 1 WHITE
10 Lb. Bag

59¢

FAMILY SCOTT

Tissue

4 ROLLS

39¢

AWAKE ORANGE

Drink

CAN

35¢

SUNSHINE VANILLA

Wafers

3 BOXES

\$1.00

KEMPELL

Cherries

2 CANS

49¢

BORDEN'S, Round Carton

Ice Cream

1/2 GALLON

69¢

W. P.

Detergent

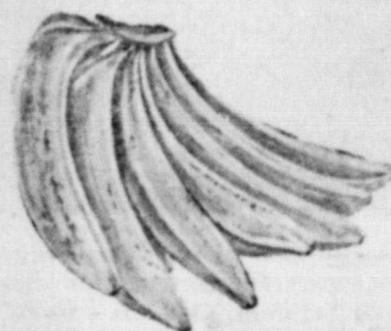
GIANT SIZE

49¢



3 LBS.

89¢



Bananas

10¢ POUND

IDAHOAN INSTANT

Potatoes

1 LB. BAG

35¢

WASHINGTON DELICIOUS

Apples

POUND

17¢

WRIGHT'S

Franks

12 OZ. PK.

49¢

SMOKE RITE

Bacon

2 LBS.

89¢

PORK

Chops

LB.

59¢

GRADE A WHOLE

Fryers

POUND

29¢

\$UPER \$AVE MARKETS



WE GIVE GOLD BOND STAMPS!

